

1 **Genomic surveillance of *Clostridioides difficile* transmission and virulence in a healthcare setting**

2 Erin P. Newcomer^{1,2*}, Skye R. S. Fishbein^{1,3,*}, Kailun Zhang^{1,3}, Tiffany Hink⁴, Kimberly A. Reske⁴,

3 Candice Cass⁴, Zainab H. Iqbal⁴, Emily L. Struttman⁴, Erik R. Dubberke^{4**}, Gautam Dantas^{1,2,3,5,6**}

4 ¹The Edison Family Center for Genome Sciences and Systems Biology, Washington University School of
5 Medicine, St. Louis, Missouri, USA.

6 ²Department of Biomedical Engineering, Washington University in St. Louis, St. Louis, Missouri, USA

7 ³Department of Pathology and Immunology, Division of Laboratory and Genomic Medicine, Washington
8 University School of Medicine, St. Louis, Missouri, USA.

9 ⁴Division of Infectious Diseases; Washington University School of Medicine, St. Louis, Missouri, USA

10 ⁵Department of Molecular Microbiology; Washington University School of Medicine, St. Louis, Missouri,
11 USA

12 ⁶Department of Pediatrics, Washington University School of Medicine, St. Louis, Missouri, USA

13 *These authors contributed equally to this work

14 **Corresponding authors: ERD: edubberk@wustl.edu; GD: dantas@wustl.edu

15 **Abstract**

16 *Clostridioides difficile* infection (CDI) is a major cause of healthcare-associated diarrhea, despite
17 the widespread implementation of contact precautions for patients with CDI. Here, we
18 investigate strain contamination in a hospital setting and genomic determinants of disease
19 outcomes. Across two wards over six months, we selectively cultured *C. difficile* from patients
20 (n=384) and their environments. Whole-genome sequencing (WGS) of 146 isolates revealed
21 that most *C. difficile* isolates were from clade 1 (131/146, 89.7%), while only one isolate of the
22 hypervirulent ST1 was recovered. Of culture-positive admissions (n=79), 19 (24%) of patients
23 were colonized with toxigenic *C. difficile* on admission to the hospital. We defined 25 strain
24 networks at ≤ 2 core gene SNPs; 2 of these networks contain strains from different patients.
25 Strain networks were temporally linked ($p < 0.0001$). To understand genomic correlates of
26 disease, we conducted WGS on an additional cohort of *C. difficile* (n=102 isolates) from the
27 same hospital and confirmed that clade 1 isolates are responsible for most CDI cases. We
28 found that while toxigenic *C. difficile* isolates are associated with the presence of *cdtR*,
29 nontoxigenic isolates have an increased abundance of prophages. Our pangenomic analysis of
30 clade 1 isolates suggests that while toxin genes (*tcdABER* and *cdtR*) were associated with CDI
31 symptoms, they are dispensable for patient colonization. These data indicate toxigenic and
32 nontoxigenic *C. difficile* contamination persists in a hospital setting and highlight further
33 investigation into how accessory genomic repertoires contribute to *C. difficile* colonization and
34 disease.

35 **Background**

36 *Clostridioides difficile* infection (CDI) is one of the most common healthcare-associated
37 infections (HAIs) in the US and is the leading cause of healthcare-associated infectious
38 diarrhea^{1,2}. Since the early 2000s, *C. difficile* research has focused largely on hypervirulent
39 strains, such as PCR ribotype 027^{1,3-6}, which were responsible for hospital-associated CDI
40 outbreaks. Strains of ribotype 027 were responsible for 51% and 84% of CDI cases in the US
41 and Canada in 2005, respectively^{1,4,5}. Since then, other circulating strains have emerged as the
42 prevalent strains causative of CDI, such as 078 and 014/020⁷⁻⁹. One report indicated that the
43 prevalence of PCR ribotype 027 decreased from 26.2% in 2012 to 16.9% in 2016⁹. As the
44 landscape of *C. difficile* epidemiology continues to evolve, we must update our understanding of
45 how various strains of this pathogen evolve, spread, and cause disease.

46 In addition to the changing prevalence of CDI-causing *C. difficile* strains, their transmission
47 dynamics also appear to be evolving. In the late 1980s, it became clear that patients with active
48 CDI shed spores onto their surroundings, leading to *C. difficile* transmission and future CDI
49 events in the healthcare setting¹. Because of this, patients with active CDI are placed on contact
50 precautions to prevent transmission to susceptible patients, which has been successful in
51 reducing rates of CDI^{2,10}. Nevertheless, while epidemiological estimates indicate that 20-42% of
52 infections may be connected to a previous infection, multiple genomic studies fail to associate a
53 CDI case to a previous case¹¹⁻¹³. This suggests other potential sources of disease development
54 in the hospital environment. Indeed, while asymptomatic carriers of *C. difficile* have not been a
55 significant focus of infection prevention efforts, studies have shown these carriers do shed
56 toxigenic *C. difficile* spores to their surroundings that could cause disease¹⁴. Though carriers
57 have not been consistently identified as major transmitters of *C. difficile* that causes CDI, recent
58 work has suggested that patients carrying *C. difficile* asymptotically may be at elevated risk
59 for development of CDI¹⁵. Correspondingly, it is critical to both confirm this finding in another
60 setting, and understand the genomic factors that may influence the transition from carrier to CDI
61 manifestation in hospitalized patient populations. Correspondingly, it is critical to understand if
62 *C. difficile* carriers are major contributors to new *C. difficile* acquisition or CDI manifestation in
63 hospitalized patient populations.

64 *C. difficile* strains are categorized into five major clades and three additional cryptic clades.
65 These clades encompass immense pangenomic diversity with many mobilizable chromosomal
66 elements^{16,17}, including numerous temperate phages that have potential influences over *C.*
67 *difficile* toxin expression, sporulation, and metabolism¹⁸. Two major toxin loci, not required for
68 viability, encode large multi-unit toxins that independently augment the virulence of *C. difficile*.

69 Epithelial destruction and CDI have largely been attributed to the presence of pathogenicity
70 locus (PaLoc) encoding toxins TcdA and TcdB. In addition, an accessory set of toxins (CdtA
71 and CdtB) encoded at the binary toxin locus, may worsen disease symptoms¹⁹. Yet, many
72 nontoxicogenic strains of *C. difficile* have been documented and are adept colonizers of the GI
73 tract, even without the PaLoc²⁰. As there has been continued debate about strain-specific
74 virulence attributes²¹⁻²³, it is important to investigate the extent of strain-level pangenomic
75 diversity and consequences of such diversity on host disease^{24,25}.

76 The purpose of this study was to evaluate the role of *C. difficile* strain diversity in colonization
77 outcomes and hospital epidemiology. By sampling patients (n=384) and their environments for
78 six months in two leukemia and hematopoietic stem cell (HCT) transplant wards at Barnes-
79 Jewish Hospital in St. Louis, USA, we used isolate genomics to identify environmental
80 contamination of both toxigenic (TCD) and nontoxicogenic (NTCD) *C. difficile* by carriers and CDI
81 patients, and corresponding transmission between both patient groups. Integration of isolate
82 genomic data and CDI information from this prospective study with isolate genomic data from a
83 complementary retrospective study of asymptomatic vs symptomatic *C. difficile* colonization in
84 the same hospital^{26,27} indicated that the clade 1 lineage, containing both toxigenic strains and
85 nontoxicogenic strains, dominates circulating populations of *C. difficile* in this hospital. Further, this
86 lineage revealed novel clade-specific genetic factors that are associated with CDI symptoms in
87 patients.

88 **Methods**

89 Study Design

90 This prospective observational study took place in the leukemia and hematopoietic stem cell
91 transplant (HCT) wards at Barnes-Jewish Hospital (BJH) in St. Louis, Missouri, United States.
92 Each ward consisted of two wings with 16 beds; on the acute leukemia ward we enrolled from
93 both wings (32 beds) and on the HCT ward we enrolled on one wing (16 beds). The wards were
94 sampled for 6 months from January 2019-July 2019 (acute leukemia) and 4 months from March
95 2019-July 2019 (HCT). These units are located 2 floors apart in the same building. Colonized on
96 admission was defined as: 1. Having a *C. difficile* culture positive specimen collected before
97 calendar day 3 of admission, or 2. Having a history of an earlier *C. difficile* culture positive
98 specimen of the same strain collected during a previous hospitalization. Acquisition was
99 considered indeterminate when the earliest culture positive specimen was collected on calendar
100 day 4 or later during admission. For EIA positive admissions, new acquisitions were defined as
101 having toxigenic culture negative specimen that preceded the EIA positive clinical stool

102 collection during the same admission. EIA positive admission were classified as indeterminate if
103 the patient did not have any stool or rectal swab culture results available prior to the collection of
104 the EIA positive stool sample. EIA positive admissions were defined as colonized on admission
105 or pre-existing colonization if the patient had a toxigenic culture positive specimen that preceded
106 the EIA positive clinical stool during the same admission.

107 Sample collection, selective culture, and isolate identification

108 Patients and their environments were sampled upon admission to a study ward and then weekly
109 until discharge. Per hospital standards, bleach is used for daily and terminal discharge cleaning.
110 From each patient, a stool specimen and/or rectal swab was collected as available. Remnant
111 fecal samples from the BJH microbiology laboratory that were obtained during routine clinical
112 care for *C. difficile* testing were also collected. Stool samples and rectal swabs collected on
113 enrollment were refrigerated for up to 3 hours before processing. Specimens from all other
114 timepoints were stored in at -80°C in tryptic soy broth (TSB)/glycerol before processing.
115 Environmental samples were collected from bedrails, keyboards, and sink surfaces using 3 E-
116 swabs (Copan). If a surface was unable to be sampled, a swab was taken from the IV pump or
117 nurse call button as an alternative. Swab eluate were stored at -80°C until processing.

118 Broth enrichment culture for *C. difficile* in Cycloserine Cefoxitin Mannitol Broth with
119 Taurocholate and Lysozyme (CCMB-TAL) (Anaerobe Systems, Morgan Hill, CA) was performed
120 on all admission specimens and checked for growth at 24 hours, 48 hours, and 7 days after
121 inoculation. If *C. difficile* was isolated, all other specimens collected from that patient and their
122 surroundings were also cultured on Cycloserine-Cefoxitin Fructose Agar with Horse Blood and
123 Taurocholate (CCFA-HT) agar (Anaerobe Systems). Colonies resembling *C. difficile* (large,
124 spreading, grey, ground glass appearance) were picked by a trained microbiologist and sub-
125 cultured onto a blood agar plate (BAP). Growth from the subculture plate was identified using
126 Matrix-assisted laser desorption/ionization-time of flight mass spectrometry (MALDI-TOF MS)
127 (bioMerieux, Durham, NC). Upon identification, sweeps of *C. difficile* BAPs were collected in
128 tryptic soy broth (TSB) and stored at -80C for sequencing. If both rectal swab sample and stool
129 sample produced a *C. difficile* isolate, the stool isolate was preferentially used for analysis over
130 the rectal swab isolate. The discharge / last specimen collected for an admission was also
131 cultured for *C. difficile* if *C. difficile* was not isolated from the admission specimen. If *C. difficile*
132 was isolated from the discharge/last specimen collected, then all specimens from that admission
133 were also cultured for *C. difficile*.

134 *C. difficile* toxin enzyme immunoassay (EIA) was conducted as part of routine clinical care
135 based on clinical suspicion of CDI. To be diagnosed with *C. difficile* infection (CDI), a patient
136 must have been EIA+ for *C. difficile* toxin (Alere TOX A/B II); those who weren't tested (due to
137 no clinically significant diarrhea) or tested EIA- and were culture-positive for *C. difficile* were
138 considered *C. difficile* carriers. Episodes of carriage or CDI are defined as the time from the first
139 culture-positive specimen from a patient to the last culture-positive specimen during a given
140 hospital admission.

141 Short read sequencing and *de novo* genome assembly

142 Parameters used for computational tools are provided parenthetically. Total genomic DNA from
143 *C. difficile* isolates was extracted from frozen plate scrapes using the QIAamp BiOstic
144 Bacteremia DNA Kit (Qiagen) and quantified DNA with the PicoGreen dsDNA assay (Thermo
145 Fisher Scientific). DNA from each isolate was diluted to a concentration of 0.5 ng/μL for library
146 preparation using a modified Nextera kit (Illumina) protocol²⁸. Sequencing libraries were pooled
147 and sequenced on the NovaSeq 6000 platform (Illumina) to obtain 2×150 bp reads. Raw
148 reads were demultiplexed by index pair and adapter sequencing trimmed and quality filtered
149 using Trimmomatic (v0.38, SLIDINGWINDOW:4:20, LEADING:10, TRAILING:10,
150 MINLEN:60)²⁹. Cleaned reads were assembled into draft genomes using Unicycler (v0.4.7)³⁰.
151 Draft genome quality was assessed using Quast³¹, BMAP³², and CheckM³³, and genomes
152 were accepted if they met the following quality standards: completeness greater than 90%,
153 contamination less than 5%, N50 greater than 10,000 bp, and less than 500 contigs >1000bp.

154 Isolate characterization and typing

155 A Mash Screen was used to identify likely related genomes from all NCBI reference genomes³⁴.
156 Average nucleotide identity (ANI) between the top three hits and the draft assembly was
157 calculated using dnadiff³⁵. Species were determined if an isolate had >75% alignment and
158 >96% ANI³⁶ to a type strain, and were otherwise classified as genomospecies of the genus level
159 taxonomy call.

160 In silico multilocus sequence typing (MLST) was determined for all *C. difficile* and
161 genomospecies isolates using mlst^{37,38}. Isolate contigs were annotated using Prokka³⁹ (v1.14.5,
162 -mincontiglen 500, -force, -rnammer, -proteins GCF_000210435.1_ASM21043v1_protein.faa⁴⁰).
163 *cdtAB* was determined to be a pseudogene if there were three hits to *cdtB*, indicating the
164 damaged structure of the pseudogene⁴¹. *C. difficile* clade was determined using predefined
165 clade-MLST relationships described in Knight, et al¹⁶.

166 Phylogenetic analyses

167 The .gff files output by Prokka³⁹ were used as input for Panaroo (v1.2.10)⁴² to construct a core
168 genome alignment. The Panaroo alignment was used as input to construct a maximum-
169 likelihood phylogenetic tree using Fasttree⁴³. The output .newick file was visualized using the
170 ggtree (v3.4.0)⁴⁴ package in R. Cryptic clade isolates were determined as such based on
171 phylogenetic clustering with cryptic clade reference isolates.

172 SNP analyses and network formation

173 We identified pairwise SNP distances between isolates identified as the same MLST type. The
174 isolate assembly with the fewest number of contigs in an MLST group was chosen as a
175 reference for that MLST group. Cleaned reads were aligned to their respective reference and
176 SNP distances were calculated with snippy⁴⁵. Pairwise SNP distances between isolates were
177 calculated by merging VCF files with bcftools⁴⁶ and a custom script. Only SNPs within the core
178 genome of each MLST group were considered, thus core MLST SNPs were used for strain
179 network determination. A cutoff of ≤ 2 core MLST SNPs was used to define strain networks, as
180 has been used previously to account for strain variation^{15,47}.

181 Phage identification and clustering

182 Isolate genomes were analyzed with Cenote-Taker 2⁴⁸ to identify contigs with end features as
183 direct terminal repeats (DTRs) indicating circularity, and inverted linear repeats (ITRs) or no
184 features for linear sequences. Identified contigs were filtered by length and completeness to
185 remove false positives. Length limits were 1,000 nucleotides (nt) for the detection of circularity,
186 4,000 nt for ITRs, and 5,000 nt for other linear sequences. The completeness was computed as
187 a ratio between the length of our phage sequence and the length of matched reference
188 genomes by CheckV⁴⁹ and the threshold was set to 10.0%. Phage contigs passing these two
189 filters were then run through VIBRANT⁵⁰ with the “virome” flag to further remove obvious non-
190 viral sequences⁵⁰. Based on MIUViG recommended parameters⁵¹, phages were grouped into
191 “populations” if they shared $\geq 95\%$ nucleotide identity across $\geq 85\%$ of the genome using
192 BLASTN and CheckV.

193 Analysis of genotypic associations with disease severity

194 Two previously sequenced retrospective cohorts from the same hospital were included to
195 increase power^{26,52}. In the analyses of toxigenic vs. nontoxigenic isolates from clade 1, pyseer⁵³
196 was run using a SNP distance matrix (using snp-dist as above), binary genotypes (presence or
197 absence of *tcdB*), and Panaroo-derived gene presence/absence data. In the analysis of CDI

198 suspicion, all isolates from clade 1 were used that represented one isolate per patient-episode.
199 Isolates recovered from environmental surfaces were excluded. Using these assemblies, a core
200 genome alignment was generated using Prokka³⁹ and Panaroo⁴² as above. SNP distances were
201 inferred from the core-gene alignment using snp-dists⁵⁴. Binary phenotypes were coded for the
202 variable CDI suspicion, whereby isolates associated with a clinically tested stool were
203 associated with symptomatic colonization (TRUE). Isolates that were associated with a
204 surveillance stool and had no clinical testing associated with that patient timepoint were coded
205 as non-symptomatic colonization (FALSE). Gene candidates filtered based on 'high-bse', and
206 were annotated HMMER on RefSeq databases and using a bacteriophage-specific tool
207 VIBRANT⁵⁰. Selected outputs were visualized in R using the beta coefficient as the x-axis and
208 the $-\log_{10}(\text{likelihood ratio test p-value})$ as the y-axis.

209 Reference assembly collection

210 We chose 23 reference assemblies from Knight, et al¹⁶ for Figure 2c because of their MLST-
211 clade associations (Supplementary Table 2). References span Clades 1-5 and cryptic clades C-
212 1, C-2, and C-3, with one reference from each of the three most frequent MLSTs in each clade.
213 Cryptic clade C-3 only had 2 reference assemblies available. References were annotated and
214 included in phylogenetic tree construction as above.

215 All *Clostridioides difficile* genomes available on the National Institutes of Health (NIH) National
216 Library of Medicine (NLM) were acquired for Figure 4c construction. References from NCBI
217 (Supplementary Table 4) were included if they had less than 200 contigs. Assemblies that met
218 these quality requirements were annotated and phylogenetically clustered as above.

219 **Results**

220 Surveillance of *C. difficile* reservoirs in hospital wards reveals patient colonization and 221 environmental contamination.

222 We prospectively collected patient and environmental samples to investigate genomic
223 determinants of *C. difficile* carriage, transmission, and CDI (Figure 1). Across the study period,
224 we enrolled 384 patients from 647 unique hospital admissions, and collected patient specimens
225 upon admission and weekly thereafter (Supplementary Figure 1). We collected at least one
226 specimen (clinical stool collected as part of routine care, study collected stool, or study collected
227 rectal swab) from 364 admissions for a total of 1290 patient specimens (Table 1). We selectively
228 cultured *C. difficile* from 151 stool specimens or rectal swabs if stool was unavailable or culture-
229 negative. We also collected weekly swabs from the bedrails, sink surfaces, and in-room

230 keyboards, for a total of 3045 swabs from each site. We cultured all environmental swabs
231 collected from rooms in which patients that ever produced culturable *C. difficile* were housed, for
232 a total of 398 swab sets plus one and two additional keyboard and sink handle swabs,
233 respectively. In total, 22/398 (5.5%) of bedrail swabs cultured and 4/399 (1.0%) of keyboard
234 swabs cultured were culture-positive for *C. difficile* (Figure 2a). *C. difficile* was never recovered
235 from sink surfaces (all sinks on these units are hands-less activated) or other sampled sites.
236 Collapsing multiple positive samples from the same patient admission results in 20 positive
237 bedrails (20/79, 25.3% of all admissions with positive patient specimens) and 4 positive
238 keyboards (4/79, 5.06% of all admissions with positive patient specimens) (Figure 2b).

239 Results from selective culture indicated that 21.7% of unique admissions (79/364 admissions
240 with available specimens) were culture-positive for *C. difficile* at some point during their
241 admission (Figure 2b, Table 1). Of these, 57 were toxigenic culture positive. 19 (4% of all
242 admissions) patient-admissions were considered “colonized on admission” (i.e., toxigenic
243 culture positive within the first three calendar days of admission), and toxigenic *C. difficile* was
244 acquired in 6 (2%) admissions. For most toxigenic culture positive admissions (32; 9% of all
245 admissions), *C. difficile* acquisition was considered indeterminate, meaning the earliest
246 toxigenic culture positive specimen was collected on calendar day 4 or later during admission.
247 Full admission-level culture results can be found in Table 1.

248 *C. difficile* carriers outnumbered patients with CDI

249 Patients with CDI were identified through routine clinical care, with CDI defined as patients who
250 had stool submitted for *C. difficile* testing, as ordered by the clinical team when suspicious for
251 CDI, and who tested positive for *C. difficile* toxins by enzyme immunoassay (EIA+). Otherwise, if
252 they were culture positive and EIA- or culture positive and not EIA tested, they were considered
253 carriers. Overall, 25 positive EIAs occurred during the study period; of these, 17 occurred during
254 admissions with study specimens available for culture. Among these 17 admissions, 3 (18%)
255 were considered new *C. difficile* acquisition; 6 (35%) had indeterminate timing of *C. difficile*
256 acquisition; 3 (18%) were false positive EIAs, 3 (18%) were colonized on admission/pre-existing
257 colonization, and 2 (12%) were recurrent CDI (Table 1). The substantial detection of longitudinal
258 patient *C. difficile* colonization prompted us to investigate the genomic correlates of *C. difficile*-
259 associated disease and transmission in these two patient populations.

260 Phylogenetic clustering reveals lack of hypervirulent strains, presence of cryptic clades

261 We conducted whole-genome sequencing to ascertain phylogenetic distances among isolates
262 and to identify closely related strains of *C. difficile*. We identified 141 isolate genomes as *C.*
263 *difficile* (using a 75% alignment and 96% average nucleotide identity [ANI] threshold). One
264 isolate was identified as *Clostridium innocuum* and five isolates were classified as *C. difficile*
265 genomospecies (92-93% ANI). To contextualize population structure, we applied a previously
266 established MLST-derived clade definition to our isolate cohort¹⁶. The majority of *C. difficile*
267 isolates were from Clade 1 (131/146, 89.7% of *C. difficile* and genomospecies, Figure 2c). Four
268 patient-derived isolates were identified from clade 2, but only one was of the hypervirulent strain
269 ST1 (PCR ribotype 027)⁶. We found that the distribution of STs associated with carriers was
270 significantly different from that of STs associated with CDI patients ($p < 0.001$, Fisher's exact test,
271 Figure 2b) suggesting some strain-specificity to disease outcome.

272 Interestingly, the five genomospecies isolates clustered with other isolates belonging to a
273 recently discovered *C. difficile* cryptic clade C-1 (Supplementary Figure 2). While cryptic clades
274 are genomically divergent from *C. difficile*, these isolates can produce homologs to TcdA/B and
275 cause CDI-like disease in humans^{16,55}. In a clinical setting, they are frequently identified by
276 MALDI-TOF MS as *C. difficile* and diagnosed as causative of CDI⁵⁵. These data highlight the
277 novel distribution of circulating *C. difficile* strains in the two study wards. While many patients
278 with multiple isolates had homogeneous signatures of colonization (with closely related
279 isolates), four patients (4/72 patients with positive cultures, 6%) produced isolates from distinct
280 ST types.

281 Carriers and CDI patients contribute to transmission networks and environmental contamination

282 Given the predominance of clade 1 isolates, we sought to identify clonal populations of *C.*
283 *difficile* strains, indicative of direct *C. difficile* contamination (patient-environment) or
284 transmission (patient-patient). We compared pairwise, core genome SNP distances within
285 MLST groups to identify networks of transmission connecting isolates ≤ 2 SNPs apart
286 (Supplementary Figure 3). We identified a total of 25 strain networks, 2 of which contain patient
287 isolates from different patients (networks 17 and 31, Figure 3a,d). These strain networks were
288 temporally linked, as there were significantly fewer days between same-network isolates than
289 isolates from different networks ($p < 2.2e-16$, Wilcoxon, Figure 3b). We also sought to
290 understand if CDI patients were more likely to contaminate bedrails than carriers. While we
291 found slightly higher numbers of total bedrail isolates collected and unique bedrails
292 contaminated by networks with CDI patients, neither comparison reached statistical significance
293 (ns, Student's t-test, Supplementary Figure 4a, b).

294 We compared strain connections among a single patient's isolates from stool or rectal swab
295 ('patient'), and between these isolates and environmental isolates from their immediate
296 surroundings ('bedrail' or 'keyboard', Figure 3c). While the majority of bedrail isolates fell within
297 the same network as patient isolates from that room (33/44 comparisons, 75%), 25% (11/44
298 comparisons) were genomically distinct, suggesting contamination from alternate sources.
299 Keyboards were mostly colonized with distinct strains from the patient (22%, 2/9 comparisons),
300 indicating other routes of contamination ($p < 0.05$, Fisher's exact test, BH corrected. Figure 3c).
301 Among the networks that contain multiple patients, we found no instances of potential
302 transmission from the inhabitant of one room to the subsequent inhabitant. However, in both
303 instances, each potential transmission is associated with a temporal overlap in patient stay in
304 the same ward, providing epidemiological support for putative transmission (Figure 3d).
305 Importantly, we found no networks connecting patients with CDI to *C. difficile* carriers,
306 suggesting successful containment through contact precaution protocols. Two patients (Patients
307 2026 and 2056) carried a strain of *C. difficile* and later developed CDI with that same strain.
308 These data suggest that direct transmission from CDI patients may no longer be the driving
309 force behind patient CDI in this setting on contact precautions, and prompted us to investigate
310 the relationship between isolate genetic diversity and patient symptomology.

311 Accessory genomic elements are associated with host CDI symptoms

312 Despite evidence of transmission in this prospective study, a minority of patients were
313 diagnosed with CDI relative to those asymptotically colonized with *C. difficile* in part due to
314 the presence of nontoxigenic *C. difficile* isolates (Figure 2b). To power our investigation of
315 virulence determinants across patient-colonizing *C. difficile* strains, we performed whole
316 genome sequencing on 102 additional patient-derived *C. difficile* isolates from a previously
317 described *C. difficile*-colonized/CDI cohort from the same hospital²⁶, where all patients had
318 clinical suspicion of CDI (CDI suspicion), defined by a clinician ordering an EIA test during
319 patient admission. Using an MLST-based clade definition as above, we identified that most CDI
320 cases result from isolates within clade 1, though clade 2 isolates were more likely to be
321 associated with CDI status (Figure 4a). The latter finding supports previous data indicating that
322 clade 2 isolates are hypervirulent, often attributed to the presence of the binary toxin operon or
323 increased expression from the PaLoc^{19,56,57}. Meanwhile, some clade 1 isolates contain no toxin
324 genes, indicating a diversity of colonization strategies in this lineage. Pangenomic comparison
325 of nontoxigenic versus toxigenic isolates revealed that in addition to the PaLoc, the majority of
326 our toxigenic isolates from clade 1 (95/131 of our cohort) possess remnants of the binary toxin

327 operon (Figure 4b, *cdtR* and *cdtA/B* pseudogenes). Interestingly, we found that nontoxigenic
328 isolates had a higher diversity of phage populations relative to toxigenic isolates
329 (Supplementary Figure 5, $p=5.7e-8$, Wilcoxon). Given the previous report that full-length *cdtAB*
330 was identified only within Clades 2, 3, and 5¹⁶, we investigated the conservation of *cdtR* (the
331 transcriptional regulator of the binary toxin locus) across *C. difficile* strains (containing 5
332 lineages). We additionally examined >1400 *C. difficile* genome assemblies from NCBI
333 (Supplementary Table 4, Figure 4c). *cdtR* (unlike *cdtAB*) was dispersed across clade 1 and
334 significantly associated with *tcdB* (Figure 4d, Fisher's exact test, BH corrected), suggesting a
335 selective pressure to maintain some element of both toxin loci in these isolates. Notably, these
336 operons are not syntenic, further underlining the significance of the association. From this
337 association, we sought to further understand why some toxigenic clade 1 isolates cause CDI
338 and some colonize without symptoms. Using 148 toxigenic clade 1 isolates collected from this
339 study and two previous studies from the same hospital^{26,52}, we utilized a bacterial GWAS
340 approach, *pyseer*⁵³, that identifies genetic traits associated with strains corresponding to
341 patients with CDI symptoms. Using CDI suspicion (see Methods) as an outcome variable, we
342 found that, multiple amidases (including *cwID*), putative transcriptional regulators, and many
343 genes of unknown function were enriched in isolates associated with CDI symptoms (Figure
344 4e). These data indicate that the most prevalent, circulating *Cd* strains that cause CDI are not
345 the hypervirulent clade 2 strains, but highlight the possibility that remnant genomic features from
346 epidemic strains and other features may contribute to virulence in this hospital clade of *C.*
347 *difficile*.

348 Discussion

349 Through our prospective genomics study of two hospital wards, we were able to identify
350 connections between contamination of different surfaces and the strains carried by hospitalized
351 patients and quantify some spread between carriers. Our estimates of the prevalence of
352 patients with CDI (3.8%) agree with other estimates of 2-4% CDI in patients with cancer⁵⁸⁻⁶⁰.
353 While many studies have quantified surface contamination, few have had the genomic
354 resolution to identify clonality between isolates indicating transmission or patient shedding⁶¹⁻⁶³.
355 We observed distinct contamination between a patient's bedrail that differed from the strain the
356 patient themselves carried, indicating that the bedrail may be a point of transmission. Further,
357 we did not identify any instances of CDI that could be genomically linked to an earlier CDI case
358 or *C. difficile* carrier. We identified two possible instances of transmission between carriers,
359 though neither of these occurrences resulted in CDI. As this finding is in the context of contact
360 precautions for CDI patients, it indicates that these strategies are successful at limiting

361 transmission of *C. difficile* that causes CDI, and there is limited risk of CDI due to transmission
362 from carriers. These findings confirm previous suggestions that carriers are not a significant risk
363 for transmission leading to CDI^{64,65}.

364 Our data suggests the need to investigate diverse lineages of *C. difficile* beyond previous
365 epidemic strains to clarify mechanisms of disease. Among 79 culture positive admissions, we
366 only isolated the epidemic PCR ribotype 027 strain once, causing just one case of CDI within
367 our cohort. Because the overall burden of Clade 1 isolates was so high, we hypothesize that
368 understanding the mechanisms and genomic factors by which these isolates cause disease
369 may become more important as the burden of PCR ribotype 027 decreases⁶⁶. While Clade 1
370 isolates associated with CDI symptoms are expectedly toxigenic (containing the toxin genes in
371 the PaLoc), we also found an enrichment in two different amidase genes, that could either
372 contribute to differences in germination rate or possess endolysin function^{67,68}. How the
373 function of such a gene contributes to an increase in symptomology remains to be understood.
374 Further, we confirmed a genetic relationship between *cdtR* and *tcdB* across *C. difficile* lineages
375 that indicates some evolutionary pressure for maintaining the regulatory gene of the less
376 prevalent toxin operon (*cdtR*). This phylogenomic analysis supports recent functional data from
377 clade 2 isolates that the presence of *cdtR* increases the expression of *tcdB* disease severity in
378 an animal model of CDI⁵⁷. While this was previously suggested *in vitro*, it is unclear how
379 generalizable this relationship is across lineages⁵⁶. In fact, we predict that clade 1 isolates
380 containing only *cdtR* and the PaLoc may produce more toxin *in vivo* than those without *cdtR*.
381 Future studies are warranted to investigate the role of both classes of genes implicated in this
382 phenotype.

383 Our study has a number of important limitations. As this study focused on *C. difficile*
384 colonization, disease, and transmission in two wards in the same hospital system, studies with
385 increased sample size or meta-analysis studies are necessary to understand generalizable
386 epidemiological measurements of *C. difficile*-patient dynamics¹⁵. For example, we were unable
387 to fully quantify in-unit transmission, as not all patients were able to provide stool specimens
388 and/or consented to rectal swabs within 3 days of admission. Additionally, since we did not
389 culture all environmental swabs or specimens, we likely missed some instances of surface
390 contamination or more transient patient carriage, and thus expect that we underestimated the
391 frequencies of contamination and carriage in these wards. Further, the patients housed in the
392 leukemia and HCT ICUs are unique due to their long hospital stays and high antibiotic
393 exposure⁶⁹. While this population was selected specifically to allow us to increase our sample
394 sizes, these patient characteristics could contribute to extended *C. difficile* colonization time

395 relative to other hospital patient cohorts. Finally, we note the evidence for multi-strain
396 colonization within a single patient (Patient 2330). This patient was diagnosed with CDI, but only
397 nontoxigenic *C. difficile* was isolated (network 10). This could be due to co-colonization, and we
398 never isolated the toxigenic isolate responsible for the CDI, or a false positive toxin EIA. Given
399 our approach of only culturing and sequencing single isolates per patient timepoint, future
400 studies are needed to investigate the extent of within-patient *C. difficile* strain diversity by
401 interrogating additional cultured isolates per samples or via metagenomic methods⁷⁰.

402 Despite these limitations, this work highlights new investigative directions for the
403 prevention of CDI. This work and others find risk for patients carrying *C. difficile* long-term in
404 development of CDI, and we hypothesize that the mechanisms of virulence may be more
405 complex than previous epidemic strains. We also hypothesize that non-CDI carriers contribute
406 to the expansion of *C. difficile* transmission networks and emphasize the need to update
407 infection prevention efforts as this landscape evolves. Indeed, though much human and animal
408 research has focused on epidemic strains that are two decades old, we and others have
409 identified more disease and colonization, largely from clade 1 lineages. We also investigate
410 gene flux of phage like elements, that may play an important role in colonization, particularly in
411 nontoxigenic isolates. Moreover, within this lineage we found a mosaic representation of genes
412 associated with the PaLoc that highlight the possibility of different mechanisms of colonization
413 and virulence by this population of *C. difficile*. Future studies utilizing other human cohorts or
414 animal models are warranted to investigate disease and pathogenicity caused by Clade 1 *C.*
415 *difficile* strains.

416

417 **Conclusions**

418 Our study provides new insight into the nature of prevalent *C. difficile* strains in a hospital
419 setting, transmission between carriers, and pathogen evolution during circulation. Longitudinal
420 sampling of surfaces and patient stool revealed that both toxigenic and nontoxigenic strains of
421 *C. difficile* clade 1 are prevalent in these two wards. Moreover, our estimation of carriage
422 patterns emphasizes the need for further investigation into longitudinal carriage of *C. difficile*
423 and its increased risk for CDI. We also note distinct differences in phage carriage between
424 toxigenic and nontoxigenic *C. difficile*. We identify novel associations of accessory genes with
425 CDI symptomology and toxigenicity (*cdtR* and *cwID*). Our data highlights the complexities of
426 understanding disease from this pathogen in a hospital setting and the need to investigate
427 mechanisms of *in vivo* persistence and virulence of prevalent lineages in the host gut
428 microbiome.

429

430 **List of Abbreviations**

431 BAP: blood agar plate

432 CCFA-HT: Cycloserine-Cefoxitin Fructose Agar with Horse Blood and Taurocholate

433 CCMB-TAL: Cycloserine Cefoxitin Mannitol Broth with Taurocholate and Lysozyme

434 CDI: *Clostridioides difficile* infection

435 EIA: enzyme immunoassay

436 HAI: healthcare-associated infection

437 HGT: horizontal gene transfer

438 MALDI-TOF MS: Matrix-assisted laser desorption/ionization-time of flight mass spectrometry

439 NTCD: non-toxigenic *C. difficile*

440 PaLoc: pathogenicity locus

441 TCD: toxigenic *C. difficile*

442 TSB: tryptic soy broth

443

444 **Declarations**

445 **Ethics approval and consent to participate**

446 The study protocol was approved by the Washington University Human Research Protection
447 Office (IRB #201810103). All participants provided written informed consent.

448 **Consent for publication**

449 Not applicable.

450 **Availability of data and materials**

451 The datasets generated and analyzed during the current study are available in NCBI GenBank
452 under BioProject accession no. PRJNA980715.

453 **Competing interests**

454 The authors declare that they have no competing interests.

455 **Funding**

456 This work was supported in part by an award to ERD and GD through the Foundation for
457 Barnes-Jewish Hospital and Institute of Clinical and Translational Sciences. This publication
458 was supported by the NIH/National Center for Advancing Translational Sciences (NCATS),

459 grant UL1 TR002345 (PI: B. Evanoff). This work was also supported by funding through the
460 CDC BAA #200-2018-02926 under PI Erik Dubberke. SRSF is supported by the National
461 Institute of Child Health and Human Development (NICHD: <https://www.nicdhd.nih.gov>) of the
462 NIH under award number T32 HD004010 (PI: P. Tarr). The conclusions from this study
463 represent those of the authors and do not represent positions of the funding agencies.

464 **Authors' contributions**

465 SRSF, KAR, ERD, and GD participated in idea formulation and funding for this project. TH,
466 KAR, CC, ZHI, ELS, and ERD conducted participant enrollment, sample collection, and
467 microbiological isolation. EPN, SRSF, KZ, and GD conducted all sequencing analysis and figure
468 generation. EPN and SRSF completed the writing of the manuscript. All authors read and
469 approved the final manuscript.

470 **Acknowledgements**

471 The authors are grateful for members of the Dantas lab for their helpful feedback on the data
472 analysis and preparation of the manuscript. The authors would also like to thank the Edison
473 Family Center for Genome Sciences and Systems Biology staff, Eric Martin, Brian Koebbe,
474 MariaLynn Crosby, and Jessica Hoisington-López for their expertise and support in
475 sequencing/data analysis.

476 **References**

- 477 1 Czepiel, J. *et al.* Clostridium difficile infection: review. *Eur J Clin Microbiol Infect Dis* **38**,
478 1211-1221, doi:10.1007/s10096-019-03539-6 (2019).
- 479 2 McDonald, L. C. *et al.* Clinical Practice Guidelines for Clostridium difficile Infection in
480 Adults and Children: 2017 Update by the Infectious Diseases Society of America (IDSA)
481 and Society for Healthcare Epidemiology of America (SHEA). *Clin Infect Dis* **66**, e1-e48,
482 doi:10.1093/cid/cix1085 (2018).
- 483 3 Clements, A. C., Magalhaes, R. J., Tatem, A. J., Paterson, D. L. & Riley, T. V. Clostridium
484 difficile PCR ribotype 027: assessing the risks of further worldwide spread. *Lancet Infect*
485 *Dis* **10**, 395-404, doi:10.1016/S1473-3099(10)70080-3 (2010).
- 486 4 McDonald, L. C. *et al.* An epidemic, toxin gene-variant strain of Clostridium difficile. *N*
487 *Engl J Med* **353**, 2433-2441, doi:10.1056/NEJMoa051590 (2005).
- 488 5 Loo, V. G. *et al.* A predominantly clonal multi-institutional outbreak of Clostridium
489 difficile-associated diarrhea with high morbidity and mortality. *N Engl J Med* **353**, 2442-
490 2449, doi:10.1056/NEJMoa051639 (2005).
- 491 6 Fatima, R. & Aziz, M. The Hypervirulent Strain of Clostridium Difficile: NAP1/B1/027 - A
492 Brief Overview. *Cureus* **11**, e3977, doi:10.7759/cureus.3977 (2019).
- 493 7 Goorhuis, A. *et al.* Emergence of Clostridium difficile infection due to a new
494 hypervirulent strain, polymerase chain reaction ribotype 078. *Clin Infect Dis* **47**, 1162-
495 1170, doi:10.1086/592257 (2008).
- 496 8 Bauer, M. P. *et al.* Clostridium difficile infection in Europe: a hospital-based survey.
497 *Lancet* **377**, 63-73, doi:10.1016/S0140-6736(10)61266-4 (2011).
- 498 9 Giancola, S. E., Williams, R. J., 2nd & Gentry, C. A. Prevalence of the Clostridium difficile
499 BI/NAP1/027 strain across the United States Veterans Health Administration. *Clin*
500 *Microbiol Infect* **24**, 877-881, doi:10.1016/j.cmi.2017.11.011 (2018).
- 501 10 Balsells, E. *et al.* Infection prevention and control of Clostridium difficile: a global review
502 of guidelines, strategies, and recommendations. *J Glob Health* **6**, 020410,
503 doi:10.7189/jogh.06.020410 (2016).
- 504 11 Kong, L. Y. *et al.* Clostridium difficile: Investigating Transmission Patterns Between
505 Infected and Colonized Patients Using Whole Genome Sequencing. *Clin Infect Dis* **68**,
506 204-209, doi:10.1093/cid/ciy457 (2019).
- 507 12 Svenungsson, B. *et al.* Epidemiology and molecular characterization of Clostridium
508 difficile strains from patients with diarrhea: low disease incidence and evidence of
509 limited cross-infection in a Swedish teaching hospital. *J Clin Microbiol* **41**, 4031-4037,
510 doi:10.1128/JCM.41.9.4031-4037.2003 (2003).
- 511 13 Durham, D. P., Olsen, M. A., Dubberke, E. R., Galvani, A. P. & Townsend, J. P. Quantifying
512 Transmission of Clostridium difficile within and outside Healthcare Settings. *Emerg*
513 *Infect Dis* **22**, 608-616, doi:10.3201/eid2204.150455 (2016).
- 514 14 Warren, B. G. *et al.* The Impact of Infection Versus Colonization on Clostridioides difficile
515 Environmental Contamination in Hospitalized Patients With Diarrhea. *Open Forum Infect*
516 *Dis* **9**, ofac069, doi:10.1093/ofid/ofac069 (2022).

- 517 15 Miles-Jay, A. *et al.* Longitudinal genomic surveillance of carriage and transmission of
518 Clostridioides difficile in an intensive care unit. *Nat Med* **29**, 2526-2534,
519 doi:10.1038/s41591-023-02549-4 (2023).
- 520 16 Knight, D. R. *et al.* Major genetic discontinuity and novel toxigenic species in
521 Clostridioides difficile taxonomy. *Elife* **10**, doi:10.7554/eLife.64325 (2021).
- 522 17 Mullany, P., Allan, E. & Roberts, A. P. Mobile genetic elements in Clostridium difficile
523 and their role in genome function. *Res Microbiol* **166**, 361-367,
524 doi:10.1016/j.resmic.2014.12.005 (2015).
- 525 18 Fortier, L. C. Bacteriophages Contribute to Shaping Clostridioides (Clostridium) difficile
526 Species. *Front Microbiol* **9**, 2033, doi:10.3389/fmicb.2018.02033 (2018).
- 527 19 Gerding, D. N., Johnson, S., Rupnik, M. & Aktories, K. Clostridium difficile binary toxin
528 CDT: mechanism, epidemiology, and potential clinical importance. *Gut Microbes* **5**, 15-
529 27, doi:10.4161/gmic.26854 (2014).
- 530 20 Gerding, D. N. *et al.* Administration of spores of nontoxigenic Clostridium difficile strain
531 M3 for prevention of recurrent C. difficile infection: a randomized clinical trial. *JAMA*
532 **313**, 1719-1727, doi:10.1001/jama.2015.3725 (2015).
- 533 21 Carlson, P. E., Jr. *et al.* The relationship between phenotype, ribotype, and clinical
534 disease in human Clostridium difficile isolates. *Anaerobe* **24**, 109-116,
535 doi:10.1016/j.anaerobe.2013.04.003 (2013).
- 536 22 Walk, S. T. *et al.* Clostridium difficile ribotype does not predict severe infection. *Clin*
537 *Infect Dis* **55**, 1661-1668, doi:10.1093/cid/cis786 (2012).
- 538 23 Aitken, S. L. *et al.* In the Endemic Setting, Clostridium difficile Ribotype 027 Is Virulent
539 But Not Hypervirulent. *Infect Control Hosp Epidemiol* **36**, 1318-1323,
540 doi:10.1017/ice.2015.187 (2015).
- 541 24 Pettit, L. J. *et al.* Functional genomics reveals that Clostridium difficile Spo0A
542 coordinates sporulation, virulence and metabolism. *BMC Genomics* **15**, 160,
543 doi:10.1186/1471-2164-15-160 (2014).
- 544 25 Awad, M. M., Johanesen, P. A., Carter, G. P., Rose, E. & Lyras, D. Clostridium difficile
545 virulence factors: Insights into an anaerobic spore-forming pathogen. *Gut Microbes* **5**,
546 579-593, doi:10.4161/19490976.2014.969632 (2014).
- 547 26 Fishbein, S. R. *et al.* Multi-omics investigation of Clostridioides difficile-colonized
548 patients reveals pathogen and commensal correlates of C. difficile pathogenesis. *Elife*
549 **11**, doi:10.7554/eLife.72801 (2022).
- 550 27 Dubberke, E. R. *et al.* Clostridium difficile colonization among patients with clinically
551 significant diarrhea and no identifiable cause of diarrhea. *Infect Control Hosp Epidemiol*
552 **39**, 1330-1333, doi:10.1017/ice.2018.225 (2018).
- 553 28 Baym, M. *et al.* Inexpensive multiplexed library preparation for megabase-sized
554 genomes. *PLoS One* **10**, e0128036, doi:10.1371/journal.pone.0128036 (2015).
- 555 29 Bolger, A. M., Lohse, M. & Usadel, B. Trimmomatic: a flexible trimmer for Illumina
556 sequence data. *Bioinformatics* **30**, 2114-2120, doi:10.1093/bioinformatics/btu170
557 (2014).
- 558 30 Wick, R. R., Judd, L. M., Gorrie, C. L. & Holt, K. E. Unicycler: Resolving bacterial genome
559 assemblies from short and long sequencing reads. *PLoS Comput Biol* **13**, e1005595,
560 doi:10.1371/journal.pcbi.1005595 (2017).

- 561 31 Gurevich, A., Saveliev, V., Vyahhi, N. & Tesler, G. QAST: quality assessment tool for
562 genome assemblies. *Bioinformatics* **29**, 1072-1075, doi:10.1093/bioinformatics/btt086
563 (2013).
- 564 32 Bushnell, B. *BBMap: A Fast, Accurate, Splice-Aware Aligner*,
565 <<https://www.osti.gov/servlets/purl/1241166>> (2014).
- 566 33 Parks, D. H., Imelfort, M., Skennerton, C. T., Hugenholtz, P. & Tyson, G. W. CheckM:
567 assessing the quality of microbial genomes recovered from isolates, single cells, and
568 metagenomes. *Genome Res* **25**, 1043-1055, doi:10.1101/gr.186072.114 (2015).
- 569 34 Ondov, B. D. *et al.* Mash: fast genome and metagenome distance estimation using
570 MinHash. *Genome Biol* **17**, 132, doi:10.1186/s13059-016-0997-x (2016).
- 571 35 Kurtz, S. *et al.* Versatile and open software for comparing large genomes. *Genome Biol*
572 **5**, R12, doi:10.1186/gb-2004-5-2-r12 (2004).
- 573 36 Richter, M. & Rossello-Mora, R. Shifting the genomic gold standard for the prokaryotic
574 species definition. *Proc Natl Acad Sci U S A* **106**, 19126-19131,
575 doi:10.1073/pnas.0906412106 (2009).
- 576 37 Seemann, T. *mlst*, <<https://github.com/tseemann/mlst>> (
577 38 Jolley, K. A. & Maiden, M. C. BIGSdb: Scalable analysis of bacterial genome variation at
578 the population level. *BMC Bioinformatics* **11**, 595, doi:10.1186/1471-2105-11-595
579 (2010).
- 580 39 Seemann, T. Prokka: rapid prokaryotic genome annotation. *Bioinformatics* **30**, 2068-
581 2069, doi:10.1093/bioinformatics/btu153 (2014).
- 582 40 He, M. *et al.* Evolutionary dynamics of *Clostridium difficile* over short and long time
583 scales. *Proc Natl Acad Sci U S A* **107**, 7527-7532, doi:10.1073/pnas.0914322107 (2010).
- 584 41 Carter, G. P. *et al.* Binary toxin production in *Clostridium difficile* is regulated by CdtR, a
585 LytTR family response regulator. *J Bacteriol* **189**, 7290-7301, doi:10.1128/JB.00731-07
586 (2007).
- 587 42 Tonkin-Hill, G. *et al.* Producing polished prokaryotic pangenomes with the Panaroo
588 pipeline. *Genome Biol* **21**, 180, doi:10.1186/s13059-020-02090-4 (2020).
- 589 43 Price, M. N., Dehal, P. S. & Arkin, A. P. FastTree: computing large minimum evolution
590 trees with profiles instead of a distance matrix. *Mol Biol Evol* **26**, 1641-1650,
591 doi:10.1093/molbev/msp077 (2009).
- 592 44 Yu, G. Using ggtree to Visualize Data on Tree-Like Structures. *Curr Protoc Bioinformatics*
593 **69**, e96, doi:10.1002/cpbi.96 (2020).
- 594 45 Seemann, T. *snippy: fast bacterial variant calling from NGS reads*,
595 <<https://github.com/tseemann/snippy>> (2015).
- 596 46 Danecek, P. *et al.* Twelve years of SAMtools and BCFtools. *Gigascience* **10**,
597 doi:10.1093/gigascience/giab008 (2021).
- 598 47 Alves, F. *et al.* Molecular epidemiology of *Clostridioides difficile* in companion animals:
599 Genetic overlap with human strains and public health concerns. *Front Public Health* **10**,
600 1070258, doi:10.3389/fpubh.2022.1070258 (2022).
- 601 48 Tisza, M. J., Belford, A. K., Dominguez-Huerta, G., Bolduc, B. & Buck, C. B. Cenote-Taker 2
602 democratizes virus discovery and sequence annotation. *Virus Evol* **7**, veaa100,
603 doi:10.1093/ve/veaa100 (2021).

- 604 49 Nayfach, S. *et al.* CheckV assesses the quality and completeness of metagenome-
605 assembled viral genomes. *Nat Biotechnol* **39**, 578-585, doi:10.1038/s41587-020-00774-7
606 (2021).
- 607 50 Kieft, K., Zhou, Z. & Anantharaman, K. VIBRANT: automated recovery, annotation and
608 curation of microbial viruses, and evaluation of viral community function from genomic
609 sequences. *Microbiome* **8**, 90, doi:10.1186/s40168-020-00867-0 (2020).
- 610 51 Roux, S. *et al.* Minimum Information about an Uncultivated Virus Genome (MIUViG). *Nat*
611 *Biotechnol* **37**, 29-37, doi:10.1038/nbt.4306 (2019).
- 612 52 Fishbein, S. R. S. *et al.* Randomized Controlled Trial of Oral Vancomycin Treatment in
613 Clostridioides difficile-Colonized Patients. *mSphere* **6**, doi:10.1128/mSphere.00936-20
614 (2021).
- 615 53 Lees, J. A., Galardini, M., Bentley, S. D., Weiser, J. N. & Corander, J. pyseer: a
616 comprehensive tool for microbial pangenome-wide association studies. *Bioinformatics*
617 **34**, 4310-4312, doi:10.1093/bioinformatics/bty539 (2018).
- 618 54 Seemann, T. *snp-dists*, <<https://github.com/tseemann/snp-dists>> (2021).
- 619 55 Williamson, C. H. D. *et al.* Identification of novel, cryptic Clostridioides species isolates
620 from environmental samples collected from diverse geographical locations. *Microb*
621 *Genom* **8**, doi:10.1099/mgen.0.000742 (2022).
- 622 56 Lyon, S. A., Hutton, M. L., Rood, J. I., Cheung, J. K. & Lyras, D. CdtR Regulates TcdA and
623 TcdB Production in Clostridium difficile. *PLoS Pathog* **12**, e1005758,
624 doi:10.1371/journal.ppat.1005758 (2016).
- 625 57 Dong, Q. *et al.* Virulence and genomic diversity among clinical isolates of ST1
626 (BI/NAP1/027) Clostridioides difficile. *bioRxiv*, doi:10.1101/2023.01.12.523823 (2023).
- 627 58 Zheng, Y. *et al.* Clostridium difficile colonization in preoperative colorectal cancer
628 patients. *Oncotarget* **8**, 11877-11886, doi:10.18632/oncotarget.14424 (2017).
- 629 59 Jain, T. *et al.* Clostridium Difficile Colonization in Hematopoietic Stem Cell Transplant
630 Recipients: A Prospective Study of the Epidemiology and Outcomes Involving Toxigenic
631 and Nontoxigenic Strains. *Biol Blood Marrow Transplant* **22**, 157-163,
632 doi:10.1016/j.bbmt.2015.07.020 (2016).
- 633 60 Kamboj, M., Gennarelli, R. L., Brite, J., Sepkowitz, K. & Lipitz-Snyderman, A. Risk for
634 Clostridioides difficile Infection among Older Adults with Cancer. *Emerg Infect Dis* **25**,
635 1683-1689, doi:10.3201/eid2509.181142 (2019).
- 636 61 Claro, T., Daniels, S. & Humphreys, H. Detecting Clostridium difficile spores from
637 inanimate surfaces of the hospital environment: which method is best? *J Clin Microbiol*
638 **52**, 3426-3428, doi:10.1128/JCM.01011-14 (2014).
- 639 62 Kumar, N. *et al.* Genome-Based Infection Tracking Reveals Dynamics of Clostridium
640 difficile Transmission and Disease Recurrence. *Clin Infect Dis* **62**, 746-752,
641 doi:10.1093/cid/civ1031 (2016).
- 642 63 Kiersnowska, Z. M., Lemiech-Mirowska, E., Michalkiewicz, M., Sierocka, A. & Marczak,
643 M. Detection and Analysis of Clostridioides difficile Spores in a Hospital Environment. *Int*
644 *J Environ Res Public Health* **19**, doi:10.3390/ijerph192315670 (2022).
- 645 64 Morgan, D. J. *et al.* The Impact of Universal Glove and Gown Use on Clostridioides
646 Difficile Acquisition: A Cluster-Randomized Trial. *Clin Infect Dis* **76**, e1202-e1207,
647 doi:10.1093/cid/ciac519 (2023).

- 648 65 Miles-Jay, A. *et al.* A multisite genomic epidemiology study of *Clostridioides difficile*
649 infections in the USA supports differential roles of healthcare versus community spread
650 for two common strains. *Microb Genom* **7**, doi:10.1099/mgen.0.000590 (2021).
- 651 66 Snyderman, D. R. *et al.* Epidemiologic trends in *Clostridioides difficile* isolate ribotypes in
652 United States from 2011 to 2016. *Anaerobe* **63**, 102185,
653 doi:10.1016/j.anaerobe.2020.102185 (2020).
- 654 67 Diaz, O. R., Sayer, C. V., Popham, D. L. & Shen, A. *Clostridium difficile* Lipoprotein GerS Is
655 Required for Cortex Modification and Thus Spore Germination. *mSphere* **3**,
656 doi:10.1128/mSphere.00205-18 (2018).
- 657 68 Wydau-Dematteis, S. *et al.* Cwp19 Is a Novel Lytic Transglycosylase Involved in
658 Stationary-Phase Autolysis Resulting in Toxin Release in *Clostridium difficile*. *mBio* **9**,
659 doi:10.1128/mBio.00648-18 (2018).
- 660 69 Balsells, E. *et al.* Global burden of *Clostridium difficile* infections: a systematic review
661 and meta-analysis. *J Glob Health* **9**, 010407, doi:10.7189/jogh.09.010407 (2019).
- 662 70 Seekatz, A. M. *et al.* Presence of multiple *Clostridium difficile* strains at primary infection
663 is associated with development of recurrent disease. *Anaerobe* **53**, 74-81,
664 doi:10.1016/j.anaerobe.2018.05.017 (2018).
665
666
667

668 **Tables**

669 **Table 1.** *C. difficile* epidemiology on the admission level (N=647 admissions)

Variable	N (%)
Admissions with ≥1 stool and/or rectal swab specimen collected	364 / 647 (56)
Culture positive any time during admission	79 / 364 (22)
Toxigenic culture positive at any time during admission	57 / 364 (16)
Toxigenic culture positive on admission (Colonized on admission)	19 / 364 (4)
Toxigenic culture negative on admission, toxigenic culture positive later in admission	6 / 364 (2)
(Acquisition)	
Unknown colonization status on admission, toxigenic culture positive later in admission	32 / 364 (9)
(Indeterminate acquisition)	
Non-toxigenic culture positive at any time during admission	26 / 364 (7)
Non-toxigenic culture positive on admission (Non-toxigenic colonized on admission)	6 / 364 (2)
Non-toxigenic culture negative on admission, toxigenic culture positive later in admission (Non-toxigenic acquisition) ^a	2 / 364 (1)
Unknown colonization status on admission, non-toxigenic culture positive later in admission	18 / 364 (5)
(Indeterminate acquisition) ^b	
EIA positive during admission	25 / 647 (4)
EIA positive during admission with specimen(s) collected	17 / 364 (5)
Indeterminate toxigenic <i>C. difficile</i> acquisition	6 / 17 (35)
New acquisition	3 / 17 (18)
False positive EIA ^c	3 / 17 (18)
Colonized on admission or pre-existing colonization	3 / 17 (18)
Recurrent CDI	2 / 17 (12)

670 **Note:** Colonized on admission was defined as: 1. Having a *C. difficile* culture positive specimen
 671 collected before calendar day 3 of admission, or 2. Having a history of an earlier *C. difficile*
 672 culture positive specimen of the same strain collected during a previous hospitalization.

673 Acquisition was considered indeterminate when the earliest culture positive specimen was
 674 collected on calendar day 4 or later during admission.

675 For EIA positive admissions, new acquisitions were defined as having toxigenic culture negative
 676 specimen that preceded the EIA positive clinical stool collection during the same admission. EIA
 677 positive admission were classified as indeterminate if the patient did not have any stool or rectal
 678 swab culture results available prior to the collection of the EIA positive stool sample. EIA
 679 positive admissions were defined as colonized on admission or pre-existing colonization if the
 680 patient had a toxigenic culture positive specimen that preceded the EIA positive clinical stool
 681 during the same admission.

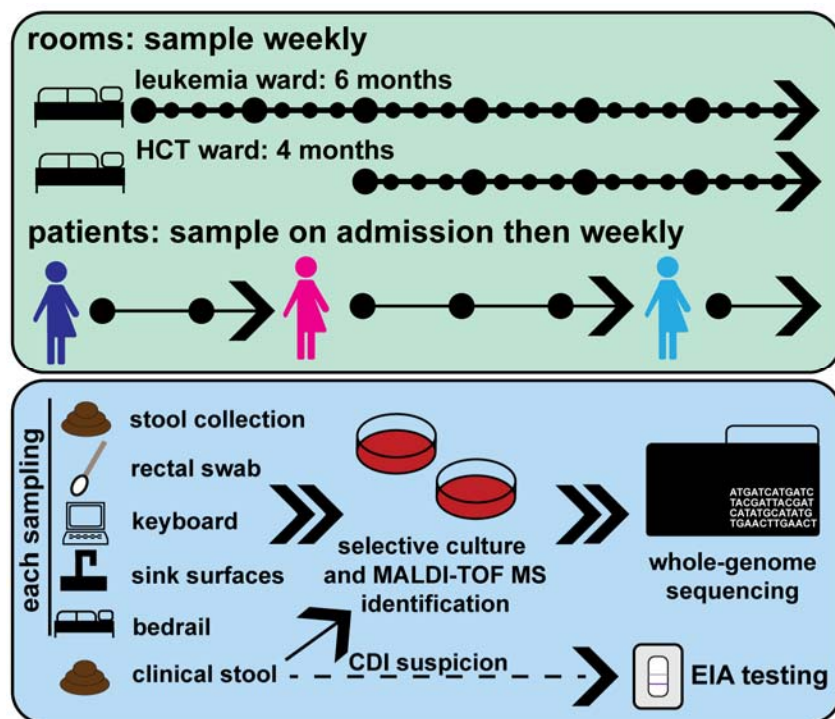
682 ^aIncludes one patient admission with non-toxigenic *C. difficile* acquisition who was co-colonized
 683 with toxigenic *C. difficile* on admission. (This patient is also counted in the toxigenic culture
 684 positive colonized on admission row.)

685 ^bIncludes two patient admissions co-colonized with toxigenic *C. difficile*; both toxigenic and non-
 686 toxigenic were indeterminate acquisition. (These patients are also counted in the toxigenic
 687 culture indeterminate acquisition row.)

688 ^cThese results were considered false positive EIAs because both the clinical stool specimen and
 689 additional surveillance stool or rectal swab specimens were toxigenic culture negative. One
 690 participant had a culture negative clinical specimen and culture negative stool and rectal swab
 691 specimens from the subsequent day. The second participant had a culture negative clinical
 692 specimen and six additional culture negative specimens (5 stool, 1 rectal swab) collected during
 693 admission, ranging from three days prior to clinical stool collection through 26 days after clinical
 694 stool collection. The third participant had four non-toxigenic culture positive specimens during
 695 the EIA+ admission (including the clinical stool; dates ranged from 8 days prior to EIA+ through
 696 6 days post-EIA+ collection) and three non-toxigenic culture positive specimens during a
 697 subsequent admission; all seven non-toxigenic culture positive specimens were the same strain.

698 None of the three participants had a toxigenic culture positive specimen during the EIA+
699 admission.
700

701 **Figure Titles and Captions**



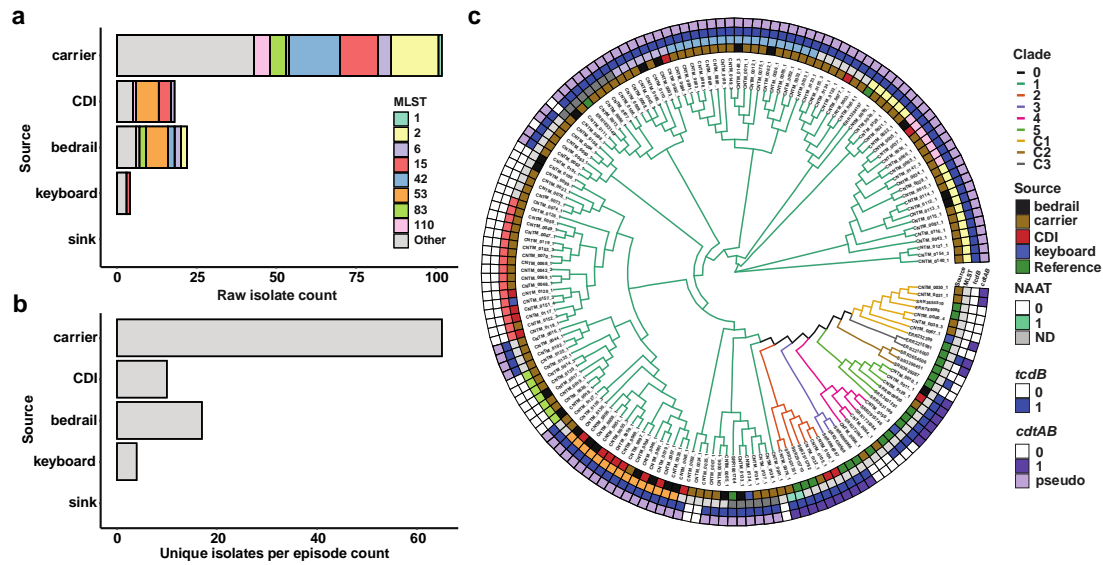
702

703 **Figure 1: Study sampling and testing overview.**

704 Caption: a) We sampled a leukemia and hematopoietic stem cell transplant ward at Barnes-
705 Jewish Hospital in St. Louis, USA for 6 and 4 months respectively. Patients were enrolled and
706 sampled upon admission, and then weekly for their time in the study wards. Surfaces were
707 sampled weekly across the duration of the study. All samples and stool collected as part of
708 routine clinical care were subjected to selective culture and MALDI-TOF MS identification, and
709 isolates were whole-genome sequenced. Results of EIA testing as part of routine care were
710 obtained.

711

712



713

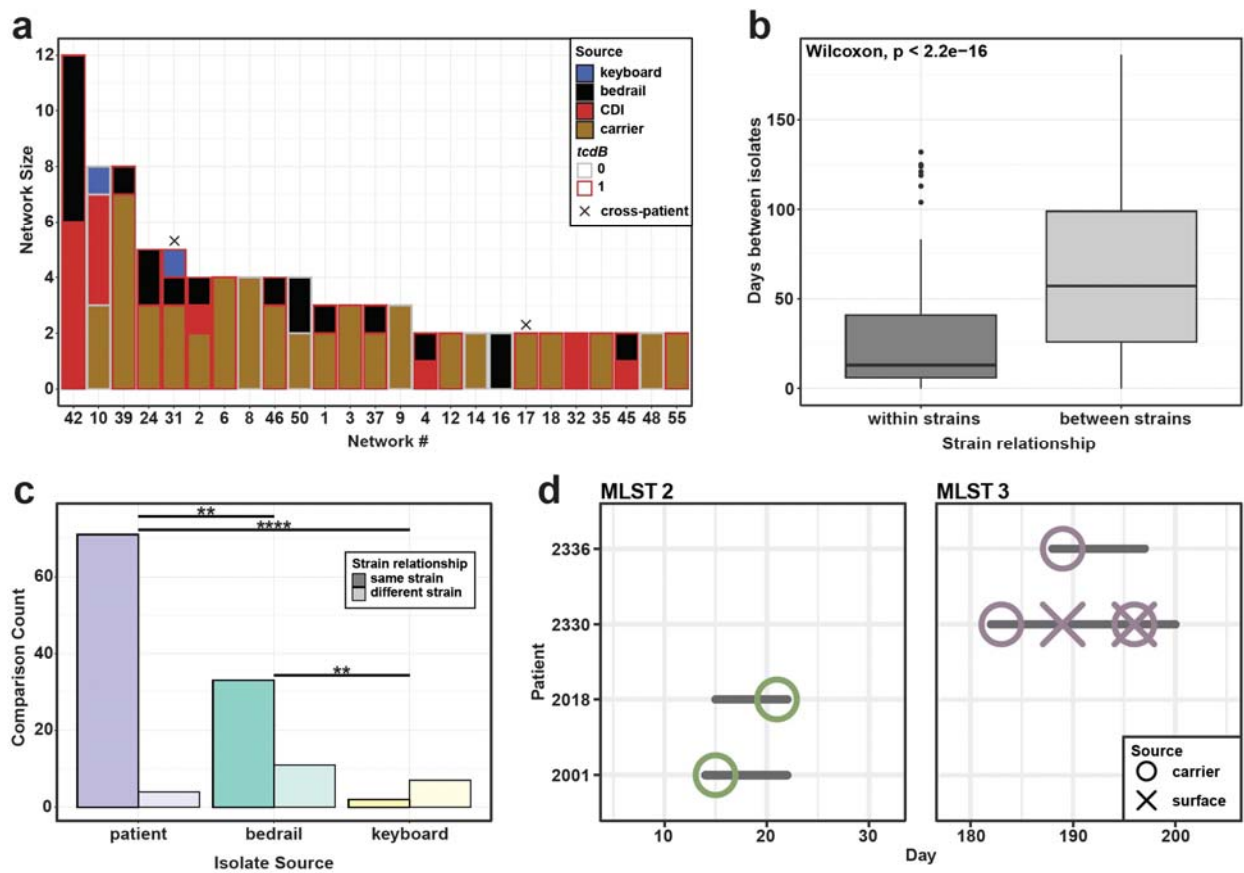
714 **Figure 2: Total samples collected and phylogenetic relationships reveal carriers**
715 **outnumber CDI patients and bedrails are the most commonly contaminated surface.**

716 Caption: Total a) isolates collected and b) culture-positive episodes from each source. We found
717 more carriers than CDI patients, and bedrails yielded the most *C. difficile* isolates. c) Cladogram
718 of all isolates collected during this study plus references.

719

720

721



722

723 **Figure 3: Surfaces are a site of environmental contamination and potential for**
 724 **transmission from colonized and CDI patients.**

725 Caption: a) Strain networks were defined by ≤ 2 MLST core gene SNP cutoff. Network 10
 726 includes the non-toxicogenic isolates from Patient 2245 that are likely not responsible for the CDI.
 727 b) Absolute value of days between isolates within strains and between strains. Isolates within
 728 the same strain were significantly temporally linked ($p < 2.2e-16$, Wilcoxon test). c) Number of
 729 comparisons in each group that fall within strain cutoff. Patient: between two isolates collected
 730 from the same patient; bedrail: between a patient isolate and an isolate taken from their bedrail;
 731 keyboard: between a patient isolate and an isolate taken from their keyboard. Fisher's exact
 732 test, BH corrected. d) Strain tracking diagram of transmission networks associated with more
 733 than one patient. Colors indicate MLST of network and horizontal lines indicate stay in a room.
 734 Patient 2330 sheds *C. difficile* onto the bedrail and patient 2336 later is identified as a carrier of
 735 the same strain.

736

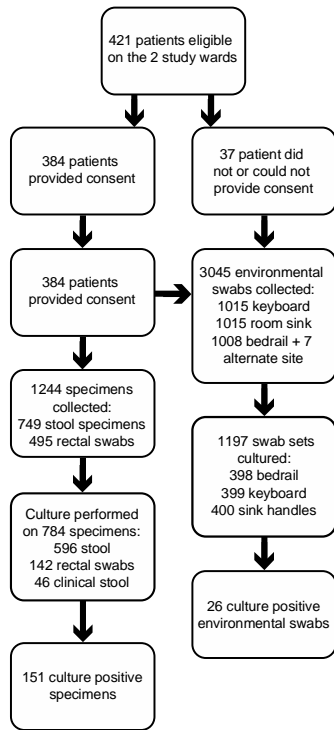
737

738

739

752

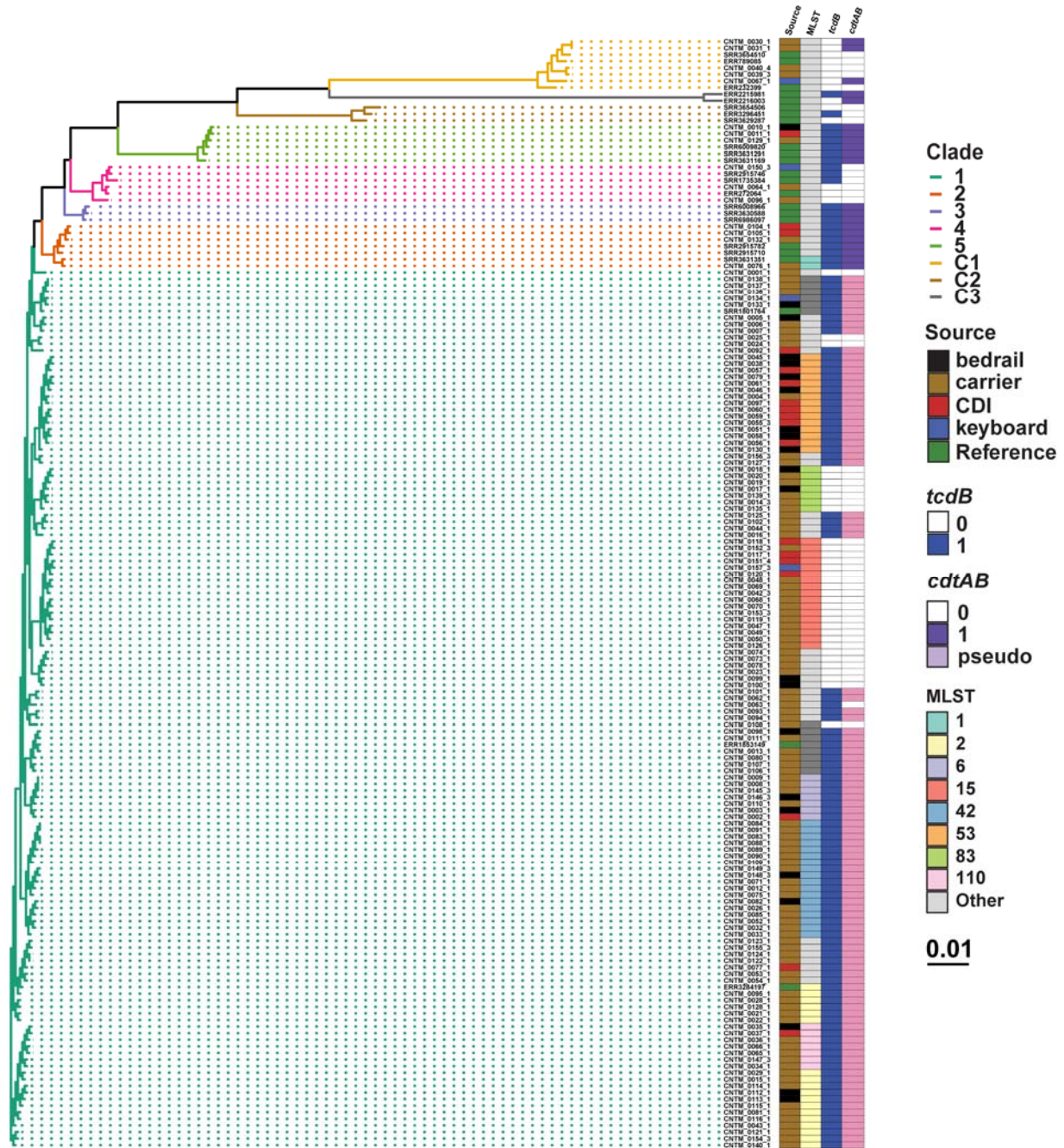
753 **Supplemental Figures and Tables Titles and Captions**



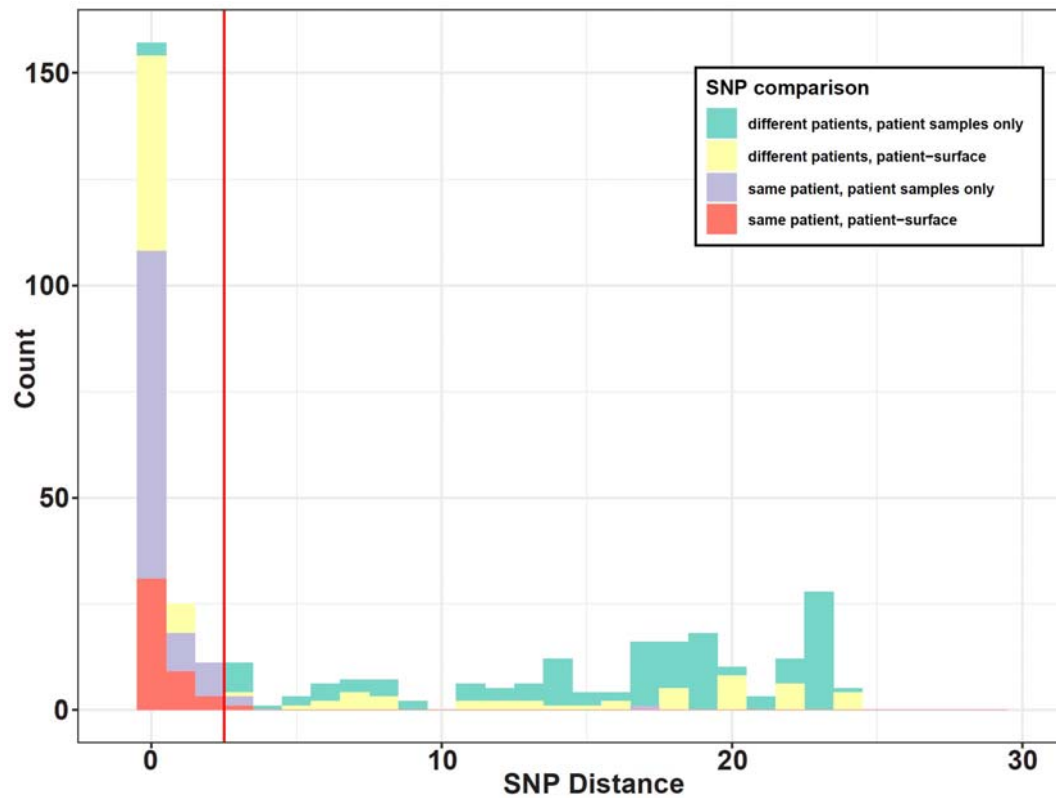
754

755 **Supplementary Figure 1: Bubble plot of enrollment, collection, and culture numbers.**

756
757
758



Supplementary Figure 2: Phylogenetic tree of isolates collected in this study and select references (Supplementary Table 2).



759

760 **Supplementary Figure 3: Histogram of core genome SNP distances between different**

761 **within-MLST isolate comparisons, zoomed to show SNP cutoff (red line at 2 SNPs).**

