

1 **Cardiopulmonary Exercise Testing in a Prospective Multicenter Cohort of Older Adults:**
2 **The Study of Muscle, Mobility and Aging (SOMMA)**

3

4 Cody Wolf, MS^{1*}; Terri L. Blackwell, MA^{2*}; Eileen Johnson, MPH²; Nancy W. Glynn, PhD³;
5 Barbara Nicklas, PhD⁴; Stephen B. Kritchevsky, PhD⁴; Elvis A. Carnero, PhD⁵; Peggy M.
6 Cawthon, PhD, MPH^{2,6}; Steven R. Cummings, MD^{2,6}; Frederico G. S. Toledo, MD⁷; Anne B.
7 Newman, MD, MPH³; Daniel E. Forman, MD^{8*}; Bret H. Goodpaster, PhD^{5*}

8

9 ¹Department of Health and Physical Activity, University of Pittsburgh, Pittsburgh, Pennsylvania,
10 USA.

11 ²San Francisco Coordinating Center, California Pacific Medical Center Research Institute, San
12 Francisco, California, USA.

13 ³Department of Epidemiology, University of Pittsburgh, Pittsburgh, Pennsylvania, USA.

14 ⁴Department of Internal Medicine-Gerontology and Geriatric Medicine, Wake Forest University
15 School of Medicine, Winston-Salem, North Carolina, USA.

16 ⁵Translational Research Institute, AdventHealth, Orlando, FL, USA.

17 ⁶Department of Epidemiology and Biostatistics, University of California, San Francisco,
18 California, San Francisco, California, USA.

19 ⁷Department of Medicine-Division of Endocrinology and Metabolism, University of Pittsburgh
20 School of Medicine, Pittsburgh, Pennsylvania, USA.

21 ⁸Department of Medicine (Geriatrics and Cardiology) University of Pittsburgh; Geriatrics
22 Research, Education and Clinical Care (GRECC), VA Pittsburgh Healthcare System, Pittsburgh,
23 PA

24 *These authors contributed equally

25 Corresponding authors:

26 Bret H. Goodpaster, PhD

27 Translational Research Institute

28 301 East Princeton Street

29 Orlando, FL 32804email: bret.goodpaster@adventhealth.com

30

31 Short Title: Cardiopulmonary Exercise Testing in Older Adults

32 Keywords: cardiorespiratory fitness, aging, frailty, muscle, VO₂peak

33 Abstract word count: 350

34 Main text word count: 4965

35 Number of Figures: 4

36 Number of Tables: 4

37 Number of References: 40

38 **ABSTRACT**

39 **BACKGROUND:** Cardiorespiratory fitness (CRF) measured by peak oxygen consumption
40 (VO_2peak) declines with aging and correlates with mortality and morbidity. Cardiopulmonary
41 Exercise Testing (CPET) has long been the criterion method to assess CRF, but its feasibility,
42 efficacy and reliability in older adults is unclear. The large, multicenter Study of Muscle,
43 Mobility and Aging (SOMMA) employed CPET to evaluate the mechanisms underlying declines
44 in mobility with aging among community-dwelling older adults. Our primary objective was to
45 design and implement a CPET protocol in older adults that was dependable, safe, scientifically
46 valuable, and methodologically reliable.

47 **METHODS:** CPET was performed using treadmill exercise in 875 adults ≥ 70 years. A
48 composite protocol included a symptom-limited peak exercise phase and two submaximal phases
49 to assess cardiopulmonary ventilatory indices during 1) participants' preferred walking speed
50 and 2) at slow walking speed of 1.5 mph (0.67 m/s). An adjudication process was in place to
51 review tests for validity if they met any prespecified criteria ($\text{VO}_2\text{peak} < 12.0$ ml/kg/min;
52 maximum heart rate (HR) < 100 bpm; respiratory exchange ratio (RER) < 1.05 and a rating of
53 perceived exertion < 15). A repeat test was performed in a subset (N=30) to assess
54 reproducibility.

55 **RESULTS:** CPET was safe and well tolerated, with 95.8% of participants able to complete the
56 VO_2peak phase of the protocol. Only 56 (6.4%) participants had a risk alert during any phase of
57 testing and only two adverse events occurred during the peak phase: a fall and atrial fibrillation.
58 The average \pm standard deviation for VO_2peak was 20.2 ± 4.8 mL/kg/min, peak HR 142 ± 18
59 bpm, and peak RER 1.14 ± 0.09 . VO_2peak and RER were slightly higher in men than women.
60 Adjudication was indicated in 47 participants; 20 were evaluated as valid, 27 as invalid (18 had a

61 data collection error, 9 did not reach VO₂peak). Reproducibility of VO₂peak was high (intraclass
62 correlation coefficient=0.97).

63 **CONCLUSIONS:** CPET was feasible, effective and safe for community-dwelling older adults,
64 many of whom had multimorbidity and frailty. These data support a broader implementation of
65 CPET to provide important insight into the role of CRF and its underlying determinants in aging
66 and age-related conditions and diseases.

67

68 **Clinical Perspective**

69

70 **What Is New?**

- 71 • Performing cardiopulmonary exercise testing in a community dwelling older adult with
72 multimorbidities or frailty is feasible and exceptionally safe under highly trained exercise
73 physiologists and physician supervision.
- 74 • Reproducibility of VO₂peak among community-dwelling older adults with significant
75 clinical complexity was high (intraclass correlation coefficient=0.97).
- 76 • The VO₂peak observed was comparable to established normative data for older adults,
77 and adds merit to the limited data collected on VO₂peak norms in older adults.

78 **What Are the Clinical Implications?**

- 79 • Ventilatory gas collection during clinical cardiac stress testing may be valuable to plan of
80 care in routine management of older adults due to the important role of aerobic fitness on
81 morbidity and mortality.
- 82 • Cardiopulmonary exercise testing can provide insight into the role of cardiorespiratory
83 fitness and its underlying determinants in aging and age-related conditions and diseases.

84

85 Non-standard Abbreviations and Acronyms

ACSM	American College of Sports Medicine
APMHR	Age-Predicted Maximal Heart Rate
BMI	body mass index
BP	blood pressure
CES-D	Center for Epidemiological Studies-Depression
CHAMPS	Community Healthy Activities Model Program for Seniors
CI	confidence interval
CPET	cardiopulmonary exercise testing
CRF	cardiorespiratory fitness
CV	coefficient of variation
ECG	Electrocardiogram
EC _w	energetic cost of walking
HR	heart rate
ICC	intraclass correlation coefficient
MET	metabolic equivalent of task
MR	magnetic resonance
PWS	preferred walking speed
RER	respiratory exchange ratio
RPE	rating of perceived exertion
SD	standard deviation
SOMMA	Study of Muscle, Mobility and Aging
SWS	slow walking speed

VCO ₂	carbon dioxide exhalation
VE	minute ventilation
VO ₂	oxygen inhalation
VO ₂ peak	peak oxygen consumption

86

87 INTRODUCTION

88 Cardiorespiratory fitness (CRF) refers to the capacity of the circulatory and respiratory
89 systems to supply oxygen to skeletal muscle mitochondria for energy production needed during
90 physical activity.¹ Peak oxygen consumption (VO_2peak) is the criterion measure of CRF, which
91 declines with aging, is a key metric of physical function and a strong predictor of risk for
92 morbidity and mortality.² It is often applied to diagnose and evaluate the effects of disease as
93 well as constitutive physiologic mechanisms.³ VO_2peak assessed using symptom-limited
94 cardiopulmonary exercise testing (CPET) is a vetted criterion metric of CRF.^{1,4,5} CPET entails an
95 exercise provocation to stimulate integrated physiologic responses (cardiac, pulmonary, muscle,
96 autonomic, circulatory) that can be assessed through patterns in ventilatory indices.^{1,6}
97 Measurements of oxygen consumption (VO_2), carbon dioxide production (VCO_2), minute
98 ventilation, and associated indices during progressive exercise intensity assess aerobic capacity,
99 ventilatory efficiency, and other aspects of physical function. These can discern patterns of
100 performance and physical limitation, with a wide range of clinical and research applications. The
101 reliability of CPET for measuring CRF in younger populations has been well-established.^{1,7} Its
102 application, feasibility and reliability in older adults, however, is less certain. Studies to validate
103 VO_2peak in older adults have been limited to small sample sizes, with many lingering questions
104 regarding their feasibility, reliability and safety amidst age-related issues of mobility
105 impairments, multimorbidity, frailty, fear of falling or maximal exertion.^{8,9}

106 The conceptual value of CRF assessments using CPET in older adults is strong. VO_2peak
107 correlates with physical function¹⁰⁻¹², frailty, disability, and mortality¹³ in older adults. CPET has
108 been useful in determining the etiology of dyspnea, a common problem for older adults.¹

109 Likewise, CPET is useful in determining diagnosis, prognosis and management of heart failure,
110 chronic obstructive lung disease and other clinical challenges pertinent to older adults.¹

111 In the Study of Muscle, Mobility and Aging (SOMMA), a study designed to distinguish
112 subcellular mechanisms in skeletal muscle underlying mobility disability and functional decline
113 over a three year period in older adults, CPET is integral to the primary study objectives to
114 clarify key relationships between skeletal muscle mitochondrial respiration and CRF. Optimal
115 accuracy of CPET is paramount to better understand these relationships.¹⁴ SOMMA and other
116 studies of aging and age-related conditions and diseases require a CPET protocol that is
117 dependable, safe and reliable.

118 Many rudimentary issues for exercise testing become more complex for older adults,
119 especially those who have no prior experience with exercise testing or training. Goals to achieve
120 adequate motivation and confidence for a high exercise workload are often difficult, especially as
121 many older adults become fearful at higher exercise intensities. While CPET using a bicycle has
122 advantages of stability and safety, cycling is not an exercise that is familiar to many older
123 Americans. In comparison, walking is a more familiar exercise that may provide a more
124 meaningful evaluation of physiologic capacities, but concerns regarding walking limitations (gait
125 instability, pain) and safety (falls, anxiety, hemodynamics, arrhythmia) may also increase with
126 treadmill modes.¹⁵⁻¹⁷ Similarly, while breathing through a mouthpiece is commonly employed
127 for CPET, the discomfort associated with mouthpieces may become disproportionate due to
128 changes in jaw strength and dentition, and difficulty tolerating a nose clip and breathing
129 exclusively through the mouth. For many older adults, face masks provide greater comfort and
130 feasibility during exercise. However, it is not clear if face masks can achieve effective air seals

131 for accurate ventilatory measurements for those experiencing age-related changes in facial
132 structure.¹⁸

133 The primary aim of this report was to provide a detailed overview of the SOMMA CPET
134 protocol. We report methods to achieve dependable assessments of cardiorespiratory fitness
135 (VO_2peak) and submaximal exercise performance with associated safety and reliability. We also
136 examine feasibility of CPET among subpopulations in SOMMA with functional limitations and
137 comorbidities.

138

139 **METHODS**

140 ***SOMMA Participants***

141 Details of the design of SOMMA are published elsewhere (<https://sommaonline.ucsf.edu>).¹⁹
142 Volunteers were recruited at two clinical sites (University of Pittsburgh and Wake Forest
143 University School of Medicine) from April 2019 to December 2021.¹⁹ Individuals were eligible
144 to participate if they were ≥ 70 years old, willing and able to complete a skeletal muscle biopsy
145 and undergo magnetic resonance (MR). Individuals were excluded if they reported an inability to
146 walk $\frac{1}{4}$ mile or climb a flight of stairs; had body mass index (BMI) ≥ 40 kg/m^2 ; had an active
147 malignancy or dementia; had medical contraindication to biopsy or MR. Finally, participants
148 must have been able to complete the 400-meter walk; those who seemed unable to do so at the
149 screening visit completed a 4-meter walk to ensure their walking speed was ≥ 0.6 m/s . All
150 participants provided written informed consent, and the study was approved by the WIRB-
151 Copernicus Group. The goal was to collect CPET data on all participants at the baseline visit.
152 The SOMMA baseline data was collected over three separate visits, with a goal of completion

153 within 30 days. The first visit included a 400-meter walk test, strength and physical function
154 measures, a detailed medical review of medical history and a resting electrocardiogram (ECG).
155 CPET was done at the second visit. This provided the CPET team several days to obtain any
156 pertinent details of prior ECGs or medical history to ensure each participant's safety to complete
157 the anticipated CPET. Completion of the 400-meter walking test provided SOMMA participants
158 with an initial experience of a monitored functional assessment that contributed to greater
159 confidence for the later CPET.

160

161 ***Rationale for CPET Protocol Selection***

162 The CPET protocol was developed by a working group of exercise physiologists and
163 investigators with expertise in studies of older adults. CPET in SOMMA was performed using
164 treadmill exercise with the rationale that walking is a more universally familiar exercise to older
165 adults than bicycling. Walking was also better aligned with functional capacities needed for
166 independent mobility. The SOMMA CPET protocol was structured with 3 phases to capture a
167 full range of functional domains: (Phase 1) preferred walking speed (PWS); (Phase 2)
168 progressive exercise with increasing incline to evaluate VO_2 peak (Peak); (Phase 3) slow walking
169 speed (SWS). The reasoning for a three-phase protocol was to observe peak aerobic capacity and
170 incorporate other novel submaximal indices of walking energetics.¹⁰

171 CPET was conducted by experienced exercise physiologists under the supervision of a
172 physician or physician assistant. Staff conducting CPET went through formal, centralized
173 training with steps to standardize the testing process, including participant encouragement.
174 Contraindications for exercise testing were consistent with standard American College of Sports

175 Medicine (ACSM) guidelines.²⁰ To further optimize safety, eligibility screening included an
176 “alert system”, where potential safety concerns were systematically reviewed. These potential
177 concerns, grouped as low and high risk, included identification of alerts from blood pressure
178 (BP), heart rate (HR), and ECG that warranted further evaluation before CPET testing or, if
179 occurring during CPET, stopping testing and evaluating clinically (Listed in Table 1). Pre-CPET
180 low-risk alerts required clearance by the study physician for CPET to proceed or were not
181 cleared for Phase 2, while high-risk alerts led to a hold until participants were cleared by their
182 personal physician, the study physician and the study medical safety officer. Alerts during CPET
183 were consistent with the ACSM guideline’s relative and absolute contraindications for stopping
184 the test.²⁰

185

186 *CPET Equipment*

187 Exercise was performed on a treadmill (Trackmaster, Full Vision Inc. Newton, KS) coupled
188 with a cardiopulmonary metabolic cart (Medgraphics Ultima Series, Medgraphics Corporation,
189 St. Paul, MN). Breath-by-breath ventilatory measurements were assessed using face masks (Hans
190 Rudolph Inc., Shawnee, KS) fitted to each participant according to size options. Initially, an
191 adjustable neoprene face mask that was designed to stretch over participants’ faces was used
192 (Medgraphics, n=94). After discovering inconsistencies in ventilatory measurements from the
193 neoprene mask, its use was discontinued and the Hans Rudolph mask was used. If a participant
194 preferred, a mouthpiece and nose clip were substituted for the face mask (n=3 participants).

195 12-lead (Mason-Likar) ECG waveforms and pulse oxygen saturation (Nonin Inc., Plymouth,
196 MN) were monitored continuously. HR, BP and rating of perceived exertion (RPE)²¹ were
197 assessed in each of three phases of the CPET protocol.

198

199 ***Familiarization***

200 A familiarization period was performed prior to starting the CPET protocol. The goal of
201 familiarization was to first demonstrate and then ensure the participant could achieve proper
202 walking gait, and then explain each phase of the protocol. Exercise physiologists demonstrated
203 these steps before encouraging the participants to repeat them and confirm successful learning.
204 Familiarization included emphasis on the importance of normal stride length, safe positioning,
205 regular breathing, and focusing eyes ahead. The speeds utilized at each phase were demonstrated,
206 differentiating between PWS and SWS. Following the familiarization period, the participant was
207 prepared with electrode lead placement and face mask fitting. Participants then sat for resting
208 hemodynamics.

209

210 ***The CPET Protocol***

211 The CPET protocol was structured with three phases: (Phase 1) preferred walking speed
212 (PWS); (Phase 2) progressive exercise with increasing incline to evaluate VO₂peak (Peak);
213 (Phase 3) slow walking speed (SWS). Phases 1 and 2 were conducted sequentially without
214 interruption. After Phase 2, participants were given a 20-minute rest before beginning Phase 3.

215 Phase 1 consisted of 5 minutes of treadmill walking at each participant's PWS with 0%
216 incline. The PWS was based on the participant's gait speed during the 400-meter walk test that
217 was completed at the first SOMMA study visit. Continuous collection of ventilatory gases was
218 performed as participants walked, along with assessments of RPE and manual BP at minutes 4
219 and 5.

220 The exercise physiologists used consistent coaching phrases to describe Phase 1 as a "warm-
221 up" before the progressive intensity exercise of Phase 2 began. However, if a participant reached
222 a peak effort during Phase 1 (n=4), exercise intensity would not increase, and CPET would
223 progress directly to recovery part of Phase 2.

224 Phase 2 entailed a progression of exercise intensity to achieve VO_{2peak} . The goals were to
225 achieve a respiratory exchange ratio (RER) ≥ 1.05 and/or RPE ≥ 17 . The VO_{2peak} is defined as
226 the highest 30-second average of VO_2 achieved during Phase 2. The Peak protocol was premised
227 on a Modified Balke protocol¹⁷ with systematized modifications to better suit the SOMMA
228 population.

229 Whereas the Modified Balke protocol usually entails walking at either 2.0 or 3.0 mph (0.89
230 or 1.34 m/s), in SOMMA the initial treadmill speed was the PWS. If a participant's PWS was
231 < 2.0 mph (0.89 m/s), the initial speed used in Phase 2 was increased, but with discretion by the
232 exercise physiologist to select a speed that was well tolerated; the initial speeds used in Phase 2
233 were < 2.0 mph (0.89 m/s) for 49 participants. Furthermore, the Modified Balke protocol usually
234 starts at a 2.5% incline and increases 2.5% at each 2-minute stage thereafter until a participant
235 reaches volitional fatigue. In SOMMA, 2.5% increases in treadmill incline were made every 2
236 minutes, but limited to a maximal incline of 10% to avoid biomechanically awkward walking at
237 steeper angles. Thereafter, higher exercise intensity beyond the 10% incline relied on increasing

238 treadmill speed up to 0.5 mph (0.22 m/s) at each 2-minute stage until volitional fatigue. To evoke
239 a maximal effort, participants were prompted before each change in speed and incline and
240 encouraged to continue until they could no longer maintain the given workload. Every 2 minutes
241 and at peak performance, HR, BP and RPE were assessed.

242 Once the participant reached volitional fatigue, a 1-minute recovery period walking at 1 mph
243 (0.45 m/s) and 0% incline was initiated, followed by 4 minutes of seated recovery. During the
244 recovery periods continuous assessments of ventilatory indices, ECG, HR, and oxygen saturation
245 were completed as well as monitoring of BP and RPE at minute 5. The participant was asked to
246 continue sitting for the remainder of the 20-minute recovery period.

247 During Phase 3, the participant walked on the treadmill at 1.5 mph (0.67 m/s) and 0% incline,
248 with continuous collection of ventilatory gases and assessments of RPE at minutes 4 and 5 and
249 manual BP at minute 5.

250 Throughout each of the phases of testing, risk alerts associated with the exercise provocation
251 were carefully monitored and addressed by the supervising exercise physiologist and clinician as
252 per ACSM guidelines.²⁰

253

254 ***Quality Control***

255 The CPET metabolic cart received maintenance every 6 months to ensure proper calibration
256 (ventilatory, treadmill speed, grade). The CPET working group optimized the protocol and face
257 mask used for testing, created a format for saving and sharing data, and created an adjudication
258 process to review validity of tests in question. The CPET working group met regularly to review

259 protocol questions, safety and data quality. Data collected were reviewed monthly by the
260 working group to evaluate consistency between sites in the application of the protocol.

261

262 *Adjudication of VO₂peak Data*

263 To ensure that Phase 2 data were accurate, tests were adjudicated if they met at least one of the
264 following criteria: VO₂peak <12 ml/kg/min; maximum RPE <15 and maximum RER<1.05 (up to
265 the start of recovery); maximum HR <100 bpm. Adjudicators were assigned from the CPET
266 working group and were provided with data from CPET along with participant characteristics
267 (age, sex, anthropometrics, gait speed, medication use). Adjudicators determined the validity of
268 the Phase 2 data, as well as indicated if the data had a systematic problem and should not be used
269 for the other two phases.

270

271 *Repeatability*

272 Repeatability testing was conducted on a convenience sample of n=30 (15 per site, equal
273 number by sex), who repeated all phases of the CPET protocol. The goal was for the repeat tests
274 to be completed 7 days after the initial CPET, at the same time of day.

275

276 *Assessment of Walking Energetics*

277 To examine walking energetics for both Phases 1 and 3 (PWS, SWS), the energetic cost of
278 walking (EC_w) was calculated as the average VO₂ consumption from the last 3 minutes of each
279 test. We derived the energy cost-capacity ratio of both phases as $100 \cdot EC_w / VO_{2peak}$.¹¹

280

281 ***Participant Phenotypes and Characteristic Data***

282 SOMMA recruited community-dwelling older adults with diverse characteristics.
283 Multimorbidity, frailty and recurrent falling were quantified as it is often assumed that these
284 subpopulations are unable to complete maximal exercise testing. Depression was defined as a
285 score ≥ 10 on the Center for Epidemiological Studies Depression Scale (CES-D-10).²²
286 Information on self-reported history of chronic health conditions and depression was combined
287 to create the SOMMA multimorbidity index (0-11).²³ The frailty phenotype was defined
288 following the criteria by Fried et al.²⁴ Participants reported information about lifestyle, falls
289 history, mobility limitations, smoking status and medication use.^{25,26} Participants were
290 categorized as recurrent fallers if they reported ≥ 2 falls in the past year. Self-reported physical
291 activity was assessed with the Community Healthy Activities Model Program for Seniors
292 (CHAMPS) questionnaire.²⁷ Age predicted maximal heart rate (APMHR) was estimated as $208 -$
293 $0.7 * \text{age}$.²⁸ Slow gait speed was defined as ≤ 0.8 m/s on the 4-meter test. Obesity was defined as
294 $\text{BMI} \geq 30$ kg/m².

295

296 ***Statistical Analysis***

297 Participant characteristics, phenotypic data and CPET phase completion were summarized by
298 means and standard deviations (SD) for continuous variables, counts and percentages for
299 categorical variables. Differences in these characteristics between participants cleared or
300 excluded from the Phase 2 portion of CPET were analyzed using t-tests or Wilcoxon rank-sum
301 tests for continuous variables, χ^2 tests for categorical characteristics. Similar comparisons were

302 performed by phenotype and mask type. Similarly, differences in CPET measures by sex was
303 analyzed. The distribution of VO_2 peak across age was displayed graphically.

304 For the repeatability analysis, differences between CPET parameters from the original and
305 repeat measures were examined using paired t-tests. Agreement between the two measures was
306 examined with correlations and intraclass correlation coefficients (ICC) and 95% confidence
307 intervals (CI), computed using a 2-way analysis of variance. A coefficient of variation (CV) was
308 also calculated.²⁹ Bland-Altman plots were presented to assess systematic bias in the differences
309 in measurement of four parameters of Phase 2 (VO_2 peak, maximum RER, maximum HR,
310 maximum RPE).³⁰ Formal tests of systematic bias were performed using linear regression to
311 examine whether the scatter in the Bland-Altman plots was heteroscedastic.³¹ A mixed models
312 approach was used to examine the fixed effect of site and order of test (original vs. repeat).

313 Significance levels reported were 2-sided. Statistical analyses were performed using SAS
314 software, version 9.4 (SAS Institute, Inc, Cary, NC).

315

316 **RESULTS**

317 *Participant Characteristics*

318 Of the 879 SOMMA participants, 875 performed CPET. Of the 4 who had no CPET
319 performed, 2 were never screened for CPET, one was not cleared for testing, and one was
320 cleared but was unable to use the treadmill. Of the 875 who attempted CPET, 84.8% were White;
321 59% were women; average age was 76.3 ± 5.0 years; and average BMI was 27.6 ± 4.6 kg/m².
322 The average 4-meter usual-pace gait speed was 1.04 ± 0.20 m/s. Only 41 (4.8%) had 3 or more
323 chronic conditions. Based on CHAMPS, participants reported an average baseline of 7 hours per
324 week of moderate-intensity physical activity (Table 2).

325 Of the 875 cleared for CPET, 19 (2.2%) were only cleared for the two sub-peak phases
326 (PWS, SWS). They were older, had slower average gait speed, more likely to have a history of
327 atrial fibrillation, were more likely to be a recurrent faller and had a higher prevalence of frailty
328 ($p < 0.05$ for all, Table 2).

329

330 *Comparison of Face Mask Type*

331 Comparison of data from participants by mask type showed that the Hans Rudolph masks
332 achieved greater consistency of ventilatory measures than the neoprene face mask. VO_{2peak} was
333 similar for participants wearing either type of mask ($p = 0.29$). However, participants wearing the
334 Hans Rudolph mask were less likely to have their tests identified for adjudication (7.89% vs
335 17.02%, $p < 0.01$). Of those participants with tests that needed adjudication, those wearing the
336 Hans Rudolph mask were more likely to be adjudicated as valid (77.78% vs 25.00%, $p < 0.01$).
337 Few participants ($n = 6$) had Phase 2 (Peak) stopped due to mask discomfort.

338

339 *Completion of the 3 Phases of CPET*

340 As shown in Figure 1, there was a high rate of completion for the CPET protocol; 863
341 (98.6%) completed Phase 1 (PWS) and 860 (98.3%) completed Phase 3 (SWS). A total of 852
342 (97.3%) performed Phase 2 (Peak). Older participants were less likely to finish Phase 1 or Phase
343 2, but had similar completion rates to younger participants for Phase 3 (Supplemental Table 1).
344 Compared to non-frail participants, those classified as frail were more likely to not be cleared for
345 Phase 2 (9.09% vs 1.60%). Recurrent fallers were also more likely not to be cleared for Phase 2
346 (5.41% vs 1.70%). Recurrent fallers who completed the CPET protocol, however, had similar

347 rates of risk alerts during the test as those who fell 0-1 times in the past year. Those “slow
348 walkers” were more likely to be unable to complete Phase 2 (Supplemental Table 2). Those with
349 3 or more comorbidities were more likely to not have performed Phase 2 and were more likely to
350 have stopped the protocol before reaching Phase 3. There were no differences in test completion
351 by obesity (Supplemental Table 3).

352

353 ***Pre-CPET Risk Alerts***

354 Of the 876 screened for CPET eligibility, 189 (22%) had a low-risk alert during screening or
355 CPET (Table 1). Blood pressure and ECG risk alerts during screening were common and were
356 typically judged to be not serious such that the protocol was continued. Of the participants with a
357 risk alert that occurred during screening, 94% were cleared for all 3 phases, and only 11% of
358 those participants had an alert during CPET.

359

360 ***Safety During CPET***

361 Very few participants had a risk alert during Phases 1 and 3 [PWS 5 (0.6%), SWS 2 (0.2%)]
362 (Table 1). Among 852 participants who attempted Phase 2 (Peak), 6% had a risk alert, although
363 most went on to complete Phase 3. The most common alert during testing was acute ischemia
364 pattern of ST-T changes (Phase 1, n=3; Phase 2, n=27; Phase 3, n=1). The medical safety officer
365 was notified of all high risk alerts or adverse events occurring during CPET (n=50 participants).
366 With the exception of 7 participants for whom the high risk alert was for a known condition, the
367 remaining 43 participants were either contacted in person (by phone, email, letter), or were
368 referred for medical treatment. There were two adverse events that occurred during Phase 2

369 (Peak). One participant fell on the treadmill. This adverse event resolved in one day with no need
370 for treatment, and was classified as mild severity with minor skin irritation and soft tissue
371 effects. One participant developed atrial fibrillation during the test and was referred to the
372 emergency room for treatment, resulting in an overnight hospitalization. This event was
373 considered serious, with resolution in one day. CPET for both these participants was stopped.
374 There were no statistically significant differences in the number of risk alerts during CPET
375 across age groups, frailty status, gait speed, multimorbidity status or obesity (Supplemental
376 Tables 1 -3).

377

378 *Ventilatory Indices*

379 Men had higher VO_2 peak values on average than women (Table 3). The average maximum
380 HR during Phase 2 (Peak) did not differ by sex. Men had a slightly higher maximum RER value
381 during Phase 2 than women. (Figure 2). The average percentage of the maximum HR to the age-
382 predicted maximum heart rate was 91.72 ± 11.42 , with 60% reaching 90% or more of their age-
383 predicted maximum heart rate.

384 The average treadmill speed for Phase 1 (PWS) was 1.05 ± 0.18 m/s, with an average EC_w of
385 12.44 ± 2.49 mL/kg/min, and a cost-capacity ratio of $63.21\% \pm 12.39\%$. On average, men had
386 higher PWS and EC_w , and lower cost-capacity ratio than women.

387 For Phase 3 (SWS) the average EC_w was 9.46 ± 1.64 mL/kg/min, and an average cost-
388 capacity ratio of 48.81 ± 12.56 . On average, men had higher EC_w and lower cost-capacity ratio
389 than women.

390 For all but recurrent fallers, the average VO_2peak was significantly lower among those in the
391 compromised group (Supplemental Figure 1). Those 85 years and older had a lower average
392 VO_2peak by 2.87 mL/kg/min compared to younger participants, those classified as frail had a
393 lower average VO_2peak by 4.62 mL/kg/min compared to non-frail participants, those slow
394 walkers had a lower average VO_2peak by 4.49 mL/kg/min compared to faster walkers, those with
395 ≥ 3 comorbidities had a lower average VO_2peak by 3.23 mL/kg/min compared to those with 0-2
396 comorbidities, and obese participants had a lower average VO_2peak by 3.50 mL/kg/min
397 compared to those with $\text{BMI} < 30 \text{ kg/m}^2$. VO_2peak declined with age (Figure 2).

398

399 *Adjudication Process*

400 Of the 852 participants that performed Phase 2 (Peak), 47 (5.5%) were flagged for
401 adjudication. (Figure 3) The majority ($n=28$) were due to low VO_2peak ($\text{VO}_2 < 12 \text{ mL/kg/min}$),
402 while 21 had low HR (maximum HR $< 100 \text{ bpm}$). Of the 47 adjudicated, data were deemed valid
403 for 20 (42.6%). Nine (19.1%) were adjudicated as invalid because the participant was not able to
404 complete the test. Eighteen (38.3%) were adjudicated as invalid, primarily due to technical or
405 other unknown issues with the gas exchange data.

406

407 *Repeatability*

408 The measurement of the Phase 2 (Peak) was highly reproducible (Table 4). The reliability as
409 shown by the ICC demonstrated almost perfect agreement for VO_2peak (0.97), and substantial
410 agreement for maximum HR, RER and RPE (0.74 - 0.86). The Bland-Altman plots for these
411 measures (Figure 4) illustrate a random scattering of points above and below the average mean

412 difference with few points falling outside the 95% CI, showing a lack of systematic bias between
413 the first and second measurements. The formal tests of heteroscedasticity were not significant
414 ($p > 0.05$). Results from mixed models for the Phase 2 measures did not show systematic bias
415 based on study site ($p > 0.07$) or whether the measurement was from the original or repeat
416 measurement ($p > 0.09$).

417 Likewise, the reliability of EC_w for Phases 1 and 3 (PWS, SWS) had strong agreement (ICCs
418 0.84, 0.78), but a poor agreement for RPE (ICCs 0.44, 0.19). Paired t-tests between the original
419 and repeat measures from these phases showed a significant difference for EC_w , RPE and cost-
420 capacity ratio, with the original measurements being higher on average than the repeat measures.
421 Results from mixed models did not show any systematic bias based on study site ($p > 0.09$), but
422 did show a systematic bias for whether the measurement was from the original or repeat
423 measurement for EC_w and cost-capacity ratio for both phases, and RPE for Phase 1 ($p < 0.05$).

424

425 **DISCUSSION**

426 The primary finding from this study is that CPET was highly feasible and safe to effectively
427 obtain VO_{2peak} as the criterion measure of CRF among older community-dwelling adults,
428 including many with phenotypic features of frailty, multimorbidity, and poor physical function.
429 Of the 879 participants enrolled in SOMMA, 99.7% were deemed eligible for CPET, and of
430 those, 97.3% completed the peak exercise protocol. After adjudication, we obtained valid
431 VO_{2peak} values in 96.2% who attempted the test. Only 25 participants terminated CPET early.
432 While others have reported results from CPET in older adults, they have been from smaller
433 studies or conglomerations of multiple studies³²⁻³⁵; and most lacked details regarding participant

434 selection, or excluded participants with poor physical function, frailty or multimorbidity.

435 Therefore, our study provides more generalizable data on the feasibility, safety and efficacy of
436 CPET across a wider range of older adults.

437 The utility of CPET for older adults has often been questioned, largely because of safety
438 concerns or reservations that many older adults cannot achieve peak exercise thresholds^{15,36}
439 and/or that they are unable to achieve sufficient motivation or stability to achieve high exercise
440 workloads. In SOMMA, we created a working group to design the CPET protocol specifically
441 for older adults. We implemented a familiarization protocol, protocol standardization, quality
442 control, safety alerts, and an adjudication process to assess valid VO₂peak tests. Because of these
443 rigorous methods, we obtained valid ventilatory measurements and had few risk alerts along with
444 a very high proportion of individuals who reliably achieved VO₂peak. This is particularly
445 important for multicenter, longitudinal studies.

446 One of the key findings is that CPET is feasible and safe in community-dwelling older adults
447 with a range of disease risk, disease burden and physical function when those with active
448 cardiopulmonary disease and very slow gait speed have been excluded. Although procedures
449 were implemented to exclude those in whom maximal exertion exercise was contraindicated,
450 only 1 participant was not cleared for any phase of CPET and 19 (2%) were not cleared for Phase
451 2 (Peak), with a remarkably high proportion of participants having completed Phase 2 without
452 incident. We monitored potential risk and uncovered a relatively small number of symptoms and
453 ECG abnormalities. There were only two adverse events, one considered mild severity.

454 There were no significant differences in the number of risk alerts during CPET across age
455 groups, frailty status, gait speed, multimorbidity status or obesity. Only 12.5% of alerts during
456 CPET were from previously known conditions. Notably, 29% of participants with risk indicators

457 during provocative exercise testing had a pre-CPET risk alert, suggesting high clinical value of
458 CPET, as well as predominant safety of the assessment. Our results confirm the utility of CPET
459 for ventilatory assessments in older adults, as well as for HR, BP, ECG, and other valuable
460 nonventilatory physiology.¹³

461 These SOMMA CPET data also provide an opportunity to evaluate additional metrics,
462 including submaximal respiratory data. The SOMMA cohort included participants at the lower
463 end of physical function in which CPET data are limited. The safety of CPET has been reported
464 previously, mostly in patients with cardiovascular and pulmonary disease³⁷, but also among
465 generally healthy adults.³⁵ Still, less is known about the safety of CPET specifically in older
466 adults, especially those with compromised physical function. Participant selection criteria, the
467 diversity of populations studied and the CPET protocol all make it difficult to compare CPET
468 safety across studies, yet our study strengthens rationale and method for application of CPET in
469 older adults.

470 The average and range of VO₂peak values in SOMMA are consistent with other databases
471 and smaller studies in older adults.³³⁻³⁵ The recently published Fitness Registry and the
472 Importance of Exercise: A National Data Base (FRIEND) showed VO₂peak ranged from 13.6-
473 29.4 ml/kg/min in septuagenarian men and 12.3-22.8 ml/kg/min in septuagenarian women.³⁵ As
474 in SOMMA, CRF is lower in older versus younger adults, and lower in women versus men, and
475 there is heterogeneity among those being tested. SOMMA stands out in comparison to these
476 reports by clarifying the functional impact of multimorbidity, frailty, obesity and other factors
477 that are rarely assessed in CPET analyses. Future SOMMA analyses will explore in depth the
478 associations of CPET with these factors. Reliable measures of VO₂peak will be crucial to
479 understand the mechanism underlying CRF and physical function. For example, we have

480 reported in SOMMA that VO₂peak is strongly associated with skeletal muscle mitochondrial
481 energetics.³⁸ Longitudinal SOMMA data will be instrumental in determining a role for CRF in
482 mobility decline.

483 Repeated CPET showed excellent reproducibility for VO₂peak. These data are consistent
484 with previous reports which showed similarly strong test-retest reproducibility.^{39,40} The low RPE
485 ICC during PWS and SWS may be attributed to a familiarization bias. There were no systematic
486 site differences for any of the measures across all phases, showing consistency between multiple
487 operators at multiple sites. Given that SOMMA entails treadmill exercise, the reproducibility
488 data are even more notable.

489

490 ***Limitations***

491 Race and ethnic subgroups were not large enough to assess the differences of race/ethnicity.
492 Further, SOMMA excluded candidates who could not complete the 400-meter walk or who
493 walked <0.6 m/s over 4 meters, so results cannot be extended to those with more significant
494 mobility disability.

495

496 ***Conclusions***

497 As a critical part of SOMMA we employed a CPET protocol that is feasible, safe, and
498 effective in older adults with a wide range of physical function and disease, and could be used
499 reliably as part of a multicenter study. SOMMA achieved high quality assessments of peak
500 performance as well as submaximal assessments of walking efficiency. CPET data will provide a

501 critical window into potential mechanisms underlying the biological aging process and risk for
502 functional decline and morbidity. Moreover, implications of the SOMMA CPET protocol imply
503 broader clinical and research potential, with generalizable efficacy for clinical care and research
504 assessments among older adults. SOMMA uniquely demonstrates the value and utility of CPET,
505 with potential to better understand and moderate organ and cellular changes that are associated
506 with aging.

507

508 **ARTICLE INFORMATION**

509 **Acknowledgements**

510 CPET Working Group: Elvis A. Carnero; Steve Anthony; Cheyenne Barnett; Terri Blackwell;
511 Peggy Cawthon; Amelia Cervantes; Robin Collins; Michelle Danielson; Daniel Forman; Nancy
512 Glynn; Bret Goodpaster; Michelle Gordon; Teresa Harnish; Eileen Johnson; Justin Johnson ;
513 Kim Kennedy; Reagan Moffit; Anne Newman; Barbara Nicklas; Benjamin Schumacher;
514 Frederico G. S. Toledo; April Tuttle; Katey Webber; Cody Wolf.

515

516 **Sources of Funding**

517 The Study of Muscle, Mobility and Aging is supported by funding from the National Institute on
518 Aging, grant number AG059416.” Study infrastructure support was funded in part by NIA
519 Claude D. Pepper Older American Independence Centers at University of Pittsburgh
520 (P30AG024827) and Wake Forest University (P30AG021332) and the Clinical and Translational
521 Science Institutes, funded by the National Center for Advancing Translational Science, at Wake
522 Forest University (UL1 0TR001420).

523 **Disclosures**

524 All authors report no conflicts.

525 **Supplemental Material**

526 **Tables S1-S3**

527 **Figure S1**

528

529 **REFERENCES**

- 530 1. Balady GJ, Arena R, Sietsema K, Myers J, Coke L, Fletcher GF, Forman D, Franklin B,
531 Guazzi M, Gulati M, et al. Interdisciplinary Council on Quality of Care and Outcomes
532 Research. Clinician's Guide to cardiopulmonary exercise testing in adults: a scientific
533 statement from the American Heart Association. *Circulation*. 2010;122:191-225. doi:
534 10.1161/CIR.0b013e3181e52e69.
- 535
- 536 2. Ross R, Blair SN, Arena R, Church TS, Després JP, Franklin BA, Haskell WL,
537 Kaminsky LA, Levine BD, Lavie CJ, et al. Importance of Assessing Cardiorespiratory
538 Fitness in Clinical Practice: A Case for Fitness as a Clinical Vital Sign: A Scientific
539 Statement From the American Heart Association. *Circulation*. 2016;134:e653-e699. doi:
540 10.1161/CIR.0000000000000461.
- 541
- 542 3. Ghosh S, Hota M, Chai X, Kiranya J, Ghosh P, He Z, Ruiz-Ramie JJ, Sarzynski MA,
543 Bouchard C. Exploring the underlying biology of intrinsic cardiorespiratory fitness
544 through integrative analysis of genomic variants and muscle gene expression profiling. *J*
545 *Appl Physiol*. (1985). 2019;126:1292-1314. doi: 10.1152/jappphysiol.00035.2018.
- 546
- 547 4. Ferrazza AM, Martolini D, Valli G, Palange P. Cardiopulmonary exercise testing in the
548 functional and prognostic evaluation of patients with pulmonary diseases. *Respiration*.
549 2009;77:3-17. doi: 10.1159/000186694.

550

- 551 5. Tran, D. (2018). Cardiopulmonary Exercise Testing. In P. C. Guest (Ed.), Investigations
552 of Early Nutrition Effects on Long-Term Health: Methods and Applications (pp. 285-
553 295). New York, NY: Springer New York.
- 554
- 555 6. Forman DE, Myers J, Lavie CJ, Guazzi M, Celli B, Arena R. Cardiopulmonary exercise
556 testing: relevant but underused. *Postgrad Med.* 2010;122:68-86. doi:
557 10.3810/pgm.2010.11.2225.
- 558
- 559 7. Decato TW, Bradley SM, Wilson EL, Hegewald MJ. Repeatability and Meaningful
560 Change of CPET Parameters in Healthy Subjects. *Med Sci Sports Exerc.* 2018;50:589-
561 595. doi: 10.1249/MSS.0000000000001474.
- 562
- 563 8. Davies LC, Francis DP, Piepoli M, Scott AC, Ponikowski P, Coats AJ. Chronic heart
564 failure in the elderly: value of cardiopulmonary exercise testing in risk stratification.
565 *Heart.* 2000;832:147-51. doi: 10.1136/heart.83.2.147.
- 566
- 567 9. Mejhert M, Linder-Klingsell E, Edner M, Kahan T, Persson H. Ventilatory variables are
568 strong prognostic markers in elderly patients with heart failure. *Heart.* 2002;88:239-43.
569 doi: 10.1136/heart.88.3.239.

570

- 571 10. Richardson CA, Glynn NW, Ferrucci LG, Mackey DC. Walking energetics, fatigability,
572 and fatigue in older adults: the study of energy and aging pilot. *J Gerontol A Biol Sci Med*
573 *Sci.* 2015;70:487-94. doi: 10.1093/gerona/glu146.
- 574
- 575 11. Schrack JA, Simonsick EM, Ferrucci L. The relationship of the energetic cost of slow
576 walking and peak energy expenditure to gait speed in mid-to-late life. *Am J Phys Med*
577 *Rehabil.* 2013;92:28-35. doi: 10.1097/PHM.0b013e3182644165.
- 578
- 579 12. Guralnik JM, Ferrucci L, Simonsick EM, Salive ME, Wallace RB. Lower-extremity
580 function in persons over the age of 70 years as a predictor of subsequent disability. *N*
581 *Engl J Med.* 1995;332:556-61. doi: 10.1056/NEJM199503023320902.
- 582
- 583 13. Forman DE, Arena R, Boxer R, Dolansky MA, Eng JJ, Fleg JL, Haykowsky M, Jahangir
584 A, Kaminsky LA, Kitzman DW, et al. Prioritizing Functional Capacity as a Principal End
585 Point for Therapies Oriented to Older Adults With Cardiovascular Disease: A Scientific
586 Statement for Healthcare Professionals From the American Heart Association.
587 *Circulation.* 2017;135:e894-e918. doi: 10.1161/CIR.0000000000000483.
- 588
- 589 14. Dhakal BP, Malhotra R, Murphy RM, Pappagianopoulos PP, Baggish AL, Weiner RB,
590 Houstis NE, Eisman AS, Hough SS, Lewis GD. Mechanisms of exercise intolerance in
591 heart failure with preserved ejection fraction: the role of abnormal peripheral oxygen

592 extraction. *Circ Heart Fail.* 2015;8:286-94. doi:

593 10.1161/CIRCHEARTFAILURE.114.001825.

594

595 15. Huggett DL, Connelly DM, Overend TJ. Maximal aerobic capacity testing of older

596 adults: a critical review. *J Gerontol A Biol Sci Med Sci.* 2005;60:57-66. doi:

597 10.1093/gerona/60.1.57.

598

599 16. Church TS, Gill TM, Newman AB, Blair SN, Earnest CP, Pahor M. Maximal fitness

600 testing in sedentary elderly at substantial risk of disability: LIFE-P study experience. *J*

601 *Aging Phys Act.* 2008;16:408-15. doi: 10.1123/japa.16.4.408.

602

603 17. Gill TM, DiPietro L, Krumholz HM. Role of exercise stress testing and safety monitoring

604 for older persons starting an exercise program. *JAMA.* 2000;284:342-9. doi:

605 10.1001/jama.284.3.342.

606

607 18. Freemas JA, Wilhite DP, Greenshields JT, Adamic EM, Mickleborough TD. Comparison

608 between a facemask and mouthpiece on breathing mechanics and gas exchange variables

609 during high-intensity exercise. *Eur J Sport Sci.* 2020;20:211-218. doi:

610 10.1080/17461391.2019.1628309.

611

612 19. Cummings SR, Newman AB, Coen PM, Hepple RT, Collins R, Kennedy K, Danielson

613 M, Peters K, Blackwell T, Johnson E, et al. The Study of Muscle, Mobility and Aging

- 614 (SOMMA). A Unique Cohort Study about the Cellular Biology of Aging and Age-related
615 Loss of Mobility. *J Gerontol A Biol Sci Med Sci*. 2023 Feb 9:glad052. doi:
616 10.1093/gerona/glad052. Epub ahead of print. PMID: 36754371.
- 617
- 618 20. Liguori Feito Y, Fountaine C, & Roy B. G. ACSM's guidelines for exercise testing and
619 prescription. *American College of Sports Medicine*. 2022;Eleventh edition.
- 620
- 621 21. Borg GA. Psychophysical bases of perceived exertion. *Med Sci Sports Exerc*.
622 1982;14:377-81.
- 623
- 624 22. Andresen EM, Malmgren JA, Carter WB, Patrick DL. Screening for depression in well
625 older adults: evaluation of a short form of the CES-D (Center for Epidemiologic Studies
626 Depression Scale). *Am J Prev Med*. 1994;10:77-84.
- 627
- 628 23. Espeland MA, Crimmins EM, Grossardt BR, Crandall JP, Gelfond JA, Harris TB,
629 Kritchevsky SB, Manson JE, Robinson JG, Rocca WA, et al. Clinical Trials Targeting
630 Aging and Age-Related Multimorbidity. *J Gerontol A Biol Sci Med Sci*. 2017;72:355-
631 361. doi: 10.1093/gerona/glw220.
- 632
- 633 24. Fried LP, Tangen CM, Walston J, Newman AB, Hirsch C, Gottdiener J, Seeman T, Tracy
634 R, Kop WJ, Burke G, et al. Frailty in older adults: evidence for a phenotype. *J Gerontol A
635 Biol Sci Med Sci*. 2001;56:M146-56. doi: 10.1093/gerona/56.3.m146.

- 636
- 637 25. Fitti JE, Kovar MG. The Supplement on Aging to the 1984 National Health Interview
638 Survey. *Vital Health Stat 1*. 1987;(21):1-115.
- 639
- 640 26. Pincus T, Summey JA, Soraci SA Jr, Wallston KA, Hummon NP. Assessment of patient
641 satisfaction in activities of daily living using a modified Stanford Health Assessment
642 Questionnaire. *Arthritis Rheum*. 1983;26:1346-53. doi: 10.1002/art.1780261107.
- 643
- 644 27. Stewart AL, Mills KM, King AC, Haskell WL, Gillis D, Ritter PL. CHAMPS physical
645 activity questionnaire for older adults: outcomes for interventions. *Med Sci Sports Exerc*.
646 2001;33:1126-41. doi: 10.1097/00005768-200107000-00010.
- 647
- 648 28. Tanaka H, Monahan KD, Seals DR. Age-predicted maximal heart rate revisited. *J Am*
649 *Coll Cardiol*. 2001;37:153-6. doi: 10.1016/s0735-1097(00)01054-8.
- 650
- 651 29. Shrout PE, Fleiss JL. Intraclass correlations: uses in assessing rater reliability. *Psychol*
652 *Bull*. 1979;86:420-8. doi: 10.1037//0033-2909.86.2.420.
- 653
- 654 30. Bland JM, Altman DG. Statistical methods for assessing agreement between two methods
655 of clinical measurement. *Lancet*. 1986;1(8476):307-10.
- 656

- 657 31. Hopkins WG. Measures of reliability in sports medicine and science. *Sports Med.*
658 2000;30:1-15. doi: 10.2165/00007256-200030010-00001.
- 659
- 660 32. Scardovi AB, De Maria R, Celestini A, Perna S, Coletta C, Feola M, Aspromonte N,
661 Rosso GL, Carunchio A, Ferraironi A, et al. Additive prognostic value of
662 cardiopulmonary exercise testing in elderly patients with heart failure. *Clin Sci (Lond).*
663 2009;116:415-22. doi: 10.1042/CS20080111.
- 664
- 665 33. Edvardsen E, Hansen BH, Holme IM, Dyrstad SM, Anderssen SA. Reference values for
666 cardiorespiratory response and fitness on the treadmill in a 20- to 85-year-old population.
667 *Chest.* 2013;144:241-248. doi: 10.1378/chest.12-1458.
- 668
- 669 34. Loe H, Rognmo Ø, Saltin B, Wisløff U. Aerobic capacity reference data in 3816 healthy
670 men and women 20-90 years. *PLoS One.* 2013;8:e64319. doi:
671 10.1371/journal.pone.0064319. Erratum in: *PLoS One.* 2013;8(11).
672 doi:10.1371/annotation/e3115a8e-ca9d-4d33-87ef-f355f07db28e.
- 673
- 674 35. Kaminsky LA, Arena R, Myers J, Peterman JE, Bonikowske AR, Harber MP, Medina
675 Inojosa JR, Lavie CJ, Squires RW. Updated Reference Standards for Cardiorespiratory
676 Fitness Measured with Cardiopulmonary Exercise Testing: Data from the Fitness
677 Registry and the Importance of Exercise National Database (FRIEND). *Mayo Clin Proc.*
678 2022;97:285-293. doi: 10.1016/j.mayocp.2021.08.020.

- 679
- 680 36. Kwok JM, Miller TD, Hodge DO, Gibbons RJ. Prognostic value of the Duke treadmill
681 score in the elderly. *J Am Coll Cardiol.* 2002;39:1475-81. doi: 10.1016/s0735-
682 1097(02)01769-2.
- 683
- 684 37. Guazzi M, Bandera F, Ozemek C, Systrom D, Arena R. Cardiopulmonary Exercise
685 Testing: What Is its Value? *J Am Coll Cardiol.* 2017;70:1618-1636. doi:
686 10.1016/j.jacc.2017.08.012.
- 687
- 688 38. Mau T, Lui LY, Distefano G, Kramer PA, Ramos SV, Toledo FGS, Santanasto AJ,
689 Shankland EG, Marcinek DJ, Jurczak MJ, et al. Mitochondrial energetics in skeletal
690 muscle are associated with leg power and cardiorespiratory fitness in the Study of
691 Muscle, Mobility, and Aging (SOMMA). *J Gerontol A Biol Sci Med Sci.* 2023;78:1367-
692 1375. doi: 10.1093/gerona/glac238.
- 693
- 694 39. Marburger CT, Brubaker PH, Pollock WE, Morgan TM, Kitzman DW. Reproducibility
695 of cardiopulmonary exercise testing in elderly patients with congestive heart failure. *Am J*
696 *Cardiol.* 1998;82:905-9. doi: 10.1016/s0002-9149(98)00502-5.
- 697
- 698 40. Barron A, Dhutia N, Mayet J, Hughes AD, Francis DP, Wensel R. Test-retest
699 repeatability of cardiopulmonary exercise test variables in patients with cardiac or

700 respiratory disease. *Eur J Prev Cardiol.* 2014;21:445-53. doi:

701 10.1177/2047487313518474.

702

703 Table 1. Risk Alerts occurring during CPET Eligibility or Testing: The Study of Muscle,
704 Mobility and Aging (SOMMA)

Risk Alert Parameter	Pre-CPET (N= 876)	Phase 1 (PWS) (N= 875)	Phase 2 (Peak) (N= 852)	Phase 3 (SWS) (N= 863)
Alerts During Eligibility Screening:	149 (17.01)			
High Risk				
Electrocardiogram				
Atrial fibrillation/other supraventricular tachycardia with rate >100 (and no medical history)	1			
Substantial ventricular ectopy	0			
Acute infarct pattern	2			
Acute ischemia pattern of ST-T changes	0			
Acute pericarditis pattern	0			
2 nd degree (type 2) or 3 rd degree block	0			
QRS widening >120ms (no history of bundle branch block)	17			
Other acute abnormalities	2			
Blood Pressure				
Systolic >180 mmHg or <90 mmHg	1			
Diastolic >110 mmHg	0			
Heart Rate				
<40 bpm or >110 bpm	1			
Low Risk				
Electrocardiogram				
Pre-excitation	0			
1 st or 2 nd (type 1) degree heart block	56			
Other non-acute abnormalities	16			
Blood Pressure				
Systolic 160 to ≤180 or 90-100 mmHg	28			
Diastolic 100 to ≤110 mmHg	6			
Heart Rate				
90-110 bpm or 40-50 bpm	43			
Alerts During CPET:		5 (0.57)	51 (5.99)	2 (0.23)
High Risk				
Atrial fibrillation/other supraventricular tachycardia with rate >100 (and no medical history)		1	8	0
Substantial ventricular ectopy		0	5	0
Acute ischemia pattern of ST-T changes		3	27	1
QRS widening >120ms (no history of bundle branch block)		0	1	0
Other acute abnormalities		1	5	0
Significant Pain		3	0	0
Other Alert		0	1	0
Adverse Event: Participant fell		0	1	0
Low Risk				
Other non-acute abnormalities		0	5	0
Systolic 160 to ≤180 or 90-100 mmHg		0	3	0
90-110 bpm or 40-50 bpm		1	4	1
Phase stopped early?				
Completed		3	NA	2
Stopped early		2	NA	0
Participant went on to the next Phase		1	43	NA

705 Abbreviations: CPET, cardiopulmonary exercise testing; PWS, Preferred Walking Speed; SWS,
706 Slow Walking Speed. Data shown as n (%) or n.
707 Note: Data is on a participant level, so one participant may have multiple events.
708 High risk alert: requiring review by the medical safety officer/study physician prior to participant
709 leaving clinic or the same day as the clinic being notified of the finding;
710 Low risk alert: requiring review by the medical safety officer/study physician by at least the next
711 business day of observation or notification of the finding, with recommended follow-up with the
712 participant (if any) taken no more than 10 days after observation or notification of the finding, or
713 sooner if deemed medically necessary.
714

715 Table 2. Baseline Characteristics by CPET Eligibility: The Study of Muscle, Mobility and
716 Aging (SOMMA)

Characteristic	All (N= 875)	All 3 Phases (N= 856)	Phase 1, 3 only (N= 19)	P-value*
Site				<0.001
University of Pittsburgh	437 (49.94)	435 (50.82)	2 (10.53)	
Wake Forest University School of Medicine	438 (50.06)	421 (49.18)	17 (89.47)	
Age (years)	76.34 ± 4.99	76.28 ± 4.96	79.11 ± 5.74	0.01
Sex				
Women	517 (59.09)	505 (59.00)	12 (63.16)	0.72
Men	358 (40.91)	351 (41.00)	7 (36.84)	
Race				0.59
Black	115 (13.14)	113 (13.20)	2 (10.53)	
White	742 (84.80)	726 (84.81)	16 (84.21)	
Other race	18 (2.06)	17 (1.99)	1 (5.26)	
Smoking status				0.48
Never	490 (56.32)	477 (56.05)	13 (68.42)	
Past	355 (40.80)	349 (41.01)	6 (31.58)	
Current	25 (2.87)	25 (2.94)	0	
Beta blocker use with 30 days of baseline	163 (18.67)	156 (18.27)	7 (36.84)	0.07
CHAMPS: Hours/week in moderate-intensity exercise-related activities (MET \geq 3)	7.03 ± 7.09	7.06 ± 7.12	5.57 ± 5.08	0.48
Body mass index (kg/m ²)	27.60 ± 4.56	27.58 ± 4.56	28.22 ± 4.69	0.55
Body mass index \geq 30 kg/m ²	250 (28.57)	243 (28.39)	7 (36.84)	0.42
4-meter walk gait speed (m/s)	1.04 ± 0.20	1.04 ± 0.20	0.88 ± 0.12	<0.001
4-meter walk gait speed \leq 0.8 m/s	89 (10.17)	84 (9.81)	5 (26.32)	0.04
SOMMA Multimorbidity Index (0-11)				
0	371 (42.99)	364 (43.13)	7 (36.84)	0.07
1	340 (39.40)	335 (39.69)	5 (26.32)	
2	111 (12.86)	107 (12.68)	4 (21.05)	
3+	41 (4.75)	38 (4.50)	3 (15.79)	
History of:				
Cancer, excluding non-melanoma skin cancer	217 (24.89)	210 (24.62)	7 (36.84)	0.28
Cardiac arrhythmia (atrial fibrillation)	34 (3.90)	31 (3.63)	3 (15.79)	0.03
Chronic kidney disease or renal failure	33 (3.79)	33 (3.87)	0	1.00
Chronic obstructive pulmonary disease/other lung disease	115 (13.19)	111 (13.01)	4 (21.05)	0.30
Coronary heart disease	59 (6.77)	56 (6.57)	3 (15.79)	0.13
Congestive heart failure	6 (0.69)	6 (0.70)	0	1.00
Depression (CES-D-10 \geq 10)	73 (8.45)	71 (8.40)	2 (10.53)	0.67
Diabetes mellitus	131 (15.02)	128 (15.01)	3 (15.79)	1.00
Stroke	21 (2.41)	20 (2.34)	1 (5.26)	0.37
Aortic stenosis	8 (0.92)	7 (0.82)	1 (5.26)	0.16
Age-Predicted Maximal Heart Rate (bpm)	154.56 ± 3.49	154.60 ± 3.47	152.63 ± 4.02	0.01
Recurrent faller (2+ in past year)	111 (12.73)	105 (12.31)	6 (31.58)	0.03
Any difficulty walking 2-3 blocks	33 (3.81)	31 (3.65)	2 (11.11)	0.15
Frailty status				
Robust	386 (44.11)	382 (44.63)	4 (21.05)	<0.001
Intermediate (pre-frail)	423 (48.34)	414 (48.36)	9 (47.37)	
Frail	66 (7.54)	60 (7.01)	6 (31.58)	

717 Abbreviations: CES-D, Center for Epidemiological Studies-Depression; CHAMPS, Community Healthy
718 Activities Model Program for Seniors; CPET, cardiopulmonary exercise testing; MET, metabolic
719 equivalent of task; SOMMA, Study of Muscle, Mobility and Aging.
720 Data shown as mean \pm SD or n(%)
721 *P-values from a t-test for normally distributed continuous variables, a Wilcoxon rank-sum test for
722 skewed continuous data, a chi-square test for categorical data or a Fisher's exact test for categorical data
723 with low expected cell counts.
724

725 Tables 3. CPET measures by sex: The Study of Muscle, Mobility and Aging (SOMMA)

CPET Measure	All (N= 875)	Men (N= 358)	Women (N= 517)	P-value*
Phase 1: Preferred Walking Speed				
Energetic cost of walking (mL/kg/min)	12.44 ± 2.49	12.95 ± 2.47	12.07 ± 2.44	<.0001
Rating of Perceived Exertion (6-20)	10.50 ± 2.03	10.32 ± 2.03	10.64 ± 2.02	0.02
Heart rate (bpm)	103.74 ± 17.22	99.35 ± 16.48	106.82 ± 17.08	<.0001
Respiratory exchange ratio	0.90 ± 0.09	0.90 ± 0.09	0.89 ± 0.09	0.11
Treadmill speed (m/s)	1.05 ± 0.18	1.08 ± 0.17	1.02 ± 0.18	<.0001
Cost-Capacity Ratio (%)	63.21 ± 12.39	59.90 ± 12.96	65.61 ± 11.39	<.0001
Phase 2: Peak				
VO ₂ peak (mL/kg/min)	20.22 ± 4.82	22.27 ± 5.00	18.75 ± 4.11	<.0001
VO ₂ peak (mL/min)	1528.30 ± 433.40	1865.62 ± 410.69	1286.95 ± 248.94	<.0001
Maximum Rating of Perceived Exertion (6-20)	17.65 ± 1.42	17.66 ± 1.37	17.64 ± 1.46	0.91
Maximum heart rate (bpm)	141.87 ± 18.00	140.50 ± 18.24	142.82 ± 17.79	0.07
Maximum heart rate as a percentage of APMHR	91.72 ± 11.42	90.85 ± 11.59	92.33 ± 11.27	0.06
Respiratory exchange ratio at peak	1.13 ± 0.09	1.13 ± 0.09	1.12 ± 0.09	0.02
Maximum Respiratory exchange ratio	1.14 ± 0.09	1.15 ± 0.08	1.14 ± 0.09	0.04
Phase 3: Slow Walking Speed (1.5 mph)				
Energetic cost of walking (mL/kg/min)	9.46 ± 1.64	9.61 ± 1.59	9.35 ± 1.66	0.02
Rating of Perceived Exertion (6-20)	8.41 ± 1.90	8.18 ± 1.70	8.57 ± 2.01	0.008
Heart rate (bpm)	100.08 ± 15.78	96.73 ± 15.41	102.40 ± 15.63	<.0001
Respiratory exchange ratio	0.80 ± 0.06	0.80 ± 0.06	0.80 ± 0.07	0.13
Cost-Capacity Ratio (%)	48.81 ± 12.56	44.90 ± 11.22	51.61 ± 12.73	<.0001

726 Abbreviations: APMHR, Age-Predicted Maximal Heart Rate; CPET, cardiopulmonary exercise
 727 testing; PWS, Preferred Walking Speed; SWS, Slow Walking Speed; VO₂, oxygen consumption;
 728 VO₂peak, peak oxygen consumption.

729 Data shown as mean ± SD or n(%)

730 *P-values from a t-test for normally distributed continuous variables, a Wilcoxon rank-sum test
 731 for skewed continuous data.

Table 4. CPET repeatability (n=30): The Study of Muscle, Mobility and Aging (SOMMA)

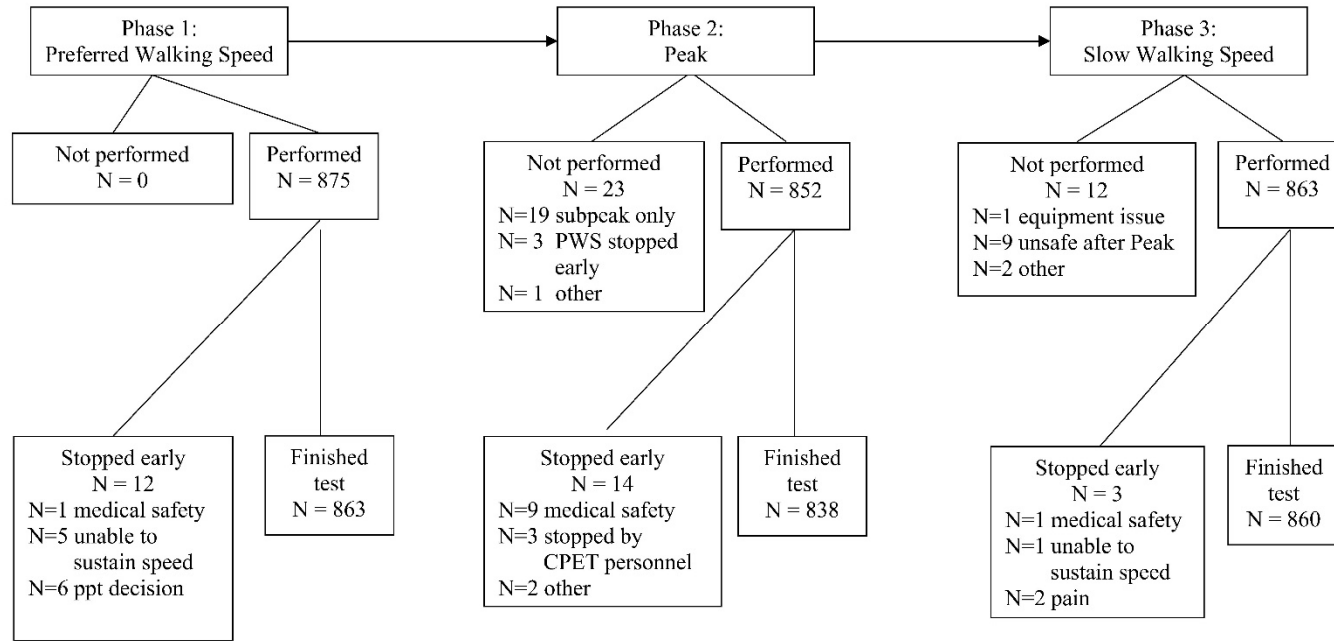
CPET Measure	Original	Repeat	Difference* (Original - Repeat)	Absolute Difference	Pearson Correlation (95% CI)**	CV	ICC (95% CI)
Phase 1: Preferred Walking Speed							
Energetic cost of walking (mL/kg/min)	12.55 ± 2.69	11.90 ± 2.62	0.64 ± 1.37*	1.01 ± 1.11	0.87 (0.74, 0.94)	11.17	0.84 (0.92, 0.70)
Rating of Perceived Exertion (6-20)	10.13 ± 2.03	9.21 ± 2.02	0.93 ± 2.00*	1.69 ± 1.39	0.52 (0.19, 0.75)	20.65	0.44 (0.69, 0.11)
Heart rate (bpm)	103.27 ± 13.76	102.63 ± 13.27	0.63 ± 8.51	6.70 ± 5.13	0.80 (0.62,0.90)	8.26	0.81 (0.90,0.64)
Respiratory exchange ratio	0.90 ± 0.09	0.90 ± 0.06	0.00 ± 0.05	0.04 ± 0.03	0.78 (0.58,0.89)	6.12	0.75 (0.87,0.54)
Cost-capacity ratio (%)	61.68 ± 13.23	59.55 ± 12.80	2.13 ± 5.25*	4.32 ± 3.60	0.92 (0.84, 0.96)	8.66	0.91 (0.96, 0.82)
Phase 2: Peak							
VO ₂ peak (mL/kg/min)	21.06 ± 5.87	20.66 ± 5.55	0.40 ± 1.39	1.12 ± 0.90	0.97 (0.94, 0.99)	6.68	0.97 (0.98, 0.94)
VO ₂ peak (mL/min)	1580.70 ± 439.64	1546.50 ± 400.52	34.20 ± 109.33	85.47 ± 74.88	0.97 (0.94, 0.99)	6.99	0.96 (0.98, 0.93)
Maximum Rating of Perceived Exertion (6-20)	17.80 ± 1.42	17.73 ± 1.17	0.07 ± 0.94	0.67 ± 0.66	0.75 (0.54, 0.88)	5.32	0.74 (0.87, 0.53)
Maximum heart rate (bpm)	144.00 ± 18.65	141.90 ± 17.32	2.10 ± 9.30	7.83 ± 5.26	0.87 (0.74, 0.94)	6.51	0.86 (0.93, 0.74)
Maximum Respiratory exchange ratio	1.15 ± 0.09	1.14 ± 0.07	0.00 ± 0.06	0.04 ± 0.04	0.77 (0.57, 0.89)	4.96	0.76 (0.88, 0.56)
VCO ₂ (mL/min) at peak	1799.83 ± 519.13	1741.63 ± 445.89	58.20 ± 159.88	122.87 ± 115.97	0.96 (0.91, 0.98)	9.03	0.94 (0.97, 0.88)
VE/VO ₂ ratio at peak	39.87 ± 7.46	38.90 ± 5.56	0.97 ± 4.54	3.17 ± 3.34	0.80 (0.61, 0.90)	11.52	0.76 (0.88, 0.56)
End-tidal carbon dioxide (mmHg) at peak	34.53 ± 4.76	34.43 ± 4.48	0.10 ± 2.17	1.43 ± 1.61	0.89 (0.78, 0.95)	6.30	0.89 (0.95, 0.79)
Phase 3: Slow Walking Speed (1.5 mph)							
Energetic cost of walking (mL/kg/min)	9.68 ± 1.71	9.14 ± 1.51	0.54 ± 0.94*	0.80 ± 0.73	0.84 (0.68, 0.92)	10.02	0.78 (0.89, 0.60)
Rating of Perceived Exertion (6-20)	8.33 ± 1.75	8.17 ± 1.69	0.21 ± 2.21*	1.52 ± 1.60	0.18 (-0.20, 0.51)	26.77	0.19 (0.51, -0.18)
Heart rate (bpm)	102.00 ± 12.79	100.07 ± 9.99	1.93 ± 8.02	6.53 ± 4.90	0.78 (0.58,0.89)	7.93	0.75 (0.87,0.54)
Respiratory exchange ratio	0.80 ± 0.06	0.80 ± 0.06	0.00 ± 0.06	0.04 ± 0.03	0.60 (0.30,0.79)	6.96	0.60 (0.79,0.32)
Cost-capacity ratio (%)	48.58 ± 12.95	46.58 ± 11.72	2.00 ± 4.16*	3.40 ± 3.08	0.95 (0.89, 0.98)	8.74	0.93 (0.97, 0.86)

Abbreviations: CPET, cardiopulmonary exercise testing; CI, confidence interval; CV, coefficient of variation; ICC, intraclass correlation coefficient; VCO₂, carbon dioxide exhalation; VE, minute ventilation; VO₂, oxygen inhalation; VO₂peak, peak oxygen inhalation.

*paired t-tests (original and repeat) p<0.05.

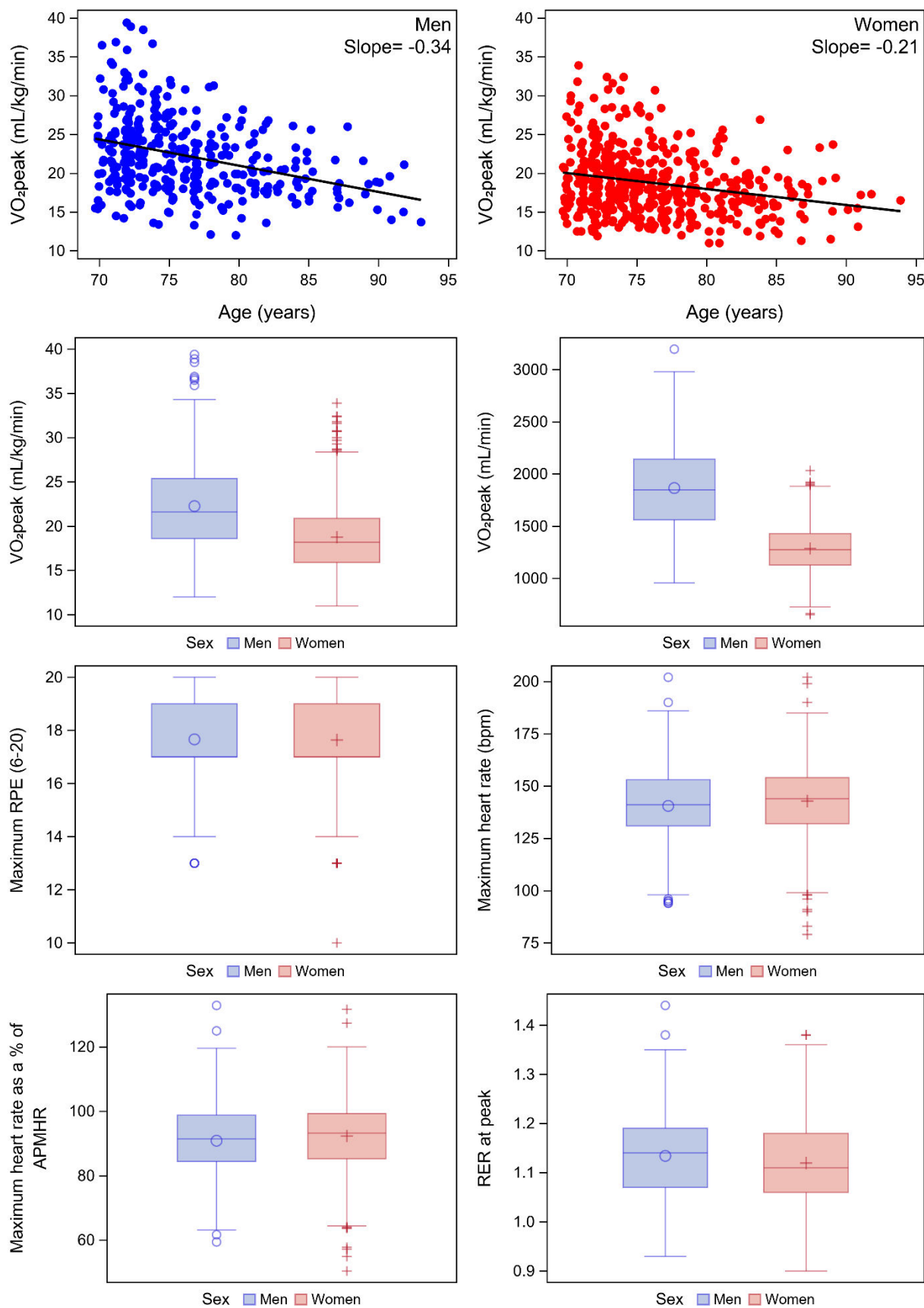
**All p-values <0.01.

Figure 1. CPET performed in the Study of Muscle, Mobility and Aging (SOMMA)



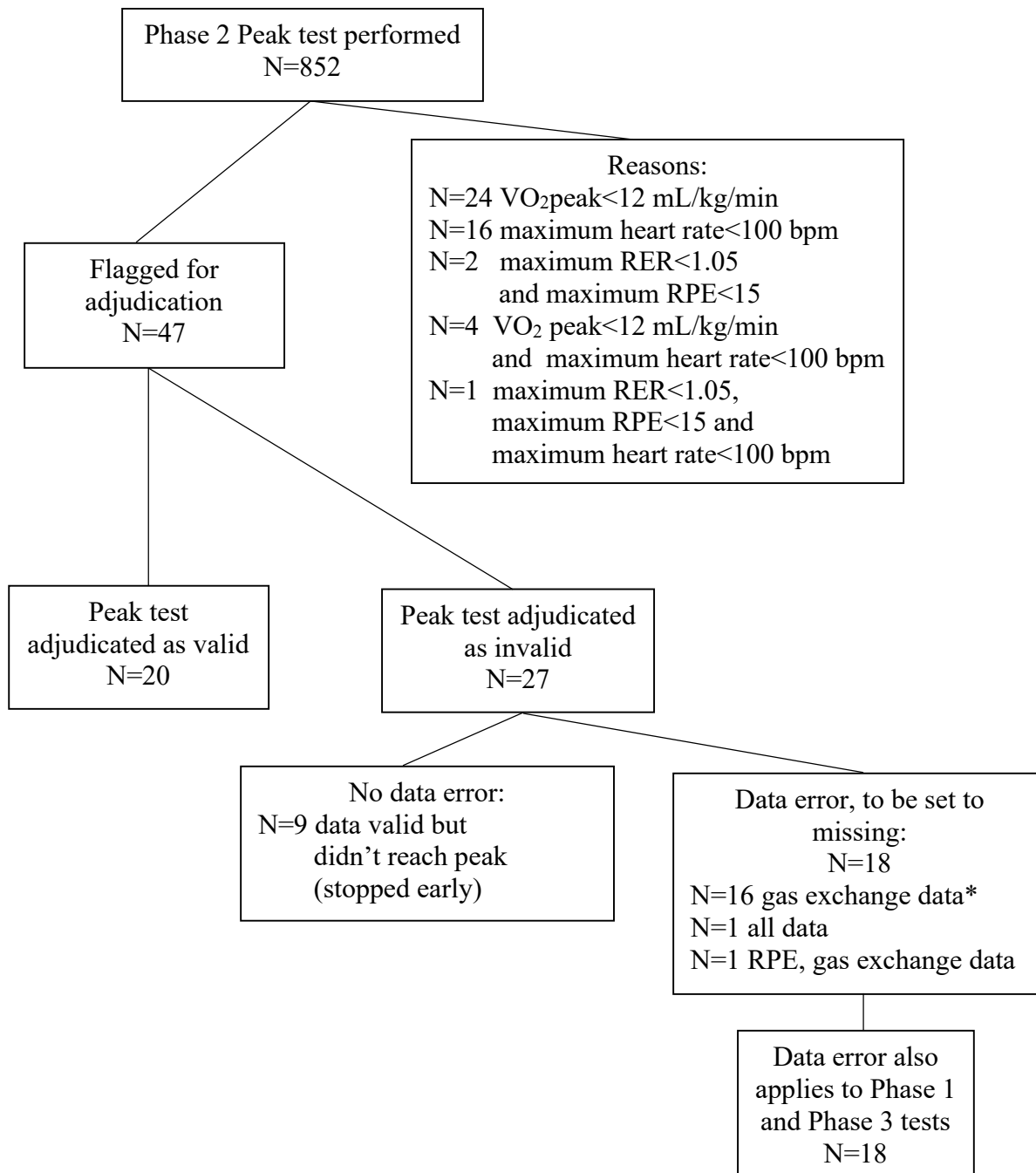
Abbreviations: CPET, cardiopulmonary exercise testing; ppt, participant; PWS, Preferred Walking Speed; SOMMA, Study of Muscle, Mobility and Aging.

Figure 2: Distributions of CPET measures from Phase 2 (Peak) by Sex: The Study of Muscle, Mobility and Aging (SOMMA)



Abbreviations: APMHR, Age-Predicted Maximal Heart Rate; CPET, cardiopulmonary exercise testing; RER, respiratory exchange ratio; RPE, rating of perceived exertion; VO_2 peak, peak oxygen consumption.

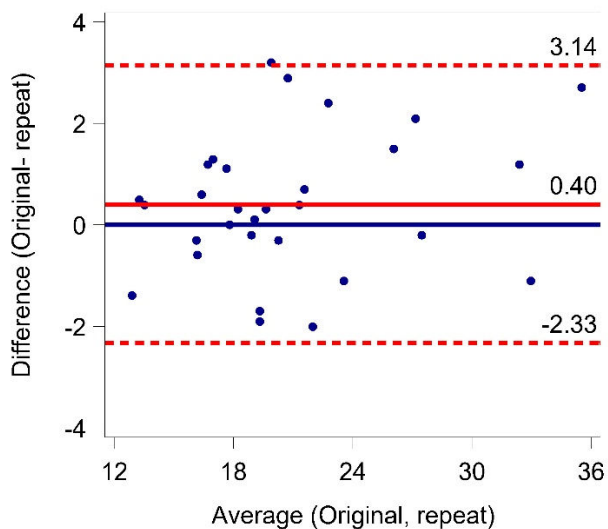
Figure 3. Adjudication Process for CPET data in the Study of Muscle, Mobility and Aging (SOMMA)



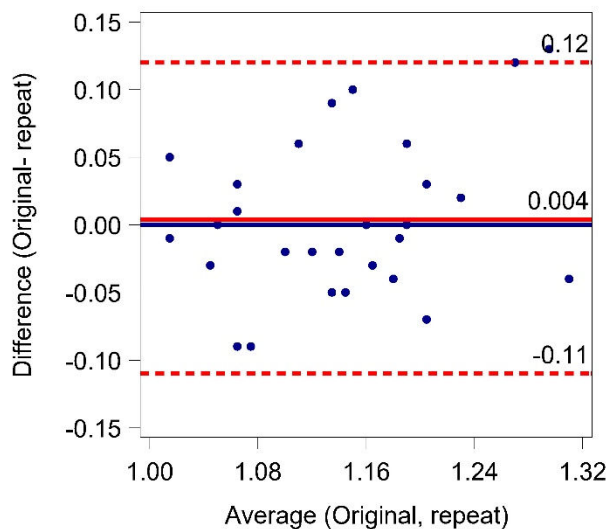
*Gas exchange was measured with a Medgraphics (N=12) or a Hans Rudolph (N=6) mask
Abbreviations: CPET, cardiopulmonary exercise testing; RER, respiratory exchange ratio; RPE, rating of perceived exertion; SOMMA, Study of Muscle, Mobility and Aging; VO₂peak, peak oxygen utilization.

Figure 4. Bland-Altman plots showing the agreement between the original and repeat CPETs: The Study of Muscle, Mobility and Aging (SOMMA)

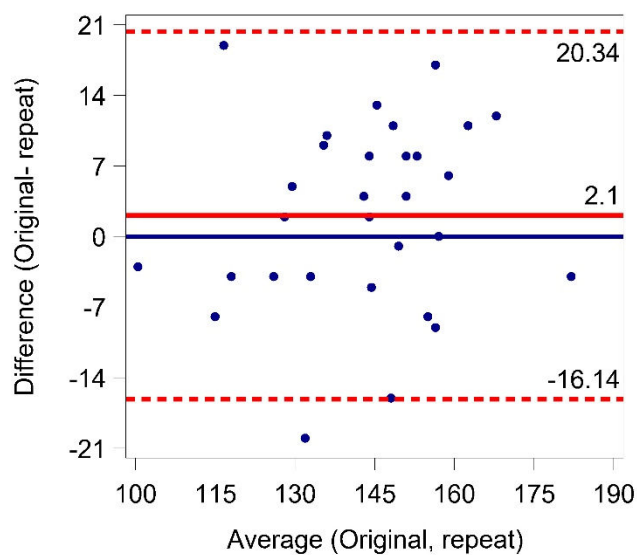
A. VO_{2peak} (mL/kg/min)



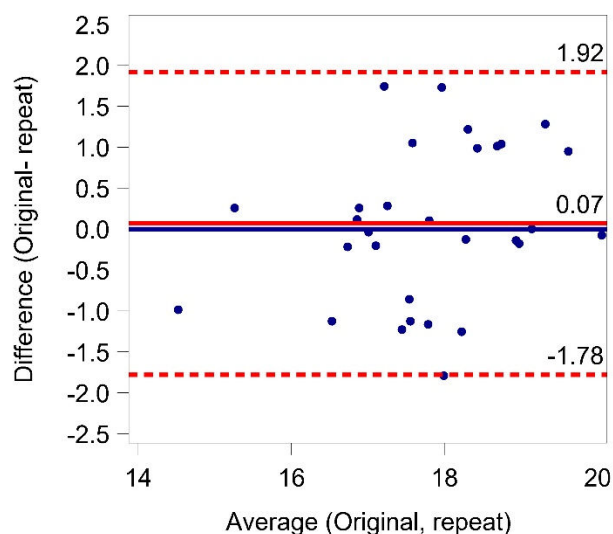
B. Maximum RER



C. Maximum heart rate (bpm)



D. Maximum RPE



Abbreviations: CPET, cardiopulmonary exercise testing; RER: respiratory exchange ratio; RPE: rating of perceived exertion; VO_{2peak} , peak oxygen consumption.

Dotted lines represent upper and lower 95% limits of agreement. The unbroken red line represents mean differences.