

1 **Title:** Comparative performance of COVID-19 Test Methods in Healthcare Workers during the Omicron  
2 Wave

3

4 **Authors:** Emma Tornberg, BS; Alexander Tomlinson, BS; Nicholas T.T. Oshiro; BS, Esraa Derfalie, RN;  
5 Marcel E. Curlin, MD.

6

7

8 **Author Affiliations:** Department of Medicine, Division of Infectious Diseases, Oregon Health and  
9 Sciences University, Portland, OR, USA

10

11 **Correspondence and Reprint Requests to:** Emma Tornberg, MD candidate, tornberg@ohsu.edu

12

13 **Running Head:** Text

14 **Tables and Figures:** Tables: [5]; Figures: [5]

15 **References:** 21

16 **Word count:** Text: 2198; Abstract: 250

17 **Key words:** COVID-19, diagnostic test, PCR, AgRDT, occupational health

18 **Author Disclosure Statement:** The authors have no competing financial interests or other conflicts of  
19 interest

20

21 **Abstract:**

22 **Introduction:** The COVID-19 pandemic presents unique requirements for accessible, reliable testing, and  
23 many testing platforms and sampling techniques have been developed. However, not all test methods  
24 have been systematically compared to each other or a common gold standard, and the performance of  
25 tests developed in the early epidemic have not been consistently re-evaluated in the context of newly  
26 emerging SARS-CoV-2 variants.

27 **Methods:** We conducted a repeated measures study with adult healthcare workers presenting for SARS-  
28 CoV-2 testing. Participants were tested using seven test modalities: PCR with samples from the  
29 nasopharynx, oropharynx, and saliva; and BinaxNOW and iHealth antigen-based rapid detection tests  
30 (AgRDT) sampling the oropharynx and the nares. Test sensitivity was compared using any positive PCR  
31 test as the gold standard.

32 **Results:** 325 individuals participated in the study. PCR tests were the most sensitive with saliva PCR at  
33  $0.957 \pm 0.048$ , nasopharyngeal PCR at  $0.877 \pm 0.075$ , and oropharyngeal PCR at  $0.849 \pm 0.082$ . Standard  
34 nasal rapid antigen tests were less sensitive but roughly equivalent at  $0.613 \pm 0.110$  for BinaxNOW  
35 brand and  $0.627 \pm 0.109$  for iHealth. Oropharyngeal rapid antigen tests were the least sensitive with  
36 BinaxNOW and iHealth brands at  $0.400 \pm 0.111$  and  $0.311 \pm 0.105$  respectively.

37 **Conclusion:** PCR remains the most sensitive testing modality for COVID-19, with saliva PCR being  
38 significantly more sensitive than oropharyngeal PCR and equivalent to nasopharyngeal PCR. Saliva  
39 testing has patient comfort and financial benefits, making it a preferred testing modality. Nasal AgRDTs  
40 are less sensitive than PCR though more accessible and convenient.

41

42

43 **Introduction**

44 The dramatic appearance of the highly transmissible SARS-CoV-2 pandemic on the world stage in late  
45 2019 created an urgent need for rapid, point-of-care diagnostic tests that could accurately detect  
46 infectious cases. By 2022, a wide range of testing modalities had been developed, generally relying on  
47 either nucleic acid amplification (NAAT) or detection of viral antigens by lateral flow chromatography  
48 (antigen rapid diagnostic tests, or Ag-RDTs). NAAT-based tests are generally regarded as the most  
49 sensitive testing modality but require laboratory processing, have longer result turnaround times, and  
50 may yield false positive results in those with recent resolved infection. Use of at-home Ag-RDTs has been  
51 widespread, with 20% of individuals reporting use of one of these tests during the last 30 days during  
52 the period of omicron variant dominance (omicron wave)<sup>1</sup>. Pre-omicron data showed sensitivity of a  
53 single Ag-RDT to be approximately 70%, with positive correlation between higher viral load as estimated  
54 by Ct values and sensitivity<sup>2-4</sup>. Early studies during the omicron wave show varied sensitivity between  
55 Ag-RDT brands<sup>5</sup>, with some such as the BinaxNOW showing maintained sensitivity of around 65%<sup>6</sup>.  
56 Other brands such as iHealth have shown similar sensitivity in detecting delta and omicron variants in  
57 the laboratory but have not been as widely validated in epidemiologic studies during the delta and  
58 omicron waves<sup>7</sup>.

59  
60 Several additional factors may affect this performance. Many of these tests were developed and  
61 validated before the emergence of B.1.1.529 (omicron) variants of concern and subsequent viral  
62 strains<sup>8</sup>. The rapidly evolving nature of variants and subvariants of SARS-CoV-2 lead to questions  
63 regarding the validity of previously developed tests with virus changes that may affect viral load or  
64 optimal test sample source. Site of testing is another important variable. For NAATs, the most common  
65 of which use polymerase chain reaction (PCR) technology, a variety of sample sources have been  
66 evaluated including nasopharyngeal swabs (NP), oropharyngeal swabs (OP), and saliva samples. Pre-

67 omicron meta-analyses showed either equivalence in saliva and NP testing<sup>9</sup>, or slightly increased  
68 sensitivity of NP testing compared with saliva<sup>10-12</sup>. However, some studies involving early omicron  
69 strains showed better sensitivity with saliva swabs compared to mid-turbinate swabs<sup>13,14</sup>. NP testing is  
70 more costly than saliva and can be associated with significant discomfort.<sup>15</sup> The standard collection site  
71 for AgRDTs is the bilateral nares<sup>16,17</sup>, but the evidence of better PCR sensitivity in saliva compared to NP  
72 raises the question of whether OP AgRDT testing could provide equal or better sensitivity. Given the  
73 many available testing platforms and testing sites, lack of standardization between methods, and  
74 significant issues relating to cost, performance, and patient experience, we performed a repeated-  
75 measures observational study in a sample of adult healthcare workers presenting consecutively for  
76 SARS-CoV-2 testing at the Oregon Health and Sciences University Occupational Health clinic.

77

#### 78 **Methods:**

79 *Regulatory approval:* This study was performed with informed consent from all participating individuals,  
80 with approval and regulatory oversight by the Oregon Health and Sciences University institutional  
81 review board.

82

83 *Recruitment:* We designed a repeated measures study evaluating PCR tests, iHealth Ag-RDTs, and  
84 BinaxNOW Ag-RDTs at the OHSU Occupational Health Testing Site. Between January 25, 2022 and  
85 March 4, 2022, individuals presenting for SARS-CoV-2 testing for any reason at OHSU Occupational  
86 Health were approached consecutively and offered screening for enrollment on a first-come-first-serve  
87 basis. Individuals who had tested positive for COVID-19 in the last 90 days were excluded due to risk of  
88 false-positive results, and participants were required to be over the age of 18. Following consent, we  
89 tested each participant using 7 testing modalities as follows: PCR (nasopharyngeal swab, oropharyngeal

90 swab, saliva sample); BinaxNOW Ag-RDT (nasal swab, oropharyngeal swab); and IHealth Ag-RDT (nasal  
91 swab, oropharyngeal swab).

92

93 *PCR testing:* Researchers collected NP and OP swabs from participants in accordance with CDC  
94 guidelines<sup>18</sup>. For saliva testing, participants were required to not eat or drink anything for 30 minutes  
95 prior to sample collection. They were then directed to spit the saliva that pooled in the bottom of their  
96 mouth into the collection tube until it reached the volume specified by the manufacturer. Saliva samples  
97 were stored on ice and all samples were transported to the OHSU Molecular Microbiology Laboratory  
98 for testing on the day of collection. Viral RNA was extracted using the King Fisher MagMAX  
99 Viral/Pathogen Nucleic Acid Isolation Kit, then samples were tested using Taqpath™ COVID-19 Multiplex  
100 RT-PCR which targets the Covid-19 S-gene, N-gene, and ORF1ab. A positive test result required positive  
101 readings in 2/3 targets at a cycle threshold <40.

102

103 *AgRDT testing:* Researchers collected and ran nasal swabs in accordance with manufacturer  
104 specifications<sup>16,17</sup>, except that samples were collected and tested outdoors at ambient temperatures  
105 ranging from 40-60°F (manufacturer suggest testing at “room temperature”). OP Ag-RDT samples were  
106 collected in accordance with CDC OP guidelines and samples were run otherwise in accordance with  
107 manufacturer guidelines. All samples were read out after the recommended run time by the collecting  
108 researcher.

109

110 *Statistical Analysis:* Symptom data, test results, and sequencing data were described using frequencies  
111 and percentages. Likelihood ratios for symptoms and pairs of symptoms were calculated from  
112 contingency tables. Using a positive test on any PCR test as the gold standard, contingency tables were  
113 generated for each testing modality, and sensitivities and specificities were calculated. McNemar’s test

114 was used for P-values. A P-value of <0.05 was considered statistically significant. Statistical analyses  
115 were conducted using Python version 3.10.8.

116

117 *Data agreement:* all deidentified data will be made publicly available on request by writing to  
118 [tornberg@ohsu.edu](mailto:tornberg@ohsu.edu).

119

## 120 **Results:**

121 *Patients and samples:* 325 individuals participated in this study. Six were not tested with BinaxNOW kits  
122 due to supply shortages, one did not receive OP iHealth testing due to user error, and 32 were not  
123 tested in saliva due to eating or drinking within 30 minutes of the time of testing. All others were tested  
124 using all testing modalities. 75 individuals were positive on at least one test; 8 individuals were positive  
125 on a single test; 19 individuals were positive on 1 or more PCR tests but negative on all antigen rapid  
126 detection tests; 0 were negative on all PCR tests but positive on one or more AgDT; and 13 individuals  
127 were positive on all tests performed. Distribution of number of positive tests per individual and types of  
128 positive tests per number of positive test are shown in figures 1 and 2.

129

130 *Symptoms:* 27 different symptoms were reported across all (A) participants. 16 of these were reported  
131 in individuals that tested positive (P) (table 1). Sore throat (A = 23.8%, P = 21.3%), cough (A = 12.6, P =  
132 20.0), and headache (A = 11.8, P = 11.1) were the most commonly reported symptoms for both A and P  
133 participants. Likelihood ratios (LR) for single symptoms ranged from 0.00 (nausea) to 3.33 (fever) (Table  
134 2). Likelihood ratios of a positive test were highest for the combinations of chills and cough (26.7), fever  
135 and headache (5.3), and headache and cough (5.2) (Table 3).

136

137 *Test Sensitivity and Specificity:* Test sensitivity ranged from  $0.311 \pm 0.105$  for OP iHealth to  $0.957 \pm 0.048$   
138 for saliva PCR. Test specificity was 1 (Table 4) for all tests examined. Among individuals positive by any  
139 PCR, 68.0% were positive on all three PCR tests (Figure 3) and among those positive for one or more PCR  
140 tests, 74.7% had at least one positive AgRDT. Individuals positive on any PCR were positive on at least  
141 one nasal AgRDT and at least one OP AgRDT 34.7% of the time, positive on at least one nasal AgRDT but  
142 no OP AgRDTs 28.0% of the time, and positive on at least one OP AgRDT but no nasal AgRDTs 12.0% of  
143 the time (Figure 4). Sensitivities of PCR tests were significantly higher than AgRDTs (all  $p < 0.0001$ ). There  
144 were no significant differences in performance between BinaxNow and iHealth, for either nasal  
145 swabbing ( $p = 1.0$ ) or OP swabbing ( $p = 0.14$ ). With respect to testing method: Nasal AgRDTs tests were  
146 more sensitive than OP AgRDTs (all  $p < 0.01$ ). Saliva PCR was significantly more sensitive than OP PCR  
147 ( $p < 0.05$ ), and trended towards greater sensitivity than NP PCR, though this did not reach significance  
148 ( $p = 0.11$ ). NP and OP PCR testing were not significantly different (Figure 5).

149  
150 *Sequenced Lineages:* 115 samples (including multiple samples from individual participants) were  
151 sequenced for Pango Lineage and Nextstrain Clade (Table 5) yielding 8 viral strains by Pango lineage.  
152 Ba.1.1 and 21K (Omicron) were the most common, respectively.

153  
154 **Discussion:**

155 We compared seven test modalities for the diagnosis of COVID-19 in 325 participants. We found that  
156 PCR tests were the most sensitive, nasal AgRDTs were moderately sensitive, and OP AgRDTs were the  
157 least sensitive. Prior meta-analyses showed single AgRDTs to have a sensitivity of approximately 70%,  
158 and previous studies of BinaxNOW demonstrated a sensitivity of around 65%<sup>5,6</sup>. AgRDT test performance  
159 in nasal samples in our study did not differ significantly from these published results. PCR tests had  
160 higher sensitivity than all AgRDTs, roughly consistent with previous research on PCR test sensitivity<sup>10</sup>.

161

162 Site of testing was also an important factor. Saliva tests were significantly more sensitive than OP tests,  
163 but NP tests were not significantly different from saliva or OP tests. This is consistent with prior research  
164 on the Omicron variant<sup>14</sup>. Saliva tests are less uncomfortable and less expensive than NP tests<sup>9,15</sup>, which  
165 combined with their equal sensitivity to NP tests would appear to make them a preferred test method.  
166 One downside to saliva testing is the need for participants to abstain from eating or drinking for 30  
167 minutes prior to testing. During major infection waves such as Omicron, maximizing testing throughput  
168 was important, and a 30-minute wait time could be problematic. However, saliva testing can be  
169 performed by lay individuals, or even as part of an unsupervised “drop-box” collection system, and could  
170 also represent a substantial benefit when testing in the pediatric population.

171

172 Use of oropharyngeal swabbing for AgRDTs is a non-standard technique, which in this study yielded  
173 lower sensitivity than nasal AgRDTs. Nevertheless, 9 out of 75 positive participants were positive on at  
174 least one OP AgRDT, but negative on both nasal AgRDTs, highlighting considerable test performance  
175 variability by swabbing site. The reason for this discrepancy is unknown, and could represent variability  
176 in individual test kit performance, technical factors during swabbing and/or actual site-specific biological  
177 variability in shedding of viral antigens. This observation raises the question as to whether sensitivity  
178 during point-of-care or home use of AgRDTs might be optimized by the use of both an oral and a nasal  
179 swab during testing. A study by Goodall et al. in 2022 examining the use of OP swabs and combined  
180 nasal/throat swabs during the omicron wave found different results, with both NP and OP swabs having  
181 0.645 sensitivity compared to PCR<sup>19</sup>. They also found that combined nasal/throat swabs had an  
182 increased sensitivity compared to PCR at 0.887. Important differences between this study and our work  
183 include their use of asymptomatic participants, RT-PCR from residual viral media, Panbio brand tests,



184 and sample self-collection. More research is needed to elucidate potential benefits of OP swabs in  
185 conjunction with nasal swabs and/or utility of combined nasal/throat swabs.

186

187 While early predictive models had found loss of taste and smell, fatigue, cough, and anorexia to be  
188 highly correlated with a positive COVID-19 test<sup>20</sup>, in our series Individual symptoms most predictive of a  
189 positive test were cough, chills, and fever, with chills and cough being the most significant predictive  
190 pair of a positive test. Loss of taste and smell were not commonly reported symptoms in our dataset,  
191 and fatigue was quite common but less predictive than many other symptoms. Other studies performed  
192 during prevalence of the Omicron variant reported patterns of symptomatology with those observed  
193 here<sup>21</sup>, underscoring the need for continued surveillance and clinical research during the evolution of a  
194 viral pandemic. Among 115 samples yielding viral genomic sequences, 82 were BA.1.1, and all were  
195 within the Omicron family, suggesting most infections in our cohort were due to the omicron variant. A  
196 comparative assessment of symptoms and test performance by viral strain was therefore not possible.

197

198 This study has several limitations. During data collection, some AgRDTs tests were run at outside  
199 ambient seasonal temperatures ranging from 36°F – 60°F. This complies with storage recommendations  
200 for both brands (35.6°F and 86°F). However, iHealth manufacturer instructions recommend running the  
201 assays between 65-86 °F, and slightly colder temperatures in our “real-world setting” may have affected  
202 test performance. Our data set only included one asymptomatic positive individual, who was positive  
203 on all three PCR tests negative on all AgRDTs. A 2023 meta-analysis showed decreased sensitivity at  
204 42.6% when AgRDTs were used as screening tools in the general population<sup>4</sup>. AgRDTs therefore may be  
205 most valuable for maximizing early detection of COVID-19 in symptomatic individuals but should not be  
206 relied on exclusively for all testing purposes.

207

208 Conclusion: PCR COVID-19 tests are the most sensitive, and should remain the gold standard for COVID-  
209 19 detection. Testing by PCR in saliva is more sensitive than PCR using OP samples, and offers financial,  
210 operational, and patient comfort advantages compared to NP tests. AgRDTs are less sensitive than PCR  
211 tests. AgRDTs conducted in the standard nasal manner are more sensitive than AgRDTs conducted with  
212 oropharyngeal samples. Differences in both test sensitivity and COVID-19 symptom presentation  
213 between our data and older, pre-Omicron data reinforce the need for continued assessment of tests and  
214 risk stratification tools as pandemics evolve.

215  
216  
217  
218

219 **Acknowledgments**

220 We gratefully acknowledge the Occupational Health team, including Kira Loken, Skylar Workinger,  
221 Andrea Dayot, Natlie Dutro, and the rest of the occupational health team. We are grateful for the  
222 assistance of Oregon National Guard members Austin Krause, Charlie Jedda, and Jack Kelly. We thank  
223 the OHSU Molecular Microbiology Lab for support with laboratory testing, the Oregon Health Authority  
224 for providing additional rapid antigen tests and medical student researchers Mikaela Siegel, Emily  
225 Burney, Ying Yu, and Lynn Bajorek for assistance with recruiting and testing. Lastly, we are especially  
226 appreciative of the OHSU workforce members for their extraordinary generosity in participating in this  
227 study.

228

229 **Funding**

230 This study was supported by the OHSU Department of Occupational Health and the OHSU School of  
231 Medicine.

232

233 **Tables**

Symptom	All Participants		Positive Participants	
	Number reporting	Proportion reporting	Number reporting	Proportion reporting
sore throat	165	0.2381	46	0.2130
cough	87	0.1255	43	0.1991
headache	82	0.1183	24	0.1111
congestion	74	0.1068	18	0.0833
fatigue	60	0.0866	12	0.0556
body aches	60	0.0866	23	0.1065
rhinorrhea	43	0.0620	8	0.0370
fever	36	0.0519	18	0.0833
chills	21	0.0303	10	0.0463
nausea	12	0.0173		
diarrhea	9	0.0130		
shortness of breath	6	0.0087	3	0.0139
chest tightness	5	0.0072	2	0.0093
dizziness	5	0.0072	2	0.0093
sneezing	4	0.0058	1	0.0046
loss of smell	4	0.0058	2	0.0093
vomiting	3	0.0043		
ear pain	3	0.0043	2	0.0093
sinus pressure	3	0.0043	1	0.0046
hot flashes	2	0.0029		
stuffy nose	2	0.0029		
gastrointestinal	2	0.0029		
neck stiffness	1	0.0014		
loss of taste	1	0.0014		
night sweats	1	0.0014	1	0.0046
loss of appetite	1	0.0014		
insomnia	1	0.0014		

**Table 1: Symptoms Reported by All/Positive participants.** Total number of participants reporting each symptom is reported on the left side of each pair, with percentage in that category listed on the right.

Symptom	Likelihood ratio
sore throat	1.289
cough	3.258
headache	1.379
congestion	1.071
fatigue	0.833
body aches	2.037
runny nose	0.762
fever	3.333
chills	3.030
nausea	0.000

**Table 2:** Likelihood ratio of a positive vs a negative test

235

236

	sore throat	cough	headache	congestion	fatigue	body aches	runny nose	fever	chills	gi	nausea
sore throat											
cough	3.60										
headache	1.35	5.15									
congestion	0.93	3.33	1.78								
fatigue	0.77	2.14	1.11	0.63							
body aches	2.63	3.94	2.04	0.71	0.71						
runny nose	0.53	0.95	0.37	0.00	1.67	0.95					
fever	4.07	5.00	5.33	2.22	0.67	2.50	0.00				
chills	2.78	26.67	3.33	2.00	0.56	2.67	3.33	4.44			
gi	0.00	0.00	0.00	0.00	0.00	0.00	0.00	0.00			
nausea	0.00	0.00	0.00	0.00	0.00	0.00	0.00	0.00		0.00	

**Table 3:** Likelihood Ratios for Positive Tests of Paired Symptoms.

237

238

Test	Sensitivity	Specificity
OP BinaxNOW	0.400 ± 0.111	1.000 ± 0.000
OP iHealth	0.311 ± 0.105	1.000 ± 0.000
Nasal BinaxNOW	0.613 ± 0.110	1.000 ± 0.000
Nasal iHealth	0.627 ± 0.109	1.000 ± 0.000
NP PCR	0.877 ± 0.075	1.000 ± 0.000
OP PCR	0.849 ± 0.082	1.000 ± 0.000
Saliva PCR	0.957 ± 0.048	1.000 ± 0.000

**Table 4:** Sensitivity and Specificity of all tests measured against any positive PCR as gold standard.

240

	<b>Pango lineage</b>		<b>Nextstrain clade</b>
<b>BA.1.1</b>	82	<b>21K (Omicron)</b>	111
<b>BA.1.15</b>	9	<b>21L (Omicron)</b>	4
<b>BA.1.20</b>	8		
<b>BA.1.1.18</b>	4		
<b>BA.2</b>	4		
<b>BA.1.17</b>	4		
<b>BA.1</b>	2		
<b>BA.1.17.2</b>	2		

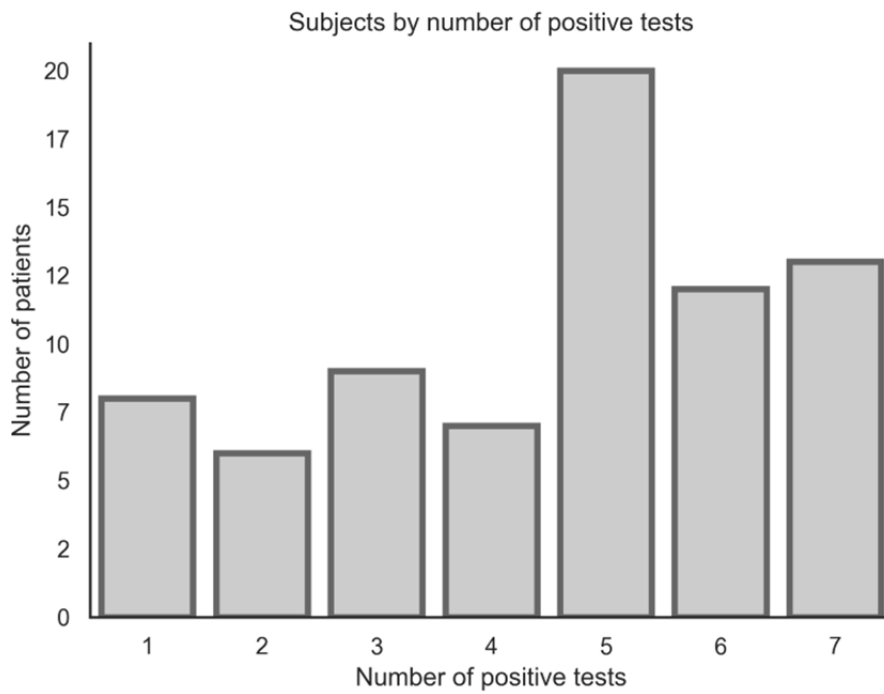
**Table 5:** Number of samples in each Pango lineage and Nextstrain clade.

241

242

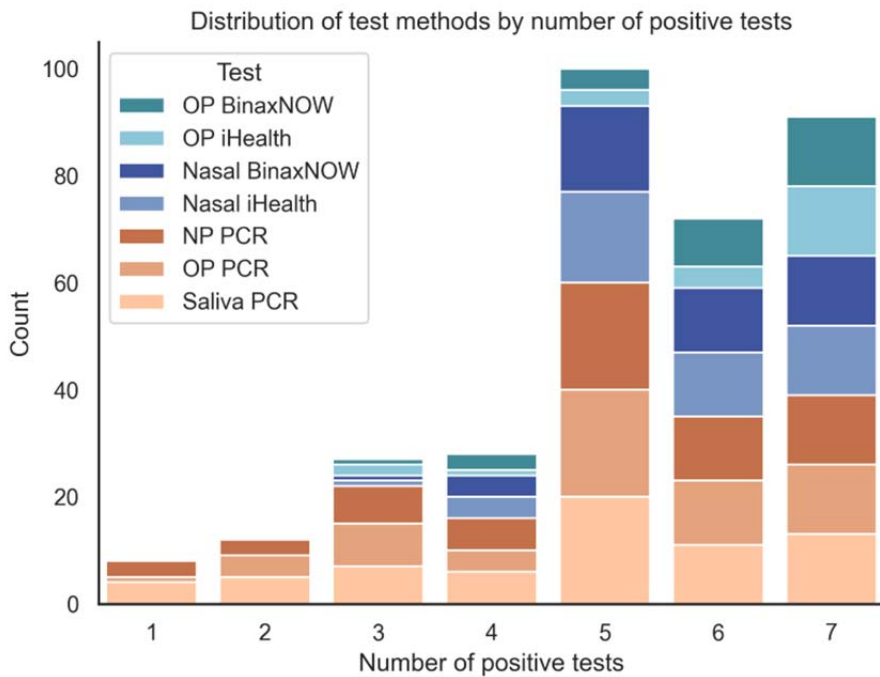


243 **Figures**



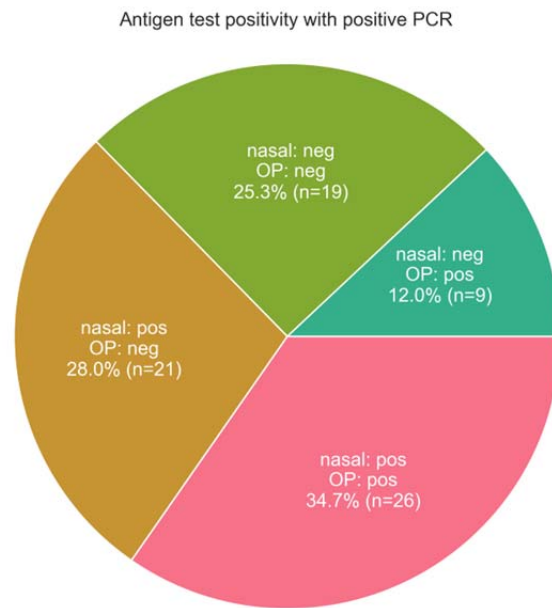
244

245 Figure 1: Subjects by number of positive tests.



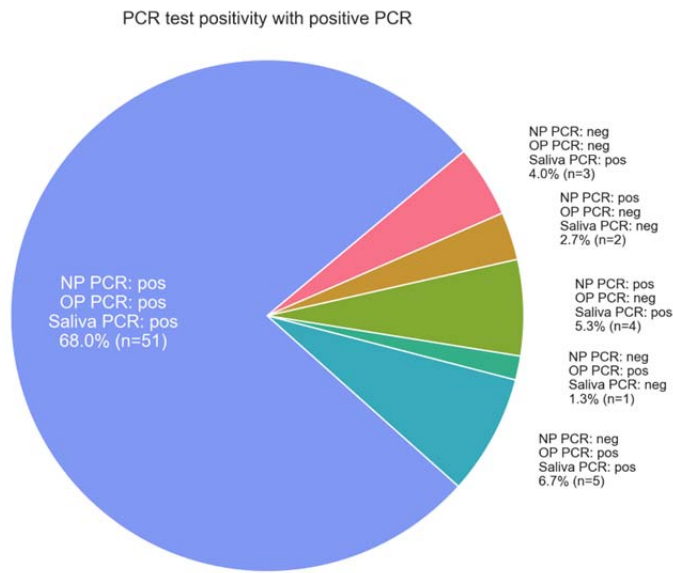
246

247 Figure 2: Distribution of test methods by number of positive tests.



248

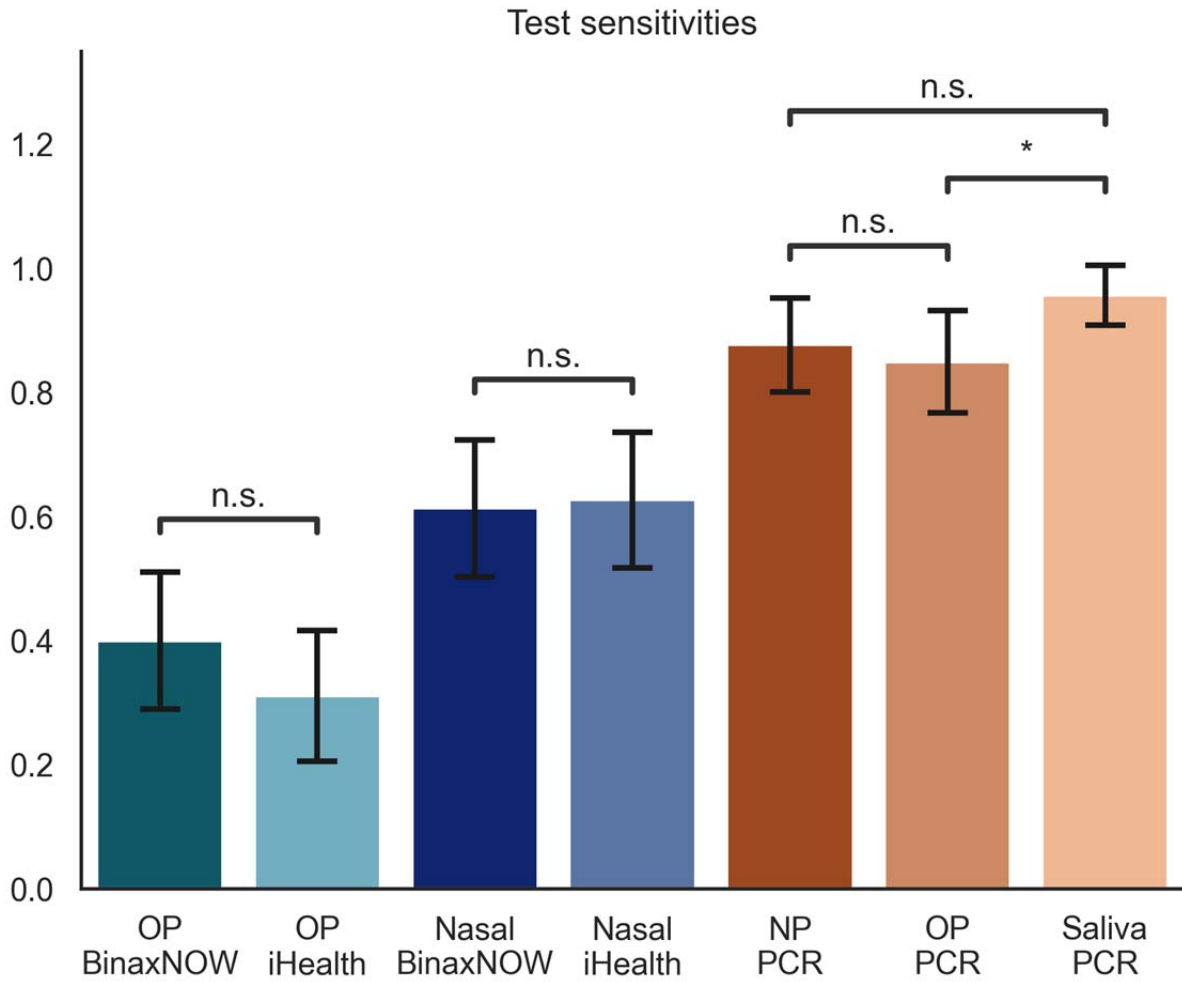
249 **Figure 3:** PCR test positivity breakdown in participants with a positive PCR test that 1 or more sites.



250

251 **Figure 4:** Antigen rapid detection test positivity breakdown in participants with 1 or more positive PCR

252 tests.



253

254 **Figure 5:** Sensitivities of All Tests. "n.s." denotes no significant difference between tests. "\*" denotes  
255 significant difference with  $p < 0.05$ . All other comparisons not marked are significantly different with  
256  $p < 0.01$ .

257

258

259 **References**

- 260 1. Rader B, Gertz A, Iuliano AD, et al. Use of At-Home COVID-19 Tests - United States, August 23,  
261 2021-March 12, 2022. *MMWR Morb Mortal Wkly Rep*. Apr 1 2022;71(13):489-494.  
262 doi:10.15585/mmwr.mm7113e1
- 263 2. Brummer LE, Katzenschlager S, McGrath S, et al. Accuracy of rapid point-of-care antigen-based  
264 diagnostics for SARS-CoV-2: An updated systematic review and meta-analysis with meta-regression  
265 analyzing influencing factors. *PLoS Med*. May 2022;19(5):e1004011. doi:10.1371/journal.pmed.1004011
- 266 3. Dinnes J, Deeks JJ, Berhane S, et al. Rapid, point-of-care antigen and molecular-based tests for  
267 diagnosis of SARS-CoV-2 infection. *Cochrane Database Syst Rev*. Mar 24 2021;3:CD013705.  
268 doi:10.1002/14651858.CD013705.pub2
- 269 4. Fragkou PC, Moschopoulos CD, Dimopoulou D, et al. Performance of point-of care molecular  
270 and antigen-based tests for SARS-CoV-2: a living systematic review and meta-analysis. *Clin Microbiol*  
271 *Infect*. Mar 2023;29(3):291-301. doi:10.1016/j.cmi.2022.10.028
- 272 5. Bekliz M P-RF, Puhach O, et al. Sensitivity of SARS-CoV-2 antigen-detecting rapid tests for  
273 Omicron variant. medRxiv2022.
- 274 6. Schrom JM, C.; Pilarowski, G.; et al. Comparison of SARS-CoV-2 Reverse Transcriptase  
275 Polymerase Chain Reaction and BinaxNOW Rapid Antigen Tests at a Community Site During an Omicron  
276 Surge. *Annals of Internal Medicine*. 2022;175(5):682-690. doi:10.7326/m22-0202 %m 35286144
- 277 7. Kanjilal S, Chalise S, Shah AS, et al. Performance of three rapid antigen tests against the SARS-  
278 CoV-2 Omicron variant. *medRxiv*. 2022:2022.02.17.22271142. doi:10.1101/2022.02.17.22271142
- 279 8. Drain PK. Rapid Diagnostic Testing for SARS-CoV-2. *N Engl J Med*. Jan 20 2022;386(3):264-272.  
280 doi:10.1056/NEJMcp2117115
- 281 9. Bastos ML, Perlman-Arrow S, Menzies D, Campbell JR. The Sensitivity and Costs of Testing for  
282 SARS-CoV-2 Infection With Saliva Versus Nasopharyngeal Swabs : A Systematic Review and Meta-  
283 analysis. *Ann Intern Med*. Apr 2021;174(4):501-510. doi:10.7326/M20-6569
- 284 10. Lee RA, Herigon JC, Benedetti A, Pollock NR, Denkinger CM. Performance of Saliva,  
285 Oropharyngeal Swabs, and Nasal Swabs for SARS-CoV-2 Molecular Detection: a Systematic Review and  
286 Meta-analysis. *J Clin Microbiol*. Apr 20 2021;59(5)doi:10.1128/JCM.02881-20
- 287 11. Ibrahim N, Delaunay-Moisan A, Hill C, et al. Screening for SARS-CoV-2 by RT-PCR: Saliva or  
288 nasopharyngeal swab? Rapid review and meta-analysis. *PLoS One*. 2021;16(6):e0253007.  
289 doi:10.1371/journal.pone.0253007
- 290 12. Duncan DB, Mackett K, Ali MU, Yamamura D, Balion C. Performance of saliva compared with  
291 nasopharyngeal swab for diagnosis of COVID-19 by NAAT in cross-sectional studies: Systematic review  
292 and meta-analysis. *Clin Biochem*. Jul 2023;117:84-93. doi:10.1016/j.clinbiochem.2022.08.004
- 293 13. Marais G, Hsiao NY, Iranzadeh A, et al. Improved oral detection is a characteristic of Omicron  
294 infection and has implications for clinical sampling and tissue tropism. *J Clin Virol*. Jul 2022;152:105170.  
295 doi:10.1016/j.jcv.2022.105170
- 296 14. Ursic T, Kogoj R, Sikonja J, et al. Performance of nasopharyngeal swab and saliva in detecting  
297 Delta and Omicron SARS-CoV-2 variants. *J Med Virol*. Jun 1 2022;doi:10.1002/jmv.27898
- 298 15. Moisset X, Gautier N, Godet T, et al. Nasopharyngeal swab-induced pain for SARS-CoV-2  
299 screening: A randomised controlled trial of conventional and self-swabbing. *Eur J Pain*. Apr  
300 2021;25(4):924-929. doi:10.1002/ejp.1722
- 301 16. Abbott. BinaxNOW COVID-19 Ag Card - Instructions for Use. Abbott. Accessed September 22,  
302 2022.
- 303 17. iHealth. iHealth COVID-19 Antigen Rapid Test - Instruction for Use Home Testing. Accessed  
304 September 22, 2022.

- 305 18. Interim Guidelines for Collecting and Handling of Clinical Specimens for COVID-19 Testing.  
306 Centers for Disease Control and Prevention. Updated 15 July 2022. Accessed 7 July 2022, 2022.
- 307 19. Goodall BL, LeBlanc JJ, Hatchette TF, Barrett L, Patriquin G. Investigating the Sensitivity of Nasal  
308 or Throat Swabs: Combination of Both Swabs Increases the Sensitivity of SARS-CoV-2 Rapid Antigen  
309 Tests. *Microbiol Spectr*. Aug 31 2022;10(4):e0021722. doi:10.1128/spectrum.00217-22
- 310 20. Menni C, Valdes AM, Freidin MB, et al. Real-time tracking of self-reported symptoms to predict  
311 potential COVID-19. *Nat Med*. Jul 2020;26(7):1037-1040. doi:10.1038/s41591-020-0916-2
- 312 21. Petersen MS, S IK, Eliassen EH, et al. Clinical characteristics of the Omicron variant - results from a  
313 Nationwide Symptoms Survey in the Faroe Islands. *Int J Infect Dis*. Sep 2022;122:636-643.  
314 doi:10.1016/j.ijid.2022.07.005  
315