

1 **Combination of QTL and GWAS to uncover the role of phosphodiesterases in**
2 **ischemic heart disease**

3 Jun Xiao, M.D., Ph.D.^{1,2}, Ziting Gao, M.D.³, Hongye Wei, M.D.³, Yajing Wei, M.D.³,
4 Ziyi Qiu, M.D.³, Wuqing Huang, M.D., Ph.D.³

5 ¹ Department of Cardiovascular Surgery, Fujian Medical University Union Hospital,
6 Fuzhou, Fujian, China.

7 ² Fujian Provincial Clinical Research Center for Cardiovascular Diseases Heart Center of
8 Fujian Medical University, Fuzhou, Fujian, China.

9 ³ Department of Epidemiology and Health Statistics, School of Public Health, Fujian
10 Medical University, Fuzhou, Fujian, China.

11 ***Corresponding author:** Wuqing Huang

12 Fujian Medical University,

13 No 1, Xue Yuan Road, University Town, 350108

14 Fuzhou City, Fujian Province, China.

15 Email: wuqing.huang@fjmu.edu.cn

16 Telephone: +8617338896101

17 **Short title:** Phosphodiesterases and ischemic heart disease

18 **Word count:** abstract (246), main text (3403), figures (5)

19 **Abbreviations:** CHD, coronary heart disease; CI, confidence interval; CpG, Cytosine-
20 guanine dinucleotides; eQTLs, expression quantitative trait loci; GWAS, genome-wide
21 association study; HEIDI, heterogeneity in dependent instruments; mQTL, Methylation
22 quantitative trait loci; MI, myocardial infarction; OR, odds ratio; PDE,
23 phosphodiesterase; SNP, single-nucleotide polymorphism; SMR, summary-data-based
24 Mendelian Randomization.

25 **Abstract**

26 **Background:** Phosphodiesterases (PDEs) are regarded as important therapeutic targets for
27 multiple diseases, and the cardiovascular benefits of several PDE inhibitors have received
28 extensive interests.

29 **Objectives:** To explore the relationship between genetically-predicted PDEs and
30 ischemia heart disease via drug target Mendelian Randomization (MR) approach.

31 **Methods:** The expression of genes encoding PDEs was used to proxy the level of PDEs,
32 and available quantitative trait loci of gene expression and DNA methylation (eQTLs and
33 mQTLs) for each target gene were identified as the genetic instruments. Coronary heart
34 disease (CHD) and myocardial infarction (MI) were the outcomes. Summary-data-based
35 MR method was used to generate the estimates and two-step MR analysis was applied to
36 investigate the mediation of metabolic traits.

37 **Results:** MR analyses identified two types of PDEs, PDE5 and PDE8, genetically-
38 predicted expression in blood of the encoded genes was significantly associated with the
39 risk of CHD ($OR_{PDE5A}=1.22, 95\% CI=1.06-1.40$; $OR_{PDE8A}=1.26, 95\% CI=1.07-1.49$) and
40 MI ($OR_{PDE5A}=1.27, 95\% CI=1.09-1.48$; $OR_{PDE8A}=1.24, 95\% CI=1.04-1.48$). Especially,
41 the highest expression of PDE5A was observed in artery aorta, which was also positively
42 related to CHD ($OR=1.17, 95\% CI=1.05-1.32$) and MI ($OR=1.15, 95\% CI=1.02-1.30$).
43 Besides, the methylation level of 12 CpG sites showed a relation with CHD or MI via
44 affecting PDE5A expression. The observed association between PDE5A expression and
45 outcomes were partly mediated by blood pressure and LDL cholesterol, and the
46 association with MI were mostly mediated by CHD (Proportion-mediated: 78.84%).

47 **Conclusions:** This study provided genetic evidence about the protective role of PDE5
48 inhibition against ischemic heart disease, especially in preventing patients with CHD
49 from developing MI.

50 **Keywords:** phosphodiesterases, coronary heart disease, myocardial infarction, Mendelian
51 randomization.

52 **Introduction**

53 Phosphodiesterases (PDEs), a family of enzymes from PDE1 to PDE11, are well-known
54 to play a critical role in the regulation of intracellular signaling via hydrolyzing cyclic
55 nucleotides cyclic adenosine monophosphate (cAMP) and/or cyclic guanosine
56 monophosphate (cGMP)(1). The cAMP and cGMP are the second messengers linking to
57 a series of physiological processes, thus PDEs are regarded as important therapeutic
58 targets for multiple diseases (2). Although the PDE families are structurally related, the
59 molecular diversity makes them functionally distinct (2). Some PDE inhibitors have
60 been widely used in clinical practice, and emerging evidence indicates that PDE
61 inhibitors have the potential to be developed or repurposed for a wide range of clinical
62 applications (2,3).

63 The cardiovascular benefits of PDE inhibitors have received extensive interests in
64 recent decades, for example, accumulating epidemiological studies suggested that PDE5
65 inhibitors could enhance contractile function for patients with heart failure, improve the
66 prognosis in patients with coronary heart disease, reduce ventricular arrhythmias, and so
67 on (4-16). Coronary heart disease (CHD) is the most common type of cardiovascular
68 diseases, and myocardial infarction (MI) is a major cause of death worldwide. Since
69 1960s, cAMP and cGMP were found to inhibit platelet aggregation and a group of PDE
70 inhibitors were considered as anti-platelet agents, for instance, dipyridamole (PDE3
71 inhibitor) has been approved for secondary prevention of ischemic stroke (17). PDE
72 inhibitors were also reported to ameliorate some established risk factors of coronary heart
73 disease, such as metabolic syndrome, a cluster of several metabolic disorders (18).
74 Although these evidence have suggested the cardiovascular benefits of PDE inhibitors,
75 there is a paucity of studies comprehensively exploring the causal effect of PDE
76 inhibitors on CHD or MI.

77 Randomized clinical trial (RCT) is recognized as the gold standard to confirm the
78 causal effect, however, RCT is not always feasible due to the difficulty of
79 implementation. Mendelian randomization (MR) is thus developed for causal inference
80 by using genetic variants as instruments. Previous studies have applied drug-target MR
81 method to explore the potential drug targets by using quantitative trait loci (QTLs) as

82 instruments, which are genetic variants associated with quantitative traits , such as gene
83 expression (eQTL), protein (pQTL), methylation (mQTL), et al(19,20).

84 Therefore, in this study, we aimed to investigate the role of PDEs on CHD and MI
85 by using available eQTLs and mQTLs of genes encoding PDEs as instruments via MR
86 approach and explore how the identified PDEs affect the outcome through metabolic
87 traits.

88

89 **Methods**

90 **Study design**

91 The design of the study was summarized in **Figure 1**. In the primary analysis, we
92 comprehensively investigated the causal effect of the expression of genes encoding PDEs
93 on the risk of CHD or MI by using eQTLs from blood as instruments. For significant MR
94 associations, we further conducted a series of secondary analyses. Firstly, the observed
95 significant associations were examined by using eQTLs in artery or heart tissues as
96 instruments. Secondly, it is known that DNA methylation plays an important role in
97 regulating gene expression, thus we further investigated the relationship between
98 methylation level of related genes encoding significant PDEs and the outcomes by using
99 mQTLs in blood as instruments. Thirdly, two-step MR analysis was used to explore if
100 metabolic traits perform a mediating role between the identified PDEs and the outcomes,
101 including body mass index (BMI), blood pressure, blood lipids and blood glucose.

102 Summary-level data from publicly available genome-wide association studies
103 (GWASs), expression and methylation quantitative trait loci (eQTLs and mQTLs) studies,
104 were used in this study, all of which have been approved by the relevant institutional
105 review boards with informed consents from participants. Details of data resources are
106 presented in **Supplementary Table 1**.

107 **Selection of genetic instruments**

108 We used the expression of the encoded gene to proxy the level of each PDE, and eQTLs
109 for related genes were used as instruments of gene expression. Given that data of eQTLs
110 in blood are most comprehensive and top eQTLs are highly correlated between blood and
111 other tissues, eQTLs in blood were used to generate genetic instruments to identified

112 significant PDEs in the primary analysis. For significant associations, we provided
113 additional evidence by using eQTLs in disease-related organs (ie., artery and heart tissues)
114 as instruments. Summary-level data of eQTLs in blood and tissues were obtained from
115 eQTLGen Consortium (N=31,684) and GTEx Consortium V8 (Artery Aorta: N=387;
116 Artery Tibial: N=372; Heart Atrial Appendage: N=584), respectively (21,22). And
117 common SNPs significantly associated with the expression and the methylation in blood
118 for related genes were identified and used to generate instruments of the level of
119 methylation, summary data of mQTLs were selected from a meta-analysis of two cohorts
120 (N=1,980) (23). To reduce weak instrument bias, we only included cis-QTLs (i.e., QTLs
121 within 1 Mb windows from the region of the encoded gene). Hence, common cis-eQTLs
122 or cis-mQTLs (minor allele frequency (MAF) >1%) significantly associated with the
123 expression or methylation of PDEs were identified, in which $p < 5.0 \times 10^{-8}$ was set as
124 the significant threshold to select cis-eQTLs or cis-mQTLs in blood and the threshold of
125 $p < 1.0 \times 10^{-5}$ was used to select cis-eQTLs in tissues due to the limited number of
126 available cis-eQTLs in tissues and the relatively small sample size of original studies.
127 The most significant cis-eQTL or cis-mQTL for each gene was finally selected as the
128 genetic instrument. The coefficient obtained from eQTL or mQTL study is equivalent to
129 1-SD change of the level of gene expression or DNA methylation for each additional
130 effect allele. The details of QTLs data are presented in **Supplementary Table 1.**

131 **Outcome sources**

132 The outcome is ischemic heart disease, including CHD and MI. The GWAS summary-
133 level data for CHD (cases: N=60,801; controls: N=123,504) and MI (cases: N=43,676;
134 controls: N=128,199) were obtained from the CARDIoGRAMplusC4D Consortium with
135 meta-analyses of 48 GWASs, in which the study population was predominantly
136 individuals with European ancestry (24). Metabolic traits were considered as the potential
137 mediators: summary data of GWAS for systolic and diastolic blood pressure was
138 obtained from the International Consortium of Blood Pressure; data for low-density
139 lipoprotein cholesterol (LDL-C), high-density lipoprotein cholesterol (HDL-C) and
140 triglycerides (TG) obtained from the Global Lipids Genetics Consortium; data for body
141 mass index obtained from the GIANT Consortium; data for fasting blood glucose

142 obtained from the MAGIC Consortium. The details of GWASs data are presented in
143 **Supplementary Table 1.**

144 **Statistical analyses**

145 Effect estimates were generated by using summary-data-based MR (SMR) method,
146 which was recently developed to evaluate the association of quantitative trait and
147 outcome combining summary-level data from QTL and GWAS studies (25). F-statistic
148 was calculated to assess the strength of genetic instruments, an F-statistic of >10
149 indicates a small role of weak instrument bias in the results (26). The heterogeneity in
150 dependent instruments (HEIDI) test was applied to assess if linkage disequilibrium
151 played a role in the observed association of gene expression or methylation with outcome
152 of interest, in which p value <0.01 indicates that association may be due to linkage. One
153 SNP probably regulates the expression of more than one genes, resulting in the presence
154 of horizontal pleiotropy. To evaluate the potential impact of horizontal pleiotropy, genes
155 near the instrumental variant (within a 1Mb window) were identified if the expression
156 was significantly associated with the variant. Then SMR analysis was conducted to
157 examine if the instrumental variant affected the risk of outcomes via regulating the
158 expression of nearby genes.

159 Inverse-variance weighted mendelian randomization (IVW-MR) method was
160 applied to obtain the estimates of the causal associations between metabolic traits and the
161 outcome. To evaluate if the significant association between PDE and outcome was
162 mediated by metabolic traits, we conducted a two-step MR study between PDE,
163 candidate mediators, and incident outcome. Two-step MR, also known as network MR, is
164 similar to the approach calculating the product of coefficients (27). We first calculated
165 two MR coefficients: the association between PDE and the mediator (β_1) and the
166 association between the mediator and the outcome (β_2), then multiplied two
167 coefficients to estimate the indirect effect ($\beta_1 \cdot \beta_2$). The total effect was estimated
168 by MR coefficient of PDE on the outcome (β_0) and the direct effect was calculated by
169 the difference between total effect and indirect effect ($\beta_0 - \beta_1 \cdot \beta_2$). Proportion of
170 mediated effect was calculated by the formula of $(\beta_1 \cdot \beta_2) / \beta_0$. P-value of <0.05
171 was considered as statistical significance. To account for multiple testing correction,

172 Bonferroni correction was also used to adjust the thresholds of significance level, with a
173 strong evidence of $P < 0.05 / (\text{number of genes})$ and a suggestive evidence of $0.05 / (\text{number}$
174 $\text{of genes}) \leq P < 0.05$. All analyses were conducted by using SMR software (version 1.03)
175 or R software (version 4.1.0).

176

177 **Results**

178 **Genetic instrument selection**

179 As shown in **Figure 1 and Supplementary Table 2**, a total of 7,737 SNPs significantly
180 associated with the expression in blood of 17 genes encoding PDE1 to PDE9 were
181 identified. While there is a lack of available cis-eQTLs identified for PDE10 and PDE11,
182 thus these two PDEs were not included in the analyses. The most significant cis-eQTL
183 for all 17 encoded genes had F statistics of > 10 , indicating a small role of weak
184 instrument bias in our study. Approved or investigational drugs targeting PDEs are
185 presented in **Supplementary Table 2**.

186 **MR analysis between the expression of genes encoding PDEs in blood and outcomes**

187 As shown in **Figure 2 and Supplementary table 3**, the most significant association with
188 the risk of both CHD and MI was found on PDE5A expression, in which a 1-SD increase
189 of PDE5A expression was associated with increased risk of CHD with an OR of 1.22 (95%
190 CI=1.06-1.40, $P = 0.0046$) or MI with an OR of 1.27 (95% CI=1.09-1.48,
191 $P = 0.0024$). The observed association with MI kept significant after bonferroni
192 correction using a significance threshold of $P < 0.003$ (multiple testing for 17 genes)
193 and HEIDI test suggested a small role of linkage disequilibrium in the observed
194 association ($P_{\text{CHD}} = 0.160$; $P_{\text{MI}} = 0.375$). Besides, MR analysis provided a suggestive
195 evidence for a positive association between PDE8A expression and the risk of CHD
196 (OR=1.26, 95% CI=1.07-1.49, $P = 0.0047$) and MI (OR=1.24, 95% CI=1.04-1.48,
197 $P = 0.0175$), which tended to null after bonferroni correction and HEIDI test in MI
198 analysis showed the potential presence of linkage disequilibrium ($P < 0.01$). As shown in
199 **Supplementary Table 5**, six genes were identified nearby the instrumental variant of
200 PDE5A expression in blood (rs10518336) and the expression of which were significantly

201 related to the instrumental variant. Among them, the expression of four genes were
202 associated with the risk of outcomes, indicating that the horizontal pleiotropy may not be
203 ruled out (**Supplementary Table 6**). No association was observed between the
204 expression of gene nearby the instrumental variant of PDE8A expression in blood
205 (rs67804993) and the outcomes (**Supplementary Table 6**).

206 **MR analysis between the expression of PDE5A or PDE8A in artery or heart tissues** 207 **and outcomes**

208 As MR analyses found a strong evidence for the association between the expression of
209 PDE5A or PDE8A and the risk of CHD and MI, we further examine the association of
210 PDE5A/PDE8A expression in relevant tissues with outcomes. Heart and artery are the
211 predominating organs in cardiovascular diseases. **Supplementary Figure 1 and 2**
212 display the tissue-specific expression of PDE5A and PDE8A from GTEx Portal. PDE5A
213 was expressed highest in artery aorta, followed by artery tibial, and the expression in
214 artery coronary ranked six place, indicating an important role of PDE5 in artery. While
215 PDE8A was expressed highest in nerve tibial, and the expression in artery tibial ranked
216 15 place.

217 There were 188, 13 and 9 cis-eQTLs identified to generate instruments for PDE5A
218 expression in artery aorta, artery tibial and heart atrial appendage respectively, and 2 cis-
219 eQTLs were identified as instruments for PDE8A expression in artery tibial (**Figure 1**).
220 As shown in **Figure 3 and Supplementary table 4**, the associations between PDE5A
221 expression and the outcome were also found in artery aorta ($OR_{CHD}=1.17$, 95% CI=1.05-
222 1.32, $P=0.0066$; $OR_{MI}=1.15$, 95% CI=1.02-1.30, $P=0.0269$) and heart atrial
223 appendage ($OR_{CHD}=1.20$, 95% CI=1.02-1.41, $P=0.0312$; $OR_{MI}=1.18$, 95% CI=0.99-
224 1.40, $P=0.0667$). The observed association with CHD passed the bonferroni
225 correction test ($P<0.013$, multiple testing for 4 genes) and the HEIDI test ($P>0.01$).
226 No nearby genes were found to be significantly related to the instrumental variant of
227 PDE5A expression in artery aorta (rs1393966) (**Supplementary table 5**). No association
228 was observed between the expression in heart atrial appendage of gene nearby the
229 instrumental variant of PDE5A expression (rs75098287) and the outcomes

230 **(Supplementary Table 6)**. These results suggesting a small role of the horizontal
231 pleiotropy in the observed associations.

232 **MR analysis between the methylation of PDE5A or PDE8A in blood and outcomes**

233 There were 1,185 and 310 cis-mQTLs in blood identified to generate instruments of DNA
234 methylation in 14 CpG sites of PDE5A and 12 CpG sites of PDE8A, respectively (**Figure**
235 **1**). Among these CpG sites, the methylation level of 12 CpG sites of PDE5A and 7 CpG
236 sites of PDE8A robustly associated with the expression of the corresponding gene had
237 significant associations with the risk of CHD and MI in the same direction, indicating
238 that methylation in these CpG sites may affect the outcomes via regulating gene
239 expression(**Figure 4, Supplementary table 7 and 8**).

240 **Two step MR analyses between PDE5A expression, metabolic traits and outcomes**

241 As shown in **Supplementary table 9**, the expression of PDE5A but not PDE8A was
242 related to multiple metabolic traits, thus two step MR analyses were performed to explore
243 the causal relationship between PDE5A expression, metabolic traits and the risk of CHD
244 or MI. **Figure 5** showed that the association between PDE5A expression and CHD or MI
245 was partly mediated by diastolic blood pressure (Proportion-mediated_{CHD}=25.97%;
246 Proportion-mediated_{MI}=21.42%), systolic blood pressure (Proportion-mediated_{CHD}
247 =15.77%; Proportion-mediated_{MI} =11.63%) and LDL-C (Proportion-mediated_{CHD}
248 =15.35%; Proportion-mediated_{MI} = 8.17%). The association between PDE5A expression
249 and MI was mostly mediated by CHD (Proportion mediated=78.84%). No mediated role
250 of body mass index, blood glucose or other lipids was observed between PDE5A
251 expression and outcomes.

252 **Discussion**

253 To investigate the therapeutical potential of PDE inhibitors for ischemic heart disease and
254 the underlying pathways, we explored the association of the expression of genes
255 encoding PDEs (i.e., PDE1-PDE9) with the risk of CHD and MI in this MR study. Two
256 types of PDEs, PDE5 and PDE8, were identified to have the potential to be repurposed
257 for CHD or MI prevention in this study. Specifically, a strong evidence was observed for
258 the positive association of PDE5A expression in blood and artery aorta (the tissue with

259 highest expression) with the risk of CHD and MI. We also identified 12 CpG sites, the
260 methylation level of which was significantly related to the risk of CHD and MI via
261 affecting the PDE5A expression. Mediation analysis suggested that PDE5 inhibition
262 might reduce the incidence of ischemic heart disease partly through regulating blood
263 pressure and LDL cholesterol. These findings provided genetic evidence that PDE5
264 inhibitors may be effective in the prevention of CHD and MI, especially in protecting
265 against MI among patients with CHD.

266 PDE5, encoded by PDE5A gene, is an enzyme selectively hydrolyzing cGMP,
267 which is distributed across most tissues of human body. Thus, it is known that PDE5
268 inhibitors, including sildenafil, vardenafil and tadalafil, exert its therapeutic effect by
269 inhibiting cGMP degradation. PDE5 inhibitors were originally developed to treat angina
270 while failed in clinical trials, then repurposed and approved by FDA for treating erectile
271 dysfunction in 1998, pulmonary arterial hypertension in 2005 and benign prostatic
272 hyperplasia in 2011 (4-6). Given of the safety of PDE5 inhibitors and the involvement of
273 cGMP in vast physiological processes, enormous interest has been raised to explore the
274 potential new functions of PDE5 inhibitors(6).

275 Growing preclinical studies have reported that PDE5 inhibitors play a protective role
276 against cardiovascular diseases, such as heart failure, MI, ischemia-induced ventricular
277 arrhythmias, myocardial hypertrophy and so on (4-6). Several clinical trials have
278 demonstrated the benefits of PDE5 inhibitors in patients with heart failure, while the
279 effect on ischemic heart disease is still uncertain (28). A number of observational studies
280 have reported the protective effect of PDE5 inhibitors on ischemic heart disease (29-31).
281 For example, a nationwide Danish cohort study including 71,710 men found that PDE5
282 inhibitors use was related to a decreased incidence of MI as compared to the general male
283 population without receiving PDE5 inhibitors (RR=0.74; 95% CI=0.69-0.79), however
284 indication bias may play a role in the observed association (31). Another case-control
285 study including type 2 diabetic men with silent coronary heart disease found that
286 treatment with PDE5 inhibitors and statins was negatively associated with the occurrence
287 of major adverse cardiac events (HR=0.66, 95%CI=0.46-0.97), while in which the effect
288 of statins and PDE5 inhibitors cannot be distinguished and indication bias cannot be
289 eliminated as well(30). A recent real-world study based on Swedish nationwide registers

290 investigated the protective effect by comparing the survival between men treated with
291 PDE5 inhibitors and those treated with alprostadil in order to reduce the influence from
292 indication bias, since erectile dysfunction is the major indication of PDE5 inhibitors and
293 alprostadil is another treatment for erectile dysfunction(29). This study included 18,542
294 men with stable coronary heart disease and found that men treated with PDE5 inhibitors
295 had a lower mortality as well as a reduced incidence of major adverse cardiac events,
296 including MI (HR= 0.81, 95%CI=0.70–0.93). Although indication bias can be reduced as
297 much as possible by using active comparator, it is impossible to be completely avoided
298 and unknown confounders cannot be ruled out in observational studies. Besides, as these
299 drugs were mainly prescribed for men to treat erectile dysfunction in real world, it is
300 unlikely to assess the effect in general population. Our study observed consistent results
301 that increased expression of PDE5A was related to a higher risk of CHD and MI, which
302 provided strong supportive evidence for findings from previous observational studies.
303 Besides, we found that the mediated proportion of CHD on the positive relation between
304 PDE5 and MI risk was as high as round 80%, indicating that PDE5 inhibition probably
305 contributed to preventing patients with CHD from MI. Furthermore, PDE5 has been
306 emerged as novel target for treating metabolic disorders, which are known risk factors of
307 ischemic heart disease (18). This study also observed a mediated effect of blood pressure
308 and LDL cholesterol between PDE5 inhibition and ischemic heart disease, which offered
309 some clues for the underlying mechanisms, calling for further studies.

310 PDE8 was also identified in this study, the inhibition of which was recently found to
311 be a potential novel therapeutic target of treating airway diseases and dementia (32,33).
312 No studies reported the cardiovascular effect of PDE8. Although this MR study found
313 that the expression in blood of PDE8A was related to the risk of CHD and MI, the
314 association did not pass the bonferroni correction test. Besides, PDE8A was expressed
315 less in cardiovascular organs and no relationship was observed between the PDE8A
316 expression in artery and the outcomes. Therefore, whether PDE8 inhibition really had a
317 cardiovascular benefit need to be further investigated.

318 This is the first MR study to comprehensively explore the causal effects of PDEs on
319 ischemic heart disease. The use of QTLs as instruments to proxy drug exposure in MR
320 study could overcome the shortcomings of observational studies, such as confounding

321 bias and reverse causation. Besides, several types of QTLs (eQTLs in blood, artery aorta
322 and heart, mQTLs in blood) have provided consistent evidence, indicating the robustness
323 of the protective effect of PDE5 inhibition on ischemic heart disease. Two-step MR
324 analysis contributed to identifying the subgroup population that may benefit more from
325 PDE5 inhibitors use. However, there are several limitations. Firstly, this study used the
326 expression of drug target genes to proxy drug exposure, which might not be equivalent to
327 clinical treatment because of a gap between drug targets and available agents, for
328 example, there may be various effects across different types of PDE5 inhibitors. However,
329 these findings could provide additional evidence for previous observational studies
330 regarding the preventive effect of PDE5 inhibitors against ischemic heart disease. Hence,
331 RCTs are required to further investigate the efficacy of different PDE5 inhibitors.
332 Secondly, horizontal pleiotropy cannot be excluded when using eQTLs in blood as
333 instruments for PDE5A expression in primary analysis, while consistent associations
334 were observed using eQTLs in tissues or mQTLs in blood as instrument, suggesting the
335 robustness of the findings. Thirdly, false negative association of other PDEs cannot be
336 ruled out in drug target MR study as there may be unidentified eQTLs which play a more
337 important role in gene expression than the identified top eQTL. Fourthly, this study was
338 conducted based on summary-level data, thus we were unable to explore the specific
339 effect in subgroup population, such as in men and women. Fifthly, genetic data of this
340 study were mainly collected from population of European ancestry, leading to a limited
341 generalization of these findings.

342 **Conclusion**

343 In conclusion, this drug-target MR study identified PDE5 that had the potential to be
344 repurposed as novel target for CHD and MI prevention, especially in protecting against
345 MI among patients with CHD, and the underlying mechanisms of the effect might be
346 partly involved in regulating blood pressure and LDL cholesterol.

347

348 **Acknowledgments:** The data used for the analyses described in this manuscript were
349 obtained from the eQTLGen Consortium, GTEx Portal, Global Lipids Genetics
350 Consortium, International Consortium of Blood Pressure, GIANT Consortium, MAGIC
351 Consortium and CARDIoGRAMplusC4D Consortium on 01/07/2023. We thank the
352 patients and investigators who contributed to these studies.

353 **Ethical statement:** All publicly available genome-wide association studies (GWASs)
354 and quantitative trait loci (QTLs) studies used in this MR analyses were approved by the
355 relevant institutional review boards with informed consents from participants.

356 **Funding Information:** This work was supported by National Natural Science
357 Foundation of China (82304213) and Start-up Fund for high-level talents of Fujian
358 Medical University (XRCZX2021026) to Dr. Wuqing Huang. The funder had no role in
359 study design, data collection and interpretation, or the decision to submit the work for
360 publication.

361 **Author Contributors:** All authors were responsible for the study concept and design.
362 WH obtained funding. JX did the statistical analysis. JX and WH drafted the manuscript,
363 and all authors revised it for important intellectual content.

364 **Competing interests:** The authors declare no conflict of interest.

365 **References**

- 366 1. Boswell-Smith V, Spina D, Page CP. Phosphodiesterase inhibitors. *British journal of*
367 *pharmacology* 2006;147 Suppl 1:S252-7.
- 368 2. Maurice DH, Ke H, Ahmad F, Wang Y, Chung J, Manganiello VC. Advances in targeting
369 cyclic nucleotide phosphodiesterases. *Nature reviews Drug discovery* 2014;13:290-314.
- 370 3. Huang W, Sundquist J, Sundquist K, Ji J. Use of Phosphodiesterase 5 Inhibitors Is
371 Associated With Lower Risk of Colorectal Cancer in Men With Benign Colorectal
372 Neoplasms. *Gastroenterology* 2019;157:672-681.e4.
- 373 4. Hutchings DC, Anderson SG, Caldwell JL, Trafford AW. Phosphodiesterase-5 inhibitors
374 and the heart: compound cardioprotection? *Heart (British Cardiac Society)*
375 2018;104:1244-1250.
- 376 5. Ravipati G, McClung JA, Aronow WS, Peterson SJ, Frishman WH. Type 5
377 phosphodiesterase inhibitors in the treatment of erectile dysfunction and cardiovascular
378 disease. *Cardiology in review* 2007;15:76-86.
- 379 6. Das A, Durrant D, Salloum FN, Xi L, Kukreja RC. PDE5 inhibitors as therapeutics for heart
380 disease, diabetes and cancer. *Pharmacology & therapeutics* 2015;147:12-21.
- 381 7. Hashimoto T, Kim GE, Tunin RS et al. Acute Enhancement of Cardiac Function by
382 Phosphodiesterase Type 1 Inhibition. *Circulation* 2018;138:1974-1987.
- 383 8. Nakano SJ, Miyamoto SD, Movsesian M, Nelson P, Stauffer BL, Sucharov CC. Age-related
384 differences in phosphodiesterase activity and effects of chronic phosphodiesterase
385 inhibition in idiopathic dilated cardiomyopathy. *Circulation Heart failure* 2015;8:57-63.
- 386 9. Pagani ED, Buchholz RA, Silver PJ. Cardiovascular cyclic nucleotide phosphodiesterases
387 and their role in regulating cardiovascular function. *Basic research in cardiology* 1992;87
388 Suppl 1:73-86.
- 389 10. Kloner RA. Cardiovascular effects of the 3 phosphodiesterase-5 inhibitors approved for
390 the treatment of erectile dysfunction. *Circulation* 2004;110:3149-55.
- 391 11. Vinogradova TM, Lakatta EG. Dual Activation of Phosphodiesterase 3 and 4 Regulates
392 Basal Cardiac Pacemaker Function and Beyond. *International journal of molecular*
393 *sciences* 2021;22.
- 394 12. Leroy J, Fischmeister R. Inhibit a Phosphodiesterase to Treat Heart Failure? *Circulation*
395 2018;138:2003-2006.
- 396 13. Roks AJM. Phosphodiesterase-1 in the cardiovascular system. *Cellular signalling*
397 2022;92:110251.
- 398 14. Bevan S, Porteous L, Sitzer M, Markus HS. Phosphodiesterase 4D gene, ischemic stroke,
399 and asymptomatic carotid atherosclerosis. *Stroke* 2005;36:949-53.
- 400 15. Lee DI, Zhu G, Sasaki T et al. Phosphodiesterase 9A controls nitric-oxide-independent
401 cGMP and hypertrophic heart disease. *Nature* 2015;519:472-6.
- 402 16. Chen S, Zhang Y, Lighthouse JK et al. A Novel Role of Cyclic Nucleotide
403 Phosphodiesterase 10A in Pathological Cardiac Remodeling and Dysfunction. *Circulation*
404 2020;141:217-233.
- 405 17. Smolenski A. Novel roles of cAMP/cGMP-dependent signaling in platelets. *Journal of*
406 *thrombosis and haemostasis* : JTH 2012;10:167-76.
- 407 18. Lugnier C, Meyer A, Talha S, Geny B. Cyclic nucleotide phosphodiesterases: New targets
408 in the metabolic syndrome? *Pharmacology & therapeutics* 2020;208:107475.
- 409 19. Gaziano L, Giambartolomei C, Pereira AC et al. Actionable druggable genome-wide
410 Mendelian randomization identifies repurposing opportunities for COVID-19. *Nat Med*
411 2021;27:668-676.

- 412 20. Huang W, Xiao J, Ji J, Chen L. Association of lipid-lowering drugs with COVID-19
413 outcomes from a Mendelian randomization study. *eLife* 2021;10.
- 414 21. Vosa U, Claringbould A, Westra HJ et al. Large-scale cis- and trans-eQTL analyses identify
415 thousands of genetic loci and polygenic scores that regulate blood gene expression. *Nat*
416 *Genet* 2021;53:1300-1310.
- 417 22. Consortium GT. The GTEx Consortium atlas of genetic regulatory effects across human
418 tissues. *Science* 2020;369:1318-1330.
- 419 23. McRae AF, Marioni RE, Shah S et al. Identification of 55,000 Replicated DNA Methylation
420 QTL. *Sci Rep* 2018;8:17605.
- 421 24. Nikpay M, Goel A, Won HH et al. A comprehensive 1,000 Genomes-based genome-wide
422 association meta-analysis of coronary artery disease. *Nat Genet* 2015;47:1121-1130.
- 423 25. Zhu Z, Zhang F, Hu H et al. Integration of summary data from GWAS and eQTL studies
424 predicts complex trait gene targets. *Nat Genet* 2016;48:481-7.
- 425 26. Burgess S, Thompson SG. Avoiding bias from weak instruments in Mendelian
426 randomization studies. *Int J Epidemiol* 2011;40:755-64.
- 427 27. Carter AR, Sanderson E, Hammerton G et al. Mendelian randomisation for mediation
428 analysis: current methods and challenges for implementation. *Eur J Epidemiol*
429 2021;36:465-478.
- 430 28. Nadur NF, de Azevedo LL, Caruso L, Graebin CS, Lacerda RB, Kümmerle AE. The long and
431 winding road of designing phosphodiesterase inhibitors for the treatment of heart
432 failure. *European journal of medicinal chemistry* 2021;212:113123.
- 433 29. Andersson DP, Landucci L, Lagerros YT et al. Association of Phosphodiesterase-5
434 Inhibitors Versus Alprostadil With Survival in Men With Coronary Artery Disease. *Journal*
435 *of the American College of Cardiology* 2021;77:1535-1550.
- 436 30. Gazzaruso C, Solerte SB, Pujia A et al. Erectile dysfunction as a predictor of
437 cardiovascular events and death in diabetic patients with angiographically proven
438 asymptomatic coronary artery disease: a potential protective role for statins and 5-
439 phosphodiesterase inhibitors. *Journal of the American College of Cardiology*
440 2008;51:2040-4.
- 441 31. Vestergaard N, Søggaard P, Torp-Pedersen C, Aasbjerg K. Relationship between
442 treatment of erectile dysfunction and future risk of cardiovascular disease: A nationwide
443 cohort study. *European journal of preventive cardiology* 2017;24:1498-1505.
- 444 32. Johnstone TB, Smith KH, Koziol-White CJ et al. PDE8 Is Expressed in Human Airway
445 Smooth Muscle and Selectively Regulates cAMP Signaling by beta(2)-Adrenergic
446 Receptors and Adenylyl Cyclase 6. *Am J Respir Cell Mol Biol* 2018;58:530-541.
- 447 33. Wu XN, Zhou Q, Huang YD et al. Structure-based discovery of orally efficient inhibitors
448 via unique interactions with H-pocket of PDE8 for the treatment of vascular dementia.
449 *Acta Pharm Sin B* 2022;12:3103-3112.

450

Figure legends:

Figure 1. Flowchart of the study.

Figure 2. Association between the expression of PDEs in blood and coronary heart disease or myocardial infarction. (A) Coronary heart disease; (B) Myocardial infarction. * Shown in ascending order of p value.

Figure 3. Association between the expression of PDE5A or PDE8A in artery or heart tissue and coronary heart disease or myocardial infarction.

Figure 4. Association between the methylation of PDE5A or PDE8A and the gene expression in blood, coronary heart disease or myocardial infarction. (A) PDE5A; (B) PDE8A.

Figure 5. Two-step mendelian randomization between PDE5A expression, metabolic traits and coronary heart disease or myocardial infarction. (A) Coronary heart disease; (B) Myocardial infarction. * Percentage in plots indicates the proportion of mediated effect. The asterisk in plots indicates statistical significance ($P < 0.05$).

Supplementary files:

Supplementary Table 1. Information of eQTL and GWAS summary data.

Supplementary Table 2. Information of PDE family.

Supplementary Table 3. SMR association between the expression of genes encoding PDEs in blood and coronary heart disease or myocardial infarction.

Supplementary Table 4. SMR association between the expression of PDE5A or PDE8A in artery or heart tissue and coronary heart disease or myocardial infarction.

Supplementary Table 5. The eQTL association between top SNP of PDE5A or PDE8A with the expression of other nearby genes.

Supplementary Table 6. SMR association between the expression of genes adjacent to PDE5A or PDE8A and coronary heart disease or myocardial infarction.

Supplementary Table 7. SMR association between the methylation of PDE5A and the PDE5A expression in blood, coronary heart disease or myocardial infarction.

Supplementary Table 8. SMR association between the methylation of PDE8A and the PDE8A expression in blood, coronary heart disease or myocardial infarction.

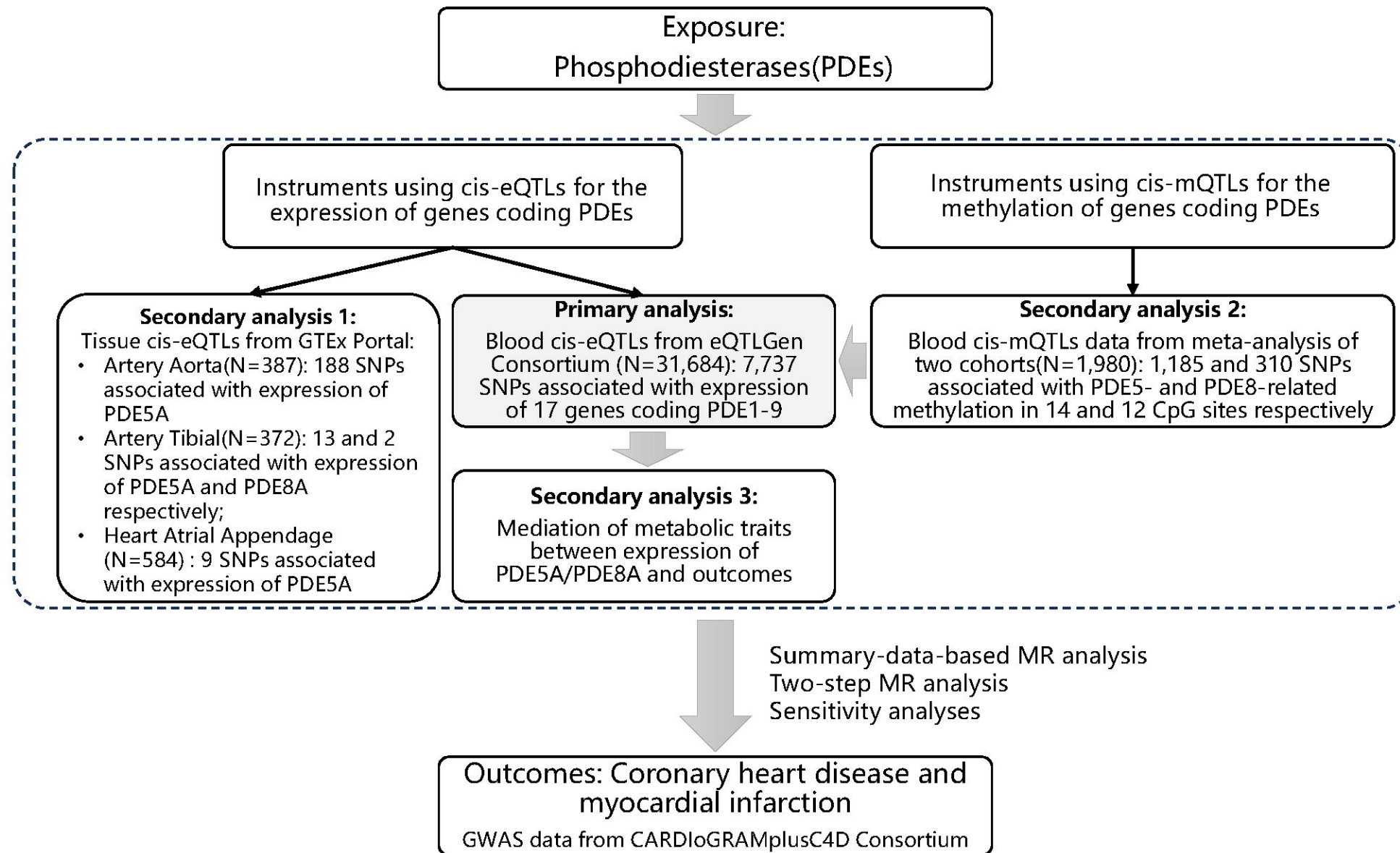
Supplementary Table 9. SMR association between the expression of PDE5A or PDE8A in blood and metabolic traits.

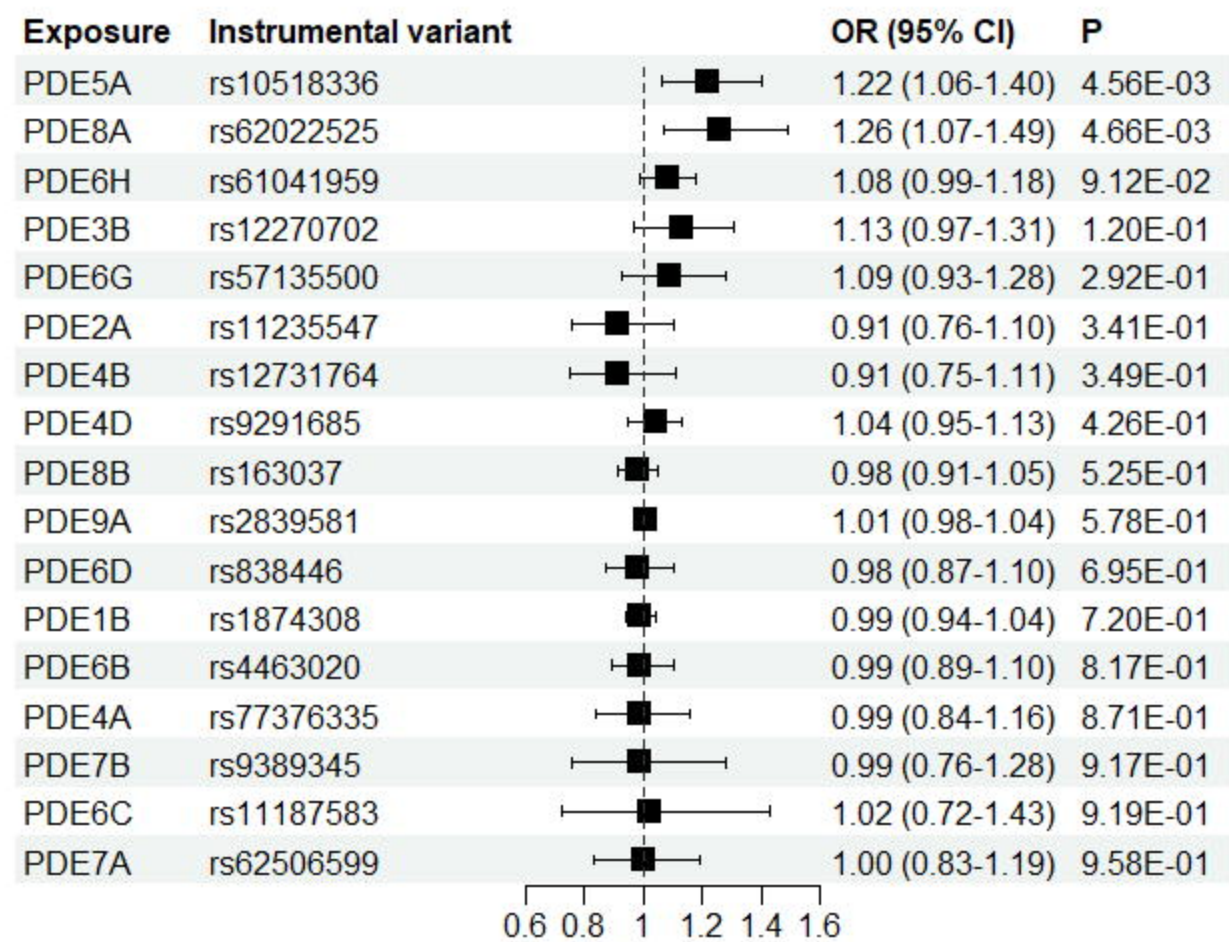
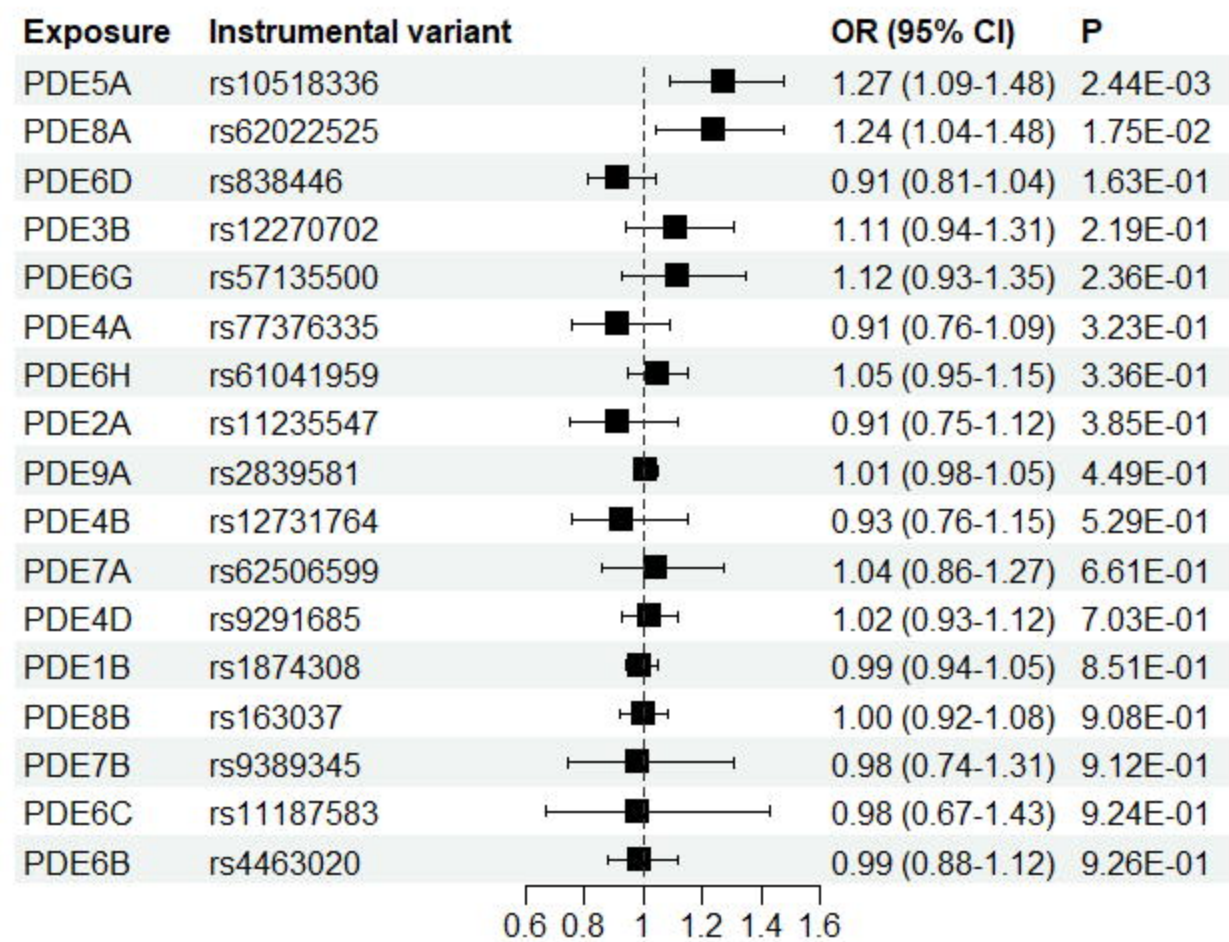
Supplementary Table 10. IVW-MR association between metabolic traits and coronary heart disease or myocardial infarction.

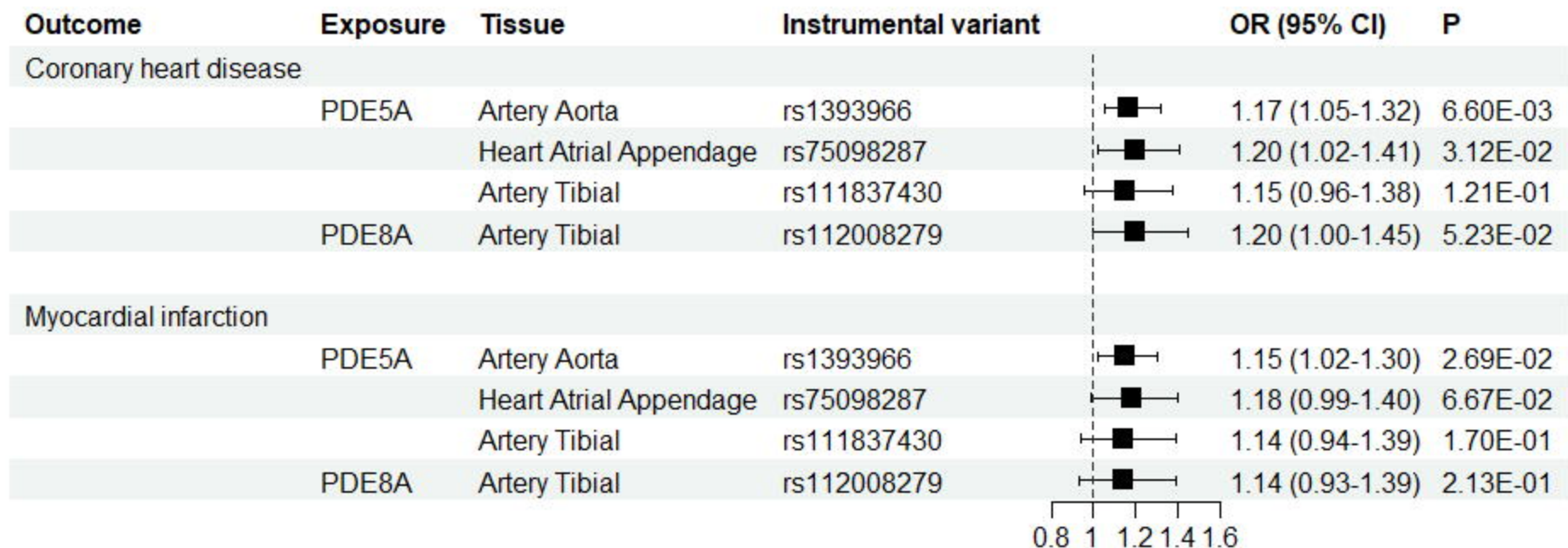
Supplementary Table 11. Two-step mendelian randomization between PDE5A expression in blood, metabolic traits and coronary heart disease or myocardial infarction.

Supplementary Figure 1. Tissue gene expression for PDE5A from GTEx Portal.

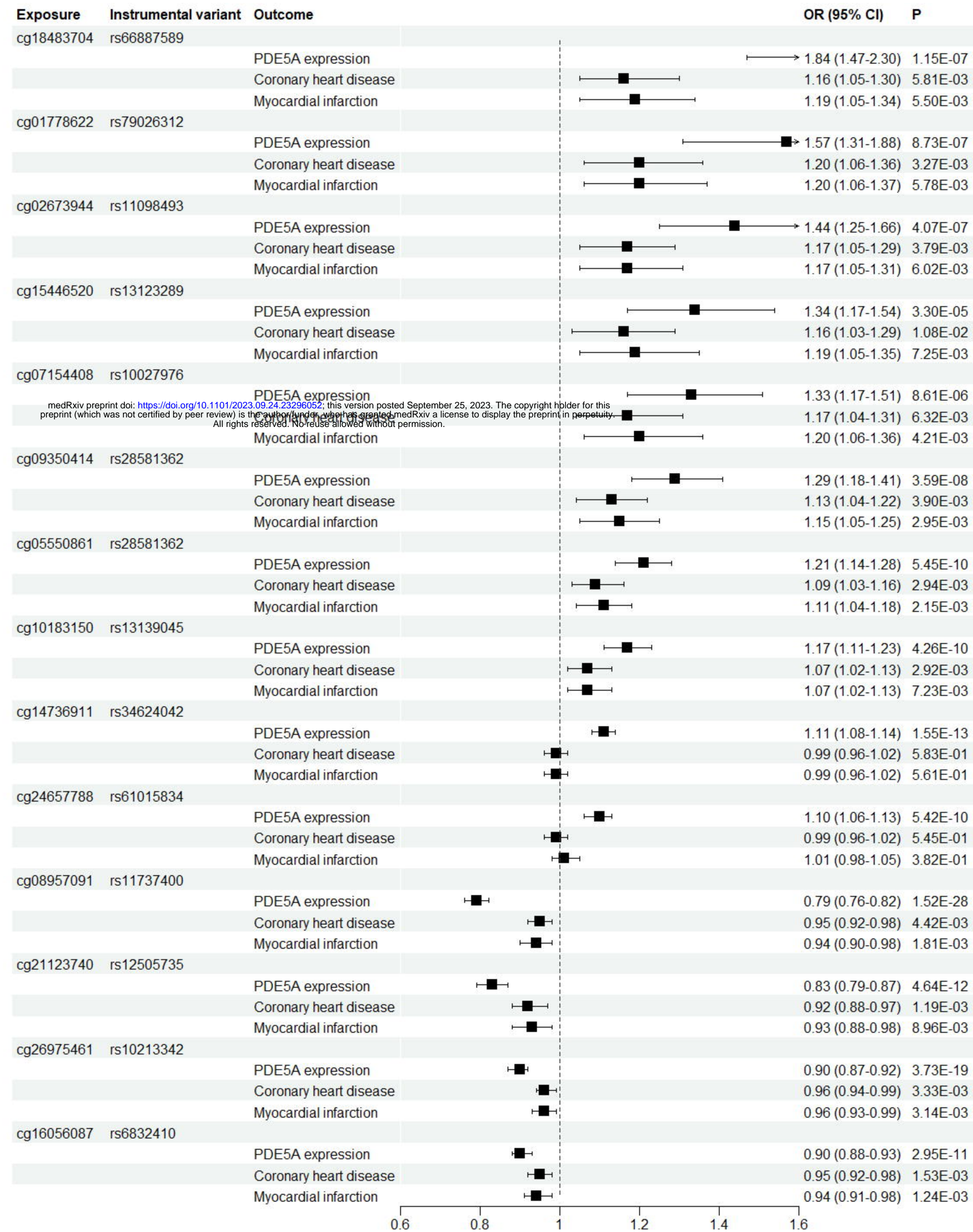
Supplementary Figure 2. Tissue gene expression for PDE8A from GTEx Portal.



(A)**(B)**



(A)



(B)

