

1 Maternal smoking DNA methylation risk score associated with health
2 outcomes in offspring of European and South Asian ancestry

3
4 Wei Q. Deng^{1,2,3*}, Nathan Cawte⁴, Natalie Campbell³, Sandi M. Azab^{3,5}, Russell J de Souza^{3,5},
5 Amel Lamri^{3,4}, Katherine M. Morrison⁶, Stephanie A. Atkinson⁶, Padmaja Subbarao⁷, Stuart E.
6 Turvey⁸, Theo J. Moraes^{7,9}, Koon K. Teo^{3,4,5}, Piush Mandhane¹⁰, Meghan B. Azad¹¹, Elinor
7 Simons¹², Guillaume Pare^{4,5,13,14}, Sonia S. Anand^{3,4,5*}

- 8
9
10 1. Peter Boris Centre for Addictions Research, St. Joseph's Healthcare Hamilton, Hamilton,
11 Canada.
12 2. Department of Psychiatry and Behavioural Neurosciences, McMaster University,
13 Hamilton, Canada.
14 3. Department of Medicine, Faculty of Health Sciences, McMaster University, Hamilton,
15 Canada.
16 4. Population Health Research Institute, David Braley Cardiac, Vascular and Stroke
17 Research Institute, Hamilton, Canada.
18 5. Department of Health Research Methods, Evidence, and Impact, McMaster University,
19 Hamilton, Canada.
20 6. Department of Pediatrics, McMaster University, Hamilton, Canada.
21 7. Department of Pediatrics, University of Toronto, Toronto, Canada.
22 8. Department of Pediatrics, BC Children's Hospital, The University of British Columbia,
23 Vancouver, Canada

- 24 9. Program in Translational Medicine, SickKids Research Institute, Toronto, Canada
- 25 10. Department of Pediatrics, University of Alberta, Edmonton, Canada
- 26 11. Children’s Hospital Research Institute of Manitoba, Department of Pediatrics and Child
- 27 Health, University of Manitoba, Winnipeg, Canada
- 28 12. Section of Allergy and Immunology, Department of Pediatrics and Child Health,
- 29 University of Manitoba, Canada
- 30 13. Thrombosis and Atherosclerosis Research Institute, David Braley Cardiac, Vascular and
- 31 Stroke Research Institute, Hamilton, Canada
- 32 14. Department of Pathology and Molecular Medicine, McMaster University, Michael G.
- 33 DeGroote School of Medicine, Hamilton, Canada

34

35 *Correspondence: dengwq@mcmaster.ca; anands@mcmaster.ca

36

37

38

39

40

41

42

43

44

45

46 **Abstract**

47 Maternal smoking has been linked to adverse health outcomes in newborns but the extent to
48 which it impacts newborn health has not been quantified through an aggregated cord blood DNA
49 methylation (DNAm) score. Here we examine the feasibility of using cord blood DNAm scores
50 leveraging large external studies as discovery samples to capture the epigenetic signature of
51 maternal smoking and its influence on newborns in White European and South Asian
52 populations. We first examined association between individual CpGs and cigarette smoking
53 during pregnancy, smoking exposure in two White European birth cohorts (n = 744). Several
54 previously reported genes for maternal smoking were supported, with the strongest and most
55 consistent signal from the *GFII* gene (6 CpGs with $p < 5 \times 10^{-5}$). Leveraging established CpGs for
56 maternal smoking, we constructed a cord blood epigenetic score of maternal smoking that was
57 validated in one of the European-origin cohorts (n = 347). This score was then tested for
58 association with smoking status, secondary smoking exposure during pregnancy, and health
59 outcomes in offspring measured after birth in an independent white European (n = 397) and a
60 South Asian birth cohort (n = 504). The epigenetic maternal smoking score was strongly
61 associated with smoking status during pregnancy (OR=1.09 [1.07,1.10], $p=5.5 \times 10^{-33}$) and more
62 hours of self-reported smoking exposure per week (1.93 [1.27, 2.58], $p=7.8 \times 10^{-9}$) in White
63 Europeans, but not with self-reported exposure ($p > 0.05$) in South Asians. The same score was
64 consistently associated with a smaller birth size (-0.37 ± 0.12 cm, $p=0.0023$) in the South Asian
65 cohort and a lower birth weight (-0.043 ± 0.013 kg, $p=0.0011$) in the combined cohorts. This cord
66 blood epigenetic score can help identify babies exposed to maternal smoking and assess its long-
67 term impact on growth. Notably, these results indicate a consistent association between the
68 DNAm signature of maternal smoking and a small body size and low birthweight in newborns, in

69 both white European mothers who exhibited some amount of smoking and in South Asian
70 mothers who themselves were not active smokers.

71

72 **Introduction**

73 Maternal smoking has adverse effects on offspring health including pre-term delivery (1,2),
74 stillbirth (3), and low birth weight (4), and is associated with pregnancy complications such as
75 maternal higher blood pressure, and gestational diabetes (5). Consistent with the Developmental
76 Origins of Health and Disease (DOHaD) hypothesis, maternal smoking exposes the developing
77 fetus to harmful chemicals in tobacco that negatively impact the health of newborns, resulting in
78 early-onset metabolic diseases, such as childhood obesity (6–9). Yet self-reported smoking status
79 is subject to underreporting among pregnant women (10–12). This could subsequently impact the
80 effectiveness of interventions aimed at reducing smoking during pregnancy and may skew data
81 on the risks associated with maternal smoking.

82

83 DNA methylation is one of the most commonly studied epigenetic mechanisms by which
84 cells regulate gene expression, and is increasingly recognized for its potential as a biomarker
85 (13). Differential DNA methylation has been established as a reliable biochemical response to
86 cigarette smoking and was shown to capture the long-lasting effects of persistent smoking in ex-
87 smokers (14–16). Recent large epigenome-wide association studies (EWAS) have robustly
88 identified differentially methylated cytosine–phosphate–guanine (CpG) sites associated with
89 adult smoking (15,17,18) and maternal smoking (19,20). Our recent systematic review of 17 cord
90 blood epigenome-wide association studies (EWAS) found that out of the 290 CpG sites reported
91 to be associated with at least one of the following: maternal diabetes, pre-pregnancy body mass

92 index (BMI), diet during pregnancy, smoking, and gestational age, 19 sites were identified in
93 more than one study and all of them associated with maternal smoking (21). Furthermore, these
94 findings have led to a more thorough investigation of the epigenetic mechanisms underlying
95 associations between well-established epidemiological exposures and outcomes, such as the
96 relationship between maternal smoking and birth weight in Europeans (20,22–25) and the less
97 studied African American populations (24) as well as between maternal diet and cardiovascular
98 health (26).

99
100 Only a handful of cohort studies were designed to assess the influence of maternal
101 exposures on DNA methylation changes in non-Europeans (24,27). It has been suggested that
102 systematic patterns of methylation (28), such as cell composition, could differ between
103 individuals of different ancestral backgrounds, which could in turn confound the association
104 between differential DNAm and smoking behaviours (29). These systematic differences also
105 contribute to different smoking-related methylation signals at individual CpGs (30). Thus, a
106 comparative study of maternal smoking exposure is a first step towards generalizing existing
107 EWAS results to other populations and a necessary step towards addressing health disparities
108 that exist between populations due to societal privilege, including race or ethnicity and
109 socioeconomic factors.

110
111 A promising direction in epigenetic studies of adult smoking is the application of a
112 methylation score (31); this strategy can also be applied to disseminate current knowledge on
113 differential DNA methylation studies of maternal smoking. A methylation score is usually tissue-
114 specific and combines information from multiple CpGs using statistical models (13). Reducing

115 the number of predictors and measurement noise in the data can lead to better statistical power
116 and a more parsimonious instrument for subsequent analyses. It is also of interest to determine
117 whether methylation scores demonstrate the capacity to predict outcomes in diverse human
118 populations, given the presence of systematic differences in methylation patterns due to ancestral
119 backgrounds (28).

120

121 In this paper, we investigated the epigenetic signature of maternal smoking on cord blood
122 DNA methylation in newborns, as well as its association with newborn and later life outcomes in
123 one South Asian which refers to people who originate from the Indian subcontinent, and two
124 predominantly European-origin birth cohorts. Similar to the Born in Bradford study (32), we
125 observed several differentiating epidemiological characteristics between South Asian and
126 European-origin mothers. Notably, almost none of the South Asian mothers were current
127 smokers and had low smoking rates pre-pregnancy as compared to European mothers, which is
128 consistent with the broader trends of lower smoking rates in South Asian females (33). Another
129 relevant observation is the small birth size and low birth weight in the South Asian newborns.
130 These differences in newborn size and weight may be influenced by various factors, including
131 maternal nutrition, genetics, and socioeconomic status. Keeping these differences in mind, we
132 first conducted cohort-specific epigenetic association studies between available CpGs and
133 maternal smoking in the predominantly European-origin cohorts, benchmarking with previously
134 identified CpGs for maternal smoking and adult smoking. Second, we leveraged the reported
135 summary statistics from existing large EWASs to construct a methylation risk score (MRS) for
136 maternal smoking. The MRS was first internally validated in one of the European-origin cohorts
137 and then tested in a second independent European-origin cohort. Third, we examined the

138 association between maternal smoking MRS and newborn health outcomes, including length,
139 weight, BMI ponderal index, and early-life anthropometrics in both European and South Asian
140 cohorts.

141

142

143 **Materials and Methods**

144

145 **Study population**

146 The NutriGen Alliance is a consortium consisting of four prospective, population-based birth
147 cohorts that enrolled birthing mother and newborn pairs in Canada. Details of these cohorts have
148 been described elsewhere (34). The current investigation focused on i). European-origin
149 offspring from the population-based CHILD study who were selected for methylation analysis,
150 ii). The Family Atherosclerosis Monitoring In early life (FAMILY) study that is predominately
151 European-origin, and iii). The SouTh Asian biRth cohort (START) study that is exclusively
152 comprised of people who originated from the Indian subcontinent known as South Asians. The
153 ethnicity of the parents was self-reported and recorded at baseline in all three cohorts. Biological
154 samples, clinical assessments, and questionnaires were used to derive health phenotypes and an
155 array of genetic, epigenetic, and metabolomic data. The superordinate goal of the NutriGen study
156 is to understand how nutrition, environmental exposures, and physical health of mothers impact
157 the health and early development of their offspring using a multi-omics approach.

158

159 **Methylation data processing and quality controls**

160 Newborn cord blood samples were processed using two methylation array technologies. About
161 half of the START samples and selected samples from CHILD were hybridized to the Illumina
162 Human-Methylation450K BeadChip (HM450K) array, which covers CpGs in the entire genome
163 (35) The raw methylation data were generated by the Illumina iScan software and separately pre-
164 processed for START and CHILD using the “*sesame*” R package following pipelines designed
165 for HM450K BeadChip (36). The FAMILY samples were profiled using a targeted array based
166 on the Infinium Methylation EPIC designed by the Genetic and Molecular Epidemiology
167 Laboratory (GMEL; Hamilton, Canada). The GMEL customized array includes ~3000 CpG sites
168 that were previously reported to associate with complex traits or exposures and was designed to
169 maximize discovery while keeping the costs of profiling epigenome-wide DNA methylation
170 down. The targeted methylation data were pre-processed using a customized quality control
171 pipeline and functions from the “*sesame*” R package recommended for EPIC.

172
173 Pre-processed data were then used to derive the β -value matrix, where each column gives
174 the methylation level at a CpG site as a ratio of the probe intensity to the overall probe intensity.
175 Additional quality control filters were applied to the final beta-value matrices to remove samples
176 with > 10% missing probes and CpG probes with >10% samples missing. Cross-reactive probes
177 and SNP probes were removed as recommended for HM450 (37) and EPIC arrays (38,39). For
178 CpG probes with a missing rate <10%, mean imputation was used to fill in the missing values.
179 We further excluded samples that were either mismatches between reported sex and methylation-
180 inferred sex or were duplicates. Finally, considering the low prevalence of smokers, we sought to
181 reduce spurious associations by removing non-informative probes that were either all
182 hypomethylated (β -value < 0.1) or hypermethylated (β -value > 0.9), which have been shown to

183 have less optimal performance (40). A summary of the sample and probe inclusion/exclusion is
184 shown in Supplementary Table 1. A detailed description of pre-processing and quality control
185 steps is included in Supplementary Material.

186
187 Cell-type proportions (CD8T, CD4T, Natural Killer cells, B cells, monocytes,
188 granulocytes, and nucleated red blood cells) were estimated following a reference-based
189 approach developed for cord blood (41) and using R packages
190 “*FlowSorted.CordBloodCombined.450k*” and “*FlowSorted.Blood.EPIC*”. All data processing
191 and subsequent analyses were conducted in R v.4.1.0 (42).

192

193 **Phenotype data processing and quality controls**

194 At the time of enrollment, all pregnant women completed a comprehensive questionnaire that
195 collected information on prenatal diet, smoking, education, socioeconomic factors, physical
196 activities and health as detailed previously (43,44). Maternal smoking history (0=never smoked,
197 1=quit before this pregnancy, 2=quit during this pregnancy, or 3=current smoker) was assessed
198 during the second trimester (at baseline). Smoke exposure was measured as “number of hours
199 exposed per week”. GDM was determined based on a combination of oral glucose tolerance test
200 (OGTT), self-report, and reported diabetic treatments (insulin, pills, or restricted diet). For South
201 Asian mothers in START, the same OGTT threshold as Born in Bradford (27,32) was used,
202 while the International Association of the Diabetes and Pregnancy Study Groups (IASDPSG)
203 criteria (45) for OGTT were used in CHILD and FAMILY cohorts. Mode of delivery
204 (emergency c-section vs. other) was collected at the time of delivery.

205

206 Newborn length and weight were collected immediately after birth and extracted from
207 medical chart. The newborns were then followed up at 1, 2, 3, and 5 years of age and provided
208 basic anthropometric measurements, including height, weight, hip and waist circumference, BMI,
209 sum of the skinfolds (triceps skinfold and subscapular skinfold). Additional phenotypes included
210 smoking exposures (hours per week) at home, potential allergy based on mother reporting any of:
211 eczema, hay fever, wheeze, asthma, food allergy (egg, cow milk, soy, other) for her child in
212 FAMILY and START, and asthma based on mother's opinion in CHILD ("In your opinion, does
213 the child have any of the following? Asthma").

214

215 **Phenotype and Methylation Data Consolidation**

216 The current investigation examines the impact of maternal smoking or smoke exposure on DNA
217 methylation derived from newborn cord blood in START and the two predominately European
218 cohorts (CHILD and FAMILY). To maximize sample size in FAMILY and CHILD, we retained
219 either self-identified or genetically confirmed Europeans based on available genetic data
220 (Supplementary Table 1). The cohorts consist of representative population samples without
221 enrichment for any clinical conditions, though only singleton mothers were invited to participate.
222 For continuous phenotypes, an analysis of variance (ANOVA) using the F -statistics or a two-
223 sample t -test was used to compare the mean difference across the three cohorts or two groups,
224 respectively. For categorical phenotypes, a chi-square test of independence was used to compare
225 the difference in frequencies of observed categories. Note that three of the categories under
226 smoking history in the START cohort had expected cell counts less than 5, and was thus
227 excluded from the comparison, the reported p -value was for CHILD and FAMILY.

228

229 The final analytical datasets, after combining the quality-controlled methylation data and
230 phenotypic data, included 352, 411, and 504 mother-newborn pairs from CHILD, FAMILY, and
231 START, respectively. Demographic characteristics and relevant covariates of the epigenetic
232 subsample and the overall sample are summarized in Table 1 and Supplementary Table 2,
233 respectively.

234

235 **Epigenome-Wide Association of Maternal Smoking in European Cohorts**

236

237 Since there were no current smokers in START (Table 1), we tested the association between
238 maternal smoking and differential methylated sites in FAMILY (# of CpG = 2,544) and CHILD
239 (# of CpG = 200,050). The primary outcome variable was “current smoker”, defined by mothers
240 self-identified as currently smoking during the pregnancy vs. those who never smoked or quit
241 either before or during pregnancy. We also included a secondary outcome variable “ever
242 smoker”, defined by mothers who are current smokers or have quit smoking vs. those who never
243 smoked. A tertiary outcome was smoking exposure, measured by the number of hours per week
244 reported by the expectant mothers, and was available in all cohorts. We summarized the type of
245 analyses for different outcomes in Supplementary Table 3.

246

247 We first conducted a separate epigenetic association study in each cohort, testing the
248 association between methylation β -values at individual CpGs and the smoking phenotype using
249 either a logistic regression model for smoking status or a linear regression for smoking exposure
250 as the outcome. The model adjusted for additional covariates including the estimated cord blood
251 cell proportions, maternal age, social disadvantage index, which is a continuous composite

252 measure of social and economic exposures (46), mother's years of education, GDM, and parity.
253 The smoking exposure variable was skewed, and a rank-based transformation was applied to
254 mimic a standard normal distribution.

255

256 We then meta-analyzed association results for maternal smoking status in the European
257 cohorts using an inverse variance-weighted fixed-effect model. The meta-analysis was conducted
258 for 2,112 CpGs that were available in both CHILD (profiled using HM450K) and FAMILY
259 (profiled using the targeted array). For the tertiary outcome, we conducted an inverse variance
260 meta-analysis including START using both a fixed-effect model. For each EWAS or meta-
261 analysis, the false discovery rate (FDR) adjustment was used to control multiple testing and we
262 considered CpGs that passed an FDR-adjusted p -value < 0.05 to be relevant for maternal
263 smoking.

264

265 **Using DNA Methylation to Construct Predictive Models for Maternal Smoking**

266

267 We sought to construct a predictive model in the form of a methylation risk score (MRS) using
268 reported associations of maternal smoking. The proposed solution adapted the existing lassosum
269 method (47) that was originally designed for polygenic risk scores, where the matrix of SNP
270 genotypes (X) can be conveniently replaced by the β -value matrix. For more details, see the
271 Supplementary Material. Briefly, an objective function under elastic-net constraint was
272 minimized to obtain the elastic-net solution γ , where only summary statistics (b) and a scalar of
273 the covariance between the β -values of the CpGs ($X'X$) are needed. The tuning parameters λ_1
274 and λ_2 were chosen by validating on the observed smoking history (as a continuous outcome) in

275 CHILD that produced the most significant model. The optimized λ_1 and λ_2 were then used to
276 create a final model that entails a list of CpGs and their corresponding weights, which were then
277 used to calculate a MRS for maternal smoking in the FAMILY and START samples.

278

279 The summary statistics of the discovery EWAS were obtained from EWAS catalog
280 (<http://www.ewascatalog.org/>) reported under “PubMed ID 27040690” by Joubert and
281 colleagues (19). The summary statistics were restricted to the analysis “sustained maternal
282 smoking in pregnancy effect on newborns adjusted for cell composition”. Of the 2620 maternal
283 smoking CpGs that passed the initial screening, 2,107 were available in CHILD but only 128
284 were common to CHILD, FAMILY, and START. To evaluate whether the targeted GMEL-EPIC
285 array design has comparable performance as the epigenome-wide array to evaluate the epigenetic
286 signature of maternal smoking, a total of three MRSs were constructed, two using the 128 CpGs
287 available in all cohorts – across the HM450K and targeted GMEL-EPIC arrays – and with either
288 CHILD (n = 347 with non-missing smoking history) or FAMILY (n = 397 with non-missing
289 smoking history) as the validation cohort, and another using 2,107 CpGs that were only available
290 in CHILD and START samples with CHILD as the validation cohort. The validation model
291 considered the continuous smoking history without modification as the outcome, while
292 accounting for covariates, which included the estimated cord blood cell proportions, maternal
293 age, social disadvantage index, mother’s years of education, GDM, and parity. Henceforth, we
294 referred to these derived maternal smoking scores as the FAMILY targeted MRS, CHILD
295 targeted MRS, and the HM450K MRS, respectively. To benchmark and compare with existing
296 maternal smoking MRSs, we calculated the Reese score using 28 CpGs (48,49), Richmond
297 score using 568 CpGs (49), Rauschert score using 204 CpGs (50), Joubert score using all 2,620

298 CpGs with evidence of association for maternal smoking (19), and finally a three-CpG score for
299 air pollution (51). The details of these scores and score weight can be found in Supplementary
300 Table 4.

301

302 **Statistical analysis**

303 For each cohort, we contrasted the three versions of the derived scores using an analysis of
304 variance analysis (ANOVA) along with pairwise comparisons using a two-sample *t*-test to
305 examine how much information might be lost due to the exclusion of more than 10-fold CpGs at
306 the validation stage, in all samples and in non-smokers. We also examined the correlation
307 structure between all derived and external MRSs using a heatmap summarizing their pairwise
308 Pearson's correlation coefficient. Then, we compared the mean difference of each MRS score
309 among smoking history using an ANOVA *F*-test and two-sample *t*-test to understand whether
310 there was a dosage dependence in the cord blood DNAm signature of maternal smoking.
311 Additionally, each score was tested against a binary outcome for current smoker vs. not, and two
312 continuous measures for smoking history and weekly smoking exposure. The binary outcome
313 was tested using a logistic regression model and the predictive performance was assessed using
314 area under the receiver operating characteristic curve (AUC). The reported 95% confidence
315 interval for each estimated AUC was derived using 2,000 bootstrap samples. The continuous
316 outcome was examined using a linear regression model and its performance was quantified using
317 the adjusted R^2 .

318

319 For the derived MRS, we empirically assessed whether a systematic difference existed in the
320 resulting score with respect to all other derived scores. This was examined via pairwise mean

321 differences between the HM450 and other scores using a two-sample *t*-test and an overall test of
322 mean difference using an ANOVA *F*-test, among all samples and the subset of never smokers.
323 Finally, we tested the association between each maternal smoking MRS and smoking phenotypes
324 in mothers, as well as offspring phenotypes using a linear regression model, when applicable,
325 adjusting for the child's age at each visit. The association results were meta-analyzed for
326 phenotypes with homogeneous effects across the cohorts using a fixed-effect model. An FDR
327 adjustment was used to control the multiple testing of meta-analyzed associations between MRS
328 and 25 (or 23, depending on the number of phenotypes available in the cohort) outcomes, and we
329 considered association that passed an FDR-adjusted *p*-value < 0.05 to be relevant.

330

331

332 **Results**

333

334 **Cohort Sample Characteristics**

335 The analyses included 763 European mother-child pairs with cord blood DNAm data from the
336 CHILD study (CHILD; *n* = 352)(52) and The Family Atherosclerosis Monitoring In earLY life
337 (FAMILY; *n* = 411) study (43), and 503 South Asian mother-child pairs from The SouTh Asian
338 biRth cohort (START) study (44). We observed lower past smoking and missingness on
339 smoking history among pregnant women in START as compared to CHILD or FAMILY using
340 the epigenetic subsample (Table 1) and the overall sample (Supplementary Table 2). Pregnant
341 women in START were significantly different from CHILD or FAMILY in that they were on
342 average younger at delivery, had a lower BMI, and a higher rate of GDM, in line with other
343 cohort studies in South Asian populations (53,54). As compared to START, newborn infants

344 from CHILD and FAMILY had a longer gestational period, a higher birth weight, and a higher
345 BMI at birth (Table 1; Supplementary Table 2). We observed no difference between cohorts in
346 terms of parity or newborn sex in the epigenetic subsample (Table 1).

347
348 Within the European epigenetic subsample, of the 744 mother–newborn pairs with
349 complete smoking history data, 40 (5.3%) newborns were exposed to current maternal smoking,
350 which is on the lower end of the spectrum for the prevalence of smoking during pregnancy
351 (9.2%-32.5%) among Canadians (55). In addition, mothers who smoked during pregnancy were
352 on average younger, had fewer years of education, and had higher household exposure to
353 smoking (Supplementary Table 6). However, there was no statistically significant difference
354 between newborns exposed to current and none or previous smoking in terms of birth weight,
355 birth length, gestational age, or estimated cord blood cell proportions.

356
357
358 **Epigenetic Association of Maternal Smoking in White Europeans**

359 The two predominantly White European cohorts, FAMILY ($n = 397$) and CHILD ($n = 347$),
360 contributed to the meta-analysis of maternal smoking for both the primary outcome of current
361 smoking (Figure 2-A) and the secondary outcome of ever smoking (Supplementary Figure 1).
362 The top associated CpGs with current maternal smoking were mapped to the growth factor
363 independent 1 (*GFII*) gene on chromosome 1, with cg12876356 as the lead (meta-analyzed
364 effect = -1.11 ± 0.22 ; meta-analyzed $p = 2.6 \times 10^{-6}$; FDR adjusted $p = 0.006$; Table 2). There were
365 no CpGs associated with the ever-smoker status at an FDR of 0.05, though the top signal
366 (cg09935388) was also mapped to the *GFII* gene (Pearson's r^2 correlation with cg12876356 =

367 0.75 and 0.68 in CHILD and FAMILY, respectively; Supplementary Figure 1). The top
368 associated CpG from the meta-analysis of smoking exposure (hours per week) in the European-
369 origin cohorts (Figure 2-B) was cpg01798813 on chromosome 17, which was also associated
370 with maternal smoking and was consistent in the direction of association (meta-analyzed effect =
371 -0.18 ± 0.04 ; meta-analyzed $p = 1.4 \times 10^{-5}$; FDR adjusted $p = 0.04$; Table 2). There was no
372 noticeable inflation of empirical type I error in the association p -values from the meta-analysis,
373 with the median of the observed association test statistic roughly equal to the expected median
374 (Supplementary Figure 2). As a sensitivity analysis, we repeated the analysis for the continuous
375 smoking exposure under rank transformation vs. raw phenotype for the associated CpG in *GFII*
376 and examined the regression diagnostics (Supplementary Material), and found that the model
377 under rank-transformation deviated less from assumptions. Further, we observed consistency in
378 the direction of association for the 128 CpGs that overlapped between our meta-analysis and the
379 2,620 CpGs with evidence of association for maternal smoking (19) (Supplementary Figure 3).
380 Specifically, the Pearson's correlation coefficient for maternal smoking and weekly smoking
381 exposure was 0.72 and 0.60, respectively. The maternal smoking and smoking exposure EWASs
382 in CHILD alone did not yield any CpGs after FDR correction (Supplementary Figure 4).

383

384

385 **Methylation Risk Score (MRS) Captures Maternal Smoking and Smoking Exposure**

386 The final MRSs, validated using CHILD European samples ($n = 347$), included 15 and 143 CpG
387 markers (Supplementary Table 7) from the targeted array and the epigenome-wide HM450 array,
388 respectively. Both produced methylation scores that were significantly associated with maternal
389 smoking history (ANOVA F-test p -values = 1.0×10^{-6} and 2.4×10^{-14} in CHILD and 3.6×10^{-16} and

390 $<2.2 \times 10^{-16}$ in FAMILY; Figure 3, Supplementary Figure 5), and the best among alternative
391 scores for CHILD and FAMILY (Supplementary Table 5). With the exception of the air
392 pollution MRS, which only contained 3 CpGs (Supplementary Table 5), all remaining scores
393 were marginally associated with smoking history in both CHILD and FAMILY (Supplementary
394 Figure 5) and correlated with each other (Supplementary Figure 6). In particular, scores that were
395 derived using the Joubert EWAS as the discovery sample, including ours, had higher pairwise
396 correlation coefficients across the birth cohorts, with many of the CpGs mapping to the same
397 genes, such as *AHRR*, *MYO1G*, *GFII*, *CYP1A1*, and *RUNX3*. There was no statistically
398 significant difference in mean between the two scores in any of the three cohorts (two-sample t-
399 test $ps > 0.6$) or among non-smokers (two-sample t-test $ps > 0.6$; Supplementary Figure 7). Since
400 the HM450 score provides statistically more significant results in both CHILD and FAMILY
401 with smoking history, despite the reduction in CpGs included (only 26 out of 143 CpGs present
402 in FAMILY; Supplementary Table 5), we proceeded with the HM450 MRS model constructed
403 using the 143 CpGs in subsequent analyses.

404

405 The HM450 MRS was significantly associated with maternal smoking history in CHILD
406 and FAMILY ($n = 397$), but we failed to meaningfully validate the association in START ($n =$
407 503; Figure 3) – not surprisingly – due to the low number of ever-smokers ($n = 2$). A weak dose-
408 dependent relationship between the MRS and the four categories of maternal smoking status in
409 the severity of exposure ([0] = never smoked; [1] = quit before this pregnancy; [2] = quit during
410 this pregnancy; [3] = currently smoking) was present in CHILD but was not replicated in
411 FAMILY (Figure 3). The AUC for detecting current smokers were 0.95 (95% confidence
412 interval: 0.89–1) and 0.89 (95% CI: 0.83–0.94) in CHILD and FAMILY (Figure 3), respectively,

413 while the AUCs for detecting ever-smokers were 0.61 (95% CI: 0.54–0.67), 0.60 (95% CI:
414 [0.55,0.69]; Supplementary Table 5), and 0.82 (95% CI: [0.55,1]; Figure 3), respectively. As a
415 result, the epigenetic maternal smoking score was strongly associated with smoking status during
416 pregnancy (OR=1.09, 95% CI: [1.07,1.10], $p=1.96\times 10^{-32}$) in the combined European cohorts.
417 Meanwhile, the maternal smoking MRS was significantly associated with increased number of
418 hours exposed to smoking per week in the two White European cohorts (1.93 ± 0.33 hours per 1
419 unit of increase in MRS, FDR adjusted $p = 1.2\times 10^{-7}$; Supplementary Table 8; cohort specific
420 $p=5.4\times 10^{-5}$ in CHILD and $p=2.3\times 10^{-5}$ in FAMILY; Table 3), but not in the South Asian birth
421 cohort ($p = 0.58$; Table 3).

422
423 Among individuals who had never smoked, no statistically significant mean difference
424 was observed in the distribution of the combined methylation score between South Asian and
425 European cohorts (Supplementary Table 9). These results provided empirical support for the
426 portability of an European-derived maternal smoking methylation score to South Asian
427 populations.

428
429

430 **Association between MRS and other phenotypes**

431 The maternal smoking MRS was consistently associated with increasing weekly smoking
432 exposure in children reported by mothers at the 1-year visit (0.44 ± 0.15 , $p = 0.0044$; Table 3) in
433 CHILD, and at 3-year visit (0.86 ± 0.26 , $p = 0.0037$; Table 3) in FAMILY, but not in START as
434 all mothers reported non-exposure to smoking in children. A higher maternal smoking MRS was
435 significantly associated with smaller birth size (-0.37 ± 0.12 , $p = 0.0023$; Table 3) and height at 1,

436 2, and 5 year visits in the South Asian cohort (Table 3). We observed similar associations with
437 body size in the white European cohorts (heterogeneity p -values > 0.2), collectively, the MRS
438 was associated with a smaller birth size (-0.22 ± 0.07 , $p = 0.0016$; FDR adjusted $p = 0.019$;
439 Supplementary Table 8) in the combined European and South Asian cohorts. Meanwhile, a
440 higher maternal smoking MRS was also associated with a lower birth weight (-0.043 ± 0.013 , $p =$
441 0.001 ; FDR adjusted $p = 0.011$; Supplementary Table 8) in the combined sample, though the
442 effect was weaker in START (-0.03 ± 0.02 ; $p = 0.094$; Table 3) as compared to the white
443 European cohorts.

444
445 The meta-analysis revealed no heterogeneity in the direction nor the effect size of
446 associations for body size and weight between populations at birth or at later visits
447 (heterogeneity p -values = $0.16-1$; Supplementary Table 8). The association between the MRS
448 and several children phenotypes, including height or length, weight, and skinfolds, appeared to
449 persist with similar estimated effects throughout early developmental years (Supplementary
450 Table 8), albeit the most significant effects were at birth, and the significance attenuated at later
451 visits. We did not find any association with self-reported allergy or asthma in children at later
452 visits (Supplementary Table 8). Further, there was no evidence of association between the MRS
453 and any maternal outcomes (Supplementary Table 8).

454
455

456 **Discussion**

457

458 We examined the epigenetic signature of maternal smoking and smoking exposure using
459 newborn cord blood samples from predominately European-origin and South Asian cohorts via
460 two strategies: an individual CpG-level EWAS approach, and a multivariate approach in the
461 form of a methylation score. The EWAS results replicated the association between maternal
462 smoking and CpGs in the *GFII* gene that is well described in the literature with respect to
463 smoking (15,17), maternal smoking (19,20,56,57), and birth weight (23). In the latter case, we
464 observed a significant association with maternal smoking history and smoking exposure in
465 European-origin newborns. Further, we noted a weak dose-dependent relationship between
466 maternal smoking history and the methylation score in one European cohort (CHILD) but this
467 was not replicated in the other (FAMILY). Since the timing and duration of maternal smoking
468 during pregnancy were not directly available, these differences could play a role in the
469 magnitude and specificity of DNA methylation changes in cord blood. Finally, the significant
470 association of the MRS with the newborn health metrics in START, in the absence of mothers'
471 active smoking, could be the result of underreporting of smoking, poor recall of the time of
472 quitting, and/or due to air pollution exposure (58), leading to oxidative stress. This suggests that
473 our cord blood DNAm signature of maternal smoking is perhaps not unique to cigarette smoking,
474 but captures similar biochemical responses, for example, via the aryl hydrocarbon receptor
475 (59,60). Our observation that a higher MRS was associated with lower birth weight and smaller
476 birth length in both ethnic populations is thus consistent with the established link between
477 oxidative stress and metabolic syndrome (61).

478

479 Contrary to DNA methylation studies of smoking in adults, where whole blood is often
480 used as a proxy tissue, there are multiple relevant tissues for maternal smoking during pregnancy,

481 including the placenta of the mother, newborn cord blood, and children's whole blood. However,
482 methylation changes measured in whole blood or placenta of the mother, or cord blood of infants
483 showed substantially different patterns of association signals (62). There are several advantages
484 of using a cord blood based biomarker from the DoHaD perspective. Firstly, cord blood provides
485 a direct reflection of the *in utero* environment and fetal exposure to maternal smoking.
486 Additionally, since cord blood is collected at birth, it eliminates potential confounding factors
487 such as postnatal exposures that may affect maternal blood samples. Furthermore, studying cord
488 blood DNAm allows for the assessment of epigenetic changes specifically relevant to the
489 newborn, offering valuable information on the potential long-term health implications.
490 Meanwhile, methylation signals are known to be tissue-specific, thus it would be of interest for
491 future research to combine differential methylation patterns from all relevant tissue to assess the
492 immediate and long-term effects of maternal smoking. Another direction to further this line of
493 research is to explore postnatal factors that mitigate prenatal exposures, for example,
494 breastfeeding, which has been shown to have a protective effect against maternal tobacco
495 smoking (63). Indeed, more research is necessary to understand the critical periods of exposure
496 and the dose-response relationship between maternal smoking and cord blood DNA methylation
497 changes. Ongoing efforts to monitor the offspring and collect data in the next decade are in
498 progress to establish the long-term association between maternal smoking and cardio-metabolic
499 health (43,44). As such, the constructed MRS can facilitate future research in child health and
500 will be included as part of the generated data for others to access.

501
502 The strengths of this report include ethnic diversity, and fine phenotyping in a
503 prospective and harmonized way with follow-up at multiple early childhood stages. This work is

504 the first major multi-ancestry study that utilizes methylation scores to study maternal smoking
505 and examines their portability from European-origin populations to South Asians. The use of
506 MRS, as compared to individual CpGs, is a powerful tool to systematically investigate the
507 influence of DNA methylation changes and whether it has lasting functional consequences on
508 health outcomes. Our results converge with previous findings that epigenetic associations of
509 maternal smoking are associated with newborn health, and add to the small body of evidence that
510 these relationships extend to non-European populations and that different ancestral populations
511 can experience the early developmental periods differently.

512
513 A few limitations should be mentioned. In the context of existing epigenetic studies of
514 maternal smoking, we were not able to replicate signals in other well-reported genes such as
515 *AHRR*, *CYP1A1*, and *MYO1G*, however, the MRS was able to pick up signals from these genes
516 (Supplementary Table 7). This could be due to several reasons. First, the customized array with a
517 limited number of CpGs (<3,000) was designed in 2016 and many large EWASs on smoking and
518 maternal smoking conducted more recently had not been included. Nonetheless, we have shown
519 that from a multivariate perspective, the MRS constructed using a targeted approach that was
520 carefully designed can be equally powerful with the advantage of being cost-effective. Second,
521 contrary to existing EWASs where the methylation values are typically treated as the outcome,
522 and the exposure, such as smoking, as the predictor; we reversed the regression such that the
523 methylation levels were the predictors and smoking exposure as the outcome. This reverse
524 regression approach is robust and our choice to reverse the regression was motivated by the goal
525 of constructing a smoking score that combines the additive effects at multiple CpGs, which
526 would otherwise be unfeasible. Third, systematic ancestral differences in DNA methylation

527 patterns had been shown to vary at individual CpGs in terms of their association with smoking
528 (30). Converging with this conclusion, we also found the association with *GFII* to be most
529 consistent after adjusting for cell composition. Fourth, while it would be of interest to examine a
530 broader range of health outcomes in children, such as lung health and allergies, we were unable
531 to acquire and standardize this information across different cohorts. This aspect should be
532 considered in future study designs. Finally, maternal smoking is often associated with other
533 confounding factors, such as socioeconomic status, other lifestyle behaviours, and environmental
534 exposures. While we have done our best to control for well-known confounders that were
535 available by study design, as in all observational studies, we could not account for unknown
536 confounding effects. Finally, in recent years, maternal smoking is on a decline as a result of
537 changes in social norms and public health policies (64). This is also consistent with the lower
538 smoking rates observed in our European cohorts (CHILD and FAMILY). Given the proportion
539 of current smokers, the effective sample size for a direct comparison between CHILD and
540 FAMILY, i.e. equivalently-powdered sample size of a balanced (50% cases, 50% controls)
541 design, were 41.7 and 104.7, respectively. While CHILD had a lower effective sample size, we
542 ultimately chose it for validating the methylation score to better cover the CpGs that were
543 significant in the discovery EWAS. A larger validation study will likely further boost the
544 performance of the methylation score and be considered in future research.

545

546 In conclusion, the epigenetic maternal smoking score we constructed was strongly
547 associated with smoking status during pregnancy and self-reported smoking exposure in White
548 Europeans, and with smaller birth size and lower birth weight in the combined South Asian and
549 White European cohorts. The proposed cord blood epigenetic signature of maternal smoking has

550 the potential to identify newborns who were exposed to maternal smoking *in utero* and to assess
551 the long-term impact of smoking exposure on offspring health. In South Asian mothers with
552 minimal smoking behaviour, the relationship between the methylation score and negative health
553 outcomes in newborns is still apparent, indicating that DNA methylation response is sensitive to
554 smoking exposure, even in the absence of active smoking.

555

556

557

558

559

560

561 **Tables and Figure legends**

562 **Table 1. Characteristics of the epigenetic subsample (1,267 mother–newborn pairs) from the CHILD, FAMILY, START**
 563 **cohorts.**

| Phenotypes | CHILD | FAMILY | START | ANOVA F-test or Chi-squared test P-value for differences |
|--------------------------------------|----------------|----------------|----------------|--|
| | (N=352) | (N=411) | (N=504) | |
| Mother | | | | |
| Smoking History | | | | |
| never smoked | 247 (70.2%) | 253 (61.6%) | 501 (99.4%) | <0.001* |
| quit before this pregnancy | 72 (20.5%) | 58 (14.1%) | 1 (0.2%) | |
| quit during this pregnancy | 17 (4.8%) | 57 (13.9%) | 1 (0.2%) | |
| currently smoking | 11 (3.1%) | 29 (7.1%) | 0 (0%) | |
| Missing | 5 (1.4%) | 14 (3.4%) | 1 (0.2%) | |
| Smoking Exposure (hr/week) | | | | |
| Mean (SD) | 0.97 (± 7.64) | 2.52 (± 12.83) | 0.33 (± 2.67) | <0.001 |
| Missing | 12 (3.4%) | 5 (1.2%) | 42 (8.3%) | |
| Gestational Diabetes Mellitus | | | | |
| YES | 16 (4.5%) | 66 (16.1%) | 183 (36.3%) | <0.001 |
| NO | 336 (95.5%) | 345 (83.9%) | 320 (63.5%) | |
| Missing | 0 (0%) | 0 (0%) | 1 (0.2%) | |
| Years of Education | | | | <0.001 |
| Mean (SD) | 16.96 (± 3.08) | 16.85 (± 3.39) | 15.81 (± 2.41) | |
| Missing | 7 (2.0%) | 3 (0.7%) | 0 (0%) | |
| Mother's Age | | | | |
| Mean (SD) | 32.69 (± 4.45) | 31.86 (± 5.42) | 30.12 (± 3.91) | <0.001 |
| Missing | 4 (1.1%) | 0 (0%) | 0 (0%) | |

| | | | | | |
|----------------|----------------------------------|----------------|----------------|----------------|--------|
| | Parity | | | | |
| | Mean (SD) | 0.72 (± 0.88) | 0.80 (± 1.02) | 0.80 (± 0.81) | 0.098 |
| | Missing | 2 (0.6%) | 0 (0%) | 13 (2.6%) | |
| | Pre-pregnancy BMI (kg/m2) | | | | |
| | Mean (SD) | 24.78 (± 5.42) | 26.46 (± 6.38) | 23.71 (± 4.45) | <0.001 |
| | Missing | 132 (37.5%) | 16 (3.9%) | 2 (0.4%) | |
| | Newborn Sex | | | | |
| | Male | 194 (55.1%) | 211 (51.3%) | 239 (47.4%) | 0.083 |
| | Female | 158 (44.9%) | 200 (48.7%) | 265 (52.6%) | |
| | Plant Based Diet | | | | |
| | Mean (SD) | -0.48 (± 0.46) | 0.19 (± 0.67) | 1.56 (± 1.14) | <0.001 |
| | Missing | 23 (6.5%) | 36 (8.8%) | 16 (3.2%) | |
| | Health Conscious Diet | | | | |
| | Mean (SD) | 0.21 (± 0.81) | -0.73 (± 0.73) | -0.42 (± 0.79) | <0.001 |
| | Missing | 23 (6.5%) | 36 (8.8%) | 16 (3.2%) | |
| | Western Diet | | | | |
| | Mean (SD) | -0.15 (± 0.63) | 1.06 (± 1.20) | -0.51 (± 0.65) | <0.001 |
| | Missing | 23 (6.5%) | 36 (8.8%) | 16 (3.2%) | |
| Newborn | Gestational Age (weeks) | | | | |
| | Mean (SD) | 39.53 (± 1.38) | 39.44 (± 1.47) | 39.20 (± 1.32) | <0.001 |
| | Missing | 4 (1.1%) | 0 (0%) | 0 (0%) | |
| | Birth Length (cm) | | | | |
| | Mean (SD) | 51.68 (± 2.52) | 50.20 (± 2.16) | 51.44 (± 2.69) | <0.001 |
| | Missing | 71 (20.2%) | 10 (2.4%) | 7 (1.4%) | |
| | Birth Weight (kg) | | | | |
| | Mean (SD) | 3.50 (± 0.49) | 3.53 (± 0.50) | 3.26 (± 0.46) | <0.001 |
| | Missing | 6 (1.7%) | 0 (0%) | 1 (0.2%) | |

| | | | | | |
|-----------------------------------|--|----------------|----------------|----------------|--------|
| Estimated cell proportions | Newborn BMI (kg/m²) | | | | |
| | Mean (SD) | 13.11 (± 1.41) | 13.94 (± 1.29) | 12.31 (± 1.39) | <0.001 |
| | Missing | 72 (20.5%) | 10 (2.4%) | 7 (1.4%) | |
| | Newborn Ponderal Index (kg/m³) | | | | |
| | Mean (SD) | 25.45 (± 3.14) | 27.79 (± 2.55) | 24.02 (± 3.17) | <0.001 |
| | Missing | 72 (20.5%) | 10 (2.4%) | 7 (1.4%) | |
| | CD8T | | | | |
| | Mean (SD) | 0.01 (± 0.01) | 0.04 (± 0.03) | 0.02 (± 0.02) | <0.001 |
| | CD4T | | | | |
| | Mean (SD) | 0.11 (± 0.06) | 0.13 (± 0.06) | 0.16 (± 0.07) | <0.001 |
| | NK | | | | |
| | Mean (SD) | 0.02 (± 0.02) | 0.03 (± 0.03) | 0.02 (± 0.03) | <0.001 |
| | Bcell | | | | |
| | Mean (SD) | 0.02 (± 0.02) | 0.04 (± 0.03) | 0.04 (± 0.03) | <0.001 |
| | Mono | | | | |
| Mean (SD) | 0.01 (± 0.02) | 0.04 (± 0.03) | 0.03 (± 0.03) | <0.001 | |
| Gran | | | | | |
| Mean (SD) | 0.80 (± 0.10) | 0.60 (± 0.13) | 0.72 (± 0.14) | <0.001 | |
| nRBC | | | | | |
| Mean (SD) | 0.08 (± 0.08) | 0.12 (± 0.11) | 0.07 (± 0.11) | <0.001 | |
| MNLR | | | | | |
| Mean (SD) | 6.59 (± 6.00) | 3.30 (± 3.14) | 3.98 (± 3.08) | <0.001 | |
| Missing | 6 (1.7%) | 0 (0%) | 3 (0.6%) | | |

* comparison for CHILD and FAMILY only

564

565 **Table 2. Meta-analysis results of association between CpGs and maternal smoking and smoking exposure that passed a**
 566 **marginal $p < 0.05$ threshold after the false discovery rate correction in European cohorts.**

| | CHR | Position | CpG | UCSC Reference Gene | Meta-analysis (CHILD and FAMILY) | | | | | Cohort-specific association P-value | | Reported Association EWAS catalog |
|-------------------------|-----|------------|----------------------------|---------------------|----------------------------------|----------------|---------------------|----------------------------------|----------------------------------|-------------------------------------|----------|-----------------------------------|
| | | | | | Fixed Effect | Standard Error | Association P-value | P-value for Effect Heterogeneity | FDR adjusted Association P-value | CHILD | FAMILY | |
| Maternal Smoking | 1 | 92481269 | cg12876356 | <i>GFII</i> | -1.11 | 0.22 | 7.33E-07 | 0.51 | 0.0019 | 0.02 | 9.45E-06 | MS;S; AC; BW |
| | 1 | 92482032 | cg09935388 | <i>GFII</i> | -1.15 | 0.24 | 2.26E-06 | 0.52 | 0.0029 | 0.02 | 2.71E-05 | MS;GA; S; AC; BMI; BW |
| | 1 | 92482405 | cg14179389 | <i>GFII</i> | -1.48 | 0.32 | 5.03E-06 | 0.73 | 0.0035 | 0.01 | 1.12E-04 | MS;S |
| | 1 | 92481144 | cg18146737 | <i>GFII</i> | -0.92 | 0.20 | 5.58E-06 | 0.50 | 0.0035 | 0.04 | 3.95E-05 | MS;S; AC; BW |
| | 1 | 92480576 | cg09662411 | <i>GFII</i> | -0.94 | 0.22 | 1.64E-05 | 0.29 | 0.0083 | 0.10 | 3.85E-05 | MS;S |
| | 1 | 92481479 | cg18316974 | <i>GFII</i> | -0.74 | 0.18 | 3.58E-05 | 0.33 | 0.0152 | 0.13 | 7.34E-05 | MS;S; AC; BW |
| | 17 | 2494783943 | cg01798813 | – | -0.83 | 0.21 | 1.09E-04 | 0.34 | 0.0395 | 0.02 | 0.0016 | A; GA; BMI |
| Smoking Exposure | 1 | 92482032 | cg09935388 | <i>GFII</i> | -0.18 | 0.04 | 1.39E-05 | 0.23 | 0.04 | 0.15 | 2.45E-05 | MS;GA; S; AC; BMI; BW |
| | 17 | 2494783943 | cg01798813 | – | -0.18 | 0.04 | 3.30E-05 | 0.13 | 0.04 | 0.00035 | 0.013 | A; GA; BMI |

567

568 MS: maternal smoking

569 GA: gestational age

570 AC: alcohol consumption

571 BMI: body mass index

572 T2D: type 2 diabetes

573 A: age

574 BW: birth weight

575

576 **Table 3. Significant associations between maternal smoking methylation risk score and phenotypes in CHILD, FAMILY and**
 577 **START.**

| | CHILD | | | FAMILY | | | START | | |
|-----------------------------------|--------------|----------------|---------------------|--------------|----------------|---------------------|--------------|----------------|---------------------|
| | Fixed Effect | Standard Error | Association P-value | Fixed Effect | Standard Error | Association P-value | Fixed Effect | Standard Error | Association P-value |
| Smoking exposure (hr/week) | 1.64 | 0.40 | 5.40E-05 | 2.58 | 0.60 | 2.34E-05 | 0.07 | 0.12 | 0.58 |
| 1-year Smoking exposure (hr/week) | 0.44 | 0.15 | 0.0044 | – | – | – | – | – | – |
| 3-year Smoking exposure (hr/week) | – | – | – | 1.15 | 0.39 | 0.0033 | – | – | – |
| Gestational weight gain (kg) | -0.36 | 0.38 | 0.35 | -0.62 | 0.26 | 0.017 | -0.14 | 0.34 | 0.69 |
| Gestational age (weeks) | 1.64 | 0.40 | 6.32E-05 | 2.84 | 0.62 | 5.52E-06 | 0.07 | 0.12 | 0.59 |
| Birth weight (kg) | -0.06 | 0.03 | 0.016 | -0.04 | 0.02 | 0.096 | -0.03 | 0.02 | 0.094 |
| Birth length (cm) | -0.14 | 0.15 | 0.35 | -0.10 | 0.10 | 0.33 | -0.37 | 0.12 | 0.0023 |
| 1-year Height (cm) | -0.32 | 0.16 | 0.047 | -0.34 | 0.14 | 0.019 | -0.42 | 0.16 | 0.0079 |
| 2-year Height (cm) | -0.13 | 0.35 | 0.72 | -0.26 | 0.17 | 0.14 | -0.57 | 0.21 | 0.0067 |
| 5-year Height (cm) | -0.36 | 0.26 | 0.16 | -0.43 | 0.26 | 0.095 | -0.47 | 0.37 | 0.21 |
| 3-year Skinfold thickness | 0.48 | 0.19 | 0.014 | 0.94 | 0.26 | 3.46E-04 | 0.24 | 0.27 | 0.38 |

| | | | | | | | | | |
|---------------------------|------|------|-------|------|------|-------|------|------|------|
| 5-year Skinfold thickness | 0.56 | 0.24 | 0.019 | 0.68 | 0.37 | 0.068 | 0.12 | 0.42 | 0.77 |
|---------------------------|------|------|-------|------|------|-------|------|------|------|

578

579

580 **Figure Legends:**

581 **Figure 1. Schematic overview of the analytical pipeline for the cord blood DNAm maternal**
582 **smoking score and association study.**

583 Figure 1-A) shows the epigenome-wide association studies conducted in the European cohorts
584 (CHILD and FAMILY); Figure 1-B) illustrated the workflow for methylation risk score (MRS)
585 construction using an external EWAS (Joubert et al., 2016) as the discovery sample and CHILD
586 study as the external validation study, while Figure 1-C) demonstrates the evaluation of the MRS
587 in two independent cohorts of white European (i.e. FAMILY) and South Asian (i.e. START).
588 The validated MRS was then tested for association with smoking specific, maternal, and children
589 phenotypes in CHILD, FAMILY, and START, as shown in Figure 1-D).

590 * indicates cohort sample size including those with missing smoking history.

591

592 **Figure 2. Manhattan plots of the meta-analyzed association between cord blood DNAm and**
593 **maternal smoking in Europeans.**

594 Manhattan plots summarized the meta-analyzed association p -values between cord blood DNA
595 methylation levels and current maternal smoking (A) or smoking exposure (B) at a common set
596 of 2,114 CpG sites. The red line denotes the smallest $-\log_{10}(p\text{-value})$ that is below the FDR
597 correction threshold of 0.05. The red dots represent established associations with maternal
598 smoking reported in Joubert and colleagues (19).

599

600 **Figure 3. Relationships between maternal smoking MRS and maternal smoking history**
601 **categories for each of the studies.**

602

603 Maternal smoking methylation score (y-axis) was shown as a function of maternal smoking
604 history (x-axis) in levels of severity for prenatal exposure for CHILD (A), FAMILY (B), and
605 START (C). Each severity level was compared to the never-smoking group and the
606 corresponding two-sample *t*-test *p*-value was reported. The analysis of variance via an F-test *p*-
607 value was used to indicate whether a mean difference in methylation score was present among all
608 smoking history categories. The sample size for START cohort was provided due to the low
609 counts in categories of any smoking. The area under the receiver operating characteristic curve
610 (AUC) for each study was shown in the lower panel.

611

612 **Supporting Information captions**

613

614 **Supplementary Material.**

615

616 **Suppl. Table 1. Quality controls for the inclusion/exclusion of samples and methylation**
617 **probes.**

618

619 **Suppl. Table 2. Characteristics of the overall sample include 5176 mother–newborn pairs**
620 **from the CHILD, FAMILY, and START cohorts.**

621

622 **Suppl. Table 3. A summary of available analyses and outcome variables in each cohort.**

623

624 **Suppl. Table 4. A summary of the DNAm maternal smoking score derivation design and**
625 **results.**

626

627 **Suppl. Table 5. Score weights for external DNAm maternal smoking scores.**

628

629 **Suppl. Table 6. Characteristics of the epigenetic subsample from CHILD and FAMILY**
630 **cohorts stratified by smoking status.**

631

632 **Suppl. Table 7. A summary of CpGs that contribute to the DNAm maternal smoking scores**
633 **and their weights.**

634

635 **Suppl. Table 8. Association between maternal smoking methylation risk score and**
636 **phenotypes in CHILD, FAMILY and START.**

637 **Suppl. Table 9. Summary of mean difference in methylation risk scores between studies in**
638 **overall samples and those never smoked.**

639

640

641

642

643 **Supplementary Figure 1. Manhattan plots of the meta-analyzed association between cord**
644 **blood DNA methylation and ever maternal smoking in the combined European cohorts.**

645 The meta-analyzed association *p*-values for ever maternal smoking and methylation levels at
646 2,114 CpG sites were summarized in the Manhattan plot. Ever maternal smoking was defined to

647 compare those who were currently smoking or quit before or during this pregnancy vs. those
648 never smoked. The red line denotes the smallest $-\log_{10}(p\text{-value})$ that is below the FDR
649 correction threshold of 0.05. The red dots represent established associations with maternal
650 smoking reported in Joubert and colleagues (19).

651
652 **Supplementary Figure 2. Quantile-quantile plots of the meta-analyzed association between**
653 **cord blood DNA methylation and maternal smoking history, smoking exposure in the**
654 **combined European cohorts.**

655 Quantile-quantile plots summarized the association p -values between cord blood DNA
656 methylation levels and current maternal smoking (A) or ever maternal smoking (B) or weekly
657 smoking exposure (C) at 2,114 CpG sites. The red line ($y=x$) is the line of reference and the
658 genomic inflation factor, calculated as the ratio between the observed median and the theoretical
659 median of the association test statistics, was annotated for each outcome.

660
661 **Supplementary Figure 3. Scatterplots of meta-analyzed association effects for maternal**
662 **smoking history or smoking exposure and reported effects of maternal smoking.**

663 Panel A) is the scatterplot of meta-analyzed effects for maternal smoking in the combined
664 CHILD and FAMILY cohorts (x-axis) vs. reported effects for maternal smoking in Joubert et al.,
665 2016 (y-axis) for all CpGs present in CHILD, FAMILY, and Joubert et al., 2016 (# CpGs = 128);
666 Panel B) is the scatterplot of meta-analyzed effects for weekly smoking exposure in the
667 combined CHILD and FAMILY cohorts (x-axis) vs. reported effects for maternal smoking in
668 Joubert et al., 2016 (y-axis) for all CpGs present in CHILD, FAMILY, and Joubert et al., 2016 (#
669 CpGs = 128). The solid gray line is the best fitted line (95% confidence interval shown as the

670 shaded area) for the linear relationship between the effect sizes and the dashed gray line
671 represents the reference of $y=x$. (19)

672

673

674 **Supplementary Figure 4. Manhattan plots of the Epigenome-wide associations between**
675 **cord blood DNAm and maternal smoking history, smoking exposure in CHLD.**

676 Manhattan plots summarized the association p -values between cord blood DNA methylation
677 levels and current maternal smoking (A) or ever maternal smoking (B) or weekly smoking
678 exposure (C) at 200,050 CpG sites. The red line denotes the smallest $-\log_{10}(p\text{-value})$ that is
679 below the FDR correction threshold of 0.05. The red dots represent established associations with
680 maternal smoking reported in Joubert and colleagues (19).

681

682 (19)

683 **Supplementary Figure 5. A comparison of results for derived and external maternal**
684 **smoking MRSs.**

685 Maternal smoking methylation score (y-axis) was shown as a function of maternal smoking
686 history (x-axis) in levels of severity ([0] = never smoked; [1] = quit before this pregnancy; [2] =
687 quit during this pregnancy; [3] = currently smoking) for prenatal exposure for each study. **The**
688 **scores shown were validated in 1) CHLD, 2) CHLD but restricted to CpGs that were also**
689 **present on the targeted array, 3) FAMILY using CpGs on the targeted array.** Each severity
690 level was compared to the never smoking group and the corresponding two sample t -test p -value
691 was reported. An omnibus test p -value to test whether a mean difference in methylation score
692 was present among all smoking history categories.

693

694 **Supplementary Figure 6. A heatmap of correlation between derived and external maternal**
695 **smoking MRSs.**

696 This heatmap illustrates the pairwise correlation between MRSs calculated in A) CHILD, B)
697 FAMILY, and C) START. Each cell represents the correlation coefficient, ranging from -1 to 1,
698 indicating the strength and direction of the association. A value of 1 signifies a perfect positive
699 correlation, while -1 indicates a perfect negative correlation. Values closer to 0 suggest no
700 correlation. The color gradient from deep blue (strong negative correlation), through white (no
701 correlation), to deep red (strong positive correlation), visually encodes the strength of these
702 relationships. The scores in the black box were derived using lassosum and internally validated.

703

704 **Supplementary Figure 7. Comparison of all methylation scores stratified by study.**

705 The boxplots captured the standardized maternal smoking methylation scores (y-axis) stratified
706 by study. The top panels summarized results for all samples in CHILD, FAMILY, and START,
707 while the bottom panels summarized results for only those in CHILD, FAMILY, and START
708 that never smoked. The p -values indicate the significance for a mean difference for each pairwise
709 comparison between the HM450K score validated in CHILD with other scores using two-sample
710 t -tests.

711

712

713 **Acknowledgements**

714 We express our sincere gratitude to all the participating families and the START, FAMILY, and
715 CHILD study teams, including interviewers, nurses, computer and laboratory technicians,
716 clerical workers, research scientists, volunteers, managers, and receptionists.

717
718 We would like to acknowledge the Genetic and Molecular Epidemiology Laboratory (GMEL),
719 an associate of Hamilton Health Sciences and McMaster University, for their indispensable
720 contributions to this work. The technical staff of GMEL conducted all epigenetic profiling,
721 including sample processing and other technical operations.

722
723 We thank the members of the Nutrigen Alliance for providing the data: Sonia S. Anand;
724 Stephanie A. Atkinson; Meghan Azad; Allan B. Becker; Jeffrey Brook; Judah A Denburg;
725 Dipika Desai; Russell J. de Souza; Milan K. Gupta; Michael Kobor; Diana L. Lefebvre; Wendy
726 Lou; Piushkumar J. Mandhane; Sarah McDonald; Andrew Mente; David Meyre; Theo J. Moraes;
727 Katherine M. Morrison; Guillaume Paré; Malcolm R. Sears; Padmaja Subbarao; Koon K. Teo;
728 Stuart E. Turvey; Julie Wilson; Salim Yusuf; Gita Wahi; Michael A. Zulyniak.

729
730 This study was funded by the Canadian Institutes of Health Research Metabolomics Team Grant:
731 MWG-146332. Dr. Anand is supported by a Tier 1 Canada Research Chair in Ethnicity and CVD
732 and Heart, Stroke Foundation Chair in Population Health, a grant from the Canadian Partnership
733 Against Cancer, Heart and Stroke Foundation of Canada and Canadian Institutes of Health
734 Research. Dr. Azad is supported by a Tier 2 Canada Research Chair in the Developmental
735 Origins of Chronic Disease.

736 **Data availability statement**

737 The summary statistics used to construct methylation risk scores are available from EWAS
738 catalog at <http://www.ewascatalog.org/?trait=maternal%20smoking%20in%20pregnancy> with
739 additional filters of PubMID 27040690 and analysis on “Sustained maternal smoking in
740 pregnancy effect on newborns adjusted for cell composition”.

741
742 Summary statistics generated in the current study, including a total of 8 primary association
743 studies (three smoking phenotypes in three cohorts) and 3 sets of meta-analyzed results in
744 Europeans are available upon request. All scripts to reproduce and validate the predictive model
745 can be found at
746 <https://github.com/WeiAkaneDeng/EpigeneticResearch/tree/main/MaternalSmoking>.

747

748 **Conflicts of interest**

749 No conflict of interest.

750

751 **Ethics Statement**

752 Ethical approval was obtained independently from the Hamilton Integrated Research Ethics
753 Board: CHILD (REB 07–2929), FAMILY (REB 02–060), and START (REB 10–640). CHILD
754 was additionally approved by the respective Human Research Ethics Boards at McMaster
755 University, the Universities of Manitoba, Alberta, and British Columbia, and the Hospital for
756 Sick Children. Legal guardians of each participant provided written informed consent. Written
757 informed consent was obtained from the parent/guardian (participating mother) for each study
758 separately. We also have now obtained additional ethics board approval from HiREB (REB

759 16592) for using the data from the three cohorts together without additional consent from the
760 participants.

761 **Reference**

762

- 763 1. Stock SJ, Bauld L. Maternal smoking and preterm birth: An unresolved health challenge.
764 Vol. 17, PLoS Medicine. 2020.
- 765 2. Liu B, Xu G, Sun Y, Qiu X, Ryckman KK, Yu Y, et al. Maternal cigarette smoking before
766 and during pregnancy and the risk of preterm birth: A dose–response analysis of 25
767 million mother–infant pairs. PLoS Med. 2020;17(8).
- 768 3. Marufu TC, Ahankari A, Coleman T, Lewis S. Maternal smoking and the risk of still birth:
769 systematic review and meta-analysis. BMC Public Health. 2015;15(1).
- 770 4. Ventura SJ, Hamilton BE, Mathews TJ, Chandra A. Trends and variations in smoking
771 during pregnancy and low birth weight: Evidence from the birth certificate, 1990-2000.
772 Pediatrics. 2003;111(5 II).
- 773 5. U.S. Department of Health and Human Services. The Health Consequences of Smoking—
774 50 Years of Progress A Report of the Surgeon General. A Report of the Surgeon General.
775 2014.
- 776 6. Montgomery SM, Ekblom A. Smoking during pregnancy and diabetes mellitus in a British
777 longitudinal birth cohort. Br Med J. 2002;324(7328).
- 778 7. Toschke A, Koletzko B, Slikker W, Hermann M, von Kries R. Childhood obesity is
779 associated with maternal smoking in pregnancy. Eur J Pediatr. 2002;161(8).
- 780 8. Oken E, Levitan EB, Gillman MW. Maternal smoking during pregnancy and child
781 overweight: Systematic review and meta-analysis. Vol. 32, International Journal of
782 Obesity. 2008.
- 783 9. Philips EM, Santos S, Trasande L, Aurrekoetxea JJ, Barros H, von Berg A, et al. Changes
784 in parental smoking during pregnancy and risks of adverse birth outcomes and childhood
785 overweight in Europe and North America: An individual participant data meta-analysis of
786 229,000 singleton births. PLoS Med. 2020;17(8).
- 787 10. England LJ, Grauman A, Qian C, Wilkins DG, Schisterman EF, Yu KF, et al.
788 Misclassification of maternal smoking status and its effects on an epidemiologic study of
789 pregnancy outcomes. Nicotine and Tobacco Research. 2007;9(10).
- 790 11. Shipton D, Tappin DM, Vadiveloo T, Crossley JA, Aitken DA, Chalmers J. Reliability of
791 self reported smoking status by pregnant women for estimating smoking prevalence: A
792 retrospective, cross sectional study. BMJ (Online). 2009;339(7732).
- 793 12. Salmasi G, Grady R, Jones J, McDonald SD. Environmental tobacco smoke exposure and
794 perinatal outcomes: a systematic review and meta-analyses. Vol. 89, Acta obstetrica et
795 gynecologica Scandinavica. 2010.
- 796 13. Yousefi PD, Suderman M, Langdon R, Whitehurst O, Davey Smith G, Relton CL. DNA
797 methylation-based predictors of health: applications and statistical considerations. Vol. 23,
798 Nature Reviews Genetics. 2022.
- 799 14. Shenker NS, Ueland PM, Polidoro S, Van Veldhoven K, Ricceri F, Brown R, et al. DNA
800 methylation as a long-term biomarker of exposure to tobacco smoke. Epidemiology.
801 2013;24(5).

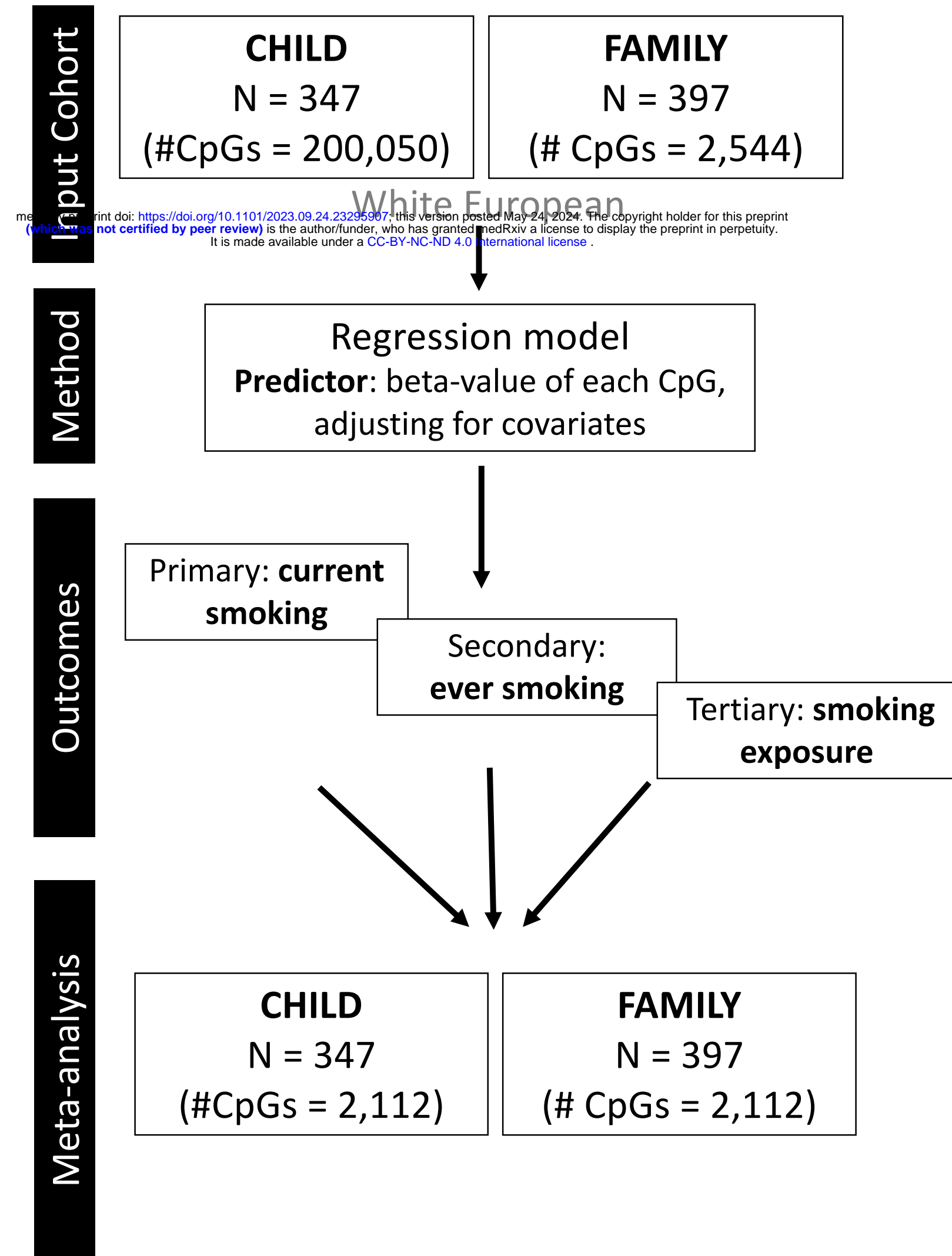
- 802 15. Joehanes R, Just AC, Marioni RE, Pilling LC, Reynolds LM, Mandaviya PR, et al.
803 Epigenetic Signatures of Cigarette Smoking. *Circ Cardiovasc Genet*. 2016;9(5).
- 804 16. Guida F, Sandanger TM, Castagné R, Campanella G, Polidoro S, Palli D, et al. Dynamics
805 of smoking-induced genome-wide methylation changes with time since smoking cessation.
806 *Hum Mol Genet*. 2015;24(8).
- 807 17. Sikdar S, Joehanes R, Joubert BR, Xu CJ, Vives-Usano M, Rezwan FI, et al. Comparison
808 of smoking-related DNA methylation between newborns from prenatal exposure and
809 adults from personal smoking. *Epigenomics*. 2019;11(13).
- 810 18. Zeilinger S, Kühnel B, Klopp N, Baurecht H, Kleinschmidt A, Gieger C, et al. Tobacco
811 Smoking Leads to Extensive Genome-Wide Changes in DNA Methylation. *PLoS One*.
812 2013 May 17;8(5).
- 813 19. Joubert BR, Felix JF, Yousefi P, Bakulski KM, Just AC, Breton C, et al. DNA
814 Methylation in Newborns and Maternal Smoking in Pregnancy: Genome-wide
815 Consortium Meta-analysis. *Am J Hum Genet*. 2016;98(4).
- 816 20. Hannon E, Schendel D, Ladd-Acosta C, Grove J, Hansen CS, Hougaard DM, et al.
817 Variable DNA methylation in neonates mediates the association between prenatal
818 smoking and birth weight. *Philosophical Transactions of the Royal Society B: Biological
819 Sciences*. 2019;374(1770).
- 820 21. Akhbir L, Stringer R, Desai D, Mandhane PJ, Azad MB, Moraes TJ, et al. DNA
821 methylation changes in cord blood and the developmental origins of health and disease – a
822 systematic review and replication study. *BMC Genomics*. 2022;23(1).
- 823 22. Witt SH, Frank J, Gilles M, Lang M, Treutlein J, Streit F, et al. Impact on birth weight of
824 maternal smoking throughout pregnancy mediated by DNA methylation. *BMC Genomics*.
825 2018;19(1).
- 826 23. Küpers LK, Xu X, Jankipersadsing SA, Vaez A, La Bastide-van Gemert S, Scholtens S, et
827 al. DNA methylation mediates the effect of maternal smoking during pregnancy on
828 birthweight of the offspring. *Int J Epidemiol*. 2015;44(4).
- 829 24. Xu R, Hong X, Zhang B, Huang W, Hou W, Wang G, et al. DNA methylation mediates
830 the effect of maternal smoking on offspring birthweight: a birth cohort study of multi-
831 ethnic US mother–newborn pairs. *Clin Epigenetics*. 2021;13(1).
- 832 25. Cardenas A, Lutz SM, Everson TM, Perron P, Bouchard L, Hivert MF. Mediation by
833 Placental DNA Methylation of the Association of Prenatal Maternal Smoking and Birth
834 Weight. *Am J Epidemiol*. 2019;188(11).
- 835 26. Murray R, Kitaba N, Antoun E, Titcombe P, Barton S, Cooper C, et al. Influence of
836 maternal lifestyle and diet on perinatal DNA methylation signatures associated with
837 childhood arterial stiffness at 8 to 9 years. *Hypertension*. 2021;78(3).
- 838 27. Raynor P, Duley L, Small N, Tuffnell D, Wild C, Wright J, et al. Born in Bradford, a
839 cohort study of babies born in Bradford, and their parents: Protocol for the recruitment
840 phase. *BMC Public Health*. 2008;8.
- 841 28. Elliott HR, Burrows K, Min JL, Tillin T, Mason D, Wright J, et al. Characterisation of
842 ethnic differences in DNA methylation between UK-resident South Asians and Europeans.
843 *Clin Epigenetics* [Internet]. 2022 Dec 1 [cited 2023 Mar 9];14(1). Available from:
844 <https://pubmed.ncbi.nlm.nih.gov/36243740/>
- 845 29. Choquet H, Yin J, Jorgenson E. Cigarette smoking behaviors and the importance of
846 ethnicity and genetic ancestry. *Transl Psychiatry*. 2021;11(1).

- 847 30. Elliott HR, Tillin T, McArdle WL, Ho K, Duggirala A, Frayling TM, et al. Differences in
848 smoking associated DNA methylation patterns in South Asians and Europeans. *Clin*
849 *Epigenetics*. 2014;6(1).
- 850 31. Bollepalli S, Korhonen T, Kaprio J, Anders S, Ollikainen M. EpiSmokEr: A robust
851 classifier to determine smoking status from DNA methylation data. *Epigenomics*.
852 2019;11(13).
- 853 32. Wright J, Small N, Raynor P, Tuffnell D, Bhopal R, Cameron N, et al. Cohort profile: The
854 born in Bradford multi-ethnic family cohort study. *Int J Epidemiol*. 2013;42(4).
- 855 33. Reitsma MB, Flor LS, Mullany EC, Gupta V, Hay SI, Gakidou E. Spatial, temporal, and
856 demographic patterns in prevalence of smoking tobacco use and initiation among young
857 people in 204 countries and territories, 1990–2019. *Lancet Public Health*. 2021;6(7).
- 858 34. de Souza RJ, Zulyniak MA, Desai D, Shaikh MR, Campbell NC, Lefebvre DL, et al.
859 Harmonization of food-frequency questionnaires and dietary pattern analysis in 4
860 ethnically diverse birth cohorts. *Journal of Nutrition*. 2016;146(11).
- 861 35. Bibikova M, Barnes B, Tsan C, Ho V, Klotzle B, Le JM, et al. High density DNA
862 methylation array with single CpG site resolution. *Genomics*. 2011;98(4).
- 863 36. Zhou W, Triche TJ, Laird PW, Shen H. SeSAMe: Reducing artifactual detection of DNA
864 methylation by Infinium BeadChips in genomic deletions. *Nucleic Acids Res*.
865 2018;46(20).
- 866 37. Chen YA, Lemire M, Choufani S, Butcher DT, Grafodatskaya D, Zanke BW, et al.
867 Discovery of cross-reactive probes and polymorphic CpGs in the Illumina Infinium
868 HumanMethylation450 microarray. *Epigenetics*. 2013;8(2).
- 869 38. Zhou W, Laird PW, Shen H. Comprehensive characterization, annotation and innovative
870 use of Infinium DNA methylation BeadChip probes. *Nucleic Acids Res*. 2017;45(4).
- 871 39. Pidsley R, Zotenko E, Peters TJ, Lawrence MG, Risbridger GP, Molloy P, et al. Critical
872 evaluation of the Illumina MethylationEPIC BeadChip microarray for whole-genome
873 DNA methylation profiling. *Genome Biol*. 2016;17(1).
- 874 40. Hillary RF, McCartney DL, McRae AF, Campbell A, Walker RM, Hayward C, et al.
875 Identification of influential probe types in epigenetic predictions of human traits:
876 implications for microarray design. *Clin Epigenetics*. 2022;14(1).
- 877 41. Gervin K, Salas LA, Bakulski KM, Van Zelm MC, Koestler DC, Wiencke JK, et al.
878 Systematic evaluation and validation of reference and library selection methods for
879 deconvolution of cord blood DNA methylation data. *Clin Epigenetics*. 2019;11(1).
- 880 42. R Core Team. R core team (2021). R: A language and environment for statistical
881 computing. R Foundation for Statistical Computing, Vienna, Austria. URL [http://www.R-](http://www.R-project.org)
882 [project.org](http://www.R-project.org). 2021.
- 883 43. Morrison KM, Atkinson SA, Yusuf S, Bourgeois J, McDonald S, McQueen MJ, et al. The
884 Family Atherosclerosis Monitoring In earlyLY life (FAMILY) study. Rationale, design, and
885 baseline data of a study examining the early determinants of atherosclerosis. *Am Heart J*.
886 2009;158(4).
- 887 44. Anand SS, Vasudevan A, Gupta M, Morrison K, Kurpad A, Teo KK, et al. Rationale and
888 design of South Asian Birth Cohort (START): A Canada-India collaborative study. *BMC*
889 *Public Health*. 2013;13(1).
- 890 45. Metzger BE. International Association of Diabetes and Pregnancy Study Groups
891 recommendations on the diagnosis and classification of hyperglycemia in pregnancy. Vol.
892 33, *Diabetes Care*. 2010.

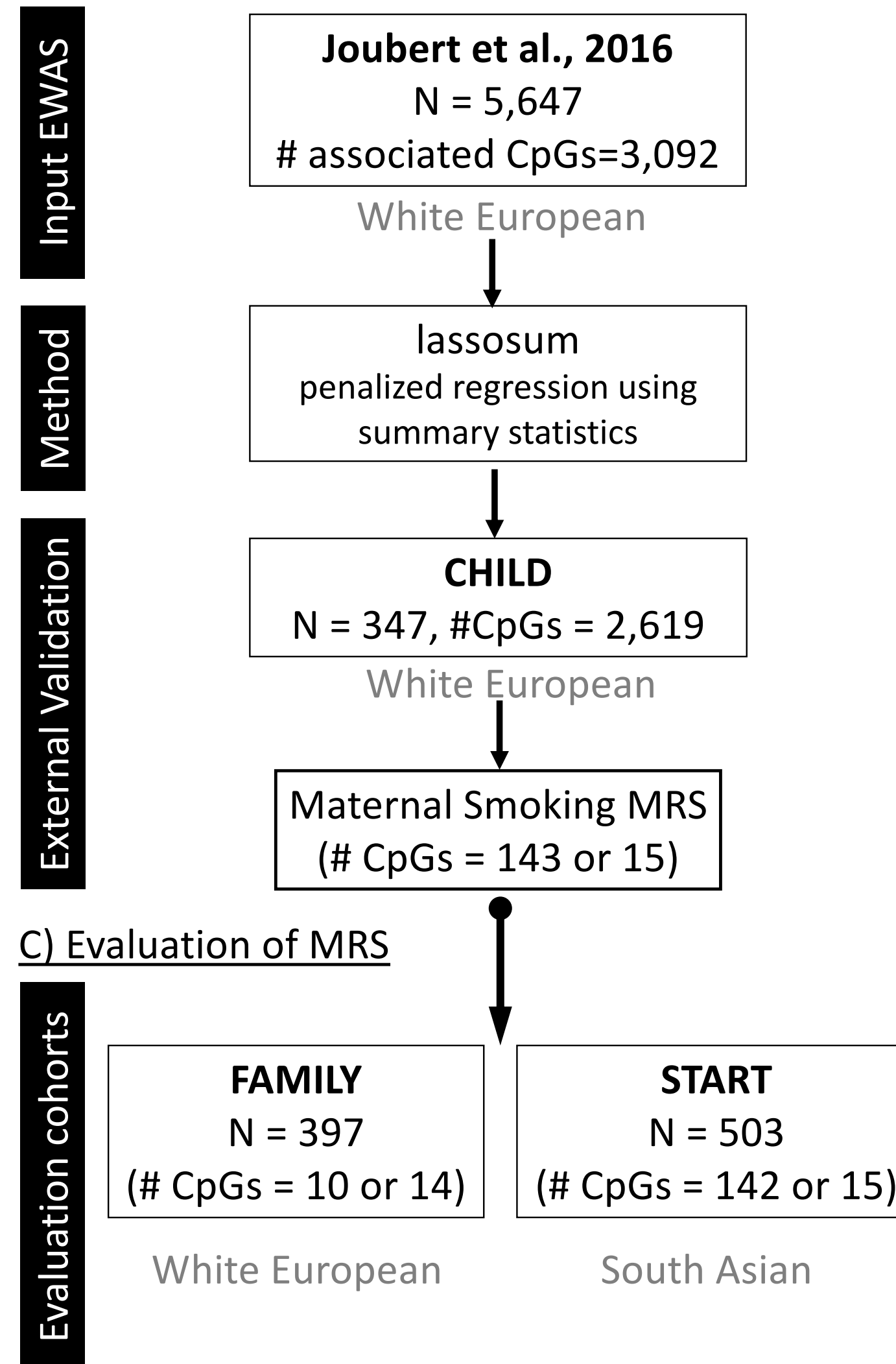
- 893 46. Anand SS, Razak F, Davis AD, Jacobs R, Vuksan V, Teo K, et al. Social disadvantage
894 and cardiovascular disease: Development of an index and analysis of age, sex, and
895 ethnicity effects. *Int J Epidemiol.* 2006;35(5).
- 896 47. Mak TSH, Porsch RM, Choi SW, Zhou X, Sham PC. Polygenic scores via penalized
897 regression on summary statistics. *Genet Epidemiol.* 2017;(February):469–80.
- 898 48. Reese SE, Zhao S, Wu MC, Joubert BR, Parr CL, Håberg SE, et al. DNA methylation
899 score as a biomarker in newborns for sustained maternal smoking during pregnancy.
900 *Environ Health Perspect.* 2017;125(4).
- 901 49. Richmond RC, Suderman M, Langdon R, Relton CL, Smith GD. DNA methylation as a
902 marker for prenatal smoke exposure in adults. *Int J Epidemiol [Internet].* 2018 Aug 1
903 [cited 2023 Mar 9];47(4):1120–30. Available from:
904 <https://academic.oup.com/ije/article/47/4/1120/5026413>
- 905 50. Rauschert S, Melton PE, Burdge G, Craig J, Godfrey KM, Holbrook JD, et al. Maternal
906 smoking during pregnancy induces persistent epigenetic changes into adolescence,
907 independent of postnatal smoke exposure and is associated with cardiometabolic risk.
908 *Front Genet.* 2019;10(JUL).
- 909 51. Gondalia R, Baldassari A, Holliday KM, Justice AE, Méndez-Giráldez R, Stewart JD, et
910 al. Methylome-wide association study provides evidence of particulate matter air
911 pollution-associated DNA methylation. *Environ Int.* 2019;132.
- 912 52. Subbarao P, Anand SS, Becker AB, Befus AD, Brauer M, Brook JR, et al. The Canadian
913 Healthy Infant Longitudinal Development (CHILD) study: Examining developmental
914 origins of allergy and asthma. *Thorax.* 2015;70(10).
- 915 53. Brydon P, Smith T, Proffitt M, Gee H, Holder R, Dunne F. Pregnancy outcome in women
916 with type 2 diabetes mellitus needs to be addressed. *Int J Clin Pract.* 2000;54(7).
- 917 54. Farrar D, Fairley L, Santorelli G, Tuffnell D, Sheldon TA, Wright J, et al. Association
918 between hyperglycaemia and adverse perinatal outcomes in south Asian and white British
919 women: analysis of data from the Born in Bradford cohort. *Lancet Diabetes Endocrinol*
920 [Internet]. 2015 Oct 1 [cited 2023 Jun 8];3(10):795. Available from:
921 </pmc/articles/PMC4673084/>
- 922 55. Lange S, Probst C, Rehm J, Popova S. National, regional, and global prevalence of
923 smoking during pregnancy in the general population: a systematic review and meta-
924 analysis. *Lancet Glob Health.* 2018;6(7).
- 925 56. Markunas CA, Xu Z, Harlid S, Wade PA, Lie RT, Taylor JA, et al. Identification of DNA
926 Methylation Changes in Newborns Related to Maternal Smoking during Pregnancy.
927 *Environ Health Perspect.* 2014;122(10).
- 928 57. Richmond RC, Simpkin AJ, Woodward G, Gaunt TR, Lyttleton O, McArdle WL, et al.
929 Prenatal exposure to maternal smoking and offspring DNA methylation across the
930 lifecourse: Findings from the Avon Longitudinal Study of Parents and Children
931 (ALSPAC). *Hum Mol Genet.* 2015;24(8).
- 932 58. Rider CF, Carlsten C. Air pollution and DNA methylation: Effects of exposure in humans.
933 Vol. 11, *Clinical Epigenetics.* 2019.
- 934 59. Vogel CFA, Van Winkle LS, Esser C, Haarmann-Stemmann T. The aryl hydrocarbon
935 receptor as a target of environmental stressors – Implications for pollution mediated stress
936 and inflammatory responses. Vol. 34, *Redox Biology.* 2020.

- 937 60. Reynolds LM, Wan M, Ding J, Taylor JR, Lohman K, Su D, et al. DNA Methylation of
938 the Aryl Hydrocarbon Receptor Repressor Associations with Cigarette Smoking and
939 Subclinical Atherosclerosis. *Circ Cardiovasc Genet.* 2015;8(5).
- 940 61. Roberts CK, Sindhu KK. Oxidative stress and metabolic syndrome. Vol. 84, *Life Sciences.*
941 2009.
- 942 62. Everson TM, Vives-Usano M, Seyve E, Cardenas A, Lacasaña M, Craig JM, et al.
943 Placental DNA methylation signatures of maternal smoking during pregnancy and
944 potential impacts on fetal growth. *Nat Commun.* 2021;12(1).
- 945 63. Moshammer H, Hutter HP. Breast-feeding protects children from adverse effects of
946 environmental Tobacco smoke. *Int J Environ Res Public Health.* 2019;16(3).
- 947 64. Martin JA, Osterman MJK, Driscoll AK. Declines in Cigarette Smoking During
948 Pregnancy in the United States, 2016-2021. *NCHS Data Brief.* 2023;(458).
949
- 950
- 951

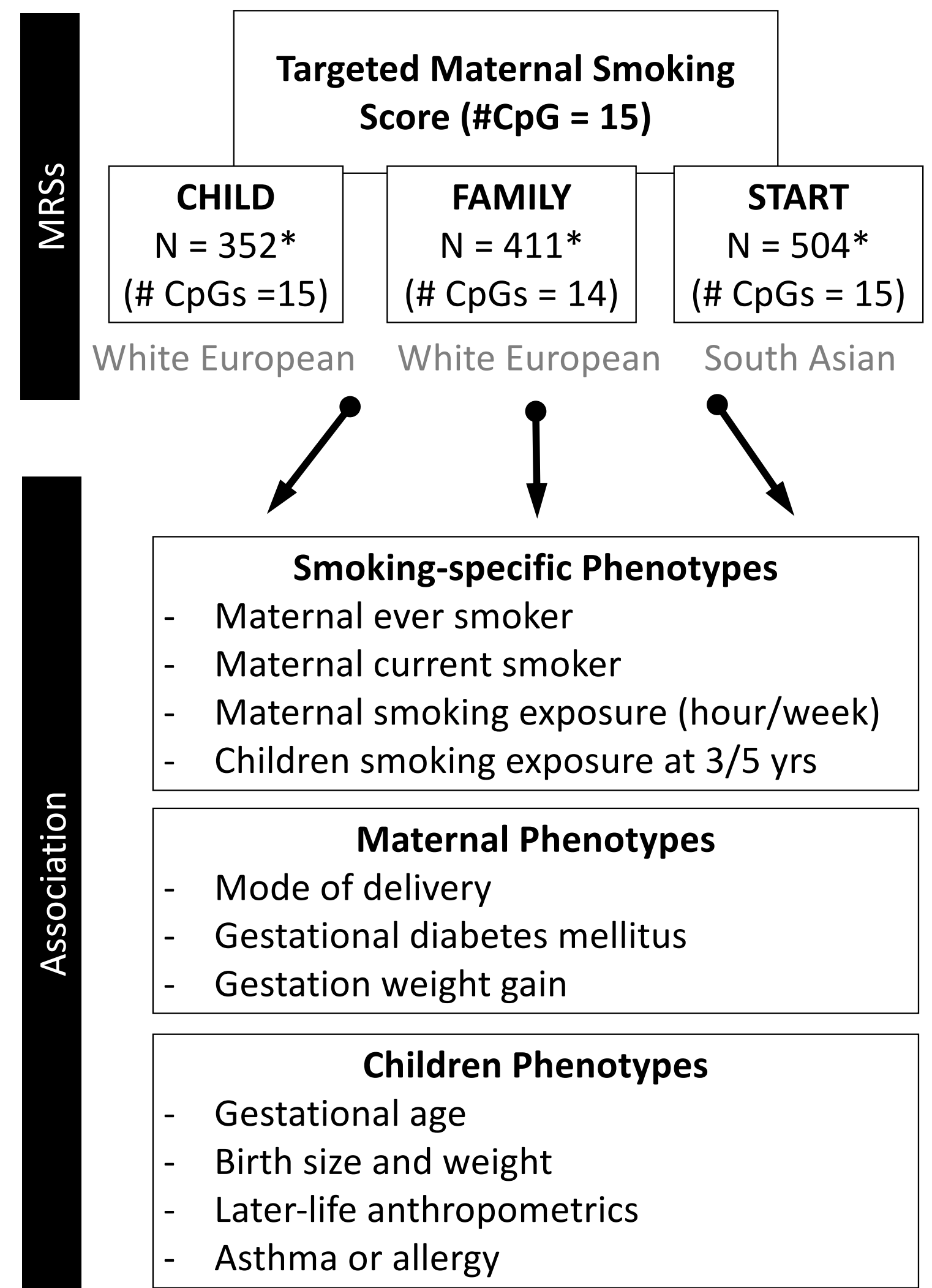
A) Epigenome-Wide Association Study in European cohorts



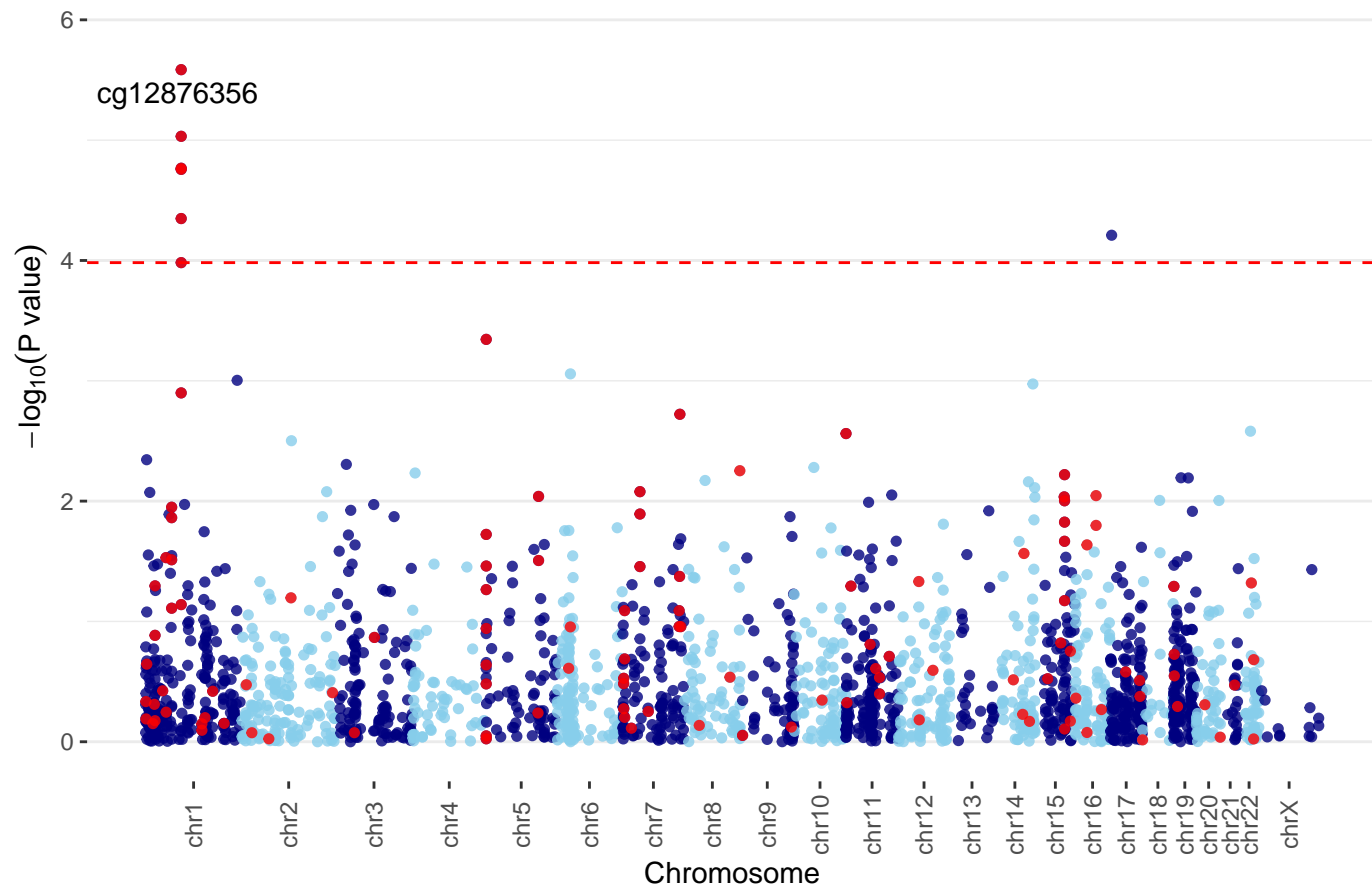
B) Construction of MRS using lasso



D) DNAm scores association with health outcomes



A) Maternal Smoking



B) Smoking Exposure

