

1 Maternal smoking DNA methylation risk score associated with health  
2 outcomes in offspring of European and South Asian ancestry

3  
4 Wei Q. Deng<sup>1,2,3\*</sup>, Nathan Cawte<sup>4</sup>, Natalie Campbell<sup>3</sup>, Sandi M. Azab<sup>3,5</sup>, Russell J de Souza<sup>3,5</sup>,  
5 Amel Lamri<sup>3,4</sup>, Katherine M. Morrison<sup>6</sup>, Stephanie A. Atkinson<sup>6</sup>, Padmaja Subbarao<sup>7</sup>, Stuart E.  
6 Turvey<sup>8</sup>, Theo J. Moraes<sup>7,9</sup>, Koon K. Teo<sup>3,4,5</sup>, Piush Mandhane<sup>10</sup>, Meghan B. Azad<sup>11</sup>, Elinor  
7 Simons<sup>12</sup>, Guillaume Pare<sup>4,5,13,14</sup>, Sonia S. Anand<sup>3,4,5\*</sup>

- 8  
9  
10 1. Peter Boris Centre for Addictions Research, St. Joseph's Healthcare Hamilton, Hamilton,  
11 Canada.  
12 2. Department of Psychiatry and Behavioural Neurosciences, McMaster University,  
13 Hamilton, Canada.  
14 3. Department of Medicine, Faculty of Health Sciences, McMaster University, Hamilton,  
15 Canada.  
16 4. Population Health Research Institute, David Braley Cardiac, Vascular and Stroke  
17 Research Institute, Hamilton, Canada.  
18 5. Department of Health Research Methods, Evidence, and Impact, McMaster University,  
19 Hamilton, Canada.  
20 6. Department of Pediatrics, McMaster University, Hamilton, Canada.  
21 7. Department of Pediatrics, University of Toronto, Toronto, Canada.  
22 8. Department of Pediatrics, BC Children's Hospital, The University of British Columbia,  
23 Vancouver, Canada

- 24 9. Program in Translational Medicine, SickKids Research Institute, Toronto, Canada
- 25 10. Department of Pediatrics, University of Alberta, Edmonton, Canada
- 26 11. Children’s Hospital Research Institute of Manitoba, Department of Pediatrics and Child
- 27 Health, University of Manitoba, Winnipeg, Canada
- 28 12. Section of Allergy and Immunology, Department of Pediatrics and Child Health,
- 29 University of Manitoba, Canada
- 30 13. Thrombosis and Atherosclerosis Research Institute, David Braley Cardiac, Vascular and
- 31 Stroke Research Institute, Hamilton, Canada
- 32 14. Department of Pathology and Molecular Medicine, McMaster University, Michael G.
- 33 DeGroote School of Medicine, Hamilton, Canada

34

35 \*Correspondence: [dengwq@mcmaster.ca](mailto:dengwq@mcmaster.ca); [anands@mcmaster.ca](mailto:anands@mcmaster.ca)

36

37

38

39

40

41

42

43

44

45

## 46 **Abstract**

47 Maternal smoking has been linked to adverse health outcomes in newborns but the extent to  
48 which it impacts newborn health has not been quantified through an aggregated cord blood DNA  
49 methylation (DNAm) score. Here we examine the feasibility of using cord blood DNAm scores  
50 leveraging large external studies as discovery samples to capture the epigenetic signature of  
51 maternal smoking and its influence on newborns in White European and South Asian  
52 populations. We first examined association between individual CpGs and cigarette smoking  
53 during pregnancy, smoking exposure in two White European birth cohorts ( $n = 744$ ). Several  
54 previously reported genes for maternal smoking were supported, with the strongest and most  
55 consistent signal from the *GFII* gene (6 CpGs with  $p < 5 \times 10^{-5}$ ). Leveraging established CpGs for  
56 maternal smoking, we constructed a cord blood epigenetic score of maternal smoking that was  
57 internally validated in one of the European-origin cohorts ( $n = 347$ ). This score was then tested  
58 for association with smoking status, secondary smoking exposure during pregnancy, and health  
59 outcomes in offspring measured after birth in an independent white European ( $n = 397$ ) and a  
60 South Asian birth cohort ( $n = 504$ ). The epigenetic maternal smoking score was strongly  
61 associated with smoking status during pregnancy (OR=1.09 [1.07,1.10],  $p=1.96 \times 10^{-32}$ ) and more  
62 hours of self-reported smoking exposure per week (1.97 [1.22, 2.71],  $p=2.80 \times 10^{-7}$ ) in White  
63 Europeans, but not with self-reported exposure ( $p > 0.05$ ) in South Asians. The same score was  
64 consistently associated with smaller birth size (-0.22 cm [-0.35, -0.083],  $p=0.0016$ ) and lower  
65 birth weight (-0.05kg [-0.075, -0.025],  $p = 3.42 \times 10^{-4}$ ) in the combined South Asian and White  
66 European cohorts. This cord blood epigenetic score can help identify babies exposed to maternal  
67 smoking and assess its long-term impact on growth. Notably, these results indicate a consistent  
68 association between the DNAm signature of maternal smoking and a small body size and low

69 birthweight in newborns, in both white European mothers who exhibited some amount of  
70 smoking and in South Asian mothers who themselves were not active smokers.

71

## 72 **Introduction**

73 Maternal smoking has adverse effects on offspring health including pre-term delivery (1,2),  
74 stillbirth (3), and low birth weight (4), and is associated with pregnancy complications such as  
75 maternal higher blood pressure, and gestational diabetes (5). Consistent with the Developmental  
76 Origins of Health and Disease (DOHaD) hypothesis, maternal smoking exposes the developing  
77 fetus to harmful chemicals in tobacco that negatively impact the health of newborns, resulting in  
78 early-onset metabolic diseases, such as childhood obesity (6–9). Yet self-reported smoking status  
79 is subject to underreporting among pregnant women (10–12). This could subsequently impact the  
80 effectiveness of interventions aimed at reducing smoking during pregnancy and may skew data  
81 on the risks associated with maternal smoking.

82

83 DNA methylation is one of the most commonly studied epigenetic mechanisms by which  
84 cells regulate gene expression, and is increasingly recognized for its potential as a biomarker  
85 (13). Differential DNA methylation has been established as a reliable biochemical response to  
86 cigarette smoking and was shown to capture the long-lasting effects of persistent smoking in ex-  
87 smokers (14–16). Recent large epigenome-wide association studies (EWAS) have robustly  
88 identified differentially methylated cytosine–phosphate–guanine (CpG) sites associated with  
89 adult smoking (15,17,18) and maternal smoking (19,20). Our recent systematic review of 17 cord  
90 blood epigenome-wide association studies (EWAS) found that out of the 290 CpG sites reported  
91 to be associated with at least one of the following: maternal diabetes, pre-pregnancy body mass

92 index (BMI), diet during pregnancy, smoking, and gestational age, 19 sites were identified in  
93 more than one study and all of them associated with maternal smoking (21). Furthermore, these  
94 findings have led to a more thorough investigation of the epigenetic mechanisms underlying  
95 associations between well-established epidemiological exposures and outcomes, such as the  
96 relationship between maternal smoking and birth weight in Europeans (20,22–25) and the less  
97 studied African American populations (24) as well as between maternal diet and cardiovascular  
98 health (26).

99  
100 Only a handful of cohort studies were designed to assess the influence of maternal  
101 exposures on DNA methylation changes in non-Europeans (24,27). It has been suggested that  
102 systematic patterns of methylation (28), such as cell composition, could differ between  
103 individuals of different ancestral backgrounds, which could in turn confound the association  
104 between differential DNAm and smoking behaviours (29). These systematic differences also  
105 contribute to different smoking-related methylation signals at individual CpGs (30). Thus, a  
106 comparative study of maternal smoking exposure is a first step towards generalizing existing  
107 EWAS results to other populations and a necessary step towards addressing health disparities  
108 that exist between populations due to societal privilege, including race or ethnicity and  
109 socioeconomic factors.

110  
111 A promising direction in epigenetic studies of adult smoking is the application of a  
112 methylation score (31); this strategy can also be applied to disseminate current knowledge on  
113 differential DNA methylation studies of maternal smoking. A methylation score is usually tissue-  
114 specific and combines information from multiple CpGs using statistical models (13). Reducing

115 the number of predictors and measurement noise in the data can lead to better statistical power  
116 and a more parsimonious instrument for subsequent analyses. It is also of interest to determine  
117 whether methylation scores demonstrate the capacity to predict outcomes in diverse human  
118 populations, given the presence of systematic differences in methylation patterns due to ancestral  
119 backgrounds (28).

120

121 In this paper, we investigated the epigenetic signature of maternal smoking on cord blood  
122 DNA methylation in newborns, as well as its association with newborn and later life outcomes in  
123 one South Asian which refers to people who originate from the Indian subcontinent, and two  
124 predominantly European-origin birth cohorts. Similar to the Born in Bradford study (32), we  
125 observed several differentiating epidemiological characteristics between South Asian and  
126 European-origin mothers. Notably, almost none of the South Asian mothers were current  
127 smokers and had low smoking rates pre-pregnancy as compared to European mothers, which is  
128 consistent with the broader trends of lower smoking rates in South Asian females (33). Another  
129 relevant observation is the small birth size and low birth weight in the South Asian newborns.  
130 These differences in newborn size and weight may be influenced by various factors, including  
131 maternal nutrition, genetics, and socioeconomic status. Keeping these differences in mind, we  
132 first conducted cohort-specific epigenetic association studies between available CpGs and  
133 maternal smoking in the predominantly European-origin cohorts, benchmarking with previously  
134 identified CpGs for maternal smoking and adult smoking. Second, we leveraged the reported  
135 summary statistics from existing large EWASs to construct a methylation risk score (MRS) for  
136 maternal smoking. The MRS was first internally validated in one of the European-origin cohorts  
137 and then tested in a second independent European-origin cohort. Third, we examined the

138 association between maternal smoking MRS and newborn health outcomes, including length,  
139 weight, BMI ponderal index, and early-life anthropometrics in both European and South Asian  
140 cohorts.

141

142

## 143 **Materials and Methods**

144

### 145 **Study population**

146 The NutriGen Alliance is a consortium consisting of four prospective, population-based birth  
147 cohorts that enrolled birthing mother and newborn pairs in Canada. Details of these cohorts have  
148 been described elsewhere (34). The current investigation focused on i). European-origin  
149 offspring from the population-based CHILD study who were selected for methylation analysis,  
150 ii). The Family Atherosclerosis Monitoring In early life (FAMILY) study that is predominately  
151 European-origin, and iii). The SouTh Asian biRth cohort (START) study that is exclusively  
152 comprised of people who originated from the Indian subcontinent known as South Asians. The  
153 ethnicity of the parents was self-reported and recorded at baseline in all three cohorts. Biological  
154 samples, clinical assessments, and questionnaires were used to derive health phenotypes and an  
155 array of genetic, epigenetic, and metabolomic data. The superordinate goal of the NutriGen study  
156 is to understand how nutrition, environmental exposures, and physical health of mothers impact  
157 the health and early development of their offspring using a multi-omics approach.

158

### 159 **Methylation data processing and quality controls**

160 Newborn cord blood samples were processed using two methylation array technologies. About  
161 half of the START samples and selected samples from CHILD were hybridized to the Illumina  
162 Human-Methylation450K BeadChip (HM450K) array, which covers CpGs in the entire genome  
163 (35). The raw methylation data were generated by the Illumina iScan software and separately pre-  
164 processed for START and CHILD using the “*sesame*” R package following pipelines designed  
165 for HM450K BeadChip (36). The FAMILY samples were profiled using a targeted array based  
166 on the Infinium Methylation EPIC designed by the Genetic and Molecular Epidemiology  
167 Laboratory (GMEL; Hamilton, Canada). The GMEL customized array includes ~3000 CpG sites  
168 that were previously reported to associate with complex traits or exposures and was designed to  
169 maximize discovery while keeping the costs of profiling epigenome-wide DNA methylation  
170 down. The targeted methylation data were pre-processed using a customized quality control  
171 pipeline and functions from the “*sesame*” R package recommended for EPIC.

172  
173 Pre-processed data were then used to derive the  $\beta$ -value matrix, where each column gives  
174 the methylation level at a CpG site as a ratio of the probe intensity to the overall probe intensity.  
175 Additional quality control filters were applied to the final beta-value matrices to remove samples  
176 with > 10% missing probes and CpG probes with >10% samples missing. Cross-reactive probes  
177 and SNP probes were removed as recommended for HM450 (37) and EPIC arrays (38,39). For  
178 CpG probes with a missing rate <10%, mean imputation was used to fill in the missing values.  
179 We further excluded samples that were either mismatches between reported sex and methylation-  
180 inferred sex or were duplicates. Finally, considering the low prevalence of smokers, we sought to  
181 reduce spurious associations by removing non-informative probes that were either all  
182 hypomethylated ( $\beta$ -value < 0.1) or hypermethylated ( $\beta$ -value > 0.9), which have been shown to



183 have less optimal performance (40). A summary of the sample and probe inclusion/exclusion is  
184 shown in Supplementary Table 1. A detailed description of pre-processing and quality control  
185 steps is included in Supplementary Material.

186  
187 Cell-type proportions (CD8T, CD4T, Natural Killer cells, B cells, monocytes,  
188 granulocytes, and nucleated red blood cells) were estimated following a reference-based  
189 approach developed for cord blood (41) and using R packages  
190 “*FlowSorted.CordBloodCombined.450k*” and “*FlowSorted.Blood.EPIC*”. All data processing  
191 and subsequent analyses were conducted in R v.4.1.0 (42).

192

### 193 **Phenotype data processing and quality controls**

194 At the time of enrollment, all pregnant women completed a comprehensive questionnaire that  
195 collected information on prenatal diet, smoking, education, socioeconomic factors, physical  
196 activities and health as detailed previously (43,44). Maternal smoking history (0=never smoked,  
197 1=quit before this pregnancy, 2=quit during this pregnancy, or 3=current smoker) was assessed  
198 during the second trimester (at baseline). Smoke exposure was measured as “number of hours  
199 exposed per week”. GDM was determined based on a combination of oral glucose tolerance test  
200 (OGTT), self-report, and reported diabetic treatments (insulin, pills, or restricted diet). For South  
201 Asian mothers in START, the same OGTT threshold as Born in Bradford (27,32) was used,  
202 while the International Association of the Diabetes and Pregnancy Study Groups (IASDPSG)  
203 criteria (45) for OGTT were used in CHILD and FAMILY cohorts. Mode of delivery  
204 (emergency c-section vs. other) was collected at the time of delivery.

205

206 Newborn length and weight were collected immediately after birth and extracted from  
207 medical chart. The newborns were then followed up at 1, 2, 3, and 5 years of age and provided  
208 basic anthropometric measurements, including height, weight, hip and waist circumference, BMI,  
209 sum of the skinfolds (triceps skinfold and subscapular skinfold). Additional phenotypes included  
210 smoking exposures (hours per week) at home, potential allergy based on mother reporting any of:  
211 eczema, hay fever, wheeze, asthma, food allergy (egg, cow milk, soy, other) for her child in  
212 FAMILY and START, and asthma based on mother's opinion in CHILD ("In your opinion, does  
213 the child have any of the following? Asthma").

214

### 215 **Phenotype and Methylation Data Consolidation**

216 The current investigation examines the impact of maternal smoking or smoke exposure on DNA  
217 methylation derived from newborn cord blood in START and the two predominately European  
218 cohorts (CHILD and FAMILY). To maximize sample size in FAMILY and CHILD, we retained  
219 either self-identified or genetically confirmed Europeans based on available genetic data  
220 (Supplementary Table 1). The cohorts consist of representative population samples without  
221 enrichment for any clinical conditions, though only singleton mothers were invited to participate.  
222 For continuous phenotypes, an analysis of variance (ANOVA) using the F-statistics or a two-  
223 sample *t*-test was used to compare the mean difference across the three cohorts or two groups,  
224 respectively. For categorical phenotypes, a chi-square test of independence was used to compare  
225 the difference in frequencies of observed categories. Note that three of the categories under  
226 smoking history in the START cohort had expected cell counts less than 5, and was thus  
227 excluded from the comparison, the reported *p*-value was for CHILD and FAMILY.

228

229 The final analytical datasets, after combining the quality-controlled methylation data and  
230 phenotypic data, included 352, 411, and 504 mother-newborn pairs from CHILD, FAMILY, and  
231 START, respectively. Demographic characteristics and relevant covariates of the epigenetic  
232 subsample and the overall sample are summarized in Table 1 and Supplementary Table 2,  
233 respectively.

234

### 235 **Epigenome-Wide Association of Maternal Smoking in European Cohorts**

236

237 Since there were no current smokers in START (Table 1), we tested the association between  
238 maternal smoking and differential methylated sites in FAMILY (# of CpG = 2,544) and CHILD  
239 (# of CpG = 200,050). The primary outcome variable was “current smoker”, defined by mothers  
240 self-identified as currently smoking during the pregnancy vs. those who never smoked or quit  
241 either before or during pregnancy. We also included a secondary outcome variable “ever  
242 smoker”, defined by mothers who are current smokers or have quit smoking vs. those who never  
243 smoked. A tertiary outcome was smoking exposure, measured by the number of hours per week  
244 reported by the expectant mothers, and was available in all cohorts. We summarized the type of  
245 analyses for different outcomes in Supplementary Table 3.

246

247 We first conducted a separate epigenetic association study in each cohort, testing the  
248 association between methylation  $\beta$ -values at individual CpGs and the smoking phenotype using  
249 either a logistic regression model for smoking status or a linear regression for smoking exposure  
250 as the outcome. The model adjusted for additional covariates including the estimated cord blood  
251 cell proportions, maternal age, social disadvantage index, which is a continuous composite

252 measure of social and economic exposures (46), mother's years of education, GDM, and parity.  
253 The smoking exposure variable was skewed, and a rank-based transformation was applied to  
254 mimic a standard normal distribution.

255  
256 We then meta-analyzed association results for maternal smoking status in the European  
257 cohorts using an inverse variance-weighted fixed-effect model. The meta-analysis was conducted  
258 for 2,112 CpGs that were available in both CHILD (profiled using HM450K) and FAMILY  
259 (profiled using the targeted array). For the tertiary outcome, we conducted an inverse variance  
260 meta-analysis including START using both a fixed-effect model. For each EWAS or meta-  
261 analysis, the false discovery rate (FDR) adjustment was used to control multiple testing and we  
262 considered CpGs that passed an FDR-adjusted  $p$ -value  $< 0.05$  to be relevant for maternal  
263 smoking.

## 264 265 **Using DNA Methylation to Construct Predictive Models for Maternal Smoking**

266  
267 We sought to construct a predictive model in the form of a methylation risk score (MRS) using  
268 reported associations of maternal smoking. The proposed solution adapted the existing lassosum  
269 method (47) that was originally designed for polygenic risk scores, where the matrix of SNP  
270 genotypes ( $X$ ) can be conveniently replaced by the  $\beta$ -value matrix. For more details, see the  
271 Supplementary Material. Briefly, an objective function under elastic-net constraint was  
272 minimized to obtain the elastic-net solution  $\gamma$ , where only summary statistics ( $b$ ) and a scalar of  
273 the covariance between the  $\beta$ -values of the CpGs ( $X'X$ ) are needed. The tuning parameters  $\lambda_1$   
274 and  $\lambda_2$  were chosen by validating on the observed smoking history (as a continuous outcome) in

275 CHILD that produced the most significant model. The optimized  $\lambda_1$  and  $\lambda_2$  were then used to  
276 create a final model that entails a list of CpGs and their corresponding weights, which were then  
277 used to calculate a MRS for maternal smoking in the FAMILY and START samples.

278

279 The summary statistics of the discovery EWAS were obtained from EWAS catalog  
280 (<http://www.ewascatalog.org/>) reported under “PubMed ID 27040690” by Joubert and  
281 colleagues (19). The summary statistics were restricted to the analysis “sustained maternal  
282 smoking in pregnancy effect on newborns adjusted for cell composition”. Of the 2620 maternal  
283 smoking CpGs that passed the initial screening, 2,107 were available in CHILD but only 128  
284 were common to CHILD, FAMILY, and START. To evaluate whether the targeted GMEL-EPIC  
285 array design has comparable performance as the epigenome-wide array to evaluate the epigenetic  
286 signature of maternal smoking, a total of three MRSs were constructed, two using the 128 CpGs  
287 available in all cohorts – across the HM450K and targeted GMEL-EPIC arrays – and with either  
288 CHILD (n = 347 with non-missing smoking history) or FAMILY (n = 397 with non-missing  
289 smoking history) as the validation cohort, and another using 2,107 CpGs that were only available  
290 in CHILD and START samples with CHILD as the validation cohort. The validation model  
291 considered the continuous smoking history without modification as the outcome, while  
292 accounting for covariates, which included the estimated cord blood cell proportions, maternal  
293 age, social disadvantage index, mother’s years of education, GDM, and parity. Henceforth, we  
294 referred to these derived maternal smoking scores as the FAMILY targeted MRS, CHILD  
295 targeted MRS, and the HM450K MRS, respectively. To benchmark and compare with existing  
296 maternal smoking MRSs, we calculated the Reese score using 28 CpGs (48,49), Richmond  
297 score using 568 CpGs (49), Rauschert score using 204 CpGs (50), Joubert score using all 2,620

298 CpGs with evidence of association for maternal smoking (19), and finally a three-CpG score for  
299 air pollution (51). The details of these scores and score weight can be found in Supplementary  
300 Table 4.

301

### 302 **Statistical analysis**

303 For each cohort, we contrasted the three versions of the derived scores using an analysis of  
304 variance analysis (ANOVA) along with pairwise comparisons using a two-sample *t*-test to  
305 examine how much information might be lost due to the exclusion of more than 10-fold CpGs at  
306 the validation stage, in all samples and in non-smokers. We also examined the correlation  
307 structure between all derived and external MRSs using a heatmap summarizing their pairwise  
308 Pearson's correlation coefficient. Then, we compared the mean difference of each MRS score  
309 among smoking history using an ANOVA *F*-test and two-sample *t*-test to understand whether  
310 there was a dosage dependence in the cord blood DNAm signature of maternal smoking.  
311 Additionally, each score was tested against a binary outcome for current smoker vs. not, and two  
312 continuous measures for smoking history and weekly smoking exposure. The binary outcome  
313 was tested using a logistic regression model and the predictive performance was assessed using  
314 area under the receiver operating characteristic curve (AUC). The continuous outcome was  
315 examined using a linear regression model and its performance was quantified using the adjusted  
316  $R^2$ .

317

318 For the derived MRS, we empirically assessed whether the resulting score was portable to the  
319 START cohort by examining the distribution of the final score among the overall samples and  
320 never smokers. The comparison examined a mean difference using an analysis of variance *F*-test,

321 a variance difference using a Levene's test, and the overall distribution using a non-parametric  
322 Anderson-Darling test. Finally, we tested the association between each maternal smoking MRS  
323 and smoking phenotypes in mothers, as well as offspring phenotypes using a linear regression  
324 model, when applicable, adjusting for the child's age at each visit. The association results were  
325 meta-analyzed for phenotypes with homogeneous effects across the cohorts using a fixed-effect  
326 model.

327

328

## 329 **Results**

330

### 331 **Cohort Sample Characteristics**

332 The analyses included 763 European mother-child pairs with cord blood DNAm data from the  
333 CHILD study (CHILD;  $n = 352$ )(52) and The Family Atherosclerosis Monitoring In earLY life  
334 (FAMILY;  $n = 411$ ) study (43), and 503 South Asian mother-child pairs from The SouTh Asian  
335 biRth cohort (START) study (44). We observed lower past smoking and missingness on  
336 smoking history among pregnant women in START as compared to CHILD or FAMILY using  
337 the epigenetic subsample (Table 1) and the overall sample (Supplementary Table 2). Pregnant  
338 women in START were significantly different from CHILD or FAMILY in that they were on  
339 average younger at delivery, had a lower BMI, and a higher rate of GDM, in line with other  
340 cohort studies in South Asian populations (53,54). As compared to START, newborn infants  
341 from CHILD and FAMILY had a longer gestational period, a higher birth weight, and a higher  
342 BMI at birth (Table 1; Supplementary Table 2). We observed no difference between cohorts in  
343 terms of parity or newborn sex in the epigenetic subsample (Table 1).

344

345           Within the European epigenetic subsample, of the 744 mother–newborn pairs with  
346 complete smoking history data, 40 (5.3%) newborns were exposed to current maternal smoking,  
347 which is on the lower end of the spectrum for the prevalence of smoking during pregnancy  
348 (9.2%-32.5%) among Canadians (55). In addition, mothers who smoked during pregnancy were  
349 on average younger, had fewer years of education, and had higher household exposure to  
350 smoking (Supplementary Table 6). However, there was no statistically significant difference  
351 between newborns exposed to current and none or previous smoking in terms of birth weight,  
352 birth length, gestational age, or estimated cord blood cell proportions.

353

354

### 355 **Epigenetic Association of Maternal Smoking in White Europeans**

356 The two predominantly White European cohorts, FAMILY ( $n = 397$ ) and CHILD ( $n = 347$ ),  
357 contributed to the meta-analysis of maternal smoking for both the primary outcome of current  
358 smoking (Figure 2-A) and the secondary outcome of ever smoking (Supplementary Figure 1).  
359 The top associated CpGs with current maternal smoking were mapped to the growth factor  
360 independent 1 (*GFII*) gene on chromosome 1, with cg12876356 as the lead (meta-analyzed  
361 effect =  $-1.11 \pm 0.22$ ; meta-analyzed  $p = 2.6 \times 10^{-6}$ ; FDR adjusted  $p = 0.006$ ; Table 2). There were  
362 no CpGs associated with the ever-smoker status at an FDR of 0.05, though the top signal  
363 (cg09935388) was also mapped to the *GFII* gene (Pearson's  $r^2$  correlation with cg12876356 =  
364 0.75 and 0.68 in CHILD and FAMILY, respectively; Supplementary Figure 1). The top  
365 associated CpG from the meta-analysis of smoking exposure (hours per week) in the European-  
366 origin cohorts (Figure 2-B) was cpg01798813 on chromosome 17, which was also associated



367 with maternal smoking and was consistent in the direction of association (meta-analyzed effect =  
368  $-0.18 \pm 0.04$ ; meta-analyzed  $p = 1.4 \times 10^{-5}$ ; FDR adjusted  $p = 0.04$ ; Table 2). There was no  
369 noticeable inflation of empirical type I error in the association p-values from the meta-analysis,  
370 with the median of the observed association test statistic roughly equal to the expected median  
371 (Supplementary Figure 2). As a sensitivity analysis, we repeated the analysis for the continuous  
372 smoking exposure under rank transformation vs. raw phenotype for the associated CpG in *GFII*  
373 and examined the regression diagnostics (Supplementary Material), and found that the model  
374 under rank-transformation deviated less from assumptions. Further, we observed consistency in  
375 the direction of association for the 128 CpGs that overlapped between our meta-analysis and the  
376 2,620 CpGs with evidence of association for maternal smoking (19) (Supplementary Figure 3).  
377 Specifically, the Pearson's correlation coefficient for maternal smoking and weekly smoking  
378 exposure was 0.72 and 0.60, respectively. The maternal smoking and smoking exposure EWASs  
379 in CHILD alone did not yield any CpGs after FDR correction (Supplementary Figure 4).

380

381

### 382 **Methylation Risk Score (MRS) Captures Maternal Smoking and Smoking Exposure**

383 The final MRSs, validated using CHILD European samples ( $n = 347$ ), included 15 and 143 CpG  
384 markers (Supplementary Table 7) from the targeted array and the epigenome-wide HM450 array,  
385 respectively. Both produced methylation scores that were significantly associated with maternal  
386 smoking history (ANOVA F-test  $p$ -values =  $1.0 \times 10^{-6}$  and  $2.4 \times 10^{-14}$  in CHILD and  $6.9 \times 10^{-16}$  and  
387  $< 2.2 \times 10^{-16}$  in FAMILY; Figure 3), and the best among alternative scores for CHILD and  
388 FAMILY (Supplementary Table 5). With the exception of the air pollution MRS, all remaining  
389 scores were marginally associated with smoking history in both CHILD and FAMILY

390 (Supplementary Figure 5) and correlated with each other (Supplementary Figure 6). There was  
391 no statistically significant difference in mean between the two scores in any of the three cohorts  
392 (two-sample t-test  $ps > 0.6$ ) or among non-smokers (two-sample t-test  $ps > 0.6$ ; Supplementary  
393 Figure 7). Since the HM450 score provides statistically more significant results in both CHILD  
394 and FAMILY with smoking history, despite the reduction in CpGs included (only 10 out of 143  
395 CpGs present in FAMILY; Supplementary Table 5), we proceeded with the HM450 MRS model  
396 constructed using the 143 CpGs in subsequent analyses.

397  
398 The HM450 MRS was significantly associated with maternal smoking history in CHILD  
399 and FAMILY ( $n = 397$ ), but not in START ( $n = 503$ ; Figure 3) – not surprisingly – due to the  
400 low number of ever-smokers ( $n = 2$ ). A weak dose-dependent relationship between the MRS and  
401 the four categories of maternal smoking status in the severity of exposure ([0] = never smoked;  
402 [1] = quit before this pregnancy; [2] = quit during this pregnancy; [3] = currently smoking) was  
403 present in CHILD but was not replicated in FAMILY (Figure 3). The areas under the Receiver  
404 Operating Characteristic (ROC) curve (area under the curve or AUC) for detecting current  
405 smokers were 0.95 and 0.89 in CHILD and FAMILY, respectively, while the AUCs for detecting  
406 ever-smokers were 0.61 and 0.60 (Supplementary Table 5), respectively. Meanwhile, the  
407 maternal smoking MRS was significantly associated with increased number of hours exposed to  
408 smoking per week in the two White European cohorts ( $1.97 \pm 0.38$  hours per 1 unit of increase in  
409 MRS, FDR adjusted  $p = 4.2 \times 10^{-6}$ ; Supplementary Table 8; cohort specific  $p = 0.0087$  in CHILD  
410 and  $0.51 \pm 0.15$ ,  $p = 6.9 \times 10^{-5}$  in FAMILY; Table 3), but not in the South Asian birth cohort ( $p =$   
411  $0.41$ ; Supplementary Table 8).

412

413           Among individuals who had never smoked, no statistically significant mean difference  
414 was observed in the distribution of the combined methylation score between South Asian and  
415 European cohorts (Supplementary Table 9). These results provided empirical support for the  
416 portability of an European-derived maternal smoking methylation score to South Asian  
417 populations.

418

419

#### 420 **Association between MRS and other phenotypes**

421 The maternal smoking MRS was consistently associated with increasing weekly smoking  
422 exposure in children reported by mothers at the 1-year visit ( $0.44\pm 0.15$ ,  $p=0.0044$ ) in CHILD,  
423 and at 3-year visit ( $0.86\pm 0.26$ ,  $p=0.0037$ ; Supplementary Table 8) in FAMILY, but not in  
424 START as everyone reported non-exposure to smoking. A higher maternal smoking MRS was  
425 significantly associated with lower birth weight ( $-0.05\pm 0.01$ ,  $p=3.4\times 10^{-4}$ ) and smaller birth size  
426 ( $-0.22\pm 0.07$ ,  $p=0.0016$ ) in the combined European and South Asian cohorts (Table 3;  
427 Supplementary Table 8). The meta-analysis revealed no heterogeneity in the direction nor the  
428 effect size of associations for body size and weight between populations at birth or at later visits  
429 (heterogeneity  $p$ -values = 0.18–1; Supplementary Table 8). The association between the MRS  
430 and several children phenotypes, including height or length, weight, and skinfolds, appeared to  
431 persist with similar estimated effects throughout early developmental years (Supplementary  
432 Table 8), albeit the most significant effects were at birth, and the significance attenuated at later  
433 visits. We did not find any association with self-reported allergy or asthma in children at later  
434 visits (Supplementary Table 8). Further, there was no evidence of association between the MRS  
435 and any maternal outcomes (Supplementary Table 8).

436

437

## 438 **Discussion**

439

440 We examined the epigenetic signature of maternal smoking and smoking exposure using  
441 newborn cord blood samples from predominately European-origin and South Asian cohorts via  
442 two strategies: an individual CpG-level EWAS approach, and a multivariate approach in the  
443 form of a methylation score. The EWAS results replicated the association between maternal  
444 smoking and CpGs in the *GFII* gene that is well described in the literature with respect to  
445 smoking (15,17), maternal smoking (19,20,56,57), and birth weight (23). In the latter case, we  
446 observed a significant association with maternal smoking history and smoking exposure in  
447 European-origin newborns. Further, we noted a weak dose-dependent relationship between  
448 maternal smoking history and the methylation score in one European cohort (CHILD) but this  
449 was not replicated in the other (FAMILY). Since the timing and duration of maternal smoking  
450 during pregnancy were not directly available, these differences could play a role in the  
451 magnitude and specificity of DNA methylation changes in cord blood. Finally, the significant  
452 association of the MRS with the newborn health metrics in START, in the absence of mothers'  
453 active smoking, could be the result of underreporting of smoking, poor recall of the time of  
454 quitting, and/or due to air pollution exposure (58), leading to oxidative stress. This suggests that  
455 our cord blood DNAm signature of maternal smoking is perhaps not unique to cigarette smoking,  
456 but captures similar biochemical responses, for example, via the aryl hydrocarbon receptor  
457 (59,60). Our observation that a higher MRS was associated with lower birth weight and smaller

458 birth length in both ethnic populations is thus consistent with the established link between  
459 oxidative stress and metabolic syndrome (61).

460  
461 Contrary to DNA methylation studies of smoking in adults, where whole blood is often  
462 used as a proxy tissue, there are multiple relevant tissues for maternal smoking during pregnancy,  
463 including the placenta of the mother, newborn cord blood, and children's whole blood. However,  
464 methylation changes measured in whole blood or placenta of the mother, or cord blood of infants  
465 showed substantially different patterns of association signals (62). There are several advantages  
466 of using a cord blood based biomarker from the DoHaD perspective. Firstly, cord blood provides  
467 a direct reflection of the *in utero* environment and fetal exposure to maternal smoking.  
468 Additionally, since cord blood is collected at birth, it eliminates potential confounding factors  
469 such as postnatal exposures that may affect maternal blood samples. Furthermore, studying cord  
470 blood DNAm allows for the assessment of epigenetic changes specifically relevant to the  
471 newborn, offering valuable information on the potential long-term health implications.  
472 Meanwhile, methylation signals are known to be tissue-specific, thus it would be of interest for  
473 future research to combine differential methylation patterns from all relevant tissue to assess the  
474 immediate and long-term effects of maternal smoking. Another direction to further this line of  
475 research is to explore postnatal factors that mitigate prenatal exposures, for example,  
476 breastfeeding, which has been shown to have a protective effect against maternal tobacco  
477 smoking (63). Indeed, more research is necessary to understand the critical periods of exposure  
478 and the dose-response relationship between maternal smoking and cord blood DNA methylation  
479 changes. Ongoing efforts to monitor the offspring and collect data in the next decade are in  
480 progress to establish the long-term association between maternal smoking and cardio-metabolic

481 health (43,44). As such, the constructed MRS can facilitate future research in child health and  
482 will be included as part of the generated data for others to access.

483  
484 The strengths of this report include ethnic diversity, and fine phenotyping in a  
485 prospective and harmonized way with follow-up at multiple early childhood stages. This work is  
486 the first major multi-ancestry study that utilizes methylation scores to study maternal smoking  
487 and examines their portability from European-origin populations to South Asians. The use of  
488 MRS, as compared to individual CpGs, is a powerful tool to systematically investigate the  
489 influence of DNA methylation changes and whether it has lasting functional consequences on  
490 health outcomes. Our results converge with previous findings that epigenetic associations of  
491 maternal smoking are associated with newborn health, and add to the small body of evidence that  
492 these relationships extend to non-European populations and that different ancestral populations  
493 can experience the early developmental periods differently.

494  
495 A few limitations should be mentioned. In the context of existing epigenetic studies of  
496 maternal smoking, we were not able to replicate signals in other well-reported genes such as  
497 *AHRR*, *CYP1A1*, and *MYO1G*, however, the MRS was able to pick up signals from these genes  
498 (Supplementary Table 7). This could be due to several reasons. First, the customized array with a  
499 limited number of CpGs (<3,000) was designed in 2016 and many large EWASs on smoking and  
500 maternal smoking conducted more recently had not been included. Nonetheless, we have shown  
501 that from a multivariate perspective, the MRS constructed using a targeted approach that was  
502 carefully designed can be equally powerful with the advantage of being cost-effective. Second,  
503 contrary to existing EWASs where the methylation values are typically treated as the outcome,

504 and the exposure, such as smoking, as the predictor; we reversed the regression such that the  
505 methylation levels were the predictors and smoking exposure as the outcome. This reverse  
506 regression approach is robust and our choice to reverse the regression was motivated by the goal  
507 of constructing a smoking score that combines the additive effects at multiple CpGs, which  
508 would otherwise be unfeasible. Third, systematic ancestral differences in DNA methylation  
509 patterns had been shown to vary at individual CpGs in terms of their association with smoking  
510 (30). Converging with this conclusion, we also found the association with *GFII* to be most  
511 consistent after adjusting for cell composition. Finally, maternal smoking is often associated with  
512 other confounding factors, such as socioeconomic status, other lifestyle behaviours, and  
513 environmental exposures. While we have done our best to control for well-known confounders  
514 that were available by study design, as in all observational studies, we could not account for  
515 unknown confounding effects. Finally, in recent years, maternal smoking is on a decline as a  
516 result of changes in social norms and public health policies (64). This is also consistent with the  
517 lower smoking rates observed in our European cohorts (CHILD and FAMILY).

518  
519 In conclusion, the epigenetic maternal smoking score we constructed was strongly  
520 associated with smoking status during pregnancy and self-reported smoking exposure in White  
521 Europeans, and with smaller birth size and lower birth weight in the combined South Asian and  
522 White European cohorts. The proposed cord blood epigenetic signature of maternal smoking has  
523 the potential to identify newborns who were exposed to maternal smoking *in utero* and to assess  
524 the long-term impact of smoking exposure on offspring health. In South Asian mothers with  
525 minimal smoking behaviour, the relationship between the methylation score and negative health

526 outcomes in newborns is still apparent, indicating that DNA methylation response is sensitive to  
 527 smoking exposure, even in the absence of active smoking.

528

529

530

531

532

533

534

535

536

537 **Tables and Figure legends**

538 **Table 1. Characteristics of the epigenetic subsample (1,267 mother–newborn pairs) from**

539 **the CHILD, FAMILY, START cohorts.**

	<b>CHILD</b>	<b>FAMILY</b>	<b>START</b>	<b>ANOVA F-test or Chi-squared test P-value for differences</b>
<b>Phenotypes</b>	<b>(N=352)</b>	<b>(N=411)</b>	<b>(N=504)</b>	
<b>Mother</b>				
<b>Smoking History</b>				
never smoked	247 (70.2%)	253 (61.6%)	501 (99.4%)	<0.001*
quit before this pregnancy	72 (20.5%)	58 (14.1%)	1 (0.2%)	
quit during this pregnancy	17 (4.8%)	57 (13.9%)	1 (0.2%)	
currently smoking	11 (3.1%)	29 (7.1%)	0 (0%)	
Missing	5 (1.4%)	14 (3.4%)	1 (0.2%)	
<b>Smoking Exposure (hr/week)</b>				
Mean (SD)	0.97 (± 7.64)	2.52 (± 12.83)	0.33 (± 2.67)	<0.001
Missing	12 (3.4%)	5 (1.2%)	42 (8.3%)	
<b>Gestational Diabetes Mellitus</b>				



	YES	16 (4.5%)	66 (16.1%)	183 (36.3%)	<0.001
	NO	336 (95.5%)	345 (83.9%)	320 (63.5%)	
	Missing	0 (0%)	0 (0%)	1 (0.2%)	
	<b>Years of Education</b>				<0.001
	Mean (SD)	16.96 ( $\pm$ 3.08)	16.85 ( $\pm$ 3.39)	15.81 ( $\pm$ 2.41)	
	Missing	7 (2.0%)	3 (0.7%)	0 (0%)	
	<b>Mother's Age</b>				<0.001
	Mean (SD)	32.69 ( $\pm$ 4.45)	31.86 ( $\pm$ 5.42)	30.12 ( $\pm$ 3.91)	
	Missing	4 (1.1%)	0 (0%)	0 (0%)	
	<b>Parity</b>				0.01
	Mean (SD)	0.72 ( $\pm$ 0.88)	0.80 ( $\pm$ 1.02)	0.80 ( $\pm$ 0.81)	
	Missing	2 (0.6%)	0 (0%)	13 (2.6%)	
	<b>Pre-pregnancy BMI (kg/m<sup>2</sup>)</b>				<0.001
	Mean (SD)	24.78 ( $\pm$ 5.42)	26.46 ( $\pm$ 6.38)	23.71 ( $\pm$ 4.45)	
	Missing	132 (37.5%)	16 (3.9%)	2 (0.4%)	
	<b>Newborn Sex</b>				0.01
	Male	194 (55.1%)	211 (51.3%)	239 (47.4%)	
	Female	158 (44.9%)	200 (48.7%)	265 (52.6%)	
	<b>Plant Based Diet</b>				<0.001
	Mean (SD)	-0.48 ( $\pm$ 0.46)	0.19 ( $\pm$ 0.67)	1.56 ( $\pm$ 1.14)	
	Missing	23 (6.5%)	36 (8.8%)	16 (3.2%)	
	<b>Health Conscious Diet</b>				<0.001
	Mean (SD)	0.21 ( $\pm$ 0.81)	-0.73 ( $\pm$ 0.73)	-0.42 ( $\pm$ 0.79)	
	Missing	23 (6.5%)	36 (8.8%)	16 (3.2%)	
	<b>Western Diet</b>				<0.001
	Mean (SD)	-0.15 ( $\pm$ 0.63)	1.06 ( $\pm$ 1.20)	-0.51 ( $\pm$ 0.65)	
	Missing	23 (6.5%)	36 (8.8%)	16 (3.2%)	
<b>Newborn</b>	<b>Gestational Age (weeks)</b>				<0.001
	Mean (SD)	39.53 ( $\pm$ 1.38)	39.44 ( $\pm$ 1.47)	39.20 ( $\pm$ 1.32)	
	Missing	4 (1.1%)	0 (0%)	0 (0%)	
	<b>Birth Length (cm)</b>				<0.001
	Mean (SD)	51.68 ( $\pm$ 2.52)	50.20 ( $\pm$ 2.16)	51.44 ( $\pm$ 2.69)	
	Missing	71 (20.2%)	10 (2.4%)	7 (1.4%)	
	<b>Birth Weight (kg)</b>				<0.001
	Mean (SD)	3.50 ( $\pm$ 0.49)	3.53 ( $\pm$ 0.50)	3.26 ( $\pm$ 0.46)	
	Missing	6 (1.7%)	0 (0%)	1 (0.2%)	
	<b>Newborn BMI (kg/m<sup>2</sup>)</b>				<0.001
	Mean (SD)	13.11 ( $\pm$ 1.41)	13.94 ( $\pm$ 1.29)	12.31 ( $\pm$ 1.39)	
	Missing	72 (20.5%)	10 (2.4%)	7 (1.4%)	
	<b>Newborn Ponderal Index (kg/m<sup>3</sup>)</b>				

	Mean (SD)	25.45 (± 3.14)	27.79 (± 2.55)	24.02 (± 3.17)	<0.001
	Missing	72 (20.5%)	10 (2.4%)	7 (1.4%)	
<b>Estimated cell proportions</b>	<b>CD8T</b>				
	Mean (SD)	0.01 (± 0.01)	0.04 (± 0.03)	0.02 (± 0.02)	<0.001
	<b>CD4T</b>				
	Mean (SD)	0.11 (± 0.06)	0.13 (± 0.06)	0.16 (± 0.07)	<0.001
	<b>NK</b>				
	Mean (SD)	0.02 (± 0.02)	0.03 (± 0.03)	0.02 (± 0.03)	<0.001
	<b>Bcell</b>				
	Mean (SD)	0.02 (± 0.02)	0.04 (± 0.03)	0.04 (± 0.03)	<0.001
	<b>Mono</b>				
	Mean (SD)	0.01 (± 0.02)	0.04 (± 0.03)	0.03 (± 0.03)	<0.001
	<b>Gran</b>				
	Mean (SD)	0.80 (± 0.10)	0.60 (± 0.13)	0.72 (± 0.14)	<0.001
	<b>nRBC</b>				
	Mean (SD)	0.08 (± 0.08)	0.12 (± 0.11)	0.07 (± 0.11)	<0.001
<b>MNLR</b>					
Mean (SD)	6.59 (± 6.00)	3.30 (± 3.14)	3.98 (± 3.08)	<0.001	
	Missing	6 (1.7%)	0 (0%)	3 (0.6%)	

\* comparison for CHILD and FAMILY only

540

541

542

543

**Table 2. Meta-analysis results of association between CpGs and maternal smoking and smoking exposure that passed a**

544

**marginal  $p < 0.05$  threshold after the false discovery rate correction in European cohorts.**

	CHR	Position	CpG	UCSC Reference Gene	Meta-analysis (CHILD and FAMILY)				Cohort-specific association P-value		Reported Association EWAS catalog	
					Fixed Effect	Standard Error	Association P-value	P-value for Effect Heterogeneity	FDR adjusted Association P-value	CHILD		FAMILY
<b>Maternal Smoking</b>	1	92481269	<u>cg12876356</u>	<i>GFII</i>	-1.11	0.22	7.33E-07	0.51	0.0019	0.02	9.45E-06	MS;S; AC; B
	1	92482032	<u>cg09935388</u>	<i>GFII</i>	-1.15	0.24	2.26E-06	0.52	0.0029	0.02	2.71E-05	MS;GA; S; A BMI; BW
	1	92482405	<u>cg14179389</u>	<i>GFII</i>	-1.48	0.32	5.03E-06	0.73	0.0035	0.01	1.12E-04	MS;S
	1	92481144	<u>cg18146737</u>	<i>GFII</i>	-0.92	0.20	5.58E-06	0.50	0.0035	0.04	3.95E-05	MS;S; AC; B
	1	92480576	<u>cg09662411</u>	<i>GFII</i>	-0.94	0.22	1.64E-05	0.29	0.0083	0.10	3.85E-05	MS;S
	1	92481479	cg18316974	<i>GFII</i>	-0.74	0.18	3.58E-05	0.33	0.0152	0.13	7.34E-05	MS;S; AC; B
	17	2494783943	cg01798813	–	-0.83	0.21	1.09E-04	0.34	0.0395	0.02	0.0016	A; GA; BMI
<b>Smoking Exposure</b>	1	92482032	<u>cg09935388</u>	<i>GFII</i>	-0.18	0.04	1.39E-05	0.23	0.04	0.15	2.45E-05	MS;GA; S; A BMI; BW
	17	2494783943	cg01798813	–	-0.18	0.04	3.30E-05	0.13	0.04	0.00035	0.013	A; GA; BMI

545

546 MS: maternal smoking

547 GA: gestational age

548 AC: alcohol consumption

549 BMI: body mass index

550 T2D: type 2 diabetes

551 A: age

552 BW: birth weight

553

554

555

556

557

558

559

560

561

562

563

564

565 **Table 3. Significant associations between maternal smoking methylation risk score and phenotypes in CHILD, FAMILY and**566 **START.**

	Meta-analysis (CHILD, FAMILY, START)					Cohort-specific association P-value		
	Fixed Effect	Standard Error	Association P-value	FDR adjusted Association P-value	P-value for Effect Heterogeneity	CHILD	FAMILY	START
Smoking Exposure (hr/week)	0.29	0.12	0.012	0.032	7.32E-07	5.40E-05	3.41E-05	0.58
Gestational Age (weeks)	0.30	0.12	0.011	0.032	1.70E-07	6.32E-05	6.38E-06	0.59
Birth Length (cm)	-0.22	0.07	0.0016	0.0076	0.33	0.35	0.16	0.0023
Birth Weight (kg)	-0.05	0.01	3.42E-04	0.0021	0.66	0.016	0.026	0.094
1-year Height (cm)	-0.38	0.09	2.00E-05	5.99E-04	0.89	0.047	0.0070	0.0079
1-year Weight (kg)	-0.09	0.04	0.018	0.044	1.00	0.16	0.17	0.19
2-year Height (cm)	-0.39	0.13	0.0018	0.0076	0.50	0.72	0.059	0.0067
3-year Skinfold thickness	0.52	0.14	1.08E-04	0.0015	0.24	0.014	0.0011	0.38
5-year Height (cm)	-0.43	0.17	0.0090	0.030	0.94	0.16	0.07	0.21
5-year Skinfold thickness	0.50	0.18	0.0061	0.023	0.59	0.019	0.089	0.77

567

568

569 **Figure Legends:**

570 **Figure 1. Schematic overview of the analytical pipeline for the cord blood DNAm maternal**  
571 **smoking score and association study.**

572 \* indicates cohort sample size including those with missing smoking history.

573

574 **Figure 2. Manhattan plots of the meta-analyzed association between cord blood DNAm and**  
575 **maternal smoking in Europeans.**

576 Manhattan plots summarized the meta-analyzed association  $p$ -values between cord blood DNA  
577 methylation levels and current maternal smoking (A) or smoking exposure (B) at a common set  
578 of 2,114 CpG sites. The red line denotes the smallest  $-\log_{10}(p\text{-value})$  that is below the FDR  
579 correction threshold of 0.05. The red dots represent established associations with maternal  
580 smoking reported in Joubert and colleagues (19).

581

582 **Figure 3. Relationships between maternal smoking MRS and maternal smoking history**  
583 **categories for each of the studies.**

584

585 Maternal smoking methylation score (y-axis) was shown as a function of maternal smoking  
586 history (x-axis) in levels of severity for prenatal exposure for each study. Each severity level was  
587 compared to the never-smoking group and the corresponding two-sample  $t$ -test  $p$ -value was  
588 reported. The analysis of variance via an F-test  $p$ -value was used to indicate whether a mean  
589 difference in methylation score was present among all smoking history categories. The sample  
590 size for START cohort was provided due to the low counts in categories of any smoking.

591

592 **Supporting Information captions**

593

594 **Supplementary Material.**

595

596 **Suppl. Table 1. Quality controls for the inclusion/exclusion of samples and methylation**  
597 **probes.**

598

599 **Suppl. Table 2. Characteristics of the overall sample include 5176 mother–newborn pairs**  
600 **from the CHILD, FAMILY, and START cohorts.**

601

602 **Suppl. Table 3. A summary of available analyses and outcome variables in each cohort.**

603

604 **Suppl. Table 4. A summary of the DNAm maternal smoking score derivation design and**  
605 **results.**

606

607 **Suppl. Table 5. Score weights for external DNAm maternal smoking scores.**

608

609 **Suppl. Table 6. Characteristics of the epigenetic subsample from CHILD and FAMILY**  
610 **cohorts stratified by smoking status.**

611

612 **Suppl. Table 7. A summary of CpGs that contribute to the DNAm maternal smoking scores**  
613 **and their weights.**

614

615 **Suppl. Table 8. Association between maternal smoking methylation risk score and**  
616 **phenotypes in CHILD, FAMILY and START.**

617 **Suppl. Table 9. Summary of mean difference in methylation risk scores between studies in**  
618 **overall samples and those never smoked.**

619

620

621

622

623 **Supplementary Figure 1. Manhattan plots of the meta-analyzed association between cord**  
624 **blood DNA methylation and ever maternal smoking in the combined European cohorts.**

625 The meta-analyzed association  $p$ -values for ever maternal smoking and methylation levels at  
626 2,114 CpG sites were summarized in the Manhattan plot. Ever maternal smoking was defined to  
627 compare those who were currently smoking or quit before or during this pregnancy vs. those  
628 never smoked. The red line denotes the smallest  $-\log_{10}(p\text{-value})$  that is below the FDR  
629 correction threshold of 0.05. The red dots represent established associations with maternal  
630 smoking reported in Joubert and colleagues (19).

631

632 **Supplementary Figure 2. Quantile-quantile plots of the meta-analyzed association between**  
633 **cord blood DNA methylation and maternal smoking history, smoking exposure in the**  
634 **combined European cohorts.**

635 Quantile-quantile plots summarized the association  $p$ -values between cord blood DNA  
636 methylation levels and current maternal smoking (A) or ever maternal smoking (B) or weekly



637 smoking exposure (C) at 2,114 CpG sites. The red line ( $y=x$ ) is the line of reference and the  
638 genomic inflation factor, calculated as the ratio between the observed median and the theoretical  
639 median of the association test statistics, was annotated for each outcome.

640

641 **Supplementary Figure 3. Scatterplots of meta-analyzed association effects for maternal**  
642 **smoking history or smoking exposure and reported effects of maternal smoking.**

643 Panel A) is the scatterplot of meta-analyzed effects for maternal smoking in the combined  
644 CHILD and FAMILY cohorts (x-axis) vs. reported effects for maternal smoking in Joubert et al.,  
645 2016 (y-axis) for all CpGs present in CHILD, FAMILY, and Joubert et al., 2016 (# CpGs = 128);  
646 Panel B) is the scatterplot of meta-analyzed effects for weekly smoking exposure in the  
647 combined CHILD and FAMILY cohorts (x-axis) vs. reported effects for maternal smoking in  
648 Joubert et al., 2016 (y-axis) for all CpGs present in CHILD, FAMILY, and Joubert et al., 2016 (#  
649 CpGs = 128). The solid gray line is the best fitted line (95% confidence interval shown as the  
650 shaded area) for the linear relationship between the effect sizes and the dashed gray line  
651 represents the reference of  $y=x$ . (19)

652

653

654 **Supplementary Figure 4. Manhattan plots of the Epigenome-wide associations between**  
655 **cord blood DNAm and maternal smoking history, smoking exposure in CHILD.**

656 Manhattan plots summarized the association  $p$ -values between cord blood DNA methylation  
657 levels and current maternal smoking (A) or ever maternal smoking (B) or weekly smoking  
658 exposure (C) at 200,050 CpG sites. The red line denotes the smallest  $-\log_{10}(p\text{-value})$  that is

659 below the FDR correction threshold of 0.05. The red dots represent established associations with  
660 maternal smoking reported in Joubert and colleagues (19).

661  
662 (19)

663 **Supplementary Figure 5. A comparison of results for derived and external maternal**  
664 **smoking MRSs.**

665 Maternal smoking methylation score (y-axis) was shown as a function of maternal smoking  
666 history (x-axis) in levels of severity ([0] = never smoked; [1] = quit before this pregnancy; [2] =  
667 quit during this pregnancy; [3] = currently smoking) for prenatal exposure for each study. **The**  
668 **scores shown were validated in 1) CHILD, 2) CHILD but restricted to CpGs that were also**  
669 **present on the targeted array, 3) FAMILY using CpGs on the targeted array.** Each severity  
670 level was compared to the never smoking group and the corresponding two sample *t*-test *p*-value  
671 was reported. An omnibus test *p*-value to test whether a mean difference in methylation score  
672 was present among all smoking history categories.

673  
674 **Supplementary Figure 6. A heatmap of correlation between derived and external maternal**  
675 **smoking MRSs.**

676 This heatmap illustrates the pairwise correlation between MRSs calculated in A) CHILD, B)  
677 FAMILY, and C) START. Each cell represents the correlation coefficient, ranging from -1 to 1,  
678 indicating the strength and direction of the association. A value of 1 signifies a perfect positive  
679 correlation, while -1 indicates a perfect negative correlation. Values closer to 0 suggest no  
680 correlation. The color gradient from deep blue (strong negative correlation), through white (no

681 correlation), to deep red (strong positive correlation), visually encodes the strength of these  
682 relationships. The scores in the black box were derived using lassosum and internally validated.

683

#### 684 **Supplementary Figure 7. Comparison of all methylation scores stratified by study.**

685 The boxplots captured the standardized maternal smoking methylation scores (y-axis) stratified  
686 by study. The top panels summarized results for all samples in CHILD, FAMILY, and START,  
687 while the bottom panels summarized results for only those in CHILD, FAMILY, and START  
688 that never smoked. The *p*-values indicate the significance for a mean difference for each pairwise  
689 comparison between the HM450K score validated in CHILD with other scores using two-sample  
690 *t*-tests.

691

692

#### 693 **Acknowledgements**

694 We express our sincere gratitude to all the participating families and the START, FAMILY, and  
695 CHILD study teams, including interviewers, nurses, computer and laboratory technicians,  
696 clerical workers, research scientists, volunteers, managers, and receptionists.

697

698 We would like to acknowledge the Genetic and Molecular Epidemiology Laboratory (GMEL),  
699 an associate of Hamilton Health Sciences and McMaster University, for their indispensable  
700 contributions to this work. The technical staff of GMEL conducted all epigenetic profiling,  
701 including sample processing and other technical operations.

702

703 We thank the members of the Nutrigen Alliance for providing the data: Sonia S. Anand;  
704 Stephanie A. Atkinson; Meghan Azad; Allan B. Becker; Jeffrey Brook; Judah A Denburg;  
705 Dipika Desai; Russell J. de Souza; Milan K. Gupta; Michael Kobor; Diana L. Lefebvre; Wendy  
706 Lou; Piushkumar J. Mandhane; Sarah McDonald; Andrew Mente; David Meyre; Theo J. Moraes;  
707 Katherine M. Morrison; Guillaume Paré; Malcolm R. Sears; Padmaja Subbarao; Koon K. Teo;  
708 Stuart E. Turvey; Julie Wilson; Salim Yusuf; Gita Wahi; Michael A. Zulyniak.

709  
710 This study was funded by the Canadian Institutes of Health Research Metabolomics Team Grant:  
711 MWG-146332. Dr. Anand is supported by a Tier 1 Canada Research Chair in Ethnicity and CVD  
712 and Heart, Stroke Foundation Chair in Population Health, a grant from the Canadian Partnership  
713 Against Cancer, Heart and Stroke Foundation of Canada and Canadian Institutes of Health  
714 Research. Dr. Azad is supported by a Tier 2 Canada Research Chair in the Developmental  
715 Origins of Chronic Disease.

#### 716 **Data availability statement**

717 The summary statistics used to construct methylation risk scores are available from EWAS  
718 catalog at <http://www.ewascatalog.org/?trait=maternal%20smoking%20in%20pregnancy> with  
719 additional filters of PubMID 27040690 and analysis on “Sustained maternal smoking in  
720 pregnancy effect on newborns adjusted for cell composition”.

721  
722 Summary statistics generated in the current study, including a total of 8 primary association  
723 studies (three smoking phenotypes in three cohorts) and 3 sets of meta-analyzed results in  
724 Europeans are available upon request. All scripts to reproduce and validate the predictive model

725 can be found at

726 <https://github.com/WeiAkaneDeng/EpigeneticResearch/tree/main/MaternalSmoking>.

727

## 728 **Conflicts of interest**

729 No conflict of interest.

730

## 731 **Ethics Statement**

732 Ethical approval was obtained independently from the Hamilton Integrated Research Ethics

733 Board: CHILD (REB 07–2929), FAMILY (REB 02–060), and START (REB 10–640). CHILD

734 was additionally approved by the respective Human Research Ethics Boards at McMaster

735 University, the Universities of Manitoba, Alberta, and British Columbia, and the Hospital for

736 Sick Children. Legal guardians of each participant provided written informed consent. Written

737 informed consent was obtained from the parent/guardian (participating mother) for each study

738 separately. We also have now obtained additional ethics board approval from HiREB (REB

739 16592) for using the data from the three cohorts together without additional consent from the

740 participants.

## 741 **Reference**

742

- 743 1. Stock SJ, Bauld L. Maternal smoking and preterm birth: An unresolved health challenge.  
744 Vol. 17, PLoS Medicine. 2020.
- 745 2. Liu B, Xu G, Sun Y, Qiu X, Ryckman KK, Yu Y, et al. Maternal cigarette smoking before  
746 and during pregnancy and the risk of preterm birth: A dose–response analysis of 25  
747 million mother–infant pairs. PLoS Med. 2020;17(8).
- 748 3. Marufu TC, Ahankari A, Coleman T, Lewis S. Maternal smoking and the risk of still birth:  
749 systematic review and meta-analysis. BMC Public Health. 2015;15(1).
- 750 4. Ventura SJ, Hamilton BE, Mathews TJ, Chandra A. Trends and variations in smoking  
751 during pregnancy and low birth weight: Evidence from the birth certificate, 1990-2000.  
752 Pediatrics. 2003;111(5 II).

- 753 5. U.S. Department of Health and Human Services. The Health Consequences of Smoking—  
754 50 Years of Progress A Report of the Surgeon General. A Report of the Surgeon General.  
755 2014.
- 756 6. Montgomery SM, Ekblom A. Smoking during pregnancy and diabetes mellitus in a British  
757 longitudinal birth cohort. *Br Med J*. 2002;324(7328).
- 758 7. Toschke A, Koletzko B, Slikker W, Hermann M, von Kries R. Childhood obesity is  
759 associated with maternal smoking in pregnancy. *Eur J Pediatr*. 2002;161(8).
- 760 8. Oken E, Levitan EB, Gillman MW. Maternal smoking during pregnancy and child  
761 overweight: Systematic review and meta-analysis. Vol. 32, *International Journal of*  
762 *Obesity*. 2008.
- 763 9. Philips EM, Santos S, Trasande L, Aurrekoetxea JJ, Barros H, von Berg A, et al. Changes  
764 in parental smoking during pregnancy and risks of adverse birth outcomes and childhood  
765 overweight in Europe and North America: An individual participant data meta-analysis of  
766 229,000 singleton births. *PLoS Med*. 2020;17(8).
- 767 10. England LJ, Grauman A, Qian C, Wilkins DG, Schisterman EF, Yu KF, et al.  
768 Misclassification of maternal smoking status and its effects on an epidemiologic study of  
769 pregnancy outcomes. *Nicotine and Tobacco Research*. 2007;9(10).
- 770 11. Shipton D, Tappin DM, Vadiveloo T, Crossley JA, Aitken DA, Chalmers J. Reliability of  
771 self reported smoking status by pregnant women for estimating smoking prevalence: A  
772 retrospective, cross sectional study. *BMJ (Online)*. 2009;339(7732).
- 773 12. Salmasi G, Grady R, Jones J, McDonald SD. Environmental tobacco smoke exposure and  
774 perinatal outcomes: a systematic review and meta-analyses. Vol. 89, *Acta obstetrica et*  
775 *gynecologica Scandinavica*. 2010.
- 776 13. Yousefi PD, Suderman M, Langdon R, Whitehurst O, Davey Smith G, Relton CL. DNA  
777 methylation-based predictors of health: applications and statistical considerations. Vol. 23,  
778 *Nature Reviews Genetics*. 2022.
- 779 14. Shenker NS, Ueland PM, Polidoro S, Van Veldhoven K, Ricceri F, Brown R, et al. DNA  
780 methylation as a long-term biomarker of exposure to tobacco smoke. *Epidemiology*.  
781 2013;24(5).
- 782 15. Joehanes R, Just AC, Marioni RE, Pilling LC, Reynolds LM, Mandaviya PR, et al.  
783 Epigenetic Signatures of Cigarette Smoking. *Circ Cardiovasc Genet*. 2016;9(5).
- 784 16. Guida F, Sandanger TM, Castagné R, Campanella G, Polidoro S, Palli D, et al. Dynamics  
785 of smoking-induced genome-wide methylation changes with time since smoking cessation.  
786 *Hum Mol Genet*. 2015;24(8).
- 787 17. Sikdar S, Joehanes R, Joubert BR, Xu CJ, Vives-Usano M, Rezwan FI, et al. Comparison  
788 of smoking-related DNA methylation between newborns from prenatal exposure and  
789 adults from personal smoking. *Epigenomics*. 2019;11(13).
- 790 18. Zeilinger S, Kühnel B, Klopp N, Baurecht H, Kleinschmidt A, Gieger C, et al. Tobacco  
791 Smoking Leads to Extensive Genome-Wide Changes in DNA Methylation. *PLoS One*.  
792 2013 May 17;8(5).
- 793 19. Joubert BR, Felix JF, Yousefi P, Bakulski KM, Just AC, Breton C, et al. DNA  
794 Methylation in Newborns and Maternal Smoking in Pregnancy: Genome-wide  
795 Consortium Meta-analysis. *Am J Hum Genet*. 2016;98(4).
- 796 20. Hannon E, Schendel D, Ladd-Acosta C, Grove J, Hansen CS, Hougaard DM, et al.  
797 Variable DNA methylation in neonates mediates the association between prenatal

- 798 smoking and birth weight. *Philosophical Transactions of the Royal Society B: Biological*  
799 *Sciences*. 2019;374(1770).
- 800 21. Akhabir L, Stringer R, Desai D, Mandhane PJ, Azad MB, Moraes TJ, et al. DNA  
801 methylation changes in cord blood and the developmental origins of health and disease – a  
802 systematic review and replication study. *BMC Genomics*. 2022;23(1).
- 803 22. Witt SH, Frank J, Gilles M, Lang M, Treutlein J, Streit F, et al. Impact on birth weight of  
804 maternal smoking throughout pregnancy mediated by DNA methylation. *BMC Genomics*.  
805 2018;19(1).
- 806 23. Küpers LK, Xu X, Jankipersadsing SA, Vaez A, La Bastide-van Gemert S, Scholtens S, et  
807 al. DNA methylation mediates the effect of maternal smoking during pregnancy on  
808 birthweight of the offspring. *Int J Epidemiol*. 2015;44(4).
- 809 24. Xu R, Hong X, Zhang B, Huang W, Hou W, Wang G, et al. DNA methylation mediates  
810 the effect of maternal smoking on offspring birthweight: a birth cohort study of multi-  
811 ethnic US mother–newborn pairs. *Clin Epigenetics*. 2021;13(1).
- 812 25. Cardenas A, Lutz SM, Everson TM, Perron P, Bouchard L, Hivert MF. Mediation by  
813 Placental DNA Methylation of the Association of Prenatal Maternal Smoking and Birth  
814 Weight. *Am J Epidemiol*. 2019;188(11).
- 815 26. Murray R, Kitaba N, Antoun E, Titcombe P, Barton S, Cooper C, et al. Influence of  
816 maternal lifestyle and diet on perinatal DNA methylation signatures associated with  
817 childhood arterial stiffness at 8 to 9 years. *Hypertension*. 2021;78(3).
- 818 27. Raynor P, Duley L, Small N, Tuffnell D, Wild C, Wright J, et al. Born in Bradford, a  
819 cohort study of babies born in Bradford, and their parents: Protocol for the recruitment  
820 phase. *BMC Public Health*. 2008;8.
- 821 28. Elliott HR, Burrows K, Min JL, Tillin T, Mason D, Wright J, et al. Characterisation of  
822 ethnic differences in DNA methylation between UK-resident South Asians and Europeans.  
823 *Clin Epigenetics* [Internet]. 2022 Dec 1 [cited 2023 Mar 9];14(1). Available from:  
824 <https://pubmed.ncbi.nlm.nih.gov/36243740/>
- 825 29. Choquet H, Yin J, Jorgenson E. Cigarette smoking behaviors and the importance of  
826 ethnicity and genetic ancestry. *Transl Psychiatry*. 2021;11(1).
- 827 30. Elliott HR, Tillin T, McArdle WL, Ho K, Duggirala A, Frayling TM, et al. Differences in  
828 smoking associated DNA methylation patterns in South Asians and Europeans. *Clin*  
829 *Epigenetics*. 2014;6(1).
- 830 31. Bollepalli S, Korhonen T, Kaprio J, Anders S, Ollikainen M. EpiSmokEr: A robust  
831 classifier to determine smoking status from DNA methylation data. *Epigenomics*.  
832 2019;11(13).
- 833 32. Wright J, Small N, Raynor P, Tuffnell D, Bhopal R, Cameron N, et al. Cohort profile: The  
834 born in bradford multi-ethnic family cohort study. *Int J Epidemiol*. 2013;42(4).
- 835 33. Reitsma MB, Flor LS, Mullany EC, Gupta V, Hay SI, Gakidou E. Spatial, temporal, and  
836 demographic patterns in prevalence of smoking tobacco use and initiation among young  
837 people in 204 countries and territories, 1990–2019. *Lancet Public Health*. 2021;6(7).
- 838 34. de Souza RJ, Zulyniak MA, Desai D, Shaikh MR, Campbell NC, Lefebvre DL, et al.  
839 Harmonization of food-frequency questionnaires and dietary pattern analysis in 4  
840 ethnically diverse birth cohorts. *Journal of Nutrition*. 2016;146(11).
- 841 35. Bibikova M, Barnes B, Tsan C, Ho V, Klotzle B, Le JM, et al. High density DNA  
842 methylation array with single CpG site resolution. *Genomics*. 2011;98(4).

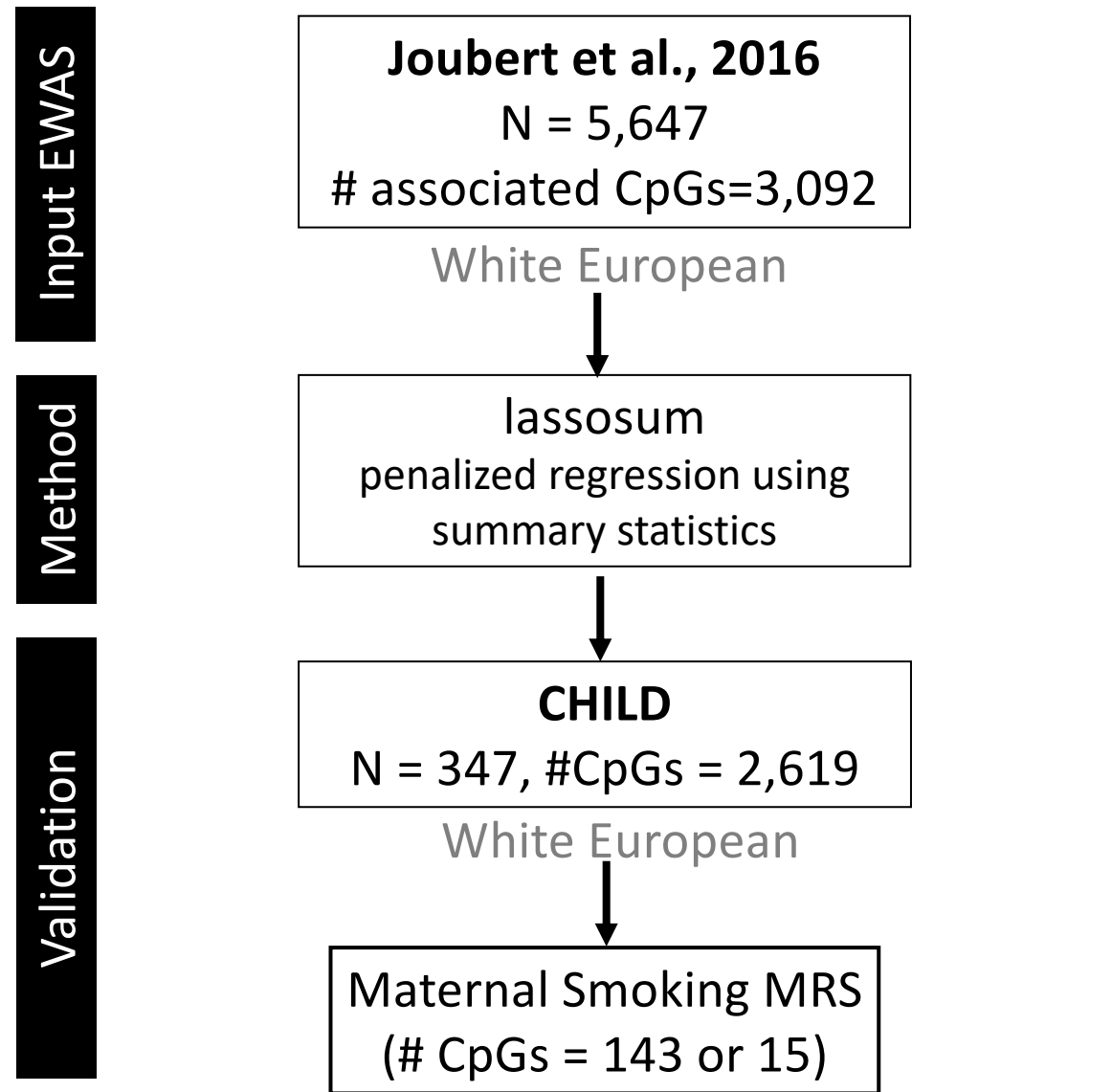


- 843 36. Zhou W, Triche TJ, Laird PW, Shen H. SeSAmE: Reducing artifactual detection of DNA  
844 methylation by Infinium BeadChips in genomic deletions. *Nucleic Acids Res.*  
845 2018;46(20).
- 846 37. Chen YA, Lemire M, Choufani S, Butcher DT, Grafodatskaya D, Zanke BW, et al.  
847 Discovery of cross-reactive probes and polymorphic CpGs in the Illumina Infinium  
848 HumanMethylation450 microarray. *Epigenetics.* 2013;8(2).
- 849 38. Zhou W, Laird PW, Shen H. Comprehensive characterization, annotation and innovative  
850 use of Infinium DNA methylation BeadChip probes. *Nucleic Acids Res.* 2017;45(4).
- 851 39. Pidsley R, Zotenko E, Peters TJ, Lawrence MG, Risbridger GP, Molloy P, et al. Critical  
852 evaluation of the Illumina MethylationEPIC BeadChip microarray for whole-genome  
853 DNA methylation profiling. *Genome Biol.* 2016;17(1).
- 854 40. Hillary RF, McCartney DL, McRae AF, Campbell A, Walker RM, Hayward C, et al.  
855 Identification of influential probe types in epigenetic predictions of human traits:  
856 implications for microarray design. *Clin Epigenetics.* 2022;14(1).
- 857 41. Gervin K, Salas LA, Bakulski KM, Van Zelm MC, Koestler DC, Wiencke JK, et al.  
858 Systematic evaluation and validation of reference and library selection methods for  
859 deconvolution of cord blood DNA methylation data. *Clin Epigenetics.* 2019;11(1).
- 860 42. R Core Team. R core team (2021). R: A language and environment for statistical  
861 computing. R Foundation for Statistical Computing, Vienna, Austria. URL [http://www.R-](http://www.R-project.org)  
862 [project.org](http://www.R-project.org). 2021.
- 863 43. Morrison KM, Atkinson SA, Yusuf S, Bourgeois J, McDonald S, McQueen MJ, et al. The  
864 Family Atherosclerosis Monitoring In earLY life (FAMILY) study. Rationale, design, and  
865 baseline data of a study examining the early determinants of atherosclerosis. *Am Heart J.*  
866 2009;158(4).
- 867 44. Anand SS, Vasudevan A, Gupta M, Morrison K, Kurpad A, Teo KK, et al. Rationale and  
868 design of South Asian Birth Cohort (START): A Canada-India collaborative study. *BMC*  
869 *Public Health.* 2013;13(1).
- 870 45. Metzger BE. International Association of Diabetes and Pregnancy Study Groups  
871 recommendations on the diagnosis and classification of hyperglycemia in pregnancy. Vol.  
872 33, *Diabetes Care.* 2010.
- 873 46. Anand SS, Razak F, Davis AD, Jacobs R, Vuksan V, Teo K, et al. Social disadvantage  
874 and cardiovascular disease: Development of an index and analysis of age, sex, and  
875 ethnicity effects. *Int J Epidemiol.* 2006;35(5).
- 876 47. Mak TSH, Porsch RM, Choi SW, Zhou X, Sham PC. Polygenic scores via penalized  
877 regression on summary statistics. *Genet Epidemiol.* 2017;(February):469–80.
- 878 48. Reese SE, Zhao S, Wu MC, Joubert BR, Parr CL, Håberg SE, et al. DNA methylation  
879 score as a biomarker in newborns for sustained maternal smoking during pregnancy.  
880 *Environ Health Perspect.* 2017;125(4).
- 881 49. Richmond RC, Suderman M, Langdon R, Relton CL, Smith GD. DNA methylation as a  
882 marker for prenatal smoke exposure in adults. *Int J Epidemiol [Internet].* 2018 Aug 1  
883 [cited 2023 Mar 9];47(4):1120–30. Available from:  
884 <https://academic.oup.com/ije/article/47/4/1120/5026413>
- 885 50. Rauschert S, Melton PE, Burdge G, Craig J, Godfrey KM, Holbrook JD, et al. Maternal  
886 smoking during pregnancy induces persistent epigenetic changes into adolescence,  
887 independent of postnatal smoke exposure and is associated with cardiometabolic risk.  
888 *Front Genet.* 2019;10(JUL).

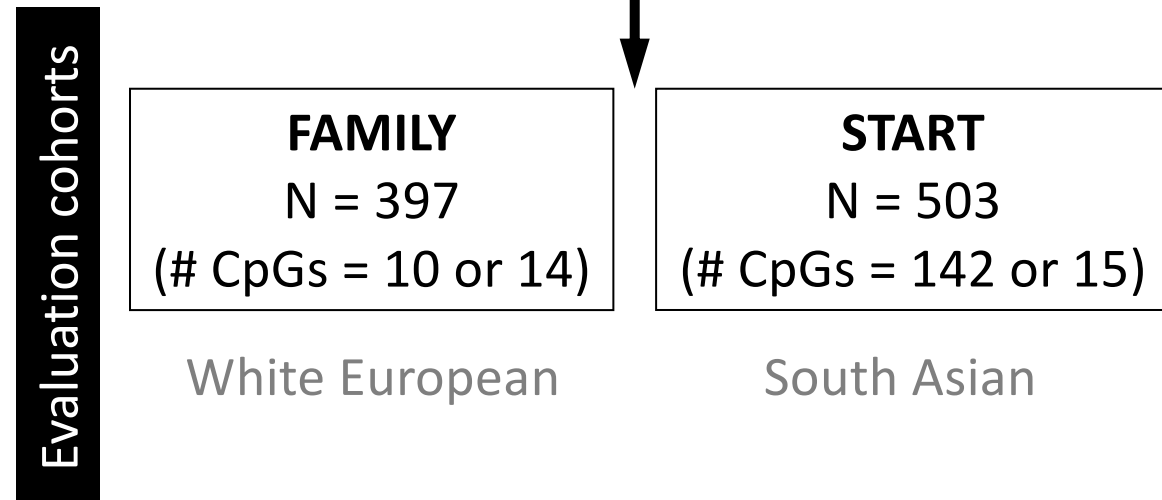


- 889 51. Gondalia R, Baldassari A, Holliday KM, Justice AE, Méndez-Giráldez R, Stewart JD, et  
890 al. Methylome-wide association study provides evidence of particulate matter air  
891 pollution-associated DNA methylation. *Environ Int.* 2019;132.
- 892 52. Subbarao P, Anand SS, Becker AB, Befus AD, Brauer M, Brook JR, et al. The Canadian  
893 Healthy Infant Longitudinal Development (CHILD) study: Examining developmental  
894 origins of allergy and asthma. *Thorax.* 2015;70(10).
- 895 53. Brydon P, Smith T, Proffitt M, Gee H, Holder R, Dunne F. Pregnancy outcome in women  
896 with type 2 diabetes mellitus needs to be addressed. *Int J Clin Pract.* 2000;54(7).
- 897 54. Farrar D, Fairley L, Santorelli G, Tuffnell D, Sheldon TA, Wright J, et al. Association  
898 between hyperglycaemia and adverse perinatal outcomes in south Asian and white British  
899 women: analysis of data from the Born in Bradford cohort. *Lancet Diabetes Endocrinol*  
900 [Internet]. 2015 Oct 1 [cited 2023 Jun 8];3(10):795. Available from:  
901 /pmc/articles/PMC4673084/
- 902 55. Lange S, Probst C, Rehm J, Popova S. National, regional, and global prevalence of  
903 smoking during pregnancy in the general population: a systematic review and meta-  
904 analysis. *Lancet Glob Health.* 2018;6(7).
- 905 56. Markunas CA, Xu Z, Harlid S, Wade PA, Lie RT, Taylor JA, et al. Identification of DNA  
906 Methylation Changes in Newborns Related to Maternal Smoking during Pregnancy.  
907 *Environ Health Perspect.* 2014;122(10).
- 908 57. Richmond RC, Simpkin AJ, Woodward G, Gaunt TR, Lyttleton O, McArdle WL, et al.  
909 Prenatal exposure to maternal smoking and offspring DNA methylation across the  
910 lifecourse: Findings from the Avon Longitudinal Study of Parents and Children  
911 (ALSPAC). *Hum Mol Genet.* 2015;24(8).
- 912 58. Rider CF, Carlsten C. Air pollution and DNA methylation: Effects of exposure in humans.  
913 Vol. 11, *Clinical Epigenetics.* 2019.
- 914 59. Vogel CFA, Van Winkle LS, Esser C, Haarmann-Stemmann T. The aryl hydrocarbon  
915 receptor as a target of environmental stressors – Implications for pollution mediated stress  
916 and inflammatory responses. Vol. 34, *Redox Biology.* 2020.
- 917 60. Reynolds LM, Wan M, Ding J, Taylor JR, Lohman K, Su D, et al. DNA Methylation of  
918 the Aryl Hydrocarbon Receptor Repressor Associations with Cigarette Smoking and  
919 Subclinical Atherosclerosis. *Circ Cardiovasc Genet.* 2015;8(5).
- 920 61. Roberts CK, Sindhu KK. Oxidative stress and metabolic syndrome. Vol. 84, *Life Sciences.*  
921 2009.
- 922 62. Everson TM, Vives-Usano M, Seyve E, Cardenas A, Lacasaña M, Craig JM, et al.  
923 Placental DNA methylation signatures of maternal smoking during pregnancy and  
924 potential impacts on fetal growth. *Nat Commun.* 2021;12(1).
- 925 63. Moshhammer H, Hutter HP. Breast-feeding protects children from adverse effects of  
926 environmental Tobacco smoke. *Int J Environ Res Public Health.* 2019;16(3).
- 927 64. Martin JA, Osterman MJK, Driscoll AK. Declines in Cigarette Smoking During  
928 Pregnancy in the United States, 2016-2021. *NCHS Data Brief.* 2023;(458).  
929
- 930
- 931

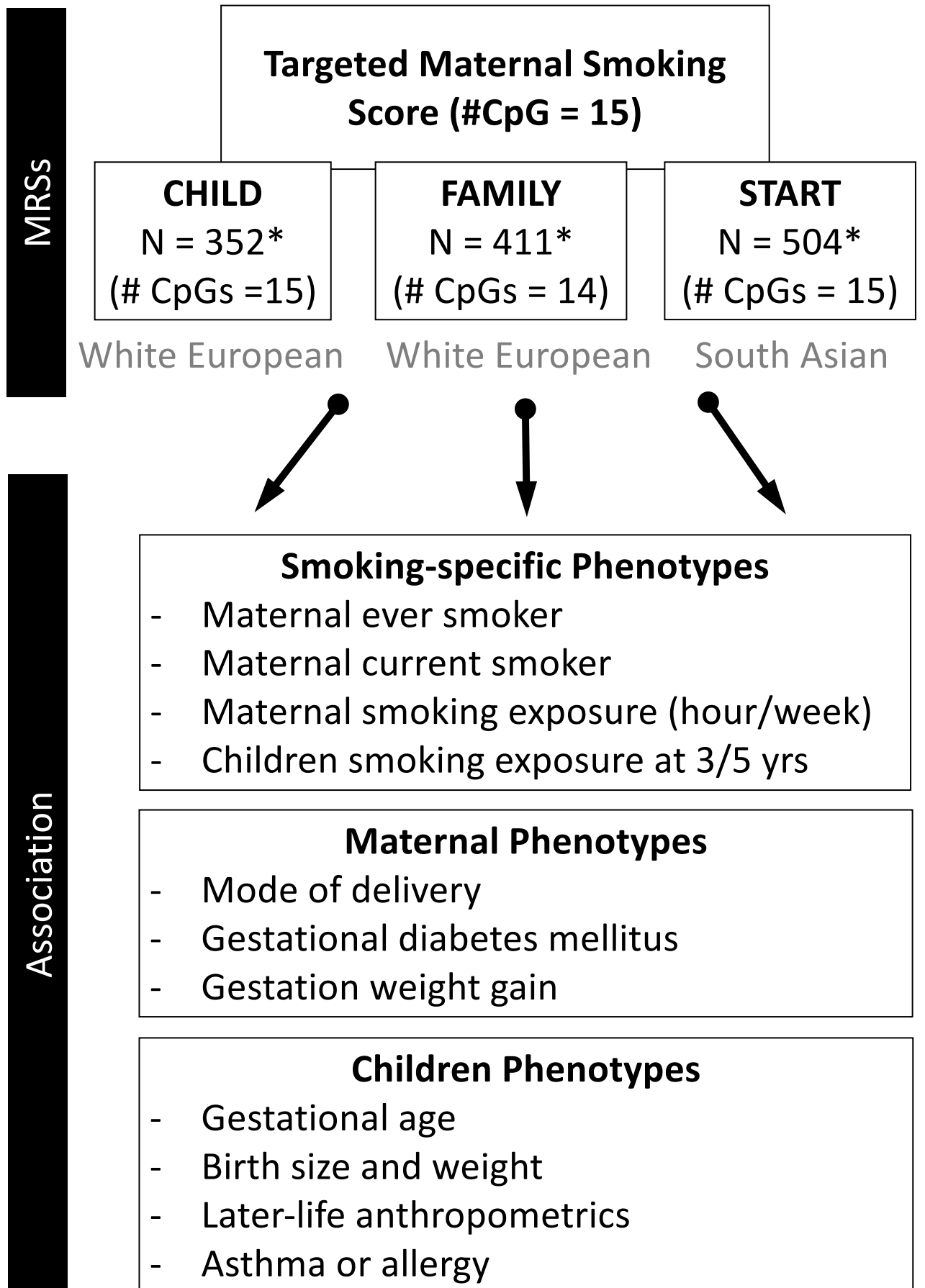
## A) Construction of MRS using lassosum



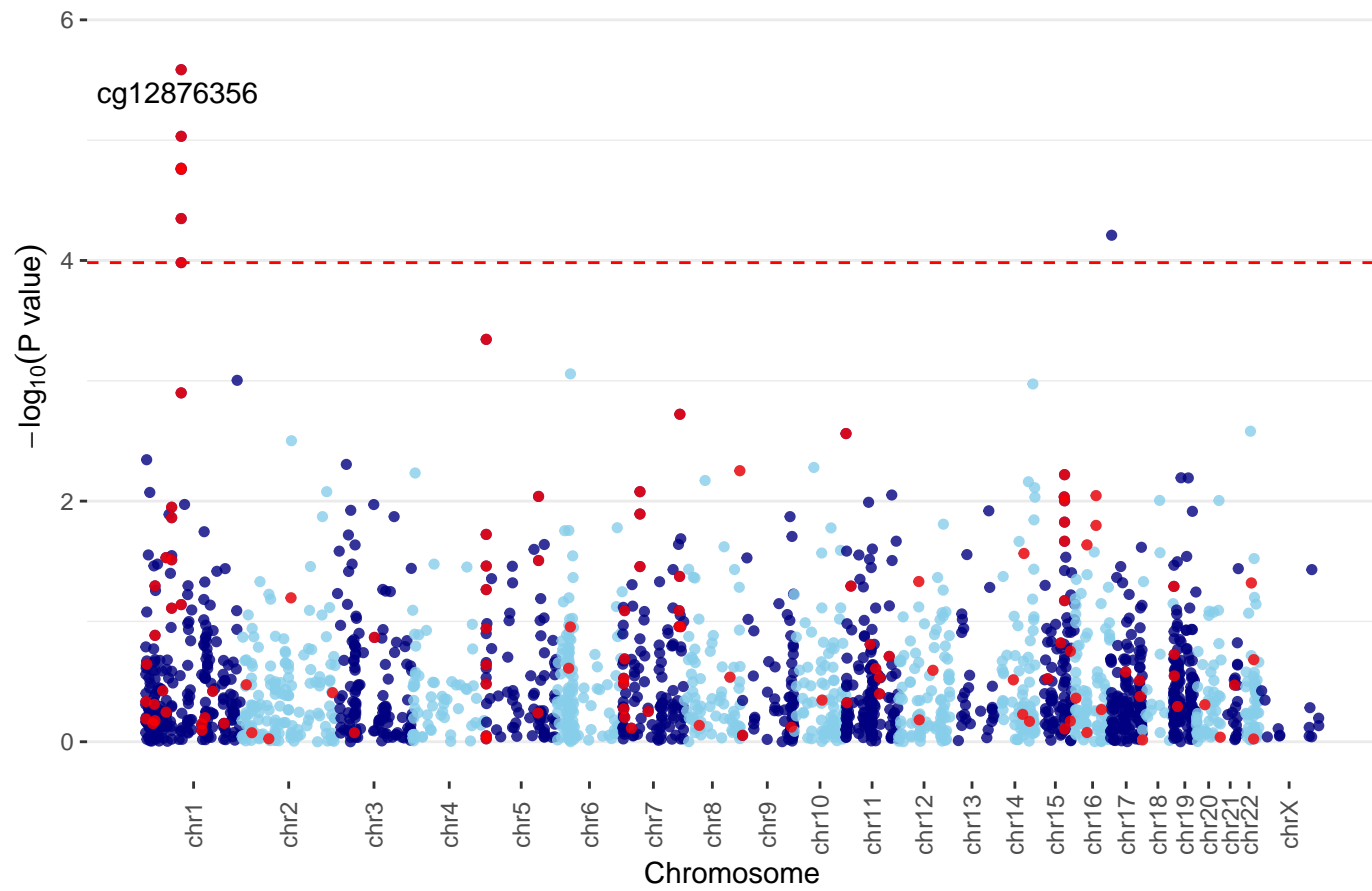
## B) Evaluation of MRS



## C) DNAm scores association with health outcomes



A) Maternal Smoking



B) Smoking Exposure

