

1 **Inhibitory control and its modification in spider phobia –** 2 **study protocol for an antisaccade training trial**

3 Short title: Assessing and training fear inhibition in spider phobia via eye-movements.

4
5 Anne Sophie Hildebrand^a

6 Contact: Anne.Hildebrand@uni-siegen.de

7 Department of Psychology, Clinical Psychology and Psychotherapy of the University of Siegen,
8 57072, Siegen, Germany.

9
10 Fabian Breuer^a

11 Contact: breuerfa@uni-muenster.de

12 Institute for Translational Psychiatry of the University of Münster, 48149, Münster, Germany.

13
14 Elisabeth Johanna Leeher

15 Contact: leeher@uni-muenster.de

16 Institute for Translational Psychiatry of the University of Münster, 48149, Münster, Germany.

17
18 Johannes B. Finke

19 Contact: Johannes.Finke@uni-siegen.de

20 Department of Psychology, Clinical Psychology and Psychotherapy of the University of Siegen,
21 57072, Siegen, Germany.

22
23 Leandra Bucher

24 Contact: Leandra.Bucher@uni-siegen.de

25 NOTE: This preprint reports new research that has not been certified by peer review and should not be used to guide clinical practice.
25 Department of Psychology, Clinical Psychology and Psychotherapy of the University of Siegen,

26 57072, Siegen, Germany.

27

28 Tim Klucken

29 Contact: Tim.Klucken@uni-siegen.de

30 Department of Psychology, Clinical Psychology and Psychotherapy of the University of Siegen,

31 57072, Siegen, Germany.

32

33 Udo Dannlowski

34 Contact: udo.dannlowski@uni-muenster.de

35 Institute for Translational Psychiatry of the University of Münster, 48149, Münster, Germany.

36

37 Kati Roesmann^b

38 Contact: kati.roesmann@uni-osnabrueck.de

39 Institute of Psychology of the University of Osnabrück, 49076 Osnabrück, Germany.

40

41 ^a Shared first authorship

42 ^b Corresponding author

43 **Abstract**

44 **Objectives:** Inhibitory control deficits are considered a key pathogenic factor in anxiety
45 disorders. To assess inhibitory control, the antisaccade task is a well-established measure,
46 assessing antisaccade performance via latencies and error rates. The present study follows three
47 aims: (1) to investigate inhibitory control via antisaccade latencies and errors in an antisaccade
48 task, and their associations with multiple measures of fear in patients with spider phobia (SP)
49 versus healthy controls (HC), (2) to investigate the modifiability of antisaccade performance
50 via a fear-specific antisaccade training in patients with SP and HC, and (3) to explore
51 associations between putative changes in antisaccade performance in SPs and diverse measures
52 of fear following the training.

53 **Methods:** Towards aim 1, we assess antisaccade latencies (primary outcome) and error rates
54 (secondary outcome) in an emotional antisaccade task. Further, the baseline assessment
55 includes assessments of psychophysiological, behavioral, and psychometric indices of fear in
56 patients with SP and HCs. To address aim 2, we compare effects of a fear-specific antisaccade
57 training with effects of a prosaccade training as a control condition. The primary and secondary
58 outcomes are reassessed at a post-1-assessment in both SPs and HCs. Aim 3 employs a cross-
59 over design and is piloted in patients with SP, only. Towards this aim, primary and secondary
60 outcomes, as well as psychophysiological, behavioral, and psychometric measures of fear are
61 reassessed at a post-2-assessment after the second training block.

62 **Conclusion:** This study aims to better understand inhibitory control processes and their
63 modifiability in spider phobia. If successful, antisaccade training may assist in the treatment of
64 specific phobia by directly targeting the putative underlying inhibitory control deficits. This
65 study has been preregistered with ISRCTN (ID: [ISRCTN12918583](#)) on 28th February 2022.

66 **Keywords**

67 Antisaccade task, specific phobia, inhibitory control, skin conductance response, startle
68 response

69 **Background**

70 Specific phobia constitutes the most prevalent anxiety disorder with a prevalence
71 ranging from 1.5% to 14.4% in adults [1]. Specific phobia is characterized by excessive fear of
72 a specific object (e.g. spiders) or a specific situation [2]. Real or expected confrontation with
73 the fear-evoking stimulus elicits a direct fear reaction, thus prompting habitual avoidance of
74 this stimulus. While specific phobia can be treated effectively [2], studies show that about one-
75 third of patients do not benefit from common first-line treatments [3, 4]. A better understanding
76 of the neurocognitive underpinnings of specific phobia as a model for anxiety disorders may
77 pave the way for developing mechanism-informed targeted interventions that could add to the
78 existing methods of treatment and address the problem of non-response to treatment.

79 Anxiety can be characterized by a fast initial shift in attention, in favor of threatening
80 stimuli [5]. The Attentional-Control Theory distinguishes two systems that are involved in
81 attentional control: a goal-driven top-down system and a stimulus-driven bottom-up system [6].
82 The presence of a fear-evoking stimulus is assumed to disrupt the balance of these systems in
83 favor of bottom-up processing, causing a shift of attention towards the fear-evoking stimulus.
84 From an evolutionary perspective, this is a highly adaptive mechanism preparing organisms for
85 fast reactions towards (potential) threats [7]. Yet, if too sensitive, this mechanism may
86 contribute to pathological anxiety, which is – amongst other aspects (e.g., avoidance, increased
87 psychophysiological responses [8]) – characterized by an inability to adequately inhibit bottom-
88 up-driven perceptual processes.

89 A well-established experimental task to assess inhibitory control is the antisaccade task
90 [9]. In the antisaccade task, participants are instructed to look in the opposite direction of a
91 peripherally presented visual stimulus. Indices of reduced inhibitory control are prolonged
92 latencies of correct antisaccades and increased error rates (gaze at the visual stimulus, instead
93 of the opposite direction). While the latency of correct antisaccades constitutes a measure of

94 inhibitory control efficiency, the error rate reflects the effectiveness of inhibitory control
95 performance [10]. Antisaccades have been used in a variety of different psychiatric populations
96 to assess inhibitory control. Perhaps most prominently, the antisaccade task has been applied in
97 the research of psychotic and schizophrenic disorders [9], however it has also been used to
98 study inhibitory control in obsessive-compulsive disorder [11], post-traumatic stress disorder
99 [12], binge-eating disorder [13], attentional-deficit-hyperactivity disorder [14], and alcohol use
100 disorder [15]. Additionally, research has identified reduced inhibitory control efficiency,
101 indexed by prolonged latencies of correct antisaccades, in a multitude of highly anxious, yet
102 subclinical participants [16, 17]. Reduced inhibitory control at high levels of (dispositional)
103 anxiety is further reported in a meta-analysis investigating the association between inhibitory
104 control and anxiety in a multitude of different tasks [18]. In line with this, it is considered a risk
105 and maintaining factor of pathological anxiety [19]. Surprisingly, there are no studies
106 investigating inhibitory control via antisaccade performance in patients with specific phobia.
107 Thus, the profile of probable inhibitory control deficits in patients with specific phobia and its
108 association with other indices of fear, like avoidance behavior and psychophysiological
109 responses, remains elusive. Furthermore, it is unclear, whether patients with specific phobia
110 show impaired inhibitory control only in response to phobia-relevant stimuli or if they exhibit
111 a general deficit in inhibitory control.

112 In previous studies, antisaccade training improved antisaccade performance in non-
113 clinical and clinical samples [20, 21]. In a sample of patients with binge eating disorder,
114 antisaccade training improved not only antisaccade performance in response to disorder specific
115 stimuli (i.e., high-caloric food), but was also associated with a significant decrease of binge
116 eating incidents. However, no changes could be found in psychometric measures associated
117 with binge eating (e.g., food craving [21]). To date, there are no studies investigating the
118 trainability of antisaccade performance in specific phobia.

119 To further elucidate the role of inhibitory control performance in specific phobia, the
120 present study investigates antisaccade performance in patients with spider phobia (SP)
121 compared to healthy controls (HC). As the literature on (dispositional) anxiety and inhibitory
122 control mainly indicates inhibitory control deficits with regard to efficiency rather than
123 effectiveness, antisaccade latency serves as the primary outcome. Antisaccade error rate (as a
124 marker of inhibitory control effectiveness) is investigated as a secondary outcome. Our study
125 follows three main aims: First, patients with spider phobia (as a model anxiety disorder) will
126 be investigated via the antisaccade task regarding potential inhibitory control deficits and their
127 associations to stimulus category (phobia-related versus neutral), psychophysiological (heart
128 rate, skin conductance, startle-response), behavioral and psychometric measures of fear (aim
129 1). This aim employs a proof-of-concept mixed factorial design with the between subject factors
130 group (SPs vs. HCs) and the within-subject factor stimulus material (phobia-related vs. neutral).
131 Second, the modifiability of inhibitory control through a fear-specific antisaccade training will
132 be piloted (aim 2). This aim employs an exploratory randomized controlled parallel group
133 design with two training conditions (antisaccade training vs. control) that will be realized in
134 SPs and HCs. Changes in antisaccade performance from baseline to post-1-assessment, and
135 their dependence on stimulus material will be assessed. Third, putative changes in inhibitory
136 control performance following the training will be investigated regarding associations to
137 changes in psychophysiological, behavioral, and psychometric measures of fear in SPs,
138 therefore exploring possible therapeutic utility (aim 3). This aim employs an exploratory cross-
139 over design in SPs only, i.e. patients will switch training conditions after the post-1-assessment,
140 and will be assessed regarding antisaccade performance, psychophysiological (heart rate, skin
141 conductance, startle-response), behavioral and psychometric measures of fear at post-2-
142 assessment.

143 **Methods**

144 **Participants**

145 Participants with a specific phobia of the animal subtype (spiders) and HCs are recruited
146 at the University of Siegen and from the general population. Interested participants are invited
147 to a short telephone screening (~ 10 minutes) and then enrolled in a more extensive clinical
148 interview (~ 1 hour) via telephone to assess further eligibility, conducted by trained research
149 assistants. SPs have to fulfill the criteria of specific phobia according to the Diagnostic and
150 Statistical Manual of Mental Disorders-IV (SCID-I, Section F [22], while HCs must not fulfill
151 the criteria of spider phobia and not exceed a value of 19 points in the Spider Phobia
152 Questionnaire (SPQ) [23]. Inclusion criteria for both groups are an age between 18 and 65 years,
153 normal or corrected to normal vision, as well as normal hearing. Exclusion criteria are any
154 psychiatric condition (except spider phobia, as well as a mild to moderate depressive episode
155 in the past SPs) assessed via the Mini-International Neuropsychiatric Interview (MINI) [24].
156 Furthermore, any history of neurological disorders, current intake of Benzodiazepines or
157 Barbiturates, astigmatism, hearing disorders, subjective auditory hypersensitivity, regular
158 nicotine consumption (> 5 cigarettes/day) or known allergy to bites of insects and arachnids
159 lead to exclusion.

160 **Sample size**

161 Based on two studies using the antisaccade task in clinical samples, we calculated two
162 a-priori power analyses using G*Power 3.1 [25] for ANOVAs (Analyses of Variance) to detect
163 large effect sizes (Cohen's $f = .40$, $\alpha = .05$, power = .85) in our primary outcome (i.e. antisaccade
164 latencies) at baseline (aim 1) [12] and for the training effect (aim 2) [21]. Results indicated a
165 required total sample size of 59 participants (30 per group).

166 **Procedure**

167 *Overall procedure*

168 After an initial telephone screening, eligible participants are invited to provide written
169 informed consent and participate in a clinical interview via telephone. If they fulfill eligibility
170 criteria, they are invited to a laboratory appointment at the University of Siegen and asked to
171 fill in an online battery of questionnaires, including the SPQ [23], beforehand via LimeSurvey
172 3.28.18 [26]. A schedule of enrollment, intervention and assessment can be found in Figure 1.

173

174 **Figure 1**

175 *Schedule of Enrollment, Intervention, and Assessment*

176 [insert figure 1 about here]

177 *Note.* Assessment schedule, including all outcome measures. An X in the corresponding box
178 indicates that assessment takes place at a certain time point. BAT: Behavioral Avoidance Test.
179 MINI: Mini International Neuropsychiatric Interview [24]. SPQ: Spider Phobia Questionnaire
180 [23]. BIS: Behavioral Inhibition System [27]. BAS: Behavioral Approach System [27]. NEO-
181 FFI: NEO Five-Factor Inventory [28]. STAI: State-Trait-Anxiety-Inventory [29]. FEAS:
182 Questionnaire on Disgust and Fear of Spiders [30]. ABI: inventory of coping with anxiety [31].
183 CERQ: Cognitive Emotion Regulation Questionnaire [32]. PANAS: Positive and Negative
184 Affect Schedule [33]. UI-18: Intolerance of Uncertainty [34]. ASI-3: Anxiety Sensitivity Index
185 [35]. NISS: Need Inventory of Sensation Seeking [36]. RSES: Rosenberg Self-Esteem Scale
186 [37]. ANPS: Affective Neuroscience Personality Scales [38]. SEE: Scales for experiencing
187 emotions [39]. MWT-B: Multiple-Choice Vocabulary Intelligence Test [40]. FEE: Disgust
188 Responsiveness [41].

189

190 The laboratory appointment begins with a baseline assessment, including a behavioral
191 avoidance test (BAT), a free-viewing task, and the antisaccade task (all of which are described

192 below). This part of the study corresponds to aim 1 (see *background* and Figure 2). Then,
193 participants will complete the antisaccade training or the control condition (prosaccade
194 training), according to a randomization scheme. After training, the antisaccade task and the
195 BAT will be repeated (post-1-assessment), and the study ends for the HCs. This part of the
196 study corresponds to aim 2 (see *background* and Figure 2). The SPs will then complete a second
197 training. Here, participants switch training conditions. After the second training, the antisaccade
198 task, the free-viewing task, the BAT, and the SPQ will be repeated (post-2-assessment). This
199 part of the study corresponds to aim 3 (see *background* and Figure 2).

200

201 **Figure 2**

202 [insert figure 2 about here]

203 *The Consort Flow Diagram*

204 *Note.* BAT: Behavioral avoidance test. HC: Healthy control participants. n: Number of
205 participants. SP: Participants with spider phobia. SPQ: Spider phobia questionnaire. Key
206 assessments to address aim 1 are shaded in green (baseline-assessment). Additionally, the
207 intervention (antisaccade and prosaccade training) and the post-1-assessment are relevant for
208 aim 2 (i.e., areas shaded in green and blue). In addition to assessments targeting aim 1 and 2, a
209 second intervention and the post-2-assessments is relevant for aim 3 (i.e., areas shaded in green,
210 blue and yellow). Note: Aim 3 refers to participants with spider phobia, only.

211

212 *Laboratory assessments*

213 **Antisaccade Task**

214 In the antisaccade task, ten stimuli, created and used by Kolassa and colleagues in
215 previous studies [42], are presented. Stimulus material comprises five phobia-related pictures
216 (black schematic pictures of spiders) and five neutral pictures (black schematic pictures of

217 flowers), as depicted in Figure 3, to assess the stimulus-dependency of predicted differences in
218 inhibitory control functions.

219 **Figure 3**

220 [insert figure 3 about here]

221 *Overview of Tasks and Intervention*

222 *Note.* A: Antisaccade task, employs stimuli from [42]. B: Free-viewing task, uses phobia-
223 related stimuli from GAPED [43]. C: Antisaccade training, uses additional phobia-related
224 stimuli from GAPED. Arrows show the instructed viewing direction of the participants. D:
225 Prosaccade training, uses neutral stimuli from GAPED. Arrows show the instructed viewing
226 direction of the participants. ITI: Inter-Trial-Interval. s: Seconds.

227

228 The antisaccade task is conducted at baseline, post-1- and post-2-assessment. For each
229 assessment, participants are placed in a darkened room. Eye movements are recorded via Eye-
230 Link 1000 plus (SR Research Ltd., Canada) at a sampling rate of 1000 Hz. For each trial, a
231 black fixation dot ($0.25^\circ \times 0.25^\circ$) is presented on a white screen, with 84 cm distance to the
232 participant, for a period of 1.5 - 3.5 seconds. After the fixation period, the dot vanishes, and the
233 visual stimulus is immediately presented (so-called step-paradigm). The visual stimulus ($3^\circ \times$
234 2.25°) is randomly presented at 12° to the left or right of the visual field for one second.

235 Phobia-related and neutral stimuli are presented equally often in a randomized order. At
236 baseline, the task includes five blocks as proposed by Antoniadou and colleagues [44]: three
237 antisaccade blocks (each including 40 antisaccades, i.e. 20 antisaccades to phobia-related and
238 20 antisaccades to neutral stimuli, each stimuli will be shown 4 times), as well as two
239 prosaccade blocks (each including 60 prosaccades, i.e. 30 prosaccades to phobia-related and 30
240 prosaccades to neutral stimuli, each stimuli will be shown 6 times), one preceding and one
241 following the antisaccade blocks. Antisaccade tasks at post-1- and post-2-assessment include
242 only three blocks of antisaccades (each including 40 antisaccades), as prosaccades are already

243 assessed at baseline, expenses for participants should be reduced and outcomes are only related
244 to antisaccade performance. Each block is followed by a one-minute break.

245 Assessment of antisaccade performance will be relevant for aims 1 – 3 of the study.

246 **Free-Viewing Task and Valence and Arousal Rating**

247 In the free-viewing task, 24 pictures of the *Geneva Affective Picture Database (GAPED)*
248 [43] are presented. The selected stimulus material comprises eight neutral pictures (inanimate
249 objects), eight generally aversive but phobia-unrelated pictures (animal mistreatment), and
250 eight phobia-related pictures (naturalistic spiders), respectively. Pictures are presented in two
251 blocks of trials, each block depicting all of the 24 pictures in a randomized order. Via ratings
252 provided by the authors of the database [43], negative pictures and pictures of spiders were
253 matched regarding valence (negative: $M = 21.35$, $SD = 8.78$; spider: $M = 20.46$, $SD = 7.77$,
254 $t(15) = 1.00$, $p = .83$) and arousal (negative: $M = 66.30$, $SD = 5.18$; spider: $M = 66.99$, $SD =$
255 6.41 , $t(15) = 1.02$, $p = .84$), while neutral pictures had higher valence ($M = 50.54$, $SD = 1.65$)
256 and lower arousal ratings ($M = 21.77$, $SD = 6.01$). Pictures are presented for six seconds each,
257 followed by a twelve-second inter-trial-interval, as depicted in Figure 3.

258 While the pictures are presented, psychophysiological measures are assessed. To assess
259 participants' startle response, an acoustic stimulus (white noise, 50 ms, 105 dB(A),
260 instantaneous rise time) is presented via headphones. This stimulus is presented 18 times during
261 visual stimulus presentation for each block, that is six times per visual stimulus category, in a
262 randomized order. The startle-eliciting stimulus occurs randomly between 4 and 5.5 seconds
263 after visual stimulus onset. During inter-trial intervals, startle responses are elicited 6 times per
264 block in a randomized order between 7.5 and 9.5 seconds after inter-trial-interval onset. Before
265 each block, the startle-eliciting stimulus is presented 6 (first block) or 3 times (second block),
266 respectively, to ensure initial habituation. Startle magnitude is measured by activity of the
267 musculus orbicularis oculi (unilateral) via electromyography (EMG), utilizing a Biopac MP160
268 system (Biopac Systems, Inc., USA) with H124SG electrodes (Kendall). Design of startle

269 assessment closely follows established methods [45]. Heart rate will be derived from
270 continuously recorded electrocardiogram (ECG) utilizing a Biopac MP160 system with EL503
271 electrodes (Biopac). To assess skin conductance responses, electrodermal activity [46, 47] is
272 measured utilizing a Biopac MP160 system with EL507 electrodes (Biopac) at the
273 thenar/hypothenar of the non-dominant hand.

274 Psychophysiological measures are assessed in the free-viewing task at baseline and post-
275 2-assessment and will be relevant to address aims 1 and 3 of the study.

276 Directly after the free-viewing task, each picture is presented again, and participants are
277 asked to rate each picture in terms of valence and arousal on a visual analog scale. Pictures and
278 the sequence of the valence and arousal ratings are randomized between participants. Ratings
279 are used to describe stimulus-characteristics based on the study sample.

280 **Behavioral Avoidance Test (BAT)**

281 Avoidance behavior is assessed by an in vivo BAT. Behavioral avoidance is indexed by
282 the final distance (in cm) between the participant and a spider (*brachypelma auratum*). For a
283 detailed description, also see [48]. BAT is conducted at baseline, post-1- and post-2-assessment
284 and will be relevant to address aims 1 and 3 of the study.

285 ***Intervention***

286 **Experimental Condition (Antisaccade Training)**

287 The intervention in this trial will constitute an antisaccade training. Participants must
288 look at the center of a screen. As depicted in Figure 3, stimuli will be presented for one second
289 left or right in the periphery field of vision with a visual angle of 12°, after a fixation period of
290 1 - 3.5 seconds, based on recommendations by Antoniadis and colleagues [44]. Participants are
291 instructed to look at the mirrored position on the screen. Stimuli will constitute ten (additional)
292 spider stimuli from the *GAPED* [43], which are shown in random order. We opted for phobia-
293 related stimuli because the training of inhibitory control would be expected to be maximal in
294 this condition. The training includes two blocks with 80 antisaccades each, separated by a pause

295 of one minute. Adherence to interventions will be improved by carefully instructing participants
296 before each training block. Implementation of the described training (including the control
297 condition described below) will be relevant to address aims 2 and 3 of the study.

298 **Control Condition (Prosaccade Training)**

299 To examine the effect of antisaccade training on antisaccade performance, we will
300 compare the effects of the antisaccade training with the effects of a prosaccade training on
301 antisaccade performance. The prosaccade training was employed to control for potential fatigue
302 effects caused by voluntary eye movements in general rather than antisaccades specifically.

303 In the control condition, as depicted in Figure 3, participants are instructed to look at
304 stimuli that appear left or right in the periphery field of vision for one second after a fixation
305 period of 1 - 3.5 seconds. Ten neutral stimuli from the *GAPED* [43] are used. In the control
306 condition, we employ neutral stimuli rather than the phobia-related stimuli employed in the
307 antisaccade training to prevent potentially beneficial effects of perceptual exposure on
308 antisaccade performance. The training includes two blocks with 80 prosaccades each, separated
309 by a pause of 60 seconds.

310 **Outcome**

311 The primary outcome of this study is correct antisaccade latency, measured at baseline,
312 post-1- and post-2-assessment in the antisaccade task. The secondary outcome is antisaccade
313 error rate, also measured at baseline, post-1- and post-2-assessment in an antisaccade task.

314 Psychophysiological measures include startle response, heart rate, and skin conductance
315 level, measured at baseline and post-2-assessment in a free-viewing task. As a behavioral
316 assessment, the final distance in the behavioral avoidance test (BAT) will be conducted at
317 baseline, post-1- and post-2-assessment. For psychometric assessment, the SPQ will be
318 conducted at baseline and post-2-assessment.

319 Exploratory analyses will be conducted to pilot a fear-specific antisaccade training.
320 Therefore, potential changes in antisaccade performance will be associated with changes in
321 psychophysiological, behavioral, and psychometric measures of fear.

322 To characterize the sample, we will additionally obtain a range of self-report measures,
323 described in Figure 1. All self-assessment questionnaires will be given out in the German
324 version.

325 **Analysis**

326 *Preprocessing*

327 **Eye Tracking:** To detect saccadic eye movements, conservative thresholds are used.
328 Saccades are defined as eye movements with a velocity $> 35^\circ/\text{sec}$, an acceleration $> 9500^\circ/\text{sec}^2$
329 and an amplitude $> 3^\circ$. For the trial to be classified as valid, onset latency of the first saccadic
330 eye movement after stimulus onset must be greater than 70 ms. Starting coordinates of the eye
331 movement must fall within a square of $5^\circ \times 5^\circ$ around the fixation stimulus. Additionally, blinks
332 must be absent. Trials with no recorded eye movements after stimulus onset are also classified
333 as invalid. A correct antisaccade (secondary outcome) is defined as a valid saccade in the
334 opposite direction of the peripheral visual stimulus. Antisaccade latency (primary outcome) is
335 defined as the time difference between stimulus onset and initiation of the correct antisaccade.
336 Participants will be excluded from analysis if $> 50\%$ of maximal possible trials are invalid.

337 **Psychophysiological data:** ECG data is pre-processed using the PhysioData Toolbox
338 (Version 0.6.3; [49]). The signal is filtered using a bandpass filter with a low cut-off at 1 Hz and
339 a high cut-off at 50 Hz. From the ECG signal, R-peaks are retrieved, which serve to calculate
340 heart rate measures. The ECG signal will be visually inspected for artifacts, as well as erroneous
341 or missed R-peaks. Missed R-peaks will be added manually, erroneous R-peaks will be deleted.
342 Trials with artifacts in the ECG signal will be discarded.

343 Skin conductance data is pre-processed using the PhysioData Toolbox. The raw signal
344 is filtered and resampled to a 20 Hz time-vector spanning the length of the filtered signal, using

345 spline interpolation. By first applying a moving minimum filter, followed by smoothing the
346 result applying a Gaussian kernel, the tonic component is calculated. The phasic component is
347 calculated by applying a 1st order high pass Butterworth filter of 0.5 Hz. The signal will be
348 visually inspected for artifacts. Trials with artifacts in the SCL signal will be discarded.

349 The raw EMG signal is filtered using a band-pass filter ranging from 10 to 500 Hz, as
350 well as rectified and smoothed, using a low-pass resistor-capacitor filter, utilizing a time
351 constant of 10 ms. A C++-based software tool will be used to identify peak responses in the
352 rectified and integrated EMG signal. Additionally, the signal will be visually inspected for
353 artifacts (e.g., preceding blinks immediately before the startle probe), as well as erroneously
354 detected response peaks. Trials with artifacts in the EMG signal will be discarded, erroneously
355 detected response peaks will be corrected manually. Startle response amplitude is defined as
356 the difference between EMG peak and baseline amplitude in a 200 ms response window.

357 *Statistical Analyses*

358 In the following, planned analyses will be described in brief. Further details on statistical
359 analyses for [aim 1](#) and [aim 2](#), can be found in the detailed statistical analyses protocols for each
360 aim. For further details on aim 3, a statistical analyses protocols will be preregistered with
361 Current Controlled Trials (ID: [ISRCTN12918583](#)).

362 Corresponding to aim 1 of the study, baseline differences in antisaccade performance
363 between participants with SP and HCs will be investigated using general linear modeling with
364 antisaccade latency and antisaccade error as outcome respectively. Diagnosis will be entered as
365 a between-subject-factor, stimulus category as a within-subject factor, resulting in a 2x2 design.
366 To investigate associations between multimodal measures of fear (psychophysiological
367 responses, BAT and SPQ scores) and antisaccade performance in SPs, multiple regression
368 analyses will be conducted with the primary and secondary outcome as dependent variables,
369 respectively. If relevant demographic or psychometric measures differ between groups, these
370 measures will be entered as covariates (for [statistical analysis plan](#) see [ISRCTN12918583](#)).

371 Corresponding to aim 2 of the study, general linear modelling will be conducted with diagnosis
372 and intervention (antisaccade training vs. prosaccade training) as between-subject factors, as
373 well as time and stimulus category as within-subject factors, resulting in a 2x2x2 design,
374 including antisaccade latency and error rate as outcomes. Again, potential confounds showing
375 group differences will be entered as covariates (for [statistical analysis plan](#) see
376 ISRCTN12918583).

377 Corresponding to aim 3 of the study, exploratory analyses will be conducted in SPs,
378 associating changes in antisaccade performance (antisaccade latency and error rate, pre vs. post-
379 2) with changes in physiological responses to fear-specific stimuli, avoidance behavior, and
380 self-reported fear of spiders (baseline vs. post-2). Additionally, antisaccade latencies and error-
381 rates will be investigated via general linear modelling with intervention (antisaccade training
382 first vs. prosaccade training first) as between-subject factors, as well as time (baseline, post-1,
383 post-2) and stimulus category as within-subject factors, resulting in a 2x2x3 design. BAT scores
384 will be investigated via general linear modelling with intervention (antisaccade training first vs.
385 prosaccade training first) as between-subject factors, and time (baseline, post-1, post-2) as
386 within-subject factor.

387 For all analyses significance levels will be set to $p = .05$.

388 **Discussion**

389 The present study is designed to compare the antisaccade performance of SPs to a HC
390 group and to examine the putative potential of an antisaccade training with phobia-related
391 stimuli to increase inhibitory control in specific phobia. It also aims to explore associations
392 between antisaccade performance and multimodal psychophysiological, behavioral, and
393 psychometric measures of fear.

394 Focusing on the comparison of SPs and HCs (aim 1), a decreased antisaccade
395 performance in SPs would yield evidence for reduced inhibitory control functions in SPs. This

396 finding would extend previous findings, which have yielded evidence for associations between
397 antisaccade performance and subclinical anxiety levels [16, 17], to clinically anxious
398 individuals. Thereby, such findings would provide further evidence for a key role of inhibitory
399 control processes in the pathogenesis and maintenance of specific phobia. Such evidence from
400 the study of antisaccade performance would complement previous evidence from the field of
401 fear conditioning, which has suggested deficient inhibitory learning processes and reduced
402 inhibition of fear responses to safe stimuli in patients with pathological anxiety [50] and non-
403 responders to exposure therapy in spider phobia [51]. As spider phobia is used as a model
404 disorder for anxiety disorders more broadly, results could also serve as foundation for research
405 on a wider range of anxiety disorders.

406 To estimate the clinical relevance of putative deficits in antisaccade performance (i.e.,
407 inhibitory control), it seems pivotal to shed light to its link with symptoms of fear. We therefore
408 investigate relationships between antisaccade performance and multimodal measures of fear
409 (e.g., psychophysiological fear responses, avoidance behavior as assessed via the BAT, and
410 self-reported symptoms as assessed via the SPQ). The finding of significant associations could
411 broaden our knowledge on the mechanistic basis of specific aspects of the fear response and
412 form the basis for future research on a potential (causal) role of inhibitory control on fear-
413 associated symptoms.

414 If a lower inhibitory control is found in patients with pathological anxiety, an
415 antisaccade training could increase antisaccade performance as seen in previous studies
416 investigating patients with other disorders [20, 21]. Aim 2 of this study targets this hypothesis.
417 A positive result would suggest that an antisaccade training does increase inhibitory processes,
418 which may in turn be a factor related to treatment outcomes in specific phobia (for review, see
419 [52]). If this is the case, the generalizability of improved antisaccade performance to clinically
420 relevant measures of fear and anxiety would be of importance. According to aim 3 of this study,
421 we therefore investigate whether changes in antisaccade performance generalize to other

422 measures of fear. Positive results regarding aim 2 and potentially also aim 3 would point
423 towards the potential of the antisaccade training as a mechanism-informed targeted intervention
424 for anxiety disorders [53]. As such, it might yield add-on effects to existing treatments and
425 increase treatment response.

426 To conclude, findings of this study on patients with spider phobia (as a model for anxiety
427 disorders more broadly) can strengthen our understanding of the mechanistic underpinnings of
428 anxiety disorders and potentially pave the way for new targeted interventions.

429

430 **Abbreviations**

431 ABI: an inventory of coping with anxiety; ANOVA: Analysis of Variance. ANPS: Affective
432 Neuroscience Personality Scales; ASI-3: Anxiety Sensitivity Index; BAS: Behavioral Approach
433 System; BAT: Behavioral Avoidance Test; BIS: Behavioral Inhibition System; CERQ: the
434 Cognitive Emotion Regulation Questionnaire; dB: decibel; ECG: electrocardiography. EMG:
435 electromyography. FEAS: Questionnaire on Disgust and Fear of Spiders; FEE: Disgust
436 Responsiveness; GAPED: Geneva Affective Picture Database; HC: Healthy control
437 participants; Hz: hertz; ITI: Inter-Trial-Interval; m: meters. MINI: Mini International
438 Neuropsychiatric Interview; ms: milliseconds. MWT-B: Multiple-Choice Vocabulary
439 Intelligence Test; n: number of participants; NISS: Need Inventory of Sensation Seeking; NEO-
440 FFI: NEO Five-Factor Inventory; PANAS: Positive and Negative Affect Schedule; RSES:
441 Rosenberg Self-Esteem Scale; s: seconds; SCID-I: Structured clinical interview for the
442 Diagnostic and Statistical Manual of Mental Disorders-IV; SCL: Skin Conductance Level.
443 SEE: Scales for experiencing emotions; SP: Patients with spider phobia; SPQ: Spider Phobia
444 Questionnaire; STAI: State-Trait-Anxiety-Inventory; UI-18: Intolerance of Uncertainty Scale

445

446

447 **Declarations**

448 **Trial status**

449 The trial (protocol version 1) was registered with Current Controlled Trials (ID:
450 ISRCTN12918583) on 28th February 2022. The recruitment process began at the 1st of March
451 2022 and will finish on the 31st of December 2023.

452 **Acknowledgements**

453 The study is funded by the DGPs (German Society for Psychology: Biological Psychology and
454 Neuropsychology) and Movisens (Peer-Mentoring-Program, awarded to FB and KR), and the
455 Innovative Medizinische Forschung (IMF) of the medical faculty of the University of Münster
456 (awarded to E JL, grant numbers: ME121805; LE121904). AH is supported by the German
457 Research Foundation (Research Training Group 2493/1: 398510439).

458 Study materials were provided by Iris-Tatjana Kolassa and colleagues and the Geneva Affective
459 Picture Database (GAPED).

460 The study is sponsored by the University of Siegen (Adolf-Reichwein-Straße 2, 57072 Siegen,
461 Germany; Contact: +49 271 740-4106, tim.klucken@psychologie.uni-siegen.de).

462 The funders of the study are not involved in the collection, analysis, and interpretation of data.

463 The sponsor of the study is involved in designing the study, and analysis and interpretation of
464 data.

465

466 **Conflict of Interests**

467 The authors declare that they have no competing interests.

468 **Authors' contributions**

469 ASH, FB, E JL, JBF, LB, TK, UD, and KR designed the study. ASH, FB, and KR drafted the
470 manuscript. ASH and FB are responsible for data collection and monitoring. All authors read
471 and approved the final manuscript. The trial is carried out by the involved researchers and

472 research assistants. While the involved researchers meet once every other month to check on
473 data collection and management and on demand, all researchers responsible for data collection
474 meet once a week to report on data collection and possible adverse events.

475 In case of important protocol modifications, all relevant parties (e.g., the respective researchers
476 and trial registries) will be informed.

477 **Availability of data and materials**

478 The responsible researchers and research assistants will have access to the final dataset. Data
479 and statistical code will be provided upon reasonable request.

480 **Ethics approval and consent to participate**

481 The study protocol was approved by the local Ethics Committee of the University of Siegen
482 (07/2021), Germany (reference number: ER_39_2021). The study was designed in accordance
483 with the Declaration of Helsinki, Good Clinical Practice guidelines, and the SPIRIT reporting
484 guidelines. During the run of the study, ethical, legal, and social aspects are anticipated and
485 addressed. Participants provide written informed consent to the experimental procedure before
486 inclusion in the study. Informed consent is obtained by research assistants conducting the
487 interviews for eligibility. Participation is entirely voluntary, and participants have the right to
488 withdraw their consent at any time. Participant information is pseudonymized and stored on a
489 secure database and can only be accessed by the involved researchers and research assistants.

490 **Randomization and Blinding**

491 The randomization scheme was implemented utilizing block randomization. Participants are
492 randomized via sequential numbers provided in a separate document.

493 Though participants are not especially informed about their allocation to a certain condition,
494 they might have been aware of the condition. A blinding of investigators is not possible.

495 **Consent for publication**

496 Not applicable.

497 The study protocol or parts of it have not been published elsewhere.

498 **References**

- 499 1. Eaton WW, Bienvenu OJ, Miloyan B. Specific phobias. *The Lancet Psychiatry*.
500 2018;5:678–86. doi:10.1016/S2215-0366(18)30169-X.
- 501 2. Bandelow B, Lichte T, Rudolf S, Wiltink J, Beutel EM. The diagnosis of and treatment
502 recommendations for anxiety disorders. *Deutsches Ärzteblatt International*.
503 2014;111:473. doi:10.3238/arztebl.2014.0473.
- 504 3. Loerinc AG, Meuret AE, Twohig MP, Rosenfield D, Bluett EJ, Craske MG. Response
505 rates for CBT for anxiety disorders: Need for standardized criteria. *Clin Psychol Rev*.
506 2015;42:72–82. doi:10.1016/j.cpr.2015.08.004.
- 507 4. Fernandez E, Salem D, Swift JK, Ramtahal N. Meta-analysis of dropout from cognitive
508 behavioral therapy: Magnitude, timing, and moderators. *Journal of Consulting and*
509 *Clinical Psychology*. 2015;83:1108. doi:10.1037/ccp0000044.
- 510 5. Mobini S, Grant A. Clinical implications of attentional bias in anxiety disorders: An
511 integrative literature review. *Psychotherapy (Chic)*. 2007;44:450–62. doi:10.1037/0033-
512 3204.44.4.450.
- 513 6. Eysenck MW, Derakshan N, Santos R, Calvo MG. Anxiety and cognitive performance:
514 attentional control theory. *Emotion*. 2007;7:336–53. doi:10.1037/1528-3542.7.2.336.
- 515 7. Roesmann K, Lueken U. Timeo–ergo sum: Ein evolutionsbiologischer Blick auf
516 Angststörungen. *PiD-Psychotherapie im Dialog*. 2022;23:36–9. doi:10.1055/a-1686-1514.
- 517 8. Löw A, Weymar M, Hamm AO. When threat is near, get out of here: Dynamics of
518 defensive behavior during freezing and active avoidance. *Psychological science*.
519 2015;26:1706–16. doi:10.1177/0956797615597332.

- 520 9. Hutton SB, Ettinger U. The antisaccade task as a research tool in psychopathology: a
521 critical review. *Psychophysiology*. 2006;43:302–13. doi:10.1111/j.1469-
522 8986.2006.00403.x.
- 523 10. Ansari TL, Derakshan N. Anxiety impairs inhibitory control but not volitional action
524 control. *Cognition and emotion*. 2010;24:241–54. doi:10.1080/02699930903381531.
- 525 11. Bey K, Lennertz L, Grützmann R, Heinzl S, Kaufmann C, Klawohn J, et al. Impaired
526 Antisaccades in Obsessive-Compulsive Disorder: Evidence From Meta-Analysis and a
527 Large Empirical Study. *Front Psychiatry*. 2018;9:284. doi:10.3389/fpsyt.2018.00284.
- 528 12. Reinhard M, Allen N, Wong LM, Schwartz BL. Neuropsychological measurement of
529 inhibitory control in posttraumatic stress disorder: An exploratory antisaccade paradigm.
530 *Journal of Clinical and Experimental Neuropsychology*. 2017;39:1002–12.
531 doi:10.1080/13803395.2017.1301389.
- 532 13. Leehr EJ, Schag K, Dresler T, Grosse-Wentrup M, Hautzinger M, Fallgatter AJ, et al.
533 Food specific inhibitory control under negative mood in binge-eating disorder: Evidence
534 from a multimethod approach. *Int J Eat Disord*. 2018;51:112–23. doi:10.1002/eat.22818.
- 535 14. Chamorro Y, Betz LT, Philipsen A, Kambeitz J, Ettinger U. The Eyes Have It: A Meta-
536 analysis of Oculomotor Inhibition in Attention-Deficit/Hyperactivity Disorder. *Biol*
537 *Psychiatry Cogn Neurosci Neuroimaging* 2021. doi:10.1016/j.bpsc.2021.05.004.
- 538 15. Schag K, Rauch-Schmidt M, Wernz F, Zipfel S, Batra A, Giel KE. Transdiagnostic
539 investigation of impulsivity in alcohol use disorder and binge eating disorder with eye-
540 tracking methodology—A pilot study. *Front Psychiatry*. 2019;10:724.

- 541 16. Basanovic J, Notebaert L, Clarke PJF, MacLeod C, Jawinski P, Chen NTM. Inhibitory
542 attentional control in anxiety: Manipulating cognitive load in an antisaccade task. *PLoS*
543 *One*. 2018;13:e0205720. doi:10.1371/journal.pone.0205720.
- 544 17. Derakshan N, Ansari TL, Hansard M, Shoker L, Eysenck MW. Anxiety, inhibition,
545 efficiency, and effectiveness. An investigation using antisaccade task. *Exp Psychol*.
546 2009;56:48–55. doi:10.1027/1618-3169.56.1.48.
- 547 18. Shi R, Sharpe L, Abbott M. A meta-analysis of the relationship between anxiety and
548 attentional control. *Clin Psychol Rev*. 2019;72:101754. doi:10.1016/j.cpr.2019.101754.
- 549 19. van Bockstaele B, Verschuere B, Tibboel H, Houwer J de, Crombez G, Koster EHW. A
550 review of current evidence for the causal impact of attentional bias on fear and anxiety.
551 *Psychological bulletin*. 2014;140:682. doi:10.1037/a0034834.
- 552 20. Jamadar SD, Johnson BP, Clough M, Egan GF, Fielding J. Behavioral and neural
553 plasticity of ocular motor control: changes in performance and fMRI activity following
554 antisaccade training. *Frontiers in human neuroscience*. 2015;9:653. doi:10.1007/s00221-
555 004-2105-9.
- 556 21. Giel KE, Speer E, Schag K, Leehr EJ, Zipfel S. Effects of a food-specific inhibition
557 training in individuals with binge eating disorder—Findings from a randomized
558 controlled proof-of-concept study. *Eating and Weight Disorders-Studies on Anorexia,*
559 *Bulimia and Obesity*. 2017;22:345–51. doi:10.1007/s40519-017-0371-3.
- 560 22. Lobbestael J, Leurgans M, Arntz A. Inter-rater reliability of the Structured Clinical
561 Interview for DSM-IV Axis I disorders (SCID I) and Axis II disorders (SCID II). *Clinical*
562 *psychology & psychotherapy*. 2011;18:75–9. doi:10.1002/cpp.693.

- 563 23. Olatunji BO, Woods CM, Jong PJ de, Teachman BA, Sawchuk CN, David B.
564 Development and initial validation of an abbreviated Spider Phobia Questionnaire using
565 item response theory. *Behavior Therapy*. 2009;40:114–30.
566 doi:10.1016/j.beth.2008.04.002.
- 567 24. Lecrubier Y, Sheehan DV, Weiller E, Amorim P, Bonora I, Sheehan KH, et al. The Mini
568 International Neuropsychiatric Interview (MINI). A short diagnostic structured interview:
569 reliability and validity according to the CIDI. *European psychiatry*. 1997;12:224–31.
570 doi:10.1016/S0924-9338(97)83296-8.
- 571 25. Faul F, Erdfelder E, Lang A-G, Buchner A. G* Power 3: A flexible statistical power
572 analysis program for the social, behavioral, and biomedical sciences. *Behavior research*
573 *methods*. 2007;39:175–91. doi:10.3758/BF03193146.
- 574 26. Limesurvey GmbH. LimeSurvey: An Open Source survey tool. Hamburg: Limesurvey
575 GmbH; 2022.
- 576 27. Strobel A, Beauducel A, Debener S, Brocke B. Eine deutschsprachige version des
577 BIS/BAS-Fragebogens von carver und white. *Zeitschrift für Differentielle und*
578 *diagnostische Psychologie* 2001. doi:10.1024/0170-1789.22.3.216.
- 579 28. Körner A, Geyer M, Roth M, Drapeau M, Schmutzer G, Albani C, et al.
580 Persönlichkeitsdiagnostik mit dem NEO-Fünf-Faktoren-Inventar: Die 30-Item-
581 Kurzversion (NEO-FFI-30). [Personality assessment with the NEO-Five-Factor
582 Inventory: the 30-Item-Short-Version (NEO-FFI-30)]. *Psychother Psychosom Med*
583 *Psychol*. 2008;58:238–45. doi:10.1055/s-2007-986199.

- 584 29. Barnes LLB, Harp D, Jung WS. Reliability generalization of scores on the Spielberger
585 state-trait anxiety inventory. *Educational and psychological measurement*. 2002;62:603–
586 18. doi:10.1177/0013164402062004005.
- 587 30. Schaller E, Gerdes A, Alpers GW, editors. *Angst ungleich ekel: der fragebogen zu ekel*
588 *und angst vor spinnen*: Pabst Lengerich; 2006.
- 589 31. Krohne HW, Egloff B. *Das Angstbewältigungs-Inventar (ABI)*. Frankfurt am Main 1999.
590 doi:10.1007/978-3-642-18976-0_7.
- 591 32. Garnefski N, Kraaij V. The Cognitive Emotion Regulation Questionnaire. *European*
592 *Journal of Psychological Assessment*. 2007;23:141–9. doi:10.1027/1015-5759.23.3.141.
- 593 33. Breyer B, Bluemke M. Deutsche Version der Positive and Negative Affect Schedule
594 PANAS (GESIS Panel). doi:10.6102/zis242.
- 595 34. Gerlach AL, Andor T, Patzelt J. Die Bedeutung von Unsicherheitsintoleranz für die
596 Generalisierte Angststörung Modellüberlegungen und Entwicklung einer deutschen
597 Version der Unsicherheitsintoleranz-Skala. *Zeitschrift für Klinische Psychologie und*
598 *Psychotherapie*. 2008;37:190–9. doi:10.1026/1616-3443.37.3.190.
- 599 35. Kemper CJ, Ziegler M, Taylor S. ASI-3-Angstsensitivitätsindex-3 2022.
600 doi:10.23668/psycharchives.4526.
- 601 36. Roth M, Hammelstein P. The Need Inventory of Sensation Seeking (NISS). *European*
602 *Journal of Psychological Assessment*. 2012;28:11–8. doi:10.1027/1015-5759/a000085.
- 603 37. Rosenberg M. Rosenberg self-esteem scale (RSE). *Acceptance and commitment therapy*.
604 *Measures package*. 1965;61:18.

- 605 38. Davis KL, Panksepp J, Normansell L. The affective neuroscience personality scales:
606 Normative data and implications. *Neuropsychanalysis*. 2003;5:57–69.
607 doi:10.1080/15294145.2003.10773410.
- 608 39. Behr M, Becker M. SEE–Skalen zum Erleben von Emotionen (SEE). *Zeitschrift für*
609 *Medizinische Psychologie*. 2006:141.
- 610 40. Lehrl S. Mehrfachwahl-Wortschatz-Intelligenztest: MWT-B: Spitta; 1999.
- 611 41. Schienle A, Walter B, Stark R, Vaitl D. Ein fragebogen zur erfassung der
612 ekelempfindlichkeit (FEE). *Zeitschrift für Klinische Psychologie und Psychotherapie*.
613 2002;31:110–20. doi:10.1026/0084-5345.31.2.110.
- 614 42. Kolassa I-T, Musial F, Kolassa S, Miltner WHR. Event-related potentials when
615 identifying or color-naming threatening schematic stimuli in spider phobic and non-
616 phobic individuals. *Bmc Psychiatry*. 2006;6:1–12. doi:10.1186/1471-244X-6-38.
- 617 43. Dan-Glauser ES, Scherer KR. The Geneva affective picture database (GAPED): a new
618 730-picture database focusing on valence and normative significance. *Behavior research*
619 *methods*. 2011;43:468–77. doi:10.3758/s13428-011-0064-1.
- 620 44. Antoniadou C, Ettinger U, Gaymard B, Gilchrist I, Kristjánsson A, Kennard C, et al. An
621 internationally standardised antisaccade protocol. *Vision Research*. 2013;84:1–5.
622 doi:10.1016/j.visres.2013.02.007.
- 623 45. Blumenthal TD, Cuthbert BN, Filion DL, Hackley S, Lipp OV, van Boxtel A. Committee
624 report: Guidelines for human startle eyeblink electromyographic studies.
625 *Psychophysiology*. 2005;42:1–15. doi:10.1111/j.1469-8986.2005.00271.x.

- 626 46. Kim KH, Bang SW, Kim SR. Emotion recognition system using short-term monitoring of
627 physiological signals. *Medical and biological engineering and computing*. 2004;42:419–
628 27. doi:10.1007/BF02344719.
- 629 47. Hamm AO, Cuthbert BN, Globisch J, Vaitl D. Fear and the startle reflex: Blink
630 modulation and autonomic response patterns in animal and mutilation fearful subjects.
631 *Psychophysiology*. 1997;34:97–107. doi:10.1111/j.1469-8986.1997.tb02420.x.
- 632 48. Schwarzmeier H, Leehr EJ, Böhnlein J, Seeger FR, Roesmann K, Gathmann B, et al.
633 Theranostic markers for personalized therapy of spider phobia: Methods of a bicentric
634 external cross-validation machine learning approach. *International journal of methods in*
635 *psychiatric research*. 2020;29:e1812. doi:10.1002/mpr.1812.
- 636 49. Sjak-Shie EE. *PhysioData Toolbox (Version 0.6.3)*; 2022.
- 637 50. Duits P, Cath DC, Lissek S, Hox JJ, Hamm AO, Engelhard IM, et al. Updated
638 meta-analysis of classical fear conditioning in the anxiety disorders. *Depression and*
639 *anxiety*. 2015;32:239–53.
- 640 51. Roesmann K, Leehr EJ, Böhnlein J, Steinberg C, Seeger F, Schwarzmeier H, et al.
641 Behavioral and magnetoencephalographic correlates of fear generalization are associated
642 with responses to later virtual reality exposure therapy in spider phobia. *Biological*
643 *Psychiatry: Cognitive Neuroscience and Neuroimaging*. 2022;7:221–30.
644 doi:10.1016/j.bpsc.2021.07.006.
- 645 52. Boehnlein J, Altegoer L, Muck NK, Roesmann K, Redlich R, Dannlowski U, Leehr EJ.
646 Factors influencing the success of exposure therapy for specific phobia: A systematic
647 review. *Neuroscience & Biobehavioral Reviews*. 2020;108:796–820.

648 53. Richter J, Pittig A, Hollandt M, Lueken U. Bridging the gaps between basic science and
649 cognitive-behavioral treatments for anxiety disorders in routine care: Current status and
650 future demands. *Zeitschrift für Psychologie*. 2017;225:252.

651

	Enrollment	Online Battery	Appointment				
			Baseline	Training	Post-1	Priming	Post-2
Participants	SP & HC	SP & HC	SP & HC	SP & HC	SP & HC	SP	SP
ENROLLMENT							
Screening for Eligibility	X						
Informed Consent	X						
Allocation	X						
Clinical Interview	X						
INTERVENTION				X		X	
FREE VIEWING							
Startle Response			X				X
Heart rate			X				X
Electrodermal Activity			X				X
ANTISACCADE-TASK							
Latencies			X		X		X
Error Rates			X		X		X
BAT			X		X		X
SELF-REPORT							
MINI	X						
SPQ	X						X
BIS/BAS		X					
NEO-FFI		X					
STAI		X					
FEAS		X					
ABI		X					
CERQ		X					
PANAS		X					
UI-18		X					
ASI-3		X					
NISS		X					
RSES		X					
ANPS		X					
SEE		X					
MWT-B							X
FEE							X

Figure 1

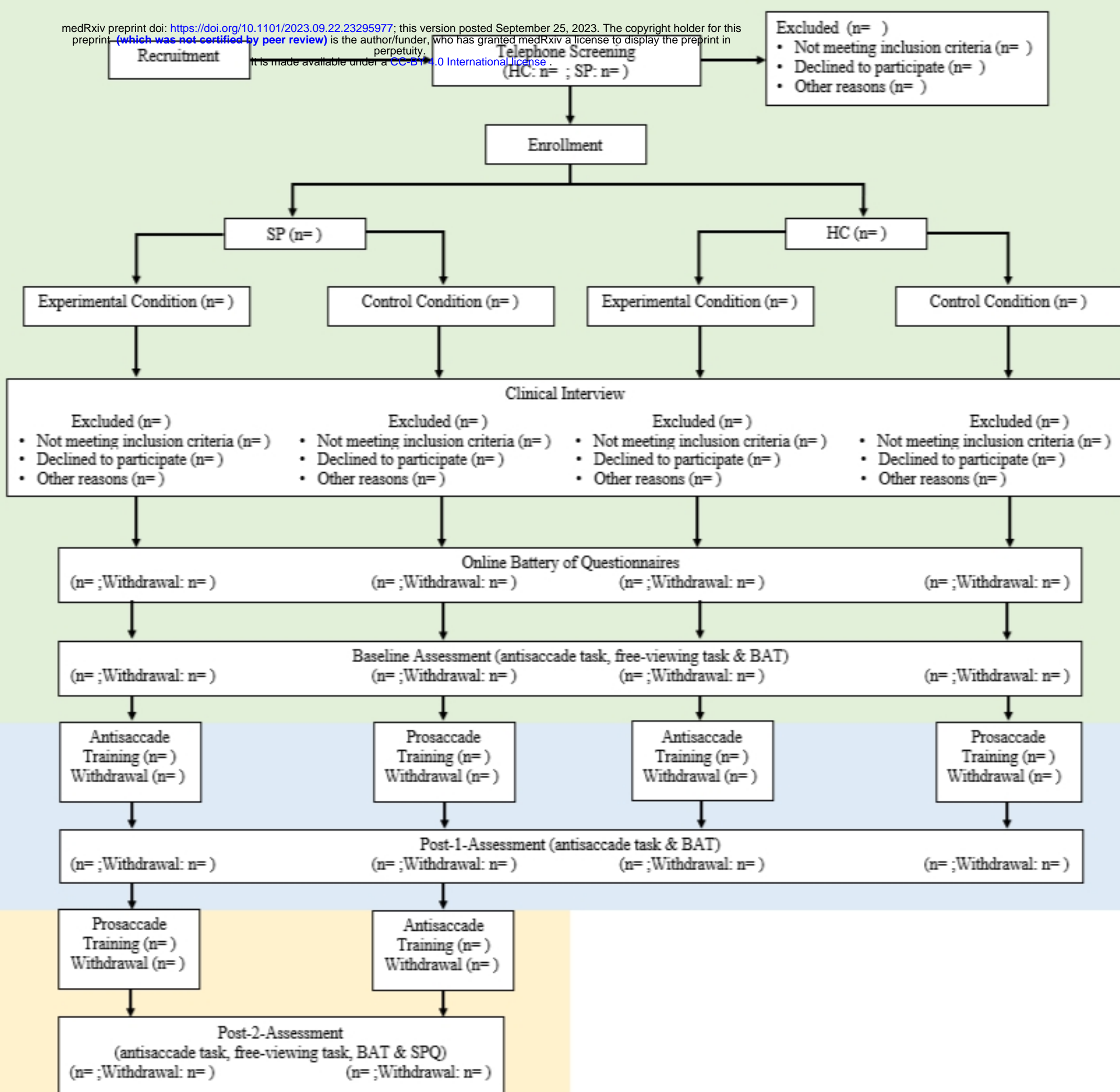


Figure 2

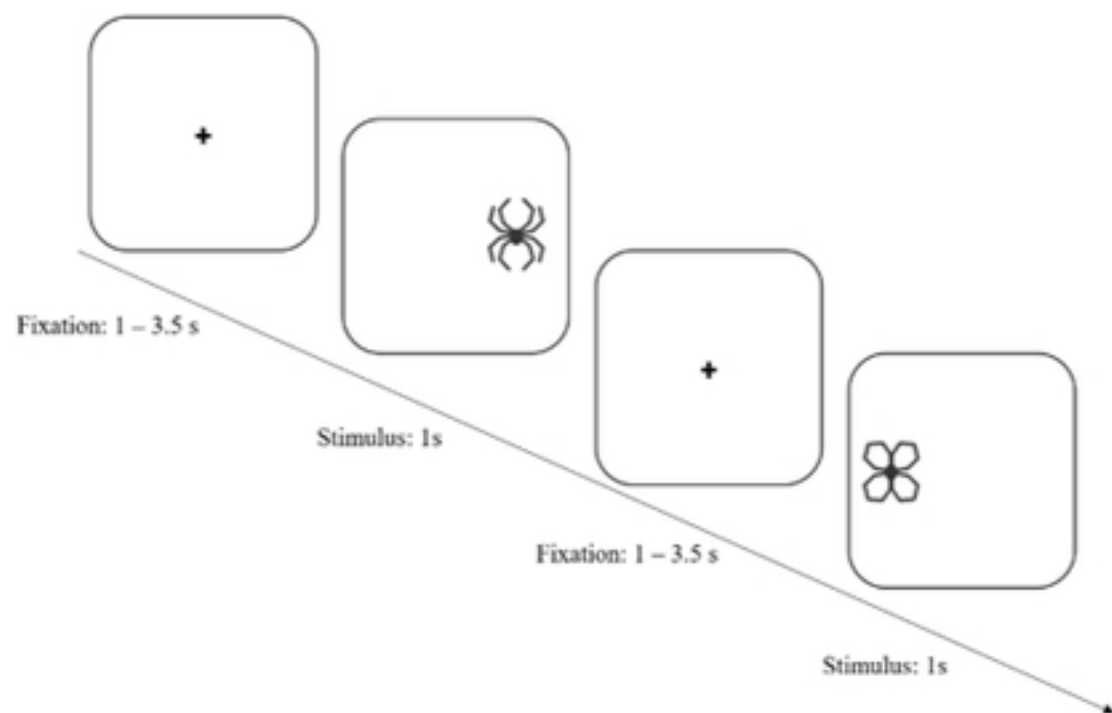
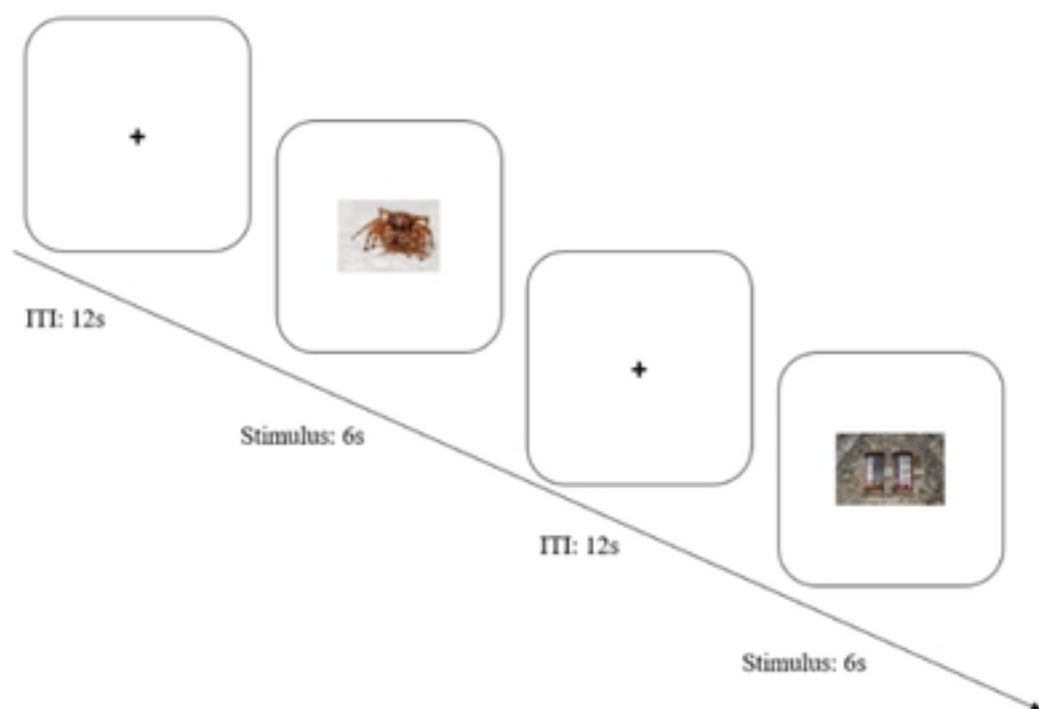
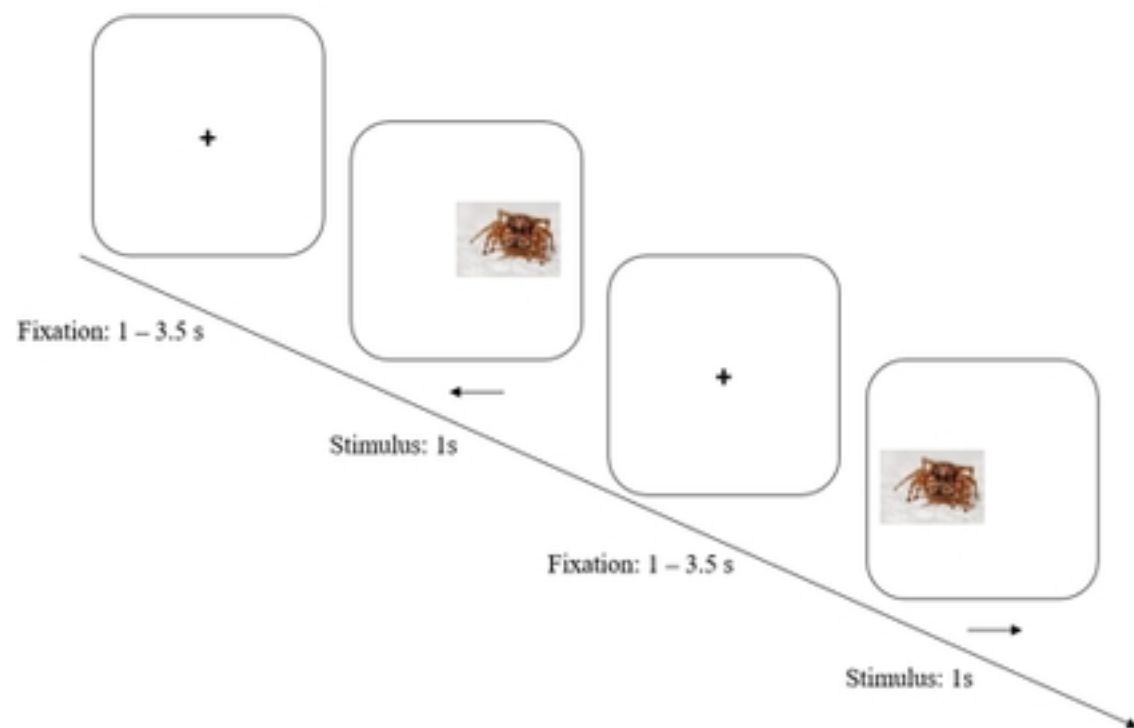
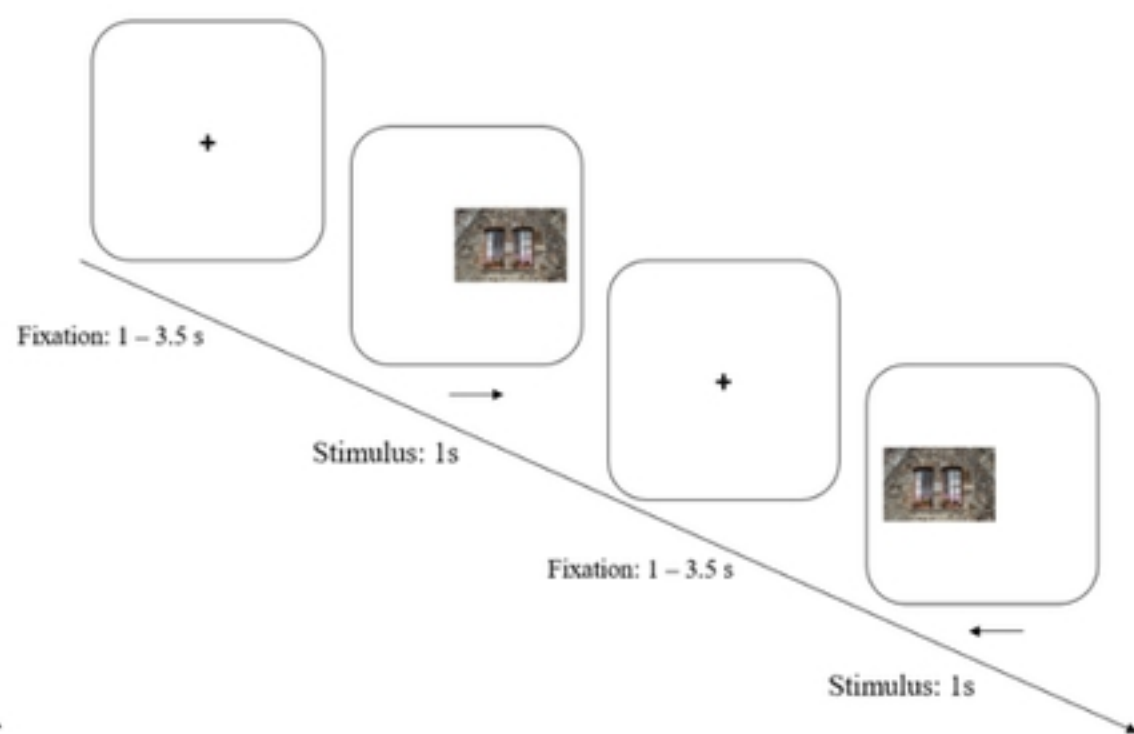
A**B****C****D**

Figure 3