

1 **Title**

2 Occurrence of human infection with *Salmonella* Typhi in sub-Saharan Africa.

3

4 **Authors**

5 Jong-Hoon Kim, Prerana Parajulee¹, Thuy Tien Nguyen, Shreeya Wasunkar, Vittal Mogasale¹,

6 Se Eun Park^{1,2}, Ursula Panzner, Ondari D. Mogeni¹, Justin Im¹, and Florian Marks^{1,3,4}

7

8 **Affiliations**

9 ¹ International Vaccine Institute, Seoul, Republic of Korea

10 ² Graduate School of Public Health, Yonsei University, Seoul, Republic of Korea

11 ³ University of Antananarivo, Antananarivo, Madagascar

12 ⁴ Cambridge Institute of Therapeutic Immunology and Infectious Disease, University of

13 Cambridge

14

15 *Corresponding author: jonghoon.kim@ivi.int

16

17

18

19

20

21

22

23

24

25

26

27

28

29

30

31

32

33

34

35

36

37

38 **Abstract**

39 Typhoid fever, caused by *Salmonella enterica* serovar Typhi, results in over 1.2 million cases
40 and 29 thousand deaths annually from sub-Saharan Africa. Combating this disease requires
41 various intervention approaches, such as typhoid conjugate vaccines and improving water,
42 sanitation, and hygiene. Enhancing the effectiveness of these strategies necessitates a
43 deeper understanding of the variation of the typhoid fever across the target region.
44 Although the magnitude and variation of typhoid fever at the country level have been
45 studied globally, sub-national variation remains underexplored. To address this gap, we
46 collected data from 265 published reports on typhoid fever occurrences in sub-Saharan
47 Africa between January 2000 and December 2020. The dataset includes information on the
48 year and geographical location of observation, diagnostic tests used, and the type of studies
49 in which typhoid fever was reported. By analyzing this dataset, we can gain insights into the
50 sub-national heterogeneity of typhoid fever's burden in the region. This knowledge will be
51 instrumental in designing more effective intervention strategies to combat the disease.

52

53

54

55

56

57

58

59

60

61

62

63 **Background & Summary**

64 Typhoid fever is a systemic bacterial infection caused by *Salmonella enterica* serovar Typhi
65 (*Salmonella* Typhi or *S. Typhi*). Patients usually present sustained fever (39-40°C) and other
66 symptoms include weakness, stomach pain, headache, diarrhea or constipation, cough, and
67 loss of appetite. Severe forms of illness include ileal perforation, which can lead to death. *S.*
68 Typhi is transmitted via fecally-contaminated food and water and the majority of typhoid
69 fever incidence is known to occur in low- and middle-income countries (LMIC)¹⁻⁶.

70

71 Globally, typhoid fever causes estimated 12 million cases and 130 thousand deaths according
72 a recent modelling study in which incidence rate data come from population-based
73 longitudinal surveillance studies conducted at 22 sites in 14 different countries between
74 1978 and 2017.¹ Earlier estimates of the global burden of typhoid fever were based on a
75 relatively simplistic approach of extrapolating the incidence rates observed in one setting to
76 the entire country or to neighbouring countries where data is unavailable²⁻⁴. However, the
77 surveillance is often conducted at sites where the disease incidence has already been
78 reported and therefore would not necessarily well represent the country⁵. Later studies used
79 sophisticated modelling techniques to adjust observed values using the distribution of
80 geospatial variables that potentially affect the transmission of typhoid fever rather than
81 simple extrapolation^{1,6}.

82

83 While they clearly show variation at the country level, existing studies fail to emphasize that
84 the burden of typhoid fever also shows significant sub-national variation for each country.
85 Outbreaks often show district-level variation of typhoid incidence⁷⁻⁹ and country-level
86 surveys show sub-national heterogeneity of incidence¹⁰⁻¹³. Understanding idiosyncratic
87 behaviour of typhoid transmission between communities will be critical for a country to
88 implement intervention programs such as campaign vaccination against endemic or

89 epidemic typhoid fever more efficiently and effectively. Efficiency and effectiveness of an
90 intervention program can improve, for instance, if the interventions are targeted on high-
91 burden areas. Identifying those high-burden areas will depend on how well we understand
92 the spatial variation of the burden of typhoid fever across the target country.

93

94 Although population-based prospective studies serve as the basis for existing estimates of
95 country-level and global burden of typhoid fever, report of sporadic cases and outbreaks
96 provide wider spatial coverage and hold information on sub-national variation of occurrence
97 of typhoid fever¹⁴. In this study, we provide the data set on the occurrence of typhoid fever
98 extracted from peer-reviewed literature. We focus on sub-Saharan Africa, where systematic
99 surveillance has shown that the burden is substantial^{1,2,5,6}. The dataset we report provides
100 information on the occurrence of typhoid fever at the hospital, or district or higher sub-
101 national administrative units. These datasets provide opportunities to better understand
102 sub-national variation of the occurrence of typhoid fever.

103

104 **Methods**

105 *Search and Data Sources*

106 Data on the occurrence of typhoid fever were extracted from peer-reviewed research
107 articles indexed in PubMed or Embase published between January 1, 2000 and October 31,
108 2020. Systematic review of the literature followed a standard procedure and the overview
109 of the procedure in a Preferred Reporting Items for Systematic Reviews and Meta-Analyses
110 (PRISMA) flow diagram (**Figure 1**). The search term used for querying PubMed and Embase
111 was designed to capture different uses of typhoid fever in the literature such as typhoid
112 fever, *Salmonella typhi*, *S. Typhi*, or enteric fever and limit to the countries from sub-Saharan
113 Africa. The exact search terms appear in the Supplement.

114 *Eligibility Criteria and Study Selection*

115 A study, regardless of study types, was eligible for inclusion in this analysis if it clearly reports
116 date and location of occurrence as well as diagnostic method used for confirmation of the
117 occurrence of human typhoid cases. We included reports of polymerase chain reaction (PCR)
118 or culture-confirmed typhoid fever where *S. Typhi* was isolated from normally sterile sites
119 such as blood, urine, bone marrow, or cerebrospinal fluid. We also included studies that
120 confirm typhoid fever through serologic tests (e.g., Widal test or enzyme-linked
121 immunosorbent assay [ELISA]) or suspected clinically (e.g., ileal perforation) while
122 acknowledging that those case definitions are less reliable compared with culture or PCR
123 confirmation. We excluded the studies that are based on the analyses of existing data and do
124 not report novel occurrence of typhoid fever in humans. For instance, some articles report
125 results of experiments using the existing isolates (e.g., susceptibility to antimicrobials or
126 other medicinal plants) and were therefore excluded. Other studies fail to provide serovars
127 while reporting infection *Salmonella*.

128

129 *Data Extraction, Study Variables, and Analytic Approach*

130 Two authors (J-HK and PP) reviewed the literature and extracted the data. Where there was
131 discordance among the two reviewers, the first author decided after discussions. Extracted
132 data included year of observation, location (smallest sub-national area possible), diagnostic
133 method, and the number of typhoid cases reported. In reports of typhoid cases from
134 observations that span multiple years without further details broken down by year, we
135 assumed that at least 1 episode of typhoid fever case occurred each year. We defined a
136 typhoid fever occurrence as a report of at least 1 episode of typhoid fever excluding any
137 duplicate reports from the same cohort. For imported cases, we assumed that the typhoid
138 episode occurred in the country in which the infection occurred according to the report. If
139 the imported cases led to local transmission, we assumed that typhoid occurred in both the

140 country of infection origin and the country of report. An outbreak was defined based on the
141 definition used in the report.

142

143 **Data Records**

144 Occurrence data were stored in an Excel spreadsheet where each row indicates an
145 occurrence event of typhoid fever for specific year and location. Some occurrence events
146 reported from a larger region may overlap those from smaller sub-regions within a region.
147 Columns indicate data source (e.g., title of the article), years of observation and report,
148 diagnostic method, number of cases reported, sub-national region (up to the smallest units
149 available), study type, longitude and latitude which were acquired through Google Map.
150 Locations may refer to the arbitrary central point of the region (e.g., neighbourhoods,
151 village) or the location of a healthcare facility. Study types were categorized into review of
152 hospital records, case report, outbreak reports, and longitudinal studies. The dataset is
153 available at the GitHub repository of the first author.¹⁵

154

155 **Technical Validation**

156 We provide an overview of the included studies by country and year of publication. Also, we
157 provide more details on the diagnostic methods used to confirm the infection, types of
158 studies in which typhoid fever were reported, year, and sub-national location of occurrence
159 of typhoid fever.

160

161 Frequency of studies by year and country

162 Occurrence of confirmed typhoid fever were reported in 31 countries from Jan 2000 to Dec
163 2020 with overall reporting frequency increasing over time (**Figure 2A**). The number of
164 reports varies by study and year of publication (**Figure 2B**) and by year in which the study
165 began (**Figure 2C**) considerably. Nigeria consistently reported the highest number of reports

166 on the occurrence of typhoid fever over the period. For countries like Angola, Benin,
167 Burundi, Guinea-Bissau, Liberia, Madagascar, Niger, Uganda, Zambia and Zimbabwe, typhoid
168 fever has been reported after 2010 considering the period from 2000 to 2020.

169 Diagnostic methods

170 We categorized the studies based on the diagnostic method employed to identify typhoid
171 fever (**Table 1**). In instances where a single study utilized multiple diagnostic methods (e.g.,
172 clinical criteria, blood culture, and bone marrow sample culture), we prioritized the method
173 with the higher performance. Specifically, if the study included the method such as the
174 culture of bone marrow or cerebrospinal fluid samples, which is recognized as the highest
175 sensitivity, we selected this method as the representative method of the study. Similarly, a
176 study incorporated blood culture but did not included methods like the bone marrow
177 culture, we chose the blood culture as the representative diagnostic method. If the methods
178 included other culture methods, we chose the methods in the order of culture of urine
179 samples, culture of stool samples, and culture of other body fluids. Other studies did not
180 specifically mention the samples used to culture but implied the culturing method (e.g.,
181 "bacterial isolation" or "microbiologically confirmed"). In this case, we created a category
182 called "Culture". For studies whose diagnostic methods do not include culturing method, we
183 chose the method in an order of Rapid tests, Widal, biochemical tests, and clinical
184 symptoms. While we sought to categories by the precision of the tests, this category maybe
185 somewhat arbitrary. The reader can access the original terms that indicated multiple
186 methods used for each study.

187

188 According to this categorization, studies based on culturing blood samples were most
189 frequent ($n=99$, 37.4%). (**Table 1**) while still numerous studies relied on less reliable
190 methods, which include clinical signs (e.g., ileal perforation) ($n=71$, 26.8%) or Widal test (or
191 agglutination) ($n=36$, 13.6%).

192

193 Study types

194 Study design was diverse and included case reports, outbreak investigation, cross-sectional
195 studies, retrospective studies (i.e., review of hospital records), and prospective studies
196 including multi-year longitudinal surveillance studies. While population-based longitudinal
197 surveillance studies can provide incidence rates of typhoid fever, they are few (n = 5) and
198 were conducted around 15 sub-national areas of 10 countries (**Table 2**). On the other hand,
199 there are other studies that report occurrence of typhoid fever and wider spatial coverage in
200 the dataset. Prospective studies including clinical trials were most common (n=212),
201 followed by retrospective (n=144), cross-sectional (n=48), outbreak investigation (n=26),
202 case report (n=26), and case-control (n=13) studies.

203

204 Geographical locations

205 Occurrence data cover entire continent although occurrences are more frequent in East and
206 West Africa. Top three countries in terms of the number of unique 20 km by 20 km grids
207 where the occurrence was reported were Nigeria (n=85), Kenya (n=24), and Tanzania (n=23)
208 (**Figure 3A-D**). Sub-national locations in the dataset includes household, primary clinic,
209 tertiary hospitals, district, or provinces. Except for the household locations (n=180),
210 occurrence of typhoid fever has been reported in small number of large hospitals and cities
211 with substantial variation across countries. In Angola, National Institute of Public Health of
212 Angola located in the Capital city, Luanda is the only place in which blood culture-confirmed
213 typhoid fever was reported. On the other hand, more than 55 health centers and hospitals
214 spread out through the country.

215

216 **Code Availability**

217 All the codes used to generate the figures and tables are available in the GitHub repository ¹⁵

218 **Funding**

219 This work was supported, in whole or in part, by Gavi, the Vaccine Alliance, and the Bill &
220 Melinda Gates Foundation, via the Vaccine Impact Modelling Consortium (Grant Number
221 OPP1157270 / INV-009125) and the Severe Typhoid Fever in Africa Program (Grant Number
222 OPP1127988). The funders were not involved in the study design, data analysis, data
223 interpretation, and writing of the manuscript. The authors alone are responsible for the
224 views expressed in this article and they do not necessarily represent the decisions, policy, or
225 views of their affiliated organizations.

226

227 **Author contributions**

228 J-HK designed the study, performed the literature search, reviewed the articles, extracted
229 the data, and wrote the manuscript. PP reviewed the articles, extracted data, and reviewed
230 the manuscript. All authors reviewed the final version of the manuscript and approved its
231 submission.

232

233 **Competing interests**

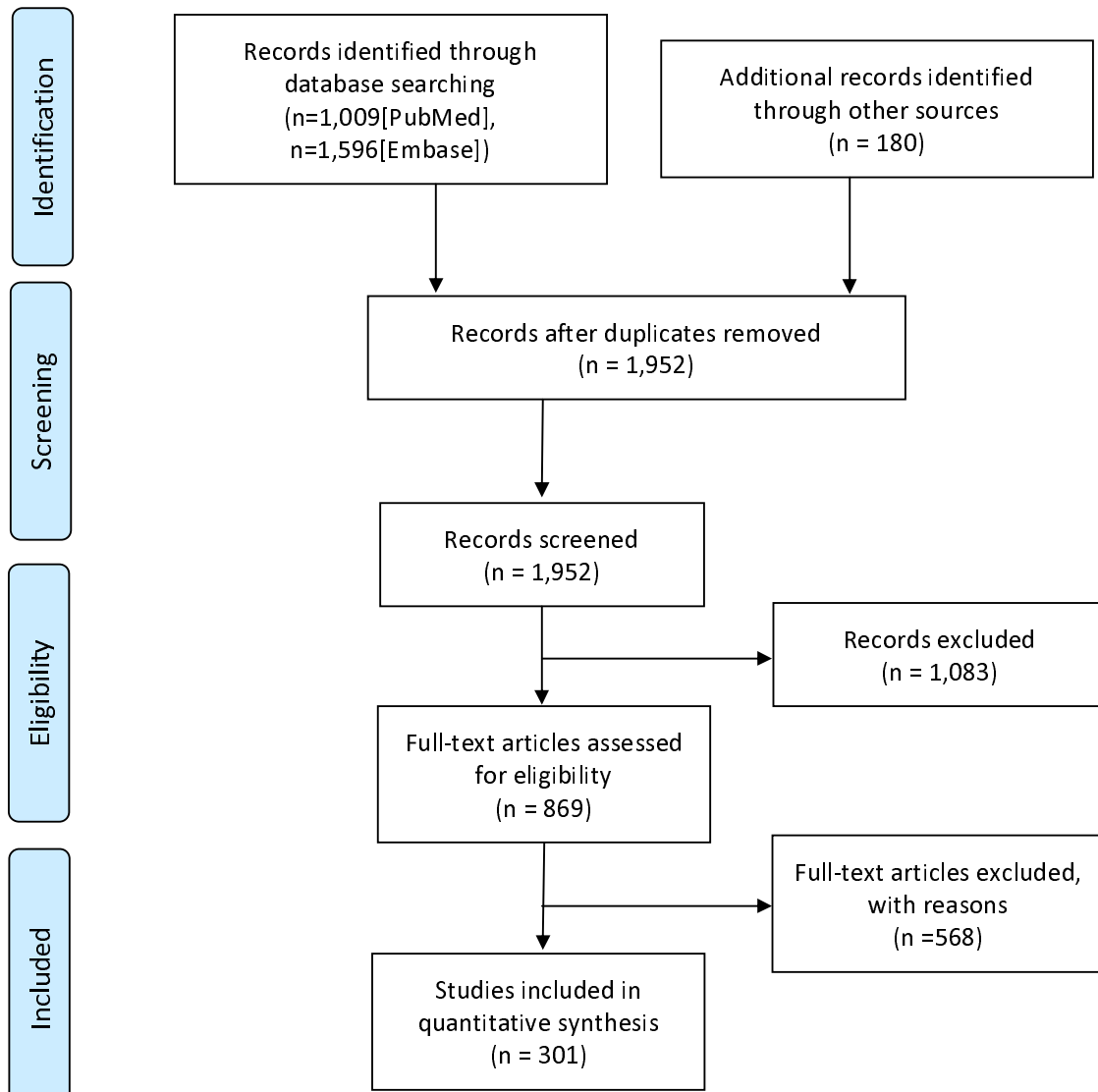
234 There is no conflict of interest.

235

236

237 **Figures**

238



239 **Figure 1.** PRISMA flow diagram

240

241

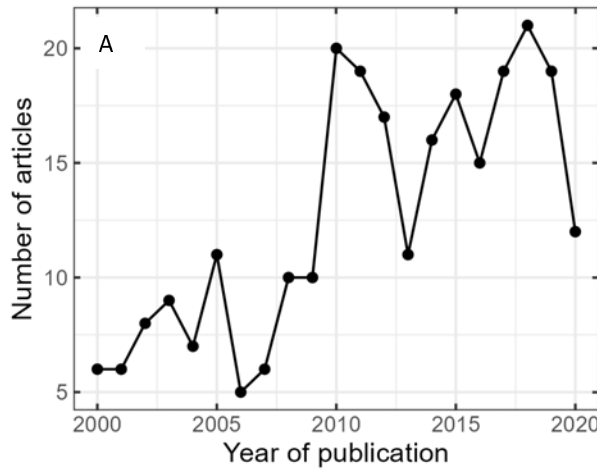
242

243

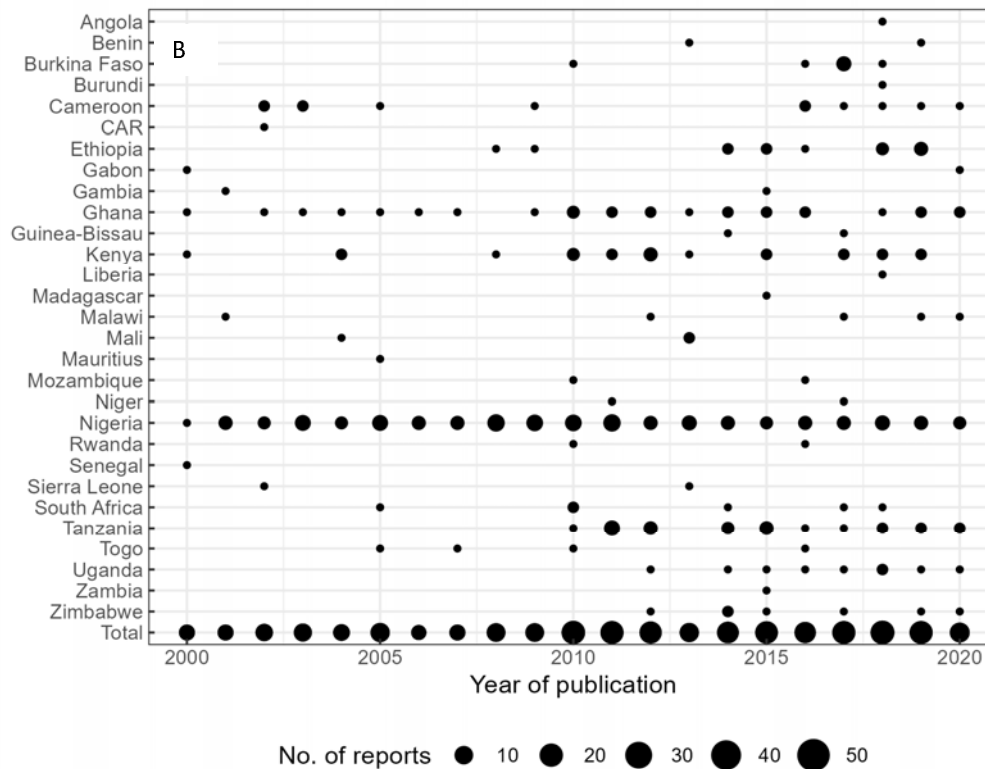
244

245

246 **Figure 2.** Number of included reports by year and country. The overall number of reports of
247 typhoid occurrence in sub-Saharan Africa increases over time (A) with the considerable
248 variation by year of publication and country (B). The number of studies showed substantial
249 variation also by country and the year in which the study began. CAR = Central African
250 Republic

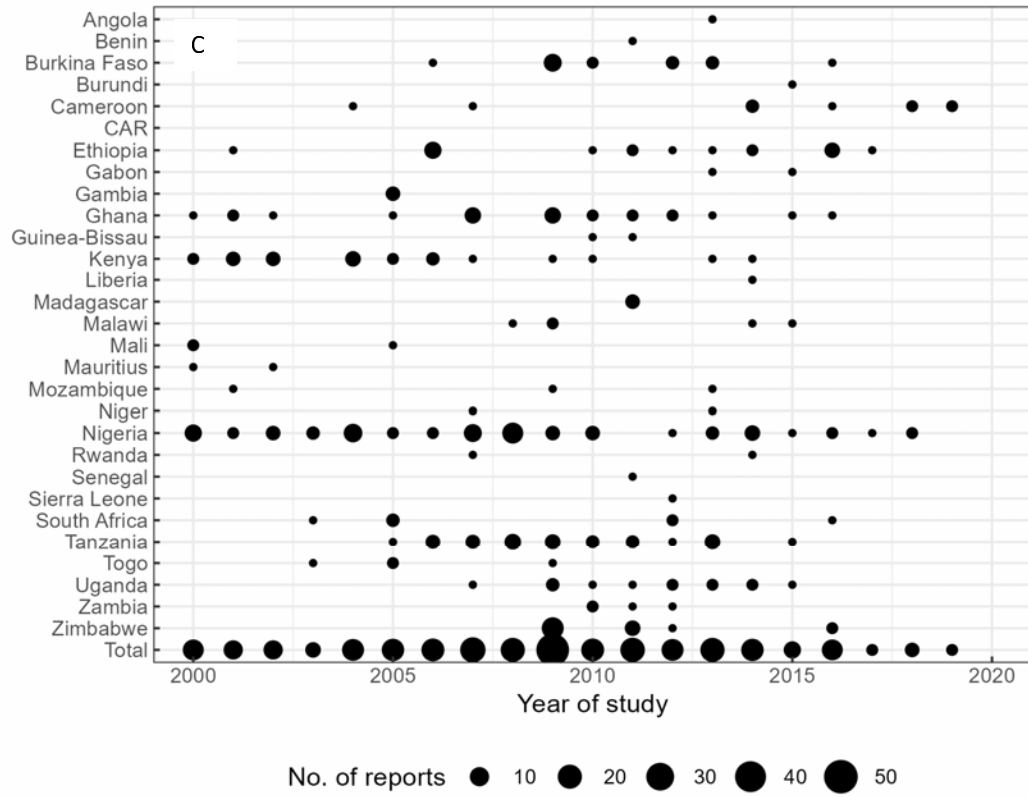


251



252

It is made available under a [CC-BY-NC-ND 4.0 International license](https://creativecommons.org/licenses/by-nc-nd/4.0/) .



253

254

255

256

257

258

259

260

261

262

263

264

265

266

267

268

269

270

271

272

273

274

275

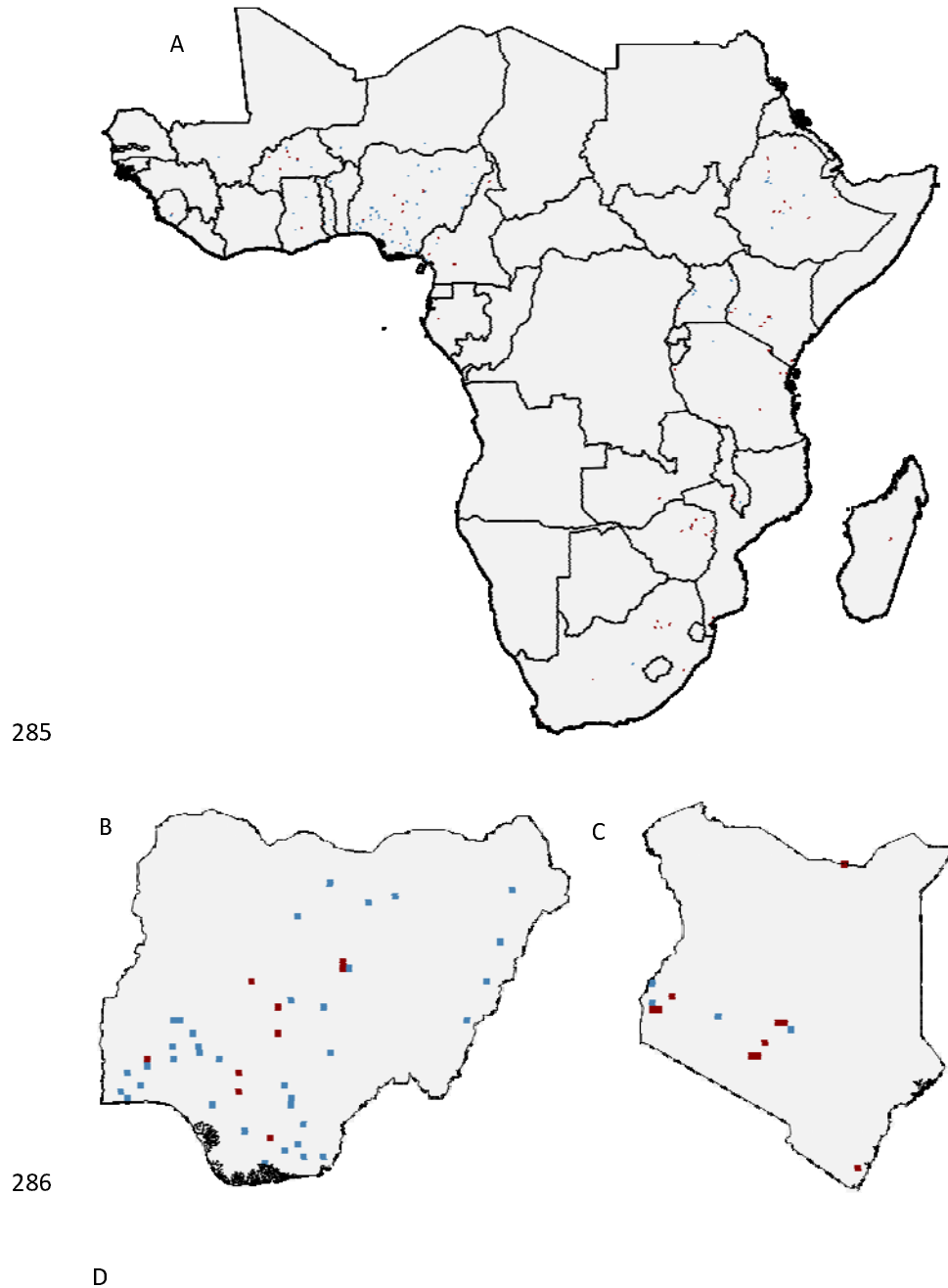
276

277

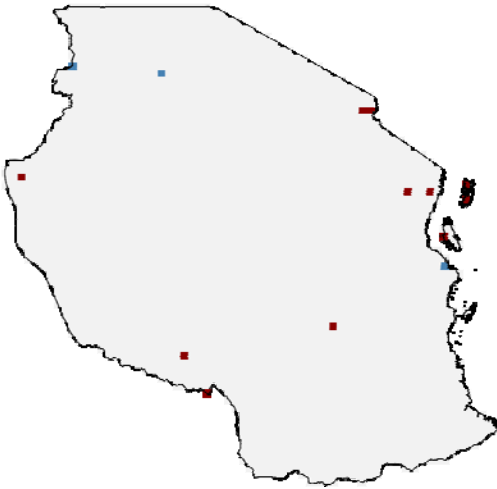
278

279

280 **Figure 3.** Geographical locations of occurrence of typhoid fever. The map has 20 km by 20
281 km resolution. Red and blue grids represent location of typhoid fever confirmed through
282 culture and other methods, respectively in Africa (A). (B), (C) and (D) represent Nigeria,
283 Kenya, and Tanzania, respectively, in which typhoid occurrences were most frequently
284 reported.



It is made available under a [CC-BY-NC-ND 4.0 International license](https://creativecommons.org/licenses/by-nc-nd/4.0/) .



287

288

289

290

291

292

293

294

295

296

297

298

299

300

301

302

303

304

305

306

307

308

309

310

311

312

313

314

315

316

317

318

319

320

321 **Table 1.** Frequency of studies by diagnostic methods. CSF = Cerebrospinal fluid.

Diagnostic method	Frequency [n (%)]	Samples of actual terms used in the literature
Culture of blood samples	99 (37.4)	"urine, blood, or stool culture", "blood or stool culture, or Widal-Felix", "blood/urine/stool culture", etc.
Clinical symptoms	71 (26.8)	"typhoid perforation", "intestinal perforation", "clinical diagnosis", "digestive perforation", "typhoid gall bladder perforation", "cholecystitis", "clinical", "hospital record", "ileal perforation", "multiple jejunal perforations", "perforated enteritis", "peritonitis", "small bowel perforation", "enterocutaneous fistula", "septicaemia", "case files", "cases reported", "death records", "typhoid fever", etc.
Widal test	36 (13.6)	"Widal test", "agglutination and titration (> 4-fold)", "Widal-Felix", "Widal and Weilfelix direct card agglutination tests (DCAT)", "Tube agglutination test", etc.
Culture of stool samples	17 (6.4)	"stool culture", etc.
Culture	14 (5.3)	"Isolation of Salmonella typhi", "culture", "isolated", "bacterial isolation", "microbiologically confirmed", "laboratory confirmed", "confirmed", etc.
Unclear	11 (4.2)	"Survey questionnaire", "surveillance data", "National Health Laboratory Services data", "standard methods with blood samples", "travel or tropical medicine clinics record", "history based on self report", "questionnaire",

		"report at medical record", "self reported"
Culture of CSF samples	5 (1.9)	"cerebrospinal fluid culture", "spinal fluid culture", "isolation from CSF, blood, or stool", etc.
Autopsy	3 (1.1)	"post mortem report", "autopsy", "coroner's autopsies"
Culture of bone marrow samples	3 (1.1)	"blood, stool or bone marrow culture", "blood and bone marrow cultures", etc.
Rapid test	2 (0.8)	"rapid typhoid test", "Blood-RDT", "rapid diagnostic test", "RDT", etc.
Culture of other body fluids	1 (0.4)	"aspirates culture", "culture of pus", "wound culture", "wound swab culture", "Ear and throat culture", "Sputum culture", "rectal swab specimens examined bacteriologically", etc.
Biochemical test	1 (0.4)	"biochemical", "biochemical testing of urine sample", "biochemical tests of environmental samples", etc.
Culture of environmental samples	1 (0.4)	"environmental sample culture", "S. typhi isolated from water"
Culture of urine samples	1 (0.4)	"urine culture"

322

323

324

325

326 Table 2. Population-based longitudinal surveillance of typhoid fever in sub-Saharan Africa
327 since 2000
328

Country	Sub-national region	Surveillance period	Ref
Burkina Faso	Nanoro, Boulkiemde	2013-2014	¹⁶
Burkina Faso	Nioko II, Polesgo	2012-2013	⁵
Ethiopia	Butajira	2012-2014	⁵
Ghana	Asante Akim North	2007-2009	¹⁷
Ghana	Asante Akim North	2010-2012	⁵
Guinea-Bissau	Bandim	2011-2013	⁵
Kenya	Lwak, Kibera	2006-2009	¹³
Kenya	Kibera	2012-2013	⁵
Madagascar	Imerintsiatosika, Isotry	2011-2013	⁵
Senegal	Pikine	2011-2013	⁵
South Africa	Pietermaritzburg	2012-2014	⁵
Sudan	East Wad Medani	2012-2013	⁵
Tanzania	Pemba Island	2010-2012	¹⁸
Tanzania	Moshi urban, Moshi rural	2011-2013	⁵

329

330

331

332

333

334

335

336

337

338

339

340

341

342

343 References

- 344 1. Antillón, M. *et al.* The burden of typhoid fever in low- and middle-income countries:
345 A meta-regression approach. *PLOS Neglected Tropical Diseases* **11**, e0005376 (2017).
- 346 2. Kim, J.-H., Mogasale, V., Im, J., Ramani, E. & Marks, F. Updated estimates of typhoid
347 fever burden in sub-Saharan Africa. *The Lancet Global Health* **5**, e969 (2017).
- 348 3. Mogasale, V. *et al.* Burden of typhoid fever in low-income and middle-income
349 countries: a systematic, literature-based update with risk-factor adjustment. *The Lancet*
350 *Global Health* **2**, e570–e580 (2014).
- 351 4. Crump, J. A., Luby, S. P. & Mintz, E. D. The global burden of typhoid fever. *Bull World*
352 *Health Organ* **82**, 346–353 (2004).
- 353 5. Marks, F. *et al.* Incidence of invasive salmonella disease in sub-Saharan Africa: a
354 multicentre population-based surveillance study. *The Lancet Global Health* **5**, e310–e323
355 (2017).
- 356 6. Stanaway, J. D. *et al.* The global burden of typhoid and paratyphoid fevers: a
357 systematic analysis for the Global Burden of Disease Study 2017. *The Lancet Infectious*
358 *Diseases* **19**, 369–381 (2019).
- 359 7. Ali, E. *et al.* Localised transmission hotspots of a typhoid fever outbreak in the
360 Democratic Republic of Congo. *Pan Afr Med J* **28**, 179 (2017).
- 361 8. Polonsky, J. A. *et al.* Descriptive epidemiology of typhoid fever during an epidemic in
362 Harare, Zimbabwe, 2012. *PLoS One* **9**, e114702 (2014).
- 363 9. Cruz Espinoza, L. M. *et al.* Variations of Invasive Salmonella Infections by Population
364 Size in Asante Akim North Municipal, Ghana. *Clin Infect Dis* **62 Suppl 1**, S17-22 (2016).
- 365 10. Ismail, K., Maiga, G., Ssebuggwawo, D., Nabende, P. & Mansourian, A. Spatio-
366 temporal trends and distribution patterns of typhoid disease in Uganda from 2012 to 2017.
367 *Geospatial Health* **15**, (2020).
- 368 11. Tamrakar, D. *et al.* Spatial Heterogeneity of Enteric Fever in 2 Diverse Communities
369 in Nepal. *Clinical Infectious Diseases* **71**, S205–S213 (2020).
- 370 12. Osei, F. B., Stein, A. & Nyadanu, S. D. Spatial and temporal heterogeneities of district-
371 level typhoid morbidities in Ghana: A requisite insight for informed public health response.
372 *PLoS One* **13**, e0208006 (2018).
- 373 13. Breiman, R. F. *et al.* Population-Based Incidence of Typhoid Fever in an Urban
374 Informal Settlement and a Rural Area in Kenya: Implications for Typhoid Vaccine Use in
375 Africa. *PLoS ONE* **7**, e29119 (2012).
- 376 14. Kim, J.-H. *et al.* A Systematic Review of Typhoid Fever Occurrence in Africa. *Clin*
377 *Infect Dis* **69**, S492–S498 (2019).
- 378 15. Kim, J.-H. Occurrence of human infection with Salmonella Typhi in sub-Saharan
379 Africa. https://github.com/kimfinale/typhoid_occurrence (2023).
- 380 16. Guiraud, I. *et al.* Population-based incidence, seasonality and serotype distribution of
381 invasive salmonellosis among children in Nanoro, rural Burkina Faso. *PLOS ONE* **12**, e0178577
382 (2017).
- 383 17. Nielsen, M. V. *et al.* Incidence and Characteristics of Bacteremia among Children in
384 Rural Ghana. *PLOS ONE* **7**, e44063 (2012).
- 385 18. Thriemer, K. *et al.* The Burden of Invasive Bacterial Infections in Pemba, Zanzibar.
386 *PLOS ONE* **7**, e30350 (2012).
- 387

388

389

390

