

1 **Associations between depression symptom burden and delirium risk: a prospective cohort**
2 **study**

3

4 Running title: Depression symptoms and delirium risk.

5

6 Arlen Gaba^{1,2}, B.S., Peng Li^{1,3}, PhD, Zheng Xi¹, M.S., Chenlu Gao^{1,3}, PhD., Cai Ruixue,¹ PhD.,
7 Kun Hu^{1,3}, PhD., Lei Gao^{1,3,4}, MBBS.

8

9 ¹ Medical Biodynamics Program, Division of Sleep and Circadian Disorders, Brigham and
10 Women's Hospital, Boston, MA, USA

11 ² Wake Forest University School of Medicine, Winston Salem, NC, USA

12 ³ Division of Sleep Medicine, Harvard Medical School, Boston, MA, USA

13 ⁴ Department of Anesthesia, Critical Care and Pain Medicine, Massachusetts General Hospital,
14 Harvard Medical School, Boston, MA, USA

15

16 Address correspondence to:

17 Arlen Gaba, BS, Tel: (617) 278-0061; Fax: (617) 732-7337; E-mail: agaba@wakehealth.edu

18 Lei Gao, MBBS, Tel: (617) 278-0061; Fax: (617) 732-7337; E-mail: lgao@mgh.harvard.edu

19 Department of Anesthesia, Massachusetts General Hospital, Boston, MA, 02114

20

21

22

23

24 **Funding:** This work was supported by the BrightFocus Foundation Alzheimer’s Disease
25 Research Program (grant number: A2020886S) to [PL]; Alzheimer’s Association Research
26 Fellowship (grant number AARFD-22-928372) to [CG]; National Institutes of Health (grant
27 numbers RF1AG064312, R01AG083799) to [KH]; National Institutes of Health (grant number
28 R03AG067985) to [LG]; and the Alzheimer’s Association Clinician Scientist Fellowship (grant
29 number AACSF-23-1148490) to [LG].

30

31

32

33

34

35

36

37

38

39

40

41

42

43

44

45

46

47 **Abstract**

48 BACKGROUND AND OBJECTIVES: Delirium and depression are increasingly common in
49 aging. There is considerable clinical overlap, including shared symptoms and comorbid
50 conditions, including Alzheimer’s disease (AD), functional decline, and mortality. Despite this,
51 the long-term relationship between depression and delirium remains unclear. This study assessed
52 the associations of depression symptom burden and its trajectory with delirium risk in a 12-year
53 prospective study of older individuals during hospitalization.

54

55 RESEARCH DESIGN AND METHODS: 319,141 UK biobank participants between 2006-2010
56 (mean 58y [range 37-74, SD=8], 54% female) reported frequency (0-3) of four depressive
57 symptoms (mood, disinterest, tenseness, or lethargy) in the preceding 2 weeks, and aggregated
58 into a depressive symptom burden score (0-12). New-onset delirium was obtained from
59 hospitalization records during 12y median follow-up. 40,451 (mean age 57±8; range 40-74y) had
60 repeat assessment on average 8y after their first. Cox proportional hazard models examined
61 whether depression symptom burden and trajectory predicted incident delirium during
62 hospitalization.

63

64 RESULTS: 5,753 (15 per 1000) newly developed delirium during follow-up. Increased risk for
65 delirium was seen for mild (aggregated scores 1-2, hazards ratio, HR=1.16, [95% confidence
66 interval 1.08–1.25], $p<0.001$), modest (scores 3-5, 1.30 [1.19–1.43], $p<0.001$) and severe (scores
67 ≥ 5 , 1.38 [1.24–1.55], $p<0.001$) depressive symptoms, versus none in the fully adjusted model.
68 These findings were independent of the number of hospitalizations and consistent across
69 hospitalization settings (e.g., surgical, medical, or critical care) and specialty (e.g.,

70 neuropsychiatric, cardiorespiratory or other). Worsening depression symptoms (≥ 1 point
71 increase), compared to no change/improved score, were associated with an additional 39%
72 increased risk (1.39 [1.03–1.88], $p=0.03$) independent of baseline depression burden. The
73 association was strongest in those over 65y at baseline (p for interaction <0.001).

74

75 DISCUSSION AND IMPLICATIONS: Depression symptom burden and worsening trajectory
76 predicted delirium risk during hospitalization. Increased awareness of subclinical depression
77 symptoms may be warranted for delirium prevention.

78

79

80 KEYWORDS:

81 Altered mental status, anxiety, postoperative, Alzheimer's disease, dementia

82

83

84

85

86

87

88

89

90

91

92

93 **Background and Objectives**

94 Delirium is a cognitive insult characterized by its acute onset, fluctuating course of the reduction
95 in attention and awareness, commonly occurring in hospital admissions as frequently as 50
96 percent of patients.^{1,2} Although delirium is a reversible form of cognitive impairment, it is
97 associated with an increased risk for dementia, nursing home placement, functional decline, and
98 mortality.³ Delirium has been linked to noncognitive features, such as sleep disruption⁴ and
99 depression symptoms.⁵ There is a known overlap in symptoms and comorbid conditions between
100 delirium and depression and a worse prognosis when both are present.^{6,7}

101
102 In older hospitalized patients, depression symptoms can be present in up to half, depending on
103 the population (medical vs. surgical) and measurement tools.^{8,9} Some evidence suggests that
104 depression may be a risk factor for delirium.^{10,11} Yet, uncertainty remains regarding the long-
105 term relationship between depression symptoms and delirium,^{12,13} particularly in larger
106 population-based cohorts across therapeutic settings (e.g., general medical vs. postoperative) and
107 age groups.⁶ In addition, shared comorbidities prevalent in older individuals, such as dementia or
108 cardiometabolic disease, are also associated with delirium risk.^{14,15} Whether depression
109 symptoms are a risk factor for delirium or a prodromal marker for neurodegeneration remains
110 unclear.¹⁶

111
112 Given that depression symptoms are modifiable, our primary objective was to determine whether
113 earlier life depression symptoms are a risk factor for incident delirium during hospitalization.
114 Within a large community sample of middle- to older-aged adults from the UK Biobank, we
115 examined the association between depression symptom burden derived from an aggregate

116 symptom frequency score and new-onset delirium after hospitalization during a median 12 years
117 of follow-up. We examined these relationships in clinically important subsets (postoperative
118 delirium and after the exclusion of known dementia) and by common comorbidities. Finally, in a
119 follow-up cohort, a median 4 years after the first assessment, we examined whether worsening
120 depression symptom trajectory contributed to additional risk for delirium.

121

122 **Research Design and Methods**

123 *Study participants and data resource*

124 Between 2006 and 2010, over 500,000 aged 37 to 70 (57 ± 8 years, 54% female) from across the
125 United Kingdom were recruited to participate in the UK biobank.¹⁷ Participants completed
126 extensive questionnaires on demographics, lifestyle choices, medical conditions, and psychiatric
127 well-being and were followed until February 2021 (median 12 years). 319,141 participants
128 (mean age [SD]: 57.9 [7.9], range: 37.4-73.8 years; 54.0% female) completed psychological
129 assessment with ≥ 1 hospitalization after baseline (given that delirium requires a precipitating
130 illness event; Supplemental Fig. 1). A subset ($n=40,451$, 52% female, mean age 64 ± 8 ; range 44-
131 83y) was reassessed between 2012 and 2020 and followed for a median of 4 years. The UK
132 Biobank structure and data validation efforts have been described in detail.¹⁸

133

134 *Standard Protocol Approvals, Registrations, and Patient Consents*

135 The UK Biobank received National Research Ethics Approval, and participants gave written
136 informed consent. This study was conducted under the terms of UK Biobank access number
137 40556 and Mass General Brigham IRB approval (#2020P002097).

138

139 *Screening of depression symptoms*

140 Participants were asked about depression symptoms frequency with 4 questions; “Over the past
141 two weeks, how often have you felt down, depressed, or hopeless?;” depressed mood), 2) “How
142 often have you had little interest or pleasure in doing things?” unenthusiasm/disinterest), 3)
143 “How often have you felt tense, fidgety, or restless?” tenseness/restlessness), and 4) “How often
144 have you felt tired or had little energy?” tiredness/lethargy). We assigned scores to the responses:
145 not at all (0), several days (1), more than half the days (2), or nearly every day (3).” A summed
146 depression symptom score (0-12) was calculated for each participant, which we used to classify
147 depression symptom burden in a way that keeps group power with increments of 2-points
148 (representing one *significantly more* or two *slightly more* frequent symptoms) as follows: “none”
149 (0), “mild” (1-2), “modest” (3-4) and “severe” (≥ 5). We excluded participants who responded
150 with “do not know” or “prefer not to answer” [depressed mood (4.6%), unenthusiasm and
151 disinterest (3.6%), tenseness and restlessness (4.2%), and tiredness and lethargy (3.1%)].
152 Depression symptom burden trajectory was calculated as the difference between the follow-up
153 and baseline scores and categorized into “no change/improved” (≤ 0 -point change) or “worsened”
154 (≥ 1 -point change). The distribution and change in scores are shown in Supplemental Figure 3.

155

156 *Assessment of delirium diagnosis*

157 The UK biobank released linked hospitalization records and International Classification of
158 Disease (ICD-10) diagnoses from the National Health Service during the follow-up period.
159 Incident delirium was the first occurrence of the ICD-10 code F05, included in hospital
160 admissions health records as described in previous studies.^{4,19-22} We excluded 61 cases where
161 delirium predated the baseline assessment and 27 where delirium predated the follow-up

162 assessment. The hospitalization settings of delirium, i.e., surgical (postoperative), medical (non-
163 surgical), and critical care, were separately identified. We identified *postoperative delirium*
164 (POD) using linked operation/procedure coding and matching operation dates within 3 days
165 before delirium and tested in separate models.²³ We classified a *medical* hospitalization setting as
166 patients with delirium who did not have any associated operations or procedures. Finally, we
167 identified those with delirium after admission to critical care units using critical care admission
168 dates provided by the UK Biobank.

169

170 We further identified *non-dementia-related delirium* by excluding a subset of participants within
171 the delirium group who had “delirium superimposed on dementia” (F05.1) or a prior diagnosis of
172 any dementia. Admitting specialist/specialty was used to specify patients with delirium admitted
173 to neuropsychiatric, cardiorespiratory, or other teams. Neuropsychiatric admitting specialty were
174 found under the data field 41245, described as “Main Specialty of Consultant (recorded)
175 Summary Administration.” See Supplemental Methods for specific grouping codes used.

176 *Assessment of covariates*

177 Covariates were grouped based on 1) demographics, 2) lifestyle factors, 3) significant
178 cardiovascular disease/risks (CVD)/comorbidities, and 4) Demographics, including age, sex,
179 education, ethnic background, and controlling for number of hospitalizations post-assessment.
180 Age at recent depression assessment was calculated in years based on the participants' birth
181 dates. Sex and ethnicity were self-reported at baseline. Ethnicity was included as European vs.
182 non-European based on the distribution of participants of European descent (94%). Education
183 was based on answering college attendance (yes/no).

184

185 Lifestyle factors included the Townsend Deprivation Index (TDI,) a material deprivation score
186 and classified into higher/lower medians), physical activity (summed metabolic equivalent
187 minutes), alcohol consumption (<4 drinks/≥4 drinks per week), BMI (weight [kg] divided by the
188 height squared [m²]), sleep duration was categorized into short (<6h/day), normal (6-9h), and
189 long (>9h) because of the previously demonstrated U-shape associations with delirium or
190 dementia,^{4,24} frequency of friend and family visits (never vs. any), and falls in the last year (none
191 vs. any).

192

193 CVD was based on hypertension, high cholesterol, smoking, diabetes, ischemic heart disease,
194 and peripheral vascular disease. Comorbidities included a previously described morbidity
195 burden^{21,25,26} based on the summed presence of any cancers, respiratory, neurological,
196 gastrointestinal, renal, hematological, endocrine, musculoskeletal, connective tissue, infectious
197 diseases/disorders, and classified as none (0)/modest (1-3)/high (≥4) conditions. Cognitive
198 performance was estimated at initial enrollment using a raw processing speed test involving the
199 mean reaction time to identify card matches correctly.²⁷

200

201 The full final model included serum 25-hydroxyvitamin D (25[OH]D, a proxy for vitamin D
202 levels recently linked to delirium within this cohort, categorized into sufficient >50nmol/L, low
203 25-50nmol/L, and deficient <25nmol/L), and pre-existing dementia/Parkinson's disease, or
204 depression diagnosis/treatment (any from seeing a psychiatrist, use of antidepressants, or a self-
205 reported/ICD-10 diagnosis).

206

207 *Statistical Analysis*

208 The features of those who developed delirium compared to those who were hospitalized but
209 remained delirium-free during follow-up were compared using chi-squared tests for categorical
210 variables (e.g., sex, ethnicity, presence/absence of comorbidities, recent smoking) and
211 independent samples t-tests or the non-parametric, Kruskal–Wallis for continuous variables (e.g.,
212 age, BMI, TDI, physical activity, reaction time, CVD, depressive symptoms burden score,
213 frequency of falls in the last month). Cox proportional hazard models were used to evaluate the
214 association between depressive symptoms burden and time to incident delirium [reported as
215 hazard ratios (HRs) and corresponding to 95% confidence intervals (CIs)].

216

217 The core model (A) controlled for demographics (age, sex, college education, ethnicity,
218 and number of hospitalizations). The lifestyle model (B) additionally controlled for TDI,
219 physical activity, alcohol consumption, BMI, sleep duration, frequency of family and friend
220 visits, and falls in the last year. The significant CVD/Comorbidities model (C) further controlled
221 for CVD risk score, morbidity burden, and cognition. The final model (D) controlled for vitamin
222 D levels, Parkinson's/Dementia, and depression diagnosis. We again examined the association
223 between depression symptom burden in the follow-up cohort. Using the core model, we adjusted
224 for the baseline depressive score and the time-lag between assessments. Sensitivity analysis
225 examined the relationship between the depression score and post-operative (surgical), medical
226 (non-surgical), non-dementia-related delirium, critical care delirium in the full cohort in addition
227 to admitting specialty in delirium cases separated into neuropsychiatric, cardiorespiratory and
228 others (non-cardiorespiratory, non-neuropsychiatric related admissions). Time-to-event was the
229 years between depressive symptoms assessment and delirium diagnosis. Delirium-free
230 participants were censored in February 2021, the last date of available records. All other

231 statistical analyses were performed using JMP Pro (Ver. 16, SAS Institute, Cary, NC, USA). *P*
232 value < 0.05 was used for statistical significance.

233

234 Data are available from the UK Biobank after submitting an application. The syntax for
235 conducting the analysis is available upon reasonable request.

236 **Results**

237 *Participant characteristics*

238 This prospective study included 319,141 participants mean [SD] age: 57.9 [8.0], range: 37.4-73.8
239 years; 54.0% female) who had all data available, were hospitalized at least once after the first
240 assessment, and had no prior delirium. (Supplemental Fig. 1). The cohort was followed for a
241 median period of 12.0 years (IQR 11.2–12.7) after baseline depression symptom burden
242 assessment. Within this period, 5,753 (15 per 1000) developed delirium.

243

244 Participants with incident delirium were more likely to be older (64.0 years vs. 57.9 years), male
245 (57.3% vs. 45.7%), lower chance of college attendance 20.8% vs. 30.0%), were more likely to be
246 of European ancestry (95.4% vs. 94.1%), lived in areas of greater deprivation (TDI -0.62 vs. -
247 1.30), had higher BMI (28.7 vs. 27.7) than those who remained delirium-free. The incident
248 delirium participants were less active (1962.5 vs. 2079.4 met-minutes), did not have differences
249 in alcohol consumption, and were more likely to sleep outside the recommended 6-9h range (<6
250 h/day: 8.2% vs. 6.1% and >9h/day: 4.5% vs. 2.1%), had a higher percentage of no family visits
251 that year (3.4% vs. 1.8%), and more likely to have fallen that year (31.6% vs. 21.4%). The
252 delirium group was more likely to have one or more CVD (68.9% vs. 31.1%), higher morbidity
253 burden with 4 or more conditions (40.5% vs. 32.0%), higher incidence of dementia/Parkinson's
254 disease (2.5 % vs. 0.2%), slower reaction time (613ms vs. 559ms), and more likely to be vitamin
255 D deficient (5.7% vs. 3.7%). Participants with delirium were also diagnosed or self-reported
256 depression more (10% vs. 7%) and had more of the cohort in the severe category of depressive
257 symptom burden scoring (12.2% vs. 9.4%) (Table 1).

258

259 *Depressive symptoms and associations with incidence of delirium*

260 Figure 1A shows a stepwise increase in risk for the first occurrence of delirium with increasing
261 depression symptom burden (mild, modest, and severe vs. none) for the core model. This
262 translated into a higher cumulative incidence of delirium over the follow-up period (Figure 1B).
263 Compared to no depressive symptoms, those with mild (HR=1.16, 95% CI [1.08-1.25],
264 $p<0.001$), modest (1.30 [1.19-1.43], $p<0.001$), or severe (1.38 [1.24-1.55], $p<0.001$) depressive
265 burden remained at higher risk for delirium in the fully adjusted model (Table 2). Using
266 coefficients (ratio of the natural log of HRs) from the core model (Supplemental Table 1), the
267 risks of modest and severe depression burden were equivalent to the effects of an additional 4
268 and 7 years of aging, respectively.

269
270 These results remained consistent when considering postoperative delirium only, after excluding
271 known dementia (i.e., non-dementia-related diagnoses of delirium), medical (non-surgical), and
272 critical care. Furthermore, these results were consistent in all cardiorespiratory admitting teams,
273 neuropsychiatric, and all other non-neuropsychiatric or cardiorespiratory admitting teams
274 (Supplemental Figure 2.) The effects of individual depression symptoms (daily vs. none) are
275 presented in Supplemental Table 2. Those with depressed mood (2.17 [1.84–2.55, $p<0.001$),
276 unenthusiasm/disinterest (1.88 [1.61–2.21], $p <0.001$), tenseness/restlessness (2.25 [1.84-2.63], p
277 <0.001), tiredness/lethargy (2.48, [2.26–2.72], $p <0.001$) were all at increased risk for incident
278 delirium. However, greater attenuation was seen for those reporting “depressed mood” and the
279 anhedonia-like question on “unenthusiasm/disinterest” in the final models.

280

281 *Depression symptoms trajectory and risk for delirium*

282 In the follow-up cohort of 40,451 participants, 213 (5.3 per 1000) developed incident delirium
283 (median follow-up time: 3.8 years [range 11 months to 11.2 years; SD 2.7]). The median time
284 from the initial depressive symptoms screening was 8.0 years [range 2.6-13.8 years; SD 2.7
285 years]. After adjusting for demographics, those who reported mild (1.51 [1.12-2.05], $p=0.008$),
286 modest (1.74 [1.13–2.67], $p=0.01$), and severe (2.80 [1.63–4.80], $p<0.001$) depression symptoms
287 were again associated with increased delirium risk when compared to those reported none (Table
288 3). After adjusting for participant baseline depression symptoms burden score and time-lag, a
289 worsening score (≥ 1) depression symptoms burden score was associated with an additional 39%
290 increased risk (1.39 [1.03–1.88], $p=0.03$; Table 3) compared to those reporting no
291 change/improved score. To mitigate the ceiling effect (those scoring high at baseline have no
292 room for worsening), we tested only those within the none and mild groups (baseline depression
293 score 0-2, 74% of the cohort) and confirmed that a worsening score (≥ 1), was associated with an
294 increased risk (1.45 [1.04–2.02], $p = 0.03$, Supplemental Table 3).

295

296 *Incident delirium risk by subgroups*

297 The risk of delirium was further examined by age ($<65y/\geq 65y$), sex, physical activity
298 (lower/higher), morbidity burden, depression, reaction time, and sleep duration (Figure 2).
299 Comparing participants with modest/severe vs. no depressive symptoms, those aged $\geq 65y$ were
300 more strongly associated with delirium risk (1.70 [1.56-1.86]) compared to participants aged
301 $<65y$ (1.36 [1.24-1.48]) p for interaction <0.001 . Similarly, patients without a depression
302 diagnosis were more strongly associated (1.65 [1.54-1.76]) compared to those with diagnosed
303 depression (1.29 [1.07-1.54]), p for interaction <0.001 . Depression symptom burden was equally

304 predictive in males and females, those with above average and below average physical activity,
305 morbidity risk, reaction times, and nighttime sleep duration.

306

307 **Discussion and Implications**

308 Our study of 319,141 community-based UK Biobank participants found that those
309 reporting mild, modest, and severe depression symptom burden were at 16%, 30%, and 38%
310 higher risk for developing hospital-diagnosed delirium over a median 12 years of follow-up
311 when compared to those reporting none. The findings were consistent for postoperative delirium
312 and after the exclusion of underlying dementia, our main secondary analysis. In non-
313 postoperative and critical care settings, these results remained consistent. Further sensitivity
314 analysis of consulting/admitting specialty demonstrated that depressive symptoms were equally
315 associated with incident delirium in neuropsychiatric, cardiorespiratory, or other admissions.
316 More recent reporting in a smaller follow-up cohort of 40,451 confirmed the association between
317 depression symptoms and delirium risk; in fact, those reporting worsened depression symptom
318 trajectory were at an additional 39% risk. The association was strongest when depression
319 symptoms were reported after the age of 65 years and in individuals without a history of
320 depression/anxiety.

321

322 These findings are consistent with prior work showing that psychiatric well-being
323 measures reliably predict delirium development.^{11,28} Specifically, postoperative delirium is more
324 likely in those with baseline depression and depressive symptoms.^{10,29,30} Dysphoric mood and
325 hopelessness, as components of depression symptoms, also increased the risk for delirium.²⁸
326 While all components/questions drove these results, interestingly, tenseness/restlessness and

327 tiredness/lethargy were most strongly associated with delirium in the final models, suggesting
328 that the full spectrum of depression and anxiety-related symptoms reported should be
329 considered.⁹ The simplicity of the assessment questions captured responses on a large scale,
330 allowing for repeated measures and examining symptom trajectory. Consistent results across two
331 separate time points and the additional risk from worsening symptoms support the idea that
332 depression may increase neurocognitive vulnerability to stressors such as illness, surgery, or
333 hospitalization rather than simply being comorbid with delirium. If replicated, these findings
334 suggest the need for optimizing depression symptom burden in older adults, separately or as part
335 of established multicomponent delirium bundles. For example, despite consistency in our
336 findings across hospitalization settings (Supplemental Figure 2), there is a window of
337 opportunity before major surgery to intervene,⁹ given that delirium is growing in an aging
338 population with exponential increases in surgical needs.³¹

339

340 Whether these results point to a causal role or an unmasking of cognitive vulnerability is
341 unclear. Underlying diseases linked to depressive symptomatology may contribute, despite being
342 included in our models. Dementia is commonly comorbid with both delirium and depression.^{6,14}
343 Neurophysiological disturbances in delirium include aberrations in monoamine
344 neurotransmission and the imbalance of dopaminergic and cholinergic signaling.³² Twin studies
345 have found an association between serotonin 2A receptor gene promoter A/A genotype and
346 depression in older men.³³ While late-life depression is associated with Alzheimer's dementia, ,
347 causal links have not been established.³⁴ Other mechanisms include shared vulnerability to
348 inflammation after illness or surgery and the impact on the aging brain and the endocrine system.
349 Elevated endogenous cortisol levels have been observed for depression and in patients with

350 severe dementia and delirium,^{35,36} and implicated in delirium pathophysiology.^{37,38} Finally,
351 depression and dementia are often accompanied by sleep and circadian disruptions.^{39,40} In this
352 study, differences in sleep duration did not modify the association between depression symptoms
353 and delirium. Fluctuations of symptoms and intensity of delirium suggest an altered circadian
354 rhythm.⁴¹ Recent evidence also indicates that circadian disturbances predispose to delirium,²⁵
355 suggesting a bidirectional relationship. In this study, we accounted for sleep duration, and the
356 association between depression symptom burden and delirium remained after controlling for
357 known dementia and excluding preexisting dementia (or “delirium superimposed on dementia”
358 cases). However, the interplay between depression, sleep/circadian health, and delirium risk in
359 the older population is an emerging area of interest.^{42,43}

360

361 The association between delirium and depression symptom burden (significant vs.
362 mild/none) was strongest in older participants over 65y (vs. <65y) and in those *without* a
363 depression diagnosis (vs. those with). Although age is one of the strongest independent risk
364 factors for developing delirium, this suggests that concurrent depression burden is even more
365 important to identify in older persons when preventing delirium. One interpretation is that
366 cognitive impairment was underreported in the older cohort and not adequately controlled.
367 Another possibility is that the temporal burden of depression symptoms, which may have been
368 undertreated or underrecognized in those over 65, was not accounted for. This could also apply
369 to participants without a formal diagnosis of depression but still reported significant symptoms,
370 which may have been left untreated, leading to greater delirium vulnerability. Our findings of an
371 increased risk in those with a worsening trajectory of depression symptoms support the latter.
372 Unfortunately, details on treatments were not available in this study. Screening questions in this

373 study may be more sensitive in detecting symptoms in patricians without a diagnosis. While
374 caution is needed, these results emphasize the importance of addressing older adults' psychiatric
375 well-being, even in the absence of depression/anxiety diagnosis, to enhance neurocognitive
376 reserve in response to acute illness or major surgical procedures. Depressive symptoms should
377 not be regarded as a normal response to aging, as they have neurocognitive consequences.⁴⁴

378

379 Strengths of this study include large sample size, long prospective follow-up, and repeat
380 assessment. The sample sizes dedicated to delirium are also uniquely large.⁴⁵ However, there are
381 several limitations. UK Biobank participants are mostly Caucasian of European descent and may
382 have healthier behaviors than the general UK population. This may underestimate the
383 associations since participants agreeing to participate may have healthier habits, fewer
384 comorbidities, and lower rates of psychiatric burden and delirium. For example, the
385 interpretation of dysphoria and other aspects of psychiatric well-being may vary across different
386 ethnicities and socioeconomic backgrounds, cautioning against extrapolating these findings to
387 populations outside this specific demographic. Despite this, prior work has shown that risk factor
388 associations in the UK Biobank are generalizable.⁴⁶

389

390 The questionnaire items were selected by a UK Biobank working group consensus of
391 experts that needed to balance broad utility with low patient burden given the large sample size.¹⁷
392 This study employed a brief rating scale using four items related to the patient health
393 questionnaire to asses psychiatric well-being.^{6,29,47-49} The simplicity allows faster assessment on
394 a large scale, but it is not a complete evaluation. The repeat assessment for depression symptom
395 trajectory is limited in power and subject to selection bias in those who agreed to be reassessed.

396 Furthermore, follow-up trajectories may be affected by ceiling and floor effects (e.g., quantifying
397 changes in individuals with none or maximum depression symptom burden at baseline is not
398 possible with our fixed scale).

399

400 We controlled for a wide range of confounders and stratified by subgroups. Still, there is
401 likely residual confounding in the described relationships, given the complex nature of
402 depression symptomatology and heterogeneity of delirium. Although we were able to adjust our
403 models for one cognitive test, UK Biobank does not have other cognitive measurements, such as
404 the Mini-Mental State Examination. We cannot exclude the possibility that many with delirium
405 had undiagnosed cognitive impairment that we could not adjust for. Those with subclinical
406 depression and depressive symptoms may have had maladaptive behaviors and consequences
407 (e.g., poor stress tolerance, coping strategies, higher chance of future substance use, lack of
408 social support), increasing opportunities for delirium via increased hospitalization numbers or
409 presenting diagnoses more likely to precipitate delirium even when controlling for number of
410 hospitalizations during follow-up. Given the potential relationship of those confounding factors
411 with our exposure (i.e., depression), we grouped participants by admitting specialty
412 physician/primary team as a proxy for admitting diagnosis (neuropsychiatric and
413 cardiorespiratory) and hospitalization setting (post-operative, non-operative, critical).

414 Carefully designed longitudinal studies tracking depression/anxiety symptoms before
415 hospitalization, e.g., a planned, elective major surgery, would help to confirm our observed link
416 between depression symptoms and delirium. On the other hand, our multivariable-adjusted
417 models may have accounted for covariates that could be on the causal pathway, e.g., physical
418 activity and alcohol/substance use. Changes in these factors, driven by depression symptoms, can

419 potentially impact delirium risk. Therefore, the results may underestimate the true strength of the
420 relationship. Finally, clinical data in the UK Biobank cohort was limited to ICD coding. Others
421 have used this approach for delirium,⁵⁰ within this cohort and are highly specific (up to 96%) for
422 delirium,⁵¹ but the sensitivity is modest (53-64% in recent studies).^{51,52} Thus, we are likely
423 missing cases, particularly milder or hypoactive forms.

424

425 Our findings provide evidence bridging psychiatric well-being and delirium prevention.
426 Since depression symptoms are modifiable and a non-cognitive proxy for resilience to inciting
427 stressors before delirium, it may prove useful for neurological risk stratification alongside
428 traditional risk factors. Additional work is required to determine the underlying mechanisms and
429 whether a causal relationship exists before focusing on screening and treatment.

430

431 **Acknowledgments:** This research has been conducted using the UK Biobank Resource under
432 Application Number 40556.

433

434 **Conflict of Interest:** None.

435

436 **Author Contributions:** Conception and design of the study: Gaba, Li, Hu and Gao L

437 Acquisition and analysis of data: Gaba, Li, Zheng, Hu, and Gao L.

438 Drafting a significant portion of the manuscript or figures: Gaba, Li, Gao C, Cai R, Hu, and Gao
439 L.

440

441

442 **References**

- 443 1. Ryan DJ, O'Regan NA, Caoimh RÓ, et al. Delirium in an adult acute hospital population:
444 predictors, prevalence and detection. *BMJ Open*. 2013;3(1). doi:10.1136/bmjopen-2012-
445 001772
- 446 2. Siddiqi N, House AO, Holmes JD. Occurrence and outcome of delirium in medical in-
447 patients: a systematic literature review. *Age Ageing*. 2006;35(4):350-364.
448 doi:10.1093/ageing/afl005
- 449 3. Bickel H, Gradinger R, Kochs E, Förstl H. High Risk of Cognitive and Functional Decline
450 after Postoperative Delirium. *Dementia and Geriatric Cognitive Disorders*. 2008;26(1):26-
451 31. doi:10.1159/000140804
- 452 4. Ulsa MC, Xi Z, Li P, et al. Association of Poor Sleep Burden in Middle Age and Older
453 Adults With Risk for Delirium During Hospitalization. *J Gerontol A Biol Sci Med Sci*.
454 2022;77(3):507-516. doi:10.1093/gerona/glab272
- 455 5. Leentjens AFG, Schievelde JNM, Leonard M, Lousberg R, Verhey FRJ, Meagher DJ. A
456 comparison of the phenomenology of pediatric, adult, and geriatric delirium. *Journal of*
457 *Psychosomatic Research*. 2008;64(2):219-223. doi:10.1016/j.jpsychores.2007.11.003
- 458 6. O'Sullivan R, Inouye SK, Meagher D. Delirium and depression: inter-relationship and
459 clinical overlap in elderly people. *Lancet Psychiatry*. 2014;1(4):303-311.
460 doi:10.1016/S2215-0366(14)70281-0
- 461 7. Givens JL, Jones RN, Inouye SK. The overlap syndrome of depression and delirium in older
462 hospitalized patients. *J Am Geriatr Soc*. 2009;57(8):1347-1353. doi:10.1111/j.1532-
463 5415.2009.02342.x
- 464 8. Cepoiu M, McCusker J, Cole MG, Sewitch M, Ciampi A. Recognition of depression in older
465 medical inpatients. *J Gen Intern Med*. 2007;22(5):559-564. doi:10.1007/s11606-006-0085-0
- 466 9. Srifuengfung M, Abraham J, Avidan MS, Lenze EJ. Perioperative Anxiety and Depression in
467 Older Adults: Epidemiology and Treatment. *The American Journal of Geriatric Psychiatry*.
468 Published online July 8, 2023. doi:10.1016/j.jagp.2023.07.002
- 469 10. Smith PJ, Attix DK, Weldon BC, Greene NH, Monk TG. Executive function and depression
470 as independent risk factors for postoperative delirium. In: *The Journal of the American*
471 *Society of Anesthesiologists*. Vol 110. The American Society of Anesthesiologists; 2009:781-
472 787.
- 473 11. Mychajliw C, Herrmann ML, Suenkel U, et al. Impaired Executive Function and Depression
474 as Independent Risk Factors for Reported Delirium Symptoms: An Observational Cohort
475 Study Over 8 Years. *Frontiers in aging neuroscience*. 2021;13:246.

- 476 12. Jankowski CJ, Trenerry MR, Cook DJ, et al. Cognitive and functional predictors and
477 sequelae of postoperative delirium in elderly patients undergoing elective joint arthroplasty.
478 *Anesth Analg*. 2011;112(5):1186-1193. doi:10.1213/ANE.0b013e318211501b
- 479 13. Detroyer E, Dobbels F, Verfaillie E, Meyfroidt G, Sergeant P, Milisen K. Is Preoperative
480 Anxiety and Depression Associated with Onset of Delirium After Cardiac Surgery in Older
481 Patients? A Prospective Cohort Study. *Journal of the American Geriatrics Society*.
482 2008;56(12):2278-2284. doi:https://doi.org/10.1111/j.1532-5415.2008.02013.x
- 483 14. Fong TG, Davis D, Growdon ME, Albuquerque A, Inouye SK. The interface between
484 delirium and dementia in elderly adults. *Lancet Neurol*. 2015;14(8):823-832.
485 doi:10.1016/S1474-4422(15)00101-5
- 486 15. Chen H, Mo L, Hu H, Ou Y, Luo J. Risk factors of postoperative delirium after cardiac
487 surgery: a meta-analysis. *Journal of Cardiothoracic Surgery*. 2021;16(1):113.
488 doi:10.1186/s13019-021-01496-w
- 489 16. Enache D, Winblad B, Aarsland D. Depression in dementia: epidemiology, mechanisms, and
490 treatment. *Curr Opin Psychiatry*. 2011;24(6):461-472.
491 doi:10.1097/YCO.0b013e32834bb9d4
- 492 17. Sudlow C, Gallacher J, Allen N, et al. UK Biobank: An Open Access Resource for
493 Identifying the Causes of a Wide Range of Complex Diseases of Middle and Old Age. *PLoS*
494 *Med*. 2015;12(3):e1001779. doi:10.1371/journal.pmed.1001779
- 495 18. Allen N, Sudlow C, Downey P, et al. UK Biobank: Current status and what it means for
496 epidemiology. *Health Policy and Technology*. 2012;1(3):123-126.
497 doi:10.1016/j.hlpt.2012.07.003
- 498 19. Bowman K, Jones L, Pilling LC, et al. Vitamin D levels and risk of delirium: A mendelian
499 randomization study in the UK Biobank. *Neurology*. 2019;92(12):e1387-e1394.
500 doi:10.1212/WNL.00000000000007136
- 501 20. Pilling LC, Jones LC, Masoli JAH, et al. Low Vitamin D Levels and Risk of Incident
502 Delirium in 351,000 Older UK Biobank Participants. *Journal of the American Geriatrics*
503 *Society*. n/a(n/a). doi:10.1111/jgs.16853
- 504 21. Gao L, Gaba A, Li P, et al. Heart rate response and recovery during exercise predict future
505 delirium risk-A prospective cohort study in middle- to older-aged adults. *J Sport Health Sci*.
506 Published online December 13, 2021:S2095-2546(21)00140-X.
507 doi:10.1016/j.jshs.2021.12.002
- 508 22. Gao L, Gaba A, Cui L, et al. Resting Heartbeat Complexity Predicts All-Cause and
509 Cardiorespiratory Mortality in Middle- to Older-Aged Adults From the UK Biobank. *J Am*
510 *Heart Assoc*. 2021;10(3):e018483. doi:10.1161/JAHA.120.018483
- 511 23. Whitlock EL, Vannucci A, Avidan MS. POSTOPERATIVE DELIRIUM. *Minerva*
512 *Anesthesiol*. 2011;77(4):448-456.

- 513 24. Sabia S, Fayosse A, Dumurgier J, et al. Association of sleep duration in middle and old age
514 with incidence of dementia. *Nature Communications*. 2021;12(1):2289. doi:10.1038/s41467-
515 021-22354-2
- 516 25. Gao L, Li P, Gaykova N, et al. Circadian Rest-Activity Rhythms, Delirium Risk, and
517 Progression to Dementia. *Ann Neurol*. Published online February 20, 2023.
518 doi:10.1002/ana.26617
- 519 26. Gao L, Zheng X, Baker SN, et al. Associations of rest-activity rhythm disturbances with
520 stroke risk and post-stroke adverse outcomes. Published online May 16,
521 2023:2023.05.14.23289966. doi:10.1101/2023.05.14.23289966
- 522 27. Fawns-Ritchie C, Deary IJ. Reliability and validity of the UK Biobank cognitive tests. *PLoS*
523 *One*. 2020;15(4). doi:10.1371/journal.pone.0231627
- 524 28. McAvay GJ, Van Ness PH, Bogardus Jr ST, et al. Depressive Symptoms and the Risk of
525 Incident Delirium in Older Hospitalized Adults. *Journal of the American Geriatrics Society*.
526 2007;55(5):684-691. doi:10.1111/j.1532-5415.2007.01150.x
- 527 29. Greene NH, Attix DK, Weldon BC, Smith PJ, McDonagh DL, Monk TG. Measures of
528 executive function and depression identify patients at risk for postoperative delirium. In: *The*
529 *Journal of the American Society of Anesthesiologists*. Vol 110. The American Society of
530 Anesthesiologists; 2009:788-795.
- 531 30. Smith PJ, Attix DK, Weldon BC, Monk TG. Depressive symptoms and risk of postoperative
532 delirium. *The American Journal of Geriatric Psychiatry*. 2016;24(3):232-238.
- 533 31. American Geriatrics Society Expert Panel on Postoperative Delirium in Older Adults.
534 Postoperative delirium in older adults: best practice statement from the American Geriatrics
535 Society. *J Am Coll Surg*. 2015;220(2):136-148.e1. doi:10.1016/j.jamcollsurg.2014.10.019
- 536 32. Maldonado JR. Pathoetiological Model of Delirium: a Comprehensive Understanding of the
537 Neurobiology of Delirium and an Evidence-Based Approach to Prevention and Treatment.
538 *Critical Care Clinics*. 2008;24(4):789-856. doi:10.1016/j.ccc.2008.06.004
- 539 33. Jansson M, Gatz M, Berg S, et al. Association between depressed mood in the elderly and
540 a5-HTR2A gene variant. *Am J Med Genet*. 2003;120B(1):79-84. doi:10.1002/ajmg.b.20016
- 541 34. Blazer DG, Burchett BB, Fillenbaum GG. APOE ϵ 4 and Low Cholesterol as Risks for
542 Depression in a Biracial Elderly Community Sample. *The American Journal of Geriatric*
543 *Psychiatry*. 2002;10(5):515-520. doi:10.1097/00019442-200209000-00004
- 544 35. O'Keeffe ST, Devlin JG. Delirium and the Dexamethasone Suppression Test in the Elderly.
545 *Neuropsychobiology*. 1994;30(4):153-156. doi:10.1159/000119154
- 546 36. Kudoh A, Takase H, Katagai H, Takazawa T. Postoperative Interleukin-6 and Cortisol
547 Concentrations in Elderly Patients with Postoperative Confusion. *Neuroimmunomodulation*.
548 2005;12(1):60-66. doi:10.1159/000082365

- 549 37. MacLulich AMJ, Ferguson KJ, Miller T, De Rooij SEJA, Cunningham C. Unravelling the
550 pathophysiology of delirium: A focus on the role of aberrant stress responses. *Journal of*
551 *Psychosomatic Research*. 2008;65(3):229-238. doi:10.1016/j.jpsychores.2008.05.019
- 552 38. Adamis D, Meagher D. Insulin-Like Growth Factor I and the Pathogenesis of Delirium: A
553 Review of Current Evidence. *Journal of Aging Research*. 2011;2011:1-11.
554 doi:10.4061/2011/951403
- 555 39. Alvaro PK, Roberts RM, Harris JK. A Systematic Review Assessing Bidirectionality
556 between Sleep Disturbances, Anxiety, and Depression. *Sleep*. 2013;36(7):1059-1068.
557 doi:10.5665/sleep.2810
- 558 40. Lim ASP, Saper CB. Sleep, circadian rhythms, and dementia. *Ann Neurol*. 2011;70(5):677-
559 679. doi:10.1002/ana.22637
- 560 41. Fitzgerald JM, Adamis D, Trzepacz PT, et al. Delirium: A disturbance of circadian integrity?
561 *Medical Hypotheses*. 2013;81(4):568-576. doi:10.1016/j.mehy.2013.06.032
- 562 42. Walker WH, Walton JC, DeVries AC, Nelson RJ. Circadian rhythm disruption and mental
563 health. *Translational psychiatry*. 2020;10(1):1-13.
- 564 43. Daou M, Telias I, Younes M, Brochard L, Wilcox ME. Abnormal Sleep, Circadian Rhythm
565 Disruption, and Delirium in the ICU: Are They Related? *Front Neurol*. 2020;11:549908.
566 doi:10.3389/fneur.2020.549908
- 567 44. Prevention C for DC and. The state of aging and health in America 2013. In: CDC; 2018.
- 568 45. Selbæk G, Neerland BE. Cognitive decline and dementia: does delirium matter? *The Lancet*
569 *Healthy Longevity*. 2022;3(4):e217-e218. doi:10.1016/S2666-7568(22)00056-3
- 570 46. Batty GD, Gale CR, Kivimäki M, Deary IJ, Bell S. Comparison of risk factor associations in
571 UK Biobank against representative, general population based studies with conventional
572 response rates: prospective cohort study and individual participant meta-analysis. *BMJ*.
573 2020;368:m131. doi:10.1136/bmj.m131
- 574 47. Givens JL, Jones RN, Inouye SK. The overlap syndrome of depression and delirium in older
575 hospitalized patients. *J Am Geriatr Soc*. 2009;57(8):1347-1353. doi:10.1111/j.1532-
576 5415.2009.02342.x
- 577 48. Lopez MN, Quan NM, Carvajal PM. A psychometric study of the Geriatric Depression
578 Scale. *European Journal of Psychological Assessment*. Published online 2010.
- 579 49. Givens JL, Sanft TB, Marcantonio ER. Functional recovery after hip fracture: the combined
580 effects of depressive symptoms, cognitive impairment, and delirium. *Journal of the*
581 *American Geriatrics Society*. 2008;56(6):1075-1079.

- 582 50. Bowman K, Jones L, Pilling LC, et al. Vitamin D levels and risk of delirium: A mendelian
583 randomization study in the UK Biobank. *Neurology*. 2019;92(12):e1387-e1394.
584 doi:10.1212/WNL.00000000000007136
- 585 51. Sepulveda E, Franco JG, Trzepacz PT, et al. Delirium diagnosis defined by cluster analysis
586 of symptoms versus diagnosis by DSM and ICD criteria: diagnostic accuracy study. *BMC*
587 *Psychiatry*. 2016;16(1):167. doi:10.1186/s12888-016-0878-6
- 588 52. Casey P, Cross W, Mart MWS, Baldwin C, Riddell K, Dārziņš P. Hospital discharge data
589 under-reports delirium occurrence: results from a point prevalence survey of delirium in a
590 major Australian health service. *Intern Med J*. 2019;49(3):338-344. doi:10.1111/imj.14066

591

592

593

594

595

596

597

598

599

600

601

602

603

604

605

606

607

608

609 **Tables**

610 **Table 1. Demographics, lifestyle, and clinical comorbidities at baseline.**

	Developed new-onset delirium (n = 5,753) Mean (SD), or n (%)	Did not develop delirium (n = 319,141) Mean (SD), or n (%)	<i>p value</i>
Demographics			
Age at baseline	64.0 (5.4)	57.9 (7.9)	<0.001
Males	57.3%	45.7%	<0.001
College Attendance	20.8%	30.0%	<0.001
Ethnic Background (European)	95.4%	94.1%	0.001
Townsend deprivation index ^a	-0.62 (0.04)	-1.30 (0.01)	<0.001
Body mass index (kg/m ²)	28.7 (5.4)	27.7 (4.9)	<0.001
Lifestyle			
Physical activity (MET-min) ^b	1963 (493)	2079.4 (462)	<0.001
Alcohol (≥ 4 drinks/week)	47.5%	47.0%	0.43
Sleep Duration			
short (<6h/day)	8.2%	6.1%	<0.001
normal (6-9h)	87.4%	91.9%	<0.001
long (>9h)	4.5%	2.1%	<0.001
Frequency of family visits (never)	3.4%	1.8%	<0.001
Falls in the last year (any)	31.6%	21.1%	<0.001
Comorbidities			
CVD risk ^c (any)	68.9%	31.1%	<0.001
Morbidity Burden (high)	40.5%	32.0%	<0.001
Dementia/Parkinson's disease	2.5%	0.2%	<0.001
Cognition (reaction time) ^d	613 (145)	559 (118)	<0.001
Vitamin D (deficient) ^e	5.7%	3.7%	<0.001
Depression/anxiety^f	10.0%	7.0%	<0.001

611

612

613 Note. Participant characteristics at baseline by delirium status. ^ahigher value = worse deprivation.

614 ^bMETS-min/week increase. ^cCVD risk score: summed hypertension, cholesterol, diabetes

615 mellitus, smoking status, and ischemic heart disease. ^dCognition reaction time in milliseconds:

616 average timed tests of symbol matching. ^eVitamin D levels: sufficient >50nmol/L, low 25-

617 50nmol/L, and deficient <25nmol/L). ^fParticipants self-reported depression and anxiety

618 symptoms, or ICD depression diagnosis. *SD* standard deviation, *CVD* cardiovascular disease.

619

620

621

622

623 **Table 2: Depressive symptoms burden and associations with incident delirium**
 624
 625

	All Delirium N = 5753	Postoperative Delirium N = 1689	Non-Dementia Related N= 4064
	HR (95% CI) <i>p</i> -value	HR (95% CI) <i>p</i> -value	HR (95% CI) <i>p</i> -value
Model A			
Mild	1.30 (1.22 – 1.38) <0.001	1.29 (1.15 – 1.45) <0.001	1.34 (1.24 – 1.44) <0.001
Modest	1.70 (1.58 – 1.84) <0.001	1.71 (1.48 – 1.96) <0.001	1.75 (1.60 – 1.92) <0.001
Severe	2.43 (2.22 – 2.68) <0.001	2.26 (1.92 – 2.66) <0.001	2.58 (2.33 – 2.86) <0.001
Model B			
Mild	1.24 (1.16 – 1.32) <0.001	1.22 (1.09 – 1.37) 0.0007	1.23 (1.15 – 1.33) <0.001
Modest	1.44 (1.32 – 1.57) <0.001	1.50 (1.30 – 1.73) <0.001	1.45 (1.32 – 1.60) <0.001
Severe	1.70 (1.53 – 1.88) <0.001	1.67 (1.40 – 2.00) <0.001	1.75 (1.56 – 1.96) <0.001
Model C			
Mild	1.19 (1.11 – 1.27) <0.001	1.17 (1.04 – 1.32) 0.008	1.18 (1.09 – 1.27) <0.001
Modest	1.35 (1.24 – 1.47) <0.001	1.40 (1.21 – 1.63) <0.001	1.36 (1.24 – 1.49) <0.001
Severe	1.48 (1.33 – 1.64) <0.001	1.45 (1.21 – 1.75) <0.001	1.50 (1.34 – 1.69) <0.001
Model D			
Mild	1.16 (1.08 – 1.25) <0.001	1.16 (1.02 – 1.30) 0.02	1.15 (1.07 – 1.25) <0.001
Modest	1.30 (1.19 – 1.43) <0.001	1.39 (1.19 – 1.63) <0.001	1.30 (1.18 – 1.44) <0.001
Severe	1.38 (1.24 – 1.55) <0.001	1.44 (1.18 – 1.75) <0.001	1.44 (1.28 – 1.62) <0.001

626
 627 Note. Cox proportional hazard models examining the association between depressive symptoms
 628 groups (with None as reference) and all delirium cases, and subgroups. Model A: demographics.
 629 Model B additionally includes Townsend deprivation index, physical activity, alcohol
 630 consumption, body mass index, sleep duration, frequency of friend and family visits, and falls.
 631 Model C: cardiovascular risk, morbidity burden, and reaction time. Model D:
 632 dementia/Parkinson’s, vitamin D, and depression/anxiety diagnosis. *HR* hazard ratio, *CI*
 633 confidence intervals.
 634

635 **Table 3: Follow-up depressive symptoms burden, trajectory, and risk for delirium.**

	N (%)	HR (95% CI)	p-value
Depressive symptoms burden follow up (213 delirium cases)			
Score (0-12) ^a	40,451	1.16 (1.09 – 1.24)	<0.001
None	18,122 (45%)	Ref.	Ref.
Mild	14,774 (36%)	1.51 (1.12 – 2.05)	0.008
Modest	5,172 (13%)	1.74 (1.13 – 2.67)	0.01
Severe	2,383 (6%)	2.80 (1.63 – 4.80)	<0.001
Depressive symptoms burden trajectory (213 delirium cases)			
No change/improved (0)	28,494 (75%)	Ref.	Ref.
Worsening (≥1)	9,650 (25%)	1.39 (1.03 – 1.88)	0.03

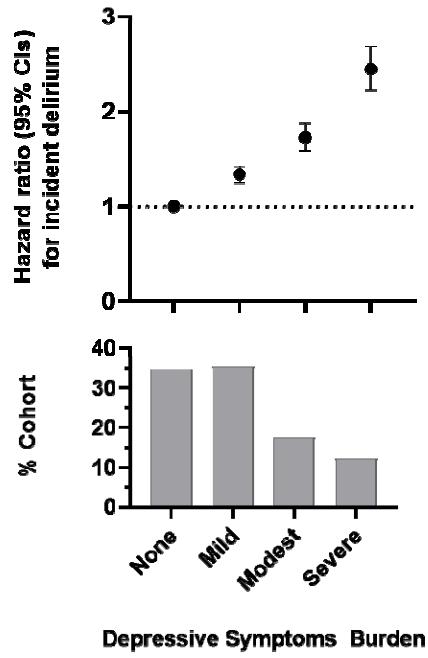
636

637 Cox proportional hazard models for follow-up depression symptom assessment and risk for
638 delirium. “Score” is the continuous symptom score.^a per 1-point increase. Subsequent groups are
639 comparing recent depressive symptoms score groups against the reference group, “None,” for all
640 delirium cases using Model A, the core model adjusting for demographics (age, sex, education,
641 ethnic background, and number of hospitalizations. *Ref.* reference category.

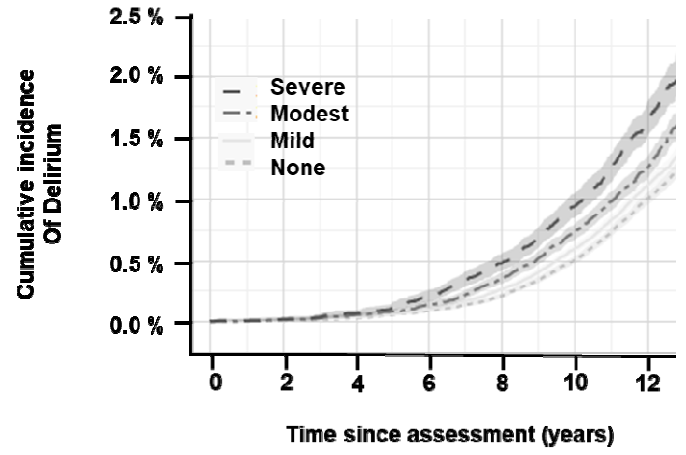
642

643 **Figure 1**

A

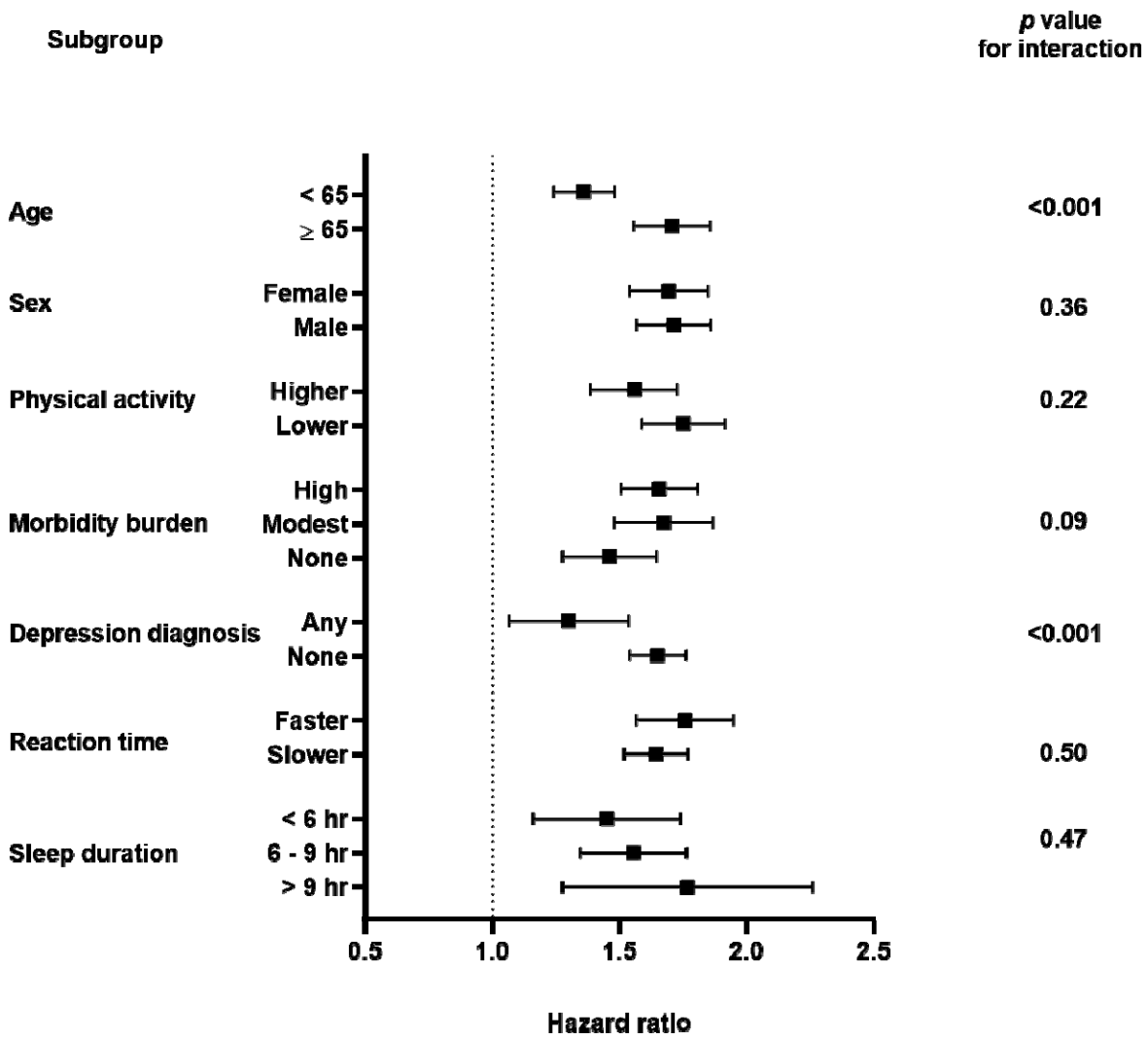


B



644

645 **Figure 2**



646

647

648

649

650

651

652

653

654

655

656 **Figure 1.** Depressive symptoms burden groups and risk for incident delirium. **(A)** Unadjusted
657 cumulative incidence plot showing the percentage of the cohort with a first diagnosis of delirium
658 over time, in the four depressive symptoms categories (None =0, Mild =1-2, Modest=3-4, and
659 Severe risk ≥ 5), based on the depression symptom burden score. Hazard ratios ($\pm 95\%$ CI) for
660 incident delirium using Cox proportional hazards regression models adjusted for age, sex,
661 education, and ethnicity, percentage of the cohort by depression symptom burden group in the
662 panel below. **(B)** Cumulative incidence plot showing the percentage of the cohort with a first
663 diagnosis of delirium over time in the four depressive symptom burden groups.

664
665

666 **Figure 2.** Forrest plot of hazard ratios and 95% confidence intervals for modest/severe
667 depression symptoms burden (versus none/mild) predicting incident delirium based on subgroups
668 of participants by age, sex, physical activity, morbidity burden, diagnosed depression, reaction
669 time and night-time sleep duration.

670
671

672 **Supplemental Methods**

673 Included specialty of the consultant in our neuropsychiatric cohort were coded such as 1020
674 Adult mental illness, 1270 Forensic Psychiatry, 1150 Clinical neuro-physiology, 1500
675 Neurology, and other specialties that fit the criteria, capturing diagnoses such strokes, TIA and
676 acute psychiatric illness. Cardiorespiratory admitting specialty codes were specialties such as
677 1070 cardiology, 1080 cardiothoracic surgery, 1800 respiratory medicine and others that fit the
678 criteria, capturing diagnoses such as heart failure, ischemic heart disease, pneumonia and others.
679 “Others,” were all other specialty encodings that did not fit into these two specifications.

680
681
682
683
684
685
686

687 **Supplemental Tables**

688 **Supplemental Table 1. Full Cox Proportional Hazard Models**

	Model A adjusted for demographics	Model B +BMI/lifestyle factors	Model C +CVD risk, cognition	Model D + morbidity burden, dementia
	HR (95% CI) <i>p</i> -value	HR (95% CI) <i>p</i> -value	HR (95% CI) <i>p</i> -value	HR (95% CI) <i>p</i> -value
Depressive Symptoms Score Category				
Mild	1.30 (1.22-1.38) <0.001	1.24 (1.16-1.32) <0.001	1.19 (1.11-1.27) <0.001	1.16 (1.08-1.25) <0.001
Modest	1.70 (1.58-1.84) <0.001	1.44 (1.32-1.57) <0.001	1.35 (1.24-1.47) <0.001	1.30 (1.19-1.43) <0.001
Severe	2.36 (2.16-2.58) <0.001	1.70 (1.53 -1.88) <0.001	1.47 (1.32-1.64) <0.001	1.38 (1.24-1.355) <0.001
Age	1.16 (1.15-1.17) <0.001	1.16 (1.16-1.17) <0.001	1.15 (1.14-1.15) <0.001	1.15 (1.15-1.16) <0.001
Male	1.59 (1.51-1.68) <0.001	1.61 (1.52-1.71) <0.001	1.55 (1.46-1.65) <0.001	1.54 (1.45-1.65) <0.001
Education (no college)	1.30 (1.22-1.38) <0.001	1.17 (1.10-1.26) <0.001	1.10 (1.03-1.18) <0.006	1.12 (1.04-1.21) 0.002
European (vs. non- European)	1.00 (0.88-1.14) 0.95	1.03 (0.89-1.20) 0.66	1.11 (0.94-1.29) 0.21	1.22 (1.03-1.46) 0.02
Number of hospitalizations	1.03 (1.03-1.03) <0.001	1.03 (1.03-1.03) <0.001	1.03 (1.03-1.03) <0.001	1.03 (1.03-1.03) <0.001
Socioeconomic deprivation (TDI)		1.07 (1.06-1.08) <0.001	1.06 (1.05-1.07) <0.001	1.05 (1.04-1.06) <0.01
Physical activity		1.00 (1.00 -1.01) <0.001	1.00 (1.00-1.00) 0.03	1.00 (1.00-1.00) 0.49
Body Mass Index		1.02 (1.02-1.03) <0.001	1.01 (1.01-1.02) <0.001	1.01 (1.00-1.02) 0.004
Alcohol (>4 Drinks per week)		1.04 (0.98-1.11) 0.17	1.03 (0.93-1.09) 0.04	1.06 (0.99-1.13) 0.08
Sleep Duration (hr) ^a				
> 9		1.45 (1.26-1.67) <0.001	1.30 (1.12-1.50) <0.001	1.33 (1.14-1.55) <0.001
< 6		1.19 (1.07-1.32) <0.001	1.14 (1.02-1.27) 0.02	1.12 (1.00 -1.26) 0.05
Friends or family visits (any)		0.68 (0.58-0.80) <0.001	0.74 (0.62-0.88) <0.001	0.75 (0.62-0.90) 0.002
Falls in the last year		1.41 (1.32-1.50) <0.001	1.35 (1.36-1.43) <0.001	1.92 (1.23-1.41) <0.001
Depression Diagnosis		1.39 (1.26-1.53) <0.001	1.03 (0.93-1.16) 0.55	1.06 (0.94-1.19) 0.37
CVD risk score			1.28 (1.25-1.33) <0.001	1.28 (1.24-1.32) <0.001

Reaction time	2.32 (2.02-2.69) <0.001	2.30 (1.97-2.66) <0.001
Morbidity Burden	1.14 (1.11-1.16) <0.001	1.12 (1.09-1.15) <0.001
Dementia/ Parkinson's		8.44 (6.97-10.2) <0.001
Vitamin D		
Low		1.17 (1.09-1.25) <0.001
Deficient		1.52 (1.38-1.66) <0.001

689

690

691 Note. Cox proportional hazard models where Model A is adjusting for demographics, Model B is
692 adjusting for lifestyle factors, model C adjusts for CVD risk and cognition, Model D is adjusting
693 for morbidity burden, dementia, and vitamin D. ^a Total sleep time compared to 6-9 hours as
694 reference. *SD* standard deviation, *CVD* cardiovascular disease.

695

696

697

698

699

700 **Supplemental Table 2. Individual depression symptoms burden score components [daily vs.**
 701 **none] and risk for delirium**
 702

	Model A HR (95% CI) <i>p</i> value	Model B HR (95% CI) <i>p</i> value	Model C HR (95% CI) <i>p</i> value	Model D HR (95% CI) <i>p</i> value
Depressed mood	2.17 (1.84-2.55) <0.001	1.37 (1.15-1.63) <0.001	1.25 (1.05-1.50) 0.01	1.15 (0.94-1.39) 0.17
Unenthusiasm/ Disinterest	1.88 (1.61-2.21) <0.001	1.15 (0.97-1.37) 0.10	1.08 (0.91-1.29) 0.38	1.06 (0.88-1.28) 0.56
Tenseness/Restlessness	2.25 (1.92-2.63) <0.001	1.52 (1.29-1.80) <0.001	1.42 (1.20-1.68) <0.001	1.34 (1.12-1.62) 0.002
Tiredness/Lethargy	2.48 (2.26-2.72) <0.001	1.64 (1.49-1.82) <0.001	1.45 (1.35-1.61) <0.001	1.41 (1.26-1.57) <0.001

703
 704
 705 Note. Individual components of Depression symptom burden score and hazard ratios for incident
 706 delirium comparing those who answered none vs daily for “frequency of “ in the past two
 707 weeks. Model A is a core model adjusting for demographics (age, sex, education, ethnic
 708 background, and number of hospitalizations. Model B includes Model A with Townsend
 709 deprivation index, physical activity, alcohol consumption, body mass index, sleep duration,
 710 frequency of friend and family visits, falls in the past year, and self-reported depression/anxiety
 711 or ICD depression diagnosis. Model C includes Model B with cardiovascular risk score,
 712 morbidity burden score, and reaction time. Model D includes Model C with dementia
 713 Parkinson’s diagnosis and vitamin D status *[Frequency in the past two weeks.]

714
 715
 716
 717
 718

719 **Supplemental Table 3.** Depressive symptoms burden score trajectory and risk for incident
720 delirium within the Mild depressive symptoms burden category.
721

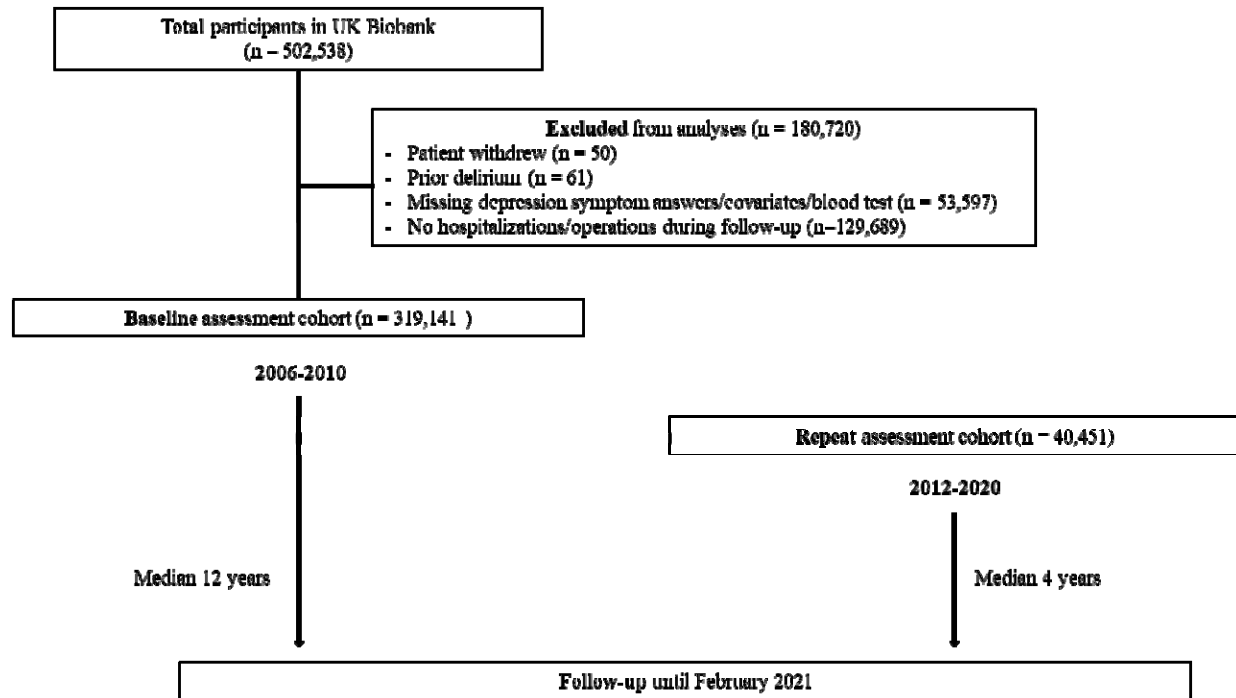
Depressive Symptoms Burden Score trajectory* (n = 162 with delirium)

No change/improved (0)	28494 (75%)	Ref	Ref
Worsening (≥ 1)	9650 (25%)	1.45 (1.04-2.02)	0.03

722
723 Note. Cox proportional hazard models comparing recent depressive symptoms score groups
724 against reference group none, for all delirium cases using Model A, the core model adjusting for
725 demographics (age, sex, education, ethnic background, and number of hospitalizations. Two-
726 sided p value for HR in comparison with the reference category, without adjustment for multiple
727 comparisons. *Comparisons within the Mild group (0-2). Abbreviations: *HR* hazard ratio, *CI*
728 confidence intervals.

729
730
731
732
733

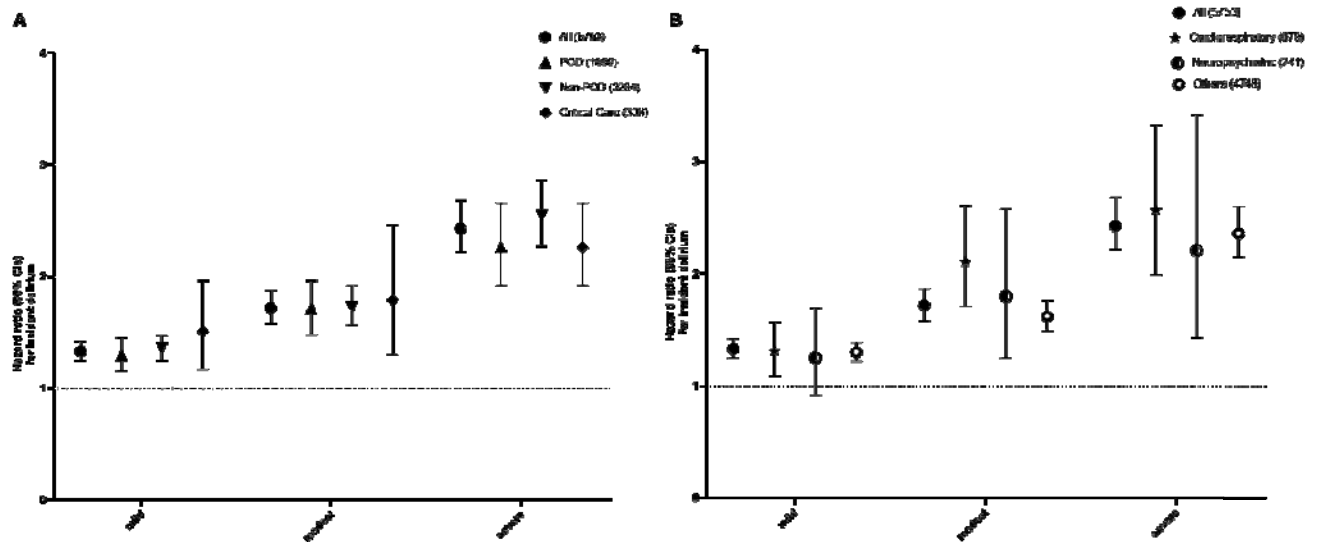
Supplemental Figures:



734
735
736
737
738
739
740

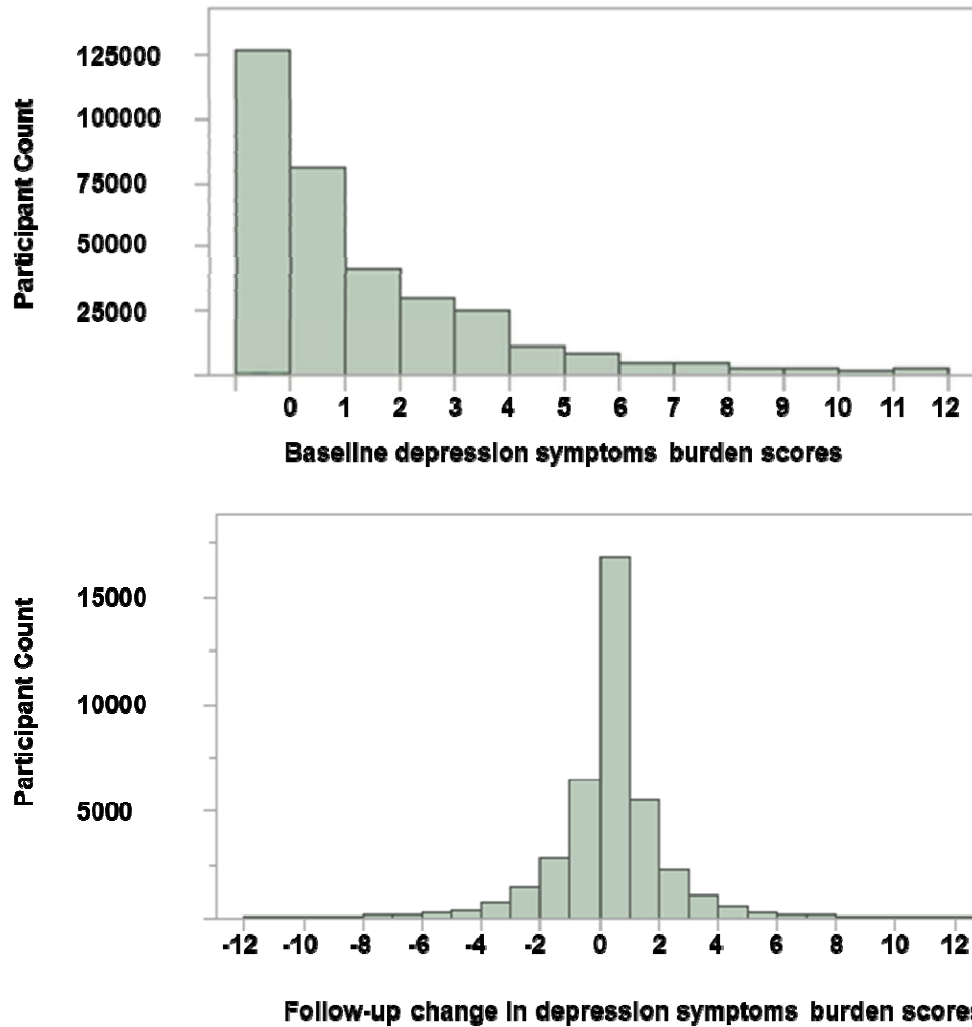
Supplemental Figure 1. Flowchart of participant selection. How participants with incident delirium were selected in the study. From the UK biobank.

741
742



743
744
745
746
747
748

Supplemental Figure 2. Cox proportional hazard models comparing the risk for incident delirium for each category of depression symptom burden score in each hospitalization setting (A), and admitting specialist/team (B). *POD* Post-operative delirium.



749

750 **Supplemental Figure 3.**

751 The number of participants for baseline depression symptoms burden score (0-12). Follow-up
752 depression symptom burden score changes from baseline.

753

754