

1 **TITLE:** Anti-SARS-CoV-2 Antibody Levels Associated with COVID-19 Protection in Outpatients  
2 Tested for SARS-CoV-2, US Flu VE Network, October 2021–June 2022

3

4 **RUNNING TITLE:** Anti-SARS-CoV-2 Antibody Concentrations

5

6 **AUTHORS:** Kelsey M. Sumner, PhD<sup>1,2\*</sup>; Ruchi Yadav, PhD<sup>1</sup>; Emma K. Noble, MSPH<sup>1,3</sup>; Ryan  
7 Sandford<sup>1</sup>; Devyani Joshi, PhD<sup>1</sup>; Sara Y. Tartof, PhD<sup>4,5</sup>; Karen J. Wernli, PhD<sup>6</sup>; Emily T. Martin,  
8 PhD<sup>7</sup>; Manjusha Gaglani<sup>8,9</sup>; Richard K. Zimmerman, MD<sup>10</sup>; H. Keipp Talbot, MD<sup>11</sup>; Carlos G.  
9 Grijalva, MD<sup>11</sup>; Jessie R. Chung, MPH<sup>1</sup>; Eric Rogier, PhD<sup>1</sup>; Melissa M. Coughlin, PhD<sup>1</sup>; Brendan  
10 Flannery, PhD<sup>1</sup>

11

12 **AUTHOR AFFILIATIONS:**

13 <sup>1</sup>Centers for Disease Control and Prevention, Atlanta, GA, USA

14 <sup>2</sup>Epidemic Intelligence Service, Centers for Disease Control and Prevention, Atlanta, GA, USA

15 <sup>3</sup>Oak Ridge Institute for Science and Education, Oak Ridge, Tennessee, USA

16 <sup>4</sup>Kaiser Permanente Southern California, Department of Research & Evaluation

17 <sup>5</sup>Department of Health Systems Science, Kaiser Permanente Bernard J. Tyson School of  
18 Medicine, Pasadena, CA, USA

19 <sup>6</sup>Kaiser Permanente Washington Health Research Institute, Seattle, WA, USA

20 <sup>7</sup>University of Michigan School of Public Health, Ann Arbor, MI, USA

21 <sup>8</sup>Baylor Scott & White Health, Temple, TX, USA

22 <sup>9</sup>Texas A&M University College of Medicine, Temple, TX, USA

23 <sup>10</sup>University of Pittsburgh, Pittsburgh, PA, USA

24 <sup>11</sup>Vanderbilt University Medical Center, Nashville, TN, USA

25

26 **\*CORRESPONDING AUTHOR:**

27 Kelsey Sumner, Email: [rhq3@cdc.gov](mailto:rhq3@cdc.gov), Phone: 404.639.0546

28 Address: U.S. Centers for Disease Control and Prevention,

29 1600 Clifton Rd Mailstop H24-7, Atlanta, GA 30329, USA

30

31 The findings and conclusions in this report are those of the authors and do not necessarily

32 represent the official position of the Centers for Disease Control and Prevention. All authors

33 have reviewed and approved of this version of the manuscript.

34 **ABSTRACT**

35 **Background:** We assessed the association between antibody concentration  $\leq 5$  days of  
36 symptom onset and COVID-19 illness among patients enrolled in a test-negative study.

37 **Methods:** From October 2021–June 2022, study sites in seven states enrolled and tested  
38 respiratory specimens from patients of all ages presenting with acute respiratory illness for  
39 SARS-CoV-2 infection using rRT-PCR. In blood specimens, we measured concentration of anti-  
40 SARS-CoV-2 antibodies against the ancestral strain spike protein receptor binding domain  
41 (RBD) and nucleocapsid (N) antigens in standardized binding antibody units (BAU/mL). Percent  
42 reduction in odds of symptomatic COVID-19 by anti-RBD antibody was estimated using logistic  
43 regression modeled as  $(1 - \text{adjusted odds ratio of COVID-19}) \times 100$ , adjusting for COVID-19  
44 vaccination status, age, site, and high-risk exposure.

45 **Results:** A total of 662 (33%) of 2,018 symptomatic patients tested positive for acute SARS-  
46 CoV-2 infection. During the Omicron-predominant period, geometric mean anti-RBD binding  
47 antibody concentrations measured 823 BAU/mL (95%CI:690–981) among COVID-19 case-  
48 patients versus 1,189 BAU/mL (95%CI:1,050–1,347) among SARS-CoV-2 test-negative  
49 patients. In the adjusted logistic regression, increasing levels of anti-RBD antibodies were  
50 associated with reduced odds of COVID-19 for both Delta and Omicron infections.

51 **Conclusion:** Higher anti-RBD antibodies in patients were associated with protection against  
52 symptomatic COVID-19 during emergence of SARS-CoV-2 Delta and Omicron variants.

53

54 **KEYWORDS**

55 SARS-CoV-2; correlates of protection; immunogenicity

56

57 **INTRODUCTION**

58 COVID-19 vaccine trials and immunologic studies have evaluated neutralizing antibodies  
59 as potential immune correlates of protection from COVID-19 illness [1, 2]. Immunobridging

60 studies have correlated anti-SARS-CoV-2 binding antibody (bAb) levels against ancestral spike  
61 and receptor binding domain (RBD) antigens with virus neutralizing antibody levels [3]. Immune  
62 correlates of protection following vaccination are important for immunobridging studies and  
63 potential evaluation of new COVID-19 vaccines and formulations [1, 2, 4]. Assessing protective  
64 antibody levels in the population may help not only vaccine evaluation but also prediction of  
65 susceptibility to and protection against emerging variants [5]. Immune correlates are continually  
66 re-evaluated as levels of protection mediated by antibodies vary with time and emergence of  
67 new SARS-CoV-2 variants.

68         Observational studies of licensed vaccines can contribute to understanding immune  
69 biomarkers associated with protection against COVID-19 illness. Observational, test-negative  
70 design (TND) studies are widely used to evaluate influenza and COVID-19 vaccine  
71 effectiveness [6, 7] and may be used to estimate antibody levels proximal to illness onset, which  
72 may correlate with protection [8]. TND COVID-19 vaccine effectiveness (VE) studies  
73 systematically enroll and test symptomatic patients who sought medical care for an acute  
74 respiratory illness [7, 9]. Reduction in the odds of laboratory-confirmed illness indicates VE  
75 against disease endpoints. Collection of sera or blood spots at enrollment near the onset of  
76 illness can be used in serologic assays to measure bAb levels early in infection that may  
77 estimate antibody titers close to the time of infection. Anti-RBD are elicited by U.S.-licensed  
78 COVID-19 mRNA vaccines but the vaccine does not elicit antibodies against the nucleocapsid  
79 (N) protein [10, 11]; thus, the presence of anti-N antibodies can be an indicator of past SARS-  
80 CoV-2 infection among vaccinated and unvaccinated individuals and anti-RBD antibodies can  
81 be an indicator of infection or vaccine-induced protection. To assess associations between  
82 symptomatic COVID-19 and anti-SARS-CoV-2 RBD and N protein immunoglobulin G (IgG)  
83 antibody levels, we quantified bAb levels during acute respiratory illness in patients enrolled in a  
84 COVID-19 VE study.

85

## 86 MATERIALS AND METHODS

### 87 *Study population and sample collection*

88 Ambulatory patients aged 1 year or older presenting within 10 days of onset of  
89 respiratory illness were enrolled from participating healthcare facilities across seven study sites  
90 in the US Influenza Vaccine Effectiveness Network, as previously described [12, 13].  
91 Epidemiologic data collected from enrolled patients included patient age, date of illness onset,  
92 reported symptoms, documented COVID-19 vaccination history including dates of COVID-19  
93 vaccination, and dates of prior positive COVID-19 tests recorded in electronic medical records.  
94 Respiratory specimens (nasal/nasopharyngeal and throat swabs) were tested for SARS-CoV-2  
95 by real-time reverse-transcription polymerase chain reaction (rRT-PCR). Patients were  
96 classified based on test results as COVID-19 cases or SARS-CoV-2 test-negative controls.  
97 SARS-CoV-2 variant infection was determined by genomic sequencing or categorized by  
98 predominant variant during two time periods as previously described [12-14]: Delta (October 1–  
99 December 24, 2021) or Omicron BA.1–5 (December 25, 2021–June 29, 2022).

100 At enrollment, research staff at each study site collected blood specimens from  
101 participants by finger stick and absorbed drops on Whatman 903 filter paper cards. Filter paper  
102 blood spots were dried at room temperature, packed with desiccant, and sent to the US Centers  
103 for Disease Control and Prevention (CDC). An acute blood specimen had to be collected from a  
104 patient within 5 days of symptom onset for inclusion in the analysis (**Supplemental figure 1**).  
105 This activity was reviewed and approved by CDC and each US Flu VE Network site's  
106 Institutional Review Board.

107

### 108 *Serologic assays*

109 Dried blood spots (DBS) have been shown to provide similar results to venipuncture for  
110 SARS-CoV-2 antibody testing [15-17]. The FlexImmArray™ SARS-CoV-2 Human IgG Antibody  
111 test (Tetracore, Rockville, MD) was used to detect SARS-CoV-2 antibodies in DBS; this test

112 uses a 7-Plex microsphere based assay designed for specific IgG antibody detection against  
113 SARS-CoV-2 [18]. It employs three immobilized SARS-CoV-2 recombinant antigens and  
114 includes three external sample controls for assessing performance. Diluted samples (1:300)  
115 were incubated with the 7-Plex microsphere mixture, and fluorescent anti-human IgG-  
116 phycoerythrin was used as the reporter. Readings were obtained using the Luminex MAGPIX  
117 instrument (Luminex Corporation, Austin, TX), and result interpretation relied on the  
118 manufacturer-provided seropositivity threshold values, represented as median fluorescence  
119 intensity (MFI) ratios  $\geq 1.2$ . To normalize raw MFI values, each test specimen's MFI value was  
120 divided by the mean calibrator MFI value. MFI ratios were standardized and calibrated against  
121 the World Health Organization (WHO) anti-SARS-CoV-2 immunoglobulin binding antibody unit  
122 (BAU) international standard (20/150) using linear regression [19]. Blinded panels of 30 DBS  
123 specimens, including SARS-CoV-2 positive and negative samples, underwent rigorous in-house  
124 verification at two sites, confirming the suitability of DBS for SARS CoV-2 human IgG detection  
125 with the Tetracore FlexImmArray kit. Antibody concentration in BAU/mL was multiplied by a  
126 dilution factor of 300 for analyses (anti-RBD seropositivity cutoff 15.9 BAU/mL; anti-N  
127 seropositivity cutoff 6.9 BAU/mL).

128

### 129 *Statistical analysis*

130 Analyses were restricted to patients with a known date of specimen collection and  
131 SARS-CoV-2 rRT-PCR result. Patients who received only one dose or >4 doses of COVID-19  
132 mRNA vaccine, any non-mRNA vaccine dose, or a dose of unknown COVID-19 vaccine type  
133 were excluded. Demographic characteristics, COVID-19 vaccination status, and prior SARS-  
134 CoV-2 infection history were compared between patients testing SARS-CoV-2-positive at  
135 enrollment versus patients who tested negative. Geometric mean anti-RBD and anti-N antibody  
136 concentration (GMC) was compared across patients by current infection status, COVID-19  
137 vaccination status (unvaccinated, two, three, or four doses), and prior SARS-CoV-2 infection

138 status, defined as electronic medical record documentation of one or more prior positive SARS-  
139 CoV-2 tests or anti-N bAb levels in acute sera indicative of prior infection ( $\geq 6.9$  BAU/mL). Prior  
140 infection was documented from March 17, 2020, to June 12, 2022. Distributions of anti-RBD and  
141 anti-N bAb levels were plotted by COVID-19 case and test-negative control status and number  
142 of COVID-19 vaccines received.

143 Odds of acute COVID-19 positive cases versus test-negative controls were estimated by  
144 anti-RBD antibody level (modeled linearly based on a functional form assessment) using a  
145 logistic regression model adjusted for COVID-19 vaccination status (modeled categorically as  
146 two, three, or four doses versus unvaccinated), age (modeled with cubic terms based on a  
147 functional form assessment), study site, illness onset week, and high-risk SARS-CoV-2  
148 exposure (healthcare worker or contact of lab-confirmed COVID-19 case). Model covariates  
149 were defined *a-priori* as previously described [12, 13] and tested for inclusion if they created  
150  $>5\%$  change in the main effect estimate or significantly improved model fit by the log-likelihood  
151 ratio test (**Supplemental Table 1**). Percent reduction in the odds of symptomatic COVID-19  
152 was calculated as  $(1 - \text{adjusted odds ratio}) \times 100$ . Models were run stratified by COVID-19 variant  
153 period as well as COVID-19 vaccination status.

154 Next, we evaluated the likelihood of COVID-19 illness by anti-N bAb levels, COVID-19  
155 vaccination status, and evidence of prior SARS-CoV-2 infection. To do so, we compared the  
156 number of COVID-19 cases that occurred stratified by anti-N antibody concentration (low  $<10$   
157 BAU/mL, medium 10–99 BAU/mL, and high  $\geq 100$  BAU/mL), where higher anti-N antibody  
158 concentration reflected more recent prior SARS-CoV-2 infection. These cut points were chosen  
159 based on natural inflection points in the functional form of anti-N antibody concentration. The  
160 percentage of participants who had anti-RBD bAb concentrations above the threshold for a 50%  
161 reduction in odds of symptomatic COVID-19 was estimated stratified by anti-N bAb  
162 categorizations, COVID-19 vaccine doses, and evidence of prior SARS-CoV-2 infection.

163 Anti-RBD and anti-N bAb concentrations were also compared in paired acute and  
164 convalescent specimens for a subset of COVID-19 cases. Paired analyses were restricted to  
165 SARS-CoV-2 positive patients with known acute and convalescent blood specimen collections  
166 within 21–56 days of one another. Anti-RBD and anti-N bAb GMC was calculated in acute and  
167 convalescent specimens. The percentage of participants who had anti-RBD bAb concentrations  
168 above the 50% threshold for reduction in symptomatic COVID-19 was estimated in the acute  
169 and convalescent specimens. All statistical analyses were performed using R version 4.0.3 (R  
170 Foundation for Statistical Computing, Vienna, Austria).

171

## 172 **RESULTS**

173 A total of 2,018 enrollees in the US Flu VE network had blood specimens collected at  
174 enrollment and were included in analyses (**Figure 1**); 662 (33%) enrollees were COVID-19 case  
175 patients and 1,356 (67%) were test-negative patients (**Figure 1**). SARS-CoV-2 positivity varied  
176 by variant period; 87 (17%) of 503 patients enrolled during the Delta variant-predominant period  
177 tested positive for SARS-CoV-2 and 575 (38%) of 1,515 tested positive during the Omicron-  
178 predominant period (**Figure 1, Table 1**). A lower percentage of cases had evidence of SARS-  
179 CoV-2 infection prior to their current acute illness in the Delta-predominant period (20%)  
180 compared to the Omicron-predominant period (42%) (**Table 1**).

181 Similar to the Delta-predominant period, during the Omicron-predominant period, GMCs  
182 of anti-RBD and anti-N bAb were lower among COVID-19 cases (anti-RBD 822.7 95% CI:  
183 689.9–981.1; anti-N 5.7 BAU/mL 95% CI: 5.0–6.5) compared to test-negative controls (anti-  
184 RBD 1189.0 95% CI: 1049.7–1346.8; anti-N 15.5 BAU/mL 95% CI: 13.6–17.8) (**Table 2**). Anti-  
185 RBD GMC was higher with increasing number of COVID-19 vaccine doses but decreased with  
186 increasing time since COVID-19 vaccination (**Table 2, Supplemental Figure 2**). During both  
187 variant periods, anti-RBD GMC was higher in patients with evidence of prior SARS-CoV-2  
188 infection compared to those without evidence of prior infection (**Table 2**).



189           During both variant periods, the likelihood of being a symptomatic COVID-19 case  
190 decreased with increasing RBD bAb level (**Figure 2A**). Threshold anti-RBD bAb levels  
191 associated with 50% reduction in odds of symptomatic COVID-19 were lower during the Delta  
192 variant-predominant period (1,968 BAU/mL) than during the Omicron-predominant period (3,375  
193 BAU/mL; **Figure 2B**). There was no clear trend in anti-RBD bAb levels associated with a 50%  
194 reduction in odds of COVID-19 when results were stratified by doses of COVID-19 vaccine  
195 received (**Supplemental Table 2**). Regardless of variant period, a higher percentage of  
196 participants with moderate anti-N bAb levels had anti-RBD bAb levels above the 50% threshold  
197 compared to participants with high anti-N bAb levels (**Table 3**). The percentage of participants  
198 above the 50% anti-RBD bAb threshold rose with increasing numbers of COVID-19 vaccine  
199 doses and evidence of prior SARS-CoV-2 infection (**Table 3**).

200           A total of 105 patients with acute SARS-CoV-2 infection and blood specimens collected  
201 at both enrollment and convalescent visits were included in an analysis subset; 104 patients  
202 were enrolled during the Omicron period and 1 during the Delta period. For the 104 patients  
203 enrolled during the Omicron variant period, the GMCs for anti-RBD bAb in acute and  
204 convalescent sera were 1257.8 (95% CI: 923.9–1712.3) and 3188.5 (95% CI: 2638.7–3853.0),  
205 and the GMCs for anti-N bAb in acute and convalescent sera were 5.5 (95% CI: 4.3–7.1) and  
206 259.4 (95% CI: 200.6–335.4), respectively; at the acute phase, 27 (26%) patients had anti-RBD  
207 bAb levels above the threshold that correlated to a 50% reduction in odds of acute SARS-CoV-2  
208 infection (3,375 BAU/mL) compared to 73 (72%) patients during the convalescent phase that  
209 had anti-RBD bAb levels above this threshold (results not shown).

210

## 211 **DISCUSSION**

212           In this observational study of patients with acute respiratory illness, the likelihood of  
213 symptomatic COVID-19 decreased as levels of bAb against ancestral SARS-CoV-2 spike RBD  
214 antigen increased. During acute-phase illness, anti-RBD bAb concentrations of 1,968 BAU/mL

215 corresponded to a 50% reduction in the likelihood of COVID-19 illness during the Delta-  
216 predominant period compared to low anti-RBD bAb levels. During the Omicron-predominant  
217 period, a 50% reduction in COVID-19 illness was observed at 3,375 BAU/mL. Patients with the  
218 highest anti-RBD antibody levels did not always have the highest anti-N antibody levels.

219       Using SARS-CoV-2 test-negative control patients, we found that a higher concentration  
220 of anti-RBD IgG antibodies was correlated with decreased odds of COVID-19 illness [20].  
221 Studies from COVID-19 vaccine trials have correlated anti-SARS-CoV-2 bAb levels against  
222 ancestral spike and RBD antigens with virus neutralizing antibody levels, which likely play a key  
223 role in protection [3]. The test-negative design provides efficient enrollment of patients with  
224 laboratory-confirmed illness (depending on proportion of COVID-19 illness among patients  
225 seeking care) and an uninfected comparison group of patients seeking care for similar illness [8,  
226 21]. While distributions of anti-RBD IgG antibody concentrations in the current study largely  
227 overlapped between COVID-19 cases and test-negative controls, higher antibody levels were  
228 associated with a reduced likelihood of COVID-19 illness. We observed that over 70% of case  
229 patients reached an anti-RBD bAb level above the threshold to reduce the odds of infection by  
230 50% in their convalescent sera. These results suggest that test-negative studies may provide a  
231 means of estimating correlates of protection as new SARS-CoV-2 variants emerge.

232       This study demonstrated that patients with high anti-RBD bAb levels did not always have  
233 high anti-N levels. This observed difference could be due to differences in prior vaccination and  
234 infection history, as U.S.-licensed COVID-19 mRNA vaccines elicit anti-RBD but not anti-N  
235 antibodies [10, 11]; anti-N antibody responses to infection have been observed to differ among  
236 vaccinated versus unvaccinated persons [22] and non-neutralizing antibody mechanisms of  
237 protection mediated by anti-N bAb may be less affected by variants. We were unable to assess  
238 time from most recent SARS-CoV-2 infection for all patients; however, anti-N antibody levels  
239 may also reflect a shorter time interval between prior and current SARS-CoV-2 infection. Future

240 analyses could further assess the role anti-N bAbs play in protection against SARS-CoV-2  
241 infection.

242         The current analysis was aided by the collection of DBS from symptomatic patients at  
243 the time of clinical presentation. In a previous analysis, presence of anti-N antibody in acute  
244 phase blood spot specimens classified five times as many patients with prior SARS-CoV-2  
245 infection as self-reported or electronic medical record documented COVID-19 [12, 13]. DBS  
246 were recognized early in the COVID-19 pandemic as alternatives to venous blood collection for  
247 anti-SARS-CoV-2 binding assays [16, 23, 24]. Self-collected DBS that could be shipped by mail  
248 facilitated SARS-CoV-2 seroprevalence [25-32] and longitudinal household cohort studies [27,  
249 33]. The binding antibody concentrations against ancestral RBD and N antigens observed using  
250 acute-phase DBS were consistent with those measured at illness onset and the convalescent  
251 phase using the Meso Scale Diagnostics quantitative binding assay utilized in many COVID-19  
252 vaccine trials [1, 3, 5, 21]. Studies evaluating bAb from DBS and serum specimen types may  
253 provide additional tools for evaluating correlates of protection against future SARS-CoV-2  
254 variants [2, 5, 34].

255         These findings are subject to several limitations. First, results are limited to mild-to-  
256 moderate ambulatory illness. Immune markers associated with protection against severe  
257 disease should be investigated. In addition, except for the subset of 105 paired acute and  
258 convalescent samples, DBS used in this study were collected at one time point during acute  
259 illness. Acute-phase antibody titers may reflect early antibody rise in some individuals, resulting  
260 in an overestimation of the antibody response at the time of infection for cases; however,  
261 analyses were restricted to acute-phase specimens collected within 5 days of symptom onset to  
262 limit influence of early antibody response as much as possible. Antibody levels were assessed  
263 against ancestral RBD and N antigens rather than against antigens representative of SARS-  
264 CoV-2 variants circulating at the time of infection. Levels of variant-specific antibody associated  
265 with protection are likely lower than those measured using ancestral antigens. A low number of

266 individuals received four COVID-19 vaccine doses, and small sample sizes limited our ability to  
267 compare 50% thresholds for a reduction in odds of COVID-19 stratified by vaccine doses, with  
268 results inconsistent. Further, use of DBS in this multi-plex, microsphere assay was previously  
269 validated against qualitative serologic assays [18] but not against standardized assays widely  
270 used to quantify bAb levels [35]. This study was designed to assess applicability of the test-  
271 negative study design to interrogate antibody levels associated with SARS-CoV-2 associated  
272 illness. Validation of specimen types and serologic assays is needed before acceptance of this  
273 approach.

274 Overall, these results suggest a role for observational studies designed to assess  
275 vaccine effectiveness in evaluating immune correlates of protection. Standardization of  
276 serologic assays and ongoing immunobridging studies using well-characterized sera will be  
277 needed to update correlates of protection against circulating SARS-CoV-2 variants and facilitate  
278 approval of new vaccines [4]. With multiple licensed and recommended COVID-19 vaccines,  
279 observational studies incorporating immune markers can complement immunogenicity studies in  
280 evaluation of relative vaccine effectiveness.

281

## 282 **ACKNOWLEDGMENTS**

283 We acknowledge Edward A. Belongia from the Marshfield Clinic; Bruno Lewin, Ana Florea,  
284 Jennifer Ku, Vennis Hong, Harp Takhar, Sally Shaw, Jeniffer Kim, Britta Amundsen, Ashley  
285 McDaniel, Raul Calderon, Gabriela Jimenez, Alicia Torres, Alexandria Reyes, Korina Chen, and  
286 Susie Flores from Kaiser Permanente Department of Health Research Science; C. Hallie  
287 Phillips, Erika Kiniry, Stacie Wellwood, Kathryn Moser, Brianna Wickersham, Matt Nguyen,  
288 Rachael Doud, Suzie Park from Kaiser Permanente Washington Health Research Institute;  
289 Dayna Wyatt, Stephanie Longmire, Meredith Denny, Zhouwen Liu, and Yuwei Zhu of Vanderbilt  
290 University Medical Center; and Sara S. Kim and Manish Patel of US CDC.

291

292 **CONFLICTS OF INTEREST**

293 Dr. Zimmerman reports grants from CDC, during the conduct of the study, and grants from  
294 Sanofi Pasteur, outside the submitted work. Dr. Grijalva reports other from CDC, grants from  
295 NIH, other from FDA, grants and other from AHRQ, other from Merck, and other from Syneos  
296 Health, outside the submitted work. Dr. Talbot reports grants from CDC, during the conduct of  
297 the study. All other authors report not conflicts of interest.

298

299 **FUNDING**

300 This work was supported by Centers for Disease Control grant numbers 75D30121C11529,  
301 75D30121C12339, 75D30121C12246, 75D30121C11513, 75D30121C12279,  
302 75D30121C11909, 75D30121C11519, National Institutes of Health grant number  
303 UL1TR001857, and National Center for Advancing Translational Sciences Clinical Translational  
304 Science Award number 5UL1TR002243–03.

305

306 **DISCLAIMER**

307 The findings and conclusions in this report are those of the authors and do not necessarily  
308 represent the views of the U.S. Centers for Disease Control and Prevention (CDC). Some  
309 authors are federal employees of the United States government, and this work was prepared as  
310 part of their official duties. Title 17 U.S.C. 105 provides that 'copyright protection under this title  
311 is not available for any work of the United States Government.'

312

313 **DATA AVAILABILITY**

314 All data produced in the present study are available upon reasonable request to the  
315 corresponding author.

316 **REFERENCES**

- 317 1. Gilbert PB, Montefiori DC, McDermott AB, et al. Immune correlates analysis of the mRNA-  
318 1273 COVID-19 vaccine efficacy clinical trial. *Science* **2022**; 375:43-50.
- 319 2. Khoury DS, Cromer D, Reynaldi A, et al. Neutralizing antibody levels are highly predictive of  
320 immune protection from symptomatic SARS-CoV-2 infection. *Nat Med* **2021**; 27:1205-11.
- 321 3. Benkeser D, Montefiori DC, McDermott AB, et al. Comparing antibody assays as correlates of  
322 protection against COVID-19 in the COVE mRNA-1273 vaccine efficacy trial. *Sci Transl Med*  
323 **2023**; 15:eade9078.
- 324 4. US Department of Health and Human Services FaDA, and Center for Biologics Evaluation  
325 and Research, . Emergency Use Authorization for vaccines to prevent COVID-19: guidance for  
326 industry. Appendix 2. . Available at: [https://www.fda.gov/regulatory-information/search-fda-](https://www.fda.gov/regulatory-information/search-fda-guidance-documents/emergency-use-authorization-vaccines-prevent-covid-19)  
327 [guidance-documents/emergency-use-authorization-vaccines-prevent-covid-19](https://www.fda.gov/regulatory-information/search-fda-guidance-documents/emergency-use-authorization-vaccines-prevent-covid-19) Accessed June  
328 12 2023.
- 329 5. Khoury DS, Docken SS, Subbarao K, Kent SJ, Davenport MP, Cromer D. Predicting the  
330 efficacy of variant-modified COVID-19 vaccine boosters. *Nat Med* **2023**.
- 331 6. Dean NE, Hogan JW, Schnitzer ME. Covid-19 Vaccine Effectiveness and the Test-Negative  
332 Design. *N Engl J Med* **2021**; 385:1431-3.
- 333 7. Sullivan SG, Feng S, Cowling BJ. Potential of the test-negative design for measuring  
334 influenza vaccine effectiveness: a systematic review. *Expert Rev Vaccines* **2014**; 13:1571-91.
- 335 8. Follmann DA, Dodd L. Immune correlates analysis using vaccinees from test negative  
336 designs. *Biostatistics* **2022**; 23:507-21.
- 337 9. Jackson ML, Nelson JC. The test-negative design for estimating influenza vaccine  
338 effectiveness. *Vaccine* **2013**; 31:2165-8.
- 339 10. Centers for Disease Control and Prevention. Interim guidelines for COVID-19 antibody  
340 testing. Available at: [https://www.cdc.gov/coronavirus/2019-ncov/hcp/testing/antibody-tests-](https://www.cdc.gov/coronavirus/2019-ncov/hcp/testing/antibody-tests-guidelines.html)  
341 [guidelines.html](https://www.cdc.gov/coronavirus/2019-ncov/hcp/testing/antibody-tests-guidelines.html). Accessed August 31 2023.

- 342 11. Fox T, Geppert J, Dinnes J, et al. Antibody tests for identification of current and past  
343 infection with SARS-CoV-2. *Cochrane Database Syst Rev* **2022**; 11:CD013652.
- 344 12. Kim SS, Chung JR, Talbot HK, et al. Effectiveness of two and three mRNA COVID-19  
345 vaccine doses against Omicron- and Delta-Related outpatient illness among adults, October  
346 2021-February 2022. *Influenza Other Respir Viruses* **2022**; 16:975-85.
- 347 13. Tartof SY, Xie F, Yadav R, et al. Prior SARS-CoV-2 infection and COVID-19 vaccine  
348 effectiveness against outpatient illness during widespread circulation of SARS-CoV-2 Omicron  
349 variant, US Flu VE network. *Influenza Other Respir Viruses* **2023**; 17:e13143.
- 350 14. Lambrou AS, Shirk P, Steele MK, et al. Genomic Surveillance for SARS-CoV-2 Variants:  
351 Predominance of the Delta (B.1.617.2) and Omicron (B.1.1.529) Variants - United States, June  
352 2021-January 2022. *Morbidity and Mortality Weekly Report* **2022**; 71:6.
- 353 15. Mulchandani R, Brown B, Brooks T, et al. Use of dried blood spot samples for SARS-CoV-2  
354 antibody detection using the Roche Elecsys (R) high throughput immunoassay. *J Clin Virol*  
355 **2021**; 136:104739.
- 356 16. Sims MD, Podolsky RH, Childers KL, et al. Dried blood spots are a valid alternative to  
357 venipuncture for COVID-19 antibody testing. *J Immunol Methods* **2023**; 513:113420.
- 358 17. Zava TT, Zava DT. Validation of dried blood spot sample modifications to two commercially  
359 available COVID-19 IgG antibody immunoassays. *Bioanalysis* **2021**; 13:13-28.
- 360 18. Mitchell KF, Carlson CM, Nace D, et al. Evaluation of a Multiplex Bead Assay against  
361 Single-Target Assays for Detection of IgG Antibodies to SARS-CoV-2. *Microbiol Spectr* **2022**;  
362 10:e0105422.
- 363 19. Zhuo R, Charlton C, Plitt S, et al. Comparison of SARS-CoV-2 spike antibody quantitative  
364 titer reporting using the World Health Organization International Standard Units by four  
365 commercial assays. *J Clin Virol* **2022**; 156:105292.
- 366 20. Plotkin SA, Gilbert PB. Nomenclature for immune correlates of protection after vaccination.  
367 *Clin Infect Dis* **2012**; 54:1615-7.

- 368 21. Benkeser D, Fong Y, Janes HE, et al. Immune correlates analysis of a phase 3 trial of the  
369 AZD1222 (ChAdOx1 nCoV-19) vaccine. *NPJ Vaccines* **2023**; 8:36.
- 370 22. Follmann D, Janes HE, Chu E, et al. Kinetics of the Antibody Response to Symptomatic  
371 SARS-CoV-2 Infection in Vaccinated and Unvaccinated Individuals in the Blinded Phase of the  
372 mRNA-1273 COVID-19 Vaccine Efficacy Trial. *Open Forum Infect Dis* **2023**; 10:ofad069.
- 373 23. Cholette F, Mesa C, Harris A, et al. Dried blood spot specimens for SARS-CoV-2 antibody  
374 testing: A multi-site, multi-assay comparison. *PLoS One* **2021**; 16:e0261003.
- 375 24. Turgeon CT, Sanders KA, Rinaldo P, et al. Validation of a multiplex flow immunoassay for  
376 detection of IgG antibodies against SARS-CoV-2 in dried blood spots. *PLoS One* **2021**;  
377 16:e0252621.
- 378 25. Brown L, Byrne RL, Fraser A, et al. Self-sampling of capillary blood for SARS-CoV-2  
379 serology. *Sci Rep* **2021**; 11:7754.
- 380 26. Cowgill KD, Erosheva EA, Elder A, Miljacic L, Buskin S, Duchin JS. Anti-SARS-CoV-2  
381 seroprevalence in King County, WA-Cross-sectional survey, August 2020. *PLoS One* **2022**;  
382 17:e0272783.
- 383 27. de Hoog MLA, Sluiter-Post JGC, Westerhof I, et al. Longitudinal Household Assessment of  
384 Respiratory Illness in Children and Parents During the COVID-19 Pandemic. *JAMA Netw Open*  
385 **2022**; 5:e2237522.
- 386 28. Karp DG, Danh K, Espinoza NF, Seftel D, Robinson PV, Tsai CT. A serological assay to  
387 detect SARS-CoV-2 antibodies in at-home collected finger-prick dried blood spots. *Sci Rep*  
388 **2020**; 10:20188.
- 389 29. Matias WR, Fulcher IR, Sauer SM, et al. Disparities in SARS-CoV-2 Infection by Race,  
390 Ethnicity, Language, and Social Vulnerability: Evidence from a Citywide Seroprevalence Study  
391 in Massachusetts, USA. *J Racial Ethn Health Disparities* **2023**:1-11.



- 392 30. Roxhed N, Bendes A, Dale M, et al. Multianalyte serology in home-sampled blood enables  
393 an unbiased assessment of the immune response against SARS-CoV-2. *Nat Commun* **2021**;  
394 12:3695.
- 395 31. Tang X, Sharma A, Pasic M, et al. Assessment of SARS-CoV-2 Seropositivity During the  
396 First and Second Viral Waves in 2020 and 2021 Among Canadian Adults. *JAMA Netw Open*  
397 **2022**; 5:e2146798.
- 398 32. Valentine-Graves M, Hall E, Guest JL, et al. At-home self-collection of saliva, oropharyngeal  
399 swabs and dried blood spots for SARS-CoV-2 diagnosis and serology: Post-collection  
400 acceptability of specimen collection process and patient confidence in specimens. *PLoS One*  
401 **2020**; 15:e0236775.
- 402 33. Oelsner EC, Krishnaswamy A, Balte PP, et al. Collaborative Cohort of Cohorts for COVID-  
403 19 Research (C4R) Study: Study Design. *Am J Epidemiol* **2022**; 191:1153-73.
- 404 34. Gilbert PB, Donis RO, Koup RA, Fong Y, Plotkin SA, Follmann D. A Covid-19 Milestone  
405 Attained - A Correlate of Protection for Vaccines. *N Engl J Med* **2022**; 387:2203-6.
- 406 35. Khoury DS, Schlub TE, Cromer D, et al. Correlates of Protection, Thresholds of Protection,  
407 and Immunobridging among Persons with SARS-CoV-2 Infection. *Emerg Infect Dis* **2023**;  
408 29:381-8.

## TABLES

**Table 1. Characteristics of COVID-19 case and SARS-CoV-2 test negative control patients with acute respiratory illness by SARS-CoV-2 molecular test result**

Characteristic	Delta period <sup>1</sup>			Omicron period <sup>2</sup>		
	Test-negative control N = 416	Case N = 87	p-value <sup>3</sup>	Test-negative control N = 940	Case N = 575	p-value <sup>4</sup>
Age, Median (range)	34 (1, 83)	38 (7, 72)	0.699	38 (3, 82)	40 (5, 82)	0.006
Sex <sup>5</sup> , n (%)			0.779			0.245
Female	250 (60%)	51 (59%)		623 (66%)	364 (63%)	
Male	165 (40%)	36 (41%)		316 (34%)	210 (37%)	
Race/ethnicity <sup>6</sup> , n (%)			0.240			0.009
White, non-Hispanic	250 (60%)	54 (64%)		597 (64%)	321 (57%)	
Black, non-Hispanic	18 (4.3%)	6 (7.1%)		38 (4.1%)	23 (4.1%)	
Asian, non-Hispanic	38 (9.2%)	7 (8.2%)		69 (7.4%)	71 (13%)	
Other, non-Hispanic	16 (3.9%)	6 (7.1%)		37 (4.0%)	26 (4.6%)	
Hispanic	92 (22%)	12 (14%)		191 (20%)	123 (22%)	
Days from symptom onset, Median (range)	3 (0, 5)	2 (0, 5)	0.239	2 (0, 5)	2 (0, 5)	<0.001
COVID-19 vaccination status, n (%)			0.029			0.660
Unvaccinated	82 (20%)	28 (32%)		160 (17%)	85 (15%)	
Two doses	234 (56%)	45 (52%)		233 (25%)	150 (26%)	
Three doses	100 (24%)	14 (16%)		521 (55%)	326 (57%)	
Four doses	0 (0%)	0 (0%)		26 (2.8%)	14 (2.4%)	
Evidence of prior SARS-CoV-2 infection <sup>7</sup> , n (%)			0.002			<0.001
No	262 (63%)	70 (80%)		345 (37%)	333 (58%)	
Yes	154 (37%)	17 (20%)		595 (63%)	242 (42%)	
Self-reported presence of ≥1 medical condition <sup>8</sup> , n (%)	92 (23%)	23 (28%)	0.335	257 (28%)	142 (25%)	0.243
Healthcare worker or close contact with confirmed COVID-19 case, n (%)	115 (28%)	41 (47%)	<0.001	406 (43%)	314 (55%)	<0.001
Study site, n (%)			0.046			<0.001
California	194 (47%)	37 (43%)		243 (26%)	207 (36%)	
Pennsylvania	93 (22%)	29 (33%)		132 (14%)	57 (9.9%)	
Tennessee	52 (12%)	8 (9.2%)		83 (8.8%)	46 (8.0%)	
Texas	50 (12%)	4 (4.6%)		201 (21%)	83 (14%)	
Wisconsin	27 (6.5%)	9 (10%)		72 (7.7%)	27 (4.7%)	
Michigan	0 (0%)	0 (0%)		76 (8.1%)	51 (8.9%)	
Washington	0 (0%)	0 (0%)		133 (14%)	104 (18%)	

<sup>1</sup> The Delta-predominant period was defined as the period from October 1–December 24, 2021.

<sup>2</sup> The Omicron-predominant period was defined as the period from December 25, 2021–June 29, 2022.

<sup>3</sup> Wilcoxon rank sum test; Pearson's Chi-squared test; Fisher's exact test

<sup>4</sup> Wilcoxon rank sum test; Pearson's Chi-squared test

<sup>5</sup> 3 missing sex

<sup>6</sup> 23 missing race/ethnicity

<sup>7</sup> Evidence of prior SARS-CoV-2 infection was defined as electronic medical record documentation of prior positive SARS-CoV-2 tests or anti-N bAb levels in acute sera indicative of prior infection (≥6.9 BAU/mL). Prior infection was documented from March 17, 2020, to June 12, 2022.

<sup>8</sup> 63 missing self-reported presence of ≥1 medical condition

**Table 2. Geometric mean concentrations (BAU/mL) in acute phase dried blood spots for anti-SARS-CoV-2 RBD and N antigens by COVID-19 case status, COVID-19 vaccination status and prior laboratory-confirmed SARS-CoV-2 infection**

Variable	Delta Period <sup>1</sup>				Omicron Period <sup>2</sup>			
	Spike protein Receptor Binding Domain (RBD)		Nucleocapsid protein (N)		Spike protein Receptor Binding Domain (RBD)		Nucleocapsid protein (N)	
	No. with antibody detected <sup>3</sup> / No. Tested (%)	Geometric mean concentration (95% CI)	No. with antibody detected <sup>4</sup> / No. Tested (%)	Geometric mean concentration (95% CI)	No. with antibody detected <sup>3</sup> / No. Tested (%)	Geometric mean concentration (95% CI)	No. with antibody detected <sup>4</sup> / No. Tested (%)	Geometric mean concentration (95% CI)
<b>SARS-CoV-2 RT-PCR result</b>								
Case	63/87 (72%)	112.1 (57.9,217.2)	17/87 (20%)	2.1 (1.5,3.0)	530/575 (92%)	822.7 (689.9,981.1)	228/575 (40%)	5.7 (5.0,6.5)
Test-negative control	381/416 (92%)	497.8 (398.6,621.6)	148/416 (36%)	4.0 (3.3,4.8)	886/940 (94%)	1189.0 (1049.7,1346.8)	580/940 (62%)	15.5 (13.6,17.8)
<b>COVID-19 vaccination status</b>								
Unvaccinated	63/110 (57%)	30.8 (17.1,55.4)	37/110 (34%)	3.6 (2.2,5.8)	165/245 (67%)	81.3 (56.1,118.0)	144/245 (59%)	17.2 (12.2,24.3)
2 doses	271/279 (97%)	489.8 (403.0,595.4)	70/279 (25%)	2.7 (2.2,3.3)	374/383 (98%)	919.7 (785.4,1077.1)	180/383 (47%)	9.0 (7.2,11.2)
3 doses	110/114 (96%)	2434.9 (1827.0,3245.0)	58/114 (51%)	7.1 (5.8,8.8)	837/847 (99%)	2146.8 (1989.6,2316.4)	458/847 (54%)	9.9 (8.9,11.1)
4 doses	---	---	---	---	40/40 (100%)	3510.3 (3041.6,4051.1)	26/40 (65%)	12.4 (8.5,18.1)
<b>Time since last COVID-19 vaccination</b>								
< 90 days	118/121 (98%)	2570.1 (2026.5,3259.5)	63/121 (52%)	7.4 (6.0,9.1)	287/293 (98%)	2729.2 (2371.9,3140.4)	205/293 (70%)	14.7 (12.3,17.5)
≥90 days	263/272 (97%)	458.9 (374.6,562.1)	65/272 (24%)	2.6 (2.1,3.2)	964/977 (99%)	1462.0 (1345.2,1588.9)	459/977 (47%)	8.5 (7.6,9.6)
<b>Evidence of prior SARS-CoV-2 infection<sup>5</sup></b>								
No	274/332 (83%)	173.7 (131.0,230.2)	---	---	606/678 (89%)	491.4 (413.0,584.8)	---	---
Yes	170/171 (99%)	1801.6 (1465.3,2215.2)	---	---	810/837 (97%)	1888.7 (1701.6,2096.4)	---	---

Abbreviations: N, Nucleocapsid; RBD, receptor binding domain; rRT-PCR, real-time reverse-transcription polymerase chain reaction

<sup>1</sup> The Delta-predominant period was defined as the period from October 1–December 24, 2021.

<sup>2</sup> The Omicron-predominant period was defined as the period from December 25, 2021–June 29, 2022.

<sup>3</sup> Tetracore cutoff (anti-RBD BAU/mL) = 15.9

<sup>4</sup> Tetracore cutoff (anti-N BAU/mL) = 6.9

<sup>5</sup> Evidence of prior SARS-Cov-2 infection was defined as electronic medical record documentation of prior positive SARS-CoV-2 test results or anti-N bAb levels in acute sera indicative of prior infection (≥6.9 BAU/mL). Prior infection was documented from March 17, 2020, to June 12, 2022. Anti-N bAb level measurements are not shown in the table for this variable because anti-N bAb levels were included in the calculation of prior infection.

**Table 3. Likelihood of symptomatic COVID-19 by anti-N binding antibody levels, COVID-19 vaccination status, and prior SARS-CoV-2 infection history**

Variable	Delta period <sup>1</sup>		Omicron period <sup>2</sup>	
	No. cases/Total (%)	No. anti-RBD bAb above protective threshold <sup>3</sup> /Total (%)	No. cases/Total (%)	No. anti-RBD bAb above protective threshold <sup>4</sup> /Total (%)
<b>Anti-N binding antibody levels</b>				
Low (<10 BAU/mL)	76/389 (20%)	93/389 (24%)	402/847 (47%)	155/847 (18%)
Medium (10–99 BAU/mL)	7/79 (9%)	58/79 (73%)	133/430 (31%)	220/430 (51%)
High (≥100 BAU/mL)	4/35 (11%)	21/35 (60%)	40/238 (17%)	100/238 (42%)
<b>COVID-19 vaccination status</b>				
Unvaccinated	28/110 (25%)	14/110 (13%)	85/245 (35%)	20/245 (8%)
2 doses	45/279 (16%)	62/279 (22%)	150/383 (39%)	73/383 (19%)
3 doses	14/114 (12%)	96/114 (84%)	326/847 (38%)	355/847 (42%)
4 doses	—	—	14/40 (35%)	27/40 (68%)
<b>Evidence of prior SARS-CoV-2 infection<sup>5</sup></b>				
No	70/332 (21%)	56/332 (17%)	333/678 (49%)	69/678 (10%)
Yes	17/171 (10%)	116/171 (68%)	242/837 (29%)	406/837 (49%)

Abbreviations: bAb, binding antibody; CI, confidence interval; N, Nucleocapsid; RBD, receptor binding domain

<sup>1</sup> The Delta-predominant period was defined as the period from October 1–December 24, 2021.

<sup>2</sup> The Omicron-predominant period was defined as the period from December 25, 2021–June 29, 2022.

<sup>3</sup> 50% reduction in odds of symptomatic COVID-19 cutoff for anti-RBD binding antibody levels during the Delta period: 1,968 BAU/mL

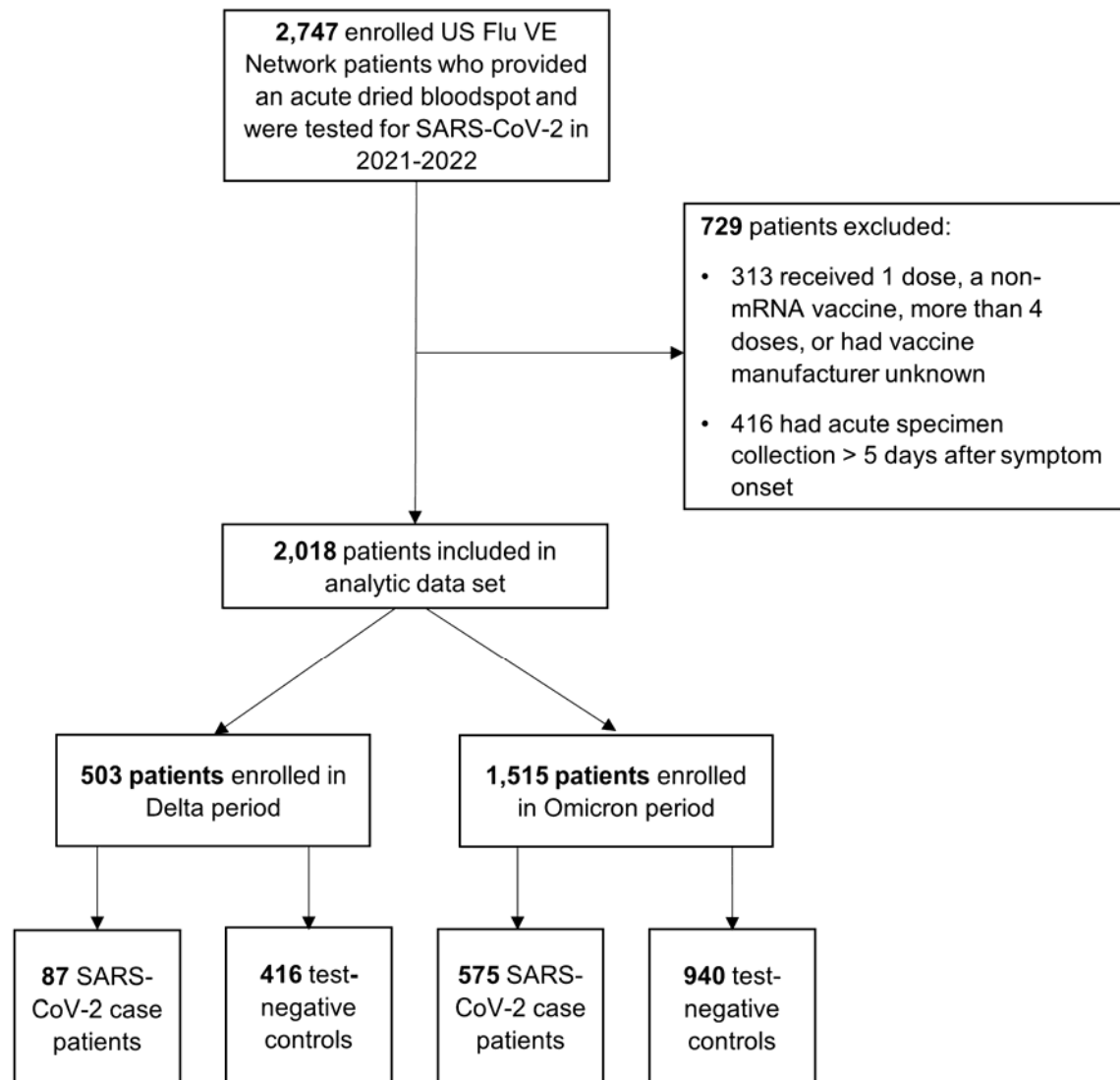
<sup>4</sup> 50% reduction in odds of symptomatic COVID-19 cutoff for anti-RBD binding antibody levels during the Omicron period: 3,375 BAU/mL

<sup>5</sup> Evidence of prior SARS-Cov-2 infection was defined as electronic medical record documentation of prior positive SARS-CoV-2 test results or anti-N bAb levels in acute sera indicative of prior infection (≥6.9 BAU/mL). Prior infection was documented from March 17, 2020, to June 12, 2022. Anti-N bAb level measurements are not shown in the table for this variable because anti-N bAb levels were included in the calculation of prior infection.

## FIGURES

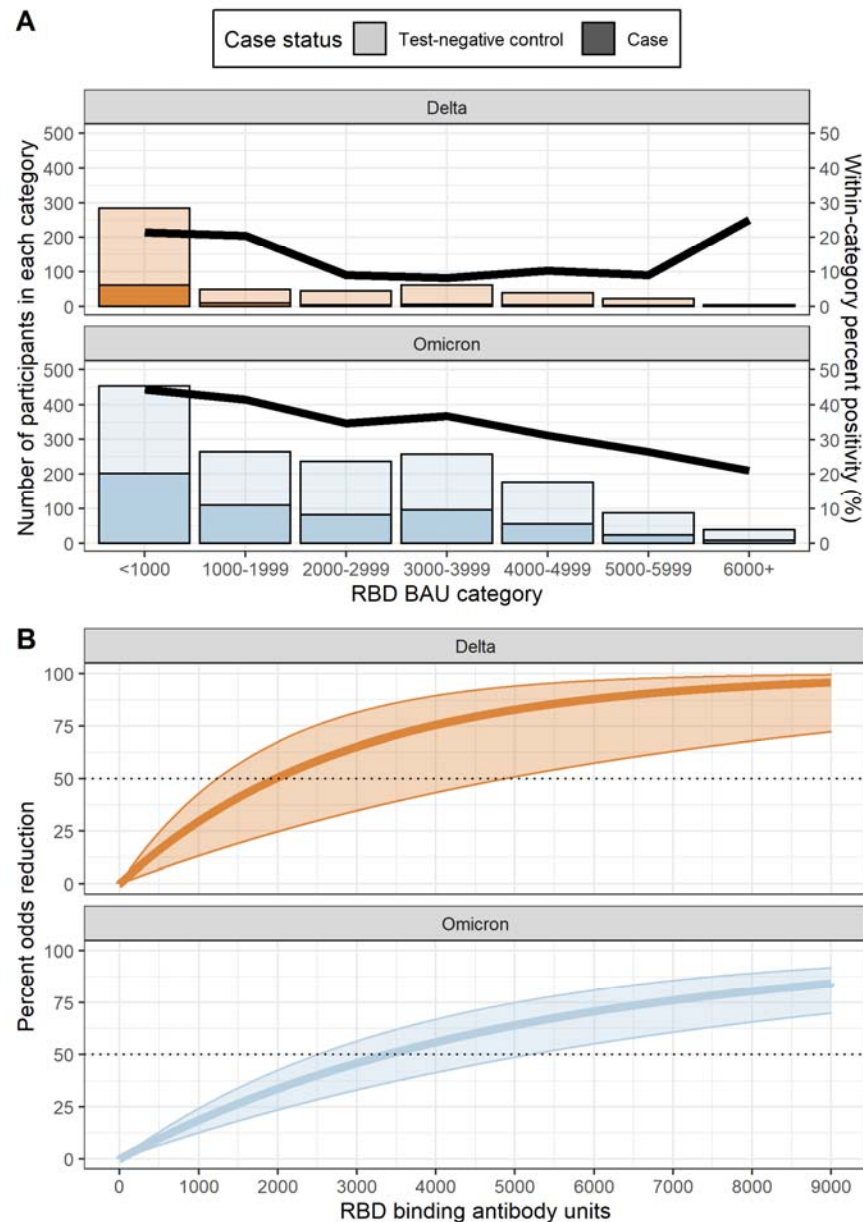
### Figure 1. US Influenza Vaccine Effectiveness Network enrollment for 2021–22 season.

The number of patients enrolled in the US Flu VE Network and included in the final analytic data set are shown, detailing each of the exclusion criterion applied. The Delta-predominant period was from October 1–December 24, 2021, and the Omicron-predominant period from December 25, 2021–June 29, 2022.



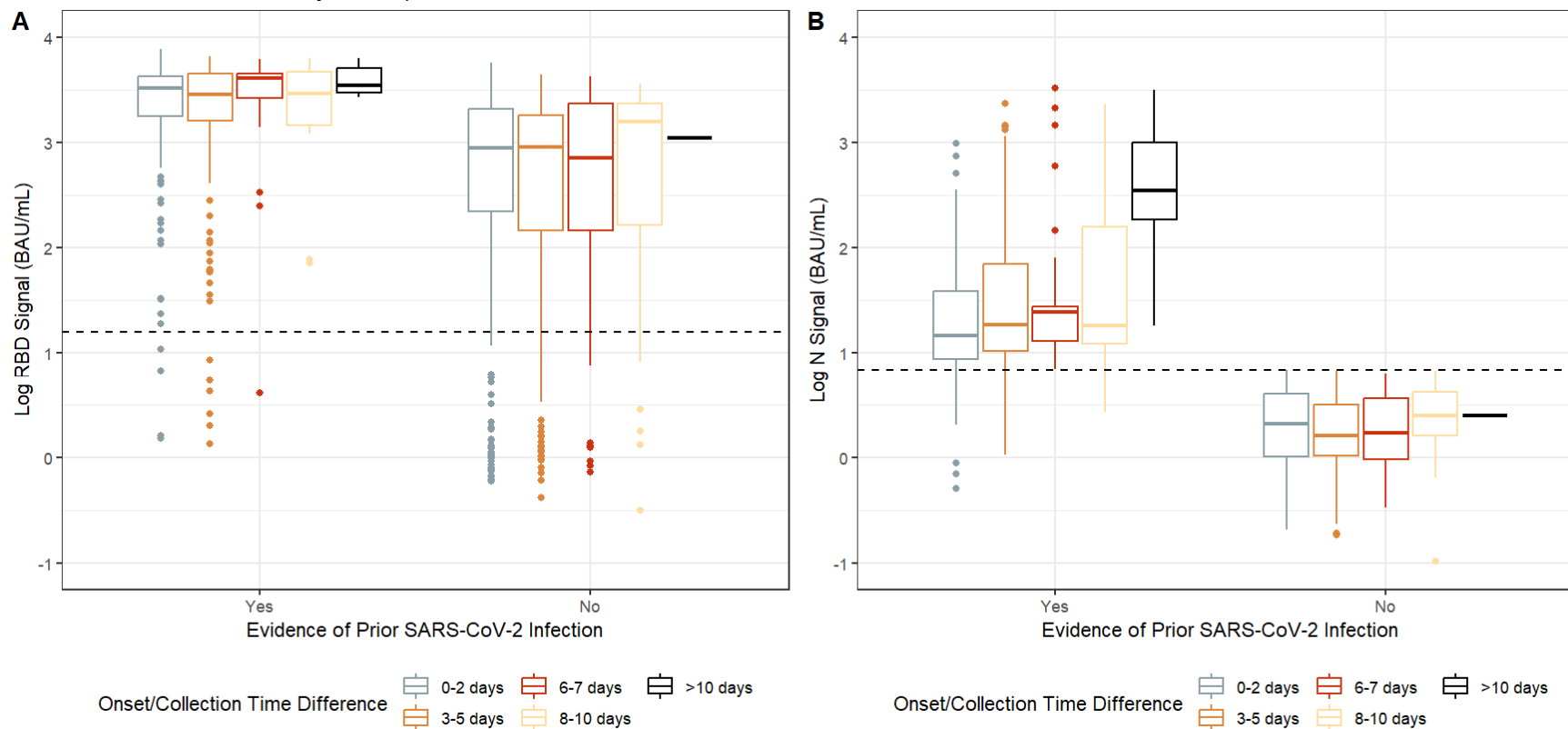
**Figure 2. Association between SARS-CoV-2 anti-spike receptor binding domain (RBD) IgG antibodies and likelihood of symptomatic COVID-19. 2A.**

Bars indicate the number of COVID-19 case (darker shading) and test-negative control (lighter shading) patients within each anti-RBD binding antibody unit (BAU) category. The line represents SARS-CoV-2 rRT-PCR test positivity within each anti-RBD binding antibody category. Results presented stratified by the Delta (orange) and Omicron (grey) variant periods. The Delta-predominant period was from October 1–December 24, 2021, and the Omicron-predominant period from December 25, 2021–June 29, 2022. **2B.** The percent odds reduction in COVID-19 illness by anti-RBD binding antibody level is presented stratified by the Delta (orange) and Omicron (grey) variant periods. Percent odds reduction was estimated as  $(1 - \text{adjusted odds ratio}) \times 100$ , using the adjusted odds ratio produced by a logistic regression model adjusted for COVID-19 vaccination status, age, study site, illness onset week, and high-risk SARS-CoV-2 exposure.

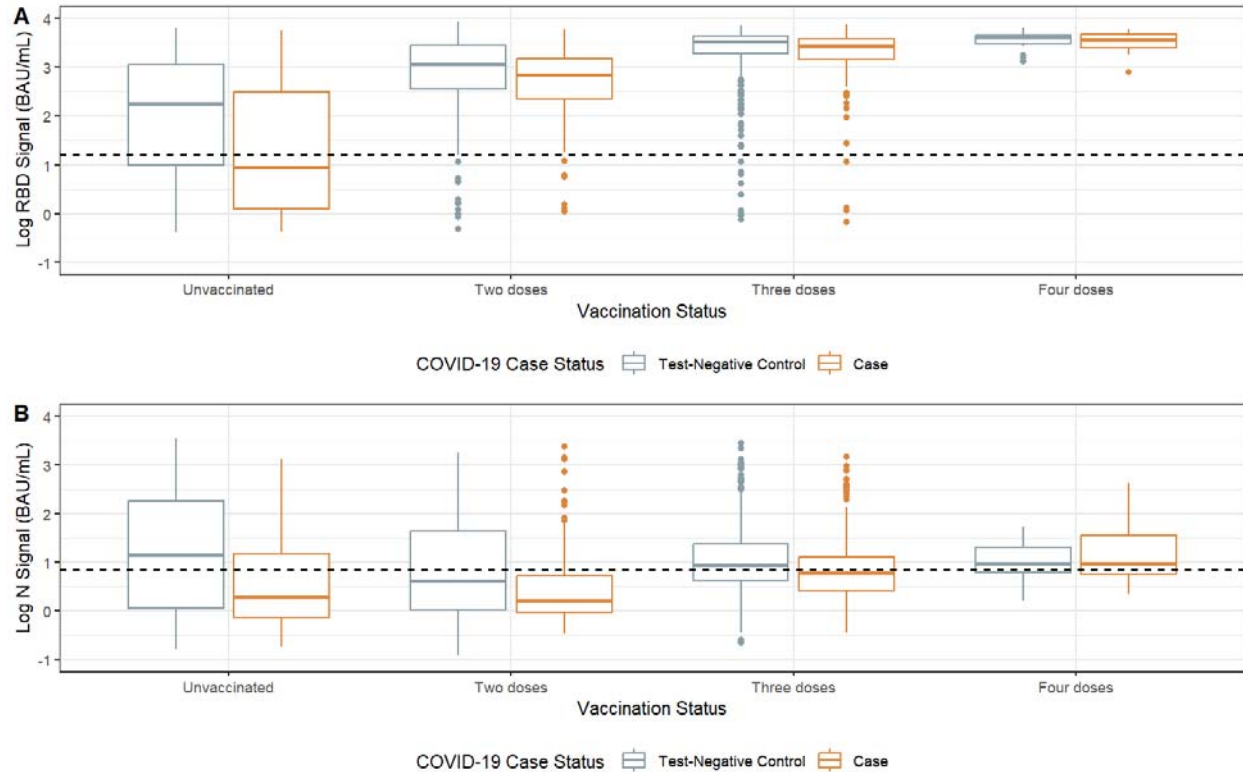


## SUPPLEMENTAL MATERIALS

**Supplemental Figure 1. Distribution of anti-RBD and anti-N binding antibody levels across time between symptom onset and dried blood spot collection.** Anti-RBD (S1A) and anti-N (S1B) antibody levels (BAU/mL) by days after reported symptom onset among SARS-CoV-2 rRT-PCR positive patients with and without evidence of prior SARS-CoV-2 infection. Binding antibody levels are presented on the log<sub>10</sub> scale. The dotted line represents the manufacturer's cutoff for positivity (≥15.9 BAU/mL for anti-RBD and ≥6.9 BAU/mL for anti-N antibody levels).



**Supplemental Figure 2. Distribution of anti-RBD and anti-N binding IgG antibody levels across COVID-19 case and vaccination status.** Anti-RBD (S2A) and anti-N (S2B) antibody levels (BAU/mL) COVID-19 case and test-negative control status and number of COVID-19 vaccine doses received. Binding antibody levels are presented on the log<sub>10</sub> scale. The dotted line represents the manufacturer's cutoff for positivity ( $\geq 15.9$  for anti-RBD and  $\geq 6.9$  for anti-N antibody levels).





**Supplemental Table 1. Assessment of potential confounding covariates for association between anti-RBD binding antibody levels and symptomatic COVID-19 during the Omicron variant period**

Covariate assessed	Total number of observations	$\beta^1$	Percent change in estimate from original adjustment set <sup>2</sup>	AIC	Log-likelihood test $p$ -value <sup>2</sup>
Original adjustment set <sup>3</sup>	1448	$-2.1 \times 10^{-4}$	—	1826.7	—
Variables removed from original adjustment set:					
- <b>COVID-19 vaccination status</b>	1448	$-2.3 \times 10^{-4}$	<b>9.0%</b>	1824.1	0.340
- <b>Age (cubed)</b>	1448	$-2.2 \times 10^{-4}$	4.3%	1845.9	<b>&lt;0.001</b>
- Sex	1450	$-2.1 \times 10^{-4}$	0.1%	1826.7	NA <sup>4</sup>
- Race-ethnicity	1466	$-2.1 \times 10^{-4}$	0.9%	1851.3	NA <sup>4</sup>
- <b>Study site</b>	1448	$-2.0 \times 10^{-4}$	3.9%	1848.6	<b>&lt;0.001</b>
- <b>Illness onset week</b>	1448	$-2.0 \times 10^{-4}$	<b>5.4%</b>	1836.5	<b>&lt;0.001</b>
- Presence of chronic medical condition	1494	$-2.0 \times 10^{-4}$	4.5%	1891.5	NA <sup>4</sup>
- <b>High-risk SARS-CoV-2 exposure</b>	1448	$-2.1 \times 10^{-4}$	1.0%	1837.9	<b>&lt;0.001</b>

Abbreviations: AIC, Akaike information criterion

<sup>1</sup> The  $\beta$  estimate for the association between anti-RBD binding antibody levels (coded linearly) and odds of COVID-19 illness is shown.

<sup>2</sup> Covariates that when added changed the  $\beta$  estimate by >5% or had a  $p$ -value <0.05 by the log-likelihood ratio test are bolded.

<sup>3</sup> Original adjustment set included COVID-19 vaccination status, age, sex, race-ethnicity, study site, illness onset week, presence of at least one chronic medical condition, and high-risk SARS-CoV-2 exposure.

<sup>4</sup> Not applicable because different total number of observations than adjusted model.

**Supplemental Table 2. Fifty percent threshold for reduced odds of symptomatic COVID-19 stratified by doses of COVID-19 vaccine received**

Variable	Delta period <sup>1</sup>		Omicron period <sup>2</sup>	
	No. cases/Total (%)	50% threshold (BAU/mL) <sup>3</sup>	No. cases/Total (%)	50% threshold (BAU/mL) <sup>3</sup>
<b>COVID-19 vaccination status</b>				
Unvaccinated	28/110 (25%)	696	85/245 (35%)	2943
2 doses	45/279 (16%)	3128	150/383 (39%)	1712
3 doses	14/114 (12%)	961	326/847 (38%)	8528
4 doses	—	—	14/40 (35%)	2680

Abbreviations: N, Nucleocapsid; RBD, receptor binding domain

<sup>1</sup> The Delta-predominant period was defined as the period from October 1–December 24, 2021.

<sup>2</sup> The Omicron-predominant period was defined as the period from December 25, 2021–June 29, 2022.

<sup>3</sup> Percent reduction in symptomatic COVID-19 was estimated by  $(1 - \text{adjusted odds ratio}) \times 100$ , using the adjusted odds ratio produced by a logistic regression model adjusted for age, study site, illness onset week, and high-risk SARS-CoV-2 exposure. The 50% threshold was where the percent reduction curve crossed 50%.