

1

2

3

4

5 Early initiation of polymyxin B hemoperfusion therapy for cancer patients with
6 refractory septic shock

7

8 **Short title:** Early PMX-DHP initiation for septic shock

9

10

11

12

13

14

15 Jae Hoon Lee, Won Ho Han*

16

17 Critical Care Medicine, National Cancer Center, 323 Ilsan-ro, Ilsandong-gu, Goyang-si

18 10408, Gyeonggi-do, Republic of Korea

19

20

21

22

23

24 *Corresponding author:

25 E-mail: 13408@ncc.re.kr (WHH)

NOTE: This preprint reports new research that has not been certified by peer review and should not be used to guide clinical practice.

26 Abstract

27 **Purpose:** In this study, we analyzed correlations between 28-day mortality and
28 hemodynamic changes, measured using polymyxin B-immobilized fiber column direct
29 hemoperfusion initiation time, in patients with cancer with refractory septic shock. **Materials**
30 **and methods:** We retrospectively analyzed 45 patients with cancer who received polymyxin
31 B-immobilized fiber column direct hemoperfusion due to refractory septic shock. Patients
32 were categorized into early (<12 h between refractory septic shock and initiation of
33 polymyxin B-immobilized fiber column direct hemoperfusion) and late (>12 h) initiation
34 groups. Changes in vasoactive inotrope scores, sequential organ failure assessment scores,
35 and PaO₂/FiO₂ ratios before and 24 h after polymyxin B-immobilized fiber column direct
36 hemoperfusion, were compared. **Results:** Univariable analysis showed that 28-day mortality
37 risk was associated with diabetes mellitus (odds ratio=3.081; 95% confidence interval
38 =1.290–7.360; *p*=0.011), lactic acid (odds ratio=1.010; 95% confidence interval =1.005–
39 1.014; *p*<0.0001), and sequential organ failure assessment score (odds ratio=1.190; 95%
40 confidence interval =1.044–1.357; *p*=0.009). Multivariable analysis showed that 28-day
41 mortality risk was associated with diabetes mellitus (odds ratio=2.718; 95% confidence
42 interval =1.013–7.291; *p*=0.047), early initiation (odds ratio=0.268; 95% confidence interval
43 =0.094–0.765; *p*=0.014), and lactic acid (odds ratio=1.009; 95% confidence interval =1.004–
44 1.014; *p*<0.0001). Overall survival was slightly higher in the early than in the late initiation
45 group (*p*=0.0515). Comparisons of variables before and 24 h after polymyxin B-immobilized
46 fiber column direct hemoperfusion revealed that vasoactive inotrope scores decreased in both
47 the early and late groups (Δ 318 vs. Δ 114; *p*=0.001 and *p*=0.005, respectively), whereas the
48 PaO₂/FiO₂ ratio slightly increased (Δ 127.5 vs. Δ 95.6; *p*=0.350 and *p*=0.390, respectively)
49 over time. **Conclusions:** In patients with cancer with refractory septic shock, early initiation

50 of polymyxin B-immobilized fiber column direct hemoperfusion reduced inotrope-
51 vasopressor requirement and 28-day mortality.

52

53 **Keywords:** sepsis; 28-day mortality; risk factors; hemodynamics; respiratory function; organ
54 failure

55

56 **Introduction**

57 Sepsis causes life-threatening organ dysfunction through dysregulation of host
58 responses to infection [1]. Eleven million of the 49 million people that contract sepsis
59 globally each year die, equivalent to a total global mortality of 19.7%. However, sepsis-
60 related mortality has shown a decreasing trend with an increase in early detection and
61 improvements in therapeutic strategies [2]. Sepsis is a significant risk factor in
62 immunocompromised patients with cancer undergoing treatment, as well as in those with a
63 known poor prognosis. The incidence of sepsis is 3- to 5-fold higher in patients with cancer,
64 at 16.4 cases per 1,000 persons, than in those without. Furthermore, the proportion of sepsis-
65 related mortality is approximately 3-fold higher than that of annual cancer deaths (10% vs.
66 37.8%), although mortality rates vary across cancer types [3].

67 Polymyxin B-immobilized fiber column direct hemoperfusion (PMX-DHP) is a
68 potential therapy developed in 1994 to reduce blood endotoxin levels and treat septic shock,
69 which effectively enhances hemodynamics and respiratory functions in patients with septic
70 shock, caused by intra-abdominal infection [4]. However, whether it contributes to survival
71 and prevents organ failure is controversial, and there are no established guidelines on the best
72 time to perform PMX-DHP [5-8].

73 To date, studies on PMX-DHP have mainly targeted patients with no cancer, and
74 there is a scarcity of literature on patients with cancer. This prompted the present

75 investigation, in which we analyzed the correlation between PMX-DHP initiation time and
76 28-day mortality in patients with cancer with refractory septic shock. Additionally, we aimed
77 to verify whether hemodynamics, sequential organ failure assessment (SOFA) scores, and
78 oxygenation levels improve following PMX-DHP treatment.

79

80 **Materials and methods**

81 This single-center, retrospective study was conducted in 45 patients with cancer aged
82 ≥ 18 years, who received PMX-DHP to treat septic shock, at the intensive care unit of our
83 institution between October 2019 and March 2023. Septic shock was identified based on the
84 criteria established for identification of sepsis and septic shock (Sepsis-3), including the
85 requirement of vasopressors to maintain a mean arterial pressure (MAP) of ≥ 65 mm Hg and a
86 serum lactate level of > 2 mmol/L in the absence of hypovolemia according [1]. PMX-DHP
87 was administered to patients who voluntarily consented to the treatment. Refractory septic
88 shock was defined as the requirement of ≥ 0.5 $\mu\text{g}/\text{kg}/\text{min}$ of norepinephrine or an additional
89 dose of vasopressin to maintain MAP of > 65 mmHg [9]. We administered IV hydrocortisone
90 at a dose of 200 mg/d, provided as 50 mg intravenously every 6 hours, to all patients
91 diagnosed with refractory septic shock.

92 For PMX-DHP, the blood flow rate was set at 100 mL/min and controlled by the
93 attending physician depending on the patient's state to maintain a steady rate. For
94 anticoagulation, 20–40 mg/h of nafamostat mesylate, a synthetic serine protease inhibitor,
95 was administered. The duration of PMX-DHP was 2 h or more; the infusion time and
96 frequency were determined by the attending physicians [10,11]. Patients who received PMX-
97 DHP treatment within 12 h from the diagnosis of refractory septic shock were assigned to the
98 “early initiation” group, while those who were treated after 12 h or more had elapsed since
99 their diagnosis were assigned to the “late initiation” group.

100 The following patient characteristics were entered as variables for the analyses: age,
101 sex, underlying disease (diabetes mellitus (DM), hypertension, cerebrovascular accident,
102 chronic kidney disease, and chronic obstructive pulmonary disease), cancer type (intra-
103 abdominal/genitourinary/lung/others), pre-PMX-DHP laboratory data (absolute neutrophil
104 count, platelet count, C-reactive protein, lactic acid levels, procalcitonin, creatinine levels,
105 PaO₂/FiO₂ ratio), severity (acute physiology and chronic health evaluation III (APACHE
106 III)), SOFA score, PMX-DHP frequency, vasoactive inotrope scores (VIS), primary infection
107 site (lung, abdominal, genitourinary, others), microbiological culture, mechanical ventilator,
108 intervention, surgical intervention, and 28-day mortality.

109 VIS were measured as follows [12]:

$$110 \quad \begin{aligned} VIS = & \text{dopamine dose } (\mu\text{g}/\text{kg}/\text{min}) + \text{dobutamine dose } (\mu\text{g}/\text{kg}/\text{min}) + 100 \\ & \times \text{epinephrine dose } (\mu\text{g}/\text{kg}/\text{min}) + 10 \times \text{milrinone dose } (\mu\text{g}/\text{kg}/\text{min}) \\ & + 10,000 \times \text{vasopressin dose } (\text{units}/\text{kg}/\text{min}) + 100 \\ & \times \text{norepinephrine dose } (\mu\text{g}/\text{kg}/\text{min}) \end{aligned}$$

111 Using patient data, correlations of the aforementioned variables with PMX-DHP
112 initiation time (early initiation group <12 h; late initiation group >12 h) were assessed by
113 calculating differences in values reported before and 24 h after PMX-DHP. This study was
114 approved by the Institutional Review Board of the National Cancer Center (Approval No.:
115 NCC2023-0170). The data access period for the manuscript is from July 3, 2023, the date
116 IRB approval, to July 21, 2023. The requirement for the acquisition of informed consent from
117 patients was waived owing to the retrospective nature of this study.

118

119 **Statistical analysis**

120 Continuous variables are expressed as mean \pm standard deviation or median
121 (minimum-maximum or range). Categorical variables were compared between groups using
122 the Pearson χ^2 and Fisher's exact test, and continuous variables were compared using *t*-tests
123 for parametric and the Wilcoxon rank sum test for nonparametric data. Statistical significance

124 was set at $p < 0.05$. The final set of variables in the multivariable model were selected via
125 backward elimination in the univariable analysis, with $p < 0.1$. All statistical analyses were
126 performed using SAS® version 9.4 for Windows® (SAS Institute, Cary, NC, USA).

127

128 **Results**

129 **Characteristics of the patient group undergoing PMX-DHP** 130 **treatment**

131 A total of 45 patients received PMX-DHP for refractory septic shock. Patients' mean
132 age was 64.4 years, and 24 patients (53.5%) died within 28 days due to multi-organ failure
133 caused by septic shock. The most frequent type of cancers were genitourinary (53.3%), intra-
134 abdominal cancers (31.1%), and lung cancer (8.9%). The most frequent primary infection site
135 was the abdomen (64.4%), followed by the lung (20.0%), and the genitourinary tract (11.1%).
136 Gram-negative bacteria were the most common microorganism (62.5%). The median
137 inotropes-vasopressor requirement (VIS) to maintain an MAP ≥ 65 mmHg was 289.7 (9–913).
138 The mean APACHE III score before PMX-DHP was 93.9 ± 29.2 , while the mean SOFA score
139 was 13.2 ± 3.3 . Additionally, 41 patients underwent mechanical ventilation (91.1%) and the
140 median PaO₂/FiO₂ ratio was 141.2 (20.2–534.3) (Table 1).

141

142 **Table 1. Characteristics of patients treated with PMX-DHP.**

	Patients (N=45)	Percentage (%)
Sex		
Male	19	42.2
Female	26	57.8

Age	64.4 ± 11.7	
Underlying disease		
Diabetes mellitus	13	28.9
Hypertension	21	46.7
Cerebrovascular accident	6	13.3
Chronic kidney disease	2	4.4
Chronic obstructive pulmonary disease	1	2.2
Type of cancer		
Intra-abdominal	14	31.1
Genitourinary	24	53.3
Lung	4	8.9
Others	3	6.7
APACHE III	93.9 ± 29.2	
SOFA	13.2 ± 3.3	
No. of PMX-DHP* treatment		
#1	38	84.4
> #2	7	15.6
VIS	289.7 ± 220.5	
Primary infection site		
Lung	9	20
Abdominal	29	64.4
Genitourinary	5	11.1
Others	2	4.4

Laboratory values

ANC (/uL)	1575.5 (0–30589)
Platelet count (10^3 /uL)	107 (2–299)
CRP [#] (mg/dL)	15.5 (0.1–30.5)
Lactic acid (mg/dL)	95 (13.6–353.4)
Procalcitonin (mg/mL)	30.2 (0.4–526.6)
Creatinine (mg/dL)	1.5 (0.3–7.7)
P/F ratio	141.2 (20.2–534.3)

Positive culture

G(-)	25	62.5
G(+)	11	27.5
Mixed	4	10

Mechanical ventilation

41	91.1
----	------

Intervention

14	68.9
----	------

Operation

16	64.4
----	------

28-day mortality

Alive	21	46.7
Death	24	53.3

143 ANC: absolute neutrophil count; APACHE III: Acute Physiology and Chronic Health
 144 Evaluation III (APACHE III); CRP: C-reactive protein; G(-): Gram-negative bacteremia;
 145 G(+): Gram-positive bacteremia; P/F ratio: ratio of arterial oxygen partial pressure to fraction
 146 of inspired oxygen ($\text{PaO}_2/\text{FiO}_2$); PMX-DHP: polymyxin B-immobilized fiber column direct
 147 hemoperfusion; SOFA: sequential organ failure assessment; VIS: vasoactive inotrope score
 148 (dopamine dose ($\mu\text{g}/\text{kg}/\text{min}$) + dobutamine dose ($\mu\text{g}/\text{kg}/\text{min}$) + $100 \times$ epinephrine dose

149 ($\mu\text{g}/\text{kg}/\text{min}$) + 10 \times milrinone dose ($\mu\text{g}/\text{kg}/\text{min}$) + 10,000 \times vasopressin dose (units/kg/min) +
150 100 \times norepinephrine dose ($\mu\text{g}/\text{kg}/\text{min}$)

151

152 When patients were divided into two groups— early and late —based on the PMX-
153 DHP initiation time, the most frequent cancer type in both groups was genitourinary cancer
154 (early vs. late, 55.0% vs. 52.0%, respectively). The disease severity indices (i.e., median
155 APACHE III and SOFA scores) did not vary significantly between the two groups (APACHE
156 III score: 95.5 (41–144) vs. 94 (36–159), $p=0.427$; SOFA score: 13 (6–18) vs. 14 (7–21),
157 $p=0.270$). The VIS was higher in the early group than the late group (372.5 [15–913] vs. 213
158 [9–847], $p=0.020$). In both groups, the abdominal area was the most frequent primary
159 infection site (60% vs. 68%). Gram-negative bacteremia was the most commonly detected
160 bacteria on microbiological culture in both groups (64.7% vs. 60.9%, $p=0.309$). Compared to
161 that of the early initiation group, the late initiation group showed a slightly higher rate of
162 gram-positive bacteremia (17.6% vs. 34.8%), a higher rate of intervention to infection source
163 control (15% vs. 44%, $p=0.037$), a lower frequency of surgical intervention (45% vs. 25%,
164 $p=0.237$), and a higher level of 28-day mortality (30% vs. 60%, $p=0.045$) (Table 2).

165

166 **Table 2. Baseline characteristics of the early vs. the late initiation treatment group.**

	Early (N=20)	Late (N = 25)	<i>p</i> -value
Sex			
Male	9 (45.0%)	10 (40.0%)	0.736
Female	11 (55.0%)	15 (60.0%)	
Age	66.2 \pm 11.2	62.9 \pm 12.0	0.362
Underlying disease			

Diabetes mellitus	13 (65.0%)	19 (76.0%)	0.419
Hypertension	11 (55.0%)	10 (40.0%)	0.316
Cerebrovascular accident	5 (25.0%)	1 (4.0%)	0.074
Chronic kidney disease	1 (5.0%)	1 (4.0%)	1
Chronic obstructive pulmonary disease	1 (5.0%)	0 (0.0%)	0.444
Type of cancer			
Intra-abdominal	5 (25.0%)	9 (36.0%)	0.792
Genitourinary	11 (55.0%)	15 (52.0%)	
Lung	2 (10.0%)	2 (8.0%)	
Others	2 (10.0%)	1 (4.0%)	
APACHE III	97.8 ± 30.8	90.7 ± 28.1	0.427
SOFA	12.6 ± 3.2	13.7 ± 3.4	0.27
No. of PMX-DHP treatment			
#1	17 (85.0%)	21 (84.0%)	1
> #2	3 (15.0%)	4 (16.0%)	
VIS	365.9 ± 207.2	228.8 ± 215.5	0.02
Primary infection site			
Lung	3 (15.0%)	6 (24.0%)	0.411
Abdominal	12 (60.0%)	17 (68.0%)	
Genitourinary	4 (20.0%)	1 (4.0%)	
Others	1 (5.0%)	1 (4.0%)	
Positive culture			
G(-)	11 (64.7%)	14 (60.9%)	0.309

G(+)	3 (17.6%)	8 (34.8%)	
Mixed	3 (17.6%)	1 (4.3%)	
Mechanical ventilation	19 (95.0%)	22 (88.0%)	0.617
Intervention	3 (15.0%)	11 (44.0%)	0.037
Operation	9 (45.0%)	7 (28.0%)	0.237
28-day mortality			
Alive	14 (70.0%)	10 (40.0%)	0.045
Death	6 (30.0%)	15 (60.0%)	
ANC (uL)	1191 (0–22568)	2266 (0–30589)	0.097
Non-Neutropenia (ANC>1500)	9 (45%)	15 (62.5%)	0.246
Neutropenia (ANC<1500)	11 (55.0%)	9 (37.5%)	
Platelet count (10³/uL)	117.5 (13–299)	96 (2–246)	0.289
CRP (mg/dL)	14.9 (0.1–27.3)	15.8 (1.1–30.5)	0.173
Lactic acid (mg/dL)	90.3 (13.6–353.4)	95 (26.1–262.9)	0.807
Procalcitonin (mg/mL)	44.5 (0.4–144.2)	20.7 (1.3–526.6)	0.34
Creatinine (mg/dL)	1.4 (0.3–7.7)	1.5 (0.4–4)	1
P/F ratio	121.8 (20.2–524)	156 (48.1–534.3)	0.576

167 ANC: absolute neutrophil count; APACHE III: Acute Physiology and Chronic Health
 168 Evaluation III (APACHE III); CRP: C-reactive protein; G (-): Gram-negative bacteremia; G
 169 (+): Gram-positive bacteremia; P/F ratio: ratio of arterial oxygen partial pressure to fraction
 170 of inspired oxygen (PaO₂/FiO₂); PMX-DHP: polymyxin B-immobilized fiber column direct
 171 hemoperfusion; SOFA: sequential organ failure assessment (SOFA); VIS: vasoactive
 172 inotrope score

173

174 **Overall survival in the early vs. late group**

175 The number of deaths within 28 days from the initiation of PMX-DHP was compared
176 for both groups; six deaths were recorded in the early and 15 in the late initiation group
177 (Table 2). The survival rate was $\geq 50\%$ in the early group, and the median survival was 7 days
178 in the late group. While the 28-day overall survival was slightly higher in the early compared
179 to the late group, no significant difference was found ($p=0.0515$) (Fig 1).

180

181 **Fig 1. Estimation of overall survival according to initiation of polymyxin B-immobilized**
182 **fiber column direct hemoperfusion (PMX-DHP).**

183

184 **Univariable and multivariable analyses of 28-day mortality**

185 Our univariable analysis of 28-day mortality in patients with cancer with refractory
186 septic shock after PMX-DHP showed that DM (odds ratio (OR)=3.081; 95% confidence
187 interval (CI)=1.290–7.360; $p=0.011$), lactic acid levels (OR=1.010; 95% CI=1.005–1.014;
188 $p<0.0001$), and SOFA scores (OR=1.190; 95% CI=1.044–1.357; $p=0.009$) were correlated
189 with 28-day mortality. A multivariable analysis was performed using backwards selection
190 and the univariable analysis results; the results indicated that 28-day mortality was correlated
191 with DM (OR=2.718; 95% CI=1.013–7.291; $p=0.047$), early initiation (OR=0.268; 95%
192 CI=0.094–0.765; $p=0.014$), and lactic acid levels (OR=1.009; 95% CI=1.004–1.014;
193 $p<0.0001$) (Table 3).

194

195 **Table 3. Univariable and multivariable analysis of 28-day mortality.**

	Univariable analysis		Multivariable analysis	
	OR (95% CI)	<i>p</i> -value	OR (95% CI)	<i>p</i> -value
Sex	1.294 (0.549–3.049)	0.555		

Age	1.001 (0.065–1.038)	0.974		
Underlying disease				
Diabetes mellitus	3.081 (1.290–7.360)	0.011	2.718 (1.013–7.291)	0.047
Hypertension	1.098 (0.466–2.587)	0.83		
Cerebrovascular accident	1.206 (0.3555–4.097)	0.765		
Chronic kidney disease	4.025 (0.898–18.042)	0.069		
COPD	3.126 (0.409–23.917)	0.272		
Initiation of PMX-DHP				
Late				
Early	0.423 (0.163–1.093)	0.076	0.268 (0.094–0.765)	0.014
Type of cancer				
Intra-abdominal	2.171 (0.274–17.166)	0.463		
Genitourinary	0.948 (0.119–7.578)	0.96		
Lung	2.205 (0.229–21.199)	0.494		
Others				
APACHE III	1.002 (0.988–1.017)	0.77		
SOFA score	1.190 (1.044–1.357)	0.009		
VIS	1.002 (1.000–1.004)	0.093		
Primary infection site				
Lung	1.258 (0.151–10.46)	0.832		
Abdominal	0.696 (0.090–5.362)	0.728		
Genitourinary	0.697 (0.063–7.694)	0.768		

Mechanical ventilation	5.373 (0.303–95.258)	0.252		
Intervention	1.138 (0.459–2.821)	0.78		
Operation	0.474 (0.173–1.298)	0.146		
ANC (/uL)				
Non-Neutropenia (ANC>1500)				
Neutropenia (ANC<1500)	0.560 (0.223–1.408)	0.218		
Platelet count (10³/uL)	0.996 (0.990–1.002)	0.194		
CRP (mg/dL)	0.992 (0.938–1.049)	0.769		
Lactic acid (mg/dL)	1.010 (1.005–1.014)	<0.0001	1.009 (1.004–1.014)	<0.0001
Procalcitonin (mg/mL)	0.990 (0.973–1.008)	0.281		
Creatinine (mL/dL)	1.165 (0.911–1.490)	0.223		
P/F ratio	0.998 (0.005–1.002)	0.343		

196 ANC: absolute neutrophil count; APACHE III: Acute Physiology and Chronic Health
197 Evaluation III (APACHE III); COPD: chronic obstructive pulmonary disease; CRP: C-
198 reactive protein; P/F ratio: ratio of arterial oxygen partial pressure to fraction of inspired
199 oxygen (PaO₂/FiO₂); PMX-DHP: polymyxin B-immobilized fiber column direct
200 hemoperfusion; SOFA: sequential organ failure assessment (SOFA); VIS: vasoactive
201 inotrope score; OR: odds ratio; CI: confidence interval.

202

203 **Changes in values of variables after PMX-DHP treatment (early**
 204 **vs. late initiation)**

205 Comparison of variables before and 24 h after PMX-DHP showed that, in both
 206 groups, VIS ($p=0.001$ vs. $p=0.005$, respectively) and creatinine levels ($p=0.016$ vs. $p<0.001$)
 207 significantly decreased after PMX-DHP. However, the decrease in the VIS was higher in the
 208 early initiation group (Fig 2).

209
 210 **Fig 2. Changes in variables associated with initiation of polymyxin B-immobilized fiber**
 211 **column direct hemoperfusion (PMX-DHP): vasoactive inotrope score (VIS)**

212
 213 In both groups, the platelet count ($\Delta 62.0$ vs. $\Delta 25.5$; $p=0.007$ vs. $p=0.061$,
 214 respectively), lactic acid levels ($\Delta 37.5$ vs. $\Delta 33.2$; $p=0.080$ vs. $p=0.083$), and SOFA scores
 215 ($p=0.230$ vs. $p=0.022$) significantly decreased after PMX-DHP. After 24 h, the PaO₂/FiO₂
 216 ratio was higher in both groups ($\Delta 127.5$ vs. $\Delta 95.6$; $p=0.350$ vs. $p=0.390$, respectively), with
 217 the degree of increase being slightly higher in the early initiation group (Table 4).

218
 219 **Table 4. Changes in variables after PMX-DHP treatment.**

	Before HP	After HP	<i>p</i> -value
Early initiation			
ANC (/uL)	1191 (0–22568)	3158.5 (0–23000)	0.083
Platelet count (10 ³ /uL)	117 (13–299)	55 (16–165)	0.007
CRP (mg/dL)	14.5 (0.1–27.3)	18.5 (8.2–38)	0.015
Lactic acid (mg/dL)	73.7 (13.6–353.4)	36.2 (17.3–278.5)	0.080
Procalcitonin (mg/mL)	44.5 (0.4–144.2)	54.7 (19.1–307.3)	0.400

Creatinine (mg/dL)	1.3 (0.3–6.6)	1.1 (0.3–2.6)	0.016
P/F ratio	160 (20.2–524)	287.5 (37.2–498)	0.350
SOFA score	11 (6–17)	10 (4–15)	0.230
VIS	336 (15–736)	18 (0–693)	0.001

Late initiation

ANC (/uL)	2214.5 (1–30589)	11110.5 (4–35040)	0.830
Platelet count (10^3 /uL)	116 (3–246)	90.5 (0–138)	0.061
CRP (mg/dL)	17.6 (4.4–30.5)	18.4 (2.3–39)	0.920
Lactic acid (mg/dL)	82.4 (26.1–234.8)	49.2 (13–287.5)	0.083
Procalcitonin (mg/mL)	22.7 (1.3–526.6)	19.7 (0.1–238.7)	0.110
Creatinine (mg/dL)	1.5 (0.5–3.7)	1 (0.5–1.8)	<0.0001
P/F ratio	164.9 (48.1–134.3)	260.5 (66.6–544.4)	0.390
SOFA score	13 (7–21)	12 (3–18)	0.022
VIS	124 (9–496)	10 (0–451)	0.005

220 ANC: absolute neutrophil count; CRP: C-reactive protein; P/F ratio: ratio of arterial oxygen
 221 partial pressure to fraction of inspired oxygen ($\text{PaO}_2/\text{FiO}_2$); PMX-DHP: polymyxin B-
 222 immobilized fiber column direct hemoperfusion; SOFA: sequential organ failure assessment
 223 (SOFA); VIS: vasoactive inotrope score

224

225 **Discussion**

226 This study was conducted to analyze the correlation between PMX-DHP initiation
 227 time and 28-day mortality in patients with cancer with refractory septic shock and to verify
 228 whether hemodynamics, SOFA scores, and oxygenation levels improve after PMX-DHP. A
 229 mortality rate of 53.3% related to refractory septic shock was observed in this study, which
 230 did not significantly differ from that of a previous meta-analysis of patients with cancer after

231 sepsis treatment (48–62%) [13]. However, the earlier reported mortality has been found to be
232 slightly higher than the 28-day mortality related to septic shock observed in our patients with
233 cancer who received PMX-DHP (19–37.7%) [7,8,14]. This may be due the
234 immunosuppressed nature of our patients which resulted in higher disease severity (APACHE
235 III score; SOFA score) than those in studies performed at other centers. Another possible
236 explanation could be that the treatment initiation in the present study occurred at a
237 comparatively more severe stage, as the initiation of PMX-DHP follows the diagnosis of
238 refractory septic shock.

239 The results of this study demonstrate that the requirement for a vasoactive inotrope
240 agent to maintain hemodynamics after PMX-DHP decreased in the early initiation group,
241 which led to a fall in 28-day mortality. The inotropes-vasopressor requirement decreased
242 (VIS, $\Delta 318$ vs. $\Delta 114$, $p=0.001$ vs. $p=0.005$) after PMX-DHP in both the early and the late
243 group; however, the decrease was larger in the early than the late group. Before the treatment,
244 the requirement for a vasoactive inotrope agent to maintain hemodynamics was higher in the
245 early than the late group; this enabled a relatively faster detection of refractory septic shock
246 by the attending physician and thereby the administration of PMX-DHP, which reduced 28-
247 day mortality. This implies that rapid administration of PMX-DHP within 12 h could improve
248 hemodynamics and prevent life-threatening organ failure, thereby contributing to a reduction
249 in mortality.

250 Through the modulation of activated mononuclear cells and neutrophils, PMX-DHP
251 improves pulmonary oxygenation by suppressing inflammatory mediators and systemic
252 inflammation [15]. In the current study, the PaO₂/FiO₂ ratio was higher in both groups after
253 PMX-DHP, with a slightly larger increase in the early initiation group, although the
254 difference was not statistically significant ($\Delta 127.5$ vs. $\Delta 95.6$; $p=0.350$ vs. $p=0.390$). The
255 PaO₂/FiO₂ ratio was assessed 24 h after PMX-DHP in the current study; this fact might

256 explain the differences between ours and the findings of previous studies, where the target
257 was acute respiratory distress syndrome or acute lung injury and the PaO₂/FiO₂ ratio was
258 evaluated 72–96 h after PMX-DHP [5,10,15].

259 Studies have shown that PMX-DHP prevents acute kidney injury and renal tubular
260 cell apoptosis by maintaining the acid-base balance and lowering the plasma concentrations
261 of lactate, creatinine, IL-6, and IL-10 [16]. In the current study, likewise, the creatinine level
262 decreased in both groups after PMX-DHP (early group, $p=0.016$ vs. late group, $p<0.001$).
263 However, this could not be confirmed to be an outcome of PMX-DHP, as most patients
264 (78%) also underwent continuous renal replacement therapy. In addition, studies where
265 continuous renal replacement therapy and PMX-DHP were concurrently applied did not
266 report a reduction in mortality [17]. Moreover, creatinine levels did not significantly affect
267 28-day mortality in our patient sample, which corresponds with the results of previous
268 studies.

269 Conventionally, the duration of PMX-DHP is 2 h; however, recent studies have
270 reported that, in the event of endotoxin adsorption saturation, extending its duration to >2 h
271 could enhance pulmonary oxygenation and hemodynamics, thereby reducing 28-day
272 mortality [18–20]. The PMX-DHP duration in the current study was 15 h on an average. One
273 or two additional treatments were performed by the attending physician; however, no
274 significant correlation was found between the treatment frequency and 28-day mortality
275 (OR=1.640; 95%CI=0.598–4.499; $p=0.036$).

276 The most common adverse effects of PMX-DHP are thrombocytopenia, transient
277 hypotension, and allergic reactions [21]. Accordingly, the platelet count after hemoperfusion
278 in the current study decreased in both the early and late initiation groups ($\Delta 62$ vs. $\Delta 25.5$;
279 $p=0.007$ vs. $p=0.061$). The patients in our sample did not have transient hypotension or
280 allergic reactions.

281 This study has certain limitations. First, this was a single-center, retrospective study
282 with a small sample size, which limits the generalizability of our findings. Second, we
283 focused on patients with refractory septic shock without initial measurements of endotoxin
284 levels, which limited our analysis of endotoxemia-targeted PMX-DHP treatment effects.
285 However, PMX-DHP is known to induce the absorption of endogenous cannabinoids,
286 activated neutrophils, and monocytes, modify the monocyte surface marker expression, and
287 be an effective treatment option for gram-positive bacteremia [15,22]. We can therefore infer
288 that PMX-DHP provides beneficial effects for both gram-negative and positive bacteremia.

289 Despite these limitations, this is the first study to assess the effects of PMX-DHP in
290 patients with cancer with refractory septic shock, and our findings confirm that the early
291 initiation of PMX-DHP, compared to its late initiation, can reduce 28-day mortality and the
292 inotropes-vasopressor requirement for maintaining hemodynamics. In the future, a
293 multicenter, large-scale, randomized, controlled study should be conducted to determine the
294 optimal initiation time.

295

296 **Conclusions**

297 In our sample of patients with cancer with refractory septic shock, the early initiation
298 of PMX-DHP, compared to its late initiation, was effective in reducing 28-day mortality and
299 the inotropes-vasopressor requirement for maintaining hemodynamics. Based on these
300 findings, the optimal initiation time should be determined in a follow-up study.

301

302 **Acknowledgements**

303 The author thanks Dr. Jee hee-Kim for invaluable help and advice throughout the
304 study and Ms. Mira Han for assistance with bioinformatics and statistics; and Editage for
305 English language editing.

306

307 **Data availability**

308 All data generated or analyzed during this study are included in this published article.

309

310 **References**

- 311 1. Singer M, Deutschman CS, Seymour CW, Shankar-Hari M, Annane D, Bauer M, et
312 al. The third international consensus definitions for sepsis and septic shock (Sepsis-3).
313 JAMA. 2016;315: 801-810. doi:[10.1001/jama.2016.0287](https://doi.org/10.1001/jama.2016.0287).
- 314 2. Rudd KE, Johnson SC, Agesa KM, Shackelford KA, Tsoi D, Kievlan DR, et al.
315 Global, regional, and national sepsis incidence and mortality, 1990-2017: analysis for
316 the Global Burden of Disease Study. Lancet. 2020;395: 200-211. doi:[10.1016/S0140-
317 6736\(19\)32989-7](https://doi.org/10.1016/S0140-6736(19)32989-7).
- 318 3. Williams MD, Braun LA, Cooper LM, Johnston J, Weiss RV, Qualy RL, et al.
319 Hospitalized cancer patients with severe sepsis: analysis of incidence, mortality, and
320 associated costs of care. Crit Care. 2004;8: R291-R298. doi:[10.1186/cc2893](https://doi.org/10.1186/cc2893).
- 321 4. Shimizu T, Miyake T, Tani M. History and current status of polymyxin B-
322 immobilized fiber column for treatment of severe sepsis and septic shock. Ann
323 Gastroenterol Surg. 2017;1: 105-113. doi:[10.1002/ags3.12015](https://doi.org/10.1002/ags3.12015).
- 324 5. Cruz DN, Antonelli M, Fumagalli R, Foltran F, Brienza N, Donati A, et al. Early use
325 of polymyxin B hemoperfusion in abdominal septic shock: the EUPHAS randomized
326 controlled trial. JAMA. 2009;301: 2445-2452. doi:[10.1001/jama.2009.856](https://doi.org/10.1001/jama.2009.856).

- 327 6. Payen DM, Guilhot J, Launey Y, Lukaszewicz AC, Kaaki M, Veber B, et al. Early
328 use of polymyxin B hemoperfusion in patients with septic shock due to peritonitis: a
329 multicenter randomized control trial. *Intensive Care Med.* 2015;41: 975-984.
330 doi:[10.1007/s00134-015-3751-z](https://doi.org/10.1007/s00134-015-3751-z).
- 331 7. Dellinger RP, Bagshaw SM, Antonelli M, Foster DM, Klein DJ, Marshall JC, et al.
332 Effect of targeted polymyxin B hemoperfusion on 28-day mortality in patients with
333 septic shock and elevated endotoxin level. The Euphrates randomized clinical
334 trial. *JAMA.* 2018;320: 1455-1463. doi:[10.1001/jama.2018.14618](https://doi.org/10.1001/jama.2018.14618).
- 335 8. Fujii T, Ganeko R, Kataoka Y, Furukawa TA, Featherstone R, Doi K, et al.
336 Polymyxin B-immobilized hemoperfusion and mortality in critically ill adult patients
337 with sepsis/septic shock: a systematic review with meta-analysis and trial sequential
338 analysis. *Intensive Care Med.* 2018;44: 167-178. doi:[10.1007/s00134-017-5004-9](https://doi.org/10.1007/s00134-017-5004-9)
339 [published correction appears in *Intensive Care Med.* 2018 January 16].
- 340 9. Bassi E, Park M, Azevedo LCP. Therapeutic strategies for high-dose vasopressor-
341 dependent shock. *Crit Care Res Pract.* 2013;2013: 654708. doi:[10.1155/2013/654708](https://doi.org/10.1155/2013/654708).
- 342 10. Mitaka C, Kusao M, Kawagoe I, Satoh D, Iba T, Ronco C. Impact of extended
343 duration of polymyxin B-immobilized fiber column direct hemoperfusion on
344 hemodynamics, vasoactive substance requirement, and pulmonary oxygenation in
345 patients with sepsis: an observational study. *Blood Purif.* 2022;51: 62-69.
346 doi:[10.1159/000515685](https://doi.org/10.1159/000515685).
- 347 11. Mitaka C, Tsuchida N, Kawada K, Nakajima Y, Imai T, Sasaki S. A longer duration
348 of polymyxin B-immobilized fiber column hemoperfusion improves pulmonary
349 oxygenation in patients with septic shock. *Shock.* 2009;32: 478-483.
350 doi:[10.1097/SHK.0b013e3181a2a978](https://doi.org/10.1097/SHK.0b013e3181a2a978).

- 351 12. Gaies MG, Jeffries HE, Niebler RA, Pasquali SK, Donohue JE, Yu S. Vasoactive-
352 inotropic score (VIS) is associated with outcome after infant cardiac surgery: an
353 analysis from the pediatric cardiac critical care consortium and virtual PICU system
354 registries. *Pediatr Crit Care Med*. 2014;15: 529-537. doi:
355 [10.1097/PCC.000000000000153](https://doi.org/10.1097/PCC.000000000000153).
- 356 13. Nazer L, Lopez-Olivo MA, Cuenca JA, Awad W, Brown AR, Abusara A, et al. All-
357 cause mortality in cancer patients treated for sepsis in intensive care units: a
358 systematic review and meta-analysis. *Support Care Cancer*. 2022;30: 10099-10109.
359 doi:[10.1007/s00520-022-07392-w](https://doi.org/10.1007/s00520-022-07392-w).
- 360 14. Klein DJ, Foster D, Walker PM, Bagshaw SM, Mekonnen H, Antonelli M.
361 Polymyxin B hemoperfusion in endotoxemic septic shock patients without extreme
362 endotoxemia: a post hoc analysis of the Euphrates trial. *Intensive Care Med*. 2018;44:
363 2205-2212. doi:[10.1007/s00134-018-5463-7](https://doi.org/10.1007/s00134-018-5463-7).
- 364 15. Tsushima K, Kubo K, Koizumi T, Yamamoto H, Fujimoto K, Hora K, et al. Direct
365 hemoperfusion using a polymyxin B immobilized column improves acute respiratory
366 distress syndrome. *J Clin Apher*. 2002;17: 97-102. doi:[10.1002/jca.10019](https://doi.org/10.1002/jca.10019).
- 367 16. Mitaka C, Masuda T, Kido K, Uchida T, Abe S, Miyasho T, et al. Polymyxin B
368 hemoperfusion prevents acute kidney injury in sepsis model. *J Surg Res*. 2016;201:
369 59-68. doi:[10.1016/j.jss.2015.10.020](https://doi.org/10.1016/j.jss.2015.10.020).
- 370 17. Lee JM, Baek SD, Kim TH, Jeon HR, Han JH, Chang JW. Uncertain clinical effect of
371 polymyxin B hemoperfusion in patients with septic acute kidney injury requiring
372 continuous renal replacement therapy. *Shock*. 2021;56: 551-556.
373 doi:[10.1097/SHK.0000000000001752](https://doi.org/10.1097/SHK.0000000000001752).
- 374 18. Yamashita C, Hara Y, Kuriyama N, Nakamura T, Nishida O. Clinical effects of a
375 longer duration of polymyxin B-immobilized fiber column direct hemoperfusion

- 376 therapy for severe sepsis and septic shock. Ther Apher Dial. 2015;19: 316-323.
377 doi:[10.1111/1744-9987.12339](https://doi.org/10.1111/1744-9987.12339).
- 378 19. Miyamoto K, Kawazoe Y, Kato S. Prolonged direct hemoperfusion using a
379 polymyxin B immobilized fiber cartridge provides sustained circulatory stabilization
380 in patients with septic shock: a retrospective observational before-after study. J
381 Intensive Care. 2017;5: 19. doi:[10.1186/s40560-017-0214-3](https://doi.org/10.1186/s40560-017-0214-3).
- 382 20. Kawazoe Y, Sato T, Miyagawa N, Yokokawa Y, Kushimoto S, Miyamoto K, et al.
383 Mortality effects of prolonged hemoperfusion therapy using a polymyxin B-
384 immobilized fiber column for patients with septic shock: a sub-analysis of the
385 DESIRE trial. Blood Purif. 2018;46: 309-314. doi:[10.1159/000491744](https://doi.org/10.1159/000491744).
- 386 21. Ronco C, Klein DJ. Polymyxin B hemoperfusion: a mechanistic perspective. Crit
387 Care. 2014;18: 309. doi:[10.1186/cc13912](https://doi.org/10.1186/cc13912).
- 388 22. Kawamata T, Imaizumi H, Yoshida M, Kaneko M. Polymyxin B-immobilized fiber
389 improves hyperdynamic state in MRSA septic patients. Intensive Care Med. 1997;23:
390 130-131.

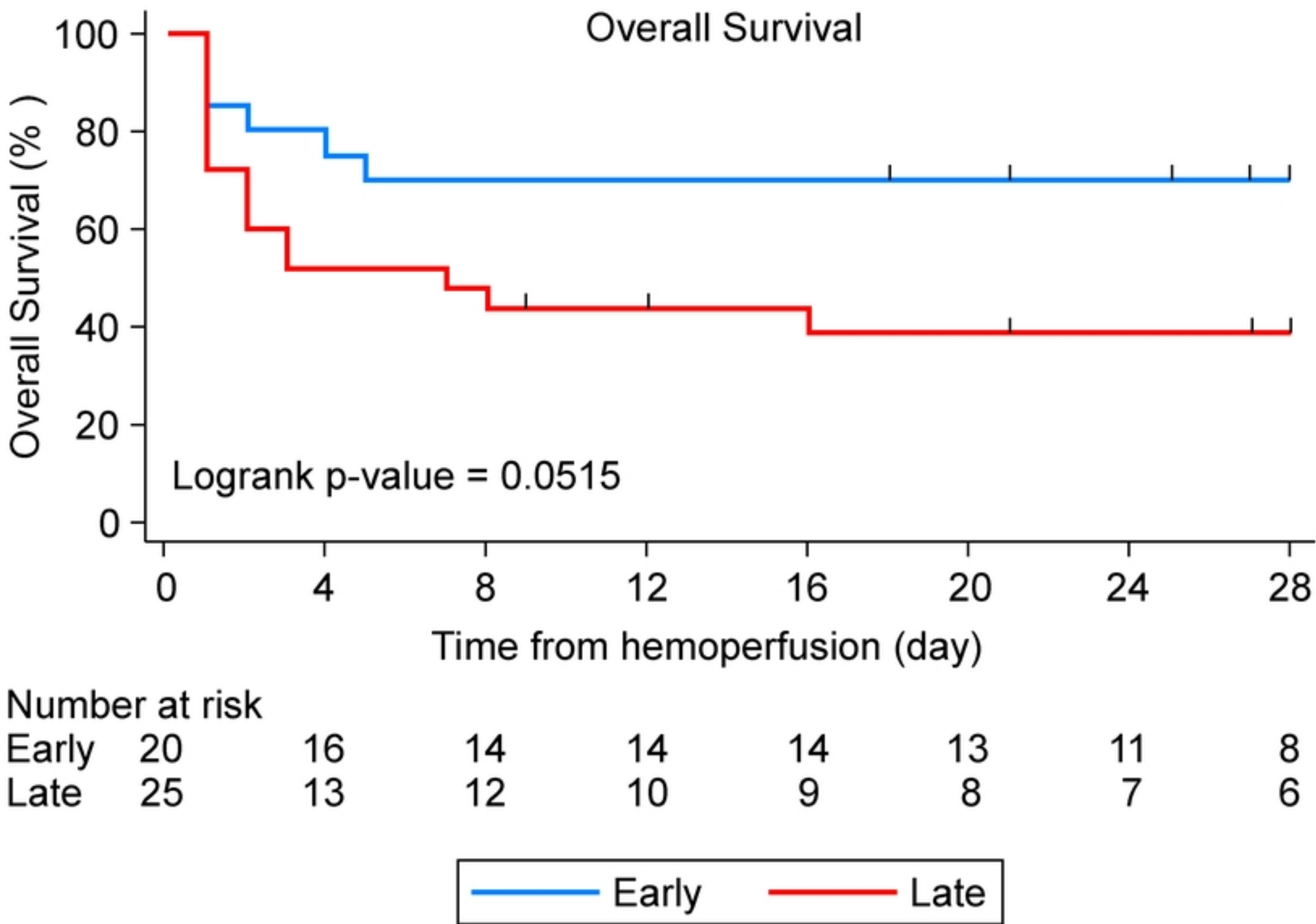


Figure 1

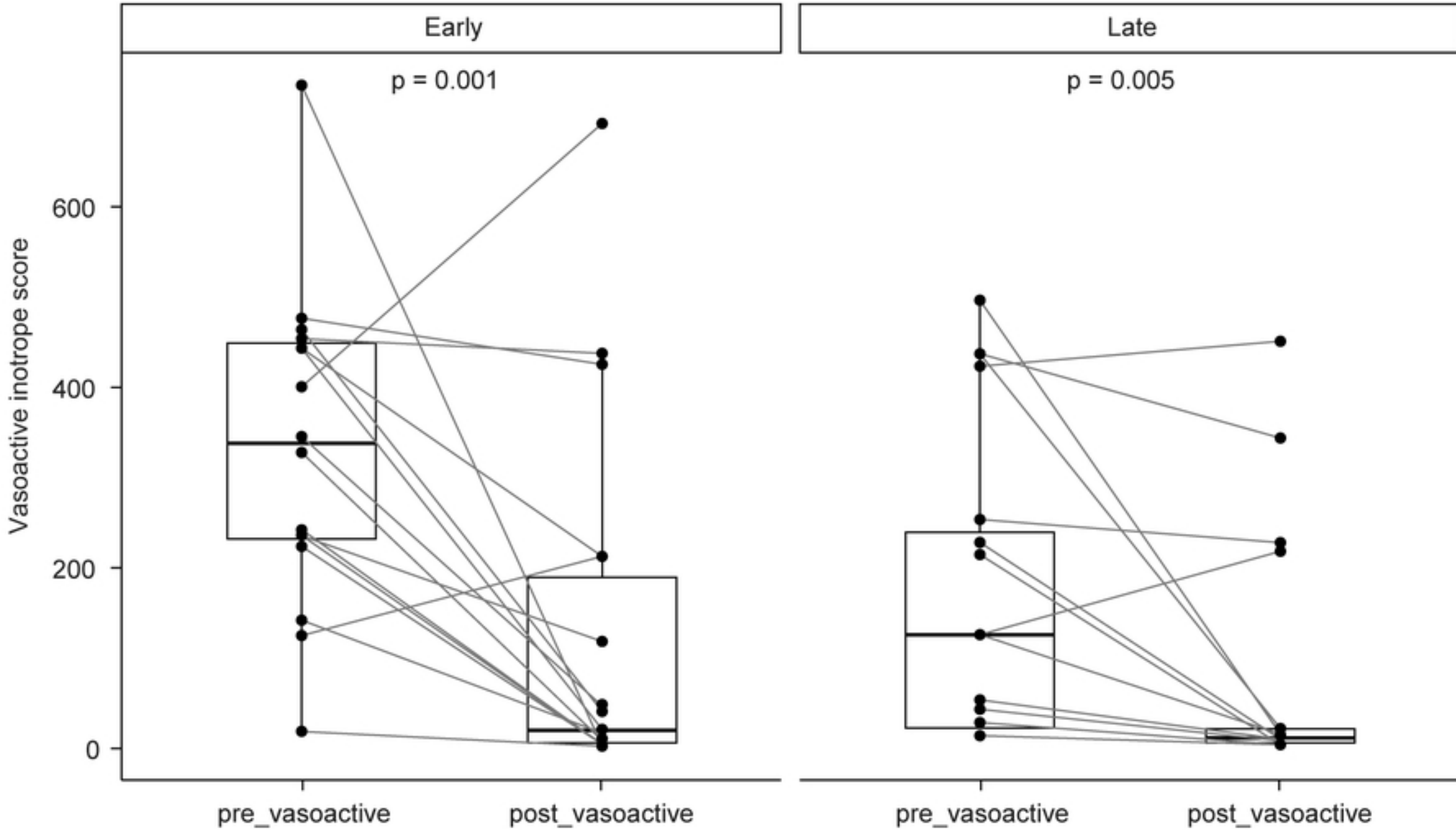


Figure 2