

1  
2  
3  
4  
5  
6  
7  
8  
9  
10  
11  
12  
13  
14  
15  
16  
17  
18  
19  
20  
21  
22  
23  
24  
25

Early initiation of polymyxin B hemoperfusion therapy for cancer patients with refractory septic shock

**Short title:** Early PMX-DHP initiation for septic shock

Jae Hoon Lee, Won Ho Han\*

Critical Care Medicine, National Cancer Center, 323 Ilsan-ro, Ilsandong-gu, Goyang-si  
10408, Gyeonggi-do, Republic of Korea

\*Corresponding author:

E-mail: [13408@ncc.re.kr](mailto:13408@ncc.re.kr) (WHH)

NOTE: This preprint reports new research that has not been certified by peer review and should not be used to guide clinical practice.

## 26 Abstract

27 **Purpose:** In this study, we analyzed correlations between 28-day mortality and  
28 hemodynamic changes, measured using polymyxin B-immobilized fiber column direct  
29 hemoperfusion initiation time, in patients with cancer with refractory septic shock. **Materials**  
30 **and methods:** We retrospectively analyzed 45 patients with cancer who received polymyxin  
31 B-immobilized fiber column direct hemoperfusion due to refractory septic shock. Patients  
32 were categorized into early (<12 h between refractory septic shock and initiation of  
33 polymyxin B-immobilized fiber column direct hemoperfusion) and late (>12 h) initiation  
34 groups. Changes in vasoactive inotrope scores, sequential organ failure assessment scores,  
35 and PaO<sub>2</sub>/FiO<sub>2</sub> ratios before and 24 h after polymyxin B-immobilized fiber column direct  
36 hemoperfusion, were compared. **Results:** Univariable analysis showed that 28-day mortality  
37 risk was associated with diabetes mellitus (odds ratio=3.081; 95% confidence interval  
38 =1.290–7.360; *p*=0.011), lactic acid (odds ratio=1.010; 95% confidence interval =1.005–  
39 1.014; *p*<0.0001), and sequential organ failure assessment score (odds ratio=1.190; 95%  
40 confidence interval =1.044–1.357; *p*=0.009). Multivariable analysis showed that 28-day  
41 mortality risk was associated with diabetes mellitus (odds ratio=2.718; 95% confidence  
42 interval =1.013–7.291; *p*=0.047), early initiation (odds ratio=0.268; 95% confidence interval  
43 =0.094–0.765; *p*=0.014), and lactic acid (odds ratio=1.009; 95% confidence interval =1.004–  
44 1.014; *p*<0.0001). Overall survival was slightly higher in the early than in the late initiation  
45 group (*p*=0.0515). Comparisons of variables before and 24 h after polymyxin B-immobilized  
46 fiber column direct hemoperfusion revealed that vasoactive inotrope scores decreased in both  
47 the early and late groups ( $\Delta$ 318 vs.  $\Delta$ 114; *p*=0.001 and *p*=0.005, respectively), whereas the  
48 PaO<sub>2</sub>/FiO<sub>2</sub> ratio slightly increased ( $\Delta$ 127.5 vs.  $\Delta$ 95.6; *p*=0.350 and *p*=0.390, respectively)  
49 over time. **Conclusions:** In patients with cancer with refractory septic shock, early initiation

50 of polymyxin B-immobilized fiber column direct hemoperfusion reduced inotrope-  
51 vasopressor requirement and 28-day mortality.

52

53 **Keywords:** sepsis; 28-day mortality; risk factors; hemodynamics; respiratory function; organ  
54 failure

55

## 56 **Introduction**

57 Sepsis causes life-threatening organ dysfunction through dysregulation of host  
58 responses to infection [1]. Eleven million of the 49 million people that contract sepsis  
59 globally each year die, equivalent to a total global mortality of 19.7%. However, sepsis-  
60 related mortality has shown a decreasing trend with an increase in early detection and  
61 improvements in therapeutic strategies [2]. Sepsis is a significant risk factor in  
62 immunocompromised patients with cancer undergoing treatment, as well as in those with a  
63 known poor prognosis. The incidence of sepsis is 3- to 5-fold higher in patients with cancer,  
64 at 16.4 cases per 1,000 persons, than in those without. Furthermore, the proportion of sepsis-  
65 related mortality is approximately 3-fold higher than that of annual cancer deaths (10% vs.  
66 37.8%), although mortality rates vary across cancer types [3].

67 Polymyxin B-immobilized fiber column direct hemoperfusion (PMX-DHP) is a  
68 potential therapy developed in 1994 to reduce blood endotoxin levels and treat septic shock,  
69 which effectively enhances hemodynamics and respiratory functions in patients with septic  
70 shock, caused by intra-abdominal infection [4]. However, whether it contributes to survival  
71 and prevents organ failure is controversial, and there are no established guidelines on the best  
72 time to perform PMX-DHP [5-8].

73 To date, studies on PMX-DHP have mainly targeted patients with no cancer, and  
74 there is a scarcity of literature on patients with cancer. This prompted the present

75 investigation, in which we analyzed the correlation between PMX-DHP initiation time and  
76 28-day mortality in patients with cancer with refractory septic shock. Additionally, we aimed  
77 to verify whether hemodynamics, sequential organ failure assessment (SOFA) scores, and  
78 oxygenation levels improve following PMX-DHP treatment.

79

## 80 **Materials and methods**

81 This single-center, retrospective study was conducted in 45 patients with cancer aged  
82  $\geq 18$  years, who received PMX-DHP to treat septic shock, at the intensive care unit of our  
83 institution between October 2019 and March 2023. Septic shock was identified based on the  
84 criteria established for identification of sepsis and septic shock (Sepsis-3), including the  
85 requirement of vasopressors to maintain a mean arterial pressure (MAP) of  $\geq 65$  mm Hg and a  
86 serum lactate level of  $> 2$  mmol/L in the absence of hypovolemia according [1]. PMX-DHP  
87 was administered to patients who voluntarily consented to the treatment. Refractory septic  
88 shock was defined as the requirement of  $\geq 0.5$   $\mu\text{g}/\text{kg}/\text{min}$  of norepinephrine or an additional  
89 dose of vasopressin to maintain MAP of  $> 65$  mmHg [9]. We administered IV hydrocortisone  
90 at a dose of 200 mg/d, provided as 50 mg intravenously every 6 hours, to all patients  
91 diagnosed with refractory septic shock.

92 For PMX-DHP, the blood flow rate was set at 100 mL/min and controlled by the  
93 attending physician depending on the patient's state to maintain a steady rate. For  
94 anticoagulation, 20–40 mg/h of nafamostat mesylate, a synthetic serine protease inhibitor,  
95 was administered. The duration of PMX-DHP was 2 h or more; the infusion time and  
96 frequency were determined by the attending physicians [10,11]. Patients who received PMX-  
97 DHP treatment within 12 h from the diagnosis of refractory septic shock were assigned to the  
98 “early initiation” group, while those who were treated after 12 h or more had elapsed since  
99 their diagnosis were assigned to the “late initiation” group.

100 The following patient characteristics were entered as variables for the analyses: age,  
101 sex, underlying disease (diabetes mellitus (DM), hypertension, cerebrovascular accident,  
102 chronic kidney disease, and chronic obstructive pulmonary disease), cancer type (intra-  
103 abdominal/genitourinary/lung/others), pre-PMX-DHP laboratory data (absolute neutrophil  
104 count, platelet count, C-reactive protein, lactic acid levels, procalcitonin, creatinine levels,  
105 PaO<sub>2</sub>/FiO<sub>2</sub> ratio), severity (acute physiology and chronic health evaluation III (APACHE  
106 III)), SOFA score, PMX-DHP frequency, vasoactive inotrope scores (VIS), primary infection  
107 site (lung, abdominal, genitourinary, others), microbiological culture, mechanical ventilator,  
108 intervention, surgical intervention, and 28-day mortality.

109 VIS were measured as follows [12]:

$$110 \quad \begin{aligned} VIS = & \text{dopamine dose } (\mu\text{g}/\text{kg}/\text{min}) + \text{dobutamine dose } (\mu\text{g}/\text{kg}/\text{min}) + 100 \\ & \times \text{epinephrine dose } (\mu\text{g}/\text{kg}/\text{min}) + 10 \times \text{milrinone dose } (\mu\text{g}/\text{kg}/\text{min}) \\ & + 10,000 \times \text{vasopressin dose } (\text{units}/\text{kg}/\text{min}) + 100 \\ & \times \text{norepinephrine dose } (\mu\text{g}/\text{kg}/\text{min}) \end{aligned}$$

111 Using patient data, correlations of the aforementioned variables with PMX-DHP  
112 initiation time (early initiation group <12 h; late initiation group >12 h) were assessed by  
113 calculating differences in values reported before and 24 h after PMX-DHP. This study was  
114 approved by the Institutional Review Board of the National Cancer Center (Approval No.:  
115 NCC2023-0170). The data access period for the manuscript is from July 3, 2023, the date  
116 IRB approval, to July 21, 2023. The requirement for the acquisition of informed consent from  
117 patients was waived owing to the retrospective nature of this study.

118

## 119 **Statistical analysis**

120 Continuous variables are expressed as mean  $\pm$  standard deviation or median  
121 (minimum-maximum or range). Categorical variables were compared between groups using  
122 the Pearson  $\chi^2$  and Fisher's exact test, and continuous variables were compared using *t*-tests  
123 for parametric and the Wilcoxon rank sum test for nonparametric data. Statistical significance

124 was set at  $p < 0.05$ . The final set of variables in the multivariable model were selected via  
125 backward elimination in the univariable analysis, with  $p < 0.1$ . All statistical analyses were  
126 performed using SAS® version 9.4 for Windows® (SAS Institute, Cary, NC, USA).

127

## 128 **Results**

### 129 **Characteristics of the patient group undergoing PMX-DHP** 130 **treatment**

131 A total of 45 patients received PMX-DHP for refractory septic shock. Patients' mean  
132 age was 64.4 years, and 24 patients (53.5%) died within 28 days due to multi-organ failure  
133 caused by septic shock. The most frequent type of cancers were genitourinary (53.3%), intra-  
134 abdominal cancers (31.1%), and lung cancer (8.9%). The most frequent primary infection site  
135 was the abdomen (64.4%), followed by the lung (20.0%), and the genitourinary tract (11.1%).  
136 Gram-negative bacteria were the most common microorganism (62.5%). The median  
137 inotropes-vasopressor requirement (VIS) to maintain an MAP  $\geq 65$  mmHg was 289.7 (9–913).  
138 The mean APACHE III score before PMX-DHP was  $93.9 \pm 29.2$ , while the mean SOFA score  
139 was  $13.2 \pm 3.3$ . Additionally, 41 patients underwent mechanical ventilation (91.1%) and the  
140 median PaO<sub>2</sub>/FiO<sub>2</sub> ratio was 141.2 (20.2–534.3) (Table 1).

141

142 **Table 1. Characteristics of patients treated with PMX-DHP.**

	<b>Patients (N=45)</b>	<b>Percentage (%)</b>
<b>Sex</b>		
Male	19	42.2
Female	26	57.8

<b>Age</b>	64.4 ± 11.7	
<b>Underlying disease</b>		
Diabetes mellitus	13	28.9
Hypertension	21	46.7
Cerebrovascular accident	6	13.3
Chronic kidney disease	2	4.4
Chronic obstructive pulmonary disease	1	2.2
<b>Type of cancer</b>		
Intra-abdominal	14	31.1
Genitourinary	24	53.3
Lung	4	8.9
Others	3	6.7
<b>APACHE III</b>	93.9 ± 29.2	
<b>SOFA</b>	13.2 ± 3.3	
<b>No. of PMX-DHP* treatment</b>		
#1	38	84.4
> #2	7	15.6
<b>VIS</b>	289.7 ± 220.5	
<b>Primary infection site</b>		
Lung	9	20
Abdominal	29	64.4
Genitourinary	5	11.1
Others	2	4.4

### Laboratory values

ANC (/uL)	1575.5 (0–30589)
Platelet count ( $10^3$ /uL)	107 (2–299)
CRP <sup>#</sup> (mg/dL)	15.5 (0.1–30.5)
Lactic acid (mg/dL)	95 (13.6–353.4)
Procalcitonin (mg/mL)	30.2 (0.4–526.6)
Creatinine (mg/dL)	1.5 (0.3–7.7)
P/F ratio	141.2 (20.2–534.3)

### Positive culture

G(-)	25	62.5
G(+)	11	27.5
Mixed	4	10

### Mechanical ventilation

41 91.1

### Intervention

14 68.9

### Operation

16 64.4

### 28-day mortality

Alive	21	46.7
Death	24	53.3

---

143 ANC: absolute neutrophil count; APACHE III: Acute Physiology and Chronic Health  
144 Evaluation III (APACHE III); CRP: C-reactive protein; G(-): Gram-negative bacteremia;  
145 G(+): Gram-positive bacteremia; P/F ratio: ratio of arterial oxygen partial pressure to fraction  
146 of inspired oxygen ( $\text{PaO}_2/\text{FiO}_2$ ); PMX-DHP: polymyxin B-immobilized fiber column direct  
147 hemoperfusion; SOFA: sequential organ failure assessment; VIS: vasoactive inotrope score  
148 (dopamine dose ( $\mu\text{g}/\text{kg}/\text{min}$ ) + dobutamine dose ( $\mu\text{g}/\text{kg}/\text{min}$ ) +  $100 \times$  epinephrine dose



149 ( $\mu\text{g}/\text{kg}/\text{min}$ ) + 10  $\times$  milrinone dose ( $\mu\text{g}/\text{kg}/\text{min}$ ) + 10,000  $\times$  vasopressin dose (units/kg/min) +  
150 100  $\times$  norepinephrine dose ( $\mu\text{g}/\text{kg}/\text{min}$ )

151

152 When patients were divided into two groups— early and late —based on the PMX-  
153 DHP initiation time, the most frequent cancer type in both groups was genitourinary cancer  
154 (early vs. late, 55.0% vs. 52.0%, respectively). The disease severity indices (i.e., median  
155 APACHE III and SOFA scores) did not vary significantly between the two groups (APACHE  
156 III score: 95.5 (41–144) vs. 94 (36–159),  $p=0.427$ ; SOFA score: 13 (6–18) vs. 14 (7–21),  
157  $p=0.270$ ). The VIS was higher in the early group than the late group (372.5 [15–913] vs. 213  
158 [9–847],  $p=0.020$ ). In both groups, the abdominal area was the most frequent primary  
159 infection site (60% vs. 68%). Gram-negative bacteremia was the most commonly detected  
160 bacteria on microbiological culture in both groups (64.7% vs. 60.9%,  $p=0.309$ ). Compared to  
161 that of the early initiation group, the late initiation group showed a slightly higher rate of  
162 gram-positive bacteremia (17.6% vs. 34.8%), a higher rate of intervention to infection source  
163 control (15% vs. 44%,  $p=0.037$ ), a lower frequency of surgical intervention (45% vs. 25%,  
164  $p=0.237$ ), and a higher level of 28-day mortality (30% vs. 60%,  $p=0.045$ ) (Table 2).

165

166 **Table 2. Baseline characteristics of the early vs. the late initiation treatment group.**

	Early (N=20)	Late (N = 25)	<i>p</i> -value
<b>Sex</b>			
Male	9 (45.0%)	10 (40.0%)	0.736
Female	11 (55.0%)	15 (60.0%)	
<b>Age</b>	66.2 $\pm$ 11.2	62.9 $\pm$ 12.0	0.362
<b>Underlying disease</b>			

Diabetes mellitus	13 (65.0%)	19 (76.0%)	0.419
Hypertension	11 (55.0%)	10 (40.0%)	0.316
Cerebrovascular accident	5 (25.0%)	1 (4.0%)	0.074
Chronic kidney disease	1 (5.0%)	1 (4.0%)	1
Chronic obstructive pulmonary disease	1 (5.0%)	0 (0.0%)	0.444
<b>Type of cancer</b>			
Intra-abdominal	5 (25.0%)	9 (36.0%)	0.792
Genitourinary	11 (55.0%)	15 (52.0%)	
Lung	2 (10.0%)	2 (8.0%)	
Others	2 (10.0%)	1 (4.0%)	
<b>APACHE III</b>	97.8 ± 30.8	90.7 ± 28.1	0.427
<b>SOFA</b>	12.6 ± 3.2	13.7 ± 3.4	0.27
<b>No. of PMX-DHP treatment</b>			
#1	17 (85.0%)	21 (84.0%)	1
> #2	3 (15.0%)	4 (16.0%)	
<b>VIS</b>	365.9 ± 207.2	228.8 ± 215.5	0.02
<b>Primary infection site</b>			
Lung	3 (15.0%)	6 (24.0%)	0.411
Abdominal	12 (60.0%)	17 (68.0%)	
Genitourinary	4 (20.0%)	1 (4.0%)	
Others	1 (5.0%)	1 (4.0%)	
<b>Positive culture</b>			
G(-)	11 (64.7%)	14 (60.9%)	0.309

G(+)	3 (17.6%)	8 (34.8%)	
Mixed	3 (17.6%)	1 (4.3%)	
<b>Mechanical ventilation</b>	19 (95.0%)	22 (88.0%)	0.617
<b>Intervention</b>	3 (15.0%)	11 (44.0%)	0.037
<b>Operation</b>	9 (45.0%)	7 (28.0%)	0.237
<b>28-day mortality</b>			
Alive	14 (70.0%)	10 (40.0%)	0.045
Death	6 (30.0%)	15 (60.0%)	
<b>ANC (uL)</b>	1191 (0–22568)	2266 (0–30589)	0.097
Non-Neutropenia (ANC>1500)	9 (45%)	15 (62.5%)	0.246
Neutropenia (ANC<1500)	11 (55.0%)	9 (37.5%)	
<b>Platelet count (10<sup>3</sup>/uL)</b>	117.5 (13–299)	96 (2–246)	0.289
<b>CRP (mg/dL)</b>	14.9 (0.1–27.3)	15.8 (1.1–30.5)	0.173
<b>Lactic acid (mg/dL)</b>	90.3 (13.6–353.4)	95 (26.1–262.9)	0.807
<b>Procalcitonin (mg/mL)</b>	44.5 (0.4–144.2)	20.7 (1.3–526.6)	0.34
<b>Creatinine (mg/dL)</b>	1.4 (0.3–7.7)	1.5 (0.4–4)	1
<b>P/F ratio</b>	121.8 (20.2–524)	156 (48.1–534.3)	0.576

---

167 ANC: absolute neutrophil count; APACHE III: Acute Physiology and Chronic Health  
 168 Evaluation III (APACHE III); CRP: C-reactive protein; G (-): Gram-negative bacteremia; G  
 169 (+): Gram-positive bacteremia; P/F ratio: ratio of arterial oxygen partial pressure to fraction  
 170 of inspired oxygen (PaO<sub>2</sub>/FiO<sub>2</sub>); PMX-DHP: polymyxin B-immobilized fiber column direct  
 171 hemoperfusion; SOFA: sequential organ failure assessment (SOFA); VIS: vasoactive  
 172 inotrope score

173

## 174 Overall survival in the early vs. late group

175 The number of deaths within 28 days from the initiation of PMX-DHP was compared  
176 for both groups; six deaths were recorded in the early and 15 in the late initiation group  
177 (Table 2). The survival rate was  $\geq 50\%$  in the early group, and the median survival was 7 days  
178 in the late group. While the 28-day overall survival was slightly higher in the early compared  
179 to the late group, no significant difference was found ( $p=0.0515$ ) (Fig 1).

180

181 **Fig 1. Estimation of overall survival according to initiation of polymyxin B-immobilized**  
182 **fiber column direct hemoperfusion (PMX-DHP).**

183

## 184 **Univariable and multivariable analyses of 28-day mortality**

185 Our univariable analysis of 28-day mortality in patients with cancer with refractory  
186 septic shock after PMX-DHP showed that DM (odds ratio (OR)=3.081; 95% confidence  
187 interval (CI)=1.290–7.360;  $p=0.011$ ), lactic acid levels (OR=1.010; 95% CI=1.005–1.014;  
188  $p<0.0001$ ), and SOFA scores (OR=1.190; 95% CI=1.044–1.357;  $p=0.009$ ) were correlated  
189 with 28-day mortality. A multivariable analysis was performed using backwards selection  
190 and the univariable analysis results; the results indicated that 28-day mortality was correlated  
191 with DM (OR=2.718; 95% CI=1.013–7.291;  $p=0.047$ ), early initiation (OR=0.268; 95%  
192 CI=0.094–0.765;  $p=0.014$ ), and lactic acid levels (OR=1.009; 95% CI=1.004–1.014;  
193  $p<0.0001$ ) (Table 3).

194

195 **Table 3. Univariable and multivariable analysis of 28-day mortality.**

	Univariable analysis		Multivariable analysis	
	OR (95% CI)	<i>p</i> -value	OR (95% CI)	<i>p</i> -value
Sex	1.294 (0.549–3.049)	0.555		

<b>Age</b>	1.001 (0.065–1.038)	0.974		
<b>Underlying disease</b>				
Diabetes mellitus	3.081 (1.290–7.360)	0.011	2.718 (1.013–7.291)	0.047
Hypertension	1.098 (0.466–2.587)	0.83		
Cerebrovascular accident	1.206 (0.3555–4.097)	0.765		
Chronic kidney disease	4.025 (0.898–18.042)	0.069		
COPD	3.126 (0.409–23.917)	0.272		
<b>Initiation of PMX-DHP</b>				
Late				
Early	0.423 (0.163–1.093)	0.076	0.268 (0.094–0.765)	0.014
<b>Type of cancer</b>				
Intra-abdominal	2.171 (0.274–17.166)	0.463		
Genitourinary	0.948 (0.119–7.578)	0.96		
Lung	2.205 (0.229–21.199)	0.494		
Others				
<b>APACHE III</b>	1.002 (0.988–1.017)	0.77		
<b>SOFA score</b>	1.190 (1.044–1.357)	0.009		
<b>VIS</b>	1.002 (1.000–1.004)	0.093		
<b>Primary infection site</b>				
Lung	1.258 (0.151–10.46)	0.832		
Abdominal	0.696 (0.090–5.362)	0.728		
Genitourinary	0.697 (0.063–7.694)	0.768		

<b>Mechanical ventilation</b>	5.373 (0.303–95.258)	0.252		
<b>Intervention</b>	1.138 (0.459–2.821)	0.78		
<b>Operation</b>	0.474 (0.173–1.298)	0.146		
<b>ANC (/uL)</b>				
Non-Neutropenia (ANC>1500)				
Neutropenia (ANC<1500)	0.560 (0.223–1.408)	0.218		
<b>Platelet count (10<sup>3</sup>/uL)</b>	0.996 (0.990–1.002)	0.194		
<b>CRP (mg/dL)</b>	0.992 (0.938–1.049)	0.769		
<b>Lactic acid (mg/dL)</b>	1.010 (1.005–1.014)	<0.0001	1.009 (1.004–1.014)	<0.0001
<b>Procalcitonin (mg/mL)</b>	0.990 (0.973–1.008)	0.281		
<b>Creatinine (mL/dL)</b>	1.165 (0.911–1.490)	0.223		
<b>P/F ratio</b>	0.998 (0.005–1.002)	0.343		

---

196 ANC: absolute neutrophil count; APACHE III: Acute Physiology and Chronic Health  
197 Evaluation III (APACHE III); COPD: chronic obstructive pulmonary disease; CRP: C-  
198 reactive protein; P/F ratio: ratio of arterial oxygen partial pressure to fraction of inspired  
199 oxygen (PaO<sub>2</sub>/FiO<sub>2</sub>); PMX-DHP: polymyxin B-immobilized fiber column direct  
200 hemoperfusion; SOFA: sequential organ failure assessment (SOFA); VIS: vasoactive  
201 inotrope score; OR: odds ratio; CI: confidence interval.

202

203 **Changes in values of variables after PMX-DHP treatment (early**  
 204 **vs. late initiation)**

205 Comparison of variables before and 24 h after PMX-DHP showed that, in both  
 206 groups, VIS ( $p=0.001$  vs.  $p=0.005$ , respectively) and creatinine levels ( $p=0.016$  vs.  $p<0.001$ )  
 207 significantly decreased after PMX-DHP. However, the decrease in the VIS was higher in the  
 208 early initiation group (Fig 2).

209  
 210 **Fig 2. Changes in variables associated with initiation of polymyxin B-immobilized fiber**  
 211 **column direct hemoperfusion (PMX-DHP): vasoactive inotrope score (VIS)**

212  
 213 In both groups, the platelet count ( $\Delta 62.0$  vs.  $\Delta 25.5$ ;  $p=0.007$  vs.  $p=0.061$ ,  
 214 respectively), lactic acid levels ( $\Delta 37.5$  vs.  $\Delta 33.2$ ;  $p=0.080$  vs.  $p=0.083$ ), and SOFA scores  
 215 ( $p=0.230$  vs.  $p=0.022$ ) significantly decreased after PMX-DHP. After 24 h, the  $\text{PaO}_2/\text{FiO}_2$   
 216 ratio was higher in both groups ( $\Delta 127.5$  vs.  $\Delta 95.6$ ;  $p=0.350$  vs.  $p=0.390$ , respectively), with  
 217 the degree of increase being slightly higher in the early initiation group (Table 4).

218  
 219 **Table 4. Changes in variables after PMX-DHP treatment.**

	Before HP	After HP	<i>p</i> -value
<b>Early initiation</b>			
ANC (/uL)	1191 (0–22568)	3158.5 (0–23000)	0.083
Platelet count ( $10^3/\text{uL}$ )	117 (13–299)	55 (16–165)	0.007
CRP (mg/dL)	14.5 (0.1–27.3)	18.5 (8.2–38)	0.015
Lactic acid (mg/dL)	73.7 (13.6–353.4)	36.2 (17.3–278.5)	0.080
Procalcitonin (mg/mL)	44.5 (0.4–144.2)	54.7 (19.1–307.3)	0.400

Creatinine (mg/dL)	1.3 (0.3–6.6)	1.1 (0.3–2.6)	0.016
P/F ratio	160 (20.2–524)	287.5 (37.2–498)	0.350
SOFA score	11 (6–17)	10 (4–15)	0.230
VIS	336 (15–736)	18 (0–693)	0.001

---

**Late initiation**

ANC (/uL)	2214.5 (1–30589)	11110.5 (4–35040)	0.830
Platelet count ( $10^3$ /uL)	116 (3–246)	90.5 (0–138)	0.061
CRP (mg/dL)	17.6 (4.4–30.5)	18.4 (2.3–39)	0.920
Lactic acid (mg/dL)	82.4 (26.1–234.8)	49.2 (13–287.5)	0.083
Procalcitonin (mg/mL)	22.7 (1.3–526.6)	19.7 (0.1–238.7)	0.110
Creatinine (mg/dL)	1.5 (0.5–3.7)	1 (0.5–1.8)	<0.0001
P/F ratio	164.9 (48.1–134.3)	260.5 (66.6–544.4)	0.390
SOFA score	13 (7–21)	12 (3–18)	0.022
VIS	124 (9–496)	10 (0–451)	0.005

---

220 ANC: absolute neutrophil count; CRP: C-reactive protein; P/F ratio: ratio of arterial oxygen  
 221 partial pressure to fraction of inspired oxygen ( $\text{PaO}_2/\text{FiO}_2$ ); PMX-DHP: polymyxin B-  
 222 immobilized fiber column direct hemoperfusion; SOFA: sequential organ failure assessment  
 223 (SOFA); VIS: vasoactive inotrope score

224

225 **Discussion**

226 This study was conducted to analyze the correlation between PMX-DHP initiation  
 227 time and 28-day mortality in patients with cancer with refractory septic shock and to verify  
 228 whether hemodynamics, SOFA scores, and oxygenation levels improve after PMX-DHP. A  
 229 mortality rate of 53.3% related to refractory septic shock was observed in this study, which  
 230 did not significantly differ from that of a previous meta-analysis of patients with cancer after



231 sepsis treatment (48–62%) [13]. However, the earlier reported mortality has been found to be  
232 slightly higher than the 28-day mortality related to septic shock observed in our patients with  
233 cancer who received PMX-DHP (19–37.7%) [7,8,14]. This may be due the  
234 immunosuppressed nature of our patients which resulted in higher disease severity (APACHE  
235 III score; SOFA score) than those in studies performed at other centers. Another possible  
236 explanation could be that the treatment initiation in the present study occurred at a  
237 comparatively more severe stage, as the initiation of PMX-DHP follows the diagnosis of  
238 refractory septic shock.

239         The results of this study demonstrate that the requirement for a vasoactive inotrope  
240 agent to maintain hemodynamics after PMX-DHP decreased in the early initiation group,  
241 which led to a fall in 28-day mortality. The inotropes-vasopressor requirement decreased  
242 (VIS,  $\Delta 318$  vs.  $\Delta 114$ ,  $p=0.001$  vs.  $p=0.005$ ) after PMX-DHP in both the early and the late  
243 group; however, the decrease was larger in the early than the late group. Before the treatment,  
244 the requirement for a vasoactive inotrope agent to maintain hemodynamics was higher in the  
245 early than the late group; this enabled a relatively faster detection of refractory septic shock  
246 by the attending physician and thereby the administration of PMX-DHP, which reduced 28-  
247 day mortality. This implies that rapid administration of PMX-DHP within 12 h could improve  
248 hemodynamics and prevent life-threatening organ failure, thereby contributing to a reduction  
249 in mortality.

250         Through the modulation of activated mononuclear cells and neutrophils, PMX-DHP  
251 improves pulmonary oxygenation by suppressing inflammatory mediators and systemic  
252 inflammation [15]. In the current study, the  $\text{PaO}_2/\text{FiO}_2$  ratio was higher in both groups after  
253 PMX-DHP, with a slightly larger increase in the early initiation group, although the  
254 difference was not statistically significant ( $\Delta 127.5$  vs.  $\Delta 95.6$ ;  $p=0.350$  vs.  $p=0.390$ ). The  
255  $\text{PaO}_2/\text{FiO}_2$  ratio was assessed 24 h after PMX-DHP in the current study; this fact might

256 explain the differences between ours and the findings of previous studies, where the target  
257 was acute respiratory distress syndrome or acute lung injury and the PaO<sub>2</sub>/FiO<sub>2</sub> ratio was  
258 evaluated 72–96 h after PMX-DHP [5,10,15].

259 Studies have shown that PMX-DHP prevents acute kidney injury and renal tubular  
260 cell apoptosis by maintaining the acid-base balance and lowering the plasma concentrations  
261 of lactate, creatinine, IL-6, and IL-10 [16]. In the current study, likewise, the creatinine level  
262 decreased in both groups after PMX-DHP (early group,  $p=0.016$  vs. late group,  $p<0.001$ ).  
263 However, this could not be confirmed to be an outcome of PMX-DHP, as most patients  
264 (78%) also underwent continuous renal replacement therapy. In addition, studies where  
265 continuous renal replacement therapy and PMX-DHP were concurrently applied did not  
266 report a reduction in mortality [17]. Moreover, creatinine levels did not significantly affect  
267 28-day mortality in our patient sample, which corresponds with the results of previous  
268 studies.

269 Conventionally, the duration of PMX-DHP is 2 h; however, recent studies have  
270 reported that, in the event of endotoxin adsorption saturation, extending its duration to >2 h  
271 could enhance pulmonary oxygenation and hemodynamics, thereby reducing 28-day  
272 mortality [18–20]. The PMX-DHP duration in the current study was 15 h on an average. One  
273 or two additional treatments were performed by the attending physician; however, no  
274 significant correlation was found between the treatment frequency and 28-day mortality  
275 (OR=1.640; 95%CI=0.598–4.499;  $p=0.036$ ).

276 The most common adverse effects of PMX-DHP are thrombocytopenia, transient  
277 hypotension, and allergic reactions [21]. Accordingly, the platelet count after hemoperfusion  
278 in the current study decreased in both the early and late initiation groups ( $\Delta 62$  vs.  $\Delta 25.5$ ;  
279  $p=0.007$  vs.  $p=0.061$ ). The patients in our sample did not have transient hypotension or  
280 allergic reactions.

281           This study has certain limitations. First, this was a single-center, retrospective study  
282 with a small sample size, which limits the generalizability of our findings. Second, we  
283 focused on patients with refractory septic shock without initial measurements of endotoxin  
284 levels, which limited our analysis of endotoxemia-targeted PMX-DHP treatment effects.  
285 However, PMX-DHP is known to induce the absorption of endogenous cannabinoids,  
286 activated neutrophils, and monocytes, modify the monocyte surface marker expression, and  
287 be an effective treatment option for gram-positive bacteremia [15,22]. We can therefore infer  
288 that PMX-DHP provides beneficial effects for both gram-negative and positive bacteremia.

289           Despite these limitations, this is the first study to assess the effects of PMX-DHP in  
290 patients with cancer with refractory septic shock, and our findings confirm that the early  
291 initiation of PMX-DHP, compared to its late initiation, can reduce 28-day mortality and the  
292 inotropes-vasopressor requirement for maintaining hemodynamics. In the future, a  
293 multicenter, large-scale, randomized, controlled study should be conducted to determine the  
294 optimal initiation time.

295

## 296 **Conclusions**

297           In our sample of patients with cancer with refractory septic shock, the early initiation  
298 of PMX-DHP, compared to its late initiation, was effective in reducing 28-day mortality and  
299 the inotropes-vasopressor requirement for maintaining hemodynamics. Based on these  
300 findings, the optimal initiation time should be determined in a follow-up study.

301

## 302 **Acknowledgements**

303 The author thanks Dr. Jee hee-Kim for invaluable help and advice throughout the  
304 study and Ms. Mira Han for assistance with bioinformatics and statistics; and Editage for  
305 English language editing.

306

## 307 **Data availability**

308 All data generated or analyzed during this study are included in this published article.

309

## 310 **References**

- 311 1. Singer M, Deutschman CS, Seymour CW, Shankar-Hari M, Annane D, Bauer M, et  
312 al. The third international consensus definitions for sepsis and septic shock (Sepsis-3).  
313 JAMA. 2016;315: 801-810. doi:[10.1001/jama.2016.0287](https://doi.org/10.1001/jama.2016.0287).
- 314 2. Rudd KE, Johnson SC, Agesa KM, Shackelford KA, Tsoi D, Kievlan DR, et al.  
315 Global, regional, and national sepsis incidence and mortality, 1990-2017: analysis for  
316 the Global Burden of Disease Study. Lancet. 2020;395: 200-211. doi:[10.1016/S0140-  
317 6736\(19\)32989-7](https://doi.org/10.1016/S0140-6736(19)32989-7).
- 318 3. Williams MD, Braun LA, Cooper LM, Johnston J, Weiss RV, Qualy RL, et al.  
319 Hospitalized cancer patients with severe sepsis: analysis of incidence, mortality, and  
320 associated costs of care. Crit Care. 2004;8: R291-R298. doi:[10.1186/cc2893](https://doi.org/10.1186/cc2893).
- 321 4. Shimizu T, Miyake T, Tani M. History and current status of polymyxin B-  
322 immobilized fiber column for treatment of severe sepsis and septic shock. Ann  
323 Gastroenterol Surg. 2017;1: 105-113. doi:[10.1002/ags3.12015](https://doi.org/10.1002/ags3.12015).
- 324 5. Cruz DN, Antonelli M, Fumagalli R, Foltran F, Brienza N, Donati A, et al. Early use  
325 of polymyxin B hemoperfusion in abdominal septic shock: the EUPHAS randomized  
326 controlled trial. JAMA. 2009;301: 2445-2452. doi:[10.1001/jama.2009.856](https://doi.org/10.1001/jama.2009.856).

- 327 6. Payen DM, Guilhot J, Launey Y, Lukaszewicz AC, Kaaki M, Veber B, et al. Early  
328 use of polymyxin B hemoperfusion in patients with septic shock due to peritonitis: a  
329 multicenter randomized control trial. *Intensive Care Med.* 2015;41: 975-984.  
330 doi:[10.1007/s00134-015-3751-z](https://doi.org/10.1007/s00134-015-3751-z).
- 331 7. Dellinger RP, Bagshaw SM, Antonelli M, Foster DM, Klein DJ, Marshall JC, et al.  
332 Effect of targeted polymyxin B hemoperfusion on 28-day mortality in patients with  
333 septic shock and elevated endotoxin level. The Euphrates randomized clinical  
334 trial. *JAMA.* 2018;320: 1455-1463. doi:[10.1001/jama.2018.14618](https://doi.org/10.1001/jama.2018.14618).
- 335 8. Fujii T, Ganeko R, Kataoka Y, Furukawa TA, Featherstone R, Doi K, et al.  
336 Polymyxin B-immobilized hemoperfusion and mortality in critically ill adult patients  
337 with sepsis/septic shock: a systematic review with meta-analysis and trial sequential  
338 analysis. *Intensive Care Med.* 2018;44: 167-178. doi:[10.1007/s00134-017-5004-9](https://doi.org/10.1007/s00134-017-5004-9)  
339 [published correction appears in *Intensive Care Med.* 2018 January 16].
- 340 9. Bassi E, Park M, Azevedo LCP. Therapeutic strategies for high-dose vasopressor-  
341 dependent shock. *Crit Care Res Pract.* 2013;2013: 654708. doi:[10.1155/2013/654708](https://doi.org/10.1155/2013/654708).
- 342 10. Mitaka C, Kusao M, Kawagoe I, Satoh D, Iba T, Ronco C. Impact of extended  
343 duration of polymyxin B-immobilized fiber column direct hemoperfusion on  
344 hemodynamics, vasoactive substance requirement, and pulmonary oxygenation in  
345 patients with sepsis: an observational study. *Blood Purif.* 2022;51: 62-69.  
346 doi:[10.1159/000515685](https://doi.org/10.1159/000515685).
- 347 11. Mitaka C, Tsuchida N, Kawada K, Nakajima Y, Imai T, Sasaki S. A longer duration  
348 of polymyxin B-immobilized fiber column hemoperfusion improves pulmonary  
349 oxygenation in patients with septic shock. *Shock.* 2009;32: 478-483.  
350 doi:[10.1097/SHK.0b013e3181a2a978](https://doi.org/10.1097/SHK.0b013e3181a2a978).

- 351 12. Gaies MG, Jeffries HE, Niebler RA, Pasquali SK, Donohue JE, Yu S. Vasoactive-  
352 inotropic score (VIS) is associated with outcome after infant cardiac surgery: an  
353 analysis from the pediatric cardiac critical care consortium and virtual PICU system  
354 registries. *Pediatr Crit Care Med*. 2014;15: 529-537. doi:  
355 [10.1097/PCC.000000000000153](https://doi.org/10.1097/PCC.000000000000153).
- 356 13. Nazer L, Lopez-Olivo MA, Cuenca JA, Awad W, Brown AR, Abusara A, et al. All-  
357 cause mortality in cancer patients treated for sepsis in intensive care units: a  
358 systematic review and meta-analysis. *Support Care Cancer*. 2022;30: 10099-10109.  
359 doi:[10.1007/s00520-022-07392-w](https://doi.org/10.1007/s00520-022-07392-w).
- 360 14. Klein DJ, Foster D, Walker PM, Bagshaw SM, Mekonnen H, Antonelli M.  
361 Polymyxin B hemoperfusion in endotoxemic septic shock patients without extreme  
362 endotoxemia: a post hoc analysis of the Euphrates trial. *Intensive Care Med*. 2018;44:  
363 2205-2212. doi:[10.1007/s00134-018-5463-7](https://doi.org/10.1007/s00134-018-5463-7).
- 364 15. Tsushima K, Kubo K, Koizumi T, Yamamoto H, Fujimoto K, Hora K, et al. Direct  
365 hemoperfusion using a polymyxin B immobilized column improves acute respiratory  
366 distress syndrome. *J Clin Apher*. 2002;17: 97-102. doi:[10.1002/jca.10019](https://doi.org/10.1002/jca.10019).
- 367 16. Mitaka C, Masuda T, Kido K, Uchida T, Abe S, Miyasho T, et al. Polymyxin B  
368 hemoperfusion prevents acute kidney injury in sepsis model. *J Surg Res*. 2016;201:  
369 59-68. doi:[10.1016/j.jss.2015.10.020](https://doi.org/10.1016/j.jss.2015.10.020).
- 370 17. Lee JM, Baek SD, Kim TH, Jeon HR, Han JH, Chang JW. Uncertain clinical effect of  
371 polymyxin B hemoperfusion in patients with septic acute kidney injury requiring  
372 continuous renal replacement therapy. *Shock*. 2021;56: 551-556.  
373 doi:[10.1097/SHK.0000000000001752](https://doi.org/10.1097/SHK.0000000000001752).
- 374 18. Yamashita C, Hara Y, Kuriyama N, Nakamura T, Nishida O. Clinical effects of a  
375 longer duration of polymyxin B-immobilized fiber column direct hemoperfusion

- 376 therapy for severe sepsis and septic shock. Ther Apher Dial. 2015;19: 316-323.  
377 doi:[10.1111/1744-9987.12339](https://doi.org/10.1111/1744-9987.12339).
- 378 19. Miyamoto K, Kawazoe Y, Kato S. Prolonged direct hemoperfusion using a  
379 polymyxin B immobilized fiber cartridge provides sustained circulatory stabilization  
380 in patients with septic shock: a retrospective observational before-after study. J  
381 Intensive Care. 2017;5: 19. doi:[10.1186/s40560-017-0214-3](https://doi.org/10.1186/s40560-017-0214-3).
- 382 20. Kawazoe Y, Sato T, Miyagawa N, Yokokawa Y, Kushimoto S, Miyamoto K, et al.  
383 Mortality effects of prolonged hemoperfusion therapy using a polymyxin B-  
384 immobilized fiber column for patients with septic shock: a sub-analysis of the  
385 DESIRE trial. Blood Purif. 2018;46: 309-314. doi:[10.1159/000491744](https://doi.org/10.1159/000491744).
- 386 21. Ronco C, Klein DJ. Polymyxin B hemoperfusion: a mechanistic perspective. Crit  
387 Care. 2014;18: 309. doi:[10.1186/cc13912](https://doi.org/10.1186/cc13912).
- 388 22. Kawamata T, Imaizumi H, Yoshida M, Kaneko M. Polymyxin B-immobilized fiber  
389 improves hyperdynamic state in MRSA septic patients. Intensive Care Med. 1997;23:  
390 130-131.

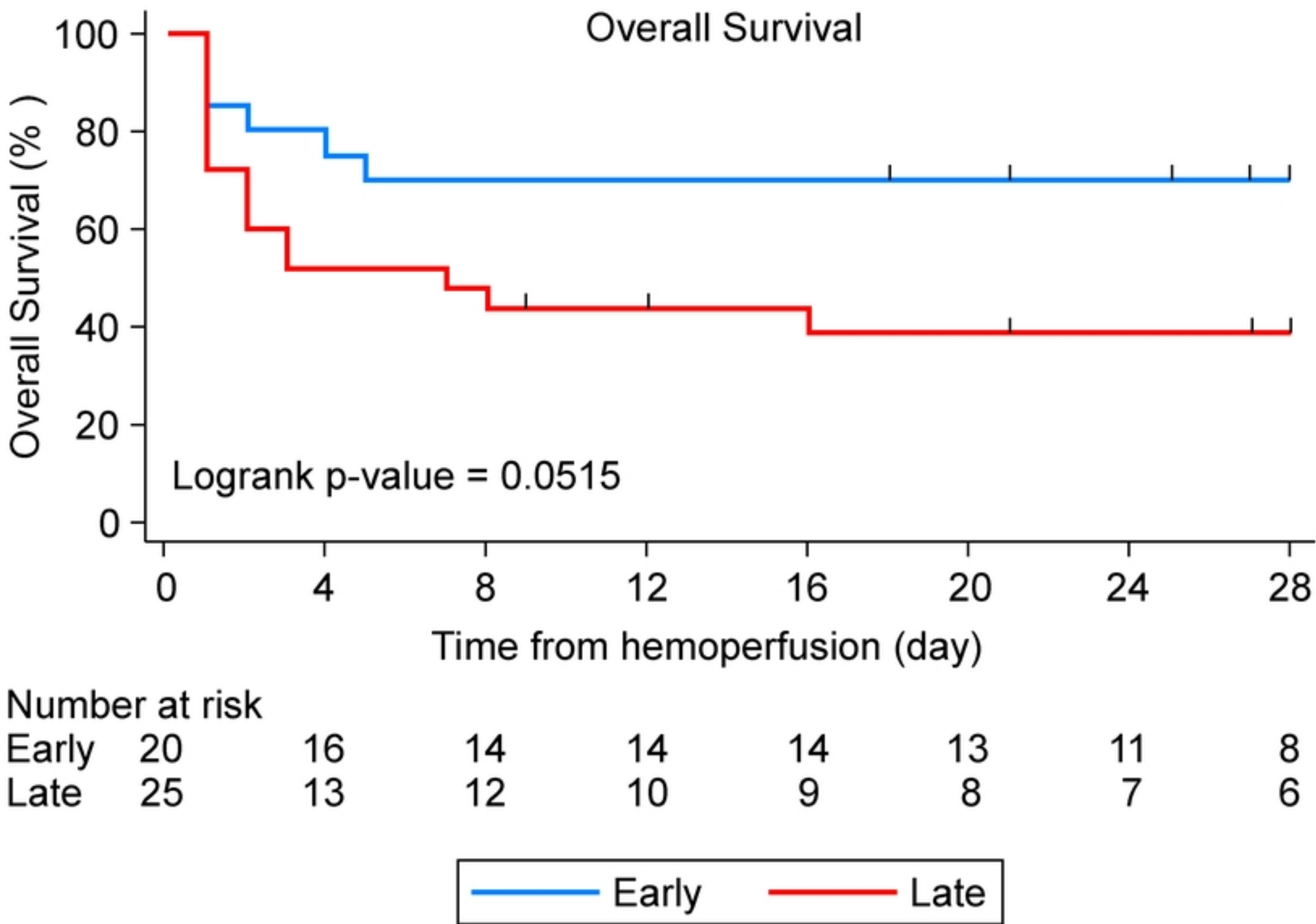


Figure 1



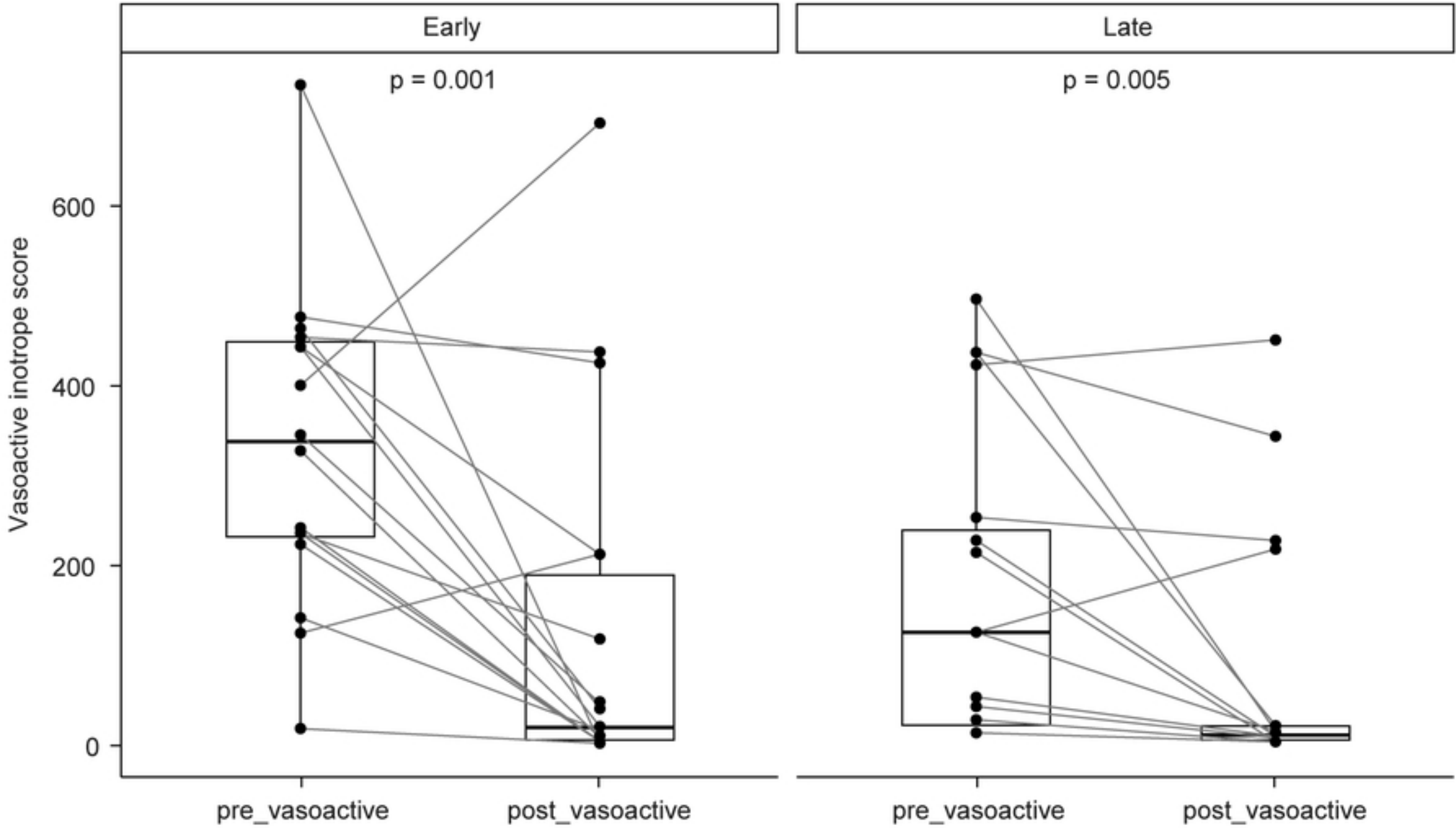


Figure 2