

It is made available under a [CC-BY-NC-ND 4.0 International license](#) .

Running head: Corpus callosum abnormalities and language in preterm

Corpus callosum abnormalities at term-equivalent age are associated with language development at two years corrected age in infants born very preterm

Katsuaki Kojima^{1,2}, Julia E Kline¹, Mekibib Altaye^{1,2,3}, Beth M Kline-Fath^{1,4}, Nehal A Parikh^{1,2} for

the Cincinnati Infant Neurodevelopment Early Prediction Study (CINEPS) Investigators

1. Neurodevelopmental Disorders Prevention Center, Perinatal Institute, Cincinnati Children's Hospital Medical Center, 3333 Burnet Avenue, Cincinnati, OH 45229-3039
2. Department of Pediatrics, University of Cincinnati College of Medicine, 3230 Eden Avenue, Cincinnati, OH 45267
3. Division of Biostatistics and Epidemiology, Cincinnati Children's Hospital Medical Center, 3333 Burnet Avenue, Cincinnati, OH 45229-3039
4. Department of Radiology, University of Cincinnati College of Medicine, 3230 Eden Avenue, Cincinnati, OH 45267

Corresponding author: nehal.parikh@cchmc.org

DISCLOSURE

Authors have no conflicts of interest to disclose. This study was presented at the 2023 Pediatric Academic Societies Meeting. Supported by the National Institutes of Health from the National Institute of Neurological Disorders and Stroke (R01-NS094200, R01-NS096037, and R01-EB029944) to N.A.P. and from the National Center for Advancing Translational Sciences (2UL1TR001425-05A1) to K.K.

Keywords

Diffusion tensor imaging; neurodevelopmental outcome; newborn; infant, preterm; Bayley-III; corpus callosum; language

CORPUS CALLOSUM ABNORMALITIES AND LANGUAGE IN PRETERM

ABSTRACT (50 words/50 words)

We studied the impact of microstructural abnormalities in the corpus callosum on language development in 348 infants born very prematurely. We discovered that the fractional anisotropy of the corpus callosum anterior midbody was a significant predictor of standardized language scores at two years, independent of clinical and social risk factors.

INTRODUCTION

Preterm birth significantly increases the risk of neurodevelopmental impairments (NDIs) in children, as indicated by numerous studies¹⁻³. A particular area of concern within these impairments is language development^{4,5}. Language outcomes carry considerable significance, as they can affect several functional outcomes ranging from academic performance and social interaction to future earning potential⁶⁻⁸.

The early detection of NDIs is crucial for the timely initiation of appropriate interventions⁹. However, predicting language outcomes presents a substantial challenge due to the complex nature of language development. This complexity arises from a multitude of factors including, but not limited to, socioeconomic status^{10,11}, extent of language exposure¹², hearing capabilities¹³, neurological complications, and primary speech and language disorders.

In preterm children, language outcomes have been associated with various factors, including medical complications during the neonatal period, such as bronchopulmonary dysplasia (BPD)^{14,15} and sepsis¹⁶. Additionally, neuroimaging abnormalities discernible in brain MRIs at term^{17,18} as well as socioeconomic elements¹⁹ are understood to influence language outcomes.

Diffusion tensor imaging (DTI) offers a method to assess the mobility of water molecules within tissues, facilitating the visualization and evaluation of white matter tract microstructure²⁰. Notably, microstructural changes in white matter, as identified by DTI, have been correlated with language outcomes in children born preterm²¹⁻²⁴. In particular, the corpus callosum (CC) has been consistently associated with language outcomes of preterm children²². Fractional anisotropy (FA) values in the CC specifically have been linked to language outcomes even after accounting for medical risks²⁵. Within the CC, the anterior midbody of the CC appears to be particularly correlated with neurodevelopmental

It is made available under a [CC-BY-NC-ND 4.0 International license](https://creativecommons.org/licenses/by-nc-nd/4.0/) .

CORPUS CALLOSUM ABNORMALITIES AND LANGUAGE IN PRETERM

outcomes²⁶. However, the potential predictive value of DTI measures in the anterior midbody of the CC for language outcomes - independent of clinical, social, and term MRI abnormalities - has yet to be thoroughly investigated.

A significant challenge in conducting DTI studies is the manual analysis of DTI data, which can be both time-intensive and susceptible to measurement errors. An automated tractography segmentation (TractSeg) tool²⁷ was developed to address these challenges. This openly-available tool uses an encoder-decoder fully convolutional neural network (FCNN) for segmentation. The model was trained and evaluated on a dataset of 105 subjects from the Human Connectome Project (HCP), where reference segmentations for 72 tracts were obtained through a multi-step process involving existing tractography methods and manual refinement. Wasserthal and colleagues showed that the trained model demonstrated remarkable accuracy in segmenting white matter tracts, even when dealing with reduced-quality data, and outperformed a variety of other available methods. This approach offers improved reproducibility and significantly reduces the likelihood of measurement errors. The TractSeg tool has already been utilized to evaluate white matter tracts in school-age preterm children²⁸, patients with traumatic brain injuries²⁹, and gliomas³⁰.

In the present study, we aim to investigate the correlation between microstructural white matter abnormalities in the anterior midbody of the CC and language outcomes in very preterm infants using TractSeg software. Our hypothesis is that the FA values in the anterior midbody of the CC can serve as a predictor of language development at age two, independently of clinical, neuroimaging, and social risk factors.

METHODS

The present study is a secondary analysis utilizing data gathered prospectively from the Cincinnati Infant Neurodevelopment Early Prediction Study cohort of very preterm infants. Comprehensive details about the cohort study have been described elsewhere¹⁵. In brief, over 300 infants born very preterm (at or before 32 weeks of gestational age) were recruited from 5 neonatal intensive care units (NICUs) in the greater Cincinnati area. All infants born very preterm in one of these NICUs

It is made available under a [CC-BY-NC-ND 4.0 International license](https://creativecommons.org/licenses/by-nc-nd/4.0/) .

CORPUS CALLOSUM ABNORMALITIES AND LANGUAGE IN PRETERM

between September 2016 and November 2019 were eligible for inclusion. We approached 95% of all eligible very preterm infants. Infants were excluded if they met any of the following criteria: (1) known chromosomal or congenital anomalies affecting the central nervous system; (2) cyanotic heart disease; or (3) hospitalization and mechanical ventilation with greater than 50% supplemental oxygen at 45 weeks postmenstrual age (PMA).

The Cincinnati Children's Hospital institutional review board approved the study, and the review boards of the other participating hospitals approved the study based on established reciprocity agreements. Written informed consent was provided by a parent or guardian of each study infant after they were given at least 24 hours to review the consent and ask questions of the investigators.

A trained team of research personnel collected a predefined list of maternal characteristics, details related to pregnancy/delivery, and infant data¹⁵. Several known predictors of neurodevelopmental outcomes were evaluated in this study, which included gestational age at birth, severe brain abnormality on MRI, post-menstrual age (PMA) at the time of MRI, sex, high-risk social status, severe BPD (Grade III)³¹, and culture-positive late-onset sepsis.

Social status was evaluated using a composite metric consisting of six aspects: family structure (reflecting the number and relational context of the child's caregivers), the educational level of the primary caregiver, the occupation of the main income earner, household income, language spoken at home, and maternal age at the time of birth³². The scores for this metric ranged from 0 to 12, with a score of 6 or higher designated as high risk.

Brain MRIs were conducted between 39 and 44 weeks PMA. Images were collected during natural sleep with a 3T Philips Ingenia scanner (Philips Healthcare) and a 32-channel head coil located at Cincinnati Children's Hospital, as previously described³³. All participants underwent their scans at this single site. DTI was obtained using a 36-direction spin echo EPI sequence with parameters set as follows: TE 88 ms, TR 6972 ms, FOV 160 × 160 mm, in-plane resolution of 2mm x 2mm, slice thickness of 2mm, and a b-value of 800 s/mm². To mitigate the need for sedation, we implemented our 'feed-and-wrap' technique along with a fast spin echo EPI sequence with multiband imaging to minimize the time infants

It is made available under a [CC-BY-NC-ND 4.0 International license](https://creativecommons.org/licenses/by-nc-nd/4.0/) .

CORPUS CALLOSUM ABNORMALITIES AND LANGUAGE IN PRETERM

in the scanner and the effects of motion. We used the recently developed Developing Human Connectome Project (dHCP) pipeline³⁴ for dMRI preprocessing, as previously described³⁵. This pipeline reduces the effects of head motion by 1) selecting the “best” pair (i.e., least affected by intra-volume motion) of b0 volumes for each PE direction; 2) applying FSL EDDY, a non-parametric approach that corrects for distortions from motion, motion-induced signal drop-out, and eddy currents; and 3) detecting and replacing outlier slices.

We utilized a composite MRI abnormality severity score, known as the global brain abnormality score, as outlined by Kidokoro et al.³⁶ and as previously described in our cohort³⁷. This score is determined by signal abnormalities and instances of impaired brain development across multiple regions, including the cerebral white matter, cortical gray matter, deep nuclear gray matter, and cerebellum³⁶. All MRI scans and two-dimensional biometric measurements were conducted by a single pediatric neuroradiologist who was responsible for computing the global brain abnormality score. This neuroradiologist was blind to all clinical data to ensure objectivity in the assessments.

For each subject, we preprocessed the diffusion-weighted data as previously described^{17,38}. Preprocessing included eddy current correction and rotation of the b-vectors. We input the diffusion images into TractSeg²⁷ with the ‘--raw_diffusion_input’ flag, which alerts TractSeg that the input is diffusion images rather than peak images (the default). TractSeg then performs constrained spherical deconvolution (CSD) to extract the three principal fiber orientations at each voxel. Next, TractSeg segments the start and end regions of the bundles to create tract orientation maps (TOMs). Finally, probabilistic tractography is performed by seeding from the TOMs. The TractSeg algorithm samples orientations from a Gaussian distribution placed on each fiber orientation distribution peak. Only streamlines starting and ending in the correct regions are retained. After tractography, we extracted the fractional anisotropy (FA) values along all streamlines for 50 tracts, including seven regions of the CC (splenium, isthmus, anterior midbody, posterior midbody, rostrum, rostral body, and genu; see Figure 1, online only) as described by Teli et al.³⁹.

It is made available under a [CC-BY-NC-ND 4.0 International license](https://creativecommons.org/licenses/by-nc-nd/4.0/) .

CORPUS CALLOSUM ABNORMALITIES AND LANGUAGE IN PRETERM

Skilled examiners performed developmental evaluations when the children were between 22 and 26 months corrected age using the Bayley Scales of Infant & Toddler Development, 3rd edition (BSID-III)⁴⁰. All examiners involved in the Bayley assessments were trained in accordance with the standards of the NICHD Neonatal Research Network. The BSID-III language subscale measures language comprehension and vocabulary; the language composite score is comprised of and derived from the receptive and expressive language subdomain scores. The language composite score was normalized to have a mean of 100, a standard deviation of ± 15 , and a range of 40 to 160. Receptive and expressive language scores were converted into scaled scores with a mean of 10 and a standard deviation (SD) of 3⁴⁰. These scores were calculated for the child's corrected age at the assessment.

Patient demographics, FA values, and BSID-III scores were summarized using medians and ranges for continuous variables and frequencies and percentages for categorical variables. To investigate the relationship between the FA values of the anterior midbody of the CC and the composite Language score of BSID-III (primary outcome), we employed multivariable linear regression analysis, incorporating the predefined predictors of language outcome as covariates (gestational age at birth, severe brain abnormality on MRI, PMA at the time of MRI, sex, high-risk social status, severe BPD (Grade III)³¹, and culture-positive late-onset sepsis). In our secondary analyses, we evaluated additional CC segments as predictors, with receptive and expressive language scores serving as additional outcome variables. To assess any potential bias in our findings, we conducted a comparison of baseline characteristics between the study participants who completed the study and those lost to follow-up.

RESULTS

Out of the 348 infants enrolled in the study with identical DTI data acquisition, high-quality DTI at term-equivalent age was obtained from 328 (94%) of them. Sixteen participants could not provide this data due to poor-quality images resulting from severe brain injury or motion artifacts, and four participants were excluded - two withdrew from the study, one died prior to BSID-III testing at a year of age, and one was identified as an outlier due to extensive hemorrhagic injury. A total of 280 infants (85%)

It is made available under a [CC-BY-NC-ND 4.0 International license](#) .

CORPUS CALLOSUM ABNORMALITIES AND LANGUAGE IN PRETERM

successfully completed the Bayley assessment. The baseline characteristics, FA values of the six regions of the CC, and language outcomes are presented in Tables 1 and 2 (online only).

The comparison of baseline characteristics between infants evaluated at follow-up ($n = 280$) and those lost to follow-up ($n = 48$) indicated that these two cohorts were generally similar ($p > .05$), with the exception of two variables: gestational age at birth and sex (refer to Table 3, online only). Infants evaluated at follow-up had a lower gestational age, which could potentially have a negative effect on their language scores. Conversely, a higher proportion of the infants evaluated at follow-up were female, a factor that may have a favorable influence on language outcomes.

The multivariable models revealed that the mean FA values in the anterior midbody of the CC were a significant predictor of Bayley language composite score ($p = .047$, adjusted R^2 : .182) over and above other known clinical predictors. Female sex, PMA at DTI, high-risk social status, and severe brain abnormalities at term were also significant predictors in the primary analysis for language composite scores. In secondary analyses focused on language subdomains, the FA values in the anterior midbody of the CC also emerged as a significant predictor of the Bayley expressive language score ($p = .045$, adjusted R^2 : .141) (Table 4), but not receptive language scores ($p = .112$). Additional CC segments, including the splenium ($p = .048$, adjusted R^2 : .158) and posterior midbody ($p = .043$, adjusted R^2 : .152) were found to significantly predict expressive language scores as well (Tables 5, online only).

DISCUSSION

In the present study, we demonstrated that the mean FA values in the anterior midbody of the CC, measured at term-corrected age, significantly predicted both Bayley language composite scores and expressive language scores at 2 years corrected age, after controlling for known clinical and social risk factors in our cohort of very preterm infants.

Our findings bear significance in that they demonstrate a robust association between DTI measures and language outcomes, independent of both clinical and social risk factors. This association stands in contrast to previous DTI studies, which only controlled for clinical factors^{26, 41, 42}. Social factors are widely acknowledged as potent predictors of language outcomes^{10, 11}, and this was again validated in

It is made available under a [CC-BY-NC-ND 4.0 International license](#) .

CORPUS CALLOSUM ABNORMALITIES AND LANGUAGE IN PRETERM

our study. A comprehensive longitudinal study tracking 224 very preterm infants over 13 years found that socioenvironmental factors correlated with language outcomes in multivariable analysis, while biological factors did not exhibit such a relationship¹⁹. Another recent study incorporated a social factor in their multivariable model for language outcomes using DTI measures but did not include clinical risk factors in the same model²⁵. Our research, on the other hand, accounts for both clinical and social factors, establishing that microstructural measures remain significant independent predictors of language outcomes when all these elements are considered.

Alongside microstructural white matter abnormalities, other factors such as social risk score, female sex, and severe brain abnormalities identified on brain MRI at term-corrected age were significantly associated with language outcomes, aligning with previous research^{25,26}. In contrast, severe BPD⁴³ and late-onset sepsis⁴⁴ - factors previously found to significantly predict language outcomes - did not exhibit a statistically significant association with language outcomes in our model. This discrepancy might be attributed to the relatively low occurrence of these events in our study (Of the participants who had neurodevelopmental data, 12 (4%) had severe BPD, and 31 (11%) had sepsis.), leading to insufficient statistical power to detect a significant relationship despite the relatively large sample size of our study.

Our multivariable models' adjusted R^2 values were relatively low (0.182 for the Bayley language composite score and between 0.143 and 0.158 for the expressive language score), though in line with previous studies⁴¹. This may suggest the potential omission of important clinical predictors of language outcomes from our models, such as home language environment^{45,46}, other imaging predictors (e.g., functional MRI measures⁴⁷ and brain morphometry⁴⁸), and measures of hearing⁴⁹. Additionally, accurately quantifying language development at 2 years is inherently challenging, as evidenced by the limited association between the cognitive and language outcomes at 2 years and later childhood scores in prior studies^{50,51}. In contrast, Valavani et al. (2021) developed a machine learning model combining clinical factors and neonatal diffusion MRI measures that achieved a higher balanced accuracy of 91% for predicting language deficits at 2 years corrected age in preterm infants⁴². He et al.⁵² used deep learning and a multimodal MRI approach that included DTI and resting state functional MRI to achieve 88%

It is made available under a [CC-BY-NC-ND 4.0 International license](https://creativecommons.org/licenses/by-nc-nd/4.0/) .

CORPUS CALLOSUM ABNORMALITIES AND LANGUAGE IN PRETERM

balanced accuracy in predicting language deficits at age 2. While their primary objective was to construct a classification model for predicting language deficits—a different approach than ours—their research underscores the potential of using diffusion MRI biomarkers in conjunction with machine/deep learning techniques to enhance prediction accuracy.

We discovered significant associations between FA values in the anterior midbody of the CC and both composite and expressive language scores but not receptive language scores. This aligns with a previous study that revealed an association between the volume of the anterior portion of CC and verbal span ability, a measure of expressive language function⁵³. While further research is necessary to understand the association between specific white matter tracts and distinct language outcomes, our finding, combined with prior studies, suggests that preterm infants exhibiting abnormalities in the anterior midbody of the CC could benefit from early language intervention, with a particular emphasis on expressive language skills.

Our study has several limitations. The TractSeg software, while validated for use in school-aged children²⁸, has limited data regarding its application in newborns. Our model incorporated severe BPD and late-onset sepsis as predictors of language outcomes based on two prior large-scale studies^{14,16}, despite other clinical risk factors, such as fetal growth restriction and necrotizing enterocolitis being suggested in other studies²⁵. We, however, consider severe BPD and sepsis to be the most rigorously studied among these clinical risk factors and aimed to avoid excessive covariates, which could lead to overfitting and collinearity. Despite these limitations, we believe our findings are significant because of the large sample size, prospectively collected data, and the evaluation of multiple known social and clinical predictors within a single model, using automated/reproducible DTI analysis.

In conclusion, within this regional cohort of very preterm infants, we found that the FA values of the anterior midbody of the CC significantly predicted language outcomes at two years corrected age, independent of various clinical and social risk factors.

It is made available under a [CC-BY-NC-ND 4.0 International license](https://creativecommons.org/licenses/by-nc-nd/4.0/).

CORPUS CALLOSUM ABNORMALITIES AND LANGUAGE IN PRETERM

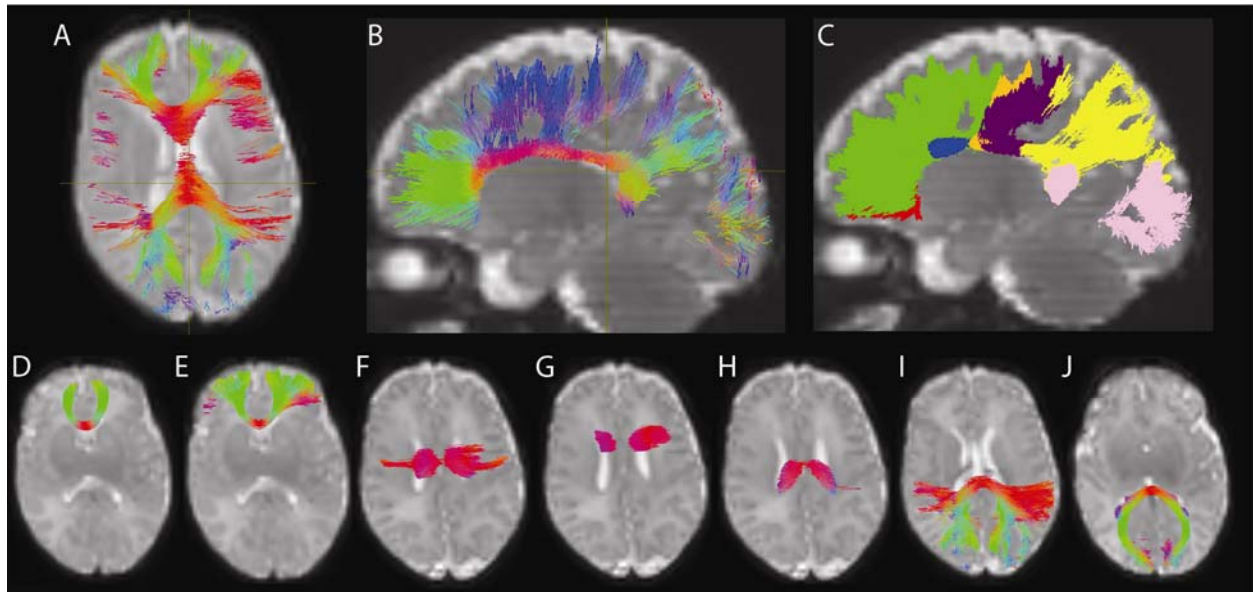


Figure 1. Tractography of Corpus Callosum Subregions. Axial views of all corpus callosum subregions are shown in Panel A, while sagittal views are depicted in Panel B. Panel C provides a sagittal view with color coding to differentiate each subregion: red for the rostrum, green for the genu, blue for the rostral body, orange for the anterior midbody, purple for the posterior midbody, yellow for the isthmus, and pink for the splenium. Panels D to J show the axial orientation of individual subregions: the rostrum (D), genu (E), anterior midbody (F), rostral body (G), posterior midbody (H), isthmus (I), and splenium (J), respectively.

CORPUS CALLOSUM ABNORMALITIES AND LANGUAGE IN PRETERM

Table 1: Clinical characteristics for very preterm infants with diffusion tensor imaging at term-corrected age

	n = 328
Gestation, weeks, median (range)	29.8 (23.0, 32.9)
Postmenstrual age at DTI, weeks, median (range)	43.0 (39.0, 45.1)
Birth weight, grams, median (range)	1235 (410, 2905)
Birth weight, z-score, median (range)	0.0 (-3.5, 3.8)
Race [†]	
Black	75 (24%)
White	216 (69%)
Other	23 (7%)
Hispanic [†]	21 (7%)
Female sex	159 (48%)
Any antenatal steroid exposure	300 (91%)
Apgar scores <5 at 5 minutes [‡]	44 (14%)
Intraventricular hemorrhage grade II, III, or IV, or any cerebellar hemorrhage on cranial ultrasound within 10 days after birth	29 (9%)
Grade 3 BPD	14 (4%)
Postnatal steroid exposure for BPD	31 (9%)
High-risk social status	59 (18%)
Primary language other than English [§]	20 (6%)
Late onset sepsis	36 (11%)
Necrotizing enterocolitis	19 (6%)
Severe brain abnormalities (global brain abnormality score \geq 12) on term MRI	38 (12%)

*All values are N (%) unless otherwise noted.

[†]Data missing for 14 infants.

[‡]Data missing for 4 infants.

[§]Data missing for 16 infants.

It is made available under a [CC-BY-NC-ND 4.0 International license](https://creativecommons.org/licenses/by-nc-nd/4.0/) .

CORPUS CALLOSUM ABNORMALITIES AND LANGUAGE IN PRETERM

Table 2: Mean fractional anisotropy values of the white matter tracts and language outcomes for very preterm infants

	median (range)
Splenum	n = 325
	0.34 (0.12 – 0.45)
Isthmus	n = 326
	0.29 (0.13 – 0.38)
Anterior midbody	n = 289
	0.28 (0.18 – 0.36)
Posterior midbody	n = 321
	0.28 (0.18 – 0.36)
Rostrum	n = 314
	0.29 (0.13 – 0.38)
Rostral body	n = 251
	0.25 (0.17 – 0.32)
Genu	n = 324
	0.24 (0.10 – 0.34)
Bayley language composite score	n = 280
	94 (46 – 153)
Bayley receptive language score	n = 272
	9.0 (1 – 26)
Bayley expressive language score	n = 272
	9.0 (1 – 19)

It is made available under a [CC-BY-NC-ND 4.0 International license](https://creativecommons.org/licenses/by-nc-nd/4.0/) .

CORPUS CALLOSUM ABNORMALITIES AND LANGUAGE IN PRETERM

Table 3: Distribution of important clinical and socioeconomic factors and DTI measures between those who were evaluated at follow-up and lost to follow-up

Clinical and socioeconomic factors *	Evaluated at follow-up (n = 280)	Lost to follow-up (n = 48)	p value
Gestational age at birth, weeks, median (range)	29.6 (23.1-32.9)	30.7 (23.0-32.9)	.0008
Postmenstrual age at MRI, weeks, median (range)	42.9 (39.0-45.1)	43.2 (40.7-44.6)	.276
Female sex	143 (51%)	16 (33%)	.028
High-risk social status	49 (18%)	10 (21%)	.547
Severe brain abnormalities	36 (13%)	2 (4%)	.091
Sepsis	31 (11%)	5 (10%)	1.000
Severe BPD	12 (4%)	2 (4%)	1.000
FA values in the Splenium, median (range) ¹	0.34 (0.12-0.45)	0.35 (0.26-0.41)	.196
FA values in the Isthmus, median (range) ²	0.29 (0.13-0.38)	0.30 (0.23-0.36)	.009
FA values in the Anterior midbody, median (range) ³	0.28 (0.18-0.36)	0.29 (0.21-0.36)	.051
FA values in the Posterior midbody, median (range) ⁴	0.21 (0.11-0.38)	0.28 (0.20-0.37)	.257
FA values in the Rostrum, median (range) ⁵	0.28 (0.15-0.41)	0.30 (0.22-0.36)	.011
FA values in the Rostral body, median (range) ⁶	0.25 (0.17-0.32)	0.27 (0.18-0.32)	.005
FA values in the Genu, median (range) ⁷	0.24 (0.10-0.34)	0.25 (0.18-0.29)	.017

*All values are N (%) unless otherwise noted.

1: Data missing for 3 infants of the 328 infants (evaluated at follow-up 3).

2: Data missing for 2 infants of the 328 infants (evaluated at follow-up 2).

3: Data missing for 39 infants of the 328 infants (evaluated at follow-up 36, lost to follow-up 3).

4: Data missing for 7 infants of the 328 infants (evaluated at follow-up 7).

5: Data missing for 14 infants of the 328 infants (evaluated at follow-up 12, lost to follow-up 2).

6: Data missing for 77 infants of the 328 infants (evaluated at follow-up 65, lost to follow-up 12).

7: Data missing for 4 infants of the 328 infants (evaluated at follow-up 4).

It is made available under a [CC-BY-NC-ND 4.0 International license](https://creativecommons.org/licenses/by-nc-nd/4.0/).

CORPUS CALLOSUM ABNORMALITIES AND LANGUAGE IN PRETERM

Table 4: Multivariable linear regression models for predicting language development

Predictors	Bayley language composite score		Bayley expressive language score	
	Coefficient (95% CI)	p value	Coefficient (95% CI)	p value
Mean FA of the anterior midbody of the corpus callosum	96 (1, 190)	.047	17.1 (0.4, 33.9)	.045
Female sex	4.8 (0.2, 9.4)	.039	1.0 (0.2, 1.8)	.015
Gestational age at birth	0.6 (-0.4, 1.6)	.222	-0.0 (-0.2, 0.1)	.643
Postmenstrual age at DTI	-1.9 (-3.9, -0.0)	.048	-0.3 (-0.7, 0.0)	.051
High-risk social status	-14 (-20, -8)	<.0001	-2.4 (-3.4, -1.3)	<.0001
Severe brain abnormalities	-12 (-21, -2)	.015	-1.1 (-2.8, 0.7)	.237
Sepsis	-2.9 (-11.3, 5.5)	.495	-0.5 (-2.1, 1.1)	.542
Severe BPD	-0.9 (-14.8, 13.0)	.894	-1.2 (-4.1, 1.6)	.389
Adjusted R2	.182		.143	
Model Statistics	F(8, 235) = 7.74, p < .0001		F(8, 227) = 5.90, p < .0001	

It is made available under a [CC-BY-NC-ND 4.0 International license](https://creativecommons.org/licenses/by-nc-nd/4.0/) .

CORPUS CALLOSUM ABNORMALITIES AND LANGUAGE IN PRETERM

Table 5: Multivariable linear regression models for predicting language development

Predictors	Bayley expressive composite score		Bayley expressive language score	
	Coefficient (95% CI)	p value	Coefficient (95% CI)	p value
Mean FA of the splenium of the corpus callosum	9.5 (0.09, 19)	.048		
Mean FA of the posterior midbody of the corpus callosum			14.4 (0.4, 28.4)	.043
Female sex	1.1 (0.3, 1.9)	.005	1.1 (0.4, 1.9)	.004
Gestational age at birth	-0.1 (-0.2, 0.1)	.404	-0.0 (-0.2, 0.1)	.588
Postmenstrual age at DTI	-0.2 (-0.5, 0.1)	.164	-0.3 (-0.6, 0.0)	.095
High-risk social status	-2.4 (-3.4, -1.4)	<.0001	-2.2 (-3.2, -1.1)	<.0001
Severe brain abnormalities	-0.9 (-2.4, 0.6)	.218	-1.0 (-2.5, 0.5)	.201
Sepsis	-0.7 (-2.2, 0.7)	.305	-0.6 (-2.0, 0.9)	.447
Severe BPD	-2.1 (-4.4, 0.2)	.075	-1.7 (-4.1, 0.7)	.162
Adjusted R2	.158		.152	
Model Statistics	F(8, 260) = 7.28, p < .0001		F(8, 256) = 6.91, p < .0001	

CORPUS CALLOSUM ABNORMALITIES AND LANGUAGE IN PRETERM

ACKNOWLEDGEMENT

We sincerely thank the parents of infants that participated in our study and the Cincinnati Infant Neurodevelopment Early Prediction Study (CINEPS) Investigators: Principal Investigator: Nehal A. Parikh, DO, MS. Collaborators (in alphabetical order): Armin Allahverdy, PhD, Mekibib Altaye, PhD, Anita Arnsperger, RRT, Traci Beiersdorfer, RN BSN, Kaley Bridgewater, RT(MR) CNMT, Tanya Cahill, MD, Kim Cecil, PhD, Kent Dietrich, RT, Christen Distler, BSN RNC-NIC, Juanita Dudley, RN BSN, Brianne Georg, BS, Meredith Glover, BS, Cathy Grisby, RN BSN CCRC, Lacey Haas, RT(MR) CNMT, Karen Harpster, PhD, OT/RL, Lili He, PhD, Scott K. Holland, PhD, V.S. Priyanka Illapani, MS, Kristin Kirker, CRC, Julia E. Kline, PhD, Beth M. Kline-Fath, MD, Hailong Li, PhD, Matt Lanier, RT(MR) RT(R), Stephanie L. Merhar, MD MS, Greg Muthig, BS, Brenda B. Poindexter, MD MS, David Russell, JD, Kari Tepe, BSN RNC-NIC, Leanne Tamm, PhD, Julia Thompson, RN BSN, Jean A. Tkach, PhD, Hui Wang, PhD, Jinghua Wang, PhD, Brynne Williams, RT(MR) CNMT, Kelsey Wineland, RT(MR) CNMT, Sandra Wuertz, RN BSN CCRP, Donna Wuest, AS, Weihong Yuan, PhD. We also greatly appreciate the support of our NICU fellows, nurses, and staff, and most importantly, all the study families that made this research possible.

CORPUS CALLOSUM ABNORMALITIES AND LANGUAGE IN PRETERM

REFERENCES

- [1] Linsell L, Malouf R, Morris J, Kurinczuk JJ, Marlow N. Prognostic Factors for Poor Cognitive Development in Children Born Very Preterm or With Very Low Birth Weight: A Systematic Review. *JAMA pediatrics*. 2015;169:1162-72.
- [2] Brydges CR, Landes JK, Reid CL, Campbell C, French N, Anderson M. Cognitive outcomes in children and adolescents born very preterm: a meta-analysis. *Dev Med Child Neurol*. 2018;60:452-68.
- [3] Pierrat V, Marchand-Martin L, Marret S, Arnaud C, Benhammou V, Cambonie G, et al. Neurodevelopmental outcomes at age 5 among children born preterm: EPIPAGE-2 cohort study. *Bmj*. 2021;373:n741.
- [4] Nguyen TN, Spencer-Smith M, Zannino D, Burnett A, Scratch SE, Pascoe L, et al. Developmental Trajectory of Language From 2 to 13 Years in Children Born Very Preterm. *Pediatrics*. 2018;141.
- [5] van Noort-van der Spek IL, Franken MC, Weisglas-Kuperus N. Language functions in preterm-born children: a systematic review and meta-analysis. *Pediatrics*. 2012;129:745-54.
- [6] McKean C, Reilly S, Bavin EL, Bretherton L, Cini E, Conway L, et al. Language Outcomes at 7 Years: Early Predictors and Co-Occurring Difficulties. *Pediatrics*. 2017;139.
- [7] Law J, Rush R, Schoon I, Parsons S. Modeling developmental language difficulties from school entry into adulthood: literacy, mental health, and employment outcomes. *J Speech Lang Hear Res*. 2009;52:1401-16.
- [8] Johnson CJ, Beitchman JH, Brownlie EB. Twenty-year follow-up of children with and without speech-language impairments: family, educational, occupational, and quality of life outcomes. *Am J Speech Lang Pathol*. 2010;19:51-65.
- [9] Spittle A, Orton J, Anderson PJ, Boyd R, Doyle LW. Early developmental intervention programmes provided post hospital discharge to prevent motor and cognitive impairment in preterm infants. *Cochrane Database Syst Rev*. 2015:CD005495.
- [10] Arriaga RI, Fenson L, Cronan T, Pethick SJ. Scores on the MacArthur Communicative Development Inventory of children from low and middle-income families. *Applied Psycholinguistics*. 1998;19:209-23.
- [11] Morgan PL, Farkas G, Hillemeier MM, Hammer CS, Maczuga S. 24-Month-Old Children With Larger Oral Vocabularies Display Greater Academic and Behavioral Functioning at Kindergarten Entry. *Child Dev*. 2015;86:1351-70.
- [12] Weisleder A, Fernald A. Talking to children matters: early language experience strengthens processing and builds vocabulary. *Psychological science*. 2013;24:2143-52.
- [13] Tomblin JB, Oleson JJ, Ambrose SE, Walker E, Moeller MP. The influence of hearing aids on the speech and language development of children with hearing loss. *JAMA Otolaryngol Head Neck Surg*. 2014;140:403-9.
- [14] Twilhaar ES, Wade RM, de Kieviet JF, van Goudoever JB, van Elburg RM, Oosterlaan J. Cognitive Outcomes of Children Born Extremely or Very Preterm Since the 1990s and Associated Risk Factors: A Meta-analysis and Meta-regression. *JAMA pediatrics*. 2018;172:361-7.
- [15] Parikh NA, Sharma P, He L, Li H, Altaye M, Priyanka Illapani VS, et al. Perinatal Risk and Protective Factors in the Development of Diffuse White Matter Abnormality on Term-Equivalent Age Magnetic Resonance Imaging in Infants Born Very Preterm. *The Journal of pediatrics*. 2021;233:58-65 e3.

CORPUS CALLOSUM ABNORMALITIES AND LANGUAGE IN PRETERM

- [16] Synnes A, Luu TM, Moddemann D, Church P, Lee D, Vincer M, et al. Determinants of developmental outcomes in a very preterm Canadian cohort. *Archives of disease in childhood Fetal and neonatal edition*. 2017;102:F235-F4.
- [17] Parikh MN, Chen M, Braimah A, Kline J, McNally K, Logan JW, et al. Diffusion MRI Microstructural Abnormalities at Term-Equivalent Age Are Associated with Neurodevelopmental Outcomes at 3 Years of Age in Very Preterm Infants. *AJNR American journal of neuroradiology*. 2021;42:1535-42.
- [18] Ullman H, Spencer-Smith M, Thompson DK, Doyle LW, Inder TE, Anderson PJ, et al. Neonatal MRI is associated with future cognition and academic achievement in preterm children. *Brain*. 2015;138:3251-62.
- [19] Nguyen TN, Spencer-Smith M, Pascoe L, Treyvaud K, Lee KJ, Thompson DK, et al. Language Skills in Children Born Preterm (<30 Wks' Gestation) Throughout Childhood: Associations With Biological and Socioenvironmental Factors. *J Dev Behav Pediatr*. 2019;40:735-42.
- [20] Meoded A, Orman G, Huisman T. Diffusion Weighted and Diffusion Tensor MRI in Pediatric Neuroimaging Including Connectomics: Principles and Applications. *Semin Pediatr Neurol*. 2020;33:100797.
- [21] Dibble M, Ang JZ, Mariga L, Molloy EJ, Bokde ALW. Diffusion Tensor Imaging in Very Preterm, Moderate-Late Preterm and Term-Born Neonates: A Systematic Review. *The Journal of pediatrics*. 2021;232:48-58 e3.
- [22] Stipdonk LW, Franken MJP, Dudink J. Language outcome related to brain structures in school-aged preterm children: A systematic review. *PloS one*. 2018;13:e0196607.
- [23] Pogribna U, Burson K, Lasky RE, Narayana PA, Evans PW, Parikh NA. Role of diffusion tensor imaging as an independent predictor of cognitive and language development in extremely low-birth-weight infants. *AJNR American journal of neuroradiology*. 2014;35:790-6.
- [24] Bugada MC, Kline JE, Parikh NA. Microstructural Measures of the Inferior Longitudinal Fasciculus Predict Later Cognitive and Language Development in Infants Born With Extremely Low Birth Weight. *Journal of child neurology*. 2021;36:981-9.
- [25] Barnett ML, Tusor N, Ball G, Chew A, Falconer S, Aljabar P, et al. Exploring the multiple-hit hypothesis of preterm white matter damage using diffusion MRI. *Neuroimage Clin*. 2018;17:596-606.
- [26] Thompson DK, Inder TE, Faggian N, Warfield SK, Anderson PJ, Doyle LW, et al. Corpus callosum alterations in very preterm infants: perinatal correlates and 2 year neurodevelopmental outcomes. *Neuroimage*. 2012;59:3571-81.
- [27] Wasserthal J, Neher P, Maier-Hein KH. TractSeg - Fast and accurate white matter tract segmentation. *Neuroimage*. 2018;183:239-53.
- [28] Siffredi V, Liverani MC, Van De Ville D, Freitas LGA, Borradori Tolsa C, Huppi PS, et al. Corpus callosum structural characteristics in very preterm children and adolescents: Developmental trajectory and relationship to cognitive functioning. *Dev Cogn Neurosci*. 2023;60:101211.
- [29] Tallus J, Mohammadian M, Kurki T, Roine T, Posti JP, Tenovuo O. A comparison of diffusion tensor imaging tractography and constrained spherical deconvolution with automatic segmentation in traumatic brain injury. *Neuroimage Clin*. 2023;37:103284.
- [30] Shams B, Reisch K, Vajkoczy P, Lippert C, Picht T, Fekonja LS. Improved prediction of glioma-related aphasia by diffusion MRI metrics, machine learning, and automated fiber bundle segmentation. *Hum Brain Mapp*. 2023.

CORPUS CALLOSUM ABNORMALITIES AND LANGUAGE IN PRETERM

- [31] Jensen EA, Dysart K, Gantz MG, McDonald S, Bamat NA, Keszler M, et al. The Diagnosis of Bronchopulmonary Dysplasia in Very Preterm Infants. An Evidence-based Approach. *Am J Respir Crit Care Med*. 2019;200:751-9.
- [32] Roberts G, Howard K, Spittle AJ, Brown NC, Anderson PJ, Doyle LW. Rates of early intervention services in very preterm children with developmental disabilities at age 2 years. *Journal of paediatrics and child health*. 2008;44:276-80.
- [33] Tamm L, Patel M, Peugh J, Kline-Fath BM, Parikh NA, Cincinnati Infant Neurodevelopment Early Prediction Study G. Early brain abnormalities in infants born very preterm predict under-reactive temperament. *Early human development*. 2020;144:104985.
- [34] Bastiani M, Cottaar M, Fitzgibbon SP, Suri S, Alfaro-Almagro F, Sotiropoulos SN, et al. Automated quality control for within and between studies diffusion MRI data using a non-parametric framework for movement and distortion correction. *Neuroimage*. 2019;184:801-12.
- [35] Kline JE, Yuan W, Harpster K, Altaye M, Parikh NA. Association between brain structural network efficiency at term-equivalent age and early development of cerebral palsy in very preterm infants. *Neuroimage*. 2021;245:118688.
- [36] Kidokoro H, Neil JJ, Inder TE. New MR imaging assessment tool to define brain abnormalities in very preterm infants at term. *AJNR American journal of neuroradiology*. 2013;34:2208-14.
- [37] Jain VG, Kline JE, He L, Kline-Fath BM, Altaye M, Muglia LJ, et al. Acute histologic chorioamnionitis independently and directly increases the risk for brain abnormalities seen on magnetic resonance imaging in very preterm infants. *American journal of obstetrics and gynecology*. 2022.
- [38] Kaur S, Powell S, He L, Pierson CR, Parikh NA. Reliability and repeatability of quantitative tractography methods for mapping structural white matter connectivity in preterm and term infants at term-equivalent age. *PloS one*. 2014;9:e85807.
- [39] Teli R, Hay M, Hershey A, Kumar M, Yin H, Parikh NA. Postnatal Microstructural Developmental Trajectory of Corpus Callosum Subregions and Relationship to Clinical Factors in Very Preterm Infants. *Sci Rep*. 2018;8:7550.
- [40] Bayley N, Infant S. Bayley scales of infant and toddler development—Third Edition: Technical manual. 2006.
- [41] Dubner SE, Rose J, Bruckert L, Feldman HM, Travis KE. Neonatal white matter tract microstructure and 2-year language outcomes after preterm birth. *Neuroimage Clin*. 2020;28:102446.
- [42] Valavani E, Blesa M, Galdi P, Sullivan G, Dean B, Cruickshank H, et al. Language function following preterm birth: prediction using machine learning. *Pediatric research*. 2021.
- [43] Martin M, Smith L, Hofheimer JA, McGowan EC, O'Shea TM, Pastyrnak S, et al. Bronchopulmonary dysplasia and neurobehavioural outcomes at birth and 2 years in infants born before 30 weeks. *Archives of disease in childhood Fetal and neonatal edition*. 2022.
- [44] Bright HR, Babata K, Allred EN, Erdei C, Kuban KCK, Joseph RM, et al. Neurocognitive Outcomes at 10 Years of Age in Extremely Preterm Newborns with Late-Onset Bacteremia. *The Journal of pediatrics*. 2017;187:43-9 e1.
- [45] Lowe JR, Nolen TL, Vohr B, Adams-Chapman I, Duncan AF, Watterberg K. Effect of primary language on developmental testing in children born extremely preterm. *Acta paediatrica*. 2013;102:896-900.

CORPUS CALLOSUM ABNORMALITIES AND LANGUAGE IN PRETERM

- [46] Chan NH, Synnes A, Grunau RE, Colby L, Petrie J, Elfring T, et al. Impact of Differing Language Background Exposures on Bayley-III Language Assessment in a National Cohort of Children Born Less than 29 Weeks' Gestation. *Children (Basel)*. 2022;9.
- [47] Kwon SH, Scheinost D, Vohr B, Lacadie C, Schneider K, Dai F, et al. Functional magnetic resonance connectivity studies in infants born preterm: suggestions of proximate and long-lasting changes in language organization. *Dev Med Child Neurol*. 2016;58 Suppl 4:28-34.
- [48] Kvanta H, Bolk J, Brostrom L, Nosko D, Fernandez de Gamarra-Oca L, Padilla N, et al. Language performance and brain volumes, asymmetry, and cortical thickness in children born extremely preterm. *Pediatric research*. 2023.
- [49] Tomblin JB, Harrison M, Ambrose SE, Walker EA, Oleson JJ, Moeller MP. Language Outcomes in Young Children with Mild to Severe Hearing Loss. *Ear and hearing*. 2015;36 Suppl 1:76S-91S.
- [50] Wong HS, Santhakumaran S, Cowan FM, Modi N, Medicines for Neonates Investigator G. Developmental Assessments in Preterm Children: A Meta-analysis. *Pediatrics*. 2016;138.
- [51] Lowe J, Bann CM, Dempsey AG, Fuller J, Taylor HG, Gustafson KE, et al. Do Bayley-III Composite Scores at 18-22 Months Corrected Age Predict Full-Scale IQ at 6-7 Years in Children Born Extremely Preterm? *The Journal of pediatrics*. 2023;263:113700.
- [52] He L, Li H, Chen M, Wang J, Altaye M, Dillman JR, et al. Deep Multimodal Learning From MRI and Clinical Data for Early Prediction of Neurodevelopmental Deficits in Very Preterm Infants. *Frontiers in neuroscience*. 2021;15:753033.
- [53] Bartha-Doering L, Kollndorfer K, Schwartz E, Fischmeister FPS, Alexopoulos J, Langs G, et al. The role of the corpus callosum in language network connectivity in children. *Developmental science*. 2021;24:e13031.