

## **Factors associated with delayed umbilical cord clamping in public health facilities in Debremarkos town, northwest Ethiopia**

Betel Bogale Workineh<sup>1\*</sup>, Endeshaw Admasu Cherkose<sup>2\*</sup>, Belayneh Ayanaw Kassie<sup>3\*</sup>

<sup>1</sup> Department of Midwifery, School of Nursing and Midwifery, Institutes of Health Sciences, Wollega University, Nekemte, Ethiopia

<sup>2,3</sup> Department of Women's and Family Health, School of Midwifery, College of Medicine and Health Sciences, University of Gondar, Gondar, Ethiopia

### **Email addresses:**

Betel Bogale Workineh: [bethelbogale25@gmail.com](mailto:bethelbogale25@gmail.com) (BBW)

Endeshaw Admasu Cherkose: [endashe99@gmail.com](mailto:endashe99@gmail.com) (EAC)

Belayneh Ayanaw Kassie: [belyuayanaw@gmail.com](mailto:belyuayanaw@gmail.com) (BAK)

**\*Corresponding Author:** Betel Bogale Workineh

## Abstract

**Background:** Delayed cord clamping is a proven intervention to improve both maternal and neonatal health and nutrition. World Health Organization recommends not clamping the umbilical cord before 1 minute of delivery. However, little is known about the timing of umbilical cord clamping, and associated factors in Ethiopia.

**Objective:** To assess the timing of umbilical cord clamping and associated factors among women who gave birth at public health institutions in Debremarkos town, 2022/23.

**Methods:** A facility-based cross-sectional study was conducted from December 01, 2022, to January 30, 2023, among women selected using systematic random sampling. Data was collected through observation and review of medical records using a checklist. The data was entered to Epi-data version 4.6.0.4 and analyzed by STATA 14. Descriptive statistics, bivariable and multivariable logistic regression models were fitted.

**Result:** A study of 388(91.73% response rate) women-newborn pairs found that 206(53.09%) newborns received delayed umbilical cord clamping, with mean and median clamping times of  $67.87 \pm 39.86$  SD and 60s, respectively. In the multivariable analysis, giving birth at the hospital (AOR = 2.47, 95% CI: 1.21-5.03), attended by medical interns (AOR = 2.47, 95% CI: 1.29-5.41), receiving uterotonic for AMTSL at or after 60 seconds of giving birth (AOR = 10.36, 95% CI: 6.02-17.84), Rh-negative mothers (AOR = 3.91, 95% CI: 1.40-10.95), and multiparity (AOR = 0.54, 95% CI: 0.32-0.93) were significantly associated with delayed umbilical cord clamp.

**Conclusion:** In this study, half of the newborns had delayed umbilical cord clamping. However, the result is still unsatisfactory, as the recommendations for delayed cord clamping extend to all newborns who do not require intensive care. Therefore, considering

the proven benefit of delayed umbilical cord clamping, obstetric care providers should adhere to clinical guidelines for this proven intervention.

**Keywords:** Delayed umbilical cord clamp, Umbilical cord, Debremarkos

## Introduction

1

Globally, there were over 1.2 billion cases of iron deficiency anemia (IDA) in 2016 (1). It affects 5% to 25% of preschool children in high-income countries and up to 100% in low-income countries (2). In Ethiopia, its prevalence under-five children is 57%, of which 72% are among infants and young children (3). Also, it has been shown that iron deficiency in infancy contributes to impaired cognitive, motor, and behavioural development that may be irreversible (4,5).

2

3

4

5

6

7

For the first 6 months of life, babies predominantly meet their iron needs from their birth iron endowment, which is influenced by birth weight, gestational age, and the timing of cord clamping (1). There are different policies on the timing of cord clamping; early or immediate cord clamping (ECC) and delayed cord clamping (DCC) (6). The World Health Organization (WHO) defines delayed cord clamping as the clamping of the cord within 1 to 3 minutes of birth (7).

8

9

10

11

12

13

Early cord clamping has been shown to be associated with a double chance of anemia at 3 to 6 months in term infants (8). Likewise, it has been demonstrated that DCC by 60 seconds allows approximately 80 mL of blood to be transferred from the placenta to the newborn and reaches approximately 100 mL by 180 seconds (2). This placental transfusion provides sufficient iron reserves for the first 6–8 months of life, preventing or delaying the development of iron deficiency until other interventions such as the use of iron-fortified foods— can be implemented (7). So, DCC is an evidence-based, low-cost intervention used to prevent IDA and its consequences for children in low- and middle-income countries where its prevalence is high (5).

14

15

16

17

18

19

20

21

22

DCC is also established as a strategy for decreasing rates of intraventricular hemorrhage, 23  
necrotizing enterocolitis, and the requirement of transfusion in term and preterm infants (9). A 24  
50% reduction in intraventricular hemorrhage in all grades has been shown in the review of 10 25  
trials (10). In addition, the Cochrane review reported that delayed cord clamping may reduce 26  
the risk of death before discharge for babies born preterm(11). DCC has been demonstrated to 27  
improve oxygen saturation, facilitate spontaneous breathing, and smoother cardiovascular 28  
transition (12,13). 29

As a result of that evidence multiple professional organizations, including the World Health 30  
Organization (WHO),the American College of Obstetrics and Gynecology (ACOG) and the 31  
National Institutes for Health and Care Excellence, now recommend delayed cord clamping 32  
for infants of all gestational ages (4,7,14). 33

Despite various recommendations, it is observed that there are differences in health care 34  
providers' birth practices and cord clamping times all over the world (15,16). However, in our 35  
country, Ethiopia, there is little information regarding the current timing of cord clamping, and 36  
there is no study evaluating the factors affecting the timing of cord clamping. Therefore, this 37  
study was aimed at assessing the proportion of delayed cord clamping and its associated factors 38  
among women who gave birth at public health institutions. 39

## **Methods** 40

### **Study design, period, area and population** 41

The institution-based cross-sectional study design was conducted among women who gave birth at public health institutions in Debremarkos town, northwest Ethiopia, from December 01, 2022, to January 30, 2023. Debre Markos town is the administrative town of East Gojjam Zone, which is located 276 km away from Bahir Dar, the capital city of Amhara Regional State, and 300 km away from Addis Ababa (capital city of Ethiopia). Currently, it has seven kebeles (the smallest administrative unit in Ethiopia). Debre Markos town has one comprehensive specialized hospital and four public health centers: Debre Markos, Gozamen, Hidasse, and Wuseta health centers, which provide antenatal, labor, and delivery services.

All laboring women in the public health facility in Debremarkos town were the source of the population. All laboring women in public health facilities in Debremarkos town during the study period were the study population. All laboring women who had had alive fetus and gave birth to an alive newborn were included. Women identified as planning to give birth by caesarean section, mothers whose fetus died during intrapartum, second-born twins, mothers whose new-borns had tight nuchal cords (i.e., wrapped tightly around their necks) and cord clamping done prior to delivery, major fetal anomalies or no intent to resuscitate, and those who arrived at the institution in the expulsive period were excluded.

## Sample size & sampling procedures

58

The sample size was determined by using the single population proportion formula through StatCalc Epi Info™ version 7.2.4.0, considering the following assumptions: 95% level of confidence, 5% margin of error, and 50% proportion of delayed cord clamping (p-value) since there is no prior study from Ethiopia. The sample size for the first objective was calculated to be 384, and this gave the largest sample size than those calculated for the associated factors. By considering a 10% nonresponse rate, the final sample size was 423.

Systematic random sampling was used to select the study participants from the five public health facilities in Debremarkos town, namely: Debremarkos Comprehensive and Specialized Hospital, Debremarkos Health Center, Gozamen Health Center, Wuseta Health Center, and Hidassie Health Center. The previous three months' client flow to the five health facilities for delivery service was reviewed from the registration book to estimate the expected number of pregnant women who were admitted for delivery in two months. Therefore, the average number of laboring women admitted to the labor ward in the previous three months was 1061, 60, 54, 46, and 57 for Debremarkos Comprehensive and Specialized Hospital, Debremarkos Health Center, Gozamen Health Center, Wuseta Health Center, and Hidassie Health Center, respectively.

75

The sample size was proportionally allocated to health centers and the hospital based on the 76  
respective health facilities' three-month deliveries before this study. Accordingly, the 77  
proportional allocation to population size for each health facility was 351, 20, 18, 15, and 19 78  
for Debremarkos Comprehensive and Specialized Hospital, Debremarkos Health Center, 79  
Gozamen Health Center, Wuseta Health Center, and Hidassie Health Center, respectively. The 80  
sampling interval (kth unit) was obtained by dividing the total number of pregnant women who 81  
were admitted for delivery in the last two months (calculated to be 852) by the desired sample 82  
size (total number of sample sizes). The first woman was randomly chosen for the survey by 83  
the lottery method, and then data were collected from all women who gave birth throughout 84  
the day and night during the two-month study period. Every kth value (2) according to their 85  
sequence of birth was included in the study. 86

$$K = \frac{N}{n} = \frac{852}{423} = 2 \quad 87$$



## **Operational definitions** 88

### **✚ Delayed cord clamping (DCC) 89**

DCC is referred to as when the interval between the birth of the baby and the time that the first clamp was applied to the umbilical cord is greater than or equal to one minute (7). 90  
91

## **Data collection procedures (instrument, personnel) 92**

For this study, a checklist that was adopted from studies done in different literature was used(12,16,25–29,17–24). Data were collected through participant observation to prevent bias. To complete observations, the data collector used printed checklists to record data and a stopwatch. A stopwatch was used to time the cord clamping interval. The stopwatch was pressed once at the time of the birth and once when the first clamp was applied to the umbilical cord. To prevent bias, we did not define ECC and DCC in the questionnaire but categorized the time points afterward based on the WHO criteria. 93  
94  
95  
96  
97  
98  
99

Data related to the timing of cord clamping and AMTSL was collected by observation; labor-delivery characteristics, obstetric complications, maternal characteristics, and newborn characteristics were collected by medical record review or observation. There were four midwife data collectors in the hospital (2 for day and 2 for night), eight student midwife data collectors at the health center (one for day and one for night in each health center), and two MSc. midwife supervisors were recruited. 100  
101  
102  
103  
104  
105

## **Data quality control** 106

The training was given on how to collect the data, the way to approach it, observation techniques, how to keep the information, and how to better understand the overall process of the data collection procedure before the actual data collection. And before the actual data collection, a pretest was done on 5% of the sample size at Yejube Primary Hospital to check the language clarity and appropriateness of the checklist. During data collection, the checklist was checked for completeness daily by the supervisor and principal investigator.

## **Data processing and analysis** 113

Data were checked, coded, and entered into EPI data version 4.2.0.6; then they were exported to STATA 14 for analysis. The descriptive analysis was done for all variables. Variables were categorized as to whether early cord clamping (ECC) or DCC was used (DCC was defined as  $\geq 60$  s). Finally, binary logistic regression was used to determine factors of receiving DCC.

Bivariable logistic regression was used to identify statistically significant independent variables, and independent variables having a p-value of less than 0.2 were considered candidates for multivariable logistic regression for controlling confounders (29). Model assumption fulfillment and the multicollinearity test were done prior to multivariate logistic regression. The final logistic model's goodness of fit was assessed using the Hosmer-Lemeshow goodness of fit test. In multivariable logistic regression, a p-value of  $<0.05$  with a 95% confidence interval for the odds ratio was used to determine the significance of the association.

## Ethical Consideration

126

Ethical clearance was obtained from the School of Midwifery under the delegation of the University of Gondar institutional review board with ref No. MIDW/30/2015. Official permission was secured from Debremarkos Comprehensive and Specialized Hospital and each health center and submitted to each public health facility department unit focal person.

Healthcare providers were informed that they were going to be observed while attending a birth. Also, they were told that the data would be used only for the study purpose and would not be personally identifiable. In order to maintain the scientific validity of the research, they were not informed that they were specifically observed for their timing of cord clamping. This is supported by the National Research Ethics Review Guideline and the International Ethical Guidelines for Health-related Research Involving Humans. This is due to the fact that this study fulfilled the three conditions set by them to obtain approval for modification or waiver of informed consent. i.e., the data were not personally identifiable; the research has important social value and poses no more than minimal risk to participants (30,31).

Written informed consent, which was prepared in the local language (Amharic), was obtained from the study participants' mothers. The woman consented at the time of admission to the hospital for labor care when the data collector considered it would be appropriate for her to consent at that time (i.e. if she was not unduly distressed and not in a circumstance where the discussion may have impacted on her ability to cope with labor), and participation in the study was offered at this time. If any concern existed about a woman's ability to consent, she was excluded from the study.

## Results 147

### Study population 148

Among the 421 women who were eligible and consented to have information collected from 149  
their births, 388 were included for a measurement of the timing of umbilical cord clamping 150  
(**Fig. 1**). Overall, 377 women delivered singletons, and 11 women delivered twins. Second- 151  
born twins (n = 11) were excluded. Thus, all subsequent outcomes are reported for the 152  
remaining 388 singletons and firstborn twins. 153

### Maternal characteristics 154

The mean maternal age in the year was 27.6 (SD of 5.2). The majority (59.79%) of the women 155  
were multiparous. Rh-negative mothers were 29 (7.47%). Maternal anemia during pregnancy 156  
was found in 5 cases (1.29%), and maternal infection (mothers who were positive for syphilis, 157  
HIV, HBV, or HSV) was found in 16 cases (4.12%) (**Table 1**). 158

**Table 1 Maternal characteristics among women who gave birth in Debremarkos town public health institutions, north Ethiopia, 2022/23, (n=388)** 159  
160

Variables	Frequency	Percentage
<b>Parity</b>		
Primipara	156	40.21
Multipara	232	59.79
<b>Maternal Rh status</b>		
Rh-positive	287	73.97
Rh-negative	29	7.47
Unknown	72	18.56
<b>Antenatal steroid received</b>		
Yes	17	4.38
No	371	95.62

161

Variables	Frequency	Percentage
<b>Maternal infection</b>		
Yes	16	4.12
No	367	94.59
Unknown	5	1.29
<b>The mother received antibiotics before birth</b>		
Yes	50	12.89
No	338	87.11
<b>Maternal anemia during pregnancy</b>		
Yes	5	1.29
No	383	98.71

---

**Key: Maternal infection = Syphilis or HIV or HBV or HSV**

162

163

## Newborn characteristics

164

Newborns of both sexes had an equal proportion, and the average birth weight was 2941.2g (SD of 446.5). Most of them were in cephalic presentation, while 14 (3.62%) were in breech (**Table 2**). Majority (61.76%) of newborns were born at term. (**Fig. 2**)

**Newborn characteristics among women who gave birth in Debremarkos town public health institutions, north Ethiopia, 2022/23, (n=388)**

Variables	Frequency	Percentage
<b>Sex of the baby</b>		
Male	194	50.0
Female	194	50.0
<b>Birth weight</b>		
VLBW (<1500g)	4	1.03
LBW (1500-2500g)	68	17.53
Normal BW ( $\geq$ 2500g)	316	81.44
<b>Gestation</b>		
Singleton	377	97.16
Multiple (first-born twins)	11	2.84

170

Variables	Frequency	Percentage
<b>Presentation at birth</b>		
Cephalic	369	95.10
Breech	14	3.62
Face	5	2.29
<b>Apgar at the first minute score &lt;7</b>		
Yes	83	21.39
No	305	78.61
<b>The newborn needs resuscitation</b>		
Yes	94	24.23
No	294	75.77

---

171

172



## Labor delivery characteristics

173

The majority (82.22%) of women gave birth at the hospital, while the rest gave birth in the four health centers. Spontaneous vaginal deliveries were 324 (83.51%), while 54 (13.92%) were instrumental deliveries. More than half (60.82%) of deliveries occur during the day. Metallic clamp forceps were used as an instrument to clamp the umbilical cord in 235 (60.57%) newborns. And cord milking was done in 130 (33.51%) of births (**Table 3**). Intramuscular oxytocin was used as a prophylactic uterotonic during the third stage of labor in all women. The range of uterotonic administration times was from 9 to 351 seconds.

**Table 3 Labor delivery characteristics among women who gave birth in Debremarkos town public health institutions, north Ethiopia, 2022/23, (n=388)**

181  
182

Variable	Frequency	Percentage
<b>Institution (place of delivery)</b>		
Hospital	319	82.22
Health center	69	17.78
<b>Shift</b>		
Night time	152	39.18
Day time	236	60.82
<b>Mode of delivery</b>		
Spontaneous vaginal delivery	334	86.08
Instrumental delivery	54	13.92

Variable	Frequency	Percentage
<b>Position of the infant immediately after birth</b>		
At the level of perineum	3	0.77
Above the perineum	385	99.23
<b>Uterotonic administration time</b>		
At $\geq$ 60 seconds	167	43.04
At $<$ 60 seconds	221	56.96

183

## Obstetrics complications

184

Regarding obstetric complications, there were 53 (13.66%) induction or augmentation, 15.8 (3.87%) antepartum hemorrhage, 111 (28.61%) MSAF during labor delivery, 4 (1.03%) chorioamnionitis, and 13 (3.35%) preeclampsia or eclampsia. Women who gave birth with an episiotomy and a perineal tear occurring were 10 (2.5%), and 73 (18.81%), respectively (Fig.3).

185  
186  
187  
188  
189

190

## Professional factors

191

Midwives were cord clampers in 324 (83.51%) births (Fig. 4). There was teamwork in 323 (83.25%) deliveries, and the maximum number of HCPs in the team was 4. And there was an HCP dedicated to giving ENC in 328 (84.54%) cases.

192

193

194

.	195
<b>Umbilical cord clamping practice</b>	196
The proportion of mothers who have received a delayed cord clamp ( $\geq 60$ seconds) for their	197
babies was 53.09% (95% CI: 48.09–58.03%). The range of umbilical cord clamping times in	198
this study's data set was 8 seconds to 187 seconds. The mean cord clamp time was 67.85 (SD	199
39.9) seconds ( <b>Fig. 5</b> ). Three of the 11 first-born twins and 5 of the 14 second-born twins had	200
their umbilical cords clamped at or after 60 seconds of birth. Delayed cord clamp was received	201
in 198 (53.66%) cephalic presentations and 4 (28%) breech presentations.	202
	203
<b>Factors associated with the timing of umbilical cord clamp</b>	204
<b>Bivariable analysis</b>	205
Findings from bivariable logistic regression showed that parity, maternal Rh status, gestational	206
age, the need for resuscitation, place of delivery, mode of delivery, uterotonic for AMTSL	207
administration time, cord milking, induction/augmentation, PROM, MSAF during labor	208
delivery, perineal tear, the professional difference of the cord clumper, teamwork, and the	209
presence of personnel dedicated to giving ENC were found to be associated with delayed cord	210
clamp with a p-value of $<0.2$ .	211
	212

<b>Multivariable analysis</b>	213
In multivariable logistic regression parity, maternal Rh status, place of delivery, uterotonic administration time, and a professional difference in cord clamping were significantly associated with delayed cord clamp with a p-value of 0.05.	214 215 216
women who gave birth at the hospital were 2.47 times more likely to receive DCC as compared to those who gave birth in the health centers (AOR = 2.47, 95% CI: 1.21-5.03). likewise, women who were attended by medical interns were 2.47 times more likely to receive DCC as compared to those who were attended by midwives (AOR = 2.47, 95% CI: 1.29-5.41). Similarly, among women to whom uterotonic for AMTSL was administered within greater than 60 seconds of giving birth, the odds of receiving DCC were 10.36 times greater than their counterparts (AOR = 10.36, 95% CI: 6.02-17.84). Rh-negative mothers were 3.91 times more likely to receive DCC than those who were Rh-positive (AOR = 3.91, 95% CI: 1.40-10.95). The odds of receiving DCC for their baby were 46% less likely among multipara women as compared to primipara women (AOR = 0.54, 95% CI: 0.32-0.93) ( <b>Table 4</b> ).	217 218 219 220 221 222 223 224 225 226

**Table 4 Bivariable and Multivariable analysis to identify factors associated with timing of umbilical cord clamping among women who gave birth in Debremarkos town public health institutions, North Ethiopia, 2022/23(n=388)**

227  
228  
229

Variables	Delayed cord clamp		COR	AOR
	Yes	No	95% CI	95% CI
	N= 206/53.09%	N=182/46.91%		
<b>Parity</b>				
Multipara	115/49.57	117/50.43	0.70 (0.47,1.06)	0.54 (0.32-0.93)*
Primipara	91/58.33	65/41.67	1	1
<b>Maternal Rh status</b>				
Negative	21/75.0	7/25.0	2.70 (1.11,6.55)	3.91 (1.40-10.95)*
Unknown	34/46.58	39/53.42	0.79 (0.47,1.31)	0.81 (0.42- 1.55)
Positive	151/52.61	136/47.39	1	1
<b>Gestational Age</b>				
Preterm	17/51.52	16/48.48	1.07 (0.52,2.22)	0.46 (0.16 - 1.28)
Post-term	15/62.50	9/37.50	1.68 (0.71,4.00)	1.44 (0.47- 4.37)
Unknown	59/59.00	41/41.00	1.45 (0.90,2.33)	1.03 (0.55-1.92)
Term	115/49.78	116/50.22	1	1

230

231

Variables	Delayed cord clamp		COR	AOR
	Yes N= 206/53.09%	No N=182/46.91%	95% CI	95% CI
<b>Resuscitation needed</b>				
Yes	55/58.51	39/41.49	1.33 (0.83,2.1)	0.87 (0.46-1.62)
No	151/51.36	143/48.64	1	1
<b>Institution(place of delivery)</b>				
hospital	187/58.62	132/41.38	3.73 (2.10,6.61)	2.47 (1.21-5.03)*
Health center	19/27.54	50/72.46	1	1
<b>Mode of delivery</b>				
Instrumental delivery	34/62.96	20/37.04	1.60 (0.89,2.90)	0.68 (0.30-1.56)
SVD	172/51.50	162/48.50	1	1
<b>Uterotonic administration time for AMTSL</b>				
At $\geq$ 60 seconds	136/81.44	31/18.56	9.46 (5.84,15.33)	10.36 (6.02-17.84)***
At <60 seconds	70/31.67	151/68.33	1	1
<b>PROM</b>				
Yes	33/68.75	15/31.25	2.12 (1.11,4.05)	2.35 (0.97-5.72)
No	173/50.88	167/49.12	1	1

Variables	Delayed cord clamp		COR	AOR
	Yes N= 206/53.09%	No N=182/46.91%	95% CI	95% CI
<b>MSAF</b>				
Yes	72/64.86	39/35.24	1.97 (1.25,3.11)	1.04 (0.57-1.90)
No	134/48.38	143/51.62	1	1
<b>Perineal tear</b>				
Yes	50/68.49	23/31.51	0.80 (0.25,1.34)	1.12 (0.57-2.18)
No	156/49.52	159/50.58	1	1
<b>Attending Professional</b>				
Medical intern	37/71.15	15/28.85	2.40 (1.27,4.56)	2.47 (1.29,5.41)*
Doctors	5/41.67	7/58.33	0.70 (0.22,2.24)	1.40 (0.32,6.02)
Midwives	164/50.62	160/49.38	1	1

**Keys:** 234

AOR=Adjusted odds ratio, COR=crude odds ratio, CI=Confidence interval, 1=reference, 235

\*p<0.05, \*\*p<0.01 \*\*\*p<0.001 236

MSAF=meconium-stained amniotic fluid 237

PROM=premature rupture of membrane 238

SVD= spontaneous vaginal delivery 239

## Discussion

240

In this study, the percentage of delayed cord clamps (DCC) was found to be 53.09% (95% CI: 48.09-58.03%). This finding is comparable to the findings of studies conducted in Nepal (48%) (20) and Brazil (53.7%) (29). It is also in accordance with a study conducted in five public hospitals in Bangladesh, Nepal, and Tanzania, which shows that 47.3-73% of the newborns received DCC (32).

241

242

243

244

245

On the other hand, this finding is higher as compared to the study conducted in California (23%) (18). The disparity might be because the newborns in this study included all gestational ages greater than 28 weeks and also healthy newborns, whereas the study done in California included preterm and acutely ill infants admitted to neonatal intensive care units (18).

246

247

248

249

Regarding factors associated with delayed cord clamping, the place of delivery was found to be an important factor associated with DCC. In this study, women who gave birth at the hospital were 2.47 times more likely to receive DCC as compared to those who gave birth in the health centers (AOR = 2.47, 95% CI: 1.21-5.03). The ability to provide delayed umbilical cord clamping may vary among institutions and settings; decisions in those circumstances are best made by the team caring for the mother-infant pair (4). This can be explained by the fact that there are more care providers with higher education in hospitals than in health centers. As it is a teaching hospital, the hospital staff has more opportunities to be exposed to updates. Teaching hospitals are often synonymous with academic medical centers, which are expected to provide evidence-based care.

250

251

252

253

254

255

256

257

258

259

260



Regarding professional factors, professional differences were found to be significantly associated with DCC. In this study, the odds of DCC were 2.47 times higher among women who were attended by medical interns as compared to those who were attended by midwives (AOR = 2.47, 95% CI: 1.29-5.41). This can be explained by the fact that medical interns are expected to provide evidence-based care because they are actual students and have more access to updated and evidence-based information.

Prophylactic uterotonic administration time during the third stage of labor management was found to be another important factor significantly associated with DCC. Among women to whom uterotonic was administered at or after 60 seconds of giving birth, the odds of receiving DCC were 10.36 times greater than their counterparts (AOR = 10.36, 95% CI: 6.02-17.84). The reason may be related to the evidence that uterotonic drugs alter placental transfusion speed and duration (33). Thus, a delay in administering uterotonic during delayed cord clamping in this study might be necessary to avoid this uterotonic effect.

Maternal Rh status was found to be another factor associated with DCC. The likelihood that Rh-negative mothers would receive DCC was 3.91 times greater than that of Rh-positive mothers (AOR = 3.91, 95% CI: 1.40-10.95). This result does not fit the theory that DCC is not the usual norm due to fear of the potential risk of sensitization, hyper-bilirubinemia and exacerbation of anemia in these cases. The finding could be explained by a bias in estimation related to overestimations of short duration and underestimations of longer duration (34,35).

Furthermore, the odds of receiving DCC for their baby were 47% less likely among 281  
multiparous women as compared to primiparous mothers (AOR = 0.54, 95% CI: 0.32-0.93). 282  
This could be explained by the fact that multiparity increases the incidence of medical and 283  
obstetric complications, so earlier clamping of the umbilical cord may be required to manage 284  
complications, i.e., to provide essential care like newborn resuscitation. Supporting this, in this 285  
study, DCC was less likely in newborns who needed resuscitation. However, this result was 286  
not statistically significant. This is also supported by another result of this study. i.e., 287  
resuscitation was needed in 38.69% of babies born to mothers with obstetric complications, 288  
whereas it was only 8.99% among babies born to mothers without obstetric complications. 289  
There are some limitations to this study that need to be addressed. Firstly, the healthcare 290  
providers did not know specifically that they were observed for their cord clamping practice, 291  
even though they were aware that they were observed. Therefore, the Hawthorne effect was 292  
reduced using participatory observation. Secondly, the data in this study cannot identify the 293  
reasons why delayed cord clamping was undertaken or not. And these data lack specific 294  
healthcare provider-related factors. 295

## **Conclusion** 296

Half of the newborns got delayed umbilical cord clamping, however the result is still 297  
unsatisfactory since the recommendations for DCC extended to all newborns, including those 298  
who do not require intensive care. According to this observational study, delivery attended by 299  
a medical intern, administering uterotonic for AMTSL at greater than 60 seconds of delivery, 300  
maternal Rh-negative status, and delivery at the hospital were found to contribute to delayed 301  
cord clamp. Whereas, multiparity was negatively associated with delayed cord clamping. 302

Health and educational bureaus should better design programs and strategies to increase 303  
delayed cord clamping practice. Healthcare providers should better consider the quantifiable 304  
benefits of delayed cord clamping and advocate for major adherence to DCC guidelines. 305  
Moreover, qualitative studies are needed to recognize potential barriers to the use of DCC and 306  
identify factors that would help facilitate a change in clinical practice and to explore the 307  
experience and perception of healthcare providers about the timing of cord clamping. 308

## **Abbreviations** 309

AMTSL=Active Management of Third Stage of Labor, AOR=Adjusted Odds Ratio, 310  
CI=Confidence Interval, COR=Crude Odds Ratio, DCC=Delayed Cord Clamping, ECC=Early 311  
Cord Clamping, ENC=Essential Newborn Care, IDA=Iron Deficiency Anemia, 312  
NICU=Neonatal Intensive Care Unit, WHO=World Health Organization 313

## **Consent for publication** 314

Not applicable. 315

<b>Availability of data and materials'</b>	316
Datasets are available from the corresponding author upon reasonable request.	317
<b>Competing interests</b>	318
The authors have declared there is no competing interest.	319
<b>Funding</b>	320
No specific fund was secured for this study	321
<b>Authors' contribution</b>	322
BBW, BAK and EAC developed the concept of the research, acquired the research proposal,	323
and facilitated data collection. BBW carried out statistical analysis. BBW, BAK and EAC draft	324
the manuscript. All authors critically reviewed, revised and approved the manuscript.	325
<b>Acknowledgment</b>	326
We are grateful to the Debremarkos Specialized and Comprehensive Hospital, the four health	327
centers, and the heads of the respective MCH units and staff for their cooperation. Our deepest	328
gratitude also goes to data collectors, supervisors, and study participants for their involvement	329
in the data collection process.	330

## References

- 331
1. Pasricha SR, Tye-Din J, Muckenthaler MU, Swinkels DW. Iron deficiency. *Lancet* 332  
[Internet]. 2021;397(10270):233–48. Available from: [http://dx.doi.org/10.1016/S0140-](http://dx.doi.org/10.1016/S0140-333)  
6736(20)32594-0 334
  2. Bayer K. Delayed umbilical cord clamping in the 21st century: Indications for practice. 335  
*Adv Neonatal Care*. 2016;16(1):68–73. 336
  3. Molla A, Egata G, Mesfin F, Arega M, Getacher L. Prevalence of Anemia and 337  
Associated Factors among Infants and Young Children Aged 6-23 Months in Debre Berhan 338  
Town, North Shewa, Ethiopia. *J Nutr Metab*. 2020;2020. 339
  4. ACOG. Delayed umbilical cord clamping after birth. Committee Opinion No. 684. 340  
American College of Obstetricians and Gynecologists. *Obs Gynecol*. 2017;129(684):e5-10. 341
  5. Lozoff B, Beard J, Connor J, Felt B, Georgieff M, Schallert T. Long-lasting neural and 342  
behavioral effects of iron deficiency in infancy. *Nutr Rev*. 2006;64(5 SUPPL. 1). 343
  6. Ibrahim NO, Sukkarieh HH, Bustami RT, Alshammari EA, Alasmari LY, Al-Kadria 344  
HM. Current umbilical cord clamping practices and attitudes of obstetricians and midwives 345  
toward delayed cord clamping in Saudi Arabia. *Ann Saudi Med*. 2017;37(3):216–24. 346
  7. World Health Organization (WHO). Guideline: Delayed umbilical cord and nutrition 347  
outcomes maternal and infant health clamping for improved WHO. *World Heal Organ*. 2014; 348
  8. Leslie MS. Perspectives on Implementing Delayed Cord Clamping. *Nurs Womens* 349  
*Health*. 2015;19(2):164–76. 350

9. Qian Y, Ying X, Wang P, Lu Z, Hua Y. Early versus delayed umbilical cord clamping on maternal and neonatal outcomes. *Arch Gynecol Obstet* [Internet]. 2019;300(3):531–43. Available from: <https://doi.org/10.1007/s00404-019-05215-8>
10. Raju TNK. Timing of umbilical cord clamping after birth for optimizing placental transfusion. *Curr Opin Pediatr*. 2013;25(2):180–7.
11. Rabe H, Gyte GML, Díaz-Rossello JL, Duley L. Effect of timing of umbilical cord clamping and other strategies to influence placental transfusion at preterm birth on maternal and infant outcomes. *Cochrane Database Syst Rev*. 2019;2019(9).
12. Bryce E, Mullany LC, Khattry SK, Tielsch JM, Leclercq SC, Katz J. Coverage of the WHO ’ s four essential elements of newborn care and their association with neonatal survival in southern Nepal. *BMC Pregnancy Childbirth*. 2020;6:1–9.
13. Village EG. Neonatal Outcome Following Cord Clamping After Onset of Spontaneous Respiration. *Pediatrics*. 2014;134:265–73.
14. NICE. Guideline:Intrapartum care for healthy women and babies. Nice. 2021;(December 2014).
15. Aydoğan Kirmizi D, Başer E, Demir Çaltekin M, Onat T, Kara M, Yalvac ES. Behaviors and Attitudes of Obstetricians in Turkey Related to Cord Clamping, Cord Milking, and Skin-To-Skin Contact. *Cureus*. 2021;13(7):1–8.
16. Singh N, Brammer D. Delayed cord clamping in infants born less than 35 weeks: A retrospective study. *J Neonatal Perinatal Med*. 2020;1–5.
17. Boere I, Smit M, Roest AAW, Lopriore E, Van Lith JMM, Te Pas AB. Current practice of cord clamping in the Netherlands: A questionnaire study. *Neonatology*. 2015;107(1):50–5.

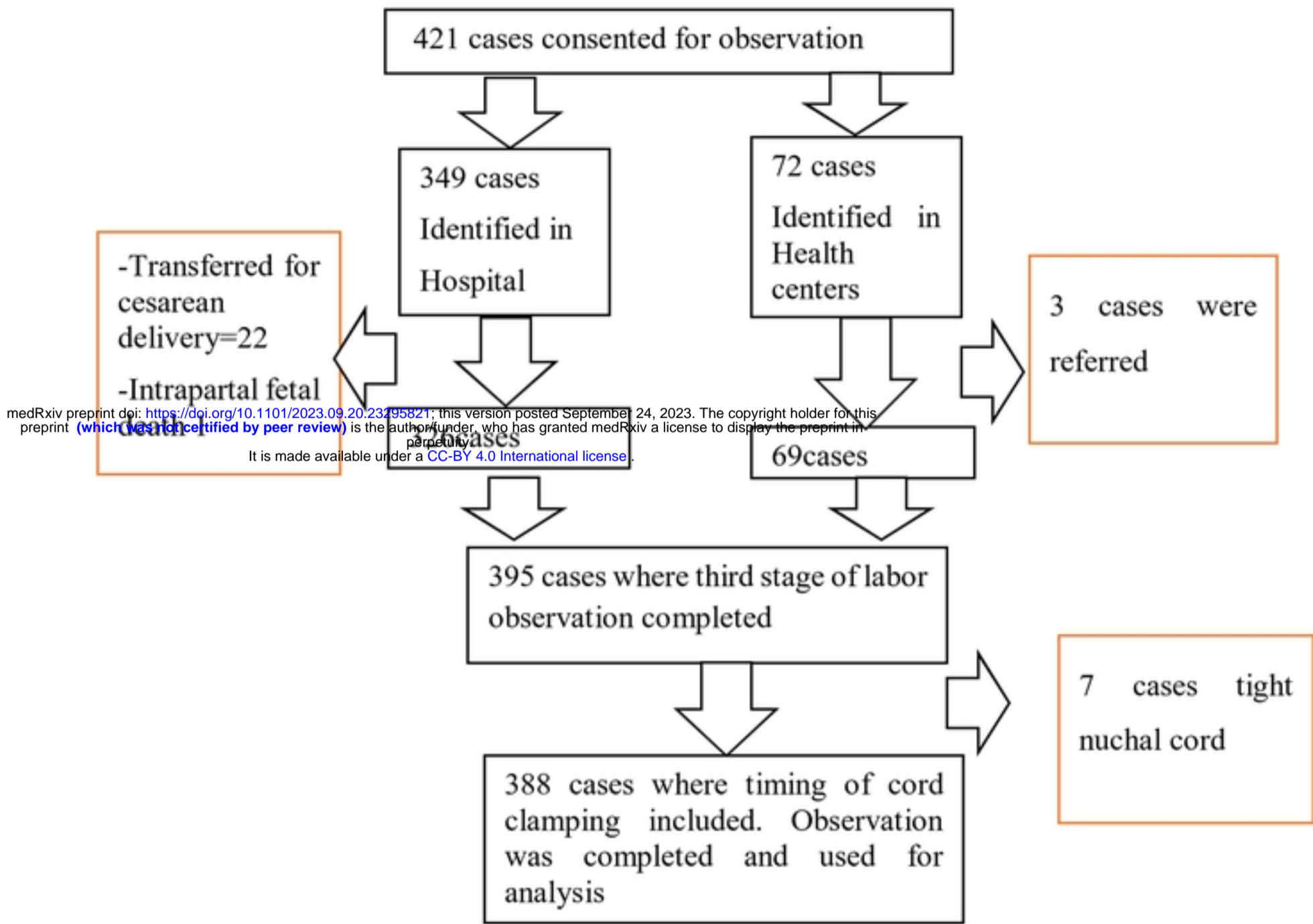
18. Tran CL, Parucha JM, Jegatheesan P, Lee HC. Delayed Cord Clamping and Umbilical Cord Milking among Infants in California Neonatal Intensive Care Units. *Am J Perinatol.* 2020;37(2):151–7.
19. Devin J, Larkin P. Delayed cord clamping in term neonates: Attitudes and practices of midwives in Irish hospitals. *Int J Childbirth.* 2018;8(1):4–17.
20. Nelin V, Kc A, Andersson O, Rana N, Målqvist M. Factors associated with timing of umbilical cord clamping in tertiary hospital of Nepal. *BMC Res Notes [Internet].* 2018;11(1):1–6. Available from: <https://doi.org/10.1186/s13104-018-3198-8>
21. Leslie MS, Erickson-Owens D, Park J. Umbilical Cord Practices of Members of the American College of Nurse-Midwives. *J Midwifery Women’s Heal.* 2020;65(4):520–8.
22. Ortiz-Esquinas I, Gómez-Salgado J, Pascual-Pedreño AI, Rodríguez-Almagro J, Ballesta-Castillejos A, Hernández-Martínez A. Variability and associated factors in the management of cord clamping and the milking practice among Spanish obstetric professionals. *Sci Rep.* 2020;10(1):1738.
23. Grobman WA, Yee LM. Evaluation of Introduction of a Delayed Cord Clamping Protocol for Premature Infants in a High-Volume Maternity Center. *HHS Public Access.* 2018;129(5):835–43.
24. Braddick L, Tuckey V, Abbas Z, Lissauer D, Ismail K, Manaseki-holland S, et al. International Journal of Gynecology and Obstetrics CLINICAL ARTICLE A mixed-methods study of barriers and facilitators to the implementation of postpartum hemorrhage guidelines in Uganda. *Int J Gynecol Obstet.* 2016;132:89–93.

25.	Sacks E, Mehrtash H, Bohren M, Balde MD, Vogel JP, Adu-bonsaffoh K, et al. Articles	394
	The first 2 h after birth : prevalence and factors associated with neonatal care practices from a	395
	multicountry , facility-based , observational study. Lancet Glob Heal. 2021;9:72–80.	396
26.	Pichler G, Cheung PY, Binder C, O’Reilly M, Schwabegger B, Aziz K, et al. Time	397
	course study of blood pressure in term and preterm infants immediately after birth. PLoS One.	398
	2014;9(12):114504.	399
27.	Grobman WA, Yee LM. Evaluation of Introduction of a Delayed Cord Clamping	400
	Protocol for Premature Infants in a High-Volume Maternity Center. PMC. 2018;129(5):835–	401
	43.	402
28.	Hewitt T, Baddock S, Patterson J. Timing of cord clamping : An observational study	403
	of cord clamping practice in a maternity hospital in Aotearoa New Zealand. New Zeal Coll	404
	Midwives Journa. 2022;(58):19–26.	405
29.	Strada JKR, Vieira LB, Gouveia HG, Betti T, Wegner W, Pedron CD. Factors	406
	associated with umbilical cord clamping in term newborns *. Rev Esc Enferm USP.	407
	2022;56:1–8.	408
30.	(WHO) C for IO of MS (CIOMS) in collaboration with the WHO. International Ethical	409
	Guidelines for Health-related Research Involving Humans [Internet]. Biomedical Research.	410
	2016. 1921–1931 p. Available from: <a href="http://www.sciencedirect.com/science/article/B6VC6-45F5X02-9C/2/e44bc37a6e392634b1cf436105978f01">http://www.sciencedirect.com/science/article/B6VC6-</a>	411
	<a href="http://www.sciencedirect.com/science/article/B6VC6-45F5X02-9C/2/e44bc37a6e392634b1cf436105978f01">45F5X02-9C/2/e44bc37a6e392634b1cf436105978f01</a>	412
31.	Technology FMoSa. National Research Ethics Review Guideline. 2015. p. 56.	413

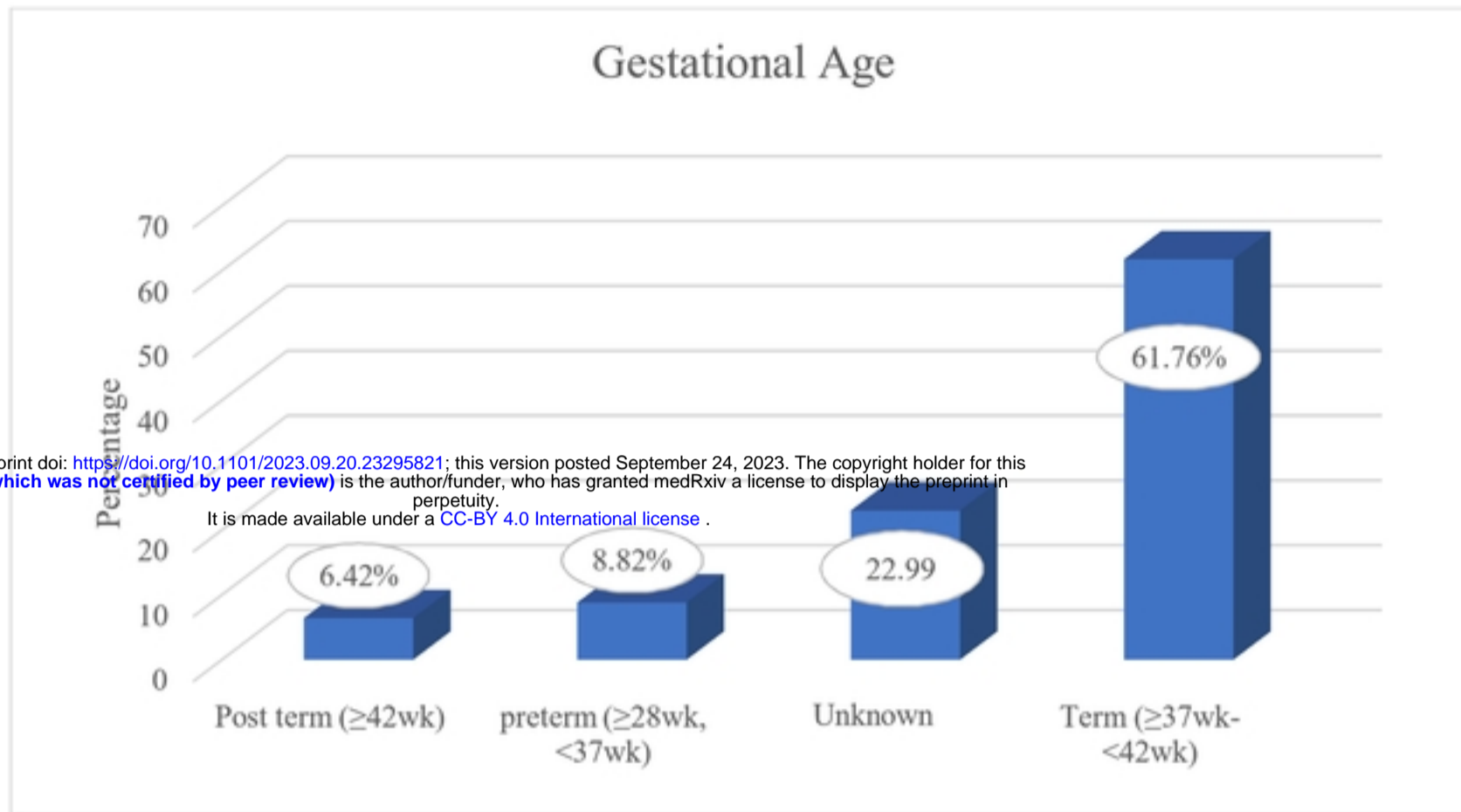


32. Tahsina T, Hossain AT, Ruysen H, Rahman AE, Day LT, Peven K, et al. Immediate newborn care and validation study. *BMC Pregnancy Childbirth* [Internet]. 2020;21(Suppl 1):1–17. Available from: <http://dx.doi.org/10.1186/s12884-020-03421-w>
33. Impact S, No P. Scientific Impact Paper No. 14: Clamping of the Umbilical Cord and Placental Transfusion. *Obstet Gynaecol*. 2015;17(3):216–216.
34. Roy MM, Christenfeld NJS, Jones M. Actors, observers, and the estimation of task duration. *Q J Exp Psychol*. 2013;66(1):121–37.
35. Lejeune H, Wearden JH. Vierordt’s the Experimental Study of the Time Sense (1868) and its legacy. *Eur J Cogn Psychol*. 2009;21(6):941–60.

**Fig 1. Flow chart of study participants included in this study**



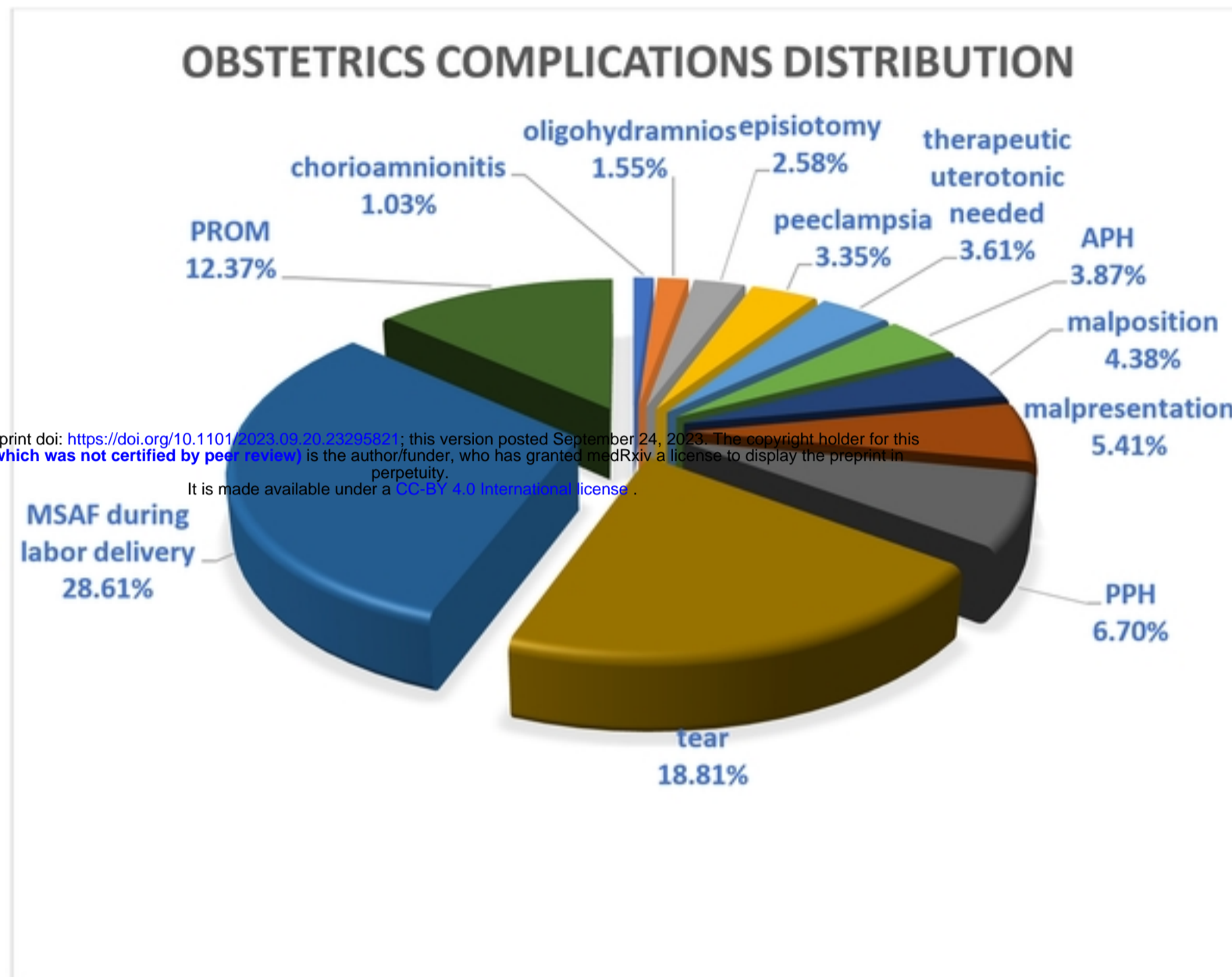
**Fig 2. Gestational age among women who gave birth in Debremarkos town public health institutions, north Ethiopia, 2022/23**



medRxiv preprint doi: <https://doi.org/10.1101/2023.09.20.23295821>; this version posted September 24, 2023. The copyright holder for this preprint (which was not certified by peer review) is the author/funder, who has granted medRxiv a license to display the preprint in perpetuity.

It is made available under a [CC-BY 4.0 International license](https://creativecommons.org/licenses/by/4.0/).

**Fig 3. Distribution of Obstetrics complication among women who gave birth in Debremarkos town public health institutions, north Ethiopia, 2022/23, (n=388)**



medRxiv preprint doi: <https://doi.org/10.1101/2023.09.20.23295821>; this version posted September 24, 2023. The copyright holder for this preprint (which was not certified by peer review) is the author/funder, who has granted medRxiv a license to display the preprint in perpetuity. It is made available under a [CC-BY 4.0 International license](https://creativecommons.org/licenses/by/4.0/).

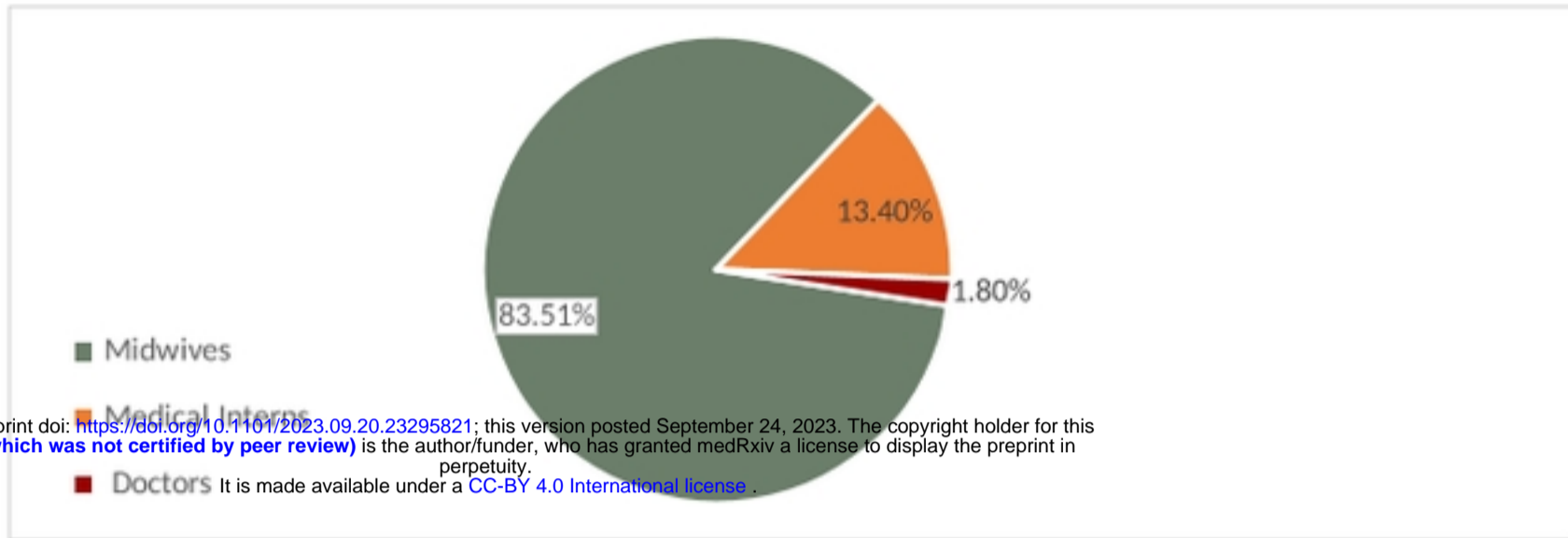
**Keys:** MSAF= Meconium-stained amniotic fluid

PPH= Postpartum Hemorrhage

PROM= Premature Rupture of Membrane

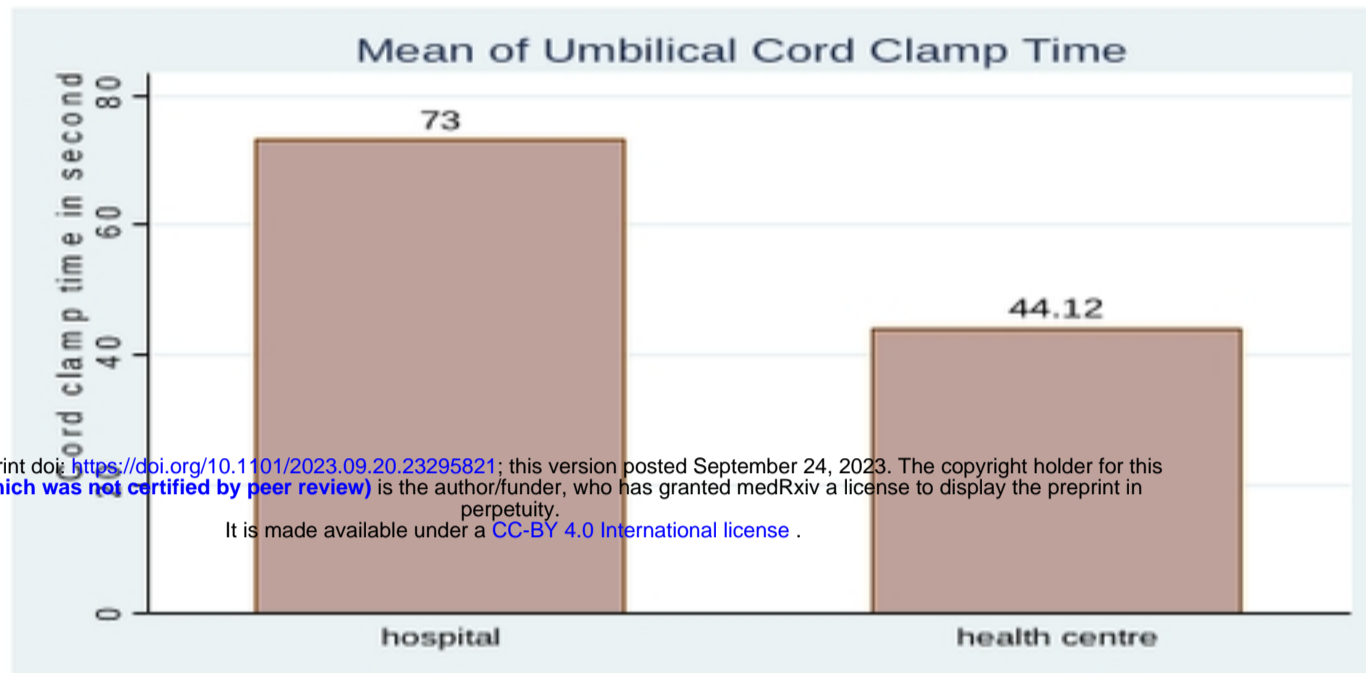
APH= Antepartum Hemorrhage

**Fig 4. Professional difference of cord clampers in Debremarkos town public health institutions, north Ethiopia, 2022/23, (n=388)**



medRxiv preprint doi: <https://doi.org/10.1101/2023.09.20.23295821>; this version posted September 24, 2023. The copyright holder for this preprint (which was not certified by peer review) is the author/funder, who has granted medRxiv a license to display the preprint in perpetuity. It is made available under a [CC-BY 4.0 International license](https://creativecommons.org/licenses/by/4.0/).

**Fig 5. The mean cord clamp time in Debremarkos town public health institutions, north Ethiopia, 2022/23**



medRxiv preprint doi: <https://doi.org/10.1101/2023.09.20.23295821>; this version posted September 24, 2023. The copyright holder for this preprint (which was not certified by peer review) is the author/funder, who has granted medRxiv a license to display the preprint in perpetuity. It is made available under a [CC-BY 4.0 International license](https://creativecommons.org/licenses/by/4.0/).