

Healthcare system barriers impacting the care of Canadians with myalgic encephalomyelitis: a scoping review

Said Hussein¹; Lauren Eiriksson²; Maureen MacQuarrie LLB³; Scot Merriam BASc³; Maria Dalton MSc¹; Eleanor Stein MD^{1*}; Rosie Twomey PhD^{2*}

¹Cumming School of Medicine, University of Calgary, Calgary, AB; ²Faculty of Kinesiology, University of Calgary, Calgary, AB; ³Patient Partners. *Co-senior author

Corresponding author: Rosie Twomey PhD

Rosemary.Twomey@ucalgary.ca

Online supplementary material: <https://osf.io/yctx3/>

Manuscript word count: 4449/4500

Reference number: 50/50

Abstract

Background: Myalgic encephalomyelitis (ME, also known as chronic fatigue syndrome or ME/CFS) is a debilitating, complex, multi-system illness. Developing a comprehensive understanding of the multiple and interconnected barriers to optimal care will help advance strategies and care models to improve quality of life for people living with ME in Canada.

Objectives: To: (1) identify and systematically map the available evidence; (2) investigate the design and conduct of research; (3) identify and categorize key characteristics; and (4) identify and analyze knowledge gaps related to healthcare system barriers for people living with ME in Canada.

Methods: The protocol was preregistered in July 2022. Peer-reviewed and grey literature was searched, and patient partners retrieved additional records. Eligible records were Canadian, included people with ME/CFS and included data or synthesis relevant to healthcare system barriers.

Results: In total, 1821 records were identified, 406 were reviewed in full, and 21 were included. Healthcare system barriers arose from an underlying lack of consensus and research on ME and ME care; the impact of long-standing stigma, disbelief, and sexism; inadequate or inconsistent healthcare provider education and training on ME; and the heterogeneity of care coordinated by family physicians.

Conclusions: People living with ME in Canada face significant barriers to care, though this has received relatively limited attention. This synthesis, which points to several areas for future research, can be used as a starting point for researchers, healthcare providers and decision-makers who are new to the area or encountering ME more frequently due to the COVID-19 pandemic.

Funding: This study was funded by the University of Calgary (VPR Catalyst Grant) and the Interdisciplinary Canadian Collaborative ME (ICanCME) Research Network (New Frontier ME Discovery Grant).

Key words: Chronic fatigue syndrome; ME/CFS; Post-viral illness; Health services; Health systems; Care models.

Background

Myalgic encephalomyelitis (ME, also known as chronic fatigue syndrome or ME/CFS) is a debilitating, complex, multi-system illness. ME is characterized by a substantial reduction or impairment in function accompanied by profound fatigue, post-exertional malaise, unrefreshing sleep, and cognitive impairment or orthostatic intolerance [1]. The 2019 Canadian Community Health Survey (CCHS) estimates that nearly half a million people in Canada live with ME [2]. The most common onset event for ME is an acute infection, and there are known links between post-COVID-19 condition (long COVID) and ME [3]. Therefore, the current burden of ME in Canada is significantly underestimated. The pathogenesis of ME is not fully understood, and although research on the biological underpinnings is rapidly progressing, there is currently no definitive biomarker and no known cure.

Globally, ME has a long history of controversy and low credibility [4], and patients are still impacted by stigma and disbelief within the healthcare system [5]. People with ME would benefit from timely screening and diagnosis and access to expert and multidisciplinary care [1]. Yet, negative interactions with the healthcare system and significant unmet healthcare needs seem to be the norm. People with ME have described healthcare system barriers – an obstacle that prevents or restricts the use of health services by making it more difficult for individuals to access or benefit from care. The Canadian healthcare system is unique and diverse, but to our knowledge, Canadian health services research on ME is sparse. Combined with the low level of trust given to patient testimonials, this may explain why Canadian decision-makers appear to have underrecognized the legitimacy and severity of the unmet needs of people living with ME.

Developing a comprehensive understanding of the multiple and interconnected healthcare system barriers will help advance strategies and care models to improve the quality of life of people living with ME. Our approach to developing this understanding involved a synthesis of existing literature and interviews with healthcare professionals who provide care for people with ME or have lived experience of ME. This article represents one element of this methodological triangulation, and the second is reported in a companion paper [6]. A scoping review was indicated because the concept of healthcare system barriers is broad; it was unclear what information was available across peer-reviewed and grey literature, and this method of knowledge synthesis is used to identify and map the available evidence. The objectives of this scoping review were to: (1) identify and systematically map the available evidence on healthcare system barriers for Canadians with ME; (2) investigate the design and conduct of research on this topic; (3) identify and categorize key characteristics or factors related to healthcare system barriers for Canadians with ME; and (4) identify and analyze knowledge gaps.

Methods

The Preferred Reporting Items for Systematic reviews and Meta-Analyses extension for Scoping Reviews was used to report this review [7].

Protocol and Registration

The review protocol was prospectively registered on the Open Science Framework on July 11, 2022 (<https://osf.io/fb2yk/>), and no significant deviations occurred.

Eligibility Criteria

Three concepts informed our eligibility criteria and search strategy: (1) ME (including ME/CFS or CFS, which are also used in the literature); (2) Canadian context ("Canadian" is used throughout to refer to people residing in the land now known as Canada, with an acknowledgement that much of this land is unceded territory); and (3) healthcare system barriers.

Inclusion Criteria:

- The participants, population, or context explicitly included ME. Patients were diagnosed using any recognized diagnostic criteria, or patients self-reported their diagnosis. The sample could include multiple conditions, but a proportion must have ME.
- The participants, population, or context were Canadian. In the case of expert reviews/consensus documents that were not otherwise explicitly about Canada, the first or last author's institutional affiliation was Canadian.
- The participants/population were exclusively or primarily aged ≥ 18 years old (or described as adults).
- Peer-reviewed articles and grey literature documents, including quantitative or qualitative data relevant to healthcare system barriers or expert reviews/consensus documents that explicitly discuss healthcare system barriers (where experts could be clinicians focusing on ME or representatives of ME patient associations).
- MSc or PhD theses, including quantitative or qualitative data relevant to healthcare system barriers (not otherwise published in the peer-reviewed literature).
- Published in English.

Exclusion Criteria:

- The sample or context describes chronic or complex symptoms or an illness that is not ME (such as chronic fatigue, a symptom of multiple pathologies).
- Articles that provide inadvertent examples of, for example, stigma and stereotyping, yet do not explicitly discuss healthcare system barriers.
- Study or review protocols.
- Conference abstracts/proceedings.

Although the concept of healthcare system barriers is wide-ranging, we were interested in barriers at multiple levels, whether governance challenges and resource constraints, health system engagement, or institutional bias. These were used in our protocol as broad examples of upstream factors that result in the patient's experience of suboptimal care.

Information Sources and Search Strategy

The information sources and search strategy were developed with assistance from an academic librarian.

Peer-reviewed Literature

We searched five databases for citation and reference data across life sciences, biomedicine, behavioural and social sciences, nursing, and general academic journals. We searched MEDLINE(R), Embase, and PsycINFO via the Ovid interface, CINAHL via the EBSCO interface, and supplemented this using the Web of Science database. These formal searches were conducted on July 11, 2022. The full search strategy for peer-reviewed literature is available in the protocol (<https://osf.io/ychx3/>). The search strategy was conducted using a combination of two of the three key concepts: (1) ME and (2) Canadian context. The ME concept was broad enough to capture all potentially relevant records (for example, we included chronic and persistent fatigue and post-infectious or post-viral fatigue/illness as search terms) and narrowed to ME, ME/CFS or CFS during screening. The Canadian context was captured using a search filter to retrieve studies related to Canada, Canadian provinces, and the one hundred largest Canadian centres by the University of Alberta Library [8]. The third concept (healthcare system barriers) was not included in our search strategy because pilot searches confirmed that the literature was sparse enough for us to consider all Canadian literature on ME and its potential relevance to this search concept.

Grey Literature

We searched Canada Commons, a database that covers Canadian E-books and government and policy documents, on November 25, 2022. We also used two custom Google search engines. A custom search engine for Canadian public health information (Ontario Public Health Libraries Association) was used to search the websites of federal and provincial health departments, public health agencies, and collaborating centres [9]. A custom Google search engine designed by the University of Waterloo Library was used to search for Canadian federal, provincial, and municipal government documents and publications [10]. These custom Google searches were conducted on January 18, 2023. Based on pilot testing for relevance, two search terms were used in the final searches for both databases: "chronic fatigue syndrome" and "myalgic encephalomyelitis." Pilot testing using other terms such as "post-viral illness," "fatigue syndrome," "post-viral fatigue," and "post-exertional malaise" did not result in any unique records. In addition, our team included patient partners who were aware of (or involved in producing) grey literature relevant to this scoping review, particularly from provincial and national ME patient associations. Patient partners provided potentially eligible documents, which were included in the grey literature screening if they had not already arisen from the database searches.

Selection of Sources of Evidence

Peer-reviewed Literature

Search results were de-duplicated using the Systematic Review Accelerator [11]. All categorized duplicates (ranging from extremely likely to likely duplicates) were manually checked to confirm the correct classification as duplicates. Following de-deduplication, records were imported into Rayyan, a systematic review software [12]. Titles and abstracts were independently screened for eligibility by two researchers (SH, LE), blinded to each other's decisions during this initial process. RT reviewed all conflicts, and records

considered potentially relevant were retrieved in full and assessed for eligibility. A spreadsheet was used for full-text screening. SH or LE made preliminary notes and decisions, and RT performed a subsequent screening of all full texts against the eligibility criteria. In the case of uncertainty or discrepancies between RT, SH, and LE, all authors were consulted, and a consensus was reached via review and discussion.

Grey Literature

For Canada Commons, due to low numbers, all records from a search of "myalgic encephalomyelitis" were exported to a spreadsheet. For the "chronic fatigue syndrome" search, the first 200 records (ordered by relevance) were exported after pilot screening indicated that the first ~50 records were potentially relevant. Due to low numbers, all records resulting from custom Google searches were exported to a spreadsheet. Following manual de-duplication, records were retrieved in full and assessed for eligibility by SH or LE. RT reviewed all decisions, and a consensus was reached through author discussions. Unique grey literature provided by patient partners was manually added to a spreadsheet and screened against the eligibility criteria by LE and RT (no discrepancies). All authors had the opportunity to review decisions and their justifications, and consensus was reached for all records.

Data Charting Process and Data Items

Data from eligible studies were charted using standardized tables designed for this review using an iterative process based on seed articles. LE, SH or RT charted the data, and ES, MM, and SM validated this charting. Article-level data items included the author, year of publication, research design (or article description), sample size and characteristics (where applicable), and a summary of the data or discussion relevant to healthcare system barriers, with no (or minimal) interpretation.

Synthesis of Results

Evidence from peer-reviewed and grey literature was presented in Tables, including a summary of the healthcare system barriers discussed.

Patient Involvement Statement

Working Group 6 of the Interdisciplinary Canadian Collaborative ME (ICanCME) Research Network was a collaboration between researchers, clinicians, and people with lived experience of ME who met during 2-hour meetings held monthly via videoconference throughout 2021-2022. A series of studies were conceptualized by the Working Group beginning in May 2021 based on the group mandate and priorities. Patient partners participated as their capacity allowed and were involved in the grant and ethics applications. MM and SM initially collated relevant literature, which became the seed articles used in developing the systematic search strategy. Three authors live with ME and were involved throughout this review (including protocol development, adjudication on full-text screening, grey literature searches, and manuscript review and editing).

Results

The selection of sources of evidence is reported in Figure 1, divided by peer-reviewed and grey literature searches. In total, 1821 records were identified, 406 were reviewed in full, and 21 were included in this scoping review (Figure I).

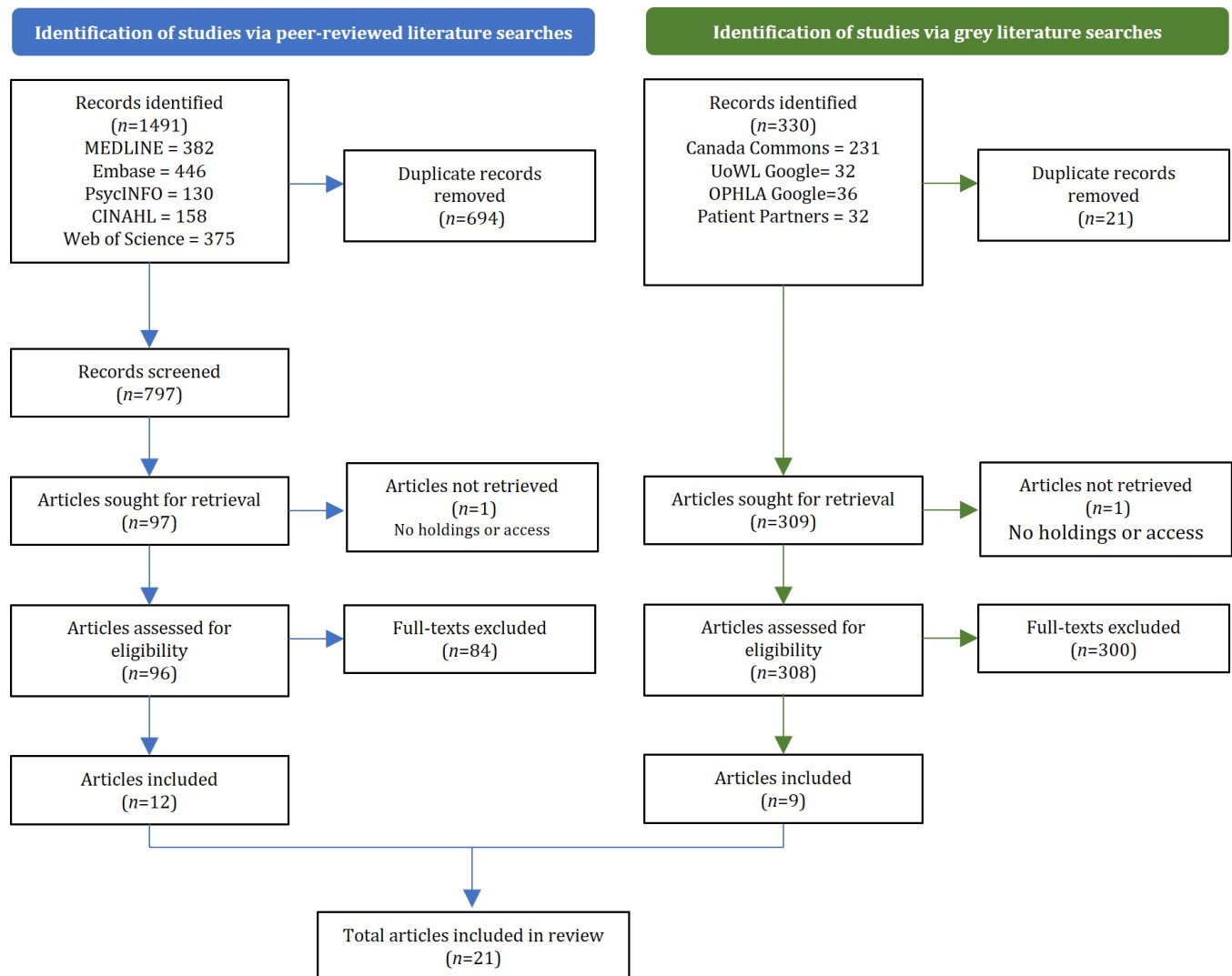


Figure I. Flow diagram of the selection of sources of evidence.

Characteristics and Results of Individual Sources of Evidence

For each article, the research design (or article description), data relevant to our research objectives, and a summary of the healthcare system barriers discussed were extracted.

Of the 12 eligible peer-reviewed articles, nine included primary or secondary data [13–21], and three were included as expert reviews/consensus documents [22–24]. Most did not explicitly focus on healthcare system barriers, and in some cases, relevance to healthcare system barriers was limited or indirect (for example, [18–20]; Table 1). One paper reported on data collected in the past decade [13]. Five peer-reviewed articles reported analyses of the data collected in the CCHS, a cross-sectional survey designed to provide population-level health information ([13–16,18]). As part of an interview, CCHS respondents were asked about specific long-term health conditions, defined as conditions that have already lasted 6 months or those expected to last 6 months, and diagnosed by a health professional. A positive case for CFS was recorded with a "Yes" in response to the question, "Do you have chronic fatigue syndrome?" Secondary analyses used CCHS cycles between 2001-2014.

Of the nine eligible grey literature articles, three reports were included as expert reviews/consensus documents [25–27]. A recent report involving a partnership between a patient association and a health centre contained a rich synthesis of the current situation for people with ME in BC alongside preliminary data [5]. Two articles were developed by an expert panel established by the Ontario Minister of Health and Long-Term Care [26,26], and the final report included two relevant appendices containing quantitative and qualitative data [26] (summarized separately in Table II). Two newsletters from patient associations presented data, one included for the analysis of CCHS data from 2014 [28] and one based on a 1992 survey of physicians in BC [29]. Two reports were Compendiums of a more extensive process guiding an Ontario Centre of Excellence Business Case involving surveys of people with ME [30] and healthcare professionals [31]. One report focused on the care and support needs of people with ME in Quebec [32].

Healthcare system barriers arose from an underlying lack of consensus and research on ME and ME care, the impact of long-standing stigma, disbelief, and sexism, inadequate or inconsistent healthcare provider education and training on ME, and the heterogeneity of care coordinated by family physicians. Results from peer-reviewed and grey literature are synthesized in Table I and II, respectively, and explored in more detail in the Discussion.

Table I. Results of individual sources of evidence: Peer-reviewed literature[¥]

Author	Year	Title	Study design/description	Primary/ secondary data ^{¥¥}	Summary relevant to healthcare system barriers for people living with ME
Hu & Baines [22]	2018	Recent insights into 3 underrecognized conditions: myalgic encephalomyelitis-chronic fatigue syndrome, fibromyalgia, and environmental sensitivities-multiple chemical sensitivity	Commentary for Canadian family physicians	N/A	<ul style="list-style-type: none"> * No consistent physical or laboratory findings. * Lack of proven treatments. * Lack of clinical practice guidelines. * Psychological symptoms mistaken for the causes rather than the effect of the disease. * Uncertainty about management strategies deter clinicians and scientists from clinical care and research. * Research funding "meagre or non-existent" (from 2012-2015, CIHR funded 2 grants for ME). * Social stigmatization.
Park & Gilmour [13]	2017	Medically unexplained physical symptoms (MUPS) among adults in Canada: comorbidity, health care use and employment	<p>Analysis of 2014 CCHS & 2012 CCHS-MH data in adults aged ≥25.</p> <p>For the purpose of this study, CFS, FM, and MCS were categorized as MUPS.</p>	<p><i>2014 CCHS data:</i></p> <ul style="list-style-type: none"> * 1.6% [95%CI=1.4-1.8] reported CFS. * CFS more common in some groups: women vs. men; without vs. with postsecondary graduation; lowest vs. higher household incomes; widowed/separated/divorced vs. married/never married; white race vs. non-white race. * Comorbidities: 30% and 15% of pwCFS also had FM or MCS, respectively. 64.7% have 3 or more other chronic symptoms. * Aggregate data for CFS, FM and MCS: Compared to a reference group (without CFS, FM, MCS), the aggregate group reported higher use of healthcare services (consultations with family doctors, specialists, mental health services, and other healthcare providers), unmet needs (needing but not receiving healthcare in the past 12 months), more unemployment or being permanently unable to work, more activity restrictions, including at work and at home. <p><i>2012 CCHS-MH data</i></p> <ul style="list-style-type: none"> * 35% [95%CI=27-43] of pwCFS had a mental health condition. 	<ul style="list-style-type: none"> * In the absence of explanation for symptoms, patients may be referred to practitioners in various domains. * Unmet needs despite high rates of consultation with healthcare professionals may reflect difficulties obtaining a diagnosis and treatment.

Bested & Marshall [23]	2015	Review of myalgic encephalomyelitis/chronic fatigue syndrome: an evidence-based approach to diagnosis and management by clinicians	Expert review from the viewpoint of the treating clinician, including a case study.	N/A	<ul style="list-style-type: none"> * No clinically available diagnostic blood test or investigation. * Sparse research funding. * Inconsistent ME/CFS definitions/criteria means difficulty in carrying out definitive studies that would lead to new understanding of pathophysiology, diagnostic tests, and treatments. * As a result, clinicians have been skeptical that ME/CFS was legitimate, and patients have been maligned, told they did not have a real physical illness. * There is a huge economic cost for the individual (income losses due to inability to work, and medical costs), their family, and society. * Difficulties diagnosing ME/CFS are due to insufficient training of specialists and family doctors (most medical schools do not teach about ME/CFS in a formal systematic fashion and textbooks are not up to date in this area of medicine), fatigue being a symptom that comprises 25% of primary care physician appointments (it is imprecise and difficult to operationalize), and multiple clinical and research definitions. * Studies erroneously concluded that pwCFS improve with graded exercise therapy when it can be contraindicated and harmful. * Historically, cognitive behavioral therapy was inappropriately touted as a cure for ME/CFS if patients changed their "belief system". * Patients often try costly alternative and complementary approaches in hopes of a cure.
Rusu et al. [15]	2015	Chronic fatigue syndrome and fibromyalgia in Canada: prevalence and associations with six health status indicators	Analysis of 2010 CCHS data in people aged ≥12.	<ul style="list-style-type: none"> * 1.4% [95%CI=1.3-1.6] reported CFS; * CFS more common women vs. men, adults >40 vs. those aged 12-39, lowest vs. higher household incomes; * Comorbidities: 23% pwCFS also had FM; * Aggregate data for CFS and FM: Compared to a reference group (without these conditions), this aggregate group were more likely to report poor health status. 	<ul style="list-style-type: none"> * Comorbidity is a central issue in the population and the cumulative effects of coexisting chronic conditions may substantially affect health status outcomes. * Researchers and clinicians can anticipate substantial complexity in their studies and clinical care. * Whether socioeconomic status and lifestyle risk factors are a determinant or consequence of CFS cannot be ascertained due to the cross-sectional nature of the survey. The direction of such relationships is unclear.

Boyd [24]	2012	Are some disabilities more equal than others? conceptualising fluctuating or recurring impairments within contemporary legislation and practice	Contextual discussion of the legitimacy of episodic disabilities such as ME/CFS (UK focus), drawing on ongoing discussion in Canada.	N/A	<ul style="list-style-type: none"> * Fluctuating or recurring impairments (episodic disabilities) such as ME/CFS are afforded questionable legitimacy, including in policy for income assistance. * Although the mental or physical effects of ME/CFS are acknowledged as a set of symptoms/characteristics, the lived experience of disability as a varying phenomenon is rarely considered. * Unpredictable symptoms and those not immediately visible contribute to overt suspicion, e.g., the existence and nature of ME/CFS has been long contested. * A lack of physically obvious symptoms compromises recognition and identification of [those with ME/CFS as] disabled people. The unsympathetic pseudonym "yuppie flu" in the later 1980s demonstrates widespread and public skepticism. * Episodic disability can have a negative impact on scheduling and coordination of care.
Williams et al. [16]	2011	Alternative health care consultations in Ontario, Canada: a geographic and socio-demographic analysis	<p>Analysis of 2005 CCHS data in people aged ≥18 in Ontario.</p> <p>Respondents were asked about alternative healthcare consultations (massage, acupuncture, homeopathy/naturopathy) made in the past 12months.</p>	<ul style="list-style-type: none"> * People with a chronic health condition were more likely (OR=1.90) to seek alternative care than those without. * People with fair/poor' health were more likely (OR=1.27) to seek alternative care than those with excellent/very good health. * People with unmet needs were more likely (OR=1.72) to seek alternative care than those without. * Women were more likely (OR= 2.03) to have an alternative care consultation than men * In women with CFS, 42% of those with unmet needs consulted an alternative care provider vs. 24% of those without unmet needs. 	<ul style="list-style-type: none"> * Women, people with chronic conditions, lower health status and unmet healthcare needs are more likely to seek alternative healthcare. * Women with CFS are more likely to see an alternative provider if they feel their healthcare needs are not being met. * Limited success in the treatment of CFS in traditional biomedical model may be one reason why alternative healthcare practices are sought out for treatment, often alongside conventional medicine.
Lavergne et al. [17]	2010	Functional impairment in chronic fatigue syndrome, fibromyalgia, and multiple chemical sensitivity.	Retrospective chart review of 128 consecutive patients with CFS, FM, or MCS at the Environmental Health Clinic at Women's College Hospital, Toronto	<ul style="list-style-type: none"> * N=16/72 pwCFS had paid employment and n=25/72 disability benefits. * N=19/72 reported no health coverage. * The main strategy pwCFS reported for dealing with health problems was rest (n=33/72). * ~8-16 visits to family physicians in the past year. 	<ul style="list-style-type: none"> * The Environmental Health Clinic is the only government-funded clinic in Ontario that is provincially mandated to assess pwCFS. It accepts referrals from family physicians and specialists, and there are long wait times for assessment. This biases patient selection towards those with greater duration and severity of illness.

			(January 2005-March 2006). Canadian clinical working case definition used for diagnosis. N=72 with CFS.	<ul style="list-style-type: none"> * ~4-26 visits to any other physician in the past year. * Participants had lower functional status relative to age and sex-matched controls, and the lowest scores were in those with combined CFS, FM and MCS. 	<ul style="list-style-type: none"> * Unclear origin and course of CFS, and the absence of consistently abnormal physical and laboratory findings have generated difficulties for patients in securing disability support in Canada. * The high number of physician visits is likely related to complexity, comorbidities, and low functional status.
Fuller-Thomson & Nimigon [18]	2008	Factors associated with depression among individuals with chronic fatigue syndrome: findings from a nationally representative survey	Analysis of 2000/1 CCHS data in adults aged ≥12.	<ul style="list-style-type: none"> * 36% prevalence of depression in pwCFS * 31% of these depressed respondents reported that they had spoken with their family doctor about mental health issues in the preceding year. * 17% had consulted a psychiatrist and 15% with a psychologist. 	<ul style="list-style-type: none"> * Although pwCFS with depression had frequent contact with their family physician, 7/10 had not discussed mental health issues with their family physician in the preceding year. * 40% of pwCFS with depression had not discussed mental health issues in the past year with any health professionals.
Park & Knudson [14]	2007	Medically unexplained physical symptoms	<p>Analysis of 2002/3 CCHS data in adults aged ≥12.</p> <p>For the purpose of this study, CFS, FM, and MCS were categorized as MUPS.</p>	<ul style="list-style-type: none"> * CFS more common in women vs. men, those aged >45 vs. 12-44, lowest vs. higher household incomes. * 43% of pwCFS needed help with instrumental activities of daily living (preparing meals, everyday housework, getting to appointments, running errands, personal finances). * 15% of pwCFS needed help with personal activities of daily living (bathing, dressing, eating, taking medication, moving inside the house). * 27% of pwCFS reported fair or poor mental health, 34% reported life dissatisfaction, and 36.4% reported at least one psychiatric disorder in the past 12 months. * For healthcare consultations, 33% of pwCFS consulted a family doctor ≥10 times, 53% consulted a specialist, and 28% consulted an alternative practitioner in the past 12 months. 	<ul style="list-style-type: none"> * "Medically unexplained physical symptoms" characterize conditions that cannot be identified through physical examination or medical testing, such as CFS. The lack of explanations from such assessments causes confusion and controversy for clinicians. * People with "Medically unexplained physical symptoms" (such as CFS) were more likely than those without to report needing help with activities of daily living, worse physical and mental health, and more consultations with healthcare providers (which may reflect multiple referrals).
Fossey et al. [19]	2004	Sleep quality and psychological adjustment in chronic fatigue syndrome	Observational sub-study Montreal, Quebec. PwCFS recruited from physician referrals and support groups, diagnosed by physician (unknown method) and	<ul style="list-style-type: none"> * 58% (15/26) pwCFS fulfilled criteria for a sleep disorder such as sleep apnea/hypopnea syndrome, restless legs syndrome or periodic limb movement disorder (vs. 13% in the control group). * 35/37 self-reported at least one insomnia subtype. Non-restorative sleep was common (89%). 	<ul style="list-style-type: none"> * Prior to participating in this study, neither the pwCFS nor their physicians had been aware that they had a diagnosable sleep disorder.

			confirmed by the research physician using the Fukuda definition. N=26 (analyzed). Sleep disorders assessed using polysomnography.	* Depression and neuroticism scores were in the normative range for age.	
Lee et al. [20]	2001	Illness experience, meaning and help-seeking among Chinese immigrants in Canada with chronic fatigue and weakness.	Observational study using an adapted Explanatory Model Interview Catalogue for semi-structured interviews and numerical summaries. N=50 first-generation Chinese immigrants to Canada with prominent symptoms of medically unexplained chronic fatigue and weakness.	<ul style="list-style-type: none"> * 86% considered their problems to be serious, 72% reported 6-8 symptoms including fatigue, sleep disturbance, and other somatic symptoms such as headaches, muscle pains, dizziness. * Simple activities of daily living were transformed into insurmountable challenges. * Symptoms intensified with fatigue and developed gradually after immigration to Canada. * Some felt they had never recovered from a previous severely cold winter or that they were experiencing a prolonged flu. * Accounts of psychological distress emphasized impaired cognition and social functioning. * Some felt unable to fulfil culturally based obligations to elderly parents and young children. * Fatigue was the most frequent name participants gave to the problem (n=13) with neurasthenia second (n=10). Only two specified the common North American term CFS, and one identified the problem as "yuppie flu". * Most (70%) said that they would keep others from knowing about their fatigue because it was 'a cultural thing' that Chinese people would not tell others about their "failures or disgrace". With associations to a mental illness, disclosure became an even greater concern. * The advice of physicians to rest and take time off work was not appreciated since it was not a cure. Being told there was "nothing 	<ul style="list-style-type: none"> * Comparative studies suggesting the prevalence of CFS is higher in white people may be due to differences in health service utilization. * Little is known about CFS in specific ethnocultural groups, despite differences in the health beliefs and practices of minorities (such as the Chinese Canadians vs. the larger Canadian society). This can lead to dissatisfaction for the patient and healthcare provider. * Chinese immigrants with prominent fatigue/weakness had sought help from doctors to no avail (no diagnosis or medications). They were generally dissatisfied with prior clinical care if they felt their concerns had not been heard. * Participants found that traditional Chinese medicine practitioners were better able to understand the terms they most comfortably used to explain their illness, but the financial burden deterred many. * Participants sought help from specialists as well as family doctors, but consultations were typically disappointing (insufficient time to listen and examine, inadequate illness explanations, short or conflicting responses to questions, treatment of isolated symptoms rather than the root cause, lack of understanding of the vocabulary of traditional Chinese medicine). * Participants noted failure of healthcare professionals to understand the impact of migration, the nature of their distress, and how this adds to the frustration of an already helpless condition.

				wrong" was distressing rather than comforting,	
Clarke [21]	2000	The search for legitimacy and the "expertization" of the lay person: the case of chronic fatigue syndrome	<p>Observational interview study with 60 people affiliated with Ontario-based ME/CFS support or advocacy groups.</p> <p>Participants were either professionally or self-diagnosed with CFS (self-reported).</p>	<p>* 62% sought a diagnosis from >3 doctors. One reported seeing >25 doctors in a search for help. A few were diagnosed immediately because the doctor was a friend who did extra research, or because they had experience/interest in the disease.</p> <p>* 50% were referred to a psychiatrist.</p> <p>* 38% consulted with alternative and complementary practitioners despite costs.</p> <p>* PwCFS developed a calculus of "good doctor" (may not be able to diagnose but believed the patient) vs. "bad doctor" (does not take symptoms seriously).</p> <p>* 48% men and 22% women felt they had a physician who could be a regular source of information.</p> <p>* Lay persons often become "experts" about the diseases, possible treatments, and which doctors will advocate for the patient to insurance companies and employers.</p> <p>* Two-thirds reported that they regularly relied on their own research about symptoms, treatments, and prognosis.</p> <p>* 78% of men and 70% of women relied upon a local support group as a source of regular information.</p>	<p>* The reality of CFS is contested and a substantial proportion or previous literature has a psychiatric focus.</p> <p>* CFS has had many names and there is ambiguity in the diagnosis. A fundamental aspect of CFS is the surplus suffering experienced due to the illegitimacy of the disease and difficulties finding a doctor and a label.</p> <p>* Most patients experience a long and complex process of getting a diagnosis.</p> <p>* Most searches for a diagnosis involved "doctor shopping" because of personal dissatisfaction with the lack of an adequate explanation, or due to multiple referrals to organ-specific specialists resulting in multiple inconclusive tests.</p> <p>* Differences in opinions, disputes and contradictions between doctors were observed (e.g., viral vs. psychological explanations). In these cases, the lay people were forced to decide on their own if doctors were correct or helpful.</p> <p>* In the absence of general agreement among doctors, patients become "experts". There can be a gap between what doctors and patients know about the disease.</p> <p>* Patients relied on and travelled to a few doctors scattered across the country because they became known to as "believers" who diagnose the disease.</p> <p>* CFS does not readily fit in the medical model.</p>

CIHR=Canadian Institutes of Health Research; CCHS=Canadian Community Health Survey, a nationally representative survey; CCHS-MH=Canadian Community Health Survey-Mental Health; FM=fibromyalgia; MCS=multiple chemical sensitivities; MH=mental health; OR=odds ratio; pw=people with (such as pwCFS). *Terminology (such as CFS and medically unexplained physical symptoms) used in the included paper/analysis has been used within this table. **Primary data deemed relevant to the present research objectives.

Table II. Results of individual sources of evidence: Grey literature[‡]

Author [Reference]	Year	Title	Study design/description	Primary/Secondary Data ^{‡‡}	Summary relevant to healthcare system barriers for people living with ME
Robertson et al [5] <i>A partnership between the ME/FM Society of BC & BC Women's Hospital & Health Centre</i>	2021	M.E. in BC: How the Healthcare System for M.E. Impacts Clinicians and Patients	<p>Patient-led inquiry project.</p> <p>Preliminary health needs assessment in preparation for a province-wide study.</p> <p>Patient interviews (<i>n</i>=8) and focus groups (<i>n</i>=17). Patients self-reported a physician diagnosis.</p> <p>Survey of healthcare professionals (<i>n</i>=173; 31% physicians).</p>	<p><i>Patient interviews and focus groups:</i> Summarized in the next column.</p> <p><i>Healthcare professional survey</i></p> <p>* On a Likert scale of 1 (no information) to 5 (know very well), 80% rated their knowledge of ME as 1-3 (no to moderate knowledge).</p> <p>* 52% had interacted with a pwME in their practice (19% were unsure).</p> <p>* 44% had no confidence to diagnose ME, and 53% were not confident to treat pwME.</p>	<p>* Patients described: inaccessible and scarce health-related navigation and support; being left to navigate care independently, research symptoms, bring information to their family doctors and find other doctors; self-navigation being physically and mentally demanding, which further impacted health; lengthy and challenging paths to diagnosis; unclear paths to treatment and unclear treatment expectations.</p> <p>* The inconsistency of the healthcare system and continual dismissal by healthcare professionals left patients seeking support elsewhere.</p> <p>* Those living alone described ill-suited homecare services, and challenges getting to medical appointments.</p> <p>* Some were denied applications to disability insurance programs, some were not ineligible for no-fee support.</p> <p>* Patients were aware that there are no clinical resources for doctors.</p> <p>* Due to negative experiences and stigma with the healthcare system, some patients avoided accessing care.</p> <p>* The Complex Chronic Disease Program is the only provincial referral centre for people living with ME in BC and there is a high demand and lengthy waitlists.</p> <p>* Clinicians recognized: that a psychological bias remains; the need for improved education, diagnostic and clinician guidelines, and access to referral resources; the lack of specialist home for ME, and how this contributes to stigma and marginalization.</p>
ME/FM Society of BC [25]	2019	A response to the BC Framework for Accessibility Legislation Consultation From the ME/FM Society of BC	Submission as part of a consultation on a BC framework for accessibility legislation.	N/A	<p>* The burden of the disease is compounded by delays in diagnosis, failures of treatment, errors in the treatment of comorbidities, misunderstanding, stigma, and bias.</p> <p>* Transportation (driving and public transit) may be impossible for those unable to leave their</p>

					<p>home, those with mobility or sensory challenges, etc.</p> <ul style="list-style-type: none"> * Stigma is particularly prominent for pw invisible disabilities, such as ME, that impact standing, energy, and sensory sensitivities. * PwME can be accused of malingering and exaggerating, including in the medical community, insurance industry, and government. * ME is often dismissed as "chronic fatigue" and trivialised as "everybody's tired". * A systemic lack of knowledge throughout the healthcare system is reflected in a lack government policy, funding, and strategic initiatives and services focussed on ME. * The only provincial program providing specialized care for ME is a referral program with a two and a half year waitlist. Patients are eligible for services for only 18 months. * Management strategies that conserve energy are not aligned with requirements that patients demonstrate they have done all they can to maximize functional independence to qualify for disability supports or benefits. * Hospital emergency and treatment rooms and wards are loud and bright, have no place to lie down, staff unfamiliar with ME, and this often results in a traumatic experience. * Few pwME qualify for: long term care, assisted living, home care, transportation to and from healthcare appointments, dietitians, or assistance with the purchase of a wheelchair or dietary supplements.
Task Force on Environmental Health [26]	2018	Care Now An Action Plan to Improve Care for People with Myalgic Encephalomyelitis/Chronic Fatigue Syndrome (ME/CFS), Fibromyalgia (FM) and Environmental Sensitivities/Multiple Chemical	A final report developed by an expert panel established by the Minister of Health and Long-Term Care, providing 10 recommendations for improving care for ME/CFS, FM and ES/MCS.	* 2.1% [95%CI=1.7-2.5]; Ontarians aged ≥12 reported CFS (2015 and 2016 CCHS data)	<p>The panel noted:</p> <ul style="list-style-type: none"> * Throughout the healthcare system: little recognition of how serious and severe ME/CFS is; a shortage of knowledgeable care providers; a lack of clinical tools to support and guide care; a shortage of services and supports for patients; a dearth of research and leadership to improvement the management of ME/CFS and health outcomes; a failure to acknowledge stigma. * Healthcare system factors that worsen experience/outcomes include stigma and skepticism and long wait time between tests or specialists.

		Sensitivity (ES/MCS)			<p>* There is a lack of clinical and scientific understanding of the causes, cures, and best care for ME/CFS. ME/CFS does not belong to a specific medical speciality nor have established diagnostic tools.</p> <p>* Many providers are not aware of ME/CFS and may question or dismiss patients. They may be unwilling to accommodate patient needs when they seek care. PwME/CFS may avoid hospitals even when they need them due to adverse responses.</p> <p>* Homecare case managers may have variable knowledge of ME/CFS.</p> <p>* Individuals with the condition are often unaware of ME/CFS and its symptoms, which undermines their ability to seek appropriate care and advocate with healthcare providers.</p> <p>* Medical/nursing educational programs establish their own curriculums, independent of government. Engaging each program is time consuming and the outcome is uncertain.</p> <p>* There are few secondary or specialized ME/CFS care providers. The one clinic in Ontario is resource-constrained and patients are limited to 3 visits, primarily for diagnosis.</p> <p>* Historically, physicians gained expertise through self-study/experience without formal medical specialization. A one-year fellowship in Environmental Health for 3rd year post-grad medical students has not always attracted sufficient applicants due to several factors.</p> <p>* Billing codes may not reflect current definitions of ME/CFS.</p>
Appendix E: Institute for Clinical Evaluative Sciences		Healthcare utilization and costs among Ontarians with Chronic Fatigue Syndrome or Fibromyalgia	A study using administrative data from 2011-2015 (aggregate data for ME/CFS and FM)	<p>* 85% female, ~half aged 50-65</p> <p>* The average number of visits to a family doctor was 12-13 in pwME/CFS or FM, compared to 6-8 for a comparator group without these conditions.</p> <p>* The average number of visits to a specialist was 12-13 in pwME/CFS or FM, compared to 7-8 for a comparator group.</p>	<p>* Several factors, including the absence of a validated case definition for identifying pwME/CFS prevents prevalence estimates based on administrative data.</p> <p>* ME/CFS and FM are costly to the healthcare system, especially due to physician visits, prescription drugs, and hospitalizations.</p>

Appendix F: Ipsos Public Affairs		Healthcare Practitioner Consultation - Qualitative Report for the Task Force on Environmental Health	Interviews with $n=15$ physicians in Ontario who had treated patients with ME/CFS, ES/MCS or FM in the past year (aggregate data)	<p>* A higher proportion of the ME/CFS or FM group had >1 hospitalizations, emergency department visits, same day procedures, and home care visits.</p> <p>* These conditions are ill-defined and encompass a broad spectrum of patient complaints with varying impact.</p> <p>* There are no measurable physiological changes or tests to demonstrate the presence or cause of these conditions.</p> <p>* There is a lack of evidence-based treatments, and these pertain to managing vs. curing these conditions.</p> <p>* Mentioning mental health issues can result in patient's feeling that physicians do not believe them.</p> <p>* Given the limitations in understanding, this can be frustrating for both physicians and patients.</p> <p>* Participants were aware of dismissal/rejection of these conditions in the wider community.</p> <p>* Some participants who had previously been skeptical, changed their opinions due to scientific literature and personal experience treating patients.</p> <p>* Family physicians felt "at a loss" given the broader lack of guidelines and acknowledgement,</p> <p>* Some were not aware of billing codes or felt that codes should reflect the additional time required for care of these complicated conditions.</p>	<p>* A fundamental challenge is the number of unknowns about ME/CFS.</p> <p>* The lack of scientific evidence on the etiology, presentation and treatments contributes to legitimacy issues in the wider physician community.</p> <p>* Being unable to pinpoint a cause and the limited treatment options can be frustrating for physicians, and patients can feel let down by the system due to a disjoint in what they want vs. what physicians can offer.</p> <p>* There is a lack of resources such as evidence-based guidelines and toolkits for healthcare professionals.</p>
Task Force on Environment al Health [27]	2017	Time for Leadership: Recognizing and Improving Care for those with ME/CFS, FM and ES/MCS	Phase 1 (interim) report (the final report [26] is described above)	<p>Compared to Ontarians without ME/FM/MCS, these patients are more likely to:</p> <p>* Have unmet health care needs (24% vs 10%).</p> <p>* Have one or more other chronic conditions (77% vs 36%).</p> <p>* Experience life stress (37% vs 21%).</p> <p>* Have fair or poor self- perceived health (45% vs 11%).</p> <p>* Have fair or poor self-perceived mental health (23% vs 7%).</p>	<p>* There is an overall lack of knowledge, research, and skilled providers.</p> <p>* Only a handful of primary care practitioners are knowledgeable and confident about managing ME/CFS.</p> <p>* In Ontario, there is one specialized assessment and diagnosis centre, and it is unable to meet growing demand. The shortage of providers results in long wait times and limits the amount of care and follow up.</p>

				<ul style="list-style-type: none"> * Not have worked in the last year (54% vs 24%). * Be in the lowest income category (53% vs 32%). 	<ul style="list-style-type: none"> *Because the severity of ME/CFS varies, personalized care plans are needed. Without skilled providers to develop those plans, patients and caregivers are left to manage on their own. * Patients often face unnecessary testing and long wait times to receive a diagnosis due to the lack of knowledge about ME/CFS. * There are few treatments available to ME patients and they often must make costly adaptations to their environment. * Lack of recognition of ME/CFS can result in patients not receiving needed social supports and resources.
Parlor [28]	2017	Under-served and in great need: what the Canadian Community Health Survey 2005, 2010, 2014 tells us about myalgic encephalomyelitis/chronic fatigue syndrome and fibromyalgia	<p>Included for the analysis of 2014 CCHS data in people aged ≥12</p> <p><i>(Halapy & Palor)</i></p>	<ul style="list-style-type: none"> * 1.4% reported CFS (63% women); * 48% need help with tasks; * 23% of those aged 18-64 were permanently unable to work; * 21% had ≥10 consultations with a family doctor in the previous 12 months; * 34% had unmet healthcare needs * 14% had ≥5 consultations with a specialist/other doctor in the previous 12 months; * 13% had unmet home care needs * ~45% had moderate-severe pain. <p><i>2016 CCHS prevalence data also reported (1.9%, 64% women).</i></p>	<ul style="list-style-type: none"> * The number of pwCFS who face unmet needs (34%) is higher than other chronic conditions. Consistency across CCHS cycles suggests there has been a lack of progress. * The proportion of pwCFS having ≥5 specialist consultations is high relative to other chronic conditions and may be for specific symptoms or comorbid conditions. * PwCFS face high rates of unmet home care needs and poverty due to the lack of adequate health and social supports. * Clinical and research programs in BC, Ontario and Nova Scotia are too small to meet the demand.
Burstyn [30] <i>The Myalgic Encephalomyelitis Association of Ontario (MEAO)</i>	2013	<p>Recognition, Inclusion and Equity: Perspectives of Ontarians with ES/MCS, ME/CFS and FM.</p> <p><i>Compendium 1/4 to the Ontario Centre of Excellence Business Case</i></p>	<p>A report representing the patient perspectives within a process guiding the Ontario Centre of Excellence Business Case.</p> <p>Questionnaire with 56 patients in Ontario living with ME/CFS, FM, or ES/MSC (<i>n</i>=25 ME/CFS)</p>	<p><i>The below is a summary based on aggregate qualitative data from ES/MCS, ME/CFS and FM.</i></p> <ul style="list-style-type: none"> * Participants noted widespread negative social attitudes that are uncaring, dismissive, and discriminatory, including from certain physicians. * Almost all felt invisible to health and social service providers, and this was linked with a lack of legitimacy of their condition. * The vast majority noted the stigma of the condition, which can lead to denial and deterioration. * A lack of specialized care, homecare, respite care, childcare and caregiver care was noted, 	<ul style="list-style-type: none"> * Physicians are key decision-makers, legitimizers, and gatekeepers, yet relevant approaches are not yet taught in most medical schools. * This lack of education and training contributes to negativity, discrimination, and neglect, and physician beliefs that ME is mental illness or hypochondria. * The healthcare system is not patient-centred. * Specialized services only offer assessment/diagnosis and a limited number of appointments. * With ME more common in women, gender bias contributes to the dismissal and psychologization of ME and a lack of research.

		<i>Part Three – Community voices</i>		<p>especially when private services are not an option.</p> <p>* Many women spoke of the sexist perceptions that their illnesses were not real or serious, but due to women's physiology or [the stereotype] tendency to complain.</p> <p>* Participants noted that these conditions were not adequately researched or funded because they primarily affect women.</p> <p>* Several men spoke of the strains of being sick on their gender identity, and having what was perceived as a "women's condition".</p> <p>* Insurance, public and social benefits was extremely difficult to obtain and, in some cases, deficient.</p> <p>* Getting a diagnosis was difficult, took years of medical consultations.</p> <p>* Long wait times and the need to consult many different specialists was common.</p> <p>* The vast majority has encountered healthcare professionals who believed their health problems were psychological or affective disorders, or a form of hypochondria.</p> <p>* Physician ignorance and disrespect lead to a fear of doctors.</p>	
<p>Molot [31]</p> <p><i>Ontario Centre of Excellence in Environmental Health (OCEEH) Steering Committee.</i></p>	2013	Academic and Clinical Perspectives (Compendium 3/4 of the Business Case for OCEEH)	<p>Expert review and survey distributed to community health centres in Ontario.</p> <p>41 respondents, 80% physicians and 20% nurse practitioners.</p>	<p>* 73% were not comfortable with their ability to diagnose ME/CFS (only 2% were totally comfortable).</p> <p>* 24% were totally or somewhat comfortable with treating patients.</p> <p>* Many areas on further education were recommended for inclusion.</p>	<p>* Outside of the one specialized clinic, and absence of education means physicians and nurse practitioners in Ontario were not comfortable diagnosing or treating ME/CFS.</p> <p>* The present level of available treatment is insufficient to induce recovery or reduce disability, especially measured as return to work.</p> <p>* Because underlying mechanisms are not yet well understood, treatment based on etiology has yet to develop.</p> <p>* The psychologization of ME/CFS has a long history. Although mood disorders are more common in pwME/CFS, it is often unclear if these precede the illness or are a consequence of it.</p>
Pedersen [32]	2010	Care and support needs of people with chronic fatigue syndrome/myalg	Mixed methods approach including semi-structured interviews with 17	* Experience of symptoms was difficult to describe.	<p>* Stigma is closely linked to the psychologizing of health problems by medical professionals.</p> <p>* Not being acknowledged as sick by the authoritative medical professions can be</p>

		ic encephalomyelitis in Quebec	pwCFS living in Québec, primarily recruited from a specialist practice in Montréal.	<ul style="list-style-type: none"> * Experiences of sudden energy crashes or dizziness in public led to insecurity about going out alone for some. * The costs of medication and treatments posed considerable financial strain, even for those with private insurance. * It had taken many years for some to obtain a formal diagnosis. * Antidepressants and pain medication were perceived as "random" when the cause of symptoms was unknown. This negatively impacted medication compliance and trust with physicians. * Many had faced disbelief and patronizing remarks from social workers and insurance agents. * Showing a "good spirit" about the illness made one participant's physician think he felt better than he did. * Almost all participants had their condition not taken seriously by healthcare professionals. Some were refused referral to specialists for diagnostic procedures or were told directly that it was "all in their heads" or was not a serious illness. * Several patients ended up without a treating physician when changing physicians. * In several cases, insurance claims were contested or not accepted. Accessing social programs was difficult and came with regular re-evaluations. * Some concealed their CFS diagnosis with healthcare professionals to prevent negative reactions. 	<p>confusing and painful and create shame, doubt, and fear.</p> <ul style="list-style-type: none"> * Being disbelieved by healthcare professionals can lead patients to question the competence of professionals and seek other sources of information or alternative care. * Physician disbelief and lack of knowledge can lead to a prolonged process of obtaining a diagnosis or in some cases little to no help. * Some patients choose to not disclose their CFS diagnosis when receiving care. * Lack of physician knowledge, organized care and infrastructure leave patients feeling frustrated or abandoned. * When changing family physicians, patients risk not finding another, especially if there is a shortage. * Being actively engaged in the diagnostic/treatment process may reinforce suspicion of malingering by physicians (when it could be a way of coping with the lack of control when faced with professional disbelief or disorganized care). * Suspicion of malingering from insurance companies and social services authorities results in repeated re-evaluations to determine eligibility for financial reimbursement or social welfare, which is stressful to the patient and time consuming for all.
Merriam [29]	1992	The Nanaimo ME Support Group News: Results of Physicians Survey	Survey of family doctors ($n=37$) in Nanaimo (BC) on ME	<p><i>Doctors indicated that:</i></p> <ul style="list-style-type: none"> * 76% had ≥ 1 current patient who had been given a diagnosis of ME (by themselves or others), 38% encountered ME ≥ 2 times per month, and 43% had signed disability-related forms based on ME. * For a subset who were reluctant to diagnose or accept another doctor's diagnosis of ME, this was explained by: 	

				<ul style="list-style-type: none"> - <i>No clear diagnostic marker (41%);</i> - <i>Unknown pathogenesis (26%);</i> - <i>ME is more likely psychiatric than physical (6%).</i> * 40% believed ME precedes depression symptoms, 3% believed the reverse, and most thought both could occur/were undecided. * Common challenges included dealing with patient's frustration of not having a clear diagnosis (78%), not having a diagnostic test or effective treatment (73%). 	
--	--	--	--	---	--

BC=British Columbia; CCHS=Canadian Community Health Survey, a nationally representative survey; pw=people with (such as pwCFS). ES=environmental sensitivities; FM=fibromyalgia; MCS=multiple chemical sensitivities[¥]Terminology (such as CFS and medically unexplained physical symptoms) used in the included paper/analysis has been used within this table. ^{¥¥}Primary data deemed relevant to the present research objectives.

Discussion

We identified the Canadian evidence relevant to healthcare system barriers for people living with ME using a preregistered scoping review process, including systematic searches of academic and grey literature and consultation with patient partners. By synthesizing the 21 eligible articles, we mapped the barriers to care reported in the literature and categorized these as outlined below (1-4). In addition, we explored the design and conduct of research on this topic. Knowledge gaps and future directions are integrated into the following sections.

The available evidence on healthcare system barriers for Canadians with ME

It is telling that only one peer-reviewed article reported on data (relevant to our objectives) collected in the past decade [13]. Although overall, the literature articles contained rich and compelling information, there were methodological limitations throughout the empirical studies. With few exceptions (such as [17,26]), participant's diagnoses were self-reported (unknown criteria), other participant characteristics were not fully described, some of the data on ME were aggregated with other conditions such as fibromyalgia [13,15,16,26,27,30], reporting standards were highly variable, and some articles involving research on human participants did not undergo ethical review [5,29]. For data on ME prevalence, healthcare utilization and unmet healthcare needs, Canada has relied on the CCHS, which has known limitations. For example, for the CCHS cycles analyzed in included articles [13–16,18,26–28], participants were asked about receiving a diagnosis of CFS by a healthcare professional. ME was not included as an option in past CCHS cycles (see [1] for more detail on naming issues related to ME and CFS). Furthermore, this data underestimates the prevalence and burden of CFS in Canada due to the difficulties, and multi-year delays patients face when seeking a diagnosis from a healthcare professional. Because the CCHS is a cross-sectional survey, it prohibits conclusions about the direction of associations, such as higher rates of depression in people with ME vs. controls [18]. Nevertheless, the assumption that depression causes or perpetuates ME appears to have gained far more traction in the healthcare system, and patient symptoms are regularly dismissed as having no biological basis [14,16,21,31,32]. There is an alternative explanation that aligns with patient testimonials - higher rates of depression are an anticipated outcome of living with a debilitating chronic illness that reduces function and limits activities.

Although there was one novel attempt to use administrative data (*Appendix E* [26]), more population health research is needed on ME. Research must be methodologically rigorous and transparently reported to generate robust and impactful evidence on ME. Given the historical issues and controversies in ME research, open science principles must be adopted, and partnerships between researchers and people with lived experience are crucial. Meaningful patient engagement goes beyond involvement as participants to involvement in governance, priority setting, developing, conducting, and/or disseminating research. The ICanCME Research Network has made progress towards this.

There are several international studies relevant to our work, and our review corroborates findings from the US, Europe, and Australia. As an example, there are published data from the US on topics such as ME healthcare utilization and economic impact [33,34], comparisons of the disparities between the burden of the disease vs. funding allocated to it [35], patient access, barriers to, and satisfaction with care [36], qualitative analyses of negative health care experiences [37]. We do not have the equivalent published data

for Canada. Adding Canadian-centric evidence to the scientific record is essential for several reasons. First, this involves adhering to international standards for the conduct and reporting of research. Second, this is part of building a case for decision-makers to justify allocating more funds toward improving ME research and healthcare delivery in Canada. Third, the scientific record is where many clinicians engage in self-directed learning.

Key characteristics or factors related to healthcare system barriers for Canadians with ME

We grouped barriers across four overlapping and interrelated categories. Patient partners noted that the situation described is an unfortunate norm they have been navigating for many years.

(1) An underlying lack of consensus and research on ME and ME care

Several expert reviews/consensus documents involving physicians pointed to the lack of consensus on the name, etiology, diagnostic criteria, and treatment/management of ME in the scientific literature. A lack of accepted Canadian clinical care guidelines and toolkits for healthcare professionals was also apparent. The situation has arisen from a historical lack of recognition and research funding, which has downstream impacts on available healthcare services. Even in an unprecedented scenario of a patient having early access to a knowledgeable physician who is familiar with ME, located at a sufficiently resourced clinic, and confident in assessment, diagnosis, and management, currently, there are no evidence-based treatments that cure ME or result in a return to pre-illness function.

A European Commission study concluded that ME receives insufficient research funding relative to its (high) burden [38]. The high burden of ME is assumed to, in part, stem from the lack of evidence about the etiology and treatment of the condition. The requirement to increase research activity also applies to Canada [26]. The first dedicated investment in biomedical research on ME in Canada was made in 2019, and the pathophysiology is under investigation internationally¹. While this is underway, those involved in ME research/care have reached a consensus on several (international) clinical guidelines, and these can be shared with healthcare professionals [1,39,40]. In our experience, and based on the scientific literature, there are few independent researchers studying ME in Canada. This limits the ability of some teams to apply for funding, submit ethics applications, and publish. Alongside biomedical researchers, those with expertise in medical, educational ecosystems, anti-stigma interventions, and population health should be supported to enter the field through targeted investments.

(2) The impact of long-standing stigma, disbelief, and sexism

This category is not particular to Canada but arose from nearly all included resources. A historical overview was out of the scope of our review, but to summarize, ME is (and always has been) a contested illness that arouses suspicion that symptoms are exaggerated, used to avoid duties, work, or obtain insurance. On the contrary, obtaining disability insurance and other social benefits has been notoriously difficult for people with ME [5,17,25,32]. Because ME affects more women than men, the legacy of women's symptoms being assigned to hysteria cannot be underestimated. Historically, doctors, researchers, and research participants have predominantly been male, and this is still being corrected. There are now many examples of gender bias in healthcare (the gender pain gap is one example, where women's pain is more likely to be disbelieved, psychologized, and undertreated [41]) and gender disparity in funding of diseases predominantly impacting women [42], with ME being a prominent example. By association, this also impacts men, who are invalidated

as having a predominantly female condition [30]. Stigma, disbelief, and sexism lead to healthcare visits where patient testimonials are discredited, leading to distress and withdrawal from the healthcare system to alternative care [14,16,21,32]. We point interested readers to Blease et al. [4], who describe healthcare consultations as a setting where people with ME are vulnerable to epistemic injustice.

There is evidence that people with ME are viewed differently by healthcare providers. In an analysis of an online forum, natural language processing was used to show that doctors' attitudes are inconsistent across disease types, and ME was discussed with more negative language than all other diseases [43]. Several included articles used ambiguous terms describing symptoms as 'medically unexplained' [13,14,20]. Although this can be used as a broad term for symptoms for which patients seek biological care where providers have not found a biological cause, it is most often used for symptoms with primarily psychosocial causes [44]. This label can be harmful to people with complex conditions like ME because 'unexplained' symptoms can be used as evidence of dysfunctional illness beliefs [45]. The stress and humiliation of being disbelieved contribute to the emotional burden, which can then be incorrectly perceived as a cause rather than the consequence of the illness [32]. In addition, ME is an invisible disability that leaves some homebound or bedbound, yet for others is episodic, involving unpredictable fluctuations that occur without warning and last for uncertain periods of time. Both invisible and episodic disabilities are delegitimized, and people with ME are less likely to experience healthcare professionals who understand the support needed [24,46].

(3) Inadequate or inconsistent healthcare provider education and training on ME

Several articles included reports from healthcare providers noting inadequate education and training on ME [5,23,26,31], and this was reflected in patient reports [5,30,32]. In line with international studies, to our knowledge, ME is sporadically included in medical/healthcare curricula and not in sufficient depth to be comprehensive [47]. For example, in Europe, family physicians lack confidence in diagnosing or managing the care of people living with ME and desire more education [48]. With the increased awareness of post-viral illness and ME due to the COVID-19 pandemic and the involvement of occupational and physical therapists in long COVID rehabilitation, the knowledge of recently trained healthcare professionals is unknown. Although there are gaps in what we know about the current situation in Canada, the National Institute for Health and Care Excellence's call for significant improvements in the education of healthcare professionals [40] is certainly applicable. Currently, a workforce that is experiencing unreasonable demands, high levels of stress and burnout amidst a primary care crisis [49] must identify credible sources and self-direct their learning on ME. Because this may not be possible for the majority of healthcare providers, patients have the frustrating experience of bringing research and clinical guidance to their physician [5], and this is not always received positively. Instead, a shared Canadian curriculum and series of materials to support learning could be collaboratively developed and tested. Alongside a comprehensive needs assessment for Canadian healthcare providers, models for implementing education and continuing professional development on ME are needed.

(4) The heterogeneity of care coordinated by family physicians

The barriers described in categories 1-3 contribute to the obstacles patients face accessing care, typically via family physicians. Depending on the knowledge, experience, and bias of the individual doctor, the experience of assessment, diagnosis, and management will vary for each patient. Not being acknowledged as sick can be confusing and painful, and multiple articles described the long and difficult paths to diagnosis that people

face in Canada [5,21,26,30,32]. Even in the absence of treatments, diagnosis goes beyond validation: it is necessary for specific resources (e.g., insurance and employment services) [21]. ME is a multi-system illness that does not fit neatly under a single medical specialty and has not been widely adopted by one. Considering there are common comorbidities [13,15], and investigations are needed so other medical conditions are not missed [39], multiple referrals are often required [17,21,26,28]. Care continuity relies on an engaged and supportive family physician to help navigate the patient through the complexity of the illness and healthcare system. The family doctor can be a gatekeeper for secondary and tertiary healthcare.

The inaccessibility of care can also be an obstacle, and many patients struggle with travel, the demands of the visit, and the lack of home and virtual services. In rare specialist ME clinics (three we are aware of in Canada), patients may have a better interaction with the healthcare system, but the waitlists are long, and services are limited due to a lack of resources. Although some articles included the perspectives of healthcare professionals [26,31], the structural barriers to specializing in ME care have yet to be explored. However, some patients acknowledge the need for supportive infrastructure and appropriate reimbursement for physicians (given the complexity of CFS) [32].

Limitations and considerations

The search may have missed relevant studies or grey literature from Québec due to a lack of resources for French translation. Because our research was focused on barriers, we did not report on the positive experiences of those who have accessed specialist care or had a supportive family doctor, but these reports (though far outnumbered by negative experiences) do exist [5,30]. Healthcare system barriers experienced by children and adolescents (and their caregivers) were not explored. Although significant overlap with the adult experience can be expected, some obstacles may be unique. In addition, participation in research is often inaccessible for people with severe ME. Although their perspectives may not be fully included herein, barriers to care are extreme. The barriers identified were drawn from samples of primarily white women (where reported) and may not be representative of the Canadian population. The experience of other genders and different equity-deserving groups living with ME is largely unknown. For example, new immigrants may experience language barriers [20], Indigenous communities lack culturally sensitive access to the healthcare system [50], and there are long-standing healthcare inequities for racialized groups, which remain to be explored in the context of ME. Systematically evaluating Canadian research inputs (funding) was out of the scope of this review but is undoubtedly an upstream factor that impacts healthcare delivery. While we provide recommendations for future health services research, recommendations made within included reports were not synthesized.

Conclusion

People living with ME in Canada experience significant obstacles that prevent or restrict the use of health services by making it more difficult to access or benefit from care, but this has received relatively limited attention in the scientific literature. Healthcare system barriers for people with ME are numerous, interconnected, and intensify the suffering and distress caused by this chronic, complex, multi-system illness. Barriers arise from an underlying lack of consensus and research on ME and ME care, the impact of long-standing stigma, disbelief, and sexism, inadequate or inconsistent healthcare provider education and training

on ME, and the heterogeneity of care coordinated by family physicians. Methodologically rigorous studies using open science and patient engagement principles are urgently needed. This synthesis, which points to several areas for future research, can be used as a starting point for researchers, healthcare providers or decision-makers who are new to the area or encountering ME more frequently due to the COVID-19 pandemic.

CRedit (Contributor Roles Taxonomy)

Said Hussein: Methodology; Investigation; Writing – original draft.

Lauren Eiriksson: Investigation; Writing – review & editing.

Maureen MacQuarrie: Conceptualization; Writing – review & editing.

Scot Merriam: Conceptualization; Writing – review & editing.

Maria Dalton: Writing – review & editing.

Eleanor Stein: Conceptualization; Funding acquisition; Supervision, Project administration; Writing – review & editing.

Rosie Twomey: Conceptualization; Funding acquisition; Methodology; Investigation; Project administration; Supervision, Writing – original draft.

Funding

This study was funded by the University of Calgary (VPR Catalyst Grant) and the ICanCME Research Network (New Frontier ME Discovery Grant). During this scoping review, RT was funded by a CIHR Postdoctoral Fellowship.

Acknowledgements

From 2021-2023, several members of the Interdisciplinary Canadian Collaborative Myalgic Encephalomyelitis (ICanCME) Research Network, Working Group 6 provided input on this study. We would like to acknowledge Christiane Garcia; Izzat Jiwani; Kelli Franklin; Jane McKay; M. Sarah Selke, Farah Tabassum, and Deirdre Walsh. We would like to thank Bronte Burnette-Chiang (University of Calgary), who assisted with developing the search strategy.

Conflicts of Interest

ES is a retired physician who provides paid online educational services to people with ME and related diseases. MM was a member of the Ontario Task Force on Environmental Health. SM was the leader of the Nanaimo ME Support Group and involved in the related Physicians Survey. The ICanCME Research Network was funded by a 2019 Catalyst Network grant awarded by CIHR-Institute of Musculoskeletal Health and Arthritis (CIHR-IMHA). During manuscript preparation, RT accepted a position within CIHR-IMHA. RTs involvement with ICanCME was restricted to the publication of existing studies and was terminated thereafter.

Footnotes

¹ Government of Canada invests \$1.4M in biomedical research to improve the quality of life of people living with myalgic encephalomyelitis: <https://www.canada.ca/en/institutes-health-research/news/2019/08/government-of-canada-invests-14m-in-biomedical-research-to-improve-the-quality-of-life-of-people-living-with-myalgic-encephalomyelitis.html>

References

1. Committee on the Diagnostic Criteria for Myalgic Encephalomyelitis/Chronic Fatigue Syndrome, Board on the Health of Select Populations, Institute of Medicine. Beyond Myalgic Encephalomyelitis/Chronic Fatigue Syndrome: Redefining an Illness. Washington (DC): National Academies Press (US); 2015. Available: <http://www.ncbi.nlm.nih.gov/books/NBK274235/>
2. National ME/FM Action Network. Quest Newsletter. Quest 125, Fall 2020. Available: <https://www.mefmaction.com/images/stories/quest-newsletters/Quest125.pdf> (Accessed June: 2022).
3. Choutka J, Jansari V, Hornig M, Iwasaki A. Unexplained post-acute infection syndromes. Nat Med. 2022;28: 911–923. doi:10.1038/s41591-022-01810-6
4. Blease C, Carel H, Geraghty K. Epistemic injustice in healthcare encounters: evidence from chronic fatigue syndrome. J Med Ethics. 2017;43: 549–557. doi:10.1136/medethics-2016-103691
5. Robertson H, LeBlanc L, Debelic K (ME/FM Society of BC) & Nacul L, Prestley N, Boulter T (BC Womens Hospital & Health Centre). M.E. in BC: How the Healthcare System for M.E. Impacts Clinicians and Patients. ME/FM Society of BC; 2021. Available: https://www.mefm.bc.ca/_files/ugd/79ee02_56c79b08ee32498dab0edd9dad569700.pdf
6. Dalton M, Jiwani I, Walsh D, Stein E, Twomey R (2023). Healthcare provider perspectives on barriers to care for people living with myalgic encephalomyelitis: a square peg in a round hole. Under preparation.
7. Tricco AC, Lillie E, Zarin W, O'Brien KK, Colquhoun H, Levac D, et al. PRISMA Extension for Scoping Reviews (PRISMA-ScR): Checklist and Explanation. Ann Intern Med. 2018;169: 467–473. doi:10.7326/M18-0850
8. Campbell, SM. Filter to retrieve studies related to Canada, Canadian provinces, and the one hundred largest Canadian centres from the Ovid MEDLINE database. John W. Scott Health Sciences Library, University of Alberta. Rev. March 06, 2020 <http://guides.library.ualberta.ca/health-sciences-search-filters/geographic-filters>.
9. Ontario Public Health Libraries Association. Custom Search Engine for Canadian Public Health Information. URL: <https://www.ophla.ca/p/customsearchcanada.html>. (Accessed: January 2022).
10. University of Waterloo Library. Google Customize Government Documents Search. <https://subjectguides.uwaterloo.ca/canadian-govinfo> (Accessed: January 2023).
11. Clark J, Glasziou P, Del Mar C, Bannach-Brown A, Stehlik P, Scott AM. A full systematic review was completed in 2 weeks using automation tools: a case study. J Clin Epidemiol. 2020;121: 81–90. doi:10.1016/j.jclinepi.2020.01.008
12. Ouzzani M, Hammady H, Fedorowicz Z, Elmagarmid A. Rayyan—a web and mobile app for systematic reviews. Syst Rev. 2016;5. doi:10.1186/s13643-016-0384-4
13. Park J, Gilmour H. Medically unexplained physical symptoms (MUPS) among adults in Canada: Comorbidity, health care use and employment. Health Rep. 2017;28: 3–8.
14. Park J, Knudson S. Medically unexplained physical symptoms. Health Rep. 2007;18: 43–47.

15. Rusu C, Gee ME, Lagacé C, Parlor M. Chronic fatigue syndrome and fibromyalgia in Canada: prevalence and associations with six health status indicators. *Health Promot Chronic Dis Prev Can.* 2015;35: 3–11. doi:10.24095/hpcdp.35.1.02
16. Williams AM, Kitchen P, Eby J. Alternative health care consultations in Ontario, Canada: A geographic and socio-demographic analysis. *BMC Complement Altern Med.* 2011;11: 47. doi:10.1186/1472-6882-11-47
17. Lavergne MR, Cole DC, Kerr K, Marshall LM. Functional impairment in chronic fatigue syndrome, fibromyalgia, and multiple chemical sensitivity. *Canadian Family Physician.* 2010;56: e57–e65.
18. Fuller-Thomson E, Nimigon J. Factors associated with depression among individuals with chronic fatigue syndrome: findings from a nationally representative survey. *Fam Pract.* 2008;25: 414–422. doi:10.1093/fampra/cmn064
19. Fossey M, Libman E, Bailes S, Baltzan M, Schondorf R, Amsel R, et al. Sleep quality and psychological adjustment in chronic fatigue syndrome. *J Behav Med.* 2004;27: 581–605. doi:10.1007/s10865-004-0004-y
20. Lee R, Rodin G, Devins G, Weiss MG. Illness experience, meaning and help-seeking among Chinese immigrants in Canada with chronic fatigue and weakness. *Anthropology & Medicine.* 2001;8: 89–107. doi:10.1080/13648470120063915
21. Clarke JN. The search for legitimacy and the “expertization” of the lay person: the case of chronic fatigue syndrome. *Soc Work Health Care.* 2000;30: 73–93. doi:10.1300/J010v30n03_05
22. Hu H, Baines C. Recent insights into 3 underrecognized conditions: Myalgic encephalomyelitis-chronic fatigue syndrome, fibromyalgia, and environmental sensitivities-multiple chemical sensitivity. *Can Fam Physician.* 2018;64: 413–415.
23. Basted AC, Marshall LM. Review of Myalgic Encephalomyelitis/Chronic Fatigue Syndrome: an evidence-based approach to diagnosis and management by clinicians. *Rev Environ Health.* 2015;30: 223–249. doi:10.1515/reveh-2015-0026
24. Boyd V. Are some disabilities more equal than others? Conceptualising fluctuating or recurring impairments within contemporary legislation and practice. *Disability & Society.* 2012;27: 459–469. doi:10.1080/09687599.2012.662828
25. ME/FM Society of BC (2019). A Response to the BC Framework for Accessibility Legislation Consultation From the ME|FM Society of BC. URL: <https://www2.gov.bc.ca/assets/gov/government/about-the-bc-government/accessible-bc/disability-consultation/2019-consultation/myalgic-encephalomyelitis-and-fibromyalgia-society.pdf&sa=U&ved=2ahUKEwjng838wtH8AhUvBUQIHVOrCxYQFnoECAUQAg&usg=AOvVaw140xKIAzm2QwTZNrStcPKy> (Accessed: April 2023).
26. Task Force on Environmental Health. Care Now: An Action Plan to Improve Care for People with Myalgic Encephalomyelitis/Chronic Fatigue Syndrome (ME/CFS), Fibromyalgia (FM) and Environmental Sensitivities/Multiple Chemical Sensitivity (ES/MCS). December 2018. Available: <http://www.health.gov.on.ca/en/public/programs/environmentalhealth/> (Accessed July 2022).

27. Task Force on Environmental Health. Time for Leadership: Recognizing and Improving Care for those with ME/CFS, FM and ES/MCS. Available: https://www.health.gov.on.ca/en/common/ministry/publications/reports/environmental_health_2017/task_force_on_environmental_health_report.pdf (Accessed: July 2022).
28. Parlor M (2017). Under-served and in great need what the Canadian Community Health Survey 2005, 2010, 2014 tells us about myalgic encephalomyelitis/chronic fatigue syndrome and fibromyalgia. National ME/FM Action Network Quest Newsletter 112. Available at: https://www.mefmaction.com/images/stories/quest_newsletters/Quest112.pdf (Accessed: January 2023).
29. Merriam S (1992). The Nanaimo M.E. Support Group News No. 7 Fall/Winter. Retrieved from the author, available upon request.
30. Burstyn V (2013). Recognition Inclusion and Equity - the Time is Now: Perspectives of Ontarians Living With ES/MCS, ME/CFS and FM. (Toronto: Myalgic Encephalomyelitis Association of Ontario MEAO). Available at: https://recognitioninclusionandequity.org/wp-content/uploads/2013/12/rie_patient-pers_complete.pdf (Accessed June 1, 2023).
31. Molot (2013). Academic and Clinical Perspectives - Ontario Centre of Excellence in Environmental Health (OCEEH). Compendium 3/4 of the Business Case for an OCEEH. Available at: <https://recognitioninclusionandequity.org/wp-content/uploads/2013/12/academic-and-clinical-perspectives-final-october-22-2013.pdf> (Accessed: January 1, 2023).
32. Pedersen VH (AETMIS). Care and support needs of people with chronic fatigue syndrome/myalgic encephalomyelitis in Quebec. AETMIS (Agence d'évaluation des technologies et des modes d'intervention en santé); 2010. Available: https://www.inesss.qc.ca/fileadmin/doc/AETMIS/Rapports/Autres/2010_02_monograph_en.pdf (Accessed: July 2022).
33. Bae J, Lin J-MS. Healthcare Utilization in Myalgic Encephalomyelitis/Chronic Fatigue Syndrome (ME/CFS): Analysis of US Ambulatory Healthcare Data, 2000-2009. *Front Pediatr.* 2019;7: 185. doi:10.3389/fped.2019.00185
34. Valdez AR, Hancock EE, Adebayo S, Kiernicki DJ, Proskauer D, Attewell JR, et al. Estimating Prevalence, Demographics, and Costs of ME/CFS Using Large Scale Medical Claims Data and Machine Learning. *Front Pediatr.* 2018;6: 412. doi:10.3389/fped.2018.00412
35. Mirin AA, Dimmock ME, Jason LA. Research update: The relation between ME/CFS disease burden and research funding in the USA. *Work.* 2020;66: 277–282. doi:10.3233/WOR-203173
36. Sunnquist M, Nicholson L, Jason LA, Friedman KJ. Access to Medical Care for Individuals with Myalgic Encephalomyelitis and Chronic Fatigue Syndrome: A Call for Centers of Excellence. *Mod Clin Med Res.* 2017;1: 28–35. doi:10.22606/mcmr.2017.11005
37. McManimen S, McClellan D, Stoothoff J, Gleason K, Jason LA. Dismissing chronic illness: A qualitative analysis of negative health care experiences. *Health Care Women Int.* 2019;40: 241–258. doi:10.1080/07399332.2018.1521811
38. European Commission, Directorate-General for Research and Innovation, Tuyl, L., Zinger, N., Heide, I., et al., Scoping study on evidence to tackle high-burden under-researched medical conditions:

discussion paper, Publications Office of the European Union, 2023, <https://data.europa.eu/doi/10.2777/311040>.

39. Bateman L, Bested AC, Bonilla HF, Chheda BV, Chu L, Curtin JM, et al. Myalgic Encephalomyelitis/Chronic Fatigue Syndrome: Essentials of Diagnosis and Management. *Mayo Clinic Proceedings*. 2021;96: 2861–2878. doi:10.1016/j.mayocp.2021.07.004
40. National Institute for Health and Care Excellence (NICE). Myalgic encephalomyelitis (or encephalopathy)/chronic fatigue syndrome: diagnosis and management. NICE guideline [NG206]. Published: 29 October 2021. Available at: www.nice.org.uk/guidance/ng206.
41. Cleghorn E. The gender pain gap has gone on for too long – it’s time we closed it. *New Scientist*; 2021. Available: <https://www.newscientist.com/article/mg25033400-100-the-gender-pain-gap-has-gone-on-for-too-long-its-time-we-closed-it/> (Accessed: July 2023).
42. Mirin AA. Gender Disparity in the Funding of Diseases by the U.S. National Institutes of Health. *J Womens Health (Larchmt)*. 2021;30: 956–963. doi:10.1089/jwh.2020.8682
43. Scoles B, Nicodemo C. Doctors’ attitudes toward specific medical conditions. *Journal of Economic Behavior & Organization*. 2022;204: 182–199. doi:10.1016/j.jebo.2022.09.023
44. O’Leary D. Why Bioethics Should Be Concerned With Medically Unexplained Symptoms. *Am J Bioeth*. 2018;18: 6–15. doi:10.1080/15265161.2018.1445312
45. Scott MJ, Crawford JS, Geraghty KJ, Marks DF. The ‘medically unexplained symptoms’ syndrome concept and the cognitive-behavioural treatment model. *J Health Psychol*. 2022;27: 3–8. doi:10.1177/13591053211038042
46. Rajan, D. Serious Problems Experienced by Diverse People with Disabilities: Western Canada – A Qualitative Study. The Institute for Research and Development on Inclusion and Society (IRIS); 2021. Available: <https://irisinstitute.ca/resource/serious-problems-experienced-by-diverse-people-with-disabilities-western-canada-a-qualitative-study/> (Accessed: July 2023).
47. Muirhead N, Muirhead J, Lavery G, Marsh B. Medical school education on myalgic encephalomyelitis. *Medicina (Kaunas)*. 2021;57: 542. doi:10.3390/medicina57060542
48. Cullinan J, Pheby DFH, Araja D, Berkis U, Brenna E, de Korwin J-D, et al. Perceptions of European ME/CFS Experts Concerning Knowledge and Understanding of ME/CFS among Primary Care Physicians in Europe: A Report from the European ME/CFS Research Network (EUROMENE). *Medicina (Kaunas)*. 2021;57: 208. doi:10.3390/medicina57030208
49. Glazier RH. Our role in making the Canadian health care system one of the world’s best: How family medicine and primary care can transform-and bring the rest of the system with us. *Can Fam Physician*. 2023;69: 11–16. doi:10.46747/cfp.690111
50. Nguyen NH, Subhan FB, Williams K, Chan CB. Barriers and Mitigating Strategies to Healthcare Access in Indigenous Communities of Canada: A Narrative Review. *Healthcare*. 2020;8: 112. doi:10.3390/healthcare8020112