

1 **Metabolic health tracking using Ultrahuman M1 continuous glucose monitoring**
2 **platform in non- and pre-diabetic Indians: a multi-armed observational study**

3 **Authors:** Monik Chaudhry¹ Mohit Kumar^{1,2} Vatsal Singhal^{1,2} and Bhuvan Srinivasan^{1,3}

4 **Affiliations:**

5 1-Ultrahuman Healthcare Private Limited, Bangalore, Karnataka, India

6 2- Equal author

7 3- Corresponding author

8

9 **Corresponding Author**

10 Bhuvan Srinivasan

11 Ultrahuman Healthcare Private Limited,

12 No. 799, V K Paradise Sector2, HSR Layout Bengaluru

13 Karnataka, Bengaluru, India 560102

14 Email: bhuvan@ultrahuman.com

15

16 **Abstract**

17 **Background:** CGM-based tracking is expanding in non-diabetic groups to meet wellness and
18 preventive care needs. However, data is limited on short-term outcomes for glycemic control,
19 insulin resistance and correlation of algorithm-derived score to known glycemic metrics in
20 controlled settings, making benchmarking difficult. This is especially true for the high-risk
21 Indian/South Asian demographic.

22 **Objectives:** To examine changes resulting from the Ultrahuman (UH) M1 CGM application-
23 with concomitant FitBit tracker use in patterns of glucose variability (GV). Evaluate GV
24 correlations with stress, sleep duration, inflammation, and activity. Examine correlations
25 between UH metabolic score (UH-MS) and biomarkers of dysglycemia and insulin
26 resistance.

27 **Methods:** Participants (N=53 non-diabetic, 52 pre-diabetic) wore the UH-M1 CGM and
28 FitBit tracker for a 14-day period. HsCRP, cortisol, OGTT, HbA1c, HOMA-IR levels, and
29 standard blood profile measurements were obtained.

30 **Results:** Mean glucose levels, restricted time in range (70-110mg/dL), and GV metrics were
31 significantly different between non- and pre-diabetics and displayed improvements with M1
32 use. Strong correlations of specific GV metrics with inflammation were found in pre-
33 diabetics, with modest correlation between sleep and activity in non-diabetics. Elevated
34 HOMA-IR, HbA1c, and OGTT were linked with J-index and high blood glucose index in
35 pre-diabetics, and low blood glucose index in non-diabetics. UH-MS displayed a strong
36 inverse relationship with insulin resistance and glucose dysregulation.

37 **Conclusions:** The study presents the first guidance values of glycemic indices of non- and
38 pre-diabetic Indians and supports the notion that short-duration CGM use with algorithm
39 scores can affect positive changes in glucose management.

40 **Clinical Trials Registry - India identifier - CTRI/2022/08/044808**

41 **Keywords:** Metabolism, Continuous glucose monitoring, Wearables, Digital health, Insulin
42 resistance, Glycemic control, prediabetes, non-diabetics, Metabolic Score, Inflammation.

43

44

45 **Introduction**

46 Type 2 diabetes mellitus (T2DM) and its associated metabolic conditions are known
47 global pandemics with an estimated prevalence of 422 million.¹ Similarly, the burden of
48 prediabetes (intermediate hyperglycemia) is increasing at an aggressive rate with a
49 projected estimate of 8.0 % (454 million) by 2030 and 8.6% (548 million) by 2045.^{1,2}
50 Prediabetes is defined by glycemic variables that are intermediate between healthy and
51 diabetic ranges. Hyperglycemia is known to upregulate chronic inflammatory markers,
52 and cellular stress such as increased reactive oxygen species (ROS) generation which
53 leads to a condition termed insulin resistance, wherein cells become insensitive to insulin
54 and have lower activity-dependent glucose uptake.^{3,4} These physiological and cellular
55 changes propel the individual towards the diabetic “state”, and it is estimated that
56 approximately 5-10% of pre-diabetics convert to diabetics per year worldwide with a
57 large variation depending on diagnostic criteria and geography⁵.

58 Interestingly, a considerable proportion of pre-diabetic patients can revert to
59 normoglycemia if proper corrective measures are implemented including consistent
60 tracking of blood glucose levels and complementing lifestyle modification.⁶ The widely
61 accepted American Diabetes Association (ADA) guidelines, therefore, strongly
62 emphasize the adoption of these non-pharmacological management and lifestyle
63 modification techniques as soon as a person is diagnosed as a pre-diabetic.⁷ The extension
64 of these health management measures has reached the wellness sector in recent times,
65 attesting to their real-world effectiveness.

66 Several risk-scoring diagnostics and biochemical tests (random blood glucose, fasting
67 blood glucose [FBG], 75g-oral glucose tolerance test [OGTT], glycated hemoglobin
68 [HbA1c]) usually in combination, are widely used for pre-diabetes and diabetes
69 surveillance.^{8,9} In recent times, the practice of continuous glucose monitoring (CGM)

70 using subcutaneous sensors has revolutionized the concept of real-time glucose tracking
71 and offered dependable solutions for screening both diabetic and pre-diabetic
72 individuals.^{10, 11} CGM-mediated real-time tracking of glycemic variables improves the
73 chances of detecting glycemic deviations in basal, night-time, and postprandial
74 conditions, and derive correlations between dietary- and exercise-related changes in
75 lifestyle and glucose tolerance. These advantages have accelerated the adoption of CGMs
76 among high-performance athletes, fitness-oriented healthy individuals, and suspected pre-
77 diabetics.^{12,13} The challenge remains in developing easy-to-understand metrics and user
78 interfaces that promote better adoption and compliance, and enhance the predictive
79 component of interpreted glycemic trends by evidence-based correlation.

80 The Ultrahuman (UH) M1 platform consists of a CGM sensor, application (app)-based
81 analytics, and timely fitness advice provided by certified experts.¹⁵ The captured glucose
82 data is used to generate the daily user-specific metabolic score (MS), which is a holistic
83 snapshot of a user's daily glucose regulation patterns (see Methods).¹⁶ The app also
84 prompts lifestyle changes by providing actionable nudges and alerts to the user (e.g., a
85 prompt to move if the glucose level rises above the target range).

86 In South Asia, especially India, CGMs are predominantly used for diabetes evaluation.¹⁷
87 While wellness and lifestyle monitoring apps enjoy reasonable following, the data include
88 user-uploaded, non-biomarker information such as food logs, step counts, sleep duration,
89 etc., which provide a general overview of health but cannot be substantially correlated to
90 clinical biomarkers. This gap in biomarker-based tracking is especially crucial for India
91 which is increasingly being known as the "Diabetic capital of the world".¹⁸ In a recently
92 published, nationwide survey, the overall prevalence of diabetes was calculated to be
93 11.4%, and for prediabetes 15.3%.¹⁹ More concerning was that individuals with
94 intermediate fasting glucose (IFG, 100-125mg/dL) had tripled since the last survey in

95 2017.²⁰ Alongside are the findings of the CUREs longitudinal study, which reports that
96 58.9% of pre-diabetic Indians convert to diabetes over a 10-year period.²¹ Taken together,
97 there is substantial evidence of Indian and South Asians having a high susceptibility to
98 metabolic syndrome and a silent epidemic is most likely underway in this population.

99 Although the scope of remote monitoring and use of apps has improved after the COVID
100 pandemic, the lack of population-scale, curated digital data for evidence-based profiling
101 of health status creates a gap in usable glycemic benchmarks for Indian and South Asian
102 profiles. This results in a dearth of clinically relevant data to differentiate between the
103 healthy and at-risk populations based on CGM findings, impacting the design of point-of-
104 care, customized lifestyle management interventions, which is the main premise of non-
105 pharmacological management for diabetes prevention prescribed by ADA and other
106 organizations.

107 Therefore, to address this gap, we undertook a controlled, multi-arm observational study
108 to simultaneously derive glycemic variability (GV) data in non-diabetics (healthy) and
109 pre-diabetics, correlate these with established markers of inflammation, stress, and
110 lifestyle indicators of sleep, step count, and heart rate; examine the relationship between
111 these biomarkers and MS, and finally obtain profiles of glucose tolerance following a 14-
112 day use of the UH-M1 platform for both groups.

113 **Methods**

114 *Study design and participants*

115 This prospective two-arm parallel-group observational study was conducted across multiple
116 urban diabetes clinics and hospitals (N=9) across the states of Delhi, Karnataka, Telangana,
117 Gujarat, and Tamil Nadu within India. Following this, participants were recruited in an
118 enrolment period that spanned from September 2022 to December 2022.

119 The overarching aim of this study was to assess CGM-derived GV indices and their
120 correlation with clinical biomarkers in healthy and pre-diabetic individuals to generate
121 reference data on metabolic health for this age and geographic group. The dataset would also
122 be used to a) investigate MS correlation with well-established clinical biomarkers of stress,
123 sleep, inflammation, insulin resistance, and glucose intolerance, and b) form the basis of
124 updating MS. MS is a proprietary algorithmic output that has been developed by Ultrahuman
125 Pvt Ltd., for the purpose of metabolic fitness tracking and management.¹⁶

126 Participants (males and females) were included in the study if they were between 25-50 years
127 of age (both inclusive) and had body mass index (BMI) within 20 – 30 kg/m² range. They
128 were required to comply with the advised use of CGM (Abbott FreeStyle Libre²², activity
129 tracker (Fitbit Inspire 2), and the UH Application. The exclusion criteria consisted of a
130 history of acute or subacute infection (within the last three months) and chronic illnesses
131 (including T1 (Type 1)- and T2DM, and cardiac disease), anemia, endocrine disorders, and
132 autoimmune conditions. Individuals taking antimicrobials, including antibiotics, antivirals,
133 and antifungals were also ineligible for participation.

134 The study was conducted in compliance with the International Conference of
135 Harmonization/Good Clinical Practice guidelines (ICH-GCP) and the Declaration of
136 Helsinki. Participants voluntarily signed a written informed consent form prior to
137 participation and were allowed to withdraw from the study at any time. The study protocol

138 was reviewed and approved by the ethics committees of all the participating centers. Ethics
139 clearance was secured individually at each site involving either the hospital's ethics
140 committee or an independently instituted ethics committee for smaller clinics. The details of
141 the trial site, ethics committee, and date of approval are provided in a tabular format in
142 **Supplementary Table 7**. This study is registered in the Clinical Trials Registry - India
143 CTRI/2022/08/044808.

144

145 *Study procedure*

146 Random sampling method was used to recruit eligible subjects. During the screening visit
147 (between -3 to -1 day from the baseline [inclusion] visit), a detailed medical, medication-
148 related, and family history was acquired. Demographic data, anthropometric measurements,
149 and vital signs were recorded and blood samples were obtained to estimate FBG, and
150 glycated HbA1c levels. Potential participants also underwent an OGTT test. Based on the
151 results obtained, the subjects were then screened for eligibility and those selected were
152 divided into two groups: healthy/non-diabetic (FBG: 79-99 mg/dl; HbA1c: 4.0-5.6 % and 2-
153 hour plasma glucose during 75-g OGTT below 140 mg/dL) and pre-diabetics (FBG: 100-125
154 mg/dl; HbA1c: 5.7-6.4 % and 2-hour plasma glucose during 75-g OGTT: 140–199 mg/dL)
155 based on the ADA criteria of Screening and Diagnostic Tests for Prediabetes.⁷

156

157 At day 0 (baseline visit), the eligibility was reconfirmed by repeating the OGTT and a general
158 physical examination. Details regarding the CGM and UH-M1 application were also
159 explained to the participants during this visit. The app was installed on the smartphone of the
160 subject, and he/she was trained on the features of the app and its use. Once the subject was
161 familiar with the app, the CGM was attached to the upper arm (preferably left) and activated
162 followed by the initializing of the app. The participants were asked to follow a regular daily

163 routine and log (food information) the same on the UH-M1 app daily. He/she was instructed
164 to contact the investigator or the team in case of any difficulties while using the app.
165 Adverse reactions (if any) were planned to be coded using the MedDRA central coding
166 dictionary, version 25. All medications were to be coded using the WHO-DD, September 1,
167 2019, or later. Preferred ATC coding was planned to be applied to encode medications use.
168 A second follow-up visit was arranged between days 5-7 of the trial period. The tests
169 conducted on this day included an OGTT and a general physical examination. This OGTT
170 visit was postponed in subjects with any concomitant indigestion, gastric irritation, or
171 vomiting. Data collection ended on day 14 of CGM and app use, followed by a final, physical
172 examination and laboratory investigations. In the case of sensor failure (sensor stopped
173 reporting values or widely fluctuating measurements) the endpoint occurred earlier. This
174 session was termed as the “End of study” (EOS) visit. In addition, the participants also
175 completed a satisfaction feedback form and a Pittsburgh Sleep Quality Index (PSQI) sleep
176 self-assessment questionnaire during this visit.²³ Subjects experiencing any temporary health
177 issues, technical difficulties in using CGM, CGM data collection failure, or non-compliance
178 with the app were discontinued/withdrawn from the study.

179

180 ***Study endpoints:***

181 The primary endpoints included CGM-based glucose indices over 14 days period such as the
182 mean glucose levels as described by a 24-hour profile during 2 weeks; time in glucose ranges
183 (TIR: 70-180 mg/dL for “acceptable” diabetes glucose range; TAR: time-above-range >180
184 mg/dL and TBR: time-below-range <70 mg); GV as measured by the standard deviation (SD)
185 and the coefficient of variation (CV); and the mean amplitude of glycaemic excursions
186 (MAGE), defined as the arithmetic mean of the amplitude of glucose excursions that are
187 greater than the standard deviation of the glucose values. In addition, for the

188 preventive/wellness use case, the UH-CGM application employs a tighter target range of 70-
189 110mg/dL; and hence it was also computed for the healthy and pre-diabetic groups post-facto
190 after study completion. Daily MS scores were generated for each participant across the study
191 period which were then used for correlation analyses (representative snapshot of MS display
192 on the app interface is depicted in Supplementary Figure S1).

193 The secondary endpoints included changes in FBG levels from day 0 -15, the correlation
194 between GV indices and sleep duration, step count, heart rate (acquired from fitness tracker
195 use), and blood-based biomarkers such as stress (serum cortisol), inflammation (serum Hs-C
196 reactive protein (Hs-CRP)). Additional samples to catalog gut microbiome, and urine
197 metabolites were also acquired for future analyses and are not within the scope of this
198 manuscript.

199

200 ***Statistical analysis:***

201 Data were analyzed between day 2-14 of CGM use to rule out differences in sensor
202 application across participants and known variability of sensor output in the first 24h of
203 sensor activation²⁴. Data were analyzed using the R Software version 4.2.2.²⁵ Intent-to-Treat
204 (ITT) set (included all subjects who were enrolled in the study) and Per Protocol (PP) set
205 (included all subjects who completed the study procedures as per the planned protocol) were
206 defined for analyzing the data. Normality tests were performed to select the appropriate test
207 and the outliers were removed following $\pm 3SD$ for normal distributions, and beyond three
208 times lowest and highest interquartile range (IQR) for non-parametric data. Categorical data
209 were presented as frequencies and proportions and compared using the Chi-square test with
210 Yates correction or Fischer's exact t-test, as appropriate. Continuous data were presented as
211 mean with SD or median with interquartile range and were compared using unpaired t-test, or
212 Mann-Whitney U test, as appropriate. In addition to summary statistics, the differences in the

213 primary endpoint results between non-diabetic and pre-diabetic subjects' groups were
214 compared using statistical models. Least-squares means (LSM), visit differences in LSM, and
215 the corresponding 95% confidence intervals (CIs) for the subject group differences were
216 estimated using the model. Receiver operating characteristic (ROC) curve analysis was used
217 to assess the predictive value of CGM-based GV indices in prediabetes. For the secondary
218 endpoints, Pearson correlation or Spearman coefficients were calculated and presented in
219 graph and tabular outputs to assess the association between the clinical biomarkers, and
220 interstitial glucose. Linear models were also used to explore these associations. All statistical
221 tests were conducted at a 2-sided alpha level of 0.05 and a 2-sided 95% CI was provided.
222

223 **Results**

224 Patient disposition and trends

225 A total of 151 subjects were screened of which 105 met all the inclusion criteria and
226 participated in the study (**Figure 1**). All the 105 enrolled participants completed the study
227 and there were no drop-outs. Both the healthy (n=53) and pre-diabetic (n=52) groups
228 were well-matched with respect to baseline demographics and clinical characteristics
229 (**Supplementary Table S1**). The mean BMI was slightly higher in healthy, but there was
230 no significant difference between the groups. Physical examination and medical history
231 were well within the inclusion parameters. Although there was a higher prevalence of
232 familial diabetes in the pre-diabetic cohort and a higher rate of familial hypertension in
233 the non-diabetic group, the differences were not statistically supported (data not shown).
234 No serious adverse events were reported during the study.

235 Primary outcomes: Changes in mean blood glucose and TIRs, across non-diabetics and pre- 236 diabetics over time

237 Over the years, a wealth of studies have contributed to the generation of a set of CGM-
238 derived glycemic indices, which have been used in a variety of ways to assess metabolic
239 health.²⁶ Normal reference ranges of some of these markers are available in small studies
240 with diverse ethnic representation; however, information on South Asians derived from
241 controlled studies is scarce.²⁷

242 In our cohort, we observed a significant difference in daily the mean glucose levels
243 detected by UH-M1 between the healthy (Mean \pm SD: 102.4 \pm 11.78 mg/dL) and pre-
244 diabetic (Mean \pm SD: 112.2 \pm 14.25 mg/dL) individuals and this difference extended over
245 the entire duration of 14 days (Two-way ANOVA, main effect, cohort: p<0.0001;
246 interaction cohort x day: p<0.01; **Figure 2A**). It is noteworthy that there was a significant
247 downward trend over time in mean glucose levels in both groups (main effect, day:

248 p<0.0001). The mean percentage of CGM-based TIR between day 2 to day 14 was better
249 in healthy individuals (95.3 % \pm 10.43) than in the pre-diabetic group (94.6 % \pm 9.4),
250 however, there was no statistically significant difference between the two groups (Two-
251 way ANOVA, main effect, cohort: p=0.91; main effect, day: p=0.91, **Figure 2B**).
252 Furthermore, TIR adherence tapered over the period of 14 days, especially towards the
253 end of the study in healthy and pre-diabetics (**Figure 2B**). The UH-M1 application uses a
254 relatively tighter target range of 70-110mg/dL glucose (as compared to the normal TIR of
255 72-180 mg/dL). Post-facto calculation for this restricted TIR (rTIR), revealed extremely
256 significant differences between the groups and across days (Two-way ANOVA, main
257 effect, cohort: p<0.0001; main effect, day: p<0.0001, interaction cohort x day: p<0.
258 0.00001, **Supplementary Figure S2**). Pre-diabetics consistently had lower dwell times in
259 the optimal rTIR range as compared to non-diabetics, and both groups appeared to reach
260 comparable rTIR values by the end of the study period. For TAR (>180 mg/dL glucose),
261 there was a statistically significant difference (Two- way ANOVA, main effect, cohort:
262 p<0.01; main effect, day, ns, interaction cohort x day: ns) between pre-diabetics (mean
263 1.4% \pm 4.15) and healthy individuals (mean 0.1% \pm 0.72); and the healthy participants had
264 negligible hyperglycemic events (**Figure 2C**). Interestingly, a clear downward trend was
265 detected in pre-diabetics over time (**Figure 2C**). There were no distinct trends in TBR
266 identifying hypoglycemic events (< 72 mg/dL glucose), in healthy (mean 1.6% \pm 6.43) and
267 pre-diabetics (mean 1.0% \pm 5.99) with a higher level of such events in both groups
268 towards the end of the observation period (**Figure 2D**).

269

270 Primary outcomes: Changes in glycemic variability indices, across non-diabetics and pre-
271 diabetics over time

272 Next, we measured a variety of CGM-derived indices of cumulative glycemic variability
273 in an effort to identify which of the metrics efficiently differentiated between non-
274 diabetics and pre-diabetics and captured changes in trends due to app-based tracking.
275 Results revealed that GV, as measured by standard deviation (GV by SD), captured
276 significant across-group differences in the analyses period (19.4 ± 6.51 pre-diabetics vs
277 16.2 ± 4.85 non-diabetics, Two-way ANOVA, main effect, cohort: $p<0.001$; main effect,
278 day: $p<0.001$, interaction cohort x day: ns, **Figure 2E**). In comparison, GV as measured
279 by the coefficient of variation (GV by CV), had more overlaps between groups, with
280 milder but significantly different values (17.3 ± 5.67 pre-diabetics vs 15.8 ± 4.57 non-
281 diabetics, Two-way ANOVA, main effect, cohort: $p<0.05$; main effect, day: $p<0.05$,
282 interaction cohort x day: ns; **Figure 2F**). Both GV by SD and GV by CV indices
283 displayed a gradual decrease over the trial period in both groups.
284 Mean amplitude of glycaemic excursions (MAGE) values showed across-day
285 improvements, but the level of decrease was not as significant as GV, and there was no
286 distinction between healthy (30.7 ± 15.99) and pre-diabetic (32.9 ± 18.19) individuals (Two-
287 way ANOVA, main effect, cohort: $p=0.083$; main effect, day: $p<0.0001$, interaction
288 cohort x day: ns; **Figure 2G**).
289 Finally, FBG levels were monitored at the beginning and end of the study to provide an
290 external anchor point for CGM-derived values. FBG increased modestly from 90.5 ± 7.90
291 mg/dl at baseline to 92.3 ± 7.28 mg/dl at day 15 in healthy individuals while it decreased
292 from 99.1 ± 10.11 mg/dl at baseline to 96.3 ± 9.84 mg/dl in pre-diabetics (**Figure 2H**).
293 Given the convergent trend of FBG values, there were no significant differences between
294 groups or across time in each group (ANCOVA model with treatment as fixed effect and
295 FBS values at baseline visit as covariate, $p=0.81$).

296 Secondary outcomes: Correlation of CGM-derived glycemic metrics with biomarkers
297 associated with metabolic syndrome

298 A wealth of evidence supports a strong relationship between stress-related markers such
299 as inflammation, disturbed sleep, reduced physical exercise, and impaired cortisol and the
300 development of prodromal conditions like prediabetes.²⁸⁻³⁰ Several data points are also
301 available for the Indian / South Asian demographic group as well.³¹ However, these
302 reports do not utilize CGM-derived metrics. To address this gap, we carried out a
303 correlation analysis for sleep, stress, inflammation, heart rate, and step count in our cohort
304 with the following seven established glycemic indices: J-index, high blood glucose index
305 (HBGI), low blood glucose index (LBGI), average daily risk range (ADRR), MAGE,
306 mean of daily differences (MODD) and continuous overall net glycemic action
307 (CONGA).³² Here we highlight the main results with all data presented in

308 **Supplementary Tables S2-S5.**

309 The strongest correlation was found between GV indices and inflammation as measured
310 by serum Hs-CRP levels (**Supplementary Table 2, Figure 3 A-C**). The J index, HBGI,
311 and LBGI revealed a strong positive correlation in pre-diabetics, but not in non-diabetic
312 individuals. Surprisingly, there was little correlation with stress as measured by serum
313 cortisol levels and any of the GV indices in either group (**Supplementary Table S3**).
314 This may be because GV was calculated over 2-14 days whereas cortisol levels were
315 measured on day 0 and day 15. Sleep duration was negatively correlated with HBGI in
316 non-diabetic but not pre-diabetic individuals (**Supplementary Table S4, Figure 3D**).
317 Interestingly, CONGA was negatively correlated with sleep data in both groups, the
318 significance of which is as yet unclear.

319 Fitness tracker-derived motility and sleep metrics showed weak but significant
320 correlations. There was a significant positive correlation between ADRR, MODD, and

321 step count in non-diabetics (**Supplementary Table S5, Figure 3E**), while heart rate was
322 positively correlated with ADRR and MAGE in pre-diabetics (**Supplementary Table 5,**
323 **Figure 3F**).

324 Correlations with CGM-derived GV indices with HOMA-IR, OGTT, and HbA1c

325 While CGM-derived indices have been utilized to develop algorithms to differentiate
326 between healthy and diabetic individuals, studies evaluating the correlation of CGM-
327 derived GV metrics with clinical gold standards to detect impaired glucose tolerance
328 (IGT) and insulin resistance such as HbA1c, OGTT, and HOMA-IR are scarce.³¹⁻³³ To
329 bridge this gap, we carried out a post-hoc analysis, correlating the factors recorded in our
330 study (**Table 1**). For all clinical biomarkers, daily glycemic variability (J-index) was a
331 strong associate in the pre-diabetes group with highly significant positive correlations.
332 The HBGI count in both healthy and pre-diabetics was a consistent measure of elevated
333 OGTT and HbA1c levels. However, HBGI correlated with increased HOMA IR showing
334 that insulin resistance is a feature of IGT space and not a healthy glucose control space.
335 LBGI showed some interesting correlations with OGTT and HOMA-IR in the healthy
336 group, perhaps indicating that hypoglycemic events requiring glucose mobilization are
337 more tightly regulated in normal glucose tolerance regimes. Specifically, in healthy
338 participants, the glucose swing as captured by the ADRR or MODD is likely a better
339 predictor of nascent insulin resistance. In summary, there is a difference in the type of
340 glycemic parameters that a healthy or an IGT user of CGMs should focus on.

341 Correlations of MS with biomarkers associated with metabolic syndrome and fitness metrics

342 The MS metric was developed as an all-encompassing snapshot of glucose tolerance and
343 by extension, of the glycemic fitness of UH-M1 users. While this proprietary score is
344 composed of weighted contributions from an individual's glycemic variability, time in
345 range, and mean glucose values, we tested the correlation of MS with the clinical

346 biomarkers gathered for both pre- and non-diabetic groups, in an effort to benchmark in a
347 controlled population. As shown in Table 2, MS had extremely strong negative
348 correlations with inflammation (HsCRP), HbA1c, OGTT, and HOMA-IR in pre-diabetic
349 participants. In non-diabetics, significant negative correlations were found between OGTT
350 and HOMA-IR only. As a counterpoint, MS did not show any correlation with single-
351 snapshot FBG levels in either group, attesting to its cumulative informational quality. In
352 the fitness tracker metrics, the MS in both groups was weakly correlated with step count,
353 heart rate, and sleep duration. Heart rate (being tightly regulated), displayed the expected
354 negative correlation with MS and was statistically significant for both groups.
355 Interestingly, a small but significant positive correlation was found between sleep duration
356 and MS in non-diabetics, with a paradoxical weak, negative correlation between sleep and
357 MS in pre-diabetics.

358

359 **Discussion**

360 The study cohort was representative of an urban, young adult Indian population who were
361 non-obese, but overweight which constitutes a third of Indian adults as per the National
362 Family Health Survey (NFHS-5) conducted in 2021.³⁴ This is also the population most prone
363 to developing prediabetes and diabetes in India, although the share of rural patients is seen to
364 be increasing.¹⁹⁻²⁰ To our knowledge, this is the first study that provides CGM-derived
365 guidance values of glycemic indices and variability in non-diabetic (healthy) and pre-diabetic
366 Indian populations. Furthermore, our extended analyses revealed that of the multiple
367 glycemic indices used in this therapy area, there is a difference in the significance of
368 correlating benchmarks of glucose control like HbA1c, OGTT, and insulin resistance by
369 HOMA-IR between healthy and pre-diabetics. Interestingly, UH-MS mirrors many of the
370 trends in glycemic dysfunction found in pre-diabetics and offers a dynamic, easy-to-

371 understand metric that can generate personalized information. Finally, we report that
372 inflammation had the strongest positive correlation with glycemic indices in pre-diabetics
373 indicating that significant metabolic dysregulation is already underway in this group. This
374 supports the notion that glucose tolerance regimes are most likely a contiguous spectrum,
375 rather than discrete states of non-diabetes, pre-diabetes, and diabetes.

376 In terms of digital health tracking, studies like GLITTER, Twin Precision Nutrition (TPN)
377 Program, and ambulatory glucose profiling (AGP) have demonstrated the power of CGM-
378 based tracking in making real-time interventional decisions like dietary- or exercise changes,
379 dosage changes of insulin, etc, that can be tracked by patients and clinicians
380 simultaneously.³⁵⁻³⁷ Within India, electronic health (e-health) and mobile health (m-health)
381 initiatives have been successfully used to provide support, motivation, and directional
382 suggestions to large cohorts to make healthier lifestyle choices.³⁸⁻³⁹ Internationally, large
383 cohort studies have been undertaken in developed countries like the Dehgani-Zahedani et al,
384 2021 (Sugar.AI initiative), that show that a 10-day CGM app-based tracking regime can
385 significantly promote healthier metabolic-oriented choices in healthy and at-risk
386 individuals.⁴⁰ The gap lay in reference data of CGM-derived glycemic metrics for non-
387 diabetic/healthy Indians (and by extension South Asians), which were either not the focus of
388 clinical studies like GLITTER and Twin, or underrepresented in North American and
389 European studies. With a demographic contribution of over a fifth of the world's population,
390 and being a high-risk group for developing metabolic syndromes, this group represents an
391 important resource for gathering natural history, baseline evidence development, and
392 increased surveillance.

393 In terms of primary outcomes of the study, we found a consistent and significant difference in
394 mean glucose levels between non-diabetics and pre-diabetics with no significant differences
395 in TIR per the broader ADA guideline range. Interestingly, the rTIR per app guidance of a

396 target range of 70-110mg/dL was significantly improved in both groups and across all days,
397 highlighting the need to adjust metrics to derive useable information in a context-specific
398 manner. The improved rTIR was also tracked with lesser hyper- and hypo-glycemic events
399 in both groups over days. CGM-based metrics of GV as measured by SD, CV, and MAGE
400 also showed significant improvement over time in both groups. However, the data alludes to
401 the fact that for more lasting changes in FBG and allied indices, tracking for a period longer
402 than 14 days might be required to yield lasting corrective changes for pre-diabetics.

403 Inflammation as measured by hsCRP had the strongest positive correlation with glycemic
404 indices in pre-diabetics. This confirms the fact that there is already significant metabolic
405 dysregulation in this group. This is of particular importance as a clear association between
406 cardiovascular disease and prediabetes has emerged over the past few years.⁴¹ Furthermore,
407 Indians have been known to have a higher hsCRP level both in healthy and pre-diabetics.⁴²⁻⁴³
408 In this study, pre-diabetics displayed a trend of having roughly twice the levels of
409 inflammation as compared to healthy participants even though the cohort was comparably
410 overweight. This is in dramatic contrast to the cortisol data, which seems to indicate that
411 stress levels were comparable between the groups.

412 In the domains of sleep duration, heart rate, and step count, the data indicated that glycemic
413 indices were only correlated in the healthy group. The sleep duration correlates reported in
414 this study were derived using the FitBit tracker. Results indicate that higher GV and
415 increased episodes of hyperglycemia have noticeably less impact on sleep duration in healthy
416 people and are more of a concern for at-risk individuals such as pre-diabetics. Hence these
417 metrics take on added significance only when a pre-diabetes diagnosis has been made.

418 Although not in the remit of this current study, it is possible that multi-modal analyses of data
419 for pre-diabetics could identify sub-populations with specific sleep disturbance patterns that
420 correlate better with impaired glucose control.

421 Step count and heart rate monitoring have now become integral parts of any fitness agenda.
422 Although the strength of the correlations between these factors and GV was found to be weak
423 in this study, it should be considered that other coexisting factors may also influence the
424 relationship. For healthy individuals, a recent study reported every 1000 step increase per day
425 was correlated with a blunted GV the following day but not within the same day.⁴⁴ Per
426 protocol, this study analysed within-day GV with step count and heart rate which may be the
427 reason for the weaker association of these metrics in our study. Nevertheless, the positive
428 correlation of step count with mean daily differences is a useful indicator of daily swings
429 which can potentially be leveraged to optimally fuel for exercise sessions in healthy
430 individuals.

431 An important post-hoc analysis conducted on the study data aimed to address a vital gap in
432 point-of-care surveillance. With busy lifestyles, people often miss conducting wellness
433 check-ups involving gold-standard biomarkers (HbA1c, OGTT, and HOMA-IR) for glucose
434 tolerance. Hence, by the time systemic symptoms appear, an individual has already
435 progressed to an advanced clinical state within the diabetic spectrum. Recent studies have
436 investigated the predictive power of CGM systems to differentiate healthy, pre-diabetic, and
437 diabetic individuals using these biomarkers.^{33,45} Our results indicate that daily GV (J-index)
438 was a strong proxy in the pre-diabetes group of all three clinical parameters in the Indian and
439 South Asian demographics. This relationship did not hold true in the healthy participant
440 group indicating a need to attribute differential weightage to these indices based on diagnosis.
441 The HBGI in both healthy and pre-diabetics was a consistent measure of elevated OGTT and
442 HbA1c. However, hyperglycaemic events correlated with increased HOMA IR indicating that
443 insulin resistance was a feature of the IGT space specifically. Instead, in healthy participants,
444 the glucose swing daily as captured by the ADRR or MODD was a better predictor of insulin
445 resistance. We hope that these relationships will be explored in larger controlled and real-

446 world cohorts to determine the best continuous proxies for clinical biomarkers of glucose
447 dysfunction.

448 Wellness/risk score calculators offer an easy-to-understand metric for laypeople to appreciate
449 the risk of developing various conditions. Scores such as the Life's Essential 8TM developed
450 by the American Heart Association predict cardiovascular health based on self-reported
451 responses to generalized questions and offer a demographic risk factor-powered perspective
452 to an individual's heart health.⁴⁶ On the other hand, personalized wearables and digital health
453 monitoring devices are accompanied by aggregate, algorithmic scores to serve as an easy-to-
454 understand handle for a user to track his/her health and potentially modify their behaviour.
455 Only a handful of these scores have been validated using cohorts in controlled settings and
456 benchmarked to accepted clinical biomarkers. To our knowledge, our study is novel in its
457 approach to clinically validate UH-MS and the results indicate that the score is an effective
458 digital proxy for IGT and insulin resistance in the population studied. Given its relevance to
459 glucose tolerance and insulin resistance, it is plausible to imagine an expanded use case in
460 other ethnic groups.

461 The main limitation of the study was the short duration of CGM use (14-day period) which
462 may have been minimally sufficient to glean early indications of the positive impact of UH-
463 M1-based tracking. A longer observational study is required to derive more substantive
464 conclusions on app-guided lifestyle changes or the data mining of real-world, non-controlled
465 evidence from the UH user community. Other limitations included capturing basic sleep
466 duration using the Fitbit activity tracker, which did not have refined measurement of epochs,
467 and REM vs. non-REM which could have linked more accurately to GV measured in pre-
468 diabetics. This also holds true for opposing correlation patterns of sleep duration with
469 metabolic score. It is not clear how a high MS (indicative of strong glycemic control) is

470 linked with poor sleep in pre-diabetics at the same time that good sleep is coincident with
471 high MS in non-diabetics.

472 With this study, we lay the foundation for further exploring valuable dynamics of GV with
473 day-to-day activities as well as the metabolic parameters in non-diabetic and pre-diabetic
474 diabetic individuals. The findings underscore the value of using CGMs for wellness and
475 preventive surveillance. Long-term studies will provide more data on these associations and
476 may serve as a guide to managing these individuals by making adequate lifestyle and if
477 required, pharmacological changes.

478 **Conclusions:** This study provides a reference data set for CGM-derived glycemic metrics in
479 adult Indian/South Asian groups, for a 14-day use period. The data indicates that the specific
480 GV indices correlate better with clinical biomarkers and lifestyle indicators for pre-diabetics
481 as compared to non-diabetics and should be given varying weightage by clinicians when
482 reviewing the fitness of the two groups. Finally, the study also provides critical support for
483 the use of MS score as a digital proxy for glycemic health.

484

485 **Declarations:**

486 Conflicting interests: B.S, V.S., and M.K. are stakeholders in Ultrahuman Healthcare Private Limited.
487 M.C. was a full-time employee of Ultrahuman during the study and analysis period. M.K. and V.S.
488 declare no other conflict of interest. B.S. is a stakeholder of Triomics Healthcare.

489 Funding Statement: The study was sponsored by Ultrahuman Healthcare Pvt. Ltd.

490 Ethical approval: Ethical approval was obtained from each of the clinical trials individually. This is
491 captured in Supplementary Protocol file uploaded and information is available publicly on the Clinical
492 Trial Registry of India website, accessed by trial identifier [CTRI/2022/08/044808](https://www.ctri.gov.in/CTRI/showstudy?ids=CTRI/2022/08/044808)

493 Guarantor: B.S. (ORCID ID: 0009-0009-4865-380X)

494 Author Contributions: B.S.: Conceptualization, Methodology, Overall supervision and coordination,
495 and manuscript review; M.C.- Trial coordination, Curation of Data, Extended data analysis,
496 Visualization, manuscript review; M.K. and V.S.- Conceptualization, Funding acquisition,
497 Technological development, and support.

498 All named authors meet the International Committee of Medical Journal Editors (ICMJE) criteria for
499 authorship for this article, take responsibility for the integrity of the work, and have given their
500 approval for this version to be published.

501 Acknowledgments: The authors would like to thank all the participants in the study. Authors are
502 grateful to Dr. Prabhat Ranjan Sinha, Dr. R.P. Rajesh, Dr. Neeta Deshpande, Dr. Suresh S.M., Dr.
503 Banshi Saboo, Dr. Hamsraj Alva, Dr. B.V.S.N. Raju, Dr. Sriharee Kulkarni, and Dr. Pankaj Aneja
504 who were principal investigators at the various trial sites. Additionally, the authors acknowledge the
505 contributions of Triomics Healthcare for trial automation and trial management, Dr. Aditi
506 Bhattacharya for scientific analyses and publication development support, and Dr. Aafrin Khan for
507 editorial support of the manuscript.

508 Data availability: Study outcomes data can be made available upon reasonable request. The M1 and
509 MS platform codes and technical details are proprietary assets of Ultrahuman and will not be
510 disclosed.

511

Tables and Figures

Table 1. Correlation between Glycaemic variability indices and HbA1c, OGTT, and HOMA-IR (PP Population)

Glycaemic Variability Indices	Statistics	HbA1c %		OGTT		HOMA-IR	
		Healthy (N = 53)	Pre - Diabetic (N = 52)	Healthy (N = 53)	Pre - Diabetic (N = 52)	Healthy (N = 53)	Pre - Diabetic (N = 52)
J index	Correlation coefficient	0.17	0.22	-0.12	0.39	-0.15	0.35
	p-value	0.0781	0.0265	0.2377	0.0001	0.3092	0.0169
Low blood glucose index	Correlation coefficient	-0.16	0.13	0.21	-0.05	0.47	-0.06
	p-value	0.1150*	0.2078*	0.0370	0.6403	0.0010	0.6965
High blood glucose index	Correlation coefficient	0.19	0.22	-0.10	0.39	-0.08	0.38
	p-value	0.0498*	0.0284*	0.3322	0.0001	0.5791	0.0096
Average daily risk range	Correlation coefficient	0.01	0.32	0.10	0.29	0.45	0.14
	p-value	0.9122*	0.0009*	0.3352	0.0030	0.0017	0.3530
Mean amplitude of glucose excursion	Correlation coefficient	-0.09	0.09	-0.01	0.05	0.09	-0.13
	p-value	0.3382*	0.3671*	0.9313	0.6439	0.5346	0.3857
Mean of daily differences	Correlation coefficient	0.14	-0.03	-0.07	0.08	-0.33	0.04
	p-value	0.1485*	0.7867*	0.5091	0.4094	0.0270	0.8012
Continuous overall net glycaemic action	Correlation coefficient	0.03	0.19	-0.00	0.02	-0.01	-0.03

	p-value	0.7910	0.0496	0.9843	0.8603	0.9346	0.8472
p-value based on Pearson correlation & Spearman correlation test							
* represent Spearman correlation test							

Table 2: Correlation Between Metabolic Score and Stress (by Cortisol), Inflammation (by Hs-CRP), HbA1C%, OGTT values, HOMA IR, fasting glucose levels, and fitness variables (PP Population)

Metabolic Score with PSQI Score, Stress, Inflammation, HbA1C %, OGTT, HOMA-IR and GMI	Statistics	Healthy (N = 53)	Pre - Diabetic (N = 52)
Stress	Correlation coefficient	-0.05	0.16
	p-value	0.6023*	0.1142*
Inflammation	Correlation coefficient	-0.16	-0.38
	p-value	0.2748*	0.0055*
HbA1C (%)	Correlation coefficient	-0.15	-0.36
	p-value	0.1397	0.0002
OGTT	Correlation coefficient	-0.27	-0.42
	p-value	0.0056*	<0.0001*
HOMA-IR	Correlation coefficient	-0.37	-0.43
	p-value	0.0113*	0.0036*
Fasting Blood Glucose	Correlation coefficient	0.01	-0.15
	p-value	0.9186	0.1189
Step Count	Correlation coefficient	-0.004	0.07
	p-value	0.908	0.0978
Heart Rate	Correlation coefficient	-0.13	-0.08
	p-value	0.0006	0.0380
Sleep Duration	Correlation coefficient	0.12	-0.08
	p-value	0.0014	0.0356
p-value based on Pearson correlation & spearman correlation test. * represents Spearman Correlation test			

Figure 1. Patient disposition

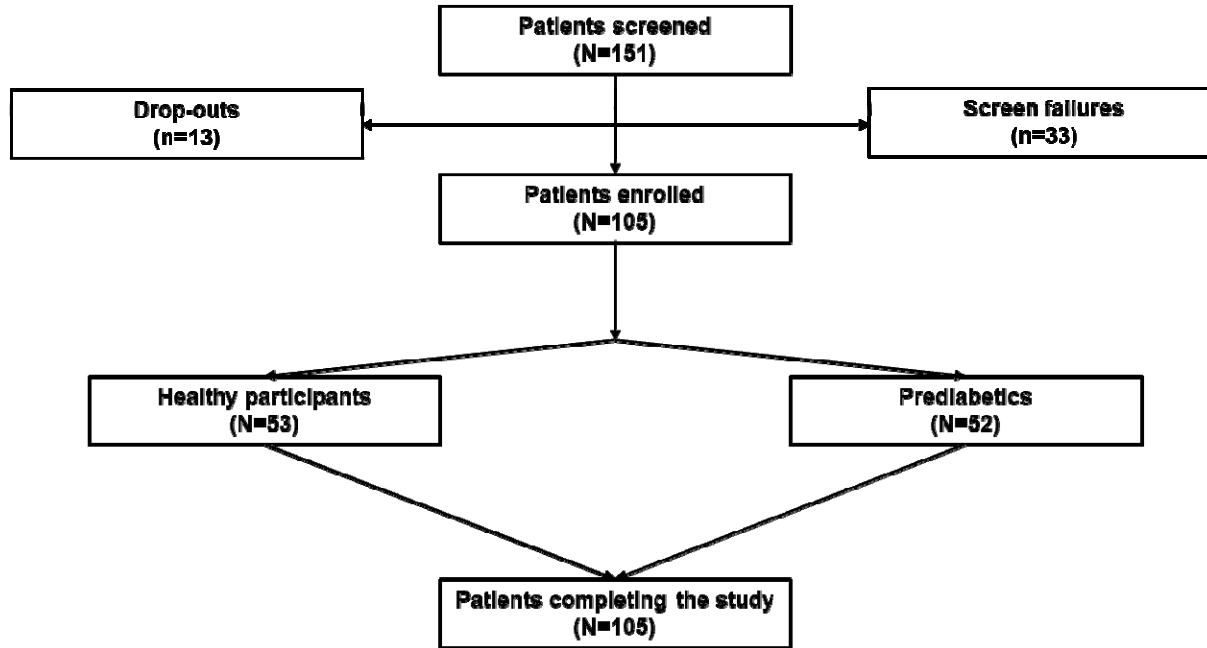
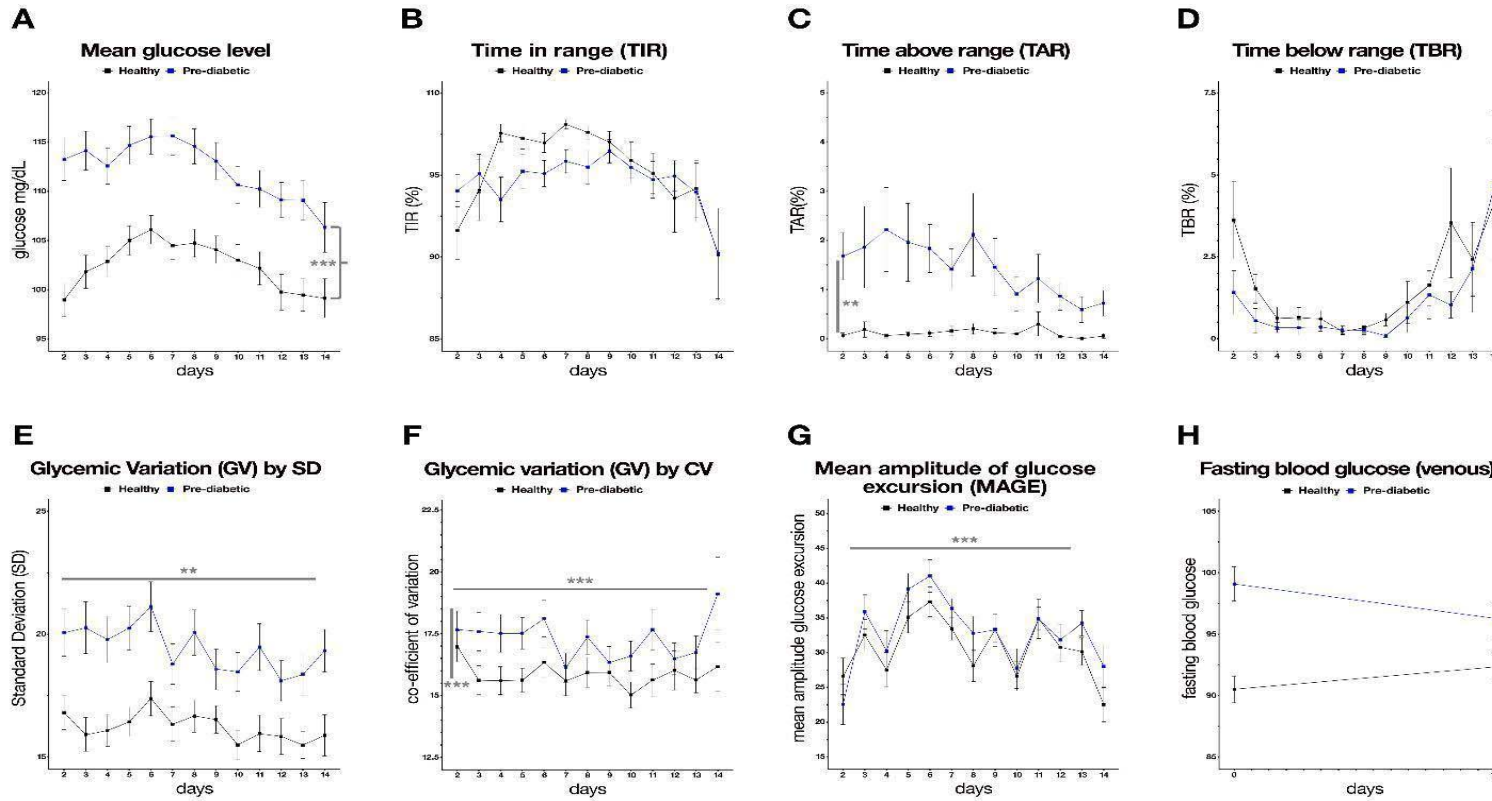
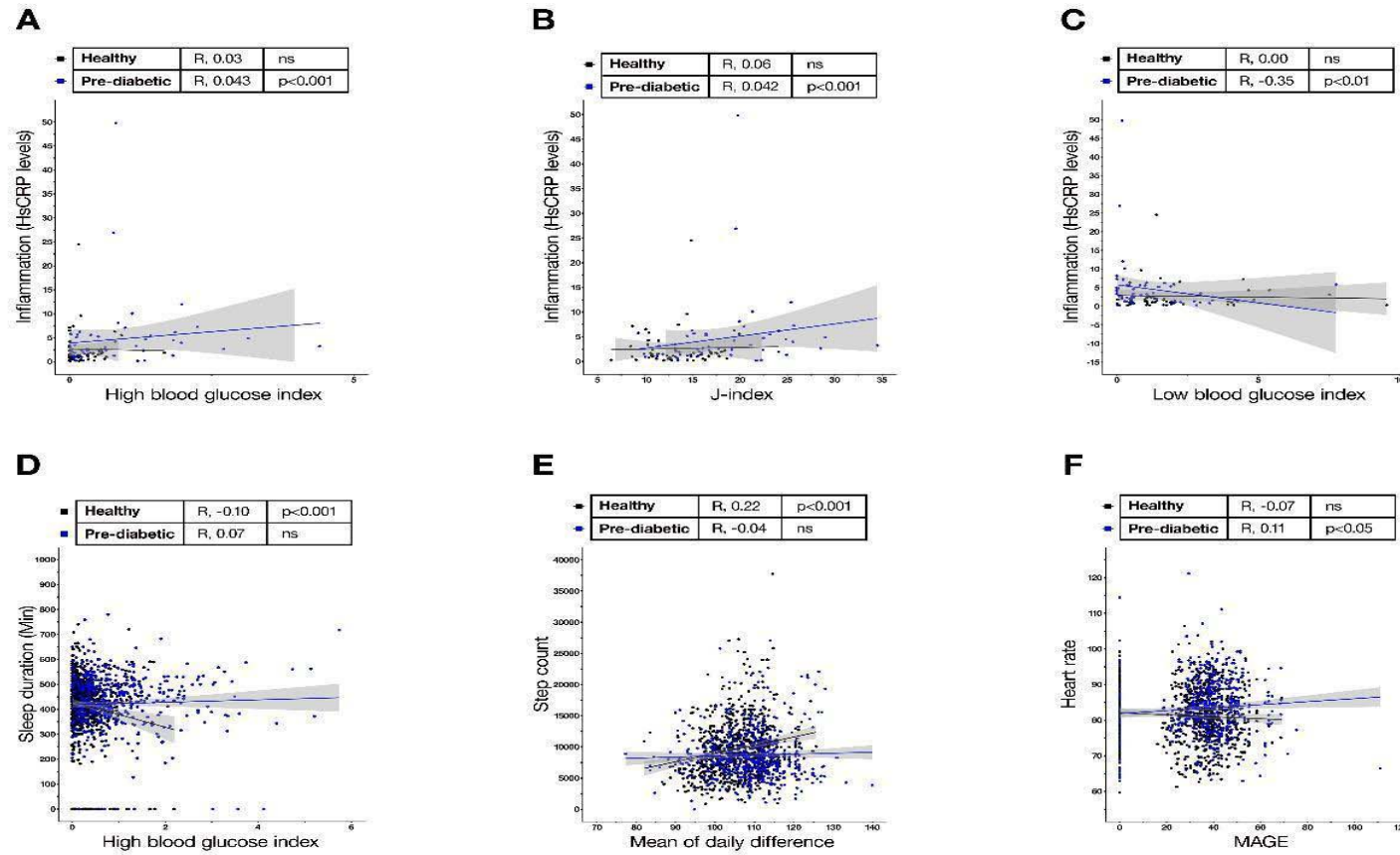


Figure 2. Primary outcome measures in healthy vs. pre-diabetic within the stipulated time-frame



CV: Coefficient of variation; MAGE: Mean amplitude of glycemic excursion; SD: Standard deviation. *, **, *** denotes $p < 0.05$, 0.01 and 0.001, by Two-way ANOVA (see text for details)

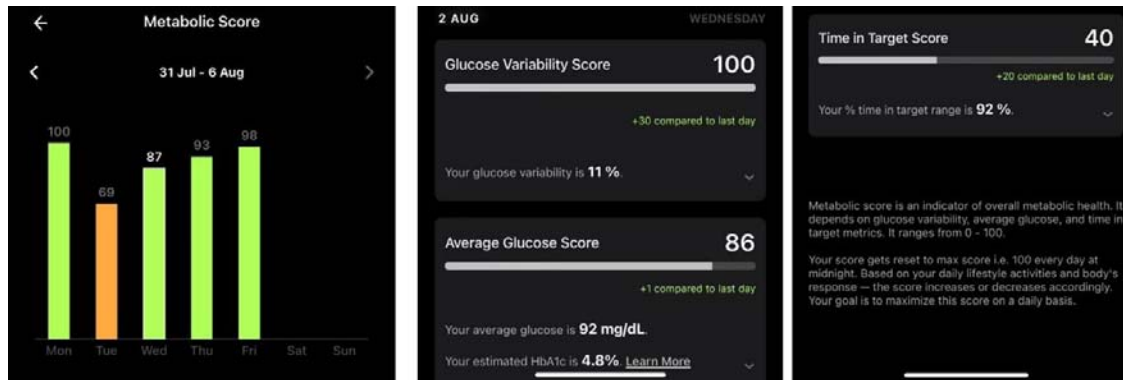
Figure 3. Secondary outcomes: Correlations of GV with clinical biomarkers associated with impaired glucose tolerance (IGT) and commonly tracked fitness measures



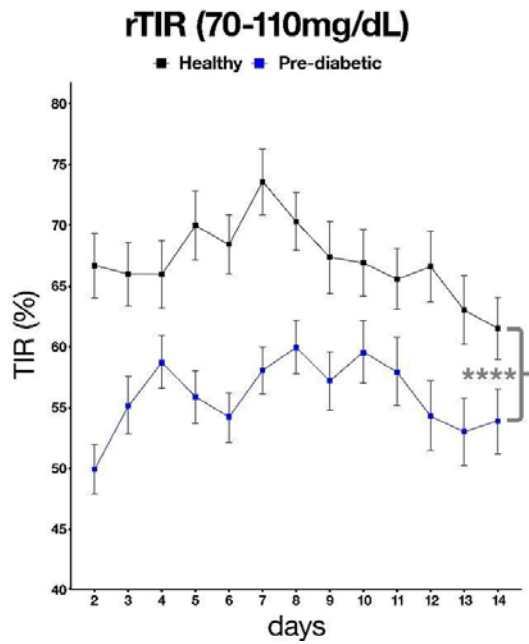
R - correlation coefficient. Linked to Supplementary Tables 2-5

Supplementary section

Supplementary Figure S1: Exemplar snapshot of the MS information panel on the M1 platform



Supplementary Figure S2: Restricted time in range in healthy vs pre-diabetic within the stipulated time-frame



rTIR: restricted Time in range, Statistical analyses: Two-factor ANOVA (cohort x day; main effect, cohort: $p < 0.0001$; main effect, day: $p < 0.0001$, interaction cohort x day: $p < 0.00001$)

Supplementary Table S1: Baseline demographics

Parameter	Statistics	Healthy (N=53)	Pre-Diabetic (N=52)
Gender n (%)	Male	39 (73.6)	45 (86.5)
Age (Years)	N*	53	52
	Mean (SD)	32.8 (6.56)	35.6 (6.94)
	Median (Q1, Q3)	30.0 (28.0, 37.0)	35.5 (30.5, 41.0)
	Min, Max	25.0, 47.0	25.0, 49.0
BMI (kg/m ²)	N*	53	52
	Mean (SD)	25.571 (2.8634)	26.456 (2.6311)
	Median (Q1, Q3)	25.390 (24.050, 27.940)	26.830 (24.905, 28.410)
	Min, Max	20.030, 29.760	20.260, 29.940

BMI: Body mass index; SD: Standard deviation.

Supplementary Table S2: Correlation between Glycaemic variability indices and inflammation (as measured by Hs-CRP) (PP Population)

Inflammation with glycaemic variability indices	Statistics	Healthy (N = 53)	Pre - Diabetic (N = 52)
J index	Correlation coefficient	0.06	0.42
	p-value	0.6959	0.0020
Low blood glucose index	Correlation coefficient	-0.002	-0.35
	p-value	0.9876	0.0108
High blood glucose index	Correlation coefficient	0.03	0.43
	p-value	0.8162	0.0016
Average daily risk range	Correlation coefficient	-0.05	-0.12
	p-value	0.7448	0.3840
Mean amplitude of glucose excursion	Correlation coefficient	0.01	-0.10
	p-value	0.9637	0.4692
Mean of daily differences	Correlation coefficient	-0.10	0.20
	p-value	0.5034	0.1492
Continuous overall net glycaemic action	Correlation coefficient	0.04	0.004
	p-value	0.7912	0.9772
p-value based on Pearson correlation & spearman correlation test * represent spearman correlation test			

Supplementary Table S3: Correlation between glycaemic variability indices and stress (as measured by cortisol) (PP Population)

Stress with glycaemic variability indices	Statistics	Healthy (N = 53)	Pre - Diabetic (N = 52)
J index	Correlation coefficient	0.06	-0.15
	p-value	0.5615*	0.1253*
Low blood glucose index	Correlation coefficient	-0.04	0.09
	p-value	0.7242*	0.3663*
High blood glucose index	Correlation coefficient	0.04	-0.16
	p-value	0.6688*	0.0970*
Average daily risk range	Correlation coefficient	0.01	-0.08
	p-value	0.8956*	0.4105*
Mean amplitude of glucose excursion	Correlation coefficient	-0.09	0.06
	p-value	0.3760*	0.5502*
Mean of daily differences	Correlation coefficient	-0.07	-0.08
	p-value	0.4685*	0.4078*
Continuous overall net glycaemic action	Correlation coefficient	-0.09	-0.05
	p-value	0.3521	0.5844
p-value based on Pearson correlation & spearman correlation test * represent spearman correlation test			

Supplementary Table S4: Correlation between Glycaemic variability indices and sleep duration (PP Population)

Glycaemic variability indices	Statistics	Healthy (N = 53)	Pre - Diabetic (N = 52)
J index	Correlation coefficient	-0.08	0.07
	p-value	0.0336	0.0872
Low blood glucose index	Correlation coefficient	0.01	-0.05
	p-value	0.8938	0.2408
High blood glucose index	Correlation coefficient	-0.10	0.07
	p-value	0.0082	0.0845
Average daily risk range	Correlation coefficient	-0.07	0.06
	p-value	0.0768	0.1262
Mean amplitude of glucose excursion	Correlation coefficient	-0.06	-0.06
	p-value	0.1025	0.1445
Mean of daily differences	Correlation coefficient	-0.05	-0.04
	p-value	0.1591	0.3318
Continuous overall net glycaemic action	Correlation coefficient	-0.09	-0.10
	p-value	0.0159	0.0115
<p>p-value based on Pearson correlation & spearman correlation test * represent spearman correlation test</p>			

Supplementary Table S5: Correlation between Glycaemic variability indices and physical activity (step count) (PP Population)

Glycaemic variability indices	Statistics	Step Count		Heart rate	
		Healthy (N = 53)	Pre - Diabetic (N = 52)	Healthy (N = 53)	Pre - Diabetic (N = 52)
J index	Correlation coefficient	-0.03	-0.09	0.04	0.06
	p-value	0.4363	0.0174	0.3207	0.1545
Low blood glucose index	Correlation coefficient	0.04	0.01	0.11	-0.06
	p-value	0.2966	0.7298	0.0045	0.1100
High blood glucose index	Correlation coefficient	0.004	-0.10	0.05	0.05
	p-value	0.9173	0.0134	0.2071	0.1768
Average daily risk range	Correlation coefficient	0.10	0.004	0.15	0.07
	p-value	0.0082	0.9146	0.0001	0.0847
Mean amplitude of glucose excursion	Correlation coefficient	0.06	-0.05	-0.07	0.11
	p-value	0.0950	0.1747	0.0520	0.0048
Mean of daily differences	Correlation coefficient	0.22	-0.04	-0.08	-0.04
	p-value	<0.0001	0.2973	0.0412	0.2983
Continuous overall net glycaemic action	Correlation coefficient	0.04	-0.06	-0.09	0.05
	p-value	0.2493	0.1449	0.0145	0.2324
p-value based on Pearson correlation & spearman correlation test * represent spearman correlation test					

Supplementary Table 7: Details of trial sites, principal investigators, ethics committee approval dates

Site Name (Name of Ethics Board)	Site Address	Date of Approval
Aakash Healthcare Private Limited (Hospital Ethics Board)	Aakash Healthcare, Private Limited Hospital Plot Road No. 201, Sector-3, Dwarka, New Delhi -110075	11 th August 2022
Aadhavvan Diabetes & Research Centre (Universal Ethics Committee)	No.3, 5th Street, Eswar Nagar, Kodambakkam, Chennai, Tamil Nadu - 600024	08 th August 2022
Belgaum Diabetes Centre (Diabetes Centre Ethics Committee)	Ground and second floor, Maruti street, Belgaum, Karnataka- 590001	12 th August 2022
Suresh Diacare (Bangalore Ethics Committee)	No 723B, 11th Main Rd, 3rd Block, Rajajinagar, Bengaluru, Karnataka 560010	26 th September 2022
Diacare Research (Shrey Hospital Institutional Ethics Committee)	1,2 Gandhi Park, near Nehrunagar, Ambawadi, Ahmedabad, Gujarat- 380015	12 th August 2022
Vinaya Hospital, (Hospital Ethics Committee)	Vinaya Hospital and Research Centre (a unit of KIMS), Karangalpady, Mangaluru, Karnataka-575003	30 th July 2022
Induss Hospital, (Institutional Ethics Committee)	Induss Hospital, Opp. Kothapet Fruit Market Kothapet, Sri Sai Shivani Complex, HUDA Complex, Saroornagar, Hyderabad, Telangana- 500035	14 th October 2022
Kulkarni's Medzonne (Bangalore Ethics Committee)	Kulkarni's Medzonne, GD Naidu Hall, Mohan Matrix, 450 th ,12 th cross road, Near Vidya Bharti School, Mahalakshmiapuram, Bengaluru, Karnataka. 560086	03 rd October 2022
Naveda Healthcare Centre (Good Society Ethical Research Oversight Committee)	A-1/81, Sector-8, Rohini, Delhi. 110085	02 nd August 2022

References

1. World health organization- https://www.who.int/health-topics/diabetes#tab=tab_1 (Accessed 23rd July 2023)
2. Yip WCY, Sequeira IR, Plank LD, and Poppitt SD. Prevalence of Pre-Diabetes across Ethnicities: A Review of Impaired Fasting Glucose (IFG) and Impaired Glucose Tolerance (IGT) for Classification of Dysglycaemia. *Nutrients*. 2017; 22;9(11):1273.
3. Saeedi P, Petersohn I, Salpea P, et al. IDF Diabetes Atlas Committee. Global and regional diabetes prevalence estimates for 2019 and projections for 2030 and 2045: Results from the International Diabetes Federation Diabetes Atlas, 9th edition. *Diabetes Res Clin Pract*. 2019;157:107843.
4. Dali-Youcef N, Mecili M, Ricci R, and Andrès E. Metabolic inflammation: connecting obesity and insulin resistance. *Ann Med*. 2013; 45(3):242-53.
5. Fazli GS, Moineddin R, Bierman AS, and Booth GL. Ethnic variation in the conversion of prediabetes to diabetes among immigrant populations relative to Canadian-born residents: a population-based cohort study. *BMJ Open Diabetes Res Care*. 2020; 8(1):e000907.
6. Tuomilehto J, Lindström J, Eriksson JG, et al. Finnish Diabetes Prevention Study Group. Prevention of type 2 diabetes mellitus by changes in lifestyle among subjects with impaired glucose tolerance. *N Engl J Med*. 2001; 344(18):1343-50.
7. Prevention or Delay of Type 2 Diabetes: Standards of Medical Care in Diabetes—2021. American Diabetes Association. *Diabetes J*. *Diabetes Care* 2021;44(Supplement_1):S34–S39
8. Duan D, Kengne AP, and Echouffo-Tcheugui JB. Screening for Diabetes and Prediabetes. *Endocrinol Metab Clin North Am*. 2021; 50(3):369-385.
9. Bergman M, Abdul-Ghani M, DeFronzo RA, et al. Review of methods for detecting glycemic disorders. *Diabetes Res Clin Pract*. 2020; 165:108233.
10. Rodbard D. Continuous Glucose Monitoring: A Review of Successes, Challenges, and Opportunities. *Diabetes Technol Ther*. 2016; 18 Suppl 2(Suppl 2):S3-S13.
11. Soliman A, DeSanctis V, Yassin M, et al. Continuous glucose monitoring system and new era of early diagnosis of diabetes in high risk groups. *Indian J Endocrinol Metab*. 2014; 18(3):274-82.
12. Klonoff DC, Nguyen KT, Xu NY, et al. Use of Continuous Glucose Monitors by People Without Diabetes: An Idea Whose Time Has Come? *J Diabetes Sci Technol*. 2022; doi: 10.1177/19322968221110830.
13. Daly A, and Hovorka R. Technology in the management of type 2 diabetes: Present status and future prospects. *Diabetes Obes Metab*. 2021; 23(8):1722-1732.
15. <https://blog.ultrahuman.com/blog/beginners-guide-to-the-ultrahuman-m1/> (accessed 23rd July 2023)
16. <https://blog.ultrahuman.com/blog/how-is-your-metabolic-score-calculated/> (Accessed 13th August 2023)
17. Mohan V, Joshi S, Mithal A, et al. Expert Consensus Recommendations on Time in Range for Monitoring Glucose Levels in People with Diabetes: An Indian Perspective. *Diabetes Ther*. 2023; 14(2):237-249.
18. Wells JC, Pomeroy E, Walimbe SR, et al. The Elevated Susceptibility to Diabetes in India: An Evolutionary Perspective. *Front Public Health*. 2016; 4:145.
19. Anjana RM, Unnikrishnan R, Deepa M, et al. ICMR-INDIAB Collaborative Study Group. Metabolic non-communicable disease health report of India: the ICMR-INDIAB national cross-sectional study (ICMR-INDIAB-17). *Lancet Diabetes Endocrinol*. 2023; 11(7):474-489.

20. Anjana RM, Deepa M, Pradeepa R et al. ICMR–INDIAB Collaborative Study Group. Prevalence of diabetes and prediabetes in 15 states of India: results from the ICMR-INDIAB population-based cross-sectional study. *Lancet Diabetes Endocrinol.* 2017; 5(8):585-596.
21. Anjana RM, Shanthi Rani CS, et al. Incidence of Diabetes and Prediabetes and Predictors of Progression Among Asian Indians: 10-Year Follow-up of the Chennai Urban Rural Epidemiology Study (CURES). *Diabetes Care.* 2015; 38(8):1441-8.
22. https://www.accessdata.fda.gov/cdrh_docs/pdf19/K193371.pdf (Accessed 21st July 2023)
23. Buysse DJ, Reynolds CF 3rd, Monk TH, et al. The Pittsburgh Sleep Quality Index: a new instrument for psychiatric practice and research. *Psychiatry Res.* 1989; 28(2):193-213.
24. Bailey T, Bode BW, Christiansen MP, et al. The Performance and Usability of a Factory-Calibrated Flash Glucose Monitoring System. *Diabetes Technol Ther.* 2015; 17(11):787-94.
25. <https://www.R-project.org>. R Core Team (2021). R: A language and environment for statistical computing. R Foundation for Statistical Computing, Vienna, Austria. (Accessed March 2023).
26. Battelino T, Danne T, Bergenstal RM, et al. Clinical Targets for Continuous Glucose Monitoring Data Interpretation: Recommendations from the International Consensus on Time in Range. *Diabetes Care.* 2019; 42(8):1593-1603.
27. Hill NR, Oliver NS, Choudhary P, et al. Normal reference range for mean tissue glucose and glycemic variability derived from continuous glucose monitoring for subjects without diabetes in different ethnic groups. *Diabetes Technol Ther.* 2011; 13(9):921-8.
28. Jaiswal A, Tabassum R, Podder A, et al. Elevated level of C-reactive protein is associated with risk of prediabetes in Indians. *Atherosclerosis.* 2012; 222(2):495-501.
29. Sonnier T, Rood J, Gimble JM, and Peterson CM. Glycemic control is impaired in the evening in prediabetes through multiple diurnal rhythms. *J Diabetes Complications.* 2014; 28(6):836-43.
30. Hur MH, Lee MK, Seong K, and Hong JH. Deterioration of Sleep Quality According to Glycemic Status. *Diabetes Metab J.* 2020; 44(5):679-686.
31. Mishra A, Podder V, Modgil S, et al. Higher Perceived Stress and Poor Glycemic Changes in Prediabetics and Diabetics Among Indian Population. *J Med Life.* 2020;13(2):132-137.
32. Satya Krishna SV, Kota SK, Modi KD. Glycemic variability: Clinical implications. *Indian J Endocrinol Metab.* 2013;17(4):611-9.
33. Acciaroli G, Sparacino G, Hakaste L, et al. Diabetes and Prediabetes Classification Using Glycemic Variability Indices From Continuous Glucose Monitoring Data. *J Diabetes Sci Technol.* 2018;12(1):105-113.
34. main.mohfw.gov.in/sites/default/files/NFHS-5_Phase-II_0.pdf (Accessed 22nd July 2023)
35. Jain AB. Glycemic improvement with a novel interim intervention technique using retrospective professional continuous glucose monitoring (GLITTER study): A study from Mumbai, India. *Diabetes Metab Syndr.* 202;15(3):703-709.
36. Shamanna P, Saboo B, Damodharan S, et al. Reducing HbA1c in Type 2 Diabetes Using Digital Twin Technology-Enabled Precision Nutrition: A Retrospective Analysis. *Diabetes Ther.* 2020; 11(11):2703-2714.
37. Anjana RM, Kesavadev J, Neeta D, et al. Multicenter Real-Life Study on the Effect of Flash Glucose Monitoring on Glycemic Control in Patients with Type 1 and Type 2 Diabetes. *Diabetes Technol Ther.* 2017; 19(9):533-540.

38. Ranjani H, Nitika S, Anjana R, et al. Impact of noncommunicable disease text messages delivered via an app in preventing and managing lifestyle diseases: results of the myArogya worksite-based effectiveness study from India. *J Diabetol*. 2020; 11: 90–100.
39. Pfammatter A, Spring B, Saligram N, et al. mHealth Intervention to Improve Diabetes Risk Behaviors in India: A Prospective, Parallel Group Cohort Study. *J Med Internet Res*. 2016; 18(8):e207. doi: 10.2196/jmir.5712.
40. Dehghani Zahedani A, Shariat Torbaghan S, Rahili S, et al. Improvement in Glucose Regulation Using a Digital Tracker and Continuous Glucose Monitoring in Healthy Adults and Those with Type 2 Diabetes. *Diabetes Ther*. 2021;12(7):1871-1886.
41. Zand A, Ibrahim K, Patham B. Prediabetes: Why Should We Care? *Methodist Debakey Cardiovasc J*. 2018; 14(4):289-297.
42. Kamath DY, Xavier D, Sigamani A, and Pais P. High sensitivity C-reactive protein (hsCRP) & cardiovascular disease: An Indian perspective. *Indian J Med Res*. 2015; 142(3):261-8.
43. Ghule A, Kamble TK, Talwar D, et al. Association of Serum High Sensitivity C-Reactive Protein With Pre-diabetes in Rural Population: A Two-Year Cross-Sectional Study. *Cureus*. 2021;13(10):e19088. doi: 10.7759/cureus.19088.
44. El Fatouhi D, Héritier H, Allémann C, et al. Associations Between Device-Measured Physical Activity and Glycemic Control and Variability Indices Under Free-Living Conditions. *Diabetes Technol Ther*. 2022; 24(3):167-177.
45. Longato E, Acciaroli G, Facchinetti A, et al. Simple Linear Support Vector Machine Classifier Can Distinguish Impaired Glucose Tolerance Versus Type 2 Diabetes Using a Reduced Set of CGM-Based Glycemic Variability Indices. *J Diabetes Sci Technol*. 2020; 14(2):297-302.
46. <https://www.heart.org/en/healthy-living/healthy-lifestyle/lifes-essential-8>. (Accessed 13th August 2023)