

1 **Clinical Performance of SARS-CoV-2 Rapid Antigen Tests: A Systematic**
2 **Review and Meta-Analysis**

3 Nina Germic^a, Johannes Hayer^b and Qian Feng^{a,*}

4 ^a Roche Diagnostics International Ltd, Rotkreuz, Switzerland

5 ^b Roche Diagnostics GmbH, Mannheim, Germany

6
7 *** Corresponding author:**

8 Qian Feng

9 ADDRESS: Forrenstrasse 2, 6343 Rotkreuz, Switzerland

10 PH: +41 41 792 30 24

11 EMAIL: qian.feng.qf1@roche.com

12
13 **Other authors:**

14 Nina Germic

15 EMAIL: nina.germic@roche.com

16
17 Johannes Hayer

18 EMAIL: johannes.hayer@roche.com

22 **HIGHLIGHTS**

- 23 • Meta-analysis of 86 studies of SARS-CoV-2 rapid antigen test (RAT)
- 24 performance
- 25 • RAT performance supports near-patient testing for early COVID-19 diagnosis
- 26 • RAT specificity is high and sensitivity is reliable in those with high viral load
- 27 • RAT sensitivity in symptomatic patients is higher than in asymptomatic
- 28 individuals
- 29 • RAT sensitivity is higher for direct swabs compared to swabs in transport media

30

ABSTRACT

Objectives: We conducted a meta-analysis of RAT diagnostic accuracy for SARS-CoV-2 infections, and further evaluated test sensitivity versus the presence of symptoms, days post symptom onset (DPSO), sample viral load, and sample type (i.e. direct swabs versus specimens stored in transport media).

Methods: Three databases were searched systematically for performance evaluations of the Roche-distributed SDB SARS-CoV-2 Rapid Antigen Test (Roche/SDB RAT) through March 2022. If the Roche/SDB RAT was compared with any of 9 commonly available antigen tests, data from these tests were also included.

Results: Overall sensitivity of RATs among different manufacturers and study cohorts varied between 36.0% (95% CI: 24.0-50.1) and 79.4% (95% CI: 64.8-89.0). Roche/SDB RATs demonstrated a competitive performance with a pooled (including off-label use) sensitivity of 70.0%, and nearly 100% specificity in included studies. The Roche/SDB RATs exhibited reliable sensitivity in patients with a relatively high viral load (96.6% [95% CI: 95.2-98.2] for $Ct \leq 25$). Roche/SDB RATs were more sensitive in symptomatic patients within the first 7 DPSO (85.5% [95% CI: 81.2-88.4]), and when used to test direct swabs (74.4% [95% CI: 69.7-80.3]).

Conclusion: RATs show reliable performance in clinical settings and should be considered when rapid diagnosis of SARS-CoV-2 infection is critical.

Keywords: SARS-CoV-2, COVID-19, clinical performance, rapid antigen test, lateral flow assay, point-of-care, in vitro diagnostics

31 INTRODUCTION

32 Coronavirus disease 2019 (COVID-19) is caused by infection with severe acute
33 respiratory syndrome coronavirus 2 (SARS-CoV-2)[1] and as of August 2023, there
34 have been more than 769 million confirmed cases of COVID-19, including 6.9 million
35 deaths reported to WHO.[2] The clinical spectrum of SARS-CoV-2 infection is wide,
36 ranging from an asymptomatic infection to severe pneumonia with acute respiratory
37 distress syndrome and death.[3-5] Timely diagnosis can contribute to clinical
38 management and outbreak control. Diagnostic testing involves detecting viral
39 biomarkers, or detecting the human immune response to the virus.[6] Commonly used
40 diagnostic methods for SARS-CoV-2 include Real-Time Polymerase Chain Reaction
41 (RT-PCR), which has become the gold standard, viral culture, serology assays, and
42 antigen-detection tests, both at Point-of-Care and in laboratories.[7] RT-PCR enables
43 accurate diagnosis of SARS-CoV-2 infection with technical turn-around times ranging
44 from less than an hour to 24 hours.[8]

45 Rapid antigen tests (RATs) produce results quickly with a turnaround time of 15-30
46 minutes.[9] Further, RATs are convenient to use, widely available to the general
47 population, and less expensive than NAATs.[9] However, they are typically less
48 sensitive than RT-PCR and other NAATs. Varying clinical performance has been
49 reported for SARS-CoV-2 RATs from different manufacturers and among diverse
50 patient populations on a global scale. A previous meta-analysis reported a pooled RAT
51 sensitivity and specificity of 71.2% and 98.9% respectively, although sensitivity
52 increased to 76.3% when analysis was confined to studies that followed the
53 manufacturers' instructions.[10] A Cochrane review also summarized results from

54 various studies that examined or analyzed the diagnostic accuracy of rapid antigen
55 tests.[11] When tests were used according to manufacturer instructions, average
56 sensitivities by brand ranged from 34.3% to 91.3% in symptomatic participants for 20
57 tests with eligible data, while sensitivity ranged from 28.6% to 77.8% for 12 tests
58 studied in asymptomatic participants. Corman et al. showed that the Abbott Panbio™
59 COVID-19 Ag Rapid Test, the Healgen® Coronavirus Ag Rapid Test Cassette (Swab),
60 the R-Biopharm RIDA® QUICK SARS-CoV-2 Antigen Test, and the Roche/SD
61 Biosensor SARS-CoV-2 Rapid Antigen Test detect as few as 4-4 plaque-forming units
62 (PFU) of virus (88 PFU/mL).[12]

63 The SARS-CoV-2 Rapid Antigen Test manufactured by SD Biosensor and distributed
64 by Roche Diagnostics (equivalent to the STANDARD Q COVID-19 Ag Test; hereafter
65 “Roche/SDB RAT”)¹ was broadly used internationally during the pandemic, both in
66 professional point-of-care settings and as a self-test. To evaluate the diagnostic
67 accuracy of the Roche/SDB RAT, we performed an unbiased literature search
68 including studies across 36 different countries.[12] In this meta-analysis, we analyzed
69 the overall performance of the Roche/SDB RAT, followed by sub-analyses according to
70 the presence of symptoms, days post symptom onset (DPSO), cycle threshold (Ct)
71 ranges and sample types (direct swabs vs samples stored in transport media). If the
72 Roche/SDB RAT was compared with one of 9 other widely available antigen tests
73 (Abbott, Acon, BD, Biosynex, Boson, Laihe, MP BIO, Siemens, Quidel), data from
74 these tests were included as well.

¹ Also including SARS-CoV-2 Rapid Antigen Test Nasal and SARS-CoV-2 Antigen Self Test Nasal.

75 Our meta-analysis of 86 studies shows that RAT performance supports near-patient
76 testing for early COVID-19 diagnosis, with reliable sensitivity in those with relatively
77 high viral load. In general, RATs correctly diagnosed the bulk of SARS-CoV-2-infected
78 persons within the first week of symptom onset.

79

80 **OBJECTIVES AND STUDY DESIGN**

81 **Search Strategy**

82 This meta-analysis was performed according to the Preferred Reporting Items for
83 Systematic Reviews and Meta-Analyses (PRISMA) guidelines.[13] SURUS, a custom-
84 built natural language processing (NLP) Engine (Medstone Science B.V.) was used to
85 conduct query-based searches for relevant papers from January 2020 through March
86 2022. The databases MEDLINE, and preprint servers MedRxiv and BioRxiv were
87 initially searched for clinical performance studies of a commercial SARS-CoV-2 RAT
88 with the following search strings: (“SARS-CoV-2” OR “Rapid antigen test” OR “point of
89 care” or “lateral flow assay” or “Roche/SD Biosensor/Standard Q”) AND
90 (“nasopharyngeal” OR “nasal” OR “oro-nasopharyngeal” OR “oropharyngeal” OR “viral
91 culture”) AND (“Sensitivity” OR “Specificity” OR “Accuracy” OR “PPA” OR “NPA” OR
92 “PPV” OR “NPV” OR “LOD” OR “TCID”). Only papers that evaluated the Roche/SDB
93 RAT performance with any of the specified parameters were considered if results were
94 reported at the manufacturer level. If the Roche/SDB RAT was compared with one of
95 the 9 other antigen tests of interest (Abbott, Acon, BD, Biosynex, Boson, Laihe, MP
96 BIO, Siemens, Quidel), the data from these tests were included as well.

97 In addition to the machine-learning approach, a manual search including FIND (The
98 Foundation for Innovative New Diagnostics [FIND], 2020) was conducted.

99 **Data Extraction**

100 Data extraction from identified studies was carried out by Medstone Science B.V. using
101 the NLP algorithm, and results were manually validated and verified. The following
102 information was extracted: publication characteristics (e.g., publication date, publication
103 type, publication ID, and hyperlink to full text), study design (e.g., study size, location,
104 timelines, sample collection, reference test), characteristics of study participants (e.g.,
105 age, presence of symptoms, DPSO at the time of diagnosis), test performance (e.g.,
106 sensitivity and specificity) and QUADAS parameters for study quality.[14] We
107 considered 7 quality parameters that are known to affect test performance, including 1)
108 whether the patient sample represented the target population; 2) whether patient
109 selection criteria were clearly described; 3) whether the time interval between the
110 reference test and RAT was appropriately brief; 4) whether RAT execution was
111 described in sufficient detail for test replication; 5) whether reference test execution
112 was described in sufficient detail for test replication; 6) whether blinded interpretation of
113 RAT results occurred; and 7) whether patient withdrawals and sample exclusion were
114 explained.

115 **Selection criteria**

116 Initially, 135 records were identified. We excluded duplicates, records that were not in
117 the English language or outside the analysis time window, and any publications that did

118 not evaluate the Roche/SDB RAT, thus retaining 124 publications for further analysis.

119 All 124 publications used an RT-PCR test as a comparator.

120 For qualitative analysis, studies were excluded if:

121 a) the total number of analyzed samples was <100; or

122 b) testing was not performed using clinical samples (i.e. contrived or cultured
123 viral material); or

124 c) the specimen source for the antigen testing was only “saliva”; or

125 d) time between antigen sampling and comparator sampling was defined as “>
126 24 hours”.

127 Ninety-seven records were identified for qualitative analysis.

128 For quantitative analysis (meta-analysis), studies were excluded if no discernible
129 numbers of true positive (TP) and false negative (FN), or true negative (TN) and false
130 positive (FP) values could be manually extracted from the presented data in the eligible
131 studies. Eighty-six records were identified for quantitative analysis.

132 **Statistical Analysis**

133 The extracted data were entered into an electronic database and classified according
134 to the RAT that was studied. Information on the overall clinical performance (sensitivity,
135 specificity) and stratified analysis based on DPSO, presence or absence of symptoms
136 at the time of sampling, Ct values of paired RT-PCR results, and use of direct swabs vs
137 specimens stored in transport media was recorded for each eligible study.

138 As confidence intervals (CIs) reported in the publications were calculated using
139 differing methods, all confidence intervals were recalculated using the exact Clopper–
140 Pearson method for better comparability. Due to the heterogeneity in sub-groups and
141 the small number of studies available for some RATs, we report the differences
142 between tests descriptively rather than statistically. Relative sensitivity and specificity
143 of RATs were calculated in relation to RT-PCR results as the gold standard (based on
144 the number of TP, TN, FP, and FN values extracted from eligible studies).

145 The meta-analysis of the performance results of RATs against RT-PCR reference
146 methods was performed using the statistical software R (R Foundation for Statistical
147 Computing, 2020).

148 For overall clinical performance, we undertook the statistical pooling of estimates
149 across all manufacturers namely Abbott, Acon, BD, Biosynex, Boson, Laihe, MP BIO,
150 Roche, Siemens, and Quidel. The metaprop function from the “meta” package[15] was
151 used to calculate the effect size for each individual test and pooled overall in a forest
152 plot (**Figure 1**).

153 The stratified analyses discussed above are depicted as forest plots (**Figures 2 and 3**)
154 which show the individual results of each study. Due to the high heterogeneity of the
155 results in the different studies, rather than the mean, the median and a corresponding
156 CI were used in the result descriptions. The CIs were calculated using a Wald interval
157 on the ranks. In case the sample size was not sufficient for the calculations, the
158 minimal and maximal study result per condition (and manufacturer) was used as a
159 proxy for confidence limits.

160 A bivariate model was fitted as a linear mixed model, and variance components were
161 estimated by restricted maximum likelihood, using the reitsma function from the “mada”
162 package[16, 17] for each system investigated in five or more studies.[18] The results
163 are presented as a summary receiver operating characteristic (SROC) curve plot
164 **(Figure 4)**. The summary estimates, SROC curves, and confidence regions are
165 depicted when a sufficient number of studies was available (>5 studies for SROC
166 curves, >3 studies for summary estimates and confidence regions).

167

168 **RESULTS**

169 Per PRISMA guidelines, the selection of studies by applying the eligibility criteria is
170 summarized in **Supplemental (Suppl.) Figure 1**. According to our search criteria, 97
171 publications investigating 166,561 samples were included in this systematic review and
172 qualitative analysis. If the Roche/SDB RAT was compared with one of the 9 common
173 antigen tests of interest, the data from these tests were included as well. The search
174 results included the following antigen tests of interest: i) Panbio™ COVID-19 Ag Rapid
175 Test Device by Abbott (henceforth called “**Abbott**”); ii) Flowflex® SARS-CoV-2 Antigen
176 rapid test and COVID-19 Antigen Home Test by Acon Laboratories (henceforth called
177 “**Acon**”); iii) BD Veritor™ System for Rapid Detection of SARS-CoV-2 by Becton
178 Dickinson (henceforth called “**BD**”); iv) BIOSYNEX COVID-19 Ag BSS by Biosynex SA
179 (henceforth called “**Biosynex**”); v) Rapid SARS-CoV-2 Antigen Test Card by Xiamen
180 Boson Biotech (henceforth called “**Boson**”); vi) LYHER® Novel Coronavirus (COVID-
181 19) Antigen Test Kit (Colloidal Gold) by Hangzhou Laihe Biotech (henceforth called
182 “**Laihe**”); vii) Rapid SARS-CoV-2 Antigen Test Card by MP Biomedicals (henceforth

183 called “**MP Bio**”); viii) CLINITEST[®] Rapid COVID-19 Antigen Test by Siemens
184 Healthineers (henceforth called “**Siemens**”) and ix) Sofia SARS Antigen FIA by Quidel
185 Corporation (henceforth called “**Quidel**”).

186 The Roche/SDB RAT was investigated in 36 countries within the selected time period.
187 We analyzed the number of studies investigating RAT performance by publication date
188 and geographical location (**Figure 5**). The number of identified studies increased
189 steadily through Q2 2021 as the pandemic progressed. Europe was the leading region
190 evaluating Roche/SDB SARS-CoV-2 RAT performance (n= 65 records), with Asia a
191 distant second (n= 21 records). Studies published in 2021 reported higher numbers of
192 participants compared to 2020, and this is likely due to the increased incidence of
193 SARS-CoV-2 as well as the broader acceptance and availability of RATs (**Figure 5(b)**).

194 Although the number of relevant studies may have reached a plateau, more
195 participants were recruited in clinical trials in Q1 2022 (n=32,677) compared to Q1
196 2021 (n=10,380). In addition, the number of participants per quarter showed a trend of
197 recruiting more participants per individual study.

198 **Overall sensitivity**

199 The quantitative analysis of overall sensitivities was performed for a subset of 84
200 studies, in which the exact TP and FN numbers were known. All studies included the
201 Roche/SDB RAT (104 distinct cohorts), while Abbott was covered by 23 studies (24
202 cohorts), BD and Siemens by 7, Biosynex by 4, Acon by 3 studies, Boson was covered
203 by 2 studies, and Laihe, MP Bio, and Quidel by 1 study. For these studies, the pooled
204 sensitivity of RATs varied from 36.0% to 79.4% across manufacturers, with the pooled

205 sensitivity for the Roche/SDB RAT of 70.0% (95% CI: 66.5-73.4) as shown in **Figure**
206 **1(a) (also Suppl. Figure 2)**. Discrepancies and the wide range of RAT sensitivities
207 may have arisen due to several factors and sub-analyses for these parameters were
208 conducted to assess their impact on test performance.

209 **Sensitivity in Symptomatic vs Asymptomatic Study Participants**

210 The presence of COVID-19 symptoms (as reported by the studies) was used to
211 perform a stratified sensitivity analysis as shown in **Figure 2(a) (also Suppl. Figure 3)**.
212 Thirty-five studies included symptomatic subjects whereas 26 studies included
213 asymptomatic participants. The median sensitivity of RATs in symptomatic patients
214 was considerably higher (78.0% [95% CI: 73.3-82.7]) than in those without symptoms
215 (49.6% [95% CI: 38.6-58.7]), suggesting that RATs are more effective in detecting an
216 infection in the symptomatic population. This is consistent with previous studies
217 reporting higher RAT sensitivity in the symptomatic population.[19, 20]

218 The Roche/SDB RAT demonstrated a median sensitivity of 78.9% [95% CI: 74.4-83.4]
219 in symptomatic patients (n=43 distinct cohorts from 35 studies), and a median
220 sensitivity of 53.3% [95% CI: 43.6-63.0] in asymptomatic subjects (n=27 distinct
221 cohorts from 26 studies). Thirteen studies² included RATs from other manufacturers,
222 and reported median sensitivity between 68.6% - 90.4% in symptomatic cohorts and
223 between 27.3% - 57.3% in asymptomatic cohorts.

224 **Sensitivity for Days Post Symptom Onset (DPSO)**

² These 13 studies included the following subsets: 12 studies for sensitivity in symptomatic patients, and 7 studies for sensitivity in asymptomatic patients.

225 Time elapsed since symptom onset is a clinically relevant parameter.[9, 21-23]
226 Therefore, we analyzed the performance of RATs with regard to DPSO in symptomatic
227 populations. The results showed the following median sensitivity of RATs overall:
228 85.9% [95% CI: 79.2-92.3], 86.1% [95% CI: 81.2-88.2] and 50.0% [95% CI: 38.2-62.5]
229 for ≤ 5 , ≤ 7 and > 7 DPSO, respectively (**Figure 2(b)**, also **Suppl. Figure 4**).

230 The Roche/SDB RAT showed a very similar median sensitivity profile of 86.0% [95%
231 CI: 79.2-92.9], 85.5% [95% CI: 81.2-88.4] and 57.1% [95% CI: 38.2-66.7] for ≤ 5 , ≤ 7
232 and > 7 DPSO, respectively.

233 **Sensitivity by Cycle Threshold (Ct)**

234 RAT performance is commonly expressed as relative sensitivity and specificity against
235 RT-PCR. All included studies used Cycle Threshold (Ct) values of the RT-PCR
236 methods as a proxy for viral load in samples, likely due to the lack of an internationally
237 standardized quantitative method at the time these studies were conducted.

238 Pooled sensitivities grouped by Ct thresholds for each manufacturer as shown in the
239 forest plot in **Figure 3(a)** ranged from 42.5% to 100% (**also Suppl. Figure 5**). The
240 median sensitivities of the Roche/SDB RAT for Ct values of ≤ 20 , ≤ 25 and ≤ 30 were
241 100.0% [95% CI: 97.2-100], 96.6% [95% CI: 95.2-98.2] and 85.3% [95% CI: 83.3-88.6],
242 respectively. These results showed that RATs are well suited to detect infected
243 individuals with relatively high viral loads, which have been associated with higher risk
244 of virus transmission.[24, 25] Higher Ct values were generally associated with reduced
245 sensitivities.

246 **Sensitivity for Direct Swabs vs Samples Stored in Transport Media**

247 The majority of SARS-CoV-2 RATs support performance claims for direct swabs from
248 the upper respiratory tract, which must be eluted in the proprietary buffer supplied by
249 the manufacturer. For some RATs, swabs eluted in specific transport media are also
250 validated and claimed. However, due to practical and usability reasons swab samples
251 eluted in a variety of transport media were often used to validate RAT performance in
252 clinical studies and practice.

253 Our results show slightly inferior median sensitivity for samples eluted/stored in
254 transport media (63.9% [95% CI: 54.0-70.0]) versus direct swabs (72.0% [95% CI:
255 68.6-76.6]) across manufacturers, although most of the contributing studies were of the
256 Roche/SDB RAT, as shown in **Figure 3(b)**. The median sensitivity of the Roche/SDB
257 RAT for direct swabs and for samples stored in transport media is 74.4% [95% CI:
258 69.7-80.3] (61 distinct cohorts from 46 studies) and 66.5% [95% CI: 50.9-72.5] (37
259 distinct cohorts from 33 studies) respectively.

260 **Overall Specificity**

261 RATs generally have high specificity. This is also reflected in our meta-analysis. The
262 pooled specificity for all manufacturers ranged from 99.1% to 100%, with the pooled
263 specificity for the Roche/SDB RAT of 99.5% [95% CI: 99.3-99.7] as shown in **Figure**
264 **1(b) (also Suppl. Figure 6)**. The presence or absence of symptoms had little effect on
265 RAT median specificity (99.8% [95% CI: 99.4-100] or (99.8% [95% CI: 99.6-100]),
266 respectively). Also, the use of transport media did not influence RAT specificity when
267 compared to direct swabs. Our meta-analysis showed equivalent specificity for direct
268 swabs and samples stored in transport media (99.6% and 99.8% respectively) across
269 different manufacturers, although most of the contributing studies were of the

270 Roche/SDB RAT (99.6% [95% CI: 99.3-99.7] and 99.7% [95% CI: 97.7-100]
271 respectively) as depicted in **Suppl. Figure 7**.

272 **SROC Analyses for all RATs**

273 SROC plots are cumulative ROC plots for data derived from multiple studies that can
274 depict both sensitivity and specificity; for a meaningful analysis a certain sample size is
275 needed. An SROC curve was included only for RATs assessed in more than 5 cohorts,
276 and the overall model estimate per manufacturer with corresponding confidence ellipse
277 only for RATs assessed in more than 3 cohorts. As shown in **Figure 4**, the
278 Roche/SDB, BD and Abbott RATs showed similar performance with largely overlapping
279 CIs while the performance of the Siemens RAT was slightly inferior based on this
280 limited data set (n = 5 studies).

281

282 **DISCUSSION**

283 RATs played a critical role during the COVID-19 pandemic. Comprehensive
284 understanding of the capabilities and limitations of RATs for SARS-CoV-2 diagnosis is
285 crucial to assess their utility in an endemic setting. It is important to note that RATs
286 have been shown to be sensitive enough to detect cases with relatively high viral
287 loads, i.e. pre-symptomatic and early symptomatic cases,[26-28] with a slight
288 advantage for direct swabs versus samples stored in transport media.[29] Such cases
289 are likely to account for a significant proportion of transmissions.[24] At present the
290 World Health Organization recommends that RATs meet the minimum performance
291 requirement of at least 80% sensitivity and 97% specificity when compared to NAATs

292 for SARS-CoV-2 detection in symptomatic individuals within the first 7 days of
293 symptoms onset.[23] The US Centers for Disease Control and Prevention (CDC), the
294 European Center for Disease Prevention and Control (eCDC) and the European Union
295 (EU) also set similar requirements for specific cohorts based on symptoms and DPSO,
296 and recommend comparing the RAT results to well characterized and highly sensitive
297 RT-PCR methods.[9, 21, 22]

298 This global systematic review and meta-analysis presents an overview of the key
299 confounders across studies that report the sensitivity and specificity of commercially
300 available SARS-CoV-2 RATs. Altogether, 97 articles investigating the use of RATs
301 from 10 different manufacturers across 166,561 samples presented findings based on
302 Ct and DPSO ranges, for direct swabs versus samples stored in transport media, and
303 for symptomatic versus asymptomatic patients. The performance of RATs was
304 calculated as relative sensitivity and specificity against RT-PCR results. RATs were
305 typically more sensitive for symptomatic patients, when used less than 7 days after
306 symptom onset, and when using direct swabs. Particularly in samples with a relatively
307 high viral load, which has been associated with increased transmission probability, [24]
308 RATs demonstrated convincing and reliable sensitivity. RAT specificity was generally
309 very high and independent of the parameters assessed in this meta-analysis. The
310 Roche/SDB RAT performed competitively based on the studies assessed, and we
311 found significant differences in test performance across RATs in various studies,
312 though the sample size for some RATs was very small.

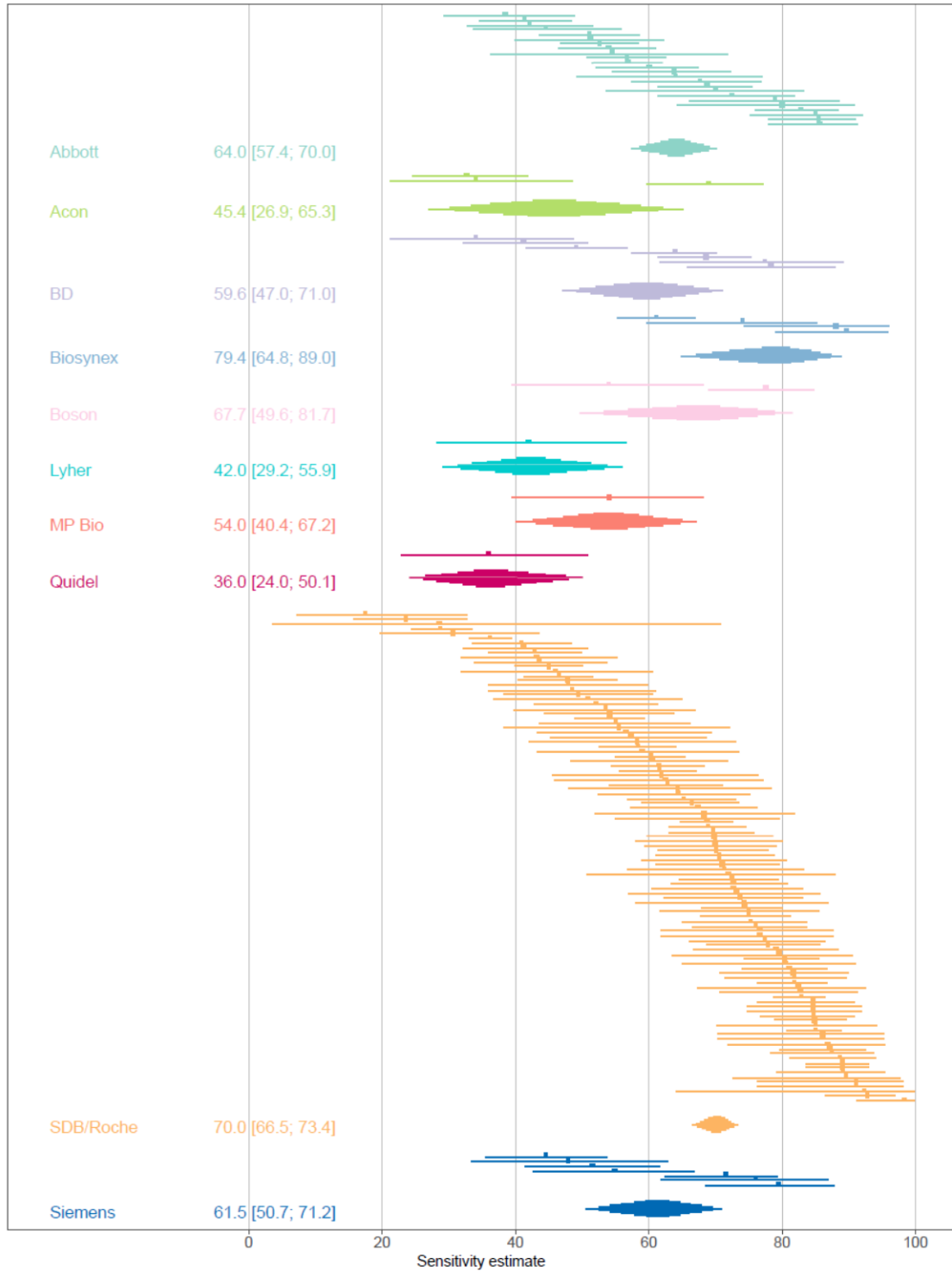
313 We did not aim to assess statistical significance, but the multiple trials selected for
314 systematic review and meta-analysis have a widespread distribution covering a range

315 of prevalence and patient populations, thus the results are generalizable on a larger
316 scale. Overall the results support the applicability of RATs for early case detection.

317 This study has some limitations. The variation in test sensitivity observed across
318 studies may have been caused by the heterogeneity of study populations, with different
319 disease severity levels and sampling at different time points. The use of different
320 sample types, extraction methods and RT-PCR reference tests may also have
321 contributed to this variation. Further, our meta-analysis focused on studies evaluating
322 the Roche/SDB RAT, and only included a small number of studies that compared the
323 Roche/SDB RAT against a selection of tests offered by other manufacturers. Finally,
324 the meta-analysis contains a limited number of studies that tested the Omicron variant
325 of SARS-CoV-2 due to the timing of this search. Assessment of later studies conducted
326 during the Omicron wave is needed to gain greater insight into RAT diagnostic
327 accuracy in this context, although few novel mutations have been identified in the
328 Omicron nucleocapsid protein (target of most RATs) compared to earlier variants.[7]

329 In conclusion, the diagnostic accuracy of the SARS-CoV-2 Roche/SDB rapid antigen
330 test in detecting SARS-CoV-2 infections was robust and reliable, especially in samples
331 with a relatively high viral load. Based on 86 studies including comparisons to other
332 RATs, the Roche/SDB RAT showed competitive performance. These results support
333 the use of RATs for early detection of infections and identification of individuals with
334 significant viral loads, thereby contributing to patient management as well as
335 transmission-control decision making.

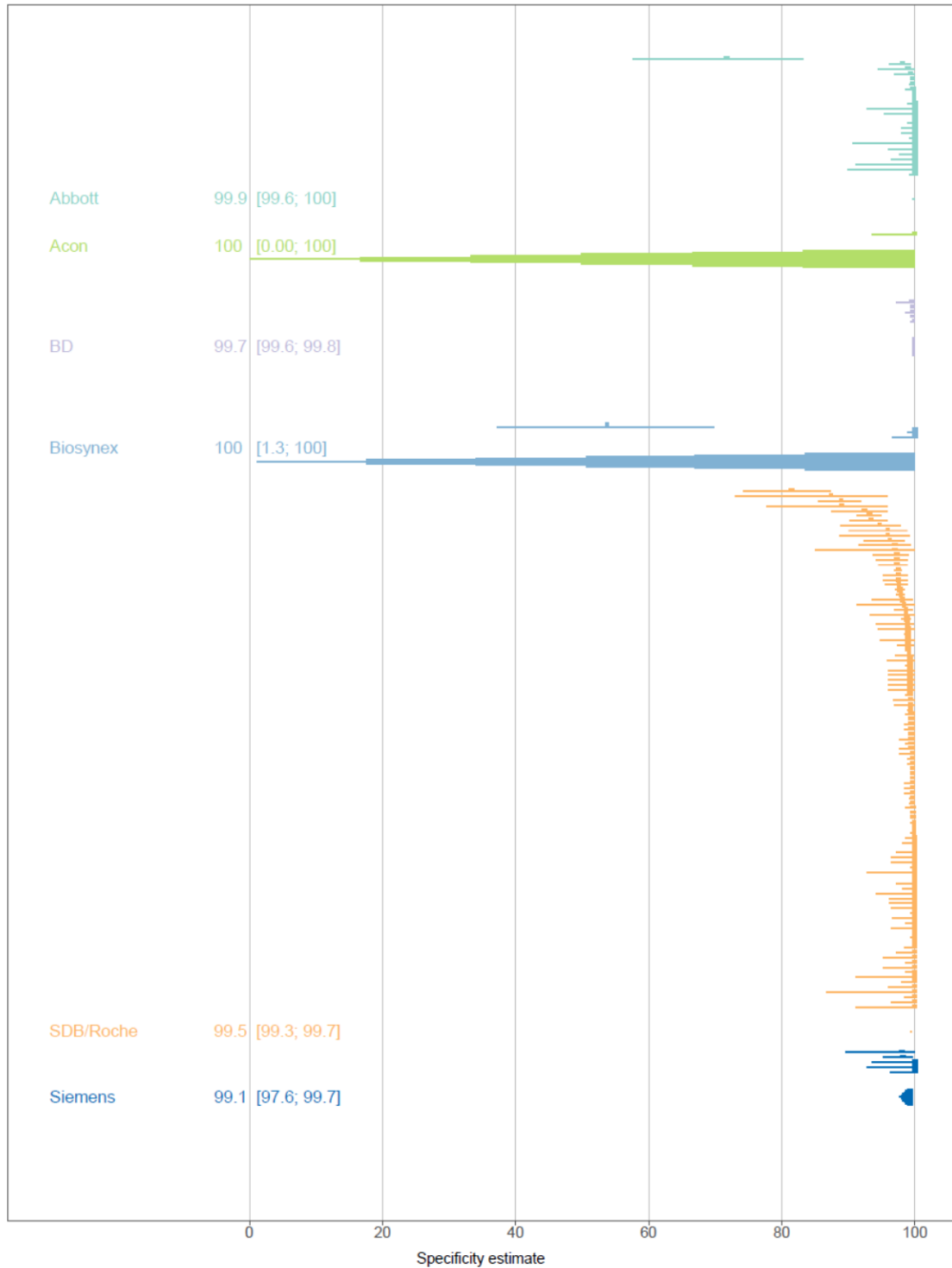
336



337

338

(a)



339

340

(b)

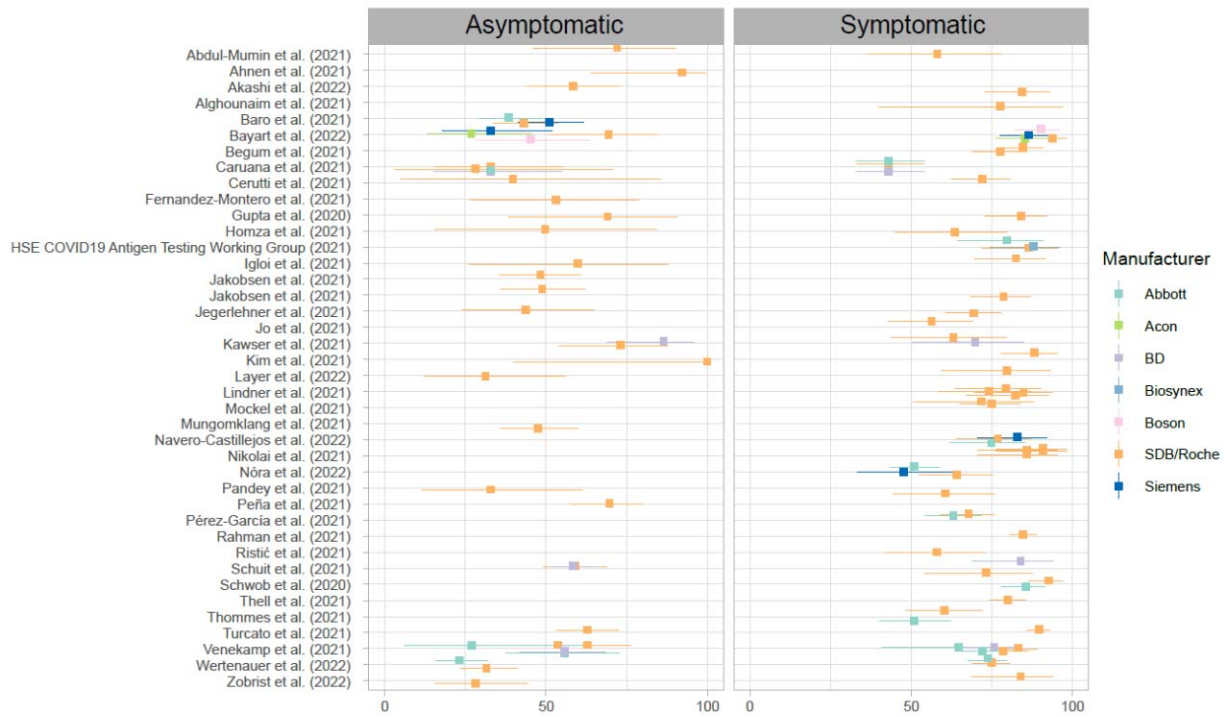
341 **Figure 1.** (a) Forest plot of included studies showing overall sensitivity across different RATs. Each row

342 corresponds to one study (if distinct cohorts were presented within one study, the sensitivity is presented

343 per cohort). Sensitivity is marked by a dot and the corresponding 95% confidence interval by a line, with
344 the results ordered by test manufacturer. Additionally, the summary result for each manufacturer is
345 depicted by a diamond at the end of each section. (b) Forest plot of studies evaluating overall specificity
346 across RAT manufacturers.

347

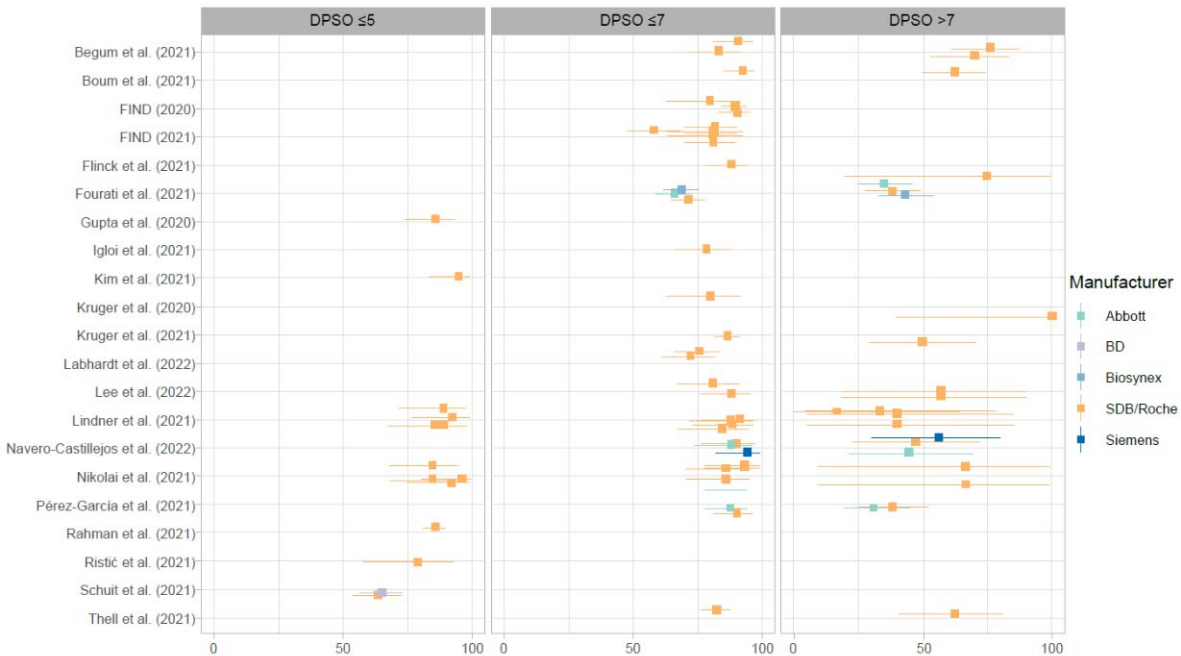
348



349

350

(a)



351

352

(b)

353 **Figure 2:** (a) Forest plot of studies showing sensitivity for symptomatic and asymptomatic patients,
354 grouped by RAT manufacturer. (b) Forest plot of studies showing sensitivity grouped by Days Post
355 Symptom Onset (DPSO) threshold (≤ 5 , ≤ 7 and >7).

356

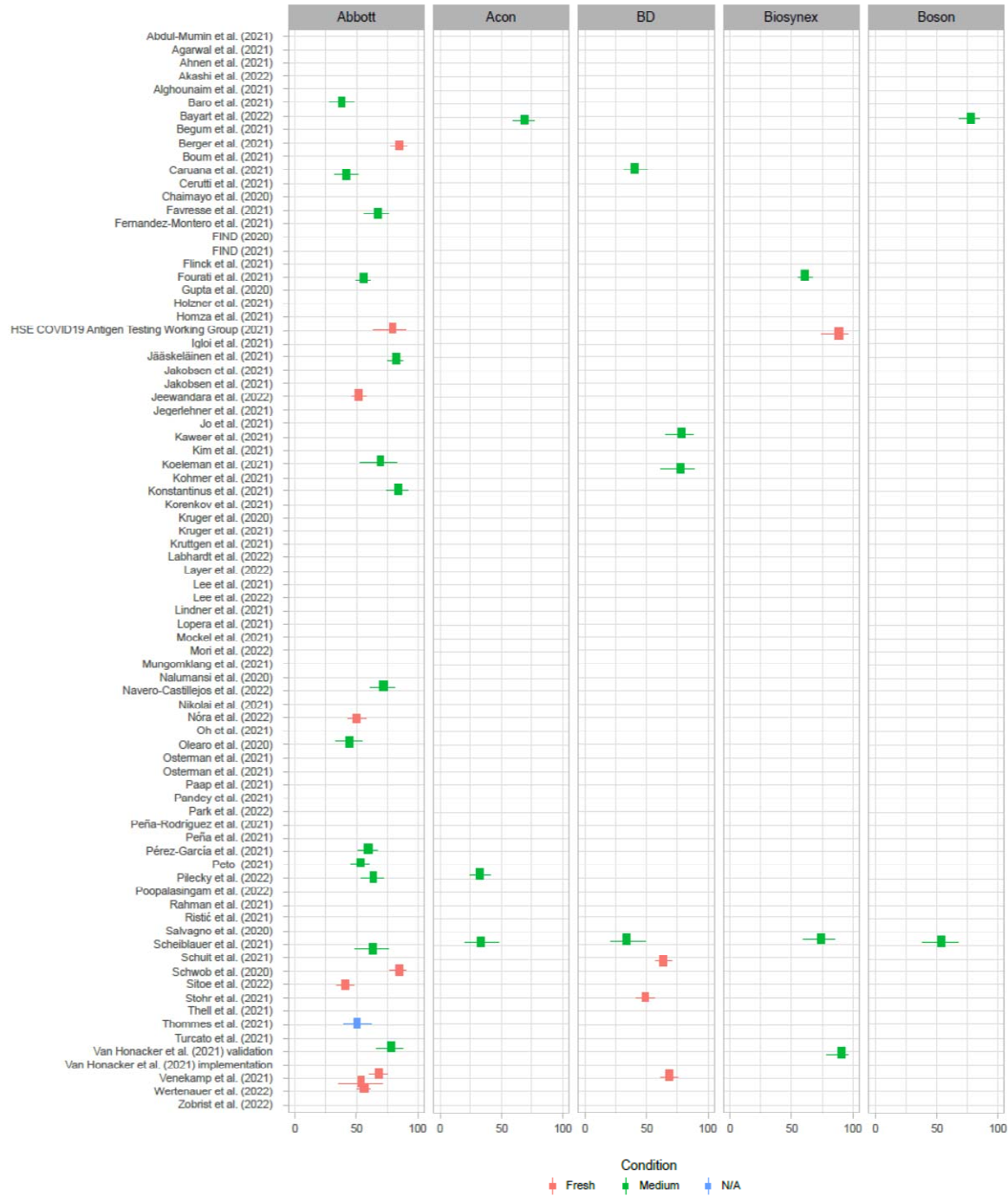
357

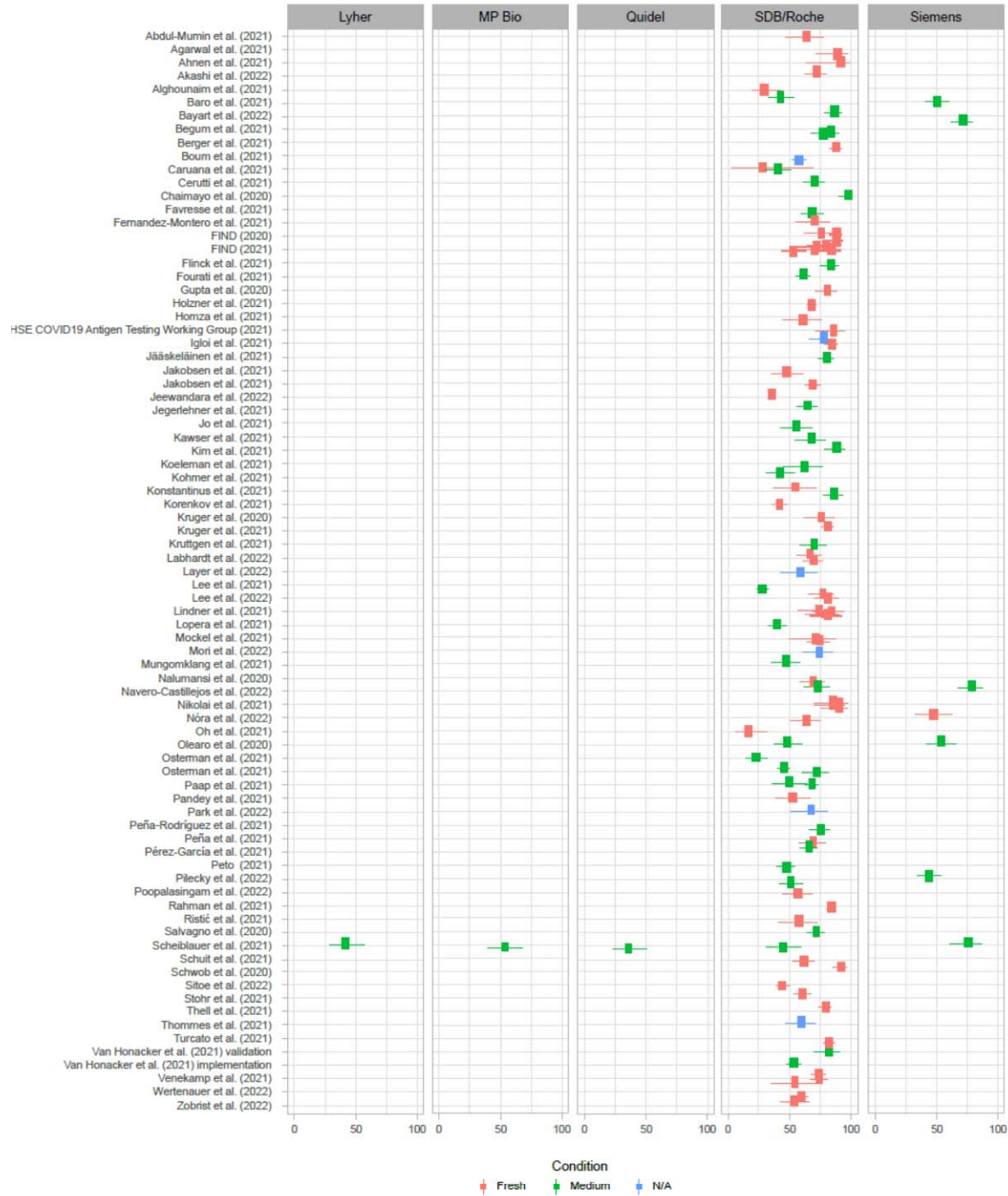


358
359

(a)

360





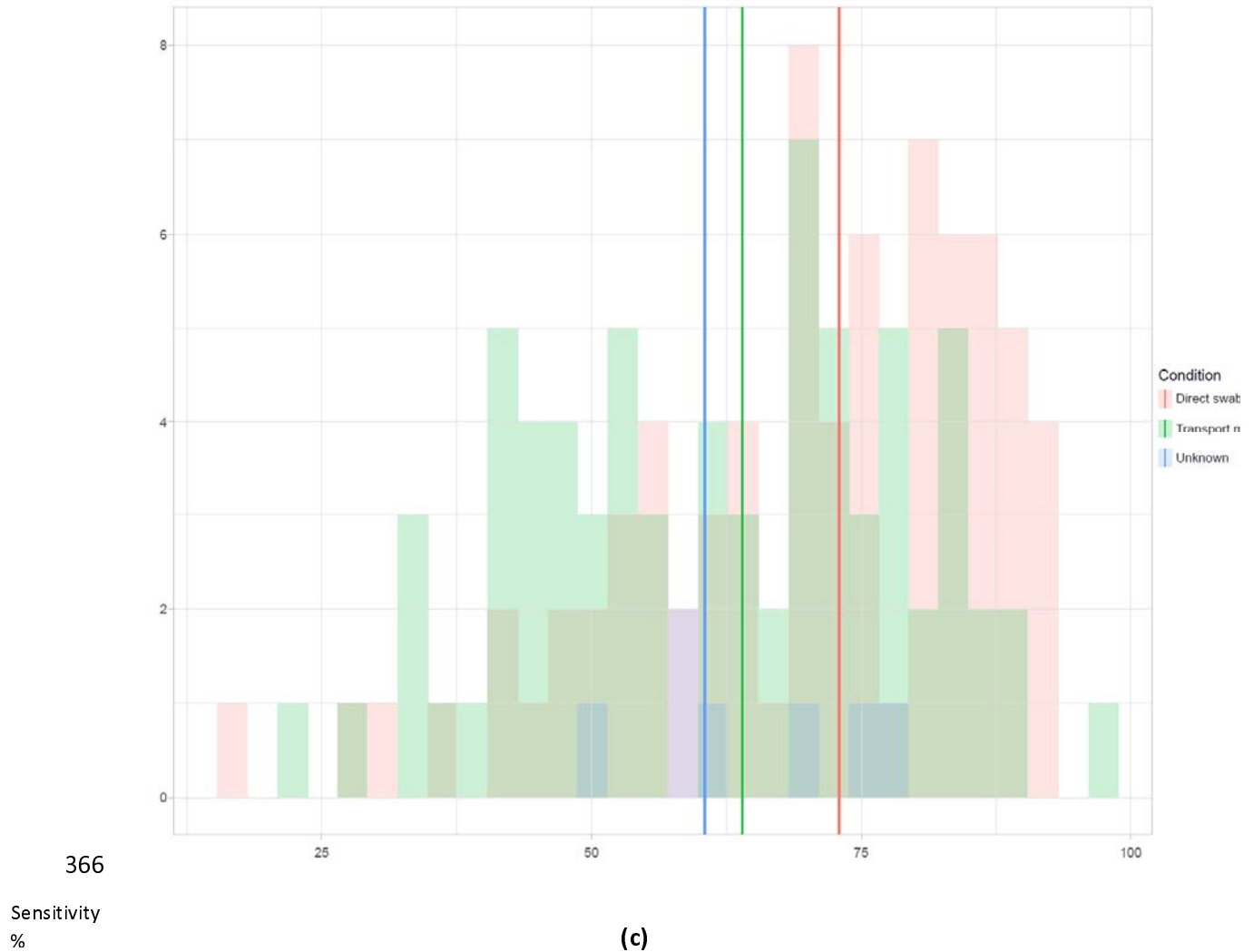
362

363

(b)

364

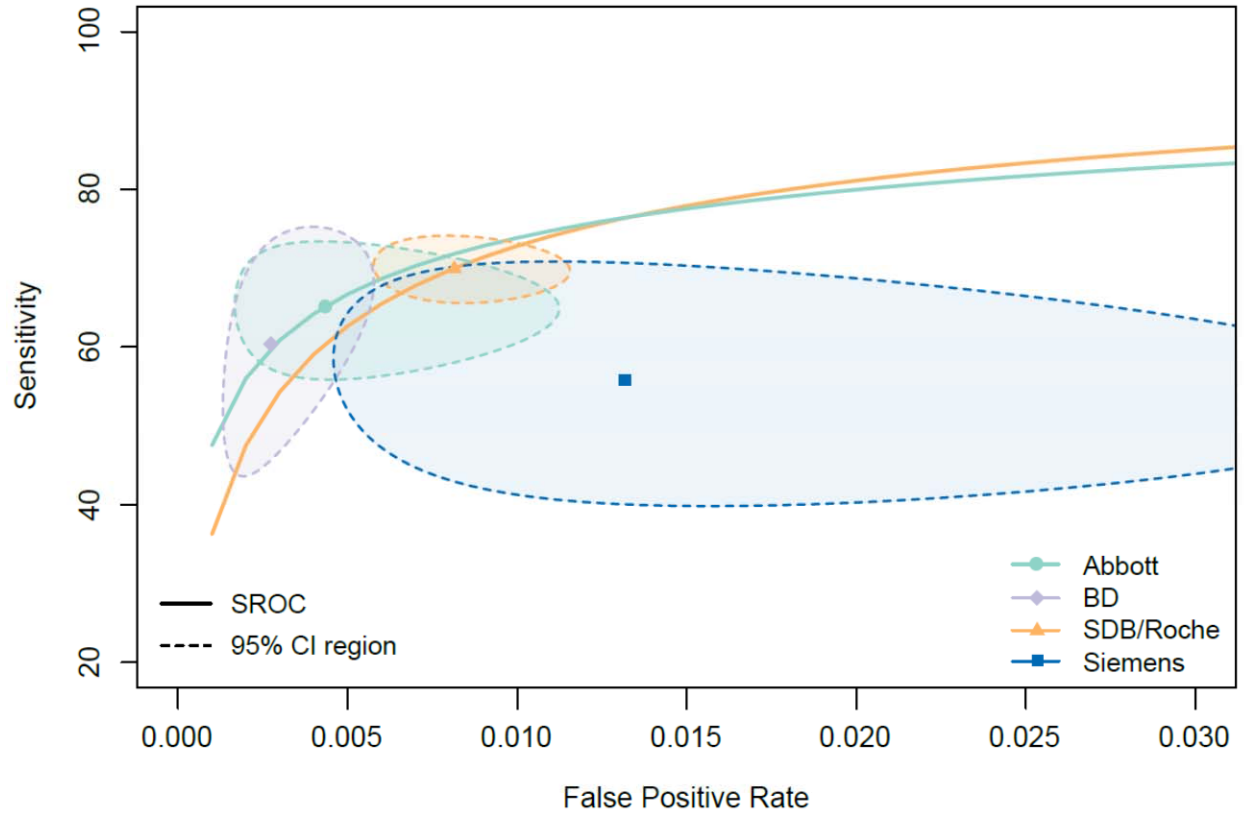
365



368 **Figure 3:** (a) Forest plot of studies showing sensitivity across the cycle (Ct) threshold range grouped by
369 Ct thresholds (≤ 20 , ≤ 25 , ≤ 30 and ≤ 33). (b) Forest plot of studies showing sensitivity for direct swabs
370 versus samples stored in transport media, grouped by RAT manufacturer. (c) Histogram of sensitivities
371 for direct swabs versus samples stored in transport media.

372

373



374

375

376 **Figure 4:** SROC plots for all RATs across different manufacturers. The summary estimate is shown as a
377 filled marker and the associated 95% confidence ellipse as thin dashed lines for each RAT that was
378 covered in more than 3 studies. The SROC curve (thick solid lines) was plotted for all RATs that were
379 covered by more than 5 studies.

380

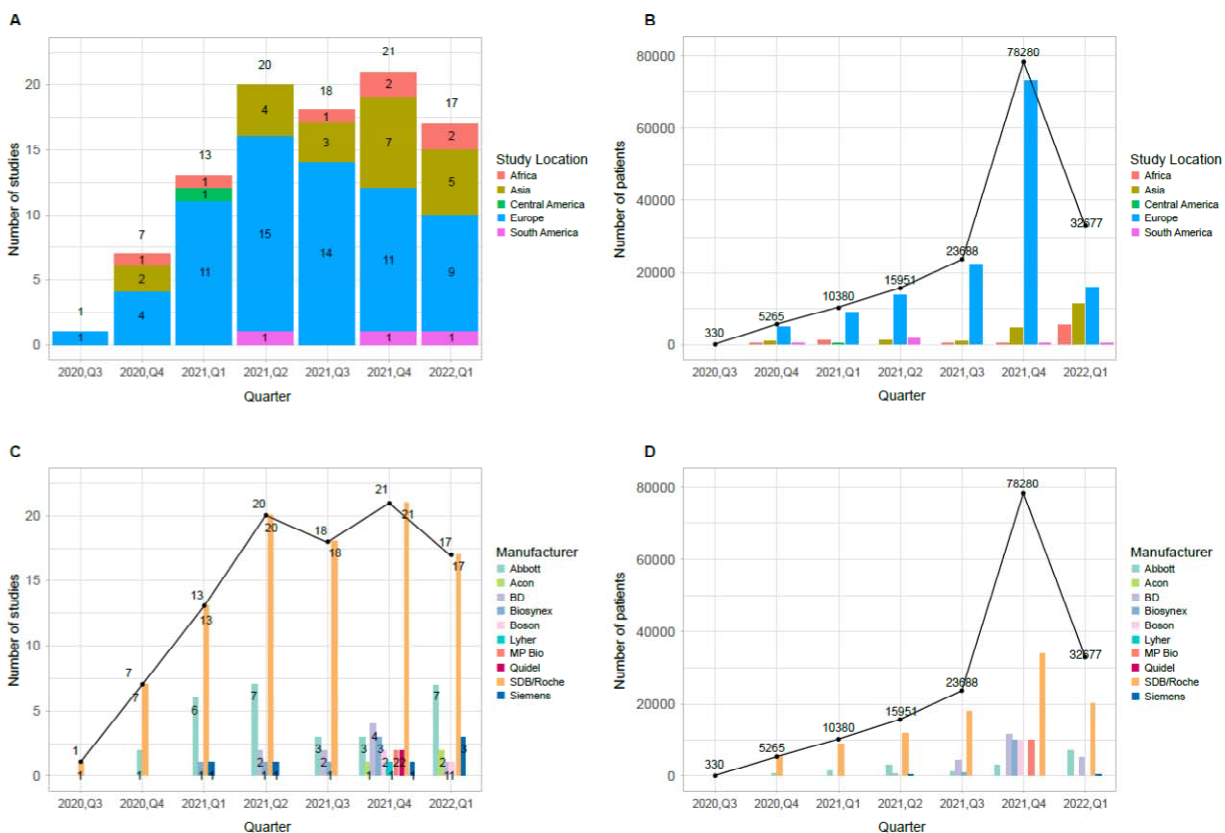
381

382

383

384

385



386

387 **Figure 5:** Global evaluation of SARS-CoV-2 rapid antigen tests (RATs) by publication date and
 388 geographical location. (a) Distribution of included studies temporally and regionally (b) Distribution of the
 389 included study participants temporally and regionally. (c) Distribution of included studies temporally by
 390 RAT manufacturer. (d) Distribution of included study participants temporally by RAT manufacturer.

391

392 **Acknowledgements:** The authors would like to acknowledge the contribution of Sumedha Sinha
393 (Roche Diagnostics Solutions, Pleasanton, California, USA) for writing assistance and proofreading of
394 the article.

395 **Funding:** This work was supported by Roche Diagnostics International Ltd.

396 **Declaration of Competing Interest:** NG and QF are employees of Roche Diagnostics International Ltd
397 and JH is an employee of Roche Diagnostics GmbH. QF holds stocks in F. Hoffmann-La Roche Ltd.

398 **Ethical Approval:** The data supporting this manuscript are from published studies, each reporting their
399 own IRB approvals.

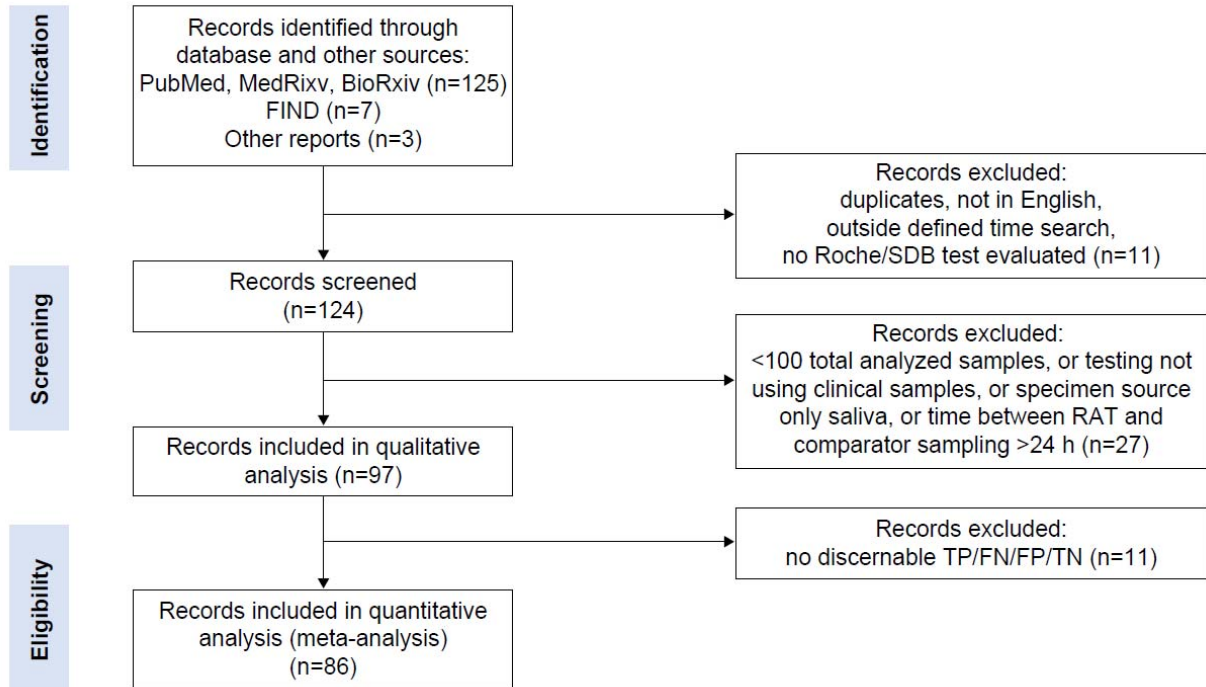
400 **Disclaimer:** The Roche/SD Biosensor SARS-CoV-2 Rapid Antigen Test/SARS-CoV-2 Rapid Antigen
401 Test Nasal/ SARS-CoV-2 Antigen Self Test Nasal (Roche/SDB RAT) is an in vitro diagnostic test in
402 countries accepting the CE mark.

403

404

405 **APPENDIX 1 - Supplemental Figures**

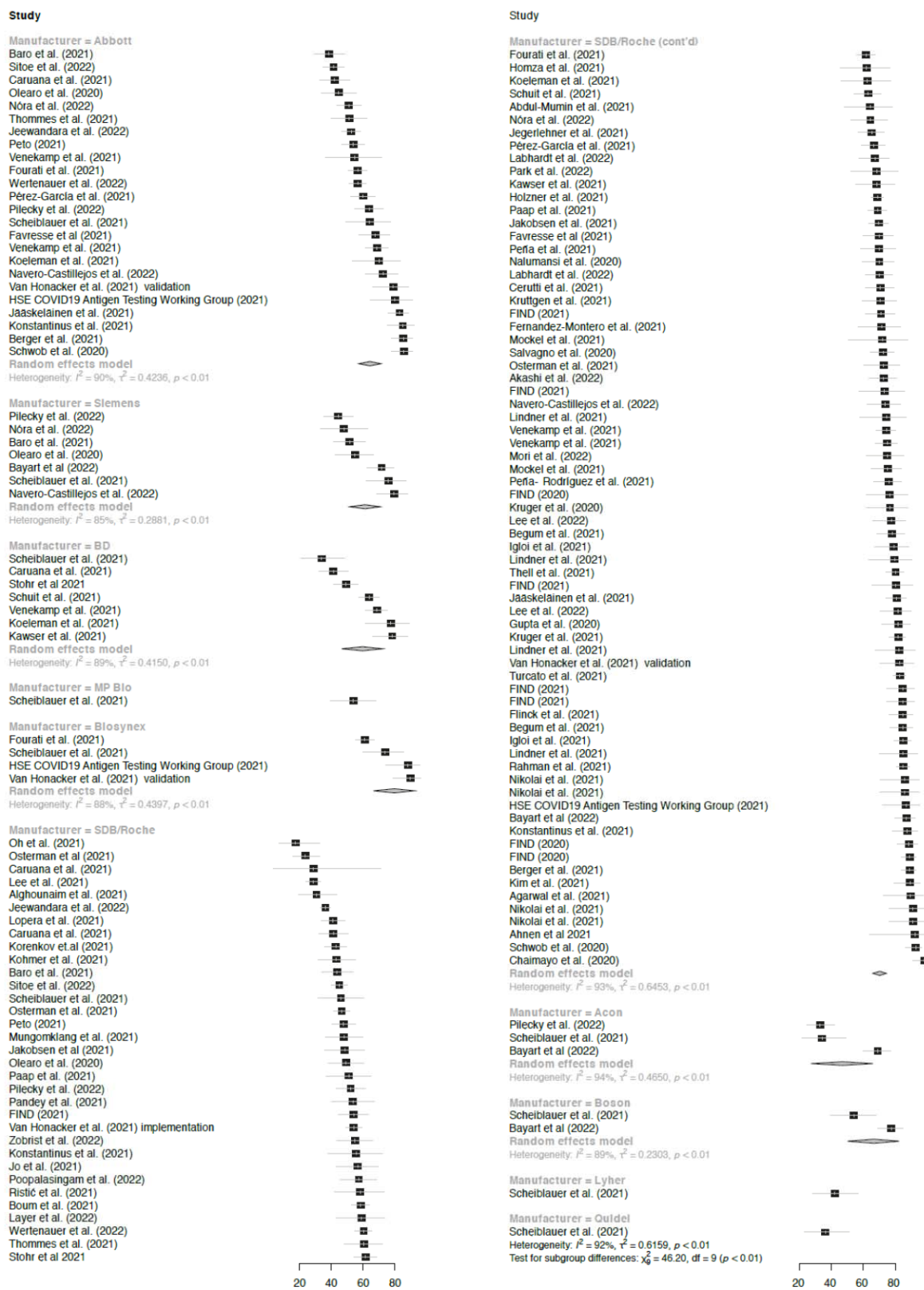
406 **FIGURES**



407

408 **Supplemental Figure 1:** PRISMA Flow chart of study selection for inclusion in the meta-analysis and
409 systematic review.

410



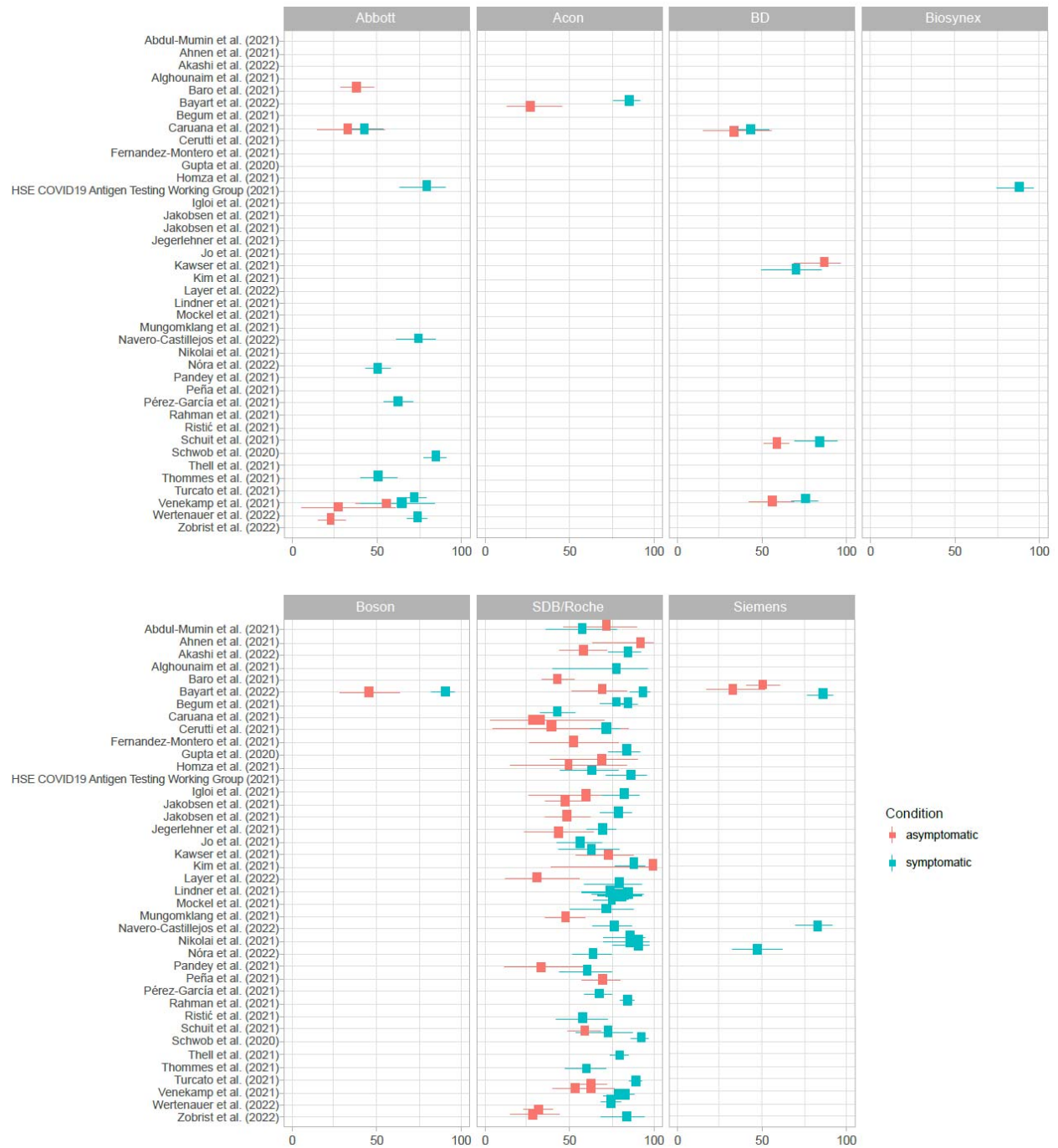
411

412

Supplemental Figure 2: Overall RAT sensitivity across all studies included in the meta-analysis.

413

414



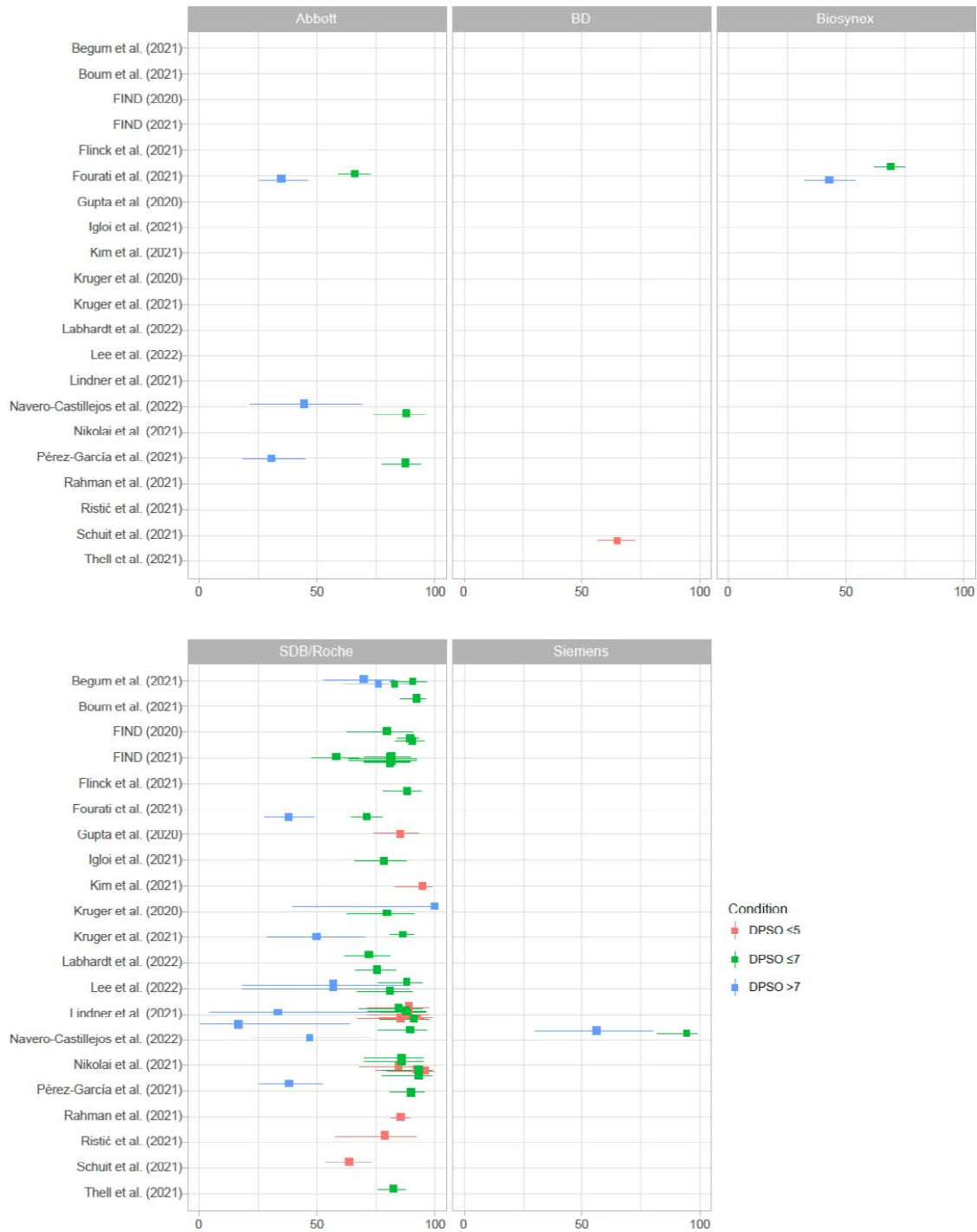
415

416

417 **Supplemental Figure 3:** Sensitivity across studies for different RAT manufacturers with symptomatic vs

418 asymptomatic cases coded by color.

419



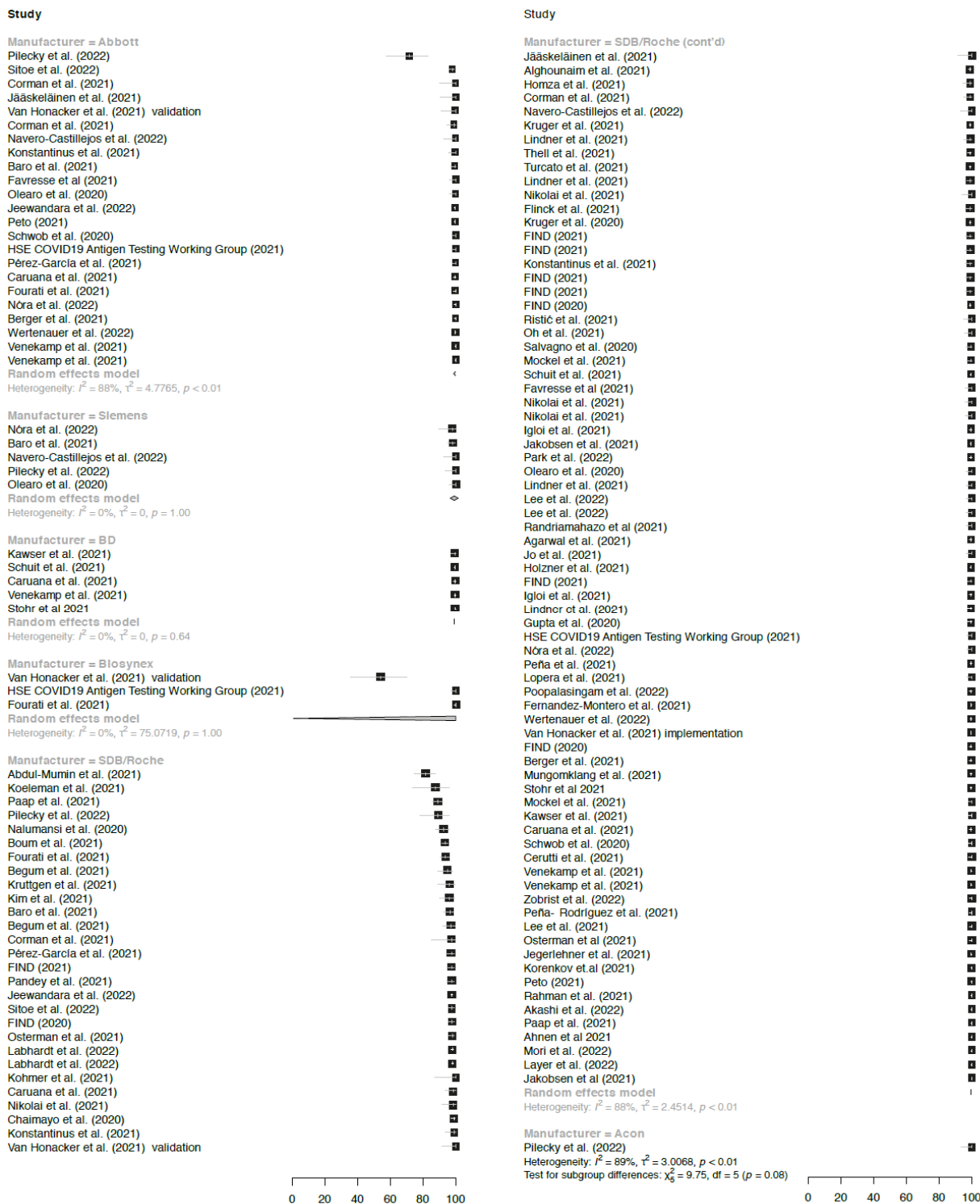
420

421 **Supplemental Figure 4:** Sensitivity across studies for different RAT manufacturers with number of days

422 post symptom onset (DPSO: ≤ 5 , ≤ 7 , > 7) coded by color.

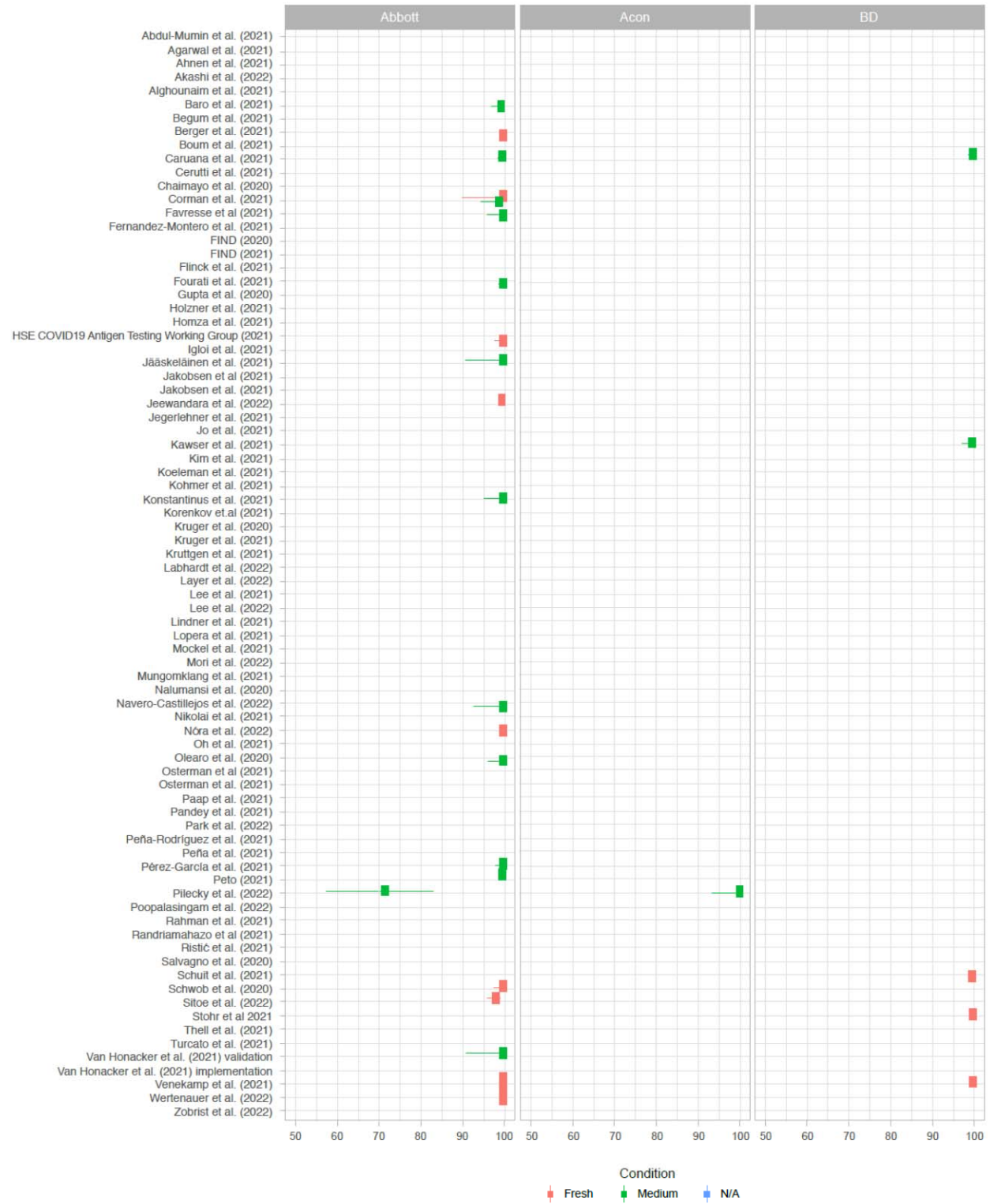
423

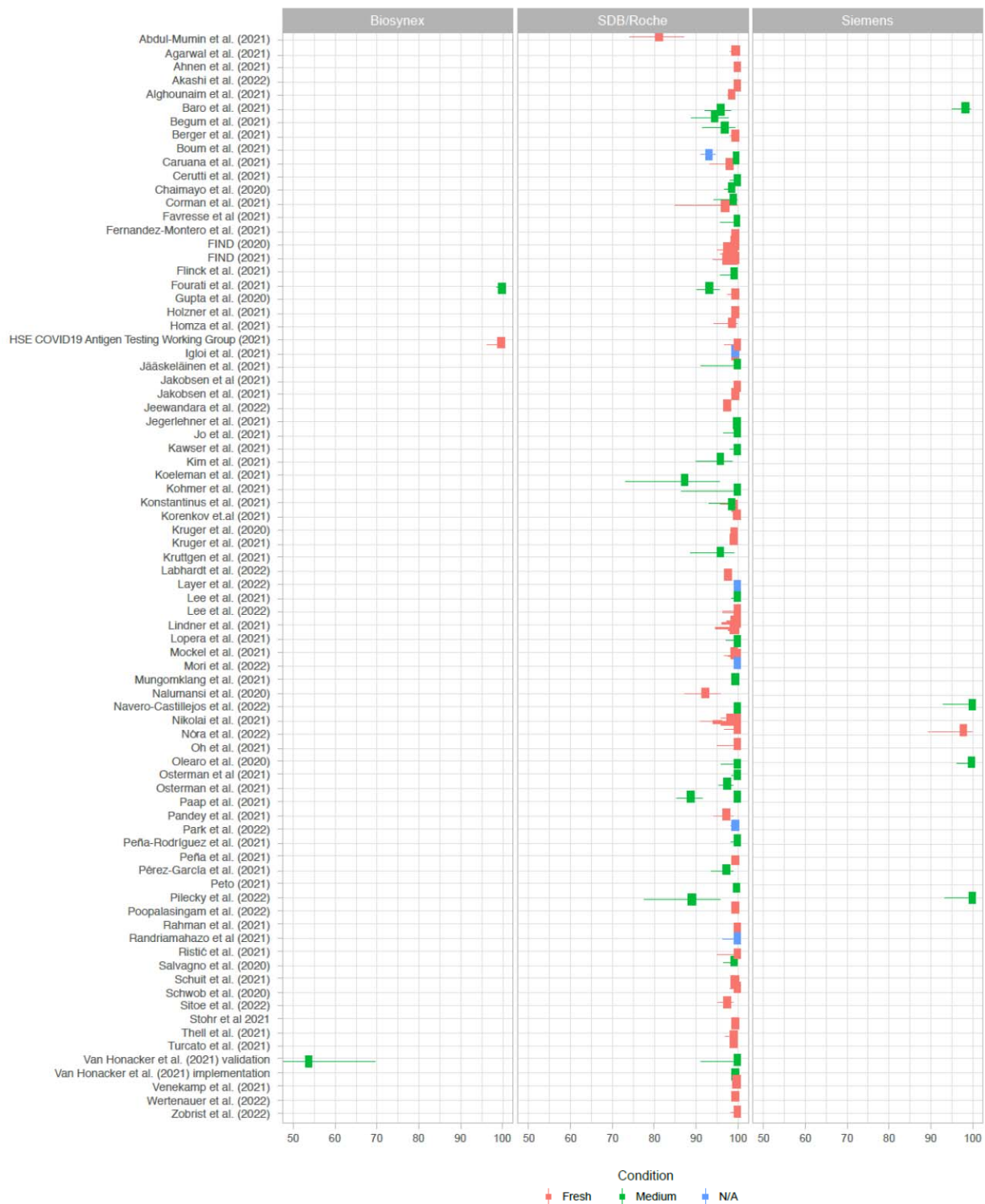




428

429 **Supplemental Figure 6:** Overall RAT specificity across all studies included in the meta-analysis.





431

432 **Supplemental Fig. 7:** Specificity across studies for different RAT manufacturers with sample type

433 (stored in medium, direct swab or N/A) coded by color.

434

435 **REFERENCES**

- 436 1. Wang, D., et al., *Clinical Characteristics of 138 Hospitalized Patients With 2019 Novel*
437 *Coronavirus-Infected Pneumonia in Wuhan, China*. JAMA, 2020. **323**(11): p. 1061-1069.
- 438 2. Gradishar, W.J., et al., *Breast Cancer, Version 3.2022, NCCN Clinical Practice Guidelines in*
439 *Oncology*. J Natl Compr Canc Netw, 2022. **20**(6): p. 691-722.
- 440 3. Centers for Disease Control and Prevention (CDC). *Symptoms of COVID-19*. Published 2021.
441 <https://www.cdc.gov/coronavirus/2019-ncov/symptoms-testing/symptoms.html>. Accessed
442 April 2023.
- 443 4. World Health Organization (WHO). *Coronavirus disease (COVID-19)*.
444 <https://www.who.int/health-topics/coronavirus> Accessed August 2023.
- 445 5. Wolff, A.C., et al., *Human Epidermal Growth Factor Receptor 2 Testing in Breast Cancer:*
446 *American Society of Clinical Oncology/College of American Pathologists Clinical Practice*
447 *Guideline Focused Update*. J Clin Oncol, 2018. **36**(20): p. 2105-2122.
- 448 6. Bray, F., et al., *Global cancer statistics 2018: GLOBOCAN estimates of incidence and mortality*
449 *worldwide for 36 cancers in 185 countries*. CA Cancer J Clin, 2018. **68**(6): p. 394-424.
- 450 7. Islam, F., et al., *Understanding the omicron variant (B.1.1.529) of SARS-CoV-2: Mutational*
451 *impacts, concerns, and the possible solutions*. Ann Med Surg (Lond), 2022. **78**: p. 103737.
- 452 8. National Comprehensive Cancer Network. *NCCN Guidelines Version 2.2019 Breast Cancer*. 2019
453 [cited 2019 Aug. 27]; Available from:
454 https://www.nccn.org/professionals/physician_gls/f_guidelines.asp#site.
- 455 9. Ferlay, J., et al. *Global Cancer Observatory: Cancer Today Breast Cancer Fact Sheet*. 2018 [cited
456 2019 Aug. 26]; Available from: <https://gco.iarc.fr/today/fact-sheets-cancers>.
- 457 10. Brummer, L.E., et al., *Accuracy of novel antigen rapid diagnostics for SARS-CoV-2: A living*
458 *systematic review and meta-analysis*. PLoS Med, 2021. **18**(8): p. e1003735.
- 459 11. Dinnes, J., et al., *Rapid, point-of-care antigen and molecular-based tests for diagnosis of SARS-*
460 *CoV-2 infection*. Cochrane Database Syst Rev, 2021. **3**(3): p. CD013705.
- 461 12. Corman, V.M., et al., *Comparison of seven commercial SARS-CoV-2 rapid point-of-care antigen*
462 *tests: a single-centre laboratory evaluation study*. Lancet Microbe, 2021. **2**(7): p. e311-e319.
- 463 13. Page, M.J., et al., *The PRISMA 2020 statement: an updated guideline for reporting systematic*
464 *reviews*. BMJ, 2021. **372**: p. n71.
- 465 14. Whiting, P., et al., *The development of QUADAS: a tool for the quality assessment of studies of*
466 *diagnostic accuracy included in systematic reviews*. BMC Med Res Methodol, 2003. **3**: p. 25.
- 467 15. Schwarzer G. 2020. *Meta (version 4.15-1) [program]*<https://CRAN.R-project.org/package=meta>
468 [Accessed 29 December 2022]. .
- 469 16. Reitsma JB, Glas AS, Rutjes AW, Scholten RJ, Bossuyt PM, Zwinderman AH. *Bivariate analysis of*
470 *sensitivity and specificity produces informative summary measures in diagnostic reviews*. J Clin
471 *Epidemiol*. 2005;58(10):982-990. doi:10.1016/j.jclinepi.2005.02.022. .
- 472 17. Doebler P. 2017. *Mada (version 0.5.8) [program]*<https://CRAN.R-project.org/package=mada>
473 [Accessed 29 December 2022]. .
- 474 18. Rutter, C.M. and C.A. Gatsonis, *A hierarchical regression approach to meta-analysis of*
475 *diagnostic test accuracy evaluations*. Stat Med, 2001. **20**(19): p. 2865-84.
- 476 19. Jegerlehner, S., et al., *Diagnostic accuracy of a SARS-CoV-2 rapid antigen test in real-life clinical*
477 *settings*. Int J Infect Dis, 2021. **109**: p. 118-122.
- 478 20. Jakobsen KK, Jensen JS, Todsén T, Lippert F, Martel CJ, Klokke M, von Buchwald C. *Detection of*
479 *SARS-CoV-2 infection by rapid antigen test in comparison with RT-PCR in a public setting*.
480 *MedRxiv*. 2021 Jan 25:2021-01.

- 481 21. *European Commission (EC) for the European Union (EU). Commission Implementing Regulation*
482 *(EU) 2022/1107 of 4 July 2022 laying down common specifications in accordance with*
483 *Regulation (EU) 2017/746. [https://health.ec.europa.eu/latest-updates/commission-](https://health.ec.europa.eu/latest-updates/commission-implementing-regulation-eu-20221107-4-july-2022-laying-down-common-specifications-2022-07-05_en)*
484 *implementing-regulation-eu-20221107-4-july-2022-laying-down-common-specifications-2022-*
485 *07-05_en* Accessed June 2023.
- 486 22. *European Centre for Disease Prevention and Control (ECDC). Options for the use of rapid*
487 *antigen tests for COVID-19 first update, October 2021.*
488 *[https://www.ecdc.europa.eu/sites/default/files/documents/Options-for-the-use-of-rapid-](https://www.ecdc.europa.eu/sites/default/files/documents/Options-for-the-use-of-rapid-antigen-tests-for-COVID-19-first-update.pdf)*
489 *antigen-tests-for-COVID-19-first-update.pdf* Accessed May 2023.
- 490 23. Sung, H., et al., *Global Cancer Statistics 2020: GLOBOCAN Estimates of Incidence and Mortality*
491 *Worldwide for 36 Cancers in 185 Countries.* CA Cancer J Clin, 2021. **71**(3): p. 209-249.
- 492 24. Lee, L.Y.W., et al., *Severe Acute Respiratory Syndrome Coronavirus 2 (SARS-CoV-2) Infectivity by*
493 *Viral Load, S Gene Variants and Demographic Factors, and the Utility of Lateral Flow Devices to*
494 *Prevent Transmission.* Clin Infect Dis, 2022. **74**(3): p. 407-415.
- 495 25. Zhou, J., et al., *Viral emissions into the air and environment after SARS-CoV-2 human challenge:*
496 *a phase 1, open label, first-in-human study.* Lancet Microbe, 2023.
- 497 26. van Beek, J., et al., *From more testing to smart testing: data-guided SARS-CoV-2 testing choices,*
498 *the Netherlands, May to September 2020.* Euro Surveill, 2022. **27**(8).
- 499 27. Lavezzo, E., et al., *Suppression of a SARS-CoV-2 outbreak in the Italian municipality of Vo'.*
500 *Nature*, 2020. **584**(7821): p. 425-429.
- 501 28. Arons, M.M., et al., *Presymptomatic SARS-CoV-2 Infections and Transmission in a Skilled*
502 *Nursing Facility.* N Engl J Med, 2020. **382**(22): p. 2081-2090.
- 503 29. Kritikos, A., et al., *Sensitivity of Rapid Antigen Testing and RT-PCR Performed on*
504 *Nasopharyngeal Swabs versus Saliva Samples in COVID-19 Hospitalized Patients: Results of a*
505 *Prospective Comparative Trial (RESTART).* Microorganisms, 2021. **9**(9).
- 506