

1 **Title: Long-term Mortality Among Hospitalized Adults with Sepsis in Uganda: a Prospective**

2 **Cohort Study**

3

4 **Authors:** Paul W. Blair, MD\*<sup>1,2</sup>; Stephen Okello, MD<sup>3</sup>; Abdullah Wailagala, MD<sup>4</sup>; Rodgers R. Ayebare,

5 MD<sup>4</sup>; David F. Olebo, BS<sup>3</sup>; Mubaraka Kayiira, MD<sup>4</sup>; Stacy M. Kemigisha MD<sup>4</sup>, Willy Kayondo, BS<sup>3</sup>;

6 Melissa Gregory, MS<sup>1</sup>; Jeff W. Koehler, PhD<sup>5</sup>; Randal J. Schoepp, PhD<sup>5</sup>; Helen Badu, MBA<sup>1</sup>; CDR

7 Nehkonti Adams, MD, MS<sup>6</sup>; Prossy Naluyima PhD<sup>3</sup>; Charmagne Beckett, MD<sup>6</sup>; Peter Waitt, MBChB<sup>4</sup>;

8 Mohammed Lamorde, FRCP, PhD<sup>4</sup>; Hannah Kibuuka, MD<sup>3</sup>; Danielle V. Clark, PhD<sup>1</sup>

9

10

11 **Affiliations:**

12 <sup>1</sup>The Henry M. Jackson Foundation for the Advancement of Military Medicine, Bethesda, MD,

13 USA;

14 <sup>2</sup>Division of Infectious Diseases, Johns Hopkins University School of Medicine, Baltimore, MD,

15 USA;

16 <sup>3</sup>Makerere University Walter Reed Project, Kampala, Uganda;

17 <sup>4</sup>Infectious Diseases Institute, Makerere University, Kampala, Uganda;

18 <sup>5</sup>U.S. Army Medical Research Institute of Infectious Diseases (USAMRIID), Fort Detrick,

19 Frederick, Maryland, USA;

20 <sup>6</sup>Naval Medical Research Center Infectious Diseases Directorate, Bethesda, MD, USA.

21

22 **\*Corresponding author**

23

24

25

26  
27  
28  
29  
30  
31  
32  
33  
34  
35  
36  
37  
38  
39  
40  
41  
42  
43  
44  
45  
46  
47  
48  
49  
50  
51

**Abstract– 198 words**

**Background:** Twelve-month mortality in sepsis survivors has not been previously characterized in sub-Saharan Africa.

**Methods:** Hospitalized adults with  $\geq 2$  modified systemic inflammatory response syndrome (SIRS) criteria (temperature  $< 36^{\circ}\text{C}$  or  $> 38^{\circ}\text{C}$ , heart rate  $\geq 90$  beats per minute, or respiratory rate  $\geq 20$  breaths per minute) were enrolled at a tertiary care centre from October 2017 to August 2022. Multiple clinical blood and respiratory molecular and antigen assays were used to identify infectious etiologies. Baseline demographics were evaluated for risk of death by 1 month and 12 months using Cox proportional hazards regression.

**Results:** Among 435 participants, the median age was 45.0 years (interquartile range [IQR]: 28.0, 60.0) years, 57.6% were female, and 31.7% were living with HIV. Malaria (17.7%) followed by tuberculosis (4.7%), and bacteremia (4.6%) were the most common detected causes of illness. Overall, 49 (11.3%) participants died, and 24 participants died between one month and one year (49.0% of deaths and 5.5% of the cohort). Female participants had a decreased risk of death by 12-months (unadjusted hazard ratio [HR]: 0.37; 95% confidence interval [CI]: 0.21 to 0.66).

**Conclusions:** The burden of sepsis may be underestimated in sub-Saharan Africa due to limited long-term follow-up.

**Keywords:** Sepsis, Bloodstream infection, HIV, Sepsis/epidemiology, Africa South of the Sahara

52 **Text – 3,097 words**

### 53 **Introduction**

54 In 2017, 11 million deaths occurred due to sepsis<sup>1</sup>. The burden of sepsis is highest in low- and middle-  
55 income countries (LMIC), settings where treatment resources are lowest<sup>1</sup>. Long-term mortality after  
56 sepsis is high, ranging from 28 to 66% over 12 months<sup>2</sup>. However, long-term outcomes after sepsis in  
57 LMICs are largely unknown with only one, to our knowledge, prospective study past 28-days<sup>3</sup> and the  
58 overwhelming majority of studies coming from North American and Europe. There have been no  
59 published studies from sub-Saharan Africa (SSA) describing post-sepsis mortality at 12-months<sup>2-5</sup>.

60  
61 We conducted a prospective observational study to characterize severe infectious disease pathogens,  
62 clinical manifestations, and host response among patients presenting for care at Fort Portal Regional  
63 Referral Hospital in Fort Portal, Uganda<sup>6</sup>. One purpose of the study has been to build a continuous base of  
64 severe infectious disease clinical research operations and training in preparation for more complex  
65 protocols, including interventional clinical trials<sup>6</sup>. We describe long-term (12-month) outcomes after five  
66 years of enrollment, causes of sepsis, and the mortality risk associated with baseline clinical  
67 characteristics.

68

### 69 **Materials and Methods**

70 Persons 18 years of age and older presenting with suspected infection and  $\geq 2$  modified systemic  
71 inflammatory response syndrome (SIRS) criteria (temperature  $< 36^{\circ}\text{C}$  or  $> 38^{\circ}\text{C}$ , heart rate  $\geq 90$  beats per  
72 minute, or respiratory rate  $\geq 20$  breaths per minute) were enrolled at Fort Portal Regional Referral  
73 Hospital (FPRRH) in Fort Portal, Uganda. SIRS was incorporated in sepsis cohorts<sup>7</sup> prior to Sepsis 3  
74 criteria<sup>8</sup> and maintained for consistency. Adult patients 18 years of age and older presenting at the  
75 outpatient department, emergency department, or medical wards were evaluated for enrollment from  
76 October 2017 to August 2022. Patients were not eligible if they were deemed too ill to participate with an  
77 imminently terminal comorbidity or if they presented with severe anaemia (hemoglobin  $< 7$  g/dL) due to

78 phlebotomy requirements. Due to initial inflammation biomarker objectives<sup>9</sup>, participants were excluded  
79 with known immunocompromising conditions including drug induced immunosuppression, anatomic or  
80 functional asplenia, recent chemotherapy, pregnancy and <6 weeks post partum females, but participants  
81 with HIV were eligible. FPRRH serves as a health facility to eight districts in western Uganda  
82 (Supplementary Figure S1) and includes an isolation unit for referral of patients with high consequence  
83 pathogens including during the 2022 Sudan virus disease outbreak<sup>6,10,11</sup>. After screening potential  
84 participants, 435 participants enrolled from October 2017 to August 2022. The study team collected  
85 demographic, clinical, and laboratory data at 0, 6, and 24 hour time points after enrollment and at 72  
86 hours starting after the first 260 enrollments. Study participants were followed until discharge and at 1  
87 month when a physical exam, history, and labs were also done. Telephone follow-ups were done at 6-  
88 months and 12-months. All clinical and laboratory data were recorded daily by designated study staff on  
89 the case report forms. Survival was determined during in-person visits or telephone calls when  
90 participants could not attend in-person visits. There were 398 participants at 28-days follow-up, 383  
91 participants at 6-month follow-up, and 338 participants at 12-month follow-up (Figure 1).

92  
93 Physiologic parameters (heart rate, blood pressure, oxygen saturation, and temperature) were  
94 prospectively collected at study visits at enrollment, 6 hours, and 24 hours while hospitalized and at in-  
95 person follow-up visits. After enrollment, an i-STAT analysis (Abbott, Chicago, IL) for lactate and blood  
96 gases was performed on blood collected at scheduled at 0, 6, and 24 hour study visits. Clinical tests were  
97 routinely performed including complete blood counts, coagulation analyses, and chemistries. Diagnostic  
98 testing included blood culture with antimicrobial sensitivity testing, urinalysis, HIV testing with consent,  
99 malaria smears and malaria rapid diagnostic tests were routinely performed. If there was blood culture  
100 growth, the BCID FilmArray (Biofire, Salt Lake City, Utah, USA) assay was run for bacterial species  
101 confirmation. If there was clinical suspicion based on respiratory symptoms, testing for tuberculosis was  
102 performed using PCR sputum testing (Xpert MTB/RIF Ultra, Cepheid, California, USA). Patients with

103 known COVID-19 were not enrolled until June 2021. Hospital-based COVID-19 testing (rapid diagnostic  
104 tests or PCR) was recorded until replaced by multiplex PCR sputum testing (Xpert® Xpress SARS-CoV-  
105 2/Flu/RSV, Cepheid, California, USA) in July 2022 for those with respiratory symptoms. If HIV testing  
106 was positive, urine lipoarabinomannan (Abbott TB LAM Ag, Illinois, United States) testing was  
107 performed. The Biofire FilmArray Global Fever polymerase chain reaction (PCR) panel (Biofire, Utah,  
108 USA) was run on whole blood samples to identify 19 bacterial, viral, or protozoal targets or plasma if  
109 whole blood was unavailable (first 36 participants)<sup>12</sup>. Plasma samples were run in duplicate with a  
110 Crimean-Congo hemorrhagic fever virus real-time RT-PCR assay targeting the NP gene using previously  
111 described methods<sup>13-15</sup> but replaced after transition of the Global Fever panel from off-site to on-site use  
112 after the first 237 participants. Extracted nucleic acid (5 µl) from plasma samples from the first 237  
113 participants were run with a Crimean-Congo hemorrhagic fever virus real-time RT-PCR assay targeting  
114 the NP gene in duplicate using the using SuperScript One-Step RT-PCR Kit (ThermoFisher Scientific)  
115 using previously described methods<sup>13-15</sup>. Primers (CCHFV-S-F649 5'GGAVTGGTGVAGGGARTTTG  
116 and CCHFV-S-R705 5'-CADGGTGGRTTGAARGC) were at 5 µM concentrations, and the probe  
117 (CCHFV-S-p670 FAM-CAARGGCAARTACATMAT-MGBNFQ) was at 0.1 µM M. Cycling conditions  
118 were 50°C for 15 min; 95°C for 5 min; and 45 cycles at 94 °C for 1 s, 55 °C for 20 s, and 68 °C for 5 s.  
119 Fluorescence was measured after each extension step, and a sample was considered negative if the  
120 quantification cycle (Cq) was greater than 40 cycles.

121

## 122 *Analysis*

123 Summary statistics were performed for baseline characteristics and microbiology results. Baseline  
124 demographics were compared between those that completed followed to those that did not (were  
125 withdrawn or lost-to-follow-up, 6.4%) using the Kruskal-Wallis test. Person-time was administratively  
126 censored at the known last visit among those who were lost-to-follow-up or withdrawn. After checking  
127 the proportional hazards assumption using Schoenfeld residuals and log-log plots (resulting in exclusion

128 of platelet count and dichotomizing respiratory rate), baseline characteristics of age, sex, HIV status,  
129 clinical laboratory results, qSOFA score were evaluated for their association with 28-days and 12-month  
130 survival with Cox regression models. The logrank test was performed to evaluate for a difference in  
131 survival based on HIV status or sex. Sepsis severity clinical decision tools were dichotomized for  
132 bivariate models according to current usage, including qSOFA score  $\geq 2$  (range, 0 [best] to 3 [worst]  
133 points) and UVA score  $\geq 2$  (range, 0 [best] to 13 [worst])<sup>16</sup>. Bivariate analyses were exploratory;  
134 therefore, a p-value correction was not performed.

135  
136 Enrollment in the Fort Portal sepsis cohort to a sample size up to 1,075 participants is planned to estimate  
137 the risk of emerging pathogens with a precision of 3%. We herein present results from the first 435  
138 participants to disseminate clinical epidemiologic information, inform clinicians about the differential  
139 diagnosis of severe infection in Uganda, and describe long-term outcomes after the first five years of  
140 enrollment. A map of Uganda was created using ArcGIS ArcGIS Online (Redlands, CA)<sup>17</sup>. Analyses were  
141 performed using Stata, version 16.0 (StataCorp LLC, College Station, TX, USA), and figures were  
142 created using Stata or R, version 4.0.1 (R Foundation).

143

## 144 **Results**

145 Participants were a median (IQR) of 42.0 (28.0 to 57.0) years of age at enrollment and 59.1% were female  
146 (n= 257) (Table 1). A diagnosis of human immunodeficiency virus (HIV) was common (31.7%; n=138)  
147 of which 17.4% (n=24) were new diagnoses. Otherwise, known comorbid illness was uncommon (Table  
148 1). At enrollment, there were 21.2% (n=91) with a qSOFA score of  $\geq 2$ . Tachypnea and tachycardia was  
149 common but most participants were normotensive and afebrile (Table 1). The median duration of  
150 hospitalization was 3.0 days (IQR: 2.0 to 5.0 days).

151

152 *Diagnoses, clinical microbiology, and antibiotics*

153 Among the 32.4% (141 of 435 participants) with a positive microbiologic result, malaria was the most  
154 common cause of illness. There were 6.3% (27 of 424) with positive malaria smears and 17.7% (75 of  
155 425) with positive malaria rapid diagnostic tests (Table 3). Among 43 RDT positive samples with smear  
156 quantification results, the median parasitemia was 10,240 (IQR: 1,680, 60,000) parasites/ $\mu$ L of blood. The  
157 Global Fever PCR panel was most frequently positive from *Plasmodium spp.* (25.4%; 102 of 401) or  
158 specifically *P.falciparum* (19.5%, 78 of 401).

159 Non-malarial positive Global Fever panel PCR results were uncommon but included two cases of  
160 *Leptospira spp.*, and one case of *Salmonella enterica* serovar *Typhi*. A single positive CCHF virus result  
161 was obtained with single-plex RT-PCR and confirmed with national referral laboratory testing at the  
162 Uganda Viral Research Institute. Intriguingly, this CCHF case was a 25-year-old woman with one week  
163 of fevers and chills with no hemorrhagic symptoms, a normal complete blood count, and only a borderline  
164 elevated AST (30 U/L) on the complete metabolic panel. Hospital-based COVID-19 testing was positive  
165 in 32.7% (35 of 107 participants). Results including a Delta variant surge<sup>18</sup> from June 2021 to December  
166 2021 were positive in 58.3% (28 of 48 participants tested) but positivity decreased to 11.9% (7 of 59  
167 participants tested) from January 2022 to August 2022.

168 The most frequent confirmed non-malarial causes of sepsis were tuberculosis and bacteremia. Of 160  
169 participants able to produce sputum samples, 10.6% (17 of 146 with sputum) were positive for *M.*  
170 *tuberculosis* by Cepheid GeneXpert. Among those with HIV and urine samples, 5.0% (5/121) had  
171 positive LAM results including 3 without sputum Cepheid GeneXpert testing resulting in 20 total  
172 tuberculosis cases (4.6% of the cohort). Out of 414 participants with blood cultures, there was growth  
173 among 4.6% (N=19) of participants and *Streptococcus pneumoniae* (N=7; 1.7%) was the most common  
174 isolate (Table 2). One out of 1 cerebrospinal fluid cultures grew *Cryptococcus neoformans*. The most  
175 common antimicrobials received among participants included ceftriaxone (85%), metronidazole (34.7%),  
176 azithromycin (27.8%), artesunate (17.5%), and ciprofloxacin (17.2%). Notably, 7.8% received anti-  
177 tuberculosis treatment and 6.4% received doxycycline or tetracycline. Among those with microbiologic  
178 testing, 32.9% (141 of 428 participants) had a positive result. Majority (36 of 49, 73.5%) of deaths did not

179 have a microbiologic diagnosis. Among those with positive results, testing indicated tuberculosis (n=3),  
180 malaria (n=3), bacteremia (n=4) and COVID-19 (n=4).

181

182 *Risk of death at 28-days and 12-months*

183 Overall, 49 (11.3%) participants died. By 28-days, 25 (5.7%) participants died, and 24 deaths occurred  
184 between 28-days and 12-months (49.0% of deaths and 5.5% of the cohort). Among those with a qSOFA  
185  $\geq 2$  at enrollment, 18.8% (17 of 91 participants) died by 12-months. Compared to the rest of the cohort,  
186 those lost-to-follow-up had a similar age (median 44, IQR: 33.5 to 59.0 years;  $p=0.29$ ), female sex  
187 (50.0%;  $p=0.31$ ), prevalence of HIV (25.0%,  $p=0.43$ ) and baseline qSOFA score (median 1, IQR: 1 to 1;  
188  $p=0.90$ ). Death occurred a median of 46.0 (IQR: 7.0 to 178.0) days from enrollment and 38.8% of those  
189 that died had HIV. In bivariate analyses, while age was not associated with increased risk of death, female  
190 participants had a lower risk of death over 28-days (HR: 0.44; 95% CI: 0.21 to 0.75; Supplementary  
191 Figure S2A) and 12-months (HR: 0.37; 95% CI: 0.21 to 0.66, logrank test  $p<0.001$ , Figure 2A and Figure  
192 3A) than male participants. People with HIV were not observed to have an increased risk of death over  
193 28-days (HR: 1.02; 95% CI: 0.44 to 2.36) or 12-months (HR: 1.38; 95% CI: 0.77 to 2.44; logrank test  
194  $p=0.19$ ). Baseline physiologic metrics were associated with an increased risk of death over both 28-days  
195 and 12-months including an increased heart rate, decreased oxygen saturation, decreased mental status,  
196 qSOFA score  $\geq 2$ , and UVA score  $\geq 2$  (Figure 2C-D, Figure 3A). Clinical laboratory parameters associated  
197 with increased risk of death over 28-days and 12-months included decreased serum sodium, increased  
198 neutrophil/lymphocyte ratio, increased AST, increased creatinine, and increased lactate (Supplementary  
199 Figure S2B and Figure 3B). A positive malaria RDT was not associated with a difference in risk of death  
200 over 28-days (HR: 0.40; 95% CI: 0.09 to 1.70) but was associated with a decreased risk of 12-month  
201 mortality (HR: 0.30; 95% CI: 0.09 to 0.96)(Figure 3C). Any microbiologic diagnosis was not associated  
202 with a difference in risk of death over 28-days (HR: 0.96, 95% CI: 0.41 to 2.23) or 12-months (HR: 0.73,  
203 95% CI: 0.39 to 1.37).

204



## 205 Discussion

206 Our study is the first to describe mortality at one year after generalized sepsis in a well-characterized  
207 large prospective cohort in sub-Saharan Africa (SSA) <sup>3,5</sup>. We identified that almost half of deaths among  
208 adults that presented with suspected sepsis occurred after 28-days. The most common causes of illness  
209 were malaria, tuberculosis, and bacteremia, and an unsuspected case of CCHF was identified. COVID-19  
210 was the most common cause of illness during a 2021 surge. The majority of causes of illness were  
211 unknown despite multiple clinical microbiologic assays.

212  
213 There is a paucity of long-term outcome data in SSA. In a meta-analysis of 15 studies of sepsis in SSA  
214 performed in 2019, none had results of mortality after 30 days <sup>5</sup>. Compared to the 11.3% 12-month  
215 mortality we observed, the pooled in-hospital sepsis mortality among those meeting SIRS score of  $\geq 2$   
216 from 7 cohort studies with enrollment years ranging from 2008 to 2013 was 19% (95% CI, 12 to 29%,  
217 n=1159) <sup>5</sup>. HIV status was not associated with a difference in risk of mortality, consistent with a recent  
218 small acute febrile illness cohort in Uganda with a similar baseline prevalence of an elevated qSOFA  
219 score <sup>19</sup>. The similar risk of death observed among those with HIV is potentially a testament to outcome  
220 improvements from increased access to outpatient antiretroviral treatment <sup>19,20</sup>. However, this may not be  
221 generalizable to other countries in SSA. Patients with HIV had a higher risk of death in a recent sepsis  
222 cohort in Malawi<sup>3</sup>. In that study, death was observed in 18% at 28-days and in 31% at 180 days. Overall  
223 lower death rates in our cohort may have been due to baseline patient population differences, including  
224 nonspecificity of SIRS criteria for sepsis eligibility<sup>7</sup>, or advancements in clinical care at the Fort Portal  
225 site <sup>6</sup>. Long-term mortality may be higher in more severely ill individuals or in other settings with less  
226 resources for sepsis management. Standardized multi-site cohorts and surveillance studies are needed for  
227 definitive conclusions.

228  
229 Although sepsis syndrome is likely a final common pathway for many of these infectious diseases-related  
230 deaths, few studies from SSA have provided insight into the microbiologic diagnoses of these patients. A

231 meta-analysis of African bacteremia studies reported a 10% prevalence of bloodstream infections <sup>21</sup>. A  
232 more recent 2019 meta-analysis demonstrated that tuberculosis dominates as a cause of sepsis in SSA <sup>5</sup>.  
233 Similar to our findings, standard clinical microbiological laboratory analysis for bacterial, mycobacterial,  
234 and malarial pathogens were detected a cause in only ~30% of cases, most commonly *Mycobacterium*  
235 *tuberculosis*, non-typhoidal Salmonella, *Staphylococcus aureus*, and *Streptococcus pneumoniae*. A recent  
236 study of adult and paediatric patients hospitalized with acute febrile illness in Tanzania were discovered  
237 to have acute bacterial zoonoses as the most common group of aetiologies (26.2%) including  
238 leptospirosis, Q fever, and spotted fever group rickettsioses, none of which are identified by standard  
239 culture methods <sup>22</sup>.

240

241 Our findings highlighted the public health utility of ongoing infectious illness cohorts. Our study  
242 identified a case of CCHF that otherwise would not have been detected. Similarly, CCHF was previously  
243 identified at the Global Fever panel febrile illness study site in Mubende, Uganda <sup>12,23</sup>. During the 2022  
244 Sudan virus disease outbreak, multiple suspect Ebola cases have been identified as CCHF. Detection of  
245 these cases suggests that CCHFV is an uncommon but persistent cause of suspected sepsis or febrile  
246 illness in Uganda and that cases without fulminant hemorrhagic symptoms likely occur undetected  
247 outside of outbreaks. Additionally, we identified COVID-19 as the most common causes of suspected  
248 sepsis in this remote referral hospital during a local surge<sup>18</sup>. Our finding emphasize the unaccounted  
249 burden of admissions during outbreaks and subsequent deaths due to outbreaks and emerging infectious  
250 diseases in low-resource and remote settings. As emerging infectious disease threats become more  
251 commonplace and with challenges from known endemic threats, highlighted by the 2022 Sudan virus  
252 outbreak in Uganda <sup>11</sup>, our need to rapidly recognize and effectively manage these causes of severe  
253 infection grows more urgent. In recent years, several public health emergencies of international concern  
254 were first detected in critically ill patients, patients meeting the diagnostic criteria for sepsis. Scaling and  
255 developing point-of-care diagnostics would help facilitate early recognition of emerging causes of sepsis  
256 to initiate infection control, supportive treatment, and reporting of emerging infectious diseases.

257

258 We identified several clinical parameters associated with death by 28-days and by 12-months. Consistent  
259 with prior studies <sup>3,19</sup>, decreased oxygen saturation was found to be associated with an increased risk of  
260 death. Patients with respiratory failure may be at particularly risk in hospitals without respiratory support  
261 including high flow nasal cannula and mechanical ventilation or access to supplemental oxygen upon  
262 discharge. Elevated UVA scores, qSOFA scores, and point-of-care lactate were each associated with an  
263 increased risk of death consistent with prior studies in LMICs <sup>7,16,24</sup>. Prior research that demonstrated the  
264 additive prognostic value of serum lactate in Uganda, Malawi, and Southeast Asia <sup>3,25,26</sup>. A positive  
265 malaria result was associated with a decreased risk of death at 12-months. While this finding is tempered  
266 by multiple comparisons, a protective association was observed in the Malawi cohort <sup>3</sup>. Malaria in adults  
267 with suspected sepsis may be less fatal due to longstanding immunity, access to diagnostics, and  
268 commonly employed empiric anti-malarial treatment regimens. Detection of any pathogen was not  
269 associated with risk of death but inference is complicated by intrinsic pathogen differences, effects on  
270 treatment decisions, and increased assay sensitivity with higher inoculum infections. Future research  
271 should be performed to evaluate the effect of point-of-care diagnostics for decreasing time to accurate  
272 treatments.

273

274 Our study has several limitations. First, while laboratory testing in this cohort was robust and included a  
275 broad molecular panel, blood cultures, and rapid diagnostic tests, tuberculosis and rickettsial infections  
276 were likely missed but current point-of-care diagnostics are limited for these pathogens. CD4 or HIV viral  
277 load results were not routinely available, preventing inference about level of HIV control. Second, the  
278 effect of sepsis on quality of life at one month was not ascertained at follow-up visits. Future research  
279 plans to include surveys to determine the long-term burden of sepsis on quality of life. Third, despite  
280 similar baseline characteristics, those lost to follow-up may have been more at risk for death; our estimate  
281 of long-term mortality may be underestimated. Despite limitations, to our knowledge this is the first  
282 cohort study in SSA to describe long-term mortality to 12-months after suspected sepsis.

283

284 **Conclusions**

285 Almost half of the deaths observed overall occurred during the observation period from one month to one  
286 year. The burden of sepsis in SSA is likely underestimated. Patients discharged after admission for sepsis  
287 likely represent a vulnerable population that should have a longitudinal follow-up for medical care.

288

289 **Declarations**

290 This protocol and informed consent were approved by the U.S. Army Medical Research and Development  
291 Command Institutional Review (# M-10573) and Makerere University School of Public Health IRB#  
292 490). All participants provided written consent that was provided in either English or their local language.  
293 All procedures were in accordance with the ethical standards of the Helsinki Declaration of the World  
294 Medical Association. The investigators have adhered to the policies for protection of human subjects as  
295 prescribed in 45 CFR 46.

296

297 The contents of this article are the sole responsibility of the authors and do not necessarily reflect the  
298 views, assertions, opinions, or policies of the Henry M. Jackson Foundation for the Advancement of  
299 Military Medicine, Inc., the U.S. Department of Defense, the U.S. government, or any other government  
300 or agency. Mention of trade names, commercial products, or organizations does not imply endorsement  
301 by the U.S. government. Some of the authors of this work are military service members or employees of  
302 the U.S. government. This work was prepared as part of their official duties. Title 17 U.S.C. x105  
303 provides that “Copyright protection under this title is not available for any work of the United States  
304 government.” Title 17 U.S.C. x101 defines a U.S. government work as a work prepared by a military  
305 service member or employee of the U.S. government as part of that person’s official duties.

306

307 *Acknowledgments.* We would like to thank all of the Fort Portal research nurses, laboratory technicians,  
308 and hygienists and the medical staff. We would also like to thank David Brett-Major, MD, James Lawler,  
309 MD, Nahid Bhadelia, MD, and Karen Martins, PhD for their contributions to the Fort Portal research site.

310  
311 *Author contributions.* PWB conceived and designed the study, analyzed, and interpreted data, and wrote  
312 the manuscript. DFO, AW, SO, and MK collected data. SO, MG, RJS, PW and HB contributed to project  
313 execution. ML, CB, HK, and DVK oversaw project execution and contributed to obtaining resources. PN,  
314 AW, DFO, HK, RJS, and PW contributed to interpretation of results. All authors reviewed and approved  
315 this manuscript.

316  
317 *Financial support.* This project was supported by Joint Program Executive Office (JPEO-EB) W911QY-  
318 20-9-0004 (2020 OTA). Pathogen testing supported by Naval Medical Logistics Command (NMLC)  
319 cooperative agreement N626451920001.

320

321 *Conflicts of interests.* The authors have no financial interests to declare.

322

## 323 **References**

- 324 1. Rudd KE, Johnson SC, Agesa KM, et al. Global, regional, and national sepsis incidence and  
325 mortality, 1990-2017: analysis for the Global Burden of Disease Study. *Lancet (London, England)* 2020;  
326 **395**(10219): 200-11.
- 327 2. Gritte RB, Souza-Siqueira T, Curi R, Machado MCC, Soriano FG. Why Septic Patients Remain  
328 Sick After Hospital Discharge? *Front Immunol* 2020; **11**: 605666.
- 329 3. Lewis JM, Mphasa M, Keyala L, et al. A longitudinal observational study of aetiology and long-  
330 term outcomes of sepsis in Malawi revealing the key role of disseminated tuberculosis. *Clinical infectious  
331 diseases : an official publication of the Infectious Diseases Society of America* 2021.

- 332 4. Winters BD, Eberlein M, Leung J, Needham DM, Pronovost PJ, Sevransky JE. Long-term  
333 mortality and quality of life in sepsis: a systematic review. *Critical care medicine* 2010; **38**(5): 1276-83.
- 334 5. Lewis JM, Feasey NA, Rylance J. Aetiology and outcomes of sepsis in adults in sub-Saharan  
335 Africa: a systematic review and meta-analysis. *Crit Care* 2019; **23**(1): 212.
- 336 6. Martins KA, Ayebare RR, Bhadelia N, et al. Pre-positioned Outbreak Research: The Joint  
337 Medical Emerging Diseases Intervention Clinical Capability Experience in Uganda. *Health security* 2020;  
338 **18**(2): 114-24.
- 339 7. Blair PW, Mehta R, Oppong CK, et al. Screening tools for predicting mortality of adults with  
340 suspected sepsis: an international sepsis cohort validation study. *BMJ Open* 2023; **13**(2): e067840.
- 341 8. Singer M, Deutschman CS, Seymour CW, et al. The Third International Consensus Definitions  
342 for Sepsis and Septic Shock (Sepsis-3). *JAMA* 2016; **315**(8): 801-10.
- 343 9. Krishnan S, Beckett C, Espinosa B, Clark DV. Austere environments Consortium for Enhanced  
344 Sepsis Outcomes (ACESO). *Shock (Augusta, Ga)* 2020; **53**(3): 377-8.
- 345 10. Naluyima P, Kayondo W, Ritchie C, et al. The joint mobile emerging disease clinical capability  
346 (JMEDICC) laboratory approach: capabilities for high-consequence pathogen clinical research. *PLoS*  
347 *neglected tropical diseases* 2019; **13**(12): e0007787.
- 348 11. Kiggundu T, Ario AR, Kadobera D, et al. Notes from the Field: Outbreak of Ebola Virus Disease  
349 Caused by Sudan ebolavirus - Uganda, August-October 2022. *MMWR Morb Mortal Wkly Rep* 2022;  
350 **71**(45): 1457-9.
- 351 12. Manabe YC, Betz J, Jackson O, et al. Clinical evaluation of the BioFire Global Fever Panel for  
352 the identification of malaria, leptospirosis, chikungunya, and dengue from whole blood: a prospective,  
353 multicentre, cross-sectional diagnostic accuracy study. *Lancet Infect Dis* 2022.
- 354 13. Nimo-Paintsil SC, Mosore M, Addo SO, et al. Ticks and prevalence of tick-borne pathogens from  
355 domestic animals in Ghana. *Parasites & vectors* 2022; **15**(1): 86.

- 356 14. Koehler JW, Delp KL, Hall AT, et al. Sequence Optimized Real-Time Reverse Transcription  
357 Polymerase Chain Reaction Assay for Detection of Crimean-Congo Hemorrhagic Fever Virus. *Am J Trop*  
358 *Med Hyg* 2018; **98**(1): 211-5.
- 359 15. Voorhees MA, Padilla SL, Jamsransuren D, et al. Crimean-Congo Hemorrhagic Fever Virus,  
360 Mongolia, 2013-2014. *Emerg Infect Dis* 2018; **24**(12): 2202-9.
- 361 16. Adegbite BR, Edoa JR, Ndzebe Ndoumba WF, et al. A comparison of different scores for  
362 diagnosis and mortality prediction of adults with sepsis in Low-and-Middle-Income Countries: a  
363 systematic review and meta-analysis. *EClinicalMedicine* 2021; **42**: 101184.
- 364 17. Environmental Systems Research Institute I. ArcGIS. Redlands, CA: ArcGIS Online; 2022.
- 365 18. Bakamutumaho B, Lutwama JJ, Owor N, et al. Epidemiology, Clinical Characteristics, and  
366 Mortality of Hospitalized Patients with Severe COVID-19 in Uganda, 2020–2021. *Annals of the*  
367 *American Thoracic Society* 2022; **19**(12): 2100-3.
- 368 19. Blair PW, Kobba K, Kakooza F, et al. Aetiology of hospitalized fever and risk of death at Arua  
369 and Mubende tertiary care hospitals in Uganda from August 2019 to August 2020. *BMC infectious*  
370 *diseases* 2022; **22**(1): 869.
- 371 20. Otieno G, Whiteside YO, Achia T, et al. Decreased HIV-associated mortality rates during scale-  
372 up of antiretroviral therapy, 2011-2016. *Aids* 2019; **33**(15): 2423-30.
- 373 21. Reddy EA, Shaw AV, Crump JA. Community-acquired bloodstream infections in Africa: a  
374 systematic review and meta-analysis. *Lancet Infect Dis* 2010; **10**(6): 417-32.
- 375 22. Crump JA, Morrissey AB, Nicholson WL, et al. Etiology of severe non-malaria febrile illness in  
376 Northern Tanzania: a prospective cohort study. *PLoS Negl Trop Dis* 2013; **7**(7): e2324.
- 377 23. Jones BW RD, Gurling MA, Veloz M, Jackson O, Burton M, Batty N, Belgique P, Andjelic CA,  
378 & Phillips CA. Clinical Evaluation of the BioFire® FilmArray® Global Fever Panel. Poster C-1803.  
379 American Society of Tropical Medicine & Hygiene (ASTMH) Annual Meeting; 2019 November 20 - 24,  
380 2019; Washington, DC; 2019.

381 24. Moore CC, Jacob ST, Pinkerton R, et al. Point-of-care lactate testing predicts mortality of severe  
382 sepsis in a predominantly HIV type 1-infected patient population in Uganda. *Clinical infectious diseases* :  
383 *an official publication of the Infectious Diseases Society of America* 2008; **46**(2): 215-22.

384 25. Wright SW, Hantrakun V, Rudd KE, et al. Enhanced bedside mortality prediction combining  
385 point-of-care lactate and the quick Sequential Organ Failure Assessment (qSOFA) score in patients  
386 hospitalised with suspected infection in southeast Asia: a cohort study. *Lancet Glob Health* 2022; **10**(9):  
387 e1281-e8.

388 26. Moore CC, Jacob ST, Jacob ST, et al. Point-of-care lactate testing predicts mortality of severe  
389 sepsis in a predominantly HIV type 1–infected patient population in Uganda. *Clinical Infectious Diseases*  
390 2008; **46**(2): 215-22.

391

## 392 **Figure legends.**

393 Figure 1. Cohort flow diagram.

394 Figure 2. Kaplan-Meier plots by sex (A), HIV status (B), qSOFA score (C), and UVA score (D).

395 Figure 3. Hazard ratio forest plot of 12-month mortality risk associated with baseline demographics and

396 vital signs (A), clinical laboratory results (B), and clinical microbiology results (C). Min.:Minute,

397 qSOFA: quick Sepsis Organ related Failure Assessment; Pos.: positive; UVA: Universal Vital

398 Assessment.

399



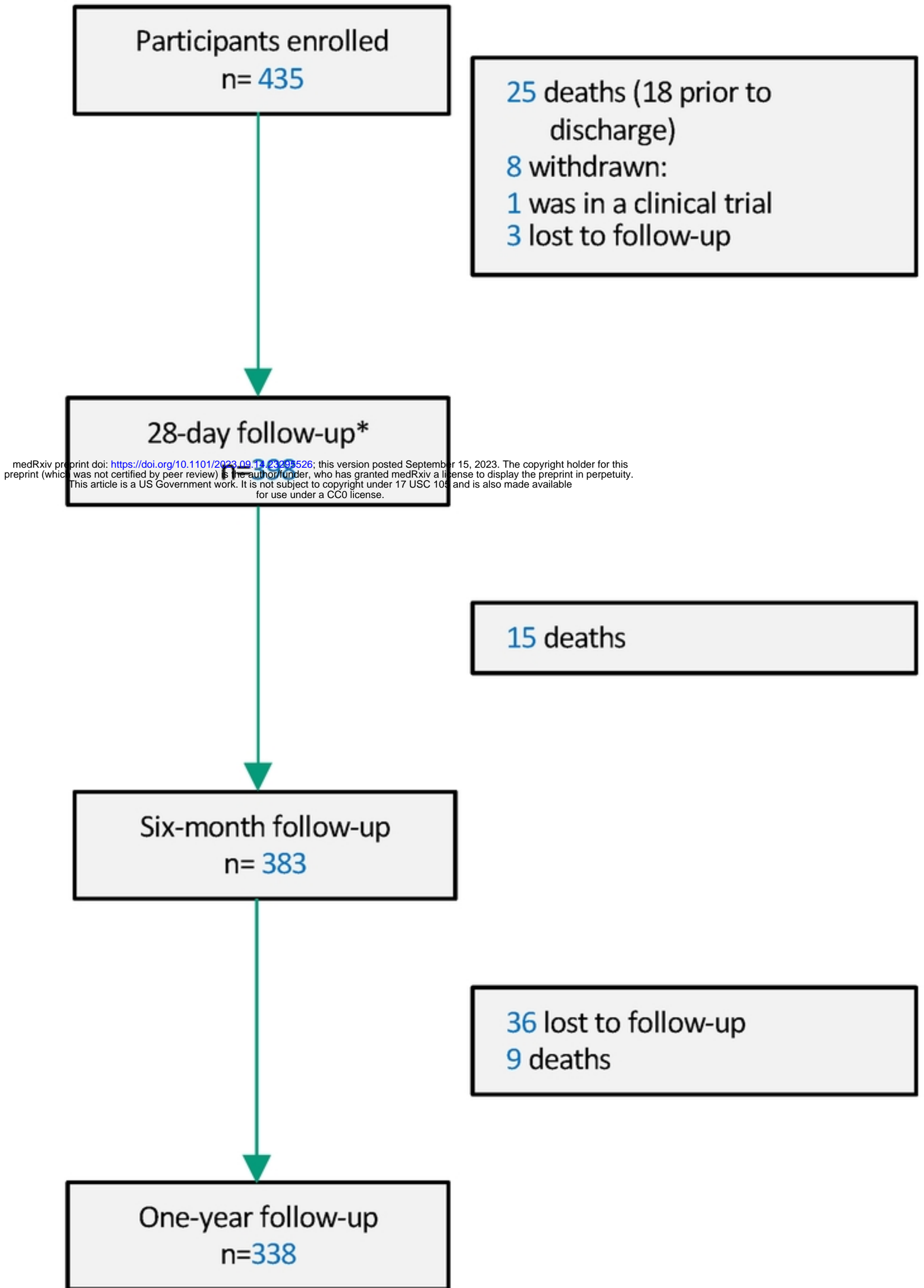


Figure 1. Cohort flow diagram.

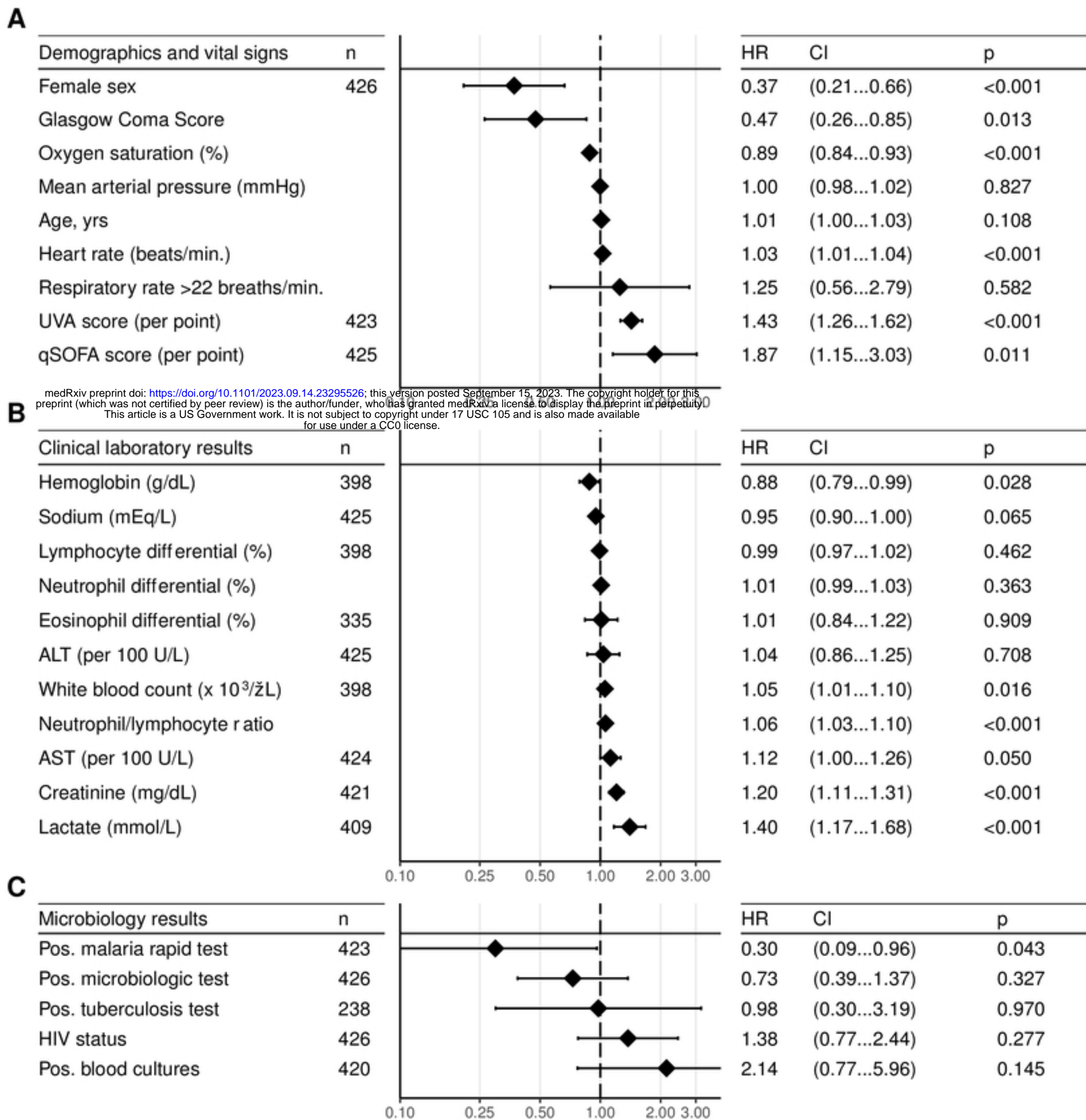
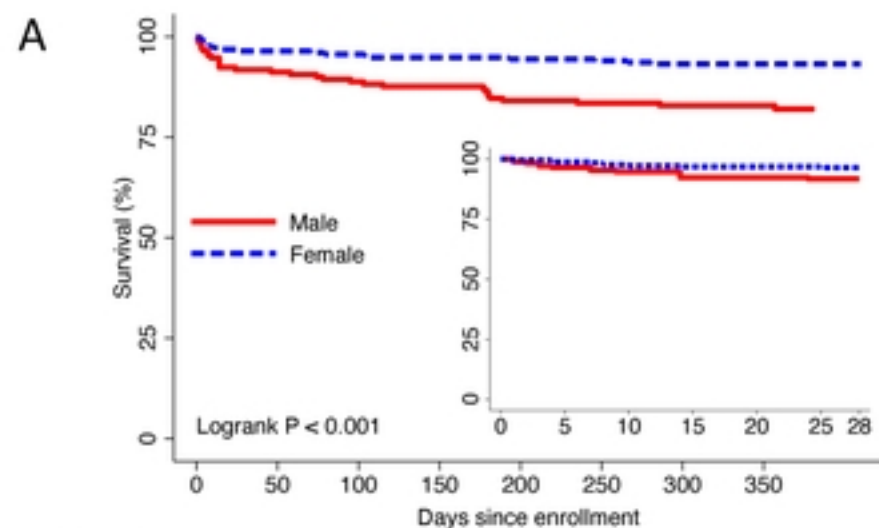
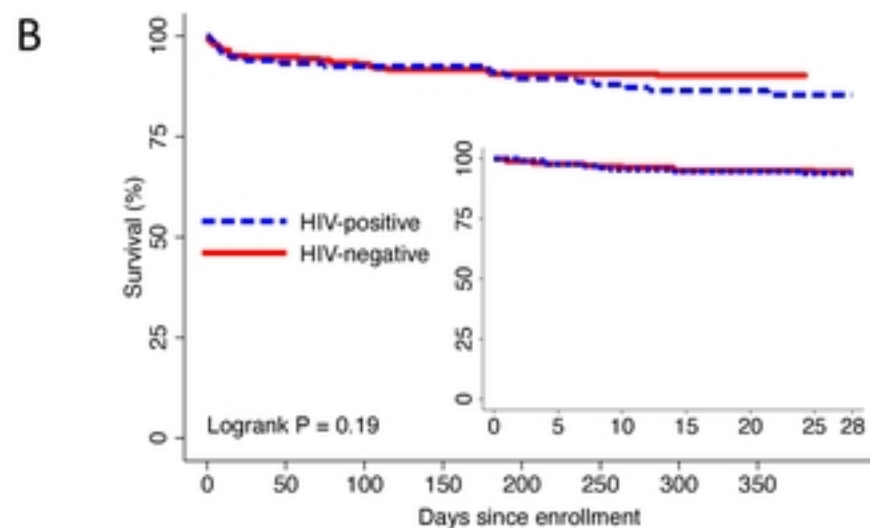


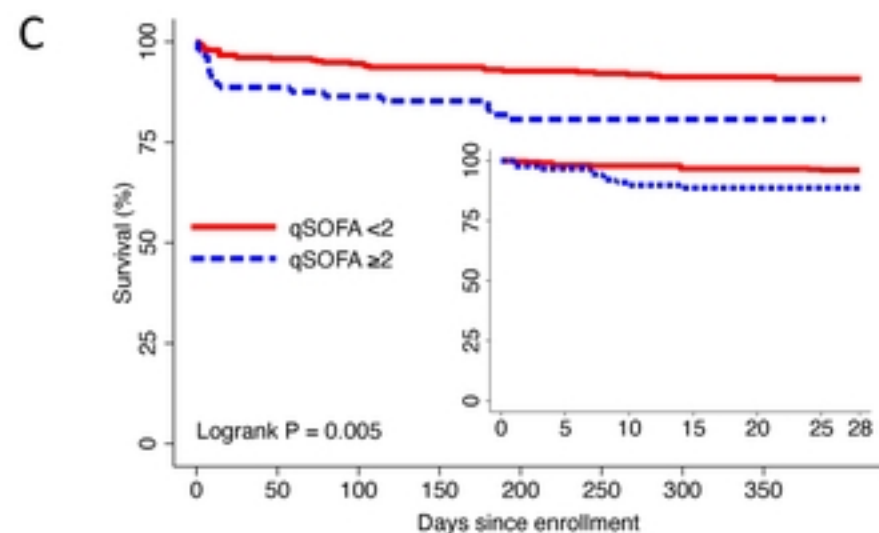
Figure 3. Hazard ratio forest plot of 12-month mortality risk a



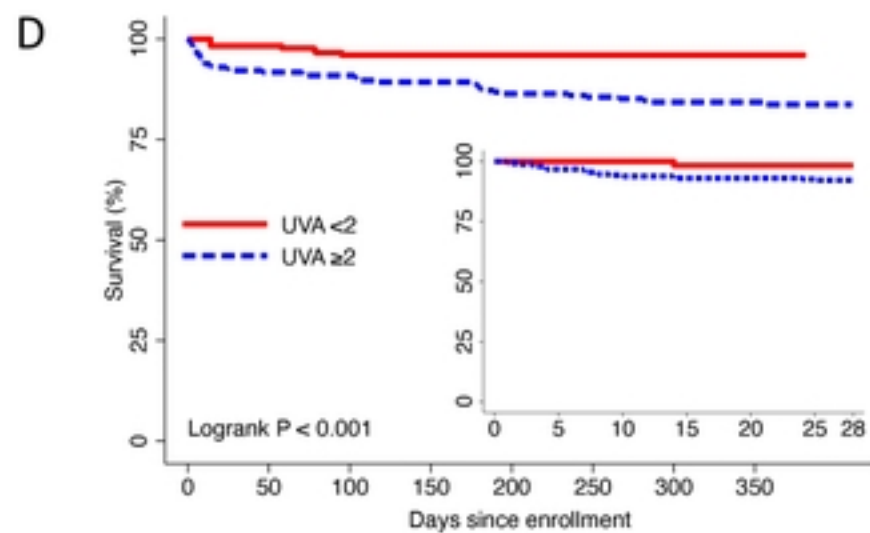
No. at Risk:  
 Male 171(15)154 (4) 150 (2) 148 (6) 142 (1) 141 (1) 134 (0) 134  
 Female 253 (9) 242 (2) 240 (2) 238 (1) 235 (1) 234 (2) 225 (0) 224



No. at Risk:  
 HIV-positive 134 (9) 124 (1) 123 (0) 123 (4) 119 (2) 117 (2) 113 (0) 113  
 HIV-negative 290(15)272 (5) 267 (4) 263 (3) 258 (0) 258 (1) 246 (0) 245



No. at Risk:  
 qSOFA <math>< 2</math> 334(14)317 (4) 313 (3) 310 (3) 305 (2) 303 (3) 289 (0) 288  
 qSOFA >math>\ge 2</math> 89 (10) 78 (2) 76 (1) 75 (4) 71 (0) 71 (0) 69 (0) 69



No. at Risk:  
 UVA <math>< 2</math> 177 (3) 172 (4) 168 (0) 168 (0) 167 (0) 167 (0) 159 (0) 158  
 UVA >math>\ge 2</math> 244(20)222 (2) 220 (4) 216 (7) 208 (2) 206 (3) 198 (0) 198

Figure 2. Kaplan-Meier plots by sex (A), HIV status (B), qSOFA score (C), and UVA score (D).