

1 Leukocyte Telomere Length and Cardiac Structure and Function: A Mendelian Randomization Study

2 Ahmed Salih^{1,2}, Ilaria Boscolo Galazzo³, Gloria Menegaz³, and André Altmann⁴

3 ¹William Harvey Research Institute, NIHR Barts Biomedical Research Centre, Queen Mary University of

4 London, Charterhouse Square, London, EC1M 6BQ, UK

5 ²Department of Population Health Sciences, University of Leicester, Leicester, UK

6 ³University of Verona, Department of Computer Science, Verona, Italy

7 ⁴Centre for Medical Image Computing (CMIC), Department of Medical Physics and Biomedical Engineering,

8 University College London, London, UK

9 Abstract: Existing research demonstrates association of shorter telomere length (TL) with increased risk of
10 age-related health outcomes including cardiovascular diseases. However, the direct causality of these
11 relationships is not definitively established. Cardiovascular aging at an organ-level may be captured using
12 image derived phenotypes (IDPs) of cardiac anatomy and function. In the current study, we use two-sample
13 Mendelian Randomization (MR) to assess the causal link between TL and 54 cardiac magnetic resonance
14 imaging (CMR) measures representing structure and function across the four cardiac chambers. Genetically
15 predicted shorter TL was causally linked to smaller ventricular cavity sizes including left ventricular end-systolic
16 volume (LVESV), left ventricular end-diastolic volume (LVEDV), lower left ventricular mass (LVM) and
17 pulmonary artery. The association with LVM ($\beta = 0.217$, $P_{FDR} = 0.016$) remained significant after multiple testing
18 adjustment, whilst other associations were attenuated. Our findings support a causal role for shorter TL and
19 faster cardiac aging, with the most prominent relationship with LVM.

20 *Keywords*— Telomere, Cardiac IDPs, Mendelian Randomization

21 1 Introduction

22 Global population aging has increased the burden of chronic non-communicable diseases of older age, among
23 which, cardiovascular diseases (CVDs) are the most prominent [1]. The risk of age-related CVD is not uniform
24 across the population. Indeed, biological cardiovascular aging is influenced by a wide range of environmental
25 and lifestyle exposures throughout life [2]. Furthermore, the susceptibility to CVDs varies even among
26 individuals with similar exposure profiles, suggesting the crucial role of inherent genetic determinants of
27 biological aging.

28 Telomeres are distinct regions of repetitive nucleotide sequences and protein complexes at the end of
29 chromosomes [3]. Their function is to protect against nucleotide degradation, unnecessary recombination,
30 repair, and inter-chromosomal fusion [4, 5]. Telomeres become progressively shorter with each cell division.

31 Shorter telomere lengths (TL) have been linked to increased risk of death and age-related disease, including a
32 range of CVDs [6]. For instance, longer TL are causally associated with decreased risk of myocardial infarction,
33 coronary atherosclerosis and ischemic heart disease [7]. There is wide variation of TL across the population
34 with evidence of high and consistent heritability [8, 9]. As such, TL has been proposed as an indicator of
35 biological aging providing information beyond chronological age and environmental exposures. However, TL
36 can also be modified by diseases, such as diabetes and atherosclerosis, which may confound its relationships
37 with incident CVD and death [6]. That is, the causality of the relationships between TL and CVD is not
38 adequately demonstrated in existing literature [10]. Cardiac magnetic resonance (CMR) became an essential
39 tool for the characterization of CVDs. The cardiovascular phenotype alters in a predictable and established
40 manner with increasing age, which may be accurately captured using CMR [11]. Thus, CMR phenotypes provide
41 reliable continuous measures of cardiovascular aging. The recent availability of genome wide association study
42 (GWAS) data [12, 13, 14, 15] for a rich array of CMR phenotypes provides opportunity to evaluating causal
43 associations of TL with cardiovascular aging.

44 A statistical genetics technique that can help establish causality from GWAS results is Mendelian
45 Randomization (MR). A recent study used MR to examine the association between TL and seven CMR metrics
46 [16]. The findings indicate that shorter TL was associated with reduced left ventricular mass, reduced left
47 ventricular stroke volume, reduced global ventricular volume and reduced overall ventricular size. However,
48 only the reduction in left ventricular mass would survive multiple testing correction across the seven explored
49 traits. In particular, the study implemented a one-sample MR, where the exposure (TL) and outcome (CMR
50 metrics) are obtained from the same individuals, which enabled the authors to leverage a large dataset
51 comprising N=460,000 individuals to identify instrumental genetic instruments of TL for the MR analysis.
52 However, such analyses are known to be more prone to bias compared to two-sample MR [17]. For instance,
53 'weak instruments' bias the result towards the observed association between exposure and outcome [17],
54 whereas 'winners curse' may lead one-sample MR to underestimate the true causal effect [18]. Therefore, a
55 two-sample MR, where there is no overlap between the samples of the exposure and the outcome and which
56 avoids such biases, can be used to substantiate these findings. Finally, Aung et al [16] focused on the most
57 common CMR metrics. However, there are further metrics, such as ejection fraction, which are of broad
58 interest and can be explored using available GWAS summary statistics in a two-sample MR framework.

59 In this study we used two-sample MR to examine the causal association of TL with 54 CMR phenotypes,
60 leveraging publicly available GWAS summary statistics of TL and cardiac phenotypes. This work provides novel
61 insights into the causal associations of TL with cardiovascular aging and its potential as a marker of biological
62 cardiovascular age, independent of age and environmental exposures.

63 2 Data

64 2.1 Cardiac IDPs GWAS

65 Right atrium

66 The GWAS summary statistics of the right atrium [12] that is publicly available was considered in the current
67 analysis. Right heart structure and function GWAS was conducted for 40,000 participants from UK Biobank
68 (UKB).

69 Participants were excluded if they had history with specific heart diseases. GWAS analysis was conducted for
70 34 CMR measures including right ventricular volume at end diastolic and end systolic, ejection fraction and
71 stroke volume. In addition, Pirruccello et al [12] conducted GWAS for the pulmonary system, including
72 pulmonary root diameter, pulmonary artery (PA) and diameter of PA. Similar measures were also used but
73 indexed for body surface area. Whilst their analysis was mainly focused on right atrium, they also conducted
74 GWAS for left and right ventricular metrics. The full list of all 34 CMR measures reported and the GWAS results
75 can be found in [12].

76 Right ventricular

77 To represent right ventricular phenotypes, we used publicly available GWAS summary statistics of the following
78 four right ventricular measures: end systolic volume (RVESV), stroke volume (RVSV), ejection fraction (RVEF)
79 and end diastolic volume (RVEDV) [13]. In summary, the results are based on 29,506 participants from UKB free
80 from pre-existing myocardial infarction or heart failure.

81 Left atrium

82 GWAS was performed using five functional and volumetric left atrium (LA) variables from UKB for 35,658
83 participants. The variables included LA minimum (LAmin) volumes, indexed LA maximum (LAMax), LA active
84 emptying fraction (LAAEF), LA passive emptying fraction (LAPEF), and LA total emptying fraction (LATEF) [14].

85 Left ventricular

86 We used the GWAS summary statistics for the following six left ventricular measures: end-diastolic volume
87 (LVEDV), mass (LVM), end-systolic volume (LVESV), ejection fraction (LVEF), mass to end-diastolic volume ratio
88 (LVMVR) and stroke volume (LVSV) [15]. However, as the summary statistics of LVSV were not available, this
89 measure was excluded from further analyses. The study was conducted on 16,923 European participants from
90 UKB.

91 Aortic distensibility

92 GWAS was conducted to assess the association of the genetic bases and six aortic dimension and distensibility
93 phenotypes. These included ascending aortic distensibility, ascending aortic minimum area, ascending aortic

94 maximum area, descending aortic distensibility, descending aortic minimum area, descending aortic maximum
95 area [19]. The analysis was conducted on 32,590 Caucasian participants from UKB.
96 Arterial stiffness index
97 Arterial stiffness index (ASI) GWAS was conducted on 127,121 European-ancestry individuals from UKB [20].
98 Such analysis has been facilitated by its ease of acquisition and its role in a wide range of cardiovascular
99 diseases.
100 The analysis ended up with a set of variants in four loci that are significantly associated with ASI.

101 2.2 TL GWAS

102 We used 33 single nucleotide polymorphisms (SNPs) that have been shown to be significantly associated with
103 TL in previous studies [21, 22, 23]. The first 20 SNPs were from a recent study that was conducted on 78,592
104 European individuals, under the ENGAGE project (European Network for Genetic and Genomic Epidemiology).
105 The remaining 13 SNPs were used before in [24] to conduct MR analysis with a wide range of aging-related
106 outcomes. The focus on these studies, which did not use UKB data, for the selection of the instrumental
107 variables allows us to conduct a two-sample MR study using CMR GWAS summary statistics that were obtained
108 using UKB participants.

109 The process of choosing proxies for SNPs that are not available for the GWAS on CMR measures and ensure
110 that they are not in linkage disequilibrium (LD) was performed as described previously [25]. Briefly, ten SNPs
111 were excluded as they were in high LD ($R^2 > 0.02$) with other SNPs. Ensembl [26] was used to calculate LD using
112 GBR (British in England and Scotland) samples from Phase 3 (version 5) of the 1,000 Genomes Project. The final
113 list of the 23 SNPs is shown in Table 1.

SNPs	Chr	Pos	Gene	EA	OA	EA	Beta	SE	P-value
rs2695242	1	226594038	PARP1	G	T	0.83	-0.039	0.0064	9.31E-11
rs11125529	2	54475866	ACYP2	A	C	0.16	0.065	0.012	4.48E-08
rs6772228	3	58376019	PXK	T	A	0.76	0.041	0.014	3.91E-10
rs55749605	3	101232093	SENP7	A	C	0.58	-0.037	0.007	2.45E-08
rs7643115	3	169512241	TERC	A	G	0.243	-0.0858	0.0057	6.42E-51
rs13137667	4	71774347	MOB1B	C	T	0.959	0.0765	0.0137	2.37E-08
rs7675998	4	164007820	NAF1	G	A	0.8	0.048	0.012	4.35E-16
rs7705526	5	1285974	TERT	A	C	0.328	0.082	0.0058	4.82E-45
rs34991172	6	25480328	CARMIL1	G	T	0.068	-0.0608	0.0105	6.03E-09
rs805297	6	31622606	PRRC2A	A	C	0.313	0.0345	0.0055	3.41E-10
rs59294613	7	124554267	POT1	A	C	0.293	-0.0407	0.0055	1.12E-13
rs9419958	10	105675946	STN1 (OBFC1)	C	T	0.862	-0.0636	0.0071	4.77E-19
rs228595	11	108105593	ATM	A	G	0.417	-0.0285	0.005	1.39E-08
rs76891117	14	73399837	DCAF4	G	A	0.1	0.0476	0.0084	1.64E-08
rs3785074	16	69406986	TERF2	G	A	0.263	0.0351	0.0056	4.5E-10

rs62053580	16	74680074	RFWD3	G	A	0.169	- 0.0389	0.0071	3.96E-08
rs7194734	16	82199980	MPHOSPH6	T	C	0.782	- 0.0369	0.006	6.72E-10
rs3027234	17	8136092	CTC1	C	T	0.83	0.103	0.012	2E-08
rs8105767	19	22215441	ZNF208	G	A	0.289	0.0392	0.0054	5.21E-13
rs6028466	20	38129002	DHX35	A	G	0.17	0.058	0.013	2.57E-08
rs71325459	20	62268341	RTEL1	T	C	0.015	- 0.1397	0.0227	7.04E-10
rs75691080	20	62269750	STMN3	T	C	0.091	- 0.0671	0.0089	5.75E-14
rs73624724	20	62436398	ZBTB46	C	T	0.129	0.0507	0.0074	6.08E-12

114 Table 1: List of the SNPs used in the MR analysis. The SNPs in bold are proxies as the original SNPs were not
115 available for cardiac IDPs GWAS. SNPs, ID of the SNP; Chr, chromosome; Pos, position of the SNP in the
116 genome; EA, effect allele; OA, other allele; EAF, effect allele frequency; Beta, beta value of the SNP in GWAS;
117 SE, standard error.

118 3 Methods

119 The statistical analysis was implemented using TwoSampleMR package [27] in R adopting inverse variance
120 weighted (IVW) method as the primary analysis. Weighted mode (WMO) and weighted median (WMe)
121 methods were also performed as complementary MR analyses. MR-Egger regression [28] and weighted median
122 function [29] were used to detect heterogeneity and directional pleiotropy of the genetic instruments. To test
123 for horizontal pleiotropy test, leave-one-SNP-out analyses, MR-Egger intercept test, and the modified Cochran
124 Q statistic methods were applied. Moreover, MR-Pleiotropy Residual Sum and Outlier (MR-PRESSO) [30] was
125 used to detect and correct pleiotropy. False discovery rate (FDR) [31] correction was finally applied to the IVW
126 results to adjust for multiple tests across the 54 cardiac GWAS studies independently at $\alpha = 0.05$.

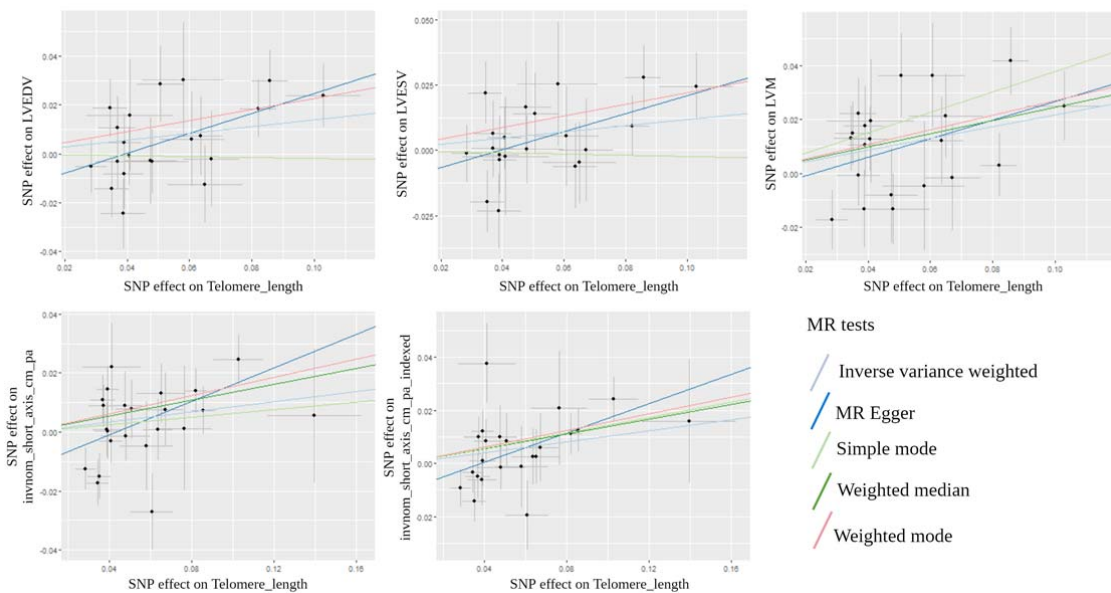
127 4 Results

128 In total 54 MR tests were conducted to examine the causal association of TL and CMR phenotypes. All the
129 instrumental variables used from TL GWAS were also available for cardiac IDPs, with the exception of two SNPs
130 from the LV GWAS [15]. We could not select suitable proxies for these two SNPs, since all variants in the region
131 showed low linkage disequilibrium ($LD < 0.01$). Consequently, these two SNPs were excluded when MR was
132 conducted between TL and LV IDPs. Five measures showed nominally significant association with TL in both the
133 main and complementary analyses (Table 2). Specifically, we found significant causal association of shorter TL
134 with smaller LV cavity volumes in end-diastole and end-systole (lower LVEDV and LVESV) and lower LVM.
135 Shorter TL was also significantly associated with smaller short axis PA size (in both indexed and non-indexed
136 versions of this metric). There was no evidence of significant horizontal pleiotropy in these five measures, as
137 per MR-PRESSO. In addition, the MR-Egger intercept p-value was not significant indicating no horizontal
138 pleiotropy. The association with LVESV was not significant in one of the complementary analyses (WMe), whilst
139 significant in other analyses. The associations with short axis PA size (in both indexed and non-indexed
140 versions of this metric), LVEDV and LVESV were attenuated to statistically non-significant after multiple testing
141 adjustment ($P_{FDR} > 0.05$). The association with LVM was the most robust, remaining statistically significant after

142 multiple testing adjustment ($P_{FDR} = 0.016$). The remaining CMR measures were not significantly associated with
 143 TL (Table S1). The results showed that shortening TL over time causes reduction particularly in LVM and
 144 suggestively in four other measures. Figure 1 shows the direction of the association of the five cardiac IDPs and
 145 TL. It shows that TL shortening causes reduction of all of these metrics over time.

CMR measure	IVW (beta)	IVW (se)	IVW (p-value)	IVW (P_{FDR} -value)	MR Egger (p-value)	WMe (p-value)	WMo (p-value)	MR-PRESSO (p-value)	Source
LVEDV	0.138	0.054	0.011	0.198	0.011	0.003	0.025	0.44	[15]
LVESV	0.118	0.054	0.029	0.392	0.027	0.141	0.031	0.61	[15]
LVM	0.217	0.061	0.0003	0.016	0.048	0.005	0.029	0.27	[15]
short_axis_cm_pa	0.085	0.043	0.049	0.486	0.012	0.007	0.013	0.06	[12]
short_axis_cm_pa_i	0.103	0.038	0.007	0.189	0.006	0.005	0.014	0.22	[12]

146 Table 2: Results of the Mendelian randomization for the CMR measures that have significant association with
 147 TL. IVW: Inverse variance weighted ; WMe: Weighted median; WMo: Weighted median; se: stander error ;pa:
 148 pulmonary artery; i: indexed to body surface area.



149

150 Figure 1: Association of TL and the five cardiac IDPs in the primary (IVW) and in the complementary analyses.

151 5 Discussion

152 We present an extensive evaluation of the causal relationships between TL and 54 cardiac IDPs using two-
 153 sample MR analysis. We demonstrate causal association of shorter TL with smaller LV cavity volumes (smaller
 154 LVEDV and LVESV) and lower LVM. The most robust association was between TL and LVM, with the association
 155 remaining significant after multiple testing correction of the primary analysis. The pattern of associations
 156 reflects associations of TL with a pattern of cardiovascular phenotypic alterations in keeping with greater
 157 cardiac aging. These phenotypic alterations have been shown to confer significant cardiovascular risk,
 158 particularly when present at younger ages. Thus, our work supports a causal role for TL in driving poorer

It is made available under a [CC-BY 4.0 International license](https://creativecommons.org/licenses/by/4.0/) .

159 cardiovascular health and sheds light into potential mechanisms causing differential susceptibility to CVD
160 across the population. The pattern of phenotypic alterations observed in association with shorter TL is
161 consistent with age-related cardiovascular changes reported in population imaging cohorts [32]. There are
162 distinct age-related morphological alterations of the heart, which are reflected in cardiovascular imaging
163 phenotypes and widely reported in the literature [11]. Increasing age is associated with cardio-myocyte
164 attrition [33], which is detected as lower LV mass on CMR.

165 There is also substantial decline in LV volumes with increasing age, which is disproportionately greater than the
166 LV mass decline, therefore resulting in a concentric pattern of LV remodelling in older ages [32]. With regards
167 to functional metrics, the pattern is more complex, poorer strain metrics are generally noted, although their
168 measurement on CMR can be challenging. LV stroke volume is reduced with increasing age, but accompanied
169 by minimal or no change in LV ejection fraction. Increased vascular stiffness with older age is well described in
170 the literature [34] and linked to the described ventricular remodelling through patterns of ventricular-arterial
171 coupling [35]. The described age-related cardiovascular alterations have been linked to increased risk of
172 cardiovascular events.

173 Thus, the observed associations with shorter TL in our study are well matched to existing knowledge on cardiac
174 age-related remodelling.

175 Whilst our analysis indicates causal relationship between shorter TL and age-related LV remodelling, it is not
176 clear whether this represents a direct effect of TL or an indirect effect mediated through greater propensity to
177 risk factors such as diabetes. Indeed, previous work has been linked shorter TL to poorer glycaemic control
178 [36], higher blood pressure [37, 38, 39], and total cholesterol [40]. It is likely that TL acts through multiple
179 direct and indirect pathways to accelerate cardiac aging and increase propensity to disease. Further studies
180 elucidating these precise mechanisms are essential to advance knowledge in this area. The associations with
181 right ventricular and atrial metrics were not significant in our analysis. This may reflect greater technical
182 challenges in deriving these phenotypes and thus greater noise limiting detection of SNPs in GWAS for these
183 metrics. For instance, the RV has an irregular anatomy, and its segmentation is far more challenging than the
184 LV with greater inter-operator variation [41]. It is also possible that the LV reflects more readily age-related
185 alterations than the other chambers. The associations of CMR metrics with aging are not extensively studied
186 due to limited availability of large population cohorts. As the performance automated segmentation tools
187 improve and with greater availability of population datasets our understanding of the genetic architecture of
188 the heart is expected to improve with greater opportunity to understand its alterations with age.

189 The instrumental variables (SNPs) used in our analysis belong to wide range of genes that regulate TL and are
190 also linked to the development of cardiac diseases and vascular risk factors. rs11125529, rs7675998,
191 rs8105767 and rs7194734 SNPs belong to the *ACYP2*, *NAF1*, *ZNF208* and *MPHOSPH6* genes, respectively, which

192 were found to be associated with increasing risk of developing coronary heart disease [42, 22, 43]. rs6772228
193 belongs to the *PXK* gene which is associated with total cholesterol levels [44]. Finally, the *RTEL1* gene plays a
194 protective role against coronary heart disease [45].
195 Importantly, our study confirms the previously reported causal association between TL and LVM [16] using
196 two-sample MR, which is less susceptible to bias compared to one-sample MR. Similarly to Aung et al. [16],
197 who reported a nominally significant effect between TL and left-ventricular stroke volume, there were also
198 significant associations between TL and Left ventricular end-diastolic and end-systolic volume, but these did
199 not survive multiple testing correction. Interestingly, our results were achieved using only 23 SNPs as
200 instrumental variables, which were previously reported to be significantly associated with TL, as compared to
201 the 130 SNPs by Aung et al [16] based on a UKB GWAS analysis. Of note, the effect sizes in our study were
202 larger than the ones previously reported using one-sample MR. For example, the effect size of LVM in our
203 study is 0.21, while Aung et al [16] report 0.13. Accordingly, the results of the current study provide additional
204 robust evidence for an causal association between TL and CMR metrics.
205 To the best of our knowledge, this is the first study that attempts to assess the casual link between TL and a
206 wide range of cardiac IDPs. Our results indicate a significant and causal role of TL on the LV structure. A
207 previous study [2] demonstrated the role of wide range of daily-life style and exposures in cardiac aging. Our
208 study identified a new significant player in cardiac aging which might help to better understand the ageing-
209 driven

210 Funding

211 AS is supported by a British Heart Foundation project grant (PG/21/10619). IBG and GM acknowledges support
212 from Fondazione CariVerona (Bando Ricerca Scientifica di Eccellenza 2018, EDIPO project, num. 2018.0855.2019)
213 and MIUR D.M. 737/2021 "AI4Health: empowering neurosciences with eXplainable AI methods".

214 Disclosure

215 The authors have no disclosures.

216 References

217 [1] Gregory A Roth et al. "Global burden of cardiovascular diseases and risk factors, 1990–2019: update
218 from the GBD 2019 study". In: *Journal of the American College of Cardiology* 76.25 (2020), pp. 2982–
219 3021.

- 220 [2] Zahra Raisi-Estabragh et al. “Estimation of biological heart age using cardiovascular magnetic resonance
221 radiomics”. In: *Scientific Reports* 12.1 (2022), pp. 1–12.
- 222 [3] Patrick Revy, Caroline Kannengiesser, and Alison A Bertuch. “Genetics of human telomere biology
223 disorders”. In: *Nature Reviews Genetics* (2022), pp. 1–23.
- 224 [4] Maria A Blasco. “Telomeres and human disease: ageing, cancer and beyond”. In: *Nature Reviews
225 Genetics* 6.8 (2005), pp. 611–622.
- 226 [5] Maria A Blasco. “Telomere length, stem cells and aging”. In: *Nature chemical biology* 3.10 (2007), pp.
227 640–
228 649.
- 229 [6] Antonio L Serrano and Vicente Andrés. “Telomeres and cardiovascular disease: does size matter?” In:
230 *Circulation research* 94.5 (2004), pp. 575–584.
- 231 [7] Yingjian Deng et al. “Telomere length and the risk of cardiovascular diseases: A Mendelian
232 randomization study”. In: *Frontiers in Cardiovascular Medicine* 9 (2022), p. 1012615.
- 233 [8] Linda Broer et al. “Meta-analysis of telomere length in 19 713 subjects reveals high heritability, stronger
234 maternal inheritance and a paternal age effect”. In: *European journal of human genetics* 21.10 (2013),
235 pp. 1163–1168.
- 236 [9] Kathryn Demanelis et al. “Determinants of telomere length across human tissues”. In: *Science* 369.6509
237 (2020), eaaz6876.
- 238 [10] Karen Anne Mather et al. “Is telomere length a biomarker of aging? A review”. In: *Journals of
239 Gerontology
240 Series A: Biomedical Sciences and Medical Sciences* 66.2 (2011), pp. 202–213.
- 241 [11] Nadine Kawel-Boehm et al. “Reference ranges (“normal values”) for cardiovascular magnetic resonance
242 (CMR) in adults and children: 2020 update”. In: *Journal of cardiovascular magnetic resonance* 22.1
243 (2020), pp. 1–63.
- 244 [12] James P Pirruccello et al. “Genetic analysis of right heart structure and function in 40,000 people”. In:
245 *Nature genetics* 54.6 (2022), pp. 792–803.
- 246 [13] Nay Aung et al. “Genome-wide association analysis reveals insights into the genetic architecture of right
247 ventricular structure and function”. In: *Nature genetics* 54.6 (2022), pp. 783–791.
- 248 [14] Gustav Ahlberg et al. “Genome-wide association study identifies 18 novel loci associated with left atrial
249 volume and function”. In: *European heart journal* 42.44 (2021), pp. 4523–4534.

- 250 [15] Nay Aung et al. “Genome-wide analysis of left ventricular image-derived phenotypes identifies fourteen
251 loci associated with cardiac morphogenesis and heart failure development”. In: *Circulation* 140.16
252 (2019), pp. 1318–1330.
- 253 [16] Nay Aung et al. “Association of Longer Leukocyte Telomere Length With Cardiac Size, Function, and
254 Heart Failure”. In: *JAMA cardiology* (2023).
- 255 [17] S Burgess et al. “Guidelines for performing Mendelian randomization investigations: update for summer
256 2023”. In: (2023).
- 257 [18] Shi-Yi Chen, Zhe Feng, and Xiaolian Yi. “A general introduction to adjustment for multiple comparisons”.
258 In: *Journal of thoracic disease* 9.6 (2017), p. 1725.
- 259 [19] Catherine M Francis et al. “Genome-wide associations of aortic distensibility suggest causality for aortic
260 aneurysms and brain white matter hyperintensities”. In: *Nature communications* 13.1 (2022), p. 4505.
- 261 [20] Kenneth Fung et al. “Genome-wide association study identifies loci for arterial stiffness index in 127,121
262 UK Biobank participants”. In: *Scientific reports* 9.1 (2019), p. 9143.
- 263 [21] Chen Li et al. “Genome-wide association analysis in humans links nucleotide metabolism to leukocyte
264 telomere length”. In: *The American Journal of Human Genetics* 106.3 (2020), pp. 389–404.
- 265 [22] Veryan Codd et al. “Identification of seven loci affecting mean telomere length and their association
266 with disease”. In: *Nature genetics* 45.4 (2013), pp. 422–427.
- 267 [23] Massimo Mangino et al. “Genome-wide meta-analysis points to CTC1 and ZNF676 as genes regulating
268 telomere homeostasis in humans”. In: *Human molecular genetics* 21.24 (2012), pp. 5385–5394.
- 269 [24] Chia-Ling Kuo et al. “Telomere length and aging-related outcomes in humans: A Mendelian
270 randomization study in 261,000 older participants”. In: *Aging cell* 18.6 (2019), e13017.
- 271 [25] Ahmed Salih et al. “Telomere length is causally connected to brain MRI image derived phenotypes: A
272 mendelian randomization study”. In: *Plos one* 17.11 (2022), e0277344.
- 273 [26] Andrew D Yates et al. “Ensembl 2020”. In: *Nucleic acids research* 48.D1 (2020), pp. D682–D688.
- 274 [27] Gibran Hemani et al. “The MR-Base platform supports systematic causal inference across the human
275 phenome”. In: *elife* 7 (2018).
- 276 [28] Jack Bowden, George Davey Smith, and Stephen Burgess. “Mendelian randomization with invalid
277 instruments: effect estimation and bias detection through Egger regression”. In: *International journal of*
278 *epidemiology* 44.2 (2015), pp. 512–525.

- 279 [29] Jack Bowden et al. “Consistent estimation in Mendelian randomization with some invalid instruments
280 using a weighted median estimator”. In: *Genetic epidemiology* 40.4 (2016), pp. 304–314.
- 281 [30] Marie Verbanck et al. “Detection of widespread horizontal pleiotropy in causal relationships inferred
282 from Mendelian randomization between complex traits and diseases”. In: *Nature genetics* 50.5 (2018),
283 pp. 693–698.
- 284 [31] Yoav Benjamini and Yosef Hochberg. “Controlling the false discovery rate: a practical and powerful
285 approach to multiple testing”. In: *Journal of the Royal statistical society: series B (Methodological)* 57.1
286 (1995), pp. 289–300.
- 287 [32] Susan Cheng et al. “Age-related left ventricular remodeling and associated risk for cardiovascular
288 outcomes: the Multi-Ethnic Study of Atherosclerosis”. In: *Circulation: Cardiovascular Imaging* 2.3 (2009),
289 pp. 191–198.
- 290 [33] Piero Anversa et al. “Myocyte cell loss and myocyte hypertrophy in the aging rat heart”. In: *Journal of*
291 *the*
292 *American College of Cardiology* 8.6 (1986), pp. 1441–1448.
- 293 [34] Richard M Nethononda et al. “Gender specific patterns of age-related decline in aortic stiffness: a
294 cardiovascular magnetic resonance study including normal ranges”. In: *Journal of Cardiovascular*
295 *Magnetic Resonance* 17.1 (2015), pp. 1–9.
- 296 [35] David A Kass. “Age-related changes in ventricular–arterial coupling: pathophysiologic implications”. In:
297 *Heart failure reviews* 7.1 (2002), pp. 51–62.
- 298 [36] Feifei Cheng et al. “Shortened leukocyte telomere length is associated with glycemic progression in type
299 2 diabetes: a prospective and mendelian randomization analysis”. In: *Diabetes Care* 45.3 (2022), pp.
300 701–709.
- 301 [37] LG Grunnet et al. “Leukocyte telomere length is associated with elevated plasma glucose and HbA1c in
302 young healthy men independent of birth weight”. In: *Scientific Reports* 9.1 (2019), p. 7639.
- 303 [38] Dries S Martens et al. “Association of newborn telomere length with blood pressure in childhood”. In:
304 *JAMA Network Open* 5.8 (2022), e2225521–e2225521.
- 305 [39] Abraham Aviv and Hana Aviv. “Telomeres and essential hypertension”. In: *American journal of*
306 *hypertension* 12.4 (1999), pp. 427–432.
- 307 [40] Behrooz Karimi et al. “Serum level of total lipids and telomere length in the male population: a
308 crosssectional study”. In: *American journal of men’s health* 13.2 (2019), p. 1557988319842973.

- 309 [41] Xulei Qin, Zhibin Cong, and Baowei Fei. “Automatic segmentation of right ventricular ultrasound images
310 using sparse matrix transform and a level set”. In: *Physics in Medicine & Biology* 58.21 (2013), p. 7609.
- 311 [42] Hui Ding et al. “Association between previously identified loci affecting telomere length and coronary
312 heart disease (CHD) in Han Chinese population”. In: *Clinical interventions in aging* 9 (2014), p. 857.
- 313 [43] Yanbin Song et al. “Association between TNIP1, MPHOSPH6 and ZNF208 genetic polymorphisms and the
314 coronary artery disease risk in Chinese Han population”. In: *Oncotarget* 8.44 (2017), p. 77233.
- 315 [44] “Discovery and refinement of loci associated with lipid levels”. In: *Nature genetics* 45.11 (2013), pp.
316 1274–
317 1283.
- 318 [45] Shijuan Lu et al. “Genetic analysis of the relation of telomere length-related gene (RTEL1) and coronary
319 heart disease risk”. In: *Molecular genetics & genomic medicine* 7.3 (2019), e550.