

1 **Neonatal outcomes after proteomic biomarker-guided intervention: the AVERT**
2 **PRETERM TRIAL**

3

4 Matthew K. HOFFMAN, MD, MPH¹; Carrie KITTO¹; Zugui ZHANG, PhD¹; Jing SHI²,
5 PhD; Michael G. WALKER², PhD; Babak SHAHBABA³, PhD; Kelly RUHSTALLER, MD
6 MSCE¹

7 ¹Department of Obstetrics and Gynecology, ChristianaCare, Newark, DE

8 ²Walker Bioscience, Carlsbad, CA

9 ³Departments of Statistics and Computer Science, University of California Irvine, Irvine,
10 CA

11

12 **Conflicts of Interest**

13 BS, JS, and MGW are paid consultants of Sera Prognostics, Inc. For the purposes of
14 this study, JS and MGW reported to MKH and were paid consultants of ChristianaCare,
15 and BS was supported by Sera Prognostics, Inc. MKH received an investigator-initiated
16 grant from Sera Prognostics, Inc., to conduct this study.

17

18 **Source of Funding**

19 This study was performed as an investigator-initiated trial funded by Sera Prognostics,
20 Inc. The funder provided testing and funds to conduct the trial. The study plan was

21 mutually agreed upon by the investigators and the funder; however, the funder was
22 blinded to study results until after data lock and analysis completion.

23

24 **Corresponding Author**

25 Matthew K. Hoffman, MD MPH

26 Department of Obstetrics & Gynecology

27 4755 Ogletown-Stanton Road

28 Newark, DE 19718

29 Telephone: +1 (302) 301-3350

30 Fax: +1 (302) 733-3340

31 Email: mhoffman@christianacare.org

32 **Abstract**

33 **1. Background**

34 Vaginal progesterone, low dose aspirin and care management (comprising increased
35 outreach and education) has been shown to reduce the rate of prematurity in select
36 populations, but identifying at-risk pregnancies has been problematic.

37 **2. Objective(s)**

38 Test the hypothesis that screening singleton, non-anomalous pregnancies lacking
39 traditional clinical risk factors with a validated blood test for preterm birth risk prediction,
40 then targeting those with elevated risk for preventive treatment, would improve neonatal
41 outcomes as compared to a large historical population.

42 **3. Study Design**

43 The AVERT PRETERM trial took place from June 2018-September 2020 at
44 ChristianaCare Hospital (Newark, DE). Singleton non-anomalous pregnancies with no
45 history of preterm birth were enrolled in a prospective study arm and followed through
46 neonatal hospital discharge. Participants were screened using a serum proteomic test
47 for spontaneous preterm birth risk during a gestational age window spanning 19^{1/7}-20^{6/7}
48 weeks. Pregnancies identified by the test to be at elevated risk for preterm birth
49 ($\geq 16.0\%$, approximately twice the U.S. population risk) were offered aspirin 81 mg daily,
50 open-label vaginal progesterone 200 mg daily and care management. We compared
51 outcomes for women who screened either low-risk or higher-risk accepting treatment
52 with those in a historical study arm of 10,000 pregnancies. Our co-primary outcomes
53 were neonatal hospital length of stay and an ordinal neonatal morbidity index score

54 based on the occurrence of grade III/IV interventricular hemorrhage, necrotizing
55 enterocolitis (Bell stage II/III), respiratory distress syndrome, bronchopulmonary
56 dysplasia, retinopathy of prematurity (stage III), sepsis, and neonatal death or neonatal
57 intensive care unit length of stay. Cox proportional hazards survival analysis and ordinal
58 logistic regression were utilized to evaluate outcomes and control for population
59 differences.

60 **4. Results**

61 A total of 1463 women were screened and tested before research operations were
62 ceased due to the advent of the COVID-19 pandemic, and three women were
63 subsequently deemed ineligible after screening. Of these, 34.72% (507/1460) were
64 deemed high-risk, with 56.41% (286/507) accepting intervention and 43.59% (221/507)
65 forgoing intervention. The remaining 65.3% (953/1460) were designated as low-risk.
66 Women in the prospective arm were older, more obese, more likely to have
67 hypertension and smoke, and less likely to use opioids compared to women in the
68 historical arm. The primary analyses found that neonates in the prospective arm were
69 discharged from the hospital earlier ($P=0.01$; hazard ratio, 1.35; 95% confidence
70 interval, 1.08-1.70) and had lower neonatal morbidity index scores ($P=0.031$; odds ratio,
71 0.81; 95% confidence interval, 0.67-0.98). Average neonatal hospital length of stay
72 decreased by 21%, and severe neonatal morbidity (neonatal morbidity index ≥ 3) was
73 reduced on average by 18%.

74 **5. Conclusions**

75 Identifying singleton, non-anomalous pregnancies lacking traditional risk factors with a
76 validated proteomic blood test for preterm birth risk and providing treatment to those at
77 risk resulted in improved neonatal outcomes compared to controls in a racially diverse
78 cohort. This test-and-treatment strategy shows promise for ameliorating the impacts of
79 premature birth among individuals in this previously unidentified patient population.

80

81 **Keywords**

82 Care management, low-dose aspirin, neonatal morbidity index, NICU length of stay,
83 pregnancy, preterm birth, proteomic biomarker, risk stratification, spontaneous preterm
84 birth, vaginal progesterone

85 **Introduction**

86 Preterm birth (PTB) remains the leading cause of perinatal mortality,^{1,2} and
87 children born prematurely are at greater risk for chronic medical conditions^{3,4} and
88 developmental delays.⁵ These risks are inversely proportional to the neonate's
89 gestational age (GA) at birth.⁶ Improvements in survival are largely attributable to the
90 use of improved neonatal care⁷ and antenatal corticosteroids.⁸ Strategies targeting at-
91 risk women, such as focused care management⁹ (comprising increased outreach and
92 education) along with low-dose aspirin (LDASA),¹⁰ and vaginal progesterone^{11,12} have
93 demonstrated reductions in PTB, but their impact has been limited by poor precision in
94 identifying at-risk pregnancies. Shortened cervical length measured by transvaginal
95 sonography in the second trimester has been shown to predict the risk of preterm
96 delivery.¹³ With vaginal progesterone treatment, the PTB rate <34 weeks' gestation is
97 decreased by approximately 45%, but the rate of PTB <37 weeks' gestation is
98 unchanged.¹⁴ The utility of this strategy is blunted by the limited ability of cervical
99 sonography to identify women who will deliver preterm, with most women delivering
100 prematurely not having a short cervix at the time of routine sonography.^{15,16} Similarly,
101 LDASA has been shown to decrease PTB incidence and severity^{17,18} but generally has
102 been recommended for pregnancies at risk for preeclampsia.¹⁹ Finally, care
103 management of higher-risk pregnancies has been shown to decrease PTB; historically,
104 however, its use has targeted pregnancies with known PTB risk factors,^{9,20} which are
105 frequently absent in those who deliver prematurely.

106 Recently, novel discoveries in proteomics have come to identify and validate
107 proteins that are differentially expressed in pregnancies that deliver prematurely

108 compared to term births. One validated spontaneous PTB (sPTB) predictor, which
109 evaluates the ratio of serum insulin-like growth factor binding protein 4 (IGFBP4) to sex
110 hormone-binding globulin (SHBG) in the window of 19^{1/7}-20^{6/7} weeks' gestation,
111 stratified risk in U.S. women with a precision (area under the receiver operating
112 characteristic curve [AUC]) of 0.80.²¹ A risk score threshold corresponding to twice the
113 U.S. population PTB risk was subsequently validated²² and shown to significantly
114 stratify higher- and lower-risk subjects for an extended blood draw window of 18^{0/7}-20^{6/7}
115 weeks' gestation.

116 Nonetheless, the question of whether targeting treatment can improve neonatal
117 outcomes for women indicated by the test to be at increased risk for preterm delivery
118 but who lack traditional clinical risk factors remains largely uninvestigated. The purpose
119 of the AVERT PRETERM trial was to test the hypothesis that screening singleton non-
120 anomalous pregnancies with a validated blood test for PTB risk prediction, and then
121 treating higher-risk pregnancies with care management, LDASA, and vaginal
122 progesterone, would improve neonatal outcomes compared to a large historical
123 population.

124

125 **Materials and Methods**

126 The AVERT PRETERM trial was conducted from June 2018-September 2020 at
127 ChristianaCare Hospital, a regional health care system based in Newark, DE.
128 ChristianaCare serves a mixed urban and rural population across Delaware and
129 Maryland.

130

131 ***Trial Oversight***

132 The study protocol (NCT03151330) was approved by the ChristianaCare institutional
133 review board prior to participant enrollment. An independent data safety monitoring
134 board convened prior to study initiation, approved the protocol, and provided oversight
135 of adverse events. All subjects provided written informed consent to participate in the
136 study. The listed authors accept responsibility for the accuracy and completeness of the
137 data and for fidelity in the conduct of the trial.

138 In April 2020, all non-COVID research was halted at ChristianaCare Health
139 System, and the decision was made to terminate the trial and reassess the analytic plan
140 in a blinded fashion. In July 2020, an investigation²³ showed that COVID-19 infection led
141 to an increase in prematurity. To avoid bias in comparison of pre-pandemic controls to
142 prospective subjects who reached term during the pandemic period, we modified the
143 statistical analysis plan (SAP), while blinded, by limiting the primary analysis to subjects
144 who had reached 37 weeks' gestation before the local spread of SARS-CoV-2 and the
145 associated research shutdown.

146

147 ***Screening and Recruitment***

148 Two separate study arms were defined, both of which comprised singleton pregnancies
149 without ultrasound evidence of mullerian or fetal anomalies, cervical shortening (<25
150 mm), genetic anomalies, history of a prior PTB, cervical cerclage or medical conditions
151 with clear indication for PTB <37 weeks' gestation. Pregnancies in the prospective arm

152 were identified and screened for eligibility in ambulatory sites and/or at the time of
153 routine imaging ultrasound. Due to the requirements of the proteomic blood test for
154 prematurity (PreTRM), women in the prospective arm were excluded if they had a blood
155 transfusion during the current pregnancy, known hyperbilirubinemia, or were taking
156 traditional or low molecular weight heparin. Similarly, prospective patients were
157 excluded if they had a known reaction or contraindication to progesterone or aspirin.

158

159 ***Procedures***

160 Following consent, blood was obtained from women in the prospective arm during the
161 window of 19^{1/7}-20^{6/7} weeks' gestation. Samples were processed, shipped, stored, and
162 analyzed using the PreTRM test in a Clinical Laboratory Improvement Amendments-
163 and College of American Pathologists-certified laboratory (Sera Prognostics, Inc., Salt
164 Lake City, UT), as described previously.^{21,24} Test results were shared with the
165 participant and her care provider. Pregnancies with a sPTB risk score $\geq 16.0\%$
166 (approximately twice the U.S. population risk) were then offered and consented again to
167 receive care management, consisting of twice-weekly nursing contacts to monitor
168 medication compliance and symptom development, aspirin 81 mg daily, and
169 progesterone 200 mg intravaginally daily. The remainder of care was determined by the
170 treating clinician. Outcomes for both study arms were obtained through a validated
171 obstetrical registry²⁵ or, for patients in the prospective arm who delivered at another
172 institution, through review of individual medical records. External data review was
173 performed for all prospective patients in addition to 10% of the historical arm to ensure
174 that eligibility requirements were met. An error rate of $<3\%$ was deemed acceptable. All

175 PTB cases in both arms were reviewed further for accurate assessment of primary
176 outcomes by a single investigator (MKH). Additionally, because secular changes in care
177 might affect outcomes in a non-random fashion amongst women in the prospective arm,
178 major changes in guidance or management protocols were documented on a quarterly
179 basis.

180

181 ***Trial Outcomes***

182 Two co-primary outcomes were selected, the first being neonatal hospital length of stay
183 (NNLOS). Because of the competing risk of death resulting in shorter stays, we set the
184 NNLOS for fetuses or newborns who expired to be one day longer than the longest
185 neonatal stay observed among all neonates. The second co-primary outcome was
186 based on a neonatal morbidity index (NMI)¹⁴ composed of the following components:
187 grade III/IV intraventricular hemorrhage, necrotizing enterocolitis (Bell stage II/III),
188 respiratory distress, bronchopulmonary dysplasia (need for oxygen at 28 days of life or
189 36 weeks post-conceptual age), retinopathy of prematurity (stage III), proven sepsis
190 (positive blood cultures) and postnatal death. To provide severity estimates, NMI
191 scoring was organized as follows: 0, no events; 1, one event or neonatal intensive care
192 unit (NICU) admission <5 days with no perinatal mortality; 2, two events or five to 20
193 days of NICU admission with no perinatal mortality; 3, three events or >20 days in the
194 NICU without perinatal mortality; and 4, perinatal mortality.

195

196 ***Power and Sample Size Analysis***

197 At termination, 1873 eligible subjects had been enrolled in the prospective arm, with
198 1460 reaching 37 weeks' gestation prior to the first reported COVID-19 case in
199 Delaware. A total of 10000 consecutive historical controls who met the same eligibility
200 criteria were selected from an approximately two-year period immediately prior to study
201 initiation.

202 From institutional data on pregnancies at ChristianaCare, we estimated a
203 historical PTB rate of 9.1%. Sample size estimation was based on simulations of the co-
204 primary outcomes using a simulated GA distribution with a singleton PTB rate of 9.1%
205 and an effect of intervention based on existing literature. α -level spending of 0.05 was
206 shared between co-primaries using Holm's method.

207 For the first co-primary outcome, the proportion of subjects with NMI scores ≥ 3
208 was assumed to be 2.0-2.3% in the prospective arm and near 3.6% in the control arm,
209 based on a previous clinical utility study.²⁶ Assuming these proportions and a one-sided
210 Fisher's Exact test, a sample size of approximately 1453 subjects with outcomes in the
211 prospective arm with 55% compliance among higher-risk subjects, and approximately
212 10000 historical controls, would provide power of 0.7-0.9.²⁷

213 For the second co-primary outcome, NNLOS from time of birth up to discharge,
214 the hazard ratio (HR) based on simulations was expected to be 1.32-1.46, based on the
215 previously referenced clinical utility study.²⁶ Assuming these HRs, a sample size of
216 approximately 1453 subjects with outcomes in the prospective arm with 55%
217 compliance among higher-risk subjects and approximately 10000 historical controls,
218 would provide power of at least 0.8.²⁷

219

220 **Statistical Analysis**

221 Descriptive statistics were used to describe all data. Variables were summarized using
222 means and standard deviations for continuous data, and percentages and frequencies
223 for categorical data. Comparisons for baseline characteristics were performed; the
224 Wilcoxon rank sum test was used to compare continuous variables between two
225 groups, and contingency table analysis (chi-square) was used to compare categorical
226 variables. In comparisons, differences with $P < 0.05$ were considered significant.

227 The first co-primary hypothesis, reduction in severe composite NMI scores, was
228 tested using ordinal logistic regression, adjusted by covariates. The second co-primary
229 hypothesis, reduction in neonatal length of stay, and the two co-secondary hypotheses,
230 reduction in NICU length of stay (NICULOS) and increase in GA at birth (GAB), were all
231 tested using Cox proportional hazards regression, adjusted by covariates.

232 The co-primary and co-secondary analyses used a modified intent-to-treat
233 population, defined as all subjects for whom both co-primary outcomes were known;
234 and who were either selected for the historical control arm, received a low-risk PreTRM
235 test result, or consented to and initiated treatment with vaginal progesterone and
236 LDASA <24 weeks' gestation after receiving a higher-risk PreTRM test result.

237 As prespecified by a selection procedure defined in the SAP, subjects in the
238 highest 8.5% quantile of each arm were included in the NICULOS and NNLOS
239 analyses, while subjects in the lowest 8.5% quantile of each arm were included in the
240 GAB analysis. Specifically, 8.5% was selected to be 1.2 times the PTB rate of the

241 historical control arm (7.1%). This was done to examine outcomes at the extremes of
242 PTB rather than capturing short NICU stays for conditions that tend to dominate NICU
243 admissions, including transient tachypnea of the newborn, hypoglycemia and
244 temperature instability.

245 As prespecified in the SAP, the covariates included in the models for the primary
246 and secondary analyses were maternal age, parity and maternal substance use
247 disorders, assessed as Neonatal Opioid Withdrawal Syndrome. Additional covariates
248 were examined in sensitivity analyses.

249 Differences between the treatment arms in the proportion of each treatment
250 group at each NMI level were calculated using the fitted ordinal logistic regression
251 model with the covariates maternal age, parity and maternal substance use disorders.
252 Percent differences between the treatment arms for time to event analyses were
253 calculated using the hazard rate for each group as estimated by the fitted Cox
254 proportional hazards model with the covariates maternal age, parity and maternal
255 substance use disorders.

256 The proportional odds assumption for the effect of treatment arm in the ordinal
257 logistic regression was examined and found not to be violated. The proportional hazards
258 assumption for treatment arm in the Cox regression analyses was tested and found not
259 to be violated.

260 Analyses were performed using R software version 4.2.2.³² Two-tailed *P*-values
261 <0.05 were considered significant. Holm's multiple comparisons correction was used for
262 the co-primary hypotheses.

263

264 **Results**

265 At study termination, 1873 eligible subjects had been enrolled in the prospective arm,
266 1463 of whom aligned with pre-COVID-19 patient care conditions and were screened
267 with the PreTRM test (**Figure 1**). Of these, 34.7% (507/1463) were deemed higher risk
268 by the PreTRM test. Among the screened population, 83.3% (1218/1463) had clinical
269 outcomes and qualified either as low-risk (77.1%; 939/1218) or as higher-risk accepting
270 treatment (22.9%; 279/1218).

271 Baseline participant characteristics and delivery data are shown in **Table 1**. The
272 prospective arm was noted to be significantly older, more obese, less likely to be
273 nulliparous, and more likely to have hypertension and smoke than historical controls.
274 Similarly, body mass index was higher in the prospective arm compared to historical
275 controls – mostly due to higher weight, though the prospective arm was nominally taller
276 than historical controls. The proportion of Black women in both arms was 26.5%,
277 reflecting the racial diversity in the study site’s patient population. Three women
278 reported stopping vaginal progesterone due to adverse effects, and one woman
279 discontinued LDASA.

280 Results of hypothesis tests for the co-primary and co-secondary outcomes are
281 presented in **Table 2**. NNLOS was significantly reduced in the prospective arm vs the
282 historical arm (HR 1.35; 95% CI, 1.08-1.7; $P=0.01$). The Kaplan-Meier plot for NNLOS is
283 shown in **Figure 2**, reflecting a reduction of mean NNLOS of 21% (Cox proportional
284 hazard [PH] $P = 0.01$). NMI scores were significantly reduced in the prospective arm vs

285 the historical arm (OR 0.81; 95% CI 0.67-0.98; $P=0.03$), indicating more favorable
286 outcomes for the prospective arm (**Table 2**). Specifically, the probability of NMI ≥ 1 (any
287 impairment) or NMI ≥ 3 (severe NMI) was reduced on average approximately by 13%-
288 17% or 18%, respectively, across a range of co-variate values (**Supplemental Table 1**).

289 After achieving statistical significance for both co-primary endpoints per the SAP,
290 we proceeded to test the two co-secondary hypotheses. In Cox regression analysis,
291 children tended to leave the NICU earlier (HR 1.2; 95%CI, 0.96-1.51), but this difference
292 was not significant ($P=0.12$). No differences in overall weeks' gestation was noted
293 ($P=0.584$, HR 0.962).

294 In a non-prespecified analysis, we noted that although there was no difference in overall
295 GA at delivery, there was a difference in the number of pregnancies that delivered <32
296 weeks' gestation (HR, 0.52; 95%CI, 0.28-0.94; Cox PH $P=0.009$) (**Figure 3**),
297 corresponding to an extension of mean gestation for births <32 weeks of 2.5 weeks
298 (mean of 27.46 and 29.93 weeks for historical and prospective arms, respectively).

299 **Figure 4** shows a Kaplan-Meier plot for neonatal hospital stay among babies born <32
300 weeks. Neonates left the hospital earlier in the prospective arm than the historical arm
301 (HR, 1.84, 95% CI 1.01-3.36, Cox PH $P=0.046$) with differences in mean stays of
302 approximately 30% (mean of 97.23 and 68.47 days for historical and prospective arms,
303 respectively). This suggests that an increase in pregnancy duration amongst births <32
304 weeks in the prospective arm was associated with shorter neonatal hospital stay.

305 Finally, in an exploratory analysis of all subjects (not only the 8.5%ile specified in
306 the primary analysis) NNOLOS was reduced by 16% (mean of 5.1 and 4.28 days, HR:
307 1.15, 95%CI, 1.08-1.22, $P<0.001$) and 17% (mean 3.95 and 3.27 days, HR 1.15, 95%

308 CI, 1.08-1.22, $P < 0.001$), with and without the adjustment for neonatal death,
309 respectively.

310

311 **Comment**

312 ***Principal Findings***

313 The results of this trial demonstrate that women who were screened and stratified with a
314 proteomic test for PTB risk, and were treated with care management, LDASA, and
315 vaginal progesterone, had shorter NNLOS and less severe neonatal morbidities
316 compared to a large historical arm, after controlling for population differences.

317

318 ***Results in the Context of What is Known***

319 Historically, evidence has existed for the benefit of intervening on pregnant women
320 stratified by clinical risk factors. These data suggest that proteomic biomarker-based
321 stratification and focused intervention may improve outcomes in otherwise low-risk
322 women.

323

324 ***Clinical Implications***

325 These findings suggest a potential approach for universal screening and treatment to
326 help ameliorate complications of PTB amongst women who lack traditional risk factors
327 for preterm delivery. The results of this study resonate with an investigation³³ that
328 randomized 1,191 women to either knowing and receiving treatment vs not knowing the

329 results of their screening test. In that study, the NICU length of stay due to sPTB was
330 significantly less amongst those screened and treated vs. those not receiving their test
331 results (median 6.8 days vs. 45.5 days; $P=0.005$), though the study was limited by small
332 numbers. We note that similar strategies of both evaluating prior pregnancy for PTB
333 and/or routine cervical length have been widely accepted in many centers,^{28,29} but this
334 strategy captures a limited number of PTBs, and pregnancy history is not relevant for
335 the first-time mothers who represent a sizable portion of the population.

336 Given the notable increase in PTB rate among Black women (14.4%) as
337 compared to the U.S. population as a whole (10.2%),² it is important to note that Black
338 participants were represented in the AVERT PRETERM prospective and historical arms
339 with a proportion (26.5%) nearly double recent U.S. population estimates (13.6%).³⁰ The
340 results in this study population, along with those in two large and similarly diverse
341 studies,^{21,31} indicate that the PreTRM test will be applicable across the diverse U.S.
342 population.

343

344 ***Research Implications***

345 Patient knowledge of preterm birth risk via validated proteomic testing may offer
346 an opportunity to combine a novel risk assessment with strategies proven to be effective
347 with clinical risk factors. Based on survey data, pregnant women are frequently resistant
348 to taking medication due to perceived deleterious effects during pregnancy. Prospective
349 trials randomizing women to being informed of results with clinical treatment vs testing
350 with blinded results have begun and will provide more definitive evidence.

351

352 ***Strengths and Limitations***

353 Strengths of the trial include a multimodal strategy incorporating interventions that have
354 consistently shown benefit in reducing the impacts of prematurity, as well as a novel
355 proteomic blood test that has been validated in multiple cohorts. Additionally, we note
356 that the dataset used to obtain the historical controls has been well validated, and all
357 cases of PTB were reviewed. Clinically, the impact appears to be greatest amongst
358 pregnancies delivering <34 weeks' gestation, which remains the primary driver of
359 newborn and child morbidity and mortality.

360 Limitations of the study are inherent in the design of comparing a prospective
361 arm that differed from the historical arm in several maternal demographic and medical
362 conditions. These were addressed through multivariable modeling, but we note that this
363 remains a potential source of bias. Even so, significant demographic differences in the
364 prospective arm vs the historical arm – older age, more hypertension and more smoking
365 – likely biases the prospective arm toward increased PTB incidence, further
366 underscoring the importance of our findings. Additionally, at least for the use of LDASA,
367 guideline changes have expanded the number of women eligible for treatment, and a
368 recent estimate suggests that most pregnancies should be counseled about LDASA.³⁸.
369 Finally, we note some overlap of our co-primary outcomes, as NICULOS was also part
370 of the NMI.

371

372 ***Conclusions***

373 In summary, (1) screening singleton, non-anomalous pregnancies lacking traditional
374 clinical risk factors with a validated proteomic blood test for preterm birth prediction,
375 then (2) targeting those with elevated risk for preventive treatment, improved neonatal
376 outcomes as compared to a large historical population. This test-and-treatment strategy
377 led to shorter hospital stays and improved NMI scores across a diverse population.

378

379 **Acknowledgements**

380 We wish to acknowledge the funding provided by Sera Prognostics, Inc., to conduct this
381 independent investigation. Jennifer Logan, PhD, an employee of Sera Prognostics, Inc.,
382 provided medical writing support for the manuscript.

383 **References**

- 384 1. Liu L, Oza S, Hogan D, et al. Global, regional, and national causes of under-5
385 mortality in 2000-15: an updated systematic analysis with implications for the
386 Sustainable Development Goals. *Lancet* 2016;388(10063):3027-3035. DOI:
387 10.1016/S0140-6736(16)31593-8.
- 388 2. Osterman MJK, Hamilton BE, Martin, J.A., Driscoll AKV, C.P. Births: Final Data
389 for 2020. Division of Vital Statistics, National Center for Health Statistics, U.S.
390 Centers for Disease Control and Prevention. 2022 Feb 7. Available at
391 <https://www.cdc.gov/nchs/nvss/births.htm>. Accessed February 9, 2022.
- 392 3. Moster D, Lie RT, Markestad T. Long-term medical and social consequences of
393 preterm birth. *N Engl J Med* 2008;359(3):262-73. DOI:
394 10.1056/NEJMoa0706475.
- 395 4. Crump C, Sundquist K, Sundquist J, Winkleby MA. Gestational age at birth and
396 mortality in young adulthood. *JAMA* 2011;306(11):1233-40. DOI:
397 10.1001/jama.2011.1331.
- 398 5. Sun BZ, Moster D, Harmon QE, Wilcox AJ. Association of Preeclampsia in Term
399 Births With Neurodevelopmental Disorders in Offspring. *JAMA Psychiatry*
400 2020;77(8):823-829. DOI: 10.1001/jamapsychiatry.2020.0306.
- 401 6. Tyson JE, Parikh NA, Langer J, Green C, Higgins RD, National Institute of Child
402 H, Human Development Neonatal Research N. Intensive care for extreme
403 prematurity--moving beyond gestational age. *N Engl J Med* 2008;358(16):1672-
404 81. DOI: 10.1056/NEJMoa073059.

- 405 7. Richardson DK, Gray JE, Gortmaker SL, Goldmann DA, Pursley DM, McCormick
406 MC. Declining severity adjusted mortality: evidence of improving neonatal
407 intensive care. *Pediatrics* 1998;102(4 Pt 1):893-9. DOI: 10.1542/peds.102.4.893.
- 408 8. Crowley PA. Antenatal corticosteroid therapy: a meta-analysis of the randomized
409 trials, 1972 to 1994. *Am J Obstet Gynecol* 1995;173(1):322-35. DOI:
410 10.1016/0002-9378(95)90222-8.
- 411 9. Garite TJ, Manuck TA. Should case management be considered a component of
412 obstetrical interventions for pregnancies at risk of preterm birth? *Am J Obstet*
413 *Gynecol* 2023;228(4):430-437. DOI: 10.1016/j.ajog.2022.09.022.
- 414 10. Hoffman MK, Goudar SS, Kodkany BS, et al. Low-dose aspirin for the prevention
415 of preterm delivery in nulliparous women with a singleton pregnancy (ASPIRIN):
416 a randomised, double-blind, placebo-controlled trial. *Lancet*
417 2020;395(10220):285-293. DOI: 10.1016/S0140-6736(19)32973-3.
- 418 11. Hassan SS, Romero R, Vidyadhari D, et al. Vaginal progesterone reduces the
419 rate of preterm birth in women with a sonographic short cervix: a multicenter,
420 randomized, double-blind, placebo-controlled trial. *Ultrasound Obstet Gynecol*
421 2011;38(1):18-31. DOI: 10.1002/uog.9017.
- 422 12. Fonseca EB, Celik E, Parra M, Singh M, Nicolaides KH, Fetal Medicine
423 Foundation Second Trimester Screening G. Progesterone and the risk of preterm
424 birth among women with a short cervix. *N Engl J Med* 2007;357(5):462-9. DOI:
425 10.1056/NEJMoa067815.
- 426 13. Iams JD, Goldenberg RL, Meis PJ, et al. The length of the cervix and the risk of
427 spontaneous premature delivery. National Institute of Child Health and Human

- 428 Development Maternal Fetal Medicine Unit Network. N Engl J Med
429 1996;334(9):567-72. DOI: 10.1056/NEJM199602293340904.
- 430 14. Cahill AG, Odibo AO, Caughey AB, Stamilio DM, Hassan SS, Macones GA,
431 Romero R. Universal cervical length screening and treatment with vaginal
432 progesterone to prevent preterm birth: a decision and economic analysis. Am J
433 Obstet Gynecol 2010;202(6):548 e1-8. DOI: 10.1016/j.ajog.2009.12.005.
- 434 15. Esplin MS, Elovitz MA, Iams JD, et al. Predictive Accuracy of Serial Transvaginal
435 Cervical Lengths and Quantitative Vaginal Fetal Fibronectin Levels for
436 Spontaneous Preterm Birth Among Nulliparous Women. Jama
437 2017;317(10):1047-1056. DOI: 10.1001/jama.2017.1373.
- 438 16. Berghella V, Saccone G. Cervical assessment by ultrasound for preventing
439 preterm delivery. Cochrane Database Syst Rev 2019;9(9):CD007235. DOI:
440 10.1002/14651858.CD007235.pub4.
- 441 17. Duley L, Meher S, Hunter KE, Seidler AL, Askie LM. Antiplatelet agents for
442 preventing pre-eclampsia and its complications. Cochrane Database Syst Rev
443 2019;2019(10). DOI: 10.1002/14651858.CD004659.pub3.
- 444 18. Low dose aspirin in pregnancy and early childhood development: follow up of the
445 collaborative low dose aspirin study in pregnancy. CLASP collaborative group. Br
446 J Obstet Gynaecol 1995;102(11):861-8. DOI: 10.1111/j.1471-
447 0528.1995.tb10872.x.
- 448 19. Henderson JT, Vesco KK, Senger CA, Thomas RG, Redmond N. Aspirin Use to
449 Prevent Preeclampsia and Related Morbidity and Mortality: Updated Evidence

- 450 Report and Systematic Review for the US Preventive Services Task Force.
451 JAMA 2021;326(12):1192-1206. DOI: 10.1001/jama.2021.8551.
- 452 20. Newman RB, Sullivan SA, Menard MK, Rittenberg CS, Rowland AK, Korte JE,
453 Kirby H. South Carolina Partners for Preterm Birth Prevention: a regional
454 perinatal initiative for the reduction of premature birth in a Medicaid population.
455 Am J Obstet Gynecol 2008;199(4):393 e1-8. DOI: 10.1016/j.ajog.2008.07.047.
- 456 21. Saade GR, Boggess KA, Sullivan SA, et al. Development and validation of a
457 spontaneous preterm delivery predictor in asymptomatic women. Am J Obstet
458 Gynecol 2016;214(5):633 e1-633 e24. DOI: 10.1016/j.ajog.2016.02.001.
- 459 22. Burchard J, Polpitiya AD, Fox AC, et al. Clinical Validation of a Proteomic
460 Biomarker Threshold for Increased Risk of Spontaneous Preterm Birth and
461 Associated Clinical Outcomes: A Replication Study. J Clin Med
462 2021;10(21):5088. DOI: 10.3390/jcm10215088.
- 463 23. Khalil A, von Dadelszen P, Draycott T, Ugwumadu A, O'Brien P, Magee L.
464 Change in the Incidence of Stillbirth and Preterm Delivery During the COVID-19
465 Pandemic. JAMA 2020;324(7):705-6. DOI: 10.1001/jama.2020.12746.
- 466 24. Bradford C, Severinsen R, Pugmire T, et al. Analytical validation of protein
467 biomarkers for risk of spontaneous preterm birth. Clinical Mass Spectrometry
468 2017;3:25-38. DOI: 10.1016/j.clinms.2017.06.002.
- 469 25. Zhang J, Troendle J, Reddy UM, et al. Contemporary cesarean delivery practice
470 in the United States. Am J Obstet Gynecol 2010;203(4):326 e1-326 e10. DOI:
471 10.1016/j.ajog.2010.06.058.

- 472 26. Branch DW, VanBuren JM, Porter TF, et al. Prediction and Prevention of Preterm
473 Birth: A Prospective, Randomized Intervention Trial. Am J Perinatol 2021. DOI:
474 10.1055/s-0041-1732339.
- 475 27. NCSS Statistical Software. Group-Sequential Analysis for Two Proportions.
476 Available at [https://www.ncss.com/wp-](https://www.ncss.com/wp-content/themes/ncss/pdf/Procedures/NCSS/Group-Sequential%20Analysis%20for%20Two%20Proportions.pdf)
477 [content/themes/ncss/pdf/Procedures/NCSS/Group-](https://www.ncss.com/wp-content/themes/ncss/pdf/Procedures/NCSS/Group-Sequential%20Analysis%20for%20Two%20Proportions.pdf)
478 [Sequential Analysis for Two Proportions.pdf](https://www.ncss.com/wp-content/themes/ncss/pdf/Procedures/NCSS/Group-Sequential%20Analysis%20for%20Two%20Proportions.pdf). Accessed May 1, 2023.
- 479 28. Son M, Grobman WA, Ayala NK, Miller ES. A universal mid-trimester
480 transvaginal cervical length screening program and its associated reduced
481 preterm birth rate. Am J Obstet Gynecol 2016;214(3):365 e1-5. DOI:
482 10.1016/j.ajog.2015.12.020.
- 483 29. Werner EF, Hamel MS, Orzechowski K, Berghella V, Thung SF. Cost-
484 effectiveness of transvaginal ultrasound cervical length screening in singletons
485 without a prior preterm birth: an update. Am J Obstet Gynecol 2015;213(4):554
486 e1-6. DOI: 10.1016/j.ajog.2015.06.020.
- 487 30. U.S. Census Bureau. Quick Facts. Available at
488 <https://www.census.gov/quickfacts/fact/table/US/PST045222>. Accessed July 18,
489 2023.
- 490 31. Markenson GR, Saade GR, Laurent LC, et al. Performance of a proteomic
491 preterm delivery predictor in a large independent prospective cohort. Am J
492 Obstet Gynecol MFM 2020;2(3):100140. DOI: 10.1016/j.ajogmf.2020.100140.

493

494 **Table 1. Baseline characteristics and delivery data**

	Historical	Prospective	Prospective (low risk)	Prospective (higher risk accepting treatment)	P-value (prospective vs historical) [†]
N	10000	1218	939	279	
Age					<0.001
N	10000	1218	939	279	
Mean (SD)	29.6 (5.4)	30.5 (5.7)	30.5 (5.6)	30.5 (5.9)	
Gravida					<0.001
N	9954	1135	874	261	
Mean (SD)	2.7 (1.7)	2.41 (1.5)	2.45 (1.6)	2.27 (1.4)	
Parity					<0.001
N	9953	1159	893	266	
Mean (SD)	1.1 (1.2)	0.9 (1.1)	0.9 (1.1)	0.7 (1.0)	
Percent nulliparous [N, (%)]	6544 (65.7)	630 (54.4)	507 (56.8)	123 (46.2)	<0.001
Number of miscarriages					0.25
N	9953	1130	870	260	
Mean (SD)	1.6 (1.1)	1.6 (1.0)	1.6 (1.0)	1.6 (0.9)	
Race [‡] [N, (%)]					<0.001
American Indian	21 (0.2)	1 (0.1)	0 (0.0)	1 (0.4)	
Asian	783 (7.8)	76 (6.3)	55 (5.9)	21 (7.6)	
Black	2653 (26.5)	322 (26.5)	259 (27.7)	63 (22.7)	
Other	909 (9.1)	74 (6.1)	53 (5.7)	21 (7.6)	
White	5634 (56.3)	740 (61.0)	568 (60.7)	172 (61.9)	
Prepregnancy BMI					0.04
N	9476	728	562	166	
Mean (SD)	27.5 (8.5)	28.2 (7.6)	27.5 (7.7)	30.4(6.7)	
BMI <19 kg/M ² [N, (%)]	403 (4.3)	32 (4.4)	28 (5)	4 (2.4)	0.85
Height (inches)					<0.001
N	9838	1033	797	236	
Mean (SD)	64.1 (2.7)	64.48 (2.69)	64.44 (2.69)	64.62 (2.7)	
Diabetes [N, (%)]	127 (1.3)	19 (1.6)	14 (1.5)	5 (1.8)	0.42
Opioid Use [N, (%)]	242 (2.4)	13 (1.1)	11 (1.2)	2 (0.7)	0
Hypertension [N, (%)]	606 (6.1)	105 (8.6)	72 (7.7)	33 (11.9)	<0.001
Smoking [N, (%)]	709 (7.8)	100 (9.5)	70 (8.6)	30 (12.3)	0.06
Insurance type [N, (%)]					0.67
Government	2969 (29.7)	315 (28.6)	244 (28.5)	71 (28.6)	
Other	19 (0.2)	1 (0.1)	1 (0.1)	0 (0)	
Private	7012 (70.1)	787 (71.4)	610 (71.3)	177 (71.4)	
Delivery type [N, (%)]					<0.001
Dilation & evacuation	0 (0.0)	1 (0.1)	0 (0.0)	1 (0.2)	
Primary cesarean delivery	1577 (15.8)	283 (20.2)	164 (17.9)	119 (24.5)	
Repeat cesarean delivery	1541 (15.4)	177 (12.6)	119 (13.0)	58 (12.0)	
Vaginal delivery	6630 (66.3)	923 (65.8)	624 (68)	299 (61.6)	
Vaginal delivery after cesarean	252 (2.5)	18 (1.3)	10 (1.1)	8 (1.6)	

495 [†]P-value reflects comparison of prospective vs historical arm.

496 [‡]Race is based on self-report.

497 BMI, body mass index.

498 **Table 2: Results of hypothesis tests for the co-primary and co-secondary**
 499 **outcomes using prespecified covariates**

Co-primary endpoints				
	Hazard ratio	Lower confidence limit	Upper confidence limit	P-value
Neonatal length of hospital stay [†]				
Study arm prospective	1.35	1.08	1.70	0.01
Parous or nulliparous	0.94	0.82	1.08	0.39
Age	1.00	0.99	1.01	0.75
Opioid use	1.53	1.30	1.79	<0.001
	Odds ratio	Lower confidence limit	Upper confidence limit	P-value
Neonatal morbidity index [‡]				
Study arm prospective	0.81	0.67	0.98	0.03
Parous or nulliparous	0.58	0.52	0.65	0
Age	1.01	1.00	1.02	0.13
Opioid use	2.62	1.97	3.45	<0.001
Co-secondary endpoints				
	Hazard ratio	Lower confidence limit	Upper confidence limit	P-value
Neonatal intensive care unit length of stay [†]				
Study arm prospective	1.20	0.96	1.51	0.12
Parous or nulliparous	0.96	0.84	1.10	0.57
Age	1.00	0.99	1.01	0.78
Opioid use	2.36	1.71	3.27	<0.001
	Hazard ratio	Lower confidence limit	Upper confidence limit	P-value
Gestational age (weeks)				
Study arm	0.96	0.84	1.10	0.58
Parous or nulliparous	0.85	0.77	0.93	<0.001
Age	1.00	0.99	1.01	0.93
Opioid use	0.91	0.73	1.14	0.41

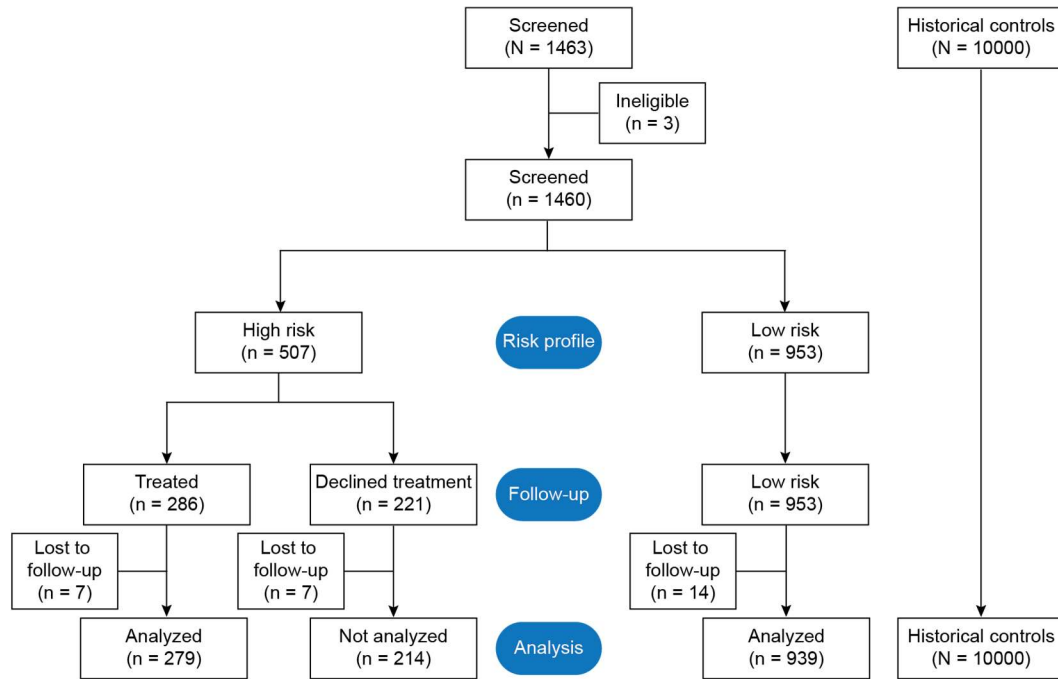
500 The co-primary and co-secondary outcomes included subjects in the upper 8.5%
 501 quantile of neonatal length of stay, neonatal morbidity index score, and neonatal
 502 intensive care unit length of stay within each arm, so that the large proportion of normal
 503 births would not dilute the differences between arms.

504 [†]Cox regression analysis

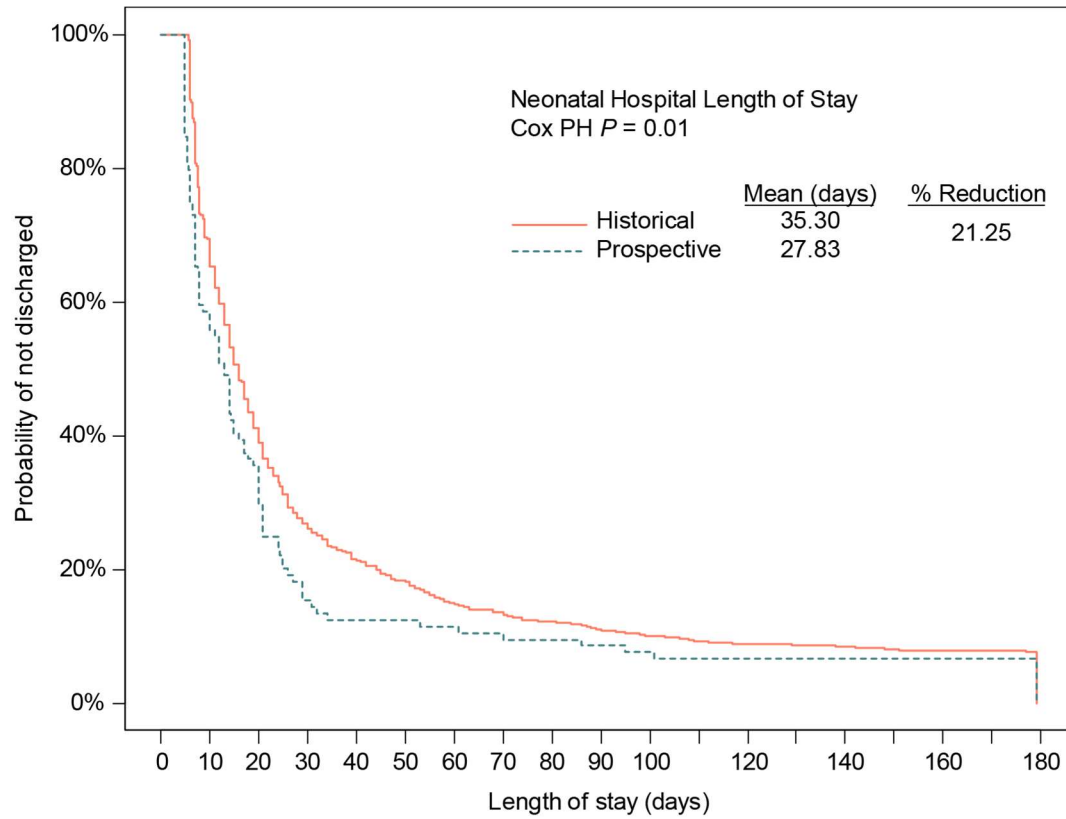
505 [‡]Ordinal logistic regression analysis

506 **Figure 1. Consort diagram for study inclusion**

507



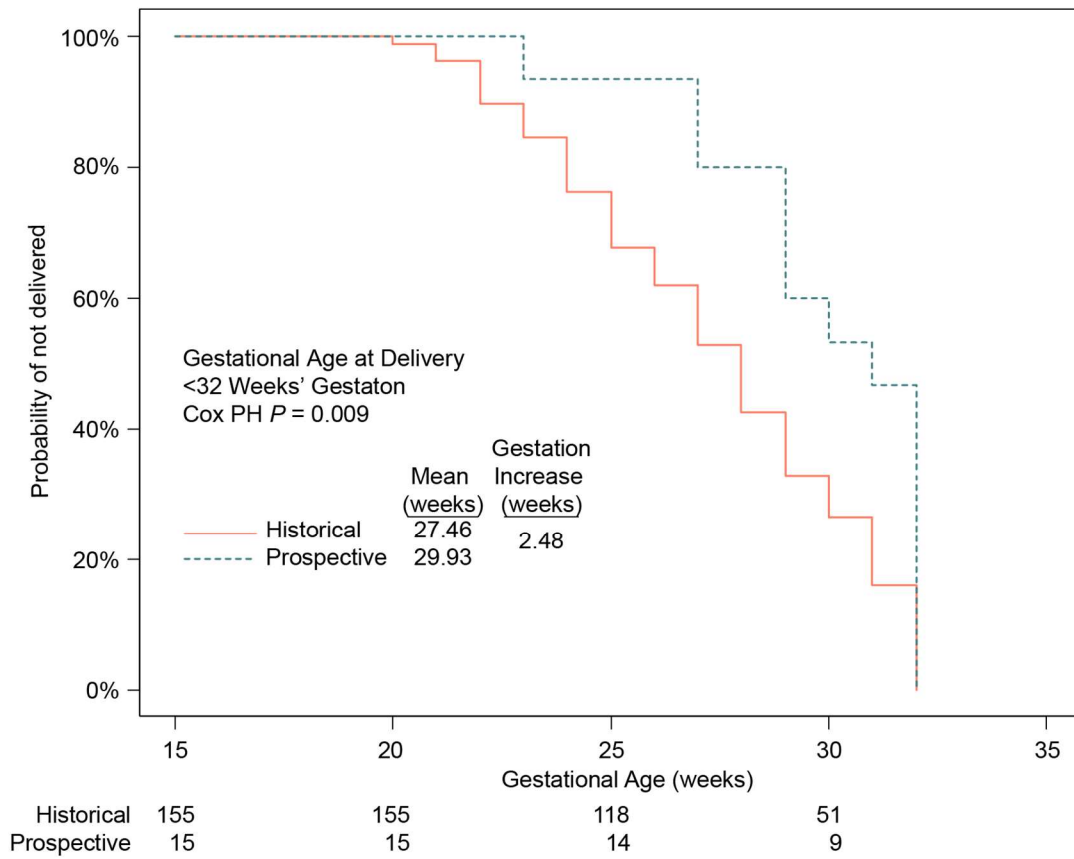
509 **Figure 2: Kaplan-Meier curves for neonatal hospital length of stay**



510

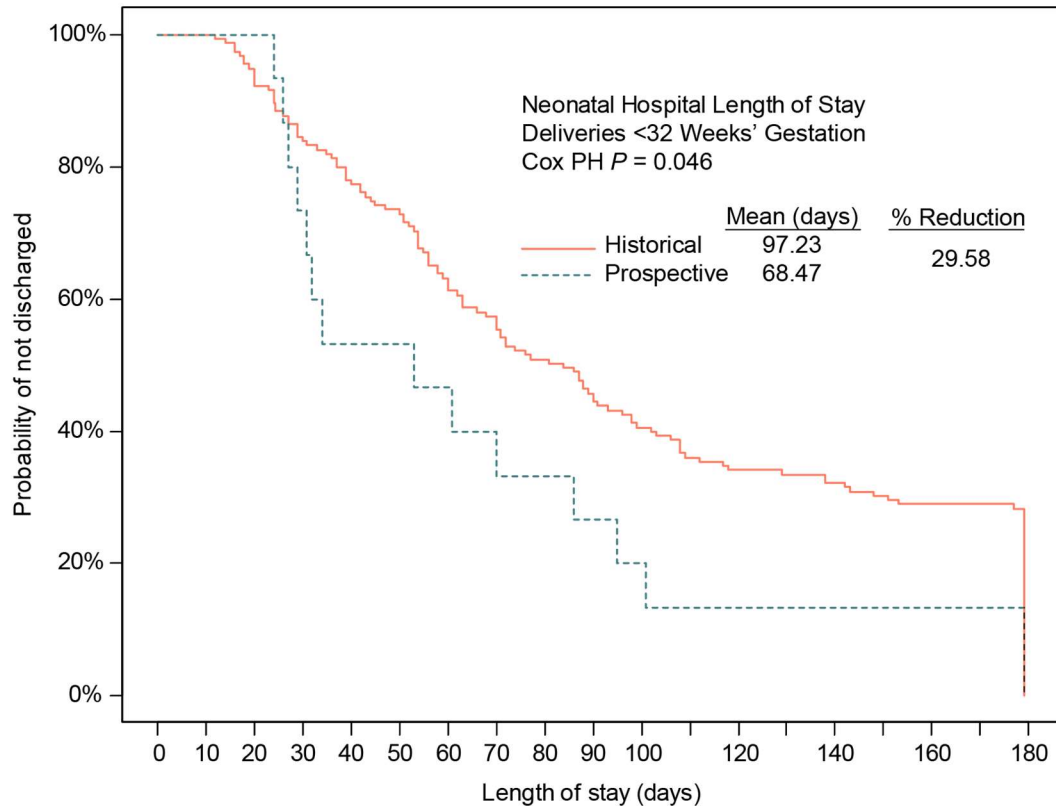
Historical	858	588	353	231	186	158	130	117	106	96	87	80	76	75	73	70	68	68
Prospective	104	60	37	16	13	13	12	11	10	9	8	7	7	7	7	7	7	7

511 **Figure 3: Kaplan-Meier curves for gestational age (weeks) for babies born <32**
 512 **weeks' gestation**



513

514 **Figure 4: Kaplan-Meier curves for neonatal length of hospital stay (days) for**
 515 **babies born <32 weeks' gestation**



516

Historical	155	155	147	131	121	114	98	89	79	71	63	56	53	52	50	47	45	45
Prospective	15	15	15	11	8	8	7	6	5	4	3	2	2	2	2	2	2	2

517

518 **Supplementary Table 1. Comparison of probabilities of NMI levels and percent**
 519 **differences in probabilities between arms for a range of co-variate values.**

Arm	Multiparous	Age	Opioid Use	Predicted probabilities of NMI categories							Percent reduction in risks in Prospective arm relative to Control arm	
				NMI = 0	NMI = 1	NMI = 2	NMI = 3	NMI = 4	NMI >= 3	NMI >= 1	NMI >= 3	NMI >= 1
Historical	No	30	No	0.831	0.082	0.055	0.024	0.009	0.033	0.169		
Prospective	No	30	No	0.858	0.069	0.045	0.020	0.007	0.027	0.142	18.47%	16.29%
Historical	Yes	30	No	0.894	0.053	0.034	0.014	0.005	0.020	0.106		
Prospective	Yes	30	No	0.912	0.044	0.028	0.012	0.004	0.016	0.088	18.68%	17.32%
Historical	No	30	Yes	0.652	0.147	0.119	0.060	0.022	0.082	0.348		
Prospective	No	30	Yes	0.698	0.132	0.102	0.050	0.018	0.068	0.302	17.69%	13.24%
Historical	Yes	30	Yes	0.763	0.109	0.078	0.036	0.013	0.050	0.237		
Prospective	Yes	30	Yes	0.799	0.095	0.066	0.030	0.011	0.041	0.201	18.21%	15.16%
Historical	No	20	No	0.842	0.077	0.051	0.023	0.008	0.031	0.158		
Prospective	No	20	No	0.868	0.065	0.042	0.018	0.006	0.025	0.132	18.51%	16.47%
Historical	Yes	20	No	0.901	0.049	0.031	0.013	0.005	0.018	0.099		
Prospective	Yes	20	No	0.919	0.041	0.026	0.011	0.004	0.015	0.081	18.70%	17.44%
Historical	No	20	Yes	0.670	0.141	0.113	0.056	0.021	0.076	0.330		
Prospective	No	20	Yes	0.715	0.127	0.096	0.046	0.017	0.063	0.285	17.79%	13.56%
Historical	Yes	20	Yes	0.777	0.103	0.073	0.034	0.012	0.046	0.223		
Prospective	Yes	20	Yes	0.812	0.090	0.061	0.028	0.010	0.038	0.188	18.27%	15.40%
Historical	No	40	No	0.819	0.087	0.059	0.026	0.009	0.036	0.181		
Prospective	No	40	No	0.848	0.074	0.049	0.022	0.008	0.029	0.152	18.43%	16.10%
Historical	Yes	40	No	0.886	0.057	0.036	0.016	0.005	0.021	0.114		
Prospective	Yes	40	No	0.906	0.047	0.030	0.013	0.004	0.017	0.094	18.65%	17.19%
Historical	No	40	Yes	0.633	0.152	0.126	0.065	0.024	0.089	0.367		
Prospective	No	40	Yes	0.680	0.138	0.109	0.053	0.020	0.073	0.320	17.59%	12.91%
Historical	Yes	40	Yes	0.748	0.115	0.084	0.039	0.014	0.054	0.252		
Prospective	Yes	40	Yes	0.785	0.100	0.070	0.032	0.012	0.044	0.215	18.15%	14.91%

NMI, neonatal morbidity index