

1 **Interaction between placental efflux transporters and use of antiseizure or**  
2 **antidepressant drugs during pregnancy on birth weight in the Norwegian Mother,**  
3 **Father and Child Cohort Study**

4  
5 Marta H. Hernandez<sup>1,2\*</sup>, Jacqueline M. Cohen<sup>1,3</sup>, Karoline H. Skåra<sup>1,4</sup>, Thea K.  
6 Grindstad<sup>1</sup>, Yunsung Lee<sup>1</sup>, Per Magnus<sup>1</sup>, Pål R. Njølstad<sup>5,6</sup>, Ole A. Andreassen<sup>7,8</sup>,  
7 Elizabeth C. Corfield<sup>9,10</sup>, Alexandra Havdahl<sup>9,10,11,12</sup>, Espen Molden<sup>13,14</sup>, Kari Furu<sup>1,3</sup>,  
8 Maria C. Magnus<sup>1¶</sup>, Alvaro Hernaez<sup>1,2¶</sup>

9  
10 1. Centre for Fertility and Health, Norwegian Institute of Public Health, Oslo,  
11 Norway.

12 2. Blanquerna School of Health Sciences, University Ramon Llull, Barcelona,  
13 Spain.

14 3. Department of Chronic Diseases, Norwegian Institute of Public Health, Oslo,  
15 Norway.

16 4. Department of Community Medicine and Global Health, Institute of Health and  
17 Society, University of Oslo, Oslo, Norway.

18 5. Center for Diabetes Research, Department of Clinical Science, University of  
19 Bergen, Bergen, Norway

20 6. Children and Youth Clinic, Haukeland University Hospital, Bergen, Norway

21 7. Norwegian Centre for Mental Disorders Research, NORMENT, Division of Mental  
22 Health and Addiction, Oslo University Hospital, Oslo, Norway

23 8. Institute of Clinical Medicine, University of Oslo, Oslo, Norway

24 9. Center for Genetic Epidemiology and Mental Health, Norwegian Institute of Public  
25 Health, Oslo, Norway

26 10. Nic Waals Institute, Lovisenberg Diakonale Hospital, Oslo, Norway

27 11. PROMENTA Research Center, Department of Psychology, University of Oslo,  
28 Oslo, Norway

NOTE: This preprint reports new research that has not been certified by peer review and should not be used to guide clinical practice.

29 12. MRC Integrative Epidemiology Unit, University of Bristol, Bristol, United Kingdom

30 13. Center for Psychopharmacology, Diakonhjemmet Hospital, Oslo, Norway.

31 14. Section for Pharmacology and Pharmaceutical Department of Pharmacy,  
32 University of Oslo, Oslo, Norway

33

34 ¶: both authors contributed equally to this work.

35

36 **\*Corresponding author**

37 E-mail: [martahh1@blanquerna.url.edu](mailto:martahh1@blanquerna.url.edu) (MHH)

38 **ABSTRACT (286 words)**

39 **Background:** Intrauterine exposure to antiseizure and antidepressant drugs is  
40 associated with adverse pregnancy outcomes, including low birth weight. Gene variants  
41 in placental efflux transporter genes may alter foetal exposure to these drugs.

42 **Methods:** We investigated whether genetic variants in placental efflux transporters  
43 modified the impact of maternal antiseizure and antidepressant drug use on offspring  
44 birth weight, using data from the Norwegian Mother, Father and Child Cohort Study and  
45 the Medical Birth Registry of Norway (69,828 offspring with their genotype data, 81,189  
46 with maternal genotype data). We systematically searched for gene variants in placental  
47 efflux transporters influencing drug exposure [MDR1-*ABCB1* (7 alleles), MRP1-*ABCC1*  
48 (2), MRP2-*ABCC2* (3) and, BCRP-*ABCG2* (2)] and calculated genetic scores (sum of  
49 alleles potentially related to low transporter activity). We assessed the interaction  
50 between prenatal drug use and genetic scores on birth weight.

51 **Findings:** Prenatal antiseizure medication exposure was associated with lower birth  
52 weight (-95.5 grams, 95% CI -190 to -0.78). This relationship depended on the offspring's  
53 MRP2-*ABCC2* genetic score. Birth weight differences between exposed vs. unexposed  
54 were 70.3 g (95% CI -494 to 634) in the lowest genetic score category and -306 g (95%  
55 CI -361 to -31.8) in the highest (interaction *p*-value = 0.019; main variant: rs3740066).  
56 The antiseizure medication-lower birth weight association also depended on the  
57 maternal MDR1-*ABCB1* genetic score. Birth weight differences between exposed vs.  
58 unexposed were -66.8 g (95% CI -225 to 91.2) in the lowest genetic score category and  
59 -317 g (95% CI -517 to -117) in the highest (interaction *p*-value = 0.037; main variants:  
60 rs10248420 and rs2235015). Prenatal antidepressant exposure was associated with low  
61 birth weight, but no gene-drug interactions were observed.

62 **Conclusions:** MRP2-*ABCC2* and MDR1-*ABCB1* variants may influence prenatal  
63 antiseizure medication's impact on neonatal birth weight.

64 **Keywords:** antiseizure medication, birth weight, MRP2-*ABCC2*, MDR1-*ABCB1*, MoBa,  
65 MBRN.

66 **SUMMARY**

67

68 **What is already known on this topic.**

- 69 - Low birth weight increases the risk of neonatal death, morbidity, and lifelong  
70 susceptibility to various health conditions, including neurodevelopmental,  
71 cardiometabolic, respiratory, and psychiatric disorders.
- 72 - Previous studies have reported an association between maternal use of centrally  
73 acting medication during pregnancy and low birth weight in the offspring, but the  
74 underlying causes remain poorly understood.
- 75 - It is of great concern to identify strategies that can modulate foetal exposure to  
76 these medications and enable individualised, safe use since discontinuation may  
77 also increase the risk of harm to the mother.

78

79 **What this study adds.**

- 80 - Our study uncovered genetic variants in both offspring (rs3740066) and mother  
81 (rs10248420 and rs2235015) linked to placental efflux transporters that  
82 modulated the association between maternal antiseizure drug use during  
83 pregnancy and the risk of low birth weight in the offspring, marking the first  
84 exploration of such interactions.
- 85 - If these findings are confirmed and information about specific drugs is  
86 incorporated, this could potentially be used in the development of personalized  
87 recommendations for pregnant women undergoing these treatments.

## 88 INTRODUCTION

89

90 The use of medication during pregnancy must carefully balance benefits to the mother  
91 and potential harm to the offspring.<sup>1</sup> Centrally acting drugs (such as antiseizure drugs  
92 [mainly lamotrigine, 0.3% of pregnancies] and antidepressants [1.5% of pregnancies])  
93 have been increasingly used during pregnancy.<sup>2,3</sup> However, intrauterine exposure to  
94 these medications may be associated with adverse pregnancy outcomes such as  
95 impaired foetal growth and reduced birth weight in offspring.<sup>4-6</sup> Furthermore, these  
96 conditions are linked to a multitude of morbidities, resulting in both immediate and long-  
97 term adverse consequences for newborns, their families, and society.<sup>7</sup> The placenta  
98 plays an essential role in substance exchange between mother and foetus (e.g.,  
99 nutrients, metabolic by-products). Small, non-polar, lipophilic xenobiotics such as  
100 antiseizure drugs and antidepressants can pass through the placenta via passive  
101 diffusion.<sup>8</sup> However, several active proteins can efflux these compounds from the foetus  
102 back to the mother.<sup>9</sup> Active efflux proteins from the adenosine triphosphate-binding  
103 cassette superfamily (such as P-glycoprotein, breast cancer resistance protein, and  
104 others multidrug resistance proteins) are involved in the transplacental passage of drugs  
105 particularly affecting the passage of centrally-acting drugs and their metabolites.<sup>10,11</sup>  
106 Several antiseizure drugs and antidepressants are substrates for these transporters.<sup>12,13</sup>  
107 Efflux transporters may therefore have a foetoprotective effect by lowering the  
108 concentrations of potentially toxic drugs on the foetal side. Genetic variants in the  
109 transporters may modify their activity and could be located in the offspring or maternal  
110 genotype.<sup>14,15</sup> Little is known about the role of genetic variants in placental efflux  
111 transporters on the modulation of the association of antiseizure drugs and  
112 antidepressants during pregnancy with offspring outcomes such as low birth weight.

113 Our aim was to explore whether there is an interaction between the use of  
114 antiseizure drugs or antidepressants during pregnancy and genetic variants related to

- 115 placental efflux transporters (in P-glycoprotein, breast cancer resistance protein, and  
116 others multidrug resistance proteins) on offspring birth weight.

## 117 MATERIALS AND METHODS

118

### 119 *Study participants*

120 We included participants in the Norwegian Mother, Father, and Child Cohort Study  
121 (MoBa). MoBa is a prospective, population-based pregnancy cohort conducted by the  
122 Norwegian Institute of Public Health. Pregnant women and their partners were recruited  
123 across Norway between 1999-2008 at the time of routine ultrasound screening (~17<sup>th</sup>  
124 gestational week). The cohort includes approximately 114,000 children, 95,000 mothers,  
125 and 75,000 fathers.

126 This work used a subsample of offspring from singleton pregnancies with  
127 available information on genotype and birth weight (from version #12 of the quality-  
128 assured data files released on May 11, 2022). Genotype data was obtained from blood  
129 samples provided during pregnancy and at birth (mothers) and umbilical cord blood at  
130 birth (offspring).<sup>16</sup> A total of 238,001 samples have been genotyped in 24 genotyping  
131 batches with varying selection criteria, genotyping platforms, and genotyping centres.<sup>17</sup>  
132 Quality control, phasing, and imputation were performed using the MoBaPsychGen  
133 pipeline as previously described.<sup>17</sup>

134 Our work is described according to the Strengthening the Reporting of  
135 Observational studies in Epidemiology guidelines (Supplemental Table 3).<sup>18</sup>

136

### 137 *Use of centrally acting drugs*

138 We used self-reported information on the use of centrally acting drugs from MoBa  
139 questionnaires in the 18<sup>th</sup> and 30<sup>th</sup> gestational weeks.<sup>19</sup> Specifically, women were asked  
140 whether they had epilepsy or depression, and if they answered yes, whether any  
141 medications were used to treat the condition(s). This project has no information on the  
142 specific drug(s) the woman used. Any reported use of medication(s) for epilepsy (yes/no)  
143 or depression (yes/no) were categorized and evaluated separately.

144

145 *Birth weight*

146 Data on offspring birth weight in grams was obtained from the Medical Birth Registry of  
147 Norway, a national health registry which contains information about all births in Norway  
148 since 1967.<sup>20</sup>

149

150 *Covariates*

151 Information on maternal age at delivery (continuous), parity (1, 2, 3,  $\geq 4$ ) and sex of the  
152 offspring (female/male) was obtained from the birth registry. Furthermore, information on  
153 maternal years of education (continuous), pre-pregnancy body mass index (continuous),  
154 having ever smoked (yes/no), and self-reported depression or epilepsy was gathered in  
155 the questionnaire administered at gestational week 18.

156

157 *Genetic variants related to placental transporters and genetic scores.*

158 We performed a systematic review in PubMed, Web of Science, pharmacogenetic  
159 websites (<https://www.pharmgkb.org>) and GWAS catalog (<https://www.ebi.ac.uk/gwas/>)  
160 to identify gene variants on the adenosine triphosphate-binding cassette superfamily of  
161 placental efflux transporters (MDR1-*ABCB1*, MRP1-*ABCC1*, MRP2-*ABCC2*, and BCRP-  
162 *ABCG2*). We followed the recommendations of the Preferred Reporting Items for  
163 Systematic reviews and Meta-Analyses statement.<sup>21</sup> A detailed description of the search  
164 is available in Supplemental Materials.

165         After the systematic review, we only conserved genetic variants that were not in  
166 linkage disequilibrium according to linkage disequilibrium block analysis in the 1000  
167 Genomes CEU and GBR populations (given the MoBa participants passing the post-  
168 imputation quality control cluster with these populations;  $R^2 < 0.8$ ) and with a minor allele  
169 frequency  $> 1\%$ .<sup>22</sup> Genetic scores were calculated as the sum of the number of risk  
170 alleles for all genetic variants related to each transporter in a participant. The genetic  
171 score was represented in the results as a genetic score if the number of score values  
172 were  $\leq 5$ . Otherwise, we represented them in quartiles. We considered a risk allele to be



173 the allele associated with any of these five theoretical situations potentially related to an  
174 increased exposure of the drug to the foetus: decreased function of the transporter,  
175 declined expression of the transporter, non-resistance to the treatment, higher  
176 concentrations of the drug, or more adverse effects. Information related to the studies is  
177 available in Supplemental Table 2.

178

### 179 *Ethical approval*

180 The MoBa study is conducted according to the Declaration of Helsinki for medical  
181 research involving human subjects. The establishment of MoBa and initial data collection  
182 was based on a license from the Norwegian Data Protection Agency. It is now based on  
183 regulations related to the Norwegian Health Registry Act. Participants provided written  
184 informed consent before joining the cohort. This project was approved by the Regional  
185 Committee for Medical and Health Research Ethics of South/East Norway (reference:  
186 2017/1362).

187

### 188 *Statistical analyses*

189 Normally distributed continuous variables were described by means and standard  
190 deviations, nonnormally distributed continuous variables by medians and 25<sup>th</sup>-75<sup>th</sup>  
191 percentiles, and categorical variables by proportions.

192 We first assessed the relationship between maternal use of centrally acting drugs  
193 during pregnancy and birth weight using multivariable linear regressions adjusted for  
194 offspring sex and maternal factors (age at delivery, years of education, pre-pregnancy  
195 body mass index, parity and having ever smoked). Clustered standard errors were  
196 computed to account for dependence among births to mothers contributing with more  
197 than one pregnancy in MoBa. To determine whether there were significant interactions  
198 between maternal prenatal use of centrally acting drugs and the genetic scores on the  
199 offspring birth weight, we applied likelihood ratio tests between nested linear regression  
200 models with and without an interaction product-term of “exposure group × genetic score”.

201 The nested models were further adjusted for the first twenty ancestry-informative genetic  
202 principal components and genotyping batch. We considered any interaction with a  $p$ -  
203 value for the overall interaction test  $< 0.05$  and a differential association between  
204 medication use and offspring birth weight in the two extreme categories according to the  
205 genetic score. Whether an interaction was found, we further explored interactions with  
206 the individual variants in the genetic score as sensitivity analyses using the same  
207 strategy (as these were exploratory sensitivity analyses, we here considered any  
208 interaction with a  $p$ -value  $< 0.1$ ).

209 Statistical analyses were performed in R Software, version 4.1.0. Our analysis  
210 code is available in GitHub:

211 [https://github.com/alvarohernaez/Gene\\_psyoactivedrug\\_BW\\_MoBa/](https://github.com/alvarohernaez/Gene_psyoactivedrug_BW_MoBa/).

212 **RESULTS**

213

214 *Study population*

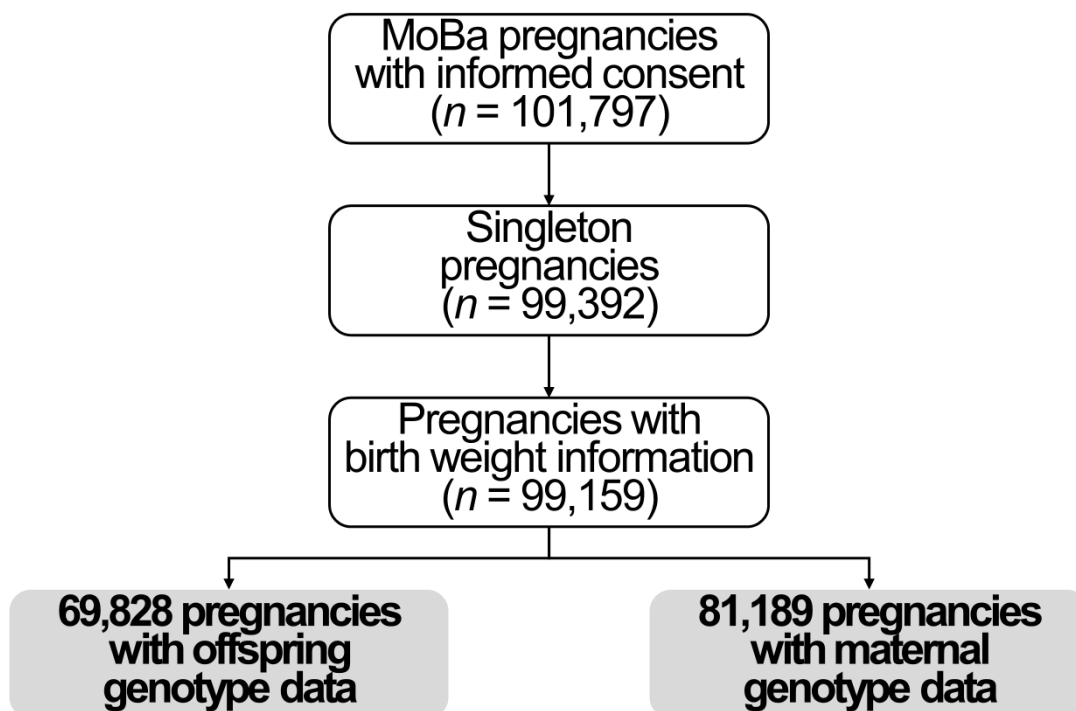
215 In our study, we included 69,828 singleton pregnancies with offspring genotype  
216 information and offspring birth weight, and 81,189 singleton pregnancies with maternal  
217 genotype data and offspring birth weight (Figure 1). Mean birth weight was 3,639 grams  
218 (SD 522). A total of 174 children (0.25%) were exposed to maternal use of antiseizure  
219 drugs during pregnancy and 766 (1.10%) to antidepressants. Women using centrally  
220 acting drugs were younger (only for antiseizure drugs), had lower educational attainment,  
221 and were more likely to have ever smoked (Table 1).

222

223

224 **Figure 1.** Flow chart of study participants.

225



226

227 **Table 1.** Baseline characteristics of mothers with offspring genotype information.

228

	Antiseizure drugs		Antidepressants	
	Exposed ( <i>n</i> = 174)	Unexposed ( <i>n</i> = 69,654)	Exposed ( <i>n</i> = 766)	Unexposed ( <i>n</i> = 69,062)
Age at delivery (years), mean ± SD	29.1 ± 4.83	30.2 ± 4.52	30.2 ± 5.07	30.2 ± 4.51
Education years, mean ± SD	15.9 ± 3.64	17.1 ± 3.30	16.2 ± 3.63	17.2 ± 3.30
Pre-pregnancy body mass index (kg/m <sup>2</sup> ), median (25 <sup>th</sup> -75 <sup>th</sup> percentiles)	23.3 (21.6-26.4)	23.3 (21.1-25.9)	23.2 (21.1-26.6)	23.1 (21.1-25.9)
Having ever smoked, <i>n</i> (%)	107 (61.8%)	34,310 (50.0%)	510 (67.4%)	33,907 (49.9%)
Previous number of deliveries:				
0, <i>n</i> (%)	64 (36.8%)	23,589 (33.9%)	261 (34.1%)	23,343 (33.9%)
1, <i>n</i> (%)	42 (24.1%)	22,342 (32.1%)	223 (29.1%)	22,113 (32.1%)
2, <i>n</i> (%)	44 (25.3%)	13,697 (19.7%)	156 (20.4%)	13,547 (19.7%)
3, <i>n</i> (%)	15 (8.62%)	6,118 (8.78%)	72 (9.40%)	6,045 (8.77%)

≥4, <i>n</i> (%)	9 (5.17%)	3,908 (5.61%)	54 (7.05%)	3,851 (5.59%)
Offspring birth weight, mean ± SD	3,516 ± 603	3,639 ± 522	3,574 ± 512	3,640 ± 522
Biological sex of the offspring:				
Female, <i>n</i> (%)	84 (48.3%)	35,549 (51.0%)	366 (47.8%)	35,267 (51.1%)
Male, <i>n</i> (%)	90 (51.7%)	34,105 (49.0%)	400 (52.2%)	33,795 (48.9%)

229

230 *Search of genetic variants on placental transporters*

231 The systematic search identified 26 genetic variants in the placental transporter genes  
232 associated with differences in antiseizure drugs and/or antidepressant outcomes  
233 (Supplemental Figure 1), of which 14 were independent and available in the MoBa  
234 genotype database (Supplemental Table 1). Seven variants were found for MDR1-  
235 *ABCB1*, two for MRP1-*ABCC1*, three for MRP2-*ABCC2*, and two for BCRP-*ABCG2*. We  
236 used these genetic variants to calculate risk scores. The ranges of values for the four  
237 genetic scores calculated were: 0 to 11 (MDR1-*ABCB1*; we presented the stratified  
238 associations according to quartiles), 0 to 4 (MRP1-*ABCC1*), 2 to 6 (MRP2-*ABCC2*), and  
239 0 to 4 (BCRP-*ABCG2*).

240

241 *Interaction between genetic variants of placental transporters and exposure to*  
242 *antiseizure drugs during pregnancy on birth weight*

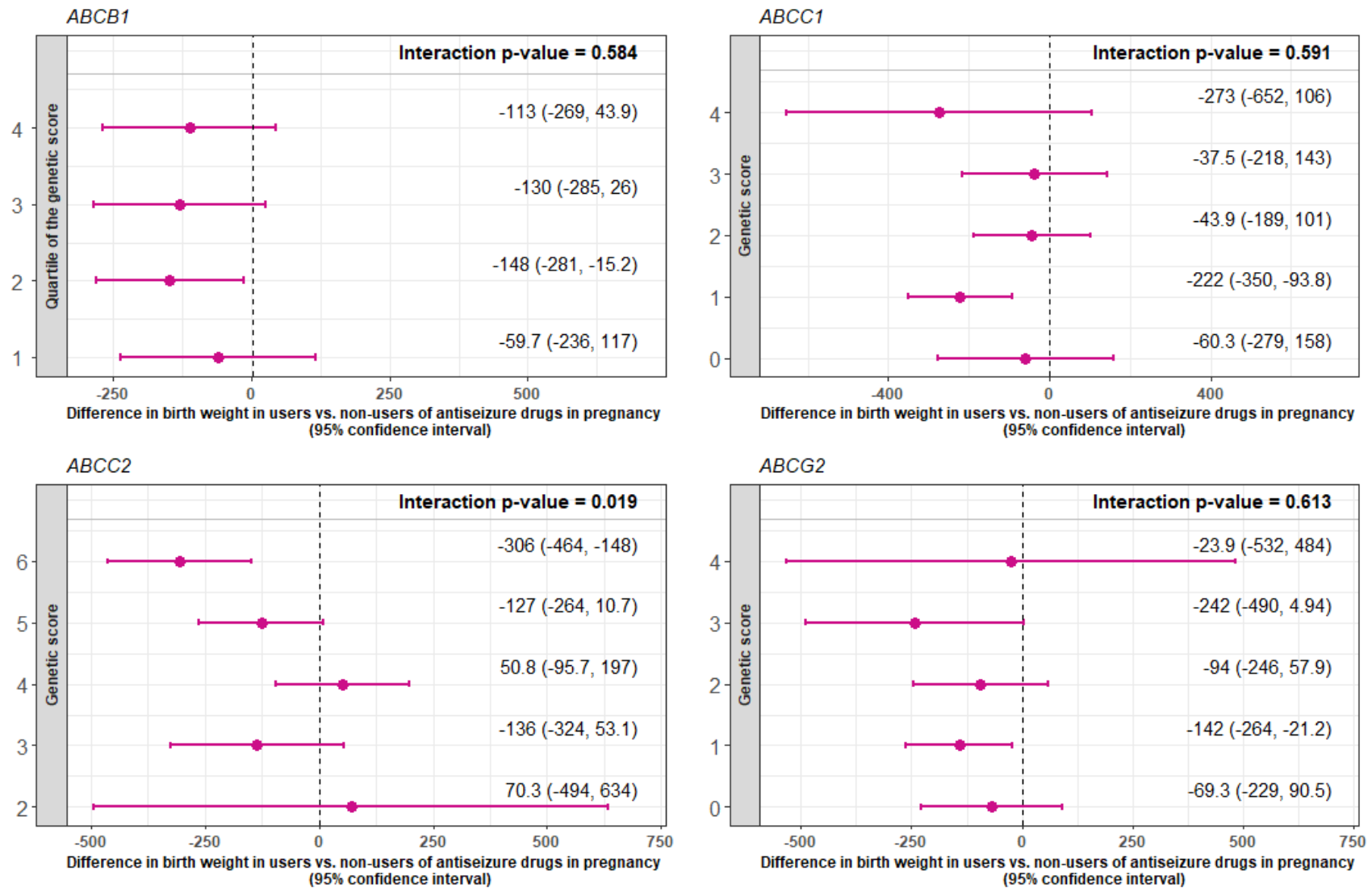
243 Antiseizure medication use during pregnancy was associated with lower birth weight (-  
244 95.5 g, 95% confidence interval [CI] -190 to -0.78). Greater values of the MRP2-*ABCC2*  
245 genetic score in the offspring were associated with lower birth weight in offspring of  
246 mothers who used antiseizure drugs during pregnancy. The difference in birth weight  
247 between exposed vs. unexposed was 70.3 g (95% CI -494 to 634) in the lowest genetic  
248 score category (2 risk alleles) and -306 g (95% CI -361 to -31.8) in the highest (6 risk  
249 alleles) ( $p$ -value for interaction = 0.019; Figure 2). The variant with the strongest evidence  
250 of an interaction in the sensitivity analyses of the MRP2-*ABCC2* genetic score was  
251 rs3740066 ( $p$ -value for interaction = 0.023; Supplemental Figure 2).

252 Greater values of the MDRP1-*ABCB1* genetic score in the mother were also  
253 linked to lower birth weight among offspring of mothers who used antiseizure drugs  
254 during pregnancy. The difference in birth weight between exposed vs. unexposed were  
255 -66.8 g (95% CI -225 to 91.2) in the lowest genetic score category (first quartile) and -  
256 317 g (95% CI -517 to -117) in the highest (fourth quartile) ( $p$ -value for interaction =  
257 0.037; Figure 3). Variants rs10248420 and rs2235015 included in the MDRP1-*ABCB1*

258 genetic score had some evidence of an interaction in the sensitivity analyses ( $p$ -values  
259 for interactions = 0.042 and 0.058, respectively; Supplemental Figure 3).

260 **Figure 2.** Differences in birth weight associated with pregnancy exposure to antiseizure medication due to the genetic scores for placental  
 261 transporters in the offspring.

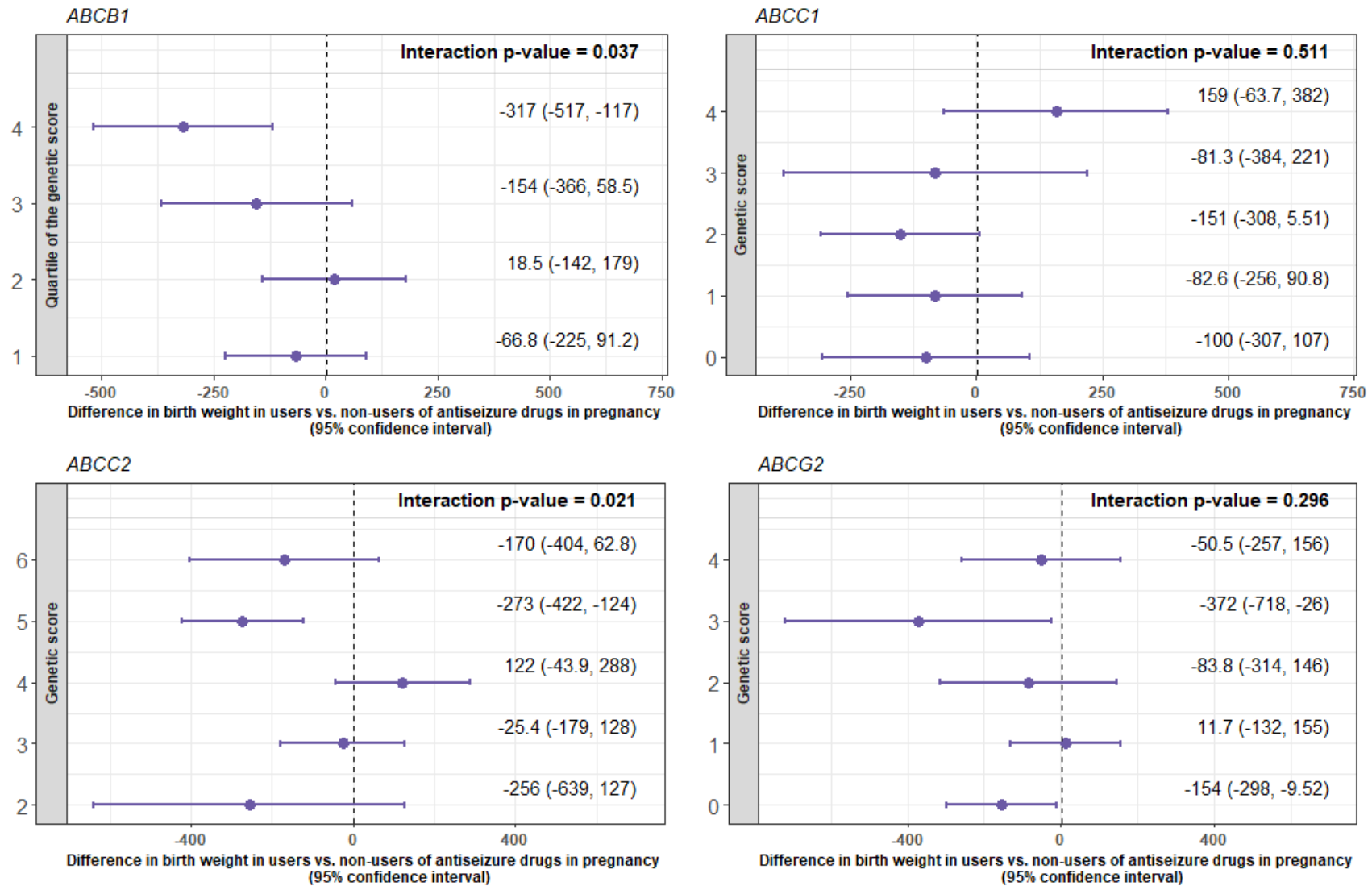
262





263 **Figure 3.** Differences in birth weight associated with pregnancy exposure of antiseizure medication due to the genetic scores for placental  
 264 transporters in the mother.

265



266 *Interaction between genetic variants of placental transporters and exposure to antidepressants*  
267 *during pregnancy on birth weight*

268 Use of antidepressant drugs during pregnancy was associated with lower birth weight (-60.5  
269 g, 95% CI -97.6 to -23.3). However, we observed no interactions between prenatal use of  
270 antidepressants and any genetic score of placental efflux transporters (in offspring or mothers)  
271 on birth weight in the offspring (Supplemental Figures 4 and 5).

272 **DISCUSSION**

273

274 In this large population-based study, involving offspring of mothers who used antiseizure  
275 medication during pregnancy, a high genetic score for *MRP2-ABCC2* in the offspring and  
276 *MDR1-ABCB1* in the mother, suggesting a greater exposure to these drugs, was associated  
277 with lower birth weight in the offspring.

278 *MDR1-ABCB1* and *MRP2-ABCC2* are the only transporters located in the apical  
279 membrane of the trophoblast (maternal side) and their function is to return xenobiotics to  
280 maternal circulation.<sup>23</sup> Thus, it seems plausible that genetic variants linked to lower transporter  
281 activity are associated with higher foetal exposure and greater toxicity of antiseizure drugs. In  
282 addition, the main variant in the interaction between the *MRP2-ABCC2* genetic score and  
283 prenatal antiseizure drug use (rs3740066) has been previously linked to a poorer response to  
284 antiseizure medication<sup>24</sup> and a higher risk of other adverse events during pregnancy  
285 (intrahepatic cholestasis of pregnancy).<sup>25</sup> The differences in the interactions found within  
286 genetic variants in the offspring (*MRP2-ABCC2*) and maternal genome (*MDR1-ABCB1*) can  
287 be explained by physiological changes in the placenta structure. Early in pregnancy, the  
288 separation between the maternal circulation and the foetal circulation by the trophoblasts  
289 villous barrier is 50-100  $\mu\text{m}$  (second month). It becomes progressively thinner as the  
290 pregnancy proceeds (only 4-5  $\mu\text{m}$  at term).<sup>26</sup> In addition, the total placenta surface area  
291 increases from about 5  $\text{m}^2$  at 28 weeks of gestation to 12  $\text{m}^2$  at term. Thus, passive diffusion  
292 of medications increases with gestational age, which means that medication can reach the  
293 foetal circulation more easily later in pregnancy.<sup>26</sup> At the same time, the expression of *MRP2-*  
294 *ABCC2* increases with advancing gestational age, whereas the expression of *MDR1-ABCB1*  
295 declines.<sup>27,28</sup> As a consequence of all these phenomena, the presence of risk alleles for *MRP2-*  
296 *ABCC2* may play a more significant role in determining the offspring's exposure. However, an  
297 alternative hypothesis could also explain our findings. A greater foetal exposure to medication  
298 due to lower activity of the efflux transporters may also be linked to lower medication levels in  
299 the mother and a poorer control of the disease. Greater disease effects in mothers may be

300 associated with alternative mechanisms that may also explain an increased risk of low birth  
301 weight in the offspring.

302         There could be several reasons for the lack of gene-drug interactions with  
303 antidepressants. First, the association between exposure to antidepressants during pregnancy  
304 and birth weight is of a smaller magnitude in our data, which can make the search of gene-  
305 drug interactions more challenging. Second, the accuracy of our data regarding the usage of  
306 antidepressants may be less precise, as women may have varying criteria for identifying such  
307 treatments. This discrepancy may not be present regarding antiseizure drugs. Finally, a larger  
308 proportion of women may discontinue the use of antidepressants during pregnancy compared  
309 to antiseizure medications.<sup>29</sup>

310         Our study has some limitations. First, due to the unavailability of information on the  
311 specific drug utilized, we conducted our analysis based on aggregated drug groups. Although  
312 the main medications in each group show similar pharmacodynamic behaviour and their usage  
313 during pregnancy reduces the number of medications under consideration,<sup>3</sup> this may interfere  
314 with our findings because there may be variations in the medication groups' interactions due  
315 to differences in transporter affinity or dose-dependent effects.<sup>26,30</sup> Second, due to the lack of  
316 a genome-wide association study showing which genetic variants are associated with high or  
317 low activity of efflux transporters, we calculated risk scores using studies on genetic variants  
318 indirectly related to high or low activity (e.g., treatment resistance, treatment efficacy, presence  
319 of adverse effects). Third, the interactions found in our data are only suggestive and our  
320 findings require replication in independent populations to confirm their validity. Finally, the  
321 characteristics of our participants (individuals of northern European ancestry with moderate-  
322 high socioeconomic status) limit our capacity to generalize our conclusions to other  
323 populations.

324 **CONCLUSIONS**

325 In summary, genetic variants in MRP2-*ABCC2* and MDR1-*ABCB1* placental transporters may  
326 modulate the association between prenatal exposure to antiseizure drugs and low birth weight  
327 in the offspring. To the best of our knowledge, this is the largest gene-drug interaction study  
328 on offspring birth weight to date and it was performed in a well-characterized population with  
329 genome-wide genotype information. If our findings are confirmed, particularly in studies in  
330 which we know exactly which drug the mothers have used during pregnancy, the assessment  
331 of these genetic variants may be implemented in clinical settings to support safer use of  
332 antiseizure drugs during pregnancy.

333 **DATA AVAILABILITY STATEMENT**

334 Consent given by the participants does not open for storage of data on an individual level in  
335 repositories or journals. Researchers who want access to datasets for replication should apply  
336 to [datatilgang@fhi.no](mailto:datatilgang@fhi.no). Access to datasets requires approval from the Regional Committee for  
337 Medical and Health Research Ethics in Norway and an agreement with MoBa.

338

339 **ACKNOWLEDGMENTS**

340 The MoBa Cohort Study is supported by the Norwegian Ministry of Health and Care Services  
341 and the Ministry of Education and Research. We thank all the participating families in Norway  
342 who take part in this ongoing cohort study, and those who contributed to the recruitment and  
343 the infrastructure of the cohort.

344 We thank the Norwegian Institute of Public Health for generating high-quality genomic  
345 data. This research is part of the HARVEST collaboration, supported by the Research Council  
346 of Norway (project reference: #229624). We also thank the NORMENT Centre for providing  
347 genotype data, funded by the Research Council of Norway (project reference: #223273), South  
348 East Norway Health Authority, and Stiftelsen Kristian Gerhard Jebsen. We further thank the  
349 Center for Diabetes Research (University of Bergen) for providing genotype data funded by  
350 the European Research Council Advanced Grant project SELECTIONPREDISPOSED,  
351 Stiftelsen Kristian Gerhard Jebsen, the Trond Mohn Foundation, the Research Council of  
352 Norway, the Novo Nordisk Foundation, the University of Bergen, and the Western Norway  
353 Health Authority.

354 This work was performed on the TSD (Tjeneste for Sensitive Data) facilities, owned by  
355 the University of Oslo, operated, and developed by the TSD service group at the University of  
356 Oslo, IT-Department ([tsd-drift@usit.uio.no](mailto:tsd-drift@usit.uio.no)).

357 This paper does not necessarily reflect the position or policy of the Norwegian Research  
358 Council.

359

360

361 **FUNDING**

362 The MoBa Cohort Study is supported by the Norwegian Ministry of Health and Care Services  
363 and the Norwegian Ministry of Education and Research. This project received funding from the  
364 European Research Council under the European Union's Horizon 2020 research and  
365 innovation program (grant agreement No 947684). This work was also partly supported by the  
366 Research Council of Norway through its Centres of Excellence funding scheme, project  
367 number 262700 and 223273, and the project "Women's fertility – an essential component of  
368 health and well-being", number 320656, and co-funded by the European Research Council  
369 (grant agreement No 101071773). M.H.H. was supported by the fellowship "*Estancias de*  
370 *movilidad Jose Castillejo dentro del Programa Estatal de Promoción del Talento y su*  
371 *empleabilidad, en el marco del Plan Estatal de Investigación Científica y Técnica y de*  
372 *Innovación 2017-2020*", from the Spanish government. P.R.N. was supported by the European  
373 Research Council (grant agreement No 293574), the Novo Nordic Foundation  
374 (#NNF19OC0054741) and the Trond Mohn Foundation (PRECISE-DIA). E.C. and A.Havdahl  
375 were supported by the Research Council of Norway (274611) and the South-Eastern Norway  
376 Regional Health Authority (project numbers 2020022, 2021045). O.A.A. was supported by the  
377 European Research Council (grant agreement No 964874) and the Research Council of  
378 Norway (300309, 273291). The funders had no role in the study design; the collection, analysis,  
379 and interpretation of data; in the writing of the report; or in the decision to submit the article for  
380 publication. Views and opinions expressed in this paper are those of the authors only and do  
381 not necessarily reflect those of the funders. Neither the European Union nor the granting  
382 authority can be held responsible for them.

383

384 **CONFLICTS OF INTEREST**

385 O.A.A. is a consultant for cortechs.ai and has received speaker's honorarium from Janssen,  
386 Lundbeck, and Sunovion unrelated to the current work. The rest of the authors declare that no  
387 competing interests exist.

388

389 **AUTHORS' CONTRIBUTION**

390 M.H.H. conceived and designed the study, was responsible for data curation, formal analyses,  
391 data interpretation, and drafting the article. J.M.C. critically revised the article and contributed  
392 to interpretation of the data. K.H.S. provided support in data analysis, software use, and  
393 visualization of results, and critically revised the article. T.K.W.G. was involved in the  
394 interpretation of data and critically revised the article. Y.L. contributed to data acquisition and  
395 critically revised the article. P.M. contributed to data acquisition and critically revised the article.  
396 P.R.N. contributed to data acquisition and critically revised the article. O.A.A. contributed to  
397 data acquisition and critically revised the article. E.C. contributed to data acquisition and  
398 critically revised the article. A.Havdahl contributed to data acquisition and critically revised the  
399 article. E. Molden critically revised the article. S.E.H. contributed to data acquisition, obtained  
400 funding, and critically revised the article. K.F. provided support in data analysis and critically  
401 revised the article. M.C.M. and A.Hernaes coordinated the project, contributed to data  
402 interpretation, and critically revised the article. M.H.H. and A.Hernaes are the guarantors of  
403 this study, accept full responsibility for the work and the conduct of the study, had access to  
404 the data, and controlled the decision to publish.

405



406 **REFERENCES**

- 407 1. Benevent J, Montastruc F, Damase-Michel C. The importance of  
408 pharmacoepidemiology in pregnancy-implications for safety. *Expert Opin Drug Saf.* 2017;16:  
409 1181–1190. doi:10.1080/14740338.2017.1363177
- 410 2. Molenaar NM, Bais B, Lambregtse-van den Berg MP, Mulder CL, Howell EA, Fox NS,  
411 et al. The international prevalence of antidepressant use before, during, and after pregnancy:  
412 A systematic review and meta-analysis of timing, type of prescriptions and geographical  
413 variability. *J Affect Disord.* 2020;264: 82–89. doi:10.1016/j.jad.2019.12.014
- 414 3. Cohen JM, Cesta CE, Furu K, Einarsdóttir K, Gissler M, Havard A, et al. Prevalence  
415 trends and individual patterns of antiepileptic drug use in pregnancy 2006-2016: A study in the  
416 five Nordic countries, United States, and Australia. *Pharmacoepidemiol Drug Saf.* 2020;29:  
417 913–922. doi:10.1002/pds.5035
- 418 4. Margulis AV, Hernandez-Diaz S, McElrath T, Rothman KJ, Plana E, Almquist C, et al.  
419 Relation of in-utero exposure to antiepileptic drugs to pregnancy duration and size at birth.  
420 *PLoS One.* 2019;14: e0214180. doi:10.1371/journal.pone.0214180
- 421 5. Veiby G, Daltveit AK, Engelsen BA, Gilhus NE. Fetal growth restriction and birth defects  
422 with newer and older antiepileptic drugs during pregnancy. *J Neurol.* 2014;261: 579–588.  
423 doi:10.1007/s00415-013-7239-x
- 424 6. Wartko PD, Weiss NS, Enquobahrie DA, Chan KCG, Stephenson-Famy A, Mueller BA,  
425 et al. Association of antidepressant continuation in pregnancy and infant birth weight. *J Clin*  
426 *Psychopharmacol.* 2021; Publish Ahead of Print: 403. doi:10.1097/jcp.0000000000001410
- 427 7. Ashorn P, Ashorn U, Muthiani Y, Aboubaker S, Askari S, Bahl R, et al. Small vulnerable  
428 newborns—big potential for impact. *Lancet.* 2023;401: 1692–1706. doi:10.1016/s0140-  
429 6736(23)00354-9
- 430 8. Evseenko D, Paxton JW, Keelan JA. Active transport across the human placenta:  
431 impact on drug efficacy and toxicity. *Expert Opin Drug Metab Toxicol.* 2006;2: 51–69.  
432 doi:10.1517/17425255.2.1.51

- 433 9. Wang J-S, Newport DJ, Stowe ZN, Donovan JL, Pennell PB, DeVane CL. The  
434 emerging importance of transporter proteins in the psychopharmacological treatment of the  
435 pregnant patient. *Drug Metab Rev.* 2007;39: 723–746. doi:10.1080/03602530701690390
- 436 10. Joshi AA, Vaidya SS, St-Pierre MV, Mikheev AM, Desino KE, Nyandege AN, et al.  
437 Placental ABC transporters: Biological impact and pharmaceutical significance. *Pharm Res.*  
438 2016;33: 2847–2878. doi:10.1007/s11095-016-2028-8
- 439 11. Syme MR, Paxton JW, Keelan JA. Drug transfer and metabolism by the human  
440 placenta. *Clin Pharmacokinet.* 2004;43: 487–514. doi:10.2165/00003088-200443080-00001
- 441 12. Wolking S, Schaeffeler E, Lerche H, Schwab M, Nies AT. Impact of genetic  
442 polymorphisms of ABCB1 (MDR1, P-glycoprotein) on drug disposition and potential clinical  
443 implications: Update of the literature. *Clin Pharmacokinet.* 2015;54: 709–735.  
444 doi:10.1007/s40262-015-0267-1
- 445 13. Goetzl L, Darbinian N, Merabova N, Devane LC, Ramamoorthy S. Gestational age  
446 variation in human placental drug transporters. *Front Pharmacol.* 2022;13.  
447 doi:10.3389/fphar.2022.837694
- 448 14. Daud ANA, Bergman JEH, Bakker MK, Wang H, de Walle HEK, Plösch T, et al.  
449 Pharmacogenetics of drug-induced birth defects: the role of polymorphisms of placental  
450 transporter proteins. *Pharmacogenomics.* 2014;15: 1029–1041. doi:10.2217/pgs.14.62
- 451 15. Ewing G, Tatarchuk Y, Appleby D, Schwartz N, Kim D. Placental transfer of  
452 antidepressant medications: Implications for postnatal adaptation syndrome. *Clin*  
453 *Pharmacokinet.* 2015;54: 359–370. doi:10.1007/s40262-014-0233-3
- 454 16. Paltiel L, Haugan A, Skjerden T, et al. The biobank of the Norwegian Mother and Child  
455 Cohort Study—present status. *Norsk Epidemiologi.* 2014;24: 29–35. Available:  
456 <https://www.ntnu.no/ojs/index.php/norepid/article/view/1755/1752>
- 457
- 458 17. Corfield EC, Frei O, Shadrin AA, Rahman Z, Lin A, Athanasiu L, et al. The Norwegian  
459 Mother, Father, and Child cohort study (MoBa) genotyping data resource: MoBaPsychGen  
460 pipeline v.1. *bioRxiv.* 2022. p. 2022.06.23.496289. doi:10.1101/2022.06.23.496289

- 461 18. von Elm E, Altman DG, Egger M, Pocock SJ, Gøtzsche PC, Vandenbroucke JP. The  
462 Strengthening the Reporting of Observational Studies in Epidemiology (STROBE) statement:  
463 guidelines for reporting observational studies. *J Clin Epidemiol.* 2008;61: 344–349.  
464 doi:10.1016/j.jclinepi.2007.11.008
- 465 19. Magnus P, Birke C, Vejrup K, Haugan A, Alsaker E, Daltveit AK, et al. Cohort profile  
466 update: The Norwegian mother and child cohort study (MoBa). *Int J Epidemiol.* 2016;45: 382–  
467 388. doi:10.1093/ije/dyw029
- 468 20. Irgens LM. The Medical Birth Registry of Norway. Epidemiological research and  
469 surveillance throughout 30 years: Thirty years' birth registration. *Acta Obstet Gynecol Scand.*  
470 2000;79: 435–439. doi:10.1034/j.1600-0412.2000.079006435.x
- 471 21. Page MJ, McKenzie JE, Bossuyt PM, Boutron I, Hoffmann TC, Mulrow CD, et al. The  
472 PRISMA 2020 statement: an updated guideline for reporting systematic reviews. *BMJ.*  
473 2021;372: n71. doi:10.1136/bmj.n71
- 474 22. Machiela MJ, Chanock SJ. LDlink: a web-based application for exploring population-  
475 specific haplotype structure and linking correlated alleles of possible functional variants.  
476 *Bioinformatics.* 2015;31: 3555–3557. doi:10.1093/bioinformatics/btv402
- 477 23. Smit JW, Huisman MT, van Tellinghen O, Wiltshire HR, Schinkel AH. Absence or  
478 pharmacological blocking of placental P-glycoprotein profoundly increases fetal drug  
479 exposure. *J Clin Invest.* 11 1999;104: 1441–1447. doi:10.1172/jci7963
- 480 24. Qu J, Zhou B-T, Yin J-Y, Xu X-J, Zhao Y-C, Lei G-H, et al. ABCC2 polymorphisms and  
481 haplotype are associated with drug resistance in Chinese epileptic patients: ABCC2  
482 polymorphisms and epilepsy drug resistance. *CNS Neurosci Ther.* 2012;18: 647–651.  
483 doi:10.1111/j.1755-5949.2012.00336.x
- 484 25. Sookoian S, Castaño G, Burgueño A, Gianotti TF, Pirola CJ. Association of the  
485 multidrug-resistance-associated protein gene (ABCC2) variants with intrahepatic cholestasis  
486 of pregnancy. *J Hepatol.* 2008;48: 125–132. doi:10.1016/j.jhep.2007.08.015
- 487 26. Al-Enazy S, Ali S, Albekairi N, El-Tawil M, Rytting E. Placental control of drug delivery.  
488 *Adv Drug Deliv Rev.* 2017;116: 63–72. doi:10.1016/j.addr.2016.08.002

- 489 27. Meyer zu Schwabedissen HE, Jedlitschky G, Gratz M, Haenisch S, Linnemann K,  
490 Fusch C, et al. Variable expression of mrp2 (abcc2) in human placenta: Influence of gestational  
491 age and cellular differentiation. *Drug Metab Dispos.* 2005;33: 896–904.  
492 doi:10.1124/dmd.104.003335
- 493 28. Sun M, Kingdom J, Baczyk D, Lye SJ, Matthews SG, Gibb W. Expression of the  
494 multidrug resistance P-glycoprotein, (ABCB1 glycoprotein) in the human placenta decreases  
495 with advancing gestation. *Placenta.* 2006;27: 602–609. doi:10.1016/j.placenta.2005.05.007
- 496 29. Cohen JM, Selmer R, Furu K, Karlstad Ø. Interrupted time series analysis to assess  
497 changes in prescription filling around conception and implications for exposure  
498 misclassification. *Pharmacoepidemiol Drug Saf.* 2020;29: 745–749. doi:10.1002/pds.4974
- 499 30. Staud F, Cerveny L, Ceckova M. Pharmacotherapy in pregnancy; effect of ABC and  
500 SLC transporters on drug transport across the placenta and fetal drug exposure. *J Drug Target.*  
501 2012;20: 736–763. doi:10.3109/1061186x.2012.716847
- 502

503 **SUPPORTING INFORMATION**

504 **TABLE OF CONTENTS**

505 **SUPPLEMENTAL MATERIALS** .....30

506     Search strategy of genetic variants.....30

507 **SUPPLEMENTAL TABLES**.....31

508     Supplemental Table 1. Expected risk allele for birth weight in efflux transporters.....31

509     Supplemental Table 2. The articles detail the development of the expected risk allele for

510     the transporter score.....32

511     Supplemental Table 3. STROBE checklist for cohort studies .....35

512 **SUPPLEMENTAL RESULTS**.....36

513     Supplemental Figure 1. Flow chart of the systematic literature review of genetic variants

514     on placental efflux transporters .....36

515     Supplemental Figure 2. Differences in birth weight associated with pregnancy use of

516     antiseizure drugs due to ABCC2 individual genetic variants in the offspring .....37

517     Supplemental Figure 3. Differences in birth weight associated with pregnancy use of

518     antiseizure drugs due to ABCB1 individual genetic variants in the mother .....38

519     Supplemental Figure 4. Differences in birth weight associated with pregnancy use of

520     antidepressant medication and placental transporter genetic scores in the offspring .....39

521     Supplemental Figure 5. Differences in birth weight associated with pregnancy use of

522     antidepressant medication and placental transporter genetic scores in the mother .....40

523 **SUPPLEMENTAL REFERENCES**.....41

524

525 **SUPPLEMENTAL MATERIALS**

526

527 **Search strategy of genetic variants**

528 All studies that examined the association between the placental transporters of interest and  
529 epilepsy or depression were researched. We systematically searched PubMed, Web of  
530 Science, pharmacogenetic websites (<https://www.pharmgkb.org>) and GWAS catalog  
531 (<https://www.ebi.ac.uk/gwas/home>). All databases were searched using the Boolean method  
532 with the following terms (1 AND 2 AND 3): 1) “antiseizure” OR “antiepilepsy” OR  
533 “anticonvulsants” OR “antidepressant” OR “benzodiazepines”; 2) “polymorphism” OR “genetic  
534 polymorphism” OR “genetic variant” OR “pharmacogenetics”; 3) “ATP binding cassette” or  
535 “ABCB1” OR “ABCC1” OR “ABCC2” OR “ABCG2” OR “ABCC5” OR “ABCC3”. In addition, the  
536 reference and discussions of all pooled articles were carefully scanned for additional  
537 publications. We excluded studies: 1) not performed in humans; 2) not published in English; 3)  
538 not published in scientific journals; and 4) focused on other drug groups.

539

540 **SUPPLEMENTAL TABLES**  
541

542 **Supplemental Table 1.** Expected risk allele for birth weight in efflux transporters.  
543

Gene	Polymorphism	Chromosome	Position	Expected risk allele for birth weight	Expected risk allele frequency in Europeans	References	Conserved after linkage disequilibrium block analysis
<i>ABCB1</i>	rs1045642	7	87138645	G	0.42	(1-9)	Yes
<i>ABCB1</i>	rs28401781	7	87148328	T	0.12	(10)	No
<i>ABCB1</i>	rs2235067	7	87149922	T	0.13	(11)	No
<i>ABCB1</i>	rs4148740	7	87152103	G	0.13	(12)	No
<i>ABCB1</i>	rs10280101	7	87153585	C	0.13	(11)	No
<i>ABCB1</i>	rs7787082	7	87157051	A	0.18	(11,13)	No
<i>ABCB1</i>	rs2032583	7	87160561	G	0.13	(11, 14-17)	No
<i>ABCB1</i>	rs2032582	7	87160618	T/A	A: 0.41 T: 0.02	(11, 15, 18-25)	No
<i>ABCB1</i>	rs4148739	7	87161049	C	0.13	(10-12)	No
<i>ABCB1</i>	rs11983225	7	87161520	C	0.13	(11)	No
<i>ABCB1</i>	rs10248420	7	87164986	G	0.18	(11, 26)	Yes
<i>ABCB1</i>	rs2235040	7	87165750	T	0.13	(11,15,16)	No
<i>ABCB1</i>	rs12720067	7	87169356	T	0.13	(11)	No
<i>ABCB1</i>	rs2032588	7	87179443	G	0.94	(27)	No, SNP not in MoBa
<i>ABCB1</i>	rs1128503	7	87179601	G	0.58	(5,12,22)	Yes
<i>ABCB1</i>	rs2235015	7	87199564	A	0.21	(11,17)	Yes
<i>ABCB1</i>	rs9282564	7	87229440	G	0.10	(28)	Yes
<i>ABCB1</i>	rs10245483	7	89637608	G	0.51	(29)	Yes
<i>ABCC1</i>	rs875740	16	16123048	C	0.35	(30)	Yes
<i>ABCC1</i>	rs212090	16	16236004	A	0.46	(31,32)	Yes
<i>ABCC2</i>	rs717620	10	101542578	C	0.79	(33-36)	Yes
<i>ABCC2</i>	rs4148386	10	101548468	G	0.44	(12)	No
<i>ABCC2</i>	rs2273697	10	101563815	G	0.80	(12, 37)	Yes
<i>ABCC2</i>	rs3740066	10	101604207	C	0.63	(12,33,38)	Yes
<i>ABCG2</i>	rs2231142	4	89052323	T	0.10	(39,40)	Yes
<i>ABCG2</i>	rs3114020	4	89083666	C	0.40	(40)	Yes

544

**Supplemental Table 2.** The articles detail the development of the expected risk allele for the transporter score.

Gene	Polymorphism	Drug	Study participants	Effect		P-value	Expected risk allele in the publication	Risk allele for birth weight	Reference
<i>ABCB1</i>	rs1045642	All antiepileptic drugs	114 drug-resistant epilepsy patients, 213 seizure-free patients and 287 controls (Taiwan)	Efficacy	The C allele and the CC genotype were associated with drug resistance relative to the T allele and the TT genotype.	0.001	T	G	1
<i>ABCB1</i>		All antiepileptic drugs	746 patients with epilepsy and 179 controls (China)	Efficacy	The TT genotype was associated with drug resistance	0.0009	G		2
<i>ABCB1</i>		All antiepileptic drugs	220 patients with epilepsy and 220 controls (India)	Efficacy	The TT genotype was associated with drug resistance relative to the CC genotype.	0.001	G		3
<i>ABCB1</i>		Carbamazepine	3,293 patients with epilepsy. Meta analysis	Pharmacokinetics/ Efficacy	The T allele was associated with lower concentrations, lower absorption, and resistance to the drug activity.	0.004	T		4
<i>ABCB1</i>		Carbamazepine	2,126 patients with epilepsy. Meta-analysis	Efficacy	The T allele was associated to decreased plasma concentrations of the drug.	<0.05	G		5
<i>ABCB1</i>		Agomelatine	28 healthy volunteers (Spain)	Pharmacokinetics	The TT genotype was associated with lower concentrations or lower absorption of the drug.	0.047	G		6
<i>ABCB1</i>		All antiepileptic drugs	8,716 patients with epilepsy, 4,037 drug-resistant epilepsy patients and 4,679 drug-responsive patients. Meta analysis	Efficacy	The T allele was associated with higher risk of drug resistance in the overall population and in Caucasians.	0.006	G		7
<i>ABCB1</i>		Carbamazepine	In vitro	Impact of T allele on the sensitivity, intracellular accumulation, and transepithelial permeability of antiepileptic drugs	The recombinant T allele cells showed higher resistance to carbamazepine compared with C allele cells in the cytotoxicity assay. The intracellular accumulation of carbamazepine was significantly decreased in cells transfecting with recombinant T allele when compared with recombinant C allele cells.	0.01	G		8
<i>ABCB1</i>		Carbamazepine	210 patients with epilepsy (China)	Pharmacokinetics	The GG genotype was associated with increased concentrations of carbamazepine relative to the AG genotype.	0.001	G		9
<i>ABCB1</i>	rs10248420	All antidepressants	256 patients with epilepsy (Europe)	Efficacy	The G allele was associated with increased likelihood of remission when treated with amitriptyline, citalopram, paroxetine or venlafaxine relative to the A allele.	0.0095	G	G	11
<i>ABCB1</i>		Olanzapine	80 healthy volunteers (Spain)	Efficacy	The A allele was associated with decreased drug response compared to the G allele	0.047	G		26
<i>ABCB1</i>	rs1128503	All antiepileptic drugs	90 patients with epilepsy (USA)	Pharmacokinetics	AA and AG genotypes were associated with increased clearance of carbamazepine relative to the GG genotype.	0.036	G	G	12
<i>ABCB1</i>		Lamotrigine	222 patients with epilepsy (Croatia)	Pharmacokinetics	The genotype CC was associated with higher lamotrigine concentrations compared to CT and TT genotypes.	0.021	G		22
<i>ABCB1</i>		Carbamazepine	2,126 patients with epilepsy. Meta-analysis	Efficacy	The CC genotype was associated with lower resistance to carbamazepine.	0.03	G		5
<i>ABCB1</i>	rs2235015	All antidepressants	339 patients with depression (European)	Efficacy	The A allele was associated with higher remission for P-glycoprotein antidepressants, citalopram, paroxetine, amitriptyline, and venlafaxine, relative to the C allele.	0.025	A	A	11



Gene	Polymorphism	Drug	Study participants	Effect		P-value	Expected risk allele in the publication	Risk allele for birth weight	Reference
ABCB1		All antidepressants	73 patients with depressive disorder (Germany)	Efficacy	The A allele was associated with increased likelihood of remission when treated with amitriptyline, citalopram, paroxetine or venlafaxine, relative to the C allele.	0.030	A		17
ABCB1	rs9282564	Paroxetine	71 psychiatric patients (Switzerland)	Efficacy	The G allele was associated with greater clinical response.	0.043	G	G	28
ABCB1	rs10245483	All antidepressants	683 patients with major depressive disorder (multisite)	Efficacy	The T allele was associated with less remission.	0.001	G	G	29
ABCC1	rs875740	All antiepileptic drugs	199 patients from the Mayo Clinic Bipolar Disorder Biobank GWAS (USA)	Efficacy	The C allele was associated with better treatment response.	0.0089	C	C	30
ABCC1	rs212090	Clozapine	137 medicated patients (Australia)	Adverse effects	The A allele was associated with higher diastolic blood pressure (adverse effect)	0.01	A	A	31
ABCC1		All antidepressants	148 patients with major depressive disorder (Australia)	Efficacy	The A allele was included in the pharmacogenetic guide group and associated with greater remission	0.0001	A		32
ABCC2	rs717620	All antiepileptic drugs	537 patients with epilepsy (217 drug resistant patients and 320 drug responders) (China)	Efficacy	The TT genotype was associated with drug resistance	0.001	C	C	33
ABCC2		All antiepileptic drugs	4,300 patients with epilepsy (2,261 drug-resistant patients and 2,039 drug-responsive patients). Meta-analysis	Efficacy	The T allele was associated with drug resistance	0.0006	C		34
ABCC2		All antiepileptic drugs	254 patients with epilepsy (104 drug-resistant and 150 drug-responsive) (China)	Efficacy	The TT genotype was associated with drug resistance, relative to the CC genotype	0.001	C		35
ABCC2		All antiepileptic drugs	1,842 patients with epilepsy. Meta-analysis	Efficacy	The T allele was associated with drug resistance.	0.002	C		36
ABCC2	rs2273697	All antiepileptic drugs	90 patients with epilepsy (USA)	Pharmacokinetics	AA and AG genotypes were associated with higher drug clearance relative to the GG genotype.	<0.05	G	G	12
ABCC2		All antiepileptic drugs	453 patients with epilepsy (China)	Efficacy	The A allele was associated with drug resistance.	0.001	G		37
ABCC2	rs3740066	All antiepileptic drugs	90 patients with epilepsy (USA)	Pharmacokinetics	The G allele was associated with lower carbamazepine-10, 11-epoxide (metabolite): carbamazepine ratio.	0.008	C	C	12
ABCC2		All antiepileptic drugs	537 patients with epilepsy (217 drug resistant patients and 320 drug responders) (China)	Efficacy	CT and TT genotypes were associated with drug resistance relative to CC genotype.	0.038	C		33
ABCC2		No drug	In vitro study	In vitro function of the transporter	The T allele was associated with a decreased function of the transporter.	0.017	C		38

Gene	Polymorphism	Drug	Study participants	Effect		P-value	Expected risk allele in the publication	Risk allele for birth weight	Reference
ABCG2	rs2231142	Lamotrigine	112 patients with epilepsy (China)	Pharmacokinetics	The TT genotype was associated with increased concentrations of lamotrigine relative to GG and GT genotypes.	0.015	T	T	39
ABCG2		Lamotrigine	140 patients with epilepsy (China)	Pharmacokinetics	CA and AA genotypes were associated with higher concentrations of lamotrigine relative to the CC genotype.	<0.05	T		40
ABCG2	rs3114020	Lamotrigine	140 patients with epilepsy (China)	Pharmacokinetics	CC and CT genotypes were associated with increased concentrations of lamotrigine relative to the TT genotype.	0.01	C	C	40

547

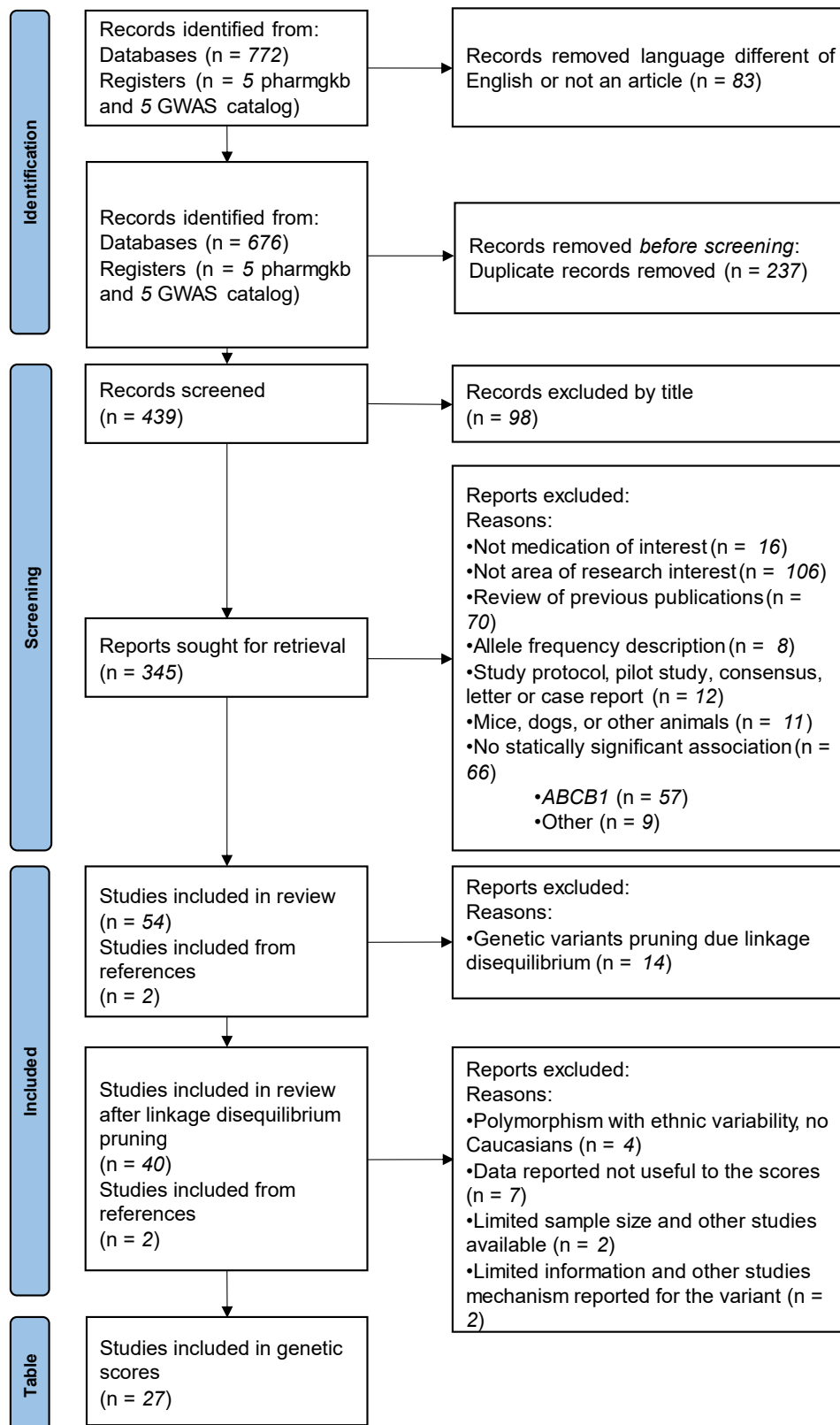
548 **Supplemental Table 3. STROBE checklist for cohort studies**  
549

	Item No	Recommendation	Page No
<b>Title and abstract</b>			
Title and abstract	1	(a) Indicate the study's design with a commonly used term in the title or the abstract	1
		(b) Provide in the abstract an informative and balanced summary of what was done and what was found	3-4
<b>Introduction</b>			
Background/ rationale	2	Explain the scientific background and rationale for the investigation being reported	6-7
Objectives	3	State specific objectives, including any pre-specified hypotheses	6-7
<b>Methods</b>			
Study design	4	Present key elements of study design early in the paper	6
Setting	5	Describe the setting, locations, and relevant dates, including periods of recruitment, exposure, follow-up, and data collection	8
Participants	6	(a) Give the eligibility criteria, and the sources and methods of selection of participants. Describe methods of follow-up	8-9
		(b) For matched studies, give matching criteria and number of exposed and unexposed	-
Variables	7	Clearly define all outcomes, exposures, predictors, potential confounders, and effect modifiers. Give diagnostic criteria, if applicable	9-11
Data sources/ measurement	8	For each variable of interest, give sources of data and details of methods of assessment (measurement). Describe comparability of assessment methods if there is more than one group	8-11
Bias	9	Describe any efforts to address potential sources of bias	9-11
Study size	10	Explain how the study size was arrived at	Fig.1
Quantitative variables	11	Explain how quantitative variables were handled in the analyses. If applicable, describe which groupings were chosen and why	10
Statistical methods	12	(a) Describe all statistical methods, including those used to control for confounding	10-11
		(b) Describe any methods used to examine subgroups and interactions	10-11
		(c) Explain how missing data were addressed	-
		(d) If applicable, explain how loss to follow-up was addressed	-
		(e) Describe any sensitivity analyses	11
<b>Results</b>			
Participants	13*	(a) Report numbers of individuals at each stage of study—e.g. numbers potentially eligible, examined for eligibility, confirmed eligible, included in the study, completing follow-up, and analyzed	Fig. 1
		(b) Give reasons for non-participation at each stage	
		(c) Consider use of a flow diagram	
Descriptive data	14*	(a) Give characteristics of study participants (e.g. demographic, clinical, social) and information on exposures and potential confounders	11, Table 1
		(b) Indicate number of participants with missing data for each variable of interest	-
		(c) Summarize follow-up time (e.g., average and total amount)	-
Outcome data	15	Report numbers of outcome events or summary measures over time	14-18
Main results	16	(a) Give unadjusted estimates and, if applicable, confounder-adjusted estimates and their precision (e.g., 95% confidence interval). Make clear which confounders were adjusted for and why they were included	14-18 Figures 2,3
		(b) Report category boundaries when continuous variables were categorized	14-18 Figures 2,3
		(c) If relevant, consider translating estimates of relative risk into absolute risk for a meaningful time period	-
Other analyses	17	Report other analyses done—e.g. analyses of subgroups and interactions, and sensitivity analyses	18, Supplemental figures 2-5
<b>Discussion</b>			
Key results	18	Summarize key results with reference to study objectives	19
Limitations	19	Discuss limitations of the study, taking into account sources of potential bias or imprecision. Discuss both direction and magnitude of any potential bias	20
Interpretation	20	Give a cautious overall interpretation of results considering objectives, limitations, multiplicity of analyses, results from similar studies, and other relevant evidence	19-20
Generalizability	21	Discuss the generalizability (external validity) of the study results	20
<b>Other information</b>			
Funding	22	Give the source of funding and the role of the funders for the present study and, if applicable, for the original study on which the present article is based	23

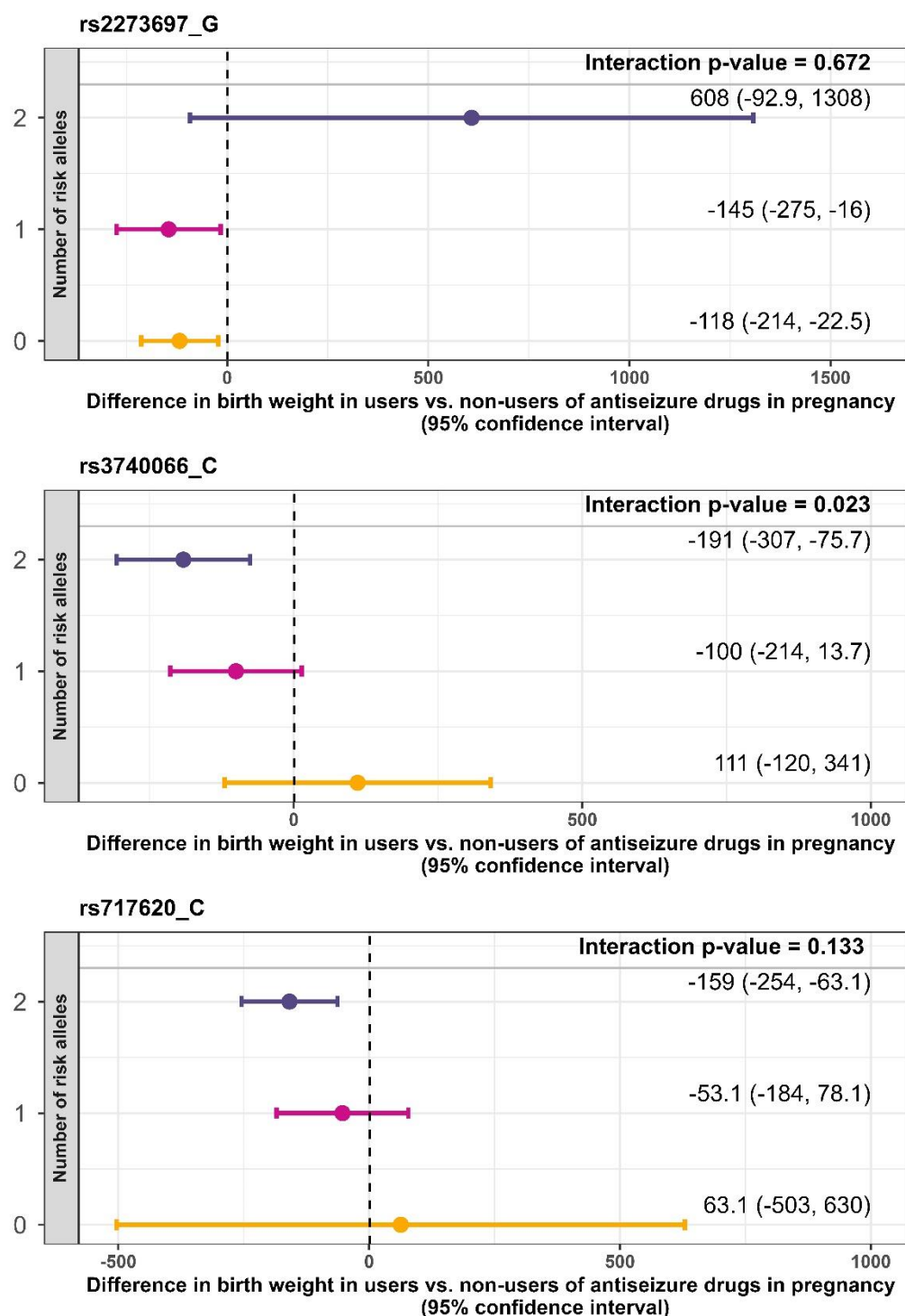
551 **SUPPLEMENTAL RESULTS**  
552

553 **Supplemental Figure 1.** Flow chart of the systematic literature review of genetic variants on  
554 placental efflux transporters.

555

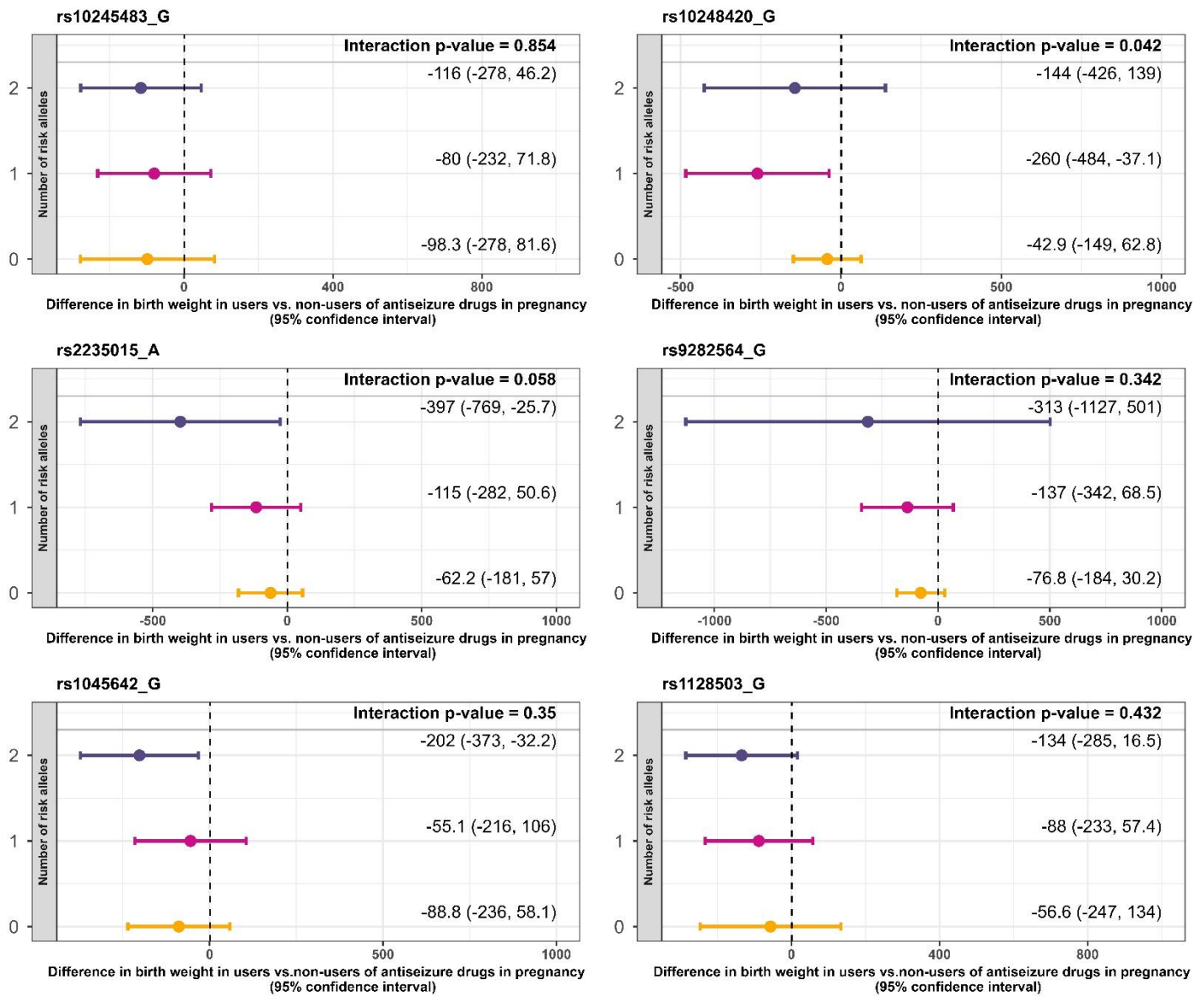


556 **Supplemental Figure 2.** Differences in birth weight associated with pregnancy use of  
557 antiseizure drugs due to *ABCC2* individual genetic variants in the offspring.



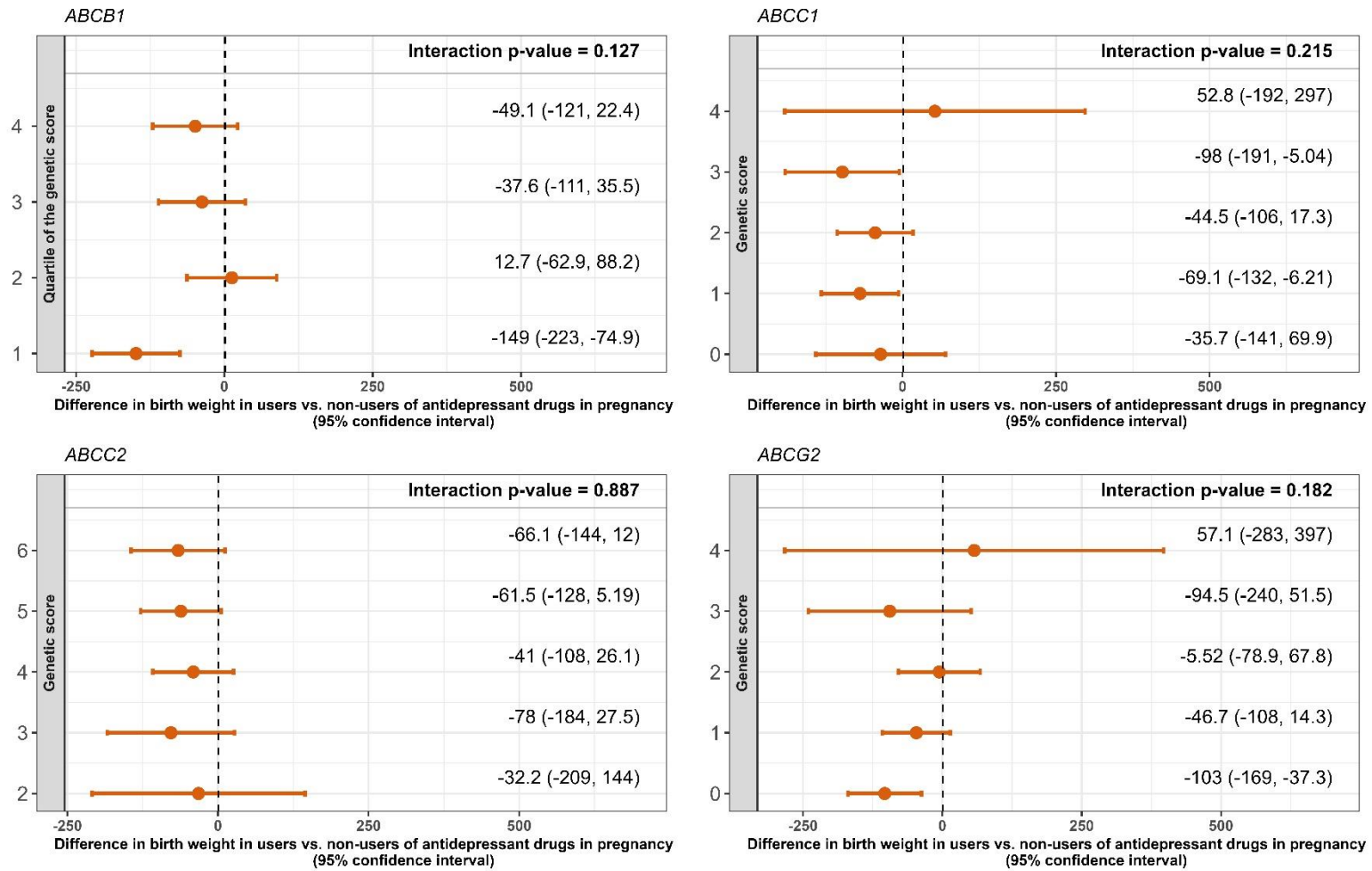
558

559 **Supplemental Figure 3.** Differences in birth weight associated with pregnancy use of  
 560 antiseizure drugs due to *ABCB1* individual genetic variants in the mother.  
 561



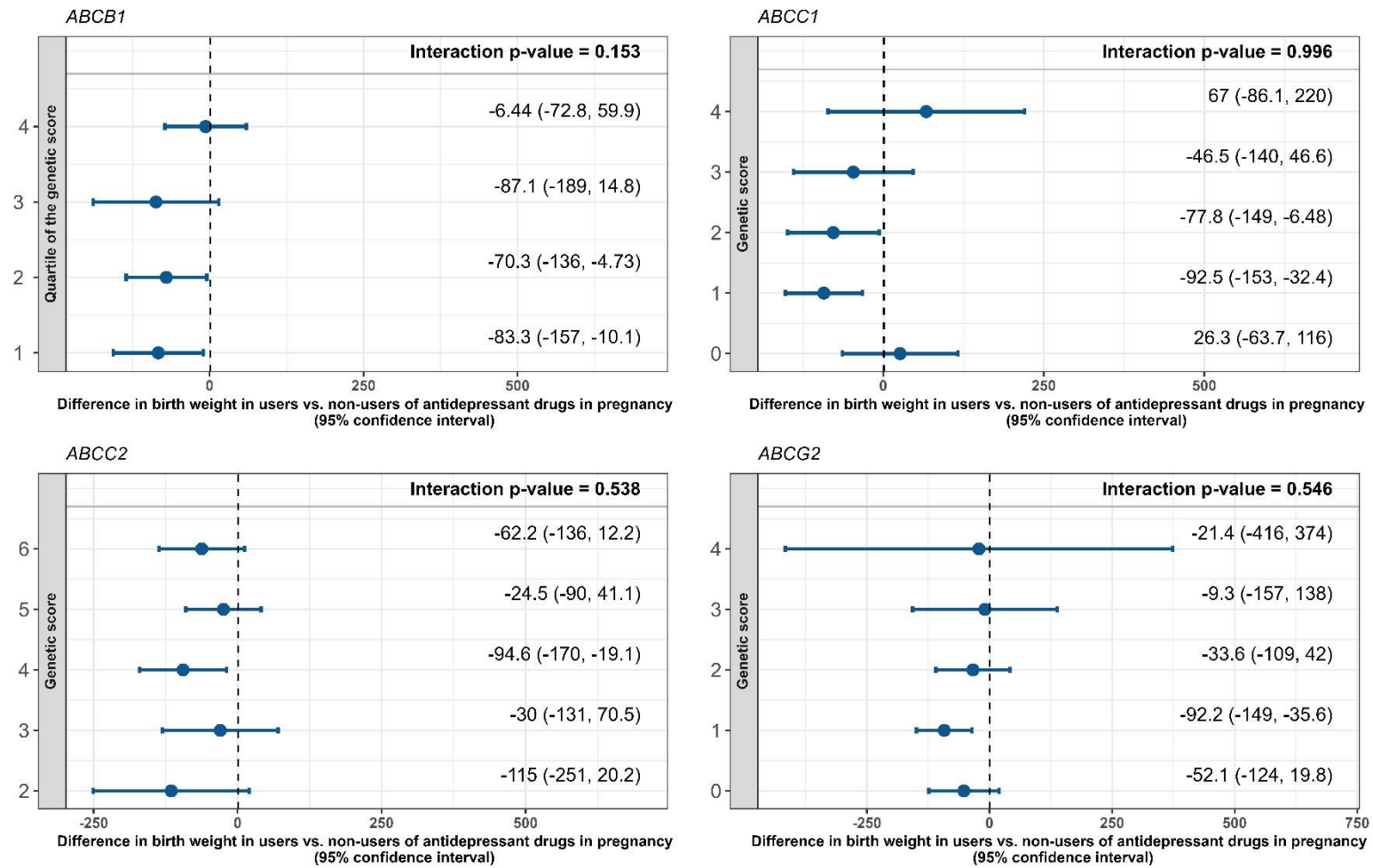
562  
563  
564

**Supplemental Figure 4.** Differences in birth weight associated with pregnancy use of antidepressant medication and placental transporter genetic scores in the offspring.



565  
566

**Supplemental Figure 5.** Differences in birth weight associated with pregnancy use of antidepressant medication and placental transporter genetic scores in the mother.





567 **SUPPLEMENTAL REFERENCES**  
568

- 569 1. Hung C-C, Jen Tai J, Kao P-J, Lin M-S, Liou H-H. Association of polymorphisms  
570 in NR1I2 and ABCB1 genes with epilepsy treatment responses. *Pharmacogenomics*.  
571 2007;8: 1151–1158. doi:10.2217/14622416.8.9.1151
- 572 2. Kwan P, Baum L, Wong V, Ng PW, Lui CHT, Sin NC, et al. Association between  
573 ABCB1 C3435T polymorphism and drug-resistant epilepsy in Han Chinese. *Epilepsy*  
574 *Behav.* 2007;11: 112–117. doi:10.1016/j.yebeh.2007.04.013
- 575 3. Shaheen U, Prasad DKV, Sharma V, Suryaprabha T, Ahuja YR, Jyothy A, et al.  
576 Significance of MDR1 gene polymorphism C3435T in predicting drug response in  
577 epilepsy. *Epilepsy Res.* 2014;108: 251–256. doi:10.1016/j.eplepsyres.2013.11.009
- 578 4. Zhang M-L, Chen X-L, Bai Z-F, Zhao X, Li W-X, Wang X-Y, et al. ABCB1 c.3435C  
579 > T and EPHX1 c.416A > G polymorphisms influence plasma carbamazepine  
580 concentration, metabolism, and pharmacoresistance in epileptic patients. *Gene*.  
581 2021;805: 145907. doi:10.1016/j.gene.2021.145907
- 582 5. Fan Y-X, Zhang Z, Meng J-R, Yin S-J, Wang P, Zhou T, et al. Association of  
583 ABCB1 polymorphisms with carbamazepine metabolism and resistance in epilepsy: A  
584 meta-analysis. *Epilepsy Res.* 2021;177: 106785. doi:10.1016/j.eplepsyres.2021.106785
- 585 6. Saiz-Rodríguez M, Ochoa D, Belmonte C, Román M, Vieira de Lara D, Zubiaur  
586 P, et al. Polymorphisms in CYP1A2, CYP2C9 and ABCB1 affect agomelatine  
587 pharmacokinetics. *J Psychopharmacol.* 2019;33: 522–531.  
588 doi:10.1177/0269881119827959
- 589 7. Li M, Tan J, Yang X, Su L, Xie J, Liang B, et al. The ABCB1-C3435T  
590 polymorphism likely acts as a risk factor for resistance to antiepileptic drugs. *Epilepsy*  
591 *Res.* 2014;108: 1052–1067. doi:10.1016/j.eplepsyres.2014.03.019

- 592 8. Shen X-M, Cheng J. Effects ofMDR1(C3435T) polymorphism on resistance,  
593 uptake, and efflux to antiepileptic drugs. *DNA Cell Biol.* 2019;38: 250–255.  
594 doi:10.1089/dna.2018.4553
- 595 9. Zhu X, Yun W, Sun X, Qiu F, Zhao L, Guo Y. Effects of major transporter and  
596 metabolizing enzyme gene polymorphisms on carbamazepine metabolism in Chinese  
597 patients with epilepsy. *Pharmacogenomics.* 2014;15: 1867–1879.  
598 doi:10.2217/pgs.14.142
- 599 10. Huang X, Yu T, Li X, Cao Y, Li X, Liu B, et al. ABCB6, ABCB1 and ABCG1 genetic  
600 polymorphisms and antidepressant response of SSRIs in Chinese depressive patients.  
601 *Pharmacogenomics.* 2013;14: 1723–1730. doi:10.2217/pgs.13.151
- 602 11. Uhr M, Tontsch A, Namendorf C, Ripke S, Lucae S, Ising M, et al. Polymorphisms  
603 in the drug transporter gene ABCB1 predict antidepressant treatment response in  
604 depression. *Neuron.* 2008;57: 203–209. doi:10.1016/j.neuron.2007.11.017
- 605 12. Puranik YG, Birnbaum AK, Marino SE, Ahmed G, Cloyd JC, Remmel RP, et al.  
606 Association of carbamazepine major metabolism and transport pathway gene  
607 polymorphisms and pharmacokinetics in patients with epilepsy. *Pharmacogenomics.*  
608 2013;14: 35–45. doi:10.2217/pgs.12.180
- 609 13. Lee S-T, Ryu S, Kim S-R, Kim M-J, Kim S, Kim J-W, et al. Association study of  
610 27 annotated genes for clozapine pharmacogenetics: Validation of preexisting studies  
611 and identification of a new candidate gene, ABCB1, for treatment response. *J Clin*  
612 *Psychopharmacol.* 2012;32: 441–448. doi:10.1097/jcp.0b013e31825ac35c
- 613 14. Breitenstein B, Brückl TM, Ising M, Müller-Myhsok B, Holsboer F, Czamara D.  
614 ABCB1gene variants and antidepressant treatment outcome: A meta-analysis. *Am J*  
615 *Med Genet B Neuropsychiatr Genet.* 2015;168: 274–283. doi:10.1002/ajmg.b.32309

- 616 15. de Klerk OL, Nolte IM, Bet PM, Bosker FJ, Snieder H, den Boer JA, et al. ABCB1  
617 gene variants influence tolerance to selective serotonin reuptake inhibitors in a large  
618 sample of Dutch cases with major depressive disorder. *Pharmacogenomics J.* 2013;13:  
619 349–353. doi:10.1038/tpj.2012.16
- 620 16. Sarginson JE, Lazzeroni LC, Ryan HS, Ershoff BD, Schatzberg AF, Murphy GM.  
621 ABCB1 (MDR1) polymorphisms and antidepressant response in geriatric depression.  
622 *Pharmacogenet Genomics.* 2010;20: 467–475. doi:10.1097/fpc.0b013e32833b593a
- 623 17. Breitenstein B, Scheuer S, Brückl TM, Meyer J, Ising M, Uhr M, et al. Association  
624 of ABCB1 gene variants, plasma antidepressant concentration, and treatment response:  
625 Results from a randomized clinical study. *J Psychiatr Res.* 2016;73: 86–95.  
626 doi:10.1016/j.jpsychires.2015.11.010
- 627 18. Gassó P, Rodríguez N, Mas S, Pagerols M, Blázquez A, Plana MT, et al. Effect  
628 of CYP2D6, CYP2C9 and ABCB1 genotypes on fluoxetine plasma concentrations and  
629 clinical improvement in children and adolescent patients. *Pharmacogenomics J.*  
630 2014;14: 457–462. doi:10.1038/tpj.2014.12
- 631 19. Glauser TA, Holland K, O'Brien VP, Keddache M, Martin LJ, Clark PO, et al.  
632 Pharmacogenetics of antiepileptic drug efficacy in childhood absence epilepsy: CAE  
633 Pharmacogenetics. *Ann Neurol.* 2017;81: 444–453. doi:10.1002/ana.24886
- 634 20. Kato M, Fukuda T, Serretti A, Wakeno M, Okugawa G, Ikenaga Y, et al. ABCB1  
635 (MDR1) gene polymorphisms are associated with the clinical response to paroxetine in  
636 patients with major depressive disorder. *Progress in Neuro-Psychopharmacology and  
637 Biological Psychiatry.* 2008;32: 398–404. doi:10.1016/j.pnpbp.2007.09.003
- 638 21. Mittal B, Kumari R, Lakhan R, Garg RK, Kalita J, Misra UK. Pharmacogenomic  
639 association study on the role of drug metabolizing, drug transporters and drug target  
640 gene polymorphisms in drug-resistant epilepsy in a north Indian population. *Indian J Hum  
641 Genet.* 2011;17: 32. doi:10.4103/0971-6866.80357

- 642 22. Lovrić M, Božina N, Hajnšek S, Kuzman MR, Sporiš D, Lalić Z, et al. Association  
643 between lamotrigine concentrations and ABCB1 polymorphisms in patients with  
644 epilepsy. *Ther Drug Monit.* 2012;34: 518–525. doi:10.1097/ftd.0b013e31826517c6
- 645 23. Rafaniello C, Sessa M, Bernardi FF, Pozzi M, Cheli S, Cattaneo D, et al. The  
646 predictive value of ABCB1, ABCG2, CYP3A4/5 and CYP2D6 polymorphisms for  
647 risperidone and aripiprazole plasma concentrations and the occurrence of adverse drug  
648 reactions. *Pharmacogenomics J.* 2018;18: 422–430. doi:10.1038/tpj.2017.38
- 649 24. Vijayan NN, Mathew A, Balan S, Natarajan C, Nair CM, Allencherry PM, et al.  
650 Antipsychotic drug dosage and therapeutic response in schizophrenia is influenced by  
651 ABCB1 genotypes: a study from a south Indian perspective. *Pharmacogenomics.*  
652 2012;13: 1119–1127. doi:10.2217/pgs.12.86
- 653 25. Subenthiran S, Abdullah NR, Muniandy PK, Joseph JP, Cheong KC, Ismail Z, et  
654 al. G2677T polymorphism can predict treatment outcome of Malaysians with complex  
655 partial seizures being treated with Carbamazepine. *Genet Mol Res.* 2013;12: 5937–  
656 5944. doi:10.4238/2013.november.26.3
- 657 26. Zubiaur P, Soria-Chacartegui P, Koller D, Navares-Gómez M, Ochoa D,  
658 Almenara S, et al. Impact of polymorphisms in transporter and metabolizing enzyme  
659 genes on olanzapine pharmacokinetics and safety in healthy volunteers. *Biomed*  
660 *Pharmacother.* 2021;133: 111087. doi:10.1016/j.biopha.2020.111087
- 661 27. Bet PM, Verbeek EC, Milaneschi Y, Straver DBM, Uithuisje T, Bevova MR, et al.  
662 A common polymorphism in the ABCB1 gene is associated with side effects of PGP-  
663 dependent antidepressants in a large naturalistic Dutch cohort. *Pharmacogenomics J.*  
664 2016;16: 202–208. doi:10.1038/tpj.2015.38
- 665 28. Gex-Fabry M, Eap CB, Oneda B, Gervasoni N, Aubry J-M, Bondolfi G, et al.  
666 CYP2D6 and ABCB1 genetic variability: Influence on paroxetine plasma level and

- 667 therapeutic response. *Ther Drug Monit.* 2008;30: 474–482.  
668 doi:10.1097/ftd.0b013e31817d6f5d
- 669 29. Schatzberg AF, DeBattista C, Lazzeroni LC, Etkin A, Murphy GM Jr, Williams LM.  
670 ABCB1 genetic effects on antidepressant outcomes: A report from the iSPOT-D trial. *Am*  
671 *J Psychiatry.* 2015;172: 751–759. doi:10.1176/appi.ajp.2015.14050680
- 672 30. Ho AM-C, Coombes BJ, Nguyen TTL, Liu D, McElroy SL, Singh B, et al. Mood-  
673 stabilizing antiepileptic treatment response in bipolar disorder: A genome-wide  
674 association study. *Clin Pharmacol Ther.* 2020;108: 1233–1242. doi:10.1002/cpt.1982
- 675 31. Piatkov I, Caetano D, Assur Y, Lau SL, Jones T, Boyages SC, et al. ABCB1 and  
676 ABCC1 single-nucleotide polymorphisms in patients treated with clozapine.  
677 *Pharmgenomics Pers Med.* 2017;10: 235–242. doi:10.2147/pgpm.s142314
- 678 32. Singh AB. Improved antidepressant remission in major depression via a  
679 pharmacokinetic pathway polygene pharmacogenetic report. *Clin Psychopharmacol*  
680 *Neurosci.* 2015;13: 150–156. doi:10.9758/cpn.2015.13.2.150
- 681 33. Qu J, Zhou B-T, Yin J-Y, Xu X-J, Zhao Y-C, Lei G-H, et al. ABCC2 polymorphisms  
682 and haplotype are associated with drug resistance in Chinese epileptic patients: ABCC2  
683 polymorphisms and epilepsy drug resistance. *CNS Neurosci Ther.* 2012;18: 647–651.  
684 doi:10.1111/j.1755-5949.2012.00336.x
- 685 34. Qian L, Fang S, Yan Y-L, Zeng S-S, Xu Z-J, Gong Z-C. The ABCC2 c.-24C > T  
686 polymorphism increases the risk of resistance to antiepileptic drugs: A meta-analysis. *J*  
687 *Clin Neurosci.* 2017;37: 6–14. doi:10.1016/j.jocn.2016.10.014
- 688 35. Xue T, Lu ZN. Association between the polymorphisms in the ATP-binding  
689 cassette genes ABCB1 and ABCC2 and the risk of drug-resistant epilepsy in a Chinese  
690 Han population. *Genet Mol Res.* 2016;15. doi:10.4238/gmr15048752

- 691 36. Grover S, Kukreti R. A systematic review and meta-analysis of the role  
692 of ABCC2 variants on drug response in patients with epilepsy. *Epilepsia*. 2013;54: 936–  
693 945. doi:10.1111/epi.12132
- 694 37. Ma C-L, Wu X-Y, Zheng J, Wu Z-Y, Hong Z, Zhong M-K. Association of SCN1A,  
695 SCN2A and ABCC2 gene polymorphisms with the response to antiepileptic drugs in  
696 Chinese Han patients with epilepsy. *Pharmacogenomics*. 2014;15: 1323–1336.  
697 doi:10.2217/pgs.14.89
- 698 38. Laechelt S, Turrini E, Ruehmkorf A, Siegmund W, Cascorbi I, Haenisch S. Impact  
699 of ABCC2 haplotypes on transcriptional and posttranscriptional gene regulation and  
700 function. *Pharmacogenomics J*. 2011;11: 25–34. doi:10.1038/tpj.2010.20
- 701 39. Shen C-H, Zhang Y-X, Lu R-Y, Jin B, Wang S, Liu Z-R, et al. Specific OCT1 and  
702 ABCG2 polymorphisms are associated with Lamotrigine concentrations in Chinese  
703 patients with epilepsy. *Epilepsy Res*. 2016;127: 186–190.  
704 doi:10.1016/j.epilepsyres.2016.09.004
- 705 40. Zhou Y, Wang X, Li H, Zhang J, Chen Z, Xie W, et al. Polymorphisms of ABCG2,  
706 ABCB1 and HNF4 $\alpha$  are associated with Lamotrigine trough concentrations in epilepsy  
707 patients. *Drug Metab Pharmacokinet*. 2015;30: 282–287.  
708 doi:10.1016/j.dmpk.2015.05.002
- 709