

1 **Circulation of SARS-CoV-2 and co-infection with** 2 ***Plasmodium falciparum* in Equatorial Guinea**

3
4 Diana López-Farfán¹, Policarpo Ncogo^{2,3}, Consuelo Oki⁴, Matilde Riloha⁴, Valero Ondo⁴,
5 Pablo Cano-Jiménez⁵, Francisco José Martínez-Martínez⁵, Iñaki Comas^{5,6}, Nerea
6 Irigoyen⁷, Pedro Berzosa^{3,8}, Agustín Benito Llanes⁸ & Elena Gómez-Díaz¹

7
8 ¹Instituto de Parasitología y Biomedicina López-Neyra, Consejo Superior de
9 Investigaciones Científicas (IPBLN, CSIC), Granada, Spain.

10 ²Instituto de Salud Carlos III, Madrid, Spain.

11 ³Fundación CSAI. Madrid, Spain.

12 ⁴Ministerio de Sanidad y Bienestar Social, Malabo, Equatorial Guinea.

13 ⁵Instituto de Biomedicina de Valencia, Consejo Superior de Investigaciones Científicas
14 (IBV, CSIC), Valencia, Spain.

15 ⁶CIBER in Epidemiology and Public Health, Madrid, Spain

16 ⁷Division of Virology, Department of Pathology, University of Cambridge, Cambridge,
17 UK.

18 ⁸Centro Nacional de Medicina Tropical. CIBERINFEC, Instituto de Salud Carlos III.
19 Madrid, Spain.

20
21 * Corresponding author:

22 E-mail: diana.lopez@ipb.csic.es (DL-F)

23
24 Keywords: COVID-19, malaria, co-infection, coronavirus, Africa, genomic surveillance

NOTE: This preprint reports new research that has not been certified by peer review and should not be used to guide clinical practice.

25

26 **Abstract**

27 The impact of COVID-19 in Africa has been a big concern since the beginning of the
28 pandemic. However, low incidence of COVID-19 case severity and mortality has been
29 reported in many African countries, although data are highly heterogeneous and, in some
30 regions, like Sub-Saharan Africa, very scarce. Many of these regions are also the cradle
31 of endemic infectious diseases like malaria. The aim of this study was to determine the
32 prevalence of SARS-CoV-2, the diversity and origin of circulating variants as well as the
33 frequency of co-infections with malaria in Equatorial Guinea. For this purpose, we
34 conducted antigen diagnostic tests for SARS-CoV-2, and microscopy examinations for
35 malaria of 1,556 volunteers at six health centres in Bioko and Bata from June to October
36 2021. Nasopharyngeal swab samples were also taken for molecular detection of SARS-
37 CoV-2 by RT-qPCR and whole genome viral sequencing. We report 3.0% of SARS-
38 CoV-2 and 24.4% of malaria prevalence over the sampling in Equatorial Guinea. SARS-
39 CoV-2 cases were found at a similar frequency in all age groups, whereas the age groups
40 most frequently affected by malaria were children (36.8% [95% CI 30.9-42.7]) and
41 teenagers (34.7% [95% CI 29.5-39.9]). We found six cases of confirmed co-infection of
42 malaria and SARS-CoV-2 distributed among all age groups, representing a 0.4%
43 frequency of co-infection in the whole sampled population. Interestingly, the majority of
44 malaria and SARS-CoV-2 co-infections were mild. We obtained the genome sequences
45 of 43 SARS-CoV-2 isolates, most of which belong to the lineage Delta (AY.43) and that
46 according to our pandemic-scale phylogenies were introduced from Europe in multiple
47 occasions (7 transmission groups and 17 unique introductions). This study is relevant in
48 providing first-time estimates of the actual prevalence of SARS-CoV-2 in this malaria-

49 endemic country, with the identification of circulating variants, their origin, and the
50 occurrence of SARS-CoV-2 and malaria co-infection.

51

52 **Introduction**

53 The coronavirus disease 19 (COVID-19) has caused more than 767 million cases and 6,9
54 million deaths worldwide. However, only a small proportion of these (around 9,5 million
55 cases [1.24%] and 175,339 deaths [2.52%]) have occurred in Africa (data as of July 2023,
56 WHO COVID-19 Dashboard) (1). Moreover, inside Africa, the distribution of cases has
57 been uneven. Most of the reported cases are from a few Northern and Southern countries
58 like South Africa (4.0 million cases), Morocco (1.27 million cases) and Tunisia (1.15
59 million cases). In comparison, only 634,161 cases account for Central African countries.
60 These data suggest country-specific factors such as reduced transmission or limited
61 testing, raising questions about the real impact of the pandemic in Central African
62 countries.

63 Genomic SARS-CoV-2 surveillance has been vital in monitoring the emergence,
64 evolution and spread of different variants of concern (VOC). Indeed, several VOC, such
65 as Alpha, Beta, Delta and Omicron, were first detected on the African continent or have
66 spread extensively on it (2–4). Despite the heterogeneous pandemic across Africa, most
67 countries have reported multiple waves of infection (4). Genomic sequencing has also
68 revealed that each wave has been dominated by a different lineage (4,5). Within Africa
69 regional viral population diversity has been observed in the first and second waves and,
70 to a lesser extent, in the third wave. In North and Southern Africa, the first and second
71 waves were dominated by Beta (B1) and Alpha lineages, replaced by Delta and Omicron
72 in the third and fourth waves, respectively. However, different lineages in West, East and
73 Central Africa have dominated the first, second and third waves (4). In addition, other

74 minor lineages have been detected co-circulating and contributing to epidemic waves in
75 all regions of the continent (4,6) . In this context, characterising the local diversity of
76 SARS-CoV-2 variants country by country becomes critical.

77 Equatorial Guinea is located on the west coast of Central Africa and consists of two parts,
78 the mainland and an insular region (i.e., Bioko is the main island). As of April 2023, this
79 country had reported 17,130 cases and 183 deaths, most of them from the insular region
80 (77,2%) (7). Like in other African countries, data about the prevalence of SARS-COV-2
81 infection in Equatorial Guinea is still scarce. Indeed, to our knowledge, no representative
82 studies exist which evaluate the prevalence of SARS-COV-2 in this country.

83 After Equatorial Guinea confirmed its first case of COVID-19 community transmission
84 on March 14, 2020, there have been five waves (7). A genomic analysis of SARS-COV-
85 2 sequences revealed that the first wave from April to July 2020 was dominated by the
86 early lineage B.1.192, the second wave from January to April 2021 was dominated by the
87 Beta variant (B.1.351), and the third wave began during July 2021 with the Delta variant
88 (AY.43) (5).

89 To date, there are deposited 213 SARS-CoV-2 whole genome sequences from Equatorial
90 Guinea on the GISAID database (8). These data correspond, however, to 1.2% of reported
91 cases, which is far from the World Health Organization (WHO) recommendation to
92 sequence at least 5% of COVID-19 cases by country (9). Hence, there is a need to
93 increase the number of SARS-CoV-2 genomes to sequence for a complete assessment of
94 the diversity of variants circulating in the country.

95 Apart from the direct mortality impact of COVID-19, the pandemic has also resulted in a
96 worsening crisis in controlling several endemic diseases in Africa (10–12). During the
97 first year of the COVID-19 pandemic, malaria cases and deaths in Africa increased from
98 213 to 228 million cases and from 534,000 to 602,000 deaths (15 million more cases and

99 68,000 more deaths). This was mainly due to disruption in malaria interventions (13),
100 reaching the worst-case scenario projected at the beginning of the pandemic (14). During
101 2021, the increase of malaria cases continued but was less marked (2 million more cases)
102 while deaths remained stable (13). This was possible due to the efforts of countries and
103 partners that provided additional funding to deliver essential malaria services (13).
104 Besides these collateral effects, the circulation of COVID-19 in malaria-endemic
105 countries raises the possibility of co-infection. The frequency and consequences of co-
106 infection at the population level have been assessed in eight African (15,16,25,26,17–24)
107 and one Indian (27) malaria-endemic countries. However, these studies have shown very
108 heterogeneous results depending on the study design and the population or subpopulation
109 sampled (**S1 Table in S1 Text**).

110 Equatorial Guinea is among the moderate to high malaria transmission countries in the
111 African Region, which accounts for 95% of cases and 96% of malaria deaths globally. To
112 date, no study has examined the occurrence and frequency of SARS-COV-2 and malaria
113 co-infection.

114 To fill these gaps, in this work, we conducted a cross-sectional study of 1,556 volunteers
115 at six health centres, three in Bioko (island) and three in Bata (mainland), from June to
116 October 2021. All subjects were tested for SARS-CoV-2 by rapid antigen diagnostic tests
117 and for malaria by microscopy. Moreover, swab samples were also taken for SARS-CoV-
118 2 RT-qPCR and whole genome viral sequencing. To our knowledge, this is one of the
119 largest SARS-CoV-2 epidemiological studies conducted in Sub-Saharan Africa. This is
120 also the first to evaluate SARS-COV-2 and malaria co-infection in this endemic malaria
121 country.

122

123 **Methods**

124

125 **Ethics**

126 This protocol was revised by members of the ISCIII/FCSAI at Equatorial Guinea,
127 approved by the Spanish National Research Council (CSIC), the Ethics Committee of
128 Biomedical Research in Andalusia (CCEIBA), and the technical committee of the
129 Ministry of Health and Social Welfare of Equatorial Guinea. The field procedures were
130 carried out by the technical staff of the National Malaria Programme of the Ministry of
131 Health and Social Welfare of Equatorial Guinea. The protocol is in conformity with the
132 declaration of Helsinki and all international regulations about the ethical principles in
133 biomedical research involving human subjects. SARS-CoV-2 and malaria-positive
134 individuals were provided with treatment and assisted by medical professionals. During
135 the screening, local authorities, health centres and volunteers were informed about the
136 objectives of the study and the protocols performed.

137

138 **Study design**

139 This study was conducted at six health centres in Equatorial Guinea, three located at
140 Bioko Island (Hospital Regional de Malabo, Centro de Salud Buena Esperanza and
141 Centro de Salud de Campo Yaundé) and three located at the mainland city of Bata (Centro
142 de Salud María Rafols, Centro de Salud La Libertad and Hospital Regional de Bata).
143 1,556 volunteers were enrolled at the six health centres from 1st June to 4th October 2021
144 (**S2 Table in S1 text**). Demographic and clinical information collected included age, sex,
145 temperature, symptomatology and pregnancy state. Since COVID-19 vaccination started
146 on March 2021, only non-vaccinated volunteers were eligible for the study.
147 Prior to taking any samples, participants were required to sign the informed consent form
148 created for the study. For each participating subject, one drop of blood was obtained by

149 capillary puncture of the fingertip. This blood was used for malaria detection by
150 microscopy. When there was consent, a nasopharyngeal sample was also collected for
151 rapid antigen detection of SARS-CoV-2. For SARS-CoV-2 positive antigen test
152 volunteers, a second nasopharyngeal sample was taken, and the swab was stored in pre-
153 filled tubes containing 0.5 mL of inactivating lysis buffer (AVL, QIAGEN) for molecular
154 testing of SARS-CoV-2 and whole genome viral sequencing. These samples were kept at
155 4°C for 24h and at -20°C or -80°C for extended storage and subsequent analysis.

156

157 **Malaria and SARS-CoV-2 diagnosis**

158 Malaria was detected by microscopy following standard methods (28). Blood thick
159 smears were screened for *Plasmodium falciparum* asexual and gametocyte stages in the
160 blood.

161 Antigen detection of SARS-CoV-2 was performed from individual nasal swabs samples
162 using the Panbio™ COVID-19 Ag Rapid Test (Abbot) following the manufacturer's
163 instructions. For SARS-COV-2 molecular detection, RNA was extracted from 140 µL of
164 the AVL preservative solution using the QIAamp viral RNA extraction kit (QIAGEN)
165 following the manufacturer's instructions. RT-qPCR analysis was performed using the
166 one-step Direct SARS-CoV-2 Realtime PCR Kit (Vircell S.L) following the
167 manufacturer's instructions, reactions were performed in 20 µL final volume (5 µL of
168 RNA sample and 15 µL of RT-PCR mix) using a CFX96 Real-Time PCR Detection
169 System (Bio-Rad, Hercules, CA, USA). Cycle threshold (Ct) values were analysed using
170 the BIORAD CFX manager software. Gene targets identified with this kit were the
171 *nucleocapsid* (N), the *envelope* (E) and the human *RNase P*. Samples were considered
172 positive when the N and E target genes had a cycle threshold (Ct) < 40. Positive and
173 negative controls were always included.

174

175 **Statistical analysis**

176 Association between variables was tested with the Wilcoxon Sum Rank tests (for
177 continuous quantitative variables) and the Kruskal-Wallis chi-squared test.

178

179 **Whole genome sequencing and phylogenetic analysis**

180 RNA from SARS-CoV-2 positive samples with a Ct value ≤ 35 was sent for sequencing
181 to the Instituto de Biomedicina de Valencia (IBV-CSIC). RNA was retrotranscribed into
182 cDNA, and SARS-CoV-2 complete genome amplification was performed in two
183 multiplex PCR, accordingly to openly available protocol developed by the ARTIC
184 network⁵ using the V4.1 multiplex primers scheme (artic-network n.d.). Two resulting
185 amplicon pools were combined and used for library preparation. Genomic libraries were
186 constructed with the Nextera DNA Flex Sample Preparation kit (Illumina Inc., San Diego,
187 CA) according to the manufacturer's protocol with five cycles for indexing PCR. Whole
188 genome sequencing was performed in a MiSeq platform (2×150 cycles paired-end run;
189 Illumina). Sequences obtained went through an open-source bioinformatic pipeline based
190 on IVAR6 (29). The different steps of the pipeline are as follows: 1) removal of human
191 reads with Kraken (30); 2) filtering of the fastq files using fastp v 0.20.1 (31) (arguments:
192 `-cut tail, -cut-window-size, -cut-mean-quality, -max_len1, -max_len2`); 3) mapping and
193 variant calling using IVAR v 1.2; and 4) quality control assessment with MultiQC (32).
194 Consensus sequences generated by this pipeline were aligned against the SARS-CoV-2
195 reference sequence (33) with MAFFT (34). Problematic positions were masked using the
196 `mask_alignment.py` script from the repository maintained by Rob Lanfear⁷. Lineages and
197 clade nomenclature were assigned using Pangolin (35) and Nexclade online tool (36).

198 The phylogenetic tree was generated with Nextclade v2.5.08, downloaded in JSON
199 format and visualised using Auspice v2.37.3 online tool¹⁹ (37,38).

200

201 **Genome-based epidemiological analysis**

202 A genome-based epidemiological analysis was performed on the sequenced Guinea
203 Equatorial samples following the pipeline described in Martínez-Martínez et al (39). We
204 used a pandemic-scale phylogenomics analysis tool called UShER (40) to place the
205 newly-sequenced samples in a prebuilt phylogeny. For this purpose, we downloaded an
206 existing SARS-CoV-2 phylogeny (eTree) composed of 15.649.343 sequences uploaded
207 in GISAID (8) on July 27th, 2023 from the UCSC ftp server (ftp:apache/cgi-
208 bin/hgPhyloPlaceData/wuhcor1). This method avoids subsampling the dataset by the
209 country of origin or the sampling date, maintaining the broadest possible context.

210 Using Robert Lanfear's `global_profile_alignment.sh` (41), we aligned the Guinea
211 Equatorial sequences against the Wuhan reference sequence (MN908947.3). We used the
212 `faToVcf` tool from the UShER toolbox to obtain the VCF file, and used this file as input
213 along with the eTree to place the new 43 sequences.

214 To speed up the analysis, we extracted the Beta and Delta variants' clades from the eTree
215 using `matUtils` (42) after identifying the parental nodes using the Taxonium viewer (43).

216 Finally, using a custom code developed in R, we identified the likely country/region of
217 origin and the period of the introductions. To do so, we first defined 3 possible categories
218 for our sequences: transmission group, if they fell in a node in which >60% samples were
219 from Equatorial Guinea; unique sequence, if they fell in a node with lower presence of
220 the country and the length of their branches is greater than 0; and unclassified, if they had
221 no branch length. Then, we searched for the closest sequence with the minimal genetic
222 distance in SNPs that was collected within a period between the 3 months prior to the

223 sampling date, and the sampling date minus 10 days. All the commands used in this
224 analysis are available at the GitLab repository along with the custom code
225 (<https://gitlab.com/tbgenomicsunit/covid-guinea>).

226

227 **Ethics Statement**

228 The studies involving human participants were reviewed and approved by Ethics
229 Committee of the Spanish National Research Council (CSIC), the Ethics Committee of
230 Biomedical Research in Andalusia (CCEIBA), and the technical committee of the
231 Ministry of Health and Social Welfare of Equatorial Guinea. Participants were required
232 to sign the informed consent form created for the study. As the study involved children,
233 a signed declaration of conformity for participating was obtained from their parents
234 and/or legal representatives.

235

236 **Results and Discussion**

237 Compared to the rest of the world, the impact of COVID-19 in Africa has been relatively
238 low in terms of severe disease incidence and mortality rate. Several specific socio-
239 ecological and economic factors (i.e., warm weather, younger population, lower
240 population density and mobility, limited testing capacity and previously trained immunity
241 by past infectious diseases) have been proposed to explain the apparent lower
242 transmission (44,45). Other reports, however, suggest that this impact has been vastly
243 underestimated, especially in low-income countries, due to insufficient testing and
244 uneven genomic surveillance. This is probably the case in Equatorial Guinea, where no
245 comprehensive studies assess the prevalence of SARS-CoV-2 and the number of viral
246 genomes available is still very low.

247 Apart from the noticeable direct effects, the COVID-19 pandemic severely affected the
248 global fight against several endemic infectious diseases, namely VIH, tuberculosis and
249 malaria, mainly because of an interruption and reduction in their control programmes
250 (10–12). But recent data points towards a more direct biological interaction between these
251 diseases In the case of malaria, it has been suggested that severity of COVID-19 infection
252 in malaria-endemic regions may be influenced by co-infection or previous malaria
253 exposure (20,27). Some studies also suggested a possible cross-immunity due to common
254 immunodominant epitopes between the malaria parasite and SARS-CoV-2 (46–48).
255 Prevalence studies of SARS-CoV-2 and co-infection with malaria in sub-Saharan
256 countries are therefore essential to understand the real impact of the pandemic in the
257 African continent.

258 This is the first comprehensive study of SARS-CoV-2 prevalence in Equatorial Guinea
259 and the first to evaluate malaria co-infection. For this purpose, 1,556 volunteers were
260 recruited at six Equatorial Guinea health centres for four months in 2021 (from June to
261 October) (**S2 Table in S1 Text**). The study was conducted in three health centres on
262 Bioko Island (the site of the country capital, Malabo) and three health centres in the
263 mainland city of Bata. Of the participants, 72.6% were female and 27.4% were male.
264 Samples were distributed to four age groups as follows: A. 5-12 years old (16.8%), B. 13-
265 20 years old (20.8%), C. 21-40 years old (46.2%) and D. >40 years (16.3%). The
266 distribution of positive cases by age and gender is detailed in **Table 1**.

267

268 **Table 1. Demographic characteristics and distribution of positive cases in the whole sampled population by age and gender.**

269

270

271

272

273

274

275

276

277

278

Age group (years)	Gender ^a	Non-infected	SARS-CoV-2	Malaria	SARS-CoV-2 & malaria	Subtotal	Total
A. 5-12	F	89 (62.7%)	4 (2.8%)	49 (34.5%)	0	142 (54.4%)	261 (16.8%)
	M	69 (58,0%)	5 (4.2%)	47 (39.5%)	2 (1.7%)	119 (45,6%)	
B. 13-20	F	149 (61.1%)	8 (3.3%)	84 (35.0%)	1 (0.4%)	240 (74.3%)	323 (20.8%)
	M	54 (65.1%)	1 (1.2%)	28 (33.7%)	0	83 (25.7%)	
C. 21-40	F	444 (79,1%)	11 (2.0%)	108 (19.2%)	2 (0.4%)	561 (78,0%)	719 (46.2%)
	M	128 (81,0%)	9 (5.7%)	21(13.3%)	0	158 (22.0%)	
D. >40	F	152 (82.0%)	5 (2.7%)	30 (16.1%)	1 (0.5%)	186 (73.5%)	253 (16.3%)
	M	52 (77.6%)	3 (4.5%)	12 (17.9%)	0	67 (26.5%)	
Subtotal	F	834 (67.9%)	28 (2.5%)	271 (24.0%)	4 (0.3%)	1.129 (72.6%)	1.556
	M	303 (71,0%)	18 (4.2%)	108 (25.3%)	2 (0.5%)	427 (27.4%)	
Total		1.137 (73.1%)	46 (3.0%)	379 (24.4%)	6 (0.4%)		

279

280 Data are presented as n (%).

281 ^a F: female; M: male

282

283 For this sampling period and subjects, a total of 46 individuals tested positive by SARS-
284 CoV-2 antigen rapid diagnostic tests, resulting in an overall prevalence of 3.0% (95% CI
285 2.1-3.8). However, most of the positives were in the health centres of Bioko Island,
286 resulting in a local prevalence of 6.7% (43 positives out of 643 samples) (**S2 Table in S1**
287 **Text**). This agrees with the official data from Equatorial Guinea authorities reporting that
288 most SARS-CoV-2 cases were from Bioko Island (7), the site of the capital. SARS-CoV-
289 2 positive cases were found at similar prevalence in all age groups (**Fig 1A**) and there
290 were no significant differences between males and females ($W = 39812$, p -value = 0.07)
291 (**Fig 1B**). However, a temporal trend for SARS-CoV-2 positives increased progressively
292 over the sampling period to reach a peak of 10% of prevalence in September 2021 (**Fig**
293 **2**). This trend agrees with the official reports for this country that recorded 4,739 COVID-
294 19 cases by September 2021 (49), coinciding with our sampling period with a peak of
295 cases. Regarding the symptomatology of these cases, most of the SARS-CoV-2 positive
296 cases were mild symptomatic (91.3%), with fever as the most common symptom (**S3 and**
297 **S4 Tables in S1 Text**).

298

299 **Fig 1. Prevalence of SARS-CoV-2 and malaria cases by age group and gender.**

300 (A) Prevalence by age group. (B) Prevalence by gender.

301 **Fig 2. Prevalence of SARS-CoV-2 and malaria over the study period.**

302

303 Nasopharyngeal swabs available of 43 SARS-CoV-2 positive samples were confirmed
304 positive by RT-qPCR with high viral loads, and cycle threshold values were in the range
305 of 7-29. The RNA of these 43 PCR-positive samples was sent for whole genome
306 sequencing. After genome assembly and quality control, good quality genomes were
307 obtained from 40 samples and medium/low quality genomes from three samples. All the

308 sequences were assigned to lineages using the dynamic lineage classification method,
309 Phylogenetic Assignment of Named Global Outbreak Lineages (PANGOLIN) (35).
310 Phylogenetic analysis revealed that most of the sequences belonged to the lineage AY.43
311 (38 samples), however, other minor lineages were found, like AY.36 (3 samples) and
312 B.1.351 (2 samples) (**Fig 3 and S5 Table in S1 text**). Our results are in line with a recent
313 genomic study that described the SARS-CoV-2 lineages for the first three waves of the
314 pandemic in Equatorial Guinea from February 2020 to October 2021 (5). That study
315 reported that the first wave from April to July 2020 was dominated by the early lineage
316 B.1.192, the second wave from January to April 2021 was caused by the Beta VOC
317 (B.1.351), and the third wave that began in July 2021 was dominated by the Delta VOC
318 (AY.43).

319

320 **Fig 3. Phylogenetic tree with the 43 new SARS-CoV-2 genomes from Equatorial**
321 **Guinea.** Equatorial Guinea genomes placed on a reference tree of 1,495 published
322 genomes from all over the world. Phylogenetic tree generated with Nextclade online
323 software v2.5.0 (<https://clades.nextstrain.org>) (accessed on 01 Jun 2023) and visualized
324 using Auspice v2.37.3 (<https://auspice.us/>).

325

326 Our sampling period began in June 2021, when a few positive cases were detected and
327 coincided with the end of the second wave (**Fig 2**). From the end of June to the first half
328 of July, the two genomes available were identified as Beta VOC (B.1.351). The lineage
329 B.1.351 was first identified in South Africa in September 2020 and subsequently defined
330 as a variant of concern (VOC) (3). Since then, it spread to other African countries (50).
331 The earliest sequence of this lineage reported from Equatorial Guinea was in January
332 2021 (51).

333 However, the peak of our sampling mostly overlaps with the third wave of the pandemic,
334 between August and September 2021 (**Fig 2**). For that period, most isolated sequences
335 were identified as the Delta variant (AY.43), the VOC that dominated the third wave in
336 Equatorial Guinea. Delta variant was first detected in India in late 2020 (52), from where
337 it was spread to more than 170 countries, including 37 African territories (4). It has been
338 reported that most of the introductions of this variant into Africa (72%) can be attributed
339 to India (4).

340 The other minor lineage found in this study was AY.36, corresponding to samples
341 collected at the end of August. This is an uncommon Delta lineage that was dominant in
342 Nigeria by June-August 2021 (80% cases) but that represented less 0.5% of Delta cases
343 globally as of September 2021 (6). Its introduction in Nigeria was inferred due to a single
344 introduction during April 2021 and the subsequent spread in the country (6).

345 To better determine the likely origin and introduction period of the Equatorial Guinea
346 sequenced samples, we performed a genome-based epidemiological analysis using
347 pandemic-scale phylogenies (53). The results are summarized in **Fig 4 and Table S6**, our
348 script identifies 17 unique introductions and 7 transmission groups or clusters, whereas
349 11 out of 43 samples remain unclassified. Regarding the origin of the introductions, both
350 the transmission groups and unique introductions are mostly of European origin (71.4%,
351 5 out of 7, and 47.1%, 8 out of 17; respectively), in these cases we cannot identify the
352 exact country since many potential origins were found.

353

354 **Fig 4. Origin and introduction period of the Equatorial Guinea sequenced samples.**

355 (A) Dot plots display introduction periods for transmission groups and unique sequences.

356 Each dot and its segment represent an introduction and its estimated time interval of

357 entrance in the country, coloured by the origin. (B) Pie charts represent the proportion of
358 introductions for transmission groups (top pie) and unique introductions (bottom pie).

359

360 In those cases, where the country of origin was identified, we found one transmission
361 group from the United Kingdom (UK) and another from Spain. Concerning 9 unique
362 introductions identified by country, they come from France (4/17, 23.5%), UK (3/17,
363 17.6%), Spain (1/17, 5.9%) and Denmark (1/17, 5.9%). The introductions from Spain
364 correspond to the three AY.36 samples, the two Beta (B.1.351) samples came from UK
365 and France, while the 27 identified AY.43 samples belong to Europe (16/27), France
366 (7/27), UK (3/27) and Demark (1/27). Collectively, these results point to that the
367 introduction of SARS-CoV-2 to Equatorial Guinea was mainly from outside Africa, not
368 from neighbouring countries.

369 Regarding the estimated time interval of the introductions, both Beta introductions
370 present a wider interval when compared with Delta, with a range of 2 to 3 months of
371 uncertainty (**Fig 4**). However, this may be due to the large-scale sequencing effort of
372 Delta compared to Beta (~39 K Beta sequences vs. ~ 5 M Delta sequences in GISAID).
373 In our analysis, most Delta introductions occurred between mid-July and mid-September,
374 in concordance with the Delta wave seen at a global scale.

375 In relation to malaria incidence in Equatorial Guinea, 379 individuals were positive by
376 microscopy out of 1,556 tested (24.4% [95% CI 22.2-26.5]). No significant sex difference
377 was observed ($W = 226149$, p -value = 0.6) (**Fig 1B**). However, there were significant
378 differences between age groups in malaria prevalence (Kruskal-Wallis chi-squared =
379 64.812, $df = 3$, p -value < 0.001), with malaria mainly affecting children aged below 12
380 years (36.8% [95% CI 30.9-42.7]) and teenagers between 13-20 years old (34.7% [95%
381 CI 29.5-39.9]) (**Fig 1A**). The majority of the malaria-positive individuals were

382 symptomatic (92,3%), and the most common symptom was fever (≥ 37.5), but also
383 included other mild to moderate symptoms such as headache, weakness, muscle and joint
384 pain, cough, dizziness, vomiting, diarrhoea and anorexia (**S3 and S4 Tables in S1 text**).

385 No comorbidities were reported among the malaria-positive cases.

386 When considering these two diseases together, we report six cases of confirmed SARS-
387 CoV-2 co-infection with malaria. Of them, two were children (8 and 10 years old), one
388 was a teenager (14 years old), and three were adults (25, 33 and 41 years old) (**Table 1**).

389 Most of the co-infections were detected during the peak of SARS-CoV-2 cases in
390 September 2021 (**Fig 2**). The sequenced co-infection cases were the dominant lineage
391 AY.43 (4 samples) and B.1.351 (1 sample) (**S5 Table in S1 Text**). One case was not
392 sequenced because the swab sample could not be obtained. Five co-infection cases were
393 symptomatic, the symptoms registered for three cases were mild and included fever,
394 weakness, headache and dizziness. For the other two cases the symptoms were not
395 specified (**S3 and S4 Tables in S1 Text**).

396 The overall co-infection prevalence reported in this study is low, 0.4% (6/1,556),
397 however, if we calculate the co-infection prevalence among the malaria-positive
398 subpopulation, it corresponds to the 1.6% (6/379), and the co-infection prevalence among
399 the COVID-19 subpopulation is 13% (6/46). One possible explanation for the low rate of
400 co-infections in our study could be the small sample size for the age group of adults >40
401 years (16.3%, 253/1,556) and children of 5-12 years (16.8%, 261/1,556), the groups most
402 affected by COVID-19 and malaria, respectively. Indeed, in our previous study carried
403 out in Burkina Faso, most of the co-infections were detected in children and teenagers
404 (15), while in another study of Uganda, the highest prevalence of co-infection was in the
405 age groups of 0-20 years and above 60 years (20).

406 Apart from this study, SARS-CoV-2 and malaria co-infection population studies have
407 been conducted on nine malaria-endemic countries with heterogeneous results depending
408 on the study design and the population or subpopulation studied (**S1 Table in S1 Text**).

409 Most studies have evaluated malaria co-infection prevalence among COVID-19
410 confirmed patients reporting a wide range of prevalence from 0.63% to 100% (17–
411 21,23,26). Among the few studies that have analysed a random population sample, the
412 low co-infection prevalence that we found in Equatorial Guinea (0.4%) is in the range
413 with what has been reported from Nigeria (0.32%) (16), India (0.73%) (27), Burkina Faso
414 (1.9%) (15), Angola (1.9%) (25) and Gabon (2.2%) (24).

415 Finally, the low co-infection rate in this and other studies is supported by our previous
416 work in which we explored “*in vitro*” co-infection of human erythrocytes by *Plasmodium*
417 and SARS-CoV-2. In that study, we reported a low entry of SARS-CoV-2 and a negligible
418 interaction with *Plasmodium falciparum*, so the presence of either pathogen does not
419 affect SARS-CoV-2 or *Plasmodium* infection (54). Our findings in mature erythrocytes
420 were in contrast to other studies that reported direct SARS-CoV-2 infection of human
421 erythroid progenitors causing impaired haemoglobin homeostasis, anaemia and other
422 coagulopathies observed in COVID-19 patients (55,56).

423 The low SARS-CoV-2 prevalence reported in Equatorial Guinea and the low case severity
424 would support the hypothesis of protection by cross-immunity or trained immunity due
425 to co-occurring endemic diseases such as malaria (46–48). In this study, however, we
426 cannot conclude the consequences of malaria and COVID-19 co-infection since the
427 clinical course for co-infection cases was not systematically recorded. Some other studies
428 have addressed the clinical consequences of malaria and COVID-19 co-infection but with
429 contradictory results. Recent retrospective studies of COVID-19 patients have found that
430 malaria co-infection is associated with prolonged hospitalisation (26) and had greater

431 mortality risk compared with just SARS-CoV-2 infection (23). However, other studies
432 report that patients with SARS-CoV-2 and malaria did not seem to have a worst disease
433 outcome, but previous malaria exposure seems to be related to less frequency of severe
434 COVID-19 (20). In another study, COVID-19 patients co-infected with malaria had
435 significantly faster recovery compared to those not co-infected (27). All this considered,
436 additional retrospective and prospective studies are required to better understand the
437 clinical implications of SARS-CoV-2 and malaria co-infections.

438

439 **Conclusion**

440 The present study expands on the limited knowledge about COVID-19 prevalence in
441 Central Africa. Our results provide further insights into SARS-COV-2 variant circulation,
442 transmission and evolution in Africa, and confirmed that by June to October 2021, the
443 Delta variant AY.43 was dominating the SARS-CoV-2 infections in Equatorial Guinea,
444 together with a few minor variants. This study also challenges the assumption of Africa
445 as a source of new variants that subsequently spread globally. Finally, we report SARS-
446 CoV-2 and malaria co-infection cases but at low frequency in the population. Importantly,
447 co-infection cases did not worsen symptoms or severity.

448

449 **Acknowledgments**

450 We would like to thank all volunteers who participated in this study and the local
451 authorities and communities in Equatorial Guinea for their support. We also thank the
452 IPBLN and IBV core facilities for their support to project activities.

453

454 **References**

- 455 1. World Health Organization. WHO COVID-19 Dashboard [Internet]. [cited 2023
456 Jul 28]. Available from: <https://covid19.who.int/>
- 457 2. Kannan S, Shaik Syed Ali P, Sheeza A. Omicron (B.1.1.529) - variant of concern
458 - molecular profile and epidemiology: A mini review. *Eur Rev Med Pharmacol*
459 *Sci.* 2021;25(24):8019–22.
- 460 3. Tegally H, Wilkinson E, Lessells RJ, Giandhari J, Pillay S, Msomi N, et al.
461 Sixteen novel lineages of SARS-CoV-2 in South Africa. *Nat Med* [Internet].
462 2021;27(3):440–6. Available from: [http://dx.doi.org/10.1038/s41591-021-01255-](http://dx.doi.org/10.1038/s41591-021-01255-3)
463 3
- 464 4. Tegally H, San JE, Cotten M, Moir M, Tegomoh B, Mboowa G, et al. The
465 evolving SARS-CoV-2 epidemic in Africa: Insights from rapidly expanding
466 genomic surveillance. *Science* [Internet]. 2022 Oct 7 [cited 2023 Jun
467 5];378(6615). Available from: [/pmc/articles/PMC9529057/](https://pubmed.ncbi.nlm.nih.gov/39529057/)
- 468 5. Hosch S, Mpina M, Nyakurungu E, Borico NS, Obama TMA, Ovona MC, et al.
469 Genomic Surveillance Enables the Identification of Co-infections With Multiple
470 SARS-CoV-2 Lineages in Equatorial Guinea. *Front Public Heal.*
471 2022;9(January):1–7.
- 472 6. Ozer EA, Simons LM, Adewumi OM, Fowotade AA, Omoruyi EC, Adeniji JA,
473 et al. Multiple expansions of globally uncommon SARS-CoV-2 lineages in
474 Nigeria. *Nat Commun.* 2022;13(1).
- 475 7. MINSABS. Ministerio de Sanidad y Bienestar Social-Guinea Equatorial
476 [Internet]. [cited 2023 Apr 23]. Available from:
477 <https://guineasalud.org/estadisticas/>
- 478 8. Shu Y, McCauley J. GISAID: Global initiative on sharing all influenza data –
479 from vision to reality. *Eurosurveillance* [Internet]. 2017 Mar 3 [cited 2023 Aug

- 480 22];22(13):1. Available from: </pmc/articles/PMC5388101/>
- 481 9. World Health Organization. Scaling up genomic sequencing in Africa [Internet].
482 Available from: [https://www.afro.who.int/news/scaling-genomic-sequencing-](https://www.afro.who.int/news/scaling-genomic-sequencing-africa)
483 [africa](https://www.afro.who.int/news/scaling-genomic-sequencing-africa)
- 484 10. Uwishema O, Badri R, Onyeaka H, Okereke M, Akhtar S, Mhanna M, et al.
485 Fighting Tuberculosis in Africa: The Current Situation Amidst the COVID-19
486 Pandemic. *Disaster Med Public Health Prep* [Internet]. 2022 [cited 2023 Jul 3];
487 Available from: <https://pubmed.ncbi.nlm.nih.gov/35673793/>
- 488 11. Shi B, Zheng J, Xia S, Lin S, Wang X, Liu Y, et al. Accessing the syndemic of
489 COVID-19 and malaria intervention in Africa. *Infect Dis poverty* [Internet]. 2021
490 Dec 1 [cited 2023 Jul 3];10(1). Available from:
491 <https://pubmed.ncbi.nlm.nih.gov/33413680/>
- 492 12. Uwishema O, Sapkota S, Wellington J, Onyeaka CVP, Onyeaka H.
493 Leishmaniasis control in the light of the COVID-19 pandemic in Africa. *Ann*
494 *Med Surg* [Internet]. 2022 Aug 1 [cited 2023 Jul 3];80:104263. Available from:
495 </pmc/articles/PMC9339101/>
- 496 13. (WHO) WHO. World malaria report 2022. Geneva; 2022.
- 497 14. World Health Organization. The potential impact of health service disruptions on
498 the burden of malaria: a modelling analysis for countries in sub-Saharan Africa
499 [Internet]. 2020. 29 p. Available from:
500 <https://www.who.int/publications/i/item/9789240004641>
- 501 15. López-Farfán D, Yerbanga RS, Parres-Mercader M, Torres-Puente M, Gómez-
502 Navarro I, Sanou DMS, et al. Prevalence of SARS-CoV-2 and co-infection with
503 malaria during the first wave of the pandemic (the Burkina Faso case). *Front*
504 *Public Heal* [Internet]. 2022 Dec 12 [cited 2023 Jan 18];10. Available from:

- 505 [/pmc/articles/PMC9791192/](#)
- 506 16. Amoo OS, Aina OO, Okwuraiwe AP, Onwuamah CK, Shaibu JO, Ige F, et al.
507 COVID-19 Spread Patterns Is Unrelated to Malaria Co-Infections in Lagos,
508 Nigeria. *Adv Infect Dis*. 2020;10(05):200–15.
- 509 17. Muhammad Y, Aminu YK, Ahmad AE, Iliya S, Muhd N, Yahaya M, et al. An
510 elevated 8-isoprostaglandin F2 alpha (8-iso-PGF2 α) in COVID-19 subjects co-
511 infected with malaria. *Pan Afr Med J [Internet]*. 2020 Sep 21 [cited 2022 Sep
512 15];37(78):1–10. Available from: [/pmc/articles/PMC7680236/](#)
- 513 18. Onosakponome EO, Wogu MN. The Role of Sex in Malaria-COVID19
514 Coinfection and Some Associated Factors in Rivers State, Nigeria. *J Parasitol*
515 *Res*. 2020;2020.
- 516 19. Matangila JR, Nyembu RK, Telo GM, Ngoy CD, Sakobo TM, Massolo JM, et al.
517 Clinical characteristics of COVID-19 patients hospitalized at Clinique Ngaliema,
518 a public hospital in Kinshasa, in the Democratic Republic of Congo: A
519 retrospective cohort study. *PLoS One [Internet]*. 2020;15(12 December):1–15.
520 Available from: <http://dx.doi.org/10.1371/journal.pone.0244272>
- 521 20. Achan J, Serwanga A, Wanzira H, Kyagulanyi T, Nuwa A, Magumba G, et al.
522 Current malaria infection, previous malaria exposure, and clinical profiles and
523 outcomes of COVID-19 in a setting of high malaria transmission: an exploratory
524 cohort study in Uganda. *The Lancet Microbe [Internet]*. 2022;3(1):e62–71.
525 Available from: [http://dx.doi.org/10.1016/S2666-5247\(21\)00240-8](http://dx.doi.org/10.1016/S2666-5247(21)00240-8)
- 526 21. Bakamutumaho B, Cummings MJ, Owor N, Kayiwa J, Namulondo J,
527 Byaruhanga T, et al. Severe COVID-19 in uganda across two epidemic phases: A
528 prospective cohort study. *Am J Trop Med Hyg*. 2021;105(3):740–4.
- 529 22. Morton B, Barnes KG, Anscombe C, Jere K, Matambo P, Mandolo J, et al.

- 530 Distinct clinical and immunological profiles of patients with evidence of SARS-
531 CoV-2 infection in sub-Saharan Africa. *Nat Commun.* 2021;12(1).
- 532 23. Hussein R, Guedes M, Ibraheim N, Ali MM, El-Tahir A, Allam N, et al. Impact
533 of COVID-19 and malaria coinfection on clinical outcomes: a retrospective
534 cohort study. *Clin Microbiol Infect.* 2022 Aug 1;28(8):1152.e1-1152.e6.
- 535 24. Ditombi BCM, Ngondza BP, Boulingui CM, Nguema OAM, Ngomo JMN,
536 M'Bondoukwé NP, et al. Malaria and COVID-19 prevalence in a population of
537 febrile children and adolescents living in Libreville. *South African J Infect Dis*
538 [Internet]. 2022 Oct 26 [cited 2023 Jun 7];37(1). Available from:
539 </pmc/articles/PMC9634652/>
- 540 25. Sebastião CS, Gaston C, Paixão JP, Euclides |, Sacomboio NM, Neto Z, et al.
541 Coinfection between SARS-CoV-2 and vector-borne diseases in Luanda, Angola.
542 2021 [cited 2023 Jun 15]; Available from:
543 <https://onlinelibrary.wiley.com/doi/10.1002/jmv.27354>
- 544 26. Ingabire PM, Nantale R, Sserwanja Q, Nakireka S, Musaba MW, Muyinda A, et
545 al. Factors associated with prolonged hospitalization of patients with corona virus
546 disease (COVID-19) in Uganda: a retrospective cohort study. *Trop Med Health*
547 [Internet]. 2022 Dec 1 [cited 2023 Jun 16];50(1):100. Available from:
548 </pmc/articles/PMC9795158/>
- 549 27. Mahajan NN, Gajbhiye RK, Bahirat S, Lokhande PD, Mathe A, Rathi S, et al.
550 Co-infection of malaria and early clearance of SARS-CoV-2 in healthcare
551 workers. *J Med Virol.* 2021;93(4):2431–8.
- 552 28. WHO. *Malaria Microscopy Quality Assurance Manual.* 2009;
- 553 29. Grubaugh ND, Gangavarapu K, Quick J, Matteson NL, De Jesus JG, Main BJ, et
554 al. An amplicon-based sequencing framework for accurately measuring intrahost

- 555 virus diversity using PrimalSeq and iVar. *Genome Biol* [Internet]. 2019 Jan 8
556 [cited 2022 Sep 16];20(1):1–19. Available from:
557 <https://genomebiology.biomedcentral.com/articles/10.1186/s13059-018-1618-7>
- 558 30. Wood DE, Salzberg SL. Kraken: Ultrafast metagenomic sequence classification
559 using exact alignments. *Genome Biol* [Internet]. 2014 Mar 3 [cited 2022 Sep
560 16];15(3):1–12. Available from:
561 <https://genomebiology.biomedcentral.com/articles/10.1186/gb-2014-15-3-r46>
- 562 31. Chen S, Zhou Y, Chen Y, Gu J. fastp: an ultra-fast all-in-one FASTQ
563 preprocessor. *Bioinformatics* [Internet]. 2018 Sep 9 [cited 2022 Sep
564 16];34(17):i884. Available from: [/pmc/articles/PMC6129281/](https://pubmed.ncbi.nlm.nih.gov/30771362/)
- 565 32. Ewels P, Magnusson M, Lundin S, Källner M. MultiQC: summarize analysis
566 results for multiple tools and samples in a single report. *Bioinformatics* [Internet].
567 2016 Oct 1 [cited 2022 Sep 16];32(19):3047–8. Available from:
568 <https://academic.oup.com/bioinformatics/article/32/19/3047/2196507>
- 569 33. Wu F, Zhao S, Yu B, Chen YM, Wang W, Song ZG, et al. A new coronavirus
570 associated with human respiratory disease in China. *Nat* 2020 5797798 [Internet].
571 2020 Feb 3 [cited 2022 Sep 16];579(7798):265–9. Available from:
572 <https://www.nature.com/articles/s41586-020-2008-3>
- 573 34. Katoh K, Standley DM. MAFFT Multiple Sequence Alignment Software Version
574 7: Improvements in Performance and Usability. *Mol Biol Evol* [Internet]. 2013
575 Apr 1 [cited 2022 Sep 16];30(4):772–80. Available from:
576 <https://academic.oup.com/mbe/article/30/4/772/1073398>
- 577 35. O’Toole Á, Scher E, Underwood A, Jackson B, Hill V, McCrone JT, et al.
578 Assignment of epidemiological lineages in an emerging pandemic using the
579 pangolin tool. *Virus Evol* [Internet]. 2021 [cited 2022 Sep 16];7(2). Available

- 580 from: [/pmc/articles/PMC8344591/](https://pubmed.ncbi.nlm.nih.gov/3444591/)
- 581 36. Aksamentov I, Roemer C, Hodcroft EB, Neher RA. Nextclade: clade assignment,
582 mutation calling and quality control for viral genomes. *J Open Source Softw*
583 [Internet]. 2021 Nov 30 [cited 2022 Sep 16];6(67):3773. Available from:
584 <https://joss.theoj.org/papers/10.21105/joss.03773>
- 585 37. Hadfield J, Megill C, Bell SM, Huddleston J, Potter B, Callender C, et al.
586 NextStrain: Real-time tracking of pathogen evolution. *Bioinformatics*. 2018 Dec
587 1;34(23):4121–3.
- 588 38. Sagulenko P, Puller V, Neher RA. TreeTime: Maximum-likelihood
589 phylodynamic analysis. *Virus Evol* [Internet]. 2018 Jan 1 [cited 2022 Sep
590 16];4(1). Available from: [/pmc/articles/PMC5758920/](https://pubmed.ncbi.nlm.nih.gov/3444591/)
- 591 39. Martínez-Martínez FJ, Massinga AJ, De Jesus Á, Ernesto RM, Cano-Jiménez P,
592 Chiner-Oms Á, et al. Tracking SARS-CoV-2 introductions in Mozambique using
593 pandemic-scale phylogenies: a retrospective observational study. *Lancet Glob
594 Heal*. 2023;11(6):e933–41.
- 595 40. Turakhia Y, Thornlow B, Hinrichs AS, Maio N, Gozashti L, Lanfear R, et al.
596 Ultrafast Sample placement on Existing tRees (UShER) enables real-time
597 phylogenetics for the SARS-CoV-2 pandemic. *Nat Genet* [Internet]. [cited 2023
598 Aug 23]; Available from: <https://doi.org/10.1038/s41588-021-00862-7>
- 599 41. Lanfear R. Global phylogenies of SARS-CoV-2 sequences [Internet]. Available
600 from: <https://github.com/roblanf/sarscov2phylo>
- 601 42. Thornlow B. matUtils [Internet]. Available from: [https://usher-
602 wiki.readthedocs.io/en/latest/matUtils.html](https://usher-wiki.readthedocs.io/en/latest/matUtils.html)
- 603 43. Sanderson T. Taxonium, a web-based tool for exploring large phylogenetic trees
604 *eLife* 11:e82392. *Elife* [Internet]. 2022;11:e82392. Available from:

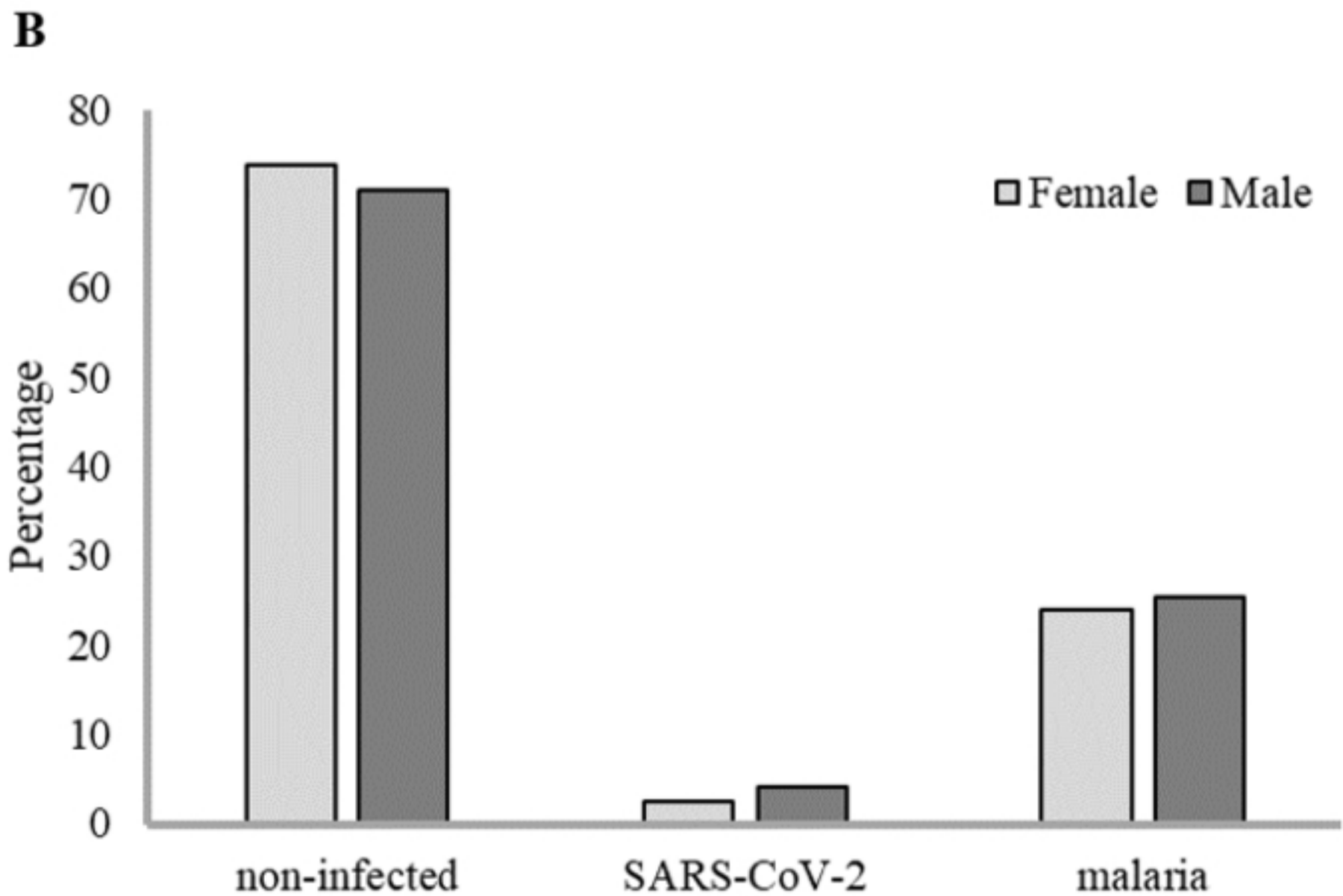
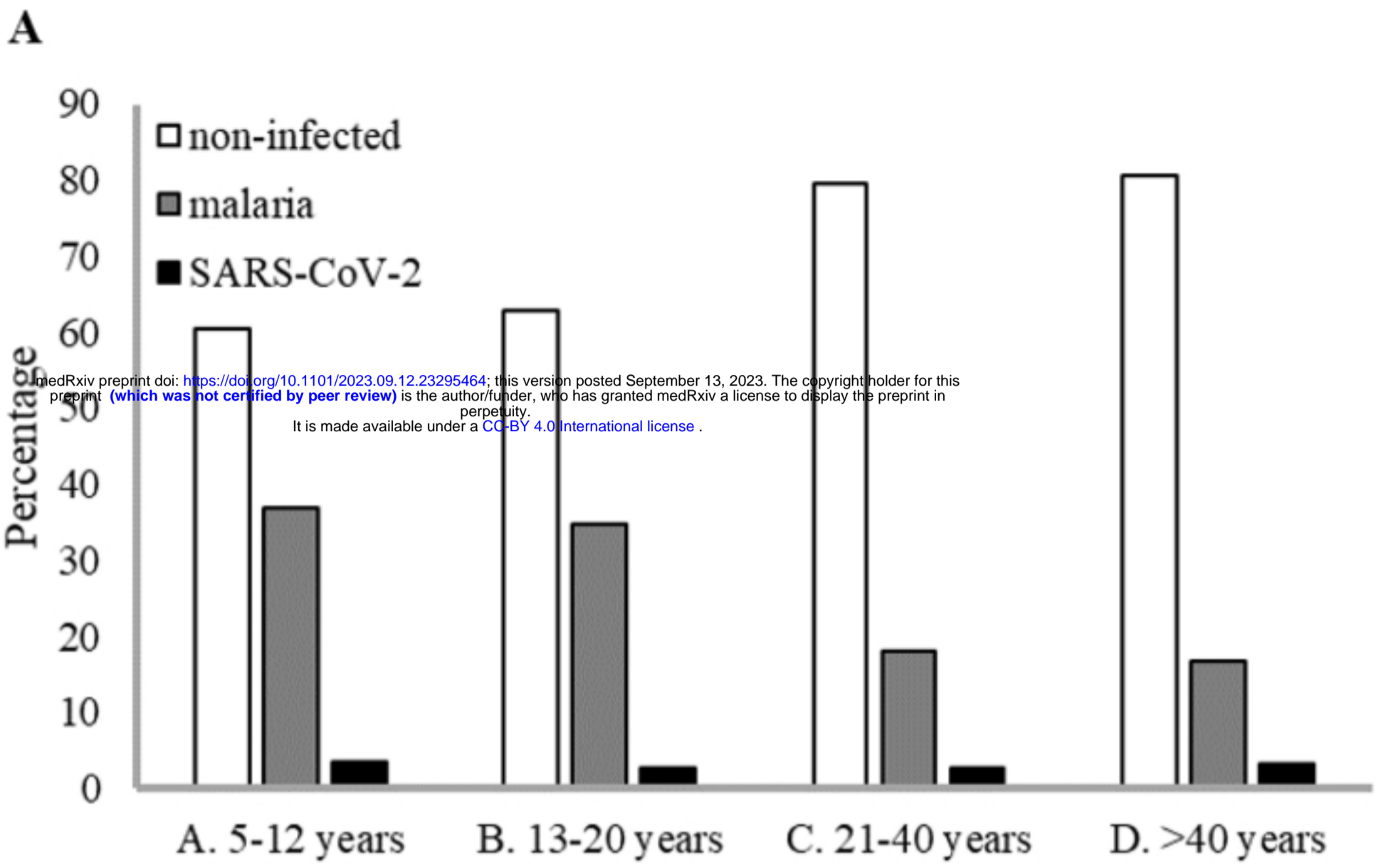
- 605 <https://doi.org/10.7554/eLife.82392%0A>
- 606 44. Kusi KA, Frimpong A, Partey FD, Lamptey H, Amoah LE, Ofori MF. High
607 infectious disease burden as a basis for the observed high frequency of
608 asymptomatic SARS-CoV-2 infections in sub-Saharan Africa. *AAS Open Res.*
609 2021;4(May):2.
- 610 45. Hussein MIH, Albashir AAD, Elawad OAMA, Homeida A. Malaria and
611 COVID-19: unmasking their ties. *Malar J* [Internet]. 2020;19(1):1–10. Available
612 from: <https://doi.org/10.1186/s12936-020-03541-w>
- 613 46. Osei SA, Biney RP, Anning AS, Nortey LN, Ghartey-Kwansah G. Low
614 incidence of COVID-19 case severity and mortality in Africa; Could malaria co-
615 infection provide the missing link? *BMC Infect Dis* [Internet]. 2022;22(1):1–11.
616 Available from: <https://doi.org/10.1186/s12879-022-07064-4>
- 617 47. Iesa MAM, Osman MEM, Hassan MA, Dirar AIA, Abuzeid N, Mancuso JJ, et al.
618 SARS-CoV-2 and Plasmodium falciparum common immunodominant regions
619 may explain low COVID-19 incidence in the malaria-endemic belt. *New*
620 *microbes new Infect* [Internet]. 2020 Nov 1 [cited 2022 Jul 7];38. Available
621 from: <https://pubmed.ncbi.nlm.nih.gov/33230417/>
- 622 48. Raham TF. Influence of malaria endemicity and tuberculosis prevalence on
623 COVID-19 mortality. *Public Health* [Internet]. 2021;194:33–5. Available from:
624 <https://doi.org/10.1016/j.puhe.2021.02.018>
- 625 49. Johns Hopkins University. Johns Hopkins coronavirus resource center [Internet].
626 [cited 2023 Jul 10]. Available from:
627 <https://coronavirus.jhu.edu/region/equatorial-guinea>
- 628 50. Wilkinson E, Giovanetti M, Tegally H, San JE, Lessells R, Cuadros D, et al. A
629 year of genomic surveillance reveals how the SARS-CoV-2 pandemic unfolded

- 630 in Africa. *Science* (80-). 2021;374(6566):423–31.
- 631 51. cov-lineages.org [Internet]. Available from: [https://cov-](https://cov-lineages.org/lineage_list.html)
- 632 [lineages.org/lineage_list.html](https://cov-lineages.org/lineage_list.html)
- 633 52. Mlcochova P, Kemp SA, Dhar MS, Papa G, Meng B, Ferreira IATM, et al.
- 634 SARS-CoV-2 B.1.617.2 Delta variant replication and immune evasion. *Nat* 2021
- 635 5997883 [Internet]. 2021 Sep 6 [cited 2023 Jun 5];599(7883):114–9. Available
- 636 from: <https://www.nature.com/articles/s41586-021-03944-y>
- 637 53. Martínez-Martínez J, Cano-Jiménez P, Chiner-Oms Á, Bsc G-N, Guillot-
- 638 Fernández M, Jiménez-Serrano S, et al. Tracking SARS-CoV-2 introductions in
- 639 Mozambique using pandemic-scale phylogenies: a retrospective observational
- 640 study. *Artic Lancet Glob Heal* [Internet]. 2023 [cited 2023 Aug 23];11:933–74.
- 641 Available from: <https://gitlab>.
- 642 54. López-Farfán D, Irigoyen N, Gómez-Díaz E. Exploring SARS-CoV-2 and
- 643 *Plasmodium falciparum* coinfection in human erythrocytes. *Front Immunol*
- 644 [Internet]. 2023 Mar 13 [cited 2023 Jun 5];14. Available from:
- 645 <https://pubmed.ncbi.nlm.nih.gov/36993979/>
- 646 55. Huerga Encabo H, Grey W, Garcia-Albornoz M, Wood H, Ulferts R, Aramburu
- 647 IV, et al. Human Erythroid Progenitors Are Directly Infected by SARS-CoV-2:
- 648 Implications for Emerging Erythropoiesis in Severe COVID-19 Patients. *Stem*
- 649 *cell reports* [Internet]. 2021 Mar 9 [cited 2022 Aug 10];16(3):428–36. Available
- 650 from: <https://pubmed.ncbi.nlm.nih.gov/33581053/>
- 651 56. Shahbaz S, Xu L, Osman M, Sligl W, Shields J, Joyce M, et al. Erythroid
- 652 precursors and progenitors suppress adaptive immunity and get invaded by
- 653 SARS-CoV-2. *Stem Cell Reports*. 2021 May 11;16(5):1165–81.
- 654

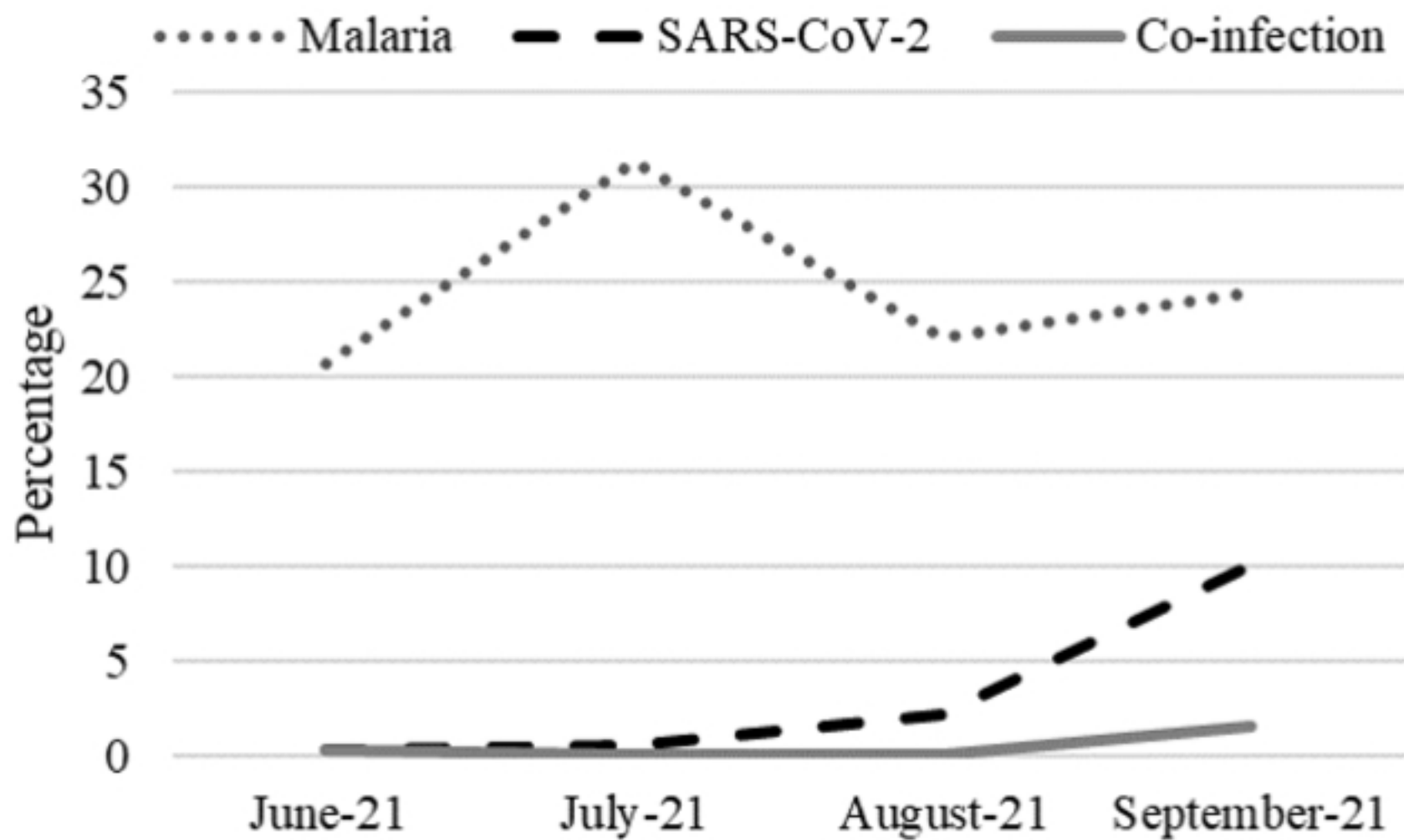
655 **Supporting information**

656 **S1 Text. Tables S1 to S5**

657 **S6 Table. Genome-based epidemiological analysis of the sequenced samples**



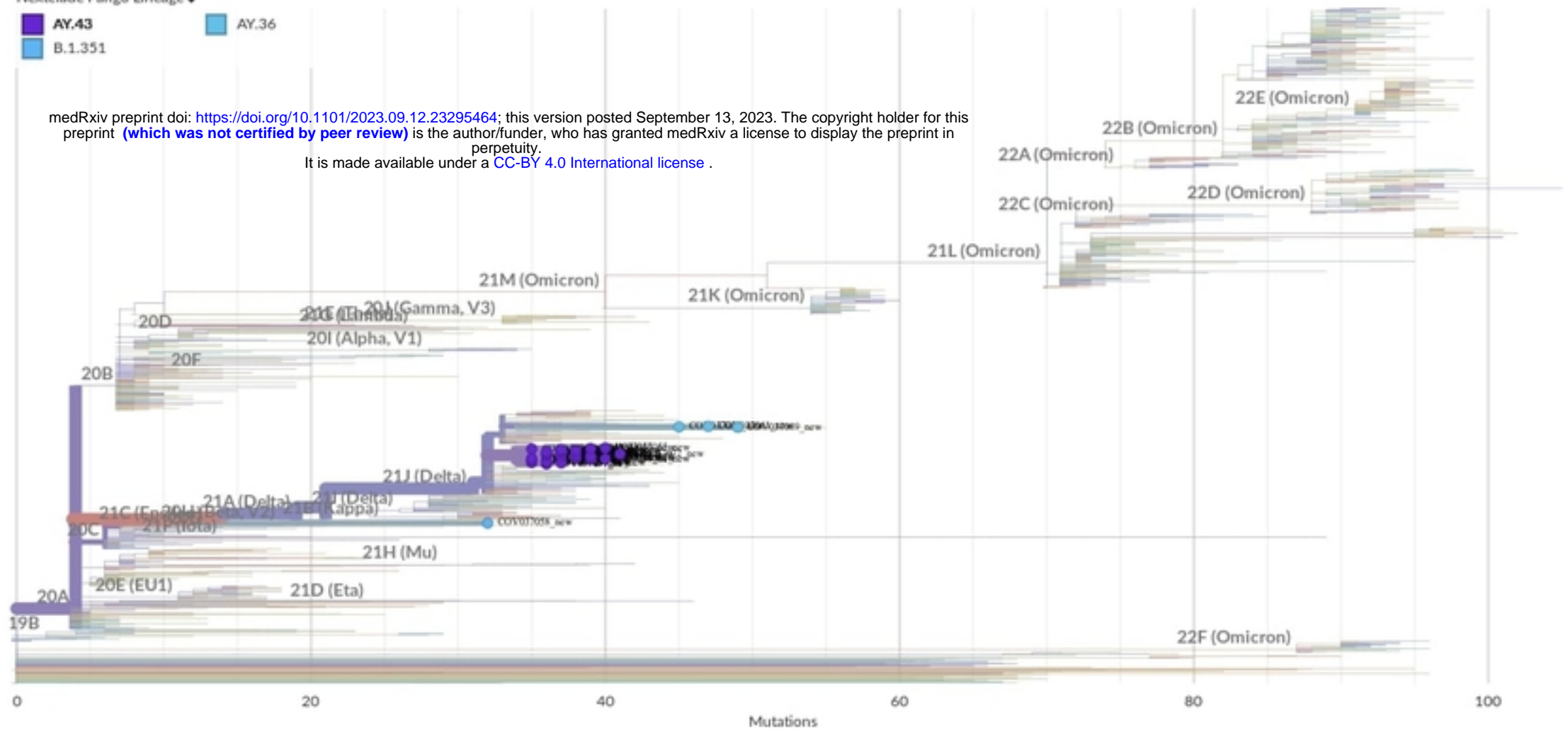
Figure

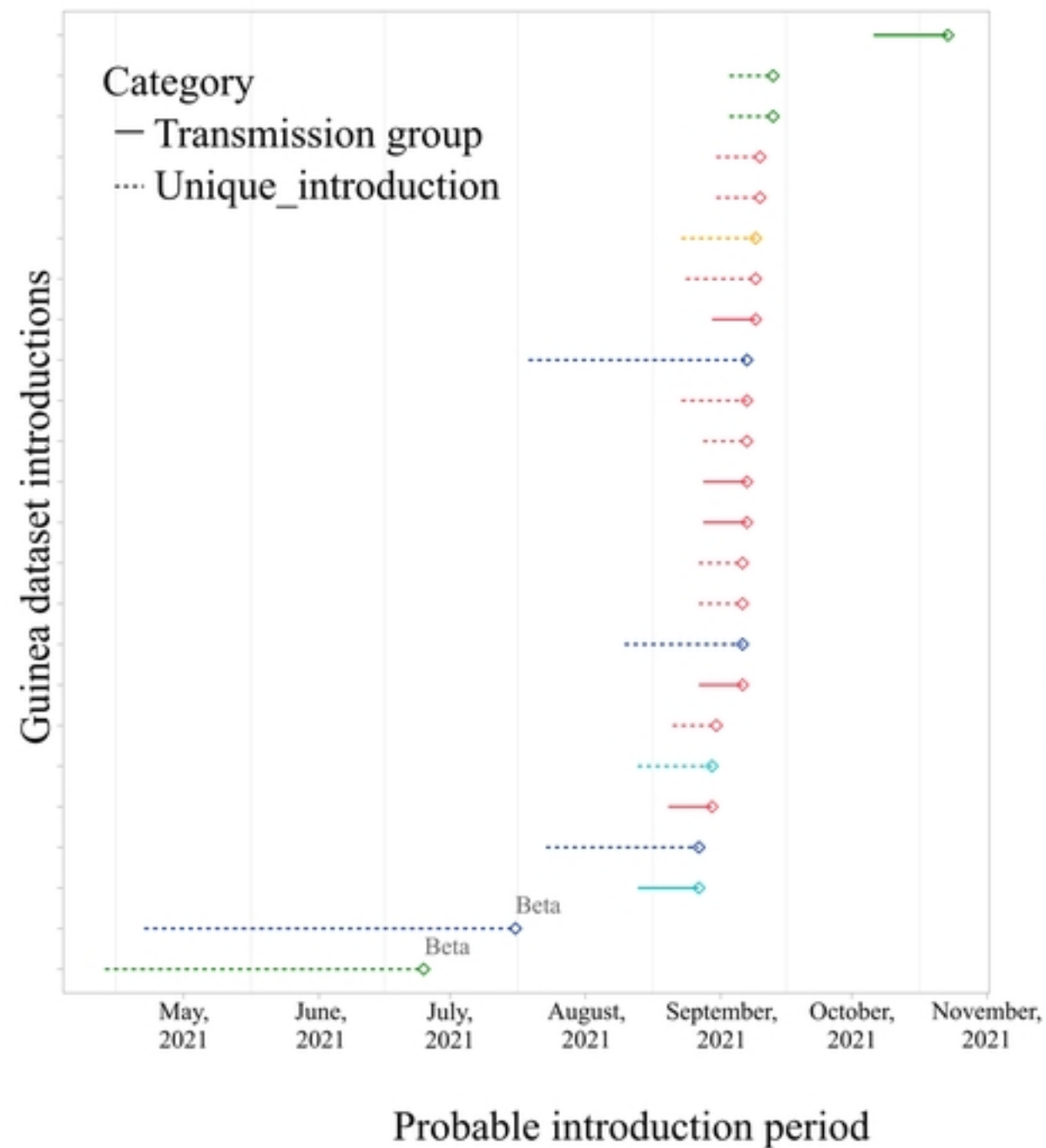
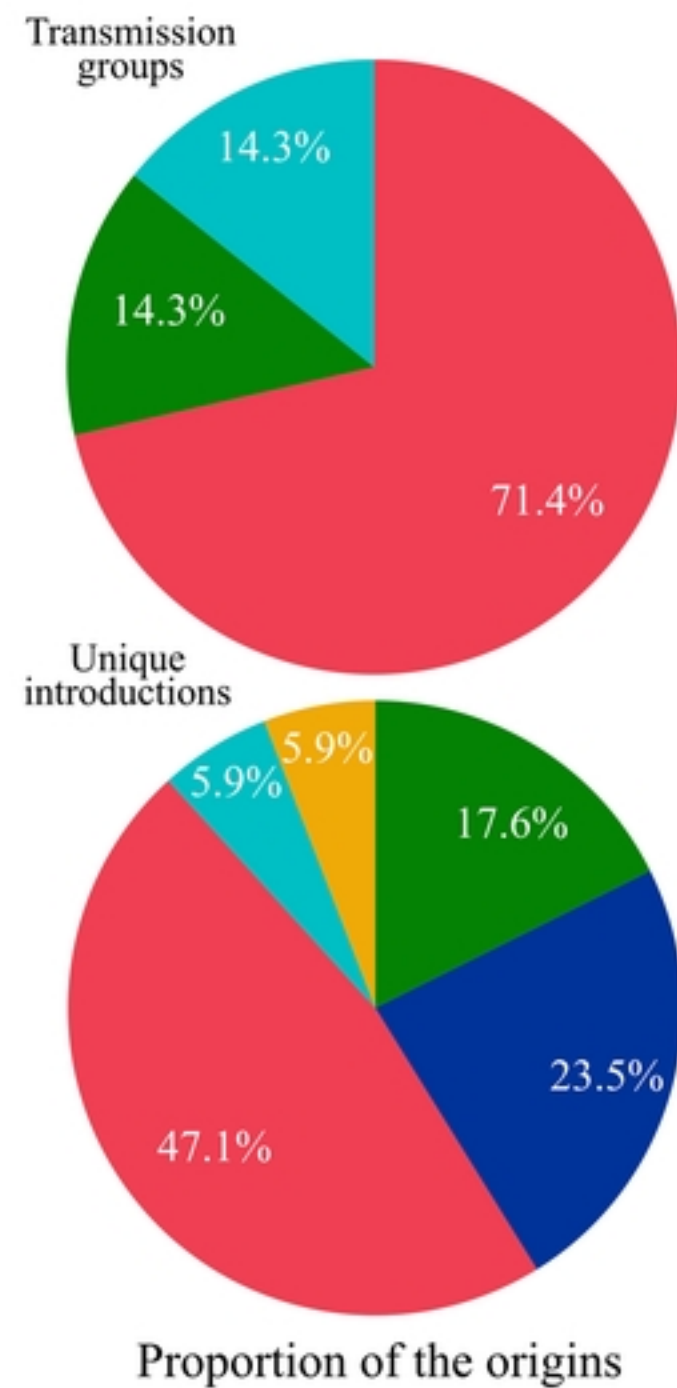


Figure

AY.43 AY.36
B.1.351

medRxiv preprint doi: <https://doi.org/10.1101/2023.09.12.23295464>; this version posted September 13, 2023. The copyright holder for this preprint (which was not certified by peer review) is the author/funder, who has granted medRxiv a license to display the preprint in perpetuity. It is made available under a [CC-BY 4.0 International license](https://creativecommons.org/licenses/by/4.0/).



A**B**

Figure