

## TITLE PAGE

# Effectiveness of Online Training in Improving Primary Care Doctors' Competency in Brief Tobacco Interventions: A Cluster Randomised Controlled Trial of WHO Modules in Delta State, Nigeria

\*Nnamdi Stephen Moeteke,<sup>1,2,3</sup> Patrick Oyibo,<sup>4,5</sup> Oboratare Ochei,<sup>1,5</sup> Maureen Iru Ntaji,<sup>1,5</sup> Nyemike Simeon Awunor,<sup>1,5</sup> Mitchell Oritsewino Adeyemi,<sup>1</sup> Mike Ibobo Enemuwe,<sup>1,5</sup> Eseoghene Agbatutu,<sup>1</sup> Oluwaseun Opeyemi Adesoye<sup>1</sup>

Authors' Affiliations:

<sup>1</sup>Department of Community Medicine, Delta State University Teaching Hospital, Oghara, Nigeria

<sup>2</sup>Center for Primary Care, Department of Global Health and Social Medicine, Harvard Medical School, Boston, United States

<sup>3</sup>Department of Community and Public Health, Idaho State University, Pocatello, United States

<sup>4</sup>Department of Health Services Research and Management, City, University of London, United Kingdom

<sup>5</sup>Department of Community Medicine, Delta State University, Abraka, Nigeria

\*Corresponding Author: Dr. Nnamdi Moeteke, Department of Community and Public Health, Idaho State University, 921 South 8<sup>th</sup> Avenue, Stop 8109, Pocatello, Idaho 83209, United States. [nnamdimoeke@isu.edu](mailto:nnamdimoeke@isu.edu)

**Conflict of Interests:** The authors have no competing interests

**Funding:** None

## ABSTRACT

**Background:** The World Health Organisation (WHO) strongly recommends that brief tobacco interventions should be routinely offered in primary care. However, medical doctors do not consistently and effectively intervene during their encounters with cigarette smokers. There is a paucity of studies assessing the effect of training on the tobacco intervention competency of primary care doctors in Nigeria.

**Aim:** To evaluate the effectiveness of online training in improving competency in brief tobacco interventions among primary care doctors in Delta State, Nigeria.

**Methods:** A cluster-randomised controlled trial was conducted among eligible doctors working in government-owned facilities. The 22 eligible Local Government Areas (LGAs) served as clusters. The intervention group received a WHO six-hour online course on brief tobacco cessation intervention, delivered via Zoom. The control group received no intervention. A structured questionnaire was sent to participants via WhatsApp before and six months after the training. The primary outcome variables were scores for knowledge, attitude, self-efficacy, and practice. Differences in change of scores between intervention and control groups were assessed with *t*-test. To adjust for clustering, these inter-group differences were further analysed using linear mixed-effects regression modelling with study condition modelled as a fixed effect, and LGA of practice entered as a random effect.

**Results:** The intervention group had a significantly higher mean of change in scores for knowledge (effect size 0.344) and confidence (effect size 0.52).

**Conclusion:** The study shows that training, even online, positively affects clinician competency in brief tobacco intervention. This is important for primary care systems in developing countries. Mandatory in-service training and promotion of the WHO modules are recommended.

**Keywords:** Smoking cessation; Brief tobacco interventions; Primary care physicians; Healthcare provider training; Delta State, Nigeria

## INTRODUCTION

There are over a billion smokers in the world, 80% of whom live in low- and middle-income countries (LMICs).<sup>1,2</sup> It is projected that tobacco use will cause one in six deaths among adults (close to ten million deaths each year) by 2030, 80% of which will occur in LMICs.<sup>1,2</sup> The critical role of smoking cessation in decreasing the burden of tobacco-related death and disability has been increasingly evident in recent years.<sup>3</sup> Clinical modalities for tobacco cessation and treatment of dependence are either behavioural or pharmacological.<sup>4</sup> Behavioural therapy entails practical counselling (in problem solving/skills training/stress management), providing social support as part of treatment, and helping to secure social support outside of treatment.<sup>4</sup> **Brief behavioural cessation interventions** refer to cessation counselling delivered regularly during routine clinic consultations whether or not patients are seeking help with smoking cessation. They last less than 10 minutes.<sup>5</sup> **Intensive interventions** are more comprehensive and individualised, offered by Tobacco Treatment Specialists through individual/group counselling, cessation support groups, and telephone counselling in the setting of addiction treatment/mental health centres or social service agencies.<sup>1</sup> Intensive interventions are more effective but more time- and cost-demanding, and, therefore, far less available, particularly in developing countries.<sup>1,6</sup> Better results are obtained when counselling and medications are combined. Both should be used, except where pharmacotherapy is contraindicated.<sup>4</sup> There is no significant difference between the costs of cigarettes and Nicotine Replacement Therapy.<sup>7</sup> Routine brief counselling and low-cost drugs (such as Nortriptyline and Cystisine) are affordable for and in countries at all levels of economic development.<sup>8</sup> Treatment of tobacco dependence is “the ‘gold standard’ in preventive medicine and health care cost-effectiveness”.<sup>9</sup> Article 14 of the World Health Organisation (WHO)

Framework Convention on Tobacco Control (FCTC) - “the world’s first public health treaty” - mandates countries to elaborately promote cessation and draw-up treatment guidelines to be made widely available along with treatment services.<sup>10</sup>

Because of its comprehensive, whole-person focus, experts have identified the primary care setting as ideal for the integration of screening for tobacco use and offering brief cessation intervention to tobacco users at every contact.<sup>11</sup> One strategy that has been proposed for the treatment of tobacco use in primary care is the 5As/5Rs Model of brief intervention (Figure 1) which requires less than 10 minutes of direct clinician time.<sup>12</sup> The critical nature of the doctor-patient relationship and the enormous confidence reposed on doctors means that the place of the primary care doctor in cessation intervention is paramount.<sup>3,8</sup> Smokers rate physician advice highly, and “physician-delivered interventions such as counselling are strongly supported by a solid body of evidence”.<sup>9</sup> Ironically, physicians do not consistently and effectively intervene when they come in contact with smokers, except if the immediate ailment is tobacco-related.<sup>8</sup> They usually believe that the patients are not interested in the advice and that intervening is outside their primary duties; physicians, themselves, may even be poorly informed about tobacco cessation.<sup>8</sup> Other barriers to the delivery of cessation intervention include fear of hurting patients’ feelings, perceived ineffectiveness of cessation advice, deficiency of counselling skills, low provider self-efficacy, time constraints, etc.<sup>13</sup>

Despite the unequivocal stance of the WHO, as of 2018, only six middle-income countries and one low-income country offered comprehensive cessation support in primary care.<sup>14</sup> The establishment of effective cessation services has been hindered by a “lack of training for healthcare providers, competing disease priorities, e.g. HIV and TB, and lack of data and locally applicable tobacco cessation guidelines”.<sup>15</sup> Nigeria currently has neither a national tobacco cessation strategy nor clinical guidelines, and there is virtually no form of training for

healthcare workers before and after graduation.<sup>14</sup> Nearly 70% of current smokers in the country would like to quit.<sup>16</sup> However, a nationally representative survey of Nigerian physicians showed that less than a third had good knowledge of smoking cessation.<sup>17</sup> Over 70% reported that tobacco education in the medical school curriculum is inadequate, and about two-thirds cited poor knowledge of the issue as the greatest obstacle to their implementing cessation intervention.<sup>17</sup> There is poor perception and low capacity to provide smoking cessation services among health care workers in Nigeria, with only 5% of respondents in a study reporting having ever received such training.<sup>18</sup> Another study reported poor implementation of the 5A's by physicians, with many missed opportunities for cessation intervention.<sup>19</sup>

*Competency* is the sum of knowledge, attitude, and ability to perform a given task that eventually translates to behaviour that enables a professional to perform their role effectively.<sup>20</sup> Various studies have highlighted the contributory factors in the performance of brief cessation interventions by healthcare personnel (Figure 2).<sup>5,21–23</sup> The behaviour change theories applied in health promotion, each with its own explanatory variables, can also be used to understand changes in the clinical practices of healthcare professionals.<sup>24</sup> One of such theories is the Social Learning Theory (SLT). The three key explanatory factors in SLT (Figure 3), which must be modified in order for a new behaviour to be acquired, performed, and maintained, are *behavioural capacity*, *efficacy expectations*, and *outcome expectations*. *Behavioural capacity* refers to the requisite knowledge and skills for the performance of the desired behaviour. *Efficacy expectations (Self-efficacy or Confidence)* are the beliefs regarding one's ability to successfully execute a desired behaviour. Perceptions of self-efficacy are based on people's assessment of themselves – whether they have the knowledge and skills to make changes in their behaviour and whether external factors such as time and money will allow that change.<sup>25</sup>

*Outcome expectations* are the beliefs that the performance of a particular behaviour will lead to desired effects or consequences. SLT as a framework can be applied in the evaluation of an educational intervention.<sup>26</sup> In an assessment of an intervention to train primary care physicians on brief tobacco cessation, it would be important to measure the change in the practice of the desired behaviour, as well as change in the explanatory variables: knowledge/skill levels, perceived self-efficacy, and beliefs about the usefulness of the behaviour. The desired behaviour would be the consistent practice of the 5A's model, and *Outcome expectations* (attitudes) would be the degree to which primary care physicians expect that carrying out the 5A's model among their patients who smoke will lead to cessation.<sup>25</sup>

There is a paucity of studies assessing the effect of training on the smoking cessation competency of primary care physicians in Nigeria. A synthesis of the literature from other regions indicates that training health professionals in smoking cessation is effective.<sup>27-34</sup> However, the majority of available studies fall short of appropriate design, sampling technique, and sample size. The necessity of adapting training programmes to varied cultures and evaluating their effectiveness in different settings has been highlighted.<sup>8,27</sup> Given the constraints in low-income countries like Nigeria, online courses may be more desirable because they “allow distance learning when local training opportunities and resources are scarce”.<sup>27</sup> This is a need to fill the knowledge gaps and provide evidence to inform policy on the development of workforce competency. Therefore, the aim of this study was to evaluate the effectiveness of online training with WHO modules in improving competency in brief tobacco cessation interventions among primary care doctors in Delta State, Nigeria.

## **MATERIALS AND METHODS**

## **Study Area**

This study was conducted in Delta State, which is in the south-south geo-political zone of Nigeria. The population of the State is 4,112,445 (males: 2,069,309; females: 2,043,136).<sup>35</sup> Delta State has 25 Local Government Areas (LGAs) distributed into 3 senatorial districts. Eight of these LGAs are urban. A smoking prevalence as high as 15.8% has been reported for the general population.<sup>36</sup> Primary medical and dental care is delivered in the General Outpatient Clinics of primary, secondary and tertiary health facilities by Medical/Dental Officers (doctors without specialist training) and resident doctors/consultants in Family Medicine or Community Medicine. There are 318 government-employed primary care doctors.

## **Study Design**

A cluster randomised controlled trial (CRCT) design was necessitated by the nature of the intervention, to avoid “contamination” in the control group.<sup>37</sup> Local Government Areas (LGAs) served as clusters and the units of randomisation.

## **Study Population**

The study population consisted of primary care doctors working in government-owned health facilities.

## **Selection/Eligibility Criteria**

Primary care doctors who had practised for at least one year post-registration were included. Those who were scheduled to proceed on in-service training or had chronic illnesses requiring recurrent days off duty were excluded to reduce the chances of inability to participate in the training and follow-up assessment. Those working in two or more clinics in different LGAs were also excluded (to prevent contamination). LGAs with less than four doctors were excluded based on the calculation for the required minimum size for each cluster (shown below).

## Sample Size Determination

The minimum sample size per group for a Cluster Randomised Controlled Trial,  $N_C = N_I \times VIF$ , where  $N_I$  is the minimum sample size for an individual Randomised Controlled, and VIF is the Variance Inflation Factor.<sup>38</sup>

VIF is needed because of the likely similarities between participants within a cluster which makes it inappropriate to handle them as purely independent observations. Sample sizes for cluster randomised trials should be larger to maintain statistical power.<sup>39</sup> The increment is given by the *Design Effect* or *Variance Inflation Factor (VIF)*:  $1 + (m - 1)\rho$ , where  $m$  is the average cluster size, and  $\rho$  is the intra-cluster correlation coefficient.<sup>40</sup>

The minimum sample size per study arm for an individual Randomised Controlled Trial ( $N_I$ ) is calculated using the following formula.<sup>41</sup>

$$N_I = \frac{2 \times (Z_{\alpha/2} + Z_{\beta})^2 \times S^2}{\delta^2}$$

Where

S = Pooled standard deviation of both comparison groups

$\delta$  = Anticipated difference between the group means ( $\mu_1 - \mu_2$ )

$Z_{\alpha/2} = Z_{0.05/2} = Z_{0.025} = 1.96$  (from Z table) at type-1 error of 5%

$Z_{\beta} = Z_{0.20} = 0.842$  (from Z table) at a power of 80%

Therefore,

$$N_I = \frac{2 \times (1.96 + 0.842)^2 \times S^2}{(\mu_1 - \mu_2)^2}$$

$$N_I = \frac{2 \times (1.96 + 0.842)^2}{(\mu_1 - \mu_2)^2/S^2}$$

Since  $(\mu_1 - \mu_2)/S = \textit{Effect Size}$ , a standardised quantitative measure of the magnitude of an experimental effect,<sup>41</sup>

$$N_I = 2 \times \frac{(1.96 + 0.842)^2}{\textit{Effect Size}^2}$$



*Effect Size*<sup>2</sup>

$$N_I = \frac{15.7}{\text{Effect Size}^2}$$

In a previous educational intervention study on tobacco cessation counselling among health professionals<sup>33</sup>, the *Effect Size* was 0.52.

Therefore,  $N_I = 15.7 \div 0.52^2 \approx 59$  per arm

Singh *et al* have determined the intra-cluster correlation for a number of process of care outcome measures at the primary care practice level and estimated the value for tobacco dependence treatment to be 0.054.<sup>42</sup>

As such, the VIF for this study was  $1 + (12.56 - 1)0.054 = 1.61128$ , and the minimum sample size per arm for the CRCT,  $N_C = N_I \times \text{VIF} = 59 \times 1.61128 \approx 96$ .

To take care of possible attrition this was increased by 10% to 106 per arm (212 in total).

### **Sampling, Randomisation and Recruitment**

The minimum number of clusters required per arm when there are unequal cluster sizes is

$$k = \{N_I [1 + ((cv^2 + 1) m - 1) \rho]\} \div m$$

where *cv* represents the coefficient of variation of the cluster sizes.<sup>38</sup>

$$k = \{60[1 + ((1.288949^2 + 1)12.56 - 1)0.054]\} \div 12.56 = 8.62 \approx 9$$

The required minimum size for each cluster is given by the formula below.<sup>38</sup>

$$N_I (1 - \rho) \div [K - N_I (cv^2 + 1) \rho], \text{ where } K \text{ is the number of clusters available}$$

$$= 60(1 - 0.054) \div [25 - 60(1.288949^2 + 1)0.054] = 3.47 \approx 4$$

Given that there are 25 LGAs in Delta State, all eligible primary care doctors in all the 22 eligible LGAs were recruited for the study. Using the official list of personnel from the relevant government agencies, recruitment took place between 21<sup>st</sup> March and 2<sup>nd</sup> April, 2022.

Stratified randomisation was employed. The eligible clusters were divided into three subgroups based on senatorial districts. Each subgroup was further stratified into rural and urban, and clusters in each sub-stratum were randomly allocated to each study arm by simple randomisation using a random number table.

## **Intervention**

The intervention was the WHO e-Learning course *Training for primary care providers: brief tobacco interventions*.<sup>43</sup> “WHO encourages primary care providers worldwide to attend this training to improve their knowledge, skills, and confidence to assist tobacco users in quitting as part of routine practice in primary care”.<sup>43</sup> The course (which consists of six modules) is self-paced and takes an average of six hours to complete. Three of the authors (Public Health Physicians with WHO certification in brief tobacco interventions) guided participants through the course in a Zoom meeting. A PowerPoint presentation obtained from the WHO website was used.<sup>44</sup> This presentation covers the six modules and three more (Table 1). Participants were free to choose from one of five standardised training sessions held on five different days, between April 22 and May 3, 2022. Each session lasted for six hours in total, apart from two fifteen-minute breaks. The control group did not receive any intervention until after the study.

## **Study Instrument**

This study employed a self-administered structured questionnaire adapted from previously validated instruments by Gichuki.<sup>5</sup> The questionnaire was pretested among twenty primary care medical practitioners in a neighbouring state and revised for clarity. The questionnaire was sent to participants electronically via WhatsApp before the training and six months after. It is made up of five sections developed to assess socio-demographic independent variables (age, sex, smoking status and years of practice, job cadre, etc.), and dependent variables (knowledge,

attitude, level of confidence, and practice of smoking cessation intervention, based on the 5A's model).

### **Method of Data Collection**

Data was collected in two phases viz pre-training and six months post-training.

The questionnaire section on **“Knowledge”** consisted of 9 questions and 11 statements that were used to evaluate the level of awareness of the participants as regards the benefits of providing smoking cessation interventions, behavioural smoking cessation intervention methods/ techniques, pharmacological smoking cessation interventions, and nicotine dependence and withdrawal symptoms. Knowledge was assessed using a 3-point scale: “Yes”/“No”/ “Don't know” for the questions, and “True”/ “False”/ “Don't know” for the statements.

The section on **“Attitude”** comprised 9 statements that were used to assess the mindset of the participants with respect to the role of health care providers in the provision of smoking cessation interventions, the effect of smoking cessation interventions on the health care provider-patient relationship, acceptance of smoking cessation interventions by patients, and availability of time to provide smoking cessation interventions during routine consultations. Each response was scored on a 3-point scale (“Agree”, “Indifferent”, “Disagree”).

**Self-efficacy (confidence)** of the participants in providing smoking cessation interventions was measured with 8 questions based on the 5A's strategy and the participants were required to rate their confidence in performing the various activities using a 3-point scale: “not at all confident”, “a little confident” and “fully confident”).

In the section on **“Practice”**, ten questions were used to assess, using a 3-point scale, the frequency of performance of different procedures in the 5A's model in daily interactions with patients (“Never”, “Sometimes”, and “Always”).

## Data Management

### a) Measurement of outcome variables

Total scores for knowledge, attitude, confidence, and practice were calculated for each participant as follows. Each correct response to the knowledge-based questions or statements attracted a score of 1, and each incorrect/ “don’t know” response, was zero. The highest possible total score was 20. A score of 1 was given for each response agreeing with an appropriate attitude-based statement or disagreeing with an inappropriate one, while a score of zero was given for each response disagreeing with an appropriate statement, agreeing with an inappropriate one, or being indifferent. The highest possible total score was 9.

For confidence-based questions, a score of zero was awarded for “not confident”, one for “a little confident” and two for “confident”. Total confidence scores could range from 0 to 16. For practice-based questionnaire items, a score of two was awarded for “always”, one for “sometimes” and zero for “never”. Possible total scores could range from 0 to 20.

### b) Statistical analyses

Collected data was entered into a Microsoft Excel spreadsheet and exported to IBM SPSS Statistics v. 25 for analysis. Continuous variables were summarised as means  $\pm$  standard deviation while categorical variables were summarised as frequencies and percentages.

The independent variables were socio-demographic and other characteristics as well as study condition (‘received training’ or ‘no training’). The outcome variables were levels of knowledge, attitude, self-efficacy, and practice for each participant expressed as total scores. The changes in the outcome measures (post-training) were also calculated.

Bivariate analyses included an initial baseline comparison of variables between study arms using Chi-square and *t*-test to assess comparability and the success of randomisation.

Participants who were lost to follow-up were also compared with those who completed the

study in each arm. Analysis of differences between intervention and control groups for change of total scores of the outcome variables was done with *t*-test. To allow for clustering by LGA, these inter-group differences were further analysed using linear mixed-effects regression modelling with ‘study condition’ modelled as a fixed effect and ‘LGA of practice’ entered as a random effect.<sup>45</sup> The model was also adjusted for potential confounders noted at the baseline comparison of the study arms. Bonferroni correction for multiple comparisons was included. All outcome analyses were by intention to treat, according to the pre-intervention random allocation. The level of significance for all analyses was set at  $\alpha = 0.05$ .

### **Ethical Considerations**

The Institutional Review Board of Harvard University determined that this study (Protocol number IRB22-0197) is exempt. However, the Health Research Ethics Committee of the Delta State University Teaching Hospital, Oghara gave ethical approval (Approval Number: HREC/PAN/2021/008/0420). The participants signed the written informed consent form after reading the Participant Information Document and getting answers to any questions they had (from the investigator or the Ethics Committee). Participants were assured of their confidentiality. It was made clear that they could freely decline participation at any point during the research.

Since the online course required hours of internet connection, allowing participants to bear the cost would have contravened the principle of non-maleficence. An appropriate data bundle (commensurate with the duration of the online training on Zoom), five CME points, and a certificate of training were given to each participant. These were provided as compensation and a token of appreciation which are generally acceptable “because they aim to make a participant whole, are quite minimal or are offered in a way that would not influence decisions to participate”.<sup>46</sup>

There are ethical concerns about withholding a potentially efficacious intervention from participants in the control arm of a study. In the absence of an intervention in current use, the control arm may receive no intervention, provided they have identical access to all the treatment and preventive services as those in the intervention arm.<sup>39</sup> This study sought to assess the efficacy of an online training package in improving physicians' competency in smoking cessation for which there is yet no modality already in use in Nigeria. In line with the principle of beneficence, at the end of the study, participants in the control arm were offered the same training as those in the intervention arm.

## **RESULTS**

The pre-intervention response rates were 88.8% (91.8% in the intervention arm, and 85.5% in the control arm). The total number of subjects at the end of the study was 261 (141 in the intervention group, and 120 in the control group). This gave post-intervention response rates of 88.7% in the intervention arm and 82.8% in the control arm (Figure 4).

At baseline, the study and control groups were only significantly different in age, years of medical practice, and level of health care to which their facility belonged (Table 2). With respect to sociodemographic characteristics and work-related variables, there was no statistically significant difference between participants who were lost to follow-up and those who completed the study. The intervention group had a significantly higher mean of change in score for knowledge, confidence, and practice (Table 3). However, after adjusting for clustering and possible confounders, the difference was only significant for knowledge and confidence (Table 4).

## **DISCUSSION**

Six months post-intervention, there was a significantly higher improvement in the knowledge and confidence of participants in the intervention group compared to those in the control group. This is similar to the results of a randomised controlled trial (RCT) conducted among community-based health professionals in Scotland which showed a significant improvement in knowledge, and cluster-randomised controlled trials (CRCT) in Switzerland and the United States which demonstrated an increase in confidence.<sup>47-49</sup> However, training had no significant effect on attitude and practice in this current study unlike RCTs done in Scotland and Indonesia, and CRCTs conducted in Finland, Switzerland, and the United States.<sup>33,34,47-50</sup> The observed ineffectiveness of the training in improving attitude in this current study may be due to the high level of good attitude pre-intervention. The observed difference in effect on practice could be because these previous studies adopted a workshop form of training which, in addition to educational methods such as lectures, PowerPoint presentations, and interactive sessions, included more participatory breakout role-play sessions with typical patient/case scenarios and demonstrations. This explanation is supported by SLT with its explanatory variables of behaviour change and the processes through which these influences can be modified. SLT holds that *Behavioural capacity* or *skill set* can be altered through observational learning (watching someone else model the desired behaviour) and participatory learning (direct experience through supervised practice and repetition). Also, important in SLT is the role of vicarious experience: observing peers successfully perform a behaviour modifies one's expectations about their own behaviour. Training intervention using participatory workshop modules achieves these through demonstrations and role plays. This current study, wherein training was done by online lectures and brainstorming/interactive sessions, lacked direct practice, successful individual performance of 5A's, and vicarious experience. Therefore, the failure of the intervention to improve practice could be tied to the absence of these modifiers.<sup>26</sup> Another explanation for the lack of improvement in practice can be deduced from this study's

conceptual framework wherein practice is influenced firstly by the interaction of several health system factors (including the availability of organisational support such as brochures for patients, guidelines, specialist clinics for referral, financial coverage for cessation intervention) with knowledge and attitude.<sup>5,21-23</sup> The absence of these factors in Nigeria may have made it impossible for the knowledge and confidence gained by the physicians from the training to translate into action. Despite the shortfall, the improvement in knowledge and confidence are useful. This is because the knowledge necessary for behaviour change (behavioural capacity) is seen as a powerful tool in building self-efficacy. Self-efficacy has been proposed as the most important prerequisite for behaviour change and will affect how much effort is put into a task and the outcome of that task. As such the development of knowledge and confidence are crucial to achieving behaviour change.<sup>51</sup> Overall, this study supports the general suggestion in the wider literature that training, even online, has a positive effect on clinician competency, though actual change in behaviour (increase in practice) is more likely if there is observational and participatory (practical) learning in keeping with SLT.<sup>25-34,47-55</sup>

A limitation of this study is the susceptibility of cluster trials to selection biases at the cluster level and the individual level (recruitment of individuals into the study).<sup>56</sup> The former was minimised by ensuring careful randomisation of clusters by an independent person. Full identification aided by the sampling frame (complete list of employees) from the relevant government agencies, and provision of compensation to participants in the training/study were used to maximise the inclusion of individuals within the clusters and reduce drop-outs.<sup>56</sup> Some form of compensation and token of appreciation are generally acceptable in research, to the extent that they aim to make a participant whole, are minimal, and are offered in a way that does not influence the decision to participate.<sup>46</sup> Secondly, this study relied on self-reported data to assess the smoking cessation practice and confidence of participants. As such, some



level of under/over-reporting may have occurred. The assurance of confidentiality and an appeal to the participants for candour was used to minimise this bias.

A strength of this study is the use of a previously validated instrument with established adequate Cronbach's alpha coefficients for the assessment of tobacco cessation intervention knowledge, attitude, self-efficacy, and practice. Also, this study had a high response rate of 85.9% which has a positive implication for external validity. Individuals who turn down research invitations tend to be different from those who participate.<sup>57</sup> The extent of the non-response bias was determined by comparing respondents who completed the study with those who were lost to follow-up.<sup>45</sup> The small number of dropouts in each arm and the comparability with the complying population indicate that the bias is likely to be insignificant.<sup>37</sup> There were formal power considerations from the outset, and the sample size was also above the calculated required minimum which means that it was adequate to detect statistically significant differences where such exist.<sup>56</sup> Survey response rates have been on the decline in recent times due to progressively increasing time pressures on people, and medical doctors respond less than other health workers.<sup>56</sup> This threat was borne in mind especially with the shortage of medical personnel due to massive brain drain. Making repeated contact with selected study subjects is a strategy for improving recruitment.<sup>57</sup> This was employed with three courteous reminder messages (at roughly 72-hourly intervals) after the initial contact for each of the two phases of the study. This is one of the few studies on the effect of training on tobacco cessation competency that employed a linear mixed effects model to account for clustering. In addition, there was an adjustment for baseline factors and covariates which reduces the estimates of the standard errors and increases precision.<sup>37</sup> Adjusting for covariates can also improve the power of a trial by reducing the magnitude of the between-cluster variation.<sup>37</sup> These considerations make this study generalisable, and its findings useful for informing policy.

## **CONCLUSION AND RECOMMENDATIONS**

Using appropriate design, sampling technique, and sample size, this study's findings meet its aim to fill the gap in the literature in Nigeria regarding the effect of training on primary care doctors' tobacco intervention competency. To the best of our knowledge, this is the first study to provide data in this regard in Nigeria. Training improved knowledge and confidence scores, though there was no significant effect on attitude and practice. This study has important implications for primary care systems in Nigeria, and public health strategies for tobacco control through demand reduction measures.

There should be formulation and implementation of policies that engender pre- and in-service training on cessation interventions for primary care doctors in Nigeria. The inclusion of smoking cessation in the curriculum of medical schools, and periodic continuing medical education courses, preferably in the form of in-person workshops, should be emphasised. However, online training can be adopted where resources or circumstances do not permit workshops. Information about the free WHO online course should be widely circulated, and its uptake encouraged. More research on improving competency in delivery cessation services among primary care doctors is needed. Studies to comparatively assess the effectiveness of online versus in-person training; determine if the length of training modulates effectiveness as well as the optimum duration; and examine the relative contributions of the various health system factors to the practice of cessation intervention will better inform policy.<sup>58</sup> Also, more studies in Nigeria that replicate this current one would be important to confirm its findings and build evidence for the generalisability of the observed effect.

## **ACKNOWLEDGMENT**

This study was conducted while Nnamdi Moeteke was a Visiting Scholar at the Harvard Medical School Centre for Primary Care, under the Programme in Global Primary Care and Social Change. We are grateful to the Centre, and the Programme's Director Dr David B. Duong for the opportunity, and their guidance and support.

## REFERENCES

1. World Health Organization (WHO). Tools for advancing tobacco control in the XXIst century: policy recommendations for smoking cessation and treatment of tobacco dependence. Geneva: World Health Organisation; 2003. 1–72 p.
2. VanSchayck OCP, Williams S, Barchilon V, Baxter N, Jawad M, Katsaounou PA, et al. Treating tobacco dependence: guidance for primary care on life-saving interventions. Position statement of the IPCRG. *npj Primary Care Respiratory Medicine* [Internet]. 2017;27:38–49. Available from: <http://dx.doi.org/10.1038/s41533-017-0039-5>
3. Zwar NA, Richmond RL. Role of the general practitioner in smoking cessation. *Drug and Alcohol Review*. 2006;25:21–6.
4. Fiore M, Jaén C, Baker T, Bailey WC, Benowitz N, Curry SJ. Treating tobacco use and dependence: 2008 update. Clinical practice guideline. Rockville, MD: U.S. Department of Health and Human Services. Public Health Service; 2008. 1–276 p.
5. Gichuki JW. Health care providers knowledge, attitude and practice of smoking cessation interventions in public health facilities in Kiambu County, Kenya. University of Nairobi; 2014.
6. Ali AYM, Safwat T, Onyemelukwe G, Otaibi MA Al, Amir AA, Nawas YN, et al. Smoking prevention and cessation in the Africa and Middle East regions: a consensus draft guideline for healthcare providers - executive summary. *Respiration*. 2012;83(5):423–32.
7. Raw M, McNeill A, West R. Smoking cessation guidelines for health Professionals - a guide to effective smoking cessation interventions for the health care system. *Thorax*. 1998;53(5):S1–19.
8. Ward KD. Tobacco intervention research in low- and middle-income countries: lessons learned and future directions. *Journal of Smoking Cessation*. 2016;11(2):61–4.
9. Hayes RB, Geller A, Churchill L, Jolicoeur D, Murray DM, Shoben A, et al. Teaching tobacco dependence treatment and counseling skills during medical school: rationale and design of the medical students helping patients quit tobacco (MSQuit) group randomized controlled trial. *Contemporary Clinical Trials*. 2014;37(2):284–93.
10. Nilan K, Raw M, McKeever TM, Murray RL, McNeill A. Progress in implementation of WHO FCTC article 14 and its guidelines: a survey of tobacco dependence treatment provision in 142 countries. *Addiction*. 2017;112(11):2023–31.

11. Crowley RA, Kirschner N. The integration of care for mental health, substance abuse, and other behavioral health conditions into primary care: executive summary of an American College of Physicians position paper. *Annals of Internal Medicine*. 2015;163(4):298–9.
12. Fiore M, Jaén C, Baker T, Bailey WC, Benowitz N, Curry SJ. A clinical practice guideline for treating tobacco use and dependence: 2008 update. A U.S. public health service report. *American Journal of Preventive Medicine*. 2008;35(2):158–76.
13. Applegate BW, Sheffer CE, Crews KM, Payne TJ, Smith PO. A survey of tobacco-related knowledge, attitudes and behaviours of primary care providers in Mississippi. *Journal of Evaluation in Clinical Practice*. 2008;14:537–44.
14. World Health Organization. WHO report on the tobacco epidemic, 2019. Geneva: World Health Organisation; 2019. 1–109 p.
15. Batini C, Ahmed T, Ameer S, Kilonzo G, Ozoh OB, van Zyl-Smit RN. Smoking cessation on the African continent: challenges and opportunities. *African Journal of Thoracic and Critical Care Medicine*. 2019;25(2):46–8.
16. World Health Organization. WHO Report on the Global Tobacco Epidemic, 2019 [Internet]. Geneva: World Health Organisation; 2019. 1–109 p. Available from: <http://www.who.int/tobacco/mpower/offer/en/>
17. Desalu OO, Adekoya AO, Elegbede AO, Dosunmu A, Kolawole TF, Nwogu KC. Knowledge of and practices related to smoking cessation among physicians in Nigeria. *Journal of Brazilian Pneumology*. 2009;35(12):1198–203.
18. Jamda MA, Bajoga U, Gajida AU. Knowledge and practice of smoking cessation services among health care workers in Abuja, Federal Capital Territory, Nigeria. *Journal of Community Health and Primary Health Care*. 2015;27:37–45.
19. Odukoya O, Jamda M, Onigbogi O, Uguru N, Onigbogi M, James F, et al. Tobacco cessation interventions in tertiary hospitals in Nigeria: an audit of patient records. *Nicotine and Tobacco Research*. 2017;19(8):983–9.
20. McNeill J. Skills vs. competencies - what's the difference, and why you should care [Internet]. Hays: Recruiting Experts Worldwide. 2021 [cited 2021 Apr 8]. Available from: <https://social.hays.com/2019/10/04/skills-competencies-whats-the-difference/>
21. Abdullah ASM, Rahman ASMM, Suen CW, Wing LS, Ling LW, Mei LY, et al. Investigation of Hong Kong doctor's current knowledge, beliefs, attitudes, confidence and practices: implications for the treatment of tobacco dependency. *Journal of the Chinese Medical Association* [Internet]. 2006;69(10):461–71. Available from: [http://dx.doi.org/10.1016/S1726-4901\(09\)70310-7](http://dx.doi.org/10.1016/S1726-4901(09)70310-7)
22. Carson K V., Smith BJ, Verbiest MEA, Crone MR, Brinn MP, Esterman AJ, et al. Training health professionals in smoking cessation. *Cochrane Database of Systematic Reviews*. 2012;2012(5):2–4.
23. Passey ME, D'Este CA, Sanson-Fisher RW. Knowledge, attitudes and other factors associated with assessment of tobacco smoking among pregnant aboriginal women by health care providers: a cross-sectional survey. *BMC Public Health* [Internet]. 2012;12(1):165–74. Available from: <http://www.biomedcentral.com/1471-2458/12/165>
24. Lepage M, Dumas L, Saint-Pierre C. Teaching smoking cessation to future nurses: Quebec educators' beliefs. *Western Journal of Nursing Research*. 2015;37(3):376–93.
25. Naidoo J, Wills J. *Foundations for Health Promotion*. 3rd ed. London: Bailliere

- Tindall/Elsevier; 2009. 7 p.
26. van Ryn M, Heaney CA. What's the Use of Theory? *Health Education Quarterly*. 1992;19(3):315–30.
  27. Martínez C, Castellano Y, Company A, Guillen O, Margalef M, Alicia Arrien M, et al. Impact of an online training program in hospital workers' smoking cessation interventions in Bolivia, Guatemala and Paraguay. *Gaceta Sanitaria* [Internet]. 2018;32(3):236–43. Available from: <http://dx.doi.org/10.1016/j.gaceta.2017.10.020>
  28. Sherman JJ, Smith BL. Effect of a smoking cessation educational intervention on knowledge and confidence of pharmacy students versus community leaders. *Pharmacy Practice*. 2019;17(1):1302–8.
  29. Saba M, Bittoun R, Saini B. Instructional design and assessment: a workshop on smoking cessation for pharmacy students. *American Journal of Pharmaceutical Education*. 2013;77(9):1–9.
  30. Uti OG, Sofola O. Impact of an educational intervention on smoking counseling practice among Nigerian dentists and dental students. *Nigerian Journal of Clinical Practice*. 2015;18(1):75–9.
  31. Simansalam S, Brewster JM, Mohamed MHN. Training Malaysian pharmacy undergraduates with knowledge and skills on smoking cessation. *American Journal of Pharmaceutical Education*. 2015;79(5):1–7.
  32. Maynard A, Metcalf M, Hance L. Enhancing readiness of health profession students to address tobacco cessation with patients through online training. *International Journal of Medical Education*. 2012;3:57–62.
  33. Amemori M, Virtanen J, Korhonen T, Kinnunen TH, Murtomaa H. Impact of educational intervention on implementation of tobacco counselling among oral health professionals: a cluster-randomized community trial. *Community Dentistry and Oral Epidemiology*. 2013;41:120–9.
  34. Kristina SA, Prabandari YS, Widayanti AW, Thavoncharoensap M. Measuring effects of pharmacists' training on smoking cessation using mystery shoppers. *International Journal of Pharmaceutical and Clinical Research*. 2016;8(2):123–9.
  35. Delta State Government. About Delta State [Internet]. Delta State Government. 2021 [cited 2022 Feb 9]. Available from: <https://www.deltastate.gov.ng/about-delta/>
  36. Adeloye D, Auta A, Fawibe A, Gadanya M, Ezeigwe N, Mpazanje RG, et al. Current prevalence pattern of tobacco smoking in Nigeria: a systematic review and meta-analysis. *BMC Public Health*. 2019;19:1719–32.
  37. Campbell MJ. Challenges of cluster randomised trials. *Journal of Comparative Effectiveness Research*. 2014;3(3):271–81.
  38. Hemming K, Girling AJ, Sitch AJ, Marsh J, Lilford RJ. Sample size calculations for cluster randomised controlled trials with a fixed number of clusters. *BMC Medical Research Methodology*. 2011;11:102–12.
  39. Carneiro I, Howard N, Bailey L. *Introduction to Epidemiology*. 2nd ed. Maidenhead: McGraw-Hill Education; 2011. 45–48 p.
  40. Parker DR, Evangelou E, Eaton C. Intraclass Correlation Coefficients for Cluster Randomized Trials in Primary Care: The Cholesterol Education and Research Trial (CEART). *Contemporary Clinical Trials*. 2005;26:260–7.

41. McConnell MM, Monteiro S, Bryson GL. Sample Size Calculations for Educational Interventions: Principles and Methods. *Canadian Journal of Anaesthesia*. 2019;66:864–73.
42. Singh J, Liddy C, Hogg W, Taljaard M. Intracluster Correlation Coefficients for Sample Size Calculations Related to Cardiovascular Disease Prevention and Management in Primary Care Practices. *BMC Research Notes*. 2015;8:89–98.
43. Pan American Health Organisation and World Health Organisation. Training for primary care providers: brief tobacco interventions - 2021 (WHO e-learning course) [Internet]. Virtual Campus for Public Health. 2021 [cited 2022 Jan 21]. Available from: <https://www.campusvirtualsp.org/en/course/training-primary-care-providers-brief-tobacco-interventions-2021-who-e-learning-course>
44. World Health Organisation. Part III: training for primary care providers: brief tobacco interventions [Internet]. Geneva: World Health Organisation; 2014. Available from: [https://cdn.who.int/media/docs/default-source/quitting-tobacco/part-iii-trainingprimarycareprovidersbriefftobaccointerventions.pdf?sfvrsn=c1dc07cb\\_2](https://cdn.who.int/media/docs/default-source/quitting-tobacco/part-iii-trainingprimarycareprovidersbriefftobaccointerventions.pdf?sfvrsn=c1dc07cb_2)
45. Bruce N, Pope D, Stanistreet D. *Quantitative Methods for Health Research: A Practical Interactive Guide to Epidemiology and Statistics*. 2nd ed. Chichester: John Wiley and Sons; 2008. 1–12 p.
46. Largent EA, Lynch HF. Paying research participants: regulatory uncertainty, conceptual confusion, and a path forward. *Yale Journal of Health Policy, Law, and Ethics*. 2017;17(1):61–141.
47. Kerr S, Whyte R, Watson H, Tolson D, McFadyen AK. A mixed-methods evaluation of the effectiveness of tailored smoking cessation training for healthcare practitioners who work with older people. *Worldviews on Evidence-Based Nursing*. 2011;8(3):177–86.
48. Prokhorov A V., Hudmon KS, Marani S, Foxhall L, Ford KH, Luca NS, et al. Engaging physicians and pharmacists in providing smoking cessation counseling. *Archives of Internal Medicine* [Internet]. 2010;170(18):1640–6. Available from: <http://archinte.ama-assn.org/cgi/reprint/170/18/1640%5Cnhttp://ovidsp.ovid.com/ovidweb.cgi?T=JS&PAGE=reference&D=emed9&NEWS=N&AN=2010572880>
49. Cornuz J, Humair J, Seematter L, Stoianov R, VanMelle G, Stalder H, et al. Efficacy of resident training in smoking cessation: a randomized, controlled trial of a program based on application of behavioral theory and practice with standardized patients. *Annals of Internal Medicine* [Internet]. 2002;136:429–37. Available from: <http://www.scopus.com/inward/record.url?eid=2-s2.0-0037133536&partnerID=40&md5=2c98f2360578a53a8c51123202d300f0>
50. Kottke TE, Brekke ML, Solberg LI, Hughes JR. A randomized trial to increase smoking intervention by physicians. Doctors helping smokers, round 1. *JAMA*. 1989;261(14):2101–6.
51. Nutbeam D. Using theory to guide change at the individual level. In: Cragg L, Davies M, Macdowall W, editors. *Health Promotion Theory*. 2nd ed. Berkshire: Open University Press; 2013. p. 65–78.
52. Caplan L, Stout C, Blumenthal DS. Training physicians to do office-based smoking cessation increases adherence to PHS guidelines. *Journal of Community Health*. 2011;36(2):238–43.
53. Sheffer CE, Barone CP, Anders ME. Training health care providers in the treatment of tobacco use and dependence: pre- and post-training results. *Journal of Evaluation in*



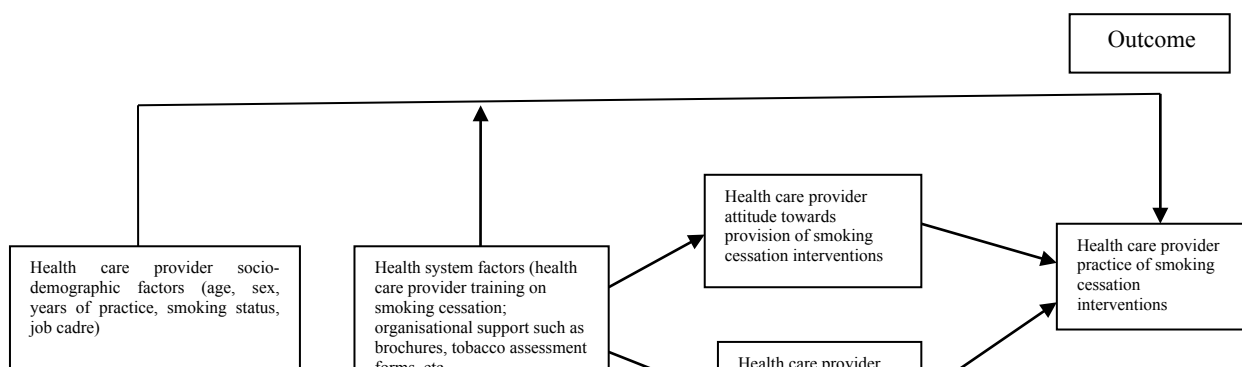
Clinical Practice. 2009;15(4):607–13.

54. Hudmon KS, Kroon LA, Corelli RL, Saunders KC, Spitz MR, Bates TR. Training future pharmacists at a minority educational institution: evaluation of the Rx for change tobacco cessation training. *Cancer Epidemiology, Biomarkers and Prevention*. 2004;13(3):477–81.
55. McLeod S. Behaviorist approach [Internet]. *Simply Psychology*. 2022 [cited 2022 May 27]. Available from: <https://www.simplypsychology.org/behaviorism.html>
56. Bowling A. *Research methods in health: investigating health and health services*. 4th ed. Berkshire: Open University Press; 2014.
57. Hulley S, Cummings S, Browner W, Grady D, Newman T. *Designing Clinical Research*. 4th ed. Philadelphia: Lippincott Williams and Wilkins; 2013. 29–30 p.
58. Graham GF. *Nursing student training, perception, and behavior in tobacco cessation counseling: a randomised experimental study*. Texas Woman’s University; 2010.

## FIGURES AND TABLES



**Figure 1: The 5As/5Rs Model for treatment of tobacco use and dependence<sup>6</sup>**





**Figure 2: Conceptual framework illustrating the link between various demographic and health system factors with the health care providers' knowledge, attitude and practice of smoking cessation interventions<sup>5,21-23</sup>**

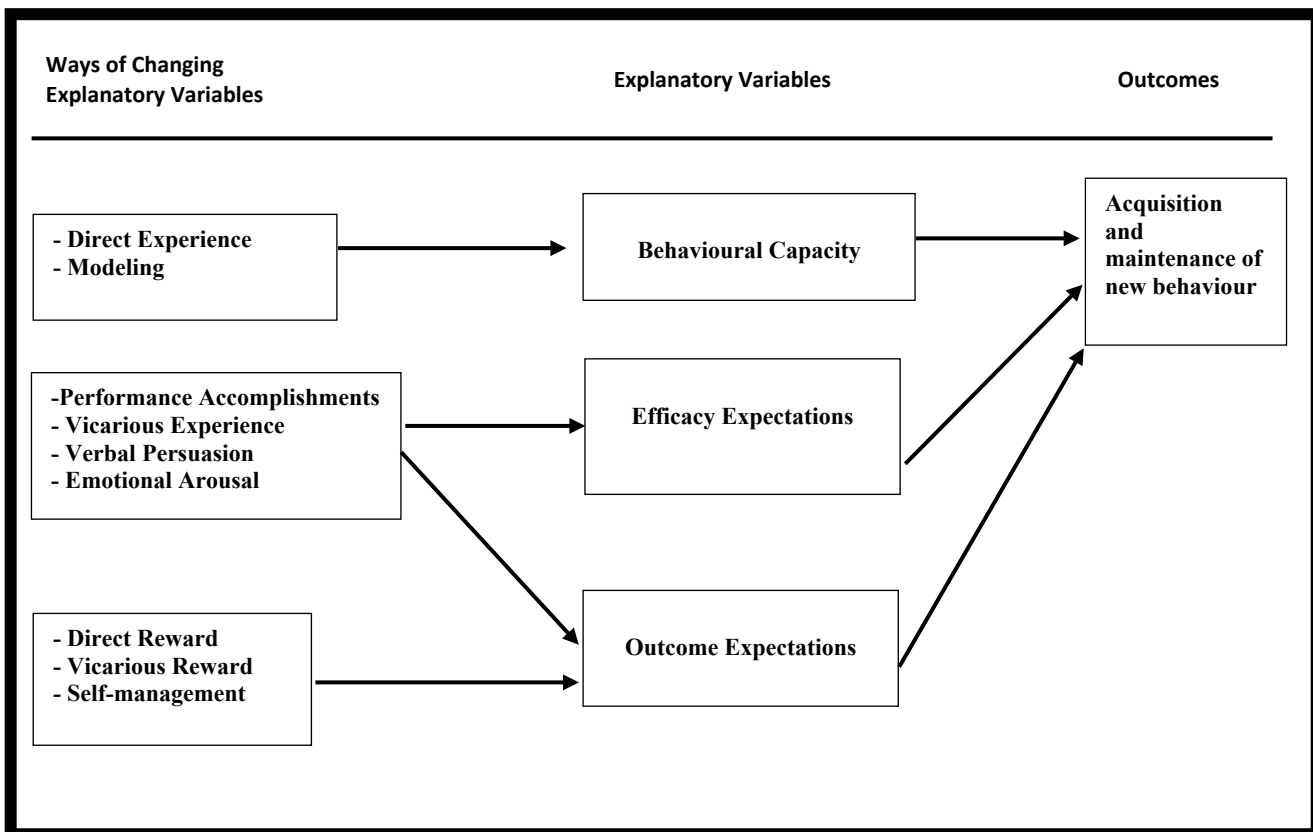
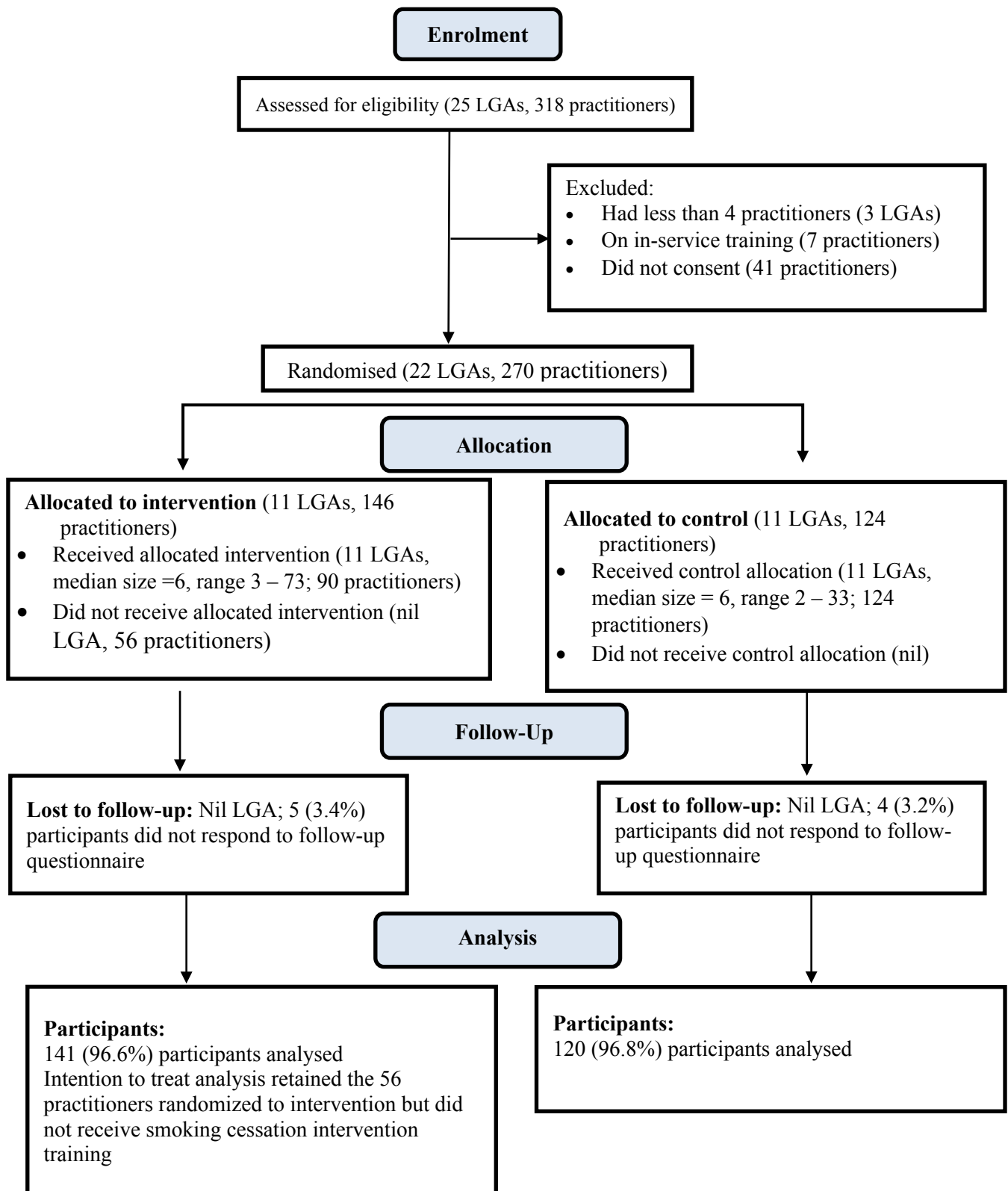


Figure 3: Explanatory variables and processes of the Social Learning Theory<sup>26</sup>



**Figure 4: Flow of clusters and participants through the trial**

**Table 1: Overview and learning outcomes of the training modules**

Overview and time taken to complete	Learning outcomes
<p data-bbox="162 1240 767 1346"><b>Module 1: The role of primary care providers in tobacco control and tobacco dependence treatment (40 minutes)</b></p> <ul data-bbox="220 1384 767 1727" style="list-style-type: none"><li data-bbox="220 1384 767 1547">• The role of health professionals as role models, clinicians, educator, scientist, leader, opinion-builder, alliance-builder, and watching out for tobacco industry activities</li><li data-bbox="220 1559 767 1619">• Description of brief advice used in the WHO FCTC Article 14 guidelines</li><li data-bbox="220 1630 767 1691">• Brief tobacco intervention as an opportunistic intervention</li><li data-bbox="220 1702 767 1727">• Effectiveness of brief advice on quitting</li></ul>	<p data-bbox="794 1240 1382 1272">Participants should be able to</p> <ul data-bbox="842 1317 1382 1659" style="list-style-type: none"><li data-bbox="842 1317 1382 1422">• Acknowledge their roles in tobacco control and tobacco dependence treatment</li><li data-bbox="842 1433 1382 1494">• Describe the purpose of this training course</li><li data-bbox="842 1505 1382 1565">• Describe existing effective tobacco dependence treatment methods</li><li data-bbox="842 1576 1382 1659">• Describe the definition, effectiveness, feasibility, and content of brief tobacco interventions</li></ul>
<p data-bbox="162 1832 767 1892"><b>Module 2: Basics of tobacco use and tobacco dependence (40 minutes)</b></p> <ul data-bbox="220 1937 767 2038" style="list-style-type: none"><li data-bbox="220 1937 767 1998">• Overview of local, national, worldwide patterns of tobacco use.</li><li data-bbox="220 2009 767 2038">• Theory and evidence on the three</li></ul>	<ul data-bbox="842 1832 1382 2038" style="list-style-type: none"><li data-bbox="842 1832 1382 1892">• Identify patterns of tobacco use (local, national, international)</li><li data-bbox="842 1904 1382 2009">• Describe the health, social and economic impact of tobacco use on tobacco users and others</li><li data-bbox="842 2020 1382 2038">• Clarify common misconceptions held by</li></ul>

---

elements of tobacco addiction: physical/physiological dependence; emotional/psychological connection; and habitual and social connection	tobacco users <ul style="list-style-type: none"><li>• Explain the benefits of quitting tobacco use</li><li>• Describe why people smoke and why they don't stop.</li></ul>
<b>Module 3: Overview of brief tobacco interventions (40 minutes)</b> <ul style="list-style-type: none"><li>• The primary purpose of a brief tobacco intervention</li><li>• The population impact of a brief tobacco intervention</li><li>• The several structured brief tobacco intervention models that can guide primary care providers through the right process to talk to patients about tobacco use and deliver advice (5A's/5R's)</li></ul>	<ul style="list-style-type: none"><li>• Describe the purpose and population impact of a brief tobacco intervention</li><li>• Describe at least three brief tobacco intervention models</li></ul>
<b>Module 4: Asking, advising, and assessing readiness to quit (40 minutes)</b> <ul style="list-style-type: none"><li>• How to ask about tobacco use and document tobacco use status in the medical record</li><li>• Theory of why advice should be personalized and how to tailor advice for a particular patient</li><li>• Theories of motivation (when is someone ready to quit?) and how to assess readiness to quit</li></ul>	<ul style="list-style-type: none"><li>• Ask and advise patients about their tobacco use in an appropriate way</li><li>• Use two ways to assess patients' readiness to quit</li></ul>
<b>Module 5: Dealing with low motivation (40 minutes)</b> <ul style="list-style-type: none"><li>• Overview of the 5R's approach and where it should be inserted during a brief intervention</li><li>• Use of some motivational tools to motivate patients for quitting tobacco use such as cost calculators; photos of smoking-exacerbated facial ageing; the carbon monoxide (CO) monitor; risk charts.</li></ul>	<ul style="list-style-type: none"><li>• Describe the 5R's brief tobacco intervention model</li><li>• Respond appropriately to exhibited stop-smoking resistance, employing the 5R's model</li><li>• Respond appropriately in cases of low motivation to quit, using motivational tools</li></ul>
<b>Module 6: Assisting and arranging for follow-up(40 minutes)</b> <ul style="list-style-type: none"><li>• Actions that can be taken to aid patients in quitting: helping to develop a quit plan; providing practical counselling to deal with challenges; providing intra-treatment social support; recommending pharmacotherapy if appropriate; providing supplementary materials</li><li>• Arranging for follow-up contacts</li></ul>	<ul style="list-style-type: none"><li>• Assist patients to stop tobacco use by helping them with a quit plan and providing intra-treatment social support and supplementary materials</li><li>• Arrange follow-up contacts</li><li>• Arrange a referral to specialist services if available</li><li>• Deliver a full, brief tobacco intervention according to the 5A's and 5R's models</li></ul>

---

- 
- Review of each stage of the 5A's and 5R's models

---

**Module 7: Addressing Non-smokers' exposure to Second-hand Smoke (40 minutes)**

- Overview of second-hand smoke
- Use of the 5A's model to offer a brief intervention to educate non-smokers about the dangers of second-hand smoke and advise them on avoiding the effects of second-hand smoke

- Describe the definition and dangers of second-hand smoke
- Describe the brief intervention model for reducing non-smokers' exposure to second-hand smoke

---

**Module 8: Pharmacotherapy (40 minutes)**

- Nicotine Replacement Therapy (nicotine gum, trans-dermal patch, lozenge, oral inhaler, and nasal spray), bupropion and varenicline:

- what those medications are
- the purpose of using those medications
- available dosage
- advantages and disadvantages
- who can use those medications
- general guidelines for using those medications
- side-effects and warnings

- Methods of assessing the level of nicotine dependence

- Describe effective tobacco cessation medications
- Prescribe the available range of NRT products
- Recommend bupropion and varenicline
- Apply tools to assess tobacco users' levels of nicotine dependence.

---

**Module 9: Promoting brief tobacco interventions in the community (40 minutes)**

- Community resources for delivering brief interventions: tobacco quit lines, specialist services in cessation clinics, local tobacco cessation classes and support groups, smokers' web-based assistance, free self-help materials

- Identify outreach opportunities for delivery of brief tobacco interventions to tobacco users in their homes or community settings
  - Identify referral resources within a local community for the primary care provider to deliver brief tobacco interventions
-

**Table 2: Baseline socio-demographic characteristics of participants**

	Control (n=124)		Intervention (n=146)		Total (N=270)		Test statistic	p-value
<b>Age (years)</b>								
Mean ± SD	45.63±8.11		43.08±7.34		44.25±7.79		t=2.715	<b>0.007</b>
<b>Years of experience</b>								
Mean ± SD	17.44±8.12		14.88±7.22		16.06±7.74		t=2.746	<b>0.006</b>
<b>Sex</b>	<i>n</i>	%	<i>n</i>	%	<i>n</i>	%		
Male	89	71.8	91	62.3	180	66.7	χ <sup>2</sup> =2.692	0.101
Female	35	28.2	55	37.7	90	33.3		
<b>Job description</b>	<i>n</i>	%	<i>n</i>	%	<i>n</i>	%		
Consultant	11	8.9	17	11.6	28	10.4	χ <sup>2</sup> =6.856	0.077

R. Doctor	30	24.2	53	36.3	83	30.7		
M. Officer	79	63.7	70	47.9	149	55.2		
D. Officer	4	3.2	6	4.2	10	3.7		
<b>Level of healthcare of facility</b>	<b><i>n</i></b>	<b>%</b>	<b><i>n</i></b>	<b>%</b>	<b><i>n</i></b>	<b>%</b>		
Primary	14	11.3	15	10.1	29	10.8	$\chi^2=7.583$	<b>0.023</b>
Secondary	77	62.1	69	47.3	146	54.1		
Tertiary	33	26.6	62	42.6	95	35.1		
<b>Smoking status</b>								
Current Smoker	2	1.6	2	1.4	4	1.5	$\chi^2=0.027$	0.987
Ex-smoker	11	8.9	13	8.9	24	8.9		
Never smoked	111	89.5	131	89.7	242	89.6		
<b>Previous training on smoking cessation</b>								
Yes	25	20.2	25	17.1	50	18.5	$\chi^2=0.410$	0.522
No	99	79.8	121	82.9	220	81.5		

R – Resident; M – Medical; D – Dental |  $\chi^2$ = Chi-Square test | t= Independent Sample t-test



**Table 3: Comparison of means of the changes in total scores (95% confidence intervals) between the intervention and control groups at six months post-intervention**

<b>Primary outcome</b>	<b>Intervention (n=141)</b>	<b>Control (n=120)</b>	<b>Difference between groups</b>	<b>t statistic (df)</b>	<b>p-value</b>	<b>Effect size</b>
Knowledge	1.61 (1.11 - 2.14)	0.63 (0.26 - 1.00)	0.985 (0.313 - 1.657)	2.884 (259)	<b>0.0001</b>	0.353
Attitude	0.20 (-0.08 - 0.44)	0.29 (0.05 - 0.57)	-0.093 (-0.476 - 0.290)	-0.479 (259)	0.870	-
Confidence	3.02 (2.41 - 3.65)	0.75 (0.20 - 1.27)	2.271 (1.470 - 3.073)	5.578 (259)	<b>0.0001</b>	0.656
Practice	0.91 (0.23 - 1.70)	0.58 (0.001 - 1.20)	0.332 (-0.654 - 1.317)	0.662 (259)	<b>0.046</b>	0.212

**Table 4: \*Adjusted comparison between groups for mean of the changes in total scores (95% confidence intervals) of outcome variables at six months**

<b>Primary Outcome</b>	<b>Intervention (n=141)</b>	<b>Control (n=120)</b>	<b>Difference between groups</b>	<b>t statistic (df)</b>	<b>p-value<sup>a</sup></b>	<b>Effect size (95% CI)</b>
Knowledge	1.558 (0.923 - 2.193)	0.599 (0.001 - 1.198)	0.958 (0.092 - 1.825)	2.456 (10.277)	<b>0.033</b>	0.344 (0.099 - 0.589)
Attitude	0.214 (-0.046 - 0.474)	0.292 (0.011 - 0.573)	-0.077 (-0.460 - 0.306)	-0.398 (258)	0.691	-
Confidence	2.748 (1.868 - 3.628)	0.947 (0.080 -	1.800 (0.573 - 3.028)	3.104 (16.324)	<b>0.007</b>	0.520

		1.815)				(0.273
						–
						0.767)
Practice	0.900 (0.228 -	0.583 (-	0.317 (-	0.631	0.529	-
	1.572)	0.142 -	0.672 -	(258)		
		1.309)	1.306)			

\*Adjusted for clustering (by LGA of practice) and group differences in age, years of practice, and level of health facility between groups using linear mixed-effects regression modelling

<sup>a</sup>Adjustment for multiple comparisons: Bonferroni