

1 **Detection of carbapenem resistance genes in *Campylobacter coli* and *Campylobacter jejuni***
2 **isolated from chickens, and diarrheic children aged less than five years in Kampala city,**
3 **Uganda.**

4 Walter Okello^{1,2}, Ann Nanteza¹, Felix Opiyo¹, Justin Okello¹, Lesley Rose Ninsiima¹, Peter
5 Marin¹, David Onafro¹, Patrick Pithua³, Clovice Kankya¹, Terence Odoch¹

6
7 ¹Department of Biosecurity Ecosystems and Veterinary Public Health, College of Veterinary
8 Medicine, Animal Resources and Biosecurity (COVAB), Makerere University, P.O. Box 7062,
9 Kampala, Uganda

10 ²International Institute of Tropical Agriculture, P.O. Box 7878, Kampala, Uganda

11 ³Department of Population Health Sciences, Virginia-Maryland College of Veterinary Medicine,
12 Virginia Polytechnic Institute and State University, Blacksburg, 24061, United States

13 *Correspondence, walteriqueokello@gmail.com/ W.Okello@cgiar.org, +256 783923827

14

15 **Keywords**

16 Carbapenem resistance genes, *Campylobacter coli*, *Campylobacter jejuni*, Chickens, Diarrheic
17 children aged less than five years.

18

19 **Abstract**

20 *Campylobacter* species are recognized as one of the significant causative agents of global
21 foodborne illnesses and potential reservoirs for dissemination of antimicrobial resistance due to
22 their zoonotic nature. Unlike other bacteria such as *Klebsiella pneumoniae*, *E. coli*, *Enterobacter*,
23 etc., *Campylobacter* has shown limited or absent resistance to Carbapenems, critically important
24 "last resort" antibiotics. This distinct resistance profile prompted this investigation into the
25 prevalence of Carbapenem resistance genes in *Campylobacter* species, specifically *Campylobacter*
26 *coli* (*C. coli*) and *Campylobacter jejuni* (*C. jejuni*).

27 Analyses were conducted on 292 archived *C. coli* and *C. jejuni* isolates obtained from chickens
28 and diarrheic children under five years of age in Kampala city, Uganda. The primary objectives
29 included assessment of phenotypic susceptibility of the isolates to Meropenem and Imipenem
30 using the Kirby Bauer disk diffusion method, as well as determination of the occurrence of four
31 selected Carbapenem resistance genes (*bla*VIM, *bla*NDM-1, *bla*IMP, and *bla*OXA-48) using

32 multiplex polymerase chain reaction (PCR).

33 Interestingly, despite the observed phenotypic susceptibility to Meropenem and Imipenem in all
34 the *Campylobacter* isolates, 29.8% harbored at least one of the four selected Carbapenem
35 resistance genes, including blaVIM, blaNDM-1, blaIMP, and blaOXA-48. The prevalence of the
36 resistance genes was 55(28.1%) in chickens and 15(38.5%) in children. Notably, blaVIM was the
37 predominant gene, detected in 57.1% of the isolates, followed by blaNDM-1 (11.4%), blaIMP
38 (8.6%), and blaOXA-48 (5.7%). Coexistence of multiple resistance genes was also observed, with
39 blaVIM and blaIMP present in 10.0% of the isolates, and blaVIM and blaNDM-1 in 5.7%. One
40 isolate displayed simultaneous presence of blaNDM-1, blaVIM, and blaIMP.

41 This study uncovered a previously unexplored realm in *Campylobacter* research, identifying
42 Carbapenem resistance genes in *Campylobacter* in Uganda. The identification of these resistance
43 genes, despite the apparent phenotypic susceptibility to Carbapenems, signifies the presence of a
44 substantial reservoir of carbapenem resistance genes in *Campylobacter*.

45

46

47 **Introduction**

48 Antimicrobial resistance (AMR) is an increasing global threat to public health, posing a significant
49 risk to vulnerable populations, including neonates, critically ill patients, and those with weakened
50 immune systems [1]. The World Health Organization [2] has identified AMR as a global health
51 security concern, emphasizing the need for action across government sectors and society as a
52 whole. In the United States alone, the Centers for Disease Control (CDC) estimated that AMR-
53 related direct healthcare costs could reach up to \$20 billion annually, with additional costs of up
54 to \$35 billion per year in terms of lost productivity [3]. Moreover, a report released by the Uganda
55 National Academy of Sciences in 2015 highlighted the worsening trends of resistance and the
56 diminishing effectiveness of commonly used antibiotics in Uganda [4].

57 In response to the rising AMR threat, Uganda has taken significant steps to combat the spread of
58 antibiotic resistance. Notably, the country has developed a National Antimicrobial Resistance
59 Action Plan spanning from 2018 to 2023. This action plan outlines a comprehensive strategy to
60 tackle AMR across multiple sectors and stakeholders, including the health sector, agriculture,
61 animal husbandry, and environmental management. The implementation of this plan aims to curb
62 the misuse and overuse of antibiotics, enhance surveillance and monitoring of resistant pathogens,

63 improve infection prevention and control practices, and promote responsible antimicrobial use in
64 both humans and animals. Even though the Uganda AMR national action plan, supports the
65 analysis, dissemination, and sharing of surveillance data and Information on AMR to facilitate,
66 decision-making on diagnoses and treatments in clinical public health, veterinary practice,
67 environment, and wildlife laboratories and food technologies, no data on molecular mechanisms
68 associated with resistance to Carbapenems in *Campylobacter* has been generated.

69 *Campylobacter* infections are a major cause of bacterial gastroenteritis worldwide [5], with
70 *Campylobacter jejuni* and *Campylobacter coli* being the primary species responsible for human
71 disease. The Centers for Disease Control and Prevention (CDC) estimated that a substantial
72 number of infections, approximately 300,000 cases per year in the United States alone, are caused
73 by drug-resistant *Campylobacter* strains [6]. This alarming trend underscores the urgent need for
74 comprehensive surveillance and understanding of AMR mechanisms in *Campylobacter* especially
75 in low-income settings such as Uganda.

76 Poultry, including chickens, plays a critical role in the epidemiology of AMR, especially in the
77 context of *Campylobacter* species [7]. The transmission of resistant *Campylobacter* from poultry
78 to humans is of significant concern, as it may compromise the effectiveness of commonly used
79 antibiotics for the treatment of these infections. The proximity of humans to poultry and the
80 potential for direct or indirect contact with contaminated poultry products contribute to the spread
81 of AMR at the animals-humans-environment interface [8], amplifying the global burden of
82 antimicrobial resistance.

83 The emergence and dissemination of carbapenem resistance in Gram-negative bacteria including
84 *Campylobacter* pose an alarming threat, as carbapenems are often considered as last-line treatment
85 options for severe bacterial infections [9].

86 Resistance to Carbapenems is commonly due to the production of Carbapenemases such as;
87 veronica integron metallo-beta-lactamase types (VIM), imipenemase (IMP) types, *Klebsiella*
88 *pneumoniae* Carbapenemase (KPC), oxacillinase_48 (OXA_48), and New Delhi metallo-beta-
89 lactamase-1 (NDM-1), encoded by Carbapenem resistance determining genes (CRDGs):*blaVIM*,
90 *blaIMP*, *blaKPC*, *blaOXA_48*, and *blaNDM-1*, respectively [10]. Resistance to Carbapenems may
91 also be due to plasmid AmpC beta-lactamases in combination with ESBLs, mutations, and altered
92 expression of porins. The presence of carbapenem resistance genes in *Campylobacter* strains raises
93 concerns about the potential dissemination of these resistance determinants in the environment,

94 which could further contribute to the global spread of AMR.
95 Therefore, this research aimed to investigate the phenotypic resistance patterns to selected
96 carbapenems and the prevalence of CRDGs in *C. coli* and *C. jejuni* isolated from chickens and
97 diarrheic children aged less than five years in Kampala city, Uganda. This research will provide
98 critical insights into the dynamics of carbapenem resistance in this pathogen and contribute to
99 informing effective strategies for its control and prevention, ultimately protecting public health.

100

101 **Materials And Methods**

102 **Study design**

103 This was a cross-sectional study that aimed at determining phenotypic resistance patterns against
104 Meropenem and Imipenem and detecting four Carbapenem resistance genes (*blaOXA-48*,
105 *blaNDM-1*, *blaVIM* and *blaIMP*) in archived samples of *Campylobacter species*, *C. coli*, and *C.*
106 *jejuni* isolates at Food Hygiene Laboratory, Makerere University, College of Veterinary Medicine,
107 Animal Resources and Biosecurity (COVAB).

108 **Study population**

109 The study was conducted on all 292(48 from children and 244 from chickens) isolates of
110 *Campylobacter species* previously stored at -40°C in the Food Hygiene Laboratory at the
111 Department of Biosecurity, Ecosystems and Veterinary Public Health in 2021. The bacterial
112 isolates had been recovered from faecal and rectal swab samples from diarrheic children aged five
113 years and below who were attending Mulago National Referral Hospital and Kisenyi Health Centre
114 III and from cloacal swabs of chickens in the childrens' homes or neighborhoods in Kampala city,
115 Uganda, between 2020 and 2021. These isolates were obtained using the method as described by
116 [11]. Briefly, faecal samples were cultured on Exeter broth and transferred to Modified Charcoal
117 Cefoperazone Deoxycholate Agar (MCCDA) through 0.45µm Nitrocellulose filters. Suspected
118 *Campylobacter* colonies were sub -cultured on blood agar and Identification was based on colony
119 morphology.

120

121 **Retrieval of *Campylobacter* species isolates from storage.**

122 The isolates and associated data were first accessed on 1st September 2022. Retrieval of isolates

123 and analysis of phenotypic antibiotic susceptibility patterns were performed from the Food
124 Hygiene Laboratory at COVAB using the method by [11]. All the 292 cryopreserved samples of
125 *Campylobacter species* in Microbank (Oxoid) with 15% glycerol were resuscitated in nutrient
126 broth by pipetting 100µl of the glycerol stock in which the isolates were archived into 1ml of
127 nutrient broth. Incubation was done at 42°C for 24 hours under microaerophilic conditions created
128 by Campygen® (Oxoid, UK) gas-generating pack in an anaerobic jar. After 24-hour incubation,
129 100µl of the broth culture was transferred onto a 0.45micrometer nitrocellulose membrane filter
130 placed on sterile MCCDA (Blood-Free agar) (Oxoid, UK) containing *Campylobacter* selective
131 supplement SR0155 (Oxoid, UK). The fluid was spread on the filter using a sterile micro loop and
132 allowed to drain through for 30 minutes. Incubation was then done for 24 hours at 42°C under
133 microaerophilic conditions created by Campygen® (Oxoid, UK) in an anaerobic jar. A pool of
134 colonies from the MCCDA was emulsified in nutrient broth (Oxoid, UK) and transferred to the
135 Molecular Laboratory at COVAB for DNA extraction and identification of *Campylobacter species*
136 using PCR.

137 **Determination of phenotypic antimicrobial susceptibility patterns against Meropenem and** 138 **Imipenem in *Campylobacter* species isolates**

139 All the archived isolates once resuscitated were subjected to antimicrobial susceptibility testing
140 using the Kirby-Bauer disk diffusion susceptibility testing Method [12]. The standardised bacterial
141 inoculum using 0.5 Mcfarland standards was grown on Mueller-Hinton agar (Oxoid, UK) in the
142 presence of two Carbapenem antibiotics (Imipenem 10µg, Meropenem 10µg) (Oxoid, UK) and
143 incubated for 24 hours at an ambient temperature of 42°C in a microaerophilic condition provided
144 by Campygen®. At the end of incubation, the zone inhibition diameters were measured using a
145 ruler and a pair of dividers. The results of the zone inhibition diameters were interpreted as
146 resistant, intermediate, and susceptible following the Clinical and Laboratory Standards Institute
147 (CLSI), 2021 guidelines [13]. Details of the Carbapenem breakpoints are summarized in Table 1.

148 **Table 1: Standard zone diameters for Imipenem and Meropenem CLSI, 2021 [13]**

	ZONE DIAMETERS		
	Resistant	Intermediate	Susceptible
Imipenem and Meropenem	<19 mm	20- 22 mm	≥ 23 mm

149

150 **Molecular identification of *Campylobacter* species and detection of carbapenem resistance**
151 **genes**

152 ***Campylobacter* DNA Extraction**

153 Wizard genomic DNA purification kit from PROMEGA (USA) was used to extract DNA based
154 on the manufacturer's instructions: Centrifugation of 1ml of the overnight culture was done for
155 two minutes at 13,000 rpm and the supernatant was discarded. Nuclei Lysis Solution (600µl) was
156 added to the pellet and incubated for five minutes at 80°C, then cooled to room temperature. Three
157 microliters of RNase solution were added and incubated at 37°C for 60 minutes, then cooled to
158 room temperature (25°C). Two hundred microliters of Protein precipitation solution were added,
159 vortexed, incubated on ice for five minutes, and centrifuged at 13,000 rpm for three minutes. The
160 supernatant was transferred to a clean tube containing 600µl of room-temperature isopropanol,
161 centrifuged, and the supernatant decanted. Seventy percent ethanol (600µl) was added to the pellet,
162 mixed, and centrifuged for two minutes at 13,000 rpm. The ethanol was aspirated, and the pellet
163 was air-dried for 10 minutes at 25°C. Finally, the DNA pellet was rehydrated in 100µl of
164 Rehydration Solution for one hour at 65°C.

165

166 **Identification of genus *Campylobacter*, species *C. coli* and *C. jejuni* by PCR**

167 Using a multiplex PCR, *Campylobacter* species 16S RNA gene, specific genes for *C. coli* and *C.*
168 *jejuni* (*ask* and *cj0414* respectively) were amplified as described by [14]. Briefly, 1x of wif1 Taq
169 mix, 0.25µM of each forward and reverse primers (Table 2), and 1.5µl of the template DNA were
170 mixed and topped up with PCR water to a 25µl reaction volume. The amplification was carried
171 out in a thermocycler (Bio Rad, USA) using the following conditions: initial denaturation at 95°C
172 for 15 minutes followed by 25 cycles of denaturation at 95°C for 30 seconds, annealing at 58°C
173 for 1 minute, extension at 72°C for 1 minute and a final extension at 72°C for 7 minutes.

174

175 **Table 2: Primers used in the amplification of *Campylobacter* species, *C. coli* and *C. jejuni***

Target organism	Size (bp)	Tm	Target gene	Primer	Primer sequence	Reference
Genus <i>Campylobacter</i>	816		<i>16S rRNA</i>	C412F	GGATGACACTTTTC GGAGC	[15]
				C128R	CATTGTAGCACGTG TGTC	
<i>C. coli</i> ,	502		<i>Ask</i>	CC18F	GGTATGATTTCTAC AAAGCGAG	[15]
				CC519R	ATAAAAGACTATCG TCGCGTG	
<i>C. jejuni</i> ,	161		<i>cj0414</i>	C-1	CAAATAAAGTTAGA GGTAGAATGT	[16]
				C-3	CCATAAGCACTAGC TAGCTGAT	

176

177 The PCR amplicons were run on 2% agarose gel. The gel was run in Tris-acetate EDTA (TAE)
178 buffer at 125 voltage for 35 minutes in the presence of gel red for staining the DNA. The gel was
179 then visualised under a ultra-violet gel illuminator.

180

181 **Multiplex PCR detection of Carbapenem resistance genes**

182 Only positive samples for *Campylobacter species* 16S RNA, *C. coli*, and *C. jejuni* were subjected
183 to the detection of resistance genes. My Taq Mix (Bioline, Alvinston, Canada) of 2x Concentration
184 was used to perform the Multiplex PCR to detect the four resistance genes (*blaOXA_48*, *blaNDM-1*,
185 *blaIMP*, and *blaVIM*) using eight primers shown in table 3. These four genes were selected
186 because of their clinical significance and being the most commonly reported carbapenem
187 resistance genes in other bacteria such as the *Enterobacteriaceae*.

188 A total PCR reaction of 12.5µl was used comprising 6.25 µl of 2x My Taq Mix, 0.25 µl of 10µM
189 of both Forward and reverse primer, and 2µl of DNA template and nuclease-free water was used
190 to top up to 12.5 µl total reaction mix. The following PCR programs were used, initial
191 denaturation at 94°C for 5 minutes, followed by 40 cycles of denaturation at 94°C for 45 seconds,
192 annealing at 50°C for 1 minute, extension at 72°C for 1 minute, one final cycle of extension at

193 72⁰C for 10 minutes and hold at 4⁰C for infinity. Electrophoresis was done to detect the presence
194 of the resistance genes and run on 2% agarose gel at 100V, 300MA for 50 minutes, and DNA
195 stained with 3x Gel Red. The gel was then visualised under a UV gel illuminator.

196

197 **Table 3: Primers for amplification of four selected Carbapenem resistance genes**

Gene	Primer sequence (5-3)	Amplicons size(bp)	Reference
<i>blaNDM-1</i>	Forward: GGTTTGGCGATCTGGTTTTTC	521	[10]
	Reverse: CGGAATGGCTCATCACGATC		
<i>blaVIM</i>	Forward: GATGGTGTTTGGTTCGCATA	390	[10]
	Reverse: CGAATGCGCAGCACCAG		
<i>blaOXA-48</i>	Forward: GCTTGATCGCCCTCGATT	238	[10]
	Reverse: GATTTGCTCCGTGGCCGAAA		
<i>blaIMP</i>	Forward: GAAGGCGTTTATGTTCATAC	587	[17]
	Reverse: GTAAGTTTCAAGAGTGATGC		

198

199

200 **Data analysis**

201 The phenotypic antibiotic susceptibility patterns and Carbapenem resistance genes for each isolate
202 were recorded as per sample identification numbers. All results obtained were verified for any
203 clerical errors by comparing the final lab report results with the raw data generated in the lab that
204 detailed every step undertaken before concluding on the results reported. After the verification
205 process, the generated data were coded and entered in Microsoft Excel and then exported to
206 STATA 14 software for analysis. Data analysis was conducted in STATA version 14, proportion
207 differences were computed using the Chi-square test, and statistical differences were determined
208 at 0.05 level of significance and 95% confidence level.

209 **Ethical considerations**

210 This study did not require ethical approval as it focused on archived isolates. However, permission
211 to use the isolates was sought from the Principal Investigator of the primary study that obtained
212 the isolates. The primary study underwent review and approval by the School of Health Sciences,
213 Makerere University Research Ethical Committee and received approval from the School of
214 Health Sciences Research Ethics Committee (SHSREC REF. 2020/034), also uploaded as ‘others’.
215 The approved informed consent included the option to utilize stored isolates for further research
216 purposes. Written consent was obtained from care takers of the children whose stool samples were
217 collected in the primary study. All files containing electronic data were password-protected.
218 Laboratory identification numbers previously used for sample isolation, which concealed patients'
219 identities, were retained during this analysis.

220

221 **Results**

222

223 **Phenotypic antimicrobial resistance patterns of *Campylobacter* species against Meropenem** 224 **and Imipenem**

225 All 292(100%) isolates of *C. coli* and *C. jejuni* were phenotypically susceptible to both
226 Meropenem and Imipenem antibiotics, (Zone of inhibition diameters ranged from 33-48mm, Mean
227 and SD= 41.5 4.2 respectively)

228

229 **Molecular identification of *Campylobacter* species, *C. coli* and *C. jejuni***

230

231 Out of the 292 isolates of *Campylobacter* species included in this study, 288(98.6%) of the isolates
232 were positive for genus *Campylobacter* 16S RNA gene, of which 31(10.8%) were *C. jejuni*,
233 204(70.8%) were *C. coli*, 50(17.4%) mixed isolates of *C. coli* and *C. jejuni* and 3(1.0%) were
234 genus *Campylobacter* but neither *C. coli* nor *C. jejuni*. Of the 235 isolates confirmed as *C. coli*
235 and *C. jejuni*, 39(16.60%) were from children aged less than five years and 196(83.40%) were
236 from chicken. 38(97.44%) of the 39 isolates from children were *C. coli*, 1(2.56%) was *C. jejuni*;
237 and 166(84.69%) of the 196 isolates from chicken were *C. coli* and 30 (15.31%) were *C. jejuni*. A
238 representative agarose gel for multiplex PCR amplification of *Campylobacter* species 16S RNA
239 genes, *C. coli*, and *C. jejuni* specific genes is shown in figure 1.

240

241 *Fig 1: Representative agarose gel for multiplex PCR amplification of Campylobacter species 16S*
242 *RNA genes, C. coli, and C. jejuni specific genes*
243 *Lane M: Molecular marker-50bp (Bioline, Alvinston, Canada). Lane NC: Negative control*
244 *(Distilled water). Lane PC: Positive control- C. coli (ATCC 33559, Thermo Fisher, US) positive*
245 *control. Lanes 1-14 test samples. Lane 2 is Campylobacter species different from C. coli and C.*
246 *jejuni; Samples 1-14 are all positive for Campylobacter species 16S RNA gene, and sample 2 is a*
247 *Campylobacter species different from C. coli and C. jejuni. Lanes 3, 6, 10, and 13 have both C.*
248 *coli and C. jejuni. Campylobacter species were detected on a gel by the presence of 816bp band,*
249 *while C. coli and C. jejuni had bands of 502bp and 161bp, respectively.*

250

251 **Prevalence of Carbapenem resistance genes in *C. coli* and *C. jejuni*.**

252

253 Out of the 235 isolates of *C. coli* and *C. jejuni*, 70(29.8%, 95% Conf. Interval= 0.2424904
254 0.3598934) were positive for at least one of the four carbapenem resistance genes targeted in this
255 study with a higher prevalence in *C. jejuni*, 16(51.6%) than in *C. coli*, 54(26.5%). The prevalence
256 of the resistance genes was 55(78.5%, CI= 0.6712809-0.8681365) in chickens and 15(21.4%, CI=
257 0.1318635-0.3287191) in children.

258 Overall, the most predominant gene was blaVIM 40(57.1%), followed by blaNDM-1 8(11.4%),
259 blaIMP 6(8.6%) and blaOXA-48 was 4(5.7%). A combination of blaVIM and blaIMP was 7(10.0
260 %), blaVIM and blaNDM-1 4(5.7%), and 1(1.4%) had blaNDM-1, blaVIM and blaIMP. The
261 difference in the prevalence of the genes in *C. coli* and *C.jejuni* was statically significant (Chi-
262 square value= 4.0358 and P-value = 0.045) as shown in table 4 and 5. A representative agarose
263 gel for multiplex PCR amplification of selected carbapenem resistance genes (blaVIM, blaIDM-
264 1, blaOXA-48, and blaIMP) in *C. coli* and *C. jejuni* is shown in figure 2.

265

266

267

268 *Fig 2: Representative agarose gel for multiplex PCR amplification of selected carbapenem*
269 *resistance genes (blaVIM, blaIDM-1, blaOXA-48, and blaIMP) in C. coli and C. jejuni*
270 *Lane LM: Molecular marker-50bp (Bioline, Alvinston, Canada). Lanes S1-S10 tested samples.*
271 *Samples S2, S3, S5 and S8 were positive for blaOXA-48; samples S1, S2, and S6 were positive for*

272 *blaVIM*; samples S2, S3 and S8 were positive for *blaNDM-1*; Samples S1, and S6 were positive
 273 for *blaIMP*. Carbapenem resistance genes; *blaNDM-1*, *blaVIM*, *blaOXA-48*, and *blaIMP* were
 274 detected on a gel by the presence of band sizes of 521bp, 390bp, 238bp, and 587bp, respectively.

275 **Table 4: Frequency of Carbapenem resistance genes in *C. coli* and *C. jejuni* isolates**

276
 277

Source of isolates	Test organism	Carbapenem resistance genes		
		Negative n (%)	Positive n (%)	subtotal-N (%)
Chicken	<i>C. coli</i>	127(76.5)	39(23.5)	166(84.7)
	<i>C. jejuni</i>	14(6.7)	16(53.3)	30(15.3)
subtotal		141(70.9)	55(28.1)	196(83.4)
Children	<i>C. coli</i>	23(60.5)	15(39.5)	38(97.4)
	<i>C. jejuni</i>	1(100.0)	0(0.0)	1(2.6)
subtotal		24(61.5)	15(38.5)	39(16.7)
Total-N (%)		165(70.2)	70(29.8)	235(100)

278
 279

280 **Table 5: Frequency of four selected carbapenem resistance genes in *C. coli* and *C. jejuni***

Carbapenem resistance gene	Species		Total-N (%)
	<i>C. coli</i> -n (%)	<i>C. jejuni</i> -n (%)	
<i>blaIMP</i>	5(7.1)	1(1.4)	6(8.6)
<i>blaNDM-1</i>	6(8.6)	2(2.9)	8(11.4)
<i>blaVIM</i>	32(45.7)	8(11.4)	40(57.1)
<i>blaOXA-48</i>	2(2.9)	2(2.9)	4(5.7)
<i>blaVIM</i> and <i>blaNDM</i>	2(2.9)	2(2.9)	4(5.7)
<i>blaNDM</i> , <i>blaVIM</i> and	1(1.4)	0(0.0)	1(1.4)

blaIMP				
blaVIM	and	6(8.6)	1(1.4)	7(10.0)
blaIMP				
Total		54	16	70
		77.1%	22.9%	100.0%

281
282

283 Discussion

284 Carbapenem resistance is a growing concern in bacterial infections, as these drugs are considered
285 last-resort antibiotics. This study focused on detecting carbapenem resistance genes in
286 *Campylobacter coli* and *Campylobacter jejuni* isolates from children and chicken. Interestingly,
287 all the isolates obtained from diarrheic children and chickens were found to be phenotypically
288 susceptible to Meropenem and Imipenem, which is consistent with the fact that carbapenems are
289 not currently used to treat *Campylobacter* infections in humans and are not licensed for use in
290 animal medicine [18]. This is similar to a study conducted by [19] which reported no resistance to
291 Meropenem and Imipenem in *Campylobacter species* isolated from international travelers.
292 However, it is important to note that with time and increased use of carbapenems, even in animal
293 medicine, resistance is likely to emerge. Although the *Campylobacter* species in this study did not
294 exhibit phenotypic resistance to Meropenem and Imipenem, other pathogens in Uganda have
295 shown resistance to these antibiotics. For example [20] reported prevalence of 33% and 21% in
296 *P. aeruginosa* from patients and the environment respectively while it was 14% and 86% in *A.*
297 *baumannii* from patients and environment respectively at Mulago hospital. Moreover, [21]
298 reported 22.4% in *Enterobacteriaceae* at Mulago hospital, Kampala. These findings highlight the
299 importance of monitoring resistance patterns in different bacterial species and environments.
300 The prevalence of carbapenem resistance genes in the *Campylobacter* isolates in this study was
301 29.79%, which is consistent with previous studies on carbapenem resistance genes in other bacteria
302 in Uganda. For instance, a study on *Enterobacteriaceae* at Mulago Hospital reported a prevalence
303 of 28.6%, while *Acinetobacter baumannii* and *Pseudomonas aeruginosa* showed prevalence rates
304 of 2.7% and 7.4%, respectively [21]. Similar to *Enterobacteriaceae*, *Campylobacter* species
305 possess mobile genetic elements that can facilitate the horizontal transfer of resistance genes [22].

306 This emphasizes the need for further research on the mechanisms of gene transfer and integron
307 dynamics to understand the spread and persistence of carbapenem resistance genes in
308 *Campylobacter* in the environment.

309 The results also revealed that 28.1% (55 out of 196) of *Campylobacter* isolates from chickens were
310 positive for carbapenem resistance genes, while 38.5% (15 out of 39) of *Campylobacter* isolates
311 from children carried these resistance genes. This prevalence indicates a concerning level of
312 carbapenem resistance genes in both chicken and children's populations in Kampala city, Uganda.
313 The high prevalence of carbapenem resistance genes in *Campylobacter* isolates from chickens is
314 consistent with previous studies that have identified poultry as a significant reservoir for
315 antimicrobial-resistant bacteria [23]. The poultry industry often employs the widespread use of
316 antibiotics, including critically important carbapenems-like antimicrobials such as cephalosporins,
317 to promote growth and prevent diseases in chickens [24]. Such practices create a favorable
318 environment for the selection and persistence of resistant bacteria in chicken populations.

319 The higher prevalence of carbapenem resistance genes in *Campylobacter* isolates from children is
320 particularly concerning. It raises the possibility of release into the environment and transmission
321 of drug resistant *Campylobacter* from human sources to poultry and vice versa possibly through
322 the consumption of contaminated feeds/food and contact with infected chickens. Children,
323 especially those in low-resource settings, are particularly vulnerable to the infection [25], and the
324 presence of carbapenem-resistant *Campylobacter* in this population raises significant public health
325 concerns.

326
327 Among the carbapenem resistance genes detected, blaVIM was the most prevalent at 57.1%, which
328 aligns with a previous study that reported blaVIM as the most common gene at 10.1%[21].
329 Interestingly, all the detected genes (blaVIM, blaNDM-1, blaIMP, and blaOXA-48) were present
330 in *C. coli* and *C. jejuni* isolates, despite these isolates being phenotypically susceptible to
331 Meropenem and Imipenem. This suggests that the development of resistance due to the presence
332 of carbapenems in the environment was unlikely as previous studies have indicated that resistance
333 genes can be expressed in the presence of antibiotics in the environment [26]. The high prevalence
334 of blaVIM in this study is suggestive of the role of the accessory genome in evolution of
335 carbapenem resistance in the environment. The blaVIM is characterized as an acquired MBL gene
336 translocated between bacteria via class-1 integrons, in horizontal gene transfer mechanisms mostly

337 involving conjugative plasmids [27] & [22]. This makes it essential to conduct further research on
338 the mechanisms of horizontal gene transfer and integron dynamics. Understanding the molecular
339 pathways of gene transfer will provide insights into the spread and persistence of carbapenem
340 resistance genes in the environment, enabling the development of targeted interventions and
341 control strategies. It is also important to conduct regular monitoring of environmental sources for
342 the presence of carbapenem resistance genes. Regular monitoring of environmental sources, such
343 as wastewater, agricultural runoff, and other potential reservoirs, is also crucial to assess the extent
344 of environmental contamination and identify possible transmission routes.

345 The study detected a low prevalence of blaOXA-48 at 2.9% among the isolates. This can be
346 attributed to the unique characteristics of OXA-48-like enzymes, which have low or no hydrolytic
347 activity towards carbapenems [28]. Additionally, the identification of OXA-48-type producers can
348 be challenging due to their point mutant analogs with extended-spectrum beta-lactamases (ESBLs)
349 [29]. Hence, estimating the true prevalence rates of OXA-48-like producers is difficult. This study
350 also found co-existence of blaVIM, blaNDM, and blaIMP in *C. coli* and *C. jejuni* isolates at
351 9(12.9%), indicating that the isolates have the potential for resistance to multiple carbapenem
352 drugs. Although carbapenems have never been licensed for use in livestock animals in any country
353 [30], sporadic cases of carbapenemase-producing bacteria have not only been reported in
354 companion animals but also in livestock, food, and wild animals [31]. Therefore, besides
355 nosocomial bacteria, the food chain and other reservoirs may contribute to the transmission of
356 carbapenem resistance [32]. Strict regulations and discouraging the use of carbapenems in animals
357 are crucial to prevent the emergence and spread of carbapenem resistance genes at the livestock-
358 human interface.

359

360 **Conclusions**

361 This study revealed that all the isolates were susceptible to Meropenem and Imipenem. This study
362 also has, for the first time, reported a high prevalence of carbapenem resistance genes in *C. coli*
363 and *C. jejuni* globally at 29.8%. The blaVIM was the most prevalent carbapenem resistance gene.

364

365 **Limitation of the study**

366 Samples were collected from limited geographic space, mainly hospital based, and the number was
367 quite small. This impacted the generalizability of the results.

368

369 **Recommendations**

370

371 Further research and analysis to identify and characterize *Campylobacter* species other than *C. coli*
372 and *C. jejuni* should be conducted in such settings as in this study. This investigation should focus
373 on understanding their genetic diversity, resistance gene profiles, and potential involvement in
374 carbapenem resistance. A better understanding of these species will aid in developing targeted
375 interventions and control strategies.

376 A comprehensive assessment of the current utilization and management practices of carbapenems
377 in both human and animal settings in Uganda should be conducted. This assessment should include
378 surveys, interviews, and data collection from healthcare facilities, veterinary clinics, and farms to
379 determine the extent of carbapenem usage, prescribing patterns, and adherence to guidelines. This
380 information will help identify potential sources of carbapenem resistance and inform future
381 intervention strategies.

382 A comprehensive surveillance system to monitor the prevalence and trends of carbapenem
383 resistance specifically in *Campylobacter* isolates from diarrheic children and chickens should be
384 established. This surveillance should involve routine testing of isolates for carbapenem resistance
385 genes and phenotypic susceptibility. Timely data collection and analysis will facilitate early
386 detection of emerging resistance patterns and inform targeted interventions.

387 A robust antibiotic stewardship programs in healthcare and veterinary settings in Uganda should
388 be developed and implemented. These programs should focus on promoting responsible use of
389 carbapenems, ensuring appropriate prescribing practices, and monitoring antimicrobial
390 consumption. Collaboration between human and animal health sectors is crucial to address the
391 potential overlap in antibiotic usage and to harmonize stewardship efforts.

392

393 **Authors' contributions**

394 WO, AN, and TO: conceptualization. WO, TO, AN, JO and FLO: data collection. WO, JO, AN,
395 and TO: formal analysis. OW, TO, and AN: investigations. WO, AN, CK and TO: methodology.
396 WO, AN, TO: discussion. WO, CK, AN, PM, LN, DO, JO, and FLO: writing original draft. WO,
397 JO, AN, LN, and TO: writing final draft. PP, CK, and TO: resources. CK, AN, TO, and PP:
398 supervision. All authors contributed to the article and approved the submitted version.

399

400 **Funding**

401 This study was funded by Norwegian Agency for Development Cooperation (NORAD) through
402 the Norwegian Programme for Capacity Development in Higher Education and Research for
403 Development (NORHED II) project titled “Climate Change and infectious Diseases Management,
404 a One Health Approach” and Department of Population Health Sciences, Virginia-Maryland
405 College of Veterinary Medicine.

406 **Acknowledgment**

407 Our sincere appreciation to the Norway government through NORHED II and the Department of
408 Population Health Sciences, Virginia-Maryland College of Veterinary Medicine for funding this
409 research. A special appreciation also to the staff of Molecular Biology and Food Hygiene
410 Laboratories of COVAB, Makerere University for the technical assistance during the laboratory
411 phase of this study.

412

413 **References**

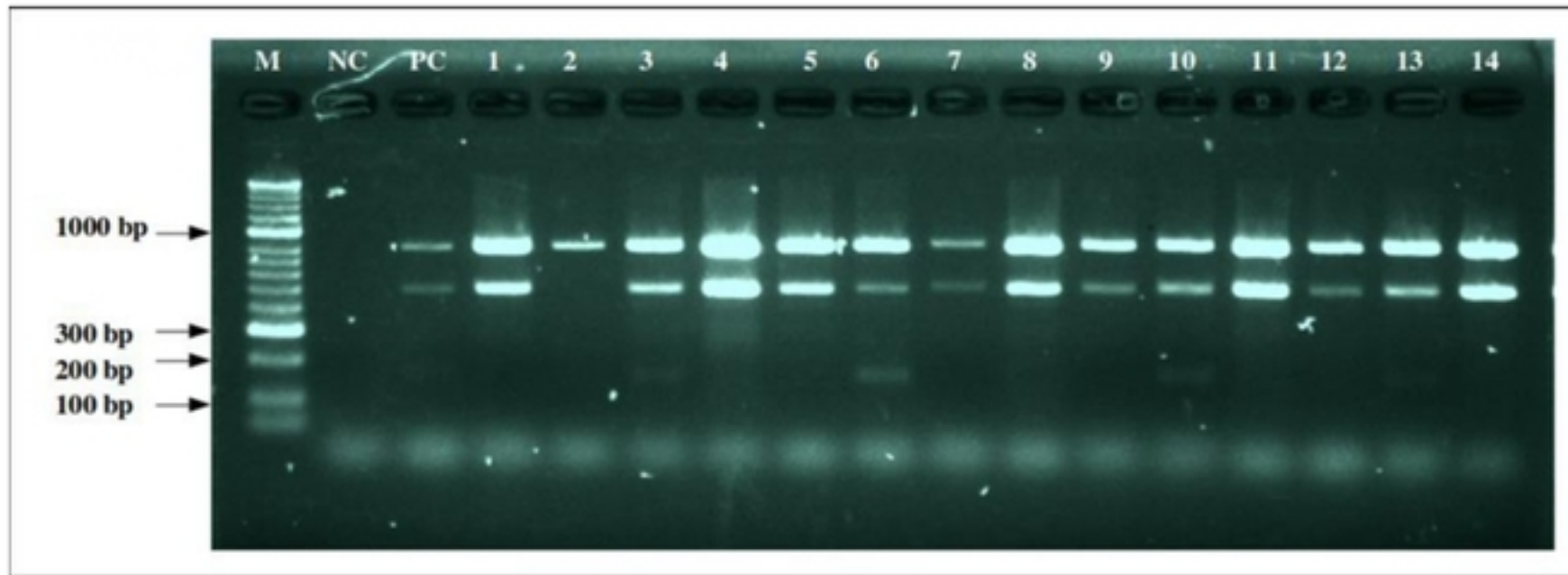
414

- 415 [1] F. Prestinaci, P. Pezzotti, and A. Pantosti, “Antimicrobial resistance: a global multifaceted
416 phenomenon,” *Pathog. Glob. Health*, vol. 109, no. 7, pp. 309–318, 2015.
- 417 [2] W. H. Organization, *Antimicrobial resistance: global report on surveillance*. World
418 Health Organization, 2014.
- 419 [3] D. van Duin and Y. Doi, “The global epidemiology of carbapenemase-producing
420 Enterobacteriaceae,” *Virulence*, vol. 8, no. 4, pp. 460–469, 2017.
- 421 [4] M. Kimaanga, “Temporal dynamics of enterobacteriaceae antimicrobial resistance at the
422 human-pig interface in peri-urban Kampala.” Makerere University, 2019.
- 423 [5] N. O. Kaakoush, N. Castaño-Rodríguez, H. M. Mitchell, and S. M. Man, “Global
424 epidemiology of *Campylobacter* infection,” *Clin. Microbiol. Rev.*, vol. 28, no. 3, pp. 687–
425 720, 2015.
- 426 [6] C. A. Whitehouse, S. Zhao, and H. Tate, “Antimicrobial resistance in *Campylobacter*
427 species: mechanisms and genomic epidemiology,” *Adv. Appl. Microbiol.*, vol. 103, pp. 1–
428 47, 2018.
- 429 [7] J. Kim *et al.*, “Comparative analysis of aerotolerance, antibiotic resistance, and virulence

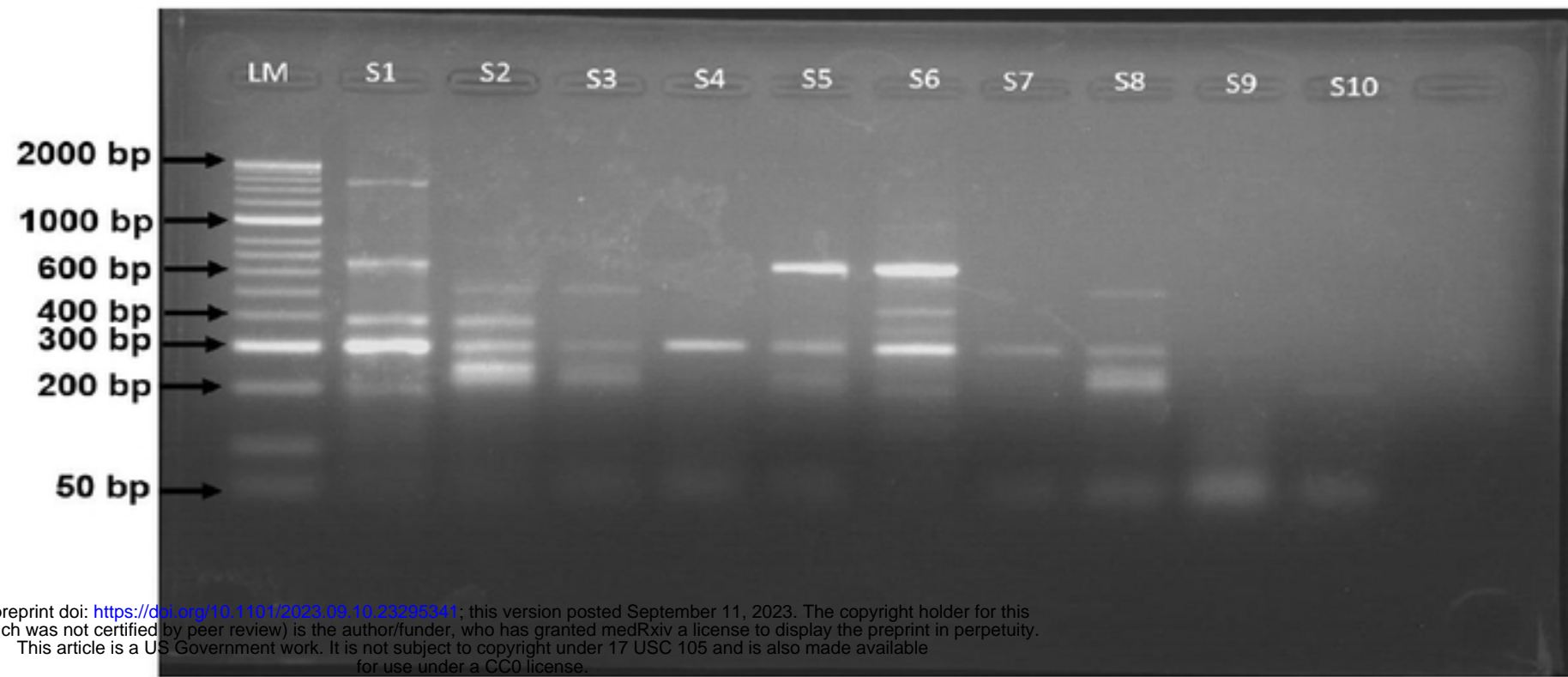
- 430 gene prevalence in *Campylobacter jejuni* isolates from retail raw chicken and duck meat
431 in South Korea,” *Microorganisms*, vol. 7, no. 10, p. 433, 2019.
- 432 [8] S. A. Khan, M. A. Imtiaz, M. A. Sayeed, A. H. Shaikat, and M. M. Hassan,
433 “Antimicrobial resistance pattern in domestic animal-wildlife-environmental niche via the
434 food chain to humans with a Bangladesh perspective; a systematic review,” *BMC Vet.*
435 *Res.*, vol. 16, pp. 1–13, 2020.
- 436 [9] H. J. Morrill, J. M. Pogue, K. S. Kaye, and K. L. LaPlante, “Treatment options for
437 carbapenem-resistant Enterobacteriaceae infections,” in *Open forum infectious diseases*,
438 2015, vol. 2, no. 2.
- 439 [10] M. F. Mushi, S. E. Mshana, C. Imirzalioglu, and F. Bwanga, “Carbapenemase genes
440 among multidrug resistant gram negative clinical isolates from a tertiary hospital in
441 Mwanza, Tanzania,” *Biomed Res. Int.*, vol. 2014, 2014.
- 442 [11] L. K. Williams, L. C. Sait, T. A. Cogan, F. Jørgensen, R. Grogono-Thomas, and T. J.
443 Humphrey, “Enrichment culture can bias the isolation of *Campylobacter* subtypes,”
444 *Epidemiol. Infect.*, vol. 140, no. 7, pp. 1227–1235, 2012.
- 445 [12] J. Hudzicki, “Kirby-Bauer disk diffusion susceptibility test protocol,” *Am. Soc.*
446 *Microbiol.*, vol. 15, pp. 55–63, 2009.
- 447 [13] I. I. Lewis and S. James, “Performance standards for antimicrobial susceptibility testing,”
448 *(No Title)*, 2022.
- 449 [14] B. da S. Frasao, V. A. Marin, and C. A. Conte-Junior, “Molecular detection, typing, and
450 quantification of *Campylobacter* spp. in foods of animal origin,” *Compr. Rev. Food Sci.*
451 *Food Saf.*, vol. 16, no. 4, pp. 721–734, 2017.
- 452 [15] D. Linton, A. J. Lawson, R. J. Owen, and J. Stanley, “PCR detection, identification to
453 species level, and fingerprinting of *Campylobacter jejuni* and *Campylobacter coli* direct
454 from diarrheic samples,” *J. Clin. Microbiol.*, vol. 35, no. 10, pp. 2568–2572, 1997.
- 455 [16] R. WANG, M. F. SLAVIK, and W. CAO, “A RAPID PCR METHOD FOR DIRECT
456 DETECTION of LOW NUMBERS of CAMPYLOBACTER JEJUNI 1,” *J. Rapid*
457 *Methods Autom. Microbiol.*, vol. 1, no. 2, pp. 101–108, 1992.
- 458 [17] S. A. Khalaf, N. N. Mahmood, and M. A. D. Saleh, “Detection of tetM, armA, blaPER-1
459 and blaIMP genes in *E. coli* isolates among the gram negative bacteria that cause urinary
460 tract infections,” in *Journal of Physics: Conference Series*, 2021, vol. 1999, no. 1, p.

- 461 12021.
- 462 [18] M. Bassetti, M. Peghin, and D. Pecori, “The management of multidrug-resistant
463 Enterobacteriaceae,” *Curr. Opin. Infect. Dis.*, vol. 29, no. 6, pp. 583–594, 2016.
- 464 [19] A. Post *et al.*, “Antibiotic susceptibility profiles among *Campylobacter* isolates obtained
465 from international travelers between 2007 and 2014,” *Eur. J. Clin. Microbiol. Infect. Dis.*,
466 vol. 36, no. 11, pp. 2101–2107, 2017.
- 467 [20] D. P. Kateete, R. Nakanjako, M. Okee, M. L. Joloba, and C. F. Najjuka, “Genotypic
468 diversity among multidrug resistant *Pseudomonas aeruginosa* and *Acinetobacter* species at
469 Mulago Hospital in Kampala, Uganda,” *BMC Res. Notes*, vol. 10, no. 1, pp. 1–10, 2017.
- 470 [21] D. Okoche, B. B. Asimwe, F. A. Katabazi, L. Kato, and C. F. Najjuka, “Prevalence and
471 characterization of carbapenem-resistant Enterobacteriaceae isolated from Mulago
472 National Referral Hospital, Uganda,” *PLoS One*, vol. 10, no. 8, p. e0135745, 2015.
- 473 [22] V. L. Kung, E. A. Ozer, and A. R. Hauser, “The accessory genome of *Pseudomonas*
474 *aeruginosa*,” *Microbiol. Mol. Biol. Rev.*, vol. 74, no. 4, pp. 621–641, 2010.
- 475 [23] C. M. Schroeder, D. G. White, and J. Meng, “Retail meat and poultry as a reservoir of
476 antimicrobial-resistant *Escherichia coli*,” *Food Microbiol.*, vol. 21, no. 3, pp. 249–255,
477 2004.
- 478 [24] C. H. Brower *et al.*, “The prevalence of extended-spectrum beta-lactamase-producing
479 multidrug-resistant *Escherichia coli* in poultry chickens and variation according to farming
480 practices in Punjab, India,” *Environ. Health Perspect.*, vol. 125, no. 7, p. 77015, 2017.
- 481 [25] S. Budge *et al.*, “Risk factors and transmission pathways associated with infant
482 *Campylobacter* spp. prevalence and malnutrition: A formative study in rural Ethiopia,”
483 *PLoS One*, vol. 15, no. 5, p. e0232541, 2020.
- 484 [26] H. Knothe, P. Shah, V. Kremery, M. Antal, and S. Mitsuhashi, “Transferable resistance to
485 cefotaxime, cefoxitin, cefamandole and cefuroxime in clinical isolates of *Klebsiella*
486 *pneumoniae* and *Serratia marcescens*,” *Infection*, vol. 11, no. 6, pp. 315–317, 1983.
- 487 [27] G. J. Da Silva and S. Domingues, “Insights on the horizontal gene transfer of
488 carbapenemase determinants in the opportunistic pathogen *Acinetobacter baumannii*,”
489 *Microorganisms*, vol. 4, no. 3, p. 29, 2016.
- 490 [28] M. Rivera-Izquierdo *et al.*, “OXA-48 carbapenemase-producing enterobacterales in
491 Spanish hospitals: An updated comprehensive review on a rising antimicrobial

- 492 resistance,” *Antibiotics*, vol. 10, no. 1, p. 89, 2021.
- 493 [29] F. S. Codjoe and E. S. Donkor, “Carbapenem resistance: a review,” *Med. Sci.*, vol. 6, no.
494 1, p. 1, 2017.
- 495 [30] J. Fernández, B. Guerra, and M. R. Rodicio, “Resistance to carbapenems in non-typhoidal
496 *Salmonella enterica* serovars from humans, animals and food,” *Vet. Sci.*, vol. 5, no. 2, p.
497 40, 2018.
- 498 [31] N. Woodford, D. W. Wareham, B. Guerra, and C. Teale, “Carbapenemase-producing
499 Enterobacteriaceae and non-Enterobacteriaceae from animals and the environment: an
500 emerging public health risk of our own making?,” *J. Antimicrob. Chemother.*, vol. 69, no.
501 2, pp. 287–291, 2014.
- 502 [32] I. Kühn *et al.*, “Epidemiology and ecology of enterococci, with special reference to
503 antibiotic resistant strains, in animals, humans and the environment: example of an
504 ongoing project within the European research programme,” *Int. J. Antimicrob. Agents*,
505 vol. 14, no. 4, pp. 337–342, 2000.
506



medRxiv preprint doi: <https://doi.org/10.1101/2023.09.10.23295341>; this version posted September 11, 2023. The copyright holder for this preprint (which was not certified by peer review) is the author/funder, who has granted medRxiv a license to display the preprint in perpetuity. This article is a US Government work. It is not subject to copyright under 17 USC 105 and is also made available for use under a CC0 license.



medRxiv preprint doi: <https://doi.org/10.1101/2023.09.10.23296341>; this version posted September 11, 2023. The copyright holder for this preprint (which was not certified by peer review) is the author/funder, who has granted medRxiv a license to display the preprint in perpetuity. This article is a US Government work. It is not subject to copyright under 17 USC 105 and is also made available for use under a CC0 license.