

Autism Caregiver Coaching in Africa (ACACIA): Protocol for a type 1-hybrid effectiveness-implementation trial

Lauren Franz ^{1,2,3}, Marisa Viljoen ³, Sandy Askew ², Musaddiqah Brown ³, Geraldine Dawson ¹, J Matias Di Martino ⁴,
Guillermo Sapiro ⁴, Katlego Sebolai ³, Noleen Seris ³, Nokuthula Shabalala ³, Aubyn Stahmer ⁵, Elizabeth L Turner ^{2,6},
Petrus J de Vries ³

¹ Duke Center for Autism and Brain Development, Division of Child and Adolescent Psychiatry, Department of Psychiatry and Behavioral Sciences, Duke University, Durham, North Carolina, USA

² Duke Global Health Institute, Duke University, Durham, North Carolina, USA

³ Centre for Autism Research in Africa (CARA), Division of Child & Adolescent Psychiatry, Department of Psychiatry and Mental Health, University of Cape Town, Cape Town, Western Cape, South Africa

⁴ Department of Electrical and Computer Engineering, Duke University, Durham, North Carolina, USA

⁵ Center for Excellence in Developmental Disabilities, MIND Institute, University of California Davis, California, USA

⁶ Department of Biostatistics and Bioinformatics, Duke University, Durham, North Carolina, USA.

*Corresponding author

E-mail: lauren.franz@duke.edu (LF)

NOTE: This preprint reports new research that has not been certified by peer review and should not be used to guide clinical practice.

Abstract

Background: While early autism intervention can significantly improve outcomes, gaps in implementation exist globally. These gaps are clearest in Africa, where forty percent of the world's children will live by 2050. Task-sharing early intervention to non-specialists is a key implementation strategy, given the lack of specialists in Africa. Naturalistic Developmental Behavioral Interventions (NDBI) are a class of early autism intervention that can be delivered by caregivers. As a foundational step to address the early autism intervention gap, we adapted a non-specialist delivered caregiver coaching NDBI for the South African context, and pre-piloted this cascaded task-sharing approach in an existing system of care.

Objectives: First, we will test the effectiveness of the caregiver coaching NDBI compared to usual care. Second, we will describe coaching implementation factors within the Western Cape Department of Education in South Africa.

Methods: This is a type 1 effectiveness-implementation hybrid design; assessor-blinded, group randomized controlled trial. Participants include 150 autistic children (18-72 months) and their caregivers who live in Cape Town, South Africa, and those involved in intervention implementation. Early Childhood Development practitioners, employed by the Department of Education, will deliver 12, one hour, coaching sessions to the intervention group. The control group will receive usual care. Distal co-primary outcomes include the Communication Domain Standard Score (Vineland Adaptive Behavior Scales, Third Edition) and the Language and Communication Developmental Quotient (Griffiths Scales of Child Development, Third Edition). Proximal secondary outcome include caregiver strategies measured by the sum of five items from the Joint Engagement Rating Inventory. We will describe key implementation determinants.

Results: Participant enrolment started in April 2023. Estimated primary completion date is March 2027.

Conclusion: The ACACIA trial will determine whether a cascaded task-sharing intervention delivered in an educational setting leads to meaningful improvements in communication abilities of autistic children, and identify implementation barriers and facilitators.

Trial registration: NCT05551728 in Clinical Trial Registry (<https://clinicaltrials.gov>)

46 Introduction

47 Globally there is growing recognition of the importance of strengthening the capacity of caregivers and
48 clinicians to deliver services at the community-level that result in improved quality of life of all autistic people [1].
49 Early autism intervention is recognized as critical given that specialist-delivered intervention can significantly
50 improve child and family outcomes, reduce the need for services at a later age, and be a cost-effective approach [2-
51 3]. Most autistic people live in low- and middle-income countries (LMIC), where few systems of care provide
52 developmental screening or early intervention [4]. Forty percent of the world’s children will live in Africa by 2050 [5].
53 This demographic reality underlines the necessity of feasible early intervention services that can be scaled-up within
54 existing systems of care.

55 Research has demonstrated that caregivers can be coached to implement early intervention strategies with
56 their young autistic child across daily activities [6]. Low intensity caregiver coaching can impact caregiver-child
57 interaction styles and child outcomes [7-8]. Naturalistic Developmental Behavioral Interventions (NDBI) comprise a
58 class of early intervention approaches that caregivers can deliver [9]. The Early Start Denver Model (ESDM) is an
59 evidence-based NDBI [10]. In the ESDM approach, strategies increase a child’s attention and engagement with their
60 caregiver, thereby increasing opportunities for learning communication and social skills, leading to improvements in
61 child outcomes, including language abilities [11].

62 The efficacy of ESDM delivered via therapists, caregivers, and teachers has been evaluated in a wide range of
63 cultures, including in the United States, Israel, Taiwan, Italy, China, Japan, and Australia among others [2, 10, 12–20].
64 While these studies indicate that NDBI approaches, such as ESDM, hold promise for addressing the needs of young
65 autistic children in LMIC, the research outlined in the current protocol paper aims to address three important gaps in
66 the existing literature. First, very few studies to date have included diverse community partners, including autistic
67 self-advocates, in the research process [21]. Such involvement is important to ensure that the intervention is
68 acceptable to the autism community [22]. Second, caregiver coaches have almost exclusively been highly trained
69 specialists, usually licensed in the fields of psychology and/or education. Lack of access to such specialists in most
70 parts of the world requires that studies include task-sharing to non-specialists as an implementation strategy [1, 23].
71 Third, in a meta-analysis of early autism interventions using non-specialist, only two of the included studies were

72 from LMIC [24–26]. Furthermore, in these two studies the therapists and teachers were the identified ‘non-
73 specialists’, a workforce unlikely to be scalable in Africa. In an Indian study, supervised lay health workers delivered a
74 developmental intervention, demonstrating positive effects on children’s outcomes [27]. Although that study
75 supports the feasibility of non-specialist coaches in India, barriers and facilitators of implementation will be different
76 in other world regions, including Africa. Thus, we aim to develop an early autism intervention approach in Africa that
77 is inclusive of diverse perspectives and incorporates cascaded task-sharing.

78 In Africa, Community Health Workers are often proposed as the non-specialists to target for task-sharing
79 [28]. In some LMIC, early childhood development services have been integrated into maternal and child Community
80 Health Worker programs [29-30]. Challenges with this approach have been identified and include limited Community
81 Health Worker training in early child development, difficulties managing competing demands resulting in poor
82 quality of care and burn out, and lack of individualization of approach [31–33]. This lack of individualization is
83 particularly problematic for children with variable developmental profiles, a common observation in autism. In the
84 current study, we aim to address each of these challenges by working with Early Childhood Development (ECD)
85 practitioners, a non-specialist workforce distinct from Community Health Workers, who have specific training in
86 early child development. ECD practitioners are employed by the Education Department, will have dedicated time to
87 coach, will work under supervision, and use an intervention that can be tailored to meet individual needs.
88 Addressing these challenges will help create a non-specialist workforce, well-positioned to provide coaching for
89 caregivers to deliver early autism intervention, thereby increasing the likelihood of long-term sustainability and
90 scalability of the approach.

91 South Africa, with one of the highest income inequality rates worldwide, is a diverse upper-middle income
92 country [34]. Few families with young children are able to access early autism intervention due to limited services
93 and structural barriers, including poverty and the legacy of apartheid [35–40]. Families able to access publically
94 available services receive approximately one 30-minute therapy session every 4–6 weeks for a limited period of time.
95 Caregivers are typically not included in therapy sessions and are asked to wait outside the room. A South African
96 study documented racial variations in expressive language in a neurodevelopmental clinic, with a significantly
97 greater number of Black compared to White children non-verbal at diagnosis (94% vs 42%) [41]. The need for early

98 autism intervention is increasing, with a documented 276% rise over the last decade in the children waiting for
99 special education services [37].

100 As a foundational step to address the intervention gap in South Africa, in 2015 a partnership between Duke
101 University in the United States and the University of Cape Town (UCT) in South Africa was established [42]. The long-
102 term goal of this partnership was to contextually adapt and implement a cascaded task-sharing NDBI for young
103 autistic children, and to integrate it into a South African system of care. The research team completed the following
104 steps: First, after a significant body of formative research, ECD practitioners were identified as the non-specialist
105 workforce that could serve as intervention coaches [36]. ECD practitioners are well-suited for this role as they are
106 employed by the Education Department, trained in early child development, supervised in their day to day activities,
107 and supported by national policy [43]. A partnership between the ECD workforce and the National Education
108 Department was already established – an alignment that will be critical for future scale-up [44]. Second, the specific
109 NDBI approach (ESDM) was identified based on local interest and available resources. Specifically, this approach was
110 selected because UCT-based clinicians had received some training in ESDM when the partnership with Duke
111 University was established, and the US-based Principal Investigator (PI) was a faculty member at an academic
112 institution where ESDM training occurred. Furthermore, the relationship-based approach of the ESDM aligns with
113 the dominant approach to early childhood mental health in South Africa [45]. Third, the ‘fit’ of NDBI-caregiver
114 coaching with South African caregiver-child dyads was evaluated [35, 46–48]. Interviews with caregivers and
115 behavioral coding of caregiver-child interactions were conducted to understand interaction styles, and common daily
116 routines in which the caregiver coaching intervention could be carried out. Fourth, ESDM coaching procedures were
117 adapted for delivery by non-specialists. Fifth, the team conducted a pilot study of the cascaded task-sharing
118 approach was completed with 10 caregiver-child dyads [23]. Cascaded task-sharing refers to task-sharing the
119 caregiver-coaching role, from a highly trained specialist to a non-specialist. This pilot study demonstrated that
120 caregivers could learn NDBI strategies when coached by non-specialist ECD practitioners, with caregiver
121 implementation fidelity increasing in 10/10 participants. Growth in child communication was also documented, with
122 significant gains seen on the Communication Domain Standard Score of the Vineland Adaptive Behavior Scales, Third
123 Edition (VABS-3) [49] (9/10 improved), and the Language and Communication Developmental Quotient of the
124 Griffiths Scales of Child Development, Third Edition (Griffiths III) [50] (9/10 improved). Finally, mindful of the ‘digital

125 divide', intervention materials were adapted to be shared through WhatsApp, a low-cost messaging software widely
126 used across Africa.

127 Given that the contextually adapted cascaded task-sharing NDBI has demonstrated proof-of-principle, a
128 larger scale trial is required to answer a set of key questions. The first key question is whether the caregiver coaching
129 intervention is effective in terms of its ability to improve child outcomes meaningfully. The majority of caregiver
130 coaching intervention studies only utilize study-specific behavioral coding of caregiver-child interaction as a primary
131 outcome measure [51]. This approach has significant limitations. Behavioral coding measures may only identify
132 circumscribed and temporary changes that may not be indicative of broader developmental gains. A recommended
133 approach to assess meaningful intervention impact is to use tools that measure change that is clinically meaningful
134 [52]. This can be accomplished by using child-focused measures that identify generalization of child skills with
135 different interaction partners and environments (i.e., clinician-administered standardized developmental
136 assessments). The second key question to address is identification of intervention implementation facilitators and
137 barriers. The implementation context is critical to consider in early autism intervention, particularly the 'fit' between
138 intervention and context [35]. The Exploration, Preparation, Implementation, Sustainment (EPIS) framework, is an
139 implementation framework that has been used to specify the complex context for evidence-based practice
140 implementation [53, 54]. The EPIS framework can guide identification of influential contextual factors that hinder or
141 support the implementation process. Recognizing the importance of community partner engagement, the EPIS
142 framework includes a community academic partnership as a bridging factor that can address potential ideological
143 differences, help ensure research products are acceptable to end-users, and support longitudinal community partner
144 engagement across the research cycle [54, 55].

145 For the current study, we will conduct a 1:1 parallel-arm, single (assessor)-blinded, individually randomized,
146 group-treatment, randomized controlled trial (RCT) using a hybrid type 1 effectiveness-implementation design [56,
147 57]. We will evaluate the effectiveness of the cascaded task-sharing intervention on child communication outcomes
148 compared to usual care, in young autistic children (18-72 months) who live in Cape Town, South Africa, while
149 documenting factors that affect implementation. ECD practitioners will complete a four-day training with ESDM-
150 certified therapists from South Africa. During the training ECD practitioners will be introduced to core NDBI concepts
151 and caregiver coaching strategies. ECD practitioners will practice these new coaching and NDBI strategies with a

152 caregiver-child dyad. Ongoing supervision is follows the apprenticeship model for lay counsellor supervision in
153 mental health [58]. The RCT design can be classified as an individually randomized group-treatment trial in which
154 'groups' arise in the treatment arm as a result of multiple caregivers being coached by the same ECD practitioner
155 (with coaching provided individually to the caregiver) [57]. This can potentially result in correlated outcomes of
156 caregiver-child dyads in the intervention arm, trained by the same ECD practitioner (i.e. these caregivers would
157 therefore be members of the same 'group'). We note that no 'grouping' and therefore no correlation of outcomes
158 are expected in the control arm as no training or interactions with the same ECD practitioner are expected. The
159 primary hypothesis of the proposed study is that young autistic children who are randomized with their caregiver to
160 receive 12, 1-hour caregiver coaching sessions (intervention arm), will have greater gains in communication abilities
161 (assessed using two co-primary outcomes, namely the Communication Domain Standard Score from the VABS-3 and
162 the Language and Communication Developmental Quotient from the Griffiths III), at distal follow-up assessment (24
163 weeks post-randomization), compared with autistic children who receive usual care (control arm). The secondary
164 hypothesis of this study is that caregivers in the intervention arm will have greater gain in NDBI caregiver strategies
165 (measured by the sum of 5 caregiver items from the Joint Engagement Rating Inventory during caregiver-child
166 interaction) [59], at a proximal follow-up assessment (16 weeks post-randomization), compared to the control arm.

168 **Materials and methods**

169 See S1 Checklist for the Standard Protocol Items Recommendations for Interventional Trials (SPIRIT)
170 Checklist used for study protocol reporting [60]. The schedule of enrolment, baseline assessment, intervention, and
171 16 weeks (proximal) and 24 weeks (distal) follow-up post-randomization assessments is shown in Fig 1.

172 **Fig 1. Standard Protocol Items: Recommendations for Interventional Trials (SPIRIT) schedule of enrolment,**
173 **interventions, and assessments** (ADOS-2: Autism Diagnostic Observation Schedule, Second Edition; VABS-3:
174 Vineland Adaptive Behavior Scales-3; Griffiths III: Griffiths Scales of Child Development, Third Edition; JERI: Joint
175 Engagement Rating Inventory; PSOCs: Parent Sense of Competence Scale; PSI-SF: Parenting Stress Index-Short Form;
176 CSQ - Caregiver Strain Questionnaire; SRS-2: Social Responsiveness Scale, Second Edition; S2K: SenseToKnow mobile

app; $-t_1$: Pre-randomization; 0 : Baseline Assessment; t_1 : Intervention delivery; t_2 : Repeat Assessment – Proximal outcome; t_3 : Repeat Assessment – Distal outcome; t_4 : Repeat Assessment – Proximal; t_x : close out)

Trial setting

The study will be conducted in Cape Town, South Africa. Formative work identified the Education Department as study implementation partner [36]. With the support of Inclusive and Specialized Education Department Leadership, we will identify Special Education Schools in the Cape Town Metropolitan area who employ ECD practitioners, the non-specialist workforce that will deliver the cascaded task-sharing intervention. Caregiver coaching will occur in these schools. We will recruit participants for the RCT (caregiver-child dyads) from the Western Cape Education Department Provincial Autism Waiting List for special education services. This is a list of autistic children with a clinical diagnosis of autism from community providers awaiting public sector special education services when they reach school-going age [38].

Participants

To assess intervention effectiveness, we will invite caregiver-child dyads who meet the following criteria to join the study: (1) child's age is 18-72 months, (2) child meets the Diagnostic and Statistical Manual of Mental Disorders, Fifth Edition (DSM-5) criteria for autism spectrum disorder [61], informed by the Autism Diagnostic Observation Schedule, Second Edition (ADOS-2), [62] which is administered by research reliable clinicians, (3) child's caregiver speaks isiXhosa, isiZulu, Afrikaans, or English, (4) child's race is African or Coloured (a South African term for mixed race), (5) lives in the Cape Town recruitment area, and (6) caregiver is at least 18 years of age. Exclusion criteria are: (1) child has a genetic disorder of known etiology (for example, fragile X syndrome), (2) child has significant sensory or motor impairment that would preclude use of the play materials, (3) child has major physical abnormalities that would interfere with participation in the coaching intervention, a (4) child has a history of serious head injury and/or neurological condition, and (5) caregiver indicates they will be unable to attend assessments and 12 sessions. We will enroll 150 caregiver-child dyads in the RCT (300 participants).

200 To identify implementation barriers and facilitators we will invite those involved in intervention
201 implementation through participation in the intervention trial and community academic partnership members to
202 provide feedback. Specifically, caregivers who receive coaching, ECD practitioners who conduct coaching, ECD
203 supervisors, and Western Cape Education Department leadership will be included. These participants will be directly
204 involved in intervention implementation and be able to provide input on the specific outer (for example, policies and
205 funding) and inner (for example, provider training and child characteristics) contextual, and innovation (for example,
206 intervention complexity) factors outlined in the EPIS framework [54]. Community academic partnership members
207 will include the PI, Co-PI, Education Department leadership, and other community partners (for example, caregivers
208 and autistic adults). These participants will provide input on functioning of the community-academic partnership. We
209 will enroll 20 participants to assess implementation barriers and facilitators.

210 **Trial intervention**

211 The cascaded task-sharing intervention, Autism Caregiver Coaching in Africa (ACACIA), is informed by ‘Help is
212 in Your Hands’ online materials, which include core components of ESDM that align with eleven common elements
213 shared across all NDBI [63]–[65]. ‘Help is in Your Hands’ materials are open-access, designed for low-resource, low-
214 literacy settings, and include narrated video and animation examples of caregivers using intervention strategies
215 across daily routines in naturalistic home-based environments [64]. The research team systematically adapted both
216 coaching procedures and ‘Help is in Your Hands’ intervention content to fit the South African context [23, 35, 36, 46–
217 48]. Modifications to training, supervision, and session structures were made to facilitate intervention delivery by
218 non-specialist providers. Adaptations to intervention materials produced simple visuals and text that can be sent to
219 caregivers through WhatsApp, a low-cost messaging software, widely used across Africa. Adaptations to intervention
220 materials were made collaboratively by multicultural/multilingual South African ESDM therapists, the PI (an ESDM
221 therapist and certified trainer), and a co-developer of ‘Help is in Your Hands’. The Ecological Validity Framework,
222 which consists of eight dimensions of intervention important to consider during adaptation, guided the adaptation
223 approach [66]. Twelve caregiver-facing WhatsApp messages containing visuals with simple-text, and ECD
224 practitioner-facing session scripts were developed. Over 12, one-hour ECD practitioner delivered coaching sessions,
225 caregivers review ACACIA intervention content with ECD practitioners and are coached to increase their child’s

226 attention and communication, create and vary joint activity routines, and use the antecedents, behaviors, and
227 consequences to support the development of new behaviors. See Table 1 for a description of the specific content of
228 the 12 ACACIA coaching sessions. Participants randomized to the control arm will receive usual care, which may vary
229 between participants but will likely include low-frequency of speech and/or occupational therapy (i.e.,
230 approximately one 30-minute therapy session every 4–6 weeks).

231

232 **Table 1. ACACIA coaching session content**

ACACIA session	Session content
1	Set goals, and identify child likes and dislikes
2	Identify child spotlight of attention and how to increase attention to caregiver
3	Identify and follow child-preferred interests
4	Increase child use and understanding of non-verbal communication
5	Support child ability to share interests through giving, pointing and showing
6	Increase child use and understanding of verbal communication
7	The 4-part joint activity structure (set-up, theme, variation, and closing)
8	Sensory social routines to increase child attention and learning
9	Support child learning across all daily activities
10	Understand reasons for and consequences of child behaviour
11	Teach a new behaviour by showing, telling and helping your child
12	To help new behaviours stick, practice, get others to practice, and give less help over time

233

234 **Measures**

235 **Sociodemographic and child characteristics**

236 At baseline assessment descriptive characteristics for the child (age, race/ethnicity, child’s home language,
237 physical sex at birth) and caregiver (relationship to the child, gender, age, race/ethnicity, marital status, level of
238 education, and household income). Child autism-related behaviors will be assessed with the ADOS-2, a clinician

239 administered, play-based, semi-structured assessment designed to elicit autism-related behaviours in a standardized
240 way [62]. Adverse events will be assessed across study contact points using a general inquiry elicitation approach
241 [67]. Additionally, caregivers will report on autism related-services (outside of caregiver coaching sessions) their
242 child receives across study contact points.

243 **Clinical outcome measures**

244 Primary clinical outcome.

245 *The Vineland Adaptive Behavior Scales-3 (VABS-3) - Communication Domain Standard Score.* The VABS-3 is a
246 caregiver interview, which is semi-structured and administered by a trained clinician. The VABS-3 evaluated how the
247 child performs adaptive behaviors relative to age-based norms. The VABS-3 yields an overall composite score and
248 standard scores across four domains including communication, socialization, daily living skills, and motor skills [49].
249 Subscale scores range from 20-140 with higher scores indicating greater frequency of the specific behavior.

250 *The Griffiths Scales of Child Development, Third Edition (Griffiths III)-Language Developmental Quotient:* The
251 Griffiths-III is a developmental measure, administered by a trained clinicians, that evaluates children birth to six
252 years of age [50]. The Griffiths-III profiles child development across 5 domains: language and communication,
253 foundations of learning, personal-social-emotional, eye and hand coordination and gross motor. Developmental
254 quotients (DQ) are calculated by $(\text{Developmental Age}/\text{Chronological Age}) * 100$. Higher DQ indicate greater
255 consistency between chronological and developmental age.

256 Secondary clinical outcomes.

257 *The Joint Engagement Rating Inventory (JERI) - Sum of five Caregiver Activity Items:* is a behavioral coding
258 inventory that assesses specific features of caregiver-child interactions [59]. The JERI includes 32, 7-point Likert scale
259 items, which assess dyadic interaction, child activity, child engagement states and caregiver activity. In the ACACIA
260 trial, a composite score of five JERI caregiver activity items will be calculated and include: following the child's
261 interests, scaffolding, language facilitation, affect, and communicative temptations. For each of the 7-point caregiver
262 activity items, higher scores will indicate higher frequency and quality of caregiver behaviors.

263

264 Additional measures.

265 *The Parent Sense of Competence Scale (PSOC)*: is a 16-item questionnaire, completed by the caregiver, that
266 measures feeling of confidence and competence in ‘parenting’ their children and ‘parenting’ satisfaction [68]. Items,
267 across these two domains, are rated on a 6-point Likert scale with high scores representing high degrees of
268 satisfaction and efficacy.

269 *The Parenting Stress Index-Short Form (PSI-SF)*: is a 36-item questionnaire, completed by the caregiver, and
270 designed to measure stress associated with parenting [69]. Three subscales (difficult child, parent–child
271 dysfunctional interaction, and parenting distress), with 12 items per subscale, are rated on a 5-point Likert scale,
272 with higher scores indicating a greater degree of parenting stress.

273 *The Caregiver Strain Questionnaire (CSQ)*: is a 21-item, 5-point Likert scale caregiver-completed measure of
274 strain experienced by the caregiver [70]. Higher scores relate to higher caregiver strain.

275 *Social Responsiveness Scale Second Edition (SRS-2)*: is a 65-item, 4-point Likert scale caregiver-completed
276 measure of social-related challenges in autism [71]. Five subscales (social cognition, social awareness, social
277 motivation, social communication, and restricted interests and repetitive behaviour), and a Total Score are reported,
278 with higher scores indicating greater challenges.

279 *SenseToKnow*: is a digital assessment method, that contains a set of brief stimuli, displayed on a tablet,
280 designed to elicit multiple autism-related behaviors including attention to speech, social attention, affective
281 expression, fine motor skills and postural control [72–77]. Using recordings made by the camera in a tablet, a
282 computer automatically codes these behaviors using computer vision analysis and machine learning.

283 **Implementation outcome measures**

284 Fig 2 outlines specific EPIS framework outer and inner contextual, bridging and innovation factors, selected
285 to evaluate based on the teams formative work (See Fig 2) [54].

287 **Fig 2. EPIS constructs to identify implementation determinants for scale-up**

288

289 *Service, environment, policies, and funding:* Individual interviews and focus groups will be completed with
290 personnel involved in intervention implementation. Qualitative questions will assess (within the Education
291 Department): (1) the feasibility of external autism early intervention trainings, monitoring and support, (2) funding
292 avenues that could facilitate external trainings and ongoing monitoring and support, (3) relevant policies that relate
293 to children with developmental disabilities, and (4) policy direction in the area of early child development and care
294 of children with developmental disabilities.

295 *Family structural issues and caregiver-child characteristics:* Caregivers of young autistic children will
296 complete focus groups and the Caregiver Strain Questionnaire (described above under additional measures).
297 Qualitative questions will assess caregiver: (1) perceptions of and goals for their child, (2) perceptions of coaching,
298 and (3) contextual factors that affect coaching implementation (for example, language, culture, location, cost,
299 delivery agent, family support, and available resources).

300 *Evidence-based practice 'fit':* Individual interviews and focus groups will be completed with the personnel
301 involved in implementation of the cascaded task-sharing approach. Qualitative questions will assess: (1) logistics of
302 caregiver coaching, including impact on workload, burden and space, (2) perceptions of caregiver coaching, including
303 child and caregiver impact, (3) perceptions of coaching materials, including WhatsApp intervention content, and (4)
304 sustainability of coaching practices.

305 *Leadership and organizational characteristics:* Two brief surveys will be completed by personnel involved in
306 intervention implementation in order to understand leadership and the organizational characteristics of the
307 implementation partner (Education Department). The Implementation Leadership Survey is a 12-item measure that
308 assesses support from leadership for the implementation of evidence-based practices [78]. The Implementation
309 Climate Scale is an 18-item measure that assesses the value an organization places on implementation of evidence-
310 based practices [79].

311 *Quality and fidelity monitoring and support:* Fidelity monitoring and focus groups will be completed with
312 personnel involved in implementation of the coaching intervention. Both caregiver and coaching implementation
313 fidelity will be assessed using ESDM fidelity checklists [80]. The 13-item ESDM Caregiver Fidelity Checklist assesses

314 the fidelity with which caregivers use ESDM strategies during caregiver-child interactions. Each fidelity item rates
315 performance from one to five, with higher scores reflecting a greater fidelity. The 13-item ESDM Coaching Fidelity
316 Checklist assesses specific coaching behaviours. This checklist includes a Likert- scale of 1 to 4, with higher scores
317 reflecting greater fidelity. Focus groups will assess: (1) feasibility of establishing fidelity of early intervention
318 practices, (2) ongoing available support and monitoring to support fidelity, and (3) funding to facilitate ongoing
319 support and monitoring.

320 *Community academic partnership:* Community academic partnership members will complete a quantitative
321 survey and a qualitative individual interview to understanding the partnerships functioning and impact. Survey items
322 are informed by a community academic partnership systematic review [81, 82]. Items, will be assessed across five
323 domains: general satisfaction, impact, trust, collaborative decision making, and meeting organization and structure,
324 with community academic partnership members selecting whether a facilitating factor was ‘present’ or ‘not present’
325 during the preceding year. Qualitative individual interviews will follow survey administration to further expand upon
326 the presence or absence of facilitating factors.

327 **Measuring outcomes at post intervention follow-up**

328 **Clinical Outcomes**

329 Data will be collected for intervention and control arm at baseline (Baseline assessment), 16-weeks post-
330 randomization (Repeat assessment – proximal outcome), and 24-weeks post-randomization (Repeat assessment –
331 distal outcome). Control arm dyads will then receive the intervention. Data collection will be performed for the
332 control arm 36-weeks post-randomization (Repeat assessment – proximal). Fig. 3 shows the RCT study design. All
333 data collection will occur through in-person assessments by assessors blinded to participant study arm allocation.

334

335 **Fig 3. Flow diagram of participant enrolment, group allocation, and follow-up of the individually randomized**
336 **group treatment RCT with delayed intervention control**

337

338 **Implementation Outcomes**

339 To understand implementation barriers and facilitators, data will be collected from those involved in
340 intervention implementation and community academic partnership members. Data for caregivers in the intervention
341 group will be collected 16-weeks post-randomization (Repeat assessment – proximal outcome). Data for ECD
342 practitioners, and other Education Department team members will be collected at a single time point (mid-year in
343 Year 3 of the study). Data for community academic partnership members will be collected at a single time point in
344 Years 2 and 4 of the study.

345 **Sample Size**

346 We target a minimum of 80% power for each of the two co-primary clinical outcomes used to evaluate
347 effectiveness. More specifically, we power each co-primary clinical outcome at a two-tailed alpha level of 0.025
348 based on an individually randomized group-treatment trial design with 150 recruited dyads (75 in each of the two
349 trial arms). We further assume a common outcome variance in each arm, conservatively anticipate an intraclass
350 correlation (ICC) of 0.02 in the intervention arm, a magnitude of clustering measured in other contexts, and assume
351 that the coaching will be delivered by 3 ECD practitioners, each of whom will deliver the cascaded task-sharing
352 intervention to an equal number of caregivers [57]. Using a standard approach to calculate power for an individually
353 randomized group-treatment trial, we estimate being able to detect a standardized effect size of 0.63 for each of the
354 co-primary outcomes, based on having data from 60 participants per arm at the distal 24-week follow-up, assuming
355 20% attrition of the original 75 per arm [83].

356 **Recruitment**

357 Partner schools will identify caregiver-child dyads from their waitlist of young autistic children who are not
358 enrolled in in-person instruction. School staff will share with the research coordinator the contact information of the
359 primary caregiver of potentially eligible dyads. The research coordinator will contact potentially eligible participants
360 via phone to provide study information, and assess interest in study participation. Those who are interested in study
361 participation will be screened for eligibility based on study inclusion/exclusion criteria. If the caregiver-child dyad are

362 eligible based on phone screen inclusion/exclusion criteria, they will be invited to participate in the study and a
363 baseline assessment will be scheduled. Implementation outcome participants will be purposively sampled and
364 include all who receive (caregivers in the intervention arm), deliver (ECD practitioners), supervise (ECD supervisors)
365 and support (Education Department leadership) intervention delivery, and community academic partnership
366 members.

367 **Sequence generation and randomization**

368 Randomization will occur after the baseline visit is completed using stratification by caregiver-reported child
369 physical sex at birth. The randomization process will be managed using REDCap, a web-based software platform that
370 is secure and designed to support research study data capture [84, 85]. A study statistician will generate allocation
371 tables to assign participant dyads equally (1:1) to intervention and control arms. Separate allocation tables will be
372 generated for boys and girls using permuted blocks randomly sized from 2 to 8. These allocation tables will then be
373 uploaded to REDCap where they will function to determine the intervention allocation of a participant when the
374 research coordinator clicks a button in the software to trigger the randomization. The REDCap software prevents
375 staff and participants from accessing the allocation tables to predict the intervention or control arm assignment.
376 Participants will learn their arm assignment after completing their baseline assessment, when they will be oriented
377 to the intervention or informed that they are on the intervention wait list and will also be scheduled to come for
378 follow-up assessments.

379 **Allocation concealment**

380 Baseline assessments will be conducted prior to randomization to ensure masking of caregiver-child dyads to
381 allocation status, after which concealment is no longer possible.

382 **Blinding**

383 Due to the administrative logistics of the study and intervention, participants and some study staff and
384 investigators cannot be blinded. However, clinical outcome assessors and statisticians will be blinded participant arm
385 assignment. Participants will be asked to not disclose arm allocation during assessments. Every effort will made to

386 minimize unnecessary exposure of the intervention arm or components. REDCap has several features to limit the
387 visibility of the study arm to specific staff after the intervention assignment has been made which will be utilized
388 whenever possible. Clinical assessors performing evaluation assessments will be blinded throughout the study until
389 the final assessment, which is performed for the control arm only. However, because the participants are not
390 blinded, there is some risk they may reveal their intervention status to the assessors. The statisticians will be blinded
391 during the analysis.

392 **Adherence**

393 The intervention group supervisors and research coordinator will monitor participant intervention
394 attendance. Intervention supervisors are certified ESDM-therapists, and will follow the apprenticeship model for lay
395 counsellor supervision in mental health, tailoring supervision intensity based on demonstrated ECD practitioner
396 coaching competencies [58]. Adherence will be measured based on the number of coaching sessions attended, and
397 the time period over which sessions are completed. The research coordinator will monitor attendance and
398 completion of assessment sessions and related study protocols across participant groups. If non-adherence is
399 observed, the research team will assess and respond at the time, and consider implementing additional outreach
400 activities to reengage participants, but do not anticipate this to be a significant problem based on pilot work.

401 **Data management**

402 The research coordinator will oversee screening, consent, scheduling, and REDCap group allocation. The
403 research coordinator will also oversee training of the clinical assessors and ECD practitioners. Clinical assessors,
404 blinded to study arm allocation, will complete and rate primary and secondary clinical outcome measures. All study
405 staff will receive training and ongoing supervision in data security and confidentiality, including confidentiality
406 protection, mandated reporting, and ethical research conduct. All data will be coded with a unique participant ID
407 number. The key linking names and participant IDs will be stored in REDCap and in a password protected document,
408 accessible only to essential study staff. Surveys and assessment forms will be entered into REDCap to be stored on a
409 private, firewall protected network. REDCap is a HIPAA compliant, web-based application.; All REDCap data
410 transmission is encrypted, and access to the application is password-protected with a two-factor identification

411 requirement. REDCap offers additional features for data security and management, including audit trails tracking
412 data updates and exports, the ability to limit data access by user roles and to limit exports to deidentified data for
413 data sharing and analysis. In accordance with terms and conditions for data sharing, other electronic data such as
414 video recordings will be transferred to a secure, HIPAA-compliant project folder on box.com at Duke University
415 through Box Sync, and deleted from the recording equipment post-transfer. No electronic data will be stored on a
416 laptop or external hard drive. Duke University will manage the infrastructure where electronic research data is
417 stored on a secure server, protected by two factor authentication. Essential study staff will access the drive through
418 a secure VPN connection. Locked file cabinets in locked research offices will be used to securely store non-
419 electronic data. Access to data storage areas will be restricted to essential study staff.

420 **Data Analyses**

421 **Clinical Outcomes**

422 We will use the linear mixed-effects model framework to analyze primary and secondary child and caregiver
423 clinical outcomes, all of which are either continuous or score outcomes. Separate models will be fitted for each
424 outcome and will include both 16- and 24-week follow-up data collected in both trial arms, with sensitivity analyses
425 including the additional follow-up data collected in the control arm after introduction of the intervention to that
426 arm. The model structure will follow the approach of Moerbeek & Teernestra for an individually randomized group-
427 treatment design with clustering in one intervention arm, by using random effects to account for the partially nested
428 design (i.e. for ECD practitioner in the intervention arm), for correlation within-child over time, and by allowing for
429 heteroscedasticity in residual variances in each arm [86]. Fixed effects will include intervention arm (categorical),
430 time (categorical), the arm-by-time interaction (to allow for different intervention effects at 16- and 24-weeks),
431 caregiver-reported child physical sex at birth (to account for the stratified design) and the baseline level of the
432 outcome (i.e. using an analysis of covariance (ANCOVA) approach to gain power for our outcome analyses).
433 Sensitivity analyses will additionally adjust for hours of non-study intervention services received.

434 Regarding missing outcome data, we note that the linear mixed effects modeling approach is valid under the
435 missing-at-random assumption [87]. We will carefully characterize missing data patterns by arm and will summarize

436 the baseline covariates for those with and without missing outcome data in order to identify baseline covariates that
437 may predict missing data patterns by arm. If identified, these covariates will be additionally adjusted for in
438 regression models. In the unlikely case that there are missing baseline levels of an outcome, the ANCOVA approach
439 adjusting for the baseline level of the outcome would exclude all follow-up outcomes from the analysis for such
440 participants. Were such a situation to arise, an alternative constrained longitudinal data analysis approach will be
441 used, whereby the baseline level is modeled as an outcome with mean levels constrained to be equal in both trial
442 arms [88].

443 The decision rule for our co-primary outcomes will follow the union-intersection testing approach. That is,
444 we will consider the intervention to be successful if there is a significant signal on at-least-one of our co-primary
445 outcomes, regardless of whether or not the other outcome is also significant. Regression diagnostics through visual
446 inspection of the model residuals will be used to examine model assumptions, including the degree to which the
447 fitted variance structure matches that of the data. In the case that the fit of the model is deemed to be inadequate
448 or the model fails to converge, alternative modeling strategies will be employed (for example, generalized estimating
449 equations). Intention-to-treat principle will be applied to all main analyses, with sensitivity analyses that adjust for
450 compliance in the intervention arm [88].

451 Additional pre-planned analyses include both moderation and mediation. Potential moderators include
452 caregiver characteristics (for example, stress, strain and sense of competence), and variability in child factors that
453 can be measured from a dimensional perspective (for example, with the SRS-2). Each of these will be considered
454 separately by adding the potential moderator and its interaction with the intervention indicator and with time, as
455 well as the three-way interaction. These analyses will be completed separately for each of the two primary
456 outcomes. A mediation analysis will be performed using 16-week uptake in caregiver strategies as a mediator on the
457 pathway between the intervention and each of the 24-week co-primary distal outcomes. Additional exploratory
458 analyses will include visual examination (for example, scatterplots) of changes in the SenseToKnow dimensional
459 quantitative measures of autism-related behaviours.

460 **Implementation Outcomes**

461 Mixed methods will be used to identify implementation determinants. Qualitative data will be analyzed
462 using directed content analysis [89]. Quantitative measures will be summarized using descriptive statistics. Three
463 main strategies will be used to integrate qualitative and quantitative data [90]. First, through convergence,
464 qualitative and quantitative will be triangulated to understand whether these data supply the same answer to the
465 same question. Second, through expansion, results will be linked when the former is used to explain unexpected
466 findings. Third, through complementarity, qualitative results will be embedded within quantitative results to
467 contextualize quantitative results.

468 **Monitoring**

469 The study is considered minimal risk. As such, the Principal Investigators will primarily be responsible for
470 oversight of study conduct, and will monitor the safety and data integrity for the project. The Principal Investigators
471 will meet regularly with the study team to discuss study progress, including any adverse events or data integrity
472 concerns. Adverse events will be monitored through a general inquiry approach, by study staff at each contact point
473 [67]. All deviations and/or corrective actions requiring reporting will be submitted to UCT Human Research Ethics
474 Committee (HREC) and the Duke Health System Institutional Review Board (DUHS IRB). At least twice a year, and
475 any time an adverse event occurs, the Principal Investigators will conduct a data and safety review. During this
476 review process, the Principal Investigators will evaluate any adverse events and determine whether these events
477 affect the study risk/benefit ratio and whether the protocol or consent should be modified. UCT HREC and the DUHS
478 IRB will also review this protocol on a yearly basis (or more frequently if deemed necessary) as part of the continuing
479 review process. At this time, they will: (1) reassess the risks and benefits to participants, the informed consent
480 process, and safeguards for human subjects, (2) review participant enrolment and retention, (3) consider any new
481 academic developments that might impact participant safety, and (4) review any adverse events.

482 **Ethics and funding**

Ethics approval has been obtained from the UCT HREC (HREC REF:367/2022) and Duke IRB (Pro00111048).

Additional approvals were obtained from Red Cross War Memorial Children's Hospital (RXH: RCC358/WC_202208_038), and the Western Cape Education Department (Reference#: 20220511-2021). The study is registered as a clinical trial on ClinicalTrials.gov (NCT05551728). Any protocol amendments will be submitted to ethics boards and the clinical trial registry. Participants will sign informed consent prior to initiation of study activities. Participants enrolled in the study will have the opportunity to evaluate and review the consent for the study, and privacy will be maintained during the conduct of intervention sessions and study related activities. For caregiver-child dyads, the child's caregiver/legal guardian who signs the consent form must be legally authorized to sign informed consent on behalf of the child. Verbal assent from children will not be sought as per UCT Policy (study site and primary ethics board) the earliest age at which assent is recommended is 7 years, and all children in this study will be 6 years or younger at time of consent [91]. Verification of comprehension of consent will be accomplished by providing participants with a one-page summary of the informed consent information and asking participants to recall central points in the consent process. Participants will be reminded that they can stop participating at any time or refuse to attend any portion of the study or skip any question in an assessment. Any declaration of interests will be specified in consent documentation. This study has been funded by the National Institute of Health (Grant number: R01MH127573) in the United States.

Results

In terms of current study progress: ethics approval has been obtained from the UCT and Duke, study staff have been hired, study clinicians have been trained in the administration of primary outcome measures, schools have been identified where caregiver coaching will occur, and ECD practitioners have been trained to deliver the coaching intervention. Participant enrolment was initiated in April 2023. Estimated primary completion date is March 2027. Data generated by the ACACIA trial will be shared through presentations at community events and scientific meetings, peer-reviewed publications, and will be submitted to ClinicalTrials.gov.

508 Discussion

509 Task-sharing early autism caregiver coaching to non-specialists, integrated within existing care systems, may
510 support scale up of services for young autistic children in low-resource environments [1, 23]. The ACACIA trial, which
511 is adequately powered to assess the effectiveness of a contextually adapted, cascaded task-sharing intervention
512 delivered in an educational setting, will determine whether the intervention results in significant and meaningful
513 improvement in short-and-long-term child outcomes, and in particular meaningful improvements in child
514 communication. Furthermore, the study will identify key determinants (barriers and facilitators) of intervention
515 implementation, which will support the design of implementation strategies for scale up of the approach in low-
516 resource settings.

518 Limitations

519 Due to the nature of the coaching intervention, participants cannot be blinded. Clinical assessors are
520 however, and we will ask caregivers not to disclose which intervention arm they are in to the assessor. Second,
521 caregiver-child dyads may receive ongoing services (for example, speech therapy or occupational therapy) as part of
522 usual care, which may affect child and caregiver outcomes. Moreover, the intensity, duration and focus of usual care
523 may differ amongst participants. Third, while intervention caregivers will be asked to complete a home recorded
524 caregiver-child interaction each week that would be reviewed in session, as an effort to support home practice and
525 generalization of skills, they may decide not to do so, or may experience technical difficulties, thereby decreasing
526 home-practice of strategies. Fourth, social desirability bias may impact ratings of self-reported outcomes. However,
527 both primary outcomes are clinician administered and rated.

529 Conclusions

530 The ACACIA trial will provide an evaluation of contextually adapted, cascaded task-sharing intervention
531 in South Africa that can provide accessible, low-cost and scalable early autism intervention access in low-resource
532 settings. Effective services and supports, provided in a timely way, to those in need, may improve both child and
533 family outcomes, including quality of life.

534

535 Authors' contributions

536 **Conceptualization:** Lauren Franz, Petrus J de Vries

537 **Data curation:** Marisa Viljoen, Sandy Askew, Musaddiqah Brown, Elizabeth L Turner

538 **Funding acquisition:** Lauren Franz

539 **Investigation:** Marisa Viljoen, Musaddiqah Brown, Katlego Sebolai, Noleen Seris, Nokuthula Shabalala

540 **Methodology:** Lauren Franz, Geraldine Dawson, J Matias Di Martino, Guillermo Sapiro, Aubyn Stahmer, Elizabeth L
541 Turner, Petrus J de Vries

542 **Project administration:** Lauren Franz, Marisa Viljoen, Musaddiqah Brown, Katlego Sebolai, Petrus J de Vries

543 **Writing – original draft:** Lauren Franz, Marisa Viljoen, Sandy Askew, Elizabeth L Turner, Petrus J de Vries

544 **Writing – review and editing:** Lauren Franz, Marisa Viljoen, Sandy Askew, Musaddiqah Brown, Geraldine Dawson, J
545 Matias Di Martino, Guillermo Sapiro, Katlego Sebolai, Noleen Seris, Nokuthula Shabalala, Aubyn Stahmer, Elizabeth L
546 Turner, Petrus J de Vries

547 Supporting information

548 **S1 Checklist. SPIRIT 2013 checklist: Recommended items to address in a clinical trial protocol and related**
549 **documents**

550 References

- 551 [1] Lord C, Charman T, Havdahl A, Carbone P, Anagnostou E, Boyd B, et al. The Lancet Commission on the
552 future of care and clinical research in autism. *Lancet*. 2022 Jan 15;399(10321):271–334.
- 553 [2] Estes A, Munson J, Rogers SJ, Greenson J, Winter J, Dawson G. Long-Term Outcomes of Early Intervention
554 in 6-Year-Old Children With Autism Spectrum Disorder. *J Am Acad Child Adolesc Psychiatry*. 2015 Jul;54(7):580–7.
- 555 [3] Cidav Z, Munson J, Estes A, Dawson G, Rogers S, Mandell D. Cost Offset Associated With Early Start
556 Denver Model for Children With Autism. *J Am Acad Child Adolesc Psychiatry*. 2017 Sep;56(9):777–83.
- 557 [4] Franz L, Chambers N, von Isenburg M, de Vries PJ. Autism spectrum disorder in Sub-Saharan Africa: A
558 comprehensive scoping review. *Autism Res*. 2017 May;10(5):723–49.
- 559 [5] United Nations Children’s Fund. UNICEF DATA. 2014 [cited 2023 Jul 3]. Generation 2030 | Africa: Child
560 demographics in Africa. Available from: [https://data.unicef.org/resources/generation-2030-africa-child-](https://data.unicef.org/resources/generation-2030-africa-child-demographics-in-africa/)
561 [demographics-in-africa/](https://data.unicef.org/resources/generation-2030-africa-child-demographics-in-africa/)
- 562 [6] Pacia C, Holloway J, Gunning C, Lee H. A Systematic Review of Family-Mediated Social Communication
563 Interventions for Young Children with Autism. *Rev J Autism Dev Disord*. 2022;9(2):208–34.
- 564 [7] Wetherby AM, Guthrie W, Woods J, Schatschneider C, Holland RD, Morgan L, et al. Parent-implemented
565 social intervention for toddlers with autism: an RCT. *Pediatrics*. 2014 Dec;134(6):1084–93.
- 566 [8] Pickles A, Le Couteur A, Leadbitter K, Salomone E, Cole-Fletcher R, Tobin H, et al. Parent-mediated social
567 communication therapy for young children with autism (PACT): long-term follow-up of a randomised controlled trial.
568 *Lancet*. 2016 Nov 19;388(10059):2501–9.
- 569 [9] Schreibman L, Dawson G, Stahmer AC, Landa R, Rogers SJ, McGee GG, et al. Naturalistic Developmental
570 Behavioral Interventions: Empirically Validated Treatments for Autism Spectrum Disorder. *J Autism Dev Disord*.
571 2015;45(8):2411–28.
- 572 [10] Dawson G, Rogers S, Munson J, Smith M, Winter J, Greenson J, et al. Randomized, controlled trial of an
573 intervention for toddlers with autism: the Early Start Denver Model. *Pediatrics*. 2010 Jan;125(1):e17-23.
- 574 [11] Shi B, Wu W, Dai M, Zeng J, Luo J, Cai L, et al. Cognitive, Language, and Behavioral Outcomes in Children
575 With Autism Spectrum Disorders Exposed to Early Comprehensive Treatment Models: A Meta-Analysis and Meta-
576 Regression. *Front Psychiatry*. 2021;12:691148.
- 577 [12] Rogers SJ, Estes A, Lord C, Munson J, Rocha M, Winter J, et al. A Multisite Randomized Controlled Two-
578 Phase Trial of the Early Start Denver Model Compared to Treatment as Usual. *J Am Acad Child Adolesc Psychiatry*.
579 2019 Sep;58(9):853–65.
- 580 [13] Sinai-Gavrilov Y, Gev T, Mor-Snir I, Vivanti G, Golan O. Integrating the Early Start Denver Model into
581 Israeli community autism spectrum disorder preschools: Effectiveness and treatment response predictors. *Autism*.
582 2020 Nov;24(8):2081–93.
- 583 [14] Lin TL, Chiang CH, Ho SY, Wu HC, Wong CC. Preliminary clinical outcomes of a short-term low-intensity
584 Early Start Denver Model implemented in the Taiwanese public health system. *Autism*. 2020 Jul;24(5):1300–6.
- 585 [15] Colombi C, Narzisi A, Ruta L, Cigala V, Gagliano A, Pioggia G, et al. Implementation of the Early Start
586 Denver Model in an Italian community. *Autism*. 2018 Feb;22(2):126–33.

- 587 [16] Devescovi R, Colonna V, Dissegna A, Bresciani G, Carrozzi M, Colombi C. Feasibility and Outcomes of the
588 Early Start Denver Model Delivered within the Public Health System of the Friuli Venezia Giulia Italian Region. *Brain*
589 *Sci.* 2021 Sep 10;11(9):1191.
- 590 [17] Zhou B, Xu Q, Li H, Zhang Y, Wang Y, Rogers SJ, et al. Effects of Parent-Implemented Early Start Denver
591 Model Intervention on Chinese Toddlers with Autism Spectrum Disorder: A Non-Randomized Controlled Trial: Effects
592 of P-ESDM in China. *Autism Research.* 2018 Apr;11(4):654–66.
- 593 [18] Tateno Y, Kumagai K, Monden R, Nanba K, Yano A, Shiraishi E, et al. The Efficacy of Early Start Denver
594 Model Intervention in Young Children with Autism Spectrum Disorder Within Japan: A Preliminary Study. *Soa*
595 *Chongsonyon Chongsin Uihak.* 2021 Jan 1;32(1):35–40.
- 596 [19] Holzinger D, Laister D, Vivanti G, Barbaresi WJ, Fellingner J. Feasibility and Outcomes of the Early Start
597 Denver Model Implemented with Low Intensity in a Community Setting in Austria. *J Dev Behav Pediatr.* 2019
598 Jun;40(5):354–63.
- 599 [20] Vivanti G, Dissanayake C, Duncan E, Feary J, Capes K, Upson S, et al. Outcomes of children receiving
600 Group-Early Start Denver Model in an inclusive versus autism-specific setting: A pilot randomized controlled trial.
601 *Autism.* 2019 Jul;23(5):1165–75.
- 602 [21] Roche L, Adams D, Clark M. Research priorities of the autism community: A systematic review of key
603 stakeholder perspectives. *Autism.* 2021 Feb;25(2):336–48.
- 604 [22] Schuck RK, Tagavi DM, Baiden KMP, Dwyer P, Williams ZJ, Osuna A, et al. Neurodiversity and Autism
605 Intervention: Reconciling Perspectives Through a Naturalistic Developmental Behavioral Intervention Framework. *J*
606 *Autism Dev Disord.* 2022 Oct;52(10):4625–45.
- 607 [23] Rieder AD, Viljoen M, Seris N, Shabalala N, Ndlovu M, Turner EL, et al. Improving access to early
608 intervention for autism: findings from a proof-of-principle cascaded task-sharing naturalistic developmental
609 behavioural intervention in South Africa. *Child Adolesc Psychiatry Ment Health.* 2023 May 20;17(1):64.
- 610 [24] Reichow B, Servili C, Yasamy MT, Barbui C, Saxena S. Non-specialist psychosocial interventions for
611 children and adolescents with intellectual disability or lower-functioning autism spectrum disorders: a systematic
612 review. *PLoS Med.* 2013 Dec;10(12):e1001572; discussion e1001572.
- 613 [25] Wong VCN, Kwan QK. Randomized controlled trial for early intervention for autism: a pilot study of the
614 Autism 1-2-3 Project. *J Autism Dev Disord.* 2010 Jun;40(6):677–88.
- 615 [26] Tsang SKM, Shek DTL, Lam LL, Tang FLY, Cheung PMP. Brief Report: Application of the TEACCH Program
616 on Chinese Pre-School Children with Autism—Does Culture Make a Difference? *J Autism Dev Disord.* 2007 Feb
617 1;37(2):390–6.
- 618 [27] Divan G, Vajaratkar V, Cardozo P, Huzurbazar S, Verma M, Howarth E, et al. The Feasibility and
619 Effectiveness of PASS Plus, A Lay Health Worker Delivered Comprehensive Intervention for Autism Spectrum
620 Disorders: Pilot RCT in a Rural Low and Middle Income Country Setting. *Autism Res.* 2019 Feb;12(2):328–39.
- 621 [28] Schleiff MJ, Aitken I, Alam MA, Damtew ZA, Perry HB. Community health workers at the dawn of a new
622 era: 6. Recruitment, training, and continuing education. *Health Research Policy and Systems.* 2021 Oct 12;19(3):113.
- 623 [29] Black MM, Walker SP, Fernald LCH, Andersen CT, DiGirolamo AM, Lu C, et al. Early childhood
624 development coming of age: science through the life course. *Lancet.* 2017 Jan 7;389(10064):77–90.

- 625 [30] Richter LM, Daelmans B, Lombardi J, Heymann J, Boo FL, Behrman JR, et al. Investing in the foundation
626 of sustainable development: pathways to scale up for early childhood development. *Lancet*. 2017 Jan
627 7;389(10064):103–18.
- 628 [31] Jaskiewicz W, Tulenko K. Increasing community health worker productivity and effectiveness: a review
629 of the influence of the work environment. *Human Resources for Health*. 2012 Sep 27;10(1):38.
- 630 [32] Smith S, Deveridge A, Berman J, Negin J, Mwambene N, Chingaipe E, et al. Task-shifting and
631 prioritization: a situational analysis examining the role and experiences of community health workers in Malawi.
632 *Human Resources for Health*. 2014 May 2;12(1):24.
- 633 [33] Okyere E, Mwanri L, Ward P. Is task-shifting a solution to the health workers' shortage in Northern
634 Ghana? *PLoS One*. 2017 Mar 30;12(3):e0174631.
- 635 [34] The World Bank. World Development Indicators | DataBank [Internet]. [cited 2023 Jul 3]. Available
636 from: <https://databank.worldbank.org/source/world-development-indicators.%20Accessed%209December%202022>
- 637 [35] Guler J, de Vries PJ, Seris N, Shabalala N, Franz L. The importance of context in early autism intervention:
638 A qualitative South African study. *Autism*. 2018 Nov;22(8):1005–17.
- 639 [36] Franz L, Adewumi K, Chambers N, Viljoen M, Baumgartner JN, de Vries PJ. Providing early detection and
640 early intervention for autism spectrum disorder in South Africa: stakeholder perspectives from the Western Cape
641 province. *J Child Adolesc Ment Health*. 2018 Nov;30(3):149–65.
- 642 [37] Pillay S, Duncan M, de Vries PJ. Autism in the Western Cape province of South Africa: Rates, socio-
643 demographics, disability and educational characteristics in one million school children. *Autism*. 2021
644 May;25(4):1076–89.
- 645 [38] Pillay S, Duncan M, de Vries PJ. Who's waiting for a school? Rates, socio-demographics, disability and
646 referral profile of children with autism spectrum disorder awaiting school placement in the Western Cape Province
647 of South Africa. *Autism*. 2022 Oct;26(7):1849–63.
- 648 [39] Pillay S, Duncan M, de Vries PJ. "We are doing the best we can to bridge the gap" - service provider
649 perspectives of educational services for autism spectrum disorder in South Africa. *Front Psychiatry*. 2022;13:907093.
- 650 [40] Mayosi BM, Benatar SR. Health and Health Care in South Africa — 20 Years after Mandela. *New England
651 Journal of Medicine*. 2014 Oct 2;371(14):1344–53.
- 652 [41] Springer PE, Toorn R van, Laughton B, Kidd M. Characteristics of children with pervasive developmental
653 disorders attending a developmental clinic in the Western Cape Province, South Africa. *South African Journal of Child
654 Health*. 2013 Aug 30;7(3):95–9.
- 655 [42] Guler J, Stewart KA, de Vries PJ, Seris N, Shabalala N, Franz L. Conducting caregiver focus groups on
656 autism in the context of an international research collaboration: Logistical and methodological lessons learned in
657 South Africa. *Autism*. 2023 Apr;27(3):751–61.
- 658 [43] Department of Social Development. National Integrated Early Childhood Development Policy | UNICEF
659 South Africa [Internet]. [cited 2023 Jul 3]. Available from: [https://www.unicef.org/southafrica/reports/national-
660 integrated-early-childhood-development-policy](https://www.unicef.org/southafrica/reports/national-integrated-early-childhood-development-policy)
- 661 [44] South African Government. Joint Press Statement: Early Childhood Development (ECD) Function Shift |
662 South African Government [Internet]. [cited 2023 Jul 3]. Available from: [https://www.gov.za/speeches/joint-press-
663 statement-early-childhood-development-ecd-function-shift-16-mar-2021-0000](https://www.gov.za/speeches/joint-press-statement-early-childhood-development-ecd-function-shift-16-mar-2021-0000)

- 664 [45] Berg A, Lachman A. Positive Relational Experiences in Infancy May Influence Outcomes in Children in a
665 Low and Middle-Income Country Setting Such as South Africa. *Front Public Health*. 2021;9:665908.
- 666 [46] Ramseur K, de Vries PJ, Guler J, Shabalala N, Seris N, Franz L. Caregiver descriptions of joint activity
667 routines with young children with autism spectrum disorder in South Africa. *Pediatr Med*. 2019 Mar;2:6.
- 668 [47] Makombe CBT, Shabalala N, Viljoen M, Seris N, de Vries PJ, Franz L. Sustainable implementation of early
669 intervention for autism spectrum disorder through caregiver coaching: South African perspectives on barriers and
670 facilitators. *Pediatr Med*. 2019 Aug;2:39.
- 671 [48] Ndlovu M. Towards Naturalistic Developmental Behavioural Interventions for Autism in Africa: Nature
672 and Context of Caregiver-Child Interactions in Low-Resource South African Environments [MSc (Med) Neuroscience].
673 [Cape Town, South Africa]: University of Cape Town; 2022.
- 674 [49] Sparrow SS, Cichetti S, Saulnier C. Vineland Adaptive Behavior Scales, Third Edition. San Antonio, TX:
675 Pearson.
- 676 [50] Green E, Stroud L, Bloomfield S, Cronje J, Foxcroft C, Hurter K, et al. Griffiths Scales of Child
677 Development, Third Edition. Göttingen: Hogrefe Publishing Group.
- 678 [51] Franz L, Goodwin CD, Rieder A, Matheis M, Damiano DL. Early intervention for very young children with
679 or at high likelihood for autism spectrum disorder: An overview of reviews. *Dev Med Child Neurol*. 2022
680 Sep;64(9):1063–76.
- 681 [52] Sandbank M, Bottema-Beutel K, Crowley S, Cassidy M, Dunham K, Feldman JI, et al. Project AIM: Autism
682 intervention meta-analysis for studies of young children. *Psychol Bull*. 2020 Jan;146(1):1–29.
- 683 [53] Aarons GA, Hurlburt M, Horwitz SM. Advancing a conceptual model of evidence-based practice
684 implementation in public service sectors. *Adm Policy Ment Health*. 2011 Jan;38(1):4–23.
- 685 [54] Moullin JC, Dickson KS, Stadnick NA, Rabin B, Aarons GA. Systematic review of the Exploration,
686 Preparation, Implementation, Sustainment (EPIS) framework. *Implement Sci*. 2019 Jan 5;14(1):1.
- 687 [55] Dingfelder HE, Mandell DS. Bridging the Research-to-Practice Gap in Autism Intervention: An Application
688 of Diffusion of Innovation Theory. *J Autism Dev Disord*. 2011 May;41(5):597–609.
- 689 [56] Curran GM, Bauer M, Mittman B, Pyne JM, Stetler C. Effectiveness-implementation hybrid designs:
690 combining elements of clinical effectiveness and implementation research to enhance public health impact. *Med
691 Care*. 2012 Mar;50(3):217–26.
- 692 [57] Pals SL, Murray DM, Alfano CM, Shadish WR, Hannan PJ, Baker WL. Individually Randomized Group
693 Treatment Trials: A Critical Appraisal of Frequently Used Design and Analytic Approaches. *Am J Public Health*. 2008
694 Aug;98(8):1418–24.
- 695 [58] Murray LK, Dorsey S, Bolton P, Jordans MJ, Rahman A, Bass J, et al. Building capacity in mental health
696 interventions in low resource countries: an apprenticeship model for training local providers. *International Journal of
697 Mental Health Systems*. 2011 Nov 18;5(1):30.
- 698 [59] Adamson LB, Bakeman R, Deckner DF, Nelson PB. Rating parent-child interactions: joint engagement,
699 communication dynamics, and shared topics in autism, Down syndrome, and typical development. *J Autism Dev
700 Disord*. 2012 Dec;42(12):2622–35.

- 701 [60] Chan AW, Tetzlaff JM, Altman DG, Laupacis A, Gøtzsche PC, Krleža-Jerić K, et al. SPIRIT 2013 Statement:
702 Defining Standard Protocol Items for Clinical Trials. *Ann Intern Med*. 2013 Feb 5;158(3):200–7.
- 703 [61] American Psychiatric Association. *Diagnostic and Statistical Manual of Mental Disorders (DSM-5)*.
704 Arlington, VA: American Psychiatric Association;
- 705 [62] Lord C, Rutter M, DiLavore P, Risi S, Gotham K, Bishop S. *Autism diagnostic observation schedule*,
706 Second Edition. Torrance, CA: Western Psychological Services; 2012.
- 707 [63] Rogers S, Stahmer A. Help Is In Your Hands | Login [Internet]. [cited 2023 Jul 19]. Available from:
708 <https://helpisinyourhands.org/course>
- 709 [64] Rogers SJ, Stahmer A, Talbott M, Young G, Fuller E, Pellecchia M, et al. Feasibility of delivering parent-
710 implemented NDBI interventions in low-resource regions: a pilot randomized controlled study. *J Neurodev Disord*.
711 2022 Jan 5;14(1):3.
- 712 [65] Frost KM, Brian J, Gengoux GW, Hardan A, Rieth SR, Stahmer A, et al. Identifying and measuring the
713 common elements of naturalistic developmental behavioral interventions for autism spectrum disorder:
714 Development of the NDBI-Fi. *Autism*. 2020 Nov;24(8):2285–97.
- 715 [66] Bernal G, Bonilla J, Bellido C. Ecological validity and cultural sensitivity for outcome research: issues for
716 the cultural adaptation and development of psychosocial treatments with Hispanics. *J Abnorm Child Psychol*. 1995
717 Feb;23(1):67–82.
- 718 [67] Coates M, Spanos M, Parmar P, Chandrasekhar T, Sikich L. A Review of Methods for Monitoring Adverse
719 Events in Pediatric Psychopharmacology Clinical Trials. *Drug Saf*. 2018;41(5):465–71.
- 720 [68] Johnston C, Mash EJ. A Measure of Parenting Satisfaction and Efficacy. *Journal of Clinical Child*
721 *Psychology*. 1989 Jun 1;18(2):167–75.
- 722 [69] Abidin R. *Manual for the parenting stress index*. 3rd ed. Odessa, FL: Psychological Assessment
723 Resources; 1995.
- 724 [70] Brannan AM, Heflinger CA, Brickman L. The Caregiver Strain Questionnaire: Measuring the Impact on
725 the Family of Living with a Child with Serious Emotional Disturbance. *Journal of Emotional and Behavioral Disorders*.
726 1997;5(4):212–22.
- 727 [71] Constantino J, Gruber C. *Social responsiveness scale (SRS) manual*. Los Angeles, CA: Western
728 Psychological Services; 2005.
- 729 [72] Perochon S, Di Martino M, Aiello R, Baker J, Carpenter K, Chang Z, et al. A scalable computational
730 approach to assessing response to name in toddlers with autism. *J Child Psychol Psychiatry*. 2021 Sep;62(9):1120–31.
- 731 [73] Perochon S, Matias Di Martino J, Carpenter KLH, Compton S, Davis N, Espinosa S, et al. A tablet-based
732 game for the assessment of visual motor skills in autistic children. *NPJ Digit Med*. 2023 Feb 3;6(1):17.
- 733 [74] Krishnappa Babu PR, Di Martino JM, Chang Z, Perochon S, Aiello R, Carpenter KLH, et al. Complexity
734 analysis of head movements in autistic toddlers. *J Child Psychol Psychiatry*. 2023 Jan;64(1):156–66.
- 735 [75] Chang Z, Di Martino JM, Aiello R, Baker J, Carpenter K, Compton S, et al. Computational Methods to
736 Measure Patterns of Gaze in Toddlers With Autism Spectrum Disorder. *JAMA Pediatr*. 2021 Aug 1;175(8):827–36.

- 737 [76] Carpenter KLH, Hahemi J, Campbell K, Lippmann SJ, Baker JP, Egger HL, et al. Digital Behavioral
738 Phenotyping Detects Atypical Pattern of Facial Expression in Toddlers with Autism. *Autism Res.* 2021 Mar;14(3):488–
739 99.
- 740 [77] Perochon S, Di Martino JM, Carpenter KLH, Compton S, Davis N, Eichner B, et al. Early detection of
741 autism using digital behavioral phenotyping. *Nature Medicine*, In Press.
- 742 [78] Aarons GA, Ehrhart MG, Farahnak LR. The implementation leadership scale (ILS): development of a brief
743 measure of unit level implementation leadership. *Implementation Science.* 2014 Apr 14;9(1):45.
- 744 [79] Ehrhart MG, Aarons GA, Farahnak LR. Assessing the organizational context for EBP implementation: the
745 development and validity testing of the Implementation Climate Scale (ICS). *Implementation Science.* 2014 Oct
746 23;9(1):157.
- 747 [80] Rogers SJ, Vismara LA, Dawson G. Coaching parents of young children with autism: promoting
748 connection, communication, and learning. New York: Guilford Publications; 2021.
- 749 [81] Drahota A, Meza RD, Brikho B, Naaf M, Estabillo JA, Gomez ED, et al. Community-Academic
750 Partnerships: A Systematic Review of the State of the Literature and Recommendations for Future Research. *Milbank*
751 *Q.* 2016 Mar;94(1):163–214.
- 752 [82] Gomez E, Drahota A, Stahmer AC. Choosing strategies that work from the start: A mixed methods study
753 to understand effective development of community-academic partnerships. *Action Res (Lond).* 2021 Jun;19(2):277–
754 300.
- 755 [83] National Institutes of Health. IRGT Sample Size Calculator, Research Methods Resources [Internet]. 2022
756 [cited 2023 Aug 17]. Available from: <https://researchmethodsresources.nih.gov/Tools#irgt>
- 757 [84] Harris PA, Taylor R, Thielke R, Payne J, Gonzalez N, Conde JG. Research electronic data capture
758 (REDCap)--a metadata-driven methodology and workflow process for providing translational research informatics
759 support. *J Biomed Inform.* 2009 Apr;42(2):377–81.
- 760 [85] Harris PA, Taylor R, Minor BL, Elliott V, Fernandez M, O'Neal L, et al. The REDCap consortium: Building
761 an international community of software platform partners. *J Biomed Inform.* 2019 Jul;95:103208.
- 762 [86] Moerbeek M, Teerenstra S. Power analysis of trials with multilevel data. Boca Raton, FL: Chapman &
763 Hall/CRC Press; 2016.
- 764 [87] Fitzmaurice G, Laird N, Ware J. *Applied Longitudinal Analysis*, 2nd Edition. Wiley; 2011.
- 765 [88] Coffman CJ, Edelman D, Woolson RF. To condition or not condition? Analysing 'change' in longitudinal
766 randomised controlled trials. *BMJ Open.* 2016 Dec 1;6(12):e013096.
- 767 [89] Hsieh HF, Shannon SE. Three approaches to qualitative content analysis. *Qual Health Res.* 2005
768 Nov;15(9):1277–88.
- 769 [90] Creswell J, Plano Clark V. *Designing and conducting mixed methods research* (2nd edition). Los Angeles,
770 CA: SAGE Publications; 2011.
- 771 [91] University of Cape Town, Faculty of Health Sciences. Human Research Ethics Committee Standard
772 Operating Procedures Version 7.0 [Internet]. 2019. Available from:
773 [https://health.uct.ac.za/sites/default/files/media/documents/health_uct_ac_za/54/UCT%20HREC%20Standard%20](https://health.uct.ac.za/sites/default/files/media/documents/health_uct_ac_za/54/UCT%20HREC%20Standard%20Operating%20Procedures%20Version%207.0%20October%202019.pdf)
774 [Operating%20Procedures%20Version%207.0%20October%202019.pdf](https://health.uct.ac.za/sites/default/files/media/documents/health_uct_ac_za/54/UCT%20HREC%20Standard%20Operating%20Procedures%20Version%207.0%20October%202019.pdf)
775

	Enrolment	sex at birth; adverse events.	STUDY PERIOD				
			Allocation	Intervention delivery	Repeat Assessment – Proximal outcome	Post-allocation	Repeat Assessment – Distal outcome
TIMEPOINT (weeks)	-t ₁	0	t ₁	t ₂	t ₃	t ₄	t ₅
ENROLMENT:	April 2023						
Initial telephonic screen	X	VABS-3, Griffiths III, JERI, PSOCs, PSI-SE, CSQ, SRS-2, S2K, adverse events		VABS-3, Griffiths III, JERI, PSOCs, PSI-SE, CSQ, SRS-2, S2K, adverse events	VABS-3, Griffiths III, JERI, PSOCs, PSI-SE, CSQ, SRS-2, S2K, adverse events		VABS-3, Griffiths III, JERI, PSOCs, PSI-SE, CSQ, SRS-2, S2K, adverse events
Eligibility criteria							
Information consent							
Allocation		X					
INTERVENTIONS:							
<i>[Intervention group - coaching sessions]</i>			←	Funding; Family Structural Issues and Caregiver-child Characteristics; Evidence-based Practice 'Fit'; Community Academic Partnership; Leadership and Organizational Characteristics; Quality and Fidelity Monitoring and Support	X		
<i>[Delayed control group - coaching sessions]</i>					X	→	X
ASSESSMENTS:							
<i>[List other data variables-implementation]</i>		Child: ADOS-2, age, race/ethnicity, child's home language, physical sex at birth; adverse events. Caregiver: relationship to the child, gender, age, race/ethnicity,					
<i>baseline variables-intervention group</i>		or education, and household income					
<i>Baseline variables-control group</i>		Child: ADOS-2, age, race/ethnicity, child's home language, physical					

Figure 1

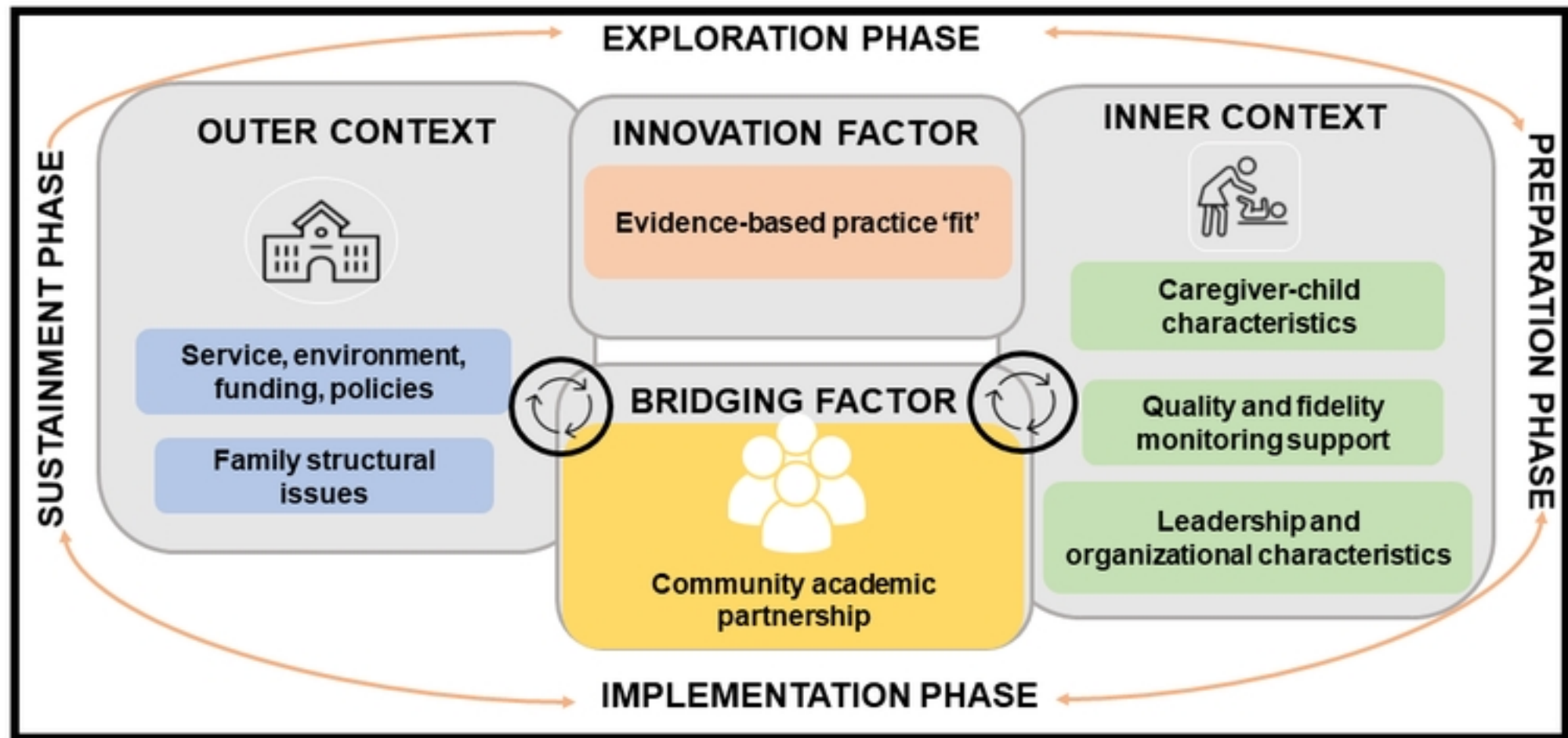


Figure 2

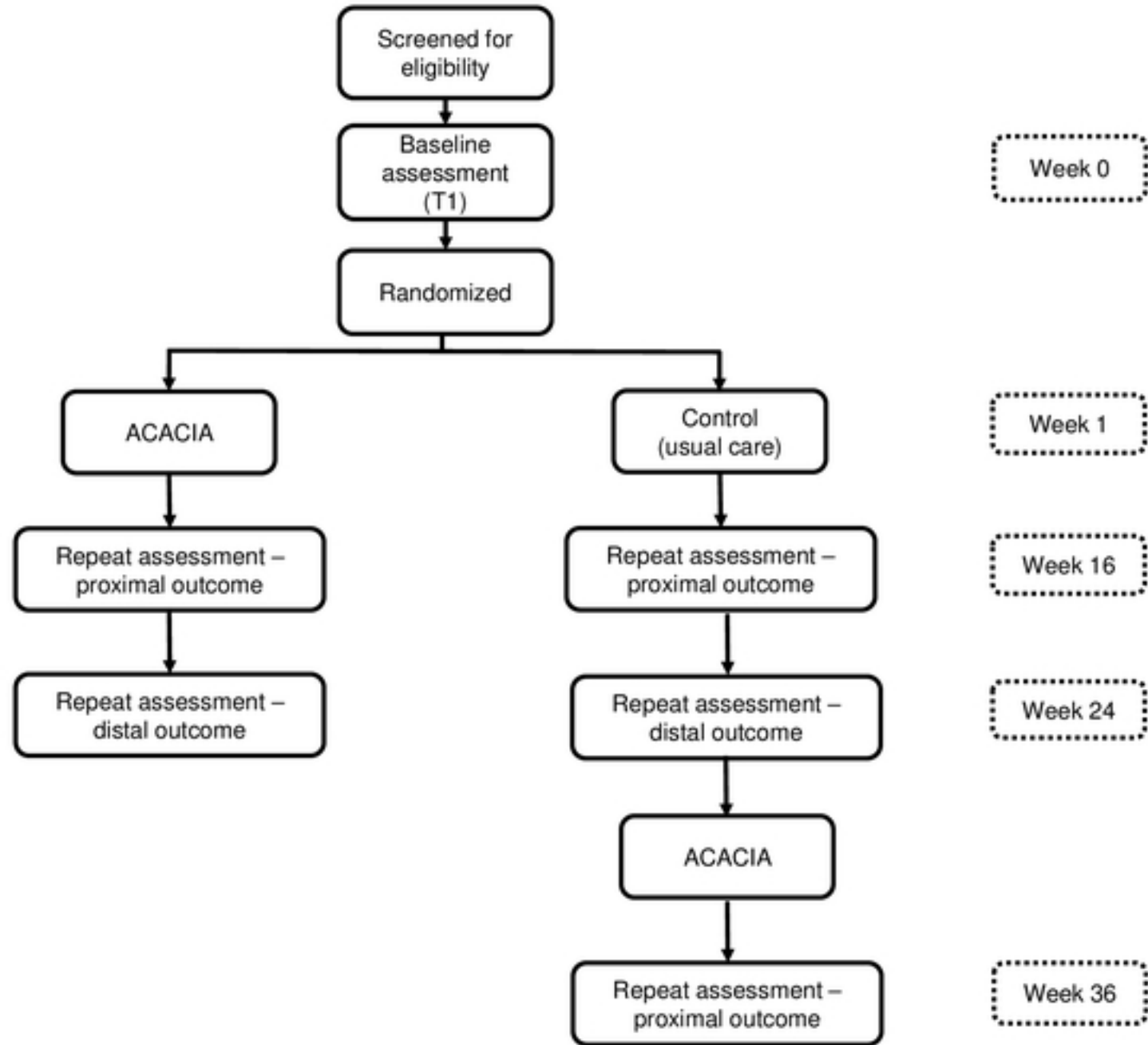


Figure 3