

1 **Malaria trends in districts that were targeted and not-targeted for seasonal malaria**  
2 **chemoprevention in children under five years of age in Guinea, 2014–2021**

3  
4 *Bisanzio D,<sup>1</sup> Keita MS,<sup>2</sup> Camara A,<sup>3</sup> Guilavogui T,<sup>4</sup> Diallo T,<sup>2</sup> Barry H,<sup>2</sup> Preston A,<sup>5</sup> Bangoura L,<sup>6</sup>*  
5 *Mbounga E,<sup>6</sup> Florey L,<sup>8</sup> Taton JL,<sup>2</sup> Fofana A,<sup>2</sup> Reithinger R<sup>1,†</sup>*

6  
7 1 RTI International, Washington D.C., U.S.A.; 2 PMI StopPalu+ Project, RTI International, Conakry,  
8 Guinea; 3 National Directorate of Disease Control, Ministry of Health, Conakry, Guinea; 4 National  
9 Malaria Control Program, Conakry Guinea; 5 RTI International, Fort Collins, CO, U.S.A.; 6 U.S.  
10 President's Malaria Initiative, US Agency for International Development, Conakry, Guinea; 7 U.S.  
11 President's Malaria Initiative, US Agency for International Development, Washington D.C., U.S.A.

12 † Corresponding author: Richard Reithinger, e-mail: [reithinger@yahoo.co.uk](mailto:reithinger@yahoo.co.uk)

13

## ABSTRACT

14  
15  
16  
17  
18  
19  
20  
21  
22  
23  
24  
25  
26  
27  
28  
29  
30  
31  
32  
33  
34  
35  
36  
37  
38  
39  
40  
41  
42  
43

**Background** Seasonal malaria chemoprevention (SMC) is one of the main interventions recommended by WHO to prevent and reduce childhood malaria. Since 2015, Guinea has implemented SMC targeting children aged 3–59 months (CU5) in districts with high and seasonal malaria transmission.

**Objective** We assessed the programmatic impact of SMC in Guinea’s context of scaled-up malaria intervention programming by comparing malaria-related outcomes in 14 districts that had (n = 8) or had not (n = 6) been targeted for SMC.

**Methods** Using routine health management information system data, we calculated the district-level monthly test positivity rate (TPR) and monthly uncomplicated and severe malaria incidence for the whole population and disaggregated age groups (<5yrs and ≥5yrs of age). Changes in malaria indicators through time were analyzed by calculating the district-level compound annual growth rate (CAGR) from 2014 to 2021; we used statistical analyses to describe the time trend of the number of tested clinical cases, TPR, uncomplicated malaria incidence, and severe malaria incidence.

**Results** The CAGR of TPR of all age groups was statistically lower in SMC (median = -7.8%, range [IQR] = -9.7%, -5.5%) compared to non-SMC (median = -3.0%, IQR = -3.0%, -1.2%) districts. Similarly, the CAGR in uncomplicated malaria incidence was significantly lower in SMC (median = 1.8%, IQR = -0.9%, 3.5%) compared to non-SMC (median = 11.5%, IQR = 8.8%, 14.0%) districts. For both TPR and uncomplicated malaria incidence the observed difference was also significant age disaggregated. The CAGR of severe malaria incidence showed that all age groups experienced a decline in severe malaria in both SMC and non-SMC districts. However, this decline was significantly higher in SMC (median = -22.3%, IQR= -27.6%, -18.2%) than in non-SMC (median = -5.1%, IQR= -7.7; -3.6) districts for the entire population, as well as both CU5 and people over 5 years of age.

**Conclusion** Our results provide evidence to support that—even in an operational programming context—adding SMC to the comprehensive package of malaria interventions yields a positive epidemiological impact and results in greater reduction in TPR, as well as the incidence of uncomplicated and severe malaria in CU5.

**Key words:** malaria, seasonal malaria chemoprevention, effectiveness, control, Guinea

## 44 INTRODUCTION

45 Malaria is the leading cause of morbidity and mortality in Guinea, with 2,422,445 confirmed cases and  
46 1,029 deaths reported in 2021.<sup>1</sup> Over the past decade Guinea’s National Malaria Control Programme  
47 (NMCP)—in collaboration with bilateral, multilateral, and non-governmental partners—has scaled up  
48 malaria prevention and control efforts, including rapid diagnostic tests (RDTs), artemisinin-based  
49 combination therapies (ACTs), intermittent preventive treatment for pregnant women (IPTp) with  
50 sulfadoxine–pyrimethamine (SP), and insecticide-treated nets (ITNs).<sup>2</sup> Additionally, in 2015, the  
51 NMCP piloted and then rolled out seasonal malaria chemoprevention (SMC) in children aged 3-59  
52 months (CU5). Recommended by the WHO since 2012 for countries with seasonal malaria  
53 transmission,<sup>3</sup> SMC is the monthly administration of a single dose of sulfadoxine–pyrimethamine (SP)  
54 and three daily doses of amodiaquine (AQ) (SP-AQ) to CU5 during the peak malaria transmission  
55 season. SMC can reduce the incidence of clinical malaria in the 28 days following administration by  
56 up to 75% when effectively deployed;<sup>4-7</sup> depending on the length of the rainy season, three to five  
57 cycles of SMC are conducted.<sup>8</sup> As of 2021, 13 countries had adopted SMC (i.e., Benin, Burkina Faso,  
58 Cameroon, Chad, Gambia, Ghana, Guinea, Guinea Bissau, Mali, Niger, Nigeria, Senegal and Togo) at  
59 different scales of implementation.<sup>8</sup>

60 Clinical trials and meta-analyses have demonstrated the efficacy of SMC to reduce malaria  
61 incidence during the intervention period and parasitemia prevalence at the end of the transmission  
62 season, and suggest a positive impact on all-cause mortality.<sup>4-7</sup> There is also some evidence that SMC  
63 results in lower prevalence of moderate to severe anemia and is associated with greater weight gain or  
64 improvement of malnutrition indicators, but such effects have not always been significant across  
65 studies.<sup>7, 9-14</sup> Monthly administration of SP-AQ was found to be the drug regimen with the highest  
66 efficacy,<sup>15-17</sup> and using community health workers (CHWs) to deliver SMC was shown to be more  
67 cost-effective than using facility-based nurses, immunization outreach clinics, or outreach trekking  
68 teams.<sup>18,19</sup>

69 While there is strong evidence of the effect of SMC in rigorously conducted academic  
70 research studies, evidence on the protective effect of SMC in programmatic contexts is more limited.<sup>7,  
71 20, 21</sup> This type of evaluation is challenging but very necessary—indeed, the effectiveness of  
72 interventions in the context of public health programs often differs from the efficacy measured in  
73 academic research studies, because of operational challenges when interventions are implemented at  
74 scale.<sup>22, 23</sup>

75 The aim of the analyses presented here was to assess the programmatic impact of SMC in  
76 Guinea’s context of scaled-up malaria intervention programming, specifically by comparing malaria-  
77 related outcomes in districts that had or had not been targeted for SMC between 2015 and 2021.  
78 Additionally, to do so, we wanted to use a methodological (i.e., using data routinely collected by  
79 Guinea’s health management information system) and an analytical approach (i.e., using the  
80 compound annual growth rate) that is simple and would allow the NMCP to readily monitor SMC  
81 effectiveness against standard malariometric indicators as it continues to expand the intervention  
82 across the country.

## 84 METHODOLOGY

### 85 Study Setting

86 The Republic of Guinea is located in West Africa: it covers a total land area of 245,860 km<sup>2</sup> and has  
87 an estimated population of 13.5 million people. The country is divided into 8 major administrative  
88 regions, which are further divided into 38 préfectures (districts), five of which comprise the urban  
89 areas around the capital city, Conakry. Districts are the main administrative unit where many of the  
90 public services are planned, managed, and implemented, including for health and malaria. Guinea’s  
91 climate is tropical and humid with a wet (June to November) and a dry season (December to May); the  
92 rainy season is followed by a peak malaria transmission season, with the highest malaria case count  
93 typically observed between July to November / December. Approximately 95% of malaria cases in  
94 Guinea are caused by *Plasmodium falciparum*, the principal vectors being *Anopheles gambiae*,  
95 *Anopheles funestus*, and *Anopheles arabiensis*.<sup>1, 24, 25</sup>

96

## 97 **SMC in Guinea**

98 Guinea introduced SMC initially in 6 districts in 2015, scaling up to 17 districts by 2021, with four  
99 monthly community-based SMC campaigns (cycles) conducted during the peak malaria transmission  
100 season (generally from July to October). The NMCP implements SMC in partnership with  
101 nongovernmental and international organizations that financially support the National Malaria  
102 Strategic Plan and its activities. As per WHO guidance,<sup>8</sup> the recommended drug regimen for SMC is  
103 SP-AQ. CHWs (existing ones as well as ones mobilized specifically for the SMC campaign)  
104 administer SP and the first dose of AQ to eligible children and give the remaining two daily doses of  
105 AQ to the caregiver.

106 Cycles of SMC are conducted each year—once every 4 weeks during peak malaria  
107 transmission season. SMC usually starts late July, but the exact starting date fluctuates every year  
108 depending on several factors, including logistical considerations and rainfall. The target population for  
109 SMC comprises all CU5, excluding those with known allergies to SP or AQ, those under  
110 cotrimoxazole treatment, and those severely ill or experiencing a presumptive malaria episode.  
111 Children 3–11 months of age receive one 25 mg dose of sulphadoxine, one 12.5 mg dose of  
112 pyrimethamine, and three doses of 75 mg AQ given over the course of three consecutive days;  
113 children 12–59 months of age receive double doses of SP and AQ. The children’s vaccination booklets  
114 are consulted to help determine their age.

115 In teams of two, CHWs go door-to-door to every household; sometimes they organize  
116 distribution sessions at gathering venues such as markets, churches, dwellings, mosques, and fields.  
117 After explaining the SMC strategy (objective, rationale, risks, and benefits, treatment instructions) to  
118 the caregiver, they administer treatments, with any children with malaria or danger signs referred to  
119 the closest health centre. CHWs fill in forms where they indicate the number of treatments  
120 administered in every household, and they keep updated stock management sheets. Drugs are supplied  
121 through the Ministry of Health (MOH) to the health centres, who then allocate them to the CHWs.  
122 Nurses in health centres are responsible for coordinating CHWs’ work and for collecting SMC forms.  
123 Supervisory visits are conducted by nurses and district health authorities.

124

## 125 **Malaria Data**

126 In the aftermath of the 2014–2016 Ebola outbreak, the MOH established a strategic plan to strengthen  
127 its routine surveillance system, which led to the adoption of the District Health Information Software  
128 (DHIS) 2, an open source, online software application as the national health information system  
129 platform for monthly aggregate data from health facilities. Today this health management information  
130 system (HMIS) is managed by Guinea’s *Système National d’Information Sanitaire* (SNIS) and has  
131 been rolled out nationally;<sup>26</sup> a separate instance is also currently used for weekly aggregate disease  
132 surveillance and individual case surveillance of epidemic-prone diseases. The NMCP uses DHIS2 to  
133 store the monthly aggregate epidemiological surveillance data collected, including all out -and  
134 inpatients seen, suspected clinical malaria cases seen, suspected clinical malaria cases tested, malaria  
135 cases confirmed, and malaria cases treated.<sup>26</sup> Monthly numbers of tested clinical malaria cases,  
136 confirmed positive clinical cases, and severe malaria are disaggregated by age group (<5 years of age  
137 [ $<5$  yrs],  $\geq 5$  years of ages [ $\geq 5$  yrs], and pregnant women). Data for CU5 and people  $\geq 5$  yrs of age (PO5)  
138 were downloaded for January 2014 to November 2021 from the SNIS portal; we also downloaded the  
139 estimated catchment population of each health facility for each year.

140

## 141 **Study area, Study Population, and Data Analysis**

142 Analyses included 8 (Labé, Koubia, Tougue, Mali, Lelouma, Gaoual, Koundara, and Dinguiraye) and  
143 6 (Boffa, Boké, Coyah, Dubreka, Forecariyah, and Fria) districts where SMC campaigns were or were  
144 not performed from January 2014 to November 2021, respectively. We adjusted analyses to account  
145 for different year of enrolment of districts in the SMC campaign (i.e., Labé and Lelouma started SMC  
146 in 2017). The 14 study districts were among the districts supported by StopPalu and StopPalu+,  
147 projects funded by the U.S. President’s Malaria initiative and implemented by RTI International. The  
148 remaining districts covered by these two projects were the communes of the capital Conakry (i.e.,

149 Matam, Dixinn, Ratoma, Matoto, and Kaloum), which were not eligible for SMC due to their low  
150 malaria prevalence; these districts were therefore excluded from the analyses.

151 Among all the study districts' facilities reporting data to SNIS, we selected those that had a  
152 high level of malaria data reporting completeness. Given the long study period and possible  
153 difficulties in consistent data reporting, an arbitrary threshold of 10 missing months within the 2014–  
154 2021 study period and no more than 3 continuously missing months per year was used to identify  
155 facilities with adequate data reporting completeness. We only included public health facilities (i.e.,  
156 hospitals, all health centre types, and health posts) supported by StopPalu and StopPalu+. This  
157 selection method identified 131 facilities of the 149 in the dataset with adequate reporting  
158 completeness. The resulting catchment population based on the selected facilities was 4,451,792  
159 people in 2014, increasing to 5,244,844 people in 2021.

160 Using the extracted indicator data from SNIS, we calculated the monthly test positivity rate  
161 (TPR) and monthly uncomplicated and severe malaria incidence at the district level for the whole  
162 population, as well as disaggregated by age groups (<5yrs and ≥5yrs of age). We used statistical  
163 analyses to describe the time trend of the number of tested fevers, TPR, uncomplicated malaria  
164 incidence, and severe malaria incidence. The changes of these malaria indicators through time were  
165 analyzed by calculating the compound annual growth rate (CAGR) from 2014 to 2021 at the district  
166 level. The CAGR was calculated by dividing a time series end value by its beginning value and raising  
167 the resulting figure to the inverse number of the time series years subtracting it by one. Thus, for our  
168 SMC analyses, the CAGR for each malaria indicator was calculated as follows:

$$169 \quad CAGR = \left( \frac{value_{2021}}{value_{2014}} \right)^{\frac{1}{n}} - 1$$

170 where n is the year of SMC implementation. Testing for differences in malaria indicator values and  
171 their CAGR between SMC and non-SMC districts were performed by using the Wilcoxon's signed  
172 rank test.<sup>27</sup>

173

#### 174 **Ethical approval**

175 This study only used existing (secondary) data that were collected for public health planning and  
176 programming purposes. The data were only available and analyzed at the aggregate level and thus  
177 ethical approval for the analyses was not necessary a priori.

178

## 179 **RESULTS**

### 180 **SMC Coverage**

181 In the districts included in the analyses, 8.1 million treatment doses of SP+AQ were administered to  
182 eligible CU5 between 2015 and 2021, resulting in an average annual programmatic SMC coverage of  
183 89% (range between years: 86–93%).

184

### 185 **Number of Clinical Malaria cases Tested**

186 From January 2014 to November 2021, 5,002,551 clinical malaria cases were tested in the health  
187 facilities included in the study, of which 1,658,637 were CU5 (33.2%) (**Table 1**). Among all tested  
188 clinical cases, 2,484,794 (49.7%) and 2,517,757 (50.3%) were tested in SMC and non-SMC districts,  
189 respectively; in both district groups the proportion of clinical malaria in CU5 was approximately 30%  
190 of all tested clinical cases (SMC districts = 29.8% vs non-SMC districts = 36.5%) (**Table 1**). From  
191 2014 to 2021, the trend of tested clinical cases in CU5 and PO5 showed consistent increase in all  
192 districts (**Figure 2**). The 2014–2021 CAGR of tested clinical cases for SMC districts (median =  
193 12.2%, range = 4.1%, 20.6%) was significantly lower compared to that of non-SMC districts (median  
194 = 19.3%; range = 12.9%, 22.2 %) (Wilcoxon's test, p<0.05) (**Figure 3**). When disaggregated by age,  
195 the CAGR of tested clinical cases was lower in SMC districts compared to non-SMC districts for both  
196 CU5 and PO5, but it was only statistically significant for CU5 (Wilcoxon's test, p<0.05) (**Figure 3**).

197

### 198 **Test Positivity Rate**

199 The TPR among individuals who were tested from 2014–2021 was 56.9% (2,843,956 people), with  
200 PO5 having a slightly higher TPR (57.7%) compared to CU5 (55.2%) (**Table 1**). When SMC was  
201 accounted for, SMC districts had a lower TPR compared to non-SMC districts for each age group,  
202 with the difference in TPR being 15.6 and 12.3 percentage points for CU5 and PO5, respectively  
203 (**Table 1**). Comparing the TPR among districts from 2014 to 2021, the TPR steadily declined in SMC  
204 districts, while the decline in most non-SMC districts stopped in 2019, followed by an increase during  
205 2020 and 2021 (**Figure 4**). The TPR trend during the 2014–2021 study period showed a malaria  
206 season characterized by a high transmission season between July and December (Guinea’s rainy  
207 season: June–November), followed by a low transmission period occurring between January and May  
208 (Guinea’s dry season: December–May) (**Figure 5**); peak malaria transmission usually occurred  
209 between August and September. The TPR of SMC and non-SMC districts was similar in 2014  
210 (Wilcoxon’s test,  $p>0.05$ ), but evolved annually to become significantly different in 2021 (Wilcoxon’s  
211 test,  $p<0.05$ ) (**Figure 5**). When disaggregated by age, for both age groups, the reduction in TPR  
212 between 2014 and 2021 in SMC districts (CU5 tested fevers: median = -46.6%, range = -64.6%, -  
213 30.3%; PO5 tested fevers: median = -42.6%, range = -56.2%, -15.8%) was more than two times higher  
214 compared to the reduction in non-SMC districts (CU5 tested fevers: median = -17.1%, range = -  
215 37.9%, 1.1%; PO5 tested fevers: median = -18.5%, range = -56.2%, -2.8%) (**Figure 6**). The CAGR of  
216 TPR of all age groups was statistically lower in the SMC (median = -7.8%, range = -9.7%, -5.5%)  
217 compared to non-SMC (median = -3.0%, range = -3.0%, -1.2%) districts (Wilcoxon’s test,  $p<0.05$ ,  
218 **Figure 3**). When disaggregated by age, the CAGR was significantly different for both CU5 (SMC  
219 districts: median = -8.6%, range = -10.9%, -6.3%; non-SMC districts: median = -2.6%, range = -3.3%,  
220 -1.4%) and PO5 (SMC districts: median = -7.6%, range = -9.4%, -5.2%; non-SMC districts: median =  
221 -2.9%, range = -3.3%, -1.5%) when comparing the two district groups (Wilcoxon’s test,  $p<0.05$ ,  
222 **Figure 3**).

223

#### 224 **Uncomplicated Malaria Incidence**

225 The median malaria incidence in SMC districts was 18.5 cases per 1,000 people (IQR = 14.5, 21.6) in  
226 2014 and 19.1 cases per 1,000 people (IQR = 16.4, 28.6) in 2021 (**Figure 7**). The median incidence in  
227 non-SMC districts was 10.3 cases per 1,000 people (IQR = 9.1, 17.3) in 2014 and 26.7 cases per 1,000  
228 people (IQR = 18.2, 33.7) in 2021. Thus, both SMC and non-SMC districts experienced an increase of  
229 incidence from 2014 to 2021. Comparing the incidence trend among the age groups and districts, only  
230 the incidence of CU5 in SMC districts showed a declining trend from 2014 to 2021. Incidence showed  
231 to be statistically lower during the low transmission seasons in the SMC districts compared to non-  
232 SMC districts (Wilcoxon’s test) (**Figure 8**). The CAGR in all-age malaria incidence in SMC districts  
233 (median = 1.8%, range = -0.9%, 3.5%) was significantly lower compared to non-SMC districts  
234 (median = 11.5%, range = 8.8%, 14.0%) (Wilcoxon’s test  $p<0.05$ , **Figure 3**). When disaggregated by  
235 age, the CAGR between SMC and non-SMC districts were significantly different for both CU5 (SMC  
236 districts: median = -3.9%, range = -7.6%, -2.6%; non-SMC districts: median = 10.2%, range = 7.5%, -  
237 12.9%) and PO5 (SMC districts: median = 3.9%, range = 1.6%, 6.3%; non-SMC districts: median =  
238 11.5%, range = 9.6%, 14%) when comparing the two district groups (Wilcoxon’s test,  $p<0.05$ , **Figure**  
239 **3**).

240

#### 241 **Number of Severe Malaria Cases**

242 From January 2014 to November 2021, 264,726 severe malaria cases were reported from the facilities  
243 included in the study, of which 111,647 (42.2%) were from SMC districts and 153,079 (57.8%) from  
244 non-SMC districts. The proportion of severe malaria in CU5 was similar in SMC districts (40,426  
245 cases, 36.2%) and non-SMC districts (56,459 cases, 36.8%). The median severe malaria incidence in  
246 SMC districts declined from 1.4 cases per 1,000 people (IQR = 1.1, 1.6) in 2014 to 0.2 cases per 1,000  
247 people (IQR = 0.1, 0.3) in 2021, and from 0.9 cases per 1,000 people (IQR = 0.8, 1.1) to 0.6 cases per  
248 1,000 people (IQR = 0.5, 0.7) in non-SMC districts (**Figure 9**). The incidence of severe cases was  
249 higher in PO5 in both SMC districts and non-SMC districts. The reduction of severe malaria cases  
250 declined in both age groups, but was significantly higher in the CU5 (Wilcoxon’s test  $p<0.05$ ) (**Figure**  
251 **10**). The CAGR of severe malaria incidence showed that all age groups experienced a decline in

252 severe malaria in both SMC and non-SMC districts. However, this decline was significantly higher in  
253 SMC (median = -22.3%, range = -27.6%, -18.2%) than in non-SMC (median = -5.1%, range = -7.7, -  
254 3.6) districts for the entire population, as well as both CU5 and PO5 (Wilcoxon's test  $p < 0.05$ ) (**Figure**  
255 **3**).

256

## 257 **DISCUSSION**

258 Randomized controlled trials have shown that SMC can reduce the incidence of clinical malaria,  
259 parasitemia, anemia, severe malaria, and all-cause mortality in CU5, when effectively deployed.<sup>4-7</sup>  
260 Several studies have analyzed the effectiveness of SMC when implemented at large operational scales,  
261 showing SMC protective effectiveness against clinical malaria ranging from 73–98% in CU5 at 28 and  
262 42-days post-SMC administration, respectively.<sup>28, 29</sup> However, these studies relied on large samples of  
263 at-risk populations (i.e., CU5), either following case / control study designs,<sup>28, 29</sup> or using nationally  
264 representative surveys such as Demographic and Health Surveys or Malaria Indicator Surveys.<sup>30, 31</sup>  
265 While such approaches are certainly robust, they can be onerous, time-consuming, and costly, and may  
266 not allow for continuous monitoring of the intervention across all SMC implementation areas.

267 As countries' HMIS are strengthened, there is the opportunity to increasingly use data that is  
268 routinely (passively) collected by health facilities and reported by districts.<sup>32-36</sup> Using district-level  
269 data from Guinea's HMIS collected between 2014–2021, we show the programmatic impact of SMC  
270 in targeted districts, confirming the effectiveness of SMC shown in various controlled research  
271 studies. Our analyses show that—in a context of strengthened case management and medium to high  
272 coverage of LLINs—SMC significantly reduced the TPR, uncomplicated malaria incidence, and the  
273 incidence of severe malaria in CU5 in Guinea between 2014–2021. These findings also corroborate  
274 other recent analyses estimating SMC effectiveness through use of routine health information system  
275 data. Thus, in Chad, using generalized additive modelling, Richardson et al.<sup>37</sup> estimated that SMC  
276 reduced the number of suspected and confirmed malaria in CU5 by 18% (95% CI: 6–28) and 19%  
277 (95% CI: 7–29) at primary health facilities in 23 health districts during the months of SMC  
278 implementation, respectively. Similarly, an evaluation of the ACCESS-SMC program using a  
279 difference-in-differences approach of DHIS2 data observed a 45.0% and 55.2% reduction in malaria  
280 outpatients after two years of SMC implementation in Burkina Faso and The Gambia, respectively; the  
281 study also reported substantial reductions in the number of malaria inpatients and malaria hospital  
282 deaths following SMC.<sup>29</sup>

283 Interestingly, we show that the effect of SMC is particularly pronounced in the dry season  
284 rather than the rainy season. We hypothesize that SMC results in CU5 either being fully protected  
285 from infection or, if infected, only having infections with low parasitemia (which may be due to  
286 incomplete adherence to the 3-day regimen, or drug resistance).<sup>38</sup> Combined with the lower abundance  
287 and density of mosquitoes during the dry season, this then results in lower transmission rates, which  
288 leads to a lower incidence. Similar observations have been made in studies evaluating vector control  
289 interventions.<sup>39</sup> These observations do show, however, that in Guinea SMC should possibly start  
290 earlier than in July (i.e., to have a greater effect on infection protection and transmission intensity  
291 during peak transmission season), and that studies monitoring SMC impact should potentially monitor  
292 effectiveness beyond the currently recommended 28–42 days post SMC administration.<sup>40</sup>

293 Moreover, unlike prior controlled academic research and other studies, our analyses also  
294 demonstrate an effect of SMC administered to CU5, albeit lower, on PO5, specifically for TPR,  
295 uncomplicated malaria incidence, and severe malaria incidence. Such effect seems plausible, given  
296 that—even in a context of decreasing malaria prevalence such as Guinea<sup>1</sup>—CU5 still represent a large  
297 proportion of all cases (i.e., 55.2% for the 2014–2021 study period; **Table 1**) and, thus, a substantial  
298 proportion of the human reservoir infecting anopheline mosquitoes. Any significant intervention effect  
299 reducing the CU5 *Plasmodium* reservoir will lower transmission intensity and, thus, spill over and  
300 reduce malariometric indicators in PO5.

301 As support continues for malaria elimination and additional means for malaria control are  
302 introduced (e.g., vaccines), alternative methods for measuring impact must be explored outside trial  
303 settings as controlled and observational research studies to investigate effectiveness at scale are very  
304 costly. Multiple impact evaluations and approaches that address gaps or biases in data and

305 triangulating between data sources strengthens the plausibility of program impact. We used the CGAR  
306 as an analytical method. The CAGR is a commonly used methodology in the field of economics to  
307 describe changes in (economic) growth from the beginning to the end of a timeseries. The advantage  
308 of using CAGR compared to other analytical approaches—such as average annualized rates—is that  
309 the resulting estimate is not affected by fluctuations within the time series that could produce  
310 misleading results. The CAGR methodology has previously been used in the public health field to  
311 evaluate health care systems and effects of interventions through time.<sup>41–43</sup> An additional advantage of  
312 the approach is that, because it is algebra-based, it does not require advanced data analytics or  
313 modelling expertise, and thus can be applied by program personnel with a basic understanding of  
314 calculus (e.g., in MS Excel worksheets, or even DHIS2).

315 Because SMC is consistently proving to be a high-coverage and effective intervention,  
316 several countries with seasonal malaria transmission outside of the Sahel are now piloting SMC to be  
317 included in their malaria intervention package (e.g., Uganda<sup>44</sup> and Mozambique<sup>45</sup>). WHO recently  
318 amended the SMC guidelines to give countries flexibility to change the SMC regimen (e.g., by adding  
319 additional SMC cycles to cover longer peak transmission seasons, or by including older age groups).<sup>8</sup>  
320 Such step is likely going to increase the effect of SMC even further, either in CU5 (if additional SMC  
321 cycles are added) or in older age groups (if older age groups are covered with SMC)—indeed recent  
322 studies in Burkina Faso, Mali and Senegal seem to corroborate this.<sup>46–48</sup> Moreover, there is increased  
323 interest to use SMC campaigns to integrate or leverage other health interventions,<sup>49–51</sup> the rationale  
324 being that (1) other health interventions that may not have as high population acceptance or coverage  
325 as SMC would benefit from the high acceptance and coverage of SMC; and (2) cost-efficiencies  
326 would be obtained, since combining intervention planning, implementation and monitoring would  
327 result in various economies of scale (e.g., training of health workers, transport costs, limiting health  
328 workers' time to implement campaigns rather than providing health services).

329

### 330 **Limitations**

331 Several potential caveats of our analyses should be highlighted. First, our analyses did not adjust for  
332 intervention coverage, either for SMC or other malaria interventions such as LLINs. Thus, we assume  
333 that programmatic coverage, use of, and adherence to these interventions is relatively homogenous and  
334 that the only difference in overall malaria intervention coverage between the two sets of districts  
335 included in our analyses is the administration of SMC to CU5. Post-SMC round assessments  
336 consistently showed programmatic coverage of 82–93% across districts included in our analyses  
337 (**Table 1**). Moreover, as per 2021 Malaria Indicator Survey data, LLIN use in CU5 in households with  
338 at least 1 LLINs was 60.4% in survey enumeration areas in SMC districts, compared to 65.6% for non-  
339 SMC districts.

340 Second, using routine HMIS data for impact evaluations can be problematic due to internal  
341 validity, completeness, and potential bias in estimates of effect, and caution must be exercised in  
342 interpreting analytical findings.<sup>32</sup> Additionally, challenges with HMIS data are that they are dependent  
343 on the proportion of infected individual cases seeking treatment for malaria at public sector health  
344 facilities; the proportion of patients seeking care who are parasitologically diagnosed; and facilities  
345 reporting all suspected and confirmed malaria cases consistently over time. Thus, for example, even  
346 though SMC was implemented in Guinea since 2015, an increase in the number of fevers was  
347 observed in CU5, suggesting a lack of impact of SMC. However, during this period, changes in access  
348 to health services occurred, such as improvement in malaria case detection and diagnosis at facility  
349 and community levels, removal of user access fees for CU5 and pregnant women, and improvement in  
350 the availability of malaria diagnostic and case management commodities. We controlled for such bias  
351 by excluding health facilities with incomplete reporting (i.e., facilities with 10 months of missing data  
352 throughout the study period, and no more than 3 continuously missing months per year), and note that  
353 these facilities were evenly spread across SMC and non-SMC districts. We also note that our analyses  
354 of the SMC effect in CU5 was consistently observed across all malariometric indicators included in  
355 our analysed.

356 Third, malaria testing to identify cases in Guinea is largely RDT-based. Although used tests  
357 have a high sensitivity and specificity, it is possible that low parasitemic and asymptomatic infections



358 were missed. It is unlikely, however, that such infections would have clustered in a specific  
359 spatiotemporal pattern across SMC compared to non-SMC districts, and, thus, would unlikely change  
360 our findings and conclusions.

361 Fourth, we delineated our analyses to district boundaries, rather than a defined area size (e.g.,  
362 25 km<sup>2</sup>). This was done because routinely collected HMIS data gets aggregated at that level and  
363 districts are the lowest administrative unit in Guinea that plan, implement and monitor malaria  
364 programming; any response to an increase in malaria cases would occur at district level.

365 Finally, spatial analyses performed using arbitrary spatial divisions such as district  
366 administrative boundaries can be affected by the modifiable areal unit problem.<sup>52,53</sup> For example,  
367 cases that were reported at a health facility in a given district could stem from households in a  
368 different district, and therefore, bias district-level malaria HMIS data. Thus, the possibility remains  
369 that cases got infected outside of their district (e.g., during travel).

370

## 371 **CONCLUSION**

372 Our study provides evidence to support that—even in an operational programming context—adding  
373 SMC to the comprehensive package of malaria interventions yields a positive epidemiological impact  
374 and results in a greater reduction in TPR, malaria incidence and hospitalizations in CU5 than when  
375 implementing an intervention package without SMC. We also show that the use of routine HMIS data  
376 represents a viable method for assessing the epidemiological impact of public health interventions in  
377 the absence of trial studies, household surveys, and extensive covariate data. Further studies on the  
378 effectiveness of SMC at scale should use data obtained from a wider range of sources.

379 **Acknowledgements**

380 We thank Guinea's Ministry of Health staff who participated in SMC programmatic efforts, as well as  
381 the communities in the study districts for their collaboration.

382 **Funding**

383 Financial support for this study was provided by the U.S. President's Malaria Initiative through the  
384 U.S. Agency for International Development StopPalu (Cooperative Agreement Number: AID-675-A-  
385 13-00005) and StopPalu+ (Cooperative Agreement Number: 72067518CA000015) programs. The  
386 findings and conclusions in this report are those of the author(s) and do not necessarily represent the  
387 official position of the U.S. Agency for International Development.

388 **Competing Interest**

389 None declared.

390 **Patient and public involvement**

391 Patients and/or the public were not involved in the design, or conduct, or reporting, or dissemination  
392 plans of this research.

## 393 REFERENCES

394

- 395 1. Ministry of Health. Annual Bulletin of the National Malaria Control Program 2020. Ministry  
396 of Health, Conakry, 2021.
- 397 2. NMCP. National Strategic Plan 2018–2022. Ministry of Health, Conakry, 2018.
- 398 3. WHO. Seasonal malaria chemoprevention for Plasmodium falciparum malaria control in  
399 highly seasonal transmission areas of the Sahel sub-region in Africa. WHO, Geneva, 2012.
- 400 4. Wilson AL, IPTc Taskforce IP. A systematic review and meta-analysis of the efficacy and  
401 safety of intermittent preventive treatment of malaria in children (IPTc). PLoS One 2011; 6:  
402 e16976.
- 403 5. Meremikwu MM, Donegan S, Sinclair D, Esu E, Oringanje C. Intermittent preventive  
404 treatment for malaria in children living in areas with seasonal transmission. Cochrane  
405 Database Syst Rev 2012; 2: CD003756.
- 406 6. Cairns M, Roca-Feltrer A, Garske T, Wilson A, Diallo D, Milligan P, Ghani A, Greenwood  
407 AM. Estimating the potential public health impact of seasonal malaria chemoprevention in  
408 African children. Nature 2012; 3: 881.
- 409 7. WHO. Guidelines for malaria. WHO, Geneva, 2022. [https://www.who.int/teams/global-](https://www.who.int/teams/global-malaria-programme/guidelines-for-malaria)  
410 [malaria-programme/guidelines-for-malaria](https://www.who.int/teams/global-malaria-programme/guidelines-for-malaria)
- 411 8. WHO. Updated WHO recommendations for malaria chemoprevention among children and  
412 pregnant women. WHO, Geneva, 2022. [https://www.who.int/news/item/03-06-2022-Updated-](https://www.who.int/news/item/03-06-2022-Updated-WHO-recommendations-for-malaria-chemoprevention-among-children-and-pregnant-women)  
413 [WHO-recommendations-for-malaria-chemoprevention-among-children-and-pregnant-women](https://www.who.int/news/item/03-06-2022-Updated-WHO-recommendations-for-malaria-chemoprevention-among-children-and-pregnant-women)
- 414 9. Dicko A, Diallo AI, Tembine I, Dicko Y, Dara N, Sidibe Y, Santara G, Diawara H, Conaré T,  
415 Djimde A, Chandramohan D, Cousens S, Milligan PJ, Diallo DA, Doumbo OK, Greenwood  
416 B. Intermittent preventive treatment of malaria provides substantial protection against malaria  
417 in children already protected by an insecticide-treated bednet in Mali: a randomised, double-  
418 blind, placebo-controlled trial. PLoS Med 2011; 8: e1000407.
- 419 10. Konaté AT, Yaro JB, Ouédraogo AZ, Diarra A, Gansané A, Soulama I, Kangoyé DT, Kaboré  
420 Y, Ouédraogo E, Ouédraogo A, Tiono AB, Ouédraogo IN, Chandramohan D, Cousens S,  
421 Milligan PJ, Sirima SB, Greenwood B, Diallo DA. Intermittent preventive treatment of  
422 malaria provides substantial protection against malaria in children already protected by an  
423 insecticide-treated bednet in Burkina Faso: a randomised, double-blind, placebo-controlled  
424 trial. PLoS Med 2011; 8: e1000408.
- 425 11. Cissé B, Sokhna C, Boulanger D, Milet J, Bâ el H, Richardson K, Hallett R, Sutherland C,  
426 Simondon K, Simondon F, Alexander N, Gaye O, Targett G, Lines J, Greenwood B, Trape JF.  
427 Seasonal intermittent preventive treatment with artesunate and sulfadoxine-pyrimethamine for  
428 prevention of malaria in Senegalese children: a randomised, placebocontrolled, double-blind  
429 trial. Lancet 2006; 367: 659–667.
- 430 12. Diawara F, Steinhardt LC, Mahamar A, Traore T, Kone DT, Diawara H, Kamate B, Kone D,  
431 Diallo M, Sadou A, Mihigo J, Sagara I, Djimde AA, Eckert E, Dicko A. Measuring the impact  
432 of seasonal malaria chemoprevention as part of routine malaria control in Kita, Mali. Malaria J  
433 2017; 16:325.
- 434 13. Kweku M, Liu D, Adjuik M, Binka F, Seidu M, Greenwood B, Chandramohan D. Seasonal  
435 intermittent preventive treatment for the prevention of anaemia and malaria in Ghanaian  
436 children: a randomized, placebo-controlled trial. PLoS One 2008; 3: e4000.
- 437 14. Ntab B, Cissé B, Boulanger D, Sokhna C, Targett G, Lines J, Alexander N, Trape JF,  
438 Simondon F, Greenwood BM, Simondon KB. Impact of intermittent preventive anti-malarial  
439 treatment on the growth and nutritional status of preschool children in rural Senegal (West  
440 Africa). Am J Trop Med Hyg 2007; 77: 411–417.
- 441 15. Sokhna C, Cissé B, Bâ el H, Milligan P, Hallett R, Sutherland C, Gaye O, Boulanger D,  
442 Simondon K, Simondon F, Targett G, Lines J, Greenwood B, Trape JF. A trial of the efficacy,

- 443 safety and impact on drug resistance of four drug regimens for seasonal intermittent  
444 preventive treatment for malaria in Senegalese children. *PLoS One* 2008; 3: e1471.
- 445 16. Bojang K, Akor F, Bittaye O, Conway D, Bottomley C, Milligan P, Greenwood B. A  
446 randomised trial to compare the safety, tolerability and efficacy of three drug combinations for  
447 intermittent preventive treatment in children. *PLoS One* 2010; 5: e11225.
- 448 17. Zongo I, Milligan P, Compaore YD, Some AF, Greenwood B, Tarning J, Rosenthal PJ,  
449 Sutherland C, Nosten F, Ouedraogo JB. Randomized noninferiority trial of  
450 dihydroartemisinin-piperaquine compared with sulfadoxine-pyrimethamine plus amodiaquine  
451 for seasonal malaria chemoprevention in Burkina Faso. *Antimicrob Agents Chemother* 2015;  
452 59: 4387–4396.
- 453 18. Patouillard E, Conteh L, Webster J, Kweku M, Chandramohan D, Greenwood B. Coverage,  
454 adherence and costs of intermittent preventive treatment of malaria in children employing  
455 different delivery strategies in Jasikan, Ghana. *PLoS One* 2011; 6: e24871.
- 456 19. Bojang KA, Akor F, Conteh L, Webb E, Bittaye O, Conway DJ, Jasseh M, Wiseman V,  
457 Milligan PJ, Greenwood B. Two strategies for the delivery of IPTc in an area of seasonal  
458 malaria transmission in the Gambia: a randomised controlled trial. *PLoS Med* 2011; 8:  
459 e1000409.
- 460 20. Buffet PA, Briand V, Renia L, Thellier M, Danis M, Mazier D. Intermittent preventive  
461 antimalarial treatment to children (IPTc): firebreak or fire trap? *Trends Parasitol* 2008; 24:  
462 482–485, discussion 485–486.
- 463 21. Beeson JG, Rogerson SJ, Mueller I, Richards JS, Fowkes FJ. Intermittent preventive treatment  
464 to reduce the burden of malaria in children: new evidence on integration and delivery. *PLoS*  
465 2011; *Med* 8: e1000410.
- 466 22. Barreto ML. Efficacy, effectiveness, and the evaluation of public health interventions. *J*  
467 *Epidemiol Community Health* 2005; 59: 345–346.
- 468 23. The malERA Refresh Consultative Panel on Health Systems and Policy Research: An updated  
469 research agenda for health systems and policy research in malaria elimination and eradication.  
470 *PLoS Medicine* 2017; 14: e1002454.
- 471 24. Beavogui AH, Delamou A, Camara BS, Camara D, Kourouma K, Camara R, Sagara I, Lama  
472 EK, Djimde A. Prevalence of malaria and factors associated with infection in children aged 6  
473 months to 9 years in Guinea: results from a national cross-sectional study. *Parasite Epidemiol*  
474 *Control* 2020;11: e00162.
- 475 25. Sayre D, Camara A, Barry Y, Deen TB, Camara D, Dioubaté M, Camara I, Keita K, Diakité  
476 N, Lo Y, Bah I, Camara HF, Condé MS, Fofana A, Sarr A, Lama E, Irish S, Plucinski M.  
477 Combined Epidemiologic and Entomologic Survey to Detect Urban Malaria Transmission,  
478 Guinea, 2018. *Emerg Infect Dis.* 2021; 27: 599-602.
- 479 26. Reynolds E, Martel LD, Bah MO, Bah M, Bah MB, Boubacar B, Camara N, Camara YB,  
480 Corvil S, Diallo BI, Diallo IT, Diallo MK, Diallo MT, Diallo T, Guilavogui S, Hemingway-  
481 Foday JJ, Hann F, Kaba A, Kaba AK, Kande M, Lamarana DM, Middleton K, Sidibe N,  
482 Souare O, Standley CJ, Stolka KB, Tchwenko S, Worrell MC, MacDonald PDM.  
483 Implementation of DHIS2 for Disease Surveillance in Guinea: 2015-2020. *Front Public Health*  
484 2022;9: 761196.
- 485 27. Hollander M, Wolfe DA. *Nonparametric Statistical Methods*. New York: John Wiley & Sons,  
486 1973.
- 487 28. Cairns M, Ceesay SJ, Sagara I, Zongo I, Kessely H, Gamougam K, Diallo A, Ogboi JS,  
488 Moroso D, Van Hulle S, Eloike T, Snell P, Scott S, Merle C, Bojang K, Ouedraogo JB, Dicko  
489 A, Ndiaye JL, Milligan P. Effectiveness of seasonal malaria chemoprevention (SMC)  
490 treatment when SMC is implemented at scale: case-control studies in 5 countries. *PLoS*  
491 *Medicine* 2021; 18: e1003727.
- 492 29. ACCESS-SMC Partnership. Effectiveness of seasonal malaria chemoprevention at scale in  
493 west and central Africa: an observational study. *Lancet* 2020; 396: 1829–40.

- 494 30. Druetz T. Evaluation of direct and indirect effects of seasonal malaria chemoprevention in  
495 Mali. *Scientific Reports* 2018; 8: 8104.
- 496 31. de Cola MA, Sawadogo B, Richardson S, Ibinaiye T, Traoré A, Compaoré CS, Oguoma C,  
497 Oresanya O, Tougri G, Rassi C, Roca-Feltrer A, Walker P, Okell LC. Impact of seasonal  
498 malaria chemoprevention on prevalence of malaria infection in malaria indicator surveys in  
499 Burkina Faso and Nigeria. *BMJ Global Health* 2021; 7: e008021.
- 500 32. Rowe AK, Kachur SP, Yoon SS, Lynch M, Slutsker L, Steketee RW. Caution is required  
501 when using health facility based data to evaluate the health impact of malaria control efforts in  
502 Africa. *Malar J* 2009; 8: 1–3.
- 503 33. Afrane YA, Zhou G, Githeko AK, Yan G. Utility of health facility-based malaria data for  
504 malaria surveillance. *PLoS One* 2013; 8: e54305.
- 505 34. Ashton RA, Bennett A, Yukich J, Bhattarai A, Keating J, Eisele TP. Methodological  
506 considerations for use of routine health information system data to evaluate malaria program  
507 impact in an era of declining malaria transmission. *Am J Trop Med Hyg* 2017; 97: 46–57.
- 508 35. WHO. Analysis and Use of Health Facility Data: Guidance for Malaria Programme Managers.  
509 World Health Organization, Geneva, 2018.
- 510 36. Wagenaar BH, Sherr K, Fernandes Q, Wagenaar AC. Using routine health information  
511 systems for well-designed health evaluations in low- and middle-income countries. *Health  
512 Policy Planning* 2016; 31: 129–135
- 513 37. Richardson S, Moukenet A, Diar MSI, de Cola MA, Rassi C, Counihan H, Roca-Feltrer A.  
514 Modeled Impact of Seasonal Malaria Chemoprevention on District-Level Suspected and  
515 Confirmed Malaria Cases in Chad Based on Routine Clinical Data (2013-2018). *Am J Trop  
516 Med Hyg*. 2021; 105: 1712-1721.
- 517 38. Chotsiri P, White NJ, Tarning. Pharmacokinetic considerations in seasonal malaria  
518 chemoprevention. *Trends Parasitol*. 2022; 38; 673–682.
- 519 39. Fullman N, Burstein R, Lim SS, Medlin C, Gakidou E. Nets, spray or both? The effectiveness  
520 of insecticide-treated nets and indoor residual spraying in reducing malaria morbidity and  
521 child mortality in sub-Saharan Africa. *Malar J*. 2013; 12: 62.
- 522 40. WHO (2022) Malaria chemoprevention efficacy study protocol. World Health  
523 Organization, Geneva, 2022.
- 524 41. Hwang J, Shen JJ, Kim SJ, Chun SY, Kim PC, Lee SW, Byun D, Yoo JW. Opioid use  
525 disorders and hospital palliative care among patients with gastrointestinal cancers: ten-year  
526 trend and associated factors in the US from 2005 to 2014. *Medicine* 2020; 99: e20723.
- 527 42. Joo MK, Yoo JW, Mojtahedi Z, Kim P, Hwang J, Koo JS, Kang HT, Shen JJ. Ten-year trends  
528 of utilizing palliative care and palliative procedures in patients with gastric Cancer in the  
529 United States from 2009 to 2018-a nationwide database study. *BMC Health Services Research*  
530 2022; 22: 20.
- 531 43. Moses H, Matheson DH, Dorsey ER, George BP, Sadoff D, Yoshimura S. The anatomy of  
532 health care in the United States. *JAMA* 2013; 310: 1947–1964.
- 533 44. Nuwa A, Baker K, Bonnington C, Odongo M, Kyagulanyi T, Bwanika JB, Richardson S,  
534 Nabakooza J, Achan J, Kajubi R, Odong DS, Nakirunda M, Magumba G, Beinomugisha G,  
535 Marasciulo-Rice M, Abio H, Rassi C, Rutazaana D, Rubahika D, Tibenderana J, Opigo J. A  
536 non-randomized controlled trial to assess the protective effect of SMC in the context of high  
537 parasite resistance in Uganda. *Malar J*. 2023; 22: 63.
- 538 45. Baker K, Aide P, Bonnington CA, Rassi C, Richardson S, Roca-Feltrer A, Rodrigues M, Siteo  
539 M, Pulido Tarquino IA, Enosse S, McGugan C, de Carvalho EA, Saute F, Mayor Aparicio  
540 AG, Candrinho B (2022) Feasibility, Acceptability, and Protective Efficacy of Seasonal  
541 Malaria Chemoprevention Implementation in Nampula Province, Mozambique: Protocol for a  
542 Hybrid Effectiveness-Implementation Study. *JMIR Res Protoc*. 11: e36403.
- 543 46. Cissé B, Ba EH, Sokhna C, NDiaye JL, Gomis JF, Dial Y, Pitt C, NDiaye M, Cairns M, Faye  
544 E, NDiaye M, Lo A, Tine R, Faye S, Faye B, Sy O, Konate L, Kouevijdin E, Flach C, Faye O,  
545 Trape JF, Sutherland C, Fall FB, Thior PM, Faye OK, Greenwood B, Gaye O, Milligan P.

- 546 Effectiveness of seasonal malaria chemoprevention in children under 10 years of age in  
547 Senegal: a stepped-wedge cluster randomised trial. *PLoS Medicine* 2016; 13: e1002175.
- 548 47. Ndiaye JLA, Ndiaye Y, Ba MS, Faye B, Ndiaye M, Seck A, Tine R, Thior PM, Atwal S,  
549 Beshir K, Sutherland C, Gaye O, Milligan P. Seasonal malaria chemoprevention combined  
550 with community case management of malaria in children under 10 years of age, over 5  
551 months, in south-east Senegal: a cluster randomised trial. *PLoS Medicine* 2019; 16: e1002762.
- 552 48. Bâ EH, Pitt C, Dial Y, Faye SL, Cairns M, Faye E, Ndiaye M, Gomis JF, Faye B, Ndiaye JL,  
553 Sokhna C, Gaye O, Cissé B, Milligan P. Implementation, coverage and equity of large-scale  
554 door-to-door delivery of seasonal malaria chemoprevention (SMC) to children under 10 in  
555 Senegal. *Scientific Reports* 2018; 8: 5489.
- 556 49. Bazant E, McPhillips-Tangum C, Shrestha SD, G S P, Khera A, Nic Lochlainn L, Habtamu E,  
557 Patel VI, Muhire G, Saarlans KN. Promising practices for the collaborative planning of  
558 integrated health campaigns from a synthesis of case studies. *BMJ Glob Health* 2022; 7:  
559 e010321.
- 560 50. Oresanya O, Phillips A, Okereke E, Ahmadu A, Ibinaiye T, Marasciulo M, Ward C, Adesoro  
561 O, Mohammed R, Nikau J, Isokpunwu CO, Inname MA, Counihan H, Baker K, Maxwell K,  
562 Smith H. Co-implementing vitamin A supplementation with seasonal malaria  
563 chemoprevention in Sokoto State, Nigeria: a feasibility and acceptability study. *BMC Health  
564 Serv Res.* 2022; 22: 871
- 565 51. Keita MS, Camara A, Daffe M, Fofana A, Balde M, Diallo T, Barry H, Fitch E, Taton JL,  
566 Bangoura L, Mbounga E, Reithinger R. Integrating nutrition assessments and seasonal malaria  
567 chemoprevention: Results from a mixed-methods feasibility study in Guinea. *Trop Med Int  
568 Health* 2023; 28: 571–575.
- 569 52. Wong DW. The modifiable areal unit problem (MAUP). In: *WorldMinds: geographical  
570 perspectives on 100 problems*; 2004. Springer, Dordrecht, 2004.
- 571 53. Alegana VA, Atkinson PM, Wright JA, et al. Estimation of malaria incidence in northern  
572 Namibia in 2009 using Bayesian conditional- autoregressive spatial- temporal models. *Spat  
573 Spatiotemporal Epidemiol* 2013; 7: 25–36.
- 574 54. Gilmartin C, Nonvignon J, Cairns M, Milligan P, Bocoum F, Winskill P, Moroso D, Collins  
575 D. Seasonal malaria chemoprevention in the Sahel subregion of Africa: a cost-effectiveness  
576 and cost-savings analysis. *Lancet Glob Health* 2019; 9: e199–e208.
- 577

It is made available under a [CC-BY 4.0 International license](#) .

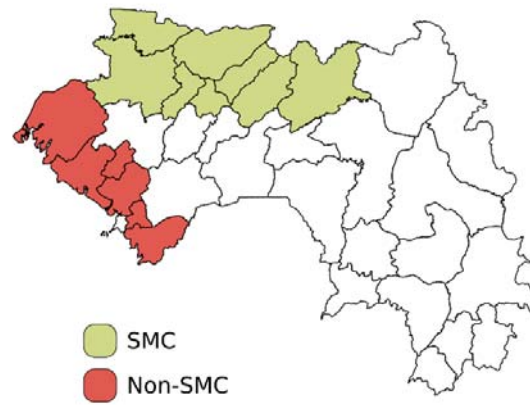
## 578 **Tables and figures**

**Table 1. Number of tested fevers, positive tests, and positive rate divided by age group and SMC coverage during the study period (January 2014 – November 2021).**

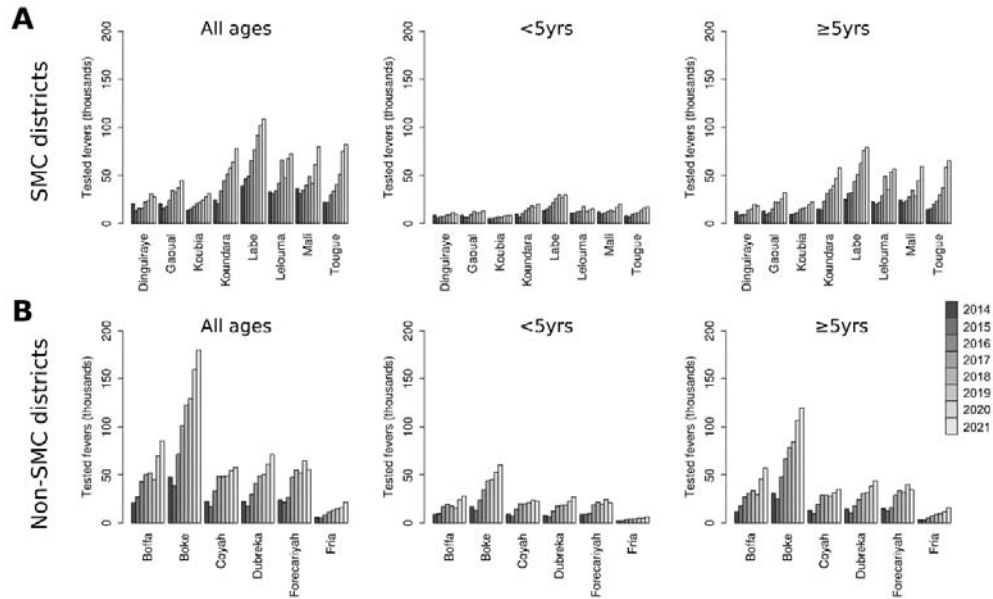
| Age Group       | All districts |                   | SMC districts |                   | Non-SMC district |                   |
|-----------------|---------------|-------------------|---------------|-------------------|------------------|-------------------|
|                 | Tested        | Positive (%)      | Tested        | Positive (%)      | Tested           | Positive (%)      |
| <5yrs age group | 1,658,637     | 915,831 (55.2%)   | 739,403       | 344,420 (46.6%)   | 919,234          | 571,411 (62.2%)   |
| ≥5yrs age group | 3,343,914     | 1,928,125 (57.7%) | 1,745,391     | 904,818 (51.8%)   | 1,598,523        | 1,023,307 (64.1%) |
| Total           | 5,002,551     | 2,843,956 (56.9%) | 2,484,794     | 1,249,238 (50.3%) | 2,517,757        | 1,594,718 (63.4%) |



**Figure 1. Districts covered by the StopPalu and StopPalu+ in which SMC was performed.**

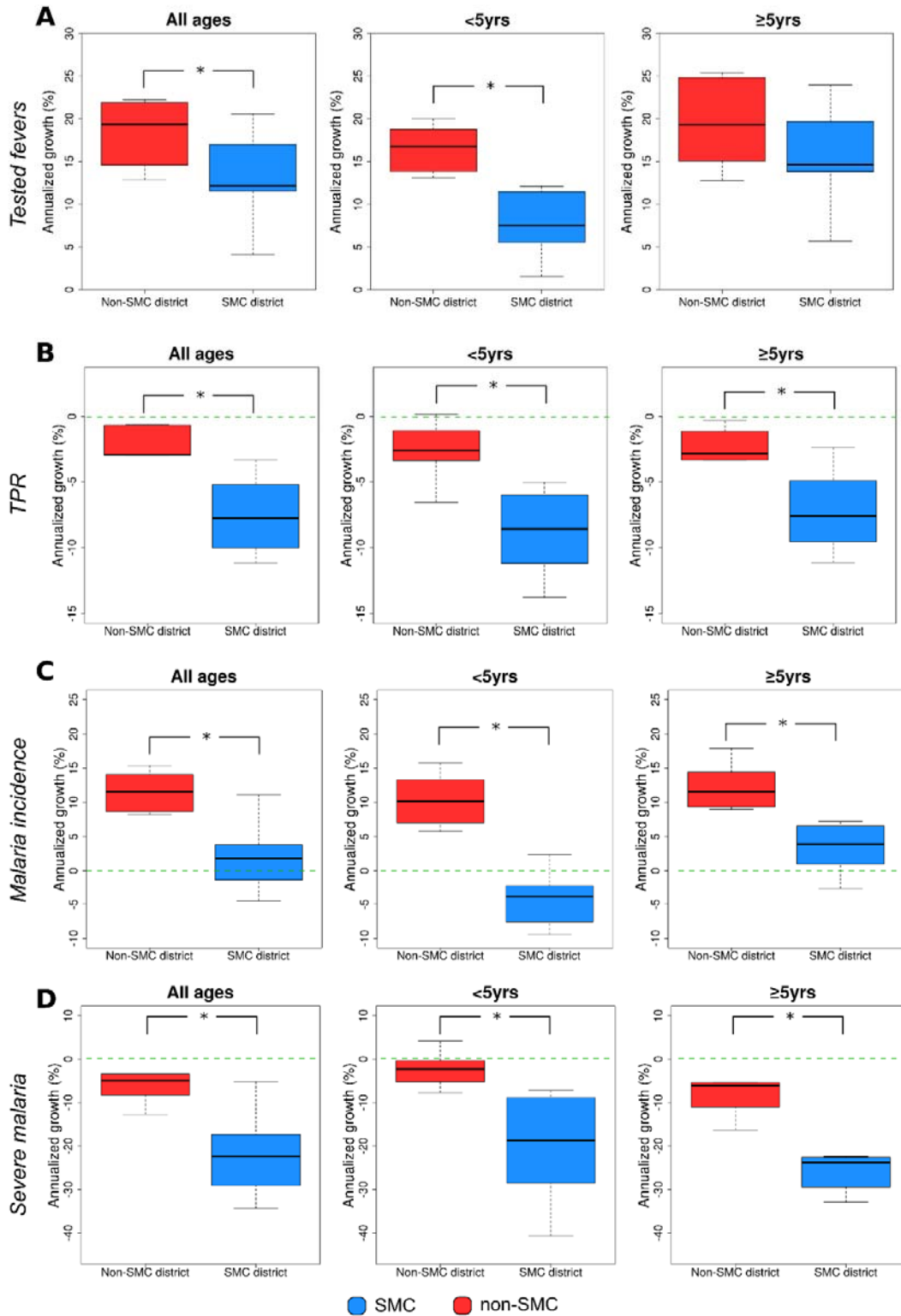


**Figure 2. Number of tested fevers in SMC and non-SMC districts per age group and year.** Plots show tested fevers for all-age groups, <5yrs age group, and  $\geq 5$ yrs age group in SMC (A) and non-SMC districts (B)



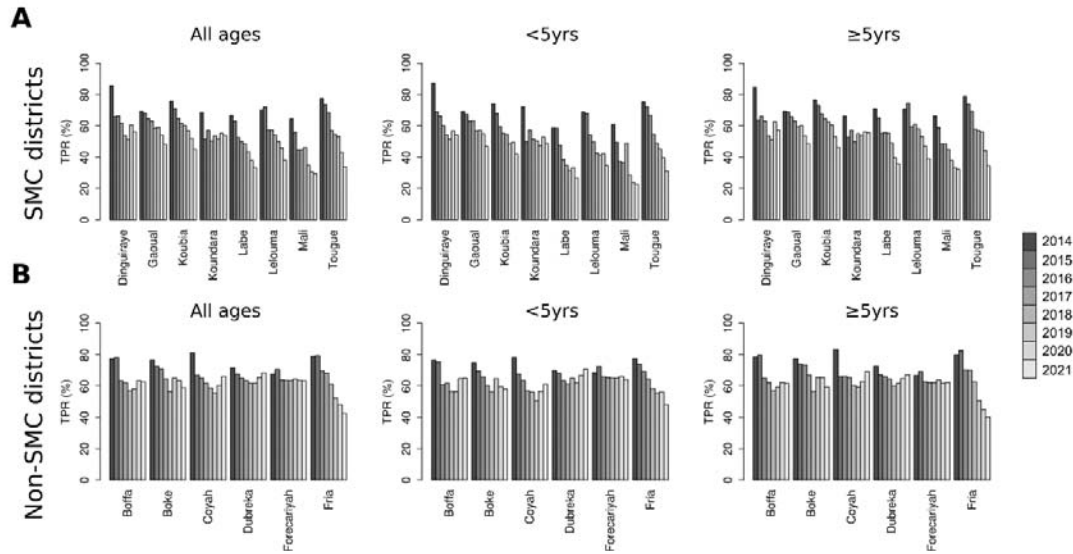
It is made available under a [CC-BY 4.0 International license](https://creativecommons.org/licenses/by/4.0/).

**Figure 3. CAGR of tested fevers (A), TPR (B), malaria incidence (C), and severe malaria cases (D) in SMC districts and non-SMC districts from 2014 to 2021.** The ‘\*’ symbol represents a significant difference ( $p < 0.05$ , Wilcoxon’s test) between CAGR values of SMC district and non-SMC districts.

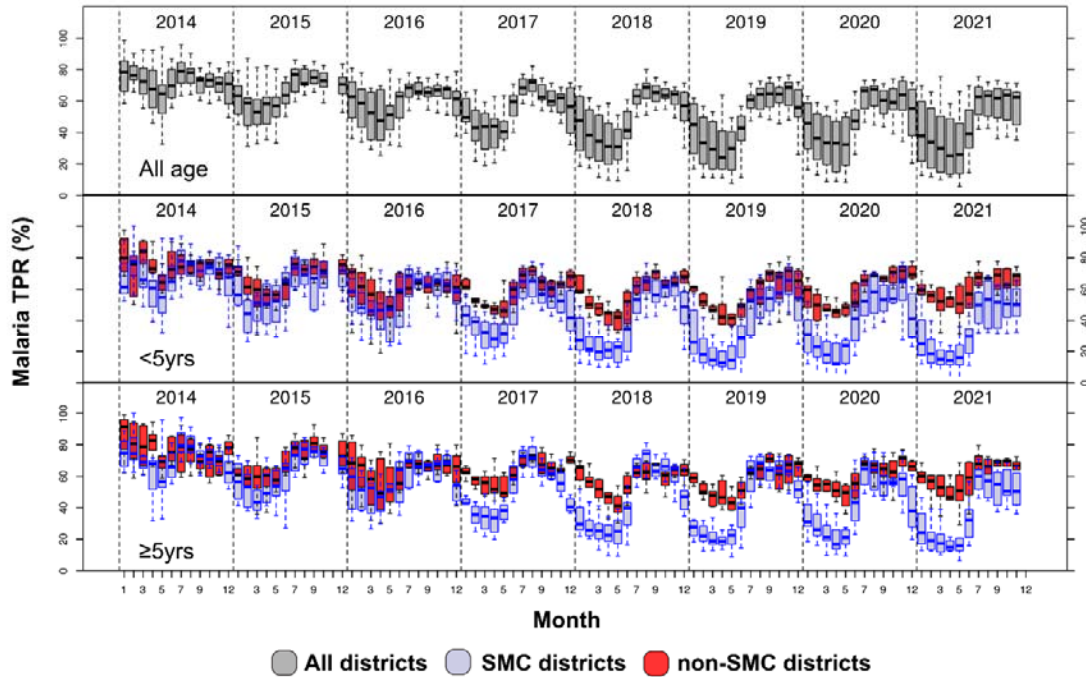


It is made available under a [CC-BY 4.0 International license](https://creativecommons.org/licenses/by/4.0/).

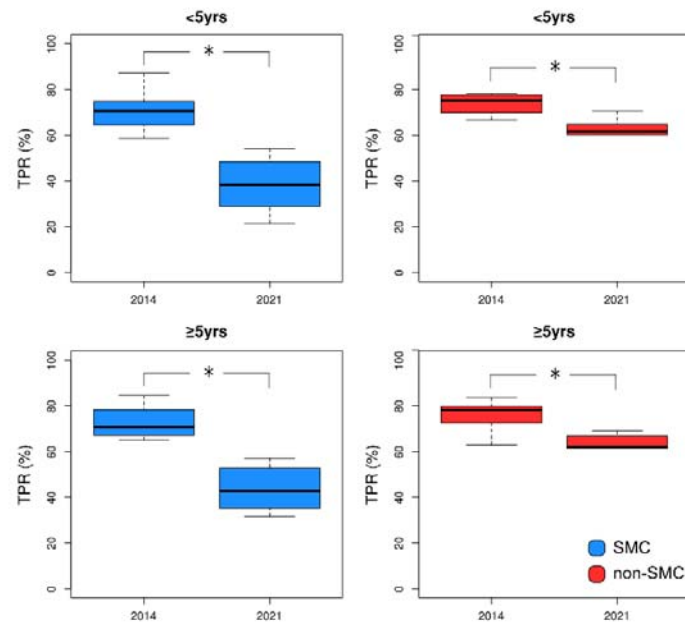
**Figure 4. TPR of tested fevers in SMC districts and non-SMC districts per age group and year.** Plots show TPR for all-age groups, <5yrs age group, and  $\geq 5$ yrs age group in SMC (A) and non-SMC districts (B)



**Figure 5. Boxplot of annual TPR of SMC districts and non-SMC districts from January 2014 to November 2021 for all age groups, <5 age group, and ≥5 age group.**

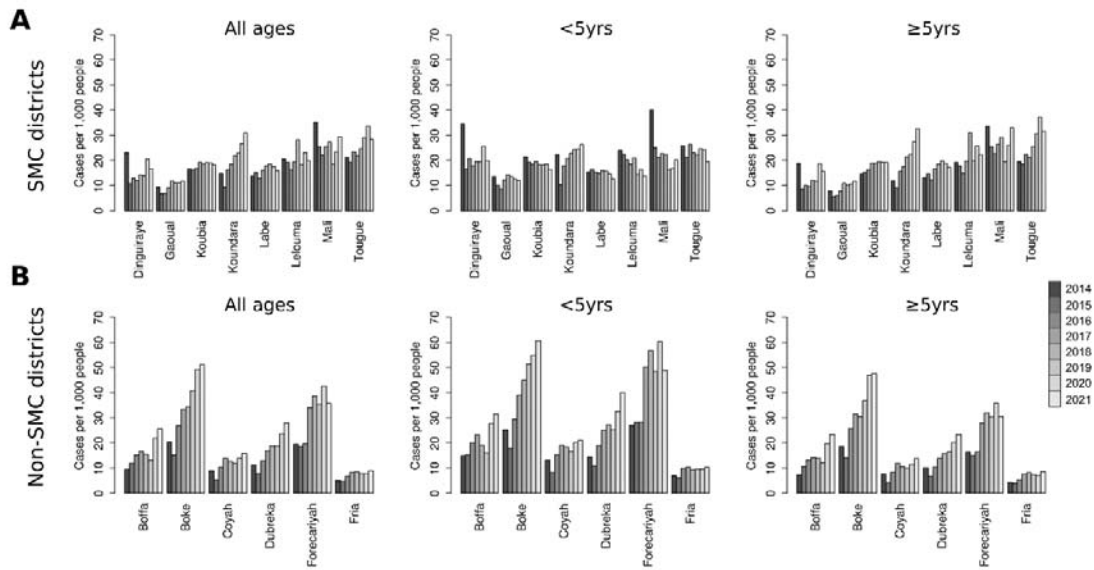


**Figure 6. Boxplot comparing TPR of SMC (left column) and non-SMC (right column) districts by age group of 2014 to November 2021 for <5 yrs and ≥5 yrs age group. The ‘\*’ symbol represents a significant difference ( $p < 0.05$ , Wilcoxon’s test) between SMC and non-SMC districts.**

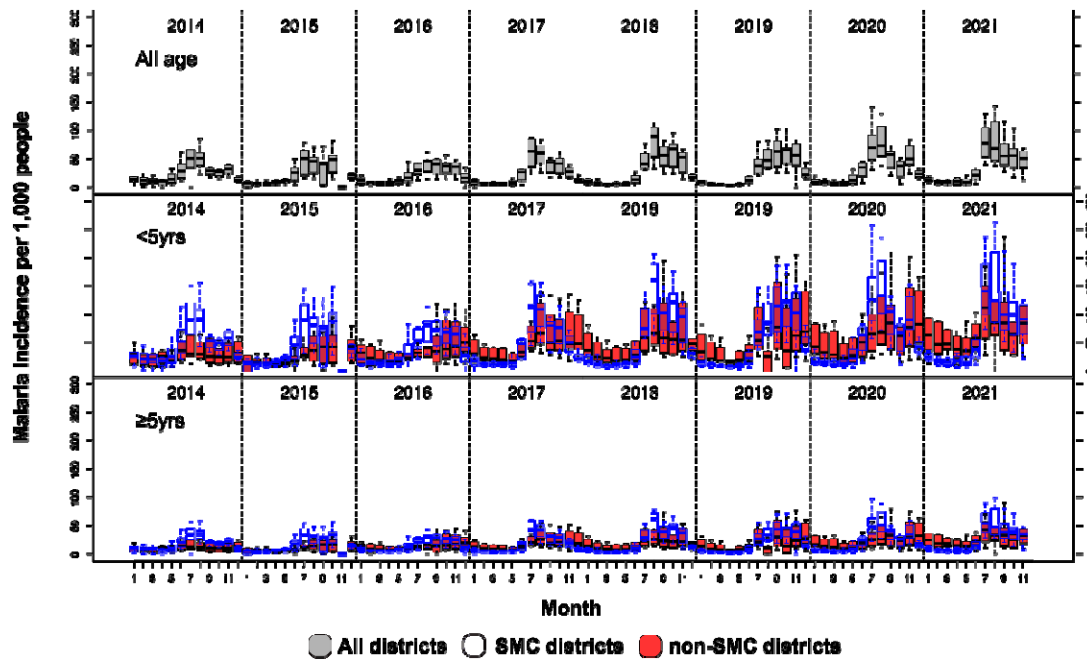


It is made available under a [CC-BY 4.0 International license](https://creativecommons.org/licenses/by/4.0/).

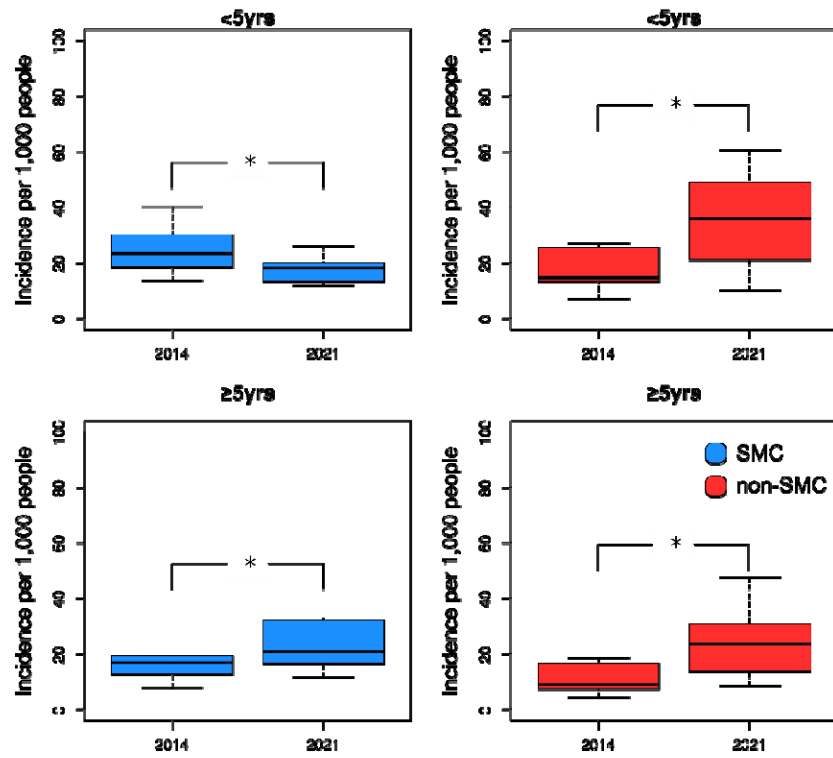
**Figure 7. Malaria incidence in SMC (A) and non-SMC (B) districts per age group and year.** Plots show malaria incidence for all-age groups, <5yrs age group, and ≥5yrs age group in SMC (A) and non-SMC districts (B)



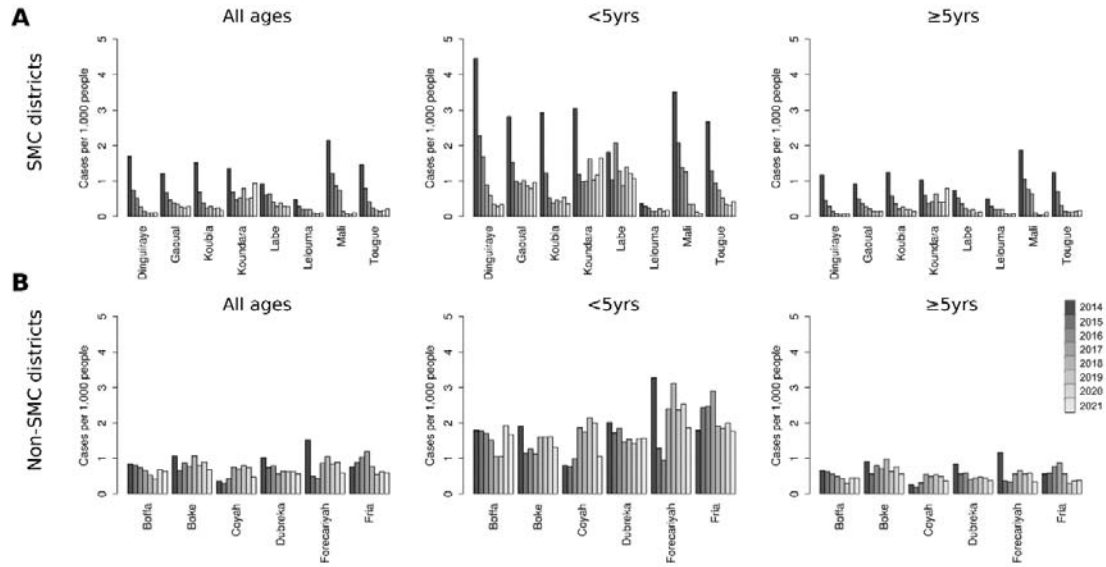
**Figure 8. Boxplot of malaria incidence of SMC districts and non-SMC districts from January 2014 to November 2021 for all age groups, <5 yrs age group, and ≥5 yrs age group, by year.**



**Figure 9. Boxplot comparing malaria incidence of SMC (left column) and non-SMC (right column) districts per age group of 2014 to April 2019 for <5 yrs age group and ≥5 yrs age group. The ‘\*’ symbol represents a significant difference ( $p < 0.05$ , Wilcoxon’s test) between SMC and non-SMC districts.**



**Figure 10. Incidence of severe malaria cases in SMC (A) and non-SMC (B) districts per age group and year.** Plots show severe malaria incidence for all-age groups, <5yrs age group, and  $\geq 5$ yrs age group in SMC (A) and non-SMC districts (B)



**Figure 11. Boxplot comparing severe malaria cases per 1,000 people in SMC (left column) and non-SMC (right column) districts per age group of 2014 to April 2019 <5 yrs age group and ≥5 yrs age group. The ‘\*’ symbol represents a significant difference ( $p < 0.05$ , Wilcoxon’s test) between SMC district and non-SMC districts.**

