

Edgar et al. (preprint, v3, 2024-01-05)
LONG-TERM DISGUST HABITUATION

Long-term disgust habituation with limited generalisation in care home workers

Charlotte Edgar ¹, Faye Chan ¹, Thomas Armstrong ², & Edwin S. Dalmaijer ¹

Affiliations

1. School of Psychological Science, University of Bristol, United Kingdom
2. Department of Psychology, Whitman College, Walla Walla, United States

Contact Details

Dr Edwin S. Dalmaijer, School of Psychological Science, University of Bristol, 12A Priory Road, Bristol, BS8 1TU, United Kingdom. edwin.dalmaijer@bristol.ac.uk

Acknowledgements

CE and FC were students on the *MSc in Psychology (Conversion)* course at the University of Bristol.

Conflicts of Interest

The authors declare that they have no competing interests (financial or other) that could have influenced or appeared to influence the work reported here.

Author Contributions (CRediT)

CE: conceptualisation, methodology, investigation, data curation, writing (review & editing); **FC:** methodology, investigation, writing (review & editing); **TA:** methodology, writing (review & editing); **ESD:** conceptualisation, methodology, software, formal analysis, data curation, writing (original draft), visualisation, supervision, funding acquisition.

Word count: 5845 (Introduction 1134, Methods 2019, Results 1227, Discussion 1465)

NOTE: This preprint reports new research that has not been certified by peer review and should not be used to guide clinical practice.

Edgar et al. (preprint, v3, 2024-01-05)
LONG-TERM DISGUST HABITUATION

Abstract

Countless workers handle bodily effluvia and body envelope violations every working day, and consequentially face deeply unpleasant levels of disgust. Understanding if and how they adapt can help inform policies to improve worker satisfaction and reduce staff turnover. So far, limited evidence exist that self-reported disgust is reduced (or lower to begin with) among those employed in high-disgust environments. However, it is unclear if this is due to demand effects or translates into real behavioural changes. Here, we tested healthcare assistants (N=32) employed in UK care homes and a control sample (N=50). We replicated reduced self-reported pathogen disgust sensitivity in healthcare workers compared to controls. We also found it negatively correlated with career duration, suggesting long-term habituation. Furthermore, we found that healthcare assistants showed no behavioural disgust avoidance on a web-based preferential looking task (equivalent to eye tracking). Surprisingly, this extended to disgust elicitors found outside care homes, suggesting generalisation of disgust habituation. While we found no difference between bodily effluvia (core disgust) and body envelope violations (gore disgust), generalisation did not extend to other domains: self-reported sexual and moral disgust sensitivity were not different between healthcare assistants and the control group, nor was there a correlation with career duration. In sum, our work confirms that people in high-frequency disgust employment are less sensitive to pathogen disgust. Crucially, we provide preliminary evidence that this is due to a process of long-term habituation with generalisation to disgust-elicitors within the pathogen domain, but not beyond it.

Keywords

disgust; habituation; disgust avoidance; contamination; healthcare professionals; nursing homes

Edgar et al. (preprint, v3, 2024-01-05)
LONG-TERM DISGUST HABITUATION

Introduction

Disgust occurs in response to “offensive” stimuli (Darwin, 1872) in order to avoid those associated with risk of contamination and illness (Angyal, 1941). It is counted among the basic emotions (Ekman & Friesen, 1971), and thought to be evolved in response to disease threat (Curtis & Biran, 2001; Rozin & Fallon, 1987; Tybur et al., 2013). While disgust is evolutionary selected for at the population level in a wide variety of environments (Dalmaijer & Armstrong, 2020), disgust sensitivity is not necessarily related to current health within modern humans (de Barra et al., 2014). Hence, provided sufficient hygiene is observed, feelings of disgust could be maladaptive in certain contexts. Specifically, cleaning and medical professionals routinely encounter bodily effluvia (e.g. faeces) and the results of body envelope violations (e.g. wounds). This has the potential of causing significant discomfort through repeated disgust, and it remains largely unclear if and how individuals adapt to those potent disgust elicitors.

In the short term, disgust appears difficult to overcome. It has been characterised as “cognitively impenetrable” (Royzman & Sabini, 2001) due to its resistance to approaches that aim to reduce negative emotions, such as cognitive restructuring (Mason & Richardson, 2012) and extinction and counter-conditioning (Engelhard et al., 2014). One reason could be that disgust is elicited by concrete rather than abstract properties of stimuli (Royzman & Sabini, 2001) and by simple associative links rather than complex appraisals (Russell & Giner-Sorolla, 2013). Put more simply: you can’t reason your way around a big stinky poo.

Non-cognitive mechanisms of (un)learning may also fail to reduce disgust. Habituation within a single experiment simply does not occur: oculomotor avoidance of a disgusting stimulus is equally strong from the first to the last trial, even if there were 24 trials of 12 seconds each (~5 minutes in total), and it remains unmoved after a period of encouraged direct exposure with a monetary incentive (Dalmaijer et al., 2021). This is not the case for other negatively valenced stimuli, including fear-inducing and suicide-related stimuli, to which oculomotor responses readily habituate (Armstrong et al., 2022; Dalmaijer et al., 2021). Sustained avoidance in this task is typically preceded by a brief (~1 second) period of initial approach to novel disgusting stimuli (Armstrong et al., 2022; Dalmaijer et al., 2021; Nord et al., 2021). The task is therefore analogous to coming into contact with offensive stimuli in the wild: after perceiving a stimulus is offensive, the feeling of disgust drives avoidance of potential contaminants and is adaptive because it reduces the risk of illness.

Individuals may have more success habituation to disgust in the long term, but the existing evidence is limited. For example, cadaver work reduces medical students’ disgust with body envelope violations over a period of several months, but does not generalise to other disgust domains or even to still-warm deceased bodies (Rozin, 2008). Disgust sensitivity is also lower among emergency physicians, but unrelated to the number of “disgusting” incidents (Schnapp et al., 2019); suggesting a possible self-selection of less disgust-sensitive individuals into medicine. However, compared to medical students, qualified healthcare providers are less likely to disengage

Edgar et al. (preprint, v3, 2024-01-05)
LONG-TERM DISGUST HABITUATION

from patients due to disgust with their symptoms; which potentially suggests habituation through experience (Reynolds et al., 2019). Further evidence comes from non-medical populations: disgust is subtly lower in mothers than childless women (Prokop & Fančovičová, 2016), and disgust for meat products is lower in butchers and deli workers compared to the general population (Piazza et al., 2021).

The summarised studies mostly rely on self-report measures of disgust elicited by written or picture stimuli. Such self-report measures can have excellent psychometric properties, for example the internal consistency (Tybur et al., 2013) and external agreement with others' ratings (Karinen et al., 2023) of the Three-Domain Disgust Scale, or the high test-retest reliability of self-reported disgust for images (Dalmaijer et al., 2021). While experimental tasks are often less reliable than self-report measures (Dang et al., 2020), behavioural disgust avoidance measured in preferential looking tasks has excellent internal consistency, Spearman-Brown $\rho=0.81$ to 0.94 and Cronbach's $\alpha=0.78$ to 0.91 (Anwyl-Irvine et al., 2022), and test-retest reliability equal to self-reported disgust ratings (Dalmaijer et al., 2021). Behavioural disgust avoidance correlates with self-reported disgust sensitivity, $R=0.28$ to $R=0.34$ (Dalmaijer et al., 2021), and with self-reported disgust ratings for stimuli, $R=0.19$ to 0.50 (Anwyl-Irvine et al., 2022). However, a major difference between self-report and behavioural measures of disgust avoidance is that self-reported disgust shows a very large (Cohen's $d=1.25$) placebo effect, whereas oculomotor avoidance (gaze dwell time) in preferential looking tasks only shows a small to medium (Cohen's $d=0.44$) effect (Schienle et al., 2016).

Self-reported disgust shows varied levels of habituation (Cogle et al., 2007; Dalmaijer et al., 2021; Rouel et al., 2018) that can occur even in the absence of behavioural changes (Dalmaijer et al., 2021). Because of the difference in suggestibility between self-report and behavioural avoidance measures of disgust (Schienle et al., 2016), it could be that the apparent difference in habituation between them reflects a demand effect: We think it likely that participants who are repeatedly asked to self-report disgust between being subjected to disgust-inducing stimuli are likely to understand researchers might expect them to reduce their ratings. We thus think that to better understand underlying emotional changes as a function of prolonged exposure to disgust elicitors, one must also measure behaviour.

In addition to being important for theory, understanding behaviour is also important in practice. Many workers, including cleaners and healthcare professionals, have to approach and handle potential contaminants. Better understanding whether and how their disgust adapts could help inform policy to improve job satisfaction and retention.

In the past, disgust avoidance behaviour has been quantified with eye-tracking measures. In preferential looking tasks, individuals look away from disgust elicitors and prefer to look at neutral stimuli instead. This pattern of sustained avoidance is unique to disgust, and does not occur for stimuli associated with anger, happiness, or suicide (Armstrong et al., 2022; Dalmaijer et al., 2021). Eye tracking requires dedicated equipment, but can be replicated online using a blurred stimulus display with a cursor-locked aperture of high resolution. This method can be employed online, and

Edgar et al. (preprint, v3, 2024-01-05)
LONG-TERM DISGUST HABITUATION

has great psychometric properties: it has high reliability, correlates strongly with eye-tracking measures, and correlates with self-report to the same extent that eye-tracking measures do (Anwyl-Irvine et al., 2022). It is thus a highly practical way to measure disgust avoidance.

Here, we aim to answer two main questions: 1) Does disgust avoidance behaviour habituate over the course of long-term high-frequency exposure to bodily effluvia and body envelope violations, and 2) Does this habituation generalise to stimuli outside of this context? To do so, we study healthcare assistants in UK care homes and a non-medical control group. Based on outlined previous studies, we expect to see habituation to disgust elicitors within care home contexts, but no generalisation beyond those.

Methods

Participants

Two samples were recruited for the purpose of this study. One sample comprised healthcare assistants employed by non-NHS residential care homes in England. They were approached with permission from their employer and the School of Psychological Science Research Ethics Committee (approval code 10842), and their data was collected between 21 June and 2 August 2022. The other sample was a control group sampled from the general population (not healthcare workers), recruited through Prolific Academic with permission from the same ethics committee (approval code 11904), and their data was collected on 31 August and 1 September 2022.

The healthcare assistant sample was made up of 32 individuals; 21 of whom identified as female, 10 as male, and 1 preferred not to say; 20 identified as “White”, 5 as “Asian or Asian British”, 4 as “Black, Black British, Caribbean, or African”, 2 as “mixed or multiple ethnic groups”, and 1 as “other ethnic group”. Their age was recorded in brackets, with 4 in the 18-21 years range, 10 in 22-25, 8 in 26-29, 5 in 30-33, 2 in 34-37, 1 in 38-41, none between 42-49, and 2 in 50+. Their career duration as a healthcare assistant in a care home ranged from 1 to 79 months, with a mean of 23.0, a median of 19.5, and a standard deviation of 19.9. Their work hours ranged from 15 to 40 hours per week, with a mean of 31.3, a median of 32, and a standard deviation of 7.8.

The control sample was recruited through Prolific Academic. We limited our recruitment to those residing (but not necessarily born) in the UK, to mirror the healthcare assistant sample. Out of a total of 50 participants, 25 identified as female and 25 as male; 39 identified as “White”, 5 as “Asian”, 2 as “Black”, 2 as “mixed”, and 2 were without ethnicity data. Their ages ranged from 21 to 65 years, with a mean of 35.28, median of 31.0, and standard deviation of 11.9. Divided into age brackets, there were 5 in the range of 18-21 years, 6 in 22-25, 10 in 26-29, 7 in 30-33, 5 in 34-37, 4 in 38-41, 5 in 42-49, and 8 in 50+. We were unable to exclude participants on the basis of fine-grained occupational data, so individuals with disgust-facing roles may have been included.

Edgar et al. (preprint, v3, 2024-01-05)
LONG-TERM DISGUST HABITUATION

The samples were mostly well-matched, although the control sample had an equal male-female division, whereas the healthcare assistant sample skewed female. Previous sex differences have been reported in self-reported disgust sensitivity (Tybur et al., 2009), but not in the behavioural disgust avoidance task employed here (Dalmaijer et al., 2021). If such differences appeared in our results, it would have skewed the healthcare assistant group towards higher self-reported (primarily sexual) disgust sensitivity than the control group. (This was not the case.)

Procedure

Healthcare assistants were recruited directly (in person and via email), and via word-of-mouth within their facilities. This was facilitated through author CE, who has experience as a healthcare assistant, and established contact with residential care homes. Upon agreeing to participate, they were directed to questionnaires hosted on Qualtrics, and from there to the behavioural disgust avoidance task hosted on Gorilla.

The control sample was recruited through Prolific Academic, from where they were directed to a study hosted on Gorilla that presented them with the behavioural disgust avoidance task and questionnaires. For both samples, written informed consent was obtained through our web-based experimental interface prior to participation.

Because participants completed the study from home, hardware limitations were less strict, and display size was not standardised. We allowed participation only through a computer (any operating system), using only Firefox or Google Chrome as browser (to ensure task compatibility).

For the healthcare assistant sample, we included specific questions on their professional experience. We asked how long they have been employed in care homes, how many hours they worked per typical week, and how often they encountered a range of specific disgust elicitors (e.g. soiled adult pads, faeces outside of the toilet, blood stains, or open wounds).

Self-reported disgust sensitivity

We administered the Three-Domain Disgust Scale (Tybur et al., 2009), which is comprised of 21 items equally divided between three subscales of pathogen, sexual, and moral disgust sensitivity. Questions were answered with a rating from 0 (“not at all disgusting”) to 6 (“extremely disgusting”), and averaged within each subscale. This questionnaire was a product of thorough psychometric work, and as a result items load well onto their designated subscales, which have high internal consistency.

We also attempted to administer the Disgust Scale – revised (Haidt et al., 1994; Olatunji et al., 2007), but failed to do so due to an error that caused only the first half of the questionnaire to be presented to the healthcare assistant sample.

Edgar et al. (preprint, v3, 2024-01-05)
LONG-TERM DISGUST HABITUATION

Behavioural disgust avoidance

Our behavioural disgust avoidance task was a preferential looking task, in each trial of which people are presented with two side-by-side presented images of a disgusting and a neutral content. Stimuli appeared in fixed positions to the left and right of the centre, but which stimulus appeared on which side was randomised. After a single practice trial with neutral stimuli, a 16 disgust-neutral stimulus pairs were repeated 4 times each. The order was randomised within each block of 16 unique stimulus presentations, and a break was offered halfway through the task. The presentation time of each stimulus was 10 seconds, the inter-stimulus interval was 1 second, and each trial started with a centrally-presented fixation marker that had to be clicked with the mouse cursor.

In eye-tracking versions of this task (Armstrong et al., 2014, 2022; Dalmaijer et al., 2021), eye movements are recorded with a specialised device. Because we were keen to accommodate healthcare assistants with testing-at-home, we instead opted for a web-based version in which participants move a high-fidelity aperture through an otherwise blurred display to mimic natural vision. This approach has been validated to identify attentional biases for threatening (Woronko et al., 2023) and sexual stimuli (Milani et al., 2023); and has been shown to be reliable and valid in preferential looking tasks with disgusting or pleasant stimuli (Anwyl-Irvine et al., 2022).

The task was hosted on the online experiment builder and presentation platform Gorilla (Anwyl-Irvine et al., 2020), using its MouseView.js plug-in for stimulus presentation with a mouse-locked aperture (Anwyl-Irvine et al., 2022). This platform offers decent presentation and response timing accuracy (Anwyl-Irvine et al., 2021), which were more than adequate considering our long presentation time of 10 seconds.

Stimulus images were sampled from the DIRT stimulus set (Haberkamp et al., 2017), and depicted faeces, mucous, sick (vomit), blood, and wounds; or neutral matches such as clean toilets, sinks, tissues, objects and environments, and unharmed body parts. The stimuli were subdivided into two equally sized categories for core (bodily effluvia) and gore (body envelope violations and other harms). The image pairs were then further subdivided into another two equally sized categories by a subject expert (author CE): those likely to be encountered within a care home, and those likely encountered outside of it.

The variable of interest was dwell time, or how long a participant hovered their mouse cursor over (and was thus able to observe) an image. This was recorded for both types of stimuli, as well as for any space outside of them.

Data reduction and statistical analysis

For each individual, self-reported disgust sensitivity was computed as the average of all 7 questions within the pathogen, sexual, and moral subscales. These were then compared between the healthcare assistant and control groups using Welch's t-test, which is more reliable when samples have unequal size (as ours did). Bayes Factors for t-tests were computed using a Cauchy prior with scale factor 0.707 (Rouder et al., 2009).

Edgar et al. (preprint, v3, 2024-01-05)
LONG-TERM DISGUST HABITUATION

Within the healthcare assistant sample, self-reported disgust sensitivity scores were also correlated with the number of months participants had worked in care homes, using parametric (R) and non-parametric (Kendall's τ) correlation coefficients. “Jeffreys exact” Bayes Factors (Ly et al., 2016) were also computed for correlations, using $\kappa=1$.

Within each trial of the preferential looking task, dwell time was computed as the cumulative time that the mouse cursor hovered over each of three areas of interest: the disgusting stimulus, the neutral stimulus, and the display outside of those stimuli. These were then converted to proportions by dividing dwell time for each area by the trial duration.

We analysed dwell time proportions using linear mixed-effects analyses, with participant number as a random factor. We tested a number of models, ranging from highly complex (all factors included) to most basic (only testing for disgust-neutral differences). We did this for the combined samples, as well as for healthcare assistants and controls separately.

Dichotomous factors were group (healthcare assistant or control), stimulus (disgust or neutral), environment (stimulus from inside or outside care home context), disgust type (stimulus core or gore). Stimulus repetition (each stimulus was shown four times) was used as a continuous factor. Within each model, we also included all conceivable interaction effects between the included factors.

After running the linear mixed-effects analyses, we identified as best-fitting model that with the lowest Bayesian Information Criterion (BIC). We reported the difference in BIC between the best and second-best fitting models (Δ BIC). We interpreted these according to Raftery's guidelines, treating Δ BIC values over 10 as very strong evidence for the best-fitting model (Raftery, 1995). For readers' convenience, we also computed Bayes Factors (BF) from the BICs using the approach outlined by Wagenmakers (2007). These quantified evidence in support of the best-fitting model compared to the second-best fitting model; and we interpreted them according to an adjusted interpretation (Andraszewicz et al., 2015) of Jeffreys' guidelines (Jeffreys, 1961), which consider BF values of 1-3 “anecdotal”, 3-10 as “moderate”, 10-30 as “strong”, 30-100 as “very strong”, and over 100 as “extreme” evidence for the alternative hypothesis (e.g. difference or correlation); and the reciprocal values as evidence for the null hypothesis (e.g. no difference or no correlation).

The described analysis of preferential looking data is an established approach that has been applied in data from both eye-tracking (Dalmaijer et al., 2021; Nord et al., 2021) and MouseView.js (Anwyl-Irvine et al., 2022). Analyses were conducted in Python 3.8.10, using NumPy 1.22.0 (Harris et al., 2020), SciPy 1.7.1 (Virtanen et al., 2020), and Pingouin 0.5.3 (Vallat, 2018); and Matplotlib 3.4.3 (Hunter, 2007) was used for data visualisation.

Statistical power

The sample size of this study was primarily determined by practical limitations, such as access to healthcare assistants working in care homes. We thus provide power estimations for our achieved sample sizes ($N=32$ healthcare assistants and $N=50$ control) in Figure 1. Our statistical power is low for direct tests of differences and correlations, which could result in erroneous rejection of the

Edgar et al. (preprint, v3, 2024-01-05)
LONG-TERM DISGUST HABITUATION

alternative hypothesis (Type II error). We have aimed to remedy this to some extent by contextualising p values with 95% confidence intervals on test statistics and with Bayes Factors to quantify the weight of evidence for the alternative or null hypotheses.

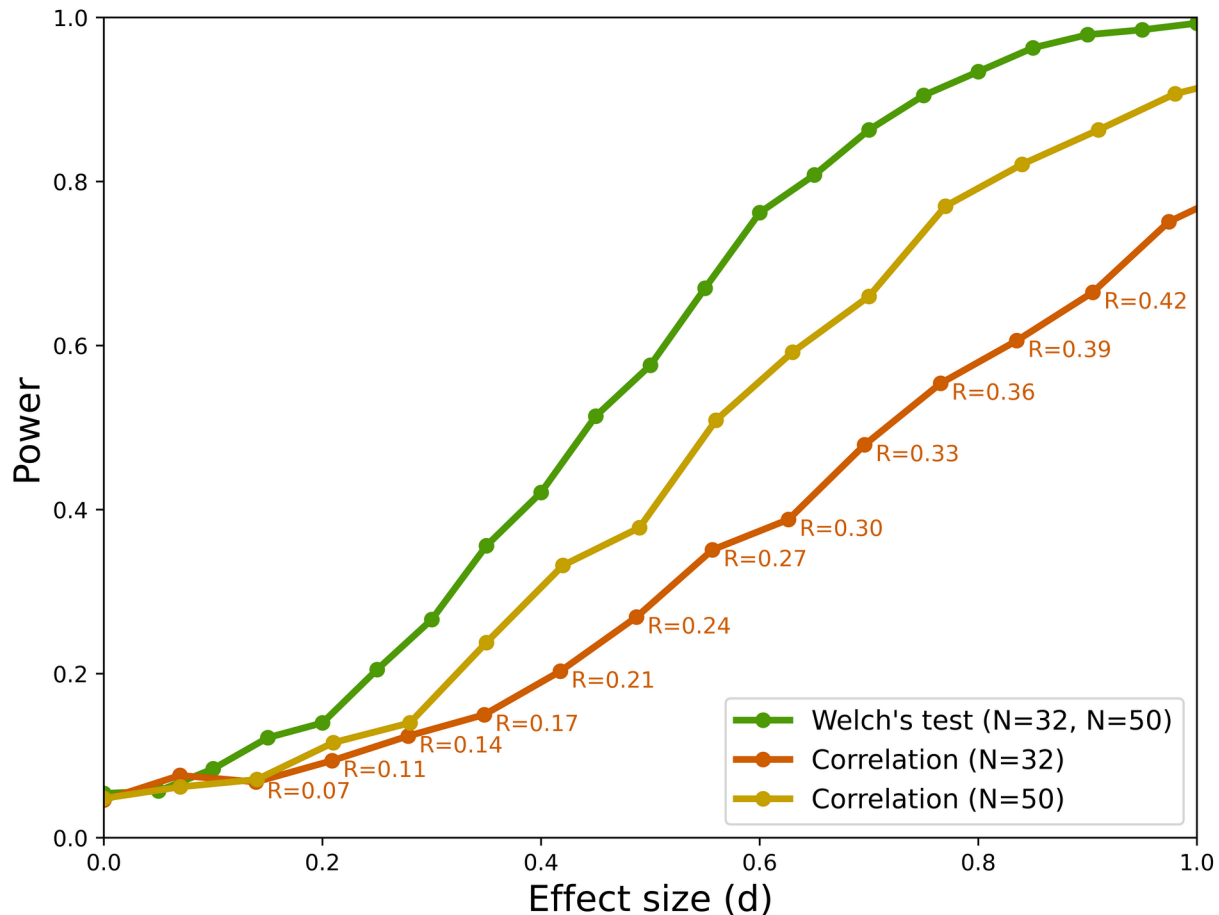


Figure 1. Statistical power (y-axis) as a function of effect size (x-axis) for the sample sizes employed in the current study. Power was computed as the proportion of simulated tests ($N=1000$) that resulted in a statistically significant difference. To fit within the same plot, correlation coefficients R were converted to d , but for convenience R values are annotated.

For linear mixed-effects analyses, power depends on the number of individuals and the number of observations per individual; and the recommended total number of observations per condition is 1600 (Brysbaert & Stevens, 2018). In our study, the number of observations per condition is 5248 for the full sample (82 participants, 16 stimuli per condition, each with 4 repetitions), 2048 for the healthcare assistant sample, and 3200 for the control sample. Note that the cited recommendation is for research on response times, and aimed at “very small” effect sizes (Brysbaert & Stevens, 2018). By contrast, the main effect of stimulus type (disgust vs. neutral) on

Edgar et al. (preprint, v3, 2024-01-05)
LONG-TERM DISGUST HABITUATION

dwelling time in preferential looking tasks is rather large: $\beta=0.49$ in a well-powered study with $N=101$ and 4848 observations per condition (Dalmaijer et al., 2021). In sum, while our sample size is limited, we made up for this with a relatively high number of observations per participant to meet recommendations for statistical power.

In addition to the above, we report Bayes Factors for comparisons between linear mixed-effects models, and 95% confidence intervals on effect estimates to contextualise p values.

Open materials

Anonymised data and analysis scripts have been made available through Zenodo:
<https://doi.org/10.5281/zenodo.8325975>.

Results

Manipulation check: healthcare assistants frequently encounter disgust elicitors

We found that, as expected, healthcare assistants reported frequently encountering specific disgust elicitors in both the core and gore category. In the core disgust domain, less frequently encountered were stoma and catheter bags, and more frequent were encounters with (soiled) adult pads and faeces outside of the toilet. In the gore domain, blood stains and open wounds were relatively frequent. Frequency distributions for all queried elicitors are displayed in Figure 2.

Edgar et al. (preprint, v3, 2024-01-05)
 LONG-TERM DISGUST HABITUATION

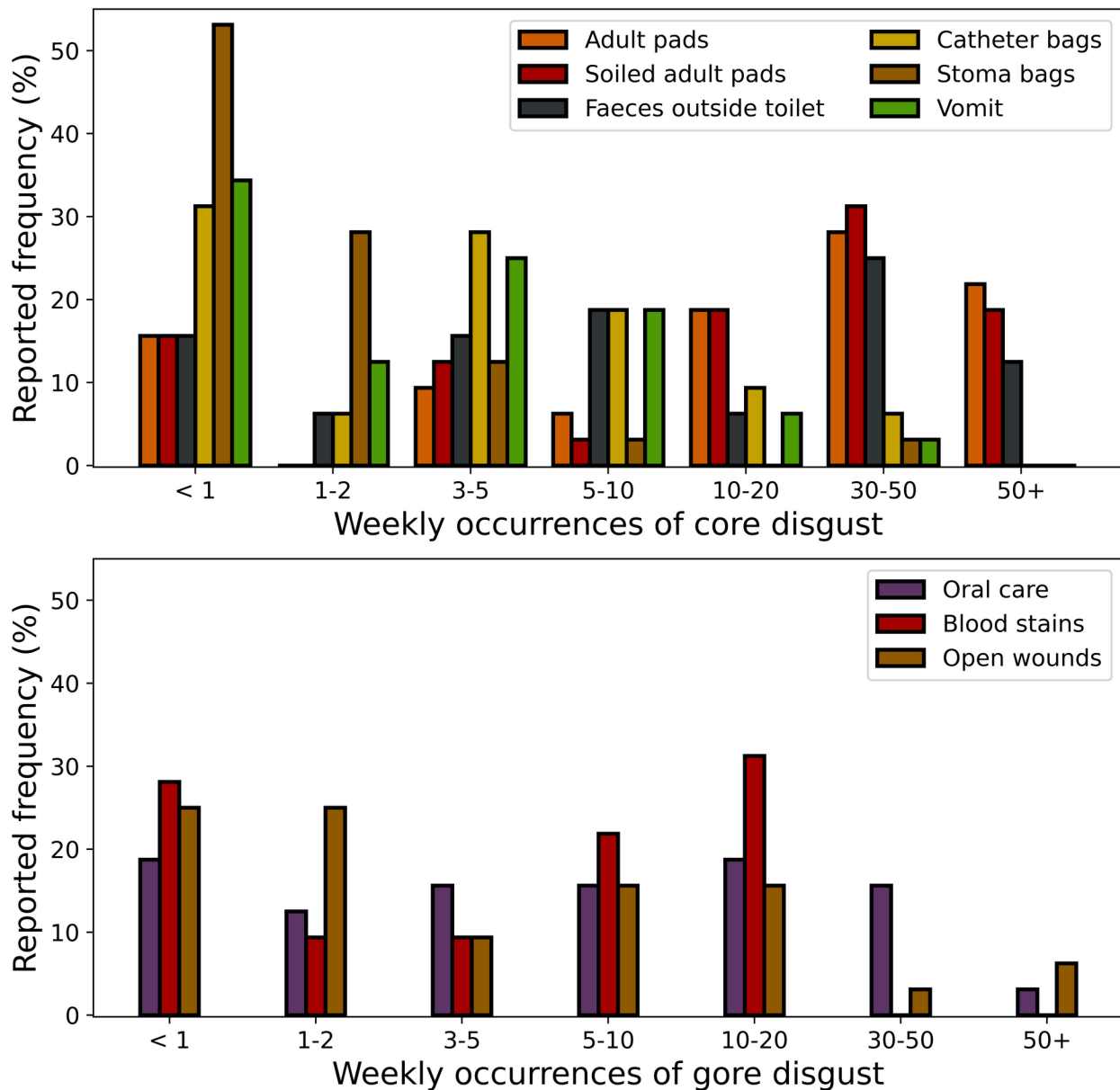


Figure 2. Relative frequencies of reports from healthcare assistants of the number of weekly encounters with specific disgust elicitors. The top plot depicts elicitors in the “core” category (mostly related to bodily effluvia), and the bottom plot the “gore” category (mostly related to body envelope violations).

Disgust avoidance is lower in healthcare professionals than controls

For illustration purposes, we quantified disgust avoidance as the difference in dwell time proportion between the disgust and neutral stimuli, averaged across participants within each sample. The results are shown in Figure 3 (control group) and Figure 4 (healthcare assistants). Disgust avoidance

Edgar et al. (preprint, v3, 2024-01-05)
LONG-TERM DISGUST HABITUATION

was pronounced in the control group, but was absent in the healthcare assistants. Statistical analyses supported this observation, and are summarised below.

The best-fitting full model ($\Delta\text{BIC}=78.57$, $\text{BF}=1.15\text{e}17$, “extreme” evidence for this model over the next-best) showed no main effects of group [$\beta=0.048$, 95% CI (-0.145, 0.240), $t=0.49$, $p=0.629$], stimulus [$\beta=-0.052$, 95% CI (-0.106, 0.001), $t=-1.91$, $p=0.059$], or repetition [$\beta=0.013$, 95% CI (-0.025, 0.051), $t=0.68$, $p=0.496$]; nor an interaction between group and repetition [$\beta=0.032$, 95% CI (-0.016, 0.081), $t=1.30$, $p=0.197$]. However, it did show interactions between group and stimulus [$\beta=-0.435$, 95% CI (-0.503, -0.366), $t=-12.45$, $p<1\text{e-}16$], suggesting that participants in the control group showed a larger difference in dwell time over disgusting and neutral images than healthcare assistants. There was also an interaction between stimulus and repetition [$\beta=-0.167$, 95% CI (-0.220, -0.113), $t=-6.11$, $p=3.311\text{e-}8$], suggesting the difference between dwell time over disgusting and neutral stimuli increased with repeated presentations. Finally, there was an interaction between group, stimulus, and interaction [$\beta=-0.131$, 95% CI (-0.200, -0.063), $t=-3.76$, $p=3.16\text{e-}4$], suggesting that the increase in dwell time difference between disgusting and neutral stimuli was larger for the control group compared to the care home group.

The best-fitting model’s inclusion of the group factor (and its interaction with the stimulus factor) demonstrated that the control and healthcare samples were different in their disgust avoidance. The equivalent model without the group factor fitted substantially worse than the best-fitting model ($\Delta\text{BIC}=118.63$, $\text{BF}=5.76\text{e}25$, “extreme” evidence for this model over the next-best).

The lack of inclusion of factors environment (inside or outside care home context) and disgust type (core or gore) suggested that neither affected disgust avoidance. For the control group, this was likely because all subcategories were equally effective in inspiring disgust avoidance. For the healthcare assistant group, this was unexpected, and suggests that their lack of avoidance of disgusting stimuli generalised beyond the context of their care home.

Taken together, these findings revealed that the control sample showed more disgust avoidance than the healthcare assistants, and a larger increase in avoidance over repeated exposures after an initial subtle inclination towards the disgusting stimulus.

Within-group confirmatory analyses

The linear-mixed effects analysis on both groups yielded interesting insights, but some might have been hard to interpret due to being two- and three-way interactions. The following linear-mixed effects analyses are conducted on each group separately to confirm that our interpretations hold.

Within the control group, the best fitting model ($\Delta\text{BIC}=33.65$, $\text{BF}=2.03\text{e}7$, “extreme” evidence for this model over the next-best) showed a main effect of stimulus [$\beta=-0.467$, 95% CI (-0.509, -0.425), $t=-21.89$, $p<1\text{e-}16$], a main effect of repetition [$\beta=0.043$, 95% CI (0.014, 0.073), $t=2.88$, $p=0.006$], and an interaction between stimulus and repetition [$\beta=-0.286$, 95% CI (-0.328, -0.244), $t=-13.40$, $p<1\text{e-}16$]. This confirms that the control group showed more dwell time for neutral compared to disgusting stimuli, and that this difference increased with repeated exposures.

Edgar et al. (preprint, v3, 2024-01-05)
LONG-TERM DISGUST HABITUATION

The lack of inclusion of factors environment (inside or outside care home context) and disgust type (core or gore) confirmed that neither affected disgust avoidance for the control group.

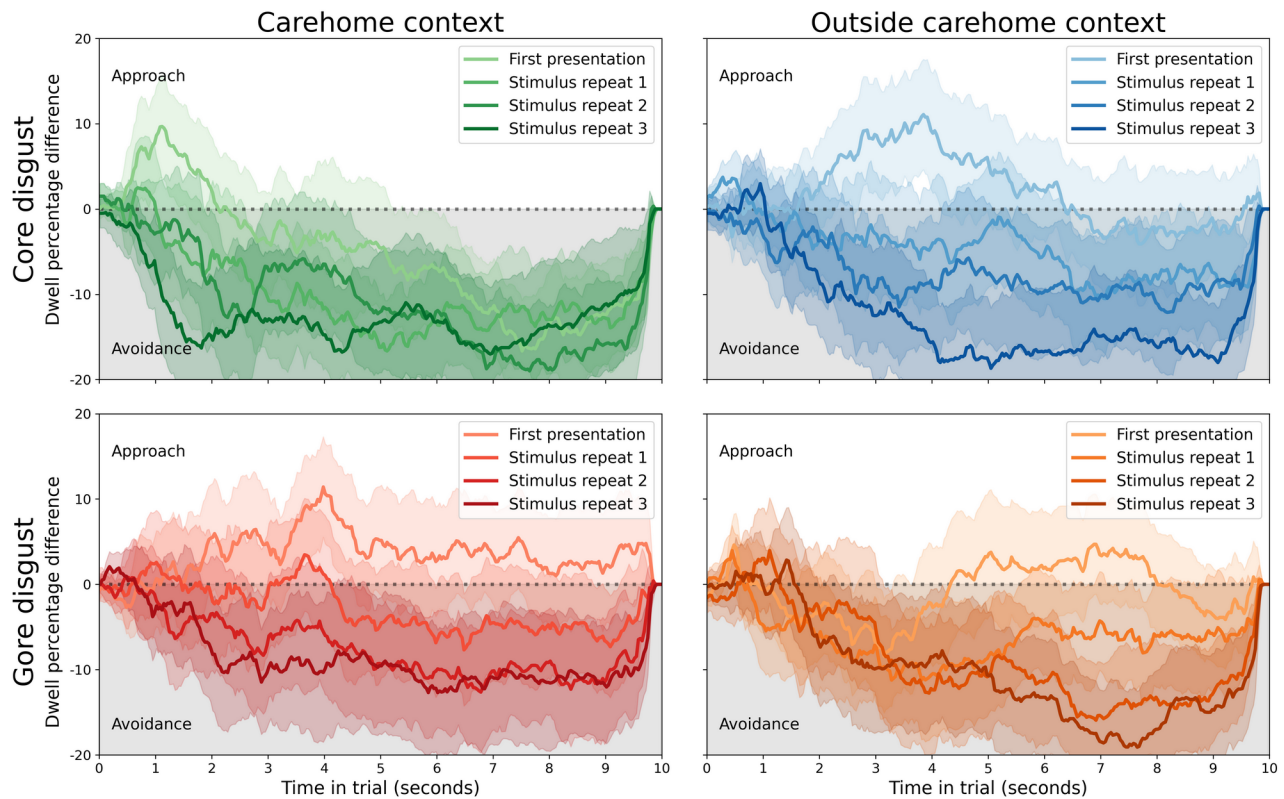


Figure 3. Disgust avoidance in the control group. Across conditions, participants showed stable disgust avoidance that increased with stimulus repetitions. Each line reflects the average difference in dwell time percentage between the disgusting and neutral stimuli, with shaded areas depicting the 95% confidence interval. The top row is for core disgust stimuli (images with bodily effluvia), the bottom for gore disgust (images related to body envelope violations). The left column is for stimuli that are often encountered within care homes, the right for stimuli encountered outside of that context.

Within the care home group, the best fitting model ($\Delta\text{BIC}=38.85$, $\text{BF}=2.73\text{e}8$, “extreme” evidence for this model over the next-best) showed no main effect of stimulus [$\beta=-0.057$, 95% CI (-0.113, -0.000), $t=-1.97$, $p=0.057$], no main effect of repetition [$\beta=0.014$, 95% CI (-0.025, 0.054), $t=0.71$, $p=0.486$], and an interaction between stimulus and repetition [$\beta=-0.181$, 95% CI (-0.238, -0.125), $t=-6.31$, $p=5.17\text{e}-7$]. This suggests that while there were no substantial effects of either stimulus or repetition, healthcare assistants showed a subtle decrease (from non-significant approach to non-significant avoidance) over repeated stimulus presentations. The non-inclusion of factors environment (inside or outside care home context) and disgust type (core or gore) in the best fitting model confirmed that neither played a role in shaping disgust avoidance behaviour.

Edgar et al. (preprint, v3, 2024-01-05)
LONG-TERM DISGUST HABITUATION

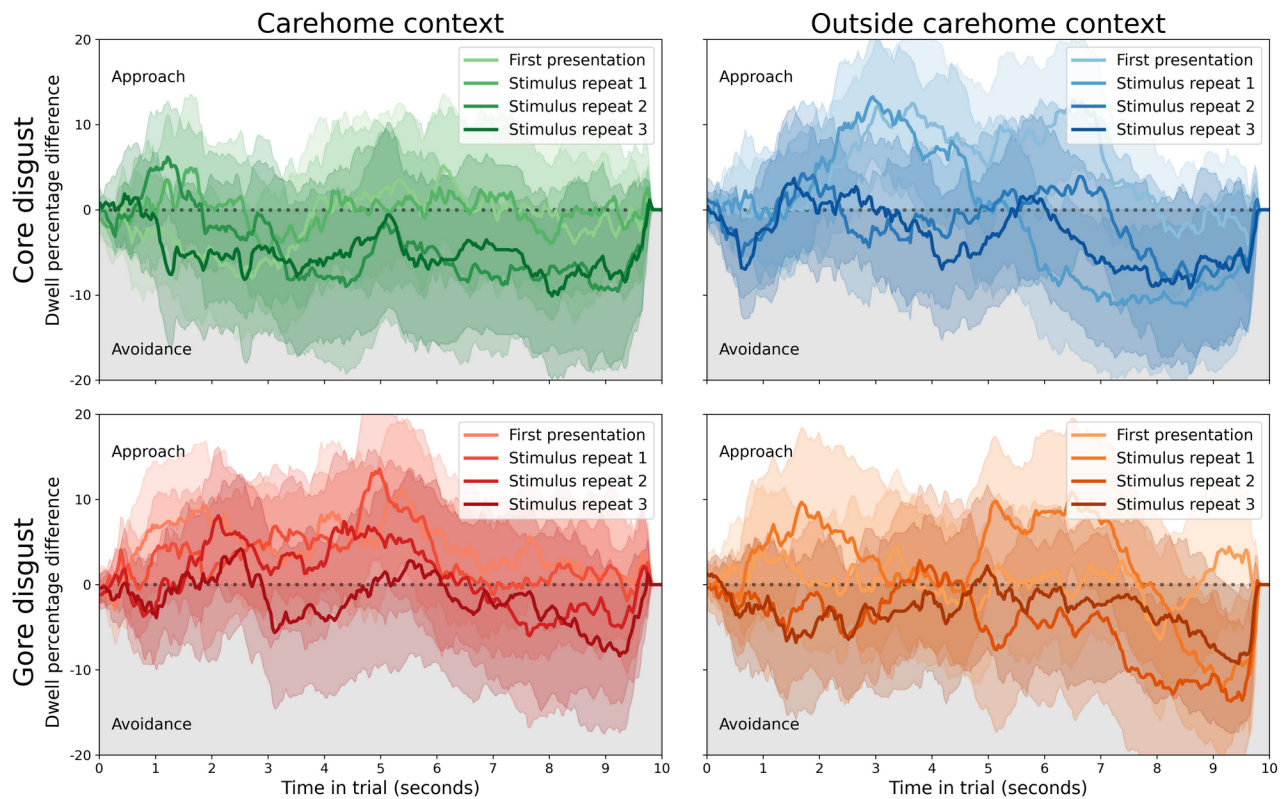


Figure 4. An absence of disgust avoidance in the healthcare assistant group. Across conditions, participants showed no bias towards either stimulus. Each line reflects the average difference in dwell time percentage between the disgusting and neutral stimuli, with shaded areas depicting the 95% confidence interval. The top row is for core disgust stimuli (images with bodily effluvia), the bottom for gore disgust (images related to body envelope violations). The left column is for stimuli that are often encountered within care homes, the right for stimuli encountered outside of that context.

Self-reported pathogen disgust

When compared to scores from the original psychometric study of the Three-Domain Disgust Scale (Tybur et al., 2009), our healthcare assistant sample scored substantially lower on all subscales [pathogen: $t(37.64)=-4.42$, $p=8.09e-5$, $BF_{10}=1385$, “extreme” evidence for a difference; sexual: $t(40.61)=-5.10$, $p=8.40e-6$, $BF_{10}=25772$, “extreme” evidence for a difference; moral: $t(33.21)=-3.23$, $p=0.003$, $BF_{10}=21.8$, “strong” evidence for a difference], and our control samples scored statistically significantly lower only on the sexual subscale [pathogen: $t(58.52)=-1.84$, $p=0.071$, $BF_{01}=1.29$, “anecdotal” evidence for no difference; sexual: $t(54.95)=-3.43$, $p=0.001$, $BF_{10}=37.4$, “very strong” evidence for a difference; moral: $t(56.13)=-1.59$, $p=0.118$, $BF_{01}=1.93$, “anecdotal” evidence for no difference]. This could reflect differences in cultural background (original in US,

Edgar et al. (preprint, v3, 2024-01-05)
LONG-TERM DISGUST HABITUATION

ours in UK), period during which data was collected (original in 2008 or before, ours in 2022), and participant age, maturity, and socioeconomic background (original sample from university undergraduates, ours from individuals from a higher age range and ~80% non-student).

More importantly, when compared directly, self-reported pathogen disgust sensitivity was lower for healthcare assistants [$M=3.08$, $SD=0.95$] than controls [$M=3.57$, $SD=1.09$], $t(72.50)=-2.09$, CI 95% (-0.95, -0.02), $p=0.040$, $BF_{10}=1.52$, “anecdotal” evidence for a difference. There was no difference in self-reported sexual disgust sensitivity between healthcare assistants [$M=2.37$, $SD=0.99$] and controls [$M=2.61$, $SD=1.39$], $t(78.95)=-0.90$, CI 95% (-0.77, 0.29), $p=0.370$, $BF_{01}=2.99$, “anecdotal”/“moderate” evidence for no difference; or in self-reported moral disgust sensitivity for healthcare assistants [$M=2.98$, $SD=1.22$] and controls [$M=3.43$, $SD=1.15$], $t(63.11)=-1.65$, CI 95% (-1.00, -0.1), $p=0.104$, $BF_{01}=1.32$, “anecdotal” evidence for no difference. This suggested that healthcare assistants could be less sensitive to pathogen disgust than the control group, but that statistical evidence for this was weak and ripe for replication in a larger sample. The potential difference could be a result of habituation in healthcare assistants, but it could also be a pre-existing difference.

There was a statistically significant correlation between the number of months healthcare assistants worked in a care home [$M=23.03$, $SD=19.58$] and their self-reported pathogen disgust sensitivity [$\tau=-0.28$, $p=0.027$; $R=-0.38$, CI 95% (-0.64, -0.04), $p=0.031$, $BF_{10}=2.03$, “anecdotal” evidence for correlation]; but not for sexual [$\tau=-0.14$, $p=0.274$; $R=-0.19$, CI 95% (-0.50, 0.17), $p=0.303$, $BF_{01}=2.73$, “anecdotal” evidence for no correlation] or moral disgust sensitivity [$\tau=-0.22$, $p=0.093$; $R=-0.23$, CI 95% (-0.54, 0.13), $p=0.205$, $BF_{01}=2.11$, “anecdotal” evidence for no correlation]. This suggested that healthcare assistants’ pathogen disgust sensitivity reduced over the duration of their careers, or that more disgust-sensitive healthcare assistants were more likely to exit the profession. Note that the statistical evidence was weak, and would ideally be replicated in a larger sample in future work.

A reduction over the duration of healthcare assistants’ careers was not evident in average behavioural disgust avoidance [$\tau=-0.04$, $p=0.757$; $R=0.07$, CI 95% (-0.29, 0.41), $p=0.718$, $BF_{01}=4.27$, “moderate” evidence for no correlation]. However, this could well be due to a floor effect, as this sample’s mean avoidance was indistinguishable from 0 [$t(32)=-0.34$, CI 95% (-0.07, 0.09), $p=0.736$, $BF_{01}=5.03$, “moderate” evidence for no difference].

Discussion

Healthcare assistants working in care homes did not show behavioural disgust avoidance, where a non-medical control group did. This was true for stimuli that depicted bodily effluvia and (the results of) body envelope violations, i.e. core and gore disgust. Unexpectedly, healthcare assistants also lacked behavioural avoidance of stimuli that typically occur outside of care homes, whereas the control group showed typical avoidance. This suggested that care home workers habituated to the

Edgar et al. (preprint, v3, 2024-01-05)
LONG-TERM DISGUST HABITUATION

types of disgust that they face on a daily basis, and that this habituation generalised to all core and gore disgust elicitors.

We also found that healthcare assistants self-reported lower pathogen disgust sensitivity compared to controls, which could reflect habituation among care home workers or a pre-existing difference between the groups. Self-reported pathogen disgust sensitivity was negatively correlated with how long healthcare assistants were employed in care homes, suggesting it reduced over prolonged and repeated exposure to disgust elicitors, consistent with a long-term habituation account. This pattern of results did not hold for sexual or moral disgust sensitivity, suggesting no generalisation of disgust habituation to different domains.

Evidence for disgust habituation

Our results are concordant with previous evidence of reduced self-reported disgust as a function of exposure in medical (Reynolds et al., 2019; Rozin, 2008; Schnapp et al., 2019) and non-medical environments (Piazza et al., 2021; Prokop & Fančovičová, 2016). They also corroborate the previous study of time-in-job and reduction in self-reported disgust for meat products in butchers and deli workers (Piazza et al., 2021).

Crucially, our findings support evidence of habituation in self-reported disgust sensitivity with corroborating behavioural data. This is an important piece of triangulation, because self-report measures and actual avoidance behaviour do not always align in disgust (Cougle et al., 2007; Dalmaijer et al., 2021; Rouel et al., 2018). For example, minor reductions in self-reported disgust ($d=0.38$ in two separate experiments) have been paired with a statistically significant absence of habituation in oculomotor disgust avoidance in a short-term experimental study (Dalmaijer et al., 2021). In the introduction, we suggested this could be due to demand effects. However, we think our findings in healthcare assistants suggest that long-term habituation to disgust occurs in both self-report and behavioural avoidance.

Evidence for limited generalisation of habituation

To our surprise, healthcare assistants did not only show a lack of disgust avoidance for stimuli that can be found in care homes, but also to those outside of this context. This is evidence for generalisation of habituation from the environment in which it occurred to elicitors from outside this environment. It was a surprising finding, as previous reports suggested highly limited generalisation in medical students whose work on cadavers habituated them to cold but not warm bodies (Rozin, 2008). This difference could be due to response modality: our results are behavioural, whereas previous evidence comes from self-report. However, it could also be an effect of experience: our sample of healthcare assistants had worked in care homes for an average of almost two years, whereas the students in the previous study had only been enrolled a single first-year gross anatomy class at university that spanned 2-3 months. Perhaps disgust only generalises on the larger timescale of exposure in the present study.

Edgar et al. (preprint, v3, 2024-01-05)
LONG-TERM DISGUST HABITUATION

In self-report measures, both core and gore disgust elicitors load onto the same “pathogen disgust” factor (Tybur et al., 2009). However, this could be due to a lack of number and richness of items in the employed questionnaire, which does not include a great deal of body envelope violations. Indeed, previous studies have shown differences in response profiles between core and gore disgust. Bodily effluvia inspire a physiological change in stomach rhythm whereas body envelope violations alter heart-rate variability (Shenhav & Mendes, 2014). In addition, the two share a different but partially overlapping response profile in oxygenated blood in the brain (Wright et al., 2004); and in alpha power in the electroencephalogram, although this could simply reflect differences in arousal (Sarlo et al., 2005). It has been argued that this difference is due to vicarious feelings inspired by empathic simulation of observed body envelope violations, which is then verbalised as “disgust” despite it being qualitatively different to disgust to bodily effluvia (Kupfer, 2018).

Despite the above, we observed no difference in avoidance between the two stimulus categories in the control or the healthcare assistant group. This is not necessarily a limitation of the method, as differences in behavioural avoidance between subcategories of disgust elicitors (bodily effluvia versus spoiled food) have previously been shown (Armstrong et al., 2022). Healthcare assistants’ lack of behavioural avoidance of both bodily effluvia and bodily harm could thus reflect a genuine habituation to each separate category.

In sum, long-term habituation of disgust avoidance generalised to stimuli found outside the set of habituated stimuli within the overarching “pathogen disgust” category. However, reductions in self-reported “sexual disgust” and “moral disgust” sensitivity were not found. We interpret this pattern as limited generalisation of disgust habituation within the pathogen domain, but not beyond it.

Potential implications for healthcare staff retention

This is a small study, and should thus only be taken as preliminary. However, the notion of long-term habituation to disgusting stimuli aligns with anecdotal reports from those who come into close contact with them on a regular basis, like parents and healthcare professionals who report being less bothered by soiled nappies and pads over time. Because the high levels of disgust are profoundly unpleasant, they are likely to negatively impact staff retention, which is a problem for 48% of care homes in the UK (Care Quality Commission, 2022). Thus, reducing disgust in healthcare professionals could help to combat workforce challenges that negatively impact the sector.

Within the lab, such habituation does not occur in the short term, not even after encouraged exposure through monetary incentives (Dalmaijer et al., 2021). However, previous efforts were successful in reducing disgust avoidance with a combination of encouraged exposure and domperidone, a peripheral dopamine antagonist that normalises gastric rhythm and barely crosses the blood-brain barrier (Nord et al., 2021).

Our current findings suggest that long-term disgust habituation may occur in healthcare careers. We think this habituation could potentially be encouraged with pharmacological support in

Edgar et al. (preprint, v3, 2024-01-05)
LONG-TERM DISGUST HABITUATION

the early stages of employment, thereby leading to professionals developing earlier reductions in disgust avoidance and greater job satisfaction. However, further research is warranted before implementation of this type of measure: while disgust is unpleasant, it is also adaptive. The effect of a single dose of domperidone on disgust avoidance was subtle, but it is unknown if sustained usage could push individuals towards maladaptive behaviour such as reduced hand-washing.

Limitations

An obvious limitation of this study is the relatively small sample size of N=32 in the healthcare assistants sample and N=50 in the control sample. This was due to practical limitations on access to care home facilities and their staff, and we aimed to remedy this by including a relatively large number of trials per condition in the preferential looking task (64 trials per condition per participant). In addition, where this was not possible, we have aimed to report statistics in such a way that the uncertainty in estimates is clearly reflected in both confidence intervals and Bayes Factors.

One alternative explanation for the differences between healthcare assistants and the control group is selection bias. Disgust sensitivity partially predicts enrolment into different specialities and courses among medical students, with those scoring lower being more likely to choose more hands-on careers like nursing and surgery (Consedine, Yu, Hill, et al., 2013; Consedine, Yu, & Windsor, 2013; Consedine & Windsor, 2014). We cannot rule out that our sample of healthcare assistants started their careers with lower disgust sensitivity. However, the correlation between disgust sensitivity and time worked in healthcare suggests that habituation also occurred on top of any pre-existing difference.

It is harder to rule out longitudinal selection bias. Specifically, it could be that individuals with lower disgust sensitivity have a lower yearly probability of quitting. This would mean that, within a sample of healthcare professionals, those with lower disgust sensitivity are more likely to be overrepresented among individuals with longer careers. This could result in an artificial correlation between career duration and disgust sensitivity. The only way to fully exclude this alternative interpretation is with a longitudinal design and a survival analysis.

Conclusion

Self-reported pathogen (but not sexual or moral) disgust sensitivity is lower in healthcare assistants who work in care homes compared to a control sample, and correlates with the duration of employment. In addition, behavioural avoidance of core (bodily effluvia) and gore (body envelope violations) disgust stimuli found inside and outside care home contexts was absent in healthcare assistants, but present in the control group. This suggests prolonged and frequent exposure to contaminants (faeces, sick, mucous, blood, wounds, etc.) induces habituation that generalises to non-healthcare stimuli, but not outside of the pathogen disgust domain.

Edgar et al. (preprint, v3, 2024-01-05)
LONG-TERM DISGUST HABITUATION

References

- Andraszewicz, S., Scheibehenne, B., Rieskamp, J., Grasman, R., Verhagen, J., & Wagenmakers, E.-J. (2015). An Introduction to Bayesian Hypothesis Testing for Management Research. *Journal of Management*, *41*(2), 521–543. <https://doi.org/10.1177/0149206314560412>
- Angyal, A. (1941). Disgust and related aversions. *Journal of Abnormal and Social Psychology*, *36*, 393–412.
- Anwyl-Irvine, A. L., Armstrong, T., & Dalmaijer, E. S. (2022). MouseView.js: Reliable and valid attention tracking in web-based experiments using a cursor-directed aperture. *Behavior Research Methods*, *54*, 1663–1687. <https://doi.org/10.3758/s13428-021-01703-5>
- Anwyl-Irvine, A. L., Dalmaijer, E. S., Hodges, N., & Evershed, J. K. (2021). Realistic precision and accuracy of online experiment platforms, web browsers, and devices. *Behavior Research Methods*, *53*, 1407–1425. <https://doi.org/10.3758/s13428-020-01501-5>
- Anwyl-Irvine, A. L., Massonnié, J., Flitton, A., Kirkham, N., & Evershed, J. K. (2020). Gorilla in our midst: An online behavioral experiment builder. *Behavior Research Methods*, *52*(1), 388–407. <https://doi.org/10.3758/s13428-019-01237-x>
- Armstrong, T., McClenahan, L., Kittle, J., & Olatunji, B. O. (2014). Don't look now! Oculomotor avoidance as a conditioned disgust response. *Emotion*, *14*(1), 95–104.
<https://doi.org/10.1037/a0034558>
- Armstrong, T., Stewart, J. G., Dalmaijer, E. S., Rowe, M., Danielson, S., Engel, M., Bailey, B., & Morris, M. (2022). I've seen enough! Prolonged and repeated exposure to disgusting stimuli increases oculomotor avoidance. *Emotion*, *22*(6), 1368–1381.
<https://doi.org/10.1037/emo0000919>
- Brybaert, M., & Stevens, M. (2018). Power Analysis and Effect Size in Mixed Effects Models: A Tutorial. *Journal of Cognition*, *1*(1), 9. <https://doi.org/10.5334/joc.10>
- Care Quality Commission. (2022). *The state of health care and adult social care in England (2021-2022)* (State of Care, p. 140). <https://www.cqc.org.uk/publication/state-care-202122>

Edgar et al. (preprint, v3, 2024-01-05)
LONG-TERM DISGUST HABITUATION

- Consedine, N. S., & Windsor, J. A. (2014). Specific disgust sensitivities differentially predict interest in careers of varying procedural-intensity among medical students. *Advances in Health Sciences Education*, 19(2), 183–201. <https://doi.org/10.1007/s10459-013-9469-1>
- Consedine, N. S., Yu, T.-C., Hill, A. G., & Windsor, J. A. (2013). Disgust sensitivity and the ‘non-rational’ aspects of a career choice in surgery. *The New Zealand Medical Journal*, 126(1371), 19–26.
- Consedine, N. S., Yu, T.-C., & Windsor, J. A. (2013). Nursing, pharmacy, or medicine? Disgust sensitivity predicts career interest among trainee health professionals. *Advances in Health Sciences Education*, 18(5), 997–1008. <https://doi.org/10.1007/s10459-012-9439-z>
- Cogle, J. R., Wolitzky-Taylor, K. B., Lee, H.-J., & Telch, M. J. (2007). Mechanisms of change in ERP treatment of compulsive hand washing: Does primary threat make a difference? *Behaviour Research and Therapy*, 45(7), 1449–1459.
<https://doi.org/10.1016/j.brat.2006.12.001>
- Curtis, V., & Biran, A. (2001). Dirt, Disgust, and Disease: Is Hygiene in Our Genes? *Perspectives in Biology and Medicine*, 44(1), 17–31. <https://doi.org/10.1353/pbm.2001.0001>
- Dalmajer, E. S., & Armstrong, T. (2020). The human behavioural immune system is a product of cultural evolution. *ArXiv:2008.13211 [q-Bio]*. <http://arxiv.org/abs/2008.13211>
- Dalmajer, E. S., Lee, A., Leiter, R., Brown, Z., & Armstrong, T. (2021). Forever yuck: Oculomotor avoidance of disgusting stimuli resists habituation. *Journal of Experimental Psychology: General*. <https://doi.org/10.1037/xge0001006>
- Dang, J., King, K. M., & Inzlicht, M. (2020). Why Are Self-Report and Behavioral Measures Weakly Correlated? *Trends in Cognitive Sciences*, 24(4), 267–269.
<https://doi.org/10.1016/j.tics.2020.01.007>
- Darwin, C. (1872). Chap. XI. Disdain—Contempt—Disgust—Guilt—Pride, etc. - Helplessness—Patience—Affirmation and Negation. In *The expression of emotions in man and animals* (pp. 254–277). John Murray, Albemarle Street.

Edgar et al. (preprint, v3, 2024-01-05)
LONG-TERM DISGUST HABITUATION

- de Barra, M., Islam, M. S., & Curtis, V. (2014). Disgust Sensitivity Is Not Associated with Health in a Rural Bangladeshi Sample. *PLOS ONE*, 9(6), e100444.
<https://doi.org/10.1371/journal.pone.0100444>
- Ekman, P., & Friesen, W. V. (1971). Constants across cultures in the face and emotion. *Journal of Personality and Social Psychology*, 17(2), 124–129. <https://doi.org/10.1037/h0030377>
- Engelhard, I. M., Leer, A., Lange, E., & Olatunji, B. O. (2014). Shaking That Icky Feeling: Effects of Extinction and Counterconditioning on Disgust-Related Evaluative Learning. *Behavior Therapy*, 45(5), 708–719. <https://doi.org/10.1016/j.beth.2014.04.003>
- Haberkamp, A., Glombiewski, J. A., Schmidt, F., & Barke, A. (2017). The DISgust-RelaTed-Images (DIRTI) database: Validation of a novel standardized set of disgust pictures. *Behaviour Research and Therapy*, 89, 86–94. <https://doi.org/10.1016/j.brat.2016.11.010>
- Haidt, J., McCauley, C., & Rozin, P. (1994). Individual differences in sensitivity to disgust: A scale sampling seven domains of disgust elicitors. *Personality and Individual Differences*, 16(5), 701–713. [https://doi.org/10.1016/0191-8869\(94\)90212-7](https://doi.org/10.1016/0191-8869(94)90212-7)
- Harris, C. R., Millman, K. J., van der Walt, S. J., Gommers, R., Virtanen, P., Cournapeau, D., Wieser, E., Taylor, J., Berg, S., Smith, N. J., Kern, R., Picus, M., Hoyer, S., van Kerkwijk, M. H., Brett, M., Haldane, A., del Río, J. F., Wiebe, M., Peterson, P., ... Oliphant, T. E. (2020). Array programming with NumPy. *Nature*, 585(7825), 357–362.
<https://doi.org/10.1038/s41586-020-2649-2>
- Hunter, J. D. (2007). Matplotlib: A 2D Graphics Environment. *Computing in Science & Engineering*, 9(3), 90–95. <https://doi.org/10.1109/MCSE.2007.55>
- Jeffreys, H. (1961). *Theory of probability*. Clarendon Press.
- Karinen, A. K., Tybur, J. M., & de Vries, R. E. (2023). The disgust traits: Self–other agreement in pathogen, sexual, and moral disgust sensitivity and their independence from HEXACO personality. *Emotion*, 23(1), 75–86. <https://doi.org/10.1037/emo0000795>
- Kupfer, T. R. (2018). Why are injuries disgusting? Comparing pathogen avoidance and empathy accounts. *Emotion*, 18(7), 959–970. <https://doi.org/10.1037/emo0000395>

Edgar et al. (preprint, v3, 2024-01-05)
LONG-TERM DISGUST HABITUATION

- Ly, A., Verhagen, J., & Wagenmakers, E.-J. (2016). Harold Jeffreys's default Bayes factor hypothesis tests: Explanation, extension, and application in psychology. *Journal of Mathematical Psychology*, 72, 19–32. <https://doi.org/10.1016/j.jmp.2015.06.004>
- Mason, E. C., & Richardson, R. (2012). Treating disgust in anxiety disorders. *Clinical Psychology: Science and Practice*, 19(2), 180–194. <https://doi.org/10.1111/j.1468-2850.2012.01282.x>
- Milani, S., Armstrong, T., Dalmaijer, E. S., Anwyl-Irvine, A. L., & Dawson, S. J. (2023). Examining Attentional Biases Elicited by Sexual Stimuli Using MouseView.js: An Online Paradigm to Mimic Eye Movements. *The Journal of Sex Research*, 1–14. <https://doi.org/10.1080/00224499.2023.2209792>
- Nord, C. L., Dalmaijer, E. S., Armstrong, T., Baker, K., & Dalgleish, T. (2021). A Causal Role for Gastric Rhythm in Human Disgust Avoidance. *Current Biology*, 31(3), 629-634.e3. <https://doi.org/10.1016/j.cub.2020.10.087>
- Olatunji, B. O., Williams, N. L., Tolin, D. F., Abramowitz, J. S., Sawchuk, C. N., Lohr, J. M., & Elwood, L. S. (2007). The Disgust Scale: Item analysis, factor structure, and suggestions for refinement. *Psychological Assessment*, 19(3), 281–297. <https://doi.org/10.1037/1040-3590.19.3.281>
- Piazza, J., Hodson, G., & Oakley, A. (2021). Butchers' and deli workers' psychological adaptation to meat. *Emotion*, 21(4), 730–741. <https://doi.org/10.1037/emo0000738>
- Prokop, P., & Fančovičová, J. (2016). Mothers are less disgust sensitive than childless females. *Personality and Individual Differences*, 96, 65–69. <https://doi.org/10.1016/j.paid.2016.02.064>
- Raftery, A. E. (1995). Bayesian Model Selection in Social Research. *Sociological Methodology*, 25, 111–163.
- Reynolds, L. M., Powell, P., Lin, Y. S., Ravi, K., Chung, C. -Y. K., & Consedine, N. S. (2019). Fighting the flinch: Experimentally induced compassion makes a difference in health care providers. *British Journal of Health Psychology*, 24(4), 982–998. <https://doi.org/10.1111/bjhp.12390>

Edgar et al. (preprint, v3, 2024-01-05)
LONG-TERM DISGUST HABITUATION

- Rouder, J. N., Speckman, P. L., Sun, D., Morey, R. D., & Iverson, G. (2009). Bayesian t tests for accepting and rejecting the null hypothesis. *Psychonomic Bulletin & Review*, *16*(2), 225–237. <https://doi.org/10.3758/PBR.16.2.225>
- Rouel, M., Stevenson, R. J., Milne-Home, J., & Smith, E. (2018). Differences in emotions and cognitions experienced in contamination aversion. *Journal of Experimental Psychopathology*, *9*(3), 204380871879482. <https://doi.org/10.1177/2043808718794826>
- Royzman, E. B., & Sabini, J. (2001). Something it Takes to be an Emotion: The Interesting Case of Disgust. *Journal for the Theory of Social Behaviour*, *31*(1), 29–59. <https://doi.org/10.1111/1468-5914.00145>
- Rozin, P. (2008). Hedonic ‘adaptation’: Specific habituation to disgust/death elicitors as a result of dissecting a cadaver. *Judgment and Decision Making*, *3*(2), 191–194.
- Rozin, P., & Fallon, A. E. (1987). A perspective on disgust. *Psychological Review*, *94*(1), 23–41. <https://doi.org/10.1037/0033-295X.94.1.23>
- Russell, P. S., & Giner-Sorolla, R. (2013). Bodily moral disgust: What it is, how it is different from anger, and why it is an unreasoned emotion. *Psychological Bulletin*, *139*(2), 328–351. <https://doi.org/10.1037/a0029319>
- Sarlo, M., Buodo, G., Poli, S., & Palomba, D. (2005). Changes in EEG alpha power to different disgust elicitors: The specificity of mutilations. *Neuroscience Letters*, *382*(3), 291–296. <https://doi.org/10.1016/j.neulet.2005.03.037>
- Schienle, A., Gremsl, A., Übel, S., & Körner, C. (2016). Testing the effects of a disgust placebo with eye tracking. *International Journal of Psychophysiology*, *101*, 69–75. <https://doi.org/10.1016/j.ijpsycho.2016.01.001>
- Schnapp, B., Fleming, E., Kraut, A., Westergaard, M., Batt, R., & Patterson, B. (2019). Maggots, Mucous and Monkey Meat: Does Disgust Sensitivity Affect Case Mix Seen During Residency? *Western Journal of Emergency Medicine*, *21*(1), 87–90. <https://doi.org/10.5811/westjem.2019.9.44309>

Edgar et al. (preprint, v3, 2024-01-05)
LONG-TERM DISGUST HABITUATION

- Shenhav, A., & Mendes, W. B. (2014). Aiming for the stomach and hitting the heart: Dissociable triggers and sources for disgust reactions. *Emotion, 14*(2), 301–309.
<https://doi.org/10.1037/a0034644>
- Tybur, J. M., Lieberman, D., & Griskevicius, V. (2009). Microbes, mating, and morality: Individual differences in three functional domains of disgust. *Journal of Personality and Social Psychology, 97*(1), 103–122. <https://doi.org/10.1037/a0015474>
- Tybur, J. M., Lieberman, D., Kurzban, R., & DeScioli, P. (2013). Disgust: Evolved function and structure. *Psychological Review, 120*(1), 65–84. <https://doi.org/10.1037/a0030778>
- Vallat, R. (2018). Pingouin: Statistics in Python. *Journal of Open Source Software, 3*(31), 1026.
<https://doi.org/10.21105/joss.01026>
- Virtanen, P., Gommers, R., Oliphant, T. E., Haberland, M., Reddy, T., Cournapeau, D., Burovski, E., Peterson, P., Weckesser, W., Bright, J., van der Walt, S. J., Brett, M., Wilson, J., Millman, K. J., Mayorov, N., Nelson, A. R. J., Jones, E., Kern, R., Larson, E., ... Vázquez-Baeza, Y. (2020). SciPy 1.0: Fundamental algorithms for scientific computing in Python. *Nature Methods, 17*(3), 261–272. <https://doi.org/10.1038/s41592-019-0686-2>
- Wagenmakers, E.-J. (2007). A practical solution to the pervasive problems of p values. *Psychonomic Bulletin & Review, 14*(5), 779–804. <https://doi.org/10.3758/BF03194105>
- Woronko, S. E., Jessup, S. C., Armstrong, T., Anwyl-Irvine, A. L., Dalmaijer, E. S., & Olatunji, B. O. (2023). A novel probe of attentional bias for threat in specific phobia: Application of the “MouseView.js” approach. *Journal of Anxiety Disorders, 96*, 102700.
<https://doi.org/10.1016/j.janxdis.2023.102700>
- Wright, P., He, G., Shapira, N. A., Goodman, W. K., & Liu, Y. (2004). Disgust and the insula: FMRI responses to pictures of mutilation and contamination. *NeuroReport, 15*(15), 2347–2351.