

Predictors of SARS-CoV-2 anti-Spike IgG antibody levels following two COVID-19 vaccine doses among children and adults in the Canadian CHILD Cohort

Rilwan Azeez^{1,3}, Larisa Lotoski^{2,3}, Geoffrey L. Winsor⁴, Corey R. Arnold⁵, Yannick Galipeau⁵, Martin Pelchat⁵, Stephanie Goguen^{2,3}, Elinor Simons^{2,3}, Theo J. Moraes⁶, Piush J. Mandhane⁷, Stuart E. Turvey⁸, Shelly Bolotin⁹, David M. Patrick^{10,11}, Jared Bullard^{2,12}, Lisa M. Lix¹³, Natasha Doucas¹⁴, Natalie Rodriguez^{2,3}, Fiona S.L. Brinkman⁴, Padmaja Subbarao^{6,15}, Marc-André Langlois⁵, Meghan B. Azad^{2,3*}

Affiliations

- 1 Department of Immunology, University of Manitoba, Winnipeg, MB, Canada.
- 2 Department of Pediatrics and Child Health, University of Manitoba, Winnipeg, MB, Canada.
- 3 Children's Hospital Research Institute of Manitoba, Winnipeg, MB, Canada.
- 4 Department of Molecular Biology and Biochemistry, Simon Fraser University, Burnaby, BC, Canada.
- 5 Department of Biochemistry, Microbiology and Immunology, University of Ottawa, Ottawa, ON, Canada.
- 6 Division of Respiratory Medicine, Department of Pediatrics and Program in Translational Medicine, SickKids Research Institute, The Hospital for Sick Children, ON, Canada.
- 7 Department of Pediatrics, University of Alberta, Edmonton, AB, Canada.
- 8 Department of Pediatrics, University of British Columbia, Vancouver, BC, Canada.
- 9 Centre for Vaccine Preventable Diseases, University of Toronto: Dalla Lana School of Public Health, University of Toronto; Department of Laboratory Medicine and Pathobiology, University of Toronto; Public Health Ontario.
- 10 School of Population and Public Health, University of British Columbia, Vancouver, BC, Canada.
- 11 British Columbia Centre for Disease Control, Vancouver, BC, Canada.
- 12 Cadham Provincial Laboratory, Manitoba Health, Winnipeg, MB, Canada.
- 13 Department of Community Health Sciences, University of Manitoba, Winnipeg, MB, Canada.
- 14 CHILD Cohort Study National Parent Engagement Committee.
- 15 Department of Medicine, Faculty of Health Sciences, McMaster University, Hamilton, ON, Canada.

*Corresponding Author: Meghan Azad, 501G-715 McDermot Avenue, Winnipeg, MB Canada, R3E 3P4 | +1 (204) 975-7754 | meghan.azad@umanitoba.ca | @MeghanAzad

Main Document: Abstract = 250 Words, Text = 2216 Words, 6 Figures, 3 Tables

Supplement: 1 Figure, 1 Table

Abstract

Background: Vaccination helps prevent SARS-CoV-2 infection and severe COVID-19. However, vaccine-induced humoral immune responses vary among individuals and wane over time. We aimed to describe the SARS-CoV-2 anti-spike IgG antibody response to vaccination and identify health and demographic factors associated with this response among children and adults.

Methods: We studied a subset of double-vaccinated children (n= 151; mean age: 12 ±1.5 years, 46% female) and adults (n= 995; 44 ±6.0 years, 60% female) from the Canadian CHILD Cohort. Dried blood spots were collected over two time periods (March 2021 to September 2021; October 2021 to January 2022). Antibody levels were quantified using automated chemiluminescent ELISAs. Demographic, vaccination, and health data were collected via online questionnaires. Associations were determined using multivariable regression.

Results: Our cohort had SARS-CoV-2 anti-spike seropositivity rate of 97% following two COVID-19 vaccine doses. In both children and adults, the highest antibody levels were observed around three months post-vaccination and did not differ by biological sex. Higher antibody levels were associated with: prior SARS-CoV-2 infection ($\beta=0.15$ scaled luminescence units, 95%CI, 0.06-0.24), age <18 years ($\beta=0.15$, 95%CI 0.05-0.26) and receiving the Moderna mRNA ($\beta=0.23$, 95%CI 0.11-0.34) or Pfizer-BioNTech mRNA vaccines ($\beta= 0.10$, 95%CI, 0.02-0.18) vs. a combination of mRNA and Oxford-AstraZeneca viral vector vaccines. There were no differences in antibody levels when comparing a 3-8 vs. 9-16-week interval between vaccine doses.

Interpretation: We identified key factors associated with post-vaccination antibody responses in children and adults, which could help improve future vaccine development and deployment among different population subgroups.

Keywords: COVID-19 pandemic, SARS-CoV-2, immunology, antibodies, pediatrics, CHILD cohort study.

Introduction

Vaccination is the most effective way to prevent SARS-CoV-2 infection and severe COVID-19^{1,2}. However, vaccine-induced humoral immune antibody responses vary among individuals and wane over time³. Pre-existing health and sociodemographic factors have been associated with the varied immune response to vaccination³. Age, biological sex, prior SARS-CoV-2 infection, vaccine type and dosing intervals have all been reported to influence the magnitude of vaccine-induced immune responses among different population subgroups⁴⁻⁷. However, the variation and timing of this immune response is not fully understood, particularly in children. Further, few COVID-19 vaccine studies have involved participants with heterogeneous (“mix-and-match”) vaccine combinations. Understanding the determinants of COVID-19 vaccine responsiveness is an important research priority that could provide more insights on ways to improve COVID-19 vaccine immunogenicity and efficacy among different population subgroups.

In this study, we described the SARS-CoV-2 anti-spike IgG antibody response to vaccination and identified health and demographic factors associated with vaccine-induced antibody response among double-vaccinated children and adults in the Canadian CHILD Cohort.

Methods

Study design and population

We conducted a SARS-CoV-2 anti-spike and anti-nucleocapsid seroprevalence study using dried blood spots collected in two phases (Phase A: March 2021-September 2021; Phase B: October 2021-January 2022) among participants from the CHILD COVID-19 Add-on Study, embedded within the Canadian CHILD Cohort Study. Eligibility, consent, recruitment, and detailed methodology are as described elsewhere⁸. Notably, Phase B collection started one month before the approval of vaccines for children aged 5-11 years in Canada. In total, 3059 participants (1501 children and 1558 adults) contributed serology data for the current analyses (**Figure 1**). Participants provided one (n=1242) or two (n=1817) samples (n=4876 samples total); all but 58 Phase B participants contributed samples in Phase A. For analyses focused on double vaccinated participants, we limited our subsample to those who received two COVID-19 vaccine doses prior to their first or second DBS sampling (151 children and 995 adults).

Data collection

Quarterly questionnaires collecting information were delivered using REDCap^{9,10} at baseline (January to June 2021) and three follow-up periods (August to September 2021, October to December 2021, January to March 2022) to capture: demographics, employment, COVID-19 testing, diagnosis, and vaccination uptake, and comorbidities. Brief biweekly questionnaires were deployed to capture COVID-19 testing and diagnosis. Blood for serology was collected from March 2021 to September 2021 (Phase A) and October 2021 to January 2022 (Phase B) using Dried Blood Spot (DBS) kits delivered and returned by mail.¹¹⁻¹³

COVID-19 case definition

Self-reported SARS-CoV-2 infection measures: Self-reported infection was captured through the biweekly and quarterly questionnaires. Participants were considered to have SARS-CoV-2 infection

after reporting a positive COVID-19 test ascertained through any of the following: polymerase chain reaction test, mouth rinse test, or antibody/serology test.

SARS-CoV-2 serology: We measured SARS-CoV-2 anti-spike and anti-nucleocapsid immunoglobulin G (IgG) antibodies on automated chemiluminescent enzyme-linked immunosorbent assays (ELISAs) at the University of Ottawa Serology and Diagnostics High Throughput Facility as previously described.¹⁴ Participants with both anti-spike and anti-nucleocapsid levels above the pre-determined cut-off of 0.16 units¹⁴ were considered seropositive due to previous infection.

Statistical analysis

Anti-spike and anti-nucleocapsid dried blood spot serology levels had skewed distributions and were compared using the Mann–Whitney test for two groups or Kruskal Wallis test for more than two groups. Among double-vaccinated participants, we used a) polynomial linear regression models with locally estimated scatterplot smoothing¹⁵ (LOESS) to visualize trends in antibody levels by time since second vaccination, and b) univariable and multivariable linear regression analyses to identify predictors of antibody levels. Candidate predictors were selected based on domain expertise and factors known to be associated with vaccine humoral responses. All covariates with *p*-values <0.2 in univariable models were included in a multivariable model to assess the independent relationships with anti-spike IgG antibodies. Results are reported as beta-estimates and 95% confidence intervals (95% CIs).

Results

The mean age of participants was 44 (SD ±6) years among adults and 12 (SD ±1.5) years among children (**Figure 1**). The majority identified as having European ancestral origins (60%) and most adults (75%) had a university degree (**Table 1**). About 45% of families had an essential worker (defined as working in healthcare, delivery, retail, security or building maintenance) in their household. Notably, children (<18 years) are under-represented in the double-vaccinated serology sub-cohort (13% compared to 52% of the overall cohort) because vaccines were approved later for this age group.

Vaccine types and timing for double-vaccinated participants are summarized in **Table 2**. Among adults, 66% received mRNA vaccines for both doses (47% BNT162b2, 11% mRNA-1273, 8% combination of the two), while 30% received a combination of viral vector (ChAdOx1-S) and mRNA vaccine, and 4% received viral vector vaccines only. Children almost exclusively (99%) received the BNT162b2 mRNA vaccine for both doses. Participants received their second dose a median of 57 (IQR 41-65) days after the first dose. The mean interval between receipt of second vaccine dose and DBS sampling was 103 days (SD± 37) for children and 133 days (SD± 55) for adults.

Anti-spike SARS-CoV-2 IgG antibody response following vaccination

Median anti-spike IgG antibody levels were significantly higher in individuals with two COVID-19 vaccine doses (1.81 scaled luminescence units, IQR 1.55-2.14) compared to unvaccinated (0.08, IQR 0.05-0.10; *p* <0.001), or single vaccinated participants (1.76 units, IQR 1.37-2.10 *p* <0.001), but lower than those who had received a third vaccine dose (1.90 units, IQR 1.67-2.24, *p* <0.001). Among double-vaccinated participants, antibody responses were highly

variable, ranging nearly 3 orders of magnitude from 0.02 to 3.02 scaled luminescence units (**Figure 2A**). About 3% had antibody levels below the seropositivity threshold and were classified as “non-responders” (children: 3%, n=5/151; adults: 3%, n= 26/995).

Vaccine responses by age, sex, vaccine type and comorbidities

Among double-vaccinated participants, children had significantly higher median antibody levels (2.08 units, IQR 1.71-2.24) than adults (1.79 units, IQR 1.49 -2.09, $p < 0.001$) (**Figure 3A**). For both age groups, the highest antibody levels were observed approximately three months (thirteen weeks) after the second dose (**Figure 2B**), and no sex differences were observed ($p = 0.42$) (**Figure 3B**).

Over half of double-vaccinated participants received mRNA vaccines for both vaccine doses (n= 811/1146, 99% of children and 66% of adults). Participants receiving mRNA-1273 or mRNA-BNT162b2 for both vaccine doses had significantly higher median antibody levels (1.96 units, IQR 1.75-2.18) and (1.85 units, IQR 1.57-2.18), respectively, in comparison to viral vector ChAdOx1-S vaccinated participants (1.16 units, IQR 0.65-1.81) ($p < 0.001$) (**Figure 4A**). These findings were also observed across measured time-points in a polynomial linear regression model (**Figure 4B**).

The most common medical conditions among participants were allergies, anxiety, asthma, and depression (range: 4-22%) (**Tables 1 and S1**); none of which were associated with vaccine responses. We had limited power to evaluate immunosuppressive conditions (defined as cancer, insulin and non-insulin dependent diabetes, inflammatory bowel disease, kidney disease, pneumonia, and severe obesity) as these affected less than 5% of participants.

Antibody levels and vaccine responses in previously infected and infection-naïve participants

About 13% (n=147/1146) of double-vaccinated participants had evidence of prior COVID-19 when considering both serology and self-report. Prevalence was higher among adults (14%, n= 138/995) than children (6%, n= 9/151) ($p = 0.007$) but did not differ by sex in either age group ($p = 0.42$ for children; $p = 0.43$ for adults) (**Table 3**). Hybrid immunity (elicited through a combination of infection and vaccination¹⁶) was associated with higher and more rapid production of antibodies (**Figure 5A**). Following receipt of two COVID-19 vaccine doses, antibody levels peaked within the first month among previously infected participants, compared to four months post-vaccination among infection-naïve individuals (**Figure 5B**).

Independent predictors of antibody levels in double-vaccinated individuals

In multivariable analysis (**Figure 6**), independent predictors of higher post-vaccination antibody levels were: previous SARS-CoV-2 infection ($\beta = 0.15$ Scaled Luminescence units; 95%CI 0.06, 0.24), age <18 years ($\beta = 0.15$; 95%CI, 0.05, 0.26), and receiving mRNA-vaccines (vs. a combination of mRNA and viral vector: $\beta = 0.23$ for mRNA-1273 and $\beta = 0.10$ for mRNA-BNT162b2). Lower antibody levels were associated with being over 6 months post-vaccination (vs. 0-3 months; $\beta = -0.24$; 95%CI -0.37, -0.12) and receiving the viral vector ChAdOx1-S vaccine for both doses ($\beta = -0.46$; 95%CI -0.64, -0.28). Biological sex, presence of immunosuppressive comorbidities, and interval between vaccine doses (3-8 weeks vs 9-16 weeks) were not independently associated with post-vaccination antibody levels. Similar associations were observed in stratified analyses investigating adults and children separately (**Figure S1**).

Interpretation

We report SARS-CoV-2 anti-spike IgG antibody responses among 3059 participants from a Canadian general population cohort of adults and children. Our cross-sectional analyses revealed an anti-spike IgG antibody seropositivity rate of 97% among 1146 double-vaccinated participants. Age, previous SARS-CoV-2 infection, vaccine type, and time since vaccination were identified as independent predictors of post-vaccination antibody levels.

The 97% seropositivity rate following two vaccine doses in our cohort is lower than rates reported in studies conducted in Italy (99.8%)²⁰, Germany (99.8%)²² and England (98.9%)²³. However, these studies included cohorts of healthcare workers who may have been exposed to repeated SARS-CoV-2 antigenic stimulation through prior infection, thereby influencing post-vaccination antibody levels with resultant higher seropositivity rates compared to our general population cohort.

Six percent of children and fourteen percent of adults in our cohort had hybrid immunity at the time of serologic testing (March 2021 to January 2022). Participants with hybrid immunity had significantly higher antibody levels compared to infection-naïve participants. While our study did not evaluate the chronological order of natural infection and vaccine-induced immunity, our data agrees with findings from cohorts of healthcare workers in Spain³⁰, USA³⁶ and Kuwait³⁷ where individuals with prior COVID-19 had higher vaccine-induced antibody response.

SARS-CoV-2 anti-spike IgG antibody levels were lower in adults than children in our study, consistent with evidence in other studies that adults have reduced humoral responses to COVID-19 vaccine and other vaccine types compared to children¹⁷⁻²³. We did not detect any sex differences, contrasting with other studies that found higher SARS-CoV-2 anti-spike IgG antibody levels in females compared to males^{20,21,24,25}. However, similar to our findings, Brlić P. et al reported no significant gender-related differences in post-vaccination antibody levels among a cohort of 1072 healthcare workers in Croatia²⁶. The lack of consistency regarding the association of biological sex and COVID-19 vaccine-induced humoral responses warrants further evaluation.

Participants in our cohort who received a combination of an mRNA and viral-vector vaccine had significantly higher antibody levels than homogenous viral-vector vaccinees, but lower levels than homogenous mRNA vaccine recipients. This contrasts with other findings that demonstrated higher antibody levels amongst heterogenous mRNA and viral-vector vaccinees compared to homogenous mRNA (BNT162b2) vaccine recipients^{21,27-29}. Using a polynomial linear regression model to assess cross-sectional antibody levels, we showed that immune responses to mRNA-based vaccines were better maintained over the first six months compared to viral-vector vaccines. This is not surprising as mRNA vaccines induce more rapid humoral responses through short-lived plasma blasts compared to viral-vector vaccines³⁰, in both plasma and saliva.²¹

SARS-CoV-2 anti-spike IgG antibody levels appear to wane three months after receipt of a second vaccine dose in our cohort. Similarly, a prospective general cohort study in Holland involving 2412 double-vaccinated participants showed a decline in antibody levels beginning at

around four to six months post-vaccination³⁰. Our findings on the timing of post-vaccination antibody decline provide further evidence supporting Health Canada's current vaccination policy of a five-to-six-month interval between receipt of second vaccine dose and eligibility for third vaccine dose³¹.

We did not observe any differences between a 3 to 8 week dosing interval compared to a 9 to 16 week regimen, in contrast to data showing higher antibody levels after an extended regimen (6 to 14 weeks) compared with a shorter regimen (2 to 5 weeks)⁵³. More research is required to understand and optimize COVID-19 vaccine dosing intervals.

Limitations of the study

Our study has limitations. First, we did not capture the surge of new infections and re-infections by the more transmissible SARS-CoV-2 Omicron strain that emerged after the majority of our sample collection was complete. We expect re-infections to significantly impact the magnitude of post-vaccination antibody response. Second, the work presented here did not disaggregate the order of, and interval between infection and vaccination among study participants. Third, we relied on self-reported data (e.g., vaccine timing and type) which may introduce inaccuracies due to recall bias. Further, we did not measure other vaccine-induced immune responses, including T-cell, innate immune or memory-based responses, which may be important predictors of post-vaccination antibody response. Finally, our cohort over-represents higher socioeconomic status households which may limit generalizability to the Canadian general population.

Conclusion

In this study involving over 3000 Canadians, including both children and adults and more than 1000 double-vaccinated individuals from the general population, we identified multiple health and demographic predictors of COVID-19 vaccine-induced antibody responses. Higher SARS-CoV-2 IgG antibody levels were associated with prior SARS-CoV-2 infection, recent vaccination, age under 18 years, and receiving mRNA vaccines, while no associations were observed for biological sex or time interval between doses. These findings help improve our understanding of COVID-19 induced humoral immune response in Canadian families and provide new information to inform future vaccine research and implementation strategies.

Declarations

Acknowledgements

We are grateful to all the families who took part in this CHILD COVID-19 Add-on Study and the entire CHILD Study team, which includes study site coordinators, research assistants, nurses, computer and laboratory technicians, clerical workers, research scientists, volunteers, managers, and receptionists at the following institutions: McMaster University, University of Manitoba, University of Alberta, SickKids, and University of British Columbia. We acknowledge Jay Onysko (Public Health Agency of Canada) who served on the CHILD COVID-19 Add-on Study Knowledge

User Committee. We thank the main CHILD Cohort Study participant families for their dedication and commitment to advancing health research.

Authors' contributions

RA contributed to conceptualization, writing the original draft, formal analysis and reviewing and editing the final version. LL contributed to conceptualization, writing the original draft, project administration and supervision, formal analysis, and reviewing and editing the final version. GW and SG contributed to data curation and formal analysis. FB contributed to conceptualization, funding acquisition, data curation, formal analysis and reviewing and editing the final version. ML, CA, YG and MP contributed to serological analysis, editing and reviewing the final version. SB, JB, and DP, contributed to conceptualization, funding acquisition, and reviewing and editing the final version. ES, TJM, TES, PJM and PS contributed to conceptualization, funding acquisition, and reviewing and editing the final version. ND contributed to questionnaire review and revision, reviewing, and editing the final version. NR contributed to conceptualization, funding acquisition, project administration and reviewing the final version. MBA contributed to conceptualization, writing the original draft, funding acquisition, project administration and supervision, formal analysis, methodology and reviewing and editing the final version.

Funding

This work was supported by funding from the Canadian Institutes of Health Research and the Canadian COVID-19 Immunity Task Force [VR5-172658] and Research Manitoba [4494]. Core funding for the CHILD Cohort Study was provided by the Canadian Institutes of Health Research [CIHR; AEC-85761 , PJT-148484 , FDN-159935 , and EC1-144621], the Allergy, Genes and Environment Network of Centres of Excellence (AllerGen NCE) [12CHILD], BC Children's Hospital Foundation, Don & Debbie Morrison, and Genome Canada/Genome BC [274CHI]. This research was supported, in part, by the Canada Research Chairs program: MBA holds a Tier 2 Canada Research Chair in the Developmental Origins of Health and Disease; SET holds a Tier 1 Canada Research Chair in Pediatric Precision Health; PS holds Tier 1 Canada Research Chair in Pediatric Asthma & Lung Health EC is supported by a Social Science and Humanities Research Council Postdoctoral Fellowship. FSLB is an SFU Distinguished Professor. YG is supported by a Frederick Banting and Charles Best CGS-D from the Canadian Institutes of Health Research [476885]. Production of COVID-19 reagents was financially supported by NRC's Pandemic Response Challenge Program. The funding agencies had no role in the design and conduct of the study; collection, management, analysis, and interpretation of the data; preparation, review, or approval of the manuscript; and decision to submit the manuscript for publication. In alignment with the call from the Canadian Chief Science Advisors, this COVID-19 related publication will be open access. Production of COVID-19 reagents was financially supported by the NRC Pandemic Response Challenge Program.

Data availability

Existing CHILD researchers and CHILD COVID-19 Knowledge Users will be given rapid access to study data on request. New researchers interested in developing or collaborating on a project using CHILD data are encouraged to contact the study's National Coordinating Centre for a formal

request. Data request and access details are outlined on the CHILD website: <https://childstudy.ca/for-researchers/study-data/>.

Competing interests

The authors declare that they have no competing interests.

Ethics approval

This study was approved by Research ethics boards at the University of British Columbia (H20-02324), University of Alberta (Pro00102524), University of Manitoba (HS24250), The Hospital for Sick Children (1000071220) and McMaster University (1108).

Figures

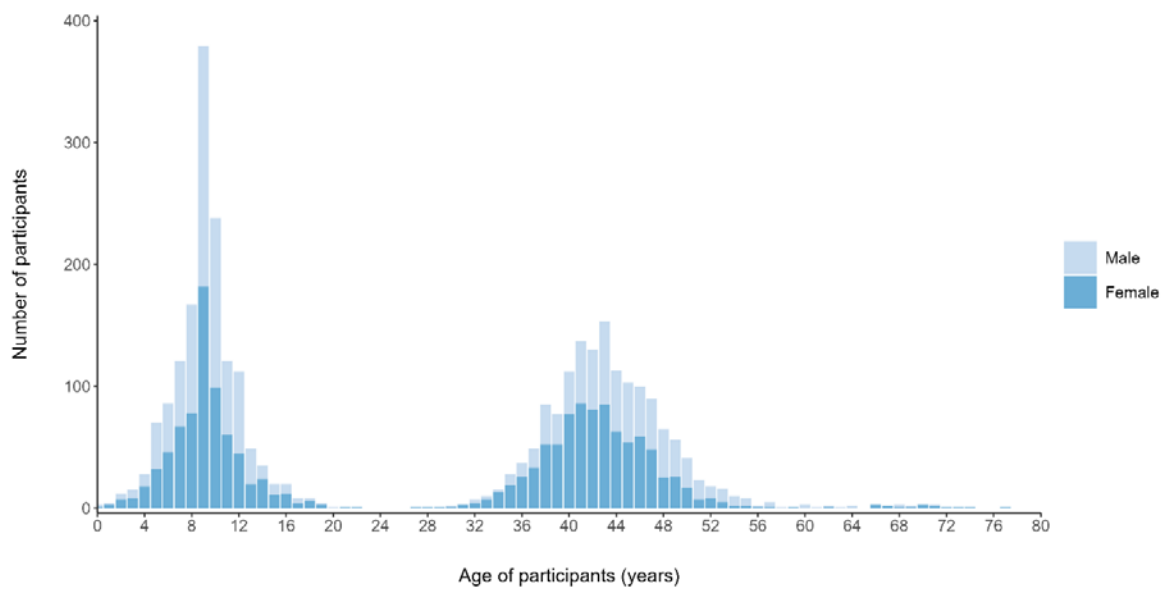


Figure 1. Age and biological sex of participants contributing serology data in the CHILD COVID-19 Add-On Study. N=3059 individuals (1501 children and 1558 adults).

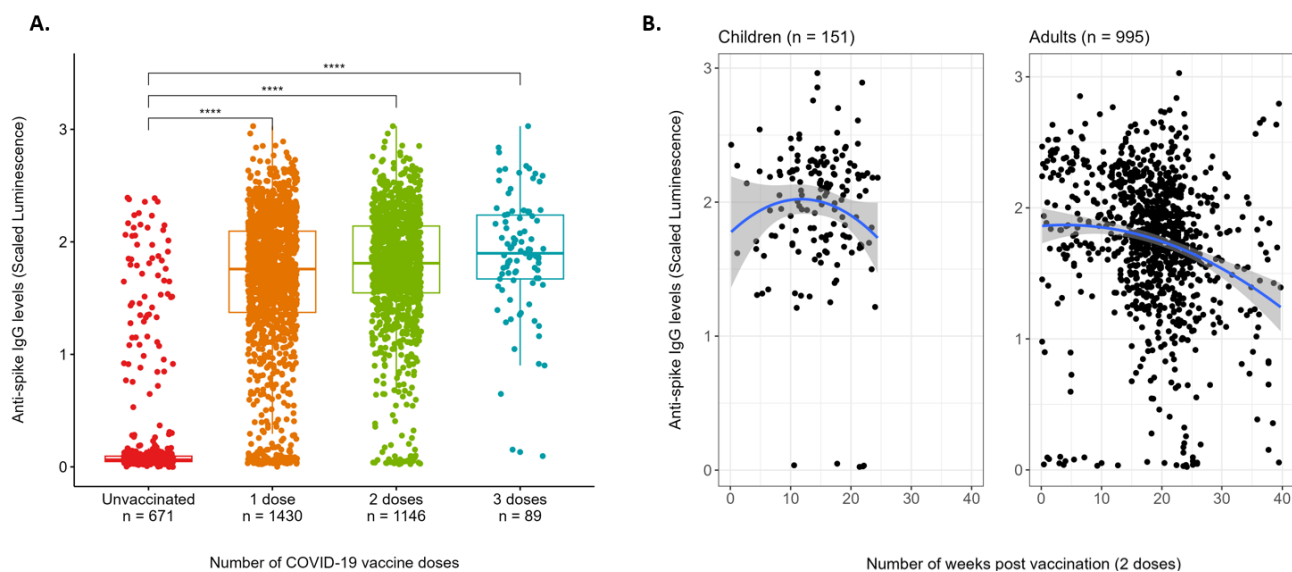


Figure 2. Anti-spike SARS-CoV-2 IgG antibody levels according to number of COVID-19 vaccine doses (A) and time since vaccination (B) in the CHILD Cohort. Serology from dried blood spots collected between March 2021 and January 2022. A) Horizontal lines indicate medians. B) Curved blue lines and gray shaded bands represent fit and 95% confidence interval from a polynomial linear regression model. Time range is larger for adults because vaccines were approved later for children. ****Kruskal-Wallis p -value <0.001 .

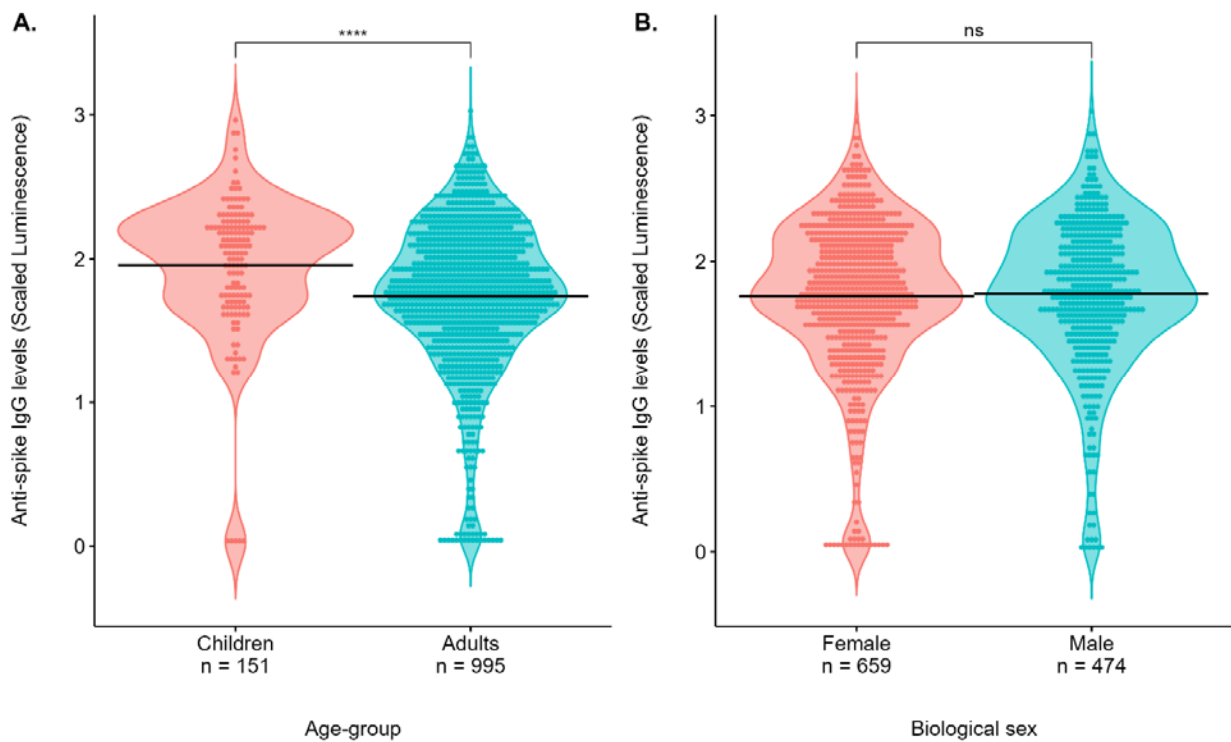


Figure 3. Anti-spike SARS-CoV-2 IgG antibody levels following two COVID-19 vaccine doses by age and sex in the CHILD Cohort. Serology from dried blood spots collected between March 2021 and January 2022. Horizontal lines indicate medians. ****Mann Whitney U p-value <0.001; ns - not significant.

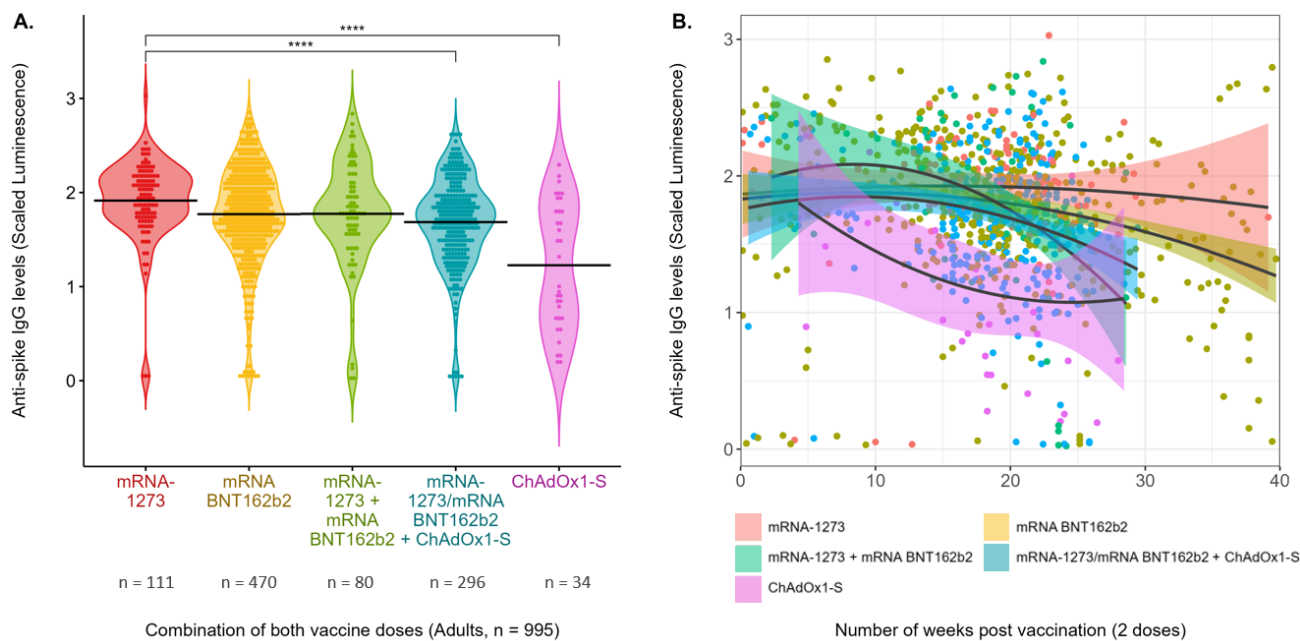


Figure 4. Anti-spike SARS-CoV-2 IgG antibody levels by type of COVID-19 vaccine received among double-vaccinated adults in the CHILD Cohort. Cross-sectional serology data from dried blood spots collected between March 2021 and January 2022. **A)** Horizontal lines indicate medians. **B)** Curved lines and shaded colored bands represent fit and 95% confidence interval from a polynomial linear regression model. ****Kruskal-Wallis p -value < 0.001.

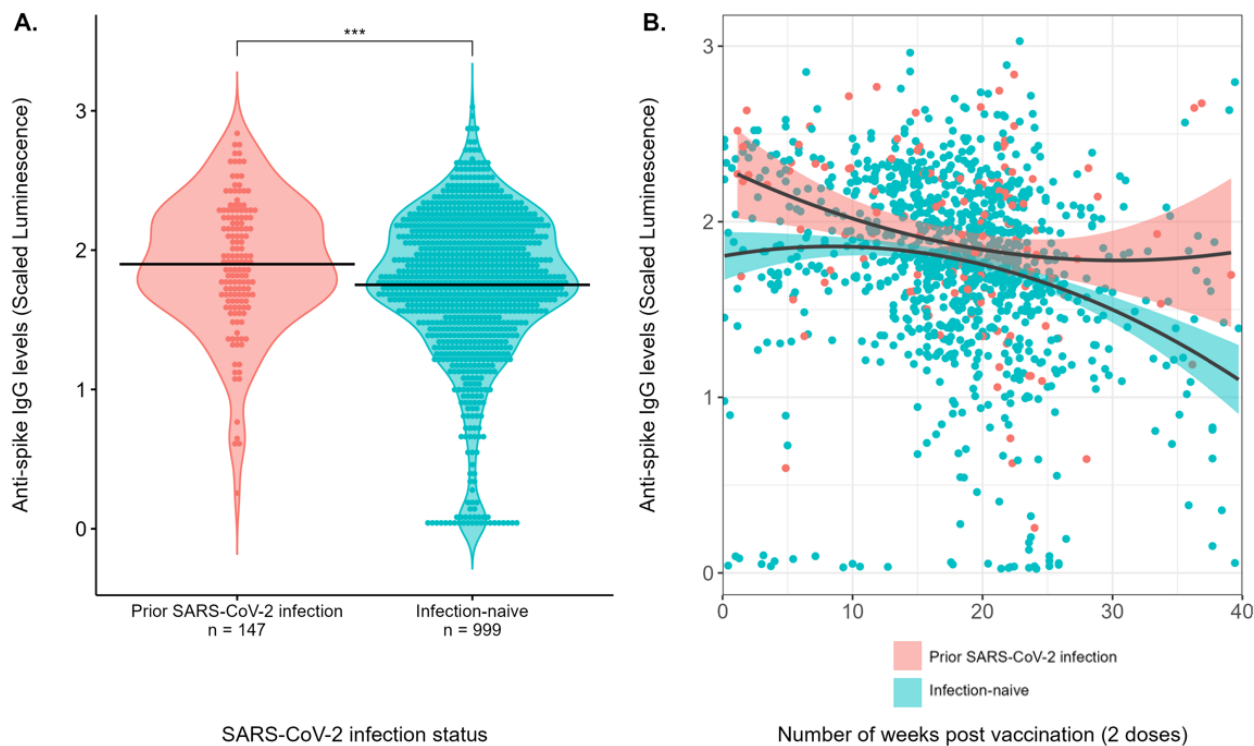


Figure 5. Anti-spike SARS-CoV-2 IgG antibody by SARS-CoV-2 infection status (based on self-report and serology) among double-vaccinated children and adults in the CHILD Cohort. Serology from dried blood spots collected between March 2021 and January 2022. **A)** Horizontal lines indicate medians. **B)** Hybrid immunity (combined infection and vaccination) appears to increase and slow the decay of antibody levels. ***Mann Whitney U p -value = 0.001.

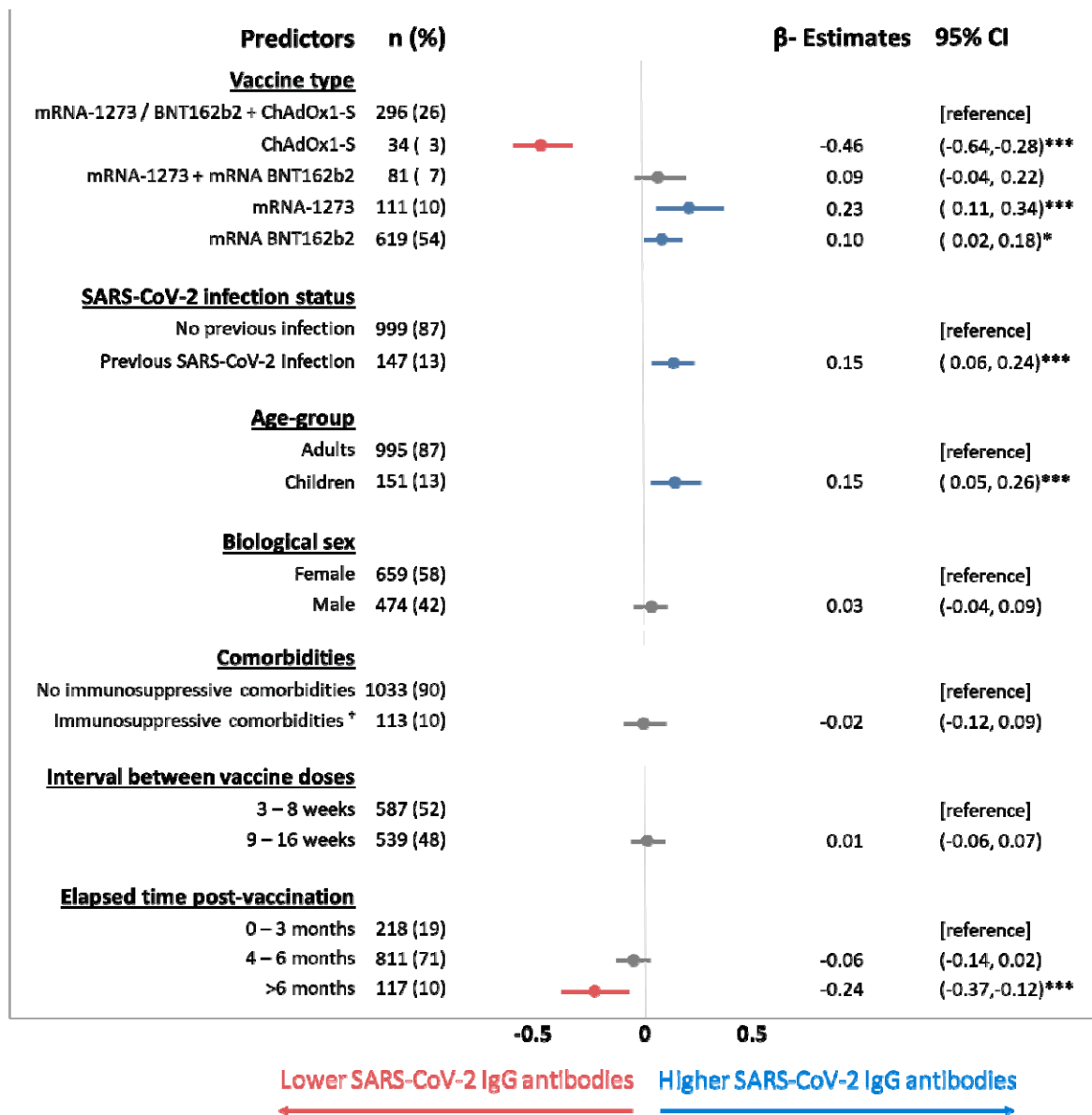


Figure 6. Predictors of anti-spike SARS-CoV-2 IgG antibody levels following two COVID-19 vaccine doses in the CHILD Cohort (n=1082). Cross-sectional serology data from dried blood spots collected between March 2021 and January 2022. Multivariable linear regression p-values *** ≤ 0.001 , ** ≤ 0.01 , * ≤ 0.05 . † Immunosuppressive comorbidities include current diagnosis of cancer, diabetes, pneumonia, and severe obesity.

Tables

Table 1. Baseline demographic characteristics of CHILD COVID-19 Study participants: overall and restricted to those with two vaccine doses prior to serologic testing.

Characteristics	Double vaccinated serology sub-cohort N=1146	Total CHILD COVID-19 Study cohort N=5378
Age group (participants, n)	1146	5378
Children (9-17 years)	151 (13)	2802 (52)
Adults (18- 77 years)	995 (87)	2576 (48)
Study site at initial CHILD enrolment in 2009-12 (participants, n)	1146	5378
Vancouver	333 (29)	1468 (27)
Edmonton	217 (19)	915 (17)
Manitoba	352 (31)	1800 (33)
Toronto	244 (21)	1195 (22)
Biological sex¹ (participants, n)	1133	5323
Female	659 (58)	2818 (53)
Male	474 (42)	2505 (47)
Ancestry (participants, n)	1146	5340
Europe	688 (60)	1651 (36)
UK (England, Ireland, Scotland, Wales)	654 (57)	1201 (26)
Asia or Polynesia	164 (14)	678 (14)
North America (not First Nations)	101 (9)	518 (11)
First Nations	51 (5)	284 (6)
Central or South America	22 (2)	151 (3)
Africa	14 (1)	104 (2)
Middle East	7 (1)	79 (2)
Australia or New Zealand	4 (0)	51 (1)
Comorbidities² (participants, n)	1146	4576
Non-immunosuppressive medical conditions		
Allergies	255 (22)	842 (18)
Anxiety	144 (13)	490 (11)
Asthma/wheeze	86 (8)	296 (7)
Depression	76 (7)	224 (5)
Attention deficit disorder	34 (3)	228 (5)
Immunosuppressive medical conditions		
Arthritis	40 (4)	110 (2)
Immune disorder	24 (2)	66 (1)
Diabetes (non-insulin dependent)	19 (2)	41 (1)
Severe obesity (BMI \geq 40)	18 (2)	91 (2)
Educational attainment (adults, n)	978	2172
High school or less	53 (5)	182 (9)
Postsecondary certificate / diploma	189 (19)	502 (23)
Bachelor's degree	428 (44)	897 (41)
Graduate degree	308 (32)	591 (27)
Educational attainment (children, n)³	151	2280
Elementary	85 (56)	1841 (80)
Junior High	42 (28)	170 (7)
High School	16 (11)	57 (3)
Occupation type (adults, n)	912	2018
Essential worker in household ⁴	413 (45)	879 (44)
Other occupation	499 (55)	1139 (56)

¹Participants with non-binary or undisclosed current biological sex were excluded from the analysis (n= 13). ²A full list of comorbidities is provided in the supplement (values do not add to 100% because participants could select multiple responses). ³Other education attainment for younger participants not in school are not shown. ⁴Healthcare, delivery worker, store worker, security, building maintenance. Values are n (%).

Table 2. Vaccine types and time intervals among double-vaccinated participants.

Combination for both vaccine doses	Adults N=995	Children N=151
Vaccine combination, n (%)		
mRNA BNT162b2 (Pfizer BioNTech)	470 (47)	149 (99)
mRNA-1273 / BNT162b2 + ChAdOx1-S	296 (30)	0 (0)
mRNA-1273 (Moderna)	111 (11)	0 (0)
mRNA-1273 + BNT162b2	80 (8)	1 (1)
ChAdOx1-S (Oxford-AstraZeneca)	34 (4)	0 (0)
Days between first and second dose, median (IQR)	57 (41-65)	45 (33-54)
Days since second dose, mean \pm standard deviation	133 \pm 55	103 \pm 37

IQR, interquartile range.

Table 3. SARS-CoV-2 infection prevalence among double vaccinated participants, by age group and sex.

Double-vaccinated participants	Prior SARS-CoV-2 infection, n (%)	Chi-square <i>p</i>-value
Age-group, n (%)		
Children	9/151 (6.0)	0.01
Adults	138/995 (13.9)	
Biological sex¹, n (%)		
Female	90/659 (15.0)	0.47
Male	57/474 (12.6)	

Values are n (%) for non-missing data for each variable. ¹Participants with non-binary or undisclosed current biological sexes were excluded from the analysis due to low statistical power (n= 13).

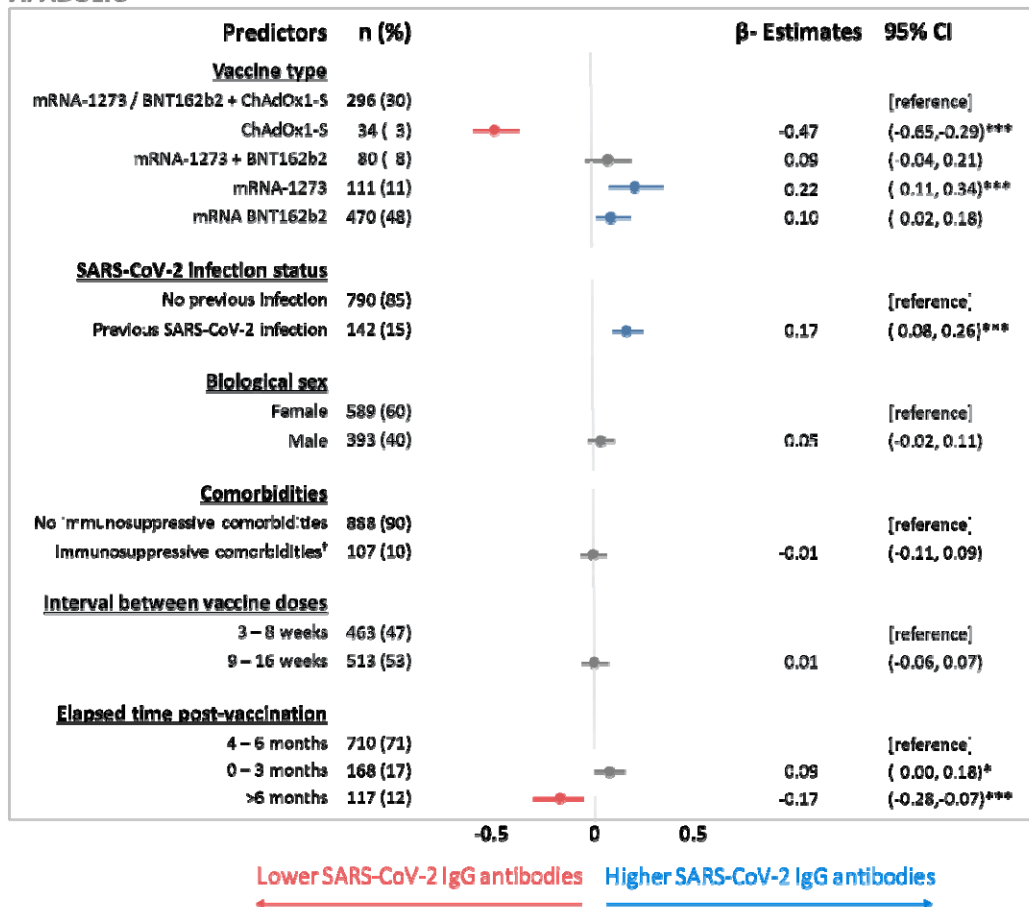
Supplementary Material

Table S1. Underlying medical conditions reported by double-vaccinated participants.

	Adults	Children
Medical condition, n (%)	995 (87)	151 (13)
Non-immunosuppressive conditions		
Allergies	219 (22)	34 (22)
Anxiety	121 (12)	17 (11)
Asthma/wheeze	73 (7)	13 (8)
Depression	69 (7)	4 (3)
Migraine headaches	62 (6)	3 (2)
Blood pressure, high	61 (6)	2 (1)
Chronic heartburn/reflux	50 (5)	1 (1)
Anemia (low blood count)	40 (4)	1 (1)
Irritable bowel syndrome	32 (3)	0 (0)
Cholesterol, high	31 (3)	0 (0)
Serious acne/skin problem	24 (2)	0 (0)
Attention deficit disorder (ADD,ADHD)	17 (2)	17 (11)
Urinary infections, recurrent	9 (1)	0 (0)
Learning disorder	5 (1)	6 (4)
Autism	4 (0)	6 (4)
Bronchitis	4 (0)	0 (0)
Heart disease	4 (0)	0 (0)
Osteoporosis	4 (0)	0 (0)
Behaviour problems	3 (0)	5 (3)
Bipolar disorder	2 (0)	0 (0)
Epilepsy	2 (0)	0 (0)
Croup	1 (0)	2 (1)
Stroke	1 (0)	0 (0)
Substance abuse (excluding alcohol)	1 (0)	0 (0)
Immunosuppressive conditions[†]		
Arthritis	40 (4)	0 (0)
Immune disorder	21 (2)	2 (1)
Diabetes (non-insulin dependent)	19 (2)	0 (0)
Severe Obesity (BMI ≥40)	16 (2)	2 (1)
Inflammatory bowel diseases	15 (2)	0 (0)
Cancer	8 (1)	0 (0)
Kidney disease (including kidney stones)	5 (1)	1 (1)
Diabetes (insulin dependent)	1 (0)	1 (1)
Pneumonia	1 (0)	0 (0)
One or more immunosuppressive condition	107 (11)	6 (4)
No medical condition	169 (17)	50 (33)

[†] Classified as immunosuppressive medical conditions or medical conditions requiring immunosuppressive therapy.

A. ADULTS



B. CHILDREN

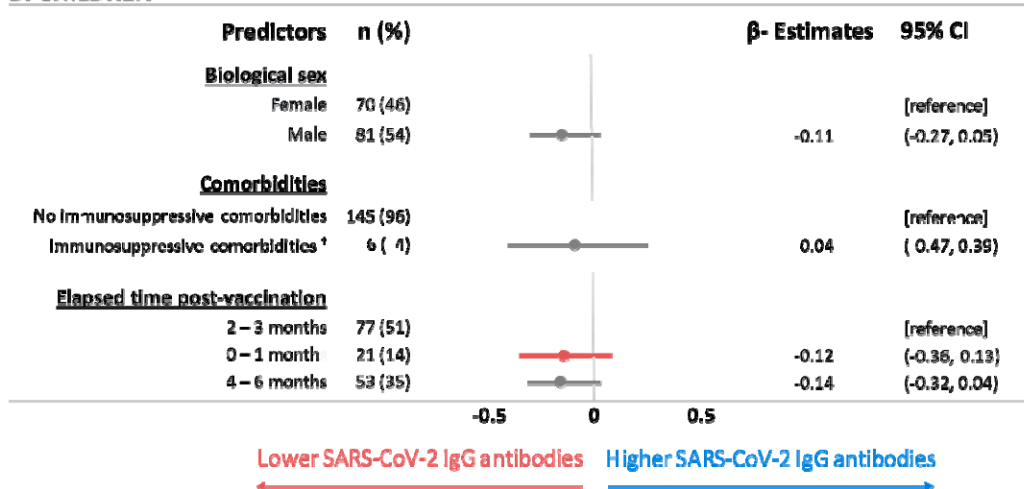


Figure S1. Multivariable linear regression: predictors of anti-spike IgG antibody levels following two COVID-19 vaccine doses in 932 adults (A) and 153 children (B). Cross-sectional serology data from dried blood spots collected between March 2021 and January 2022. p -value *** \leq 0.001, ** \leq 0.01, * \leq 0.05. [†]Immunosuppressive comorbidities include current diagnosis of cancer, diabetes, pneumonia, and severe obesity.

References

1. Coronavirus disease (COVID-19): Vaccines [Internet]. Available from: [https://www.who.int/news-room/questions-and-answers/item/coronavirus-disease-\(covid-19\)-vaccines](https://www.who.int/news-room/questions-and-answers/item/coronavirus-disease-(covid-19)-vaccines)
2. Johansson MA, Quandelacy TM, Kada S, Prasad PV, Steele M, Brooks JT, et al. SARS-CoV-2 Transmission From People Without COVID-19 Symptoms. *JAMA Netw Open*. 2021 Jan 4;4(1):e2035057–e2035057. Available from: <https://jamanetwork.com/uml.idm.oclc.org/journals/jamanetworkopen/fullarticle/2774707>
3. Kumar R, Burns EA. Age-related decline in immunity: implications for vaccine responsiveness. <https://doi.org/10.1586/1476058474467>. 2014 May;7(4):467–79. Available from: <https://www.tandfonline.com/doi/abs/10.1586/14760584.7.4.467>
4. Terpos E, Trougakos IP, Apostolakou F, Charitaki I, Sklirou AD, Mavrianou N, et al. Age-dependent and gender-dependent antibody responses against SARS-CoV-2 in health workers and octogenarians after vaccination with the BNT162b2 mRNA vaccine. *Am J Hematol*. 2021 Jul 7;96(7):E257. Available from: [/pmc/articles/PMC8250071/](https://pubmed.ncbi.nlm.nih.gov/34459863/)
5. Ebinger JE, Fert-Bober J, Printsev I, Wu M, Sun N, Prostko JC, et al. Antibody responses to the BNT162b2 mRNA vaccine in individuals previously infected with SARS-CoV-2. *Nat Med*. 2021 Jun 1;27(6):981. Available from: [/pmc/articles/PMC8205849/](https://pubmed.ncbi.nlm.nih.gov/34459863/)
6. Buonfrate D, Piubelli C, Gobbi F, Martini D, Bertoli G, Ursini T, et al. Antibody response induced by the BNT162b2 mRNA COVID-19 vaccine in a cohort of health-care workers, with or without prior SARS-CoV-2 infection: a prospective study. *Clinical Microbiology and Infection*. 2021 Dec 1;27(12):1845. Available from: [/pmc/articles/PMC8316640/](https://pubmed.ncbi.nlm.nih.gov/34459863/)
7. Sheikh A, McMenamin J, Taylor B, Robertson C. SARS-CoV-2 Delta VOC in Scotland: demographics, risk of hospital admission, and vaccine effectiveness. *Lancet*. 2021 Jun 26;397(10293):2461. Available from: [/pmc/articles/PMC8201647/](https://pubmed.ncbi.nlm.nih.gov/34459863/)
8. Azeez R, Lotoski L, Dubeau A, Rodriguez N, Reyna ME, Freitas T, et al. Investigating SARS-CoV-2 infection and the health and psychosocial impact of the COVID-19 pandemic in the Canadian CHILD Cohort: study methodology and cohort profile. *medRxiv*. 2022 Oct 21;2022.10.19.22281242. Available from: <https://www.medrxiv.org/content/10.1101/2022.10.19.22281242v1>
9. Harris PA, Taylor R, Thielke R, Payne J, Gonzalez N, Conde JG. Research electronic data capture (REDCap)-A metadata-driven methodology and workflow process for providing translational research informatics support. *J Biomed Inform*. 2009 Apr;42(2):377–81.
10. Harris PA, Taylor R, Minor BL, Elliott V, Fernandez M, O’Neal L, et al. The REDCap consortium: Building an international community of software platform partners. *J Biomed Inform*. 2019 Jul 1;95.
11. Steensels D, Pierlet N, Penders J, Mesotten D, Heylen L. Comparison of SARS-CoV-2 Antibody Response Following Vaccination With BNT162b2 and mRNA-1273. *JAMA*. 2021 Oct 19;326(15):1533–5. Available from: <https://pubmed.ncbi.nlm.nih.gov/34459863/>
12. Turgeon CT, Sanders KA, Rinaldo P, Granger D, Hilgart H, Matern D, et al. Validation of a multiplex flow immunoassay for detection of IgG antibodies against SARS-CoV-2 in dried blood spots. *PLoS One*. 2021 May 1;16.
13. Weisser H, Steinhagen K, Höcker R, Borchardt-Lohölter V, Anvari Ö, Kern PM. Evaluation of dried blood spots as alternative sampling material for serological detection of anti-SARS-CoV-2 antibodies

- using established ELISAs. *Clin Chem Lab Med*. 2021 Apr 1;59(5):979–85. Available from: <https://pubmed.ncbi.nlm.nih.gov/33554537/>
14. Colwill K, Galipeau Y, Stuible M, Gervais C, Arnold C, Rathod B, et al. A scalable serology solution for profiling humoral immune responses to SARS-CoV-2 infection and vaccination. *Clin Transl Immunology*. 2022 Jan 1;11(3):e1380. Available from: <https://onlinelibrary-wiley-com.uml.idm.oclc.org/doi/full/10.1002/cti2.1380>
 15. Cleveland WS. Robust Locally Weighted Regression and Smoothing Scatterplots. *J Am Stat Assoc*. 1979 Dec 1;74(368):829–36. Available from: <https://www.scienceopen.com/document?vid=bd7dffe1-bb13-4d7a-9a50-b67949f5f029>
 16. Hui DS. Hybrid immunity and strategies for COVID-19 vaccination. *Lancet Infect Dis*. 2022 Sep;0(0). Available from: <http://www.thelancet.com.uml.idm.oclc.org/article/S1473309922006405/fulltext>
 17. Jabal KA, Ben-Amram H, Beiruti K, Batheesh Y, Sussan C, Zarka S, et al. Impact of age, ethnicity, sex and prior infection status on immunogenicity following a single dose of the BNT162b2 mRNA COVID-19 vaccine: Real-world evidence from healthcare workers, Israel, December 2020 to January 2021. *Eurosurveillance*. 2021 Feb 1;26(6):2100096. Available from: <https://www.eurosurveillance.org/content/10.2807/1560-7917.ES.2021.26.6.2100096>
 18. Cervia C, Nilsson J, Zurbuchen Y, Valaperti A, Schreiner J, Wolfensberger A, et al. Systemic and mucosal antibody responses specific to SARS-CoV-2 during mild versus severe COVID-19. *J Allergy Clin Immunol*. 2021 Feb 1;147(2):545-557.e9. Available from: <https://pubmed.ncbi.nlm.nih.gov/33221383/>
 19. Sterlin D, Mathian A, Miyara M, Mohr A, Anna F, Claër L, et al. IgA dominates the early neutralizing antibody response to SARS-CoV-2. *Sci Transl Med*. 2021 Jan 1;13(577):2223. Available from: [/pmc/articles/PMC7857408/](https://pubmed.ncbi.nlm.nih.gov/33221383/)
 20. Dan JM, Mateus J, Kato Y, Hastie KM, Yu ED, Faliti CE, et al. Immunological memory to SARS-CoV-2 assessed for up to 8 months after infection. *Science* (1979). 2021 Feb 5;371(6529). Available from: <https://www-science-org.uml.idm.oclc.org/doi/10.1126/science.abf4063>
 21. Mubarak A, Almutairi S, Al-Dhabbah AD, Aldabas SY, Bhat R, Alqoufail MM, et al. Durability of SARS-CoV-2 Specific IgG Antibody Responses Following Two Doses of Match and Mixed COVID-19 Vaccines Regimens in Saudi Population. *Infect Drug Resist*. 2022;15:3791–800. Available from: <https://pubmed.ncbi.nlm.nih.gov/35875613/>
 22. Goel RR, Apostolidis SA, Painter MM, Mathew D, Pattekar A, Kuthuru O, et al. Distinct antibody and memory B cell responses in SARS-CoV-2 naïve and recovered individuals following mRNA vaccination. *Sci Immunol*. 2021 Apr 4;6(58):1–19. Available from: [/pmc/articles/PMC8158969/](https://pubmed.ncbi.nlm.nih.gov/35875613/)
 23. Naaber P, Tserel L, Kangro K, Sepp E, Jürjenson V, Adamson A, et al. Dynamics of antibody response to BNT162b2 vaccine after six months: a longitudinal prospective study. *The Lancet Regional Health - Europe*. 2021 Nov 1;10:100208. Available from: [/pmc/articles/PMC8418937/](https://pubmed.ncbi.nlm.nih.gov/35875613/)
 24. Grzelak L, Velay A, Madec Y, Gallais F, Staropoli I, Schmidt-Mutter C, et al. Sex Differences in the Evolution of Neutralizing Antibodies to Severe Acute Respiratory Syndrome Coronavirus 2. *J Infect Dis*. 2021 Sep 15;224(6):983–8. Available from: <https://pubmed.ncbi.nlm.nih.gov/33693749/>
 25. Majcherek M, Matkowska-Kocjan A, Szymczak D, Karasek M, Szeremet A, Kiraga A, et al. Two Doses of BNT162b2 mRNA Vaccine in Patients after Hematopoietic Stem Cell Transplantation: Humoral

- Response and Serological Conversion Predictors. *Cancers (Basel)*. 2022 Jan 1;14(2). Available from: <https://pubmed.ncbi.nlm.nih.gov/35053487/>
26. Brlić PK, Pavletić M, Lerga M, Krstanović F, Matešić MP, Miklić K, et al. SARS-CoV-2 Spike and Nucleocapsid Antibody Response in Vaccinated Croatian Healthcare Workers and Infected Hospitalized Patients: A Single Center Cohort Study. *Viruses*. 2022 Sep 1;14(9):1966. Available from: <https://www.mdpi.com/1999-4915/14/9/1966/htm>
 27. Hillus D, Schwarz T, Tober-Lau P, Hastor H, Thibeault C, Kasper S, et al. Safety, reactogenicity, and immunogenicity of homologous and heterologous prime-boost immunisation with ChAdOx1-nCoV19 and BNT162b2: a prospective cohort study. *medRxiv*. 2021 Jun 2;2021.05.19.21257334. Available from: <https://www.medrxiv.org/content/10.1101/2021.05.19.21257334v2>
 28. Lewis D. Mix-and-match COVID vaccines: the case is growing, but questions remain. *Nature*. 2021 Jul 1;595(7867):344–5. Available from: <https://pubmed.ncbi.nlm.nih.gov/34211168/>
 29. Borobia AM, Carcas AJ, Pérez-Olmeda M, Castaño L, Bertran MJ, García-Pérez J, et al. Immunogenicity and reactogenicity of BNT162b2 booster in ChAdOx1-S-primed participants (CombiVacS): a multicentre, open-label, randomised, controlled, phase 2 trial. *The Lancet*. 2021 Jul 10;398(10295):121–30. Available from: <http://www.thelancet.com.uml.idm.oclc.org/article/S0140673621014203/fulltext>
 30. van den Hoogen LL, Verheul MK, Vos ERA, van Hagen CCE, van Boven M, Wong D, et al. SARS-CoV-2 Spike S1-specific IgG kinetic profiles following mRNA or vector-based vaccination in the general Dutch population show distinct kinetics. *Sci Rep*. 2022 Dec 1;12(1).
 31. COVID-19 Vaccine Booster Recommendations.