

1 Title: The Impact of Social Determinants of Health and Lifestyle on the Association of Lipoprotein(a)  
2 with Myocardial Infarction and Stroke

3  
4 Authors: Eric J. Brandt MD, MHS<sup>1,2</sup>; Matthias Kirch, MS<sup>1</sup>; Nimai Patel, MD<sup>3</sup>; Chaitanya Chennareddy,  
5 BS<sup>4</sup>; Venkatesh L. Murthy, MD, PhD<sup>2,5</sup>; Sascha N. Goonewardena, MD, PhD<sup>2</sup>

6  
7 Affiliations

8 <sup>1</sup> Institute for Healthcare Policy and Innovation, University of Michigan, Ann Arbor, MI

9 <sup>2</sup> Division of Cardiovascular Medicine, Department of Internal Medicine, University of Michigan, Ann  
10 Arbor, MI

11 <sup>3</sup> Division of Cardiovascular Medicine, Department of Internal Medicine, The University of Texas Health  
12 Science Center at Houston, Houston, TX

13 <sup>4</sup> Case Western Reserve University School of Medicine, Cleveland, OH

14 <sup>5</sup> Divisions of Nuclear Medicine and Cardiothoracic Imaging, Department of Radiology, University of  
15 Michigan, Ann Arbor, MI

16

17 Corresponding Author and Reprint Contact

18 Eric J Brandt, MD, MHS

19 24 Frank Lloyd Wright Dr, Lobby A, Ann Arbor, MI 48106, USA

20 Telephone: +1 586 215 4404; Fax: n/a

21 Email: EricJBrandtMD@gmail.com

22 Twitter: @DrEJBMD

23

24 Word count (text): 3096

25 Word count (abstract): 315

26 **Abstract**

27 **Background:** In European cohorts, a higher Mediterranean diet or Life's Simple 7 (LS7) score abolished  
28 or attenuated the risk associated with increasing Lipoprotein(a) [Lp(a)] on cardiovascular outcomes. This  
29 is unstudied in US cohorts. The impact of social determinants of health (SDOH) on the association of  
30 Lp(a) with cardiovascular outcomes remains unstudied. We sought to test if a SDOH score and LS7 score  
31 impacts the association of Lp(a) with myocardial infarction (MI) or stroke.

32 **Methods:** Observational Cohort of US Adults from the Atherosclerosis Risk in Communities (ARIC) and  
33 Multi-Ethnic Study of Atherosclerosis (MESA) cohorts. We performed sequential multivariable Cox  
34 proportional hazard analysis, first adjusting for age, gender, non-HDL-C, race and ethnicity, then added  
35 SDOH and LS7 scores sequentially. The primary outcomes were time until first fatal or nonfatal MI or  
36 stroke.

37 **Results:** ARIC (n=15,072; median Lp(a)=17.3 mg/dL) had 16.2 years average follow up. MESA  
38 (n=6,822; median Lp(a)=18.3 mg/dL) had 12.3 years average follow-up. In multivariable analyses  
39 adjusted for age, gender, race and ethnicity, and non-HDL-C, Lp(a) was associated (HR, p-value) with MI  
40 in ARIC (1.10, <0.001) and MESA (1.09, <0.001), and stroke in ARIC (1.08, <0.001) but not MESA  
41 (0.97, 0.50). With SDOH and LS7 added to the model associations remained similar (association of Lp(a)  
42 with MI in ARIC 1.09, <0.001 and in MESA 1.10, 0.001, with stroke in ARIC 1.06, <0.003 and in MESA  
43 0.96, 0.39). In models with all covariates, each additional SDOH correlated positively with MI (ARIC  
44 1.13, <0.001; MESA 1.11, <0.001) and stroke (ARIC 1.17, <0.001; HR 1.07, p=0.11) and each additional  
45 LS7 score point correlated negatively with MI (ARIC 0.81, <0.001; MESA 0.84, <0.001) and stroke  
46 (ARIC 0.82, <0.001; MESA 0.84, <0.001).

47 **Conclusions and Relevance:** SDOH and lifestyle factors were predictors for MI and stroke that did not  
48 impact the association between Lp(a) and cardiovascular events. Our findings support that Lp(a) is an  
49 independent risk factor for MI and possibly stroke.

50 **Keywords:** Lipoprotein(a), lifestyle, social determinants of health, acute myocardial infarction, stroke

## 51 **Introduction**

52 Lipoprotein(a) (Lp(a)) is an independent risk factor for the development of atherosclerotic  
53 cardiovascular diseases (ASCVD).<sup>1</sup> Aside from apheresis, there are no clinically available therapies that  
54 specifically target lowering of Lp(a), although agents are being developed (e.g., pelacarsen, olpasiran,  
55 etc.) and other FDA-approved therapies (e.g., PCSK9 inhibitors and Niacin) have small impacts on Lp(a)  
56 levels. While awaiting therapeutic agents, patients with elevated Lp(a) can lower their risk for ASCVD  
57 with statins and other lipids lowering therapies.<sup>1</sup> Additionally, lifestyle and social determinants of health  
58 (SDOH) have large impacts on cardiovascular outcomes and can be targets for risk modification.<sup>2,3</sup>

59 Findings from two European cohorts suggest that a healthy lifestyle can decrease the risk for  
60 ASCVD among those with elevated Lp(a). In the EPIC-Norfolk cohort (n=14,051 men and women from  
61 Norfolk, UK), those in the top versus the bottom tertile of Life's Simple 7 (LS7) score and Lp(a)  $\geq 50$   
62 mg/dL had a hazard ratio (HR) of 0.33 (95% CI, 0.17-0.63) for death from coronary heart disease or  
63 stroke.<sup>4</sup> The risk of elevated Lp(a) was not completely abolished since those with Lp(a)  $< 50$  mg/dL in the  
64 top tertile of LS7 score had a HR of 0.17 (95% CI 0.12-0.31). Second, in the ATTICA study (n=3,042  
65 Greek men and women) without ASCVD, a higher Mediterranean diet score did not influence Lp(a)  
66 levels, but did abolish (HR 1.00, 95%CI 0.98-1.01) the risk associated with Lp(a) for having an ASCVD  
67 event.<sup>5</sup>

68 SDOH are the conditions in which people are born, live, and work.<sup>6</sup> SDOH are associated with  
69 ASCVD events and may help to explain the differences in cardiovascular risk between different  
70 populations.<sup>7-9</sup> SDOH can impact risk for ASCVD via psychological, behavioral, and biologic  
71 mechanisms, which include chronic stress responses and systemic inflammation.<sup>10</sup> Given that Lp(a) is an  
72 acute phase reactant whose level is mediated by periods of inflammation, it is plausible that SDOH could  
73 impact the association of Lp(a) on risk for CVD events.<sup>11</sup>

74 The impact of lifestyle factors on the association of Lp(a) with cardiovascular events has not been  
75 tested in US cohorts. Further, the impact of SDOH on the association of Lp(a) with cardiovascular  
76 outcomes is untested in any cohorts. We hypothesized that accounting for SDOH and lifestyle factors

77 would greatly mitigate the risk associated with Lp(a) for myocardial infarction (MI) or stroke in US  
78 cohorts.

## 79 **Methods**

### 80 *Data*

81 We performed retrospective analysis of prospectively data from the Atherosclerosis Risk in  
82 Communities (ARIC) and the Multi-Ethnic Study of Atherosclerosis (MESA) cohorts. ARIC and MESA  
83 are prospective, longitudinal investigations into the cardiac risk factors, health outcomes, and  
84 demographic patterning of atherosclerosis. ARIC enrolled men and women aged 35-84 years, beginning  
85 in 1987 from four US communities. MESA enrolled men and women aged 45-64 years, beginning in  
86 2000 from six US communities. Data were obtained via requests to the National Institute of Health's  
87 Biologic Specimen and Data Repository Information Coordinating Center. We used data from the first  
88 examination cycle and cohort surveillance data for cardiovascular events. The study was deemed exempt  
89 from review by the University of Michigan institutional review board.

### 90 *Outcomes*

91 The primary outcomes were time until first fatal or nonfatal MI or stroke. In ARIC, outcomes  
92 were tracked semi-annually through 2006. In MESA, outcomes were tracked annually through 2015.

### 93 *Lipoprotein(a) assays*

94 In ARIC, Lp(a) was measured as protein mass using a double-antibody enzyme-linked  
95 immunosorbent assay technique.<sup>12,13</sup> The protein-mass represents about one-third of the total molecule  
96 mass,<sup>14</sup> thus the Lp(a)-mass measured in ARIC Visit 1 was tripled to be similar to the Lp(a) total-mass  
97 measurement in MESA. This technique, although isoform sensitive, had excellent correlation ( $r=0.88$ )  
98 with samples performed at Visit 4 using an isoform insensitive turbidimetric immunoassay (Denka Seiken  
99 Co. Ltd., Tokyo, Japan).<sup>15</sup> In MESA, Lp(a) was measured from cold storage 10-11 years after sample  
100 collection as mass content using an isoform insensitive latex-enhanced turbidimetric immunoassay  
101 (Denka Seiken, Tokyo, Japan) by Health Diagnostics Laboratory (Richmond, Virginia).<sup>16,17</sup>

102 *Statistical Design and Analysis*

103 We performed sequential multivariable cox proportional hazard analysis. In Model 1, covariates  
104 were age, gender, race and ethnicity, non-HDL-C (per 25 mg/dL increase), and Lp(a) (per 25 mg/dL  
105 increase). Model 2 included a SDOH score: an integer score ranging from zero to five in ARIC and zero  
106 to 11 in MESA. SDOH in ARIC included being unemployed, income <300% of the federal poverty level,  
107 <high school education, no regular site for healthcare access, and government or no health insurance.  
108 SDOH in MESA included these determinants and not being married or living with a partner, not owning a  
109 home, reports of loneliness/lack of social support, unsafe neighborhood residence, experience of  
110 discrimination in the last year, and somewhat or very serious food access problems. Model 3 included the  
111 LS7 score (smoking status, body mass index, physical activity, dietary score, total cholesterol, blood  
112 pressure, and fasting plasma glucose), which has been previously defined.<sup>3</sup> Each category received zero to  
113 two points (range 0-14). Non-HDL-C was calculated by subtracting HDL-C from Total Cholesterol and  
114 corrected for Lp(a) mass (non-HDL-C=Total Cholesterol-HDL-C-(Lp(a)x0.3)).<sup>18</sup> We used interaction  
115 terms to test whether Lp(a) is moderated by SDOH or LS7 scores.

116 To test the proportional hazards assumption we examined log-log plots of survival for parallel  
117 curves in all fully constructed models, which were acceptable for all outcomes. All p-values were two-  
118 sided. Statistical significance was set at  $p < 0.05$ . Data were analyzed using Stata software, version 16  
119 (StataCorp, LLC).

120 *Sensitivity analyses*

121 To understand if correlations between SDOH and LS7 scores could impact outcomes, we tested  
122 whether SDOH or LS7 scores predicted Lp(a) level in age, gender, race and ethnicity, and non-HDL-C  
123 adjusted models.

124 To understand the association between categorical Lp(a) level and cardiovascular outcomes we  
125 use coarsened exact matching to match cases (Lp(a) >50 mg/dL) to controls (Lp(a) <50 mg/dL). In ARIC,  
126 matching covariates were coarsened to age (44-55, or 56-66), non-HDL-C (0-120.0, 120.1-160.0, 160.1-  
127 200.0, 200.1-240.0, and  $\geq 240.1$  mg/dL), SDOH score (0, 1-2, 3-5), and LS7 score (0-4, 5-9, 10-14). Non-

128 coarsened variables included gender and race and ethnicity. In MESA matching covariates were similar  
129 except age (44-57, 57-70, and 70-84) and SDOH score (0-1, 1-3, 3-5, >5). We repeated cox proportional  
130 hazards regression in the same three models as described above except that we consider Lp(a) as a three-  
131 level outcome (<50 mg/dL,  $\geq$ 50 to <100 mg/dL, and  $\geq$ 100 mg/dL).

## 132 **Results**

### 133 *Population Characteristics*

134 In ARIC the mean age was 54 years and in MESA 62 years. Most were female (54.5% in ARIC  
135 and 52.9% in MESA, **Table 1**). The largest race and ethnicity represented was non-Hispanic White  
136 (73.9% in ARIC, 38.5% in MESA), followed by non-Hispanic Black (26.1% in ARIC, 27.8% in MESA),  
137 and only MESA included Chinese (11.8%) and Hispanic (22.0%) individuals. Mean Lp(a) was similar in  
138 both cohorts (30.3 mg/dL in ARIC and 30.1 mg/dL in MESA), whereas non-HDL-C was higher in ARIC  
139 (155 mg/dL) than MESA (134 mg/dL). SDOH scores were lower in ARIC (mean(SD)=1.0(1.1)) than  
140 MESA (mean=2.3(1.7)). Mean(SD) LS7 score was similar in ARIC (7.8(2.3)) and MESA (8.3(2.1)).

### 141 *Lp(a) association with SDOH and LS7 scores*

142 In age, gender, and race and ethnicity adjusted models, SDOH score did not predict Lp(a) level  
143 (increase in mg/dL Lp(a) per SDOH), 95% CI) in either ARIC (0.50 (-0.003, 1.00)) or MESA (0.24 (-  
144 0.27, 0.74)). However, LS7 score did predict lower Lp(a) level in both ARIC (-0.68 (-0.90, -0.45) and  
145 MESA (-0.46, (-0.85, -0.07)).

### 146 *Myocardial Infarction*

147 In all models, Lp(a) (per 25 mg/dL increase) was associated with MI (**Table 2**). The HR (95%  
148 CI) only slightly attenuated after adding SDOH and LS7 into the models (in ARIC from 1.11 (1.08, 1.14)  
149 to 1.09 (1.06, 1.11) and in MESA from 1.11 (1.05, 1.17) to 1.10 (1.04, 1.16)). The association between non-  
150 HDL-C and MI in ARIC (1.16 (1.14, 1.18)) and MESA (1.09 (1.03, 1.05)) was similar when adding  
151 SDOH (1.15 (1.13, 1.17) in ARIC and 1.09 (1.03, 1.15) in MESA), then attenuated substantially once  
152 LS7 score was added in ARIC (1.04 (1.02, 1.06) and nonsignificant in MESA (1.02 (0.96, 1.08)).

153           Among demographic characteristics, there was no change in the association between age and MI  
154 and only a small change in association between gender and MI when adding SDOH and LS7 score (**Table**  
155 **2**). There were changes in the association between race and ethnicity and MI when adding SDOH and  
156 LS7 into the models; the association of identifying as non-Hispanic Black compared to non-Hispanic  
157 White changed in ARIC from 1.34 (1.24, 1.45) to 0.88 (0.80, 0.96) and in MESA from 0.95 (0.78, 1.17)  
158 to 0.72 (0.58, 0.89). For those in MESA identifying as Hispanic, the association shifted from 1.01 (0.82,  
159 1.24) to 0.75 (0.59, 0.94). There was no significant shift for those identifying as non-Hispanic Chinese.  
160 Given the large changes in association we also tested for interactions between race and ethnicity with  
161 SDOH and LS7 scores, all of which were nonsignificant ( $p>0.05$ ).

162           There were no significant interactions between SDOH and Lp(a) on MI in ARIC (HR 1.01,  
163  $p=0.46$ ) or MESA (1.01,  $p=0.68$ ). There was an interaction with a small effect size between LS7 and  
164 Lp(a) on MI in MESA (0.97,  $p=0.03$ ), but not ARIC (1.00,  $p=0.58$ ).

#### 165 *Stroke*

166           Lp(a) associated with stroke in ARIC, but not in MESA (**Table 3**). In ARIC, the association with  
167 stroke (HR (95% CI)) only slightly declined from 1.08 (1.05, 1.12) to 1.06 (1.02, 1.09) when including  
168 SDOH and LS7 scores. The association between non-HDL-C and stroke in ARIC (1.09 (1.06, 1.11)) and  
169 MESA (1.10 (1.01, 1.19)) decreased slightly when adding SDOH (1.08 (1.05, 1.11) in ARIC and 1.10  
170 (1.02, 1.19) in MESA), then became non-significant once LS7 score was added (0.98 (0.95, 1.01) in  
171 ARIC and 1.03 (0.94, 1.12) in MESA).

172           Among demographic characteristics, there was no change in association between age and stroke  
173 and only a slight shift between gender and stroke when adding SDOH and LS7 score to the models  
174 (**Table 3**). Again there were shifts in associations for race and ethnicity and stroke; identifying as non-  
175 Hispanic Black compared to non-Hispanic White changed when adding SDOH and LS7 scores to the  
176 models in ARIC from HR 1.96 (1.77, 2.18) to 1.24 (1.10, 1.40) and in MESA from 1.43 (1.06, 1.95) to  
177 1.12 (0.82, 1.54). For those in MESA identifying as Hispanic, the association also shifted from 1.53 (1.14,  
178 2.06) to 1.20 (0.87, 1.66). There was no significant shift for those identifying as non-Hispanic Chinese.

179 Given the large changes in association we also tested for interactions between race and ethnicity with  
180 SDOH and LS7 scores, all of which were nonsignificant ( $p>0.05$ ).

181 There were no significant interactions between SDOH and Lp(a) on stroke in ARIC (HR 1.01,  
182  $p=0.38$ ) or MESA (1.01, 0.67) nor between LS7 and Lp(a) on stroke in ARIC (0.99, 0.40) or MESA  
183 (0.98, 0.36).

#### 184 *Coarsened Exact Matching*

185 In ARIC, there were 214 (1.9% of those with Lp(a)  $<50$  mg/dL) individuals unmatched with  
186 Lp(a)  $<50$  mg/dL and 535 (14.8%) with Lp(a)  $\geq 50$  mg/dL. In MESA, there were 1004 (18.7%)  
187 individuals unmatched with Lp(a)  $<50$  mg/dL and 146 (10.0%) with Lp(a)  $>50$  mg/dL. In ARIC, weight  
188 cases were similar to weighted controls in all factors except for Lp(a) (81.3 mg/dL vs 19.4 mg/dL,  
189  $p<0.001$ ) (**Table 4**). In MESA, cases were similar to controls except for non-HDL-C (122.7 mg/dL vs  
190 125.8 mg/dL,  $p=0.005$ ) and Lp(a) (86.0 mg/dL vs 18.8 mg/dL,  $p<0.001$ ).

191 In fully adjusted models that included SDOH score and LS7 score, Lp(a)  $\geq 50$  mg/dL to  $<100$   
192 mg/dL was associated with MI in ARIC (HR 1.13,  $p<0.001$ ) and MESA (1.12, 0.12) (**Figure 1**). Lp(a)  
193  $\geq 100$  mg/dL was also associated with MI in ARIC (1.44,  $p<0.001$ ) and MESA (1.57, 0.007). Associations  
194 between other covariates and MI were similar, including similar shifts in association between race and  
195 ethnicity with MI after adding SDOH and LS7 scores to the model (**Table 5**).

196 In fully adjusted models that included SDOH score and LS7 score, Lp(a)  $>50$  mg/dL to  $<100$   
197 mg/dL was associated with stroke in ARIC (1.17, 0.01), but not in MESA (1.18, 0.31) (**Figure 1**). Lp(a)  
198  $>100$  mg/dL was also associated with stroke in ARIC (1.26, 0.02), but not in MESA (0.77, 0.43).

199 Associations between other covariates and MI were similar, including similar shifts in association  
200 between race and ethnicity with stroke after adding SDOH and LS7 scores to the model (**Table 6**).

#### 201 **Discussion**

202 In this observational study of two well-characterized, multi-center US cohorts, Lp(a) was  
203 associated with MI in both cohorts and stroke in ARIC but not MESA. Accounting for SDOH and  
204 lifestyle factors did not attenuate the association between Lp(a) and MI or stroke. However, lifestyle



205 factors and SDOH were strong predictors of MI or stroke. The large impact of adding SDOH and LS7  
206 scores on the association between race and ethnicity and non-HDL-C with cardiovascular events suggests  
207 that SDOH and LS7 may mediate these associations.

208         Based on the results of two prior studies,<sup>4,5</sup> we expected that social and lifestyle factors would  
209 mediate the risk for ASCVD events related to Lp(a). However, this was not the case since the risk  
210 associated with Lp(a) on MI and stroke did not change when accounting for LS7 or SDOH scores. This  
211 differed from the ATTICA study since the addition of a Mediterranean diet score led to an abolishment of  
212 the risk from Lp(a). This was more similar to the EPIC-Norfolk study wherein despite better lifestyle  
213 associated with lower risk but did not abolish the risk among those with elevated Lp(a). Social and  
214 lifestyle factors also unlikely moderate the effect of Lp(a) on outcomes since interaction terms were not  
215 sufficiently compelling. This was similar to EPIC-Norfolk since interaction tests were also insignificant  
216 in this cohort,<sup>4</sup> but differed from ATTICA wherein an interaction between Mediterranean diet score and  
217 Lp(a) was significant ( $p < 0.001$ ).<sup>5</sup>

218         Lp(a) is an acute phase reactant that may increase in times of inflammation. The chronic stressors  
219 from SDOH could have been expected to impact Lp(a) levels.<sup>11</sup> However, we did not observe that SDOH  
220 score correlated with Lp(a) levels. There was however an observed, albeit small impact of LS7 score on  
221 Lp(a) levels, which is likely not clinically relevant. This could be because LS7 points are given for lower  
222 cholesterol levels, thus there could be collinearity (although post-hoc testing (not shown) did not reveal  
223 high collinearity between LS7 or non-HDL-C and Lp(a)). Also, bariatric surgery or lower BMI has  
224 correlated in some studies with lower Lp(a) level,<sup>19,20</sup> although this observation is inconsistent.<sup>21,22</sup> Lastly,  
225 increased healthy lifestyle may could have anti-inflammatory impacts that could impact Lp(a) level.<sup>23</sup>

226         Even after accounting for many factors, Lp(a) remained associated with MI. This was observed  
227 when tested as a linear association and again after matching cases to controls based on Lp(a) as a  
228 categorical variable. Our matching analysis achieved excellent balance between cases and controls, with  
229 the only unbalanced factors as non-HDL-C, which differed by 3 mg/dL and we do not expect to account  
230 for a large difference in associated outcomes. In this matching analysis our results were consistent with

231 prior studies,<sup>1</sup> Lp(a)  $\geq 50$  mg/dL had a moderate effect size on risk for MI, which was higher at levels  
232  $\geq 100$  mg/dL. This was similar between cohorts. In a meta-analysis of studies, an Lp(a) of 48 mg/dL had a  
233 HR of about 1.1-1.2 and a level of 96 mg/dL or above a HR of about 1.3.<sup>24</sup> Increased risk at level of  $\geq 50$   
234 mg/dL then  $\geq 100$  mg/dL were less consistent in the context of stroke wherein Lp(a) is associated with  
235 stroke in ARIC but not MESA. Similar to MI in ARIC there was a stepwise increase in effect size at  
236 higher Lp(a) levels, which was a lower effect size than that observed in MI. However, the associations in  
237 MESA were absent. Prior studies testing the association between Lp(a) and stroke have been variable,  
238 with one meta-analysis suggesting that the impact of Lp(a) on increased risk for stroke may be more  
239 likely among cohort  $\leq 55$  years old.<sup>25</sup>

240 Our study has important clinical implications in the context that both SDOH and LS7 were  
241 consistent predictors of ASCVD. This consistency suggests that SDOH and lifestyle factors should  
242 continue to be the focus of clinicians. Health systems should continue to increase screening for SDOH  
243 and create pathways for managing SDOH when they are identified.<sup>2,26,27</sup>

244 There are also implications surrounding the observation that when SDOH and LS7 were added to  
245 the model, these mediated the association of other covariates. The associations between non-Hispanic  
246 Black or Hispanic participants and CVD events decreased or inverted as SDOH and LS7 were added to  
247 the models. This suggests that non-Hispanic Black or Hispanic participants' SDOH and LS7 scores were  
248 confounding associations as mediators between race and ethnicity with MI or stroke. Addressing SDOH  
249 and lifestyle factors can therefore be seen as a chance for healthy equity in managing risk for  
250 ASCVD.<sup>2,26,28</sup> Future studies looking at associations between race and ethnicity and events should  
251 recognize our observations and that differences across race and ethnicity are driven by non-biologic  
252 factors (e.g., structural inequities).<sup>8,29,30</sup>

253 Lastly, when SDOH and lifestyle factors were included in the models, the effect size for the  
254 association between non-HDL-C and outcomes was reduced or eliminated. The largest shift occurred  
255 when the LS7 score was added to the model. This suggests that some of the association between  
256 atherogenic lipids and risk for ASCVD is driven by lifestyle factors. The LS7 score includes a lipid

257 component, thus there could be collinearity of variables in the model. Lastly, the effect size of non-HDL-  
258 C on outcomes could have been reduced in the context that we were unable to track therapies introduced  
259 over time. If those with higher non-HDL-C were more likely to be treated with lipid lowering therapies  
260 then this could confound this association.

#### 261 *Strengths*

262 A strength of this study is that we used two large cohorts with long follow up periods and many  
263 of the observations were similar between cohorts. Additionally we used multiple methods and yielded  
264 similar results, including matching cases of Lp(a)  $\geq 50$  mg/dL to controls that were similar on many  
265 factors.

#### 266 *Limitations*

267 Our study has limitations. There may be additional SDOH that were not measured in either  
268 cohort. Several of the items are self-reported, which could be subject to social desirability bias and  
269 incomplete data collection. Lastly, these data are observational and further work needs to be done to  
270 understand the mechanisms by which SDOH and lifestyle alter the biochemistry of Lp(a).

#### 271 *Conclusions*

272 Our findings support that Lp(a) is an independent risk factor for cardiovascular events and that  
273 this associated risk is not greatly impacted by SDOH or lifestyle factors. In addition, SDOH and lifestyle  
274 factors are strong predictors of ASCVD risk that may explain some of the association between race and  
275 ethnicity or non-HDL-C with MI or stroke. This impact of SDOH and LS7 should be considered when  
276 designing and interpreting observational and clinical studies.

277 Acknowledgements: None

278

279 Sources of Funding: NIH K23MD017253

280

281 Disclosures: EJB reports research funding from the National Institutes of Health (K23MD017253) and the

282 Blue Cross Blue Shield of Michigan Foundation. He has received consulting fees from New Amsterdam

283 Pharmaceuticals. VLM is supported by the Melvyn Rubenfire Professorship in Preventive Cardiology. He

284 serves as principal investigator for grants R01HL136685, R01AG05979, and U01DK123013 from the

285 National Institutes of Health. VLM owns stock in Amgen, Merck, Pfizer, and Eli Lilly. Other authors

286 (MK, BP, CC, SNG) have no disclosures to report.

287   References

- 288   1.   Tsimikas S. A Test in Context: Lipoprotein(a): Diagnosis, Prognosis, Controversies, and Emerging  
289       Therapies. *J Am Coll Cardiol* [Internet]. 2017;69:692–711. Available from:  
290       <http://dx.doi.org/10.1016/j.jacc.2016.11.042>
- 291   2.   Brandt EJ, Tobb K, Cambron JC, Ferdinand K, Douglass P, Nguyen PK, Vijayaraghavan K, Islam S,  
292       Thamman R, Rahman S, Pendyal A, Sareen N, Yong C, Palaniappan L, Ibebuogu U, Tran A,  
293       Bacong AM, Lundberg G, Watson K. Assessing and Addressing Social Determinants of  
294       Cardiovascular Health: JACC State-of-the-Art Review. *J Am Coll Cardiol* [Internet]. 2023;81:1368–  
295       1385. Available from: <http://dx.doi.org/10.1016/j.jacc.2023.01.042>
- 296   3.   Lloyd-Jones DM, Hong Y, Labarthe D, Mozaffarian D, Appel LJ, Van Horn L, Greenlund K,  
297       Daniels S, Nichol G, Tomaselli GF, Arnett DK, Fonarow GC, Ho PM, Lauer MS, Masoudi FA,  
298       Robertson RM, Roger V, Schwamm LH, Sorlie P, Yancy CW, Rosamond WD, American Heart  
299       Association Strategic Planning Task Force and Statistics Committee. Defining and setting national  
300       goals for cardiovascular health promotion and disease reduction: the American Heart Association’s  
301       strategic Impact Goal through 2020 and beyond. *Circulation* [Internet]. 2010;121:586–613.  
302       Available from: <http://dx.doi.org/10.1161/CIRCULATIONAHA.109.192703>
- 303   4.   Perrot N, Verbeek R, Sandhu M, Boekholdt SM, Hovingh GK, Wareham NJ, Khaw KT, Arsenault  
304       BJ. Ideal cardiovascular health influences cardiovascular disease risk associated with high  
305       lipoprotein(a) levels and genotype: The EPIC-Norfolk prospective population study. *Atherosclerosis*  
306       [Internet]. 2017;256:47–52. Available from: <http://dx.doi.org/10.1016/j.atherosclerosis.2016.11.010>
- 307   5.   Foscolou A, Georgousopoulou E, Magriplis E, Naumovski N, Rallidis L, Matalas AL, Chrysohoou  
308       C, Tousoulis D, Pitsavos C, Panagiotakos D. The mediating role of Mediterranean diet on the  
309       association between Lp(a) levels and cardiovascular disease risk: A 10-year follow-up of the

- 310 ATTICA study. *Clin Biochem* [Internet]. 2018;60:33–37. Available from:  
311 <http://dx.doi.org/10.1016/j.clinbiochem.2018.07.011>
- 312 6. Satcher D. Include a social determinants of health approach to reduce health inequities. *Public*  
313 *Health Rep* [Internet]. 2010;125 Suppl 4:6–7. Available from:  
314 <http://dx.doi.org/10.1177/00333549101250s402>
- 315 7. Palacio A, Mansi R, Seo D, Suarez M, Garay S, Medina H, Tang F, Tamariz L. Social determinants  
316 of health score: does it help identify those at higher cardiovascular risk? *Am J Manag Care*  
317 [Internet]. 2020;26:e312–e318. Available from: <http://dx.doi.org/10.37765/ajmc.2020.88504>
- 318 8. Bundy JD, Mills KT, He H, LaVeist TA, Ferdinand KC, Chen J, He J. Social determinants of health  
319 and premature death among adults in the USA from 1999 to 2018: a national cohort study. *Lancet*  
320 *Public Health* [Internet]. 2023;8:e422–e431. Available from: [http://dx.doi.org/10.1016/S2468-](http://dx.doi.org/10.1016/S2468-2667(23)00081-6)  
321 [2667\(23\)00081-6](http://dx.doi.org/10.1016/S2468-2667(23)00081-6)
- 322 9. Teshale AB, Htun HL, Owen A, Gasevic D, Phyo AZZ, Fancourt D, Ryan J, Steptoe A, Freak-Poli  
323 R. The Role of Social Determinants of Health in Cardiovascular Diseases: An Umbrella Review. *J*  
324 *Am Heart Assoc* [Internet]. 2023;12:e029765. Available from:  
325 <http://dx.doi.org/10.1161/JAHA.123.029765>
- 326 10. Havranek EP, Mujahid MS, Barr DA, Blair IV, Cohen MS, Cruz-Flores S, Davey-Smith G,  
327 Dennison-Himmelfarb CR, Lauer MS, Lockwood DW, Rosal M, Yancy CW, American Heart  
328 Association Council on Quality of Care and Outcomes Research, Council on Epidemiology and  
329 Prevention, Council on Cardiovascular and Stroke Nursing, Council on Lifestyle and  
330 Cardiometabolic Health, and Stroke Council. Social Determinants of Risk and Outcomes for  
331 Cardiovascular Disease: A Scientific Statement From the American Heart Association. *Circulation*  
332 [Internet]. 2015;132:873–898. Available from: <http://dx.doi.org/10.1161/CIR.0000000000000228>

- 333 11. Feingold KR, Grunfeld C. The Effect of Inflammation and Infection on Lipids and Lipoproteins  
334 [Internet]. MDText.com, Inc.; 2022 [cited 2023 Jul 11]. Available from:  
335 <https://www.ncbi.nlm.nih.gov/books/NBK326741/>
- 336 12. Gaubatz JW, Heideman C, Gotto AM Jr, Morrisett JD, Dahlen GH. Human plasma lipoprotein [a].  
337 Structural properties. *J Biol Chem* [Internet]. 1983;258:4582–4589. Available from:  
338 <https://www.ncbi.nlm.nih.gov/pubmed/6220008>
- 339 13. Gaubatz JW, Cushing GL, Morrisett JD. Quantitation, isolation, and characterization of human  
340 lipoprotein (a). *Methods Enzymol*. 1986;129:167–186.
- 341 14. Virani SS, Brautbar A, Davis BC, Nambi V, Hoogeveen RC, Sharrett AR, Coresh J, Mosley TH,  
342 Morrisett JD, Catellier DJ, Folsom AR, Boerwinkle E, Ballantyne CM. Associations between  
343 lipoprotein(a) levels and cardiovascular outcomes in black and white subjects: the Atherosclerosis  
344 Risk in Communities (ARIC) Study. *Circulation* [Internet]. 2012;125:241–249. Available from:  
345 <http://dx.doi.org/10.1161/circulationaha.111.045120>
- 346 15. Agarwala A, Pokharel Y, Saeed A, Sun W, Virani SS, Nambi V, Ndumele C, Shahar E, Heiss G,  
347 Boerwinkle E, Konety S, Hoogeveen RC, Ballantyne CM. The association of lipoprotein(a) with  
348 incident heart failure hospitalization: Atherosclerosis Risk in Communities study. *Atherosclerosis*  
349 [Internet]. 2017;262:131–137. Available from:  
350 <http://dx.doi.org/10.1016/j.atherosclerosis.2017.05.014>
- 351 16. Guan W, Cao J, Steffen BT, Post WS, Stein JH, Tattersall MC, Kaufman JD, McConnell JP,  
352 Hoefner DM, Warnick R, Tsai MY. Race is a key variable in assigning lipoprotein(a) cutoff values  
353 for coronary heart disease risk assessment: the Multi-Ethnic Study of Atherosclerosis. *Arterioscler*  
354 *Thromb Vasc Biol* [Internet]. 2015;35:996–1001. Available from:  
355 <http://dx.doi.org/10.1161/atvbaha.114.304785>

- 356 17. Rikhi R, Hammoud A, Ashburn N, Snavelly AC, Michos ED, Chevli P, Tsai MY, Herrington D,  
357 Shapiro MD. Relationship of low-density lipoprotein-cholesterol and lipoprotein(a) to cardiovascular  
358 risk: The Multi-Ethnic Study of Atherosclerosis (MESA). *Atherosclerosis* [Internet]. 2022;363:102–  
359 108. Available from: <http://dx.doi.org/10.1016/j.atherosclerosis.2022.10.004>
- 360 18. Tsimikas S, Karwatowska-Prokopczuk E, Gouni-Berthold I, Tardif J-C, Baum SJ, Steinhagen-  
361 Thiessen E, Shapiro MD, Stroes ES, Moriarty PM, Nordestgaard BG, Xia S, Guerriero J, Viney NJ,  
362 O’Dea L, Witztum JL. Lipoprotein(a) Reduction in Persons with Cardiovascular Disease. *N Engl J*  
363 *Med* [Internet]. 2020;382:244–255. Available from:  
364 <https://www.nejm.org/doi/full/10.1056/NEJMoa1905239>
- 365 19. Jamialahmadi T, Reiner Ž, Alidadi M, Kroh M, Almahmeed W, Ruscica M, Sirtori C, Rizzo M,  
366 Santos RD, Sahebkar A. The Effect of Bariatric Surgery on Circulating Levels of Lipoprotein (a): A  
367 Meta-analysis. *Biomed Res Int* [Internet]. 2022;2022:8435133. Available from:  
368 <http://dx.doi.org/10.1155/2022/8435133>
- 369 20. Hoursalas A, Tsarouhas K, Tsitsimpikou C, Kolovou G, Vardavas A, Hoursalas I, Spandidos DA,  
370 Milionis H, Elisaf M, Tsiara S. Moderately elevated lipoprotein (a) levels are associated with an  
371 earlier need for percutaneous coronary intervention in recurrent cardiovascular disease. *Exp Ther*  
372 *Med* [Internet]. 2022;24:444. Available from: <http://dx.doi.org/10.3892/etm.2022.11371>
- 373 21. Corsetti JP, Sterry JA, Sparks JD, Sparks CE, Weintraub M. Effect of weight loss on serum  
374 lipoprotein(a) concentrations in an obese population. *Clin Chem* [Internet]. 1991;37:1191–1195.  
375 Available from: <https://www.ncbi.nlm.nih.gov/pubmed/1830250>
- 376 22. Berk KA, Yahya R, Verhoeven AJM, Touw J, Leijten FP, van Rossum EF, Wester VL, Lips MA,  
377 Pijl H, Timman R, Erhart G, Kronenberg F, Roeters van Lennep JE, Sijbrands EJG, Mulder MT.  
378 Effect of diet-induced weight loss on lipoprotein(a) levels in obese individuals with and without type



- 379 2 diabetes. *Diabetologia* [Internet]. 2017;60:989–997. Available from:  
380 <http://dx.doi.org/10.1007/s00125-017-4246-y>
- 381 23. Kim S, Chang Y, Cho J, Hong YS, Zhao D, Kang J, Jung H-S, Yun KE, Guallar E, Ryu S, Shin H.  
382 Life’s Simple 7 Cardiovascular Health Metrics and Progression of Coronary Artery Calcium in a  
383 Low-Risk Population. *Arterioscler Thromb Vasc Biol* [Internet]. 2019;39:826–833. Available from:  
384 <http://dx.doi.org/10.1161/ATVBAHA.118.311821>
- 385 24. Erqou S, Kaptoge S, Perry PL, Di Angelantonio E, Thompson A, White IR, Marcovina SM, Collins  
386 R, Thompson SG, Danesh J. Lipoprotein(a) concentration and the risk of coronary heart disease,  
387 stroke, and nonvascular mortality. *JAMA* [Internet]. 2009;302:412–423. Available from:  
388 <http://dx.doi.org/10.1001/jama.2009.1063>
- 389 25. Nave AH, Lange KS, Leonards CO, Siegerink B, Doehner W, Landmesser U, Steinhagen-Thiessen  
390 E, Endres M, Ebinger M. Lipoprotein (a) as a risk factor for ischemic stroke: a meta-analysis.  
391 *Atherosclerosis* [Internet]. 2015;242:496–503. Available from:  
392 <http://dx.doi.org/10.1016/j.atherosclerosis.2015.08.021>
- 393 26. Velarde G, Bravo-Jaimes K, Brandt EJ, Wang D, Douglass P, Castellanos LR, Rodriguez F,  
394 Palaniappan L, Ibebuogu U, Bond R, Ferdinand K, Lundberg G, Thaman R, Vijayaraghavan K,  
395 Watson K. Locking the Revolving Door: Racial Disparities in Cardiovascular Disease. *J Am Heart*  
396 *Assoc* [Internet]. 2023;e025271. Available from: <http://dx.doi.org/10.1161/JAHA.122.025271>
- 397 27. Vanjani R, Reddy N, Giron N, Bai E, Martino S, Smith M, Harrington-Steppen S, Trimbur MC. The  
398 Social Determinants of Health — Moving Beyond Screen-and-Refer to Intervention. *N Engl J Med*  
399 [Internet]. 2023;389:569–573. Available from: <https://doi.org/10.1056/NEJMms2211450>
- 400 28. Arnett DK, Blumenthal RS, Albert MA, Buroker AB, Goldberger ZD, Hahn EJ, Himmelfarb CD,  
401 Khera A, Lloyd-Jones D, McEvoy JW, Michos ED, Miedema MD, Munoz D, Smith SC Jr, Virani

- 402 SS, Williams KA Sr, Yeboah J, Ziaeian B. 2019 ACC/AHA Guideline on the Primary Prevention of  
403 Cardiovascular Disease: Executive Summary: A Report of the American College of  
404 Cardiology/American Heart Association Task Force on Clinical Practice Guidelines. *J Am Coll*  
405 *Cardiol* [Internet]. 2019;140:e563–e595. Available from:  
406 <http://dx.doi.org/10.1016/j.jacc.2019.03.009>
- 407 29. Braveman P, Parker Dominguez T. Abandon “Race.” Focus on Racism. *Front Public Health*  
408 [Internet]. 2021;9:689462. Available from: <http://dx.doi.org/10.3389/fpubh.2021.689462>
- 409 30. Javed Z, Haisum Maqsood M, Yahya T, Amin Z, Acquah I, Valero-Elizondo J, Andrieni J, Dubey P,  
410 Jackson RK, Daffin MA, Cainzos-Achirica M, Hyder AA, Nasir K. Race, Racism, and  
411 Cardiovascular Health: Applying a Social Determinants of Health Framework to Racial/Ethnic  
412 Disparities in Cardiovascular Disease. *Circ Cardiovasc Qual Outcomes* [Internet]. 2022;15:e007917.  
413 Available from: <http://dx.doi.org/10.1161/CIRCOUTCOMES.121.007917>

#### 414 Figure Legends

415

416 Figure 1: Cox proportional hazards regression results for association of Lp(a)  $\geq 50$  mg/dL or  $< 50$   
417 mg/dL with myocardial infarction or stroke in ARIC and MESA <sup>a</sup>

418

419 <sup>a</sup> These proportional hazards regression graphs were generated after exposures (Lp(a)  $\geq 50$   
420 mg/dL) were matched using coarsened exact matching to controls (Lp(a)  $< 50$  mg/dL). Covariates  
421 included age, gender, race and ethnicity, non-HDL-C, SDOH score, and LS7 score.

422 Table 1: Population characteristics (n=15,027 for ARIC, n=6,822 for MESA)

	ARIC n, % or mean (SD)	MESA n, % or mean (SD)
Age (years)	54 (6)	62 (10)
Female	8196, 54.5%	3601, 52.9%
Race and Ethnicity	-	-
Non-Hispanic White	11,110, 73.9%	2,622, 38.5%
Non-Hispanic Black	3917, 26.1%	1892, 27.8%
Non-Hispanic Chinese	n/a	804, 11.8%
Hispanic	n/a	1496, 22.0%
Lipoprotein(a) (mg/dL)	30.3 (32.1)	30.1 (34.0)
Non-HDL-C (mg/dL)	155 (43.9)	134 (36.1)
SDOH Score	1.0 (1.1)	2.3 (1.7)
Life's Simple 7 Score	7.8 (2.3)	8.3 (2.1)

423 Abbreviations: ARIC = Atherosclerosis Risk in Communities; MESA=Multi-Ethnic Study of Atherosclerosis; Non-  
424 HDL-C = Non-High Density Lipoprotein-Cholesterol; SDOH = Social Determinants of Health

425 Table 2: Sequential Multivariable Cox Proportional Hazards Regression for Myocardial Infarction in ARIC and  
 426 MESA

427  
 428 A: ARIC (n=14,306)

	Model 1			Model 2			Model 3		
	HR	95% CI	p-value	HR	95% CI	p-value	HR	95% CI	p-value
Age (per year)	1.09	1.09, 1.10	<0.001	1.09	1.08, 1.10	<0.001	1.09	1.08, 1.10	<0.001
Male	1.62	1.52, 1.74	<0.001	1.62	1.52, 1.73	<0.001	1.60	1.50, 1.71	<0.001
Race and Ethnicity	-	-	-	-	-	-	-	-	-
Non-Hispanic White	Ref	Ref	Ref	Ref	Ref	Ref	Ref	Ref	Ref
Non-Hispanic Black	1.34	1.24, 1.45	<0.001	1.13	1.04, 1.23	0.006	0.88	0.80, 0.96	0.003
Non-HDL-C (per 25 mg/dL increase)	1.16	1.14, 1.18	<0.001	1.15	1.13, 1.17	<0.001	1.04	1.02, 1.06	<0.001
Lipoprotein(a) (per 25 mg/dL increase)	1.11	1.08, 1.14	<0.001	1.11	1.08, 1.14	<0.001	1.09	1.06, 1.12	<0.001
SDOH Score (per 1 point increase)	-	-	-	1.22	1.18, 1.26	<0.001	1.13	1.09, 1.17	<0.001
Life's Simple 7 Score (per 1 point increase)	-	-	-	-	-	-	0.81	0.80, 0.83	<0.001

429  
 430 B: MESA (n=6,668)

	Model 1			Model 2			Model 3		
	HR	95% CI	p-value	HR	95% CI	p-value	HR	95% CI	p-value
Age (per year)	1.06	1.05, 1.07	<0.001	1.05	1.04, 1.06	<0.001	1.05	1.04, 1.06	<0.001
Male	2.19	1.85, 2.58	<0.001	2.36	2.00, 2.79	<0.001	2.37	2.00, 2.80	<0.001
Race and Ethnicity	-	-	-	-	-	-	-	-	-
Non-Hispanic White	Ref	Ref	Ref	Ref	Ref	Ref	Ref	Ref	Ref
Non-Hispanic Black	0.95	0.78, 1.17	0.65	0.86	0.70, 1.06	0.16	0.72	0.58, 0.89	0.002
Non-Hispanic Chinese	0.78	0.59, 1.03	0.08	0.69	0.52, 0.92	0.01	0.78	0.58, 1.03	0.08
Hispanic	1.01	0.82, 1.24	0.92	0.81	0.65, 1.02	0.07	0.75	0.59, 0.94	0.012
Non-HDL-C (per 25 mg/dL increase)	1.09	1.03, 1.15	0.002	1.09	1.03, 1.15	0.003	1.02	0.96, 1.08	0.53
Lipoprotein(a) (per 25 mg/dL increase)	1.11	1.05, 1.17	<0.001	1.11	1.05, 1.17	<0.001	1.10	1.04, 1.16	0.001
SDOH Score (per 1 point increase)	-	-	-	1.14	1.08, 1.20	<0.001	1.11	1.05, 1.17	<0.001
Life's Simple 7 Score (per 1 point increase)	-	-	-	-	-	-	0.84	0.81, 0.88	<0.001

431

432 Table 3: Sequential Multivariable Cox Proportional Hazards Regression for Stroke in ARIC and MESA

433

434 A: ARIC (n=14,286)

	Model 1			Model 2			Model 3		
	HR	95% CI	p-value	HR	95% CI	p-value	HR	95% CI	p-value
Age (per year)	1.11	1.10, 1.12	<0.001	1.11	1.10, 1.12	<0.001	1.11	1.10, 1.12	<0.001
Male	1.28	1.16, 1.40	<0.001	1.27	1.15, 1.39	<0.001	1.25	1.14, 1.38	<0.001
Race and Ethnicity	-	-	-	-	-	-	-	-	-
Non-Hispanic White	Ref	Ref	Ref	Ref	Ref	Ref	Ref	Ref	Ref
Non-Hispanic Black	1.96	1.77, 2.18	<0.001	1.60	1.43, 1.80	<0.001	1.24	1.10, 1.40	<0.001
Non-HDL-C (per 25 mg/dL increase)	1.09	1.06, 1.11	<0.001	1.08	1.05, 1.11	<0.001	0.98	0.95, 1.01	0.13
Lipoprotein(a) (per 25 mg/dL increase)	1.08	1.05, 1.12	<0.001	1.08	1.04, 1.12	<0.001	1.06	1.02, 1.09	0.003
SDOH Score (per 1 point increase)	-	-	-	1.26	1.20, 1.31	<0.001	1.17	1.12, 1.22	<0.001
Life's Simple 7 Score (per 1 point increase)	-	-	-	-	-	-	0.82	0.80, 0.84	<0.001

435

436 B: MESA (n=6,666)

	Model 1			Model 2			Model 3		
	HR	95% CI	p-value	HR	95% CI	p-value	HR	95% CI	p-value
Age (per year)	1.07	1.06, 1.09	<0.001	1.07	1.06, 1.08	<0.001	1.07	1.06, 1.08	<0.001
Male	1.26	1.00, 1.59	0.05	1.34	1.05, 1.70	0.02	1.34	1.05, 1.70	0.02
Race and Ethnicity	-	-	-	-	-	-	-	-	-
Non-Hispanic White	Ref	Ref	Ref	Ref	Ref	Ref	Ref	Ref	Ref
Non-Hispanic Black	1.43	1.06, 1.95	0.02	1.34	0.99, 1.83	0.06	1.12	0.82, 1.54	0.47
Non-Hispanic Chinese	0.64	0.40, 1.04	0.07	0.59	0.36, 0.96	0.03	0.66	0.41, 1.08	0.10
Hispanic	1.53	1.14, 2.06	0.005	1.31	0.95, 1.82	0.10	1.20	0.87, 1.66	0.27
Non-HDL-C (per 25 mg/dL increase)	1.10	1.01, 1.19	0.02	1.10	1.01, 1.19	0.03	1.03	0.94, 1.12	0.54
Lipoprotein(a) (per 25 mg/dL increase)	0.97	0.89, 1.07	0.58	0.97	0.88, 1.07	0.56	0.96	0.87, 1.05	0.39
SDOH Score (per 1 point increase)	-	-	-	1.10	1.02, 1.19	0.02	1.07	0.99, 1.15	0.11
Life's Simple 7 Score (per 1 point increase)	-	-	-	-	-	-	0.84	0.79, 0.89	<0.001

437

438 Table 4: Population Characteristics Cases with Lipoprotein(a)  $\geq 50$  mg/dL and Controls with Lipoprotein(a)  $< 50$   
 439 mg/dL after Coarsened Exact Matching Weights Applied

440  
 441 A: ARIC

	Controls n, % or mean (SD)	Cases n, % or mean (SD)	p-value
Age (years)	54.3 (5.8)	54.3 (5.8)	0.66
Female	6826, 60.9%	1872, 60.9%	1.00
Race and Ethnicity	-	-	-
Non-Hispanic White	6224, 44.5%	1366, 44.5%	1.00
Non-Hispanic Black	4981, 55.6%	1366, 55.6%	1.00
Lipoprotein(a) (mg/dL)	19.4 (13.9)	81.3 (30.1)	<0.001
Non-HDL-C (mg/dL)	150 (45.0)	149 (44.4)	0.73
SDOH Score	1.2 (1.2)	1.2 (1.1)	0.80
Life's Simple 7 Score	7.5 (2.3)	7.4 (2.3)	0.07

442  
 443 B: MESA

	Controls n, % or mean (SD)	Cases n, % or mean (SD)	p-value
Age (years)	62.3 (9.9)	62.3 (10.0)	0.83
Female	2554, 5.87%	773, 58.7%	1.00
Race and Ethnicity	-	-	-
Non-Hispanic White	1364, 31.4%	413, 31.4%	1.00
Non-Hispanic Black	2051, 47.2%	621, 47.2%	1.00
Non-Hispanic Chinese	248, 5.7%	75, 5.7%	1.00
Hispanic	683, 15.7%	207, 15.7%	1.00
Lipoprotein(a) (mg/dL)	18.8 (13.3)	86.0 (34.6)	<0.001
Non-HDL-C (mg/dL)	125.8 (33.3)	122.7 (35.3)	0.005
SDOH Score	2.3 (1.7)	2.3 (1.7)	0.78
Life's Simple 7 Score	8.2 (2.0)	8.1 (2.0)	0.38

444

445 Table 5: Sequential Multivariable Cox Proportional Hazards Regression for Myocardial Infarction in ARIC and  
 446 MESA After Coarsened Exact Matching

447  
 448 A: ARIC (n=14,010)

	Model 1			Model 2			Model 3		
	HR	95% CI	p-value	HR	95% CI	p-value	HR	95% CI	p-value
Age (per year)	1.10	1.09, 1.10	<0.001	1.09	1.09, 1.10	<0.001	1.09	1.09, 1.10	<0.001
Male	1.54	1.44, 1.64	<0.001	1.53	1.43, 1.64	<0.001	1.57	1.46, 1.68	<0.001
Race and Ethnicity	-	-	-	-	-	-	-	-	-
Non-Hispanic White	Ref	Ref	Ref	Ref	Ref	Ref	Ref	Ref	Ref
Non-Hispanic Black	1.39	1.30, 1.49	<0.001	1.17	1.09, 1.26	<0.001	0.89	0.82, 0.96	0.003
Non-HDL-C (per 25 mg/dL increase)	1.15	1.13, 1.17	<0.001	1.14	1.12, 1.16	<0.001	1.03	1.01, 1.05	0.01
Lipoprotein(a)	-	-	-	-	-	-	-	-	-
0 to <50 mg/dL	Ref	Ref	Ref	Ref	Ref	Ref	Ref	Ref	Ref
≥50 to <100 mg/dL	1.15	0.001	0.001	1.16	1.07, 1.27	0.001	1.13	1.04, 1.23	0.005
≥100 mg/dL	1.53	<0.001	<0.001	1.53	1.33, 1.77	<0.001	1.44	1.24, 1.66	<0.001
SDOH Score (per 1 point increase)	-	-	-	1.20	1.16, 1.24	<0.001	1.12	1.08, 1.15	<0.001
Life's Simple 7 Score (per 1 point increase)	-	-	-	-	-	-	0.81	0.79, 0.82	<0.001

449  
 450 B: MESA (n=5,573)

	Model 1			Model 2			Model 3		
	HR	95% CI	p-value	HR	95% CI	p-value	HR	95% CI	p-value
Age (per year)	1.05	1.04, 1.06	<0.001	1.05	1.04, 1.06	<0.001	1.04	1.03, 1.05	<0.001
Male	2.06	1.72, 2.46	<0.001	2.24	1.86, 2.68	<0.001	2.21	1.84, 2.65	<0.001
Race and Ethnicity	-	-	-	-	-	-	-	-	-
Non-Hispanic White	Ref	Ref	Ref	Ref	Ref	Ref	Ref	Ref	Ref
Non-Hispanic Black	1.00	0.82, 1.22	0.98	0.90	0.73, 1.11	0.32	0.77	0.62, 0.95	0.02
Non-Hispanic Chinese	0.63	0.39, 1.01	0.06	0.55	0.34, 0.90	0.02	0.63	0.38, 1.02	0.06
Hispanic	0.95	0.72, 1.25	0.70	0.72	0.53, 0.97	0.03	0.68	0.50, 0.92	0.01
Non-HDL-C (per 25 mg/dL increase)	1.05	0.98, 1.12	0.18	1.05	0.98, 1.12	0.18	0.99	0.93, 1.07	0.88
Lipoprotein(a)	-	-	-	-	-	-	-	-	-
0 to <50 mg/dL	Ref	Ref	Ref	Ref	Ref	Ref	Ref	Ref	Ref
≥50 to <100 mg/dL	1.21	0.97, 1.52	0.09	1.23	0.98, 1.53	0.07	1.20	0.96, 1.50	0.12
≥100 mg/dL	1.60	1.15, 2.22	0.005	1.60	1.15, 2.23	0.005	1.57	1.13, 2.19	0.007
SDOH Score (per 1 point increase)	-	-	-	1.16	1.09, 1.22	<0.001	1.13	1.05, 1.17	<0.001
Life's Simple 7 Score (per 1 point increase)	-	-	-	-	-	-	0.86	0.81, 0.88	<0.001

451  
 452

453 Table 6: Sequential Multivariable Cox Proportional Hazards Regression for Stroke in ARIC and MESA After  
 454 Coarsened Exact Matching

455  
 456 A: ARIC (n=13,989)

	Model 1			Model 2			Model 3		
	HR	95% CI	p-value	HR	95% CI	p-value	HR	95% CI	p-value
Age (per year)	1.10	1.09,1.11	<0.001	1.10	1.09, 1.10	<0.001	1.10	1.09, 1.10	<0.001
Male	1.27	1.16, 1.40	<0.001	1.25	1.14, 1.37	<0.001	1.27	1.16, 1.40	<0.001
Race and Ethnicity	-	-	-	-	-	-	-	-	-
Non-Hispanic White	Ref	Ref	Ref	Ref	Ref	Ref	Ref	Ref	Ref
Non-Hispanic Black	1.99	1.81, 2.18	<0.001	1.58	1.42, 1.74	<0.001	1.18	1.06, 1.31	0.003
Non-HDL-C (per 25 mg/dL increase)	1.04	1.02, 1.07	0.001	1.03	1.01, 1.06	0.02	0.93	0.90, 0.96	<0.001
Lipoprotein(a)	-	-	-	-	-	-	-	-	-
0 to <50 mg/dL	Ref	Ref	Ref	Ref	Ref	Ref	Ref	Ref	Ref
≥50 to <100 mg/dL	1.18	1.05, 1.33	0.006	1.19	1.06, 1.34	0.004	1.17	1.04, 1.31	0.01
≥100 mg/dL	1.35	1.10, 1.64	0.003	1.33	1.09, 1.62	0.005	1.26	1.03, 1.53	0.02
SDOH Score (per 1 point increase)	-	-	-	1.26	1.21, 1.31	<0.001	1.18	1.13, 1.23	<0.001
Life's Simple 7 Score (per 1 point increase)	-	-	-	-	-	-	0.81	0.79, 0.83	<0.001

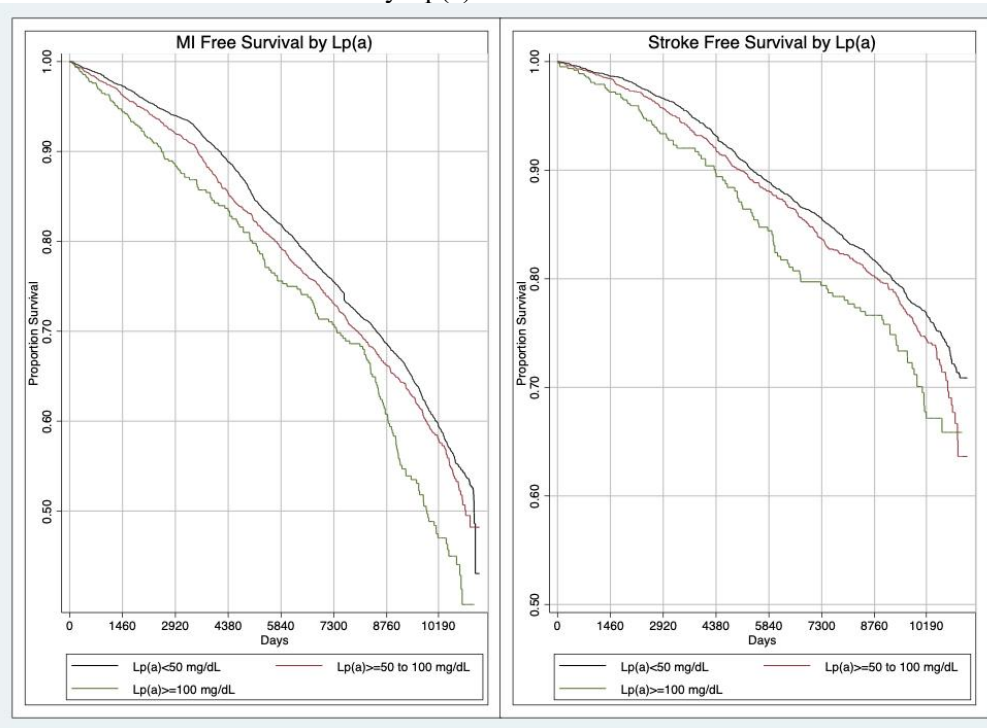
457  
 458 B: MESA (n=5,575)

	Model 1			Model 2			Model 3		
	HR	95% CI	p-value	HR	95% CI	p-value	HR	95% CI	p-value
Age (per year)	1.07	1.06, 1.09	<0.001	1.07	1.05, 1.08	<0.001	1.07	1.05, 1.08	<0.001
Male	1.26	0.97, 1.64	0.08	1.34	1.03, 1.76	0.03	1.33	1.01, 1.74	0.04
Race and Ethnicity	-	-	-	-	-	-	-	-	-
Non-Hispanic White	Ref	Ref	Ref	Ref	Ref	Ref	Ref	Ref	Ref
Non-Hispanic Black	1.24	0.91, 1.69	0.17	1.15	0.84, 1.58	0.37	0.97	0.70, 1.34	0.51
Non-Hispanic Chinese	0.76	0.37, 1.53	0.44	0.69	0.34, 1.40	0.30	0.79	0.39, 1.61	0.87
Hispanic	1.52	1.04, 2.23	0.03	1.23	0.81, 1.88	0.33	1.15	0.75, 1.76	0.51
Non-HDL-C (per 25 mg/dL increase)	1.09	0.98, 1.20	0.08	1.09	0.99, 1.20	0.08	1.03	0.93, 1.14	0.55
SDOH Score (per 1 point increase)	-	-	-	1.11	1.02, 1.22	0.02	1.08	0.99, 1.15	0.08
Life's Simple 7 Score (per 1 point increase)	-	-	-	-	-	-	0.84	0.79, 0.89	<0.001

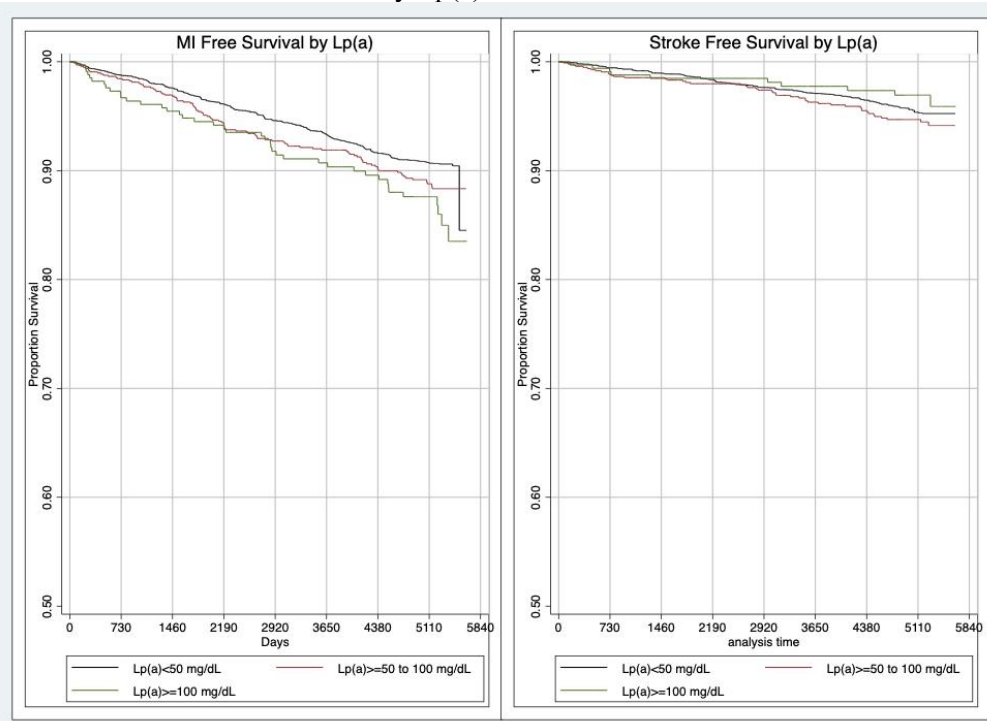
459  
 460



461 Figure 1: Cox proportional hazards regression results for association of Lp(a)  $\geq 50$  mg/dL or  $< 50$  mg/dL  
462 with myocardial infarction or stroke in ARIC and MESA  
463 A: Event free survival in ARIC by Lp(a) level



464  
465 B: Event free survival in MESA by Lp(a) level



466