

1 **Characteristics of the sexual networks of gay, bisexual, and other men who**
2 **have sex with men in Montréal, Toronto, and Vancouver: implications for the**
3 **transmission and control of mpox in Canada**

4
5 Fanyu Xiu^{1*}, Jorge Luis Flores Anato^{1*}, Joseph Cox^{1,2}, Daniel Grace³, Trevor A. Hart^{3,4}, Shayna
6 Skakoon-Sparling^{4,5}, Milada Dvorakova², Jesse Knight^{6,7}, Linwei Wang⁶, Oliver Gatalo^{3,6}, Evan
7 Campbell⁴, Terri Zhang⁴, Hind Sbihi^{8,9}, Michael A. Irvine^{8,10}, Sharmistha Mishra^{3,6,7,11}, Mathieu
8 Maheu-Giroux^{1‡}

9
10 * these authors contributed equally

11 ‡ corresponding author

12
13 **Author Affiliations:**

- 14 1. Department of Epidemiology and Biostatistics, McGill University, Montréal, QC,
15 Canada.
16 2. Research Institute of the McGill University Health Centre, Montréal, QC, Canada.
17 3. Dalla Lana School of Public Health, University of Toronto, Toronto, ON, Canada.
18 4. Department of Psychology, Toronto Metropolitan University, Toronto, ON, Canada.
19 5. Department of Psychology, University of Guelph, Guelph, ON
20 6. MAP Centre for Urban Health Solutions, Unity Health Toronto, Canada.
21 7. Institute of Medical Sciences, University of Toronto, Toronto, ON, Canada.
22 8. Data and Analytic Services, British Columbia Centre for Disease Control, Vancouver,
23 BC, Canada.
24 9. School of Population and Public Health, University of British Columbia, Vancouver, BC,
25 Canada.
26 10. Faculty of Health Sciences, Simon Fraser University, Burnaby, BC, Canada.
27 11. Department of Medicine, St. Michael's Hospital, University of Toronto, Toronto, ON,
28 Canada.

29
30 **Abstract:** 280 words

31 **Main text:** 3,807 words

32
33 **Corresponding author:**

34 Mathieu Maheu-Giroux, ScD
35 Department of Epidemiology and Biostatistics,
36 School of Population and Global Health
37 McGill University
38 2001 Avenue McGill College (Suite 1200),
39 Montréal, QC, Canada,
40 H3A 1G1
41 E-mail: mathieu.maheu-giroux@mcgill.ca
42 Phone: (+1) 514-398-5110

43 Abstract

44

45 **Background:** The 2022-2023 global mpox outbreak disproportionately affected gay, bisexual,
46 and other men who have sex with men (GBM). In Canada, >70% of cases thus far have been
47 among GBM in Montréal, Toronto, and Vancouver. We examined how the distributions of
48 sexual partners 1) varied by city and over time related to the COVID-19 pandemic and 2)
49 were associated with mpox transmission.

50 **Methods:** The *Engage Cohort Study* (2017-2023) recruited GBM via respondent-driven
51 sampling in Montréal, Toronto, and Vancouver (n=2,449). We compared numbers of sexual
52 partners in the past 6 months across cities and three time periods: pre-COVID-19 pandemic
53 (2017-2019), pandemic (2020-2021), and post-restrictions (2021-2023). We modeled the
54 distribution of sexual partner numbers using Bayesian negative binomial regressions and
55 post-stratification, adjusting for sampling design and attrition. We estimated the basic
56 reproduction number (R_0), secondary attack rate (SAR), and cumulative incidence
57 proportion of mpox using the fitted distributions and case timeseries.

58 **Results:** The pre-COVID-19 pandemic distribution of sexual partner numbers was similar across
59 cities: participants' mean number of partners was 10.3 (95%CrI: 9.3-11.3) in Montréal, 12.8
60 (11.1-14.7) in Toronto, and 10.6 (9.41-11.9) in Vancouver. Partner numbers decreased
61 during the pandemic in all cities. Post-restrictions, sexual activity increased but remained
62 well below pre-pandemic levels. Based on reported cases and post-restrictions distributions,
63 the estimated R_0 (2.4-2.6) and cumulative incidences (0.6-0.9%) were similar across cities.
64 The estimated average SAR across cities was 79%.

65 **Conclusion:** GBM sexual activity after restrictions were lifted remained below pre-pandemic
66 levels. Comparable sexual partner distributions across cities may explain similarities in
67 mpox R_0 and cumulative incidence across cities. Public health authorities should consider
68 the risk of mpox resurgence for future vaccination and surveillance strategies as sexual
69 activity is expected to recover.

70 **Key words:** mpox; men who have sex with men; sexual networks; heavy-tailed network;
71 secondary attack rate; basic reproduction number.

72

73 **Background**

74 A global outbreak of mpox (the disease caused by monkeypox virus) unfolded from
75 May–October 2022, predominantly affecting gay, bisexual, and other men who have sex with
76 men (GBM). The outbreak was unprecedented in its spread through sexual networks, number of
77 cases generated, and geographical distribution, with most of the nearly 90,000 confirmed cases
78 worldwide (May 2022–June 2023) occurring among GBM in regions with no previous history of
79 reported transmission.^{1–3} These unusual transmission patterns of mpox virus were recognized by
80 the *World Health Organization* (WHO) as a public health emergency of international concern
81 (lasting from July 2022 to May 2023).⁴

82 In Canada, over 70% of reported cases were concentrated among GBM in the three
83 largest cities: Montréal, Toronto, and Vancouver.^{5–7} Mpox cases were identified at the frontlines,
84 in GBM sexual health clinics, with swift responses from community, clinical, and public health
85 partners.^{6,7} Since December 2022, sporadic new cases have been reported to the *Public Health*
86 *Agency of Canada*,⁸ and questions remain regarding the future risk of mpox resurgence.⁹

87 An important factor shaping transmission during the 2022–2023 mpox outbreak was the
88 structure of GBM sexual networks.^{10,11} Studies from Europe and North America attributed local
89 outbreaks to densely clustered sexual networks among GBM with a high number of sexual
90 partners.^{12–15} Additionally, earlier case investigations revealed close linkages to international
91 travel and sex-on-premises venues.^{2,12,16} The concept of “core group” in sexually transmitted
92 infections posits that a small group of individuals with a high number of sexual partners
93 disproportionately contribute to transmission.¹⁷ It recognizes that heterogeneity in sexual partners
94 is crucial to transmission dynamics. In other words, the average number of sexual partners from
95 a chosen member of the sexual network (i.e., degree) is not as informative as the distribution of
96 sexual partner numbers (i.e., *degree distribution*) of that network. As such, mathematical
97 modeling suggested that the basic reproduction number (R_0) of mpox—the expected number of
98 secondary cases arising from an initial infection in an entirely susceptible population— may be
99 significantly greater than 1 as reported among GBM in the United Kingdom.¹⁴ Estimates of R_0
100 from other modeling studies based on European and Canadian populations ranged from 1.5 to
101 4.3.¹⁸

102 Although these findings have provided insights into the transmission dynamics of mpox,
103 there remains uncertainty regarding how GBM sexual networks in major Canadian cities shaped
104 transmission. The outbreak occurred in the aftermath of the COVID-19 pandemic, which may
105 have affected usual sexual networks of GBM. For instance, the lifting of travel restrictions and
106 other public health measures may have increased the number and types of sexual partnerships
107 formed and facilitated international dissemination of the virus.^{12,16,19,20}

108 Given these uncertainties, we leveraged data from the *Engage Cohort Study* and public
109 mpox incidence data to improve our understanding of the relationship between sexual network
110 density and mpox transmission during 2022–2023 in Montréal, Toronto, and Vancouver.
111 Specifically, we estimated the distribution of sexual partner numbers among GBM in each city,
112 and investigated how these distributions changed over time to assess the influence of COVID-19
113 pandemic on sexual behaviours. We also assessed the transmission potential of mpox in each city
114 by estimating the R_0 and cumulative mpox incidence in each city, and the average secondary
115 attack rate (SAR) across cities.

116 **Methods**

117 **Study setting and population**

118 The *Engage Cohort Study* (*Engage*; 2017–present) is a prospective, population-based
119 cohort study of GBM in Montréal, Toronto, and Vancouver. Eligible participants were self-
120 identified cis or trans men living in one of the three cities, aged ≥ 16 years, who reported sex with
121 another man in the past 6 months (P6M), understood English or French, and provided written
122 consent. From February 2017 to August 2019, participants were recruited using respondent-
123 driven sampling (RDS), a method used to sample hard-to-reach populations to estimate more
124 representative population characteristics.²¹ Initial participants were purposively selected to
125 represent diverse characteristics of the GBM community, and all participants were invited to
126 recruit up to six peers in their social networks. Details of the cohort, including use of the RDS
127 method, have been detailed in previous research.^{22,23}

128 To investigate changes in sexual behaviours related to the COVID-19 pandemic, we used
129 data from baseline visits and two follow-up visits:

- 130 • The *pre-pandemic period* was defined as the participants’ baseline visit (February 2017–
131 August 2019).
- 132 • The *pandemic period* was the earliest follow-up visit that occurred between June 2020–
133 November 2021, covering successive waves of COVID-19 pandemic measures. The start
134 of this period was chosen because *Engage* study visits only resumed three months after
135 the COVID-19 pandemic was declared by the WHO (March 11th, 2020)²⁴. The end of
136 the period was the start of the post-restrictions period.
- 137 • The *post-restrictions period* was defined as the latest follow-up visit that occurred
138 between December 2021–February 2023. To ensure consistency of the time periods
139 across cities, we defined the start of this period based on the easing of entry requirements
140 for non-essential travel into Canada (September 3, 2021).²⁵ The start of the time period
141 was shifted forward by three months to account for the 6-month recall period used in the
142 *Engage* questionnaire. Additionally, we used travel restrictions given the history of
143 international travel reported from initial mpox case investigations. The end of this period
144 was the latest available data cut from the *Engage Cohort Study* (February 2023).

145 **Variables**

146 Our primary outcome was the self-reported number of sexual partners in the P6M,
147 measured through the question “*During the PAST 6 MONTHS, with how many guys have you*
148 *had any kind of sex (anal, oral, mutual masturbation, rimming, frontal/vaginal, etc.)?*”. Informed
149 by epidemiological data on mpox cases,^{2,12,26} the following bio-behavioral variables were
150 considered correlates of the number of sexual partners in the P6M in the analyses (details in
151 *Table S1*):

- 152 • Age (18-29, 30-39, 40-49, 50-59, ≥60 years);
- 153 • Relationship status and sexual arrangement (no relationship, exclusive relationship, open
154 relationship, unclear);
- 155 • HIV status (determined using 4th generation testing with a confirmatory assay; or self-
156 report if testing data unavailable [4% participants at baseline]);
- 157 • Visit to bathhouses and/or sex clubs at least once in the P6M (binary);
- 158 • Attendance of group sex events at least once in the P6M (binary);
- 159 • Use of dating apps to find partners at least once in the P6M (binary); and

- 160 • Participation in transactional sex at least once in the P6M (i.e., receive money and/or
161 goods in exchange for sex; binary).

162 Missing values for the last four variables were handled using the missing indicator
163 method for all analyses.²⁷

164 **Distribution of sexual partner numbers, rationale for weighting, and computation of** 165 **weights**

166 To estimate the distribution of sexual partner numbers in each city, we modeled the
167 observed distributions in a Bayesian framework. Briefly, we first fitted a negative binomial
168 regression model to the number of sexual partners in P6M, using the correlates mentioned above
169 as covariates in the model. We then incorporated sampling and attrition weights via post-
170 stratification, by using the fitted posterior sample of the number of sexual partners in P6M for
171 each participant. Lastly, we computed the fitted population distribution of sexual partner
172 numbers based on the post-stratified samples.

173 We chose a regression approach over direct distribution fitting to examine individual
174 correlates and to incorporate survey sampling and attrition weights. Regression models were
175 fitted using Hamiltonian Monte Carlo in *Stan*, with 4,000 iterations (2 chains, 2,000 burn-in
176 iterations, no thinning), using non-informative priors and assessing convergence via traceplots
177 and \hat{R} . We then used the posterior distribution of each participant's outcome to estimate the
178 population distribution of sexual partner numbers, incorporating RDS-II weights and inverse
179 probability of censoring weights (IPCW) via post-stratification. For the pre-COVID-19
180 pandemic time period, only RDS-II weights were used. To adjust for attrition in the pandemic
181 and post-restrictions time periods, we used the product of RDS-II weights and IPCW (henceforth
182 RDS-IPC weights).

183 Given that *Engage* is an RDS sample, we used RDS-II weights to ensure the estimated
184 distributions of sexual partner numbers were more representative of the target population
185 (sexually active GBM in each city). In RDS samples, participants with larger social networks
186 have a higher chance of being recruited; RDS-II weights adjust for this sampling design by
187 assigning a weight that is inversely proportional to the self-reported network size.²¹ To adjust for
188 attrition at follow-up visits, we used IPCWs to reduce potential biases stemming from correlation
189 between the outcome (number of sexual partners in P6M) and being lost to follow-up.²⁸

190 Finally, to compare the distribution of sexual partner numbers between a pair of cities or
191 time periods, we computed the proportion of the iterations (posterior distribution samples) that
192 had greater cumulative density for ≥ 25 and ≥ 100 partners. These thresholds were based on a
193 previous modeling study from the Netherlands, which estimated that GBM with a mean of 25
194 partners in the P6M accounted for about 20% of mpox cases, and those with a mean of about 100
195 partners accounted for over 60% of cases.²⁹

196 **Basic reproduction numbers, secondary attack rate, and cumulative incidence proportion**

197 The basic reproduction number R_0 is a measure of an infectious agent's transmission
198 potential within a given network.^{30,31} We first estimated the R_0 of mpox in each city based on the
199 fitted distribution of GBM's sexual partner numbers in the P6M (post-restrictions period), by
200 using the next-generation matrix (NGM) approach.³² Briefly, we partitioned the GBM population
201 in each city into 100 sexual activity groups based on the number of sexual partners from the
202 RDS-IPC-weighted posterior distribution. For each group, we computed the size (i.e., proportion
203 of GBM in the group) and the average number of sexual partners. We constructed the
204 transmission, transition and auxiliary matrices based on a Susceptible-Exposed-Infectious-
205 Removed model, assuming no interventions or behaviour changes during the analysis period.
206 The three matrices allowed for the construction of a NGM, and R_0 was computed as the largest
207 non-zero eigenvalue of this matrix. We repeated the procedure for each city at the post-
208 restrictions period under a range of SAR³³, defined here as the proportion of sexual partnerships
209 that could be expected to result in transmission from an infected individual.³⁴

210 Given the uncertainty in the SAR of mpox, we also estimated R_0 from the reported mpox
211 cases from Québec, Ontario, and British Columbia, where Montréal, Toronto, and Vancouver are
212 located, respectively. Province-wide mpox incidence was assumed to reflect transmission in each
213 city given that the majority of the cases were reported from these cities.⁵⁻⁷ Briefly, we used
214 publicly available data on reported mpox cases⁶ to estimate this R_0 using the formula $R_0 = 1 +$
215 $D\Lambda$, where the duration of infectiousness D is assumed to be 17.3 days,³⁵⁻³⁸ and the epidemic
216 growth rate Λ was estimated from the slope of the log cumulative cases over time. We used the
217 first 50 days after the first case in each province, which corresponded to the period of initial
218 exponential growth.³³ We then compared the estimates of R_0 calculated from the next-generation
219 matrix to the case series to estimate the SAR. We estimated the SAR as the SAR value necessary

220 for the two methods of calculating R_0 to be equal. Lastly, to quantify potential increases in mpox
221 transmission if sexual activity recovers to pre-COVID-19 levels, we estimated the R_0 using the
222 NGM method based on the pre-pandemic distribution of sexual partner numbers and the average
223 SAR across cities.

224 Lastly, we estimated the cumulative incidence proportion of mpox cases among GBM
225 during the 2022–2023 outbreak in each city using GBM population size estimates from previous
226 studies. Briefly, we assumed that sexually active GBM (sex with a man in P6M) constituted
227 2.9% of the ≥ 15 -year-old male population in each city.^{39–41} For each city’s population size, we
228 used the 2021 census population counts of the corresponding census metropolitan area.⁴²

229 **Sensitivity analyses**

230 We performed three sensitivity analyses. First, to verify the robustness of results
231 regarding the distribution of sexual partner numbers to our weighting approach, we repeated the
232 analyses restricting the analytical sample to participants who had visits at all three timepoints.
233 Second, as age is an important determinant of sexual activity and differences in the age
234 distribution of the participants across the three cities have been reported,⁴³ we performed
235 regression-based standardization. Using all model covariates, we standardized the distributions to
236 the covariate distribution observed in Vancouver. Lastly, given uncertainty regarding mpox
237 transmission probabilities through different types of sex acts,^{2,44} we repeated the analyses
238 focusing on the number of anal sex partners as the outcome.

239 All analyses were conducted using *R* (version 4.2.2) and *RStan* (version 2.21.7).
240 Additional details on methods can be found in the *Supplementary Methods*. The code used for
241 analyses is available from GitHub ([https://github.com/pop-health-mod/
242 mpox-engage-sex-networks](https://github.com/pop-health-mod/mpox-engage-sex-networks)).

243 **Ethics**

244 Ethics approval was obtained from the Research Institute of the McGill University Health
245 Centre and the Research Ethics Office of the Faculty of Medicine and Health Sciences, McGill
246 University (A06-M32-23B), Toronto Metropolitan University (REB #2016-113), the University
247 of Toronto (protocol #00033527), St. Michael’s Hospital (REB #17-043), the University of
248 Windsor (REB #33443), the University of British Columbia (H16-01226), Providence Health

249 Care (H16-01226), the University of Victoria (H16-01226), Simon Fraser University (H16-
250 01226).

251 **Results**

252 **Study population**

253 There were 2,449 GBM recruited to *Engage*, with 1,179 participants in Montréal, 517 in
254 Toronto, and 753 in Vancouver. Retention over the study period was slightly higher in Montréal,
255 where 70% and 67% of participants had at least one visit during the pandemic and post-
256 restrictions period, respectively, compared to 58% and 56% for Toronto, and 60% and 52% for
257 Vancouver (*Table S2*).

258 Accounting for RDS-II, participants in Montréal were older on average than in Toronto
259 and Vancouver—37% aged ≥ 40 years, versus 25% and 29%, respectively. In all three cities,
260 approximately half of participants reported not being in a relationship at baseline. There were
261 fewer participants living with HIV in Montréal (14%; 95% Confidence Interval [CI]: 12%–16%),
262 compared to 22% (95%CI: 19%–26%) in Toronto and 20% (95%CI: 18%–23%) in Vancouver.
263 More participants reported attending bathhouses and group sex in Toronto (39% [95%CI: 35%–
264 43%] and 23% [95%CI: 19%–26%], respectively) than in Montréal (31% [95%CI: 29%–34%]
265 and 16% [95%CI: 14%–18%]) and Vancouver (29% [95%CI: 26%–32%] and 21% [95%CI:
266 18%–24%]). Lastly, the RDS-II-weighted mean number of sexual partners in the P6M was 8.7
267 (95%CI: 7.4–9.9) in Toronto, compared to 8.1 (95%CI: 6.9–9.4) in Montréal and 8.0 (95%CI:
268 6.8–9.2) in Vancouver (*Table 1*).

169 **Table 1. Unadjusted and RDS-II adjusted baseline estimates of the number of sexual partners in the past six months and its correlates among the**
 170 **Engage Cohort Study participants in Montréal, Toronto, and Vancouver, 2017–2019**

	Montréal			Toronto			Vancouver			Overall		
	n	(%)	RDS-II weighted % (95% CI)	n	(%)	RDS-II weighted % (95% CI)	n	(%)	RDS-II weighted % (95% CI)	n	(%)	RDS-II weighted % (95% CI)
	1179			517			753			2449		
Age group												
18-29	384	(33)	36 (34–39)	222	(43)	51 (46–55)	293	(39)	45 (42–49)	899	(37)	42 (40–44)
30-39	340	(29)	27 (24–29)	183	(35)	24 (20–28)	235	(31)	26 (23–29)	758	(31)	26 (24–28)
40-49	166	(14)	15 (13–17)	57	(11)	8 (6–10)	86	(11)	10 (8–12)	309	(13)	12 (10–14)
50-59	181	(15)	12 (10–14)	39	(8)	11 (8–14)	91	(12)	11 (9–13)	311	(13)	12 (10–14)
60+	108	(9)	10 (8–12)	16	(3)	6 (4–8)	48	(6)	8 (6–10)	172	(7)	9 (8–10)
Relationship status and sexual agreement												
Single	671	(57)	56 (53–59)	279	(54)	47 (43–52)	413	(55)	57 (54–61)	1363	(56)	55 (53–57)
Open	330	(28)	24 (22–27)	173	(33)	25 (21–29)	221	(29)	21 (18–24)	724	(30)	23 (22–25)
Exclusive	97	(8)	10 (9–12)	48	(9)	21 (17–24)	83	(11)	15 (13–18)	228	(9)	14 (13–15)
Unclear	81	(7)	9 (8–11)	17	(3)	7 (4–9)	36	(5)	7 (5–8)	134	(5)	8 (7–9)
HIV status*												
Seropositive	215	(18)	14 (12–16)	101	(20)	22 (19–26)	132	(18)	20 (18–23)	448	(18)	18 (16–19)
Seronegative / unknown	964	(82)	86 (84–88)	416	(80)	78 (74–81)	621	(82)	80 (77–82)	2001	(82)	82 (81–84)
Bathhouse/sex club attendance in the P6M[†]												
Yes	452	(38)	31 (29–34)	273	(53)	39 (35–43)	283	(38)	29 (26–32)	1008	(41)	32 (30–34)
No	716	(61)	67 (65–70)	237	(46)	56 (52–61)	464	(62)	70 (67–73)	1417	(58)	66 (64–68)
Missing [‡]	11	(1)	1 (1–2)	7	(1)	5 (3–7)	6	(1)	1 (0–2)	24	(1)	2 (1–2)
Group sex event attendance in the P6M[†]												
Yes	273	(23)	16 (14–18)	192	(37)	23 (19–26)	208	(28)	21 (18–24)	673	(27)	19 (17–20)
No	900	(76)	83 (81–85)	316	(61)	72 (68–75)	540	(72)	79 (76–81)	1756	(72)	79 (78–81)
Missing [‡]	6	(1)	1 (0–2)	9	(2)	6 (4–8)	5	(1)	1 (0–1)	20	(1)	2 (1–2)

Dating app use to find partners in the P6M[†]											
Yes	766 (65)	56 (53–59)	403 (78)	60 (56–64)	556 (74)	65 (61–68)	1725 (70)	59 (57–61)			
No	413 (35)	44 (41–47)	114 (22)	40 (36–44)	197 (26)	35 (32–39)	724 (30)	41 (39–43)			
Transactional sex in the P6M[†]											
Yes	88 (7)	6 (5–7)	54 (10)	6 (4–7)	42 (6)	6 (4–8)	184 (8)	6 (5–7)			
No	1070 (91)	91 (89–93)	454 (88)	93 (91–95)	703 (93)	93 (91–94)	2227 (91)	92 (91–93)			
Missing [‡]	21 (2)	3 (2–4)	9 (2)	1 (0–2)	8 (1)	1 (1–2)	38 (2)	2 (2–3)			
Number of sexual partners in the P6M (mean)											
	12.4 (SD 22.1)	8.1 (6.9–9.4)	19 (SD 1.6)	8.7 (7.4–9.9)	12.2 (SD 19)	8 (6.8–9.2)	13.7 (SD=23.8)	8.2 (7.4–9.7)			
Number of anal sexual partners in the P6M (mean)											
	7.4 (SD 15.3)	4.9 (3.9–5.8)	12.2 (SD 24.3)	5.9 (4.7–7.1)	8.3 (SD 15.4)	5.2 (4.3–6)	8.7 (SD=17.7)	5.2 (4.6–5.9)			

!71 CI, confidence interval; SD, standard deviation; P6M, past 6 months; RDS, respondent driven sampling.

!72 RDS-II weights are inversely proportional to participants' social network size.

!73 * HIV status was determined based on 4th generation testing with a confirmatory assay. If the laboratory test result was unknown, self-reported status was used.

!74 † At least once in the P6M.

!75 ‡ Missing includes “prefer not to answer.”

!76

277 **Correlates of the networks' number of sexual partners**

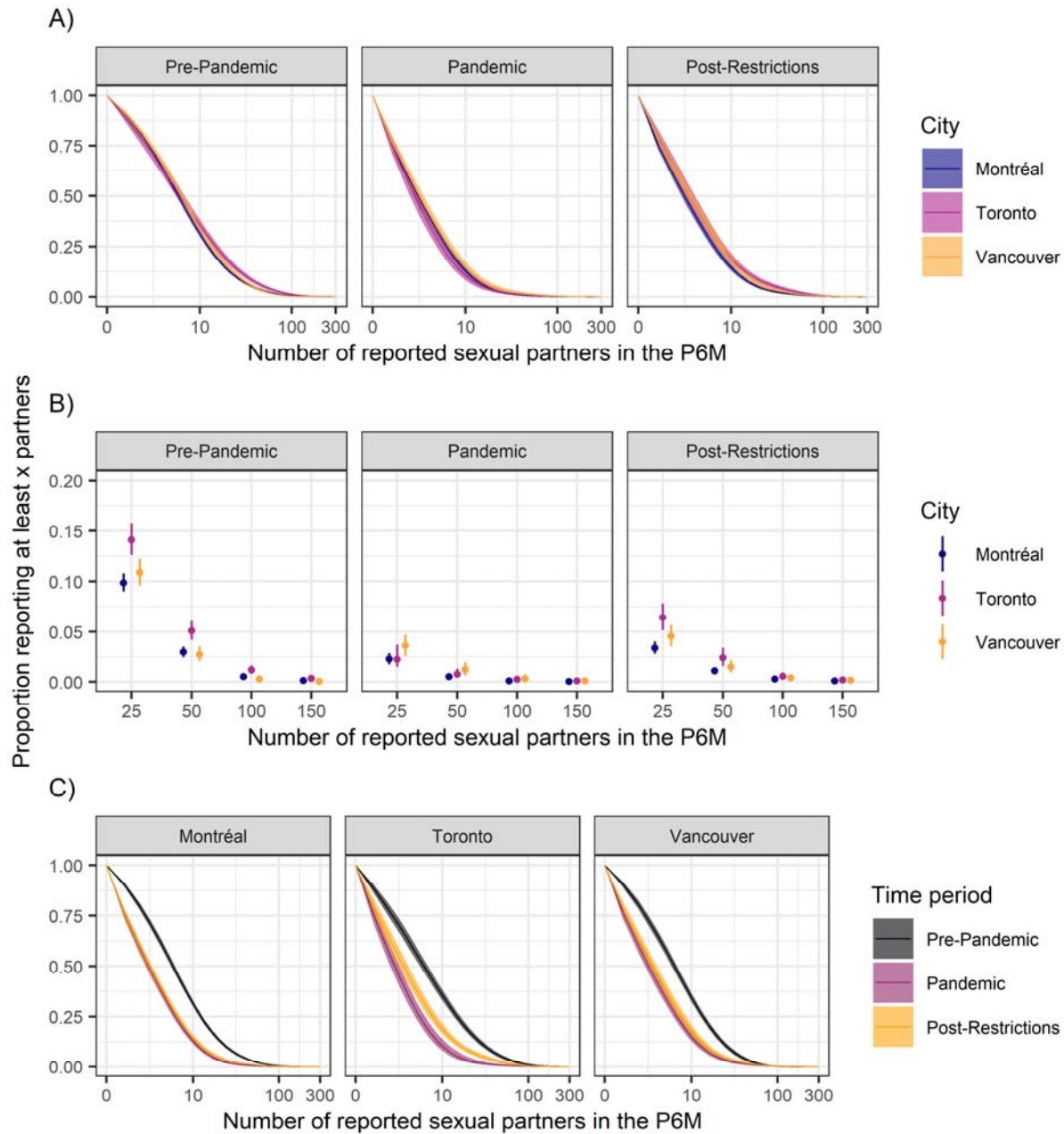
278 In all three cities, a higher number of sexual partners in the post-restrictions period was
279 strongly associated with attendance of group sex events, with a rate ratio (RR) of 3.65 (95%
280 Credible Interval [CrI]: 2.79–4.74) in Montréal, 3.44 (95%CrI: 2.43–4.83) in Toronto, and 3.08
281 (95%CrI: 2.22–4.32) in Vancouver. Other strong correlates were participation in transactional
282 sex, usage of dating apps, and visit to bathhouses and/or sex clubs (*Table S3*).

283 **Differences in the distribution of sexual partner numbers by city and time period**

284 Overall, the fitted distribution of sexual partner numbers was similar across the three
285 cities: the mean number of partners was 10.3 (95%CrI: 9.3-11.3) in Montréal, 12.8 (95%CrI:
286 11.1-14.7) in Toronto and 10.6 (95%CrI: 9.41-11.9) in Vancouver. However, pre-pandemic,
287 sexual networks in Toronto had the heaviest-tailed distribution, with 1.2% (95%CrI: 0.8-1.6%)
288 of GBM reporting ≥ 100 partners in the P6M, compared with 0.5% (95%CrI: 0.3-0.7%) in
289 Montréal and 0.3% (95%CrI: 0.1-0.5%) in Vancouver. All posterior distribution samples showed
290 that Toronto had a larger cumulative density of ≥ 100 numbers of sexual partners than Montréal
291 and Vancouver. This result held during the post-restrictions period: 0.5% (95%CrI: 0.2-0.9%) of
292 GBM in Toronto reported ≥ 100 partners, 0.3% (95%CrI: 0.2-0.5%) in Montréal, and 0.4%
293 (95%CrI: 0.2-0.7%) in Vancouver. Post-restrictions, Toronto had a larger cumulative density of
294 ≥ 100 numbers compared to Montréal and Vancouver (83% and 63% of the posterior distribution
295 samples, respectively; *Figure 1; Figure S1*).

296 Compared to the pre-pandemic period, all three cities witnessed a marked reduction in the
297 distribution of sexual partner numbers during the COVID-19 pandemic. In all three cities across
298 all 4,000 posterior distribution samples, the cumulative density of ≥ 25 sexual partners in the
299 P6M were consistently larger for the pre-pandemic vs. pandemic period. Sexual activities
300 appeared to have rebounded after lifting travel restrictions: in Montréal, Toronto, and
301 Vancouver, 100%, 100%, and 92% of posterior distribution samples showed a larger proportion
302 of participants reporting ≥ 25 sexual partners in the P6M as compared to the pandemic period.
303 However, sexual activities have not fully recovered to pre-pandemic levels: in all three cities,
304 100% of the posterior distribution samples had a greater proportion of GBM with ≥ 25 sexual
305 partners in the pre-pandemic than the post-restrictions period (*Figure 1*).

306



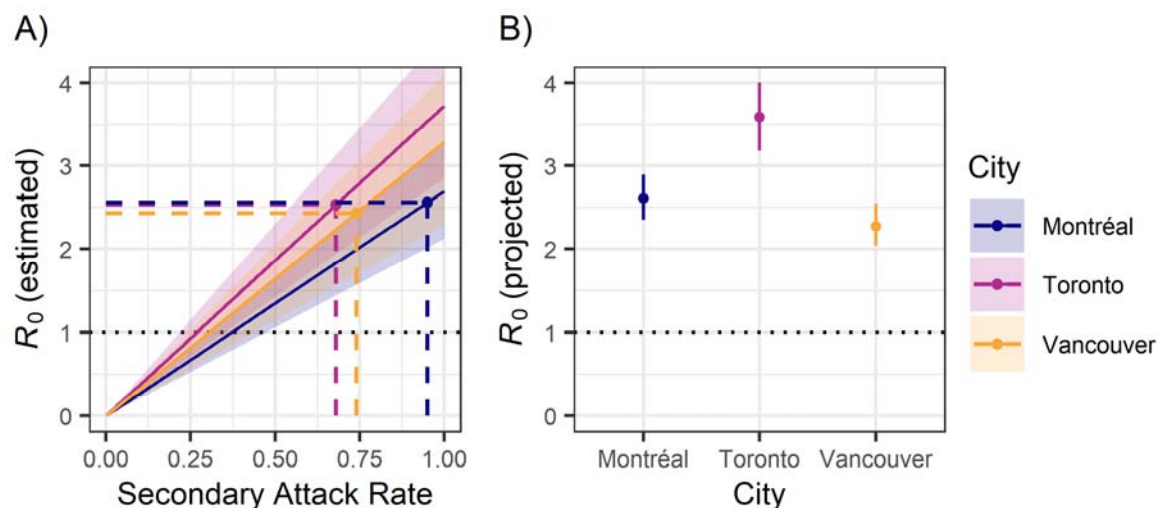
307
 308 **Figure 1. Cumulative distribution of sexual partner numbers in the past 6 months across Montréal,**
 309 **Toronto, and Vancouver at each time period, weighted by respondent driven sampling (RDS-II)**
 310 **and inverse probability of censoring weights, with 95% credible intervals. A) Full distribution (one**
 311 **time period per panel), B) Selected values (one time period per panel), C) Full distribution (one city per**
 312 **panel). P6M: past 6 months.**

313

314 Basic reproduction numbers from reported case counts and the next-generation matrix

315 Based on the reported cases counts, we estimated an R_0 of 2.55, 2.53 and 2.44 in
316 Montréal, Toronto and Vancouver, respectively (**Figure 2A**). We also estimated a cumulative
317 incidence proportion of mpox-diagnosed GBM ranging from 0.6–0.9% in all cities, assuming
318 that GBM comprise 2.9% of all men ≥ 15 years old in each city (**Table S5, Figure S2**).

319 By comparing the R_0 based on mpox cases to the NGM R_0 estimated from the partnership
320 distributions, we estimated that the average per-partnership SAR across cities was 79%. Based
321 on this SAR, had the distribution of sexual partner numbers been at pre-pandemic levels, the
322 mpox R_0 using the NGM would have been 2.61 (Montréal), 3.59 (Toronto), and 2.27
323 (Vancouver; **Figure 2B**).



324 **Figure 2. Basic reproduction number (R_0) of mpox.** A) City-specific R_0 estimates based on the initial
325 growth rate of reported mpox cases (dashed lines) and on the fitted distribution of sexual partner numbers
326 using the next-generation matrix method in the post-restrictions period (solid lines, shaded area: 95%
327 credible intervals). B) Projected R_0 to the pre-pandemic period, assuming pre-pandemic sexual activity
328 and using the mean of the three cities' secondary attack rate (79%). Next-generation matrix assumes
329 proportionate mixing of sexual activity groups is assumed. P6M: past 6 months.

331 Sensitivity analyses

332 When restricting the sample to only participants with follow-up at each time period, the
333 distributions of sexual partner numbers were broadly similar for all cities and time periods
334 (**Figure S3**). Similarly, standardizing the distributions to the covariate distribution in Montréal
335 did not substantially change the results for Vancouver. However, in Toronto, the tail of the

336 distribution of sexual partner numbers was slightly lighter in Toronto after standardization,
337 especially for the pre-pandemic and post-restrictions time periods (*Figure S4*). When using anal
338 sexual partner as outcome, the comparisons across cities and time periods did not qualitatively
339 change, but the distributions had smaller means and lighter tails (*Figure S5*).

340 Overall, these sensitivity analyses suggest that the results are relatively robust to the
341 weighting methods and to differences in covariate distributions across the cities. However, the
342 expected R_0 and SAR would be lower based on anal sexual partners as compared to all sexual
343 partners.

344 **Discussion**

345 In a large RDS cohort of GBM in Canada's three largest cities, there was a marked
346 decrease in the distribution of sexual partner numbers during the COVID-19 pandemic compared
347 to the pre-pandemic period (2017–2019). Despite a small increase after travel restrictions were
348 lifted (late 2021–early 2023), GBM sexual activity was well below pre-pandemic levels at the
349 time of the 2022–2023 mpox outbreak. Despite the reductions in sexual partnerships, the R_0 of
350 mpox was approximately 2.5 in all three cities during the 2022–2023 mpox outbreak. As the
351 population's social and sexual behaviors are expected to recover towards pre-pandemic levels,
352 the mpox R_0 may increase; it is therefore essential to continue public health surveillance and
353 preventative activities —community outreach, vaccination— to mitigate the local impacts of
354 mpox re-introductions into Canada.

355 We found that GBM had substantially fewer sexual partners in all three cities during the
356 COVID-19 pandemic, and sexual activity remained lower than pre-pandemic levels even after
357 restrictions were lifted. These findings are in line with previous research from Canada^{45,46} and
358 Europe^{19,47,48} which suggest that GBM sexual behaviours were influenced by public health
359 measures and messaging related to the COVID-19 pandemic. The implications of our findings
360 are that as sexual behaviours are expected to return towards pre-pandemic levels, future mpox
361 outbreaks remain possible. Outbreak risks are also further amplified with case importation risks
362 in an interconnected world and limited availability of mpox vaccines and therapeutics in
363 countries in Africa where mpox has been endemic for decades.⁴⁹

364 We found that attendance of group sex events, participation in transactional sex, usage of
365 dating apps, and visits to bathhouse and/or sex clubs were associated with higher numbers of
366 sexual partners in urban Canadian GBM. Notably, group sex events, use of dating apps, and
367 visits to bathhouse and/or sex clubs were also associated with earlier mpox cases during the
368 2022-2023 outbreak.^{2,12} In the context of ongoing low coverage of 2nd dose mpox vaccination
369 across the three cities, and across other cities in Canada, these venues therefore provide a
370 potentially interesting focus for prioritized and tailored vaccine strategies to increase coverage.
371 For example, pop-up vaccine clinics could be set at bathhouses and sex clubs in partnership with
372 community organizations.⁵⁰⁻⁵² Additionally, focused communication campaigns to promote
373 mpox vaccination could be rolled out on GBM-dating apps.^{53,54}

374 Across Montréal, Toronto, and Vancouver, we estimated an R_0 of about 2.5 based on the
375 incidence data. This is comparable to the 2.4 observed in Italy and in a pooled analysis of data
376 from European countries.^{55,56} However, there is high variability in R_0 estimates from the pooled
377 European analysis, with estimates ranging from 1.6 (Belgium) to 3.0 (Italy).⁵⁶ Despite this high
378 R_0 , we estimated a cumulative incidence proportion of only 0.6-0.9% of GBM by October 2022.
379 Similarly, an analysis by Murayama et al.¹⁵ found that epidemic growth reached its peak at
380 cumulative incidence proportions of 0.15–0.47% in various North American and European
381 countries. Such estimates are substantially lower than the theoretical “herd immunity threshold”
382 of 60% (assuming homogeneous contact rates) implied by the current R_0 estimates, although $R_0 <$
383 1 may be more readily achieved if those at higher risk are disproportionately protected by
384 vaccination and/or prior infection.⁵⁷

385 The results should be interpreted considering three main limitations. First, our post-
386 restrictions period overlaps with the time when spread of the SARS-CoV-2 Omicron variant took
387 place. Thus, the estimated distribution of sexual partner numbers may have been affected by
388 measures introduced in response to the Omicron SARS-CoV-2 wave. However, these restrictions
389 were relatively short-lived, and our definition enabled consistent and comparable time period
390 definitions across cities.⁵⁸ Second, although we used IPCW to address attrition bias, this bias
391 may not have been fully adjusted if the loss to follow-up model was misspecified (i.e., not all
392 variables associated with attrition were included). Lastly, our quantification of mpox
393 transmission potential assumed proportionate (to degree) mixing among sexual activity groups

394 for computational simplicity. If mixing was “like-with-like” (assortative) by sexual activity, the
395 modeled R_0 given SAR would increase, and thus the inferred SAR would decrease.

396 Our approach to estimating the distribution of sexual partner numbers has several
397 strengths. First, we implemented both RDS-II weights and IPCW to obtain estimates
398 representative of sexually active GBM in the three largest Canadian cities. Furthermore, inter-
399 city comparisons enabled us to account for potential differences in GBM communities in each
400 city and explore their relative impact on the transmission dynamics of mpox. Finally, *Engage*'s
401 longitudinal data collection allowed us to quantify behavioural changes among GBM from pre-
402 COVID-19 pandemic up to February 2023.

403 **Conclusion**

404 In Montréal, Toronto, and Vancouver, GBM had fewer sexual partners during the
405 COVID-19 pandemic. Even after travel restrictions were lifted in late 2021, sexual activities
406 among urban Canadian GBM had not fully recovered to pre-pandemic levels. The overall
407 distribution of sexual partner numbers was similar across cities, potentially explaining the similar
408 observed cumulative fraction of mpox cases among GBM in the three cities. With sexual activity
409 expected to return to pre-pandemic levels, public health authorities should consider the potential
410 risk of mpox resurgence. Improving first- and second- dose vaccination coverage among
411 individuals at risk with high numbers of sexual partners should be prioritized.

412 **Declarations**

413 **Acknowledgments**

414 The authors would like to thank the *Engage* study participants, office staff, and
415 community engagement committee members, as well as our community partner agency, *RÉZO*.
416 *Engage/Momentum II* is funded by the Canadian Institutes for Health Research (CIHR, #TE2-
417 138299), the CIHR Canadian HIV/AIDS Trials Network (#CTN300), the Canadian Foundation
418 for AIDS Research (CANFAR, #Engage), the Ontario HIV Treatment Network (OHTN, #1051),
419 the Public Health Agency of Canada (Ref: 4500370314), Toronto Metropolitan University,
420 Canadian Blood Services (#MSM2017LP-OD), and the Ministère de la Santé et des Services
421 sociaux (MSSS) du Québec.

422 **Author contribution**

423 JLFA, FX, and MM-G contributed to the conception and design. JC, DG, TAH, MD, and
424 SM were involved in the design, data collection, and data management of the *Engage Cohort*
425 *Study*. Analyses were performed by JLFA and FX, with support from MM-G. JK, LW, OG, HS,
426 MI, and SM provided input on preliminary methods discussions. The manuscript was drafted by
427 FX and JLFA. All authors contributed to the interpretation of results and reviewed the
428 manuscript for important intellectual content. Overall supervision for this project was provided
429 by MM-G. All authors approved the final manuscript.

430 **Conflict of interest**

431 JC reports investigator-sponsored research grants from Gilead Sciences Canada and ViiV
432 Healthcare, all outside of the submitted work. MM-G reports an investigator-sponsored research
433 grant from Gilead Sciences Inc., and contractual arrangements from the World Health
434 Organization and the Joint United Nations Programme on HIV/AIDS (UNAIDS), all outside of
435 the submitted work. All other authors report no conflict of interest.

436 **Funding**

437 This study was funded by the *Canadian Network for Modeling Infectious Diseases*
438 (CANMOD) to SM, MI, and MM-G, and a grant from the *Canadian Institutes of Health*
439 *Research* (CIHR) to MI, SM, HS, and MM-G. MM-G's research program is funded by a Canada
440 Research Chair (Tier 2) in *Population Health Modeling*. FX acknowledges a studentship from
441 the *McGill Center for Viral Diseases*. TAH received support from a Chair in Gay and Bisexual
442 Men's Health from the Ontario HIV Treatment Network. SM's research program is funded by a
443 Canada Research Chair (Tier 2) in *Mathematical Modeling and Program Science*.

444 Software and source code

445 Analysis code is available on a *GitHub* repository ([https://github.com/pop-health-](https://github.com/pop-health-mod/mpox-engage-sex-networks)
446 [mod/mpox-engage-sex-networks](https://github.com/pop-health-mod/mpox-engage-sex-networks)).

447 References

- 448 1. Huang Y, Mu L, Wang W. Monkeypox: epidemiology, pathogenesis, treatment and prevention. *Signal*
449 *Transduct Target Ther.* 2022;7:373. doi:10.1038/s41392-022-01215-4
- 450 2. Thornhill JP, Barkati S, Walmsley S, et al. Monkeypox Virus Infection in Humans across 16 Countries
451 — April–June 2022. *N Engl J Med.* 2022;387(8):679-691. doi:10.1056/NEJMoa2207323
- 452 3. Mathieu E, Spooner F, Dattani S, Ritchie H, Roser M. Mpox (monkeypox). *Our World Data.*
453 Published online May 24, 2022. Accessed June 14, 2023. <https://ourworldindata.org/monkeypox>
- 454 4. WHO. WHO Director-General declares the ongoing monkeypox outbreak a Public Health Emergency
455 of International Concern. Accessed April 8, 2023. [https://www.who.int/europe/news/item/23-07-2022-](https://www.who.int/europe/news/item/23-07-2022-who-director-general-declares-the-ongoing-monkeypox-outbreak-a-public-health-event-of-international-concern)
456 [who-director-general-declares-the-ongoing-monkeypox-outbreak-a-public-health-event-of-](https://www.who.int/europe/news/item/23-07-2022-who-director-general-declares-the-ongoing-monkeypox-outbreak-a-public-health-event-of-international-concern)
457 [international-concern](https://www.who.int/europe/news/item/23-07-2022-who-director-general-declares-the-ongoing-monkeypox-outbreak-a-public-health-event-of-international-concern)
- 458 5. La Presse Canadienne. La santé publique rapporte deux nouveaux cas de mpox diagnostiqués à
459 Montréal. L'actualité. Published March 30, 2023. Accessed June 15, 2023.
460 [https://lactualite.com/actualites/la-sante-publique-rapporte-de-nouveaux-cas-de-mpox-diagnostiques-a-](https://lactualite.com/actualites/la-sante-publique-rapporte-de-nouveaux-cas-de-mpox-diagnostiques-a-montreal/)
461 [montreal/](https://lactualite.com/actualites/la-sante-publique-rapporte-de-nouveaux-cas-de-mpox-diagnostiques-a-montreal/)
- 462 6. BCCDC. Mpox. Accessed June 15, 2023. <http://www.bccdc.ca/health-info/diseases-conditions/mpox>
- 463 7. Public Health Ontario. Mpox in Ontario: May 1, 2022 to May 23, 2023. Published online 2022.
- 464 8. Public Health Agency of Canada. Mpox (monkeypox) epidemiology update — Canada.ca. Published
465 August 12, 2022. Accessed June 14, 2023. <https://health-infobase.canada.ca/mpox/>
- 466 9. Dufranne Q. Deux cas de variole simienne recensés à Montréal; appel à la vigilance. Accessed April 8,
467 2023. [https://journalmetro.com/actualites/montreal/3041126/deux-cas-de-variole-simienne-recenses-a-](https://journalmetro.com/actualites/montreal/3041126/deux-cas-de-variole-simienne-recenses-a-montreal-appel-a-la-vigilance/)
468 [montreal-appel-a-la-vigilance/](https://journalmetro.com/actualites/montreal/3041126/deux-cas-de-variole-simienne-recenses-a-montreal-appel-a-la-vigilance/)
- 469 10. Ward T, Christie R, Paton RS, Cumming F, Overton CE. Transmission dynamics of monkeypox
470 in the United Kingdom: contact tracing study. *BMJ.* 2022;379:e073153. doi:10.1136/bmj-2022-073153
- 471 11. Government of the UK. Investigation into monkeypox outbreak in England: technical briefing 1.
472 GOV.UK. Accessed April 8, 2023. [https://www.gov.uk/government/publications/monkeypox-](https://www.gov.uk/government/publications/monkeypox-outbreak-technical-briefings/investigation-into-monkeypox-outbreak-in-england-technical-briefing-1)
473 [outbreak-technical-briefings/investigation-into-monkeypox-outbreak-in-england-technical-briefing-1](https://www.gov.uk/government/publications/monkeypox-outbreak-technical-briefings/investigation-into-monkeypox-outbreak-in-england-technical-briefing-1)
- 474 12. Vusirikala A, Charles H, Balasegaram S, et al. Epidemiology of Early Monkeypox Virus
475 Transmission in Sexual Networks of Gay and Bisexual Men, England, 2022. *Emerg Infect Dis.*
476 2022;28(10):2082-2086. doi:10.3201/eid2810.220960
- 477 13. Spicknall IH, Pollock ED, Clay PA, et al. Modeling the Impact of Sexual Networks in the
478 Transmission of Monkeypox virus Among Gay, Bisexual, and Other Men Who Have Sex with Men —
479 United States, 2022. *Morb Mortal Wkly Rep.* 2022;71(35):1131-1135. doi:10.15585/mmwr.mm7135e2
- 480 14. Endo A, Murayama H, Abbott S, et al. Heavy-tailed sexual contact networks and monkeypox
481 epidemiology in the global outbreak, 2022. *Science.* 2022;378(6615):90-94.
482 doi:10.1126/science.add4507
- 483 15. Murayama H, Pearson CAB, Abbott S, et al. Accumulation of immunity in heavy-tailed sexual
484 contact networks shapes mpox outbreak sizes. *J Infect Dis.* Published online July 4, 2023:jjad254.

- 485 doi:10.1093/infdis/jiad254
- 486 16. Adegboye OA, Eugenia Castellanos M, Alele FO, et al. Travel-Related Monkeypox Outbreaks in
487 the Era of COVID-19 Pandemic: Are We Prepared? *Viruses*. 2022;14(6):1283.
488 doi:10.3390/v14061283
- 489 17. Stigum H, Falck W, Magnus P. The core group revisited: The effect of partner mixing and
490 migration on the spread of gonorrhoea, chlamydia, and HIV. *Math Biosci*. 1994;120(1):1-23.
491 doi:10.1016/0025-5564(94)90036-1
- 492 18. Banuet-Martinez M, Yang Y, Jafari B, et al. Monkeypox: A review of epidemiological modelling
493 studies and how modelling has led to mechanistic insight. *Epidemiol Infect*. Published online May 23,
494 2023:1-44. doi:10.1017/S0950268823000791
- 495 19. Brown JR, Reid D, Howarth AR, et al. Sexual behaviour, STI and HIV testing and testing need
496 among gay, bisexual and other men who have sex with men recruited for online surveys pre/post-
497 COVID-19 restrictions in the UK. *Sex Transm Infect*. Published online March 1, 2023.
498 doi:10.1136/sextrans-2022-055689
- 499 20. Gilbert M, Chang HJ, Ablona A, et al. Partner number and use of COVID-19 risk reduction
500 strategies during initial phases of the pandemic in British Columbia, Canada: a survey of sexual health
501 service clients. *Can J Public Health Rev Can Santé Publique*. 2021;112(6):973-983.
502 doi:10.17269/s41997-021-00566-9
- 503 21. Volz E, Heckathorn DD. Probability Based Estimation Theory for Respondent Driven Sampling.
504 *J Official Stat*.
- 505 22. Harvey-Lavoie S, Apelian H, Labbé AC, et al. Community-Based Prevalence Estimates of
506 Chlamydia trachomatis and Neisseria gonorrhoeae Infections Among Gay, Bisexual, and Other Men
507 Who Have Sex With Men in Montréal, Canada. *Sex Transm Dis*. 2021;48(12):939-944.
508 doi:10.1097/OLQ.0000000000001486
- 509 23. Hart TA, Moore DM, Noor SW, et al. Prevalence of HIV and sexually transmitted and blood-
510 borne infections, and related preventive and risk behaviours, among gay, bisexual and other men who
511 have sex with men in Montreal, Toronto and Vancouver: results from the Engage Study. *Can J Public
512 Health Rev Can Sante Publique*. 2021;112(6):1020-1029. doi:10.17269/s41997-021-00546-z
- 513 24. WHO. WHO Director-General's opening remarks at the media briefing on COVID-19 - 11 March
514 2020. Accessed April 18, 2023. [https://www.who.int/director-general/speeches/detail/who-director-
515 general-s-opening-remarks-at-the-media-briefing-on-covid-19---11-march-2020](https://www.who.int/director-general/speeches/detail/who-director-general-s-opening-remarks-at-the-media-briefing-on-covid-19---11-march-2020)
- 516 25. Canada Border Services Agency. Travel Advisory: REMINDER – On September 7, new
517 measures for fully vaccinated international travellers to Canada will come into force. Published
518 September 3, 2021. Accessed April 18, 2023. [https://www.canada.ca/en/border-services-
519 agency/news/2021/09/travel-advisory-reminder--on-september-7-new-measures-for-fully-vaccinated-
520 international-travellers-to-canada-will-come-into-force.html](https://www.canada.ca/en/border-services-agency/news/2021/09/travel-advisory-reminder--on-september-7-new-measures-for-fully-vaccinated-international-travellers-to-canada-will-come-into-force.html)
- 521 26. Chapin-Bardales J, Rosenberg ES, Sullivan PS, Jenness SM, Paz-Bailey G. Trends in Number
522 and Composition of Sex Partners Among Men Who Have Sex With Men in the United States, National
523 HIV Behavioral Surveillance, 2008–2014. *J Acquir Immune Defic Syndr* 1999. 2019;81(3):257-265.
524 doi:10.1097/QAI.0000000000002025
- 525 27. Song M, Zhou X, Pazaris M, Spiegelman D. The Missing Covariate Indicator Method is Nearly
526 Valid Almost Always. *arXiv*. Published online October 29, 2021. doi:10.48550/arXiv.2111.00138
- 527 28. Cole SR, Hernán MA. Constructing Inverse Probability Weights for Marginal Structural Models.
528 *Am J Epidemiol*. 2008;168(6):656-664. doi:10.1093/aje/kwn164

- 529 29. Xiridou M, Miura F, Adam P, Op de Coul E, de Wit J, Wallinga J. The fading of the mpox
530 outbreak among men who have sex with men: a mathematical modelling study. *medRxiv*. Published
531 online 2023. doi:10.1101/2023.01.31.23285294
- 532 30. Delamater PL, Street EJ, Leslie TF, Yang YT, Jacobsen KH. Complexity of the Basic
533 Reproduction Number (R0) - Volume 25, Number 1—January 2019 - Emerging Infectious Diseases
534 journal - CDC. doi:10.3201/eid2501.171901
- 535 31. Diekmann O, Heesterbeek JA, Metz JA. On the definition and the computation of the basic
536 reproduction ratio R0 in models for infectious diseases in heterogeneous populations. *J Math Biol*.
537 1990;28(4):365-382. doi:10.1007/BF00178324
- 538 32. Diekmann O, Heesterbeek J a. P, Roberts MG. The construction of next-generation matrices for
539 compartmental epidemic models. *J R Soc Interface*. 2009;7(47):873-885. doi:10.1098/rsif.2009.0386
- 540 33. Vynnycky E, White R. An introduction to infectious disease modelling. Accessed June 27, 2023.
541 <https://anintroductiontoinfectiousdiseasemodelling.com/>
- 542 34. Porta M. Secondary Attack Rate. In: *A Dictionary of Epidemiology*. Oxford University Press;
543 2016. Accessed July 7, 2023. <https://>
- 544 35. Suñer C, Ubals M, Tarín-Vicente EJ, et al. Viral dynamics in patients with monkeypox infection:
545 a prospective cohort study in Spain. *Lancet Infect Dis*. 2023;23(4):445-453. doi:10.1016/S1473-
546 3099(22)00794-0
- 547 36. Prasad S, Galvan Casas C, Strahan AG, et al. A dermatologic assessment of 101 mpox
548 (monkeypox) cases from 13 countries during the 2022 outbreak: Skin lesion morphology, clinical
549 course, and scarring. *J Am Acad Dermatol*. 2023;88(5):1066-1073. doi:10.1016/j.jaad.2022.12.035
- 550 37. Tarín-Vicente EJ, Alemany A, Agud-Dios M, et al. Clinical presentation and virological
551 assessment of confirmed human monkeypox virus cases in Spain: a prospective observational cohort
552 study. *Lancet Lond Engl*. 2022;400(10353):661-669. doi:10.1016/S0140-6736(22)01436-2
- 553 38. Sheffer R, Savion M, Nuss N, Amitai Z, Salama M. Monkeypox outbreak in the Tel Aviv
554 District, Israel, 2022. *Int J Infect Dis*. 2023;128:88-90. doi:10.1016/j.ijid.2022.12.023
- 555 39. Sorge JT, Colyer S, Cox J, et al. Estimation of the Population Size of Gay, Bisexual and Other
556 Men Who Have Sex with Men in Canada, 2020. Poster presented at: AIDS 2022 - The 24th
557 International AIDS Conference; 2022; Montreal. Accessed July 11, 2023.
558 https://programme.aids2022.org/PAGMaterial/PPT/1639_6910/gbMSM_PSE_poster_AIDS2022_FIN
559 AL.pdf
- 560 40. Mauck DE, Gebrezgi MT, Sheehan DM, et al. Population-based methods for estimating the
561 number of men who have sex with men: A systematic review. *Sex Health*. 2019;16(6):527-538.
562 doi:10.1071/SH18172
- 563 41. Milwid RM, Xia Y, Doyle CM, et al. Past dynamics of HIV transmission among men who have
564 sex with men in Montréal, Canada: a mathematical modeling study. *BMC Infect Dis*. 2022;22(1):233.
565 doi:10.1186/s12879-022-07207-7
- 566 42. Statistics Canada. *Census Profile, 2021 Census of Population.*; 2023. Accessed August 1, 2023.
567 <https://www12.statcan.gc.ca/census-recensement/2021/dp-pd/prof/index.cfm?Lang=E>
- 568 43. Sang JM, Gholamian B, Wang L, et al. Examining differential success in recruitment using
569 respondent driven sampling (RDS) in a multi-site study of gay, bisexual and other men who have sex
570 with men. *BMC Med Res Methodol*. 2023;23(1):136. doi:10.1186/s12874-023-01886-9
- 571 44. Towns JM, Lim CK, Chow EPF, et al. Persistence of monkeypox virus at oral and rectal sites.
572 *Lancet Microbe*. 2023;4(4):e210. doi:10.1016/S2666-5247(22)00382-2

- 573 45. Skakoon-Sparling S, Palma PA, Zahran A, et al. Loneliness and the sexual behavior of sexual
574 minority men in the context of the COVID-19 pandemic. *Soc Personal Psychol Compass*. Published
575 online June 2023:e12814. doi:10.1111/spc3.12814
- 576 46. Daroya E, Grey C, Lessard D, et al. 'I did not have sex outside of our bubble': changes in sexual
577 practices and risk reduction strategies among sexual minority men in Canada during the COVID-19
578 pandemic. *Cult Health Sex*. 2022;0(0):1-17. doi:10.1080/13691058.2022.2139414
- 579 47. Williams A, Gillespie D, Couzens Z, Wood F, Hughes K, Hood K. Changing sexual behaviours
580 amongst MSM during the COVID-19 restrictions in Wales: a mixed methods study. *BMC Public*
581 *Health*. 2022;22(1):396. doi:10.1186/s12889-022-12821-w
- 582 48. Reyniers T, Rotsaert A, Thunissen E, et al. Reduced sexual contacts with non-steady partners and
583 less PrEP use among MSM in Belgium during the first weeks of the COVID-19 lockdown: results of
584 an online survey. *Sex Transm Infect*. 2021;97(6):414-419. doi:10.1136/sextrans-2020-054756
- 585 49. Adetifa I, Muyembe JJ, Bausch DG, Heymann DL. Mpox neglect and the smallpox niche: a
586 problem for Africa, a problem for the world. *The Lancet*. 2023;401(10390):1822-1824.
587 doi:10.1016/S0140-6736(23)00588-3
- 588 50. Holt W. Montreal Has A Pop-Up Monkeypox Vaccine Clinic Until August 7. MTL Blog.
589 Published August 5, 2022. Accessed August 1, 2023. [https://www.mtlblog.com/montreal/montreal-](https://www.mtlblog.com/montreal/montreal-has-a-pop-up-monkeypox-vaccine-clinic-until-august-7)
590 [has-a-pop-up-monkeypox-vaccine-clinic-until-august-7](https://www.mtlblog.com/montreal/montreal-has-a-pop-up-monkeypox-vaccine-clinic-until-august-7)
- 591 51. Lavoie J. Toronto bathhouse workers among first to be offered monkeypox vaccine. CTV News
592 Toronto. Published June 11, 2022. Accessed August 1, 2023. [https://toronto.ctvnews.ca/toronto-](https://toronto.ctvnews.ca/toronto-bathhouse-workers-among-first-to-be-offered-monkeypox-vaccine-1.5942961)
593 [bathhouse-workers-among-first-to-be-offered-monkeypox-vaccine-1.5942961](https://toronto.ctvnews.ca/toronto-bathhouse-workers-among-first-to-be-offered-monkeypox-vaccine-1.5942961)
- 594 52. CBC News. Monkeypox vaccines to be offered at Vancouver bathhouses as 21 cases confirmed
595 in B.C. CBC. Published July 9, 2022. Accessed August 1, 2023.
596 <https://www.cbc.ca/news/canada/british-columbia/monkeypox-vaccine-pride-1.6515118>
- 597 53. Harrison LB, Bergeron G, Cadieux G, et al. Monkeypox in Montréal: Epidemiology,
598 Phylogenomics, and Public Health Response to a Large North American Outbreak. *Ann Intern Med*.
599 2023;176(1):67-76. doi:10.7326/M22-2699
- 600 54. Reyes-Urueña J, D'Ambrosio A, Croci R, et al. High monkeypox vaccine acceptance among
601 male users of smartphone-based online gay-dating apps in Europe, 30 July to 12 August 2022. *Euro*
602 *Surveill Bull Eur Sur Mal Transm Eur Commun Dis Bull*. 2022;27(42):2200757. doi:10.2807/1560-
603 7917.ES.2022.27.42.2200757
- 604 55. Guzzetta G, Mammone A, Ferraro F, et al. Early Estimates of Monkeypox Incubation Period,
605 Generation Time, and Reproduction Number, Italy, May–June 2022. *Emerg Infect Dis*.
606 2022;28(10):2078-2081. doi:10.3201/eid2810.221126
- 607 56. Branda F, Pierini M, Mazzoli S. Monkeypox: Early estimation of basic reproduction number R0
608 in Europe. *J Med Virol*. 2023;95(1):e28270. doi:10.1002/jmv.28270
- 609 57. Fine P, Eames K, Heymann DL. "Herd Immunity": A Rough Guide. *Clin Infect Dis*.
610 2011;52(7):911-916. doi:10.1093/cid/cir007
- 611 58. CIHI. Canadian COVID-19 Intervention Timeline. Accessed June 19, 2023.
612 <https://www.cihi.ca/en/canadian-covid-19-intervention-timeline>