

1 **Investigating the relationship between extreme weather and cryptosporidiosis and giardiasis in**
2 **Colorado: a multi-decade study using distributed-lag nonlinear models**

3

4 **Elise N. Grover ^{a,*}, James L. Crooks ^{b,c}, Elizabeth J. Carlton ^a, Sara H. Paull ^a, William B. Allshouse**
5 **^a, Rachel H. Jervis ^d, Katherine A. James ^{a,c}**

6 ^a *Department of Environmental and Occupational Health, Colorado School of Public Health, University of*
7 *Colorado Anschutz Medical Campus, Aurora, USA*

8 ^b *Division of Biostatistics and Bioinformatics, National Jewish Health, Denver, USA*

9 ^c *Department of Epidemiology, Colorado School of Public Health, University of Colorado Anschutz*
10 *Medical Campus, Aurora, USA*

11 ^d *Colorado Department of Public Health and the Environment, Denver, USA*

12

13

*Corresponding author: email: elise.grover@cuanschutz.edu
post: Colorado School of Public Health
13001 E. 17th Pl., B1119
Aurora, CO 80045, USA

14

15

16

17

18

19

20

21

22

23

24

25 **Abstract**

Environmentally-mediated protozoan diseases like cryptosporidiosis and giardiasis are likely to be highly impacted by extreme weather, as climate-related conditions like temperature and precipitation have been linked to their survival, distribution, and overall transmission success. Our aim was to investigate the relationship between extreme temperature and precipitation and cryptosporidiosis and giardiasis infection using monthly weather data and case reports from Colorado counties over a twenty-one year period. Data on reportable diseases and weather among Colorado counties were collected using the Colorado Electronic Disease Reporting System (CEDRS) and the Daily Surface Weather and Climatological Summaries (Daymet) Version 3 dataset, respectively. We used a conditional Poisson distributed-lag nonlinear modeling approach to estimate the lagged association (between 0 and 12-months) between relative temperature and precipitation extremes and the risk of cryptosporidiosis and giardiasis infection in Colorado counties between 1997 – 2017, relative to the risk found at average values of temperature and precipitation for a given county and month. We found distinctly different patterns in the associations between temperature extremes and cryptosporidiosis, versus temperature extremes and giardiasis. When maximum or minimum temperatures were high (90th percentile) or very high (95th percentile), we found a significant increase in cryptosporidiosis risk, but a significant decrease in giardiasis risk, relative to risk at the county and calendar-month mean. Conversely, we found very similar relationships between precipitation extremes and both cryptosporidiosis and giardiasis, which highlighted the prominent role of long-term (>8 months) lags. Our study presents novel insights on the influence that extreme temperature and precipitation can have on parasitic disease transmission in real-world settings. Additionally, we present preliminary evidence that the standard lag periods that are typically used in epidemiological studies to assess the impacts of extreme weather on cryptosporidiosis and giardiasis may not be capturing the entire relevant period.

26

27 **Keywords:** cryptosporidiosis, giardiasis, climate change, extreme weather, distributed lag, time series

28

29

30

31

32 **Funding**

33 This research did not receive any specific grant from funding agencies in the public, commercial, or not-
34 for-profit sectors.

35 **Ethical approval**

36 The Colorado Multiple Institution Review Board reviewed and approved of this study as meeting
37 Institutional Review Board exemption status.

38

39

40

41

42

43

44

45

46

47

48

49

50

51

52

53

54

55

56

57

58

59

60

61

62

63 1. Introduction

64 In recent decades, rapid increases in global temperatures are giving rise to an array of changes
65 in local ecosystems, local climates and the frequency and magnitude of extreme weather, all of which are
66 likely to impact environmentally-mediated illnesses such as those transmitted by the parasitic protozoa,
67 *Cryptosporidium* and *Giardia* (Fletcher, Stark et al. 2012, Luber and Lemery 2015, Pozio 2020, IPCC
68 2021). These protozoan diseases are a leading cause of the estimated 1.7 billion cases of diarrheal
69 disease that occur every year (Lane and Lloyd 2002, Fayer, Dubey et al. 2004, Chalmers and Davies
70 2010, Liu, Platts-Mills et al. 2016, Efstratiou, Ongerth et al. 2017), with an estimated 33,900 deaths and
71 2.94 million disability-adjusted life-years (DALYs) lost to illness caused by enteric protozoa annually
72 (Torgerson, Devleeschauwer et al. 2015). *Cryptosporidium* and *Giardia* are both zoonotic, waterborne
73 parasites that are transmitted by animals and humans via the fecal-oral route, and are most frequently
74 acquired by humans from contaminated drinking or recreational water, though contact with livestock and
75 livestock-contaminated agricultural products can also play a significant role in human transmission
76 (Hunter and Thompson 2005, Karanis, Kourenti et al. 2006, Budu-Amoako, Greenwood et al. 2011,
77 Dumètre, Aubert et al. 2012, Dreelin, Ives et al. 2014, Painter, Gargano et al. 2016, Ligda, Claerebout et
78 al. 2020). As such, regions of the world that have limited access to clean water, are prone to water
79 scarcity, or lack infrastructure to support widespread access to improved sanitation tend to be the most at
80 risk of cryptosporidiosis and giardiasis (Hunter and Thompson 2005, Ahmed, Guerrero Flórez et al.
81 2018). Nevertheless, high income settings can experience increases in protozoan enteric disease risk as
82 a result of societal factors like rising irrigation dependence (Liu, Folberth et al. 2013, Lake and Barker
83 2018), growing participation in outdoor recreational activities (Hlavsa, Roberts et al. 2015, Painter,
84 Gargano et al. 2016, Association 2021, Ferguson, McIntosh et al. 2022), and environmental phenomena
85 such as the rising frequency and severity of extreme temperatures and precipitation (Fletcher, Stark et al.
86 2012, Molloy, Dreelin et al. 2017, Intergovernmental Panel on Climate Change 2018, Akhtar 2020, IPCC
87 2021). Given the high burden of environmentally-mediated illnesses like cryptosporidiosis and giardiasis,
88 as well as uncertainty that arises around rapidly changing climate systems, investigations into the
89 relationship between local transmission dynamics and climate extremes are of paramount importance.

90 While several studies have demonstrated associations between climate conditions and
91 cryptosporidiosis and giardiasis, these relationships can vary drastically by local context (e.g., local
92 climate and ecosystem type, season, land use, water regulations, etc.) (Naumova, Jagai et al. 2007,
93 Fletcher, Stark et al. 2012, Lal, Hales et al. 2012, Semenza, Herbst et al. 2012). For instance, a meta-
94 analysis conducted by Jagai and colleagues (2009) demonstrated that while temperature was more
95 strongly associated with cryptosporidiosis in temperate climates, precipitation was a stronger predictor in
96 tropical climates, though notably, neither temperature nor precipitation was significantly associated with
97 cryptosporidiosis in arid or semi-arid climates (Jagai, Castronovo et al. 2009). In the case of temperature
98 and cryptosporidiosis, more studies have reported a positive relationship between cryptosporidiosis and
99 temperature (Hu, Tong et al. 2007, Hu, Tong et al. 2007, Naumova, Jagai et al. 2007, Lake, Pearce et al.
100 2008, Jagai, Castronovo et al. 2009, Ajampur, Liakath et al. 2010, Hu, Mengersen et al. 2010, Hu,
101 Mengersen et al. 2010, Kent, McPherson et al. 2015, Ikiroma and Pollock 2021, Ma, Destouni et al. 2021,
102 Wang, Wang et al. 2023) than a negative one (Britton, Hales et al. 2010, Kent, McPherson et al. 2015). In
103 the case of giardiasis, the reported relationship with temperature has been less consistent (Wang, Wang
104 et al. 2023), with some studies suggesting a positive association (Naumova, Jagai et al. 2007, Britton,
105 Hales et al. 2010), others reporting a negative one (Wilkes, Edge et al. 2011, Li, Chase et al. 2019,
106 Masina, Shirley et al. 2019), and at least one suggesting no association (Lal, Ikeda et al. 2013). Likewise,
107 studies assessing the relationship between precipitation and cryptosporidiosis and giardiasis have had
108 similarly mixed results (Miller, Lewis et al. 2007, Naumova, Jagai et al. 2007, Keeley and Faulkner 2008,
109 Mons, Dumètre et al. 2009, Britton, Hales et al. 2010, Gonzalez-Moreno, Hernandez-Aguilar et al. 2013,
110 Lal, Baker et al. 2013, Daniels, Smith et al. 2016, Liu, Gong et al. 2020, Wang, Wang et al. 2023).

111 Further challenging our understanding of how rapidly changing climates can impact
112 cryptosporidiosis and giardiasis transmission is the fact that to date, few studies have specifically
113 assessed local climate extremes in relation to cryptosporidiosis and giardiasis (Carlton, Woster et al.
114 2016). This is particularly true in the case of temperature extremes, where the vast majority of the
115 literature comes from experimental, rather than epidemiological studies. Overall, experimental studies
116 have highlighted that both *Cryptosporidium* oocysts and *Giardia* cysts can survive and remain viable after
117 short-term temperature extremes (Wickramanayake, Rubin et al. 1985, Fayer and Nerad 1996, Fayer,

118 Trout et al. 1998, Fayer, Morgan et al. 2000, King, Keegan et al. 2005, Alum, Absar et al. 2014). For
119 example, *Cryptosporidium* oocysts stored in water held at -10°C and -5°C remained infectious for up to 1
120 and 8 weeks of storage respectively, while those held at 35°C for up to a week of storage could produce
121 light infections in mice (Fayer and Nerad 1996, Fayer, Trout et al. 1998). Meanwhile, *Giardia* cysts are
122 more sensitive to temperatures below freezing or above 30°C than *Cryptosporidium* oocysts, with one
123 study finding low viability (<0.2%) when *Giardia* cysts were stored at either -6°C or 37°C for more than 3
124 days (Wickramanayake, Rubin et al. 1985).

125 By contrast, few epidemiological studies have focused specifically on the relationship between
126 temperature extremes and protozoan disease transmission in real-world settings. In a recent review by
127 Wang, Wang & Cao (2023), the authors identified a total of three studies that assessed the relationship
128 between extreme high temperatures – expressed as daily, weekly or monthly maximum temperature –
129 and cryptosporidiosis, all of which used a lag of ≤3 months, and all found a positive association with
130 maximum temperature in at least one study location (Hu, Mengersen et al. 2010, Kent, McPherson et al.
131 2015, Brankston, Boughen et al. 2018, Wang, Wang et al. 2023). Meanwhile, the same review (Wang,
132 Wang et al. 2023) identified just one study that assessed the relationship between low temperature –
133 specifically, mean minimum monthly temperature – and cryptosporidiosis, which highlighted positive
134 association between 0-, 1-, and 2-month lagged mean minimum monthly temperature and
135 cryptosporidiosis in metropolitan areas, but a negative relationship between 3-month lagged minimum
136 monthly temperature and cryptosporidiosis in rural areas (Kent, McPherson et al. 2015).

137 Precipitation extremes have been more frequently studied in relation to cryptosporidiosis and
138 giardiasis transmission (Keeley and Faulkner 2008, Chhetri, Takaro et al. 2017, Lal and Konings 2018,
139 Brunn, Fisman et al. 2019, Chhetri, Galanis et al. 2019, Forbes, Hosking et al. 2021, Ma, Destouni et al.
140 2021, Graydon, Mezzacapo et al. 2022), though the magnitude of the relationships tend to be highly
141 dependent on background conditions, and subsequently, how variables and lags are defined and
142 measured. Both periods of drought and heavy rainfall can cause inefficiencies and reduced effectiveness
143 of water treatment systems, which can subsequently impact the risk of cryptosporidiosis and giardiasis
144 transmission (Curriero, Patz et al. 2001, Thomas, Charron et al. 2006, Nichols, Lane et al. 2009, Luber
145 and Lemery 2015, Chhetri, Takaro et al. 2017, Schreiber, Heinkel et al. 2019). For example, studies

146 conducted in Australia and the Netherlands have found that periods of drought were associated with
147 decreased water quality (Senhorst and Zwolsman 2005, Zwolsman and van Bokhoven 2007), and an
148 increased risk of cryptosporidiosis (Lal and Konings 2018). Likewise, periods of heavy rainfall can also
149 cause sewage system overflow, contamination of irrigation systems, wells and private water supplies, and
150 subsequent food and waterborne illnesses (Semenza, Herbst et al. 2012, Luber and Lemery 2015). For
151 instance, researchers in Vancouver, Canada found that the risk of runoff-related cryptosporidiosis and
152 giardiasis incidence was highest when a period of excessive dryness was followed by heavy rainfall
153 (Chhetri, Takaro et al. 2017). Exposure via runoff and waste water system failures may be particularly
154 important for parasitic protozoan diseases, which are more resilient than most bacteria and viruses in the
155 face of conventional water treatment methods (Omarova, Tussupova et al. 2018), and are less commonly
156 the target of operational surveillance systems (Fletcher, Stark et al. 2012).

157 The majority of studies assessing the relationship between temperature and precipitation
158 extremes and cryptosporidiosis and giardiasis have assessed lag periods of between climate and disease
159 of up to three months (Hu, Tong et al. 2007, Naumova, Jagai et al. 2007, Hu, Mengersen et al. 2010, Hu,
160 Mengersen et al. 2010, Kent, McPherson et al. 2015, Chhetri, Takaro et al. 2017, Brankston, Boughen et
161 al. 2018, Brunn, Fisman et al. 2019, Chhetri, Galanis et al. 2019), however, we know that pathogen
162 survival in the ambient environment is likely longer under optimal conditions. While determining the
163 maximum survival time in the ambient environment can be challenging, controlled studies have
164 demonstrated that *Giardia* cysts submerged in river and lake water at winter temperatures maintained
165 viability at 12-weeks post-baseline (deRegnier, Cole et al. 1989), while *Cryptosporidium* oocyst infectivity
166 can remain after being stored in water for over five months at 5-15°C (Fayer, Trout et al. 1998), and up to
167 a year when stored in low turbidity water (Badenoch 1990). Given their demonstrated capacity for
168 prolonged survival, epidemiological studies that assess the potential for longer lagged effects in real-world
169 settings are needed.

170 Table 1 provides examples from the literature and a summary of some of the hypothesized
171 mechanisms by which extreme precipitation and temperature may impact *Cryptosporidium* and *Giardia*
172 mobilization and survival and subsequent cryptosporidiosis and giardiasis transmission. In light of the
173 many influences that weather and the environment have on the transmission of protozoan pathogens, as

174 well as remaining uncertainty surrounding the time- and location-specific conditions that may amplify or
175 reduce risk, localized investigations of weather extremes and their lagged effects on transmission are
176 needed.

177 In this study, we investigated the potential impact of temperature and precipitation extremes on
178 cryptosporidiosis and giardiasis risk in Colorado counties between 1997 – 2017. Our approach was
179 designed to allow evaluation of lagged relationships up to 12 months, addressing a gap in the
180 epidemiological evidence to date. We used a flexible, distributed-lag nonlinear modeling approach to
181 explore nonlinear outcome-predictor relationships and permit lagged effects to be spread over time, two
182 characteristics that are desirable when exploring the impacts of highly variable environmental conditions
183 on health outcomes. In so doing, we provide valuable insight on the relationships between real-world
184 shifts in temperature and precipitation and two important, but often overlooked sources of waterborne
185 illness, with the goal of advancing our basic understanding of the mechanisms by which climate impacts
186 infectious diseases and improving risk forecasting.

187 **2. Materials and Methods**

188 **2.1. Study design**

189 In this study, we assessed the impacts of precipitation and temperature extremes on reported
190 cases of cryptosporidiosis and giardiasis in Colorado counties between 1997 and 2017. Specifically, our
191 primary objective was examining the effects of extreme temperature and precipitation values – defined as
192 the 5th, 10th, 90th and 95th percentile values of countywide monthly averages for maximum daily
193 temperature (TMAX), minimum daily temperature (TMIN) and total precipitation (PRECIP) (each mean-
194 centered by county and calendar month) – on monthly counts of reported human cryptosporidiosis and
195 giardiasis cases. We also investigated the relevant lag periods over which extreme weather was
196 associated with cryptosporidiosis and giardiasis in Colorado counties and evaluated whether season
197 served as an effect modifier within our models. We used a distributed lag nonlinear modeling (DLNM)
198 approach, conditioned on total case counts within each of the twelve calendar-months for a given county
199 (Gasparri, Armstrong et al. 2010, Armstrong, Gasparri et al. 2014). The Colorado Multiple Institution
200 Review Board reviewed and approved of this study as meeting Institutional Review Board exemption
201 status.

202 **2.2. Cryptosporidiosis and giardiasis incidence**

203 Data on reportable diseases in Colorado were collected using the Colorado Electronic Disease
204 Reporting System (CEDRS), which is made available upon request from the Colorado Department of
205 Public Health and Environment (CDPHE). Our study spanned the 21-year period between January 1997
206 through December 2017, using monthly case reports of cryptosporidiosis and giardiasis by county as our
207 two outcomes of interest. As both cryptosporidiosis and giardiasis are mandatory reportable diseases and
208 CDPHE conducted lab audits to ensure proper monthly reporting, for the purposes of this study we
209 assumed that cases of sufficient severity to warrant medical attention and appropriate testing in Colorado
210 counties between 1997 and 2017 were captured in the CEDRS dataset.

211 In order to estimate incidence, we used annual county population estimates from the Colorado
212 Department of Local Affairs (Colorado Department of Local Affairs 2019). Although Broomfield County
213 was approved by voters as Colorado's 64th county in 1998, it was not included as its own county in this
214 analysis until 2000, as prior to this point, the Colorado Department of Local Affairs census data recorded
215 Broomfield's population as a part of Boulder County's population.

216 **2.3. Climatological variables**

217 For our climatological variables, we used the Daily Surface Weather and Climatological
218 Summaries (Daymet) Version 3 dataset derived by the National Center for Atmospheric Research
219 (NCAR), which provides daily estimates of weather parameters across a 1-kilometer grid spacing for
220 North America (Thornton, Thornton et al. 2017). In order to align the resolution of our climatological data
221 with the monthly resolution of case report data that was available for all Colorado counties between 1997
222 – 2017, TMAX (°C) and TMIN (°C) were each averaged across all 1-km grid points within a given county
223 for each month between January 1996 and December 2017, such that each county-month had a single
224 estimated average value for TMIN and TMAX. PRECIP was estimated for each county-month using total
225 daily precipitation (mm) measured at each 1-km grid point within a county's borders, summed across all
226 days in each month and averaged across all grid points in the county. The Daymet Version 3 dataset
227 includes all forms of precipitation (e.g., snow, sleet, rain), which are converted to a water-equivalent depth
228 in millimeters. Notably, while our outcome data begins in 1997, the data for the explanatory variables
229 begins in January 1996 to allow for up to 12-month lagged effects for each of our weather parameters.

230 To make the definition of extremes most relevant to the local weather conditions found in
231 Colorado counties, we mean-centered our weather variables by county and calendar-month, such that
232 values could be interpreted as hot/cold or wet/dry for the specific location and time of year. All three
233 weather variables were subsequently mean-centered by county and calendar-month, allowing TMAX,
234 TMIN and PRECIP to be defined relative to their location and time. For example, the average TMAX was
235 8.9°C for Adams County in December 2017, while the mean-centered (MC)- TMAX was +2.6°C (as
236 compared to other Decembers between 1996 – 2017 in Adams County), indicating a warmer than
237 average December in Adams County in 2017.

238 In this analysis, we were ultimately interested in the association between extreme temperature
239 and precipitation and cryptosporidiosis and giardiasis incidence. Thus, to define the set of relevant
240 predictor values to be evaluated as the numerator in our relative risk calculations, we used the 5th, 10th,
241 90th and 95th percentile values of our mean-centered weather variables, referred to respectively as very
242 low, low, high and very high throughout this analysis, as detailed in Appendix Table A1.

243 **2.4. Analysis**

244 To assess the lagged effects of MC-TMAX, MC-TMIN and MC-PRECIP on human
245 cryptosporidiosis and giardiasis cases in Colorado counties between 1997-2017, we used a conditional
246 Poisson DLNM approach (Gasparri, Armstrong et al. 2010, Armstrong, Gasparri et al. 2014). We
247 investigated a wide range of potential lags between 0- and 12-months by varying the number of internal
248 knots (0-6) for the spline functions used to define the lag space and comparing model performance
249 across these formulations of the lag space. Whereas 2- and 4-month lags were selected because they
250 aligned with the typical lag range indicated in the literature (Hu, Tong et al. 2007, Naumova, Jagai et al.
251 2007, Hu, Mengersen et al. 2010, Hu, Mengersen et al. 2010, Kent, McPherson et al. 2015, Ikiroma and
252 Pollock 2021), 6-, 8-, 10- and 12-month lags was also examined in detail in order to determine whether
253 extreme weather could have more prolonged impacts of on giardiasis or cryptosporidiosis case counts in
254 Colorado counties between 1997 – 2017. Ultimately, this design allowed us to identify potential longer-
255 term trends that might have otherwise been missed if only short-term lags were assessed. The impacts of
256 MC-TMAX, MC-TMIN and MC-PRECIP on monthly cryptosporidiosis and giardiasis county case counts
257 were each assessed independently, making a total of six outcome-predictor combinations.

258 The steps that were taken to conduct this analysis for each of the six outcome-predictor pairs of
259 interest to this study are outlined in Figure 1. In Step 1, initial exploratory analyses were conducted to
260 summarize between-season differences in our outcome- predictor pairs across our study period. A three-
261 month definition of season was also used in our exploratory assessment to investigate the distribution of
262 the data across the calendar year. Winter was defined as December – February; spring as March – May;
263 summer as June – August; and fall as September – November.

264 Next, we developed several different cross-basis structures to investigate potential non-linearities
265 in the lagged predictor-outcome relationship over time and space, using the “dlnm” package in R
266 (Gasparrini 2011, RStudio Team 2020). A cross-basis is a bi-dimensional space of functions that
267 encapsulates both the shape of the relationship between the outcome and predictors (termed the
268 “predictor space”), as well as the distributed lagged effects (i.e. the “lag space”) (Gasparrini, Armstrong et
269 al. 2010). To develop a cross-basis with suitable functions defining both the predictor space and the lag
270 space, we investigated the fit of different third-degree spline functions (natural spine, B-spline and
271 penalized spline) with incrementally increasing degrees of freedom (maximum of seven), while the
272 predictor space was held constant using a simple linear basis function. In all models, the maximum lag
273 was defined as 12-months. The default settings for knot placements were used for each spline function
274 such that internal knots were placed at equally spaced points along the lag-space, while the boundary
275 knots were set to 0- and 12-months for the natural and B-spline functions. We used a conditional Poisson
276 generalized nonlinear modeling (GNM) approach to compare model fit across the different lag space
277 functions used in the cross-basis. All models also included an intercept, a continuous year term to
278 account for linear time trends, an offset for county population (i.e., the natural log of the county’s annual
279 population), and county-month as the conditioning (i.e., stratum) variable. Each model’s Bayesian
280 information criterion (BIC) was used to identify the three best lag space definitions for the cross-basis.

281 Once suitable functions were identified for the lag space, Step 3 was to develop the predictor
282 space using a similar process for the lag space. That is, the fit of different third-degree spline functions
283 with incrementally increasing degrees of freedom (up to a maximum of five) were compared for the
284 predictor space, while we defined the lag space using the top three previously identified lag space
285 formulations. In addition to assessing different variations of third-degree spline functions, threshold

286 functions were also assessed for the predictor space. The BIC value was used again to select the three
287 best fit models across all the different cross-basis formulations.

288 We looked for evidence of potential effect modification by season in Step 4. Four separate cross-
289 basis terms (one for each three-month season) were generated, using the top performing predictor space
290 and lag space definitions previously identified through Steps 2 and 3. In total, the procedure outlined in
291 steps 2-4 yielded a set of 50 models for each outcome-predictor pair, which were then compared a final
292 time using both the Akaike information criterion (AIC) and BIC values to select a final subset of six models
293 that were reserved for further exploration. To demonstrate the analytical process that was used to build
294 suitable cross-basis structures in Steps 2-4, Appendix Table A2 provides an example from one outcome-
295 predictor pair, detailing all model variants that were developed for MC-TMIN and cryptosporidiosis.

296 The predictive capacity of each of the six AIC/BIC-selected models for a given outcome-predictor
297 was then assessed using cross-validation in Step 5. For each of the six models, repeated training and
298 testing was conducted using a 21-fold cross-validation (Kuhn 2008). Each fold contained a year of
299 observations, such that, within each fold, 20 years of data were used to train the model while the
300 remaining year of county-month observations was used for validation. This training-validation process
301 was repeated a total of twenty-one times, once for each year between 1997 and 2017. The mean RMSE
302 value summarizing the performance across all tuning and validation iterations was then used as an
303 indicator of the overall predictive skill of the model. The model with the lowest mean RMSE was selected
304 as the final model (Appendix Table A3).

305 The final model was re-run using a conditional quasi-Poisson GNM variant to obtain adjusted
306 confidence intervals to account for overdispersion (Step 6). As was done with for the conditional Poisson
307 models, the quasi-conditional Poisson models included an intercept outside of the cross-basis, a
308 continuous year term to account for long-term trends, county-month as the conditioning variable, and an
309 offset for county population. In Step 7, we used these models to generate estimates of the relative risk
310 (RR) with 95% confidence intervals (95%CI) of cryptosporidiosis or giardiasis across a matrix of extreme
311 predictor values (i.e., 5th, 10th, 90th and 95th percentile values) at 2-month lag increments, relative to the
312 risk of disease found at zero (i.e., the mean for a given county and calendar-month).

313 Finally, to visualize our relative risk estimates and the entire predicted outcome surface across all
314 predictor and lag values, we created a set of plots depicting the predictor-lag-outcome surface, using a
315 reference value of zero (i.e., the mean) in all cases. We used a p-value of <0.05 to indicate statistical
316 significance in this study. Stata 15 (Stata Statistical Software: Release 15 (2017). StataCorp LP, College
317 Station, TX) and R Studio 4.0 (RStudio Team (2020). RStudio: Integrated Development Environment for
318 R. RStudio, PBC, Boston, MA URL <http://www.rstudio.com/>) were used for all analyses (StataCorp 2015,
319 RStudio Team 2020).

320 **3. Results**

321 Between 1997 and 2017, the total population in Colorado increased by more than 40%, rising
322 from approximately 3.9 million to 5.6 million (Table 2). The total count of cryptosporidiosis and giardiasis
323 cases was highest in the summer (38.2% of cryptosporidiosis cases; 30.6% of giardiasis cases) and the
324 fall (32.1% of cryptosporidiosis cases; 30.3% of giardiasis cases) across all Colorado counties. Extreme
325 temperatures (i.e., 5th, 10th, 90th and 95th percentile values of MC-TMIN and MC-TMAX) were less
326 frequent during the summer season than other times of the year, while precipitation extremes (i.e., 5th,
327 10th, 90th and 95th percentile values of MC-PRECIP) were most frequent during the spring and summer
328 seasons (see Table 3). The total Colorado cryptosporidiosis case rate (per 100,000 people) increased
329 over the study period, while Colorado's giardiasis case rate decreased (Figure 2). There was also a
330 decrease in the frequency of extreme low temperatures ($\leq 10^{\text{th}}$ percentile value of MC-TMIN or MC-TMAX)
331 and a notable increase in the frequency of extreme high temperatures ($\geq 90^{\text{th}}$ percentile value of MC-TMIN
332 or MC-TMAX) in Colorado counties between 1997 and 2017 (Figure 3). See Figure 3 for a depiction of
333 the distribution of Colorado's county population, county case rates, extreme precipitation, and extreme
334 temperatures in 1997, 2007 and 2017.

335 Each of the final models selected via cross-validation for modeling the impacts of weather
336 extremes on cryptosporidiosis cases used natural or B-splines in both the lag and predictor spaces, while
337 the models for giardiasis cases employed a natural or B-spline in the lag space and a linear function to
338 model the predictor space. Although some of the top six AIC/BIC-selected models included interaction
339 terms to account for some seasonal variation in temperature and precipitation extremes (see Table 3 for
340 details), none of these models were ultimately selected as the final model via cross-validation for any

341 outcome-predictor pair. Appendix Table A3 details the cross-basis structure and the cross-validation
342 results for the top six models of each outcome-predictor pair.

343 **3.1. Extreme low temperatures**

344 Compared to the risk of cryptosporidiosis found at the county and calendar-month mean, extreme
345 low temperatures were generally associated with a decrease in cryptosporidiosis risk in the short-term (0
346 – 8 month lags), followed by an increase in cryptosporidiosis risk in the long-term (10 – 12-month lags)
347 (Figure 4, Table 4). For example, when the maximum temperature was very low (5th percentile) 4-months
348 prior, there was a 6.2% decrease in the risk of cryptosporidiosis cases relative to the risk at the mean
349 (very low MC-TMAX: RR 0.938; 95% CI 0.910 – 0.965), while at the 12-month lag, there was a 16.3%
350 increase (very low MC-TMAX: RR 1.163; 95% CI 1.103 – 1.227). The one exception to the u-shaped
351 pattern between cryptosporidiosis and low temperatures was when minimum temperatures were very low
352 (5th percentile). In this case, our model suggested an inverted u-shaped wherein there was an increase in
353 cryptosporidiosis risk (relative to the risk at the county and calendar-month mean) at all lags between 0
354 and 12-months, which peaked between the 6-month lag (very low MC-TMIN: RR 1.080, 95%CI 1.046 –
355 1.116) and 8-month lag (very low MC-TMIN: RR: 1.083, 95% CI 1.052 – 1.114).

356 We also found an inverted u-shaped pattern between lagged extreme low temperatures and
357 giardiasis (Figure 4, Table 4). When maximum temperatures were very low (5th percentile) or low (10th
358 percentile), the relative risk of giardiasis cases relative to the risk at the county and calendar-month mean
359 was highest at the 6-month lag (very low MC-TMAX: RR 1.011, 95% CI 1.002 – 1.020; low MC-TMAX:
360 RR 1.008, 95% CI 1.002 – 1.015). By comparison, the relative risk of giardiasis peaked at the 4-month lag
361 for both measures of minimum temperatures (very low MC-TMIN: RR 1.033; 95% CI 1.022 – 1.045; low
362 MC-TMIN: RR 1.024; 95% CI 1.015 – 1.032). At longer lags (8 – 12 months), we found that neither low
363 nor very low values of MC-TMAX or MC-TMIN yielded a significant change in the risk of giardiasis cases,
364 relative to the mean.

365 **3.2. Extreme high temperatures**

366 When MC-TMAX or MC-TMIN was either high (90th percentile) or very high (95th percentile),
367 there was an inverted u-shaped increase in the lagged (0 to 12-months) risk of cryptosporidiosis, relative
368 to the risk at the county and calendar-month mean (Figure 5). In all cases, the relative risk of

369 cryptosporidiosis peaked at the 6-month lag (high MC-TMAX: RR 1.086; 95% CI 1.064 – 1.109; very high
370 MC-TMAX: RR 1.076; 95% CI 1.048 – 1.105; high MC-TMIN: RR 1.129; 95% CI 1.104 – 1.155; very high
371 MC-TMIN: RR 1.122, 95% CI 1.087 – 1.157) (Table 5).

372 For giardiasis, we found a significant decrease in the risk of cases when MC-MAXT or MC-MINT
373 were lagged between 0 – 6 months and either high (90th percentile) or very high (95th percentile) (Figure
374 4). The risk of giardiasis at high or very high temperatures (relative to the risk at the county and calendar
375 month mean values) was at its lowest at the 4-month lag in all cases (high MC-TMAX: RR 0.991; 95% CI
376 0.984 – 0.998; very high MC-TMAX: RR 0.989; 95% CI 0.980 – 0.998; high MC-TMIN: RR 0.983; 95% CI
377 0.977 – 0.990; very high MC-TMIN: RR 0.978, 95% CI 0.969 – 0.987) (Table 5). The decrease in the
378 relative risk of giardiasis was more pronounced with extreme high minimum temperatures than with
379 extreme high maximum temperatures, as shown in Figure 5.

380 **3.3. Extreme low precipitation**

381 The relationship between extreme low levels of monthly precipitation and both cryptosporidiosis
382 and giardiasis risk was only significantly different than the risk at the county and calendar-month mean
383 when allowing for a lag of at least 8-months (Figure 6). In all cases, our models suggested that the
384 relative risk of both cryptosporidiosis and giardiasis was lowest 12-months after low (10th percentile) or
385 very low (5th percentile) levels of precipitation (Table 6). In the case of cryptosporidiosis, there was an
386 18.1% decrease (RR 0.819, 95% CI 0.769 – 0.871) in the risk of cases relative to the county and
387 calendar-month mean when precipitation 12-months prior was very low (5th percentile), and a 13.5%
388 decrease (RR 0.865, 95% CI 0.825 – 0.905) in the risk of cases when precipitation 12-months prior was
389 low (10th percentile). For giardiasis, the associations with extreme low precipitation were similar, but less
390 pronounced: there was a 3.2 decrease (RR 0.977, 95% CI 0.962 – 0.992) in the relative risk of giardiasis
391 cases when precipitation 12-months prior was very low (5th percentile), and a 1.8% decrease (RR 0.982,
392 95% CI 0.970 – 0.994) in the risk of cases when precipitation 12-months prior was low (10th percentile).

393 **3.4. Extreme high precipitation**

394 When precipitation was high (90th percentile) or very high (95th percentile), the risk of
395 cryptosporidiosis cases (relative to the risk at the county and calendar-month mean) decreased in the
396 short-term (2 – 6 month lags), but increased relative to the mean at lags of 8 – 12 months (see Figure 6).

397 In the short-term, the decrease in cryptosporidiosis risk was largest 4-months after higher than average
398 precipitation (high MC-PRECIP: RR 0.956, 95% CI 0.939 – 0.973; very high MC-PRECIP: RR 0.921, 95%
399 CI 0.895 – 0.948) while in the long-term, the relative increase in cryptosporidiosis risk peaked at 10-
400 months post high precipitation levels (high MC-PRECIP: RR 1.036, 95% CI 1.018 – 1.055; very high MC-
401 PRECIP: RR 1.034, 95% CI 1.006 – 1.063).

402 In the case of giardiasis, extreme high precipitation was not associated with a significant change
403 in giardiasis risk in the short-term (relative to the risk at county and calendar-month mean precipitation
404 levels), but was associated with a small increase in risk in the long-term (i.e., 10 and 12-month lags)
405 (Figure 6, Table 6). For example, when precipitation was 31.5 mm above the monthly average (90th
406 percentile) 12-months prior, there was a 2% increase in the risk of giardiasis cases (RR 1.020, 95% CI
407 1.007 – 1.034), while at 46.6 mm above the monthly average (5th percentile) 12-months prior, there was a
408 3% increase in the risk of giardiasis cases (RR 1.030, 95% CI 1.010 – 1.051).

409 **4. Discussion**

410 In this investigation of the relationships between weather extremes and two highly burdensome
411 parasitic diseases in Colorado counties between 1997 and 2017, we found distinctly different patterns in
412 the associations between temperature extremes and cryptosporidiosis, versus temperature extremes and
413 giardiasis. Conversely, our models of precipitation extremes were very similar between cryptosporidiosis
414 and giardiasis, all of which highlighted the prominent role of long-term lags. These are novel findings that
415 have not been replicated in other epidemiological studies, which may, at least in part, be due to the
416 unique methodology employed in the current study. Whereas other studies to date have tended to focus
417 on short-lived extreme weather events that represent relatively infrequent occurrences (e.g., flooding), or
418 simple, absolute definitions of extremes (e.g., ≥ 37 °C) and lags (e.g., 3-months), in our study, extremes
419 were always defined relative to the county and calendar-month mean, and lags were more flexible as a
420 result of our use of DLNMs. As such, our analysis provides novel insights into the subtleties of the lagged
421 relationships between periodic temperature and precipitation extremes relative to local averages and two
422 important, but often overlooked protozoan diseases over an extended period.

423 In the case of extreme low temperatures, we found a significant increase in giardiasis case risk
424 when either the maximum or minimum temperature (lagged ≤ 6 months) was low or very low (10th and 5th

425 percentile, respectively) relative to the county and calendar-month. By contrast, we found a significant
426 decrease in the relative risk of cryptosporidiosis when maximum temperature was low or very low 2-8
427 months prior, as well when minimum temperature was low 2-4 months prior (though notably, the
428 relationship was reversed when minimum temperature was very low). To date, few studies have focused
429 on the relationship between extreme low temperatures and cryptosporidiosis or giardiasis, and those that
430 have tend to be experimental and focused on parasite viability and survival rather than real-world
431 transmission dynamics and risks. This dearth of epidemiological evidence regarding protozoa and low
432 temperatures may be linked to a historical focus on transmission potential at above average
433 temperatures, as investigations into the seasonality of giardiasis and cryptosporidiosis have established
434 that incidence tends to peak in spring or summer in temperate climates (Naumova, Jagai et al. 2007,
435 Jagai, Castronovo et al. 2009, Lal, Hales et al. 2012, Gutiérrez-Gutiérrez and Palomo-Ligas 2023).

436 The relationship that we found between extreme high temperatures and cryptosporidiosis and
437 giardiasis risk was consistent with that of low temperatures: when maximum or minimum temperatures
438 were high (90th percentile) or very high (95th percentile), we found a significant increase in
439 cryptosporidiosis risk, but a significant decrease in giardiasis risk, relative to the risk found at the county
440 and calendar-month mean. For both cryptosporidiosis and giardiasis, the relative risk peaked 6-months
441 after extreme high temperatures, though for cryptosporidiosis, there remained a statistically significant
442 association at longer lags (i.e., 8 and 10 months). In the case of cryptosporidiosis, our findings align with
443 the existing evidence on the relationship with high maximum/minimum temperatures, which suggests that
444 there tends to be higher risk of cryptosporidiosis at higher temperatures (Ajampur, Liakath et al. 2010,
445 Hu, Mengersen et al. 2010, Kent, McPherson et al. 2015, Brankston, Boughen et al. 2018). For example,
446 one study conducted in Brisbane Australia demonstrated that when relative humidity was less than 63%
447 and weekly maximum temperature exceeded 31°C, the relative risk of cryptosporidiosis cases increased
448 by 13.64 (Hu, Mengersen et al. 2010). While research on giardiasis and extreme temperature is sparse,
449 studies on *Giardia* cyst survival and identification also align with our findings, suggesting a negative
450 association between air and water temperatures and concentrations of *Giardia* cysts in the ambient
451 environment (Wilkes, Edge et al. 2011, Li, Chase et al. 2019, Masina, Shirley et al. 2019). However, it is
452 worth noting that these studies also found that the same was true of *Cryptosporidium* oocysts (Wilkes,

453 Edge et al. 2011, Li, Chase et al. 2019, Masina, Shirley et al. 2019), which conflicts with the
454 aforementioned studies suggesting that cryptosporidiosis risk increases with higher temperatures
455 (Ajjampur, Liakath et al. 2010, Hu, Mengersen et al. 2010, Kent, McPherson et al. 2015, Brankston,
456 Boughen et al. 2018). Taken together, these seemingly contradictory results may suggest that both
457 extreme low and extreme high temperatures have the potential to amplify cryptosporidiosis risk under the
458 right environmental conditions, whereas *Giardia* may simply be more sensitive to extreme high
459 temperatures. This is supported by evidence from in vitro and in vivo experiments which have indicated
460 that *Giardia* cysts demonstrate greater temperature-dependence and higher die-off rates than
461 *Cryptosporidium* oocysts at both high and low temperatures (Olson, Goh et al. 1999, Alum, Absar et al.
462 2014).

463 Another possible explanation for why *Cryptosporidium* and *Giardia* respond differently to extreme
464 temperatures is that the primary hosts associated with each pathogen are different. For example, a study
465 conducted in Georgia, USA found that synanthropic flies living alongside wildlife and livestock could serve
466 as mechanical vectors of *Cryptosporidium* and *Giardia*, with viable *Cryptosporidium* being isolated from
467 56% of sampled flies, while *Giardia* was isolated from just 8% of those sampled (Conn, Weaver et al.
468 2007). As warm-weather, ectothermic species, the development time of the studied fly species tends to
469 decrease as temperatures increase, up until a threshold temperature when development will cease – for
470 example, above 34°C for similar species of blowflies found in Asia (Zhang, Wang et al. 2019). Thus, if
471 cattle and synanthropic flies are in fact a major part of the transmission pathway for cryptosporidiosis, but
472 not giardiasis in Colorado, then the association between cryptosporidiosis (and not giardiasis) and above
473 average maximum and minimum temperatures (which notably, generally fall below a 34°C threshold in
474 Colorado counties) is consistent with what would be expected. While further study is still needed to
475 determine whether flies are in fact an important vector in either the cryptosporidiosis or giardiasis
476 transmission cycles in Colorado, epidemiological studies to date have highlighted that livestock (primarily
477 cattle) are a major reservoir of zoonotic *Cryptosporidium parvum*, and that direct contact with livestock or
478 indirect contact via drinking water are likely major transmission pathways (Fayer, Morgan et al. 2000,
479 Stantic-Pavlinic, Xiao et al. 2003, Hunter and Thompson 2005). Meanwhile, livestock are not believed to
480 be a major source of giardiasis transmission to human populations (Hunter and Thompson 2005).

481 In this study, we found that extreme high levels of precipitation were followed by a decrease in
482 the relative risk of cryptosporidiosis (and giardiasis, though not statistically significant) in the short-term
483 (<8-month lag), and a significant increase in the relative risk of both cryptosporidiosis and giardiasis in the
484 long-term (10 – 12 month lags). Although the lags that we used in our study were considerably longer
485 than the typical lags assessed for cryptosporidiosis and giardiasis to date, these findings may potentially
486 be indicative of a dilution effect in the short-term, followed by increased dispersal and opportunity for
487 transmission events in the long-term. While evidence in favor of the latter phenomenon is difficult to
488 assess given that long-term risks of extreme precipitation have not been a focus in the literature to date,
489 one study from Australia did find a 1.8% increase in cryptosporidiosis risk when annual rainfall increased
490 by 78 mm (Forbes, Hosking et al. 2021). Meanwhile, several studies have provided evidence in favor of a
491 short-term dilution effect. For example, the dilution effect was believed to be at play in one study
492 conducted in Canada, which demonstrated lower odds of human cryptosporidiosis when water levels
493 were higher than average 19-20 days prior (Brankston, Boughen et al. 2018). Similarly, an assessment of
494 environmental concentrations of giardia cysts in storm-based runoff from dairy lots in California found an
495 overall negative association between giardia concentrations and cumulative precipitation, with the highest
496 concentrations found early in the rainfall-runoff season (Miller, Lewis et al. 2007). Notably, a recent review
497 that assessed the body of evidence in support of the concentration-dilution hypothesis – that is, that
498 conflicting findings on the impacts of rainfall on diarrhea result from underlying differences in background
499 rain levels – found four studies that identified dilution (specifically, rainfall following wet periods) as a
500 potential mechanism explaining an inverse association between rainfall and diarrhea (Kraay, Man et al.
501 2020). While an investigation of the impacts of rainfall following wetter than average weather was outside
502 of the scope of this study, future investigations of the impacts of this phenomenon on giardiasis and
503 cryptosporidiosis, as well as the underlying sources of contamination for each pathogen within Colorado
504 counties is warranted.

505 In the case of extreme low levels of precipitation, we found that neither low nor very low
506 precipitation was significantly associated with the relative risk of either cryptosporidiosis or giardiasis
507 cases in the short-term (<8-month lag), but in the long-term (10 – 12 month lags), there was a significant
508 decrease in the risk of both cryptosporidiosis and giardiasis cases. Whereas other studies assessing the

509 effects of weather and climate on cryptosporidiosis and giardiasis have most frequently assessed lag
510 periods of between one and three months (Hu, Tong et al. 2007, Naumova, Jagai et al. 2007, Hu,
511 Mengersen et al. 2010, Hu, Mengersen et al. 2010, Kent, McPherson et al. 2015), in our study, we
512 allowed for a lag of up to 12-months. This decision was based on the body of evidence from a small set of
513 experimental studies which have suggested that under the right conditions, *Cryptosporidium* oocysts and
514 *Giardia* cysts may be able to survive and maintain viability for much longer than the period typically
515 assessed in the epidemiological literature – potentially as long as six months to a year (Badenoch 1990,
516 Fayer, Trout et al. 1998). Overall, our analysis suggest that that the transmission of cryptosporidiosis and
517 giardiasis in Colorado counties may be sensitive to longer-term periods of excess dryness or drought, as
518 has been found with diarrheal pathogens in other regions of the world (Bush, O'Neill et al. 2014, Chhetri,
519 Takaro et al. 2017, Lal and Konings 2018). While our study was not designed to assess the impacts of
520 rainfall after prolonged periods of drought on transmission, future studies aimed at investigating this in
521 Colorado and the American West are greatly needed.

522 Although giardiasis and cryptosporidiosis cases reported in Colorado counties between 1997 –
523 2017 tended to follow the standard seasonal pattern that have been previously identified for temperate
524 climates, wherein case counts tend to peak in the summer or early fall (Lal, Hales et al. 2012) (See Table
525 3), the final models selected via cross-validation for each of our outcome-predictor pairs did not ultimately
526 include an interaction for season. This is notable, as season-specific effects have been demonstrated in
527 other contexts (Odoi, Martin et al. 2003, Muchiri, Ascolillo et al. 2009), which are believed to arise as a
528 result of season-specific exposure opportunities such as local agricultural practices, recreational water
529 uses, and how people interact with the environment (Learmonth, Ionas et al. 2002, Odoi, Martin et al.
530 2003). While it is possible that the relationship between precipitation and temperature and
531 cryptosporidiosis and giardiasis truly does not vary substantially by season in Colorado counties, it is also
532 possible that our models were underpowered for detecting seasonal effects.

533 Thus, a limitation of this study was the potential for being underpowered when it came to the
534 seasonal effect modification assessment, due to the panel structure of the data, our conditioning on
535 county-month, the complex lag-predictor cross-basis structures already included in each model, and the
536 fact that we had a relatively small number of observations for each county (252 month-years for 63

537 counties, and 216 for Broomfield County). Another limitation to this study was that the smallest time-unit
538 possible given the data available for the study period was month, making it impossible for us to determine
539 the effects of short-term weather events. Additionally, because county was the smallest geographic-unit in
540 this study, we were unable to investigate sub-county location-specific nuances such as variations in
541 elevation, access to healthcare (which may impact case reporting) or popular recreational activities (which
542 may impact exposure). While including a grouping term in our cross-basis and conditioning on county-
543 calendar-month helps to account for unmeasured intra-county variation, we remain unable to assess
544 inner-county differences.

545 Another limitation to this study is that our outcome data does not necessarily indicate the location
546 where the pathogen was acquired, only the county of residence for an infected individual. This means that
547 travel related cases (i.e., cases acquired in another county, state or country) were not excluded from our
548 analysis, and were therefore a probable source of noise in our data that likely biased our results toward
549 the null. This study also relied on laboratory reported cryptosporidiosis and giardiasis, and, due to the
550 variable severity of disease, many infections with these protozoa go unreported. Meanwhile, among
551 cases of sufficient severity to warrant medical attention, changes in the use, accuracy and types of
552 diagnostic tests that were available for the clinical detection of cryptosporidiosis and giardiasis across the
553 study period also have the potential to bias our results. While cryptosporidiosis and giardiasis diagnostic
554 tests remained relatively unchanged in the 90s and early 2000s (Ricciardi and Ndao 2015), the more
555 widespread introduction of multiplex tests means that healthcare providers could more easily test for an
556 array of diseases in patients exhibiting gastrointestinal symptoms. Being able to easily test for multiple
557 diseases could increase detection of suspected disease, as well as increase incidental findings of
558 cryptosporidiosis and giardiasis. However, as shown in Figure 2, giardiasis cases have decreased in
559 Colorado over time, whereas cryptosporidiosis cases have steadily increased. A linear term for year was
560 included in each of our models to help account for these and other linear time trends.

561 **5. Conclusion**

562 Our analysis has shown that the risk of cryptosporidiosis and giardiasis in Colorado and beyond
563 is likely to change as weather patterns shift in the coming years. Warmer temperatures and an increase in
564 weather extremes can be expected. In the last 30 years, Colorado's average temperature has increased

565 by 2°F (1.1 °C), with current estimates projecting that the average temperature for the state could
566 increase another 5°F (2.8°C) before 2050 (Colorado Health Institute 2017). As such, it is possible that the
567 coming years will see a continued reduction in the transmission of giardiasis (Figure 2), as our study has
568 highlighted that extreme high temperatures tend to be associated with reduced giardiasis infection risk in
569 Colorado. Meanwhile, our results have also suggested the potential for increasing cryptosporidiosis risk in
570 the years to come, as we found extreme high temperatures were associated with an increase in the risk
571 of cryptosporidiosis cases. These discordant findings indicate that the impact of climate change may not
572 be the same for all protozoan pathogens and highlight the need for further study of the location-specific
573 environmental conditions that could be simultaneously promoting the transmission potential of one
574 protozoan pathogen while suppressing another. Our study has also highlighted the potential for long-term
575 lagged effects of extreme precipitation on cryptosporidiosis and giardiasis, a novel finding that warrants
576 further investigation in other contexts. As the frequency and magnitude of temperature and precipitation
577 extremes rise as a result of human-driven climate change, climate extremes are gradually shifting to
578 become the “new normal”. As such, our analysis contributes to the larger body of science on climate and
579 health, helping to characterize the diverse and complex effects that our changing climate is likely having
580 on human health now and in the not-so-distant future.

581 .

582

583

584

585

586

587

588

589

590

591

592

593 **CRedit authorship contribution statement**

594 **Elise Grover:** Conceptualization, Methodology, Software, Validation, Formal analysis, Data curation,
595 Writing – Original Draft, Writing – Review & Editing, Visualization, Project administration. **James Crooks:**
596 Methodology, Software, Validation, Writing – Original Draft, Writing – Review & Editing, Supervision.
597 **Elizabeth Carlton:** Writing – Original Draft, Writing – Review & Editing, Supervision. **Sara Paull:** Writing
598 – Original Draft, Writing – Review & Editing. **William Allshouse:** Writing – Original Draft, Writing –
599 Review & Editing. **Rachel Jervis:** Resources, Data Curation, Writing – Review & Editing. **Katherine**
600 **James:** Conceptualization, Methodology, Data curation, Writing – Original Draft, Writing – Review &
601 Editing, Supervision, Project administration, Funding acquisition.

602 **Declaration of competing interest**

603 The authors declare that they have no known competing financial interests or personal relationships that
604 could have appeared to influence the work reported in this paper.

605 **Acknowledgements**

606 This work was made possible by the Colorado Department of Public Health and Environment (CDHPE)
607 and the National Center for Atmospheric Research (NCAR), who collected and shared the data used in
608 this analysis.

609 **Data availability**

610 Data on reportable diseases in Colorado is made available upon request from CDPHE. The Daily Surface
611 Weather and Climatological Summaries (Daymet) Version 3 dataset that was used in this analysis is
612 available upon request from NCAR.

613

614

615

616

617

618

619

620

621 **Figure captions**

622

623 **Figure 1. Illustration of the analytical steps used in this study.**

624 *Figure 1 caption: The 8-Step analytical process that was used for each outcome and predictor of interest in this study*
625 *is outlined above. The two outcomes in this study were case counts of cryptosporidiosis, and case counts of*
626 *giardiasis. The three predictors were the average maximum monthly temperature, the average minimum monthly*
627 *temperature, and the total monthly precipitation. We therefore repeated Steps 1-8 a total of six times for this study,*
628 *once for each outcome-predictor pair.*

629

630 **Figure 2. Reported cryptosporidiosis and giardiasis cases across all Colorado counties between**
631 **1997 – 2017.**

632 *Figure 2 caption: Depiction of the annual count of cryptosporidiosis and giardiasis cases across all Colorado*
633 *counties between 1997 – 2017. Whereas there was a decrease in the total number of cases of giardiasis, there was*
634 *an increase in the total number of cryptosporidiosis cases in Colorado cases between 1997 and 2017.*

635

636 **Figure 3. Depiction of population, case rates and extreme weather in 1997, 2007 and 2017 by**
637 **Colorado counties**

638 *Figure 3 caption: Maps depicting Colorado county population, cryptosporidiosis and giardiasis case rates*
639 *(per 100,000 people), and extreme weather in 1997, 2007 and 2017 are shown in Figure 3. The series of*
640 *maps depicting precipitation indicate the total number of months in 1997, 2007, and 2017 that a county's*
641 *mean-centered precipitation was low ($\leq 10^{\text{th}}$ percentile value) or high ($\geq 90^{\text{th}}$ percentile value), relative to*
642 *all mean-centered precipitation values observed in Colorado counties across the 21-year study period.*
643 *The series of maps depicting extreme temperatures combined minimum temperature and maximum*
644 *temperature, such that the maximum possible number of months with extreme low or extreme high*
645 *temperature readings for a county in a given year would be 24 (12 possible for maximum temperature,*
646 *plus 12 possible for minimum temperature). Thus, the low temperature maps indicate the total number of*
647 *months in 1997, 2007 and 2017 that either the mean-centered minimum temperature or the mean-*
648 *centered maximum temperature was low ($\leq 10^{\text{th}}$ percentile value) for a given county, while the high*
649 *temperature maps indicate the total number of months in 1997, 2007 and 2017 that either the mean-*
650 *centered minimum temperature or the mean-centered maximum temperature was high ($\geq 90^{\text{th}}$ percentile*
651 *value) for a given county, relative to all mean-centered minimum and maximum temperature values*
652 *observed in Colorado counties across the 21-year study period.*

653

654 **Figure 4. Depictions of the lagged effects of extreme low temperatures on the risk of**
655 **cryptosporidiosis and giardiasis cases in Colorado counties**

656 *Figure 4 Caption: The effects of very low (5th percentile) and low (10th percentile) temperatures, lagged 0*
657 *– 12 months, on the risk of cryptosporidiosis and giardiasis (relative to the risk at the county and calendar*
658 *month mean) are depicted in Figure 3. The top panel depicts extreme low values of the monthly average*
659 *daily maximum temperature, mean-centered by county and calendar-month (MC-TMAX), while the bottom*
660 *panel depicts extreme low values of the monthly average daily minimum temperature, mean-centered by*
661 *county and calendar-month (MC-TMIN).*

662

663 **Figure 5. Depictions of the lagged effects of extreme high temperatures on the risk of**
664 **cryptosporidiosis and giardiasis cases in Colorado counties**

665 *Figure 5 Caption: The effects of very high (95th percentile) and high (90th percentile) temperatures, lagged*
666 *0 – 12 months, on the risk of cryptosporidiosis and giardiasis (relative to the risk at the county and*
667 *calendar month mean) are depicted in Figure 4. The top panel depicts extreme high values of the monthly*
668 *average daily maximum temperature, mean-centered by county and calendar-month (MC-TMAX), while*
669 *the bottom panel depicts extreme high values of the monthly average daily minimum temperature, mean-*
670 *centered by county and calendar-month (MC-TMIN).*

671

672 **Figure 6. Depictions of the lagged effects of extreme precipitation on the risk of cryptosporidiosis**
673 **and giardiasis cases in Colorado counties**

674 *Figure 6 Caption: The effects of extreme monthly precipitation, lagged 0 – 12 months, on the risk*
675 *(relative to the risk at the county and calendar-month mean) of cryptosporidiosis (left) and giardiasis*
676 *(right) are depicted in Figure 5. The top panel depicts the lagged effects of very low (5th percentile) and*
677 *low (10th percentile) values of the countywide average of the total monthly precipitation, mean-centered*
678 *by county and calendar-month (MC-PRECIP), while the bottom panel depicts the lagged effects of very*
679 *high (95th percentile) and high (90th percentile) values of MC-PRECIP on the risk of cryptosporidiosis and*
680 *giardiasis.).*

681

682

683

684

685

686

687

688

689

690

691 **REFERENCES**

692

- 693 Ahmed, S. A., M. Guerrero Flórez and P. Karanis (2018). "The impact of water crises and climate
694 changes on the transmission of protozoan parasites in Africa." *Pathogens and global health* **112**(6): 281-
695 293.
- 696 Ajampur, S. S., F. B. Liakath, A. Kannan, P. Rajendran, R. Sarkar, P. D. Moses, A. Simon, I. Agarwal, A.
697 Mathew, R. O'Connor, H. Ward and G. Kang (2010). "Multisite study of cryptosporidiosis in children with
698 diarrhea in India." *J Clin Microbiol* **48**(6): 2075-2081.
- 699 Akhtar, R. (2020). Introduction: Extreme Weather Events and Human Health: A Global Perspective.
700 *Extreme Weather Events and Human Health: International Case Studies*. R. Akhtar. Cham, Springer
701 International Publishing: 3-11.
- 702 Alum, A., I. M. Absar, H. Asaad, J. R. Rubino and M. K. Ijaz (2014). "Impact of environmental conditions
703 on the survival of cryptosporidium and giardia on environmental surfaces." *Interdiscip Perspect Infect Dis*
704 **2014**: 210385.
- 705 Armstrong, B. G., A. Gasparrini and A. Tobias (2014). "Conditional Poisson models: a flexible alternative
706 to conditional logistic case cross-over analysis." *BMC Medical Research Methodology* **14**(1): 122.
- 707 Association, O. I. (2021). "Special Report: New Outdoor Participant (Covid and Beyond)." *Preuzeto* **25**:
708 2021.
- 709 Badenoch, J. (1990). *Cryptosporidium in water supplies. Report of the group of experts*, HMSO.
- 710 Brankston, G., C. Boughen, V. Ng, D. N. Fisman, J. M. Sargeant and A. L. Greer (2018). "Assessing the
711 impact of environmental exposures and Cryptosporidium infection in cattle on human incidence of
712 cryptosporidiosis in Southwestern Ontario, Canada." *PloS one* **13**(4): e0196573-e0196573.
- 713 Britton, E., S. Hales, K. Venugopal and M. G. Baker (2010). "The impact of climate variability and change
714 on cryptosporidiosis and giardiasis rates in New Zealand." *Journal of Water and Health* **8**(3): 561-571.
- 715 Brunn, A., D. N. Fisman, J. M. Sargeant and A. L. Greer (2019). "The Influence of Climate and Livestock
716 Reservoirs on Human Cases of Giardiasis." *Ecohealth* **16**(1): 116-127.
- 717 Budu-Amoako, E., S. J. Greenwood, B. R. Dixon, H. W. Barkema and J. T. McClure (2011). "Foodborne
718 Illness Associated with Cryptosporidium and Giardia from Livestock." *Journal of Food Protection* **74**(11):
719 1944-1955.
- 720 Bush, K. F., M. S. O'Neill, S. Li, B. Mukherjee, H. Hu, S. Ghosh and K. Balakrishnan (2014). "Associations
721 between extreme precipitation and gastrointestinal-related hospital admissions in Chennai, India." *Environ*
722 *Health Perspect* **122**(3): 249-254.
- 723 Carlton, E. J., A. P. Woster, P. DeWitt, R. S. Goldstein and K. Levy (2016). "A systematic review and
724 meta-analysis of ambient temperature and diarrhoeal diseases." *Int J Epidemiol* **45**(1): 117-130.
- 725 Chalmers, R. M. and A. P. Davies (2010). "Minireview: clinical cryptosporidiosis." *Exp Parasitol* **124**(1):
726 138-146.
- 727 Chhetri, B. K., E. Galanis, S. Sobie, J. Brubacher, R. Balshaw, M. Otterstatter, S. Mak, M. Lem, M.
728 Lysyshyn, T. Murdock, M. Fleury, K. Zickfeld, M. Zubel, L. Clarkson and T. K. Takaro (2019). "Projected
729 local rain events due to climate change and the impacts on waterborne diseases in Vancouver, British
730 Columbia, Canada." *Environ Health* **18**(1): 116.
- 731 Chhetri, B. K., T. K. Takaro, R. Balshaw, M. Otterstatter, S. Mak, M. Lem, M. Zubel, M. Lysyshyn, L.
732 Clarkson, J. Edwards, M. D. Fleury, S. B. Henderson and E. Galanis (2017). "Associations between
733 extreme precipitation and acute gastro-intestinal illness due to cryptosporidiosis and giardiasis in an
734 urban Canadian drinking water system (1997-2009)." *J Water Health* **15**(6): 898-907.
- 735 Colorado Department of Local Affairs. (2019). "County and Municipal Population Timeseries." Retrieved
736 March 1, 2019, from <https://demography.dola.colorado.gov/population/data/county-muni-timeseries/>.
- 737 Colorado Health Institute (2017). Colorado's Climate and Colorado's Health: Examining the Connection,
738 CHI.
- 739 Conn, D. B., J. Weaver, L. Tamang and T. K. Graczyk (2007). "Synanthropic flies as vectors of
740 Cryptosporidium and Giardia among livestock and wildlife in a multispecies agricultural complex." *Vector*
741 *Borne Zoonotic Dis* **7**(4): 643-651.
- 742 Curriero, F. C., J. A. Patz, J. B. Rose and S. Lele (2001). "The association between extreme precipitation
743 and waterborne disease outbreaks in the United States, 1948-1994." *Am J Public Health* **91**(8): 1194-
744 1199.

745 Daniels, M. E., W. A. Smith, W. P. Schmidt, T. Clasen and M. W. Jenkins (2016). "Modeling
746 *Cryptosporidium* and *Giardia* in Ground and Surface Water Sources in Rural India: Associations with
747 Latrines, Livestock, Damaged Wells, and Rainfall Patterns." *Environ Sci Technol* **50**(14): 7498-7507.
748 deRegnier, D. P., L. Cole, D. G. Schupp and S. L. Erlandsen (1989). "Viability of *Giardia* cysts suspended
749 in lake, river, and tap water." *Appl Environ Microbiol* **55**(5): 1223-1229.
750 Dreelin, E. A., R. L. Ives, S. Molloy and J. B. Rose (2014). "*Cryptosporidium* and *Giardia* in surface water:
751 a case study from Michigan, USA to inform management of rural water systems." *Int J Environ Res Public*
752 *Health* **11**(10): 10480-10503.
753 Dumètre, A., D. Aubert, P.-H. Puech, J. Hohwayer, N. Azas and I. Villena (2012). "Interaction Forces
754 Drive the Environmental Transmission of Pathogenic Protozoa." *Applied and Environmental Microbiology*
755 **78**(4): 905-912.
756 Efstratiou, A., J. E. Ongerth and P. Karanis (2017). "Waterborne transmission of protozoan parasites:
757 Review of worldwide outbreaks - An update 2011–2016." *Water Research* **114**: 14-22.
758 Fayer, R., J. P. Dubey and D. S. Lindsay (2004). "Zoonotic protozoa: from land to sea." *Trends Parasitol*
759 **20**(11): 531-536.
760 Fayer, R., U. Morgan and S. J. Upton (2000). "Epidemiology of *Cryptosporidium*: transmission, detection
761 and identification." *Int J Parasitol* **30**(12-13): 1305-1322.
762 Fayer, R. and T. Nerad (1996). "Effects of low temperatures on viability of *Cryptosporidium parvum*
763 oocysts." *Appl Environ Microbiol* **62**(4): 1431-1433.
764 Fayer, R., J. M. Trout and M. C. Jenkins (1998). "Infectivity of *Cryptosporidium parvum* Oocysts Stored in
765 Water at Environmental Temperatures." *The Journal of Parasitology* **84**(6): 1165-1169.
766 Ferguson, M. D., K. McIntosh, D. B. K. English, L. A. Ferguson, R. Barcelona, G. Giles, O. Fraser and M.
767 Leberman (2022). "The Outdoor Renaissance: Assessing the Impact of the COVID-19 Pandemic upon
768 Outdoor Recreation Visitation, Behaviors, and Decision-Making in New England's National Forests."
769 *Society & Natural Resources* **35**(10): 1063-1082.
770 Fletcher, S. M., D. Stark, J. Harkness and J. Ellis (2012). "Enteric protozoa in the developed world: a
771 public health perspective." *Clin Microbiol Rev* **25**(3): 420-449.
772 Forbes, O., R. Hosking, K. Mokany and A. Lal (2021). "Bayesian spatio-temporal modelling to assess the
773 role of extreme weather, land use change and socio-economic trends on cryptosporidiosis in Australia,
774 2001–2018." *Science of The Total Environment* **791**: 148243.
775 Gasparrini, A. (2011). "Distributed Lag Linear and Non-Linear Models in R: The Package *dlm*." *Journal*
776 *of Statistical Software* **43**(8): 1 - 20.
777 Gasparrini, A., B. Armstrong and M. G. Kenward (2010). "Distributed lag non-linear models." *Stat Med*
778 **29**(21): 2224-2234.
779 Gonzalez-Moreno, O., R. A. Hernandez-Aguilar, A. K. Piel, F. A. Stewart, M. Gracenea and J. Moore
780 (2013). "Prevalence and climatic associated factors of *Cryptosporidium* sp. infections in savanna
781 chimpanzees from Ugalla, Western Tanzania." *Parasitol Res* **112**(1): 393-399.
782 Graydon, R. C., M. Mezzacapo, J. Boehme, S. Foldy, T. A. Edge, J. Brubacher, H. M. Chan, M. Dellinger,
783 E. M. Faustman, J. B. Rose and T. K. Takaro (2022). "Associations between extreme precipitation,
784 drinking water, and protozoan acute gastrointestinal illnesses in four North American Great Lakes cities
785 (2009–2014)." *Journal of Water and Health* **20**(5): 849-862.
786 Gutiérrez-Gutiérrez, F. and L. Palomo-Ligas (2023). "Change in the incidence of intestinal diseases
787 caused by parasitic protozoa in the Mexican population during the period (2015–2019) and its association
788 with environmental and socioeconomic risk factors." *Parasitology Research* **122**(4): 903-914.
789 Hlavsa, M. C., V. A. Roberts, A. M. Kahler, E. D. Hilborn, T. R. Mecher, M. J. Beach, T. J. Wade and J. S.
790 Yoder (2015). "Outbreaks of Illness Associated with Recreational Water--United States, 2011-2012."
791 *MMWR Morb Mortal Wkly Rep* **64**(24): 668-672.
792 Hu, W., K. Mengersen, S.-Y. Fu and S. Tong (2010). "The use of ZIP and CART to model
793 cryptosporidiosis in relation to climatic variables." *International Journal of Biometeorology* **54**(4): 433-440.
794 Hu, W., K. Mengersen and S. Tong (2010). "Risk factor analysis and spatiotemporal CART model of
795 cryptosporidiosis in Queensland, Australia." *BMC Infectious Diseases* **10**(1): 311.
796 Hu, W., S. Tong, K. Mengersen and D. Connell (2007). "Weather Variability and the Incidence of
797 *Cryptosporidiosis*: Comparison of Time Series Poisson Regression and SARIMA Models." *Annals of*
798 *Epidemiology* **17**(9): 679-688.

799 Hu, W., S. Tong, K. Mengersen and D. Connell (2007). "Weather variability and the incidence of
800 cryptosporidiosis: comparison of time series poisson regression and SARIMA models." Ann Epidemiol
801 **17**(9): 679-688.

802 Hunter, P. R. and R. C. Thompson (2005). "The zoonotic transmission of Giardia and Cryptosporidium."
803 Int J Parasitol **35**(11-12): 1181-1190.

804 Ikiroma, I. A. and K. G. Pollock (2021). "Influence of weather and climate on cryptosporidiosis-A review."
805 Zoonoses Public Health **68**(4): 285-298.

806 Intergovernmental Panel on Climate Change (2018). IPCC Special Report on Global Warming of 1.5 °C:
807 Summary for Policymakers (SR15). Geneva, Switzerland.

808 IPCC (2021). Climate Change 2021: The Physical Science Basis. Contribution of Working Group I to the
809 Sixth Assessment Report of the Intergovernmental Panel on Climate Change [Masson-Delmotte, V., P.
810 Zhai, A. Pirani, S.L. Connors, C. Péan, S. Berger, N. Caud, Y. Chen, L. Goldfarb, M.I. Gomis, M. Huang,
811 K. Leitzell, E. Lonnoy, J.B.R. Matthews, T.K. Maycock, T. Waterfield, O. Yelekçi, R. Yu, and B. Zhou
812 (eds.)]. Cambridge University Press. In Press.

813 Jagai, J. S., D. A. Castronovo, J. Monchak and E. N. Naumova (2009). "Seasonality of cryptosporidiosis:
814 A meta-analysis approach." Environ Res **109**(4): 465-478.

815 Karanis, P., C. Kourenti and H. Smith (2006). "Waterborne transmission of protozoan parasites: A
816 worldwide review of outbreaks and lessons learnt." Journal of Water and Health **5**(1): 1-38.

817 Keeley, A. and B. R. Faulkner (2008). "Influence of land use and watershed characteristics on protozoa
818 contamination in a potential drinking water resources reservoir." Water Research **42**(10): 2803-2813.

819 Kent, L., M. McPherson and N. Higgins (2015). "A positive association between cryptosporidiosis
820 notifications and ambient temperature, Victoria, Australia, 2001-2009." J Water Health **13**(4): 1039-1047.

821 King, B. J., A. R. Keegan, P. T. Monis and C. P. Saint (2005). "Environmental temperature controls
822 Cryptosporidium oocyst metabolic rate and associated retention of infectivity." Appl Environ Microbiol
823 **71**(7): 3848-3857.

824 Kraay, A. N. M., O. Man, M. C. Levy, K. Levy, E. Ionides and J. N. S. Eisenberg (2020). "Understanding
825 the Impact of Rainfall on Diarrhea: Testing the Concentration-Dilution Hypothesis Using a Systematic
826 Review and Meta-Analysis." Environ Health Perspect **128**(12): 126001.

827 Kuhn, M. (2008). "Building Predictive Models in R Using the caret Package." Journal of Statistical
828 Software **28**(5): 1 - 26.

829 Lake, I. R. and G. C. Barker (2018). "Climate Change, Foodborne Pathogens and Illness in Higher-
830 Income Countries." Current Environmental Health Reports **5**(1): 187-196.

831 Lake, I. R., J. Pearce and M. Savill (2008). "The seasonality of human cryptosporidiosis in New Zealand."
832 Epidemiol Infect **136**(10): 1383-1387.

833 Lal, A., M. G. Baker, S. Hales and N. P. French (2013). "Potential effects of global environmental changes
834 on cryptosporidiosis and giardiasis transmission." Trends Parasitol **29**(2): 83-90.

835 Lal, A., S. Hales, N. French and M. G. Baker (2012). "Seasonality in human zoonotic enteric diseases: a
836 systematic review." PLoS one **7**(4): e31883.

837 Lal, A., T. Ikeda, N. French, M. G. Baker and S. Hales (2013). "Climate variability, weather and enteric
838 disease incidence in New Zealand: time series analysis." PLoS One **8**(12): e83484.

839 Lal, A. and P. Konings (2018). "Beyond reasonable drought: hotspots reveal a link between the 'Big Dry'
840 and cryptosporidiosis in Australia's Murray Darling Basin." Journal of Water and Health **16**(6): 1033-1037.

841 Lane, S. and D. Lloyd (2002). "Current trends in research into the waterborne parasite Giardia." Crit Rev
842 Microbiol **28**(2): 123-147.

843 Learmonth, J., G. Ionas, A. Pita and R. Cowie (2002). "Seasonal shift in Cryptosporidium parvum
844 transmission cycles in New Zealand." Journal of Eukaryotic Microbiology(Supplement): 34S-35S.

845 Li, X., J. A. Chase, R. F. Bond, P. Lor, K. Fernandez, T. H. Nguyen, M. L. Partyka, A. Thiptara and E. R.
846 Atwill (2019). "Microbiological safety of popular recreation swimming sites in Central California." Environ
847 Monit Assess **191**(7): 456.

848 Ligda, P., E. Claerebout, D. Kostopoulou, A. Zdragas, S. Casaert, L. J. Robertson and S. Sotiraki (2020).
849 "Cryptosporidium and Giardia in surface water and drinking water: Animal sources and towards the use of
850 a machine-learning approach as a tool for predicting contamination." Environ Pollut **264**: 114766.

851 Liu, A., B. Gong, X. Liu, Y. Shen, Y. Wu, W. Zhang and J. Cao (2020). "A retrospective epidemiological
852 analysis of human Cryptosporidium infection in China during the past three decades (1987-2018)." PLOS
853 Neglected Tropical Diseases **14**(3): e0008146.

854 Liu, J., C. Folberth, H. Yang, J. Röckström, K. Abbaspour and A. J. Zehnder (2013). "A global and
855 spatially explicit assessment of climate change impacts on crop production and consumptive water use."
856 PLoS One **8**(2): e57750.

857 Liu, J., J. A. Platts-Mills, J. Juma, F. Kabir, J. Nkeze, C. Okoi, D. J. Operario, J. Uddin, S. Ahmed, P. L.
858 Alonso, M. Antonio, S. M. Becker, W. C. Blackwelder, R. F. Breiman, A. S. Faruque, B. Fields, J. Gratz,
859 R. Haque, A. Hossain, M. J. Hossain, S. Jarju, F. Qamar, N. T. Iqbal, B. Kwambana, I. Mandomando, T.
860 L. McMurry, C. Ochieng, J. B. Ochieng, M. Ochieng, C. Onyango, S. Panchalingam, A. Kalam, F. Aziz, S.
861 Qureshi, T. Ramamurthy, J. H. Roberts, D. Saha, S. O. Sow, S. E. Stroup, D. Sur, B. Tamboura, M.
862 Taniuchi, S. M. Tennant, D. Toema, Y. Wu, A. Zaidi, J. P. Nataro, K. L. Kotloff, M. M. Levine and E. R.
863 Houpt (2016). "Use of quantitative molecular diagnostic methods to identify causes of diarrhoea in
864 children: a reanalysis of the GEMS case-control study." Lancet **388**(10051): 1291-1301.

865 Luber, G. and J. Lemery (2015). Global Climate Change and Human Health: From Science to Practice,
866 Wiley.

867 Ma, Y., G. Destouni, Z. Kalantari, A. Omazic, B. Evengård, C. Berggren and T. Thierfelder (2021).
868 "Linking climate and infectious disease trends in the Northern/Arctic Region." Sci Rep **11**(1): 20678.

869 Masina, S., J. Shirley, J. Allen, J. M. Sargeant, R. A. Guy, P. M. Wallis, J. Scott Weese, A. Cunsolo, A.
870 Bunce and S. L. Harper (2019). "Weather, environmental conditions, and waterborne Giardia and
871 Cryptosporidium in Iqaluit, Nunavut." Journal of Water and Health **17**(1): 84-97.

872 Miller, W. A., D. J. Lewis, M. Lennox, M. G. Pereira, K. W. Tate, P. A. Conrad and E. R. Atwill (2007).
873 "Climate and on-farm risk factors associated with Giardia duodenalis cysts in storm runoff from California
874 coastal dairies." Appl Environ Microbiol **73**(21): 6972-6979.

875 Molloy, S. L., E. A. Dreelin and J. B. Rose (2017). Extreme Weather Events and Human Health.
876 International Encyclopedia of Public Health (Second Edition). S. R. Quah. Oxford, Academic Press: 70-
877 76.

878 Mons, C., A. Dumètre, S. Gosselin, C. Galliot and L. Moulin (2009). "Monitoring of Cryptosporidium and
879 Giardia river contamination in Paris area." Water Research **43**(1): 211-217.

880 Muchiri, J. M., L. Ascolillo, M. Mugambi, T. Mutwiri, H. D. Ward, E. N. Naumova, A. I. Egorov, S. Cohen,
881 J. G. Else and J. K. Griffiths (2009). "Seasonality of Cryptosporidium oocyst detection in surface waters of
882 Meru, Kenya as determined by two isolation methods followed by PCR." J Water Health **7**(1): 67-75.

883 Naumova, E. N., J. S. Jagai, B. Matyas, A. DeMaria, Jr., I. B. MacNeill and J. K. Griffiths (2007).
884 "Seasonality in six enterically transmitted diseases and ambient temperature." Epidemiol Infect **135**(2):
885 281-292.

886 Nichols, G., C. Lane, N. Asgari, N. Q. Verlander and A. Charlett (2009). "Rainfall and outbreaks of
887 drinking water related disease and in England and Wales." J Water Health **7**(1): 1-8.

888 Odoi, A., S. W. Martin, P. Michel, J. Holt, D. Middleton and J. Wilson (2003). "Geographical and temporal
889 distribution of human giardiasis in Ontario, Canada." International Journal of Health Geographics **2**(1): 5.

890 Olson, M. E., J. Goh, M. Phillips, N. Guselle and T. A. McAllister (1999). "Giardia Cyst and
891 Cryptosporidium Oocyst Survival in Water, Soil, and Cattle Feces." Journal of Environmental Quality **28**:
892 1991-1996.

893 Omarova, A., K. Tussupova, R. Berndtsson, M. Kalishev and K. Sharapatova (2018). "Protozoan
894 Parasites in Drinking Water: A System Approach for Improved Water, Sanitation and Hygiene in
895 Developing Countries." Int J Environ Res Public Health **15**(3).

896 Painter, J. E., J. W. Gargano, J. S. Yoder, S. A. Collier and M. C. Hlavsa (2016). "Evolving epidemiology
897 of reported cryptosporidiosis cases in the United States, 1995-2012." Epidemiol Infect **144**(8): 1792-1802.

898 Pozio, E. (2020). "How globalization and climate change could affect foodborne parasites." Experimental
899 Parasitology **208**: 107807.

900 Ricciardi, A. and M. Ndao (2015). "Diagnosis of parasitic infections: what's going on?" J Biomol Screen
901 **20**(1): 6-21.

902 RStudio Team (2020). RStudio: Integrated Development for R. RStudio, PBC, Boston, MA, 2020.

903 Schreiber, C., S.-B. Heinkel, N. Zacharias, F.-M. Mertens, E. Christoffels, U. Gayer, C. Koch and T.
904 Kistemann (2019). "Infectious rain? Evaluation of human pathogen concentrations in stormwater in
905 separate sewer systems." Water Science and Technology **80**(6): 1022-1030.

906 Semenza, J. C., S. Herbst, A. Rechenburg, J. E. Suk, C. Höser, C. Schreiber and T. Kistemann (2012).
907 "Climate Change Impact Assessment of Food- and Waterborne Diseases." Crit Rev Environ Sci Technol
908 **42**(8): 857-890.

909 Senhorst, H. A. and J. J. Zwolsman (2005). "Climate change and effects on water quality: a first
910 impression." Water Sci Technol **51**(5): 53-59.
911 Stantic-Pavlinic, M., L. Xiao, S. Glaberman, A. A. Lal, T. Orazen, A. Rataj-Verglez, J. Logar and I. Berce
912 (2003). "Cryptosporidiosis associated with animal contacts." Wien Klin Wochenschr **115**(3-4): 125-127.
913 StataCorp (2015). Stata Statistical Software: Release 15. College Station, TX, StataCorp LP.
914 Thomas, K. M., D. F. Charron, D. Waltner-Toews, C. Schuster, A. R. Maarouf and J. D. Holt (2006). "A
915 role of high impact weather events in waterborne disease outbreaks in Canada, 1975 - 2001." Int J
916 Environ Health Res **16**(3): 167-180.
917 Thornton, P. E., M. M. Thornton, B. W. Mayer, Y. Wei, R. Devarakonda, R. S. Vose and R. B. Cook
918 (2017). Daymet: Daily Surface Weather Data on a 1-km Grid for North America, Version 3, ORNL
919 Distributed Active Archive Center.
920 Torgerson, P. R., B. Devleeschauwer, N. Praet, N. Speybroeck, A. L. Willingham, F. Kasuga, M. B.
921 Rokni, X. N. Zhou, E. M. Fèvre, B. Sripa, N. Gargouri, T. Fürst, C. M. Budke, H. Carabin, M. D. Kirk, F. J.
922 Angulo, A. Havelaar and N. de Silva (2015). "World Health Organization Estimates of the Global and
923 Regional Disease Burden of 11 Foodborne Parasitic Diseases, 2010: A Data Synthesis." PLoS Med
924 **12**(12): e1001920.
925 Wang, X., X. Wang and J. Cao (2023). "Environmental Factors Associated with Cryptosporidium and
926 Giardia." Pathogens **12**(3).
927 Wickramanayake, G. B., A. J. Rubin and O. J. Sproul (1985). "Effects of Ozone and Storage Temperature
928 on Giardia Cysts." Journal AWWA **77**(8): 74-77.
929 Wilkes, G., T. A. Edge, V. P. Gannon, C. Jokinen, E. Lyautey, N. F. Neumann, N. Ruecker, A. Scott, M.
930 Sunohara, E. Topp and D. R. Lapen (2011). "Associations among pathogenic bacteria, parasites, and
931 environmental and land use factors in multiple mixed-use watersheds." Water Res **45**(18): 5807-5825.
932 Zhang, Y., Y. Wang, J. Sun, G. Hu, M. Wang, J. Amendt and J. Wang (2019). "Temperature-dependent
933 development of the blow fly *Chrysomya pinguis* and its significance in estimating postmortem interval."
934 Royal Society Open Science **6**(9): 190003.
935 Zwolsman, J. J. and A. J. van Bokhoven (2007). "Impact of summer droughts on water quality of the
936 Rhine River - a preview of climate change?" Water Sci Technol **56**(4): 45-55.

937

Table 1. Hypothesized mechanisms by which temperature and precipitation extremes can impact protozoan disease transmission.

Weather extremes	Direction of association	Examples of hypothesized impacts on pathogens survival, mobilization and distribution	Examples of hypothesized climate-related pathogen exposure routes
Temperature			
Above average temperature	Increase in protozoan transmission	<ul style="list-style-type: none"> • Prolonged infectivity of oocysts (King and Monis 2007) • Enhanced survivability of temperature-dependent mechanical vectors (Conn, Weaver et al. 2007) 	<ul style="list-style-type: none"> • Changes in outdoor recreational activities and water quality (Schets, Husman et al. 2011, Young, Sanchez et al. 2022) • Changes in livestock roaming, health, and potential for direct or indirect livestock contact (Thornton, van de Steeg et al. 2009) • Changes in drinking water supply and quality (Boithias, Choisy et al. 2016)
	Decrease in protozoan transmission	<ul style="list-style-type: none"> • Pathogen desiccation and decreased viability (Dixon 2014) • Accelerated degradation of oocysts and cysts (Olson, Goh et al. 1999) 	
Below average temperature	Increase in protozoan transmission	<ul style="list-style-type: none"> • Prolonged survival on surfaces (Alum, Absar et al. 2014) • Prolonged survival in water (deRegnier, Cole et al. 1989) • Prolonged infectivity in warm seasons (Fayer, Trout et al. 1998) 	
	Decrease in protozoan transmission	<ul style="list-style-type: none"> • Decreased survival in cold seasons (Fayer, Trout et al. 1998) 	
Precipitation			
Above average precipitation	Increase in protozoan transmission	<ul style="list-style-type: none"> • Increase in contaminated runoff (Davies-Colley, Nagels et al. 2008) • Sewage overflows (Tolouei, Dewey et al. 2019) 	<ul style="list-style-type: none"> • Changes in outdoor recreational water activities and water quality (Gunady, Koutsoukos et al. 2016, Iniguez-Armijos, Sánchez et al. 2020) • Changes in farmland irrigation practices and runoff (Chaidez, Soto et al. 2005, Spanakos, Biba et al. 2015, Amanullah, Khalid et al. 2020) • Changes in drinking water supply and quality (Boithias, Choisy et al. 2016) • Changes in potential for direct contact with contaminated water (Tolouei, Dewey et al. 2019)
	Decrease in protozoan transmission	<ul style="list-style-type: none"> • Dilution of overall pathogen concentration (Ajeegah, Njine et al. 2010) 	
Below average precipitation	Increase in protozoan transmission	<ul style="list-style-type: none"> • Increase in effluent concentrations in surface or stored water supplies (Boxall, Hardy et al. 2009, Boithias, Choisy et al. 2016) 	
	Decrease in protozoan transmission	<ul style="list-style-type: none"> • Decreased water turbidity and pathogen contamination (Chhetri, Takaro et al. 2017, De Roos, Gurian et al. 2017) • Decrease in contaminated runoff (Miller, Lewis et al. 2008) 	

Examples of various hypothesized mechanisms by which extreme temperature and precipitation could potentially impact protozoan survival, mobilization and distribution, and subsequent potential for exposure and disease transmission are provided in Table 1.

Table 2. Summary of population and cases at five year increments for Colorado counties during the study period.

Summaries by year	1997^a	2002	2007	2012	2017
Population summary	N	N	N	N	N
Number of counties	63 ^b	64	64	64	64
Total population	3,995,923	4,504,709	4,821,784	5,189,861	5,609,445
Case counts	N (% total)	N (% total)	N (% total)	N (% total)	N (% total)
Cryptosporidiosis	24 (1.2)	57 (2.8)	216 (10.7)	102 (5.1)	199 (9.9)
Giardiasis	767 (6.3)	577 (4.8)	580 (4.8)	528 (4.4)	514 (4.3)

^a The first year that monthly cryptosporidiosis and giardiasis case counts for all Colorado counties became available via the Colorado Electronic Disease Reporting System was 1997. However, our estimates of climatological extremes were generated from data between 1996 – 2017 to allow for lagged effects.

^b There were 63 counties in Colorado until 2000, when Broomfield county became the 64th Colorado county

Table 3. Summary of cases and weather extremes by season in Colorado counties between 1996 - 2017.

Summaries by season	Winter	Spring	Summer	Fall	All Season
Case counts	N (%)	N (%)	N (%)	N (%)	N Total
Cryptosporidiosis	262 (13.0)	338 (16.7)	770 (38.2)	648 (32.1)	2,018
Giardiasis	2,340 (19.4)	2,386 (19.7)	3,693 (30.6)	3,664 (30.3)	12,083
Extreme weather summaries ^a					
MC-TMIN	N (%)	N (%)	N (%)	N (%)	N Total
≤ 5 th percentile (-2.5°C)	384 (45.5)	216 (25.6)	35 (4.2)	209 (24.8)	844
≤ 10 th percentile (-1.8°C)	684 (40.5)	409 (24.2)	142 (8.4)	454 (26.9)	1689
≥ 90 th percentile (1.8°C)	746 (44.2)	357 (21.1)	169 (10.0)	417 (24.7)	1689
≥ 95 th percentile (2.4°C)	440 (52.1)	181 (21.4)	28 (3.3)	196 (23.2)	844
MC-TMAX	N (%)	N (%)	N (%)	N (%)	N Total
≤ 5 th percentile (-3.0°C)	282 (33.4)	194 (23.0)	92 (10.9)	276 (32.7)	844
≤ 10 th percentile (-2.3°C)	483 (28.6)	454 (26.9)	280 (16.6)	472 (28.0)	1689
≥ 90 th percentile (2.4°C)	459 (27.2)	507 (30.0)	271 (16.0)	453 (26.8)	1689
≥ 95 th percentile (3.0°C)	251 (29.7)	230 (27.3)	105 (12.4)	258 (30.6)	844
MC-PRECIP ^b	N (%)	N (%)	N (%)	N (%)	N Total
≤ 5 th percentile (-36.0 mm)	133 (15.8)	260 (30.8)	297 (35.2)	154 (18.2)	844
≤ 10 th percentile (-28.4 mm)	232 (13.7)	530 (31.4)	554 (32.8)	373 (22.1)	1689
≥ 90 th percentile (31.5 mm)	298 (17.6)	487 (28.8)	528 (31.3)	376 (22.3)	1689
≥ 95 th percentile (46.6 mm)	160 (19.0)	260 (30.8)	248 (29.4)	176 (20.9)	844

MC-TMIN = Countywide monthly average of minimum daily temperature, mean-centered by county-month

MC-TMAX = Countywide monthly average of maximum daily temperature, mean-centered by county-month

MC-PRECIP = Countywide average of the total monthly precipitation, mean-centered by county-month

^a Extreme temperatures and precipitation were defined as the 5th, 10th, 90th and 95th percentile values of the countywide average monthly values of maximum daily temperature, minimum daily temperature and total precipitation, given the county and time of year (i.e., mean-centered by county and month). For each of the four definitions of extreme weather, the total number and percent of all observations that were considered “extreme” using each definition are summarized by three-month season.

^b Precipitation was summed across all forms of precipitation (e.g. snow, sleet, rain, etc.), and converted to a water-equivalent depth in millimeters.

Table 4. Comparing the lagged effects of extreme low temperatures on the relative risk of cryptosporidiosis and giardiasis cases in Colorado counties between 1997 – 2017

	2-month lag RR ^a (95% CI)	4-month lag RR ^a (95% CI)	6-month lag RR ^a (95% CI)	8-month lag RR ^a (95% CI)	10-month lag RR ^a (95% CI)	12-month lag RR ^a (95% CI)
Cryptosporidiosis						
Extreme low max. temperature						
Very low (5 th percentile): -3°C below average	0.961 (0.945 – 0.978)*	0.938 (0.910 – 0.965)*	0.942 (0.912 – 0.974)*	0.986 (0.960 – 1.013)	1.063 (1.030 – 1.097)*	1.163 (1.103 – 1.227)*
Low (10 th percentile): -2.3°C below average	0.956 (0.943 – 0.969)*	0.928 (0.907 – 0.950)*	0.928 (0.905 – 0.952)*	0.967 (0.946 – 0.989)*	1.038 (1.012 – 1.065)*	1.132 (1.085 – 1.180)*
Extreme low min. temperature						
Very low (5 th percentile): -2.5°C below average	1.034 (1.016 – 1.052)*	1.063 (1.032 – 1.094)*	1.080 (1.046 – 1.116)*	1.083 (1.052 – 1.114)*	1.073 (1.034 – 1.114)*	1.058 (0.993 – 1.127)
Low (10 th percentile): -1.8°C below average	0.987 (0.976 – 0.999)*	0.980 (0.960 – 0.999)*	0.982 (0.960 – 1.004)	0.997 (0.978 – 1.017)	1.023 (0.997 – 1.049)*	1.054 (1.010 – 1.100)*
Giardiasis						
Extreme low max. temperature						
Very low (5 th percentile): -3°C below average	1.006 (1.001 – 1.011)*	1.010 (1.002 – 1.019)*	1.011 (1.002 – 1.020)*	1.007 (0.999 – 1.014)	1.000 (0.991 – 1.009)	0.991 (0.975 – 1.007)
Low (10 th percentile): -2.3°C below average	1.005 (1.001 – 1.008)*	1.008 (1.001 – 1.014)*	1.008 (1.002 – 1.015)*	1.005 (0.999 – 1.011)	1.000 (0.993 – 1.007)	0.993 (0.981 – 1.005)
Extreme low min. temperature						
Very low (5 th percentile): -2.5°C below average	1.028 (1.016 – 1.041)*	1.033 (1.022 – 1.045)*	1.023 (1.014 – 1.033)*	1.009 (0.997 – 1.021)	0.998 (0.987 – 1.010)	1.001 (0.976 – 1.027)
Low (10 th percentile): -1.8°C below average	1.020 (1.012 – 1.029)*	1.024 (1.015 – 1.032)*	1.017 (1.010 – 1.024)*	1.006 (0.998 – 1.015)	0.999 (0.991 – 1.007)	1.001 (0.983 – 1.019)

^a The lagged risk of cryptosporidiosis or giardiasis cases at the specified definition of extreme low temperature, relative to the risk of cryptosporidiosis or giardiasis cases at the county and calendar-month mean

* p-value < 0.05

Table 5. Comparing the lagged effects of extreme high temperatures on the relative risk of cryptosporidiosis and giardiasis cases in Colorado counties between 1997 – 2017

	2-month lag RR ^a (95% CI)	4-month lag RR ^a (95% CI)	6-month lag RR ^a (95% CI)	8-month lag RR ^a (95% CI)	10-month lag RR ^a (95% CI)	12-month lag RR ^a (95% CI)
Cryptosporidiosis						
Extreme high max. temperature						
High (90 th percentile): 2.4°C above average	1.044 * (1.033 – 1.056)	1.077 * (1.057 – 1.098)	1.086 * (1.064 – 1.109)	1.062 * (1.043 – 1.081)	1.015 (0.992 – 1.038)	0.958 * (0.922 – 0.996)
Very high (95 th percentile): 3°C above average	1.037 * (1.022 – 1.053)	1.066 * (1.040 – 1.093)	1.076 * (1.048 – 1.105)	1.060 * (1.036 – 1.084)	1.025 (0.995 – 1.056)	0.982 (0.932 – 1.035)
Extreme high min. temperature						
High (90 th percentile): 1.8°C above average	1.061 * (1.048 – 1.074)	1.110 * (1.088 – 1.133)	1.129 * (1.104 – 1.155)	1.106 * (1.085 – 1.129)	1.054 * (1.027 – 1.081)	0.990 (0.947 – 1.034)
Very high (95 th percentile): 2.4°C above average	1.056 * (1.038 – 1.073)	1.101 * (1.070 – 1.133)	1.122 * (1.087 – 1.157)	1.107 * (1.077 – 1.138)	1.068 * (1.028 – 1.109)	1.017 (0.954 – 1.085)
Giardiasis						
Extreme high max. temperature						
High (90 th percentile): 2.4°C above average	0.995 * (0.991 – 0.999)	0.992 * (0.985 – 0.998)	0.991 * (0.984 – 0.998)	0.994 (0.989 – 1.000)	1.000 (0.993 – 1.008)	1.008 (0.995 – 1.021)
Very high (95 th percentile): 3°C above average	0.994 * (0.989 – 0.999)	0.990 * (0.982 – 0.998)	0.989 * (0.980 – 0.998)	0.993 (0.986 – 1.000)	1.000 (0.991 – 1.010)	1.009 (0.993 – 1.026)
Extreme high min. temperature						
High (90 th percentile): 1.8°C above average	0.980 * (0.972 – 0.989)	0.977 * (0.969 – 0.985)	0.983 * (0.977 – 0.990)	0.994 (0.985 – 1.002)	1.001 (0.993 – 1.009)	0.999 (0.981 – 1.017)
Very high (95 th percentile): 2.4°C above average	0.973 * (0.962 – 0.985)	0.969 * (0.959 – 0.980)	0.978 * (0.969 – 0.987)	0.992 (0.981 – 1.002)	1.002 (0.991 – 1.013)	0.999 (0.975 – 1.023)

^a The lagged risk of cryptosporidiosis or giardiasis cases at the specified definition of extreme high temperature, relative to the risk of cryptosporidiosis or giardiasis cases at the county and calendar-month mean

* p-value ≤ 0.05

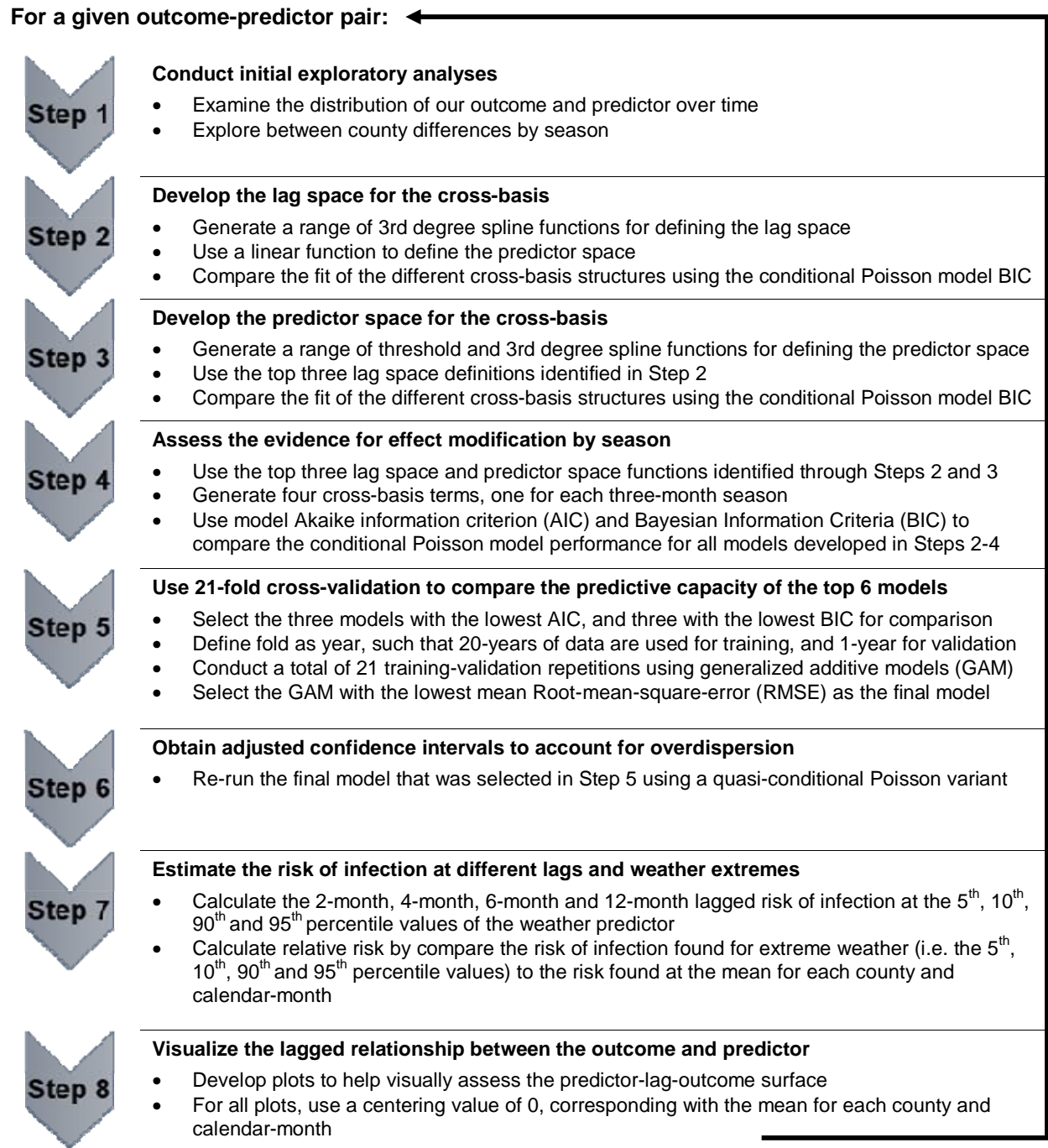
Table 6. Comparing the lagged effects of precipitation extremes on the relative risk of cryptosporidiosis and giardiasis cases in Colorado counties between 1997 – 2017

	2-month lag RR ^a (95% CI)	4-month lag RR ^a (95% CI)	6-month lag RR ^a (95% CI)	8-month lag RR ^a (95% CI)	10-month lag RR ^a (95% CI)	12-month lag RR ^a (95% CI)
Extreme low precipitation						
Cryptosporidiosis						
Very low (5 th percentile): -36 mm below average	0.998 (0.970 – 1.027)	0.995 (0.959 – 1.032)	0.988 (0.957 – 1.020)	0.958 (0.918 – 1.001)	0.896 * (0.865 – 0.927)	0.819 * (0.769 – 0.871)
Low (10 th percentile): -28.4 mm below average	1.001 (0.981 – 1.023)	1.000 (0.974 – 1.028)	0.993 (0.970 – 1.016)	0.968 * (0.938 – 0.999)	0.922 * (0.898 – 0.945)	0.865 * (0.825 – 0.905)
Giardiasis						
Very low (5 th percentile): -36 mm below average	1.004 (0.999 – 1.009)	1.006 (0.998 – 1.014)	1.005 (0.996 – 1.014)	0.998 (0.991 – 1.006)	0.989 * (0.980 – 0.997)	0.977 * (0.962 – 0.992)
Low (10 th percentile): -28.4 mm below average	1.003 (0.999 – 1.007)	1.005 (0.998 – 1.011)	1.004 (0.997 – 1.011)	0.999 (0.993 – 1.005)	0.991 * (0.984 – 0.998)	0.982 * (0.970 – 0.994)
Extreme high precipitation						
Cryptosporidiosis						
High (90 th percentile): 31.5 mm above average	0.965 * (0.952 – 0.979)	0.956 * (0.939 – 0.973)	0.985 (0.969 – 1.001)	1.023 * (1.001 – 1.045)	1.036 * (1.018 – 1.055)	1.032 * (1.001 – 1.064)
Very high (95 th percentile): 46.6 mm above average	0.938 * (0.918 – 0.959)	0.921 * (0.895 – 0.948)	0.969 * (0.945 – 0.995)	1.029 (0.995 – 1.064)	1.034 * (1.006 – 1.063)	1.001 (0.955 – 1.050)
Giardiasis						
High (90 th percentile): 31.5 mm above average	0.996 (0.992 – 1.001)	0.995 (0.988 – 1.002)	0.996 (0.988 – 1.004)	1.001 (0.995 – 1.008)	1.010 * (1.002 – 1.018)	1.020 * (1.007 – 1.034)
Very high (95 th percentile): 46.6 mm above average	0.995 (0.989 – 1.001)	0.992 (0.982 – 1.002)	0.994 (0.982 – 1.005)	1.002 (0.992 – 1.012)	1.015 * (1.003 – 1.027)	1.030 * (1.010 – 1.051)

^a The lagged risk of cryptosporidiosis or giardiasis cases at the specified definition of precipitation extremes, relative to the risk of cryptosporidiosis or giardiasis cases at the county and calendar-month mean

* p-value < 0.05

Figure 1. Illustration of the analytical steps used in this study.



Repeat the entire process (Steps 1-8) for each outcome-predictor pair

Figure 1 caption: The 8-Step analytical process that was used for each outcome and predictor of interest in this study is outlined above. The two outcomes in this study were case counts of cryptosporidiosis, and case counts of giardiasis. The three predictors were the average maximum monthly temperature, the average minimum monthly temperature, and the total monthly precipitation. We therefore repeated Steps 1-8 a total of six times for this study, once for each outcome-predictor pair.

Figure 2. Reported cryptosporidiosis and giardiasis case rates per 100,000 people across all Colorado counties between 1997 – 2017.

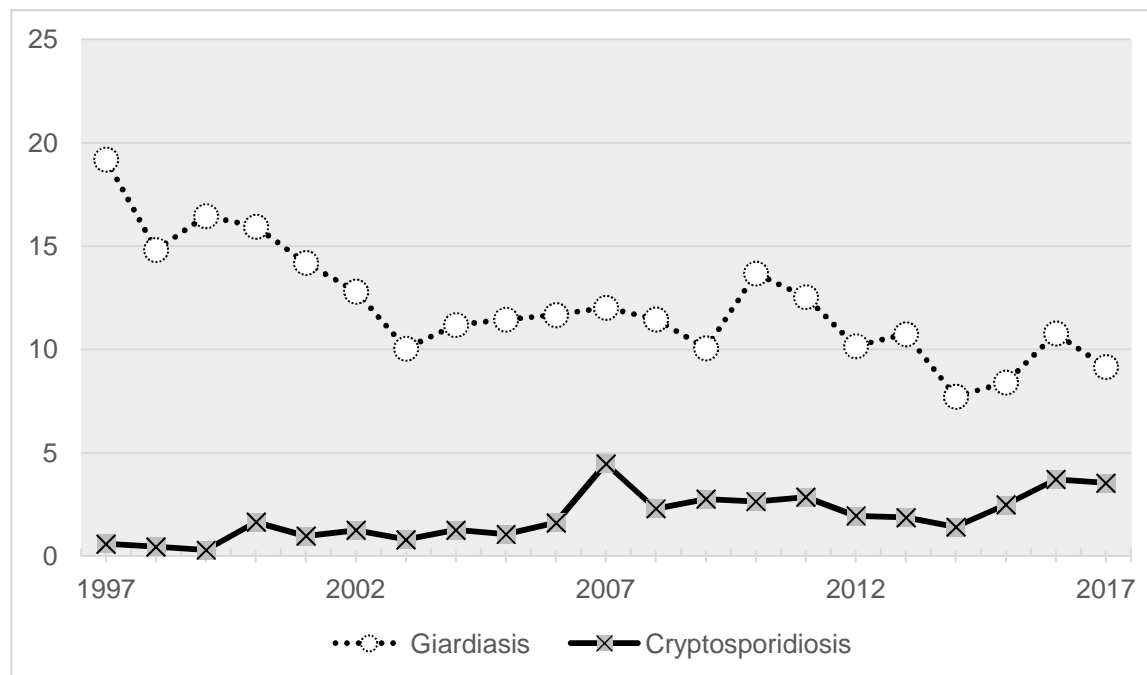


Figure 2 caption: Depiction of the annual count of cryptosporidiosis and giardiasis cases across all Colorado counties between 1997 – 2017. Whereas there was a decrease in the total number of cases of giardiasis, there was an increase in the total number of cryptosporidiosis cases in Colorado cases between 1997 and 2017.

Figure 3. Depiction of population, case rates and extreme weather in 1997, 2007 and 2017 by Colorado counties

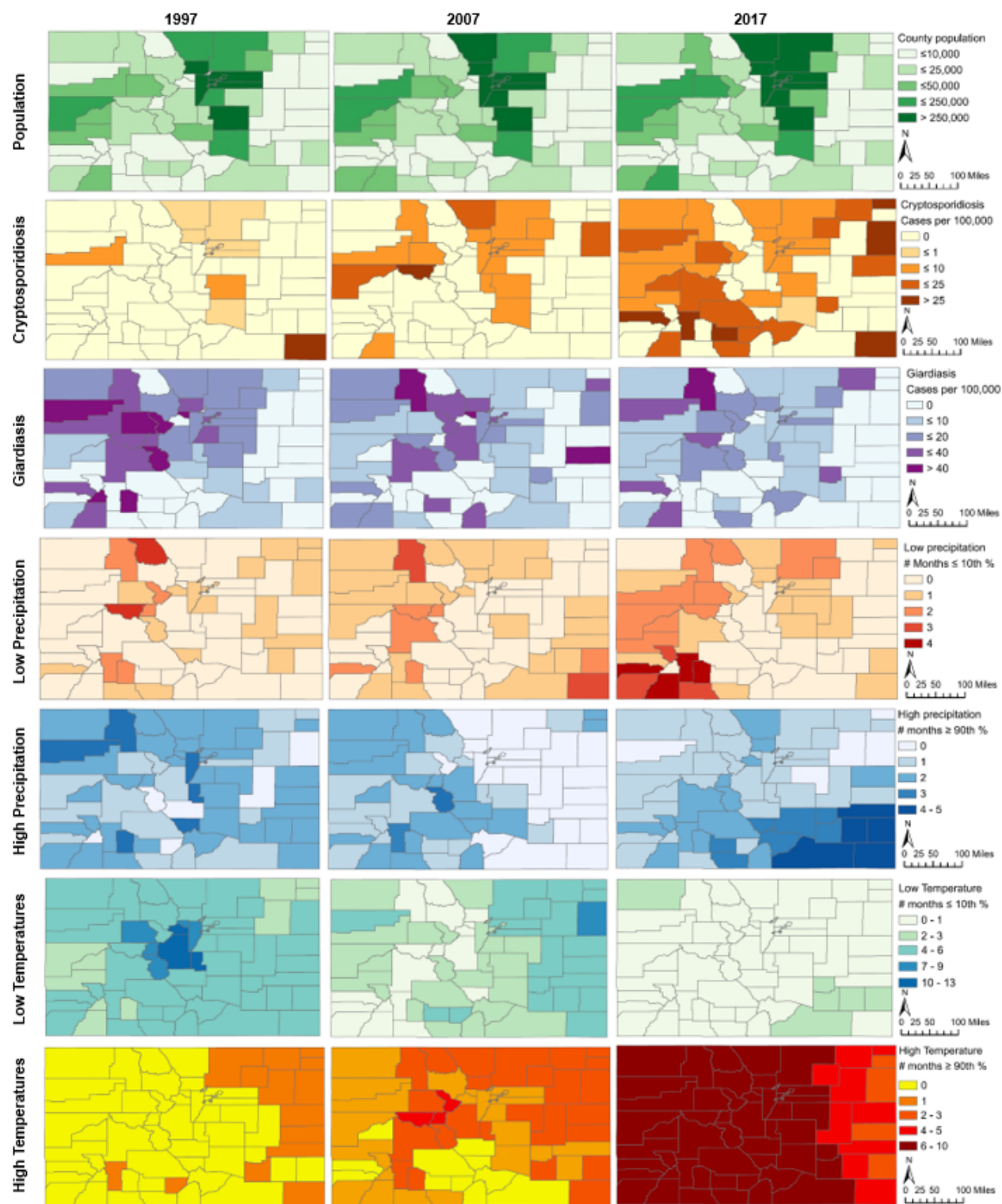
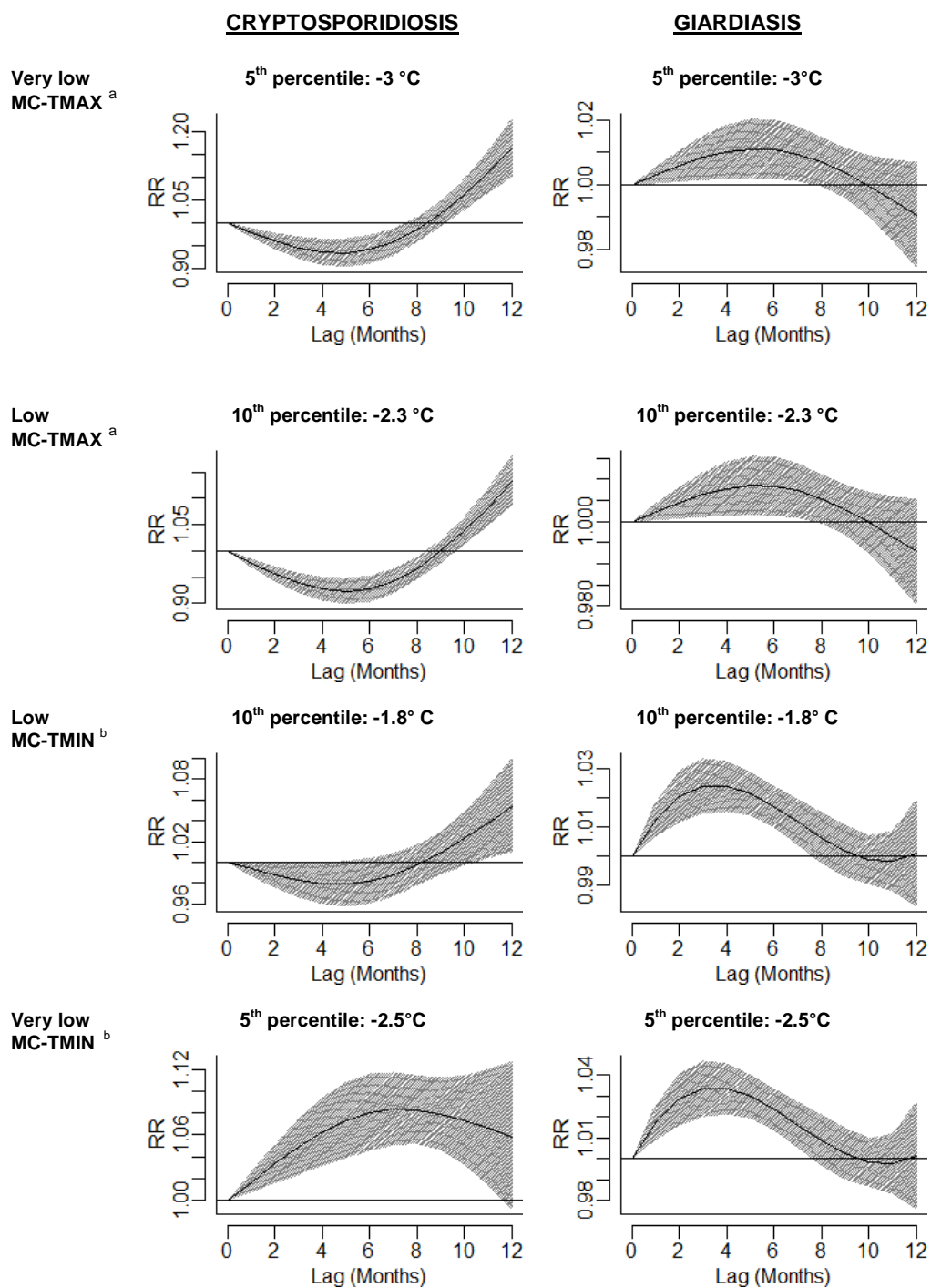


Figure 3 caption: Maps depicting Colorado county population, cryptosporidiosis and giardiasis case rates (per 100,000 people), and extreme weather in 1997, 2007 and 2017 are shown in Figure 3. The series of maps depicting precipitation indicate the total number of months in 1997, 2007, and 2017 that a county's mean-centered precipitation

was low ($\leq 10^{\text{th}}$ percentile value) or high ($\geq 90^{\text{th}}$ percentile value), relative to all mean-centered precipitation values observed in Colorado counties across the 21-year study period. The series of maps depicting extreme temperatures combined minimum temperature and maximum temperature, such that the maximum possible number of months with extreme low or extreme high temperature readings for a county in a given year would be 24 (12 possible for maximum temperature, plus 12 possible for minimum temperature). Thus, the low temperature maps indicate the total number of months in 1997, 2007 and 2017 that either the mean-centered minimum temperature or the mean-centered maximum temperature was low ($\leq 10^{\text{th}}$ percentile value) for a given county, while the high temperature maps indicate the total number of months in 1997, 2007 and 2017 that either the mean-centered minimum temperature or the mean-centered maximum temperature was high ($\geq 90^{\text{th}}$ percentile value) for a given county, relative to all mean-centered minimum and maximum temperature values observed in Colorado counties across the 21-year study period.

Figure 4. Depictions of the lagged effects of extreme low temperatures on the risk of cryptosporidiosis and giardiasis cases in Colorado counties



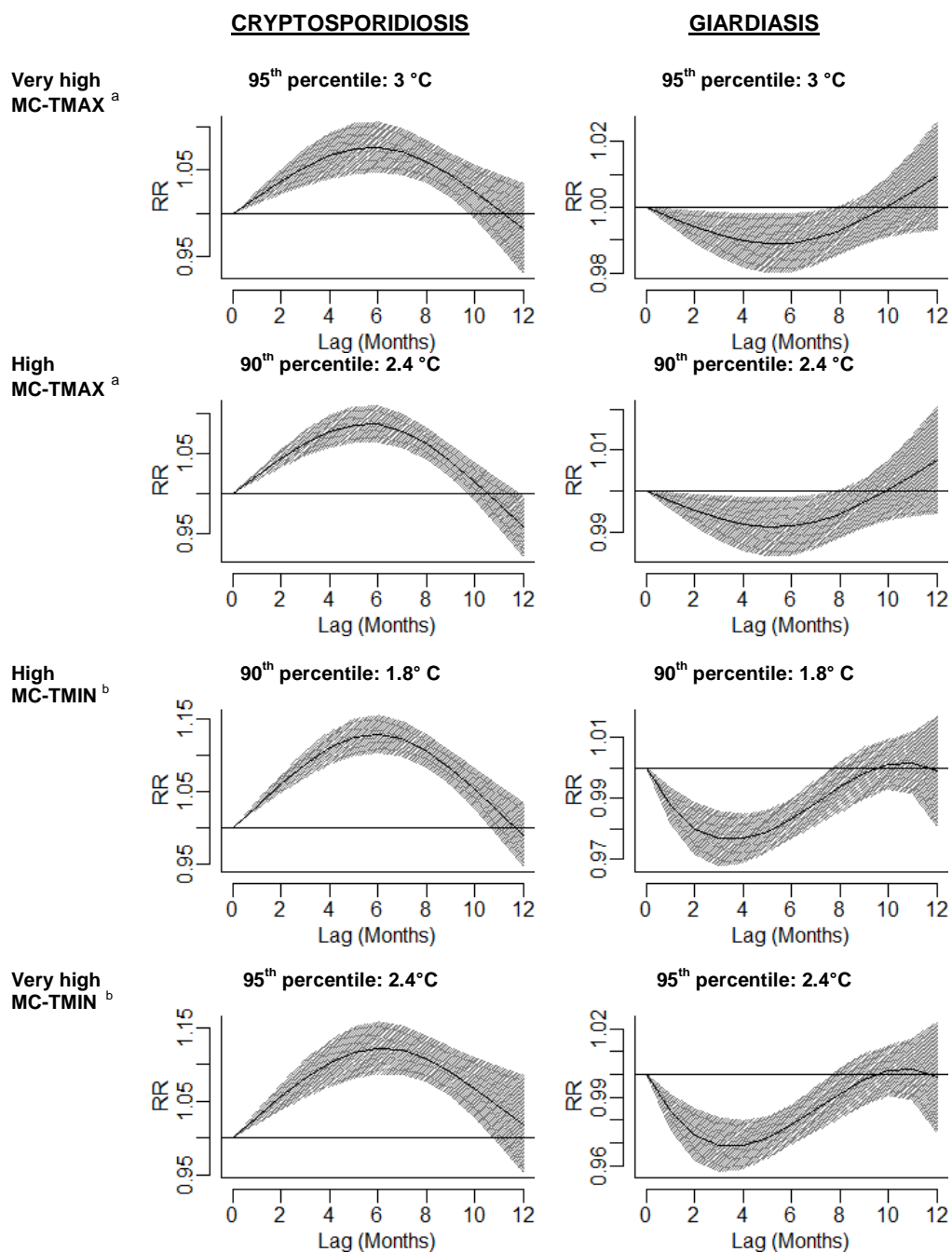
^a Monthly average of daily maximum temperature, mean-centered by county and calendar-month

^b Monthly average of daily minimum temperature, mean-centered by county and calendar-month

Figure 4 Caption: The effects of very low (5th percentile) and low (10th percentile) temperatures, lagged 0 – 12 months, on the risk of cryptosporidiosis and giardiasis (relative to the risk at the county and calendar month mean) are depicted in Figure 3. The top panel depicts extreme low values of the monthly average

daily maximum temperature, mean-centered by county and calendar-month (MC-TMAX), while the bottom panel depicts extreme low values of the monthly average daily minimum temperature, mean-centered by county and calendar-month (MC-TMIN).

Figure 5. Depictions of the lagged effects of extreme high temperatures on the risk of cryptosporidiosis and giardiasis cases in Colorado counties



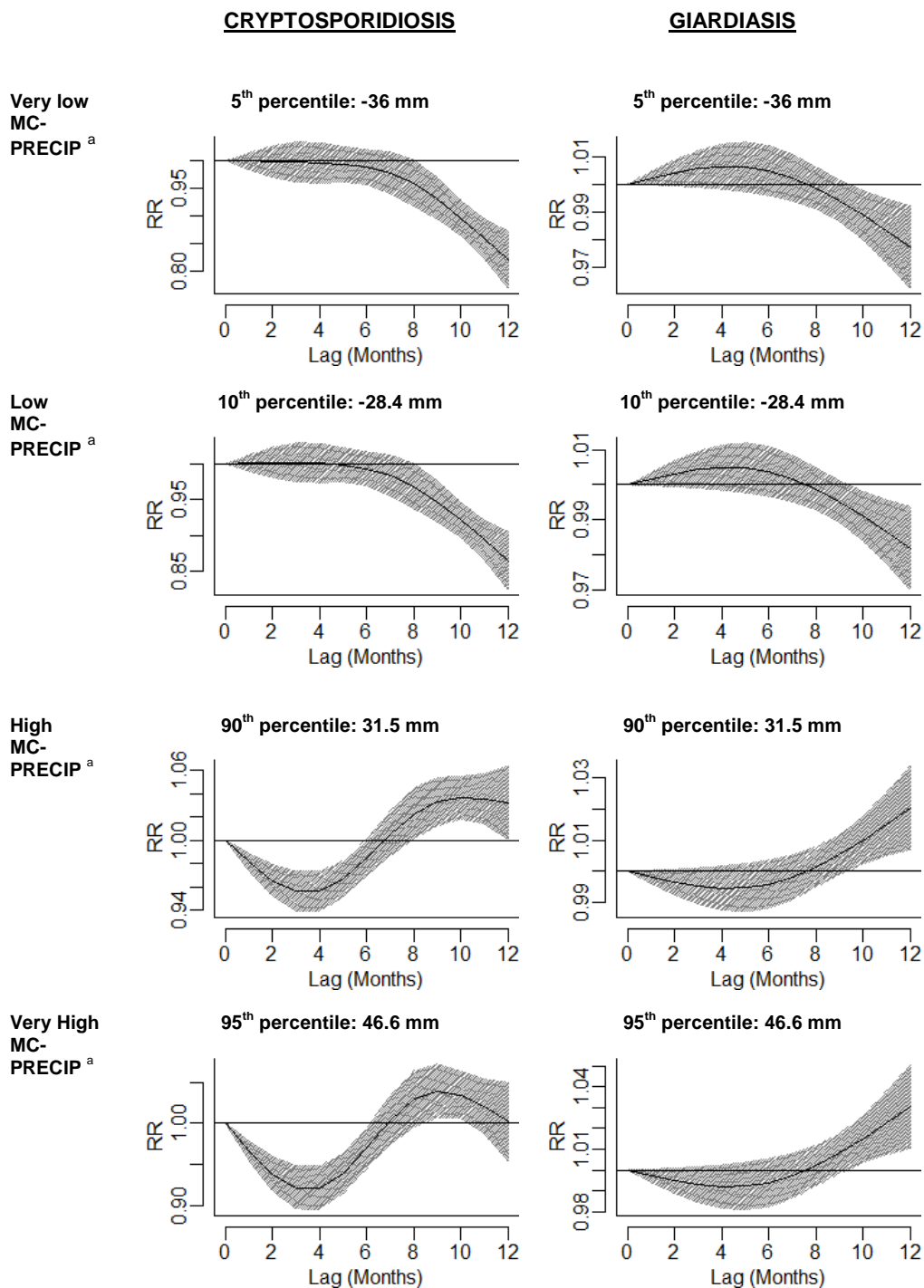
^a Monthly average of daily maximum temperature, mean-centered by county and calendar-month

^b Monthly average of daily minimum temperature, mean-centered by county and calendar-month

Figure 5 Caption: The effects of very high (95th percentile) and high (90th percentile) temperatures, lagged 0 – 12 months, on the risk of cryptosporidiosis and giardiasis (relative to the risk at the county and calendar month mean) are depicted in Figure 4. The top panel depicts extreme high values of the monthly average daily maximum temperature, mean-centered by county and calendar-month (MC-TMAX), while

the bottom panel depicts extreme high values of the monthly average daily minimum temperature, mean-centered by county and calendar-month (MC-TMIN).

Figure 6. Depictions of the lagged effects of extreme precipitation on the risk of cryptosporidiosis and giardiasis cases in Colorado counties



^a Countywide average of the total monthly precipitation, mean-centered by county and calendar-month

Figure 6 Caption: The effects of extreme monthly precipitation, lagged 0 – 12 months, on the risk (relative to the risk at the county and calendar-month mean) of cryptosporidiosis (left) and giardiasis (right) are depicted in Figure 5. The top panel depicts the lagged effects of very low (5th percentile) and low (10th percentile) values of the countywide average of the total monthly precipitation, mean-centered

by county and calendar-month (MC-PRECIP), while the bottom panel depicts the lagged effects of very high (95th percentile) and high (90th percentile) values of MC-PRECIP on the risk of cryptosporidiosis and giardiasis.).