

1 **Menarche, pubertal timing and the brain: female-specific patterns of brain maturation**  
2 **beyond age-related development**

3

4 Nina Gottschewsky<sup>1,#,\*</sup>, Dominik Kraft<sup>1,#</sup>, Tobias Kaufmann<sup>1,2,3\*</sup>

5 <sup>1</sup> *Department of Psychiatry and Psychotherapy, Tübingen Center for Mental Health, University of*  
6 *Tübingen, Germany*

7 <sup>2</sup> *Norwegian Centre for Mental Disorders Research, Division of Mental Health and Addiction, Oslo*  
8 *University Hospital & Institute of Clinical Medicine, University of Oslo, Oslo, Norway*

9 <sup>3</sup> *German Center for Mental Health (DZPG), Partner site Tübingen, Germany*

10

11 *# These authors contributed equally*

12 \* Correspondence: Nina Gottschewsky, MSc and Tobias Kaufmann, PhD

13 Email:

14 [nina.gottschewsky@stud.uni-tuebingen.de](mailto:nina.gottschewsky@stud.uni-tuebingen.de)

15 [tobias.kaufmann@med.uni-tuebingen.de](mailto:tobias.kaufmann@med.uni-tuebingen.de)

16 Postal address:

17 Department of Psychiatry and Psychotherapy, Calwerstr. 14, 72076 Tübingen

18

19

20

21 **Abstract**

22 Background: Puberty depicts a period of profound and multifactorial changes ranging from social to  
23 biological factors. While brain development in youths has been studied mostly from an age perspective,  
24 recent evidence suggests that pubertal measures may be more sensitive to study adolescent  
25 neurodevelopment, however, studies on pubertal timing in relation to brain development are still scarce.

26 Methods: We investigated if pre- vs. post-menarche status can be classified using machine learning on  
27 cortical and subcortical structural magnetic resonance imaging (MRI) data from strictly age-matched  
28 adolescent females from the Adolescent Brain Cognitive Development (ABCD) cohort. For comparison of  
29 the identified menarche-related patterns to age-related patterns of neurodevelopment, we trained a brain age  
30 prediction model on data from the Philadelphia Neurodevelopmental Cohort and applied it to the same  
31 ABCD data, yielding differences between predicted and chronological age referred to as brain age gaps. We  
32 tested the sensitivity of both these frameworks to measures of pubertal maturation, specifically age at  
33 menarche and puberty status.

34 Results: The machine learning model achieved moderate but statistically significant accuracy in the  
35 menarche classification task, yielding for each subject a class probability ranging from 0 (pre-) to 1 (post-  
36 menarche). Comparison to brain age predictions revealed shared and distinct patterns of neurodevelopment  
37 captured by both approaches. Continuous menarche class probabilities were positively associated with brain  
38 age gaps, but only the menarche class probabilities – not the brain age gaps – were associated with age at  
39 menarche.

40 Conclusions: This study demonstrates the use of a machine learning model to classify menarche status from  
41 structural MRI data while accounting for age-related neurodevelopment. Given its sensitivity towards  
42 measures of puberty timing, our work suggests that menarche class probabilities may be developed toward  
43 an objective brain-based marker of pubertal development.

44

45

46 **Keywords**

47 Female brain development, menarche, pubertal timing, machine learning on imaging data

48

49 **Highlights**

- 50 ✓ We classified pre- vs. post-menarche status in adolescent females from structural brain imaging data
- 51 ✓ We compared class probabilities to brain-age predictions to disentangle puberty- vs. age-related patterns
- 52 of brain development
- 53 ✓ The derived continuous brain-based menarche class probabilities captured shared but also unique
- 54 variations of adolescent neurodevelopment, and were associated with pubertal timing and status

55

56

57 **Plain English Summary**

58 Puberty is a period of substantial changes in the life of youths, and these include profound brain changes.

59 Most studies have investigated age related changes in brain development, recent work however suggests

60 that looking at brain development through the lens of pubertal development can provide additional insights

61 beyond age effects. We here analyzed brain imaging data from a group of same-aged adolescent girls from

62 the Adolescent Brain Cognitive Development study. Our goal was to investigate if we could determine from

63 brain images whether a girl had started her menstrual period (menarche) or not, and we used machine

64 learning to classify between them. This machine learning model does not just return a “yes/no” decision,

65 but also returns a number between 0 and 1 indicating a probability to be pre- (0) or post- (1) menarche. To

66 rule out, that our approach only maps age-related development, we selected a strictly age-matched sample

67 of girls and compared our classification model to a brain age model trained on independent individuals. Our

68 model classified between pre- and post-menarche with moderate accuracy. The obtained class probability

69 was partly related to age-related brain development, but only the probability was significantly associated

70 with pubertal timing (age at menarche). In summary, our study uses a machine learning model to estimate

71 whether a girl has reached menarche based on her brain structure. This approach offers new insights into

72 the connection between puberty and brain development and might serve as an objective way to assess

73 pubertal timing from imaging data.

74

75

## 76 **Background**

77 Adolescence is a time of profound changes to the body and the brain, with substantial impact on an  
78 individual's behaviour, emotions, and self-perception, among other things [1]. This transition includes  
79 puberty, the time period during which an individual acquires the capability for sexual reproduction [2]. The  
80 latter is characterised by an interplay of gonadotropin-releasing hormone, gonadotropins such as follicle-  
81 stimulating hormone and luteinizing hormone, and sex hormones such as androgens, estrogens and  
82 progesterones. Together, they not only drive changes of the body, but also directly act on the brain [3].  
83 Studies using magnetic resonance imaging (MRI) to investigate human brain anatomy have illustrated that  
84 the brain undergoes significant changes during adolescence described by a complex yet orchestrated  
85 interplay of progressive (e.g., myelination) and regressive (e.g., pruning) neuronal processes [4]. While  
86 brain development in youths has been commonly investigated through the lens of age-related brain  
87 maturation, there has been an increasing number of studies focusing on neurodevelopment mediated by  
88 pubertal processes in youth [5–7]. These studies suggest that puberty-related brain development cannot be  
89 simply explained by age trajectories but rather goes beyond the effects of growing older [7–9] and  
90 consequently that pubertal development may thus be a more sensitive measure to study neurodevelopment  
91 in youths as compared to age [6].

92 A recent systematic review on the relationship between pubertal and structural brain development  
93 in human adolescents describes brain wide reductions in cortical grey matter thickness and volume  
94 associated with progressed pubertal maturation from both cross-sectional and longitudinal studies [7].  
95 Findings suggest that these effects are global across the brain with frontal regions showing the most  
96 pronounced effects [7,10]. Alongside cortical changes, advanced pubertal maturation is also associated with  
97 subcortical brain development, in particular the amygdala and hippocampus [11]. Across studies these  
98 effects are subject to sex differences, which not only manifest in varying effect sizes but also sometimes in  
99 opposing effect directions in males and females [5,12].

100 While methodological choices, such as accounting for age in statistical models, may factor into the  
101 diverging observations, these differences may also stem from variability that is inherent to pubertal  
102 maturation [13]. Although all individuals pass through the same pubertal stages, there is large variability  
103 regarding pubertal timing and the speed of progression [14,15]. Pubertal timing describes the time point at  
104 which an individual reaches certain pubertal milestones in comparison to their peers of the same age [16].  
105 While pubertal timing appears to be highly heritable [17,18], recent evidence is also linking variation in  
106 pubertal timing to environmental factors, such as nutrition intake, socioeconomic status or obesity [14]. This  
107 malleability may consequently lead to pubertal onsets that deviate in their timing and individuals thus  
108 experiencing early or late pubertal onsets [5]. Interestingly these deviations in pubertal timing appear to be  
109 associated with physical and psychiatric health issues [5,19].

110 Many studies over the years have shown an association between pubertal timing and  
111 psychopathology [20–22]. In boys, evidence concerning the effect of pubertal timing on health risks is  
112 inconsistent and could be best described by the ‘off-time hypothesis’, that is either very early or very late  
113 onset [23]. In contrast, evidence for the association between health risk and puberty timing in girls has been  
114 well-replicated, converging on the so-called ‘early timing hypothesis’, which posits that early maturing girls  
115 (most often assessed using age at menarche as a proxy measure, i.e. age at which individuals experience  
116 their first menstruation) are more likely to experience adverse mental health outcomes than their on time  
117 and late maturing peers [24,25]. Therefore, pubertal timing and its malleability depict a critical tipping point  
118 which may set the course for later vulnerability and worse (mental) health outcome.

119 While most puberty-related imaging studies to date have focused on investigating the association  
120 between the brain and puberty status (i.e., the quantification of pubertal characteristics indicating a more or  
121 less advanced maturation akin to the transition through pubertal stages), imaging studies on pubertal timing  
122 – despite its importance for emerging (mental) health risks – are to the best of our knowledge scarce. The  
123 current study investigated the impact of pubertal timing on brain maturation, deploying age-matching to  
124 control for age-related neurodevelopment. Using structural imaging data from the Adolescent Brain  
125 Cognitive Development cohort (ABCD; [26]) we aimed at classifying pre- and post-menarcheal females  
126 using a machine learning model. To validate the sensitivity of our approach and to test the biological validity  
127 of the obtained class probabilities, we drew comparison to a brain age prediction framework, investigating  
128 to what extent both approaches capture the same or distinct neurodevelopmental variance in the female  
129 adolescent brain.

130

## 131 **Methods**

### 132 *Sample Descriptions*

133 ABCD: For the menarche classification and as the test sample for the age prediction model, we included  
134 data of  $N = 3248$  female (henceforth referring to individuals assigned female at birth; mean age = 11.91  
135 years,  $SD = 0.65$ ) participants of the Adolescent Brain Cognitive Development study 2-year follow up data  
136 [26]. Study protocols have been approved by either local institutional review boards (IRB) or by reliance  
137 agreements with the central IRB at University of California. For each study participant, structural brain  
138 imaging features were obtained from the tabulated imaging data provided by the ABCD release 4.0 [27].  
139 The 2-year follow up data was chosen because it offers the most balanced distribution of pre- and post-  
140 menarcheal individuals. Subjects with missing MRI or missing relevant demographic data were excluded.  
141 Furthermore, those who did not answer either ‘yes’ or ‘no’ to the question ‘Have you begun to menstruate  
142 (started to have your period)?’ from the ABCD Youth Pubertal Development Scale and Menstrual Cycle  
143 Survey History (PDMS) [28], or whose imaging data quality was deemed too low for inclusion by two

144 ABCD researchers, were excluded. From the PDMS data we determined pubertal status ranging from  
145 prepubertal to postpubertal. In brief, we summed pubic hair growth and breast development scores and  
146 incorporated information about menarche and converted resulting score to a pubertal status category  
147 according to a scheme provided by the ABCD study (variable: `pds_p_ss_female_category`). Pubertal status  
148 was calculated from youth-reported as well as caregiver-reported data to account for differences in the  
149 perception of pubertal maturation.

150  
151 PNC: We used data from N= 786 female participants (mean age = 15.25 years, SD = 3.65) of the  
152 Philadelphia Neurodevelopmental Cohort (PNC; [29]) as an independent training sample to derive an age  
153 prediction model. In PNC, all study procedures were approved by the respective institutional review boards.  
154 We processed the T1 MRI images using FreeSurfer (version 7.1.1) [30] and derived the same cortical and  
155 subcortical features as used for the ABCD cohort. Euler numbers were used as a proxy of image quality for  
156 quality control [31]. Subjects with missing MRI, missing demographic data, a Euler number more than three  
157 standard deviations below the mean, or those with a medical rating of 3 or higher (severe medical condition)  
158 were excluded.

159  
160 *MRI data description*

161 For each subject in both data sets we included a total number of 234 anatomical MRI features. Specifically,  
162 we used 30 subcortical features as well as, for each hemisphere, 34 volume, 34 thickness, and 34 area cortical  
163 features matching the Desikan-Killiany atlas [32] (see Supplementary Table S1). Of note, since ABCD data  
164 was acquired across 21 study sites, we performed batch harmonization with *neuroCombat* (v.0.2.12) [33]  
165 for each individual modality and training and testing sets independently.

166  
167 *Statistical Analyses*

168 All statistical analyses were performed in python (v.3.10.5) [34]. Basic data handling was performed with  
169 numpy (v.1.23.2) [35] and pandas (v.1.4.3) [36,37].

170  
171 Menarche Classification: For the classification of pre- and post-menarche individuals in the ABCD sample,  
172 a linear discriminant analysis (LDA) classification model was trained using scikit-learn (version 1.1.1; [38]).  
173 For classification we split the full ABCD sample (N=3248 females) into a training and an independent test  
174 set by randomly sampling 20% of the data into the test set. The test sample consisted of N = 650 participants  
175 (pre-menarche: N = 419, mean age = 11.68 years, SD = 0.56; post-menarche: N = 231, mean age = 12.32  
176 years, SD = 0.59). Furthermore, to avoid bias in the training process, propensity score matching [39] was  
177 performed in the training data to achieve equal distributions of age and MRI scanner in the pre- and post-  
178 menarche groups, as well as equal group sizes. After age-matching, there was no statistical age difference

179 (two-sided independent samples t-test,  $p = 0.968$ ) between the pre- and post-menarche groups in the training  
180 dataset (pre-menarche:  $N = 775$ , mean age = 12.09 years,  $SD = 0.58$ ; post-menarche:  $N = 775$ , mean age =  
181 12.09 years,  $SD = 0.58$ ). Participants' responses to the question 'Have you begun to menstruate (started to  
182 have your period?)' from the ABCD Youth Pubertal Development Scale and Menstrual Cycle Survey  
183 History (PDMS) were used as target labels for the classification algorithm. Responses were encoded  
184 numerically in the original survey as (4: Yes; 1: No) and relabelled to 0 and 1.

185 Train- and test set features were independently transformed into z-scores. Model tuning was  
186 performed via scikit-learn's GridSearchCV. The hyperparameters explored in the grid search included the  
187 'solver' parameter with options ['svd', 'lsqr', 'eigen'] and the 'shrinkage' parameter with values [None, 'auto',  
188 0, 0.1, 0.2, 0.3, 0.4, 0.5, 0.6, 0.7, 0.8, 0.9, 1]. The performance metric used for evaluation was accuracy and  
189 a 10-fold cross-validation approach was employed to assess the model's performance during hyperparameter  
190 tuning. For the final model, an LDA model was fitted to the entire training dataset using the selected  
191 hyperparameters (solver: least squares solution, shrinkage: 0.8). A combined approach of 5-fold cross  
192 validation and a permutation test with 1000 permutations was employed to assess classifier performance.  
193 To assess the model's performance on unseen data, the menarche status of participants from a held-out test  
194 sample of ABCD subjects was classified. An accuracy score and a confusion matrix were calculated.  
195 Furthermore, a permutation test with 1000 permutations was conducted to confirm that the accuracy of the  
196 classifier was significantly higher than chance. The estimated class probabilities of the withheld test sample  
197 were extracted from the LDA model to further assess the biological validity of the classification.

198  
199 Brain age prediction: The python package of the XGBoost (v1.6.1) library was used [40] to predict  
200 chronological age in months from the same 235 sMRI features as those used in the menarche classification.  
201 Model tuning was again performed via scikit-learn's GridSearchCV. The hyperparameters explored in the  
202 grid search were 'max\_depth': [3,6,9], 'max\_leaves': [0,2,5,10], 'learning\_rate': [0.001,0.01,0.1,0.5,1,3],  
203 'min\_child\_weight': [1,10,100] and 'n\_estimators': [100, 500, 1000]. The performance metric used for  
204 evaluation was mean squared error (mse) and a 5-fold cross-validation approach was employed to assess  
205 the model's performance during hyperparameter tuning. The final model was fitted to the entire training  
206 dataset using the determined hyperparameters ('learning\_rate': 0.01, 'max\_depth': 6, 'max\_leaves': 0,  
207 'min\_child\_weight': 10, 'subsample': 0.5, 'num\_rounds': 1000). Again, a combined approach of 5-fold cross  
208 validation and a permutation test with 1000 permutations was employed to assess classifier performance via  
209 root-MSE (RMSE) and mean absolute error (MAE). The model's performance on unseen data was tested  
210 by applying it to the ABCD withheld test sample described above. The rmse and MAE were calculated and  
211 the brain age gap (difference between predicted brain age and chronological age; BAG) was calculated for  
212 further analysis.



### 213 *Association Analyses*

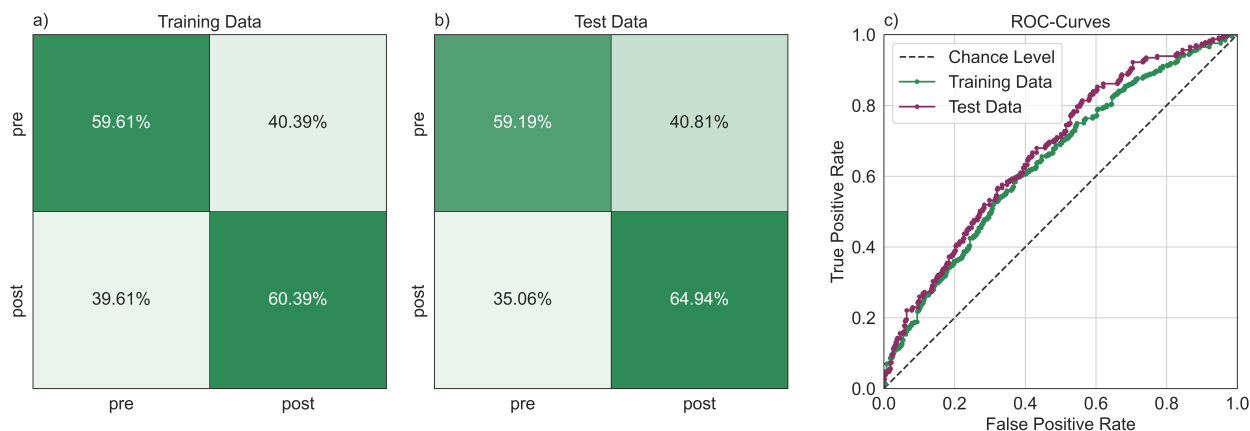
214 Association analyses were performed with the ordinary least squares (OLS) regression function of the  
215 Python module *statsmodels* (v0.13.2) [41]. In line with previous studies [42,43], a residualised BAG was  
216 produced by regressing age and scanning site on BAG. Menarche class probabilities were residualised in  
217 the same way to account for age and scanning site. OLS regression was performed to test the association of  
218 residualised BAG and residualised menarche class probabilities. Finally, we tested for associations between  
219 age at menarche and residualised menarche class probabilities, as well as age at menarche and residualised  
220 BAG using OLS. Likewise, we tested for association between pubertal status and menarche class  
221 probability, as well as BAG, respectively. All association analyses were repeated accounting for potential  
222 effects of sociodemographic status (SES), body mass index (BMI) and race / ethnicity. In brief, BMI was  
223 calculated by averaging two height and weight measurements respectively and using the formula ‘height  
224 (lb) / height (in) x 703’. Ethnicity was encoded in 5 levels: White, Black, Hispanic, Asian, other (multiracial  
225 or ethnicity with too few members in the sample). Ordinal SES variables were transformed through rank-  
226 based inverse normal transformation and averaged, producing a single SES variable. Further details on the  
227 covariates and its calculations can be found in Kraft et al. [13].

228

### 229 **Results**

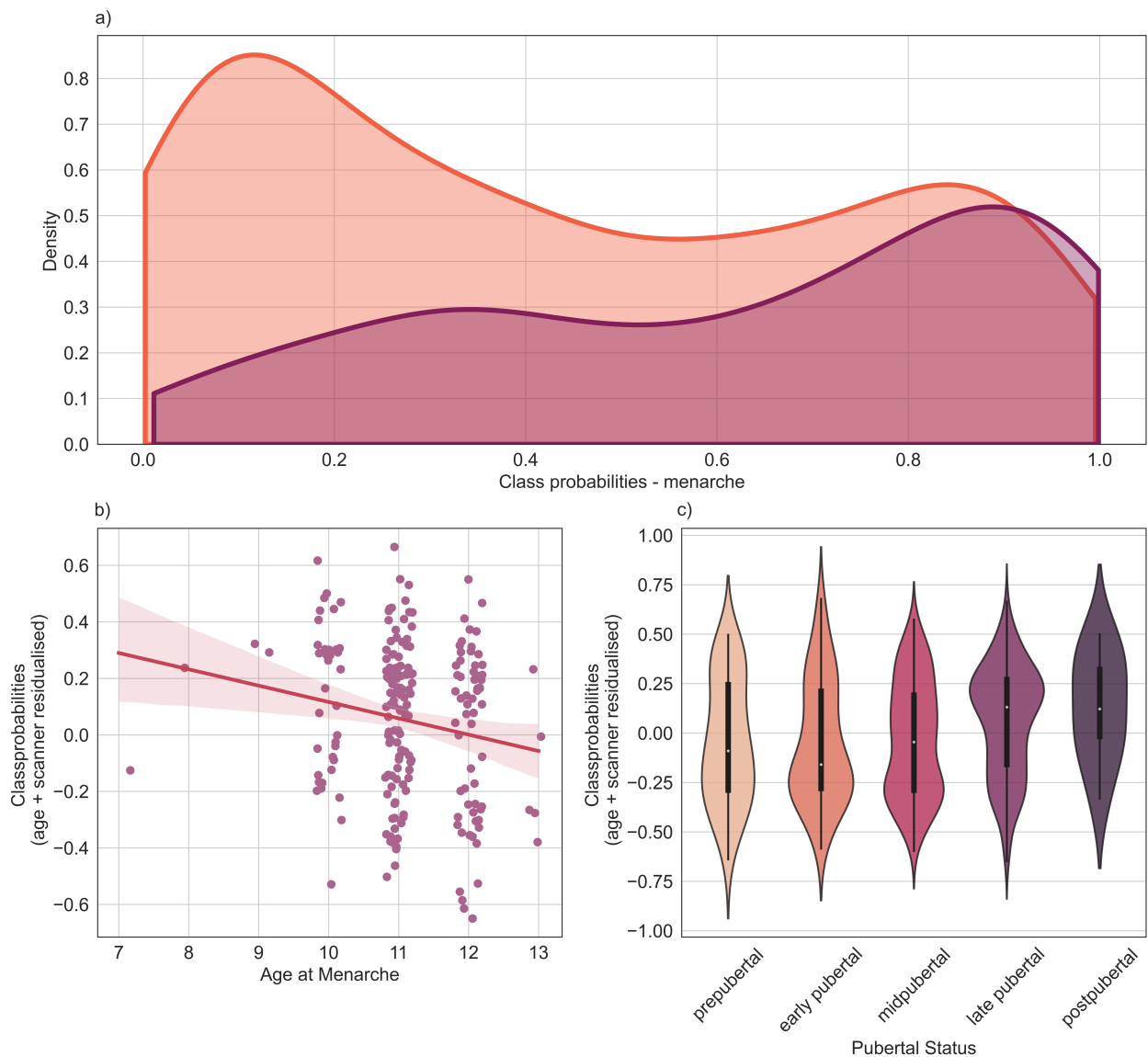
230 We first tested if it was possible to classify from anatomical MRI between same-aged pre- and post-  
231 menarcheal girls. Our classifier trained in a sample of age-matched groups of females pre- and post-  
232 menarche performed with an accuracy of 60.00% in 5-fold cross validation ( $p < 0.001$  across 1000  
233 permutations; Fig. 1a). Applied to a held-out test set of 419 pre- and 231 post-menarcheal girls, the classifier  
234 performed equally well (61.23% accuracy, Fig. 1b, c).





235  
236 *Figure 1: Menarche can be classified from brain imaging data. a) Confusion matrix of 5-fold cross validation in training data; b)*  
237 *Confusion matrix of classification model applied to hold-out test data; c) ROC curves of 5-fold cross validation and hold-out test*  
238 *data classification.*

239 Figure 2a depicts the class probability obtained from the pre-/post-menarche classifier for each individual  
240 in the independent ABCD test sample. In an association analysis in the post-menarche group, we found an  
241 association of derived class probabilities and age at menarche. Specifically, individuals with an earlier  
242 menarche tend to be classified as post-menarche with a higher confidence (adj.  $R^2 = 0.1121$ ,  $F(26, 188) =$   
243  $2.129$ ,  $t = -2.714$ ,  $p = 0.007$ ), supporting biological sensitivity of the class probabilities beyond the binary  
244 pre-/post distinction (Figure 2b). We furthermore found a positive association between menarche class  
245 probability and pubertal status (youth-reported PDMS: adj.  $R^2 = 0.020$ ,  $F(1, 629) = 13.94$ ,  $t = 3.734$ ,  $p <$   
246  $0.001$ , caregiver-reported PDMS: : adj.  $R^2 = 0.022$ ,  $F(1, 616) = 14.76$ ,  $t = 3.842$ ,  $p < 0.001$ ; Figure 3c),  
247 further corroborating biological sensitivity. Of note, both associations (age at menarche, puberty status)  
248 were diminished when incorporating BMI, SES and race/ethnicity as confound factors (Supplementary  
249 Table S2), highlighting the complex relationship between these factors, puberty and the brain.



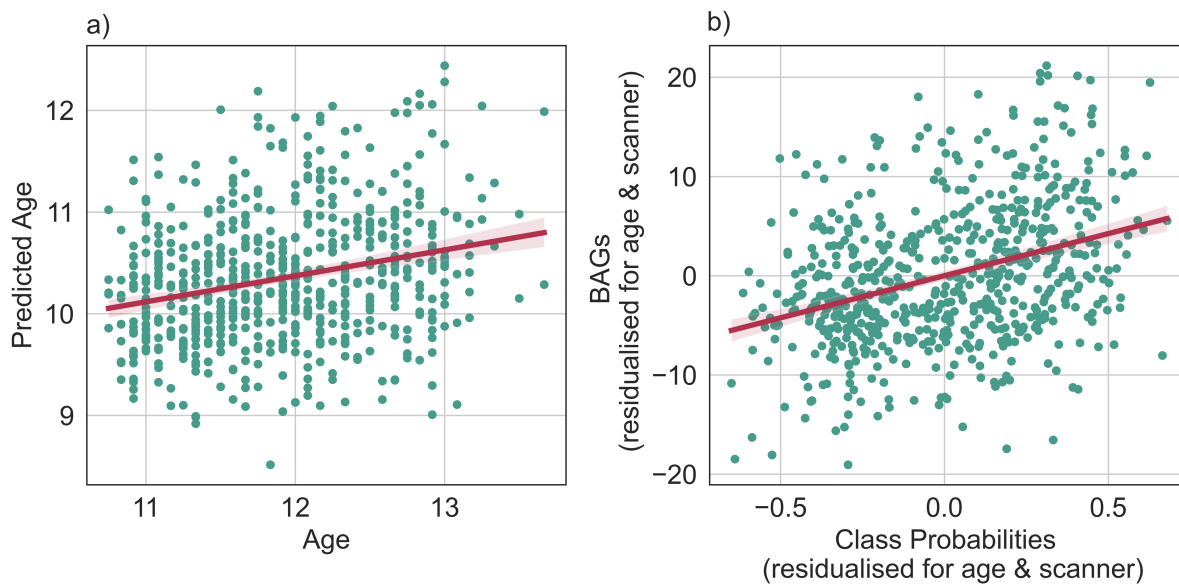
250

251 *Figure 2: Menarche class probabilities are associated with measures of pubertal timing and status. a) Density plot of post-menarche*  
252 *class probabilities of the pre- and post-menarche groups respectively. Class probability of 1 signifies a 100% confident*  
253 *classification as post-menarche, class probability of 0 signifies a 100% confident classification as pre-menarche. b) Association of*  
254 *age at menarche and menarche class probability controlled for age and scanner. c) Distribution of class probabilities (age- and*  
255 *scanner residualised) by puberty category (youth-reported).*

256 Pubertal development and age are intertwined. Our classifier distinguished between pre- and post-  
257 menarcheal females of same age, thereby essentially distinguishing earlier from later pubertal timing relative  
258 to age-matched peers. We further sought to investigate whether and to which degree the menarche class  
259 probabilities relate to brain age patterns. Our brain age prediction model performed with an RMSE of 2.3  
260 years and a MAE of 1.8 years (5-fold cross validation) in the PNC sample, and permutation tests indicating  
261 significant age prediction ( $p < 0.001$ , 1000 permutations). We next applied the brain age prediction model to

262 the same independent ABCD test sample as used as test sample in the menarche classification. Here, the  
263 prediction model performed with an RMSE of 1.8 years and a MAE of 1.6 years (Figure 3a). From the  
264 predicted brain ages, we calculated the brain age gap (difference between predicted brain age and  
265 chronological age; BAG). These gaps were significantly associated with menarche class probabilities (Fig.  
266 3b), as observed from a linear model controlling for the effect of age and scanner (adj.  $R^2 = 0.126$ ,  $F(1, 648)$   
267  $= 94.51$ ,  $t = 9.722$ ,  $p < 0.001$ ). This association stayed significant when including BMI, SES, and race /  
268 ethnicity as covariates in the analysis (Supplementary Table S2). BAG was positively associated with  
269 pubertal status (youth-reported PDMS: adj.  $R^2 = 0.008$ ,  $F(1, 629) = 5.826$ ,  $t = 2.414$ ,  $p = 0.016$ , caregiver-  
270 reported PDMS: adj.  $R^2 = 0.009$ ,  $F(1, 616) = 6.841$ ,  $t = 2.616$ ,  $p = 0.009$ ). This effect was descriptively  
271 smaller as compared to the class probability effect and also diminished after including both variables into a  
272 single model, in which only class probabilities remained significantly associated with pubertal status ( $t =$   
273  $3.076$ ,  $p = 0.002$ ). Interestingly, whereas the menarche class probability was weakly associated with age at  
274 menarche as reported above, the brain age gaps were not. Including age at menarche in the model showed  
275 no correlation of BAG and age at menarche (adj.  $R^2 = 0.366$ ,  $F(26, 188) = 5.760$ ,  $t = -1.748$ ,  $p = 0.082$ ),  
276 lending support to the idea that the menarche classification model picks up biological variability additional  
277 to that revealed by a brain age model.

278



279  
280 *Figure 3: Comparison of menarche classification to a brain age prediction framework. a) Predicted age by age. b) BAGs*  
281 *residualised for age and scanner by menarche class probabilities residualised for age and scanner.*

282

283

## 284 **Discussion**

285 The present study aimed at investigating whether structural MRI data can be used to correctly classify pre-  
286 vs post-menarche status in adolescent females, thus shedding light on the neurodevelopment associated with  
287 pubertal timing. For this, we successfully trained a machine learning model for the classification of pre- and  
288 post-menarcheal females in the ABCD cohort while strictly controlling for age-related neurodevelopment  
289 through age-matching. To further disentangle age- vs. puberty-related patterns in neurodevelopment, we  
290 performed subsequent comparison to a brain age prediction framework that predicts chronological age from  
291 MRI, revealing shared and distinct variance in the two machine learning approaches. Finally, we  
292 investigated if the class probabilities obtained from menarche classification render a continuous biological  
293 marker of pubertal timing that can add relevant information beyond the pre- vs post-menarche dichotomy.  
294 Indeed, our results indicate that the probabilities are sensitive to other key variables of pubertal maturation,  
295 in particular age at menarche and pubertal status.

### 296 297 *Menarche classification*

298 We argue that leveraging a multivariate, machine learning model helps to integrate information from a  
299 collection of brain regions into a single score, which eventually may overcome the inherent complexity of  
300 modelling puberty in a univariate fashion and its accompanying statistical considerations [7,44–46] (see  
301 [44] for a conceptually similar approach of integrating various sources into a single marker representing  
302 pubertal timing). By doing so, our menarche classification model performed with moderate yet significantly  
303 above chance accuracy during cross-validation and when applied to a withheld test sample. To rule out that  
304 this classification solely mimics a separation of a younger vs. older subgroup of females, we performed a  
305 strict age matching prior to model training. Consequently, our results suggest that there is menarche related  
306 neuronal variance detectable in structural MRI data. This aligns well with endocrinological trajectories,  
307 which are characterized by a substantial, year-long increase in estradiol levels prior to menarche [47] and  
308 related findings that estrogens affect neuroplasticity [6,48,49].

### 309 310 *Validation of derived class probabilities*

311 Given the close relationship between pubertal- and age-related neurodevelopment we contrasted the results  
312 of our classification model to outcomes of a brain age prediction framework. This approach aimed at  
313 exploring the degree to which our derived class probabilities and brain-age estimations capture similar or  
314 distinct patterns of neurodevelopmental variation in the adolescent female brain. Testing the brain age  
315 prediction model on the above mentioned held-out test sample from the ABCD cohort, we observed highly  
316 significant and accurate model performance comparable to results of previous studies modelling brain age  
317 in the ABCD cohort [6]. Our derived menarche class probabilities were positively related to brain age gaps

318 (BAGs, i.e., the difference between someone’s brain and chronological age), matching earlier results that  
319 associated brain age with pubertal status (e.g., [6]) and pubertal timing (e.g., [44]). Individuals with higher  
320 class probabilities (i.e., a higher probability of being classified as post-menarche) also had higher brain-age  
321 gaps (i.e., an indication of a more mature brain in relation to their chronological ages), suggesting that both  
322 approaches capture variations in adolescent brain development related to advanced brain maturation. Our  
323 work however extends previous findings, by showing that our menarche classification approach seems to  
324 be able to better exploit traces of pubertal timing in the brain that are specific to puberty and go beyond the  
325 traces of age-related neurodevelopment that are captured by a brain age prediction framework. This finding  
326 is in line with previous suggestions that puberty related processes may be a more sensitive measure to  
327 investigate adolescent brain development compared to age-related neurodevelopment [6–9].

328  
329 To prove the additional benefit of studying neurodevelopment from a puberty-focused perspective and to  
330 further substantiate the biological validity and capability of the class probabilities of capturing meaningful  
331 biological variance, we furthermore aimed at investigating the probabilities associations with puberty-  
332 related measurements. In the ABCD study, puberty is assessed by different means, ranging from hormonal  
333 measurements to self-reported evaluation of perceived pubertal maturation (see [50]). The latter allows to  
334 localize individuals in different pubertal stages or categories ranging from pre- to post-pubertal. As  
335 described before, for females the score is derived by summing over ratings of key physical changes, such as  
336 breast development and pubic hair growth, but also the (non-) completion of menarche [14]. Since menarche  
337 is directly incorporated in the pubertal category scores, we additionally showed that higher pubertal category  
338 scores (thus indicating a later pubertal stage) are associated with higher class probabilities, which serves as  
339 an important sanity check for our proposed approach. Higher BAGs were also significantly associated with  
340 higher pubertal category scores, however with a descriptively smaller effect sized compared to the class  
341 probabilities. Furthermore, after including both variables into a model, only the effect of class probabilities  
342 remained significant. Furthermore, we show that post-menarche class probabilities were weakly yet  
343 significantly associated with age at menarche. In contrast, the association between BAG and age at menarche  
344 was not significant. This suggests that there are traces of pubertal timing in the brain that go beyond patterns  
345 of age-related brain development, and that these traces can be more successfully exploited by our proposed  
346 menarche classification model than by the brain age prediction framework. Interestingly, the pattern of  
347 higher class probabilities in females that underwent early or earlier menarche, resonates with the hypothesis  
348 that the brain might be more susceptible to the hormonal influences of puberty at a younger age and that,  
349 therefore, individuals who experience an earlier menarche undergo the increase of gonadal hormones at a  
350 time when their brain is relatively more sensitive to their effects on neuroplasticity [51,52]. Of note, after  
351 adding SES, race/ethnicity, and BMI as covariates into our analyses, the association between the class  
352 probabilities and age at menarche diminished. This observation matches previous reports about the close

353 link between pubertal processes, for example pubertal timing (e.g., operationalized as age at menarche) [53]  
354 and these covariates (e.g., [54–56]). Importantly, associations between the aforementioned covariates and  
355 puberty were also replicated for ABCD 2-year follow up data, which we used in the current study [14].  
356 While we consider it important to understand the associations with these covariates, their interplay is  
357 difficult to disentangle with the data at hand, given the relationship between pubertal timing and these  
358 variables. We argue that these results rather warrant further systematic investigation of the interplay between  
359 all factors in the equation.

360

### 361 *Methodological considerations and future directions*

362 Potential limitations may stem from the fact that we limited our machine learning model to structural  
363 imaging data from cortical and subcortical regions. While this decision resonates with well-replicated  
364 findings of cortical and subcortical grey matter changes during puberty [7], integrating additional imaging  
365 features, such as white matter measures, may help in a more holistic investigation of pubertal timing. While  
366 myelination plays a crucial role in shaping the human brain during adolescence, findings regarding pubertal  
367 maturation appear to be either mixed regarding different measures of white matter (e.g., [5,7]) or lack  
368 previous investigations. Furthermore, while we followed a common approach of training our brain-age  
369 prediction model in an independent dataset (see e.g., [6,42]) and applying it to our target sample in the  
370 ABCD cohort, recent work from Ray and colleagues [57] suggests that refined brain age models (i.e., a  
371 combination of pre-trained models with subsequent finetuning on a fraction of the target data) may improve  
372 model performance and thus also downstream analyses. Lastly, our work focuses on a proof of concept on  
373 the 2-year follow up data of the ABCD study. With additional longitudinal data becoming available through  
374 upcoming releases, the ABCD study depicts an unprecedented resource to validate our model and proof its  
375 usability, since more and more female will eventually undergo their menarche.

376

### 377 **Perspective and Significance**

378 This work may be seen as a proof of principle that pubertal timing can be classified from brain imaging  
379 data. Previous studies that have used age focused approaches like brain age prediction frameworks have  
380 found associations with pubertal measures [44], yet our results suggest that grounding the modelling in  
381 puberty data directly may yield brain based markers that are even more sensitive to pubertal status and  
382 timing. Future studies may thus further explore similar approaches toward the development of brain-based  
383 puberty markers that may be useful in downstream analyses in developmental neuroscience.

384

### 385 **Conclusion**

386 We introduced a machine learning approach that classifies menarche status of adolescent females from their  
387 cortical and subcortical structural MRI data. The derived continuous brain-based class probabilities captured

388 shared but also unique variations of adolescent neurodevelopment when compared to a brain-age prediction  
389 model. Taken together, our results suggest that there are markers of menarche in the brain that can be  
390 formalized into a continuous class probability, which might in the future be developed toward an objective  
391 brain-based marker of pubertal timing.

392

393

#### 394 **Declarations**

395

#### 396 **Ethics approval**

397 PNC study procedures were approved by institutional review boards of the University of Pennsylvania and  
398 the Children's Hospital of Philadelphia. All participants or their caregiver provided written informed  
399 consent. ABCD procedures were approved by either the local site Institutional Review Board or by local  
400 Institutional Review Board reliance agreements with the central Institutional Review Board at the University  
401 of California. All participants and their parents provided written informed consent.

402

#### 403 **Consent for publication**

404 All subjects consented to study inclusion as part of the data acquisition in the ABCD or PNC cohort. Data  
405 was shared with the authors via dedicated data use agreements.

406

#### 407 **Availability of data and material**

408 Data used in this study has been shared with the authors under the data usage agreements of the respective  
409 cohorts (i.e., ABCD and PNC). To use these resources, interested scholars can obtain access by signing their  
410 own respective data usage agreements with the officials. Code used to analyze the data will be made  
411 available on github upon acceptance of the manuscript.

412

#### 413 **Competing interests.**

414 The authors declare that they have no competing interests.

415

#### 416 **Funding**

417 TK received support by the Fortune Program (2660-0-0), Faculty of Medicine, University of Tübingen, and  
418 the Research Council of Norway (#323961). TK is a member of the Machine Learning Cluster of  
419 Excellence, EXC number 2064/1, Project number 39072764. Brain imaging data was processed on the



420 BMBF-funded de.NBI Cloud as part of the German Network for Bioinformatics Infrastructure (031A537B,  
421 031A533A, 031A538A, 031A533B, 031A535A, 031A537C, 031A534A, 031A532B).

422

### 423 **Author contribution**

424 NG had the initial idea to build a menarche classifier. NG and TK conceptualized the study. TK processed  
425 the imaging data. DK curated the ABCD data. NG analysed the data. NG visualized the data. All authors  
426 interpreted the data and wrote the paper. TK received funding.

427

### 428 **Acknowledgement**

429 The authors used data from the Philadelphia Neurodevelopmental Cohort (PNC,  
430 [https://www.ncbi.nlm.nih.gov/projects/gap/cgi-bin/study.cgi?study\\_id=phs000607.v3.p2](https://www.ncbi.nlm.nih.gov/projects/gap/cgi-bin/study.cgi?study_id=phs000607.v3.p2), access  
431 permission no 29782) and the Adolescent Brain Cognitive Development<sup>SM</sup> Study (ABCD, [abcdstudy.org](http://abcdstudy.org)),  
432 Support for the collection of the PNC data set was provided by grant #RC2MH089983 awarded to Raquel  
433 Gur, MD, PhD, and #RC2MH089924 awarded to Hakon Hakonarson, MD, PhD. ABCD data, held in the  
434 NIMH Data Archive (NDA), is a multisite, longitudinal study designed to recruit more than 10,000 children  
435 age 9-10 and follow them over 10 years into early adulthood. The ABCD Study® is supported by the  
436 National Institutes of Health and additional federal partners under award numbers U01DA041048,  
437 U01DA050989, U01DA051016, U01DA041022, U01DA051018, U01DA051037, U01DA050987,  
438 U01DA041174, U01DA041106, U01DA041117, U01DA041028, U01DA041134, U01DA050988,  
439 U01DA051039, U01DA041156, U01DA041025, U01DA041120, U01DA051038, U01DA041148,  
440 U01DA041093, U01DA041089, U24DA041123, U24DA041147. A full list of supporters is available at  
441 <https://abcdstudy.org/federal-partners.html>. A listing of participating sites and a complete listing of the  
442 study investigators can be found at [https://abcdstudy.org/consortium\\_members/](https://abcdstudy.org/consortium_members/). PNC and ABCD  
443 consortium investigators designed and implemented the respective studies and/or provided data but did not  
444 participate in the analysis or writing of this report. This manuscript reflects the views of the authors and  
445 does not necessarily reflect the opinions or views of any other agency, organization, employer or company.

446

### 447 **Supplementary Information**

448 [Additional File 1](#): Supplementary Table S1, S2

## 449 References

- 450 [1] Mendle J, Beltz AM, Carter R, Dorn LD. Understanding Puberty and Its Measurement: Ideas for  
451 Research in a New Generation. *J Res Adolesc* 2019;29:82–95. <https://doi.org/10.1111/jora.12371>.
- 452 [2] Susman EJ, Dorn LD. Puberty: Its role in development. *Handb. Psychol. Dev. Psychol.* Vol 6 2nd  
453 Ed, Hoboken, NJ, US: John Wiley & Sons, Inc.; 2013, p. 289–320.
- 454 [3] Sisk CL, Zehr JL. Pubertal hormones organize the adolescent brain and behavior. *Front*  
455 *Neuroendocrinol* 2005;26:163–74. <https://doi.org/10.1016/j.yfrne.2005.10.003>.
- 456 [4] Paus T, Keshavan M, Giedd JN. Why do many psychiatric disorders emerge during adolescence?  
457 *Nat Rev Neurosci* 2008;9:947–57. <https://doi.org/10.1038/nrn2513>.
- 458 [5] Beck D, Ferschmann L, MacSweeney N, Norbom LB, Wiker T, Aksnes E, et al. Puberty  
459 differentially predicts brain maturation in male and female youth: A longitudinal ABCD Study 2022.  
460 <https://doi.org/10.1101/2022.12.22.22283852>.
- 461 [6] Holm MC, Leonardsen EH, Beck D, Dahl A, Kjelkenes R, de Lange A-MG, et al. Linking brain  
462 maturation and puberty during early adolescence using longitudinal brain age prediction in the  
463 ABCD cohort. *Dev Cogn Neurosci* 2023;60:101220. <https://doi.org/10.1016/j.dcn.2023.101220>.
- 464 [7] Vijayakumar N, Op de Macks Z, Shirtcliff EA, Pfeifer JH. Puberty and the human brain: Insights  
465 into adolescent development. *Neurosci Biobehav Rev* 2018;92:417–36.  
466 <https://doi.org/10.1016/j.neubiorev.2018.06.004>.
- 467 [8] Blakemore S-J, Burnett S, Dahl RE. The role of puberty in the developing adolescent brain. *Hum*  
468 *Brain Mapp* 2010;31:926–33. <https://doi.org/10.1002/hbm.21052>.
- 469 [9] Suleiman AB, Galván A, Harden KP, Dahl RE. Becoming a sexual being: The ‘elephant in the  
470 room’ of adolescent brain development. *Dev Cogn Neurosci* 2017;25:209–20.  
471 <https://doi.org/10.1016/j.dcn.2016.09.004>.
- 472 [10] Koolschijn PCMP, Peper JS, Crone EA. The Influence of Sex Steroids on Structural Brain  
473 Maturation in Adolescence. *PLOS ONE* 2014;9:e83929.  
474 <https://doi.org/10.1371/journal.pone.0083929>.
- 475 [11] Satterthwaite TD, Vandekar S, Wolf DH, Ruparel K, Roalf DR, Jackson C, et al. Sex Differences in  
476 the Effect of Puberty on Hippocampal Morphology. *J Am Acad Child Adolesc Psychiatry*  
477 2014;53:341-350.e1. <https://doi.org/10.1016/j.jaac.2013.12.002>.
- 478 [12] Wierenga LM, Sexton JA, Laake P, Giedd JN, Tamnes CK, the Pediatric Imaging N and Genetics  
479 Study. A Key Characteristic of Sex Differences in the Developing Brain: Greater Variability in  
480 Brain Structure of Boys than Girls. *Cereb Cortex* 2018;28:2741–51.  
481 <https://doi.org/10.1093/cercor/bhx154>.
- 482 [13] Kraft D, Alnæs D, Kaufmann T. Traces of pubertal brain development and health revealed through  
483 domain adapted brain network fusion. *medRxiv*; 2023.  
484 <https://doi.org/10.1101/2023.01.26.23285055>.
- 485 [14] Herting MM, Uban KA, Gonzalez MR, Baker FC, Kan EC, Thompson WK, et al. Correspondence  
486 Between Perceived Pubertal Development and Hormone Levels in 9-10 Year-Olds From the  
487 Adolescent Brain Cognitive Development Study. *Front Endocrinol* 2021;11:549928.  
488 <https://doi.org/10.3389/fendo.2020.549928>.
- 489 [15] Savin-Williams RC, Ream GL. Pubertal Onset and Sexual Orientation in an Adolescent National  
490 Probability Sample. *Arch Sex Behav* 2006;35:279–86. <https://doi.org/10.1007/s10508-006-9032-8>.
- 491 [16] Graber JA, Seeley JR, Brooks-Gunn J, Lewinsohn PM. Is Pubertal Timing Associated With  
492 Psychopathology in Young Adulthood? *J Am Acad Child Adolesc Psychiatry* 2004;43:718–26.  
493 <https://doi.org/10.1097/01.chi.0000120022.14101.11>.
- 494 [17] Silventoinen K, Haukka J, Dunkel L, Tynelius P, Rasmussen F. Genetics of Pubertal Timing and Its  
495 Associations With Relative Weight in Childhood and Adult Height: The Swedish Young Male  
496 Twins Study. *Pediatrics* 2008;121:e885–91. <https://doi.org/10.1542/peds.2007-1615>.
- 497 [18] Wohlfahrt-Veje C, Mouritsen A, Hagen CP, Tinggaard J, Mieritz MG, Boas M, et al. Pubertal Onset  
498 in Boys and Girls Is Influenced by Pubertal Timing of Both Parents. *J Clin Endocrinol Metab*  
499 2016;101:2667–74. <https://doi.org/10.1210/jc.2016-1073>.

- 500 [19] Ahmed ML, Ong KK, Dunger DB. Childhood obesity and the timing of puberty. *Trends Endocrinol*  
501 *Metab* 2009;20:237–42. <https://doi.org/10.1016/j.tem.2009.02.004>.
- 502 [20] Copeland WE, Worthman C, Shanahan L, Costello EJ, Angold A. Early Pubertal Timing and  
503 Testosterone Associated With Higher Levels of Adolescent Depression in Girls. *J Am Acad Child*  
504 *Adolesc Psychiatry* 2019;58:1197–206. <https://doi.org/10.1016/j.jaac.2019.02.007>.
- 505 [21] Mendle J, Ferrero J. Detrimental psychological outcomes associated with pubertal timing in  
506 adolescent boys. *Dev Rev* 2012;32:49–66. <https://doi.org/10.1016/j.dr.2011.11.001>.
- 507 [22] Stumper A, Olino TM, Abramson LY, Alloy LB. Pubertal Timing and Substance use in  
508 Adolescence: an Investigation of Two Cognitive Moderators. *J Abnorm Child Psychol*  
509 2019;47:1509–20. <https://doi.org/10.1007/s10802-019-00524-7>.
- 510 [23] Hoyt LT, Niu L, Pachucki MC, Chaku N. Timing of puberty in boys and girls: Implications for  
511 population health. *SSM - Popul Health* 2020;10:100549.  
512 <https://doi.org/10.1016/j.ssmph.2020.100549>.
- 513 [24] McNeilly EA, Saragosa-Harris NM, Mills KL, Dahl RE, Magis-Weinberg L. Reward sensitivity and  
514 internalizing symptoms during the transition to puberty: An examination of 9-and 10-year-olds in  
515 the ABCD Study. *Dev Cogn Neurosci* 2022;58:101172. <https://doi.org/10.1016/j.dcn.2022.101172>.
- 516 [25] Trépanier L, Juster R-P, Marin M-F, Plusquellec P, Francois N, Sindi S, et al. Early menarche  
517 predicts increased depressive symptoms and cortisol levels in Quebec girls ages 11 to 13. *Dev*  
518 *Psychopathol* 2013;25:1017–27. <https://doi.org/10.1017/S0954579413000345>.
- 519 [26] Volkow ND, Koob GF, Croyle RT, Bianchi DW, Gordon JA, Koroshetz WJ, et al. The conception  
520 of the ABCD study: From substance use to a broad NIH collaboration. *Dev Cogn Neurosci*  
521 2018;32:4–7. <https://doi.org/10.1016/j.dcn.2017.10.002>.
- 522 [27] Hagler DJ, Hatton SeanN, Cornejo MD, Makowski C, Fair DA, Dick AS, et al. Image processing  
523 and analysis methods for the Adolescent Brain Cognitive Development Study. *NeuroImage*  
524 2019;202:116091. <https://doi.org/10.1016/j.neuroimage.2019.116091>.
- 525 [28] Petersen AC, Crockett L, Richards M, Boxer A. A self-report measure of pubertal status: Reliability,  
526 validity, and initial norms. *J Youth Adolesc* 1988;17:117–33. <https://doi.org/10.1007/BF01537962>.
- 527 [29] Satterthwaite TD, Connolly JJ, Ruparel K, Calkins ME, Jackson C, Elliott MA, et al. The  
528 Philadelphia Neurodevelopmental Cohort: A publicly available resource for the study of normal and  
529 abnormal brain development in youth. *NeuroImage* 2016;124:1115–9.  
530 <https://doi.org/10.1016/j.neuroimage.2015.03.056>.
- 531 [30] Fischl B. FreeSurfer. *NeuroImage* 2012;62:774–81.  
532 <https://doi.org/10.1016/j.neuroimage.2012.01.021>.
- 533 [31] Rosen AFG, Roalf DR, Ruparel K, Blake J, Seelaus K, Villa LP, et al. Quantitative assessment of  
534 structural image quality. *NeuroImage* 2018;169:407–18.  
535 <https://doi.org/10.1016/j.neuroimage.2017.12.059>.
- 536 [32] Desikan RS, Ségonne F, Fischl B, Quinn BT, Dickerson BC, Blacker D, et al. An automated  
537 labeling system for subdividing the human cerebral cortex on MRI scans into gyral based regions of  
538 interest. *NeuroImage* 2006;31:968–80. <https://doi.org/10.1016/j.neuroimage.2006.01.021>.
- 539 [33] Fortin J-P, Cullen N, Sheline YI, Taylor WD, Aselcioglu I, Cook PA, et al. Harmonization of  
540 cortical thickness measurements across scanners and sites. *NeuroImage* 2018;167:104–20.  
541 <https://doi.org/10.1016/j.neuroimage.2017.11.024>.
- 542 [34] Van Rossum G, Drake FL. The Python language reference. Release 3.0.1 [Repr.]. Hampton, NH:  
543 Python Software Foundation; 2010.
- 544 [35] Harris CR, Millman KJ, van der Walt SJ, Gommers R, Virtanen P, Cournapeau D, et al. Array  
545 programming with NumPy. *Nature* 2020;585:357–62. <https://doi.org/10.1038/s41586-020-2649-2>.
- 546 [36] McKinney W. *Data Structures for Statistical Computing in Python*, Austin, Texas: 2010, p. 56–61.  
547 <https://doi.org/10.25080/Majora-92bf1922-00a>.
- 548 [37] Reback J, Jbrockmendel, McKinney W, Van Den Bossche J, Roeschke M, Augspurger T, et al.  
549 *pandas-dev/pandas: Pandas 1.4.3 2022*. <https://doi.org/10.5281/ZENODO.6702671>.
- 550 [38] Pedregosa F, Varoquaux G, Gramfort A, Michel V, Thirion B, Grisel O, et al. Scikit-learn: Machine  
551 learning in Python. *J Mach Learn Res* 2011;12:2825–30.

- 552 [39] Zhao Q-Y, Luo J-C, Su Y, Zhang Y-J, Tu G-W, Luo Z. Propensity score matching with R:  
553 conventional methods and new features. *Ann Transl Med* 2021;9:812. <https://doi.org/10.21037/atm-20-3998>.  
554
- 555 [40] Chen T, Guestrin C. XGBoost: A Scalable Tree Boosting System. *Proc. 22nd ACM SIGKDD Int.*  
556 *Conf. Knowl. Discov. Data Min.*, New York, NY, USA: Association for Computing Machinery;  
557 2016, p. 785–94. <https://doi.org/10.1145/2939672.2939785>.
- 558 [41] Seabold S, Perktold J. *Statsmodels: Econometric and Statistical Modeling with Python*, Austin,  
559 Texas: 2010, p. 92–6. <https://doi.org/10.25080/Majora-92bf1922-011>.
- 560 [42] Kaufmann T, van der Meer D, Doan NT, Schwarz E, Lund MJ, Agartz I, et al. Common brain  
561 disorders are associated with heritable patterns of apparent aging of the brain. *Nat Neurosci*  
562 2019;22:1617–23. <https://doi.org/10.1038/s41593-019-0471-7>.
- 563 [43] Trang TL, Kuplicki RT, McKinney BA, Yeh H-W, Thompson WK, Paulus MP, et al. A Nonlinear  
564 Simulation Framework Supports Adjusting for Age When Analyzing BrainAGE. *Front Aging*  
565 *Neurosci* 2018;10.
- 566 [44] Dehestani N, Whittle S, Vijayakumar N, Silk TJ. Developmental brain changes during puberty and  
567 associations with mental health problems. *Dev Cogn Neurosci* 2023;60:101227.  
568 <https://doi.org/10.1016/j.dcn.2023.101227>.
- 569 [45] Matte Bon G, Kraft D, Comasco E, Derntl B, Kaufmann T. Modeling brain sex in the limbic system  
570 as phenotype for female-prevalent mental disorders. *medRxiv*; 2023.  
571 <https://doi.org/10.1101/2023.08.17.23294165>.
- 572 [46] Rosenberg MD, Finn ES. How to establish robust brain–behavior relationships without thousands of  
573 individuals. *Nat Neurosci* 2022;25:835–7. <https://doi.org/10.1038/s41593-022-01110-9>.
- 574 [47] DiVall SA, Radovick S. Pubertal Development and Menarche. *Ann N Y Acad Sci* 2008;1135:19–28.  
575 <https://doi.org/10.1196/annals.1429.026>.
- 576 [48] Brinton RD. Estrogen-induced plasticity from cells to circuits: predictions for cognitive function.  
577 *Trends Pharmacol Sci* 2009;30:212–22. <https://doi.org/10.1016/j.tips.2008.12.006>.
- 578 [49] Galea LAM, Frick KM, Hampson E, Sohrabji F, Choleris E. Why estrogens matter for behavior and  
579 brain health. *Neurosci Biobehav Rev* 2017;76:363–79.  
580 <https://doi.org/10.1016/j.neubiorev.2016.03.024>.
- 581 [50] Cheng TW, Magis-Weinberg L, Guazzelli Williamson V, Ladouceur CD, Whittle SL, Herting MM,  
582 et al. A Researcher’s Guide to the Measurement and Modeling of Puberty in the ABCD Study® at  
583 Baseline. *Front Endocrinol* 2021;12:608575. <https://doi.org/10.3389/fendo.2021.608575>.
- 584 [51] Graber JA. Pubertal timing and the development of psychopathology in adolescence and beyond.  
585 *Horm Behav* 2013;64:262–9. <https://doi.org/10.1016/j.yhbeh.2013.04.003>.
- 586 [52] Schulz KM, Molenda-Figueira HA, Sisk CL. Back to the future: The organizational–activational  
587 hypothesis adapted to puberty and adolescence. *Horm Behav* 2009;55:597–604.  
588 <https://doi.org/10.1016/j.yhbeh.2009.03.010>.
- 589 [53] Barendse M, Byrne ML, Flournoy J, McNeilly EA, Williamson VG, Barrett A-M, et al. Multi-  
590 method assessment of pubertal timing and associations with internalizing psychopathology in early  
591 adolescent girls 2020. <https://doi.org/10.31234/osf.io/p5vfb>.
- 592 [54] Hiatt RA, Stewart SL, Deardorff J, Danial E, Abdiwahab E, Pinney SM, et al. Childhood  
593 Socioeconomic Status and Menarche: A Prospective Study. *J Adolesc Health Off Publ Soc Adolesc*  
594 *Med* 2021;69:33–40. <https://doi.org/10.1016/j.jadohealth.2021.02.003>.
- 595 [55] Kelly Y, Zilanawala A, Sacker A, Hiatt R, Viner R. Early puberty in 11-year-old girls: Millennium  
596 Cohort Study findings. *Arch Dis Child* 2017;102:232–7. <https://doi.org/10.1136/archdischild-2016-310475>.
- 597
- 598 [56] Rosenfield RL, Lipton RB, Drum ML. Thelarche, pubarche, and menarche attainment in children  
599 with normal and elevated body mass index. *Pediatrics* 2009;123:84–8.  
600 <https://doi.org/10.1542/peds.2008-0146>.
- 601 [57] Ray B, Chen J, Fu Z, Suresh P, Thapaliya B, Farahdel B, et al. Replication and Refinement of Brain  
602 Age Model for adolescent development 2023:2023.08.16.553472.  
603 <https://doi.org/10.1101/2023.08.16.553472>.

