

Monitoring Heart Failure Patients with Mobile Health Technologies: Outcomes from a 180-day Prospective Study

Sukanya Mohapatra¹, Mirna Issa², Vedrana Ivezic³, Rose Doherty¹, Stephanie Marks¹, Esther Lan², Keith Rozett³, Lauren Cullen³, Wren Reynolds³, Rose Rocchio³, Gregg C. Fonarow², Michael K. Ong², William F. Speier^{1,4}, Corey W. Arnold^{1,4,5}

¹ Department of Molecular, Cell, and Developmental Biology, UCLA

² Department of Ecology and Evolutionary Biology, UCLA

² Department of Radiology, UCLA

² Department of Medicine, UCLA

³ Office of Advanced Research Computing, UCLA

⁴ Department of Bioengineering, UCLA

⁵ Department of Pathology & Laboratory Medicine, UCLA

Corresponding Author Information:

Corey W. Arnold, PhD

Director, Computational Diagnostics Lab

Professor of Bioengineering, Radiology, and Pathology & Laboratory Medicine

University of California, Los Angeles (UCLA)

924 Westwood Blvd Ste 600

Los Angeles, CA 90024

cwarnold@mednet.ucla.edu

28 **Abstract**

29 Mobile health (mHealth) methods have grown in popularity in preventative medicine due to their
30 convenience, cost, and ability to acquire actionable data. At the same time, the burden of many
31 diseases has grown due to their prevalence and high rates of morbidity and mortality. To
32 combat this burden, mHealth can be customized to improve adherence to recommended
33 regimens and decrease doctor or hospital visits for patients and their families. Heart failure (HF)
34 is a disease with an especially high burden for which mHealth can be used to promote
35 adherence to advised care plans with the goal of decreasing exacerbations and their associated
36 urgent and emergency care visits. Our study compared adherence to different mHealth
37 monitoring regimens that used activity trackers, scales, and a mobile app with gamification
38 features and a financial incentive. In a prospective analysis of 111 HF patients monitored for
39 180 days, we found that a regimen including a mobile app with a gamified financial incentive led
40 to significantly higher adherence to activity tracker (95% vs. 72.2%, $p=0.0101$) and weight
41 (87.5% vs. 69.4%, $p=0.0016$) monitoring compared to a regimen that included the monitoring
42 devices alone. Our findings indicate that mobile apps with added engagement features can be
43 useful tools to reduce temporal adherence decline and may thus increase the impact of mHealth
44 driven interventions.

45

46 **Introduction**

47 Heart failure (HF) is a severe health condition associated with high morbidity, mortality, and
48 health resource use (Al Olama et al., 2015). In the United States, 6.2 million adults have HF,
49 and roughly \$31 billion is spent annually on HF-related costs (Virani et al., 2020). Approximately
50 400,000 death certificates in 2018 cited HF and it is predicted that by 2030, cases will surge by
51 25% (Nelson, 2021; Benjamin et al. 2019; Virani et al., 2020). The relatively high prevalence of
52 this chronic disease and associated morbidity and mortality impose a substantial economic

53 burden on healthcare expenditures. An alarming cost increase is projected, with a total of up to
54 \$69.7 billion by 2030, a 127% growth since 2012 (Virani et al., 2020).

55
56 The primary contributor to HF spending is hospitalization, accounting for 75-80% of total costs
57 (Heidenreich et al., 2013). With approximately one million annual hospitalizations, HF is a
58 leading cause of hospital admissions in people over 65 (Mcdermott et al., 2005). Readmissions
59 among HF patients are, in particular, a significant concern. Approximately 1 in 4 patients are
60 readmitted within 30 days of discharge, and 1 in 2 patients are readmitted within six months of
61 discharge (Nelson et al., 2021). Clinical guidelines suggest that adherence to self-care
62 recommendations such as regular medication intake, weight monitoring, and physical activity is
63 vital to a favorable prognosis (Lainscak et al., 2011; Ponikowski et al., 2016; Riegel et al., 2009).
64 Nearly half of all HF readmissions are preventable with enhanced adherence to such self-care
65 behavior after discharge (Michalsen et al., 1998; Tsuyuki et al., 2001; Windham et al.). There is
66 a clear need to identify effective adherence-enhancing tools and methods to promote positive
67 HF health outcomes.

68
69 Mobile health (mHealth), using mobile interventions to support health, may be a preferable and
70 less intensive method to deliver medical care (Hale et al., 2015; Kumar et al., 2013; Steinhubl et
71 al., 2015). By including the use of mHealth technologies in the home monitoring of HF, patients
72 may be more inclined to play an active role in lifestyle modifications that are intended to improve
73 their health outcomes and prevent rehospitalization (Feldman et al., 2018). The use of mobile
74 applications can supplement these mHealth interventions by providing patients with an avenue
75 to monitor their progress and receive adherence notifications. Such apps are designed to serve
76 as a helpful reminder for patients to complete their daily self-care tasks, potentially increasing
77 the effectiveness of telemedicine interventions, including those involving mHealth technologies
78 (Jaarsma et al., 2000).

79

80 The use of mHealth has been expanding to include more diverse patient populations (Fiordelli et
81 al., 2013). Attributable to their remote nature and resulting accessibility, mHealth technologies
82 have extended into smartphone applications, imaging services, and other technological
83 functions. These developments can enhance support for patients by enabling them to complete
84 health and symptom monitoring surveys, providing education on risk factors, and allowing
85 patients to monitor and track health metrics continuously and in real time. Present-day home
86 monitoring interventions employ wireless sensors, telephone services, websites, and home
87 visits from nurses (Suh et al., 2011; Wakefield et al., 2009; Zan et al., 2015a). Several studies
88 using mHealth in HF patients have suffered from small sample size and poor patient adherence
89 to monitoring (Chaudhry et al., 2013; Gensini et al., 2017; Ong et al., 2016; Ware et al., 2019;
90 Zan et al., 2015b). For instance, one trial found that only 55.4% of patients randomized to
91 telemonitoring used the given technology-based intervention at least half of the time at month
92 one, and 51.7% at month six (Gensini et al., 2017). The reported low adherence levels and
93 inconclusive results associated with such studies are in part attributable to the high monitoring
94 burden of home interventions. In investigating strategies to overcome these barriers, the
95 combined use of gamification and financial incentives has yet to be extensively employed in
96 mHealth adherence studies (Tran et al., 2022).

97

98 This study evaluated differences in adherence levels to three distinct mHealth home monitoring
99 regimens in HF patients involving a combination of devices, a mobile app, and financial
100 incentives with the hypothesis that including a mobile app would boost adherence to study
101 devices. Device and app usage data from participants in each regimen were compared using
102 statistical analyses to identify any differences. Our results provide new insights into tailoring
103 mHealth interventions to drive adherence.

104

105 **Study Design/Methods**

106 ***Study Population***

107 This prospective study included patients with heart failure at the University of California, Los
108 Angeles (UCLA) medical center. The study was approved by the UCLA Institutional Review
109 Board (IRB). Patients with an HF diagnosis were identified using our institution's electronic
110 health record (EHR). English-speaking adults aged 50-80 who had a diagnosis of HF and
111 owned a smartphone were eligible to participate in the study. Exclusion criteria included
112 participants who were receiving hemodialysis, had received an organ transplant or were on an
113 organ transplant waiting list, or did not have the cognitive or physical ability to participate.

114 ***Subject Recruitment***

115 Figure 1 overviews our study population and recruitment procedures. Individuals who met the
116 eligibility criteria were contacted by email and text to gauge interest in the study. Over the
117 phone, research personnel contacted interested individuals to provide them with additional
118 information and conducted the verbal consent process with those interested in participating. To
119 ensure an interested individual was capable of using their smartphone, they first participated in
120 a daily survey delivered via text messages for one week. The survey consisted of three
121 questions: 1) how much did symptoms of heart failure limit your life yesterday? 2) were you able
122 to take your medication as prescribed yesterday? and 3) did you follow your recommended diet
123 yesterday? Participants who completed at least five of the seven surveys were invited to
124 participate in the full study for 180 days.

125 ***Study Groups***

126 To investigate the impact of different mHealth regimens on adherence, three groups used
127 various combinations of an activity tracker, a scale, a mobile app, and a financial incentive. The
128 groups are defined as follows: devices only (Group D), devices and mobile app (Group D+A),

129 and devices and mobile app with a financial incentive (Group D+A+F). Group D received only
130 the devices (i.e., the activity tracker and scale). Group D+A received the devices as well as a
131 smartphone application developed by the study team. Group D+A+F received the devices, the
132 study smartphone application, and a financial incentive based on the participant's adherence,
133 which maxed out at \$150 and was paid at the completion of the monitoring period. Over the
134 phone, all participants were taught how to use the devices, and those in Groups D+A and
135 D+A+F were also taught how to access the smartphone application and navigate all features
136 within the application. Groups were also measured using standard surveys (described below).

137 ***Study Devices and Mobile App***

138 Fitbit Charge 4 (FC4) and Fitbit Charge 5 (FC5)

139 The Fitbit Charge 4 (FC4) and Fitbit Charge 5 (FC5) were used in all groups to provide daily
140 feedback on a variety of parameters, such as physical activity. The FC4 (Fitbit Inc.) is a
141 commercially available wrist-worn device with a 3-axial accelerometer, an altimeter, and an
142 optical heart rate tracker. Similarly, the FC5 (Fitbit Inc.) consists of a 3-axial accelerometer,
143 vibration motor, multipurpose electrical sensors, and an optical heart-rate tracker. Using these
144 components, the FC4 and FC5 track, record, and deliver real-time information on step count,
145 heart rate, sleep, and active minutes. Patients were directed to wear the Fitbit device on their
146 wrists at all times, except when charging the device. Patients were also instructed on how to
147 use the Fitbit smartphone application. The device's battery life lasts between three and five
148 days, with a charging time of approximately one hour.

149 BodyTrace Scale

150 Participants were provided with a BodyTrace scale (BodyTrace Inc., New York, New York) for
151 daily weighing. The BodyTrace scale includes a cellular modem with a factory-installed SIM
152 card. The scale arrives ready for use with four AA batteries and requires no user configuration.

153 Weight data is uploaded to a cloud-based database via the cellular modem. From this database,
154 researchers can directly download the data.

155 myHeartCare Mobile Application

156 For this study, the research team developed *myHeartCare*, a cross-platform (iOS or Android)
157 mobile app capable of linking to the Fitbit tracker and BodyTrace scale. Groups D+A and
158 D+A+F, the mobile app users, downloaded this app and were instructed on navigating its
159 features. The app is divided into four sections: 1) adherence statistics, 2) surveys, 3) rewards,
160 and 4) social. A daily “To-Do” list on the statistics page prompts patients to sync their Fitbit to
161 their smartphone, weigh themselves, and complete a daily survey via the app, which used the
162 same three questions as described above regarding diet, medication, and HF symptoms. At 9
163 AM each day participants received a push notification asking them to sync their Fitbit and take
164 their daily survey. On the statistics page, participants can also track their weight over time and
165 identify fluctuations by visualizing the recorded data from the BodyTrace scale as a time plot.
166 The survey page enables participants to access their daily surveys and the rewards page allows
167 them to monitor their study progress. For adhering to their daily tasks (syncing Fitbit, weight,
168 survey), participants in Group D+A were able to earn and track points. Those in Group D+A+F
169 were also able to accumulate and track points with the addition that points were tied to financial
170 earnings, which were displayed to the user and delivered via a cash gift card at the end of the
171 180-day study period. Additionally, the social page allowed users to invite friends and family to
172 view their adherence history and send encouraging messages.

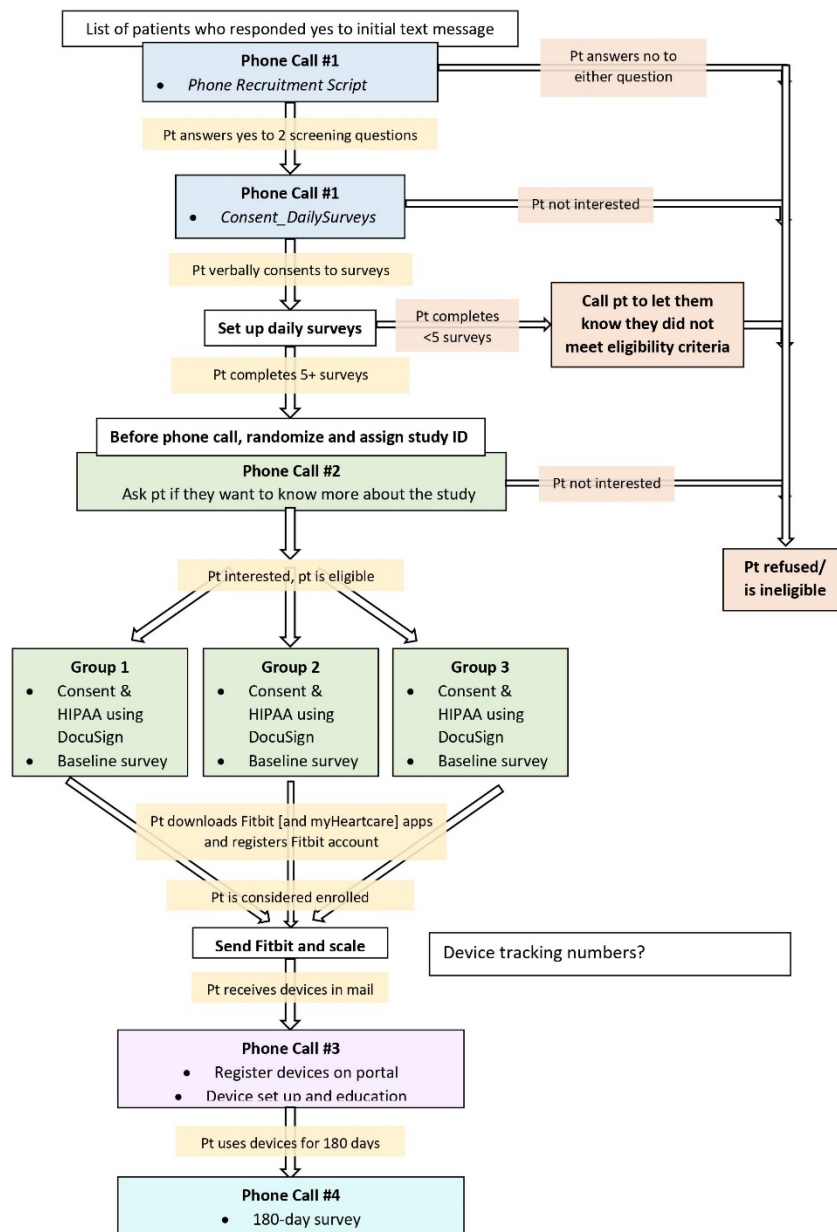
173 **Baseline Survey**

174 Those who consented to participate in the study were administered a baseline survey consisting
175 of questions relating to demographic information and two institutional review board-approved
176 questionnaires—the Minnesota Living with Heart Failure Questionnaire (MLHFQ) (Bilbao et al.,

177 2016) and Patient-Reported Outcomes Measurement Information System (PROMIS) Global
178 Health (Cella et al., n.d.). These questionnaires were used to measure the HF patients' health-
179 related quality of life through patient-reported outcomes using a 5-point Likert scale. Following
180 this survey, patients were officially consented into the study and randomized to one of the three
181 study groups.

182 ***Follow-Up Survey***

183 After 180 days of monitoring, participants were contacted over the phone and administered a
184 follow-up survey. The survey consisted of the same two questionnaires administered in the
185 baseline survey—the MLHFQ and PROMIS Global Health. In addition to these questionnaires,
186 participants were asked to rate their experiences with the Fitbit and the BodyTrace scale. The
187 survey assessed factors of these devices, such as helpfulness, ease of incorporation into daily
188 life, and whether each device helped the participant adhere to their care plan. Participants were
189 then offered an option for an additional 180 days of Fitbit and BodyTrace scale data collection,
190 which did not require completion of the daily survey.



191
 192 **Figure 1.** Enrollment flow diagram detailing the steps between recruiting patients with an initial message to eventually
 193 surveying responses at the conclusion of their study period.

194

195

196 **Data Collection and Analysis**

197 The study team configured a server to connect to vendor APIs that were used to pull participant
198 data and update the myHeartCare app in real-time when a task had been completed for
199 subjects in the D+A and D+A+F groups. The server also received the responses to the daily
200 questionnaire for the D+A and D+A+F groups. Three metrics were used to define adherence: if a
201 subject 1) synced their Fitbit, 2) checked their weight, and 3) completed the daily survey.
202 Adherence for each task is computed as the fraction of days the task was completed (e.g. Fitbit
203 synced) divided by the total number of days in the time period of analysis (e.g., 30 days). The
204 three groups were compared across the three measurements of adherence using Kruskal-Wallis
205 tests and Mann-Whitney U tests to make pairwise comparisons.

206 **Results**

207 111 participants completed the 180 study between July 2021 and April 2023. The demographics
208 of the participants who completed the study are shown in Table 1. Our results demonstrate that
209 participants within groups D+A and D+A+F had a higher adherence rate over time for the three
210 measured tasks compared to Group D. Moreover, there was a greater decline in Group D's
211 adherence rates as their participation in the study progressed relative to the groups which
212 utilized the mobile app. Figure 2 displays the average adherence of each group to the three
213 measured tasks for each day of participation in the study and Figure 3 shows box plots of
214 subject adherence over 30 day and 180 day periods.

215 Fitbit Syncing

216 Regarding Fitbit syncing, those in group D+A+F had an adherence rate of 97.5% after the first
217 30 days in the study and an adherence rate of 95% at the end of the 180-day period. Those in
218 group D+A had an adherence rate of 100% after the first 30 days and 91.4% at the end of the
219 study for syncing their Fitbit. Group D participants had an adherence rate of 97.2% after the first

220 30 days and an adherence rate of 72.2% at the end of the study for syncing their Fitbit. A
221 significant difference in adherence ($p < 0.05$) was found between Group D and Group D+A+F
222 during the first 30 ($p=0.0097$), 60 ($p=.0028$), 90 ($p=.0051$), 120 ($p=.0081$), 150 ($p=0.0061$), and
223 180 ($p=0.0101$) days of the study.

224 Self-Weighing

225 For self-weighing, Group D+A+F had an adherence rate of 92.5% after the first 30 days and
226 87.5% at the end of the study. Group D+A had an adherence rate of 94.3% after the first 30
227 days and ended with the same adherence rate for weighing themselves at the 180-day time
228 point. For Group D, the adherence rate was 94.4% after 30 days and 69.4% at the 180-day
229 period of the study ending. Statistical analysis revealed a significant difference between Group
230 D and Group D+A+F during the first 30 ($p=0.0005$), 60 ($p=0.0001$), 90 ($p=0.0001$), 120 ($p=0.0006$),
231 150 ($p=0.0010$), and 180 ($p=0.0016$) days of the study. There was a significant difference
232 between Group D+A and Group D+A+F only for the first 60 ($p=0.031$) days of the study. A
233 significant difference was found between Group D and Group D+A for the first 60 ($p=0.0166$), 90
234 ($p=0.0119$), 120 ($p=0.0106$), 150 ($p=0.0138$), and 180 ($p=0.0201$) days of the study.

235 Survey Taking

236 Participants in Group D did not have the option of taking the daily survey as they did not have
237 the mobile app. Group D+A+F had an adherence rate of 95% at 30 days and 87.5% at 180
238 days. Group D+A had adherence rates of 88.6% after the first 30 days and 82.9% at the end of
239 the study. Statistical analysis indicated only a significant difference between Group D+A and
240 Group D+A+F for the first 30 ($p=0.0391$) and 60 ($p=0.0347$) days of the study.

241

242

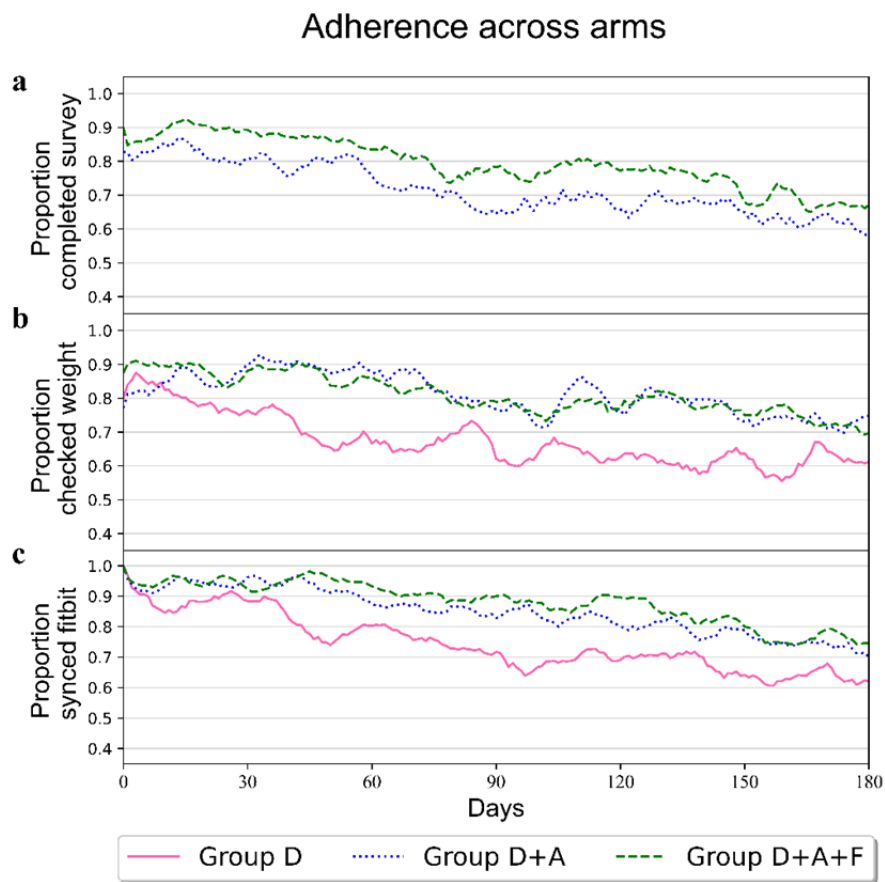
243

244 **Table 1.** Demographics of 111 participants who completed the study, organized by category.

Category	Sub-Category	Frequency (N)	Percent (%)
Gender	Male	82	73.87%
	Female	29	26.13%
	Non-binary/third gender	0	0.00%
	Prefer not to say	0	0.00%
Race	White	83	74.77%
	Black/African-American	15	13.51%
	Asian	10	9.01%
	American Indian/Alaskan	3	2.70%
	Native Hawaiian/Pacific Islander	0	0.00%
	Don't know/Refuse	5	4.50%
Age	50-60	33	26.73%
	61-70	41	36.94%
	71-80	37	33.33%
Education	High School	7	6.31%
	Some College/Associate Degree/Trade School	27	24.32%
	Bachelor's Degree	25	22.52%
	Master's Degree or above	52	46.85%
	Don't know/Refuse	0	0.00%

Income	\$0-\$25,000	8	7.21%
	\$25,001-\$50,000	12	10.81%
	\$50,001-\$75,000	8	7.21%
	\$75,001 or more	77	69.37%
	Don't know/Refuse	6	5.41%
Hispanic/Latino	No	101	91.00%
	Yes	10	9.00%
	Don't know/Refuse	0	0.00%
Ischemic/Non-ischemic	Ischemic	58	52.25%
	Non-ischemic	43	38.74%
	Unknown	10	9.01%
NYHA Class	1	13	11.71%
	2	43	38.74%
	3	21	18.92%
	4	2	1.80%
	1 to 2	3	2.70%
	2 to 3	9	8.10%
	3 to 4	2	1.80%
	Unknown	18	16.22%
LVEF Median	<10	1	0.9%
	15-20	2	1.80%

	<20	1	0.9%
	20-25	6	5.41%
	25-30	6	5.41%
	30-35	16	14.41%
	35-40	11	9.91%
	<40	1	0.9%
	40-45	8	7.21%
	45-50	10	9.01%
	50-55	12	10.81%
	55-60	9	8.11%
	60-65	8	7.21%
	65-70	2	1.80%
	70-75	3	2.70%
	Unknown	15	13.51%

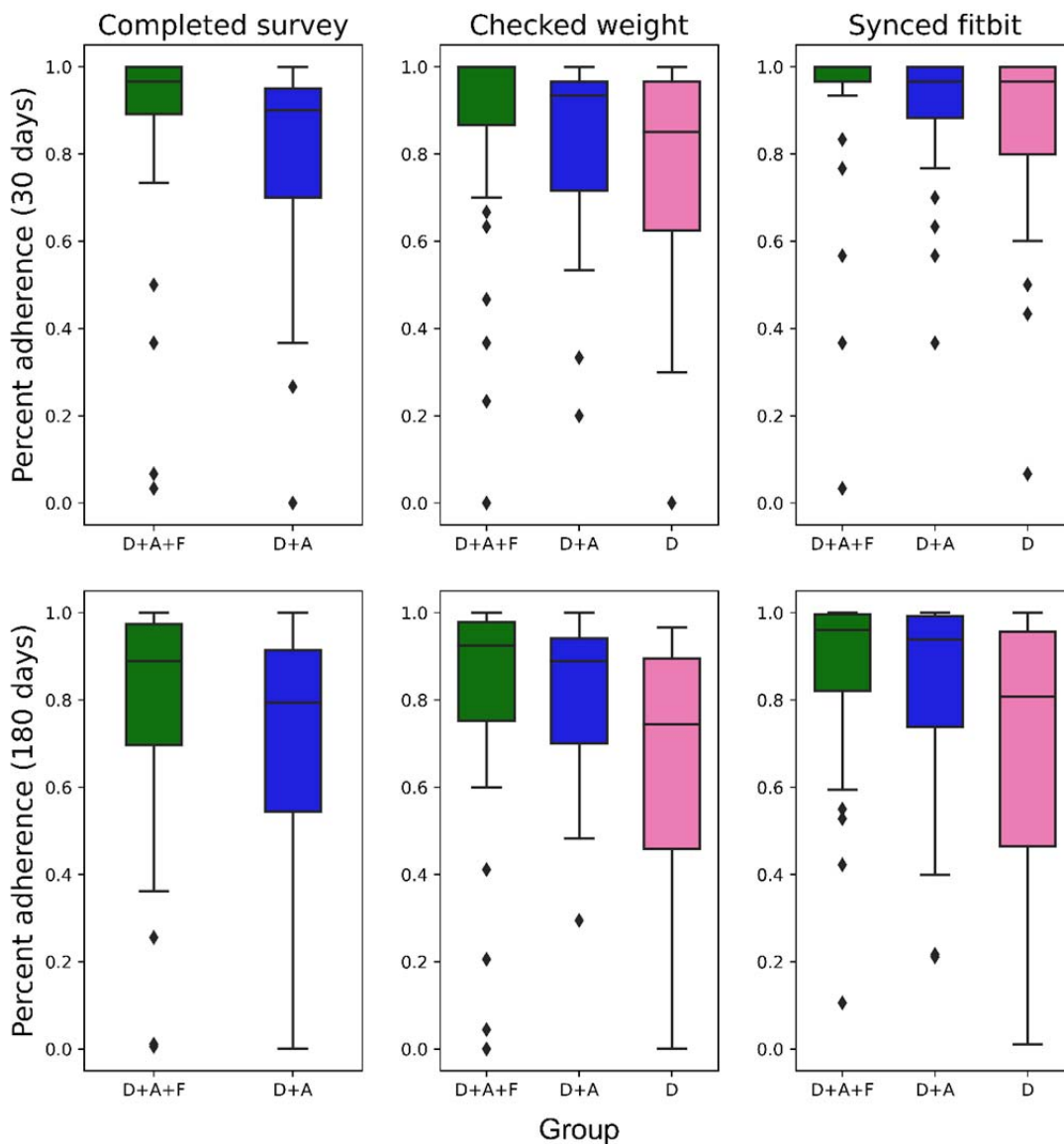


246

247 **Figure 2.** Plots of adherence rates for the three primary tasks completed by study participants, classified by
248 intervention group. Group D is classified with a solid pink line, Group D+A is classified with a dotted blue line, and
249 Group D+A+F is classified with a dotted green line.

250

251



252

253 **Figure 3.** Box plots of device adherence and mobile app survey completion (D+A and D+A+F groups only) for the
254 different groups at 30 and 180 days. Unit of analysis is a subject's fraction of days the task was completed divided by
255 the time period. Two subjects did not have cellular service at their home, which prevented the weight scale from
256 syncing and thus resulted in 0% adherence for the duration of the study.

257 **Conclusions**

258 Research investigating the value of remote monitoring in HF patients has generally found
259 adherence to be a critical barrier to effective implementation. Another study of HF patients used
260 a wireless transmission pod, a scale, and a blood pressure and heart rate monitor to capture

261 data remotely (Ong et al., 2016). At 180 days, the investigators found 68% adherence to
262 telephone coaching, but only 51.7% adherence to telemonitoring. A previous study conducted
263 by our team employed Fitbits in the remote monitoring of ischemic heart disease patients and
264 observed an adherence rate to daily syncing of 72% at the 90-day time point (Speier et al.,
265 2018). This result is similar to Group D's adherence rate in the current study. In contrast, the
266 adherence rates at 90 days for Groups D+A and D+A+F were 82.86% and 90%, respectively.
267 Notably, the inclusion of a financial incentive (Group D+A+F) drove adherence significantly
268 higher than the baseline group with no app (Group D), and even Group D+A had significantly
269 higher adherence than Group D for weight monitoring. These findings support the use of mobile
270 apps to boost adherence to telemonitoring.

271 Despite higher adherence relative to previous work, we still observed adherence decay over
272 time. Future modifications to our study protocol could incorporate an incentive at regular time
273 intervals to sustain long-term adherence, such as device upgrades and more frequent financial
274 reward distributions rather than waiting until the end of the study. Additionally, real-time
275 responses could be solicited via the app to participants who begin falling in adherence,
276 providing new insights and possibly ways to improve engagement.

277 Finally, given that the app, tracker, and scale send data in real time, there is an opportunity for
278 scalable monitoring of populations using machine learning approaches that could search for
279 patients at risk of exacerbation. These algorithms would require larger datasets with which to
280 train, as well as targets defined from clinical review or patient follow-up (e.g., urgent care visits).
281 The inclusion of additional data points, such as demographics and co-morbidities, would likely
282 improve algorithm performance. Similarly, methods for tracking symptoms, diet, and medication
283 adherence more quantitatively and precisely would be important indicators for adverse future
284 events.

285 References

- 286
- 287 Al Olama, A. A., Benlloch, S., Antoniou, A. C., Giles, G., Severi, G., Neal, D. E., Hamdy, F. C.,
288 Donovan, J. L., Muir, K., Schleutker, J., Henderson, B. E., Haiman, C. A., Schumacher, F.
289 R., Pashayan, N., Pharoah, P. D. P., Ostrander, E. A., Stanford, J. L., Batra, J., Clements,
290 J. A., ... Zachariah, B. (2015). Risk Analysis of Prostate Cancer in PRACTICAL, a
291 Multinational Consortium, Using 25 Known Prostate Cancer Susceptibility Loci. *Cancer*
292 *Epidemiology, Biomarkers & Prevention : A Publication of the American Association for*
293 *Cancer Research, Cosponsored by the American Society of Preventive Oncology*, 24(7),
294 1121–1129. <https://doi.org/10.1158/1055-9965.EPI-14-0317>
- 295 Benjamin E, Muntner P, Alonso A, Bittencourt M, Callaway C, Carson A, Chamberlain A, Chang
296 A, Cheng S, Das S, Delling F, Djousse L, ..., Virani S. Heart Disease and Stroke
297 Statistics—2019 Update: A Report From the American Heart Association. *Circulation*,
298 139(10), E56-E528. <https://www.ahajournals.org/doi/10.1161/CIR.0000000000000659>
- 299 Bilbao, A., Escobar, A., García-Perez, L., Navarro, G., & Quirós, R. (2016). The Minnesota living
300 with heart failure questionnaire: Comparison of different factor structures. *Health and*
301 *Quality of Life Outcomes*, 14(1). <https://doi.org/10.1186/s12955-016-0425-7>
- 302 Cella, D., Yount, S., Rothrock, N., Gershon, R., Cook, K., Reeve, B., Ader, D., Fries, J. F.,
303 Bruce, B., Rose, M. (2007). *The Patient-Reported Outcomes Measurement Information*
304 *System (PROMIS): Progress of an NIH Roadmap Cooperative Group during Its First Two*
305 *Years on JSTOR*. Medical Care, Vol. 45, No. 5, Supplement 1: The Patient-Reported
306 Outcomes Measurement Information System (PROMIS): Overview and Developmental
307 Work. Retrieved April 10, 2023, from
308 https://www.jstor.org/stable/40221453?casa_token=W_oJQdfDiwAAAAA%3A8m9qi0K9t-uaNRdUJJTiOufsqtlI0niNAkSiQjASI-CRQ4ZVwD1AIBB-6HC-saerOUMM9n-k4cA3UohJ_7rWsb4Ymea-ydr5IWHXEPqKsJlm5HDRhcs
309
310
- 311 Chaudhry, S. I., Mattera, J. A., Curtis, J. P., Spertus, J. A., Herrin, J., Lin, Z., Phillips, C. O.,
312 Hodshon, B. V., Cooper, L. S., & Krumholz, H. M. (2013). Telemonitoring in Patients with
313 Heart Failure A bs t r a c t. *NEJM.Org. N Engl J Med*, 363, 2301–2310.
314 <https://doi.org/10.1056/NEJMoa1010029>
- 315 Fiordelli, M., Diviani, N., & Schulz, P. J. (2013). Mapping mHealth Research: A Decade of
316 Evolution. *J Med Internet Res* 2013;15(5):E95 <https://www.jmir.org/2013/5/E95>, 15(5),
317 e2430. <https://doi.org/10.2196/JMIR.2430>
- 318 Gensini, G. F., Alderighi, C., Rasoini, R., Mazzanti, M., & Casolo, G. (2017). Value of
319 Telemonitoring and Telemedicine in Heart Failure Management. *Cardiac Failure Review*,
320 3(2), 116. <https://doi.org/10.15420/CFR.2017:6:2>
- 321 Heidenreich, P. A., Albert, N. M., Allen, L. A., Bluemke, D. A., Butler, J., Fonarow, G. C.,
322 Ikonomidis, J. S., Khavjou, O., Konstam, M. A., Maddox, T. M., Nichol, G., Pham, M., Piña,
323 I. L., & Trogon, J. G. (2013). Forecasting the impact of heart failure in the united states a
324 policy statement from the American heart association. *Circulation: Heart Failure*, 6(3), 606–
325 619. <https://doi.org/10.1161/HHF.0b013e318291329a>

- 326 Jaarsma, T., Abu-Saad, H. H., Dracup, K., & Halfens, R. (2000). Self-care Behaviour of Patients
327 with Heart Failure. *Scandinavian Journal of Caring Sciences*, 14(2), 112–119.
328 <https://doi.org/10.1111/J.1471-6712.2000.TB00571.X>
- 329 Khan, M. S., Sreenivasan, J., Lateef, N., Abougergi, M. S., Greene, S. J., Ahmad, T., Anker, S.
330 D., Fonarow, G. C., & Butler, J. (2021). Trends in 30- and 90-Day Readmission Rates for
331 Heart Failure. *Circulation: Heart Failure*, 14(4), E008335.
332 <https://doi.org/10.1161/CIRCHEARTFAILURE.121.008335>
- 333 Kumar, S., Nilsen, W. J., Abernethy, A., Atienza, A., Patrick, K., Pavel, M., Riley, W. T., Shar,
334 A., Spring, B., Spruijt-Metz, D., Hedeker, D., Honavar, V., Kravitz, R., Craig Lefebvre, R.,
335 Mohr, D. C., Murphy, S. A., Quinn, C., Shusterman, V., & Swendeman, D. (2013). Mobile
336 Health Technology Evaluation: The mHealth Evidence Workshop. *American Journal of*
337 *Preventive Medicine*, 45(2), 228. <https://doi.org/10.1016/J.AMEPRE.2013.03.017>
- 338 Mcdermott, K. W., Elixhauser, A., & Sun, R. (2005). *Trends in Hospital Inpatient Stays in the*
339 *United States, 2005-2014*. www.hcup-us.ahrq.gov/faststats/landing.jsp
- 340 Michalsen, A., König, G., & Thimme, W. (1998). Preventable causative factors leading to
341 hospital admission with decompensated heart failure. *Heart (British Cardiac Society)*,
342 80(5), 437–441. <https://doi.org/10.1136/HRT.80.5.437>
- 343 Nelson, R. (2021). Hospital Admissions and Readmissions for Heart Failure Are on the Rise.
344 *American Journal of Nursing*, 121(5), 17.
345 <https://doi.org/10.1097/01.NAJ.0000751052.45715.A7>
- 346 Ong, M. K., Romano, P. S., Edgington, S., Aronow, H. U., Auerbach, A. D., Black, J. T., De
347 Marco, T., Escarce, J. J., Evangelista, L. S., Hanna, B., Ganiats, T. G., Greenberg, B. H.,
348 Greenfield, S., Kaplan, S. H., Kimchi, A., Liu, H., Lombardo, D., Mangione, C. M., Sadeghi,
349 B., ... Yan, T. (2016). Effectiveness of Remote Patient Monitoring After Discharge of
350 Hospitalized Patients With Heart Failure: The Better Effectiveness After Transition–Heart
351 Failure (BEAT-HF) Randomized Clinical Trial. *JAMA Internal Medicine*, 176(3), 310–318.
352 <https://doi.org/10.1001/JAMAINTERNMED.2015.7712>
- 353 Pallangyo, P., Millinga, J., Bhalia, S., Mkojera, Z., Misidai, N., Swai, H. J., Hemed, N. R.,
354 Kaijage, A., & Janabi, M. (2020). Medication adherence and survival among hospitalized
355 heart failure patients in a tertiary hospital in Tanzania: A prospective cohort study. *BMC*
356 *Research Notes*, 13(1), 1–8. <https://doi.org/10.1186/S13104-020-04959-W/FIGURES/1>
- 357 Speier, W., Dzubur, E., Zide, M., Shufelt, C., Joung, S., Van Eyk, J. E., Bairey Merz, C. N.,
358 Lopez, M., Spiegel, B., & Arnold C. (2018). Evaluating utility and compliance in a patient-
359 based eHealth study using continuous-time heart rate and activity trackers. *Journal of the*
360 *American Medical Informatics Association : JAMIA*, 25(10), 1386.
361 <https://doi.org/10.1093/JAMIA/OCY067>
- 362 Steinhubl, S. R., Muse, E. D., & Topol, E. J. (2015). The emerging field of mobile health.
363 *Science Translational Medicine*, 7(283).
364 <https://doi.org/10.1126/SCITRANSLMED.AAA3487/ASSET/385AA314-F48E-4CAD-B39C-9E8F775D8D0B/ASSETS/GRAPHIC/7-283RV3-F2.JPEG>
365

- 366 Suh, M. K., Chen, C. A., Woodbridge, J., Tu, M. K., Kim, J. I., Nahapetian, A., Evangelista, L. S.,
367 & Sarrafzadeh, M. (2011). A Remote Patient Monitoring System for Congestive Heart
368 Failure. *Journal of Medical Systems*, 35(5), 1165. [https://doi.org/10.1007/S10916-011-](https://doi.org/10.1007/S10916-011-9733-Y)
369 [9733-Y](https://doi.org/10.1007/S10916-011-9733-Y)
- 370 Tran, S., Smith, L., El-Den, S., & Carter, S. (2022). The Use of Gamification and Incentives in
371 Mobile Health Apps to Improve Medication Adherence: Scoping Review. *JMIR MHealth*
372 *and UHealth*, 10(2). <https://doi.org/10.2196/30671>
- 373 Tsuyuki, R. T., McKelvie, R. S., Arnold, J. M. O., Avezum A., J., Barretto, A. C. P., Carvalho, A.
374 C. C., Isaac, D. L., Kitching, A. D., Piegas, L. S., Teo, K. K., & Yusuf, S. (2001). Acute
375 precipitants of congestive heart failure exacerbations. *Archives of Internal Medicine*,
376 161(19), 2337–2342. <https://doi.org/10.1001/ARCHINTE.161.19.2337>
- 377 Virani, S. S., Alonso, A., Benjamin, E. J., Bittencourt, M. S., Callaway, C. W., Carson, A. P.,
378 Chamberlain, A. M., Chang, A. R., Cheng, S., Delling, F. N., Djousse, L., Elkind, M. S. V.,
379 Ferguson, J. F., Fornage, M., Khan, S. S., Kissela, B. M., Knutson, K. L., Kwan, T. W.,
380 Lackland, D. T., ... Tsao, C. W. (2020). Heart disease and stroke statistics—2020 update a
381 report from the American Heart Association. *Circulation*, 141(9), E139–E596.
382 <https://doi.org/10.1161/CIR.0000000000000757>
- 383 Wakefield, B. J., Holman, J. E., Ray, A., Scherubel, M., Burns, T. L., Kienzle, M. G., &
384 Rosenthal, G. E. (2009). Outcomes of a home telehealth intervention for patients with heart
385 failure. *Journal of Telemedicine and Telecare*, 15(1), 46–50.
386 <https://doi.org/10.1258/JTT.2008.080701/FORMAT/EPUB>
- 387 Ware, P., Dorai, M., Ross, H. J., Cafazzo, J. A., Laporte, A., Boodoo, C., & Seto, E. (2019).
388 Patient Adherence to a Mobile Phone–Based Heart Failure Telemonitoring Program: A
389 Longitudinal Mixed-Methods Study. *JMIR Mhealth Uhealth* 2019;7(2):E13259
390 <https://Mhealth.Jmir.Org/2019/2/E13259>, 7(2), e13259. <https://doi.org/10.2196/13259>
- 391 Windham, B. G., Bennett, R. G., Gottlieb, S., & Hopkins, J. (n.d.). *Care Management*
392 *Interventions for Older Patients With Congestive Heart Failure*. <http://www.cms.hhs.gov>
- 393 Zan, S., Agboola, S., Moore, S. A., Parks, K. A., Kvedar, J. C., & Jethwani, K. (2015a). Patient
394 Engagement With a Mobile Web-Based Telemonitoring System for Heart Failure Self-
395 Management: A Pilot Study. *JMIR Mhealth Uhealth* 2015;3(2):E33
396 <https://Mhealth.Jmir.Org/2015/2/E33>, 3(2), e3789. <https://doi.org/10.2196/MHEALTH.3789>
- 397 Zan, S., Agboola, S., Moore, S. A., Parks, K. A., Kvedar, J. C., & Jethwani, K. (2015b). Patient
398 Engagement With a Mobile Web-Based Telemonitoring System for Heart Failure Self-
399 Management: A Pilot Study. *JMIR Mhealth Uhealth* 2015;3(2):E33
400 <https://Mhealth.Jmir.Org/2015/2/E33>, 3(2), e3789. <https://doi.org/10.2196/MHEALTH.3789>