

1 **Linear ablation for persistent atrial fibrillation: an evidence-based study**

2

3 Changhao Xu<sup>1#</sup>, MD; Kaige Li<sup>1#</sup>, MD; Xiyao Zhu<sup>2</sup>, MD; Xinhua Wang<sup>3</sup>, MD; Ping Ye<sup>4</sup>,  
4 MD; Weifeng Jiang<sup>1</sup>, MD; Shaohui Wu<sup>1</sup>, MD; Kai Xu<sup>1</sup>, MD; Xiangting Li<sup>5</sup>, MD; Ying  
5 Wang<sup>6</sup>, MD; Qidong, Zheng<sup>7</sup>, MD; Yanzhe Wang<sup>8</sup>, MD; Lihua Leng<sup>9</sup>, MD; Zengtang  
6 Zhang<sup>10</sup>, MD; Bing Han<sup>11</sup>, MD; Yu Zhang<sup>1</sup>, MD; Mu Qin<sup>1\*</sup>, MD; Xu Liu<sup>1\*</sup>, MD, PhD;

7

8 <sup>1</sup> Department of Cardiology, Shanghai Chest Hospital, Shanghai Jiao Tong University,  
9 Shanghai, China

10 <sup>2</sup> Department of Clinical Integration of Traditional Chinese and Western medicine, First  
11 Clinical Medical College, Shandong University of Traditional Chinese Medicine,  
12 No.4655 University Road, Changqing District, Jinan City, Shandong 250355, China

13 <sup>3</sup> Department of Cardiology, Ren Ji Hospital, Shanghai Jiao Tong University School of  
14 Medicine, No.160 Pujian Road, Shanghai 200127, China

15 <sup>4</sup> Department of Cardiology, The Central Hospital of Wuhan, Tongji Medical College,  
16 Huazhong University of Science and Technology, No.26 Shengli Street, Jiang'an  
17 District, Wuhan City, Hubei 430014, China

18 <sup>5</sup> Department of Cardiology, Affiliated Hospital of Jining Medical University, No.89  
19 Guhuai Road, Jining City, Shandong 272007, China

20 <sup>6</sup> Department of Cardiology, Second Affiliated Hospital of Shandong University of  
21 Traditional Chinese Medicine, No.1 Jingba Road, Jinan City, Shandong 25000, China

22 <sup>7</sup> Department of Cardiology, Yuhuan Second People's Hospital, No.77 Huanbao Road,

**NOTE: This preprint reports new research that has not been certified by peer review and should not be used to guide clinical practice.**

1 Yuhuan City, Zhejiang 317600, China

2 <sup>8</sup> Department of Cardiology, Changshu Hospital of Traditional Chinese Medicine, No.

3 6 Huanghe Road, Changshu City, Jiangsu 215516, China

4 <sup>9</sup> Department of Cardiology, The PLA Navy Anqing Hospital, No.150 Shuangjing

5 Street, Anqing City, Anhui 246003, China

6 <sup>10</sup> Department of Cardiology, Jinan City People's Hospital, No.1 Xuehu Street,

7 Changshao North Road, Laiwu District, Jinan City, Shandong 250102, China

8 <sup>11</sup> Department of Cardiology, Xuzhou Central Hospital, No.199 South Jiefang Road,

9 Xuzhou City, Jiangsu 221009, China

10

11 # Changhao Xu and Kaige Li contributed equally to this work.

12

13 **\*Corresponding authors:** Mu Qin (qinmu-1001@live.cn) and Xu Liu

14 ([heartlx@sina.com](mailto:heartlx@sina.com))

15 Department of Cardiology, Shanghai Chest Hospital, Shanghai Jiao Tong University

16 Address: No.241 West Huaihai Road, Shanghai, China, 200030

17 Tel: +86 21 62821990 2603

18 Fax: + 86 21 62821105

19

20 **Short title:** Linear ablation for intermediate atrial tachycardia

21

22 **Total word count:** 3970.

1

2 **Funding:** This research was supported by Grants from the National Natural Science  
3 Foundation of China (No. 82370355) and the National Key Research and Development  
4 Project (Grant Number 2018YFC1312503).

5

6 **Trial Registration:** [chictr.org.cn](http://chictr.org.cn); Optimization of intervention strategies for persistent  
7 atrial fibrillation; ChiCTR2200060075.

8

9 **Disclosures:** None.

10

11 **Acknowledgements:** None.

12

1 **Abstract**

2 **Background**

3 Additional linear ablation for persistent atrial fibrillation (PerAF) still has limited  
4 evidence-based medical proof.

5 **Objectives**

6 We probed into the mechanisms of intermediate atrial tachycardia (AT) during PerAF  
7 termination by catheter ablation and provided evidence for it.

8 **Methods**

9 136 patients who converted to organized AT after PerAF termination in the Extent-AF  
10 study were analyzed. Bi-atrial activation mapping combined with entrainment mapping  
11 were performed to identify the mechanisms and critical isthmus of these ATs.

12 **Results**

13 A total of 164 ATs in 136 patients were identified (average 1.2 per patients) and 143  
14 (87%) ATs in 113 patients (average 1.3 per patient) were successfully mapped. The  
15 mechanisms of intermediate ATs were macro-reentry in 110 (77%), micro-reentry in 21  
16 (15%), and focal AT in 12 (8%). Among the macro-reentrant ATs, the most common  
17 were perimitral ATs (PM-AT) 52 (47%), followed by roof dependent ATs (RF-AT) in  
18 40 (36%) and typical atrial flutter (AFL) in 18 (16%). 98 (72%) patients had  
19 successfully ablated intermediate ATs. Among these patients, 88 (90%) required at least  
20 one of the perimitral line, roofline, or peritricuspid line to finally restore sinus rhythm.  
21 At the end of 12 months of follow-up, 63 (64.3%) patients with successful ablative ATs  
22 were free of any arrhythmia.

1 **Conclusion**

2 The majority of intermediate ATs after PerAF termination were macro-reentrant ATs.  
3 Linear ablation targets the mitral isthmus, roof, and tricuspid isthmus was a critical step  
4 of PerAF ablation to restore sinus rhythm in up to 90% patients, suggesting the  
5 importance of additional linear ablation.

6

7 **Key word: Atrial fibrillation; Catheter ablation; Atrial tachycardia; Linear**  
8 **ablation.**

9

## 1 **Introduction**

2 Despite optimal strategy for persistent atrial fibrillation (PerAF) ablation have not  
3 been well established, linear ablation was still the most popular additional ablative  
4 strategy since 1994(1), which has substrate compartmentalization effect that reduces  
5 the area available for the completion of wavelet circuits. Among the several linear  
6 lesions, the perimitral line and the roofline were most widely used. The rationale for  
7 mitral isthmus ablation is the preferential propagation circumferential around the mitral  
8 annulus that may facilitate AF in response to functional or anatomic conduction  
9 block(2). In addition, left atrial roof is a region with highly fragmented electrograms  
10 and plays a role in supporting macro-reentry around the pulmonary veins, which is the  
11 theoretical basis for roof line ablation(3). Despite several theories support the  
12 rationality of performing additional linear ablation, it still lacks evidence-  
13 based medical proof and its effectiveness remains to be verified. The Extent-AF study  
14 demonstrated that procedural termination of PerAF indicates a higher probability of  
15 sinus rhythm maintenance(4). Study of us and other groups showed that up to 87%  
16 PerAF converted to organized atrial tachycardia (AT) before sinus rhythm (SR)  
17 restoration during catheter ablation(4-7). Furthermore, successful ablation of  
18 intermediate ATs led to better rhythm outcome in PerAF patients(8). Therefore, the  
19 intermediate ATs, a transient state between PerAF and SR, may represent remnant  
20 arrhythmic mechanism after AF termination. It is plausible that the mechanisms of  
21 intermediate ATs may provide evidence-based medical proof for appropriate linear  
22 ablation. The Extent-AF study was a large prospective, multicenter trial comparing

1 three mainstream ablation strategies in patients with PerAF(4). We aim to investigate  
2 the clinical significance of ATs after PerAF termination in the Extent-AF study.

3

#### 4 **Methods**

##### 5 **Study population**

6 We enrolled 136 patients who converted to organized AT after PerAF termination  
7 in the Extent-AF study. The detailed study protocol has been published previously(4).

8 The study was approved by the ethics committees at each participant center.

##### 9 **Study procedures**

10 All patients were in spontaneous AF at the beginning of the procedure. Patients  
11 were randomized assigned to receive the following three ablation strategies in a 1:1:1  
12 ratio, which included: PVI plus linear ablation and/or vein of Marshall (VOM) ethanol  
13 infusion, PVI plus electrogram (EGM)-guided ablation, extensive ablation (PVI plus  
14 anatomical-guided ablation and EGM-guided ablation) PVI was successfully  
15 performed in all patients. Catheter ablation was performed under the guidance of  
16 electro-anatomical mapping system (CARTO, Biosense Webster, CA, USA). Targeted  
17 EGM includes locally short-cycle length potentials, spatial-temporal dispersion  
18 potentials, high-frequency potentials, and focal activity.

19 If AF converted to stable AFL/AT, atrial activation mapping combined with  
20 multiple sites entrainment mapping were performed to identify the critical isthmus of  
21 these ATs. A high-density mapping technique was employed in all cases. To annotate  
22 electrograms during activation mapping, a stable intracardiac reference is necessary.

1 Typically, a multipolar catheter placed in the coronary sinus (CS) serves this purpose.  
2 However, if there is instability or the presence of low-voltage atrial or large far-field  
3 ventricular electrograms, the reference catheter can be placed in one of the appendages.  
4 The "window-of-interest (WOI)" was set to encompass approximately 90% of the cycle  
5 length (CL) to capture tachycardias with various mechanisms. Mapping of the left  
6 atrium was performed initially using a Pentaray catheter. The mapping results were  
7 interpreted as follows:

8 1) The presence of common macro-reentry patterns, such as mitral annular flutter,  
9 roof-dependent flutter, or scar-related reentry, was assessed. This involved determining  
10 whether there was a conspicuous "red-to-purple" transition in the corresponding  
11 anatomical regions (around the mitral annulus, roof, or near scar tissue). If this  
12 transition was observed, the atrial flutter was initially classified as macro-reentry.  
13 Subsequently, entrainment mapping was performed at relevant key anatomical sites,  
14 including the anterior wall, left atrial roof, left atrial bottom, left atrial appendage base,  
15 mitral isthmus, left atrial posterior wall, and areas adjacent to scar tissue, to validate the  
16 findings. Entrainment mapping was conducted by applying pacing stimuli with a cycle  
17 length 20 to 30ms shorter than the tachycardia cycle length (TCL). A site was  
18 considered part of the reentry circuit if the post-pacing interval (PPI), measured from  
19 the stimulation artifact to the return atrial electrogram on the ablation catheter, fell  
20 within 30ms of the TCL.

21 2) The possibility of wavefront collision around the mitral valve, roof, or tricuspid  
22 valve, which would exclude perimitral atrial flutter, roof-dependent atrial flutter, or



1 tricuspid valve-dependent atrial flutter, respectively, was evaluated. If these conditions  
2 were ruled out, special types of atrial flutter, such as localized reentry or focal activation,  
3 were considered. Careful mapping of specific atrial electrograms, including areas with  
4 long-duration signals and fragmented potentials, was performed. The electrogram  
5 activation sequence was adjusted based on the operator's experience. Focal AT was  
6 maintained by activity originating from a localized region with a centrifugal activation  
7 pattern recorded in the electro-anatomical mapping system. Additionally, voltage  
8 mapping information was used to identify suspicious areas of low voltage. It is worth  
9 noting that regions exhibiting complex electrograms often correspond to critical  
10 isthmuses for these types of atrial flutter. Entrainment mapping techniques (as described  
11 earlier) were applied in other regions of the left atrium to further exclude the possibility  
12 of macro-reentry and determine the spatial distribution of the left atrial reentry circuit.

13 3) If unsatisfactory results were obtained from entrainment mapping within the left  
14 atrium or if there were time gaps exceeding 20ms, passive activation within the left  
15 atrium was considered, suggesting the potential presence of the main reentry circuit in  
16 the right atrium. In such cases, activation mapping and entrainment mapping were  
17 performed in the right atrium, following the same procedures as in the left atrium. Clear  
18 mapping results and effective entrainment pacing in the right atrium would confirm the  
19 location of the main reentry circuit in the right atrium. If time gaps in activation were  
20 also observed in the right atrium, the possibility of bi-atrial reentry or extracardiac  
21 involvement in atrial flutter should be considered.

22 For macro reentrant ATs, the key isthmus was ablated and conduction block of the

1 linear lesions were confirmed using pacing protocol after sinus rhythm (SR) restoration.  
2 If perimetral block cannot be achieved by endocardial ablation, ablation inside the  
3 coronary sinus or VOM ethanol infusion was performed. Similarly, key isthmus was  
4 also ablated in localized ATs. If the patient has multiple mechanisms of ATs, the  
5 operator should pursue successful ablation of each type of AT.

6 The procedure should be stopped and 150-200 J direct current conversion (DCCV)  
7 was performed to restore SR under the following situation: 1) for safety reasons; 2) AF  
8 still persists despite all ablation lesions were created appropriately; 3) the procedural  
9 time was beyond 5 hours; 4) difficulties associated with successfully identify the  
10 mechanisms of the ATs, eliminating all the marked EGM area, or creating a complete  
11 bidirectional block linear lesion despite the operator's best efforts. Bidirectional block  
12 of the linear lesions was verified in SR.

### 13 **Follow-up**

14 Anti-arrhythmic medications were discontinued in all patients before 3 months.  
15 The first 3 months after the initial ablation was considered as a "blanking period".  
16 Outpatient visits and 48h Holter monitoring were scheduled at 1, 3, 6, 9, 12 months,  
17 and every 6 months thereafter if the patient remained asymptomatic. Monthly telephone  
18 interviews were also done. All patients were strongly recommended to undergo  
19 additional ECGs and 7-day Holter recordings when their symptoms were suggestive of  
20 tachycardia. A "recurrence" of atrial arrhythmia was considered any episode lasting 30s  
21 (symptomatic or asymptomatic) detected by ECG and/or Holter.

### 22 **Statistical analysis**

1 Continuous variables were expressed as mean  $\pm$  standard deviation or median with  
2 interquartile range and compared using independent sample t-tests or non-parametric  
3 tests, whereas discrete variables were expressed as percentages and compared using  $\chi^2$   
4 tests.

5 Survival curves were performed using the Kaplan–Meier method. All tests of  
6 significance were two-sided, with a probability  $<0.05$  considered significant. All  
7 statistical analyses were performed using SPSS version 9.1 (SAS institute, Inc., Cary,  
8 NC) and GraphPad Prism 9.0 software (GraphPad Software Inc, San Diego, CA, USA).

9

## 10 **Results**

### 11 **Study population**

12 The extent-AF study included a total of 450 patients in 10 experienced centers in  
13 China. 216 (48%) patients experienced acute AF termination and 63% (136/216)  
14 converted to one or more organized AFL/AT. The baseline characteristics of these  
15 patients were listed in the **Table 1**.

### 16 **Procedural characteristics**

17 PVI was successfully performed in all patients. A total of 164 ATs in 136 patients  
18 were identified (average 1.2 per patients). In detail, 11 (7%) types ATs stopped  
19 spontaneously and could not be re-induced, 4 (2%) ATs terminated during entrainment  
20 mapping, and 8 (5%) had constantly changing TCL during mapping and were unable to  
21 identify the mechanism and critical isthmus of the ATs. Therefore, a total of 143 (87%)  
22 ATs were successfully mapped in the 113 (average 1.3 per patient) patients.

1 In the 113 patients with clear mechanisms of ATs, 86 (76%) were presented as  
2 single mechanism AT and 27 (24%) had at least two patterns of ATs. 128 (89%) ATs in  
3 98 (87%) patients were successfully ablated. The remaining 15 (13%) patients  
4 underwent DCCV to restore SR. The mapping time and radiofrequency (RF) time for  
5 single mechanism AT were 19.5 (IQ range 16 – 26.5) min and 15 (IQ range 10 – 20)  
6 min, respectively. As for patients who had at least two patterns of ATs, the mapping time  
7 and radiofrequency (RF) time were 45 (IQ range 33 – 55) min and 27 (IQ range 22 –  
8 29) min, respectively.

### 9 **Mechanism of intermediate ATs**

10 As shown in Table 2, the mechanisms of intermediate ATs were macro-reentry in  
11 110 (77%), micro-reentry in 21 (15%), and focal AT in 12 (8%). Among the macro-  
12 reentrant ATs, the most common were perimitral ATs (PM-AT) 52 (47%), followed by  
13 roof dependent ATs (RF-AT) in 40 (36%) and typical atrial flutter (AFL) in 18 (16%)  
14 (Figure 1B). As for micro-reentrant ATs, the critical sites were left atrial anterior wall  
15 in 11 (52%) patients, PV in 6 (29%), LA appendage ridge in 2 (10%), septum in  
16 2 (10%), and superior vena cava in 1 (5%) (Figure 1C). 12 ATs were considered as focal  
17 ATs, 7 (58%) were related to the left atrial anterior wall, 3 (25%) were related to PV,  
18 and 2 (16%) involved LAA (Figure 1D).

### 19 **Ablation of single mechanism intermediate ATs**

20 In 86 patients with single mechanism AT, 68 (79%) were presented as macro  
21 reentry AT, which included 35 (41%) PM-AT, 23 (27%) RF-AT, and 10 (12%) typical  
22 AFL. Endocardial mitral linear ablation only successfully terminated 22 (63%)

1 perimitral ATs. Rate of endocardial perimitral block was 67% by endocardial mitral  
2 linear ablation only with an RF application time of 20 min (IQ range 18 – 23). 28%  
3 patients underwent epicardial ablation inside the coronary sinus and 40% received  
4 VOM ethanol infusion. After epicardial ablation and/or VOM ethanol infusion, the rate  
5 of successful perimitral block and termination of perimitral ATs increased to 83% and  
6 91%, respectively. Complete block of the roofline was achieved in 96% patients with  
7 an RF application time of 10 min (IQ range 8 – 13). 22 (96%) Roof dependent ATs were  
8 successfully ablated. Peritricuspid block was achieved in 96% patients with an RF  
9 application time of 12 min (IQ range 10 – 15) and all peritricuspid ATs were  
10 successfully ablated.

11 Among the remaining 18 patients, 10 patients had micro-reentry or focal AT  
12 involved in the LA anterior wall, 5 patients had micro-reentry or focal AT involved in  
13 the PV, 2 had AT related to LAA, and 1 had AT related the septum. Apart from 2 patients  
14 with LA anterior wall related AT, all micro-reentry or focal AT were successfully  
15 ablated.

16 In total, the rate of successful single mechanism AT ablation was 93% (80/86).  
17 Therefore, 64 (80%) patients with single mechanism AT required at least one of mitral  
18 line, roofline, and peritricuspid line to finally restore SR.

### 19 **Ablation of multiple mechanisms intermediate ATs**

20 In 27 patients with multiple mechanisms ATs, 24 patients had two types of ATs and  
21 3 had 3 types of AT. 23 patients initially presented with macro reentrant AT. 6 patients  
22 were considered having ‘dual-loop’ AT, which had both mitral and roof dependent re-

1 entry. Among these patients, anterior LA linear lesions, which joins the mitral annulus  
2 to the right superior PV lesions, successfully terminated AT in 3 (50%) patients. The  
3 rate of conduction block across the anterior LA line was 33%. Based on the experience  
4 of the operators, all of these 6 patients received mitral line and roof line ablation.

5 Among 24 patients with 2 types of ATs, 17 (71%) were successfully ablated. The  
6 reason for failed ablation were unable to achieve perimitral block in 4 (57%) patients,  
7 difficult to achieve LA anterior wall block in 2 (29%), and unable to achieve  
8 peritricuspid block in 1 (14%) patient who was very fat. In 3 patients with 3 types ATs,  
9 2 were successfully treated. One patient was initially presented as micro reentry AT in  
10 the LA anterior wall, followed by typical AFL, and finally restored to SR by superior  
11 vena cava isolation. The other patient had AT related to PV, LA roof, and finally  
12 terminated by LAA base ablation. The remaining 1 patient underwent DCCV because  
13 the anterior LA line could not be block.

14 Taken together, 18 (66.7%) patients with multiple mechanisms ATs restored SR by  
15 catheter ablation successfully, which is significantly lower than patients with single  
16 mechanism AT ( $p < 0.001$ ). In additional, all of these 18 patients required at least one  
17 of mitral line, roofline, and peritricuspid line to finally restore SR. In total, 98 (72%)  
18 patients had successfully ablated intermediate ATs. Among these patients, 88 (90%)  
19 required at least one of the perimitral line, roofline, or peritricuspid line to finally  
20 restore sinus rhythm.

## 21 **Rhythm outcome of study population**

22 For 136 patients who converted to organized AT during ablation, 75 (55.1%) were

1 still in SR, 97 (71.3%) were freedom from AF recurrence, and 114 (83.8%) were  
2 freedom from AT recurrence at the end of 12 months of follow-up (Figure 2A).

3 As for 98 patients who finally restored SR through ablation of intermediate ATs,  
4 63 (64.3%) patients were free of any arrhythmia, 73 (74.5%) were free of AF recurrence,  
5 and 88 (89.8%) were free from AT recurrence at the end of 12 months of follow-up  
6 (Figure 2B).

7

## 8 **Discussion**

### 9 **Main Findings**

10 The present study pioneered the application of the reverse thinking method,  
11 presenting empirical evidence for additional linear ablation following the mechanisms  
12 of intermediate ATs post PerAF termination. Principal outcomes are as follows: 1) ATs  
13 after AF termination can be successfully mapped (87%) and ablated (73%) in the  
14 majority of patients. and 2) Macroreentrant mechanisms representing the most  
15 prevalent in these ATs, constituting 77% of the total ATs. Of these macro-reentrant ATs,  
16 PM-AT were the most frequent, followed by RF-AT and typical AFL. Collectively,  
17 nearly 90% of patients required a minimum of one perimitral line, roofline, or  
18 peritricuspid line to successfully restore sinus rhythm, which may corroborate the  
19 efficacy of mitral line, roofline, and tricuspid line ablation.

### 20 **Linear ablation of PerAF**

21 Our investigation that offers a unique study design employing a reverse thinking  
22 strategy to underscore the importance of linear ablation for PerAF. By comprehensively

1 analyzing the underlying mechanisms of ATs observed during AF ablation, we strived  
2 to systematically clarify the causal relationship, thereby illuminating the rationale and  
3 imperative need for linear ablation in the management of persistent AF. Haïssaguerre et  
4 al. pioneered the introduction of linear ablation in 1994, revealing its potential by  
5 achieving successful sinus rhythm restoration in a PerAF case via the creation of linear  
6 lesions(1). Nonetheless, it warrants mentioning that despite the increasing volume of  
7 research focused on linear ablation primarily originating from the theoretical  
8 underpinnings of surgical maze procedures(9,10) that encompass atrial isolation and  
9 interruption of reentrant electrical activity, there exists a noticeable dearth of  
10 compelling evidence gleaned from rigorous, evidence-based medicine studies. Within  
11 the confines of our own study, we noted that a significant percentage (63%) of patients  
12 undergoing ablation for PerAF encountered AT during the procedure. This striking  
13 observation affirms the crucial role of linear ablation in PerAF management, offering  
14 substantial empirical evidence to corroborate its efficacy and clinical applicability.

### 15 **Mechanism of macro reentrant atrial flutter**

16 With the escalation in catheter radiofrequency ablation procedures, the mechanism  
17 and post-ablation results of macro-reentrant AT have garnered considerable attention  
18 from electrophysiologists. Conventionally, the mechanism of macro-reentrant AT  
19 encompasses the initiation and maintenance of reentrant activation around a stable  
20 centrally located obstacle. This central obstacle can be composed of normal or abnormal  
21 structures and may be static, functional, or a combination thereof(11). In patients  
22 transitioning from AF to AT during ablation procedures or patients exhibiting post-



1 ablation recurrence of AT, the primary mechanisms of macro-reentrant AT were PM-AT  
2 (30%-50%), RF-AT (10%-30%), and typical AFL (10%-60%) (12-15), with PM-AT  
3 ablation being the most challenging(16).

4 Anatomical factors, such as the presence of endocardial pouches, coronary arteries  
5 inducing a heat-sink effect, and myocardial thickness can present difficulties in  
6 achieving permanent conduction block in certain patients. Furthermore, the VOM has  
7 variable connections to neighboring myocardium, such as CS, LA, or PVs, making the  
8 achievement of isthmus block often necessitate radiofrequency energy delivery in the  
9 coronary sinus. This can be challenging due to its tortuosity and may pose a risk of  
10 injury to the coronary arteries(17). The recent VENUS study demonstrated the efficacy  
11 of additional VOM ethanol infusion. In our study, we also implemented ethanol  
12 infusion of VOM in 40% of patients with confirmed isthmus-dependent atrial flutter,  
13 resulting in a heightened isthmus block rate of 91%. Although ethanol ablation of the  
14 Marshall vein is not a universal remedy for isthmus-dependent atrial flutter, it retains  
15 an increasingly significant role.

#### 16 **Mapping and ablation of other complex atrial flutter**

17 High-density mapping has been validated by numerous prior studies as being  
18 instrumental in detecting various complex cardiac arrhythmias (18,19). In our research,  
19 high-density mapping was implemented for all patients with AT. The preliminary step  
20 during activation mapping entails the assessment the likelihood of macro-reentry. By  
21 eliminating wavefront collision around the mitral valve/roof /or tricuspid valve, PM-  
22 AT/RF-AT/or typical AFL can be respectively ruled out. Only upon the exclusion of

1 common macro-reentrant arrhythmias, other intricate arrhythmias such as figure-of-  
2 eight reentry, double atrial reentry, and localized reentry are contemplated. In our  
3 experience, these arrhythmias typically involve critical isthmuses, resulting in  
4 profoundly slow conduction with extended duration electrograms and complex  
5 electrograms. Ablation targeting these regions usually terminates AT. Further ablation  
6 lines targeting other areas such as the mitral isthmus line and roof line may be  
7 advantageous in improving the prognosis of AT post termination of complex atrial  
8 flutter. Moreover, multiple linear lesions might precipitate the emergence of localized  
9 reentry, leading to areas with double potentials and far-field electrograms that pose  
10 consistent reconciliation challenges for automated algorithms and/or the operator. Even  
11 with a high-density map, areas of low voltage and scar in the atria harboring localized  
12 reentry might not readily yield a diagnosis. This is a commonplace scenario with small  
13 circuits and necessitates user intervention for accurate timing assignment and/or  
14 performing entrainment mapping to discern the components of the reentry circuit. The  
15 mapping and ablation of complex ATs continue to demand more precise ablation  
16 catheters and mapping systems.

### 17 **Ablation strategies for persistent atrial fibrillation**

18 While guidelines(20) have yet to proffer conclusive recommendations regarding  
19 ablation strategies for PerAF, many electrophysiologists continue to favor linear  
20 ablation. This strategy provides a relatively fixed and straightforward ablation method  
21 aimed at achieving a "bidirectional" block and obtaining clear electrophysiological  
22 ablation endpoint, a feat challenging to achieve with other mainstream ablation

1 strategies that lack definitive electrophysiological endpoints. However, linear ablation  
2 also presents certain limitations. Primarily, as a standardized rather than personalized  
3 method for AF ablation, it may not be suitable for all patients. Not all patients with  
4 PerAF possess reentry circuits around the mitral isthmus, tricuspid isthmus, or LA roof.  
5 Additionally, its incapacity to address the maintenance mechanism of PerAF makes it  
6 difficult to terminate AF intraoperatively(21). In our prior study, standalone linear  
7 ablation yielded an intraoperative AF termination rate of a mere 20.7%(4).  
8 Incorporating electrogram-guided ablation to linear ablation increased the termination  
9 rate to 66.7%. Significantly, patients achieving AF termination exhibited a lower  
10 incidence of AF recurrence. Therefore, extensive ablation targeting electro-anatomical  
11 mechanisms to pursue AF termination might constitute the optimal strategy for PerAF.  
12 The need for additional studies and improvements in ablation strategies remains  
13 imperative to improve outcomes in PerAF patients and alleviate the burden of this  
14 arrhythmia.

### 15 **Rhythm outcome of AT converted from AF during ablation**

16 Patients reaching AF termination during catheter ablation are generally considered  
17 to have a superior prognosis(22,23). However, for the majority of patients with PerAF,  
18 direct conversion to SR is frequently challenging to accomplish, and an intermediate  
19 rhythm of AT is often encountered. Although initial studies implied that this arrhythmia  
20 might predict a poorer prognosis and that ablation lines are difficult to sustainably  
21 block(7), advancements in catheter ablation techniques and mapping technology have  
22 made it possible for stable and complete linear ablation of this rhythm disturbance to

1 also lead to favorable outcomes(24). In fact, some studies(25) have shown that  
2 intervention using linear ablation targeting the mechanisms of AT have been more  
3 effective in achieving stable SR than both direct current cardioversion and direct SR,  
4 with a higher success rate sustained at the 1-year mark following the first and second  
5 procedures. In our study, among 98 patients who restored SR through ablation of  
6 intermediate AT, 63 (64.3%) patients remained free of any arrhythmia at the end of the  
7 12-month follow-up period. This evidence suggests that favorable outcomes can be  
8 achieved by restoring SR via the ablation of intermediate rhythms.

### 9 **Study limitation**

10 This study had several limitations. Firstly, this was a descriptive study probe into  
11 the mechanisms of intermediate ATs occurred after AF termination in the Extent-AF  
12 study. The efficacy of additional linear ablation should be further demonstrated in large  
13 randomized, control study. Secondly, in this study, we focused on intermediate ATs  
14 occurred after AF termination. Considering the various AF termination rate of different  
15 ablation strategies, studies that applied different ablation strategies may lead to different  
16 results. For example, PVI plus additional linear ablation had relative low AF  
17 termination, which was around 20% in previous literature. Thirdly, the Extent-AF study  
18 did not include a PVI alone arm, additional substrate modification increased the  
19 incidence of AT and most of them are iatrogenic ATs. It is possible that PVI alone may  
20 have some benefit over extensive substrate modification.

### 21 **Conclusions**

22 During PerAF ablation, macro-reentrant ATs accounted for up to 77% of ATs

1 occurred after AF termination. 90% patients required at least one linear lesion across  
2 mitral isthmus, roof and tricuspid isthmus to restore SR, which provide evidence for  
3 additional linear ablation.  
4

## 1 **References**

- 2 1. Haïssaguerre M, Gencel L, Fischer B et al. Successful catheter ablation of atrial fibrillation.  
3 J Cardiovasc Electrophysiol 1994;5:1045-52.
- 4 2. Jais P, Hocini M, Hsu L-F et al. Technique and Results of Linear Ablation at the Mitral  
5 Isthmus. Circulation 2004;110:2996-3002.
- 6 3. Hocini M, Jais P, Sanders P et al. Techniques, evaluation, and consequences of linear block  
7 at the left atrial roof in paroxysmal atrial fibrillation: a prospective randomized study.  
8 Circulation 2005;112:3688-96.
- 9 4. Li K, Xu C, Zhu X et al. Multi-centre, prospective randomized comparison of three different  
10 substrate ablation strategies for persistent atrial fibrillation. Europace 2023;25.
- 11 5. O'Neill MD, Jais P, Takahashi Y et al. The stepwise ablation approach for chronic atrial  
12 fibrillation--evidence for a cumulative effect. J Interv Card Electrophysiol 2006;16:153-67.
- 13 6. Knecht S, Hocini M, Wright M et al. Left atrial linear lesions are required for successful  
14 treatment of persistent atrial fibrillation. Eur Heart J 2008;29:2359-66.
- 15 7. Ning M, Dong JZ, Liu XP et al. Mechanisms of organized atrial tachycardia during catheter  
16 ablation of chronic atrial fibrillation by stepwise approach. Chin Med J (Engl)  
17 2010;123:852-6.
- 18 8. Rostock T, Salukhe TV, Hoffmann BA et al. Prognostic role of subsequent atrial  
19 tachycardias occurring during ablation of persistent atrial fibrillation: a prospective  
20 randomized trial. Circ Arrhythm Electrophysiol 2013;6:1059-65.
- 21 9. Cox JL, Schuessler RB, D'Agostino HJ, Jr. et al. The surgical treatment of atrial fibrillation.  
22 III. Development of a definitive surgical procedure. J Thorac Cardiovasc Surg

- 1 1991;101:569-83.
- 2 10. Cox JL, Boineau JP, Schuessler RB, Kater KM, Lappas DG. Five-year experience with the  
3 maze procedure for atrial fibrillation. *Ann Thorac Surg* 1993;56:814-823; discussion 823-  
4 4.
- 5 11. Saudi N, Cosío F, Waldo A et al. A classification of atrial flutter and regular atrial  
6 tachycardia according to electrophysiological mechanisms and anatomical bases; a  
7 Statement from a Joint Expert Group from The Working Group of Arrhythmias of the  
8 European Society of Cardiology and the North American Society of Pacing and  
9 Electrophysiology. *Eur Heart J* 2001;22:1162-82.
- 10 12. Rostock T, Drewitz I, Steven D et al. Characterization, mapping, and catheter ablation of  
11 recurrent atrial tachycardias after stepwise ablation of long-lasting persistent atrial  
12 fibrillation. *Circ Arrhythm Electrophysiol* 2010;3:160-9.
- 13 13. Choi Y, Kim S, Baek JY et al. Acute and long-term outcome of redo catheter ablation for  
14 recurrent atrial tachycardia and recurrent atrial fibrillation in patients with prior atrial  
15 fibrillation ablation. *J Interv Card Electrophysiol* 2021;61:227-234.
- 16 14. Katritsis G, Luther V, Cortez-Dias N et al. Electroanatomic Characterization and Ablation  
17 of Scar-Related Isthmus Sites Supporting Perimitral Flutter. *JACC Clin Electrophysiol*  
18 2021;7:578-590.
- 19 15. Haïssaguerre M, Hocini M, Sanders P et al. Catheter ablation of long-lasting persistent  
20 atrial fibrillation: clinical outcome and mechanisms of subsequent arrhythmias. *J*  
21 *Cardiovasc Electrophysiol* 2005;16:1138-47.
- 22 16. Yokokawa M, Sundaram B, Garg A et al. Impact of mitral isthmus anatomy on the

- 1           likelihood of achieving linear block in patients undergoing catheter ablation of persistent  
2           atrial fibrillation. *Heart Rhythm* 2011;8:1404-10.
- 3    17.    Wong KC, Lim C, Sadarmin PP et al. High incidence of acute sub-clinical circumflex artery  
4           'injury' following mitral isthmus ablation. *Eur Heart J* 2011;32:1881-90.
- 5    18.    García-Bolao I, Ballesteros G, Ramos P et al. Identification of pulmonary vein reconnection  
6           gaps with high-density mapping in redo atrial fibrillation ablation procedures. *Europace*  
7           2018;20:f351-f358.
- 8    19.    Pashakhanloo F, Herzka DA, Halperin H, McVeigh ER, Trayanova NA. Role of 3-  
9           Dimensional Architecture of Scar and Surviving Tissue in Ventricular Tachycardia: Insights  
10          From High-Resolution Ex Vivo Porcine Models. *Circ Arrhythm Electrophysiol*  
11          2018;11:e006131.
- 12   20.    Hindricks G, Potpara T, Dagres N et al. 2020 ESC Guidelines for the diagnosis and  
13          management of atrial fibrillation developed in collaboration with the European  
14          Association for Cardio-Thoracic Surgery (EACTS): The Task Force for the diagnosis and  
15          management of atrial fibrillation of the European Society of Cardiology (ESC) Developed  
16          with the special contribution of the European Heart Rhythm Association (EHRA) of the  
17          ESC. *Eur Heart J* 2021;42:373-498.
- 18   21.    Verma A, Jiang CY, Betts TR et al. Approaches to catheter ablation for persistent atrial  
19          fibrillation. *N Engl J Med* 2015;372:1812-22.
- 20   22.    O'Neill MD, Wright M, Knecht S et al. Long-term follow-up of persistent atrial fibrillation  
21          ablation using termination as a procedural endpoint. *Eur Heart J* 2009;30:1105-12.
- 22   23.    Honarbakhsh S, Dhillon G, Abbass H et al. Noninvasive electrocardiographic imaging-



1 guided targeting of drivers of persistent atrial fibrillation: The TARGET-AF1 trial. Heart

2 Rhythm 2022;19:875-884.

3 24. Nagamoto Y, Tsuchiya T, Miyamoto K, Yamaguchi T, Takahashi N. Atrial tachycardia

4 during ongoing atrial fibrillation ablation. - EnSite array analysis. Circ J 2011;75:1080-9.

5 25. Faustino M, Pizzi C, Capuzzi D et al. Impact of atrial fibrillation termination mode during

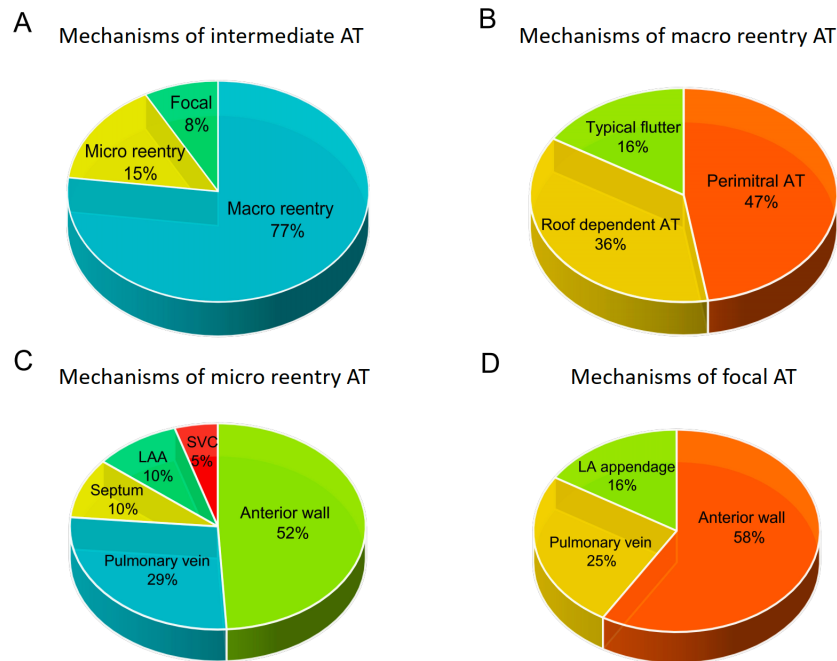
6 catheter ablation procedure on maintenance of sinus rhythm. Heart Rhythm

7 2014;11:1528-35.

8

9

1 **Figures**



2

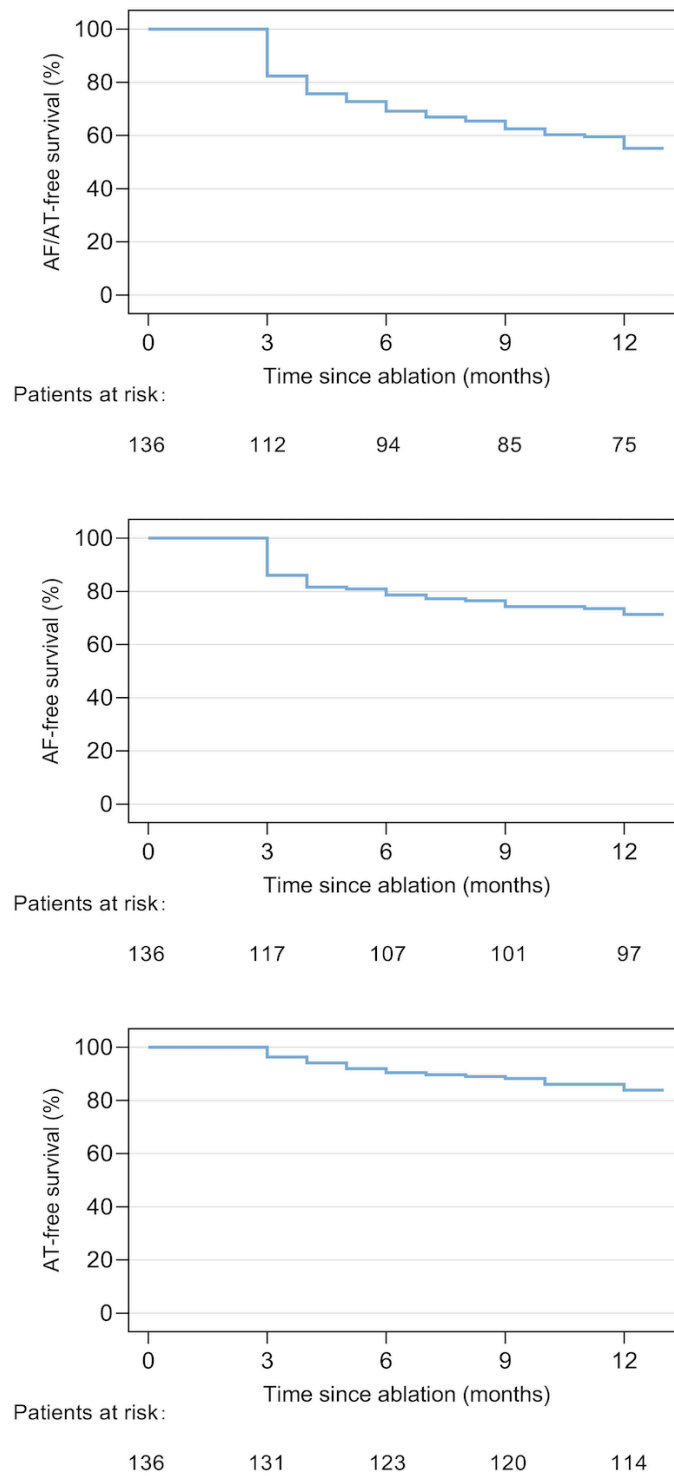
3

**Figure 1.** Mechanism of intermediate ATs

4 AT, Atrial Tachycardia; LAA, Left Atrial Appendage; SVC, Superior Vena Cava; LA,

5 Left Atrium.

6

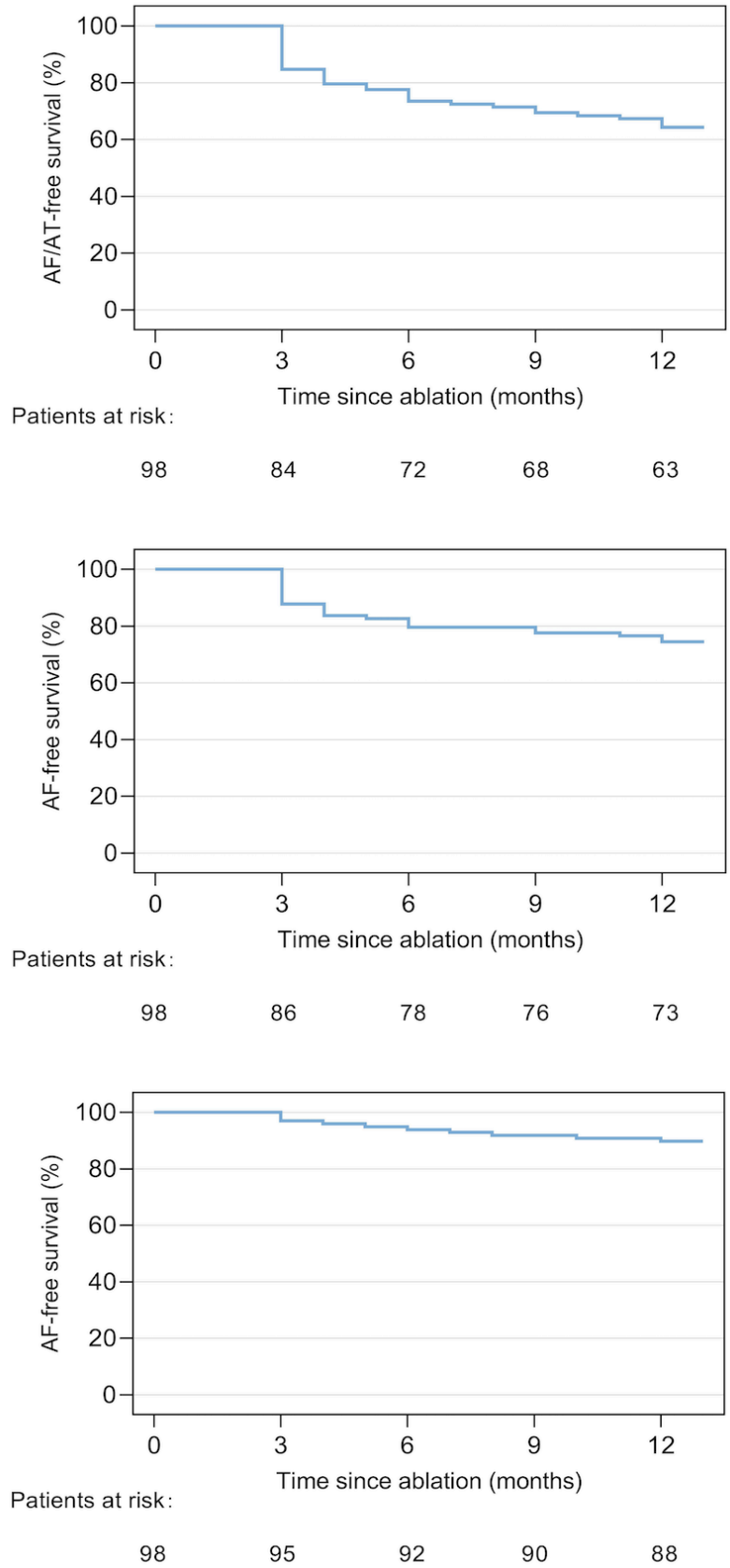


1

2

**Figure 2A.** Rhythm outcome in patients converted to organized AT during ablation

3

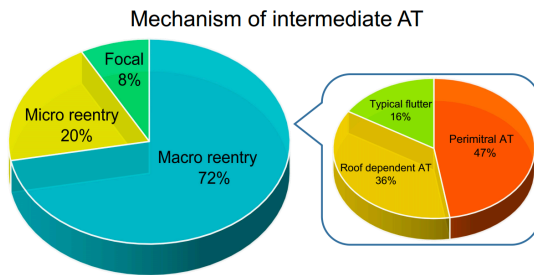
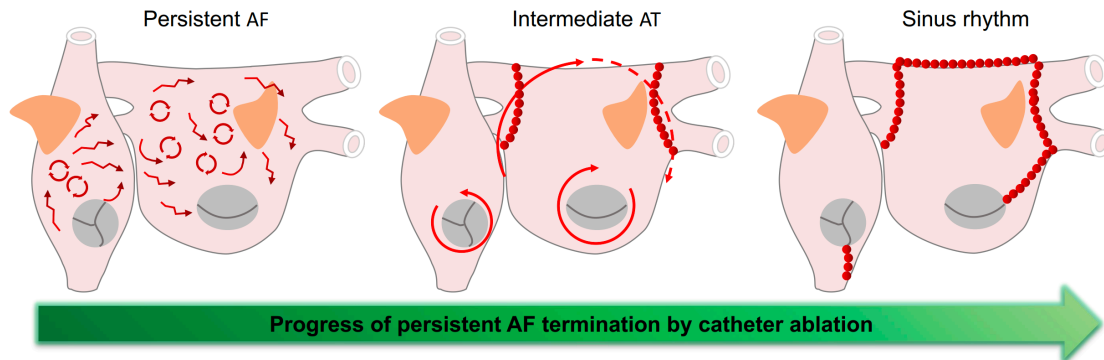


1

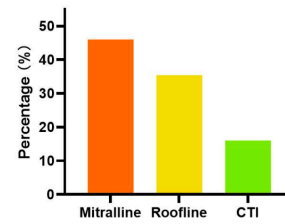
2

**Figure 2B.** Rhythm outcome in patients restored SR by ablation of intermediate ATs

3



Linear lesions required to restore sinus rhythm



1  
2  
3

### Central Illustration

1 **Tables**

2 **Table 1. Baseline characteristics**

<b>All patients (n = 136)</b>	
Age (years)	65.2 ± 9.9
Male, n (%)	99 (72.8)
AF duration, months	4 (1 - 24)
Longstanding AF	58 (43.6)
CHADS2-VAS score	2.2 ± 1.3
<b>Comorbidity, n (%)</b>	
Hypertension	73 (53.7)
Diabetes mellitus	25 (18.4)
Prior Stroke	13 (9.6)
Coronary artery disease	16 (11.8)
Heart failure	18 (13.2)
<b>Concomitant medications, n (%)</b>	
Amiodarone	126 (92.6)
Beta-blocker	51 (37.5)
<b>Echocardiography parameters</b>	
LAD (mm)	44.1 ± 5.6
LVEF (%)	61.1 ± 8.4

3 BMI, body mass index; LAD, left atrial diameter; LVEF, left ventricle ejection fraction.

4

5 **Table 2. Distribution and mechanisms of intermediate ATs**

AT mechanisms	Critical sites	n (%)
Macro-reentry	Mitral isthmus	52 (36%)
	Roof	40 (28%)
	Tricuspid isthmus	18 (13%)
	Micro-reentry	21 (15%)
Micro-reentry	LA anterior wall	11 (8%)
	PV	6 (4%)
	LA appendage	2 (1%)
	Septum	2 (1%)
	SVC	1 (1%)
Focal	LA anterior wall	7 (5%)
	PV	3 (2%)
	LA appendage	2 (1%)

6 LA, left atrial; PV, pulmonary vein; SVC, superior vena cava.