

1 **Field study to determine the reliability of HIV viral load results shows minimal impact of delayed**
2 **testing.**

3 Diana Hardie*^{1,2}, Howard Newman², Joanna Ried^{2,3}, Nei-Yuan Hsiao^{1,2}, Gert van Zyl^{2,3}, Lucia Hans^{4,5},
4 Jasantha Odayar⁶, Stephen Korsman^{1,2}

5 ¹ Division of Medical Virology, Department of Pathology, University of Cape Town, Cape Town, South
6 Africa

7 ² National Health Laboratory Service, Johannesburg, South Africa

8 ³ Division of Medical Virology, University of Stellenbosch, Cape Town, South Africa.

9 ⁴ National Health Laboratory Service, National Priority Programme (NPP), Johannesburg, South Africa

10 ⁵ Department of Molecular Medicine and Haematology, Faculty of Health Sciences, University of
11 Witwatersrand, Johannesburg, 2193, South Africa

12 ⁶ Division of Epidemiology & Biostatistics, School of Public Health, University of Cape Town, Cape Town,
13 South Africa

14 *Diana Hardie

15 Diana.hardie@uct.ac.za

16

17

18 **Abstract:**

19 Understanding factors that impact on the accuracy of HIV viral load (VL) results is key to quality
20 improvements of VL programmes, particularly in resource limited settings. In this study we evaluated
21 whether testing delay and room temperature storage (between 25-30°C) prior to testing affected
22 results. 249 individuals who were on antiretroviral therapy, or with newly diagnosed HIV, were
23 recruited and three PPT samples were collected from each patient. One sample was tested within 24
24 hours, while the others were stored un-centrifuged at ambient temperature prior to testing.
25 Centrifugation and testing of matched samples were performed on days 4 and 7 after collection. In
26 samples with initial VL >2 log copies/mL, time delay and ambient temperature storage had minimal
27 impact. When grouped according to day 1 VL range, 96-100% of samples at day 4 and 93-100% at day 7
28 had a VL within 0.5 log copies/mL of the first result. Greatest variability was observed at day 4 and 7
29 when the day 1 VL was <2 log copies/mL, however, there was no trend of increasing difference with
30 time. Of day 1 samples with undetectable VL or VL <50copies/mL, 80% and 78% had concordant results
31 at days 4 and 7, respectively. Detection in later samples appeared to be stochastic, rather than
32 showing a worsening trend. These results provide further evidence that VL is stable in PPT tubes for up
33 to 7 days when stored at room temperature. It shows that there is significant variability in samples with
34 VL close to the limit of detection, not affected by testing delay. Stochastic variation or technical factors
35 that may increase the chance of false positive results could possibly account for this.

36 **Introduction**

37 Viral load (VL) testing is a key element to reaching and monitoring progress towards the UNAIDS
38 95:95:95 targets(1). This reflects ensuring that HIV-infected patients are diagnosed, started on anti-
39 retroviral therapy (ART) and are virologically suppressed. South Africa (SA) has the world's largest
40 treatment program with > 6 million people living with HIV (PLWH) enrolled(2). Over 6 million viral loads
41 were performed by public sector laboratories in SA in 2022(3). However, logistics and pre-analytical
42 challenges such as transporting, registering, centrifuging and storing samples could compromise the
43 quality of testing.

44 Currently manufacturers of high throughput VL platforms such as Roche Molecular Systems (Pleasanton,
45 USA) and Abbott Laboratories (Chicago, USA) recommend that whole blood samples should be

46 centrifuged within 6 to 24 hours of collection and plasma should either be frozen at - 80 °C or tested
47 within 5 days of sample collection(4)(5). Transporting samples to the laboratory for separation into
48 plasma is often not achievable within the official manufacturer time constraints in resource-limited
49 settings. Samples may reach the laboratory more than 24 hours after collection and are stored at 4°C in
50 their primary tubes until testing. The extent to which these pre-analytical factors compromise the
51 accuracy of results was assessed in two laboratory simulation studies (6)(7) and a systematic review (8).
52 All three showed good preservation of viral RNA beyond the currently recommended testing time. This
53 finding was confirmed in a local study performed at Groote Schuur Hospital in which routine diagnostic
54 samples collected in ethylenediaminetetraacetic acid (EDTA) tubes or EDTA-plasma preparation tubes
55 (PPT) were stored after initial HIV VL testing at a range of times and storage temperatures(9). The VL in
56 samples stored for up to a week reliably differentiated between ART-suppressed and failing patients in
57 98.8% of instances(9). However, samples had already been centrifuged prior to storage and the study
58 was performed entirely in the laboratory environment. In addition, it was only possible to follow trends
59 in VL from the same patient over 2 time points due to sample volume constraints. In this current study,
60 we evaluated the extent to which testing delay and adverse sample storage affects VL by testing serial
61 samples from the same patients at different time points after sample collection.

62 **Study objectives:**

- 63 1. To determine the impact of testing delay on the accuracy of HIV RNA quantification in diagnostic
64 specimens collected and stored in un-centrifuged PPT tubes.
- 65 2. To describe the impact of storage at a warmer ambient temperature (storage between 25-30°C)
66 on the precision of HIV RNA quantification in diagnostic samples in un-centrifuged PPT tubes.
- 67 3. To determine whether centrifugation prior to storage improves the precision of results in
68 samples where testing is delayed and whether omitting a 2nd re-centrifugation step prior to
69 delayed testing affects precision (evaluated at one site, namely GSH).

70 **Methods:**

71 Ethical approval for the study was obtained from the Human Subjects Research Ethics Committee of the
72 Faculty of Health sciences at the University of Cape Town (HREC Ref 159/2019). Written informed
73 consent was obtained from all participants prior to enrolment. Only individuals older than 18 years were
74 recruited.

75 Enrolment for 2 sites (PE and TBH) began on 21 November and 5 December 2019 and ended on 24
76 January and 23 January 2020, respectively. Enrolment for the 3rd site (GSH) began on 28 August 2022
77 and ended on 6 June 2023 (following normalisation of laboratory services after SARS-CoV-2 pandemic).

78 The study was performed at three sites within the National Health Laboratory Service (NHLS) network of
79 HIV VL testing laboratories. Patients were recruited from four ARV clinics, three in the Cape Metro and
80 one in the Eastern Cape Province of South Africa. Patients who were due to have a VL test or who were
81 newly diagnosed and not yet on therapy, were approached and asked to give two extra blood tubes for
82 HIV VL testing. Three PPT samples were collected during the same blood draw and delivered to the
83 regional HIV VL testing laboratory. On arrival, one sample was centrifuged and sent for immediate HIV
84 VL testing. Testing was completed within 24 hours of sample collection. The result from this test was
85 issued for routine patient management. The other two tubes were stored un-centrifuged in routine
86 field conditions where the temperature varied between 25-30°C. Four days after sample collection, one
87 of the stored samples was centrifuged and a VL test was performed. Seven days after sample collection,
88 the third tube was centrifuged and tested. VL testing was performed using the routine assay in each of
89 the three participating laboratories at the time of study, namely Roche CAP/CTM (Tygerberg laboratory),
90 Roche 6800 (Port Elizabeth laboratory) and Abbott Alinity m (Groote Schuur laboratory). The study plan
91 is given in Fig 1.

92 **Fig 1 Study plan:**

93 On a subset of patients (done at Groote Schuur laboratory only), HIV VL was repeated at day 7 on the
94 sample that had been centrifuged and tested on day one. The day 1 centrifuged samples were stored
95 under the same conditions as the yet untested samples, prior to repeat testing. The samples were not
96 re-centrifuged prior to repeat testing on day 7. They were used to assess whether storage in an already
97 centrifuged state improved stability of VL in the sample.

98 VL data from days 1, 4 and 7 testing were extracted from the laboratory information system and
99 analysed using Bland-Altman plots (10).

100 For analysis, unless otherwise specified, samples with a VL that was lower than the limit of detection
101 (LDL) were assigned a value of “1” (0 log) copies/mL. Samples with a VL value of <20 copies/mL, were
102 assigned a value of “19” (1.28 log) copies/mL, otherwise the log value of the reading in copies/mL was
103 used for analysis.

104 A difference in VL of >0.5 log copies/mL was considered significant and likely to reflect a change that
105 was caused by factors other than random expected variation. (11)

106

107 **Results:**

108 A total of 249 patients were consented and provided 3 PPT samples for testing (51 from Tygerberg, 60
109 from Port Elizabeth (PE) and 138 from Groote Schuur (GSH). Samples from 6 patients arrived at the
110 laboratory more than 24 hours after collection and these patients were excluded from the study.

111 Day 1 VLs segregated into the following VL categories: 55 (22.6%) were LDL, 46 (18.9%) were
112 detectable, but <50 copies/mL, 7 (2.9%) were 50-100 copies/mL, 28 (11.5%) were 2-3 log copies/mL, 30
113 (12.3%) were 3-4log copies/mL, 36 (14.8%) were 4-5log copies/mL, 30 (12.3%) were 5-6log copies/mL
114 and 11 (4.5%) were >6 log copies/mL.

115 **Table 1: Proportion of samples tested on day 4 and 7 within 0.3 and 0.5 log copies/mL of day 1 viral**
116 **load value by day 1 VL category:**

Day 1 viral load by category	Number of samples	Day 4 viral load % within 0.3 log of day 1 result	Day 4 viral load % within 0.5 log of day 1 result	Day 7 viral load % within 0.3 log of day 1 result	Day 7 viral load % within 0.5 log of day 1 result
LDL	55	51%	51%	60%	60%
<log2	53	51%	60%	55%	62%
Log2-3	27	89%	96%	81%	93%
Log3-4	30	87%	97%	87%	97%
Log4-5	36	81%	100%	86%	97%
Log5-6	30	93%	97%	97%	97%
>log6	11	73%	100%	91%	100%

117

118 **Viral load stability at day 4 and 7:**

119 Bland-Altman plots were used to evaluate differences in day 1 vs day 4 VL results and between day 1
120 and day 7(10). Overall, there was very little difference in paired readings at both day 4 and day 7
121 compared with day 1. The mean bias at day 4 was -0.15 and for day 7 was -0.12 log copies per mL,
122 indicating a lower reading in the samples where testing was delayed, but the decay was minimal (**Fig 2**).
123 For samples with an initial VL of >2 log copies/mL, the paired VL value at day 4 and day 7 was within 0.5

124 log copies/mL in 96-100% of instances for day 4 and 93-100% of instances for day 7 (**table 1**), signifying
125 minimal impact of the testing delay on the quantification. The greatest variation was observed for
126 samples with day 1 VLs less than 2 log copies/mL, with only 60% of samples at day 4 and 62% at day 7
127 having a repeat viral load within 0.5 log copies/mL. In this very low viraemic range, even though many
128 of the changes were >0.5 log copies/mL, the difference in quantification does not reflect real clinically
129 significant differences in VL value. No clinical action would be indicated for results in this (<2 log
130 copies/mL) range(12)(13). Indeed, in the 101 samples with a day 1 viral load below 50 copies/mL, 80%
131 remained <50 copies/ml at the day 4 test and 78% at the day 7 test.

132

133 **Figure 2: Variability of all paired VL results at day 4 and 7: Bland-Altman plots of day1 vs day4 VL (a)**
134 **and day1 vs day7 (b) show negative bias of -0,14 log copies/mL at day4 and -0,12 log copies/mL at day**
135 **7, with greatest variability at lower day 1 VL (<2logcopies/mL). Green lines represent + and -2SD and**
136 **red dotted line the mean difference in HIV viral load on Bland Altman plots. Histograms of paired VL**
137 **differences at day 4 and 7 are shown in(c) and (d). The peaks at -1.2 to -0.9 and +0.9 to 1.2 mostly**
138 **reflect samples with VLs that were <1.3 log copies/mL which transitioned to LDL or LDL samples that**
139 **transitioned to <1.3log copies/mL.**

140

141 **Viral load precision between 100-1000 copies/mL (2-3 log copies/mL):**

142 27 samples had day 1 VL values between 100 and 1000 copies per mL. Variability was much less, with
143 96% of samples on day 4 and 93% on day 7 having VL within 0.5 log copies/mL. The box and whisker
144 plot (**Fig 3a**) which included all samples with quantifiable VL from 20-1000 copies/mL show the
145 overlapping VL ranges at day 1, 4 and 7, with occasional outlier values.

146

147

148 **Figure 3: Viral load changes in samples with day 1 viral load between 1.3-3 log copies/mL: (a) shows a**
149 **box and whisker plot comparing viral load ranges at 1, 4 and 7 days. Histograms in (b) and (c) show**
150 **the variation in paired samples at day 4 and 7.**

151

152 **Day 1 undetectable/<50 copies/mL samples that became detectable on repeat**
153 **testing:**

154 In total, 18 patients who had viral loads <50 copies/mL at day 1 had a repeat viral load of >2 log
155 copies/mL at day 4 or day 7 (**Fig 4a**) and of these, 8 were >2 log copies/mL at both time points.
156 Detection in a later sample appeared to be stochastic. There was no trend to suggest that this
157 phenomenon worsened with time. The testing site or automated technology used to perform testing
158 seemed to be an important factor as this varied from 0% (GSH, Abbott Alinity), 11% and 22% at days 4
159 and 7 (Tygerberg, Roche CAP/CTM) to 50% (PE, Roche Cobas 6800). (**Fig 4b**)

160

161 **Figure 4 (a) shows the number and viral load ranges on days 4 and 7 of samples that were day 1 LDL or**
162 **had values <50 copies/mL which became detectable on repeat testing and (b) shows the proportion of**
163 **samples with day 1 viral loads of LDL or <50 copies/mL that had a VL >2 log copies/ml on repeat**
164 **testing, by testing site/technology used.**

165 Patients with a day 1 VL of detectable, but <20, were 2.3 times more likely to have a detectable VL at
166 day 4 and 1.8 times more likely to have a detectable VL at day 7 than patients with an undetectable day
167 1 VL (LDL).

168

169 **Stability in centrifuged samples:**

170 VL stability in samples that were centrifuged on day 1 and (re-) tested on day 7 was also analysed in a
171 subset of 103 samples from one centre (GSH). The day 1 sample was stored after initial testing under
172 the same conditions as the un-centrifuged samples and was retested on day 7 (without re-
173 centrifugation). The VL values on day 1 and 7 were very similar (**Fig 5**). The mean difference in VL
174 between day 1 and day 7 was 0.03 log copies/mL and SD was narrower at 0.42 than for the samples that
175 were first centrifuged and tested on day 7. No samples had a clinically significant change in VL when
176 comparing the day 1 and day 7 samples. One sample had an initial VL of 4.95 log copies/mL which
177 changed to 3.85 log copies/mL. Thus, there was only one result in this group with a clinically significant
178 (-1.1 log copies/mL) VL change. The good results in this experiment could reflect: better sample
179 preservation during storage when sample is separated on day 1, lack of viral RNA leakage in the PPT

180 tubes on storage (previously flagged as a potential problem (14)(15)) or other technical factors relating
181 to the testing site.

182

183 **Figure 5: Variability of paired viral loads of day 1 samples that were re-run on day 7: (a) Bland Altman**
184 **plot reveals minimal bias and lower variance in day 1 vs day 7 results. Green lines represent + and -**
185 **2SD and the red dotted line the mean difference in HIV viral load. Histogram in (b) shows the**
186 **difference in day 1 and 7 viral load results.**

187 **Discussion:**

188 Various factors impact on the accuracy of HIV VL test results (Lucia's paper) and an understanding of
189 these is key to better interpretation of the result and mitigation of potential inaccuracies. In this study
190 we found that delay of testing for the first 7 days had minimal effect on test results. This was clearly
191 shown for samples with an initial VL >2 logs. Testing of paired samples at day 4 and 7 returned
192 equivalent results in 96-100% (at day 4) and 93-100% (at day 7) of instances when stratified by VL level
193 at day 1 (sample tested within 24 hours of collection). These findings are compatible with previous work
194 done by ourselves (9) and a systematic review by Bonner et al (8) which showed that VL was stable
195 when samples are stored under laboratory conditions for up to 7 days. However, here we provide
196 additional field data on the stability of samples with a day 1 VL below 3 log copies/mL and also show
197 that storage of samples in an un-centrifuged state are stable when stored at ambient temperatures
198 between 25 and 30°C for up to 7 days. This more closely matches the real-world situation, especially in
199 low-and-middle-income countries with high HIV disease burdens and large antiretroviral treatment
200 programmes such as in SA. Under these conditions testing is often delayed due to logistical issues,
201 especially in remote rural areas, and these results provide reassurance that time delay is not a major
202 cause of result inaccuracies.

203 Significant variability was observed in samples with day 1 VLs of <2log, with only 60% (on day 4) and 62%
204 (on day 7) of samples having repeat VL values within 0.5 log copies/mL. But factors other than time
205 delay are more likely responsible. Variability in logarithmic terms near the limit of detection is expected
206 to be greater because at this level, detection/loss of detection and outlier results will represent a bigger
207 logarithmic change(16). Clinicians should be aware of the inherent VL variability in this range and
208 interpret results with caution.

209 Both local and international guidelines advise using VL levels of <50 copies/mL to reflect viral
210 suppression in patients on antiretroviral therapy (ART) (12)(17) and it was reassuring that for samples
211 with a day 1 VL in this range, 80% at day 4 and 78% at day 7 remained in this category on repeat testing.
212 Nonetheless, recent studies have highlighted the diagnostic importance of persistent low level viraemia
213 in patients on ART as a marker of increased risk of virological failure(18,19) and a better understanding
214 of the cause of these low positive results is needed.

215 Low VLs could also result from detection of intra-cellular viral nucleic acids in stored samples (12,13).
216 Sometimes cellular material remains above the gel in PPT tubes after centrifugation (15)and aspiration
217 during the testing process can falsely elevate the VL in recently suppressed individuals(20). This
218 phenomenon is only likely to make a difference if the plasma VL is very low or undetectable to start off
219 with. This could account for some of the 20% of patients who had suppressed (<50 copies/mL) day 1
220 VLs, that were detectable in day 4 or 7 samples. Of note, samples from patients that were detectable,
221 but VL was <20 copies/mL at day 1, were twice as likely to have a detectable VL in a stored sample than
222 patients that had an undetectable VL at day 1.

223 Noteworthy was the observation that the proportion of samples affected, varied markedly at the
224 different testing sites. Technical factors such as duration and speed of centrifugation of primary
225 samples, the method of sample aspiration by the auto-analyser or other undefined laboratory factors
226 could increase false reactivity during the testing process. Re-centrifugation immediately prior to testing
227 has been recommended (15) as a means to reduce false reactivity in stored samples, the rationale is that
228 cellular elements containing viral nucleic acids may diffuse into the plasma when storage is prolonged.
229 In the subset of 103 patients evaluated, re-centrifugation was omitted when the sample first tested on
230 day 1 was rerun on day 7. Interestingly, no samples had a clinically significant change in VL when
231 comparing the day 1 and day 7 samples. This result was reassuring. A caveat is that this experiment
232 was only done at the site where there was very low variability in the stored samples anyway.

233 **Limitations:**

234 Only three samples were collected from each patient, and this limited the number of factors we could
235 evaluate. Testing occurred across 3 sites and different testing platforms could have accounted for some
236 of the differences that were seen, for example, a much lower rate of detectable viral load in later
237 samples with day 1 suppressed VL at one site. In the LMIC context where samples may arrive for testing

238 after transport at temperatures above 30°C and in EDTA tubes without gel separator, more evaluation is
239 needed to define the limits of acceptable pre-analytical conditions.

240

241 **Conclusion:**

242 Our field study provides further evidence that time delay had minimal impact on viral load quantification
243 when samples were stored at room temperature. When the D1, D4 and D7 results were compared,
244 substantial variability was observed in samples with VLs close to the limit of detection, but there was no
245 trend to suggest increasing variance with time. Some samples with negligible VL at day 1 had detectable
246 VL on samples tested later and this was more likely to happen when the day 1 plasma VL was <20 rather
247 than LDL. The most likely explanation is that this reflects a combination of stochastic variation and false
248 detection of low level viraemia during the testing process. The variation observed near the limit of assay
249 detection could also contribute to the phenomenon of viral blips. The contribution of other patient-
250 related and technical issues requires further investigation.

251 **References:**

- 252 1. FAST-TRACK Ending the AIDS Epidemic by 2030. UNAIDS Publ [Internet]. 2014;(1):1–14. Available
253 from: https://www.unaids.org/sites/default/files/media_asset/JC2686_WAD2014report_en.pdf
- 254 2. NHLS Annual report 2017/18 [Internet]. 2018. p. 71–5. Available from:
255 http://intranet.nhls.ac.za/assets/files/policy/NHLS_AR_2018.pdf
- 256 3. Hans L, Cassim N, Sarang S, Hardie D, Ndlovu S, Venter WDF, et al. HIV Viral Load Testing in the
257 South African Public Health Setting in the Context of Evolving ART Guidelines and Advances in
258 Technology , 2013 – 2022. Diagnostics [Internet]. 2023;13(17):2013–22. Available from:
259 <https://doi.org/10.3390/diagnostics13172731>
- 260 4. Abbott RealTime HIV1 kit insert 51-602100/R10 [Internet]. 2014. Available from:
261 [https://www.who.int/diagnostics_laboratory/evaluations/pq-list/hiv-
262 vrl/160530_0145_027_00_final_public_report_v2.pdf](https://www.who.int/diagnostics_laboratory/evaluations/pq-list/hiv-vrl/160530_0145_027_00_final_public_report_v2.pdf)
- 263 5. Roche CAP/CTM HIV-1 v2.0 EXPT-IVD [Internet]. 2018. Available from: [https://pim-
264 eservices.roche.com/eLD_SF/za/en/Documents/GetDocument?documentId=ab57160e-0bd6-
265 e811-df87-00215a9b3428](https://pim-eservices.roche.com/eLD_SF/za/en/Documents/GetDocument?documentId=ab57160e-0bd6-e811-df87-00215a9b3428)

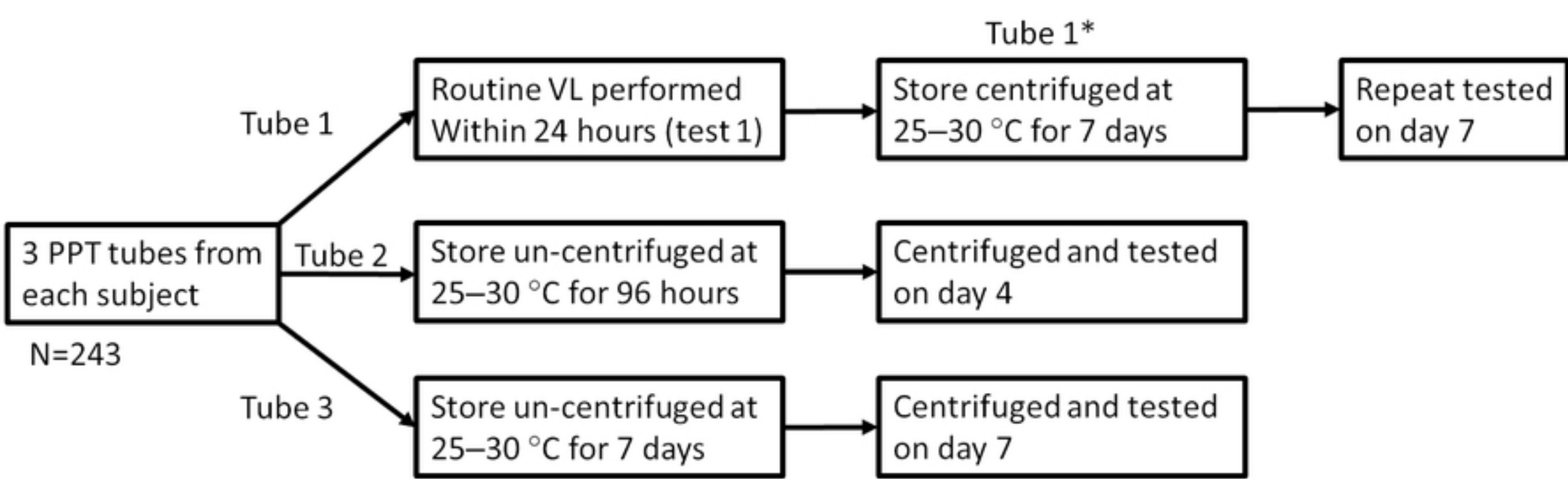
- 266 6. Vandamme AM, Van Laethem K, Schmit JC, Van Wijngaerden E, Reynders M, Debyser Z, et al.
267 Long-term stability of human immunodeficiency virus viral load and infectivity in whole blood.
268 Eur J Clin Invest. 1999;29(5):445–52. available from [https://doi.org/10.1046/j.1365-](https://doi.org/10.1046/j.1365-2362.1999.00462.x)
269 2362.1999.00462.x
- 270 7. Amellal B, Murphy R, Maiga A, Brucker G, Katlama C, Calvez V, et al. Stability of HIV RNA in
271 plasma specimens stored at different temperatures. HIV Med. 2008;9(9):790–3. available from
272 [https://doi.org/ 10.1111/j.1468-1293.2008.00632.x](https://doi.org/10.1111/j.1468-1293.2008.00632.x)
- 273 8. Bonner K, Siemieniuk RA, Boozary A, Roberts T, Fajardo E, Cohn J. Expanding access to HIV viral
274 load testing: A systematic review of RNA stability in EDTA tubes and PPT beyond current time and
275 temperature thresholds. PLoS One. 2014;9(12):1–13. available from [https://](https://doi.org/10.1371/journal.pone.0113813)
276 doi.org/10.1371/journal.pone.0113813
- 277 9. Hardie D, Korsman S, Ameer S, Vojnov L, Hsiao NY. Reliability of plasma HIV viral load testing
278 beyond 24 hours: Insights gained from a study in a routine diagnostic laboratory. PLoS One.
279 2019;14(7):1–12. available from [https://doi.org 10.1371/journal.pone.0219381/](https://doi.org/10.1371/journal.pone.0219381/)
- 280 10. Giavarina D. Understanding Bland Altman analysis. Biochem Medica. 2015;25(2):141–51.
281 available from [https://doi.org/ 10.11613/BM.2015.015](https://doi.org/10.11613/BM.2015.015)
- 282 11. Douglas Wilson, Sudeshni Naidoo, Linda-Gail Bekker, Mark Cotton GM. Handbook of HIV
283 Medicine. 1st ed. Douglas Wilson, Sudeshni Naidoo, Linda-Gail Bekker, Mark Cotton GM, editor.
284 Oxford New York: Oxford University Press, South Africa; 2002. 44–46 p.
- 285 12. Jeremy Nel, Graeme Meintjes, Regina Osih (Chairpersons), Larisse Badenhorst, John Black, Rosie
286 Burton, Nomathemba Chandiwana, Francesca Conradie, Natasha Davies, Mariam Edo, Ute
287 Feucht, Cloete Jansen Van Vuuren, John Joska, Richard Lessells, Gary Maartens, Pheto Mangena,
288 Thandekile Manzini, Yunus Moosa, Ndiviwe Mphothulo, Jennifer Nash, Dulcy Rakumakoe, Evan
289 Shoul, Phumla Sinxadi, David Spencer, Helen van der Plas, Camilla Wattrus, Jeannette Wessels,
290 Joana Woods, Jarrod Zamparini. SOUTHERN AFRICAN HIV CLINICIANS SOCIETY GUIDELINES FOR
291 ANTIRETROVIRAL THERAPY IN ADULTS : 2023 UPDATE A publication of the Southern African HIV
292 Clinicians Society. 2023; available at <http://www.sahivsoc.org>
- 293 13. World Health Organization. CONSOLIDATED GUIDELINES ON HIV PREVENTION, TESTING,
294 DELIVERY AND MONITORING: TREATMENT, SERVICE RECOMMENDATIONS FOR A PUBLIC HEALTH

- 295 APPROACH. Geneva: WHO; 2021.
- 296 14. Kran AMB, Jonassen TØ, Sannes M, Jakobsen K, Lind A, Mæland A, et al. Overestimation of
297 human immunodeficiency virus type 1 load caused by the presence of cells in plasma from
298 plasma preparation tubes. *J Clin Microbiol*. 2009;47(7):2170–4. available at [http://doi.org/](http://doi.org/10.1128/JCM.00519-09)
299 [10.1128/JCM.00519-09](http://doi.org/10.1128/JCM.00519-09)
- 300 15. Procop GW, Taega AJ, Starkey C, Tungsiripat M, Warner D, Schold JD, et al. Preanalytic process
301 linked to spuriously elevated HIV viral loads: improvement on an FDA-approved process. *Diagn*
302 *Microbiol Infect Dis*. 2017;89(1):44–6. available at [http://doi.org](http://doi.org/10.1016/j.diagmicrobio.2016.09.003)
303 [10.1016/j.diagmicrobio.2016.09.003](http://doi.org/10.1016/j.diagmicrobio.2016.09.003)
- 304 16. Cobb BR, Vaks JE, Do T, Vilchez RA. Evolution in the sensitivity of quantitative HIV-1 viral load
305 tests. *J Clin Virol [Internet]*. 2011;52(SUPPL. 1):S77–82. Available from:
306 <http://dx.doi.org/10.1016/j.jcv.2011.09.015>
- 307 17. Ellman TM, Alemayehu B, Abrams EJ, Arpadi S, Howard AA, El-Sadr WM. Selecting a viral load
308 threshold for routine monitoring in resource-limited settings: Optimizing individual health and
309 population impact: Optimizing. *J Int AIDS Soc*. 2017;20:16–8. available from [http://doi.org/](http://doi.org/10.1002/jia2.25007)
310 [10.1002/jia2.25007](http://doi.org/10.1002/jia2.25007)
- 311 18. Chun HM, Abutu A, Milligan K, Ehoche A, Shiraishi RW, Odafe S, et al. Low-level viraemia among
312 people living with HIV in Nigeria: a retrospective longitudinal cohort study. *Lancet Glob Heal*.
313 2022;10(12):e1815–24. available from [http://doi.org/](http://doi.org/10.1016/S2214-109X(22)00413-2) [10.1016/S2214-109X\(22\)00413-2](http://doi.org/10.1016/S2214-109X(22)00413-2)
- 314 19. Crespo-Bermejo C, de Arellano ER, Lara-Aguilar V, Valle-Millares D, Gómez-Lus ML, Madrid R, et
315 al. Persistent low-Level viremia in persons living with HIV undertreatment: An unresolved status.
316 *Virulence [Internet]*. 2021;12(1):2919–31. Available from:
317 <https://doi.org/10.1080/21505594.2021.2004743>
- 318 20. Golob JL, Stern J, Holte S, Kitahata MM, Crane HM, Coombs RW, et al. HIV DNA levels and decay
319 in a cohort of 111 long-term virally suppressed patients. *Aids [Internet]*. 2018;(January):1.
320 Available from: <http://insights.ovid.com/crossref?an=00002030-900000000-97148>

321

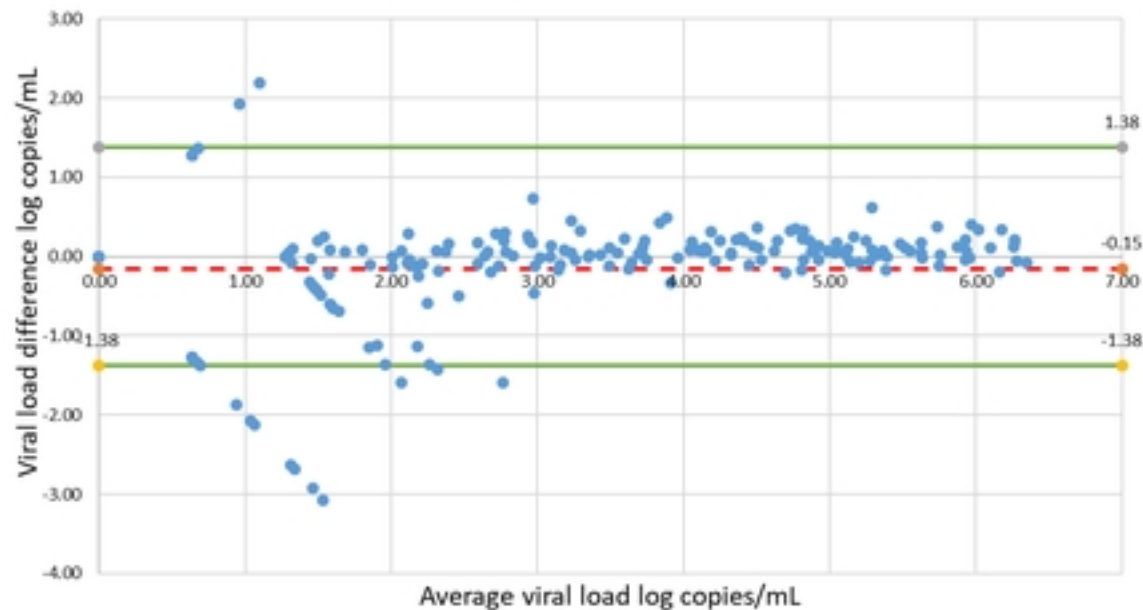
322 **Supporting information:**

323 **S1 File_XLS: Raw data file containing day 1, 4 and 7 viral load results of study samples.**

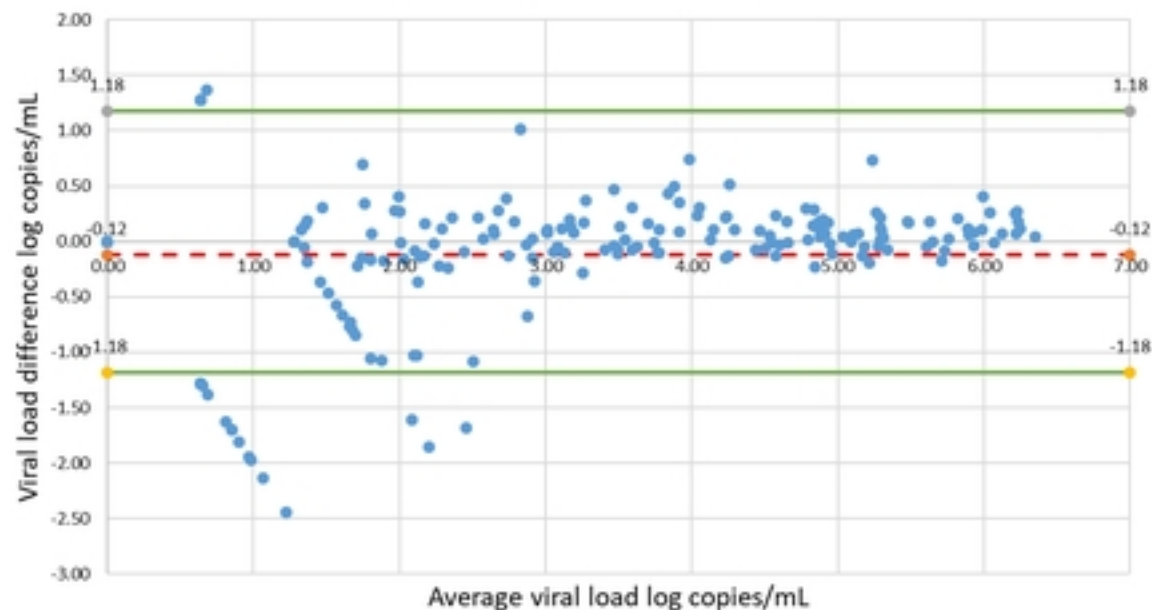


*Subset: n=103, tube 1 retested on day 7

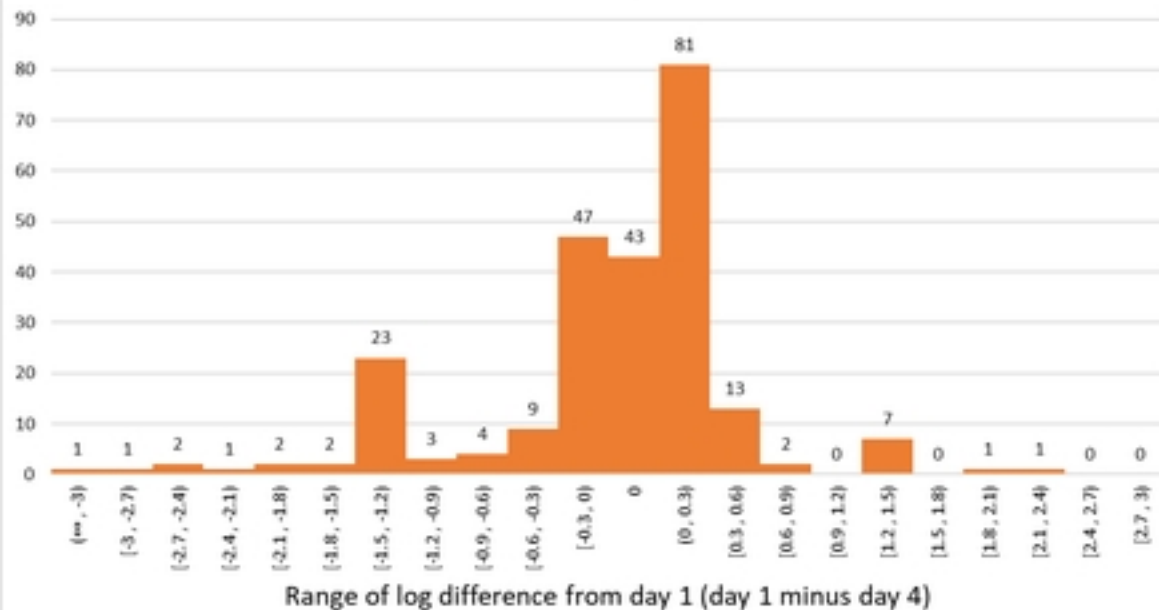
Day 1 compared with day 4



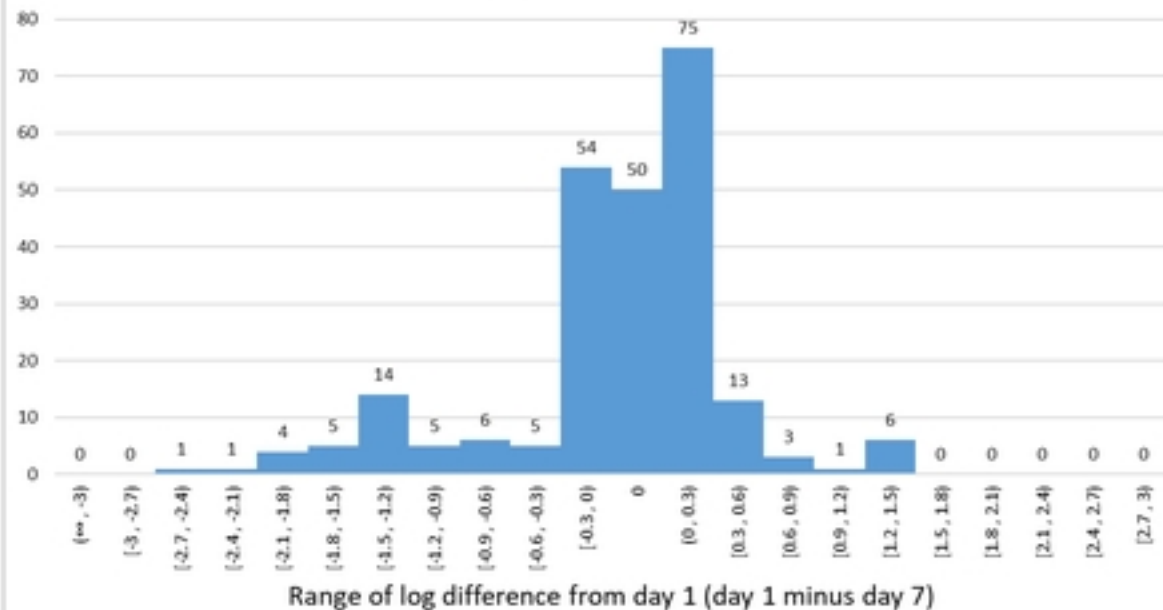
Day 1 compared with day 7



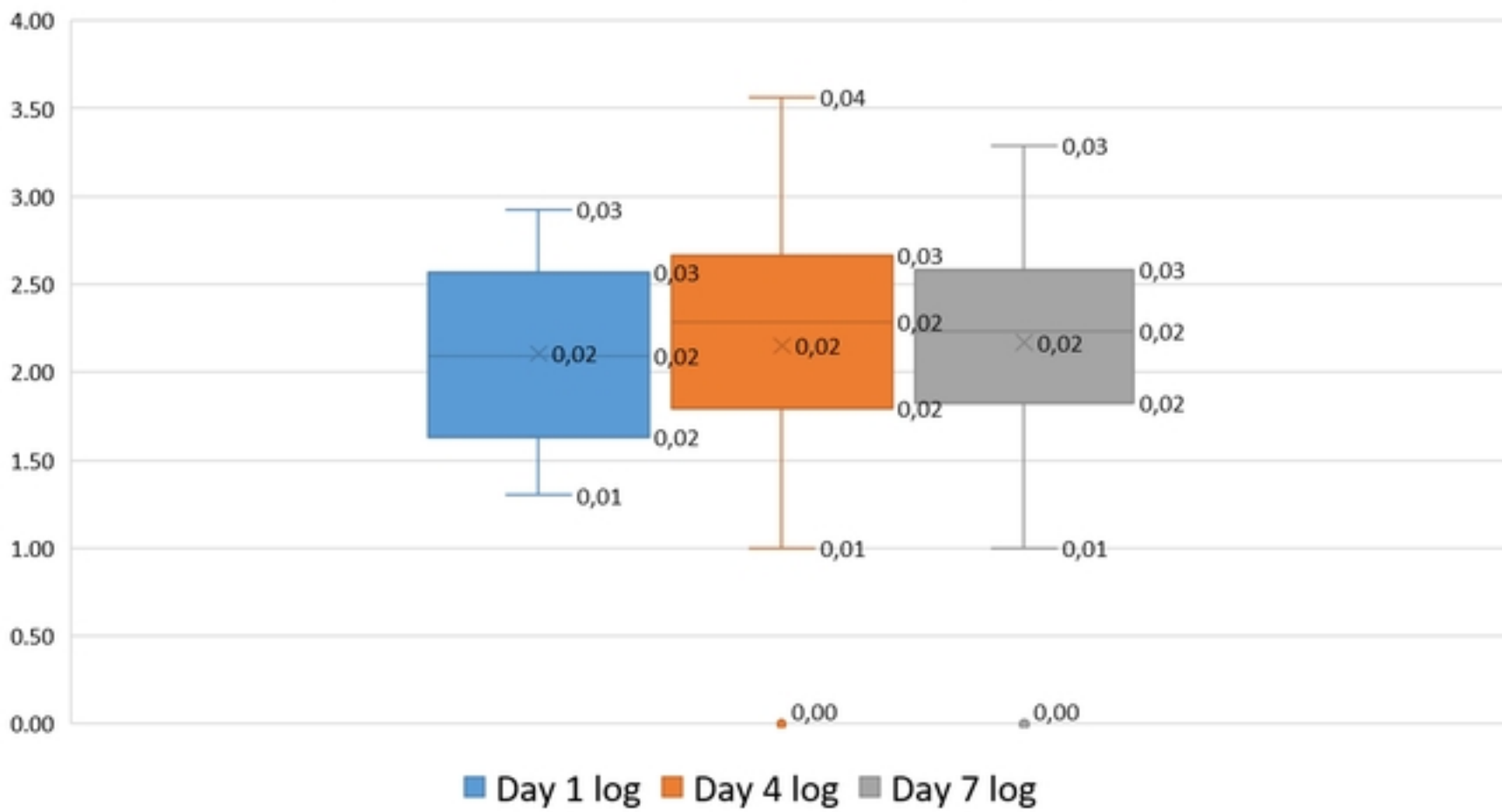
Day 1 to day 4



Day 1 to day 7

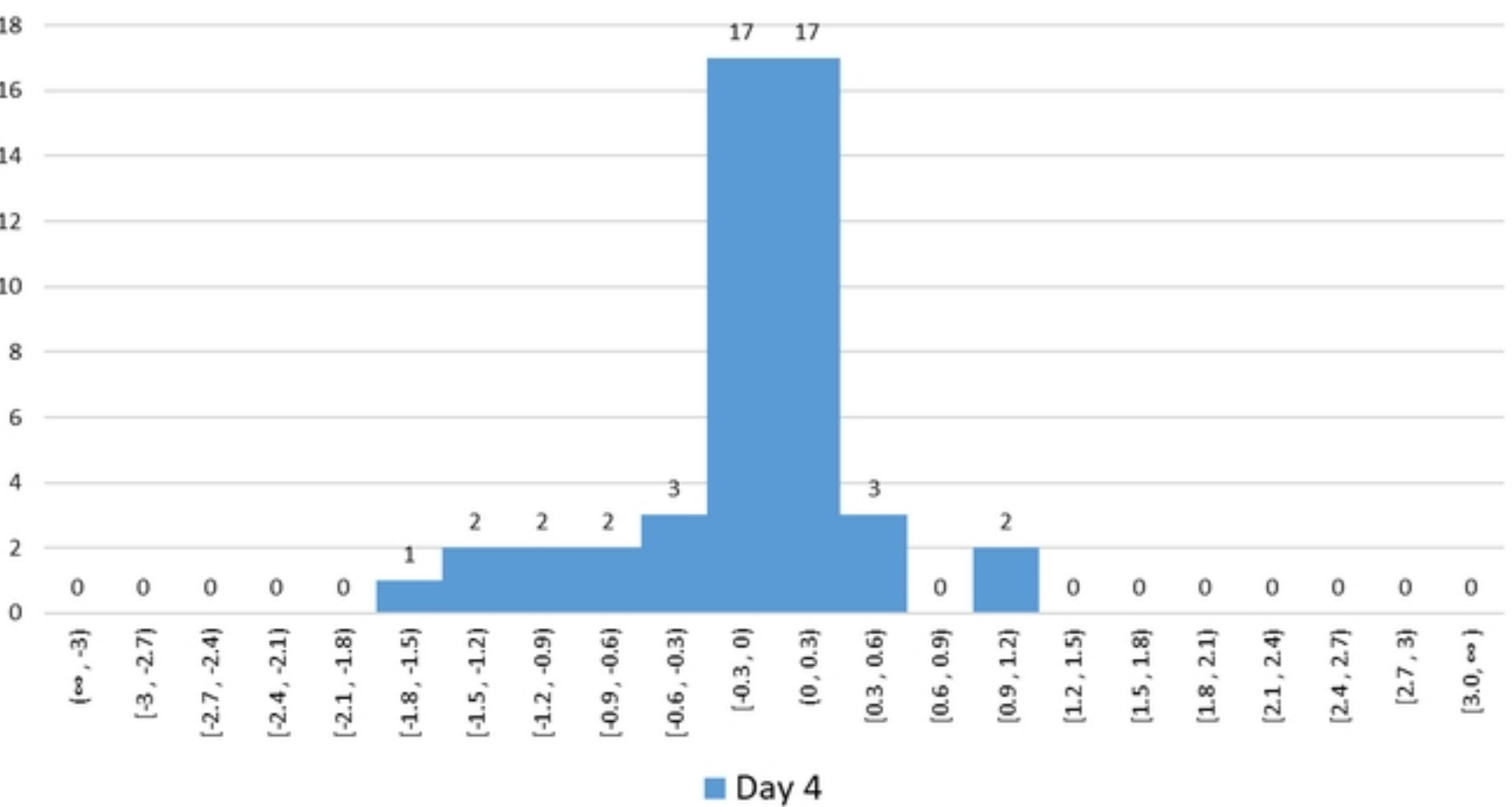


Day 1 viral load between 2–1000 copies/mL

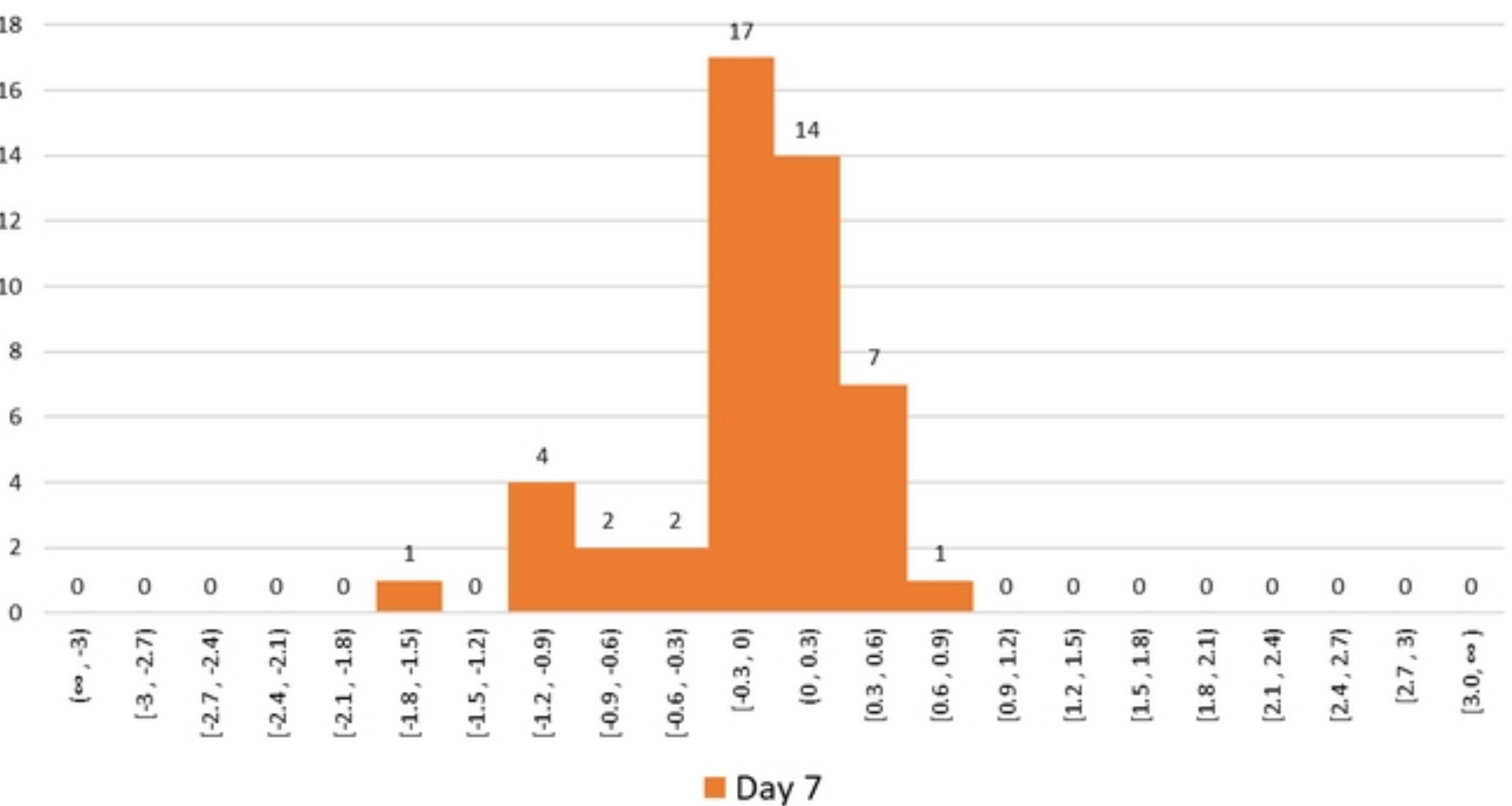


medRxiv preprint doi: <https://doi.org/10.1101/2023.08.30.23294838>; this version posted September 2, 2023. The copyright holder for this preprint (which was not certified by peer review) is the author/funder, who has granted medRxiv a license to display the preprint in perpetuity. It is made available under a [CC-BY 4.0 International license](https://creativecommons.org/licenses/by/4.0/).

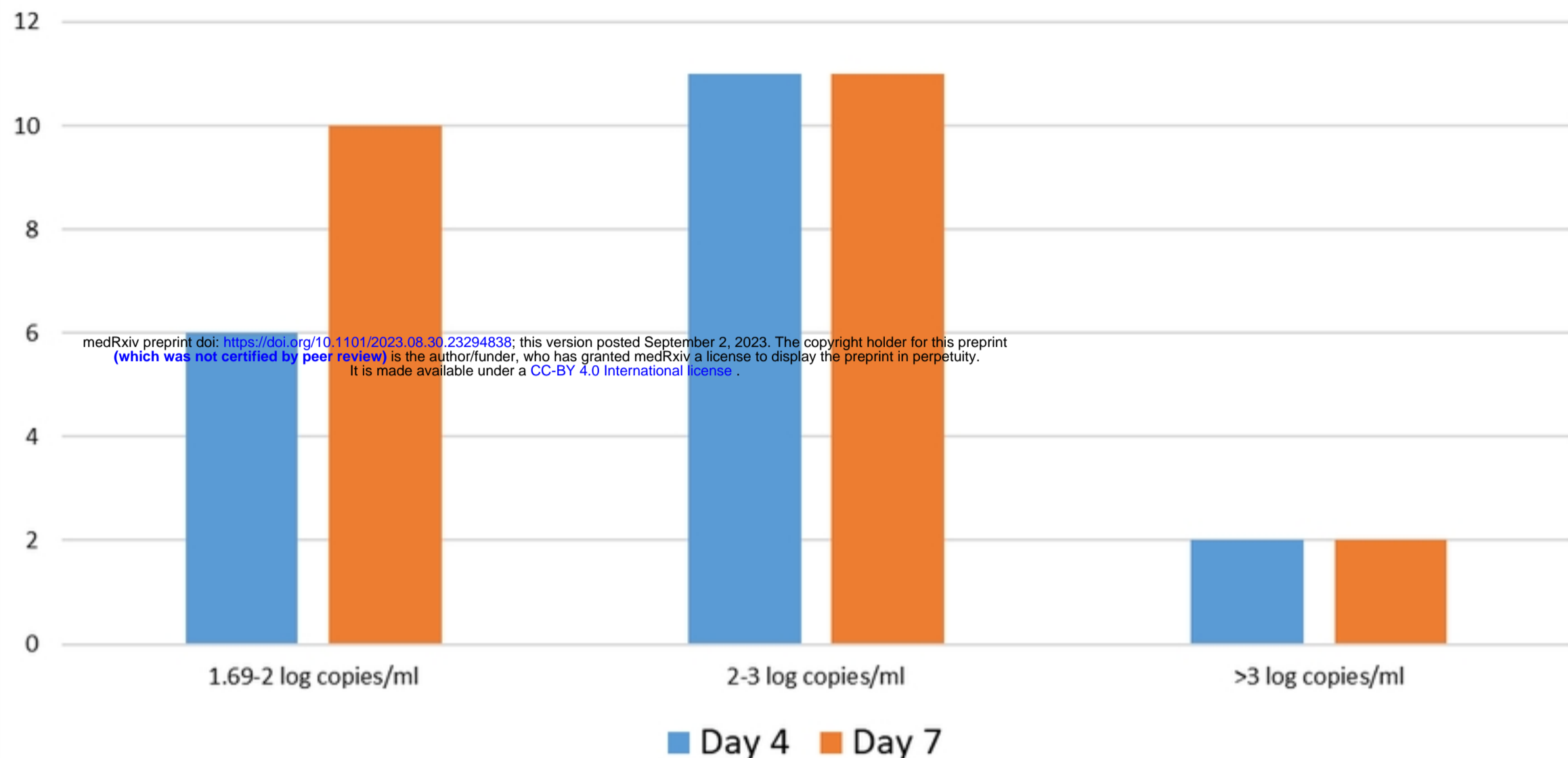
Viral load log 1.3–0 copies/ml: day 4



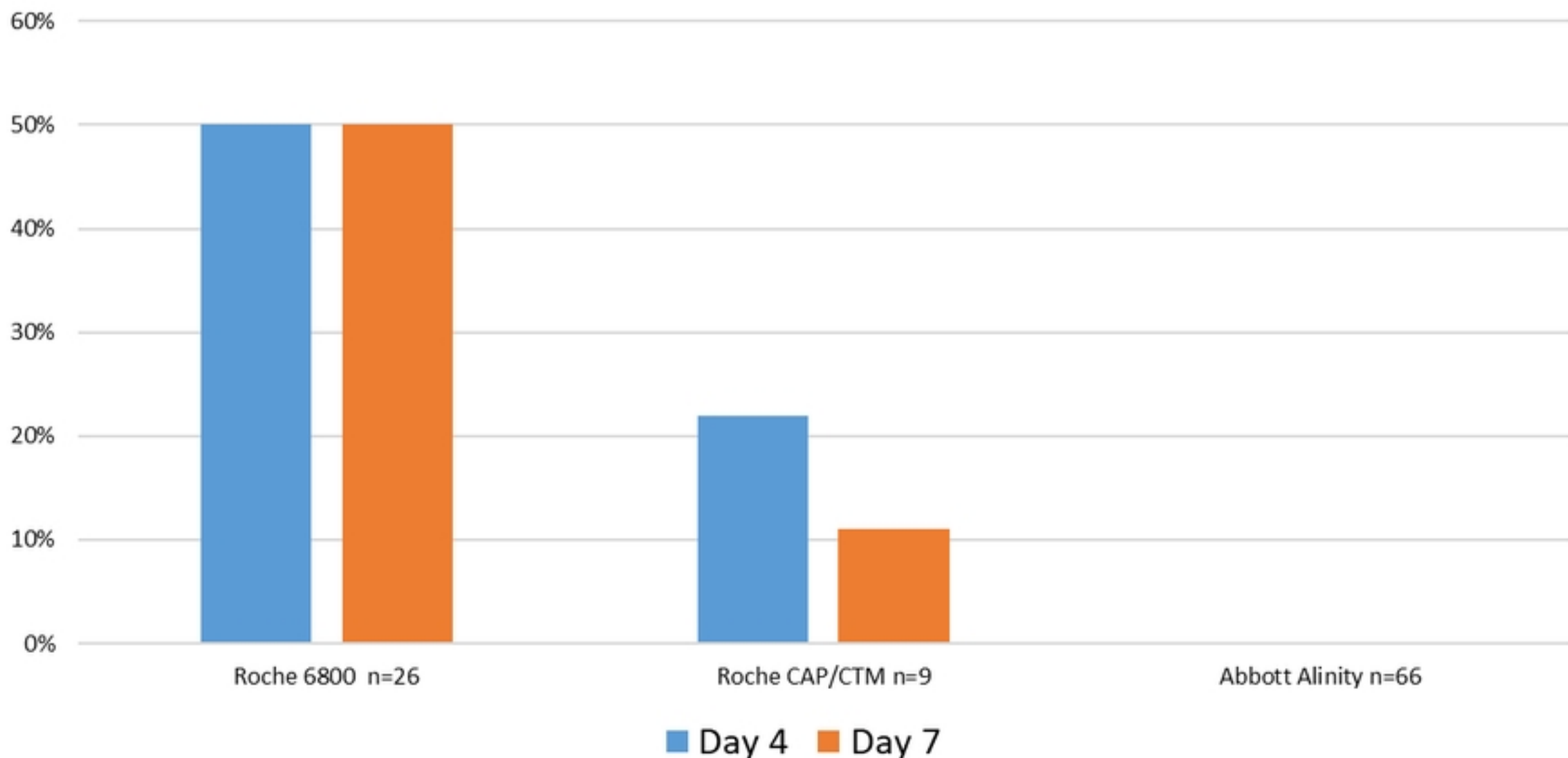
Viral load log 1.3–3 copies/ml: day 7



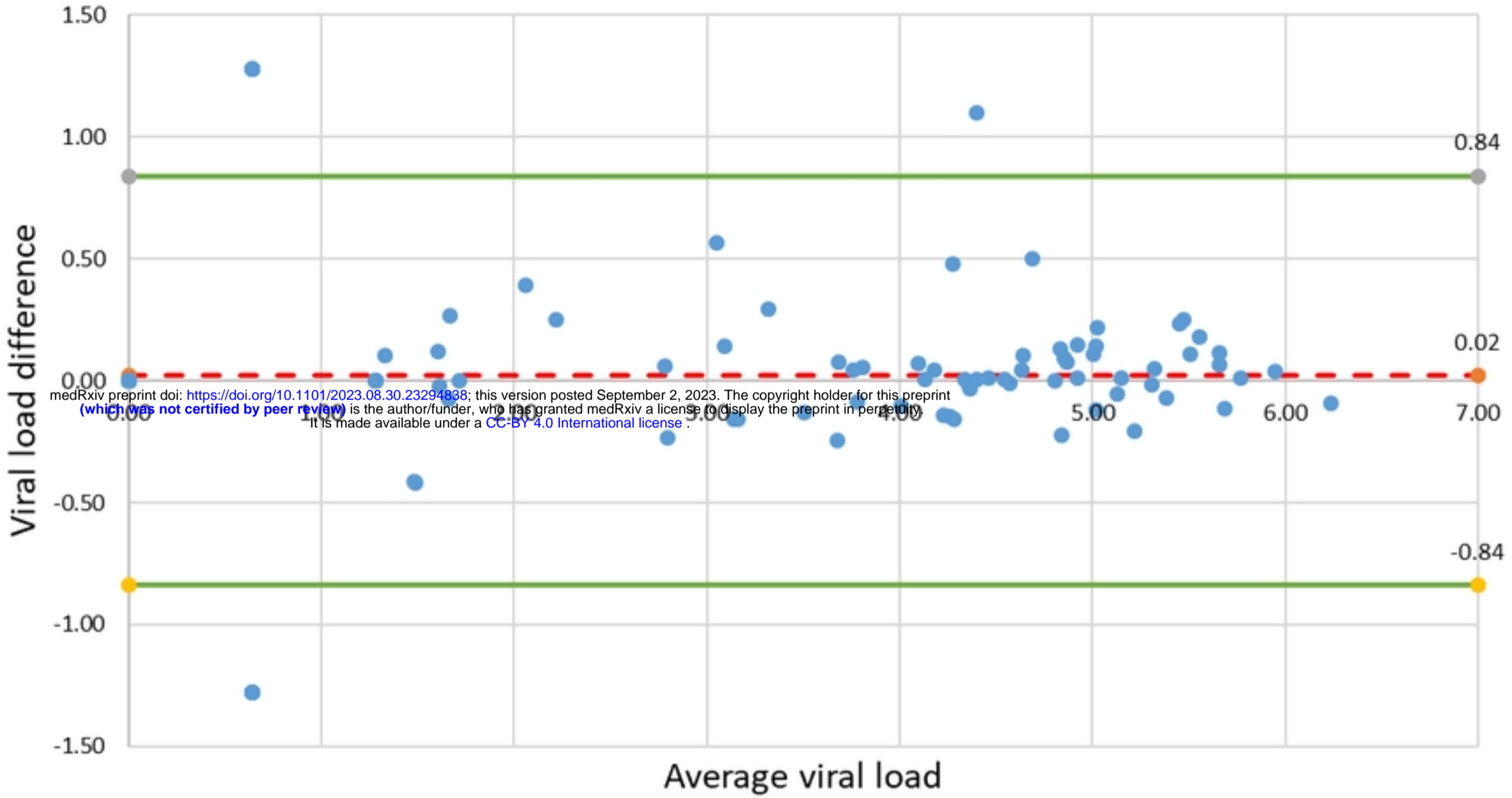
Day 1 LDL/<50 c/mL samples with a raised delayed test result (day 4 or day 7)



Proportion of day 1 LDL/<50 c/mL samples with a raised delayed test result (day 4 or 7)



Day 1 vs day 7R



Day 1 to day 7R

