

1 A retrospective longitudinal study of adenovirus group F, norovirus GI and GII, rotavirus, and
2 enterovirus nucleic-acids in wastewater solids at two wastewater treatment plants: Solid-liquid
3 partitioning and relation to clinical testing data

4
5 Alexandria B. Boehm^{1*}, Bridgette Hughes², Dorothea Duong², Niaz Banaei³, Bradley J. White²,
6 Marlene K. Wolfe⁴

- 7
8 1. Department of Civil & Environmental Engineering, School of Engineering and Doerr
9 School of Sustainability, Stanford University, 473 Via Ortega, Stanford, CA, USA
10 2. Verily Life Sciences LLC, South San Francisco, CA, USA
11 3. Stanford Health Care Clinical Microbiology Laboratory, Stanford University, School of
12 Medicine, Palo Alto, CA, USA
13 4. Gangarosa Department of Environmental Health, Rollins School of Public Health, Emory
14 University, 1518 Clifton Rd, Atlanta, GA, USA

15
16
17
18 * Author to whom correspondence should be addressed. Email: aboehm@stanford.edu, Tel:
19 650-724-9128
20

21
22
23
24
25
26
27
28
29
30
31
32
33
34
35
36
37
38
39
40
41
42
43
44
45
46
47

Abstract

Background: Enteric infections are important causes of morbidity and mortality, yet clinical surveillance is limited. Wastewater-based epidemiology (WBE) has been used to study community circulation of individual enteric viruses and panels of respiratory diseases, but there is limited work studying concurrent circulation of a suite of important enteric viruses.

Methods: A retrospective WBE study was carried out at two wastewater treatment plants located in California, United States. Using droplet digital polymerase chain reaction (PCR), we measured concentrations of human adenovirus group F, enteroviruses, norovirus genogroups I and II, and rotavirus nucleic-acids in wastewater solids two times per week for 26 months (n=459 samples) between 2/1/21 and 4/14/23. A novel probe-based PCR assay was developed and validated for adenovirus. We compared viral nucleic-acid concentrations to positivity rates for viral infections from clinical specimens submitted to a local clinical laboratory to assess concordance between the data sets.

Findings: We detected all viral targets in wastewater solids. At both wastewater treatment plants, human adenovirus group F and norovirus GII nucleic-acids were detected at the highest concentrations (median concentrations greater than 10^5 cp/g), while rotavirus RNA was detected at the lowest concentrations (median on the order of 10^3 cp/g). Rotavirus, adenovirus group F, and norovirus nucleic-acid concentrations were positivity associated with clinical specimen positivity rates. Concentrations of tested viral nucleic-acids exhibited complex associations with SARS-CoV-2 and other respiratory viral nucleic-acids in wastewater, suggesting divergent transmission patterns.

48 **Interpretation:** This study provides evidence for the use of wastewater solids for the sensitive
49 detection of enteric virus targets in WBE programs aimed to better understand the spread of
50 enteric disease at a localized, community level without limitations associated with testing many
51 individuals. Wastewater data can inform clinical, public health, and individual decision making
52 aimed to reduce transmission of enteric disease.
53

54 **Introduction**

55

56 Infectious diseases are leading causes of morbidity and mortality¹, and climate change may
57 exacerbate the spread of critical and emerging diseases². Diarrheal illness, in particular, is a
58 leading cause of morbidity and mortality especially for children³. Enteric viruses, including
59 human noroviruses, adenoviruses, enteroviruses, and rotavirus, are responsible for a large
60 percentage of diarrheal illnesses^{4,5}. Unfortunately, there is limited data on the incidence and
61 prevalence of enteric viral infections and their etiologies in most of the world. Data that do exist
62 are biased to severe cases, or individuals with comorbidities, and are often limited to syndromic
63 data on GI symptoms that are non-specific. This limits the ability to inform prevention and
64 response activities, including vaccine development, vaccination campaigns, pharmaceutical and
65 non-pharmaceutical interventions.

66

67 Wastewater-based epidemiology (WBE) is emerging as a tool for assessing population-level
68 disease occurrence. Wastewater contains excretions from individuals that enter drains and
69 toilets including feces, urine, sputum, mucus and saliva. When individuals are infected by a
70 pathogen, that pathogen or its components (nucleic-acids and proteins) can be excreted and
71 enter wastewater. When wastewater is collected at a wastewater treatment plant (WWTP), it
72 represents a composite sample of all the people in the sewershed (anywhere from $\sim 10^4$ - 10^6
73 individuals). This includes even infected and shedding individuals who are asymptomatic or
74 mildly symptomatic and those who do not seek or receive medical care. Results regarding
75 presence and concentration of infectious disease targets can be available 24 hours after sample
76 collection. Therefore, WBE data can be complementary to clinical data by providing rapid results
77 at a community scale and may even provide early warnings of disease spread. Work to date
78 suggests that wastewater monitoring are related to community disease levels and can be used

79 to detect occurrence of important respiratory^{6,7}, enteric^{8,9}, and emerging and outbreak
80 infections^{10,11}.

81
82 Wastewater is a mixture of liquids (water, urine, and other liquids), and solids or particles (feces,
83 food, cells, and other material). Viruses tend to partition to the solids in wastewater, where their
84 concentrations can be orders of magnitude higher than in the liquid on a mass equivalent
85 basis^{12,13}. It has been proposed that using wastewater solids can provide sensitive
86 measurements for WBE applications, but the affinity of enteric viruses to wastewater solids in
87 WBE applications has not been previously described.

88
89 The goal of this study is to test the utility of WBE for a suite of enteric viral pathogens. We
90 conduct a retrospective study to measure concentrations of enteric virus nucleic-acids in two
91 samples each week of wastewater solids samples over 26 months from two wastewater
92 treatment plants in the San Francisco Bay Area of California, US. In particular, we measured
93 concentrations of human adenovirus group F, rotavirus, human norovirus GI and GII, and
94 enterovirus nucleic-acids. These viruses were chosen for the study because they represent
95 some of the most important etiologies of enteric viral infections globally^{3,4}. In addition, we
96 measured these targets in both the solids and liquid fractions of wastewater to assess their
97 affinity to the solid matrix. Finally, we test whether wastewater concentrations of enteric virus
98 nucleic-acids are associated with positivity rates from clinical samples from a local diagnostic
99 laboratory.

100

101 **Methods**

102

103 **(RT-)PCR assays.** We used previously published assays for rotavirus¹⁴, human norovirus
104 (HuNoV) GI¹⁵ and GII¹⁶, and enteroviruses (EV)¹⁷. We designed novel PCR primers and an

105 internal hydrolysis probe for adenovirus group F (HAdV). HAdV genome sequences were
106 downloaded from National Center for Biotechnology Information (NCBI) in April 2022 and
107 aligned to identify conserved regions. Primers and probes were developed *in silico* using
108 Primer3Plus (<https://primer3plus.com/>). Parameters used in assay development are provided in
109 Table S1. All primers and probe sequences (Table S2) were screened for specificity *in silico* and
110 *in vitro* against virus panels and genomic and synthetic target nucleic-acids (appendix p 2,
111 Table S3). We also used previously published assays for the SARS-CoV-2¹⁸, and pepper mild
112 mottle virus M gene (PMMoV)².

113
114 **Study design and sample collection.** This study is an observational, retrospective longitudinal
115 surveillance study. Two WWTPs that serve 75% (1,500,000 people) of Santa Clara County, (SJ)
116 and 25% (250,000 people) of San Francisco County (OSP), California were included in the
117 study (Figure S1). Further WWTP descriptions are elsewhere¹⁹.

118
119 Wastewater solids samples were collected daily for a prospective WBE effort beginning
120 November 2020 and stored, and a subset of those samples (two samples per week, 459
121 samples total) are used in this study. The samples were chosen to span a 26 month period
122 (2/1/21 - 4/14/23) spanning different phases of the COVID-19 pandemic.

123
124 To compare concentrations of enteric virus nucleic-acids in liquid wastewater and wastewater
125 solids, eight samples of settled solids and 24-hour composited influent were collected from OSP
126 from the primary clarifier and the inlet to the plant, respectively, on July 11, 13-16, 17, 18, and
127 21, 2023 (n=8, hereafter labeled as samples 1-8) using clean sterile containers.

128
129 **Procedures.** For the retrospective study, 50 mL of wastewater solids were collected using
130 sterile technique in clean bottles from the primary clarifier. At SJ, twenty-four hour composite

131 samples were collected by combining grab samples from the sludge line every six hours. At
132 OSP, a grab sample was collected from the sludge line. Samples were stored at 4°C,
133 transported to the lab, and processed within six hours. Solids were dewatered²⁰ and frozen at -
134 80°C for 4 - 60 weeks. Frozen samples were thawed overnight at 4°C and then nucleic-acids
135 were obtained from the dewatered solids following previously published protocols^{18,21}. Nucleic-
136 acids were obtained from 10 replicate sample aliquots. Each replicate nucleic-acid extract from
137 each sample was subsequently stored between 8 and 273 days for SJ and between 1 and 8
138 days for OSP at -80°C and subjected to a single freeze thaw cycle. Upon thawing, targets were
139 measured immediately using digital droplet (RT-)PCR with multiplexed assays for SARS-CoV-2,
140 rotavirus, HAdV, HuNoV GI, HuNoV GII, EV, and PMMoV. PMMoV is highly abundant in human
141 stool and wastewater²² and is used as an internal recovery and fecal strength control. Each
142 nucleic-acid extract was run in a single well so that 10 replicate wells were run for each sample
143 for each assay.

144
145 In order to investigate potential losses from storage and freeze thaw of the samples and their
146 nucleic-acid extracts, we compared measurements of the SARS-CoV-2 and PMMoV measured
147 in the retrospective, longitudinal study obtained using the stored samples to measurements from
148 the same samples that were not stored and analyzed prospectively for a regional monitoring
149 effort (appendix p 3).

150
151 For the wastewater liquid/solid comparison, influent and solids samples were transported to the
152 laboratory on ice and stored at 4°C for 7 days during which time we expect minimal decay of
153 nucleic-acid target based on experiments with other similar targets²³. The solids were
154 dewatered and processed exactly as described above for the retrospective samples. The
155 influent samples were processed to obtain nucleic-acid as described previously¹⁰; 10
156 subsamples were processed per sample (appendix p 2). Nucleic-acid templates were used

157 immediately (no storage) as template in multiplexed (RT-)PCR reactions for rotavirus, HAdV,
158 EV, HuNoV GI, HuNoV GII, and PMMoV. Each subsample nucleic-acid extract was run in a
159 single well so that 10 replicate wells were run for each sample for each assay.

160
161 Further details of the dd(RT)-PCR, including the use of controls and thresholding, are described
162 in the appendix (pp 2-3). We confirmed that multiplexing up to eight assays in a single reaction
163 did not interfere with target quantification (appendix p 3). Concentrations of nucleic-acid targets
164 were converted to concentrations in units of copies (cp)/g dry weight or per milliliter of liquid
165 using dimensional analysis. The errors are reported as standard deviations. Three positive
166 droplets across 10 merged wells corresponds to a concentration between ~500-1000 cp/g; the
167 range in values is a result of the range in the equivalent mass of dry solids added to the wells,
168 or 1 cp/ml for liquid.

169
170 **Enteric virus infection positivity rate data.** Data are not gathered on incidence and
171 prevalence of rotavirus, adenovirus group F, or norovirus infections in the US. As such, we use
172 rotavirus, adenovirus group F, or norovirus clinical test positivity rates to infer information about
173 the spread of disease. We used positivity rates from Stanford Health Care Clinical Microbiology
174 Laboratory (“clinical laboratory”) for comparison to wastewater data. The clinical laboratory tests
175 stool specimens of symptomatic patients for rotavirus, adenovirus group F, and HuNoV using
176 the BIOFIRE GI panel (bioMérieux, Inc., Salt Lake City, UT). HuNoV testing included both GI
177 and GII, but is not disaggregated. The clinical laboratory is among the largest in Santa Clara
178 County, where SJ WWTP is located, and receives specimens from counties in the San
179 Francisco Bay Area. We assumed that the positivity rates recorded at the clinical laboratory are
180 reasonable estimates for the positivity rates for residents in the sewersheds. Positivity rates are
181 aggregated weekly. Enteroviruses are a diverse group of viruses and there is no clinical testing
182 data available that represents disease occurrence caused by enteroviruses in aggregate.

183

184 **Statistical analysis.** Data tended to be not normal, so non-parametric tests were used. We
185 compared concentrations at SJ and OSP for each viral target using Mann-Whitney U tests (5
186 tests total). We tested the null hypothesis that infection positivity rates are not associated with
187 the nucleic-acids concentrations in wastewater solids at each WWTP (8 tests total) using
188 Kendall's test of association; we used weekly aggregated positivity rate from the clinical
189 laboratory, and average of the two weekly concentrations of viral nucleic-acids for the analysis.
190 We tested the null hypothesis that nucleic-acid concentrations of each virus were not associated
191 between the two WWTPs (5 tests total) using Kendall's test; since samples from the exact same
192 day at SJ and OSP were not processed, we used the weekly average concentrations. We tested
193 the null hypothesis that viral nucleic-acid concentrations were not associated within each
194 WWTP (20 tests total) using Kendall's test. We used a p value of 0.0013 (0.05/38) for alpha=
195 0.05 to account for multiple hypotheses testing. All analysis was carried out using RStudio
196 (1.4.1106) and R (4.0.5).

197

198 **Ethics.** This study was reviewed by theStanford University Institutional Review Board (IRB) and
199 the IRB determined that this research does not involve human subjects and is exempt from
200 oversight.

201

202 **Results**

203

204 Results are reported as suggested in the Environmental Microbiology Minimal Information
205 guidelines²⁴ (appendix p 4, Figure S2, Table S4). Extraction and (RT-)PCR negative and
206 positive controls performed as expected (negative and positive, respectively). In the 459
207 samples comprising the retrospective study, consistency of PMMoV measurements in samples
208 within WWTP indicated no gross nucleic-acid extraction failures (appendix pp 3-4). Comparison

209 of SARS-CoV-2 and PMMoV measurements made on unstored samples to those used in this
210 retrospective study that were stored, and for which the nucleic-acid underwent one freeze-thaw
211 gave equivocal results; PMMoV showed no degradation. However, median (IQR) ratios of
212 measurements in stored and fresh samples was 0.2 (0.1-0.3) and 0.4 (0.2-0.6) for SJ and OSP,
213 respectively, suggesting some degradation (appendix p 4). Although not ideal, storage of
214 samples is essential for retrospective work.

215
216 Results of *in silico* analysis indicated no cross reactivity of the enteric virus (RT-)PCR probe-
217 based assays with sequences deposited in NCBI; *in vitro* testing against non-target and target
218 viral nucleic-acids (Table S3) also indicated no cross reactivity. We multiplexed eight different
219 assays in each PCR reaction. We found that the concentration of each target was not affected
220 by the presence of orthogonal targets as background (Figure S3).

221
222 Viral nucleic-acid concentrations in eight matched wastewater liquid and solid samples were
223 orders of magnitude higher in the solids compared to the liquid wastewater, on a per mass basis
224 (Figures 1 and S4). The distribution coefficients, K_d , defined as the ratio of nucleic-acids
225 concentrations in solids to liquids, in decreasing rank order of medians (IQR) are: EV K_d 26000
226 ml/g (12300-28700), HuNoV GI K_d 24400 ml/g (9800-28900), HuNoV GII K_d 16100 ml/g (10000-
227 22400); HAdV K_d 6700 ml/g (14600-13200); PMMoV K_d 3700 ml/g (3400-4400); and rotavirus K_d
228 650 (400-980). Given the observed enrichment of viral targets in wastewater solids, it is justified
229 to use the solid matrix for prospective wastewater monitoring for infectious disease targets.

230
231 The retrospective, longitudinal study detected EV, HAdV, rotavirus, and HuNoV GI and GII
232 nucleic-acids in wastewater solids (Figures 2 and S5) throughout the study with most showing
233 some cyclic, season patterns with higher concentrations in winter/spring periods. Median
234 concentrations of each enteric viral target were significantly higher at SJ relative to OSP (Mann-

235 Whitney U Test, all $p < 0.001$) for all viral targets except for HuNoV GII, but the effect size was
236 less than 1 order of magnitude (Table 1). Within each WWTP, median concentrations of the
237 different viruses ranked highest to lowest were HAdV (highest median concentration of 5.8×10^5
238 and 1.9×10^6 cp/g for OSP and SJ, respectively) followed by HuNoV GII (5.7×10^5 and 7.0×10^5
239 cp/g for OSP and SJ, respectively), EV (4.1×10^4 and 5.4×10^4 cp/g for OSP and SJ,
240 respectively), HuNoV GI (2.8×10^4 and 3.4×10^4 cp/g for OSP and SJ, respectively), and rotavirus
241 with the lowest (1×10^3 and 3.3×10^3 cp/g for OSP and SJ, respectively). Other summary
242 statistics (interquartile ranges, maximums and number of non-detects) generally follow the same
243 pattern (Table 1).

244
245 Between WWTPs, concentration of rotavirus, HAdV, and HuNoV GII nucleic-acids were
246 positively associated (rotavirus $\tau = 0.27$, $p < 10^{-4}$; HAdV $\tau = 0.49$, $p < 10^{-13}$; HuNoV GII $\tau =$
247 0.36 , $p < 10^{-7}$) whereas HuNoV GI and EV concentrations were not correlated between WWTPs.
248 Within SJ WWTP, the viral nucleic-acid concentrations were positively associated with each
249 other (τ between 0.25 and 0.6 depending on viral target, all $p < 10^{-4}$) except that EV was not
250 associated with rotavirus, HuNoV GII, or HuNoV GI nucleic-acid concentrations. Within OSP,
251 rotavirus and HuNoV GI ($\tau = 0.23$, $p = 0.00036$), HuNoV GII and GI ($\tau = 0.30$, $p < 10^{-5}$), and
252 HAdV and EV ($\tau = 0.21$, $p = 0.00079$) nucleic-acid concentrations were positively associated.

253
254 Time series of enteric virus nucleic-acids in relation to SARS-CoV-2 RNA measured herein, and
255 other respiratory virus nucleic-acids reported at SJ previously⁷ are provided in Figure 3. At SJ,
256 enteric virus nucleic-acid concentrations increased after the BA.1 surge starting on 2/1/22 and
257 peaked contemporaneously near the BA.2 surge peak, and declined sharply after the BA.2
258 surge. This is in contrast to the pattern observed for a suite of non-SARS-CoV-2 respiratory
259 viruses (including parainfluenza, metapneumovirus, influenza, and coronaviruses) that peaked
260 just prior to the BA.1 surge, and decreased sharply after, and then rose again during the BA.2

261 surge. At OSP, a local maxima in the enteric virus nucleic-acid concentrations occurs near the
262 BA.2 surge, as observed at SJ, but thereafter, patterns for the different viruses diverge. HAdV
263 and HuNoV GI remained relatively high for the duration of the time series after the BA.2 surge,
264 while rotavirus and HuNoV GII concentrations were highest at the end of the time series (spring
265 2023).

266
267 The clinical laboratory processed a median (IQR) of 80 (66-89) samples per week. Median
268 (IQR) positivity rates were lowest for rotavirus (0% (0-1.4%), max = 4.8%), intermediate for
269 adenovirus group F (0 (0 -1.5%), max = 9.1%) and highest for HuNoV (4.8% (2.8-7.5%), max =
270 18.0%). HAdV in wastewater solids at both WWTPs was positively correlated to adenovirus
271 positivity rates ($\tau = 0.30$ for OSP and 0.38 for SJ, both $p < 10^{-4}$). HuNoV GII in wastewater
272 solids at both WWTPs was positively correlated to norovirus positivity rates ($\tau = 0.36$ for OSP
273 and 0.26 for SJ, both $p < 10^{-4}$). HuNoV GI in wastewater solids was not associated with norovirus
274 positivity rates ($\tau = 0.16$, $p = 0.014$ for OSP, $\tau = 0.0067$, $p = 0.92$ for SJ). Rotavirus in
275 wastewater solids at SJ was positively associated with rotavirus positivity rates ($\tau = 0.24$,
276 $p = 0.00049$); however, rotavirus at OSP was not associated with positivity rate ($\tau = 0.19$, $p =$
277 0.0081).

278

279 Discussion

280

281 We detected rotavirus, human adenovirus group F (HAdV), enterovirus (EV), and human
282 norovirus (HuNoV) genogroups I and II in wastewater solids at two San Francisco Bay Area
283 WWTPs twice per week for 26 weeks. We observed coherence of the viral target concentrations
284 between the two WWTPs, suggesting some regional coherence in community infections and
285 shedding into wastewater. Many of the targets showed temporal coherent patterns within
286 WWTPs with maxima in concentrations in the winter/spring seasons. Viral enteric infections are

287 usually seasonal with higher rates in the winter months²⁵, and seasonal wastewater patterns are
288 consistent with that despite various behavior changes potentially associated with the COVID-19
289 pandemic over the course of the study. Temporal variation of the enteric viral targets are distinct
290 from those of SARS-CoV-2 and other respiratory viruses in wastewater, suggesting divergent
291 disease dynamics. However, low enteric virus nucleic-acid concentrations in the winter/spring of
292 2021, relative to the following years may be a result of non-pharmaceutical interventions in
293 place during the early period of COVID-19 pandemic, particularly prior to 4/14/21 when vaccines
294 became widely available, which may have limited the spread of enteric viral infections.

295
296 Concentrations of rotavirus, HAdV, and HuNoV GII in wastewater solids were associated with
297 clinical positivity rates for infections associated with the viruses. This is despite the biases and
298 limitations associated with the clinical data; specifically that the tests were administered on
299 specimens from severely ill individuals, and the individuals tested may not reside or work in the
300 sewersheds of the two WWTPs. While there is no ground-truth data available to determine
301 disease occurrence, results suggest that enteric viral nucleic-acid concentrations in wastewater
302 solids can yield insight into enteric disease activity in contributing communities. The lack of
303 correlation of HuNoV GI and norovirus positivity rates is consistent with data suggesting HuNoV
304 GII is the main genogroup causing symptomatic illness in this region²⁶. The EV assay used in
305 this study is a pan-*Enterovirus* genus assay and therefore detects a number of different viruses
306 including coxsackieviruses, enteroviruses, and echoviruses. The diversity of viruses detected
307 with the assay, and the diversity of presentations associated with them, including meningitis,
308 diarrhea, rash, and respiratory symptoms means that there is no clinical metric that can be used
309 for comparison to the collected wastewater data. However, detection of these viruses in
310 wastewater suggests occurrence of enterovirus infections in the communities.

311

312 Concentrations of enteric virus nucleic-acid targets are enriched by orders of magnitude in
313 wastewater solids relative to liquid on mass equivalent basis. These findings are consistent with
314 previous reports that viruses in wastewater tend to adsorb to wastewater solids¹². There was
315 variation in the degree of adsorption among viruses suggesting virus structure might influence
316 adsorption characteristics. Ye et al.²⁷ suggest enveloped viruses partition more favorably to
317 wastewater solids than non-enveloped viruses, but our findings suggest non-enveloped viruses
318 are enriched in wastewater solids to a similar extent¹³, at least when they are measured using
319 molecular methods. There are limited data on concentrations of enteric virus nucleic-acids in
320 wastewater solids¹², and to our knowledge, no longitudinal measurement of a suite of enteric
321 viruses measured contemporaneously. However, some of our results are consistent with
322 observations made in liquid wastewater. For example, HAdV is reported to be among the
323 highest concentration enteric viruses in wastewater²⁸, and herein, it was found at the highest
324 concentrations in wastewater solids.

325
326 Rotavirus was detected at the lowest concentration of enteric viruses tested, consistent with the
327 fact that live, oral rotavirus vaccines are regularly administered to infants in the study area and
328 the resultant low clinical positivity rates. Based on available rotavirus vaccine sequences, the
329 rotavirus assay may detect vaccine genomic RNA. As infants in our study area typically wear
330 diapers, it is unclear to what extent the vaccine strains from infants may appear in wastewater.
331 However, as vaccine strains are live, transmission to others who do use the wastewater system
332 may be possible, with their shedding possibly influencing concentrations of rotavirus RNA in the
333 waste stream.

334
335 Worldwide there are limited to no direct data on the incidence and prevalence of enteric viral
336 infections, and the data that do exist are biased to those who are severely ill or to individuals
337 who seek and obtain diagnostic testing. Wastewater represents a composite biological sample

338 of the entire contributing community and concentrations of enteric virus nucleic-acids can
339 provide insights into disease occurrence including occurrence of asymptomatic and mild enteric
340 virus infections. Such information can inform clinical decision making, hospital staffing, or
341 informational alerts to the public about the circulation of disease. Additional work at WWTPs is
342 warranted to substantiate these findings. Further work is needed to better characterize viral
343 shedding characteristics to inform model-based estimates of disease incidence and prevalence
344 from wastewater measurements²⁹.

345 **Acknowledgements.** We acknowledge the numerous people at San Jose and Oceanside
346 wastewater treatment plants who contributed to wastewater sample collection and Allegra Koch
347 for her support with literature review. This research was performed on the ancestral and
348 unceded lands of the Muwekma Ohlone people. We pay our respects to them and their Elders,
349 past and present, and are grateful for the opportunity to live and work here.

350 **Declaration of interests.** BH, DD, and BW are employees of Verily Life Sciences, LLC.

351
352 **Data sharing statement.** Wastewater data are available publicly at the Stanford Digital
353 Repository (<https://doi.org/10.25740/hr647tm4528>). Positivity rate data for clinical specimens
354 are available upon request.

355
356 **Author contributions.** Alexandria Boehm: conceptualisation, data curation, formal analysis,
357 funding acquisition, investigation, methodology, project administration, resources, software,
358 supervision, validation, visualisation, writing – original draft, writing – review & editing. Bridgette
359 Hughes: conceptualisation, data curation, formal analysis, investigation, methodology, writing –
360 original draft, writing – review & editing. Dorothea Duong: conceptualisation, data curation,
361 formal analysis, investigation, methodology, writing – review & editing. Niaz Banaei: data
362 curation, methodology, validation, writing – review & editing. Bradley White: conceptualisation,

363 data curation, investigation, methodology, project administration, resources, software,
364 supervision, validation, writing – review & editing. Marlene Wolfe: conceptualisation, project
365 administration, writing – review & editing.

366

367

368 References

369

370

- 371 1 Bhutta ZA, Sommerfeld J, Lassi ZS, Salam RA, Das JK. Global burden, distribution, and
372 interventions for infectious diseases of poverty. *Infectious Diseases of Poverty* 2014; **3**: 21.
- 373 2 Lafferty KD. The ecology of climate change and infectious diseases. *Ecology* 2009; **90**: 888–
374 900.
- 375 3 Troeger C, Forouzanfar M, Rao PC, *et al.* Estimates of global, regional, and national
376 morbidity, mortality, and aetiologies of diarrhoeal diseases: a systematic analysis for the
377 Global Burden of Disease Study 2015. *The Lancet Infectious Diseases* 2017; **17**: 909–48.
- 378 4 Kotloff KL, Nataro JP, Blackwelder WC, *et al.* Burden and aetiology of diarrhoeal disease in
379 infants and young children in developing countries (the Global Enteric Multicenter Study,
380 GEMS): a prospective, case-control study. *The Lancet* 2013; **382**: 209–22.
- 381 5 Chansaenroj J, Tuanthap S, Thanusuwannasak T, *et al.* Human enteroviruses associated
382 with and without diarrhea in Thailand between 2010 and 2016. *PLOS ONE* 2017; **12**:
383 e0182078.
- 384 6 Wu F, Zhang J, Xiao A, *et al.* SARS-CoV-2 Titers in Wastewater Are Higher than Expected
385 from Clinically Confirmed Cases. *mSystems* 2020; **5**: e00614-20.
- 386 7 Boehm AB, Hughes B, Duong D, *et al.* Wastewater concentrations of human influenza,
387 metapneumovirus, parainfluenza, respiratory syncytial virus, rhinovirus, and seasonal
388 coronavirus nucleic-acids during the COVID-19 pandemic: a surveillance study. *The Lancet*
389 *Microbe* 2023; **4**: e340–8.
- 390 8 Boehm AB, Wolfe MK, White B, *et al.* Human norovirus (HuNoV) GII RNA in wastewater
391 solids at 145 United States wastewater treatment plants: Comparison to positivity rates of
392 clinical specimens and modeled estimates of HuNoV GII shedders. *Journal of Exposure*
393 *Science & Environmental Epidemiology* 2023. DOI:10.1038/s41370-023-00592-4.
- 394 9 Diemert S, Yan T. Clinically Unreported Salmonellosis Outbreak Detected via Comparative
395 Genomic Analysis of Municipal Wastewater Salmonella Isolates. *Appl Environ Microbiol*
396 2019; **85**: e00139-19.
- 397 10 Wolfe MK, Yu AT, Duong D, *et al.* Use of Wastewater for Mpox Outbreak Surveillance in
398 California. *N Engl J Med* 2023; published online Jan 18. DOI:10.1056/NEJMc2213882.
- 399 11 Barber C, Crank K, Papp K, *et al.* Community-Scale Wastewater Surveillance of *Candida*
400 *auris* during an Ongoing Outbreak in Southern Nevada. *Environ Sci Technol* 2023; **57**: 1755–
401 63.
- 402 12 Yin Z, Voice T, Tarabara V, Xagorarakis I. Sorption of Human Adenovirus to Wastewater
403 Solids. *Journal of Environmental Engineering* 2018; **144**: 06018008.
- 404 13 Roldan-Hernandez L, Boehm AB. Adsorption of respiratory syncytial virus (RSV), rhinovirus,
405 SARS-CoV-2, and F+ bacteriophage MS2 RNA onto wastewater solids from raw wastewater.
406 *Environmental Science & Technology* 2023.
- 407 14 Jothikumar N, Kang G, Hill VR. Broadly reactive TaqMan® assay for real-time RT-PCR
408 detection of rotavirus in clinical and environmental samples. *Journal of Virological Methods*

409 2009; **155**: 126–31.

410 15Jothikumar Narayanan, Lowther James A., Henshilwood Kathleen, Lees David N., Hill
 411 Vincent R., Vinjé Jan. Rapid and Sensitive Detection of Noroviruses by Using TaqMan-Based
 412 One-Step Reverse Transcription-PCR Assays and Application to Naturally Contaminated
 413 Shellfish Samples. *Applied and Environmental Microbiology* 2005; **71**: 1870–5.

414 16Loisy F, Atmar RL, Guillon P, Le Cann P, Pommepuy M, Le Guyader F. Real-time RT-PCR
 415 for norovirus screening in shellfish. *Journal of Virological Methods* 2005; **123**: 1–7.

416 17Gregory JB, Litaker RW, Noble RT. Rapid one-step quantitative reverse transcriptase PCR
 417 Assay with competitive internal positive control for detection of enteroviruses in
 418 environmental samples. *Applied and Environmental Microbiology* 2006; **72**: 3960–7.

419 18Boehm AB, Wolfe MK, Wigginton KR, *et al.* Human viral nucleic acids concentrations in
 420 wastewater solids from Central and Coastal California USA. *Scientific Data* 2023; **10**: 396.

421 19Wolfe MK, Topol A, Knudson A, *et al.* High-Frequency, High-Throughput Quantification of
 422 SARS-CoV-2 RNA in Wastewater Settled Solids at Eight Publicly Owned Treatment Works in
 423 Northern California Shows Strong Association with COVID-19 Incidence. *mSystems* 2021; **6**:
 424 e00829-21.

425 20Topol A, Wolfe M, White B, Wigginton K, Boehm A. High Throughput pre-analytical
 426 processing of wastewater settled solids for SARS-CoV-2 RNA analyses. *protocols.io* 2021.
 427 DOI:dx.doi.org/10.17504/protocols.io.btyqnpvw.

428 21Topol A, Wolfe M, Wigginton K, White B, Boehm A. High Throughput RNA Extraction and
 429 PCR Inhibitor Removal of Settled Solids for Wastewater Surveillance of SARS-CoV-2 RNA.
 430 *protocols.io* 2021. DOI:dx.doi.org/10.17504/protocols.io.btyrnpv6.

431 22Symonds EM, Nguyen KH, Harwood VJ, Breitbart M. Pepper mild mottle virus: A plant
 432 pathogen with a greater purpose in (waste)water treatment development and public health
 433 management. *Water Research* 2018; **144**: 1–12.

434 23Roldan-Hernandez L, Graham KE, Duong D, Boehm AB. Persistence of Endogenous SARS-
 435 CoV-2 and Pepper Mild Mottle Virus RNA in Wastewater-Settled Solids. *ACS EST Water*
 436 2022; published online March 11. DOI:10.1021/acsestwater.2c00003.

437 24Borchardt MA, Boehm AB, Salit M, Spencer SK, Wigginton KR, Noble RT. The
 438 Environmental Microbiology Minimum Information (EMMI) Guidelines: qPCR and dPCR
 439 Quality and Reporting for Environmental Microbiology. *Environ Sci Technol* 2021; **55**: 10210–
 440 23.

441 25Fisman D. Seasonality of viral infections: mechanisms and unknowns. *Clinical Microbiology*
 442 *and Infection* 2012; **18**: 946–54.

443 26Eftim SE, Hong T, Soller J, *et al.* Occurrence of norovirus in raw sewage – A systematic
 444 literature review and meta-analysis. *Water Research* 2017; **111**: 366–74.

445 27Ye Y, Ellenberg RM, Graham KE, Wigginton KR. Survivability, Partitioning, and Recovery of
 446 Enveloped Viruses in Untreated Municipal Wastewater. *Environ Sci Technol* 2016; **50**: 5077–
 447 85.

448 28Katayama H, Haramoto E, Oguma K, *et al.* One-year monthly quantitative survey of
 449 noroviruses, enteroviruses, and adenoviruses in wastewater collected from six plants in
 450 Japan. *Water Research* 2008; **42**: 1441–8.

451 29Arts PJ, Kelly JD, Midgley CM, *et al.* Longitudinal and quantitative fecal shedding dynamics
 452 of SARS-CoV-2, pepper mild mottle virus, and crAssphage. *mSphere* 2023; **0**: e00132-23.

454

WWTP		Rota	HAdV	EV	HuNoV GI	HuNoV GII
OSP	median	1.0x10 ³	5.8x10 ⁵	4.1x10 ⁴	2.8x10 ⁴	5.7x10 ⁵
	25th	0	4.9x10 ⁴	2.6x10 ⁴	1.2x10 ⁴	3.5x10 ⁵

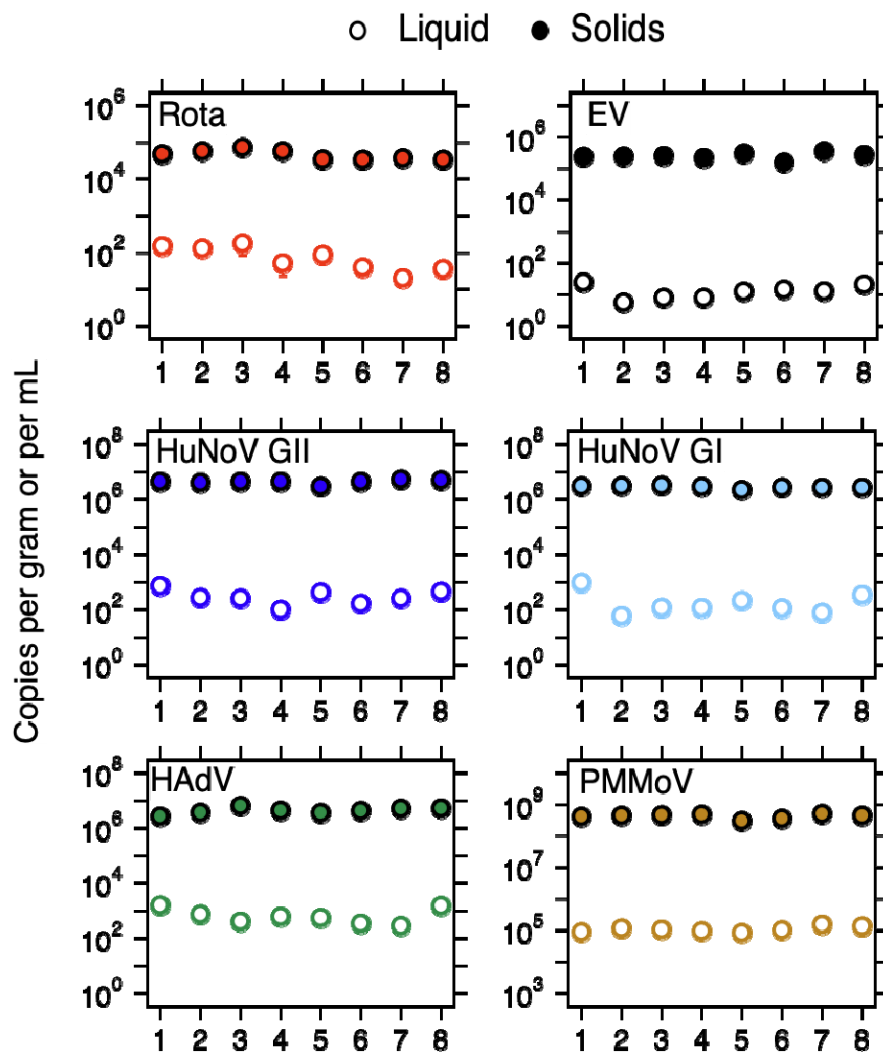
	75th	3.2×10^3	1.5×10^6	6.9×10^4	4.7×10^4	1.1×10^6
	max	7.8×10^4	5.8×10^6	2.4×10^5	2.6×10^5	6.4×10^6
	# ND	89	9	0	0	0
	#	230	230	230	230	230
SJ	median	3.3×10^3	1.9×10^6	5.4×10^4	3.4×10^4	7.0×10^5
	25th	1.5×10^3	5.3×10^5	3.7×10^4	1.6×10^4	3.5×10^5
	75th	8.5×10^3	4.3×10^6	7.5×10^4	7.6×10^4	1.5×10^6
	max	2.7×10^5	8.5×10^7	1.2×10^6	1.4×10^6	1.1×10^8
	# ND	24	0	1	0	0
	#	229	229	229	229	229

455 Table 1. Summary statistics for infectious disease targets in OSP and SJ wastewater solids.
 456 WWTP is wastewater treatment plant. Units of concentration are copies per gram dry weight.
 457 25th is 25th percentile, 75th is 75th percentile, max is the maximum value, # ND is number of
 458 non-detect, # is the total number of samples. Units for the concentrations are copies per gram
 459 dry weight.

460

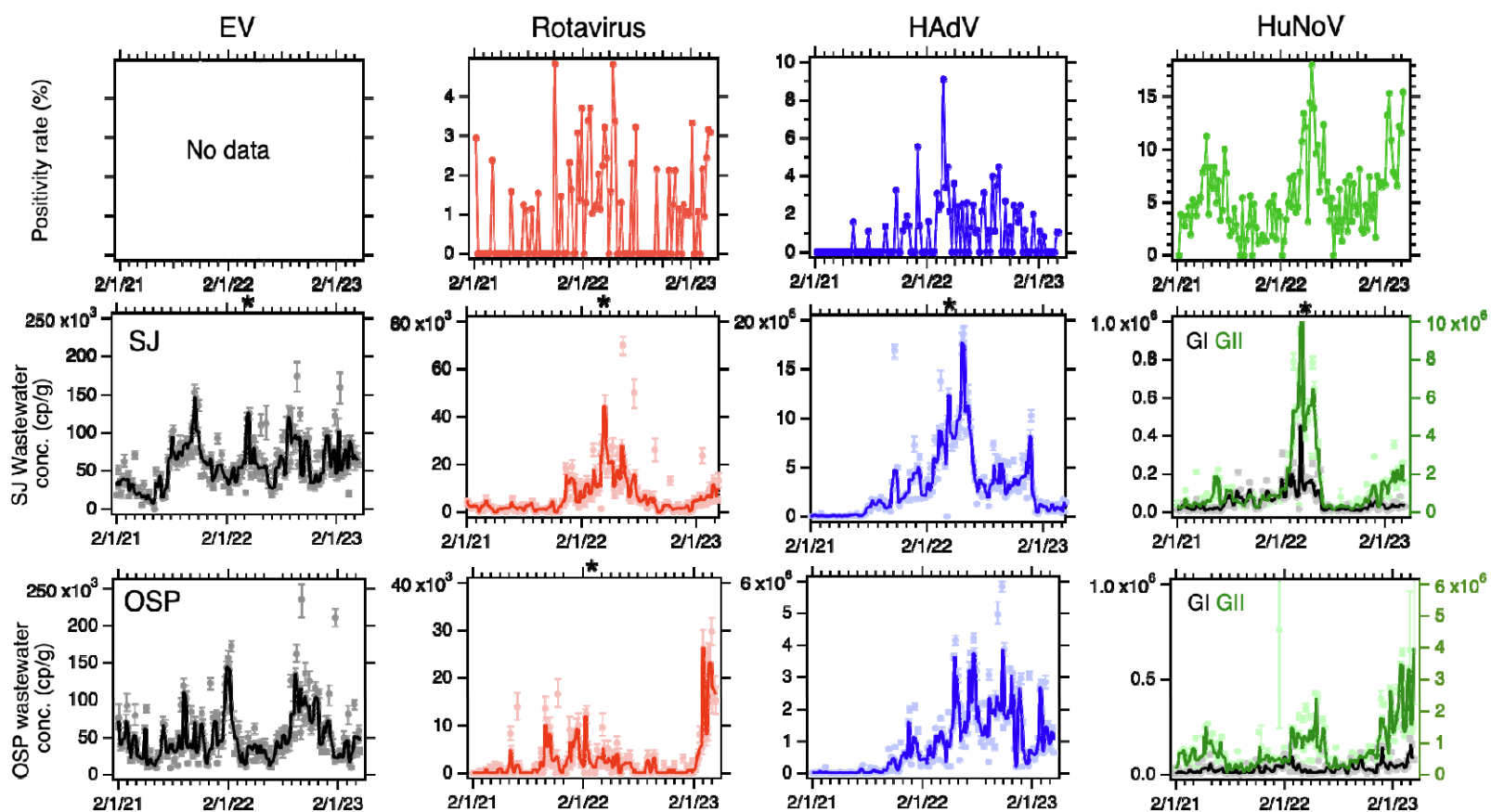
461

462



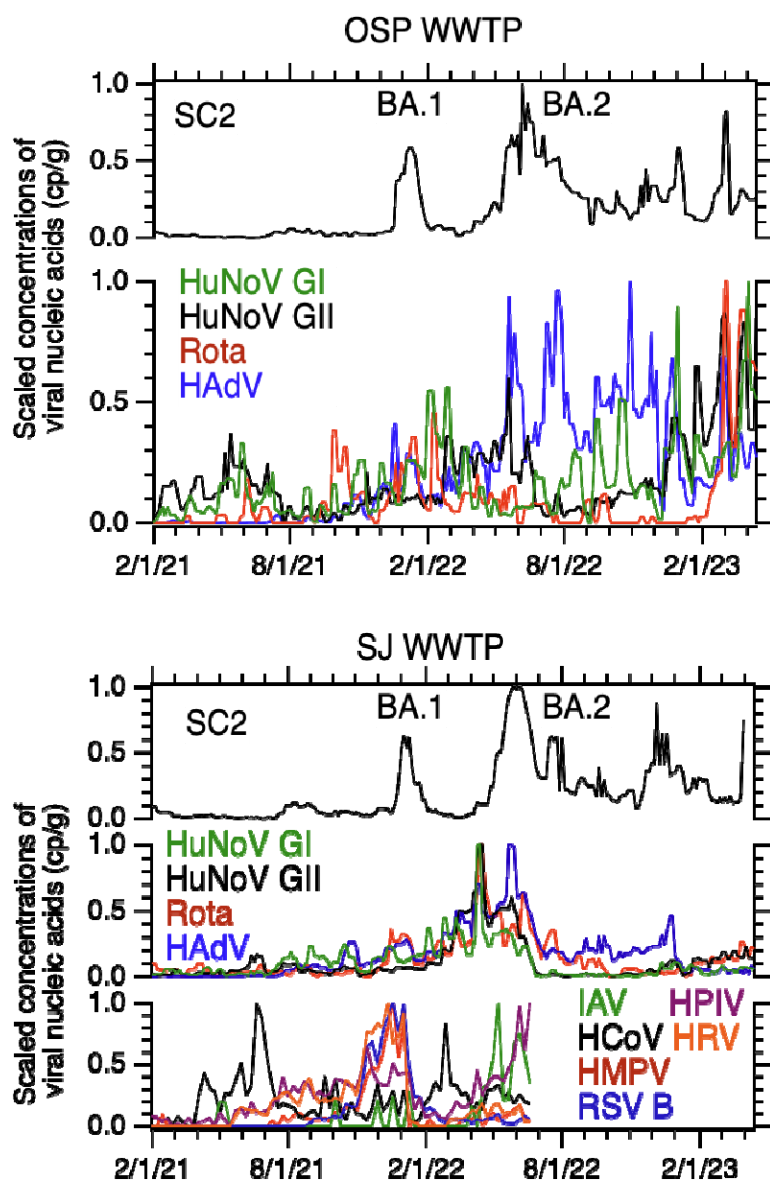
463

464 Figure 1. Concentration of viral targets in wastewater solids and liquid. Error bars are standard
465 deviations and in most cases cannot be seen because they are smaller than the symbols. The
466 x-axis shows the sample numbers (1-8) as indicated in the main text. The units on the y-axis are
467 copies per gram of solids or milliliters of liquid. Rota is rotavirus, HAdV is human adenovirus
468 group F, HuNoV GI and GII are human norovirus genogroup I and II, respectively, EV is
469 enterovirus, and PMMoV is pepper mild mottle virus.



470

471 Figure 2. Positivity rates from the clinical laboratory for rotavirus, adenovirus group F, and norovirus infections (top panels), and
 472 concentrations of EV, rotavirus, HAdV, and HuNoV GI and GII nucleic-acids in wastewater solids at SJ (middle panels) and OSP
 473 (bottom panels). Error bars on the wastewater measurements show standard deviations. The solid lines in the wastewater plots
 474 represent smoothing using the median of 3-adjacent samples. The norovirus plots show GII in green (right axes) and GI in black (left
 475 axis). A black asterisk at the top of a plot indicates a value at that date that is higher than the y-axis scale. An asterisk on the top axis
 476 indicates a single data point out of range of the axis: EV at SJ: 1.2×10^6 cp/g on 4/14/22, Rota at SJ: 2.7×10^5 cp/g on 4/14/22,
 477 HAdV at SJ: 85×10^6 cp/g on 4/14/22, HuNoV GI at SJ: 1.4×10^6 cp/g on 4/14/22, HuNoV GII at SJ: 1×10^8 cp/g on 4/14/22, and
 478 Rota at OSP: 78×10^3 cp/g on 3/6/23.



479

480 Figure 3 Standardized virus concentrations. Standardized, 3-sample smoothed (using median)
 481 concentrations of the HuNoV GI and GII, rotavirus (Rota), and human adenovirus (HAdV) (middle or
 482 bottom left axis) and SARS-CoV-2 (SC2, top axis) measured in this study in wastewater solids from OSP
 483 (top plot) and SJ (bottom plot). The BA.1 and BA.2 surges in SC2 concentrations is labeled in each plot
 484 atop of adjacent, respectively, to the surges. Data from respiratory viruses previous published by Boehm
 485 et al.⁷ at SJ through mid summer 2022 are provided on the bottom of the SJ plot; IAV is influenza A,
 486 HCoV is seasonal coronaviruses, HMPV is human metapneumovirus, HPIV is human parainfluenza virus,
 487 HRV is human rhinovirus and RSV B is respiratory syncytial virus B. The dominant SARS-CoV-2 variant
 488 circulating is provided at the top of the figure near each SARS-CoV-2 surge in concentration. The
 489 standardized concentration (C_{sd}) is calculated using the following formula $C_{sd}(t) = C(t) - C_{min} / (C_{max} - C_{min})$
 490 where $C(t)$ is the smoothed concentration of the viral target, and C_{max} and C_{min} are the max and min of the
 491 smoothed concentrations observed over the duration of the time series.