

# 1 **Recommendations for surveillance of pulmonary dysfunction** 2 **among childhood, adolescent, and young adult cancer survivors: a** 3 **report from the International Late Effects of Childhood Cancer** 4 **Guideline Harmonization Group**

5  
6 Maria Otth MD\*, Rahel Kasteler MD\*, Renée L. Mulder PhD, Jennifer Agrusa MD, Saro H.  
7 Armenian DO, Dana Barnea MD, Prof Anne Bergeron MD, Neel S. Bhatt MD, Stephen J. Bourke  
8 MD, Prof Louis S. Constine MD, Myrofora Goutaki PhD, Prof Daniel M. Green MD, Ulrike  
9 Hennewig MD, Veronique Houdouin MD, Prof Melissa M. Hudson MD, Prof Leontien Kremer PhD,  
10 Prof Philipp Latzin MD, Antony Ng PhD, Kevin C. Oeffinger MD, Christina Schindera MD, Prof  
11 Roderick Skinner PhD, Grit Sommer PhD, Saumini Srinivasan MD, Dennis C. Stokes MD, Birgitta  
12 Versluys MD, Nicolas Waespe MD, Daniel J. Weiner MD, Andrew C. Dietz MD<sup>°</sup>, Prof Claudia E.  
13 Kuehni MD<sup>°</sup>

14 \*shared first authors

15 <sup>°</sup>shared last authors

- 16  
17
- 18 • Institute of Social and Preventive Medicine, University of Bern, Bern, Switzerland (M  
19 Goutaki PhD, C Schindera MD, G Sommer PhD, N Waespe MD, Prof CE Kuehni MD)
  - 20 • Department of Oncology, Haematology, Immunology, Stem Cell Transplantation and Somatic  
21 Gene Therapy, University Children's Hospital Zurich, Zurich, Switzerland (M Otth MD, R  
22 Kasteler MD)
  - 23 • Pediatric Hematology-Oncology Center, Children's Hospital of Eastern Switzerland, St  
24 Gallen, Switzerland (M Otth MD, R Kasteler MD)
  - 25 • Department of Health Sciences and Medicine, University of Lucerne, Lucerne, Switzerland  
26 (M Otth MD)
  - 27 • Princess Máxima Center for Pediatric Oncology, Utrecht, The Netherlands (RL Mulder PhD,  
28 Prof LCM Kremer PhD, B Versluys MD)
  - 29 • Department of Pediatric Hematology Oncology, C.S. Mott Children's Hospital, University of  
30 Michigan, Michigan, USA (J Agrusa MD)
  - 31 • Department of Pediatrics, City of Hope, Duarte, California, USA (SH Armenian MD)
  - 32 • Department of Hematology and Department of Oncology, Tel Aviv Sourasky Medical Center,  
33 Tel Aviv, Israel (D Barnea MD)
  - 34 • Hôpitaux Universitaires de Genève, Université de Genève, Genève, Switzerland (Prof A  
35 Bergeron MD)
  - 36 • Clinical Research Division, Fred Hutchinson Cancer Center, Seattle, WA, USA (NS Bhatt  
37 MD)
  - 38 • Department of Respiratory Medicine, Royal Victoria Infirmary, Newcastle upon Tyne, United  
39 Kingdom (SJ Bourke MD)
  - 40 • Departments of Radiation Oncology and Pediatrics, University of Rochester Medical Center,  
41 Rochester, NY, USA (Prof LS Constine MD)
  - 42 • Department of Oncology (Prof MM Hudson MD, Prof DM Green MD), Department of  
43 Epidemiology and Cancer Control (Prof MM Hudson MD), St Jude Children's Research  
44 Hospital, Memphis, TN, USA
  - 45 • University Hospital of Giessen and Marburg, Pediatric Hematology and Oncology, Giessen,  
46 Germany (U Hennewig MD)
  - 47 • AP-HP, Hôpital Robert Debré, Service de Pneumopédiatrie, Paris, France (V Houdouin MD)

- 48 • Division of Paediatric Respiratory Medicine and Allergology, Department of Paediatrics,  
49 Inselspital, Bern University Hospital, University of Bern, Bern, Switzerland (M Goutaki PhD,  
50 Prof P Latzin MD)
- 51 • Department of Paediatric Oncology, Royal Hospital for Children, Bristol, UK (A Ng PhD)
- 52 • Department of Community and Family Medicine, Duke University School of Medicine,  
53 Durham, NC, USA (KC Oeffinger MD)
- 54 • Division of Pediatric Oncology/Haematology, University Children's Hospital Basel,  
55 University of Basel, Basel, Switzerland (C Schindera MD)
- 56 • Department of Paediatric and Adolescent Haematology/ Oncology, Great North Children's  
57 Hospital and Newcastle University Centre for Cancer, Newcastle upon Tyne, UK (Prof R  
58 Skinner PhD)
- 59 • Division of Pulmonology, Department of Pediatrics, University of Tennessee Health Science  
60 Center, Memphis, Tennessee, USA (S Srinivasan MD, D Stokes MD)
- 61 • Pediatric Hematology and Oncology, University Children's Hospital Bern, University of Bern,  
62 Bern, Switzerland (N Waespe MD, Prof. CE Kuehni MD)
- 63 • CANSEARCH Research Platform for Paediatric Oncology and Haematology, Department of  
64 Pediatrics, Gynecology and Obstetrics, Faculty of Medicine, University of Geneva, Geneva,  
65 Switzerland (N Waespe MD)
- 66 • Division of Pediatric Pulmonology, University of Pittsburgh, Pittsburgh, PA, USA (DJ Weiner  
67 MD)
- 68 • Shape Therapeutics, Inc., Seattle, WA, USA (AC Dietz MD)

69  
70  
71

72 **Corresponding author:**

73 Claudia E Kuehni  
74 Institute of Social and Preventive Medicine  
75 University of Bern  
76 Bern, Switzerland  
77 claudia.kuehni@unibe.ch  
78 Phone: 0041 31 684 35 07

79  
80

81 **Source of support:**

82 Swiss Cancer Research (grant no: KFS-4157-02-2017, KLS/KFS-4825-01-2019 and KFS-5302-02-  
83 2021), Cancer League Bern, Kinderkrebshilfe Schweiz and Lung League Bern supported our study.

84  
85

86 **Keywords:**

- 87 - Children
- 88 - Adolescents
- 89 - Young adults
- 90 - Survivors
- 91 - Childhood cancer/malignancy
- 92 - Late effects
- 93 - Pulmonary dysfunction
- 94 - Lung disease
- 95 - Respiratory
- 96 - Surveillance
- 97 - Lung Function

98  
99

## 100 **Abbreviations**

101	ATS	American Thoracic Society
102	CAYA	Childhood Adolescent and Young Adult
103	COG	Childrens' Oncology Group
104	DCOG	Dutch Childrens' Oncology Group
105	DLCO	Diffusion capacity for carbon-monoxide
106	ERS	European Respiratory Society
107	FEV1	Forced expiratory volume in the first second
108	FVC	Forced vital capacity
109	GLI	Global Lung Initiative
110	GRADE	Grading of Recommendations, Assessment, Development and Evaluation
111	GvHD	Graft versus Host Disease
112	HSCT	Haematopoietic Stem Cell Transplantation
113	IGHG	International Guideline Harmonization Group
114	LTFU	Long-term follow-up
115	MEF25-75%	Maximal expiratory flow between 25% and 75% of the FVC
116	PFT	Pulmonary function testing
117	PRISMA	Preferred Reporting Items for Systematic Reviews and Meta-Analyses
118	RV	Residual volume
119	TBI	Total Body Irradiation
120	TLC	Total lung capacity
121	UKCCLG	United Kingdom Children's Cancer and Leukaemia Group

122 **ABSTRACT**

123 Childhood, adolescent, and young adult (CAYA) cancer survivors are at risk of pulmonary  
124 dysfunction. Current follow-up care guidelines are discordant. Therefore, the International Late  
125 Effects of Childhood Cancer Guideline Harmonization Group established and convened a panel of 33  
126 experts to develop evidence-based surveillance guidelines. We critically reviewed available evidence  
127 regarding risk factors for pulmonary dysfunction, types of pulmonary function testing, and timings of  
128 surveillance, then we formulated our recommendations. We recommend that CAYA cancer survivors  
129 and healthcare providers are aware of reduced pulmonary function risks and pay vigilant attention to  
130 potential symptoms of pulmonary dysfunction, especially among survivors treated with allogeneic  
131 haematopoietic stem cell transplantation, thoracic radiotherapy, and thoracic surgery. Based on  
132 existing limited evidence, our panel currently recommends pulmonary function testing only for  
133 symptomatic survivors. Since scarce existing evidence informs our recommendation, we highlight the  
134 need for prospective collaborative studies to address pulmonary function knowledge gaps among  
135 CAYA cancer survivors.

## 136 INTRODUCTION

137 Children, adolescents, and young adults (CAYA) diagnosed with cancer are at risk for pulmonary  
138 dysfunction and death from pulmonary conditions years to decades after completing treatment (1-5).  
139 Treatment modalities previously defined as lung-toxic include chemotherapeutic agents, such as  
140 busulfan, bleomycin, carmustine, and lomustine, and thoracic radiotherapy, thoracic surgery, and  
141 allogeneic haematopoietic stem cell transplantation (HSCT) (6, 7). Pathophysiological mechanisms of  
142 pulmonary damage include oxidative stress from lung-toxic chemotherapeutics, free radical formation  
143 during radiotherapy, and transplant-specific pulmonary complications, such as idiopathic pneumonia  
144 syndrome or bronchiolitis obliterans (7-9). Free radicals injure type II pneumocytes, resulting in  
145 decreased proliferative capacity, less surfactant production, and ultimately reduced lung compliance  
146 (10). Activations of an inflammatory cascade and changes in endothelial cells of surrounding  
147 vasculature result in leakage of proteins and inflammatory cells into alveoli (10). Such inflammation is  
148 commonly the final path of different pathophysiological mechanisms which can either resolve or  
149 progress to fibrotic changes in alveolar septa, causing restrictive impairments. Surgical removal of  
150 parts of the lung or chest wall as part of cancer therapy reduces lung volumes and causes restrictive  
151 changes.

152 Symptomatic pulmonary dysfunction presents with chronic cough or dyspnea, especially on exertion.  
153 With large pulmonary functional reserve, dyspnea may not be noticed until a substantial decline in  
154 pulmonary function has occurred. Pulmonary function testing (PFT) detects pulmonary dysfunction  
155 before symptoms arise. Commonly used PFT include spirometry, body plethysmography, and  
156 measurement of diffusion capacity for carbon-monoxide (DLCO). Spirometry and body  
157 plethysmography mainly assess changes in larger airways. Examinations detecting changes in lung  
158 periphery or inhomogeneous ventilation, such as washout tests, are used to answer research questions,  
159 yet remain unintroduced into routine clinical care (11). Among CAYA cancer survivors exposed to  
160 lung-toxic treatments, obstructive changes have been reported in up to 4%, restrictive disease 24%,  
161 and diffusion capacity impairment 49% (1, 2). Proportions are even higher among certain sub-groups  
162 of CAYA cancer survivors, such as following HSCT (12).

163 Since long-term CAYA cancer survivor numbers constantly increase from diagnostic, risk  
164 stratification, and treatment strategy advances, long-term CAYA cancer survivor surveillance is a high  
165 priority (13). Awareness of the risk of late effects from cancers or treatments led to the development of  
166 different long-term follow-up (LTFU) guidelines, such as those from the Children’s Oncology Group  
167 (COG), the Dutch Childhood Oncology Group (DCOG), and from the United Kingdom Children’s  
168 Cancer and Leukaemia Group (UKCCLG) (14-16). Although COG, DCOG, and UKCCLG guidelines  
169 recommend screening for pulmonary dysfunction, they are discordant regarding indication, timing of  
170 initiation, frequency, and screening method. The International Late Effects of Childhood Cancer  
171 Guideline Harmonization Group (IGHG) surveillance guidelines develop internationally harmonised  
172 and implementable recommendations based on evidence from existing literature and international  
173 expert consensus when evidence is unavailable (17). In this current IGHG initiative, we specifically  
174 define which CAYA cancer survivors likely benefit from screening for pulmonary dysfunction and  
175 when and how screening should be performed. We also further highlight limitations of the current  
176 evidence informing surveillance recommendations for pulmonary dysfunction and knowledge gaps to  
177 address in future research.

## 178 **METHODS**

### 179 **Methodology of International Late Effects of Childhood Cancer Guideline Harmonization** 180 **Group (IGHG) and formulating key questions**

181 Information about methods used to formulate IGHG recommendations was published previously (18).  
182 For our current recommendation, we organised a guideline panel of 33 members—representing COG,  
183 DCOG, UKCCLG, the Pan-European Network for Care of Survivors after Childhood and Adolescent  
184 Cancer (PanCare)—and pulmonary health and late effects experts from various medical specialties:  
185 paediatric oncology and haematology; paediatric and adult pulmonology; radiation oncology;  
186 epidemiology; and guideline experts (Appendix A) (19-21).

187 IGHG’s approach to formulating recommendations involves answering five key questions: 1) "Who  
188 needs surveillance?" 2) "What surveillance modality should be used?" 3) "At what frequency should  
189 surveillance be performed?" 4) "When should surveillance be initiated?" and 5) "What should be done  
190 when abnormalities are found?" Based on our preliminary literature search and a resulting absence of

191 data, we performed the systematic literature search for only question 1) “Who needs surveillance?”  
192 and used expert opinions from paediatric and adult pulmonologists for questions 2–5. We did not use  
193 guidelines for surveillance of other pulmonary diseases, such as idiopathic interstitial pneumonitis or  
194 chronic obstructive pulmonary disease, due to different underlying pathophysiological mechanisms.  
195 Notably, guidelines for other diseases start with symptomatic patients diagnosed with specific  
196 pulmonary diseases, which differs from our population of interest—asymptomatic CAYA cancer  
197 survivors at risk of developing pulmonary problems.

### 198 **Comparing existing guidelines and formulating clinical questions**

199 First, we separately compared COG, DCOG, Scottish Intercollegiate Guidelines Network, and  
200 UKCCLG recommendations for each of the five key questions (15, 16, 19, 22). For the key question,  
201 “What should be done when abnormalities are found?” we also included vaccination and lifestyle  
202 factors. For the key question “Who needs surveillance?” we subsequently formulated 11 clinical  
203 questions and sub-questions to strengthen concordant recommendations and find consensus for  
204 discordant recommendations (Appendix B).

205 We used the PICO-framework to formulate clinical questions (23). Our *population* of interest included  
206 CAYA cancer survivors—defined by at least 50% of survivors diagnosed before age 30—who  
207 completed cancer treatment at least two years previously. We included potentially lung-toxic treatment  
208 modalities (selected chemotherapeutic agents, thoracic radiotherapy, thoracic surgery, and allogeneic  
209 HSCT) and tobacco exposure as *interventions*. We also included all chemotherapeutic agents  
210 mentioned in current LTFU guidelines as risk factors for pulmonary dysfunction (bleomycin, busulfan,  
211 and nitrosoureas [lomustine and carmustine]). Based on expert opinion, we additionally included  
212 treatment with cyclophosphamide, gemcitabine, and methotrexate. *Comparators* were considered  
213 during data extraction and differed between studies according to study design, such as non-exposed  
214 survivors, survivors exposed to lower chemotherapeutic doses, or community controls. Our *outcome*  
215 of interest was pulmonary dysfunction assessed by PFT. We focused on this single outcome because  
216 our preliminary literature search showed that other commonly reported clinical endpoints—in  
217 particular survivor-reported symptoms or clinician-reported diagnoses—had been assessed and  
218 reported heterogeneously and had the risk of subjectivity, such as different definitions of chronic

219 cough or dyspnea (24-28). We categorised pulmonary dysfunction into four groups: obstruction (by  
220 FEV1, FEV1/FVC, MEF25–75%); restriction (by TLC, FVC); hyperinflation (by RV, RV/TLC); and  
221 diffusion capacity impairment (by DLCO). Although clinically relevant hyperinflation should be  
222 interpreted together with obstruction, we defined hyperinflation as a separate pulmonary outcome  
223 since it was defined as such in included studies.

#### 224 **Systematic literature search on "Who needs surveillance?"**

225 We conducted our first systematic literature search in accordance with the preferred reporting items  
226 for systematic reviews and meta-analyses (PRISMA) guidelines restricted to PubMed and Ovid in  
227 November 2016 with updates in June 2019; December 2020; June 2022; and April 2023 (29). We  
228 developed our search strategy based on 11 clinical questions and five concepts: cancer diagnosis,  
229 population of CAYA cancer survivors, potential lung-toxic treatment modalities, pulmonary  
230 outcomes, and late effects (Appendix C). The inclusion criteria were given through the PICO-  
231 framework. We also excluded studies with fewer than 20 participants and studies only assessing  
232 prevalence of pulmonary dysfunction without measuring effect sizes of associations between  
233 exposures and pulmonary dysfunction (Appendix D).

234 Guideline panel members screened titles, abstracts, and full-texts. Two authors independently screened  
235 each study. Coordinators (MO, RK) resolved discrepancies. We extracted data from each study and  
236 entered it into evidence summary tables (Appendix E); separately performed risk of bias assessments  
237 for each study (Appendix F); and completed overall quality assessments of available evidence for each  
238 clinical question, according to the GRADE criteria (Appendix G) (18, 30). Each eligible study could  
239 contribute to answering more than one clinical question. For our overall conclusion of evidence, we  
240 summarised findings by type of pulmonary dysfunction (Appendix H).

#### 241 **Expert consensus on surveillance modality, start and frequency of screening, and procedures in** 242 **case of pulmonary dysfunction**

243 For questions about surveillance modality, start and frequency of screening, and procedures in cases of  
244 pulmonary dysfunction (key questions 2–5), we held numerous meetings with paediatric and adult  
245 pulmonologists and guideline development experts. We formulated suggestions based on initial



246 meetings, which we then discussed with guideline panel members until reaching consensus through an  
247 iterative approach with successive revisions and implementing suggestions from all panel members.

248

### 249 **Translating evidence into recommendations**

250 We assessed evidence and information we gathered from our systematic literature search and expert  
251 consensus within the evidence-to-decision framework—it weighs the impact of screening by  
252 estimating benefits and harms, resources and costs, impact on health inequities, acceptability, and  
253 feasibility. Through panel discussions, we achieved consensus for final recommendations, which we  
254 subsequently discussed with additional experts, including oncologists and survivors (Appendix A).

## 255 **RESULTS**

### 256 **Comparison with existing guidelines**

257 Comparing existing guidelines revealed relevant discordance (Appendix I). Since the Scottish  
258 guideline omitted recommendations for pulmonary dysfunction, we excluded it (22). The remaining  
259 three guidelines considered CAYA cancer survivors at risk for pulmonary dysfunction after exposure  
260 to bleomycin, busulfan, nitrosoureas, thoracic radiotherapy, or thoracic surgery. Practical details  
261 revealed discordances, including cut-off doses for chemotherapeutic agents or thoracic radiotherapy;  
262 radiation volume; age at treatment; and additional risk factors, such as renal dysfunction and  
263 pulmonary infection. All three guidelines recommended PFT, yet did not specify tests. We found no  
264 concordance for screening frequency and starting screening with five and ten years after diagnosis in  
265 the Dutch guideline; two years after completion of treatment in the COG guideline; and end of  
266 treatment in the UK guideline. Guidelines agreed about referring CAYA cancer survivors to  
267 pulmonologists in cases of pulmonary dysfunction; alerting anaesthetists about previous bleomycin  
268 treatment; advising survivors not to smoke; and considering pneumococcal and influenza  
269 immunisation (Appendix I).

### 270 **General results from systematic literature search**

271 Our systematic literature search identified 9284 studies. We assessed 704 full-texts for eligibility; 26  
272 studies fulfilled inclusion criteria (Figure 1, Table 1) (1-3, 31-53). Reasons for excluding full-texts  
273 mainly included 1) assessing outcomes other than pulmonary function by PFT (n=186); 2) including

274 non-CAYA cancer survivors (n=164); and 3) assessing outcomes fewer than two years after  
275 completing treatment (n=91). Most studies (n=12) included CAYA survivors of different cancer types;  
276 followed by studies on leukaemia (n=7), lymphoma (n=4), and brain tumors, neuroblastoma, and  
277 osteosarcoma with one study each. Appendix J contains key characteristics and our summary of  
278 evidence for each included study; Appendix K presents our evidence assessment summary and quality  
279 of data contributing to recommendations per clinical question. Quality of evidence was very low or  
280 low for most clinical questions (Table 2). We summarise primary reasons for downgrading the quality  
281 of evidence in Table 3 and provide more detail in Appendix K.

### 282 **Evidence on risk factors for pulmonary dysfunction among CAYA cancer survivors**

283 We identified seven studies examining allogeneic HSCT as a risk factor for pulmonary dysfunction  
284 (31-37); 13 studies for thoracic radiotherapy (1-3, 31, 38, 40, 45-48, 50-52); five studies for thoracic  
285 surgery (1, 31, 38-40); between one and eight studies for selected chemotherapeutic agents  
286 (bleomycin, busulfan, nitrosoureas, cyclophosphamide, methotrexate); no studies for gemcitabine; and  
287 six studies for tobacco exposure (2, 40, 41, 43-45) (Table 2, Appendix K). For busulfan and  
288 nitrosoureas, only one study of very low quality was available; it provided insufficient evidence to  
289 decide whether these agents significantly impact pulmonary function (2). Four studies of low to very  
290 low quality of evidence assessed pulmonary function after cyclophosphamide-containing treatment (1,  
291 42, 46, 47). Studies examining effects from active tobacco smoking showed contradictory results (2,  
292 41, 43-45). No studies examined impact from passive tobacco smoking or cannabis use. Our clinical  
293 questions and sub-questions aimed to investigate impact from exposure versus non-exposure and also  
294 impact from different dose levels; age at exposure; chronic graft versus host disease; infections; and  
295 total body irradiation among individuals treated with HSCT (Appendix B). Between one and four  
296 studies examined impact from different cyclophosphamide, methotrexate, and bleomycin doses; yet no  
297 studies were available for different doses of nitrosoureas and busulfan. Seven studies examined the  
298 impact of age at treatment with HSCT and radiotherapy.

299 Overall, we identified several potential sources of bias and methodological issues in most studies  
300 (Table 3). Study design was retrospective in more than half (n=14), increasing risks of bias and non-  
301 standardised measurements. Half of the studies did not describe original population sizes from where

302 they selected participants at risk. This makes it uncertain if results are internally and externally  
303 representative and can be extrapolated for the entire population of CAYA cancer survivors. Only half  
304 of the studies described how they performed pulmonary function testing, such as by implementing the  
305 joint European Respiratory Society (ERS)-American Thoracic Society (ATS) recommendations. Even  
306 though most studies (74%) reported reference values used to standardize CAYA cancer survivor PFT  
307 results, studies used 22 different sources of reference values—with up to ten different sources in one  
308 study (47). Only two studies used internationally recommended all-age reference values from the  
309 Global Lung Initiative (GLI) (3, 52). Cut-off value definitions, such as for restrictive disease, were  
310 inconsistent, which made PFT results difficult to interpret and impossible to compare between studies  
311 and age groups. Additionally, findings from different studies on the same exposure were frequently  
312 inconsistent or contradictory, such as with bleomycin (31, 38, 39). Inconsistent and contradictory  
313 aspects precluded analysing quantitatively and interpreting findings, such as a meta-analysis;  
314 prevented formulation of recommendations for specific pulmonary function abnormalities, such as  
315 obstructive, restrictive, and diffusion impairment; confounded analysis of effects of specific  
316 chemotherapeutic agents on pulmonary function; or prevented definition of cut-off doses for  
317 chemotherapeutics or radiotherapy. However, studies we examined provided some evidence CAYA  
318 cancer survivors treated with allogeneic HSCT, thoracic radiotherapy, and thoracic surgery are at risk  
319 for pulmonary dysfunction as measured by PFT.

## 320 **Translating evidence and expert consensus into recommendations**

### 321 *Asymptomatic CAYA cancer survivors*

322 Our panel concluded evidence was insufficient for recommending routine PFT for asymptomatic  
323 CAYA cancer survivors at present (Appendix L, Table 4). The current evidence is low quality with  
324 risks of participation bias and cannot be translated to represent the wider general situation in  
325 asymptomatic CAYA cancer survivors. Such factors are essential for formulating clear  
326 recommendations. For exposures with evidence of impacting pulmonary function, there is currently no  
327 effective intervention that reverses or delays pulmonary disease progression among asymptomatic  
328 survivors. Therefore, risk-benefit-assessments do not favour screening now. However, since extensive  
329 evidence shows smoking presents harmful effects on pulmonary health among the general population,

330 our panel agreed about counselling CAYA cancer survivors not to smoke. The panel further  
331 recommended vaccinations for CAYA cancer survivors at risk for pulmonary-related pathogens, as  
332 appropriate for other vulnerable populations (Table 4). Influenza vaccination is recommended based  
333 on concordance between existing guidelines. Based on local or national recommendations for  
334 populations with increased vulnerability of pulmonary disease, such as pneumococcus and SARS-  
335 CoV-2, the panel recommended considering additional vaccinations against bacteria or viruses. All  
336 three LTFU care guidelines mentioned informing anaesthetists about previous bleomycin treatment,  
337 yet without further information or support from included studies; our additional search showed  
338 contradictory findings (54, 55).

### 339 *Symptomatic CAYA cancer survivors*

340 For symptomatic CAYA cancer survivors—especially among those treated with allogeneic HSCT,  
341 thoracic radiotherapy, and thoracic surgery—our panel agreed upon readily performing PFT with  
342 results evaluated by pulmonologists experienced with CAYA cancer populations. Health care  
343 professionals and CAYA cancer survivors should heed symptoms, such as chronic cough, chest  
344 tightness, dyspnoea, wheezing, or exercise intolerance. Consideration of differential diagnoses, such as  
345 cardiac dysfunction, should guide selection of appropriate investigations. Pulmonologists from our  
346 guideline panel recommended spirometry, body plethysmography, and DLCO measurements wherever  
347 possible. Breath washout tests can additionally be performed if available. Fractional exhaled nitric  
348 oxide, bronchodilator reversibility tests, or other specific investigations should be used for differential  
349 diagnoses of other pulmonary dysfunction causes, which—even among vulnerable populations—are  
350 arguably more frequent reasons for pathological findings than previous cancer treatment, such as  
351 asthma in cases of obstructive disease. Managing cases of abnormal findings and frequency of further  
352 PFT depends on local institutions and guidance from local pulmonologists; it is not part of our  
353 recommendations.

## 354 **DISCUSSION**

355 Our review summarises existing guidelines, evidence from systematic literature searches, and  
356 harmonised recommendations for pulmonary dysfunction screening among CAYA cancer survivors  
357 diagnosed before age 30 with exposure to potentially lung-toxic cancer treatment modalities. Because

358 current evidence is scarce with quality limitations and because there are no effective treatments for  
359 asymptomatic pulmonary dysfunction, our panel limited recommendations for PFT to symptomatic  
360 CAYA cancer survivors only. We recommend health care providers to be aware of increased risks for  
361 possible pulmonary dysfunction—especially among survivors treated with allogeneic HSCT, thoracic  
362 radiotherapy, and thoracic surgery; be vigilant for early clinical symptoms of pulmonary dysfunction;  
363 and refer symptomatic CAYA cancer survivors to pulmonologists experienced with the population.  
364 We also recommend counselling all CAYA cancer survivors about lifestyle factors relevant for  
365 pulmonary and general health.  
366 Our recommendations are supported by two additional studies specific for children following HSCT  
367 (56, 57). Both studies were not considered in our final recommendation as they formulated follow-up  
368 recommendations independent of underlying diagnosis, including HSCT for malignant diseases,  
369 immune deficiencies, inherited bone marrow failure syndromes, and haemoglobinopathies. However,  
370 after two years of follow-up, neither study recommended regular PFT for asymptomatic children and  
371 adolescents; rather they advised considering follow-up PFT based on symptoms and past  
372 measurements (56, 57).

### 373 **Gaps in knowledge and future directions for research**

374 With currently available evidence, we only answered a few of our original clinical questions and often  
375 to only a limited extent, such as any exposure to radiotherapy without differentiation for doses or  
376 volumes. To improve evidence on pulmonary dysfunction among CAYA cancer survivors, we  
377 outlined gaps in knowledge and methodological approaches for future research (Table 5).  
378 We identified existing knowledge gaps for dose-response relationships of all studied exposures; newer  
379 chemotherapeutic or immunotherapeutic agents; other medical conditions, such as pulmonary  
380 complications during treatment, co-morbidities; impact of treatments on physiological processes  
381 affecting pulmonary function, such as lung growth and physiologic ageing; and also approaches for  
382 early assessment of pulmonary dysfunction and effects from preventive or curative interventions.  
383 Most studies focused on well-established risk factors such as HSCT (31-37), thoracic radiotherapy (1-  
384 3, 31, 38, 40, 45-48, 50-52), and thoracic surgery (1, 31, 38-40). For chemotherapeutic agents—even  
385 those with previously reported pulmonary toxicity, such as bleomycin— we found clinical evidence

386 for CAYA cancer survivors insufficient. Future studies evaluating other classical chemotherapeutic  
387 agents, targeted or immunotherapeutic agents, or pharmacovigilance data might identify new aspects  
388 of pulmonary dysfunction among CAYA cancer survivors. It is similar for radiotherapy, including a  
389 lack of data comparing photon and proton therapy where toxicity of protons might be lower from  
390 smaller irradiated volume compared with photons, possibly resulting in less lung-toxicity. For all  
391 exposures, we lack knowledge on how they interact with each other or how age at treatment or  
392 additional medical conditions modify impact from exposures; we also have little information about  
393 dose-response relationships.

394 Peak lung function attained in early adulthood and the trajectory of lung function decline with ageing  
395 are important for lung health across the life span. The impact of cancer itself, pulmonary  
396 complications during treatment, pulmonary co-morbidities, such as asthma, or impaired somatic  
397 growth, such as scoliosis, on peak attained lung function has not been examined. No studies examined  
398 whether CAYA cancer survivors start at a lower peak attained lung function or whether physiological  
399 ageing and decline in pulmonary function is faster and steeper than among the general population.  
400 Frailty and accelerated ageing were previously described for childhood cancer survivors (58-60). The  
401 definition of frailty is met when fulfilling three or more of five criteria: reduced lean muscle mass,  
402 weakness, slow walking speed, low energy expenditure, and fatigue (61). Ness et al. showed that  
403 components of frailty—reduced strength, walking speed, and increased fatigue—were as frequent  
404 among childhood cancer survivors from the St. Jude Lifetime Cohort at a median age of 33 years as  
405 among people age 65 years and older in the general population (62). By calculating the deficit  
406 accumulation index score, Williams et al. showed childhood cancer survivors acquire more damage  
407 and disease than community controls (60). Both studies suggest accelerated ageing among childhood  
408 cancer survivors. Factors contributing to accelerated ageing and frailty include more rapid cellular  
409 senescence, telomere length reduction, epigenetic modifications, somatic mutations, and mitochondrial  
410 DNA damage (58). These factors may also affect lung growth and function among children and  
411 adolescents or result in faster pulmonary ageing, but their potential impact among CAYA cancer  
412 survivors is unknown.

413 Another gap in knowledge concerns measuring early stages of pulmonary dysfunction. Prior studies  
414 primarily utilized spirometry, body plethysmography, or DLCO measurement. More sensitive tests,  
415 such as multiple breath washout tests, may identify pulmonary disease earlier and eventually  
416 contribute to better understanding of pulmonary dysfunction development among CAYA cancer  
417 survivors. Parisi et al. and Schindera et al. investigated pulmonary function of childhood cancer  
418 survivors using multiple breath washout tests (63, 64). Parisi et al. investigated 57 survivors with  
419 median follow-up time of 6.2 years from end of treatment; they did not show differences in ventilation  
420 homogeneity compared with controls (64). The 46 survivors evaluated by Schindera et al. were  
421 median 20 years from cancer diagnosis (63). Survivors defined as high risk (bleomycin, busulfan,  
422 nitrosoureas, HSCT, thoracic radiotherapy, or surgery) tended to have more ventilation inhomogeneity  
423 than those at standard risk (other cancer therapies), yet not significantly (63). In both studies, more  
424 survivors had abnormal washout tests than abnormal spirometry.

425 Available data made it impossible to reach conclusions about the longitudinal course of pulmonary  
426 function as survivors progress through childhood, puberty, and adulthood in their growth and  
427 development followed by a trajectory of ageing. Eight studies with repeated PFT results suffered from  
428 attrition bias, small sample sizes, and included sub-groups of CAYA cancer survivors, such as HSCT  
429 (2, 32, 33, 35, 37, 47, 52, 53). Ideally with baseline PFT before starting treatment, longitudinal data—  
430 ascertained at regular intervals from diagnosis—will be available improve knowledge about the onset  
431 of pulmonary dysfunction and its evolution.

432 PFT provides one way of assessing pulmonary health. Clinical symptoms or imaging are other  
433 possible modalities. Clinical symptoms lack objectivity and vary with age, which limits precise  
434 measurement. In addition, questions about clinical symptoms are worded differently between studies,  
435 which makes comparisons difficult. Louie et al validated selected self-reported complications from  
436 HSCT survivors (65). No data exist for other CAYA cancer survivor populations or for other questions  
437 about pulmonary dysfunction.

438 We suggest future studies take weaknesses and methodological problems we identified from the  
439 literature we reviewed into account and avoid them whenever possible (Table 5). Collaboration  
440 between paediatric oncologists and pulmonologists helps avoid shortcomings when conducting PFT



441 and reporting results. Collaborative studies with harmonised protocols could maximise statistical  
442 power with larger numbers of CAYA cancer survivors and allow stratifying analyses into sub-groups  
443 defined by therapeutic exposures, age at treatment, cumulative doses, or genotype. Prospective rather  
444 than retrospective studies allow for standardising assessments, such as PFT at predefined time points,  
445 and minimise selection and attrition biases. Assessing patient-reported outcomes, such as symptoms,  
446 functional limitations, and quality of life, together with PFT, helps determine the clinical significance  
447 of findings and their impact on lives of patients and their families.

448 To obtain accurate measurements, PFT must be performed to high standards, by trained personnel  
449 explicitly applying published guidelines and standards, including ERS/ATS guidelines. Reporting,  
450 interpreting, and applying results in clinical practice are equally important. It is essential that future  
451 studies use GLI reference equations to standardise PFT results and make them comparable between  
452 age groups and regions (66, 67). Binary cut-offs—describing results as either normal or abnormal—  
453 reduce statistical power and introduce interpretations based on pre-defined threshold values. Since cut-  
454 off values differ between studies, such dichotomisation hampers comparisons of results, leading to  
455 conflicting and potentially misleading proportions of CAYA cancer survivors with pulmonary  
456 dysfunction. Reporting results as raw data and z-scores based on internationally agreed, age-adjusted  
457 reference values is preferred and allows comparing and pooling data.

458 We suggest studies investigating pulmonary function among CAYA cancer survivors be conducted in  
459 the knowledge that at present no curative treatments exist for suspected progressive inflammatory and  
460 fibrotic changes underlying pulmonary dysfunction. Therefore, we advise careful study of benefits and  
461 harms from repeat testing. However, awareness of impaired pulmonary function possibly leads to  
462 earlier treatment of bacterial infections with antibiotics, especially because excess pulmonary  
463 mortality and hospitalisations among CAYA cancer survivors are mainly from infection (68, 69). The  
464 U.S. Food and Drug Administration and European Medicines Agency approved two anti-fibrotic  
465 drugs—pirfenidone and nintedanib—for the treatment of idiopathic pulmonary fibrosis; patients with  
466 progressive-fibrosing unclassifiable interstitial lung disease possibly also benefit (70). Therefore, in  
467 the future the possible benefit from anti-fibrotic drugs could be an area for investigation among  
468 CAYA cancer survivors.



469 **Strengths and limitations**

470 Strengths of our recommendation are multidisciplinary and international collaboration, which included  
471 perspectives from paediatric and adult specialists in CAYA cancer care and survivors; broad inclusion  
472 criteria; our thorough review process paired with in-depth quality assessment of included studies; and  
473 resulting evidence. Limitations mainly reflect lack of available evidence: studies with small sample  
474 sizes, heterogeneous PFT result reporting, use of different reference values; and scarce longitudinal  
475 data.

476 **Conclusion**

477 CAYA cancer survivors treated with allogeneic HSCT, thoracic radiotherapy, and thoracic surgery  
478 were reported at risk for pulmonary dysfunction. However, our extensive literature search highlights  
479 the absence of robust evidence linking these exposures and pulmonary dysfunction because of small  
480 study sizes, high risks of bias, inconsistently assessing and reporting PFT results, and a lack of  
481 effective interventions to prevent the deterioration of asymptomatic pulmonary dysfunction.  
482 Therefore, our panel could not currently recommend routine PFT for asymptomatic CAYA cancer  
483 survivors. Yet, it is important for health care professionals and CAYA cancer survivors to be aware of  
484 possibly impaired pulmonary health and act vigilantly about appropriately investigating and following  
485 up when symptoms develop. We also recommend routine vaccinations recommended for people with  
486 pulmonary diseases and careful counselling relating to avoidance of tobacco products. Our results  
487 highlighted the current paucity of evidence, revealed relevant knowledge gaps, and emphasised that  
488 clearly defined, well-planned, harmonised, and collaborative studies and reports of pulmonary  
489 function outcomes are urgently needed to improve the body of evidence about pulmonary function  
490 among CAYA cancer survivors in the future.

## 491 **Acknowledgment**

492 We thank Elio Castagnola and Cecile Ronckers for their contribution to the title and abstract and full  
493 text screening; Prof Thorsten Langer (Pediatric Oncology and Hematology, University Hospital for  
494 Children and Adolescents, Lübeck, Germany) and Daniel Mulrooney (St Jude Children's Research  
495 Hospital, Memphis, TN, USA) for critically appraising the recommendations and manuscript as  
496 external reviewers; and Anna Apel (CEO of Saving Kids with Cancer Foundation, Poland; PanCare  
497 Board Member) and Katie Weyer as survivor representatives. Lastly, we thank Kristin Marie Bivens  
498 (Institute of Social and Preventive Medicine, University of Bern) for her editorial assistance.  
499

## 500 **Author contributions**

501 Concept and design: CEK, ACD, RLM, SHA, MMH, LK, RK

502 Literature search: CEK, RLM, RK, MO

503 Title and abstract screening: all authors

504 Full text screening: all authors

505 Data extraction: all authors

506 Risk of bias assessment: CEK, RLM, RK, MO, CS, MG, NW

507 Quality of evidence assessment: CEK, RLM, RK, MO, CS, MG, NW

508 Manuscript writing: all authors

509 Manuscript review: all authors

510

511 MO and RK have directly accessed and verified all underlying data reported in the manuscript.

512 All authors had full access to all the data in the study and accept responsibility for the submission for  
513 publication.

514

515

## 516 **Declaration of interest**

517 - AC Dietz is employed by and has equity in Shape Therapeutics, Inc. and was employed by  
518 and has equity in bluebird bio, Inc., neither of which provided financial support or  
519 oversight of this work.

520 - AB received fees for lectures and/or boards from Astra-Zeneca, Novartis, Enanta paid to  
521 her institution as well as travel grants from Boehringer and Astra-Zeneca.

522 - CEK received grants from the Swiss National Science Foundation

523 - DJW received grants/contracts from Vertex pharmaceuticals, Cystic Fibrosis Foundation,

524 Cystic Fibrosis Foundation Therapeutic Development Network, payment or honoraria for

525 lectures/ presentations by Cystic Fibrosis Foundation and American Board of Pediatrics

526 - GS and RK received support for the present manuscript by Bernische Krebsliga and  
527 Lungenliga Bern

528 - LSC received support from University of Alabama for COG Survivorship guidelines,

529 royalties or licenses from Springer and Wolters Kluwer, payment or honoraria for

530 lectures/ presentations from the American Society for Hematology and the University of

531 Miami, travel support from the First International Pediatric Cardio-oncology meeting, and

532 participates on the Data Safety Monitoring Board or Advisory Board of the NCI PDQ

533 - MG received a grant from the Swiss National Science Foundation, support for attending

534 meetings and/or travel from the European Respiratory Society, has a leadership role in the  
535 BEAT-PCD ERS clinical research collaboration

536 - NW received general research support from CANSEARCH Research Foundation,

537 payment/honoraria and support to attend an international meeting from Swedish Orphan

538 Biovitrum (SOBI), participates on a Data Safety Monitoring Board or Advisory Board

539 from SOBI

540 - PL received grants/contracts from Vertex and OM Pharma, payments or honoraria for

541 lectures/ presentations by Vertex, Vifor and OM Pharma, participates on a Data Safety

542 Monitoring Board or Advisory Board from Polyphor, Santhera, Vertex, OM Pharma,

543 Vifor, Sanofi Aventis

544 - UH received a grant and support for attending meetings from the German Childhood  
545 Cancer Foundation,  
546  
547

## 548 **Funding**

549 Swiss Cancer Research (grant no: KFS-4157-02-2017, KLS/KFS-4825-01-2019 and KFS-5302-02-  
550 2021), Cancer League Bern, Kinderkrebshilfe Schweiz, and Lung League Bern provided support for  
551 our study. Funders played no role in study design, data collection and analysis, decision to publish, or  
552 preparation of the manuscript.  
553  
554  
555

## 556 **References**

- 557 1. Mulder RL, Thonissen NM, van der Pal HJ, Bresser P, Hanselaar W, Koning CC, et al.  
558 Pulmonary function impairment measured by pulmonary function tests in long-term survivors of  
559 childhood cancer. *Thorax*. 2011;66(12):1065-71.
- 560 2. Armenian SH, Landier W, Francisco L, Herrera C, Mills G, Siyahian A, et al. Long-term  
561 pulmonary function in survivors of childhood cancer. *Journal of clinical oncology : official  
562 journal of the American Society of Clinical Oncology*. 2015;33(14):1592-600.
- 563 3. Green DM, Zhu L, Wang M, Ness KK, Krasin MJ, Bhakta NH, et al. Pulmonary function after  
564 treatment for childhood cancer. A report from the St. Jude Lifetime Cohort Study (SJLIFE).  
565 *Annals of the American Thoracic Society*. 2016;13(9):1575-85.
- 566 4. Reulen RC, Winter DL, Frobisher C, Lancashire ER, Stiller CA, Jenney ME, et al. Long-term  
567 cause-specific mortality among survivors of childhood cancer. *Jama*. 2010;304(2):172-9.
- 568 5. Schindler M, Spycher BD, Ammann RA, Ansari M, Michel G, Kuehni CE, et al. Cause-specific  
569 long-term mortality in survivors of childhood cancer in Switzerland: A population-based study.  
570 *International journal of cancer*. 2016;139(2):322-33.
- 571 6. Huang TT, Hudson MM, Stokes DC, Krasin MJ, Spunt SL, Ness KK. Pulmonary outcomes in  
572 survivors of childhood cancer: a systematic review. *Chest*. 2011;140(4):881-901.
- 573 7. Skinner R, Kaplan R, Nathan PC. Renal and pulmonary late effects of cancer therapy. *Seminars  
574 in oncology*. 2013;40(6):757-73.
- 575 8. Hildebrandt GC, Fazekas T, Lawitschka A, Bertz H, Greinix H, Halter J, et al. Diagnosis and  
576 treatment of pulmonary chronic GVHD: report from the consensus conference on clinical  
577 practice in chronic GVHD. *Bone marrow transplantation*. 2011;46:1283.
- 578 9. Saglio F, Zecca M, Pagliara D, Giorgiani G, Balduzzi A, Calore E, et al. Occurrence of long-  
579 term effects after hematopoietic stem cell transplantation in children affected by acute leukemia  
580 receiving either busulfan or total body irradiation: results of an AIEOP (Associazione Italiana  
581 Ematologia Oncologia Pediatrica) retrospective study. *Bone marrow transplantation*.  
582 2020;55(10):1918-27.
- 583 10. Straub JM, New J, Hamilton CD, Lominska C, Shnayder Y, Thomas SM. Radiation-induced  
584 fibrosis: mechanisms and implications for therapy. *J Cancer Res Clin Oncol*.  
585 2015;141(11):1985-94.
- 586 11. Robinson PD, Latzin P, Verbanck S, Hall GL, Horsley A, Gappa M, et al. Consensus statement  
587 for inert gas washout measurement using multiple- and single- breath tests. *The European  
588 respiratory journal*. 2013;41(3):507-22.
- 589 12. Stenehjem JS, Smeland KB, Murbraech K, Holte H, Kvaløy S, Wethal T, et al. Diffusing  
590 capacity impairment is prevalent in long-term lymphoma survivors after high-dose therapy with  
591 autologous stem cell transplantation. *Bone marrow transplantation*. 2016;52:646.
- 592 13. Botta L, Gatta G, Capocaccia R, Stiller C, Cañete A, Dal Maso L, et al. Long-term survival and  
593 cure fraction estimates for childhood cancer in Europe (EUROCORE-6): results from a  
594 population-based study. *The Lancet Oncology*. 2022;23(12):1525-36.
- 595 14. Children`s Oncology Group Long Term Follow-Up guidelines Version 5.0 2018 [cited 2019  
596 05.04.2019]. Available from:  
597 [http://www.survivorshipguidelines.org/pdf/2018/COG\\_LTFU\\_Guidelines\\_v5.pdf](http://www.survivorshipguidelines.org/pdf/2018/COG_LTFU_Guidelines_v5.pdf).

- 598 15. Dutch Children's Oncology Group SKION. Guidelines for follow-up in survivors of childhood  
599 cancer 5 years after diagnosis. 2010 [cited 08.05.2018]. Available from:  
600 <https://www.skion.nl/voor-patienten-en-ouders/late-effecten/533/richtlijn-follow-up-na->  
601 [kinderkanker/](https://www.skion.nl/voor-patienten-en-ouders/late-effecten/533/richtlijn-follow-up-na-kinderkanker/).
- 602 16. United Kingdom Children's Cancer Study Group. Therapy based long term follow-up - Practice  
603 Statement 2005. [cited 08.05.2018]. Available from:  
604 <https://www.cclg.org.uk/write/MediaUploads/Member%20area/Treatment%20guidelines/LTFU>  
605 [-full.pdf](https://www.cclg.org.uk/write/MediaUploads/Member%20area/Treatment%20guidelines/LTFU).
- 606 17. International Guideline Harmonization Group (IGHG). [cited 04.11.2020]. Available from:  
607 <https://www.ighg.org/>.
- 608 18. Kremer LC, Mulder RL, Oeffinger KC, Bhatia S, Landier W, Levitt G, et al. A worldwide  
609 collaboration to harmonize guidelines for the long-term follow-up of childhood and young adult  
610 cancer survivors: a report from the International Late Effects of Childhood Cancer Guideline  
611 Harmonization Group. *Pediatric blood & cancer*. 2013;60(4):543-9.
- 612 19. Children's Oncology Group Long Term Follow-Up guidelines Version 4.0 2013 [cited  
613 0.05.2018]. Available from: <https://www.childrensoncologygroup.org/>.
- 614 20. Children's Cancer and Leukaemia Group. [cited 29.05.2022]. Available from:  
615 <https://www.cclg.org.uk/>.
- 616 21. PanCare - Pan-European Network for Care of Survivors after Childhood and Adolescent  
617 Cancer. [cited 29.05.2022]. Available from: [www.pancare.eu](http://www.pancare.eu).
- 618 22. Scottish Intercollegiate Guidelines Network (SIGN). Long term follow up of survivors of  
619 childhood cancer - A national clinical guideline 2013. [cited 16.11.2021]. Available from:  
620 <https://www.sign.ac.uk/media/1070/sign132.pdf>.
- 621 23. Centre for Evidence-Based Medicine (CEBM). Asking focused questions: University of Oxford,  
622 Oxford UK. [cited 29.05.2022]. Available from: <https://www.cebm.ox.ac.uk/resources/ebm->  
623 [tools/asking-focused-questions](https://www.cebm.ox.ac.uk/resources/ebm-).
- 624 24. Oth M, Schindera C, Güngör T, Ansari M, Scheinemann K, Belle FN, et al. Transplant  
625 characteristics and self-reported pulmonary outcomes in Swiss childhood cancer survivors after  
626 hematopoietic stem cell transplantation-a cohort study. *Bone marrow transplantation*. 2021;  
627 56(5):1065-1076.
- 628 25. Kasteler R, Weiss A, Schindler M, Sommer G, Latzin P, von der Weid NX, et al. Long-term  
629 pulmonary disease among Swiss childhood cancer survivors. *Pediatric blood & cancer*.  
630 2018;65(1).
- 631 26. Dietz AC, Chen Y, Yasui Y, Ness KK, Hagood JS, Chow EJ, et al. Risk and impact of  
632 pulmonary complications in survivors of childhood cancer: A report from the Childhood Cancer  
633 Survivor Study. *Cancer*. 2016;122(23):3687-96.
- 634 27. Mertens AC, Yasui Y, Liu Y, Stovall M, Hutchinson R, Ginsberg J, et al. Pulmonary  
635 complications in survivors of childhood and adolescent cancer. A report from the Childhood  
636 Cancer Survivor Study. *Cancer*. 2002;95(11):2431-41.
- 637 28. Huang TT, Chen Y, Dietz AC, Yasui Y, Donaldson SS, Stokes DC, et al. Pulmonary outcomes  
638 in survivors of childhood central nervous system malignancies: a report from the Childhood  
639 Cancer Survivor Study. *Pediatric blood & cancer*. 2014;61(2):319-25.
- 640 29. Moher D, Liberati A, Tetzlaff J, Altman DG. Preferred reporting items for systematic reviews  
641 and meta-analyses: the PRISMA statement. *Int J Surg*. 2010;8(5):336-41.
- 642 30. Atkins D, Best D, Briss PA, Eccles M, Falck-Ytter Y, Flottorp S, et al. Grading quality of  
643 evidence and strength of recommendations. *BMJ*. 2004;328(7454):1490.
- 644 31. Record E, Williamson R, Wasilewski-Masker K, Mertens AC, Meacham LR, Popler J. Analysis  
645 of risk factors for abnormal pulmonary function in pediatric cancer survivors. *Pediatric blood &*  
646 *cancer*. 2016;63(7):1264-71.
- 647 32. Inaba H, Yang J, Pan J, Stokes DC, Krasin MJ, Srinivasan A, et al. Pulmonary dysfunction in  
648 survivors of childhood hematologic malignancies after allogeneic hematopoietic stem cell  
649 transplantation. *Cancer*. 2010;116(8):2020-30.
- 650 33. Ginsberg JP, Aplenc R, McDonough J, Bethel J, Doyle J, Weiner DJ. Pre-transplant lung  
651 function is predictive of survival following pediatric bone marrow transplantation. *Pediatric*  
652 *blood & cancer*. 2010;54(3):454-60.

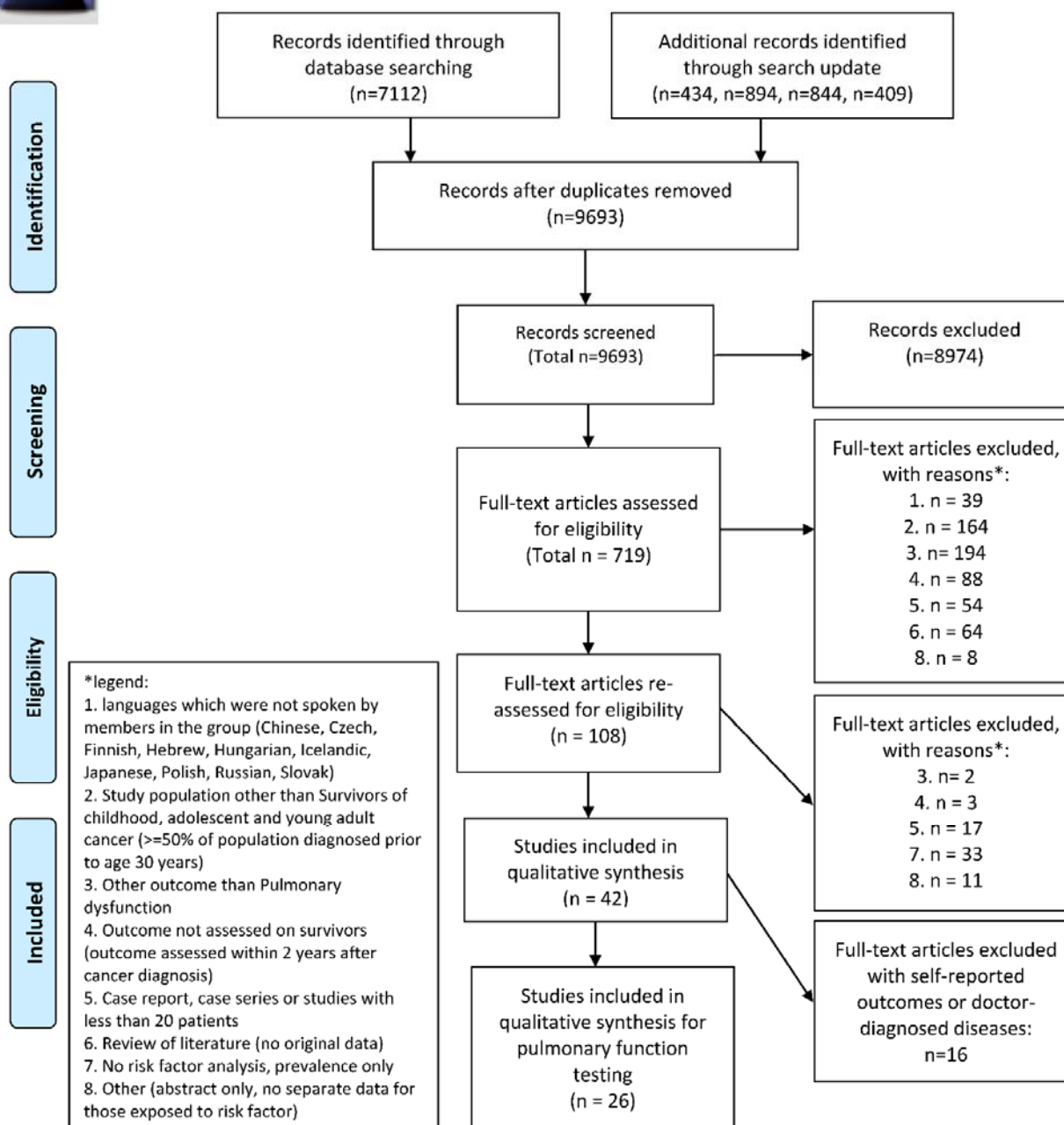
- 653 34. Leung W, Ahn H, Rose SR, Phipps S, Smith T, Gan K, et al. A prospective cohort study of late  
654 sequelae of pediatric allogeneic hematopoietic stem cell transplantation. *Medicine*.  
655 2007;86(4):215-24.
- 656 35. Madanat-Harjuoja LM, Valjento S, Vettenranta K, Kajosaari M, Dyba T, Taskinen M.  
657 Pulmonary function following allogeneic stem cell transplantation in childhood: a retrospective  
658 cohort study of 51 patients. *Pediatric transplantation*. 2014;18(6):617-24.
- 659 36. Hoffmeister PA, Madtes DK, Storer BE, Sanders JE. Pulmonary function in long-term survivors  
660 of pediatric hematopoietic cell transplantation. *Pediatric blood & cancer*. 2006;47(5):594-606.
- 661 37. Wieringa J, van Kralingen KW, Sont JK, Bresters D. Pulmonary function impairment in  
662 children following hematopoietic stem cell transplantation. *Pediatric blood & cancer*.  
663 2005;45(3):318-23.
- 664 38. De A, Kamath S, Wong K, Olch AJ, Malvar J, Sposto R, et al. Correlation of pulmonary  
665 function abnormalities with dose volume histograms in children treated with lung irradiation.  
666 *Pediatric pulmonology*. 2015;50(6):596-603.
- 667 39. Denbo JW, Zhu L, Srivastava D, Stokes DC, Srinivasan S, Hudson MM, et al. Long-term  
668 pulmonary function after metastasectomy for childhood osteosarcoma: a report from the St Jude  
669 lifetime cohort study. *Journal of the American College of Surgeons*. 2014;219(2):265-71.
- 670 40. Stone A, Friedman DN, Kushner BH, Wolden S, Modak S, LaQuaglia MP, et al. Assessment of  
671 pulmonary outcomes, exercise capacity, and longitudinal changes in lung function in pediatric  
672 survivors of high-risk neuroblastoma. *Pediatric blood & cancer*. 2019;66(11):e27960.
- 673 41. Nysom K, Holm K, Hertz H, Hesse B. Risk factors for reduced pulmonary function after  
674 malignant lymphoma in childhood. *Medical and pediatric oncology*. 1998;30(4):240-8.
- 675 42. Nysom K, Holm K, Olsen JH, Hertz H, Hesse B. Pulmonary function after treatment for acute  
676 lymphoblastic leukaemia in childhood. *British journal of cancer*. 1998;78(1):21-7.
- 677 43. Oancea SC, Gurney JG, Ness KK, Ojha RP, Tyc VL, Klosky JL, et al. Cigarette smoking and  
678 pulmonary function in adult survivors of childhood cancer exposed to pulmonary-toxic therapy:  
679 results from the St. Jude lifetime cohort study. *Cancer epidemiology, biomarkers & prevention*.  
680 2014;23(9):1938-43.
- 681 44. Myrdal OH, Kanellopoulos A, Christensen JR, Ruud E, Edvardsen E, Kongerud J, et al. Risk  
682 factors for impaired pulmonary function and cardiorespiratory fitness in very long-term adult  
683 survivors of childhood acute lymphoblastic leukemia after treatment with chemotherapy only.  
684 *Acta oncologica (Stockholm, Sweden)*. 2018;57(5):658-64.
- 685 45. Zorzi AP, Yang CL, Dell S, Nathan PC. Bleomycin-associated Lung Toxicity in Childhood  
686 Cancer Survivors. *Journal of pediatric hematology/oncology*. 2015;37(8):e447-52.
- 687 46. Jenney ME, Faragher EB, Jones PH, Woodcock A. Lung function and exercise capacity in  
688 survivors of childhood leukaemia. *Medical and pediatric oncology*. 1995;24(4):222-30.
- 689 47. Green DM, Merchant TE, Billups CA, Stokes DC, Broniscer A, Bartels U, et al. Pulmonary  
690 function after treatment for embryonal brain tumors on SJMB03 that included craniospinal  
691 irradiation. *International journal of radiation oncology, biology, physics*. 2015;93(1):47-53.
- 692 48. Khan F, Williams AM, Weiner DJ, Constine LS. Impact of Respiratory Developmental Stage on  
693 Sensitivity to Late Effects of Radiation in Pediatric Cancer Survivors. *Adv Radiat Oncol*.  
694 2020;5(3):426-33.
- 695 49. Mittal A, Bhethanabhotla S, Ganguly S, Vishnubhatla S, Khadgawat R, Patel C, et al. Late  
696 effects in pediatric Hodgkin lymphoma survivors after uniform treatment with ABVD with or  
697 without radiotherapy. *Pediatric blood & cancer*. 2021;68(11):e29293.
- 698 50. Weiner DJ, Maity A, Carlson CA, Ginsberg JP. Pulmonary function abnormalities in children  
699 treated with whole lung irradiation. *Pediatric blood & cancer*. 2006;46(2):222-7.
- 700 51. Oguz A, Tayfun T, Citak EC, Karadeniz C, Tatlicioglu T, Boyunaga O, et al. Long-term  
701 pulmonary function in survivors of childhood Hodgkin disease and non-Hodgkin lymphoma.  
702 *Pediatric blood & cancer*. 2007;49(5):699-703.
- 703 52. Otth M, Yammine S, Usemann J, Latzin P, Mader L, Spycher B, et al. Longitudinal lung  
704 function in childhood cancer survivors after hematopoietic stem cell transplantation. *Bone  
705 marrow transplantation*. 2022;57(2):207-14.
- 706 53. Marina NM, Greenwald CA, Fairclough DL, Thompson EI, Wilimas JA, Mackert PW, et al.  
707 Serial pulmonary function studies in children treated for newly diagnosed Hodgkin's disease  
708 with mantle radiotherapy plus cycles of cyclophosphamide, vincristine, and procarbazine



- 709 alternating with cycles of doxorubicin, bleomycin, vinblastine, and dacarbazine. *Cancer*.  
710 1995;75(7):1706-11.
- 711 54. Donat SM, Levy DA. Bleomycin associated pulmonary toxicity: is perioperative oxygen  
712 restriction necessary? *The Journal of urology*. 1998;160(4):1347-52.
- 713 55. LaMantia KR, Glick JH, Marshall BE. Supplemental oxygen does not cause respiratory failure  
714 in bleomycin-treated surgical patients. *Anesthesiology*. 1984;60(1):65-7.
- 715 56. Chow EJ, Anderson L, Baker KS, Bhatia S, Guilcher GMT, Huang JT, et al. Late Effects  
716 Surveillance Recommendations among Survivors of Childhood Hematopoietic Cell  
717 Transplantation: A Children's Oncology Group Report. *Biology of Blood and Marrow*  
718 *Transplantation*. 2016;22(5):782-95.
- 719 57. Dietz AC, Duncan CN, Alter BP, Bresters D, Cowan MJ, Notarangelo L, et al. The Second  
720 Pediatric Blood and Marrow Transplant Consortium International Consensus Conference on  
721 Late Effects after Pediatric Hematopoietic Cell Transplantation: Defining the Unique Late  
722 Effects of Children Undergoing Hematopoietic Cell Transplantation for Immune Deficiencies,  
723 Inherited Marrow Failure Disorders, and Hemoglobinopathies. *Biology of Blood and Marrow*  
724 *Transplantation*. 2017;23(1):24-9.
- 725 58. Ness KK, Kirkland JL, Gramatges MM, Wang Z, Kundu M, McCastlain K, et al. Premature  
726 Physiologic Aging as a Paradigm for Understanding Increased Risk of Adverse Health Across  
727 the Lifespan of Survivors of Childhood Cancer. *Journal of clinical oncology*. 2018;36(21):2206-  
728 15.
- 729 59. Armenian SH, Gibson CJ, Rockne RC, Ness KK. Premature Aging in Young Cancer Survivors.  
730 *Journal of the National Cancer Institute*. 2019;111(3):226-32.
- 731 60. Williams AM, Mandelblatt J, Wang M, Armstrong GT, Bhakta N, Brinkman TM, et al.  
732 Premature aging as an accumulation of deficits in young adult survivors of pediatric cancer.  
733 *Journal of the National Cancer Institute*. 2023;115(2):200-7.
- 734 61. Fried LP, Tangen CM, Walston J, Newman AB, Hirsch C, Gottdiener J, et al. Frailty in older  
735 adults: evidence for a phenotype. *J Gerontol A Biol Sci Med Sci*. 2001;56(3):M146-56.
- 736 62. Ness KK, Krull KR, Jones KE, Mulrooney DA, Armstrong GT, Green DM, et al. Physiologic  
737 frailty as a sign of accelerated aging among adult survivors of childhood cancer: a report from  
738 the St Jude Lifetime cohort study. *Journal of clinical oncology*. 2013;31(36):4496-503.
- 739 63. Schindera C, Usemann J, Zuercher SJ, Jung R, Kasteler R, Frauchiger B, et al. Pulmonary  
740 Dysfunction after Treatment for Childhood Cancer. Comparing Multiple-Breath Washout with  
741 Spirometry. *Annals of the American Thoracic Society*. 2021;18(2):281-9.
- 742 64. Parisi GF, Cannata E, Manti S, Papale M, Meli M, Russo G, et al. Lung clearance index: A new  
743 measure of late lung complications of cancer therapy in children. *Pediatric pulmonology*.  
744 2020;55(12):3450-6.
- 745 65. Louie AD, Robison LL, Bogue M, Hyde S, Forman SJ, Bhatia S. Validation of self-reported  
746 complications by bone marrow transplantation survivors. *Bone marrow transplantation*.  
747 2000;25(11):1191-6.
- 748 66. Quanjer PH, Stanojevic S, Cole TJ, Baur X, Hall GL, Culver BH, et al. Multi-ethnic reference  
749 values for spirometry for the 3-95-yr age range: the global lung function 2012 equations. *The*  
750 *European respiratory journal*. 2012;40(6):1324-43.
- 751 67. Graham BL, Steenbruggen I, Miller MR, Barjaktarevic IZ, Cooper BG, Hall GL, et al.  
752 Standardization of Spirometry 2019 Update. An Official American Thoracic Society and  
753 European Respiratory Society Technical Statement. *American journal of respiratory and critical*  
754 *care medicine*. 2019;200(8):e70-e88.
- 755 68. Fidler MM, Reulen RC, Bright CJ, Henson KE, Kelly JS, Jenney M, et al. Respiratory mortality  
756 of childhood, adolescent and young adult cancer survivors. *Thorax*. 2018;73(10):959-68.
- 757 69. Smith L, Glaser AW, Peckham D, Greenwood DC, Feltbower RG. Respiratory morbidity in  
758 young people surviving cancer: Population-based study of hospital admissions, treatment-  
759 related risk factors and subsequent mortality. *International journal of cancer*. 2018;145(1):20-8.
- 760 70. Maher TM, Corte TJ, Fischer A, Kreuter M, Lederer DJ, Molina-Molina M, et al. Pirfenidone in  
761 patients with unclassifiable progressive fibrosing interstitial lung disease: a double-blind,  
762 randomised, placebo-controlled, phase 2 trial. *The Lancet Respiratory medicine*. 2020;8(2):147-  
763 57.
- 764



### PRISMA 2009 Flow Diagram



From: Moher D, Liberati A, Tetzlaff J, Altman DG, The PRISMA Group (2009). Preferred Reporting Items for Systematic Reviews and Meta-Analyses: The PRISMA Statement. PLoS Med 6(6): e1000097. doi:10.1371/journal.pmed1000097

For more information, visit [www.prisma-statement.org](http://www.prisma-statement.org).

**Figure 1: Flow diagram for selection of studies**

(Studies could be included in more than one category)

**Table 1: Key characteristics of included studies used for recommendation (n=26).** Detailed information available in Appendix K.

<b>Author</b>	<b>Population</b>	<b>Outcome relevant for recommendation</b>
Armenian et al., J Clin Oncol, 2015 <sup>2</sup>	1. Number of survivors analysed (treatment years) 2. Diagnostic group 3. Proportion of survivors exposed to specific treatments 1. N=121 (1972–2007) 2. Treatment-related inclusion criteria: no restriction for cancer diagnosis, at least one pulmonary toxic treatment modality (1) pulmonary toxic chemotherapy (bleomycin, busulfan, nitrosoureas), and/or 2) chest radiation, and/or 3) allogeneic HSCT with cGVHD, and/or 4) pulmonary surgery (lobectomy, metastasectomy, or wedge resection) 3. Exposure/PICO: Bleomycin 35%, busulfan 12%, nitrosoureas 10%, radiotherapy 74%, surgery 6%, HSCT 36%	1. Pulmonary function parameters assessed 2. Definition of pulmonary dysfunction 1. TLC, FVC, FEV1, FEV1/FVC, DLCO 2. Obstructive=FEV1/FVC<0.7, FEV1<80%pred Restrictive= TLC<75%pred, FEV1≥80%pred Diffusion capacity impairment =DLCO<75%pred
De et al., Pediatr Pulmonol, 2015 <sup>38</sup>	1. N=49 (1999–2009) 2. Treatment-related inclusion criteria: no restriction for cancer diagnosis, radiotherapy involving the lung 3. Exposure/PICO: Bleomycin 78%, cyclophosphamide 82%, radiotherapy 100%, surgery 18%	1. FEV1, FVC, FEV1/FVC, FEF25–75, RV, TLC. RV/TLC, phase II N <sub>2</sub> , DLCO 2. Obstructive=FEV1/FVC <80%pred or abnormal FEV1 or FEF25–75%pred with normal lung volumes (i.e., normal TLC) Restrictive=TLC <77%pred Hyperinflation= RV/TLC ratio >28% Diffusion capacity impairment= DLCOadj <65%pred or DLCOadj/VA <4 ml/mm/Hg/min/L
Denbo et al., J Am Coll Surg, 2014 <sup>39</sup>	1. N=21 (1968–1998) 2. Treatment-related inclusion criteria: diagnosis of osteosarcoma and pulmonary metastasectomy 3. Exposure/PICO: Bleomycin 28%, surgery 100%	1. FVC, FEV1, TLC, DLCO 2. Threshold for pathological parameters=FVC <80% pred; FEV1 <80%pred; TLC <75%pred; DLCOcorr <75%pred Obstructive=FEV1/FVC < 0.70 Restrictive=TLC <75%pred
Ginsberg et al., PBC, 2010 <sup>33</sup>	1. N=317 (1978–2005) 2. Treatment-related inclusion criterion: first myeloablative SCT (autologous or allogeneic) and at least one PFT available 3. Exposure/PICO: Allogeneic SCT 76%, TBI 55%	1. FEV1, FVC, TLC, FEF25–75, FVC, TLC, DLCO 2. Threshold for pathological parameters=FEV1, FEF25–75%, FVC, TLC, DLCO as z-scores if below -2 z-scores



Green et al., Int J Radiat Oncol Biol Phys, 2015 <sup>47</sup>	<ol style="list-style-type: none"> <li>1. N=260 (2003–2010)</li> <li>2. Treatment-related inclusion criterion: embryonal brain tumors</li> <li>3. Exposure/PICO: Cyclophosphamide 100%, craniospinal radiotherapy 100%</li> </ol>	<ol style="list-style-type: none"> <li>1. FEV1, FVC, TLC, DLCO</li> <li>2. Threshold for pathological parameters=FEV1&lt;80%pred, FVC&lt;80%pred, DLCO&lt;75%pred, TLC&lt;75% pred</li> </ol>
Green et al., Ann Am Thorac Soc, 2016 <sup>3</sup>	<ol style="list-style-type: none"> <li>1. N=606 (unknown, SJLIFE)</li> <li>2. Treatment-related inclusion criteria: no restriction for cancer diagnosis, at least one pulmonary toxic treatment modality (1) bleomycin, busulfan, BCNU, or CCNU; and/or (2) radiation therapy to the chest, whole lung, mediastinum, axilla, mini-mantle, mantle, extended mantle, total lymphoid irradiation, subtotal lymphoid irradiation, or total body irradiation; and/or (3) surgical procedures (pulmonary lobectomy, metastasectomy, or wedge resection), at least one PFT measurement</li> <li>3. Exposure/PICO: Bleomycin 21.3%, busulfan 2.6%, cyclophosphamide 64.5%, nitrosoureas 3.8%, radiotherapy 76.7%, surgery 19.7%, HSCT 6.6%</li> </ol>	<ol style="list-style-type: none"> <li>1. FEV1, FVC, TLC, DLCO</li> <li>2. Threshold for pathological parameters=FEV1&lt;80%pred, FVC&lt;80%pred, FEV1/FVC&lt;0.7, TLC&lt;75%pred, DLCOcorr&lt;75%pred</li> </ol>
Hoffmeister et al., PBC, 2006 <sup>36</sup>	<ol style="list-style-type: none"> <li>1. N=215 (1969–1995)</li> <li>2. Treatment-related inclusion criterion: myeloablative HSCT</li> <li>3. Exposure/PICO: Cyclophosphamide proportion not reported, TBI 88%</li> </ol>	<ol style="list-style-type: none"> <li>1. FEV1, FVC, FEV1/FVC, TLC, DLCO</li> <li>2. Threshold for pathological parameters=TLC&lt;80%, FVC, FEV1, FEV1/FVC&lt;80%, DLCO&lt;70%</li> </ol>
Inaba et al., Cancer, 2010 <sup>32</sup>	<ol style="list-style-type: none"> <li>1. N=89 (1990–2005)</li> <li>2. Treatment-related inclusion criteria: allogeneic HSCT and available PFT before HSCT</li> <li>3. Exposure/PICO: Cyclophosphamide 95%, radiotherapy (TBI) 97%</li> </ol>	<ol style="list-style-type: none"> <li>1. FEV1, FVC, TLC, DLCO, FEF25–75, RV, FRC</li> <li>2. Threshold for pathological parameters=FEV1, FVC, TLC, DLCOcorr &lt;80%pred, FEF25-75 &lt;67%pred, RV and FRC &gt;120%pred. FEV1/FVC&lt;0.8. RV/TLC&gt;0.3. Obstructive=FEV1/FVC&lt;0.8, FEV1&lt;80%pred, FEF25–75 &lt;67%pred Restrictive=FVC&lt;80%pred, TLC&lt;80%pred,</li> </ol>
Jenney et al., Med Pediatr Oncol, 1995 <sup>46</sup>	<ol style="list-style-type: none"> <li>1. N=69 (1954–1988)</li> <li>2. Treatment-related inclusion criterion: acute leukaemia, at least one PFT available</li> <li>3. Exposure/PICO: Cyclophosphamide (proportion not reported), craniospinal irradiation 14%</li> </ol>	<ol style="list-style-type: none"> <li>1. EV1, FVC, RV, FRC, ITGV, RAW, SGAW, TLC, DLCO</li> <li>2. Threshold for pathological parameters=FEV1, FVC, RV, FRC, ITGV, RAW, SGAW, TLC, DLCO analyzed as &lt;80%pred and &lt;85%pred</li> </ol>

Khan et al., Adv Radiat Oncol, 2020 <sup>48</sup>	<ol style="list-style-type: none"> <li>1. N=61 (1995–2016)</li> <li>2. Treatment-related inclusion criteria: no restriction for cancer diagnosis, radiotherapy to the lung</li> <li>3. Exposure/PICO: Bleomycin 59%, radiotherapy 100%</li> </ol>	<ol style="list-style-type: none"> <li>1. FEV1, FVC, TLC, DLCO</li> <li>2. Obstructive=FVC z-score &gt;-1.645, FEV1 z-score &lt;-1.645, FEV1/FVC ratio z-score &lt;-1.645. Restrictive=TLC z-score &lt;-1.645. Hyperinflation=RV/TLC ratio z-score &gt;+1.645. DLCO z-score &lt;-1.645</li> </ol>
Leung et al., Medicines (Baltimore), 2007 <sup>34</sup>	<ol style="list-style-type: none"> <li>1. N=155 (1990–2003)</li> <li>2. Treatment-related inclusion criteria: no restriction for cancer diagnosis, allogeneic HSCT</li> <li>3. Exposure/PICO: Allogeneic HSCT 100%, TBI 79%</li> </ol>	<ol style="list-style-type: none"> <li>1. FEV1, FVC, FEV1/FVC, TLC, DLCO</li> <li>2. Threshold for pathological parameters=FEV1/FVC&lt;85%pred, TLC and DLCO &lt;80%pred</li> </ol>
Madanat-Harjuoja et al., Pediatr Transplant, 2014 <sup>35</sup>	<ol style="list-style-type: none"> <li>1. N=51 (1993–2005)</li> <li>2. Treatment-related inclusion criteria: no restriction for cancer diagnosis, allogeneic HSCT</li> <li>3. Exposure/PICO: Cyclophosphamide 47%, TBI 98%, total nodal irradiation 2%</li> </ol>	<ol style="list-style-type: none"> <li>1. FEV1, FVC, FEV1/FVC</li> <li>2. Obstructive=FEV1&lt;80% and FEV1/FVC&lt;80% Restrictive=FVC&lt;80% and FEV1/FVC&gt;80%</li> </ol>
Marina et al., Cancer, 1995 <sup>53</sup>	<ol style="list-style-type: none"> <li>1. N=37 (1983–1988)</li> <li>2. Treatment-related inclusion criteria: Hodgkin lymphoma plus mantle radiotherapy plus chemotherapy with COP and ABVD</li> <li>3. Exposure/PICO: Bleomycin 100%, mantle radiotherapy 100%</li> </ol>	<ol style="list-style-type: none"> <li>1. VC, TLC, DLCO</li> <li>2. Threshold for pathological parameters=FVC, TLC, DLCO, DLCO/VA as %predicted; no cut-off values defined</li> </ol>
Mittal et al., PBC, 2021 <sup>49</sup>	<ol style="list-style-type: none"> <li>1. N=154 (2003–2013)</li> <li>2. Treatment-related inclusion criteria: Hodgkin lymphoma</li> <li>3. Exposure/PICO: Bleomycin 100%</li> </ol>	<ol style="list-style-type: none"> <li>1. FEV1, FVC, DLCO</li> <li>2. Threshold for pathological parameters=FEV1, FVC, DLCO &lt;80%pred Restrictive=FVC&lt;80%pred, FEV1/FVC≥85 Mixed=FVC&lt;80%pred, FEV1/FVC&lt;85</li> </ol>
Mulder et al., Thorax, 2011 <sup>1</sup>	<ol style="list-style-type: none"> <li>1. N=193 (1966–1996)</li> <li>2. Treatment-related inclusion criteria: no restriction for cancer diagnosis, at least one pulmonary toxic treatment modality (bleomycin, pulmonary radiotherapy and/or pulmonary surgery)</li> <li>3. Exposure/PICO: Bleomycin 57%, radiotherapy 40.9%, surgery 16.6%</li> </ol>	<ol style="list-style-type: none"> <li>1. TLC, FVC, FEV1, FEV1/VC, DLCO</li> <li>2. Obstructive=FEV1/VC<sub>max</sub> &lt;0.70 and FEV1&lt;80%pred Restrictive=TLC &lt;75%pred or FVC &lt;75%pred with normal FEV1/VC<sub>max</sub> ratio if no TLC available Diffusion capacity impairment=DLCO or KCO &lt;75%pred</li> </ol>

Myrdal et al., Acta Oncol, 2018 <sup>44</sup>	<ol style="list-style-type: none"> <li>1. N=116 (1970–2002)</li> <li>2. Treatment-related inclusion criteria: acute lymphoblastic leukaemia (chemotherapy only)</li> <li>3. Exposure/PICO: Smoking 19%</li> </ol>	<ol style="list-style-type: none"> <li>1. FEV1, FVC, FEV1/FVC, TLC, RV, DLCO</li> <li>2. Threshold for pathological parameters=FVC, FEV1, FE1/FVC, TLC, RV, DLCO, DLCO/VA; reported as absolute values and percentage of predicted Obstructive= FEV1/FVC &lt;0.7 Restrictive and DLCO impairment= &lt;80%pred</li> </ol>
Nysom et al., Br J Cancer, 1998 <sup>42</sup>	<ol style="list-style-type: none"> <li>1. N=94 (1970–1990)</li> <li>2. Treatment-related inclusion criteria: Acute lymphoblastic leukaemia</li> <li>3. Exposure/PICO: Cyclophosphamide 46%, methotrexate 73%, smoking (former or current) 23%</li> </ol>	<ol style="list-style-type: none"> <li>1. FEV1, FVC, TLC, DLCO</li> <li>2. Threshold for pathological parameters=FEV1, FVC, TLC, DLCO as z-scores, abnormal if &gt;1.645 residual SD from predicted mean values Obstructive=low FEV1/FVC Restrictive=reduced FVC or TLC or restrictive flow-volume curve</li> </ol>
Nysom et al., Med Padiatr Oncol, 1998 <sup>41</sup>	<ol style="list-style-type: none"> <li>1. N=41 (1970–1992)</li> <li>2. Treatment-related inclusion criteria: Hodgkin and non-Hodgkin lymphoma</li> <li>3. Exposure/PICO: Radiotherapy 51%</li> </ol>	<ol style="list-style-type: none"> <li>1. FEV1, FVC, TLC, DLCO</li> <li>2. Threshold for pathological parameters=FEV1, FVC, TLC, DLCO as z-scores, abnormal if &gt;1.645 residual SD from predicted mean values</li> </ol>
Oancea et al., Cancer Epidemiol Biomarkers Prev, 2014 <sup>43</sup>	<ol style="list-style-type: none"> <li>1. N=433 (unknown)</li> <li>2. Treatment-related inclusion criteria: no restriction for cancer diagnosis, at least one pulmonary toxic treatment modality (pulmonary lobectomy, metastasectomy or wedge resection, bleomycin, busulfan, lomustine, carmustine, or radiotherapy to the chest, whole lung, mediastinum, axilla, mini-mantle, mantle, extended mantle, total lymphoid irradiation, subtotal lymphoid irradiation, or total body irradiation)</li> <li>3. Exposure/PICO: Bleomycin 22%, busulfan 2%, nitrosoureas 4%, radiotherapy 81%, surgery 17%</li> </ol>	<ol style="list-style-type: none"> <li>1. FEV1, FVC, TLC, DLCO</li> <li>2. Obstructive=FEV1/FVC &lt;0.70 Restrictive=TLC &lt; 75%pred</li> </ol>
Oguz et al., PBC, 2007 <sup>51</sup>	<ol style="list-style-type: none"> <li>1. N=75 (1992–2003)</li> <li>2. Treatment-related inclusion criteria: Hodgkin and non-Hodgkin lymphoma</li> <li>3. Exposure/PICO: Radiotherapy 55%</li> </ol>	<ol style="list-style-type: none"> <li>1. FEV1, FVC, FEV1/FVC, TLC, RV, RV/TLC, DLCO</li> <li>2. Obstructive by FEV1, FVC, FEV1/FVC. Restrictive by TLC, RV, RV/TLC ratio. Diffusion capacity impairment by DLCO. No further information.</li> </ol>
Oth et al., Bone Marrow Transplant, 2022 <sup>52</sup>	<ol style="list-style-type: none"> <li>1. N=74 (1976–2010)</li> <li>2. Treatment-related inclusion criteria: autologous or allogeneic HSCT</li> <li>3. Exposure/PICO: Radiotherapy 70%, thoracic surgery 14%, allogeneic HSCT, 68%, busulfan 34%, carmustine 7%, lomustine 1%, bleomycin 5%</li> </ol>	<ol style="list-style-type: none"> <li>1. FEV1, FVC, MMEF, TLC, RV, DLCO</li> <li>2. Threshold for pathological parameters=FEV1, FVC, MMEF, TLC, RV, DLCO as z-scores, abnormal if z-scores &lt;-1.645</li> </ol>

Record et al., PBC, 2016 <sup>31</sup>	<ol style="list-style-type: none"> <li>1. N=143 (2000–2009)</li> <li>2. Treatment-related inclusion criteria: no restriction for cancer diagnosis, at least one pulmonary toxic treatment modality (bleomycin, busulfan, carmustine, lomustine; radiation to the chest (mantle, mediastinal, whole lung fields), abdomen (whole abdomen, upper abdominal field), or TBI; or surgery to the chest or lung (lobectomy, wedge resection, or thoracotomy))</li> <li>3. Exposure/PICO: Bleomycin 33·6%, nitrosoureas 11·9%, radiotherapy 67·8%, surgery 16·8%, HSCT 46·9%</li> </ol>	<ol style="list-style-type: none"> <li>1. FEV1, FVC, FEV1/FVC, FEF25-75, TLC, RV</li> <li>2. Obstructive= FVC &lt;80%pred.; FEV1&lt;80%pred or FEV1/FVC&lt;80%pred, or FEF25-75% &lt;68%pred Restrictive=TLC &lt;80%pred Hyperinflation=RV&gt;120%pred or RV/TLC &gt;28%pred</li> </ol>
Stone et al., PBC, 2020 <sup>40</sup>	<ol style="list-style-type: none"> <li>1. N=62 (1996–2013)</li> <li>2. Treatment-related inclusion criteria: High-risk neuroblastoma</li> <li>3. Exposure/PICO: Busulfan 6·5%, cyclophosphamide 100%, radiotherapy 34%, surgery 23%</li> </ol>	<ol style="list-style-type: none"> <li>1. FEV1, FVC, FEF25-75, TLC, DLCO</li> <li>2. Threshold for pathological parameters=FEV1, FVC, TLC, DLCO &lt;80%pred Obstructive=FEV1/FVC&lt;0·8 Restrictive=TLC&lt;80 %pred</li> </ol>
Weiner et al., PBC, 2006 <sup>50</sup>	<ol style="list-style-type: none"> <li>1. N=30 (1988–2003)</li> <li>2. Treatment-related inclusion criteria: no restriction to cancer diagnosis, whole lung irradiation</li> <li>3. Exposure/PICO: Bleomycin 10%, radiotherapy 100%</li> </ol>	<ol style="list-style-type: none"> <li>1. FVC, FEV1, FEV1/FVC, TLC, DLCO, MIP, MEP</li> <li>2. Each pulmonary function parameter was considered normal if it was within two standard deviations of the mean (<math>-2 &lt; Z &lt; 2</math>)</li> </ol>
Wieringa et al., PBC, 2005 <sup>37</sup>	<ol style="list-style-type: none"> <li>1. N=39 (2001–2003)</li> <li>2. Treatment-related inclusion criteria: no restriction to cancer diagnosis, allogeneic HSCT</li> <li>3. Exposure/PICO: Cyclophosphamide 100%, TBI or thoracoabdominal irradiation 79%, busulfan 15%</li> </ol>	<ol style="list-style-type: none"> <li>1. FEV1, FVC, FRC, RV, TLCO</li> <li>2. Threshold for pathological parameters=FEV1, FVC, FRC, RV, TLCO, pathological when &lt;80%predicted Obstructive=FEV1/FVC &lt; 80%pred Restrictive=TLC &lt;80%pred Diffusion capacity impairment=TLCO &lt;80%pred</li> </ol>
Zorzi et al., J Pediatr Hematol Oncol, 2015 <sup>45</sup>	<ol style="list-style-type: none"> <li>1. N=143 (1997–2010)</li> <li>2. Treatment-related inclusion criteria: Hodgkin lymphoma, extracranial germ cell tumors</li> <li>3. Exposure/PICO: Bleomycin 100%; radiotherapy 60%, smoking 2%</li> </ol>	<ol style="list-style-type: none"> <li>1. FVC, TLC, RV, DLCO</li> <li>2. Threshold for pathological parameters=TLC&lt;80%pred, FVC &lt;80%pred, DLCO &lt;80%pred Obstructive=abnormal FVC, normal TLC and RV/TLC &gt;=30% and scooped flow-volume loop Restrictive=reference to Pellegrino et al</li> </ol>

Abbreviations: ABVD, adriamycin, bleomycin, vinblastine, dacarbazine; COP, cyclophosphamide, vincristine, prednisone; DLCO, diffusion capacity for carbon monoxide; FVC, forced vital capacity; HSCT, hematopoietic stem cell transplantation; MIP, maximum inspiratory pressure; MEP, maximum expiratory pressure; n, number; PFT, pulmonary function testing; pred., predicted; SD, standard deviation; SCT, stem cell transplantation; TBI, total body irradiation; TLC, total lung capacity.

**Table 2: Conclusions and quality of the evidence for the risk and risk factors for pulmonary function impairment among childhood, adolescent, and young adult cancer survivors diagnosed up to age 30.**

		<b>Obstructive*</b>	<b>Restrictive*</b>	<b>Hyperinflation*</b>	<b>Diffusion capacity*</b>
<b>HSCT</b>	<b>Yes/no</b>	= Very low <sup>31</sup>	= Very low <sup>31</sup>	↑ Very low <sup>31</sup>	No study
	<b>Age</b>	↑ Low <sup>32,33</sup>	= Very low <sup>33,37</sup>	NS	↑ Very low <sup>32,33,34</sup>
	<b>GvHD</b>	↑ Very low <sup>35,36</sup>	↑ Very low <sup>35</sup>	NS	↑ Low <sup>34</sup>
	<b>Infection</b>	NS	NS	NS	NS
	<b>TBI</b>	= Very low <sup>34,36</sup>	↑ Very low <sup>34,36</sup>	NS	↑ Moderate <sup>34</sup>
<b>Cyclophosphamide</b>	<b>Yes/no</b>	↑ Very low <sup>46</sup>	↑ Very low <sup>1,46</sup>	NS	= Low <sup>1</sup>
	<b>Higher dose</b>	= Very low <sup>(Green 2015)</sup>	↑ Very low <sup>(Green 1998)</sup>	NS	NS
	<b>Age</b>	NS	NS	NS	NS
<b>Methotrexate</b>	<b>Yes/no</b>	NS	NS	NS	NS
	<b>Higher dose</b>	NS	= Very low <sup>42</sup>	NS	NS
<b>Gemcitabine</b>	<b>Age</b>	NS	NS	NS	NS
	<b>Yes/no</b>	NS	NS	NS	NS
<b>Bleomycin</b>	<b>Yes/no</b>	↓ Very low <sup>31,38,39</sup>	= Very low <sup>1,2,31,38,39</sup>	↓ Very low <sup>31,38</sup>	= Very low <sup>1,2,38,39</sup>
	<b>Higher dose</b>	= Very low <sup>31</sup>	↑ Very low <sup>31</sup>	= Very low <sup>31</sup>	= Very low <sup>45,49,53</sup>
	<b>Age</b>	NS	NS	NS	NS
<b>Busulfan</b>	<b>Yes/no</b>	NS	= Very low <sup>2</sup>	NS	= Very low <sup>2</sup>
	<b>Higher dose</b>	NS	NS	NS	NS
	<b>Age</b>	NS	NS	NS	NS
<b>Nitrosourea</b>	<b>Yes/no</b>	NS	= Very low <sup>2</sup>	No study	= Very low <sup>2</sup>
	<b>Higher dose</b>	NS	NS	NS	NS
	<b>Age</b>	NS	NS	NS	NS
<b>Radiotherapy</b>	<b>Yes/no</b>	↑ Very low <sup>31,40,46,51,52</sup>	↑ Very low <sup>1,31,40,46,51,52</sup>	↑ Very low <sup>31,51,52</sup>	↑ Very low <sup>1,40,454,46,51,52</sup>
	<b>Higher dose</b>	↑ Very low <sup>3,38,50</sup>	↑ Very low <sup>2,3,38,47,50</sup>	↑ Very low <sup>38</sup>	↑ Very low <sup>2,3,38,47,50</sup>
	<b>Field</b>	NS	NS	NS	NS
	<b>Age</b>	= Very low <sup>38,48,50</sup>	= Very low <sup>38,48,50</sup>	= Very low <sup>38</sup>	= Very low <sup>38,48,50</sup>
	<b>Radiosensitizer</b>	NS	NS	NS	NS

<b>Surgery</b>	<b>Yes/no</b>	↑ Very low <sup>31,38,39,40</sup>	↑ Very low <sup>1,31,38,39,40</sup>	= Very low <sup>31,38</sup>	= Very low <sup>1,38,39,40</sup>
	<b>Resection volume</b>	NS	NS	NS	NS
	<b>Age</b>	NS	NS	NS	NS
<b>Combinations</b>	<b>Surgery and chemotherapy</b>	NS	No case in bleomycin plus surgery arm (bleomycin only as reference) <sup>1</sup>	NS	= Very low <sup>1</sup>
	<b>Surgery and radiotherapy</b>	= Very low <sup>40</sup>	= Very low <sup>1,40</sup>	NS	↑ Very low <sup>1,40</sup>
	<b>Radiotherapy and chemotherapy</b>	↓ Very low <sup>41</sup>	= Very low <sup>1,41</sup>	NS	↑ Very low <sup>1,41</sup>
<b>Smoking</b>	<b>Yes/no</b>	= Very low <sup>40</sup>	= Very low <sup>40</sup>	NS	= Very low <sup>40</sup>
	<b>(Ex-)smoker vs. smoker</b>	↑ Very low <sup>43</sup>	= Very low <sup>2,41,43</sup>	NS	= Very low <sup>2,43,44,45</sup>
	<b>Higher dose (pack years)</b>	NS	NS	NS	NS
	<b>Environmental exposure</b>	NS	NS	NS	NS
	<b>Cannabis</b>	NS	NS	NS	NS

Explanation for categorisation of risk factors: ↑ increased risk; ↓ decreased risk; = no increased risk, inconsistent or not significant findings.

GvHD, Graft versus Host Disease; TBI, Total Body Irradiation; HSCT, Haematopoietic Stem Cell Transplantation; NS, No Study. \*Categorisation of pulmonary function parameters by publication in Table 1

**Table 3: Main reasons for downgrading the quality of evidence**

<b>Representativeness uncertain:</b> <ul style="list-style-type: none"><li>- 13 studies (50%) did not report original cohort sizes from where populations at-risk were selected (selection and attrition biases).</li></ul>
<b>Imprecision and indirectness in performing PFT:</b> <ul style="list-style-type: none"><li>- Only 15 of 27 included studies (56%) used ERS/ATS recommendations on how to perform PFT.</li></ul>
<b>Imprecision and indirectness in reporting PFT results:</b> <ul style="list-style-type: none"><li>- Only 20 of 27 studies (74%) reported the source of reference values used to standardise the survivor results. 22 different sources of reference values were used overall, with up to 10 different sources of reference values in the same study.</li><li>- Only 2 of 27 studies (7%) used the reference values from the global lung initiative, which is established as the international standard.</li></ul>
<b>Inconsistent reporting of PFT results:</b> <ul style="list-style-type: none"><li>- 20 of 27 studies reported percentage of predicted values</li><li>- 5 of 27 studies reported z-scores</li><li>- 1 of 27 studies reported percentage of predicted values and z-scores</li><li>- 1 of 27 studies reported percentage of predicted and absolute values</li></ul>
<b>Inconsistent definitions of cut-off values</b> used to define normal values, obstruction, restriction, or diffusion capacity impairment

Abbreviations: ATS, American Thoracic Society; ERS, European Respiratory Society; PFS, pulmonary function testing

**Table 4: Harmonised recommendations for surveillance of pulmonary dysfunction for childhood, adolescent, and young adult cancer survivors.**

<b>General recommendations</b>
CAYA cancer survivors and their healthcare providers should be aware of the risk of reduced pulmonary function, and pay attention to symptoms (shortness of breath on exertion, chronic cough) after treatment with: <ul style="list-style-type: none"><li>- Allogeneic haematopoietic stem cell transplantation (very low quality of evidence)</li><li>- Radiotherapy to fields exposing lung tissue, including TBI (very low to moderate quality of evidence)</li><li>- Surgery to the lung or chest wall (very low quality of evidence)</li></ul> (strong recommendation)
In at-risk* CAYA cancer survivors it is recommended to: <ul style="list-style-type: none"><li>- Get a yearly influenza vaccination and additional vaccinations based on local or national recommendations</li><li>- Consider vaccination against viral pathogens that cause pneumonias according to local or national guidelines</li></ul>
For all CAYA cancer survivors it is recommended to: <ul style="list-style-type: none"><li>- Avoid tobacco exposure, quit smoking, and/or reduce exposure to environmental smoke</li></ul> (strong recommendation, expert opinion)
<b>Who needs surveillance for pulmonary dysfunction and what surveillance modality should be used?</b>
Routine pulmonary function testing is not recommended for <u>asymptomatic</u> at-risk* CAYA cancer survivors, due to lack of interventions to prevent the deterioration of asymptomatic pulmonary dysfunction (strong recommendation, lack of evidence, expert opinion)

\*Survivors treated with allogeneic haematopoietic stem cell transplantation (very low quality of evidence); radiotherapy to fields exposing lung tissue, including TBI (very low to moderate quality of evidence); and surgery to the lung or chest wall (very low quality of evidence)

Abbreviations: CAYA, childhood adolescent and young adult; TBI, total body irradiation



**Table 5: Gaps in knowledge and future directions for research**

<b>Current knowledge gaps</b>
<p><b>Risk factors for symptomatic and asymptomatic pulmonary dysfunction among CAYA cancer survivors</b>, including therapeutic exposures, medical conditions, and environmental exposures.</p> <ul style="list-style-type: none"> <li>• Treatment with <ul style="list-style-type: none"> <li>• chemotherapeutic agents with reported pulmonary toxicity according to current LTFU guidelines, such as bleomycin, busulfan, carmustine, lomustine</li> <li>• chemotherapeutic agents without reported pulmonary toxicity according to current LTFU guidelines and without clear evidence, such as cyclophosphamide, methotrexate</li> <li>• targeted agents, such as tyrosine kinase inhibitors, checkpoint inhibitors, and monoclonal antibodies</li> <li>• immunotherapy, such as chimeric antigen receptor T-cell therapy</li> <li>• thoracic radiotherapy, such as proton versus photon therapy, and increasing radiation doses or volumes</li> <li>• thoracic surgery, such as thoracotomy and pneumonectomy</li> <li>• haematopoietic stem cell transplantation</li> <li>• combination of the above-mentioned treatment modalities</li> <li>• combination of bleomycin with additional oxygen (during anaesthesia)</li> </ul> </li> <li>• Impact of time from exposure on pulmonary function</li> <li>• Impact of age at exposure on the risk of developing pulmonary dysfunction</li> <li>• Impact of attained age at screening on outcome measures, such as PFT results, and clinical symptoms</li> <li>• Impact of existing co-morbidities on pulmonary function, such as cardiac disease, impaired immune function, and neurological deficits</li> <li>• Impact of genetic variants on pulmonary toxicity of cancer treatments</li> <li>• Impact of acute treatment-related toxicities on pulmonary function, such as pulmonary infections, pulmonary GvHD</li> <li>• Impact of inhaled substances, such as vaping, medicinal cannabis, alone or in combination with smoking cigarettes (during therapy and post-therapy)</li> </ul> <p><b>Detection of pulmonary dysfunction among CAYA cancer survivors</b></p> <ul style="list-style-type: none"> <li>• Benefit of novel PFT, such as multiple-breath washout tests, exhaled nitric oxide, impulse oscillometry, and lung imaging (MRI), including acceptability, sensitivity, specificity, practical consequences, and costs</li> <li>• Longitudinal course of pulmonary dysfunction after cancer treatments, including onset and progression, to determine intervals for PFT</li> <li>• Effects of the cancer itself and cancer treatments on physiological processes, including lung growth, peak attained lung function, and functional decline with ageing</li> <li>• Association of functional outcomes (from PFT detected by screening) with clinical symptoms (onset, type, and severity)</li> <li>• Predictive value of serial PFT to identify individuals who will develop pulmonary dysfunction in the future and who will become symptomatic</li> <li>• Predictive value of serial lung function tests with relation to termination of screening (normal or stable results)</li> <li>• Cost-effectiveness of different screening frequencies and modalities</li> <li>• Potential harms associated with excessive screening and false-positive findings</li> </ul>

### **Interventions to prevent, reverse, or slow the decline in pulmonary function**

- Effect of variation in cancer treatments, such as radiotherapy, chemotherapy, or surgery on pulmonary dysfunction
- Effect of lifestyle and other preventive strategies on development or worsening of pulmonary dysfunction, such as lifestyle counselling and physical activity
- Effect of interventions, such as medical treatments and physiotherapy, to improve or reverse pulmonary dysfunction
- Benefit of optimal management of co-morbidities, such as cardiac dysfunction and chronic immunosuppression, on pulmonary dysfunction and pulmonary symptoms
- Effect of therapeutic targets used for other pulmonary diseases, such as antifibrotic drugs

### **Factors to be considered in future studies assessing the risk of pulmonary dysfunction among CAYA cancer survivors**

- Close collaboration between oncologists and pulmonologists; paediatric and adult experts.

#### **Study design**

- Need for sufficient numbers of CAYA cancer survivors undergoing PFT to maximise statistical power and allow stratifying analyses into sub-groups
- Collaboration between different study groups working with harmonised protocols
- Avoidance of selection or attrition bias among study cohorts, by testing independent of pulmonary symptoms; access to testing independent of socioeconomic factors etc
- Longitudinal investigations including baseline before starting treatment and serial assessment of pulmonary function and correlation with symptoms and other patient-reported outcomes

#### **Standardisation of PFT**

- Performance of PFT by trained personnel in centres with expertise / accredited centres
- Performance of PFT according to standardised protocols, such as ERS/ATS guidelines
- Interpretation of PFT results according to standardised protocols for quality control, such as ERS/ATS guidelines, and standardised reference values, stratified by age and sex, such as GLI
- Reporting PFT results as raw data and z-scores instead of binary cut-offs, such as normal or abnormal, restrictive, obstructive, or diffusion capacity impairment
- Measurement of different lung function parameters to better describe the nature of lung function impairment
- Using novel PFT to facilitate detection of pulmonary dysfunction

Abbreviations: ATS, American Thoracic Society; CAYA, childhood adolescent and young adult; ERS, European Respiratory Society; GvHD, Graft versus Host Disease; GLI, Global Lung Initiative; MRI, magnetic resonance imaging; LTFU, long-term follow-up; PFT, pulmonary function testing