

## Kinetics and durability of humoral responses to SARS-CoV-2 infection and vaccination

Komal Srivastava<sup>1,2\*</sup>, Juan Manuel Carreño<sup>1,2\*</sup>, Charles Gleason<sup>1,2\*</sup>, Brian Monahan<sup>1,2\*</sup>, Gagandeep Singh<sup>1,2</sup>, Anass Abbad<sup>1,2</sup>, Johnstone Tcheou<sup>1,2</sup>, Ariel Raskin<sup>1,2</sup>, Giulio Kleiner<sup>1,2</sup>, Harm van Bakel<sup>6,1,7</sup>, Emilia Mia Sordillo<sup>3</sup>, PARIS Study Group<sup>1,2</sup>, Florian Krammer<sup>1,2,3\*</sup>, Viviana Simon<sup>1,2,3,4,5\*</sup>

<sup>1</sup>*Department of Microbiology, Icahn School of Medicine at Mount Sinai, New York, NY, USA*

<sup>2</sup>*Center for Vaccine Research and Pandemic Preparedness (C-VARPP), Icahn School of Medicine at Mount Sinai, New York, NY, USA*

<sup>3</sup>*Department of Pathology, Molecular and Cell-Based Medicine, Icahn School of Medicine at Mount Sinai, New York, NY, USA*

<sup>4</sup>*Division of Infectious Diseases, Department of Medicine, Icahn School of Medicine at Mount Sinai, New York, NY, USA*

<sup>5</sup>*The Global Health and Emerging Pathogens Institute, Icahn School of Medicine at Mount Sinai, New York, NY, USA*

<sup>6</sup>*Department of Genetics and Genomic Sciences, Icahn School of Medicine at Mount Sinai, New York, NY, USA*

<sup>7</sup>*Icahn Genomics Institute, Icahn School of Medicine at Mount Sinai, New York, NY, USA*

\* Shared contributions

To whom correspondence should be addressed: [viviana.simon@mssm.edu](mailto:viviana.simon@mssm.edu) and [florian.krammer@mssm.edu](mailto:florian.krammer@mssm.edu)

PARIS Study Group (alphabetical order): Hala Alshammary, Angela A. Amoako Dalles Andre, Mahmoud Awawda, Maria C Bermúdez-González, Katherine F. Beach, Dominika Bielak, Gianna Y. Cai, Rachel L. Chernet, Christian Cognigni, Yuxing Chen, Lily Q. Eaker, Emily D. Ferreri, Daniel L. Floda, Miriam Fried, Joshua Z. Hamburger, Denise Jurczynszak, Hyun Min Kang, Neko Lyttle, Julia C. Matthews, Jacob Mauldin, Wannu A. Mendez, Jacob Mischka, Sara Morris, Lubbertus CF Mulder, Ismail Nabeel, Jessica Nardulli, Annika Oostenink, Kayla T. Russo, Ashley-Beathrese Salimbangon, Miti S. Saksena, Amber A. Shin, Levy A. Sominsky, Daniel Stadlbauer, Leeba Sullivan, Morgan Van Kesteren, Temima Yellin, Ania Wajnberg

**Keywords:** SARS-CoV-2 immunity, antibodies, durability, SARS-CoV-2 variants, model

36

37 **ABSTRACT**

38 We analyzed the kinetics and durability of the humoral responses to severe acute respiratory  
39 syndrome coronavirus 2 (SARS-CoV-2) infection and vaccination using >8,000 longitudinal  
40 samples collected over a three-year period (April 2020 – April 2023) in the New York City  
41 metropolitan area. Upon primary immunization, participants with pre-existing immunity mounted  
42 higher antibody responses faster and achieved higher steady-state levels compared to naïve  
43 individuals. Antibody durability was characterized by two phases: an initial rapid decay, followed by  
44 a phase of stabilization with very slow decay resulting in an individual spike binding antibody  
45 steady state. Booster vaccination equalized the differences in antibody levels between participants  
46 with and without hybrid immunity, but the antibody titers reached decreased with each successive  
47 antigen exposure. Break-through infections increased antibody titers to similar levels as an  
48 additional vaccine dose in naïve individuals. Our study provides strong evidence for the fact that  
49 SARS-CoV-2 antibody responses are long lasting, with an initial waning phase followed by a  
50 stabilization phase.

## 51 INTRODUCTION

52 The emergence of severe acute respiratory syndrome coronavirus 2 (SARS-CoV-2) in late  
53 2019 sparked the global coronavirus disease 2019 (COVID-19) pandemic that is now in its fourth  
54 year. Vaccines to mitigate the impact of the pandemic were developed at record speed and have  
55 saved millions of lives. However, the emergence of SARS-CoV-2 variants<sup>1</sup> and waning immunity<sup>2</sup>  
56 have decreased the effectiveness of the vaccines against symptomatic disease<sup>3</sup>. These two  
57 issues, emergence of antigenically distinct SARS-CoV-2 variants and waning immunity, are often  
58 conflated and used interchangeably but represent two different phenomena<sup>4</sup>. Most vaccines used  
59 in North America and Europe are based on lipid nanoparticles (LNP) containing messenger RNA  
60 (mRNA) produced by Pfizer/BioNTech (BNT162b2) or Moderna (mRNA-1273), and the common  
61 perception now is that mRNA-based vaccine-induced immunity wanes quickly<sup>5</sup>. However, this  
62 assumption is mostly based on data from short-term studies that include a very limited number of  
63 data points following peak responses<sup>2,5</sup>.

64 In March of 2020, the densely populated New York metropolitan area was hit with an  
65 exponential increase of severe SARS-CoV-2 infections resulting in a staggering number of  
66 fatalities and a severely overburdened health care system<sup>6-8</sup>. Due to shortages of personal  
67 protective equipment, essential workers in the health care system were at high risk for infection. In  
68 response to this crisis, we established (a) a specific and sensitive SARS-CoV-2 binding enzyme-  
69 linked immunosorbent assay (ELISA) to measure humoral immune responses<sup>9</sup>, and (b) an  
70 observational longitudinal cohort of health care workers of the Mount Sinai Health System to  
71 determine the kinetics of these humoral responses. This study, named *Protection Associated with*  
72 *Rapid Immunity to SARS-CoV-2 (PARIS)*<sup>10</sup>, aims to capture the dynamics of SARS-CoV-2 antibody  
73 responses to both infection as well as vaccinations, to determine re-infection rates, and to assess  
74 correlates of protection in the context of individual immune histories.

75 With over 8,000 longitudinal study visits across a single cohort during the first three years of  
76 the pandemic, our investigation represents one of the most extensive and in-depth assessments of  
77 the longevity of SARS-CoV-2 immune responses to date. Using this longitudinal cohort, we  
78 determined the kinetics of antibody responses to spike protein after infections, during the primary  
79 immunization series, during monovalent and bivalent booster vaccination as well as during  
80 breakthrough infections. Our findings indicate that, in contrast to common perception, COVID-19  
81 mRNA vaccination induces long-lasting antibody responses in humans. The PARIS study also  
82 provides insights into the effect of booster vaccination and breakthrough infections on the stability  
83 of antibody responses.

## 84 RESULTS

### 85 STUDY DESIGN

86 PARIS (*Protection Associated with Rapid Immunity to SARS-CoV-2*) is an observational  
87 longitudinal study that enrolled 501 adults, mostly healthcare workers (**Table 1**) with or without pre-  
88 existing SARS-CoV-2 immunity. The first participants were enrolled in April 2020 when NYC  
89 emerged as one of the very early epicenters of the pandemic in the United States. We have  
90 conducted over 8,000 study visits with data and biospecimen collection spanning a three-year  
91 period (April 2020 to March 2023).

92 Of the participants, 67% were female and 56% self-identified as white. The mean age at  
93 study enrollment was 41 years (**Table 1**). At the first study visit, 62% of the participants had no  
94 measurable SARS-CoV-2 spike binding antibodies (naive, seronegative). At each study visit we  
95 collected data and biospecimen (e.g., blood, saliva). Study visits were scheduled at shorter  
96 intervals (2-4 weeks) from study entry through week 8 after enrollment, but the intervals between  
97 visits were extended (to approximately 4-8 weeks) for follow-up visits after week 8. Ad hoc study  
98 visits were included at short intervals (e.g., weekly) after immune events such as vaccination or  
99 infection. Serum samples were used to measure antibodies binding to the ancestral spike protein  
100 using an established in-house method that was developed early in the pandemic<sup>9</sup>.

101 465 of 501 PARIS participants (93%) were vaccinated against SARS-CoV-2 using mRNA  
102 vaccines: 342/465 received two doses of Pfizer BNT162b2 and 111/465 received two doses of  
103 Moderna mRNA-1273. A small proportion of participants received one dose of the Johnson &  
104 Johnson vaccine [Ad26.COV2.S], or two doses of the *CoviShield*<sup>TM</sup> [AZD1222] vaccine as their  
105 primary SARS-CoV-2 immunization regimen (**Table 1**). The number of vaccine doses administered  
106 to a given PARIS participant ranged from two to six doses. Briefly, 366/465 (79%) of PARIS  
107 participants who completed their primary immunizations subsequently elected to receive a third  
108 vaccine dose ("booster"). Of these 366 participants, 97 (27%) received a second booster (4th  
109 vaccine dose overall; 27/97 monovalent ancestral booster vaccine versus 70/97 bivalent  
110 ancestral/BA.5 vaccine). Of these 97 participants, 15 opted for a third booster (5<sup>th</sup> vaccine dose  
111 overall). Of these 15 participants, one opted for a fourth booster (6<sup>th</sup> vaccine dose overall). Lastly,  
112 14/27 participants with two monovalent boosters elected to get the bivalent booster.

113

### 114 ANTIBODY RESPONSES TO INFECTION AND PRIMARY IMMUNIZATION

115 38% of the study participants entered the PARIS study having detectable spike binding IgG  
116 antibodies, albeit at highly variable levels (**Figure 1**, area under the curve (AUC) range at baseline:

117 12.5 to 4,189). Infection-induced anti-spike antibodies showed relatively high stability over  
118 approximately 10 months of pre-vaccine follow-up. A detailed analysis of this phase of the study  
119 has been reported previously<sup>11</sup>.

120 Vaccinations with mRNA vaccines were available to health care workers in Mid-December  
121 2020 (December 15<sup>th</sup>, 2020, for Pfizer BNT162b2; December 28<sup>th</sup>, 2020, for Moderna mRNA-  
122 1273). In naïve individuals, the first dose of the mRNA vaccine induced no to relatively low levels of  
123 antibodies (**Suppl. Figure 2A**) but the second vaccine dose, administered 16-31 days after the first  
124 (Pfizer BNT162b2: median 21 days [range:16-30]; Moderna mRNA-1273: median 27 days [21-31],  
125 increased titers to 5,936 (AUC, peak at 35 days post first dose, **Figure 2A, Suppl. Figure 2**). In  
126 contrast, individuals with pre-existing immunity induced by infection reached peak titers faster,  
127 approximately 10 days after the first dose and achieved significantly higher antibody titers (AUC  
128 19,594, peak at 10 days post first dose (**Figure 2A, Suppl. Figure 2**). After completing the primary  
129 immunization regimen, participants without pre-existing immunity had > 3-fold lower peak  
130 responses compared to participants with pre-existing immunity ( $p < 0.001$ ).

131 During the approximately 400 day-long follow-up period, we found an initial steep five-fold  
132 drop of antibody titers in vaccinated individuals with and without pre-existing immunity followed by  
133 a stabilization phase (**Figure 2A**). Based on a simple rolling geometric mean, post-vaccine data  
134 was observed to have two rough “phases” with different rates of decay (**Figure 3A**). This  
135 observation resembled a bi-phasic decay that is well-approximated by a two-component three-  
136 parameter one-phase exponential decay model framework, prompting us to explore the kinetics of  
137 the antibody response in more detail. We fitted a nonlinear mixed-effects (NLME) model to  
138 describe the antibody dynamics from two weeks up to one year after the completion of the primary  
139 vaccination series. The same model was also fit to antibody dynamics after the third vaccine dose.  
140 Specifically, our model has two components: a rapid-decay component with a half-life measured in  
141 weeks to months (e.g., antibodies produced by the plasmablast response), and a steady-state  
142 component to capture convergence to stable titers during prolonged follow-up (e.g., antibodies  
143 produced by long-lived plasma cells) (**Suppl. Figure 3A**).

144 NLME models were fit using the NLMixed procedure in SAS to account for variable  
145 longitudinal sampling between participants. A per-participant random effect for each component  
146 accounts for the significant variability in both antibody response magnitude and kinetics. Fixed  
147 effects due to demographic parameters and vaccine type were fit as multiplicative shifts in the  
148 expected geometric mean area under the curve (AUC) across the entire time course. Datasets  
149 were stratified by immune status prior to vaccination, with models fit independently to each  
150 group. Results for the final models including demographic factors are reported, with independent

151 models fitted for post-vaccine and post-boost antibody dynamics as well as for participants with  
152 (“hybrid immunity”) and without (“naïve”) pre-vaccine SARS-CoV-2 infection (**Suppl. Table 1**).

153 The PARIS NLME model fits closely the observed antibody dynamics post-vaccination,  
154 irrespective of prior infection status (**Figure 3A, 3B**). It also provides the means for a personalized  
155 two-component immunity score accounting for an individual’s SARS-CoV-2 immune history  
156 reflecting both the magnitude of the peak response and the stability of that response (**Suppl.**  
157 **Figure 3**). These two phases with distinct half-lives distinguish the PARIS model from commonly  
158 available models that only consider exponential decay in binding antibodies after vaccination.  
159 When comparing our two-phase decay model with a simple exponential decay model, we noted  
160 that the latter overestimates the rate of decay in months 6 to 12 post-vaccination in our cohort  
161 (**Suppl. Figure 3B**).

162 For the post-vaccine model (**Figure 3A**), the initial antibody levels measured at 14 days  
163 after the second dose are 6,100 AUC in the naïve group (blue) and 17,000 AUC in the hybrid  
164 immunity group (2.8-fold higher, in orange). This “peak” response is composed of two components  
165 in each case. In the naïve group, the short-lived component has a magnitude of 5,700 AUC (95%  
166 Confidence Interval [CI]: 5,200-6,400) with a half-life of 29.6 days (CI: 28.1-31.2) and the stable  
167 component has a magnitude of 330 AUC (CI: 290-370). In the hybrid immunity group, the short-  
168 lived component has a magnitude of 15,000 AUC (CI: 13,000-18,000) with a half-life of 30.7 days  
169 (CI: 28.4-33.5) and the stable component has a magnitude of 1,800 AUC (CI: 1,500-2,100).  
170 Because of the larger difference in the stable component, the gap between the hybrid immunity  
171 group and the naïve group increases to 4.8-fold at 180 days and 5.4-fold at 360 days after  
172 completion of the primary immunization regimen, respectively. Six months after vaccination, the  
173 predicted geometric mean antibody titer (GMT) was 445 AUC in the vaccine-only immunity group  
174 corresponding to an 18.6-fold reduction relative to the peak antibody levels. In the hybrid immunity  
175 group, the predicted GMT was 2,142 corresponding to a 10.7-fold reduction relative to the peak  
176 antibody levels. Reductions in antibody levels over the next six months. At 12 months post-  
177 vaccination, the predicted GMT was 329 in the vaccine-only immunity group corresponding to only  
178 a 1.35-fold reduction relative to antibody levels six months after vaccination. In the hybrid immunity  
179 group, the predicted GMT was 1,783 AUC a year after the initial immunization corresponding to a  
180 1.2-fold reduction relative to antibody levels at six months post-vaccination. Thus, although the  
181 kinetics of decay in the stable plateau phase are comparable between the two groups, the  
182 predicted antibody titer levels for each group differed by more than four-fold (e.g., AUC 329 versus  
183 AUC 1,783).



184 In addition to examining broad patterns in antibody kinetics, we specifically quantified the  
185 impact of vaccine type as well as demographic factors including gender, age, race, and ethnicity.  
186 Effects were modeled as a constant multiplicative increase or decrease in GMT over the entire time  
187 course. Of these, only age and vaccine type were statistically significant at the  $p < 0.05$  level in any  
188 group. The effect of vaccine type is illustrated in **Figure 3D** for the post-vaccine model. There is a  
189 statistically significant effect in the naïve group, with a 1.43-fold increase in antibody levels (CI:  
190 1.20-1.70) in the Moderna mRNA-1273 vaccine recipients compared to the Pfizer BNT162b2  
191 recipients. There was no statistically significant impact of vaccine type noted in the hybrid immunity  
192 group. The effect of age was modest but nonetheless significant in the naïve group: each decade  
193 of additional age lived corresponded to a 1.17-fold decrease in antibodies (CI: 1.041-1.187)  
194 (**Suppl. Table 1**). In the hybrid immunity group, there was no statistically significant effect.

195 In summary, based on our data and modeling, antibody titers achieved a steady state  
196 seven to nine months after the primary vaccination series. Stable titers were higher for individuals  
197 with hybrid immunity as compared naïve vaccinees suggesting induction of long-lived serum  
198 antibody titers even after the primary vaccination series. In addition, vaccine type and age had a  
199 modest but measurable influence on antibody titer levels in participants without hybrid immunity.

200

## 201 **ANTIBODY RESPONSES TO BOOSTER IMMUNIZATIONS**

202 Third dose booster vaccination were authorized for health care workers in September 2021  
203 (September 22<sup>nd</sup>, 2021, for Pfizer BNT162b2 and October 20<sup>th</sup>, 2021, for Moderna mRNA-1273).  
204 Booster vaccination resulted in 27-fold increases in peak spike antibody responses in previously  
205 naïve individuals (**Figure 2B**). In contrast, hybrid immune individuals displayed only a 4-fold  
206 increase due to their higher baseline. Four weeks after booster vaccination, the peak titers were  
207 similar between previously naïve participants (mean AUC: 10,162) and those with hybrid immunity  
208 (mean AUC: 8,001, **Figure 2B**). This stands in stark contrast to the humoral immune responses  
209 mounted upon the primary series (**Figure 1, Figure 2A, Suppl. Fig. 2B**). The third vaccine dose  
210 seemed to act as an ‘equalizer’ lifting the antibody titers of participants with vaccine-only immunity  
211 for the first time in our longitudinal study to the level of those with infection- and vaccine-induced  
212 immunity.

213 Antibody kinetics post-boost were different compared to kinetics after the primary series  
214 (**Figure 3B**). The initial waning of antibodies was slower, and titers stabilized at similar levels to  
215 those of the hybrid immune group post-primary vaccination. Importantly, titers settled at  
216 comparable levels for both previously naïve and participants with hybrid immunity and stabilized

217 again after approximately seven to nine months. Interestingly, although they stabilized at similar  
218 levels, peak levels post boost were moderately but significantly lower than in the hybrid immune  
219 group post primary vaccination series.

220 The fourth vaccine dose did boost serum antibody levels, albeit to a much lower fold-  
221 increase compared to prior vaccine doses (vaccine-only 3.9-fold, hybrid immune 4.8-fold) (**Figure**  
222 **2C**). The peak antibody titers after the second booster vaccine were comparable to the peak titers  
223 achieved after the first booster vaccination. Antibody waning kinetics were also very similar to the  
224 kinetics observed after administration of the 3<sup>rd</sup> vaccine dose (**Figure 1, Figure 2B, Suppl. Fig,2**).  
225 For individuals receiving a third/fourth booster dose (fifth or sixth vaccine dose overall), the data  
226 was too sparse for an in-depth analysis, but antibody titers were generally within the same range  
227 observed post-3<sup>rd</sup> and post-4<sup>th</sup> vaccine doses (**Figure 1**).

228 We next used our model for the analysis of post boost antibody kinetics. For the post-boost  
229 model, antibody levels at 14 days after third dose are 9,500 AUC in the naïve group and 7,400  
230 AUC in the hybrid immunity group (**Figure 3B**). In the naïve group, the short-lived component had  
231 a magnitude of 7,500 AUC (CI: 6,500-8,700) with a half-life of 44 days (CI: 39-50) and the stable  
232 component has a magnitude of 2,000 AUC (CI: 1500-2500). In the hybrid immunity group, the  
233 short-lived component has a magnitude of 5400 UC (CI: 4,300-6,800) with a half-life of 73 days  
234 (CI: 60-93) and the stable component has a magnitude of 2,000 AUC (CI: 1,400-2,700). Predicted  
235 geometric mean antibody levels 180 days after the beginning of the modeling period (14 days post-  
236 boost) are 0.22-fold peak antibody levels in the non-hybrid immunity group and 0.38-fold peak  
237 antibody levels in the hybrid immunity group. The rate of decay slows over the next six months,  
238 with predicted antibody levels at day 360 of the modeled period are 0.79-fold antibody levels at day  
239 180 in the naïve group and 0.70-fold day 180 antibody levels in the hybrid immunity group. Despite  
240 this difference in shape, the geometric mean magnitude of the antibody response is similar across  
241 both groups throughout the entire time course studied, with fold-change between groups with and  
242 without hybrid immunity ranging from 0.72 to 1.22 and no detectable difference in the magnitudes  
243 of the stable component of the model. Because of this, antibody kinetics after boost are well  
244 approximated by a single model trained on a combined dataset disregarding prior infection status  
245 (**Figure 3B**).

246 We next compared antibody kinetics after the first booster immunization to those mounted  
247 after the primary vaccination (**Figure 3C**). In the model, peak antibody levels after boost are  
248 between those for the naïve and hybrid immunity groups post-primary vaccination, and the stable  
249 component of the response post-boost is slightly higher in the hybrid immunity group suggesting  
250 slower decay. Of note, in the post-boost dataset, the effect due to primary vaccine type follows a



251 pattern like that observed after the primary immunization. Participants without hybrid immunity who  
252 received the Moderna mRNA-1273 vaccine for their primary series show a 1.41-fold increase  
253 relative to Pfizer recipients (CI: 1.10-1.82). The hybrid immunity group shows no statistically  
254 significant difference nor trend due to primary vaccine type. Taken together, our data indicate that  
255 booster vaccine doses increase the level at which long term serum antibody responses stabilize.

256

## 257 **IMMUNE RESPONSES UPON BREAKTHROUGH INFECTIONS**

258 While during the early phase of the pandemic, re-infections were rare, breakthrough  
259 infections increase with the emergence of variants of concern, especially the Omicron variant. Viral  
260 variants of concern started to circulate in the NYC metropolitan area in early 2021 (**Figure 4A**). In  
261 our study, we identified breakthrough infections based on participant self-reporting (rapid antigen  
262 tests or PCR testing at external facilities), nucleic acid amplification tests and/or an increase in  
263 antibody titers (e.g., >4-fold).

264 A total of 225 SARS-CoV-2 infections were recorded among participants over the duration  
265 of the PARIS study, with most new infections (214/225) occurring after immunization (at least one  
266 vaccine dose administered). We documented three infections after the first vaccine dose and 37  
267 infections after the second vaccine dose but before the booster vaccination (**Figure 4B**). There  
268 were 174 breakthrough infections identified in participants who had received at least one booster  
269 vaccine dose. The bulk of breakthrough infections were observed after December 20, 2021, when  
270 Omicron BA.1 started to spread widely in our community (192/214 new infections). At that point in  
271 time, 299 PARIS participants had received a vaccine dose within the prior six months (10/289  
272 second dose of the primary immunization series, 288/289 a booster vaccine dose). 55/299  
273 participants who received a vaccine dose within six months prior to the Omicron wave, experienced  
274 a breakthrough infection between December 2021 and February 2022. Nine infections occurred at  
275 least 14 days after the participant received a bivalent booster. Of note, one person had three  
276 consecutive infections with Omicron variants. Interestingly, before highly antigenically distinct  
277 Omicron variants started to circulate in the NYC metropolitan area beginning around mid-  
278 December 2021 (**Figure 4A**), most breakthrough infections occurred in vaccinated individuals who  
279 were previously naïve, and none occurred in the hybrid immunity group (**Figure 4C**, left panel).  
280 After the emergence of the different Omicron lineages, this picture changed, and breakthrough  
281 infections also became more common in hybrid immune individuals (**Figure 4C**, right panel), but  
282 hybrid immunity continued to have a protective effect as compared to non-hybrid immunity  
283 ( $p=0.00029$ , log rank test).

284 We next explored whether breakthrough infections differed from booster vaccination with  
285 respect to the increased antibody magnitude. We compared the data for 176 breakthrough  
286 infections (at least 14 days after primary vaccination) to the effect observed after receiving an  
287 additional vaccine dose (**Figure 4D**). To start, we compared the effect of a booster dose after the  
288 primary immunization series (VVV) in participants who had no recorded infection to the change in  
289 antibodies in participants who experienced a breakthrough infection after the primary immunization  
290 series (VVI). Breakthrough infection in participants who had only had vaccine induced antibodies  
291 was the third antigen encounter and increased antibody titers by more than 30-fold, in a manner  
292 comparable to an mRNA vaccine booster dose. If the breakthrough infection was the fourth antigen  
293 encounter, the fold induction was lower (due to a higher baseline) resulting in an approximately  
294 four to five-fold increase which was comparable to a 4<sup>th</sup> vaccine dose. For the fourth antigen  
295 encounter, in the case of a participant whose breakthrough infection was not their first infection and  
296 who initially had hybrid immunity (IVVI), however, saw a relatively lower fold change in antibody  
297 responses as opposed to participants with hybrid immunity who received a booster dose (IVVV).  
298 This difference may be due to the hybrid immunity limiting virus replication during breakthrough  
299 infections, leading to less immune stimulation. A similar observation was made when the  
300 breakthrough infection as opposed to booster dose was the fifth exposure in participants with  
301 hybrid immunity. Especially in formerly naïve individuals, one could argue that breakthrough  
302 infections, their first infections, are equivalent to vaccine booster doses in terms of antibody  
303 response, while in individuals with hybrid immunity the vaccine has a better effect on boosting  
304 systemic antibodies when compared to a second infection.

305

#### 306 **REACTOGENICITY DURING PRIMARY VACCINATION SERIES AND BOOSTER DOSES**

307 In addition to immunogenicity, we analyzed the reactogenicity profiles associated with the  
308 different vaccine doses in study participants with and without immunity prior to the primary  
309 immunizations. After each vaccine dose, participants were provided a survey to provide self-  
310 reported side effects experienced. This analysis builds on preliminary data published in early  
311 2021<sup>12</sup> which reported that participants with pre-existing immunity experience more systemic side  
312 effects after the first vaccine dose compared to naïve participants. We now have data not only on  
313 the reactogenicity of the second and third vaccine doses but also longitudinal data on how side  
314 effects changed at an individual level.

315 We collected information regarding local (injection site: pain, erythema, induration,  
316 lymphadenopathy) and systemic (e.g., chills, fatigue, fever, headache, arthralgia, myalgia

317 nausea/emesis, pharyngitis) side effects using a survey that allowed participants to self-report the  
318 signs and symptoms experienced after each of the first three vaccine doses. 391 PARIS  
319 participants provided survey responses regarding symptoms experienced after the 1<sup>st</sup> vaccine  
320 dose, 333 participants provided survey responses to the second dose, and 254 participants  
321 responded to the side effects survey after a booster dose. From all survey responses received, we  
322 selected the subset of 228 participants (69% female, 70% naïve at primary vaccination) who  
323 submitted surveys after each of the first, second and third vaccine doses. Of note, 69% of these  
324 respondents received three doses of Pfizer BNT162b2, 21% three doses of Moderna mRNA-1273,  
325 and 11% had a mix of vaccine types. Participants without three mRNA vaccine doses were  
326 excluded. The distribution of vaccine types was broadly similar across participants with differing  
327 immune histories (**Suppl. Table 3**).

328 Overall, the vaccines were well tolerated with most participant experiencing mild to  
329 moderate side effects. Of the participants who reported severe side effects, none required medical  
330 attention. 60-72% of the participants who completed all three surveys reported at least one  
331 symptom (Dose 1: 60%, Dose 2: 72%, Dose 3: 67%). Across all vaccine doses and independent of  
332 infection history, injection site pain is the top reported local side effect and fatigue is the top  
333 reported systemic side effect. 11/160 naïve participants and 5/68 participants with hybrid immunity  
334 recorded a breakthrough infection prior to the booster dose. Participants with hybrid immunity  
335 experienced overall more side effects (**Figure 5**) although the difference in frequency relative to  
336 naïve participants became smaller with each additional vaccination. After the first dose, both local  
337 and systemic side effects were more common in participants with pre-existing immunity compared  
338 to naïve participants (**Figure 5**). After the second dose naïve participants reported a higher  
339 incidence of systemic side effects while the frequency of local injection site symptoms remained  
340 relatively unchanged. The booster vaccination resulted in less painful injection site reactions in the  
341 participants with hybrid immunity (Dose 1/2: 63% vs. Dose 3: 49%) while there was no such  
342 difference in the vaccine only immunity group (Dose 2: 52% vs Dose 3: 53%). Both groups also  
343 reported lymphadenopathy (e.g., axillary) to occur more frequently (7-11%) while fatigue remained  
344 unchanged (43-44%). The incidence of chills jumped from 6% to 28% in the naïve group while  
345 participants with hybrid immunity only experienced a two-fold increase (19% to 32%) upon booster  
346 vaccination. **Suppl. Table 4** provides a summary of the frequency of side effects. When analyzing  
347 the data, age had no observable trend for the incidence or severity of reported vaccine  
348 reactogenicity. Female participants reported more side effects in most categories when compared  
349 to male participants, but this could also be a bias from the side effects respondents' group as most  
350 participants are female. In the naïve participant subgroup, Moderna mRNA-1273 vaccinees

351 experienced more chills, nausea, arthralgia, fever, headache, erythema and induration at the  
352 injection site after the second and third dose of the vaccine compared to Pfizer vaccinees. The  
353 median duration between 2<sup>nd</sup> and 3<sup>rd</sup> vaccine doses was 272 days (range: 155-400).

354 To better capture how vaccine reactogenicity changes between the three vaccine doses  
355 and visualize symptom clusters, we performed Unweighted Pair Group Method with Arithmetic  
356 Mean (UPGMA) clustering based on Jaccard distance with optimal leaf ordering (**Figure 5**). This  
357 ordering showed that, while overall frequencies of side effects appeared comparable between  
358 Dose 2 and 3, this does not hold true at the individual participant level. Indeed, some participants  
359 with vaccine induced immunity experienced little or no symptoms after the second dose but  
360 reported several systemic side effects after the third dose while others had far fewer side effects  
361 after the booster vaccination compared to the second dose.

362 Taken together, these real-world data indicate that pre-existing immunity modulates the  
363 reactogenicity with additional SARS-CoV-2 vaccine doses resulting in more pronounced side  
364 effects. Booster vaccine doses produced slightly fewer systemic side effects relative to the second  
365 vaccine dose in naïve participants while the opposite is true for those with hybrid immunity.

## 366 DISCUSSION

367 The PARIS study<sup>10</sup> aimed to investigate the durability of immune responses mounted to  
368 SARS-CoV-2 infection and vaccination. Indeed, the SARS-CoV-2 pandemic provided  
369 unprecedented challenges but also opportunities to address fundamental questions in human  
370 immunology. A large proportion of the human population was exposed — for the first time and  
371 within a very limited time window of the pandemic — to a new respiratory viral pathogen and to a  
372 series of sequential immunizations that included an antigen to which the whole population was  
373 naive.

374 We used our extensive longitudinal antibody data with frequent sampling to address several  
375 important open questions about SARS-CoV-2 antibody-based immunity. It is often assumed that  
376 immunity after vaccination with mRNA vaccines wanes quickly. In some cases, this is based on the  
377 observation that vaccine effectiveness decreases over time<sup>2</sup>. However, declining vaccination  
378 effectiveness is impacted not just by waning immune responses, but also by virus evolution<sup>13</sup>. In  
379 other cases, the observation window is limited to the peak response and a brief period, thereafter,  
380 producing a linear decay model that does not accurately reflect B-cell biology. Finally, many  
381 studies analyze receptor binding domain-focused neutralizing antibodies only but ignore the large  
382 number of other epitopes present on the spike protein. Our study design allows us to follow  
383 individuals longitudinally from the onset of the pandemic, through primary immunization series and  
384 now after booster immunizations providing an invaluable opportunity to comprehensively analyze  
385 long-term kinetics of antibody-based immunity (**Figure 1**). We found that anti-spike antibody  
386 kinetics after the primary immunization series follow a pattern that would be expected from basic B-  
387 cell biology. After primary vaccination, serum antibodies produced by plasmablasts reach a high  
388 peak<sup>14</sup>. Plasmablast responses are the first line of defense when it comes to B-cells<sup>14</sup>. These cells  
389 proliferate quickly, circulate in the periphery, and produce large amounts of antibodies – but  
390 typically disappear within two weeks<sup>15,16</sup>. The antibodies they produce have a longer half-life (e.g.,  
391 IgG1 has a half-life of approximately four weeks<sup>17</sup>), but eventually also wane over the period of  
392 weeks to months. This is consistent with the 28-to-34-day half-life of the short-lived component of  
393 our PARIS model following the primary vaccination series. However, serum antibody responses  
394 then stabilized after the initial few months. The more stable long-term serum antibody response is  
395 likely produced by long-lived plasma cells which have in the meantime migrated from lymph nodes  
396 into the bone marrow<sup>18</sup>. Again, the observations in our cohort basically follow textbook B-cell  
397 biology. Interestingly, waning kinetics were slower after the booster doses and the level at which  
398 titers stabilized became higher after each booster dose. We noted a clear “ceiling” effect with  
399 respect to the overall peak antibody titers reached. While initial titers after the primary vaccination

400 series in previously infected individuals could reach almost 20,000 AUC, overall, the titers in  
401 general seemed to peak at approximately 10,000 AUC. This ceiling seemed to slowly become  
402 lower with repeated exposures and booster doses (**Figure 2**).

403 A key contribution of our study is the development of a robust model suitable for dissecting  
404 the biological factors contributing to the durability of SARS-CoV-2 immune responses (**Figure 3**).  
405 Leveraging our extensive longitudinal antibody data, we could identify patterns and associations  
406 that shed light on the mechanisms underpinning long-term antibody protection. Our model allows  
407 us to interrogate the determinants of antibody dynamics, including prior SARS-CoV-2 infection and  
408 vaccine type as well as age. We found that individuals with initial infections followed by vaccination  
409 had antibody decay kinetics similar to individuals who were naïve before the primary vaccination  
410 series, however their peak titers were higher<sup>12</sup>, and so was the titer at which their long-term serum  
411 antibodies eventually settled. Interestingly, the booster dose acted as an equalizer, bringing the  
412 serum antibody to similar levels in the group who was initially infected and the group that was  
413 initially naïve. Other factors that influenced antibody titers, including long-term stable titers, were  
414 age and vaccine type. As observed in other studies that stated superiority of Moderna mRNA-1273  
415 over Pfizer BNT162b2 in terms of induced immune responses or protection<sup>19,20</sup>, we saw that the  
416 Moderna mRNA-1273 vaccine induced approximately 1.3-fold higher titers than the Pfizer  
417 BNT162b2 vaccine, although differences were only significant in initially naïve individuals.

418 Our study also allowed us to determine infection rates in our cohort. We found that during  
419 the pre-Omicron era very few breakthrough infections occurred and only in the previously naïve  
420 group (**Figure 4**). During this time not a single breakthrough infection was detected in the hybrid  
421 immune group over the course of 11 months. This changed significantly during the Omicron era  
422 when the majority of our participants experienced breakthrough infections over the course of 18  
423 months. This observation makes sense since Omicron has a strong escape phenotype and its  
424 spike mutations undermine neutralizing antibodies induced by the ancestral or earlier variant  
425 spikes<sup>1</sup>. However, a notable protective effect remained in the hybrid immune group as compared to  
426 initially naïve individuals (**Figure 4C**). We also assessed the immune responses to breakthrough  
427 infections. When comparing the number of antigen exposures, we found that a breakthrough  
428 infection after the primary vaccination series in previously naïve individuals induced antibody titers  
429 comparable a third dose of vaccine (booster dose). We found a similar pattern for the fourth  
430 exposure (4<sup>th</sup> vaccine dose versus breakthrough infection after the 3<sup>rd</sup> vaccine dose). This suggests  
431 that these initial breakthrough infections in vaccinated but previously naïve individuals do in fact act  
432 similarly to a booster dose in terms of inducing antibody responses. The picture changed in  
433 individuals who had an initial infection followed by two or three vaccinations. When comparing



434 breakthrough infection versus one additional vaccination in those highly exposed individuals we  
435 saw that vaccination still robustly boosted serum antibody titers but breakthrough infection did not,  
436 at least not as robustly as vaccination. We speculate that virus replication in these individuals was  
437 highly restricted due to their strong pre-existing immunity and that therefore the presence of less  
438 antigen leads to a lower induction of immunity.

439 Our longitudinal study setting also allowed us to investigate vaccine reactogenicity as it was  
440 experienced after the first, second and third vaccine dose in a longitudinal manner at individual  
441 participant level. These data are of great relevance since reactogenicity can increase vaccine  
442 hesitancy and reduce uptake. In PARIS, SARS-CoV-2 mRNA vaccines were generally well  
443 tolerated with mild to modest side effects occurring in two thirds of the vaccinees. As reported by  
444 us and others<sup>12,21</sup>, both local and systemic side effects were more common in individuals with  
445 hybrid immunity (**Figure 5**). Our participant level analysis of vaccine reactogenicity reveal the  
446 landscape of reactogenicity with several symptom clusters being apparent in the participant group  
447 with no infection prior to vaccination. In future studies, we plan on analyzing whether certain  
448 pattern of vaccine side effects predict the level of immunogenicity. These real-world data on side  
449 effects associated with sequential vaccine doses is important to provide guidance for individuals  
450 concerned regarding future immunizations.

451 Our study has several limitations. We were unable to analyze mucosal immune responses  
452 which are especially interesting during breakthrough infections. We and other have previously  
453 shown that secretory IgA antibodies are not induced or boosted by mRNA vaccination in  
454 individuals who were previously naïve but that titers increase in hybrid immune individuals after  
455 their first vaccination<sup>22,23</sup>. We plan, therefore, to conduct similar studies at additional time points in  
456 our cohort in the future. Additionally, because our purpose was to analyze serum antibody kinetics,  
457 the current study did not measure neutralizing antibody responses since binding antibodies contain  
458 all antibodies to the spike and not just antibodies to certain neutralizing epitopes. Similarly, the  
459 current study focused on antibodies to the full-length spike rather than RBD. However, since we  
460 have observed differential antibody kinetics for spike and RBD<sup>24</sup> (which is part of the spike), we  
461 plan to measure RBD antibodies in the future. We plan to assess antibody avidity in our  
462 longitudinal cohort using different methods as previously described<sup>25</sup>. Of note, binding antibodies  
463 have been tied to protection from severe COVID-19 outcomes in the absence of neutralizing  
464 antibodies in a recent study<sup>26</sup>. Finally, the current study examines reactivity to ancestral spike, and  
465 not to later variant spikes or nucleoprotein. Assays utilizing the ancestral spike also detect  
466 antibodies induced by variant breakthrough infection and existing bivalent vaccines. Indeed, it has

467 been shown that no to little specific antibodies are generated to new spikes and most of the  
468 response is cross-reactive<sup>27,28</sup> in a manner consistent with 'backboosting'<sup>29</sup>.

469 In summary, we show that antibody responses to SARS-CoV-2 mRNA vaccination follow a  
470 classical biphasic decay with a rapid waning phase initially followed by a transition into a  
471 stabilization phase after 7-9 months. We also show that hybrid immunity showed better protection  
472 against breakthrough infection in both the pre-Omicron but also the post-Omicron era and we show  
473 that breakthrough infections in vaccinated, previously naïve individuals have an effect like a  
474 booster dose. These data suggest that COVID-19 mRNA vaccination does induce long lasting  
475 spike-specific antibodies consistent with B-cell biology.

476 **ACKNOWLEDGEMENTS**

477 We thank all the participants of our longitudinal PARIS study for their generous and continued  
478 support of our COVID-19 research programs.

479 This work was funded in part by the Centers of Excellence for Influenza Research and Surveillance  
480 (CEIRS, contract # HHSN272201400008C), the Centers of Excellence for Influenza Research and  
481 Response (CEIRR, contract # 75N93021C00014), by the Collaborative Influenza Vaccine  
482 Innovation Centers (CIVICs contract # 75N93019C00051), by philanthropic donations and by  
483 institutional funds including the Mount Sinai Center for Vaccine Research and Pandemic  
484 Preparedness.

485 This effort was also in part supported by the Serological Sciences Network (SeroNet) in part with  
486 Federal funds from the National Cancer Institute, National Institutes of Health, under Contract No.  
487 75N91021F00001 via 21X092F1 Mod 01. The content of this publication does not necessarily  
488 reflect the views or policies of the Department of Health and Human Services, nor does mention of  
489 trade names, commercial products or organizations imply endorsement by the U.S. Government.

490

491 **CONFLICT OF INTEREST STATEMENT**

492 The Icahn School of Medicine at Mount Sinai has filed patent applications relating to SARS-CoV-2  
493 serological assays and NDV-based SARS-CoV-2 vaccines which list Florian Krammer as co-  
494 inventor. Dr. Viviana Simon is also listed on the SARS-CoV-2 serological assays patent. Mount  
495 Sinai has spun out a company, Kantaro, to market serological tests for SARS-CoV-2. Florian  
496 Krammer has consulted for Curevac, Merck and Pfizer, and is currently consulting for 3rd Rock  
497 Ventures, GSK, Gritstone and Avimex and he is a co-founder and scientific advisory board  
498 member of CastleVax. The Krammer laboratory is also collaborating with Pfizer on animal models  
499 of SARS-CoV-2.

500

501

502

503

504

505

506

507 **REFERENCES**

- 508 1 Carreño, J. M. *et al.* Activity of convalescent and vaccine serum against SARS-CoV-2  
509 Omicron. *Nature* (2021). <https://doi.org/10.1038/s41586-022-04399-5>
- 510 2 Menegale, F. *et al.* Evaluation of Waning of SARS-CoV-2 Vaccine-Induced Immunity: A  
511 Systematic Review and Meta-analysis. *JAMA Netw Open* **6**, e2310650 (2023).  
512 <https://doi.org/10.1001/jamanetworkopen.2023.10650>
- 513 3 Zaeck, L. M., GeurtsvanKessel, C. H. & de Vries, R. D. COVID-19 vaccine effectiveness  
514 and evolving variants: understanding the immunological footprint. *Lancet Respir Med* **11**,  
515 395-396 (2023). [https://doi.org/10.1016/S2213-2600\(23\)00140-6](https://doi.org/10.1016/S2213-2600(23)00140-6)
- 516 4 DeGrace, M. M. *et al.* Defining the risk of SARS-CoV-2 variants on immune protection.  
517 *Nature* **605**, 640-652 (2022). <https://doi.org/10.1038/s41586-022-04690-5>
- 518 5 Feikin, D. R. *et al.* Duration of effectiveness of vaccines against SARS-CoV-2 infection and  
519 COVID-19 disease: results of a systematic review and meta-regression. *Lancet* **399**, 924-  
520 944 (2022). [https://doi.org/10.1016/S0140-6736\(22\)00152-0](https://doi.org/10.1016/S0140-6736(22)00152-0)
- 521 6 Gonzalez-Reiche, A. S. *et al.* Introductions and early spread of SARS-CoV-2 in the New  
522 York City area. *Science* **369**, 297-301 (2020). <https://doi.org/10.1126/science.abc1917>
- 523 7 Wajnberg, A. *et al.* Humoral response and PCR positivity in patients with COVID-19 in the  
524 New York City region, USA: an observational study. *Lancet Microbe* **1**, e283-e289 (2020).  
525 [https://doi.org/10.1016/s2666-5247\(20\)30120-8](https://doi.org/10.1016/s2666-5247(20)30120-8)
- 526 8 Stadlbauer, D. *et al.* Repeated cross-sectional sero-monitoring of SARS-CoV-2 in New York  
527 City. *Nature* **590**, 146-150 (2021). <https://doi.org/10.1038/s41586-020-2912-6>
- 528 9 Amanat, F. *et al.* A serological assay to detect SARS-CoV-2 seroconversion in humans. *Nat*  
529 *Med* **26**, 1033-1036 (2020). <https://doi.org/10.1038/s41591-020-0913-5>
- 530 10 Simon, V. *et al.* PARIS and SPARTA: Finding the Achilles' Heel of SARS-CoV-2. *mSphere*  
531 **7**, e0017922 (2022). <https://doi.org/10.1128/msphere.00179-22>
- 532 11 Kubale, J. *et al.* SARS-CoV-2 Spike-Binding Antibody Longevity and Protection from  
533 Reinfection with Antigenically Similar SARS-CoV-2 Variants. *mBio* **13**, e0178422 (2022).  
534 <https://doi.org/10.1128/mbio.01784-22>
- 535 12 Krammer, F. *et al.* Antibody Responses in Seropositive Persons after a Single Dose of  
536 SARS-CoV-2 mRNA Vaccine. *N Engl J Med* **384**, 1372-1374 (2021).  
537 <https://doi.org/10.1056/NEJMc2101667>
- 538 13 Krammer, F. The role of vaccines in the COVID-19 pandemic: what have we learned?  
539 *Semin Immunopathol* (2023). <https://doi.org/10.1007/s00281-023-00996-2>
- 540 14 Akkaya, M., Kwak, K. & Pierce, S. K. B cell memory: building two walls of protection against  
541 pathogens. *Nat Rev Immunol* **20**, 229-238 (2020). <https://doi.org/10.1038/s41577-019-0244-2>
- 542
- 543 15 Wrammert, J. *et al.* Rapid cloning of high-affinity human monoclonal antibodies against  
544 influenza virus. *Nature* **453**, 667-671 (2008). <https://doi.org/10.1038/nature06890>
- 545 16 Ellebedy, A. H. *et al.* Defining antigen-specific plasmablast and memory B cell subsets in  
546 human blood after viral infection or vaccination. *Nat Immunol* **17**, 1226-1234 (2016).  
547 <https://doi.org/10.1038/ni.3533>
- 548 17 Mankarious, S. *et al.* The half-lives of IgG subclasses and specific antibodies in patients  
549 with primary immunodeficiency who are receiving intravenously administered  
550 immunoglobulin. *J Lab Clin Med* **112**, 634-640 (1988).

- 551 18 Turner, J. S. *et al.* SARS-CoV-2 infection induces long-lived bone marrow plasma cells in  
552 humans. *Nature* **595**, 421-425 (2021). <https://doi.org/10.1038/s41586-021-03647-4>
- 553 19 Ioannou, G. N., Locke, E. R., Green, P. K. & Berry, K. Comparison of Moderna versus  
554 Pfizer-BioNTech COVID-19 vaccine outcomes: A target trial emulation study in the U.S.  
555 Veterans Affairs healthcare system. *EClinicalMedicine* **45**, 101326 (2022).  
556 <https://doi.org/10.1016/j.eclinm.2022.101326>
- 557 20 Bajema, K. L. *et al.* Comparative Effectiveness and Antibody Responses to Moderna and  
558 Pfizer-BioNTech COVID-19 Vaccines among Hospitalized Veterans - Five Veterans Affairs  
559 Medical Centers, United States, February 1-September 30, 2021. *MMWR Morb Mortal Wkly*  
560 *Rep* **70**, 1700-1705 (2021). <https://doi.org/10.15585/mmwr.mm7049a2>
- 561 21 Atmar, R. L. *et al.* Homologous and Heterologous Covid-19 Booster Vaccinations. *N Engl J*  
562 *Med* **386**, 1046-1057 (2022). <https://doi.org/10.1056/NEJMoa2116414>
- 563 22 Sano, K. *et al.* SARS-CoV-2 vaccination induces mucosal antibody responses in previously  
564 infected individuals. *Nat Commun* **13**, 5135 (2022). [https://doi.org/10.1038/s41467-022-](https://doi.org/10.1038/s41467-022-32389-8)  
565 [32389-8](https://doi.org/10.1038/s41467-022-32389-8)
- 566 23 Sheikh-Mohamed, S. *et al.* Systemic and mucosal IgA responses are variably induced in  
567 response to SARS-CoV-2 mRNA vaccination and are associated with protection against  
568 subsequent infection. *Mucosal Immunol* **15**, 799-808 (2022).  
569 <https://doi.org/10.1038/s41385-022-00511-0>
- 570 24 Amanat, F. *et al.* SARS-CoV-2 mRNA vaccination induces functionally diverse antibodies to  
571 NTD, RBD, and S2. *Cell* **184**, 3936-3948.e3910 (2021).  
572 <https://doi.org/10.1016/j.cell.2021.06.005>
- 573 25 Singh, G. *et al.* Binding and avidity signatures of polyclonal sera from individuals with  
574 different exposure histories to SARS-CoV-2 infection, vaccination, and Omicron  
575 breakthrough infections. *J Infect Dis* (2023). <https://doi.org/10.1093/infdis/jiad116>
- 576 26 Vikström, L. *et al.* Vaccine-induced correlate of protection against fatal COVID-19 in older  
577 and frail adults during waves of neutralization-resistant variants of concern: an  
578 observational study. *Lancet Reg Health Eur* **30**, 100646 (2023).  
579 <https://doi.org/10.1016/j.lanepe.2023.100646>
- 580 27 Alsoussi, W. B. *et al.* SARS-CoV-2 Omicron boosting induces de novo B cell response in  
581 humans. *Nature* (2023). <https://doi.org/10.1038/s41586-023-06025-4>
- 582 28 Carreño, J. M., Singh, G., Simon, V., Krammer, F. & group, P. s. Bivalent COVID-19  
583 booster vaccines and the absence of BA.5-specific antibodies. *Lancet Microbe* **4**, e569  
584 (2023). [https://doi.org/10.1016/S2666-5247\(23\)00118-0](https://doi.org/10.1016/S2666-5247(23)00118-0)
- 585 29 Fonville, J. M. *et al.* Antibody landscapes after influenza virus infection or vaccination.  
586 *Science* **346**, 996-1000 (2014). <https://doi.org/10.1126/science.1256427>
- 587 30 Polack, F. P. *et al.* Safety and Efficacy of the BNT162b2 mRNA Covid-19 Vaccine. *N Engl J*  
588 *Med* (2020). <https://doi.org/10.1056/NEJMoa2034577>
- 589 31 Baden, L. R. *et al.* Efficacy and Safety of the mRNA-1273 SARS-CoV-2 Vaccine. *N Engl J*  
590 *Med* (2020). <https://doi.org/10.1056/NEJMoa2035389>
- 591 32 Stadlbauer, D. *et al.* SARS-CoV-2 Seroconversion in Humans: A Detailed Protocol for a  
592 Serological Assay, Antigen Production, and Test Setup. *Curr Protoc Microbiol* **57**, e100  
593 (2020). <https://doi.org/10.1002/cpmc.100>
- 594

595 **Table 1: Demographics and Immune histories in PARIS**

596

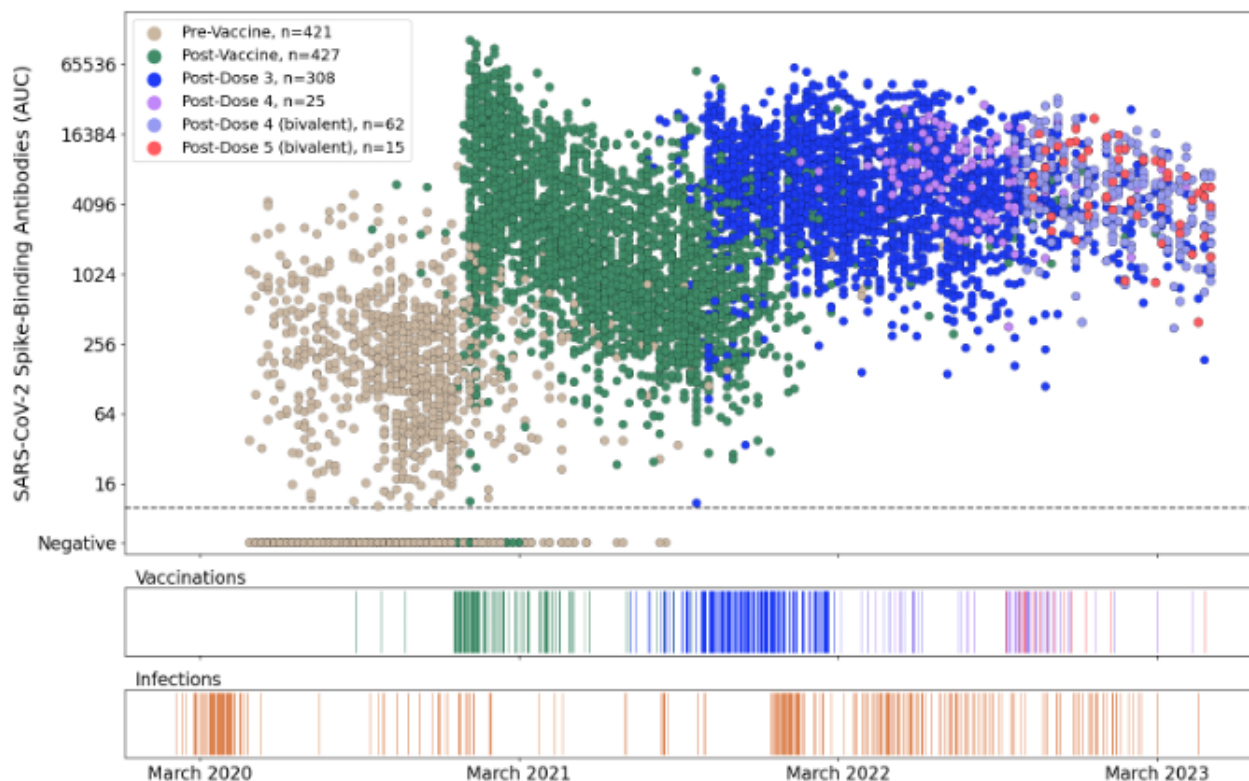
Seropositivity pre-vaccine		Yes N=183	No N=313	Total N=496
<b>Age</b>				
	mean – avg (std)	42 (11.7)	40 (11.6)	41 (11.6)
	range	21 - 77	22 - 74	21-77
<b>Gender - N (%)</b>				
	Female	118 (64%)	216 (69%)	334 (67%)
	Male	61 (33%)	88 (29%)	149 (30%)
	missing/other	4 (<1%)	9 (2%)	13 (3%)
<b>Ancestry - N (%)</b>				
	African American	15 (8%)	16 (5%)	31 (6%)
	Asian	21 (11%)	50 (16%)	71 (14%)
	White	104 (57%)	174 (56%)	278 (56%)
	missing/other	43 (24%)	73 (23%)	116 (24%)
<b>Ethnicity - N (%)</b>				
	Hispanic	34 (19%)	51 (16%)	85 (17%)
	Non-Hispanic	131 (72%)	218 (70%)	349 (70%)
	Missing/Other	18 (10%)	44 (14%)	62 (13%)
<b>Primary Vaccine Series</b>				
	Moderna	35 (19%)	76 (24%)	111 (22%)
	Pfizer	127 (69%)	215 (69%)	342 (69%)
	Not Received	15 (8%)	20 (6%)	35 (7%)
	Other	5 (1%)	0 (0%)	5 (1%)
	Unknown	1 (<1%)	2 (<1%)	38 (8%)
<b>Vaccine Dose 3 (%)</b>				
	Moderna	29 (16%)	67 (21%)	96 (19%)
	Pfizer	89 (49%)	174 (56%)	263 (53%)
	Not Received	64 (35%)	69 (22%)	133 (27%)
	Other	0 (0%)	1 (<1%)	1 (<1%)
	Unknown	1 (<1%)	2 (<1%)	3 (<1%)
<b>Vaccine Dose 4 (%)</b>				
	Moderna	1 (<1%)	3 (1%)	4 (1%)
	Moderna Bivalent	3 (2%)	9 (3%)	12 (2%)
	Pfizer	5 (3%)	16 (5%)	21 (4%)
	Pfizer Bivalent	16 (9%)	38 (12%)	54 (11%)
	Bivalent Unspecified	1 (<1%)	3 (1%)	4 (1%)
	Unknown	1 (<1%)	1 (<1%)	2 (<1%)
	Not Received	156 (86%)	243 (78%)	399 (81%)
<b>Vaccine Dose 5</b>				
	Moderna Bivalent	0 (0%)	1 (<1%)	1 (<1%)
	Pfizer Bivalent	5 (3%)	9 (3%)	14 (3%)
	Not Received	303 (97%)	178 (97%)	481 (97%)
<b>SARS-CoV-2 infections - N (%)</b>				
	never	27 (15%)	151 (50%)	6 (50%)
	Once	109 (60%)	129 (42%)	6 (50%)
	Twice	45 (25%)	20 (7%)	0 (0%)
	Thrice	2 (1%)	1 (<1%)	0 (0%)



Job description - N (%)				
	Clinician	52 (28%)	99 (32%)	151 (30%)
	PA/Nursing	37 (20%)	84 (26%)	121 (24%)
	PhD/Trainee	19 (10%)	47 (15%)	66 (13%)
	Social worker	6 (2%)	2 (<1%)	8 (2%)
	Family Member	11 (6%)	3 (1%)	14 (3%)
	Midwife	2 (1%)	3 (1%)	5 (1%)
	Other	52 (28%)	65 (20%)	117 (24%)
	Missing	4 (2%)	10 (3%)	14 (3%)

597  
598

599 **Figure 1: Longitudinal SARS-CoV-2 spike binding antibody levels in 496 PARIS participants**  
600 **over three years.**

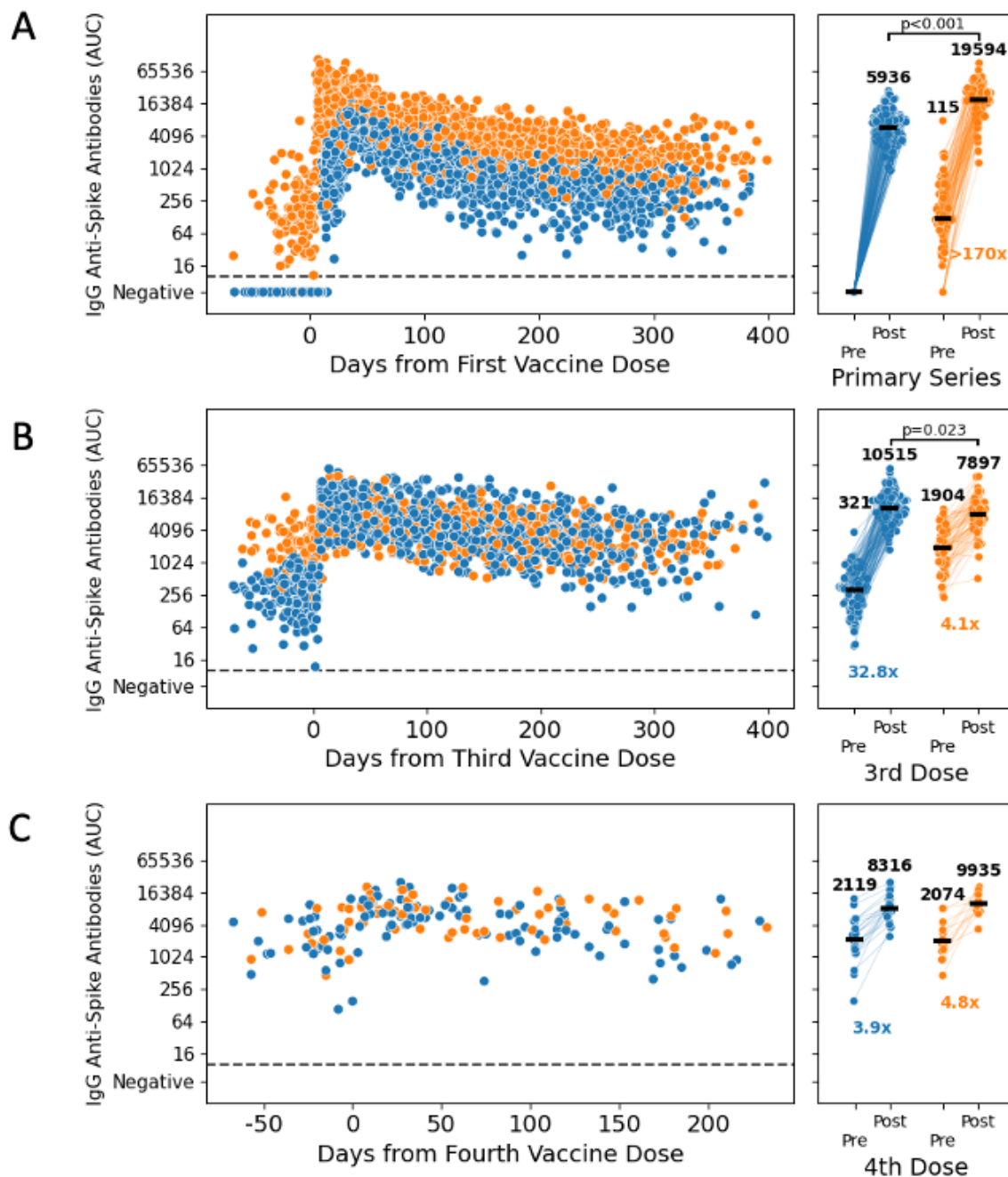


601

602 **A:** Each dot represents a distinct study visit at which spike binding antibody levels were measured.  
603 Samples are colored by prior vaccination status (2,091 samples pre-vaccination, 3,180 samples  
604 post-primary immunization [Dose 1, Dose 2], 2,364 samples post-Dose 3, 110 samples post-  
605 monovalent Dose 4, 240 samples post-bivalent dose 4, and 56 samples post-bivalent Dose 5).

606 Each SARS-CoV-2 antibody titer measurement (AUC, area under the curve) is anchored on the  
607 Monday of the corresponding week. A small amount of normally distributed noise has been added  
608 to the log<sub>2</sub>-transformed data ( $\sigma=0.1$ ), with >95% of transformed values within 15% of the original  
609 value to preserve participants' confidentiality.

610 **B, C:** SARS-CoV-2 infections (**B**) and vaccinations (**C**) events are depicted on the same timeline as  
611 the antibody values. Three participants received their primary immunization as part of the Pfizer  
612 vaccine trials. The vaccination event colors in the ribbon graph correspond to colors of points after  
613 the respective event in the antibody scatterplot shown in Panel **A**.



614 **Figure 2: Immunogenicity of the different SARS-CoV-2 vaccine doses**

615

616 Longitudinal spike binding antibodies measurements (N=4,620) for PARIS participants with  
617 (orange) or without (blue) pre-existing SARS-CoV-2 immunity.

618 **A:** Longitudinal antibody follow-up post-vaccination for 179 participants with no prior SARS-CoV-2  
619 infection (blue, 1,671 samples) and 111 participants with a pre-vaccine SARS-CoV-2 infection  
620 (orange, 1,083 samples). The right panel has matched pre- and post-vaccine timepoints for 150  
621 previously naïve participants and 92 participants with hybrid immunity.

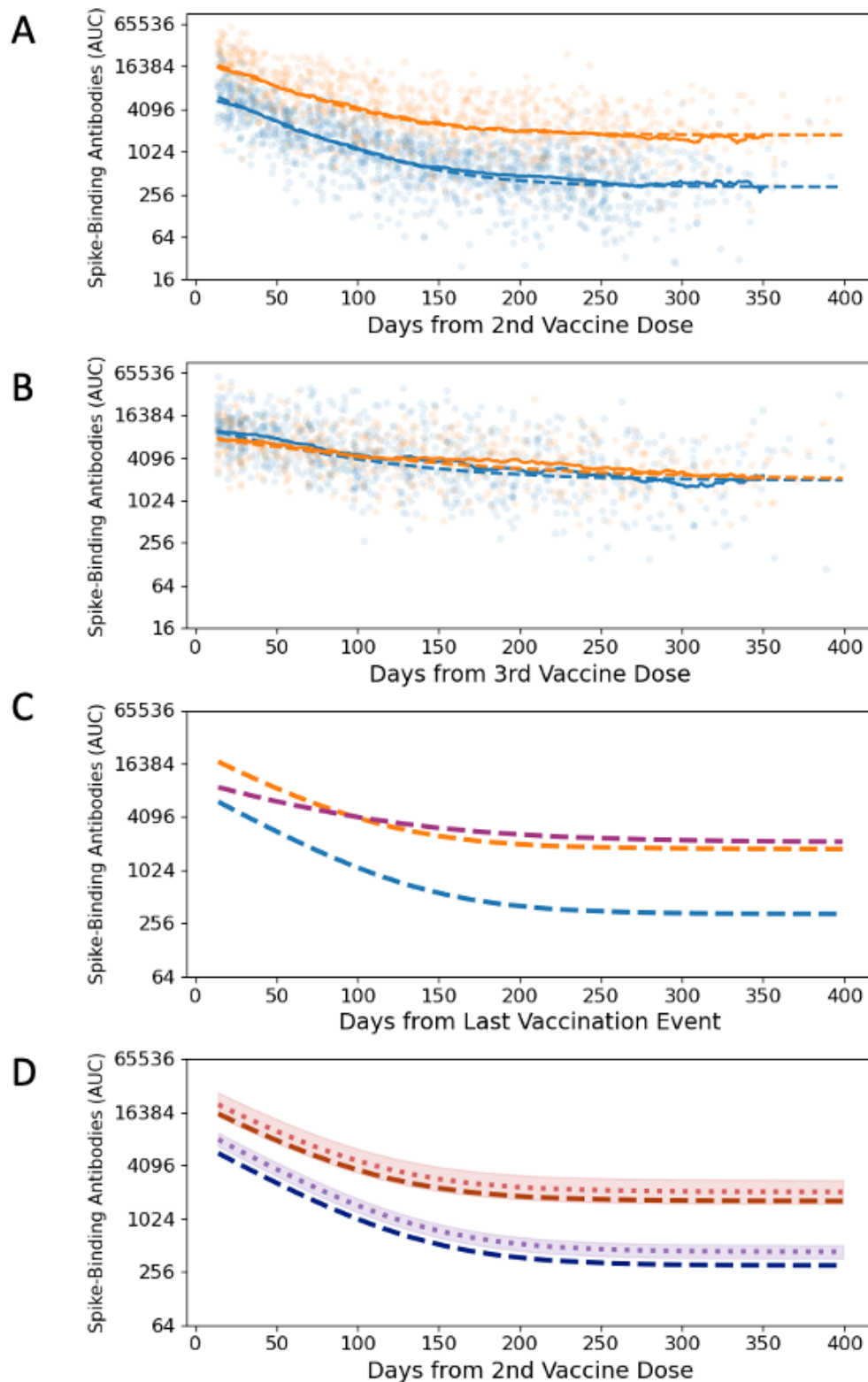
622 **B:** Longitudinal antibody follow-up pre- and post-third dose for participants with (83 participants,  
623 585 samples) and without (160 participants, 1106 samples) prior SARS-CoV-2 infection. The right  
624 panel has matched pre- and post-third dose timepoints for 64 participants with prior infection and  
625 126 participants without hybrid immunity.

626 **C:** Longitudinal antibody follow-up before and after the fourth vaccine dose is shown for 15  
627 participants with SARS-CoV-2 infection prior to fourth dose (67 samples) and 26 participants  
628 without hybrid immunity (108 samples). The right panel has matched pre- and post-fourth dose  
629 timepoints for 13 participants with prior infection and 21 participants without hybrid immunity.

630

631 Timepoints post-breakthrough infection were excluded from the analysis. Pre-vaccination  
632 timepoints were collected within 10 weeks prior to vaccination while peak post-vaccine timepoints  
633 were 1-5 weeks after administration of the vaccine dose (the second dose, in the case of the  
634 primary series). The increase in spike-binding antibodies post-vaccination was statistically  
635 significant for all recipients ( $p < 0.0001$ , Wilcoxon signed rank). Peak antibody levels post-primary  
636 vaccination were approximately 3-fold higher in the hybrid immunity group ( $p < 0.0001$ , Mann-  
637 Whitney U) compared to the vaccine-only immunity group. After third dose, peak antibody levels  
638 were modestly elevated in the vaccination-only immunity group compared to those in the hybrid  
639 immunity group ( $p = 0.023$ , Mann-Whitney U). Peak antibody levels post-dose 4 are comparable  
640 across hybrid immunity and vaccination-only groups (no statistically significant difference, Mann-  
641 Whitney U).

642



643 **Figure 3: Modelling Antibody kinetics after primary and booster vaccinations.**

644 **A:** We generated independent model predictions for the longitudinal post-vaccination antibody  
645 levels in 359 participants with (orange dashed line, 126 participants, 850 samples) and without

646 (blue dashed line, 233 participants, 1,443 samples) SARS-CoV-2 infection prior to primary  
647 immunization. The rolling 49-day geometric means for each group is shown as solid lines.

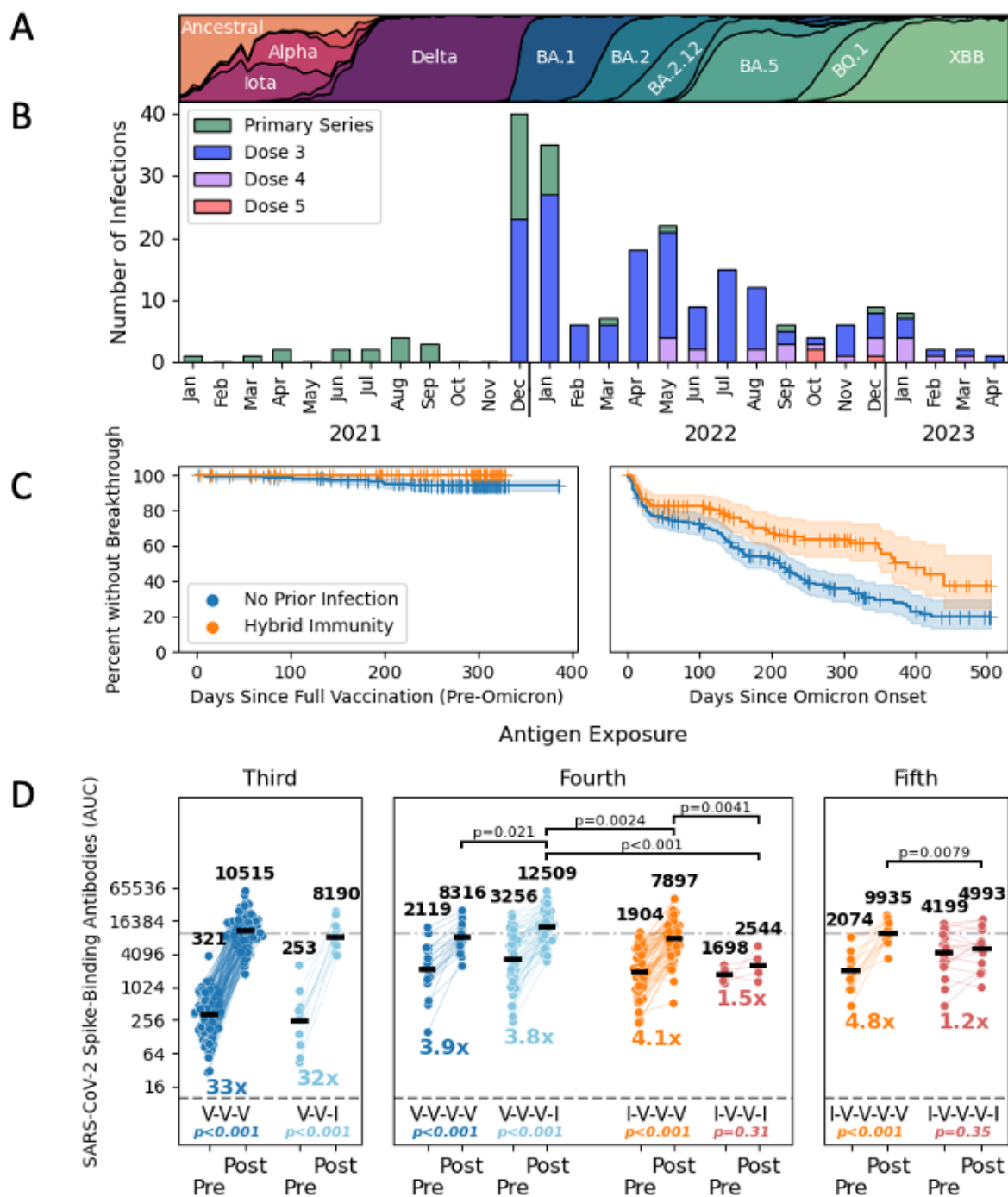
648 **B:** We fitted the same model to the longitudinal post-boost antibody levels of 223 participants (80  
649 participants with hybrid immunity, 482 samples; 143 vaccination-only participants, 844 samples).  
650 The rolling 49-day geometric means for each group is shown as solid lines.

651 **C:** The model predictions for the dynamics predicted by the post-vaccine model stratified by  
652 infection status shown in panel A to a combined post-boost model in dark pink (223 participants,  
653 1,326 samples).

654 **D:** The impact of vaccine type on antibody levels, with the fixed effect due to vaccine type  
655 separating model predictions for Pfizer recipients (dark blue and dark red dashed lines) and those  
656 for Moderna recipients (purple and red dotted lines). 95% confidence intervals of the fixed effect  
657 size are represented by the shaded area. Timepoints after breakthrough infections were excluded  
658 from the analysis. 95% confidence intervals are based on a T distribution with standard deviations  
659 calculated as part of the model fitting procedure. The vaccine type has a statistically significant  
660 effect in participants with no SARS-CoV-2 infection prior to vaccination (67% increase,  $p < 0.001$ ).



661 **Figure 4: Frequency and impact of breakthrough infections**



662 **A:** The changing SARS-CoV-2 variant landscape in NYC is depicted for the period spanning  
 663 January 2021 to April 2023.

664 **B:** The number of breakthrough infections in vaccinated PARIS participants is shown by calendar  
 665 month (2021-2023). The number of vaccine doses that participants with breakthrough infections  
 666 received prior to infection are identified by the different colors.

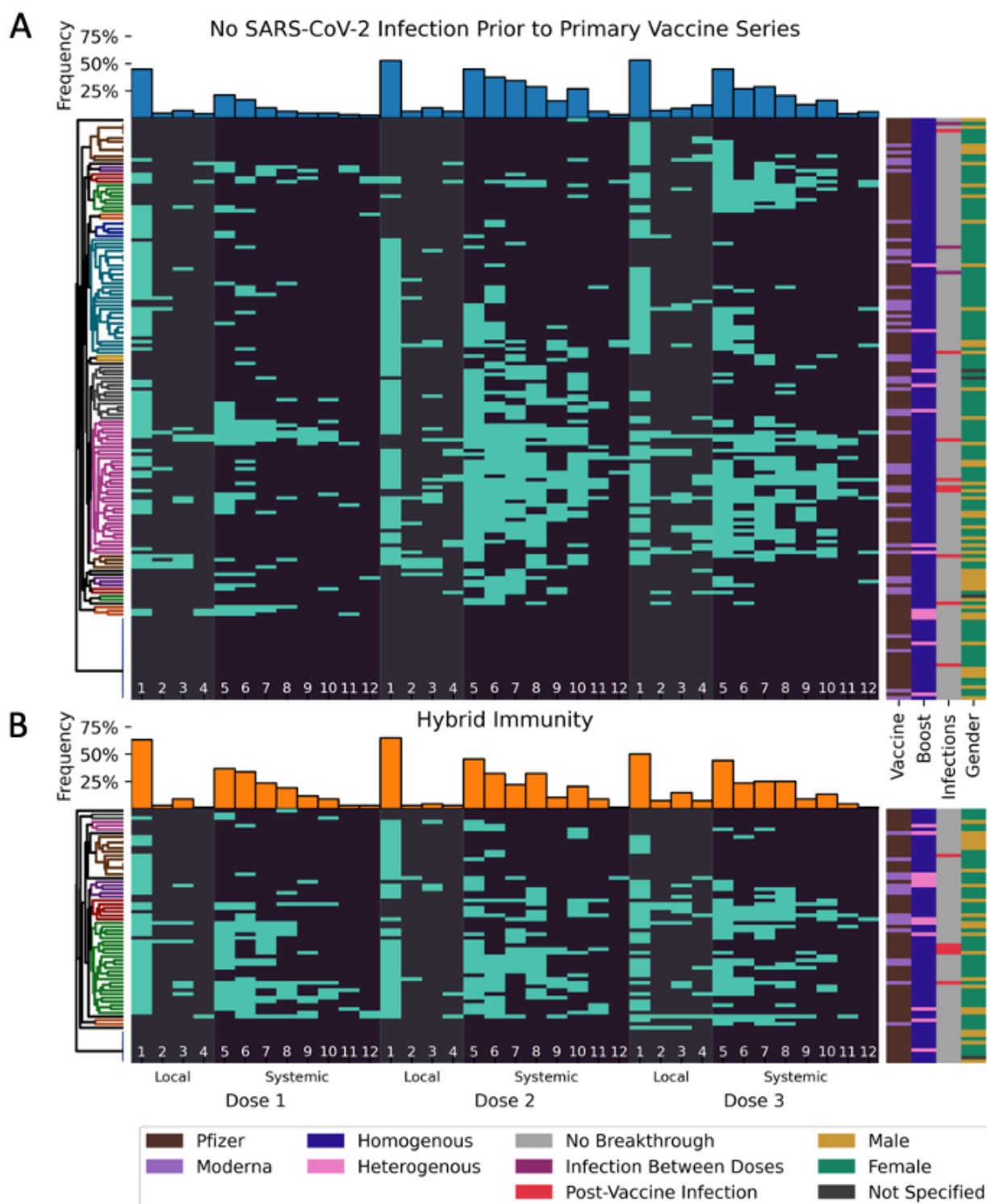
667 **C:** The frequency of breakthrough infections changed after the emergence of Omicron variants in  
 668 Mid-December 2021. Participants with hybrid immunity were only experiencing breakthrough

669 infections with antigenically diverse Omicron variants (right panel). The differences between  
670 vaccinated participants with and without hybrid immunity before (left) and after (right) the  
671 appearance of Omicron variants is captured by Kaplan-Meier plots.

672 **D:** The impact of infection and vaccination on spike-binding antibody levels are shown. Vaccination  
673 events are shown in blue and orange, with infection events shown in light blue and red.  
674 Participants are categorized by number of prior exposures and SARS-CoV-2 infection status prior  
675 to initial immunization. Second breakthrough infections are excluded. Third dose (dark blue,  
676 n=126) is compared to post-vaccine breakthrough (light blue, n=12). Fourth dose (dark blue, n=21)  
677 is paired with the breakthrough post-third dose (light blue, n=54). Third dose in previously infected  
678 participants (orange, n=64) is paired with breakthrough re-infection post-vaccine (red, n=5). Finally,  
679 antibody titers mounted in response to the fourth dose in previously infected participants (orange,  
680 n=13) are compared those mounted after breakthrough re-infections after the third dose (red,  
681 n=17).

682 Statistical comparisons within groups (Wilcoxon signed rank test) and fold-change in geometric  
683 means are reported below each group. Statistically significant differences in post-exposure  
684 antibodies at the  $p < 0.05$  level (Mann-Whitney U test) are reported above.

685 **Fig. 5: Reactogenicity reported after sequential SARS-CoV-2 accination (Dose 1, 2 and 3)**



686 **A, B:** Each line represents the post vaccine side effects reported by the same participant. Data  
 687 shown is based on 684 surveys completed by 228 participants (160 initially naïve, [70%, **Panel A**]  
 688 and 68 with hybrid immunity, [30%, **Panel B**]) after the first, second and third vaccine dose. The

689 order of the symptoms depicted are divided into side effects at the local injection site (pain [1],  
690 erythema [2], induration [3], lymphadenopathy [4], grey bands) and systemic in nature (fatigue [5],  
691 headache [6], myalgia [7], chills [8], arthralgia [9], Fever [10], nausea/emesis [11], pharyngitis [12],  
692 dark grey background).

693 Participants are split into groups based on pre-vaccine infection status and ordered by UPGMA  
694 clustering based on the Jaccard metric with optimal leaf ordering (trees shown on the left, colored  
695 clusters contain all nodes at distance less than 0.7). The presence of a symptom is indicated by a  
696 light blue bar. Bar plots for the overall frequency of each symptom are shown above the  
697 longitudinal data for each group. Vaccine type, boost type, infection status, and gender for each  
698 participant are annotated on the right.

699 **TABLE OF CONTENT FOR THE SUPPLEMENTAL ONLINE MATERIALS**

700

701 • ONLINE METHODS

702

703 • SUPPLEMENTAL TABLES S1 TO S3

704

705 • SUPPLEMENTAL FIGURES S1 TO S4

706 **ONLINE METHODS**

707 **Study Information:** In Spring 2020, most of New York City was shut down except for essential  
708 personnel needed to fight the SARS-CoV-2 pandemic. Personal Protective Equipment was in high  
709 demand and needed to be distributed to essential workers providing high risk services. Health care  
710 workers performing a wide array of different jobs (e.g., from housekeeping, students, nurses to  
711 medical doctors) fell into this category.

712 The observational longitudinal PARIS Study (Protection Associated with Rapid Immune  
713 response to SARS-CoV-2) enrolled adult individuals who worked at the Mount Sinai Health System  
714 (MSHS) in New York City in April 2020. Adult family members of MSHS employees were also  
715 eligible for participation. The study protocol IRB-20-03374 / STUDY-20-00442 was approved by the  
716 Institutional Review Board of the Mount Sinai Hospital. All study participants signed written consent  
717 forms prior to providing data or biospecimen.

718 In the first two months of the study, participants were asked to provide saliva samples  
719 weekly and to provide a blood sample every two weeks. After the two-month study visit,  
720 participants returned monthly for a period of one year, thereafter study visit frequency varied  
721 between one and two months. Nasopharyngeal or ante-near swabs were collected when  
722 participants reported symptoms suggestive of a respiratory infection. Ad hoc study visits were  
723 performed in these situations as well as after vaccination. If participants reported testing positive  
724 for a viral respiratory infection, details about the diagnostic test performed, symptom onset and  
725 disease severity were collected.

726 A total of 501 health care workers were enrolled in PARIS between April 2020 and August  
727 2021. Prior to the SARS-CoV-2 vaccine rollout in December of 2020 412/501 participants had been  
728 enrolled. Based on serological status at baseline prior to vaccination, 38% of participants had  
729 SARS-CoV-2 spike binding IgG antibodies above the limit of detection of an in-house ELISA test.  
730 One single participant reported a SARS-CoV-2 infection prior to enrollment into the study but was  
731 seronegative at baseline.

732 Of the 501 participants enrolled, one (0.2%) has received four mRNA booster doses (total  
733 vaccine doses: 6), 13 (2.6%) have received three mRNA booster doses (total vaccine doses: 5), 83  
734 (16.6%) have received two mRNA booster doses (total vaccine doses: 4) and 269 (53.7%)  
735 received one booster vaccine dose. 465 participants (93% of the total cohort) have been  
736 vaccinated with the remainder of the participants having withdrawn or being lost to follow up since  
737 immunization became mandatory for health care workers. Indeed, 36 participants withdrew from  
738 the study and their vaccination status is unknown. Of the 465 participants who were vaccinated, 99  
739 (21.3%) elected not to receive any booster vaccine dose. Over the three years of the PARIS study,  
740 we have documented over 8,000 study visits collecting blood, saliva and/or nasal swabs.



741

742 **Vaccine reactogenicity:** Qualitative survey data capturing general health questions, exposures,  
743 and changes to perceived risk to SARS-CoV-2 infection were captured monthly using a custom  
744 build REDCap database. When participants received a SARS-CoV-2 vaccination, a survey to  
745 collected information about side effects was sent out after the 1<sup>st</sup> and 2<sup>nd</sup> dose in the primary  
746 immunization series as well as after the 1<sup>st</sup> booster vaccine dose.

747 After vaccination, surveys were sent to participants to provide data on side effects  
748 experienced after dose 1, 2 and 3. The questions for the survey were designed to capture diversity  
749 of possible effects broken into two categories: systemic effects and local injection site effects. The  
750 symptoms recorded (**Suppl. Table 2**) included side effects reported in publications from Pfizer and  
751 Moderna about their respective vaccines<sup>30,31</sup>.

752 Dates by which vaccines became available to health care workers were as follows: Pfizer  
753 BioNTech: 12/15/2020 (initial) and 09/22/2021 (booster); Moderna: 12/28/2022 (initial), 10/20/21  
754 (booster). Bivalent boosters (both Pfizer/BioNTech, Moderna) were distributed starting September  
755 2022. Three participants received vaccine in the Pfizer Phase 3 vaccine trial.

756 The surveys for the first two doses were released early in 2021 and the booster survey was  
757 launched in the fall of 2021. 245 participants completed all three surveys. Participants who did not  
758 receive mRNA vaccination as their primary immunization or booster dose were excluded from the  
759 analysis as well as participants with known immunomodulatory comorbidities leaving a total  
760 complete survey response from 228 participants. For each indicated side effect, branching logic  
761 questions were designed to ask about the duration of the side effect and perceived severity. For  
762 fever and nausea/vomiting, quantitative ranges were asked. For fever, we asked about the highest  
763 temperature known. For nausea/vomiting we asked about the number of times a day the  
764 participant felt ill and vomited. The other side effects, if indicated as severe, had follow-up  
765 questions to ask if medical care was required. None of the participants who reported a severe side  
766 effect required hospitalization for treatment. All survey data was captured using REDCap  
767 database system. Severity scoring was tabulated in a REDCap report output (not reported = 0, mild  
768 = 1, moderate = 2, severe = 3) per effect per vaccine dose. The dataset for all three doses was  
769 combined and subgroups based on infection history pre-vaccine, vaccine type, and gender were  
770 created. Percent totals of reported incidence and severity were calculated per subgroup and then  
771 compared to understand differences within the PARIS cohorts and observe trends between groups  
772 across doses.

773

774 **Enzyme-linked immunosorbent assay (ELISA):** Antibody titers were measured using a two-step  
775 well-established ELISA method<sup>9,32</sup> in which serum samples are screened at a single dilution (1:50)

776 for IgG against the recombinant receptor binding domain (RBD) of the spike protein from SARS-  
777 CoV-2 (Wuhan-Hu-1), followed by detection of antibodies against the full-length spike protein (also  
778 Wuhan-Hu-1). In the first step, serum samples were screened in a high-throughput assay using the  
779 recombinant RBD protein. In brief, 96-well microtitre plates (Thermo Fisher) were coated with 50  $\mu$ l  
780 recombinant RBD protein at a concentration of 2  $\mu$ g/ml overnight at 4°C. The next day, the plates  
781 were washed three times with phosphate-buffered saline (PBS; Gibco) supplemented with 0.1%  
782 Tween-20 (PBS-T; Fisher Scientific) using an automatic plate washer (BioTek). The plates were  
783 blocked with 200  $\mu$ l blocking solution consisting of PBS-T with 3% (w/v) milk powder (American  
784 Bio) and incubated for 1 h at room temperature. Serum samples were heated at 56°C for 1 h  
785 before use to reduce the risk from any potential residual virus in the serum. The blocking solution  
786 was taken off the plates and 100  $\mu$ l of the serum samples diluted 1:50 in PBS-T containing 1%  
787 (w/v) milk powder was added to the respective wells of the microtitre plates. After 2 h, the plates  
788 were washed three times with PBS-T and 50  $\mu$ l anti-human IgG (Fab-specific) horseradish  
789 peroxidase antibody (produced in goat; Sigma, A0293) diluted 1:3,000 in PBS-T containing 1%  
790 milk powder was added to all wells and incubated for 1 h at room temperature. The microtitre  
791 plates were washed three times with PBS-T and 100  $\mu$ l SigmaFast o-phenylenediamine  
792 dihydrochloride (Sigma) was added to all wells. The reaction was stopped after 10 min with 50  $\mu$ l  
793 per well 3 M hydrochloric acid (Thermo Fisher) and the plates were read at a wavelength of 490  
794 nm with a plate reader (BioTek). Serum samples that exceeded an optical density at 490 nm  
795 (OD<sub>490</sub>) cut-off value of 0.15 were categorized as presumptive positive and were tested in a  
796 second step in confirmatory ELISAs using the full-length, recombinant spike protein. To perform  
797 the confirmatory ELISAs, the plates were coated and blocked as described above except full-  
798 length spike protein at a concentration of 2  $\mu$ g/ml was added to the plates. After 1 h, the blocking  
799 solution was removed, presumptive positive serum samples that were serially diluted (from  
800 1:80/1:100 to 204,800) in 1% milk prepared in PBS-T were added and the plates were incubated  
801 for 2 h at room temperature. The remainder of the assay was performed as described above. The  
802 cut-off value was set to an OD<sub>490</sub> value of 0.15 and true-positive samples were defined as samples  
803 that exceeded an OD<sub>490</sub> value of 0.15 at a 1:80/1:100 serum dilution. The end-point titer was  
804 calculated and defined as the last dilution before the signal dropped below an OD<sub>490</sub> of 0.15. The  
805 area under the curve (AUC) values were calculated and plotted using Prism 9 software  
806 (GraphPad). AUC values >10 were plotted as above the limited of detection in the figures included  
807 in this manuscript.

808

809 **SARS-CoV-2 variants:** Genomic data on the viral variants circulating within the New York City  
810 metropolitan area were obtained through the New York City Department of Health and Mental

811 Hygiene (DOHMH) web portal. The DOHMH maintains a publicly available database updated  
812 regularly since the beginning of the pandemic. SARS-CoV-2 variant tracking within the database  
813 begins on January 1<sup>st</sup>, 2021, and was updated weekly until May 18<sup>th</sup>, 2023 (when the COVID-19  
814 emergency was declared over in the US). Data on specific viral variants was only available for  
815 cases sequenced by and/or shared with the NYC DOHMH. Sequences were not available for all  
816 the SARS-CoV-2 positive test cases reported to DOHMH. Certain variants within the NYC data  
817 were collapsed into single categories due to the limited size of variant. The following variants were  
818 combined: XBB and XBB 1.5; BQ1 and BQ 1.1, Omicron BF.7, BA.4 and BA.4.6; B.1.427 and  
819 B.1.429 (Epsilon), and finally the B.1.526 lineages with and without E484K (Iota).

820

821 **Statistical Analysis:** Statistical testing for paired samples was done using the Wilcoxon signed  
822 rank test, with unpaired samples compared using the Mann-Whitney U test. The protectiveness of  
823 hybrid immunity was evaluated using a log rank test. UPGMA clustering for Figure 5 and all  
824 statistical tests were run using Scipy (version 1.11.1) in Python 3.9.15. Curve fitting for  
825 **Supplemental Figure 3** was done using the statsmodels package (version 0.13.2). All figures  
826 were rendered using Matplotlib (3.7.1) and Seaborn (0.12.2). The antibody kinetic model was fit  
827 using the NLMixed procedure in SAS9.4, using the trust region optimization technique and the  
828 adaptive gaussian quadrature integration method, assuming a normal distribution for the random  
829 effects and the dependent variable.

830

831 **Non-Linear Mixed models for spike binding antibodies:** Data were selected for the post-  
832 vaccine model under the following criteria: Timepoints with a discrepancy between the results  
833 generated by the research grade SARS-CoV-2 spike-binding ELISA and the Kantaro spike-binding  
834 assay performed in the CLIA certified Pathology laboratories of the Mount Sinai Hospital in the top  
835 or bottom percentile over the entire dataset were excluded. Participants who did not receive two  
836 doses of an mRNA vaccine as well as participants with unknown SARS-CoV-2 infection status prior  
837 to immunization were also excluded. Similarly, data from participants without at least two valid  
838 timepoints 14 days post-dose 2 were excluded. Samples obtained after subsequent vaccine doses  
839 or breakthrough infections were censored.

840 Data were selected for the post-boost model using the following criteria: Participants  
841 excluded from the post-vaccine model dataset were also excluded from the post-boost dataset.  
842 Participants with a breakthrough infection pre-third dose were excluded. Samples after fourth  
843 doses of the vaccine or breakthrough infections were censored. Participants without a minimum of  
844 two valid time points at least 14 days post-dose 3 were excluded.

845 Antibody decay has been observed in interventional settings where external antibody  
846 treatments were administered. Unlike clinical treatments, natural immunity has multiple sources of  
847 antibody production. Since there are multiple sources of antibody production naturally within the  
848 body, single component exponential decay models are insufficient as they will over-predict the  
849 change in decay rates. The model used here has two components which are assumed to have  
850 distinct decay rates. When reporting aggregate antibody data, the geometric mean is generally  
851 used due to a high variability within and among participants (across multiple orders of magnitudes  
852 in the datasets used here). By fitting the model directly within the log-transformed space, the output  
853 curve directly estimates the geometric mean rather than the arithmetic mean.

$$\log_2 AUC = \log_2 \left( e^{a+r_1} e^{\frac{-b}{100}(\text{days} - 14)} + e^{c+r_2} \right)$$

854  
855 All models were generated using the NLMIXED procedure in SAS9.4. This procedure is  
856 capable of fitting arbitrary nonlinear functions including both fixed and random effects. The specific  
857 model structure used in this case is shown in **Supplemental Figure 3B**. A two-phase fitting  
858 procedure was used. First, a simplified model without random effects was run from a naïve starting  
859 point, and the fitted parameter values were used as the initial values for the mixed effects model. In  
860 order to account for underlying variability across participants that was not captured by the fixed  
861 effects, a random effect was added to each component for the final mixed effect model. In addition  
862 to allowing for variability in the overall magnitude of the antibody response, this approach captures  
863 observed variability in the kinetics of the response (fold-reduction relative to peak varies among  
864 participants). The model was fit independently to datasets for participants with and without pre-  
865 vaccine SARS-CoV-2 infection (hybrid immunity) using a feature in SAS to build stratified models.  
866 The same model framework was used for both post-vaccine and post-boost models. Data from a  
867 post-boost model fit to the combined dataset without accounting for pre-vaccine immune status is  
868 also presented, reflecting a close correspondence in post-boost kinetics in both stratified groups.

869 The impact of demographic factors was assessed in the stratified post-vaccine and post-  
870 boost models. In all cases, these factors were assessed as a multiplicative factor across the entire  
871 time course studied (manifesting on graphs with log-transformed y axes as a y shift). All  
872 demographically informed models were constructed iteratively, beginning with a model including all  
873 factors considered (age, gender, race, ethnicity, and primary vaccine type). After each model fitting  
874 run, the factor with the highest assessed p value was removed if that p value did not meet a  
875 relaxed threshold for statistical significance ( $p < 0.1$ ). The model was then re-run with the reduced  
876 set of fixed effects and finalized when all factors hit this relaxed threshold. This stepwise  
877 subtractive modeling practice helps to account for confounding factors and avoids double  
878 controlling for effects that alter the result through the same mechanism. Results from the model

879 fitting in SAS were exported to csvs for visualization in Python. SAS code for the model fitting will  
880 be made available in a public GitHub repository.

881 SUPPLEMENTAL TABLES

882 Supplemental Table 1: Model development and validations  
883

Model	Hybrid Immunity	Parameter	Transformed Value	Transformed CI Lower Bound	Transformed CI Upper Bound	Transformed Units	Estimate	Standard Error	DF	tValue	Probt	Alpha	Lower	Upper	Gradient		
Vaccine: Stratified	no	a (short-lived component)	5746.81	5176.06	6381.13	AUC	8.6564	0.05311	231	162.98	<0.001	0.05	8.5518	8.7611	1.8E-07		
		b (decay rate)	29.60	31.23	28.13	HaKtLife (days)	2.3421	0.06208	231	37.73	<0.001	0.05	2.2198	2.4644	-1.4E-08		
		c (stable component)	327.63	288.88	371.59	AUC	5.7919	0.06391	231	90.63	<0.001	0.05	5.666	5.9178	1.8E-08		
		s1 variance	0.32	0.29	0.35	[N/A]	0.3177	0.01411	231	22.51	<0.001	0.05	0.2899	0.3455	1.08E-07		
		r1 variance	0.35	0.27	0.44	[N/A]	0.3535	0.04412	231	8.01	<0.001	0.05	0.2666	0.4404	1.35E-07		
		r2 variance	0.69	0.53	0.84	[N/A]	0.6853	0.07699	231	8.9	<0.001	0.05	0.5336	0.837	9.93E-08		
		r1_r2 covariance	0.27	0.19	0.36	[N/A]	0.2715	0.04387	231	6.19	<0.001	0.05	0.1851	0.358	-8E-07		
	yes	a (short-lived component)	15427.39	13244.00	17968.94	AUC	9.6439	0.07708	124	125.11	<0.001	0.05	9.4913	9.7964	4.24E-09		
		b (decay rate)	30.74	33.46	28.43	HaKtLife (days)	2.2546	0.09258	124	24.35	<0.001	0.05	2.0714	2.4379	-4.5E-10		
		c (stable component)	1776.68	1503.42	2099.60	AUC	7.4825	0.08438	124	88.68	<0.001	0.05	7.3155	7.6495	-1.4E-09		
		s1 variance	0.26	0.23	0.29	[N/A]	0.2562	0.01454	124	17.62	<0.001	0.05	0.2274	0.285	9.65E-09		
		r1 variance	0.49	0.33	0.64	[N/A]	0.4878	0.07744	124	6.3	<0.001	0.05	0.3345	0.6411	2.05E-08		
		r2 variance	0.76	0.55	0.97	[N/A]	0.759	0.1053	124	7.21	<0.001	0.05	0.5507	0.9674	1.02E-08		
		r1_r2 covariance	0.49	0.34	0.64	[N/A]	0.4929	0.07584	124	6.5	<0.001	0.05	0.3428	0.6431	-2.5E-08		
Boost: Stratified	no	a (short-lived component)	7540.92	6502.23	8744.67	AUC	8.9281	0.07493	141	119.16	<0.001	0.05	8.7799	9.0762	7.2E-09		
		b (decay rate)	44.34	50.34	39.62	HaKtLife (days)	1.5633	0.09424	141	16.59	<0.001	0.05	1.377	1.7496	-1.2E-10		
		c (stable component)	1960.20	1523.70	2521.98	AUC	7.5808	0.1274	141	59.49	<0.001	0.05	7.3289	7.8328	3.92E-09		
		s1 variance	0.30	0.26	0.33	[N/A]	0.2963	0.01692	141	17.51	<0.001	0.05	0.2628	0.3297	6.14E-09		
		r1 variance	0.33	0.22	0.44	[N/A]	0.33	0.05706	141	5.78	<0.001	0.05	0.2172	0.4428	6.59E-09		
		r2 variance	1.41	0.98	1.84	[N/A]	1.4083	0.2176	141	6.47	<0.001	0.05	0.9781	1.8385	1.04E-09		
		r1_r2 covariance	0.11	-0.08	0.31	[N/A]	0.1106	0.09835	141	1.12	0.2629	0.05	-0.08389	0.305	2.06E-10		
	yes	a (short-lived component)	5442.53	4339.44	6826.04	AUC	8.602	0.1138	78	75.61	<0.001	0.05	8.3755	8.8285	4.44E-09		
		b (decay rate)	72.79	92.77	59.89	HaKtLife (days)	0.9523	0.103	78	9.25	<0.001	0.05	0.7472	1.1574	-9E-08		
		c (stable component)	1961.27	1408.81	2730.66	AUC	7.5814	0.1662	78	45.61	<0.001	0.05	7.2505	7.9123	9.6E-08		
		s1 variance	0.22	0.18	0.25	[N/A]	0.2154	0.01662	78	12.96	<0.001	0.05	0.1823	0.2485	-2.6E-07		
		r1 variance	0.59	0.29	0.88	[N/A]	0.5872	0.1488	78	3.95	0.0002	0.05	0.291	0.8834	-4.4E-08		
		r2 variance	0.73	0.36	1.10	[N/A]	0.7349	0.1852	78	3.95	0.0002	0.05	0.3632	1.1006	-2.2E-07		
		r1_r2 covariance	0.06	-0.20	0.33	[N/A]	0.06441	-0.1329	78	0.48	0.6309	0.05	-0.2005	0.3287	-1.25E-07		
Boost: Unstratified	N/A	a (short-lived component)	1.65	1.15	2.36	AUC	8.815	0.06359	221	140.92	<0.001	0.05	8.6917	8.9383	3.65E-09		
		b (decay rate)	7.84	8.01	7.68	HaKtLife (days)	1.4392	0.07482	221	19.24	<0.001	0.05	1.2917	1.5866	-2E-09		
		c (stable component)	4.67	3.88	5.63	AUC	7.6625	0.09389	221	81.61	<0.001	0.05	7.4774	7.8475	6.45E-09		
		s1 variance	7.48	7.21	7.75	[N/A]	0.2731	0.01261	221	21.65	<0.001	0.05	0.2483	0.298	2.62E-09		
		r1 variance	0.30	0.26	0.33	[N/A]	0.4229	0.07467	221	5.66	<0.001	0.05	0.2757	0.57	-5.1E-09		
		r2 variance	0.08	-0.18	0.33	[N/A]	1.122	0.1457	221	7.7	<0.001	0.05	0.8347	1.4092	2.39E-09		
		r1_r2 covariance	0.32	0.24	0.41	[N/A]	0.1076	0.06726	221	1.6	0.1111	0.05	-0.02496	0.2402	2.91E-09		
		beta (primary vaccine type)	8159.19	6032.40	11036.91	AUC	9.0069	0.1533	231	58.75	<0.001	0.05	8.7049	9.309	1.63E-07		
		Vaccine + Demographics: Stratified	no	a (short-lived component)	29.61	31.24	28.14	HaKtLife (days)	2.341	0.06187	231	37.84	<0.001	0.05	2.2191	2.4629	-4.1E-09
				b (decay rate)	463.91	341.62	630.05	AUC	6.1397	0.1553	231	39.52	<0.001	0.05	5.8337	6.4458	1.53E-08
				c (stable component)	0.32	0.29	0.35	[N/A]	0.3179	0.01436	231	22.46	<0.001	0.05	0.29	0.3458	4.14E-08
				s1 variance	0.32	0.24	0.40	[N/A]	0.3181	0.04102	231	7.75	<0.001	0.05	0.2372	0.3989	4.63E-08
				r1 variance	0.62	0.48	0.76	[N/A]	0.6249	0.07097	231	8.76	<0.001	0.05	0.482	0.7617	6.47E-08
				r2 variance	0.23	0.15	0.31	[N/A]	0.2283	0.04018	231	5.66	<0.001	0.05	0.1491	0.3075	-3.5E-07
beta (age)	-0.02			-0.02	-0.01	Log2 Fold-Change	-0.01542	0.004836	231	-3.19	0.0016	0.05	-0.02495	-0.00589	0.00002		
beta (primary vaccine type)	0.52	0.26	0.77	Log2 Fold-Change	0.5135	0.1286	231	4.01	<0.001	0.05	0.2621	0.7689	3.16E-10				
yes	a (short-lived component)	10139.56	6071.74	16932.67	AUC	9.2242	0.2591	124	35.6	<0.001	0.05	8.7114	9.737	1.35E-07			
	b (decay rate)	30.67	33.39	28.36	HaKtLife (days)	2.26	0.09286	124	24.34	<0.001	0.05	2.0762	2.4438	-1.2E-08			
	c (stable component)	1167.36	696.10	1957.45	AUC	7.0625	0.2612	124	27.04	<0.001	0.05	6.5455	7.5794	2.34E-08			
	s1 variance	0.26	0.23	0.29	[N/A]	0.2567	0.01459	124	17.59	<0.001	0.05	0.2278	0.2856	2.55E-07			
	r1 variance	0.46	0.31	0.60	[N/A]	0.4577	0.07416	124	6.17	<0.001	0.05	0.311	0.6045	5.2E-07			
	r2 variance	0.75	0.54	0.96	[N/A]	0.754	0.1065	124	7.08	<0.001	0.05	0.5433	0.9647	3.31E-07			
	r1_r2 covariance	0.48	0.33	0.63	[N/A]	0.4791	0.07378	124	6.49	<0.001	0.05	0.333	0.6251	-5.7E-07			
	beta (age)	0.01	0.00	0.03	Log2 Fold-Change	0.01218	0.008174	124	1.49	0.1386	0.05	-0.00399	0.02836	5.68E-06			
	beta (primary vaccine type)	0.34	-0.11	0.79	Log2 Fold-Change	0.3433	0.2279	124	1.51	0.1344	0.05	-0.1077	0.7943	5.51E-09			
	Boost + Demographics: Stratified	no	a (short-lived component)	6878.80	5722.15	8266.26	AUC	8.8362	0.09312	141	94.89	<0.001	0.05	8.6521	9.0203	3.87E-07	
			b (decay rate)	44.96	51.12	40.12	HaKtLife (days)	1.5417	0.09406	141	16.39	<0.001	0.05	1.3558	1.7277	-8.4E-08	
			c (stable component)	1769.05	1354.11	2311.38	AUC	7.4782	0.1352	141	55.3	<0.001	0.05	7.2109	7.7456	-1.8E-07	
			s1 variance	0.30	0.26	0.33	[N/A]	0.2964	0.01679	141	17.65	<0.001	0.05	0.2632	0.3295	-6.5E-07	
			r1 variance	0.32	0.24	0.41	[N/A]	0.3225	0.04249	141	7.59	<0.001	0.05	0.2385	0.4065	2.02E-06	
r2 variance			1.38	0.93	1.84	[N/A]	1.3827	0.229	141	6.04	<0.001	0.05	0.93	1.8354	-2.4E-07		
r1_r2 covariance			0.08	-0.18	0.33	[N/A]	0.07543	0.1294	141	0.58	0.5610	0.05	-0.1804	0.3113	-4.8E-07		
beta (primary vaccine type)		0.50	0.14	0.86	Log2 Fold-Change	0.5009	0.1818	141	2.75	0.0067	0.05	0.1414	0.8604	7.1E-10			
yes		a (short-lived component)	5480.22	4298.84	6986.26	AUC	8.6089	0.122	78	70.59	<0.001	0.05	8.3661	8.8517	4.62E-09		
		b (decay rate)	72.80	92.75	59.91	HaKtLife (days)	0.9521	0.1029	78	9.26	<0.001	0.05	0.7473	1.1569	-8E-08		
		c (stable component)	1975.15	1404.03	2778.59	AUC	7.5884	0.1714	78	44.26	<0.001	0.05	7.2471	7.9297	8.76E-08		
		s1 variance	0.22	0.18	0.25	[N/A]	0.2155	0.01662	78	12.96	<0.001	0.05	0.1824	0.2486	-2.3E-07		
		r1 variance	0.59	0.29	0.88	[N/A]	0.587	0.1479	78	3.97	0.0002	0.05	0.2926	0.8815	-3.2E-08		
		r2 variance	0.73	0.36	1.10	[N/A]	0.7307	0.1853	78	3.94	0.0002	0.05	0.3617	1.0997	-1.9E-07		
	r1_r2 covariance	0.06	-0.20	0.33	[N/A]	0.06488	0.1315	78	0.49	0.6232	0.05	-0.1969	0.3267	1.12E-07			
beta (primary vaccine type)	-0.04	-0.50	0.43	Log2 Fold-Change	-0.03683	0.2329	78	-0.16	0.8748	0.05	-0.5006	0.4269	6.05E-09				

884  
885  
886



887 **Supplemental Table 2: Overview of the immune histories (infection, vaccination) for the 228**  
 888 **PARIS participants who completed all three vaccine reactivity surveys.**  
 889  
 890

<b>Infection Group</b>	<b>Vaccination Series</b>	<b>Male</b>	<b>Female</b>	<b>Unknown</b>	<b>Total</b>
<b>Naïve</b> <i>N: 149</i>	Pfizer	26	73	1	100
	Moderna	12	24	1	37
<b>Hybrid Immunity (Pre-Vaccine Infection)</b> <i>N: 63</i>	Heterogenous	6	5	1	12
	Pfizer	15	27	1	43
	Moderna	1	7	0	8
<b>Breakthrough Infection</b> <i>N: 11</i>	Heterogenous	5	7	0	12
	Pfizer	1	9	0	10
	Moderna	0	1	0	1
<b>Pre-Vaccine and Breakthrough Infection</b> <i>N: 5</i>	Heterogenous	0	0	0	0
	Pfizer	1	3	0	4
	Moderna	0	1	0	1
	Heterogenous	0	0	0	0
	<b>Totals</b>	<b>67</b>	<b>157</b>	<b>4</b>	<b>228</b>

891

892

893 **Supplemental Table 3: Vaccine side effects divided by vaccine doses and immunity**  
 894 **groups**

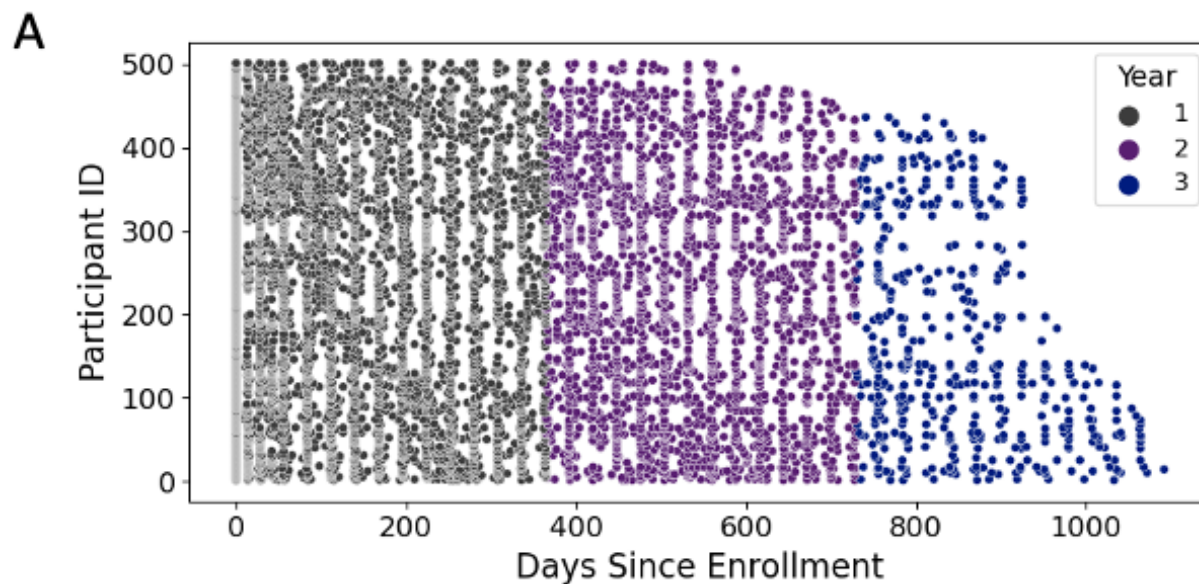
	Serostatus by Vaccine Type				Total by Vaccine Type		Total by Serostatus	
	Naïve (N=160)		Hybrid Immunity (N=68)		Total (N=228)		Total (N=228)	
	Moderna N=42 (26%)	Pfizer N=118 (74%)	Moderna N=15 (22%)	Pfizer N=53 (78%)	Moderna N=57 (25%)	Pfizer N=171 (75%)	Naïve N=160 (70%)	Hybrid Immunity N=68 (30%)
<b>Local Symptoms</b>								
Pain	33 (79%)	86 (73%)	14 (93%)	41 (77%)	47 (82%)	127 (74%)	119 (74%)	55 (81%)
Erythema	7 (17%)	14 (12%)	3 (20%)	5 (9%)	10 (18%)	19 (11%)	21 (13%)	8 (12%)
Induration	11 (26%)	17 (14%)	7 (47%)	7 (13%)	18 (32%)	24 (14%)	28 (18%)	14 (21%)
Lymphadenopathy	4 (10%)	23 (19%)	1 (7%)	4 (8%)	5 (8%)	27 (16%)	27 (17%)	5 (7%)
Other	1 (2%)	6 (5%)	4 (27%)	1 (2%)	5 (8%)	7 (4%)	7 (4%)	5 (7%)
Any Local	33 (79%)	90 (76%)	14 (93%)	42 (79%)	47 (82%)	132 (77%)	123 (77%)	56 (82%)
<b>Systemic Symptoms</b>								
Fatigue	24 (57%)	80 (68%)	13 (87%)	31 (58%)	37 (65%)	111 (65%)	104 (65%)	44 (65%)
Headache	27 (64%)	56 (47%)	9 (60%)	28 (53%)	36 (63%)	81 (47%)	83 (52%)	34 (50%)
Myalgia	19 (45%)	56 (47%)	10 (67%)	32 (60%)	29 (51%)	77 (45%)	75 (47%)	31 (46%)
Chills	17 (40%)	43 (36%)	11 (73%)	20 (38%)	28 (49%)	63 (37%)	60 (37%)	31 (46%)
Arthralgia	14 (33%)	19 (16%)	7 (47%)	7 (13%)	21 (37%)	26 (15%)	33 (21%)	14 (21%)
Fever	19 (45%)	36 (31%)	9 (60%)	11 (21%)	28 (49%)	47 (27%)	55 (34%)	20 (29%)
Nausea/Emesis	7 (17%)	11 (9%)	2 (13%)	7 (13%)	9 (16%)	18 (11%)	54 (34%)	36 (53%)
Pharyngitis	4 (10%)	11 (9%)	1 (7%)	3 (6%)	5 (8%)	14 (8%)	15 (9%)	4 (6%)
Other	6 (14%)	5 (4%)	0 (0%)	3 (6%)	6 (11%)	8 (5%)	11 (7%)	3 (4%)
Any Systemic	33 (79%)	88 (74%)	13 (87%)	40 (75%)	46 (81%)	128 (75%)	121 (76%)	53 (78%)

895  
896

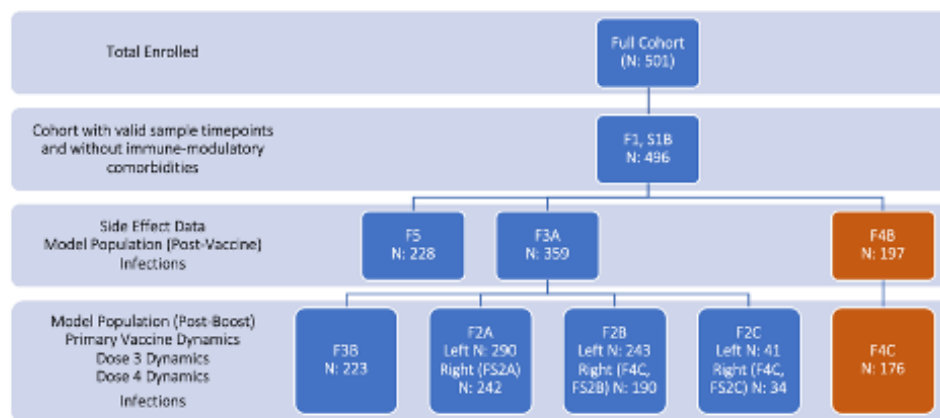
897 SUPPLEMENTAL FIGURES

898

## Srivastava et al., Supplemental Fig. 1



**B**



899

900

901 **Supplemental Figure S1:**

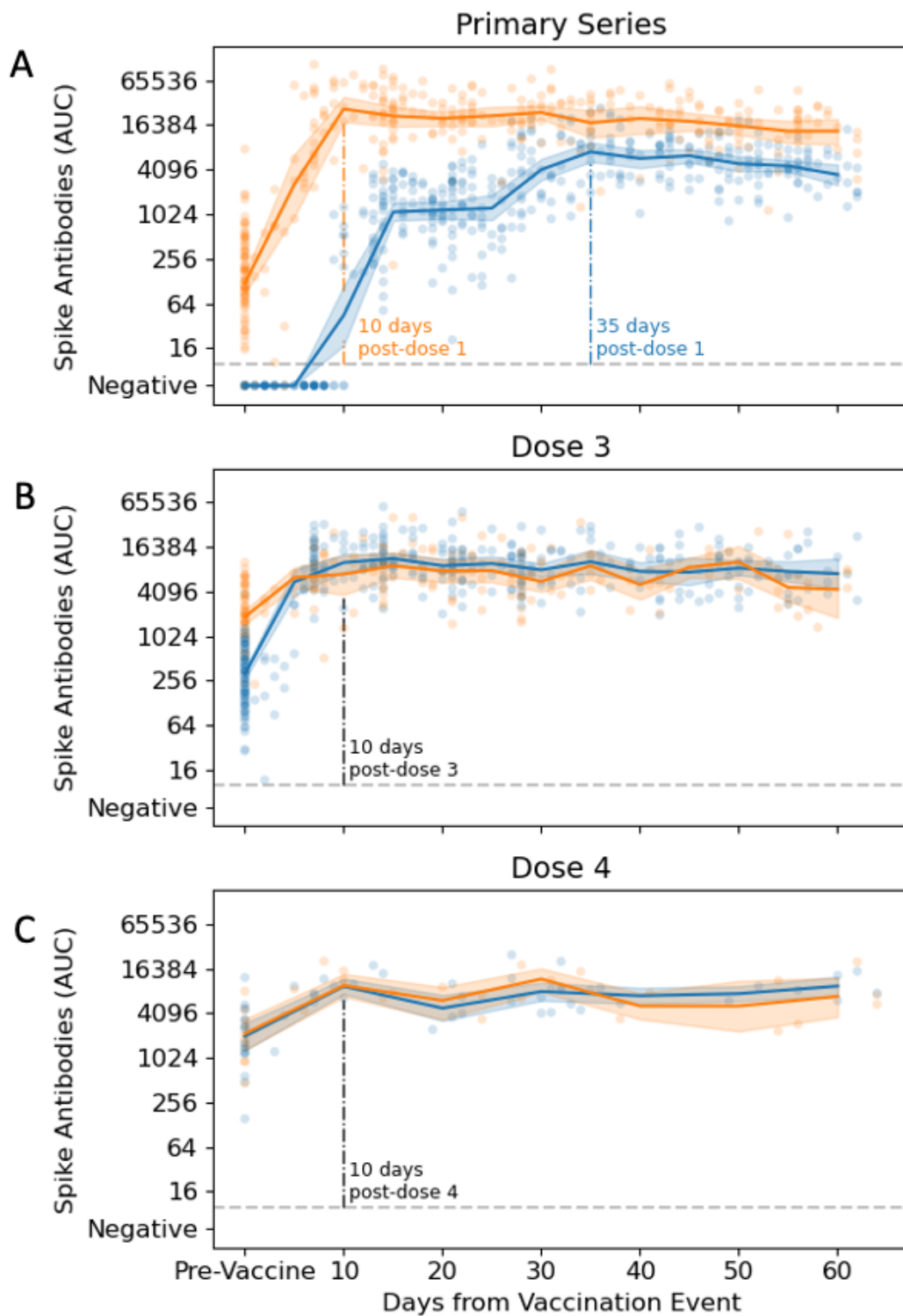
902 A: Study visits from each of the 496 PARIS participants are shown colored by year of study follow-  
903 up. A total of 8,041 samples were collected over the three years of the study.

904 B: Flow chart illustrating the data selection from PARIS study participants for the specific analyses  
905 performed. Figures in which a given dataset or subset thereof are shown are listed. Datasets  
906 based on infection data are shown in dark orange.

907

908

## Srivastava et al., Supplemental Fig. 2



910 **Supplemental Figure S2: Antibody kinetics after vaccination.**

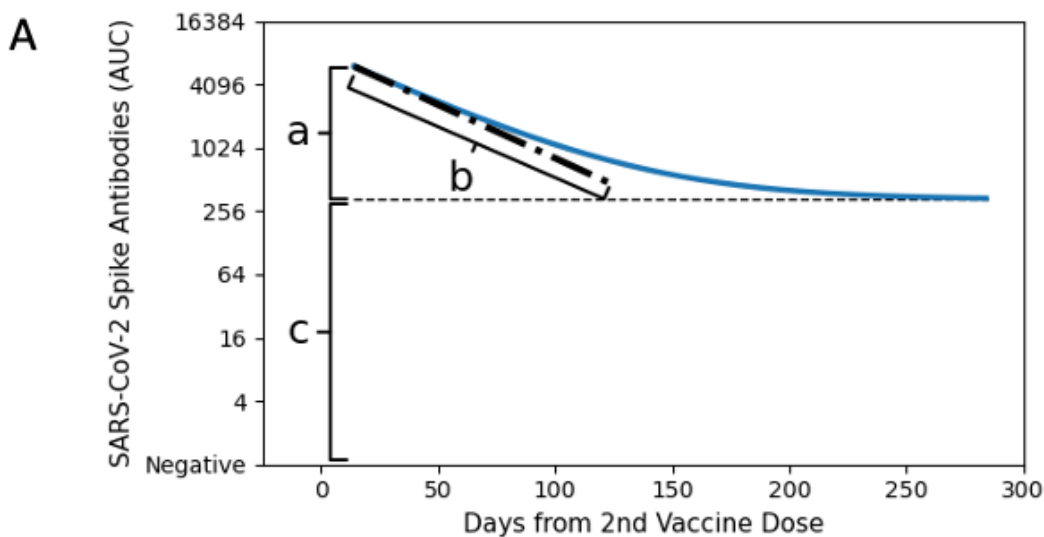
911 Early timepoints post-vaccine. Participants with hybrid immunity due to pre-vaccine SARS-CoV-2  
912 infection are shown in orange, and those without are shown in blue. Participants with breakthrough  
913 infections are excluded. Lines connect geometric means for 5-day bins (10-day bins post-dose 4),  
914 with confidence intervals constructed by bootstrapping.

915 A: Longitudinal antibody data collected within 40 days after vaccination. Data from participants  
916 with (124 participants, 375 samples) and without (166 participants, 528 samples) pre-existing  
917 immunity are shown. Approximate peak timepoints for each group are indicated by dashed lines.

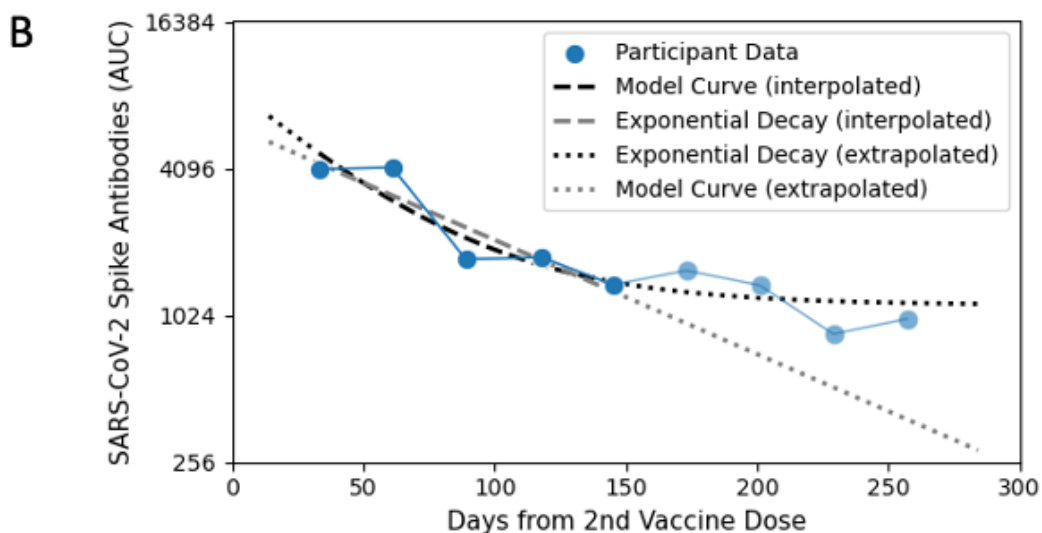
918 B: Longitudinal antibody data collected within 40 days after the third vaccine dose. Data for  
919 participants with (59 participants, 151 samples) and without (157 participants, 448 samples) prior  
920 SARS-CoV-2 infection.

921 C: Longitudinal antibody data collected within 40 days after the 4<sup>th</sup> vaccine for participants with (12  
922 participants, 28 samples) and without (25 participants, 57 samples) prior SARS-CoV-2 infection  
923

### Srivastava et al., Supplemental Fig. 3



$$\log_2 AUC = \log_2 \left( e^{a+r_1} e^{\frac{-b}{100}(days-14)} + e^{c+r_2} \right) + s_1$$



924

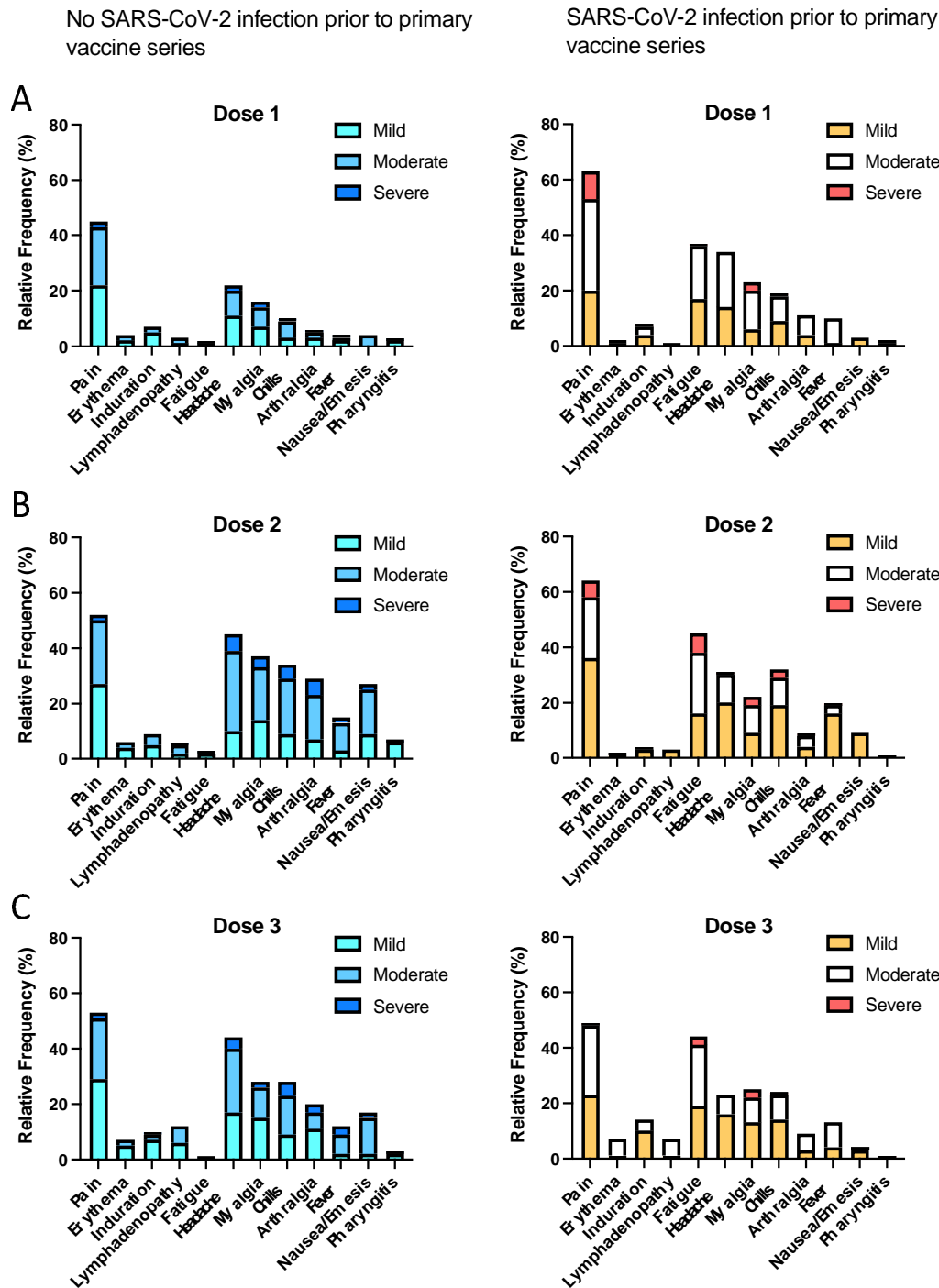
925 **Supplemental Figure S3: PARIS model development.**

926 A: The three parameters of the vaccine are illustrated here, with 'c' representing the "steady-state"  
 927 antibody level, 'a' representing the magnitude of the fast-decaying component, and 'b' representing  
 928 the rate of that decay.

929 B: Comparison of a linear fit (grey) and the PARIS model fit (black) to the first five months of data  
 930 for one representative study participant, with extrapolation from each model plotted against  
 931 additional timepoints censored from model training.



Srivastava et al., Supplemental Fig. 4



932 **Supplemental Figure S4: Frequency of mild, moderate and severe side effects reported after**  
 933 **SARS-CoV-2 vaccine doses 1, 2 and 3.**

934 Local and systemic side effects were recorded after the first (A), second (B) and third vaccine (C)  
 935 doses in PARIS participants with (right, yellow) and without (left, blue) pre-existing immunity. 230  
 936 participants completed all three surveys. Symptom severity was self-reported and classified as  
 937 mild, moderate, or severe based on description and duration.