

1 **The Impact of Laterality on the Incidence and Prognosis of Epithelial Ovarian**
2 **Cancer**

3

4 Yang Zhang¹, Yucong Huang¹, Jihui Kang², Shuzhong Yao¹, Langyu Gu^{3*}, Guofen
5 Yang^{1*}

6

7 ¹Department of Gynaecology, First Affiliated Hospital, Sun Yat-sen University,
8 Guangzhou 510060, Guangdong, China

9 ²Department of Pathology, First Affiliated Hospital, Sun Yat-sen University,
10 Guangzhou 510060, Guangdong, China

11 ³State Key Laboratory for Biocontrol, School of Life Sciences, Sun Yat-sen
12 University, Guangzhou, Guangdong 510275, China

13

14 *Correspondence:

15 Langyu Gu

16 guly6@mail.sysu.edu.cn; langyugu@gmail.com

17 Guofen Yang

18 yangguof@mail.sysu.edu.cn

19

20

21

22

23

24

25

26

27

28

29

30 **Abstract**

31

32 Epithelial ovarian cancer (EOC) is the most common type of ovarian cancer, and
33 its mortality rate is the highest among gynecological malignancies. Despite numerous
34 factors being linked to the prognosis of EOC, the impact of ovarian laterality has
35 received limited attention. In this study, we comprehensively examined the effects of
36 laterality (left-right and bilateral-unilateral) on the incidence and prognosis of EOC,
37 with a particular focus on different subtypes. By utilizing a large clinical database, we
38 found that laterality differences primarily existed between unilateral and bilateral cases
39 in terms of both incidence and prognosis. Specifically, unilateral tumour development
40 was predominantly observed in patients with clear cell, endometrioid, and mucinous
41 ovarian cancer subtypes, while bilateral involvement was more common in serous
42 ovarian cancer. Laterality differences, reflecting disparities between the left and right
43 sides, were primarily observed in various stages of the overall population and within
44 specific EOC subtypes. Specifically, significant differences in EOC incidence between
45 the left and right sides at different stages were observed in the overall population, as
46 well as in clear cell, endometrioid, and serous ovarian cancer subtypes. Although no
47 significant differences in the incidence rate between the left and right sides were noted
48 for mucinous ovarian cancer, the prognosis was substantially better on the right side
49 compared to the left side. These findings underscore the importance of considering
50 ovarian laterality, both in terms of left-right and bilateral-unilateral aspects, as a critical
51 factor associated with the incidence and prognosis of EOC. Therefore, it should be
52 taken into account in clinical practice, particularly in the context of different tumour
53 stages and subtypes of EOC.

54

55

56

57 **Key words :**

58 epithelial ovarian cancer (EOC), laterality, subtypes, stage, incidence, prognosis

59

60 **Introduction**

61 Ovarian cancer is a significant concern in the field of gynaecology, with epithelial
62 ovarian cancer (EOC) being the most common type^{1,2}. It accounts for around 85% to
63 90% of all ovarian malignant tumours³. Despite advancements in treatment, the 5-year
64 survival rate for EOC remains below 50%, posing a serious threat to women's health⁴.
65 The standard treatment plan involves surgery and chemotherapy, followed by targeted
66 therapy⁵. However, the prognosis of EOC patients can vary greatly due to the strong
67 individual heterogeneity among patients⁶. Therefore, it is crucial to improve the
68 diagnosis and prognosis of EOC in order to develop precision therapies for patients.

69

70 The prognosis of EOC is influenced by various factors including age, tumour
71 grade and stage, histological type, and treatment⁷⁻⁹. However, the impact of laterality,
72 or the side of the ovary affected by cancer, on EOC prognosis is often overlooked.
73 Some symmetrical organs affected by cancer, such as breast, testicles, and lungs, have
74 shown different prognosis outcomes depending on the side affected. For example,
75 patients with left testicular cancer, right lung cancer, and right breast cancer have been
76 found to have better survival rates compared to those with contralateral disease^{8,10-12}.
77 Even among benign ovarian tumours, the incidence of mature teratoma varies
78 significantly between the left and right sides¹³. However, few studies have analyzed the
79 impact of ovarian laterality on incidence and prognosis of EOC. Existing limited
80 studies have only compared the prognosis between unilateral and bilateral factors,
81 without considering the differences between the left and right sides^{14,15}. Additionally,
82 EOC can be divided into different subtypes, including endometrioid, clear cell, serous
83 and mucinous ovarian cancers, with unique molecular pathways, clinic treatment, and
84 survival rates¹⁶. The prognoses of these histological subtypes are thus cannot be
85 generalized¹⁷⁻²¹. Therefore, it remains unclear whether laterality should be considered
86 as an effective factor for incidence and prognosis of EOC, especially for different
87 subtypes²²⁻²⁴.

88

89 In this study, our aim is to utilize existing clinical databases to investigate the
90 impact of ovarian laterality (both unilateral-bilateral and left-right) on the incidence
91 and prognosis of EOC. Specifically, we intend to conduct a comprehensive analysis
92 focusing on different histological subtypes of EOC. We hope to provide valuable
93 insights into the prognostic significance of laterality in EOC and its implications for
94 personalized treatment strategies.

95

96 **Materials and Methods**

97 1. Population

98 The study population consisted of patients diagnosed with EOC between 2010
99 and 2017 from the SEER (Surveillance, Epidemiology, and End Results) Research
100 Plus database, 18 Registries, Nov 2020 sub (2000-2018). The data was obtained using
101 SEER*Stat software (version 8.4.1.2) (<https://seer.cancer.gov/seerstat/>).

102

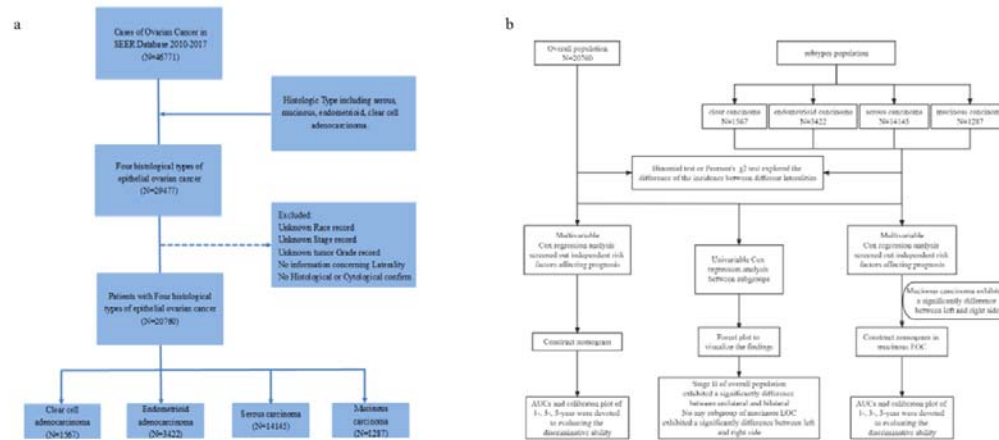
103 The inclusion criteria for the study were as follows: i) patients with a pathological
104 diagnosis of EOC based on the International Classification of Diseases for Oncology,
105 Third Edition (ICD-O-3) anatomical code (C56.9) and morphological codes (8310/3,
106 8313/3, 8380/3, 8381/3, 8382/3, 8383/3, 8441/3, 8460/3, 8461/3, 8470/3, 8471/3,
107 8480/3, 8481/3, and 8482/3); ii) availability of complete information on histological
108 type, EOC stage (according to the seventh edition of the AJCC²⁵ or SEER combination
109 stage²⁶), and laterality; iii) active follow-up to accurately record the cause of death and
110 survival time. The exclusion criteria included cases where EOC confirmation through
111 cytological or histological means was lacking, as well as instances where grade
112 classification and race information were incomplete.

113

114 The analysis was conducted at two different levels: i) the overall population,
115 which included 20,760 patients with EOC; ii) the four histological subtypes: clear cell
116 ovarian cancer (N=1567), endometrioid ovarian cancer (N=3422), serous ovarian
117 cancer (N=14145), mucinous ovarian cancer (N=1287). Details about the sampling
118 information can be found in Figure 1.

119 2. Variables

120 The demographic and clinical characteristics of patients were defined as follows:
 121 age (< 60, ≥60), ethnicity (white, black, American Indian/Alaska Native AI and
 122 Asian or Pacific Islander API), laterality (left, right and bilateral), FIGO stage (I II III
 123 and IV), tumour grade (well, moderately, poorly and undifferentiated), and whether
 124 there were chemotherapy and radiotherapy (Figure 1).



125
 126 **Figure 1** a. Flowchart of datasets with EOC and subtypes, as well as the inclusion criteria and the
 127 exclusion criteria. b. Flowchart of statistical analysis in this study. EOC, epithelial ovarian cancer.
 128 AUC, the area under the receiver operating characteristic curves.

129
 130 3. Statistical analysis

131 Binomial test and Pearson's χ^2 test were performed to explore the difference of
 132 the incidence between different laterality. Univariate Cox regression analysis was
 133 conducted to examine the impact of independent variables on the prognosis of EOC.
 134 Multivariate Cox regression analysis was employed to construct a proportional
 135 hazards model for tumour prognosis, and independent risk factors were evaluated with
 136 a significance level set at $p < 0.05$. Survival curves were generated using the K-M
 137 method to compare the differences in survival between different groups. Depending
 138 on the results of the proportional hazards assumption, either Cox analysis or the
 139 log-rank test was applied to assess the significance of the survival differences between
 140 groups.

141

142 4. Construction and evaluation of prognostic risk model

143 Based on the independent risk factors for overall survival (OS) identified through
144 multivariate Cox regression analysis, nomograms were constructed using R software
145 (version 4.2.1). The concordance index (C-index) was utilized to evaluate the
146 accuracy of the nomogram models. A higher C-index indicates a more accurate
147 predictive model. The area under the receiver operating characteristic curve (AUC)
148 was used to assess the discriminative ability of the model. A higher AUC value
149 (closer to 1) indicates better predictive performance of the model. The bootstrap
150 method was employed for internal verification through 200 repeated samplings, and a
151 calibration plot was produced. A higher level of agreement between the predicted and
152 actual survival rates indicates a higher level of model compliance.

153

154 **Results**

155 **1. Lateral incidence comparisons**

156 1. The overall distribution pattern of laterality for EOC

157

158 20,760 patients with EOC were included in the study in total, including 5965
159 (28.7%) patients with left EOC, 6097 (27.4%) patients with right EOC, and 8698
160 (41.9%) patients with both ovaries. The incidence of unilateral EOC is significantly
161 higher than the one of bilateral in the overall population (unilateral vs. bilateral =
162 12062(58.1%) vs. 8698(41.9%), $p < 0.001$). Among the unilateral EOC, 5965
163 patients (49.5%) were left and 6097 patients (50.5%) were right, indicating that there
164 is no significant difference in the overall incidence rate between the left and right
165 sides. However, there were significant differences between the left and right incidence
166 at different stages ($p = 0.002$). Further pairwise comparison indicates that this
167 difference was mainly observed in stage III (Left 47.2% vs Right 52.8%) and stage II
168 (Left 52.2% vs Right 47.8%). (Table 1)

169

170 We also characterized the distribution patterns of four subtypes of EOC in the
 171 overall population. The results revealed that unilateral tumor pathogenesis
 172 predominated in patients with clear cell (unilateral vs bilateral = 1385 (88.4%) vs 182
 173 (11.6%), $p < 0.001$), endometrioid (unilateral vs bilateral = 2892 (84.5%) vs 530
 174 (15.5%), $p < 0.001$), and mucinous ovarian cancers (unilateral vs bilateral = 1483
 175 (91.2%) vs 143 (8.8%), $p < 0.001$), whereas bilateral involvement was more common in
 176 serous ovarian cancer (unilateral vs bilateral = 6302 (44.6%) vs 7843 (55.4%), $p <$
 177 0.001) (Table 1).

178

179 **Table 1** Clinical characteristics and the overall distribution pattern of laterality for epithelial ovarian
 180 cancer (EOC)

Clinical Characteristics	LEFT (n, %)	RIGHT (n, %)	P-value	Unilateral (n, %)	Bilateral (n, %)	P-value	
Total	5965(49.5%)	6097(50.5%)	0.233 ^a	12062(58.1%)	8698(41.9%)	< 0.001 ^a	
Age	< 60	2885(49.3%)	0.827 ^b	5846(58.7%)	4107(41.3%)	0.076 ^b	
	≥ 60	3080(49.5%)		6216(57.5%)	4591(42.5%)		
	White	4868(49.6%)		4952(50.4%)	9820(57.4%)		7296(42.6%)
Race recode	Black	398(48.3%)	0.103 ^b	824(56.6%)	631(43.4%)	< 0.001 ^b	
	AI*	52(61.9%)		32(38.1%)	84(57.9%)		61(42.1%)
	API*	647(48.5%)		687(51.5%)	1334(65.3%)		710(34.7%)
Grade*	I	1105(50.8%)	0.374 ^b	2175(85.1%)	381(14.9%)	< 0.001 ^b	
	II	1162(48.3%)		1245(51.7%)	2407(71.7%)		950(28.3%)
	III	2027(49.2%)		2092(50.8%)	4119(52.2%)		3779(47.8%)
	IV	1671(49.7%)		1690(50.3%)	3361(48.4%)		3588(51.6%)
Stage*	I	2634(50.4%)	0.002 ^b	5222(90.4%)	555(9.4%)	< 0.001 ^b	
	II	802(52.2%)		733(47.8%)	1535(69.8%)		665(30.2%)
	III	1775(47.2%)		1984(52.8%)	3759(42.5%)		5083(57.5%)
	IV	754(48.8%)		792(51.2%)	1546(39.2%)		2395(60.8%)
Radiotherapy	No/Unknown	5893(49.5%)	0.551 ^b	11909(58.0%)	8619(42.0%)	0.015 ^b	
	Yes	72(47.1%)		81(52.9%)	153(65.9%)		79(34.1%)
Chemotherapy	No/Unknown	1692(48.4%)	0.150 ^b	3494(76.3%)	1088(23.7%)	< 0.001 ^b	
	Yes	4273(49.9%)		4295(50.1%)	8568(53.0%)		7610(47.0%)
Histological Type	clear cell	717(51.8%)	668(48.2%)	0.197 ^a	1385(88.4%)	182(11.6%)	< 0.001 ^a
	endometrioid	1439(49.8%)	1453(50.2%)	0.809 ^a	2892(84.5%)	530(15.5%)	< 0.001 ^a
	serous	3079(48.9%)	3223(51.1%)	0.072 ^a	6302(44.6%)	7843(55.4%)	< 0.001 ^a
	mucinous	730(49.2%)	753(50.8%)	0.568 ^a	1483(91.2%)	143(8.8%)	< 0.001 ^a

181

182 *AI: American Indian/Alaska Native; API: Asian or Pacific Islander; Grade I: well differentiated,
 183 Grade II: Moderately differentiated, Grade III: Poorly differentiated, Grade IV: Undifferentiated or
 184 anaplastic. Stage I: Tumour confined to ovaries or fallopian tube(s), Stage II: Tumour involves 1 or
 185 both ovaries or fallopian tubes with pelvic extension (below pelvic brim) or peritoneal cancer, Stage
 186 III: Tumour involves 1 or both ovaries or fallopian tubes, or peritoneal cancer, with cytologically or

187 histologically confirmed spread to the peritoneum outside the pelvis and/or metastasis to the
 188 retroperitoneal lymph nodes, Stage IV: Distant metastasis excluding peritoneal metastases.

189 a. Binomial test

190 b. Pearson's χ^2 test

191

192 2. The distribution pattern of laterality for different subtypes of EOC

193

194 The distribution patterns of laterality in the four subtypes of EOC were further
 195 characterized, considering the varied clinical characteristics and molecular
 196 mechanisms of each subtype (Table 2). In clear cell ovarian cancer, the difference in
 197 incidence between unilateral and bilateral cases was primarily observed among
 198 different stages, while the distinction between left and right incidence was mainly
 199 observed among different races. For both endometrioid and serous ovarian cancers,
 200 the primary disparity lied in the incidence rates between unilateral and bilateral cases,
 201 as significant differences were observed in almost all subgroups, except for patients
 202 who underwent radiotherapy. On the other hand, the discrepancy between left and
 203 right incidence were primarily evident among different stages. In mucinous ovarian
 204 cancer, there were no significant differences in the incidence rates between the left
 205 and right sides among different populations.

206

207 **Table 2** Lateral incidence comparisons in four subtypes of epithelial ovarian cancer (EOC)

	LEFT (n, %)	RIGHT (n, %)	P-value	Unilateral (n, %)	Bilateral (n, %)	P-value
Total						
Clear cell						
Age $\lt; 60$	435(53.1%)	384(46.9%)	0.228 ^a	819(87.3%)	119(12.7%)	0.106 ^a
Age ≥ 60	282(49.8%)	284(50.2%)		566(90.0%)	63(10.0%)	
White	549(53.3%)	481(46.7%)	0.034 ^b	1030(88.9%)	128(11.1%)	0.321 ^b
Black	23(37.7%)	38(62.3%)		61(82.4%)	13(17.6%)	
AI*	6(75.0%)	2(25.0%)		8(88.9%)	1(11.1%)	
API*	139(48.6%)	147(51.4%)		286(87.7%)	40(12.3%)	
Grade I	8(44.4%)	10 (55.6%)		18(94.7%)	1(5.3%)	
Grade II	74(51.7%)	69(48.3%)	0.915 ^a	143(92.9%)	11(7.1%)	0.154 ^b
Grade III	375(52.3%)	342(47.7%)		717(87.0%)	107(13.0%)	

Grade IV	260(51.3%)	247(48.7%)		507(88.9%)	63(11.1%)	
Stage I	477(52.7%)	428(47.3%)		905(96.6%)	32(3.4%)	
Stage II	89(52.7%)	80(47.3%)	0.564 ^a	169(88.5%)	22(11.5%)	□0.001 ^a
Stage III	115(49.6%)	117(50.4%)		232(72.0%)	90(28.0%)	
Stage IV	36(45.6%)	43(54.4%)		79(67.5%)	38(32.5%)	
No/Unknown Radiotherapy	703(51.7%)	657(48.3%)	0.669 ^a	1360(88.4%)	179(11.6%)	1.000 ^c
Radiotherapy treated	14(56.0%)	11(44.0%)		25(89.3%)	3(10.7%)	
No/Unknown Chemotherapy	143(51.1%)	137(48.9%)	0.794 ^a	280(91.2%)	27(8.8%)	0.085 ^a
Chemotherapy treated	574(51.9%)	531(48.1%)		1105(87.7%)	115(12.3%)	
Endometrioid						
Age<60	879(49.5%)	898(50.5%)	0.691 ^a	1777(82.7%)	372(17.3%)	<0.001 ^a
Age≥60	560(50.2%)	555(49.8%)		1115(87.6%)	158(12.4%)	
White	1190(50.1%)	1183(49.9%)		2373(85.2%)	412(14.8%)	
Black	65(45.5%)	78(54.5%)	0.102 ^a	143(76.9%)	43(23.1%)	0.019 ^b
AI*	14(73.7%)	5(26.3%)		19(79.2%)	5(20.8%)	
API*	170(47.6%)	187(52.4%)		357(83.6%)	70(16.4%)	
Grade I	609(51.0%)	584(49.0%)		1193(91.5%)	111(8.5%)	
Grade II	520(48.6%)	550(51.4%)	0.620 ^a	1070(84.9%)	190(15.1%)	□0.001 ^a
Grade III	258(48.8%)	271(51.2%)		529(72.6%)	200(27.4%)	
Grade IV	52(52.0%)	48(48.0%)		100(77.5%)	29(22.5%)	
Stage I	989(49.1%)	1024(50.9%)		2013(92.0%)	176(8.0%)	
Stage II	247(53.8%)	212(46.2%)	0.043 ^a	459(79.5%)	118(20.5%)	□0.001 ^a
Stage III	148(45.5%)	177(54.5%)		325(66.2%)	166(33.8%)	
Stage IV	55(57.9%)	40(42.1%)		95(57.6%)	70(42.4%)	
No/Unknown Radiotherapy	1411(49.8%)	1423(50.2%)	0.820 ^a	2834(84.7%)	513(15.3%)	0.082 ^a
Radiotherapy treated	28(48.3%)	30(51.7%)		58(77.3%)	17(22.7%)	
No/Unknown Chemotherapy	567(47.7%)	622(52.3%)	0.063 ^a	1189(90.6%)	124(9.4%)	□0.001 ^a
Chemotherapy treated	872(51.2%)	831(48.8%)		1703(80.7%)	406(19.3%)	
Serous						
Age<60	1073(48.3%)	1147(51.7%)	0.539 ^a	2220(38.6%)	3529(61.4%)	<0.001 ^a
Age≥60	2006(49.1%)	2076(50.9%)		4082(48.6%)	4314(51.4%)	
White	2552(48.8%)	2680(51.2%)		5232(44.0%)	6646(56.0%)	
Black	254(50.2%)	252(49.8%)	0.774 ^a	506(47.6%)	557(52.4%)	0.050 ^a
AI*	27(54.0%)	23(46.0%)		50(47.6%)	55(52.4%)	
API*	246(47.9%)	268(52.1%)		514(46.8%)	585(53.2%)	
Grade I	149(51.0%)	143(49.0%)		292(56.2%)	228(43.8%)	
Grade II	285(48.6%)	302(51.4%)	0.787 ^a	587(45.8%)	696(54.2%)	□0.001 ^a
Grade III	1315(48.3%)	1407(51.7%)		2722(44.3%)	3428(55.7%)	

Grade IV	1330(49.2%)	1371(50.8%)		2701(43.6%)	3491(56.4%)	
Stage I	559(51.6%)	525(48.4%)		1084(77.3%)	319(22.7%)	
Stage II	430(51.4%)	406(48.6%)	0.041 ^a	836(62.6%)	499(37.4%)	□0.001 ^a
Stage III	1455(47.3%)	1618(52.7%)		3073(39.2%)	4771(60.8%)	
Stage IV	635(48.5%)	674(51.5%)		1309(36.7%)	2254(63.3%)	
No/Unknown Radiotherapy	3052(48.9%)	3193(51.1%)		6245(44.5%)	7785(55.5%)	
Radiotherapy treated	27(47.4%)	30(52.6%)	0.821 ^a	57(49.6%)	58(50.4%)	0.278 ^a
No/Unknown Chemotherapy	537(47.5%)	594(52.5%)		1131(55.8%)	897(44.2%)	
Chemotherapy treated	2542(49.2%)	2629(50.8%)	0.306 ^a	5171(42.7%)	6946(57.3%)	□0.001 ^a
Mucinous						
Age < 60	498(48.3%)	532(51.7%)		1030(28.2%)	87(19.8%)	
Age ≥ 60	232(51.2%)	221(48.8%)	0.309 ^a	453(30.0%)	56 (22.1%)	0.034 ^a
White	577(48.7%)	608(51.3%)		1185(91.5%)	110(8.5%)	
Black	56(49.1%)	58(50.9%)	0.573 ^b	114(86.4%)	18(13.6%)	0.179 ^a
AI [*]	5(71.4%)	2(28.6%)		7(100.0%)	0(0.0%)	
API [*]	92(52.0%)	85(48.0%)		177(92.2%)	15(7.8%)	
Grade I	339(50.4%)	333(49.6%)		672(94.2%)	41(5.8%)	
Grade II	283(46.6%)	324(53.4%)	0.353 ^a	607(92.0%)	53(8.0%)	□0.001 ^a
Grade III	79(52.3%)	72(47.7%)		151(77.4%)	44(22.6%)	
Grade IV	29(54.7%)	24(45.3%)		53(91.4%)	5(8.6%)	
Stage I	609(49.9%)	611(50.1%)		1220(92.8%)	28(2.2%)	
Stage II	36(50.7%)	35(49.3%)	0.535 ^a	71(73.2%)	26(26.8%)	□0.001 ^a
Stage III	57(44.2%)	72(55.8%)		129(69.7%)	56(30.3%)	
Stage IV	28(44.4%)	35(44.6%)		63(65.6%)	33(34.4%)	
No/Unknown Radiotherapy	727(49.5%)	743(50.5%)		1470(91.2%)	142(8.8%)	
Radiotherapy treated	3(23.1%)	10(76.9%)	0.058 ^a	13(92.9%)	1(7.1%)	1.000 ^c
No/Unknown Chemotherapy	445(49.8%)	449(50.2%)		894(95.7%)	40(4.3%)	
Chemotherapy treated	285(48.4%)	304(51.2%)	0.601 ^a	589(91.2%)	103 (8.8%)	□0.001 ^a

208

209 2. Prognosis evaluation

210 2.1 Bilateral had a worse prognosis than unilateral EOC in the overall population

211 Age, ethnicity, laterality (left, right and bilateral), FIGO stage, tumour grade and
 212 whether there was chemotherapy and radiotherapy were included as independent
 213 prognostic factors. Multivariate cox regression analysis showed that older age (HR =
 214 1.526, $p < 0.001$), bilateral tumours (HR = 1.114, $p < 0.001$), black race (HR = 1.271,
 215 $p < 0.001$), higher grade and higher stage and radiotherapy (HR = 1.435, $p < 0.001$)

216 were independent risk factors for EOC, and chemotherapy (HR = 0.534, $p < 0.001$)
 217 was independent favourable factors for EOC (Table 3). For the variable of laterality,
 218 there was no significant difference in prognosis between patients with right-sided and
 219 left-sided EOC, with a hazard ratio of 0.987 ($p = 0.692$, 95%CI: 0.925-1.053) (Table
 220 2). Patients with bilateral ovarian cancer, however, had a worse prognosis than those
 221 with unilateral ovarian cancer, with a hazard ratio of 1.120 ($p < 0.001$, 95%CI:
 222 1.070-1.173).

223

224 **Table 3** Univariable and multivariable analyses of clinicopathological characteristics as predictors of
 225 overall survival (OS) for epithelial ovarian cancer (EOC).

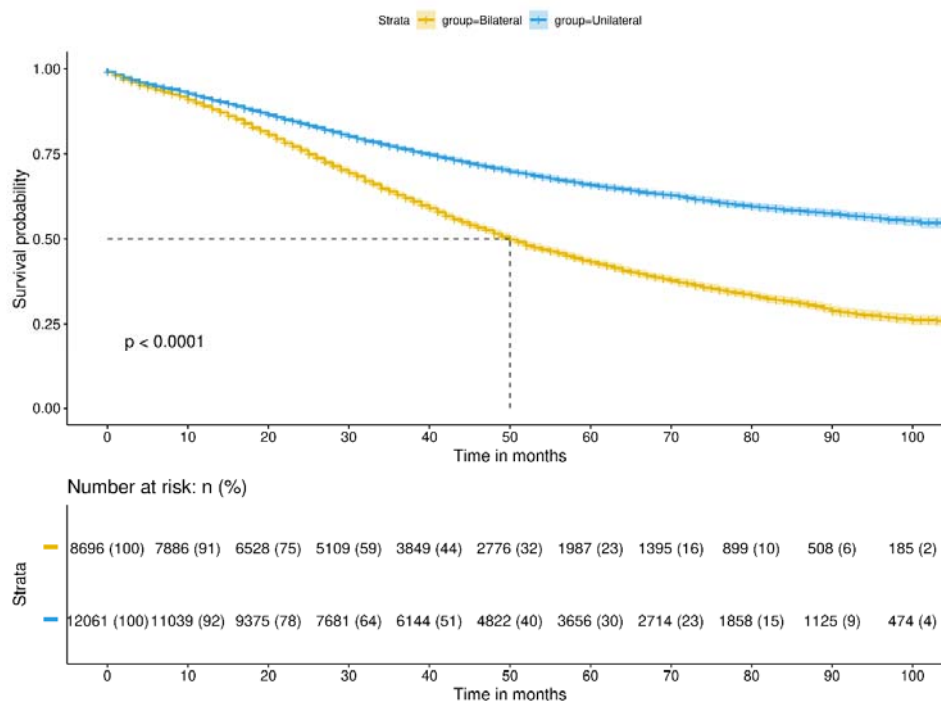
characteristics		Univariable analysis			Multivariable analysis		
		HR	95% CI	P-value	HR	95% CI	P-value
Age	≥60 years	1.922	1.838-2.011	< 0.001*	1.526	1.458-1.598	< 0.001*
	Left	Reference					
Laterality	Right	1.017	0.953-1.085	0.608	0.989	0.927-1.055	0.730
	Bilateral	1.941	1.837-2.050	< 0.001*	1.114	1.052-1.179	□ 0.001*
Race recode	White	Reference					
	Black	1.350	1.248-1.460	< 0.001*	1.271	1.175-1.375	< 0.001*
	AI	0.978	0.754-1.270	0.870	1.004	0.773-1.303	0.977
	API	0.832	0.769-0.901	< 0.001*	0.975	0.901-1.056	0.537
Grade	I	Reference					
	II	2.087	1.840-2.366	< 0.001*	1.574	1.385-1.788	< 0.001*
	III	4.563	4.080-5.102	< 0.001*	2.083	1.850-2.345	< 0.001*
	IV	4.597	4.107-5.146	< 0.001*	2.025	1.795-2.284	< 0.001*
Stage	I	Reference					
	II	2.329	2.080-2.607	< 0.001*	2.173	1.934-2.441	< 0.001*
	III	5.866	5.411-6.360	< 0.001*	5.182	4.732-5.676	< 0.001*
	IV	9.127	8.381-9.939	< 0.001*	7.854	7.131-8.649	< 0.001*
Radiotherapy	YES	1.249	1.036-1.507	0.02*	1.435	1.190-1.731	< 0.001*
Chemotherapy	YES	1.206	1.141-1.275	< 0.001*	0.534	0.504-0.566	< 0.001*

226 * $p < 0.05$. AI: American Indian/Alaska Native; API: Asian or Pacific Islander;

227

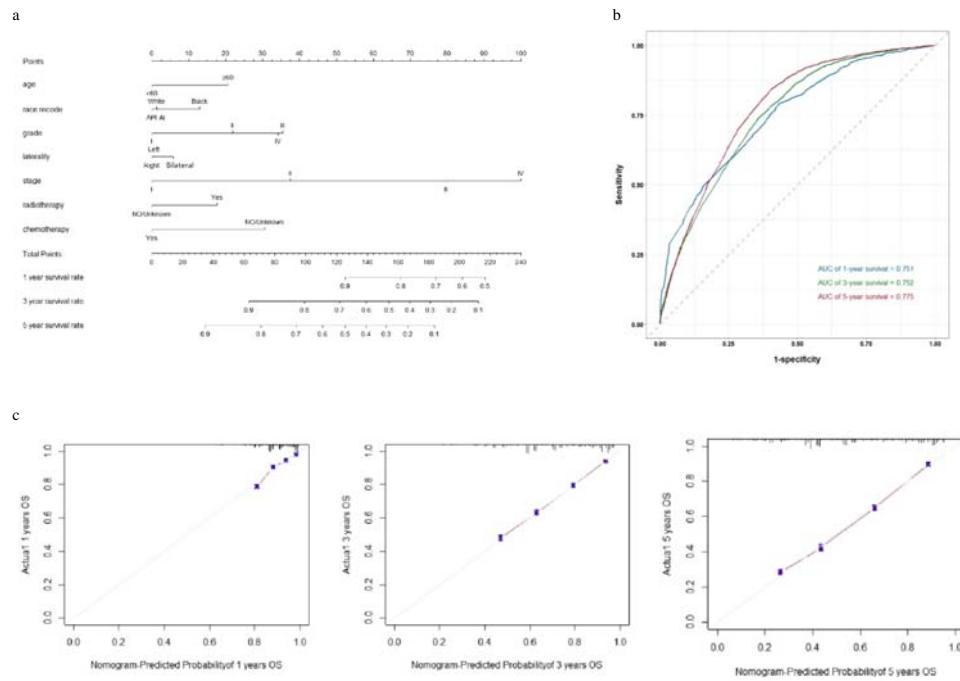
228 We further divided EOC patients into different subgroups according to laterality,
 229 i.e., unilateral vs. bilateral. The KM plot was used to compare survival differences

230 between groups. Again, results showed that the unilateral EOC had a significant
231 prognostic advantage over bilateral EOC ($p < 0.0001$) (Figure 2).
232



233
234 **Figure 2** Unilateral vs. bilateral Kaplan-Meier survival curves in overall population. The median
235 survival for bilateral tumours is 50 months, while the median survival for unilateral tumours is over
236 100 months and still not reached.

237
238 Independent risk factors filtrated based on multivariate cox regression analysis
239 were used to construct nomograms for 1-, 3- and 5-year OS (Figure 3a). The C-index
240 of the nomogram was 0.724 [95% confidence interval (CI): 0.718–0.730]. The AUCs
241 of the 1-, 3-, and 5-year nomogram models were 0.751, 0.752, and 0.775,
242 respectively. The calibration plots all demonstrated good agreement between the
243 predictive values of OS for 1-, 3- and 5-year survival and the actual survival
244 probability (Figure 3b, Figure 3c).
245



246

247 **Figure 3** a. Based on the independent risk factors screened by multivariate cox regression analysis of
248 the overall population, a nomogram was drawn to predict the survival rate of 1-, 3-, and 5-years
249 respectively. b. The area under the receiver operating characteristic curves (AUCs) of the 1-, 3-, and
250 5-year were devoted to evaluating the discriminative ability of the nomogram models. c. The
251 calibration plots of OS for 1-, 3- and 5-year.

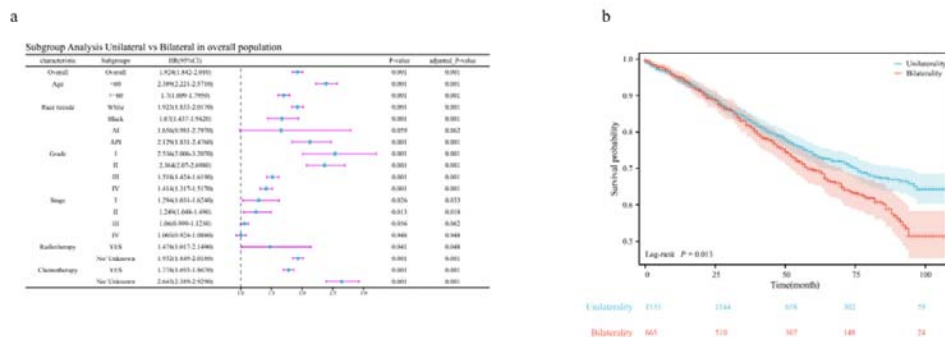
252

253 2.2 Bilateral EOC has a significantly worse prognosis than unilateral EOC, especially
254 in stage II

255

256 When we focused on the prognosis effects of laterality on subgroup population
257 divided by significant variables obtained from multivariate cox regression analysis
258 above, bilateral EOC exhibited a significantly worse prognosis than unilateral EOC in
259 most subgroups, except advanced EOC (Stage III/IV). Especially in stage II, that
260 bilateral EOC has a significantly worse prognosis than unilateral EOC which is not
261 mentioned in the FIGO staging system²⁷. To account for multiple testing, two-sided p
262 values were adjusted according to the method of Benjamini/Hochberg (B/H) to

263 control the false discovery rate (FDR). An association was considered to be
 264 statistically significant, if its corresponding B/H-adjusted p value was below 0.05,
 265 corresponding to an FDR of 5%. (Figure 4).



266
 267 **Figure 4** a. Subgroup analysis Unilateral vs. Bilateral in overall population; The last two columns list
 268 the unadjusted and adjusted p values according to Benjamini/Hochberg (BH), respectively. All 0.001
 269 refers to less than 0.001. b. Survival curve between Unilateral and Bilateral in Stage II.

270
 271 2.3 The prognosis of right-side is worse than the left-side in mucinous ovarian cancer

272 In each subtype of histology, the effect of laterality on tumour prognosis was
 273 mostly consistent with the effect in the overall population we identified above (Table
 274 3), that is patients with left and right ovarian cancer were nearly overlap with no
 275 statistical significance, but the unilateral EOC has a significant prognostic advantage
 276 over bilateral EOC (Table 4 and Supplementary File 1). However, in patients with
 277 mucinous ovarian cancer, the right-to-left prognostic hazard ratio was 0.745 ($p =$
 278 0.015, 95%CI 0.587 to 0.945) (Table 4), indicating that right mucinous ovarian cancer
 279 exhibited a better prognosis than left.

280
 281 **Table 4** Univariable and multivariable analyses of overall survival (OS) for mucinous ovarian cancer

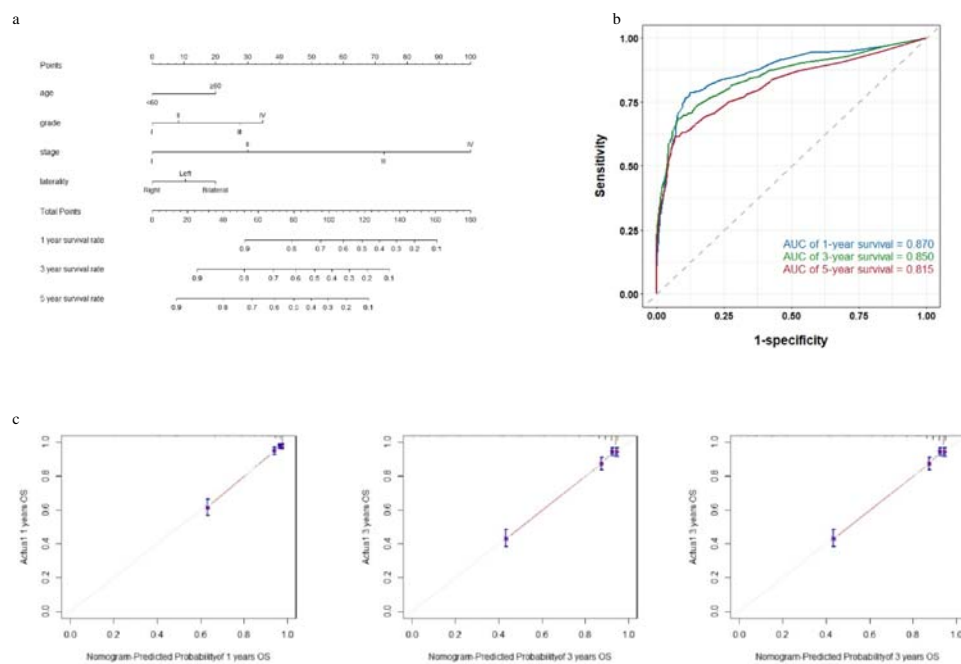
Characteristics	Univariable analysis			Multivariable analysis		
	HR	95% CI	P-value	HR	95% CI	P-value
Age (60y)	1.982	1.614-2.434	< 0.001*	1.751	1.420-2.161	< 0.001*
Laterality	Left	Reference				
	Right	0.872	0.689-1.104	0.256	0.745	0.587-0.945

	Bilateral	4.715	3.628-6.127	< 0.001*	1.303	0.978-1.736	0.07
	White	Reference					
Race recode	Black	1.776	1.297-2.433	< 0.001*			
	AI	1.910	0.612-5.958	0.265			
	API	0.868	0.614-1.228	0.423			
	I	Reference					
Grade	II	1.472	1.147-1.889	0.002	1.264	0.983-1.625	0.068
	III	4.141	3.146-5.450	< 0.001*	2.164	1.626-2.881	< 0.001*
	IV	3.082	1.949-4.875	< 0.001*	2.640	1.663-4.191	< 0.001*
	I	Reference					
Stage	II	1.888	1.599-2.230	< 0.001*	2.345	1.538-3.577	< 0.001*
	III	4.307	3.767-4.924	< 0.001*	7.858	6.033-10.236	< 0.001*
	IV	6.614	5.767-7.584	< 0.001*	16.607	12.204-22.598	< 0.001*
Radiotherapy	YES	5.321	2.833-9.992	< 0.001*			
Chemotherapy	YES	2.089	1.696-2.573	< 0.001*			

282 * $p < 0.05$.

283

284 Based on the result of COX proportional hazards model of mucinous ovarian
285 cancer, we construct the nomogram (Fig 5a). The C-index of the predictive OS
286 nomogram of mucinous ovarian cancer was 0.818 [95% confidence interval (CI):
287 0.794–0.842]. The AUCs of the 1-, 3-, and 5-year nomogram models were 0.870,
288 0.850, and 0.815, respectively. The calibration plots also demonstrated excellent
289 agreement between the predictive values of OS for 1-, 3- and 5-year survival and the
290 actual survival probability (Fig 5b, Fig 5c). This predictive OS nomogram of
291 mucinous ovarian cancer shows higher consistency than of overall population. And
292 the AUCs were closer to 1, showing good prediction performance.



293

294 **Figure 5** a. Based on the independent risk factors screened by multivariate cox regression analysis of
295 the mucinous ovarian cancer, a nomogram was drawn to predict the survival rate of 1-, 3-, and 5-years
296 respectively. b. The area under the receiver operating characteristic curves (AUCs) of the 1-, 3-, and
297 5-year were devoted to evaluating the discriminative ability of the nomogram models. c. The
298 calibration plots of OS for 1-, 3- and 5-year.

299

300 Discussion

301

302 This study investigated the impact of ovarian laterality (unilateral vs. bilateral,
303 left-side vs. right-side) on both incidence and prognosis of EOC in the overall
304 population and among different subtypes. In the overall population, the laterality
305 difference primarily occurred between unilateral and bilateral cases. The bilateral
306 incidence rate was lower than that of unilateral cases, and bilateral prognosis was worse
307 than unilateral prognosis in the overall population, which are as expected. Notably, the
308 impact of laterality on incidence rate varied among different EOC subtypes. Serous
309 ovarian cancer predominantly occurred bilaterally, while the other three subtypes

310 primarily occurred on the unilateral side, consistent with previous reports. Initially, we
311 hypothesized that this difference may be due to the bilateral origins of serous ovarian
312 cancer. However, genetic studies on bilateral invasive ovarian tumours have shown that
313 the majority of cases of serous ovarian cancer are monoclonal, representing spread
314 from a single ovarian site²⁸. Then we proposed that the discrepancy could be attributed
315 to the varying frequency of different subtypes at the initial diagnosis stage. Our dataset
316 revealed that most serous ovarian cancer cases were diagnosed at advanced stages, such
317 as stage III (51%) or IV (29%). This aligns with clinical practice, as serous ovarian
318 cancer is typically challenging to detect at an early stage, due to its small size at the
319 early stages, making it difficult to develop symptoms without metastasis or
320 complications. Additionally, serous ovarian cancer cells are mostly high-grade, type II
321 epithelial, which are aggressive and cause the disease to progress rapidly⁵.
322 Consequently, serous ovarian cancer are often detected at advanced stages, which could
323 explain why it is predominantly detected bilaterally in our study. In contrast, the
324 majority (58% to 64%) of endometrioid, mucinous, and clear cell ovarian cancer cases
325 in the dataset were diagnosed at earlier stages, such as stage I^{16,29}. This can be attributed
326 to the fact that endometrioid and clear cell ovarian cancers are endometriosis-related
327 diseases, which are relatively easier to detect early due to symptoms such as
328 dysmenorrhea. Additionally, the larger size of mucinous ovarian cancer also facilitates
329 early diagnosis compared to serous ovarian cancer³⁰.

330

331 It is noteworthy that the incidence rate between the left and right sides significantly
332 varied among different stages of EOC in the overall population. Furthermore,
333 significant differences were also observed in the incidence rates between the left and
334 right sides, as well as between unilateral and bilateral cases among different stages in
335 many EOC subtypes. Moreover, we identified stage as an important factor influencing
336 the disparities in prognosis between unilateral and bilateral cases. All these results
337 consistently demonstrated a significant relationship between stage and the differences
338 in lateral incidence rates. As we know that tumours at different stages often have
339 distinct genetic characteristics and clinical features⁵. The FIGO staging system is

340 widely used for gynaecological malignancies, including EOC, but it does not
341 adequately consider the laterality of the ovary, except in stage I where unilateral or
342 bilateral involvement is considered as a prognostic factor²⁷. Our study revealed that
343 ovarian laterality, both for unilateral-bilateral and left-right comparisons, has a
344 significant impact on both incidence and prognosis of EOC at different stages.

345

346 The impact of laterality on the prognosis of different EOC subtypes also varies,
347 particularly for mucinous ovarian cancer. We observed that the prognosis on the right
348 side was significantly better than that on the left side for mucinous ovarian cancer.
349 While univariate Cox regression analysis revealed no significant difference in
350 prognosis between the left and right sides, multivariate Cox regression analysis
351 demonstrated a significant difference ($p < 0.05$). The inconsistency between these
352 results may be attributed to the correlation between other confounding factors and
353 laterality in the univariate analysis, which masks the true effect of laterality. However,
354 multivariate analysis accounted for this effect by including other variables, revealing
355 laterality as an independent factor affecting mucinous ovarian cancer prognosis. To the
356 best of our knowledge, no literature has reported this phenomenon.

357

358 The reasons for the poorer prognosis on the left side compared to the right side of
359 mucinous ovarian cancer require further investigation. Here, we can only offer some
360 inferences based on existing research findings. Primary mucinous ovarian cancer is a
361 rare malignancy, accounting for less than 3% of all EOC cases. Nearly 60% of
362 mucinous ovarian cancer cases are metastatic ovarian tumors, with the stomach or
363 colorectum being the most common origin of metastasis^{24,30,31}. The lateral preference
364 for metastasis may be a related factor. Anatomical differences between the left and
365 right hemipelvis could provide an explanation. Charles Chapron et al³². indicated that
366 the close anatomical relationship between the sigmoid colon and the left adnexa forms a
367 barrier to the pelvic diffusion of menstrual blood reflux. This has been used to explain
368 why deeply infiltrating endometriosis lesions are more commonly observed in the
369 posterior pelvic compartment and predominantly located on the left side. This

370 asymmetric anatomy of the pelvic cavity may also affect the direct spread and
371 implantation of cancer cells, thus potentially explaining why the prognosis on the left
372 side is poor for mucinous ovarian cancer. Furthermore, variations in venous structures
373 may also be a factor that affects the distant metastasis of cancer cells, consequently
374 influencing the prognosis. Hematogenous metastasis is one of the mechanisms of
375 distant metastasis in ovarian cancer tumors. The right ovarian reflux vein joins the
376 inferior vena cava, while the left ovarian blood flows back into the renal vein³³. Due to
377 the thinness of the renal vein and its susceptibility to reflux obstruction, pelvic varices
378 in the left ovary are more common³⁴. Lastly, differences in the invasive and metastatic
379 capacities of left and right mucinous ovarian cancer cells themselves may also
380 contribute to the disparity in prognosis. Further comprehensive research is necessary to
381 elucidate the underlying mechanisms related to the different prognosis between the left
382 and right sides of mucinous ovarian cancer.

383

384 We also found significant effects of age and race on the incidence rates and
385 prognostic differences between unilateral and bilateral cases, as well as between the left
386 and right sides, both in the overall population and across different subtypes. Indeed,
387 studies have reported the effects of age and race on disease incidence rates and
388 prognosis. For instance, Lindsey A. Torre et al²⁹. demonstrated that API women have
389 the highest incidence rate of clear cell ovarian cancer and the lowest incidence rate of
390 serous ovarian cancer. Therefore, it is important to consider the impacts of age and race
391 on the laterality of incidence rates and prognosis in clinical practice.

392

393 To the best of our knowledge, our study is the first to systematically investigate the
394 impact of laterality on the incidence and prognosis of EOC. Our results suggest that
395 whether the tumour occurs unilaterally or bilaterally, the left-side or right-side,
396 significantly influences the incidence and prognosis of EOC, particularly in different
397 subtypes and stages. These findings should be taken into consideration in clinical
398 practice.

399

400 **Declarations**

401 **Ethics approval and consent to participate**

402 Not applicable.

403 **Consent for publication**

404 Not applicable.

405 **Availability of data and materials**

406 Information about the data used in this study were included in this article and its

407 supplementary files.

408 **Competing interests**

409 The authors declare no competing interests.

410 **Authors' Contributions**

411 GY and LG conceived the study. YZ conducted the analyses. YZ, YH and JK

412 conducted data curation. SY and GY gave the funding supports. YZ and LG wrote the

413 manuscript and all authors commented on it.

414 **Funding**

415 This study was supported by the National Key R&D Program of China

416 (2022YFC2704200, 2022YFC2704201).

417 **Acknowledgements**

418 We thank Prof. Canwei Xia and Prof. Xia Shen for the valuable suggestions.

419

420 **Reference:**

421 1. Berek JS, Renz M, Kehoe S, Kumar L, Friedlander M. Cancer of the ovary,

422 fallopian tube, and peritoneum: 2021 update. *Int J Gynecol Obstet*.

- 423 2021;155(S1):61-85. doi:10.1002/ijgo.13878
- 424 2. Sung H, Ferlay J, Siegel RL, et al. Global Cancer Statistics 2020: GLOBOCAN
425 Estimates of Incidence and Mortality Worldwide for 36 Cancers in 185 Countries.
426 *CA Cancer J Clin*. 2021;71(3):209-249. doi:10.3322/caac.21660
- 427 3. Kurman RJ, Shih IM. The origin and pathogenesis of epithelial ovarian cancer: a
428 proposed unifying theory. *Am J Surg Pathol*. 2010;34(3):433-443.
429 doi:10.1097/PAS.0b013e3181cf3d79
- 430 4. Doherty JA, Peres LC, Wang C, Way GP, Greene CS, Schildkraut JM. Challenges
431 and Opportunities in Studying the Epidemiology of Ovarian Cancer Subtypes. *Curr*
432 *Epidemiol Rep*. 2017;4(3):211-220. doi:10.1007/s40471-017-0115-y
- 433 5. Lheureux S, Gourley C, Vergote I, Oza AM. Epithelial ovarian cancer. *Lancet Lond*
434 *Engl*. 2019;393(10177):1240-1253. doi:10.1016/S0140-6736(18)32552-2
- 435 6. Reid BM, Permuth JB, Sellers TA. Epidemiology of ovarian cancer: a review.
436 *Cancer Biol Med*. 2017;14(1):9-32. doi:10.20892/j.issn.2095-3941.2016.0084
- 437 7. J B, Kd Y, Yz J, Zm S, Gh D. The effect of laterality and primary tumor site on
438 cancer-specific mortality in breast cancer: a SEER population-based study. *PLoS*
439 *One*. 2014;9(4). doi:10.1371/journal.pone.0094815
- 440 8. Roychoudhuri R, Putcha V, Møller H. Cancer and Laterality: A Study of The Five
441 Major Paired Organs (UK). *Cancer Causes Control*. 2006;17(5):655-662.
442 doi:10.1007/s10552-005-0615-9
- 443 9. Negri F, De Giorgi A, Gilli A, et al. Impact of laterality and mucinous histology on
444 relapse-free and overall survival in a registry-based colon cancer series. *Sci Rep*.
445 2019;9(1):3668. doi:10.1038/s41598-019-40096-6
- 446 10. Rc B, R P, B K, Z E, R D, N E. Divergent Impact of Breast Cancer Laterality on
447 Clinicopathological, Angiogenic, and Hemostatic Profiles: A Potential Role of
448 Tumor Localization in Future Outcomes. *J Clin Med*. 2020;9(6).
449 doi:10.3390/jcm9061708
- 450 11. Weiss HA, Devesa SS, Brinton LA. Laterality of breast cancer in the United
451 States. *Cancer Causes Control CCC*. 1996;7(5):539-543. doi:10.1007/BF00051887
- 452 12. Brulé SY, Jonker DJ, Karapetis CS, et al. Location of colon cancer (right-sided
453 versus left-sided) as a prognostic factor and a predictor of benefit from cetuximab
454 in NCIC CO.17. *Eur J Cancer Oxf Engl 1990*. 2015;51(11):1405-1414.
455 doi:10.1016/j.ejca.2015.03.015
- 456 13. He X, Zhao X, Wang X, et al. Distinctive pattern of left–right asymmetry of
457 ovarian benign teratomas in Chinese population: a 12-year-long cross-sectional

- 458 study. *Arch Gynecol Obstet.* 2021;303(3):729-737.
459 doi:10.1007/s00404-020-05864-0
- 460 14. Bairi KE, Trapani D, Page CL, Saad A, Jarroudi OA, Afqir S. Exploring the
461 prognostic impact of tumor sidedness in ovarian cancer: A population-based
462 survival analysis of over 10,000 patients. *Cancer Treat Res Commun.*
463 2022;33:100625. doi:10.1016/j.ctarc.2022.100625
- 464 15. Yamada Y, Mabuchi S, Kawahara N, Kawaguchi R. Prognostic significance of
465 tumor laterality in advanced ovarian cancer. *Obstet Gynecol Sci.*
466 2021;64(6):524-531. doi:10.5468/ogs.21176
- 467 16. Matz M, Coleman MP, Carreira H, et al. Worldwide comparison of ovarian cancer
468 survival: Histological group and stage at diagnosis (CONCORD-2). *Gynecol Oncol.*
469 2017;144(2):396-404. doi:10.1016/j.ygyno.2016.11.019
- 470 17. Kurman RJ, Shih IM. Molecular pathogenesis and extraovarian origin of
471 epithelial ovarian cancer--shifting the paradigm. *Hum Pathol.* 2011;42(7):918-931.
472 doi:10.1016/j.humpath.2011.03.003
- 473 18. Banerjee S, Kaye SB. New strategies in the treatment of ovarian cancer: current
474 clinical perspectives and future potential. *Clin Cancer Res Off J Am Assoc Cancer*
475 *Res.* 2013;19(5):961-968. doi:10.1158/1078-0432.CCR-12-2243
- 476 19. Crum CP, Drapkin R, Miron A, et al. The distal fallopian tube: a new model for
477 pelvic serous carcinogenesis. *Curr Opin Obstet Gynecol.* 2007;19(1):3-9.
478 doi:10.1097/GCO.0b013e328011a21f
- 479 20. Kurman RJ, Shih IM. Pathogenesis of ovarian cancer: lessons from morphology
480 and molecular biology and their clinical implications. *Int J Gynecol Pathol Off J*
481 *Int Soc Gynecol Pathol.* 2008;27(2):151-160. doi:10.1097/PGP.0b013e318161e4f5
- 482 21. Cho KR, Shih IM. OVARIAN CANCER. *Annu Rev Pathol.* 2009;4:287-313.
483 doi:10.1146/annurev.pathol.4.110807.092246
- 484 22. Cao C, Yang X. The Prevalence, Associated Factors for Lung Metastases
485 Development and Prognosis in Ovarian Serous Cancer Based on SEER Database.
486 *Technol Cancer Res Treat.* 2020;19:1533033820983801.
487 doi:10.1177/1533033820983801
- 488 23. Huang Y, Ming X, Li B, Li Z. Histological Characteristics and Early-Stage
489 Diagnosis Are Associated With Better Survival in Young Patients With Epithelial
490 Ovarian Cancer: A Retrospective Analysis Based on Surveillance Epidemiology
491 and End Results Database. *Front Oncol.* 2020;10. Accessed September 27, 2022.
492 <https://www.frontiersin.org/articles/10.3389/fonc.2020.595789>
- 493 24. Qi X, Xu L, Wang J, Yu J, Wang Y. Nomograms for primary mucinous ovarian

- 494 cancer: A SEER population-based study. *J Gynecol Obstet Hum Reprod.*
495 2022;51(7):102424. doi:10.1016/j.jogoh.2022.102424
- 496 25. Edge SB, Compton CC. The American Joint Committee on Cancer: the 7th
497 edition of the AJCC cancer staging manual and the future of TNM. *Ann Surg Oncol.*
498 2010;17(6):1471-1474. doi:10.1245/s10434-010-0985-4
- 499 26. National Institutes of Health. National Cancer Institute. Surveillance,
500 Epidemiology, and End Results Program. Statistical summaries: cancer stat fact
501 sheets (ovary) and cancer statistics review (CSR), 2013-2019.
502 <https://seer.cancer.gov/statfacts/html/ovary.html>
- 503 27. Duska LR, Kohn EC. The new classifications of ovarian, fallopian tube, and
504 primary peritoneal cancer and their clinical implications. *Ann Oncol Off J Eur Soc*
505 *Med Oncol.* 2017;28(suppl_8):viii8-viii12. doi:10.1093/annonc/mdx445
- 506 28. Tsao SW, Mok CH, Knapp RC, et al. Molecular genetic evidence of a unifocal
507 origin for human serous ovarian carcinomas. *Gynecol Oncol.* 1993;48(1):5-10.
508 doi:10.1006/gyno.1993.1002
- 509 29. Torre LA, Trabert B, DeSantis CE, et al. Ovarian cancer statistics, 2018. *CA*
510 *Cancer J Clin.* 2018;68(4):284-296. doi:10.3322/caac.21456
- 511 30. Perren TJ. Mucinous epithelial ovarian carcinoma. *Ann Oncol Off J Eur Soc Med*
512 *Oncol.* 2016;27 Suppl 1:i53-i57. doi:10.1093/annonc/mdw087
- 513 31. Kurnit KC, Frumovitz M. Primary mucinous ovarian cancer: options for surgery
514 and chemotherapy. *Int J Gynecol Cancer Off J Int Gynecol Cancer Soc.* Published
515 online October 13, 2022:ijgc-2022-003806. doi:10.1136/ijgc-2022-003806
- 516 32. Chapron C, Chopin N, Borghese B, et al. Deeply infiltrating endometriosis:
517 pathogenetic implications of the anatomical distribution. *Hum Reprod Oxf Engl.*
518 2006;21(7):1839-1845. doi:10.1093/humrep/del079
- 519 33. Gupta R, Gupta A, Aggarwal N. Variations of Gonadal Veins: Embryological
520 Prospective and Clinical Significance. *J Clin Diagn Res JCDR.*
521 2015;9(2):AC08-AC10. doi:10.7860/JCDR/2015/9493.5578
- 522 34. Riva N, Calleja-Agius J. Ovarian Vein Thrombosis: A Narrative Review.
523 *Hamostaseologie.* 2021;41(4):257-266. doi:10.1055/a-1306-4327
- 524
- 525