

1 **The Risk of Mpox (Monkeypox) Importation and Subsequent Outbreak Potential in** 2 **Mainland China: A Retrospective Statistical Modelling Study**

3
4 Xiaowei Deng^{1†}, Yuyang Tian^{1†}, Junyi Zou¹, Juan Yang¹, Kaiyuan Sun^{2*§}, Hongjie Yu^{1*§}

5
6 ¹School of Public Health, Fudan University, Key Laboratory of Public Health Safety, Ministry of
7 Education, Shanghai, China. ²Division of International Epidemiology and Population Studies,
8 Fogarty International Center, National Institutes of Health, Bethesda, MD, USA.

9
10 * Address correspondence to: Hongjie Yu; yhj@fudan.edu.cn and Kaiyuan Sun;
11 kaiyuan.sun@nih.gov

12
13 †These authors contributed equally to this work.

14 §These authors contributed equally to this work.

15 **Abstract**

16 The 2022 mpox outbreak has spread rapidly across multiple countries in the non-endemic region,
17 mainly among men who have sex with men (MSM), while China only has limited recorded
18 importation and no local outbreak. We constructed probabilistic models to simulate the risk of
19 mpox importation in mainland China, with the help of reported monkeypox cases during this
20 multi-country outbreak and the international air-travel data. And we further evaluated the mpox
21 outbreak potential given that undetected mpox infections were introduced into men who have sex
22 with men, considering different transmissibility, population immunity and population activity. We
23 found that the reduced international air-travel volume and stringent border entry policy decreased
24 about 94% and 69% mpox importations respectively. Once a mpox case is introduced into active
25 MSM population with almost no population immunity, the risk of triggering local transmission is
26 estimated at 42%, and would rise to >95% with over six cases. Our study demonstrates the key
27 role of the reduced international air-travel volume and stringent border entry policy during the
28 COVID-19 pandemic on reducing mpox importations, and the subsequent risk of triggering local
29 outbreaks among MSM.
30
31

32 **Introduction**

33 Since the first human infection was detected in Central Africa in 1970(1), the monkeypox virus
34 has been recognized as a viral zoonosis with endemic regions primarily concentrated in west and
35 central African countries(2, 3). The monkeypox virus, a member of the *Orthopoxvirus* genus in
36 the Poxviridae family, is closely related to the widely known variola virus (which causes
37 smallpox)(4). In the last two decades, the global incidence of monkeypox cases (here after,
38 monkeypox is denoted as mpox according to WHO reference) has been on the rise in endemic
39 regions, with an increase in the median age among confirmed and probable mpox cases over
40 time(5). Before the 2022 multi-country mpox outbreak, imported mpox infections in humans have
41 been reported in the USA(6-9), UK(10), Israel(11), and Singapore(12).

42
43 After the confirmation of a mpox case in England on May 7, 2022, the outbreak has
44 rapidly expanded spatially to other countries in Europe, the Americas, and Western Pacific
45 region(13). It is the first time that mpox cases have been reported in both endemic and non-
46 endemic regions with broad geographical coverage. This multi-country mpox outbreak also
47 reveals different epidemiological and clinical characters from previous outbreaks(7, 14-18) (Table
48 S1). In particular, sustained human-to-human transmission has been observed, involving
49 predominately men who have sex with men (MSM)(19), which made mpox as a sexually
50 transmitted disease (STD)(20). On July 23, 2022, the WHO declared the multi-country outbreak
51 of mpox as a Public Health Emergency of International Concern (PHEIC) due to its unprecedented
52 rapid spread in the non-endemic regions and disparate global dissemination(21, 22), and since
53 May 11, 2023, the WHO cancel the PHEIC declaration. Recently, countries/regions in East Asia
54 has started experiencing local mpox outbreaks that were not seen during the height of mpox
55 outbreak in 2022(23). As of June 15, 2023, 181 confirmed cases have reported by Japan and 102
56 cases by the Republic of Korea as of June 5(24, 25). Taiwan province reported over 50 local
57 mpox cases in May 2023. It is crucial to evaluate the mpox outbreak potential in mainland China,
58 due to its large pool of susceptible population at risk of mpox and the fundamental change in the
59 geographical range of mpox circulation.

60
61 In this study, we used mathematical models to evaluate: 1) the importation risk by
62 international air travel from countries with ongoing outbreaks; 2) the effectiveness of two sets of
63 border screening strategies considering mainland China's pre- and peri-pandemic (hypothetical)
64 border entry and quarantine policies; 3) the risk of undetected mpox importations to trigger a local
65 outbreak in mainland China across a range of plausible mpox transmissibility and contact patterns
66 among the MSM community.

68 **Results**

69 According to the WHO situation report(26), as of June 13, 2023, a total of 87,979 confirmed
70 mpox cases were reported among 111 countries and regions, with the majority of cases reported
71 in the American (59,449) and European (25,910) regions, accounting for 67.6% and 29.5% of the
72 global cases (Fig.1).

73
74 According to the air-travel data from OAG(27), we found the monthly number of arrivals
75 in China was on average 5.69 million during 2017–2019. However, the volume drastically
76 decreased to 0.6 million starting in January 2020, approximately one-tenth of the pre-pandemic
77 (2017–2019) air-travel volume (Fig.2a, inset). Assuming a hypothetical scenario that the year
78 2022 has the same air-travel volume as in 2019 (pre-pandemic), we estimated that the expected
79 number of mainland China's mpox importations would have risen above one on June 2, 2022 and
80 reached 36 (95% CI: 27–50) on September 11, 2022. In contrast, according to the actual
81 international air travel volume during 2022 (peri-pandemic), we estimated that the expected

82 cumulative importations would only reach two (95% CI: 0–5) by September 11, 2022. In Fig.2b,
83 we presented mainland China’s top 12 source countries for mpox importations based on the travel
84 volume of year 2019 and 2022, respectively. Under the air-travel volume of 2019, mainland
85 China would expect (on average) more than one mpox infection importation from epidemic
86 countries including the United States (16, 95% CI: 8–23), the United Kingdom (7, 95% CI: 3–12),
87 Spain (4, 95% CI: 1–8), France (4, 95% CI: 0–8), Canada (2, 95% CI: 0–5), Germany (1, 95% CI:
88 0–4) and Netherlands (1, 95% CI: 0–3). In contrast, under the air-travel volume of 2022, we
89 estimated that no single source country would contribute to more than one mpox importation to
90 mainland China, with the highest-ranking country (the United States) contributing to about one
91 mpox importation (95% CI: 0–3).

92
93 We first examined the effectiveness of a mpox border screening policy (measured as the
94 probability of mpox infection detection among all mpox importations) under mainland China’s
95 pandemic quarantine policy for international travelers (Scenario 1). Specifically, we found that
96 under Scenario 1, the effectiveness of border screening against mpox is insensitive to the self-
97 reporting rate of a mpox epidemiological links, as all international travelers were required to
98 quarantine due to existing pandemic policies. On the other hand, the detection rate of mpox
99 importations increases with the quarantine duration (Fig.3a). Mainland China’s pandemic policy
100 requiring a quarantine duration of 10 days (policy as of June 28, 2022(28)) would lead to high
101 effectiveness of mpox screening with a mpox detection rate reaching >80% based on our model’s
102 estimate, irrespective of the self-reporting rate of epidemiological links. However, universal
103 border entry quarantine as a stand-alone policy for mpox, in the absence of pandemic-related
104 policy, is impractical and unwarranted due to mpox’s much slower spread compared to COVID-
105 19 and the lack of evidence of pre-symptomatic transmission(29). We thus considered a scenario
106 of a border screening policy similar to the contact tracing guidance by the European Center for
107 Disease Prevention and Control (ECDC)(29). In this scenario, both the self-reporting rate of
108 epidemiological links and the duration of the medical observation influence the screening
109 effectiveness: the proportion of imported mpox infections who self-report an epidemiological
110 links sets the upper bound of the mpox border screening effectiveness, as infected individuals
111 who do not report/are unaware of mpox exposure would not undergo medical observation and
112 thus could not be promptly detected (Fig.3b). Among exposed individuals undergoing medical
113 observation, increasing the duration of medical observation would increase the detection rate of
114 border screening but the increase would start plateauing with only marginal benefit once the
115 duration reached beyond 10 days. In Fig.3c, we compared the overall effectiveness of Scenario 1
116 against Scenario 2 across a range of quarantine/medical observation durations, conditional on the
117 same proportion of self-reporting epidemiological link (50%). We found that the more stringent
118 Scenario 1 always outperforms Scenario 2 across different quarantine/medical observation
119 durations. At the quarantine/medical observation duration of 10 days, Scenario 1 on average
120 detects 83.3% of imported mpox cases while Scenario 2 could only detect 46.3%. Longer
121 quarantine/medical observation duration does not significantly improve the border screening
122 effectiveness for either of the two scenarios.

123
124 Next, we used a mathematical model to evaluate the potential of undetected mpox
125 infections triggering a local mpox outbreak. The outbreak potential of an undetected mpox
126 importation is influenced by the overall transmissibility of the mpox virus (measured as the basic
127 reproduction number R_0) and the transmission heterogeneity (measured as the overdispersion
128 parameter k , Supplement, section 8)(30). In Fig.4a, we demonstrated the outbreak probability of a
129 single undetected mpox infection in the high-risk population as a function of R_0 and k : both the
130 increasing of R_0 (increasing transmissibility) and k (decreasing transmission heterogeneity)
131 would increase the outbreak probability. Considering the recent estimation of $R_0=1.8$ for mpox

132 outbreaks in several European countries, the outbreak probability caused by one undetected mpox
133 case was estimated at 42.1% if the overdispersion parameter k was equal to 0.88, based on sexual
134 contact network among MSM in mainland China(31, 32). The outbreak probability drastically
135 goes up with the number of undetected mpox importations, reaching to above 95% with six or
136 more importations. When taking into account of emergency vaccination, the reproduction number
137 is reduced to 1.46 and the outbreak probability accordingly reduces to 29.4% minimum, which is
138 70% of the situation with $R_0=1.8$.

139 **Discussion**

140 Since the global eradication of smallpox in the 1980s and subsequent halt of the smallpox
141 vaccination program, it has been suggested that the mpox virus could emerge as the next
142 *Orthopoxvirus* of epidemic potential in humans, taking up the ecological niche vacated by
143 smallpox in the human population(33). In recent years, increasing incidence and shifting
144 demographics towards older populations and males in the endemic region were warning signs of
145 declining of mpox population immunity due to the cessation of smallpox vaccination in the 1980s
146 and population turnover. Following the first confirmed mpox case reported by the United
147 Kingdom in early May 2022, the multi-country mpox outbreak had infected about 86,000
148 individuals in non-endemic regions as of June 13, 2023, with countries in Europe and the
149 Americas being impacted most heavily. After confirming mpox's local transmission, the UK and
150 other European countries subsequently adopted contact tracing and case isolation to control their
151 outbreaks(34, 35). Following the PHEIC declaration of the outbreak by the WHO, the US
152 government declared a public health emergency for the local mpox outbreak and adopted
153 measures (case identification, contact tracing, vaccination) to suppress local transmission. When
154 faced with the importation risk of mpox, only a few countries have strengthened their border
155 screening to prevent case importation(36-41).

156
157
158 On September 16, 2022, mainland China recorded its first imported mpox case in
159 Chongqing. The case had a travel history to Germany and Spain(42) and remained the only
160 observed mpox importation as of June 5, 2023. This observed low risk of mpox importation is in
161 line with our model's projections based on 2022 air-travel volume. By examining the OAG's data
162 through October 2022, mainland China's air travel has yet to show significant recovery from that
163 of 2022 (Fig.2a) due to the stringent border entry policy that is still in place. Furthermore, as a
164 byproduct of the universal quarantine policy for border entry due to the pandemic, our analysis
165 suggests high border screening effectiveness for mpox if medical observation for mpox were
166 implemented during the mandatory quarantine. Collectively, the impact of pandemic on air-travel
167 reduction and a stringent quarantine policy have led to a low risk of mpox importation in
168 mainland China from the current multi-country mpox outbreak. However, under conditions where
169 air-travel volume is able to rebound to pre-pandemic levels, we estimate that the importation risk
170 is substantially higher, reaching 36 (95% CI: 25–47) mpox importations under the current
171 outbreak (Fig.2a).

172
173 A distinctive feature of the 2022 mpox outbreak is that it affects predominantly the
174 population in the MSM community with sustained human-to-human transmission outside the
175 endemic region(13). Modeling analysis of the UK's sexual contact network of the MSM
176 community suggested the heavy-tailed nature of network topology could result in the basic
177 reproduction number of mpox larger than the epidemic threshold of one among the group of
178 individuals who have disproportionately large numbers of partners(43). We have looked at the
179 distribution of sexual partners among MSM in China in 2010 based on the study by Zhang et.
180 al.(31, 32) (Fig.S3); it is highly heterogeneous, with 4.9% of individuals having more than 10
181 sexual partners over a period of one year. Thus, it is plausible to expect that once mpox infection

182 is introduced into the MSM community in mainland China, the mpox virus could sustain human-
183 to-human transmission and cause substantial disease burden in the high-risk population.
184 Assuming the mpox's basic reproduction number in mainland China is similar to that in Europe
185 and the United States(44), we estimate that the probability of triggering a local mpox outbreak is
186 substantial and rapidly goes up with the number of mpox introductions (Fig.4). A recent study
187 suggests that the size of the MSM community in mainland China is approximately eight
188 million(45), roughly twice the size of that in the US(46). With the changing epidemiology and
189 population immunity of mpox as well as the geographical expansion to non-endemic regions,
190 mpox has emerged as a public health threat for mainland China's MSM community in the
191 foreseeable future.

192
193 Although the global mpox epidemic trend has been on the decline since August, 2022, and
194 the WHO declared that the mpox epidemic no longer constituted a PHEIC, mpox is still
195 circulating with low intensity in non-endemic countries/regions recently(22). Several Asian
196 countries including Japan, Thailand, etc. have reported imported and local mpox cases since May,
197 2023(23, 47). Taiwan Province reported over 50 local mpox cases in May, 2023. From June to
198 July, 2023, 23 provinces in mainland China reported 597 confirmed mpox cases, suggesting likely
199 wide-spread mpox local outbreaks in mainland China. This is in agreement with our modeling
200 assessment of high mpox outbreak probability in mainland China, conditional on introduction of
201 travel-related mpox cases (Fig.2). We explored the correlation between the confirmed mpox cases
202 and active MSM population size at the province level estimated by Hu et al(45), if we remove
203 Beijing and Guangdong province (both are major international air traffic hubs for mainland
204 China) presented as outliers (Fig.S4). We further performed a regression model including both
205 mpox cases active MSM population size and air-travel volume as covariate (with interaction),
206 without removing Beijing and Guangdong (Supplement, section 10). The result of the regression
207 showed high coefficient of determination ($R^2 = 0.845$), indicating that both the active MSM
208 population size and air-travel volume contribute to explaining mpox cases number.

209
210 Our study has several limitations. First, we assumed that the air-travel behavior of the
211 population in the MSM community is the same as that of the general population, which may not
212 be true. Second, we assumed there is no under-reporting of mpox infections, which may lead to an
213 underestimation of the importation risk in mainland China. However, considering the high
214 symptomatic rate of mpox infection as well as distinct symptom presentations including fever and
215 rash, we expect our estimation and our conclusion remain robust. Lastly, data on MSM sexual
216 contact networks are limited in mainland China. In particular our MSM sexual contact network is
217 based on data pre-pandemic (2010), and during the pandemic, the sexual behavioral could have
218 changed substantially. Better characterization of the behavioral aspect of the high-risk population
219 could further improve our evaluation of mpox outbreak potential and define effective preventive
220 and mitigation public health policies against mpox.

221
222 Using pre- and peri-pandemic air-travel data and spatiotemporally resolved mpox case
223 reporting, our study demonstrates that the reduced international air-travel volume and stringent
224 border entry policy during the COVID-19 pandemic reduced mpox importations prominently.
225 However, the risk could be substantially higher with the recovery of air-travel volume to pre-
226 pandemic level. Mpox could emerged as a public health threat for mainland China given its large
227 MSM community.

228 229 **Materials and Methods**

230 *Simulating the international dissemination of the 2022 multi-country mpox outbreak and*
231 *evaluating mainland China's importation risk.*

To quantify the international importation risk of mpox from a source location i (regions with ongoing mpox transmission) to a destination location j , we need to know the outbreak size in the source location i and the connectivity between the origin (location i) and destination (location j) by air-travel. We assumed that travel-associated mpox cases that contribute to the international spread mostly reside in major metropolitan areas with international airport transportation hubs. Hence, we considered a total of 39,114 mpox cases which occurred in 39 metropolitan areas with major international airports in the top 12 countries affected by mpox (Tables S2 and S3) and evaluate their risk of exportations to mainland China. Specifically, we obtained the time series of mpox incidence at the national level from Global.health(48). We then decomposed the national-level time series into metropolitan-level proportional to the relative outbreak size of a metropolitan area with respect to its national total. For each mpox infection at the source location i , we assume that the infected individual could only make international air travel during the incubation period of τ days (i.e., prior to symptom onset), which we drew from a lognormal distribution with an average of 8.94 days and standard deviation of 4.19 (Table S4). For each case, we assumed there is a delay of σ days between symptom onset and the date of reporting, drawing from a zero-inflated negative binomial distribution with an average of 6.48 days and a standard deviation of 28.2 days (Supplement, section 4, Fig.S1). Consequently, if a mpox case is reported on date t , this infected individual could potentially travel internationally between date $t - \sigma$ and date $t - \sigma - \tau$, i.e., during his/her incubation period.

We then estimated the international air travel probability using the origin-destination air-travel data provided by Official Aviation Guide (OAG). The pandemic greatly influenced global air travel. We considered a pre-pandemic (upper-bound) scenario using the air-travel data of year 2019 and a peri-pandemic (lower-bound) scenario using the air-travel data of year 2022. For each air-travel scenario, if we denote the total air-travel volume at month m from location i to location j as Φ_{ij}^m (provided by OAG), the per-capita rate of international air travel ϕ_{ij} can be expressed as $\phi_{ij} = \frac{\Phi_{ij}^m}{N_i D_m}$, where N_i is the total population in location i and D_m is the number of days in month m . We then iterated through all mpox cases and simulated each of their potential air-travel trajectory during their incubation period τ : starting from the beginning of the incubation period $t - \sigma - \tau$, for each day forward t' till the end of the incubation period $t - \sigma$, whether the individual would travel on date t' is simulated as a Bernoulli process with the probability of travel $p_i(t')$ from location i is given by $p_i = \sum_j \phi_{ij}(t')$. Given that the individual would travel on t' , then the destination j of the international travel would be decided based on a generalized Bernoulli distribution with the conditional probability of traveling to a specific location j given by $\frac{\phi_{ij}(t')}{\sum_j \phi_{ij}(t')}$ and the simulation for this infected individual ends. The simulation of the infected individual would also end if by the end of his/her incubation period $t - \sigma$, the infected individual does not travel, and this individual would remain as a local mpox case in location i . Once we iterate through all mpox infections globally, we could sum up the cumulative number of mpox importations from location i to location j up to time point t , denoted as $m_{ij}(t)$. We repeated the entire simulation for a total of 200 times and obtained the distribution of $m_{ij}(t)$, denoted as $P(m_{ij}(t))$ to capture the stochastic nature of the modelled process. We could estimate the mean and 95% confidence interval (0.025 and 0.975 quantiles) of $m_{ij}(t)$ based on $P(m_{ij}(t))$. To ensure the validity of our model, we performed a validation analysis of the mpox importations among countries where consecutive reports of mpox cases with international travel history were available, with abovementioned pre-pandemic and peri-pandemic air-travel volume setting the upper bound and lower bound of the importation risks, respectively (Fig.S2).

Effectiveness of border screening against travel-associated mpox cases.

To quantify the effectiveness of border screening policies, we first considered a scenario (denoted as Scenario 1 hereafter) that is in compliance with mainland China's current pandemic quarantine policy for border entry: according to the recently published (July 1, 2022) guidelines to mpox prevention and control by mainland China's National Health Commission, all international travelers entering mainland China, especially for those who had travel history to regions with an on-going mpox epidemic within 21 days of border entry, should be screened for mpox during their mandatory quarantine as a part of mainland China's pandemic response(49). During the quarantine, individuals are also screened for mpox related symptoms including fever and rash. Symptomatic individuals with travel history from outbreak countries, close contact with confirmed cases, or contact with infected animals would be defined as suspected cases (Table S5). Once detected, they would be reported to the local CDC and will be transferred to designated hospitals for a 21-day medical observation, and PCR test for lesion samples/swabs/blood will be conducted. Considering the variation of pandemic mandatory quarantine durations (ranging from 7–21 days) as well as the uncertainty on the proportion of people with mpox infections complying with self-reporting, we used a mathematical model to evaluate the proportion of imported mpox infections detected post entry screening (Supplement, section 7). We also considered another hypothetical scenario (denoted as Scenario 2 hereafter) of plausible mpox entry screening in the absence of mainland China's pandemic quarantine policy for international travelers (a pre-pandemic scenario). In this scenario, international travelers with a self-reported mpox epidemiological link needed to undergo medical observation for mpox-related symptoms (e.g., fever, rash, lymphadenopathy) during which they abstain from sexual activity, in addition to other precautionary measures(29). Upon symptom onset, a suspected mpox case needs to self-isolate and seek testing. We also evaluated the effectiveness of this travel screening policy (Supplement, section 7).

Local outbreak probability.

Following Hartfield et al.'s analytical solution of outbreak probability as a function of the basic reproduction number R_0 and overdispersion parameter k (30) (Supplement, section 8), we explored the range of mpox outbreak probability with one initial infector introduced into the high-risk population in mainland China, with R_0 ranging from 1.1 to 2.0 and dispersion parameter k ranging from 0.1 to 1.2 (Fig.4a). Our best guess for R_0 for the 2022 mpox outbreak is 1.8, according to a recent study conducted by Kwok et al(44), and we consider a plausible dispersion parameter k of 0.88 through fitting the negative binomial distribution for the number of sexual partners among MSM in China(31, 32) (Fig.S3). For $R_0 = 1.8$, and $k = 0.88$, we explored how the outbreak probability would change with the number of imported mpox cases missed by the border screening process (Fig.4b). To understand the effect of emergency vaccination on preventing the outbreak probability, we used R_t to stand for the protection provided by emergency vaccination. The relationship can be illustrated as $R_t = R_0 * S$, in which S stands for the proportion of population susceptible to mpox. According to the US emergency vaccination of mpox as well as the vaccine effectiveness(50, 51), we assumed 20% high risk population get effectively vaccinated, hence the $R_t = 1.46$.

All analysis was done in R (version 4.1.1).

Acknowledgments

We would like to thank our team members (Yan Wang, Lan Yi, Jiayi Dong, Qianhui Wu, and Jun Cai) for communications on this study. The findings and conclusions in this report are those of the authors and do not necessarily represent the official position of the US National Institutes of Health.

329

330 **Author Contributions**

331 H.Yu and K.Sun conceived, designed, and supervised the study. X.Deng, Y.Tian, and J.Zou
332 collected the data. X.Deng and K.Sun contributed to the methodology, designed the model.
333 X.Deng and Y.Tian analyzed the model output. X.Deng, Y.Tian, K.Sun, and H.Yu interpreted the
334 results. X.Deng and Y.Tian prepared the figures and tables. X.Deng and Y.Tian wrote the first
335 draft of the manuscript. K.Sun, J.Yang and H.Yu critically revised the content. All authors
336 approved the final manuscript as submitted and agree to be accountable for all aspects of the
337 work.

338

339 **Funding**

340 This work was supported by the Key Program of the National Natural Science Foundation of
341 China under Grant 82130093.

342

343 **Conflicts of Interest**

344 H.Yu received research funding from Sanofi Pasteur, GlaxoSmithKline, Yichang HEC
345 Changjiang Pharmaceutical Company, Shanghai Roche Pharmaceutical Company, and
346 SINOVAC Biotech Ltd. None of these are related to this study.

347

348 **Data Availability**

349 The data that support the findings of this study are available from the corresponding author, upon
350 reasonable request.

351

352 **Supplementary Materials**

353 Fig. S1. Distribution of the interval from onset to report. (a) The probability density function. (b)
354 The cumulative distribution function.

355 Fig. S2. Validation of the importing risk estimation for 24 countries reporting importation cases
356 more than three times.

357 Fig. S3. Distribution of the number of sexual partners within 1 year among MSM community in
358 mainland China.

359 Fig. S4. Correlation between the confirmed mpox cases number and active MSM population size
360 of 31 provinces in mainland China.

361 Table S1. Summary of epidemiological and clinical features.

362 Table S2. Summary of case number and population of each metropolitan areas among top 12
363 countries affected by mpox.

364 Table S3. Summary of international airports for each metropolitan area.

365 Table S4. Fitting information for duration of rash.

366 Table S5. Case Definitions of mpox in mainland China.

367 Table S6. Summary of diagnostic accuracy of confirmation test.

368 Table S7. R^2 for different regression combination.

369 Table S8. Country/region ISO Alpha-3 code and the according UN name.

370

References

1. J. G. Breman *et al.*, Human monkeypox, 1970-79. *Bulletin of the World Health Organization* **58**, 165-182 (1980).
2. P. Venkatesan, Global monkeypox outbreak. *Lancet Infect Dis* **22**, 950 (2022).
3. WHO. (2022), vol. 2022.
4. D. B. Di Giulio, P. B. Eckburg, Human monkeypox: an emerging zoonosis. *Lancet Infect Dis* **4**, 15-25 (2004).
5. E. M. Bunge *et al.*, The changing epidemiology of human monkeypox-A potential threat? A systematic review. *PLoS Negl Trop Dis* **16**, e0010141 (2022).
6. Centers for Disease and Prevention, Update: multistate outbreak of monkeypox--Illinois, Indiana, Kansas, Missouri, Ohio, and Wisconsin, 2003. *MMWR. Morbidity and mortality weekly report* **52**, 642-646 (2003).
7. G. D. Huhn *et al.*, Clinical characteristics of human monkeypox, and risk factors for severe disease. *Clin Infect Dis* **41**, 1742-1751 (2005).
8. V. Costello *et al.*, Imported Monkeypox from International Traveler, Maryland, USA, 2021. *Emerg Infect Dis* **28**, 1002-1005 (2022).
9. F. S. Minhaj *et al.*, Monkeypox Outbreak - Nine States, May 2022. *MMWR. Morbidity and mortality weekly report* **71**, 764-769 (2022).
10. A. Vaughan *et al.*, Two cases of monkeypox imported to the United Kingdom, September 2018. *Euro Surveill* **23**, (2018).
11. N. Erez *et al.*, Diagnosis of Imported Monkeypox, Israel, 2018. *Emerg Infect Dis* **25**, 980-983 (2019).
12. S. E. F. Yong *et al.*, Imported Monkeypox, Singapore. *Emerg Infect Dis* **26**, 1826-1830 (2020).
13. WHO, "Multi-country outbreak of monkeypox, External situation report #6 - 21 September 2022," (2022).
14. L. Osadebe *et al.*, Enhancing case definitions for surveillance of human monkeypox in the Democratic Republic of Congo. *PLoS Negl Trop Dis* **11**, e0005857 (2017).
15. M. Perez Duque *et al.*, Ongoing monkeypox virus outbreak, Portugal, 29 April to 23 May 2022. *Euro Surveill* **27**, (2022).
16. E. R. Whitehouse *et al.*, Clinical and Epidemiological Findings from Enhanced Monkeypox Surveillance in Tshuapa Province, Democratic Republic of the Congo During 2011-2015. *The Journal of infectious diseases* **223**, 1870-1878 (2021).
17. A. Yinka-Ogunleye *et al.*, Outbreak of human monkeypox in Nigeria in 2017-18: a clinical and epidemiological report. *Lancet Infect Dis* **19**, 872-879 (2019).
18. N. L. Bragazzi *et al.*, Epidemiological trends and clinical features of the ongoing monkeypox epidemic: A preliminary pooled data analysis and literature review. *Journal of medical virology*, (2022).
19. WHO. (2023), vol. 2023.
20. L. T. Allan-Blitz *et al.*, A Position Statement on Mpox as a Sexually Transmitted Disease. *Clin Infect Dis*, (2022).
21. WHO. (2022), vol. 2022.
22. WHO. (2023), vol. 2023.
23. A. Endo, S. M. Jung, F. Miura, Mpox emergence in Japan: ongoing risk of establishment in Asia. *Lancet* **401**, 1923-1924 (2023).
24. L. a. W. Ministry of Health. (2023), vol. 2023.
25. K. Yoon-mi. (2023), vol. 2023.
26. WHO. (2023), vol. 2023.
27. E. Jimenez, P. Suau-Sanchez, Reinterpreting the role of primary and secondary airports in low-cost carrier expansion in Europe. *J Transp Geogr* **88**, 102847 (2020).

- 421 28. The Central People's Government of the People's Republic of China. (2022), vol. 2022.
422 29. ECDC, "Considerations for contact tracing during the monkeypox outbreak in Europe,
423 2022," (2022).
- 424 30. M. Hartfield, S. Alizon, Introducing the outbreak threshold in epidemiology. *PLoS Pathog*
425 **9**, e1003277 (2013).
- 426 31. L. Zhang, E. P. Chow, D. P. Wilson, Distributions and trends in sexual behaviors and HIV
427 incidence among men who have sex with men in China. *BMC Public Health* **12**, 546
428 (2012).
- 429 32. L. Zhang, E. P. Fung Chow, D. P. Wilson, Men who have sex with men in China have
430 relatively low numbers of sexual partners. *Infectious disease reports* **3**, e10 (2011).
- 431 33. J. O. Lloyd-Smith, Vacated niches, competitive release and the community ecology of
432 pathogen eradication. *Philos Trans R Soc Lond B Biol Sci* **368**, 20120150 (2013).
- 433 34. Ministerio de Sanidad. (2022), vol. 2022.
- 434 35. Robert Koch-Institut. (2022), vol. 2022.
- 435 36. C. R. S. Madarang. (2022), vol. 2022.
- 436 37. Bernama. (2022), vol. 2022.
- 437 38. B. PULIPAKA. (2022), vol. 2022.
- 438 39. N. S. Ali. (2022), vol. 2022.
- 439 40. K. Arin. (2022), vol. 2022.
- 440 41. B. Y. t . (2022), vol. 2022.
- 441 42. H. Zhao *et al.*, The First Imported Case of Monkeypox in the Mainland of China -
442 Chongqing Municipality, China, September 16, 2022. *China CDC Wkly* **4**, 853-854
443 (2022).
- 444 43. A. Endo *et al.*, Heavy-tailed sexual contact networks and monkeypox epidemiology in the
445 global outbreak, 2022. *Science* **378**, 90-94 (2022).
- 446 44. K. O. Kwok, W. I. Wei, A. Tang, S. Y. Shan Wong, J. W. Tang, Estimation of local
447 transmissibility in the early phase of monkeypox epidemic in 2022. *Clin Microbiol Infect*,
448 (2022).
- 449 45. M. Hu, C. Xu, J. Wang, Spatiotemporal Analysis of Men Who Have Sex With Men in
450 Mainland China: Social App Capture-Recapture Method. *JMIR Mhealth Uhealth* **8**,
451 e14800 (2020).
- 452 46. J. A. Grey *et al.*, Estimating the Population Sizes of Men Who Have Sex With Men in US
453 States and Counties Using Data From the American Community Survey. *JMIR Public*
454 *Health Surveill* **2**, e14 (2016).
- 455 47. WHO, "Multi-country outbreak of mpox," (2023).
- 456 48. M. U. G. Kraemer *et al.*, Tracking the 2022 monkeypox outbreak with epidemiological
457 data in real-time. *Lancet Infect Dis* **22**, 941-942 (2022).
- 458 49. National Health Commission of the People's Republic of China. (2022), vol. 2022.
- 459 50. CDC. (2023), vol. 2023.
- 460 51. CDC. (2023), vol. 2023.
- 461
- 462

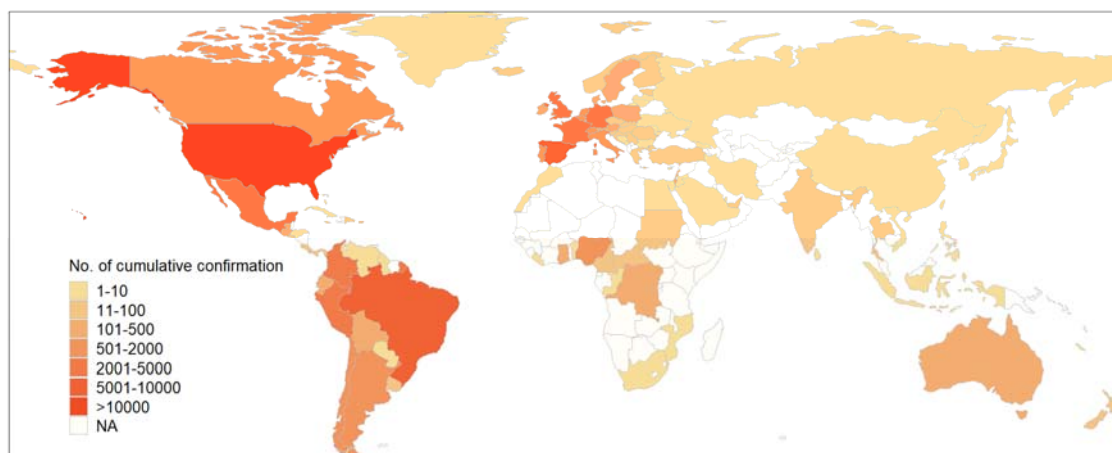


Fig. 1. Spatial distribution of mpox cases. Spatial distribution of confirmed mpox cases from January 1, 2022 to June 13, 2023. Shapes in color of ivory indicate that data in countries/regions is not available (NA).

463
464
465
466

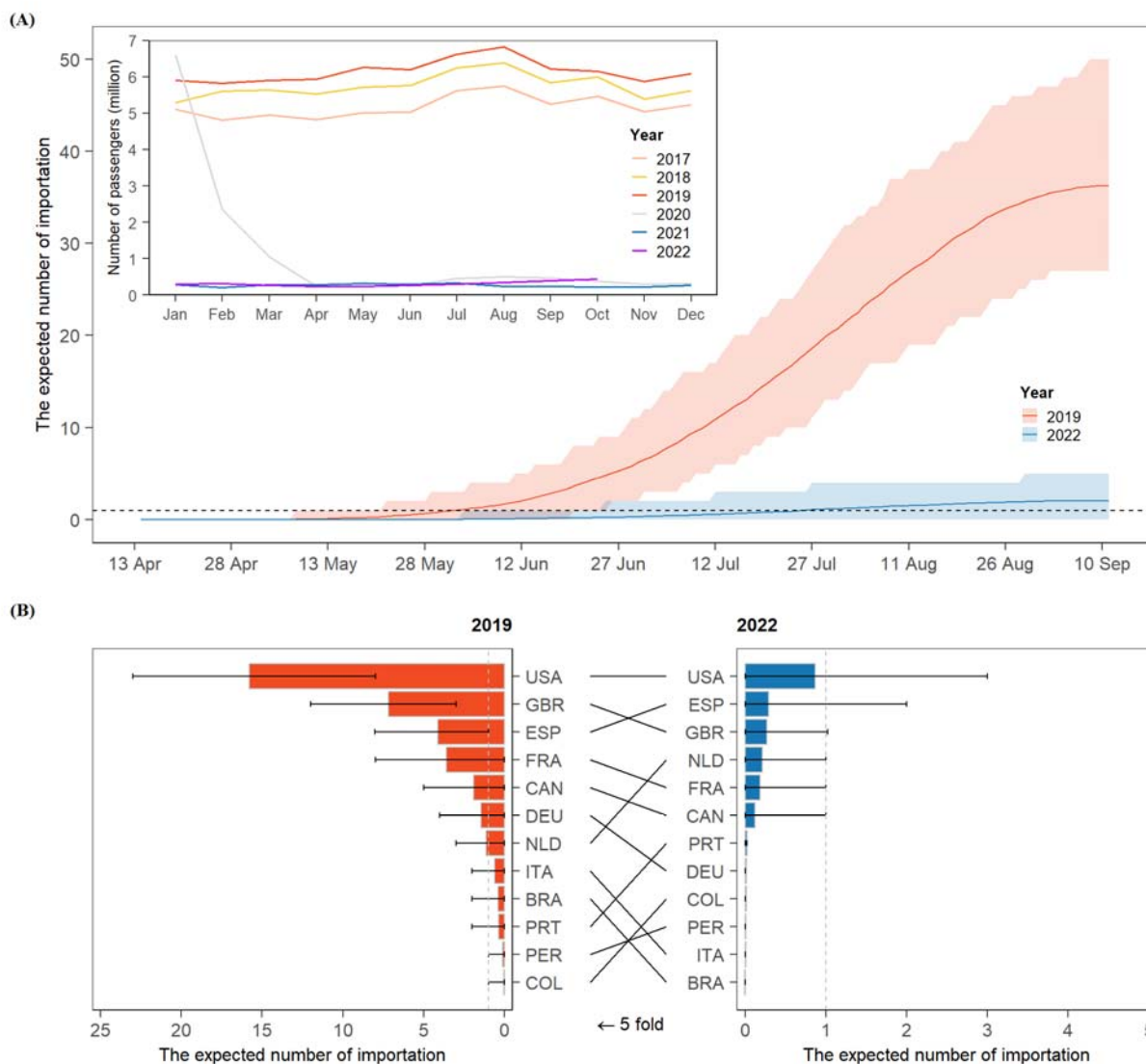
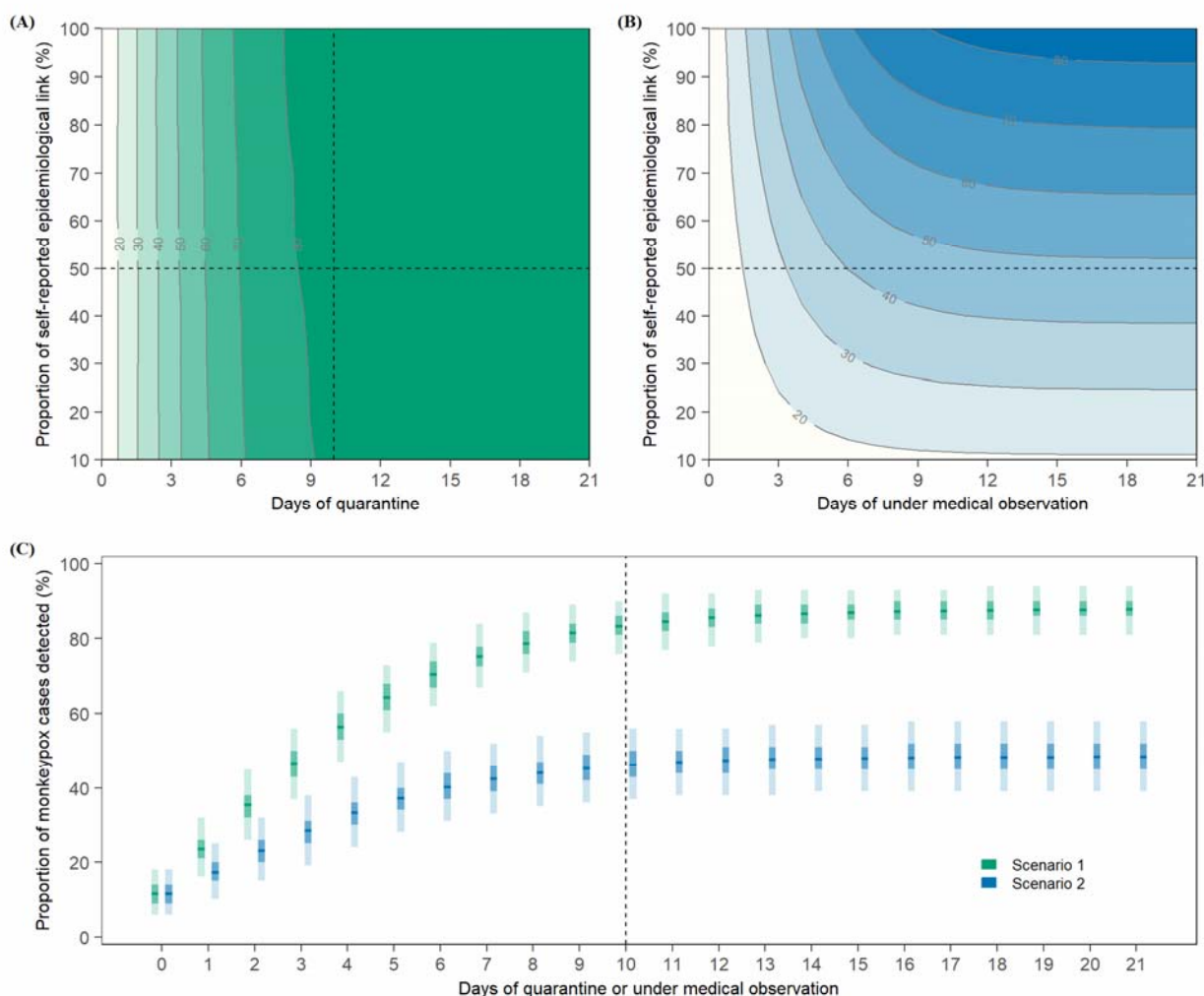
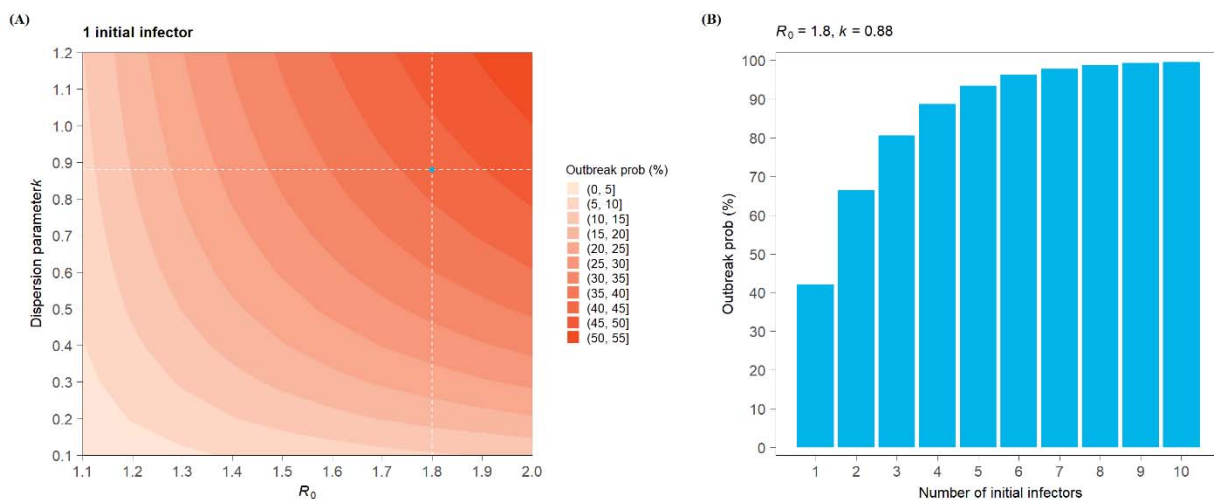


Fig. 2. The air-traffic volume and the expected number of mpox importations in China. (A) The expected cumulative number of mpox importations from May to September 2022 with air-traffic volume in 2019 and 2022. (B) The expected number of mpox case importation from other countries/regions with air-traffic volume in 2019 and 2022. In panel a, the inset indicates the monthly air-traffic volume to mainland China from 2017 to 2022. In panel b, the three letter texts are ISO Alpha-3 codes, i.e., DEU denotes Germany, ESP denotes Spain, GBR denotes the UK, etc. Detailed ISO Alpha-3 codes can be seen in Table S8.

467
468
469
470
471
472
473
474



475
476
477 **Fig. 3.** Effectiveness of mpox border screening policies under two assumed scenarios. (A) Number of total
478 detected mpox cases under Scenario 1 (corresponding to China's pandemic quarantine policy), with
479 proportion of self-reported epidemiological links ranging from 10% to 100%, and days of quarantine
480 ranging from 0 to 21. (B) Number of total detected mpox cases under Scenario 2 (a pre-pandemic scenario),
481 with proportion of self-reported epidemiological links ranging from 10% to 100%, and days of medical
482 observation ranging from 0 to 21. (C) Number of total detected mpox cases with 50% self-reported
483 epidemiological links with mpox cases under days of quarantine or medical observation from 0 to 21. In
484 panel c, the horizontal lines indicate the mean, with dark and light shades indicating 50% CI, and 95%
485 confidence interval.



486
487
488 **Fig. 4.** Estimated outbreak probability. (a) the outbreak probability of one mpox case introduced into the
489 MSM community in mainland China, with R_0 ranges from 1.1 to 2, and dispersion parameter k ranges from
490 0.1 to 1.2. In panel a, the dashed lines and dot refer to $R_0=1.8$ and $k=0.88$, a plausible guess of mpox
491 transmissibility in mainland China. (b) the outbreak probability as a function of the number of seeding
infectors ranges from 1 to 10, with $R_0=1.8$ and $k=0.88$.