

Respiratory symptoms after coalmine fire and pandemic: a longitudinal analysis of the Hazelwood Health Study adult cohort

Authors

Tyler J. Lane¹, Matthew Carroll², Brigitte M. Borg^{1,3}, Tracy A. McCaffrey⁴, Catherine L. Smith¹, Caroline Gao^{1,5}, David Brown¹, Amanda Johnson¹, David Poland², Shantelle Allgood², Jillian Ikin¹, Michael J. Abramson¹

Affiliations

¹ School of Public Health and Preventive Medicine, Monash University, Melbourne VIC Australia

² Monash Rural Health Churchill, Monash University, Churchill VIC Australia

³ Respiratory Medicine, The Alfred, Melbourne VIC Australia

⁴ Department of Nutrition, Dietetics and Food, Monash University, Melbourne VIC Australia

⁵ Orygen, Centre for Youth Mental Health, The University of Melbourne, Parkville VIC Australia

Abstract

Background

Extreme but discrete fine particle $<2.5\mu\text{m}$ ($\text{PM}_{2.5}$) exposure is associated with higher prevalence of respiratory symptoms. It is unknown whether these effects abate, persist, or worsen over time, nor whether COVID-19 exacerbates $\text{PM}_{2.5}$ effects.

Methods

We analysed longitudinal survey data from a cohort residing near a 2014 coalmine fire in regional Australia. A 2016/2017 survey included $n=4,056$ participants, of whom $n=612$ were followed-up in 2022. Items include questions about 7 respiratory symptoms, history of COVID-19, and time-location diaries that were combined with geospatial models of fire-related $\text{PM}_{2.5}$. Associations were examined using logistic and mixed-effects logistic regressions.

Results

$\text{PM}_{2.5}$ exposure predicted higher prevalence of chronic cough and current wheeze 2-3 years post-fire. At the 2022 follow-up, $\text{PM}_{2.5}$ exposure was associated with worsening prevalence of chronic cough and possibly current wheeze. While there were no detectable interaction effects between $\text{PM}_{2.5}$ and COVID-19, participants with a history of COVID-19 exhibited more significant associations between $\text{PM}_{2.5}$ exposure and respiratory symptoms.

Discussion

Short-term but extreme PM_{2.5} may increase the long-term prevalence of chronic cough, while COVID-19 may exacerbate the effect on other respiratory symptoms.

1 Introduction

Exposure to fine particulate matter $<2.5 \mu\text{m}$ ($\text{PM}_{2.5}$) worsens respiratory health.^{1,2} When the source is an extreme combustion event like wildfire, $\text{PM}_{2.5}$ is likely even more harmful.³ In early 2014, a coalmine fire near the Hazelwood power station in regional Victoria, Australia, shrouded the adjacent town of Morwell in smoke and ash for six weeks. Hourly mean $\text{PM}_{2.5}$ reached $3730\mu\text{g}/\text{m}^3$,⁴ more than 12 times the $300\mu\text{g}/\text{m}^3$ threshold for hourly mean $\text{PM}_{2.5}$ which is categorised as “extremely poor” by Environment Protection Authority Victoria.⁵ Those residing in Morwell reported numerous symptoms during the coalmine fire including respiratory problems like shortness of breath, chest tightness, and cough.⁶

The Hazelwood Health Study was established to investigate how smoke from the coalmine fire affected long-term health. In the years since, it has found numerous associations between $\text{PM}_{2.5}$ exposure and poorer respiratory health. $\text{PM}_{2.5}$ during the fire was associated with respiratory medical services including GP and specialist visits,⁷ hospital admissions, and emergency presentations,⁸ and dispensing of inhaled medicines.⁹ There is evidence that effects have persisted for at least a few years, including higher prevalence of respiratory symptoms measured between 2-4 years after the fire,^{10,11} accelerated lung ageing and features of chronic obstructive pulmonary disease (COPD) at 4 years,¹¹⁻¹³ and elevated respiratory emergency department presentations.¹⁴ Recent findings suggest some recovery in lung function 7.5 years after the fire,¹⁵ though the long-term effects remain unclear.

In late 2019, the COVID-19 pandemic emerged as another threat to respiratory health. The combination of ambient $\text{PM}_{2.5}$ exposure and COVID-19 has been associated with more severe disease.¹⁶ However, it is unknown whether discrete but extreme $\text{PM}_{2.5}$ smoke events several years in the past have similar exacerbating effects.¹⁷

In this analysis, we addressed the following research questions:

1. Does coalmine fire-related $\text{PM}_{2.5}$ affect long-term respiratory symptom trajectory?
2. Does COVID-19 infection worsen the long-term effects of coalmine fire-related $\text{PM}_{2.5}$ exposure on respiratory symptoms?

2 Methods

This study was pre-registered on the Open Science Framework on 19 July 2022, the month before the follow-up survey commenced, and updated during the survey with a more specific analysis plan on 22 November 2022.²

2.1 Participants

This analysis uses data from two surveys of the Hazelwood Health Study's Adult Cohort. The cohort was established in the initial survey, administered from May 2016 to February 2017. Using electoral rolls, we identified individuals who had been residing in Morwell, a town adjacent to the coalmine and whose residents experienced the most smoke exposure, and the nearby unexposed site of Sale, during the coalmine (see Figure 1). This resulted in a cohort of $n=4,056$.¹⁸ From August to December 2022, we invited living cohort members who were not part of a separate follow-up survey on mental health outcomes and consented to further contact ($n = 2,385$) to participate in a follow-up study. Data were collected using REDCap.^{19,20}

2.1.1 Exposures

Participant's daily mean $PM_{2.5}$ exposure during the coalmine fire was determined by blending self-reported time-location diaries, which located individuals for each 12-hour interval during the fire, with modelled estimates of hourly coalmine fire-related $PM_{2.5}$ concentrations. Modelled $PM_{2.5}$ concentrations were assigned to Morwell at Statistical Area Level 1, and other nearby affected areas at the lower resolution of Statistical Area Level 2.^{4,18} Cumulative $PM_{2.5}$ distributions during the fire are illustrated in Figure 1, showing the positions of the coalmine, exposure site Morwell, and control site Sale.

History of COVID-19 was self-reported using a standardised questionnaire,²¹ available in the supplementary materials.

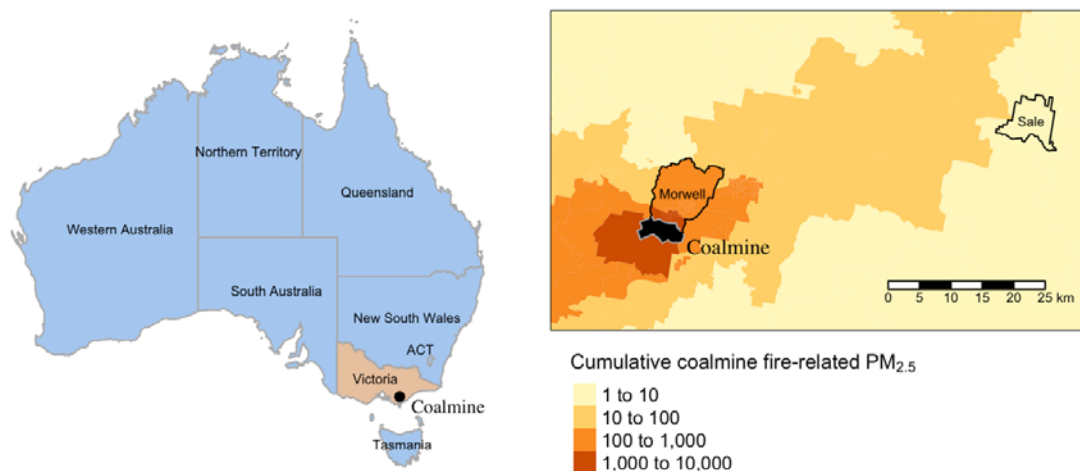


Figure 1. Maps of Australia illustrating location of the coalmine and distributions of fire related-PM_{2.5} (February to March 2014) in the surrounding areas, highlighting exposure site Morwell and control site Sale

2.1.2 Outcomes

Respiratory symptom questions were derived from a modified version of the European Community Respiratory Health Survey (ECRHS) Short Screening Questionnaire and included: current wheeze, chest tightness, nocturnal shortness of breath, resting shortness of breath, current nasal symptoms, chronic cough, and chronic phlegm.²² Items are available in supplementary materials.

2.1.3 Confounders

We adjusted for factors that could confound the effect of mine fire-related PM_{2.5} exposure and COVID-19 on the development of respiratory symptoms. Demographic factors included age at the initial (2016/17) survey, transformed with a natural spline to account for non-linear effects, and sex. Tobacco use was measured with smoking status (current, former, never) and cigarette pack-years or the number of packs of 20 cigarettes smoked per day multiplied by years as a smoker, which was square root-transformed to account for extreme right skew. We adjusted for socioeconomic factors using the Index of Relative Socioeconomic Advantage and Disadvantage (IRSAD) score for residential area at Statistical Area Level 2 based on 2016 census data²³ and individual educational attainment. Diagnosis of asthma or COPD before the coalmine fire was treated as a confounder. For analyses of the longitudinal effects of PM_{2.5} on respiratory symptoms, COVID-19 was included as a confounder. Being fully vaccinated against COVID-19 (4+ vaccinations) was included as a confounder in all analyses.

2.2 Statistical analyses

Descriptive statistics were used to characterise the sample by survey rounds and area of residence during the coalmine fire. Continuous variables are presented as medians and interquartile ranges and categorical/dichotomous variables as counts and percentages.

To estimate the longitudinal effects of PM_{2.5} on respiratory symptoms, we conducted crude and adjusted mixed-effects logistic regression models for each outcome using interaction terms between PM_{2.5} and survey round and random intercepts for participants. To estimate whether COVID-19 moderated the effect of PM_{2.5} on respiratory symptoms, we conducted crude and adjusted logistic regressions for each outcome, using interaction terms between PM_{2.5} and COVID-19. As this analysis used only cohort members who participated in the follow-up survey, we used inverse probability weights (balanced) to account for attrition from the invited cohort members to the follow-up survey. These characteristics included age at original survey, sex, educational attainment, general health, and cigarette pack-years.

Sensitivity analyses added residence during the coalmine fire (Morwell vs Sale) as this may capture other unmeasured risk factor differences such as lifestyle and quality of health services. To account for missing data, we used multiple imputation by chained equations and pooled results according to Rubin's rules.²⁴ While survey data are confidential and cannot be shared, we have archived cleaning and analytical code on a public repository.²⁵ Data were analysed in R²⁶ using RStudio.²⁷ More detail about statistical packages is available in the supplementary materials.

2.3 Ethics

This study received approval from the Monash University Human Research Ethics Committee (MUHREC) as part of the Hazelwood Adult Survey & Health Record Linkage Study (Project ID: 25680; previously CF15/872 – 2015000389 and 6066). Cohort members gave informed consent for each survey in which they participated.

3 Results

3.1 Descriptives

From the 4,056 members of the original cohort, 2,385 (59%) were invited to participate in the follow-up survey, of whom 612 (26%) participated. Reasons for non-participation are described elsewhere.¹⁷ Descriptives statistics by survey round and residence can be found in Table S1 in the supplementary materials. Among Morwell respondents the prevalence of all respiratory symptoms increased significantly between surveys, as did current wheeze, chest tightness, resting shortness of breath, and nasal allergy among Sale respondents (see Figure S1 in the supplementary materials).

3.2 Longitudinal effects of coalmine fire-related PM_{2.5} on respiratory symptoms

At the initial survey (2-3 years post-fire), crude and adjusted analyses found significant increases in the prevalence of chronic cough that was associated with mine fire-related PM_{2.5} exposure. Prevalence of current wheeze and chest tightness was also elevated in crude and adjusted models, though both attenuated in magnitude and significance with adjustment for study site (Morwell or Sale).

Between the initial 2016/17 survey and 2022 follow-up (8.5-9 years post-fire), the prevalence of chronic cough increased in conjunction with PM_{2.5} exposure across all models. Crude models also found a significant increase in current wheeze at follow-up, and while the point estimates were similar in adjusted models, there was a slight attenuation to non-significance. The long-term effects of PM_{2.5} – from the 2014 coalmine fire to 2022 follow-up survey – indicate increased prevalence of both chronic cough and current wheeze. Model results are illustrated in Figure 1 and summarised in Supplementary Table 1.

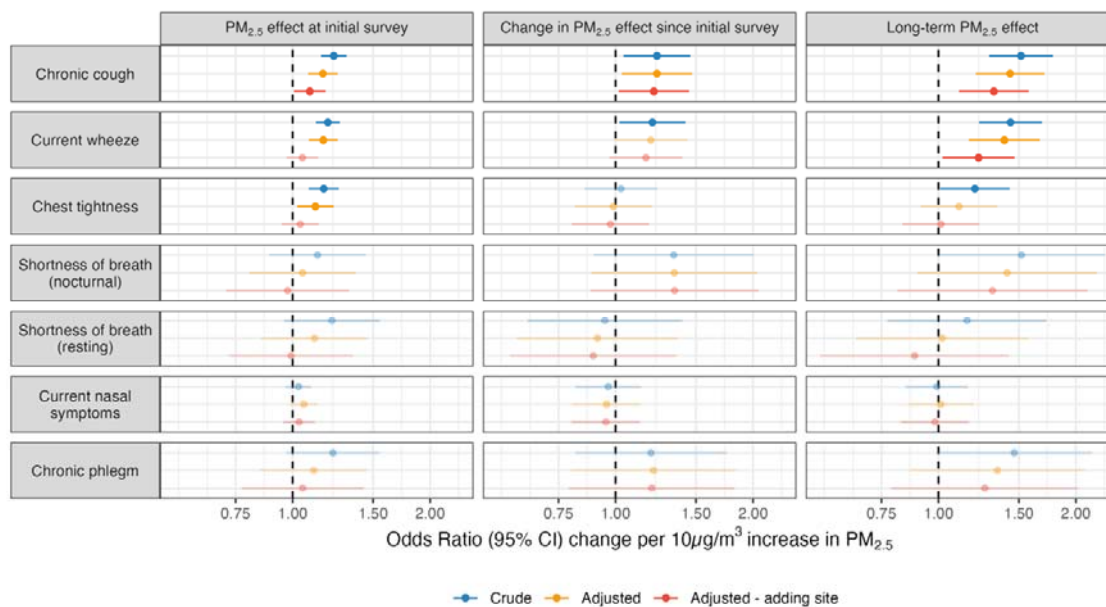


Figure 2. Effects of $10\mu\text{g}/\text{m}^3$ increase in mean coalmine fire-related $\text{PM}_{2.5}$ on odds of respiratory symptom at the initial 2016/17 survey (2-3 years post-fire), change between the two survey rounds (interaction term between fire-related $\text{PM}_{2.5}$ and survey round), and the cumulative long-term effect at the 2022 follow-up (8.5-9 years post-fire, estimated using linear combination of $\text{PM}_{2.5}$ and interaction term); faded points and intervals indicate non-significant effects

To investigate whether $\text{PM}_{2.5}$ effects on wheeze were the result of worsening asthma control, we stratified analyses based on self-reported asthma diagnoses at the initial 2016/17 survey. Surprisingly, effects were isolated to non-asthmatics. There was also a total reduction in chest tightness among asthmatics. These results are presented in Figure S2 in the supplementary materials.

3.3 Interaction effects of $\text{PM}_{2.5}$ and COVID-19 on respiratory symptoms

These analyses were limited to the 612 cohort members who participated in the follow-up survey. Compared to those invited but non-participating cohort members, follow-up participants were more likely to be female ($p=0.032$), younger ($p=0.002$), in better health ($p=0.017$), have asthma ($p=0.014$) but less likely to have COPD ($p=0.002$) before the coalmine fire, more highly educated ($p < 0.001$), from a higher socioeconomic area ($p < 0.001$), and more likely to be a former smoker than current smoker ($p < 0.001$). See Table S2 in the supplementary materials for more detail. These factors were incorporated into inverse probability weighting to account for attrition bias.

Interaction effects between $PM_{2.5}$ exposure and COVID-19 were non-significant. However, point estimates were positive for current wheeze (OR range: 1.23-1.30), chest tightness (OR range: 1.23-1.37), nocturnal shortness of breath (OR range: 1.37-1.49), and chronic phlegm (OR range: 1.28-1.30), suggestive of some exacerbation of $PM_{2.5}$ effects by COVID-19. In addition, associations between $PM_{2.5}$ and respiratory symptoms varied based on history of COVID-19. $PM_{2.5}$ exposure was only associated with chronic cough and possibly current wheeze among participants with no history of COVID-19, but among those with a history of COVID-19 it was associated with the same factors where there was some indication of $PM_{2.5}$ -COVID-19 interaction: chronic cough, current wheeze, shortness of breath (nocturnal), chronic phlegm, and possibly chest tightness. However, it is worth noting that only current wheeze was robust to adjustment for study site. Model results are summarised in Figure 3 and Table S3 in the supplementary materials.

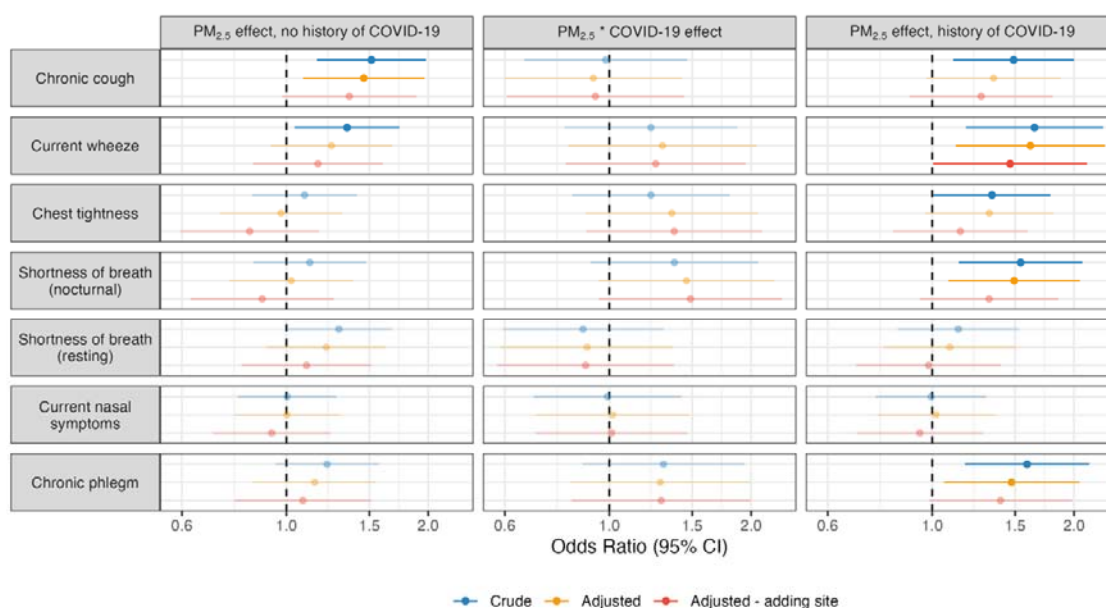


Figure 3. Effects of $10\mu\text{g}/\text{m}^3$ increases in coalmine fire-related $PM_{2.5}$ and COVID-19 on prevalence of respiratory symptoms and whether there is a moderating effect, 8.5-9 years after the fire; faded points and intervals indicate non-significant effects

4 Discussion

We found an association between PM_{2.5} from the Hazelwood coalmine fire and a sustained and worsening increase in chronic cough. Along with a persistent and perhaps worsening increase in current wheeze, the findings are a concerning development for our cohort and others around the world who have been exposed to extreme smoke events. Chronic cough is associated with deteriorations in physical, mental, and social health²⁸ and treatments are limited and complex.²⁹

Environmental triggers such as PM_{2.5} are associated with cough hypersensitivity,³⁰ which lowers the threshold for a physiological cough response.^{30,31} Such an effect has been demonstrated after other discrete but extreme air pollutant exposures like the 9/11 terrorist attacks in New York and earthquake rescue operations.³⁰ The precise mechanism is unclear, though there is evidence for neuropathology such as upregulation of sensory neuroreceptors (e.g., P2X3, TRPA1, and TRPV1) in response to air pollutants^{30,32} including PM_{2.5}.³³

It is unclear why the effects worsened over time. Another major smoke event, the 2019/2020 Black Summer bushfires, may have increased the prevalence of chronic cough, though exposures were much less extreme than the Hazelwood coalmine fire and air quality measurements suggested little difference in exposure between Morwell and nearby areas.¹⁷ If the cough hypersensitivity explanation is correct, the Black Summer bushfires could have exacerbated effects of the Hazelwood coalmine fire, significantly increasing the prevalence of chronic cough.

The mechanism behind sustained and perhaps worsening prevalence of current wheeze due to coalmine fire-related PM_{2.5} exposure is less clear. Previous analyses found limited evidence that the coalmine fire worsened asthma control.¹¹ Further, in sensitivity analyses we found that the increase in current wheeze was isolated to non-asthmatics, and there was a *reduction* in chest tightness among asthmatics. One explanation is asthmatics have access to inhaled medications that enable them to control respiratory symptoms like wheeze, while non-asthmatics do not.

There was also some evidence that long-term PM_{2.5} effects were exacerbated by COVID-19. While the interaction terms were non-significant, point estimates among several symptoms

were positive and robust to adjustment, and some PM_{2.5}-respiratory symptom associations (nocturnal shortness of breath, chronic phlegm, and possibly chest tightness) were only observed among participants with a history of COVID-19. Given the tenuous nature of these associations, we approach potential explanations with due caution. One possible pathway is the effect of PM_{2.5} on the angiotensin-converting enzyme 2 (ACE2) receptor, which the SARS-CoV2 virus uses to enter cells throughout the body,³⁴ possibly explaining why ambient PM_{2.5} exposure is associated with more severe COVID-19 disease.¹⁶

Interestingly, we observed an effect of PM_{2.5} on chronic cough regardless of COVID-19 history (while only significant in the crude model among those with a history of COVID-19, point estimates only attenuated slightly with adjustment for potential confounders). This aligns with the proposed mechanism of upregulation of sensory neuroreceptors leading to cough hypersensitivity, which has a pathway is independent of COVID-19.

4.1 Strengths and limitations

Among this study's strengths are the longitudinal design, use of time-location diaries and modelled air pollution data to estimate individual-level PM_{2.5} exposure, accounting for events occurring between survey rounds like the COVID-19 pandemic, adjustment for important confounders such as socioeconomic factors and smoking, and consistent use of standardised validated measures for respiratory symptom outcomes.

Limitations include a modest participation rate in the follow-up survey and a modest follow-up sample size, as well as a lack of participant data preceding the coalmine fire. Time-location diaries used to determine where participants were during the mine fire were likely subject to recall bias, especially since they were administered 2-3 years after the event. PM_{2.5} exposure was based on modelled estimates, which may deviate from actual concentrations especially the early days of the fire when the model predicts the highest concentrations but air quality monitoring was unavailable.⁴ Further, exposure estimates did not consider individual variations due to wearing masks or staying indoors. The uniqueness of this cohort, particularly their age, regional location, and residence within a developed country that was highly vaccinated before COVID-19 became widespread, may not generalise to other settings.

5 Conclusions

Our findings suggest extreme but short-term PM_{2.5} exposure from a coalmine fire has negative long-term effects on respiratory health, most noticeably chronic cough, possibly due to inducement of cough hypersensitivity. This is concerning because the effect appears to worsen over time, and chronic cough is associated with a deterioration in health. We also found limited evidence that COVID-19 exacerbated effects of coalmine fire-related PM_{2.5}.

There are serious implications for the millions of Australians affected by the 2019/2020 Black Summer bushfires, the hundreds of millions affected by 2020 and 2023 wildfires across the United States and Canada and elsewhere. As climate change increases the frequency, intensity, duration, and spread of fires, smoke exposure will grow as global public health problem, and may be made even worse with the spread zoonotic respiratory diseases.

6 Public Health Implications

Smoke exposure from fire events like the Hazelwood coalmine fire likely has long-term negative effects on respiratory health, which may be exacerbated in people who have had COVID-19. Our findings are timely, as wildfires raged across the globe in 2023 due to climate change and El Niño, exposing an unprecedented number of people to smoke while COVID-19 continued to spread. Our findings add to the growing body evidence on the necessity of global efforts to minimise smoke exposure, mitigate climate change, and stamp out other practices that lead to zoonotic diseases including habitat destruction and the wild animal trade.

7 Research funding

This study was funded by the Department of Health, State Government of Victoria, though it represents the views of the authors and not the Department.

8 References

1. Feng S, Gao D, Liao F, Zhou F, Wang X. The health effects of ambient PM_{2.5} and potential mechanisms. *Ecotoxicol Environ Saf.* 2016;128:67-74. doi:10.1016/j.ecoenv.2016.01.030
2. Xing YF, Xu YH, Shi MH, Lian YX. The impact of PM_{2.5} on the human respiratory system. *J Thorac Dis.* 2016;8(1):E69-E74. doi:10.3978/j.issn.2072-1439.2016.01.19
3. Franzl LM, Bratt JM, Williams KM, Last JA. Why is particulate matter produced by wildfires toxic to lung macrophages? *Toxicology and Applied Pharmacology.* 2011;257(2):182-188. doi:10.1016/j.taap.2011.09.003
4. Luhar AK, Emmerson KM, Reisen F, Williamson GJ, Cope ME. Modelling smoke distribution in the vicinity of a large and prolonged fire from an open-cut coal mine. *Atmos Environ.* 2020;229:117471. doi:10.1016/j.atmosenv.2020.117471
5. Environment Protection Authority Victoria. PM_{2.5} particles in the air. EPA Victoria. Published August 9, 2021. Accessed July 18, 2023. <https://www.epa.vic.gov.au/for-community/environmental-information/air-quality/pm25-particles-in-the-air>
6. Teague B, Catford J, Petering S. *Hazelwood Mine Fire Inquiry Report 2014*. Government of Victoria; 2014. <https://apo.org.au/node/41121>
7. Johnson AL, Gao CX, Dennekamp M, et al. Coal-mine fire-related fine particulate matter and medical-service utilization in Australia: a time-series analysis from the Hazelwood Health Study. *Int J Epidemiol.* 2020;49(1):80-93. doi:10.1093/ije/dyz219
8. Guo Y, Gao CX, Dennekamp M, et al. The association of coal mine fire smoke with hospital emergency presentations and admissions: Time series analysis of Hazelwood Health Study. *Chemosphere.* 2020;253:126667. doi:10.1016/j.chemosphere.2020.126667
9. Johnson AL, Dipnall JF, Dennekamp M, et al. Fine particulate matter exposure and medication dispensing during and after a coal mine fire: A time series analysis from the Hazelwood Health Study. *Environ Pollut.* 2019;246:1027-1035. doi:10.1016/j.envpol.2018.12.085
10. Johnson AL, Gao CX, Dennekamp M, et al. Associations between respiratory health outcomes and coal mine fire PM_{2.5} smoke exposure: A cross-sectional study. *IJERPH.* 2019;16(21):4262. doi:10.3390/ijerph16214262
11. Prasad S, Gao CX, Borg B, et al. Chronic obstructive pulmonary disease in adults exposed to fine particles from a coal mine fire. *Ann Am Thorac Soc.* 2022;19(2):186-195. doi:10.1513/AnnalsATS.202012-1544OC
12. Holt NR, Gao CX, Borg BM, et al. Long-term impact of coal mine fire smoke on lung mechanics in exposed adults. *Respirology.* 2021;26(9):861-868. doi:10.1111/resp.14102
13. McCrabb T, Borg B, Gao CX, et al. Ventilation heterogeneity is increased in adults exposed to coal mine fire-related PM_{2.5}. Published online 2023. doi:10.1101/2023.06.08.23291105

14. Smith CL, Gao CX, Xu R, et al. Long-term impact of the 2014 Hazelwood coal mine fire on emergency department presentations in Australia. *Environ Res.* 2023;223:115440. doi:10.1016/j.envres.2023.115440
15. Holt NR. Change in Lung Function After Exposure to Smoke From a Mine Fire: A Clinical Follow-up. Presented at: American Thoracic Society International Scientific Conference; 2023; Washington, D.C.
16. Sheppard N, Carroll M, Gao CX, Lane T. Particulate matter air pollution and COVID-19 infection, severity, and mortality: A systematic review and meta-analysis. *Sci Total Environ.* 2023;880. doi:10.1016/j.scitotenv.2023.163272
17. Lane TJ, Carroll M, Borg BM, et al. Long-term effects of extreme smoke exposure on COVID-19: A cohort study. Published online April 15, 2023. doi:10.1101/2023.04.12.23288500
18. Lane TJ, Carroll M, McCaffrey TA. Long-term respiratory health in a community affected by mine fire. Open Science Framework. Published July 19, 2022. <https://osf.io/yfgeb3/>
19. Ikin J, Carroll MTC, Walker J, et al. Cohort profile: The Hazelwood Health Study Adult Cohort. *Int J Epidemiol.* 2021;49(6):1777-1778g. doi:10.1093/ije/dyaa083
20. Harris PA, Taylor R, Thielke R, Payne J, Gonzalez N, Conde JG. Research electronic data capture (REDCap)—A metadata-driven methodology and workflow process for providing translational research informatics support. *J Biomed Inform.* 2009;42(2):377-381. doi:10.1016/j.jbi.2008.08.010
21. Harris PA, Taylor R, Minor BL, et al. The REDCap consortium: Building an international community of software platform partners. *J Biomed Inform.* 2019;95:103208. doi:10.1016/j.jbi.2019.103208
22. Northstone K, Howarth S, Smith D, Bowring C, Wells N, Timpson NJ. The Avon Longitudinal Study of Parents and Children - A resource for COVID-19 research: Questionnaire data capture April-May 2020 [version 2; peer review: 2 approved]. *Wellcome Open Res.* 2020;5(127). doi:10.12688/wellcomeopenres.16020.2
23. Burney P, Jarvis D. *European Community Respiratory Health Survey III (ECRHS III)*. Imperial College London; 2011. <https://www.ecrhs.org/questionnaires-and-protocols>
24. Australian Bureau of Statistics. 2033.0.55.001 - *Census of Population and Housing: Socio-Economic Indexes for Areas (SEIFA), Australia, 2016.*; 2018. Accessed May 13, 2019. <https://www.abs.gov.au/ausstats/abs@.nsf/mf/2033.0.55.001>
25. van Buuren S, Groothuis-Oudshoorn K. “mice”: Multivariate Imputation by Chained Equations in R. *J Stat Softw.* 2011;45(3):1-67. doi:10.18637/jss.v045.i03
26. Lane TJ. Respiratory symptoms after coalmine fire and pandemic: a longitudinal analysis of the Hazelwood Health Study cohort - analytical code. Bridges. Published 2023. <https://doi.org/10.26180/22596994.v2>

27. R Core Team. R: A Language and Environment for Statistical Computing. Published online 2023. <https://www.r-project.org/>
28. RStudio Team. RStudio: Integrated Development for R. Published online 2022. <https://www.rstudio.com>
29. Won HK, Song WJ. Impact and disease burden of chronic cough. *Asia Pacific Allergy*. 2021;11(2):e22. doi:10.5415/apallergy.2021.11.e22
30. Rouadi PW, Idriss SA, Bousquet J, et al. WAO-ARIA consensus on chronic cough – Part III: Management strategies in primary and cough-specialty care. Updates in COVID-19. *World Allergy Organ J*. 2022;15(5):100649. doi:10.1016/j.waojou.2022.100649
31. Jo EJ, Song WJ. Environmental triggers for chronic cough. *Asia Pac Allergy*. 2019;9(2):e16. doi:10.5415/apallergy.2019.9.e16
32. Morice AH, Millqvist E, Belvisi MG, et al. Expert opinion on the cough hypersensitivity syndrome in respiratory medicine. *Eur Respir J*. 2014;44(5):1132-1148. doi:10.1183/09031936.00218613
33. Song WJ, Morice AH. Cough hypersensitivity syndrome: A few more steps forward. *Allergy Asthma Immunol Res*. 2017;9(5):394. doi:10.4168/aair.2017.9.5.394
34. Lv H, Yue J, Chen Z, et al. Effect of transient receptor potential vanilloid-1 on cough hypersensitivity induced by particulate matter 2.5. *Life Sci*. 2016;151:157-166. doi:10.1016/j.lfs.2016.02.064
35. Bourdrel T, Annesi-Maesano I, Alahmad B, Maesano CN, Bind MA. The impact of outdoor air pollution on COVID-19: a review of evidence from *in vitro*, animal, and human studies. *Eur Respir Rev*. 2021;30(159):200242. doi:10.1183/16000617.0242-2020

Respiratory symptoms after coalmine fire and pandemic: a longitudinal analysis of the Hazelwood Health Study adult cohort: Supplementary materials

Authors

Tyler J. Lane¹, Matthew Carroll², Brigitte M. Borg^{1,3}, Tracy A. McCaffrey⁴, Catherine L. Smith¹, Caroline Gao^{1,5}, David Brown¹, Amanda Johnson¹, David Poland², Shantelle Allgood², Jillian Ikin¹, Michael J. Abramson¹

Affiliations

¹ School of Public Health and Preventive Medicine, Monash University, Melbourne VIC Australia

² Monash Rural Health Churchill, Monash University, Churchill VIC Australia

³ Respiratory Medicine, The Alfred, Melbourne VIC Australia

⁴ Department of Nutrition, Dietetics and Food, Monash University, Melbourne VIC Australia

⁵ Orygen, Centre for Youth Mental Health, The University of Melbourne, Parkville VIC Australia

Table of Contents

1	RESPIRATORY SYMPTOM QUESTIONS	3
2	DEVIATIONS FROM PRE-REGISTERED ANALYSIS PLAN	3
3	DESCRIPTIVES TABLE	5
3.1	CHANGES IN RESPIRATORY SYMPTOMS BETWEEN SURVEYS	6
4	SENSITIVITY ANALYSES: ASTHMA-STRATIFIED ANALYSES	6
5	ADDITIONAL RESOURCES	9
5.1	STATISTICAL PACKAGES FOR CLEANING AND ANALYSING STUDY DATA	9
5.2	MAPPING DATA AND SOFTWARE	9
6	MODEL OUTPUT TABLES	10
7	REFERENCES	13

1 Respiratory symptom questions

Respiratory symptom items were derived the *European Community Respiratory Health Survey III – Screening Questionnaire*¹ and are reproduced here.

- **Chronic cough:** Do you cough on most days for as much as three months a year?
- **Current wheeze:** Have you had wheezing or whistling in your chest at any time in the last 12 months?
- **Chest tightness:** Have you woken up with a feeling of tightness in your chest at any time in the last 12 months?
- **Shortness of breath (nocturnal):** Have you been woken by an attack of shortness of breath at any time in the last 12 months?
- **Shortness of breath (resting):** Have you had an attack of shortness of breath that came on during the day when you were at rest at any time in the last 12 months?
- **Current nasal symptoms:** Do you have any nasal allergies including hay fever?
- **Chronic phlegm:** Do you bring up phlegm from your chest on most days for as much as three months a year?

2 Deviations from pre-registered analysis plan

This study was pre-registered on the Open Science Framework on 19 July 2022, the month before the follow-up survey commenced, and updated during the survey with a more specific analysis plan on 22 November 2022.²

We initially planned to include terms for PM_{2.5} exposure from the 2019/2020 Black Summer bushfire, although the necessary modelled data were not available as of writing.

Additionally, we found there was likely little difference in exposure between Morwell and Sale.^{3,4} Research questions were clarified to reflect this change.

We were going to test two approaches for tobacco use (smoker status versus pack-years to capture) and select one based on model fit, but instead decided to use both. The square root transformation of pack years was not specified, but applied after observing the extreme right-skewed in the distributions. While age was pre-specified as age group, we opted to use

medRxiv preprint doi: <https://doi.org/10.1101/2023.08.23.23294510>; this version posted August 25, 2023. The copyright holder for this preprint (which was not certified by peer review) is the author/funder, who has granted medRxiv a license to display the preprint in perpetuity. It is made available under a [CC-BY-NC 4.0 International license](#).

the natural spline to better account for non-linear effects while also retaining the rich

information of a continuous rather than categorical variable. Body Mass Index was excluded

as a confounder because it only available for those who participated in the follow-up survey.

3 Descriptives table

Table S1. Sample descriptive statistics, divided by residence during the mine fire (Morwell or Sale) and survey round (2016-2017 original or 2022 follow-up); count variables are presented as *n* (%) and continuous as median (IQR)

	2016-2017 original survey		2022 follow-up survey	
	Morwell (<i>n</i> = 3037)	Sale (<i>n</i> = 960)	Morwell (<i>n</i> = 408)	Sale (<i>n</i> = 204)
Mean 24-hour PM _{2.5} exposure µg/m ³	11 [IQR: 7, 19]	0 [IQR: 0, 0]	11 [IQR: 8, 19]	0 [IQR: 0, 0]
Ever had COVID-19 <i>Missing</i>	- 3	-	168 (41%) 3	86 (42%) 0
Full COVID-19 vaccination (4+) <i>Missing</i>	- 3	-	238 (59%) 3	104 (51%) 1
Demographics/confounders				
Age at survey <i>Missing</i>	59 [IQR: 46, 70] 5	59 [IQR: 45, 70] 0	63 [IQR: 54, 71] 1	64 [IQR: 55, 73] 0
Female	1705 (55%)	550 (57%)	236 (58%)	126 (62%)
Educational attainment				
Secondary, year 10	1006 (33%)	241 (25%)	98 (24%)	29 (14%)
Secondary, years 11-12	668 (22%)	162 (17%)	80 (20%)	41 (20%)
Tertiary/trade qualification	1381 (45%)	546 (58%)	228 (56%)	133 (66%)
<i>Missing</i>	41	11	2	1
Smoker status				
Non-smoker	1495 (49%)	498 (52%)	190 (47%)	107 (53%)
Previous smoker	1052 (34%)	325 (34%)	167 (41%)	84 (42%)
Current smoker	516 (17%)	126 (13%)	47 (12%)	11 (5.4%)
<i>Missing</i>	33	11	4	2
Cigarette pack-years (excl. non-smokers)	14 [IQR: 5, 30]	15 [IQR: 5, 26]	12 [IQR: 4, 24]	20 [IQR: 5, 30]
Socioeconomic score (IRSAD)* <i>Missing</i>	833 [IQR: 782, 889] 75	898 [IQR: 844, 952] 0	838 [IQR: 782, 909] 14	930 [IQR: 844,952] 0
Asthma (pre-2014) <i>Missing</i>	715 (23%) 17	205 (21%) 5	116 (29%) 1	44 (22%) 0
COPD (pre-2014) <i>Missing</i>	148 (4.8%) 10	27 (2.8%) 4	11 (2.7%) 2	2 (1.0%) 0
Outcomes				
Chronic cough <i>Missing</i>	989 (32%) 21	189 (20%) 6	170 (42%) 4	44 (22%) 0
Current wheeze <i>Missing</i>	1317 (43%) 16	254 (27%) 5	207 (51%) 3	67 (33%) 0
Chest tightness <i>Missing</i>	792 (26%) 16	154 (16%) 3	132 (33%) 3	42 (21%) 0
Shortness of breath (nocturnal) <i>Missing</i>	635 (21%) 15	120 (13%) 3	108 (27%) 3	25 (12%) 1
Shortness of breath (resting) <i>Missing</i>	611 (20%) 27	90 (9.4%) 3	112 (28%) 1	32 (16%) 0
Current nasal symptoms <i>Missing</i>	1175 (38%) 18	347 (36%) 5	200 (49%) 3	89 (44%) 0
Chronic phlegm <i>Missing</i>	785 (26%) 21	150 (16%) 3	115 (28%) 2	31 (15%) 0

*Index of Relative Socioeconomic Advantage and Disadvantage (IRSAD) score, from the Socio-Economic Indexes for Areas (SEIFA)⁵

3.1 Changes in respiratory symptoms between surveys

Using a crude mixed-effects logistic regression, we compared the prevalence of respiratory symptoms between the initial and follow-up surveys between study sites. Each symptom increased significantly in Morwell and all but chronic cough, nocturnal shortness of breath, and chronic phlegm increased in Sale. These effects are summarised in Figure S1.

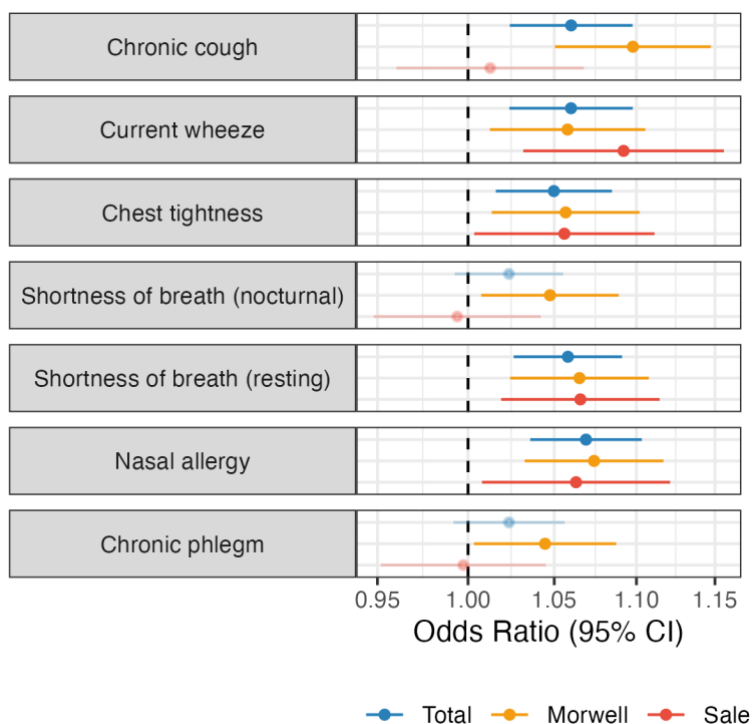


Figure S1. Changes in the prevalence of respiratory symptoms between the initial 2016/17 survey (3-4 years post-fire) and the 2022 follow-up (8.5-9 years post-fire)

4 Sensitivity analyses: asthma-stratified analyses

Analyses suggested coalmine fire-related $PM_{2.5}$ exposure was associated with an increase in the prevalence of current wheeze. Earlier Hazelwood Health Study analyses found limited evidence that Morwell residents had poorer asthma control, though no detectable association with $PM_{2.5}$. The authors postulated that poorer asthma control in Morwell could nevertheless be explained by the fire exacerbating existing asthma.⁶

Using self-reported asthma at the initial 2016/17 survey, we conducted stratified longitudinal analyses of $PM_{2.5}$ exposure's effect on respiratory symptoms. The results

suggest effects were mostly isolated to non-asthmatics, including increased prevalence of chronic cough, current wheeze, chest tightness, and chronic phlegm. There was also a reduction in chest tightness among asthmatics, which could be due to increased use in asthma medications.

The asthmatic subsample had less statistical power due to smaller numbers ($n = 999$ at the initial 2016/17 survey and 176 at the 2022 follow-up, compared to $n = 3,042$ and $n = 433$ among non-asthmatics). While this could mean that effects were harder to detect within asthmatics, point estimates indicate the exacerbation of respiratory symptoms was isolated to non-asthmatics. As we note in the *Discussion* of the main document, this may be because asthmatics have access to inhaled medications that could control respiratory symptoms brought on by the coalmine fire; a majority of asthmatics ($n = 601$, 60.2%) reported taking some sort of medication, though we have no further details about kind or frequency. Medication access may also explain why chest tightness in asthmatics decreased in asthmatics decreased between the initial and follow-up surveys. The findings are illustrated in Figure S2.

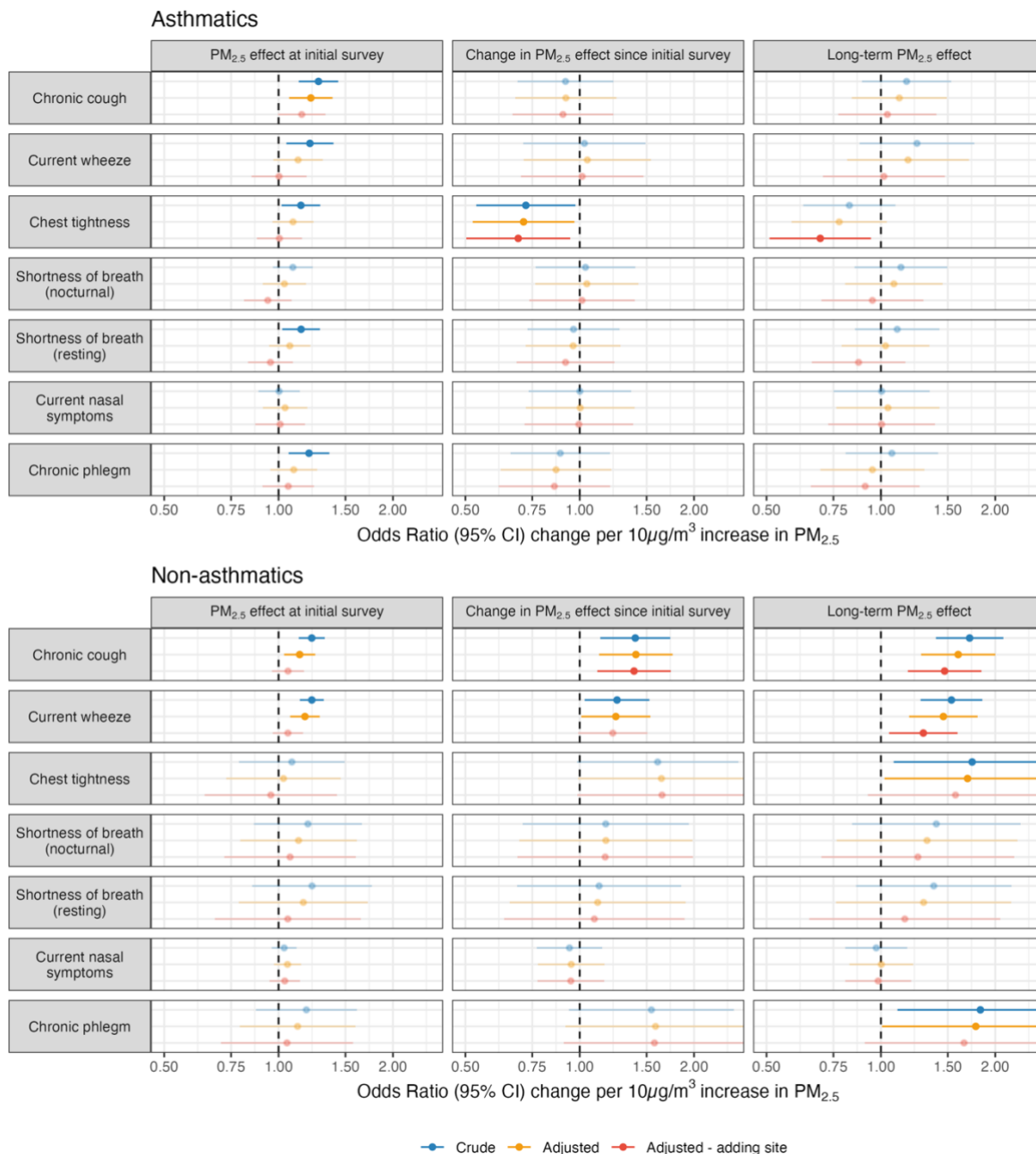


Figure S2. Analyses stratified by self-reported by asthma status on effects of $10\mu\text{g}/\text{m}^3$ increase in mean coalmine fire-related $\text{PM}_{2.5}$ on odds of respiratory symptom at the initial 2016/17 survey (2-3 years post-fire), change between the two survey rounds (interaction term between fire-related $\text{PM}_{2.5}$ and survey round), and the cumulative long-term effect at the 2022 follow-up (8.5-9 years post-fire, estimated using linear combination); faded points and intervals indicate non-significant effects

5 Additional resources

5.1 Statistical packages for cleaning and analysing study data

To give credit to authors of the statistical packages used in this paper, we have listed them here. All analyses were conducted in R⁷ in the RStudio IDE.⁸ Specific packages include: *broom.mixed*⁹ to produce tidy results tables; *glmmTMB*¹⁰ for mixed-effect logistic regression modelling; *gtsummary*¹¹ for descriptive tables and univariate comparisons; *haven*¹² to import data from different statistical package formats; *janitor*¹³ to clean column names; *mice*¹⁴ for multiple imputation; *multcomp*¹⁵ to calculate the linear combination of effects and confidence intervals from interaction terms; *naniar*¹⁶ to analyse missingness, *patchwork*¹⁷ to combine plots; *readxl*¹⁸ to import excel file data; and *tidyverse*¹⁹ to use the suite of tidyverse tools for importation, manipulation, and visualisation tools. All cleaning and analytical code have been archived on a public repository.²⁰

5.2 Mapping data and software

To create the map of coalmine fire-related PM_{2.5} distribution in Figure 1, we used geospatial data of national, state/territory, and Statistical Area Boundaries from the Australian Bureau of Statistics,²¹ coalmine boundaries from the Victorian Department of Primary Industries²² and Department of Energy, Environment and Climate Action's DataShare platform,²³ and modelled PM_{2.5} distribution estimates.²⁴ The map was created using the following R packages: *rmapshaper*²⁵ to simplify map boundaries, *sf*^{26,27} to read and write shapefiles, and *tmap*²⁸ to draw and save maps.

6 Model output tables

Table S2. Effects of 10 $\mu\text{g}/\text{m}^3$ increase in mean coalmine fire-related PM_{2.5} on odds of respiratory symptoms at the initial 2016/17 survey and changes to the 2022 follow-up; significant associations at $p \leq 0.05$ in bold

Respiratory symptom	Model type	PM _{2.5} effect at initial survey	Change in PM _{2.5} effect since initial survey	Long-term PM _{2.5} effect
Chronic cough	Crude	1.23 (1.15-1.31, p = 0.000)	1.23 (1.04-1.46, p = 0.015)	1.52 (1.29-1.78, p = 0.000)
	Adjusted	1.17 (1.08-1.26, p = 0.000)	1.23 (1.03-1.47, p = 0.024)	1.43 (1.20-1.70, p = 0.000)
	Adjusted - adding site	1.09 (1.01-1.19, p = 0.028)	1.21 (1.01-1.44, p = 0.036)	1.32 (1.11-1.58, p = 0.002)
Current wheeze	Crude	1.19 (1.12-1.27, p = 0.000)	1.20 (1.02-1.42, p = 0.029)	1.44 (1.23-1.69, p = 0.000)
	Adjusted	1.17 (1.08-1.25, p = 0.000)	1.19 (0.99-1.43, p = 0.062)	1.39 (1.16-1.66, p = 0.000)
	Adjusted - adding site	1.05 (0.97-1.14, p = 0.217)	1.16 (0.97-1.40, p = 0.104)	1.22 (1.02-1.47, p = 0.029)
Chest tightness	Crude	1.17 (1.08-1.26, p = 0.000)	1.03 (0.86-1.23, p = 0.773)	1.20 (1.01-1.43, p = 0.041)
	Adjusted	1.12 (1.02-1.23, p = 0.014)	0.99 (0.81-1.20, p = 0.896)	1.11 (0.91-1.34, p = 0.305)
	Adjusted - adding site	1.04 (0.95-1.14, p = 0.414)	0.97 (0.80-1.18, p = 0.785)	1.01 (0.83-1.23, p = 0.906)
Shortness of breath (nocturnal)	Crude	1.13 (0.89-1.45, p = 0.313)	1.34 (0.90-2.01, p = 0.154)	1.52 (1.00-2.32, p = 0.051)
	Adjusted	1.05 (0.80-1.38, p = 0.717)	1.34 (0.88-2.04, p = 0.167)	1.41 (0.90-2.22, p = 0.136)
	Adjusted - adding site	0.98 (0.71-1.33, p = 0.874)	1.34 (0.88-2.05, p = 0.171)	1.31 (0.81-2.12, p = 0.270)
Shortness of breath (resting)	Crude	1.22 (0.96-1.55, p = 0.107)	0.95 (0.64-1.40, p = 0.787)	1.15 (0.77-1.72, p = 0.481)
	Adjusted	1.12 (0.85-1.46, p = 0.428)	0.91 (0.61-1.37, p = 0.665)	1.02 (0.66-1.58, p = 0.932)
	Adjusted - adding site	0.99 (0.72-1.35, p = 0.938)	0.89 (0.59-1.36, p = 0.603)	0.88 (0.55-1.43, p = 0.612)
Current nasal symptoms	Crude	1.03 (0.97-1.10, p = 0.383)	0.96 (0.82-1.14, p = 0.664)	0.99 (0.85-1.16, p = 0.920)
	Adjusted	1.06 (0.98-1.13, p = 0.129)	0.95 (0.80-1.13, p = 0.598)	1.01 (0.85-1.19, p = 0.922)
	Adjusted - adding site	1.03 (0.95-1.12, p = 0.423)	0.95 (0.80-1.13, p = 0.570)	0.98 (0.83-1.17, p = 0.842)
Chronic phlegm	Crude	1.23 (0.97-1.55, p = 0.090)	1.20 (0.82-1.75, p = 0.358)	1.46 (0.99-2.17, p = 0.057)
	Adjusted	1.11 (0.85-1.46, p = 0.434)	1.21 (0.80-1.84, p = 0.363)	1.35 (0.87-2.10, p = 0.181)
	Adjusted - adding site	1.05 (0.77-1.43, p = 0.748)	1.20 (0.79-1.83, p = 0.389)	1.26 (0.79-2.02, p = 0.330)

Table S3. Attrition analyses comparing non-participants and participants in the follow-up survey; comparisons made with Fisher's exact test for dichotomous and categorical variables and Wilcoxon rank-sum test for continuous variables

	Non-participating (n = 1,846)	Participating (n = 612)	p-value
Daily mean fire-related PM_{2.5} exposure	8µg/m ³ [IQR: 0, 14]	8µg/m ³ [IQR: 0, 14]	0.338
Demographics			
Age at survey	60 [IQR: 47, 69]	58 [IQR: 49, 65]	0.003
<i>Missing</i>	2	1	
Female	846 (46%)	250 (41%)	0.032
Residential SES*	844 [IQR: 806, 930]	869 [IQR: 814, 936]	< 0.001
<i>Missing</i>	27	14	
Educational attainment			< 0.001
Secondary to year 10	584 (32%)	127 (21%)	
Secondary to year 11-12	377 (21%)	121 (20%)	
Tertiary/trade qualification	868 (47%)	361 (59%)	
<i>Missing</i>	17	3	
Smoker			< 0.001
Non-smoker	873 (47%)	286 (47%)	
Previous smoker	623 (34%)	249 (41%)	
Current smoker	345 (19%)	74 (12%)	
<i>Missing</i>	5	3	
Cigarette pack-years	0 [IQR: 0, 15]	0 [IQR: 0, 14]	0.869
<i>Missing</i>	42	10	
Health			
General health			0.017
Excellent	189 (10%)	67 (11%)	
Very good	516 (28%)	199 (33%)	
Good	630 (34%)	220 (36%)	
Fair	352 (19%)	95 (16%)	
Poor	145 (7.9%)	31 (5.1%)	
<i>Missing</i>	14	0	
Pre-2014 asthma	393 (21%)	160 (26%)	0.014
<i>Missing</i>	7	1	
Pre-2014 COPD	93 (5.0%)	13 (2.1%)	0.002
<i>Missing</i>	3	2	

*From the Index of Relative Socio-economic Advantage and Disadvantage (IRSAD)⁵

Table S4. Effects of 10µg/m³ increase in mean coalmine fire-related PM_{2.5} and COVID-19 on prevalence of respiratory symptoms and whether there is a moderating effect, 8.5-9 years after the coalmine fire survey; significant associations at p ≤ 0.05 in bold

Respiratory symptom	Model type	PM _{2.5} effect, no history of COVID-19	PM _{2.5} * COVID-19 effect	PM _{2.5} effect, history of COVID-19
Chronic cough	Crude	1.52 (1.16-1.98, p = 0.002)	0.98 (0.66-1.46, p = 0.931)	1.49 (1.11-2.00, p = 0.008)
	Adjusted	1.46 (1.08-1.96, p = 0.013)	0.92 (0.60-1.43, p = 0.724)	1.35 (0.97-1.87, p = 0.073)
	Adjusted - adding site	1.36 (0.98-1.89, p = 0.067)	0.93 (0.61-1.44, p = 0.758)	1.27 (0.90-1.80, p = 0.180)
Current wheeze	Crude	1.35 (1.04-1.74, p = 0.023)	1.23 (0.80-1.87, p = 0.345)	1.65 (1.18-2.31, p = 0.003)
	Adjusted	1.25 (0.93-1.68, p = 0.146)	1.30 (0.82-2.05, p = 0.268)	1.62 (1.12-2.33, p = 0.010)
	Adjusted - adding site	1.17 (0.85-1.60, p = 0.341)	1.25 (0.81-1.95, p = 0.312)	1.46 (1.00-2.13, p = 0.047)
Chest tightness	Crude	1.09 (0.85-1.41, p = 0.498)	1.23 (0.83-1.80, p = 0.300)	1.34 (1.01-1.78, p = 0.045)
	Adjusted	0.97 (0.72-1.31, p = 0.863)	1.36 (0.89-2.07, p = 0.155)	1.32 (0.97-1.81, p = 0.081)
	Adjusted - adding site	0.84 (0.60-1.17, p = 0.298)	1.37 (0.89-2.11, p = 0.148)	1.15 (0.83-1.60, p = 0.413)
Shortness of breath (nocturnal)	Crude	1.12 (0.85-1.48, p = 0.417)	1.37 (0.91-2.07, p = 0.128)	1.54 (1.14-2.08, p = 0.005)
	Adjusted	1.02 (0.76-1.39, p = 0.880)	1.46 (0.95-2.24, p = 0.085)	1.49 (1.08-2.06, p = 0.015)
	Adjusted - adding site	0.89 (0.63-1.26, p = 0.506)	1.49 (0.95-2.33, p = 0.082)	1.32 (0.94-1.85, p = 0.107)
Shortness of breath (resting)	Crude	1.29 (1.00-1.67, p = 0.051)	0.88 (0.59-1.30, p = 0.522)	1.14 (0.84-1.53, p = 0.399)
	Adjusted	1.22 (0.91-1.63, p = 0.190)	0.90 (0.59-1.37, p = 0.614)	1.09 (0.79-1.51, p = 0.603)
	Adjusted - adding site	1.10 (0.80-1.52, p = 0.545)	0.89 (0.58-1.37, p = 0.600)	0.98 (0.69-1.40, p = 0.923)
Current nasal symptoms	Crude	1.00 (0.79-1.28, p = 0.977)	0.99 (0.69-1.42, p = 0.960)	0.99 (0.76-1.30, p = 0.967)
	Adjusted	1.00 (0.77-1.30, p = 0.985)	1.02 (0.70-1.48, p = 0.934)	1.02 (0.76-1.36, p = 0.900)
	Adjusted - adding site	0.93 (0.70-1.24, p = 0.625)	1.01 (0.70-1.47, p = 0.954)	0.94 (0.69-1.28, p = 0.698)
Chronic phlegm	Crude	1.22 (0.95-1.57, p = 0.124)	1.30 (0.88-1.94, p = 0.190)	1.59 (1.17-2.15, p = 0.003)
	Adjusted	1.15 (0.85-1.55, p = 0.367)	1.28 (0.83-1.99, p = 0.263)	1.47 (1.06-2.05, p = 0.022)
	Adjusted - adding site	1.08 (0.78-1.51, p = 0.637)	1.29 (0.83-2.00, p = 0.257)	1.40 (0.99-1.98, p = 0.061)

7 References

- 1 Burney P, Jarvis D. European Community Respiratory Health Survey III (ECRHS III). Imperial College London, 2011 <https://www.ecrhs.org/questionnaires-and-protocols>.
- 2 Lane TJ, Carroll M, McCaffrey TA. Long-term respiratory health in a community affected by mine fire. *Open Sci. Framew.* 2022; published online July 19. <https://osf.io/yfgb3/>.
- 3 Holt NR, Smith CL, Gao CX, *et al.* Lung function may recover after exposure to smoke from a mine fire: cohort study. .
- 4 Lane TJ, Carroll M, Borg BM, *et al.* Long-term effects of extreme smoke exposure on COVID-19: A cohort study. 2023; published online April 15. DOI:10.1101/2023.04.12.23288500.
- 5 Australian Bureau of Statistics. 2033.0.55.001 - Census of Population and Housing: Socio-Economic Indexes for Areas (SEIFA), Australia, 2016. 2018 <https://www.abs.gov.au/ausstats/abs@.nsf/mf/2033.0.55.001> (accessed May 13, 2019).
- 6 Prasad S, Gao CX, Borg B, *et al.* Chronic obstructive pulmonary disease in adults exposed to fine particles from a coal mine fire. *Ann Am Thorac Soc* 2022; **19**: 186–95.
- 7 R Core Team. R: A Language and Environment for Statistical Computing. 2023. <https://www.r-project.org/>.
- 8 RStudio Team. RStudio: Integrated Development for R. 2022. <https://www.rstudio.com>.
- 9 Bolker B, Robinson D. broom.mixed: Tidying Methods for Mixed Models. 2020.
- 10 Brooks M E, Kristensen K, Benthem K J ,van, *et al.* glmmTMB Balances Speed and Flexibility Among Packages for Zero-inflated Generalized Linear Mixed Modeling. *R J* 2017; **9**: 378.
- 11 Sjoberg DD, Whiting K, Curry M, Lavery JA, Larmarange J. Reproducible summary tables with the gtsummary package. *R J* 2021; **13**: 570–80.
- 12 Wickham H, Miller E, Smith D. haven: Import and Export ‘SPSS’, ‘Stata’ and ‘SAS’ Files. 2022.
- 13 Firke S. janitor: Simple Tools for Examining and Cleaning Dirty Data. 2021. <https://CRAN.R-project.org/package=janitor>.
- 14 van Buuren S, Groothuis-Oudshoorn K. ‘mice’: Multivariate Imputation by Chained Equations in R. *J Stat Softw* 2011; **45**: 1–67.
- 15 Hothorn T, Bretz F, Westfall P. Simultaneous inference in general parametric models. *Biom J* 2008; **50**: 346–63.

- 16 Tierney N, Cook D, McBain M, Fay C. naniar: Data Structures, Summaries, and Visualisations for Missing Data. 2021. <https://CRAN.R-project.org/package=naniar>.
- 17 Pedersen TL. patchwork: The Composer of Plots. 2022. <https://CRAN.R-project.org/package=patchwork>.
- 18 Wickham H, Bryan J. readxl: Read Excel Files. 2019 <https://cran.r-project.org/package=readxl>.
- 19 Wickham H, Averick M, Bryan J, *et al.* Welcome to the Tidyverse. *J Open Source Softw* 2019; **4**: 1686.
- 20 Lane TJ. Respiratory symptoms after coalmine fire and pandemic: a longitudinal analysis of the Hazelwood Health Study cohort - analytical code. *Bridges*. 2023. <https://doi.org/10.26180/22596994.v2>.
- 21 Australian Bureau of Statistics. 1270.0.55.006 - Australian Statistical Geography Standard (ASGS): Correspondences, July 2011. 2012 <https://www.abs.gov.au/AUSSTATS/abs@.nsf/DetailsPage/1270.0.55.006July2011?OpenDocument>.
- 22 Department of Primary Industries. Victorian Coal: A 2006 Inventory of Resources. Morwell, Victoria: GHD Pty Ltd, 2007.
- 23 Department of Energy, Environment and Climate Action. Victorian Coal Fields. 2007; published online Aug 31. <https://datashare.maps.vic.gov.au>.
- 24 Luhar AK, Emmerson KM, Reisen F, Williamson GJ, Cope ME. Modelling smoke distribution in the vicinity of a large and prolonged fire from an open-cut coal mine. *Atmos Environ* 2020; **229**: 117471.
- 25 Teucher A, Russell K. rmapshaper: Client for 'mapshaper' for 'Geospatial' Operations. 2023. <https://CRAN.R-project.org/package=rmapshaper>.
- 26 Pebesma E. Simple Features for R: Standardized Support for Spatial Vector Data. *R J* 2018; **10**: 439–46.
- 27 Pebesma E, Bivand R. *Spatial Data Science: With Applications in R*. New York: Chapman and Hall/CRC, 2023 <https://doi.org/10.1201/9780429459016>.
- 28 Tennekes M. tmap: Thematic Maps in R. *J Stat Software* 2018; **84**: 1–39.