

1 Two years of longitudinal measurements of human adenovirus group F, norovirus GI and GII,
2 rotavirus, enterovirus, enterovirus D68, hepatitis A virus, *Candida auris*, and West Nile virus
3 nucleic-acids in wastewater solids: A retrospective study at two wastewater treatment plants
4

5
6

7 Alexandria B. Boehm^{1*}, Marlene K. Wolfe², Bradley J. White³, Bridgette Hughes³, Dorothea
8 Duong³

- 9 1. Department of Civil & Environmental Engineering, School of Engineering and Doerr
10 School of Sustainability, Stanford University, 473 Via Ortega, Stanford, CA, USA 94305
11 2. Gangarosa Department of Environmental Health, Rollins School of Public Health, Emory
12 University, 1518 Clifton Rd, Atlanta, GA, USA, 30322
13 3. Verily Life Sciences LLC, South San Francisco, CA, USA, 94080
14

15
16
17

18 * Author to whom correspondence should be addressed. Email: aboehm@stanford.edu, Tel:
19 650-724-9128
20

21
22

23 **Abstract**

24
25 Wastewater monitoring for infectious disease targets is increasingly used to better understand
26 circulation of diseases. The present study validated hydrolysis-probe digital droplet (reverse-
27 transcriptase (RT))-PCR assays for important enteric viruses (rotavirus, adenovirus group F,
28 norovirus GI and GII, and enteroviruses), outbreak or emerging viruses (hepatitis A and West
29 Nile virus), and an emerging drug resistant fungal pathogen (*Candida auris*). We used the
30 assays to retrospectively measure concentrations of the targets in wastewater solids. Viral and
31 fungal nucleic-acid concentrations were measured in two wastewater solids samples per week
32 at two wastewater treatment plants in the San Francisco Bay Area of California, USA for 26
33 months. We detected all targets in wastewater solids with the exception of West Nile virus. At
34 both wastewater treatment plants, human adenovirus group F was detected at the highest
35 concentrations, followed by norovirus GII, enteroviruses, norovirus GI, and rotavirus at the
36 lowest concentrations. Hepatitis A and *C. auris* were detected less consistently than the
37 aforementioned viruses. Enterovirus D68 was detected in a limited time frame during fall 2022
38 at both sites. The measurements reported herein, and in some cases their seasonal trends, are
39 consistent with previous reports of these targets in wastewater. These measurements represent
40 some of the first quantitative measurements of these infectious disease targets in the solid
41 fraction of wastewater. This study lays a foundation for the use of wastewater solids for the
42 detection of specific infectious disease targets in wastewater monitoring programs aimed to
43 better understand the spread of these diseases.

44 45 46 **Introduction**

47
48 Infectious diseases are a leading cause of human morbidity and mortality globally¹, and climate
49 change is projected to exacerbate the spread of critical and emerging diseases^{2,3}. Tracking
50 infectious disease in individuals and populations is essential to inform prevention and response,
51 including vaccine development, vaccination campaigns, pharmaceutical and non-
52 pharmaceutical interventions, and also to better understand disease epidemiology.

53
54 Infectious disease surveillance typically relies on clinical data. However, this data can be biased
55 towards results from individuals with severe illness, comorbidities, and access to healthcare and
56 diagnostic testing. In addition, clinical cases may not be reported to a centralized agency for
57 collation, and if they are, it may take weeks for data to be organized and delivered to a public
58 health agency for consumption. The biases and delays related to clinical data can therefore lead
59 to missed opportunities to protect public health, particularly at critical times at the emergence of
60 a disease, or the beginning and peak of an outbreak.

61
62 Wastewater monitoring for infectious disease surveillance can be used to assess the
63 occurrence of diseases in populations. Wastewater contains excretions from individuals that
64 enter drains and toilets in households and businesses including feces, urine, sputum, mucus
65 and saliva. When individuals are infected by a pathogen, then that pathogen or its components
66 (nucleic-acids and proteins) are excreted and often enter the wastewater. When wastewater is

67 collected at a wastewater treatment plant (WWTP), it represents a composite sample of all the
68 people in the sewershed that the WWTP serves (anywhere from $\sim 10^4$ - 10^6 individuals),
69 including contributions of all infected individuals in the community. Unlike clinical data, this
70 includes those who are asymptomatic or mildly symptomatic and those who do not seek or
71 receive medical care. Results regarding the presence and concentration of different infectious
72 disease targets (usually genomic nucleic-acids from viruses, bacteria or eukaryotes) can be
73 available within 24 hours of sample collection for the community as a whole, limiting reporting
74 and collating delays. Therefore, data from wastewater monitoring can be complementary to
75 clinical data and may even provide early warnings of disease spread. Work to date suggests
76 that wastewater monitoring can be used to detect occurrence of respiratory diseases including
77 COVID-19⁴, influenza A⁵ and B^{5,6}, respiratory syncytial virus (RSV)⁷, and seasonal
78 coronaviruses⁶, enteric diseases including human norovirus⁸ and salmonellosis⁹, and other
79 diseases such as mpox¹⁰, hepatitis A¹¹, and *Candida auris*¹² infections.

80
81 Raw wastewater is a complex mixture of liquids (water, urine, and other liquids put down
82 drains), and solids or particles (feces, food, cells, and other material). Previous work has shown
83 that viruses tend to partition to the solids in wastewater where their concentrations can be
84 orders of magnitude higher than in the liquid^{10,13-16}. Particles are typically defined using an
85 operational definition (for example, larger than 0.45 μm in diameter), and using this definition,
86 bacteria and eukaryotic organisms in wastewater are part of the solid fraction. The solid fraction
87 can be obtained by centrifuging raw wastewater to collect a pellet, or by sampling sludge from
88 the primary clarifier. Many wastewater monitoring programs for infectious disease targets make
89 measurements in the liquid phase of wastewater, but a handful¹⁷⁻¹⁹, including our program, use
90 solids where these targets are already enriched.

91
92 The goal of this study is to expand our understanding of the types of infections that may be
93 surveilled through the use of wastewater monitoring. Herein, we conduct a retrospective study
94 to investigate the occurrence of pathogen nucleic acids in wastewater samples over twenty-six
95 months. Our work focuses on analyzing nucleic-acids associated with the particle/solid fraction
96 of wastewater to take advantage of the “natural” ability of solids to concentrate the infectious
97 disease targets of interest. In particular, we measured concentrations of human adenovirus
98 group F, rotavirus, human norovirus GII, human norovirus GI, West Nile virus, hepatitis A virus,
99 enteroviruses, enterovirus D 68, and *Candida auris* nucleic-acids in wastewater from two
100 samples each week at two large wastewater treatment plants in the San Francisco Bay Area of
101 California, USA.

102 103 **Methods**

104
105 **RT-PCR assays.** We designed novel (RT-)PCR primers and internal hydrolysis probes for
106 adenovirus group F (hereafter, HAdV) and enterovirus D-68 variants circulating in the Northern
107 hemisphere 2022 winter (EVD68-2022). In addition, we designed a novel probe for *Candida*
108 *auris* to use in conjunction with previously published specific and sensitive primers²⁰. To design
109 these primers and probes, *C. auris*, HAdV, and EVD68-2022 genome sequences were
110 downloaded from NCBI in February 2023, April 2022, and September 2022, respectively, and

111 aligned to identify conserved regions. Primers and probes were developed *in silico* using
112 Primer3Plus (<https://primer3plus.com/>). Parameters used in assay development (e.g. sequence
113 length, GC content, and melt temperatures) are provided in Table S1. Primers and probes were
114 then screened for specificity *in silico*, and *in vitro* against virus or fungal panels, intact viruses,
115 synthetic viral genomic RNA, or cDNA sequences (Table 1).

116
117 In addition to the novel assays, we used previously published assays for enterovirus D 68
118 (EVD68)²¹, rotavirus²², hepatitis A virus (HAV)²³, human norovirus (HuNoV) GI²⁴ and HuNoV
119 GII²⁵, enteroviruses (EV)²⁶, and West Nile Virus (WNV)²⁷. Each sample was also assayed for the
120 SARS-CoV-2 N gene²⁸, and pepper mild mottle virus M gene (PMMoV)²⁸ using previously
121 published assays.

122
123 All primers and probe sequences (including custom and previously published assays) were
124 tested *in vitro* for specificity and sensitivity using virus or fungal panels (NATtrol Respiratory
125 Verification Panel NATRVP2.1-BIO, NATtrol™ EV Panel NATRVPEVP-C, NATCTVPOS-BD),
126 and genomic and synthetic target nucleic acids purchased from American Type Culture
127 Collection (ATCC, Manassas, VA) or Twist Biosciences (South San Francisco, CA) (Table 1).
128 The respiratory virus panel includes chemically inactivated intact influenza viruses,
129 parainfluenza viruses, adenovirus, rhinovirus A, metapneumovirus, rhinovirus, RSV, several
130 coronaviruses, and SARS-CoV-2; the EV panel includes chemically inactivated intact
131 coxsackieviruses, echovirus, and parechovirus. The fungal panel contains chemically
132 inactivated fungi. Nucleic acids were extracted from intact viruses or cells using Chemagic Viral
133 DNA/RNA 300 Kit H96 for Chemagic 360 (PerkinElmer, Waltham, MA).

134
135 Nucleic acids were used undiluted as template in digital droplet (RT-)PCR singleton assays for
136 sensitivity and specificity testing in single wells. The concentration of targets used in the *in vitro*
137 specificity testing was between 10³ and 10⁴ copies per well. Negative (RT-)PCR controls were
138 included on each plate.

139
140 **Wastewater analyses.** Two wastewater treatment plants that serve 75% (1,500,000 people) of
141 Santa Clara County, California (San José-Santa Clara Regional Wastewater Facility, SJ) and
142 25% (250,000 people) of San Francisco County (Oceanside Water Pollution Control Plant,
143 OSP) were included in the study (Figure 1). Further descriptions of these WWTPs can be found
144 elsewhere^{10,18}.

145
146 Samples were collected daily for a prospective COVID-19 wastewater monitoring effort starting
147 in November 2020, and a subset of those samples (two samples per week, 459 samples total)
148 are used in this study. The samples were chosen to span a 26.5 month period (2/1/21 - 4/14/23,
149 month/day/year format) that included implementation and easing of indoor mask mandates,
150 changes in COVID-19 vaccine availability, public health promotion of hand hygiene and mask
151 wearing, and periods of both high and low COVID-19 incidence.

152
153 Fifty mL of settled solids were collected using sterile technique in clean bottles from the primary
154 clarifier. At SJ, twenty-four hour composite samples were collected by combining grab samples

155 from the sludge line every six hours. At OSP, a grab sample was collected from the sludge line
156 each day. Samples were stored at 4°C, transported to the lab, and processed within six hours.
157 Solids were then dewatered²⁹ and frozen at -80°C for 4 - 60 weeks. Samples were thawed
158 overnight at 4°C and then nucleic acids were obtained from the dewatered solids following
159 previously published protocols^{28,30}. Those protocols include suspending the solids in a buffer at
160 a concentration of 75 mg/ml and using an inhibitor removal kit; together these processes
161 alleviate potential inhibition while maintaining good assay sensitivity^{28,31}. Nucleic-acids were
162 obtained from 10 replicate sample aliquots. Each replicate nucleic-acid extract from each
163 sample was subsequently stored between 8 and 273 days (median 266 days) for SJ and
164 between 1 and 8 days (median 5 days) for OSP at -80°C and subjected to a single freeze thaw
165 cycle. Upon thawing, targets were measured immediately using using digital droplet (RT-)PCR
166 with multiplexed assays for SARS-CoV-2, rotavirus, HAdV, HAV, HuNoV GI, HuNoV GII, WNV,
167 EVD68, EV, *C. auris*, and PMMoV. PMMoV is highly abundant in human stool and wastewater
168³² and is used as an internal recovery and fecal strength control³³. Each nucleic acid extract was
169 run in a single well so that 10 replicate wells were run for each sample for each assay.

170
171 The ddRT-PCR methods applied to wastewater solids to measure PMMoV in a singleplex
172 reaction and are provided in detail elsewhere¹⁸. The human virus assays were run in multiplex
173 using a probe-mixing approach and unique fluorescent molecules (HEX, FAM, Cy5, Cy5.5,
174 ROX, ATTO950) in two sets of reactions. One reaction included primers and probes for
175 rotavirus (fluorescent molecule(s) on probe: FAM), SARS-CoV-2 (FAM/HEX), WNV (ROX),
176 HuNoV GII (ATTO590), and HAdV (ROX/ATTO590). The second included primers and probes
177 for EVD68 (FAM), HAV (Cy5), EV (Cy5.5), HuNoV GI (ATTO590), and *C. auris*
178 (ROX/ATTO590). Note that the two reactions contained several additional primers and probe
179 sets that yielded results not reported herein. In particular, assays targeting the genome of HIV
180 and several influenza subtype markers were included. Each reaction was run on its own 96-well
181 plate.

182
183 Each 96-well PCR plate of wastewater samples included PCR positive controls for each target
184 assayed on the plate in 1 well, PCR negative no template controls in two wells, and extraction
185 negative controls (consisting of water and lysis buffer) in two wells. PCR positive controls
186 consisted of viral gRNA or gene blocks (Table S1).

187
188 ddRT-PCR was performed on 20 µl samples from a 22 µl reaction volume, prepared using 5.5 µl
189 template, mixed with 5.5 µl of One-Step RT-ddPCR Advanced Kit for Probes (Bio-Rad
190 1863021), 2.2 µl of 200 U/µl Reverse Transcriptase, 1.1 µl of 300 mM dithiothreitol (DDT) and
191 primers and probes mixtures at a final concentration of 900 nM and 250 nM respectively. Primer
192 and probes for assays were purchased from Integrated DNA Technologies (IDT, San Diego,
193 CA) (Table 2). Human virus and fungal targets were measured in reactions with undiluted
194 template whereas PMMoV was run on template diluted 1:100 in molecular grade water.

195
196 Droplets were generated using the AutoDG Automated Droplet Generator (Bio-Rad, Hercules,
197 CA). PCR was performed using Mastercycler Pro (Eppendorf, Enfield, CT) with with the
198 following cycling conditions: reverse transcription at 50°C for 60 minutes, enzyme activation at

199 95°C for 5 minutes, 40 cycles of denaturation at 95°C for 30 seconds and annealing and
200 extension at 59°C (for human viruses and fungi) or 56°C (for PMMoV) for 30 seconds, enzyme
201 deactivation at 98°C for 10 minutes then an indefinite hold at 4°C. The ramp rate for
202 temperature changes were set to 2°C/second and the final hold at 4°C was performed for a
203 minimum of 30 minutes to allow the droplets to stabilize. Droplets were analyzed using the
204 QX200 or the QX600 Droplet Reader (Bio-Rad). A well had to have over 10,000 droplets for
205 inclusion in the analysis. All liquid transfers were performed using the Agilent Bravo (Agilent
206 Technologies, Santa Clara, CA).

207
208 Thresholding was done using QuantaSoft™ Analysis Pro Software (Bio-Rad, version 1.0.596)
209 and QX Manager Software (Bio-Rad, version 2.0). Replicate wells were merged for analysis of
210 each sample. In order for a sample to be recorded as positive, it had to have at least 3 positive
211 droplets.

212
213 Concentrations of RNA targets were converted to concentrations in units of copies (cp)/g dry
214 weight using dimensional analysis. The total error is reported as standard deviations and
215 includes the errors associated with the Poisson distribution and the variability among the 10
216 replicates. Three positive droplets across 10 merged wells corresponds to a concentration
217 between ~500-1000 cp/g; the range in values is a result of the range in the equivalent mass of
218 dry solids added to the wells. Data collected as part of the retrospective study are available from
219 the Stanford Digital Repository (<https://purl.stanford.edu/qt551tn4819>).

220
221 **Multiplex assay performance.** Digital droplet PCR is well suited for multiplexing. This is
222 because of the inherent design of the method; there is unlikely to be more than one target
223 nucleic acid per droplet when assaying samples for rare targets like human pathogens.
224 Regardless, we sought to confirm that the multiplexing up to eight assays in one well did not
225 interfere with the quantification of targets. In particular, we tested whether the quantification of a
226 single target in the presence of and absence of relatively high concentrations of the 7 other
227 targets was substantially different. To do so, we first quantified three decimal dilutions of a
228 target nucleic acid in the absence of any other targets using the (RT)-PCR chemistry that
229 included primers and probes for all 8 targets. Then, we quantified the same decimal dilutions of
230 the single target in the presence of relatively high concentrations of standards of the 7 other
231 targets. Each dilution was run in a single well and no template, negative controls were included
232 on each PCR plate. Assays were run and thresholded as described above. Results were
233 expressed as copies per reaction and the 68% confidence intervals, as output by the
234 instrument, were included.

235
236 **SARS-CoV-2 and PMMoV RNA concentrations from prospective study in fresh samples.**

237 In order to understand potential losses from storage and freeze thaw of the samples and their
238 nucleic acid extracts, we compared measurements of the SARS-CoV-2 N gene and PMMoV
239 RNA measured in this study obtained using the stored samples to measurements from the
240 same samples that were not stored and analyzed prospectively for a large monitoring effort;
241 samples were analyzed within hours of sample collection. The methods for analysis for the N
242 gene through 3/13/23 were identical to those previously described in a Data Descriptor²⁸ with

243 the exact same approaches described in this paper except the assay was multiplexed with two
244 other assays using a two color droplet reader (QX200, Bio-rad). Between 3/13/23 and 4/15/23,
245 the N gene was multiplexed with assays for five adjacent SNPs in SARS-CoV-2 XBB*,
246 respiratory syncytial virus (RSV), influenza A, influenza B, and HuNoV GII in conjunction with a
247 6-color droplet reader (QX600, Bio-rad).

248

249 **Results & Discussion**

250

251 **QA/QC.** Results are reported as suggested in the Environmental Microbiology Minimal
252 Information guidelines³⁴ (Figure S2). Extraction and PCR negative and positive controls
253 performed as expected (negative and positive, respectively). PMMoV measurements were used
254 to assess potential for gross extraction failures as it is present in very high concentrations in the
255 samples naturally, and lack of its detection, or abnormally low measurements might indicate
256 gross extraction failures. The median (interquartile range) log₁₀-transformed PMMoV was 9.1
257 (9.0-9.2) and 8.7 (8.6-8.8) log₁₀ copies/g at SJ and OSP, respectively. The lowest
258 measurements at the two sites were 8.5 (SJ) and 8.1 (OSP) log₁₀ copies/g and given these
259 lowest values are within an order of magnitude of the medians, we concluded that there was no
260 gross extraction failures. We opted to not use an exogenous viral control, like bovine
261 coronavirus, owing to the complexities associated with interpreting recovery of an exogenous
262 spiked control in environmental samples³⁵, and its potential to interfere with other uses of the
263 samples, for example viral metagenomics.

264

265 We compared measurements of the N gene and PMMoV made on the samples that were fresh
266 to those used in this study that were stored, and for which the RNA underwent one freeze thaw.
267 Median ratio of PMMoV measurements made in this study to those made using fresh samples
268 was 0.9 (0.6-1.2) at SJ and 1.0 (0.7-1.4) at OSP suggesting limited degradation of the PMMoV
269 target in the stored and freeze thawed samples. Median ratio of SARS-CoV-2 N gene
270 measurements made in this study to those made using fresh samples was 0.2 (0.1-0.3) at SJ
271 and 0.4 (0.2-0.6) at OSP suggesting storage and freeze thaw may have reduced measurement
272 concentrations, but by less than an order of magnitude. Although not ideal, storage of samples
273 is essential for retrospective work like this.

274

275 **Assay sensitivity and specificity.** We tested previously published assays for sensitivity and
276 specificity. In silico analysis indicated no cross reactivity of the (RT-)PCR probe-based assays
277 (Table 2) with sequences deposited in National Center for Biotechnology Information (NCBI); in
278 vitro testing against non-target and target viral or fungal nucleic-acids also indicated no cross
279 reactivity. The exception was the previously published assay for EVD68 developed by Wylie et
280 al.²¹ in 2015. In silico and in vitro testing indicated the assay was not able to detect the variant of
281 EVD68 circulating in winter 2022 (EVD68-2022). We therefore developed a new set of primers,
282 and modified the probe to include a degeneracy, to amplify and detect the same region of the
283 VP1 gene targeted by the Wylie et al. assay. The EVD68 assay used herein therefore includes
284 two forward and reverse primers in order to ensure detection of all EVD68 variants in NCBI
285 including EVD68-2022. We confirmed that the new assay, with two sets of probes and the

286 modified probe, was sensitive and specific in silico and in vitro to both the EVD68-2022 strains
287 and the EVD68 historical strains. .

288
289 We developed a new assay for HAdV. We confirmed assay sensitivity and specificity in silico. In
290 vitro, there was no cross reactivity between the HAdV assay and non-target viral genomic
291 nucleic acids. We developed a probe to use in conjunction with previously published primers for
292 *C. auris*. The newly designed assay was also sensitivity and specific based on in vitro and in
293 silico analysis.

294
295 In this project, we multiplexed eight different hydrolysis-probe assays in each reaction. We
296 tested whether quantification of a target in the multiplex was affected by the presence of the 7
297 other nucleic-acid targets. We found that the concentration of each target was not affected by
298 the presence of a high concentration or orthogonal targets as background (Figure 2). This is
299 evidenced by the fact that target nucleic-acid concentrations measured in the absence and
300 presence of background orthogonal nucleic acids are similar across the decimal dilutions tested.

301
302 **Enteric viruses in wastewater solids.** Concentrations of EV, HAdV, rotavirus, HuNoV GI, and
303 HuNoV GII nucleic-acids in wastewater solids over the project are shown in Figure 3. Figure S2
304 shows concentrations normalized by PMMoV. All targets were detected in wastewater solids
305 throughout the study with most showing season patterns with higher concentrations in the winter
306 2021-2022 and 2022-2023, but not in winter 2020-2021. The exception is EV which was present
307 even at relatively high concentrations in winter 2020-2021. Viral enteric infections are seasonal
308 with higher rates in the winter months³⁶, so the seasonal patterns in the wastewater are
309 consistent with that. The lack of a winter peak in the winter of 2020-2021 may be a result of the
310 non-pharmaceutical interventions in place during the COVID-19 pandemic which may have
311 limited the spread of different infections.

312
313 Median concentrations of each enteric viral target were significantly higher at SJ relative to OSP
314 (Mann-Whitney U Test, all $p < 0.05$) but the effect size was less than 1 order of magnitude (Table
315 3). Interestingly, median concentrations of PMMoV were also higher at SJ, and the normalized
316 concentrations of these targets are more comparable (Figure S2). Within each WWTP, median
317 concentrations of the different viruses ranked highest to lowest were HAdV (highest median
318 concentration of 5.8×10^5 and 1.9×10^6 cp/g for OSP and SJ, respectively) followed by HuNoV GII
319 (5.7×10^5 and 7.0×10^5 cp/g for OSP and SJ, respectively), EV (4.1×10^4 and 5.4×10^4 cp/g for
320 OSP and SJ, respectively), HuNoV GI (2.8×10^4 and 3.4×10^4 cp/g for OSP and SJ, respectively),
321 and rotavirus with the lowest (1×10^3 and 3.3×10^3 cp/g for OSP and SJ, respectively) (Table 3).
322 Other summary statistics (25th and 75th percentiles, maximums and number of non-detects)
323 generally follow the same pattern.

324
325 Rotavirus has previously been reported to be present in wastewater sludge around the world³⁷⁻
326 ³⁹, but quantitative data on its concentration, to our knowledge, have not been reported. In the
327 present study, we observed concentrations in wastewater solids up to 10^5 cp/g with median
328 concentrations on the order of 10^3 cp/g. Concentrations of rotavirus, using both molecular
329 methods and microscopy, in raw sewage has been previously reported to be between 1 and 10^5

330 cp/ml⁴⁰⁻⁴² and as high as 100 fluorescent foci per ml^{43,44} with some authors reporting seasonal
331 occurrence⁴⁴. The measurements in this study also exhibited a seasonal occurrence with higher
332 concentrations in the winter-spring season. A number of studies have investigated different
333 genotypes of rotavirus in sewage using sequencing methods⁴¹ and this may be an interesting
334 area for further research within wastewater-based epidemiology applications. In our study area,
335 oral, live rotavirus vaccines are administered to infants less than 32 weeks of age, and as a
336 result, cases of rotavirus have decreased since vaccine introduction⁴⁵. Based on available
337 sequences of the rotavirus vaccine, the rotavirus assay used in our study may amplify and
338 detect genomic RNA from the vaccine. As infants in our study area wear diapers, including both
339 disposable and cloth, it is unclear to what extent the vaccine strains from infants will appear in
340 wastewater and contribute to the measurements reported herein. However, as vaccine strains
341 are live, transmission to others who do use the wastewater system may be possible⁴⁶, with their
342 shedding possibly influencing concentrations of rotavirus RNA in the waste stream.

343
344 As with rotavirus, there are limited reports of HuNoV GII and GI in wastewater solids³⁷ with
345 some exceptions. Boehm et al.¹⁶ report concentrations of HuNoV GII in wastewater solids from
346 these same plants from a different set of samples and found similar concentrations, but they did
347 not report concentrations of HuNoV GI. There is a large number of studies reporting HuNoV in
348 raw sewage, many of which are described in a systematic review by Eftim et al.⁴⁷ They report
349 median concentrations globally of 10-100 cp/ml with concentrations of HuNoV GII higher than
350 GI, particularly in North America. This is consistent with our findings that indicate that HuNoV GI
351 is present at an order of magnitude lower concentrations than HuNoV GII. Seasonal variation of
352 HuNoV in sewage has been reported^{8,47}, also consistent with the higher levels we observe in
353 wastewater solids in this study in the winter to spring.

354
355 The EV assay we used in this study is a pan-Enterovirus genus assay and therefore detects a
356 number of different viruses including coxsackieviruses, enteroviruses, and echoviruses. The
357 diversity of viruses detected with this assay, and the diversity of diseases associated with them,
358 including meningitis, diarrheal disease, hand-foot-and-mouth disease, and respiratory disease,
359 may explain why the concentrations observed in the present study lack clear seasonal patterns
360 as might be expected for viruses that cause single diseases³⁶. Enteroviruses have been
361 measured extensively in wastewater^{48,49}, and their presence in sludge has been
362 documented^{13,50}. Monpoeho et al.⁵⁰ reported up to 23,000 copies of EV RNA per gram of
363 sludge, strikingly consistent with the concentrations observed in this study (median ~ 10⁴ cp/g).
364 Concentrations of enteroviruses in raw liquid sewage can range from non-detect to 1000 cp/ml
365 depending on location⁴⁸. Enteroviruses have been shown to preferentially adsorb to wastewater
366 solids¹³, but the degree of sorption is governed by the type of enterovirus⁵¹.

367
368 The HAdV assay used in this study targets group F which includes adenovirus 40 and 41; both
369 cause diarrheal illness. HAdV has been documented at relatively high concentrations in raw
370 sewage (~10³ viruses/ml) at locations around the world⁵²⁻⁵⁴. Consistent with those reports, we
371 also found HAdV at the highest concentration of all the viruses tested in wastewater solids in
372 this study. HAdV has previously been reported to preferentially adsorb to wastewater solids¹³
373 where it can be found at concentrations 10⁴ higher than in the liquid phase on a per mass basis.

374 Martin et al.⁵⁵ and Reyne et al.⁵⁶ reported that concentrations of HAdV F41 in wastewater
375 influent in Ireland correlated with laboratory confirmed adenovirus F41 infections and showed a
376 seasonal trend in both, with high occurrence of infections and high concentrations in wastewater
377 in the winter-spring seasons. We also observed some evidence of seasonal changes in HAdV
378 concentrations in wastewater solids, but that pattern appears to be more pronounced in SJ
379 compared to OSP.

380
381 **Hepatitis A virus (HAV).** We detected HAV in approximately 50% of the wastewater solids
382 samples from SJ, but only 5% of the samples from OSP. Median concentrations were non-
383 detect at OSP and 6.6×10^2 cp/g at SJ with little evidence of seasonality. The lack of clear
384 seasonality is consistent with reports that HAV infections typically are not seasonal⁵⁷. HAV has
385 been detected in raw sewage globally⁵⁸. Hellmer et al.⁵⁹ measured HAV in wastewater influent
386 up to 14 cp/ml⁵⁹, and found genotypically identical strains in wastewater and clinical samples.
387 Like our measurements, they found a high degree of variability in their measurements and
388 suggested that due to high levels of shedding of the virus by infected patients, even a single
389 infection could cause large spikes in wastewater concentrations followed by non-detectable
390 concentrations. McCall et al.¹¹ measured HAV in wastewater influent during a HAV outbreak in
391 Michigan and report median concentrations of 10^3 cp/ml; the authors also showed a significant
392 positive correlation between wastewater measurements and the number of laboratory confirmed
393 incident HAV cases. There is little data on HAV in wastewater solids; in their review, Yin et al.¹³
394 identified one study⁶⁰ that indicated HAV partitioning to solids.

395
396 **Enterovirus D68 (EVD68).** EVD68 was non-detect in all samples except for those collected in
397 the fall 2022. During this season, EVD68 RNA concentrations increased coherently and
398 dramatically across the two WWTPs over ~ 6 weeks starting in mid-August to reach a peak in
399 early October 2022, and then reaching non-detect again by the end of December 2022. The
400 highest concentration observed was 72,000 cp/g at OSP and 280,000 cp/g at SJ.

401
402 A similar seasonal pattern in EVD68 in wastewater in 2022 was reported in Texas⁶¹, as well as
403 in Israel⁶² and the United Kingdom⁶³. The study in Israel reports good agreement between
404 wastewater concentrations of EVD68 and confirmed laboratory cases of EVD68 infections⁶².
405 These previous studies did not report EVD68 nucleic acid concentrations in externally valid units
406 (they reported presence/absence or copies per reaction, or proportions of all viruses), so a
407 comparison of concentrations to those reported herein is not possible. EVD68 adsorption to
408 wastewater solids has not been previously reported.

409
410 **Candida auris.** *C. auris* was not detected in any sample from SJ, but was detected in 28 of 230
411 (12%) samples from OSP. The highest concentration detected at OSP was 4000 cp/g. Detection
412 of *C. auris* at OSP was most frequent between mid July 2021 and mid October 2021. *C. auris* is
413 a drug resistant fungal pathogen that emerged in 2009⁶⁴. Previous studies have reported
414 detection of *C. auris* in wastewater influent at concentrations of 1 to 1000 cp/ml, and suggested
415 its presence is associated with confirmed infections and illnesses in the communities
416 contributing to the wastewater¹². *C. auris* is 2.5 - 5.0 μm in diameter⁶⁵ and thus is, by definition,
417 a particle and is expected to be in the solid fraction of wastewater.

418

419 **West Nile Virus (WNV).** WNV is an arbovirus spread by mosquitoes. We did not detect WNV
420 nucleic-acids in any samples - all measurements were below the lower limit of detection. This
421 finding is consistent with the lack of reporting of WNV infections in the communities served by
422 the two WWTPs (<https://westnile.ca.gov/>). To our knowledge, WNV nucleic acids have not been
423 detected in wastewater. Lee et al.⁶⁶ recently reported on challenges and opportunities
424 associated with arbovirus surveillance using wastewater.

425 **Conclusion**

426 This study validated and implemented a suite of digital (RT-)PCR assays to detect human
427 rotavirus, adenovirus group F, norovirus GI and GII, West Nile virus, hepatitis A virus, enterovirus,
428 enterovirus D68, and the fungal pathogen *C. auris*. The work presented here builds upon
429 previous research illustrating these targets are present in wastewater, and lays a foundation for
430 the use of solids for the detection of these infectious disease targets.

431 **Acknowledgements.** We acknowledge the numerous people at San Jose and Oceanside
432 wastewater treatment plants who contributed to wastewater sample collection and Allegra Koch
433 for her support with literature review. This research was performed on the ancestral and
434 unceded lands of the Muwekma Ohlone people. We pay our respects to them and their Elders,
435 past and present, and are grateful for the opportunity to live and work here.

436 **Competing interests.** BW, BH, and DD are employees of Verily Life Sciences, LLC.

437

438

439

440

441

442

443

444

445

446

447

448

449

450 References

451

- 452 (1) Bhutta, Z. A.; Sommerfeld, J.; Lassi, Z. S.; Salam, R. A.; Das, J. K. Global Burden,
453 Distribution, and Interventions for Infectious Diseases of Poverty. *Infectious Diseases of*
454 *Poverty* **2014**, 3 (1), 21. <https://doi.org/10.1186/2049-9957-3-21>.
- 455 (2) Lafferty, K. D. The Ecology of Climate Change and Infectious Diseases. *Ecology* **2009**, 90
456 (4), 888–900. <https://doi.org/10.1890/08-0079.1>.
- 457 (3) Altizer, S.; Ostfeld, R. S.; Johnson, P. T. J.; Kutz, S.; Harvell, C. D. Climate Change and
458 Infectious Diseases: From Evidence to a Predictive Framework. *Science* **2013**, 341 (6145),
459 514–519. <https://doi.org/10.1126/science.1239401>.
- 460 (4) Wu, F.; Zhang, J.; Xiao, A.; Gu, X.; Lee, W. L.; Armas, F.; Kauffman, K.; Hanage, W.;
461 Matus, M.; Ghaeli, N.; Endo, N.; Duvallet, C.; Poyet, M.; Moniz, K.; Washburne, A. D.;
462 Erickson, T. B.; Chai, P. R.; Thompson, J.; Alm, E. J. SARS-CoV-2 Titers in Wastewater
463 Are Higher than Expected from Clinically Confirmed Cases. *mSystems* **2020**, 5 (4),
464 e00614-20. <https://doi.org/10.1128/mSystems.00614-20>.
- 465 (5) Mercier, E.; D'Aoust, P. M.; Thakali, O.; Hegazy, N.; Jia, J.-J.; Zhang, Z.; Eid, W.; Plaza-
466 Diaz, J.; Kabir, M. P.; Fang, W.; Cowan, A.; Stephenson, S. E.; Pisharody, L.; MacKenzie,
467 A. E.; Graber, T. E.; Wan, S.; Delatolla, R. Municipal and Neighbourhood Level
468 Wastewater Surveillance and Subtyping of an Influenza Virus Outbreak. *Scientific Reports*
469 **2022**, 12 (1), 15777. <https://doi.org/10.1038/s41598-022-20076-z>.
- 470 (6) Boehm, A. B.; Hughes, B.; Duong, D.; Chan-Herur, V.; Buchman, A.; Wolfe, M. K.; White,
471 B. J. Wastewater Concentrations of Human Influenza, Metapneumovirus, Parainfluenza,
472 Respiratory Syncytial Virus, Rhinovirus, and Seasonal Coronavirus Nucleic-Acids during
473 the COVID-19 Pandemic: A Surveillance Study. *The Lancet Microbe* **2023**, 4 (5), e340–
474 e348. [https://doi.org/10.1016/S2666-5247\(22\)00386-X](https://doi.org/10.1016/S2666-5247(22)00386-X).
- 475 (7) Hughes, B.; Duong, D.; White, B. J.; Wigginton, K. R.; Chan, E. M. G.; Wolfe, M. K.;
476 Boehm, A. B. Respiratory Syncytial Virus (RSV) RNA in Wastewater Settled Solids
477 Reflects RSV Clinical Positivity Rates. *Environ. Sci. Technol. Lett.* **2022**, 9 (2), 173–178.
478 <https://doi.org/10.1021/acs.estlett.1c00963>.
- 479 (8) Guo, Y.; Li, J.; O'Brien, J.; Sivakumar, M.; Jiang, G. Back-Estimation of Norovirus
480 Infections through Wastewater-Based Epidemiology: A Systematic Review and Parameter
481 Sensitivity. *Water Research* **2022**, 219, 118610.
482 <https://doi.org/10.1016/j.watres.2022.118610>.
- 483 (9) Diemert, S.; Yan, T. Clinically Unreported Salmonellosis Outbreak Detected via
484 Comparative Genomic Analysis of Municipal Wastewater Salmonella Isolates. *Appl.*
485 *Environ. Microbiol.* **2019**, 85 (10), e00139-19. <https://doi.org/10.1128/AEM.00139-19>.
- 486 (10) Wolfe, M. K.; Yu, A. T.; Duong, D.; Rane, M. S.; Hughes, B.; Chan-Herur, V.; Donnelly, M.;
487 Chai, S.; White, B. J.; Vugia, D. J.; Boehm, A. B. Use of Wastewater for Mpox Outbreak
488 Surveillance in California. *N Engl J Med* **2023**. <https://doi.org/10.1056/NEJMc2213882>.
- 489 (11) McCall, C.; Wu, H.; O'Brien, E.; Xagorarakis, I. Assessment of Enteric Viruses during a
490 Hepatitis Outbreak in Detroit MI Using Wastewater Surveillance and Metagenomic
491 Analysis. *Journal of Applied Microbiology* **2021**, 131 (3), 1539–1554.
492 <https://doi.org/10.1111/jam.15027>.
- 493 (12) Barber, C.; Crank, K.; Papp, K.; Innes, G. K.; Schmitz, B. W.; Chavez, J.; Rossi, A.;

- 494 Gerrity, D. Community-Scale Wastewater Surveillance of *Candida Auris* during an Ongoing
495 Outbreak in Southern Nevada. *Environ. Sci. Technol.* **2023**, 57 (4), 1755–1763.
496 <https://doi.org/10.1021/acs.est.2c07763>.
- 497 (13) Yin, Z.; Voice, T.; Tarabara, V.; Xagorarakis, I. Sorption of Human Adenovirus to
498 Wastewater Solids. *Journal of Environmental Engineering* **2018**, 144 (11), 06018008.
499 [https://doi.org/10.1061/\(ASCE\)EE.1943-7870.0001463](https://doi.org/10.1061/(ASCE)EE.1943-7870.0001463).
- 500 (14) Wolfe, M. K.; Duong, D.; Bakker, K. M.; Ammerman, M.; Mortenson, L.; Hughes, B.; Arts,
501 P.; Luring, A. S.; Fitzsimmons, W. J.; Bendall, E.; Hwang, C. E.; Martin, E. T.; White, B.
502 J.; Boehm, A. B.; Wigginton, K. R. Wastewater-Based Detection of Two Influenza
503 Outbreaks. *Environ. Sci. Technol. Lett.* **2022**, 9 (8), 687–692.
504 <https://doi.org/10.1021/acs.estlett.2c00350>.
- 505 (15) Kim, S.; Kennedy, L. C.; Wolfe, M. K.; Criddle, C. S.; Duong, D. H.; Topol, A.; White, B. J.;
506 Kantor, R. S.; Nelson, K. L.; Steele, J. A.; Langlois, K.; Griffith, J. F.; Zimmer-Faust, A. G.;
507 McLellan, S. L.; Schussman, M. K.; Ammerman, M.; Wigginton, K. R.; Bakker, K. M.;
508 Boehm, A. B. SARS-CoV-2 RNA Is Enriched by Orders of Magnitude in Primary Settled
509 Solids Relative to Liquid Wastewater at Publicly Owned Treatment Works. *Environ. Sci.:*
510 *Water Res. Technol.* **2022**. <https://doi.org/10.1039/D1EW00826A>.
- 511 (16) Boehm, A. B.; Wolfe, M. K.; White, B.; Hughes, B.; Duong, D.; Banaei, N.; Bidwell, A.
512 Human Norovirus (HuNoV) GII RNA in Wastewater Solids at 145 United States
513 Wastewater Treatment Plants: Comparison to Positivity Rates of Clinical Specimens and
514 Modeled Estimates of HuNoV GII Shedders. *Journal of Exposure Science & Environmental*
515 *Epidemiology* **2023**. <https://doi.org/10.1038/s41370-023-00592-4>.
- 516 (17) D’Aoust, P. M.; Mercier, E.; Montpetit, D.; Jia, J.-J.; Alexandrov, I.; Neault, N.; Baig, A. T.;
517 Mayne, J.; Zhang, X.; Alain, T.; Langlois, M.-A.; Servos, M. R.; MacKenzie, M.; Figeys, D.;
518 MacKenzie, A. E.; Graber, T. E.; Delatolla, R. Quantitative Analysis of SARS-CoV-2 RNA
519 from Wastewater Solids in Communities with Low COVID-19 Incidence and Prevalence.
520 *Water Research* **2021**, 188, 116560. <https://doi.org/10.1016/j.watres.2020.116560>.
- 521 (18) Wolfe, M. K.; Topol, A.; Knudson, A.; Simpson, A.; White, B.; Duc, V.; Yu, A.; Li, L.; Balliet,
522 M.; Stoddard, P.; Han, G.; Wigginton, K. R.; Boehm, A. High-Frequency, High-Throughput
523 Quantification of SARS-CoV-2 RNA in Wastewater Settled Solids at Eight Publicly Owned
524 Treatment Works in Northern California Shows Strong Association with COVID-19
525 Incidence. *mSystems* **2021**, 6 (5), e00829-21. <https://doi.org/10.1128/mSystems.00829-21>.
- 526 (19) Peccia, J.; Zulli, A.; Brackney, D. E.; Grubaugh, N. D.; Kaplan, E. H.; Casanovas-Massana,
527 A.; Ko, A. I.; Malik, A. A.; Wang, D.; Wang, M.; Warren, J. L.; Weinberger, D. M.; Omer, S.
528 B. SARS-CoV-2 RNA Concentrations in Primary Municipal Sewage Sludge as a Leading
529 Indicator of COVID-19 Outbreak Dynamics. *Nature Biotechnology* **2020**, 38, 1164–1167.
- 530 (20) Kordalewska, M.; Zhao, Y.; Lockhart, S. R.; Chowdhary, A.; Berrio, I.; Perlin, D. S. Rapid
531 and Accurate Molecular Identification of the Emerging Multidrug-Resistant Pathogen
532 *Candida Auris*. *Journal of Clinical Microbiology* **2017**, 55 (8), 2445–2452.
533 <https://doi.org/10.1128/jcm.00630-17>.
- 534 (21) Wylie, T. N.; Wylie, K. M.; Buller, R. S.; Cannella, M.; Storch, G. A. Development and
535 Evaluation of an Enterovirus D68 Real-Time Reverse Transcriptase PCR Assay. *Journal of*
536 *Clinical Microbiology* **2015**, 53 (8), 2641–2647. <https://doi.org/10.1128/jcm.00923-15>.
- 537 (22) Jothikumar, N.; Kang, G.; Hill, V. R. Broadly Reactive TaqMan® Assay for Real-Time RT-
538 PCR Detection of Rotavirus in Clinical and Environmental Samples. *Journal of Virological*
539 *Methods* **2009**, 155 (2), 126–131. <https://doi.org/10.1016/j.jviromet.2008.09.025>.
- 540 (23) Jothikumar, N.; Cromeans, T. L.; Sobsey, M. D.; Robertson, B. H. Development and
541 Evaluation of a Broadly Reactive TaqMan Assay for Rapid Detection of Hepatitis A Virus.
542 *Applied and Environmental Microbiology* **2005**, 71 (6), 3359–3363.
543 <https://doi.org/10.1128/AEM.71.6.3359-3363.2005>.
- 544 (24) Jothikumar Narayanan; Lowther James A.; Henshilwood Kathleen; Lees David N.; Hill

- 545 Vincent R.; Vinjé Jan. Rapid and Sensitive Detection of Noroviruses by Using TaqMan-
546 Based One-Step Reverse Transcription-PCR Assays and Application to Naturally
547 Contaminated Shellfish Samples. *Applied and Environmental Microbiology* **2005**, *71* (4),
548 1870–1875. <https://doi.org/10.1128/AEM.71.4.1870-1875.2005>.
- 549 (25) Loisy, F.; Atmar, R. L.; Guillon, P.; Le Cann, P.; Pommepuy, M.; Le Guyader, F. Real-Time
550 RT-PCR for Norovirus Screening in Shellfish. *Journal of Virological Methods* **2005**, *123* (1),
551 1–7.
- 552 (26) Gregory, J. B.; Litaker, R. W.; Noble, R. T. Rapid One-Step Quantitative Reverse
553 Transcriptase PCR Assay with Competitive Internal Positive Control for Detection of
554 Enteroviruses in Environmental Samples. *Applied and Environmental Microbiology* **2006**,
555 *72* (6), 3960–3967.
- 556 (27) Lanciotti, R. S.; Kerst, A. J.; Nasci, R. S.; Godsey, M. S.; Mitchell, C. J.; Savage, H. M.;
557 Komar, N.; Panella, N. A.; Allen, B. C.; Volpe, K. E.; Davis, B. S.; Roehrig, J. T. Rapid
558 Detection of West Nile Virus from Human Clinical Specimens, Field-Collected Mosquitoes,
559 and Avian Samples by a TaqMan Reverse Transcriptase-PCR Assay. *Journal of Clinical*
560 *Microbiology* **2000**, *38* (11), 4066–4071. [https://doi.org/10.1128/jcm.38.11.4066-](https://doi.org/10.1128/jcm.38.11.4066-4071.2000)
561 [4071.2000](https://doi.org/10.1128/jcm.38.11.4066-4071.2000).
- 562 (28) Boehm, A. B.; Wolfe, M. K.; Wigginton, K. R.; Bidwell, A.; White, B. J.; Hughes, B.; Duong;
563 Chan-Herur, V.; Bischel, H. N.; Naughton, C. C. Human Viral Nucleic Acids Concentrations
564 in Wastewater Solids from Central and Coastal California USA. *Scientific Data* **2023**, *10*,
565 396.
- 566 (29) Topol, A.; Wolfe, M.; White, B.; Wigginton, K.; Boehm, A. High Throughput Pre-Analytical
567 Processing of Wastewater Settled Solids for SARS-CoV-2 RNA Analyses. *protocols.io*
568 **2021**. <https://doi.org/dx.doi.org/10.17504/protocols.io.btyqnpvw>.
- 569 (30) Topol, A.; Wolfe, M.; Wigginton, K.; White, B.; Boehm, A. High Throughput RNA Extraction
570 and PCR Inhibitor Removal of Settled Solids for Wastewater Surveillance of SARS-CoV-2
571 RNA. *protocols.io* **2021**. <https://doi.org/dx.doi.org/10.17504/protocols.io.btyrnpv6>.
- 572 (31) Huisman, J. S.; Scire, J.; Caduff, L.; Fernandez-Cassi, X.; Ganesanandamoorthy, P.; Kull,
573 A.; Scheidegger, A.; Stachler, E.; Boehm, A. B.; Hughes, B.; Knudson, A.; Topol, A.;
574 Wigginton, K. R.; Wolfe, M. K.; Kohn, T.; Ort, C.; Stadler, T.; Julian, T. R. Wastewater-
575 Based Estimation of the Effective Reproductive Number of SARS-CoV-2. *Environmental*
576 *Health Perspectives* **2022**, *130* (5), 057011–1.
- 577 (32) Symonds, E. M.; Nguyen, K. H.; Harwood, V. J.; Breitbart, M. Pepper Mild Mottle Virus: A
578 Plant Pathogen with a Greater Purpose in (Waste)Water Treatment Development and
579 Public Health Management. *Water Research* **2018**, *144*, 1–12.
580 <https://doi.org/10.1016/j.watres.2018.06.066>.
- 581 (33) Simpson, A.; Boehm, A. B. *Effect of storage on concentrations of SARS-CoV-2 RNA in*
582 *settled solids of wastewater treatment plants*. Stanford Digital Repository.
583 purl.stanford.edu/yn042kx5009.
- 584 (34) Borchardt, M. A.; Boehm, A. B.; Salit, M.; Spencer, S. K.; Wigginton, K. R.; Noble, R. T.
585 The Environmental Microbiology Minimum Information (EMMI) Guidelines: QPCR and
586 DPCR Quality and Reporting for Environmental Microbiology. *Environ. Sci. Technol.* **2021**,
587 *55* (15), 10210–10223. <https://doi.org/10.1021/acs.est.1c01767>.
- 588 (35) Kantor, R. S.; Nelson, K. L.; Greenwald, H. D.; Kennedy, L. C. Challenges in Measuring
589 the Recovery of SARS-CoV-2 from Wastewater. *Environ. Sci. Technol.* **2021**, *55* (6),
590 3514–3519. <https://doi.org/10.1021/acs.est.0c08210>.
- 591 (36) Fisman, D. Seasonality of Viral Infections: Mechanisms and Unknowns. *Clinical*
592 *Microbiology and Infection* **2012**, *18* (10), 946–954. [https://doi.org/10.1111/j.1469-](https://doi.org/10.1111/j.1469-0691.2012.03968.x)
593 [0691.2012.03968.x](https://doi.org/10.1111/j.1469-0691.2012.03968.x).
- 594 (37) Gholipour, S.; Ghalhari, M. R.; Nikaeen, M.; Rabbani, D.; Pakzad, P.; Miranzadeh, M. B.
595 Occurrence of Viruses in Sewage Sludge: A Systematic Review. *Science of The Total*

- 596 *Environment* **2022**, 824, 153886. <https://doi.org/10.1016/j.scitotenv.2022.153886>.
- 597 (38) Bibby, K.; Peccia, J. Identification of Viral Pathogen Diversity in Sewage Sludge by
598 Metagenome Analysis. *Environ. Sci. Technol.* **2013**, 47 (4), 1945–1951.
599 <https://doi.org/10.1021/es305181x>.
- 600 (39) Kittigul, L.; Pombubpa, K. Rotavirus Surveillance in Tap Water, Recycled Water, and
601 Sewage Sludge in Thailand: A Longitudinal Study, 2007–2018. *Food and Environmental*
602 *Virology* **2021**, 13 (1), 53–63. <https://doi.org/10.1007/s12560-020-09450-0>.
- 603 (40) Silva-Sales, M.; Martínez-Puchol, S.; Gonzales-Gustavson, E.; Hundesa, A.; Gironès, R.
604 High Prevalence of Rotavirus A in Raw Sewage Samples from Northeast Spain. *Viruses*
605 **2020**, 12 (3). <https://doi.org/10.3390/v12030318>.
- 606 (41) Zhou, N.; Lv, D.; Wang, S.; Lin, X.; Bi, Z.; Wang, H.; Wang, P.; Zhang, H.; Tao, Z.; Hou, P.;
607 Song, Y.; Xu, A. Continuous Detection and Genetic Diversity of Human Rotavirus A in
608 Sewage in Eastern China, 2013–2014. *Virology Journal* **2016**, 13 (1), 153.
609 <https://doi.org/10.1186/s12985-016-0609-0>.
- 610 (42) Barril, P. A.; Fumian, T. M.; Prez, V. E.; Gil, P. I.; Martínez, L. C.; Giordano, M. O.;
611 Masachessi, G.; Isa, M. B.; Ferreyra, L. J.; Ré, V. E.; Miagostovich, M.; Pavan, J. V.;
612 Nates, S. V. Rotavirus Seasonality in Urban Sewage from Argentina: Effect of
613 Meteorological Variables on the Viral Load and the Genetic Diversity. *Environmental*
614 *Research* **2015**, 138, 409–415. <https://doi.org/10.1016/j.envres.2015.03.004>.
- 615 (43) Bosch, A.; Pinto, R. M.; Blanch, A. R.; Jofre, J. T. Detection of Human Rotavirus in
616 Sewage through Two Concentration Procedures. *Water Research* **1988**, 22 (3), 343–348.
617 [https://doi.org/10.1016/S0043-1354\(88\)90200-X](https://doi.org/10.1016/S0043-1354(88)90200-X).
- 618 (44) Hejkal, T. W.; Smith, E. M.; Gerba, C. P. Seasonal Occurrence of Rotavirus in Sewage.
619 *Applied and Environmental Microbiology* **1984**, 47 (3), 588–590.
620 <https://doi.org/10.1128/aem.47.3.588-590.1984>.
- 621 (45) Rha, B.; Tate, J. E.; Payne, D. C.; Cortese, M. M.; Lopman, B. A.; Curns, A. T.; Parashar,
622 U. D. Effectiveness and Impact of Rotavirus Vaccines in the United States – 2006–2012.
623 *Expert Review of Vaccines* **2014**, 13 (3), 365–376.
624 <https://doi.org/10.1586/14760584.2014.877846>.
- 625 (46) Anderson, E. J. Rotavirus Vaccines: Viral Shedding and Risk of Transmission. *The Lancet*
626 *Infectious Diseases* **2008**, 8 (10), 642–649. [https://doi.org/10.1016/S1473-3099\(08\)70231-](https://doi.org/10.1016/S1473-3099(08)70231-7)
627 [7.](https://doi.org/10.1016/S1473-3099(08)70231-7)
- 628 (47) Eftim, S. E.; Hong, T.; Soller, J.; Boehm, A.; Warren, I.; Ichida, A.; Nappier, S. P.
629 Occurrence of Norovirus in Raw Sewage – A Systematic Literature Review and Meta-
630 Analysis. *Water Research* **2017**, 111 (Supplement C), 366–374.
631 <https://doi.org/10.1016/j.watres.2017.01.017>.
- 632 (48) Betancourt, W. Q.; Shulman, L. M. Polioviruses and Other Enteroviruses. In *Water and*
633 *Sanitation for the 21st Century: Health and Microbiological Aspects of Excreta and*
634 *Wastewater Management (Global Water Pathogen Project; Rose, J. B., Jimenez-Cisneros,*
635 *B., Eds.; Meschke, J. S., Girones, R., Series Eds.; Part 3: Specific Excreted Pathogens:*
636 *Environmental and Epidemiology Aspects - Section 1: Viruses; Michigan State University,*
637 *East Lansing, MI, 2017.*
- 638 (49) Brinkman, N. E.; Shay, F. G.; Keely, S. P. Retrospective Surveillance of Wastewater To
639 Examine Seasonal Dynamics of Enterovirus Infections. *mSphere* **2017**, 2 (3), e00099-17.
640 <https://doi.org/10.1128/mSphere.00099-17>.
- 641 (50) Monpoeho, S.; Dehée, A.; Mignotte, B.; Schwartzbrod, L.; Marechal, V.; Nicolas, J.-C.;
642 Billaudel, S.; Ferré, V. Quantification of Enterovirus RNA in Sludge Samples Using Single
643 Tube Real-Time RT-PCR. *BioTechniques* **2000**, 29 (1), 88–93.
644 <https://doi.org/10.2144/00291st03>.
- 645 (51) Gerba, C. P.; Goyal, S. M.; Hurst, C. J.; Labelle, R. L. Type and Strain Dependence of
646 Enterovirus Adsorption to Activated Sludge, Soils and Estuarine Sediments. *Water*

- 647 *Research* **1980**, *14* (9), 1197–1198. [https://doi.org/10.1016/0043-1354\(80\)90176-1](https://doi.org/10.1016/0043-1354(80)90176-1).
- 648 (52) Fong, T.-T.; Phanikumar, M. S.; Xagorarakis, I.; Rose, J. B. Quantitative Detection of
649 Human Adenoviruses in Wastewater and Combined Sewer Overflows Influencing a
650 Michigan River. *Applied and Environmental Microbiology* **2010**, *76* (3), 715–723.
651 <https://doi.org/10.1128/AEM.01316-09>.
- 652 (53) Katayama, H.; Haramoto, E.; Oguma, K.; Yamashita, H.; Tajima, A.; Nakajima, H.; Ohgaki,
653 S. One-Year Monthly Quantitative Survey of Noroviruses, Enteroviruses, and
654 Adenoviruses in Wastewater Collected from Six Plants in Japan. *Water Research* **2008**, *42*
655 (6), 1441–1448. <https://doi.org/10.1016/j.watres.2007.10.029>.
- 656 (54) Jiang, S. C. Human Adenoviruses in Water: Occurrence and Health Implications: A
657 Critical Review. *Environ. Sci. Technol.* **2006**, *40* (23), 7132–7140.
658 <https://doi.org/10.1021/es060892o>.
- 659 (55) Martin, N. A.; Gonzalez, G.; Reynolds, L. J.; Bennett, C.; Campbell, C.; Nolan, T. M.;
660 Byrne, A.; Fennema, S.; Holohan, N.; Kuntamukkula, S. R.; Sarwar, N.; Sala-Comorera, L.;
661 Dean, J.; Urtasun-Elizari, J. M.; Hare, D.; Liddy, E.; Joyce, E.; O’Sullivan, J. J.; Cuddihy, J.
662 M.; McIntyre, A. M.; Robinson, E. P.; Dahly, D.; Fletcher, N. F.; Cotter, S.; Fitzpatrick, E.;
663 Carr, M. J.; De Gascun, C. F.; Meijer, W. G. Adeno-Associated Virus 2 and Human
664 Adenovirus F41 in Wastewater during Outbreak of Severe Acute Hepatitis in Children,
665 Ireland. *Emerg Infect Dis* **2023**, *29* (4), 751–760. <https://doi.org/10.3201/eid2904.221878>.
- 666 (56) Reyne, M. I.; Allen, D. M.; Levickas, A.; Allingham, P.; Lock, J.; Fitzgerald, A.; McSparron,
667 C.; Nejad, B. F.; McKinley, J.; Lee, A.; Bell, S. H.; Quick, J.; Houldcroft, C. J.; Bamford, C.
668 G. G.; Gilpin, D. F.; McGrath, J. W. Detection of Human Adenovirus F41 in Wastewater
669 and Its Relationship to Clinical Cases of Acute Hepatitis of Unknown Aetiology. *Science of*
670 *The Total Environment* **2023**, *857*, 159579.
671 <https://doi.org/10.1016/j.scitotenv.2022.159579>.
- 672 (57) Brooks, G.; Butel, J.; Morse, S. *Medical Microbiology*, 22nd ed.; McGraw-Hill: San
673 Francisco, CA, 2001.
- 674 (58) Takuissu, G. R.; Kenmoe, S.; Ebogo-Belobo, J. T.; Kengne-Ndé, C.; Mbagha, D. S.; Bowo-
675 Ngandji, A.; Ndzie Ondigui, J. L.; Kenfack-Momo, R.; Tchatchouang, S.; Kenfack-Zanguim,
676 J.; Lontuo Fogang, R.; Zeuko’o Menkem, E.; Kame-Ngasse, G. I.; Magoudjou-Pekam, J.
677 N.; Veneri, C.; Mancini, P.; Bonanno Ferraro, G.; Iaconelli, M.; Orlandi, L.; Del Giudice, C.;
678 Suffredini, E.; La Rosa, G. Occurrence of Hepatitis A Virus in Water Matrices: A
679 Systematic Review and Meta-Analysis. *Int J Environ Res Public Health* **2023**, *20* (2).
680 <https://doi.org/10.3390/ijerph20021054>.
- 681 (59) Hellmér, M.; Paxéus, N.; Magnius, L.; Enache, L.; Arnholm, B.; Johansson, A.; Bergström,
682 T.; Norder, H. Detection of Pathogenic Viruses in Sewage Provided Early Warnings of
683 Hepatitis A Virus and Norovirus Outbreaks. *Applied and Environmental Microbiology* **2014**,
684 *80* (21), 6771–6781. <https://doi.org/10.1128/AEM.01981-14>.
- 685 (60) Arraj, A.; Bohatier, J.; Laveran, H.; Traore, O. Comparison of Bacteriophage and Enteric
686 Virus Removal in Pilot Scale Activated Sludge Plants. *Journal of Applied Microbiology*
687 **2005**, *98* (2), 516–524. <https://doi.org/10.1111/j.1365-2672.2004.02485.x>.
- 688 (61) Tisza, M.; Cregeen, S. J.; Avadhanula, V.; Zhang, P.; Ayvaz, T.; Feliz, K.; Hoffman, K. L.;
689 Clark, J. R.; Terwilliger, A.; Ross, M. C.; Cormier, J.; Henke, D.; Troisi, C.; Wu, F.; Rios, J.;
690 Deegan, J.; Hansen, B.; Balliew, J.; Gitter, A.; Zhang, K.; Li, R.; Bauer, C. X.; Mena, K. D.;
691 Piedra, P. A.; Petrosino, J. F.; Boerwinkle, E.; Maresso, A. W. Comprehensive Wastewater
692 Sequencing Reveals Community and Variant Dynamics of the Collective Human Virome.
693 *medRxiv* **2023**. <https://doi.org/10.1101/2023.05.03.23289441>.
- 694 (62) Erster, O.; Bar-Or, I.; Levy, V.; Shatzman-Steuerman, R.; Sofer, D.; Weiss, L.; Vasserman,
695 R.; Fratty, I. S.; Kestin, K.; Elul, M.; Levi, N.; Alkrenawi, R.; Mendelson, E.; Mandelboim,
696 M.; Weil, M. Monitoring of Enterovirus D68 Outbreak in Israel by a Parallel Clinical and
697 Wastewater Based Surveillance. *Viruses* **2022**, *14* (5). <https://doi.org/10.3390/v14051010>.

- 698 (63) Tedcastle, A.; Wilton, T.; Pegg, E.; Klapsa, D.; Bujaki, E.; Mate, R.; Fritzsche, M.;
699 Majumdar, M.; Martin, J. Detection of Enterovirus D68 in Wastewater Samples from the UK
700 between July and November 2021. *Viruses* **2022**, *14* (1).
701 <https://doi.org/10.3390/v14010143>.
- 702 (64) Vila, T.; Sultan, A. S.; Montelongo-Jauregui, D.; Jabra-Rizk, M. A. Candida Auris: A
703 Fungus with Identity Crisis. *Pathogens and Disease* **2020**, *78* (4), ftaa034.
704 <https://doi.org/10.1093/femspd/ftaa034>.
- 705 (65) Osei Sekyere, J. Candida Auris: A Systematic Review and Meta-Analysis of Current
706 Updates on an Emerging Multidrug-Resistant Pathogen. *Microbiologyopen* **2018**, *7* (4),
707 e00578. <https://doi.org/10.1002/mbo3.578>.
- 708 (66) Lee, W. L.; Gu, X.; Armas, F.; Leifels, M.; Wu, F.; Chandra, F.; Chua, F. J. D.; Syenina, A.;
709 Chen, H.; Cheng, D.; Ooi, E. E.; Wuertz, S.; Alm, E. J.; Thompson, J. Monitoring Human
710 Arboviral Diseases through Wastewater Surveillance: Challenges, Progress and Future
711 Opportunities. *Water Research* **2022**, *223*, 118904.
712 <https://doi.org/10.1016/j.watres.2022.118904>.
713
714
715
716

717

Virus	Genomic target	Non-target testing (negatives)	Target testing (positives)	Reference
Adenovirus F (HAdV)	Hexon gene	NATRVP2.1-BIO	ATCC VR-930DQ	Not applicable
Enterovirus D68 (EVD68)	Genome Polyprotein (VP1)	NATRVP2.1-BIO NATEVP-C	ATCC VR-1826DQ and ATCC VR-1823D Gene Blocks	Wylie et al. ²¹
Norovirus GII (HuNoV GII)	ORF1-2 junction	NATRVP2.1-BIO	ATCC VR-3235SD	Loisy et al. ²⁵
Norovirus GI (HuNoV GI)	ORF1-2 junction	NATRVP2.1-BIO NATEVP-C	ATCC VR-3234SD	Jothikuman et al. ²⁴
Rotavirus	Non-structural Region Protein 3 (NSP3)	NATRVP2.1-BIO NATEVP-C	ATCC VR-2018DQ	Jothikumar et al. ²²
Enterovirus (EV)	5' UTR	NATRVP2.1-BIO	NATEVP-C	Gregory et al. ²⁶
Hepatitis A (HAV)	5'UTR	NATRVP2.1-BIO NATEVP-C	ATCC VR-3257SD	Jothikumar et al. ²³
West Nile Virus (WNV)	Polyprotein gene	NATRVP2.1-BIO	VR-3274SD	Lanciotti et al. ²⁷
<i>Candida auris</i> (<i>C. auris</i>)	5.8S, all of ITS2, and a fragment of 28S rDNA	NATRVP2.1-BIO NATEVP-C NATCTVPOS-BD	ATCC MYA-5001	Kordalewska et al. ²⁰

718 Table 1. Viruses/fungus considered in this study and the region of the genome that each assay
719 targeted. Viruses/fungi used to test specificity are indicated as “non target testing” and
720 viruses/fungi used positive controls are indicated as “target testing”. The reference for each
721 assay is provided aside from HAdV for which an assay was developed herein. As described in
722 the text, we also developed novel primers and adjusted the probe for the EVD-68 assay to
723 capture the variant circulating in the winter of 2022. All non-target controls are panels sold by
724 Zeptomatrix (panels begin with NAT prefix, “Zepto”, Buffalo, NY). ATCC is American Type
725 Culture Collection. The NATRVP2.1-BIO panel includes chemically inactivated intact influenza
726 viruses, parainfluenza viruses, adenovirus, rhinovirus, metapneumovirus, and coronaviruses.
727 The NATEVP-C panel includes chemically inactivated intact coxsackieviruses, echovirus, and
728 parechovirus. The NATCTVPOS-BD includes chemically inactivated *Candida albicans*, *C.*
729 *krusei*, *C. glabrata*, and *Trichomoniasis vaginalis*. The full list of species in the panels is
730 available from the vendor.

Target	Primer/Probe	Sequence
HAdV	Forward	CCTCCTGTGTTACGCCAGA
	Reverse	CAGGCTGAAGTASGTATCGG
	Probe	CTCGATGATGCCGCAATGGT
HuNoV GII	Forward	ATGTTCAgRTGGATGAGRTTCTCWGA
	Reverse	TCGACGCCATCTTCATTCAACA
	Probe	AGCACGTGGGAGGGCGATCG
EVD68	Forward	CACYGAACCAGARGAAGCCA CACTGAACCAGAGGAAGCTA
	Reverse	CCAAAGCTGCTCTACTGAGAAA CTAAAGCTGCCCTACTAAGRAA
	Probe	TCGCACAGTGATAAATCRACAYGG
WNV	Forward	TCAGCGATCTCTCCACCAAAG
	Reverse	GGGTCAGCACGTTTGTTCATTG
	Probe	TGCCCCGACCATGGGAGAAGCT
HuNoV GI	Forward	GCCATGTTCCGITGG ATG
	Reverse	TCCTTAGACGCCATCATCAT
	Probe	TG GGACAGGAGATCGCAATCTC
Rotavirus	Forward	CAGTGGTTGATGCTCAAGATGGA
	Reverse	TCATTGTAATCATATTGAATACCCA
	Probe	ACAACCTGCAGCTTCAAAGAAGWGT
EV	Forward	CCCTGAATGCGGCTAAT

	Reverse	TGTCACCATAAGCAGCCA
	Probe	ACGGACACCCAAAGTAGTCGGTTC
C. auris	Forward	CGCACATTGCGCCTTGGGGTA
	Reverse	GTAGTCCTACCTGATTTGAGGCGAC
	Probe	CTTCTACCAATCTTCGCGGT
HAV	Forward	GGTAGGCTACGGGTGAAAC
	Reverse	AACAACCTACCAATATCCGC
	Probe	CTTAGGCTAATACTTCTATGAAGAGATGC

731
732 Table 2. Primers and probes used in this study. Primers and probes were purchased from
733 Integrated DNA Technologies (Coralville, IA, USA). All probes contained fluorescent molecules
734 and quenchers (5' HEX, FAM, Cy5, Cy5.5, ROX, and/or ATTO950/ZEN/3' IBFQ); FAM, 6-
735 fluorescein amidite; HEX, hexachloro-fluorescein; Cy5, Cyanine-5; Cy5.5, Cyanine5.5; ROX,
736 carboxyrhodamine; ZEN, a proprietary internal quencher from Integrated DNA Technologies
737 (Coralville, IA, USA); and IBFQ, Iowa Black FQ.

738

WWTP		Rota	HAdV	EV	HuNoV GI	HuNoV GII	HAV	EVD68	C. auris
OSP	median	1.0x10 ³	5.8x10 ⁵	4.1x10 ⁴	2.8x10 ⁴	5.7x10 ⁵	0	0	0
	25th	0	4.9x10 ⁴	2.6x10 ⁴	1.2x10 ⁴	3.5x10 ⁵	0	0	0
	75th	3.2x10 ³	1.5x10 ⁶	6.9x10 ⁴	4.7x10 ⁴	1.1x10 ⁶	0	0	0
	max	7.8x10 ⁴	5.8x10 ⁶	2.4x10 ⁵	2.6x10 ⁵	6.4x10 ⁶	9x10 ⁴	7.2x10 ⁴	4.0x10 ³
	# ND	89	9	0	0	0	220	182	202
	#	230	230	230	230	230	230	230	230
SJ	median	3.3x10 ³	1.9x10 ⁶	5.4x10 ⁴	3.4x10 ⁴	7.0x10 ⁵	6.6x10 ²	0	0
	25th	1.5x10 ³	5.3x10 ⁵	3.7x10 ⁴	1.6x10 ⁴	3.5x10 ⁵	0	0	0
	75th	8.5x10 ³	4.3x10 ⁶	7.5x10 ⁴	7.6x10 ⁴	1.5x10 ⁶	3.1x10 ³	0	0
	max	2.7x10 ⁵	8.5x10 ⁷	1.2x10 ⁶	1.4x10 ⁶	1.1x10 ⁸	4.0x10 ⁵	2.8x10 ⁵	0
	# ND	24	0	1	0	0	111	177	229
	#	229	229	229	229	229	229	229	229

739 Table 3. Summary statistics for infectious disease targets in OSP and SJ wastewater solids.
 740 Units of concentration are copies per gram dry weight. 25th is 25th percentile, 75th is 75th
 741 percentile, max is the maximum value, # ND is number of non-detect, # is the total number of
 742 samples.

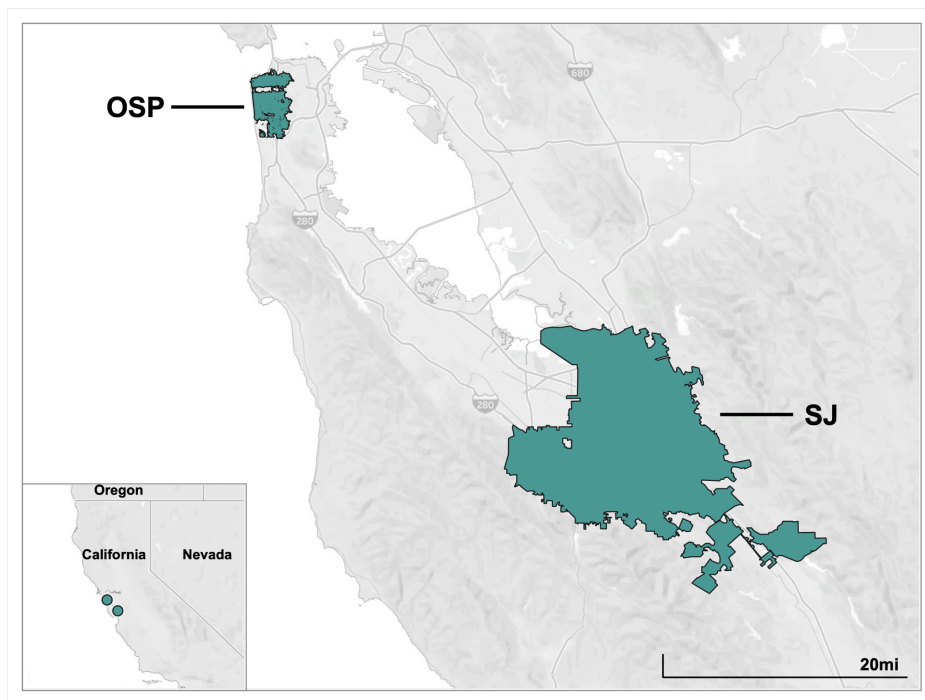
743

744

745
746
747

748 **Figures**

749

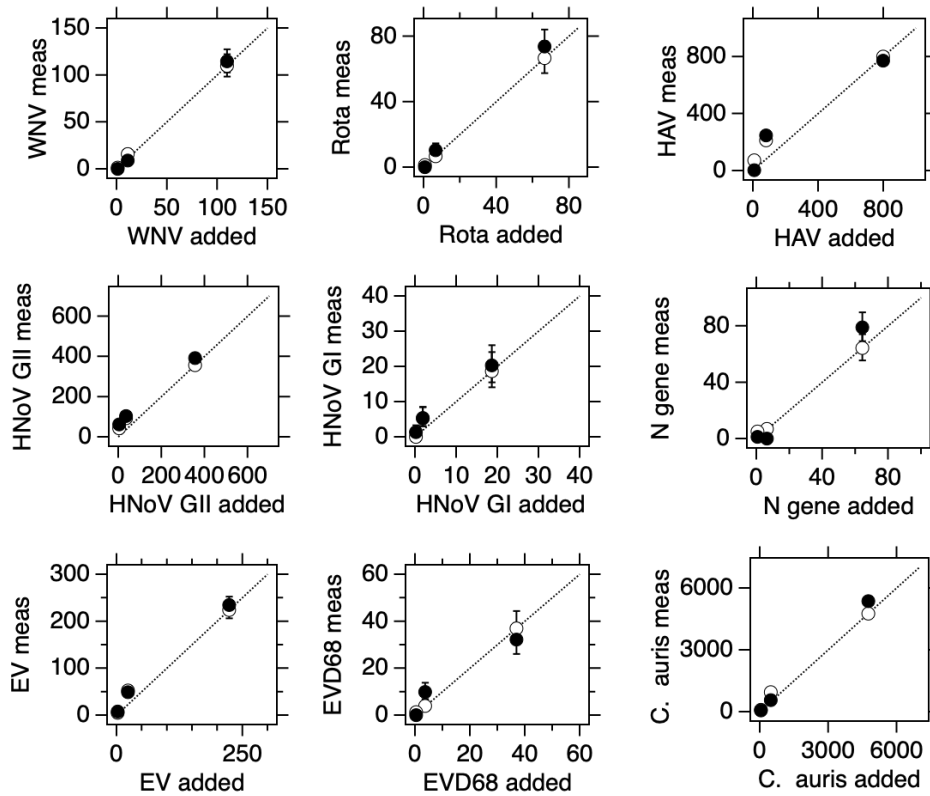


750

751 Figure 1 Sewersheds served by the two WWTPs in this study.

752

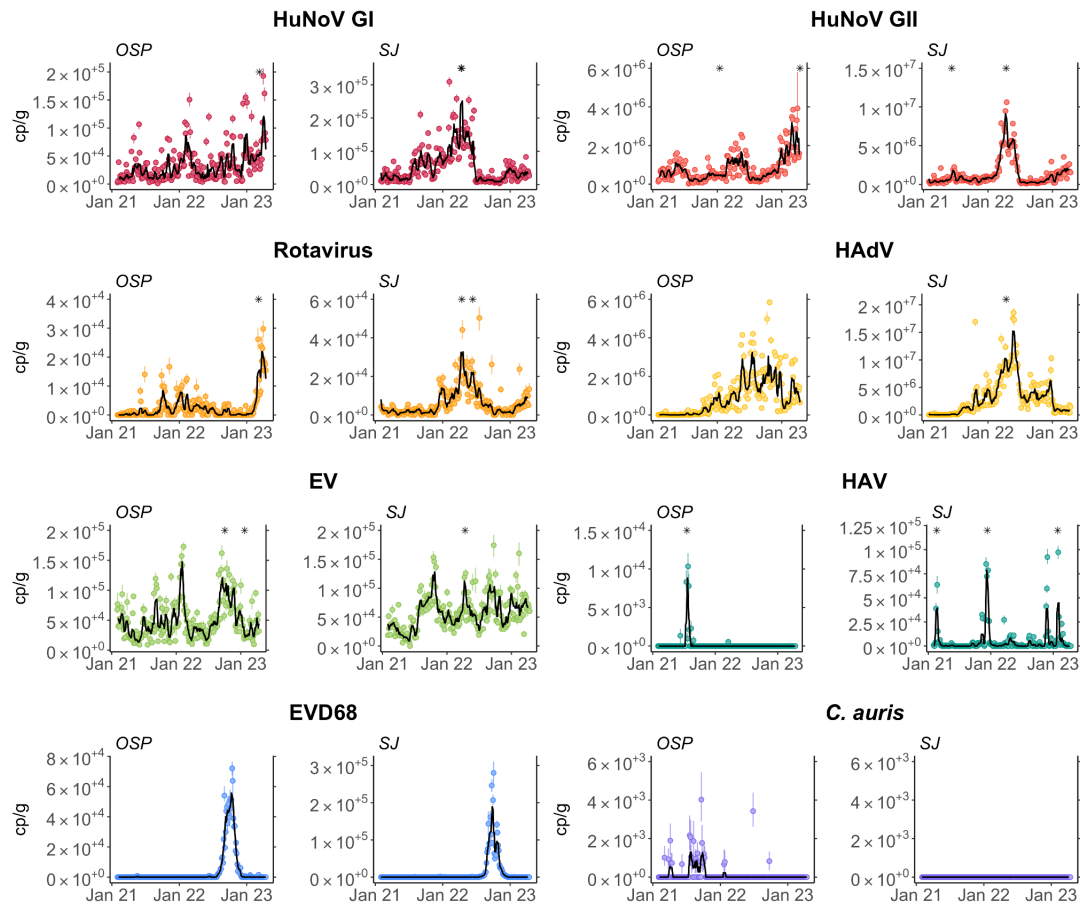
753 Figure 2. Multiplex assay performance. The concentrations of the different targets in units of copies per reaction input and measured
754 in each experiment is provided. The white symbols are for reactions without the 7 background nucleic-acid targets and black symbols
755 include high concentrations of the 7 other nucleic-acid targets. Error bars are standard deviations, if error bars cannot be seen, then
756 they are smaller than the symbol. The line represents the 1:1 line. "Meas" is measles, "Rota" is rotavirus. Abbreviations for the
757 different targets are provided in the main text.



758

759

760 **Figure 3.** Concentrations of HuNoV G1 and GII, rotavirus, HAeV, EV, HAV, EVD68 and *C. auris* nucleic-acids in wastewater solids at
761 OSP and SJ. Error bars show standard deviation. The black line shows a 5-adjacent sample trimmed average. A gray symbol at the
762 top of the plot indicates a value that is higher than the y-axis scale.



763

764