

1 **Title: Multiple synchronous spinal dural arteriovenous fistulas: A systematic**  
2 **literature review**

3

4 **Short title:** Importance of localizing multiple SDAVF

5

6 Authors: Yusuke Ikeuchi, MD<sup>1</sup>; Atsushi Fujita, MD, PhD<sup>1</sup>; Masaaki Kohta, MD, PhD<sup>1</sup>;  
7 Shunsuke Yamanishi, MD<sup>1</sup>; Kazuhiro Tanaka, MD, PhD<sup>1</sup>; Takashi Sasayama, MD,  
8 PhD<sup>1</sup>

9

10 Affiliations: <sup>1</sup>Department of Neurosurgery, Kobe University Graduate School of  
11 Medicine, 7-5-2 Kusunoki-Cho, Chuo-Ku, Kobe, Hyogo 650-0017, Japan

12

13 Corresponding author's name and current institution: Yusuke Ikeuchi

14 Department of Neurosurgery, Kobe University Graduate School of Medicine, 7-5-2  
15 Kusunoki-Cho, Chuo-Ku, Kobe, Hyogo 650-0017, Japan

16 Email: [ikesuke35@yahoo.co.jp](mailto:ikesuke35@yahoo.co.jp)

17

18

19 **Word count: 4335**

20

21 **ABSTRACT**

22 **Background:** Multiple spinal dural arteriovenous fistulas (SDAVFs) are rare and  
23 account for only 1–2% of all SDAVF cases. The treatment for SDAVFs typically  
24 involves either direct surgery or endovascular treatment. Identifying the precise location  
25 of all fistulas is paramount for successful treatment procedures when multiple SDAVFs  
26 are present. They can be classified as synchronous (occurring simultaneously) or  
27 metachronous (occurring at different times), with each type differing with respect to  
28 etiology, diagnosis, and treatment. This study systematically reviewed the literature on  
29 multiple synchronous SDAVFs.

30 **Methods:** A comprehensive search was performed to identify all published multiple  
31 synchronous SDAVF cases. Overall, 23 patients with multiple SDAVFs were identified,  
32 including 21 from 19 articles and 2 from this study. Clinical presentation, lesion  
33 location, radiographic features, surgical treatment, and outcome were analyzed in each  
34 patient.

35 **Results:** All patients in this study were male individuals, and the duration from  
36 symptom onset to diagnosis in many of these patients was longer than that previously  
37 reported. Previous studies suggested that multiple SDAVFs typically occurred within  
38 three or fewer vertebral levels. However, >50% of examined patients had remote lesions  
39 separated by more than three vertebral levels. Patients with remote lesions had a  
40 significantly worse outcome (1/7 vs. 8/11, P=0.049). Therefore, accurate localization of  
41 fistulas before spinal angiography is critical for managing multiple remote SDAVFs.

42 **Conclusions:** Considering the possibility of multiple remote SDAVFs, careful  
43 interpretation of imaging findings is essential for accurate diagnosis and appropriate  
44 treatment planning.

45

46 **Key words:** arteriovenous fistulas, magnetic resonance angiography, computed

47 tomography angiography

48

49 **List of abbreviations**

50 CTA Computed tomography angiography

51 DVT Deep venous thrombosis

52 FOV Field of view

53 MRA Magnetic resonance angiography

54 MRI Magnetic resonance imaging

55 PRISMA Preferred Reporting Items for Systematic Reviews and Meta-Analyses

56 SDAVF Spinal dural arteriovenous fistula

57 4D Four dimensional

58 **KEY MESSAGES**

59 **What is already known on this topic:** Multiple spinal dural arteriovenous fistulas  
60 (SDAVFs) can be classified as synchronous (occurring simultaneously) or  
61 metachronous (occurring at different times), and they differ in etiology, diagnosis, and  
62 treatment. However, the differences between two conditions need to be better clarified.

63

64 **What this study adds:** Patients with remote SDAVFs tended to receive more  
65 treatments and had worse prognosis than those with non-remote SDAVFs. Therefore,  
66 correct localization of fistulas before spinal angiography is essential for managing  
67 multiple remote SDAVFs.

68

69 **How this study might affect research, practice or policy:** Multiple remote SDAVFs  
70 may occur in patients; therefore, careful interpretation of imaging results is critical for  
71 accurate diagnosis and appropriate treatment planning.

72

73

74 **INTRODUCTION**

75 Spinal dural arteriovenous fistulas (SDAVFs) are acquired pathological arteriovenous  
76 shunts that develop in the layers of the dura and account for approximately 80% of all  
77 spinal vascular malformations.<sup>1</sup> They often affect the spinal cord venous drainage,  
78 resulting in a slowly progressive neurological deterioration with paraparesis, bowel and  
79 bladder dysfunction, and sensory disturbances.<sup>2</sup> The standard treatment methods for  
80 SDAVFs usually involve either direct surgical procedures or endovascular therapies.  
81 Before treatment, spinal angiography is typically conducted to pinpoint the shunt  
82 location and analyze the vasculature, which aids in devising appropriate treatment plans.  
83 Traditionally, comprehensive spinal angiography is conducted; however, this approach  
84 is time consuming, places a significant burden on patients, and carries high examination  
85 risks. Consequently, recent practices have often employed computed tomography  
86 angiography (CTA) or magnetic resonance angiography (MRA) to identify the shunt  
87 site, restricting spinal angiography to the immediate vicinity of the shunt.

88 Furthermore, some case studies have reported only a few patients with multiple  
89 SDAVFs.<sup>3-5</sup> Two types of multiple SDAVFs have been defined, namely synchronous  
90 (two or more SDAVFs occurring simultaneously) and metachronous (SDAVFs  
91 occurring at different times). These differ in etiology, diagnostic procedures, and  
92 treatment.<sup>6</sup> However, both types of multiple SDAVFs need to be clarified.

93 The present study aimed to review the literature on multiple synchronous SDAVFs  
94 according to the Preferred Reporting Items for Systematic Reviews and Meta-Analyses  
95 (PRISMA) guidelines and present two cases from our institution.

96

97 **METHODS**

98 **Literature review**

99 PubMed, Web of Science, and Cochrane databases were searched using the following  
100 terms: “spinal dural arteriovenous fistula” or “spinal dural arterio-venous fistula” in  
101 combination with “multiple,” “double,” “triple,” “concurrent,” “synchronous,”  
102 “concomitant,” “simultaneous” or “bilateral.” We did not limit our search to a specific  
103 timeframe and included only articles written in English. This study was conducted in  
104 accordance with PRISMA guidelines, and the collected articles were integrated into an  
105 EndNote library. Editorials, letters to the editor, and commentaries were excluded; 338  
106 articles were initially identified. The article review phases involved initial title  
107 screening, abstract screening, and full-text review. Two independent reviewers  
108 performed the full-text reviews. The inclusion criteria were as follows: 1) studies  
109 including patients who underwent operative management or neuroendovascular therapy  
110 of multiple synchronous SDAVFs and 2) articles with sufficient information regarding  
111 the site of lesions and outcomes for each patient to be disaggregated. The exclusion  
112 criteria were as follows: 1) studies on double DAVFs, which were intracranial and  
113 spinal lesions; 2) studies on craniocervical DAVF; and 3) studies on epidural or  
114 perimedullary AVF or arteriovenous malformation. All relevant articles on multiple  
115 SDAVFs were reviewed. No additional patients were identified in the references of the  
116 included studies.

117 Twenty-one patients with multiple SDAVFs were identified in 19 studies.<sup>1,3,5,7-22</sup> With  
118 the inclusion of the 2 cases in the present study, 23 patients were identified in total  
119 (Figure 1). Factors such as clinical presentation, lesion location, radiographic features,  
120 surgical treatment, and outcome were analyzed in each patient (Table 1).

121

## 122 **Patient population**

123 Patients with SDAVF who were treated at Kobe University Hospital were  
124 prospectively registered in the clinical database. The database was reviewed to identify  
125 all patients with multiple SDAVFs who were treated by the senior author (F.A.) between  
126 2008 and 2022. The patients were informed about available treatment options for these  
127 lesions, including conservative (nonoperative) management, endovascular embolization  
128 (if possible), and microsurgical resection. During the 14-year review period, the senior  
129 author operated on 18 patients with SDAVFs, 2 of whom had multiple SDAVFs.

130

## 131 **Statistical analyses**

132 All statistical analyses were performed using the R software (version 3.5.3; R  
133 Foundation for Statistical Computing, Vienna, Austria).<sup>23</sup> Data are presented as medians  
134 and standard deviations. The distribution of patients' baseline characteristics was  
135 evaluated between the groups using descriptive statistics. The chi-square and Fisher's  
136 exact tests were used for paired data to test for differences in distribution between the  
137 groups. Statistical significance was set at P values  $\leq 0.05$ . All tests were two tailed.

138

## 139 **Ethical considerations**

140 This study was approved by the Institutional Review Board of the Kobe University  
141 Hospital (approval number: #B230090). The study was conducted according to the  
142 principles of the Declaration of Helsinki regarding experimentation on human subjects  
143 and compliance with national regulations.

144

## 145 **RESULTS**

### 146 **Demographics and presentation**

147 A total of 23 male patients were included in this study (Figure 1). Their age ranged  
148 between 30 and 78 years, with a median age of 58.3 years. Among these patients, 18  
149 (78.2%) presented with weakness of the lower extremities; 13 (56.5%) had paresthesia,  
150 sensory loss, or pain in the lower extremities; 10 (43.5%) presented with bladder and  
151 bowel dysfunction; and 1 (4.3%) was found incidentally. The duration from symptom  
152 onset to diagnosis was recorded in 21 of 23 cases. Fifteen (71.4%) of these 21 patients  
153 demonstrated symptoms for >6 months before the diagnosis. Regarding comorbidities,  
154 two (8.7%) patients had vascular malformations at other sites and three (13.0%) had  
155 malignant tumors.

156

### 157 **Neurological examination**

158 SDAVFs were localized before spinal angiography in only five (21.7%) cases in our  
159 review, which included one case from the study by Dam-Hieu et al.,<sup>8</sup> one from the study  
160 by Hanakita et al.[13], one from the study by Li et al.,<sup>16</sup> one using magnetic resonance  
161 imaging (MRI) from the study by Khan et al.,<sup>22</sup> and one (case #2) from the present  
162 study using four-dimensional (4D)-MRA. All SDAVFs were found using spinal  
163 angiography before embolization/surgery in 16 (69.6%) patients, whereas SDAVFs  
164 were newly found after embolization/surgery in 7 (30.4%).

165 The locations of all multiple SDAVFs are shown in Figure 2A. Twelve of the 23  
166 (52.2%) patients had remote SDAVFs separated by more than three vertebral levels and  
167 constituted the remote SDAVF group. The remaining 11 patients were assigned to the  
168 non-remote SDAVF group (Figure 2B). All SDAVFs could not be identified at the time



169 of treatment in five and two patients in the remote and non-remote SDAVF groups,  
170 respectively. SDAVFs in two patients in the non-remote SDAVF group at the time of  
171 treatment could not be identified because spinal angiography was only performed  
172 between the upper and lower vertebrae in one case and spinal angiography was not  
173 performed at the author's hospital because of a referral from another institution in the  
174 other case. Among 12 patients with remote SDAVFs, SDAVFs were identified at the  
175 time of treatment in 7. SDAVFs were identified using whole-spinal angiography in two  
176 patients. Furthermore, three patients were investigated and were found to have multiple  
177 suspected shunts based on MRI and MRA results. Finally, 4D-MRA suggested the  
178 presence of SDAVFs in two patients, including one (case #2) in the present study.

179

### 180 **Surgical treatment and outcome**

181 Among 23 patients, 11 underwent surgery only, 9 underwent surgery and received  
182 endovascular treatment, and 3 received endovascular treatment only. In the group with  
183 non-remote SDAVFs, the average number of treatments was 1.45. Conversely, in the  
184 group with remote SDAVFs, the average number of treatments was 1.91, with two cases  
185 resulting in incomplete treatment (Table 2).

186 Among the 23 patients, the prognoses in 18 were reported in the articles. These  
187 prognoses were determined based on descriptions using a modified Aminoff-Logue  
188 scale and verified by two doctors. A modified Aminoff-Logue scale score was  
189 determined using information obtained 6 months post-treatment. When data from the  
190 6-month post-treatment period were unavailable, the final outcome was determined  
191 based on prognosis at the final follow-up. A good prognosis was characterized by a  
192 score of 0–1 on the Aminoff-Logue scale, while poor prognosis was defined by a score

193 of 2–5 or death at 6 months post-treatment. Among 23 patients, 8 of 9 with poor  
194 prognosis had remote SDAVFs. The remote SDAVF group tended to have significantly  
195 more cases of poor prognoses than the non-remote SDAVF group (1/7 vs. 8/11,  
196  $P=0.049$ ).

197

### 198 **Illustrative case (case #2 in the present study)**

199 A patient in their sixties presented with paresthesia and motor deficits in the lower  
200 limbs. Their Aminoff-Logue gait scale classification was grade 4, and they reported an  
201 episode of urinary incontinence. Their medical history included deep vein thrombosis,  
202 stage IV lung cancer according to the tumor, node, metastasis classification, and bone  
203 metastasis. Cancer was classified as a stable disease after chemotherapy, and the  
204 patient's life expectancy was estimated to be at least 6 months.

205 MRI revealed T2 hyperintensity in the mid-thoracic region (Th3-10) caudad and  
206 multiple dilated vessel flow voids in the thoracic region (Figure 3A). Owing to the  
207 patient's allergy to iodinated contrast agents, 4D-CTA was not performed. Instead,  
208 4D-MRA was used to localize the vascular shunts to the left T7 and right L1 regions  
209 (Figure 3B, C, D). All 4D-MRA examinations were performed using a 3-T MRI system  
210 (MAGNETOM Skyra; Siemens Healthcare, Erlangen, Germany) with a 32-channel  
211 head coil. The imaging parameters for 4D-MRA are listed in Table 3. Contrast injection  
212 was administered (0.2 mL per kg body weight dose of gadolinium-based contrast agents  
213 at a flow rate of 3 mL/s), followed by 20 mL of normal saline at the same rate. Selective  
214 digital subtraction angiography with bilateral injections from T6 to L2 revealed a right  
215 L1 SDAVF and a left T7 SDAVF (Figure 3E, G).

216 The T7 and L1 feeding arteries were embolized using 12.5% n-butyl-2-cyanoacrylate,

217 and subsequent spinal angiography demonstrated complete occlusion of the fistula  
218 (Figure 3F, H). Paresthesia was improved in both the lower legs; however, paralysis of  
219 the lower extremities worsened temporarily.

220 Follow-up MRI of the spine showed improved cord signal changes and resolution of  
221 the dorsal dilated vessel flow voids (Figure 3I). The patient died 3 months later because  
222 of lung cancer progression.

223

## 224 **DISCUSSION**

225 To the best of our knowledge, this is the first systematic review of multiple  
226 synchronous SDAVFs. Multiple synchronous SDAVFs are rare; however, they have  
227 been reported previously. Prior studies suggested that multiple SDAVFs typically occur  
228 within a range of three or fewer vertebral levels.<sup>24</sup> In contrast, more than 50% of  
229 SDAVFs identified in the present review were separated by more than three vertebral  
230 levels. Diagnosing multiple remote synchronous SDAVFs is challenging and often  
231 requires multiple treatment approaches. Localization of the fistula before spinal  
232 angiography is crucial for an accurate diagnosis. In case #2 in the present study,  
233 4D-MRA was highly effective for localization. Considering the possibility of multiple  
234 remote SDAVFs, careful interpretation of imaging findings is essential for accurate  
235 diagnosis and appropriate treatment of these complex cases.

236 Multiple SDAVFs have seldom been reported in the literature. Pierot et al. identified 2  
237 of 50 patients,<sup>3</sup> van Dijk et al. found 1 of 49,<sup>4</sup> and Krings et al. reported 1 of 129  
238 patients having multiple SDAVFs.<sup>25</sup> The estimated incidence of dual SDAVFs is quite  
239 low at approximately 1–2%. Therefore, in the present study, we focused solely on  
240 reports of synchronous SDAVFs and conducted a systematic review to address this

241 issue.

242 All patients with multiple SDAVFs included in the previous report were male. In  
243 previous reports, SDAVF has been predominantly occurring in middle-aged men.<sup>19</sup> The  
244 multiple occurrences of SDAVFs may be attributed to a systemic predisposition. Male  
245 sex hormones, such as androgens, are known to affect vascular function and structure  
246 and may play a role in the development of multiple SDAVFs.<sup>26</sup>

247 In the present review, the average duration from symptom onset to diagnosis was 15.6  
248 months. Recently, a major tertiary hospital reported a mean symptom duration of 7  
249 months.<sup>27</sup> The development of multiple SDAVFs could be attributed to the extended  
250 duration from symptom onset to diagnosis.

251 Kaku et al. reported that most multiple SDAVFs exhibited similar outflow routes at  
252 neighboring levels.<sup>24</sup> Notably, in the present review, >50% (12/23) of the SDAVFs were  
253 remote and separated by more than three vertebral levels. In the present review, patients  
254 with remote SDAVFs tended to receive more treatments and had significantly worse  
255 prognoses than those with non-remote SDAVFs. All cases of incomplete treatment were  
256 assigned to the remote SDAVF group. Since previous reports have indicated that longer  
257 time-to-treatment results in worse prognosis, the delay in improvement due to multiple  
258 treatments and the aggressiveness of the treatment may have contributed to the  
259 worsened prognosis.<sup>28</sup>

260 The gold standard for diagnosing SDAVF is spinal angiography, which confirms the  
261 diagnosis and reveals the following SDAVF characteristics before treatment: level of the  
262 fistula, anterior or posterior location to the spinal cord, venous drainage, and  
263 identification of normal spinal vasculature.<sup>29</sup> During spinal angiography,  
264 neuroradiologists often cease their search after identifying a single fistula, potentially

265 overlooking patients with multiple SDAVFs. However, localizing SDAVFs using  
266 catheter angiography may require approximately 40 selective injections into the  
267 intercostal, lumbar, sacral, cervical, and intracranial arteries.<sup>30</sup> Whole-spinal  
268 angiography significantly burdens patients, with the percentage risk of permanent and  
269 transient neurological deficits being 0.2–1.0% and 4.6%, respectively.<sup>31</sup> Jablawi et al.  
270 argued that whole-spinal angiography is not routinely warranted because of the  
271 extremely low incidence of multiple SDAVFs.<sup>19</sup> A previous study reported that multiple  
272 SDAVFs often occur within a range of three or fewer vertebral levels.<sup>24</sup> Therefore,  
273 further injections into the neighboring segmental arteries around the identified fistula  
274 zone are recommended upon detection of an SDAVF.

275 Moreover, pre-angiographic lesion localization using MRA or 3D-CTA has been  
276 reported to be beneficial for accurate diagnosis in SDAVF<sup>32,33</sup>; however, lesions may be  
277 missed in approximately 10% of cases.<sup>19</sup> Accurate diagnosis of multiple SDAVFs may  
278 be particularly challenging because of the complex vascular conditions involved.  
279 Therefore, 4D-CTA has been reported to play a complementary role in diagnosing  
280 multiple SDAVFs.<sup>32,33</sup> However, it has some limitations such as a constrained field of  
281 view (FOV) as narrow as 160 mm, which might not accurately visualize all remote  
282 SDAVFs that are located more than three vertebral levels away from the initially  
283 identified one. In the current case, multiple remote SDAVFs occurred synchronously  
284 and were separated by more than three vertebral levels, making diagnosis and treatment  
285 difficult. In recent years, 4D-MRA has been reported to be beneficial in identifying  
286 feeding arteries and accurately classifying intracranial dural AVFs. Furthermore,  
287 4D-MRA has a broader FOV of approximately 340 mm compared with 4D-CTA,  
288 making it a valuable tool for diagnosing remote SDAVFs. The height of a single

289 vertebral body is approximately 3 cm, which varies depending on the region. This  
290 implies that an imaging range of  $\geq 15$  cm is required to include both the upper and lower  
291 vertebral bodies when focusing on SDAVFs. Considering that the FOV of 4D-CTA is 16  
292 cm, if the primary SDAVF is centered, the secondary lesion may fall outside the  
293 imaging range. Therefore, employing 4D-MRA with an FOV of 34 cm is considered  
294 highly advantageous in such cases. In case #2 in the present study, 4D-MRA could  
295 effectively localize remote SDAVFs. Yamaguchi et al. highlighted that the high  
296 radiation exposure dose is a significant limitation of 4D-CTA.<sup>32,33</sup> Conversely, 4D-MRA  
297 poses no risk of radiation exposure, which is an advantageous feature of this imaging  
298 technique.

299 A single SDAVF can promote the development of a nearby second fistula owing to  
300 increased medullary venous pressure, concomitant venous stagnation, and thrombosis in  
301 the adjacent veins.<sup>19</sup> However, in the present review,  $>50\%$  of the SDAVFs were located  
302 at distant sites and separated by more than three intervertebral levels. Thus, the  
303 possibility of multiple remote SDAVFs should be considered when symptoms do not  
304 improve after treatment. Moreover, SDAVF may occur after thrombosis or in a  
305 hypercoagulable state.<sup>34</sup> In the present review, three patients had deep venous  
306 thrombosis (DVT), atrial fibrillation, or neoplastic disease, predisposing them to  
307 thrombosis. The number of lower extremity paresis cases was high (18/23), suggesting  
308 that the number of unreported DVT cases might be higher. A systemic predisposition to  
309 thrombosis and prolonged duration from symptom onset to diagnosis may be associated  
310 with the development of multiple remote SDAVFs.

311 The present study is the first to focus on difficulties in treating and diagnosing remote  
312 synchronous multiple SDAVFs. Estimating the localization of lesions using MRA or

313 CTA before spinal angiography helps diagnose and treat multiple remote SDAVFs.  
314 Furthermore, 4D-MRA may be particularly effective in diagnosing remote SDAVFs  
315 owing to its broad FOV and no risk of radiation exposure. Multiple synchronous  
316 SDAVFs are rare; however, more cases need to be evaluated to improve diagnostic and  
317 therapeutic approaches.

318 The present study had some limitations, which included a small number of case reports  
319 from a single institution and reliance on a literature review. Multiple SDAVFs are rare,  
320 and their detailed natural histories remain unknown. Moreover, some patients may have  
321 been excluded because of unconfirmed diagnoses or lack of additional treatment for  
322 multiple SDAVFs. There was also a potential for literature bias in this review. Finally,  
323 surgeons and neuroendovascular specialists should be aware that multiple SDAVFs can  
324 coincide in remote locations. Given the extreme rarity of multiple SDAVFs, it is  
325 believed that a multicenter, prospective registry study is essential.

326 In conclusion, multiple synchronous SDAVFs are rare. They were previously believed  
327 to be contiguous; however, >50% of the cases in this review involved remote lesions  
328 separated by more than three intervertebral levels. Diagnosing multiple remote SDAVFs  
329 is challenging, and multiple treatments are often necessary. Consequently, localizing the  
330 fistulas before spinal angiography is crucial in managing multiple remote SDAVFs, and  
331 4D-MRA proved beneficial in our case. Considering the possibility of multiple remote  
332 SDAVFs, careful interpretation of imaging findings is essential for accurate diagnosis  
333 and appropriate treatment planning.

334

### 335 Acknowledgments

336 None.

337

338 Sources of Funding

339 This study received no specific grants from funding agencies in the public, commercial,  
340 or non-profit sectors.

341

342 Disclosures

343 The authors report no conflicts of interest concerning the materials or methods used in  
344 this study or the findings specified in this paper.

345

346 Data availability statement

347 This review was not registered and the review protocol was not prepared. All data  
348 generated or analyzed during this study are included in this article.

349

350



351 **REFERENCES**

- 352 1. Cenzato M, Mandelli C, Scomazzoni F. Spinal dural arterio-venous fistula with  
353 multiple points of shunt. *Acta Neurochir (Wien)*. 2007;149:1255–1257.
- 354 2. Fox S, Hnenny L, Ahmed U, Meguro K, Kelly ME. Spinal dural arteriovenous  
355 fistula: a case series and review of imaging findings. *Spinal Cord Ser Cases*.  
356 2017;3:17024.
- 357 3. Pierot L, Vlachopoulos T, Attal N, Martin N, Bert S, Chiras J. Double spinal  
358 dural arteriovenous fistulas: report of two cases. *AJNR Am J Neuroradiol*.  
359 1993;14:1109–1112.
- 360 4. van Dijk JM, TerBrugge KG, Willinsky RA, Wallace MC. Multiplicity of dural  
361 arteriovenous fistulas. *J Neurosurg*. 2002;96:76–78.
- 362 5. Krings T, Mull M, Reinges MH, Thron A. Double spinal dural arteriovenous  
363 fistulas: case report and review of the literature. *Neuroradiology*. 2004;46:238–242.
- 364 6. Waser B, French H, Lalloo S, Gaikwad SB, Gupta V. Metachronous spinal  
365 dural arteriovenous fistula: Case report and review of literature on implications for  
366 pathophysiology and management. *Interdiscip Neurosurg Adv Tech Case Manag*.  
367 2021;25:101181.
- 368 7. Chaloupka JC, Gobin YP, Guglielmi G, Steichen JD, Vinuela F. Two  
369 concurrent spinal dural arteriovenous fistulae in a patient with rapidly progressive  
370 myelopathy. A case report. *Angiology*. 1995;46:251–257.
- 371 8. Dam-Hieu P, Mineo JF, Bostan A, Nonent M, Besson G. Concurrent spinal  
372 dural and intradural arteriovenous fistulas. Case report. *J Neurosurg*. 2001;95:96–99.
- 373 9. El-Serwi A, Maubon A, Vidal J, Chapot R. Double spinal dural arteriovenous  
374 fistulas. *AJNR Am J Neuroradiol*. 2006;27:321–323.

- 375 10. Nagata S, Morioka T, Natori Y, Matsukado K, Sasaki T, Yamada T. Factors that  
376 affect the surgical outcomes of spinal dural arteriovenous fistulas. *Surg Neurol.*  
377 2006;65:563–568.
- 378 11. Foote AM, Bower SP, Danks RA, Chong W. Multiple spinal dural  
379 arteriovenous fistulae and deterioration post lumbar puncture. *J Clin Neurosci.*  
380 2010;17:137–138.
- 381 12. Shankar JJ, Karel Terbrugge, Krings T. Multiple spinal and cranial dural  
382 arteriovenous fistulas. *J Neurosurg Spine.* 2011;15:113–6.
- 383 13. Hanakita S, Takai K, Kin T, Shojima M, Saito N. Double independent spinal  
384 dural arteriovenous fistulas at the thoracic spine. *Acta Neurochir (Wien).*  
385 2012;154:1157–1158.
- 386 14. Ge L, Feng R, Zhang X, Sun B, Gu S, Xu Q, Lu G, Huang L. Multidisciplinary  
387 management of multiple spinal dural arteriovenous fistulae. *Int J Clin Exp Med.*  
388 2013;6:814–821.
- 389 15. Hetts SW, English JD, Stiver SI, Singh V, Yee EJ, Cooke DL, Halbach VV.  
390 Bilateral cervical spinal dural arteriovenous fistulas with intracranial venous drainage  
391 mimicking a foramen magnum dural arteriovenous fistula. *Interv Neuroradiol.*  
392 2013;19:483–488.
- 393 16. Li J, Li G, Bian L, Hong T, Yu J, Zhang H, Ling F. Concomitant lumbosacral  
394 perimedullary arteriovenous fistula and spinal dural arteriovenous fistula. *World*  
395 *Neurosurg.* 2017;105:1041.e7–e14.
- 396 17. Gailloud P. Spinal dural arteriovenous fistula (SDAVF) variant with dual  
397 perimedullary and epidural drainage. *Eur Spine J.* 2018;27:375–379.
- 398 18. Cannizzaro D, Tropeano MP, Fornari M, Servadei F, Cardia A. Simultaneous

- 399 diagnosis and treatment of double synchronous spinal cord vascular malformation. *J*  
400 *Neurol Surg A Cent Eur Neurosurg*. 2019;80:325–332.
- 401 19. Jablawi F, Mull M. Double spinal dural arteriovenous fistulas. *J Neuroradiol*.  
402 2019;46:168–172.
- 403 20. Santillan A, Knopman J, Patsalides A, Chapot R. Double spinal dural  
404 arteriovenous fistula with extensive craniocaudal venous drainage. *J Clin Neurosci*.  
405 2019;64:252–253.
- 406 21. Iampreechakul P, Lertbutsayanukul P, Siritwimonmas S. Cauda equina  
407 arteriovenous fistula supplied by proximal radicular artery and concomitant sacral dural  
408 arteriovenous fistula: a case report and literature review. *Surg Neurol Int*. 2021;12:405.
- 409 22. Khan UA, Koumellis P, Almahfoudh R, Foroughi M. Bilateral mirror image  
410 lumbar spinal dural arterial venous fistula: a rare case and systematic review of the  
411 literature. *Br J Neurosurg*. 2021;1–4.
- 412 23. R Core Team (2013) R: A Language and Environment for Statistical  
413 Computing. R Foundation for Statistical Computing, Vienna. <http://www.R-project.org/>.
- 414 24. Kaku Y, Ohmori Y, Kawano T, Takeshima Y, Kuratsu JI. Remote lesions of  
415 synchronous sacral and cervical dural arteriovenous fistulas: a case report. *World*  
416 *Neurosurg*. 2017;105:1037.e13–e16.
- 417 25. Krings T, Coenen VA, Weinzierl M, Reinges MH, Mull M, Thron A, Rohde V.  
418 Spinal dural arteriovenous fistula associated with a spinal perimedullary fistula: case  
419 report. *J Neurosurg Spine*. 2006;4:241–245.
- 420 26. Lucas-Herald AK, Touyz RM. Androgens and androgen receptors as  
421 determinants of vascular sex differences across the lifespan. *Can J Cardiol*.  
422 2022;38:1854–1864.

- 423 27. Du B, Liang M, Fan C, Lu X, Zhang H, Li Q, Xu Y, Liu J, Bi X. Clinical and  
424 imaging features of spinal dural arteriovenous fistula: clinical experience of 15 years for  
425 a major tertiary hospital. *World Neurosurg.* 2020;138:e177–e182.
- 426 28. Jablawi F, Schubert GA, Dafotakis M, Pons-Kühnemann J, Hans FJ, Mull M.  
427 Long-term outcome of patients with spinal dural arteriovenous fistula: the dilemma of  
428 delayed diagnosis. *AJNR. Am J Neuroradiol.* 2020;41:357–363.
- 429 29. Jeng Y, Chen DY, Hsu HL, Huang YL, Chen CJ, Tseng YC. Spinal dural  
430 arteriovenous fistula: imaging features and its mimics. *Korean J Radiol.* 2015;16:1119–  
431 1131.
- 432 30. Willinsky R, Lasjaunias P, Terbrugge K, Hurth M. Angiography in the  
433 investigation of spinal dural arteriovenous fistula. A protocol with application of the  
434 venous phase. *Neuroradiology.* 1990;32:114–116.
- 435 31. Savader SJ, Williams GM, Trerotola SO, Perler BA, Wang MC, Venbrux AC,  
436 Lund GB, Osterman FA Jr. Preoperative spinal artery localization and its relationship to  
437 postoperative neurologic complications. *Radiology.* 1993;189:165–171.
- 438 32. Yamaguchi S, Takeda M, Mitsuhara T, Kajihara S, Mukada K, Eguchi K,  
439 Kajihara Y, Takemoto K, Sugiyama K, Kurisu K. Application of 4D-CTA using 320-row  
440 area detector computed tomography on spinal arteriovenous fistulae: initial experience.  
441 *Neurosurg Rev.* 2013;36:289–296.
- 442 33. Yamaguchi S, Takemoto K, Takeda M, Kajihara Y, Mitsuhara T, Kolakshyapati  
443 M, Mukada K, Kurisu K. The position and role of four-dimensional computed  
444 tomography angiography in the diagnosis and treatment of spinal arteriovenous fistulas.  
445 *World Neurosurg.* 2017;103:611–619.
- 446 34. Barnwell SL, Halbach VV, Dowd CF, Higashida RT, Hieshima GB, Wilson CB.

447 Multiple dural arteriovenous fistulas of the cranium and spine. *AJNR Am J Neuroradiol.*

448 1991;12:441–445.

449

450 **FIGURE LEGENDS**

451 Figure 1.

452 PRISMA flow diagram of article selection for meta-analysis.

453 AVF, arteriovenous fistula; SDAVF, spinal dural arteriovenous fistula.

454

455 Figure 2.

456 A: Locations of all SDAVFs. Dotted lines represent bilateral lesions, whereas solid lines  
457 represent ipsilateral lesions. The red line denotes lesions separated by more than three  
458 vertebral levels, whereas the black lines indicate lesions within a range of three  
459 vertebral levels. This figure was created with BioRender.com.

460 B: Bar graph depicting the distribution of SDAVF cases based on the number of remote  
461 vertebral levels. Patients with lesions separated by more than three vertebral levels are  
462 defined to have remote SDAVFs.

463

464 Figure 3.

465 A: Magnetic resonance imaging (MRI) reveals T2 hyperintensity from the mid-thoracic  
466 region caudad and multiple dilated vessel flow voids in the thoracic region.

467 B, C, D: 4D magnetic resonance angiography (4D-MRA) localizes vascular shunts to  
468 the left T7 and right L1 regions. B: General view of the lesion; C, D: Magnified images;  
469 C shows a T7 lesion, whereas D shows an L1 lesion.

470 E, G: Selective DSA with bilateral injections from T6 to L2 reveals a left T7 SDAVF  
471 (E) and a right L1 SDAVF (G).

472 F, H: The T7 and L1 feeding arteries are embolized using 12.5% NBCA, and subsequent  
473 spinal angiography demonstrates complete occlusion of the fistula.

474 I: Follow-up MRI showing improved cord signal changes and resolution of dorsal

475 dilated vessel flow voids.

476

477 Table 1. Literature review of 23 patients with multiple synchronous spinal arteriovenous fistulas

<b>Authors &amp; year</b>	<b>Age, sex</b>	<b>Presentation</b>	<b>Duration of symptom to diagnosis</b>	<b>Comorbidity</b>	<b>Level of the DAVFs</b>	<b>Image finding for localization</b>	<b># of therapeutic procedure</b>	<b>Type of treatment</b>	<b>Outcome at 6 months Aminoff grading scale or death</b>
<b>Pierot 1993</b> <sup>3</sup>	47, M	Paresthesia and lower extremity weakness	N/A	N/A	T6l, T8r	-	2	Embolization/surgery	N/A
	64, M	Lower extremity weakness and	N/A	N/A	T8r, T9l	-	1	Surgery	N/A



		sensory loss							
<b>Chaloupka 1995</b> <sup>7</sup>	48, M	Lower extremity weakness	2 months	N/A	T9l, L1l	-	3	Embolization/ surgery	2
<b>Dam-Hieu</b> <sup>8</sup>	49, M	Bilateral sciatic pain over 6 months., lower extremity weakness for 2 weeks	6 months	-	T6r, L1r	MRA	2	Surgery	0

<b>Krings 2004</b> <sup>4</sup>	63, M	Paresthesia and weakness of the lower extremity, BBD	6 years	-	L1r, L2r	-	2	Surgery	0
<b>El-Serwi 2006</b> <sup>9</sup>	47, M	Lower extremity weakness, BBD	9 months	N/A	T5r, T7r	-	2	Embolization	0
<b>Nagata 2006</b> <sup>10</sup>	65, M	Paresthesia of the lower extremity	5 years	N/A	T9l, T12r	-	3	Embolization/ surgery	2

<b>Cenzato 2007</b> <sup>1</sup>	45, M	Progressive dysesthesia and paresthesia of the lower extremity, BBD	6 months	N/A	T5r, T6l	-	1	Surgery	1
<b>Foote 2010</b> <sup>11</sup>	73, M	Paresthesia and weakness of the lower extremity	3 months	N/A	C4/C5 and T4/T5	-	2	Embolization/ surgery	4
<b>Shankar 2011</b> <sup>12</sup>	61, M	Incidental	-	Intracranial DAVF, LC	C2l, C3r, C6lr	-	1	Incomplete embolization	N/A

		Weakness and							
<b>Hanakita 2012</b>	57,	dysesthesia in	12		T7r				
<b>12</b>	M	the lower	months	N/A	T12l	MRA	2	Surgery	4
		extremity							
		Paresthesia of							
	30,	the lower	10		T12l,				
	M	extremity,	months	Spinal AVM	L1l	-	1	Surgery	0
<b>Ge 2013</b>		BBD							
<b>14</b>		Paresthesia							
	62,	and weakness	3 years	pelvic	T3r, T6l	-	1	Embolization	0
	M	of the lower		fracture					
		extremity							

		Severe pain in							
<b>Hetts 2013</b> <sup>15</sup>	40, M	the distal extremities, BBD	several weeks	N/A	C5,6l, C5,6r	-	2	Surgery	3
		Paresthesia							
<b>Li 2017</b> <sup>17</sup>	65, M	and weakness of the lower extremity	4 years	-	L2r, S5r	-	1	Surgery	0
		Lower extremity							
<b>Gailloud 2018</b> <sup>18</sup>	67, M	weakness and pain associated with sphincter dysfunction	N/A	-	T9l, L1r	+	2	Embolization/ surgery	N/A

		Lower							
<b>Cannizzaro 2019</b> <sup>19</sup>	74, M	extremity weakness and back pain	2 years	lumbar fracture	T10r, T11l	-	1	surgery	1
		Weakness and ataxia in the lower extremities, BBD							
<b>Jablwi 2019</b> <sup>20</sup>	51, M	lower extremities, BBD	1 year	-	T7l, T7r	-	1	Surgery	N/A
<b>Santilan 2019</b> <sup>21</sup>	55, M	Paraparesis and numbness	2 years	-	T9l, T11r	-	2	Embolization/ surgery	N/A

<b>Lampreechakul 2021</b> <sup>22</sup>	54, M	Low back pain, lower extremity weakness, BBD	3 months	-	L11, S11	-	1	Incomplete surgery	Death
<b>Khan 2021</b> <sup>23</sup>	78, M	Lower extremity weakness and BBD	10 months	Af, PC	L3r, l	-	1	Surgery	1
<b>Present case 1</b>	70s*	Paresthesia and weakness of the lower extremity, BBD	4 months	Aortic aneurysm	T7r, T11l	3D-CTA	4	Embolization/surgery	3

---

Paresthesia

and weakness

**Present case 2** 60s\* of the lower 6 months DVT, LC T7l, L1r 4D-MRA 1 Embolization Death  
extremity,  
BBD

---

478 Abbreviation list: M; male, F; female, 70s; seventies, 60s; sixties, BBD; Bladder bowel dysfunction, N/A; Not available, DAVF; dural  
479 arteriovenous fistula, LC; lung cancer, AVM; arteriovenous malformation, Af; atrial fibrillation, PC; prostate cancer, DVT; deep venous  
480 thrombosis, T; thoracic, l; left, r; right, L; lumber, C; cervical, S; sacral, MRA; magnetic resonance angiography, 3D-CTA;  
481 three-dimensional computed tomography angiography, 4D-MRA; four-dimensional magnetic resonance angiography.

482 \* To maintain anonymity, the exact age of the case has been approximated and the patient's gender has not been disclosed.

483



484 Table 2. Univariate analysis between non-remote spinal dural arteriovenous fistulas (SDAVFs) and remotod SDAVFs

	Non-remote SDAVFs (N=11)	Remote SDAVFs (N=12)	P value
Diagnosis failed rate – no. (%)	2 (18.2)	5 (41.7)	0.44
Treatment times – (ave)	1.45	1.91	0.26
Poor outcome – no. (%)	1/7	8/11	0.049

485 Poor outcome: Modified Aminoff-Logue scale  $\geq 2$  or death at 6 months

486 Abbreviation list: SDAVFs, spinal dural arteriovenous fistulas; ave, average

487 Table 3. Imaging parameters for four-dimensional magnetic resonance angiography (4D-MRA)

Parameter	Value
MRI scanner	3-T Skyra (Siemens, Germany)
TR	2.64 ms
TE	0.99 ms
Flip angle	20°
Field of view (FOV)	340 mm
Image Matrix	384 * 250
Technique	TWIST
Total scan time	60 s (1 scan 2 s, 30 dynamic)
Contrast	Injected at 3 mL/s Weight * 0.2 mL

Scan injection same timing	
Number of slices	40

488 Abbreviation list: TR, repetition Time; TE, Time to Echo; TWIST, Time-resolved angiography With Interleaved Stochastic Trajectories;

489 MRI, magnetic resonance imaging

490

Identification

Records identified through database searching:  
(Pubmed, Web of Science, Cochrane)  
(n = 456)

Additional records identified through other sources  
(n = 0)

Records after duplicates removed:  
(n = 338)

Screening

Abstracts screened:  
(n = 338)

Records excluded With reasons:  
Lack of clinical data, review,  
metachronous sdAVF, cranio-cervical  
junction AVF  
(n = 314)

Eligibility

Full-text articles  
Accessed for eligibility:  
(n = 24)

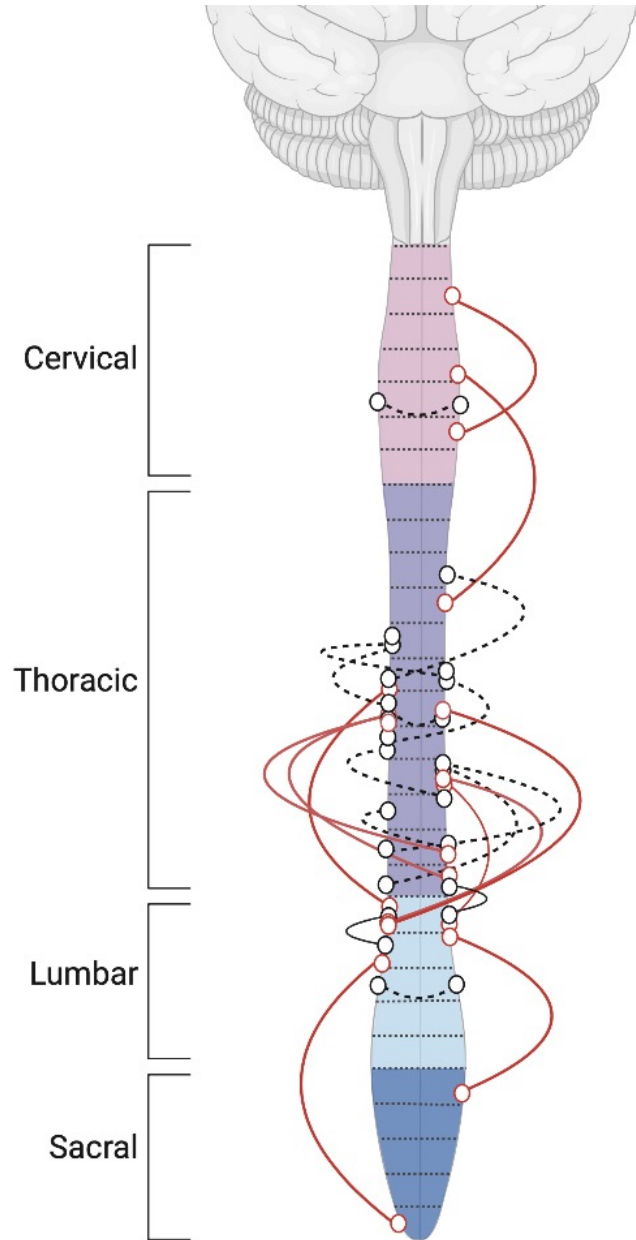
Full-text articles excluded  
With reasons:  
Lack of clinical data, review,  
metachronous sdAVF  
(n = 5)

Included

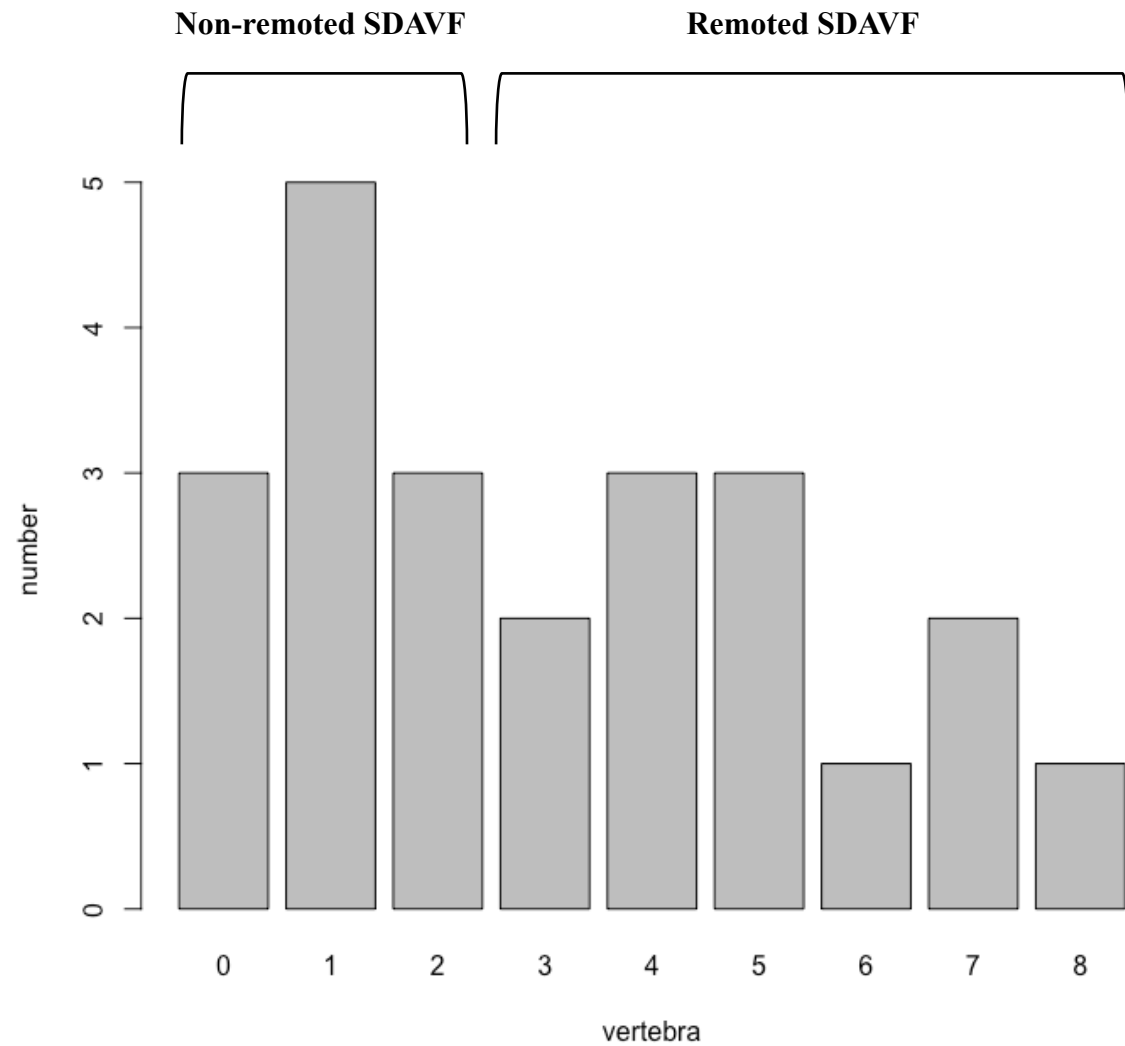
Studies included in  
qualitative synthesis:  
(n = 19)

FIG. 1. PRISMA flowchart for the search strategy in the present systematic review.

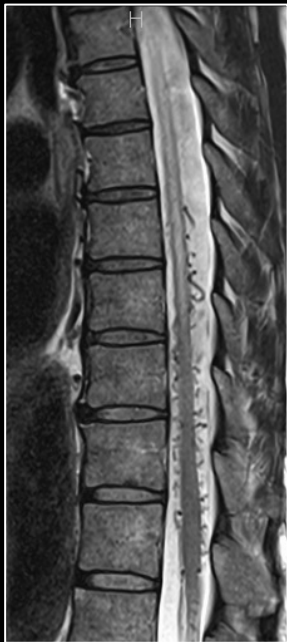
A



B



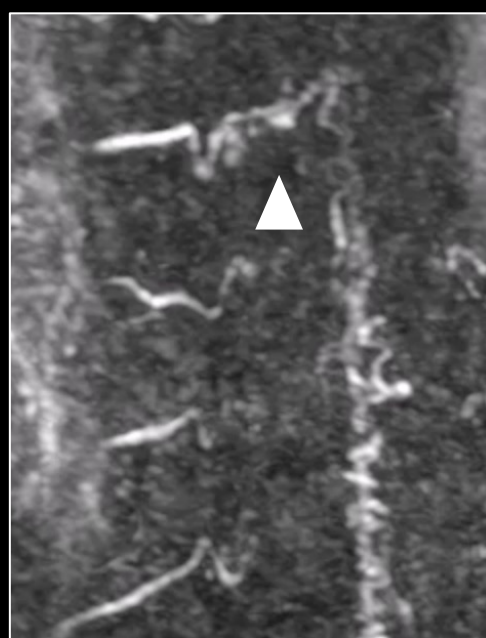
A



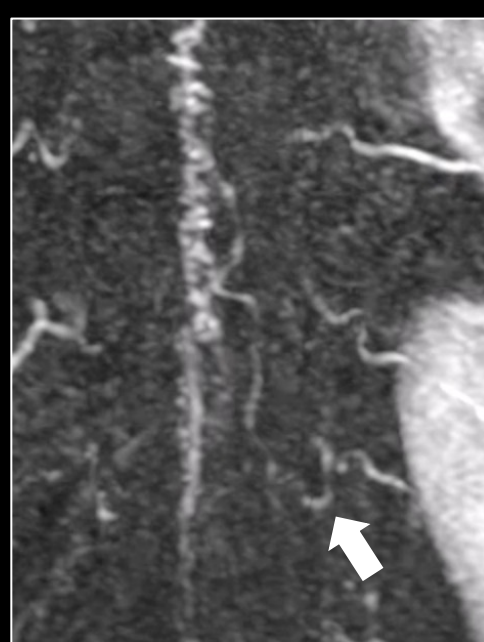
B



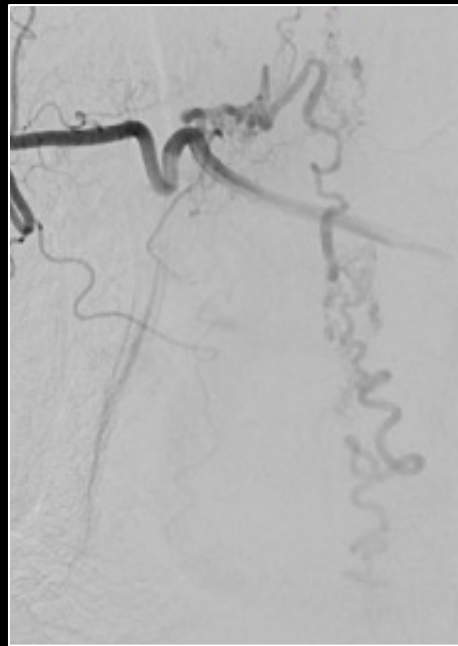
C



D



E



F



G



H



I

