

1 **Bidirectional association and shared risk factors between atrial fibrillation and**
2 **heart failure: a Mendelian Randomization study**

3 Haibin Lu, M.D.^{1,2#}, Ziting Gao, M.D.^{1#}, Hongye Wei¹, Yajing Wei¹, Ziyi Qiu¹, Jun
4 Xiao, M.D., Ph.D.^{3,4*}, Wuqing Huang, M.D., Ph.D.^{1*}

5 ¹ Department of Epidemiology and Health Statistics, School of Public Health, Fujian
6 Medical University, Fuzhou, Fujian, China.

7 ² School of Public Health, Hengyang Medical School, University of South China,
8 Hengyang 421001, China

9 ³ Department of Cardiovascular Surgery, Fujian Medical University Union Hospital,
10 Fuzhou, Fujian, China.

11 ⁴ Fujian Provincial Clinical Research Center for Cardiovascular Diseases Heart Center
12 of Fujian Medical University, Fuzhou, Fujian, China.

13 ***Corresponding author:** Wuqing Huang & Jun Xiao

14 Fujian Medical University,

15 No 1, Xue Yuan Road, University Town, 350108

16 Fuzhou City, Fujian Province, China.

17 Email: wuqing.huang@fjmu.edu.cn & xiaojun@fjmu.edu.cn

18 Telephone: +8617338896101

19 **#These authors contributed equally to this work.**

20 ***These authors also contributed equally to this work.**

21 **Short title:** Atrial fibrillation and heart failure

22 **Abbreviations:** BMI, body mass index; CI, confidence interval; GWAS,

23 Genome-Wide Association Studies; HbA1C, Glycosylated hemoglobin type A1C;
24 IVW-MR, inverse-variance weighted mendelian randomization; MR, Mendelian
25 randomization; MR-PRESSO, MR-pleiotropy residual sum and outlier; OR, odds
26 ratio; PM2.5, Particulate matter 2.5; SNPs, single nucleotide polymorphisms.

27 **Abstract**

28 **Background:** Atrial fibrillation and heart failure are closely related and share
29 multiple risk factors. We aimed to apply the mendelian randomization (MR) analysis
30 to explore the bidirectional causal link between atrial fibrillation and heart failure, and
31 the independent effect of potential risk factors on the risk of both conditions.

32 **Methods:** This is a two-sample MR study using publicly available summary-level
33 statistics of genome-wide association studies (GWAS). Bidirectional MR was
34 performed to explore the relation between atrial fibrillation and heart failure. A total
35 of 14 factors were selected as potential risk factors, univariable MR analyses were
36 used to identify shared risk factors, and then the multivariable MR analyses were
37 further used to investigate the independent effect of these factors on both conditions.
38 Inverse-variance-weighted MR (IVW-MR) were used to obtain the effect estimates.

39 **Results:** MR analysis found evidence of causal relationship between atrial fibrillation
40 and heart failure (odds ratio [OR], 1.24; 95% confidence interval [CI], 1.19–1.29), as
41 well as between heart failure and atrial fibrillation (OR, 3.88; 95% CI, 1.45–10.37).
42 Univariable MR analyses identified several shared risk factors for both conditions,
43 including body mass index (BMI), blood pressure, smoking, coronary heart disease
44 and myocardial infarction. After adjusting for atrial fibrillation, the observed
45 associations between shared factors and heart failure kept stable, such as BMI,
46 smoking, coronary heart disease and myocardial infarction. However, after adjusting
47 for heart failure, the relationships between most risk factors and atrial fibrillation
48 attenuated to null.

49 **Conclusions:** This two-sample MR study found a bidirectional relationship between
50 atrial fibrillation and heart failure, and identified several shared risk factors of both
51 conditions, which had an independent effect on the risk of heart failure while probably
52 affected the risk of atrial fibrillation via cardiac impairment.

53 **Funding:** Start-up Fund for high-level talents of Fujian Medical University (grant
54 no.XRCZX2021026) and Natural Science Foundation of Fujian Province (grant no.
55 2022J01706).

56 **Key words:** atrial fibrillation, heart failure, mendelian randomization

57 **Introduction**

58 Atrial fibrillation and heart failure have emerged as a dual epidemic, together
59 resulting in substantial public health burden (**Anter E et al., 2009**). Atrial fibrillation
60 is the most common clinical arrhythmia with an estimation of 4.7 million incident
61 cases and 60 million prevalent cases globally in 2019. And the number of atrial
62 fibrillation cases is expected to double by 2060, showing that atrial fibrillation
63 remains a major public health concern (**Dong XJ et al., 2023**). And the prevalence of
64 heart failure in adults was reported to increase from 1-2 percent in adults to more than
65 10 percent in elderly population over 70 years of age (**Jia Q et al., 2019**). With the
66 increasing life-expectancy of the general population, heart failure becomes currently
67 the fastest-growing cardiovascular disease worldwide with a rough estimation of more
68 than 64.3 million cases globally in 2017, which has been defined as a global pandemic
69 (**Savarese G et al., 2023**).

70 The coexistence of atrial fibrillation and heart failure has been appreciated for
71 several decades (**Turagam MK et al., 2019**). Previous studies have shown that
72 persistent or frequent atrial fibrillation would lead to irreversible cardiac structural
73 changes, resulting in impairment of systolic and diastolic function, and further
74 increasing the incidence of heart failure (**Carlisle MA et al., 2019**). Most patients
75 with heart failure suffered atrial enlargement, mitral regurgitation, and changes in
76 neurohumoral balance, all of which are related to higher risk of atrial fibrillation
77 (**Verhaert DVM et al., 2021**). However, it is unclear regarding the causative
78 relationship between atrial fibrillation and heart failure. In addition, as reported in

79 previous observational studies, atrial fibrillation and heart failure share a range of risk
80 factors, including hypertension, diabetes, structural heart disease, smoking, alcoholic
81 drinking, obesity and so on (**Kornej J et al., 2021; Young LJ et al., 2022; Meijers**
82 **WC et al., 2019; Roger VL, 2021**). While lack of studies distinguished the
83 independent effect of these common risk factors on the risk of atrial fibrillation or
84 heart failure, and mediated role of one condition between common risk factor and the
85 other condition.

86 Therefore, in this study, we aimed to apply the mendelian randomization (MR)
87 analysis to explore the bidirectional causal link between atrial fibrillation and heart
88 failure, and the independent effect of potential risk factors on the risk of both
89 conditions. MR study use genetic variation closely related to the exposure as
90 instrumental variables to infer causal associations between exposure and outcome
91 events (**Zheng J et al., 2017**). Using genetic variation as a tool can effectively reduce
92 the impact of confounding factors and avoid reverse causality. In this study,
93 bidirectional MR analysis was first conducted to explore the bidirectional association
94 between atrial fibrillation and heart failure; next, univariable MR analysis was
95 performed to identify the potential shared risk factors of both conditions, and
96 multivariable MR analysis including each shared risk factor and both conditions was
97 further applied to explore the effect of shared risk factors on the risk of one condition
98 independent of the other one, as well as assess the mediated role of one condition
99 between the factor of interest and risk of the other one.

100 **Methods**

101 **Data sources**

102 Publicly available summary statistics for genetic variants related to exposures and
103 outcomes were obtained from large-scaled genome-wide association studies (GWAS)
104 of European participants and used to perform two-sample MR study (**Supplementary**
105 **File-Table 1**). All these studies had been approved by the relevant institutional review
106 boards and informed consent had been obtained for all participants per the original
107 study protocols.

108 Summary-level GWAS data for atrial fibrillation were derived from a
109 meta-analysis consisting of six large cohorts: The Nord-Trøndelag Health Study,
110 deCODE, the Michigan Genomics Initiative, DiscovEHR Collaboration Cohort, UK
111 Biobank and AFGen Consortium. This study included 60,620 individuals with atrial
112 fibrillation and 970,216 controls (**Nielsen JB et al., 2018**). Cases of atrial fibrillation
113 were mainly identified by ICD-9 (427.3) or ICD-10 (I48) codes (**Nielsen JB et al.,**
114 **2018**). Summary-level GWAS data for heart failure were obtained from the Heart
115 Failure Molecular Epidemiology for Therapeutic Targets (HERMES) Consortium
116 consisting of 26 European population cohorts, including 47,309 cases of heart failure
117 and 930,014 controls (**Shah S et al., 2018**).

118 Based on the previous literature, this study summarized several potential
119 common risk factors for atrial fibrillation and heart failure, and classified these risk
120 factors into three categories: metabolic trait (waist circumference, body mass index
121 [BMI], systolic blood pressure, diastolic blood pressure, glycosylated hemoglobin

122 type A1C [HbA1C], fasting glucose, fasting insulin), environmental or behavior factor
123 (smoking, alcoholic drinking, physical activity, particulate matter 2.5 [PM2.5]
124 exposure) and comorbidity (coronary heart disease, myocardial infarction). Summary
125 statistics were obtained from GIANT consortium for waist circumference (n=245,746)
126 and body mass index (n=681,275), from ICSB consortium for blood pressure
127 (n=757,601), from MAGIC consortium for HbA1C (n=46,368), fasting glucose
128 (n=58,074) and fasting insulin (n=51,750), from GSCAN consortium for smoking
129 (ncases=311,629; ncontrols=321,173) and alcoholic drinking (n=335,394), from UK
130 Biobank for physical activity (n=440,512) and PM2.5 exposure (n=423,796), from
131 CARDIoGRAMplusC4D consortium for coronary heart disease (ncases=60,801;
132 ncontrols=123,504) and myocardial infarction (ncases=43,676; ncontrols=128,199).
133 Detailed information of data sources used in the analysis are provided in
134 **Supplementary File-Table 1.**

135 **Selection of genetic instrumental variables**

136 Single nucleotide polymorphisms (SNPs) which met genomic significance threshold
137 ($p < 5 \times 10^{-8}$) were selected from the GWAS pooled database as genetic instruments
138 corresponding to the exposure of interest (**Sanna S et al., 2019**). Linkage
139 disequilibrium was estimated by $R^2 < 0.001$ (clumping window size=10,000kb) using
140 genomic data from the European population in the 1000 Genomes Project as the
141 reference dataset, and SNP with strongest association with the exposure was retained
142 if linkage disequilibrium was present. For SNPs unavailable in the GWAS dataset of
143 outcome, suitable proxies were used as substitutes, SNPs without suitable proxies and

144 palindromic SNPs were removed. Then remaining independent SNPs with statistically
145 significance were used as genetic instruments.

146 **Statistical analysis**

147 **Primary analyses**

148 As shown in flowchart in **Fig 1**, bidirectional MR analysis was first performed to
149 explore the causal association between atrial fibrillation and heart failure. Next, we
150 performed a univariable MR analysis to estimate the causal effect of potential factors
151 on the risk of atrial fibrillation and heart failure respectively, then identified the shared
152 risk factors between atrial fibrillation and heart failure. Finally, multivariable MR
153 analysis was conducted to investigate the impact of each shared risk factor on one
154 outcome independent of the other outcome. The random-effect inverse-variance
155 weighted mendelian randomization (IVW-MR) was used as the main method
156 (**Burgess S et al., 2013**). In MR analysis, we used the F-statistic to assess the strength
157 of exposed genetic tools, and F-statistic >10 was not considered to be biased by weak
158 genetic tools (**Sanderson E et al., 2015; Burgess S et al., 2011**).

159 To account for multiple testing, Bonferroni correction was used to adjust the
160 thresholds of significance level, thus a strong evidence was suggested for $p < 0.002$
161 (thirteen exposures and two outcomes) and a suggestive evidence of $0.002 \leq p < 0.05$
162 in univariable MR. And a strong evidence was suggested for $p < 0.004$ (six exposures
163 and two outcomes) and a suggestive evidence of $0.004 \leq p < 0.05$ in multivariable MR.

164 **Sensitivity analyses**

165 Several MR methods were used to examine the robustness of the main results,
166 including simple mode, MR-Egger, weighted median, weighted mode. Sensitivity
167 analyses, including the leave-one-out analysis, Cochran's Q statistic, MR-Egger
168 intercept and MR-pleiotropy residual sum and outlier (MR-PRESSO), were applied to
169 assess the possible heterogeneity and horizontal pleiotropy in the primary analyses.
170 The leave-one-out analysis refers to evaluate the consistency of observed associations
171 by removing one SNP from analysis in turn and identify whether the results were
172 driven by any individual SNP. The Cochran Q statistic was used for heterogeneity in
173 this study, and a Cochran's Q-derived $P < 0.05$ was deemed as a marker of the presence
174 of heterogeneity. The MR-Egger intercept and MR-PRESSO analysis were used to
175 evaluate the horizontal pleiotropy of the instrumental variables. The MR-PRESSO
176 analysis consists of three components (**Verbanck M et al., 2018**): (1) Detection of
177 horizontal pleiotropy; (2) Correction of pleiotropy by removing detected outliers
178 (genetic variants with horizontal pleiotropy); (3) Comparison of the differences in
179 causal correlation before and after correction.

180 All statistical analyses were performed using R version 4.2.2 (R Foundation for
181 Statistical Computing, Vienna, Austria). MR analyses were performed using the
182 TwosampleMR, MRPRESSO and MRInstruments R packages.

183 **Results**

184 **Bidirectional MR analysis of atrial fibrillation and heart** 185 **failure**

186 We used a two-way two-sample MR study to explore the bidirectional relationship
187 between atrial fibrillation and heart failure. The F-statistic for atrial fibrillation and
188 heart failure were all greater than 10 (**Supplementary File-Table 1 and Table 2**). We
189 found evidence of causal relationship between atrial fibrillation and heart failure
190 (odds ratio [OR], 1.24; 95% confidence interval [CI], 1.19–1.29; $P < 0.001$), as well as
191 between heart failure and atrial fibrillation (OR, 3.88; 95% CI, 1.45–10.37; $P = 0.007$)
192 (**Fig 2**). Four complementary methods yielded similar results between atrial
193 fibrillation and heart failure, and consistent evidence for the causal relationship of
194 heart failure with atrial fibrillation was found across these methods (**Fig 2**). The
195 scatterplot provides an estimate of one condition for each genetic variant to the other
196 one (**Supplementary File-Fig 1**). The leave-one-out analysis of the MR association
197 did not find any SNP that had a significant impact on the estimated effect
198 (**Supplementary File-Fig 2**). The Cochran Q statistic showed an evidence of
199 heterogeneity ($P < 0.001$), thus random-effect IVW-MR was used as the main method
200 (**Supplementary File-Table 4**). Potential horizontal pleiotropy was not found in the
201 genetic instruments of atrial fibrillation (MR-Egger intercept $P = 0.171$; MR-PRESSO
202 $P = 1.000$) and heart failure (MR-Egger intercept $P = 0.090$; MR-PRESSO $P = 0.675$;
203 **Supplementary File-Table 4**).

204 **Univariable MR analysis for risk factors on atrial** 205 **fibrillation and heart failure**

206 As shown in **Fig 3**, a strong evidence was found between several factors and both
207 conditions, including BMI (heart failure: OR, 1.74; 95% CI, 1.63–1.85; $P < 0.001$;

208 atrial fibrillation: OR, 1.41; 95% CI, 1.33–1.50; $P < 0.001$), systolic blood pressure
209 (heart failure: OR, 1.02; 95% CI, 1.02–1.03; $P < 0.001$; atrial fibrillation: OR, 1.02; 95%
210 CI, 1.01–1.02; $P < 0.001$), diastolic blood pressure (heart failure: OR, 1.03; 95% CI,
211 1.02–1.04; $P < 0.001$; atrial fibrillation: OR, 1.03; 95% CI, 1.02–1.04; $P < 0.001$),
212 smoking (heart failure: OR, 1.27; 95% CI, 1.15–1.39; $P < 0.001$; atrial fibrillation:
213 OR, 1.09; 95% CI, 1.01–1.18; $P = 0.0308$), coronary heart disease (heart failure:
214 OR, 1.34; 95% CI, 1.27–1.41; $P < 0.001$; atrial fibrillation: OR, 1.11; 95% CI, 1.05–
215 1.17; $P < 0.001$) and myocardial infarction (heart failure: OR, 1.35; 95% CI, 1.26–1.44;
216 $P < 0.001$; atrial fibrillation: OR, 1.11; 95% CI, 1.06–1.16; $P < 0.001$). Heterogeneity
217 may be present in the instrumental variables for most exposures, thus random-effect
218 IVW-MR was used as the main method (**Supplementary File-Table 4**). And the
219 MR-Egger intercept and the MR-PRESSO analysis showed the presence of potential
220 horizontal pleiotropy in the instrumental variables for myocardial infarction
221 (MR-Egger intercept $P = 0.039$), while there was no horizontal pleiotropy in other
222 exposure factors (**Supplementary File-Table 4**).

223 Univariable MR analysis also found a suggestive evidence for the association of
224 fasting glucose with the higher risk of heart failure (OR, 1.17; 95% CI, 1.03–1.33;
225 $P = 0.0145$); a strong evidence for waist circumference (OR, 1.38; 95% CI, 1.18–1.60;
226 $P < 0.001$) and HbA1C (OR, 1.51; 95% CI, 1.31–1.73; $P < 0.001$) were correlated with
227 the higher risk of atrial fibrillation; and no evidence for between fasting insulin,
228 alcoholic drinking, physical activity and PM_{2.5} exposure were correlated with both
229 heart failure and atrial fibrillation (**Fig 3**). The Cochrane Q statistic showed an

230 evidence of heterogeneity among the instrument SNP effects except for fasting
231 glucose (P=0.718) and fasting insulin (P=0.316; **Supplementary File-Table 4**). And
232 the MR-PRESSO analysis showed the presence of potential horizontal pleiotropy in
233 the instrumental variables of waist circumference (P=0.008), physical activity
234 (P=0.029) and PM2.5 exposure (P<0.001; **Supplementary File-Table 4**).

235 **Multivariable MR analysis for shared risk factors on atrial** 236 **fibrillation and heart failure**

237 To obtain the independent effect of shared risk factors on each condition, we used the
238 multivariable MR approach to adjust for the effect from the other condition. As shown
239 in **Fig 4**, after adjusting for atrial fibrillation, the observed associations between
240 shared factors and heart failure kept stable, such as BMI (OR, 1.58; 95% CI, 1.49–
241 1.68), smoking (OR, 1.24; 95% CI, 1.10–1.41), coronary heart disease (OR, 1.29; 95%
242 CI, 1.23–1.36) and myocardial infarction (OR, 1.30; 95% CI, 1.22–1.38). However,
243 after adjusting for heart failure, the relationships between most risk factors and atrial
244 fibrillation attenuated to null, even a negative association was found between
245 coronary heart disease (OR, 0.72; 95% CI, 0.59–0.88) or myocardial infarction (OR,
246 0.69; 95% CI, 0.55–0.88) and atrial fibrillation.

247 **Discussion**

248 In the present study, a significant bidirectional association was found between atrial
249 fibrillation and heart failure, in which atrial fibrillation were related to 1.24 times
250 higher risk of heart failure, and heart failure associated with 3.88 times higher risk of

251 atrial fibrillation. BMI, blood pressure, smoking, coronary heart disease and
252 myocardial infarction were identified as shared risk factors of atrial fibrillation and
253 heart failure. The observed associations between shared risk factors and heart failure
254 remained stable after adjusting for atrial fibrillation, suggesting that these shared risk
255 factors were independently related to heart failure risk. However, after adjusting for
256 heart failure, the observed associations between most shared risk factors and atrial
257 fibrillation attenuated to null, indicated that heart failure played an important
258 mediated role between shared risk factors and risk of atrial fibrillation. These findings
259 suggested that weight control, blood pressure control and smoking quitting might
260 reduce the risk of heart failure, and individuals with cardiac impairment were likely to
261 benefit from these strategies in reducing atrial fibrillation risk.

262 A number of epidemiological studies suggested a link between atrial fibrillation
263 and heart failure (**Anter E et al., 2009**), as reported, the incidence of atrial fibrillation
264 in heart failure patients was as high as 20% to 60% (**Ponikowski P et al., 2021;**
265 **Muser D et al., 2019; Zakeri R et al., 2013; Prabhu S et al., 2017**), and the risk of
266 developing heart failure in atrial fibrillation patients increased by five to six times
267 (**Ruddox V et al., 2017; Vermond RA et al., 2015**). However, due to the chronic
268 nature of both conditions, it is difficult to avoid the impact of reverse causality in the
269 observational studies when estimating the causative relationship between atrial
270 fibrillation and heart failure. In recent years, some MR studies have explored the role
271 of atrial fibrillation on the risk of heart failure (**Shah S et al., 2020; Kwok MK et al.,**
272 **2021; Hu M et al., 2023**), but there is a dearth of evidence from MR study fully

273 exploring the bidirectional causal relationship between these two conditions. The
274 present bidirectional MR study provided additional evidence for the link between both
275 conditions, showing that atrial fibrillation was related to 1.24 times higher risk of
276 heart failure, and heart failure associated with 3.88 times higher risk of atrial
277 fibrillation, further confirming the important influence of atrial fibrillation and heart
278 failure on each other's occurrence and development.

279 A series of common risk factors have been related to both atrial fibrillation and
280 heart failure (**Kornej J et al., 2021; Young LJ et al., 2022; Meijers WC et al., 2019;**
281 **Roger VL, 2021**), the coexistence of both conditions may be explained by the
282 presence of these common risk factors to some extent, but lack of studies
283 comprehensively investigated how these risk factors independently affect each
284 condition, respectively. In this study, univariable MR analyses identified several
285 shared risk factors for both diseases, including BMI, blood pressure, smoking,
286 coronary heart disease and myocardial infarction. The results are consistent with those
287 of Susanna et al. who found a causal relationship between BMI and smoking with
288 atrial fibrillation and heart failure (**Larsson SC et al., 2020; Larsson SC et al., 2020**),
289 and Nhu et al. who found a causal relationship between blood pressure with atrial
290 fibrillation and heart failure (**Le NN et al., 2022**). Due to the bidirectional relationship
291 between atrial fibrillation and heart failure, we further performed multivariable MR
292 analyses to investigate the effect of these shared factors on each disease independent
293 on the other one in this study, in which we have found a strong evidence that BMI,
294 blood pressure, smoking, coronary heart disease and myocardial infarction were

295 independent risk factors for heart failure, but not for atrial fibrillation. After adjusting
296 for heart failure, the relationship of most shared factors (eg, BMI, blood pressure,
297 smoking) with atrial fibrillation was basically not significant, indicating that these
298 shared risk factors probably increased the risk of atrial fibrillation via impairment in
299 cardiac structure and function. These findings suggested that individuals with cardiac
300 impairment were likely to benefit from weight control, blood pressure control and
301 smoking quitting in reducing atrial fibrillation risk. Interestingly, after adjusting for
302 heart failure, this study found a negative correlation between coronary heart disease or
303 myocardial infarction and atrial fibrillation. Similarly, Bouwe et al. previously
304 reported a negative correlation between myocardial infarction and atrial fibrillation in
305 women (hazard ratio [HR], 0.92; 95%CI, 0.59–1.44) (**Krijthe BP et al., 2013**), the
306 underlying reason of which remained to be clarified.

307 This study has several advantages. To our knowledge, this is the first study to
308 explore the bidirectional relationship between atrial fibrillation and heart failure from
309 a genetic perspective, identify shared risk factors of both conditions and the
310 independent effect of shared risk factors on each outcome. The bidirectional causal
311 relationship between atrial fibrillation and heart failure was determined through MR
312 analysis, minimizing confounding impact and reverse causal relationships. In addition,
313 this study is the first to simultaneously explore the possible effect of metabolic trait,
314 environmental or behavior factor and comorbidity in the occurrence of atrial
315 fibrillation and heart failure at the genetic level, comprehensively exploring whether
316 there are differences in the strength of the impact of different risk factors on atrial

317 fibrillation and heart failure. To ensure the reliability of the results, we have adopted a
318 series of supplementary methods and sensitivity analyses.

319 However, this study also has some limitations. Firstly, in the GWAS study of
320 atrial fibrillation and heart failure, the aggregated data come from multiple different
321 cohorts, and their definitions of atrial fibrillation and heart failure vary, which to some
322 extent weakens the causal effects of related genetic tools. However, the studies
323 provide a comparison of the direction of genetic variation effects significantly
324 associated with previous heart failure and atrial fibrillation, and the large sample size
325 also ensures consistency in the direction of genetic effects (**Shah S et al., 2020;**
326 **Nielsen JB et al., 2018**). Secondly, the GWAS summary data used in this study were
327 obtained from relevant studies based on European populations, so the generalization
328 of the research results is limited and further testing is needed in other ethnic groups.
329 Third, potential pleiotropy cannot be ruled out, which might have biased the results.
330 Nonetheless, several approaches were performed to minimize the probability of
331 pleiotropy bias, including identifying pleiotropy with MR-Egger intercept and
332 detecting outliers by the MR-PRESSO analysis. Fourthly, the MR analysis of this
333 study is based on aggregated data and cannot further explore whether there are
334 differences in associations among different subgroups of the population at the
335 individual level.

336 **Conclusions**

337 In summary, this two-sample MR study found a bidirectional relationship between

338 atrial fibrillation and heart failure, and identified several shared risk factors of both
339 conditions, including BMI, blood pressure, smoking, coronary heart disease and
340 myocardial infarction, all of which were independently related to heart failure but
341 affected the risk of atrial fibrillation probably via impairment in cardiac structure and
342 function.

343 **Acknowledgments**

344 We thank the patients and investigators who contributed to the UK Biobank, GIANT
345 Consortium, HERMES Consortium, ICBP consortium, MAGIC consortium, GSCAN
346 Consortium, CARDIoGRAMplusC4D Consortium.

347 **Author Contributions**

348 All authors were responsible for the study concept and design. WH obtained funding.
349 HL and ZG did the statistical analysis and drafted the manuscript. WH and JX
350 critically revised the manuscript. All authors gave the final approval and agreed to be
351 accountable for all aspects of work ensuring integrity and accuracy.

352 **Data Availability Statement**

353 All raw summary-level data are available in the referenced public datasets, the detailed
354 information of which could be found in Supplementary File-Table 1. The codes and
355 curated data for the current analysis are available at
356 <https://github.com/WH57/Atrial-fibrillation-and-heart-failure>.

357 **Funding Information**

358 This work was supported by the Start-up Fund for high-level talents of Fujian Medical
359 University (grant no.XRCZX2021026) and the Natural Science Foundation of Fujian

360 Province (grant no. 2022J01706) to Dr. Wuqing Huang. The funder had no role in
361 study design, data collection and interpretation, or the decision to submit the work for
362 publication.

363 **Declaration of Competing Interest**

364 The authors declare no competing interests.

365 **References**

366 Anter E, Jessup M, Callans DJ. Atrial fibrillation and heart failure: treatment
367 considerations for a dual epidemic. *Circulation*. 2009;119(18):2516-25. doi:
368 10.1161/CIRCULATIONAHA.108.821306, PMID: 19433768

369 Dong XJ, Wang BB, Hou FF, Jiao Y, Li HW, Lv SP, Li FH. Global burden of atrial
370 fibrillation/atrial flutter and its attributable risk factors from 1990 to 2019. *Europace*.
371 2023;25(3):793-803. doi: 10.1093/europace/euac237, PMID: 36603845

372 Jia Q, Li H, Zhou H, Zhang X, Zhang A, Xie Y, Li Y, Lv S, Zhang J. Role and
373 Effective Therapeutic Target of Gut Microbiota in Heart Failure. *Cardiovasc Ther*.
374 2019;2019:5164298. doi: 10.1155/2019/5164298, PMID: 31819762

375 Savarese G, Becher PM, Lund LH, Seferovic P, Rosano GMC, Coats AJS. Global
376 burden of heart failure: a comprehensive and updated review of epidemiology.
377 *Cardiovasc Res*. 2023;118(17):3272-3287. doi: 10.1093/cvr/cvac013, PMID:
378 35150240

379 Turagam MK, Garg J, Whang W, Sartori S, Koruth JS, Miller MA, Langan N, Sofi A,
380 Gomes A, Choudry S, Dukkipati SR, Reddy VY. Catheter Ablation of Atrial
381 Fibrillation in Patients With Heart Failure: A Meta-analysis of Randomized Controlled

382 Trials. *Ann Intern Med.* 2019;170(1):41-50. doi: 10.7326/M18-0992, PMID:
383 30583296

384 Carlisle MA, Fudim M, DeVore AD, Piccini JP. Heart Failure and Atrial Fibrillation,
385 Like Fire and Fury. *JACC Heart Fail.* 2019;7(6):447-456. doi:
386 10.1016/j.jchf.2019.03.005, PMID: 31146871

387 Verhaert DVM, Brunner-La Rocca HP, van Veldhuisen DJ, Vernooy K. The
388 bidirectional interaction between atrial fibrillation and heart failure: consequences for
389 the management of both diseases. *Europace.* 2021;23(23 Suppl 2):ii40-ii45. doi:
390 10.1093/europace/euaa368, PMID: 33837758

391 Kornej J, Börschel CS, Benjamin EJ, Schnabel RB. Epidemiology of Atrial
392 Fibrillation in the 21st Century: Novel Methods and New Insights. *Circ Res.*
393 2020;127(1):4-20. doi: 10.1161/CIRCRESAHA.120.316340, PMID: 32716709

394 Young LJ, Antwi-Boasiako S, Ferrall J, Wold LE, Mohler PJ, El Refaey M. Genetic
395 and non-genetic risk factors associated with atrial fibrillation. *Life Sci.*
396 2022;299:120529. doi: 10.1016/j.lfs.2022.120529, PMID: 35385795

397 Meijers WC, de Boer RA. Common risk factors for heart failure and cancer.
398 *Cardiovasc Res.* 2019;115(5):844-853. doi: 10.1093/cvr/cvz035, PMID: 30715247

399 Roger VL. Epidemiology of Heart Failure: A Contemporary Perspective. *Circ Res.*
400 2021;128(10):1421-1434. doi: 10.1161/CIRCRESAHA.121.318172, PMID:
401 33983838

402 Zheng J, Baird D, Borges MC, Bowden J, Hemani G, Haycock P, Evans DM, Smith
403 GD. Recent Developments in Mendelian Randomization Studies. *Curr Epidemiol Rep.*

404 2017;4(4):330-345. doi: 10.1007/s40471-017-0128-6, PMID: 29226067

405 Nielsen JB, Thorolfsdottir RB, Fritsche LG, Zhou W, Skov MW, Graham SE, Herron
406 TJ, McCarthy S, Schmidt EM, Sveinbjornsson G, Surakka I, Mathis MR, Yamazaki M,
407 Crawford RD, Gabrielsen ME, Skogholt AH, Holmen OL, Lin M, Wolford BN, Dey
408 R, et al. Biobank-driven genomic discovery yields new insight into atrial fibrillation
409 biology. *Nat Genet.* 2018;50(9):1234-1239. doi: 10.1038/s41588-018-0171-3, PMID:
410 30061737

411 Shah S, Henry A, Roselli C, Lin H, Sveinbjörnsson G, Fatemifar G, Hedman ÅK,
412 Wilk JB, Morley MP, Chaffin MD, Helgadóttir A, Verweij N, Dehghan A, Almgren P,
413 Andersson C, Aragam KG, Ärnlöv J, Backman JD, Biggs ML, Bloom HL, et al.
414 Genome-wide association and Mendelian randomisation analysis provide insights into
415 the pathogenesis of heart failure. *Nat Commun.* 2020;11(1):163. doi:
416 10.1038/s41467-019-13690-5, PMID: 31919418

417 Sanna S, van Zuydam NR, Mahajan A, Kurilshikov A, Vich Vila A, Vösa U, Mujagic
418 Z, Masclee AAM, Jonkers DMAE, Oosting M, Joosten LAB, Netea MG, Franke L,
419 Zhernakova A, Fu J, Wijmenga C, McCarthy MI. Causal relationships among the gut
420 microbiome, short-chain fatty acids and metabolic diseases. *Nat Genet.*
421 2019;51(4):600-605. doi: 10.1038/s41588-019-0350-x, PMID: 30778224

422 Burgess S, Butterworth A, Thompson SG. Mendelian randomization analysis with
423 multiple genetic variants using summarized data. *Genet Epidemiol.*
424 2013;37(7):658-65. doi: 10.1002/gepi.21758, PMID: 24114802

425 Sanderson E, Windmeijer F. A weak instrument [Formula: see text]-test in linear IV

426 models with multiple endogenous variables. *J Econom.* 2016;190(2):212-221. doi:
427 10.1016/j.jeconom.2015.06.004, PMID: 29129953

428 Burgess S, Thompson SG; CRP CHD Genetics Collaboration. Avoiding bias from
429 weak instruments in Mendelian randomization studies. *Int J Epidemiol.*
430 2011;40(3):755-64. doi: 10.1093/ije/dyr036, PMID: 21414999

431 Verbanck M, Chen CY, Neale B, Do R. Publisher Correction: Detection of widespread
432 horizontal pleiotropy in causal relationships inferred from Mendelian randomization
433 between complex traits and diseases. *Nat Genet.* 2018;50(8):1196. doi:
434 10.1038/s41588-018-0164-2, PMID: 29967445

435 Ponikowski P, Alemayehu W, Oto A, Bahit MC, Noori E, Patel MJ, Butler J,
436 Ezekowitz JA, Hernandez AF, Lam CSP, O'Connor CM, Pieske B, Roessig L, Voors
437 AA, Westerhout C, Armstrong PW; VICTORIA Study Group. Vericiguat in patients
438 with atrial fibrillation and heart failure with reduced ejection fraction: insights from
439 the VICTORIA trial. *Eur J Heart Fail.* 2021;23(8):1300-1312. doi: 10.1002/ejhf.2285,
440 PMID: 34191395

441 Muser D, Liang JJ, Castro SA, Lanera C, Enriquez A, Kuo L, Magnani S, Birati EY,
442 Lin D, Schaller R, Supple G, Zado E, Garcia FC, Nazarian S, Dixit S, Frankel DS,
443 Callans DJ, Marchlinski FE, Santangeli P. Performance of Prognostic Heart Failure
444 Models in Patients With Nonischemic Cardiomyopathy Undergoing Ventricular
445 Tachycardia Ablation. *JACC Clin Electrophysiol.* 2019;5(7):801-813. doi:
446 10.1016/j.jacep.2019.04.001, PMID: 31320008

447 Zakeri R, Chamberlain AM, Roger VL, Redfield MM. Temporal relationship and

448 prognostic significance of atrial fibrillation in heart failure patients with preserved
449 ejection fraction: a community-based study. *Circulation*. 2013;128(10):1085-93. doi:
450 10.1161/CIRCULATIONAHA.113.001475, PMID: 23908348

451 Prabhu S, Voskoboinik A, Kaye DM, Kistler PM. Atrial Fibrillation and Heart Failure
452 - Cause or Effect? *Heart Lung Circ*. 2017;26(9):967-974. doi:
453 10.1016/j.hlc.2017.05.117, PMID: 28684095

454 Ruddox V, Sandven I, Munkhaugen J, Skattebu J, Edvardsen T, Otterstad JE. Atrial
455 fibrillation and the risk for myocardial infarction, all-cause mortality and heart failure:
456 A systematic review and meta-analysis. *Eur J Prev Cardiol*. 2017;24(14):1555-1566.
457 doi: 10.1177/2047487317715769, PMID: 28617620

458 Vermond RA, Geelhoed B, Verweij N, Tieleman RG, Van der Harst P, Hillege HL,
459 Van Gilst WH, Van Gelder IC, Rienstra M. Incidence of Atrial Fibrillation and
460 Relationship With Cardiovascular Events, Heart Failure, and Mortality: A
461 Community-Based Study From the Netherlands. *J Am Coll Cardiol*.
462 2015;66(9):1000-7. doi: 10.1016/j.jacc.2015.06.1314, PMID: 26314526

463 Kwok MK, Schooling CM. Mendelian randomization study on atrial fibrillation and
464 cardiovascular disease subtypes. *Sci Rep*. 2021;11(1):18682. doi:
465 10.1038/s41598-021-98058-w, PMID: 34548541

466 Hu M, Tan J, Yang J, Gao X, Yang Y. Use of Mendelian randomization to evaluate the
467 effect of atrial fibrillation on cardiovascular diseases and cardiac death. *ESC Heart*
468 *Fail*. 2023;10(1):628-636. doi: 10.1002/ehf2.14237, PMID: 36404673

469 Larsson SC, Bäck M, Rees JMB, Mason AM, Burgess S. Body mass index and body

470 composition in relation to 14 cardiovascular conditions in UK Biobank: a Mendelian
471 randomization study. *Eur Heart J.* 2020;41(2):221-226. doi: 10.1093/eurheartj/ehz388,
472 PMID: 31195408

473 Larsson SC, Mason AM, Bäck M, Klarin D, Damrauer SM; Million Veteran Program;
474 Michaëlsson K, Burgess S. Genetic predisposition to smoking in relation to 14
475 cardiovascular diseases. *Eur Heart J.* 2020;41(35):3304-3310. doi:
476 10.1093/eurheartj/ehaa193, PMID: 32300774

477 Le NN, Tran TQB, Lip S, McCallum L, McClure J, Dominiczak AF, Gill D,
478 Padmanabhan S. Unravelling the Distinct Effects of Systolic and Diastolic Blood
479 Pressure Using Mendelian Randomisation. *Genes (Basel).* 2022;13(7):1226. doi:
480 10.3390/genes13071226, PMID: 35886009

481 Krijthe BP, Leening MJ, Heeringa J, Kors JA, Hofman A, Franco OH, Witteman JC,
482 Stricker BH. Unrecognized myocardial infarction and risk of atrial fibrillation: the
483 Rotterdam Study. *Int J Cardiol.* 2013;168(2):1453-7. doi:
484 10.1016/j.ijcard.2012.12.057, PMID: 23332895

485 Nielsen JB, Thorolfsdottir RB, Fritsche LG, Zhou W, Skov MW, Graham SE, Herron
486 TJ, McCarthy S, Schmidt EM, Sveinbjornsson G, Surakka I, Mathis MR, Yamazaki M,
487 Crawford RD, Gabrielsen ME, Skogholt AH, Holmen OL, Lin M, Wolford BN, Dey
488 R, et al. Biobank-driven genomic discovery yields new insight into atrial fibrillation
489 biology. *Nat Genet.* 2018;50(9):1234-1239. doi: 10.1038/s41588-018-0171-3, PMID:
490 30061737

491 **Figure Legends:**

492 **Fig 1:** A flow chart of the study design.

493 **Fig 2:** Bidirectional MR analysis between atrial fibrillation and heart failure.

494 **Fig 3.** Univariable MR analysis of potential shared risk factors with atrial fibrillation

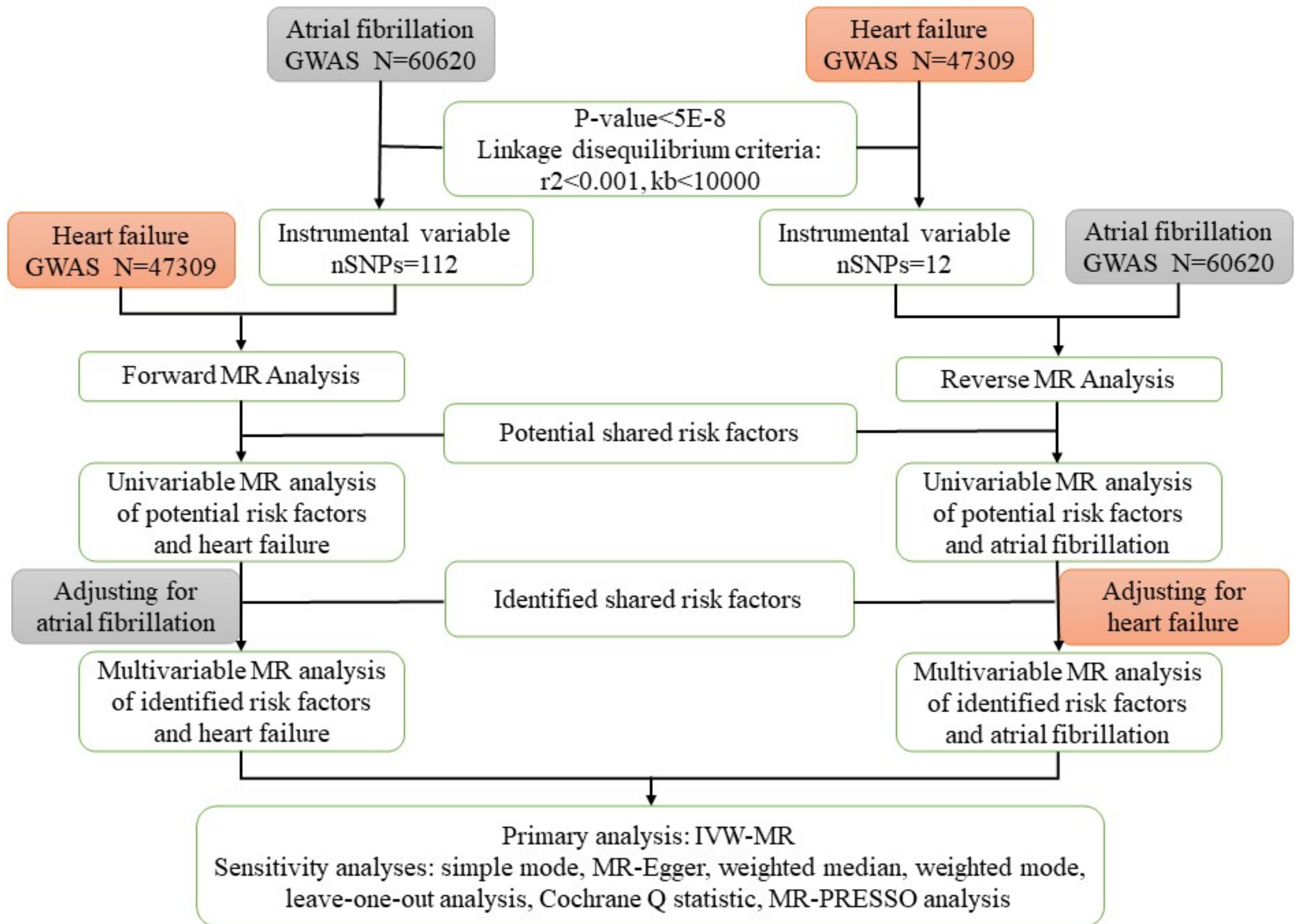
495 and heart failure.

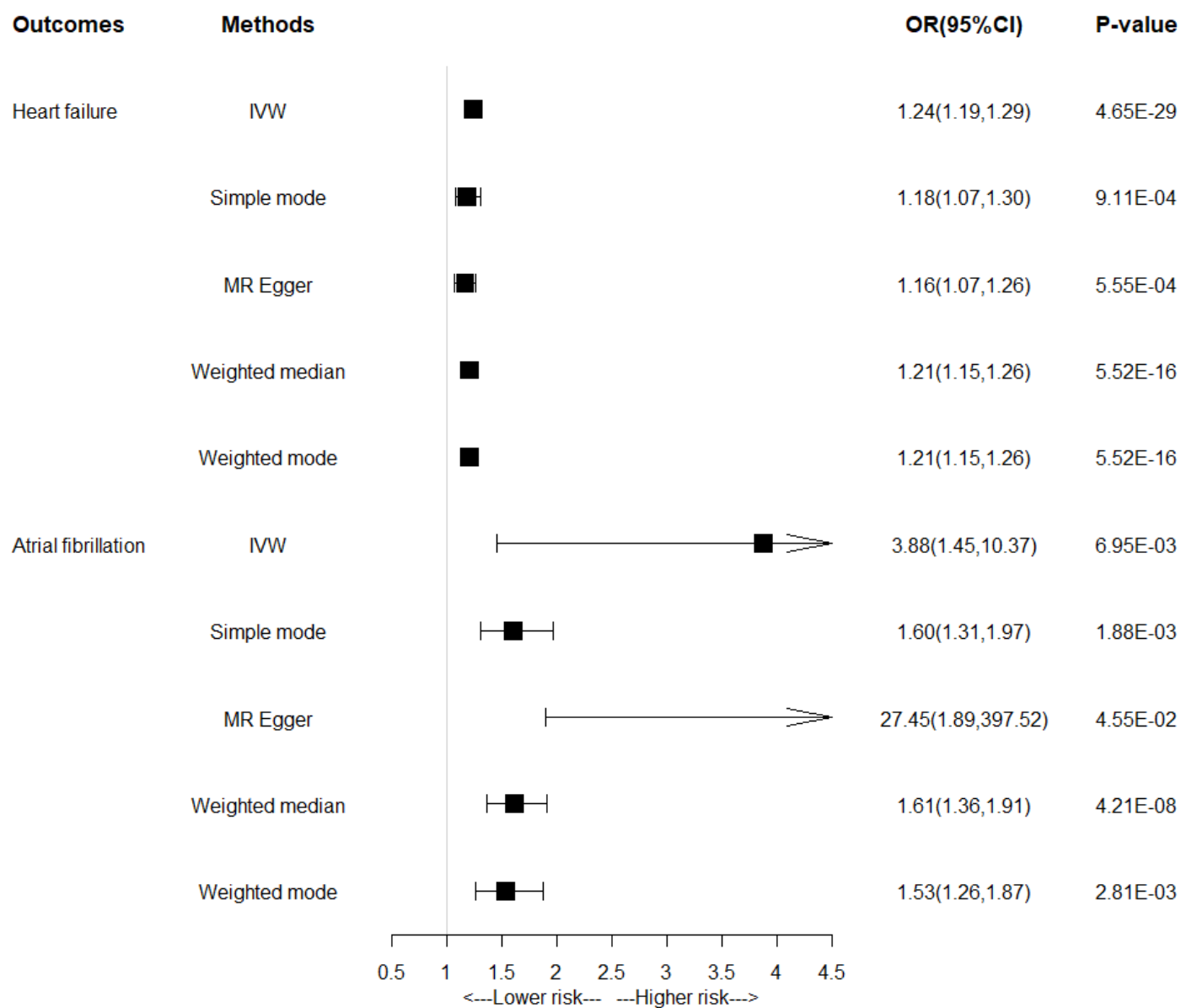
496 **Fig 4.** Multivariable MR analysis of identified shared risk factors with atrial

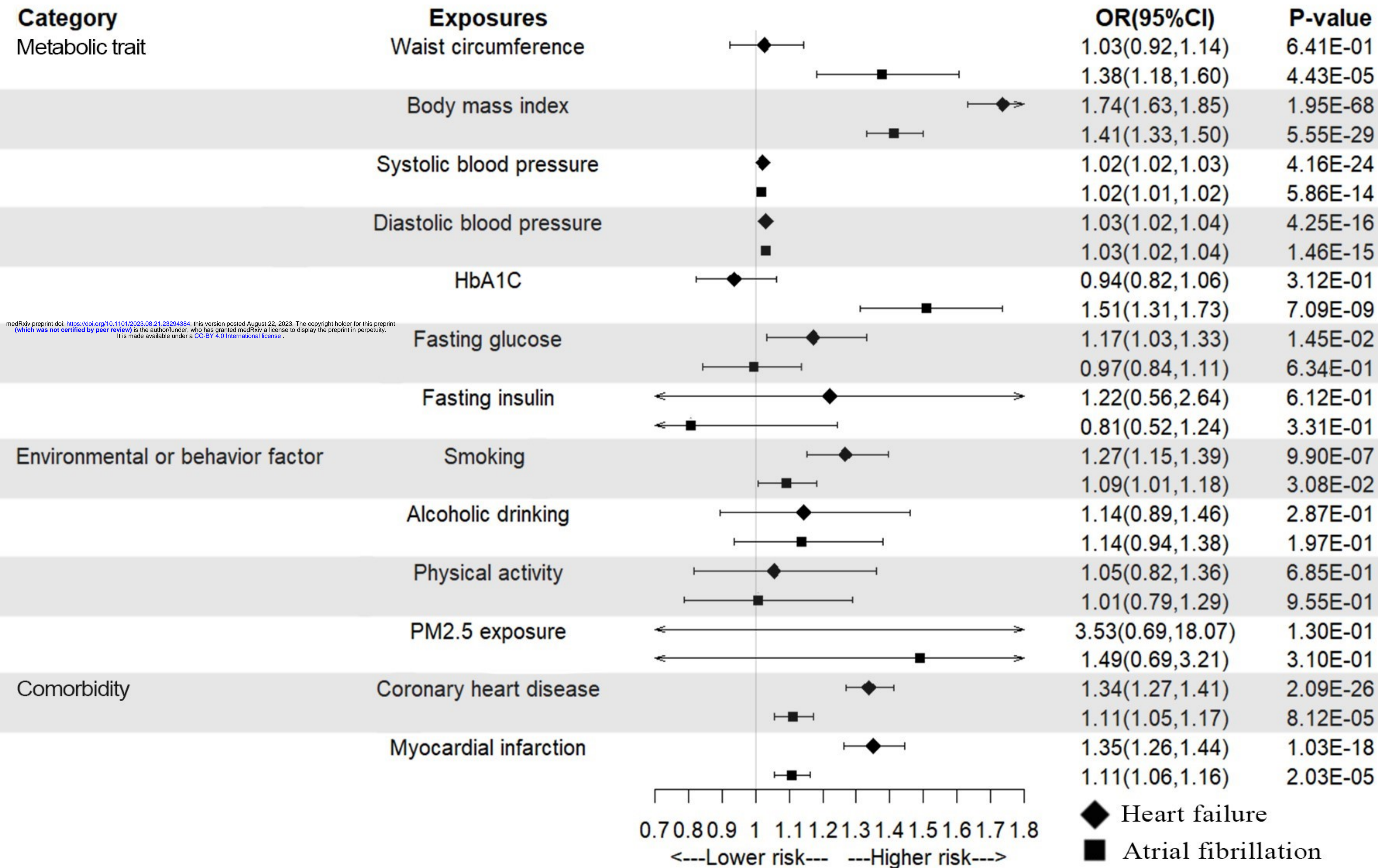
497 fibrillation and heart failure.

498 **Supporting information**

499 **Supplementary File.** Contents of Table 1-4 and Fig 1-2.







medRxiv preprint doi: <https://doi.org/10.1101/2023.08.21.23294384>; this version posted August 22, 2023. The copyright holder for this preprint (which was not certified by peer review) is the author/funder, who has granted medRxiv a license to display the preprint in perpetuity. It is made available under a [CC-BY 4.0 International license](https://creativecommons.org/licenses/by/4.0/).

medRxiv preprint doi: <https://doi.org/10.1101/2023.08.21.23294384>; this version posted August 22, 2023. The copyright holder for this preprint (which was not certified by peer review) is the author/funder, who has granted medRxiv a license to display the preprint in perpetuity. It is made available under a [CC-BY 4.0 International license](https://creativecommons.org/licenses/by/4.0/).

Category

Exposures

OR(95%CI)

P-value

Metabolic trait

Body mass index



1.58(1.49,1.68)

2.36E-47



0.93(0.83,1.04)

2.09E-01

Systolic blood pressure



1.02(1.01,1.02)

8.36E-18



1.00(0.99,1.01)

7.96E-01

Diastolic blood pressure



1.03(1.02,1.03)

5.84E-12



1.01(1.00,1.02)

3.00E-01

Environmental or behavior factor

Smoking



1.24(1.10,1.41)

4.85E-04



0.85(0.66,1.09)

1.96E-01

Comorbidity

Coronary heart disease



1.29(1.23,1.36)

8.20E-21



0.72(0.59,0.88)

1.29E-03

Myocardial infarction



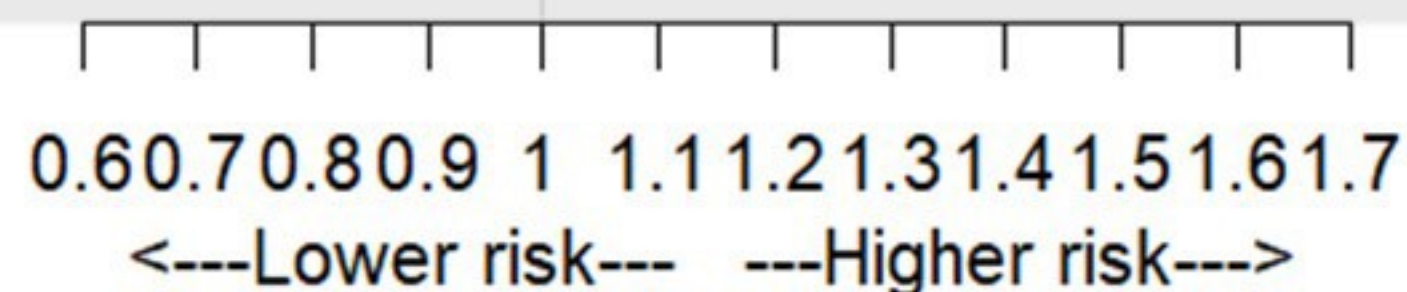
1.30(1.22,1.38)

9.81E-17



0.69(0.55,0.88)

2.84E-03



◆ Heart failure

■ Atrial fibrillation

Table of contents

Supplementary File-Table 1. Information of data sources used in the MR study.

Supplementary File-Table 2. SNPs used to construct the instruments for MR analysis atrial fibrillation and heart failure (nSNPs=112).

Supplementary File-Table 3. SNPs used to construct the instruments for MR analysis heart failure and atrial fibrillation (nSNPs=11).

Supplementary File-Table 4. Sensitivity analysis of association between atrial fibrillation, heart failure and common risk factors.

Supplementary File-Fig 1. Individual estimates of a bidirectional MR analysis of atrial fibrillation and heart failure.

Supplementary File-Fig 2. Leave-one-out method analysis results of bidirectional MR association between atrial fibrillation and heart failure.

Supplementary File-Table 1. Information of data sources used in the MR study.

| Traits | Data sources | Sample size (cases/controls) | Number of SNPs | Ancestry | Reference |
|--------------------------|-------------------------------------|---|---------------------------|----------------------|------------------|
| Atrial fibrillation | Meta analysis of six cohort studies | 60,620/970,216 | 33,519,037 | European | [1] |
| Heart failure | HERMES consortium | 47,309/930,014 | 7,773,021 | European | [2] |
| Waist circumference | GIANT consortium | 245,746 | 2,547,573 | Mixed (76% European) | [3] |
| Body mass index | GIANT consortium | 681,275 | 2,336,260 | Mixed (76% European) | [4] |
| Systolic blood pressure | ICBP consortium | 757,601 | 7,088,083 | European | [5] |
| Diastolic blood pressure | ICBP consortium | 757,601 | 7,160,619 | European | [5] |
| HbA1C | MAGIC consortium | 46,368 | 2,529,804 | European | [6] |
| Fasting glucose | MAGIC consortium | 58,074 | 2,625,495 | European | [7] |
| Fasting insulin | MAGIC consortium | 51,750 | 2,624,472 | European | [7] |
| Smoking | GSCAN consortium | 311,629/321,173 | 11,802,365 | European | [8] |
| Alcoholic drinking | GSCAN consortium | 335,394 | 11,887,865 | European | [8] |
| Physical activity | UK Biobank | 440,512 | 9,851,867 | European | [9] |
| PM2.5 exposure | UK Biobank | 423,796 | 9,851,867 | European | [10] |
| Coronary heart disease | CARDIoGRAMplusC4D consortium | 60,801/123,504 | 9,455,779 | Mixed (77% European) | [11] |
| Myocardial infarction | CARDIoGRAMplusC4D consortium | 43,676/128,199 | 9,289,492 | Mixed (77% European) | [11] |

1. Nielsen JB, Thorolfsson RB, Fritsche LG, Zhou W, Skov MW, Graham SE, Herron TJ, McCarthy S, Schmidt EM, Sveinbjörnsson G, Surakka I, Mathis MR, Yamazaki M, Crawford RD, Gabrielsen ME, Skogholt AH, Holmen OL, Lin M, Wolford BN, Dey R, et al. Biobank-driven genomic discovery yields new insight into atrial fibrillation biology. *Nat Genet.* 2018;50(9):1234-1239. doi: 10.1038/s41588-018-0171-3, PMID: 30061737
2. Shah S, Henry A, Roselli C, Lin H, Sveinbjörnsson G, Fatemifar G, Hedman ÅK, Wilk JB, Morley MP, Chaffin MD, Helgadottir A,

Verweij N, Dehghan A, Almgren P, Andersson C, Aragam KG, Ärnlöv J, Backman JD, Biggs ML, Bloom HL, et al. Genome-wide association and Mendelian randomisation analysis provide insights into the pathogenesis of heart failure. *Nat Commun.* 2020;11(1):163. doi: 10.1038/s41467-019-13690-5, PMID: 31919418

3. Shungin D, Winkler TW, Croteau-Chonka DC, Ferreira T, Locke AE, Mägi R, Strawbridge RJ, Pers TH, Fischer K, Justice AE, Workalemahu T, Wu JMW, Buchkovich ML, Heard-Costa NL, Roman TS, Drong AW, Song C, Gustafsson S, Day FR, Esko T, et al. New genetic loci link adipose and insulin biology to body fat distribution. *Nature.* 2015;518(7538):187-196. doi: 10.1038/nature14132, PMID: 25673412
4. Yengo L, Sidorenko J, Kemper KE, Zheng Z, Wood AR, Weedon MN, Frayling TM, Hirschhorn J, Yang J, Visscher PM; GIANT Consortium. Meta-analysis of genome-wide association studies for height and body mass index in ~700000 individuals of European ancestry. *Hum Mol Genet.* 2018;27(20):3641-3649. doi: 10.1093/hmg/ddy271, PMID: 30124842
5. Evangelou E, Warren HR, Mosen-Ansorena D, Mifsud B, Pazoki R, Gao H, Ntritsos G, Dimou N, Cabrera CP, Karaman I, Ng FL, Evangelou M, Witkowska K, Tzani E, Hellwege JN, Giri A, Velez Edwards DR, Sun YV, Cho K, Gaziano JM, et al. Genetic analysis of over 1 million people identifies 535 new loci associated with blood pressure traits. *Nat Genet.* 2018;50(10):1412-1425. doi: 10.1038/s41588-018-0205-x, PMID: 30224653
6. Soranzo N, Sanna S, Wheeler E, Gieger C, Radke D, Dupuis J, Bouatia-Naji N, Langenberg C, Prokopenko I, Stolerman E, Sandhu MS, Heeney MM, Devaney JM, Reilly MP, Ricketts SL, Stewart AF, Voight BF, Willenborg C, Wright B, Altshuler D, Arking D, et al. Common variants at 10 genomic loci influence hemoglobin A_{1c} levels via glycemic and nonglycemic pathways. *Diabetes.* 2010;59(12):3229-39. doi: 10.2337/db10-0502, PMID: 20858683
7. Manning AK, Hivert MF, Scott RA, Grimsby JL, Bouatia-Naji N, Chen H, Rybin D, Liu CT, Bielak LF, Prokopenko I, Amin N, Barnes D, Cadby G, Hottenga JJ, Ingelsson E, Jackson AU, Johnson T, Kanoni S, Ladenvall C, et al. A genome-wide approach accounting for body mass index identifies genetic variants influencing fasting glycemic traits and insulin resistance. *Nat Genet.* 2012;44(6):659-69. doi: 10.1038/ng.2274, PMID: 22581228
8. Liu M, Jiang Y, Wedow R, Li Y, Brazel DM, Chen F, Datta G, Davila-Velderrain J, McGuire D, Tian C, Zhan X; 23andMe Research Team; HUNT All-In Psychiatry; Choquet H, Docherty AR, Faul JD, Foerster JR, Fritsche LG, Gabrielsen ME, Gordon SD, et al. Association studies of up to 1.2 million individuals yield new insights into the genetic etiology of tobacco and alcohol use. *Nat Genet.* 2019;51(2):237-244. doi: 10.1038/s41588-018-0307-5, PMID: 30643251

9. Klimentidis YC, Raichlen DA, Bea J, Garcia DO, Wineinger NE, Mandarino LJ, Alexander GE, Chen Z, Going SB. Genome-wide association study of habitual physical activity in over 377,000 UK Biobank participants identifies multiple variants including CADM2 and APOE. *Int J Obes (Lond)*. 2018;42(6):1161-1176. doi: 10.1038/s41366-018-0120-3, PMID: 29899525
10. Eeftens M, Beelen R, de Hoogh K, Bellander T, Cesaroni G, Cirach M, Declercq C, Dèdelè A, Dons E, de Nazelle A, Dimakopoulou K, Eriksen K, Falq G, Fischer P, Galassi C, Gražulevičienė R, Heinrich J, Hoffmann B, Jerrett M, Keidel D, et al. Development of Land Use Regression models for PM(2.5), PM(2.5) absorbance, PM(10) and PM(coarse) in 20 European study areas; results of the ESCAPE project. *Environ Sci Technol*. 2012;46(20):11195-205. doi: 10.1021/es301948k, PMID: 22963366
11. Nikpay M, Goel A, Won HH, Hall LM, Willenborg C, Kanoni S, Saleheen D, Kyriakou T, Nelson CP, Hopewell JC, Webb TR, Zeng L, Dehghan A, Alver M, Armasu SM, Auro K, Bjornes A, Chasman DI, Chen S, Ford I, et al. A comprehensive 1,000 Genomes-based genome-wide association meta-analysis of coronary artery disease. *Nat Genet*. 2015;47(10):1121-1130. doi: 10.1038/ng.3396, PMID: 26343387

Supplementary File-Table 2. SNPs used to construct the instruments for MR analysis atrial fibrillation and heart failure (nSNPs=112).

| SNP | Chromosome | Position | Effect allele | Other allele | Exposure: Atrial fibrillation | | | Outcome: Heart failure | | | F-statistic |
|-------------|------------|-----------|---------------|--------------|-------------------------------|----------------|----------|------------------------|----------------|-----------|-------------|
| | | | | | Beta | Standard error | P value | Beta | Standard error | P value | |
| rs284277 | 1 | 10790797 | A | C | -0.0422 | 0.0069 | 1.25E-09 | -0.0139 | 0.0082 | 0.0905191 | 868.0021 |
| rs10753933 | 1 | 203026214 | G | T | -0.0609 | 0.0067 | 9.84E-20 | -0.0106 | 0.0078 | 0.1767 | 1894.542 |
| rs2540949 | 2 | 65284231 | T | A | -0.0659 | 0.0068 | 2.95E-22 | -0.0067 | 0.008 | 0.4041 | 2123.697 |
| rs10520260 | 4 | 174447349 | G | A | -0.0457 | 0.0073 | 3.36E-10 | 0.002 | 0.0085 | 0.8136 | 939.9542 |
| rs10741807 | 11 | 20011445 | C | T | -0.0729 | 0.0079 | 1.59E-20 | 0.0048 | 0.0093 | 0.6076 | 2030.119 |
| rs28439930 | 5 | 173393111 | C | G | -0.0458 | 0.0068 | 1.19E-11 | -0.0134 | 0.0092 | 0.146 | 1080.997 |
| rs6891790 | 5 | 172670745 | T | G | -0.0729 | 0.0076 | 4.53E-22 | -0.033 | 0.0088 | 1.81E-04 | 2227.054 |
| rs11598047 | 10 | 105342672 | G | A | 0.1537 | 0.009 | 8.95E-66 | 0.0188 | 0.0107 | 0.0774105 | 6657.906 |
| rs74910854 | 7 | 74110705 | G | A | 0.09 | 0.0164 | 4.31E-08 | 0.0587 | 0.0207 | 4.59E-03 | 1078.203 |
| rs60902112 | 3 | 194800853 | T | C | 0.0445 | 0.0079 | 1.72E-08 | 0.0056 | 0.0094 | 0.5483 | 715.0909 |
| rs8088085 | 18 | 48708548 | C | A | -0.0365 | 0.0067 | 4.79E-08 | -0.0253 | 0.0078 | 0.00121 | 683.6754 |
| rs72811294 | 17 | 12618680 | C | G | -0.072 | 0.0106 | 9.67E-12 | -0.0239 | 0.0146 | 0.1015 | 1073.181 |
| rs133885 | 22 | 26159289 | A | G | 0.0405 | 0.0068 | 2.22E-09 | 0.0136 | 0.008 | 0.0872208 | 832.9601 |
| rs1458038 | 4 | 81164723 | T | C | 0.0434 | 0.0072 | 1.74E-09 | 0.0165 | 0.0085 | 0.0530994 | 829.3745 |
| rs10520002 | 5 | 127819132 | A | G | 0.0626 | 0.0113 | 2.85E-08 | 0.0325 | 0.0135 | 0.01595 | 719.8611 |
| rs6580277 | 5 | 142818123 | G | A | 0.067 | 0.0079 | 1.64E-17 | 0.0307 | 0.0093 | 9.59E-04 | 1675.793 |
| rs4965430 | 15 | 99268850 | G | C | -0.0441 | 0.0069 | 1.26E-10 | -0.0135 | 0.0081 | 0.0942106 | 951.5225 |
| rs2834618 | 21 | 36119111 | G | T | -0.0944 | 0.0112 | 3.41E-17 | -0.0236 | 0.013 | 0.0697493 | 1738.161 |
| rs73366713 | 6 | 16415751 | A | G | -0.1035 | 0.0099 | 1.53E-25 | -0.0012 | 0.0116 | 0.9145 | 2659.526 |
| rs1545300 | 1 | 112464004 | T | C | -0.0558 | 0.0073 | 1.48E-14 | -0.0135 | 0.0085 | 0.1116 | 1372.711 |
| rs146518726 | 1 | 51535039 | A | G | 0.1605 | 0.0207 | 8.27E-15 | 0.0836 | 0.0238 | 4.50E-04 | 1687.599 |
| rs35544454 | 2 | 213266003 | T | A | -0.0589 | 0.0087 | 1.10E-11 | -0.02 | 0.0101 | 0.0468997 | 1109.901 |

| | | | | | | | | | | | |
|-------------|----|-----------|---|---|---------|--------|-----------|-----------|--------|-----------|----------|
| rs7696743 | 4 | 114393950 | G | A | 0.041 | 0.0069 | 2.21E-09 | 0.0293 | 0.0081 | 2.89E-04 | 808.3896 |
| rs6854883 | 4 | 111607315 | T | C | 0.2822 | 0.0093 | 1.00E-200 | 0.0594 | 0.0108 | 3.67E-08 | 21355.49 |
| rs62254082 | 3 | 69417585 | C | T | 0.0404 | 0.007 | 6.34E-09 | 0.0117 | 0.0082 | 0.152 | 798.5127 |
| rs67969609 | 2 | 145760353 | G | C | 0.0711 | 0.0126 | 1.71E-08 | 0.0374 | 0.015 | 0.0128 | 687.8943 |
| rs7574892 | 2 | 175512820 | A | G | 0.0552 | 0.0067 | 1.98E-16 | 0.0057 | 0.0078 | 0.4633 | 1571.418 |
| rs117984853 | 6 | 149399100 | T | G | 0.1228 | 0.012 | 1.34E-24 | 0.0027 | 0.0137 | 0.8437 | 2838.139 |
| rs7612445 | 3 | 179172979 | T | G | 0.0493 | 0.0084 | 4.81E-09 | 0.0047 | 0.0101 | 0.642899 | 765.1932 |
| rs7529220 | 1 | 22282619 | C | T | 0.0621 | 0.0098 | 1.98E-10 | -0.0051 | 0.0115 | 0.6555 | 1031.915 |
| rs6665642 | 1 | 154802139 | T | C | -0.062 | 0.0112 | 3.06E-08 | -0.0167 | 0.013 | 0.2 | 823.0411 |
| rs74832855 | 1 | 170171598 | G | A | 0.1216 | 0.018 | 1.43E-11 | 0.0052 | 0.0212 | 0.8068 | 1084.527 |
| rs72926475 | 2 | 86594487 | A | G | -0.0683 | 0.0102 | 2.37E-11 | -0.0151 | 0.012 | 0.2074 | 1037.036 |
| rs17060733 | 8 | 21866933 | C | T | -0.061 | 0.0103 | 2.64E-09 | -0.0236 | 0.0121 | 0.0511199 | 815.4107 |
| rs62521286 | 8 | 124551975 | G | A | 0.1202 | 0.0135 | 4.50E-19 | 0.0227 | 0.0159 | 0.1518 | 1847.252 |
| rs60212594 | 10 | 75414344 | C | G | -0.1176 | 0.0096 | 9.20E-35 | -0.0642 | 0.0113 | 1.19E-08 | 3522.484 |
| rs55734480 | 7 | 14372009 | A | G | 0.0548 | 0.0078 | 2.20E-12 | 0.0098 | 0.0092 | 0.2877 | 1160.308 |
| rs2860482 | 12 | 57105938 | C | A | -0.054 | 0.0076 | 1.21E-12 | -0.0256 | 0.009 | 4.46E-03 | 1197.285 |
| rs2359171 | 16 | 73053022 | A | T | 0.1746 | 0.0086 | 4.65E-91 | 0.0259 | 0.0102 | 0.01119 | 9196.112 |
| rs10773657 | 12 | 123327900 | A | C | -0.0575 | 0.0103 | 2.54E-08 | -0.0283 | 0.0123 | 0.0209802 | 811.4888 |
| rs6560886 | 12 | 133150210 | C | T | 0.051 | 0.009 | 1.49E-08 | -0.0152 | 0.0104 | 0.1443 | 895.3615 |
| rs9506925 | 13 | 23368943 | T | C | 0.0449 | 0.0075 | 2.72E-09 | 0.0041 | 0.0089 | 0.643899 | 813.8905 |
| rs2738413 | 14 | 64679960 | G | A | -0.0778 | 0.0067 | 2.55E-31 | -0.0034 | 0.0078 | 0.6624 | 3128.905 |
| rs74022964 | 15 | 73677264 | T | C | 0.1132 | 0.009 | 3.51E-36 | -0.0019 | 0.0108 | 0.8563 | 3508.443 |
| rs464901 | 22 | 18597502 | C | T | -0.0508 | 0.0072 | 1.53E-12 | -0.0026 | 0.0085 | 0.758 | 1187.149 |
| rs12426679 | 12 | 76237987 | T | C | -0.0391 | 0.0067 | 4.95E-09 | -8.00E-04 | 0.0079 | 0.92 | 786.1378 |
| rs4963776 | 12 | 24779491 | T | G | -0.0913 | 0.0088 | 1.84E-25 | -0.0214 | 0.0102 | 0.0364502 | 2565.962 |
| rs12245149 | 10 | 65321147 | A | C | -0.047 | 0.0067 | 1.66E-12 | -0.0143 | 0.0079 | 0.0693506 | 1136.706 |

| | | | | | | | | | | | |
|-------------|----|-----------|---|---|---------|--------|-----------|---------|--------|-----------|----------|
| rs80056983 | 10 | 105509902 | T | C | 0.1287 | 0.0101 | 1.68E-37 | 0.0113 | 0.0121 | 0.3542 | 3516.334 |
| rs6994744 | 8 | 141740868 | C | A | 0.0405 | 0.0066 | 1.09E-09 | 0.011 | 0.0078 | 0.1597 | 846.035 |
| rs883079 | 12 | 114793240 | T | C | 0.0981 | 0.0074 | 2.84E-40 | 0.0176 | 0.0087 | 0.0439097 | 4123.156 |
| rs10141892 | 14 | 35184323 | C | T | -0.0452 | 0.0068 | 2.95E-11 | 0.0215 | 0.008 | 6.98E-03 | 1024.808 |
| rs55985730 | 7 | 128417044 | G | T | 0.0867 | 0.0149 | 5.24E-09 | 0.0094 | 0.0169 | 0.579499 | 874.7912 |
| rs337705 | 5 | 113737062 | G | T | 0.0564 | 0.0068 | 1.63E-16 | 0.005 | 0.0082 | 0.5424 | 1539.182 |
| rs34969716 | 6 | 18210109 | A | G | 0.0702 | 0.0078 | 1.60E-19 | 0.0012 | 0.0092 | 0.8961 | 2158.569 |
| rs34080181 | 3 | 66454191 | A | G | -0.0446 | 0.0069 | 1.28E-10 | -0.0028 | 0.0083 | 0.734301 | 966.1089 |
| rs12188351 | 5 | 168386089 | A | G | 0.0865 | 0.0145 | 2.52E-09 | 0.0222 | 0.0171 | 0.1923 | 821.6067 |
| rs1563304 | 17 | 44874453 | T | C | 0.0644 | 0.0092 | 2.56E-12 | 0.0277 | 0.0108 | 0.0102601 | 1252.592 |
| rs9953366 | 18 | 46474192 | C | T | 0.049 | 0.0073 | 1.82E-11 | 0.0259 | 0.0086 | 2.50E-03 | 1107.024 |
| rs140185678 | 16 | 2003016 | A | G | 0.1659 | 0.0218 | 2.43E-14 | 0.0759 | 0.0245 | 1.95E-03 | 1925.357 |
| rs77316573 | 16 | 2265271 | T | C | 0.0529 | 0.0089 | 3.26E-09 | -0.0039 | 0.0104 | 0.708 | 920.8044 |
| rs7225165 | 17 | 1309850 | A | G | -0.0655 | 0.0111 | 3.20E-09 | -0.0342 | 0.013 | 8.34E-03 | 889.37 |
| rs6838973 | 4 | 111765495 | T | C | -0.1514 | 0.0067 | 1.03E-111 | -0.0284 | 0.008 | 3.67E-04 | 11780.74 |
| rs6747542 | 2 | 70106832 | C | T | -0.0554 | 0.0067 | 1.10E-16 | -0.0278 | 0.0079 | 3.94E-04 | 1576.194 |
| rs4073778 | 1 | 116297758 | A | C | 0.0486 | 0.0067 | 4.96E-13 | -0.006 | 0.008 | 0.4558 | 1198.904 |
| rs11264280 | 1 | 154862952 | T | C | 0.1347 | 0.0071 | 3.07E-79 | 0.0252 | 0.0084 | 2.64E-03 | 8376.037 |
| rs3820888 | 2 | 201180023 | C | T | 0.0684 | 0.0068 | 5.75E-24 | 0.0366 | 0.008 | 4.71E-06 | 2304.25 |
| rs10804493 | 3 | 111554426 | A | G | 0.0558 | 0.007 | 1.63E-15 | 0.0126 | 0.0082 | 0.1242 | 1461.494 |
| rs6771054 | 3 | 89489529 | C | T | -0.0457 | 0.0068 | 2.42E-11 | -0.0014 | 0.0081 | 0.8584 | 1037.39 |
| rs1838747 | 5 | 114426668 | G | A | 0.0391 | 0.0067 | 4.13E-09 | 0.0149 | 0.0078 | 0.0571202 | 788.5107 |
| rs10213171 | 4 | 148937537 | G | C | 0.091 | 0.0134 | 1.32E-11 | 0.0362 | 0.0159 | 0.0230701 | 977.3322 |
| rs1278493 | 3 | 135814009 | A | G | -0.0389 | 0.0068 | 8.77E-09 | -0.0146 | 0.0079 | 0.0638102 | 767.5263 |
| rs9997349 | 4 | 111473366 | A | G | -0.0668 | 0.0086 | 5.40E-15 | -0.0231 | 0.0102 | 0.0244901 | 1494.406 |
| rs73041705 | 3 | 24463235 | C | T | -0.0443 | 0.0073 | 1.55E-09 | -0.0148 | 0.0086 | 0.0860498 | 847.9208 |

| | | | | | | | | | | | |
|------------|----|-----------|---|---|---------|--------|----------|---------|--------|-----------|----------|
| rs11102343 | 1 | 112382671 | A | G | 0.0663 | 0.0111 | 2.23E-09 | 0.0191 | 0.0131 | 0.1452 | 791.4734 |
| rs56201652 | 7 | 92278116 | A | G | -0.0531 | 0.0075 | 1.74E-12 | -0.0257 | 0.0089 | 3.73E-03 | 1138.945 |
| rs6462079 | 7 | 28415827 | A | G | 0.0466 | 0.0076 | 8.79E-10 | 0.0025 | 0.0091 | 0.785301 | 901.7798 |
| rs3951016 | 6 | 118559658 | A | T | 0.0648 | 0.0067 | 2.15E-22 | -0.0144 | 0.0079 | 0.0671104 | 2154.197 |
| rs13195459 | 6 | 122403559 | A | G | -0.0623 | 0.007 | 4.15E-19 | -0.0043 | 0.0082 | 0.6023 | 1850.303 |
| rs72700114 | 1 | 170193825 | C | G | 0.2021 | 0.013 | 3.29E-54 | 0.0591 | 0.0152 | 9.48E-05 | 5918.607 |
| rs76097649 | 11 | 128764570 | A | G | 0.1151 | 0.0124 | 1.26E-20 | 0.0083 | 0.0145 | 0.566301 | 2315.737 |
| rs71454237 | 12 | 70013415 | A | G | -0.062 | 0.0084 | 1.78E-13 | -0.0119 | 0.0099 | 0.2269 | 1311.829 |
| rs7578393 | 2 | 26165528 | T | C | 0.0614 | 0.0088 | 2.42E-12 | -0.0035 | 0.0102 | 0.7323 | 1263.662 |
| rs10458660 | 10 | 77936576 | G | A | 0.0537 | 0.0087 | 6.78E-10 | 0.0121 | 0.0104 | 0.2448 | 849.731 |
| rs10821415 | 9 | 97713459 | A | C | 0.0821 | 0.0067 | 2.92E-34 | 0.0294 | 0.0079 | 2.18E-04 | 3380.472 |
| rs4935786 | 11 | 121661507 | A | T | -0.0463 | 0.0079 | 4.85E-09 | -0.0191 | 0.0094 | 0.0413 | 866.3047 |
| rs28631169 | 14 | 23888183 | T | C | 0.0522 | 0.0084 | 5.35E-10 | -0.0016 | 0.01 | 0.8752 | 893.523 |
| rs2759301 | 15 | 80994288 | A | G | 0.039 | 0.0067 | 5.04E-09 | 0.0287 | 0.0092 | 1.78E-03 | 777.9582 |
| rs12604076 | 17 | 76773638 | C | T | -0.0365 | 0.0066 | 3.63E-08 | -0.0306 | 0.0078 | 9.25E-05 | 685.7543 |
| rs2274115 | 9 | 139094773 | G | A | 0.0487 | 0.0076 | 1.69E-10 | 0.0202 | 0.009 | 0.0254203 | 1027.259 |
| rs35963991 | 8 | 11495702 | T | G | 0.0525 | 0.0095 | 2.80E-08 | 0.0288 | 0.0112 | 0.0100099 | 722.6328 |
| rs7789146 | 7 | 150661409 | A | G | -0.0584 | 0.0087 | 2.12E-11 | -0.0322 | 0.0103 | 1.78E-03 | 1033.013 |
| rs79187193 | 1 | 147255831 | A | G | -0.1162 | 0.0153 | 3.15E-14 | -0.0178 | 0.0172 | 0.301 | 1495.997 |
| rs6689306 | 1 | 154395946 | G | A | -0.046 | 0.0068 | 1.36E-11 | -0.0234 | 0.008 | 3.51E-03 | 1058.537 |
| rs577676 | 1 | 170587340 | T | C | -0.0923 | 0.0067 | 1.62E-43 | -0.0146 | 0.0079 | 0.0655194 | 4342.338 |
| rs2885697 | 1 | 41544279 | T | G | -0.0439 | 0.007 | 2.88E-10 | -0.0129 | 0.0082 | 0.1165 | 906.848 |
| rs6596717 | 5 | 106427609 | A | C | -0.0404 | 0.0068 | 3.00E-09 | 0.0037 | 0.008 | 0.6446 | 804.8427 |
| rs2040862 | 5 | 137419989 | T | C | 0.1084 | 0.0087 | 1.08E-35 | 0.0269 | 0.0103 | 8.81E-03 | 3548.985 |
| rs2031522 | 6 | 87821501 | G | A | -0.0436 | 0.0068 | 1.47E-10 | -0.0325 | 0.0081 | 6.04E-05 | 920.7361 |
| rs6790396 | 3 | 38771925 | G | C | 0.0627 | 0.0068 | 2.40E-20 | 0.0116 | 0.0079 | 0.1433 | 1955.416 |

| | | | | | | | | | | | |
|------------|----|-----------|---|---|---------|--------|----------|---------|--------|-----------|----------|
| rs7650482 | 3 | 12841804 | G | A | 0.0711 | 0.007 | 1.79E-24 | 0.022 | 0.0082 | 7.40E-03 | 2406.58 |
| rs2288327 | 2 | 179411665 | G | A | 0.0919 | 0.0089 | 7.26E-25 | 0.0019 | 0.0107 | 0.8596 | 2302.46 |
| rs28387148 | 2 | 127433465 | T | C | 0.0741 | 0.0113 | 6.25E-11 | 0.029 | 0.0131 | 0.02618 | 1065.813 |
| rs7508 | 8 | 17913970 | A | G | 0.0711 | 0.0075 | 1.69E-21 | 0.012 | 0.0088 | 0.171 | 2146.436 |
| rs11773845 | 7 | 116191301 | A | C | 0.1054 | 0.0067 | 2.39E-55 | 0.0227 | 0.0079 | 4.19E-03 | 5588.159 |
| rs11191116 | 10 | 103555611 | T | C | -0.041 | 0.007 | 4.42E-09 | 0.0119 | 0.0083 | 0.1516 | 786.9456 |
| rs775498 | 12 | 70071513 | G | A | 0.0423 | 0.0074 | 1.05E-08 | 0.003 | 0.0087 | 0.7304 | 743.8983 |
| rs74884082 | 14 | 73249419 | T | C | -0.0493 | 0.0078 | 3.48E-10 | -0.0153 | 0.0092 | 0.0977305 | 939.1377 |
| rs35569628 | 13 | 113872712 | C | T | -0.0452 | 0.008 | 1.38E-08 | -0.0242 | 0.0095 | 0.01048 | 730.3467 |
| rs11156751 | 14 | 32990437 | C | T | 0.0719 | 0.0077 | 6.94E-21 | 0.029 | 0.009 | 1.27E-03 | 2177.803 |
| rs3176326 | 6 | 36647289 | A | G | -0.0626 | 0.0085 | 1.42E-13 | -0.0577 | 0.0102 | 1.33E-08 | 1285.519 |
| rs74500426 | 4 | 174642789 | T | G | -0.0921 | 0.0127 | 4.29E-13 | -0.0091 | 0.0144 | 0.527 | 1235.479 |

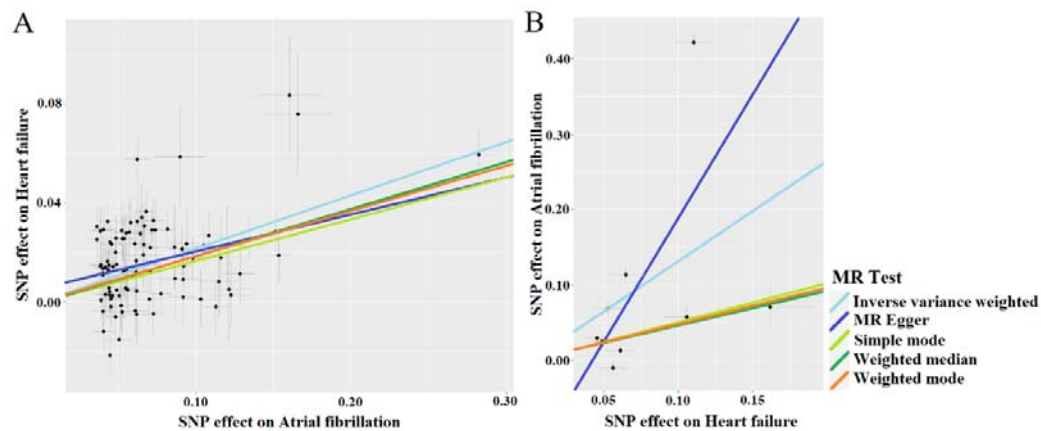
Supplementary File-Table 3. SNPs used to construct the instruments for MR analysis heart failure and atrial fibrillation (nSNPs=11).

| SNP | Chromosome | Position | Effect allele | Other allele | Exposure: heart failure | | | Outcome: Atrial fibrillation | | | F-statistic |
|------------|------------|-----------|---------------|--------------|-------------------------|----------------|----------|------------------------------|----------------|----------|-------------|
| | | | | | Beta | Standard error | P value | Beta | Standard error | P value | |
| rs660240 | 1 | 109817838 | C | T | 0.0611 | 0.0097 | 3.25E-10 | 0.013 | 0.008 | 0.1062 | 1208.621467 |
| rs11745324 | 5 | 137012171 | A | G | -0.0528 | 0.0095 | 2.34E-08 | -0.0687 | 0.0081 | 1.52E-17 | 995.4338026 |
| rs4746140 | 10 | 75417249 | C | G | -0.0666 | 0.0109 | 1.10E-09 | -0.11 | 0.0092 | 5.14E-33 | 1101.979218 |
| rs17617337 | 10 | 121426884 | T | C | -0.0561 | 0.0095 | 3.65E-09 | 0.0093 | 0.008 | 0.2485 | 1027.226956 |
| rs1510226 | 6 | 160816409 | C | T | 0.162 | 0.0285 | 1.27E-08 | 0.0714 | 0.0256 | 5.24E-03 | 912.0373006 |
| rs1556516 | 9 | 22100176 | C | G | 0.0622 | 0.0078 | 1.57E-15 | 0.0248 | 0.0066 | 1.82E-04 | 1762.756616 |
| rs4766578 | 12 | 111904371 | A | T | -0.0433 | 0.0079 | 4.90E-08 | -0.0037 | 0.0068 | 0.582 | 916.9233925 |
| rs4135240 | 6 | 36647680 | C | T | -0.0486 | 0.0084 | 6.84E-09 | -0.0251 | 0.0071 | 3.76E-04 | 1061.954529 |
| rs55730499 | 6 | 161005610 | T | C | 0.1058 | 0.0157 | 1.83E-11 | 0.0578 | 0.0139 | 3.45E-05 | 1259.661928 |
| rs56094641 | 16 | 53806453 | G | A | 0.0454 | 0.008 | 1.21E-08 | 0.0291 | 0.0067 | 1.53E-05 | 987.4982561 |
| rs17042102 | 4 | 111668626 | A | G | 0.1103 | 0.0121 | 5.71E-20 | 0.4222 | 0.0103 | 0 | 3384.637208 |

Supplementary File-Table 4. Sensitivity analysis of association between atrial fibrillation, heart failure and common risk factors.

| Outcomes | Exposures | nSNPs | beta | se | P value | Cochrane Q test pvalue | MR-Egger intercept pvalue | Global test pvalue | Distortion test pvalue |
|---------------------|--------------------------|--------------|-------------|-------------|----------------|-------------------------------|----------------------------------|---------------------------|-------------------------------|
| Heart failure | Atrial fibrillation | 99 | 0.2153007 | 0.01924315 | 4.65E-29 | 5.93E-10 | 0.090 | <0.001 | 0.675 |
| Atrial fibrillation | Heart failure | 9 | 1.3547512 | 0.50191937 | 6.95E-03 | 1.28E-215 | 0.171 | <0.001 | 1 |
| Heart failure | Waist circumference | 59 | 0.02550309 | 0.05473641 | 0.6412688 | 0.008 | 0.516 | 0.008 | NA |
| | Body mass index | 448 | 0.5518767 | 0.03156728 | 1.95E-68 | 1.48E-09 | 0.153 | <0.001 | 0.874 |
| | Systolic blood pressure | 398 | 0.02107779 | 0.002081169 | 4.16E-24 | 8.78E-23 | 0.391 | <0.001 | 0.437 |
| | Diastolic blood pressure | 391 | 0.02960439 | 0.003640814 | 4.25E-16 | 7.12E-27 | 0.484 | <0.001 | 0.815 |
| | HbA1C | 188 | -0.06584305 | 0.06512364 | 0.311994 | 1.41E-06 | 0.310 | <0.001 | 0.829 |
| | Fasting glucose | 19 | 0.1582335 | 0.06474746 | 0.01453122 | 0.718 | 0.618 | 0.745 | - |
| | Fasting insulin | 4 | 0.19998547 | 0.3942165 | 0.6119453 | 0.016 | 0.723 | 0.062 | - |

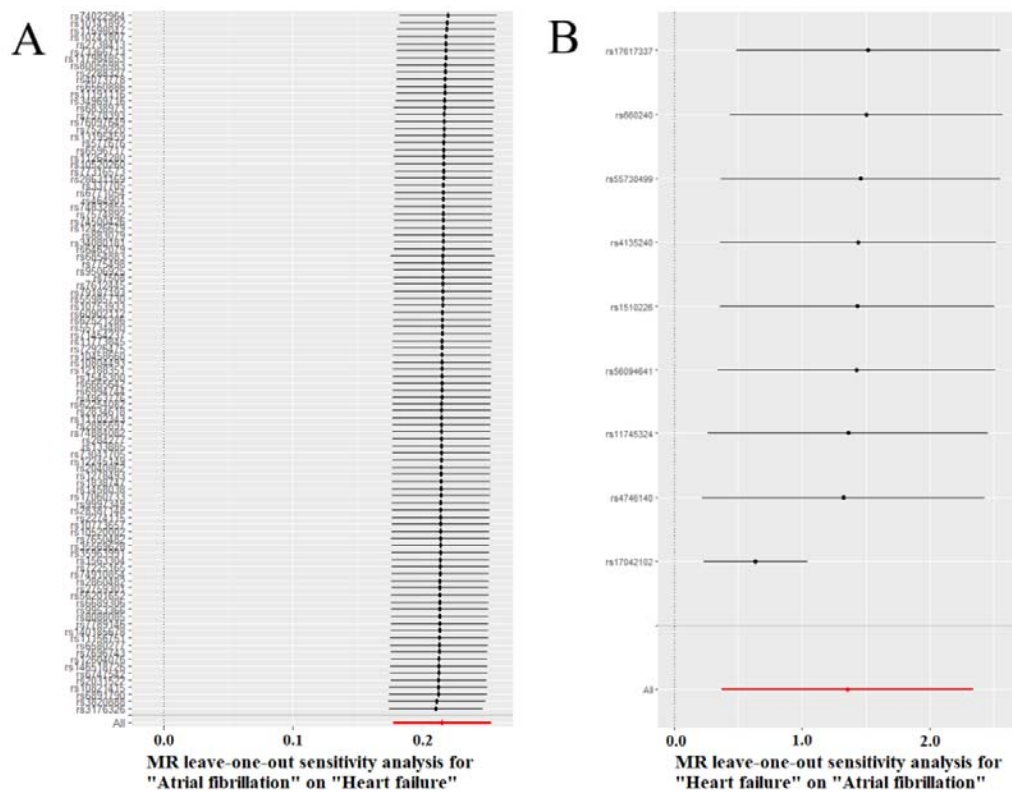
| | | | | | | | | | |
|---------------------|--------------------------|-----|--------------|-------------|------------|----------|-------|--------|--------|
| | Smoking | 73 | 0.2372768 | 0.0484872 | 9.90E-07 | 0.005 | 0.863 | 0.001 | 0.754 |
| | Alcoholic drinking | 30 | 0.133789 | 0.1255667 | 0.28665816 | 3.03E-04 | 0.971 | <0.001 | 0.521 |
| | Physical activity | 11 | 0.0529421 | 0.1304013 | 0.6847473 | 0.028 | 0.901 | 0.029 | NA |
| | PM2.5 exposure | 6 | 1.26083038 | 0.8335022 | 0.1303584 | 1.05E-09 | 0.536 | <0.001 | <0.001 |
| | Coronary heart disease | 38 | 0.2909573 | 0.02736351 | 2.09E-26 | 3.03E-07 | 0.336 | <0.001 | 0.767 |
| | Myocardial infarction | 23 | 0.300232 | 0.03399264 | 1.03E-18 | 1.67E-06 | 0.339 | <0.001 | 0.746 |
| Atrial fibrillation | Waist circumference | 63 | 0.3196562 | 0.07827214 | 4.43E-05 | 3.76E-30 | 0.301 | <0.001 | 0.689 |
| | Body mass index | 491 | 0.3453513 | 0.03091049 | 5.55E-29 | 7.80E-41 | 0.892 | <0.001 | 0.425 |
| | Systolic blood pressure | 438 | 0.01608193 | 0.00214104 | 5.86E-14 | 1.67E-92 | 0.919 | <0.001 | 0.838 |
| | Diastolic blood pressure | 442 | 0.02904597 | 0.003639805 | 1.46E-15 | 7.19E-98 | 0.188 | <0.001 | 0.691 |
| | HbA1C | 225 | 0.4113814 | 0.07106406 | 7.09E-09 | 6.95E-49 | 0.078 | <0.001 | 0.933 |
| | Fasting glucose | 22 | -0.034893326 | 0.07319565 | 0.6335664 | 1.79E-04 | 0.212 | 0.001 | 0.442 |
| | Fasting insulin | 3 | -0.21556932 | 0.2216626 | 0.3307964 | 0.316 | 0.419 | NA | NA |
| | Smoking | 85 | 0.08767079 | 0.04059599 | 0.03080424 | 0.005 | 0.863 | <0.001 | 0.639 |
| | Alcoholic drinking | 33 | 0.1280652 | 0.09928672 | 0.19710177 | 0.001 | 0.906 | 0.001 | 0.582 |
| | Physical activity | 11 | 0.007033304 | 0.125875 | 0.9554412 | 0.028 | 0.901 | 0.003 | 0.709 |
| | PM2.5 exposure | 7 | 0.3981797 | 0.3918176 | 0.3095163 | 1.05E-09 | 0.536 | 0.003 | 0.943 |
| | Coronary heart disease | 39 | 0.10563334 | 0.02680572 | 8.12E-05 | 3.03E-07 | 0.336 | <0.001 | 0.826 |
| | Myocardial infarction | 24 | 0.1030076 | 0.02417212 | 2.03E-05 | 0.001 | 0.039 | 0.004 | 0.652 |



Supplementary File-Fig 1. Individual estimates of a bidirectional MR analysis of atrial fibrillation and heart failure.

(A: Genetic variation of atrial fibrillation in individual estimates of heart failure;

B: Genetic variation of heart failure to individual estimates of atrial fibrillation)



Supplementary File-Fig 2. Leave-one-out method analysis results of bidirectional MR association between atrial fibrillation and heart failure.

(A: Atrial fibrillation → Heart failure; B: Heart failure → Atrial fibrillation)