

Preventing tuberculosis with community-based care in an HIV-endemic setting: a modeling analysis.

Jennifer M. Ross^{1,*§}, Chelsea Greene^{2*}, Cara J. Bayer³, David W. Dowdy⁴, Alastair van Heerden^{5,6}, Jesse Heitner⁷, Darcy W. Rao⁸, D. Allen Roberts⁹, Adrienne E. Shapiro^{1,10}, Zelda B. Zabinsky², Ruanne V. Barnabas^{7,11}

* These authors contributed equally

1. Division of Allergy and Infectious Diseases, Department of Medicine, University of Washington, Seattle, USA
2. Department of Industrial and Systems Engineering, University of Washington, Seattle, USA
3. Department of Epidemiology, University of North Carolina, Chapel Hill, USA
4. Department of Epidemiology, Johns Hopkins Bloomberg School of Public Health, Baltimore, USA
5. Centre for Community Based Research, Human Sciences Research Council, Pietermaritzburg, South Africa
6. SAMRC/Wits Developmental Pathways for Health Research Unit, University of the Witwatersrand, Johannesburg, South Africa
7. Division of Infectious Diseases, Massachusetts General Hospital, Boston, USA
8. Bill & Melinda Gates Foundation, Seattle, USA
9. Department of Epidemiology, University of Washington, Seattle, USA
10. Department of Global Health, University of Washington, Seattle, USA
11. Harvard Medical School, Boston, USA

§ Corresponding author: Jennifer M. Ross

International Clinical Research Center
University of Washington
325 9th Avenue, Box 359927
Seattle, WA 98104
USA
+1-206-543-9192
Jross3@uw.edu

Keywords: Differentiated care, cost effectiveness, gender, modeling, TB, HIV epidemiology

Word count:

Abstract: 345/350

Main text: 3487/3500

1 **Abstract**

2 **Introduction:**

3 Antiretroviral therapy (ART) and TB preventive treatment (TPT) both prevent tuberculosis (TB)
4 disease and deaths among people living with HIV. Differentiated care models, including
5 community-based care, can increase uptake of ART and TPT to prevent TB in settings with a
6 high burden of HIV-associated TB, particularly among men.

7 **Methods:**

8 We developed a gender-stratified dynamic model of TB and HIV transmission and disease
9 progression among 100,000 adults ages 15-59 in KwaZulu-Natal, South Africa. We drew model
10 parameters from a community-based ART initiation and resupply trial in sub-Saharan Africa
11 (Delivery Optimization for Antiretroviral Therapy, DO ART) and other scientific literature. We
12 simulated the impacts of community-based ART and TPT care programs during 2018-2027,
13 assuming that community-based ART and TPT care were scaled up to similar levels as in the DO
14 ART trial (i.e., ART coverage increasing from 49% to 82% among men and from 69% to 83%
15 among women) and sustained for ten years. We projected the number of TB cases, deaths, and
16 disability-adjusted life years (DALYs) averted relative to standard, clinic-based care. We
17 calculated program costs and incremental cost-effectiveness ratios from the provider perspective.

18 **Results:**

19 If community-based ART care could be implemented with similar effectiveness to the DO ART
20 trial, increased ART coverage could reduce TB incidence by 27.0% (range 21.3% - 34.1%) and
21 TB mortality by 36.0% (range 26.9% - 43.8%) after ten years. Increasing both ART and TPT
22 uptake through community-based ART with TPT care could reduce TB incidence by 29.7%
23 (range 23.9% - 36.0%) and TB mortality by 36.0% (range 26.9% - 43.8%). Community-based
24 ART with TPT care reduced gender disparities in TB mortality rates by reducing TB mortality
25 among men by a projected 39.8% (range 32.2% - 46.3%) and by 30.9% (range 25.3% - 36.5%)
26 among women. Over ten years, the mean cost per DALY averted by community-based ART with
27 TPT care was \$846 USD (range \$709 - \$1,012).

28 **Conclusions:**

29 By substantially increasing coverage of ART and TPT, community-based care for people living
30 with HIV could reduce TB incidence and mortality in settings with high burdens of HIV-
31 associated TB and reduce TB gender disparities.

32 **Introduction**

33 Tuberculosis (TB) is the leading cause of death globally among people living with HIV
34 (PLWH) [1]. HIV infection markedly increases the risk of progression to active TB disease [2].
35 The burden of HIV-associated TB is particularly high in South Africa, where more than 50% of
36 people with incident TB in 2021 also had HIV, compared to a global mean of 6.7% [1]. Despite
37 frequent co-occurrence, TB and HIV exhibit different gender disparity patterns in South Africa,
38 where TB prevalence nationally is higher among men compared to higher HIV prevalence
39 among women [3,4]. Multiple factors likely contribute to greater TB burden among men,
40 including gender differences in accessing health care, gender-specific contact patterns, and
41 higher prevalence of exposures that increase risk for TB infection and/or progression (e.g.,
42 mining, incarceration, use of alcohol, illicit substances, and tobacco) [5–7]. Additionally, gender
43 disparities in HIV outcomes include lower levels of HIV viral suppression among men than
44 women living with HIV across nearly all regions globally and in South Africa [8]. The higher
45 detectable viral loads in men contributes in part to higher incidence among women [1].

46 TB preventive treatment (TPT) when given with antiretroviral therapy (ART), reduces
47 the risk of TB by approximately one third [9–11]. Between 2018 and 2020, over six million
48 PLWH accessed TPT globally, exceeding the target set at the 2018 UN High-Level Meeting on
49 Tuberculosis. However, disruptions in care during the COVID-19 pandemic were associated
50 with a 21% decline in the number of people taking TPT between 2019 and 2020 [1]. While
51 global TPT figures are not disaggregated by gender, some studies conducted between 2020 and
52 2021 in sub-Saharan Africa found lower rates of TPT initiation and completion among men than
53 among women [12,13], while others did not find differences [14,15].

54 Differentiated models of care tailor health care delivery to client needs and often extend
55 care beyond traditional facility settings and involve an additional cadre of health workers [16].
56 Differentiated community-based care models have been effective and cost-effective interventions
57 for HIV and TB care in sub-Saharan Africa [17], and can improve healthcare by caring for
58 PLWH outside of health facilities. Recently, the Delivery Optimization for Antiretroviral
59 Therapy (DO ART) household-randomized trial of community-based ART initiation and
60 treatment in South Africa and Uganda demonstrated that community-based care increases the
61 proportion of PLWH who achieve viral suppression, particularly among men [18]. This
62 overcame a gender disparity in viral suppression that was observed in facility-based care models.

63 At South African DO ART sites, asymptomatic participants in the community-based care group
64 without contraindications to TPT were offered TPT starting one month after ART initiation,
65 while the standard clinic group received TPT per routine clinic procedures. TPT uptake was
66 higher among participants who received community-based care than participants who received
67 facility-based care [19]. A recent modelling analysis concluded that community-based HIV
68 treatment was cost-effective in preventing death and disability due to HIV [20]. However, the
69 longer-term impact of increased ART and TPT uptake on incident TB and TB deaths were not
70 quantified among trial participants, nor were TB incidence or deaths quantified among
71 community members who were not in the trial.

72 In this modeling study, we aim to quantify the health impact and cost-effectiveness of
73 extending community-based ART and TPT care to population scale in a TB-HIV high-burden
74 setting of KwaZulu-Natal, South Africa, including analysis of gender disparities in health
75 outcomes. In KwaZulu-Natal, where approximately 70% of people who develop TB also have
76 HIV [21], we hypothesize that reaching the ART and TPT coverage levels achieved in the DO
77 ART trial among all PLWH would substantially reduce TB disease and deaths and reduce gender
78 disparities in TB.

79

80 **Methods**

81 **Study Design and Setting**

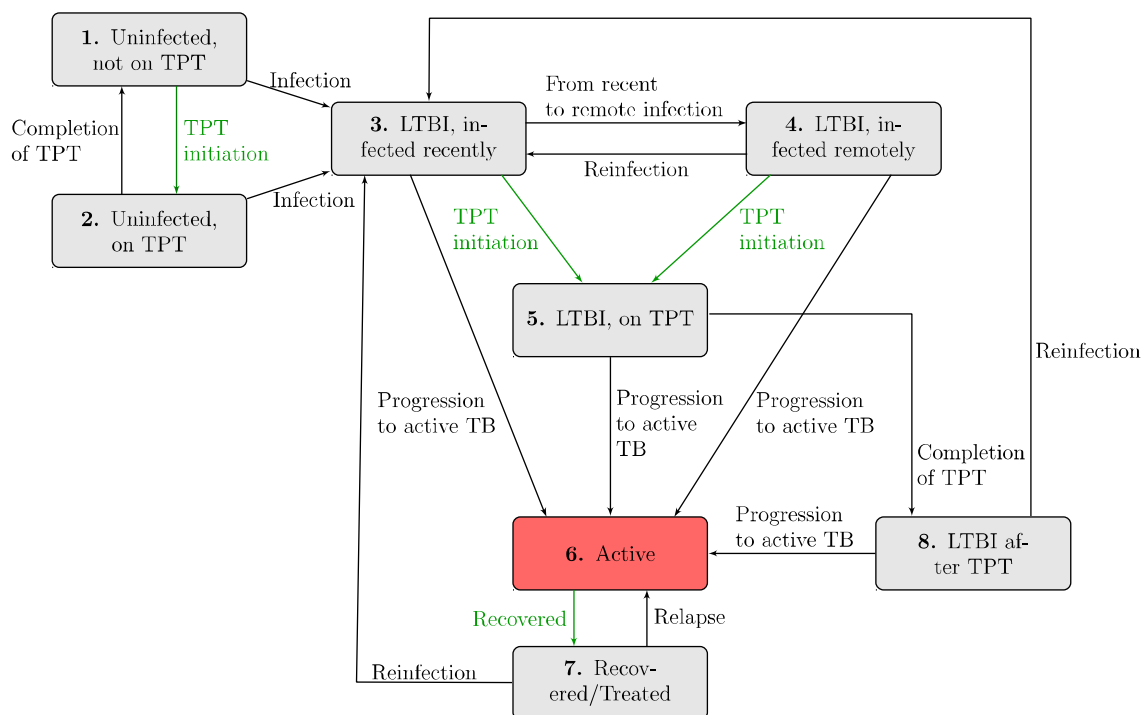
82 We developed a dynamic transmission model to simulate TB and HIV outcomes in KwaZulu-
83 Natal, South Africa. We modeled three care delivery programs, including standard facility-based
84 ART and TPT care (Program 1), community-based ART while assuming the number of
85 individuals initiating TPT occurs at the facility-based care rate (Program 2), and community-
86 based ART with TPT care (Program 3). Program 2 was not implemented in DO ART, but is
87 modeled to evaluate the independent effects of ART and TPT. We executed the model over a 10-
88 year intervention period to project health and economic outcomes – including TB incidence, TB
89 mortality, disability-adjusted life years (DALYs), and costs – for each care delivery program.

90 **Dynamic Transmission Model**

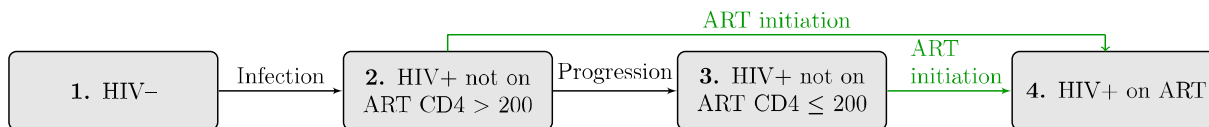
91 The dynamic transmission model is stratified by TB stage, HIV stage, TB and HIV treatment
92 status, TB drug resistance status, and gender. We simulate a population of 100,000 persons that

93 represent the adult population (ages 15-59) of KwaZulu-Natal, South Africa. The population
 94 moves through the compartments at transition rates reflecting TB and HIV infection, disease
 95 progression, treatment and recovery from TB, death, and aging into and out of the system (Fig.
 96 1). The system of ordinary differential equations is described in the appendix, and is solved in R
 97 using the deSolve package in time steps of one month [22]. Model code is available in a public
 98 repository [\(\[https://github.com/cgreene3/epi_model_HIV_TB_KZN_SA\]\(https://github.com/cgreene3/epi_model_HIV_TB_KZN_SA\)\)](https://github.com/cgreene3/epi_model_HIV_TB_KZN_SA).

TB transitions



HIV transitions



99
 100 **Figure 1. Illustration of TB and HIV dynamic transmission model.** Rates of flow between
 101 each compartment are governed by differential equations, as described in the appendix. Although
 102 not visualized here, each TB and HIV compartment is stratified across two TB drug-resistance
 103 categories and two genders. The latent TB infection (LTBI) compartment is distinguished by
 104 those infected within two years, considered recent, and more than two years, considered remote.
 105 The rate of TB preventive treatment (TPT) and antiretroviral therapy (ART) initiations
 106 (highlighted in green) are directly impacted by care delivery programs (Table 2). ART coverage
 107 is used to calculate ART initiation rates so that the proportion of PLWH on ART by gender

108 corresponds to ART coverage assumptions. The active TB compartment is highlighted in red to
109 emphasize the compartment capturing incident TB.

110 The model includes TB compartments for uninfected, latent TB infection (LTBI), active TB
111 disease, and recovered/treated populations, with LTBI divided into recently infected (within two
112 years), and remotely infected (more than two years). Those with recent infections have a higher
113 probability of progression to active TB [23]. The model considers drug-susceptible TB (DS-TB)
114 and multi-drug-resistant TB (MDR-TB) infections. We define MDR-TB as resistant to isoniazid
115 and rifampicin and assume that individuals taking TPT are not protected against acquiring an
116 MDR-TB infection.

117 The model includes HIV compartments for people living without HIV, PLWH with
118 $CD4 > 200$, with $CD4 \leq 200$, and taking ART (any CD4 count). Annual gender-specific HIV
119 incidence estimates for KwaZulu-Natal, South Africa are incorporated from the Global Burden
120 of Disease, Risk Factors, and Injuries Study 2019 (GBD 2019) [24] and the Data-driven
121 Recommendations for Interventions against Viral Infection model [25], as described in the
122 appendix. Model parameters that differ by HIV characteristics include the relative
123 transmissibility of TB [26, 27], risk of progression to active TB [28–32], duration of active TB
124 [33], and mortality rates [28–32], each of which is calibrated to account for parameter
125 uncertainty (Table 1). PLWH are eligible for TPT regardless of LTBI infection status, reflecting
126 guidance that TPT should not be delayed among PLWH for lack of available LTBI testing [34].
127 We assume that only people on ART initiate TPT.

128 The population with active TB contributes to the force of infection for new LTBI among
129 the susceptible population. The model allows different effective contact rates by gender, which
130 are calibrated, but assumes homogeneous mixing in the population. The simulated population is
131 kept constant at 100,000 by setting the total population entering the model equal to the total
132 population exiting the model (due to aging out or dying). We ran the dynamic transmission
133 model from the beginning of 1940 to the end of 2027, with a warmup and calibration period from
134 1940 through the end of 2017, and the intervention period from the start of 2018 through the end
135 of 2027. We introduced HIV incidence in 1980.

136 We accounted for parameter uncertainty by calibrating 34 parameters using values 25%
137 above and below the mean (Table 1). We used Latin hypercube sampling to generate 100,000
138 parameter sets for all 34 calibrated parameters [35]. We used each parameter set to execute the

139 model from 1940-2017. Metrics from the model outputs for each parameter set were evaluated
 140 against 10 calibration target ranges in 2005 and 2017. The calibration target metrics were TB
 141 incidence and TB mortality by HIV status (HIV-positive and HIV-negative) and gender, and
 142 HIV prevalence by gender for adults aged 15-59 in KwaZulu-Natal, South Africa, from GBD
 143 2019 [24]. We accepted parameter sets if all 20 metrics fell within the 95% uncertainty intervals
 144 of the calibration targets, resulting in 859 accepted parameter sets.

145

146 **Table 1: Dynamic transmission model input parameters.** The input parameters used in the
 147 calibration with a mean value and range of 25% from the mean.

Parameter description	Value [Range]	Reference(s)
Parameters that Impact Force of Infection with TB		
Number of effective contacts per infectious year for:		[36]
Males	14 [10.5, 17.5]	
Females	14 [10.5, 17.5]	
Relative transmissibility of TB (per year) for:		[26, 27]
HIV-	1 (reference value)	
HIV+, Not on ART, CD4 > 200	0.9 [0.675, 1.125]	
HIV+, Not on ART, CD4 ≤ 200	0.6 [0.45, 0.75]	
HIV+, On ART	0.9 [0.675, 1.125]	
Fraction of new TB infections that are MDR-TB	0.037 [0.02775, 0.04625]	[37]
Diminished risk of acquiring latent DS-TB infection while on TPT for those who are uninfected	0.43 [0.3225, 0.5375]	[38]
Increased risk of reinfection after developing active TB	4 [3, 5]	[39]
Partially protective effect of LTBI against acquiring a new TB infection	0.4 [0.3, 0.5]	[18, 26–28]
Parameters that Describe TB Progression		
Duration of TPT course	6 months (fixed value)	[18]
Duration of LTBI recently infected period	2 years (fixed value)	[23]
Annual rate of progression from:		
Recent LTBI to active TB	0.025 [0.01875, 0.03125]	[43,44]
Remote LTBI to active TB	0.001 [0.00075, 0.00125]	[45,46]
Relative risk of TB progression from LTBI to active TB:		[28–32]
HIV-	1 (reference value)	
HIV+, Not on ART, CD4 > 200	10 [7.5, 12.5]	
HIV+, Not on ART, CD4 ≤ 200	17 [12.75, 21.75]	
HIV+, On ART	3 [2.25, 5.25]	

Annual rates of progression among PLWH and on ART (IPT efficacy against DS TB)		
LTBI on TPT to active TB	0.0113 [0.0085, 0.0142]	[11]
LTBI after TPT to active TB	0.0113 [0.0085, 0.0142]	[11]
Duration of active TB (if death does not occur) for:		[33]
HIV-	2.0 years [1.5, 2.5]	
HIV+, Not on ART, CD4 > 200	1.5 years [1.125, 1.875]	
HIV+, Not on ART, CD4 ≤ 200	1.5 years [1.125, 1.875]	
HIV+, On ART	1.5 years [1.125, 1.875]	
Rate of TB relapse per year	0.01 [0.0075, 0.0125]	[47]
Parameters that Describe HIV Progression		
HIV incidence time-varying rates [†] for:		[24]
Males	See appendix	
Females	See appendix	
Duration from HIV acquisition to CD4 <200:		[48]
Males	7.72 years [5.79, 9.65]	
Females	10.25 years [7.6875, 12.8125]	
Parameters that Describe Mortality Rates		
Baseline mortality time-varying rates [†] for:		[24]
Males	See appendix	
Females	See appendix	
Increased risk of mortality for populations:		[30,49–54]
No active TB and HIV-	1 (reference value)	
Active TB, HIV-	15.5 [11.625, 19.375]	
Active TB, HIV+, Not on ART, CD4 > 200	26 [19.5, 32.5]	
Active TB, HIV+, Not on ART, CD4 ≤ 200	50 [37.5, 62.5]	
Active TB, HIV+, On ART	18.5 [13.875, 23.125]	
No active TB, HIV+, Not on ART, CD4 > 200	8 [6, 10]	
No active TB, HIV+, Not on ART, CD4 ≤ 200	26 [19.5, 32.5]	
No active TB, HIV+, On ART	1.35 [1.2, 1.5]	
Parameters that Describe Entries and Exits due to Aging		
Proportion of the population that enters each compartment, time-varying	See appendix	[24]

148 [†] Description of time-varying parameter calculations and mean values are in the appendix.

149

150 Care Delivery Programs

151 We executed the model with the 859 accepted calibrated parameter sets for the three care
152 delivery programs over a 10-year intervention period from the start of 2018 to the end of 2027.

153 The programs differ in their gender-specific ART coverage and TPT initiation rates (Table 2).

154 We assumed that programs took full effect at the start of the intervention period and were

155 maintained over 10 years. Program 1 and Program 3 reflect the levels of ART coverage and TPT
156 initiation rates observed in the facility-based care arm and the community-based care arm of the
157 DO ART trial, respectively. Program 2 reflects the levels of ART coverage observed in Program
158 3, and assumes that TPT initiation occurs at the facility-based care rate as observed in Program 1.

159 ART coverage estimates are based on the proportion of PLWH who achieve viral
160 suppression under facility-based care (Program 1) and community-based care (Program 3) in the
161 DO ART trial [18]. The proportion of PLWH on ART who achieve viral suppression and the
162 proportion of PLWH diagnosed with HIV are based on population-based survey data [4]. The
163 community-based care arm of the DO ART trial includes community-wide HIV testing, so we
164 assume that all PLWH in Program 3 know their status. TPT initiation rates for Program 2 reflect
165 the TPT initiation rates among all PLWH in Program 1, so that the number of individuals
166 initiating TPT in Program 1 and Program 2 are comparable. Details are in the appendix.

167
168 **Table 2: Facility-based and community-based care programs and parameters over the**
169 **intervention period.**
170

Program Name	ART Coverage %		TPT initiation % among PLWH on ART	
	Male	Female	Male	Female
1. Standard facility-based ART and TPT care	49	69	29	27
2. Community-based ART care with standard facility-based TPT care	82	83	17	22
3. Community-based ART with TPT care	82	83	70	75

171
172 **Cost Model**
173 The cost model includes costs of TB and HIV-related care from the program perspective (Table
174 3). Further details of the component costs are in the appendix. The annual outpatient HIV care
175 costs with community ART delivery is estimated at \$310 per person based on a micro-costing
176 study conducted during the DO ART trial under the “efficient at scale” scenario [18] and \$249
177 per person for facility-based ART delivery. Inpatient and outpatient HIV care costs exclude the
178 cost of care for TB, which is calculated separately [55]. The estimated HIV testing cost is based
179 on the assumption that programs typically test multiple individuals for HIV before finding an

180 eligible person to initiate ART screening. The cost of a six-month course of TPT includes the
 181 isoniazid cost [56], clinician time [57], the probability of developing drug-induced liver injury
 182 from isoniazid [11] and the costs of care for drug-induced liver injury [58]. TB care costs are
 183 estimated for standard treatment courses and reflect a higher treatment cost for MDR-TB [59]
 184 than for DS-TB [57]. We converted costs from the reported currency to 2018 US dollars using
 185 the consumer price index in South Africa and the United States related to the reported currency,
 186 and the currency conversion from the South African Reserve. We discounted future costs by 3%.
 187 We applied HIV- and TB-related costs to the populations in relevant model compartments at
 188 each time step and summed the total HIV and TB-related costs for each care program under the
 189 intervention period.

190
 191 **Table 3: Cost model input parameters.** All values are presented as per person costs in 2018
 192 USD and are rounded to the nearest dollar.

Cost category	Value	Reference
Annual outpatient HIV care costs for PLWH who are [±] :		
Not on ART	135	[60]
On ART under facility-based care (Program 1)	249	[18]
On ART under community-based care (Programs 2 and 3)	310	[18]
Annual inpatient HIV care costs for PLWH who are [±] :		
Not on ART, CD4 >200	62	[55]
Not on ART, CD4 ≤ 200	162	[55]
On ART (regardless of facility or community-based care)	151	[55]
Cost of HIV testing to find one person to initiate ART	24	[18, 55]
Cost of a 6-month course of TPT with isoniazid	20	[11,56–58]
Cost of a course of TB treatment for people with:		
Drug-susceptible TB	259	[57]
Multidrug-resistant TB	1889	[59]

193 [±]Inpatient and outpatient HIV care costs exclude the cost of care for TB, which is considered
 194 separately.
 195

196 Analysis

197 We calculated TB- and HIV- associated DALYs as the sum of years lived with disability (YLD)
 198 and years of life lost (YLL) during the 10-year intervention period using disability weights from
 199 GBD 2019 [61]. YLL is based on the gap between the time of death and the end of the
 200 intervention period. For example, if an individual died at the start of the eighth year of the

201 intervention period, the YLL is two years. We discounted costs and DALYs accrued during the
202 10-year intervention period by 3%. The incremental cost-effectiveness ratios (ICERs) per TB
203 death, per incident TB case, and per DALY averted are calculated for each care program over the
204 intervention period. We assessed cost-effectiveness relative to the threshold of \$590 USD per
205 DALY averted based on the opportunity cost at the margin of the South African program [62,
206 63], as in Bershteyn, et al. [64]. We conducted one-way sensitivity analyses by varying the cost
207 parameters in the model using the mean metrics from the 859 accepted parameter sets.

208

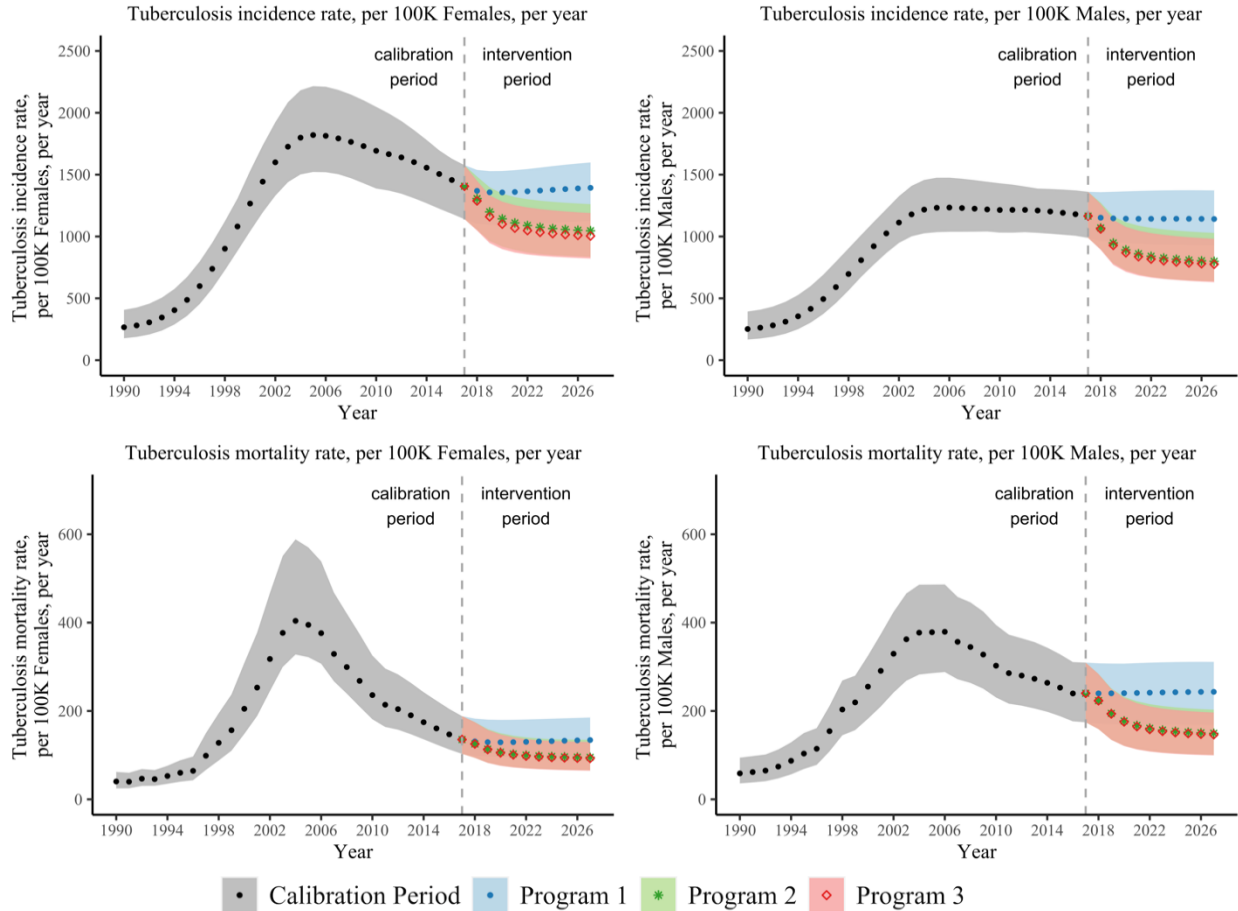
209 **Results**

210 Figure 2 illustrates the projected annual TB incidence and mortality rates by gender from 1990 to
211 2027. In 2017, the year before the start of the intervention, the estimated annual incidence of
212 active TB disease was slightly higher for women (1,406 per 100,000; range 1,141 – 1,577) than
213 for men (1,165 per 100,000; range 989 – 1,362). In 2017, nearly 74.7% (1,050 out of 1,406) of
214 women with incident TB were also living with HIV, compared to 62.4% (727 out of 1,165) of
215 men with incident TB also living with HIV. However, the estimated TB mortality rate in 2017
216 was higher for men, with an estimate of 240 (range 174 – 309) per 100,000 men compared with
217 135 (range 103 – 188) per 100,000 women.

218 Over the 10-year intervention period, an estimated 31,009 (range 25,674 – 39,021)
219 PLWH received a course of TPT in Program 3 compared to 17,264 (range 14,156 – 21,255) in
220 Program 1 and 18,221 (range 15,305 – 22,370) in Program 2 (see appendix for details). The
221 estimated number needed to treat with TPT to prevent one case of active TB was 38.

222 As illustrated in Figure 2, the benefits of community-based care programs (Programs 2
223 and 3) compared to standard facility-based care (Program 1) are most apparent at the end of the
224 intervention period. TB incidence and mortality rates by gender under each program in the last
225 year of the intervention period are provided in Table 4. Community-based ART with TPT care
226 (Program 3) reduced gender disparities in TB mortality compared to standard facility-based ART
227 and TPT care (Program 1). TB mortality declined by 39.9% (range 32.2% – 46.3%) among men
228 and 30.6% (range 25.3% - 36.5%) among women under Program 3 versus Program 1.

229



230

231 **Figure 2. Estimated TB incidence and mortality by gender.** The mean, maximum, and
 232 minimum yearly TB incidence and mortality rates from 1990-2017 over the 859 accepted
 233 parameter sets are shown in grey (dots). The mean, maximum, and minimum yearly TB
 234 incidence and mortality rates during the intervention period (2018-2027) over the 859 accepted
 235 parameter sets are illustrated by care-delivery program. During the intervention period, Program
 236 1 (standard facility-based ART and TPT care) is shown in blue (dots), Program 2 (community-
 237 based ART care with standard facility-based TPT care) is shown in green (stars), and Program 3
 238 (community-based ART with TPT care) is shown in red (diamonds).

239

240

241

242

243

244

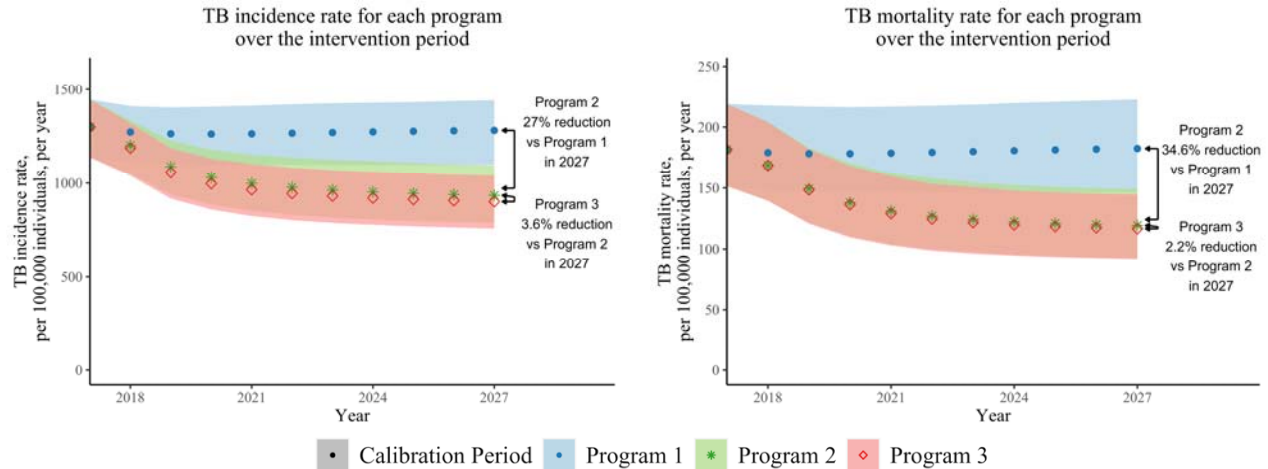
245

246 **Table 4: Estimated TB incidence and mortality by care-delivery programs in the last year**
 247 **of the intervention period.** The mean, maximum, and minimum yearly TB incidence and
 248 mortality rates are estimated over the 859 accepted parameter sets.

	Program 1 <i>Standard facility-based ART and TPT care</i>	Program 2 <i>Community-based ART care with standard facility-based TPT care</i>	Program 3 <i>Community-based ART with TPT care</i>
	Mean [Min, Max]	Mean [Min, Max]	Mean [Min, Max]
TB incidence			
TB incidence rate per 100,000 males	1,141 [977, 1,301]	799 [665, 950]	775 [654, 902]
TB incidence rate per 100,000 females	1,394 [1,185, 1,561]	1,046 [883, 1,220]	1,004 [848, 1,155]
TB mortality			
TB mortality rate per 100,000 males	243 [184, 300]	149 [111, 191]	146 [110, 184]
TB mortality rate per 100,000 females	134 [103, 174]	95 [70, 125]	93 [69, 120]

249
 250 The model projected that community-based care programs also had indirect health
 251 benefits for people without HIV through reduced community TB transmission even though ART
 252 and TPT were only taken by PLWH. In 2027, TB incidence was 12.9% (range 8.3% – 18.1%)
 253 lower among men without HIV and 9.6% (range 4.7% – 15.1%) lower among women without
 254 HIV under Program 3 versus Program 1. Estimated reductions in TB incidence and mortality for
 255 people without HIV by gender are detailed in the appendix.

256 In Figure 3, we illustrate the population-level impact of each program by comparing TB
 257 incidence and mortality rates, per 100,000 individuals over the intervention period. We estimated
 258 the impact of offering community-based ART (without changing TPT uptake) by comparing
 259 outcomes in Program 2 to Program 1. In 2027, Program 2 could reduce the TB incidence rate by
 260 27.0% (range 21.3% – 34.1%) and the TB mortality rate by 34.6% (range 24.8% – 42.2%)
 261 compared to Program 1 (Figure 3). We estimated the impact of offering community-based TPT
 262 with ART by comparing outcomes in Program 3 to Program 2. In 2027, Program 3 could reduce
 263 TB incidence by an additional 3.6% (range 0.2% – 9.9%) and TB mortality rates by 2.2% (range
 264 0.1% – 7.6%) compared to Program 2.



265
 266 **Figure 3: Estimated TB incidence and mortality by care-delivery program.** The mean,
 267 maximum, and minimum yearly TB incidence and mortality rates are estimated over the 859
 268 accepted parameter sets. Program 1 (standard facility-based ART and TPT care) is shown in blue
 269 (dots), Program 2 (community-based ART care with standard facility-based TPT care) is shown
 270 in green (stars), and Program 3 (community-based ART with TPT care) is shown in red
 271 (diamonds).

272 Health outcomes (DALYs, TB incident cases, TB deaths) and costs are summed over the
 273 10-year intervention period for each care program, shown in Table 5. These program health
 274 outcomes and costs are used to calculate incremental health gains, costs, and ICERs for the
 275 outcomes of DALYs, incident TB cases, and TB deaths between facility-based and community-
 276 based care delivery programs as in Table 6.

277
 278
 279
 280
 281
 282
 283
 284
 285
 286
 287
 288
 289
 290
 291
 292
 293
 294

295 **Table 5: Cumulative health outcomes and costs over the intervention period by program.**
 296 Values are the mean, minimum, and maximum values of the 859 accepted parameter sets. Health
 297 outcomes and costs are summed over the 10-year intervention period for a population of 100,000
 298 individuals. Discounted values are presented in 2018 values and use an annual discount rate of
 299 3%.
 300

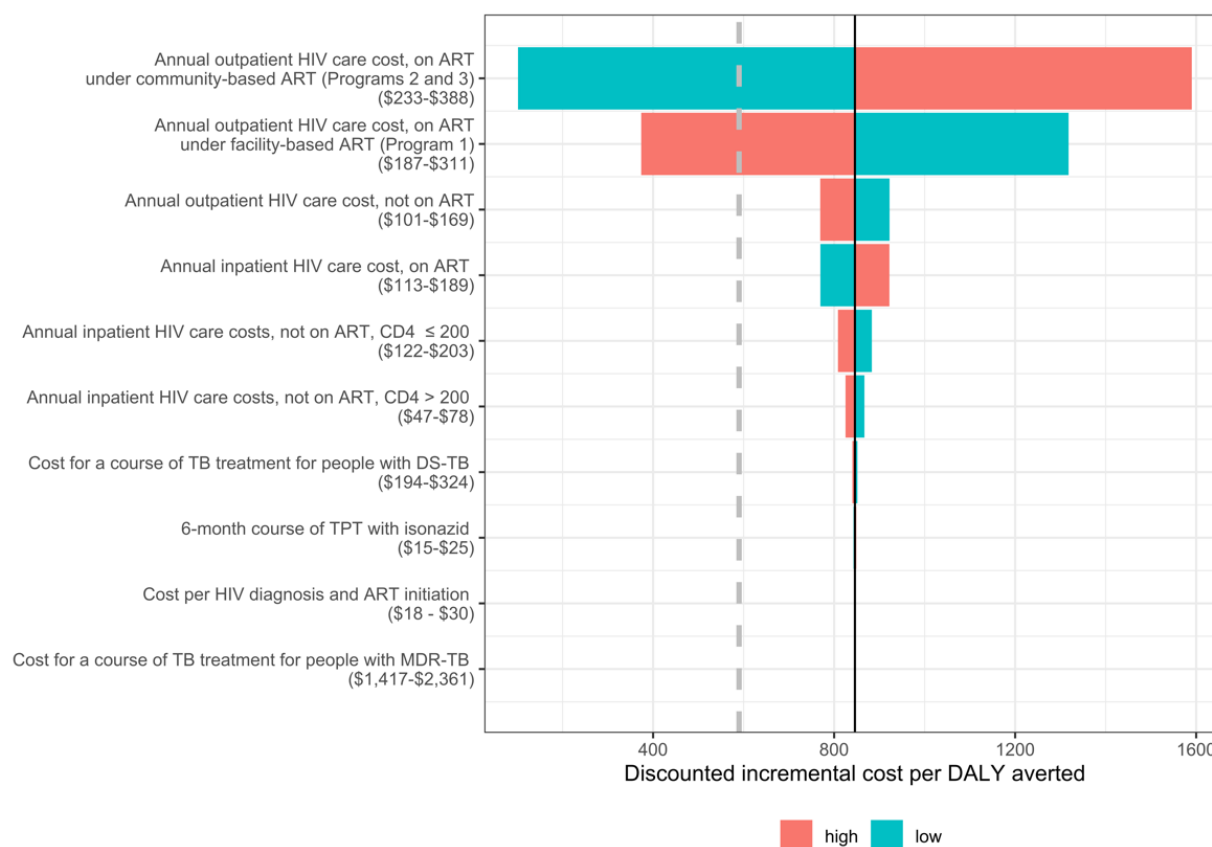
	Program 1 <i>Standard facility-based ART and TPT care</i>	Program 2 <i>Community-based ART care with standard facility-based TPT care</i>	Program 3 <i>Community-based ART with TPT care</i>
	Mean [Min, Max]	Mean [Min, Max]	Mean [Min, Max]
Health Outcomes and Costs (Undiscounted)			
DALYs (thousands)	82.0 [70.5, 92.2]	59.7 [52.4, 67.2]	59.5 [52.2, 66.9]
TB incident cases (thousands)	12.7 [10.5, 14.7]	10.0 [8.1, 12.1]	9.7 [8.1, 11.6]
TB deaths (thousands)	1.8 [1.4, 2.3]	1.3 [1.0, 1.7]	1.3 [1.0, 1.7]
Program costs (millions in USD)	99.3 [90.6, 114.1]	118.2 [107.4, 135.5]	118.4 [107.6, 135.8]
Health Outcomes and Costs (Discounted)			
DALYs (thousands)	73.4 [63.1, 82.5]	53.8 [47.1, 60.5]	53.6 [47, 60.2]
TB incident cases (thousands)	11.2 [9.2, 12.9]	8.8 [7.2, 10.7]	8.6 [7.1, 10.3]
TB deaths (thousands)	1.6 [1.2, 2]	1.2 [0.9, 1.5]	1.1 [0.9, 1.5]
Program costs (millions in USD)	87.1 [79.5, 100.1]	103.7 [94.3, 118.9]	103.9 [94.4, 119.2]

301
 302
 303
 304
 305
 306
 307
 308
 309
 310
 311
 312
 313
 314

315 **Table 6: Incremental health gains, costs, and incremental cost-effectiveness ratios (ICERs)**
 316 **between community-based and facility-based care delivery programs.** Health outcomes and
 317 costs are summed over the 10-year intervention period for a population of 100,000 individuals.
 318 Values are the mean, minimum, and maximum values over 859 parameter sets. Discounted
 319 values are presented in 2018 values and use an annual discount rate of 3%.
 320

	Program 2 vs. Program 1 <i>Community-based ART with standard facility-based TPT care vs. facility-based ART and TPT care</i>	Program 3 vs. Program 1 <i>Community-based ART with TPT care vs. facility-based ART and TPT care</i>	Program 3 vs. Program 2 <i>Community-based ART with TPT care vs. community-based ART with facility-based TPT care</i>
	Mean [Min, Max]	Mean [Min, Max]	Mean [Min, Max]
Incremental Health Gains and Costs (Undiscounted)			
DALYs averted (thousands)	22.3 [18.1, 27]	22.5 [18.2, 27.3]	0.2 [0, 0.5]
TB incident cases averted (thousands)	2.7 [2.1, 3.5]	3.0 [2.3, 3.7]	0.3 [0, 0.9]
TB deaths averted (thousands)	0.5 [0.3, 0.7]	0.5 [0.4, 0.7]	0.0 [0.0, 0.1]
Incremental costs (millions in USD)	18.8 [16.8, 21.5]	19.0 [17.0, 21.7]	0.2 [0.1, 0.3]
Incremental Health Gains and Costs (Discounted)			
DALYs averted (thousands)	19.7 [15.9, 23.8]	19.8 [16.0, 24.0]	0.1 [0.0, 0.4]
TB incident cases averted (thousands)	2.3 [1.8, 3.0]	2.6 [2.0, 3.2]	0.3 [0.0, 0.8]
TB deaths averted (thousands)	0.4 [0.3, 0.6]	0.4 [0.3, 0.6]	0.0 [0.0, 0.1]
Incremental costs (millions in USD)	16.6 [14.8, 18.9]	16.7 [14.9, 19.1]	0.2 [0.1, 0.3]
Incremental Cost-effectiveness Ratios (Health gains and costs are discounted by 3%)			
Cost per DALY averted (in USD)	843 [706, 1,017]	846 [709, 1,012]	1,967 [244, 20,282]
Cost per incident TB case averted (in USD)	7,192 [5,161, 10,010]	6,498 [4,823, 9,304]	1,109 [107, 13,012]
Cost per TB death averted (in USD)	40,692 [26,116, 62,157]	39,373 [25,606, 57,020]	19,737 [1,783, 470,597]

321 The community-based ART with TPT care program (Program 3) did not meet the cost-
 322 effectiveness threshold of \$590 USD per DALY averted with the input parameter costs given in
 323 Table 3. Figure 4 shows the impact of varying costs on the discounted incremental cost per
 324 DALY averted under Program 3 versus Program 1. The discounted incremental cost per DALY
 325 was most sensitive to the cost of outpatient HIV care. If the cost of annual outpatient care for
 326 PLWH on ART under community-based ART programs (Programs 2 and 3) were to decrease
 327 from \$310 to \$283, or if the cost of annual outpatient care for PLWH on ART under standard
 328 facility-based ART and TPT care (Program 1) were to increase from \$249 to \$260, then the
 329 discounted incremental cost per DALY would achieve the cost-effectiveness threshold.



330 **Figure 4: Sensitivity analysis of the discounted incremental cost per DALY averted by**
 331 **community-based ART with TPT care (Program 3) versus standard facility-based ART**
 332 **and TPT care (Program 1) over the intervention period.** The solid line represents the mean
 333 discounted incremental cost per DALY averted over the 859 accepted parameter sets of \$846
 334 USD per DALY averted. The dashed vertical line represents the cost-effectiveness threshold of
 335 \$590 USD per DALY averted. The horizontal bars represent the discounted incremental cost per
 336 DALY averted at bounds of 25% above of the modeled cost parameter (high) and 25% below the
 337 modeled cost parameter (low). All costs are in 2018 USD.

338 Discussion

339 Scaling up community-based ART with TPT care to the population level in a high HIV-TB
340 burden setting such as KwaZulu-Natal, South Africa, could avert substantial HIV and TB
341 morbidity and mortality, if equivalent effectiveness is maintained as demonstrated in the DO
342 ART trial. The increase in ART coverage achieved through community-based care reduced
343 cumulative TB disease by 21% over ten years, and community-based TPT care reduced it further
344 by 3%. Additionally, though the interventions were only directly delivered to PLWH, the model
345 captured indirect benefits of reduced TB incidence disease and mortality among people without
346 HIV under the community ART and TPT scenarios. Prior modeling analyses in South Africa
347 have also found that ART and TPT scale-up would be projected to reduce TB incidence among
348 people living with and without HIV [65].

349 Gender disparities in HIV and TB outcomes in this setting are complex and are reflected
350 in the model results. Specifically, the higher HIV prevalence among women (39%) compared to
351 men (20%) in our model resulted in higher incidence and mortality of HIV-associated TB among
352 women than among men, while HIV-negative women had lower TB incidence, prevalence, and
353 mortality than HIV-negative men. The larger increase in ART coverage under the community-
354 based care programs among men resulted in larger percent reductions in 10-year TB-associated
355 mortality among men than among women compared to standard clinic-based care. Gender-
356 specific model parameters included effective contact rates, HIV prevalence, HIV disease
357 progression, ART coverage, and baseline (non-HIV and non-TB associated) mortality, though
358 other features of TB epidemiology may also differ by gender, including care seeking behavior
359 that may impact active TB duration and case fatality ratios. A recent gender-specific TB model
360 in a setting with a low HIV prevalence found that interventions targeted to risk factors with a
361 higher prevalence among men (e.g. tobacco smoking and harmful alcohol use) achieved the
362 greatest projected TB incidence reductions among men, but also substantially reduced TB
363 incidence among women and children [66].

364 Our cost analysis found that community-based ART with TPT care was cost ineffective
365 relative to the cost-effectiveness threshold based on the opportunity cost at the margin of the
366 South African programme [64]. The sensitivity analysis of cost parameters indicated that
367 variation in the costs of outpatient HIV care for PLWH on ART substantially affected the ICER.

368 If the annual per person costs of outpatient HIV care for PLWH on ART under community-based
369 care were to decrease from \$310 to \$283 or the annual per person costs of outpatient HIV care
370 for PLWH on ART under facility-based care were to increase to from \$249 to \$260, then
371 community-based ART with TPT (Program 3) could be cost effective. Other community-based
372 interventions, including interval TB/HIV screening and linkage to care, were found to be cost-
373 effective in a modeling analysis set in South Africa, though these did not include community-
374 based HIV treatment and were evaluated against a higher GDP-based cost-effectiveness
375 threshold [68].

376 Strengths of this analysis include that it is based in findings from the recent DO ART
377 randomized controlled trial conducted in this setting. Additionally, the model is calibrated to
378 gender- and province-specific estimates of TB and TB-HIV incidence and mortality at two time
379 points that capture the declines in HIV-associated TB incidence and mortality in the setting of
380 increased ART coverage [5]. To reflect these dynamics, we included time varying parameters for
381 HIV incidence, prevalence, and ART coverage that incorporate historical changes in ART
382 availability. Additionally, the model incorporates uncertainty in model parameters. Uncertainty
383 remains in key aspects of TB epidemiology, including the rate of progression from latent to
384 active TB, which is represented differently across models [69]. Finally, by using a model that
385 differentiates compartments by gender, we were able to stratify outcomes by gender, which is
386 important for evaluating health program impacts on gender equity in health outcomes.

387 This analysis also has limitations. First, we assumed that the modeled care programs
388 could take effect immediately and be sustained over ten years, which may not be feasible for
389 already-strained health care workforce and budgets. However, dramatic increases in TPT
390 initiation and completion have been observed in some HIV high-incidence settings through
391 focused outreach campaigns [70]. Second, the model does not differentiate groups by age despite
392 differences in HIV and TB incidence, prevalence, and mortality by age group due to the
393 complexity of calibration across this additional dimension. Third, for simplicity, we assumed that
394 people taking TPT would not be protected from infection with an MDR-TB strain, though some
395 evidence suggests that they may have partial protection from a resistant strain [71]. Finally, the
396 economic analysis is from a health system perspective that does not include patient costs, despite
397 numerous studies documenting patient costs and avoiding catastrophic costs as a key focus of TB
398 goals [72].

399

400

401 **Conclusions**

402 If community-based ART with TPT care was scaled up to achieve similar levels of ART and
403 TPT coverage as in the DO ART trial, the TB and HIV dynamic transmission model predicts that
404 TB disease would be reduced by 24% and deaths reduced by 28% over ten years in KwaZulu-
405 Natal, South Africa. Differentiated models of HIV care can substantially reduce TB morbidity
406 and mortality and reduce gender disparities in TB.

407

408 **Competing interests**

409 The authors declare no competing interests.

410

411 **Authors' contributions**

412 JMR and RVB conceptualized the study. CG formulated and programmed the model, with
413 guidance from ZBZ and parameterization from JMR, CG, CJB, DWR, AES, and DWD. AvH,
414 DAR, AES, and RVB provided critical interpretation of the DO ART trial data. All authors
415 contributed to scenario definition and analysis planning. JMR wrote the first draft of the
416 manuscript. CG wrote the first draft of the appendix. All authors contributed to the interpretation
417 of the findings, provided critical review and revisions, and approved the final version.

418

419 **Acknowledgements**

420 Funding: This work was supported by funding from the Firland Foundation. JMR is supported by
421 the National Institute of Allergy and Infectious Diseases (K01 AI138620).

422 This work was facilitated through the use of advanced computational, storage, and networking
423 infrastructure provided by the Hyak supercomputer system and funded by the STF at the
424 University of Washington.

425 **Additional files**

426 Additional file 1: Appendix

427 The appendix file contains additional details about the study methods and additional results.

428

429

430

431 **References**

- 432 1. World Health Organization. Global Tuberculosis Report. 2022.
- 433 2. Corbett EL, Watt CJ, Walker N, Maher D, Williams BG, Raviglione MC, et al. The
434 growing burden of tuberculosis: global trends and interactions with the HIV epidemic.
435 Arch Intern Med [Internet]. 2003 May 12;163(9):1009–21. Available from:
436 <http://www.ncbi.nlm.nih.gov/pubmed/12742798>
- 437 3. Moyo S, Ismail F, Van der Walt M, Ismail N, Mkhondo N, Dlamini S, et al. Prevalence of
438 bacteriologically confirmed pulmonary tuberculosis in South Africa, 2017-19: a
439 multistage, cluster-based, cross-sectional survey. Lancet Infect Dis [Internet]. 2022 May
440 17; Available from: <http://www.ncbi.nlm.nih.gov/pubmed/35594897>
- 441 4. Human Sciences Research Council. South African National HIV Prevalence, Incidence,
442 Behaviour and Communication survey, 2017. Towards achieving the UNAIDS 90-90-90
443 targets. 2019 Oct.
- 444 5. Ledesma JR, Ma J, Vongpradith A, Maddison ER, Novotney A, Biehl MH, et al. Global,
445 regional, and national sex differences in the global burden of tuberculosis by HIV status,
446 1990–2019: results from the Global Burden of Disease Study 2019. Lancet Infect Dis
447 [Internet]. 2021 Sep; Available from:
448 <https://linkinghub.elsevier.com/retrieve/pii/S1473309921004497>
- 449 6. Horton KC, Sumner T, Houben RMGJ, Corbett EL, White RG. A Bayesian Approach to
450 Understanding Sex Differences in Tuberculosis Disease Burden. Am J Epidemiol
451 [Internet]. 2018 Nov 1;187(11):2431–8. Available from:
452 <https://doi.org/10.1093/aje/kwy131>
- 453 7. Horton KC, Hoey AL, Béraud G, Corbett EL, White RG. Systematic Review and Meta-
454 Analysis of Sex Differences in Social Contact Patterns and Implications for Tuberculosis
455 Transmission and Control. Emerg Infect Dis. 2020 May; 26(5):910–9.
- 456 8. The Joint United Nations Programme on HIV/AIDS (UNAIDS). UNAIDS Data 2021.
457 2021.

- 458 9. Rangaka MX, Wilkinson RJ, Boulle A, Glynn JR, Fielding K, van Cutsem G, et al.
459 Isoniazid plus antiretroviral therapy to prevent tuberculosis: a randomised double-blind,
460 placebo-controlled trial. *Lancet*. 2014 Aug;384(9944):682–90.
- 461 10. Danel C, Moh R, Gabillard D, Badje A, Le Carrou J, Ouassa T, et al. A trial of early
462 antiretrovirals and isoniazid preventive therapy in Africa. *N Engl J Med*. 2015;373(9).
- 463 11. Ross J, Badje A, Rangaka M, Walker A, Shapiro A, Thomas K, et al. Isoniazid preventive
464 therapy plus antiretroviral therapy for the prevention of tuberculosis: a systematic review
465 and meta-analysis of individual participant data. *The Lancet HIV*. 2022 Jan; 8(1): e8–e15.
- 466 12. Maokola W, Ngowi B, Lawson L, Robert M, Mahande M, Todd J, et al. Coverage of
467 isoniazid preventive therapy among people living with HIV; A retrospective cohort study
468 in Tanzania (2012-2016). *Int J Infect Dis IJID Off Publ Int Soc Infect Dis*. 2021
469 Feb;103:562–7.
- 470 13. Sensalire S, Karungi Karamagi Nkolo E, Nabwire J, Lawino A, Kiragga D, Muhire M, et
471 al. A prospective cohort study of outcomes for isoniazid prevention therapy: a nested
472 study from a national QI collaborative in Uganda. *AIDS Res Ther*. 2020 May;17(1):28.
- 473 14. Tram KH, Mwangwa F, Chamie G, Atukunda M, Owaraganise A, Ayieko J, et al.
474 Predictors of isoniazid preventive therapy completion among HIV-infected patients
475 receiving differentiated and non-differentiated HIV care in rural Uganda. *AIDS Care*.
476 2020 Jan;32(1):119–27.
- 477 15. Takamiya M, Takarinda K, Balachandra S, Godfrey M, Radin E, Hakim A, et al. Isoniazid
478 preventive therapy use among adult people living with HIV in Zimbabwe. *Int J STD
479 AIDS [Internet]*. 2021;32(11):1020–7. Available from:
480 <http://www.ncbi.nlm.nih.gov/pubmed/33978529>
- 481 16. Grimsrud A, Bygrave H, Doherty M, Ehrenkranz P, Ellman T, Ferris R, et al.
482 Reimagining HIV service delivery: the role of differentiated care from prevention to
483 suppression. *J Int AIDS Soc [Internet]*. 2016;19(1):21484. Available from:
484 <http://www.ncbi.nlm.nih.gov/pubmed/27914186>

- 485 17. Loveday M, Wallengren K, Reddy T, Besada D, Brust JCM, Voce A, et al. MDR-TB
486 patients in KwaZulu-Natal, South Africa: Cost-effectiveness of 5 models of care. *PLoS*
487 *One* [Internet]. 2018 Apr 18;13(4):e0196003. Available from:
488 <https://doi.org/10.1371/journal.pone.0196003>
- 489 18. Barnabas RV, Szpiro AA, van Rooyen H, Asiimwe S, Pillay D, Ware NC, et al.
490 Community-based antiretroviral therapy versus standard clinic-based services for HIV in
491 South Africa and Uganda (DO ART): a randomised trial. *Lancet Glob Heal*. 2020
492 Oct;8(10):e1305–15.
- 493 19. Shapiro AE, Szpiro AA, Sausi K, Sithole N, Koole O, Krows M, Schaafsma T,
494 Shahmanesh M, van Rooyen H, Celum C, van Heerden A, Barnabas RV. Increased TB
495 preventive therapy coverage with integrated community-based IPT and ART. OA-111.
496 *CROI*, Feb 2023.
- 497 20. Sahu M, Bayer CJ, Roberts DA, van Rooyen H, van Heerden A, Shahmanesh M, et al.
498 Population health impact, cost-effectiveness, and affordability of community-based HIV
499 treatment and monitoring in South Africa: a health economics modelling study. *medRxiv*.
500 May 2022.
- 501 21. KwaZulu-Natal Health Department. KwaZulu-Natal Department of Health Strategic Plan
502 2015-2019 [Internet]. 2015. Available from: [http://www.kznhealth.gov.za/Strategic-Plan-](http://www.kznhealth.gov.za/Strategic-Plan-2015-2019.pdf)
503 [2015-2019.pdf](http://www.kznhealth.gov.za/Strategic-Plan-2015-2019.pdf)
- 504 22. Team RC. *R: a language and environment for statistical computing*. Vienna, Austria;
505 2019.
- 506 23. Vynnycky E, Fine PE. The natural history of tuberculosis: the implications of age-
507 dependent risks of disease and the role of reinfection. *Epidemiol Infect*. 1997
508 Oct;119(2):183–201.
- 509 24. Achoki T, Sartorius B, Watkins D, Glenn SD, Kengne AP, Oni T, et al. Health trends,
510 inequalities and opportunities in South Africa's provinces, 1990–2019: findings from the
511 Global Burden of Disease 2019 Study. *J Epidemiol Community Health* [Internet]. 2022
512 May;76(5):471–81. Available from: <https://jech.bmj.com/lookup/doi/10.1136/jech-2021->

- 513 217480
- 514 25. Rao DW, Bayer CJ, Liu G, Chikandiwa A, Sharma M, Hathaway CL, et al. Modelling
515 cervical cancer elimination using single-visit screening and treatment strategies in the
516 context of high HIV prevalence: estimates for KwaZulu-Natal, South Africa. *J Int AIDS*
517 *Soc* [Internet]. 2022 Oct;25(10):e26021. Available from:
518 <http://www.ncbi.nlm.nih.gov/pubmed/36225139>
- 519 26. Martinez L, Woldu H, Chen C, Hallowell BD, Castellanos ME, Lu P, et al. Transmission
520 Dynamics in Tuberculosis Patients with Human Immunodeficiency Virus: A Systematic
521 Review and Meta-Analysis of 32 Observational Studies. *Clin Infect Dis*. 2020 Aug.
- 522 27. Huang C-C, Tchetgen ET, Becerra MC, Cohen T, Hughes KC, Zhang Z, et al. The effect
523 of HIV-related immunosuppression on the risk of tuberculosis transmission to household
524 contacts. *Clin Infect Dis*. 2014 Mar;58(6):765–74.
- 525 28. Williams BG, Granich R, De Cock KM, Glaziou P, Sharma A, Dye C. Antiretroviral
526 therapy for tuberculosis control in nine African countries. *Proc Natl Acad Sci U S A*. 2010
527 Nov;107(45):19485–9.
- 528 29. Campbell JR, Winters N, Menzies D. Absolute risk of tuberculosis among untreated
529 populations with a positive tuberculin skin test or interferon-gamma release assay result:
530 systematic review and meta-analysis. *BMJ*. 2020 Mar;368:m549.
- 531 30. Anglaret X, Minga A, Gabillard D, Ouassa T, Messou E, Morris B, et al. AIDS and non-
532 AIDS morbidity and mortality across the spectrum of CD4 cell counts in HIV-infected
533 adults before starting antiretroviral therapy in Cote d’Ivoire. *Clin Infect Dis*. 2012
534 Mar;54(5):714–23.
- 535 31. Lönnroth K, Raviglione M. Global epidemiology of tuberculosis: prospects for control.
536 *Semin Respir Crit Care Med*. 2008 Oct;29(5):481–91.
- 537 32. Suthar AB, Lawn SD, del Amo J, Getahun H, Dye C, Sculier D, et al. Antiretroviral
538 therapy for prevention of tuberculosis in adults with HIV: a systematic review and meta-
539 analysis. *PLoS Med*. 2012;9(7):e1001270.

- 540 33. Ku C-C, MacPherson P, Khundi M, Nzawa Soko RH, Feasey HRA, Nliwasa M, et al.
541 Durations of asymptomatic, symptomatic, and care-seeking phases of tuberculosis disease
542 with a Bayesian analysis of prevalence survey and notification data. *BMC Med* [Internet].
543 2021;19(1):298. Available from: <http://www.ncbi.nlm.nih.gov/pubmed/34753468>
- 544 34. World Health Organization. Latent tuberculosis infection: updated and consolidated
545 guidelines for programmatic management. Geneva, Switzerland; 2018.
- 546 35. Stein M. Large Sample Properties of Simulations Using Latin Hypercube Sampling.
547 *Technometrics* [Internet]. 1987 May;29(2):143. Available from:
548 <https://www.jstor.org/stable/1269769?origin=crossref>
- 549 36. van Leth F, van der Werf MJ, Borgdorff MW. Prevalence of tuberculous infection and
550 incidence of tuberculosis: a re-assessment of the Styblo rule. *Bull World Health Organ*
551 [Internet]. 2008 Jan;86(1):20–6. Available from:
552 <http://www.ncbi.nlm.nih.gov/pubmed/18235886>
- 553 37. World Health Organization. Global Tuberculosis Report. Geneva, Switzerland; 2020.
- 554 38. Egsmose T, Ang'awa JO, Poti SJ. The use of isoniazid among household contacts of open
555 cases of pulmonary tuberculosis. *Bull World Health Organ* [Internet]. 1965;33(3):419–33.
556 Available from: <http://www.ncbi.nlm.nih.gov/pubmed/5321762>
- 557 39. Verver S, Warren RM, Beyers N, Richardson M, van der Spuy GD, Borgdorff MW, et al.
558 Rate of reinfection tuberculosis after successful treatment is higher than rate of new
559 tuberculosis. *Am J Respir Crit Care Med* [Internet]. 2005 Jun 15;171(12):1430–5.
560 Available from: <http://www.ncbi.nlm.nih.gov/pubmed/15831840>
- 561 40. Dowdy DW, Golub JE, Saraceni V, Moulton LH, Cavalcante SC, Cohn S, et al. Impact of
562 isoniazid preventive therapy for HIV-infected adults in Rio de Janeiro, Brazil: an
563 epidemiological model. *J Acquir Immune Defic Syndr* [Internet]. 2014 Aug 15;66(5):552–
564 8. Available from: <http://www.ncbi.nlm.nih.gov/pubmed/24853308>
- 565 41. Cohen T, Lipsitch M, Walensky RP, Murray M. Beneficial and perverse effects of
566 isoniazid preventive therapy for latent tuberculosis infection in HIV-tuberculosis

- 567 coinfected populations. Proc Natl Acad Sci U S A [Internet]. 2006 May 2;103(18):7042–
568 7. Available from: <http://www.ncbi.nlm.nih.gov/pubmed/16632605>
- 569 42. Sutherland I, Svandová E, Radhakrishna S. The development of clinical tuberculosis
570 following infection with tubercle bacilli. 1. A theoretical model for the development of
571 clinical tuberculosis following infection, linking from data on the risk of tuberculous
572 infection and the incidence of clinic. Tubercle [Internet]. 1982 Dec;63(4):255–68.
573 Available from: <http://www.ncbi.nlm.nih.gov/pubmed/6763793>
- 574 43. Ferebee SH, Mount FW. Tuberculosis Morbidity in a Controlled Trial of the Prophylactic
575 Use of Isoniazid among Household Contacts. Am Rev Respir Dis [Internet]. 1962 Apr
576 1;85(4):490–510. Available from:
577 <https://www.atsjournals.org/doi/abs/10.1164/arrd.1962.85.4.490>
- 578 44. Martinez L, Sekandi JN, Castellanos ME, Zalwango S, Whalen CC. Infectiousness of
579 HIV-Seropositive Patients with Tuberculosis in a High-Burden African Setting. Am J
580 Respir Crit Care Med [Internet]. 2016;194(9):1152–63. Available from:
581 <http://www.ncbi.nlm.nih.gov/pubmed/27181053>
- 582 45. Dale KD, Karmakar M, Snow KJ, Menzies D, Trauer JM, Denholm JT. Quantifying the
583 rates of late reactivation tuberculosis: a systematic review. Lancet Infect Dis [Internet].
584 2021; Available from:
585 <https://www.sciencedirect.com/science/article/pii/S1473309920307283>
- 586 46. Glynn JR, Khan P, Mzembe T, Sichali L, Fine PEM, Crampin AC, et al. Contribution of
587 remote M.tuberculosis infection to tuberculosis disease: A 30-year population study. PLoS
588 One [Internet]. 2023;18(1):e0278136. Available from:
589 <http://www.ncbi.nlm.nih.gov/pubmed/36706117>
- 590 47. Connolly C, Reid A, Davies G, Sturm W, McAdam KPWJ, Wilkinson D. Relapse and
591 mortality among HIV-infected and uninfected patients with tuberculosis successfully
592 treated with twice weekly directly observed therapy in rural South Africa. AIDS
593 [Internet]. 1999;13(12). Available from:
594 https://journals.lww.com/aidsonline/Fulltext/1999/08200/Relapse_and_mortality_among_

- 595 HIV_infected_and.15.aspx
- 596 48. Ross JM, Ying R, Celum CL, Baeten JM, Thomas KK, Murnane PM, et al. Modeling HIV
597 disease progression and transmission at population-level: The potential impact of
598 modifying disease progression in HIV treatment programs. *Epidemics* [Internet].
599 2018;23:34–41. Available from: <http://www.ncbi.nlm.nih.gov/pubmed/29223580>
- 600 49. Abdool Karim SS, Naidoo K, Grobler A, Padayatchi N, Baxter C, Gray A, et al. Timing of
601 initiation of antiretroviral drugs during tuberculosis therapy. *N Engl J Med*. 2010
602 Feb;362(8):697–706.
- 603 50. Ackah AN, Coulibaly D, Digbeu H, Diallo K, Vetter KM, Coulibaly IM, et al. Response
604 to treatment, mortality, and CD4 lymphocyte counts in HIV-infected persons with
605 tuberculosis in Abidjan, Côte d’Ivoire. *Lancet*. 1995 Mar;345(8950):607–10.
- 606 51. Badri M, Lawn SD, Wood R. Short-term risk of AIDS or death in people infected with
607 HIV-1 before antiretroviral therapy in South Africa: a longitudinal study. *The Lancet*.
608 2006 Oct;368(9543):1254–9.
- 609 52. Nglazi MD, Bekker L-G, Wood R, Kaplan R. The impact of HIV status and antiretroviral
610 treatment on TB treatment outcomes of new tuberculosis patients attending co-located TB
611 and ART services in South Africa: a retrospective cohort study. *BMC Infect Dis*. 2015
612 Nov;15:536.
- 613 53. Osman M, Seddon JA, Dunbar R, Draper HR, Lombard C, Beyers N. The complex
614 relationship between human immunodeficiency virus infection and death in adults being
615 treated for tuberculosis in Cape Town, South Africa. *BMC Public Health*. 2015
616 Jun;15:556.
- 617 54. Pepper DJ, Schomaker M, Wilkinson RJ, de Azevedo V, Maartens G. Independent
618 predictors of tuberculosis mortality in a high HIV prevalence setting: a retrospective
619 cohort study. *AIDS Res Ther*. 2015;12:35.
- 620 55. Meyer-Rath G, van Rensburg C, Chiu C, Leuner R, Jamieson L, Cohen S. The per-patient
621 costs of HIV services in South Africa: Systematic review and application in the South

- 622 African HIV Investment Case. PLoS One. 2019;14(2):e0210497.
- 623 56. South Africa Master Health Product List [Internet]. 2021. Available from:
624 <http://www.health.gov.za/tenders/>
- 625 57. Bozzani FM, Mudzengi D, Sumner T, Gomez GB, Hippner P, Cardenas V, et al.
626 Empirical estimation of resource constraints for use in model-based economic evaluation:
627 an example of TB services in South Africa. *Cost Eff Resour Alloc* [Internet]. 2018;16:27.
628 Available from: <http://www.ncbi.nlm.nih.gov/pubmed/30069166>
- 629 58. Kim H-Y, Hanrahan CF, Martinson N, Golub JE, Dowdy DW. Cost-effectiveness of
630 universal isoniazid preventive therapy among HIV-infected pregnant women in South
631 Africa. *Int J Tuberc Lung Dis Off J Int Union against Tuberc Lung Dis*. 2018
632 Dec;22(12):1435–42.
- 633 59. Masuku SD, Berhanu R, Van Rensburg C, Ndjeka N, Rosen S, Long L, et al. Managing
634 multidrug-resistant tuberculosis in South Africa: a budget impact analysis. *Int J Tuberc
635 Lung Dis* [Internet]. 2020 Apr 1;24(4):376–82. Available from:
636 <https://www.ingentaconnect.com/content/10.5588/ijtld.19.0409>
- 637 60. Granich R, Kahn JG, Bennett R, Holmes CB, Garg N, Serenata C, et al. Expanding ART
638 for treatment and prevention of HIV in South Africa: estimated cost and cost-
639 effectiveness 2011-2050. *PLoS One*. 2012;7(2):e30216.
- 640 61. Global Burden of Disease Collaborative Network. Global Burden of Disease Study 2019
641 (GBD2019). Disability Weights. 2020.
- 642 62. Meyer-Rath G, van Rensburg C, Larson B, Jamieson L, Rosen S. Revealed willingness-to-
643 pay versus standard cost-effectiveness thresholds: Evidence from the South African HIV
644 Investment Case. *PLoS One* [Internet]. 2017;12(10):e0186496. Available from:
645 <http://www.ncbi.nlm.nih.gov/pubmed/29073167>
- 646 63. Phillips AN, Cambiano V, Johnson L, Nakagawa F, Homan R, Meyer-Rath G, et al.
647 Potential Impact and Cost-Effectiveness of Condomless-Sex–Concentrated PrEP in
648 KwaZulu-Natal Accounting for Drug Resistance. *J Infect Dis* [Internet]. 2021 Apr

- 649 23;223(8):1345–55. Available from:
650 <https://academic.oup.com/jid/article/223/8/1345/5680588>
- 651 64. Bershteyn A, Jamieson L, Kim HY, Platais I, Milali MP, Mudimu E, et al. Transmission
652 reduction, health benefits, and upper-bound costs of interventions to improve retention on
653 antiretroviral therapy: a combined analysis of three mathematical models. *The Lancet*
654 *Global Health*, Volume 10, Issue 9, 2022 Sept; Pages e1298-e1306. Available from:
655 [https://doi.org/10.1016/S2214-109X\(22\)00310-2](https://doi.org/10.1016/S2214-109X(22)00310-2).
- 656 65. Kendall EA, Azman AS, Maartens G, Boulle A, Wilkinson RJ, Dowdy DW, et al.
657 Projected population-wide impact of antiretroviral therapy-linked isoniazid preventive
658 therapy in a high-burden setting. *AIDS*. 2019 Mar;33(3):525–36.
- 659 66. Horton KC, White RG, Hoa NB, Nguyen HV, Bakker R, Sumner T, et al. Population
660 benefits of addressing programmatic and social determinants of gender disparities in
661 tuberculosis in Viet Nam: A modelling study. Gianella Malca C, editor. *PLOS Glob*
662 *Public Heal* [Internet]. 2022 Jul 14;2(7):e0000784. Available from:
663 <https://dx.plos.org/10.1371/journal.pgph.0000784>
- 664 67. Zhu J, Lyatuu G, Sudfeld CR, Kiravu A, Sando D, Machumi L, et al. Re-evaluating the
665 health impact and cost-effectiveness of tuberculosis preventive treatment for modern HIV
666 cohorts on antiretroviral therapy: a modelling analysis using data from Tanzania. *Lancet*
667 *Glob Heal* [Internet]. 2022 Nov;10(11):e1646–54. Available from:
668 <http://www.ncbi.nlm.nih.gov/pubmed/36240830>
- 669 68. Gilbert JA, Sheno S V, Moll AP, Friedland GH, Paltiel AD, Galvani AP. Cost-
670 Effectiveness of Community-Based TB/HIV Screening and Linkage to Care in Rural
671 South Africa. *PLoS One*. 2016;11(12):e0165614.
- 672 69. Menzies NA, Wolf E, Connors D, Bellerose M, Sbarra AN, Cohen T, et al. Progression
673 from latent infection to active disease in dynamic tuberculosis transmission models: a
674 systematic review of the validity of modelling assumptions. *Lancet Infect Dis* [Internet].
675 2018 Aug;18(8):e228–38. Available from:
676 <http://www.ncbi.nlm.nih.gov/pubmed/29653698>

- 677 70. Musaazi J, Sekaggya-Wiltshire C, Okoboi S, Zawedde-Muyanja S, Senkoro M, Kalema
678 N, et al. Increased uptake of tuberculosis preventive therapy (TPT) among people living
679 with HIV following the 100-days accelerated campaign: A retrospective review of
680 routinely collected data at six urban public health facilities in Uganda. medrxiv. 2022;
- 681 71. Huang C-C, Becerra MC, Calderon R, Contreras C, Galea J, Grandjean L, et al. Isoniazid
682 Preventive Therapy in Contacts of Multidrug-resistant Tuberculosis. Am J Respir Crit
683 Care Med. 2020 Jun.
- 684 72. Foster N, Vassall A, Cleary S, Cunnam L, Churchyard G, Sinanovic E. The economic
685 burden of TB diagnosis and treatment in South Africa. Soc Sci Med [Internet]. 2015
686 Apr;130:42–50. Available from: <http://www.ncbi.nlm.nih.gov/pubmed/25681713>
- 687