

Running Title: Non-invasive cardiac testing and two-year outcomes

1 **Title:** Increasing emergency department referral of chest pain patients for non-invasive cardiac  
2 testing does not improve two-year clinical outcomes.

3 **Running title:** Non-invasive cardiac testing and two-year outcomes.

4 **Authors:** Dustin G. Mark, MD <sup>1,2,3</sup>; Jie Huang, PhD <sup>3</sup>; Dustin W. Ballard, MD, MBE <sup>3,4</sup>; David R.  
5 Vinson, MD <sup>3,5</sup>; Jamal S. Rana, MD, PhD <sup>3,6</sup>; Dana R. Sax, MD, MPH <sup>1,3</sup>; Adina S. Rauchwerger,  
6 MPH <sup>3</sup>; Mary E. Reed, DrPH <sup>3</sup> for the Kaiser Permanente CREST Network Investigators.

7 **Affiliations:**

- 8 1. Department of Emergency Medicine, Kaiser Permanente Medical Center, Oakland, California.
- 9 2. Department of Critical Care Medicine, Kaiser Permanente Medical Center, Oakland,  
10 California.
- 11 3. Division of Research, Kaiser Permanente Northern California, Oakland, California.
- 12 4. Department of Emergency Medicine, Kaiser Permanente Medical Center, San Rafael,  
13 California.
- 14 5. Department of Emergency Medicine, Kaiser Permanente Medical Center, Roseville,  
15 California.
- 16 6. Department of Cardiology, Kaiser Permanente Medical Center, Oakland, California.

17 **Corresponding Author:** Dustin Mark, MD. Department of Emergency Medicine, 3600 Broadway,  
18 Oakland, CA, 94611. Email: [Dustin.G.Mark@kp.org](mailto:Dustin.G.Mark@kp.org)

19 **Financial support:** The Permanente Medical Group (TPMG) Community Health Research Grant

20 **Word count** (including Title Page, Abstract, Text, References, Tables and Figures Legends): 8052

21 **Author contributions:** study concept and design (DGM, JH, DWB, DRV, DRS, JSR, MER),  
22 acquisition of the data (JH), analysis and interpretation of the data (DGM, JH, MER), drafting of  
23 the manuscript (DGM, JS), critical revision of the manuscript for important intellectual content  
24 (DGM, JH, DWB, DRV, DRS, JSR, ASR, MER), statistical expertise (JH, MER, DGM), and acquisition  
25 of funding (DGM, JH, MER, ASR).

26 **COI Disclosure:** DGM, JH, DWB, DRV, DRS, JSR, ASR and MER report no conflicts of interest.

Running Title: Non-invasive cardiac testing and two-year outcomes

27 **Abstract**

28 Background: Non-invasive cardiac testing (NICT) has been associated with decreased long-term  
29 risks of major adverse cardiac events (MACE) among emergency department (ED) patients at  
30 high coronary risk. It is unclear whether this association extends to patients without evidence of  
31 myocardial injury on initial electrocardiogram and cardiac troponin testing.

32 Methods: Retrospective cohort study of patients presenting with chest pain between 2013-  
33 2019 to 21 EDs within an integrated health care system, excluding patients with ST-elevation  
34 myocardial infarction or myocardial injury by serum troponin testing. To account for  
35 confounding by indication, we grouped patient encounters by the NICT referral rate of the  
36 initially assigned emergency physician, relative to local peers within discrete time periods. The  
37 primary outcome was MACE within two years. Secondary outcomes were coronary  
38 revascularization and MACE inclusive of all-cause mortality (MACE-ALL). Associations between  
39 NICT referral group (low, intermediate, or high) and outcomes were assessed using risk-  
40 adjusted proportional hazards methods with censoring for competing events.

41 Results: Among 144,577 eligible patient encounters, 30-day NICT referral was 13.0%, 19.9% and  
42 27.8% in low, intermediate, and high NICT referral groups, respectively, with good balance of  
43 baseline covariates between groups. Compared with the low group, there was no significant  
44 decrease in the adjusted hazard ratio (aHR) of MACE within the intermediate (aHR 1.08, 95% CI  
45 1.02-1.14, adjusted p = 0.024) or high (aHR 1.05, 95% CI 0.99-1.11, adjusted p = 0.13) NICT  
46 referral groups. Results were similar for MACE-ALL and coronary revascularization, as well as  
47 subgroup analyses stratified by estimated risk (HEART score; 48.2% low-risk, 49.2% moderate-  
48 risk, 2.7% high-risk).

Running Title: Non-invasive cardiac testing and two-year outcomes

49 Conclusion: Increased NICT referral was not associated with a decreased hazard of MACE within  
50 two years following ED visits for chest pain without evidence of acute myocardial injury. These  
51 findings further highlight the need for evidence-based guidance regarding appropriate use of  
52 NICT in this population.

53

54 *Non-standard Abbreviations and Acronyms:* BMI = body mass index; CAD = coronary artery  
55 disease; ECG = electrocardiogram; ED = emergency department; HEART = history,  
56 electrocardiogram, age, risk factors, troponin; KPNC = Kaiser Permanente Northern California;  
57 LOQ = limit of quantitation; MACE = major adverse cardiac event; MACE-ALL = major adverse  
58 cardiac event, including all-cause mortality; NICT = non-invasive cardiac test; STEMI = ST-  
59 elevated myocardial infarction.

60

61

62

63

64

65

66

67

68

69

Running Title: Non-invasive cardiac testing and two-year outcomes

70

71 **What is Known:**

72 • In emergency department patients with chest pain but no evidence of acute myocardial  
73 injury, referral for non-invasive cardiac testing is not associated with improved  
74 outcomes within 6 to 12 months.

75 • There is some evidence that non-invasive cardiac testing may improve longer-term  
76 outcomes, especially among patients at moderate to high risk of coronary disease.

77

78 **What the Study Adds:**

79 • Higher non-invasive cardiac testing was not associated with improved outcomes within  
80 two years following emergency department visits for chest pain, absent evidence of  
81 acute myocardial injury.

82 • This finding was most evident among patients at low to moderate predicted coronary  
83 risk.

84

85

86

87

88

89

Running Title: Non-invasive cardiac testing and two-year outcomes

90 **Introduction**

91 Chest pain is a leading reason for emergency department (ED) visits in the U.S., with upwards of  
92 7 million patients evaluated annually.<sup>1</sup> Prior to 2021, American Heart Association/American  
93 College of Cardiology guidelines recommended functional or anatomic non-invasive cardiac  
94 testing (NICT) of ED patients with chest pain and possible acute coronary syndrome,  
95 irrespective of estimated risk, prior to or within 72 hours of ED discharge.<sup>2</sup> However, several  
96 large observational studies of ED patients with follow-up periods ranging from 30 to 365 days  
97 have noted that NICT was only associated with improved outcomes among patients with high  
98 estimated coronary risk and/or elevated serum cardiac troponin values.<sup>3-12</sup> Accordingly, newer  
99 guidelines and clinical policies have recommended against the routine use of NICT for ED  
100 patients at low estimated risk of acute coronary syndrome.<sup>13-15</sup>

101 However, it remains possible that there are longer-term benefits of NICT for patients at low or  
102 intermediate risk, in part because NICT does appear to increase the likelihood of coronary  
103 revascularization in these populations.<sup>4,12,16</sup> The SCOT-HEART randomized clinical trial of CT  
104 coronary angiography vs. standard care among low- to intermediate-risk patients with stable  
105 chest pain demonstrated a reduction in rates of non-fatal myocardial infarction beginning  
106 approximately 1.5 years of follow-up, an effect that appeared driven by preventative medical  
107 therapies and/or earlier coronary revascularizations.<sup>17</sup> A propensity-matched study of ED  
108 patients who underwent NICT within 30 days after a chest pain evaluation showed a non-  
109 significant reduction in the composite outcome of myocardial infarction or cardiovascular  
110 mortality at 1 year among the intermediate-risk group (HR 0.88, 95% CI 0.77-1.01).<sup>5</sup> Finally, an  
111 observational study of roughly 1.5 million patients in the outpatient Canadian setting examined

Running Title: Non-invasive cardiac testing and two-year outcomes

112 NICT completion within 90 days of a visit for chest pain or angina and found a 25% reduction in  
113 a composite outcome of unstable angina, myocardial infarction, and cardiovascular mortality  
114 over a median of four years of follow-up, with statistically significant reductions in each of the  
115 individual outcome constituents.<sup>18</sup> Thus, it is conceivable that risk reduction among lower-risk  
116 patients is more of an incremental and gradual process than among high-risk patients.

117 To help further examine this question, we previously utilized the intrinsic variability in NICT  
118 utilization that exists at both the physician and medical center level to examine associations  
119 between NICT and outcomes in a quasi-experimental observational fashion by creating well-  
120 balanced groups of ED patients with low, intermediate, or high referrals for NICT.<sup>8,10,16,19,20</sup> In  
121 that study, we did not observe an association between higher NICT utilization and 60-day major  
122 adverse cardiac events (MACE), though we did observe a positive association between NICT and  
123 coronary revascularization, consistent with other studies.<sup>4,12</sup> We now report two-year  
124 outcomes from that study population, with additional differentiation between cardiac and all-  
125 cause mortality. Our hypothesis was that higher NICT utilization would be associated with  
126 decreased risk of two-year MACE, particularly among patients at intermediate to high risk for  
127 coronary disease.

## 128 **Methods**

### 129 *Study Design and Setting*

130 We performed a retrospective study of ED chest pain encounters between January 1, 2013, and  
131 December 31, 2019, across 21 community EDs within Kaiser Permanente Northern California  
132 (KPNC). KPNC is a private, non-profit integrated healthcare system that covers 4.3 million  
133 members representing one-third of the region's population. KPNC members have been found

Running Title: Non-invasive cardiac testing and two-year outcomes

134 to be comparable to the surrounding population with respect to age, sex, race and  
135 ethnicity.<sup>21,22</sup> All care facilities (emergency, outpatient, inpatient) within KPNC utilize the same  
136 comprehensive integrated electronic health record (EHR; Epic, Verona, WI). In this study setting,  
137 patients are randomly assigned to emergency physicians in a rotating fashion upon intake and  
138 triage. The study was approved by the KPNC Institutional Review Board with a waiver of  
139 informed consent.

#### 140 *Patient Selection*

141 We included patient encounters with a chief complaint or ED diagnosis of chest pain as well as a  
142 serum troponin level measurement in the ED. To capture outcomes in a consistent manner, we  
143 required active membership in the health system for two years following the index visit, except  
144 in cases of death. We excluded patients aged under 30 or over 80 years (to select for patients  
145 most likely to benefit from NICT) or if there was a cardiac troponin value above the 99<sup>th</sup>  
146 percentile upper reference limit during the ED visit, an index ED diagnosis of ST-elevated  
147 myocardial infarction (as initial cardiac troponin levels may be normal in these patients<sup>23</sup>), an  
148 ED disposition of “expired” or “left against medical advice”, an objective cardiac test performed  
149 within the prior 6 months (exercise treadmill, myocardial perfusion, stress echo, computed  
150 tomography [CT] coronary angiography, cardiac catheterization), or if the assigned ED physician  
151 had less than 100 eligible encounters for a given epoch (inadequate sampling for NICT referral  
152 ranking, as defined below). In cases of multiple encounters by the same patient during the  
153 study period, only the first study eligible ED encounter within a given two-year window was  
154 included to avoid overlapping outcome periods.

#### 155 *Baseline Variables*

Running Title: Non-invasive cardiac testing and two-year outcomes

156 For each patient encounter, study variables were obtained from the EHR using automated  
157 electronic data extraction. This methodology was previously validated using both manually  
158 abstracted and prospectively collected data, with similar levels of agreement as compared to  
159 other prospective interrater data validation studies among ED chest pain patients.<sup>24,25</sup> Variables  
160 included age, past medical history, peak troponin value in the ED, and both presenting  
161 symptoms and electrocardiogram (ECG) findings using text string analysis of clinical notes and  
162 final ECG interpretations, respectively (Methods Supplement). We retrospectively calculated a  
163 history, electrocardiogram, age, risk factors, troponin (HEART) score for each eligible patient  
164 encounter (intraclass correlation coefficient of 0.84 as compared to prospective data).<sup>25</sup> Since  
165 patients with troponin values above the 99<sup>th</sup> percentile were excluded from the study, the  
166 maximum HEART score was 8 as opposed to 10 in the original HEART score validation study.<sup>26</sup>  
167 For the history component of the HEART score (range 0-2 points), we weighted higher risk  
168 symptoms (e.g., chest pressure or radiation to the arms or shoulders) against lower risk  
169 symptoms (e.g., pain worse with inspiration or pain reproduced with palpation) in a  
170 standardized fashion to arrive at a net balance of risk represented by the patient's symptoms.<sup>27</sup>  
171 Troponin values were obtained using the Access AccuTnI assay from 2013 through July 14, 2014  
172 and the Access AccuTnI+3 assay from July 15, 2014 through 2019 (both Beckman-Coulter, Brea,  
173 CA). The 99<sup>th</sup> percentile upper reference limit for both assays is 0.04 ng/mL per local  
174 institutional reporting guidelines and reference literature.<sup>28</sup> Because high-normal range  
175 troponins have prognostic value independent of the HEART score, we treated absolute troponin  
176 value an independent risk factor categorized as either below the limit of quantitation (LOQ,  
177 <0.02 ng/ml) or within the quantifiable normal range (between 0.02-0.04 ng/ml).<sup>24</sup>



Running Title: Non-invasive cardiac testing and two-year outcomes

178 *NICT referral groups*

179 As described previously<sup>16</sup>, to help account for confounding by indication, we utilized emergency  
180 physician-level variation in NICT referral. This approach takes advantage of the significant  
181 variance among emergency physicians in their tendency to refer for NICT and the context of a  
182 random patient-to-physician assignment system used within the study setting. We ranked  
183 emergency physicians based on how often their study-eligible patients were referred for NICT  
184 within 72 hours of the ED encounter. This ranking was relative to other emergency physicians in  
185 the local practice (to control for interfacility practice variation) and was repeated during three  
186 discrete 28-month epochs of time covering the entire study period (to account for personnel  
187 changes within local practices). To improve ranking accuracy, we excluded encounters if the  
188 emergency physician had less than 100 study-eligible patient encounters within a given epoch.  
189 Encounters were then categorized into one of three groups of NICT referral (low, intermediate,  
190 high) based on the facility and epoch-specific relative ranking of the initially assigned  
191 emergency physician. The distribution of baseline covariates between NICT referral groups was  
192 assessed using standardized differences with a value less than 0.10 indicating acceptable  
193 covariate balance.<sup>29</sup>

194 *Outcomes*

195 The primary outcome was MACE within a two-year follow-up period from the index encounter.  
196 MACE was defined as the composite of myocardial infarction, cardiac arrest, cardiogenic shock,  
197 or cardiac death. Myocardial infarction, cardiac arrest, and cardiogenic shock were defined  
198 based on the presence of corresponding International Classification of Disease, 9<sup>th</sup> and 10<sup>th</sup>  
199 revision (ICD-9/10) diagnosis codes (ICD-9 for January 1, 2013 through September 30, 2015;

Running Title: Non-invasive cardiac testing and two-year outcomes

200 ICD-10 for October 1, 2015 through December 31, 2019) listed as the first or second diagnosis  
201 at an inpatient or ED encounter within the integrated health care system, or in a coded claim  
202 for services provided at a facility outside the integrated health care system. We determined  
203 mortality using a composite death database drawing from KPNC mortality records, California  
204 Department of Public Health Vital Records, the Social Security Death Index, and the National  
205 Death Index (for cause of death). Cardiac death was designated if an ICD-10 code for “diseases  
206 of the heart” (as per the National Vital Statistics System) was listed as an underlying cause of  
207 death.<sup>30</sup> Secondary outcomes were coronary revascularization (percutaneous or surgical) and  
208 MACE inclusive of all-cause mortality (MACE-ALL), both within a two-year follow-up period.  
209 Coronary revascularization was deemed to have occurred if any corresponding ICD-9/10  
210 procedure or current procedural technology (CPT) code was used during a hospitalization  
211 within or outside the integrated health care system. Coronary revascularization was treated as  
212 a separate outcome (as opposed to being included within the composite MACE definition)  
213 because there is no reliable method to differentiate between elective or non-elective coronary  
214 revascularizations using diagnostic and/or billing codes, and elective coronary revascularization  
215 procedures are inconsistent with consensus agreements on appropriate composite MACE  
216 definitions.<sup>31,32</sup> ICD-9/10 and CPT codes used for the outcome definitions above are detailed in  
217 Methods Supplement 2. To describe downstream processes of care, we measured the following  
218 within 30 days of an encounter: performance of objective cardiac testing (NICT or cardiac  
219 catheterization), new prescriptions for cardiovascular medications (no prior fills from that drug  
220 class in the 120 days prior) and outpatient visits with primary care physicians or cardiologists.

221 *Statistical Analysis*

Running Title: Non-invasive cardiac testing and two-year outcomes

222 Associations between the rate of MACE, MACE-ALL or coronary revascularization and NICT  
223 referral group were assessed using mixed-effects proportional hazard models adjusted for  
224 patient age, sex, individual risk factors, peak troponin in the ED, ischemic-appearing ECG, and  
225 study epoch, with random effects at the facility level and robust standard errors. For MACE and  
226 coronary revascularization, we determined the cause-specific hazard by censoring for  
227 competing outcomes (non-cardiac death for MACE and all-cause mortality for coronary  
228 revascularization).<sup>33</sup> The low referral group served as the reference category. These models  
229 were applied both to the overall study population and separately to patients within the three  
230 strata of HEART score (low-risk = 0-3; moderate-risk = 4-6; high-risk = > 6). An  $\alpha=0.05$  was used  
231 to define statistical significance of hypothesis tests, with p-values adjusted for multiple  
232 comparisons using the Holm-Bonferroni method.<sup>34</sup> Data analyses were performed using Stata  
233 17.0 (StataCorp, TX).

#### 234 *Sensitivity Analysis*

235 Since previous findings showed a general decline in the completion of objective cardiac testing  
236 within 30 days of the index ED visit during the third study epoch<sup>35</sup>, and to account for potential  
237 impact of the COVID-19 pandemic on two-year follow-up period<sup>36</sup>, we repeated the overall  
238 statistical analysis using encounters from only the first and second study epochs (January 1,  
239 2013 through August 31, 2017). We also repeated the primary analysis among a restricted  
240 subgroup of encounters with troponin values in the quantifiable range of normal (0.02 to 0.04  
241 ng/ml) due to the higher independent risk of MACE in these patients, as noted above. Given  
242 that proportional hazards do not indicate the magnitude of association between a covariate  
243 and a dependent variable<sup>37</sup>, we alternatively examined the association between NICT referral

Running Title: Non-invasive cardiac testing and two-year outcomes

244 group and two-year MACE-ALL using mixed-effects logistic regression. Finally, as a post-hoc  
245 exploratory analysis, we assessed for interactions between the high and low NICT referral  
246 groups and several covariates (age, known coronary artery disease, HEART risk score category,  
247 and peak troponin value).

## 248 **Results**

249 There were 144,577 included ED encounters (Figure 1) with 700 emergency physicians across  
250 the 7-year study period. HEART score distribution was 48.2% low-risk, 49.2% moderate-risk and  
251 2.7% high-risk. The median age was 58 years (interquartile range 48-68 years), 57% were  
252 female, 23% had diabetes, 13% had coronary artery disease, 3.9% had ischemic ECG findings,  
253 12% had a peak troponin between the LOQ and the 99<sup>th</sup> percentile, and 20% were referred for  
254 NICT within 72 hours of the ED encounter (Table 1). Baseline demographic and risk factors were  
255 well-balanced across NICT referral groups, and the frequency of NICT referral was significantly  
256 different between low, intermediate, and high groups (13.0%, 19.9%, and 27.8%,  $p < 0.0001$ ,  
257 Table 1). Covariate balance was maintained within HEART score risk strata with similar  
258 between-group differences in NICT referral (Table S1).

259 Unadjusted downstream 30-day processes of care and two-year outcomes are presented in  
260 Table 2. Higher NICT referral was associated with higher 30-day objective cardiac testing (53.0%  
261 versus 32.8% in high versus low groups) along with small increases in new cardiovascular  
262 medication prescriptions and outpatient visits with either primary care or cardiology. Overall  
263 observed MACE and MACE-ALL within two years was 4.8% and 7.7%, respectively. On adjusted  
264 survival analyses (Table 3), neither intermediate or high NICT referral were associated with a  
265 lower adjusted hazard ratio (aHR) for MACE (aHRs of 1.08 and 1.05, respectively) or MACE-ALL

Running Title: Non-invasive cardiac testing and two-year outcomes

266 (aHRs of 1.06 and 1.04, respectively), with lower bounded 95% confidence intervals between  
267 0.99 and 1.02. Analysis by HEART score risk strata revealed similar differences between NICT  
268 groups in 30-day objective cardiac testing (Table S2), but likewise no evidence of lower adjusted  
269 hazards of MACE or MACE-ALL between NICT referral groups within any of the three HEART  
270 score risk strata (Table 4). There were likewise no statistically significant differences in  
271 coronary revascularizations in any of the above analyses.

272 Sensitivity analyses excluding encounters from the third study epoch (Table S3), restricted to  
273 patients with quantifiable peak troponins (Table S4), or using mixed-effects logistic regression  
274 for the MACE-ALL outcome (Table S5) were consistent with the primary analysis. Post-hoc  
275 exploratory analysis restricted to the low and high NICT referral groups demonstrated  
276 statistically significant interactions between NICT referral group and age ( $p = 0.012$ ), HEART risk  
277 score category ( $p = 0.032$ ) and peak troponin level ( $p = 0.027$ ), though in no instance was higher  
278 NICT referral significantly associated with a lower hazard of MACE (Figure 2). Unadjusted  
279 Kaplan-Meier curves for MACE-ALL are demonstrated in Figure 3.

## 280 **Discussion**

281 The 2021 American Heart Association/American College of Cardiology chest pain evaluation  
282 guideline recommends against the urgent use of NICT in low-risk ED patients with chest pain,  
283 stating that “there is no evidence that stress testing or cardiac imaging within 30 days of the  
284 index ED visit improves their outcomes”.<sup>38</sup> Since this recommendation was based on studies  
285 which used follow-up periods between 30 and 365 days<sup>4,6-8,10-12,27,39,40</sup>, we sought to assess  
286 whether increased use of NICT might improve outcomes out to two years, specifically among  
287 ED patients without objective evidence of myocardial injury. Despite finding that 1 in 5

Running Title: Non-invasive cardiac testing and two-year outcomes

288 additional patients underwent objective cardiac testing within 30 days in the high NICT referral  
289 group (equating to approximately 10,000 additional patients, as compared to the low NICT  
290 referral group), we did not find that increased NICT referral was associated with a decrease in  
291 the hazard of two-year MACE or MACE-ALL. While the magnitude of effect of a covariate on an  
292 outcome cannot be directly inferred from proportional hazard model coefficients<sup>37</sup>, the lower  
293 bounded aHR 95% confidence intervals for MACE and MACE-ALL (0.99 to 1.02) make it unlikely  
294 that an inverse relationship exists between NICT referral and these outcomes, lending further  
295 support to the above recommendation.

296 The 2021 guideline also recommends further functional or anatomic cardiac testing for most  
297 patients at intermediate risk, defined as patients who do not meet low-risk criteria but have no  
298 evidence of acute myocardial injury by troponin testing, criteria that represent 52% of our study  
299 cohort. However, we did not observe any evidence that higher NICT referral reduced the  
300 hazard of MACE among moderate-risk patients (HEART score 4 to 6) despite similar between-  
301 group differences in 30-day objective cardiac testing and a higher incidence of two-year MACE  
302 (7.2% versus 4.8% in the whole cohort). While findings were also null for higher-risk patients  
303 (HEART score > 6 or quantifiable troponin measurements), both smaller sample sizes and less  
304 pronounced between-group differences in 30-day objective cardiac testing render those results  
305 more susceptible to a type 1 error, and thus less interpretable. We likewise did not observe any  
306 overall differences in coronary revascularizations with higher NICT referral, in contrast to our  
307 prior study of 60-day outcomes in this population but consistent with other longer-term studies  
308 of NICT.<sup>16,17</sup> This may be attributable to a general decline in the performance of coronary  
309 revascularizations in the US over the past 20 years, as well as evidence suggesting equipoise

Running Title: Non-invasive cardiac testing and two-year outcomes

310 between percutaneous coronary interventions and optimal medical therapy in patients with  
311 chronic coronary syndromes.<sup>41-43</sup>

312 While our findings differ from those of Roifmen et al.<sup>5</sup> and Kawatakar et al.<sup>7</sup>, both of which  
313 reported some degree of reduction in MACE following NICT amongst high-risk ED patients with  
314 chest pain, there are some notable differences in study designs. Roifmen et al. matched on the  
315 propensity to have undergone NICT, rather than intent to refer for NICT, while Kawatkar et al.  
316 employed an instrumental variable approach (medical center-level variation in NICT  
317 performance and day-of-the week presentation). Both of these strategies are subject to  
318 residual confounding from factors associated with both NICT completion and outcomes,  
319 including access to care, health literacy, functional capacity, and treatment adherence, as well  
320 as MACE that preempt NICT completion.<sup>44-46</sup> In contrast, by using *referral* for NICT as an  
321 indicator of practice variation at the individual physician level, the current study is more  
322 representative of an intention-to-treat design and avoids the potential for attrition bias when  
323 examining at the level of NICT and/or objective cardiac test completion.

324 To be clear, these findings do not indicate that patients without evidence of acute myocardial  
325 injury do not benefit from NICT, but rather that accepted determinants of clinical risk (such as  
326 the HEART score and its components) may not be ideally suited to identifying which patients  
327 might benefit. This is suggested by our post-hoc exploratory analysis where we observed an  
328 interaction between NICT group (low or high) and age, with patients aged 30 to 49 years  
329 bordering on a reduced hazard of MACE with high NICT referral (aHR 0.81, 95% CI 0.65-1.00).  
330 On the surface, this appears counterintuitive since this age group is largely comprised of low-  
331 risk patients (median age was 49 years in low-risk HEART score subgroup versus 65 years in the

Running Title: Non-invasive cardiac testing and two-year outcomes

332 moderate-risk subgroup). However, it is also apparent that traditional cardiac risk factors carry  
333 greater prognostic weight in younger patients such that effective risk factor modification (such  
334 as smoking cessation), perhaps spurred on by greater referral for NICT, could have greater  
335 proportional benefits in younger individuals.<sup>47-50</sup> But, given the low overall event rates among  
336 younger patients, well targeted approaches to identifying patients with occult and/or  
337 premature coronary artery disease are needed.<sup>51</sup>

338 The mode of NICT employed may also be an important determinant of potential benefit. Of the  
339 NICTs performed in our study, approximately one-third had an imaging component (myocardial  
340 perfusion, stress echocardiography or CT coronary angiography). The SCOT-HEART study, an  
341 open-label randomized controlled trial of 4146 patients with stable chest pain, compared CT  
342 coronary angiography to usual care and found significantly lower rates of mortality and  
343 myocardial infarction beginning at around 2 years among those randomized to the  
344 intervention.<sup>40,52</sup> The CATCH trial, a randomized controlled trial of 576 patients with acute-  
345 onset chest pain and both normal ECGs and serial cardiac troponins, compared a CT coronary  
346 angiography-guided treatment strategy to standard care with a functional NICT and found that  
347 CT coronary angiography reduced downstream MACE out to a median of 19 months, though  
348 the difference in myocardial infarction or cardiac death was not statistically significant ( $p =$   
349  $0.06$ ).<sup>53</sup> In contrast, the PROMSIE trial, which randomized 10,003 symptomatic outpatients  
350 without established coronary artery disease to either anatomic testing with CT coronary  
351 angiography or functional NICT, did not demonstrate any difference in clinical outcomes out to  
352 a median of two years.<sup>54</sup> Whether patient selection for (and potential benefit from) CT  
353 coronary angiography can be further tailored with the use of high-sensitivity cardiac troponin



Running Title: Non-invasive cardiac testing and two-year outcomes

354 assays (specifically among patients with mildly elevated but non-diagnostic high-sensitivity  
355 troponin values) is being addressed through the ongoing TARGET-CTCA study (NCT03952351).  
356 Thus, while the utility of routine and/or urgent functional NICT in low- and intermediate-risk ED  
357 patients has rightly been questioned, in large part due to low testing yields<sup>55,56</sup>, there may still  
358 yet be a role for anatomic NICT in mitigating long-term risks in selected patients.

359 This study has several limitations. All included patients were insured and cared for within an  
360 integrated health care system, which may have reduced overall outcome risks and somewhat  
361 limits generalizability. Given the observational study design, we cannot infer a causal  
362 relationship between NICT referral and outcomes, especially regarding any suggestion of an  
363 increased hazard of MACE and MACE-ALL with higher NICT referral, though it is plausible that  
364 higher NICT referral was associated with delayed diagnoses and treatment of alternative life-  
365 threatening conditions owing to anchoring bias.<sup>57</sup> Though residual baseline confounding is  
366 possible, there were no observed imbalances in measured patient-level variables typically  
367 associated with NICT referral (e.g. age, risk factors, HEART score) and all study patients had  
368 active health plan insurance coverage and were grouped at the medical-center level over  
369 discrete epochs of time, making systematic differences in access to NICT between groups highly  
370 unlikely. Since our study excluded patients with troponin measurements above the 99<sup>th</sup>  
371 percentile of normal, our results should not be extrapolated to this specific higher risk patient  
372 population in whom benefits of NICT are more likely.<sup>7</sup> Finally, in terms of study power, though  
373 no formal calculations were performed given the fixed study period and uncertainty  
374 surrounding the ranges of NICT referral variation, the largest statistically significant result in  
375 terms of adjusted hazards (aHR 1.08 for MACE in the intermediate versus low NICT referral

Running Title: Non-invasive cardiac testing and two-year outcomes

376 group, adjusted p value = 0.024) correlated to a 0.4% unadjusted absolute increase in two-year  
377 MACE between these groups. This finding suggests that the analysis was highly sensitive to  
378 clinically relevant differences in outcomes, with the caveat for smaller high-risk subgroups  
379 noted above.

## 380 **Conclusion**

381 In this large observational study evaluating the association between 72-hour NICT referral and  
382 two-year outcomes following ED chest pain encounters in which acute myocardial injury had  
383 been excluded, higher NICT referral was not associated with a decreased risk of MACE. These  
384 findings suggest that routine NICT referral does not improve cardiac outcomes for most ED  
385 patients without evidence of acute myocardial injury, though the impact among the higher risk  
386 subset of patients remains unclear. Further studies in more targeted populations (using high-  
387 sensitivity troponin values) and/or using specific testing modalities (e.g. CT coronary  
388 angiography) may further inform best practices.

389 **Acknowledgments:** None.

390 **Sources of Funding:** This project was supported by The Permanente Medical Group's Delivery  
391 Science and Applied Research program.

392 **Disclosures:** None.

393 **Supplemental Material:** Supplemental Methods, Tables S1-S5

## 394 **References**

- 395 1. National Hospital Ambulatory Medical Care Survey: 2017 Emergency Department Summary  
396 Tables. [https://www.cdc.gov/nchs/data/nhamcs/web\\_tables/2017\\_ed\\_web\\_tables-508.pdf](https://www.cdc.gov/nchs/data/nhamcs/web_tables/2017_ed_web_tables-508.pdf).  
397 Accessed January 9th.

Running Title: Non-invasive cardiac testing and two-year outcomes

- 398 2. Amsterdam EA, Wenger NK, Brindis RG, Casey DE, Jr., Ganiats TG, Holmes DR, Jr., Jaffe AS, Jneid  
399 H, Kelly RF, Kontos MC, et al. 2014 AHA/ACC Guideline for the Management of Patients with  
400 Non-ST-Elevation Acute Coronary Syndromes: a report of the American College of  
401 Cardiology/American Heart Association Task Force on Practice Guidelines. *Journal of the*  
402 *American College of Cardiology*. 2014;64:e139-228. doi: 10.1016/j.jacc.2014.09.017
- 403 3. Kini V, Dayoub EJ, Hess PL, Marzec LN, Masoudi FA, Ho PM, Groeneveld PW. Clinical Outcomes  
404 After Cardiac Stress Testing Among US Patients Younger Than 65 Years. *Journal of the American*  
405 *Heart Association*. 2018;7:e007854. doi: 10.1161/JAHA.117.007854
- 406 4. Foy AJ, Liu G, Davidson WR, Jr., Sciamanna C, Leslie DL. Comparative effectiveness of diagnostic  
407 testing strategies in emergency department patients with chest pain: an analysis of downstream  
408 testing, interventions, and outcomes. *JAMA internal medicine*. 2015;175:428-436. doi:  
409 10.1001/jamainternmed.2014.7657
- 410 5. Roifman I, Han L, Koh M, Wijeyesundera HC, Austin PC, Douglas PS, Ko DT. Clinical Effectiveness  
411 of Cardiac Noninvasive Diagnostic Testing in Patients Discharged From the Emergency  
412 Department for Chest Pain. *Journal of the American Heart Association*. 2019;8:e013824. doi:  
413 10.1161/JAHA.119.013824
- 414 6. Safavi KC, Li SX, Dharmarajan K, Venkatesh AK, Strait KM, Lin H, Lowe TJ, Fazel R, Nallamothu BK,  
415 Krumholz HM. Hospital variation in the use of noninvasive cardiac imaging and its association  
416 with downstream testing, interventions, and outcomes. *JAMA internal medicine*. 2014;174:546-  
417 553. doi: 10.1001/jamainternmed.2013.14407
- 418 7. Kawatkar AA, Sharp AL, Baecker AS, Natsui S, Redberg RF, Lee MS, Ferencik M, Wu YL, Shen E,  
419 Zheng C, et al. Early Noninvasive Cardiac Testing After Emergency Department Evaluation for  
420 Suspected Acute Coronary Syndrome. *JAMA internal medicine*. 2020;180:1621-1629. doi:  
421 10.1001/jamainternmed.2020.4325
- 422 8. Roifman I, Han L, Koh M, Wijeyesundera HC, Austin PC, Douglas PS, Ko DT. Use of Cardiac  
423 Noninvasive Testing After Emergency Department Discharge: Association of Hospital Network  
424 Testing Intensity and Outcomes in Ontario, Canada. *Journal of the American Heart Association*.  
425 2020;9:e017330. doi: 10.1161/JAHA.120.017330
- 426 9. Natsui S, Sun BC, Shen E, Redberg RF, Ferencik M, Lee MS, Musigdilok V, Wu YL, Zheng C,  
427 Kawatkar AA, et al. Higher Emergency Physician Chest Pain Hospitalization Rates Do Not Lead to  
428 Improved Patient Outcomes. *Circulation Cardiovascular quality and outcomes*.  
429 2021;14:e006297. doi: 10.1161/CIRCOUTCOMES.119.006297
- 430 10. Natsui S, Sun BC, Shen E, Wu YL, Redberg RF, Lee MS, Ferencik M, Zheng C, Kawatkar AA, Gould  
431 MK, et al. Evaluation of Outpatient Cardiac Stress Testing After Emergency Department  
432 Encounters for Suspected Acute Coronary Syndrome. *Annals of emergency medicine*.  
433 2019;74:216-223. doi: 10.1016/j.annemergmed.2019.01.027
- 434 11. Meyer MC, Mooney RP, Sekera AK. A critical pathway for patients with acute chest pain and low  
435 risk for short-term adverse cardiac events: role of outpatient stress testing. *Annals of emergency*  
436 *medicine*. 2006;47:427-435. doi: 10.1016/j.annemergmed.2005.10.010
- 437 12. Sandhu AT, Heidenreich PA, Bhattacharya J, Bundorf MK. Cardiovascular Testing and Clinical  
438 Outcomes in Emergency Department Patients With Chest Pain. *JAMA internal medicine*.  
439 2017;177:1175-1182. doi: 10.1001/jamainternmed.2017.2432
- 440 13. American College of Emergency Physicians Clinical Policies Subcommittee on Suspected Non  
441 STEACS, Tomaszewski CA, Nestler D, Shah KH, Sudhir A, Brown MD. Clinical Policy: Critical Issues  
442 in the Evaluation and Management of Emergency Department Patients With Suspected Non-ST-  
443 Elevation Acute Coronary Syndromes. *Annals of emergency medicine*. 2018;72:e65-e106. doi:  
444 10.1016/j.annemergmed.2018.07.045

Running Title: Non-invasive cardiac testing and two-year outcomes

- 445 14. Musey PI, Jr., Bellolio F, Upadhye S, Chang AM, Diercks DB, Gottlieb M, Hess EP, Kontos MC,  
446 Mumma BE, Probst MA, et al. Guidelines for reasonable and appropriate care in the emergency  
447 department (GRACE): Recurrent, low-risk chest pain in the emergency department. *Academic*  
448 *emergency medicine : official journal of the Society for Academic Emergency Medicine*.  
449 2021;28:718-744. doi: 10.1111/acem.14296
- 450 15. Gulati M, Levy PD, Mukherjee D, Amsterdam E, Bhatt DL, Birtcher KK, Blankstein R, Boyd J,  
451 Bullock-Palmer RP, Conejo T, et al. 2021 AHA/ACC/ASE/CHEST/SAEM/SCCT/SCMR Guideline for  
452 the Evaluation and Diagnosis of Chest Pain: A Report of the American College of  
453 Cardiology/American Heart Association Joint Committee on Clinical Practice Guidelines.  
454 *Circulation*. 2021;144:e368-e454. doi: 10.1161/CIR.0000000000001029
- 455 16. Mark DG, Shan J, Huang J, Ballard DW, Vinson DR, Kene MV, Sax DR, Rauchwerger AS, Reed ME,  
456 Kaiser Permanente CNI. Higher intensity of 72-h noninvasive cardiac test referral does not  
457 improve short-term outcomes among emergency department patients with chest pain.  
458 *Academic emergency medicine : official journal of the Society for Academic Emergency Medicine*.  
459 2022;29:736-747. doi: 10.1111/acem.14448
- 460 17. Investigators S-H, Newby DE, Adamson PD, Berry C, Boon NA, Dweck MR, Flather M, Forbes J,  
461 Hunter A, Lewis S, et al. Coronary CT Angiography and 5-Year Risk of Myocardial Infarction. *The*  
462 *New England journal of medicine*. 2018;379:924-933. doi: 10.1056/NEJMoa1805971
- 463 18. Roifman I, Sivaswamy A, Chu A, Austin PC, Ko DT, Douglas PS, Wijeyesundera HC. Clinical  
464 Effectiveness of Cardiac Noninvasive Diagnostic Testing in Outpatients Evaluated for Stable  
465 Coronary Artery Disease. *Journal of the American Heart Association*. 2020;9:e015724. doi:  
466 10.1161/JAHA.119.015724
- 467 19. Cotterill PG, Deb P, Shrank WH, Pines JM. Variation in chest pain emergency department  
468 admission rates and acute myocardial infarction and death within 30 days in the Medicare  
469 population. *Academic emergency medicine : official journal of the Society for Academic*  
470 *Emergency Medicine*. 2015;22:955-964. doi: 10.1111/acem.12728
- 471 20. Roifman I, Han L, Fang J, Chu A, Austin P, Ko DT, Douglas P, Wijeyesundera H. Patient, physician  
472 and geographic predictors of cardiac stress testing strategy in Ontario, Canada: a population-  
473 based study. *BMJ Open*. 2022;12:e059199. doi: 10.1136/bmjopen-2021-059199
- 474 21. Gordon N, Lin T. The Kaiser Permanente Northern California Adult Member Health Survey. *Perm*  
475 *J*. 2016;20:15-225. doi: 10.7812/TPP/15-225
- 476 22. Davis AC, Voelkel JL, Remmers CL, Adams JL, McGlynn EA. Comparing Kaiser Permanente  
477 Members to the General Population: Implications for Generalizability of Research. *Perm J*.  
478 2023;27:87-98. doi: 10.7812/TPP/22.172
- 479 23. Wereski R, Chapman AR, Lee KK, Smith SW, Lowe DJ, Gray A, Mills NL. High-Sensitivity Cardiac  
480 Troponin Concentrations at Presentation in Patients With ST-Segment Elevation Myocardial  
481 Infarction. *JAMA Cardiol*. 2020;5:1302-1304. doi: 10.1001/jamacardio.2020.2867
- 482 24. Mark DG, Huang J, Chettipally U, Kene MV, Anderson ML, Hess EP, Ballard DW, Vinson DR, Reed  
483 ME, Kaiser Permanente CNI. Performance of Coronary Risk Scores Among Patients With Chest  
484 Pain in the Emergency Department. *Journal of the American College of Cardiology*. 2018;71:606-  
485 616. doi: 10.1016/j.jacc.2017.11.064
- 486 25. Mark DG, Huang J, Kene MV, Sax DR, Cotton DM, Lin JS, Bouvet SC, Chettipally UK, Anderson ML,  
487 McLachlan ID, et al. Automated Retrospective Calculation of the EDACS and HEART Scores in a  
488 Multicenter Prospective Cohort of Emergency Department Chest Pain Patients. *Academic*  
489 *emergency medicine : official journal of the Society for Academic Emergency Medicine*.  
490 2020;27:1028-1038. doi: 10.1111/acem.14068
- 491 26. Backus BE, Six AJ, Kelder JC, Bosschaert MA, Mast EG, Mosterd A, Veldkamp RF, Wardeh AJ, Tio  
492 R, Braam R, et al. A prospective validation of the HEART score for chest pain patients at the

Running Title: Non-invasive cardiac testing and two-year outcomes

- 493 emergency department. *International journal of cardiology*. 2013;168:2153-2158. doi:  
494 10.1016/j.ijcard.2013.01.255
- 495 27. Mahler SA, Lenoir KM, Wells BJ, Burke GL, Duncan PW, Case LD, Herrington DM, Diaz-Garelli JF,  
496 Futrell WM, Hiestand BC, et al. Safely Identifying Emergency Department Patients With Acute  
497 Chest Pain for Early Discharge. *Circulation*. 2018;138:2456-2468. doi:  
498 10.1161/CIRCULATIONAHA.118.036528
- 499 28. Greene DN, Leong TK, Collinson PO, Kamer SM, Huang K, Lorey TS, Go AS. Age, sex, and racial  
500 influences on the Beckman Coulter AccuTnl+3 99th percentile. *Clinica chimica acta;*  
501 *international journal of clinical chemistry*. 2015;444:149-153. doi: 10.1016/j.cca.2015.02.005
- 502 29. Austin PC. Balance diagnostics for comparing the distribution of baseline covariates between  
503 treatment groups in propensity-score matched samples. *Statistics in medicine*. 2009;28:3083-  
504 3107. doi: 10.1002/sim.3697
- 505 30. National Center for Health Statistics, Centers for Disease Control and Prevention. National Vital  
506 Statistics System: instructions for classification of underlying and multiple causes of death—  
507 2023. . <https://www.cdc.gov/nchs/nvss/manuals/2023/2a-2023.htm>. 2023. Accessed June 6th.
- 508 31. Cullen L, Than M, Brown AF, Richards M, Parsonage W, Flaws D, Hollander JE, Christenson RH,  
509 Kline JA, Goodacre S, et al. Comprehensive standardized data definitions for acute coronary  
510 syndrome research in emergency departments in Australasia. *Emergency medicine Australasia :*  
511 *EMA*. 2010;22:35-55. doi: 10.1111/j.1742-6723.2010.01256.x
- 512 32. Derington CG, Heath LJ, Kao DP, Delate T. Validation of algorithms to identify elective  
513 percutaneous coronary interventions in administrative databases. *PloS one*. 2020;15:e0231100.  
514 doi: 10.1371/journal.pone.0231100
- 515 33. Austin PC, Lee DS, Fine JP. Introduction to the Analysis of Survival Data in the Presence of  
516 Competing Risks. *Circulation*. 2016;133:601-609. doi: 10.1161/CIRCULATIONAHA.115.017719
- 517 34. Holm S. A Simple Sequentially Rejective Multiple Test Procedure. *Scandinavian Journal of*  
518 *Statistics*. 1979;6:65-70.
- 519 35. Mark DG, Huang J, Ballard DW, Kene MV, Sax DR, Chettipally UK, Lin JS, Bouvet SC, Cotton DM,  
520 Anderson ML, et al. Graded Coronary Risk Stratification for Emergency Department Patients  
521 With Chest Pain: A Controlled Cohort Study. *Journal of the American Heart Association*.  
522 2021:e022539. doi: 10.1161/JAHA.121.022539
- 523 36. Solomon MD, McNulty EJ, Rana JS, Leong TK, Lee C, Sung SH, Ambrosy AP, Sidney S, Go AS. The  
524 Covid-19 Pandemic and the Incidence of Acute Myocardial Infarction. *The New England journal*  
525 *of medicine*. 2020;383:691-693. doi: 10.1056/NEJMc2015630
- 526 37. Austin PC, Fine JP. Practical recommendations for reporting Fine-Gray model analyses for  
527 competing risk data. *Statistics in medicine*. 2017;36:4391-4400. doi: 10.1002/sim.7501
- 528 38. Gulati M, Levy PD, Mukherjee D, Amsterdam E, Bhatt DL, Birtcher KK, Blankstein R, Boyd J,  
529 Bullock-Palmer RP, Conejo T, et al. 2021 AHA/ACC/ASE/CHEST/SAEM/SCCT/SCMR Guideline for  
530 the Evaluation and Diagnosis of Chest Pain: Executive Summary: A Report of the American  
531 College of Cardiology/American Heart Association Joint Committee on Clinical Practice  
532 Guidelines. *Circulation*. 2021:CIR0000000000001030. doi: 10.1161/CIR.0000000000001030
- 533 39. Reinhardt SW, Lin CJ, Novak E, Brown DL. Noninvasive Cardiac Testing vs Clinical Evaluation  
534 Alone in Acute Chest Pain: A Secondary Analysis of the ROMICAT-II Randomized Clinical Trial.  
535 *JAMA internal medicine*. 2018;178:212-219. doi: 10.1001/jamainternmed.2017.7360
- 536 40. Scot-Heart Investigators. CT coronary angiography in patients with suspected angina due to  
537 coronary heart disease (SCOT-HEART): an open-label, parallel-group, multicentre trial. *Lancet*.  
538 2015;385:2383-2391. doi: 10.1016/S0140-6736(15)60291-4
- 539 41. Soares A, Boden WE, Hueb W, Brooks MM, Vlachos HEA, O'Fee K, Hardi A, Brown DL. Death and  
540 Myocardial Infarction Following Initial Revascularization Versus Optimal Medical Therapy in

Running Title: Non-invasive cardiac testing and two-year outcomes

- 541 Chronic Coronary Syndromes With Myocardial Ischemia: A Systematic Review and Meta-Analysis  
542 of Contemporary Randomized Controlled Trials. *Journal of the American Heart Association*.  
543 2021;10:e019114. doi: 10.1161/JAHA.120.019114
- 544 42. Galli M, Benenati S, Zito A, Capodanno D, Zoccai GB, Ortega-Paz L, Iaconelli A, D'Amario D, Porto  
545 I, Burzotta F, et al. Revascularization strategies versus optimal medical therapy in chronic  
546 coronary syndrome: A network meta-analysis. *International journal of cardiology*. 2023;370:58-  
547 64. doi: 10.1016/j.ijcard.2022.10.023
- 548 43. Kataruka A, Maynard CC, Kearney KE, Mahmoud A, Bell S, Doll JA, McCabe JM, Bryson C, Gurm  
549 HS, Jneid H, et al. Temporal Trends in Percutaneous Coronary Intervention and Coronary Artery  
550 Bypass Grafting: Insights From the Washington Cardiac Care Outcomes Assessment Program.  
551 *Journal of the American Heart Association*. 2020;9:e015317. doi: 10.1161/JAHA.119.015317
- 552 44. Du L, Cheng Z, Zhang Y, Li Y, Mei D. The impact of medication adherence on clinical outcomes of  
553 coronary artery disease: A meta-analysis. *European journal of preventive cardiology*.  
554 2017;24:962-970. doi: 10.1177/2047487317695628
- 555 45. Tang WH, Topol EJ, Fan Y, Wu Y, Cho L, Stevenson C, Ellis SG, Hazen SL. Prognostic value of  
556 estimated functional capacity incremental to cardiac biomarkers in stable cardiac patients.  
557 *Journal of the American Heart Association*. 2014;3:e000960. doi: 10.1161/JAHA.114.000960
- 558 46. Magnani JW, Mujahid MS, Aronow HD, Cene CW, Dickson VV, Havranek E, Morgenstern LB,  
559 Paasche-Orlow MK, Pollak A, Willey JZ, et al. Health Literacy and Cardiovascular Disease:  
560 Fundamental Relevance to Primary and Secondary Prevention: A Scientific Statement From the  
561 American Heart Association. *Circulation*. 2018;138:e48-e74. doi:  
562 10.1161/CIR.0000000000000579
- 563 47. Lloyd-Jones DM, Leip EP, Larson MG, D'Agostino RB, Beiser A, Wilson PW, Wolf PA, Levy D.  
564 Prediction of lifetime risk for cardiovascular disease by risk factor burden at 50 years of age.  
565 *Circulation*. 2006;113:791-798. doi: 10.1161/CIRCULATIONAHA.105.548206
- 566 48. Kaneko H, Yano Y, Okada A, Itoh H, Suzuki Y, Yokota I, Morita K, Fujiu K, Michihata N, Jo T, et al.  
567 Age-Dependent Association Between Modifiable Risk Factors and Incident Cardiovascular  
568 Disease. *Journal of the American Heart Association*. 2023;12:e027684. doi:  
569 10.1161/JAHA.122.027684
- 570 49. Yandrapalli S, Nabors C, Goyal A, Aronow WS, Frishman WH. Modifiable Risk Factors in Young  
571 Adults With First Myocardial Infarction. *Journal of the American College of Cardiology*.  
572 2019;73:573-584. doi: 10.1016/j.jacc.2018.10.084
- 573 50. Age dependent associations of risk factors with heart failure: pooled population based cohort  
574 study. *BMJ*. 2021;373:n880. doi: 10.1136/bmj.n880
- 575 51. Michos ED, Choi AD. Coronary Artery Disease in Young Adults: A Hard Lesson But a Good  
576 Teacher. *Journal of the American College of Cardiology*. 2019;74:1879-1882. doi:  
577 10.1016/j.jacc.2019.08.1023
- 578 52. Scot-Heart Investigators, Newby DE, Adamson PD, Berry C, Boon NA, Dweck MR, Flather M,  
579 Forbes J, Hunter A, Lewis S, et al. Coronary CT Angiography and 5-Year Risk of Myocardial  
580 Infarction. *The New England journal of medicine*. 2018;379:924-933. doi:  
581 10.1056/NEJMoa1805971
- 582 53. Linde JJ, Hove JD, Sorgaard M, Kelbaek H, Jensen GB, Kuhl JT, Hindso L, Kober L, Nielsen WB,  
583 Kofoed KF. Long-Term Clinical Impact of Coronary CT Angiography in Patients With Recent  
584 Acute-Onset Chest Pain: The Randomized Controlled CATCH Trial. *JACC Cardiovascular imaging*.  
585 2015;8:1404-1413. doi: 10.1016/j.jcmg.2015.07.015
- 586 54. Douglas PS, Hoffmann U, Patel MR, Mark DB, Al-Khalidi HR, Cavanaugh B, Cole J, Dolor RJ,  
587 Fordyce CB, Huang M, et al. Outcomes of anatomical versus functional testing for coronary

Running Title: Non-invasive cardiac testing and two-year outcomes

588 artery disease. *The New England journal of medicine*. 2015;372:1291-1300. doi:  
589 10.1056/NEJMoa1415516  
590 55. Greenslade JH, Parsonage W, Ho A, Scott A, Dalton E, Hammett C, Brown AF, Parker K, Cullen L.  
591 Utility of Routine Exercise Stress Testing among Intermediate Risk Chest Pain Patients Attending  
592 an Emergency Department. *Heart Lung Circ*. 2015;24:879-884. doi: 10.1016/j.hlc.2015.03.025  
593 56. Rahman F, Mitra B, Cameron PA, Coleridge J. Stress testing before discharge is not required for  
594 patients with low and intermediate risk of acute coronary syndrome after emergency  
595 department short stay assessment. *Emergency medicine Australasia : EMA*. 2010;22:449-456.  
596 doi: 10.1111/j.1742-6723.2010.01331.x  
597 57. Ly DP, Shekelle PG, Song Z. Evidence for Anchoring Bias During Physician Decision-Making. *JAMA*  
598 *internal medicine*. 2023. doi: 10.1001/jamainternmed.2023.2366

599

600

601

602

603

604

605

606

607

608

609

610

611

612

Running Title: Non-invasive cardiac testing and two-year outcomes

613 **Table 1. Cohort characteristics.**

	All	Low NICT referral	Intermediate NICT referral	High NICT referral	Std. Diff. (Interm. vs low)	Std. Diff. (High vs low)
Number of patients	144,577	45,773	50,048	48,756		
<b>Characteristics</b>						
Age in years, median (IQR)	58 (48-68)	58 (48-68)	58 (48-68)	58 (48-68)	0.024	0.0159
Female (%)	56.7	56.7	56.5	56.7	-0.005	-0.000
Race/ethnicity (%)						
White	52.8	52.8	53.1	52.6	0.006	-0.003
Black	10.7	10.6	10.9	10.6	0.011	-0.001
Hispanic	19.5	19.7	19.1	19.5	-0.015	-0.005
Asian	15.3	15.3	15.1	15.6	-0.005	0.009
Other	1.8	1.7	1.8	1.8	0.008	0.004
Diabetes mellitus (%)	23.4	23.2	23.4	23.5	0.005	0.007
Hypertension (%)	48.2	47.9	48.4	48.3	0.010	0.008
Hypercholesteremia (%)	50.8	50.2	51.2	51.0	0.019	0.016
Obesity (BMI $\geq$ 30, %)	43.4	43.4	43.3	43.4	-0.000	-0.001
Family history of premature CAD (%)	5.7	5.4	5.7	5.9	0.010	0.019
Smoking (%)	10.0	10.0	10.0	10.0	0.002	0.001
Peripheral artery disease (%)	2.3	2.2	2.3	2.3	0.007	0.009
Cerebrovascular disease (%)	6.5	6.7	6.5	6.4	-0.007	-0.011
Myocardial infarction (%)	7.9	7.8	7.9	8.0	0.004	0.006
Coronary revascularization (%)	7.8	7.7	7.9	7.8	0.008	0.004
Coronary artery disease (%)	12.7	12.5	12.7	12.7	0.008	0.007
Peak troponin between LOQ and 99 <sup>th</sup> percentile (%)	11.9	11.6	12.0	12.2	0.012	0.019
Ischemic-appearing ECG (%)	3.9	3.9	3.9	4.0	-0.001	0.004
HEART score, median (IQR)	4 (2-5)	4 (2-5)	4 (2-5)	4 (2-5)	0.026	0.037
HEART score 0-3 (low risk, %)	48.2	49.1	48.0	47.4	-0.021	0.034
HEART score 4-6 (moderate risk, %)	49.2	48.4	49.3	49.7	0.018	0.026
HEART score > 6 (high risk, %)	2.7	2.5	2.6	2.8	0.010	0.024
<b>Processes</b>						
NICT referral within 72 hours (%)	20.4	13.0	19.9	27.8	0.186	0.374
Index hospital admission (%)	6.1	5.7	6.3	6.4	0.027	0.031
ED LOS, hours (median, IQR)	3.8 (2.6-5.5)	3.6 (2.5-5.1)	3.9 (2.6-5.5)	4.1 (2.7-5.7)	0.109	0.201
Serial troponin testing (%)	35.4	29.7	35.6	40.6	0.126	0.231



Running Title: Non-invasive cardiac testing and two-year outcomes

614

615 Patient encounters were categorized into low, intermediate, or high NICT referral groups based  
616 on the ranking of the initial treating emergency physician within their primary medical center  
617 and during the epoch corresponding to the encounter. A standardized difference less than 0.1  
618 indicates adequate balance of a given variable between groups.

619 Abbreviations: BMI = body mass index; CAD = coronary artery disease; ECG =  
620 electrocardiogram; HEART = history, electrocardiogram, age, risk factors, troponin; IQR =  
621 interquartile range; LOQ = limit of quantitation; LOS = length of stay; NICT = non-invasive  
622 cardiac test.

623

624

625

626

627

628

629

630

631

632

633

634

635

636

637

638

639

640

641

642

643

Running Title: Non-invasive cardiac testing and two-year outcomes

644 **Table 2.** Unadjusted 2-year outcomes and 30-day cardiac testing by non-invasive cardiac test  
645 (NICT) referral group.

	All	Low NICT referral	Intermediate NICT referral	High NICT referral	p-value
Number of patients	144,577	45,773	50,048	48,756	
<b>2-year outcomes (%)</b>					
Acute myocardial infarction	3.4	3.2	3.6	3.5	0.0042
Cardiac arrest	0.5	0.6	0.5	0.5	0.5070
Cardiogenic shock	0.2	0.2	0.3	0.2	0.2663
Coronary revascularization	2.8	2.7	2.8	2.9	0.1395
Cardiac mortality	1.3	1.3	1.3	1.2	0.2539
All-cause mortality	4.6	4.5	4.7	4.5	0.2375
MACE	4.8	4.6	5.0	4.8	0.0102
MACE-ALL	7.7	7.4	7.9	7.8	0.0148
<b>30-day mediators (%)</b>					
Objective cardiac testing	43.2	32.8	43.0	53.0	<.0001
Exercise treadmill	34.2	25.9	34.1	42.1	<.0001
Myocardial perfusion	11.3	8.1	11.3	14.3	<.0001
Stress echocardiography	0.7	0.6	0.7	0.9	0.0005
CT coronary angiography	0.5	0.4	0.5	0.6	0.0005
Cardiac catheterization	3.9	3.6	3.8	4.1	<.0001
Outpatient follow-up	55.3	53.6	55.5	56.7	<.0001
Primary care	52.6	51.1	52.8	53.8	<.0001
Cardiology	7.3	6.7	7.3	7.8	<.0001
New cardiovascular medication prescription	10.3	9.6	10.3	10.8	<.0001
ACE inhibitor or ARB	3.1	3.1	3.1	3.2	0.2014
Antiplatelet	2.8	2.5	2.7	3.3	<.0001
Beta-blocker	4.4	4.1	4.6	4.6	0.0002
Statin	3.5	3.4	3.5	3.6	0.1845

646  
647 Abbreviations: ACE = angiotensin converting enzyme; ARB = angiotensin receptor blocker; CT =  
648 computed tomography; ECG = electrocardiography; MACE = major adverse cardiac event;  
649 MACE-ALL = major adverse cardiac event, including all-cause mortality; NICT = non-invasive  
650 cardiac test.

651  
652  
653  
654

Running Title: Non-invasive cardiac testing and two-year outcomes

655 **Table 3.** Adjusted hazards of primary and secondary outcomes according to non-invasive  
656 cardiac test (NICT) referral group.

Outcome	NICT referral group	Adjusted hazard ratio (95% CI)	P-value	Adjusted p-value*
2-year MACE	Low	1.0 (ref)	n/a	n/a
	Intermediate	1.08 (1.02-1.14)	0.012	0.024
	High	1.05 (0.99-1.11)	0.13	0.13
2-year MACE-ALL	Low	1.0 (ref)	n/a	n/a
	Intermediate	1.06 (1.01-1.10)	0.023	0.046
	High	1.04 (0.99-1.09)	0.13	0.13
2-year coronary revascularization	Low	1.0 (ref)	n/a	n/a
	Intermediate	1.03 (0.96-1.11)	0.43	0.43
	High	1.07 (0.99-1.15)	0.10	0.20

657  
658 Associations between outcomes and NICT referral group were assessed using mixed-effects  
659 proportional hazard models adjusting for patient age, sex, risk factors (diabetes, coronary  
660 artery disease, coronary revascularization, smoking, hypertension, hypercholesterolemia, obesity,  
661 family history of premature coronary artery disease), peak troponin value while the emergency  
662 department, ischemic-appearing changes on electrocardiogram, and epoch, with censoring of  
663 competing outcomes (non-cardiac death for MACE, all-cause mortality for coronary  
664 revascularization), random effects at the facility level, and robust standard errors.

665 \* Holm-Bonferroni method

666 Abbreviations: MACE = major adverse cardiac event; MACE-ALL = major adverse cardiac event,  
667 including all-cause mortality; NICT = non-invasive cardiac test.

668  
669  
670  
671  
672  
673

Running Title: Non-invasive cardiac testing and two-year outcomes

674 **Table 4.** Adjusted primary and secondary outcomes by non-invasive cardiac test (NICT) referral  
675 group, stratified by HEART score.

Outcome	NICT referral group	Adjusted hazard ratio (95% CI)	P-value	Adjusted p-value*
<b>Low-risk HEART scores (0 to 3, n = 69639)</b>				
2-year MACE	Low	1.0 (ref)	n/a	n/a
	Intermediate	1.06 (0.90-1.24)	0.49	0.98
	High	0.91 (0.78-1.08)	0.29	0.88
2-year MACE-ALL	Low	1.0 (ref)	n/a	n/a
	Intermediate	1.01 (0.91-1.12)	0.91	1.0
	High	0.93 (0.84-1.04)	0.21	0.84
2-year coronary revascularization	Low	1.0 (ref)	n/a	n/a
	Intermediate	1.06 (0.85-1.31)	0.61	1.0
	High	0.97 (0.77-1.21)	0.77	1.0
<b>Moderate-risk HEART scores (4 to 6, n = 71108)</b>				
2-year MACE	Low	1.0 (ref)	n/a	n/a
	Intermediate	1.10 (1.02-1.17)	0.009	0.054
	High	1.08 (1.01-1.16)	0.021	0.11
2-year MACE-ALL	Low	1.0 (ref)	n/a	n/a
	Intermediate	1.07 (1.01-1.13)	0.017	0.10
	High	1.06 (1.01-1.12)	0.028	0.14
2-year coronary revascularization	Low	1.0 (ref)	n/a	n/a
	Intermediate	1.02 (0.93-1.12)	0.66	1.0
	High	1.09 (0.99-1.19)	0.071	0.43
<b>High-risk HEART scores (&gt; 6, n = 3830)</b>				
2-year MACE	Low	1.0 (ref)	n/a	n/a
	Intermediate	0.99 (0.84-1.17)	0.93	0.98
	High	0.90 (0.76-1.06)	0.22	0.88
2-year MACE-ALL	Low	1.0 (ref)	n/a	n/a
	Intermediate	1.04 (0.90-1.21)	0.58	1.0
	High	0.98 (0.84-1.13)	0.75	1.0
2-year coronary revascularization	Low	1.0 (ref)	n/a	n/a
	Intermediate	1.05 (0.86-1.28)	0.64	1.0
	High	0.94 (0.77-1.15)	0.55	1.0

676

677

678 Following stratification into HEART score risk categories (0 to 3 = low risk; 4 to 6 = moderate  
679 risk; > 6 = high risk), associations between outcomes and NICT referral group were assessed  
680 using mixed effects proportional hazard models adjusting for patient age, sex, risk factors  
681 (diabetes, coronary artery disease, coronary revascularization, smoking, hypertension,

Running Title: Non-invasive cardiac testing and two-year outcomes

682 hypercholesteremia, obesity, family history of premature coronary artery disease), peak  
683 troponin value while the emergency department, ischemic-appearing changes on  
684 electrocardiogram, and epoch, with censoring of competing outcomes (non-cardiac death for  
685 MACE, all-cause mortality for coronary revascularization), random effects at the facility level,  
686 and robust standard errors.

687 \* Holm-Bonferroni method for multiple comparisons within and between categories

688 Abbreviations: CV = cardiovascular; HEART = history, electrocardiogram, age, risk factors,  
689 troponin; MACE = major adverse cardiac event; MACE-ALL = major adverse cardiac event,  
690 including all-cause mortality; NICT = non-invasive cardiac test.

691

692

693

694

695

696

697

698

699

700

701

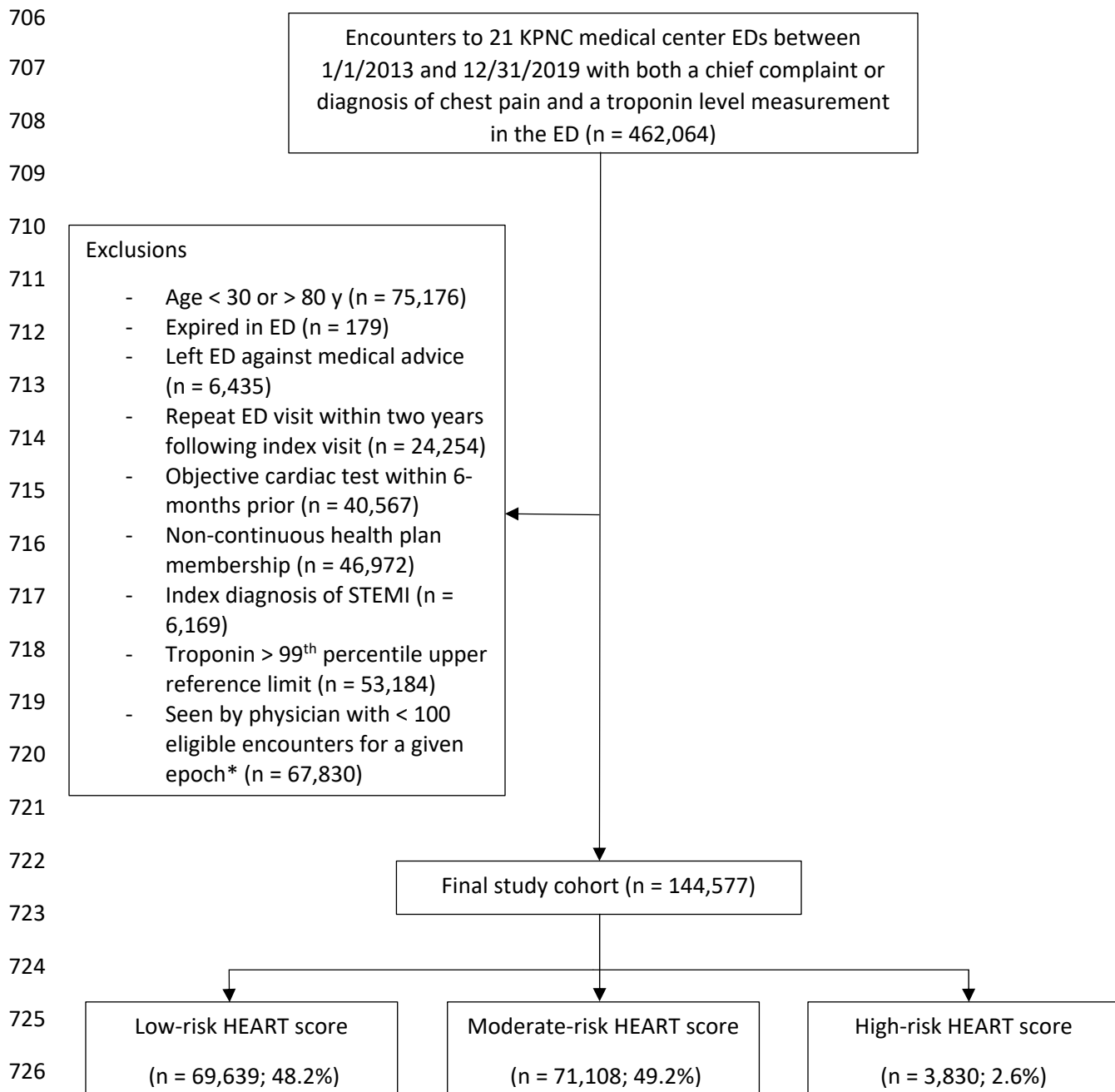
702

703

704

Running Title: Non-invasive cardiac testing and two-year outcomes

705 **Figure 1. Cohort selection.**



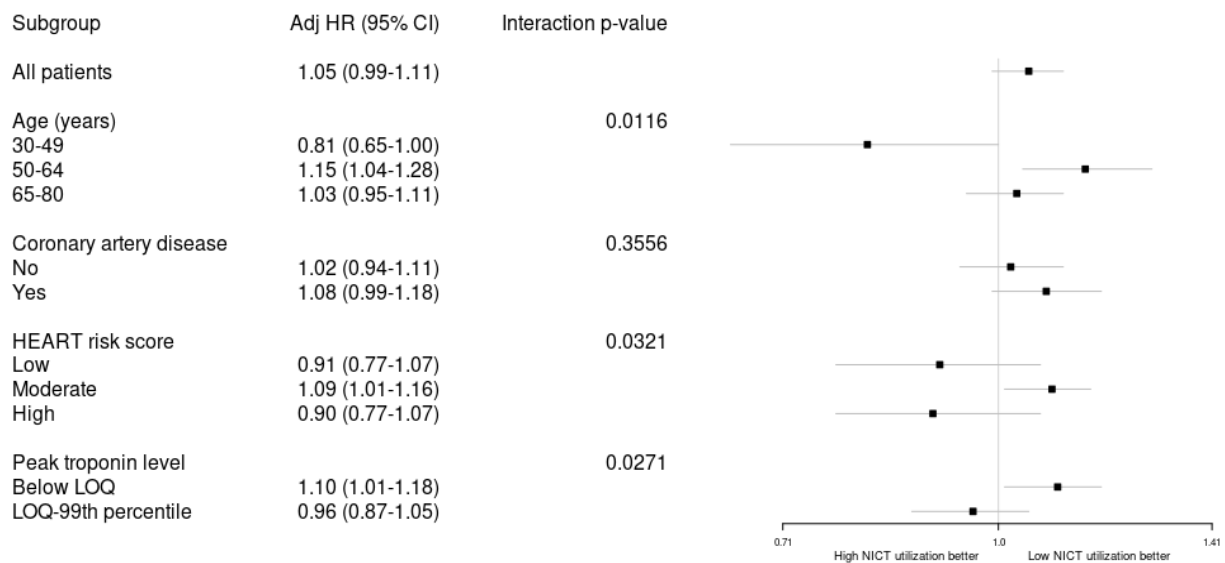
727 \*To account for practice pattern changes due to time as a confounder in our ranking of ED  
728 provider NICT referral-intensity, we divided the 7-year study period into three equal (28-month)  
729 epochs: 1) January 1, 2013 through April 30, 2015; 2) May 1, 2015 through August 31, 2017; 3)  
730 September 1, 2017 through December 31, 2019.

731 Abbreviations: ED = emergency department; HEART = history, electrocardiogram, age, risk  
732 factors, troponin; KPNC = Kaiser Permanente Northern California; STEMI = ST-elevated  
733 myocardial infarction.

Running Title: Non-invasive cardiac testing and two-year outcomes

734 **Figure 2. Forest plot of post-hoc exploratory interaction analyses for major adverse cardiac**  
 735 **events (MACE): high versus low non-invasive cardiac test (NICT) referral group.**

736



737

738 Cause-specific mixed-effects proportional hazard models for MACE were run with an interaction  
 739 term of NICT (high versus low) and each variable of interest (age, coronary artery disease,  
 740 HEART risk score, peak troponin level) respectively, adjusting for other covariates with random  
 741 effect at facility level and censoring for non-cardiac death.

742 Abbreviations: Adj = adjusted; HEART = history, electrocardiogram, age, risk factors, troponin;  
 743 LOQ = limit of quantitation; MACE = major adverse cardiac event; NICT = non-invasive cardiac  
 744 test.

745

746

747

748

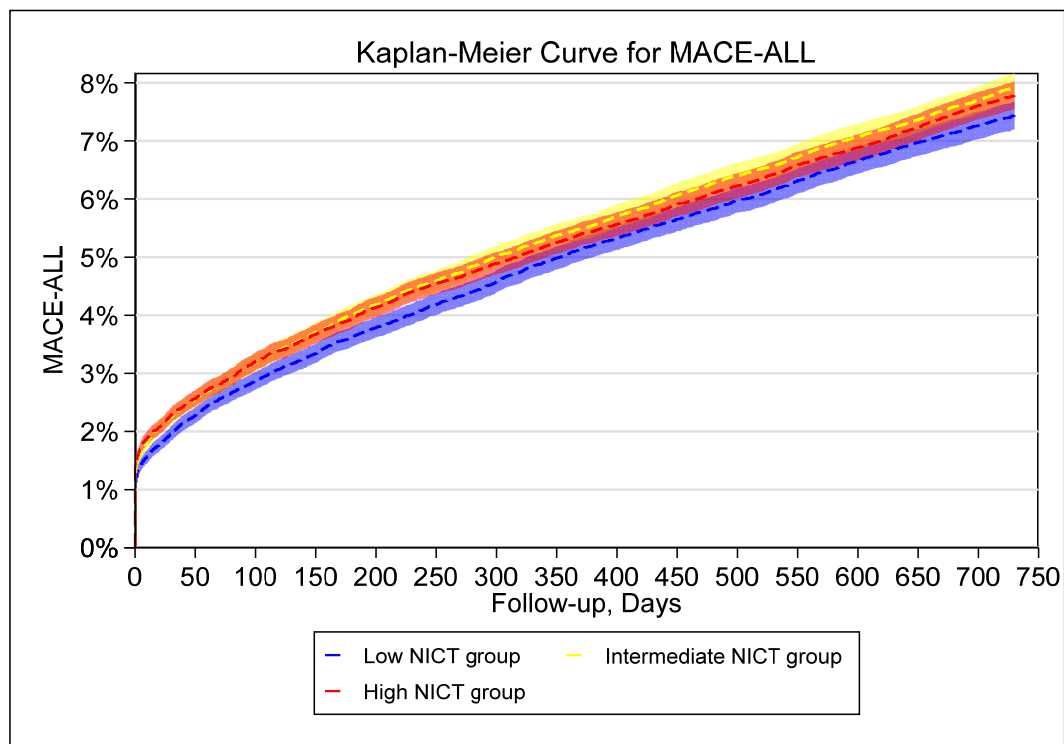
749

750

751

Running Title: Non-invasive cardiac testing and two-year outcomes

752 **Figure 3. Kaplan-Meier curve.**



753

754 Unadjusted incidence of MACE-ALL within two years according to non-invasive cardiac test  
755 (NICT) referral group.

756 MACE-ALL = major adverse cardiac event, inclusive of all-cause mortality; NICT = non-invasive  
757 cardiac test