

1 **Cheese consumption and risk of diabetic retinopathies: A Mendelian Randomization study**

2 **Short Title: Cheese and Diabetic Retinopathy**

3 Zenan Lin, MD^{1,*}; Di Hu, MD, PhD^{2,*}; Junhong Jiang, MD, PhD¹; of The μ -Biomedical Data
4 Investigating Group (Mu-BioDig)

5 * Zenan Lin and Di Hu contributed equally to this paper and should be considered as joint first authors.

6

7 The affiliations of the authors:

8 1. Department of Ophthalmology, Shanghai General Hospital, Shanghai Jiao Tong University School
9 of Medicine, Shanghai 200080, China.

10 2. Department of Ophthalmology, Children's Hospital of Fudan University, Shanghai 201102, China.

11

12 Correspondence should be addressed to:

13 Junhong Jiang, MD, PhD

14 Department of Ophthalmology, Shanghai General Hospital, Shanghai Jiao Tong University School of
15 Medicine, Shanghai 200080, China.

16 Email: junhongj@126.com or junhong.jiang@shgh.cn

17

18 **Funding:** No fund was obtained for this work.

19

20 **Acknowledgement**

21 We want to thank to the UK biobank and FinnGen project as well as the participants who generously
22 made the GWAS summary statistics of cheese intake and diabetic retinopathies publicly available. No
23 fund was obtained for this work.

24

25 **Declaration of Interest statement:** The authors have nothing to disclose.

26

27 **Abstract**

28 **Objectives:** Diabetic retinopathy (DR) is the leading cause of visual loss in working-age adults
29 worldwide. Cheese is a widely consumed dairy product, and cheese intake has various health benefiting
30 effects. This study aimed to use Mendelian randomization (MR) to investigate the impact of cheese
31 consumption on DR.

32 **Methods:** The genome-wide association study (GWAS) summary statistic generated from 451486
33 European descent was introduced to identify the valid instrumental variables (IVs) for cheese intake.
34 As the outcomes, the GWAS data of three outcome traits (DR, proliferative diabetic retinopathy or
35 PDR, diabetic maculopathy or DMP) were obtained from the FinnGen research project. Multivariable
36 MR (MVMR) analysis was also conducted to determine whether the causal associations were affected
37 by the common risk factors of DR, such as Body Mass Index, systolic blood pressure (SBP),
38 triglycerides (TG), HDL cholesterol and hemoglobin A1c (HbA1c) levels.

39 **Results:** The cheese consumption (per 1-SD increase) was found to be associated with a decreased risk
40 of DR (OR=0.701, $P=0.011$), PDR (OR=0.671, $P=0.020$), and DMP (OR=0.357, $P=0.001$). The
41 MVMR analyses demonstrated that the TG level did not affect the causal associations with the
42 decreased risks of DR and PDR. The study on DMP proved that the causal relations were independent
43 from the effect of SBP, TG, and HbA1c levels.

44 **Conclusions:** Genetic evidence suggested that cheese consumption was causally associated with the
45 decreased risk of DR. Given widespread cheese consumption, this could have significant implications
46 for global health burdens from DR.

47 **Keywords:** Mendelian Randomization; diabetic retinopathy; cheese consumption; causality

48
49
50

51 1 Introduction

52 Diabetic retinopathy (DR), the leading cause of visual loss in working-age adults globally, is the most
 53 common vascular complication in diabetes mellitus.¹ Proliferative diabetic retinopathy (PDR) and
 54 diabetic maculopathy (DMP) are the primarily vision-threatening stages of DR and lead to severe
 55 visual impairment, substantially diminishing vision-related quality of life.² As the prevalence of
 56 diabetes grows yearly, the number of people with DR and the associated healthcare burden are expected
 57 to increase dramatically.³ Although DR can be treated by retinal laser photocoagulation, intravitreal
 58 injections, and vitrectomy; the efficacy of these strategies remains insufficient.^{4,5} Therefore, to prevent
 59 the onset of DR as well as to delay the progression from early DR to vision-threatening DR are
 60 meaningful for alleviating the burden of DR-related blindness. Identifying causal and modifiable risk
 61 factors for DR is crucial for providing preventive strategies.

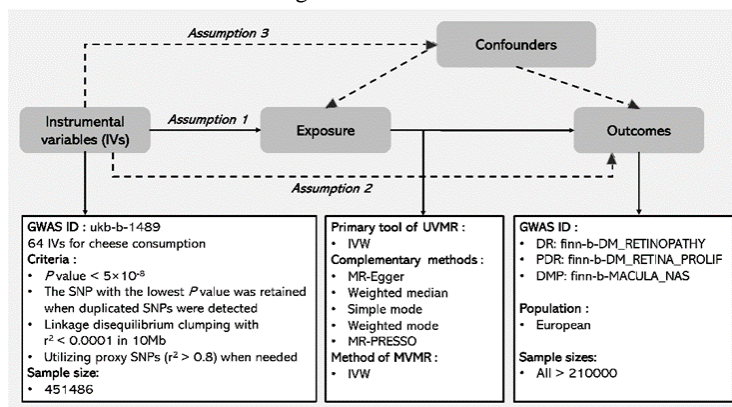
62 Dietary factors are the key modifiable risk factors that play essential roles in the preventing and
 63 managing diabetes.^{6,7} However, compared with diabetes, little is known about the role of diet in the
 64 onset and development of DR.⁸ Cheese is a staple dairy product that has been reported to be associated
 65 with a lower risk of diabetes.⁹ Recently, a large observational study on diabetic patients found that
 66 higher consumption of cheese may reduce the risk of DR progression.¹⁰ Nevertheless, due to the
 67 potential confounding and reverse causation from observational studies,¹¹ the causal relationship
 68 between cheese consumption and DR could not be concluded.

69 Mendelian randomization (MR) analysis is a powerful statistical method that exploits the random
 70 assortment of genetic variants during meiosis to assess the potential causal effect.^{11,12} As an alternative
 71 to randomized clinical trials, MR analysis offers an opportunity to investigate the causal effect
 72 efficiently. It has become widely used to assess the causal associations of risk factors in diabetes.^{13,14}
 73 To the best of our knowledge, so far no MR study has been conducted to investigate the causal role of
 74 cheese intake on DR.

75 2 Materials and methods

76 2.1 The genetic instrumental variables (IVs) for the consumption of cheese

77 In order to select the valid IVs for the consumption of cheese, the relevant genome-wide association
 78 studies (GWAS) summary dataset of the UK Biobank was acquired and analyzed via the IEU Open
 79 GWAS Project (<https://gwas.mrcieu.ac.uk/datasets/>, GWAS ID: ukb-b-1489).^{15,16} The basic features of
 80 the dataset were described in Table 1 and Figure 1.



81

82 Fig 1. The workflow describing the MR analysis on the causal association between cheese consumption

83 and DR risks.

84

85 According to the MR methodology, three key assumptions are: 1) the included IVs are robustly
86 associated with the exposure trait; 2) they are associated with the outcome only through the exposure; 3)
87 they are independent from the confounders. (See Figure 1.) In order to identify the independent SNPs,
88 we selected the SNPs with P values less than 5×10^{-8} for the linkage disequilibrium clumping ($r^2 <$
89 0.001 within 10000Kb, and using the 1000 Genomes Project Phase 3 (EUR) as the reference panel).
90 When duplicated SNPs were detected, the one with the lowest P value was retained. When the SNPs
91 were unavailable in the outcome's dataset, the proxy SNPs ($r^2 > 0.8$) were utilized for further analyses.
92 Finally, 64 IVs for cheese consumption were identified to be valid IVs. (See Supplementary Table S1.)
93 We calculated the F statistics to assess the association strength between each SNP and its corresponding
94 trait. The results indicated sufficient statistical power for all SNPs as their F statistics (see
95 Supplementary Table S1) were more significant than 10.¹⁷ The analyzing procedures were performed
96 with the R (version 4.1.3) packages *iiegwasr* (version 0.1.5) and *TwoSampleMR* (version 0.5.6).¹⁵

97 **2.2 The basic information of three outcome datasets**

98 The GWAS datasets for diabetic retinopathy (DR), proliferative diabetic retinopathy (PDR) and
99 diabetic maculopathy (DMP) were from the Finnish biobank project FinnGen
100 (<https://www.finnngen.fi/fi>). Their GWAS data was accessed via the platform of the IEU OpenGWAS
101 project (<https://gwas.mrcieu.ac.uk/datasets>, GWAS ID: "finn-b-DM_RETINOPATHY",
102 "finn-b-DM_RETINA_PROLIF", "finn-b-DM_MACULOPATHY").^{15, 16} The characteristics of the
103 datasets were shown in Table 1 and Figure 1.

104 **2.3 Univariable and multivariable MR analysis**

105 In the univariable MR (UVMR) analysis, the IVW approach was chosen as the major method, and
106 other analytical tools such as the MR Egger, weighted median, weighted mode, simple mode, and
107 MR-PRESSO were conducted to evaluate the robustness of the results. Moreover, the multivariable
108 MR (MVMR) studies were introduced to explore the potential mechanism through which cheese
109 consumption may influence the DR risk. The common risk factors for DR such as Body Mass Index
110 (BMI), systolic blood pressure (SBP), triglyceride (TG), high-density lipoprotein (HDL) cholesterol,
111 low-density lipoprotein (LDL) cholesterol, and hemoglobin A1c (HbA1c) levels were introduced into
112 the MVMR analyses. The GWAS summary statistics of the common risk factors were acquired from
113 the platform of the IEU OpenGWAS project (<https://gwas.mrcieu.ac.uk/datasets>, GWAS ID:
114 "ukb-b-19953", "ieu-b-38", "ieu-b-111", "ieu-b-109", "ieu-b-110" and "ieu-b-103", respectively).

115 **2.4 Statistical analysis**

116 Briefly, the IVW method was the major MR analytical tool, and complemented by other approaches
117 such as the MR-Egger, simple mode, weighted median, weighted mode, and MR-PRESSO. The
118 MVMR analysis was conducted to explore the potential mechanism through which the cheese intake
119 may function. All analyses were conducted with R packages *MRPRESSO* (version 1.0), *iiegwasr*
120 (version 0.1.5), and *TwoSampleMR* (version 0.5.6).^{15, 16, 18} A P value less than 0.05 was considered as
121 statistically significant.

122

123

124 **3 Results**

125 **3.1 The basic features of the included datasets for exposure and outcomes**

126 Three GWAS datasets for the cheese consumption contained 9851867 SNPs' data covering more than
 127 42000 European participants. (See Table 1. and Figure 1.) As described in the method's part, 64 IVs
 128 were regarded as valid IVs for cheese consumption. The data originated from the studies of the UK
 129 Biobank. Three DR-associated datasets from the FinnGen project were selected as the outcome cohorts
 130 for further analyses. The sample sizes for DR, PDR, and DMP were 216666 (14584 cases and 202082
 131 controls), 212889 (8681 cases and 204208 controls), and 213377 (1811 cases and 211566 controls),
 132 respectively.

133

134 Table 1. The basic information of the datasets of exposures and outcomes

Categories	Traits	IVs	GWAS ID	SNPs	Source	Ethnics	Sample size	Cases/controls
Exposure	Cheese consumption	64	ukb-b-1489	9851867	UK Biobank	European	451486	/
		/	finn-b-DM_R					
	Diabetic retinopathy		ETINOPATH	16380459	FinnGen	European	216666	14584/ 202082
			Y					
		/	finn-b-DM_R					
Outcome	Proliferative diabetic retinopathy		ETINA_PRO	16380460	FinnGen	European	212889	8681/204208
			LIF					
		/	finn-b-DM_					
	Diabetic maculopathy		MACULOPA	16380450	FinnGen	European	213377	1811/ 211566
			THY					

Note: GWAS ID refers to the datasets archived in the IEU Open GWAS project.

135

136 **3.2 The UVMR analysis from cheese consumption to the risks of three diabetic retinopathies**

137 The results of IVW analyses suggested that a 1-SD increase in cheese consumption was causally
 138 associated with a 29.9% decrease in the overall risk of DR (Odds ratio or OR=0.701, $P=0.011$), a 32.9%
 139 decrease in the PDR risk (OR=0.671, $P=0.020$) and a 64.3% decrease in the DMP risk (OR=0.357, P
 140 =0.001). Consistently, the sensitivity studies using MR Egger, Simple mode, Weighted median,
 141 Weighted mode, and MR-PRESSO also indicated cheese consumption to be a protective role for DR,
 142 PDR, and DMP, though some of them were not statistically significant. (See Table 2. and Figure 2.)
 143 While the P for Cochran's Q in the IVW analysis on DR was less than 0.05, no heterogeneities were
 144 identified to exist in the studies on PDR (P for Cochran's Q=0.078) and DMP (P for Cochran's
 145 Q=0.588). (See Table 2. And Figure 2.) No obvious directional pleiotropies were detected in three
 146 exposure-outcome pairs since their Egger intercept terms were all centered at the origin (0.006 for DR,
 147 0.001 for PDR, and -0.003 for DMP). Though the MR-PRESSO global studies also suggested no
 148 influence for the pleiotropy was observed in the analyses on PDR (P -global=0.052) and DMP
 149 (P -global=0.419), the investigation on DR implied a potential pleiotropy (P -global=0.038). The
 150 Leave-one-out tests demonstrated that no single SNP could greatly influence the overall estimates. (See

151 Figure 2.)

152

153 Table 2. The MR analyses of the causal associations between the consumption of cheese and diabetic

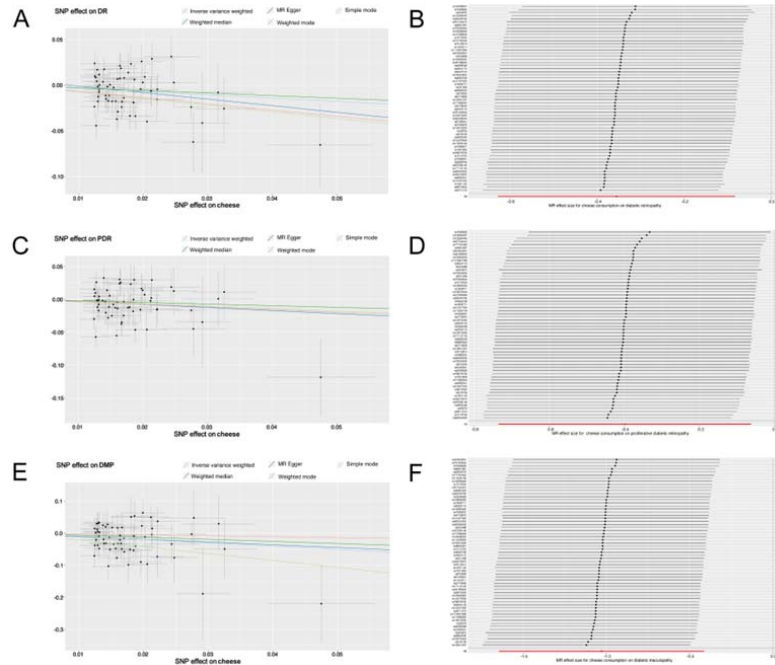
154 retinopathies

Exposure-Outcome pairs	Method	MR analysis		Heterogeneity test		Pleiotropy		P-global
		OR (95% CI)	P	Q	P	Egger intercept	P	
Cheese-DR	IVW	0.701 (0.534, 0.921)	0.011	80.454	0.033			
	MR Egger	0.489 (0.154, 1.551)	0.229	79.908	0.030	0.006	0.532	
	Simple mode	0.484 (0.191, 1.223)	0.130					
	Weighted median	0.751 (0.524, 1.078)	0.121					
	Weighted mode	0.507 (0.231, 1.114)	0.096					
	MR-PRESSO (RAW)	0.717 (0.625, 0.821)	0.017					0.038
Cheese-PDR	IVW	0.671 (0.479, 0.939)	0.020	75.047	0.078			
	MR Egger	0.627 (0.151, 2.613)	0.524	75.035	0.066	0.001	0.924	
	Simple mode	0.698 (0.245, 1.989)	0.504					
	Weighted median	0.777 (0.499, 1.211)	0.265					
	Weighted mode	0.673 (0.292, 1.548)	0.355					
	MR-PRESSO (RAW)	0.708 (0.597, 0.840)	0.048					0.052
Cheese-DMP	IVW	0.357 (0.193, 0.662)	0.001	57.756	0.558			
	MR Egger	0.428 (0.032, 5.792)	0.526	57.737	0.522	-0.003	0.889	
	Simple mode	0.116 (0.011, 1.189)	0.075					
	Weighted median	0.515 (0.209, 1.272)	0.150					
	Weighted mode	0.745 (0.112, 4.949)	0.762					

	MR-PRESSO	0.387 (0.282,	0.004	0.419
	(RAW)	0.532)		

155

156



157

158 Fig 2. (A) Scatter plots of the genetic risks of the consumption of cheese on DR; (B) Forest plot of the
 159 Leave-one-out test on the MR study of DR; (C) Scatter plots of the genetic risks of the consumption of
 160 cheese on PDR; (D) Forest plot of the Leave-one-out test on the MR study of PDR; (E) Scatter plots of
 161 the genetic risks of the consumption of cheese on DMP; (F) Forest plot of the Leave-one-out test on the
 162 MR study of DMP.

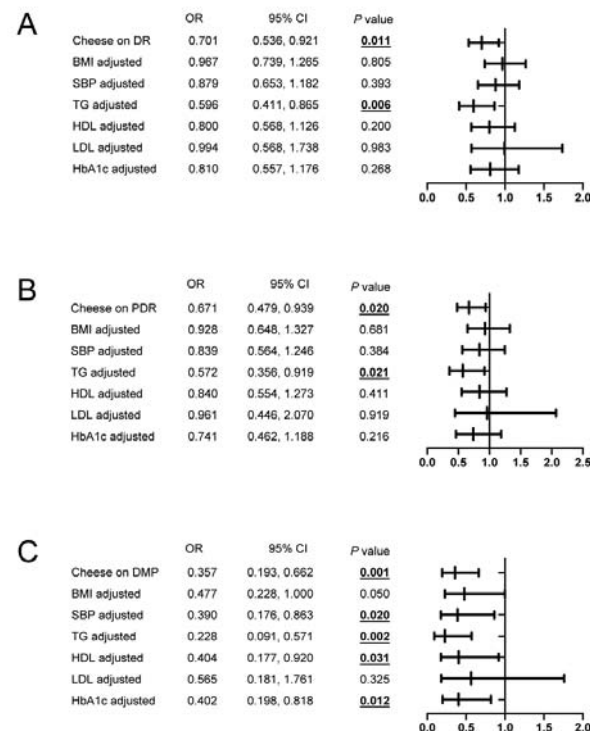
163

164

165 **3.3 The MVMR analysis from the cheese consumption to the risk of three diabetic retinopathies**

166 As the UVMR suggested the potential causal associations between the consumption of cheese and the
 167 risk of three diabetic retinopathies, the MVMR was introduced to investigate the potential mechanisms
 168 through which the exposure may influence the outcomes.

169 We found that the TG level did not affect the causal associations with the risks of DR and PDR. (See
 170 Figure 3.) The study on DMP proved that the causal relationship was independent from the effect of
 171 SBP, TG, and HbA1c levels. (See Figure 3.)



172

173

Fig 3. MVMR analyses of causal associations between cheese consumption and DR (A), PDR (B) and DMP (C) adjusted for common risk factors.

174

175

176

4 Discussion

177

In this two-sample MR study, we explored the causal effects of cheese consumption on diabetic retinopathies by leveraging large-scale GWAS data. This is the first study to show that consuming more habitual cheese was associated with a lower risk of developing diabetic retinopathies, providing a potential new treatment option for DR.

178

179

180

181

Cheese is one of the most popular dairy products in the world and contains lots of nutrients. In recent years, numerous studies have been carried out to investigate the association between cheese consumption and diabetes risk. Their results revealed that eating cheese is inversely associated with diabetes.¹⁹⁻²² For instance, a large prospective case-cohort study across 8 European countries found a modest inverse association of cheese intake with diabetes.²⁰ In a systemic review and meta-analysis on cohort studies, Aune and colleagues also identified the inverse association between cheese intake and the risk of type 2 diabetes.²¹ Interestingly, Von Post-Skagegard et al. reported that the protein in cheese has much stronger and quicker-acting glucoregulatory effects than fish protein and plant protein.²² Though previous works have implied the negative association between cheese consumption and diabetes risk; there has been little research exploring the relationship between eating cheese and DR risk. In this MR study, we confirmed that having cheese may be a protective factor for DR. This is in agreement with the results of prior studies on diabetes.

182

183

184

185

186

187

188

189

190

191

192

Cheese includes abundant calcium, vitamin D, whey protein, and magnesium. Multiple studies have demonstrated that all the substances as mentioned above are associated with reduced diabetes risk.²³⁻²⁷ This may partially explain the negative correlation between eating cheese and diabetes risk.

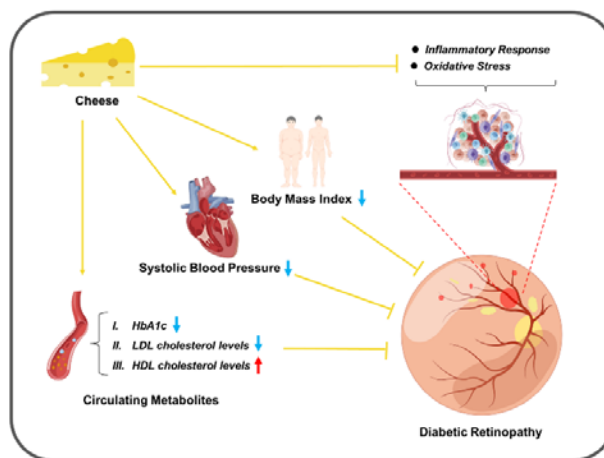
193

194

195

196 Despite the numerous studies on diabetes, to be best of our knowledge, only one published
197 investigation has assessed the association between cheese intake and DR risk by observing the 10-year
198 incidence of DR in diabetic patients in Australia.²⁸ The study showed that cheese consumption could
199 diminish the risk of DR in diabetic patients. This conclusion stands in line with our current work.

200 Higher BMI, SBP, HbA1c, LDL, and HDL cholesterol levels were acknowledged as risk factors
201 for DR.²⁹ Concurrently, these risk factors for DR are influenced by cheese intake: First, in systemic
202 parameters, cheese intake was shown to reduce BMI in a randomized controlled trial.³⁰ And a recent
203 MR report demonstrated that cheese consumption was causally associated with a lower BMI.³¹
204 Furthermore, the inverse correlation between SBP and cheese intake has also been reported.³² Secondly,
205 among circulating metabolites, HbA1c has been confirmed by a large RCT meta-analysis to be
206 negatively associated with dairy product intake like cheese.³³ Moreover, multiple RCTs showed that
207 cheese intake could decrease the levels of LDL cholesterol concentration,^{34, 35} and increase the
208 HDL-cholesterol concentration levels significantly.³⁶ In concordance with those of previous studies,
209 our MVMR results indicated that cheese consumption might function to protect DR by affecting these
210 risk factors (see Figure 4). On the other hand, cheese consumption has been proven to be able to
211 alleviate the oxidative stress³⁷ and inflammatory response,³⁸ which are the significant factors in the
212 initiation and progression of DR.^{39,40} This may also be one of the underlying mechanisms that cheese
213 consumption suppresses DR (see Figure 4).



214

215 Fig 4. Diagram showing the possible mechanism by which cheese consumption reduces the risk of DR.

216

217 Though our work confirmed the causality between cheese consumption and DR risk through the
218 MR framework, it is still limited by the following aspects. First, in the current work, cheese was
219 investigated as a general subject instead of different cheese subtypes. The study with more accurate
220 cheese subclassifications will offer a more precise and robust conclusion as different cheese subtypes
221 vary in the health-associated nutrient components. Second, all the GWAS data analyzed originated
222 from individuals of European descent which may impair the generalizability of the conclusion.

223

224 In general, our study firstly reported the inverse association between eating cheese and DR risk
225 from a MR perspective. This finding implies that daily cheese intake may be regarded as a modifiable
226 approach to decrease the DR risk.

226

227 **Conflict of Interest**

228 The authors declare no conflict of interest.

229

230 **Acknowledgement**

231 We want to thank to the UK biobank and FinnGen project as well as the participants who generously
232 made the GWAS summary statistics of cheese intake and diabetic retinopathies publicly available. No
233 fund was obtained for this work.

234

235 **Ethics Approval:**

236 The used GWAS data were publicly available and approved by their corresponding institutions. A local
237 ethics approval for the current work is not required.

238

239 **Data availability:**

240 The GWAS data were publicly available and their sources were described appropriately in the
241 manuscript.

242

243 **μ-Biomedical Data Investigation Group:**

244 Zenan Lin¹, Junhong Jiang¹, Di Hu², and Qi Zhang³

245 ¹The Department of Ophthalmology, Shanghai General Hospital, Shanghai Jiao Tong University School
246 of Medicine, Shanghai, 200080, China.

247 ²The Department of Ophthalmology, Children's Hospital of Fudan University, No.399 Wanyuan Road,
248 Shanghai, 201102, China.

249 ³The Department of Neurology, The Affiliated Taizhou People's Hospital of Nanjing Medical
250 University, Taizhou School of Clinical Medicine, Nanjing Medical University, Taizhou, Jiangsu,
251 225300, China.

252

253 **References**

254 1. Fong DS, Aiello L, Gardner TW, et al. Diabetic retinopathy. *Diabetes care* 2003;26 Suppl
255 1:S99-s102.

256 2. Klein R, Klein BE, Moss SE. Visual impairment in diabetes. *Ophthalmology* 1984;91:1-9.

257 3. Causes of blindness and vision impairment in 2020 and trends over 30 years, and
258 prevalence of avoidable blindness in relation to VISION 2020: the Right to Sight: an analysis
259 for the Global Burden of Disease Study. *The Lancet Global health* 2021;9:e144-e160.

260 4. Mohamed Q, Gillies MC, Wong TY. Management of diabetic retinopathy: a systematic

- 261 review. *Jama* 2007;298:902-16.
- 262 5. Elman MJ, Qin H, Aiello LP, et al. Intravitreal ranibizumab for diabetic macular edema
263 with prompt versus deferred laser treatment: three-year randomized trial results.
264 *Ophthalmology* 2012;119:2312-8.
- 265 6. Ojo O. Dietary Intake and Type 2 Diabetes. *Nutrients* 2019;11.
- 266 7. Ley SH, Hamdy O, Mohan V, Hu FB. Prevention and management of type 2 diabetes:
267 dietary components and nutritional strategies. *Lancet (London, England)* 2014;383:1999-2007.
- 268 8. Dow C, Mancini F, Rajaobelina K, et al. Diet and risk of diabetic retinopathy: a systematic
269 review. 2018;33:141-156.
- 270 9. Díaz-López A, Babio N, Martínez-González MA, et al. Mediterranean Diet, Retinopathy,
271 Nephropathy, and Microvascular Diabetes Complications: A Post Hoc Analysis of a
272 Randomized Trial. *Diabetes care* 2015;38:2134-41.
- 273 10. Yan X, Han X, Wu C, et al. Does daily dietary intake affect diabetic retinopathy
274 progression? 10-year results from the 45 and Up Study. 2020;104:1774-1780.
- 275 11. Davey Smith G, Hemani G. Mendelian randomization: genetic anchors for causal
276 inference in epidemiological studies. *Human molecular genetics* 2014;23:R89-98.
- 277 12. Cui Y, Si W, Zhu C. Alcohol Consumption and Mild Cognitive Impairment: A Mendelian
278 Randomization Study from Rural China. 2022;14.
- 279 13. Pedron S, Kurz CF, Schwettmann L, Laxy M. The Effect of BMI and Type 2 Diabetes on
280 Socioeconomic Status: A Two-Sample Multivariable Mendelian Randomization Study.
281 2021;44:850-852.

- 282 14. Manousaki D, Harroud A. Vitamin D levels and risk of type 1 diabetes: A Mendelian
283 randomization study. 2021;18:e1003536.
- 284 15. Hemani G, Zheng J, Elsworth B, et al. The MR-Base platform supports systematic causal
285 inference across the human phenome. *Elife* 2018;7.
- 286 16. Elsworth B, Lyon M, Alexander T, et al. The MRC IEU OpenGWAS data infrastructure.
287 *bioRxiv* 2020:2020.08.10.244293.
- 288 17. Burgess S, Butterworth A, Thompson SG. Mendelian randomization analysis with multiple
289 genetic variants using summarized data. *Genet Epidemiol* 2013;37:658-65.
- 290 18. Verbanck M, Chen C-Y, Neale B, Do R. Detection of widespread horizontal pleiotropy in
291 causal relationships inferred from Mendelian randomization between complex traits and
292 diseases. *Nature Genetics* 2018;50:693-698.
- 293 19. Poppitt SD. Cow's Milk and Dairy Consumption: Is There Now Consensus for
294 Cardiometabolic Health? *Front Nutr* 2020;7:574725.
- 295 20. Sluijs I, Forouhi NG, Beulens JW, et al. The amount and type of dairy product intake and
296 incident type 2 diabetes: results from the EPIC-InterAct Study. *Am J Clin Nutr* 2012;96:382-90.
- 297 21. Aune D, Norat T, Romundstad P, Vatten LJ. Dairy products and the risk of type 2 diabetes:
298 a systematic review and dose-response meta-analysis of cohort studies. *Am J Clin Nutr*
299 2013;98:1066-83.
- 300 22. von Post-Skagegård M, Vessby B, Karlström B. Glucose and insulin responses in healthy
301 women after intake of composite meals containing cod-, milk-, and soy protein. *European*
302 *Journal of Clinical Nutrition* 2006;60:949-954.

- 303 23. Pittas AG, Lau J, Hu FB, Dawson-Hughes B. The role of vitamin D and calcium in type 2
304 diabetes. A systematic review and meta-analysis. *J Clin Endocrinol Metab* 2007;92:2017-29.
- 305 24. Mitri J, Muraru MD, Pittas AG. Vitamin D and type 2 diabetes: a systematic review. *Eur J*
306 *Clin Nutr* 2011;65:1005-15.
- 307 25. Dong JY, Xun P, He K, Qin LQ. Magnesium intake and risk of type 2 diabetes:
308 meta-analysis of prospective cohort studies. *Diabetes Care* 2011;34:2116-22.
- 309 26. Volpe SL. Magnesium, the metabolic syndrome, insulin resistance, and type 2 diabetes
310 mellitus. *Crit Rev Food Sci Nutr* 2008;48:293-300.
- 311 27. Mozaffarian D, Cao H, King IB, et al. Trans-palmitoleic acid, metabolic risk factors, and
312 new-onset diabetes in U.S. adults: a cohort study. *Ann Intern Med* 2010;153:790-9.
- 313 28. Yan X, Han X, Wu C, et al. Does daily dietary intake affect diabetic retinopathy
314 progression? 10-year results from the 45 and Up Study. *Br J Ophthalmol* 2020;104:1774-1780.
- 315 29. Ting DS, Cheung GC, Wong TY. Diabetic retinopathy: global prevalence, major risk
316 factors, screening practices and public health challenges: a review. *Clin Exp Ophthalmol*
317 2016;44:260-77.
- 318 30. Sharafedinov KK, Plotnikova OA, Alexeeva RI, et al. Hypocaloric diet supplemented with
319 probiotic cheese improves body mass index and blood pressure indices of obese hypertensive
320 patients--a randomized double-blind placebo-controlled pilot study. *Nutrition journal*
321 2013;12:138.
- 322 31. Hu MJ, Tan JS, Gao XJ, Yang JG, Yang YJ. Effect of Cheese Intake on Cardiovascular
323 Diseases and Cardiovascular Biomarkers. *Nutrients* 2022;14.

- 324 32. Schmidt KA, Cromer G, Burhans MS, et al. Impact of low-fat and full-fat dairy foods on
325 fasting lipid profile and blood pressure: exploratory endpoints of a randomized controlled trial.
326 2021;114:882-892.
- 327 33. O'Connor S, Turcotte AF, Gagnon C, Rudkowska I. Increased Dairy Product Intake
328 Modifies Plasma Glucose Concentrations and Glycated Hemoglobin: A Systematic Review
329 and Meta-Analysis of Randomized Controlled Trials. *Advances in nutrition* (Bethesda, Md)
330 2019;10:262-279.
- 331 34. Hjerpsted J, Leedo E, Tholstrup T. Cheese intake in large amounts lowers
332 LDL-cholesterol concentrations compared with butter intake of equal fat content. *The*
333 *American journal of clinical nutrition* 2011;94:1479-84.
- 334 35. Brassard D, Tessier-Grenier M, Allaire J, et al. Comparison of the impact of SFAs from
335 cheese and butter on cardiometabolic risk factors: a randomized controlled trial. *The American*
336 *journal of clinical nutrition* 2017;105:800-809.
- 337 36. Thorning TK, Raziani F, Bendtsen NT, Astrup A. Diets with high-fat cheese, high-fat meat,
338 or carbohydrate on cardiovascular risk markers in overweight postmenopausal women: a
339 randomized crossover trial. 2015;102:573-81.
- 340 37. Vasconcelos FM, Silva HLA, Poso SMV, et al. Probiotic Prato cheese attenuates cigarette
341 smoke-induced injuries in mice. *Food research international* (Ottawa, Ont) 2019;123:697-703.
- 342 38. Tognocchi M, Conte M. Supplementation of Enriched Polyunsaturated Fatty Acids and
343 CLA Cheese on High Fat Diet: Effects on Lipid Metabolism and Fat Profile. 2022;11.
- 344 39. Stitt AW, Curtis TM, Chen M, et al. The progress in understanding and treatment of

345 diabetic retinopathy. Progress in retinal and eye research 2016;51:156-86.

346 40. Bryl A, Falkowski M, Zorena K. The Role of Resveratrol in Eye Diseases-A Review of the

347 Literature. 2022;14.

348

349

350