

1 **Parental genetically predicted liability for coronary heart disease and risk of**
2 **adverse pregnancy outcomes**

3

4 Álvaro Hernáez^{1,2,*}, Karoline H. Skåra^{3,1}, Christian M. Page^{1,4}, Vera R. Mitter⁵, Marta
5 H. Hernández^{1,2}, Per Magnus¹, Pål R. Njølstad^{6,7}, Ole A. Andreassen^{8,9}, Elizabeth C.
6 Corfield^{10,11}, Alexandra Havdahl^{10,11,12,13}, Øyvind Næss^{14,15}, Ben Brumpton^{16,17,18},
7 Bjørn Olav Åsvold^{16,17,19}, Deborah A. Lawlor^{13,20}, Abigail Fraser^{13,20,†}, Maria Christine
8 Magnus^{1,†}

9

- 10 1. Centre for Fertility and Health, Norwegian Institute of Public Health, Oslo,
11 Norway
- 12 2. Blanquerna School of Health Sciences, Universitat Ramon Llull, Barcelona,
13 Spain
- 14 3. Department of Community Medicine and Global Health, Institute of Health and
15 Society, University of Oslo, Oslo, Norway
- 16 4. Department of Physical Health and Ageing, Division for Mental and Physical
17 Health, Norwegian Institute of Public Health, Oslo, Norway
- 18 5. Pharmacoepidemiology and Drug Safety Research Group, Department of
19 Pharmacy, and PharmaTox Strategic Research Initiative, Faculty of
20 Mathematics and Natural Sciences, University of Oslo, Oslo, Norway
- 21 6. Center for Diabetes Research, Department of Clinical Science, University of
22 Bergen, Bergen, Norway
- 23 7. Children and Youth Clinic, Haukeland University Hospital, Bergen, Norway
- 24 8. Norwegian Centre for Mental Disorders Research, NORMENT, Division of
25 Mental Health and Addiction, Oslo University Hospital, Oslo, Norway

NOTE: This preprint reports new research that has not been certified by peer review and should not be used to guide clinical practice.

- 26 9. Institute of Clinical Medicine, University of Oslo, Oslo, Norway
- 27 10. Center for Genetic Epidemiology and Mental Health, Norwegian Institute of
28 Public Health, Oslo, Norway
- 29 11. Nic Waals Institute, Lovisenberg Diakonale Hospital, Oslo, Norway
- 30 12. PROMENTA Research Center, Department of Psychology, University of Oslo,
31 Oslo, Norway
- 32 13. Population Health Sciences, Bristol Medical School, University of Bristol,
33 Bristol, UK
- 34 14. Institute of Health and Society, University of Oslo, Oslo, Norway
- 35 15. Division of Mental and Physical Health, Norwegian Institute of Public Health,
36 Oslo, Norway
- 37 16. K.G. Jebsen Center for Genetic Epidemiology, Department of Public Health
38 and Nursing, Norwegian University of Science and Technology, Trondheim,
39 Norway
- 40 17. HUNT Research Centre, Department of Public Health and Nursing, Norwegian
41 University of Science and Technology, Levanger, Norway
- 42 18. Clinic of Medicine, St. Olavs Hospital, Trondheim University Hospital,
43 Trondheim, Norway
- 44 19. Department of Endocrinology, Clinic of Medicine, St. Olavs Hospital,
45 Trondheim University Hospital, Trondheim, Norway
- 46 20. MRC Integrative Epidemiology Unit, University of Bristol, Bristol, UK

47

48 †: both authors contributed equally to this work

49

50

51 **Corresponding author**

52 Alvaro Hernaez, PharmD, PhD

53 Centre for Fertility and Health, Norwegian Institute of Public Health

54 PO 222 Skøyen, 0213 Oslo, Norway

55 Telephone: (+47) 95523951

56 e-mail: alvaro.hernaez@fhi.no

57 ORCID: 0000-0001-8593-1477

58 **ABSTRACT**

59

60 **Background.** Adverse pregnancy outcomes (APO) may unmask a woman's
61 underlying risk for coronary heart disease (CHD). To test this, we estimated
62 associations between genetically predicted liability for CHD and risk of APOs in
63 mothers and their male partners. We hypothesized that associations would be found
64 for women, but not their partners (negative controls).

65 **Methods.** We studied up to 83,969 women (and up to 55,568 male partners)
66 participating in the Norwegian Mother, Father and Child Cohort Study or the
67 Trøndelag Health Study with genotyping data and information on history of any APO
68 in their pregnancies (miscarriage, stillbirth, hypertensive disorders of pregnancy,
69 gestational diabetes, small for gestational age, large for gestational age, and
70 spontaneous preterm birth). Maternal and paternal genetic risk scores (GRS) for
71 CHD were generated using 148 gene variants (p -value $< 5 \times 10^{-8}$, not in linkage
72 disequilibrium). Associations between GRS for CHD and each APO were determined
73 using logistic regression, adjusting for genomic principal components, in each cohort
74 separately, and combined using fixed effects meta-analysis.

75 **Results.** One standard deviation increase in the GRS for CHD in women was related
76 to increased risk of any hypertensive disorders of pregnancy (odds ratio [OR] 1.08,
77 95% confidence interval [CI] 1.05-1.10), pre-eclampsia (OR 1.08, 95% CI 1.05-1.11),
78 and small for gestational age (OR 1.04, 95% CI 1.01-1.06). Imprecise associations
79 with lower odds of large for gestational age (OR 0.98, 95% CI 0.96 to 1.00) and
80 higher odds of stillbirth (OR 1.04, 95% CI 0.98 to 1.11) were suggested. These
81 findings remained consistent after adjusting for number of total pregnancies and the
82 male partners' GRS and restricting analyses to stable couples. Associations for

83 miscarriage, gestational diabetes, and spontaneous preterm birth were close to the
84 null. In male partners, there was weak evidence of an association with spontaneous
85 preterm birth (OR 1.02 [0.99 to 1.05]), but not with other APOs.

86 **Conclusions.** Hypertensive disorders of pregnancy, small for gestational age and
87 stillbirth unmask women with a genetically predicted existing propensity for CHD. The
88 association of paternal genetically predicted CHD risk with spontaneous preterm birth
89 needs further exploration.

90

91 **Keywords**

92 Coronary heart disease; adverse pregnancy outcomes; parental genetic liability to
93 CHD; MoBa; HUNT

94

95 **List of abbreviations**

96 APO: adverse pregnancy outcome

97 CHD: coronary heart disease

98 CI: confidence interval

99 GD: gestational diabetes

100 GRS: genetic risk score

101 GWAS: genome-wide association study

102 HDP: hypertensive disorders of pregnancy

103 HUNT: Trøndelag Health Study

104 LGA: large for gestational age

105 MBRN: Medical Birth Registry of Norway

106 MoBa: Mother, Father, and Child Cohort Study

107 OR: odds ratio

- 108 SGA: small for gestational age
- 109 SD: standard deviation
- 110 sPTB: spontaneous preterm birth

111 INTRODUCTION

112

113 Adverse pregnancy outcomes (APO), such as miscarriage, stillbirth, hypertensive
114 disorders of pregnancy (HDP), gestational diabetes (GD), small for gestational age
115 (SGA), large for gestational age (LGA), and spontaneous preterm birth (sPTB), are
116 thought to unmask a woman's underlying liability for cardiovascular disease,
117 identifying women who 'fail' the cardiometabolic stress test of pregnancy [1].
118 Preconception cardiovascular risk factors are associated with APOs [2-7] and the
119 extent of physiological changes of pregnancy including vasodilation, decreases in
120 glucose, and changes in lipoprotein subclasses and biomarkers of low-grade
121 inflammation [8]. Moreover, adjustment for preconception cardiovascular risk factors
122 attenuates the relationship between APOs and maternal post-partum risk of
123 cardiovascular disease [9-11]. An association between genetically predicted liability
124 for cardiovascular disease and APOs in women would offer further support to the
125 'unmasking' hypothesis as germline variants are inherited at birth.

126 We therefore investigated associations between maternal and paternal genetic
127 liability for coronary heart disease (CHD) with APOs (miscarriage, stillbirth, HDP, GD,
128 SGA, LGA and sPTB). We hypothesized that we would find an association in women
129 but not in men, as men's genetic predisposition to CHD would not be revealed when
130 their female partner undergoes the cardiometabolic stress test of pregnancy. Hence,
131 we considered men as imperfect negative controls. Imperfect, because shared family
132 environment associated with both genetic liability for CHD and APO risk (e.g., body
133 mass index, smoking) [12] may result in associations between genetic liability for
134 CHD and APO risk in men. Paternal genetic variants linked to CHD might also impact
135 the epigenetics of their reproductive cells or the quality of their sperm quality, and

136 these factors may in turn influence APO risk [13, 14]. Finally, fetal genetics inherited
137 from both parents may also affect risk of APOs [15, 16]. We used genetically
138 predicted CHD risk as the exposure because CHD is the most common
139 cardiovascular disease, the leading cause of death globally, and the cardiovascular
140 event with the highest proportion of genetic variance explained in genome-wide
141 association studies (GWAS) [17].

142 **METHODS**

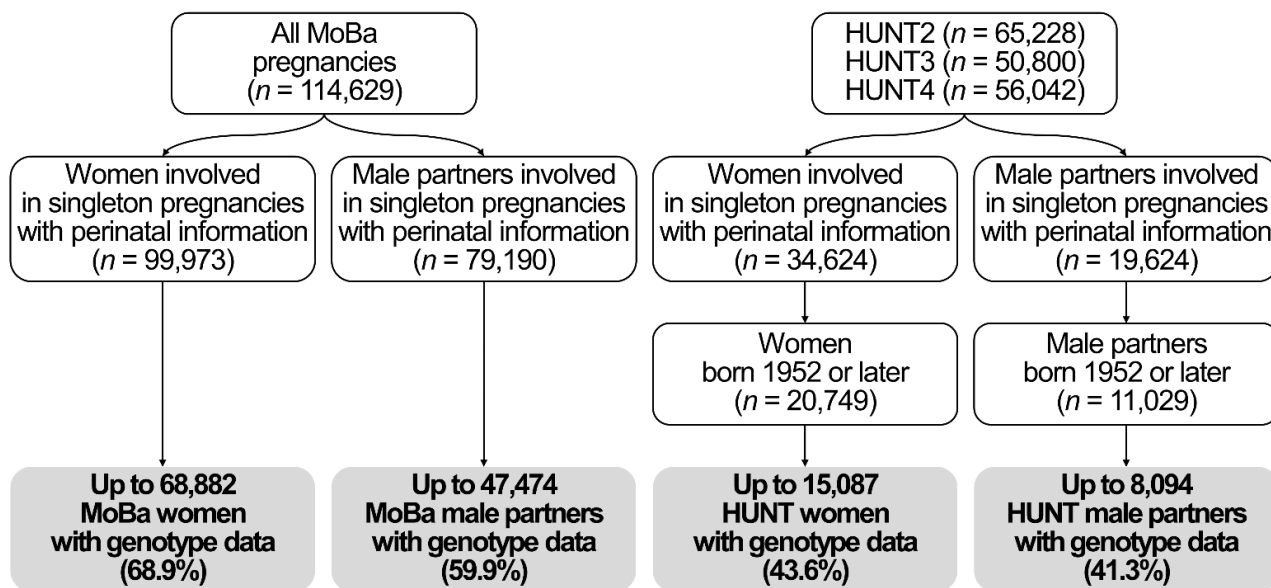
143

144 *Population description*

145 We studied participants in the Norwegian Mother, Father, and Child Cohort Study
146 (MoBa) [18] and the Trøndelag Health Study (HUNT) [19]. MoBa is a pregnancy
147 cohort study led by the Norwegian Institute of Public Health in which pregnant women
148 and their partners were recruited at approximately 17 gestational weeks between
149 1999 and 2008 all over Norway. The participation rate was 41%, and the cohort
150 includes approximately 95,200 women and 75,200 of their male partners [18]. The
151 HUNT study is a population-based cohort of the Trøndelag County in Norway
152 (representative of the general adult Norwegian population regarding morbidity,
153 mortality, income, and age), led by the Norwegian University of Science and
154 Technology and based on four data collection surveys between 1984 and 2019 [19,
155 20]. Both MoBa and HUNT participants are of predominantly European ancestry.
156 Information from the Medical Birth Registry of Norway (MBRN) for participants in both
157 cohorts was obtained by linkage using unique identification numbers.

158 This work is based on a subsample of participants in the two cohorts who had
159 at least one registered singleton pregnancy in the MBRN, available genotype data,
160 and information on the pregnancy outcomes of interest (**Figure 1**). Regarding HUNT,
161 as the MBRN has information on all births in Norway from 1967 onwards [21], we
162 restricted our analyses to cohort participants who were 15 years or younger at the
163 time when the MBRN was set up (born 1952 or later), to capture all of their births.
164 Genotype data in both cohorts came from biological samples obtained from
165 participants after genotype calling, imputation, and quality control [20, 22]. This work

166 is presented according to the Strengthening the Reporting of Observational Studies
167 in Epidemiology guidelines.



168 **Figure 1.** Flow chart

169

170 *Genetic liability for coronary heart disease*

171 We obtained publicly available summary data on the genetic variants linked to CHD
172 from the latest GWAS including ~550,000 individuals from the UK Biobank and
173 CARDIoGRAMplusC4D cohorts [17]. No MoBa or HUNT participants took part in this
174 GWAS. It identified 148 genetic variants (single nuclear polymorphisms) associated
175 with CHD at genome-wide significance (p -value $< 5 \times 10^{-8}$) and independent of each
176 other (i.e., not in linkage disequilibrium [pairwise $r^2 < 0.1$ and a physical distance of at
177 least 5,000bps]) [23]. 141 and 146 of these genetic variants were available in the
178 MoBa and HUNT databases, respectively. We used these variants to calculate
179 weighted genetic risk scores (GRSs) for CHD, representing the genetic liability for
180 CHD [24]. The exact genetic variants used in each cohort is available in

181 **Supplemental Table 1.**

182

183 *Adverse pregnancy outcomes*

184 APOs were defined using information from the MBRN for both cohorts. We identified
185 individuals in MoBa and HUNT with any history of any APO across all their registered
186 pregnancies from 1967 to 2019. Miscarriage was defined as any fetal loss prior to 23
187 completed gestational weeks, while stillbirth was defined as any fetal death after 23
188 completed gestational weeks, as registered in the MBRN [21]. The MBRN contains
189 self-reported information on the number of prior miscarriages and stillbirths at the
190 time of each registered pregnancy (it is not possible to distinguish the exact
191 gestational age of prior pregnancies not registered in the MBRN), in addition to the
192 status and gestational age of the registered pregnancies. We combined the self-
193 reported information on previous pregnancies and the registered pregnancies to
194 define complete history of miscarriage and stillbirth. HDP was defined as having any
195 registration of gestational hypertension, preeclampsia, eclampsia, or Hemolysis,
196 Elevated Liver enzymes and Low Platelets syndrome in the absence of hypertension
197 prior to the pregnancy [25]. Registrations of GD in the MBRN are made according to
198 the criteria of the Norwegian Society of Gynecology and Obstetrics in the absence of
199 a history of diabetes [26]. Notably, there is no information on blood pressure
200 measurements, proteinuria levels or glucose levels in the MBRN. The registrations of
201 HDP and GD are therefore made based on the national clinical guidelines at the time
202 [25, 26]. Gestational age was estimated using ultrasound around 18 completed
203 gestational week or last menstrual period for the small proportion without an
204 ultrasound assessment. SGA was defined as birth weight <10th percentile for
205 gestational age and biological sex [27], whilst LGA was defined as birth weight ≥90th
206 percentile for gestational age and biological sex of the offspring. Participants who
207 delivered an SGA baby were excluded from the analyses on LGA and vice versa.

208 Any non-medically induced delivery prior to the 37th week of pregnancy was
209 considered a sPTB (induced deliveries and C-sections were excluded from the
210 reference group) [28].

211

212 *Descriptive variables*

213 To describe the characteristics of our population, we obtained information on birth
214 year (value in the first pregnancy in MBRN, continuous), the number of pregnancies
215 in which the participants were involved (continuous), whether the study participants
216 were involved in pregnancies with more than one partner (yes/no), years of education
217 (value registered in the first MoBa/HUNT questionnaire available, continuous), body
218 mass index (value registered in the first MoBa/HUNT questionnaire available, in
219 kg/m²), having ever smoked (yes/no), and highest obtained parity (stillbirths plus live
220 births according to the MBRN, continuous) [29, 30].

221

222 *Ethical approval and consent to participate*

223 Both MoBa and HUNT follow the Declaration of Helsinki for Medical Research on
224 human subjects. MoBa is currently regulated by the Norwegian Health Registry Act
225 and its data collection is approved by the Norwegian Data Protection Authority.
226 HUNT was authorized by the Regional Committee for Medical and Health Research
227 (Health Region IV, Norway). Participants provided a written informed consent before
228 joining the cohorts. This project was particularly approved by the Regional Committee
229 for Medical and Health Research Ethics of South/East Norway (references:
230 2017/1362 and 78545).

231

232 *Statistical analyses*

233 We describe the distributions of normally distributed continuous variables using
234 means and standard deviations (SDs), non-normally distributed continuous variables
235 using medians and 1st-3rd quartiles, and categorical variables using numbers and
236 percentages. We assessed differences between participants with and without
237 genotype information using t-tests (normally distributed continuous variables), Mann-
238 Whitney U-tests (non-normally distributed continuous variables), and chi-squared
239 tests (categorical variables).

240 We studied the association between a one SD higher GRS for CHD and risk of
241 APOs, in mothers and their male partners separately, using logistic regression. We
242 analyzed MoBa and HUNT data individually, and subsequently meta-analyzed their
243 estimates using a fixed effects model, assuming participants from both cohorts come
244 from the same underlying population and any difference in associations is random.
245 We tested this assumption using the Cochran Q-test for between-study
246 heterogeneity, using a p -value threshold of <0.1 as an indication of heterogeneity
247 given the statistical inefficiency of between-study heterogeneity tests and the smaller
248 sample size of HUNT compared to MoBa. If significant heterogeneity was detected
249 for any of the outcomes, we meta-analyzed the estimates of the two studies using a
250 random effects model as a complementary analysis. We reduced confounding of the
251 relationship between GRSs for CHD and the outcomes due to population stratification
252 by adjusting our analyses for the first 20 ancestry-informative principal components
253 [31]. Analyses were further adjusted for genotype batch.

254 As parental negative control analyses (i.e., comparing maternal associations
255 to paternal associations) can be biased by assortative mating and other shared if
256 they are not mutually adjusted for each other [32], we repeated our main analyses in
257 the subgroup of mothers and their partners where both had genetic data. We present

258 results in this subgroup without and with mutual adjustment. The former analysis,
259 when compared with the main results, explores evidence of selection bias in the
260 subsample in couples with genetic data.

261 We conducted additional sensitivity analyses. Firstly, the more pregnancies a
262 person has, the higher the likelihood of detecting an effect of parental genetic
263 predisposition to CHD on the risk of APO. To minimize this bias, we further adjusted
264 for the total number of pregnancies the participant had. Secondly, a participant who
265 had pregnancies with various partners might have a differing risk of APO with each
266 partner. Therefore, we performed another sensitivity analysis that was confined to
267 stable couples only (i.e., participants without pregnancies with different partners
268 according to the MBRN).

269

270 Software

271 We conducted our analyses in R Software v. 4.0.3. Our analysis code is available in
272 [https://github.com/alvarohernaez/](https://github.com/alvarohernaez/GRS_CHD_pregnancy_complications_MoBa_HUNT/)
273 [GRS_CHD_pregnancy_complications_MoBa_HUNT/](https://github.com/alvarohernaez/GRS_CHD_pregnancy_complications_MoBa_HUNT/).

274 **RESULTS**

275

276 *Study population*

277 Our analyses were conducted in up to 68,882 women and 47,474 of their male
 278 partners in MoBa, and up to 15,087 women and 8,094 of their male partners in HUNT
 279 (**Figure 1**), described in **Table 1**. Meta-analyses of the main analyses involved
 280 between 66,110 (SGA) and 83,900 women (stillbirth and GD) and between 43,967
 281 (SGA) and 55,790 men (stillbirth and GD). The exact sample sizes for all analyses
 282 are available in **Supplementary Table 2**.

283

284 **Table 1.** Population description

	MoBa		HUNT	
	Women (<i>n</i> = 68,882)	Male partners (<i>n</i> = 47,474)	Women (<i>n</i> = 15,087)	Male partners (<i>n</i> = 8,094)
Birth year, range	1954-1993	1938-1990	1952-1988	1952-1988
Number of pregnancies, median (1 st -3 rd quartile; range)	2 (2-3) [range: 1-14]	2 (2-3) [range: 1-14]	2 (2-3) [range: 1-10]	2 (2-3) [range: 1-10]
Participants in pregnancies with more than one different partner, <i>n</i> (%)	9,147 (13.3%)	5,819 (12.3%)	745 (4.74%)	178 (2.08%)
Age in first pregnancy, median (1 st -3 rd quartile)	27 (24-30)	29 (26-33)	24 (20-27)	26 (23-29)
Education years, mean ± SD	17.0 ± 3.36	16.3 ± 3.56	14.3 ± 4.13	13.5 ± 4.08
Body mass index (kg/m ²),	23.1	25.4	25.2	26.6

median (1 st -3 rd quartile)	(21.1-25.9)	(23.6-27.7)	(22.7-28.6)	(24.5-29.1)
Ever smokers, <i>n</i> (%)	35,631 (52.3%)	24,294 (51.2%)	8,865 (57.0%)	4,233 (50.1%)
Total number of deliveries:				
0, <i>n</i> (%)	0 (0%)	0 (0%)	1,598 (10.5%)	595 (7.00%)
1, <i>n</i> (%)	4,611 (6.71%)	2,894 (6.12%)	6,849 (45.1%)	4,041 (47.5%)
2, <i>n</i> (%)	32,186 (46.8%)	23,368 (49.4%)	5,088 (33.5%)	3,056 (36.0%)
3, <i>n</i> (%)	24,121 (35.1%)	16,357 (34.6%)	1,285 (8.46%)	654 (7.69%)
4 or more, <i>n</i> (%)	7,784 (11.3%)	4,671 (9.88%)	378 (2.49%)	154 (1.81%)
Miscarriage, <i>n</i> (%)	20,866 (30.4%)	14,451 (30.6%)	1,950 (30.0%) ^a	1,145 (29.6%) ^a
Stillbirth, <i>n</i> (%)	872 (1.27%)	581 (1.23%)	198 (1.30%)	84 (0.99%)
Hypertensive disorders of pregnancy, <i>n</i> (%)	7,288 (10.6%)	5,186 (11.0%)	1,500 (9.87%)	870 (10.2%)
Pre-eclampsia + eclampsia, <i>n</i> (%)	5,143 (7.49%)	3,589 (7.59%)	1,080 (7.11%)	641 (7.54%)
Gestational diabetes, <i>n</i> (%)	1,495 (2.18%)	1,041 (2.20%)	127 (0.84%)	62 (0.73%)

Small for gestational age, <i>n</i> (%)	10,552 (15.8%)	7,354 (16.0%)	1,544 (10.2%)	862 (10.1%)
Large for gestational age, <i>n</i> (%)	14,620 (21.7%)	9,880 (21.3%)	1,733 (11.4%)	1,070 (12.6%)
Spontaneous preterm birth, <i>n</i> (%)	6,282 (9.18%)	4,187 (8.89%)	2,643 (17.5%)	1,509 (17.8%)

285 ^a: analyses restricted to 1998 or later pregnancies.

286

287 MoBa participants with genotype information were not meaningfully different in
 288 their birth year, total number of pregnancies, proportion of stable couples, age at first
 289 pregnancy, years of education, body mass index, smoking, or number of deliveries in
 290 relation to those without genotype data. However, they were slightly less likely to
 291 have experienced stillbirth, GD, SGA, and sPTB (**Supplementary Table 3**). HUNT
 292 participants with genotype data were born on average 12 years earlier but were not
 293 meaningfully different on their total number of pregnancies, proportion of stable
 294 couples, age at first birth, years of education, body mass index, and smoking.
 295 However, they were more like to experience several APOs (stillbirth, HDP, SGA,
 296 LGA, and sPTB) and less likely to have a history of GD (**Supplemental Table 3**).

297

298 *Genetically predicted CHD and adverse pregnancy outcomes*

299 **Figure 2** shows the main analyses and all additional and sensitivity analyses for
 300 women (Panel A) and men (Panel B).

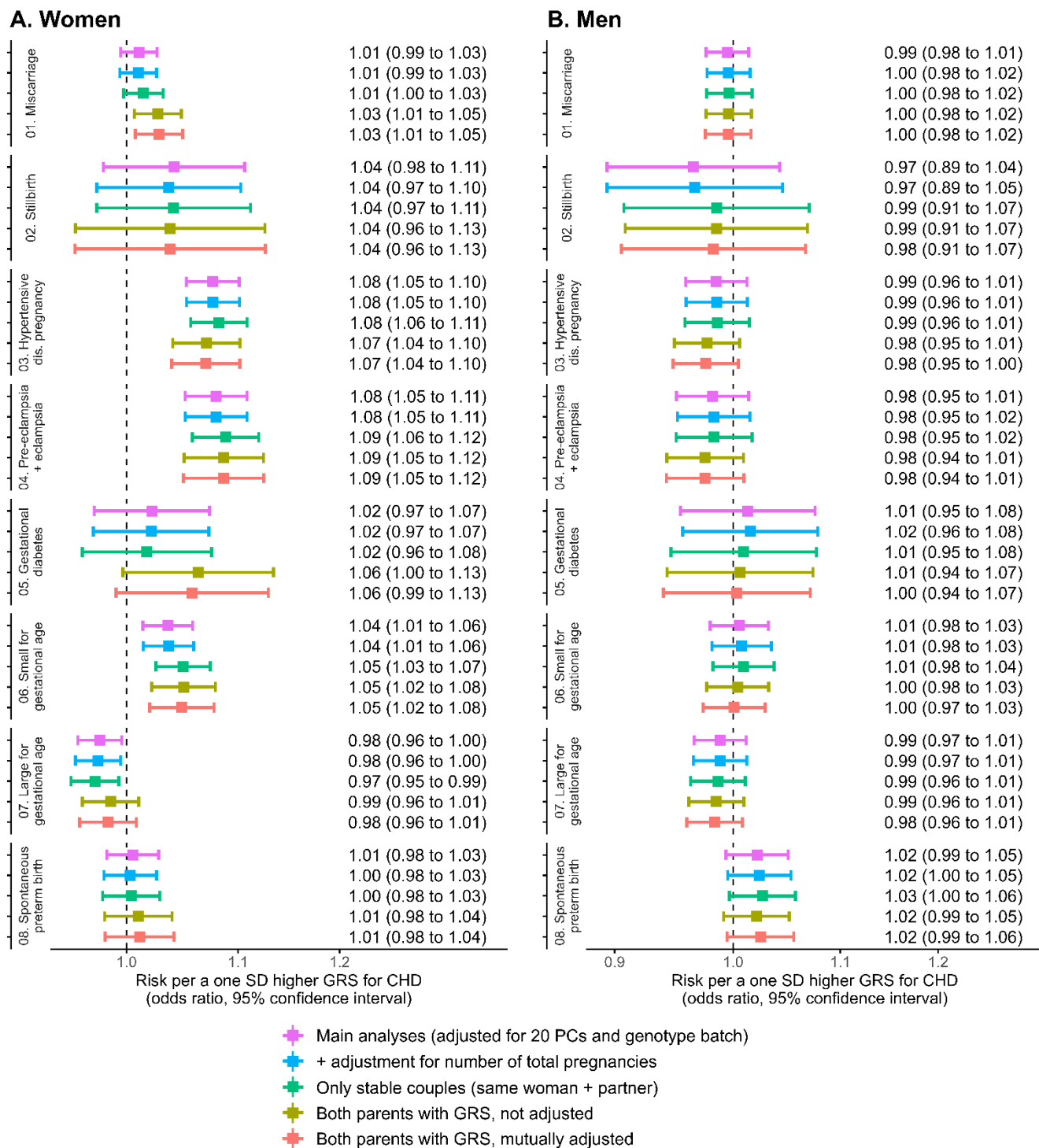
301 In women, a one SD higher GRS for CHD was associated with 8% greater
 302 odds of HDP (OR 1.08, 95% CI 1.05 to 1.10), 8% greater odds of preeclampsia (OR
 303 1.08, 95% CI 1.05 to 1.11), and 4% greater odds of having an SGA baby (OR 1.04,

304 95% CI 1.01 to 1.06). There was evidence of an inverse association between the
305 GRS for CHD and LGA (+1 SD in GRS: OR 0.98, 95% CI 0.96 to 1.00). A positive but
306 imprecise relationship was found for stillbirth (OR 1.04, 95% CI 0.98 to 1.11) and no
307 association was found with sPTB. These findings remained consistent in the subset
308 with genetic data on both parents when adjusting for partners' GRS, as well as in
309 sensitivity analyses adjusting for the number of total pregnancies and restricting the
310 analyses to stable couples. Stronger associations between the GRS for CHD and the
311 risk of miscarriage and GD were observed in couples with genotype information in
312 both parents.

313 In male partners, no association between the GRS for CHD and any APO was
314 observed, except for evidence of a relationship between the GRS for CHD and
315 greater odds of sPTB (OR 1.02, 95% CI 0.99 to 1.05). Estimates remained robust in
316 all sensitivity analyses.

317 Between-study heterogeneity was detected for two outcomes: the association
318 of the GRS for CHD with GD in women (MoBa: OR 1.04, 95% CI 0.99 to 1.09; HUNT:
319 OR 0.86, 95% CI 0.72 to 1.03; p -value for between-study heterogeneity = 0.045;
320 random effects meta-analysis: OR 0.96, 95% CI 0.30 to 3.09), and with sPTB in men
321 (MoBa: OR 1.04, 95% CI 1.01 to 1.07; HUNT: OR 0.97, 95% CI 0.92 to 1.03; p -value
322 for between-study heterogeneity = 0.053; random effects meta-analysis: OR 1.01,
323 95% CI 0.68 to 1.50). For the rest of the outcomes, findings were consistent between
324 the two cohorts (**Supplemental Figure 1**).

325 **Figure 2.** Associations between a one SD higher genetic risk score for coronary
326 heart disease and pregnancy outcomes in women (A) and men (B).



327 Sample sizes vary from 40,703 to 83,900 in women, and from 39,334 to 55,790 in
328 male partners, being smallest for the analyses in the subgroup with genetic data on
329 both parents (see Supplementary Table 2 for information on sample sizes).

330 **DISCUSSION**

331

332 Maternal genetic CHD risk was associated with increased risk of HDP, preeclampsia,
333 and SGA. Weak evidence with confidence intervals spanning the null was found for
334 associations with greater risk of stillbirth and reduced risk of LGA. Null associations
335 with miscarriage, GD, and sPTB were observed. We also found weak evidence of an
336 association between genetic CHD risk with sPTB in men, with associations with other
337 outcomes in men all being close to the null.

338 Our findings support the hypothesis that a woman's existing predisposition to
339 cardiovascular disease may be revealed during pregnancy, specifically through HDP
340 and SGA [1]. The lack of association between male partners' GRS for CHD and
341 these conditions supports these APOs reflecting maternal pre-existing risk of
342 cardiovascular disease. This agrees with previous evidence showing that women
343 who developed these APOs had a greater burden of cardiovascular risk factors
344 before pregnancy [5, 6]. Moreover, high levels of genetically determined
345 cardiovascular risk factors, such as blood pressure, body mass index, and type-2
346 diabetes, have been linked to a higher likelihood of preeclampsia or eclampsia [33].
347 Finally, a recent maternal GWAS of preeclampsia and gestational hypertension found
348 similar associations between the preeclampsia and gestational hypertension
349 polygenic risk scores and hypertension and related outcomes as those seen in
350 GWASs of men and non-pregnant women, leading authors to conclude that the loci
351 associated with preeclampsia and gestational hypertension were not pregnancy
352 specific, rather that pregnancy unmasks existing risk [34].

353 In relation to the association between the maternal genetically predicted CHD
354 risk and other APOs, pregnancy loss is a heterogeneous condition, and maternal
355 predisposition to cardiovascular disease may only be relevant to specific subsets of

356 losses. Stillbirth, which was suggestively linked to greater genetic liability for CHD in
357 our study, is thought to be induced by placental insufficiency and fetal growth
358 restrictions due to some cardiovascular risk factors during pregnancy, such as
359 hypertension [35-37]. Our findings also revealed an unexpected inverse association
360 between the GRS for CHD and LGA. However, given the small magnitude of the
361 relationship in comparison to the other APOs, and the established role of glucose
362 metabolic disturbances (such as type 1 diabetes, GD or prediabetic states due to
363 excess weight) in increasing the risk of having LGA babies [38-40], it would be
364 advisable to validate the association between the GRS for CHD and LGA in future
365 studies involving other populations. As for GD, it has been shown to be closely
366 related to type 2 diabetes, including with a recent GWAS showing strong genetic
367 correlation between the two [41]. Given the associations of type 2 and GD with
368 cardiovascular disease [42, 43], it is surprising that we did not see an association of
369 the maternal GRS for CHD with GD in our study. Limited cases in our population
370 (~2%), the between-study heterogeneity in MoBa and HUNT for this outcome,
371 changes in diagnostic criteria for GD in Norway (which were large and occurred
372 within the time frame of both studies) [26], and underrepresentation in the early years
373 of the MBRN (the precise definition of GD, which differentiates between the diabetic
374 status of the pregnant mother before and during pregnancy, was introduced in the
375 MBRN registration forms in December 1998) [44] may contribute to systematic errors
376 in its diagnosis and hinder our ability to find robust associations. Finally, the lack of
377 association between maternal genetically predicted CHD and sPTB may be due to
378 the fact that not all risk factors for this condition are cardiovascular-related [45].

379 We conceptualized paternal genetic CHD risk as an imperfect negative
380 control, as an association between the paternal GRS for CHD and APO risk could not

381 arise from a direct stress test of pregnancy but associations might arise from shared
382 family environment, paternally transmitted genetic variants of the fetus [46] or a
383 maternal immunological response to pregnancy [47]. The mutual adjustment of
384 paternal for maternal GRS should limit the effect of shared family environment,
385 making this an unlikely explanation for the association between the GRS for CHD in
386 male partners and risk of sPTB. There is evidence of both maternal and paternal
387 genetic effects on gestational duration [48]. However, this is not consistent with our
388 findings (some evidence of an association in men and no strong evidence of such a
389 relationship in women). Given the number of associations that we have explored, and
390 the different association observed in MoBa and HUNT (affected by between-study
391 heterogeneity), it is possible that the association of paternal GRS for CHD with sPTB
392 is a chance finding, which we would suggest treating with caution unless replicated in
393 other independent studies. Of note, the relationships between the maternal GRS for
394 CHD and HDP, pre-eclampsia, SGA and stillbirth were not attenuated after adjusting
395 for the male partners' GRS for CHD, suggesting that these relationships are specific
396 to women and supporting these APOs likely reflecting pre-existing cardiovascular
397 risk.

398 Our study has some limitations. Firstly, male partners were considered as
399 imperfect negative controls in our study, mainly due to the shared family environment
400 that could lead to associations between paternal GRS for CHD and APOs. However,
401 the mutual adjustment of maternal and paternal exposures in negative control
402 analyses aims to control for these shared factors, including those occurring by
403 assortative mating [32]. This imperfection may also be due to the fact that paternal
404 genetic variants related to CHD could affect their reproductive cells' epigenetics and
405 quality and may impact certain placental characteristics that depend on the fetal

406 genotype, which might subsequently alter the risk of APOs by alternative
407 mechanisms [13-16]. Secondly, we identified differences between MoBa and HUNT
408 participants with and without genotype data, which could result in selection bias and
409 reduce our external validity. Differences in MoBa might stem from blood sampling
410 during pregnancy or at delivery and it could be less likely if APOs had been detected.
411 In HUNT, genotyped participants were older. However, selection bias had minimal
412 impact on pregnancy outcomes when comparing MoBa with the general Norwegian
413 population [49]. Thirdly, GD diagnosis may have been affected by systematic errors
414 that may decrease our capacity to find robust associations with this outcome [26, 44].
415 Fourthly, we could not calculate sex-specific GRSs for CHD exposures due to the
416 lack of sex-specific results in the largest GWAS on CHD. We assumed no sex
417 differences in the GRS for CHD, but if untrue, our findings might be biased. Lastly,
418 our study population's characteristics (predominantly adult European men and
419 women) limit the generalizability of our findings to other populations. Despite these
420 limitations, our study has several strengths. To our knowledge, it is the first to
421 investigate the role of genetic liability for CHD in APOs, conducted in a large, well-
422 characterized, and genetically homogeneous population. This complements previous
423 studies that have shown associations of cardiovascular risk factors (e.g., high blood
424 pressure, dyslipidemia, impaired glucose tolerance) with APOs [2-7], by using a GRS
425 that captures environmental (i.e., genetic risk of higher body mass, smoking,
426 education, etc.) as well as likely biological risk for CHD. Unlike those previous
427 studies, interpretation of the magnitude of a one SD difference in a genetic risk score
428 for CHD is unclear. For example, the relative 8% increased odds for HDP and pre-
429 eclampsia (OR 1.08, for both) appears small but must be understood in the context
430 that the genetic variants that we used in the GRS explain ~15% of the variation in

431 CHD risk. We interpret our results as a qualitative indication of the association
432 between a propensity to CHD influencing the risk of APOs, rather than trying to
433 quantify that relationship.

434 **CONCLUSIONS**

435

436 Our results indicate that pregnancy may unmask a woman's pre-existing
437 cardiovascular risk and suggest that a family history of cardiovascular disease or
438 early onset of cardiovascular outcomes could help identify individuals who might
439 benefit from advice and closer monitoring before and during pregnancy.

440 **DECLARATIONS**

441

442 **Consent for publication**

443 Not applicable.

444

445 **Availability of data and materials**

446 The consent given by the MoBa and HUNT participants does not allow for storage of
447 individual data in repositories or journals. Researchers who want to access MoBa
448 datasets for replication should apply by sending an e-mail to datatilgang@fhi.no. This
449 procedure requires approval from the Regional Committee for Medical and Health
450 Research Ethics in Norway and an agreement with MoBa. Data from the HUNT
451 Study used for research are available upon request to the HUNT Data Access
452 Committee (hunt@medisin.ntnu.no) to research groups who meet the data
453 availability requirements described in <http://www.ntnu.edu/hunt/data>. Source data of
454 the GWAS on CHD are available in the Online Table VI of the article of Van Der
455 Harst P et al., Circ Res, 2018, available in the Supplemental Materials
456 (<https://www.ahajournals.org/doi/suppl/10.1161/CIRCRESAHA.117.312086>), as well
457 as in the IEU Open GWAS website (code: ebi-a-GCST005195).

458

459 **Competing interests**

460 O.A.A. is a consultant for cortechs.ai and has received speaker's honoraria from
461 Sunovion, Janssen, and Lundbeck. D.A.L. receives (or has received in the last 10
462 years) research support from National and International government and charitable
463 bodies, Roche Diagnostics and Medtronic for research unrelated to the current work.
464 The rest of the authors no conflict of interest.

465 **Funding**

466 This project received funding from the European Research Council under the
467 European Union’s Horizon 2020 research and innovation program (grant agreement
468 number 947684, 964874, and 101021566). This work was also supported by the
469 Research Council of Norway through its Centres of Excellence funding scheme,
470 project number 262700, and partly funded by the Research Council of Norway,
471 project “Women’s fertility – an essential component of health and well-being” (project
472 number 320656), and project number 223273. Open Access funding was provided by
473 the Norwegian Institute of Public Health. P.R.N. was supported by the European
474 Research Council (grant agreement No 293574). E.C. and A.Havdahl were
475 supported by the Research Council of Norway (274611) and the South-Eastern
476 Norway Regional Health Authority (project numbers 2020022, 2021045). B.B. and
477 B.O.A. work at the K.G. Jebsen Center for Genetic Epidemiology, which is financed
478 by Stiftelsen Kristian Gerhard Jebsen; Faculty of Medicine and Health Sciences,
479 NTNU, Norway. D.A.L. and A.F. are affiliated with a unit that receives funding from
480 the UK Medical Research Council (MC_UU_00032/05). D.A.L. was supported by the
481 British Heart Foundation (CH/F/20/90003 and AA/18/1/34219) and the European
482 Research Council (grant agreement No 101021566). The funders had no role in the
483 collection, analysis, and interpretation of data; in the writing of the report; or in the
484 decision to submit the article for publication.

485

486 **Author contributions**

487 A.F. and M.C.M. conceived and designed the study, obtained funding, and
488 coordinated the project. A.Hernaes, and M.C.M. are responsible for the data curation
489 and the formal analysis. K.H.S. and C.M.P. provided support in data analysis,

490 software use, and visualization of results. A.Hernaez, K.H.S., C.M.P., V.R.M.,
491 M.H.H., P.M., P.R.N, O.A., E.C., A.Havdahl, Ø.N., B.B., B.O.Å., D.A.L., A.F., and
492 M.C.M. were involved in the definition of the methodology of the study and the
493 interpretation of data. A.Hernaez prepared the first draft of the manuscript, and
494 K.H.S., C.M.P., V.R.M., M.H.H., P.M., P.R.N, O.A., E.C., A.Havdahl, Ø.N., B.B.,
495 B.O.Å., D.A.L., A.F., and M.C.M. revised it critically.

496

497 **Acknowledgements**

498 The MoBa Cohort Study is supported by the Norwegian Ministry of Health and Care
499 Services and the Ministry of Education and Research. The HUNT Study is a
500 collaboration between HUNT Research Centre (Faculty of Medicine and Health
501 Sciences, Norwegian University of Science and Technology), Trøndelag County
502 Council, Central Norway Regional Health Authority, and the Norwegian Institute of
503 Public Health. The genotyping in HUNT was financed by the National Institutes of
504 Health; University of Michigan; the Research Council of Norway; the Liaison
505 Committee for Education, Research and Innovation in Central Norway; and the Joint
506 Research Committee between St. Olavs Hospital and the Faculty of Medicine and
507 Health Sciences, NTNU. We are grateful to all the participants in Norway who take
508 part in the MoBa and HUNT studies, those who contributed to the recruitment, and
509 the infrastructure surrounding both cohorts.

510 We thank the Norwegian Institute of Public Health for generating high-quality
511 genomic data in the MoBa study. This research is part of the HARVEST
512 collaboration, supported by the Research Council of Norway (#229624). We also
513 thank the NORMENT Centre for providing genotype data, funded by the Research
514 Council of Norway (#223273), South East Norway Health Authority, and Stiftelsen

515 Kristian Gerhard Jebsen. We further thank the Center for Diabetes Research
516 (University of Bergen) for providing genotype information and performing quality
517 control and imputation of the data, in the context of research projects funded by the
518 European Research Council Advanced Grant SELECTIONPREDISPOSED, Stiftelsen
519 Kristian Gerhard Jebsen, the Trond Mohn Foundation, the Research Council of
520 Norway, the Novo Nordisk Foundation, the University of Bergen, and the Western
521 Norway Health Authority.

522 This work was developed on the TSD (Tjeneste for Sensitive Data) online
523 facilities, owned by the University of Oslo, which are operated and developed by the
524 TSD service group at the IT-Department in University of Oslo (tsd-drift@usit.uio.no).
525 This paper does not necessarily reflect the position or policy of the Norwegian
526 Research Council.

527 **REFERENCES**

528

- 529 1. Sattar N, Greer IA: **Pregnancy complications and maternal cardiovascular risk: opportunities**
530 **for intervention and screening?** *Bmj* 2002, **325**(7356):157-160.
- 531 2. Egeland GM, Klungsøyr K, Øyen N, Tell GS, Næss Ø, Skjærven R: **Preconception**
532 **Cardiovascular Risk Factor Differences Between Gestational Hypertension and**
533 **Preeclampsia: Cohort Norway Study.** *Hypertension* 2016, **67**(6):1173-1180.
- 534 3. Retnakaran R, Shah BR: **Divergent Trajectories of Cardiovascular Risk Factors in the Years**
535 **Before Pregnancy in Women With and Without Gestational Diabetes Mellitus: A**
536 **Population-Based Study.** *Diabetes Care* 2020, **43**(10):2500-2508.
- 537 4. Foo FL, Mahendru AA, Masini G, Fraser A, Cacciatore S, MacIntyre DA, McEniery CM,
538 Wilkinson IB, Bennett PR, Lees CC: **Association Between Prepregnancy Cardiovascular**
539 **Function and Subsequent Preeclampsia or Fetal Growth Restriction.** *Hypertension* 2018,
540 **72**(2):442-450.
- 541 5. Haug EB, Horn J, Markovitz AR, Fraser A, Vatten LJ, Macdonald-Wallis C, Tilling K,
542 Romundstad PR, Rich-Edwards JW, Åsvold BO: **Life Course Trajectories of Cardiovascular**
543 **Risk Factors in Women With and Without Hypertensive Disorders in First Pregnancy: The**
544 **HUNT Study in Norway.** *J Am Heart Assoc* 2018, **7**(15):e009250.
- 545 6. Horn J, Haug EB, Markovitz AR, Fraser A, Vatten LJ, Romundstad PR, Rich-Edwards JW, Åsvold
546 BO: **Life Course Trajectories of Maternal Cardiovascular Risk Factors according to Offspring**
547 **Birthweight: The HUNT Study.** *Sci Rep* 2020, **10**(1):10436.
- 548 7. Markovitz AR, Haug EB, Horn J, Fraser A, Tilling K, Rimm EB, Missmer SA, Williams PL,
549 Romundstad PR, Åsvold BO *et al*: **Normotensive preterm delivery and maternal**
550 **cardiovascular risk factor trajectories across the life course: The HUNT Study, Norway.** *Acta*
551 *Obstet Gynecol Scand* 2021, **100**(3):425-435.
- 552 8. Wang Q, Würtz P, Auro K, Mäkinen VP, Kangas AJ, Soininen P, Tiainen M, Tynkkynen T,
553 Jokelainen J, Santalahti K *et al*: **Metabolic profiling of pregnancy: cross-sectional and**
554 **longitudinal evidence.** *BMC Med* 2016, **14**(1):205.
- 555 9. Stuart JJ, Tanz LJ, Rimm EB, Spiegelman D, Missmer SA, Mukamal KJ, Rexrode KM, Rich-
556 Edwards JW: **Cardiovascular Risk Factors Mediate the Long-Term Maternal Risk Associated**
557 **With Hypertensive Disorders of Pregnancy.** *J Am Coll Cardiol* 2022, **79**(19):1901-1913.
- 558 10. Tobias DK, Stuart JJ, Li S, Chavarro J, Rimm EB, Rich-Edwards J, Hu FB, Manson JE, Zhang C:
559 **Association of History of Gestational Diabetes With Long-term Cardiovascular Disease Risk**
560 **in a Large Prospective Cohort of US Women.** *JAMA Intern Med* 2017, **177**(12):1735-1742.
- 561 11. Romundstad PR, Magnussen EB, Smith GD, Vatten LJ: **Hypertension in pregnancy and later**
562 **cardiovascular risk: common antecedents?** 2010(1524-4539 (Electronic)).
- 563 12. Borges MC, Clayton G, Freathy RM, Felix JF, Fernández-Sanlés A, Gonçalves Soares A, Kilpi F,
564 Yang Q, McEachan RRC, Richmond RC *et al*: **Integrating multiple lines of evidence to assess**
565 **the effects of maternal BMI on pregnancy and perinatal outcomes in up to 497,932 women.**
566 *medRxiv* 2022:2022.2007.2022.22277930.
- 567 13. Galaviz-Hernandez C, Sosa-Macias M, Teran E, Garcia-Ortiz JE, Lazalde-Ramos BP: **Paternal**
568 **Determinants in Preeclampsia.** *Front Physiol* 2018, **9**:1870.
- 569 14. Sharp GC, Lawlor DA: **Paternal impact on the life course development of obesity and type 2**
570 **diabetes in the offspring.** *Diabetologia* 2019, **62**(10):1802-1810.
- 571 15. Beaumont RN, Flatley C, Vaudel M, Wu X, Chen J, Moen G-H, Skotte L, Helgeland Ø, Sole-
572 Navais P, Banasik K *et al*: **Genome-wide association study of placental weight in 179,025**
573 **children and parents reveals distinct and shared genetic influences between placental and**
574 **fetal growth.** *medRxiv* 2022:2022.2011.2025.22282723.

- 575 16. Tyrmi JS, Kaartokallio T, Lokki AI, Jääskeläinen T, Kortelainen E, Ruotsalainen S, Karjalainen J,
576 Ripatti S, Kivioja A, Laisk T *et al*: **Genetic Risk Factors Associated With Preeclampsia and**
577 **Hypertensive Disorders of Pregnancy.** *JAMA Cardiol* 2023.
- 578 17. van der Harst P, Verweij N: **Identification of 64 Novel Genetic Loci Provides an Expanded**
579 **View on the Genetic Architecture of Coronary Artery Disease.** *Circ Res* 2018, **122**(3):433-
580 443.
- 581 18. Magnus P, Birke C, Vejrup K, Haugan A, Alsaker E, Daltveit AK, Handal M, Haugen M, Høiseth
582 G, Knudsen GP *et al*: **Cohort Profile Update: The Norwegian Mother and Child Cohort Study**
583 **(MoBa).** *Int J Epidemiol* 2016, **45**(2):382-388.
- 584 19. Åsvold BO, Langhammer A, Rehn TA, Kjelvik G, Grøntvedt TV, Sørgerd EP, Fenstad JS,
585 Heggland J, Holmen O, Stuifbergen MC *et al*: **Cohort Profile Update: The HUNT Study,**
586 **Norway.** *Int J Epidemiol* 2022.
- 587 20. Brumpton BM, Graham S, Surakka I, Skogholt AH, Løset M, Fritsche LG, Wolford B, Zhou W,
588 Nielsen JB, Holmen OL *et al*: **The HUNT Study: a population-based cohort for genetic**
589 **research.** *medRxiv* 2021.
- 590 21. Irgens LM: **The Medical Birth Registry of Norway. Epidemiological research and surveillance**
591 **throughout 30 years.** *Acta Obstet Gynecol Scand* 2000, **79**(6):435-439.
- 592 22. Corfield EC, Frei O, Shadrin AA, Rahman Z, Lin A, Athanasiu L, Akdeniz BC, Hannigan L,
593 Wootton RE, Austerberry C *et al*: **The Norwegian Mother, Father, and Child cohort study**
594 **(MoBa) genotyping data resource: MoBaPsychGen pipeline v.1.** *bioRxiv* 2022.
- 595 23. **SNPs for coronary artery disease (Dataset: ebi-a-GCST005195)**
596 [\[https://gwas.mrcieu.ac.uk/datasets/ebi-a-GCST005195/\]](https://gwas.mrcieu.ac.uk/datasets/ebi-a-GCST005195/)
- 597 24. Choi SW, Mak TS, O'Reilly PF: **Tutorial: a guide to performing polygenic risk score analyses.**
598 *Nat Protoc* 2020, **15**(9):2759-2772.
- 599 25. Scott G, Gillon TE, Pels A, von Dadelszen P, Magee LA: **Guidelines-similarities and**
600 **dissimilarities: a systematic review of international clinical practice guidelines for**
601 **pregnancy hypertension.** *Am J Obstet Gynecol* 2022, **226**(2s):S1222-s1236.
- 602 26. **Norwegian Guidelines for gestational diabetes (Svangerskapsdiabetes)**
603 [\[https://www.legeforeningen.no/foreningsledd/fagmed/norsk-gynekologisk-forening/veiledere/veileder-i-fodselshjelp/svangerskapsdiabetes/\]](https://www.legeforeningen.no/foreningsledd/fagmed/norsk-gynekologisk-forening/veiledere/veileder-i-fodselshjelp/svangerskapsdiabetes/)
- 604 27. Reforma LG, Febres-Cordero D, Trochtenberg A, Modest AM, Collier AY, Spiel MH: **Incidence**
605 **of small-for-gestational-age infant birthweight following early intertwin fetal growth**
606 **discordance in dichorionic and monochorionic twin pregnancies.** *Am J Obstet Gynecol* 2021.
- 607 28. Reddy UM, Deshmukh U, Dude A, Harper L, Osmundson SS: **Society for Maternal-Fetal**
608 **Medicine Consult Series #58: Use of antenatal corticosteroids for individuals at risk for late**
609 **preterm delivery: Replaces SMFM Statement #4, Implementation of the use of antenatal**
610 **corticosteroids in the late preterm birth period in women at risk for preterm delivery,**
611 **August 2016.** *Am J Obstet Gynecol* 2021, **225**(5):B36-b42.
- 612 29. Skåra KH, Åsvold BO, Hernáez Á, Fraser A, Rich-Edwards JW, Farland LV, Næss Ø, Lawlor DA,
613 Brumpton B, Magnus MC: **Risk of cardiovascular disease in women and men with**
614 **subfertility: the Trøndelag Health Study.** *Fertility and Sterility* 2022.
- 615 30. Hernáez Á, Wootton RE, Page CM, Skåra KH, Fraser A, Rogne T, Magnus P, Njølstad PR,
616 Andreassen OA, Burgess S *et al*: **Smoking and infertility: multivariable regression and**
617 **Mendelian randomization analyses in the Norwegian Mother, Father and Child Cohort**
618 **Study.** *Fertility and Sterility* 2022.
- 619 31. Burgess S, Davey Smith G, Davies NM, Dudbridge F, Gill D, Glymour MM, Hartwig FP, Holmes
620 MV, Minelli C, Relton CL *et al*: **Guidelines for performing Mendelian randomization**
621 **investigations.** *Wellcome Open Res* 2019, **4**:186.
- 622 32. Madley-Dowd P, Rai D, Zammit S, Heron J: **Simulations and directed acyclic graphs explained**
623 **why assortative mating biases the prenatal negative control design.** *J Clin Epidemiol* 2020,
624 **118**:9-17.

- 626 33. Ardissino M, Slob EAW, Millar O, Reddy RK, Lazzari L, Patel KHK, Ryan D, Johnson MR, Gill D,
627 Ng FS: **Maternal Hypertension Increases Risk of Preeclampsia and Low Fetal Birthweight:
628 Genetic Evidence From a Mendelian Randomization Study.** *Hypertension* 2022, **79**(3):588-
629 598.
- 630 34. Honigberg MC, Truong B, Khan RR, Xiao B, Bhatta L, Vy HMT, Guerrero RF, Schuermans A,
631 Selvaraj MS, Patel AP *et al*: **Polygenic prediction of preeclampsia and gestational
632 hypertension.** *Nat Med* 2023.
- 633 35. Brosens I, Pijnenborg R, Vercruyssen L, Romero R: **The "Great Obstetrical Syndromes" are
634 associated with disorders of deep placentation.** *Am J Obstet Gynecol* 2011, **204**(3):193-201.
- 635 36. Page JM, Silver RM: **Interventions to prevent stillbirth.** *Semin Fetal Neonatal Med* 2017,
636 **22**(3):135-145.
- 637 37. Nobles CJ, Mendola P, Mumford SL, Naimi AI, Yeung EH, Kim K, Park H, Wilcox B, Silver RM,
638 Perkins NJ *et al*: **Preconception Blood Pressure Levels and Reproductive Outcomes in a
639 Prospective Cohort of Women Attempting Pregnancy.** *Hypertension* 2018, **71**(5):904-910.
- 640 38. Black MH, Sacks DA, Xiang AH, Lawrence JM: **The relative contribution of prepregnancy
641 overweight and obesity, gestational weight gain, and IADPSG-defined gestational diabetes
642 mellitus to fetal overgrowth.** *Diabetes Care* 2013, **36**(1):56-62.
- 643 39. Landon MB, Spong CY, Thom E, Carpenter MW, Ramin SM, Casey B, Wapner RJ, Varner MW,
644 Rouse DJ, Thorp JM, Jr. *et al*: **A multicenter, randomized trial of treatment for mild
645 gestational diabetes.** *N Engl J Med* 2009, **361**(14):1339-1348.
- 646 40. Persson M, Norman M, Hanson U: **Obstetric and perinatal outcomes in type 1 diabetic
647 pregnancies: A large, population-based study.** *Diabetes Care* 2009, **32**(11):2005-2009.
- 648 41. Pervjakova N, Moen GH, Borges MC, Ferreira T, Cook JP, Allard C, Beaumont RN, Canouil M,
649 Hatem G, Heiskala A *et al*: **Multi-ancestry genome-wide association study of gestational
650 diabetes mellitus highlights genetic links with type 2 diabetes.** *Hum Mol Genet* 2022.
- 651 42. Parikh NI, Gonzalez JM, Anderson CAM, Judd SE, Rexrode KM, Hlatky MA, Gunderson EP,
652 Stuart JJ, Vaidya D: **Adverse Pregnancy Outcomes and Cardiovascular Disease Risk: Unique
653 Opportunities for Cardiovascular Disease Prevention in Women: A Scientific Statement
654 From the American Heart Association.** *Circulation* 2021, **143**(18):e902-e916.
- 655 43. Sarwar N, Gao P, Seshasai SR, Gobin R, Kaptoge S, Di Angelantonio E, Ingelsson E, Lawlor DA,
656 Selvin E, Stampfer M *et al*: **Diabetes mellitus, fasting blood glucose concentration, and risk
657 of vascular disease: a collaborative meta-analysis of 102 prospective studies.** *Lancet* 2010,
658 **375**(9733):2215-2222.
- 659 44. Stene LC, Eidem I, Vangen S, Joner G, Irgens LM, Moe N: **The validity of the diabetes mellitus
660 diagnosis in the Medical Birth Registry of Norway.** *Norsk Epidemiologi* 2009, **17**(2).
- 661 45. Kemp MW: **Preterm birth, intrauterine infection, and fetal inflammation.** *Front Immunol*
662 2014, **5**:574.
- 663 46. Shah PS: **Paternal factors and low birthweight, preterm, and small for gestational age
664 births: a systematic review.** *Am J Obstet Gynecol* 2010, **202**(2):103-123.
- 665 47. Gomez-Lopez N, Galaz J, Miller D, Farias-Jofre M, Liu Z, Arenas-Hernandez M, Garcia-Flores V,
666 Shaffer Z, Greenberg JM, Theis KR *et al*: **The immunobiology of preterm labor and birth:
667 intra-amniotic inflammation or breakdown of maternal-fetal homeostasis.** *Reproduction*
668 2022, **164**(2):R11-r45.
- 669 48. Lie RT, Wilcox AJ, Skjaerven R: **Maternal and paternal influences on length of pregnancy.**
670 *Obstet Gynecol* 2006, **107**(4):880-885.
- 671 49. Nilsen RM, Vollset SE, Gjessing HK, Skjaerven R, Melve KK, Schreuder P, Alsaker ER, Haug K,
672 Daltveit AK, Magnus P: **Self-selection and bias in a large prospective pregnancy cohort in
673 Norway.** *Paediatr Perinat Epidemiol* 2009, **23**(6):597-608.

674

675 **SUPPLEMENTAL TABLES**

676

677 **Supplemental Table 1. Genetic variants used in the calculation of the genetic risk**

678 score for coronary heart disease.

679

RSID	Chromosome	Position	Reference allele	Effect allele	Effect allele frequency	Beta	Standard error	p-value	Available in MoBa	Available in HUNT
rs36096196	1	2252205	C	T	0.1483	0.0469	0.0082	1.33E-08	Yes	Yes
rs2493298	1	3325912	C	A	0.1355	0.0514	0.0084	9.97E-10	Yes	Yes
rs4072980	1	38456106	G	A	0.4303	-0.0326	0.0052	4.13E-10	Yes	Yes
rs11591147	1	55505647	G	T	0.0164	-0.2406	0.0247	1.86E-22	No	Yes
rs17114046	1	56966350	G	A	0.9062	0.096	0.0088	8.04E-28	Yes	Yes
rs602633	1	109821511	G	T	0.2343	-0.0999	0.0062	3.63E-58	Yes	Yes
rs11806316	1	115753482	G	A	0.3668	-0.0337	0.0054	4.16E-10	Yes	Yes
rs11204892	1	151768048	G	A	0.1892	-0.0487	0.0073	2.85E-11	Yes	Yes
rs4845625	1	154422067	C	T	0.4338	0.0395	0.0051	6.69E-15	Yes	Yes
rs1892094	1	169094459	C	T	0.4956	-0.0362	0.0052	3.14E-12	Yes	Yes
rs6700559	1	200646073	C	T	0.4715	-0.0284	0.005	1.77E-08	Yes	Yes
rs2820315	1	201872264	C	T	0.3012	0.0359	0.0056	1.10E-10	Yes	Yes
rs60154123	1	210468999	C	T	0.1501	0.0444	0.008	2.58E-08	Yes	Yes
rs35158675	1	222829550	G	A	0.6821	0.0699	0.0064	5.91E-28	Yes	Yes
rs16986953	2	19942473	G	A	0.1095	0.0812	0.0098	1.06E-16	Yes	Yes
rs515135	2	21286057	C	T	0.1837	-0.0555	0.0066	5.74E-17	Yes	Yes
rs6544713	2	44073881	C	T	0.3038	0.0492	0.0056	1.84E-18	Yes	Yes
rs582384	2	45896437	C	A	0.5251	0.0332	0.0058	7.64E-09	Yes	Yes
rs6743030	2	85763520	C	T	0.465	0.0565	0.0057	1.81E-23	Yes	Yes
rs2252641	2	145801461	C	T	0.5299	-0.0368	0.0051	5.41E-13	Yes	Yes
rs12999907	2	164957251	G	A	0.8189	0.0482	0.0074	6.31E-11	Yes	Yes
rs6728861	2	203873743	G	A	0.1174	0.1054	0.0089	1.29E-32	Yes	Yes
rs1250229	2	216304384	C	T	0.2722	0.0435	0.0059	1.58E-13	Yes	Yes
rs2571445	2	218683154	G	A	0.3895	0.037	0.0052	1.56E-12	Yes	Yes
rs11677932	2	238223955	G	A	0.3157	-0.0339	0.0061	2.64E-08	Yes	Yes
rs34991912	3	14926351	C	T	0.4344	0.0379	0.0057	3.21E-11	Yes	Yes
rs7633770	3	46688562	G	A	0.4061	0.0295	0.0052	1.10E-08	Yes	Yes
rs7617773	3	48193515	C	T	0.6693	0.0355	0.0054	3.48E-11	Yes	Yes
rs4678145	3	124450081	G	C	0.1284	0.0639	0.0083	1.45E-14	Yes	Yes
rs10512861	3	132257961	G	T	0.1433	-0.0431	0.0073	3.00E-09	Yes	Yes
rs667920	3	136069472	G	T	0.7751	0.0489	0.0063	6.08E-15	Yes	Yes
rs185244	3	138092889	C	T	0.1625	0.0644	0.0076	2.40E-17	Yes	Yes
rs789294	3	154057741	G	C	0.1649	-0.0642	0.0081	3.36E-15	Yes	Yes
rs4266144	3	156852592	G	C	0.6774	-0.0346	0.0061	1.40E-08	Yes	Yes

rs12897	3	172115902	G	A	0.5914	-0.0358	0.0059	1.21E-09	Yes	Yes
rs17081933	4	57822869	T	A	0.1979	0.0399	0.007	1.17E-08	Yes	Yes
rs12500824	4	77416627	G	A	0.3565	0.0336	0.0053	1.64E-10	Yes	Yes
rs10857147	4	81181072	T	A	0.7208	-0.0491	0.0064	1.37E-14	Yes	Yes
rs11099493	4	82587050	G	A	0.6924	0.039	0.0062	2.49E-10	Yes	Yes
rs3775058	4	96117371	T	A	0.2341	0.0386	0.0067	7.63E-09	Yes	Yes
rs7678555	4	120909501	C	A	0.7166	-0.0486	0.0063	1.23E-14	Yes	Yes
rs6841581	4	148401190	G	A	0.1559	0.0751	0.0074	5.18E-24	Yes	Yes
rs7692387	4	156635309	G	A	0.1892	-0.0643	0.0065	3.34E-23	Yes	Yes
rs7696431	4	169687725	G	T	0.5098	0.0311	0.0056	3.09E-08	Yes	Yes
rs112941079	5	9546098	G	A	0.8676	0.0615	0.0085	3.75E-13	Yes	Yes
rs3936511	5	55860781	G	A	0.823	-0.0366	0.0067	3.74E-08	Yes	Yes
rs273909	5	131667353	G	A	0.8754	-0.0488	0.0078	4.74E-10	No	Yes
rs246600	5	142516897	C	T	0.4633	0.043	0.0051	6.53E-17	Yes	Yes
rs9349379	6	12903957	G	A	0.5907	-0.1072	0.0058	2.72E-76	Yes	Yes
rs6909752	6	22612629	G	A	0.3545	0.0442	0.0059	5.71E-14	Yes	Yes
rs644045	6	31883957	G	A	0.3528	-0.0413	0.0057	2.80E-13	Yes	No
rs2814944	6	34552797	G	A	0.1554	0.0479	0.0072	2.15E-11	Yes	Yes
rs1334894	6	35615130	C	T	0.0919	-0.0482	0.0088	4.84E-08	Yes	Yes
rs1321309	6	36638636	G	A	0.4907	0.028	0.0051	3.48E-08	Yes	Yes
rs10947789	6	39174922	C	T	0.7671	0.0413	0.006	7.63E-12	Yes	Yes
rs6905288	6	43758873	G	A	0.5807	0.0386	0.0056	4.00E-12	Yes	Yes
rs71566846	6	57148171	C	T	0.0662	0.0829	0.0114	3.24E-13	Yes	Yes
rs4613862	6	82612271	C	A	0.5314	0.0319	0.0052	6.58E-10	Yes	Yes
rs1591805	6	126717064	G	A	0.4927	0.037	0.0058	1.17E-10	Yes	Yes
rs2327429	6	134209837	C	T	0.695	0.0655	0.0056	3.56E-31	Yes	Yes
rs17080091	6	150997401	C	T	0.0839	-0.0537	0.0092	6.09E-09	Yes	Yes
rs55730499	6	161005610	C	T	0.0693	0.3122	0.0118	9.78E-154	Yes	Yes
rs10267593	7	1937261	G	A	0.2012	-0.036	0.0064	1.88E-08	Yes	Yes
rs7797644	7	6486067	C	T	0.2321	-0.0386	0.0069	2.10E-08	Yes	Yes
rs11509880	7	12261911	G	A	0.3612	0.0327	0.0059	3.27E-08	Yes	Yes
rs2107595	7	19049388	G	A	0.1767	0.0752	0.0073	1.25E-24	Yes	Yes
rs2107732	7	45077978	G	A	0.0874	-0.0567	0.0103	3.64E-08	No	Yes
rs2189839	7	107230026	G	A	0.2899	0.0345	0.0063	4.53E-08	Yes	Yes
rs975722	7	117332914	G	A	0.595	-0.0283	0.0052	4.17E-08	Yes	Yes
rs11556924	7	129663496	C	T	0.3624	-0.0548	0.0055	1.37E-23	Yes	Yes
rs10237377	7	139757136	G	T	0.3608	-0.0338	0.0058	6.53E-09	Yes	Yes
rs3918226	7	150690176	C	T	0.0732	0.1071	0.0115	1.35E-20	Yes	Yes
rs6997340	8	18286997	C	T	0.3025	0.0331	0.0056	4.60E-09	Yes	Yes
rs17091891	8	19843171	C	T	0.8709	0.0585	0.0078	5.15E-14	Yes	Yes
rs6984210	8	22033615	G	C	0.939	-0.0784	0.0115	1.04E-11	No	Yes
rs10093110	8	106565414	G	A	0.4167	-0.0319	0.0057	1.88E-08	Yes	Yes
rs6982502	8	126479362	C	T	0.5298	-0.0498	0.0051	7.67E-23	Yes	Yes
rs4977574	9	22098574	G	A	0.519	-0.1788	0.0056	8.82E-223	Yes	Yes
rs944172	9	110517794	C	T	0.7197	-0.0395	0.0057	3.59E-12	Yes	Yes

rs885150	9	124420173	C	T	0.7304	-0.0355	0.0058	7.86E-10	Yes	Yes
rs2519093	9	136141870	C	T	0.1841	0.0554	0.0072	2.03E-14	Yes	Yes
rs61848342	10	12303813	C	T	0.6355	-0.0363	0.0059	6.38E-10	Yes	Yes
rs9337951	10	30317073	G	A	0.3178	0.0543	0.0064	1.73E-17	No	Yes
rs1870634	10	44480811	G	T	0.3511	-0.06	0.0059	3.50E-24	Yes	Yes
rs17680741	10	82251514	C	T	0.7152	0.042	0.0062	1.72E-11	Yes	Yes
rs1412444	10	91002927	C	T	0.3527	0.0559	0.0059	2.43E-21	Yes	Yes
rs3740390	10	104638480	C	T	0.1066	-0.0662	0.0084	4.67E-15	Yes	Yes
rs4918072	10	105693644	G	A	0.2713	0.0386	0.0063	9.63E-10	Yes	Yes
rs4752700	10	124237612	G	A	0.5508	-0.0332	0.0051	8.02E-11	Yes	Yes
rs11601507	11	5701074	C	A	0.0739	0.0782	0.0108	5.61E-13	Yes	Yes
rs472109	11	9770318	G	C	0.5698	0.0391	0.0057	6.26E-12	Yes	Yes
rs7926712	11	13303085	G	A	0.3101	-0.0351	0.0061	9.41E-09	Yes	Yes
rs7116641	11	43696917	G	T	0.6877	-0.0314	0.0055	1.03E-08	Yes	Yes
rs12801636	11	65391317	G	A	0.2364	-0.0403	0.006	2.29E-11	Yes	Yes
rs606452	11	75276178	C	A	0.1707	-0.0466	0.0071	4.76E-11	Yes	Yes
rs4754698	11	100631908	G	C	0.5399	-0.0368	0.0056	6.79E-11	Yes	Yes
rs974819	11	103660567	C	T	0.3082	0.0614	0.0055	1.12E-28	Yes	Yes
rs651821	11	116662579	C	T	0.901	-0.0692	0.0096	7.03E-13	Yes	Yes
rs11838267	12	7175872	C	T	0.8679	0.0514	0.0083	6.15E-10	No	Yes
rs10841443	12	20220033	G	C	0.3409	-0.046	0.0061	2.86E-14	Yes	Yes
rs11170820	12	54513915	G	C	0.9292	-0.0832	0.0117	9.28E-13	Yes	Yes
rs11613352	12	57792580	C	T	0.235	-0.036	0.0062	4.92E-09	Yes	Yes
rs2681492	12	90013089	C	T	0.8141	-0.0558	0.0072	8.64E-15	Yes	Yes
rs11107903	12	95507971	G	A	0.0768	-0.0747	0.0105	1.06E-12	Yes	Yes
rs7137828	12	111932800	C	T	0.5535	-0.0643	0.006	3.72E-27	Yes	Yes
rs1169288	12	121416650	C	A	0.6725	-0.049	0.0056	1.26E-18	Yes	Yes
rs11057830	12	125307053	G	A	0.1465	0.0655	0.0075	1.91E-18	Yes	Yes
rs9319428	13	28973621	G	A	0.3121	0.036	0.0055	5.36E-11	Yes	Yes
rs7998440	13	33125206	G	A	0.3549	-0.0383	0.0059	1.19E-10	Yes	Yes
rs9515203	13	111049623	C	T	0.7392	0.0596	0.006	3.89E-23	No	Yes
rs1317507	13	113631780	C	A	0.2608	0.0398	0.0058	8.21E-12	Yes	Yes
rs2145598	14	58794001	G	A	0.5758	-0.0283	0.0052	4.26E-08	Yes	Yes
rs7145159	14	75583268	C	T	0.5234	-0.0319	0.0051	3.60E-10	Yes	Yes
rs112635299	14	94838142	G	T	0.0193	-0.1363	0.0222	8.44E-10	Yes	Yes
rs8003602	14	100148961	C	T	0.2681	-0.0539	0.0066	2.89E-16	Yes	Yes
rs6494488	15	65024204	G	A	0.8117	0.0382	0.007	3.90E-08	Yes	Yes
rs72743461	15	67441750	C	A	0.2211	-0.0576	0.0069	5.68E-17	Yes	Yes
rs7173743	15	79141784	C	T	0.5542	0.0636	0.0051	5.48E-36	Yes	Yes
rs1807214	15	89565257	C	A	0.8891	0.0639	0.0097	5.21E-11	Yes	Yes
rs17514846	15	91416550	C	A	0.4605	0.0559	0.0052	9.86E-27	Yes	Yes
rs17581137	15	96146414	C	A	0.754	0.0373	0.0065	1.21E-08	Yes	Yes
rs12149545	16	56993161	G	A	0.3035	-0.0374	0.0062	1.19E-09	Yes	Yes
rs1050362	16	72130815	C	A	0.3755	0.0352	0.0053	2.92E-11	Yes	Yes
rs8046696	16	75442143	G	T	0.4311	-0.0479	0.0058	1.91E-16	Yes	Yes

rs7199941	16	81906423	G	A	0.3982	0.0367	0.0051	9.36E-13	Yes	Yes
rs7500448	16	83045790	G	A	0.7594	0.0557	0.0068	1.61E-16	Yes	Yes
rs170041	17	2170216	C	T	0.2943	-0.0469	0.0056	4.11E-17	Yes	Yes
rs12936587	17	17543722	G	A	0.4379	-0.032	0.0052	9.51E-10	Yes	Yes
rs11080107	17	27938424	C	T	0.5146	-0.0358	0.0057	2.90E-10	Yes	Yes
rs76954792	17	30033514	C	T	0.2197	0.0393	0.0069	1.19E-08	Yes	Yes
rs2074164	17	40270238	G	C	0.1956	0.0423	0.0073	7.36E-09	Yes	Yes
rs17608766	17	45013271	C	T	0.8632	-0.0469	0.0076	8.20E-10	Yes	No
rs62076439	17	47404628	G	T	0.3409	0.048	0.006	1.63E-15	Yes	Yes
rs1476098	17	59237013	C	A	0.2122	0.0443	0.0072	8.51E-10	Yes	Yes
rs9892152	17	62401965	C	T	0.4717	-0.033	0.005	6.28E-11	Yes	Yes
rs9964304	18	47229717	C	A	0.716	-0.0382	0.0063	1.14E-09	Yes	Yes
rs663640	18	57846077	C	T	0.222	0.0383	0.0068	2.02E-08	Yes	Yes
rs116843064	19	8429323	G	A	0.0202	-0.1402	0.0224	3.57E-10	Yes	Yes
rs55791371	19	11188153	C	A	0.8868	0.1157	0.0092	1.93E-36	Yes	Yes
rs7251815	19	17844942	G	T	0.2162	0.0511	0.0069	1.44E-13	Yes	Yes
rs4803455	19	41851509	C	A	0.4954	-0.0484	0.0057	2.36E-17	Yes	Yes
rs7412	19	45412079	C	T	0.079	-0.1368	0.011	2.14E-35	Yes	Yes
rs867186	20	33764554	G	A	0.8971	0.0573	0.0084	6.84E-12	Yes	Yes
rs6102343	20	39924279	G	A	0.2467	0.0372	0.0065	1.12E-08	Yes	Yes
rs3827066	20	44586023	C	T	0.1437	0.0424	0.0072	4.40E-09	Yes	Yes
rs260020	20	57714025	C	T	0.1309	0.0518	0.0084	7.96E-10	Yes	Yes
rs2832227	21	30533076	G	A	0.8258	-0.0393	0.0067	4.16E-09	Yes	Yes
rs28451064	21	35593827	G	A	0.1239	0.1083	0.009	2.58E-33	Yes	Yes

681 **Supplemental Table 2.** Sample sizes.

682

	Women			Male partners		
	Main analyses	Only stable couples	Both parents with genotype data	Main analyses	Only stable couples	Both parents with genotype data
Miscarriage	75,210	65,590	45,273	51,156	45,239	45,212
Stillbirth	83,900	74,009	51,396	55,790	49,794	49,846
Hypertensive disorders of pregnancy	83,114	73,339	50,906	55,273	49,341	49,377
Pre-eclampsia + eclampsia	83,114	73,339	50,906	55,273	49,341	49,377
Gestational diabetes	83,900	74,009	51,396	55,790	49,794	49,846
Small for gestational age	66,110	58,857	40,703	43,967	39,395	39,334
Large for gestational age	69,789	61,994	42,972	46,104	41,324	41,293
Spontaneous preterm birth	83,522	73,640	51,167	55,536	49,595	49,621

683

684 **Supplemental Table 3.** Description of participants with and without genotype data in MoBa and HUNT.

685

	MoBa				HUNT			
	Women		Men		Women		Men	
	Included	Non-included	Included	Non-included	Included	Non-included	Included	Non-included
Birth year, median (1 st -3 rd quartile)	1975 (1972-1979)	1975 (1972-1979)	1973 (1970-1977)	1973 (1969-1976)	1964 (1958-1971)	1976 (1966-1985)	1962 (1956-1969)	1974 (1964-1983)
Number of pregnancies, median (1 st -3 rd quartile)	2 (2-3)	2 (2-3)	2 (2-3)	2 (2-3)	2 (2-3)	2 (2-3)	2 (2-3)	2 (2-3)
Participants in pregnancies with more than one different partner, <i>n</i> (%)	9,147 (13.3%)	2,099 (13.1%)	5,819 (12.3%)	2,945 (13.9%)	745 (4.74%)	203 (3.53%)	178 (2.08%)	51 (1.70%)
Age in first pregnancy, median (1 st -3 rd quartile)	27 (24-30)	27 (24-30)	29 (26-33)	29 (26-33)	24 (20-27)	24 (21-28)	26 (23-29)	27 (24-30)
Education years, mean \pm SD	17.0 \pm 3.36	16.7 \pm 3.55	16.3 \pm 3.56	16.0 \pm 3.66	14.3 \pm 4.13	15.0 \pm 4.14	13.5 \pm 4.08	14.1 \pm 4.27
Body mass index (kg/m ²),	23.1	23.0	25.4	25.4	25.2	25.3	26.6	26.7

median (1 st -3 rd quartile)	(21.1-25.9)	(20.9-25.7)	(23.6-27.7)	(23.6-27.7)	(22.7-28.6)	(22.6-29.0)	(24.5-29.1)	(24.5-29.4)
Ever smokers, <i>n</i> (%)	35,632 (52.3%)	8,071 (51.1%)	24,294 (51.2%)	11,461 (54.1%)	8,865 (57.0%)	3,080 (54.0%)	4,233 (50.1%)	1,533 (51.4%)
Total number of deliveries, mean ± SD	2.54 ± 0.85	2.55 ± 0.89	2.51 ± 0.81	2.54 ± 0.86	1.48 ± 0.88	1.28 ± 0.94	1.50 ± 0.81	1.31 ± 0.85
Miscarriage, <i>n</i> (%)	20,866 (30.4%)	4,835 (30.7%)	14,451 (30.6%)	6,484 (31.0%)	1,950 (30.0%) ^a	1,184 (29.4%) ^a	1,145 (29.6%) ^a	662 (29.3%) ^a
Stillbirth, <i>n</i> (%)	872 (1.27%)	238 (1.51%)	581 (1.23%)	313 (1.49%)	198 (1.30%)	45 (0.84%)	84 (0.99%)	19 (0.64%)
Any hypertensive disorders of pregnancy, <i>n</i> (%)	7,288 (10.6%)	1,730 (11.0%)	5,186 (11.0%)	2,297 (11.0%)	1,500 (9.87%)	483 (9.02%)	870 (10.2%)	288 (9.66%)
Pre-eclampsia + eclampsia, <i>n</i> (%)	5,143 (7.49%)	1,198 (7.61%)	3,589 (7.59%)	1,606 (7.67%)	1,080 (7.11%)	336 (6.28%)	641 (7.54%)	205 (6.88%)
Gestational diabetes, <i>n</i> (%)	1,495 (2.18%)	474 (3.01%)	1,041 (2.20%)	553 (2.64%)	127 (0.84%)	111 (2.07%)	62 (0.73%)	69 (2.31%)
Small for gestational age,	10,552	2,706	7,354	3,608	1,544	251	862	136

<i>n</i> (%)	(15.8%)	(17.7%)	(16.0%)	(17.8%)	(10.2%)	(4.69%)	(10.1%)	(4.56%)
Large for gestational age,	14,620	3,063	9,880	4,375	1,733	285	1,070	179
<i>n</i> (%)	(21.7%)	(20.0%)	(21.3%)	(21.4%)	(11.4%)	(5.33%)	(12.6%)	(6.00%)
Spontaneous preterm birth,	6,282	1,508	4,187	2,027	2,643	688	1,509	385
<i>n</i> (%)	(9.18%)	(9.63%)	(8.89%)	(9.73%)	(17.5%)	(13.0%)	(17.8%)	(13.0%)

686 ^a: analyses restricted to 1998 or later pregnancies.

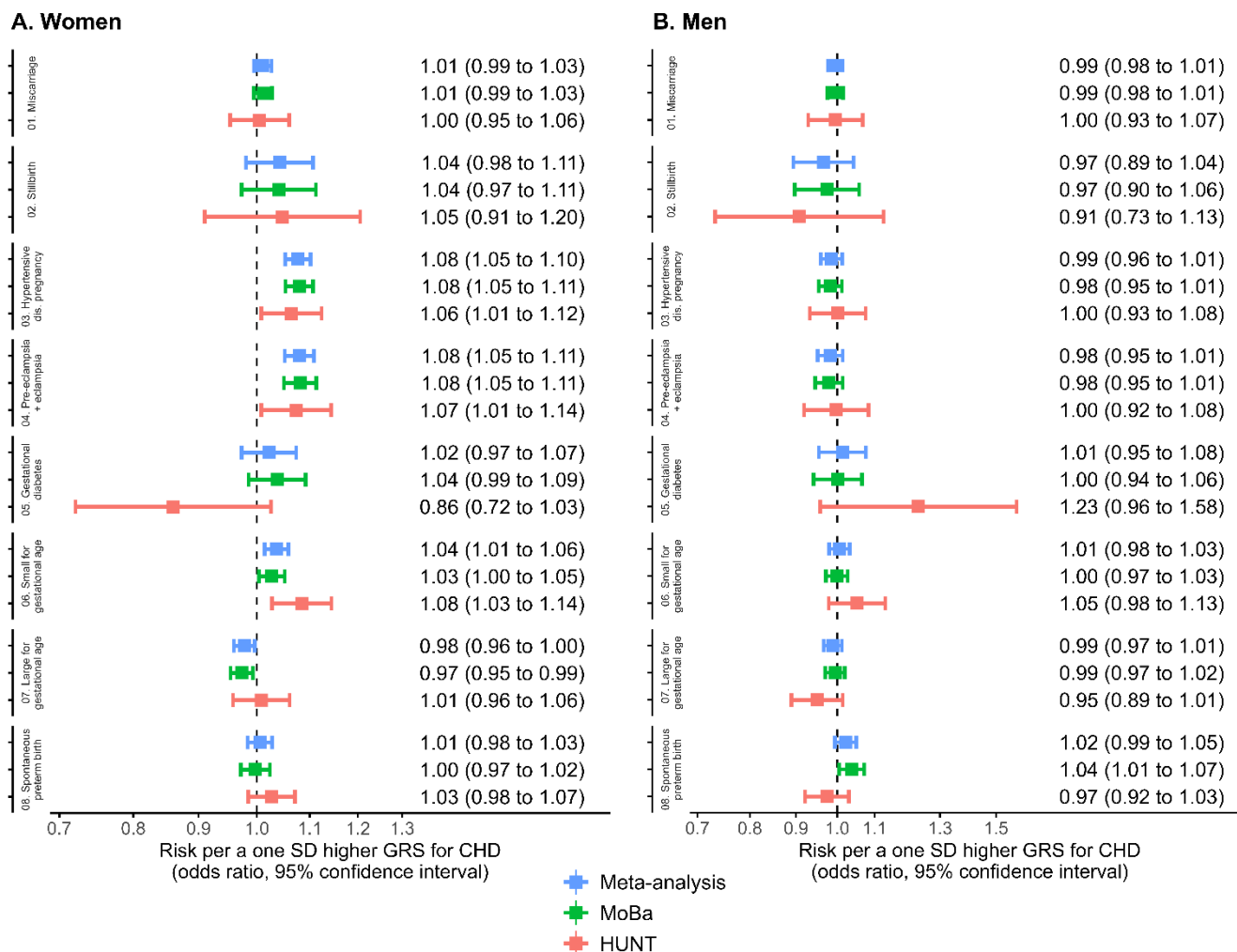
687 **SUPPLEMENTAL FIGURES**

688

689 **Supplemental Figure 1. Associations between 1 SD increase in the genetic risk**

690 **score for coronary heart disease and pregnancy outcomes in women (A) and men (B)**

691 **in MoBa and HUNT participants individually.**



692 Analyses are adjusted for the first 20 ancestry-informative genetic principal

693 components and genotype batch.