

1 **Survival trends among people living with human immunodeficiency virus on antiretroviral**
2 **treatment in two rural districts in Ghana**

3
4 **Authors**

5 Eugene Sackeya^{1,2}, Martin Muonibe Beru^{1,3}, Richard Nomo Angmortey^{1,3}, Kingsley Boakye¹,
6 Musah Baatira^{1,8}, Mohammed Sheriff Yakubu^{1,6}, Douglas Aninng Opoku^{5,7}, Aliyu Mohammed¹,
7 Nana Kwame Ayisi-Boateng⁹, Daniel Boateng^{1,4}, Emmanuel Kweku Nakua¹, and Anthony
8 Kweku Edusei¹⁰

9
10 **Affiliations**

11 ¹Department of Epidemiology and Biostatistics, School of Public Health, Kwame Nkrumah
12 University of Science and Technology, Kumasi, Ghana.

13 ²Tatale District Hospital, Tatale, Northern Region, Ghana.

14 ³Tamale Teaching Hospital, Tamale Metropolitan, Tamale - Ghana.

15 ⁴Julius Global Health, Julius Centre for Health Sciences and Primary Care, University Medical
16 Centre, Utrecht, The Netherlands.

17 ⁵Allen Clinic, Family Health Services, Kumasi, Ghana.

18 ⁶Nursing and Midwifery Training College, Nalerigu-Ghana.

19 ⁷Department Of Global Health and Internal Health, School of Public Health, Kwame Nkrumah
20 University of Science and Technology, Kumasi, Ghana.

21 ⁸St. Joseph's Midwifery Training College, Jirapa, Ghana.

22 ⁹Department Of Medicine, School of Medicine and Dentistry, Kwame Nkrumah University of
23 Science and Technology, Kumasi, Ghana

24 ¹⁰Department of Health Promotion, School of Public Health, Kwame Nkrumah University of
25 Science and Technology, Kumasi, Ghana.

26
27 **Corresponding Author**

28 Eugene Sackeya: mcsackeya@gmail.com

29

30

31 **Abstract**

32 **Background:** The human immunodeficiency virus (HIV) has caused a lot of havoc since the early
33 1970s, affecting 37.6 million people worldwide. The 90-90-90 treatment policy was adopted in
34 Ghana in 2015 with the overall aim to end new infections by 2030, and to improve the life
35 expectancy of HIV seropositive individuals. With the scale-up of Highly Active Antiretroviral
36 Therapy (HAART), the lifespan of People Living with HIV (PLWH) on antiretrovirals (ARVs) is
37 expected to improve. In rural districts in Ghana, little is known about the survival probabilities of
38 PLWH on ARVs hence, this study was conducted to estimate the survival trends of PLWH on
39 ARVs for the periods between 2016 to 2020.

40 **Methods:** A retrospective evaluation of data gathered across ARV centers within Tatale and
41 Zabzugu districts in Ghana from 2016 to 2020 among PLWH on ARVs. The census technique was
42 employed and a total of 261 participants were recruited for the study. The data was analyzed using
43 STATA software version 16.0. Lifetable analysis and Kaplan-Meier graph were used to assess the
44 survival probabilities. “Stptime” per 1000 person-years and the competing risk regression was
45 used to evaluate mortality rates and risk of mortality.

46 **Results:** The cumulative survival probability was 0.8847 (95% CI: 0.8334-0.9209). The overall
47 mortality rate was 51.89 (95% CI: 36.89-72.97) per 1000 person-years. WHO stage III and IV
48 [AHR: 4.25 (95%CI: 1.6-9.71) p = 0.001] as well as age group (50+ years) [AHR: 5.02 (95% CI:
49 1.78-14.13) p=0.002] were associated with mortality.

50 **Conclusion:** Survival probabilities is high among the population of PLWH in Ghana with
51 declining mortality rates. Clinicians should provide critical attention and care to patients at HIV
52 WHO stages III and IV and intensify HIV screening at all entry points since early diagnosis is
53 associated with high survival probabilities.

54

55 **Keywords:** Antiretroviral; Competing risk; Ghana; HIV; PLHIV; Survival trends

56

57

58

59

60 **Background**

61 The human immunodeficiency virus (HIV), the organism responsible for acquired immune
62 deficiency syndrome (AIDS) has caused a lot of havoc to individuals and families since its
63 outbreak in the early 1970s [1,2]. HIV has affected 37.6 million people worldwide as of 2020, with
64 an estimated 27.4 million people accessing antiretroviral (ARVs) therapy globally [3].

65 The majority affected by this HIV pandemic live in low and middle-income countries (LMICs)
66 with 20.6 million (55%) of all cases from eastern and southern Africa, while 4.7 million (13%) are
67 in western and central Africa [3,4]. In Ghana, about 342,307 people are living with HIV (PLWH)
68 and of these, 77% of them are receiving lifesaving highly active antiretroviral therapy (HAART)
69 [5]. The therapeutic value of antiretroviral therapy (ART) for PLWH is undeniable and early
70 initiation of ART reduces morbidity and mortality. It is evident that when HIV replication is
71 suppressed, patients have significant improvement in immunologic status, as seen by higher
72 clusters of differentiation 4 (CD4) counts, lower AIDS-related morbidity and death, and, in many
73 cases, a return to a normal or near-normal quality of life [6]. The advantages of early ART include
74 a reduction in not just classic AIDS-related problems, but also end-stage organ damage as well as
75 non-AIDS-defining malignancies [6].

76 ART administration was introduced in Ghana in June 2003 as part of a comprehensive care
77 package including voluntary counseling and testing (VCT), prevention of mother-to-child
78 transmission (PMTCT) of HIV, and the treatment and management of sexually transmitted
79 infections (STIs) [7]. However, only PLWH whose CD4 count was ≤ 350 or classified as being in
80 WHO stages III and IV were initiated on ARVs [7,8]. Owing to the global impact of the HIV
81 pandemic exceeding all expectations, with a mortality peak of 1.9 million deaths in 2006 to 0.95
82 million in 2017 [9], the World Health Organization (WHO) and its partners adopted an ambitious
83 treatment target, dubbed the 90-90-90 agenda which was reviewed in 2020 to 95-95-95. In this
84 policy, 95% of PLWH should know their status, 95% of those who know their status should be on
85 ARVs and 95% of those on ARVs should achieve viral suppression [4]. This treatment policy is
86 in line with sustainable development goal three which emphasizes the need for good health and
87 well-being of all people by 2030 with HIV being one of the significant indicators [11].

88 Ghana, a WHO member state adopted this policy in 2015 with efforts made to increase
89 accessibility to HIV counseling and testing services, provision of ARVs for all those living with

90 HIV and enhanced evaluation of effectiveness of ARVs through regular viral load assessment at
91 regular intervals at no cost to the clients [5]. As of 2019 in Ghana, 58% of PLWH know their HIV
92 status, of this number, 77% of them are receiving ARVs and 68% of those receiving ARVs have
93 their viral load suppressed [5,12].

94 During the early 1980s, to be diagnosed with HIV in Ghana was synonymous with a death
95 sentence, however, with the scale-up of HAART, more PLWH are now receiving the lifesaving
96 ARVs with the aim of improving their life expectancy [13]. In Ghana there is limited data on
97 survival trends of PLWH. This study therefore sought to estimate the survival trends of PLWH
98 on ARVs for the periods between 2016 to 2020, the mortality rate and the associated risk factors.

99

100 **Methods**

101 **Study Design**

102 The study was a retrospective evaluation of data from antiretroviral therapy (ART) sites in two
103 rural districts in Ghana (Zabzugu and Tatale Districts).

104

105 **Study Setting**

106 The study was conducted in the Zabzugu and Tatale districts of the northern region of the Republic
107 of Ghana. These two districts were purposively selected based on their active involvement in ART
108 in the region. Participants were drawn from four ART centers at the Zabzugu district hospital
109 (ZDH), Tatale district hospital (TDH), Kpalbutabu Health Center -Tatale and Nakpali Health
110 Center -Zabzugu. With the capitals of the two districts being Zabzugu and Tatale respectively,
111 they share a border with Togo in the east, to the north with Saboba, to the west Yendi, and to the
112 south, Wulensi. Zabzugu District covers an area of 1,100.1 square kilometer and Tatale Sangule
113 district covers an area of about 1,130 square kilometers [14,15].

114

115 **Study Population**

116 The study population included PLWH, 13 years old and above, in the Tatale and Zabzugu districts
117 who were diagnosed and enrolled on ARVs. The study participants were PLWH who were
118 diagnosed not earlier than 2016 or were diagnosed earlier but started ARVs in 2016 through to
119 2020. PLWH less than 13years at the time of registration due to their dependency on parents and

120 care givers likely to influence adherence and those who were transferred from districts outside the
121 two districts for lack of adequate information were excluded.

122

123 **Sampling Technique**

124 The census sampling technique was used for the selection of the research participants. The study
125 participants included all PLWH who were diagnosed with HIV from 2016 to 2020 and followed
126 for varying number of years, but not exceeding five years. A sample size of 261 participants were
127 considered for this study. The sample size constituted the entire number of PLWH who started
128 their treatment from 2016 to 2020. A total of 275 PLHIV were registered within the period, while
129 14 participants were excluded from the study as a result of transfers, under age (< 13years) and
130 incomplete information. Most of the participants entered the study at different entry points but 31st
131 December 2021 was the administrative censoring date for all participants.

132

133 **Variables description**

134 **Dependent variable:**

135 The main outcome variable was the survival probabilities of PLWH on ARVs. This predicted the
136 chance of a participant being alive following the initiation to ARVs during the study period. The
137 secondary outcomes included the mortality rate and the risk factors for mortality.

138

139 **Independent variables:**

140 The study used eleven (11) independent variables. These included the type of regimen the person
141 was on, which is either a efavirenz-based combination or a dolutegravir-based combination,
142 comorbidity/coinfection defined as any other medical condition that co-existed with HIV or AIDS
143 during diagnosis, HIV status disclosure refers to disclosing one's HIV status to anyone other than
144 a healthcare provider, and enrolment on the National Health Insurance Scheme (NHIS). The
145 remaining variables included the participant's marital status, WHO HIV stages (I, II, III, and IV),
146 client's locality or area of residence, client's health facility where ARVs is received, gender and
147 religion.

148

149

150

151 **Data Collection and Management**

152 Data collection was conducted from 1st July 2022 to 31st August 2022 using a standard checklist
153 by two public health nurses and a postgraduate student of Epidemiology and Biostatistics. This
154 was done by reviewing existing medical records including the patient's ARVs folder, the pharmacy
155 logbook, the ARVs logbook, and the viral load register. Two different data collection officers
156 collected the same data set and incomplete forms were returned to be completed and those that
157 were not completed for lack of adequate information were dropped. The data was validated by
158 comparing the data from the two research assistants to ensure accuracy and consistency. After
159 cleaning, the data was stored in a hard drive and also in Google drive for future use and protection.

160

161 **Data Analysis**

162 Data was analyzed using the STATA statistical software version 16.0. Descriptive statistics were
163 used to describe the baseline characteristics of participants including the socio-demographic and
164 the clinical characteristics. For the person-time computation, the date of administrative censorship
165 (December 31, 2021) was considered as the last date for all persons who were still alive and
166 receiving treatment. For the assessment of the survival probabilities, lifetable analysis was done
167 alongside the display of a survival function using a Kaplan-Meier graph to assess variations in
168 survival among subgroups. The overall mortality rate was calculated using stptime per 1000 person
169 years. The stptime command computed and tabulated the person-time and the incidence rate. The
170 subgroup mortality rates were calculated using stptime adjusting for the subgroup per 1000 person
171 years. To examine the association between baseline factors and mortality, the Competing risk
172 regression model was used. Statistical significance was set at p-value <0.05 at a confidence
173 interval of 95%. Variables (both significant and insignificant at the Univariate level) that were
174 deemed to be important based on previous studies [15,16] were included in the multivariable
175 analysis.

176

177 **Ethical consideration**

178 Ethical clearance was granted by the Committee for Human Research, Publication and Ethics of
179 the Kwame Nkrumah University of Science and Technology with reference number
180 CHRPE/AP/287/22. Participants informed consent was not taken since this study involved a
181 review of secondary data from hospital medical records and the patients were not available at the

182 time of the data collection. This was explained in the application for the ethical clearance and
 183 participants' consent was waived by the ethics committee. All the study data that were collected
 184 were completely anonymized.

185

186 **Results**

187 **Socio-Demographic Characteristics of Participants**

188 The study participants who were in the age category of 30 to 39 years were 41.0% with the median
 189 age (interquartile range) of 35 (14) years. More than half (66.28%) of study participants were
 190 females while a little over one third (42.53%) were Christians. Approximately 51.34% resided in
 191 the Tatale Sanguli district even though 58.62% received their medications from the Zabzugu
 192 district. Those who had no formal education constituted 72.03% of the participants while 61.30%
 193 were non-skilled workers. Approximately 89.7% were married and 90.42% of them were
 194 registered with the National Health Insurance Scheme (NHIS) (Table 1).

195

196 **Table 1: Socio-demographic characteristics of participants**

Variable	Zabzugu District Frequency (%)	Tatale District Frequency (%)	Total (%)
Age (years)			
13-19	2 (0.8)	10 (3.8)	12 (4.6)
20-29	32 (12.3)	31 (11.9)	63 (24.2)
30-39	74 (28.4)	33 (12.6)	107 (41.0)
40-49	28 (10.7)	14 (5.4)	42 (16.1)
50+	17 (6.5)	20 (7.6)	37 (14.1)
Median age (IQR)	35 (14)		
Gender			
Male	59 (22.6)	29 (11.1)	88 (33.7)
Female	94 (36.0)	79 (30.3)	173 (66.3)
Religion			
Christain	50 (19.2)	61 (23.1)	111 (42.5)
Muslim	64 (24.5)	17 (6.5)	81 (31.1)
Traditional	39 (14.9)	30 (11.5)	69 (26.4)
District-of-Residences			
Zabzugu district	118 (45.2)	1 (0.4)	119 (45.6)
Tatale district	29 (11.1)	105 (40.2)	134 (51.3)
Other districts	6 (2.3)	2 (0.8)	8 (3.1)
Educational Level			

Formal education	36 (13.8)	37 (14.2)	73 (28.0)
No formal education	117 (44.8)	71 (27.2)	188 (72.0)
Occupation			
Unemployed	50 (19.2)	30 (11.5)	80 (30.7)
Skilled worker	12 (4.6)	9 (3.5)	21 (8.1)
None skilled worker	91 (34.9)	69 (26.4)	160 (61.3)
Marital Status			
Never Married	10 (3.8)	17 (6.5)	27 (10.3)
Ever Married	143 (54.8)	91 (34.9)	234 (89.7)
NHIS Status			
Registered with NHIS	139 (53.3)	97 (37.1)	236 (90.4)
Not registered with NHIS	14 (5.4)	11 (4.2)	25 (9.6)

197 NHIS = National Health Insurance, ZDH = Zabzugu District Hospital, TDH = Tatale District Hospital, IQR:

198 Interquartile range

199

200 **Clinical characteristics of the study participants**

201 Table 2 presents results of clinical characteristics of the study participants. Majority (64.0%) were
 202 diagnosed at WHO stage I and 42.91% had disclosed their HIV status to another person other than
 203 the healthcare provider. Most of the participants (83.14%) were on Efavirenz-based Combination
 204 while 52.87% were alive and traceable at the time of the study.

205

206

207

208

209

210

211

212

213

214

215

216

217

218

219 **Table 1: Clinical Characteristics of Study Participants**

Variable	Zabzugu District Frequency (%)	Tatale District Frequency (%)	Total (%)
WHO HIV Stage			
Stage I	105 (40.2)	62 (23.8)	167 (64.0)
Stage II	15 (5.7)	25 (9.6)	40 (15.3)
Both stage III & IV	33 (12.6)	21 (8.0)	54 (20.6)
HIV status disclosure			
Disclosed	70 (26.8)	42 (16.1)	112 (42.9)
Not disclosed	83 (31.8)	66 (25.3)	149 (57.1)
Combined ARV type			
EBC	129 (49.4)	88 (33.7)	217 (83.1)
DBC	24 (9.2)	20 (7.7)	44 (16.9)
ARV's treatment outcome			
Dead	23 (8.8)	10 (3.6)	33 (12.6)
Alive	86 (33.0)	52 (19.9)	138 (52.9)
LTFU	44 (16.9)	46 (17.6)	90 (34.5)

220 WHO = World Health Organization, HIV = Human Immune Virus, ARV's = Antiretrovirals, n = Sample Size, LTFU
 221 = Loss to Follow Up, DBC = Dolutegravir Based Combination, EBC = Efavirenz Based Combination.

222
 223 **Five-Year Trend of Survival Probabilities**

224 A total of 635.981 person-years with 2.17 median person years of follow-up was contributed by
 225 the 261 participants. In the first year of follow-up, 15 mortalities were recorded giving a survival
 226 probability of 0.9376 (95% CI: 0.8987-0.9619) for the period. After three years of follow-up, the
 227 cumulative mortality was 32 and a survival probability of 0.8337 (95% CI: 0.7704-0.8809). With
 228 decline in mortalities over the years, the overall mortality at the end of the fifth years was 33 and
 229 a survival probability of 0.8049 (95% CI: 0.7145-0.8693) (table 3).

230
 231 Table 2: survival probabilities

Total person-years		635.981		
Median person years of follow-up		2.17		
Years	No at-risk	Deaths	Iterations	Survival Probability (95% CI)
0-1	261	15	41	0.9376 (0.8987-0.9619)
1-2	205	10	56	0.8847 (0.8334-0.9209)
2-3	139	7	35	0.8337 (0.7704-0.8809)

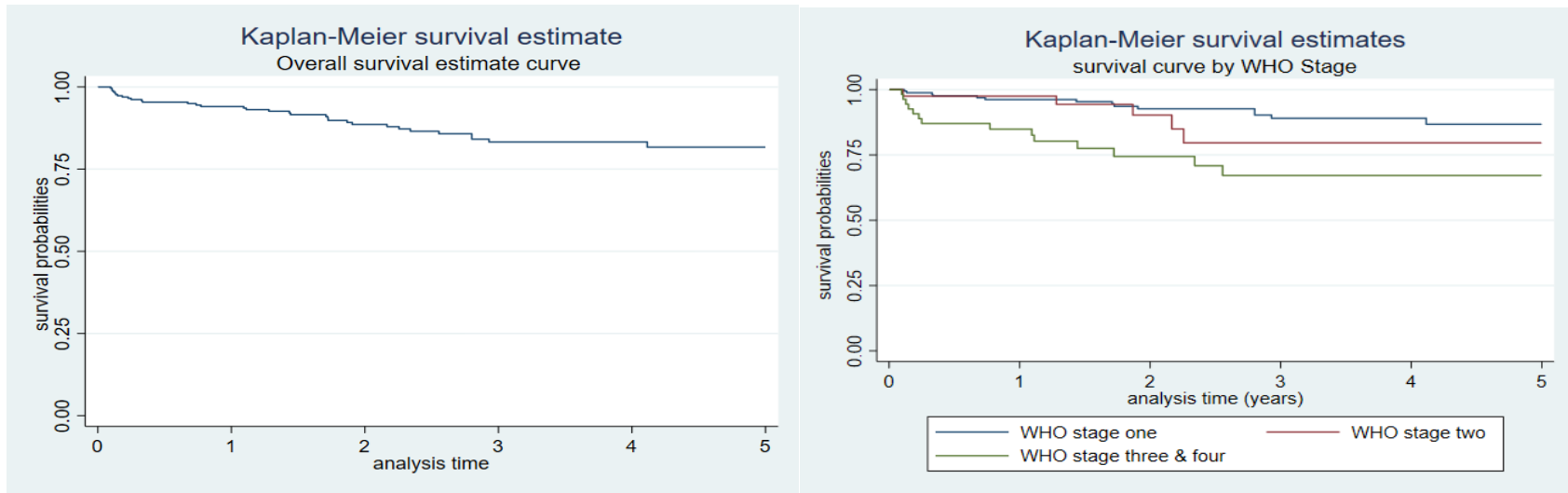
3-4	97	0	40	0.8337 (0.7704-0.8809)
4-5	57	1	56	0.8049 (0.7145-0.8693)

232 CL = Confidence Interval, NO = Number

233

234 Overall, the Kaplan-Meier survival curve revealed that the majority of fatalities occurred in the
235 first to third years after starting ARVs, thus 15, 10 & 7 respectively. Even though the overall
236 cumulative survival probability for the five-year study period was 0.8049, those who were
237 diagnosed at the WHO stages I and II had a higher survival probability as shown in figure 1 and
238 so was for women and those in the age group of 13-29 years. Patients who did not disclose their
239 HIV status had higher survival probability than those who disclosed their status but this trend
240 changed after two years of follow-up where the survival probabilities of those who disclosed their
241 status improved (Figure1).

242



243
244

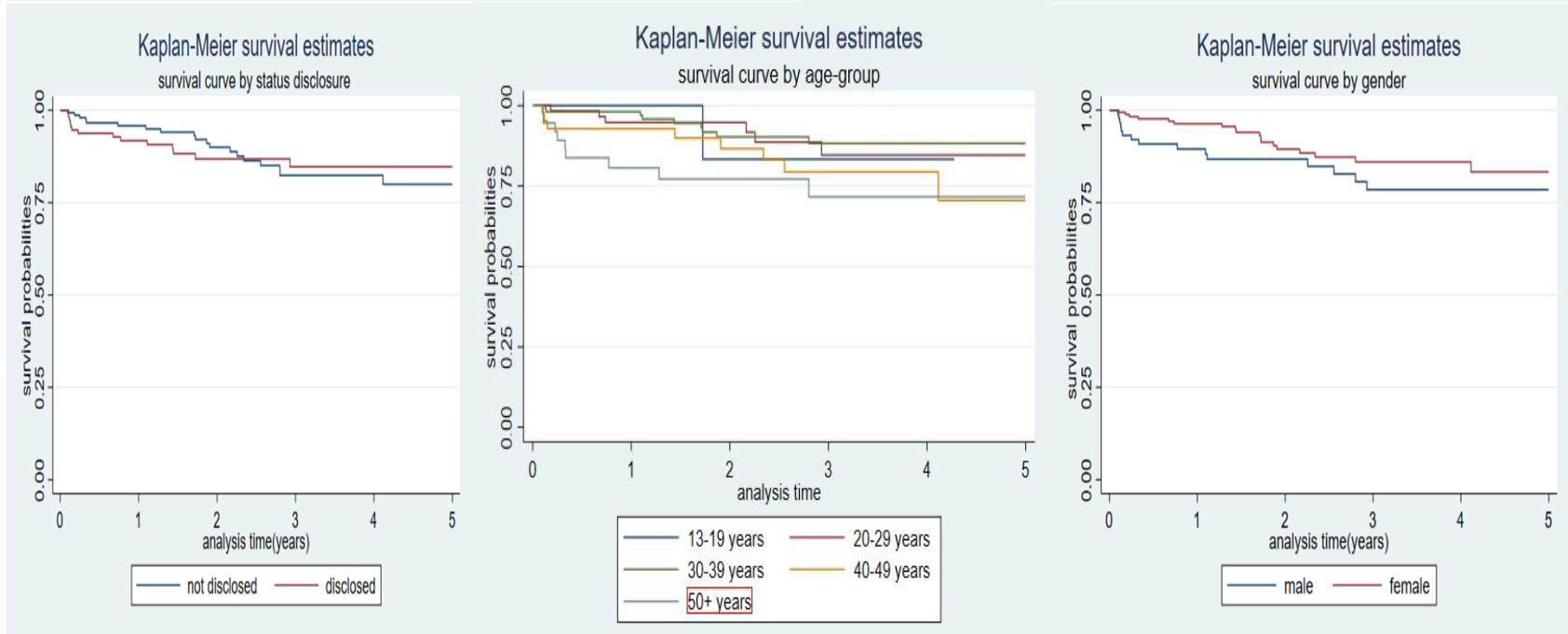


Figure 1: Kaplan Meier's Survival Estimates

245 **Five-Year Mortality Rates among PLWH on ARVs.**

246 Thirty-three (12.64%) participants died during the study period. The total person years for the five-
247 year period was 635.98 person years with the overall mortality rate of 51.89 (95% CI: 36.89-72.97)
248 per 1000 person years. Mortality rates were higher above the overall rate among participants 30
249 years and above, 55.22 (95% CI: 37.60-81.10) per 1000 person years and males 68.65 (95% CI:
250 41.39-113.87) per 1000 person years. The mortality rate was almost even among those who
251 disclosed their HIV status and those who did not with 53.60 (95% CI: 31.75- 90.51) per 1000
252 person-years and 50.69 (95% CI: 32.34-79.48) per 1000 person-years respectively. WHO stage III
253 and IV recorded the highest mortality rate of 123.75 (95% CI: 73.29-208.95) per 1000 person-
254 years.

255 In the univariate competing risk regression analysis, age was statistically significant and associated
256 with mortality. The hazard of mortality was 3.28 times higher among those aged 50 and above
257 [HR: 3.28; 95% CI: 1.29-8.33, p=0.013] and after adjusting for confounders in the multivariable
258 analysis [AHR: 5.02; 95% CI: 1.78-14.13, p=0.002]. WHO stage was statistically significant, the
259 hazard of mortality was 3.51 times higher among those diagnosed at WHO stage III & IV [HR:
260 3.51; 95% CI: 1.67-7.38, p=0.001] and the same was the case after adjusting for confounders
261 [AHR: 4.63; 95% CI: 1.91-11.18, p=0.001], however, we cannot rule out region and marital status
262 as factors influencing mortality among PLWH (Table 4).

263 Table 3: Mortality rates and their determinants

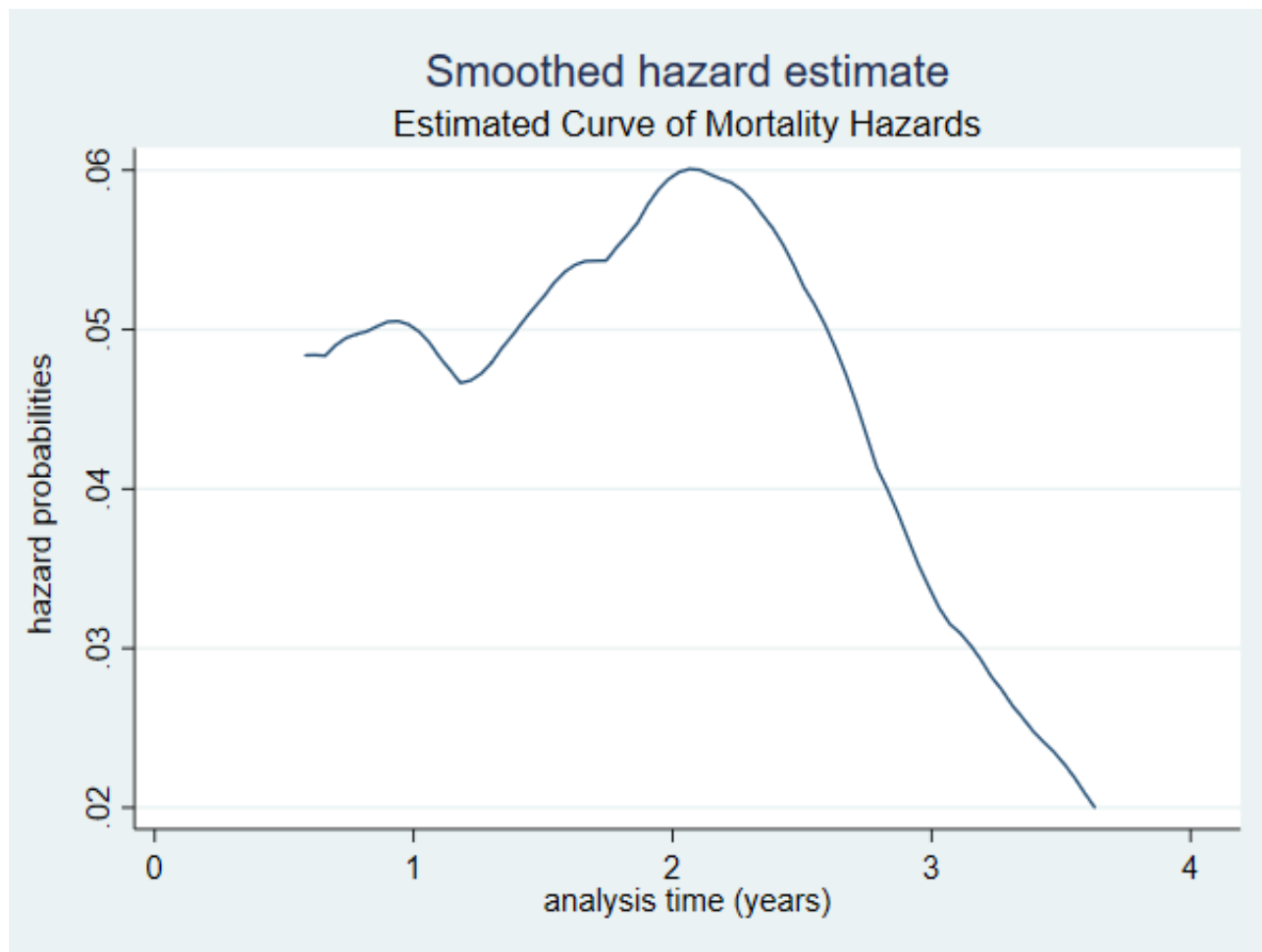
Variable (n=261)	Dead	PY	Mortality Rate per 1000 PY (95%CI)	Univariate Analysis		Multivariable Analysis	
				SHR (95% CI)	P-Value	ASHR (95% CI)	P-Value
Overall	33	635.98	51.89 (36.89-72.97)	
Age (years)							
13-19	1	23.57	42.42 (5.98-301.15)	0.92 (0.12-7.09)	0.940	6.33 (0.78-51.08)	0.083
20-29	6	141.58	42.38 (19.04-94.33)	1.12 (0.40-3.12)	0.827	1.72 (0.54-5.50)	0.358
30-39	9	275.51	32.67 (16.10-62.78)	1		1	
40-49	8	111.96	71.46 (35.74-142.88)	2.31 (0.90-5.95)	0.082	1.77 (0.60-5.18)	0.298
50+	9	83.36	107.96 (56.17-207.49)	3.28 (1.29-8.33)	0.013	5.02 (1.78-14.13)	0.002
Gender							
Female	18	417.48	43.12 (27.16-68.43)	1		1	
Male	15	218.50	68.65 (41.39-113.87)	1.70 (0.85-3.37)	0.132	1.06 (0.44-2.51)	0.893
Religion							
Traditional	6	185.79	32.29 (14.51-71.88)	1		1	
Christian	13	255.69	50.84 (29.52-87.56)	1.38 (0.52-3.67)	0.516	2.08 (0.73-5.96)	0.173
Muslim	14	194.50	71.98 (42.63-121.53)	2.20 (0.83-5.79)	0.111	2.74 (0.94-7.99)	0.065

Education								
Formal Education	9	150.62	59.75 (31.09-114.84)	1			1	
No formal Education	24	485.36	49.45 (33.14-73.77)	1.02 (0.47-2.19)	0.963		0.58 (0.23-1.45)	0.247
Occupation								
Unemployed	6	191.11	31.40 (14.10-69.88)	1			1	
Skilled worker	3	53.49	56.08 (18.09-173.89)	1.96 (0.49-7.79)	0.337		2.41 (0.43-13.42)	0.315
None Skilled	24	391.38	61.32 (41.10-91.49)	2.06 (0.85-4.99)	0.111		2.23 (0.82-6.07)	0.117
Marital status								
Never married	1	59.83	16.71 (2.35-118.66)	1			1	
Married	32	576.15	55.54 (39.28-78.54)	3.91 (0.54-28.19)	0.177		5.16 (0.97-27.50)	0.054
NHIS status								
Not Registered	3	59.79	50.17 (16.18-155.56)	1			1	
Registered	30	576.19	52.07 (36.40-74.47)	1.05 (0.31-3.56)	0.931		1.36 (0.40-4.61)	0.620
Health facility								
TDH	10	234.80	42.59 (22.92-79.15)	1			1	
ZDH	23	401.18	57.33 (38.10-86.27)	1.66 (0.79-3.48)	0.181		2.05 (0.75-5.60)	0.161

Combined ARV type								
DBC	2	77.48	25.81 (6.46-103.21)	1			1	
TBC	31	558.50	55.51 (39.04-78.93)	2.71 (0.64-11.46)	0.176	2.16 (0.38-12.45)	0.386	
Status disclosure								
Not disclosed	19	374.80	50.69 (32.34-79.48)	1			1	
Disclosed	14	261.18	53.60 (31.75- 90.51)	1.06 (0.53-2.11)	0.861	1.20 (0.57-2.53)	0.628	
WHO stage								
Stage I	14	436.16	32.10 (19.01-54.20)	1			1	
Stage II	5	86.69	57.68 (24.01-138.58)	1.65 (0.60-4.51)	0.332	1.53 (0.50-4.67)	0.454	
Stage III&IV	14	113.13	123.75 (73.29-208.95)	3.51 (1.67-7.38)	0.001	4.63 (1.91-11.18)	0.001	

264 n= Sample Size, PY= Person Years, CI=Confidence Interval, Edu= Education, ZDH= Zabzugu District Hospital, TDH= Tatale District Hospital, TBC=
265 Tenofovir Based Combination, DBC= Dolutegravir Based Combination, WHO= World Health Organization

266 Figure 2 presents the illustration of the hazard of mortality over the study period. The hazard of
267 mortality is highest between the first and the second year of follow-up but declined steadily over
268 the rest of the study period from the second year on wards.
269



270
271 Figure 2: Mortality Hazard curve

272
273 **Discussion**

274 Preventing major AIDS-related and non-AIDS-related illnesses in HIV-infected individuals
275 requires early initiation of antiretroviral medication [16]. The majority of the participants were
276 initiated to ARVs at WHO stages I and II (79.31%), This was however different from what was
277 reported in a study conducted in Ghana to assess the effects of antiretroviral therapy on all-cause
278 of mortality among PLWH. In that study, 51.0% of PLWH were diagnosed at WHO stage I and
279 II [17]. An expanded study involving most of the HIV sentinel sites in Ghana also found an even

280 lower (27.7%) prevalence of HIV initiation at WHO stage I & II [18]. The variation in findings
281 could be due to the fact that the study was conducted during the period of the 90-90-90 treatment
282 policy where there was a more accelerated action for HIV testing and treatment. During that
283 period, testing was done at the OPD instead of the laboratory where only clients who were
284 suspected of being infected were referred for testing. Providing testing services for all persons,
285 whether symptomatic or not, meant that more clients would be diagnosed in the earlier stages of
286 the disease.

287 The current study identified the majority were alive and on treatment at the end of the five years
288 of follow-up, while 34.5% were lost to follow up (LTFU) and the remaining 12.64% were dead.
289 Our findings were a little different from the findings in a study in a primary public hospital of
290 Wukro, Tigray, Ethiopia, where 11% of LTFU was recorded [19]. The reason for the high rate of
291 LTFU could be due to the high numbers diagnosed at WHO stages I and II, who are asymptomatic
292 and may not see the need to take their medications. Most of the fatalities occurred in the first and
293 second years following the start of ARVs [7]. The overall survival probabilities for the first and
294 fifth years were 0.9376 and 0.8049, respectively. These findings, projected an improvement in
295 terms of survival probabilities when compared with another study conducted in Ghana in the
296 Lawra and Jirapa districts in the upper west region where the survival probability at the end of the
297 three years was 0.795 per 1000 person years [7]. The findings were similar to the findings of a
298 study conducted in the Henan province of China from 2005 to 2014 where the cumulated survival
299 for the first and fifth year were 93.7% and 85.3% respectively [20]. The reason for the
300 improvement in survival probabilities could be due to the removal of all barriers to the initiation
301 of ARVs and early diagnosis due to the 90-90-90 policy which was not the case during the period
302 of the study by Okyere et al., (2015).

303 Significant differences in survival probabilities were observed among specific variables using the
304 Kaplan-Meier survival curve. WHO stages I and II had the highest survival probability and this
305 finding agreed with studies in Ghana's upper west region and Oromiyaa, Ethiopia where WHO
306 stages I and II had the highest survival probability than stages III and IV [7,21]. The reason for
307 the variation among the various stages could be due to the prognosis of the disease at the time of
308 diagnosis and initiation of the ARVs. Although disclosure of one's status may play a role in
309 controlling the spread of HIV, it had very little impact on the improvement of the survival

310 probability of the clients in the short term. However, in the long term, disclosing status disclosure
311 gives an individual a better chance of survival compared to someone who has not disclosed the
312 status. The reason for this dynamics could be due to the support that those who disclose their status
313 receive from their treatment supporters. Females had better survival probabilities than their male
314 counterparts and this can be attributed to the health-seeking behaviors of females [22].

315 The overall mortality rate observed was low compared with what was found in a retrospective
316 cohort study from 2004-2013 in Nepal [23]. The reason for the reduction in overall mortality in
317 this study may be due to the fact that majority of the participants were diagnosed at WHO stage I
318 and II [24]. Mortality was highest among those diagnosed at the WHO stage III and IV, meaning
319 this group will need special attention, especially within the first two years of diagnosis where most
320 of the deaths occurred. Regular clinic visits, viral load monitoring, and adherence to the ARV
321 regimen are essential to prevent mortalities. Other areas where significant variations in mortality
322 was observed were gender and religion. Morality was high among males compared to females and
323 that can be attributed to the health seeking behaviors of the male gender [22].

324 The hazard of mortality after the initiation of ARVs was statistically significant and associated
325 with those in WHO stages III and IV and age group 50+ years and after adjusting in a multivariable
326 analysis, WHO stage III and IV and age group 50+ years remained significant. The findings were
327 similar to other studies that were conducted in Ghana, sub-Saharan Africa, and other parts of the
328 world [7,17,21,23,25]. From the smooth hazard curve, the risk of mortality is highest in the first
329 and second years of ARVs initiation. More pragmatic efforts including regular clinic visits, early
330 diagnosis of opportunistic infections, viral load monitoring and so on, are required to reduce the
331 death rate within the first and second years of ARVs initiation.

332 **Strengths and limitations**

333 This is the first study of its kind on this subject and will contribute greatly to literature and also
334 serve as a baseline finding for future studies. The lack of a comparison group restricted our ability
335 to compare the outcome between those initiated on ARVs and those that are not on ARVs. Hence,
336 comparison was done using previous studies while the presence of missing data also restricted the
337 inclusion of variables such as viral load.

338

339

340 **Conclusion**

341 Survival probabilities have improved significantly among PLWH in the two districts compared to
342 previous studies conducted before the introduction of the treat-all policy. We recommend the need
343 for early diagnosis through testing at all entry points to hospitals and clinics and through the “Know
344 your Status” campaigns for HIV. Clients who are 50 years and above and those who were
345 diagnosed at the WHO stages III and IV should be given shorter clinic visit intervals and ensure
346 viral load monitoring is done as recommended by the National AIDS Control Program.

347

348 **Availability of data and materials**

349 All data are fully available without restriction

350

351 **Competing interests**

352 The authors declare that no competing interest existed for this study

353

354 **Funding**

355 None

356

357 **Author Contributions**

358 Conceptualization: ES, RNA, MMB, KB, MSY, DAO, AM, DB, EKN & AKE

359 Data curation: ES, RNA, NKAB & MMB,

360 Formal analysis: ES, RNA, MMB, KB & MSY

361 Methodology: ES, RNA, MMB, KB, MSY, DAO, NKAB, AM, DB, EKN & AKE

362 Project administration: ES, RNA, MMB, KB & MSY,

363 Supervision: AM, DB, EKN & AKE

364 Validation: DAO, AM, DB, EKN & AKE

365 Writing – original draft: ES, RNA, MMB, KB & MSY

366 Writing – review and editing: DAO, NKAB, AM, DB, EKN & AKE

367

368 **Acknowledgements**

369 We are grateful to all PLHIV whose records we reviewed for this study. To all the staff of the four
370 ARVs centers in both Tatale and Zabzugu, we thank them for their efforts in saving lives and the

371 documentation without which this study would not have been possible. We are also grateful to the
372 management of the two hospitals and the District Directors of Health Services for their approval
373 of the study. We are most grateful to God for the inspiration, guidance and protection throughout
374 the study.

375

376 **Reference**

- 377 1. Owusu-ansah Y. Socio-economic effect of HIV / AIDS in Ghana. 2009;(December 2002).
378 Available from: [https://www.ghanaweb.com/GhanaHomePage/features/Socio-economic-](https://www.ghanaweb.com/GhanaHomePage/features/Socio-economic-effect-of-HIV-AIDS-in-Ghana-30981)
379 [effect-of-HIV-AIDS-in-Ghana-30981](https://www.ghanaweb.com/GhanaHomePage/features/Socio-economic-effect-of-HIV-AIDS-in-Ghana-30981)
- 380 2. Center for Disease Control and Prevention. HIV Basics | HIV/AIDS | CDC [Internet]. 2022
381 [cited 2022 Apr 6]. Available from: <https://www.cdc.gov/hiv/basics/index.html>
- 382 3. HIV.gov. Homepage | HIV.gov [Internet]. US Department of Health and Human Services.
383 2021 [cited 2021 Jul 11]. Available from: <https://www.hiv.gov>
- 384 4. World Health Organization. HIV and AIDS [Internet]. 2023 [cited 2023 Apr 21]. Available
385 from: <https://www.who.int/news-room/fact-sheets/detail/hiv-aids>
- 386 5. Ghana AIDS Commission. Ghana's HIV Fact Sheet. Off Pres Ghana. 2019;523:1–6.
- 387 6. Zolopa AR. The evolution of HIV treatment guidelines: Current state-of-the-art of ART.
388 *Antiviral Res.* 2010 Jan;85(1):241–4.
- 389 7. Okyere GA, Alalbil PA, Ping-Naah H, Tifere Y. Determinants of Survival in Adult HIV
390 Clients on Antiretroviral Therapy in Lawra and Jirapa Districts of Upper West Region, Ghana.
391 *J Int Assoc Provid AIDS Care JIAPAC.* 2015 May;14(3):255–60.
- 392 8. Raguenaud ME, Isaakidis P, Zachariah R, Te V, Soeung S, Akao K, et al. Excellent outcomes
393 among HIV+ children on ART, but unacceptably high pre-ART mortality and losses to follow-
394 up: A cohort study from Cambodia. *BMC Pediatr.* 2009;9:54.
- 395 9. Frank TD, Carter A, Jahagirdar D, Biehl MH, Douwes-Schultz D, Larson SL, et al. Global,
396 regional, and national incidence, prevalence, and mortality of HIV, 1980-2017, and forecasts
397 to 2030, for 195 countries and territories: A systematic analysis for the Global Burden of
398 Diseases, Injuries, and Risk Factors Study 2017. *Lancet HIV.* 2019 Dec;6(12):e831–59.
- 399 10. United Nations. THE 17 GOALS | Sustainable Development [Internet]. Department of
400 Economic and Social Affairs. 2018 [cited 2021 Jul 11]. Available from:
401 <https://sdgs.un.org/goals>
- 402 11. Ghana AIDS Commission. Ghana AIDS Commission [Internet]. Ghana Aids Commission.
403 2017. p. 1–31. Available from: <https://www.ghanaims.gov.gh>
404 http://www.ghanaims.gov.gh/gac1/aids_info.php

- 405 12. Weber R, Ruppik M, Rickenbach M, Spoerri A, Furrer H, Battegay M, et al. Decreasing
406 mortality and changing patterns of causes of death in the Swiss HIV Cohort Study. *HIV Med.*
407 2013 Apr;14(4):195–207.
- 408 13. Ghana Statistical Service. Zabzugu district. 2010. 1–10 p.
- 409 14. Ghana Statistical Service. Tatale sanguli district. 2010. 1–10 p.
- 410 15. Harmon JL, Barroso J, Pence BW, Leserman J, Salahuddin N. Demographic and Illness-
411 Related Variables Associated with HIV-Related Fatigue. *J Assoc Nurses AIDS Care JANAC.*
412 2008;19(2):90–7.
- 413 16. HIV.gov. Demographics | AHEAD [Internet]. 2023 [cited 2023 Aug 8]. Available from:
414 <https://ahead.hiv.gov/methods/demographics>
- 415 17. Anthony F. National Institutes of Health (NIH). 2015 [cited 2023 Mar 7]. Benefits of Early
416 Antiretroviral Therapy in HIV Infection. Available from: [https://www.nih.gov/news-](https://www.nih.gov/news-events/nih-research-matters/benefits-early-antiretroviral-therapy-hiv-infection)
417 [events/nih-research-matters/benefits-early-antiretroviral-therapy-hiv-infection](https://www.nih.gov/news-events/nih-research-matters/benefits-early-antiretroviral-therapy-hiv-infection)
- 418 18. Dwomoh D, Tamba C, Addo SA, Wiah E, Abdulai M, Bosomprah S. Effect of antiretroviral
419 therapy on all-cause mortality among people living with HIV/AIDS in Ghana using
420 Mahalanobis distant metric matching within propensity score caliper analysis: A retrospective
421 cohort study. *PLOS ONE.* 2018 Sep 7;13(9):e0203461.
- 422 19. Obiri-Yeboah D, Pappoe F, Baidoo I, Arthur F, Hayfron-Benjamin A, Essien-Baidoo S, et al.
423 Immunologic and virological response to ART among HIV infected individuals at a tertiary
424 hospital in Ghana. *BMC Infect Dis.* 2018 Dec;18(1):1–7.
- 425 20. Mehari D, Mache T, Hailemariam L. Predictors of lost to follow up to antiretroviral therapy
426 in primary public hospital of Wukro, Tigray, Ethiopia: A case control study. *J AIDS HIV Res.*
427 2015 Jan 31;7(1):1–9.
- 428 21. Yao ST, Duan S, Xiang LF, Ye RH, Yang YC, Li YL, et al. [Survival analysis on 3103
429 HIV/AIDS patients receiving antiretroviral treatment in Dehong prefecture, Yunnan province].
430 *Zhonghua Liu Xing Bing Xue Za Zhi Zhonghua Liuxingbingxue Zazhi.* 2010 Nov
431 1;31(11):1215–8.
- 432 22. Alemu AW, Sebastián MS. Determinants of survival in adult HIV patients on antiretroviral
433 therapy in Oromiyaa, Ethiopia. *Glob Health Action.* 2010 Dec;3(1):5398.
- 434 23. Thompson AE, Anisimowicz Y, Miedema B, Hogg W, Wodchis WP, Aubrey-Bassler K. The
435 influence of gender and other patient characteristics on health care-seeking behaviour: a
436 QUALICOPC study. *BMC Fam Pract.* 2016 Mar 31;17(1):38.
- 437 24. Angdembe MR, Rai A, Bam K, Pandey SR. Predictors of mortality in adult people living with
438 HIV on antiretroviral therapy in Nepal: A retrospective cohort study, 2004–2013. Maiga AI,
439 editor. *PLOS ONE.* 2019 Apr 23;14(4):e0215776.

- 440 25. Coghill AE, Han X, Suneja G, Lin CC, Jemal A, Shiels MS. Advanced Stage at Diagnosis and
441 Elevated Mortality among HIV-infected US Cancer Patients in the National Cancer Database.
442 Cancer. 2019 Aug 15;125(16):2868–76.
- 443 26. Mangal TD, Meireles MV, Pascom ARP, de Almeida Coelho R, Benzaken AS, Hallett TB.
444 Determinants of survival of people living with HIV/AIDS on antiretroviral therapy in Brazil
445 2006-2015. BMC Infect Dis. 2019 Feb 28;19(1):206.
- 446