

1 **The role of exercise in limiting progression from liver inflammation and fibrosis to**
2 **cirrhosis and carcinoma: a systematic review with meta-analysis of human and animal**
3 **studies**

4 Stanhope, E.N.,^{1,2} Drummond, A.E.,³ Swain, C.T.V.,^{3,4} Teoh, N.,⁵ Farrell, G.,⁵ Vallance, J.K.,⁶
5 Lahart, I.M.,^{2*} Lynch, B.M.^{3,7*}

6
7 **Institutions**

- 8 1. School of Health, Science and Wellbeing, Staffordshire University, United Kingdom.
- 9 2. Faculty of Education, Health and Wellbeing, University of Wolverhampton, United
10 Kingdom.
- 11 3. Cancer Epidemiology Division, Cancer Council Victoria, Melbourne, Australia.
- 12 4. Department of Physiotherapy, Melbourne School of Health Sciences, The University of
13 Melbourne, Australia.
- 14 5. Gastroenterology and Hepatology Unit, The Canberra Hospital and The Australian
15 National University, Canberra, Australia.
- 16 6. Faculty of Health Disciplines, Athabasca University, Athabasca, Canada.
- 17 7. Centre for Epidemiology and Biostatistics, Melbourne School of Population and Global
18 Health, The University of Melbourne, Carlton, Australia.

19 * joint senior authors

20
21 **Corresponding author**

22 Edward N. Stanhope. School of Health, Science and Wellbeing, Staffordshire University, United
23 Kingdom. edward.stanhope@staffs.ac.uk

24
25 **Abstract**

26 Background: Exercise may prevent the progression of liver disease and protect against liver
27 cancer. This review with meta-analysis synthesised the evidence from both human and animal
28 studies to better understand whether exercise has the capacity to (i) promote regression of early
29 fibrosis; (ii) decrease and/or delay progression to cirrhosis; and (iii) progression to carcinoma.

30

31 Methods: A systematic search was performed to identify studies comprising of humans and
32 animals with liver disease that compared exercise to an inactive or less active control. Outcomes
33 included liver disease regression and progression, and markers of liver function and damage.

34

35 Results: We found 18 human and 29 animal studies. A single study provided direct evidence that
36 exercise can reverse NAFLD and decrease progression to cirrhosis. Meta-analysis of human
37 studies identified decreases in liver enzymes; ALT (SMD = -0.28, 95%CI = -0.53, -0.03), AST
38 (SMD = -0.12, 95%CI = -0.32, 0.07), GGT (SMD = -0.23, 95%CI = -0.36, -0.10), as well as a
39 small increase in ALP (SMD = 0.23, 95%CI = -0.13, 0.59), and liver triglycerides (SMD = -0.24,
40 95%CI = -0.66, 0.18). Meta-analysis of animal studies identified decreases in liver enzymes;
41 ALT (SMD = -2.85, 95%CI = -4.55, -1.14), AST (SMD = -2.85, 95%CI = -4.55, -1.14), and liver
42 triglycerides (SMD = -1.36, 95%CI = -2.08, -0.65), liver weight (SMD = -1.94, 95%CI = -2.78, -
43 1.10), and the NAFLD activity score (SMD = -1.36, 95%CI = -2.08, -0.65).

44

45 Conclusion: Only one study provided direct evidence that exercise has the capacity to regress
46 early fibrosis, as well as delay the progression to cirrhosis. Several studies, however, indicate
47 that exercise intervention reduce markers of liver function and damage.

48

49 **Key words**

50 NAFLD, NASH, HCC, HBV, HCV, Physical activity

51 **Introduction**

52 Liver disease is a growing concern worldwide with rising incidence rates irrespective of age, sex,
53 region, or ethnicity (1). The global prevalence of non-alcoholic fatty liver disease (NAFLD) has
54 been estimated to be between 20% and 30% in adults (2), of which ~20% have non-alcoholic
55 steatohepatitis (NASH) (3). The term NAFLD encompasses a continuum of liver pathologies,
56 ranging from non-alcoholic fatty liver (NAFL) to cirrhosis and hepatocellular carcinoma (HCC)
57 (4). Simple steatosis with minimal inflammation (NAFL) is relatively benign and has a much
58 lower risk of disease progression than patients with active inflammation (NASH) (5,6).
59 However, once liver fibrosis is present the risk of disease progression and liver-related
60 complications increases dramatically (7) and the chance of developing HCC is seven times
61 greater than that of patients without liver disease (8).

62 According to the World Health Organisation (WHO, 2020), the progression from acute hepatitis
63 B virus (HBV) to chronic HBV is relatively rare, affecting less than 5% of cases. People with
64 chronic HBV infection, however, face a notable lifetime risk of developing cirrhosis or liver
65 cancer (15% to 40%) (9). Conversely, the transition from acute hepatitis C virus (HCV) to
66 chronic HCV is more common. This transition is observed in 55% to 85% of people with HCV,
67 with approximately 15% to 30% of these people progressing to cirrhosis. In both the case of
68 HBV and HCV, the prognosis for people who develop liver cirrhosis or HCC is considerably
69 worse (10–12). Given that HCC is the third leading cause of cancer-related deaths worldwide
70 (12), and approximately 90-95% of people with HCC have underlying liver cirrhosis (13), the
71 progression from liver cirrhosis to HCC is a matter of great concern.

72 The liver is one of only a few organs that can regenerate. Its regeneration capacity, however, is
73 finite. If there is insufficient availability of hepatocytes, liver disease can become irreversible

74 with severe consequences, such as increased sensitivity to noxious substances (encephalopathy),
75 increased risk of gastrointestinal (GI) bleeding (varices and coagulopathy), and decreased bile
76 flow (14).

77 Lifestyle modification, such as increasing physical activity, may help improve liver disease
78 outcomes. Emerging evidence suggests that increasing physical activity may enhance liver
79 repair, reduce the risk of liver diseases, such as NAFLD and liver cancer, and slow the
80 progression from HBV, HCV, NAFLD, and alcohol-related liver disease to liver cirrhosis and
81 HCC (11,12). Whereas the epidemiological evidence suggests a protective effect of increased
82 physical activity against liver cancer, the experimental evidence remains inconclusive—largely
83 due to factors such as heterogeneity in the assessment of ‘exposure’—which limits support for
84 exercise intervention in treating liver disease (15).

85 Examining the evidence for the biological plausibility of exercise reducing the risk of liver
86 disease can provide support for causal inference. Preclinical studies indicate that, if hepatic
87 steatosis can be reversed through exercise intervention, then liver inflammation and fibrosis can
88 be resolved (4). Due to the invasive nature of liver biopsy, much of the mechanistic evidence for
89 the effects of exercise on liver disease comes from animal studies. However, in vivo animal
90 studies suggest liver fibrosis is more susceptible to regeneration in animals compared to humans
91 (16), and therefore species-specific liver regeneration differences cannot be ruled out (17).
92 Hence, to ensure translation, human mechanistic studies must also be examined.

93 Developing a better understanding of how exercise affects intermediate biological processes may
94 provide insight into the best ways to alter exposures for disease prevention. The overarching
95 objective of this review is to improve the understanding of whether exercise has the capacity to

96 (i) promote regression of early fibrosis, (ii) decrease or delay progression to cirrhosis; and (iii)
97 progression to carcinoma.

98 **Methodology**

99 **Study Design**

100 This was a systematic review and meta-analysis of human and animal studies.

101

102 **Search Strategy**

103 Relevant publications were identified using tailored search strategies of MEDLINE (via Ovid)
104 from 1946 - June 27, 2021, EMBASE (via Ovid) from 1974 - June 27, 2021, and SportDiscus
105 (via EBSCO) from 1985 - July 4, 2021. The tailored search strategies used a combination of
106 medical subject headings and free text terms. A version of the search strategy for MEDLINE is
107 presented in Appendix 1. Searches were performed on June 29, 2020, and updated on July 22,
108 2021.

109

110 **Eligibility criteria**

111 Both human and animal studies published in peer-reviewed journals were eligible for inclusion.
112 Only studies published in English were included. Conference abstracts were excluded.

113

114 We included human studies with parallel group randomized controlled trials (RCTs) and
115 randomized crossover trials (RXTs) designs, whereas non-randomized interventions and
116 observational studies were excluded due to their lower level of evidence for establishing causal
117 effects. Participants included adults (>18 years old) with liver inflammation (including NAFL
118 and NASH) or fibrosis. Populations with other clinically relevant health conditions (e.g.,

119 metabolic syndrome, type II diabetes) were also considered. Acceptable interventions included
120 any exercise intervention that disturbed the bodies homeostasis through muscular activity,
121 whether exclusively concentric, eccentric, or isometric, or a combination thereof (18). We
122 considered studies that offered general dietary recommendations in addition to exercise but
123 excluded studies that combined exercise and dietary interventions (e.g., caloric restriction). We
124 excluded studies if the effects of exercise could not be isolated and if the period of exercise was
125 less than seven days. We included studies that contained at least one control arm that did not
126 receive exercise.

127
128 Regarding animal studies, we included parallel randomized controlled trials involving genetic
129 and induced models of liver disease; induction methods included, but were not limited to,
130 exposure to diet and alcohol. We excluded single-group pre-post intervention studies and those
131 lacking a non-exercise period for NAFLD induction or a non-exercise induction period which
132 lasted less than eight weeks, as it is improbable to induce NAFLD within such a short timeframe
133 (19,20). Eligible interventions included any form of exercise as defined by Winter & Fowler
134 (2009). We excluded studies if the effects of exercise could not be isolated (e.g., exercise and
135 caloric restriction). To be considered for inclusion, the period of exercise intervention must have
136 been greater than seven days and studies were required to have at least one control group that did
137 not receive exercise.

138
139 We included studies that used invasive or non-invasive procedures to determine whether i)
140 inflammation or fibrosis had reverted to an earlier stage of the disease or resolved; (ii)
141 progressed to cirrhosis; (iii) and/or progressed to carcinoma.

142

143 The gold standard for evaluating liver fibrosis, cirrhosis, and carcinoma (cancer) is a liver
144 biopsy, whereby a small tissue sample from the liver is extracted for microscopic examination,
145 enabling the assessment of fibrosis (scarring), cirrhosis (advanced scarring), and the presence of
146 carcinoma or cancerous cells. However, liver biopsy is an invasive procedure that may have
147 some risks associated with it, such as bleeding or infection. As a result, non-invasive methods,
148 including FibroScan (Transient Elastography), blood tests, magnetic resonance elastography
149 (MRE), shear wave elastography (SWE), fibrosis blood panels and other imaging modalities (i.e.,
150 CT and MRI) have been developed and were included in our review.

151

152 **Selection of studies**

153 Study eligibility was judged against the pre-defined inclusion and exclusion criteria. Two authors
154 (ES, IML) independently screened the titles and abstracts of articles for eligibility. In cases of
155 disagreement the two authors discussed each case and tried to reach a consensus. If a consensus
156 could not be reached a third reviewer was consulted (BL). If inadequate information was
157 available in the title and abstract to determine eligibility it was included for next stage (full text)
158 review. The same two authors (ES, IML) independently reviewed the full text of articles that
159 were included based on the title and abstract screening. In cases where there was disagreement
160 about the eligibility of an article, the two authors aimed to reach a consensus. If a consensus
161 could not be reached a third reviewer (BL) was consulted. The authors were not blind to study
162 authors, journals, or results. A screening log was maintained and the number of excluded studies
163 and their reason for exclusion recorded.

164

165 **Data extraction**

166 Data extraction for human studies was performed by ES and IML using a pre-piloted system,
167 whereby one author extracted data into a table, and another validated the data extraction. Data
168 extraction for animal studies was performed in the same way by BL and AD. Extracted data
169 included study details (e.g., authors, year), study design, population (e.g., sample size,
170 demographic information, health status), intervention details (e.g., duration, exercise frequency,
171 intensity, time, type), comparator conditions, outcome details (e.g., definition, assessment
172 method), and statistical measures (e.g., post-intervention means and standard deviation). The
173 Webplot digitiser was used to extract data from studies that exclusively presented their results in
174 graphical form.

175

176 **Data synthesis and meta-analysis**

177 Extracted data were summarised and presented descriptively. For outcomes that were
178 consistently defined and reported in at least three studies, random effects meta-analysis was used
179 to estimate the effects of exercise on liver outcomes. Meta-analysis compared post-intervention
180 means and standard deviation between intervention and control groups. When studies had more
181 than one intervention group that met the criteria for inclusion, post-intervention means and
182 standard deviations were combined as per the Cochrane Collaboration manual (21). Meta-
183 analysis effect estimates are presented as standardised mean difference (SMD) and 95%
184 confidence interval (95%CI). Heterogeneity was assessed using the I^2 statistic. Publication bias
185 was assessed via visual inspection of funnel plots. For animal studies, meta-regression was used
186 to assess the influence of study year, study location (i.e., region), animal type, disease, and
187 disease inducement method on effect estimates. For human studies, meta-regression was used to

188 assess the influence of study year, study region, and disease type on effect estimates. Results of
189 studies not included in the meta-analyses were presented descriptively. All statistical analyses
190 were performed using Stata version 16 (Stata Corporation, College Station, Texas).

191

192 **Results**

193 **Identification of studies**

194 Search results are presented in Figure 1. Of the 1,535 records identified via database search,
195 1,352 titles and abstracts were screened, and 174 full texts were assessed for eligibility, with 60
196 full texts meeting all criteria for inclusion. Of these, there were 29 interventions in animals and
197 18 interventions conducted in humans.

198

199 **Study characteristics**

200 Study characteristics of human studies are presented in Table 1. Studies were conducted in Asia
201 (animal = 6, human = 4), Australia (human = 1), Europe (animal = 8, human = 6), the Middle
202 East (animal = 3, human = 3), North America (animal = 9, human = 1), or South America
203 (animal = 4, human = 1). A total of 1,976 participants with a median (IQR) sample of 47 (27–
204 135). There was a slightly higher proportion of male compared to female participants across
205 studies (median % = 52% vs. 48%); two studies included only female participants (22,23). The
206 median (IQR) average age was 53 (49–55) years and median (IQR) average BMI was 32 (30–33)
207 kg/m².

208

209 The type of liver disease studied included NAFLD (animal = 17, human = 14), NASH (animal =
210 5, human = 1), hepatic steatosis (animal = 4), liver cirrhosis (human = 1), liver fibrosis (animal =

211 1), polycystic liver disease (animal = 1), metabolic syndrome (human = 1), type II diabetes
212 (human = 1), and extrahepatic obstruction (animal = 1).

213

214 All but one (24) of the human studies provided details on how NAFLD was diagnosed. NAFLD
215 diagnosis methods in human studies included: proton magnetic resonance spectroscopy (MRS)
216 alone (25–27), ultrasonography alone (22), MRS and ultrasonography (28), ultrasonography and
217 elevated alanine aminotransferase (ALT) (29), Asia Pacific Working Party guidelines (30,31),
218 liver biopsy (23), and controlled attenuation parameter (CAP) measurements performed via
219 vibration-controlled elastography (VCTE) (32). Liver biopsies were used to diagnose NASH in
220 the only study that consisted of patients diagnosed with this condition (33). Whereas, in one
221 study (34) a variety of measures were used to diagnose liver cirrhosis (computed tomography,
222 MRI, transient elastography, or liver biopsy).

223

224 Human studies had one (N = 13), two (N = 4), or three (N = 1) intervention arms that were
225 relevant to this review. The interventions included only moderate-intensity continuous training
226 (N = 8), resistance training (N = 4), high-intensity interval training (N = 2), moderate-intensity
227 continuous training combined with resistance training (N = 4), vigorous-intensity training (N =
228 1), or physical activity guidelines and counselling support (N = 1). The comparison conditions
229 included a no intervention control (N = 7), standard care (N = 3), general diet and/or physical
230 activity advice (N = 3), a wait-list control (N = 1), placebo supplement (N = 1), control diet (N =
231 1), or stretching (N = 1).

232

233 Study characteristics of animal studies are presented in Table 2. Animal studies included an
234 approximate total of 992 animals and had a median [inter-quartile range (IQR)] of 32 (24–39),
235 although it was not possible to discern the exact number due to study reporting quality (e.g., a
236 study may have reported ‘7–8’ mice per group). There were 17 studies with rats and 12 studies
237 with mice.

238
239 In animal studies, these diseases were induced via diet (N = 22), genetic phenotype (N = 6), or
240 drug induced (N = 1). Animal studies had either one (N = 17) or two (N = 12) intervention arms
241 relevant to this review. Interventions in animal studies included continuous exercise (e.g.,
242 treadmill running, N = 24), voluntary exercise (e.g., voluntary wheel running, N = 8), or
243 swimming (N = 5).

244
245 Only one study (human = 1) directly reported the number of NAFLD participants who
246 experienced disease regression, reduction, or progression. In most studies, liver function and/or
247 damage were used as surrogate markers for remission and progression, and included tests for
248 liver enzymes: alanine transaminase (ALT) (animal = 18, human = 16), aspartate transaminase
249 (AST) (animal = 11, human = 15), alkaline phosphatase (ALP) (animal = 2, human = 4), and
250 gamma-glutamyl transferase (GGT) (animal = 1, human = 12).

251
252 The assessment of liver triglyceride content included hepatic triglyceride content (HTGC)
253 (animal = 9), intrahepatic triglyceride content (IHTG) (human = 1), HTGC/IHTG (human = 5),
254 liver fat percentage (human = 3), intra-hepatocellular lipid (IHCL) (human = 1), liver lipid

255 percentage (animal = 1), intrahepatic lipid content (IHL) (human = 4), liver triacylglycerol
256 (TAG) (animal = 5), and hepatic fat content (HFC) (human = 1).

257
258 For the evaluation of liver steatosis and related measures, the fatty liver index (human = 1),
259 ferritin (human = 4), fetuin A (human = 1), hepatic steatosis (human = 2), NAFLD (non-
260 alcoholic fatty liver disease) (human = 1), NAFLD activity score (NAS) (animal = 5), fibrosis
261 score (animal = 1, human = 2), and steatosis score (animal = 3) were included.

262
263 Additionally, other liver outcome measures were taken into account, such as liver droplet size
264 (animal = 4), liver stiffness (human = 2), spleen stiffness (human = 1), liver diacylglycerol
265 (DAG) (animal = 3), hepatorenal index (HRI) (human = 1), liver platelets (PLT) (human = 1),
266 hepatic tuberculosis (TB) (human = 1), liver weight (animal = 6), and vascular endothelial
267 growth factor (VEGF) (human = 1).

268
269 **Liver disease regression and/or progression**

270 In our review, only one study (25) directly investigated the impact of exercise on the remission
271 or progression of NAFLD. The findings revealed that 14% (n = 3/22) of participants assigned to
272 the exercise group achieved a decrease in hepatic fat content (HFC) to less than 5.6% (normal
273 levels), while this was observed in only 11% (n = 2/18) of those who received no intervention.
274 Moreover, 54% (n = 12/22) of the exercise group experienced a reduction in HFC, while only
275 17% (n = 3/18) in the no intervention group showed a similar improvement. Furthermore,
276 elevated HFC was observed in only 32% (n = 7/22) of participants in the exercise group,
277 compared to 72% (n = 13/18) in the no intervention arm. These findings suggest a positive

278 association between exercise intervention and the regression of early fibrosis, as well as a delay
279 in the progression to cirrhosis. We found no studies that directly evaluated the progression to
280 HCC.

281
282 **Markers of liver function and damage**

283 Meta-analysis of human studies was possible for outcomes ALT, AST, ALP, GGT, and hepatic
284 triglyceride content only (Figure 2). Meta-analysis of animal studies was possible for outcomes
285 ALT, AST, NAS, and liver triglycerides only (Figure 3). We conducted separate meta-regression
286 analyses for human (Supplementary Table 1) and animal studies (Supplementary Table 2). In
287 human studies, we accounted for year, region, disease, and study type. Meanwhile, in animal
288 studies, we controlled for year, region, animal type, disease, and inducement. Results of meta-
289 regression and funnel plots are presented in supplementary material. Results of individual studies
290 not included in the meta-analyses are presented in supplementary table 3 and 4.

291
292 **Liver enzymes**

293 Meta-analysis of studies that assessed the effects of exercise on ALT are presented in Figure 2A
294 (human studies) and Figure 3A (animal studies). In the human studies, participants who were
295 assigned to the exercise group exhibited a modest reduction in ALT levels compared to those in
296 the control group (Studies = 12, N = 1,209, SMD = -0.28, 95%CI = -0.53, -0.03). Moreover, in
297 animal studies, a greater difference in ALT levels was observed between the exercise and control
298 groups (Studies = 15, N = 274, SMD = -2.61, 95%CI = -3.91, -1.30). Heterogeneity was
299 considerable in animal studies ($I^2 = 94\%$) and substantial in human studies ($I^2 = 65\%$). Some of
300 the heterogeneity in the animal studies could be explained by animal type, with higher effect

301 estimates observed for studies with rats compared to mice (Supplementary Table 2). Funnel plots
302 suggested likely publication bias in animal studies but not for human studies (Supplementary
303 Figure 1). Additional individual studies not included in the meta-analysis reported either a
304 statistically significant reduction in ALT following intervention compared to the control group
305 (35) or no statistically significant difference (28,36) (Supplementary Table 3).

306
307 Meta-analysis of studies that assessed the effects of exercise on AST are presented in Figure 2B
308 (human studies) and Figure 3B (animal studies). Participants assigned to the intervention showed
309 a slight difference in AST compared to the control group, favouring the intervention (Studies =
310 10, N = 1,148, SMD = -0.12, 95%CI = -0.32 to 0.07). However, the certainty of this finding was
311 limited by confidence intervals that crossed the null. Additionally, animals assigned to the
312 exercise intervention demonstrated a significant difference in AST compared to the control group
313 (Studies = 8, N = 146, SMD = -2.88, 95%CI = -4.78 to -0.98). Heterogeneity was considerable in
314 animal studies ($I^2 = 95\%$) and moderate in human studies ($I^2 = 39\%$). Funnel plots suggested
315 likely publication bias in animal studies but not in human studies. Meta-regression results are
316 presented for human (Supplementary Table 1) and animal studies (Supplementary Table 2) in the
317 supplementary materials. Some of the heterogeneity in the human and animal studies meta-
318 analysis was explained by study region. Furthermore, in the animal studies, study year explained
319 some of the heterogeneity in the meta-analysis. Individual studies that were not included in the
320 meta-analysis identified a statistically significant reduction in AST in the intervention compared
321 to control arm following intervention (35) or no statistically significant difference (28,36)
322 (Supplementary Table 3).

323

324 Meta-analysis of human studies that assessed the effects of exercise on ALP are presented in
325 Figure 2C. Despite the confidence intervals crossing the null, our analysis revealed a small
326 increase in ALP among those assigned to exercise when compared with the control group
327 (Studies = 3, N = 130, SMD = 0.23, 95% CI = -0.13, 0.59). There was no evidence of
328 heterogeneity ($I^2 = 0\%$), nor was there evidence of publication bias. Meta-regression was not
329 possible for ALP in either human or animal studies. Two individual animal studies examined the
330 effects of exercise on ALP, both found a decreases in ALP for exercise compared to control
331 (37,38) (Supplementary Table 4).

332
333 Meta-analysis of human studies that assessed the effects of exercise on GGT are presented in
334 Figure 2D. There was a small decrease in GGT in participants receiving exercise intervention
335 compared to controls (Studies = 10, N = 1,142, SMD = -0.23, 95%CI = -0.36, -0.10).
336 Heterogeneity was low ($I^2 = 6\%$) and there was no clear evidence of publication bias
337 (Supplementary Figure 1). There were no statistically significant findings from the meta-
338 regression (Supplementary Table 1). In three individual studies not included in the meta-analysis,
339 two (35,36) identified decreases in GGT following exercise relative to control (Supplementary
340 table 3). One study (28) did not identify definitive differences between exercise and control
341 groups. There was no difference in GGT between groups in one animal study (39)
342 (Supplementary Table 4).

343

344

345 **Liver triglyceride content**

346 Meta-analysis of human studies that assessed the effects of exercise on HTGC are presented in
347 Figure 2E. Participants assigned to exercise showed, on average, HTGC compared to the control
348 group (Studies = 3, N = 101, SMD = -0.24, 95%CI = -0.66, 0.18). However, it's worth noting
349 that the confidence intervals overlapped the null value. Heterogeneity was low ($I^2 = 0\%$) and
350 there was no clear evidence of publication bias (Supplementary Figure 1). Meta-regression was
351 not possible for HTGC in human studies. The percentage decrease in HTGC was greater
352 following moderate and high intensity exercise compared to control in one individual human
353 study not included in the meta-analysis (28). There was no difference between moderate and
354 high intensity exercise.

355
356 Meta-analysis of animal studies that assessed the effects of exercise on liver triglycerides are
357 presented in Figure 3D. There was a large difference in liver triglycerides between exercise and
358 control groups (Studies = 10, N = 172, SMD = -1.94, 95%CI = -3.87, 0.00). Heterogeneity was,
359 however, considerable ($I^2 = 96\%$) and there was evidence of publication bias (Supplementary
360 Figure 2). Meta-regression indicated that some of the heterogeneity could be explained by animal
361 type—with larger effect estimates observed for studies that used rats—but not by year, region,
362 disease, or inducement (Supplementary Table 2). Individual animal studies not included in the
363 meta-analysis suggested lower liver triglycerides for exercise compared to control (40).

364
365 For outcomes not included in the meta-analysis (Supplementary Table 3 and Table 4), individual
366 studies suggested that exercise can decrease liver TAG (41–43), HFC (25), the fatty liver index
367 (44), IHCL (45), and IHL (24,46).

368

369 **Liver steatosis and related measures**

370 Meta-analysis of all four animal studies that assessed the effects of exercise on NAS are
371 presented in Figure 3C. There was a large decrease in NAS with exercise versus control (Studies
372 = 4, N = 98, SMD = -1.36, 95%CI = -2.08, -0.65). Heterogeneity was substantial ($I^2 = 59\%$) and
373 there was some evidence of publication bias (Supplementary Figure 2). Meta-regression of NAS
374 was not possible and therefore, the heterogeneity observed remained unexplained.

375

376 For outcomes not included in the meta-analysis (Supplementary Table 3 and Table 4), the
377 findings on Ferritin were mixed in the literature; two studies (35,36) reported a decrease with
378 exercise compared to controls, while two other studies (23,31) found no statistically significant
379 difference. Similarly, one study (47) observed differences in fibrosis score between exercise and
380 control groups, while another (33) did not find any distinction.

381

382 **Other relevant liver outcome measures**

383 Meta-analysis of all six animal studies that assessed the effects of exercise on liver weight are
384 presented in Figure 3E. There was a large difference in liver weight between exercise and control
385 groups (Studies = 6, N = 144, SMD = -1.94, 95%CI = -2.78, -1.10). Heterogeneity was
386 considerable ($I^2 = 77\%$), although could not clearly be explained by factors included in the meta-
387 regression analysis (Supplementary Table 2). There was possible publication bias evident in the
388 funnel plots (Supplementary Figure 2).

389

390 For outcomes not included in the meta-analysis (Supplementary Table 3 and Table 4), individual
391 studies suggested that exercise can decrease liver DAG (42,48), hepatic stiffness (31) and HRI
392 (36). There were null findings for liver stiffness (34), spleen stiffness (34), and VEGF (23).

393 **Discussion**

394 This current review synthesized the evidence for the effect of exercise interventions versus
395 control/standard care on liver function and disease in people and animals with established liver
396 disease. Only one study directly reported whether liver disease (NAFLD) regressed or
397 progressed in response to exercise intervention. Most studies included in this review compared
398 measures of liver function and/or damage between exercise and non-exercise interventions. The
399 findings of these studies support the biological plausibility for a protective effect of exercise on
400 liver function and disease.

401 The primary strength of this review is the synthesis of findings from both human and animal
402 studies. While there is a wealth of data from animal studies relevant to human health, systematic
403 reviews, which are common practice in clinical and public health research, remain less common
404 in animal research. Animal studies offer a unique advantage in exploring liver outcome measures
405 that are not feasible to obtain through biopsy in humans. However, it is essential to recognize
406 that the responses observed in animals may not always directly translate to human-specific
407 outcomes. On the other hand, human studies heavily rely on surrogate measures of liver function
408 and damage. By incorporating results from both human and animal studies, this review greatly
409 enhances our understanding of the effects of exercise on liver function, as well as the potential
410 translation of animal study findings to human contexts.

411 This current review also has limitations that should be considered when interpreting the findings.
412 First, we did not perform a risk of bias assessment using a pre-existing risk of bias tool. While
413 tools for assessing study quality in human clinical trials have been modified and applied to
414 animal studies (e.g., SYRCLE), when piloting this tool most animal studies scored poorly simply
415 because the information was not reported.

416 There was substantial to considerable heterogeneity in the meta-analyses, particularly the meta-
417 analyses of the animal studies, which may limit confidence in the final effect estimates. Sources
418 of heterogeneity present in animal studies that were not present in the human studies included
419 species (e.g., mouse type, rat type) as well as methods used to induce liver disease (e.g., forced
420 feeding, genetic selection). These are in addition to sources of variation present in human
421 studies, such as variations in study design and methods, participant age and sex, exercise type,
422 dose, or duration, and outcome assessment methods. Owing to the studies identified, this review
423 is limited in its ability to examine differing effects for the type and dose of exercise on liver
424 function and/or damage.

425 Our study's findings indicate that exercise interventions have a positive impact on liver health
426 and function when compared to non-exercise comparison groups. These results align with
427 evidence from epidemiological studies, which have shown that higher levels of physical activity
428 are associated with reduced instances of fatty liver and a decreased risk of liver cancer. For
429 example, in a meta-analysis of observational studies (49), higher (90th percentile) compared to
430 lower (10th percentile) duration of leisure-time physical activity was associated with decreased
431 liver cancer risk (HR = 0.73, 95%CI: 0.55, 0.98). While this epidemiological evidence suggests
432 an association between exercise and outcomes like liver cancer, results from this current review

433 support the biological plausibility of the findings. That is, exercise may reduce the risk of liver
434 cirrhosis and/or cancer by reducing measures of liver function and/or damage.

435 Improvement in liver enzymes, liver triglyceride content, and steatosis was evident in both
436 human and animal studies, but the effect estimates were generally larger in the meta-analysis of
437 animal studies compared with the human studies. This may, in part, reflect inter-species
438 differences, with greater potential for liver regeneration in animals. Alternatively, these larger
439 effect estimates may be due to a greater ability to control for sources of variation in animal
440 compared to human studies, who are likely to vary in factors such as intervention adherence,
441 diet, alcohol consumption, body fatness, as well as exercise history and tolerance. Nonetheless,
442 that improvements were present in both humans and animals supports the translation of findings
443 and relevance to people with liver disease.

444 This current review found an effect of exercise on liver outcomes, but it did not attempt to
445 determine whether these are direct or indirect effects. That is, is the benefit of exercise due to the
446 exercise itself or other factors such as fat loss that may follow exercise participation. Findings
447 from individual studies included within the review suggest at least some of the effects of exercise
448 may be via fat loss (28). However, other studies have proposed mechanisms independent of fat
449 loss, such as facilitating change via the effect of exercise on insulin signalling and serum lipid
450 concentrations, which may lead to an increased ability to suppress lipolysis in adipose tissue,
451 resulting in decreased free fatty acid delivery to the liver (47).

452 The identification of exercise's impact on liver function and damage provides essential support
453 for the idea that exercise might be linked to liver cancer. As liver cancer is a rare form of cancer,
454 directly examining this relationship presents challenges. Nevertheless, it is important to

455 emphasize that this discovery is just one step in the broader research pathway. Conducting
456 further research is necessary to delve into how these measures specifically influence the
457 incidence of liver cirrhosis and/or cancer (HCC).

458

459 **Conclusion**

460 In conclusion, a single investigation focusing on the effect of exercise on the progression and
461 remission of NAFLD revealed a significant association between exercise intervention and the
462 regression of initial fibrosis, as well as a delay in the progression of cirrhosis. Moreover, a
463 comprehensive review of existing literature reveals consistent indications of exercise's positive
464 impact on liver function and reduction of liver damage in both human subjects and animal
465 models with established liver disease. These collective results substantiate the biological
466 plausibility of exercise as a beneficial therapeutic strategy for enhancing liver function and
467 combatting liver disease. Nonetheless, further research and clinical trials are warranted to fully
468 elucidate the mechanisms underlying these observed effects and to establish more robust
469 guidelines for exercise-based interventions in liver disease management.

470

471 **Acknowledgments**

472 All authors were involved in conception and design. A. E. D. performed the literature searches,
473 with A. E. D. and J. K. V. selecting articles for exclusion and inclusion, with any disagreement
474 resolved by discussion with B. M. L. Full texts were assessed by E. N. S and I. M. L, with any
475 disagreement resolved by discussion with B. M. L. Data was extracted from human studies by E.
476 N. S. and I. M. L, and from animal studies by A. E. D. and B. M. L. Meta-analysis was
477 conducted by C. T. V. S. All authors contributed to the writing and revision of the manuscript.

478

479 **Conflicts of interest**

480 The authors declare no competing interests. No funding was received for this work. The results
481 of the study are presented clearly, honestly, and without fabrication, falsification, or
482 inappropriate data manipulation.

483 **References**

- 484 1. Asrani SK, Devarbhavi H, Eaton J, Kamath PS. Burden of Liver Diseases in the World. *J*
485 *Hepatol*. 2019 Jan 1;70(1):151–71.
- 486 2. Younossi ZM, Koenig AB, Abdelatif D, Fazel Y, Henry L, Wymer M. Global Epidemiology of
487 Nonalcoholic Fatty Liver Disease—Meta-analytic Assessment of Prevalence, Incidence, and
488 Outcomes. *Hepatology*. 2016;64(1):73–84.
- 489 3. Singh S, Allen AM, Wang Z, Prokop LJ, Murad MH, Loomba R. Fibrosis Progression in
490 Nonalcoholic Fatty Liver vs Nonalcoholic Steatohepatitis: A Systematic Review and Meta-
491 Analysis of Paired-Biopsy Studies. *Clin Gastroenterol Hepatol Off Clin Pract J Am*
492 *Gastroenterol Assoc*. 2015 Apr;13(4):643-654.e1-9; quiz e39-40.
- 493 4. Loomba R, Friedman SL, Shulman GI. Mechanisms and Disease Consequences of
494 Nonalcoholic Fatty Liver Disease. *Cell*. 2021 May 13;184(10):2537–64.
- 495 5. Day CP. Natural History of NAFLD: Remarkably Benign in the Absence of Cirrhosis.
496 *Gastroenterology*. 2005 Jul;129(1):375–8.
- 497 6. Younossi ZM, Marchesini G, Pinto-Cortez H, Petta S. Epidemiology of Nonalcoholic Fatty
498 Liver Disease and Nonalcoholic Steatohepatitis: Implications for Liver Transplantation.
499 *Transplantation*. 2019 Jan;103(1):22–7.
- 500 7. Ekstedt M, Franzén LE, Mathiesen UL, Thorelius L, Holmqvist M, Bodemar G, et al. Long-
501 Term Follow-up of Patients with NAFLD and Elevated Liver Enzymes. *Hepatol Baltim Md*.
502 2006 Oct;44(4):865–73.
- 503 8. Mittal S, Sada YH, El-Serag HB, Kanwal F, Duan Z, Temple S, et al. Temporal Trends of
504 Nonalcoholic Fatty Liver Disease-Related Hepatocellular Carcinoma in the Veteran Affairs
505 Population. *Clin Gastroenterol Hepatol Off Clin Pract J Am Gastroenterol Assoc*. 2015
506 Mar;13(3):594-601.e1.
- 507 9. Mak LY, Cruz-Ramón V, Chinchilla-López P, Torres HA, LoConte NK, Rice JP, et al. Global
508 Epidemiology, Prevention, and Management of Hepatocellular Carcinoma. *Am Soc Clin*
509 *Oncol Educ Book*. 2018 May 23;(38):262–79.
- 510 10. Czaja AJ. Review Article: The Prevention and Reversal of Hepatic Fibrosis in Autoimmune
511 Hepatitis. *Aliment Pharmacol Ther*. 2014 Feb;39(4):385–406.
- 512 11. Sepanlou SG, Safiri S, Bisignano C, Ikuta KS, Merat S, Saberifiroozi M, et al. The Global,
513 Regional, and National Burden of Cirrhosis by Cause in 195 Countries and Territories,
514 1990–2017: A Systematic Analysis for the Global Burden of Disease Study 2017. *Lancet*
515 *Gastroenterol Hepatol*. 2020 Mar;5(3):245–66.
- 516 12. Shiani A, Narayanan S, Pena L, Friedman M. The Role of Diagnosis and Treatment of
517 Underlying Liver Disease for the Prognosis of Primary Liver Cancer. *Cancer Control*. 2017
518 Sep 1;24(3):107327481772924.
- 519 13. Forner A, Llovet JM, Bruix J. Hepatocellular Carcinoma. *The Lancet*. 2012
520 Mar;379(9822):1245–55.

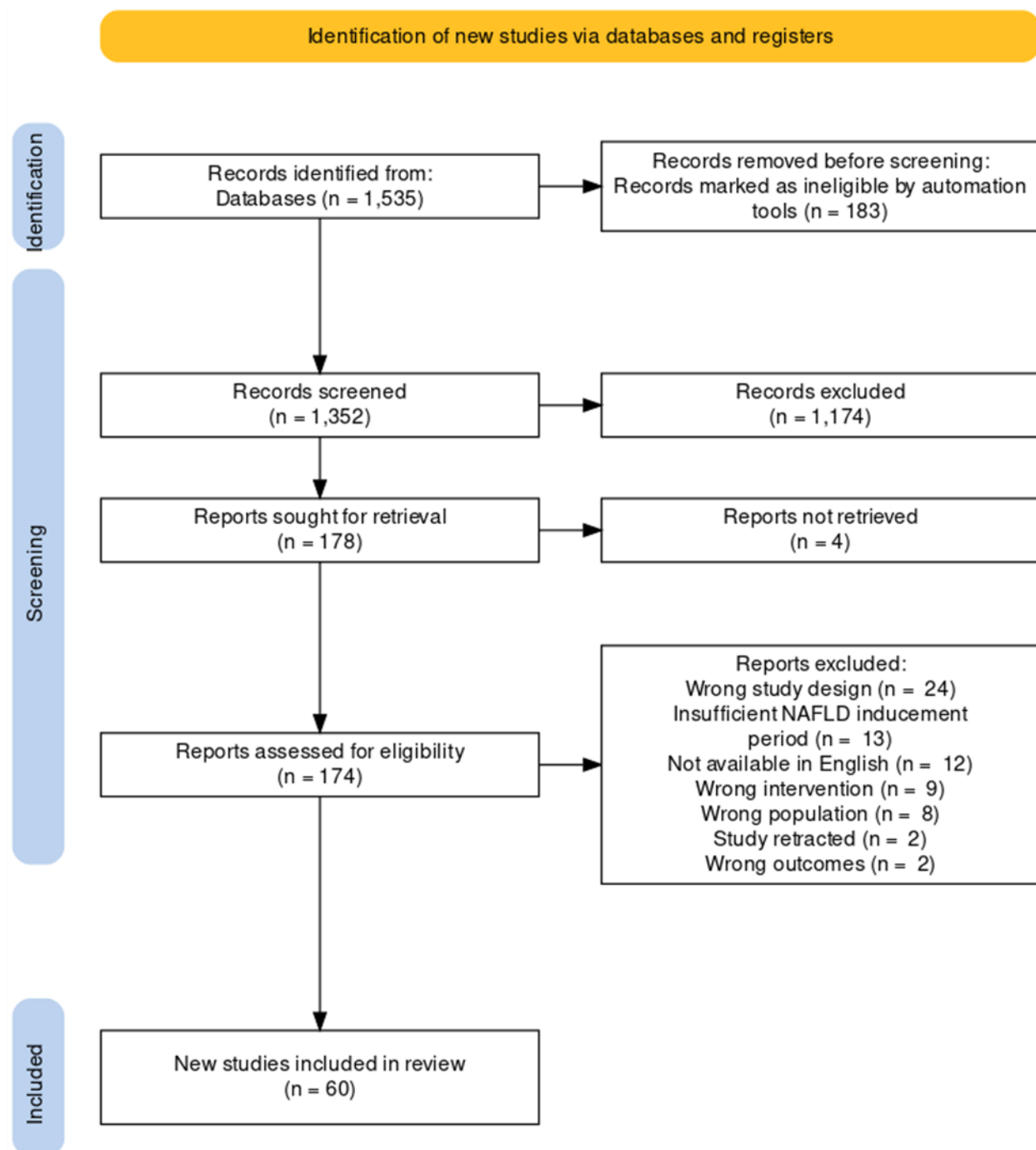
- 521 14. Sharma A, Nagalli S. Chronic Liver Disease. In: StatPearls [Internet]. Treasure Island (FL):
522 StatPearls Publishing; 2021 [cited 2021 Jun 28]. Available from:
523 <http://www.ncbi.nlm.nih.gov/books/NBK554597/>
- 524 15. WCRF. Diet, Nutrition, Physical Activity and Liver Cancer. 2015;52.
- 525 16. Desmet VJ, Roskams T. Cirrhosis Reversal: A Duel between Dogma and Myth. *J Hepatol.*
526 2004 May 1;40(5):860–7.
- 527 17. Cordero-Espinoza L, Huch M. The Balancing Act of the Liver: Tissue Regeneration versus
528 Fibrosis. *J Clin Invest.* 2018;128(1):85–96.
- 529 18. Winter EM, Fowler N. Exercise defined and quantified according to the Système
530 International d'Unités. *J Sports Sci.* 2009 Mar 1;27(5):447–60.
- 531 19. Farrell G, Schattenberg JM, Leclercq I, Yeh MM, Goldin R, Teoh N, et al. Mouse Models of
532 Nonalcoholic Steatohepatitis: Toward Optimization of Their Relevance to Human
533 Nonalcoholic Steatohepatitis. *Hepatol Baltim Md.* 2019 May;69(5):2241–57.
- 534 20. Haczeyni F, Yeh MM, Ioannou GN, Leclercq IA, Goldin R, Dan YY, et al. Mouse Models of
535 Non-Alcoholic Steatohepatitis: A Reflection on Recent Literature. *J Gastroenterol Hepatol.*
536 2018 Jul;33(7):1312–20.
- 537 21. Higgins JP, Green S, editors. *Cochrane Handbook for Systematic Reviews of Interventions:*
538 *Cochrane Book Series* [Internet]. 1st ed. Wiley; 2008 [cited 2023 Jul 26]. Available from:
539 <https://onlinelibrary.wiley.com/doi/book/10.1002/9780470712184>
- 540 22. Kelardeh B, Rahmati-Ahmadabad S, Farzanegi P, Helalizadeh M, Azarbayjani MA. Effects
541 of non-linear resistance training and curcumin supplementation on the liver biochemical
542 markers levels and structure in older women with non-alcoholic fatty liver disease. *J Bodyw
543 Mov Ther.* 2020 Jul;24(3):154–60.
- 544 23. Rezende REF, Duarte SMB, Stefano JT, Roschel H, Gualano B, De Sá Pinto AL, et al.
545 Randomized clinical trial: benefits of aerobic physical activity for 24 weeks in
546 postmenopausal women with nonalcoholic fatty liver disease. *Menopause.* 2016
547 Aug;23(8):876–83.
- 548 24. Hallsworth K, Fattakhova G, Hollingsworth KG, Thoma C, Moore S, Taylor R, et al.
549 Resistance exercise reduces liver fat and its mediators in non-alcoholic fatty liver disease
550 independent of weight loss. *Gut.* 2011 Sep 1;60(9):1278–83.
- 551 25. Cheng S, Ge J, Zhao C, Le S, Yang Y, Ke D, et al. Effect of aerobic exercise and diet on
552 liver fat in pre-diabetic patients with non-alcoholic-fatty-liver-disease: A randomized
553 controlled trial. *Sci Rep.* 2017 Nov 21;7(1):15952.
- 554 26. Pugh C, Sprung V, Aarons G, Richardson P, Shojaee-Moradie F, Umpleby A, et al. Exercise
555 training reverses endothelial dysfunction in nonalcoholic fatty liver disease. *Am J Physiol-
556 Heart Circ Physiol.* 2014;307(9):H1298–306.

- 557 27. Sullivan S, Kirk EP, Mittendorfer B, Patterson BW, Klein S. Randomized trial of exercise
558 effect on intrahepatic triglyceride content and lipid kinetics in nonalcoholic fatty liver disease.
559 *Hepatology*. 2012 Jun;55(6):1738–45.
- 560 28. Zhang HJ, He J, Pan LL, Ma ZM, Han CK, Chen CS, et al. Effects of Moderate and
561 Vigorous Exercise on Nonalcoholic Fatty Liver Disease: A Randomized Clinical Trial. *JAMA*
562 *Intern Med*. 2016 Aug 1;176(8):1074.
- 563 29. Pugh C, Cuthbertson DJ, Sprung VS, Kemp GJ, Richardson P, Margot Umpleby A, et al.
564 Exercise training improves cutaneous microvascular function in nonalcoholic fatty liver
565 disease. *Am J Physiol-Endocrinol Metab*. 2013 Jul 1;305(1):E50–8.
- 566 30. Abdelbasset WK, Tantawy SA, Kamel DM, Alqahtani BA, Elnegamy TE, Soliman GS, et al.
567 Effects of High-Intensity Interval and Moderate-Intensity Continuous Aerobic Exercise on
568 Diabetic Obese Patients with Nonalcoholic Fatty Liver Disease: A Comparative Randomized
569 Controlled Trial. *Medicine (Baltimore)*. 2020 Mar;99(10):e19471.
- 570 31. Takahashi A, Abe K, Usami K, Imaizumi H, Hayashi M, Okai K, et al. Simple Resistance
571 Exercise helps Patients with Non-alcoholic Fatty Liver Disease. *Int J Sports Med*. 2015 Jun
572 19;36(10):848–52.
- 573 32. Tutino V, De Nunzio V, Caruso M, Bonfiglio C, Franco I, Mirizzi A, et al. Aerobic Physical
574 Activity and a Low Glycemic Diet Reduce the AA/EPA Ratio in Red Blood Cell Membranes
575 of Patients with NAFLD. *Nutrients*. 2018 Sep 13;10(9):1299.
- 576 33. Houghton D, Thoma C, Hallsworth K, Cassidy S, Hardy T, Burt AD, et al. Exercise Reduces
577 Liver Lipids and Visceral Adiposity in Patients With Nonalcoholic Steatohepatitis in a
578 Randomized Controlled Trial. *Clin Gastroenterol Hepatol*. 2017 Jan;15(1):96-102.e3.
- 579 34. Sirisunhirun P, Bandidniyamanon W, Jrerattakon Y, Muangsomboon K, Pramyothin P,
580 Nimanong S, et al. Effect of a 12-week home-based exercise training program on aerobic
581 capacity, muscle mass, liver and spleen stiffness, and quality of life in cirrhotic patients: a
582 randomized controlled clinical trial. *BMC Gastroenterol*. 2022 Dec;22(1):66.
- 583 35. St. George A, Bauman A, Johnston A, Farrell G, Chey T, George J. Independent effects of
584 physical activity in patients with nonalcoholic fatty liver disease. *Hepatology*. 2009
585 Jul;50(1):68–76.
- 586 36. Zelber-Sagi S. Effect of Resistance Training on Non-Alcoholic Fatty-Liver Disease a
587 Randomized-Clinical Trial. *World J Gastroenterol*. 2014;20(15):4382.
- 588 37. Marques CMM, Motta VF, Torres TS, Aguila MB, Mandarim-de-Lacerda CA. Beneficial
589 effects of exercise training (treadmill) on insulin resistance and nonalcoholic fatty liver
590 disease in high-fat fed C57BL/6 mice. *Braz J Med Biol Res*. 2010 May;43(5):467–75.
- 591 38. Schultz A, Mendonca LS, Aguila MB, Mandarim-de-Lacerda CA. Swimming training
592 beneficial effects in a mice model of nonalcoholic fatty liver disease. *Exp Toxicol Pathol*.
593 2012 May;64(4):273–82.

- 594 39. Silva RN, Bueno PG, Avó LRS, Nonaka KO, Selistre-Araújo HS, Leal AMO. Effect of
595 physical training on liver expression of activin A and follistatin in a nonalcoholic fatty liver
596 disease model in rats. *Braz J Med Biol Res.* 2014 Jul 25;47(9):746–52.
- 597 40. Gehrke N, Biedenbach J, Huber Y, Straub BK, Galle PR, Simon P, et al. Voluntary exercise
598 in mice fed an obesogenic diet alters the hepatic immune phenotype and improves
599 metabolic parameters – an animal model of life style intervention in NAFLD. *Sci Rep.* 2019
600 Mar 8;9(1):4007.
- 601 41. Gauthier MS, Couturier K, Charbonneau A, Lavoie JM. Effects of introducing physical
602 training in the course of a 16-week high-fat diet regimen on hepatic steatosis, adipose tissue
603 fat accumulation, and plasma lipid profile. *Int J Obes.* 2004 Aug;28(8):1064–71.
- 604 42. Linden MA, Fletcher JA, Morris EM, Meers GM, Laughlin MH, Booth FW, et al. Treating
605 NAFLD in OLETF Rats with Vigorous-Intensity Interval Exercise Training. *Med Sci Sports
606 Exerc.* 2015 Mar;47(3):556–67.
- 607 43. Sheldon RD, Laughlin MH, Rector RS. Reduced hepatic eNOS phosphorylation is
608 associated with NAFLD and type 2 diabetes progression and is prevented by daily exercise
609 in hyperphagic OLETF rats. *J Appl Physiol.* 2014 May 1;116(9):1156–64.
- 610 44. Balducci S, Cardelli P, Pugliese L, D’Errico V, Haxhi J, Alessi E, et al. Volume-dependent
611 effect of supervised exercise training on fatty liver and visceral adiposity index in subjects
612 with type 2 diabetes The Italian Diabetes Exercise Study (IDES). *Diabetes Res Clin Pract.*
613 2015 Aug;109(2):355–63.
- 614 45. Shojaee-Moradie F, Cuthbertson DJ, Barrett M, Jackson NC, Herring R, Thomas EL, et al.
615 Exercise Training Reduces Liver Fat and Increases Rates of VLDL Clearance But Not VLDL
616 Production in NAFLD. *J Clin Endocrinol Metab.* 2016 Nov;101(11):4219–28.
- 617 46. Hallsworth K, Thoma C, Hollingsworth KG, Cassidy S, Anstee QM, Day CP, et al. Modified
618 high-intensity interval training reduces liver fat and improves cardiac function in non-
619 alcoholic fatty liver disease: a randomized controlled trial. *Clin Sci.* 2015 Dec
620 1;129(12):1097–105.
- 621 47. Haufe S, Hupa-Breier KL, Bayerle P, Boeck HT, Rolff S, Sundermeier T, et al.
622 Telemonitoring-Supported Exercise Training in Employees With Metabolic Syndrome
623 Improves Liver Inflammation and Fibrosis. *Clin Transl Gastroenterol.* 2021
624 Jun;12(6):e00371.
- 625 48. Rector RS, Uptergrove GM, Morris EM, Borengasser SJ, Laughlin MH, Booth FW, et al.
626 Daily exercise vs. caloric restriction for prevention of nonalcoholic fatty liver disease in the
627 OLETF rat model. *Am J Physiol-Gastrointest Liver Physiol.* 2011 May;300(5):G874–83.
- 628 49. Moore SC, Lee IM, Weiderpass E, Campbell PT, Sampson JN, Kitahara CM, et al.
629 Association of Leisure-Time Physical Activity With Risk of 26 Types of Cancer in 1.44 Million
630 Adults. *JAMA Intern Med.* 2016 Jun 1;176(6):816.
- 631 50. Rector RS, Thyfault JP, Morris RT, Laye MJ, Borengasser SJ, Booth FW, et al. Daily
632 exercise increases hepatic fatty acid oxidation and prevents steatosis in Otsuka Long-Evans
633 Tokushima Fatty rats. *Am J Physiol-Gastrointest Liver Physiol.* 2008 Mar;294(3):G619–26.

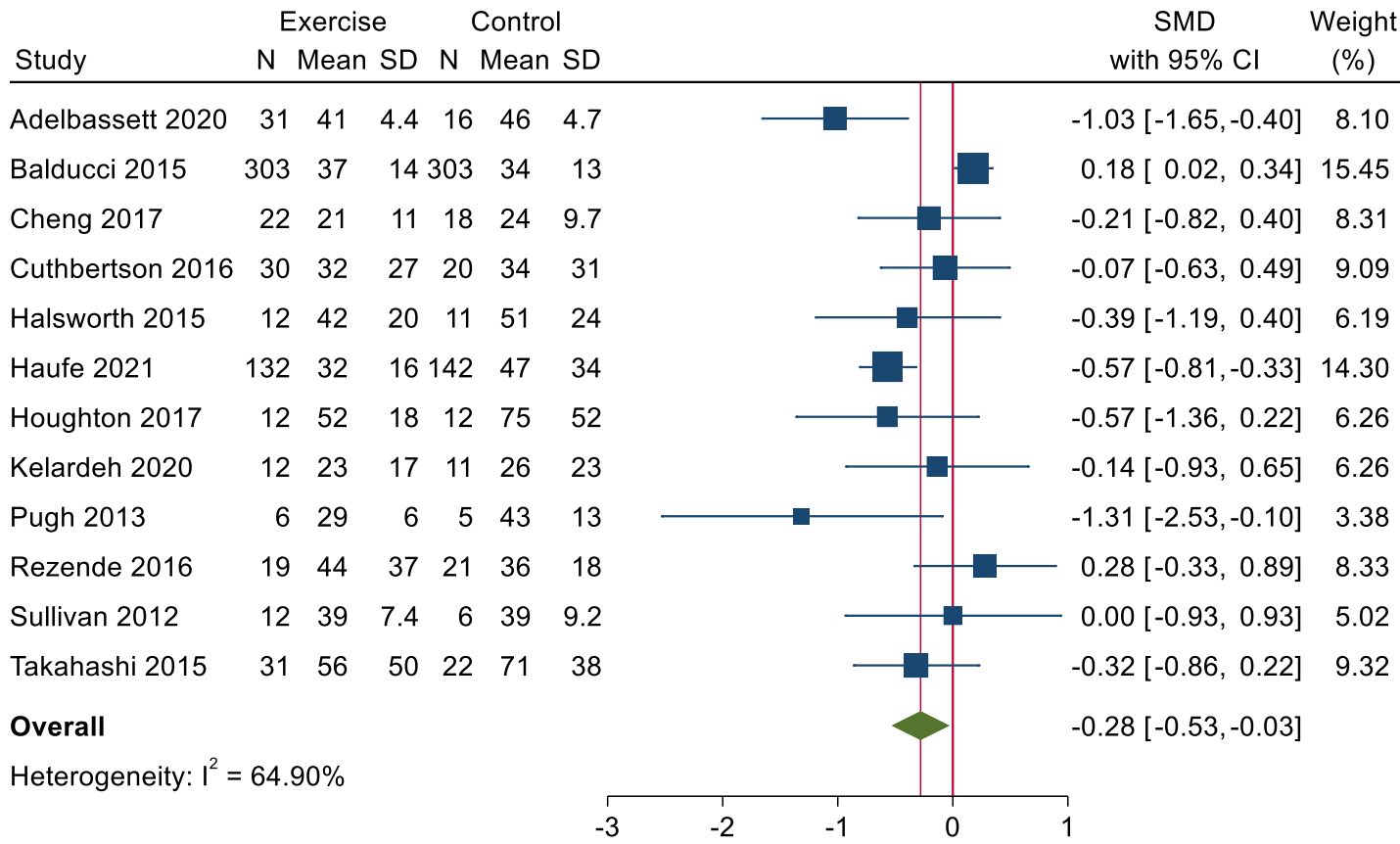
- 634 51. Fletcher JA, Meers GM, Laughlin MH, Ibdah JA, Thyfault JP, Rector RS. Modulating
635 fibroblast growth factor 21 in hyperphagic OLETF rats with daily exercise and caloric
636 restriction. *Appl Physiol Nutr Metab*. 2012 Dec;37(6):1054–62.
- 637 52. Borengasser SJ, Rector RS, Uptergrove GM, Morris EM, Perfield JW, Booth FW, et al.
638 Exercise and Omega-3 Polyunsaturated Fatty Acid Supplementation for the Treatment of
639 Hepatic Steatosis in Hyperphagic OLETF Rats. *J Nutr Metab*. 2012;2012:1–12.
- 640 53. Cho J, Kim S, Lee S, Kang H. Effect of Training Intensity on Nonalcoholic Fatty Liver
641 Disease. *Med Sci Sports Exerc*. 2015 Aug;47(8):1624–34.
- 642 54. Cho J, Koh Y, Han J, Kim D, Kim T, Kang H. Adiponectin mediates the additive effects of
643 combining daily exercise with caloric restriction for treatment of non-alcoholic fatty liver. *Int J*
644 *Obes*. 2016 Nov;40(11):1760–7.
- 645 55. Dallak MA, Bin-Jaliah I, Albawardi A, Haidara MA, Sakr HF, Eid RA, et al. Swim exercise
646 training ameliorates hepatocyte ultrastructural alterations in rats fed on a high fat and sugar
647 diet. *Ultrastruct Pathol*. 2018 Mar 4;42(2):155–61.
- 648 56. Ghareghani P, Shanaki M, Ahmadi S, Khoshdel AR, Rezvan N, Meshkani R, et al. Aerobic
649 endurance training improves nonalcoholic fatty liver disease (NAFLD) features via miR-33
650 dependent autophagy induction in high fat diet fed mice. *Obes Res Clin Pract*. 2018
651 Jan;12(1):80–9.
- 652 57. Gonçalves IO, Maciel E, Passos E, Torrella JR, Rizo D, Viscor G, et al. Exercise alters liver
653 mitochondria phospholipidomic profile and mitochondrial activity in non-alcoholic
654 steatohepatitis. *Int J Biochem Cell Biol*. 2014 Sep;54:163–73.
- 655 58. Gonçalves IO, Passos E, Diogo CV, Rocha-Rodrigues S, Santos-Alves E, Oliveira PJ, et al.
656 Exercise mitigates mitochondrial permeability transition pore and quality control
657 mechanisms alterations in nonalcoholic steatohepatitis. *Appl Physiol Nutr Metab*. 2016
658 Mar;41(3):298–306.
- 659 59. Gonçalves IO, Passos E, Rocha-Rodrigues S, Torrella JR, Rizo D, Santos-Alves E, et al.
660 Physical exercise antagonizes clinical and anatomical features characterizing Lieber-
661 DeCarli diet-induced obesity and related metabolic disorders. *Clin Nutr*. 2015
662 Apr;34(2):241–7.
- 663 60. Guarino M, Kumar P, Felser A, Terracciano LM, Guixé-Muntet S, Humar B, et al. Exercise
664 Attenuates the Transition from Fatty Liver to Steatohepatitis and Reduces Tumor Formation
665 in Mice. *Cancers*. 2020 May 29;12(6):1407.
- 666 61. Kristensen CM, Dethlefsen MM, Tøndering AS, Lassen SB, Meldgaard JN, Ringholm S, et
667 al. PGC-1 α in hepatic UPR during high-fat high-fructose diet and exercise training in mice.
668 *Physiol Rep*. 2018 Aug;6(15):e13819.
- 669 62. La Fuente FP de, Quezada L, Sepúlveda C, Monsalves-Alvarez M, Rodríguez JM, Sacristán
670 C, et al. Exercise regulates lipid droplet dynamics in normal and fatty liver. *Biochim Biophys*
671 *Acta BBA - Mol Cell Biol Lipids*. 2019 Dec;1864(12):158519.

- 672 63. Linden MA, Fletcher JA, Morris EM, Meers GM, Kearney ML, Crissey JM, et al. Combining
673 metformin and aerobic exercise training in the treatment of type 2 diabetes and NAFLD in
674 OLETF rats. *Am J Physiol-Endocrinol Metab.* 2014 Feb 1;306(3):E300–10.
- 675 64. Linden MA, Sheldon RD, Meers GM, Ortinau LC, Morris EM, Booth FW, et al. Aerobic
676 exercise training in the treatment of non-alcoholic fatty liver disease related fibrosis: Treating
677 western diet-induced NASH with exercise. *J Physiol.* 2016 Sep 15;594(18):5271–84.
- 678 65. Ok DP, Ko K, Bae JY. Exercise without dietary changes alleviates nonalcoholic fatty liver
679 disease without weight loss benefits. *Lipids Health Dis.* 2018 Dec;17(1):207.
- 680 66. Sakr HF, Abbas AM, Haidara MA. Swimming, but not vitamin E, ameliorates prothrombotic
681 state and hypofibrinolysis in a rat model of nonalcoholic fatty liver disease. *J Basic Clin
682 Physiol Pharmacol.* 2018 Jan 26;29(1):61–71.
- 683 67. Simko V, Kelley RE, Dincsoy HP, Gimmon Z, Willmann K. Exercise in rats with liver injury
684 induced by carbon tetrachloride or bile duct obstruction. Blood cholic acid and liver
685 histology. *Res Exp Med (Berl).* 1982 Jun;181(2):135–45.
- 686 68. Tang H, Tan X, Zhu L, Qin K, Gao H, Bai H. Swimming prevents nonalcoholic fatty liver
687 disease by reducing migration inhibitory factor through Akt suppression and autophagy
688 activation. *Am J Transl Res.* 2019;11(7):4315–25.
- 689 69. Xia SF, Jiang YY, Qiu YY, Huang W, Wang J. Role of diets and exercise in ameliorating
690 obesity-related hepatic steatosis: Insights at the microRNA-dependent thyroid hormone
691 synthesis and action. *Life Sci.* 2020 Feb;242:117182.
- 692 70. Sato Y, Qiu J, Miura T, Kohzuki M, Ito O. Effects of Long-Term Exercise on Liver Cyst in
693 Polycystic Liver Disease Model Rats. *Med Sci Sports Exerc.* 2020 Jun;52(6):1272–9.
- 694

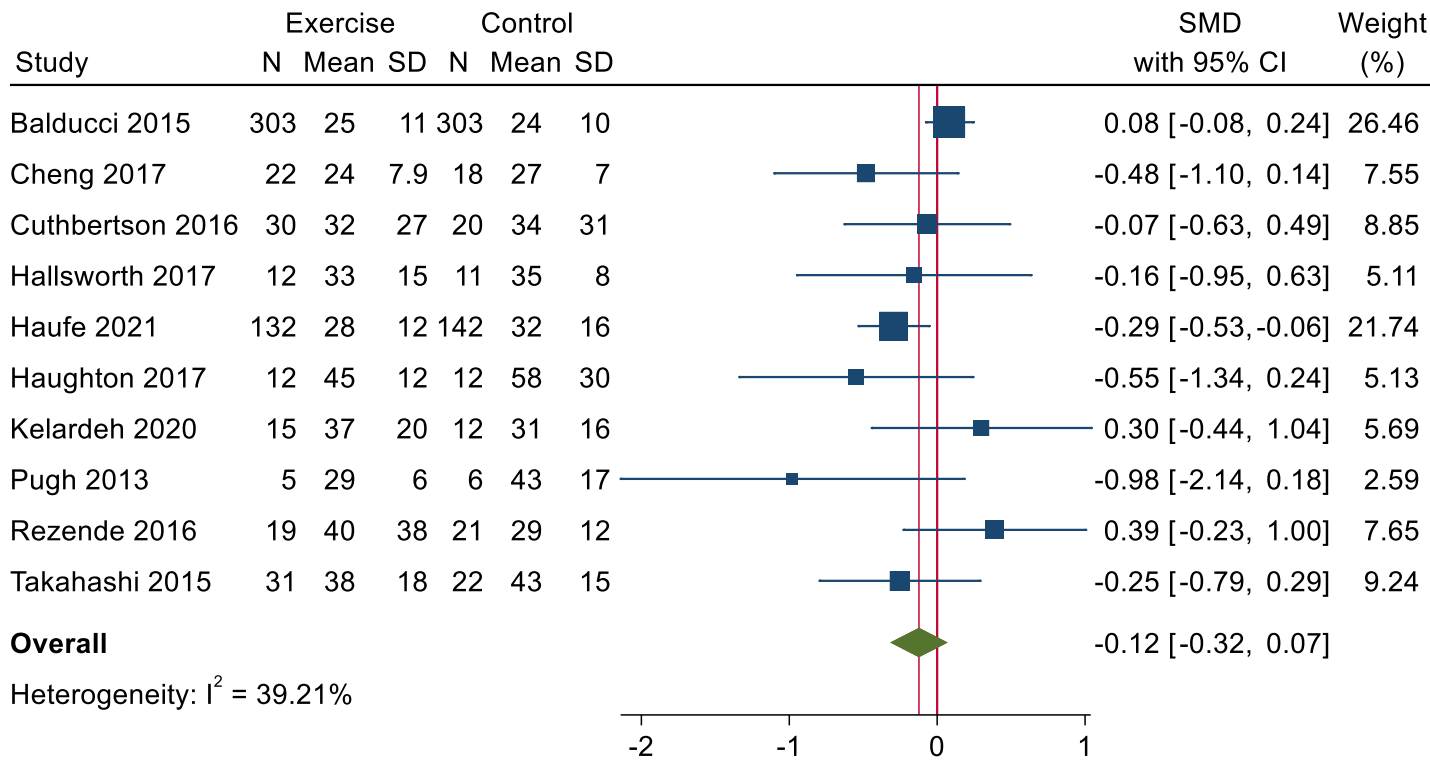


Meta-analysis of human studies

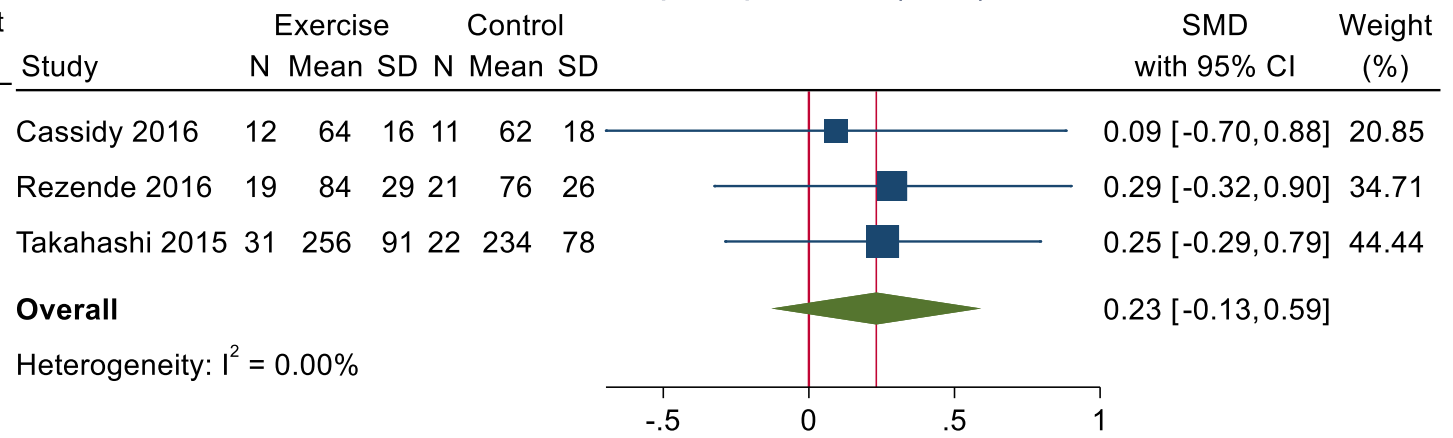
A. Alanine transaminase (ALT)



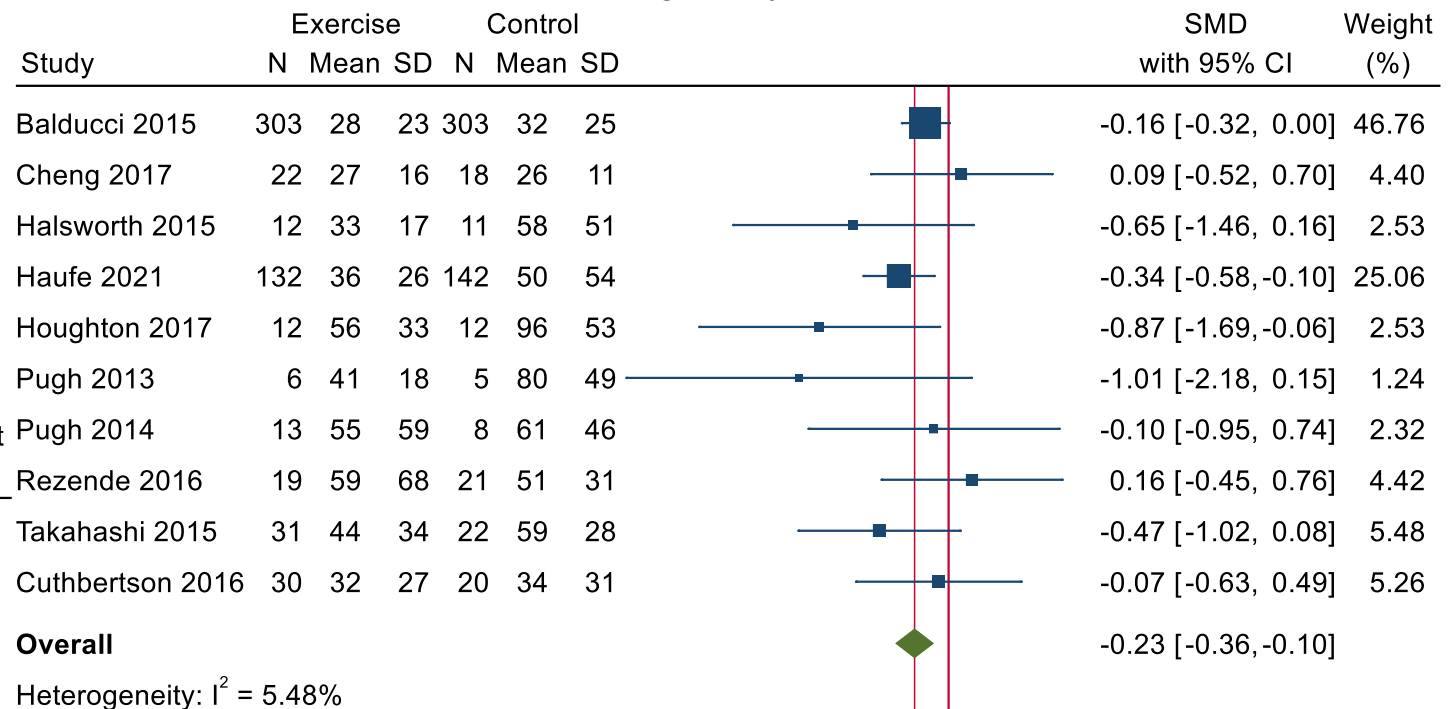
B. Aspartate transferase (AST)



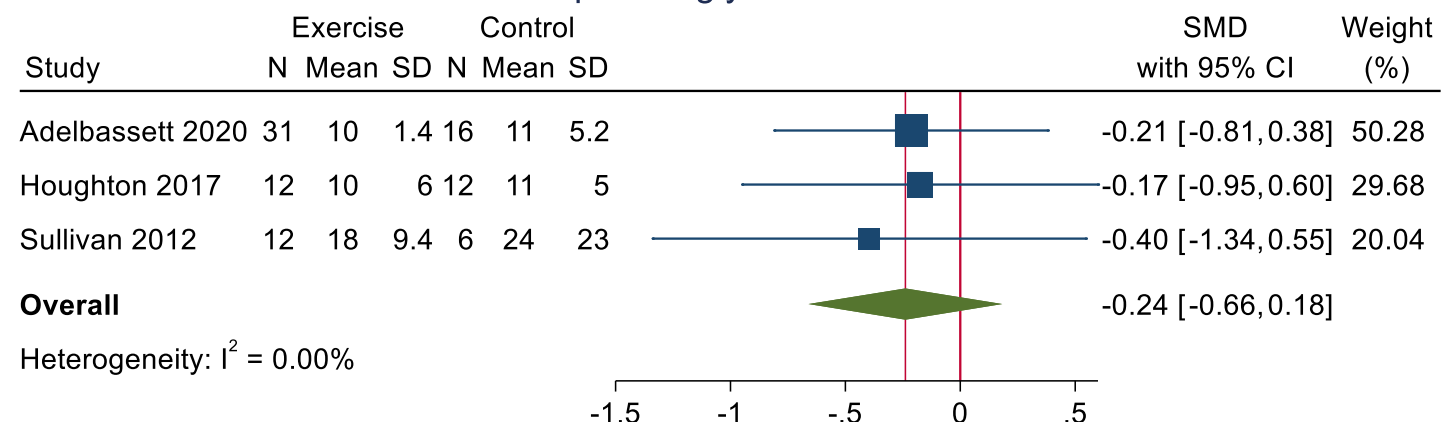
C. Alkaline phosphatase (ALP)



D. Gamma-glutamyl transferase

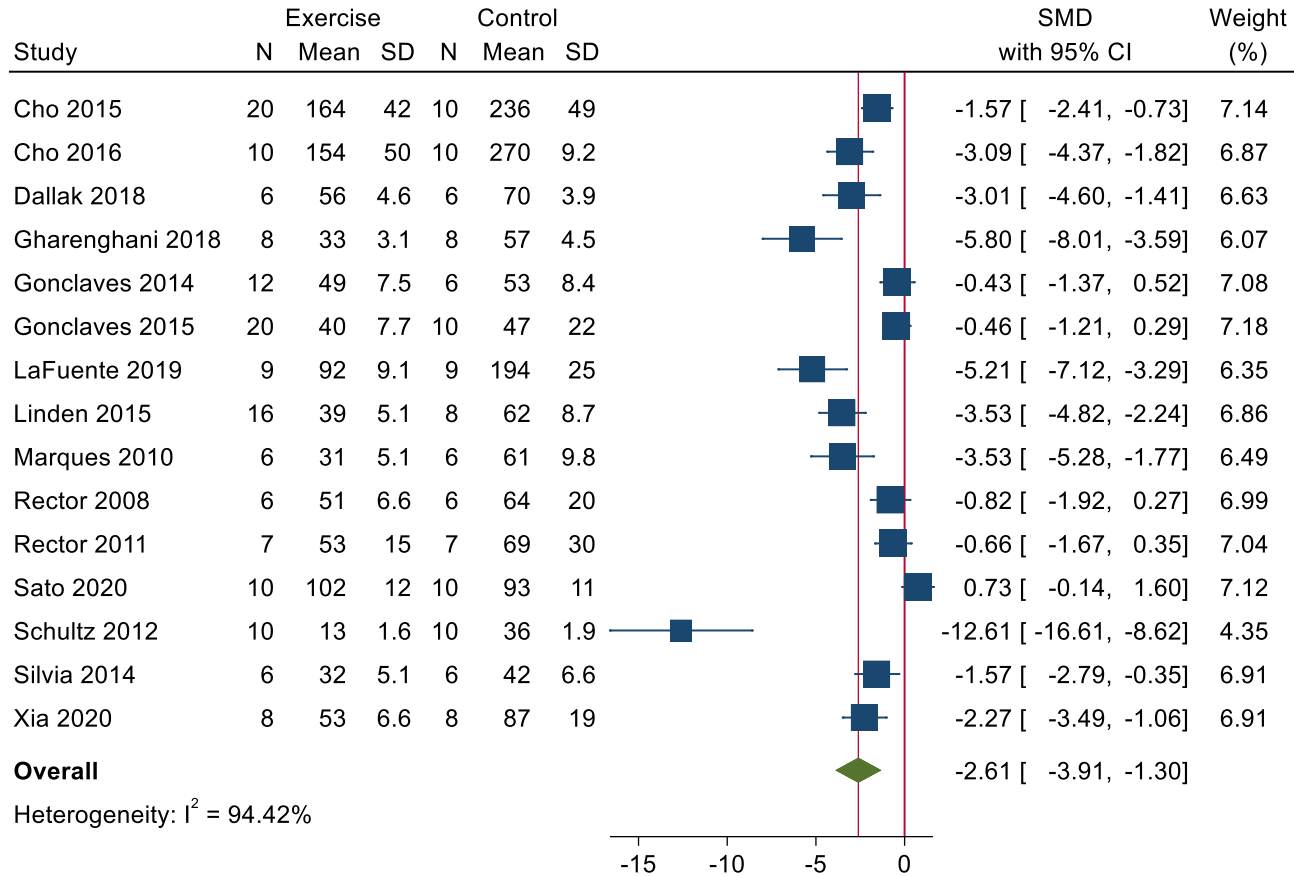


E. Hepatic triglyceride content

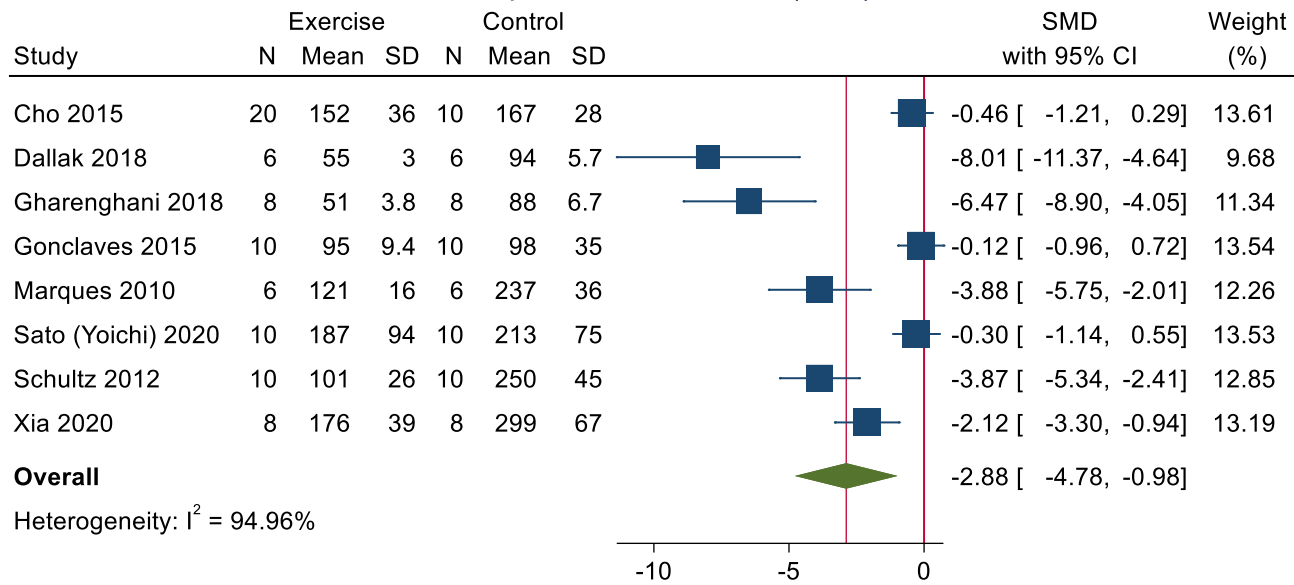


Meta-analysis of animal studies

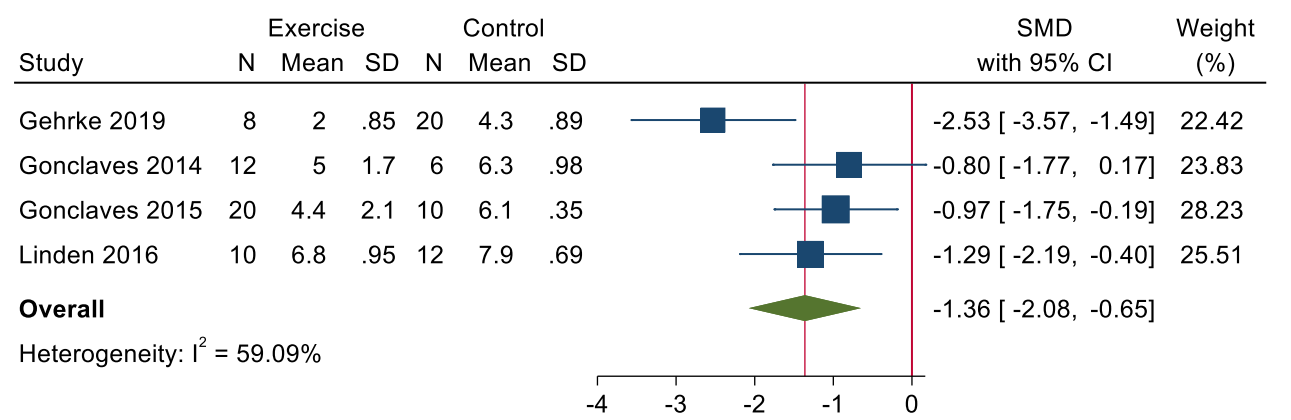
A. Alanine transaminase (ALT)



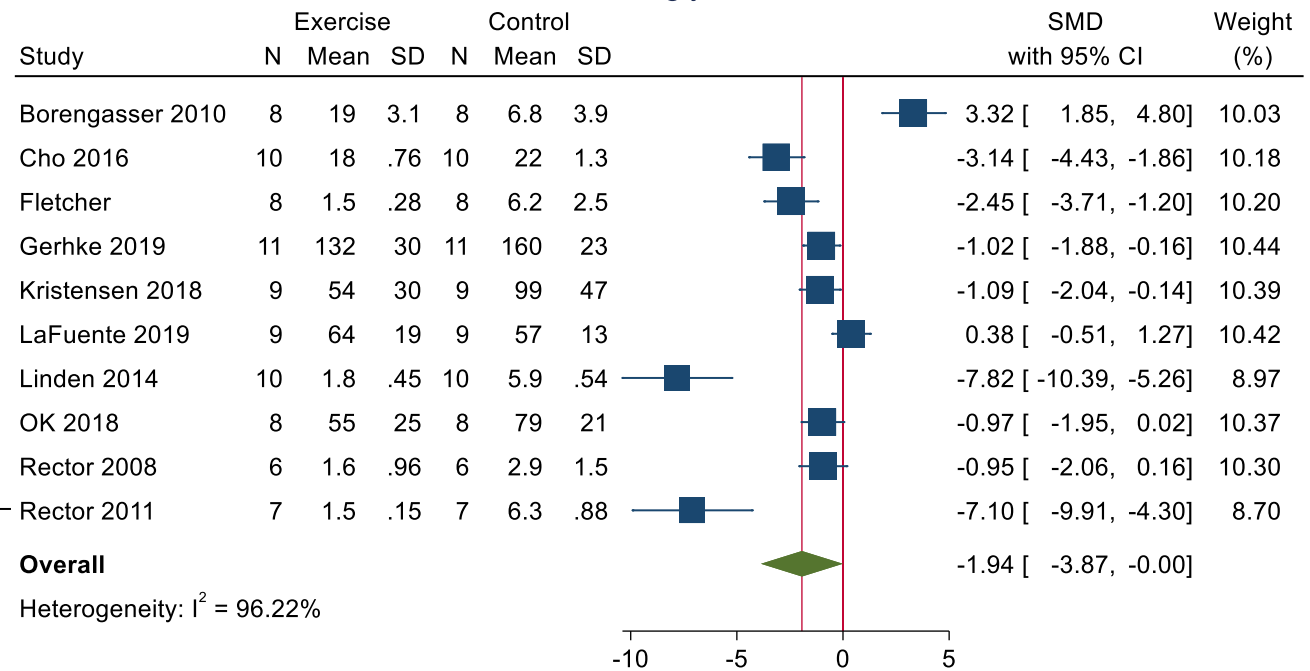
B. Aspartate transferase (AST)



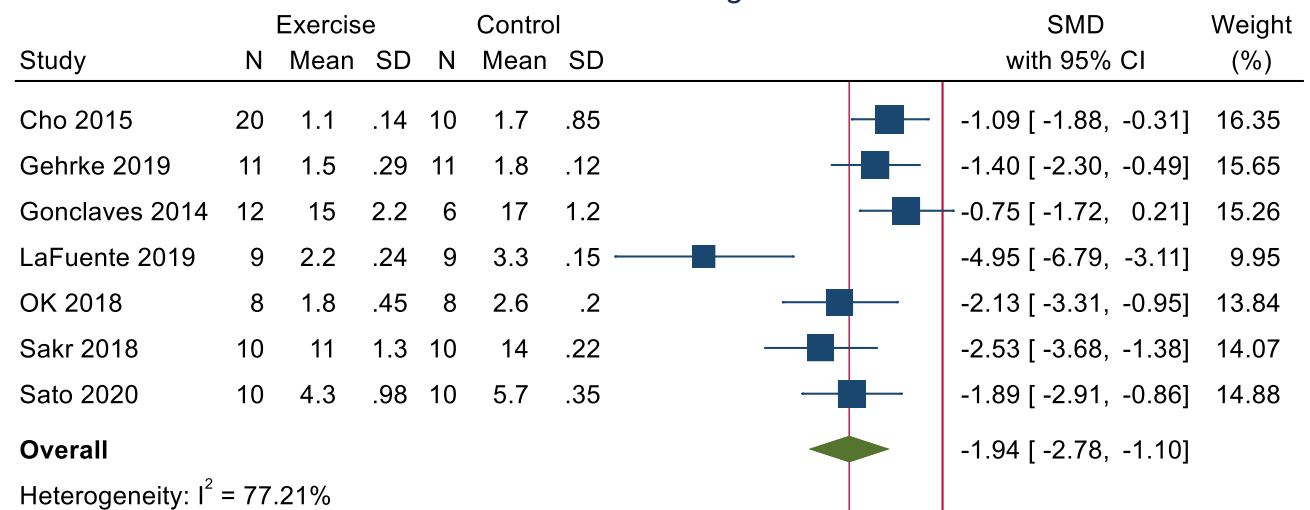
C. NAFLD Activity Score (NAS)



D. Liver Triglycerides



E. Liver Weight



Study	Location	Design	Animal type (description), mean age	Liver disease, inducement method and inducement duration	Exercise groups	Comparison groups
Borengasser 2010	USA	Parallel RCT	Rats (OLETF male rats). 13-weeks old.	Hepatic steatosis, Genetic phenotype	Standard diet. Voluntary wheel running. N = 8. 7-weeks. Standard diet and fish oil. Voluntary wheel running. N = 8. 7-weeks.	Standard diet. N = 8. 8-weeks. Standard diet and fish oil. N = 8. 8-weeks.
Cho 2015	Korea	Parallel RCT	Mouse (Male C57BL/6). 4-weeks old.	NAFLD, diet induced over 8-weeks	High fat diet and vigorous exercise. N = 10. 8-weeks. High fat diet and moderate exercise. N = 10. 8-weeks.	Control diet. N = 6-7. 16-weeks. High fat diet. N = 30. 8-weeks.
Cho 2016	Republic of Korea	Parallel RCT	Mice (C57BL/6 male mice), 4 weeks old	NAFLD, diet induced over 16-weeks	High fat diet and continuous exercise. N = 10. 8-weeks. High fat diet then standard diet and exercise. N = 10. 8-weeks.	Standard diet. N = 10. 24-weeks. High fat diet. N = 10. 24-weeks. High fat diet to standard diet. N = 10. 24 weeks (HFD) + 8-weeks (standard).
Dallak 2018	Saudi Arabia	Parallel RCT	Rats (Sprague Dawley. Sex not indicated). Unreported age.	NAFLD, diet induced over 15-weeks	Standard diet. Swimming exercise. N = 6. 15-weeks (4-weeks exercise). High cholesterol and fructose diet. Swimming exercise. N = 6. 15-weeks (4-weeks exercise).	Standard diet. N = 6. 15-weeks. High cholesterol and fructose diet. N = 6. 15-weeks.
Fletcher 2012	USA	Parallel RCT	Rats (OLETF males). 4-weeks old.	NAFLD, genetic phenotype.	OLETF rats. Voluntary exercise. N = 8. 36-weeks.	LETO rats. Standard diet. Sedentary. N = 8. 36-weeks. OLETF rats. Standard diet. Sedentary. N = 7. 36-weeks.
Gauthier 2004	Canada	Parallel RCT	Rats (Sprague-Dawley female). 6-weeks old.	Hepatic steatosis, diet induced over 8-weeks	High fat diet and continuous exercise. N = 9 (from arm 2). 8-weeks.	Control diet, sedentary. N = 9. 16-weeks. High fat diet. Sedentary. N = 18. 8-weeks.
Gehrke 2019	Germany	Parallel RCT	Mice (C57BL/6J male mice). 8-10 weeks old.	NAFLD, diet induced over 8-weeks.	Control diet and plain water. Voluntary exercise. N = 11. 12-weeks. High fat diet and enriched water. Voluntary exercise N = 11. 12-weeks.	Control diet and plain water. Sedentary. N = 11. 12-weeks. High fat diet and enriched water. N = 11. 12-weeks.
Gharenghani	Iran	Parallel RCT	Mice (C57	NAFLD, diet	High fat diet and continuous	Standard diet. N = 8. 10 or 23

2018			male mice), age not reported.	induced over 13-weeks	exercise. N = 8. 10-weeks of exercise.	weeks. High fat diet. N = 8. 10 or 23 weeks.
Goncalves 2014	Portugal	Parallel RCT	Rats (Sprague-Dawley males). 5-6 weeks old.	NASH, diet induced over 17-weeks	Standard diet. Voluntary physical activity. N = 6. 17-weeks. Standard diet. Continuous exercise. N = 6. 8-weeks. High fat diet. Voluntary physical activity. N = 6. 17-weeks. High fat diet. Continuous exercise. N = 6. 8-weeks.	Standard diet. Sedentary. N = 6. 17-weeks. High fat diet. Sedentary. N = 6. 8-weeks.
Gonclaves 2014b	Portugal	Parallel RCT	Rats (Sprague-Dawley). 5-6 weeks old.	NASH, diet induced over 17-weeks	Standard diet. Voluntary exercise. N = 6. 17-weeks. Standard diet. Continuous exercise. N = 6. 17-weeks. High fat diet. Voluntary physical activity. N = 6. 17-weeks. High fat diet. Continuous exercise. N = 6. 8-weeks.	Standard diet. Sedentary. N = 6. 17-weeks. High fat diet. Sedentary.
Gonclaves 2015	Portugal	Parallel RCT	Rats (Sprague-Dawley). 5-6 weeks old.	NASH, diet induced over 17-weeks	Standard diet. Voluntary exercise. N = 10. 17-weeks. Standard diet. Continuous exercise. N = 10. 17-weeks. High fat diet. Exercise training. N = 10 (half of arm 2). 8-weeks of exercise.	Standard diet. Sedentary. N = 20. 17-weeks. High fat diet. Sedentary. N = 20. 17-weeks.
Gonclaves 2016	Portugal	Parallel RCT	Rats (Male Sprague Dawley). 5-6 weeks old.	NASH, diet induced over 17-weeks	Standard diet. Voluntary physical activity. Unclear N. 17-weeks. Standard diet. Continuous exercise. Unclear N. 8-weeks. High fat diet. Voluntary physical activity. Unclear N. 17-weeks. High fat diet. Continuous exercise. Unclear N. 8-weeks.	Sedentary. Unclear N. 17-weeks. High fat diet. Unclear N. 8-weeks.
Guarino 2020	Switzerland	Parallel RCT	Mice (C57Bl/6N male mice). 9-weeks old.	NAFLD, diet induced over 12-20-weeks	Choline deficient high fat diet. Continuous exercise. N = 11. 8-weeks.	Standard diet. Sedentary. N = 11. 12-weeks. Choline deficient high fat diet. N = 11. 12-weeks.
Kristensen 2018	Denmark	Parallel RCT	Mouse (Liver-specific PGC-1a knockout (LKO), Floxed mice, Cre	Hepatic steatosis, diet induced over 14-weeks	Floxed mice. High fat diet. Continuous exercise. N = 9-10. 9 weeks diet, 5-weeks exercise. Knockout mice. High fat diet. Continuous exercise. N = 9-10. 9	Floxed mice. Control diet. N = 9-10. 14-weeks. Control diet. Knockout mice. N = 9-10. 14-weeks.

			mice). 8-9 weeks.		weeks diet, 5-weeks exercise.	
La Fuente 2019	South America	Parallel RCT	Mice (Male C57/BL6). 4-weeks old.	NAFLD, diet induced over 20-weeks	Standard diet. Continuous exercise. N = 9. 20-weeks. High fat diet. Continuous exercise. N = 9. 20-weeks.	Control diet. Sedentary. N = 6. 20-weeks. High fat diet. Sedentary. N = 9. 20-weeks.
Linden 2014	USA	Parallel RCT	Rats (Type 2 diabetic OLETF male rats/ Long-Evans Tokushima Otsuka (LETO) rats as controls). 20-weeks old.	NAFLD, sedentary OLETF rats develop NAFLD and hyperinsulinemia.	OLETF rats. Continuous exercise. N = 10. 12-weeks.	LETO rats. Sedentary. N = 10. 12-weeks. OLETF rats. Sedentary. N = 10. 12-weeks.
Linden 2015	USA	Parallel RCT	Rats (OLETF male rats). 20-weeks old.	NASH, diet induced over 20-weeks	OLETF- rats. Moderate exercise. N = 8-10. 12-weeks. OLETF- rats. Vigorous exercise. N = 8-10. 12-weeks.	OLETF-sedentary rats. N = 8-10. 12-weeks. High fat diet. N = 8-10. 12-weeks.
Linden 2016	USA	Parallel RCT	Rats (Otsuka Long-Evans Tokushima Fatty (OLETF) and LETF (control) male rats). 8 or 20 weeks old.	Liver Fibrosis, diet induced over 12-weeks	Continuous moderate intensity exercise. N = 10. 12-weeks.	Sedentary. N = 12. 12-weeks. Food restriction. N = 9. 12-weeks.
Marques 2010	Brazil	Parallel RCT	Mice (C57BL/6 male mice). 3-months old.	NAFLD, diet induced over 8-weeks	Standard diet. Continuous exercise. N = 6. 8-weeks. High fat diet. Exercise. N = 6. 8-weeks.	Standard diet. N = 6. 8-weeks. High fat diet. N = 6. 8-weeks.
Ok 2018	Korea	Parallel RCT	Mice (Male C57/BL6). 8-weeks old.	NAFLD, diet induced over 24-weeks	High fat diet. Continuous exercise. N = 8. 24-weeks (8-weeks of exercise). High fat diet to normal diet and continuous exercise. N = 8. 24-weeks (8-weeks of exercise).	Control diet. Sedentary. N = 8. 24-weeks.
Rector 2008	USA	Parallel RCT	Rats (OLETF male rats). 4-weeks old.	NAFLD, OLETF rats develop hepatic steatosis and mild inflammation	OLETF rats. Continuous exercise. N = 6-8. 16-weeks.	OLETF. Sedentary. N = 6-8. 16-weeks.

				comparable to NAFLD		
Rector 2011	USA	Parallel RCT	Rats (OLETF rats and LETO male rats). 4-weeks old.	NAFLD, OLETF rats develop hepatic steatosis and mild inflammation comparable to NAFLD	OLETF rats. Voluntary exercise. N = 7-8. 36-weeks.	LETO. Sedentary. N = 7-8. 36-weeks. OLETF. Sedentary. N = 7-8. 36-weeks. OLETF rats and caloric restriction. N = 7-8. 36-weeks.
Sakr 2018	Egypt	Parallel RCT	Rats (Sprague-Dawley male mice). Unreported age.	NAFLD, diet induced over 15-weeks	Standard diet. Swimming exercise. N = 10. 15-weeks. Standard diet + vitamin E. Swimming. N = 10. 15-weeks. High fat diet. Swimming. N = 10. 15-weeks.	Standard diet. N = 6. 15-weeks. Standard diet + vitamin E. N = 10. 15-weeks. High fat diet. N = 10. 15-weeks.
Sato (Yoichi) 2020	Japan	Parallel RCT	Rats (PCK and Sprague-Dawley males). 5-weeks old.	Polycystic liver disease, Mutant rats with disease	PCK rats. Continuous exercise. N = 10. 12-weeks.	Sprague-Dawley rats. Sedentary. N = 10. 12-weeks. PCK rats. N = 10. 12-weeks.
Schultz 2012	Brazil	Parallel RCT	Mice (C57BL/6 male mice). 12-weeks old.	NAFLD, diet induced over 10-weeks	Standard diet. Swimming. N = 10. 12 weeks + 10-weeks. High fat diet. Swimming. N = 5. 12+10 weeks.	Standard diet. Sedentary. N = 10. 12 weeks + 10-weeks. High fat diet. Sedentary. N = 5. 12+10 weeks.
Silva 2014	Brazil	Parallel RCT	Rats (male Wistar). Unclear age.	NAFLD, diet induced over 12-weeks	Control diet and swimming. N = 6-7. 4-weeks of swimming. High fat diet and swimming. N = 6-8/ 4-weeks of swimming.	Control diet. N = 6-7. 16-weeks. High fat diet. N = 6-7. 16-weeks.
Simko 1982	USA	Parallel RCT	Rats (Male Sprague Dawley). Unclear age.	Treatment with carbon tetrachloride or extrahepatic obstruction, Drug induced over 20-days.	CCL4 treatment. Swimming. N = 8. 20-days. Tied bile duct. Swimming. N = 10. Unclear timing.	Sedentary. N = 9. 20-days. CCL4 treatment. Sedentary. N = 7. 20-days.
Tang 2019	China	Parallel RCT	Mice (C57/BL6 wild type and migration inhibitory factor KO male mice). 6-	NAFLD, diet induced over 10-weeks	Wild type mice. High fat diet. Swimming. N = 5. 10+10-weeks. Migration inhibitory factor knock out mice. High fat diet. Exercise. N = 5. 10+10-weeks.	Wild type mice. High fat diet. Sedentary. N = 5. 10+10-weeks. Migration inhibitory factor knock out mice. High fat diet. N = 5. 10+10-weeks.

			weeks old.			
Xia 2020	China	Parallel RCT	Mice (Sprague-Dawley). 4-weeks.	Hepatic steatosis, diet induced over 10-weeks	Obesity prone mice (from high fat diet). Continuous exercise. N = 8. 7-weeks.	Low fat diet. Sedentary. N = 8. 17-weeks. High fat diet. Sedentary. N = 80 (initially). 10-weeks. Obesity prone mice (as above). Maintained diet and sedentary status. N = 8. 7-weeks.

Table 1. Characteristics of included human studies

Study	Location	Randomised design	Diagnosis	Sample N	Female (%)	Follow-up duration (weeks)	Intervention: comparison N	Intervention arm(s) description	Comparison arm(s) description
Abdelbasset 2020	Egypt	Controlled	NAFLD	48	43	8	32:16	a) MICT b) HIIT	Control
Balducci 2015	Italy	Controlled	T2DM	606	42	52	303:303	a) Low-MICT + RT b) Mod-HICT + RT	Standard care
Cheng 2017	China	Controlled	NAFLD	115	77	34	58:57	a) MICT b) MICT + diet	a) No intervention b) Diet
Hallsworth 2011	UK	Controlled	NAFLD	19	NR	8	11:8	RT	Control
Hallsworth 2015	UK	Controlled	NAFLD	29	NR	12	15:14	HIIT	Standard care
Haufe 2021	Germany	Controlled	MetS	314	14	26	160:154	MICT	Wait-list control
Houghton 2017	UK	Controlled	NASH	24	NR	12	12::12	MICT + RT	Standard care
Kelardeh 2020	Iran	Placebo	NAFLD	45	100	12	23:22	a) RT b) RT + curcumin	a) Curcumin placebo b) Curcumin
Pugh 2013	UK	Controlled	NAFLD	13	54	16	6:5	MICT	Standard care
Pugh 2014	UK		NAFLD	21	48	16	18:13	MICT	Diet and PA advice
Rezende 2016	Brazil	Controlled	NAFLD	44	100	24	21:23	MICT	Control
Sirisunhirun 2022	Thailand		Liver Cirrhosis	40	35	12	20:20	MICT + RT	PA advice & self-monitoring
St George 2009	Australia	Controlled	NAFLD	141	38	13	107:34	a) MICT + 3 CS b) MICT + 6 CS c) MICT + 6 CS + TS	Control
Sullivan 2012	USA	Controlled	NAFLD	18	72	16	12:6	MICT	Control
Takahashi 2015	Japan		NAFLD	53	64	12	31:22	RT	Diet and PA advice
Tutino 2018	Italy	Comparative	NAFLD	142	40	13	101:41	a) MICT b) MICT + RT	a) Control diet b) LGIMD

								c) MICT + LGIMD d) MICT + RT + LGIMD	
Zelber-Sagi 2014	Israel	Placebo	NAFLD	82	47	12	44:38	RT	Stretching
Zhang 2016	China	Controlled	NAFLD	220	68	48	146:74	VICT + MICT	Control